

**ORLANDO GAY CHORUS**  
*presents*

# Carry a Torch

**Terry Thomas,  
Artistic Director**

**June 22 and June 23, 2002**

**Annie Russell Theatre at Rollins College**





For the *Díva* in each of us



# Rainbow City

*Orlando's Gay Pride Megastore*

936 N Mills Avenue

Orlando FL 32803

407-898-6096

rainbowcityfla@aol.com



We 2 Have Parental Rights, is a foundation focused on bringing to light the on-going efforts for legal fairness when dealing with the gay and lesbian family.

Although gay and lesbian issues have never been more at the forefront in the judicial and legislative arenas, many jurisdictions and states still refuse to treat a family involving a same-sex couple with the same standards as heterosexual couples. In this new century, it is a goal for law makers and people in power to recognize that the innate face of the family is changing, and that the delicate bonds that hold people together must be dealt with using understanding, fairness, and with an eye to the well being of our most innocent, the children.

We 2 Have Parental Rights now has a website and attempts to bring together the resources, individuals, and focus needed to help fight for Parental Rights for everyone, and protect the important relationship between the child and the parent first.

If you would like to help or share your support with us, please go to our site:

[www.we2haveparentalrights.com](http://www.we2haveparentalrights.com)

You can also either email or phone Lisa Coons-Andersen  
Founder of the Foundation and Moderator of the website:

407-415-1990 Phone  
407-291-6409 Fax  
PO Box 607537  
Orlando, FL 32860

[Lisa@we2haveparentalrights.com](mailto:Lisa@we2haveparentalrights.com)



Help Our Children Know "We Care What Happens to You After a Break-UP"





The best relationships are the ones you never outgrow.

The same is true when it comes to your financial life. That's why at Bank of America, you'll find everything you need to manage your money, from your first bank account through retirement. And it's why we'll work with you to find the right accounts and services now and as your financial goals change. To get the most from your banking relationship, call us at 1.800.900.9000 or visit us at [bankofamerica.com](http://bankofamerica.com).

**Bank of America.**



Official Sponsor 2000-2004  
U.S. Olympic Team

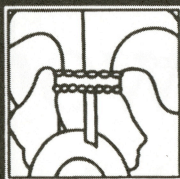
Bank of America, N.A. Member FDIC.

©2002 Bank of America Corporation. 991616  
SPN-44-1P-05000387-AD



# Maitland Art Center

*National Register of Historic Places*



*Exhibitions Lectures Workshops  
Museum Store Studio Classes Wedding Site*

231 West Packwood Avenue ■ Maitland, Florida 32751-5596  
Call: (407) 539-2181 ■ Fax: (407) 539-1198 ■ [www.maitartctr.org](http://www.maitartctr.org)

## PRESIDENT'S MESSAGE

Welcome to "*Carry A Torch*" our concert that celebrates our loves, our lives and our music. We are very excited to bring you this concert not only because it wraps up another concert season, but because we are performing two pieces that were commissioned specifically by and for the *Orlando Gay Chorus*: "*Carry The Torch*" and "*Pass the Torch*."

"*Carry The Torch*" is one of those phrases that evokes images such as a marathon runner lighting the Olympic flame or a single light in the vast darkness or even holding on to a strong belief against substantial opposition. For gay men and women it is symbolic of the need to continually educate our neighbors of who we really are and of our right to be treated fairly and without prejudice.

It is with mixed emotions that we announce that this will be the last concert we perform at the Annie Russell Theatre. We will be performing our next season's concerts at the UCF Shakespeare Festival's Margeson Theatre. The Festival Theatre is located in Loch Haven park, behind the Orlando Science Center. We will miss working with the Rollins College faculty and staff and our second home at the Annie Russell.

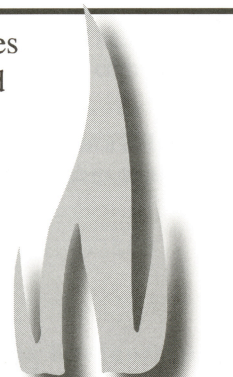
Even as we move in to our new home we will continue to carry the torch of inspiring individuals, the community and the world through excellence in musical entertainment.

Keep the torch burning in your life and we hope to see you in December for our Holiday concert at the UCF Shakespeare Festival Theatre.

Take care and all the best,

*Stephen Rhéaume*

President, Orlando Gay Chorus





*The Law Office*  
*of*  
**Norman S. Moss, P.A.**

*Can provide the legal services you require*

*Whether it is*

- *Estate Planning*
- *Medicaid Planning*
- *Contract Labor*
- *Probate Law*
- *Real Estate Law*
- *Elder Law*
- *Personal Bankruptcy*
- *Guardianship Law*

*We are a neighborhood Law Firm*

*Call us for a Free Half-Hour Consultation*

*at*

*(407) 888-3332*

*toll-free 1-877-6991*

*www.NSMPALAW.com*

*Handicap accessible*

## HONOR ROLL OF DONORS

Please consider joining the OGC Honor Roll of Donors. Your contribution will help ensure our success of using music to 1) change images and attitudes; 2) build a stronger community, and; 3) make the world a better place. Please help keep our chorus singing!

Donations to the Orlando Gay Chorus are tax deductible. OGC was founded as a 501(c)(3) not-for-profit in 1990. Revenue is generated through ticket sales, membership dues, corporate contributions and general public donations.

Donations may be sent to: OGC, PO Box 3103, Orlando, FL 32802.

### ANGEL (\$1000 - OVER)

AirTran Airways, Anonymous, Bank of America, Darden Restaurants, Joy Metropolitan Community Church, Daniel R. Grell, LC Sales & Marketing, Rainbow City, United Arts of Central Florida, Walt Disney World, Washington Mutual, Watermark

### BENEFACTOR (\$500 - \$999)

Anonymous, Fred Berliner, David Bain, Full Moon Saloon, Tim Gough, Harcourt School Publishers, Matt Knight, Stephen Rhéaume, Orlando Gay Events (Gay & Lesbian Film Series), Glenn Swank, Universal Orlando

### PATRON (\$250 - \$499)

Arvida Realty Foundation, AT&T, Kimberly A. Bowles, John Cutsinger, Don Dennis, Dish & Dat, Marie France, Hard Rock Hotel, Jerry Hedgepath & Rodd Sanders, Illuminati, Inc., David James, Arthur "Joey" Miller, Michael Slaymaker, David Schuler & Dennis Pierce, James G. Shepp, TOC Productions

### SPONSOR (\$100 - \$249)

Dale Amlund, Ken Connor, Richard & Nancy Ericson, Jeff Henderson, Ty Knight, Manuel & Mimi Leal, Frank & Marion Lightbown, Matt McKnight, Robert Neighbour, Craig O'Neil, Kenneth Pyle, Lorraine & Penny Reed, Scott Rohlf, Kim Schave, Randi Schwartz, Elgan Stappe, Terry Thomas, The Peacock Room, John Tillis, Premier Beverage, Universal Studios Orlando, Tom Werner

### FRIENDS (OTHER)

George Alvan, Joan Andrews, Anonymous, Charles Aufhammer, Barry Berliner, Marsha Bishop, Terry Bledsoe, A. J. Calabrese, Carl Cannon, Colette Cholewa, James Decker, Jayne & Howard Elder, P. J. Finster, Lee Foster, John Flynn, Patrick Goodin, Handy Pantry, Kevin Haertling, Tim Hanes, Ridge Holdridge, Lillian Johnson, Patricia King, Margot Knight, Maitland Art Center, Todd Martin, Helen McDermott, Earl Miller, Jae Nale, Eileen Null, Orlando Weekly, Ty Ostreicher, Gary Paskal, John & Rebecca Payne, Tom Radtke, Dr. David Rice, Betsy Ritter, Mark Robinson, Stephen Rutledge, Michael Sheehan, Peggy Smith-Herbst, Roberta Starr, Gretchen Steinhauser, Dennis Stoneman, John Tims, Peggy van den Berg, Elizabeth Vandergrift, William Wing & Linda Gloeckner, WMFE-FM 90.7, WTKS Real Radio 104.1, Wylde's





# CONSIDER THIS AD A ROUND OF APPLAUSE.

Washington Mutual is happy to support  
**THE ORLANDO GAY CHORUS**

Winter Park Downtown  
301 S. New York Ave.  
Winter Park, FL 32789 — 407-645-2492

FDIC Insured



**Washington Mutual**  
LET US MAKE A FAN OUT OF YOU.

## ARTISTIC STAFF

### TERRY THOMAS, ARTISTIC DIRECTOR

Terry was born in Little Rock, Arkansas, but grew up in Terre Haute, Indiana. He earned his Bachelors Degree in Instrumental Music Education at Indiana State University. He then taught high school band in Indiana for 3 years. Terry worked and lived in Kuwait for 3 years as the Performing Arts Coordinator for the American School. He later returned to Indiana State where he earned his Masters Degree (vocal) and worked as a graduate assistant in Music Theory. After graduation Terry moved to Northern Ohio where he worked as a musician at Cedar Point Amusement Park. Terry's musical talent gave him the opportunity to once again leave the country, but this time with the Department of Defense in an entertainment tour to Germany for 6 weeks. After these worldly experiences, Terry made his way to Orlando to work at Disney in their finance area. The acting bug bit Terry, and in 1991 he moved to Rockford, Illinois to pursue his other passion – theater. After his 8-month theater gig was over, he returned to Orlando and once again Disney's Finance Department. Terry is currently a cast member at the Animal Kingdom as a performance coach.

Mr. Thomas was the founding pianist of OGC in 1990. He rejoined the Chorus on the road and played piano for a Key West concert in 1994. In 1995, Terry co-directed OGC's pride concert. We are pleased and excited that Mr. Thomas has returned to the Orlando Gay Chorus as Artistic Director.

### GENOA MINGA, ACCOMPANIST

Genoa is a native of Northeast Tennessee. She earned her Bachelors of Music Education in 1980 from Shenandoah College & Conservatory of Music in Winchester, Virginia. In 1981 she received her Masters of Music Education degree and has remained active in the music education field for the past nineteen years. Genoa has worked as accompanist with noted adjudicators such as Don Nuen and David Stutzenberger at the University of Tennessee, Michael Nuss from the University of Nebraska and others.

Ms. Minga has lived in the Central Florida area for three years. We are fortunate that she found the Orlando Gay Chorus and look forward to her many valued contributions.

### KATHY SLAGE, SOLOIST

The Orlando Gay Chorus is proud to welcome Kathy Slage back to the stage. Kathy was OGC's accompanist between 1995 and 2000, and she also lended her voice to several songs, not the least of which was "Sing Out!" Her voice fit the song so beautifully, that when the Music and Artistic Development committee decided to perform that piece in this concert, we knew that we had to try and get her to reprise her solo. She graciously accepted the invitation.

Kathy studied music at the University of Northern Colorado. She works with local theater groups and is a free-lance singer and instrumentalist. She teaches piano and flute; has her own entertainment company; and is a loving mother and wife.



# I WANT TO SHOOT YOU

Professional Video Production. Corporate,  
Industrial, Commercial, Training and  
Personal videos. Over 20 years of  
production and post production experience.

If a picture is worth a thousand words a  
video speaks volumes.

## C-RAE VIDEO PRODUCTIONS

407-296-6060

**Guilt, Emotions, Frustration, Denial Questions, Acceptance**

**“Been There, Done That”**

**Help Your Parents Come Out!**

PFLAG is a monthly confidential discussion group for parents, family and friends to talk, learn, and help understand more about the gay and lesbian community. Hearing and talking with other parents who have been and are currently going through their own "Coming Out" journey, may help your parents and family.

**PFLAG Mission Statement:** Parents, Families and Friends of Lesbians and Gays promotes the health and well-being of gay, lesbian, bisexual and transgendered persons, their families and friends through support, to cope with an adverse society; education, to enlighten an ill-informed public and advocacy, to end discrimination and to secure equal civil rights. PFLAG provides opportunities for dialogue about sexual orientation and gender identity, and acts to create a society that is healthy and respectful of human diversity.



**PFLAG Help Line**

**(407) 236-9177**

[www.gayorlando.com/pflag](http://www.gayorlando.com/pflag)

**PFLAG Help Line**

**(407) 236-9177**

[www.gayorlando.com/pflag](http://www.gayorlando.com/pflag)

**PFLAG Help Line**

**(407) 236-9177**

[www.gayorlando.com/pflag](http://www.gayorlando.com/pflag)

## OUR PERFORMERS

### Tenor 1

David Baldree  
Kimberly Bowles ◇  
Doug Dunn  
Janice Emmons ◇  
Denise Encinosa ◇  
Trina Gregory ◇◎♥  
Paula LaPlace  
Russ Macomber §  
Greg Moore  
Patti Noah  
Cathy Paulsen ◎  
Angel Tillis ◇  
Frankie Valentine  
Jim Van-Horn  
Jay Webster-Jones ◇  
Bryan "Bunky" Wright

### Tenor 2

David Almeida §  
Pat Andrews  
Guy Bosworth  
Joe Erwin ◎  
Steven Hess  
Mark Klingaman ▣  
James Konkel  
Bill Neighbors  
Steve Queen ▣  
Michael Rentzel  
Angel Santiago  
Michael Slaymaker  
Bob Smith-Trent ▣  
Stephen P. Summers ♥  
Matt Swetmon  
Tim Verwey ▣  
Jeter Walker

### Baritone

Fred Bukur ♥  
Jamie Decker  
Paul Driver  
Gary E. Finch  
John Fleming  
Eckhart Förtsch  
Tim Gough  
Matthew Hardy  
Michael Hodges  
James Hogg  
Wade Lewis  
Mark Manalansan

### Baritone (cont'd)

Robb Noll ▣  
Tom Radtke  
Stephen Rhéaume  
Jeff Ritchie  
Jim Santone  
Eric Saunders  
Joe Sefick  
Eric Steckel  
Joel Strack ▣  
Mike Usowski  
Jimi Ziehr §

### Bass

Michael Ames §  
Gregory Bell ♥  
Frederick S. Berliner  
Stephen Brooks ◎  
Chris Davis  
Craig T. Friend  
Daniel R. Grell ▣  
Bob Kingston  
Vince McEachen  
Michael McKee ▣  
Lee Moody  
Bill Moore  
John Tillis  
Mark Wise  
Stephen Witt

### ASL Interpreters

Patricia Clifton  
Tim Murphy

### Support

Kevin L. Haertling  
Gary Hall  
Ridge Holdridge ♥  
Tony Mauss  
Dennis Pierce  
Lorraine Reed  
Penny Reed  
Karen Roark  
David Schuler  
Michelle Shackelford  
Denny Stoneman

### Volunteers

Wesley Azzouz  
Bob Forsythe  
Holly Haggard  
Sue Lourcey  
Kurt Ludwig  
Debbie Meade  
Steve Miller  
Sam Odom  
Cathy Thompson  
Elgan Stappe

### Associate Member

Ray L. Arnsdorf  
Jerry Craft, Jr.  
Randy Crosby  
Billy Ray Deans  
Don Dennis  
Jeff Durichek  
P.J. Finster  
Tori Hermann ◆  
Cheryl A. Hite-Scherer  
Laura Lea Koger  
Charles McDonald  
Paula Mix  
Satoshi Okuno  
Kenny Owens  
Joel Parlin  
Gary Paskal  
Steve Peterson  
Rick Rogers  
Jennifer Rossi  
Cheryl Scherer ◎  
Emily Scherer  
Pam Sehnert  
James G. Shepp  
Todd Simon  
Bill Stevers  
Guy R. Swenson  
George B. Tunncliffe, Jr.  
Bill Yahner

- ♥ Section Leader
- ▣ OUTLOUD! member
- ◇ Prism member
- ◎ Menagé member
- § Homophonic



## ACT ONE

Friends

Lindhardt/Klingman

*Steve Brooks, soloist*

Welcome Address

*Wendy Chioji and Daisy Lynum*

Pass The Torch

Moore/Sturgis

*World Premiere*

*commissioned by the Orlando Hay Chorus*

He Wasn't Talking To Me

Romanovsky/Phillips

*Mark Klingaman, soloist*

Besame Mucho

Velasquez/Skylar

Arr. Hays

*Patty Noah, guitar*

Marry Us

Littell/Seely

The Gift You Gave

Henderson/MacDuff

*Homophonic*

Sister

Williamson

*Prism*

Cry Me A River

Mercer

*OUTLOUD!*

Why Do Fools Fall In Love

Lymon/Levy Arr. Hays

Listen To My Heart

Friedman

*Intermission*

## ACT TWO

There Comes A Time

*OUTLOUD!*

By Heart

Brickman

*Trina Gregory, soloist*

Co-Dependent Medley

Arr. Thomas

*Fred Berliner and Eric Steckel, soloists*

Sing Out!

Callaway

Arr. Followell

*Kathy Slage, soloist*

When You Wish Upon A Star

Washington/Harline

Circle Of Life

John

Arr. Cole

This Is The Moment

Briceusse

Carry The Torch

Henderson/Marcus

*World Premiere*

*commissioned by the Orlando Hay Chorus*



## "CARRY A TORCH" CREW

---

Production Design ..... P.J. Finster  
Stage Manager ..... Lisa Nordstrom  
Assistant Stage Manager ..... Jim Lemons  
Lighting Design ..... Nancy Shaw  
Audio Engineer ..... Ray Christianna  
Audio Assist ..... Larry Borgarding  
House Carpenter ..... Ryan Wright  
House Manager ..... Adam Smith  
Spot Light ..... Rick White  
Percussion ..... Ken Shadrake

## OUR BOARD OF DIRECTORS

---

Stephen Rhéaume ..... President  
Jamie Decker ..... Vice President  
Kevin Haertling ..... Treasurer  
David Schuler ..... Secretary  
Tim Gough ..... Member  
Dennis Pierce ..... Member  
Gerry Shepp ..... Member

## COMMITTEE CHAIRPERSONS

---

Jamie Decker ..... Administration  
Rose Gamba, CPA ..... Administrative Support  
Stephen Brooks ..... Music and Artistic Development  
PJ Finster/Kim Bowles ..... Performance and Production  
Michael Slaymaker, Development Director ..... Fundraising  
Robb Noll ..... Membership Services  
David Schuler ..... Public Relations

## SPECIAL THANKS

---

To Disney's Animal Kingdom Show Support Staff and to our dear friends at Fourth Phase Orlando.

The Annie Russell Theatre was made available through the courtesy of the Rollins College Department of Theatre and Dance.

---

*Program layout by Paul Driver, using Adobe InDesign 2 and Photoshop 7 on a Macintosh G3 computer.*

*A Steinway takes  
you places you've  
never been.*



## STEINWAY PIANO GALLERIES

Renaissance Center, 303 E. Altamonte Drive #1225, Altamonte Springs, FL 32701

Call 407-339-3771 or visit for a complimentary color catalog.

or visit us on the web at <http://www.steinwayorlando.com>

©2001 Steinway & Sons. Steinway and the Lyre are registered trademarks.



## THOUGHTS FROM THE COMPOSERS

### SCOTT HENDERSON, "CARRY THE TORCH"

About a year ago, lyricist Linda Marcus asked me to look at her sketch for a piece she called "Mother of Exiles." What I read was a beautiful expression of the Statue of Liberty as a symbol of America's plurality, and I told her I would love to collaborate with her (our third partnership) on a choral setting. Over the next few months, we found little time to do much more than incorporate some images from Emma Lazarus' poem "The New Colossus" (1883), and change our title to "Lady of the Harbor."

Then, 9/11 changed our world.

Linda revised the lyrics again, with a new sensitivity to the nation's spirit. Still, not a note of music was written until Terry Thomas and I were discussing possible themes for a commissioned work, and he mentioned the concert title of "Carrying [a] Torch." With that inspiration and his encouragement, Linda and I worked swiftly to complete our long-anticipated anthem, now titled for the Orlando Gay Chorus, "Carry the Torch."

*Scott Henderson*

### LARRY MOORE, "PASS THE TORCH"

...let me see what I can say about "[Pass] the Torch."

1. I find Craig Sturgis [the lyricist] brings out the best in me: his sense of humor, his skill with lyrics and his musicality have always made working with him a great deal of fun, and I'm amazed we turned out a serious piece since I thought we'd end up with a comic one.

2. Usually, when we work together, Craig's been the force behind the composer selection, and the "Couch Potato" meets John Phillip Sousa concept was totally his. When you preferred a serious piece, I thought Dvorak, because I find him majestic, melodic, very moving, and nothing seemed to work with the lyric Craig gave me. After a while playing with Dvorak melodies I liked, I just figured the hell with it, I'll write something if an idea hits me. I really liked the fanfare idea: it says to me "beginning," it says "sit up and listen." I don't know where the piece is going in your program, but I wanted it to be about new beginnings, a sort of excited overture about transitions and change.

Because the passing torch is such a marathon gesture, I wanted to maintain a feeling of constant motion surrounding a calm and steady, and hopefully sturdy, melody line. I hope the ins and outs from the home key generate excitement and not a feeling of displacement.

And best of all, thank you for asking me to do something.

*Larry*

Bill Pease, Optician

**MYOPTICS** Inc.

*Contact Lenses, Eyeglasses, Sunwear*

329 N. Orange Ave. Downtown Orlando 32801  
407-245-7800

## A Hot Ticket

Choose Us As An Opening Act Or An Encore

We're Proud to Support the Arts

**DARDEN**  
RESTAURANTS.





## GALA CHORUSES

### *Our Voices Win Freedom*

The Orlando Gay Chorus is a member of GALA Choruses, the international association of the lesbian and gay choral movement. Founded in 1982, GALA Choruses represents 190 choruses, their 10,000 singers and 750,000 patrons in Australia, Europe, South America and North America. The associations' programs and services include annual conferences, matching grants to support the creation of new works, publication of reference materials, a resource center, training programs and music festivals. For more information, contact GALA Choruses, the lesbian and gay choral movement, or Festival 2002 contact: GALA Choruses, PO Box 65084, Washington, DC 20035. Phone (202)467-5830; Fax: (202)467-5831; E-mail: amoores@galachoruses.org. Web: www.galachoruses.org.

### PAUL R. ERICSON MEMORIAL FUND

Established in 1991, the Ericson Fund honors one of OGC's founding members. Paul was a charter member, second tenor section leader extraordinaire and friend of all.

The Ericson fund has two basic goals: to ensure that no chorus member is prevented from participating in any chorus event due to health-related financial constraints; and to permit the chorus to assist local AIDS support groups and individuals challenged by this disease.

Please send donations to: The Orlando Gay Chorus, Paul R. Ericson Memorial Fund, P.O. Box 3103, Orlando, FL 32802. Your gift will keep Paul's dreams alive and be part of the powerful tradition born of our community's response to AIDS.

### WOULDN'T YOU LOVE TO JOIN US?

Auditions for our 2002 Holiday concert will be held August 28<sup>th</sup> & September 4<sup>th</sup> in our rehearsal space at the newly renovated Orlando Philharmonic Orchestra/Orlando Shakespeare Festival facility. The facility is next to the Orlando Museum of Art in Loch Haven Park, just off Rollins Avenue. Our membership consists of men and women; gay, lesbian, and non-gay individuals.

Rehearsals are Wednesday evenings beginning at 7:00 PM. We perform TTBB music (Tenor1, Tenor2, Baritone, and Bass) music for the most part. We welcome those interested in singing as well as those who prefer to be part of our Fifth Section (our support group).

To audition as a singing member you do not need to prepare a piece of music. Our brief, private audition with our Artistic Director consists of pitch matching, scale singing, and singing a simple familiar melody. For more information, visit our website at [www.orlandogaychorus.org](http://www.orlandogaychorus.org)

The Orlando Gay Chorus follows an equal opportunity personnel policy, and employs personnel without regard to race, creed, color, religion, national origin, sex, sexual orientation, age, physical or mental handicap, veteran status, or marital status. This policy applies to all OGC employees, volunteers, and contractors.

For more information about OGC, write: Orlando Gay Chorus, P.O. Box 3103, Orlando, FL 32802; call (407) 841-SING; or visit us online at [www.orlandogaychorus.org](http://www.orlandogaychorus.org)

The Orlando Gay Chorus is licensed by ASCAP, the American Society of Composers, Authors and Publishers. **Any unauthorized audio recording, video recording or still photography is strictly prohibited.**

# AirTran<sup>®</sup>

AIRWAYS

### YOU NAME IT WE FRAME IT!!

*We Provide Special Attention To Your Smallest Framing Needs & To Your Largest Commercial Jobs*

## FRAMING

of Central Florida Inc.

- Custom Framing
- Portraiture
- Fine Art
- Needlework
- Fair Prices
- Above Quality Service

### DECORATING IS OUR BUSINESS

- HOMES
- OFFICES-LOBBIES
- RESTAURANTS
- REMODELING

806 VIRGINIA DR. • ORLANDO, FL 32803 • (407) 894-8644

### You love great music, how about great films?

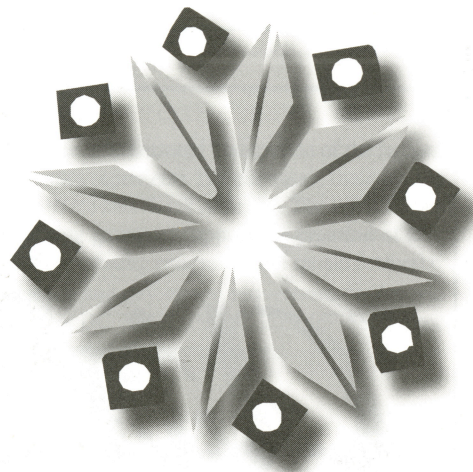
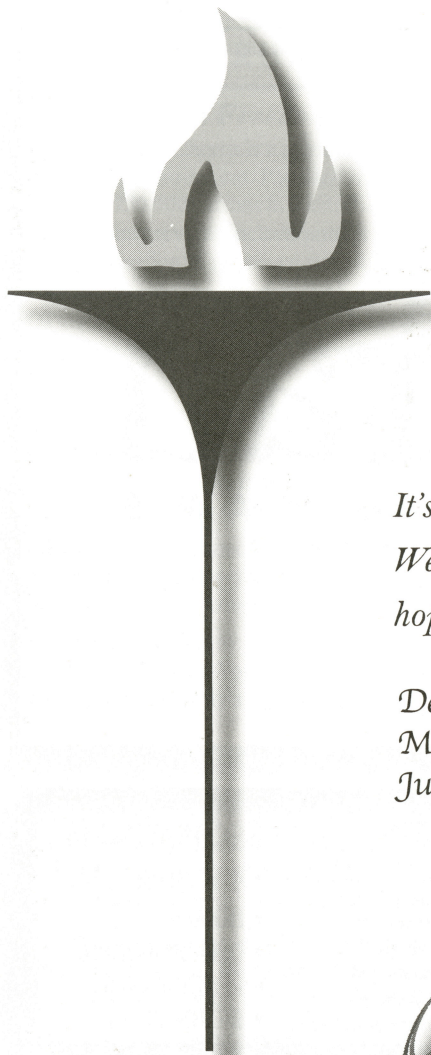
#### THE 9TH ANNUAL ORLANDO GAY & LESBIAN FILM SERIES

gayorlando.com is proud to present four exclusive events of  
LesBiGay films at the Enzian Theater  
beginning with The Fluffer on March 17, 2002  
other wonderful films will be presented on July 7, 2002,  
September 15, 2002 and December 15, 2002

Please visit [www.gayorlando.com/goevents](http://www.gayorlando.com/goevents) for details!

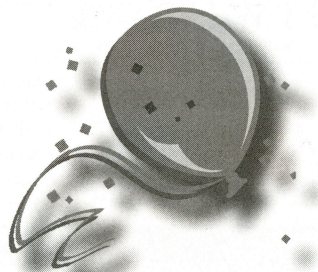






*It's been a great concert season for us!  
We thank you for your support, and  
hope you'll join us for the next season!*

*December - "Our Family Together"  
March - "Sissies And Stars"  
June - "Odd Numbers"*

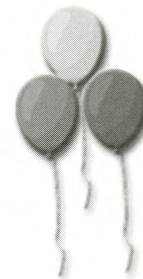


UNITED ARTS OF CENTRAL FLORIDA



The Orlando Gay Chorus is honored to once again be a recipient of grant from the United Arts of Central Florida, Inc. United Arts is an umbrella fund raising and advocacy organization for the arts and cultural community in Central Florida. Its mission is to enhance the quality and variety of cultural experiences available in Central Florida. It serves arts and cultural providers throughout Orange, Seminole, Osceola and Lake counties.

**PRIDE**  
*and*  
**JOY**



**Come join our family as we celebrate  
Gay Pride Month.**

***Worship with PRIDE at JOY MCC!***

***Sunday Worship Services***

8:30 AM, Morning Spirit, Modern Worship  
10:00 AM, Liturgical Formal Worship  
11:30 AM, Liturgical Praise Worship  
7:00 PM, Contemporary Praise in Music

***Wednesday Service***

7:00 PM, Taize Candlelight  
Focus & Centering

**Joy Metropolitan Community Church**

**2351 S. Ferncreek Ave.**

**Orlando, Florida 32806**

**407-894-1081**

**[www.joymcc.com](http://www.joymcc.com)**



# The Special Effects Systems Team

wishes

The Orlando Gay Chorus

the best of luck with this seasons program



Special Effects Systems, Inc. is the leader in  
Confetti and Streamer Launcher design.  
Not only does Special Effects Systems  
manufacture confetti launchers,  
we also stock and distribute premium  
confetti and streamer products at factory prices.  
That means Special Effects Systems  
is the local one stop shop  
for all your confetti and streamer needs.

[www.spfx.com](http://www.spfx.com)  
407/297-6520 Fax: 407/297-4041



# WATERMARK

Florida's Distinctive Gay and Lesbian Publication

[www.watermarkonline.com](http://www.watermarkonline.com)





# Full Moon Saloon



Open Daily 12pm - 2 am Happy Hour 12pm - 8pm

## Monthly Full Moon Parties

Orlando's  
Best

Sunday T - Dance

With DJ Walter Winston

Voted Best DJ In Orlando

500 N. Orange Blossom Trail Orlando Florida

(407) 648-8725

[www.fullmoonsaloon.com](http://www.fullmoonsaloon.com)





**ORLANDO GAY CHORUS**

presents

# Carry a Torch



**7:35 P.M. • Saturday, June 22, 2002**

**Annie Russell Theatre • Rollins College**

**\$15 in advance • \$18 at the door**

**Not valid after June 23, 2002**

## Carry a Torch

**7:35 P.M.**

**Saturday, June 22, 2002**

**Annie Russell Theatre**

**Rollins College**

**\$15 in advance**

**\$18 at the door**

**Not valid after June 23, 2002**

**407/841-SING**

**405 405**

**405 405**