

# WHAT TO DO AND SEE

in the  
**Cape  
Canaveral**  
area

**WINTER  
1963**



**Complete Visitors Handbook To:** COCOA,  
COCOA BEACH, MERRITT ISLAND, EAU GALLIE,  
MELBOURNE, TITUSVILLE & AREA



# The Cape Canaveral Area



**RADIATION**  
INCORPORATED

MELBOURNE, FLORIDA, PALO ALTO, CALIF.,  
AND PHILADELPHIA, PA.



## Employment opportunities with

# PAN AM

Pan American, as prime contractor to the U.S. Air Force, has fulfilled the responsibility for planning, engineering, operating and maintaining Cape Canaveral and the Atlantic Missile Range since 1953.

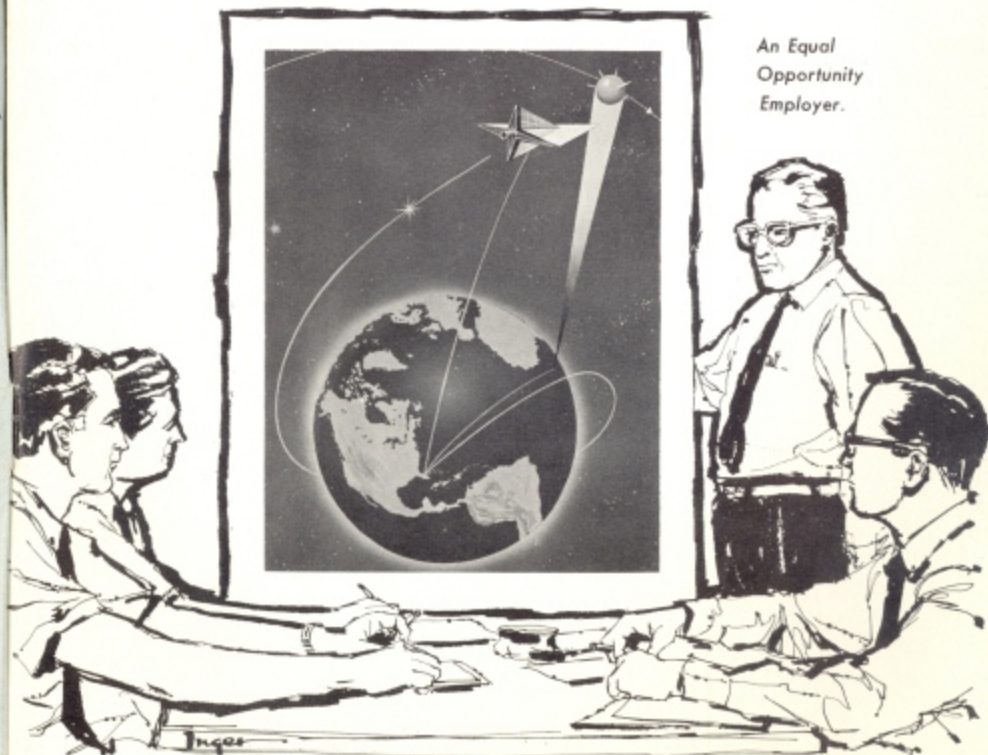
Pan American scientists and engineers have participated intimately in all stages of the national programs since early V-2 tests through Project Mercury's series of manned space flights.

With Pan American, technically respected people have freedom to choose career positions with unlimited opportunities for professional development.

In addition to normal company benefits, Pan Am offers the unique advantage of a 90% world-wide air-travel discount.

You are invited to send your resume in confidence to David D. Bruner, Personnel Manager, Guided Missiles Range Division, Pan American World Airways, Inc., P.O. Box 4336, Patrick Air Force Base, Florida.

Scientific Advisory Staff  
Advanced Planning  
Range Instrumentation  
Planning & Systems  
Design  
Program Management  
Operations  
Facilities Planning  
Facilities Engineering



An Equal  
Opportunity  
Employer.



## 4 EXCITING NEW MODELS

# Pageant

30 CORRIENTE  
AVENUE  
On Merritt Island



"MRS.  
DELIGHTFUL"

3 Bedrooms  
2 Baths  
GARAGE

**\$15,950**

Visit Pageant Homes today and see for yourself the latest design creations by one of Florida's most reputable and experienced builders. Big planning for good living!

PAGEANT HOMES NE 6-0341

**FHA-VA**  
CONVENTIONAL  
Financing

## What to Do & See in the Cape Canaveral Area

### WINTER 1963

### VACATIONING?-----

THEN USE THIS AS YOUR COMPLETE GUIDE TO ATTRACTIONS, RESTAURANTS, ENTERTAINMENT, AND ALL THINGS TO DO AND SEE

Spaceport, U.S.A.	6-17
Directory of Missile Companies	11
Missiles	15
Sightseeing and the Area	18-25
Restaurants	26-34
After Dark	34-42
Fishing	44-45
Sports	45
Churches	46-47
Shopping	24-25
Television Schedule	23

### PLANNING ON LIVING HERE?

THEN YOU'LL WANT TO KNOW EVERYTHING ABOUT THIS AREA:

Climate, Living Conditions, Living Costs, Schools, Taxes, Homes, Furniture, Higher Education	48-72
How to Buy a Home	53
Real Estate & Home Finder Map	54-55
Home Buyers Check List	61

Published four times yearly by Brownell Associates, 107 Beach Plaza Building, Cocoa Beach, Florida. Tel. SU 3-3176. Distributed free to all motels and hotels in the area. Advertising rates on request.

Published with the approval of the Gallie and South Brevard Beaches Chamber of Commerce.

Staff: W. P. Brownell, Jr., E. A. Brownell, Harry Brackett, James Smith, Craig McCauley, W. P. Brownell, Brennan Ryland, Betty Woolfe.

Copyright 1963, W. P. Brownell Jr. Reproduction without written consent prohibited.

COVER PHOTO:

Project Mercury Astronaut Leroy Cooper. NASA Photograph.

# SEE WHAT'S AROUND THE CAPE



## RENT A CAR FROM HERTZ

- Rent a new Chevrolet or other fine car by the hour, day, weekend or week.
- Low Hertz rates include everything—insurance, gas.
- With Hertz, you can rent a sedan or compact here . . . leave it with Hertz in any other city in Florida—at no extra charge!

### 5 convenient offices to serve you:

**COCOA BEACH:**  
3201 N. Atlantic  
Ave. (A1A)  
Tel. SU 3-3983/3-7771

**INDIANATLANTIC:**  
Cor. Rt. A1A & 5th Ave.  
Tel. PA 3-1810

**TITUSVILLE:**  
425 Washington Ave.  
Tel. 267-3244

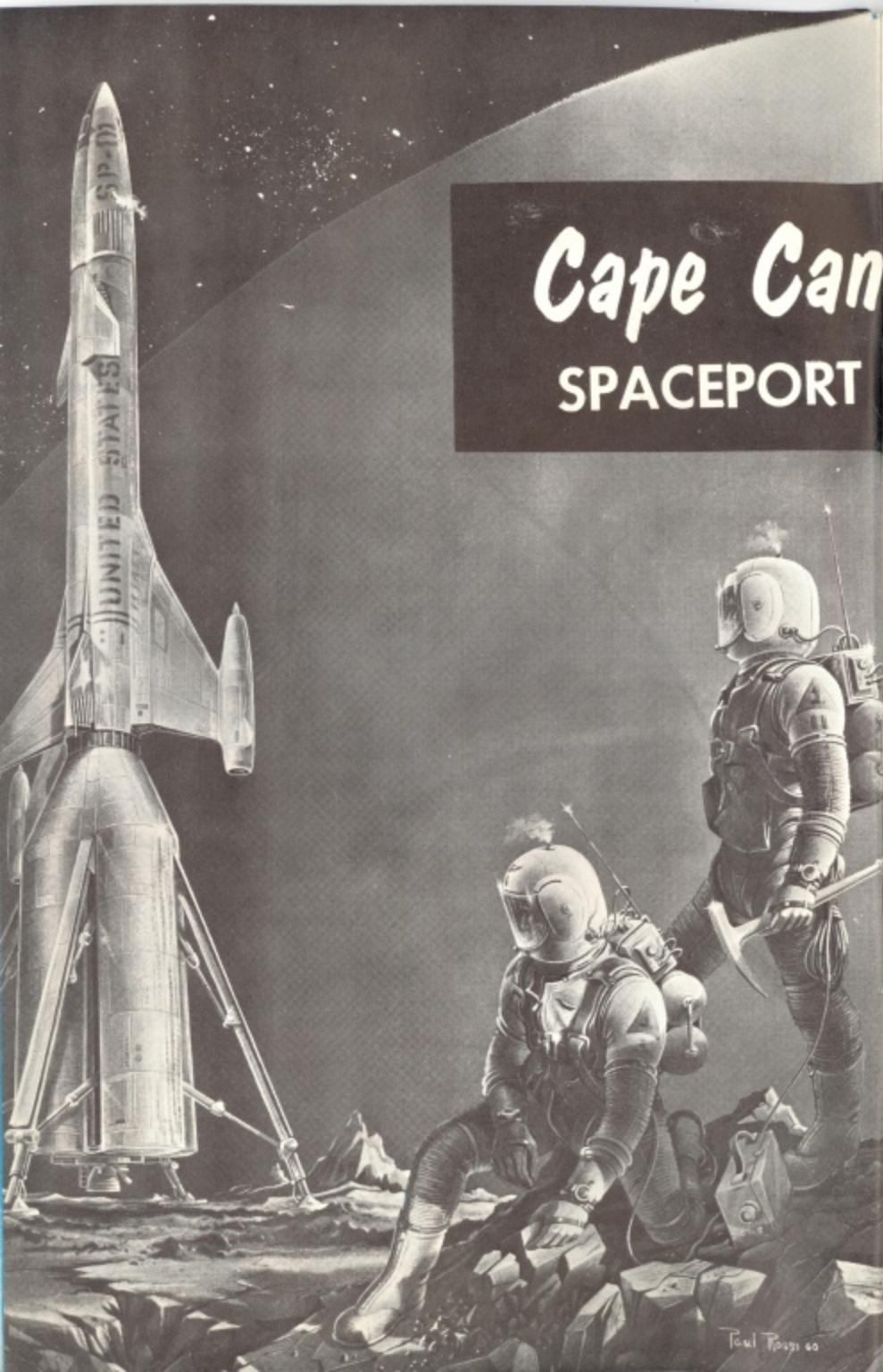
**COCOA:**  
742 S. Cocoa Blvd.  
Tel. NE 2-0701

**MELBOURNE:**  
Melbourne Airport  
Tel. PA 3-3414

**HERTZ**  
RENT A CAR

let **HERTZ** put you in the driver's seat!





# Cape Canaveral . .

## SPACEPORT U.S.A.

*Scene of mankind's greatest adventure  
-- the Cape is an exciting place to live!*

THERE'S an underlying current of excitement wherever you go among the cities of the Cape Canaveral area, an electric air of being in the midst of swiftly moving events.

For here, along broad sandy white beaches on the Atlantic and the picturesque stretches of the Banana River and the Inland Waterway where the trout and the fruit grow extra big and extra delectable, the history of the world is literally being made. Almost everyone in the area is in some way connected with this country's adventures in space and its future as a world power.

With the avowed National goal of a man on the moon by the late 1960's, and a tremendous program of continuing space research, development of Cape Canaveral as "Spaceport U.S.A." has been tremendously spurred. An additional \$60 million government land acquisition announced here last year should produce a \$20 billion expansion doubling of the population in the next few years.

### MISSILE RANGE

The Cape area is the heart of the tremendous Air Force Missile Test Center complex. Here all forces — Army, Navy, Air Forces and Civilian agencies and personnel work together, some 20,000 of them, on our missile test and space programs.

Nucleus of this center with its headquarters at Patrick Air Force Base is the Atlantic Missile Range. Cape Ca-

naveral, as the launching site for the range, is the first of a gigantic far-flung network of tracking stations, set out like stepping stones down the 10,000 mile range.

Operator and custodian of this giant shooting gallery is Pan American Airways. Because of their vast experience in operating overseas aircraft bases as a U.S. flag airline they were given the prime contract for range operations in 1954, and in turn, subcontracted the data-gathering, instrumentation and evaluation end of the work to Radio Corporation of America.

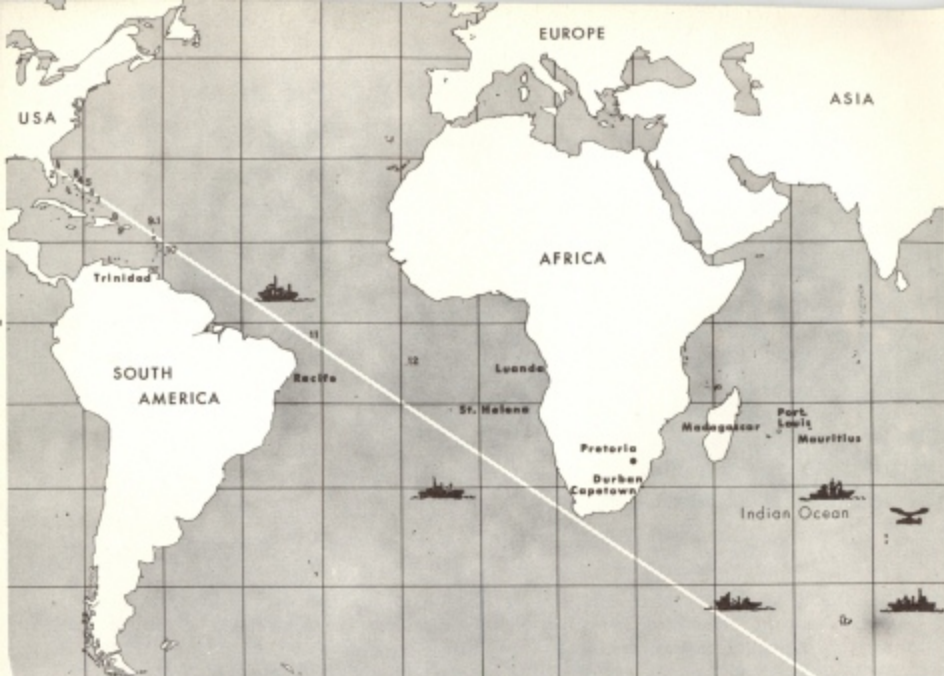
Some 9,000 personnel work on the range itself, more than half of these at the Cape. Tied into the huge Pan-Am complex are a fleet of missile tracking vessels, recovery vessels, and logistical supply vessels, while military service groups cooperate in supplying still further specialized services.

Although the Cape is famous today as a symbol of the Free World's space and missile progress, it wasn't always that way. Over one thousand missile launchings ago, in 1950, the Cape was merely a rarely-frequented 15,000 acre scrubland.

Aware that missiles were to play an important part in the military future of the nation, a military services site location committee chose this area in 1946. Because of its isolated location and the fact that it is the only part

*Continued on Page 11*





The 10,000 mile Atlantic Missile Range, showing major tracking stations included in the network. The range is operated by Pan American Airways for the Air Force Missile Test Center.

## RCA OPPORTUNITIES OVERSEAS!

**Radar and Communications Engineers**  
(BSEE OR EQUIVALENT DEGREE)

**Radar and Communications Technicians**  
(GRADUATES OF CIVILIAN OR MILITARY ELECTRONIC SCHOOLS)

For foreign assignments on one of several South Atlantic Islands or aboard new "State-of-the-Art" tracking ships. Foreign assignments include 30% or 40% bonus, equipment training, complimentary meals and lodging, frequent paid U.S. vacations, and interesting travel.

### STATESIDE

Openings exist for SCIENTISTS, MATHEMATICIANS, STATISTICIANS, DATA ANALYSTS, SCIENTIFIC PROGRAMMERS.

For advanced analysis or experiments associated with the data collection, reduction or analysis of Missile and Space Vehicle flights.

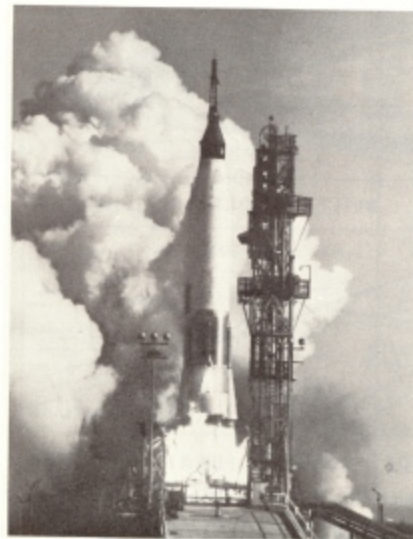
You are cordially invited to discuss your opportunities with the RCA Missile Test Project. Please call Mr. Storms at our employment office by dialing UL 7-2716 or visit or write Mr. Storms at our offices, RCA Service Co., Bldg. 423, MU 114, Patrick Air Force Base, Florida.



The Most Trusted Name In Electronics



"White room" - before flight preparation



... liftoff



recovery ...



... and debriefing.





**"THE MOST MODERN INDUSTRIAL PARK  
IN THE CAPE CANAVERAL COMPLEX!"**

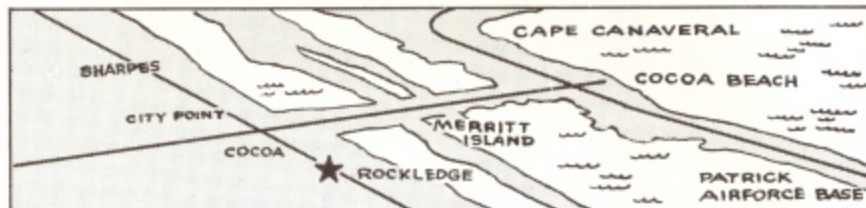
**OFFICE SPACE • WAREHOUSING • MANUFACTURING**



**STRATEGICALLY LOCATED • RAILROAD SIDING TO YOUR DOOR**



**PACKAGED PLANTS • FOR LEASE OR SALE • BUILT TO YOUR SPECIFICATIONS**



**EXCELLENT PLANNING AND CONTROL CREATE IDEAL WORKING  
CONDITIONS WHERE TOP FLIGHT PERSONNEL WORK MORE EFFICIENTLY**

**IDEALLY SITUATED AT ROCKLEDGE, ON THE F.E.C.R.R., CONTIGUOUS TO  
4-LANED U.S. H'WAY #1, ON THE MAINLAND, MIDWAY BETWEEN PATRICK AIR  
FORCE BASE AND CAPE CANAVERAL.**

## **MISSILE INDUSTRIAL PARK, INC.**

107 Beach Plaza Building, Cocoa Beach, Fla., Phone 783-3176

### **MIAMI OFFICE:**

5995 S.W. 8th STREET, MIAMI 44, FLORIDA • PHONE: MO 6-2525

## **DIRECTORY OF COMPANIES**

Company Name Mailing Address	Physical Location	Mission	Mgr., Personnel, Public Relations
A.C. SPARK PLUG P.O. Box 106, Cape Canaveral	Guidance Lab. 2 CAPE	Inertial Guidance	Adm. Assistant—Allan J. Roberts, UL 3-3547
AEROJET—GENERAL CORP. P.O. Box 4425, P.A.F.B.	CAPE	Rocket Engines	Base Mgr.—E. H. Dickens, UL 3-2044 Asst. Base Mgr. P.E. Cowdin Supervisor Devel. Test, Asst. F. W. Adkins, UL 3-3066
AERONUTRONIC [Div. of Ford Motor Co.] P.O. Box 4137, P.A.F.B.	CAPE	Assembly and Test of Missile Components	Bob Eley, UL 7-6507
AEROSPACE CORP. P.O. Box 4037, P.A.F.B.	Building 968 P.A.F.B.	Technical Consultants	
ARMA DIVISION P.O. Box 125, Cape Canaveral	CAPE	Inertial Guidance	Mgr.—O. M. Herricks, UL 3-2046/4331 Oper. Support & P.R.—Peter S. Thorne, UL 3-4440/4331
AUTONETICS P.O. Box 197, Port Canaveral	Hanger "Y" CAPE	Inertial Guidance	Base Mgr.—J. L. Melgaard, UL 3-3616 Adm. Rep.—Ralph Mitchell, UL 3-2332
AVCO P.O. Box 4426, P.A.F.B.	1815 N. Atlantic Ave. Cocoa Beach	Re-entry Vehicles	Manager—W. S. Roden, SU 3-7678 P.R. & Pers.—Rebt. Wilkison, SU 3-7678
BELL TELEPHONE LAB., INC. P.O. Box 609, Cocoa	CAPE	Radio Guidance	Res. Adm. Mgr.—G. J. Miller, UL 3-2337
THE BOEING CO. P.O. Box 1698, Cocoa Beach	7099 N. Atlantic Cocoa Beach	Assembly and Test— Minutemen	Mgr.—D. E. Graves, SU 3-7681 P.R.—R. H. Glass Pers.—SU 3-7481, Ext. 232
BURROUGHS CORP. P.O. Box 4317, P.A.F.B.	Canaveral Adm. Complex Cocoa Beach	Guidance Computers	Base Mgr.—R. J. Iser, SU 3-7485 Field. Adm.—W. H. Daniel, SU 3-2486 Pers. & P.R.—W. R. Shoenaker PA 3-9211
CHRYSLER CORP. Florida Operations P.O. Box 3000, Melbourne	1111 Sheridan Rd. Cocoa Beach	Exp. & Mfg. Launch Support Equipment	
DOUGLAS AIRCRAFT CO., INC. P.O. Box 4056, P.A.F.B.	Holiday Office Ctr. Cocoa Beach (Personnel & P.R.)	Project Delta (Satellite & Space Probes) Saturn (S-IV & S-IVB Stages)	Prod. Mgr.—G. F. Hanson, UL 3-2317 Adm. Sup.—G. O. Season, UL 3-4918 Pers.—Jim Searce, SU 3-2421 P.R.—Ken Grine, SU 3-9492
GENERAL ELECTRIC CO. P.O. Box 4247, P.A.F.B.	4291 N. Atlantic Ave. Cocoa Beach Employment Office	Space & Re-entry Vehicles—Radio and Inertial Guidance	Mgr.—R. L. Borum, SU 3-8486 P.R.—E. C. Lamm, SU 3-3760 Pers.—J. E. Wilton, SU 3-7626
GENERAL DYNAMICS ASTRONAUTICS P.O. Box 999, Cocoa Beach	Cape Colony Inn Cocoa Beach	Test—Atlas and Centaur Launch Space Vehicles	Oper. Mgr.—B. G. MacNabb, UL 3-3038 or 3035 P.R.—Winthrop Cady, UL 3-2414
HERCULES POWDER CO. P. O. Box 1407 Cocoa Beach	Cape	Rocket Motors	Mgr. (Minuteman Group) J. O. Spitznagel, UL 3-4807 Mgr. (Polaris & Space Motor Group) J. M. Glessner, UL 3-5151
INSTRUMENT CORP. OF FLA. P.O. Box 1226, Melbourne	7925 Kissimmee Highway	Timing Systems, VLF Receivers, Ballistic Camera Systems	Pres.—Ernest M. Hall, I. PA 3-8112 V.Pres. Marketing—R. F. Walker, PA 3-8112
LOCKHEED MISSILES & SPACE COMPANY P.O. Box 4537, P.A.F.B.	CAPE	Assembly & Test Space Systems Program—Missiles Systems	Space Systems Base Mgr.—R. B. Hutchins I. Re P.R.—W. J. Hughes, SU 3-8411 Pers.—D. Kulchin, SU 3-7446 Missiles Systems Base Mgr.—N. B. Chase I.R.—K. M. Haqqard, SU 3-8411 P.R.—R. Sils, SU 3-8411
INTERNATIONAL BUSINESS MACH. CORP. P.O. Box 6210 N. Atlantic Ave. P.O. Box 262 Cocoa Beach	6210 N. Atlantic Ave. Cocoa Beach	Data Processing Federal Systems	DPD Mgr.—T. L. Varney, SU 3-2215 FSD Mgr.—R. C. Earl, Jr., SU 3-2215
MARTIN COMPANY Canaveral Division Cocoa Beach	7077 N. Atlantic 1 1/2 mi. N. Causeway	Assembly/Test— Titan/Pershing Titans II	Gen. Mgr.—O. E. Tibbs, SU 3-2231 Ext. 201 P.R.—John Boyd, SU 3-2231 Ext. 202 Pers.—John M. Hatt, SU 3-2231 Ext. 210
McDONNELL AIR CRAFT P.O. Box 1408, Cocoa Beach	CAPE	Mercury Spacecraft Gemini Spacecraft	P.R.—Ray Reitter, UL 3-2992 Mgr.—J. F. Yardley, UL 3-4452 P.R.—J. E. Dryden, UL 3-4326
NATIONAL AERONAUTICS AND SPACE ADMINISTRATION Launch Operations Center Cocoa Beach	CAPE P.E. & Pers. C.A.C. Bldg.	Federal Space Agency (NASA)	Dir.—Dr. Kurt H. Debus, UL 3-3517 P.R.—Jack King, SU 3-7781 Pers.—Ben Hursey, SU 3-7777
PAN AMERICAN WORLD AIRWAYS P.O. Box 4187, P.A.F.B.	Building 425 P.A.F.B.	Operation & Development Atlantic Missile Range	V.Pres.—R. S. Mitchell P.R.—Jack F. Forten, UL 7-2837 Pers.—L. L. P. Clark, Jr., PA 3-1511
RADIATION, INC. P.O. Box 37, Melbourne	Palm Bay	Advanced Electronics Data Processing Antenna Systems	
RCA SERVICE CO., INC. P.O. Box 4036, P.A.F.B.	Building 423 P.A.F.B.	Technical Support Atlantic Missile Range	W. P. Deas, UL 7-4923 Pers.—H. D. Sims, UL 7-2233 Rep.—Bob Taylor, UL 3-5296 Pers.—Ralph Castro, UL 3-5387
ROCKETDYNE FIELD ENGINEER- ING P. O. Box 162, Cape Canaveral	CAPE	Rocket Engines	
SORABAN ENGINEERING CO. P.O. Box 1717, Melbourne	Exec. & Adm. Melbourne Production—Palm Bay	Computers	P.R. & Pers.—Jim Meals, PA 3-7221
SPACE TECHNOLOGY LABS., INC. 7001 N. Atlantic Ave.	7001 N. Atlantic Ave. Cocoa Beach	Technical Directors of Missile and Space Programs	Dir.—George S. Cherniak, SU 3-7811 P.R.—Charles A. Maxwell, SU 3-7811 Pers.—B. R. Smith, SU 3-7811
7016 N. Atlantic Ave. Cocoa Beach	1815 N. Atlantic Ave. Cocoa Beach	ARIS Ships	Mgr.—U. Wendell Richardson P.R.—P. M. Principe, SU 3-7801
THICKOL CHEMICAL CORP. Fla. Regional Office, P.O. Box 1497, Cocoa Beach	1325 N. Atlantic Ave.	Rocket Engines	Mgr.—E. N. Sizemore, SU 3-2268



# CAPE CANAVERAL **LIMOUSINE Service**

VIP Service To and From:

Cocoa Beach • Patric AFB • N.&S. County • Herndon  
& McCoy Airports • Orlando & Melbourne Airports.

**\$5.50 PER PERSON**

• FOR RESERVATIONS CALL  
**SU 3-7800**

520 Causeway (AIA) Just West of Cocoa Beach.



*USAF Ship Coastal Sentry, one of the many tracking ships used to augment the island chain in the 10,000 mile Atlantic Range.*

## AIR TAXI & CHARTER



**Direct Connections With Airline Flights  
In Orlando From Nearby Merritt Island  
20 Minutes - 1 To 3 Passengers - \$27.50**

- ☆ AIRCRAFT SALES AND SERVICE
- ☆ AIRPLANE RENTALS
- ☆ FLIGHT INSTRUCTIONS

- ☆ 24 HOUR CUSTOM CHARTER SERVICE
- ☆ SINGLE AND MULTI-ENGINE AIRPLANES
- ☆ SERVICE TO BAHAMAS

K. C. BENBOW  
President

**NE 6-8740**

Cocoa — Titusville Airport  
Hwy. U.S. 1 —  
8 mi. North of Cocoa

**CANAVERAL AVIATION CORP.**



*Historic first is this launch of a V-2 rocket during project Bumper under direction of GE. This was the first missile launched at Cape Canaveral — July 24th, 1950*

*Continued from Page 7*

of the coast that faces southeast with unobstructed access to an unlimited distance over water and over strategically located islands for tracking purposes, the site was ideal.

Early launchings in 1950 were to test the first U.S. pilotless craft, the "cruise" or winged missiles, with a shift to the ballistic missiles in early 1954.

To lead the United States in developing vehicles for the peaceful assault on space, an act of Congress in 1958 created the National Aeronautics and Space Administration (NASA). All aeronautical and space activities, other than those directly concerned with the development of weapons, military operations or the defense of the United States are directed to this civilian agency. In just three and one half years, NASA has organized one of the broadest research and development programs ever undertaken in any country.

Today the emphasis is on peacetime space uses, and our modern missiles arrive for testing at the Cape from their various manufacturers, usually by air, and are unloaded and assembled in large hangars near the "skid strip." From there they are moved to the proper launching com-

plex or "pad" where, embraced by huge gantry scaffolding, they are finally erected, tested and serviced for flight. Once ready, a meticulous countdown is followed to check the thousand and one things that must be in operating condition at the moment of liftoff.

Downrange, on the romantic Caribbean Islands of Grand Bahama, Eleuthera, San Salvadore, Mayaguana, Grand Turk, Dominican Republic, Mayaguez, Antigua, St. Lucia, Fern De Noronha and Ascension Island and on the tracking vessels that fill the gaps between the last stations in the chain, the traditionally slower pace of tropical living proceeds at a faster tempo. Weather tracking, data recording and communication equipment are tuned and welded into a tight ever-ready network that is called upon an average of several times a week to track and evaluate the missiles.

The cost of a test flight of any modern "bird" is such that all equipment must be ready to record the vital information or a shoot will be "held" until the range is completely ready.

At liftoff, the real job of the test range is underway, as relays close and information starts showering the recording devices. Tracking informa-





RCA personnel sightseeing Tri-Helix tracking antenna on Saturn Launch Complex.



10,000 YEARS AWAY — Modern Antenna of NASA's far-flung Mercury tracking system in Kano, Nigeria, vies with primitive transportation.

(Continued)

tion is relayed through the network by ground-based visual and optical tracking and radar, but some 80% of the most valuable information is gained from the missile itself. Telemetering of such information as attitude, altitude, accelerations and other engineering data is accomplished by multi-channel radio transmitting devices in the missile.

Data recorded by ground stations from the shoot is fed to computers from up to ten miles of magnetic tape, and the final evaluations fill in still more pieces in the puzzle of the unknowns on this new frontier.

Paradoxically, even an apparent failure in the missile business is often a more successful step ahead. Here at our testing range every firing is usually a "first" for some part of hardware or design.

#### SPACE TIMETABLE

Our space program calls for unmanned "hard" landing on the moon carrying a 12 pound seismographic package aboard a Ranger in 1962. "Soft" landings will begin probably in 1963, transmitting TV pictures and conducting a more sophisticated analysis of our closest neighbor in space.

Meanwhile the first (C-1) version of the Saturn booster, which will eventually be able to boost a 200,000 pound spacecraft into orbit, is now undergoing successful tests at the Cape. The Saturn will be the booster for the 3-

man Apollo spacecraft to be used for early earth-orbit "rendezvous" experiments and week-long extended orbits during 1962 and 1963.

A later version of the Saturn, the C-5, capable of orbiting the moon with a three man craft, is currently the favorable power choice for manned lunar landings.

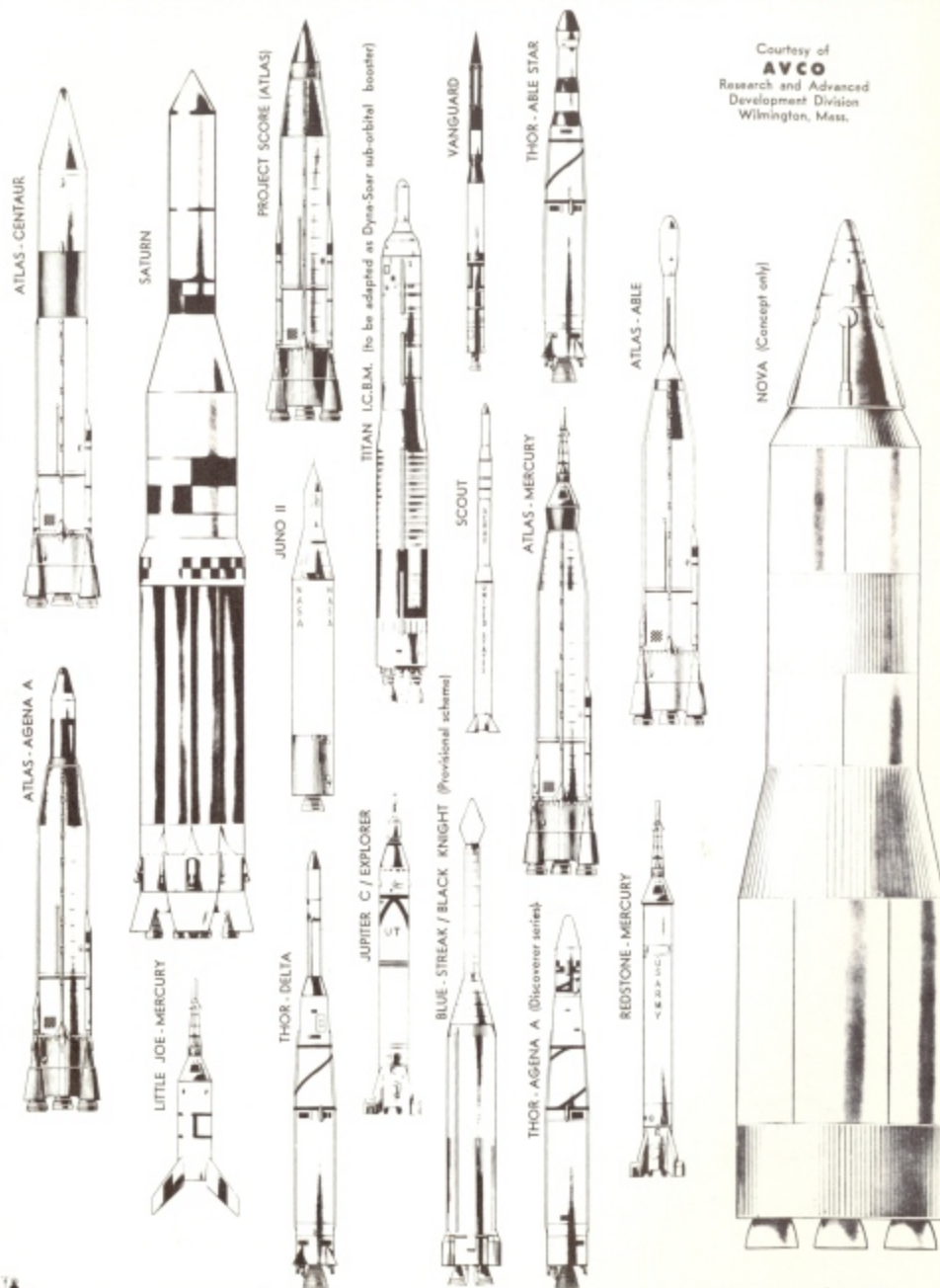
First attempts to land a man on the moon, planned now for the late 1960's, is expected to utilize orbital "rendezvous" techniques. Separate capsules and power packages will be boosted into either earth or lunar orbit, where they will mate into one unit to continue the journey. At this writing there is a good possibility that the lunar orbit may be chosen as the most desirable method.

Development is also progressing with other back-up systems, such as the Nova, super-rocket capable of sending the entire Apollo moon craft in direct ascent from earth without rendezvous.

As Spaceport, U.S.A., Cape Canaveral launching pads will be busy night and day and the air of excitement in this community of space engineers and technicians continues to grow as man comes closer to conquering space.

For those that would be in the thick of the most interesting phase of human history and the most grandiose accomplishments ever engaged upon by man, those at Cape Canaveral have the ringside seat for the world's future!

## U. S. ROCKET BOOSTERS FOR SPACE PROJECTS



Courtesy of  
**AVCO**  
Research and Advanced  
Development Division  
Wilmington, Mass.

Scale of feet



# ENGINEERS

... CONTACT THE ONLY AGENCY IN THE CAPE CANAVERAL AREA DEALING EXCLUSIVELY IN THE PLACEMENT OF TECHNICAL PERSONNEL. Our "on the spot" offices are kept continuously up to date on all employment opportunities. Client companies are the leaders in Aerospace and Electronics throughout the United States. Positions in Florida, the East Coast, Midwest and West Coast as well as foreign assignments.

## ENGINEERS AND SPECIALISTS IN:

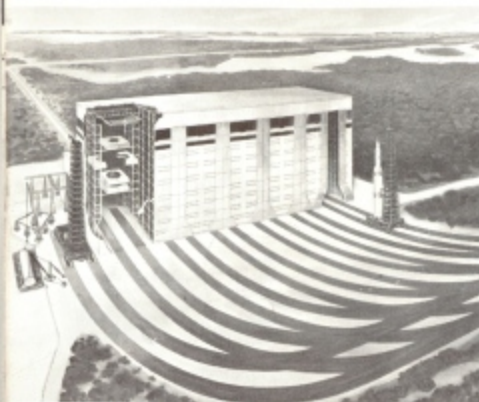
Aerodynamics	Infrared
Systems Design	Optics
Structures	Micro Wave
Instrumentation	Inertial Guidance
Circuit Design and Development	Celestial Navigation
PERT	Research and Development
Computers	Thermodynamics
Telemetry	Oceanography
RFI	Physics and other sciences

Client companies assume all fees and relocation expenses. All inquiries confidential.

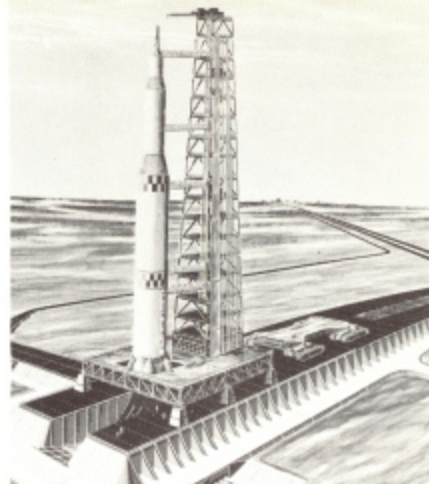
Call or send brief resume outlining education, experience, and your special objectives to:

# CAPE, INC.

U. S. Highway 1 at South Eau Gallie  
P. O. Box 1257, Melbourne, Florida. — Telephone 254-5221  
*Home of Brevard Engineering College*



*Vertical Assembly Building shown above will have bays to assemble & checkout six C-5's at once. At right Saturn C-5 is shown*



*in place on mobile launcher and below is being transported from Vertical Assembly Building to launch site by 2500 ton crawler*

## "MOON BASE"

**Complex 39 - where Saturn C-5's will launch Apollo Spacecraft**

The 7.5 million pound thrust Saturn C-5, which is assigned the manned lunar landing mission using lunar orbit rendezvous, will be carried to its launch pad — completely erected and checked out — by a 2500 ton crawler

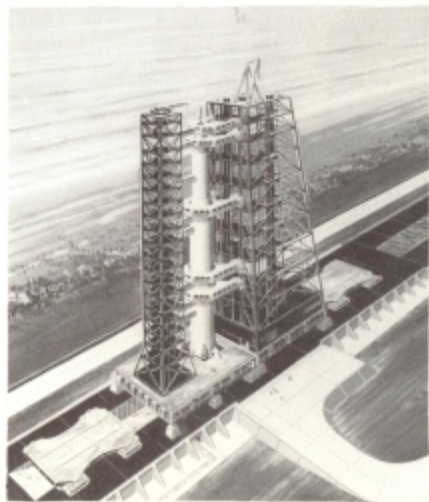
tower and transport it the two miles to the launch pad. At the pad, the 20 foot high crawler will use hydraulic cylinders to lower the rack and vehicle onto support blocks on the launch platform.

Work on the complex will begin next month with the first launch from the complex planned for 1965.

Saturn C-5's will be launched from Complex 39 in the new NASA area located Northwest of Cape Canaveral. Major elements of Complex 39, which will cover some 30,000 acres include a vertical assembly building with bays to assemble and checkout six C-5's at once. The building — 48 stories high, more than two city blocks long and 239 feet deep — will completely enclose the rockets during prelaunch activity.

Four launch pads about 9,000 feet apart spread along the Atlantic Ocean. Each pad will include a ground level flame deflector, a platform to support the crawler and a propellant loading system. All other launch equipment will be transported to the pad by the crawler.

Here is how it will work: In the assembly building, the three stage Saturn C-5 will be erected, mated to the Apollo spacecraft and checked out. When checkout is complete the crawler — some 130 feet long and 115 feet wide — will pick up the rack with the C-5 and spacecraft and the umbilical







The Technical Laboratories of the Air Force Missile Test Center (AFMTC) along U.S. Highway 1A at Patrick Air Force Base is a popular stop for visitors. Many of the larger missiles tested at Cape Canaveral are on display.

## sightseeing WINTER 1963

### TITUSVILLE

Located in Northeast Brevard County on U.S. Highway No. 1 Titusville is the nearest mainland city to Cape Canaveral and will be just five minutes driving time from the new "Nova" expansion on North Merritt Island. Being the County Seat of Brevard County and the rail head for shipments to Cape Canaveral, Titusville is the focal point of fast-growing North Brevard's business and industrial activity.

With the coming of the missile era, the area has developed modern facilities offering everything for the com-

fort and entertainment of its residents and guests. One of the few areas in Florida to have gently rolling hill country, Titusville's residential areas are most attractive. Its modern school facilities have been acclaimed in national magazines as among the most progressive in the nation.

### COCOA

COCOA is the largest city in Brevard County. Located in the center of the County it is one of Florida's older and more gracious cities and a drive up its winding River Road is both interesting and pleasant. Here the land slopes back from the Indian River and the plantation type estates of the older residents view the river with dignity of age. Modern ranch homes rub elbows with their vintage neighbors and two ages of Florida splendor may be seen in this one delightful drive. The St. John's river and ad-



Colorful Macaws from Brazil welcome you to beautiful McGee Jungle Gardens just south on US 1 in Vero Beach.



New sightseeing thrill in Cocoa Beach — Helicopter rides to see the Cape — just north of the causeway at the Cape Canaveral Fishing and Amusement Pier.

joining lake country west of Cocoa also lend themselves well for interesting and scenic side trips.

### MERRITT ISLAND

MERRITT ISLAND is located midway between Cocoa and Cocoa Beach. It is a large island and is rapidly

growing in popularity as a residential area. With the Banana River on one side and Indian River on the other its fishing and boating facilities are among the best in the County. It also offers a well kept air strip and facilities for private aircraft.

*Continued on Next Page*



GUIDED  
TOURS  
8 AM - 5 PM  
DAILY

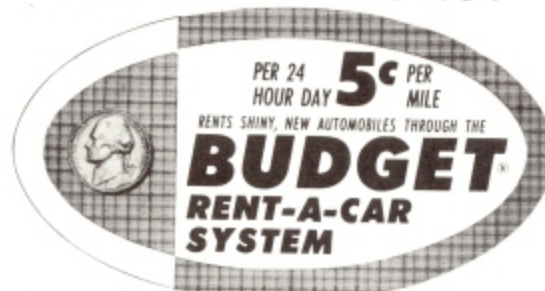
## Explore **McKEE** **JUNGLE GARDENS**

- Enchanting trails with strange, exotic beauty at every turn!
- Colorful tropical birds, wild animals, monkeys, alligators!
- Orchids growing wild on trees! See Florida's only orchid show. A continuous daily feature here.

ON U.S. 1 — SOUTH OF VERO BEACH

## BUDGET RENT-A-CAR

COAST TO COAST



Shiny new Volkswagens

Other fine cars available at LOW-LOW rates

WE FEATURE FREE HOTEL

PICKUP AND DELIVERY SERVICE

COCOA BEACH  
7008 N. Atlantic Avenue  
783 - 7608

ORLANDO  
3811 E. Colonial Drive  
CH 1 - 5436

\$3 24  
HR. DAY

5¢ \*  
PER MILE



## LYNNS Answering & Secretarial Service



Dictation • Typing  
Telephone, Desk &  
Mail Service • Notary  
Typewriter Rentals  
Machine Copies

COCOA BEACH ANSWERING SERVICE

107 Beach Plaza Bldg. • Cocoa Beach  
Lynn Clark SU 3-3176



FOR MEN WHO HATE TO WAIT

Phone SU 3-7007

- IMMEDIATE DELIVERY
- NO DROP CHARGE
- FORDS & OTHER FINE CARS

OFFICES

Ko-Ko Motel Lobby  
Cape Colony Inn Gift Shop  
Schrafft's Carriage House  
COCOA BEACH, FLORIDA

also at

Melbourne Airport  
MELBOURNE, FLORIDA

Continued

### COCOA BEACH

COCOA BEACH is situated at the very edge of Cape Canaveral about midway on the 10 mile strip between PAFB and Cape Canaveral, launching site of the mightier missiles taking off for outer space or a 9,000 mile trip "down range". The beach area has been developed to house and host the thousands of executives, engineers, scientists and technicians involved in the missile program.

Cocoa Beach offers some of the finest restaurants to be found in Florida, many nationally known. Fishing, boating and other recreational facilities abound.

Take the drive going North from the Cocoa Beach causeway. This is the main road leading up to Cape Canaveral. You can't get on the "Cape" but you will see the new plants of Martin and Boeing Companies and several of the other major contractors including NASA's Cape "Home". Continue on up to Port Canaveral. This is a deep water port serving central Florida with oil, cement, lumber and fish. The Navy has a dock area where the atomic submarines are berthed during launching tests for Polaris missiles.

The number one sightseeing thrill of the area is free for the looking and only requires patience as payment. Pick a spot anywhere along Cocoa Beach as an ideal vantage point for "bird watching". You can either drive your car right out on the beach or many of the hotels have sun decks (some complete with telescopes) which double as missile viewing platforms. The missiles will be arching from left to right in front of you which makes for ideal viewing.

Located on N. Atlantic Ave., Cocoa Beach, 1/2 M. North of Cocoa Causeway 2 Blocks South of Polaris Motel at New Canaveral Pier Site.

AIR TOURS  
OF CAPE &  
BEACH AREA  
\$5 Per  
Passenger

SU 3-3824

- EXECUTIVE TAXI
- PRIORITY CARGO
- AIR PHOTOS
- PRESS SERVICE



## HELICOPTER SERVICE by Air Florida Inc.



Top sightseeing thrill in Cape Canaveral area is "bird watching". Many of the shots receive pre-launch announcements so watch the local papers for scheduled launch activities. Anywhere along Cocoa Beach will provide a good vantage spot as missiles will be arching from left to right over the Atlantic.

A spectacular new pier THE CAPE CANAVERAL FISHING AND AMUSEMENT PIER has just been constructed and will without doubt become a major tourist attraction in Cocoa Beach. Located just one mile North of the Cocoa causeway and jutting 800 feet out into the Atlantic, the pier offers superb ocean fishing and an unparalleled view of the Cape with its towering gantrys. Telescopes have been provided for even better viewing of the launching areas. Bait and tackle are available here and a modern well equipped snack bar will be opened on the pier for the convenience of the hungry fishermen.

Operating from the new pier area is another exciting new sightseeing thrill. Here Air Florida Inc. is now operating a sightseeing helicopter service which provides an unsurpassed view of Cape Canaveral and the surrounding beach

area. Using all new equipment the helicopter offers a unique and safe way to get the best possible look at the area—a "must" for anyone buying property here.

### EAU GALLIE

Traveling further South on Route 1, one comes to EAU GALLIE. Often called "the Harbour City" it is seemingly made by nature for the boatmen for the Eau Gallie River widens into the safest land-locked harbour on the intercoastal waterway. One of the oldest and most picturesque yacht basins on the eastern seaboard can be found here.

Eau Gallie is a progressive community. Many new homes are under construction and new shopping centers banks, etc., are keeping pace with the population growth. Here too vast groves produce the prime fruit so peculiar to this area.

## CANAVERAL FISHING & AMUSEMENT PIER



- TOPS IN OCEAN FISHING!
- MISSILE SOUVENIRS
- HELICOPTER RIDES
- SNACK BAR
- AMUSEMENTS
- TELESCOPES
- FREE PARKING
- BAIT & TACKLE

Atlantic Ave.—1/2 Mi. North of Causeway (Hwy. 520), Cocoa Beach SU 3-4697



**ROCKET** 3 Minute Car Wash

MON.-TUE. **\$1.25**  
WED.-THURS.

FRI.-SAT. **\$1.50**  
SUN. - HOLIDAYS

**Spray Glaze \$9.95**

U. S. No. 1 at Sarno Rd., Eau Gallie  
Alpine 4-6585

Continued

A fine causeway connects Eau Gallie with Eau Gallie Beach and also provides ready access to Patrick AFB and "the Cape"

Eau Gallie and Melbourne, its sister city to the South share a fine modern air terminal which is served by Eastern Airlines and National Airlines

#### MELBOURNE

MELBOURNE also has excellent marinas, a yacht club and its share of the beautiful broad beaches that line the coast of the entire County. Picnic areas and boat launch ramps are available along the Melbourne-Indian Causeway which connects the beaches to the mainland.

Excellent beaches are seemingly endless here, stretching from the south tip of Melbourne (Sebastian Inlet) North to Cocoa Beach and Cape Canaveral.

#### PALM BAY

Palm Bay encompasses more than twice the area of any other city in Brevard County, and will eventually be one of the largest on Florida's East Coast.

**Avis**  
RENT-A-CAR

- CLEAN CURRENT MODEL CARS
- FREE DELIVERY IN CITY
- TRUCKS FOR EVERY JOB

307 W. ORANGE PHONE  
(Causeway at Cocoa Beach) SU 3-3643

Bay residents have ready access to all of the water sports and recreation for which Florida is so justly famous.

Two of the largest plants in the electronic field are located in a Palm Bay industrial park. Radiation, Inc. has established its national headquarters in Palm Bay and Soroban Engineering, Inc. has consolidated all of its Florida operations here.

In planning for future requirements of industry, areas have been set aside for additional industrial parks

#### McKEE JUNGLE GARDENS

Just South on U.S. 1 in Vero Beach is located world famous McKEE JUNGLE GARDENS. Here in a lush tropical atmosphere is fun and relaxation for the whole family. Enchanting jungle trails wind through this 80 acre tropical paradise with beauty at every turn. Hundreds of varieties of tropical beauty, unusual animals and rare birds await you at McKEE JUNGLE GARDENS. Unique here are two features. The "Cathedral of Palms"—the largest grove of Royal Palm Trees in the World and the Orchid Shows—the only shows of this kind in the entire State of Florida. Both are well worth a visit.

**RENT A NEW CAR!**

Rent a New '63 Valiant or other fine compact car for \$3 per day plus 8c a mile. Includes gas—service & insurance.

**KING CAR-TRUCK RENTAL**

RATES SLIGHTLY HIGHER FEB. 15th to APRIL 10th

**ONLY \$3 A DAY**

3770 E. Colonial Dr., 536 N. Atlantic Ave.,  
Ph. 423-3459 ORLANDO Ph. 783-7749 COCOA BEACH

## TELEVISION SCHEDULE

CHANNEL 2 WESH-TV (NBC)			
SUNDAY	MONDAY	TUESDAY	WEDNESDAY
4:30 NBC News	4:30 NBC News Report	4:30 NBC News Report	4:30 NBC News Report
5:00 Update	5:00 Best of Groucho	5:00 Best of Groucho	5:00 Best of Groucho
5:30 The Bullwinkle Show	5:30 I Led Three Lives	5:30 I Led Three Lives	5:30 I Led Three Lives
6:00 Meet the Press	6:00 Wayne Poucher	6:00 Wayne Poucher	6:00 Wayne Poucher
7:00 Ensign O'Toole	6:45 Huxley-Brinkley	6:45 Huxley-Brinkley	6:45 Huxley-Brinkley
7:30 Walt Disney's Wonderful World of Color	7:00 The Virginian	7:00 The Virginian	7:00 The Virginian
8:00 The 54th Where Are You Now?	7:30 The Deputy	7:30 The Deputy	7:30 The Deputy
9:00 Bonanza	8:00 The Virginian	8:00 The Virginian	8:00 The Virginian
10:00 Show of the Week	8:30 The Virginian	8:30 The Virginian	8:30 The Virginian
11:00 Peter Gunn	9:00 The Virginian	9:00 The Virginian	9:00 The Virginian
12:00 News-Sign Off	10:00 The Virginian	10:00 The Virginian	10:00 The Virginian
	11:00 The Virginian	11:00 The Virginian	11:00 The Virginian
	12:00 The Virginian	12:00 The Virginian	12:00 The Virginian
CHANNEL 6 WDBO-TV (CBS)			
SUNDAY	MONDAY	TUESDAY	WEDNESDAY
5:00 Ted Mack Hour	5:30 Deputy Davy	5:30 Deputy Davy	5:30 Deputy Davy
5:30 G.E. College Bowl	6:00 Channel 6 News	6:00 Channel 6 News	6:00 Channel 6 News
6:00 Twentieth Century—	6:30 Hennessy	6:30 Hennessy	6:30 Hennessy
7:00 Let's	7:15 CBS News, Cronkite	7:15 CBS News, Cronkite	7:15 CBS News, Cronkite
7:30 Dennis the Menace	8:00 I've Got a Secret	8:00 I've Got a Secret	8:00 I've Got a Secret
8:00 The Ed Sullivan Show	8:30 The Lucy Show	8:30 The Lucy Show	8:30 The Lucy Show
9:00 The Real McCoys	9:00 Danny Thomas Show	9:00 Danny Thomas Show	9:00 Danny Thomas Show
9:30 G.E. True Theatre	9:30 Andy Griffith Show	9:30 Andy Griffith Show	9:30 Andy Griffith Show
10:00 Candid Camera	10:00 Loretta Young Show	10:00 Loretta Young Show	10:00 Loretta Young Show
10:30 What's My Line	10:30 The Dick Van Dyke Show	10:30 The Dick Van Dyke Show	10:30 The Dick Van Dyke Show
11:00 CBS News, Severid	11:00 The Dick Van Dyke Show	11:00 The Dick Van Dyke Show	11:00 The Dick Van Dyke Show
11:15 Hollywood Movie	11:25 Hollywood Movie	11:25 Hollywood Movie	11:25 Hollywood Movie
CHANNEL 9 WLOF-TV (ABC)			
SUNDAY	MONDAY	TUESDAY	WEDNESDAY
5:30 Politics '62	4:55 American Newstand	4:55 American Newstand	4:55 American Newstand
6:00 Global Zobel	5:00 Super Popeye Playhouse	5:00 Super Popeye Playhouse	5:00 Super Popeye Playhouse
6:30 The Valiant Years	5:55 Weather	5:55 Weather	5:55 Weather
7:00 Winston Churchill	6:00 ABC Evening Report	6:00 ABC Evening Report	6:00 ABC Evening Report
7:30 The Jellies	6:30 Weather, Sports	6:30 Weather, Sports	6:30 Weather, Sports
8:00 Sunday Night Movie	6:45 Space Age Report	6:45 Space Age Report	6:45 Space Age Report
8:30 Voice of Firestone	7:00 Key Hole	7:00 Key Hole	7:00 Key Hole
9:00 Howard K. Smith	7:30 Combat	7:30 Combat	7:30 Combat
10:00 News & Comments	8:30 Hawaiian Eye	8:30 Hawaiian Eye	8:30 Hawaiian Eye
10:30 Mid-Fri. Report	9:00 The Dick Van Dyke Show	9:00 The Dick Van Dyke Show	9:00 The Dick Van Dyke Show
11:00 Mid-Fri. Report	10:00 The Dick Van Dyke Show	10:00 The Dick Van Dyke Show	10:00 The Dick Van Dyke Show
11:15 Channel 9 Theatre	11:00 ABC Evening Report	11:00 ABC Evening Report	11:00 ABC Evening Report
	11:25 Channel 9 Theatre	11:25 Channel 9 Theatre	11:25 Channel 9 Theatre
CHANNEL 9 WLOF-TV (ABC)			
THURSDAY	FRIDAY	SATURDAY	SUNDAY
4:55 American Newstand	4:55 American Newstand	4:55 American Newstand	4:55 American Newstand
5:00 Super Popeye Playhouse	5:00 Super Popeye Playhouse	5:00 Super Popeye Playhouse	5:00 Super Popeye Playhouse
5:55 Weather	5:55 Weather	5:55 Weather	5:55 Weather
6:00 ABC Evening Report	6:00 ABC Evening Report	6:00 ABC Evening Report	6:00 ABC Evening Report
6:30 Weather, Sports	6:30 Weather, Sports	6:30 Weather, Sports	6:30 Weather, Sports
7:00 Biography	7:00 Sea Hunt	7:00 Sea Hunt	7:00 Sea Hunt
7:30 Wagon Train	7:30 Donna Reed Show	7:30 Donna Reed Show	7:30 Donna Reed Show
8:00 Going My Way	8:00 Leave It to Beaver	8:00 Leave It to Beaver	8:00 Leave It to Beaver
8:30 Our Man Higgins	8:30 The Dick Van Dyke Show	8:30 The Dick Van Dyke Show	8:30 The Dick Van Dyke Show
9:00 The Dick Van Dyke Show	9:00 The Dick Van Dyke Show	9:00 The Dick Van Dyke Show	9:00 The Dick Van Dyke Show
10:00 The Dick Van Dyke Show	10:00 The Dick Van Dyke Show	10:00 The Dick Van Dyke Show	10:00 The Dick Van Dyke Show
11:00 ABC Evening Report	11:00 ABC Evening Report	11:00 ABC Evening Report	11:00 ABC Evening Report
11:25 Channel 9 Theatre	11:25 Channel 9 Theatre	11:25 Channel 9 Theatre	11:25 Channel 9 Theatre
CHANNEL 9 WLOF-TV (ABC)			
THURSDAY	FRIDAY	SATURDAY	SUNDAY
4:55 American Newstand	4:55 American Newstand	4:55 American Newstand	4:55 American Newstand
5:00 Super Popeye Playhouse	5:00 Super Popeye Playhouse	5:00 Super Popeye Playhouse	5:00 Super Popeye Playhouse
5:55 Weather	5:55 Weather	5:55 Weather	5:55 Weather
6:00 ABC Evening Report	6:00 ABC Evening Report	6:00 ABC Evening Report	6:00 ABC Evening Report
6:30 Weather, Sports	6:30 Weather, Sports	6:30 Weather, Sports	6:30 Weather, Sports
7:00 Biography	7:00 Sea Hunt	7:00 Sea Hunt	7:00 Sea Hunt
7:30 Wagon Train	7:30 Donna Reed Show	7:30 Donna Reed Show	7:30 Donna Reed Show
8:00 Going My Way	8:00 Leave It to Beaver	8:00 Leave It to Beaver	8:00 Leave It to Beaver
8:30 Our Man Higgins	8:30 The Dick Van Dyke Show	8:30 The Dick Van Dyke Show	8:30 The Dick Van Dyke Show
9:00 The Dick Van Dyke Show	9:00 The Dick Van Dyke Show	9:00 The Dick Van Dyke Show	9:00 The Dick Van Dyke Show
10:00 The Dick Van Dyke Show	10:00 The Dick Van Dyke Show	10:00 The Dick Van Dyke Show	10:00 The Dick Van Dyke Show
11:00 ABC Evening Report	11:00 ABC Evening Report	11:00 ABC Evening Report	11:00 ABC Evening Report
11:25 Channel 9 Theatre	11:25 Channel 9 Theatre	11:25 Channel 9 Theatre	11:25 Channel 9 Theatre

The above information has been compiled with the cooperation of the three television stations listed. Changes in scheduling are beyond the control of the publishers or the local stations.



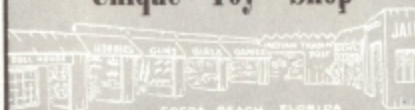
## OUT OF TOWN NEWSPAPERS

Books &  
Technical Publications  
MAGAZINES • TOBACCOS  
FILMS & FILM DEVELOPING

### Cocoa Beach NEWS CENTER

19 N ORLANDO AVE. • COCOA BEACH

## KIDDIE CORRAL Cape Canaveral's Unique Toy Shop



71 North Orlando Avenue

Dorothy Roberts

## Terraluna "GIFTS OUT OF \* THIS WORLD"

### • 8MM Movies of Astronaut Launchings!

- IMPORTS - GIFTS - GLASSWARE
- JEWELRY - HANDBAGS
- NOVELTIES - CARDS
- SOUVENIRS - ANTIQUES
- SHOPPING ASSISTANCE
- SHIPPING - GIFT WRAPPING
- EXCLUSIVE BUT NOT EXPENSIVE

OUR SPECIALTY —

### Gifts For The Folks Back Home

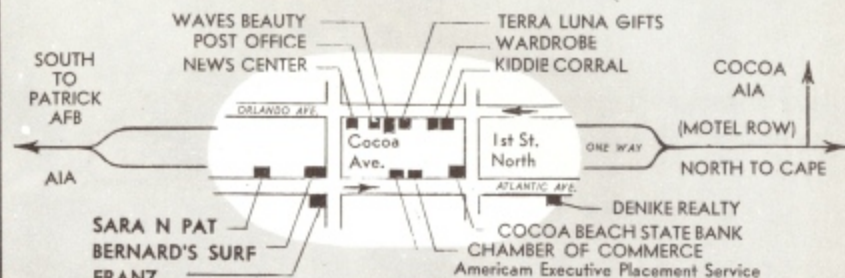
61 - 63 North Orlando Avenue  
Next to Post Office  
Downtown • Cocoa Beach

## COCOA BEACH

## DOWNTOWN SHOPPING CENTER

ORLANDO AVE. - ATLANTIC AVE.

Just a giant step from Cocoa Beach's motel row you'll find the Cocoa Beach DOWNTOWN SHOPPING CENTER. Here on Orlando and Atlantic Avenues, in one convenient location, is the answer to all your shopping needs. Distinctive gifts to fit in the corner of a travel worn suitcase or, if your taste runs larger, wrapping and shipping is "courtesy of the house" in any of these fine, distinctive shops.



- Casual and Sportswear
- Imported Shoes
- Gifts and gift wrapping

66 S. Atlantic Avenue  
Cocoa, Beach — SU 3-253

## Waves Beauty Salon

### Complete Beauty Service

"Air Conditioned  
Hair Dryers  
for your comfort"

HAIR STYLING — CONTOUR SHAPING

Next to the Post Office

Orlando Ave., Cocoa Beach SU 3-3481

# DeNIKE REALTY

• Say Hello for a Good Buy •  
HOMES • LOTS • INVESTMENTS

PHONE SU 3-3477

209 NORTH ATLANTIC

COCOA BEACH



## SHORT ON CLOTHES?

- ... forget your swim trunks? Other gear?
- ... airlines lose your luggage?
- ... short on shirts?
- ... staying longer than wardrobe allows?

chances are you'll need some new wardrobe anyway, and you'll like what you find here. Complete line of men's wear and beach wear.

## FRANZ MEN'S SHOP

No. 1 S. Atlantic Ave. — COCOA BEACH — SU 3-3188





NOW IN COCOA BEACH !

# SCHRAFFT'S

RESTAURANT  
AND  
COCKTAIL LOUNGE

"Be prepared  
to be  
pampered"

Entertainment Nightly



This 101 year old name —  
acclaimed throughout the  
world among fine restaur-  
ants — now opens its doors  
at Cocoa Beach.

PHONE 783-9431

A1A IN THE HEART OF COCOA BEACH

## Restaurants

### Handy Restaurant Reference Listing and Location Guide



For your convenience the following  
Restaurant Listings are arranged by  
the sections in which they are located.

#### COCOA BEACH

**CONGRESS INN DINING ROOM** — Serving complete meals from 6 a.m. on. Wide selection of well prepared dishes at exceptionally reasonable prices. Cocktail lounge, 3901 South Atlantic Ave. SU 3-2221.

**CAPE COLONY INN** — Truly fine food in a pleasant dining room in a brand new and very plush motor hotel. Music during lunch and dinner. Adjacent cocktail lounge with entertainment. Also a 24 hour coffee shop North Atlantic Ave. just south of Cocoa Causeway. Host Henri Landwirth. SU 3-2552.

**CONTINENTAL RESTAURANT** — Around the world dining and wining under the direction of Gourmet Chef Bob Endsley in Cocoa Beach's newest restaurant. Delightful continental atmosphere featuring an exotic menu with items drawn literally from all over the world. Drinks to match. Dinner music. 1 mi. No. of Causeway on A1A. Don Mora.



Satellite Honor Roll Plaque at Don Holt's nationally famous **RAMON'S RESTAURANT** in Cocoa Beach. Specialty at this favorite meeting place here for missilemen (which also houses the Cape Canaveral Press Club) is Roast Prime Ribs of Beef.

**BERNARD'S SURF** — Known the world over for seafoods "direct from our fishing fleet to you." Lunch and dinner in an intimate atmosphere from Cocoa Beach's most varied menu. Recommended by Gourmet. Credit cards honored. Dining room open Monday-Saturday 11 a.m. to 11 p.m. — Sunday 1 p.m. to 10:45 p.m. Cocktail lounge open 10 a.m.-2 a.m., Friday and Saturday til 3 a.m. Package goods at cut rate prices. 2 S. Atlantic Ave. SU 3-3366 or SU 3-2401.

**HOLIDAY INN** — Extremely good food in and attractive poolside dining room. Food service from 5:30 a.m. to 11 p.m. Sunday 11 a.m. to 11 p.m. Cocktail lounge. Just south of Cocoa causeway on Atlantic Ave. SU 3-2272.

**KOKO MOTEL DINING ROOM** — Continuous food service from 6 a.m. to 10 p.m. in the completely remodeled and redecorated YUM YUM room. Cocktails and beverage service from the beginning **POOH BAH LOUNGE**. 3701 S. Atlantic Ave. SU 3-7631.

**RAMON'S** — Famous for roast prime ribs and Caesar salad (recipe top secret). A truly fine restaurant. Steaks, seafoods. Lunch and dinner. Open 11 a.m. — Dinner 5 p.m. 'till midnight. Closed Sunday. Ocean end of Cocoa Causeway. V.I.P. Cocktail Lounge. 2 private dining rooms. SU 3-7444. Don Holt

Continued on Next Page





Cocoa Beach's newly opened Skyroom atop the First Federal Building now features the music and comedy of the Mark Wayne Quartet.

Continued

**MAYFAIR CAFETERIA** — Tasty food with good variety. Served cafeteria style and open 24 hours except Sunday — open then 10:45 a.m. to 2:30 p.m. and 4:30 p.m. to 8:30 p.m. 7073 North Atlantic Ave. Cocktail lounge. SU 3-4255.

## Restaurants

**SAMOA** — Unusual and authentic polynesian and cantonese cuisine, served in exotic island atmosphere. Tropical drinks from island recipes add to the charm. Daily 11:00 a.m. to 2 a.m. Fri. and Sat. 'till 3 a.m. Mr. Guy your host, 100 ft. South of Cocoa Causeway on A1A. SU 3-2540. Also now in Vero Beach on Rt. 60 (10 Royal Palm Blvd.) which is the causeway to the beach. Same excellent menu. For reservations call JO 2-4161.

**SCHRAFFT'S CARRIAGE HOUSE** — An exceptionally fine restaurant in the new Carriage House Motel serving the same famous for years. Breakfast, lunch & dinner. Cocktail lounge with entertainment. excellent foods that have made Schrafft's A1A just south of the Cocoa Causeway.

**SKYROOM RESTAURANT** — Superb dining with a view to match in this brand new room atop the fabulous 1st Federal Savings & Loan building on A1A just south of the Cocoa causeway. Complete and varied menu. Cocktail lounge and entertainment. Direct elevator service. SU 3-8491.



**WHITE CAPS** — Everything from a sandwich to a fine steak dinner. Directly on the ocean at the end of the Cocoa Causeway. Outdoor patio and an air conditioned dining room. Excellent food and very reasonable with complete dinners starting at \$1.65. Cocktail lounge. SU 3-4739.

**FAT BOY'S BARBEQUE** — This restaurant specializes in "barbeque everything" and all good. Open 11 a.m. to 9 p.m. seven days a week. Beer. 6006 N. Atlantic Ave. (Just North of the Cocoa Causeway.) Also in Cocoa on Rt. 520 West. SU 3-9115.



Head Chef Gee Wong (one of the leading Cantonese Master Chefs in this country) and Samoa Restaurant owner Mr. Guy shown at the native Chinese stove imported to assure authenticity in Chef Gee's dishes.

**IVANHOE** — A small intimate restaurant adjoining the Mayfair cafeteria. Gourmet dishes and excellent cocktails. Lunch and dinner. 7073 North Atlantic Ave. SU 3-4255.

Continued on Next Page

BERNARD'S

# Surf

**COCKTAIL LOUNGE  
DINING ROOM**



Delicious Sea Food Dinners  
From Our Fishing Fleet  
To You

Package Goods at Popular Prices

CREDIT CARDS HONORED  
RECOMMENDED BY GOURMET

COCOA BEACH "COCOA BEACH'S MOST VARIED MENU"

SU 3-3366  
SU 3-2401



## "The Toast of the Coast"

Serving Florida's Finest Food  
Roast Prime Ribs of Beef  
Charcoal Broiled Steaks  
Ramon's Caesar Salad Supreme

Visit Our New  
ORBIT ROOM



Two Private Dining Rooms  
and VIP Cocktail Lounge

# Ramon's

CLOSED  
SUNDAYS

COCOA BEACH SU 3-7444



# Colonial LOUNGE

PRIME RIBS  
BROILED STEAKS  
SEAFOODS

Cocktail Lounge

FOR RESERVATIONS  
Call Jerry at AM 7-3067

35 PALM AVENUE  
TITUSVILLE

• Buffet Luncheon Daily •

## Restaurants



Continued

### COCOA

**FAVATA'S ITALIAN FOODS** — An exceptionally good and equally varied menu featuring both Italian and American dishes. Family operated by the Favatas. Allow time for individual cooking to your order. 1417 Clearlake Road. NE 6-2598.

**HOOR GLASS GRILL** — Short order meals tastefully prepared 24 hours a day — seven days a week in a spotless air conditioned dining room. Forrest Ave. NE 6-6767.

**POINSETT LODGE** — A very nice restaurant on Lake Poinsett. Catfish and hush puppies are the specialty of the house. Steaks and chicken. Box lunches prepared. 5 miles West of Cocoa on Route 520. NE 6-3951. 5 a.m. to 8 p.m.

**HUB'S INN** — Specializing in seafood in an interesting river front dining room. 12 Noon to 8:30 p.m. 5 mi. N. of Cocoa on River Rd.

**THE NEPTUNE** — Very good seafood in pleasant surroundings. Open 7 a.m. to 1 a.m. Cocktail lounge with player piano. South U.S. Hwy. 1, Mr. Mayfield.

**TRADE WINDS CAFETERIA** — Delightful dining at moderate prices. Thursday nite is "family nite" with free dessert. Saturdays — ½ lb. steak \$1.00. Two Cocoa locations. 100 Maryland Ave., downtown and Byrd Shopping Plaza on U. S. 1 North.

Also in Melbourne see listing under that city.

**MYRT'S REST** — A very nice restaurant with a tasty complete menu. Breakfast — Lunch — Dinner. Specialty the Myrt-burger. Delicious 5 a.m. to 9 p.m. 207 Brevard Ave. NE 6-5035.

## RESTAURANT AND COCKTAIL LOUNGE

— Open 6 A.M. to 10 P.M. —  
DINNER • LUNCHEON • "BREAKFAST ANYTIME"  
Buffet Daily 11 - 2:30 — All You Care to Eat  
\$1.35 • \$2.00 On Sunday

### HOLIDAY INN

OF MELBOURNE

2605 N. Dixie Highway

Melbourne PA 3-3661



## Restaurants

### EAU GALLIE

**JERRY'S PIZZA PALACE** — A very fine Italian Restaurant featuring 5 varieties of spaghetti sauces, ravioli and 81 different pizzas baked in a brick oven. 4:30 p.m. to 2 a.m. Imported and domestic wine and beer. Takeouts too. AL 4-4515.

**HENSEL'S RED ROOSTER** — Charcoal broiled steaks and chops. Live Maine Lobster from our own lobster pond. Daily 6 a.m. to 2 a.m. Fri. and Sat. to 3 a.m. U.S. Hwy. 1. Cocktails AL 4-3462.

**LEE'S CHARCOAL PIT** — Real pit barbeque done before your eyes and delicious. 10:30 a.m. to 10:30 p.m. Closed Sundays. Beer. 1477 Ballard Dr. AL 4-4663.

### TITUSVILLE

**COLONIAL LOUNGE** — Delightful dining in a new steak house. Open hearth cooking. Steaks, seafoods, lobster and shrimp. Buffet Luncheon 11:30 to 2:00 p.m. except Sunday. Dinner 6 p.m. to 11 p.m. Cocktail lounge 10 a.m. to 12 Midnight. Package store 10 a.m. to 9 p.m. For reservations call Jerry Fields. AM 7-3067.



Outdoor patio fronting the beach at The Whitecaps Restaurant provides a fun place to relax, enjoy good food and is an excellent vantage point for watching a missile shot.

## Handy Restaurant Reference Listing and Location Guide

Continued on Next Page

## SKY ROOM RESTAURANT AND COCKTAIL LOUNGE

DANCING TO THE  
MUSIC OF THE  
MARK WAYNE  
QUARTET

LUNCHEONS  
DINNER  
OPEN 11 A.M.

Complete  
Dinners  
From  
\$2.75



DINE WITH ELEGANT DISTINCTION OVERLOOKING THE ATLANTIC  
AND BANANA RIVER

U. S. Highway A1A at Cocoa Beach — Phone SU 3-8491



# THE WHITE CAPS STEAK HOUSE

## Restaurant and Cocktail Lounge

— Our Specialty —  
**SIRLOIN STEAK TIPS**  
\$1.65  
— Complete Dinner —

Our Outdoor Patio in the finest location to watch missile launchings.

RIGHT ON THE BEACH • END OF THE CAUSEWAY • COCOA BEACH • SU 3-4739



## Restaurants

Continued

**TOWN REST**—Steaks, chops, seafood and Italian dishes. Complete catering service. Wine and Beer. 6:30 a.m. to 9 p.m. 611 S. Wash. (US 1). AM 7-1925.

**RIVER VIEW REST.**—Complete menu with the emphasis on seafoods. Chicken and Shrimp Baskets \$1.00. 2004 S. Wash. Ave. (U.S. 1). AM 7-9933.

### SATELLITE BEACH and CANOVA BEACH

(A1A South of Patrick A.F.B.)

**SATELLITE VILLA**—Here is Italian food supreme. Expertly prepared to individual order. Exceptional. Try the Manicotti. Beer and Wine. 11 a.m. to 11 p.m. A1A just south of Patrick AFB at Satellite Beach. AM 2-1340.

**THE PELICAN**—Charcoal foods. Steaks, Shishkabob and Shrimp Kabob. Resin baked potatoes. Unusual seafoods. 5:30 p.m. to 10 p.m. every day. Cocktail lounge. A1A at the Eau Gallie Causeway. AM 2-9121.

### INDIALANTIC and MELBOURNE BEACH

**MELBOURNE BEACH STEAK HOUSE**—Pfatzers meats flown in from Chicago and prepared with loving care. Seafoods too! Luncheon 11:30-2:30. Dinner 5-11 p.m. Cocktails. Just south of Melbourne causeway on A1A. PA 3-9792.

**SEA DUNES**—Excellent food in a very pleasant dining room directly on the ocean. Prime ribs, steaks and seafoods including Danish Lobster Tails. 7½ miles south of Melbourne Causeway on A1A. PA 3-6511.

ITALIAN — AMERICAN  
RESTAURANT  
AM 2-1340.



Manicotti - Spaghetti - Lasagna - Scallopine  
TAKE-OUTS - PIZZA - MICHELOB ON DRAFT  
Luncheon and Dinner — 11 A.M. to 12 Midnight  
CONTINENTAL FOOD—REASONABLE PRICES

350 NORTH A1A, SATELLITE BEACH — 2 MILES SOUTH OF PATRICK AFB



## Jerry's Pizza Palace

SPAGHETTI  
and RAVIOLI

Hours 4 P.M. to 1:30 A.M.  
Except Sundays



TAKE-OUT ORDERS — CALL AL 4-4515  
1597 Babcock Street — Eau Gallie

**TRADEWINDS HOTEL DINING ROOM**—Shannon Ave., Indialantic. Excellent hotel dining and bar facilities in a gracious "vesteryear" atmosphere. Wonderful "gay twenties" decor in cocktail lounge. Serving breakfast, lunch and dinner. Cocktails 'til 1:30 a.m. PA 3-6422. **THE CAPTAINS TABLE**—Water front dining, excellent food and a very colorful cocktail lounge — **THE PIRATES DEN**—just opened in the completely remodeled **TIDELANDS MOTOR INN** featuring continental cuisine and catering to groups and private parties. On A1A 7 miles So. of PAFB at the Melbourne Causeway. Mr. Rosen. PA 3-8545.

### MELBOURNE

**HOLIDAY INN**—A very good restaurant serving a complete menu. Open seven days a week 6 a.m. to 10 p.m. Cocktail lounge. 2605 N. Dixie (U.S. 1). PA 3-3661.

**TRADE WINDS CAFETERIA**—Truly delightful dining at moderate prices. Thursday nite is "family nite" with free dessert. Saturday is steak night. ¾ lb. Steak \$1.00. 912 Babcock. Also in Cocoa. See listing under that city.

## FAMOUS FOR PRIME RIBS AND SEA FOODS

- Gourmet Quality Dining Room
- Ship-Rek Room Cocktail Lounge

POOLSIDE PATIO DINING



## The Sea Dunes

RESORT MOTEL

A1A on the Ocean — PA 3-6511  
MELBOURNE BEACH  
9 Miles South of Melbourne Causeway



## Trade Winds CAFETERIA

LUNCHEON 11:00 A.M. — 2:15 P.M.  
DINNER: 4:30 P.M. — 8:00 P.M.

COCOA MELBOURNE  
109 Maryland Avenue 912 Babcock in  
and Byrd Plaza Melbourne Shopping Ctr.  
(Also in Orlando & Leesburg)



# CAPE COLONY INN



HENRI LANDWIRTH  
Manager

A1A — S. Atlantic Ave.  
Cocoa Beach — SU 3-2252

TOPS IN ENTERTAINMENT  
**LAS VEGAS  
FAVORITES**  
NIGHTLY IN THE LOUNGE

"SUPERB CUISINE"  
Cape Colony Inn

**DINING ROOM**

**24 Hour Coffee Shop**



JOHNNY BOLAN  
and his  
Continental Trio



☆ PACKAGE LIQUOR,  
COCOA BEACH — 1 MILE NORTH OF CAUSEWAY — 783-2881

## EXOTIC DRINKS

from around  
the world

Satisfy your spirit of adventure with one of our "adventurous spirits" and partake of the finest foods of many lands when you "make port" with our continental Gourmet Sam, Ozeran



**BUFFET**

11 A.M. — 2:30 P.M.

Except  
Saturday and  
Sunday

**\$1.25**

"All You Can Eat"

DON MORA — YOUR HOST

**Continental  
COCKTAIL LOUNGE INC.**



Cocoa Beach's newly opened Skyroom atop the First Federal Building now features the music and comedy of the Mark Wayne Quartet.

**AFTER  
DARK**



**WINTER 1963**

**EDITORS NOTE:** Because this magazine is published quarterly, you may find that toward the end of an issue, certain entertainment will sometimes change from that scheduled. However, you will find the magazine is always indicative of type and calibre of entertainment, and that replacement acts will be very similar in both quality and format.

### COCOA BEACH

For the tops in food and entertainment go to the top of the town atop the striking new First Federal Bank Building where you'll find THE SKYROOM. Here with a view that is superb and food to match the incomparable MARK WAYNE QUARTET entertains with their own imitable comedy — do impressions and impersonations — touch on rock and roll and disicland and throw in some just real good dance music for a well rounded evening's fun. Try this new and captivating dining delight. You'll go back.



Fantabulous foursome from Las Vegas — The Pep-Tones appearing at the Cape Colony Inn now thru February 2nd.

Newest addition to Cocoa Beach food and funwise is famous SCHRAFFT'S RESTAURANT at the newly opened SCHRAFFT'S CARRIAGE HOUSE MOTOR LODGE just North of the Starlite on A1A. Excellent dining and wining here in an exceptionally pretty restaurant and cocktail lounge featuring the foods that have made SCHRAFFT'S a dining favorite in other cities for years. Entertainment here too with ROSS RAPHAEL at the piano in the cocktail lounge. Give it a try and you'll join the many who are saying nice things about SCHRAFFT'S CARRIAGE HOUSE.

A step and a stop and you are next door at the beautiful HOLIDAY INN which houses that favorite rendezvous for locals and visiting missilemen — the RIVIERA LOUNGE. Friendly, relaxed atmosphere and always good entertainment with the emphasis here on small combos and singles.

Starting January 18th is pretty and bouncy BONNIE DAYE with piano and song that's both good and different. You'll like!!

Across the way is the new and already famous CAPE COLONY INN. Under the capable hand of host HENRI LANDWIRTH, the CAPE COLONY INN has quickly built a reputation for fine food, excellent drinks and superb service.

Top combos here too with THE PEP-TONES — a fantabulous foursome who have been playing the Riviera in Las Vegas — scheduled to be here from January 7th to February 2nd. Following this on the 4th of February and continuing until March 2nd are four fine young musicians and entertainers who have formed the delightful TUNESTERS. Rounding out the CAPE



OVER 1200 FAMILIES NOW LIVE IN . . .

# TAYLOR-MADE HOMES



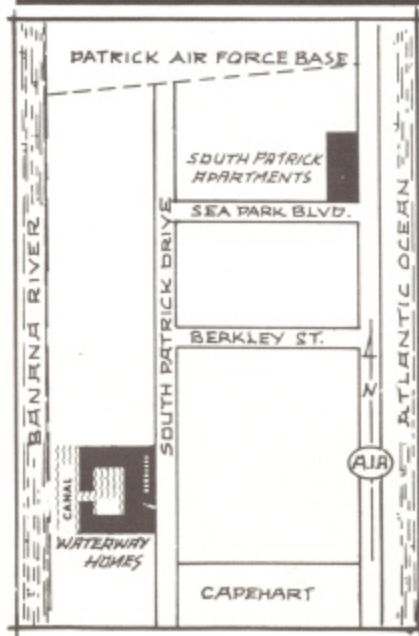
*Now Building . . .*

## WATERWAY HOMES

EXECUTIVE-TYPE WATERWAY HOMES  
ON SEAWALLED CANALS LEADING TO  
RIVER AND THE OCEAN

7 MODELS • PRICED FROM \$14,950 • FHA • VA • CONVENTIONAL

**Brevard's Finest Location: S. Patrick Dr., 1 mi. South of Patrick Air Force Base!**



*and NOW Taylor-Made Homes proudly presents . . .*

## SOUTH PATRICK Rental APARTMENTS

ON HIGHWAY A - 1 - A AND SEA PARK BOULEVARD — OPPOSITE THE OCEAN

STUDIOS from \$100-1 BEDROOM from \$125  
SPACIOUS 2 BEDROOM APTS. from \$150 MO.

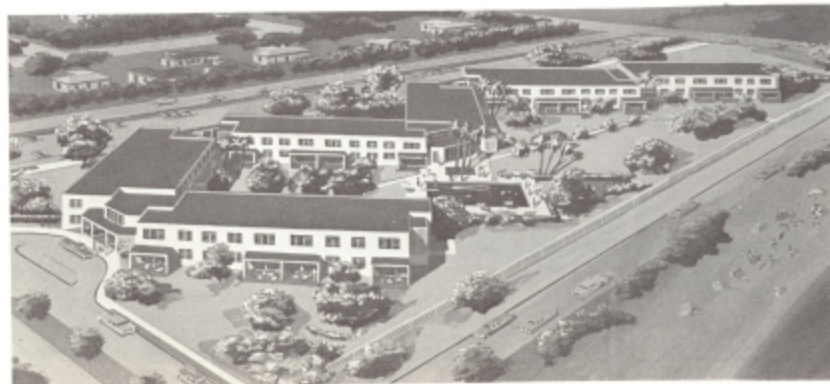
**LUXURIOUS CAREFREE LIVING!**

**CENTRALLY AIR CONDITIONED  
AND HEATED**

Swimming Pool • Recreation Area • Washers •  
Dryers • Built-in G. E. Appliances • Ample  
Parking • Beautiful Landscaping •

See . . .

RENTAL AGENT ON PREMISES!!







(Continued)

COLONY INN'S entertainment calendar during March is a group that combines music and comedy into an act that has become a Las Vegas favorite. It's the NOCK-A-BOOTS who open on March 3rd for an indefinite — and we hope long — stay. These groups all reflect the new entertainment policy here at THE CAPE COLONY INN of bringing in groups that have made a name for themselves in the entertainment capital of the and be sure of finding — top entertainment country, Las Vegas, so you can look for — at all times here at THE CAPE COLONY INN.

A definite must is MR. GUY'S "fantabulous" Polynesian restaurant and night club the SAMOA. Here a bit of the South Pacific has been painstakingly reproduced with authentic Polynesian and Cantonese foods by head chef GEE WONG, one of the best in the country formerly of the Miami Luau.

Funwise MR. GUY has imported an authentic Bahama Island group — THE SAMOA STEEL DRUM BAND — playing



Typical of the fine entertainment at the Holiday Inn's Riviera Lounge is pianist-songstress Bonnie Daye.

the wonderful island rhythms on these unusual and melodious instruments. Besides doing truly delightful floor shows this versatile group provides true native tempos for your dancing pleasure and mix in favorite "yankee tunes" for good variety. Foodwise and funwise (and even moodwise) an evening at THE SAMOA is like an evening in The Islands.

Go a little northeast, on the beach at the end of the causeway and you're at one of the swingingest spots on the Beach. At the VANGUARD LOUNGE, hosts LAURA and NORT KURLAN keep the jazz combos uppermost, with JOE HARRISON, a Providence, R.I., fixture here, entertaining with piano, song, and excellent humor during the breaks at this "meeting place on the beach."

Frequent changes in the entertainment here at THE VANGUARD to add the spice of variety to Cocoa Beach "after darkin'".

One of the most oft heard phrases in Missleland is "See you at RAMONS," long a top name among the area restaurants and an institution here. Food is magnificent and the roast beef out of this world. Exceptionally fine taped stereo music provides the background, and the Caesar Salad defies description. Host DON HOLT provides private dining rooms and VIP cocktail lounge for special parties. A meeting place.


Also an institution in the area BERNARD'S SURF offers the largest menu you've seen anywhere. Like things different? BERNARD offers chocolate-covered ants, kangaroo, bear or whale. From the biggest and most varied menu you've ever seen you can order the best seafood you've ever tasted from FISCHER'S own fishing fleet. This oldest restaurant on the beach has



Featured at Don & Frank Mora's beautiful new Continental Supper Club is local favorite Johnny Bolan and his Continental Trio.


added a new dining room and the cocktail lounge is always overflowing.

Ex jet-jockey HOWARD MOORE welcomes you at the KEG ROOM and WHITE CAPS RESTAURANT, on the beach at the end of the causeway, where the outdoor patio makes the best missile viewing site imaginable. Try their Sirloin Tip dinner at \$1.65 for a treat. *Continued on Next Page*



## An Adventure in Exotic Dining!

Recommended by GOURMET Magazine



### ENTERTAINMENT NIGHTLY

### Featuring SAMOA Steel Drum Band

Luncheons Daily  
11 A.M., From 99c

Polynesian  
Cantonese  
and American  
Cuisine  
Tropical Drinks

# SAMOA

Reservations SU 3-2540, Mr. Guy  
All Credit Cards Honored

100 Ft. South of Cocoa Causeway on A1A COCOA BEACH

## DINING ROOM

SERVING 5:30 A.M. — 11:00 P.M.

# Entertainment Nightly

— IN THE —

# RIVIERA LOUNGE

Music For Your DANCING  
Pleasure  
Cocktail Hour — 4:30 - 6:30

## Holiday Inn

• Cocoa Beach at Cape Canaveral •





Fine musical group — The Tunesters — coming to The Cape Colony Inn February 4th to March 2nd.

Continued

**AFTER  
DARK**



Last stop going North on the beach is the new and delightful supper club — THE CONTINENTAL. Here at "The Sign of the Ship" hosts DON AND FRANK MORA have created one of the finest food and fun places you'll ever visit. It's also probably the friendliest with both of these genial hosts extending the happy hand of hospitality in a genuine effort to make everyone feel at home. Good entertainment and dance groups here too with JOHNNY BOLAN currently holding down the musical spotlight. New feature here entertainmentwise — and right in keeping with the friendly atmosphere of THE CONTINENTAL is Cocoa Beach's only intimate piano bar for sippin' — singin' and listenin'. THE CONTINENTAL is offering a "world tour" of exotic dining drawn from the cuisine of faraway lands and also concocting beverages beyond belief to add to the authenticity and to the delight of an evening here. Gourmet Chef BOB ENDSLEY has been brought in to insure the quality of the food and it is truly without peer.

#### EAU GALLIE

An excellent restaurant in Eau Gallie is Jerry's Pizza Palace. Don't let the name fool you for Pizza is just one of the many fine



Authentic island entertainment nightly at the Samoa Restaurant by The Samoa Steel Band.



Famous and popular is the T.G.I.F. party at The Vanguard Lounge. Excellent buffet is served every Friday — courtesy of the house.

#### MELBOURNE

The HOLIDAY INN'S friendly cocktail lounge and excellent dining room overlooking the swimming pool provides drinks mixed by a master and served in an intimate lounge. Cocktail hour 5 to 7 with all drinks 50c.

Continued on Next Page

ALWAYS

## Continuous Entertainment

— at —  
"The  
Meeting Place"



— TGIF Party —

- ALL DRINKS 50c, 4-6 DAILY
- TGIF PARTY FRIDAY, 4-6, FREE BUFFET
- UNESCORTED LADIES WELCOME
- SUNDAY AFTERNOON JAM SESSION 4:30 P.M.-2 A.M.

"WHERE THE GIRLS ARE!"

NORTON  
and  
LAURA

Kurlan's

4 - 6  
All Drinks  
50c

# VANGUARD LOUNGE

VANGUARD MOTEL

Only Lounge on the Ocean  
Cocoa Beach

## The Pirates Den COCKTAIL LOUNGE

and

## The Captain's Table RESTAURANT

*Continental Cuisine*

catering to groups  
and private parties

**ENTERTAINMENT**

at the new

TIDELANDS MOTOR INN

AIA, 7 miles south of Patrick AFB at Melbourne  
causeway—For Reservations—Mr. Rosen PA 3-8545







Taking over the entertainment spotlight at The Cape Colony Inn commencing March 3rd is a fine musical comedy trio — The Nock-A-Bouts.

## AFTER DARK (Continued)

### MELBOURNE BEACH - INDIALANTIC

Drive south of the Melbourne Causeway on A1A and discover the different and delightful SEA DUNES MOTEL, where dinner and cocktails are served in an unusual dining room overlooking the pool. Many ex-

cellent dinners featured, but try either the Prime Ribs or Danish Lobster Tails. Well worth the drive.

Just opened to the public is the TRADE-WINDS HOTEL, for years a private club. The "Roaring Twenties" atmosphere offered here by host JOHN SUSOR promises some delightful evenings. Bar and dining room excellent and a "must see" in the area.

Indialantic's brand new PIRATES DEN at the remodeled Tideland Motor Inn on A1A is unique. It's skillfully done waterfront cocktail lounge is reminiscent of the days of Blackbeard. Also facing the beach, their CAPTAINS TABLE dining room features continental cuisine under the excellent management of ARNOLD ROSEN, something delightfully new on the south beaches.

### COCOA

Top two for wining and dining in the downtown Cocoa area are FAVATA'S fine Italian restaurant which features both Italian and American cuisine individually cooked to your order and at very reasonable prices.

### TITUSVILLE

"Showcase cooking" on the open hearth at the COLONIAL LOUNGE in Titusville is rapidly building a reputation for this recently opened restaurant and cocktail lounge. Justifiably the best in the area.

# Now with all its Prestige The Trade Winds Hotel

Invites you to visit and use its facilities

DINNER AND COCKTAILS

in

FLORIDA'S MOST UNUSUAL HOTEL

SHANNON AVENUE IN INDIALANTIC

Phone PA 3-6422

**RESIDENTIAL ACCOMMODATIONS  
WITH FULL HOTEL SERVICE**



Local beauty on the beach is Pat Adams P.A.F.B. employee. USAF Foto.



# fishing

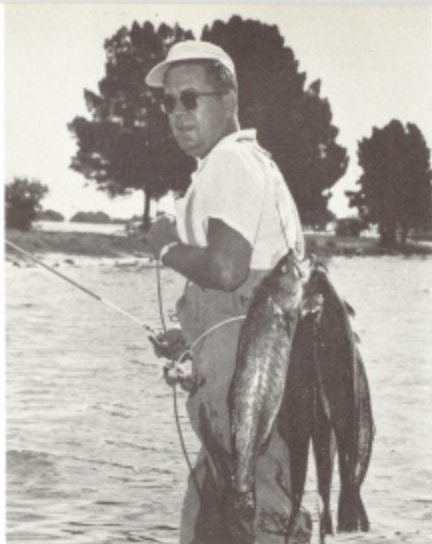
By Gary Bennett

## WINTER 1963

The "Salt Water Trout Capital of the World," Cocoa, Florida, is typical of the excellent fishing available throughout this part of Brevard County. From the rivers and lakes of Titusville to the Sebastian Inlet south of Melbourne, a five minute drive from U.S. 1 provides the best of salt water or fresh water fishing.

**SALT WATER:** No license required! The four causeways across the Indian River, Sykes Creek and Banana River to the Atlantic beaches provide easily accessible fishing from many bridges and shorelines. Free boat ramps are conveniently placed for access to miles of wonderful fishing, skiing and boating. An abundance of Trout prevails, but other varieties such as Sheepshead, Drum, Whiting, Angelfish and Croakers bite readily. No expensive safari is needed to fish the Cape Canaveral area—the most popular method is wading with light spinning tackle. The drawbridges are popular for night shrimping, fishing and crabbing. Excellent fishing is anticipated from the new Canaveral Fishing Pier on Cocoa Beach. Try this one night or day for big catches.

**SURF FISHING:** With the autumnal equinoctial period at hand, the surf angler will see more fish drawing closer to the beaches. From Titusville Beach south to Sebastian Inlet, large Bull Whiting, Sea Bream, Pompano,



Bluefish, Sheepshead, Tarpon, Channel Bass and Drum start schooling along the beaches and inlets. Sand Fleas, Cut Mullet and Dead Shrimp are the most frequently used surf baits.

**CANAVERAL HARBOR:** The wide, protected turning basin of Canaveral Harbor is a favorite year round fishing spot, providing the only tidal waters with both shallow water for the wading angler and very deep waters for the boatman. Any cut bait is productive in the Harbor. An unloading ramp for free public use is conveniently located for small boats to fish in the Harbor or outside.

**OFFSHORE AND DEEP SEA FISHING:** On favorable days, trolling with in sight of the missile launching gantries of Cape Canaveral produces sensational catches of Sailfish, Dolphin, Amberjacks, Spanish and King Mack-



erel, Cobia and Bonito. The buoys marking the entrance to the Inlet are popular hangouts for Triple-tails, Drum, Sheepshead, Jewfish, Cobia and Groupers. Deep sea fishing boats make daily trips from the Harbor in quest of Sow Snappers and Giant Groupers. The tackle and bait is furnished for \$5.00.

**FRESH WATER:** (License required) The headwaters of the famous St. Johns River begin west of Cocoa. One of the few rivers in the world which flows north, the St. Johns River abounds in Largemouth Black Bass, Pickerel, Speckled Perch (Crappie), Warmouth Perch, Copperhead Bream and Bluegills. An excellent fish camp (POINSETT LODGE) complete with cottages, restaurant, boats, motors, tackle and bait plus a fine launching ramp in case you are towing your own craft is maintained by Major Paul Dean at Lake Poinsett just off highway 520. Superb fresh water fishing is available here and if you wish to cruise, access is available to the St. John's River and Lake Winder providing miles of scenic fish filled waters.



## sports

Three excellent golf courses challenge the visitor to the Cape Canaveral Area. Whispering Hills Country Club in Titusville offers an interesting nine hole layout with complete clubhouse facilities. The Melbourne Country Club has an 18 hole course and also offers clubhouse privileges. Out on the beach a tricky Par 3 course is open for play night or day at Satellite Beach just South of Patrick Air Force Base. All three are open to the public daily on a greens fee basis.

Horseback riding is another popular pastime here. Horses may be rented at Ridge Road Riding Stable in Eau Gallie or Whispering Pines Stables on West King Street in Cocoa.

Brevard county's endless rivers, bays and inland waterways make for some of the finest boating available anywhere in Florida. Every town in the area has excellent marinas where boats may be rented by the hour, day or for longer periods

## DEEP SEA FISHING



Aboard The  
**"Miss Charleston"**  
 65 FOOT DIESEL YACHT  
 OR  
**"Miss Cocoa Beach"**  
 60 FOOT TWIN DIESEL YACHT

**ALL DAY \$5** Per Person  
 Incl. Bait and Lines  
 LIGHT LUNCH AVAILABLE AT MODERN  
 SNACK BAR — SAILS DAILY AT 8:30 A.M.  
 FROM PORT CANAVERAL  
 For Information Call Cocoa Beach SU 3-2033



## GARY BENNETTS BAIT & TACKLE

COCOA

Box 1392

FLORIDA

## FREE FISHING GUIDE TACKLE FOR RENT

SURF • SPINNING • CASTING RODS AND REELS  
 • **LIVE SHRIMP** •

FACTORY APPROVED SERVICE AND PARTS  
 PFLUEGER - ZEBCO - ORVIS - SHAKESPEARE  
 PENN - TASCO - BRONSON - MITCHELL  
 AIREX - SOUTH BEND - COMPAC RUMER





## Church Schedules

### COCOA

- DIXON BLVD. BAPTIST — Dixon Blvd. Sun. Sch. 10 a.m., worship service 11 a.m.
- FIRST BAPTIST CHURCH — Brevard Ave. and Oak St. Bible Sch. 8:30 a.m. Worship service 11 a.m.
- FIRST CHRISTIAN — 1403 Dixon Blvd. Bible Sch. 9:30 a.m. Morning worship 10:40 a.m.
- FIRST METHODIST — corner Forrest Grimes & Highland. 9 and 11 a.m. Sun. Sch. 10 a.m.
- KING STREET BAPTIST CHURCH — 1040 King Street. Sunday Sch. 9:35 a.m. Worship services 8:30 a.m. and 11 a.m.
- MESSIAH LUTHERAN (U.C.L.A.) — Highway 1 at Lucerne Dr. Church Sch. 9:15, morning service 10:30.
- ROCKLEDGE PRESBYTERIAN CHURCH — On the River Road — Worship, Junior Worship and Children's Church 11 a.m. Sunday School 9:45 a.m. Youth Fellowship 6 p.m.
- ST. MARK'S EPISCOPAL — 4 Church St. Jr. Church and Sunday Sch. 9:15, Holy Eucharist and Sermon, 7:45 and 9:15.
- ST. MARY'S CATHOLIC CHURCH — Barton Ave., Rockledge. Sunday Masses 7:30, 9 and 11:30 a.m. Confession Sat. 4 to 5, and 7 to 8 p.m.

### COCOA BEACH

- CHRIST LUTHERAN CHURCH — 7511 No. Atlantic Ave. Sun. Sch. 9:15, Worship service 8 and 10:30 a.m.
- CHURCH OF OUR SAVIOUR — Hgwy. 401. Sunday Masses: 7:30, 8:45 and 11 a.m. Confessions Sat., 7 to 8 p.m.
- COCOA BEACH CHURCH OF CHRIST — 16th St. and So. Orlando Ave. Bible study 10 a.m., Worship service 11 a.m.
- COCOA BEACH COMMUNITY CHURCH — 126 South Atlantic Ave. 9:30 and 11 a.m. Church Sch. 9:30 and 11 a.m. Youth Fellowship 7:00 p.m.
- FIRST BAPTIST — 830 So. Atlantic Ave. Sun. Sch. 9:45 a.m., worship services 8:30 and 11 a.m.

- FIRST CHRISTIAN — 350 St. Orlando Ave. Bible Sch. 9:15 a.m., morning worship 10:30 a.m.
- FIRST METHODIST — 340 S. Orlando Ave. Sun. Sch. 9:45 a.m., morning worship, 11 a.m.
- RIVERSIDE PRESBYTERIAN — No. Atlantic Ave. Sun. Sch. 9:30, morning worship 9:30 and 11 a.m.

- SEVENTH DAY ADVENTIST CHURCH — On road to Porth Canaveral. Sabbath Sch. 2:30 p.m. Worship service 3:30 p.m.
- ST. DAVID'S BY THE SEA EPISCOPAL — No. Atlantic Ave. Holy Comm. 8 a.m., morning service and church school 10:30 a.m.

### EAU Gallie

- CHRISTIAN SCIENCE SERVICES — Women's Club Bldg. Sun. Sch. 11 a.m., Church service 11 a.m.
- CHURCH OF CHRIST — City Hall, Highland Ave. Bible Study 10 a.m. Worship service 11 a.m.
- FIRST BAPTIST — Montreal Ave. Sun. Sch. 9:45 a.m., morning worship 11 a.m.
- FIRST CHRISTIAN — Croton-Berry Rd. Bible Sch. 9:45 a.m., morning worship 11 a.m.
- LUTHERAN CHURCH OF THE REDEEMER — (Missouri Synod) — North Babcock & City Limits. Sun. Sch. & Bible Classes 9:45 — Worship services 8:30 & 11 a.m.
- ST. JOHN'S EPISCOPAL — 471 Young St. Sun. Sch. 9:30, morning prayer, 11 a.m.
- ST. PAUL'S METHODIST — 743 Highland Ave. Morning worship 8:45 and 11 a.m. Church School 9:30 a.m.
- TEMPLE BETH SHOLOM — Eau Gallie Bch. 8:30 Friday.

### MERRITT ISLAND

- FIRST BAPTIST CHURCH — Merritt Island. Sunday Sch. 9:30 a.m. Morning worship 11 a.m.
- ISLAND BEACH OUTDOOR CHURCH — Causeway Rd. Worship services 8:15.
- ST. LUKE'S EPISCOPAL — Courtenay (North Merritt Island). Worship services 11 a.m.

### SOUTH BEACHES

- EASTMINSTER PRESBYTERIAN — Causeway and Riverside Dr., Indialantic. 9:45 a.m. Church Sch. 11 a.m. Morning Worship.
- FIRST BAPTIST of INDIALANTIC — Washington Ave. 9:45 a.m. Sun. Sch. 11 a.m. Worship service.
- LUTHERAN MISSION — Satellite Bch. Comm. Ctr., Sun. Sch. 10:15 a.m., Morning Worship 11:30 a.m.

- HOLY APOSTLES EPISCOPAL CHURCH — Grant Street, Satellite Beach, 7:30 a.m. Holy Communion. 9:30 p.m. Family service.

- ST. MARKS METHODIST — 330 Fourth Ave., Indialantic. 9:45 a.m. Sunday Sch. 11 a.m. Worship service.

### MELBOURNE

- CHURCH OF GOD — 475 No. Oak St. Sun. Sch. 10 a.m. Morning worship 11 a.m.
- FIRST BAPTIST OF MELBOURNE — 544 New Haven Ave. Sun. Sch. 9:45 a.m., worship service 11 a.m.
- FIRST CHRISTIAN — 614 Palmetto Ave. Sun. Sch. 9:45 a.m., morning worship 11 a.m.
- FIRST CHURCH OF CHRIST SCIENTIST — Melbourne Ave. Sun. Sch. and church services 11 a.m.

- HOLY TRINITY EPISCOPAL CHURCH — 1538 Strawbridge Ave. Holy Comm. 8 a.m. First Sun., Sun. Sch. & Family Serv. 10 a.m.
- OUR LADY OF LORDES CATHOLIC — Fee Ave. Masses 8, 9, 10 and 11 a.m.
- UNITED PRESBYTERIAN CHURCH of the Good Shepherd — South end of Country Club Road, Melbourne. S.S. 9:30 a.m., worship service 11:00 a.m.

### PALM BAY

- CHURCH OF OUR SAVIOUR — Palm Bay Civic Center. Morning services 9:30 & 11 a.m. Sun. Sch. 9:30 a.m. Eve. Service 5 p.m.
- FIRST BAPTIST CHURCH — Palm Bay Rd. Morning worship 11 a.m., Sun. Sch. 9:45 a.m. Eve. worship 7:30 p.m.
- GRACE COMMUNITY CHURCH — 798 S.E. Port Malabar Blvd. Morning service 11 a.m., Sun. Sch. 9:45 a.m., Eve. Services 7:30 p.m.
- PALM BAY METHODIST CHURCH — 702 S.E. Port Malabar Blvd. General worship 10:45 a.m., Sun. Sch. 9:30 a.m., Eve. Service 7:30 p.m.
- ST. JOSEPH'S CATHOLIC CHURCH — Miller Street, Sun. masses 8 & 11 a.m., Confessions Sat. 7:30 to 8:30 p.m.

### TITUSVILLE

- FIRST BAPTIST — 303 Main St. Sun. Sch. 9:45 a.m., morning worship 11 a.m.
- FIRST METHODIST — 213 Palm. Sun. Sch. 9:45 a.m., morning worship 11 a.m.
- ST. GABRIEL'S EPISCOPAL — 414 So. Palm. Holy Comm. 7:30, Family and Sunday Sch. services 9:30 a.m.
- ST. THERESA'S ROMAN CATHOLIC — 1128 Washington Ave. Sunday masses 7:30, 9 and 11:30 a.m.

## SHELLS



### ROUGH SCALLOP

Red, orange, yellow; the latter the most rare. Up to 1½ in. across. Abundant throughout area.



### LARGE OR BROWN COCKLE

Ivory color, spotted with red and brown. Up to 5 inches. Collect some for edging your flower borders.



### COQUINA

All colors and in stripes or plaid color combinations. Up to ¾ in. Gather these live at low tide for delicious chowder made from their broth.



### SPINY PERIWINKLE

Light blue; inside light brown, beaded surface. Up to ¾ inch. Found on beach in line left by receding tide.



### LEFT HANDED WELK

Smaller shells creamy, streaked brown; larger ones, bleached out white. Up to 10 in. Numerous on Brevard beaches.



### FIGHTING CONCH

Tan with brown, inside pink to purple, smooth surface. Up to 4 inches. Easy to get at most beaches in area.



### OLIVE SHELL

Glazed surface, white with zig-zag pattern in spiral. Up to 2 in. Frequently found after exceptionally high tide.



### AUGER SHELLS

Grey, lavender, tan or brown varieties. Sharp point, beaded surface. Up to 2 in. In small shell piles on beaches.



Two great home exhibits

# PORT MALABAR



## 1963 Space-Age Homes

Custom designed for the individual look in a tropical setting, these new Space Age Homes represent the very newest ideas in architectural treatment and scientific planning for utmost use of inner-space and outer-space. Homes priced from \$9,990 to \$19,000.



**LARK** One bedroom, one bath studio home with carport. Sales price \$9,990. FHA down payment \$340. Monthly payments \$64.

## Pershing Park Homes

If you are looking for a spacious show-place residence that is out of the ordinary in an exclusive setting, you will find the homes in Pershing Park ideally suited for your purpose. Priced from \$21,500 to \$35,000.



**DOMINICA** Three bedrooms, two baths, family room, breakfast area, swimming pool and screened patio, two-car garage.



Another Fine Florida Community by

## GENERAL DEVELOPMENT CORPORATION

Creators of Port Charlotte



**florida living**

CAPE CANAVERAL

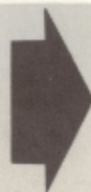
**HOME BUYERS**

AND

**REAL ESTATE**

GUIDE

*why so many people choose Cape Canaveral  
...how to choose a home — florida furni-  
ture — taxes — schools — living costs —*





**FOR THOSE WHO APPRECIATE THE FINEST!**

*--the East Coast's newest prestige community!*

**Barry Built**  
in **HOMES**

**SEACOAST SHORES**



**BRAND NEW MODELS NOW OPEN!**

★ 6 MODELS

★ 3 OR 4 BEDROOM HOMES

★ 2 OR 3 BATHS

★ FHA FINANCING

★ LOW DOWN PAYMENTS

Central Heat and Air Conditioning — Panelled Family rooms — Split levels and step-ups — Hotpoint Luxury Kitchens equipped with double oven and Rotisserie, Dishwasher, and Disposol — luminous ceilings.



The "MARTINIQUE"



The "TAHOE"



The "IMPERIAL"

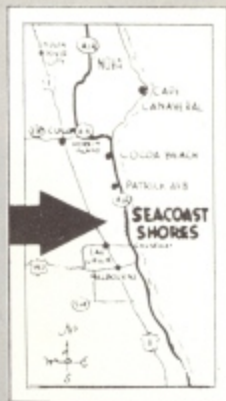


The "CAPRI"



On AIA at Indian Harbor Beach, just north of Eau Gallie Causeway, convenient to shopping, recreational areas, school and churches. Handy for those who work at Cape Canaveral, Cocoa, Patrick Air Force Base, Eau Gallie and Melbourne.

COME OUT TODAY — JUST SOUTH OF PATRICK AFB  
OR CALL AM 2-1113



RCA employees Orin Blair and Oley Humphreys watch fellow employee Harry Capadano putting during match at one of several golf courses in the Cape Canaveral area. That's Blair's son Jeb doing the caddy duty.

## Planning on Living in the Area?

THEN YOU'LL WANT TO KNOW EVERYTHING ABOUT  
THIS AREA CLIMATE, LIVING CONDITIONS, SCHOOLS

The development of the Cape Canaveral Area in recent years stands as a tribute to the creative energy and foresight of the American people.

Long before the selection of Cape Canaveral as a missile base, Brevard county enjoyed a sound economy based on citrus, agriculture and tourism.

Add to this unique benefits of a mild year-round climate: an advantageous tax structure and a planned program of educational improvement. The promotion of health facilities, police and fire protection, increased housing, clean civic government and an expanded recreation program for children make living and working in

(Continued on Page 64)

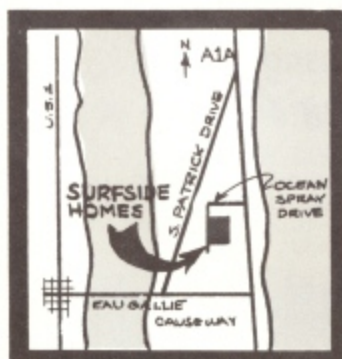


RCA's Nipper Regatta is an annual event presented by the Missile Test Project's Recreation Association.





COMPARE THESE at OUR SHOWCASE of FINE HOMES  
**3 or 4 Bedrooms from \$19,500 to \$26,000**



SURFSIDE HOMES are built up to a standard—not down to a price. They incorporate more quality features, prime materials and products and a greater degree of fine workmanship than any comparable homes in this area. They are being built in a community which is located in an incorporated city, with schools and churches closeby. SURFSIDE HOMES are only two blocks from the ocean, all have city water and have paved streets, driveways and curbs. We have sincerely tried to build beauty where it shows . . . and quality where it counts. Your inspection is invited.

**FHA - Conventional**  
**LOW MONTHLY**  
**PAYMENTS**

— SIX MODELS OPEN —  
 SOME FURNISHED

# Surfside Homes

BY  
 CASS-DALE BUILDERS

290 Greenway Avenue - Satellite Beach  
 Eau Gallie, Florida

MODEL HOMES  
 OPEN DAILY  
 10-5

## How To Buy A Home

A Working Guide And Checklist To Selecting A New Home

By H. S. SMYTHE

Buying a new home can be a wonderful and exciting thing. In a strange area, particularly if there is a limited amount of time a family can look together, it is often a confusing undertaking.

There are so many factors for a family to consider, and seeing many homes, one right after another, often leads to confusion unless a systematic approach is made. The checklist in this magazine is designed to consider all the factors that may be important to you. It also includes many important points that you might not think of at the time, and should be asked of the builder or salesman. Using this checklist whenever you visit a model home, you will be able to carefully compare each home, without confusion, at a later date.

### Time To Look

Depending upon your personal situation, it may be possible to rent a home or apartment for a few months or even a year, while you decide on a home to buy, rent or build. If you are able to rent for a short period, it takes the pressure off in selecting a home and the rewards are often worth the temporary inconvenience.

The "Home Finders Map" and development guide in this magazine provides a birds eye view of the surrounding area and access to various communities and the Cape. It also includes almost all of the large reputable builders and developers. With this you can quickly obtain a picture of the community and the various types of homes available.

### Florida Type Homes

A tremendous interest in Florida-type architecture has developed many major characteristics that you can expect in a typical Florida home. You will find an emphasis on outdoor-indoor living, with the living-dining-patio areas flowing into one another; the use of space, and the use of "cages"—large screened open patio spaces for outdoor living. Windows often become sliding glass doors that

open up the entire side of a house, or take the form of awning-type windows that give ventilation even in the rain (and seal for air conditioning better than jalousie windows, are easier to clean); utilize practical tile window sills.

### Higher Values

There are many large-scale builders in Florida and the Cape area, a factor that makes home values high for their money, for the larger builders can provide knowledge, volume buying and experience.

Check the square footage of a home "under roof," for a quick check of value, making adjustments for open patios, carports, unfinished areas, etc. Don't be overly impressed with extra gadgets and special features which can be easily evaluated in dollar value and added later at your convenience.

### Variations

It is often valuable to consider variations on a model home (that lacks just one "feature" that you need) by adding or changing features seen on other homes by the same builder. Here you must be careful, as in all "changes" on a production home, that the additional costs are spelled out in writing carefully.

### How Much Can You Spend?

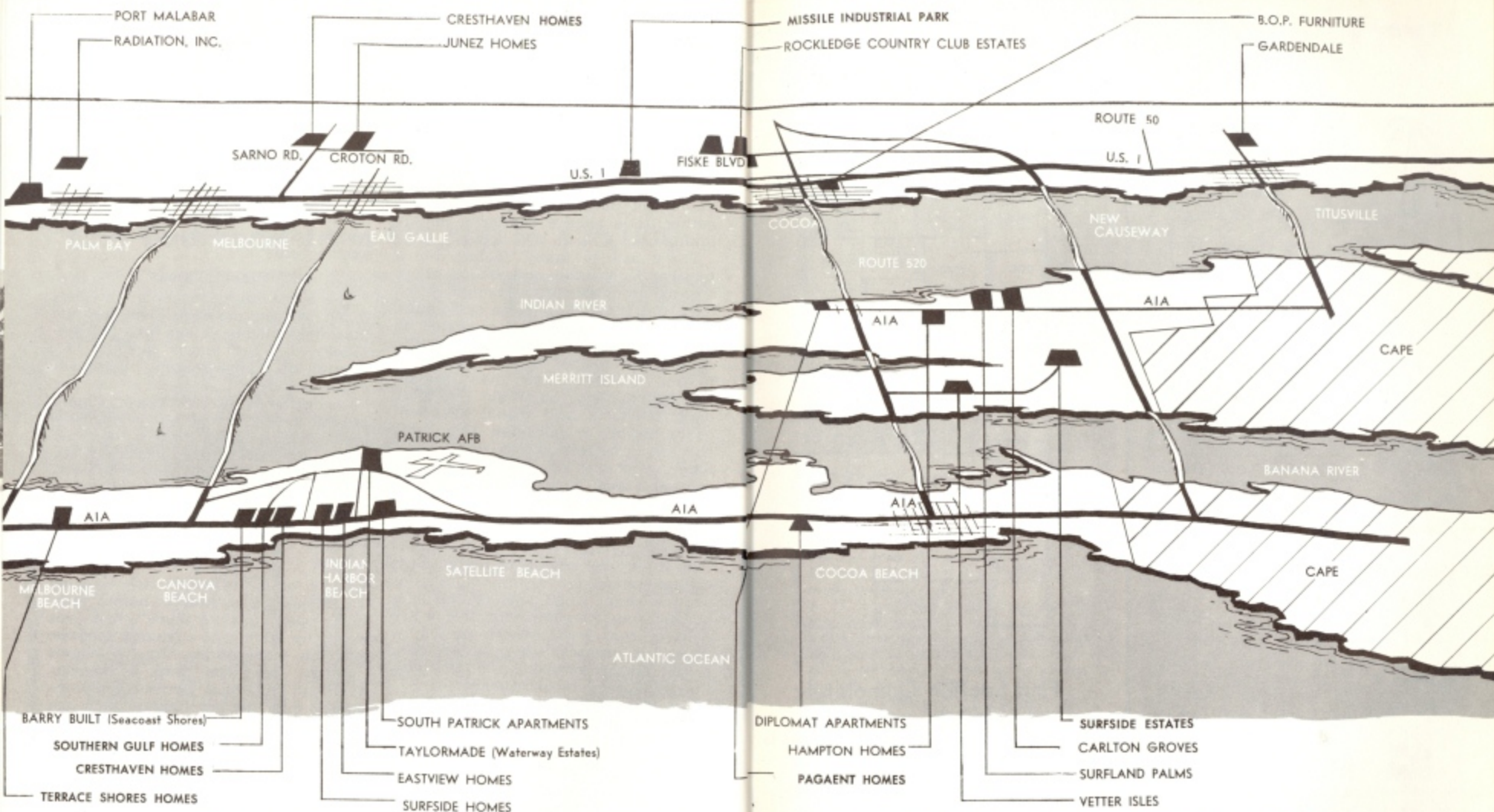
There are many guides to what is considered a proper expenditure for a home; all include all house expenses, such as insurance, repair, interest, etc. One often used rule-of-thumb is with the yearly family income in payments. Still another suggests the amount of mortgage assumed should not be over 100 times what you can afford monthly for a home. This is a personal decision based on current and future planning.

### Location

Location is important, for your house and neighborhood are inseparable. Some neighborhoods appreciate in value, others may slide down in value a little. An important factor are the

(Continued on Page 59)





## REAL ESTATE AND HOME FINDERS

**T**his map has been prepared in an effort to make it comparatively easy for the newcomer to the area to inspect the better development properties in all the cities throughout Brevard County. Each community has advantages and unique qualities all its own. A thorough inspection of all the housing areas indicated on the map is strongly recommended. The new home purchaser can then more accurately select the com-

## MAP OF CAPE CANAVERAL AREA

munity and the home within the community which best serves his individual requirements. Take time to see all the builders listed and as you do, please mention that you found them through **WHAT TO DO AND SEE IN THE CAPE CANAVERAL AREA**. They will appreciate it—and we will too. Good house hunting and happy living in your new Florida home.

(See "How To Buy A Home"—Page 53, and Home Buyers Checklist on Page 61.)



## PALMS

**ROYAL PALM**—Smooth grey, bulging trunk with bright green leaf shaft above. Dark green feather-leaved fronds. The native variety is *Roy-stones floridana*. Up to 100 feet.

**QUEEN PALM**—Or *Cocos Plumosa*, feather-leaved palm most popular in Central Florida. Distinguished from the Royal by dried brown leaf shafts. *Arecastrum romanzoffianum*. Brazil. Up to 40 ft.

**WASHINGTON PALM**—Slender trunk for its great height with matted grey beard of old fronds. Fanleaved with thorns on both sides of leaf stalk. *Washingtonia robusta*. Mexico. Up to 100 feet.

**COCONUT PALM**—Smooth leaning trunk 1 to 2 feet in diameter quite swollen at the base. Feather leaved fronds from 12 to 18 ft. long. Fruit in clusters of 12 to 20. Native up to 100 ft.

**CABBAGE PALM**—Identified by "boot jacks" on trunk left by old fan-leaved fronds. The Florida State Tree, it has many uses; the heart is eaten, berries for medicine, wisk brooms from the fibre, roots yield tanning, leaves make rope.

**TRAVELER'S PALM**—Has appearance of a huge, flat fan, with leaves growing from only two sides of trunk. A quart of pure water can be drawn from the base of a leaf stalk. Madagascar, related to Banana. Up to 40 ft. trunk.

# live in the lap of luxury THE GRIP OF A MORTGAGE! ... AND IN



*The Exec IV*



## First Section Completely Sold Out

(Which leaves us with this other house to get rid of!)



*Tropicana*



*The Country Squire*

## Featuring Such Architectural Triumphs as

- A front door.
- An all electric kitchen, which will give you the shock of your life.
- An especially wide but, unexpectedly not deep enough garage.
- A 37 foot sunken living room with 37 foot ladder included!
- An 8 foot picture window with your choice of picture . . .
- Air Conditioning — Hot in the summer — Cold in the winter . . .
- House orientation is a specialty here . . . with every home facing MECCA!
- Free snow removal for the lifetime of your house

... a sparkling interpretation of luxurious suburban living in strong grey block—sturdy brown stucco and soft green wood . . . in an unsurpassed location . . . east of the coastline . . . with an unobstructed view of the gas works and only a short walking distance from the city dump! Built by Builders with heart — nothing else — just heart!

# Eastview Homes

Models From \$20,990.

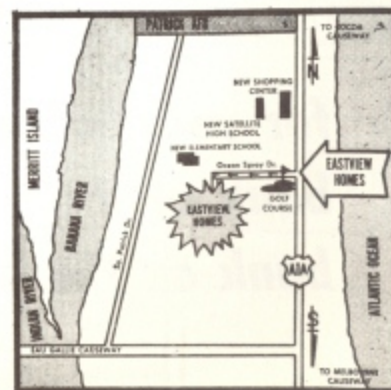
(Which Looks Cheaper Than 21,000.)

Another PALM BAY DEVELOPMENT CORP. atrocity . . . In Progressive Satellite Beach . . .

MODELS OPEN DAILY 9 'til 9  
— Ph. AM 2-2039 or AM 2-2631  
"THE MOST DESIRABLE LOCATION  
BREVARD COUNTY"

## Come Out Today

**DIRECTIONS?** Go straight out 1A1, cross the inlet turn left — 5 miles (take an oar!) turn Right . . . No, wait! Take a left to Route 0, go south 1 mile . . . No, that's no good either . . . Drive down the straightaway to . . . to . . . You know what? You can't get out here from where you are!





*Cocoa Beach -  
Center of Cape Activity . . .*

**COCOA BEACH  
STATE BANK**



**for your convenience . . . .  
bank at the  
bank on the beach**

Member Federal Deposit Insurance Corporation

82 NORTH ATLANTIC AVENUE • COCOA BEACH, FLORIDA

(Continued from Page 53)

types of neighbors — are the homes and yards nicely kept? Neighbors of similar work, interests and families are desirable but not necessary.

**Buying a Used Home**

Although the checklist in this magazine is designed primarily for those who are buying a new home, it is equally helpful in selecting a used home or in buying property to build on yourself. If you purchase an older home, try to obtain the services of a reputable real estate broker or realtor.

**Financing**

Most builders today offer most of the three types of home loans. Conventional: Made by private lending agencies. Down payments from 10% to 40; interest approximately 6 percent, payments up to 25 years. This loan involves a minimum of red tape and quickly approved.

V.A.: World War II and Korean veterans (in service prior to Jan., '55) are eligible for "GI" loans, usually with nothing down. Interest rates are low and terms may run to 30 years, but lending agencies find rates unattractive and these loans are often hard to obtain.

FHA: Loans at 5%, small down payments. Buyer must meet requirements for credit and income and seller must meet construction requirements.

Closing Costs: Legal and recording fees, bank service charges, appraisal fee, etc., may amount to several hundred dollars, often absorbed by builder or mortgage.

**Travel To Work**

In an expanding area, such as the Cape, where there are also periodic traffic problems, travel to work and location of your home can be important considerations that should be thought out with an eye to the future.

**How To Use The Checklist**

Some of the checklist considerations may be of little importance to some families, some of major importance. Check the items of major importance to you beforehand, then evaluate them carefully as you look at each of many model homes. Make notations as you visit the homes and ask questions, or you may be confused later. Good luck and good hunting!

**Live IN A  
Country Club  
Community**

On the Beach Only 4 Miles South  
of Patrick Air Force Base



See these exciting models!



**INCA \$101**

a month including  
principal, interest,  
taxes and insurance.

3 BR — 2 BATH

Central Heat and Air-Conditioning, Florida Room, Patio, Oversized Garage.  
**\$16,500**



**YOUR OWN COMMUNITY  
SWIMMING POOL  
AUDITORIUM AND  
RECREATION AREA**



Walking distance to 3 churches, bus. Public shopping area and schools nearby.

**SOUTHERN  
GULF HOMES at  
INDIAN  
HARBOR  
BEACH**



Southern Gulf Homes  
1220 Banana River Drive  
Indian Harbor Beach, Florida

Gentlemen: Please send free illustrated brochure and floor plans

Name .....  
Address .....  
City ..... State .....



**“JUST WHAT I’M LOOKING FOR!!”**



## On Lovely Merritt Island

just 6 minutes from the Cape

on the new causeway. Located in a superb setting among the citrus groves on unspoiled Merritt Island, 3 minutes from shopping center on A1A. Built by Brown-Heaney Developers, Inc. Close to schools, churches and shopping. City water and sewage.

**3 Bedrm. Homes—14,200 to 17,300**  
FHA — VA — CONVENTIONAL — LOW PAYMENTS



## Carlton Grove Estates

● 2 MILES NORTH OF COCOA CAUSEWAY ON AIA MERRITT ISLAND ●

CUSTOM BUILT HOMES ON  
SUPERB WOODED LOTS IN  
A PRIVATE COUNTRY CLUB

See the 1962 BETTER HOMES AND GARDENS  
"Idea Home" on the property. Central Brevard's  
most exclusive residential area.

Located just south of the Rockledge Country Club on Barton Ave. Turn right off Fiske Blvd.

Developed by Rockledge Golf Estates, Inc., with homes in: Pine Ridge, Venetian Way, Montclair, Pine Groves Park, Indian Hills.

# CHECK LIST

## Home Requirements

— AND —

## Comparisons

IMPORTANCE  
TO US

- ☐ Number of bedrooms/baths.
- ☐ Does the house seem to fit YOU?
- ☐ Ample bedrooms for expansion?
- ☐ Guest room available, or convertible? Necessary?
- ☐ Are children's bedrooms and area sufficiently separated from adult's area and bedrooms to allow different hours without interference?
- ☐ Storage space adequate? Useable?
- ☐ Utility room? Laundry Connections?
- ☐ Room for Hobby Shop?
- ☐ Outside entrance to lavatory?
- ☐ Separate Dining Room (if you prefer one)?
- ☐ Finishing and workmanship?
- ☐ Gas or electric stove and water heater (Preference)
- ☐ Insulation? (Ask! — important)
- ☐ Central Heat? Or adequate heating?
- ☐ Air Conditioning? (If to be added later, are ducts in?)
- ☐ Sodding and landscaping included?
- ☐ Does the lot drain well? Trees? Soil?
- ☐ Garage or carport? Covered entrance?
- ☐ Pave Driveway?
- ☐ Does your furniture fit well enough? (if brought)
- ☐ Range, refrigerator provided?
- ☐ Extras provided: vent hood, disposal, laundry, etc.?
- ☐ 100 amp electric service minimum? (ask)
- ☐ Kitchen situated to screen unsightly dishes yet converse with guests, watch children, etc.?
- ☐ Porches or patios? (Or can be added?)
- ☐ Square foot area (under roof)
- ☐ Cost
- ☐ (Other)

## AREA

- ☐ Is it reasonably convenient to work?
- ☐ Convenient to Shopping Centers, central areas?
- ☐ If no second car: Walk to Shops? Bus Lines?
- ☐ Special bonus: Location adjacent to golf clubs, beach, etc.?
- ☐ Close to schools? School bus nearby?
- ☐ Heavy fast traffic a problem with children?
- ☐ City taxes cost what? Worth it for fire protection? Garbage Collection?
- ☐ Special bonus: Community clubs, swimming pool, auditorium, activities, etc.?
- ☐ Curving streets? Curbs and gutters?
- ☐ Central Sewer and Water, or septic tank and well? Costs?
- ☐ Neighborhood well kept?
- ☐ Chances neighborhood will decline or raise in value?
- ☐ Friends, neighbors similar in interests?
- ☐ Are all streets, sewers, water mains, etc., paid for [if not you may be assessed]
- ☐ Good drainage in the area?

[illegible]



OWNED BY THE COMMUNITY WE SERVE



## We Offer Complete Banking Services

- ☆ Modern Bank Facilities
- ☆ Convenient Drive-In Tellers
- ☆ Large Customer Parking Area
- ☆ Low Cost Checking Accounts

ALL TYPES OF FINANCING

**BREVARD**  
*State Bank*

Washington and Pine Ave.

Titusville, Florida

**YOUR FINANCIAL PARTNER IN PROGRESS**

*Member Federal Deposit Insurance Corporation*

ON  
MERRITT ISLAND  
IT'S



## VETTER ISLES ESTATES

- THE CAPE'S FINEST AND MOST CONVENIENT RESIDENTIAL AREA •



## QUALITY BUILT HOMES — WATERFRONT HOMES

Just minutes from Cape and Patrick A.F.B.—F.H.A. or V.A. No down payment—immediate occupancy—waterfront property—by renowned developer of Crescent Heights, Orlando—Come see us daily or call NE 6-8114.

*Quality doesn't  
cost-it pays!*

AMERICAN  
BARCLOUNGER  
BARWICK CARPETS  
BASSETT  
BASIC WITZ  
BRADSTON RATTAN  
BROYHILL  
CALLOWAY MILLS  
CLYDE PEARSON  
CONTOUR CHAIRS  
CRAFT ASSOCIATES  
DAYSTROM  
DREXEL  
FASHION TREND  
FICKS REED RATTAN  
FINE ART LAMPS  
FLEXSTEEL  
FOUNDERS  
HICKORY CHAIR  
KARPEN  
KROEHLER  
LANE  
LIGHTOLIER  
MOHAWK CARPETS  
PULLMAN  
SELIG  
SEALY  
SPRING AIR  
STRATOLOUNGER  
WHITECRAFT RATTAN

Reputations Are Based on Real Values — bop Furniture Offers the Most Respected Brands in the Furniture Industry. Consult Us for Free Decorating Advice and Top Value.

*Fine Furniture & Carpeting*

— Also Located At —  
21 MAIN STREET, EAST, TITUSVILLE

PINE STREET (NEXT TO BREVARD JUNIOR COLLEGE) COCOA, FLORIDA (MAIN STORE)

**b.o.p.**



(Continued from Page 51)

the Cape Canaveral area a pleasant and exhilarating experience.

#### CLIMATE AND LIVING CONDITIONS

Brevard County is located in "the Nation's Health Belt" and offers probably what is closest to an ideal year round climate. Clear sunny days predominate all year. Summers are pleasant with cool nights fanned by a constant breeze off the ocean. Here the Gulf Stream swings very close inshore and helps keep even the sharpest winter day moderate and pleasant. The average year round temperature attests to this with a comfortable 72.5 degrees. Hurricanes are unknown in Brevard county.

The Cape Canaveral way of life is an easy, relaxed and informal way. The mode and dress are casual—the pace is what you make it. Entertaining is done more "at home" and even that is done mostly outdoors on patios and at "poolside". Swimming is a year round pastime here both in private pools and at the beaches. The beaches are wide hardpacked and, since there is very little undertow, are safe for children.

#### LIVING COSTS

A milder climate affords savings in many ways—on heating, on clothing, on home maintenance, on entertainment . . . and of course on your health and mental and physical well being.

You get more home and more property for your money here and there are additional state and local tax savings and freedom from exorbitant levies.

#### TAXES

Florida's constitution prohibits a state income tax. There are no inheritance taxes and no separate estate taxes except those deductible from Federal Estate tax.

The famous Homestead Exemption to legal residents allows the first \$5,000 appraised value of each home free from taxation. This lowers city and county taxes to a low percentage of similar taxes in Northern cities. There is a low state tax on intangible and personal property.

#### SCHOOLS

Excellent schools are available throughout Brevard County. Over the past ten years \$15,000,000 has been



*Tired of writing letters? Just put an eight cent stamp on the back cover of this magazine and address it to friends back home.*

spent for new facilities alone, with many more now under construction and still more planned for the future.

In addition to the fine public schools operated by the Brevard County excellent parochial schools are available throughout the area. There are also good Kindergartens in all of the cities throughout the county.

Indicative of the quality of the educational system in Brevard county when the Melbourne-Eau Gallie High School reopens for the fall term its teaching staff will include three Full-bright scholars.

Recognized in the "U.S. News and World Report" for its modern theories and practices in education, Brevard County has taken another step forward with establishment of the Brevard Junior College offering a program of general education consisting of classical and scientific courses as well as technical and vocational.

#### HIGHER EDUCATION

Excellent higher education along engineering and postgraduate lines is also available. Now in its fourth year, the Brevard Engineering College offers a Bachelor of Science in Mathematics and Electrical Engineering and a Master of Science degree in Applied Mathematics, Space Technology and Electrical Engineering. One of the most popular courses is Celestial Mechanics.

Courses are offered by night or day on their new 35 acre campus in Mel-

**SOARING**  
TO NEW RECORDS  
OF VALUE  
**350 HOMES**  
**ALREADY SOLD**

Finest Proof of Value!

ENJOY FLORIDA  
LIVING AT ITS BEST!

## CRESTHAVEN HOMES

IN EAU GALLIE

2-3 & 4 BEDROOMS  
1-2 BATHS

From  
**\$9,290**

VA from \$10 DOWN  
FHA from \$290 DOWN  
NO CLOSING COST

2245 SARNO RD., EAU  
GALLIE, ALPINE 4-6081

Directions: Cresthaven model homes are located directly on Sarno Rd. From U.S. #1 take Sarno Rd. 1 mile west to "Stairway to Happiness" sign.

## WORTH WAITING FOR! OPENING MARCH, 1963

# CRESTHAVEN

### HOMES IN SATELLITE BEACH

A PRESTIGE COMMUNITY  
OF LUXURY HOMES

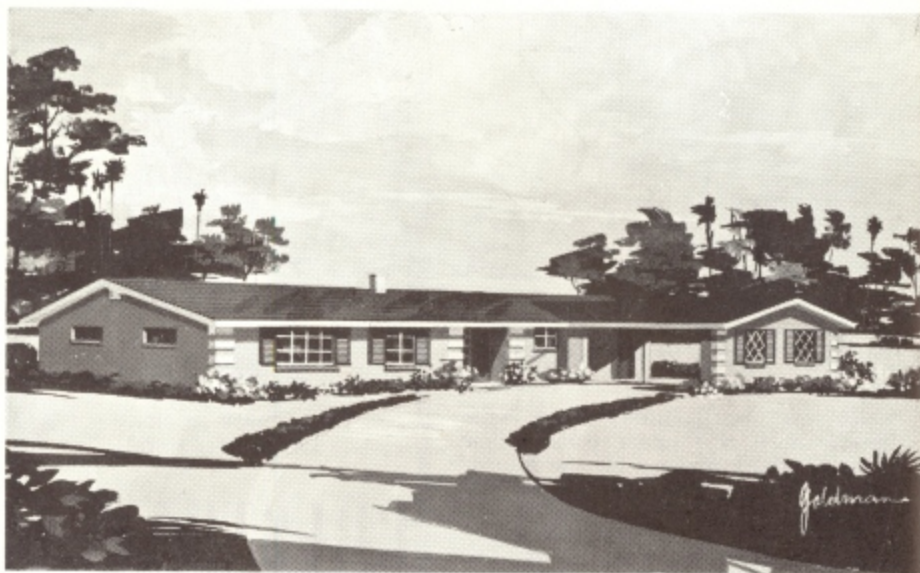
Custom-Crafted homes  
with the blue  
Atlantic as your  
neighbor . . . where  
life will be a  
constant delight.

2, 3 & 4 BEDROOMS  
\$15,990 to \$22,990





# Live in Luxury!



## The ARUBAN • 3 Bedrooms • 2 Baths — \$17,300

Surfside Estates is Brevard's first all gas community. At Surfside Estates you will find 3 and 4 bedroom homes and all with 2 baths.

Surfside Estates is truly the epitome of luxurious Florida living... many models feature spacious patios and screened in porches.

Surfside Estates features wide paved

streets, sidewalks, city water, and a complete suburban sewerage facility (no septic tanks)... plus canal front homes.

Homes begin at \$15,000 and can easily be financed through F.H.A., VA, or conventional plans... Surfside Estates, the community destined to become Brevard's most distinguished address.

### DIRECTIONS:

From Cocoa take highway #520 to our sign. Turn left and travel 1 and 1/2 miles to the entranceway to Surfside Estates.

# S

## Surfside Estates

1360 Fiddler Ave. • Merritt Island, Fla.  
Phone • 636-5528

bourne and facilities include a technical library and a teaching staff with an experience level that few universities can surpass, drawn mostly from top-flight Cape scientists.

Approximately three hundred students are presently enrolled, one third of them in graduate work. Most of the missile companies endorse and utilize the college for their engineers and are highly complimentary of the standards of this unusual college.

### HOMES

People in the Cape Canaveral Area enjoy an outdoor way of life and the homes reflect this. You'll find much emphasis on wide-open architecture, sliding glass doors, jalousie and awning windows, patios, Florida rooms, screened living spaces, screened in swimming pool, recreation enclosures and cook-out facilities.

In the last decade, particularly, Brevard homeowners have learned to integrate their housekeeping with their funkeeping, evolving a home plan that more than ever fits the living plan.

Good housing is now plentiful in the Cape Canaveral area in a wide price range. F.H.A. mortgages are available and more and more Cape personnel are finding that owning a Florida home is the key to a unique way of life. As a result rentals of homes are in good supply and housing is no longer a problem here.

### EXPANSION

With the recent announcement by the National Aeronautics and Space Administration that manned lunar flights and other missions requiring

(Continued on Page 68)

Be sure to see....

## PAGEANT HOMES

magnificent models  
in an ideal location  
on Merritt Island

(See page 4 opposite Index)

"More For Your Money"

# JUNEZ HOMES

Leewood Forest — Eau Gallie



### THE CONTINENTAL

4 Bedroom - 2 Bath — \$12,000 — From \$77 Mo.



### THE ESQUIRE

3 Bedroom - 2 Bath — \$11,650 — From \$75.00 Mo.

FURNISHED  
MODELS

OPEN  
9 - 6  
DAILY



## JUNEZ CONST. CO.

Croton Rd. at Shelby, Eau Gallie AL 4-2153



- Commercial
- Investment
- Businesses
- Acreage

## Florida Coast REAL ESTATE CO., INC.

U.S. A1A at Causeway  
Cocoa Beach, Florida SU 3-2423



**With An Eye  
For The Future**

- SUBDIVISIONS SALES  
AND DEVELOPMENT
- LAND UTILIZATION  
EXPERTS
- INVESTMENTS  
IN ACREAGE
- SYNDICATIONS

**ADVANCED  
REALTY**

515 Delaney Avenue, Cocoa, Florida  
Phone NE 6-7242

## Cape HOUSING CENTER

- NEW HOMES
- RENTALS



advanced Saturn and Nova boosters will be launched from expanded Cape Canaveral facilities the future of Brevard County looks brighter than ever.

NASA plans call for the acquisition of approximately 80,000 acres north and west of the Air Force Missile Test Center. Cape facilities, including nearby Patrick Air Force Base presently cover 17,000 acres. The additional area will be administered by the Atlantic Missile Range.

With the location of added Saturn pads and the mammoth moon complex, the economy of Brevard County will not only take a distinct upturn but the physical appearance will change.

Reliable sources in and around the Cape Canaveral area report that all this adds up to a \$20,000,000 boom for Brevard County. With the influx of new industry and the manpower that will be required, the population of the County is expected to double within the next three years.

It will do much to change the character of this former citrus center that for the past decade has been known as "The Gateway to the Moon".



**BUY THRU**

**J. J. BRYANT**  
REALTOR

**COCOA**

**Phone NE 6-7061**

*Levitt has done it again!*

300 FEET FROM BEACH  
AND OCEAN FISHING



HOMES READY FOR  
IMMEDIATE OCCUPANCY  
\$17,000 TO \$23,500

# TERRACE SHORES

A UNIQUE CONCEPT IN  
COMMUNITY PLANNING

**HOMES**

CITY WATER  
PAVED STREETS  
DRIVEWAYS AND CURBS



3 & 4 BEDROOM, 2 BATHS, ENCLOSED GARAGE,  
ALL CITY CONVENIENCES — NO CITY TAXES  
SCREENED IN PATIO, CENTRAL AIR CONDITIONING AND HEAT

FHA-VA CONVENTIONAL FINANCING  
YES, WE ALSO ACCEPT CASH



**TERRACE  
SHORES**

4 MODELS TO CHOOSE FROM  
OPEN DAILY & EVENINGS  
10 AM TO 9 PM  
PHONE PA 3-8253

ON A1A IN NORTH INDIAN RIVER



FOR 300  
DISCRIMINATING  
FAMILIES . . . .



**COMFORT STYLED HOMES WITH  
COMMUNITY PARK AND PLAYGROUND**

- Interiors Designed for Living
  - Exteriors Designed for Beauty
  - Plenty and Plenty of Closets
  - Spacious Rooms, Easily Furnished
  - All City Facilities
- STARTING AT \$15,950 - VA - FHA**

A1A 1/2 Mile North Of  
MERRITT ISLAND SHOPPING CENTER



*Cocoa Beach's finest address*

In response to the popular demand for beachfront living, Mark I, Inc., now presents the luxurious DIPLOMAT APARTMENTS. Fronting on the Atlantic Ocean just South of the Cocoa Causeway on A1A, 176 spacious 2 bedroom apartments are being built to make your dream of Florida living a reality. THE DIPLOMAT is now renting for FEBRUARY occupancy.

- Central heating and air conditioning
- Large kitchens (with plenty of cabinets)
- Master TV system
- Walk in closets
- All terrazzo floors
- Draperies throughout
- Fully tiled baths with vanities

GENERAL ELECTRIC

- Ranges
- Refrigerators
- Disposal
- Washer & Dryer
- Water Heater



*How to Make Your Dream Home Reality*  
FLORIDA POWER & LIGHT COMPANY



Model Open Daily 9 - 5

**LUXURIOUS 2 BEDROOM  
RENTAL APARTMENTS**

160 UNITS **\$150** PER MONTH

... And Don't Forget ...  
YOUR OWN PRIVATE BEACH

The **DIPLOMAT**  
APARTMENTS

3150 North Atlantic Avenue (A1A)  
1 Mile South of Cocoa Causeway — SU 3-2402



AS ADVERTISED IN

# LIFE

**these homes  
MUST BE SEEN!**

**Invites you to see the homes  
that have set the national standard  
of quality for 1962**

**VA or FHA  
financing**

**\$15,350  
to  
\$19,950**



MEMBER  
1962  
**LIFE**

HOMEBUILDING  
MARKETING  
COUNCIL



## GENERAL ELECTRIC



G.E. Weathertron Central Air Conditioning  
and Heating System  
G.E. Complete Deluxe Electric Kitchens

## 5 YEAR STRUCTURAL GUARANTEE GOLD AWARD



Hampton built Homes are unconditionally guaranteed for 5 years against structural defects. THE HAMPTON BUILT HOMES GUARANTEE EXCEEDS THE STRINGENT REQUIREMENT GUARANTEE OF STATE, COUNTY AND FEDERAL AGENCIES



Full housepower electrical service.  
Sufficient electrical capacity—switches and outlets for all the electrical appliances you have and for others you may want to add later on.

## DIRECTIONS

Drive West from Cocoa Beach or East from Cocoa on State Road 520 (the Cocoa-Cocoa Beach Causeway) to the intersection of A-1-A—Turn North on A-1-A 1/4 mile to the Entrance Gateway at Needle Blvd., and Models.

# Hampton built Homes

*Hallmark of Excellence in Concept, Construction and Design*  
Merritt Island Causeway • Merritt Island • Telephone NE 6-1805

No Envelope Necessary  
From:

To:

Place  
8 Cent  
Stamp  
Here

Florida