

ORLANDO, FLA.—*The City Beautiful*

Orlando is the seventh city of Florida, having a population of approximately 13,000. It is the largest inland city in the State.

From 1910 to 1920 Orlando increased 137.7 per cent in population and since 1920 its percentage of increase has passed those figures which, if maintained, will exceed 30,000 population by the next census year.

The outstanding feature in the city's activities since 1909 have been its construction program, topping the others by an enormous gain. During 1921 the building permits issued totalled \$1,596,019, while in 1922 Orlando went over the \$3,000,000 mark.

The spirit of push and progress is scarcely equalled by any city twice its size. The business section is famed for its up-to-date appearance and its ever-growing skyline, which now embraces on the newer structures five skyscrapers ranging from nine to eleven stories in height. Orlando also prides itself on having the largest and most beautiful High School building in the State.



LUCERNE CIRCLE.

The city's thirty-five miles of brick-paved streets, including the boulevard white way park system, are lined with nature's largest and stateliest pines and oaks. The boulevard encircling in a most strikingly and beautiful manner fifteen picturesque clear water lakes. The parks are unexcelled, each velvety with grass and dotted with a beautiful lake amply shaded by oaks and magnolias, and all within a few minutes walk of the center of the city.

Orlando's charms are so varied and its beauties so general that no matter what one's inclinations, there are delights and amusements for every taste—golf, tennis, fishing, hunting, swimming, boating, horseshoe pitching, bowling on the green, croquet, shuffle boards, roque, gun clubs, band concerts, grand opera season, vaudeville, handsome theatres and motion picture houses, and most of which are in the sunshine.

Orlando is the county seat of Orange County and is located in the very heart of Florida's brick highway system, the heart of the citrus belt, the heart of the lake region of Central Florida and from every angle most progressive and promising, giving every indication of being a city of 30,000 by the year 1930.

ORLANDO, FLORIDA

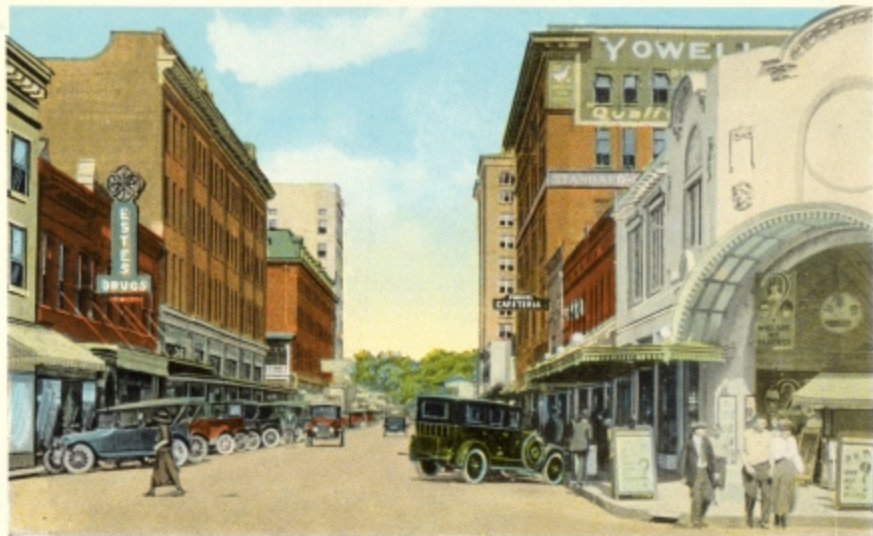


LAKE COPELAND.



COUNTRY CLUB.

ORLANDO, FLORIDA



ORANGE AVENUE NORTH FROM PINE STREET.



ORANGE AVENUE, LOOKING NORTH.

THE CITY BEAUTIFUL



COURT HOUSE AND LAKE EOLA.

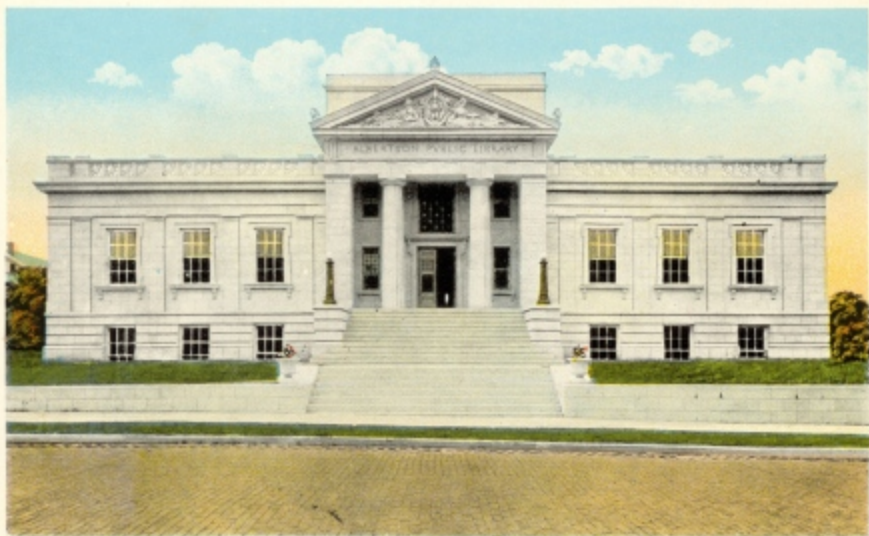


BUSINESS SECTION.

ORLANDO, FLORIDA



SOUTH ORANGE AVENUE. LOOKING OUT ON LAKE LUCERNE.



ALBERTSON PUBLIC LIBRARY.

THE CITY BEAUTIFUL

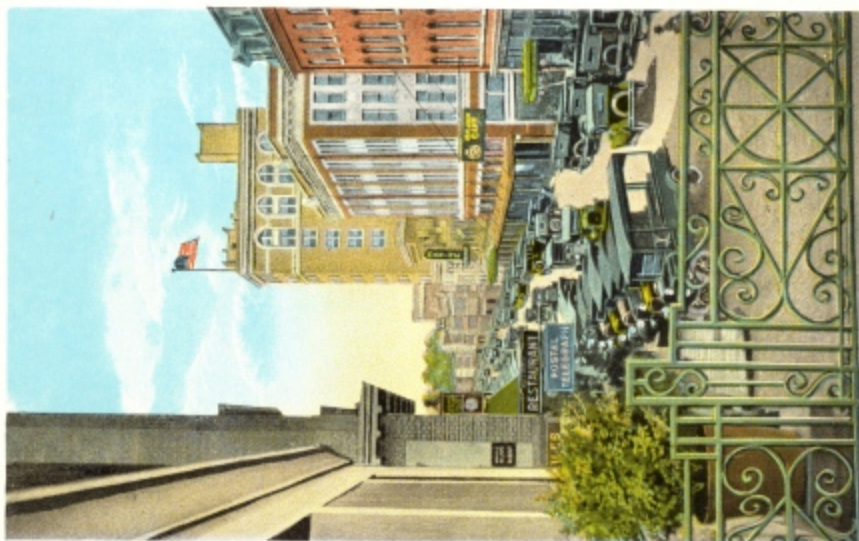


ORANGE COURT APARTMENT HOTEL.

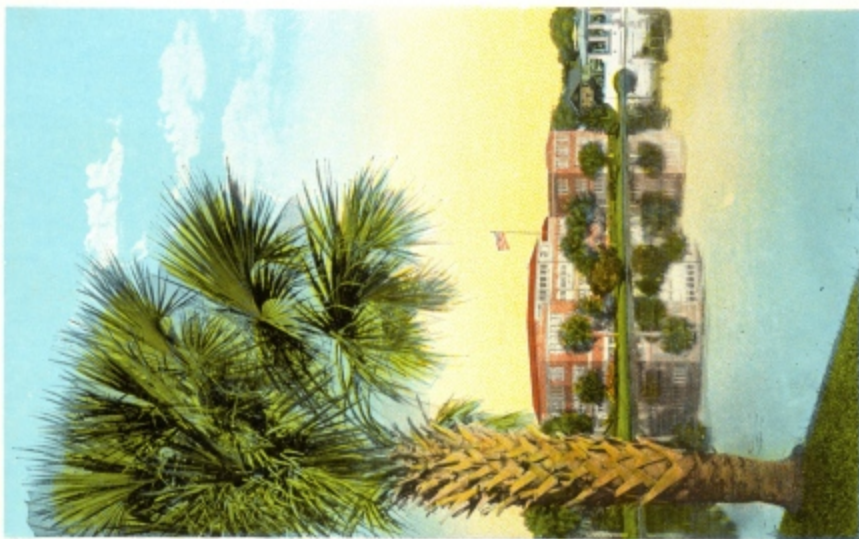


AMHERST APARTMENTS.

ORLANDO, FLORIDA



ORANGE AVENUE, AS SEEN FROM BALCONY OF ANGEILT HOTEL.



MEMORIAL HIGH SCHOOL ON LAKE EOLA.

THE CITY BEAUTIFUL



CINCINNATI REDS TRAINING ON TINKER FIELD.



A WATER HAZARD ON GOLF COURSE AT COUNTRY CLUB.



CONFEDERATE MONUMENT AND PETUNIA FLOWER BEDS, EOLA PARK.



BAND CONCERT ON LAKE EOLA.



THE SKYLINE FROM LAKE EOLA.



BIRD'S EYE VIEW OF LAKE EOLA, SHOWING MEMORIAL HIGH SCHOOL.



THE ANGBILT HOTEL.



SAN JUAN HOTEL.



ORLANDO BANK AND TRUST CO.



STATE BANK OF ORLANDO AND TRUST CO.

ORLANDO, FLORIDA



CATHEDRAL SCHOOL FROM PARK.



FIRST M. E. CHURCH SOUTH.

THE CITY BEAUTIFUL



FIRST PRESBYTERIAN CHURCH.



FIRST BAPTIST CHURCH.

ORLANDO, FLORIDA



LAKE LUCERNE CIRCLE.



FOUNTAIN IN LAKE EOLA PARK.

THE CITY BEAUTIFUL



MOONLIGHT ON LAKE CHEROKEE.



LAKE IVANHOE BY NIGHT, SHOWING ELECTRIC LIGHT AND ICE PLANT.