

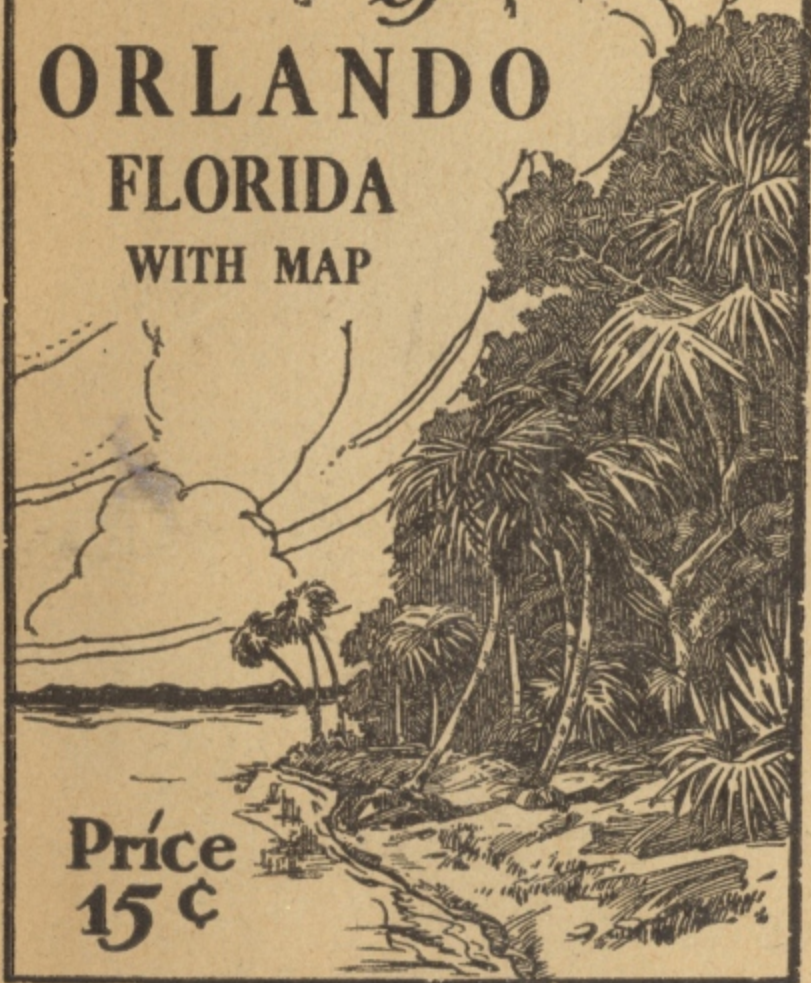
*Grant's*  
*Tourist Guide*  
*of*

ORLANDO

FLORIDA

WITH MAP

Price  
15 ¢





---

# *Grant's Tourists' Guides*

are published for the guidance of tourists, to assist in locating, easily, all the points of interest in the various cities in Florida.

They contain the description of the writer's personal visits to each place mentioned and explain how to reach it.

As you travel through other cities of this beautiful state you will find a *Grant's Tourists' Guide*, which will help you greatly to locate readily, the places, which you, as a tourist, should see.

HOMER D. GRANT.

---



---

---

*COPYRIGHT 1919*

*HOMER D. GRANT*

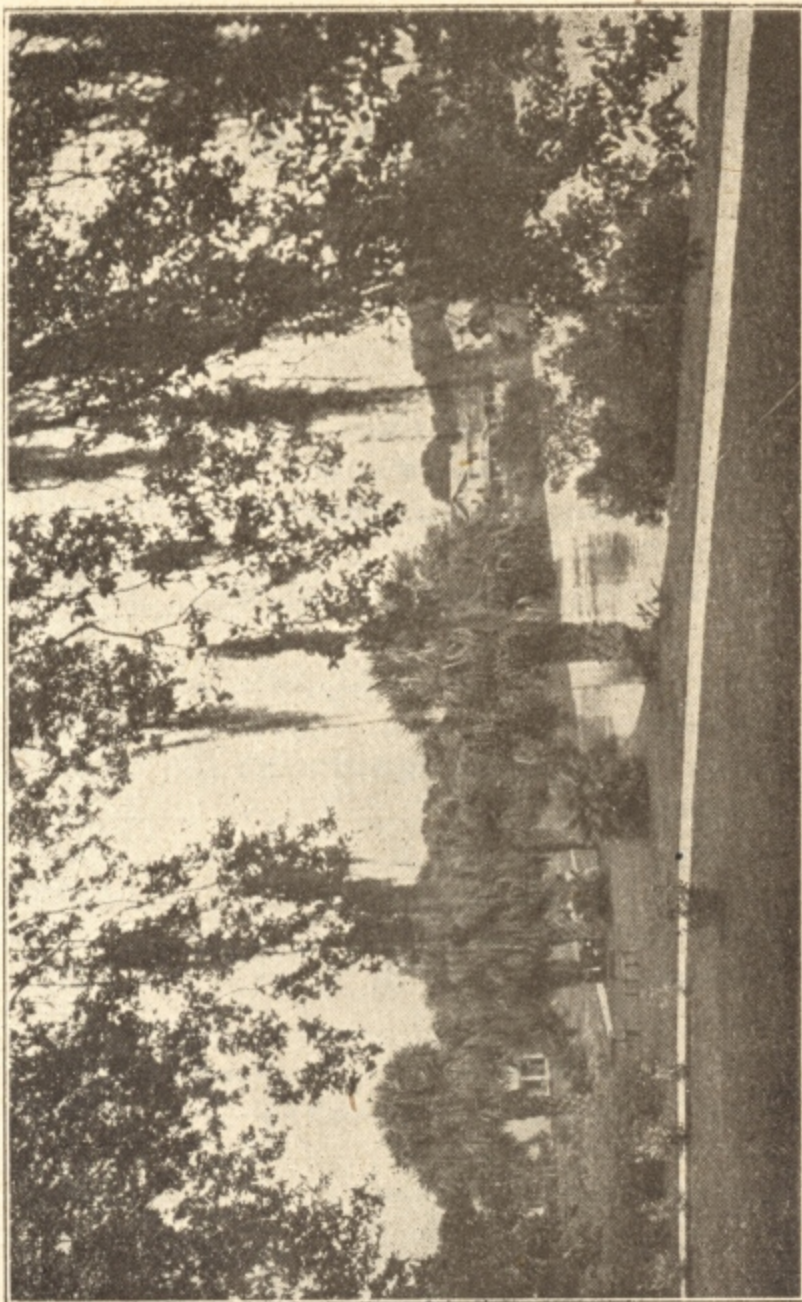
---

---

## CONTENTS

	Page.
Amusements .....	11
Auto Trips .....	17
Churches .....	31
Clubs .....	23
Distance to Principal Cities in Florida .....	39
Distance to Principal Cities in U. S. ....	43
Express Company .....	25
Florida Game Law .....	35
Fraternal Organizations .....	27
Golf .....	19
History .....	5
Hospitals .....	25
Hotels .....	37
Hunting .....	23
Lakes .....	19
Lakes in Orlando .....	23
Public Buildings .....	25
Railroads .....	25
Restaurants .....	27
Telegraph Companies .....	25
Theatres .....	23
Tourist Club .....	13
Transportation Companies .....	25





Eola Park.

## ORLANDO

THE following brief sketch of Orlando, in the early days, was taken from a speech delivered by Hon. S. A. Robinson, at the opening of the Board of Trade in 1918. Mr. Robinson is an old resident of Orlando and came here in October, 1876.

The first start that Orlando received was largely because John R. Worthington came here about 1856, and sold merchandise and ran a sawmill, grist mill and a cotton gin.

There are three versions concerning the naming of the place. The first and generally accepted one is that the late Hon. James G. Speer named it. The second one is vouched for by Mrs. Martha Tyler, who has lived in and near Orlando since 1844, and is still living here. At the old settlers' meeting held here several years since, she stated that in 1856 John R. Worthington came here and built a stone house and called the place "Orlando."

The third one was given by a Mr. Simmons, who resided in the county many years ago. He stated that in the Indian war, one Orlando Reeves, a U. S. soldier, who was in Mr. Simmons' regiment, was ambushed and killed by the Indians, in going through what is now called Hughey Bay, in the south part of the town; that he was buried on the higher land north of the bay, and the place after that was known as "Orlando Hill."



# St. George's Hotel

ST. AUGUSTINE, FLA.

Most Central Location on the Plaza.

Elevator, Electric Lights, Steam Heat, Private Baths, Running Water in All Rooms, Catering to Select and Refined Patronage.

Bus and Porter Meet All Trains.

AMERICAN PLAN.

F. DREXEL DUDLY

Manager

Ownership Management

By reason of the records of Orange County having been burned, I am unable to learn just when the county seat was established in Orlando, but it must have been about 1856. James P. Hughey was clerk of the court in 1858 and held the office for many years.

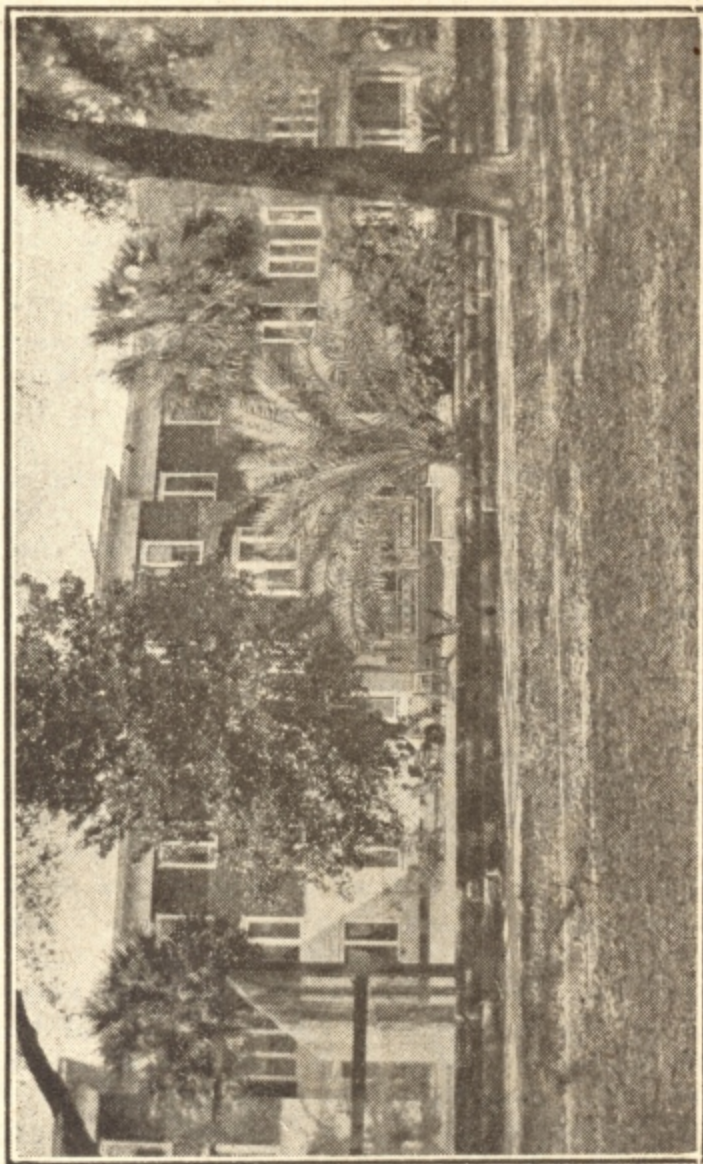
E. W. Speer was the first postmaster, and Joseph Bumby carried the mail semi-weekly between Orlando and Melonville in 1876. He usually made the trip on horseback. All goods were hauled from Melonville, a small settlement about one mile east of where Sanford is now situated, or from Mitchell's Wharf on Lake Jessup, by horse or ox teams over the sandy roads.

There were no regularly laid out roads in the county, and the travel was along trails, which, while they were somewhat direct, constantly turned and twisted to avoid the forest trees. The usual way of conveyance was a two-wheeled cart, drawn either by one horse or an ox. Often the driver rode astride the animal.

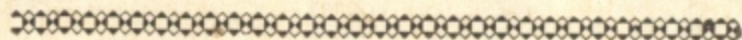
Orlando was incorporated in July, 1875, with 24 qualified voters and about 85 inhabitants of young and old within a mile of the court house. The jail in 1876 was a hewn log building with a lining of upright two-inch planks, studded with nails. However, this primitive old jail did good business for many years, and had a much better record for keeping criminals than either the present up-to-date and costly edifice or its predecessor, which was built in 1886. From this old jail yard was the execution of one "Stokes," for murder, who was the first and only white man ever hanged in Orlando.



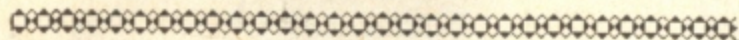
THE WYOMING HOTEL



OPEN FROM NOVEMBER TO MAY



WHEN  
IN  
ORLANDO  
READ  
*The  
Morning  
Sentinel*







Lucerne Circle.

Owing to litigation over property, Orlando was kept back from improvement until 1880, when the trouble over real estate was settled and the town at once started to grow.

Additions were laid out in 1880, and the following year much building was done.

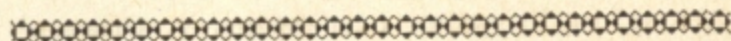
In 1879 the first railroad that ever started in this part of the country was surveyed. It was known as the Lake Jessup, Orlando & Kissimmee River Railroad, and was to run from Tuskavilla on Lake Jessup to Lake Tohopekaliga. It was graded to Orlando and probably would have been completed had not Senator George C. Brantly, who was the prime mover of it, died in New York City on his trip to purchase the iron. It is conceded, however, that the commencement of this road had much to do with the starting of the building of the South Atlantic Railroad, now the Atlantic Coast Line Railway, from Sanford to Kissimmee.

The people who settled Orlando, up to the present time, have been progressive citizens, and there has never been a time but that all have pulled together, and that the spirit still reigns supreme.

#### AMUSEMENTS.

Orlando has many attractions and entertainments for the tourist. It provides a band which gives concerts twice daily, to the great pleasure of her visitors and citizens. One of the big events of the season is the Spring Musical Festival, which last for three days. Part of the program is given by such artists as





# St. Charles Hotel

Orange Ave. and Washington St.

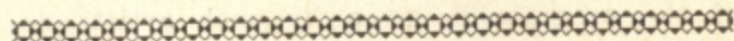
ORLANDO, FLA.



AMERICAN PLAN



Phone 165



Mischa Elman and Anna Fitsu. The balance is presented by a chorus of 200 voices. The Stabat Mater, Elijah and Olaf Trygverson were sung by the chorus last winter, with New York opera singers in solo parts. It is the only event of its kind in Florida.

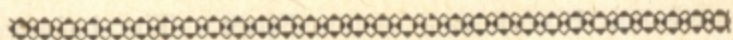
Every year on beautiful Lake Eola is held the water carnival, which is an event different from anything else given in the State. The lake, which is in the heart of the city, is alive with craft of every description, illuminated with small electric lights and Japanese lanterns. The festivities start with a parade of the decorated boats, then follows the sham battle, after which elaborate fireworks are displayed. Usually the carnival has been given at night only, but plans are being made this year to make it an all day affair—a gala day that will be long remembered by the spectators and participants.

Each year in February is held the Sub-Tropical Mid-winter Exposition. The display of vegetables, fruits, corn, stock and poultry are a revelation to the northern visitor. The horse races, midway and other special attractions provide pleasure and merriment for all.

## TOURIST CLUB.

The Board of Trade maintains a club room for the tourists in its building at the corner of Orange avenue and Oak street. Here the tourists mingle with each other, become acquainted, pass many pleasant hours at cards, checkers, dominoes, chess, etc. All the latest periodicals, State papers and northern news-

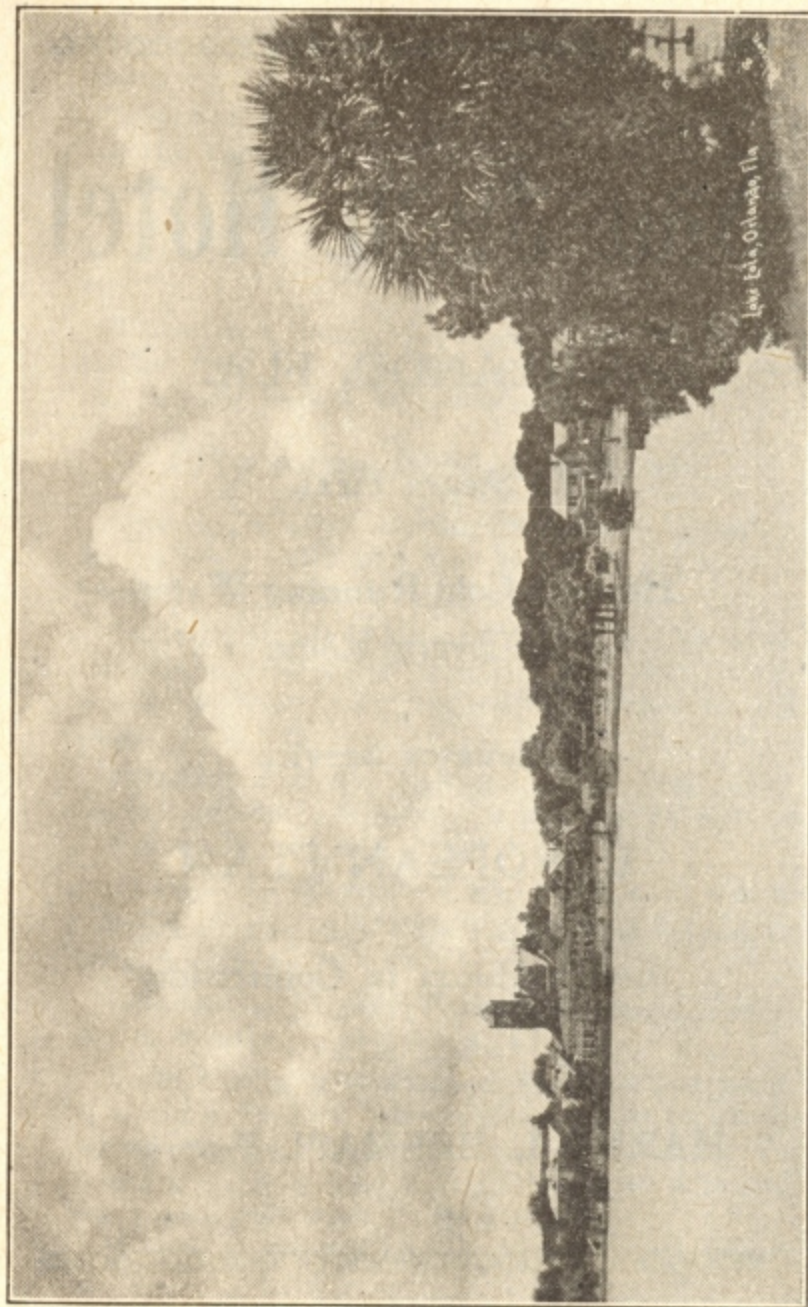
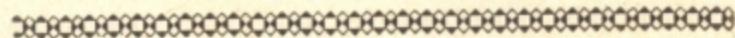




*Register*  
AND  
*Join the*  
*Tourist Club*  
AT THE  
ORLANDO  
BOARD of TRADE

HEADQUARTERS  
COR. OAK ST. AND ORANGE AVE.

*Phone 763*



Lake Eola.



\*\*\*\*\*

# San Juan Hotel

ORLANDO, FLA.

Steam Heat

Hot and Cold Running Water  
in Every Room

Elevator Service

EUROPEAN PLAN

Lunch Room in Connection

HARRY L. BEEMAN, Proprietor

\*\*\*\*\*

papers are to be found on file in the reading room.

Every week or so entertainments are given for the benefit of the visitors. Writing materials are also furnished. Make this your headquarters while in the city. Be sure to register as soon as you arrive, so your friends can find you.

There are many other amusements in Orlando, such as theaters, entertainments and dancing in hotels and academy.

## AUTO TRIPS OUT OF ORLANDO.

Orlando, Winter Garden, Minneola, Tavares, Mt. Dora, Zellwod, Apopka, and return to Orlando, 75 miles.

Orlando, Winter Garden, Minneola, Clermont, Groveland, Leesburg, Eustis, Mt. Dora, Zellwood, Apopka, and return to Orlando, 106 miles.

Orlando, Apopka, Zellwood, Mt. Dora, Sorrento, Sanford, Winter Park, and return to Orlando, 76 miles.

Orlando to Kissimmee and return, 37 miles.

Orlando, Conway, Pine Castle, and return to Orlando, 12 miles.

Orlando to Winter Park, Altamonte, Longwood, Sanford and return, 47 miles.

Palm Springs, located on the Sanford road, is about a 17-mile drive; it has a flow of about 10,000 gallons of mineral water a minute; is fine for bathing and a bath house is provided for those who wish to take a dip.

Wekiva is located on the Apopka road, about



# Buchanan Brothers

34-36 East Pine Street

ORLANDO, FLA.

Distributors

PAIGE and BRISCO MOTOR CARS.

Garage

Electric Gasoline Station

Prompt, Efficient and Courteous Service

Phone 448

## Scenic Photographs

that are

Typical of Florida

also

Local Views of

Orlando and Winter Park

KODAK FINISHING AND PORTRAITS

Y. P. ROBINSON,

WATKINS BLOCK

PHONE 581

15 miles. It is a popular place for bathing. Suits and bath house can be rented; also boats and canoes. This makes a very nice day's outing.

### LAKES.

There are about 1,000 lakes in Orange County, and nearly all are accessible by motor car on a good brick road. Lake Apopka is the second largest in the State, and is located in the western part of the county. There are several lakes in the city of Orlando, and their beauty cannot be realized without a visit. Lake Eola is surrounded by a park and fine residences. It is in the heart of the city, and a visit to it will give such pleasure that you will not want to leave it.

Lake Lucerne is located on South Orange avenue and is also a beautiful lake and residential section. There is a beautiful drive or walk surrounding each of these lakes. The beauty of these lakes cannot be excelled. In fact, all the lakes in Orlando are very beautiful and are within walking distance, and those enjoying fishing, swimming, boating and canoeing can indulge themselves to the utmost.

### GOLF.

The Orlando Country Club has a very fine 18-hole golf course. It was planned by the famous golf architect, Tom Bendelow. The course, covering a playing length of 6,392 yards, is located just northwest of the city limits. It is reached by a beautiful oak shaded drive. Bus service maintained by the club makes four trips daily. The club house is



Jefferson Court  
Apartments

Orange Ave. and Jefferson Street  
ORLANDO, FLA.

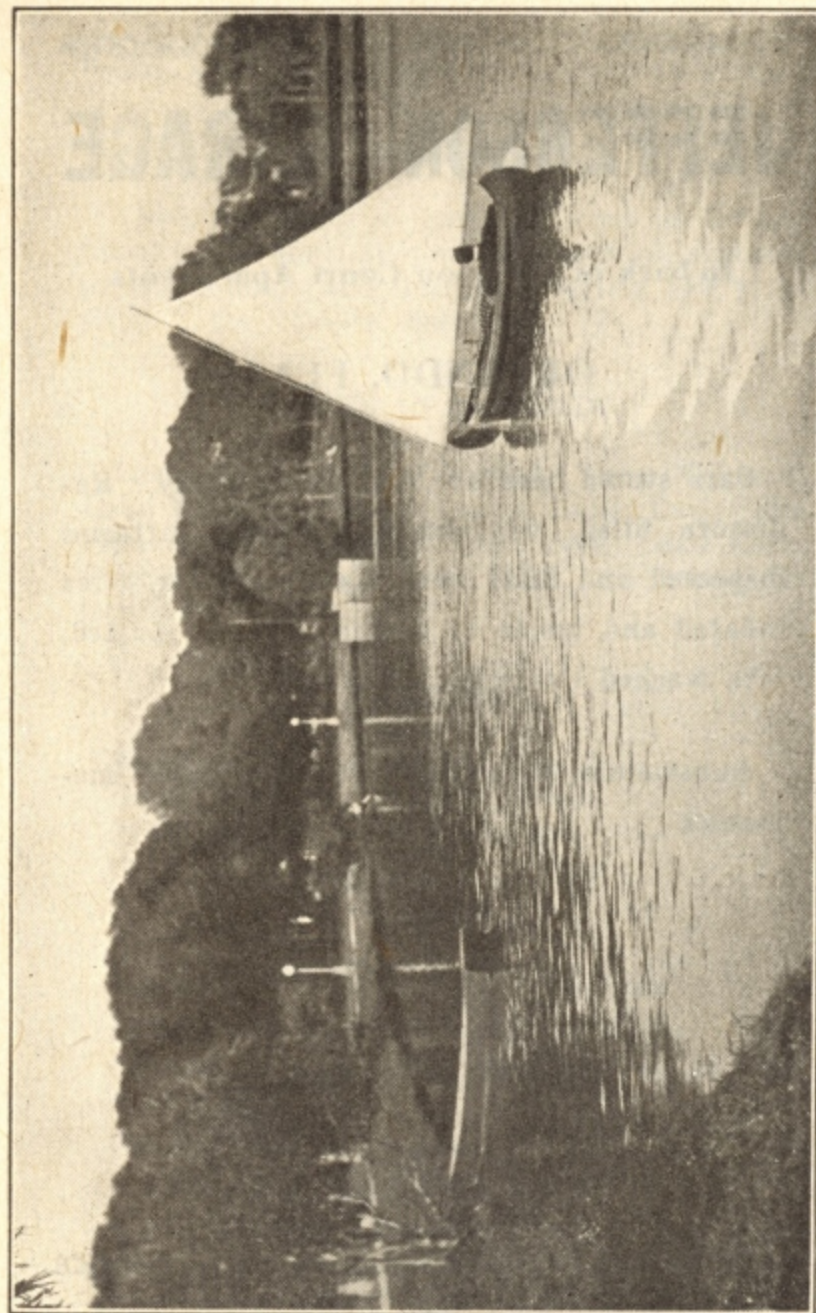
All Rooms and Apartments Fully  
Furnished

Steam Heat, Hot and Cold Running  
Water, Electric Lights furnished  
Without Charge.

Telephone in Each Apartment

MRS. H. WICHTENDAHL,

Manager



A Pretty Lake Scene.



# JEFFERSON GARAGE

In back of Jefferson Court Apartments

ORLANDO, FLA.

Cars stored here are inspected nightly. Radiators filled, windshields washed, batteries inspected and filled with distilled water, tires inflated and inside of car cleaned and dusted, cars washed overnight.

Automobile Repairing done by skilled mechanics

Satisfaction Guaranteed

OPEN ALL NIGHT

PHONE 41

E. G. GOWDY, Prop.

ideally located in every respect, with showers, baths, locker rooms and attractive dance floor.

## HUNTING.

There is plenty of game to hunt in Orange County, for quail abound in nearly all sections of the county, and deer and turkey are plentiful in the remote districts.

## LAKES IN ORLANDO.

Lake Adair, Lake Cherokee, Lake Concord, Lake Copeland, Lake Davis, Lake Dot, Lake Ivanhoe, Lake Lucerne, Lake Park, Lake Rock, Lake of the Woods, Lake Eola. (See map for location of lakes.)

## THEATERS.

Favorite Theater, 11 W. Church.  
Grand Theater, 17-19 N. Pine.  
Phillips Theater, 33 S. Orange.

## CLUBS.

Rosalind Woman's Club, Lake Eola.  
Orlando Country Club, Spring Lake.  
Orlando Tourist Club, Orange avenue, corner of Oak.  
Sorosio Club, 22 E. Pine.  
Twentieth Century Club.  
Orlando Motor Club, headquarters San Juan Hotel.



ORANGE BELT  
AUTO LINE

Operates at Regular and Frequent  
Intervals to and Between

ORLANRO.

KISSIMMEE

SANFORD

DeLAND

NEW SMYRNA

DAYTONA, and

DAYTONA BEACH

For detailed information call

PHONE 514

Office, Waiting Room and Information  
Bureau

4-W Central Ave.,  
Orlando, Fla.

TRANSPORTATION COMPANIES.

Orange Belt Auto Line, 4 W. Central avenue.  
Robinson's Auto Service. Phone 481.

TELEGRAPH COMPANIES.

Western Union, 131 Orange street.  
Postal Telegraph, 122 Orange street.

EXPRESS COMPANY.

American Railway Express, 15 E. Church  
street.

HOSPITALS.

The Florida Sanitarium, three miles north  
of Orlando.  
Orange General Hospital, 1110 Kuhl avenue.

PUBLIC BUILDINGS.

County court house, Central avenue and  
Court street.  
Post Office, Central avenue and Court street.  
County jail, Oak and Court streets.  
Board of Trade, Orange and Oak streets.  
Armory.  
City Hall, Oak street, near Orange.  
Fire Department, Oak street, near Orange.

RAILROADS.

Atlantic Coast Line, Church street, corner  
Gertrude.  
Seaboard Air Line, 27 W. Central avenue.



# Turner's Cafeteria

In the Heart of the City

(Successor to Hoefler)

Known for its Good Food and Quick Service

---

HOME COOKING

---

Coffee a Specialty

---

## Turner & Turner,

Proprietors

13 ORANGE AVE.

## RESTAURANTS.

Arcade, 18 E. Pine.  
Busy Bee, 40 W. Church.  
Middleton, 53 W. Church.  
Model Cafe, 118 S. Orange avenue.  
New York, 110 S. Orange avenue.  
Orlando Cafeteria and Restaurant, 12-14 W. Church.  
Palace Cafe and Ice Cream Parlor, 113 S. Orange avenue.  
San Juan Coffee House, 79 W. Central avenue.  
Turner's Cafeteria, 13 S. Orange avenue.

## FRATERNAL ORGANIZATIONS.

### Masonic.

Orlando Lodge No. 69, F. & A. M., meets in Masonic Hall every second and fourth Tuesday.  
Eureka Chapter No. 7, R. A. M., meets in Masonic Hall first and second Tuesdays.  
Orlando Council No. 5, R. and S. M., meets in Masonic Hall third Tuesday.

### Knights Templar.

Olivet Commandery No. 4, meets in Masonic Hall second and fourth Thursdays.

### Knights of Pythias.

Welcome Lodge No. 9, meets in Castle Hall every Friday night.

### Odd Fellows.

Orlando Lodge, meets in Odd Fellows' Hall Monday nights.



\*\*\*\*\*

# Phone 481 and 372

We take you there and bring you back

SIGHT  
SEEING  
A  
SPECIALTY



PERSONALLY  
CONDUCTED  
TOURS

Prompt and Courteous Service

OFFICE AT LUCERNE PHARMACY  
ORLANDO, FLA.

Seminole Encampment No. 13, meets in Odd Fellows' Hall first and third Tuesdays.

Rebekah Lodge No. 12, meets in Odd Fellows' Hall every Tuesday night.

## Red Men.

Econlockhatchee Tribe No. 23, meets in Odd Fellows' Hall every Tuesday night.

## Elks.

Orlando Lodge 1079, B. P. O. E., meets in their own building, Central avenue and Court street, first and third Thursdays each month.

## Modern Woodmen of America.

Camp No. 16074, meets at 222 S. Orange avenue every second and fourth Tuesday night.

## Woodmen of the World.

Magnolia Camp No. 4, meets 103 E. Pine street, every second and fourth Thursday night.

## Moose.

Royal Order of Moose No. 766, meets at 222 S. Orange avenue every Wednesday night.

## P. O. S. of A.

Washington Camp No. 13, meets every first and second Wednesday.

## Woodmen's Circle.

Magnolia Grove No. 194, meets every Wednesday, Hall 103 E. Pine street.

## Royal Neighbors of America.

Orange Camp No. 7863, meets every Tuesday evening.



DRINK  
**Chero-Cola**

*THERE'S NONE SO GOOD*

**5c.**

In a Bottle Thru a Straw

**SOLD EVERYWHERE**

**Orlando Steam Laundry**

30-86 Church St.

We Cater to the Discriminating

French Dry Cleaners

Launderers

ORLANDO - - - FLORIDA

Eagles.

Orlando Aerie No. 2047, meets Thursdays,  
222 S. Orange avenue.

Post No. 19, American Legion.

**CHURCHES.**

Christian and Missionary Alliance, Alliance  
Hall, 22 W. Pine.

Christian Science, services at Unitarian  
Chapel, Central avenue, corner of Rosalind.

Concord Park Union Chapel, 301 W. Amelia  
avenue.

Church of St. Luke's' Cathedral (Episcopal),  
Main, corner Jefferson.

Evangelic Lutheran, Central avenue, corner  
Terry.

First Baptist, Main and Pine streets.

First Presbyterian, Main, corner of Church.

First Methodist, Main, corner of Jackson.

Pentecostal Assembly, 708 Center street.

Seventh Day Adventist, Robinson avenue,  
corner Rosalind.

St. James Catholic, Orange, corner of Robin-  
son.

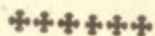
Jewish Synagogue, 502 W. Central avenue.



---

# Hotel Empire

10 W. Central Ave.,  
ORLANDO, FLA.

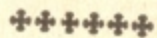


## EUROPEAN PLAN

A Comfortable, Homelike Hotel

Steam Heat, Hot and Cold Running Water in  
every room, Elevator Service.

Eighty-Five Rooms, with or without bath.



R. C. GRABEL, Proprietor

---





# TREMONT HOTEL

Main and Church St.

ORLANDO, - FLA.

A Delightful, Comfortable, Homelike Hotel

AMERICAN AND EUROPEAN PLAN

Public and Private Baths, Heat and Running Water in Every Room, Sun Parlor and Spacious Verandas.

A well kept grass putting green is located on the hotel grounds for the use of the guests.

Under New Management.

GARAGE NEARBY

N. H. SCHOONOVER, Mgr.

Associate Hotel, Royal Palms Hotel,  
Jacksonville, Fla.

## FLORIDA GAME LAWS.

No State Game Warden. County Game Warden, the Sheriff.

Deer and Turkey—Open season November 20th to March 10th.

Wild turkey, quail, (bob-white partridges) turtle doves, geese, brant, ducks, rails, coots, sand pipers, curlews, snipe and plover—Open season November 20th to March 10th. Mud and marsh hens excluded.

Limit—1 deer, 2 wild turkeys, 20 quail or 25 birds of another species and no party of two or more persons shall kill more than 4 wild turkeys or more than 40 quail in any one day, and no person shall kill more than 3 deer, 10 turkeys or 300 of any other game-bird species during open season.

Wild Ducks—Open season November 20th to March 10th.

Export—No person may take or transport out of or within the state any such game, unless same be in his personal possession, or carried openly by the owner thereof.

No person, firm or corporation shall ship any deer, bird or game beyond the limits of the county in which they were killed without ascertaining that the owner thereof has a license and accompany the same.

License—Granted by County Judges of the counties good therein. Non-residents \$15.00 for each county. Good only through open season of the season issued.



# ORLANDO HOTEL

One Block East of Depot

ORLANDO . . . FLORIDA

European Plan

Open Year Round

## Orlando Cafeteria

Near Corner Orange Ave.

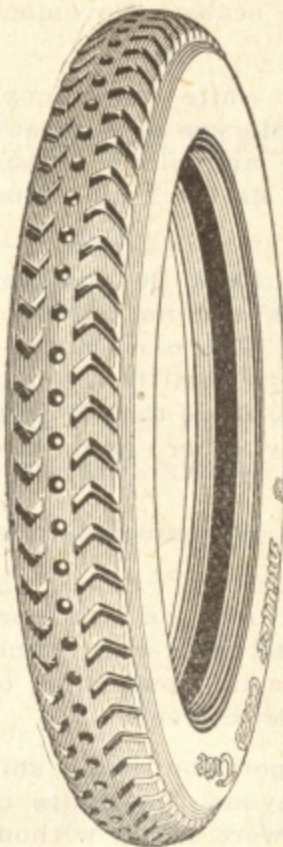
Largest and Airiest Eating Place  
in Town

### DISTANCE FROM ORLANDO TO PRINCIPAL CITIES IN FLORIDA.

City.	Population.	Distance.
Apalachicola -----	3,500	424
Arcadia -----	4,000	123
Bartow -----	4,000	73
Bradentown -----	3,500	94
Daytona -----	5,000	119
DeLand -----	4,000	40
Fort Myers -----	4,000	175
Fort Pierce -----	2,500	151
Gainesville -----	11,500	120
Jacksonville -----	125,000	146
Key West -----	20,000	531
Kissimmee -----	3,800	18
Lake City -----	6,509	141
Lakeland -----	7,500	61
Live Oak -----	5,500	164
Miami -----	16,000	375
New Smyrna -----	2,300	132
Ocala -----	6,046	160
Palatka -----	7,000	81
Plant City -----	4,702	70
St. Augustine -----	8,000	116
St. Petersburg -----	16,000	170
Sanford -----	6,000	21
Tampa -----	68,000	93
Tallahassee -----		
Tarpon Springs -----	4,000	136
West Palm Beach -----	5,000	308



# T I R E S



## The Miller

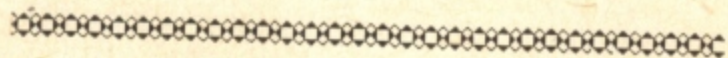
THE ONLY TIRE  
MADE WITH AN  
UNLIMITED GUAR-  
ANTEE;  
IF IT PROVES DE-  
FECTIVE WE WILL  
MAKE IT RIGHT

W. R. LINK TIRE CO.  
ORLANDO'S FIRST AND  
STILL BEST TIRE STORE

## HOTELS.

Arcade Hotel, 13 E. Church.  
Empire Hotel, 10-12 W. Central Ave. (See  
page 32.)  
Hotel Astor, 209 S. Orange Ave.  
Lucerne Hotel, 401 S. Main.  
The Melrose, 209 S. Main.  
New Grand Hotel, 15 N. Pine.  
Orland Hotel, 16-18 W. Church. (See page 43.)  
The Osceola, 305 Magnolia Ave.  
St. Charles, 23 N. Orange Ave. (See page 12.)  
San Juan, 2-12 N. Orange Ave. (See page 16.)  
The Summerlin, 104 E. Washington.  
The Pines, 105 N. Orange Ave.  
The Tremont, Main, corner Church. (See page  
24.)  
The Wyoming, 420 Magnolia Ave. (See page 8.)  
Duke Hall, E. Pine St.  
Jefferson Court Apts., Orange and Jefferson.  
(See page 20.)  
The Keystone, Church and Rosalind.





SERVICE

# Dodge Brothers Motor Cars

ONLY

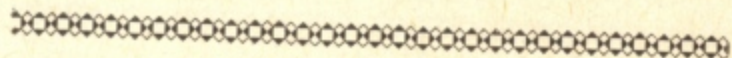
---

I. W. PHILLIPS & SONS

ORLANDO

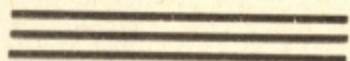
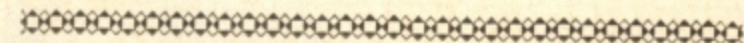
SANFORD

LEESBURG



Lake Lucerne.



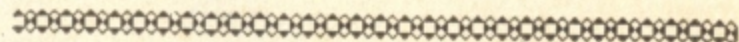
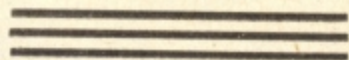


# BRIGHAM & HILL

News Agents

ORLANDO - - FLORIDA

Orlando Stationery and  
Curio Store



## DISTANCE FROM ORLANDO, FLORIDA, TO

City.	Distance.
Atlanta, Ga. -----	486
Augusta, Ga. -----	447
Asheville, N. C. -----	630
Austin, Texas -----	1,326
Baltimore, Md. -----	976
Birmingham, Ala. -----	579
Boston, Mass., via N. Y. -----	1,430
Buffalo N. Y., via Washington -----	1,381
Charleston, S. C. -----	433
Chattanooga, Tenn. -----	635
Chicago, Ill., via Cincinnati -----	1,264
Cincinnati, O. -----	961
Colorado Springs, via St. Louis -----	2,004
Columbus, Ga., via Albany, Ga. -----	443
Dallas, Tex., via New Orleans -----	1,276
Denver, Colo., via Kansas City -----	1,927
Detroit, Mich. -----	1,223
Duluth, Minn., via Chicago -----	1,869
El Paso, Texas, via Memphis -----	1,919
Evansville, Ind. -----	946
Galveston, Texas -----	1,168
Grand Rapids, Mich. -----	1,269
Hartford, Conn. -----	1,290
Havana, Cuba -----	773
Helena, Mont. -----	2,596
Houston, Texas, via New Orleans -----	1,110
Hot Springs, Ark. -----	986
Indianapolis, Ind. -----	1,070
Kansas City, Mo. -----	1,382
Little Rock, Ark. -----	926
Los Angeles, Cal. -----	2,751
Louisville, Kv. -----	958
Macon, Ga. -----	398
Memphis, Tenn. -----	794



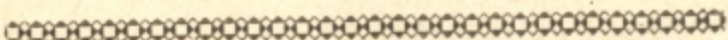



# ARAGON HOTEL

JACKSONVILLE,  
FLORIDA

---

EUROPEAN PLAN



# Huntington Hotel

ST. PETERSBURG, FLA.

A fine, up-to-date hotel, catering to the select

135 Rooms, With or Without Private Bath

ELEVATOR SERVICE

Steam Heat

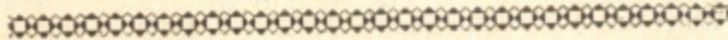
RUNNING HOT AND COLD WATER IN  
EVERY ROOM

Northern Cuisine

AMERICAN PLAN

S. LUND,

Owner and Proprietor





City.	Distance.
Milwaukee, Wis. -----	1,339
Minneapolis, Minn., via Chicago -----	1,772
Mobile, Ala., via Flomaton -----	789
Montgomery, Ala. -----	534
Nashville, Tenn., via Atlanta -----	873
Nassau, N. P. -----	697
Newark, N. J., via Washington -----	1,151
New Haven, Conn. -----	1,154
New Orleans, La., via River Junction --	748
New York, N. Y. -----	1,162
Norfolk, Va. -----	822
Oklahoma City, Okla. -----	1,281
Omaha, Neb. -----	1,580
Peoria, Ill. -----	1,281
Philadelphia, Pa. -----	1,071
Phoenix, Arizona -----	2,353
Pittsburgh, Pa. -----	1,376
Portland, Me. -----	1,479
Portland, Oregon, via Denver -----	3,382
Providence, R. I. -----	1,346
Reno, Nev. -----	3,186
Richmond, Va. -----	810
Rochester, N. Y. -----	1,549
Salt Lake City, Utah, via Denver -----	2,769
San Antonio, Texas -----	1,320
San Francisco, Cal. -----	3,237
Savannah, Ga. -----	318
Scranton, Pa., via Washington -----	1,237
Seattle, Wash., via Denver -----	3,857
Spokane, Wash., via Denver -----	3,691
St. Louis, Mo., via Nashville -----	1,084
St. Paul, Minn., via Chicago -----	1,662
Toledo, Ohio, via Cincinnati -----	1,161
Trenton, N. J., via Washington -----	1,104
Vicksburg, Miss., via Birmingham -----	872
Washington, D. C. -----	936
Wheeling, W. Va., via Cincinnati -----	1,239
Wilmington, Del., via Washington -----	1,041
Wilmington, N. C., via Savannah -----	645
Worcester Mass., via N. Y., N. H. & H. --	1,348

# HOTEL SENECA

Corner Duval and Ocean Sts.

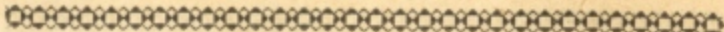
Jacksonville, Florida

## American Plan

A refined hotel, modern in every respect, that entertains a discriminating clientele. Located just off the business district. Easy of access to places of amusement and offering sensible rates. Fireproof, steam heat, spacious verandas.

R. B. GARDNER, Prop.





# Hotel Marion

St. Augustine, Fla.

Delightfully situated on the bay, overlooking the ocean.

Steam heat, electric bell and light in every room, electric elevator, private baths, hot and cold running water in every room.

American and European Plan.

Rates Moderate.

H. MUELLER, Prop.

Swiss Management