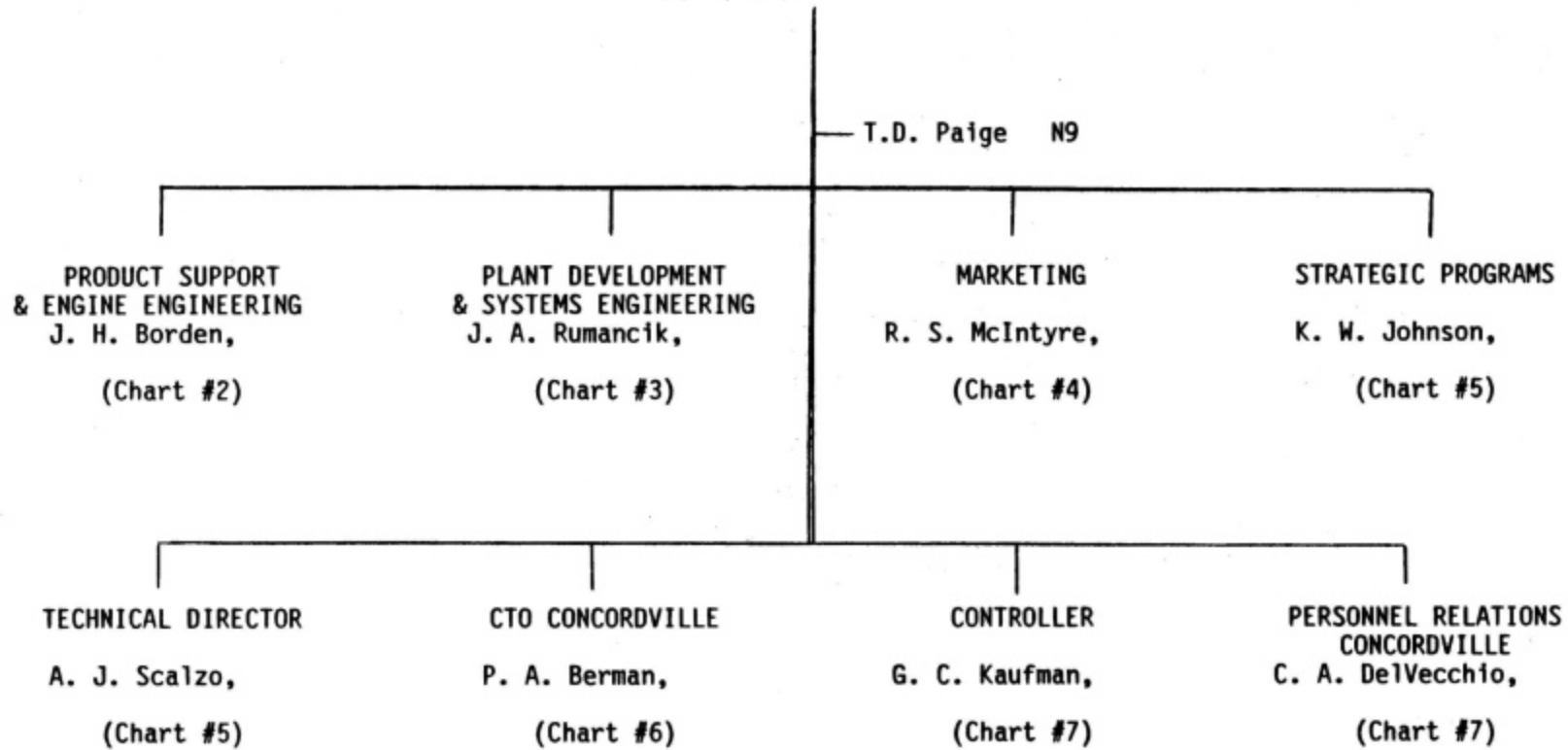
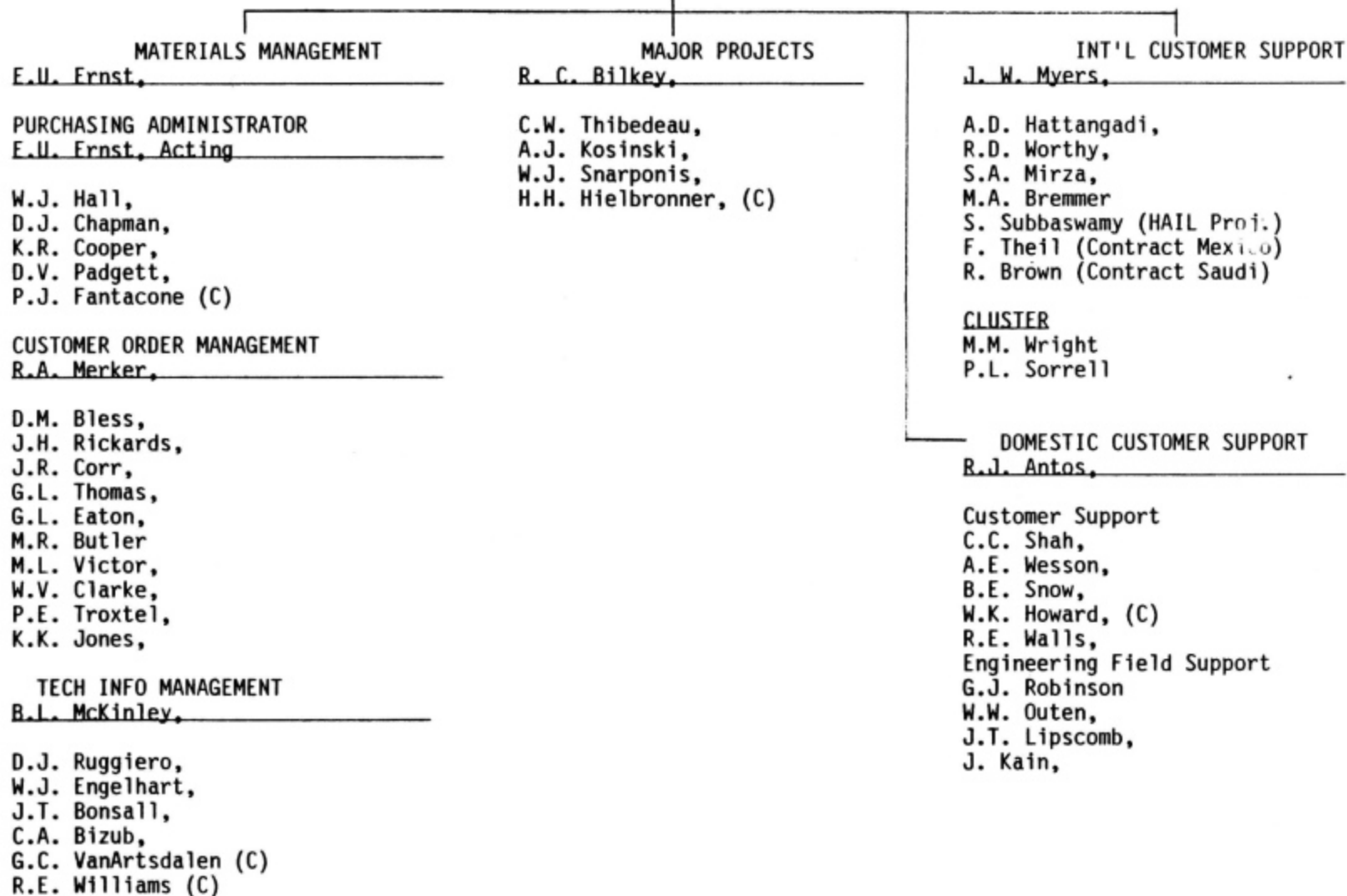


COMBUSTION TURBINE OPERATIONS
H. R. KACZOWKA



ENGINEERING & PRODUCT SUPPORT

J. H. Borden, Manager



ENGINEERING & PRODUCT SUPPORT

J. H. Borden, Manager

ENGINE DESIGN

L. D. McLaurin,

STRESS & DYNAMICS

L. D. MCLAURIN (Acting)

K.G. Hultgren,
W.E. North,
J.P. Smed,
R.G. Waugh,
D.T. Entenman,
O.L. Bertsch,
S.M. Kron,
F.A. Pisz,
J.M. Allen - Advisory Engineer

THERMO/COMBUSTION

G. S. Howard,

R.M. Lee,
S.E. Mumford,
V.A. Ogale,
P.W. Pillsbury,
C.A. Rohr,
C.W. Metzler,
M.E. Warner,

DRAFTING

R. I. Burfield, Manager

ENGINE DRAFTING

J. Donlan (6/1)
G.J. Savastano (C)
J. Turner
R.A. Olsen
T. Brown

SYSTEMS DRAFTING

N. (Skip) Middleton

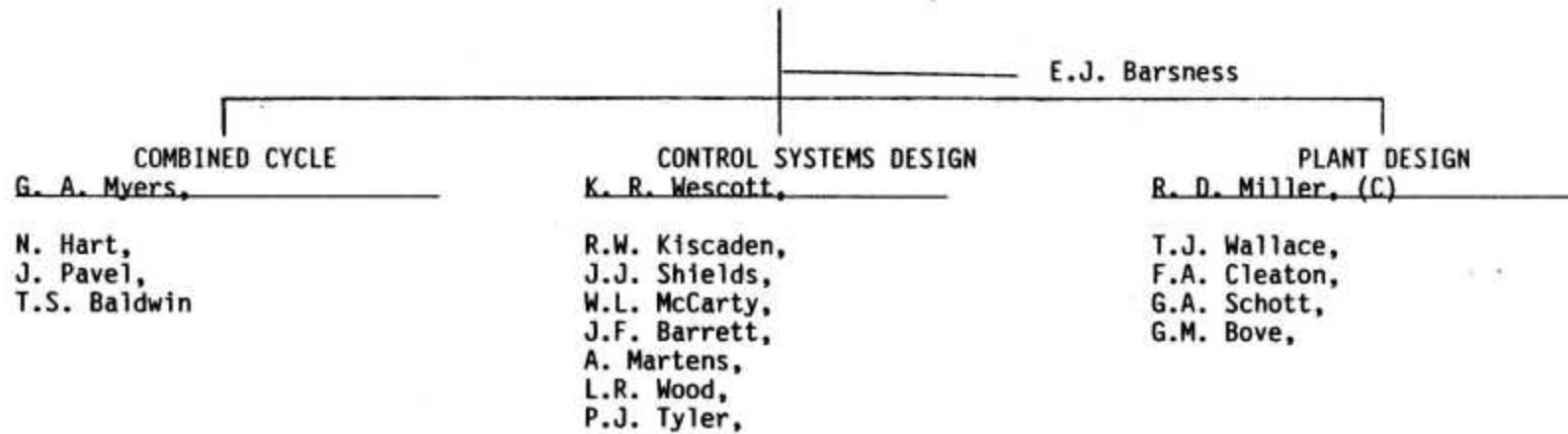
METALLURGY

R. L. Novak

T.J. Carr,

PLANT DEVELOPMENT & SYSTEMS ENGINEERING

J. A. Rumancik, Manager



COMBUSTION TURBINE MARKETING
R. S. McIntyre, Manager

J. Citino,

SERVICE MARKETING

R. S. McIntyre, (Acting)

A.E. Jordan,
K.H. Seliger,
S.G. Sujan,
A.M. Vargo,
C.M. Volk,

NEW APPARATUS MARKETING

H. L. Jaeger,

Cluster

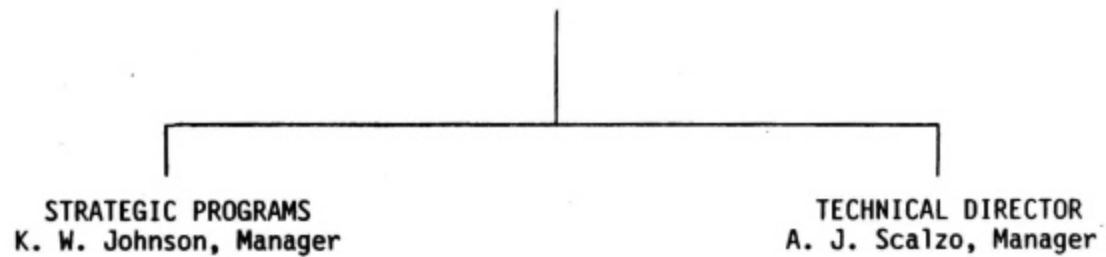
B.F. DePuy
L.A. Loden

MARKETING SUPPORT

D. R. Fraser,

C.J. Balzano,
K.M. Thomas,
S.T. Cloyd,

COMBUSTION TURBINE OPERATIONS
H. R. KACZOWKA MANAGER



COMBUSTION TURBINE OPERATIIONS - CONCORDVILLE

P. A. Berman, Manager

LONG RANGE DEVELOPMENT
Orlando (Reporting to D. Bevc)

R.V. Garland,
R.J. Thoman,
B.P. Maxwell,
H.H. Wisch (C)

DESAL OPERATIONS

R.D. Peterson, (C)
D.L. Moen,
T.J. Rabas (C)

LABORATORY FACILITY
F. K. Gabriel, Manager

D. Bunce, (C)
J.F. Thompson, (C)
C.J. Bowden, (C)
W.C. Emmerling, (C)

Concordville

G.F. Pierson, (C)
W.F. Boyd, (C)
D.A. Horazak, (C)
S.F. Arlington, (C)
W.H. Dickson, (C)
A. Zabrodsky, (C)

COMBUSTION TURBINE OPERATIONS
H. R. KACZOWKA, MANAGER

