



# Appointments

ESSD-86-05

May 14, 1986

## POWER SYSTEMS

Management Personnel  
Fellow Engineers & Scientists

This appointment letter announces the Energy Systems Service Divisions (ESSD) Projects restructuring of the merged Power Generation and Nuclear groups to meet the needs of the utility operating plant marketplace.

The organization described herein has the responsibility for the total Power Systems Business Unit (PSBU) interface with our utility operating plant customers, nuclear and fossil. This organization will provide customer contact continuity, and will be the focal point for customer contact for all division product line marketing efforts throughout PSBU. Implementation of all work scopes will be performed by the responsible Power Systems divisions.

In addition to its general responsibility for utility operating plant customer interface, ESSD Operating Plant Projects will develop specific customer strategies, outage plans, proposal activity, negotiation follow, the obtaining of customer purchase documentation, performance monitoring, corrective action assurance, resolution of suspense and/or customer dispute matters, and continuous counsel to the operating divisions in PSBU.

To these end objectives, Mr. Frank R. Bakos, General Manager, Energy Systems Service Divisions, announces the following appointments and organization structure.

Mr. Robert E. G. Ractliffe is appointed, Director, Operating Plant Projects, reporting to Mr. Bakos. Mr. Ractliffe was formerly General Manager of the Power Generation Commercial Division, Orlando.

Mr. Raymond J. Sero is appointed Manager, U.S. Nuclear Projects, with the responsibility for all PSBU products and services supplied to U.S. PWR nuclear plants. Mr. Sero was formerly Manager, ITTC, Nuclear Services Integration Division.

May 14, 1986

Mr. Thomas M. Anderson is appointed Manager, International Service Operations, with responsibility for all PSBU products and services supplied to international nuclear plants, except Europe where the responsibility is one of support, and to all international fossil plants.

Mr. Donald M. Johnson is appointed Manager, Generation Projects, Southeast and Mid-America.

Mr. Craig A. Weeks is appointed Manager, Generation Projects, Northeast, Southwest and West.

Messrs. Johnson and Weeks' responsibilities will include all PSBU products and services supplied to fossil plants. They will also be responsible for turbine generator related products and services supplied to nuclear plants, coordinated by the nuclear project manager.

Mr. Richard G. Johnson is appointed Manager, Commercial Integration. His responsibilities include the integration of commercial offers and policies for all PSBU products and services supplied to operating plants. He will also coordinate all litigations and settlements.

Messrs. Anderson, D. M. Johnson, R. G. Johnson, Sero and Weeks will report to Mr. Ractliffe.

#### U. S. NUCLEAR PROJECTS

The U.S. Nuclear Projects Department is responsible for all PSBU products and services, primary and secondary side, supplied to U.S. PWR nuclear plants.

The structure of the department remains essentially unchanged, with headquarters-based project teams and site-based service managers, except there will be four regions.

Mr. C. James Craig is appointed Regional Manager, Western and Southwestern Regions. Messrs. L. E. Elder and J. C. Hoebel continue as Project Managers, and will report to Mr. Craig. Messrs. W. W. Hicks, J. T. Moyers, R. G. Perez, J. S. Taylor, and R. A. White continue as Site Service Managers. Mr. Lou E. Pisano is appointed Site Service Manager, Palisades Nuclear Station. He was most recently Operations Consultant to Consumers Power Company at the Combustion Engineering PWR Palisades plant. Previously he served in the U.S. Nuclear Navy program. Mr. Pisano will report to Mr. Craig.

Mr. Thomas H. Dent is appointed Regional Manager, Mid-America Region. Messrs. L. R. Benson, J. W. Irons, E. V. Somers and H. C. Walls continue as Project Managers reporting to Mr. Dent. Messrs. R. M. Andersen, R. W. Buchholz, V. P. Burke, J. A. Johnson, M. J. Parvin, W. L. Reuler and A. Vukmir continue as Site Service Managers.

May 14, 1986

Mr. George W. Dillon continues as Regional Manager, Eastern Region. Messrs. O. Meeuwis, S. P. Swigart and J. A. Triggiani continue as Project Managers reporting to Mr. Dillon. Messrs. G. J. Meyer, R. H. Heisey, J. W. Jenkins, and E. A. Watjen continue as Site Service Managers. Mr. James J. Doran is appointed Site Service Manager, Millstone 3 Station. He was previously Installations Services Manager at Millstone 3, at Krsko and at Salem. Mr. Doran will report to Mr. Swigart.

Mr. Joseph J. Leblang continues as Regional Manager, Southern Region. Messrs. D. R. Beynon, R. J. Muth, D. J. Richards, R. A. Stough, and Ms. L. L. Williams continue as Project Managers reporting to Mr. Leblang. Messrs. J. Headden, R. U. Mathieson, R. J. Phillips, T. R. Puryear, J. M. Roth, G. S. Thomas and G. E. Williams continue as Site Service Managers. Mr. G. O. Percival continues as V. C. Summer Area Manager reporting to Mr. Stough.

Mr. Clem Eicheldinger continues as Project Manager, and Mr. R. H. Baulig continues as Site Service Manager, Alabama Power Company.

Mr. Daniel T. Christianson continues as Manager, Projects Integration. Mr. T. A. Lordi continues as Manager, Westinghouse Owners Group and Mr. R. A. Matheny continues his present assignment at INPO (Institute of Nuclear Power Operations). Messrs. Lordi and Matheny will continue to report to Mr. Christianson.

Messrs. Craig, Dent, Dillon, Leblang, Eicheldinger and Christianson will report to Mr. Sero.

#### GENERATION PROJECTS

The two Generation Projects departments are responsible for all PSBU products and services supplied to fossil plants. They are also responsible for turbine generator related products and services supplied to nuclear plants, coordinated by the nuclear project manager.

Specific assignments and operating service interface responsibilities on Combustion Turbine and RESD-type plants will be assessed and announced later in a separate letter.

To accomplish this broader scope of responsibilities, we have created the new field-based position entitled Technical Service Manager. His responsibilities will be similar to that of the nuclear Site Service Manager focusing on generation products for multiple customers. This position reflects a redeployment of resources, primarily from PGSD districts, to provide continuous customer contact for outage planning and to assure timely implementation by the responsible divisions.

Messrs. J. B. Bostick, R. L. Bristol, R. W. Hebert, E. K. Johnson, T. J. Kuchma, J. J. Leemon, K. A. Steinebronn, C. L. Sturla and O. L. Walter continue to report to Mr. D. M. Johnson as Generation Project Managers.

May 14, 1986

Messrs. R. Bober, G. W. Gamble, H. S. Grassian, R. T. Greenwood, E. V. Heina, D. L. Miller, J. F. Sperry and R. W. Woodward continue to report to Mr. Weeks as Generation Project Managers.

The Technical Service Managers will report to the Generation Projects Managers, and will be named at a later date.

#### INTERNATIONAL SERVICE OPERATIONS

International Service Operations is responsible for all PSBU products and services supplied to international nuclear plants (except Europe, where the responsibility is one of support) and to all international fossil plants. To ensure proper strategic and operational focus, the department will coordinate with Energy Systems Technology Divisions Power Projects Development regarding licensees, associates and local Westinghouse and PSBU subsidiaries.

There will be two regions and a Business Development Department.

Mr. William E. Mendez, Jr. is appointed Manager, Western Region, which includes the Americas, Africa and the Middle East. This department is also responsible to provide support to WNI for Europe and to ENWESA..

Mr. P. A. Szuch continues as Project Manager. Messrs. J. Alba, J. Goumas and M. Lopez-Lopez are appointed Generation Project Managers. Mr. Lopez-Lopez will continue to support the new generation opportunities in this region. Messrs. Alba, Goumas, Lopez-Lopez and Szuch will report to Mr. Mendez. Mr. J. P. McGrath, Westinghouse International Service Company (WISC), will report to Mr. Mendez on a matrix basis. Mr. F. Lepee continues as Angra Site Consultant reporting to Mr. Szuch.

Mr. Thomas J. Mitlo is appointed Manager, Eastern Region, which covers the Pacific Basin. Mr. G. E. Kubancsek continues as Project Manager. Messrs. G. E. Baker and T. E. Szabo are appointed Generation Project Managers. Messrs. Baker, Kubancsek and Szabo will report to Mr. Mitlo. Messrs. J. Antonijuan, Manila, and J. E. Morris, Manshaan Site, continue on their present assignment reporting to Mr. Kubancsek.

Mr. Peter L. Ruddle is appointed Director, Business Development-Asia with primary responsibilities for developing business opportunities and sales at Westinghouse and licensee plants in Japan, Taiwan and Korea. Mr. E. J. McNeill, Manager, Service Operations-Seoul, and Mr. W. Spencer, Service Director in Taiwan will report to Mr. Ruddle.

A new department, International Strategic Programs, is formed in order to provide required support services to International Services Operations and the regions for strategic planning, business planning, integration with the European Service Center, and for planning and implementation of programs directed towards improved methods of doing business in the various countries, including joint ventures, partnerships, etc. Mr. Thomas M. Anderson will be Acting Manager, ESSD International Strategic Programs, until a replacement is selected.

May 14, 1986

Messrs. Mendez, Mitlo and Ruddell will report to Mr. Anderson. Mr. F. M. Stutzbach, Executive Vice President, Westinghouse International Service Company (WISC), will continue to report to Mr. T. M. Anderson on a matrix basis as well as to Mr. V. S. Andersen.

All ISO personnel will remain at their current locations.

#### COMMERCIAL INTEGRATION

The Commercial Integration Department is responsible for the integration of commercial offers and policies for all PSBU products and services supplied to operating plants. The department will also coordinate all litigations and settlements.

Mr. Donald L. Fuller is appointed Manager, Program Development. He is responsible for the development and integration of multi-year customer programs in cooperation with division product line and product line marketing functions. He also has responsibility for market development of the steam generator and designated customer specific programs.

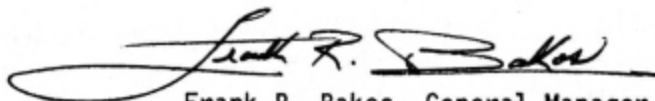
Mr. Roy W. Jones is appointed Manager, Program Marketing. He is responsible for market development of the integrated outage program, the reactor coolant pump program and designated customer specific programs.

Messrs. Fuller, Jones and Thomas E. Dunn, Manager, Strategic Development, will report to Mr. R. G. Johnson.

---

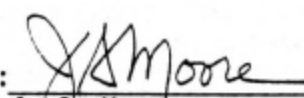
For completeness and clarity of organization responsibilities, ITI (Innovative Technologies, Inc.) continues to be responsible for customer interface with General Electric designed boiling water reactors. They will continue to interface directly with the product line divisions.

Organization charts for Operating Plant Projects and for ITI are attached.

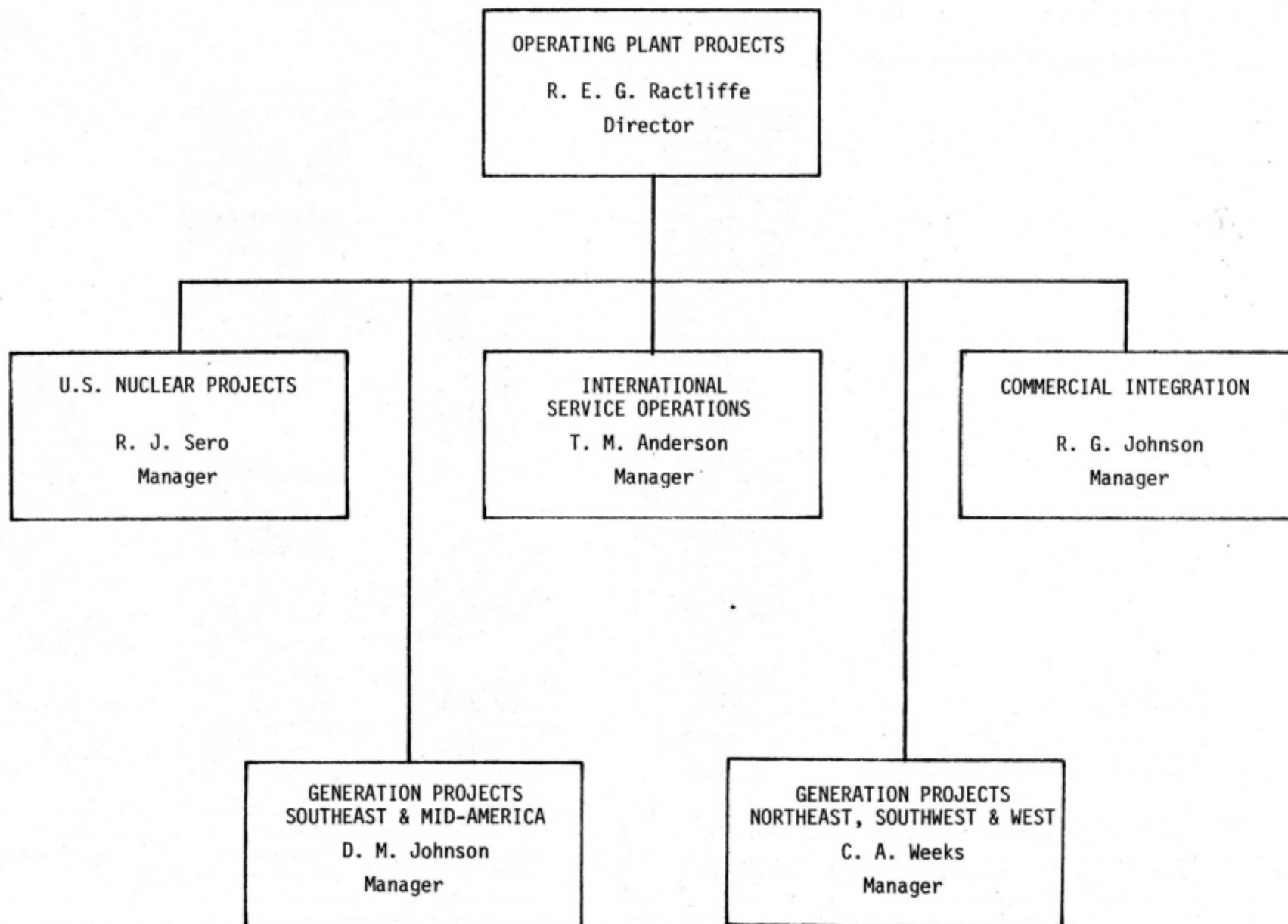


Frank R. Bakos, General Manager  
Energy Systems Service Divisions

Approved: \_\_\_\_\_



J. S. Moore  
Vice President & General Manager  
Power Systems Business Unit



May 1986



GENERATION PROJECTS  
SOUTHEAST & MID AMERICA  
D.M. (DON) JOHNSON

R.W. (ROD) HEBERT OHIO VALLEY/MIDLAND DISTRICTS	F (N)	E.K. (KEN) JOHNSON DES MOINES/N.O. CENTRAL DISTRICTS	F (N)	C.L. (CRAIG) STURLA CAROLINAS DISTRICT	F (N)	O.L. (BUCKY) WALTER SOUTHERN DISTRICT	F (N)
AEP	19	CIP Coop	4	Carolina P&L	(1)	Alabama Pwr Co	10 (2)
Big Rivers Elec Coop	5	Interstate	6	Duke Power	16 (2)	Georgia Pwr Co	17
Cinn. G&E	12	Minnkota	1	S.Carolina P&L	31 (1)	Gulf Pwr Co	5
Central Ill. PSC	3	Iowa Electric	2	CP&L Harris 1 Contract	(1)	Miss. Pwr Co	3
City of Springfield	2	Iowa Illinois	2	Duke Pwr Turb Improve.		Santee Cooper	5
Hooisier Energy	2	Dairyland	5	Mayo 2 Contract (Neg)	1	Savannah Elec	5
Illinois Pwr	6	Nebraska Pub Pwr Dist	(1G)			Southern Co Svc	
Indianapolis P&L	1	Omaha Public Pwr Dist	1				
Kentucky Util	12	Madison G&E	1				
Louisville G&E	7	WEPCO	3 (2)				
PS of Indiana	10	WPS	4 (1)				
Union Elec	10	WP&L	2				
City of Hamilton	1	NSP	7 (2)				
City of Columbus	1	Superior	1				
Southern Ind G&E	1	Basin Elec	2				
PSI Marble Hill Proj	(2)	Mont. Dak	1				
Big Rivers-Wilson 2	1	Ottertail	2				
Cinn G&E Zimmer Proj	1	MP&L	3				
		Iowa P&L	4				
		City of Austin	1				
T.J. (TOM) KUCHMA MISSOURI VALLEY DISTRICT		City of Rochester	1	J.B. (JOHN) BOSTICK FLORIDA DISTRICT		J.J. (JOE) LEEMON VA./TENN. VALLEY DISTRICTS	
Board Pub Util KC	8	Northern Pub Svc	1				
City Independence, MO	2	Lincoln Elec Sys	1				
Empire District	8	NSP Riverside Proj	1				
Kansas Cty P&L	4						
Kansas G&E	6						
St. Joseph L&P	5	K.A. (KURT) STEINEBRONN CHICAGO DISTRICT					
Missouri Pub Svc	2						
Assoc. Elec. Coop	2						
City of Columbus	4						
Springfield, MO	4						
Kansas P&L	9						
Western Pwr of C.	1						
Midwest Energy Cor.	1						

MAY 1986

**GENERATION PROJECTS  
WESTERN, SOUTH WESTERN & EASTERN  
C.A. (CRAIG) WEEKS**

**D.L. (DAVE) MILLER  
NEW YORK METRO &  
PGH. DISTRICTS**

	F (N)
Allegheny Pwr	15
Penn. Elec. Co.	10
Cleve. Elec. Illum	4
Consolidated Ed	19 (1)
NY Pwr Authority	1 (1)
Conn Light & Pwr	8
Conn Yan Atomic Pwr	(1)
Duquesne Light Co.	8 (2)

**G.W. (GLENN) GAMBLE  
PHL DISTRICTS**

	F (N)
UGI - Luzerne	1
Boston Ed.	5
Commonwealth Elec.	7
Jersey Central	14
PEPCO	2
Delmarva P&L Co.	8
Maine Yankee	(1)
New England Pwr	8
PP&L	9
Phila. Elec. Co.	18
PS of New Hampshire	7
Baltimore G&E	10 (CE)
Yankee Atomic Pwr	(1)
Metropolitan Ed	(B&W)
E. DuPont	3
Bethlehem Steel	5
Atlantic City Electric	1
City of Vineland	15
Atlantic City	1
Norwalk Harbor	1

**H.S. (HARV) GRASSIAN  
NORTHEAST & GREAT  
LAKES DISTRICTS**

	F (N)
Detroit Ed Co.	11
Consumers Pwr Co.	9 (2)
Toledo Ed. Co.	8
NY State E&G	4
Niagra Mohawk Pwr	4
Rochester G&E	(2)
PSE&G	20 (2)
Ohio Ed	21
City of Detroit	1
City of Wyandotte	1
City of Bryan	1

**E.V. (ERNIE) HEINA  
SOUTHWEST DISTRICT**

	F (N)
City of Morgan City	1
Arkansas P&L	3 (1)
Central La. Elec Co	4
City of Lafayette	1
Grand River Dam Auth	1
Miss. P&L	6
LP&L	6 (1)
Oklahoma G&E	8
Pub Svc of Oklahoma	14
SWEPDO SW Elec Pwr Co	12
W. Tex Util	2
Western Farmers Elec	4
New Orleans Pub Svc	1

**R.T. (ROGER) GREENWOOD  
NORTH TEXAS DISTRICT**

	F (N)
Dallas P&L	5
Texas Elec. Svc Co	7
Texas P&L	4
Texas Util Gen Co	7
Brazos Elec.	4
SW Public Svc.	12

**R. (DICK) BOBER  
SW TEXAS & SE  
TEXAS DISTRICTS**

	F (N)
Univ of Tex	4
Houston L&P	21 (2)
Gulf States Util	23
San Miguel Coop	1
City of Brownsville	1
Central P&L	11
Colo. River Auth.	3
City of Bryan	1
City of Austin	10
City Pub Brd San An	15

**J.F. (FRED) SPERRY  
WESTERN DISTRICTS**

	F (N)
Ariz Pub Svc	12
El Paso Elec	8
Farmington	2
PG&E	11 (2)
P.S. of N. Mex.	5
Sacra Mun Util	1 (1)
Nevada Pwr Co	8
Tucson G&E	13
San Diego G&E	4
S. Calif. Ed	15 (1)
Sierra Pacific Pwr	6
City of Colo Spgs	2
Colorado Light	2
Montana Pwr	3
Pacific P&L	2
Platte River Pwr Aut	1
Portland Gen. Elec.	1
Pub. Svc. of Colo	7
Utah P&L	8
Deseret G&T	1
City of LA	6
Hawaiian Elec	12
Imperial Irrig Dist	3
Nevada Pwr Co	8
San Diego G&E	4
Wash Pub Pwr Sup Sys	0 (1)
City of Anchorage	4
Salt River	5
Tri State G & T	3
Puget Sound	2

**R.W. (ROGER) WOODWARD  
SPECIAL PROJECTS**

	F (N)
Hydro Projects	12
Condensers	8
Feedwater Heaters	2
RCP	11 (2)
Colorado Ute	5
Large Motors	1 (1)