

# Clock-WISE Cooks Can Serve Simple, Yet Tasty Entrees

You may be the one who's always "on the go" and yet you enjoy the warmth and relaxation of family, friends and the evening meal. Diners in a dash need not be at the expense of nutrition, tastefulness or natural elegance.

Any one of the following entrees using canned salmon and vegetables can be completely prepared in minutes either conventionally or in the microwave oven. Utilizing convenient foods from the sea and garden, stocked on your shelves, or in your freezer, and prepared and served directly from heat-resistant glass or glass-ceramic dishes, will make you a very clock-wise cook — naturally.

An exotic dish for entertaining after any outing is Curried Salmon-Rice Medley, accompanied by Garden Salad. Curry-powder is found on this dish which combines colorful canned salmon, fresh rice medley and hard-cooked egg enlivened with the golden flair and distinct flavor of curry. The Garden Salad of fresh spinach, cucumbers, tomatoes and lettuce with canned mushrooms and diagonal-cut green beans adds a fresh highlight to the meal. A wood serving cradle for the heat-resistant dishes complements your dining table for an attractive, rustic look.

Speedy suppers for family or guests are served in convenient, attractive dishes to add a special touch when time is short. Spinach-Salmon Casserole is a nutritious dish, high in protein, with an ocean of flavor. Salmon, frozen cut leaf spinach, curly rosette noodles and three natural cheeses are the main components. High nutritional value and no waste makes Casserole a smart choice for purchase for your budget dollar.

An award winning, attractive, quick dish is Salmon Divan. Young broccoli appears like a heat-resistant glass baking dish and are topped with flaked canned salmon and a sauce of cream, Swiss cheese and canned whole mushrooms. Serves in a wicker basket for natural look.

A pinch of thyme adds a flavorful accent to a hearty Salmon-Corn Chowder. Whole kernel corn, celery, onion and canned salmon, affoat in cream of potato and cream of celery soups, are served in individual glass-ceramic bowls.

Be clock-wise in your cooking by serving these simple, yet delicious entrees that take just minutes to prepare.

**SALMON-RICE MEDLEY**  
2 packages (11 oz. each) frozen rice medley (rice with peas and mushrooms)  
2 tablespoons butter or margarine  
1/4 teaspoon curry powder  
2 cloves garlic, crushed  
1/4 cup chopped onion  
1 can (18 1/2 oz.) salmon  
2 hard-cooked eggs  
1/4 teaspoon cayenne pepper  
Prepare rice according to package directions. Melt

butter or margarine in skillet. Add curry powder, garlic and onion; saute until onion is tender, about 5 minutes. Drain salmon and break into chunks with a fork. Reserve several slices of hard-cooked egg for garnish, if desired. Chop remaining egg. In 8-inch square heat-resistant baking dish, combine egg, salmon, rice, cayenne and onion mixture. Bake at 350 degrees F. for 15 to 20 minutes, covered, or until heated through. Serves 4 to 6.

**MICROWAVE:** Prepare all the rice according to package microwave directions, increasing time to about 15 minutes and rearranging halfway through cooking time. Place butter or margarine in 8-inch square heat-resistant baking dish and microwave on HIGH 3 minutes, stirring once. Drain salmon and break into chunks with a fork. Reserve several slices of hard-cooked egg for garnish, if desired. Chop remaining egg; combine with onion mixture. Cover loosely with plastic wrap and microwave on HIGH 6 minutes. Serves 4 to 6.



Flavored Salmon Rice Medley with a colorful Garden Salad are time-saving attractions and perfect for entertaining.

**FOOD BARN**  
WE ACCEPT FOOD STAMPS  
Park Ave. & 25th St.  
OPEN DAILY 8 A.M. TO 9 P.M.  
7 DAYS A WEEK

**14 OZ. Pepsi Cola 88¢**  
PLUS DEPOSIT

**IVORY LIQUID 59¢**

**IVORY LIQUID 59¢**

**FROZEN FOOD**  
Tasty Potatoes 59¢  
Tasty Macaroni 59¢  
Tasty Spaghetti 59¢  
Tasty Casserole 59¢  
Tasty Chili 59¢  
Tasty Stew 59¢  
Tasty Soup 59¢

**COOL WHIP 59¢**

**TURKEYS TURKEYS 65¢**  
**TURKEYS TURKEYS 77¢**

**STEAK 1.28** **ROAST 1.68**  
USDA CHOICE BLENDED CHUCK  
USDA CHOICE BLENDED CHUCK

**PILLSBURY FLOUR 79¢**  
**MIRACLE WHIP 99¢**  
FROM ALL OF US TO ALL OF YOU!!

**THANKSGIVING SPECIALS!**  
Brownie Mix 59¢  
Cocoa 59¢  
Chocolate Syrup 59¢  
Marshmallow Cream 49¢  
Whipped Cream 49¢  
Candy Corn 49¢  
Instant Coffee 49¢

**PRODUCE SPECIALS!**  
Large Red Delicious Apples 59¢  
Large Honeycrisp Apples 59¢  
Large Firm Tomatoes 3 for \$1.00  
Chomp Stakes Cherry 3 for \$1.00

**SEALEST EXTRA RICH MILK 1.99**  
**TROPICANA ORANGE JUICE 99¢**  
**HALF GAL. CARTON 99¢**  
**CAKE MIX 79¢**  
**TEA BAGS \$1.59**

**PRODUCE SPECIALS!**  
Large Red Delicious Apples 59¢  
Large Honeycrisp Apples 59¢  
Large Firm Tomatoes 3 for \$1.00  
Chomp Stakes Cherry 3 for \$1.00

**FRYERS 38¢**

**Fryers 48¢**  
**Steak 1.98**  
**Ham 3 3.98**  
**Neck Bones 25¢**

**DAIRY DEPT.**  
Milk 29¢  
Cream Cheese 69¢  
Whipped Cream 69¢  
Whipped Butter 69¢  
Sour Cream 79¢  
Milk & Half 59¢  
Cottage Cheese 1.09

**THANKSGIVING SPECIALS!**  
Turkey 69¢  
Candy Corn 49¢  
Instant Coffee 49¢

**PRODUCE SPECIALS!**  
Large Red Delicious Apples 59¢  
Large Honeycrisp Apples 59¢  
Large Firm Tomatoes 3 for \$1.00  
Chomp Stakes Cherry 3 for \$1.00

**PRODUCE SPECIALS!**  
Large Red Delicious Apples 59¢  
Large Honeycrisp Apples 59¢  
Large Firm Tomatoes 3 for \$1.00  
Chomp Stakes Cherry 3 for \$1.00

**PRODUCE SPECIALS!**  
Large Red Delicious Apples 59¢  
Large Honeycrisp Apples 59¢  
Large Firm Tomatoes 3 for \$1.00  
Chomp Stakes Cherry 3 for \$1.00

## Iranian Students Seize NBC Crew



TEHRAN, Iran (UPI) — Militant students holding hostages in the U.S. Embassy today seized a three-member NBC-TV film crew and held them several hours inside the besieged compound, a spokesman for the students said.

An NBC spokesman in New York said the three were released after questioning, but he had no details on the detainment.

The students' spokesman said the men were seized from the rooftop of a building close to the compound while filming the interior of the occupied embassy grounds.

**No Iranian Funds In Seminole Banks**

A spot check of Seminole County banks today failed to turn up any Iranian funds falling under the presidential order to freeze these assets.

Spokesmen for ComBank of Seminole in Casselberry, Flagship Bank in Sanford, and Barnett Bank in Altamonte Springs said they did not have any Iranian assets on deposit.

The spokesman, based inside the diplomatic compound, was asked to comment on reports that some of the women and non-American hostages might be released soon through a government mediation effort to end the crisis, now in its 12th day.

"We do not agree with any such attempts," the spokesman told UPI in a telephone interview. "Our stand is the stand taken by Iran."

Women and Asian hostages were targeted for release earlier than the "white, male Americans," the sources said. There are 62 American hostages, including about half a dozen women, and about 40 non-Americans, mostly Asians. A top official said Wednesday he would ask the student militants to release some of the non-Americans if they proved to be "innocent."

correspondent Martin Fletcher, cameraman Barry Fox and soundman Derek Hotten.

Miss Modini said they were arrested at midday while covering the 12-day seizure of the American Embassy, but she was unable to provide details on the incident.

The students' spokesman told UPI the crew's films were confiscated Wednesday by the students. "But again today they came and began filming from the rooftop."

"According to our rules, that was an offense," he said. "Why did they go on the rooftop. Obviously they had some purpose other than just filming."

Asked to specify what rules had been set for newsmen covering the takeover, he said: "In any case, there is no need for reporters to pry into the interior of the embassy."

Outside the U.S. Embassy, hundreds of Iranians gathered today in support of the Modern and non-American hostages leaders opposed to any compromise promised a larger demonstration.

The sources said talks were going on about a possible "phased" release of some of the hostages. No details were given.

The new developments followed President Carter's declaration Wednesday of a "national emergency."

## County Road Survey: New Tax Seen?

Assistant County Administrator Jeff Eichenberger said an additional one-cent-a-gallon gasoline tax and a property tax in the unincorporated areas of the county are two possible funding sources.

The gasoline tax penny would be added to the eight-cent tax the state already imposes on each gallon. There is also a four-cent-a-gallon federal tax. The additional state tax cannot be imposed unless voters approve it.

County officials want to be sure they have the facts on the county's road conditions before asking for such a vote.

The extra penny per gallon would generate about \$650,000 a year for Seminole County.

As with the tax now paid for fire protection, an additional property tax in the unincorporated area, if approved, would create a special tax district. Eichenberger said he does not know how much tax would be needed if the county decides to take that action.

Seminole County has about \$3.1 million to spend this year on roads, but has more road projects that it can pay for.

## Branch Library To Stay At Old Sanford Post Office

The Sanford City Commission agreed this week to stand by its agreement with the federal government and continue operation of the Seminole County branch library in Sanford at the old post office building on First Street.

The commissioners voted to halt any effort to acquire outright the post office building for its value at the time the city was given the facility with a reverter clause. The restriction on its use as a public library for a 20-year period was included in an agreement with the U.S. General Services Administration in 1963.

County Commissioner Bill Kirshoff several weeks ago said the reverter could be removed if the city simply paid the federal government the building's value of \$4,000 at the time it was acquired in 1963.

City Commissioners agreed this week, however, since the city's intent is to continue the building's use as a public library, the payment and waiver is not necessary.

City Manager Warren Kowals has received a letter from County Administrator Roger Newlander saying the county commissioners have expressed their intention of seeking a reversion of the county lease of the building for use as a branch library through April 13, 1983.

City Commissioners agreed this week, however, since the city's intent is to continue the building's use as a public library, the payment and waiver is not necessary.

## Lie-Detectors In The Schools?

Layer and Webb explained it is a regular practice to use the machines with students' and parents' consent, although the board of education had never made a policy on the subject.

Later, layer said police department's facilities are often used for the exams, private testers are hired if police equipment is not available.

In other business the school board rejected adoption of a lie-detecting program for next year. Four principals recommended the programs for their schools while 36 rejected it.

One had no opinion.



Jonestown Remembered, Page 6A Today

Around The Clock  
Calendar  
Comics  
Editorial  
Dear Abby  
Dr. Lamb  
Hospital  
OURSELVES  
Sports  
Television  
Weather

These delicious and convenient soups for \$9.99. All soups are served in glass-ceramic bowls. Each bowl contains 300 grams of soup. Salmon Divan and Salmon Corn Chowder.

**WILDLIFE IN WOOD 59¢**



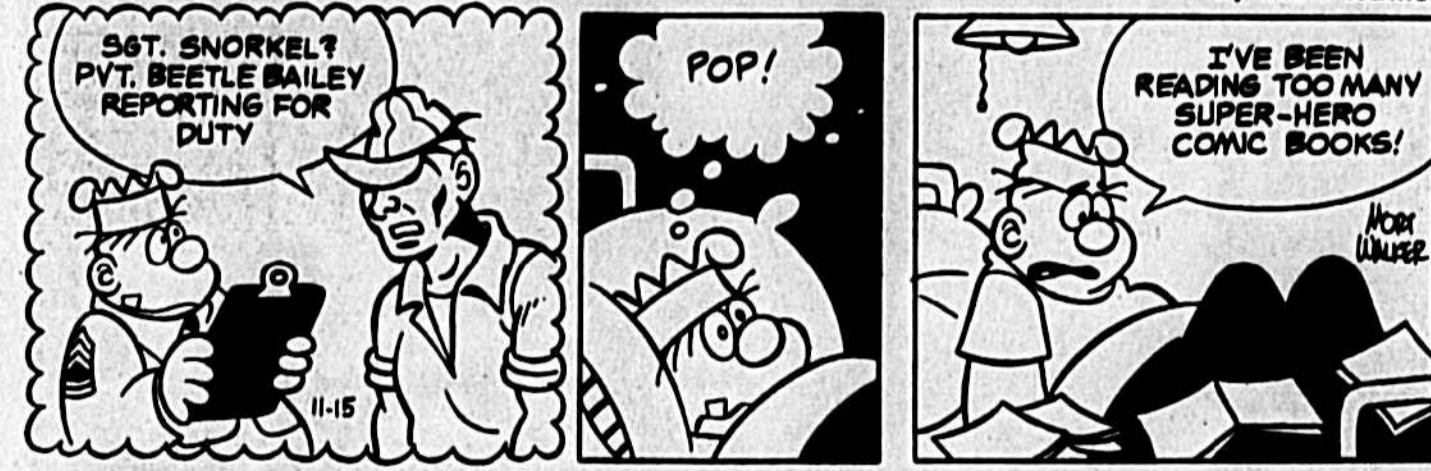




BLONDIE 6A—Evening Herald, Sanford, FL. Thursday, Nov. 15, 1979 by Chic Young



BEETLE BAILEY by Mort Walker



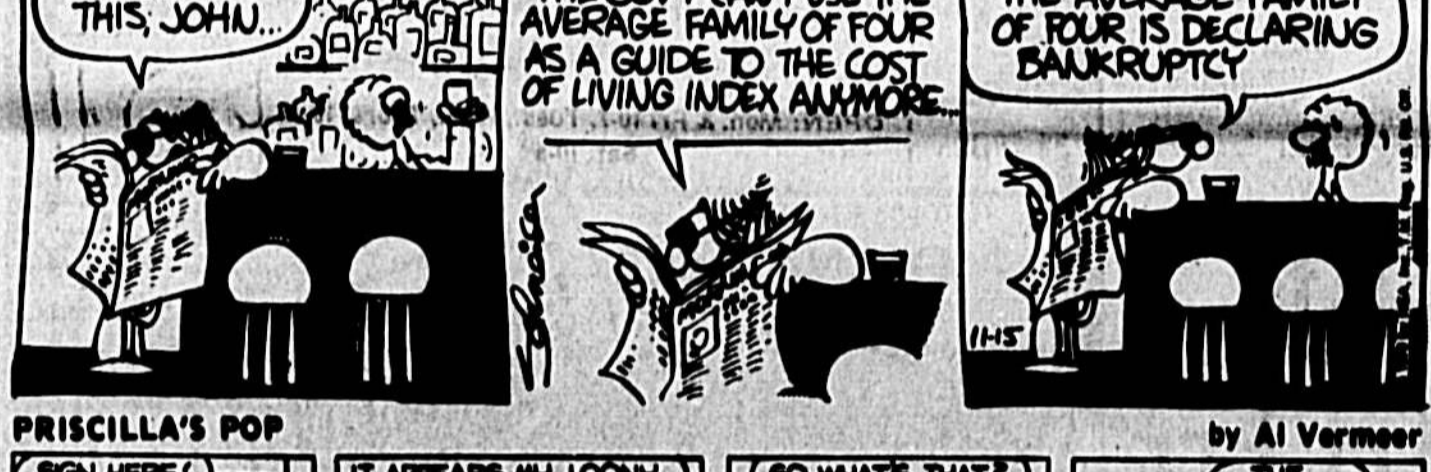
THE BORN LOSER by Art Sanson



ARCHIE by Bob Montana



EEK & MEER by Howie Schneider



PRISCILLA'S POP by Al Vermorel



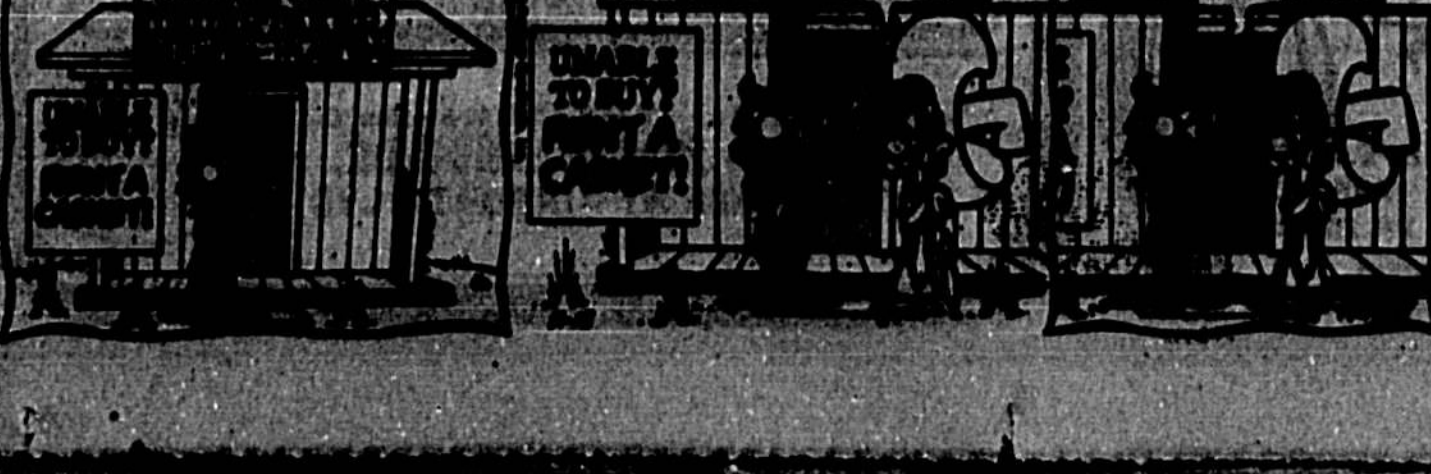
BUGS BUNNY by Staffel & Heidmuth



FRANK AND ERNEST by Bob Thaves



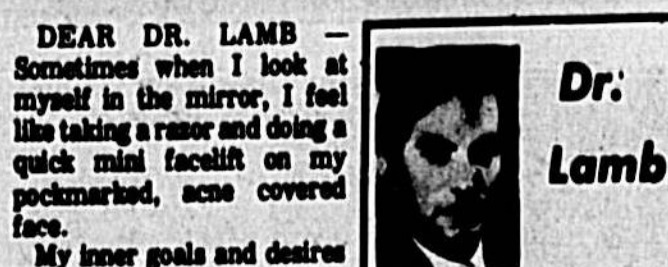
FUMBLEWEEDS by T. K. Bliss



ACROSS 43 Genetic material

Crossword puzzle grid with clues for Across and Down.

Seek Pro's Help For Chronic Acne



DEAR DR. LAMB — Sometimes when I look at myself in the mirror, I feel like taking a razor and doing a quick mini-facelift on my forehead, acne covered face.

DEAR READER — It's unlikely that you need a facelift for acne. It is true that the long-standing acne cases that have scarred and pitted the face and weakened the tissues, a facelift is sometimes needed. But that won't cure the acne process itself.

It's also true that after the acne process has burnt itself out, if a person is left with a residually pitted and scarred face, some of these can be treated surgically or by various skin peeling methods.

Now if you still have acne, you need to treat that instead of hiding from your letter. Adequate treatment early will go a long way toward preventing the pitting and scarring that may scar a person both physically and emotionally for the rest of his life.

HOROSCOPE

By BERNICE BEDEGOL

For Friday, November 16, 1979

YOUR BIRTHDAY November 16, 1979

ARIES (March 21-April 19) Being a public figure today arouses your more cooperative instincts.

SCORPIO (Oct. 24-Nov. 21) When it comes to your financial picture and how to handle it, you won't need any assistance today.

TAURUS (April 20-May 20) All odds break and West holds both the ace and queen of diamonds, so 12 tricks are there at either trump or spades.

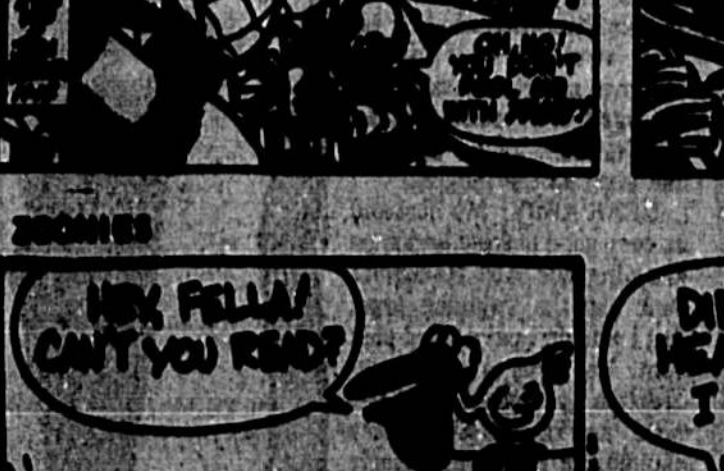
LEO (July 23-Aug. 22) You'll find good cause to change a bad habit today.

LIBRA (Sept. 23-Oct. 22) There shouldn't be any drama in your mind today as to who you are or where you want to go.

SPIDER-MAN by Stan Lee and John Romita



SPIDER-MAN by Stan Lee and John Romita



FUMBLEWEEDS by T. K. Bliss



WIN AT BRIDGE

By Donald Beecher and Alan Sussing

players would respond to two clubs. Respective of how North starts proceedings, the final contract at most tables is going to be three trump or four spades.

There are hundreds of ways to bid the hand. The contract of six clubs by North is the best final contract. All 11 responses for sure success is 2-3 breaks in both black suits and a successful spade finesse, since North can discard two of his diamonds to South's long spade.

THE few who did get there will know they bid the best hand but will get fewer points than slam makers in spades or notrump.

If the ACEL were inclined to play games with the computer-aided charity hands, they would probably do something with this one.

North and South have just 20 left-trump points between them. North has a fine opening spade hand with 11 high-card points, and balanced distribution, has a look-two-notrump response but many

TONIGHT'S TV

THURSDAY

6:00 HBO MOVIE "Masters" (1978) (S) NBC (17) NBC

6:30 CBS NEWS (17) CBS (17) CBS

6:50 NBC NEWS (17) NBC (17) NBC

7:00 THE NEWLYWEDS (17) CBS (17) CBS

7:30 THE NEWLYWEDS (17) CBS (17) CBS

7:50 THE NEWLYWEDS (17) CBS (17) CBS

8:00 THE NEWLYWEDS (17) CBS (17) CBS

8:30 THE NEWLYWEDS (17) CBS (17) CBS

9:00 THE NEWLYWEDS (17) CBS (17) CBS

9:30 THE NEWLYWEDS (17) CBS (17) CBS

10:00 THE NEWLYWEDS (17) CBS (17) CBS

10:30 THE NEWLYWEDS (17) CBS (17) CBS

11:00 THE NEWLYWEDS (17) CBS (17) CBS

11:30 THE NEWLYWEDS (17) CBS (17) CBS

12:00 THE NEWLYWEDS (17) CBS (17) CBS

12:30 THE NEWLYWEDS (17) CBS (17) CBS

1:00 THE NEWLYWEDS (17) CBS (17) CBS

1:30 THE NEWLYWEDS (17) CBS (17) CBS

2:00 THE NEWLYWEDS (17) CBS (17) CBS

2:30 THE NEWLYWEDS (17) CBS (17) CBS

3:00 THE NEWLYWEDS (17) CBS (17) CBS

TONIGHT'S TV

THURSDAY

6:00 HBO MOVIE "Masters" (1978) (S) NBC (17) NBC

6:30 CBS NEWS (17) CBS (17) CBS

6:50 NBC NEWS (17) NBC (17) NBC

7:00 THE NEWLYWEDS (17) CBS (17) CBS

7:30 THE NEWLYWEDS (17) CBS (17) CBS

7:50 THE NEWLYWEDS (17) CBS (17) CBS

8:00 THE NEWLYWEDS (17) CBS (17) CBS

8:30 THE NEWLYWEDS (17) CBS (17) CBS

9:00 THE NEWLYWEDS (17) CBS (17) CBS

9:30 THE NEWLYWEDS (17) CBS (17) CBS

10:00 THE NEWLYWEDS (17) CBS (17) CBS

10:30 THE NEWLYWEDS (17) CBS (17) CBS

11:00 THE NEWLYWEDS (17) CBS (17) CBS

11:30 THE NEWLYWEDS (17) CBS (17) CBS

12:00 THE NEWLYWEDS (17) CBS (17) CBS

12:30 THE NEWLYWEDS (17) CBS (17) CBS

1:00 THE NEWLYWEDS (17) CBS (17) CBS

1:30 THE NEWLYWEDS (17) CBS (17) CBS

2:00 THE NEWLYWEDS (17) CBS (17) CBS

2:30 THE NEWLYWEDS (17) CBS (17) CBS

3:00 THE NEWLYWEDS (17) CBS (17) CBS

TONIGHT'S TV

THURSDAY

6:00 HBO MOVIE "Masters" (1978) (S) NBC (17) NBC

6:30 CBS NEWS (17) CBS (17) CBS

6:50 NBC NEWS (17) NBC (17) NBC

7:00 THE NEWLYWEDS (17) CBS (17) CBS

7:30 THE NEWLYWEDS (17) CBS (17) CBS

7:50 THE NEWLYWEDS (17) CBS (17) CBS

8:00 THE NEWLYWEDS (17) CBS (17) CBS

8:30 THE NEWLYWEDS (17) CBS (17) CBS

9:00 THE NEWLYWEDS (17) CBS (17) CBS

9:30 THE NEWLYWEDS (17) CBS (17) CBS

10:00 THE NEWLYWEDS (17) CBS (17) CBS

10:30 THE NEWLYWEDS (17) CBS (17) CBS

11:00 THE NEWLYWEDS (17) CBS (17) CBS

11:30 THE NEWLYWEDS (17) CBS (17) CBS

12:00 THE NEWLYWEDS (17) CBS (17) CBS

12:30 THE NEWLYWEDS (17) CBS (17) CBS

1:00 THE NEWLYWEDS (17) CBS (17) CBS

1:30 THE NEWLYWEDS (17) CBS (17) CBS

2:00 THE NEWLYWEDS (17) CBS (17) CBS

2:30 THE NEWLYWEDS (17) CBS (17) CBS

3:00 THE NEWLYWEDS (17) CBS (17) CBS

Porter's \$3 Million No Joke To Dolly

NASHVILLE, Tenn. (UPI) — Dolly Parton and Porter Wagoner settled the \$3 million suit Wagoner filed against his former partner late Wednesday by agreeing to divide the business they have jointly operated for the past 12 years.

The settlement also leaves the door open for another Parton-Wagoner album which could be released in the coming year.

Assets of their businesses jointly operated by the parties for the last 12 years.

"As part of an overall settlement of all outstanding matters, Wagoner and Miss Parton may release a duet album within the next year."

Miss Parton owns 51 percent and Wagoner 49 percent of Oweren Publishing Co., which owns Firebird Recording Studio.

Wagoner filed suit against Miss Parton last February seeking \$3 million in damages and charging that she breached a long-term management contract with him.

Country Casual Pine Group advertisement featuring a living room scene and furniture details.

Country Furniture advertisement with price \$269 and distributor information.

SEIKO advertisement featuring a couple and watch details.

Zales advertisement for November Breakfast Specials and Sunday Dinner Buffet.

Plaza Win advertisement for a 99¢ sale on all books.

Free Bingo Card advertisement with coupon.

Slappy Joe advertisement for seafood and salad buffet.

Fry's Fish Fry advertisement for \$2.95 fish fry.

Slappy Joe advertisement for seafood and salad buffet.

Slappy Joe advertisement for seafood and salad buffet.

Slappy Joe advertisement for seafood and salad buffet.

SPORTS

11A—Evening Herald, Sanford, Fla. Thursday, Nov. 15, 1977

Briefly

Oiler's Tight End Barber Returns After Knee Exam

HOUSTON (UPI)—Tight end Mike Barber of the Houston Oilers returned to practice Wednesday and declared his injured right knee fit.

Affirmed To Stud In '80

LEXINGTON, Ky. (UPI)—Affirmed, the world's leading money-winning Thoroughbred with 13 stakes victories and total earnings of \$2.3 million, arrived at Spendthrift Farm Wednesday to enter stud service next year.

LoPresto Wins Legislator's

WESTBURY, N.Y. (UPI)—Assemblyman John G. LoPresto of Astoria rode Alta Womba to an eight-length victory in Wednesday night's first nonbetting \$6,000 Legislator's Cup at Roosevelt Raceway.

Rizzo Returns For Broncos

DENVER (UPI)—Linebacker Joe Rizzo, sidelined for several weeks with a leg injury, worked out in full pads Wednesday as the Denver Broncos prepared for Sunday's game at San Francisco.

SCOREBOARD

Table with columns for Eastern Conference, Atlantic Division, Pacific Division, Western Conference, Midwest Division, and South Division. Lists teams and scores for various games.

Pro Hockey

Table listing NHL games and scores, including Philadelphia vs NY Rangers, Washington vs St. Louis, and others.

Transactions

Table listing player movements between teams, including trades and signings.

'We Learned Something'—Bird Celtics Play Poorly-But Win

By United Press International. Ordinarily, any player—even rookie sensation Larry Bird—would be happy with a 25-point, 18-rebound, and 10-assist game, especially if his team won.

Boston led, 91-68, after three periods, but in NBA fashion, the game grew interesting in the final 12 minutes, with Bird trailing by just four with 24 seconds to play.

Bob Lanier added 23 and fueled the Detroit fourth-quarter comeback. Cedric Maxwell scored 20 points for Boston, Rick Robey 18, Nate Archibald 13, M.L. Carr 11, and Dave Cowens and Chris Ford 10 each.

Alumni Tip Off Saturday More Ex-Raiders Set To Play

More of Joe Sterling's former S.C.C. basketball pupils have surfaced and reported for duty in the Raider's annual Alumni game set for Saturday night, November 17th at 7:00 p.m.

Bob Lanier added 23 and fueled the Detroit fourth-quarter comeback. Cedric Maxwell scored 20 points for Boston, Rick Robey 18, Nate Archibald 13, M.L. Carr 11, and Dave Cowens and Chris Ford 10 each.

Bob Lanier added 23 and fueled the Detroit fourth-quarter comeback. Cedric Maxwell scored 20 points for Boston, Rick Robey 18, Nate Archibald 13, M.L. Carr 11, and Dave Cowens and Chris Ford 10 each.

Writer's Pick LSU To Win Southeast Hoop Crown Again, Kentucky Second

BIRMINGHAM, Ala. (UPI)—Sportswriters at the Southeastern Conference press day Wednesday to win the SEC crown again this year.

With 68 sports writers voting, LSU took first place with 604 points. Kentucky was second with 580 points, and Tennessee third with 558.

confidence might hurt LSU's chances of going all the way. "The hardest mission for me this season is to keep our intensity up as we go about trying to defend our SEC championship," he said.

Tribe To Put Homecoming Crunch On Pat's Air Mail

By Joe DeSantis Herald Sports Editor

The final chapter of the wacky and wild 1976 Five Star Football Conference regular season goes into the history books Friday night as six different squads keep their hopes alive for a piece of the conference championship.

brises and help the Hawks regroup. The Boone Braves find out how hungry a Hawk can be in week number 10. Lake Howell in nine.

Lyman opens the competition with a "rough and aggressive" Miami Killian at 8 p.m. Friday morning. If the Greyhounds win they advance to the semi-finals at 3 p.m. Saturday. The finale will be at 8 p.m. Saturday night.

Lady Greyhounds Heading For State Water Polo Tournament

By SAM COOK Herald Sports Correspondent

Lyman's girls' water polo team may be making its first long voyage when it travels to Miami Park Pool in North Miami Beach Friday.

Lyman opens the competition with a "rough and aggressive" Miami Killian at 8 p.m. Friday morning. If the Greyhounds win they advance to the semi-finals at 3 p.m. Saturday. The finale will be at 8 p.m. Saturday night.

Advertisement for Kegler's Korner, a hardware store, listing various tools and equipment.

'Wanna Buy A Baseball Team?'

NEW YORK (UPI)—Now that the New York Mets are officially for sale, the question is who will buy this potentially lucrative franchise.

Sanford Rec Dept Sets Basketball Try Outs For Saturday Nov 17th

Tryouts for the Sanford Intermediate Boys basketball league will be held Saturday at the Sanford Recreation Department office at the Sanford Civic Center.

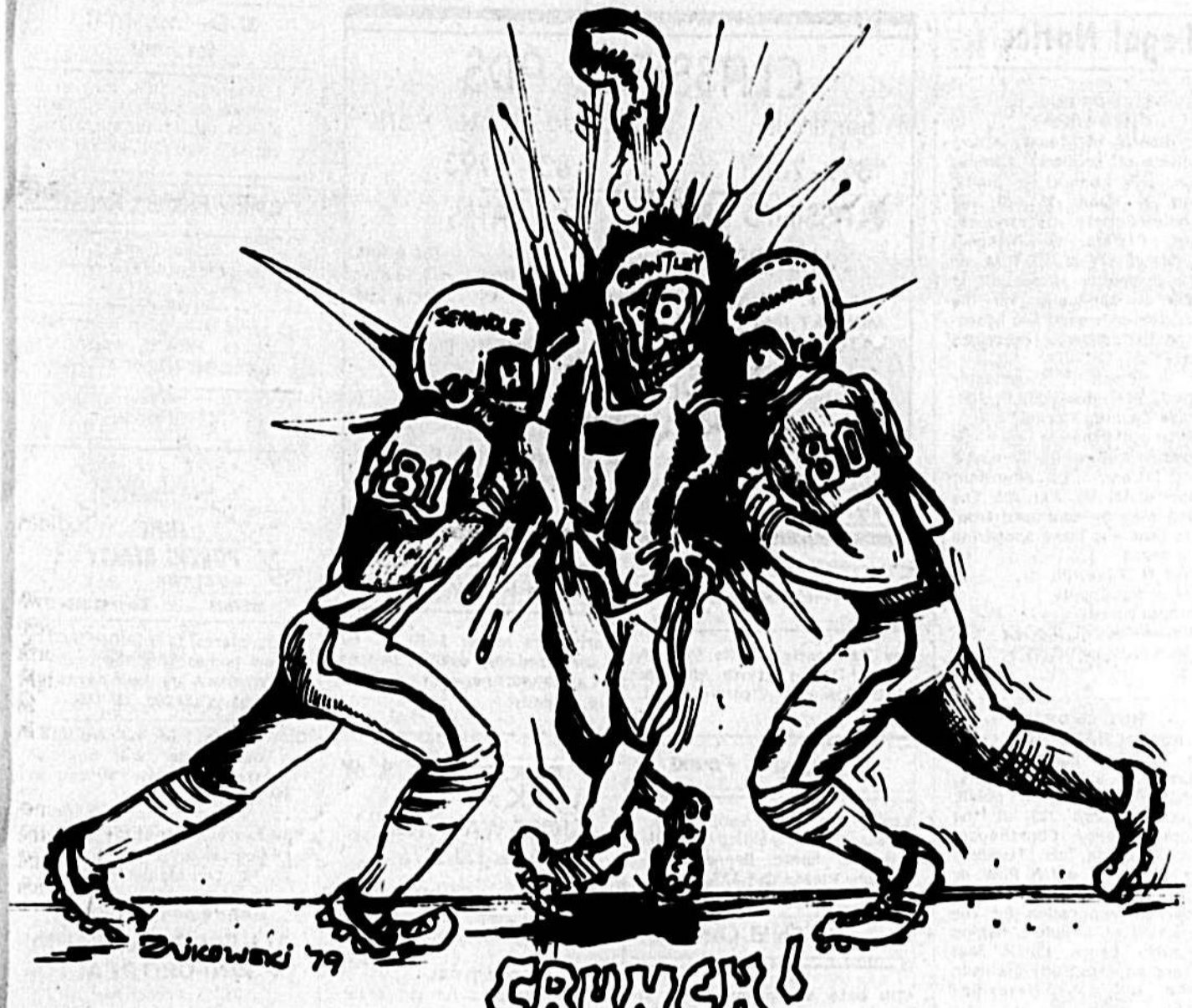
Advertisement for Williamson Communication, featuring a 'SALE' on audio equipment like cassette players and speakers.

Advertisement for High School Football, featuring Seminole vs. Lake Brantley on Friday, November 16.

Advertisement for Cablevision, offering great channels with cable service.

Advertisement for Shake 'Em Up Team and SCORE!, featuring a Big Dip and other items.

Advertisement for Mel's Gulf Service and Dekle's Gulf Service, offering car washes and services.







# SCOTTY'S OLD-TIME SAVINGS SALE



**Sheet Vinyl Flooring**  
Shock-resistant, lightweight. Two AA batteries are included. No. 5473-D.  
Reg. Price . . . . 1.39

**239** Sq. Yd.  
Reg. Price (sq. yd.) 2.99

**"The Re-Usable" COMPACT FLASHLIGHT**  
Shock-resistant, lightweight. Two AA batteries are included. No. 5473-D.  
Reg. Price . . . . 1.39

**99¢** Each

**18" Mini-Vanity PACKAGE**  
Base cabinet finished in White Leather or Dark Oak, with a Brown/Stone or White/Gold cultured marble top. (Fixtures not included.)

**34.95** Package  
Reg. Price . . . . 39.95

**Synthetic TURF**  
Green, 6 and 12' widths. L-2401.

**249** Sq. Yd.  
Reg. Price (sq. yd.) 3.19

**KITCHEN FAUCET**  
Two handle, washerless, leak-free faucet. Easy to install. No. TC 1100.

**16.95** Each  
Reg. Price (each) . . 21.10

**CONCRETE MIX**  
A 40 lb. bag will make 1/3 cu. ft. of cement.  
40 lb. Bag

**1.09** Bag  
Reg. Price (40 lb. bag) . . . . 1.36

**TRIMLINE ROMARCO**

**34.95** Package  
Reg. Price . . . . 39.95

**STP OIL TREATMENT**  
When you change oil . . . when you add oil . . . follow up with STP Oil Treatment.

**99¢** Each  
15 oz. Can  
Reg. Price (each) . . . . 1.29

**LAUNDRY TUB**  
Made of heavy duty polypropylene. (Faucet is not included.) 22 gal. capacity.

**15.99** Each  
Reg. Price . . 17.99

**Electric GRASS TRIMMER**  
Snippy, "Tap-N-Go" automatic line feed. It cuts a 10" path.  
No. 409.

**19.95** Each  
Reg. Price . . . . 23.69

**SAWHORSE BRACKETS**  
A sturdy, durable sawhorse can be made of 5 pieces of lumber and these steel brackets.

**99¢** Pair  
Reg. Price (pair) 1.39

**Plumber's Friend**  
Heavy, reinforced rib construction of the finest rubber. 5 3/4" cup. No. 4072

**89¢** Each  
Reg. Price (each) 1.39

**CARPENTER'S HAMMER**  
Double duty, 16 oz. claw hammer with hickory handle. No. 4176/SN 11 1/2".

**2.99** Each  
Reg. Price (each) . . . . 4.85

**SCREWDRIVER SET**  
Contains three flat blade, three Phillips head screwdrivers, a screw starter, punch and handle. Plastic case.

**79¢** Each  
Reg. Price (each) . . . . 1.49

**Coventry WALL PAINT**  
Interior latex paint is fast drying, odorless, and washable. Colors and white.

**6.99** Gallon  
Reg. Price (gallon) 8.49

**Mopacote Exterior HOUSE PAINT**  
All purpose acrylic latex paint with fungicide to resist mildew. White and colors.

**8.49** Gallon  
Reg. Price (gallon) 9.49

Don't Miss These Super Values At Scotty's Regular Low Prices

**Indoor/Outdoor CARPET**

**RODMATEX**—Plain back, 12' widths. Green, Blue/Green, Red and Gold.

**1.99** Sq. Yd. *Ozite*

**Sundeck SYNTHETIC TURF** in colorful Tweeds or solid Black, 6' or 12' widths.

**3.19** Sq. Yd. *Ozite*

**Out-and-Carry Carpet**

**TUFFTONS** 100% level loop foam backed carpet. Available in Gold, Earth and Green in 12' widths.

**2.99** Sq. Yd. *SCOTT'S ROYAL SCOT CARPET*

**Wall-Cote WALL PAINT**  
Interior latex paint for wall surfaces of masonry, plaster or wallboard.

White **3.99** Gallon  
Colors **3.99** Gallon

**House-Cote HOUSE PAINT**  
Flat finish, washable exterior latex paint.

White **4.49** Gallon  
Colors **4.99** Gallon

**Scot-Cote HOUSE PAINT**  
All-purpose acrylic paint for wood, masonry and metal. Super White.

**18.99** Gallon  
Reg. Price (gallon) 21.99

**LATEX KORNER**  
For interior-exterior use. Provides weathertight seal.

11 lb. oz. Cartridge **99¢** Each

**Self-Sealing ROOF GUMBLE**  
White and Colors.

3-1/2 lb. No. 240 APPOINT 16 Year Warranty **7.11** Bundle  
Seams . . . . 21.99

3-1/2 lb. ROOFGLAB 20 Year Warranty **7.46** Bundle  
Seams . . . . 22.99

**GYPSUM WALLBOARD**  
Easy-to-apply fire resistant board of solid gypsum encased in special fibrous paper.

Each **2.99**  
12' x 4' x 5/8" **2.99**  
12' x 4' x 1/2" **4.49**

**PLYWOOD SHEATHING**

AGENCY APPROVED

36" x 4' x 5/8" CDX **7.99** Piece  
12' x 4' x 5/8" CDX G ply **7.99**  
12' x 4' x 5/8" CDX H ply **8.75**  
64" x 4' x 5/8" CDX **11.49**

**Kraft Backed FIBERGLASS INSULATION**  
Save heating and cooling costs. The higher the R-Value the greater the insulating power.

R-11 Sq. Ft. R-19 Sq. Ft.  
3 1/2" x 15" 11 1/4" 8" x 15" . . . . 2.99  
3 1/2" x 23" 11 1/4" 8" x 23" . . . . 3.99

**4x4x8 PRESSURE TREATED LUMBER**  
Treated to resist wood destroying insects and rot.

**3.97** Piece

**Pressure Treated PINE**  
Resistant to decay and Termites.

2x4x8 **1.95** Piece  
2x4x10 **2.97** Piece  
2x4x12 **3.97** Piece

1x12 No. 3 SHELVING 8' thru 16' lengths.

**49¢** Lin. Ft.

**Pre-cut 2x4x8 SPRUCE/PINE STUDS**

2x4x8 SPRUCE/PINE STUDS **1.54** Piece  
2x4x8 SPRUCE/PINE STUDS **1.57** Piece

Prices quoted in this ad are based on current catalog prices. Availability of all items is subject to change. Management reserves the right to limit quantities on special sale merchandise.

**SCOTT'S STORES**  
will be CLOSED  
**THANKSGIVING DAY**  
Thursday, Nov. 28

PRICE GOOD THRU NOV. 14 thru NOV. 21

**SANFORD**  
700 French Avenue  
Ph: 323-4700

**HOURS:**  
7:30 - 6:30 Monday thru Saturday  
Closed Sunday

Enjoy That  
**Scotty's**  
Do-it-yourself Feeling

# CAR

Evening Herald  
Herald Advertiser  
Thursday, November 15, 1977



Let us help you enjoy your holiday through



# Checks Help Clean Air Of Pollutants

By MICHAEL P. WALSH  
Deputy Assistant  
Administrator,  
Office of Mobile  
Source Air Pollution  
Control, EPA

One of the things that  
attracts people to the Nor-  
thwest is the grandeur of the  
scenery, and for the  
residents of Portland, Ore.,  
the sight of Mt. Hood rising

over the city is an important  
symbol of the quality of life  
there.

But in Portland, as in most  
other urban areas of  
America, air pollution has  
become a serious problem—  
so serious that in the early  
1970s you could no longer  
take it for granted that Mt.  
Hood would be visible.

In an effort to improve the  
air quality in Portland and to

protect the health and  
wellfare of its citizens, the  
Oregon legislature voted in  
1973 to begin a program of  
motor vehicle inspection and  
maintenance (I-M).

Studies have shown that  
cars, trucks, buses and  
motorcycles are large  
contributors to the air  
pollution problems in our  
cities. Even with the  
sophisticated emission  
controls installed on newer  
cars, the emissions from  
motor vehicles can be very  
high due to incorrect ad-  
justment, lack of main-  
tenance, and tampering.

I-M programs are  
designed to identify cars  
which emit high levels of  
carbon monoxide and  
hydrocarbons and to require  
maintenance for those which  
do not meet the standards.

EPA has been studying I-  
M in Portland to determine  
how effective inspection  
programs will be in reducing  
automobile pollution. There  
were four questions we  
wanted to answer through  
this study:

1. Would the short in-  
spection test be able to  
correctly identify cars which  
need emission related  
maintenance?

2. Would tailpipe emissions  
of carbon monoxide and  
hydrocarbons be reduced by  
maintenance, and how  
much?

3. Would these emission  
reductions last? And  
4. Would the cost of repairs  
be reasonable for those  
motorists whose cars failed  
the test?

For the study, EPA per-  
formed detailed tests on 400  
cars in Portland, half of

them built between 1972 and  
1974 and half built between  
1975 and 1977. In each age  
category we selected 100  
cars which passed Oregon's  
I-M test and 100 cars which  
failed.

The cars failing their  
initial inspection were  
retested after corrective  
maintenance was per-  
formed. All cars in the study  
were then retested at three  
and six months after the  
initial tests.

After maintenance, the  
1975 and newer cars which  
had failed averaged 52  
percent lower carbon  
monoxide and 47 percent  
lower hydrocarbons than  
before maintenance. For  
older cars that failed, the  
reductions were 33 and 34  
percent.

Results from EPA's  
Portland Study show that



Majestic Mt. Hood is even more spectacular when viewed through  
Portland's clean air. The Oregon city's mandatory inspection law keeps  
car emissions clean and protects the environment.

## Car Owners Overlook Engine Tune-Up Benefits

In the face of mounting  
evidence of an engine tune-  
up's effectiveness as a  
gasoline saver and protector  
against starting trouble, a  
steady decline in the rate of  
tune-up purchases has been  
shown in a survey conducted  
by a spark plug company.

There has been a drop of  
nearly seven percent in the  
nationwide tune-up rate  
between 1975 and 1978.

In other words, over the  
period, 12 million tune-ups  
have not been performed due  
to the declining rate.

The largest drop was  
recorded in the East North  
Central states of Ohio,  
Indiana, Illinois, Wisconsin  
and Michigan, with nearly  
12.6 percent fewer tune-ups  
purchased in 1978 than in  
1975.

Only in the West North  
Central area of Minnesota,  
Iowa, Missouri, the Dakotas,  
Nebraska and Kansas did  
tune-up purchases remain  
constant.

While newer cars equipped  
with electronic ignition  
systems lead the drop in  
tune-ups, the decline was not  
limited to such vehicles.  
Vehicles older than eight  
years were tuned less  
regularly in 1978 than such  
vehicles were in 1975.

For the first time in six  
years the rate of car owners  
doing their own tune-ups  
declined from the previous  
year. In 1978, 33.4 percent  
of all tune-ups were performed  
by the owner. The figure in  
1977 was 38.2 percent.

Nevertheless, the do-it-  
yourself tune-up remains the  
most common form of  
service. New car dealer  
ships, which performed 23.2  
percent of the tune-ups, were  
next highest with a 2.2  
percentage point increase  
over the previous year.

Both service stations and  
garage and repair shops  
maintained their percentage  
share of tune-up business  
compared to the preceding  
year.

The highest rate of do-  
it-yourself tune-ups was among  
motorists in the West South  
Central area (Arkansas,  
Louisiana, Oklahoma and  
Texas), the Mountain and  
Pacific Coast states. New  
England and Middle Atlantic  
states (New York, New  
Jersey and Pennsylvania)  
had the lowest rate of do-  
it-yourselfers.

Satisfaction with tune-up  
work done remained at its  
high level during the most  
recent survey. Ninety-one  
percent of the survey  
respondents called their  
tune-ups "Excellent" or  
"Good." A "Fair" rating  
was given by 7.4 percent, and  
only 1.5 percent complained  
of "Poor" service.

The highest rate of satisfac-  
tion was registered  
by the do-it-yourself group,  
where 97.3 percent of the  
respondents rated their work  
excellent or good. Less than  
one percent rated their own  
work poor.

**SAVE THIS AD-  
IT COULD  
SAVE YOU!**

**BUTCH'S CHEVRON**

**AND 24 Hr. AAA TOWING SERVICE**

**CALL 24 HRS. 322-7397**

**PLUS  
COMPLETE AUTO, LIGHT TRUCK REPAIRS**

**BUTCH'S CHEVRON**  
CORNER MELLONVILLE & CELERY  
SANFORD

**TRANSMISSIONS**

Steer Clear of  
Transmission Trouble  
Have Your  
Transmission Checked  
And Serviced

**HARRELL & BEVERLY  
TRANSMISSIONS**

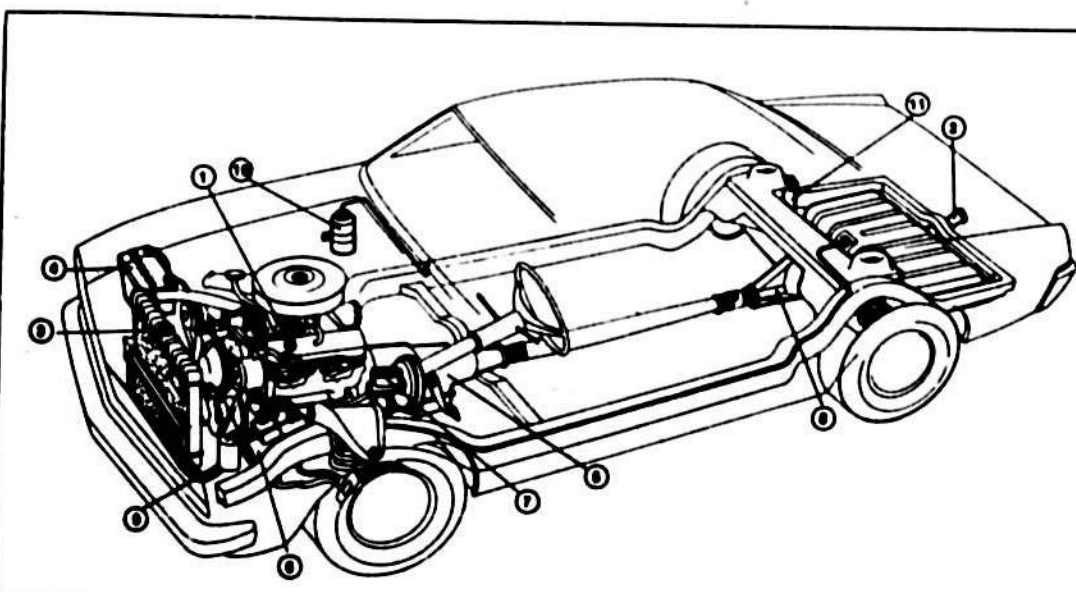
209 W. 28th St. Ph. 322-8415 Sanford

**you really  
auto  
do-it-yourself**

**TAYLOR RENTAL**  
Center

310 ORLANDO DR.  
PH. 322-9119  
SANFORD  
Taylor Rental Corporation, 1975

# Keep Eye On Fluids



Although gasoline is  
making the headlines this  
year, Car Care Council  
reminds us that it is not the  
only fluid essential to our  
cars. There can be as many  
as 10 others, most of which  
are easy to check.

If you can come up with  
only nine, you may be  
forgetting the one fluid  
reservoir that cannot be

replenished, the shock ab-  
sorber.

Hydraulic fluid is essential  
to the functioning of a shock.  
so watch for signs of  
leakage. It doesn't have to be  
a steady drip; just an oily  
appearance on the shock is a  
warning that you probably  
need a new one.

Radiator coolant: Check it  
monthly, add a 50 percent  
anti-freeze mixture, not just  
water.

Eleven vital fluids keep your car operating  
smoothly, efficiently and economically. They  
are: (1) Engine oil, (2) Fuel, (3) Radiator  
coolant, (4) Battery electrolyte, (5)  
Automatic transmission fluid, (6) Power  
steering fluid, (7) Brake fluid, (8) Rear axle  
lubricant, (9) Air conditioning refrigerant,  
(10) Windshield washer solvent, (11) Shock  
absorber fluid. Car Care Council says these  
should be checked regularly, from weekly to  
twice yearly.

**Gas Cap Must Match**

During this period of fuel  
uncertainties, many car-  
owners are buying lock-type  
gas caps. Be sure that the

**ADAMS  
Auto Parts  
Is More  
Than  
Just An  
Auto Parts  
Store!**

**Complete  
VALVE JOBS  
\$29.95 \$21.50**

- Fly Wheels Resurfaced
- Valve Guides Knurled & Installed
- Valve Seats Machined & Installed
- Cylinder Head Resurfacing
- Brake Drums & Rotors Turned

**A Complete Auto Service Center**

**SALEM OIL FILTERS  
\$2.50 MOST CARS**

**ADAMS AUTO PARTS**  
2512 Park Dr. 323-5060  
Sanford, Fla.  
OPEN DAILY 8-4 SATURDAY 8-4

**Tire sale.**  
Save on our best bias-belted whitewalls.

**Sale 2 for \$59\***  
Reg. 38.00 to 44.00 ea., plus fed. tax. El Tigre 278s feature a 2  
polyester ply body with 2 fiberglass belts. Includes sizes: A78-13,  
B78-13, and C78-13. Sport sizes also available at similar savings.

**Sale 2 for \$79\***  
Reg. 48.00 to 57.00 ea., plus fed. tax. Includes El Tigre 278  
sizes: D78-14, E78-14, G78-14, and H78-14. Size H78-14 has 4 ply  
ply-2 glass belt construction.

**Sale 2 for \$99\***  
Reg. 52.00 to 65.00 ea., plus fed. tax. Includes El Tigre 278  
sizes: G78-15, H78-15, and L78-15.

**33 month warranty**  
Plus fed. tax from 1.42 to 3.19 each tire.  
Tires mounted at no extra charge. No trade-in required.  
Sale prices effective through Saturday.

**Wheel alignment, 14.88**

**Save on light truck tires.**  
The Highway RV tire features a bias constructed nylon  
body. Wide 78 series.  
30 month warranty

Tire size	Reg.	Sale*
H78-15**	65.00	53.60
L78-15	73.00	54.40
800-16.5	72.00	59.40
875-16.5	72.00	59.40
950-16.5	80.00	66.40

\*Plus fed. tax from 2.45 to 4.49 each tire.  
\*\*Available also in belted  
construction, 42 month warranty

**Now, two great  
ways to charge!**

**This is JCPenney**

SANFORD PLAZA, HWY. 17-92 & STATE ST. OPEN MON THRU SAT 8 AM-9 PM SUNDAY 12:30-5:30 PM

Before You Buy

# Know Tire Differences

So you're going to buy a new set of "shoes" for your car. Welcome to the world of radial, bias-ply and belted-bias tires.

Sound confusing? It isn't, once you know the basics of tire construction. Learning them won't make you a tire expert, but it will help you when you go to your local tire dealer to talk tires.

There are three basic types of tire construction: radial, belted-bias and bias-ply.

**RADIAL TIRES**  
The radial tire provides an excellent combination of wear, handling and overall performance. It is the most popular tire in the original equipment and replacement passenger tire markets.

A radial tire has a body made of cords which run straight up and over in "hoop" fashion from rim-edge to rim-edge.

To provide puncture resistance, long life and tread stability, two or more very stable and strong belts are run around the tire's circumference under the tread. This combination results in a tire with extremely flexible sidewalls and a strong stable tread area in contact with the road surface.

Radial tires deflect more than bias or belted-bias and therefore have a soft or "underinflated" look.

This is why it is extremely important to check a radial's air pressure with an air pressure gauge and not by merely looking at the tires.

Radial tires are produced with various combinations of rayon, polyester, nylon, fiberglass, steel or aramid fiber in plies and belts.

Because the manufacturing process for a radial tire is more complicated, it

costs more than other types of tires. The difference in initial purchase price will frequently be compensated for through greater tread wear and improved gas mileage.

Because radials have a quicker steering response, they should not be mixed with other types of tires.

**BIAS PLY**  
Before the arrival of the belted-bias concept, the great majority of all tires were bias-ply. The term "bias" simply means that the plies, or layers of fabric cord, are applied in "criss-cross" fashion from rim-edge to rim-edge.

This configuration provides strength to the tire body in all directions. A bias tire can be made with either two or four plies of nylon, rayon or polyester.

**BELTED BIAS**  
The belted-bias tire offers high mileage and generally greater resistance to road hazards than bias-ply tires, plus excellent traction.

Basically, the belted-bias is an extension of the bias-ply tire which is constructed with two or four plies of a strong inner fabric to which the rubber sidewalls and tread are bonded.

The belted-bias tire begins in the same way, with inner plies like a bias-ply tire. Then before the tread is applied, the belts which encircle the circumference of the tire are added.

A tire with belted-bias construction keeps its tread firmly on the road, thus greatly reducing tread "squirm," a major cause of tire wear. The belts make the tire more resistant to punctures, cuts and bruises.

## Cartek LINE UP OR WEAR OUT.

BELIEVE IT OR NOT MISALIGNED WHEELS AND LOW TIRE PRESSURE CAN CUT GAS MILEAGE BY AS MUCH AS 7% AND WEAR OUT YOUR TIRES 25% FASTER.



CAR NEGLECT IS COSTLY. CHECK YOUR TIRE INFLATION. KEEP YOUR WHEELS ALIGNED AND YOU WILL GET SAFER, MORE ECONOMIC, DRIVING.

### BIG Tire & Wheel Service

2408 French Ave. (17-92) • Sanford  
321-0920 • OPEN MON.-SAT. 8:30 TO 6:30

**We are now in the MUFFLER business**

THESE TIRES MADE BY MOHAWK AND KELLY-PRINGFIELD

MOHAWK Ultrafine Steel Belted Radial	SIZE	PRICE
Two steel belts for strength	DR7B13	\$41.39
Great stop and go traction	DR7B14	41.39
Smooth ride, stable cornering	DR7B14	42.99
Resists road shocks	FR7B14	46.97
Two polyester plies	DR7B14	46.48
Absorbs road noise	FR7B15	47.07
	DR7B15	48.94
	FR7B15	55.41
	LR7B15	61.89

Plus P.A.T. of \$1.00 to \$2.50

Mohawk Motor	SIZE	PRICE
Only polyester body	DR7B13	\$39.99
Steady for traction	DR7B14	39.99
Sharp 7-rib tread design	FR7B14	41.99
Modern "J" sidewall	DR7B14	41.99
	FR7B15	43.99
	LR7B15	47.99

Plus P.A.T. of \$1.25 to \$2.25

Mohawk Ultrafine Groove Belt	SIZE	PRICE
Complete "T" tread with modern "J" sidewall	DR7B13	\$39.99
	FR7B14	39.99
	FR7B14	41.99
	FR7B14	41.99
	FR7B14	41.99
	FR7B15	43.99
	FR7B15	43.99
	LR7B15	47.99

Plus P.A.T. of \$1.25 to \$2.25

**Alignment** \$10.00  
**BRAKES** \$10.00  
**Time-By-1990** \$29.95  
**MUFFLER** \$29.95

## When You Clean... Don't Forget Inside

After you've spent part of Saturday waxing your car, you'll stand back and admire the restored beauty.

Time for a cold drink, yes. But also time to get busy on the interior because everyday use of the car can take its toll, points out the Automotive Information Council.

Upholstery and carpet materials are far more durable than they were in the "good old days," but they still need some care, says AIC.

Getting in and out of the car can track in an accumulation of dirt, mud, moisture and salt from melting snow. Tobacco smoke may have formed a film on the inside of the glass, along with producing a small disagreeable to some.

Pets and children and their associated spills and messes can also be hard on the interior of a car.

Any car, with a little elbow grease, can be restored to almost-new condition. Start by vacuuming the rugs and upholstery. The hose attachment of the vacuum and a small brush will get into the small corner areas and the crevices in the seats.

For stains on carpet or upholstery, try to scrape or blot off as much as possible before following the procedure outlined in the owner's manual for your type of upholstery and carpeting.

### It's About Time

Someone Opened A "One Stop" Car Center In Seminole County!

Lindy's Auto Center, Lake Mary Blvd. and 17-92 is open and has been servicing the area for over a year. The finest Paint & Body Shop in the area using the New Polyurethane enamel and Lacquer. Competitive prices. We replace vinyl tops or Re-Dye your old top to the color of your choice.

We have complete mechanical services from engine tune-ups to major overhauls, transmission overhauls, brake jobs, air conditioning service, and lubrication and oil change.

#### Lindy's Auto Center

Hwy 17-92 & Lake Mary Blvd. Sanford-325-4857

## 'Click' Means Time For Battery Check

When you turn the key to start your engine and your car just clicks, the problem may be a discharged battery. Or it could be nothing more than corrosion resistance on the battery terminal clamps.

According to Car Care Council, the latter is a common automotive ailment and, the most troubles, it's easily prevented.

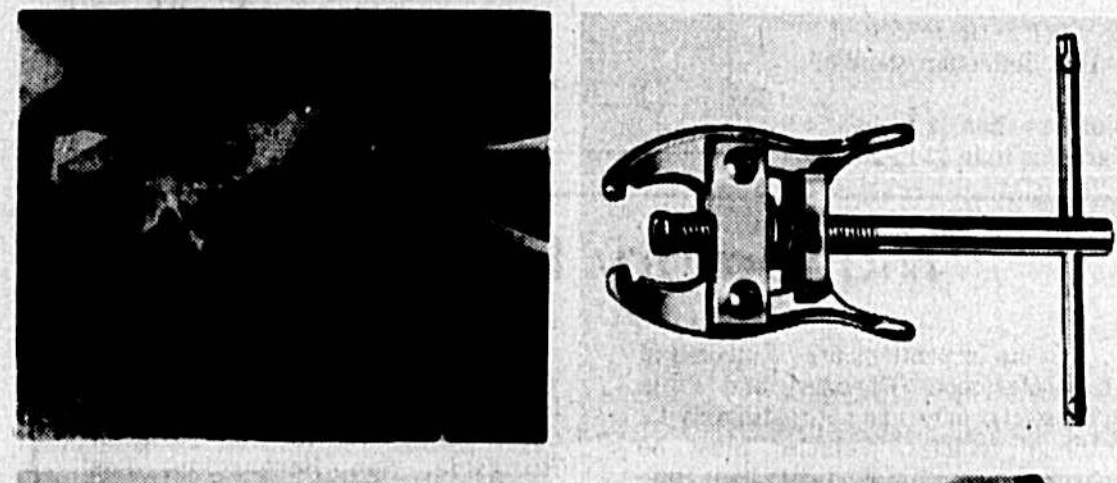
The accumulation of corrosion causes high resistance to prevent the flow of current to and from the battery. A temporary remedy, which may get you started, is to gently twist the cable terminal clamps.

Make sure all accessories are off before attempting this. A spark could cause an explosion.

Be careful not to twist the post loose from the battery!

Twisting the cable terminals may help make contact between the cable and the battery terminal. Should you make contact, enabling you to start your engine, the problem should be corrected as soon as possible by a good cleaning of the battery terminals and cable clamps. Your repairman can do the job properly in a matter of a few minutes.

- If you are a do-it-yourselfer, the Council suggests this procedure:
- 1) Pick up the following items from your auto supply store to make the job easier and safer: a cable puller and pliers; a terminal and clamp cleaning tool and, most important, safety goggles, if you don't already have them in your tool kit. Wear your goggles and wear old clothes. Also read the warning battery manufacturers put on the battery. It usually is as follows:
  - 2) Remove the battery cable first to prevent sparks resulting from accidental grounding of the positive terminal.
  - 3) Next remove the positive (+) cable from the battery terminal.
  - 4) Remove the battery hold down bracket (note the position of the terminals) and remove the battery from the vehicle.
  - 5) Place the battery on the floor near a drain and wash it with a solution of baking soda and water. DO NOT allow any solution to enter the battery cells. After cleaning, rinse the battery with clear water.
  - 6) Next inspect the battery tray and remove all signs of corrosion using the baking soda and water, then flush with clean water, dry and paint the tray.
  - 7) Inspect the cables and terminals. Replace a cable when it appears unfit for further service. When cables pass your inspection, use your cable cleaning tool and polish the terminals until they are bright and shining.
  - 8) Clean the battery posts. Be sure they are bright and shining. Then place the battery back in its tray, making sure the terminals are in the proper position.
  - 9) Install battery hold down bracket and battery cables. Start with positive (+) first. The negative (-) grounded cable is connected last.
  - 10) After the cables are snugly tightened, you can protect them covering the terminal with a coating of jelly.



Upper left: Corrosion on battery terminals can cause starting trouble and eventually can destroy the cable through faulty insulation. Upper right: A terminal puller is handy for removing stubborn battery cables. Lower right: This wire brush is especially designed for cleaning cables and terminals for proper electrical connection. Lower left: Wear safety goggles for eye protection when working around a battery.

### MR. MUFFLER

OLDEST IN SEMINOLE - STILL THE BEST

2421 SO. FRENCH AVE. (N. HWY. 17-91) SANFORD  
323-5966 323-3811

TIME PAYMENTS

CLIP THIS COUPON	CLIP THIS COUPON
<b>WHEEL ALIGNMENT</b> \$13.95 Value Only \$8.88	<b>BRAKES DISC or DRUM</b> Front or Rear Only \$34.50

Coupon Good 'til Nov. 30

**MR. MUFFLER'S**  
Wholesale Tire Company Co.  
**DISCOUNTS ON ALL TIRES**  
FREE - CORDOVAN

### NAPA

**WHILE OTHERS MAY GUESS ON CAR REPAIRS... THE PERSON BEHIND THE NAPA COUNTER KNOWS!**

We've got over 50 years experience.

NAPA has been providing top quality vehicle parts for over 50 years. Besides long experience and a reputation for quality, NAPA offers you something more — the expertise of its counter people.

People behind NAPA counters, unlike those at mass merchandisers and discount stores, are trained and experienced in everything from simple adjustments to major repairs.

So, if you seek advice as well as top-quality parts, visit your SANFORD AUTO PARTS in downtown Sanford. Whitey, Scott, Lincoln, Wayne and Ralph behind the counter know.

See your Gold Hat pro today.

#### Sanford Auto Parts

115 W. FIRST ST. DOWNTOWN SANFORD  
322-5651  
we help keep America moving

# How To Adjust, Replace Drive Belts

Automobile engine drive belts drive the car's alternator (or generator), converting mechanical action into electricity. Belts also power the water pump which circulates coolant within the engine and to the radiator.

These functions are critical to the operation of the car's electrical and cooling systems. It is important for the Do-It-Yourselfer to inspect the belts for wear and to check and adjust them for proper tension.

Most manufacturers recommend that drive belts be inspected and tightened yearly. A quick check is desirable, however, each time the hood is up, to prevent a sudden failure. Most belt wear occurs on the underside of the belt. Twist the belt with your fingers and check for the following:

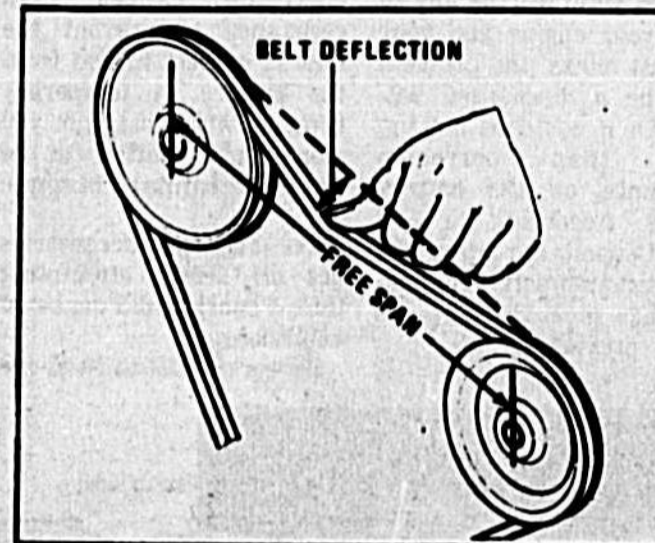
Small cracks on the belt's underside enlarge when the belt is flexed. Cracks expose the interior to damage and belts can break without warning.

Split belts may appear okay from the top, but sides and bottom may be severely split and about to fail. So always turn the belt over and check the underside. Grease rots ordinary rubber belts, making the belt sides slick and causing slippage. Mopar belts are made of special oil-resistant, 3 ply laminated fabric.

Glassed belts with hard surfaces cause noise, slippage and overheating. Using a belt lubricant will eliminate most noise caused by glazing.

Loose belts generally cause slippage, noise (high pitched squeal) and abnormal wear. The preferred method to tighten a belt is with a tension gauge. If space doesn't permit or if a gauge is not available, you can check tension by pressing on a belt in the middle of the span between two pulleys. Belt deflection should be:

1/4 to 1/2 inch for free spans of less than 12 inches.  
1/2 to 1 inch for free spans greater than 12 inches.



## Get More For Gas Dollars

Even though manual transmissions can help reduce fuel consumption, you may be robbing yourself of this gas-saving advantage by using poor shifting techniques.

Shift into high as quickly as possible. Racing along in second gear can use up to 46 per cent more fuel depending on the age and model of your car.

If a skid does develop when you are driving, turn the front wheels in the direction you are skidding. When the skid is controlled, turn the front wheels back to the straight ahead position and slowly maneuver the car back to the original course.

Do not use your brakes during a skid or you may lose control.

Don't postpone a tune-up of your car simply because it seems to be running okay. Spark plug misfiring that you may not notice will cause your engine to drink extra gas.

Be a Gas Watcher — make five gallons do the work of six.

**FALL TRANSMISSION SPECIAL**

- Remove Pan
- Install New Fluid
- Adjust Bands
- Clean Screen
- Road Test, Synchronize Leakage

**\$888** MOST CARS

LIMITED TIME ONLY!

Intersection of Hwy 17-92 & Lake Mary Boulevard  
**SANFORD**

## Mandatory Inspections

Arizona inspections are conducted in both Maricopa (Phoenix) and Pima (Tucson) counties on approximately 1.1 million vehicles. Vehicles must be checked annually at registration time and also at any time the title is changed. Inspections are conducted by a private contractor.

Florida motor vehicle inspections (MVI) are mandated by state law to be conducted once annually. The counties of the state operate the motor vehicle inspection stations for the state. In Seminole County there are MVI stations in Sanford, Casselberry and at the Sanlando sanitary transfer station.

California, after four years of voluntary inspection, began mandatory I-80 in 1978 for all vehicles in the South Coast Air Basin (all or parts of Riverside, San Bernardino, Los Angeles, Orange, Ventura and Santa Barbara counties). Inspections are required every time a vehicle changes ownership. Tests are conducted by private contractors.

New Jersey tests approximately four million cars annually on a statewide basis. Cars are checked at state inspection stations as part of the yearly safety inspection prior to being registered. Failed vehicles may be retested at certified private garages.

**Free CAR WASH**

with any \$5.00 purchase

Autos • 4x4s • Trucks • Vans

**WILLIAMS AMOCO**

The only service station in Sanford to offer a FREE car wash.

Intersection of Hwy 17-92 & Lake Mary Boulevard  
**SANFORD**

PHONE **322-9823**

# Replace Hoses At Right Time

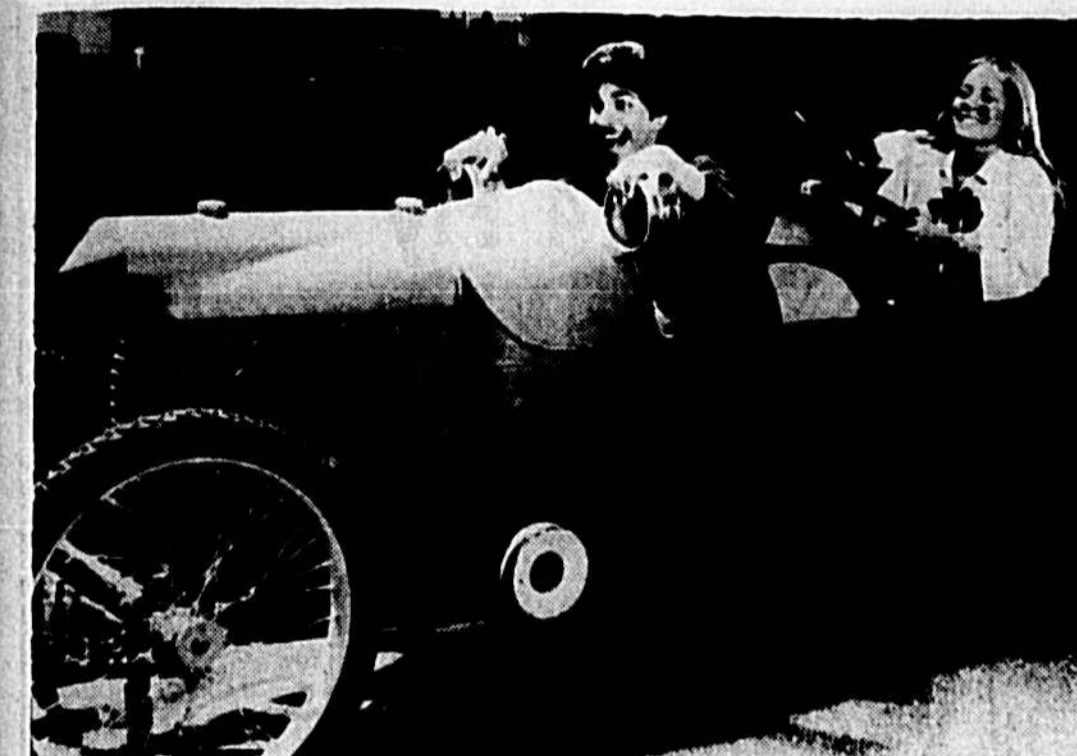
When a radiator hose goes bad on your car, do you replace just the one that failed or do you think about preventing a repeat performance by replacing other hoses in dubious condition? Automotive Cooling System Institute says the most economical procedure often is to replace all hoses at once. Rubber components of the same age are likely to fail at about the same rate. So it is logical that they should be replaced at the same time.

Additionally, hose clamps should be checked as part of the procedure, as the connection can be only as secure as the clamp that binds it.

Technical experts at the Institute say the savings can be even greater in the case of cars with two or three drive belts, operating the alternator, water pump, power steering and air conditioner compressor.

Should the damaged belt be the one on the inside (farthest from the radiator), Institute, ask your mechanic to take a good look at components to determine whether or not they are satisfactory for further use.

For more information of cooling system care, send a stamped, self-addressed no. 10 envelope to ACSI, 222 Cedar Lane, Teaneck, N.J. 07666. By return mail you will receive a free 12-page booklet entitled "Quick Course in Car Care."



DOWN IN FRONT

It gets 30 miles per gallon of gasoline, cost less than \$400 when new, and one doesn't ever have to put up with a back-seat driver. Today, such cars exist only in one's dreams or in the Henry Ford Museum in Dearborn, Mich. This bit of nostalgia to help one forget today's driving woes is a 1913 10-h.p. chain driver Scripps-Booth Cyclecar.

## Don't Forget This Part...

Patrons of self-service gasoline stations can save money, but the practice can be costly if regular maintenance is neglected.

The operator of a Los Angeles service station, who has both full-service and self-service islands, recently checked the cars of 100 customers who pump their own fuel. Of the 100 cars he found:

36 were at least a quart low on oil

24 needed radiator coolant

23 had at least one tire well below recommended pressure

27 were low on battery water

All of these items are so easy to check and so inexpensive to remedy that a motorist is being very unwise to neglect them. No tools are needed for any of these engine-compartment checks and the tires need only a pencil-type gauge which can be purchased for a dollar or two. When checking

the tires don't forget the spare in the trunk.

All of those points can be checked in just a few minutes.

Oil should be checked weekly and the other items every two or three weeks.

If you pump your own gas, here's a quick reminder list of things to check weekly or biweekly.

Oil level

Radiator coolant

Tire pressure

Power steering fluid

Brake fluid

Battery fluid

**HONDA**

Travel A Little -- Save A Lot

SALES • SERVICE • PARTS

Complete Line of New Hondas And Used Cars

COMPLETE HONDA SERVICE CENTER

ALL MECHANICAL WORK DONE ON PREMISES

NONI DIAGNOSTIC COMPUTER ANALYZER

FACTORY TRAINED MECHANICS

**ACTION HONDA**

SANFORD 323-4100 PHONE ORLANDO 831-1440  
3123 ORLANDO DR. (HWY 17-92) SANFORD

**COMPLETE AUTO INTERIORS CUSTOM BUILT**

**WE SPECIALIZE IN:**

- Boat Tops • Convertible Tops • Vinyl Tops
- Landau Roofs
- Auto Glass of all types • Seat Covers • Carpet

**OWNER**  
Lewis Childers

- CONDITIONAL GUARANTEE
- INSTALLATION SERVICE
- INSURANCE WORK
- BURNED INTERIORS

**OUR SPECIALTY**

- WE CAN MATCH 99% OF ORIGINAL INTERIORS

**Auto Glass And Seat Cover Co**

318 S. FRENCH AVE. SANFORD

**EXPERT WORKMANSHIP**

"Where Quality is No Accident"

PHONE **322-8030**

## County Receives 6 Hospital Bids

By DIANE PETRYK  
Herald Staff Writer

Bids from six hospital groups proposing to buy or lease aging, county-owned Seminole Memorial Hospital were opened this morning by county officials.

Assistant County Administrator Jeff Eichberger said it will take up to four weeks for his office to analyze the proposals and prepare them in matrix form for the secretary of the Seminole County Board of Commissioners.

Bids were received from:

- Seminole Memorial Hospital Board of Trustees, Sanford.
- Gateway Medical Management, Inc., Clearwater.
- Methodist Hospital-Foundation, Jacksonville.
- Florida Hospital, Orlando.
- American Hospital Management Corporation, Miami.
- American Corporation of America, Nashville, Tenn.

Florida Hospital, a hospital group operated by the Seventh-Day Adventist Church, proposes to utilize the existing Seminole Memorial Hospital facilities according to "a carefully worked plan of construction and renovation."

In a cover letter, Adventist President Mardian Blair said this renovation effort would adequately meet the needs of north Seminole County for many years. But at some point in the future, he said, Florida Hospital is committed to the future development of a new facility somewhere midway between Seminole Memorial Hospital and Florida Hospital at Altamonte in the International corridor.

Florida Hospital indicated the resources of its full-service hospital in Orlando would always be available as a back-up for Seminole Memorial Hospital under the Adventist system.

According to Bob Wade, Florida Hospital director of public

relations, the Orlando Hospital "has nothing much short of the Mayo Clinic."

Gateway's proposal pledges to produce a totally new hospital, on the current Seminole Memorial Hospital property, within five years.

Gateway also proposes patients using the hospital, will pay for the capital improvements rather than all taxpayers. Under Gateway's system, the county commission would retain control by possessing sole power to appoint directors of the new non-profit corporation.

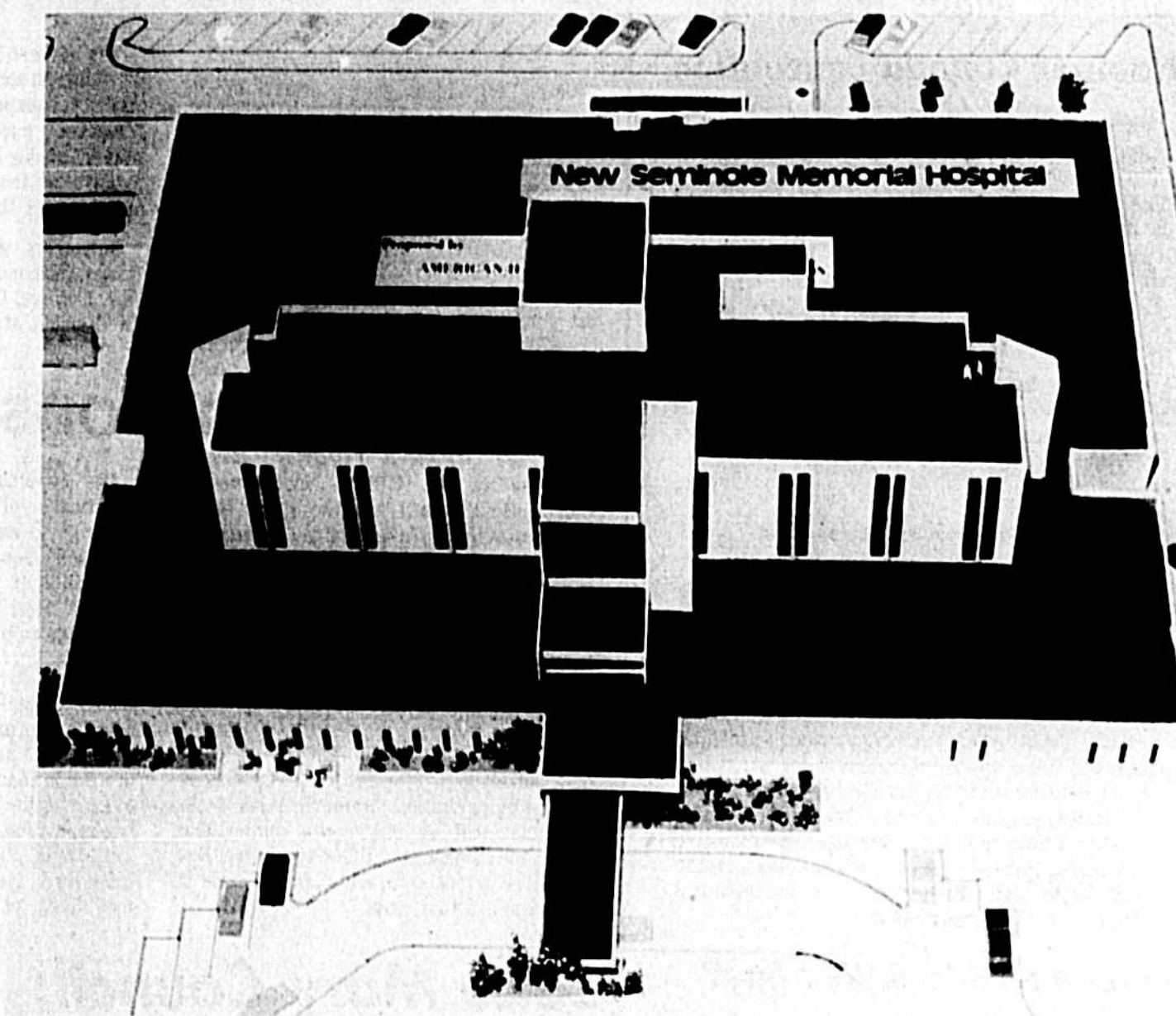
By Gateway's plan, the county would be relieved of its obligation to fund indigent care.

American Hospital Management Corporation also proposes the present facility not be renovated or expanded. The group pledged to construct a new, modern 200-bed facility in the Sanford area.

The corporation pledges to manage the present hospital during the transition period to best utilize its resources for the new hospital, to start instituting training and develop programs for a smooth transition to the new facility; to develop a personalized medical care approach for the new facility with Seminole's present physicians; and to plan, design, finance, construct and staff the new facility to open by June 1, 1982.

All American Hospital Management Corp. services would be available to provide quality care for indigent patients, its proposal said.

Details of the proposals submitted by Hospital Corporation of America and Methodist Hospital-Foundation were not available this morning.



Submitted with their proposal to replace Seminole Memorial Hospital with a new, modern 200-bed Hospital Management Corporation's suggested facility was this model showing the American design.

### AOK TIRE MART

**BFGoodrich**  
**The Tire That Beat The BAJA**  
The First Light Truck Radial Made Especially For On-Road/Off-Road Use  
**Radial All-Terrain T/A\***  
AS LOW AS **\$69.95**  
+\$3.38 P.E.T.  
SIZE 8.5 R14

- Four rugged, resilient RayOn belt plies support tread and minimize squirm
- Super traction tread for rugged performance in sand, mud or snow
- Stronger Load Range C construction

**Hercules 4 Ply Polyester Whitewall**  
**\$23.95** + \$1.45 P.E.T.  
A78-13

SIZE	OUR PRICE	P.E.T.
B78-13	26.45	1.73
C78-13	28.80	1.88
D78-14	29.19	1.93
E78-14	29.89	2.10
F78-14	30.99	2.22
G78-14	33.53	2.38
H78-14	34.78	2.41
F78-15	31.19	2.41
H78-15	32.94	2.44
L78-15	34.99	2.46
L78-15	36.96	2.96

**BFGoodrich Service Specials**  
**4-Wheel Disc-Drum Brake Reline \$69.95**  
Regular \$99.95

**BFGoodrich Shock Absorbers \$4.95 Standard \$6.95 Heavy Duty**

**New Batteries \$29.95 Exchange**

**Front End Alignment \$12.95**

**BFGoodrich Put Performance on Your Machine**  
Belted T/A 70 Bloms  
**\$39.95** +\$2.77 P.E.T.

**BFGoodrich Strong and Dependable Silvercrown Belted Whitewall Bloms**  
**\$32.95**

**Dual Belt II Radial Whitewall \$29.95**  
A78-13 +\$1.75 P.E.T.

SIZE	OUR PRICE	P.E.T.
B878-13	33.46	1.90
D878-14	38.32	2.15
E878-14	39.39	2.27
F878-14	41.94	2.38
G878-14	44.38	2.57
H878-14	46.77	2.73
H878-15	42.11	2.59
H878-15	44.39	2.64
H878-15	46.48	2.84
L878-15	49.96	3.13

### OK TIRE STORE

2415 S. French Ave. Sanford, FL 32771 PH 322-7180

## Lake Mary City Workers Get Pay Raise

By DONNA REED  
Herald Staff Writer

Lake Mary's city employees are receiving a 3.5 percent pay raise effective Oct. 1. The city council approved the pay raise at its Oct. 15 meeting.

The city council Thursday night voted to go in debt \$25,770 to purchase a 2.5 acre site on Granddune Avenue for parking.

And the city council Thursday night voted to go in debt \$25,770 to purchase a 2.5 acre site on Granddune Avenue for parking.

The council voted specifically to transfer the \$25,770 from the city's reserve funds for the employee pay raise, but did not designate a fund from which the money would be taken.

The council also voted to increase the city's pay raise from 3.5 percent to 4.5 percent.

The council voted specifically to transfer the \$25,770 from the city's reserve funds for the employee pay raise, but did not designate a fund from which the money would be taken.

The council also voted to increase the city's pay raise from 3.5 percent to 4.5 percent.

The council also voted to increase the city's pay raise from 3.5 percent to 4.5 percent.

Perinich's preferred return of only 12.5 percent was approved by the city council.

The council also voted to increase the city's pay raise from 3.5 percent to 4.5 percent.

The council also voted to increase the city's pay raise from 3.5 percent to 4.5 percent.

Thursday night, Councilman Mrs. Pat Southward brought up the pay increase for the city employees.

The council also voted to increase the city's pay raise from 3.5 percent to 4.5 percent.

The council also voted to increase the city's pay raise from 3.5 percent to 4.5 percent.

The council also voted to increase the city's pay raise from 3.5 percent to 4.5 percent.

The council also voted to increase the city's pay raise from 3.5 percent to 4.5 percent.

The council also voted to increase the city's pay raise from 3.5 percent to 4.5 percent.

**Today**

Around The Clock	4A
Bridge	5A
Columbus	5A
Comedian	5A
Crossword	5A
Ed Sullivan	5A
Dear Abby	5A
Dr. Lamph	5A
Horoscope	5A
Magical	5A
OMG/AM/PM	5A
Sports	5A
Television	5A
Weather	5A

## Iranians Warn U.S. Against Moving Shah

TEHRAN, Iran (UPI) — Muslim students holding the U.S. Embassy today threatened to use further measures against their hostages if the United States allows the shah to be moved to any country except Iran.

The threat, broadcast over loudspeakers at the occupied embassy, was laced with details of "Dern with America" and "Death to Carter" by more than 100,000 demonstrators returning from Muslim sabbath prayers at Tehran University.

"If the shah is moved from America to any country except, as we have demanded, harsher decisions will be taken regarding the hostages," a student announced.

## Major Crimes January To October

	Total Major Crimes	Murder	Rape	Force	Robbery	Aggravated Assault	Simple Assault	Breaking and Entering	Larceny	Vehicle Theft
Florida 1978	446,923	482	2,899	12,544	31,490	124,854	249,758	24,498		
Florida 1979	501,874	786	3,279	15,821	34,948	139,556	278,440	28,199		
Pct. Increase (Decrease)	12.3	15.2	16.6	26.1	11.0	Available	11.7	11.4	14.3	
Unincorporated Seminole 1978	3,205	0	15	43	144	448	923	1,548	156	
Unincorporated Seminole 1979	3,460	2	21	24	81	299	1,053	1,700	191	
Pct. Increase (Decrease)	4.7	(2.3)	33.3	(39.5)	(43.07)	(12.5)	12.3	7.8	18.3	
Sanford 1978	1,416	3	12	37	89	92	395	904	94	
Sanford 1979	1,739	3	15	42	98	52	418	1,033	68	
Pct. Increase (Decrease)	7.67	(32.3)	25	25.7	9.2	(43.3)	7.7	11.4	(37.7)	

## Sanford, County Crime Lags Behind State Levels

By DAVID M. EARLES  
Herald Staff Writer

While crime is up in Sanford and Seminole County, it is not growing as rapidly as the crime rate for Florida as a whole.

Figures for the first nine months of 1979, released yesterday by the state, show a 12.3 percent jump in the major crime rate since last year.

But the reports also indicate that Sanford police handled only 7.67 percent more major incidents, while the Seminole County Sheriff's caused a 4.7 percent increase.

The Florida Department of Law Enforcement said 62,374 major offenses were reported during the first nine months of the year.

That is nearly double the 1978 total increase of 4.8 percent from 1977.

In Sanford, major offenses handled by city police are up only 7.67 percent. In unincorporated areas of Seminole County, violent crime has increased only 4.7 percent. While all eight classes of crime reported by the FDLE increased statewide, some kinds of crime were reported less frequently locally.

In Sanford, the simple assault rate fell by 43.07 percent while vehicle thefts were down by 37.7 percent. The Seminole Sheriff reported a drop in armed robbery by 46 percent. Assaults and murders were also fewer in the unincorporated sections of the county than in 1978.

Rape increased by 30 percent in Sanford and 33.3 percent in unincorporated Seminole, a jump Seminole Sheriff John Foltz says he hopes is due to programs which encourage rape victims to report the crime. The county now has a fulltime victims' advocate, and sponsors seminars on the crime, he said.

Statewide, reports of forcible rape increased by 16.6 percent.

The murder rate in unincorporated Seminole dropped 75 percent, but the four reported murders in the county, two occurred within the Sanford city limits.

