

Radio Television May Be Practical By Light Cell Tested Out In Gotham

NEW YORK, Sept. 7.—(INS)—Practical radio television may be realized through a new light cell which has been demonstrated by the Radiovision Corporation here.

The new light cell guarantees a greater electric current when exposed to the sun's rays or an artificial light than television photoelectric cells now in use by experimenters.

The light cell resembles a large vacuum tube and inside the glass cover is a greenish fluid and several metallic electrodes. Edgar H. Felix, vice president of the company in discussing the new light cell said:

"In addition to other features it can be utilized to perform such functions about the house as turning on the hot water heater, starting the furnace, opening the windows at sunrise. However, the real value of the cell lies in its possibilities as an aid to scientific research and experimentation. It can be made to operate as an electrical storage cell, chargeable from a small battery, releasing this energy when wanted by the action of the light falling on its surface.

"It has been found that the cell, after apparently being discharged or relieved of its collected energy, recovered its full vitality when light was allowed to fall on the opposite plate, enclosed in the glass envelope. It also recovers during periods of rest. Cells left

overnight, supposedly discharged, have been found recharged in the morning."

The company controls the Cooley "Rayfoto" patents and is endeavoring to apply the device to the transmission of pictures by this method.

Mrs. Hughes Declares Women Are For Hoover

WASHINGTON, Sept. 7.—(INS)—The wives of Tennessee's farmers will vote for Herbert Hoover for president, regardless of what their husbands do, Mrs. Buelah Hughes, Republican national committeewoman from that state, announced today at Republican headquarters.

"Like all other women, the wives of our farmers want the highest possible standard of living in their homes," she said. "They want educational opportunities for their boys and girls. And they are going to vote for Hoover because they are confident he is the man who will help them attain these things."

Mrs. Hughes declared Hoover would "see that a workable program for farm relief is provided." "Hoover knows the importance of sanity in handling a big problem and will not be satisfied with half measures," she added. "But when he's finished, he'll have to put the farmers on their feet."

New York Stock Exchange Reports

NEW YORK, Sept. 7.—(INS)—	Chicago, Milwaukee & St. P. 37 1/2	New York Central 17 1/2
Allis Chalmers 138	Chile Corporation 48 1/2	N. Y. N. Haven & Hartford 61 1/4
American Beet Sugar 23 3/8	Colorado Fuel 66 5/8	Northern Pacific 8
American Agriculture 22	Colorado Gas and Electric 184 3/4	Pure Oil 21
American Can 107 1/4	Consolidated Gas 80 1/8	Pennsylvania 64 3/8
American Car and Foundry 98 1/2	Corn Products 83 3/8	Pfd. Steel Car 25 1/4
American Lintseed 125 1/8	Crochell Steel 79 3/8	Radio 218 1/4
American Locomotive 241 7/8	Delaware and Hudson 199	Republican Iron and Steel 69 7/8
American Smelting 32 1/4	Erie 55 1/2	Sinclair Oil 27 1/2
American Steel and Foundry 32 1/4	Erie First Pfd. 59	Southern Pacific 124
American Sugar Refining 73 3/4	General Electric 165 1/2	Southern Railway 111 1/2
American Tel and Tel 182 1/2	General Motors 202 3/8	Studebaker 78 1/2
Anacosta 74 7/8	Goodrich 80 7/8	Texas Corporation 68 7/8
Atchafalaya 194 3/4	Illinois Central 143 7/8	Texas Pacific Corporation 147 8/10
Atlantic Gulf and Western 53 7/8	Inspen. Corporation 23 3/4	Tobacco Products 100 1/8
Baltimore and Ohio 115 1/2	International Nickel 116 7/8	Union Pacific 113 1/2
Bethlehem Steel 62 3/4	International Ppr. 68 5/8	United Cigar Stores 30
Butte and Superior 10 1/4	Kennecott 98 1/4	U. S. Ind. Alc. 120 1/8
California Petroleum 96	Lake Valley 105	United States Rubber 38 3/8
Canadian Pacific 214 1/2	Marine Pfd. 5	United States Steel Pfd. 151
Chesapeake and Ohio 191	Mt. Corporation 37 1/2	Westinghouse 105 1/2
Chicago and Northwestern 86 5/8	National En. and S. Pfd. 34 7/8	White Motors 39
	New York Air Brake 46	Willys Overland 25 1/4

Milk Supply Jumps In Boston During Recent Hot Spell

BOSTON, Sept. 6.—(INS)—The flood of milk which almost inundated Boston during the recent hot spell is ample proof that residents of Boston are well aware of the value of milk as a hot weather food.

On one day at the peak of the thermometer's dash upward 650,000 quarts of milk flowed into this city enough to provide 2,600,000 people with a glass of milk each. From the ordinary milk receipts of 45 cars per day the figures suddenly rose to 78 cars. Most of the milk received came via the large

milk station of the Boston and Maine Railroad at East Somerville. Others came to Medford, and Everett to be reshipped to the metropolitan area or over other New England roads.

With the arrival of the heat which August is usually supposed to usher in, an increased demand for milk was anticipated. Orders for greatly increased supplies were flashed to the principal milk sources in Vermont, New Hampshire, Maine and upper New York state as well as the regular stations in northern and Western Massachusetts.

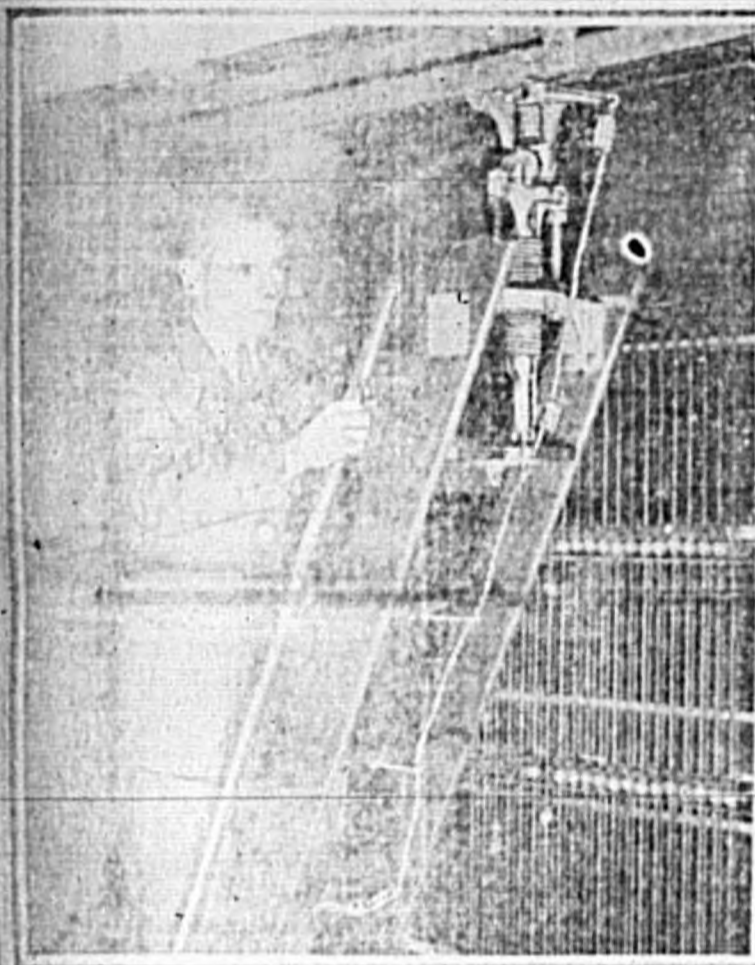
Such a high peak for milk consumption is unusual for Boston, the height of the demand usually coming in early July when the first hot spell finds many workers still at their desks.

John Coolidge Goes To See Grandmother

NORTHAMPTON, Mass., Sept. 7.—(INS)—John Coolidge, son of the President and America's own Prince of Wales, is here today to spend several days with his grand mother, Mrs. Elmira Goodhue, mother of Mrs. Coolidge and a patient at the Cooley Dickinson Hospital since last December.

When he arrived here last night, he denied that he had accepted a position in the electrical works house of Governor Trumbull at Hartford, Conn. Young Coolidge came here from New York after being secretly whisked away from inquisitive crowds and inquiring reporters upon his arrival in the metropolis yesterday.

A Sure Climb to the Top!



The new brake device for rolling ladders, developed for use in equipment rooms of automatic telephone exchange offices.

In this modern, civilized era, invention has provided a marvelous order of procedure. It is that each new machine brought into being through the widespread adoption of automatic switching equipment for telephone central offices. Using 12 1/2 inch standard into the air on dozens of racks, the central office equipment is a mechanism of wires connecting innumerable pieces of electrical apparatus. In installing and adjusting this rack equipment, many men must work side by side to each other at varying heights. Consequently, in the thousands of central offices in the country, rolling ladders such as are to be found in many retail establishments have become indispensable equipment.

Since there was always the danger that someone might inadvertently start the ladders running while it was in use and bring injury to the man on it, the Bell Telephone Laboratories set to work for the Western Electric Company to develop a self-locking ladder that would be inherently safe to use. The result was a new ladder which is supported at the hanger end by two spring coils. As a user climbs to the top of the ladder, his weight tends to pull down the spring connected to the ladder, which, in turn, affects the second spring which is connected to the hanger and operates the brake. With a man standing on the ladder at a distance of only three feet from the ground, the brake is thrown to such an extent that a force four times greater is required to move the ladder than when the brake is not in operation. As a man climbs to greater heights, the pull necessary to move it increases, thereby protecting the user and at the same time indicating to others that the ladder is occupied.

If the worker at the top of a ladder finds that his work extends beyond his reaching distance, he can release the brake by pulling on a cord. He can then roll the ladder along freely while standing on it. As soon, however, as the cord is released, the brake resets. To guard against thoughtless operation of the cord, its lower end is fastened to a strip approximately seven feet from the floor.

It is expected this brake ladder will be adaptable for use in drug, grocery and shoe stores, in factories and warehouses and other places utilizing the rolling type of ladders.

STOKES SEED SERVICES
HEREDITY VIGILANCE

The Finest Vegetable Seeds
For Fall Planting

Golden Plume Celery
Green Leaf Boston Lettuce
Broad Leaf Escarole

We Now Handle BURPEES Flower Seed for the accommodation of our customers
Place Your Orders Now

Francis C. Stokes & Co.
Seedsmen
C. R. MASON, Florida Manager
18 Arcade Sanford Phone 184

Ask These Questions Few Women Will Hesitate In Answering!

"Where can I get the popular nationally advertised foods?" "Where can I get good quality butter, coffee, teas, etc.?" "Where do food dollars go farthest?" Instantly the answer comes to mind—at the A&P Stores.

Invariably, women will tell you that the A&P stores are the answer to every food problem. All over America countless thousands of alert women express sincere appreciation by their constant patronage.

FULL CREAM CHEESE Lb. 29¢
A NEW POWDERED MILK
DRILK 1-Lb. 55¢ 2-Lbs. 95¢ 4-Lbs. \$1.75
A & P BRAND
CLEANSER 5 For 25¢
WESSON OIL Pints 23¢ Quarts 45¢
WHITE HOUSE MILK Small 5¢ Large 10¢
RAJAH BRAND
MAYONNAISE 1/2 Pints 19¢ Pints 29¢
EIGHT O'CLOCK COFFEE Lb. 37¢
WASHBURN'S GOLD MEDAL
PANCAKE FLOUR Large Package 10¢
N. B. C. COOKIES AND CRACKERS
ALL 5¢ GOODS 3 For 13¢
UKELELE BRAND NO. 2 1/2 CAN
BROKEN SLICED PINEAPPLE 23¢
A & P BRAND
GRAPE JUICE Pints 25¢ Quarts 45¢
SNOW FLOSS BRAND NO. 2 1/2 CAN
SAUER KRAUT 2 For 25¢
IONA BRAND NO. 2 CAN
TOMATOES 3 For 25¢
PACIFIC BRAND
SOFT CREPE PAPER 5 For 25¢

THE GREAT ATLANTIC & PACIFIC TEA CO.

LAWTON'S SATURDAY "MONEY SAVERS"

5 lbs. Sugar	31¢
5 lbs. Potatoes	12¢
Wesson Oil, Pint	25¢
Waldorf Paper	5¢
3 Pkgs. Matches	20¢
1-4 lb. Tea 21¢	Bananas, lb. 5¢

WE DELIVER

R. W. LAWTON

106 S. Park Ave Phone 672

PIGGLY WIGGLY

In Every Game Food Plays An Important Part In All Sports Or Endeavors Particularly In The Playing "The Game Of Life" Striving For The Goal: Good, Pure Food Is Essential To The Perfect Health That Produces Winners.

CALIFORNIA MALAGA	GRAPES	Per Pound	10¢
YELLOW GLOBE	CABBAGE Lb. 3 1/2	ONIONS 3 Lbs.	17¢
OCTAGON SMALL SIZE	SOAP 6 BARS	For	25¢
BLUE LABEL	PEAS No. 1 1/2 2 Cans		25¢
KELLOGG'S	Corn Flakes	Per Pkg	7¢
SWEET MIXED	PICKLES QT. JARS		29¢
THISTLE COUNTRY GENTLEMAN	CORN No. 2 Can		15¢
	TOMATOES No. 2 Cans 3 For		25¢
DEL-MONTE SLICED	PINEAPPLE No. 2 1/2 Can		25¢
	SUPER SUDS	Per Pkg.	9¢
MARKET DAY SPECIAL	RAISINS 4 Pound Pkg.		35¢
CRESENT	LARD 4 Lbs. 60¢ - 8 Lbs.		\$1.19

We Have A Complete Line Of Fresh Vegetables

PIGGLY WIGGLY

All Over The World
222 First St. 405 Sanford Ave. 120 Magnolia Ave.

ELDER SAYS HUSBAND HAD THREATENED LIFE

Failure Of Atlantic Hop Was Due To Womack's Action

San Francisco, Sept. 7.—Ruth Elder began her flight to Europe—once in mid-ocean—a double death was hovering over her.

Failure of Atlantic hop was due to Womack's action, she said, threatening to kill her husband, Lyle, if he did not agree to give up the hop.

Womack's assertion was that the famous aviatrix at the time of reported divorce instituted by Womack, Canal Zone.

Guard Homes Threatened Men

San Francisco, Sept. 7.—(INS)—Armed with sawed off and machine guns today guard the homes of three men.

Equipment purchased by the club, was used by the members to put on, according to the secretary.

Explosion Results In Death, Property Loss

SAN FRANCISCO, Sept. 7.—(INS)—Three men were missing today, believed to have perished in an explosion.

These missing and believed dead are: Harry Sowers; "Shorty" Johnson and Andy Anderson.

Hoover Is Man Of Destiny, Says Ford Urging His Election

(Continued From Page 1) ate the drudgery. The result is, build the machines which eliminate prosperity, he said.

"Herbert Hoover has been heading toward the presidency for a good many years—but he didn't know it," Ford said.

"What would you think of a business leader who should say that his great mission was to reorganize the offices of his concern? The main consideration is always increase and betterment of the productive energy and methods.

Trade Commission To Resume Trust Probe

(INS)—The Federal Trade Commission will resume its investigation of the propaganda activities of the power trust on Sept. 13, it was announced today.

Explosion Results In Death, Property Loss

SAN FRANCISCO, Sept. 7.—(INS)—Three men were missing today, believed to have perished in an explosion.

BLITCH'S Red Front Store

AT BLITCH'S RED FRONT STORES

YOU WILL FIND CLEAN STORES, QUALITY FOODS, MONEY SAVING PRICES, COURTEOUS ASSISTANCE BY THE STORE MEN.

Cabbage Hard Heads Per Lb. **3 1/2¢**

Onions 2 Lbs. **9¢** | **Grapes** Per Lb. **10¢**

Tomatoes No. 2 Can **3 For 25¢**

Waldorf Toilet Paper Per Roll **5¢**

Lima Beans No. 2 Can Per Can **15¢**

Rumford 1/2 Lb. Can **14¢** | 1 Lb. Can **25¢**

Swan Matches 2 Pkgs. For **5¢**

Pineapple Sliced No. 2 Can **19¢**

Rice Blue Rose 4 Pounds **23¢**

Sugar Granulated Cane 5 Pounds **31¢**

P & G Soap 5 Bars **19¢**

WE CARRY A COMPLETE ASSORTMENT OF FRESH FRUITS AND VEGETABLES.

117—EAST FIRST ST. IN THE CENTER OF SANFORD

Stokes Red Front Market

LARD 2 Lbs. **25¢** | **BACON** Lb. **19¢**

Pork Chops lb. **28¢** | **Pork Roast** Lb. **25¢**

Sausage lb. **25¢** | **Spare Ribs** Lb. **18¢**

Boned & Rolled 1st Lb. **25¢**

Lamb - Veal - Hens - Fryers

WE DELIVER

"NEVER BUY BEFORE YOU TRY"

RED STAR GROCERY AND FEED CO.

213 Sanford Ave. Phone 31

SATURDAY AND MONDAY SPECIALS

Pillsbury's Best Plain Flour 62¢ (12 Lbs.)	Golden Days Self-Rising Flour \$1 05 (24 Lbs.)
Super Suds Chips Soap Chips Fab 25¢ (3 Pkgs.)	MACARONI 4 pkgs. 25¢
Qt. Jar Sour Pickles 28¢	SPHAGETTI Qt. Jar Sweet Pickles 32¢
6 5c Pkgs. Nat'l Biscuit Co. Crackers 25¢	Mixed or Plain SUGAR 30¢ (5 Lbs.)

W. H. LONG

117 Magnolia Ave.

Tender & Juicy

Yes, "Tender & Juicy," are our steaks. That is because we select only the choicest of western beeves for our trade.

CHOICE WESTERN STEAK 30¢ Lb.
PORK SHOULDERS 25¢ Lb.
WESTERN PORK CHOPS 29¢ Lb.
WESTERN POT ROAST of BEEF 20 & 25¢
WESTERN BRISKET STEW BEEF 15¢ Lb.
FRESH GROUND WESTERN MEAT HAMBURG 20¢ Lb.
RIB OR CLEAR WHITE BACON 19¢ Lb.
Choice Western Veal

"I won't do it"

Old Mrs. Burns refuse to pay 50 cents for all-plant of any liquid insect-killer when I can get same quantity of Black Flag Liquid for only 25 cents.



Black Flag Liquid is one of the price of other liquid insect-killers. It is the deadliest made. Money back if it does not prove so. Black Flag comes in two forms—Liquid and Powder. Both are sure to kill mosquitos, roaches, ants, bed bugs, etc. Powder, 15 cents and up.

