

## Plant Diseases Spurred By Damp Night, Warm Days, Group Says

ORLANDO (U. S. P.) — Cool damp nights and rather warm days have spurred the development of plant diseases in South Florida, the group says today.

Growers need a rather long period of favorable weather to bring these diseases under control and get their crops back into a satisfactory state of growth, the agency said in its report for the first half of February.

Names of the diseases were not given. Temperatures were mostly beneficial for hardy crops in North and Central Florida, the report said.

Growing conditions were listed as generally favorable in California. In Texas, however, lack of rainfall was reported critical in all sections and the supply of irrigation water in some places very low.

South Carolina weather also was reported unfavorable for best progress of truck crops.

Florida's Feb. 2 tropical storm caused considerable damage to vegetable crops in Pompano, Dade County and Immokalee sections, the report said. Frost in north and central sections of the state did comparatively little damage, but some unprotected crops such as tomatoes, cucumbers and watermelons were reported killed.

The report by crops for Florida: Lima beans — Pompano Delay crop in fair conditions, supplies declined.

Winter snap beans — Pompano-Dade crop fair condition, volume down materially and to continue rest of month.

Spring snap beans — Everglades Central Florida planting under way. Reduced acreage in prospect.

Cabbage — Condition fair to good, recent weather favorable.

Spring celery — Setting complete.

Spring snap beans — Everglades Central Florida planting under way. Reduced acreage in prospect.

Cabbage — Condition fair to good, recent weather favorable.

Spring celery — Setting complete.

Spring snap beans — Everglades Central Florida planting under way. Reduced acreage in prospect.

Cabbage — Condition fair to good, recent weather favorable.

Spring celery — Setting complete.

Spring snap beans — Everglades Central Florida planting under way. Reduced acreage in prospect.

Cabbage — Condition fair to good, recent weather favorable.

Spring celery — Setting complete.

Spring snap beans — Everglades Central Florida planting under way. Reduced acreage in prospect.

Cabbage — Condition fair to good, recent weather favorable.

Spring celery — Setting complete.

Spring snap beans — Everglades Central Florida planting under way. Reduced acreage in prospect.

Cabbage — Condition fair to good, recent weather favorable.

Spring celery — Setting complete.

Spring snap beans — Everglades Central Florida planting under way. Reduced acreage in prospect.

Cabbage — Condition fair to good, recent weather favorable.

Spring celery — Setting complete.

at Sarasota and nearly complete in Everglades.

Sweet corn — Only fair condition in South Florida and yields below expectation.

Winter eggplant — Pompano Ft. Myers considerable damage.

Spring eggplant — Younger acreage in South Florida expected to make fair recovery. Seedlings in North Florida fair to good condition.

Lettuce — Volume declined considerably.

Winter Pepper — The storm struck important Pompano section as crop getting into full production, materially lowering prospects.

Spring pepper — Late plantings expected to overcome storm shock.

Winter potatoes — Harvesting near peak in Dade County, yield to be slightly under last season's excellent yield.

Spring squash — Plant City and Ocala — McIntosh planting largely complete.

Strawberries — Winter crop reach peak, insects reducing yield.

Watermelons — Cold caused some damage to unprotected fields, but over all extent comparatively light.

Strawberries — Winter crop reach peak, insects reducing yield.

Watermelons — Cold caused some damage to unprotected fields, but over all extent comparatively light.

Strawberries — Winter crop reach peak, insects reducing yield.

Watermelons — Cold caused some damage to unprotected fields, but over all extent comparatively light.

Strawberries — Winter crop reach peak, insects reducing yield.

Watermelons — Cold caused some damage to unprotected fields, but over all extent comparatively light.

Strawberries — Winter crop reach peak, insects reducing yield.

Watermelons — Cold caused some damage to unprotected fields, but over all extent comparatively light.

Strawberries — Winter crop reach peak, insects reducing yield.

Watermelons — Cold caused some damage to unprotected fields, but over all extent comparatively light.

Strawberries — Winter crop reach peak, insects reducing yield.

Watermelons — Cold caused some damage to unprotected fields, but over all extent comparatively light.

Strawberries — Winter crop reach peak, insects reducing yield.

Watermelons — Cold caused some damage to unprotected fields, but over all extent comparatively light.

Strawberries — Winter crop reach peak, insects reducing yield.

Watermelons — Cold caused some damage to unprotected fields, but over all extent comparatively light.

Strawberries — Winter crop reach peak, insects reducing yield.

Watermelons — Cold caused some damage to unprotected fields, but over all extent comparatively light.

## Landlords Urged To Register Property

With only two weeks to go before the deadline, hundreds of landlords in the Sanford Area have failed to register their rental accommodations, J. M. Bryant, Acting Area Rent Director, reported today.

Landlords who fail to meet this Mar. 9 deadline for registration will be in violation of federal law, Mr. Bryant said.

Minors of the rent office staff will assist any landlord in filling out the forms, Mr. Bryant said, or landlords who wish to fill them out themselves, may pick up the forms at the Rent Office at 222 Meach Building. Forms will be mailed out if they write for them at the above address, or call phone number 218.

Federal Rent Stabilization was established for virtually all rental housing accommodations in Seminole County on Jan. 24, 1942. New construction, conversions, rooms in private homes, hotels, motor courts, motels, rooming houses, apartments and houses are covered by the new program, Mr. Bryant stated. Legal penalties for most of such accommodations were leveled back to the May 1, 1941 levels.

Federal Rent Stabilization was established for virtually all rental housing accommodations in Seminole County on Jan. 24, 1942. New construction, conversions, rooms in private homes, hotels, motor courts, motels, rooming houses, apartments and houses are covered by the new program, Mr. Bryant stated. Legal penalties for most of such accommodations were leveled back to the May 1, 1941 levels.

Federal Rent Stabilization was established for virtually all rental housing accommodations in Seminole County on Jan. 24, 1942. New construction, conversions, rooms in private homes, hotels, motor courts, motels, rooming houses, apartments and houses are covered by the new program, Mr. Bryant stated. Legal penalties for most of such accommodations were leveled back to the May 1, 1941 levels.

Federal Rent Stabilization was established for virtually all rental housing accommodations in Seminole County on Jan. 24, 1942. New construction, conversions, rooms in private homes, hotels, motor courts, motels, rooming houses, apartments and houses are covered by the new program, Mr. Bryant stated. Legal penalties for most of such accommodations were leveled back to the May 1, 1941 levels.

Federal Rent Stabilization was established for virtually all rental housing accommodations in Seminole County on Jan. 24, 1942. New construction, conversions, rooms in private homes, hotels, motor courts, motels, rooming houses, apartments and houses are covered by the new program, Mr. Bryant stated. Legal penalties for most of such accommodations were leveled back to the May 1, 1941 levels.

Federal Rent Stabilization was established for virtually all rental housing accommodations in Seminole County on Jan. 24, 1942. New construction, conversions, rooms in private homes, hotels, motor courts, motels, rooming houses, apartments and houses are covered by the new program, Mr. Bryant stated. Legal penalties for most of such accommodations were leveled back to the May 1, 1941 levels.

Federal Rent Stabilization was established for virtually all rental housing accommodations in Seminole County on Jan. 24, 1942. New construction, conversions, rooms in private homes, hotels, motor courts, motels, rooming houses, apartments and houses are covered by the new program, Mr. Bryant stated. Legal penalties for most of such accommodations were leveled back to the May 1, 1941 levels.

Federal Rent Stabilization was established for virtually all rental housing accommodations in Seminole County on Jan. 24, 1942. New construction, conversions, rooms in private homes, hotels, motor courts, motels, rooming houses, apartments and houses are covered by the new program, Mr. Bryant stated. Legal penalties for most of such accommodations were leveled back to the May 1, 1941 levels.

Federal Rent Stabilization was established for virtually all rental housing accommodations in Seminole County on Jan. 24, 1942. New construction, conversions, rooms in private homes, hotels, motor courts, motels, rooming houses, apartments and houses are covered by the new program, Mr. Bryant stated. Legal penalties for most of such accommodations were leveled back to the May 1, 1941 levels.

Federal Rent Stabilization was established for virtually all rental housing accommodations in Seminole County on Jan. 24, 1942. New construction, conversions, rooms in private homes, hotels, motor courts, motels, rooming houses, apartments and houses are covered by the new program, Mr. Bryant stated. Legal penalties for most of such accommodations were leveled back to the May 1, 1941 levels.

Federal Rent Stabilization was established for virtually all rental housing accommodations in Seminole County on Jan. 24, 1942. New construction, conversions, rooms in private homes, hotels, motor courts, motels, rooming houses, apartments and houses are covered by the new program, Mr. Bryant stated. Legal penalties for most of such accommodations were leveled back to the May 1, 1941 levels.

Federal Rent Stabilization was established for virtually all rental housing accommodations in Seminole County on Jan. 24, 1942. New construction, conversions, rooms in private homes, hotels, motor courts, motels, rooming houses, apartments and houses are covered by the new program, Mr. Bryant stated. Legal penalties for most of such accommodations were leveled back to the May 1, 1941 levels.

Federal Rent Stabilization was established for virtually all rental housing accommodations in Seminole County on Jan. 24, 1942. New construction, conversions, rooms in private homes, hotels, motor courts, motels, rooming houses, apartments and houses are covered by the new program, Mr. Bryant stated. Legal penalties for most of such accommodations were leveled back to the May 1, 1941 levels.

Federal Rent Stabilization was established for virtually all rental housing accommodations in Seminole County on Jan. 24, 1942. New construction, conversions, rooms in private homes, hotels, motor courts, motels, rooming houses, apartments and houses are covered by the new program, Mr. Bryant stated. Legal penalties for most of such accommodations were leveled back to the May 1, 1941 levels.

Federal Rent Stabilization was established for virtually all rental housing accommodations in Seminole County on Jan. 24, 1942. New construction, conversions, rooms in private homes, hotels, motor courts, motels, rooming houses, apartments and houses are covered by the new program, Mr. Bryant stated. Legal penalties for most of such accommodations were leveled back to the May 1, 1941 levels.

Federal Rent Stabilization was established for virtually all rental housing accommodations in Seminole County on Jan. 24, 1942. New construction, conversions, rooms in private homes, hotels, motor courts, motels, rooming houses, apartments and houses are covered by the new program, Mr. Bryant stated. Legal penalties for most of such accommodations were leveled back to the May 1, 1941 levels.

Federal Rent Stabilization was established for virtually all rental housing accommodations in Seminole County on Jan. 24, 1942. New construction, conversions, rooms in private homes, hotels, motor courts, motels, rooming houses, apartments and houses are covered by the new program, Mr. Bryant stated. Legal penalties for most of such accommodations were leveled back to the May 1, 1941 levels.

Federal Rent Stabilization was established for virtually all rental housing accommodations in Seminole County on Jan. 24, 1942. New construction, conversions, rooms in private homes, hotels, motor courts, motels, rooming houses, apartments and houses are covered by the new program, Mr. Bryant stated. Legal penalties for most of such accommodations were leveled back to the May 1, 1941 levels.

Federal Rent Stabilization was established for virtually all rental housing accommodations in Seminole County on Jan. 24, 1942. New construction, conversions, rooms in private homes, hotels, motor courts, motels, rooming houses, apartments and houses are covered by the new program, Mr. Bryant stated. Legal penalties for most of such accommodations were leveled back to the May 1, 1941 levels.

Federal Rent Stabilization was established for virtually all rental housing accommodations in Seminole County on Jan. 24, 1942. New construction, conversions, rooms in private homes, hotels, motor courts, motels, rooming houses, apartments and houses are covered by the new program, Mr. Bryant stated. Legal penalties for most of such accommodations were leveled back to the May 1, 1941 levels.

Federal Rent Stabilization was established for virtually all rental housing accommodations in Seminole County on Jan. 24, 1942. New construction, conversions, rooms in private homes, hotels, motor courts, motels, rooming houses, apartments and houses are covered by the new program, Mr. Bryant stated. Legal penalties for most of such accommodations were leveled back to the May 1, 1941 levels.

Federal Rent Stabilization was established for virtually all rental housing accommodations in Seminole County on Jan. 24, 1942. New construction, conversions, rooms in private homes, hotels, motor courts, motels, rooming houses, apartments and houses are covered by the new program, Mr. Bryant stated. Legal penalties for most of such accommodations were leveled back to the May 1, 1941 levels.

Federal Rent Stabilization was established for virtually all rental housing accommodations in Seminole County on Jan. 24, 1942. New construction, conversions, rooms in private homes, hotels, motor courts, motels, rooming houses, apartments and houses are covered by the new program, Mr. Bryant stated. Legal penalties for most of such accommodations were leveled back to the May 1, 1941 levels.

Federal Rent Stabilization was established for virtually all rental housing accommodations in Seminole County on Jan. 24, 1942. New construction, conversions, rooms in private homes, hotels, motor courts, motels, rooming houses, apartments and houses are covered by the new program, Mr. Bryant stated. Legal penalties for most of such accommodations were leveled back to the May 1, 1941 levels.

Federal Rent Stabilization was established for virtually all rental housing accommodations in Seminole County on Jan. 24, 1942. New construction, conversions, rooms in private homes, hotels, motor courts, motels, rooming houses, apartments and houses are covered by the new program, Mr. Bryant stated. Legal penalties for most of such accommodations were leveled back to the May 1, 1941 levels.

Federal Rent Stabilization was established for virtually all rental housing accommodations in Seminole County on Jan. 24, 1942. New construction, conversions, rooms in private homes, hotels, motor courts, motels, rooming houses, apartments and houses are covered by the new program, Mr. Bryant stated. Legal penalties for most of such accommodations were leveled back to the May 1, 1941 levels.

## HOLLYWOOD

By LANA TURNER. It could be the sprained ankle of a janitor. All patients are the same to Dr. Helen Jones.

Jones is the studio physician at MGM and she is perhaps the only person on the lot who doesn't know the star system.

"Each patient gets the same kind of care from me," she remarked. "When I took the job, I didn't expect to last six weeks."

I liked to go to the movies sometimes, but show business and its stars meant nothing to me. I saw no reason why I should treat any patient differently, just because he was a movie star.

Dr. Jones has surprised herself by lasting 15 years at the studio, but she claimed she didn't know if the job will last. She recalled her first "name" patient on the lot. He was a well known comedian who had scratched his shoulder in a bathing scene.

"He was admiring himself in the hospital mirror," she remembered. "I had to remind him that I was the one to do the examining, not him. I have since had to have that mirror painted over, because of the actor's pain."

I inquired if actors had any occupational diseases, such as hangovers and ulcers. She explained, "Ulcers happen to people who repress their emotions, and actors are emotional people. Their entire training has been to give vent to their feelings."

"It is entirely the opposite with doctors. Our whole training is to hide our emotions. Often we may be disturbed about a patient or even frightened. We cannot let the patient know about our feelings."

For that reason, the rate of ulcers and heart conditions is high among doctors.

The studio hospital is primarily designed to care for industrial accidents, but any illness which occurs on the lot is cared for.

This may include nervousness on the part of the actors, to whom mild sedatives would be administered. Star accidents are not too frequent, and a strip of bruised bacon around a pineapple, placed small cubes of American cheese also on the plate. Serve with French dressing.

On crisp lettuce leaves place a slice of pineapple; cover pineapple with half a cup of cottage cheese that has been seasoned with salt and pepper and moistened with a little whipping cream. Arrange grapefruit sections, tomato sections and a strip of broiled bacon around pineapple. Place small cubes of American cheese also on the plate. Serve with French dressing.

On crisp lettuce leaves place a slice of pineapple; cover pineapple with half a cup of cottage cheese that has been seasoned with salt and pepper and moistened with a little whipping cream. Arrange grapefruit sections, tomato sections and a strip of broiled bacon around pineapple. Place small cubes of American cheese also on the plate. Serve with French dressing.

On crisp lettuce leaves place a slice of pineapple; cover pineapple with half a cup of cottage cheese that has been seasoned with salt and pepper and moistened with a little whipping cream. Arrange grapefruit sections, tomato sections and a strip of broiled bacon around pineapple. Place small cubes of American cheese also on the plate. Serve with French dressing.

On crisp lettuce leaves place a slice of pineapple; cover pineapple with half a cup of cottage cheese that has been seasoned with salt and pepper and moistened with a little whipping cream. Arrange grapefruit sections, tomato sections and a strip of broiled bacon around pineapple. Place small cubes of American cheese also on the plate. Serve with French dressing.

On crisp lettuce leaves place a slice of pineapple; cover pineapple with half a cup of cottage cheese that has been seasoned with salt and pepper and moistened with a little whipping cream. Arrange grapefruit sections, tomato sections and a strip of broiled bacon around pineapple. Place small cubes of American cheese also on the plate. Serve with French dressing.

On crisp lettuce leaves place a slice of pineapple; cover pineapple with half a cup of cottage cheese that has been seasoned with salt and pepper and moistened with a little whipping cream. Arrange grapefruit sections, tomato sections and a strip of broiled bacon around pineapple. Place small cubes of American cheese also on the plate. Serve with French dressing.

On crisp lettuce leaves place a slice of pineapple; cover pineapple with half a cup of cottage cheese that has been seasoned with salt and pepper and moistened with a little whipping cream. Arrange grapefruit sections, tomato sections and a strip of broiled bacon around pineapple. Place small cubes of American cheese also on the plate. Serve with French dressing.

On crisp lettuce leaves place a slice of pineapple; cover pineapple with half a cup of cottage cheese that has been seasoned with salt and pepper and moistened with a little whipping cream. Arrange grapefruit sections, tomato sections and a strip of broiled bacon around pineapple. Place small cubes of American cheese also on the plate. Serve with French dressing.

On crisp lettuce leaves place a slice of pineapple; cover pineapple with half a cup of cottage cheese that has been seasoned with salt and pepper and moistened with a little whipping cream. Arrange grapefruit sections, tomato sections and a strip of broiled bacon around pineapple. Place small cubes of American cheese also on the plate. Serve with French dressing.

On crisp lettuce leaves place a slice of pineapple; cover pineapple with half a cup of cottage cheese that has been seasoned with salt and pepper and moistened with a little whipping cream. Arrange grapefruit sections, tomato sections and a strip of broiled bacon around pineapple. Place small cubes of American cheese also on the plate. Serve with French dressing.

On crisp lettuce leaves place a slice of pineapple; cover pineapple with half a cup of cottage cheese that has been seasoned with salt and pepper and moistened with a little whipping cream. Arrange grapefruit sections, tomato sections and a strip of broiled bacon around pineapple. Place small cubes of American cheese also on the plate. Serve with French dressing.

On crisp lettuce leaves place a slice of pineapple; cover pineapple with half a cup of cottage cheese that has been seasoned with salt and pepper and moistened with a little whipping cream. Arrange grapefruit sections, tomato sections and a strip of broiled bacon around pineapple. Place small cubes of American cheese also on the plate. Serve with French dressing.

On crisp lettuce leaves place a slice of pineapple; cover pineapple with half a cup of cottage cheese that has been seasoned with salt and pepper and moistened with a little whipping cream. Arrange grapefruit sections, tomato sections and a strip of broiled bacon around pineapple. Place small cubes of American cheese also on the plate. Serve with French dressing.

On crisp lettuce leaves place a slice of pineapple; cover pineapple with half a cup of cottage cheese that has been seasoned with salt and pepper and moistened with a little whipping cream. Arrange grapefruit sections, tomato sections and a strip of broiled bacon around pineapple. Place small cubes of American cheese also on the plate. Serve with French dressing.

On crisp lettuce leaves place a slice of pineapple; cover pineapple with half a cup of cottage cheese that has been seasoned with salt and pepper and moistened with a little whipping cream. Arrange grapefruit sections, tomato sections and a strip of broiled bacon around pineapple. Place small cubes of American cheese also on the plate. Serve with French dressing.

On crisp lettuce leaves place a slice of pineapple; cover pineapple with half a cup of cottage cheese that has been seasoned with salt and pepper and moistened with a little whipping cream. Arrange grapefruit sections, tomato sections and a strip of broiled bacon around pineapple. Place small cubes of American cheese also on the plate. Serve with French dressing.

On crisp lettuce leaves place a slice of pineapple; cover pineapple with half a cup of cottage cheese that has been seasoned with salt and pepper and moistened with a little whipping cream. Arrange grapefruit sections, tomato sections and a strip of broiled bacon around pineapple. Place small cubes of American cheese also on the plate. Serve with French dressing.

On crisp lettuce leaves place a slice of pineapple; cover pineapple with half a cup of cottage cheese that has been seasoned with salt and pepper and moistened with a little whipping cream. Arrange grapefruit sections, tomato sections and a strip of broiled bacon around pineapple. Place small cubes of American cheese also on the plate. Serve with French dressing.

## Hal Boyle Enjoys His 41st Birthday, But Quietly

By HAL BOYLE. NEW YORK (U. S. P.) — Some years ago I started the pleasant custom of

Hint to Housewives. By CLEO M. ARNETT.

Hardly anything around the home is more popular than the cookie jar. In the cookie jar the youngsters, darting away from play for a couple of minutes, find a

flavorful snack to allay his hunger until supper-time. A favorite of artists who specialize in home scenes is the small boy standing on tip-toes to reach into the cookie jar high on the shelf. Small boys are not the only ones who like cookies, however, as many a home-maker well knows.

Because of the popularity of the cookie jar and cookies, most home-makers bake frequently to keep a supply on hand. While they usually have two or three recipes of their own, they also are on the lookout for new ones. So, here's a recipe for your cookie file and a warning that a baking won't last long, once the family has gotten a taste.

The ingredients: 1/2 cup of fat, 1 cup cane syrup, 2 beaten eggs, 2 cups sifted flour, 3 teaspoons baking powder, 1/2 teaspoon salt, and 1 cup of roasted, finely chopped peanuts.

Cream fat and syrup, and add beaten eggs. Sift dry ingredients together, add the peanuts, and then combine with first mixture. Stir until well blended. Drop batter by teaspoonfuls onto greased baking sheet, and bake in moderate oven (350 degrees Fahrenheit) for about 20 minutes. You'll have about 60 small but delicious cookies.

And here's a lunch plate that tastes good and is also packed with nutrients:

On crisp lettuce leaves place a slice of pineapple; cover pineapple with half a cup of cottage cheese that has been seasoned with salt and pepper and moistened with a little whipping cream. Arrange grapefruit sections, tomato sections and a strip of broiled bacon around pineapple. Place small cubes of American cheese also on the plate. Serve with French dressing.

On crisp lettuce leaves place a slice of pineapple; cover pineapple with half a cup of cottage cheese that has been seasoned with salt and pepper and moistened with a little whipping cream. Arrange grapefruit sections, tomato sections and a strip of broiled bacon around pineapple. Place small cubes of American cheese also on the plate. Serve with French dressing.

On crisp lettuce leaves place a slice of pineapple; cover pineapple with half a cup of cottage cheese that has been seasoned with salt and pepper and moistened with a little whipping cream. Arrange grapefruit sections, tomato sections and a strip of broiled bacon around pineapple. Place small cubes of American cheese also on the plate. Serve with French dressing.

On crisp lettuce leaves place a slice of pineapple; cover pineapple with half a cup of cottage cheese that has been seasoned with salt and pepper and moistened with a little whipping cream. Arrange grapefruit sections, tomato sections and a strip of broiled bacon around pineapple. Place small cubes of American cheese also on the plate. Serve with French dressing.

On crisp lettuce leaves place a slice of pineapple; cover pineapple with half a cup of cottage cheese that has been seasoned with salt and pepper and moistened with a little whipping cream. Arrange grapefruit sections, tomato sections and a strip of broiled bacon around pineapple. Place small cubes of American cheese also on the plate. Serve with French dressing.

On crisp lettuce leaves place a slice of pineapple; cover pineapple with half a cup of cottage cheese that has been seasoned with salt and pepper and moistened with a little whipping cream. Arrange grapefruit sections, tomato sections and a strip of broiled bacon around pineapple. Place small cubes of American cheese also on the plate. Serve with French dressing.

On crisp lettuce leaves place a slice of pineapple; cover pineapple with half a cup of cottage cheese that has been seasoned with salt and pepper and moistened with a little whipping cream. Arrange grapefruit sections, tomato sections and a strip of broiled bacon around pineapple. Place small cubes of American cheese also on the plate. Serve with French dressing.

On crisp lettuce leaves place a slice of pineapple; cover pineapple with half a cup of cottage cheese that has been seasoned with salt and pepper and moistened with a little whipping cream. Arrange grapefruit sections, tomato sections and a strip of broiled bacon around pineapple. Place small cubes of American cheese also on the plate. Serve with French dressing.

On crisp lettuce leaves place a slice of pineapple; cover pineapple with half a cup of cottage cheese that has been seasoned with salt and pepper and moistened with a little whipping cream. Arrange grapefruit sections, tomato sections and a strip of broiled bacon around pineapple. Place small cubes of American cheese also on the plate. Serve with French dressing.

On crisp lettuce leaves place a slice of pineapple; cover pineapple with half a cup of cottage cheese that has been seasoned with salt and pepper and moistened with a little whipping cream. Arrange grapefruit sections, tomato sections and a strip of broiled bacon around pineapple. Place small cubes of American cheese also on the plate. Serve with French dressing.

On crisp lettuce leaves place a slice of pineapple; cover pineapple with half a cup of cottage cheese that has been seasoned with salt and pepper and moistened with a little whipping cream. Arrange grapefruit sections, tomato sections and a strip of broiled bacon around pineapple. Place small cubes of American cheese also on the plate. Serve with French dressing.

On crisp lettuce leaves place a slice of pineapple; cover pineapple with half a cup of cottage cheese that has been seasoned with salt and pepper and moistened with a little whipping cream. Arrange grapefruit sections, tomato sections and a strip of broiled bacon around pineapple. Place small cubes of American cheese also on the plate. Serve with French dressing.

On crisp lettuce leaves place a slice of pineapple; cover pineapple with half a cup of cottage cheese that has been seasoned with salt and pepper and moistened with a little whipping cream. Arrange grapefruit sections, tomato sections and a strip of broiled bacon around pineapple. Place small cubes of American cheese also on the plate. Serve with French dressing.

On crisp lettuce leaves place a slice of pineapple; cover pineapple with half a cup of cottage cheese that has been seasoned with salt and pepper and moistened with a little whipping cream. Arrange grapefruit sections, tomato sections and a strip of broiled bacon around pineapple. Place small cubes of American cheese also on the plate. Serve with French dressing.

On crisp lettuce leaves place a slice of pineapple; cover pineapple with half a cup of cottage cheese that has been seasoned with salt and pepper and moistened with a little whipping cream. Arrange grapefruit sections, tomato sections and a strip of broiled bacon around pineapple. Place small cubes of American cheese also on the plate. Serve with French dressing.

On crisp lettuce leaves place a slice of pineapple; cover pineapple with half a cup of cottage cheese that has been seasoned with salt and pepper and moistened with a little whipping cream. Arrange grapefruit sections, tomato sections and a strip of broiled bacon around pineapple. Place small cubes of American cheese also on the plate. Serve with French dressing.

On crisp lettuce leaves place a slice of pineapple; cover pineapple with half a cup of cottage cheese that has been seasoned with salt and pepper and moistened with a little whipping cream. Arrange grapefruit sections, tomato sections and a strip of broiled bacon around pineapple. Place small cubes of American cheese also on the plate. Serve with French dressing.

On crisp lettuce leaves place a slice of pineapple; cover pineapple with half a cup of cottage cheese that has been seasoned with salt and pepper and moistened with a little whipping cream. Arrange grapefruit sections, tomato sections and a strip of broiled bacon around pineapple. Place small cubes of American cheese also on the plate. Serve with French dressing.

On crisp lettuce leaves place a slice of pineapple; cover pineapple with half a cup of cottage cheese that has been seasoned with salt and pepper and moistened with a little whipping cream. Arrange grapefruit sections, tomato sections and a strip of broiled bacon around pineapple. Place small cubes of American cheese also on the plate. Serve with French dressing.

On crisp lettuce leaves place a slice of pineapple; cover pineapple with half a cup of cottage cheese that has been seasoned with salt and pepper and moistened with a little whipping cream. Arrange grapefruit sections, tomato sections and a strip of broiled bacon around pineapple. Place small cubes of American cheese also on the plate. Serve with French dressing.

On crisp lettuce leaves place a slice of pineapple; cover pineapple with half a cup of cottage cheese that has been seasoned with salt and pepper and moistened with a little whipping cream. Arrange grapefruit sections, tomato sections and a strip of broiled bacon around pineapple. Place small cubes of American cheese also on the plate. Serve with French dressing.



IF YOU DON'T  
receive your Sanford Herald, City  
Delivery, by 7:00 P. M., please call  
YELLOW CAB 1414

# The Sanford Herald

AN INDEPENDENT DAILY NEWSPAPER

SANFORD, FLORIDA MONDAY FEB. 25, 1952

## THE WEATHER

Cloudy with occasional rain north  
and central portion and possibly  
local showers in south portion  
through Tuesday. Considerably  
colder Tuesday night.

VOLUME XXXXIII

Established 1908

THIS ISSUE TWENTY FIVE CENTS



JETS OVER SANFORD

Official U. S. Navy Photo



# Total Building Permits For 1951 In Sanford Reach Over \$2,380,000

626 Permits Issued In '51 As Compared With 605 In 1950; Many Homes Built

By WILLARD CONNOLLY  
Building permits in Sanford during 1951 totaled \$2,380,604 or more than double the 1950 total of \$1,100,000, according to John Gillon, City Manager and former building inspector.

Although this was 11 percent under the record breaking 1950 figure of \$2,601,841 in new construction, 81 more permits were issued during 1951.

Of the total last year, \$2,016,175 or 86 percent was spent on single and multiple unit family dwellings. Of this, \$1,088,175 was for 146 single family homes.

Permits totaling \$238,000, were issued for the Castle Brewer, William Clark and Edward Higgins Terrace, public housing projects, and amounted to 31 percent of the 1951 total.

In all, 626 permits, many of which were for repairs or additions, were issued in 1951 as compared with 605 in 1950. Home permits in 1950 totaled 189, bringing the two year total single unit dwellings to 315.

Among the most active building firms and contractors here are Phillips Properties, Oster-Walker Homes, Inc., W. W. Dawson Construction Co., Fred Dyeon, Paul M. Campbell, W. L. Holcombe, Frank Ashdown, R. R. Arkenburg, and W. G. Miller of DeBary. The leading architect is R. J. Moughton, Jr., designer of the Municipal Stadium, the three public housing projects, and many fine homes.

More than 101 local homes valued at more than \$1,400,000 have been built since the fall of 1949 by Phillips Properties, a progressive Central Florida building firm of which William Phillips, Jr. is president and Wilborn Phillips, Jr., vice-president.

So far the firm has spent \$25,000 for land here, \$280,000 in cash contracts and its total outlay is more than \$1,750,000, according to company officials.

The latest development is the beautiful 30 acre tract, known as the Wynwood Subdivision located east of Maitland Avenue and north of Geneva Avenue. Thirty fine homes have already been constructed there, and it is planned to build 60 more. In addition the company has on its agenda plans to build 45 homes for naval personnel.

The houses range in price from \$8,500 to \$12,500. The first phase of the development is a two acre tract of glass and aluminum bungalow in Wynwood. It is planned to build more than a million dollars worth of homes.

During September, 1949 the Phillips Properties started their first development project here with the erection of 28 moderate priced homes on Esplanade Drive in the San Lita section. During the following month they started work on 18 homes in the Pinehurst area immediately south of Seminole High School.

On Magnolia Heights six houses were erected and on the Frank L. Woodruff property, 16.

Highland Park, a subdivision which has been inactive since 1949, was the next scene of building activity by Phillips Properties and 20 fine homes were erected there.

In nearby Franklin Terrace where Barney Beck's estate once ranged and where the old Beck home is located, 20 more homes were built in the \$8,500 to \$11,000 price range.

Prior to the Wynwood program, 30 houses in the San Lita subdivision were built. There are on Orange Avenue near Maitland Avenue and off Twenty-fifth Street.

In addition a house has been built on Rose Court and another on Maitland Avenue by Phillips Properties.

Oster-Walker Homes, Inc., now in the second year of its Sanford operations, can look back on 15 constructive months during which they have erected approximately 40 homes.

A year ago, all that was visible were the foundations of three houses in the San Lita subdivision on Maitland Avenue. Today there is a large block of homes, typically Florida homes, and plans are in the making for the erection of 15 more homes in the area.

Plans have been made for the erection of 25 more homes in the area. Plans have been made for the erection of 25 more homes in the area.

Plans have been made for the erection of 25 more homes in the area. Plans have been made for the erection of 25 more homes in the area.

Plans have been made for the erection of 25 more homes in the area. Plans have been made for the erection of 25 more homes in the area.

Plans have been made for the erection of 25 more homes in the area. Plans have been made for the erection of 25 more homes in the area.

Plans have been made for the erection of 25 more homes in the area. Plans have been made for the erection of 25 more homes in the area.

Plans have been made for the erection of 25 more homes in the area. Plans have been made for the erection of 25 more homes in the area.

Plans have been made for the erection of 25 more homes in the area. Plans have been made for the erection of 25 more homes in the area.

Plans have been made for the erection of 25 more homes in the area. Plans have been made for the erection of 25 more homes in the area.

Plans have been made for the erection of 25 more homes in the area. Plans have been made for the erection of 25 more homes in the area.

Plans have been made for the erection of 25 more homes in the area. Plans have been made for the erection of 25 more homes in the area.



A two story dwelling of particular charm and of the Monterey type of architecture is that of Mr. and Mrs. Ralph T. Cowan at 118 North Summerlin Avenue in the Mayfair Section. The Cowans, who have been living in Orlando for 11 years, moved into their new home last fall. The first floor includes a large living room, dining and

breakfast rooms, kitchen, den, powder room and screen porch. On the upper floor are three bedrooms and two baths. The garage is of the double type. Mr. Cowan, owner of Cowan's dry goods store, served as chairman until recently of the Sanford Housing Authority. E. J. Moughton assisted Mr. and Mrs. Cowan in planning the house.

Photo By Connolly

## Egyptian Envoy Raps Communism On Rollins Forum

Sen. Duff Says Ike Has Made It Clear Where He Stands

WINTER PARK (AP)—An Egyptian ambassador asked the U. S. to help halt communism, a Senator spoke for Gen. Dwight Eisenhower and a movie actress said the warmth of an audience is like "that of the sun."

All were contributors to here Sunday in Rollins College's annual "publication" of its Animated Magazine. They spoke before more than 3,000 persons in three auditoriums as the publication moved indoors, because of rain, for the first time since 1937.

The actress was Mary Pickford. The ambassador was Kamel Abd El Fattah, who asked for stronger moral world leadership from this country.

Rahim said that "unjustly" handled the Nationalist movement in the Middle East, which the British - Egyptian dispute is but a symptom, can become the basis of a new world war.

The Senator was James Duff (R.-Pa.), who said "no one in public life has made it so clear where he stands on major problems" as Gen. Eisenhower.

Acting Rollins President Hugh F. McKean, First Vice-President A. J. Hanna and Vice-President-treasurer John Tiedke "edited" the three sessions.

Another contributor was Willard Caldwell, federal civil defense administrator and former Florida governor, who urged more attention to civil defense. He warned communism now has the power to strike at America.

Caldwell stressed the same points to each of his three audiences, emphasizing that "we are faced with two enemies—that threat of communism from without and the threat of thoughtless error from within."

Communism, the administrator said, has never existed from its purpose of global domination and wiping democracy off the face of the earth.

"We've got to face the harsh fact that workers of the future will make out entire country a battlefield and combat area. No one of us, military or civilian, can hope to avoid becoming a direct, personal target. Leaders of Russian terrorism have civil war propaganda as a signal for success."

Another contributor was Hiram Bingham, former governor of Hawaii, who urged more attention to civil defense. He warned communism now has the power to strike at America.

Caldwell stressed the same points to each of his three audiences, emphasizing that "we are faced with two enemies—that threat of communism from without and the threat of thoughtless error from within."

Communism, the administrator said, has never existed from its purpose of global domination and wiping democracy off the face of the earth.

"We've got to face the harsh fact that workers of the future will make out entire country a battlefield and combat area. No one of us, military or civilian, can hope to avoid becoming a direct, personal target. Leaders of Russian terrorism have civil war propaganda as a signal for success."

Another contributor was Hiram Bingham, former governor of Hawaii, who urged more attention to civil defense. He warned communism now has the power to strike at America.

Caldwell stressed the same points to each of his three audiences, emphasizing that "we are faced with two enemies—that threat of communism from without and the threat of thoughtless error from within."

Communism, the administrator said, has never existed from its purpose of global domination and wiping democracy off the face of the earth.

"We've got to face the harsh fact that workers of the future will make out entire country a battlefield and combat area. No one of us, military or civilian, can hope to avoid becoming a direct, personal target. Leaders of Russian terrorism have civil war propaganda as a signal for success."

Another contributor was Hiram Bingham, former governor of Hawaii, who urged more attention to civil defense. He warned communism now has the power to strike at America.

Caldwell stressed the same points to each of his three audiences, emphasizing that "we are faced with two enemies—that threat of communism from without and the threat of thoughtless error from within."

Communism, the administrator said, has never existed from its purpose of global domination and wiping democracy off the face of the earth.

## McCarran To Postpone Action On Request For Powers For Morris

WASHINGTON (AP)—Chairman McCarran (D.-Nev.) said today he wants his Senate Judiciary Committee to postpone action on President Truman's "unparalleled request for revolutionary powers," as McCarran put it, for Corruption Investigator Newbold Morris.

In advance of a closed meeting (10 a.m. EST) to consider the matter, McCarran declared: "I am going to recommend that we give much more extensive study to this request for authority to set up an investigation. If you please, which could deny Congress access to important information in its own investigations."

Three Republican members of the committee — Sen. Ferguson of Michigan, Wiley of Wisconsin, and Watkins of Utah—also said before the meeting that they favor more study of the President's request.

"Mr. Truman asked that Congress empower Morris to (1) grant immunity from prosecution to witnesses and (2) issue subpoenas for persons and documents in his investigation of any wrongdoing in government."

A week ago McCarran set up a Judiciary subcommittee with himself as chairman to look into the Truman request for cleanup powers. The group was instructed to report to the full committee today.

McCarran said in an interview he would report "no sentiment at all" in the subcommittee for giving Morris authority to promise witnesses immunity from prosecution. The House Judiciary Committee already has rejected the President's request for such authority, but has taken no action on the subpoena power issue.

Morris said last week he had not asked for witness immunity authority. He added, however, that he might just as well quit if he didn't get subpoena power.

McCarran said today he would favor granting subpoena authority only if Congress provided it would have access to any material Morris obtained.

## Atlantic Allies End Meeting On Europe's Defense

What It Is Going To Cost U. S. Is One Big Problem Left

LISBON, Portugal (AP)—The 14 Atlantic allies today ended a historic meeting which produced a master plan for Western Europe's defense. Just two problems remained at the final sessions of the North Atlantic Council.

1 — How much the U. S. will pay of an estimated 450 million dollar program to string air bases, communication networks and headquarters across Europe. The best guesses were at least 40 percent.

2 — Streamlining of the NATO civil and economic organization under a permanent secretary-general.

A big three meeting on Germany and Austria Tuesday holds U. S. Secretary of State Acheson, French Foreign Minister Robert Schumann and British Foreign Secretary Anthony Eden here. They will talk chiefly about lifting Allied controls on defeated West Germany's war industries and try to settle the final size and form of its contribution.

(Continued on page seven)

## COFC Pledges Builders Aid In Local Area

Hall, Breckenridge Stress Value Of Defense Area In Getting Materials

Pointing out that Seminole County has recently become a critical defense area since the reactivation of the Sanford Naval Auxiliary Air Station, and hence is able to obtain building materials in critically short supply in most parts of the country, Jack Hall, president of the Seminole County Chamber of Commerce, today pledged the support of that organization to builders seeking investments in this part of the state.

"To business and commercial interests Sanford and Seminole County offer a great opportunity as a newly developing marketing and distribution center for Central Florida," said Mr. Hall. "Anyone having any particular interest in our section of the state please call on us for any information, general or specialized, which they may desire. It is always a pleasure to be of service to anyone."

Echoing Mr. Hall's sentiments, Forrest Breckenridge, Chamber of Commerce manager, said, "There is no doubt but what Sanford and Seminole County are now entering upon the greatest period of development in their entire history. The larger centers of population such as Miami, Tampa and Jacksonville have reached their apex, so to speak, during this particular period of growth and development of Florida. It is now the turn of the smaller towns to absorb the overflow of the floods of people moving to Florida to retire, or to actively support themselves in business."

Due to the phenomenal growth of Florida, new market and distribution areas are beginning to form. Certain smaller towns are in advantageous positions to become the natural centers of distribution for these new areas of development. It is apparent that Central Florida with a population of approximately 225,000 or more people has now developed into a market which no longer can be served on a marginal basis from Jacksonville or Tampa. The customer and service requirements are such that local warehousing and distribution must be established. In addition, the exports of the area, citrus and produce, are of such volume that local handling is required.

"The Sanford and Central Florida population concentration is relatively new. The section is attractive to the tourist industry and the agricultural capabilities are extensive; citrus, produce and winter vegetables have been developed extensively and bring large incomes. The commercial development has been somewhat slow in comparison to other parts of the state, due primarily to the fact that the section is midway between Tampa and Jacksonville and therefore represents a choice competitive prize to the older commercial enterprises. It has only been in recent years that the population growth and consumer demands were such that they could no longer be handled on a marginal basis and the section is now the fourth point of high population density in the state."

"Since Sanford and Seminole County are the natural hub of this newly developing market, it follows that plans should be carefully laid by its civic and commercial organizations to take full advantage of this opportunity."

(Continued on page seven)

## Southwest Is Hit By Heavy Snows

By The Associated Press  
Snow in the Southwest was the most unusual aspect of the nation's weather picture today. Otherwise it was close to a normal winter day, except, perhaps, for Fraser, Colo., where the thermometer read 30 degrees below zero.

The Southwest snow area covered Eastern New Mexico, the Texas Panhandle, Northwest Oklahoma and parts of Kansas. Oklahoma City got two inches, Wichita, Kas., three inches.

## Jaycees Lending Aid To Drive For New Industries

Pres. Crawford Says Central Florida Is State's Best Area

By KENT CHETAIN  
"One of the primary objectives of the Seminole County Junior Chamber of Commerce is to promote new industries in our county and to co-operate to the fullest extent in locating other enterprises here," said Tim Crawford, president.

"We sincerely believe Central Florida and Seminole County in particular has more to offer the new and shifting industries from the North than any other section of the state," he added.

The Jaycees record of public spirited achievements is long and noteworthy. In 1950 the local group gained the state honors for staging the best fire prevention program during the National Fire Prevention Week.

The annual Jaycees Christmas parade was the greatest ever staged last December when an estimated 15,000 people lined the streets to watch the floats and bands in Sanford. Al Wallace was chairman of the Christmas parade committee last year.

Another Jaycees event, the children's summer Fishing Rodeo received national wide publicity in final base from Jacksonville or Tampa. The customer and service requirements are such that local warehousing and distribution must be established. In addition, the exports of the area, citrus and produce, are of such volume that local handling is required.

Currently the Junior Chamber is working on a gala Circus Day program slated for Mar. 6. The Jaycees are selling tickets to the event, receiving 50 percent of the net proceeds of the advance sale of tickets and 10 percent on the day of the circus. Fred Clay is heading the Circus Committee this year.

Clarence Knight is in charge of another civic minded campaign known as "Get-Out-the-Vote." In this connection, Mr. Crawford says the Jaycees will be active during this coming primary and general election, in getting people registered and to the polls.

The Fire Prevention program in 1950 netted the Jaycees a winning prize, which will be Sanford's to keep, if they are declared the winner of the 1951 program. Final decision will not be made for the 1951 competition until next June. However, Mr. Crawford says the local Jaycees conducted an equally good campaign in 1951 as they did when the Junior Chamber won in 1950.

(Continued on page seven)

## Mayor Offers Welcome To Men In Navy

Extending a cordial welcome to the Navy men stationed at the Sanford Naval Auxiliary Air Station, Mayor William H. Stemper pointed out today that as a former Navy man himself he stood ready at all times to do everything in his power to make their assignment here as pleasant and beneficial as possible.

Mayor Stemper also extended a welcome to winter visitors in Sanford and pointed out the new tourist building which the City is constructing through the co-operation of the Junior Chamber of Commerce and the Seminole County Chamber of Commerce. He declared that everything that can possibly be done for the recreation and entertainment of the tourists will be supported.

Explaining that Sanford and Seminole County are primarily an agricultural area, he called attention to the fact that nearly six million dollars worth of agricultural produce was sold at the State Farmers Market last year, that the annual income from catfish alone is estimated at over \$400,000 a year, and that Seminole County, though one of the smallest in the state, ranks fifth in the shipment of citrus.

Efforts being made to promote the year around business activity of the community met with his approval, he declared, adding that industrial payrolls which help to furnish employment for workers during the summer months would greatly stimulate business activity during the slack season.

One of Sanford's greatest needs at the moment, the Mayor declared, is more apartment houses and other accommodations for tourists and our expanding population. Many new houses have been built in the past year, he pointed out, but much remains to be done before the demand for homes here can be met.

Mr. Stemper was elected Mayor of Sanford at the organization meeting held in the City Hall on Jan. 2, 1952, following his reelection to a three year term last November. He had previously served on the Commission for three years.

A graduate of Stetson University in the class of 1937, Mr. Stemper served in the Navy for four years during World War II. He is now engaged in the grocery business and is a past president and active member of the Junior Chamber of Commerce.

Secretary Of Navy Stops In Sanford

Secretary of the Navy Dan A. Kimball made a five minute visit at 10:25 o'clock yesterday morning at the Sanford Naval Auxiliary Air Station. He was on his way from Miami to Washington, D. C., and his plans stopped to pick up Francis P. Whitcomb, undersecretary of the Navy, who had been visiting relatives in Deland.

The bee's value as a pollinator is 20 times greater than its value as a honey producer.

IT'S JUST GOOD

Strategy  
TO MAKE YOUR  
HOME IN SANFORD...  
SUNNY FLORIDA...

• LAND OF SUN • LAND OF HEALTH • LAND OF FUN  
(A CHOICE COMBINATION)

...AND FOR THE FINEST IN—

• Diamonds • Diamond Mounting • Watches  
• Watch Repairing • Bracelets • Rings • Pearls

WERT-JEWELER

THE WAY OF THE JEWELER

20 EAST FIRST STREET

SANFORD, FLORIDA



# Sanford Backs Favorite Son For Governor

Brailley Odham, Sanford's 1st Candidate for Governor, Attacking Rackets

By KENT CHETLAIN  
J. Brailley Odham stepped into the state gubernatorial race for the Democratic nomination on Oct. 8, 1951 to become the first candidate to announce for that office, and the first candidate for governor in Sanford's history.

Often termed a "grass root" candidate by political writers in Miami and Tampa, Mr. Odham has jumped the gun on the other contenders by invading the large metropolises of Miami, Jacksonville and Tampa.

A 6-foot 3 1/4 inch, 200 pound handsome looking man, Odham served as the youngest member of the State Legislature in 1947 representing Seminole County. While in office Mr. Odham gained considerable distinction by actively fighting for economy in government.

His most notable achievement, while in the House, however, came when he exposed Representative Pappy of Key West for offering bribes. This eventually led the House to expel Pappy and gained for Odham the honor of being voted one of the three outstanding men in the Legislature by the press.

In 1949 he was re-elected to House and during this tenure he was recognized as the leader in the fight against the sales tax. Again the press bestowed an honor on him by ranking Mr. Odham among the 10 most outstanding legislators.

In announcing his candidacy last October, Mr. Odham stated that his purpose in seeking election was to "throw the commercialized gambling racketeers, legal and illegal, out of our state and local governments."

Odham was born Sept. 6, 1919 at Brunswick, Ga., the son of the late H. B. Odham and Mrs. Minnie L. Odham, who lives in Sanford. He has five brothers and three sisters.

Mr. Odham began his public school education in Miami, but later attended public schools of Sanford and graduated from Seminole High School in 1937. He worked his way through Louisiana College, Pineville, La., finding time to captain the basketball team during his junior and senior years. He also lettered three years as a tackle on the football team at L.C. He graduated with an A.B. degree in history and business administration.

It was while going to college that he met his future wife, the pretty blonde, Dorothy Tudor of Pineville, La. They were married in Louisiana in February, 1941. Her father is a building contractor in Pineville, La. The Odhams have one child a blonde hair and blue-eyed little girl of five years.

They are members of the First Baptist Church in Sanford in which Mrs. Odham has always taken a very active part. Odham enlisted in the Naval Reserve in 1942 and his military career carried him into the European and Pacific Theaters of War on the U.S.S. Nitro which supplied ammunition for battle ships and cruisers in the Normandy invasion. He was separated from the service on December, 1945 as a lieutenant (senior grade). After the war he became the distributor for Gulf Oil Corporation in Sanford. He owned and operated the Odham Motor Company as a dealer for Studebaker cars and trucks and Kelvinator home appliances. This latter phase of (Continued on page seven)

## GUBERNATORIAL CANDIDATE



J. Brailley Odham, Sanford candidate for governor, is seen here with his wife, the former Miss Dorothy Tudor of Pineville, La., and their five year old daughter Betty.

## GOP Chiefs Meet In Gainesville To Decide On Primary

By MALCOLM B. JOHNSON  
GAINESVILLE (AP)—Florida Republican leaders met here today to decide whether to hold a state primary election, call a state convention or let a committee hand-pick delegates to the GOP National convention.

Wesley Garrison, Dade County Executive Committee member and leader of a group favoring a primary, was quoted by the St. Petersburg Times as saying "if they beat us and hand-pick the presidential delegates, we will have a contesting delegation at the National Convention."

The Times reported Garrison said "we will elect our delegates at a state convention which will be called at some point in Central Florida within the next few weeks."

The Florida Supreme Court has rejected a suit to force popular primary election of 18 delegates and ruled it is up to the State Executive Committee to decide how they will be chosen.

The three proposed methods, primary election, selection at a convention and committee appointment, have all been used in the past.

A poll of the Executive Committee recently showed even some Taft's supporters, who could probably select all 18 delegates who would favor Taft, have indicated they favor a primary or convention.

Some party leaders have said they believe a primary to let Florida Republicans express their preference choice for presidential nominee would increase party registration.

Many Floridians who vote Republican in the November general election have for years registered as Democrats so they could have a choice in selection of state and county officers whose election usually is assured by Democratic Party nomination.

## Sen. Taft Claims Backing Of 'Mac' For Nomination

MacArthur May Be Keynote Speaker At G. O. P. Convention

By The Associated Press  
Sen. Taft of Ohio has told colleagues he is confident Gen. Douglas MacArthur will give him solid support for the Republican presidential nomination when the chips are down at the Chicago convention.

Taft would not comment, but

friends say he isn't worried about reports MacArthur might be thinking of himself as a possible nominee if a deadlock develops between Taft and Gen. Dwight D. Eisenhower.

Evidence of Taft's confidence in MacArthur was seen Sunday when he said on a television (CBS) program he favored the general addressing the convention. If he does, Taft added, he probably would be the keynote speaker.

But he sidestepped a direct answer to whether he plans to name MacArthur lead of the Joint Chiefs of Staff if elected. He said he has not been elected yet, and was not announcing any appointments.

Taft's supporters regard as significant that MacArthur did not deny NewsWeek magazine's article last week that he was a Taft backer.

On the other hand, in comment-

ing on the same article, MacArthur made it clear he is not supporting Eisenhower. Newsweek said he might support Harold E. Stassen or Eisenhower if either beat Taft.

MacArthur denied this in a statement, saying he could not back Eisenhower because he didn't know how he stood on many grave issues. The Maryland Citizens for Eisenhower Sunday wired MacArthur to claim to be those of Eisenhower on several foreign and domestic issues, and asked MacArthur to clarify his position on the same matters.

The Nation's new price boss, former Gov. Ellis Arnall of Georgia, said in another radio (NBC) interview he didn't believe any republican — not even Eisenhower — could carry a single Southern state in the election.

President Truman's friends were reported looking around for a way

to beat off what some of them now regard as a threat of victory by Sen. Kefauver of Tennessee in the March 11 New Hampshire primary.

One close friend is reported to be "deeply concerned" over the outcome, and hopes something can be done to buck things up for Truman there.

Sen. Robert S. Kerr of Oklahoma is larger as a democratic candidate — if Truman doesn't run. He has promise of powerful Midwestern and Southern support.

Truman is still silent on his plans. Secretary of Agriculture Brannan said Sunday in Denver the President should seek reelection because it would "be best for the national interest."

And, Brannan added, if Truman does run, "he will be elected."

THE SANFORD HERALD  
Mon. Feb. 25, 1952 Page 1

### OSAKA RIOT

TOKYO (AP)—About 40 Japanese Sunday night smashed windows in an Osaka police station after police rejected their demands for release of two men arrested for passing leaflets advertising a Communist meeting.

### Movie Time Table

RITZ  
"Lone Star"  
1:00 - 3:08 - 5:16 - 7:24 - 9:32  
MOVIELAND  
"Mating Season"  
PRAIRIE LAKE  
"Callaway Went Thataway"  
6:15 - 8:30 - 10:00

# Get Set for Happy Summer Days!



## All Year Round

IN

BEAUTIFUL SANFORD, FLORIDA

## Where Every Pleasure

## Awaits You

- SUNNING
- SWIMMING
- TENNIS
- BOATING
- GOLF
- DANCING
- FISHING
- PICNICKING
- HUNTING

AND ABOVE ALL--SANFORD'S

FRIENDLY, PROGRESSIVE PEOPLE

## MEET YOUR FRIENDS AT

# TOUCHTON DRUG CO.

**SANFORD Movieland**  
RIDE IN THEATRE

**LAST TIME TONIGHT**

LAUGH SURPRISE OF THE YEAR!

**THE MATING SEASON**

GENE TIERNEY-JOHN LIND

**TUESDAY & WEDNESDAY**

A really new kind of thrill for every movie-goer!

**KIRK DOUGLAS**

**THE BIG CARNIVAL**

**RITZ**

OPENS 12:45 DAILY

LAST TIMES TODAY!

THE GABLE  
GARDNER  
MOORE  
CRAWFORD

**LONE STAR**

**TUES. & WED.**

SHE KNEW ALL ABOUT LOVE... BUT NOT MUCH ABOUT MEN!

**JEANNE CRAIN**

**MODEL MARRIAGE BROKER**



THE SANFORD HERALD  
Mon. Feb. 25, 1952  
Established in 1888  
Published daily except Saturdays  
and Sundays. Published on Saturdays  
except Christmas and New Year's  
Days. Magnolia Avenue  
Sanford, Florida  
Subscription Rates  
In Advance  
One Year \$12.00  
Six Months \$7.00  
Three Months \$4.00  
One Month \$1.50  
All ordinary notices, cards of  
thanks, resolutions and notices of  
funerals, will be charged for the  
number of insertions. The charge  
for the first insertion is 10c per  
line. Subsequent insertions 5c per  
line. Classified advertising rates  
on application.  
The Herald is a member of the  
Associated Press which is entitled  
to the use of the name of the  
Sanford Herald in the publication  
of all the local news printed  
in this newspaper, as well as all  
the news elsewhere.

FRIDAY, FEB. 22, 1952  
TODAY'S BIBLE VERSES  
We cannot escape that necessity,  
but why not wait calmly and  
sleep? All the days of my  
appointed time I will wait, till  
my change come. — Job, 14:14.  
We do things in a big way  
here in Florida. The Florida  
Power & Light Co., which serves  
the Sanford territory, recently an-  
nounced a 10-year expansion pro-  
gram amounting to \$332,000,000.  
Estimates indicate there will be  
1,325,000 auto tags sold in Flor-  
ida this year at a yield to the  
State of some \$25,000,000.  
There are so many Major  
League ball clubs training in  
Florida this spring, you'd think  
the whole state was just one big  
ball park.  
Sanford bank deposits have  
increased \$2,181,000 in the past  
year, giving some idea of how  
rapidly Sanford is growing. In  
1940 combined bank deposits  
were \$2,232,000. Now they are  
\$13,235,000.  
The State Advertising Com-  
mission has done excellent work  
in seeking new industries, new  
capital for development, new  
homeowners and new tourists.  
And the Sanford Herald is doing  
its bit with this special edition on  
Seminole County.  
If everyone on the home front  
was doing his bit as well as those  
on the firing line, this country  
would have little to worry about.  
Soldiers in Korea have con-  
tributed \$277,983 to the 1952  
March of Dimes. Eighth Army  
headquarters announced last week.  
How much have you given?  
"They talk of Willie, of Wil-  
liam Jennings Bryan, of Teddie  
Roosevelt," says John Temple  
Graves. "But if ever in this home  
of the brave there was so in-  
veterate, so dynamic, so dog-  
matic, a campaigner as Robert  
A. Taft, the witness is missing".  
Court dismissed.  
If you like this edition of the  
Sanford Herald, tell our adver-  
tisers for they are the ones who  
have made it possible. It costs a  
great deal of money to produce a  
newspaper like this and the only  
way to pay for all the labor that  
goes into it is through advertising.  
The Herald appreciates the sup-  
port and co-operation which it  
is receiving from the business  
community.  
Harold Stassen says that At-  
torney General J. Howard McGrath  
has become a millionaire since  
assuming public office. It is  
difficult to see how one could  
become a millionaire nowadays  
under any circumstances, but it  
is more difficult to see how a  
public office-holder could, in view  
of the relatively small salaries  
they receive. Many of them do,  
nevertheless, and the obvious as-  
sumption is that it is not honest.  
The tourist business in Florida  
will reach its long sought one  
billion dollar goal this year, if  
last summer's season approaches  
that of the last year or two, ac-  
cording to the St. Petersburg  
Times, pointing out that in some  
cases employment is up by ap-  
proximately 60 percent, largely  
as a result of the tourist business.  
Sanford is one of those com-  
munities which is being greatly  
benefited by this great influx of  
tourists.  
One of Florida's least known  
industries is the production of  
cotton in which the state ranked  
among all the states in the  
United States in the third quarter of 1951.  
Cotton has been produced in  
Sanford for many years and it is  
one of the main crops of the  
area.

## The Lost Generation

Winds and rain "amite flat the thick rotundity  
of the earth" and chaos comes again.  
From the shouts of the rioting mobs in North Africa  
to the rumble of guns in the Far East the sound and the  
fury of world-wide disorder comes to our ears. As the im-  
pelling need of defending our country against aggression  
becomes more apparent, high taxation burdens the poor as  
well as the rich, and rising deficits produce inflation and  
threaten national bankruptcy. The dilemma is a moral degeneracy which has made the mink  
coat a national symbol and has culminated in the college  
cheating scandals and the basketball fix.  
Many young men of today are perplexed and confused.  
They do not know whether to prepare themselves for the  
ways of peace, or for the field of battle. They find their  
services competed for by the armed forces, by business and  
industry, by the arts and sciences almost without regard to  
their talents, abilities or their true worth. They can make  
more money at 25 than their fathers made at 60; yet they  
can save nothing for the future, and they are concerned lest  
the houses which they are buying collapse before the final  
payments are made. They are told that they must prepare  
themselves to defend their liberties and their country, but  
they are warned that the next war will destroy civilization.  
They are lost.

Twenty-five years ago there was another lost genera-  
tion. Boys who had reached the age of 18 were snatched out  
of their homes, rushed off to training camps and within  
three months found themselves in the woods of Chateau  
Thierry. They came back to peddle apples on the streets of  
New York, or to drown their disillusionment and despair in  
bathtub gin. The high ideals and Christian principles which  
they had learned at their mother's knee crumbled under the  
impact of the speakeasies, the Wall Street bubble and dollar  
diplomacy. But the same gilded era which produced Scott  
Fitzgerald and his "Great Gatsby" also gave us William  
Faulkner, Eddie Rickenbacker, and Arthur Hays Sulzberger.  
Fifty years before that another generation of the trag-  
ic era, spawned in the whirlpools of secession and tested in  
the fire of Fredericksburg and Appomattox, was rising  
from the dust of a devastated South and a bloody and bank-  
rupt North. More demoralizing than the houses which had  
been burned to the ground were the homes which had been  
divided against themselves. Brave men wondered as they  
looked into the future whether the damage to the political  
and financial structure of the country, to men's souls, ever  
could be repaired. And yet, out of the chaos of this hopeless  
period came Joel Chandler Harris, Thomas Edison and Ol-  
iver Wendell Holmes.  
The pages of history are wet with the tears of lost gen-  
erations, and bright with the warm glow of courage, wisdom  
and justice. The French Revolution, which produced a  
Robespierre and filled the gutters of Paris and the rivers  
of France with the blood of thousands of innocent French-  
men, also gave us "Liberty, fraternity, equality". Out of the  
ashes of the Napoleonic wars arose the incomparable Wagn-  
er. And the Thirty Years War gave us Rubens, Rembrandt  
and Van Dyke and thousands of unremembered giants no  
less great for being unremembered.  
There is no lost generation for those who see the stars.  
For those who have the courage to face undaunted the fan-  
tastic terrors of the great unknown, to stand in the temples  
of their fathers with bowed heads while cynics laugh and  
sneer, to fall and rise again; for those who have the wisdom  
and integrity to put service to mankind before personal  
gain; for those who believe in God, there is hope and promise  
for the future.  
There is no lost generation for those who eat, drink  
and be merry, NOT for tomorrow we die, but because we  
are born again.

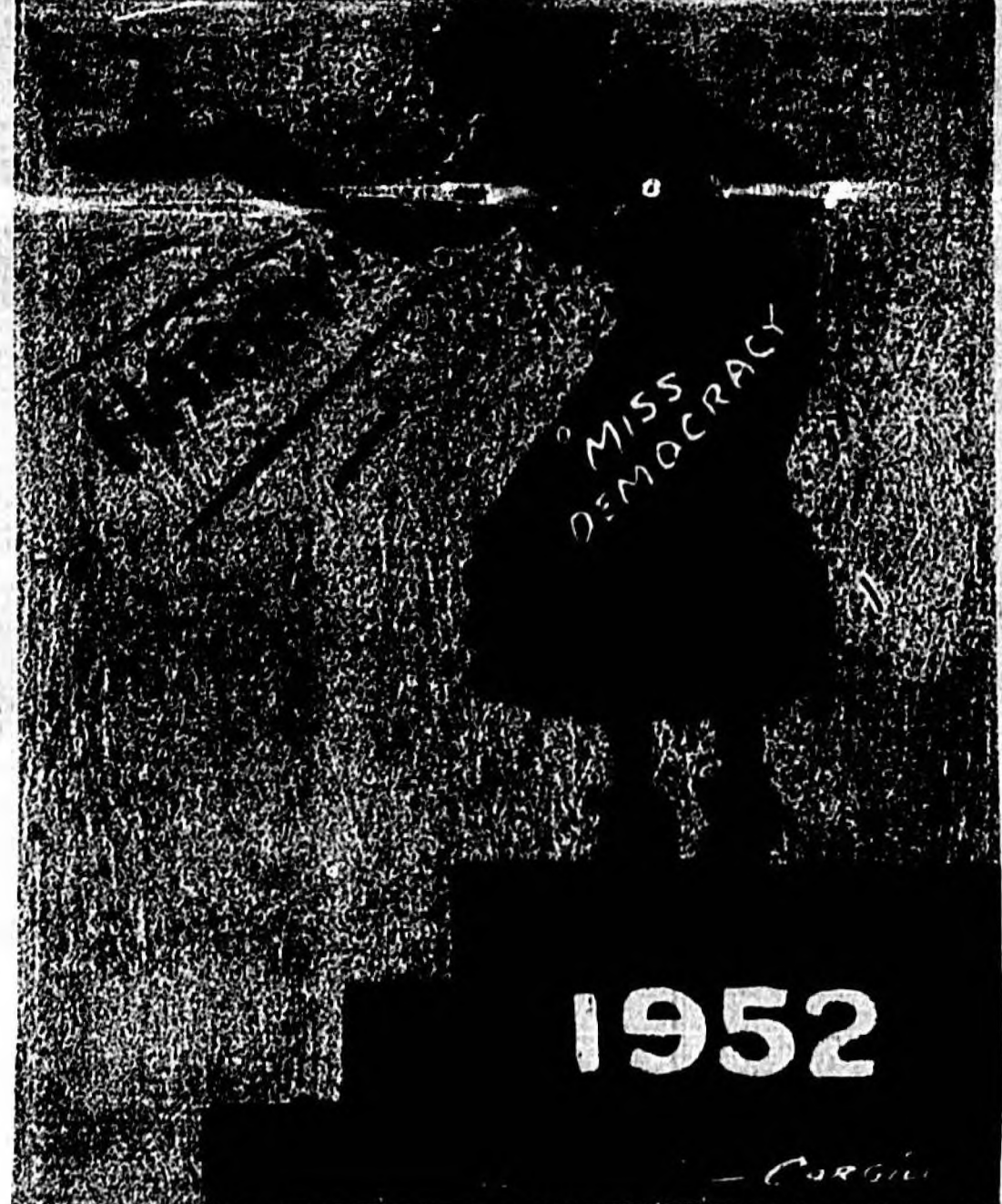
## Welcome, Navy

This issue of the Herald is dedicated to the young men  
of the Navy who have so recently come to make their  
homes among us. It is with the hope that the people of San-  
ford and Seminole County will learn more of interest about San-  
ford and Seminole County that this issue is published.  
The Naval Station, which was first commissioned on  
Nov. 3, 1942, was recommissioned after a long period of  
civilian use following the war on May 1, 1951. Known origi-  
nally as the U. S. Naval Air Station at Sanford, it is now  
called the U. S. Naval Auxiliary Air Station, and its func-  
tion of training fliers, first for the bomber command, and  
then as fighter pilots, has been changed to a home port for  
fleet air wings where planes can be reconditioned and fliers  
kept at a peak of training.  
The roll of those who have been stationed in Sanford  
is replete with the names of naval heroes. There was Capt.  
Hughes, first commanding officer who was at Pearl Harbor  
and Midway and later had a carrier shot out from under  
him in the Atlantic. Comdr. Kirkpatrick, who was on the  
Waip when it was sunk in the Pacific, and Otto Smoot, Jim  
Slincy, Maurice Lee, Millard Thrash, Chilcott, Robb, Holmer  
and Christman, and scores of others who hunted submarines  
from Iceland to Recife and fought the Japs from Midway to  
Okinawa.  
No less significant was the role played by many of  
the men now stationed in Sanford both in the second World  
War and in the Korean fighting, men like Capt. Chittenden  
who was also at Pearl Harbor and serving with Capt.  
Hughes and who won the Bronze Star in combat at Okinawa,  
and CAM Tom Dunn who was in the Philippines when the  
war broke out and is the holder of the Distinguished Flying  
Cross and several Air Medals.  
But of these and other men now stationed in Sanford  
we will let the Herald tell their stories. Suffice it for us to  
say that they are welcome to Sanford, those who have  
made of the Navy a career, and those who take it vicariously  
as a temporary call to duty by their country.  
May their stay here be a pleasant one, and when their  
service with the Navy is over, and they are ready to settle  
down in one spot where the mockingbirds sing and the fra-  
grance of the orange blossoms connotes the arrival of  
spring, may they come back to Sanford and find here the  
peace and contentment which they so richly deserve.

## C of C

(Continued from page two)  
The Chamber of Commerce and other interests for  
an orderly and economically sound  
growth and development. The San-  
ford County Chamber of Com-  
merce has in the past several  
years taken the initiative in or-  
ganizing a cooperative effort among  
those vitally concerned with the  
growth factor and sound plans have  
been devised and promulgated to  
secure a healthy balance in the  
development of the area.  
One of the planned projects  
which has done much to plan and  
develop the area is the plan to  
develop a new hotel in the area.  
The plan is to develop a new hotel  
in the area, which will be a great  
benefit to the area. The plan is to  
develop a new hotel in the area, which  
will be a great benefit to the area.  
The plan is to develop a new hotel in  
the area, which will be a great benefit  
to the area. The plan is to develop a  
new hotel in the area, which will be a  
great benefit to the area. The plan is  
to develop a new hotel in the area, which  
will be a great benefit to the area.

## LADY IN THE DARK



## Treasury Accused Of Breaking Rules To Assist Nunan

By MARVIN L. ARROWSMITH  
WASHINGTON (AP) — Sen. Fer-  
guson (R-Mich.) today accused the  
Treasury Department of "stretch-  
ing its rules to let a former in-  
ternal revenue commissioner re-  
present tax-troubled clients."  
A Treasury official called the  
accusation "somewhat far-  
fetched."  
Ferguson said in an interview  
the Treasury "had no business  
whatsoever" authorizing Joseph D.  
Nunan, former chief of the  
Revenue Bureau, to represent clients  
in tax difficulties with the  
government.  
"I think the department was  
stretching its own rules when it  
did that and I am thinking about  
introducing legislation which would  
prevent it in the future," Ferguson  
said.  
Treasury officials said Sunday  
they would welcome a move by  
Congress to clamp tight restric-  
tions on former government offi-  
cials seeking to represent clients  
before government agencies.  
In fact, a spokesman said, the  
Treasury urged a sweeping bar  
against the practice in 1930, but  
Congress did nothing about it.  
As a result, the Treasury said in  
a statement, it worked up its own  
restrictions which "go far beyond  
the prohibitions imposed by Con-  
gress."  
The Treasury said the only law  
on the subject, basically unchanged  
since 1875, bars a former employe  
for two years after leaving service  
from prosecuting any claim against  
the United States that was pending  
while he was with the government.  
The Treasury says its own rules  
bar "forever" — not for just two  
years — any former employe  
from acting as attorney or agent  
in any matter they learned about  
while working for the government.  
It said this applied to any matter,  
not just claims against the govern-  
ment.  
It does, however, permit them  
to handle cases about which they  
gained no knowledge while holding  
government jobs. This is the type  
of permission, granted 631 former  
employes, now the subject of con-  
troversy.  
The issue was brought up again  
last week when Sen. Williams (D-  
Del.) outlined in the Senate the  
cases of four taxpayers for whom  
he said Nunan got permission to  
serve as counsel. Williams said  
the government has collected "not  
one dime" in taxes or penalties in  
any of these cases.  
The Delaware lawmaker also  
said a New York law firm of which  
Nunan was a member had obtained  
Treasury consent to represent 102  
tax clients before the Revenue Bu-  
reau in cases which had been pend-  
ing while Nunan and some others  
in the firm worked for the Bureau.

## Congressman Herlong Reports By KID HERLONG

The next big issue coming up in  
Congress will be universal military  
training. It will be the order of busi-  
ness Feb. 28 until completed. We  
have received a great deal of mail  
on this subject—some for and some  
against. This is another one of  
those cases where it is not possible  
to please everyone.  
Briefly, universal military train-  
ing is a system under which nearly  
all young men in the nation, upon  
attaining the age of 18, will be re-  
quired to undergo six months of  
basic military training, followed by  
transfer to a Reserve component  
for a period of 7 1/2 years. The sole  
objective of U.M.T. is to create a  
discuss them all in one or several  
Ready Reserve of non-veterans.  
The questions that have arisen  
with regard to this program are so  
multifarious that it is not possible  
to discuss them all in one or several  
news letters. Significant factors  
with reference to the proposal are:  
(1) It will be under civilian direc-  
tion; (2) Boys will be with other  
boys of the same age group; (3)  
There will be civilian control as to  
who goes into the service; (4) No  
beverages containing more than  
one per cent of alcohol may be  
sold to members of the corps; (5)  
A boy gets free insurance while he  
is in training and for 120 days  
thereafter; (6) He maintains the  
same re-employment rights now  
granted to members of the Armed  
Forces; (7) He does not receive  
veterans' benefits under the G. I.  
Bill unless he later goes on active  
duty as a Reservist; (8) It will  
ultimately save the taxpayers of the  
country 13 billions of dollars an-  
nually.  
There are many other factors  
involved; these are only a few.  
There is no termination date set  
in the bill, but a group of us are  
preparing such an amendment  
which will set a termination date.  
At that time it will have to be re-  
examined by Congress and if it is  
working and the people want it,  
it may be continued. If not, we  
can go back to the draft. I think  
everyone agrees that we can't just  
refuse to do anything with regard  
to protecting ourselves.  
I have just completed a whip  
check of the southeastern zone  
which is my responsibility. All  
but four members were in town.  
Ninety-five per cent of these South-  
ern members were for U.M.T. in  
principle, although six members  
were not sure about this particular  
plan.  
Thank you for your answers to  
our questionnaire; they are really  
pouring in. We will tabulate them  
and give you the results at a later  
date.

## Drop A Hint About Health

W. V. Hitting  
Touchdown Drug Co.  
Mothers and fathers always  
regard themselves as excellent  
advisors to their children.  
When children grow to adults  
they can see that parents too  
need a little advice, especially  
as regards their health.  
Although parents may not  
show it or act on it immedi-  
ately, they heed the suggestions  
of their children. So drop a  
well chosen word now and then  
about seeing a doctor and  
keeping up good health. You  
will help your parents to at-  
tain the happiness and content-  
ment that later years should  
bring.  
You can discern a conscien-  
tious pharmacist by the clean  
orderly appearance of his  
pharmacy department.  
This is the mark of a serious  
pharmacist who is concerned  
with the health of his customers.

## Lovelier Permanents ... THAT ARE GOOD FOR YOUR HAIR!



**CAMPBELL'S CABINETS**  
● BUILDERS' SUPPLIES ● MILLWORK  
Phone 1447 Highway 17-92 South

---

# USED CARS

---

<b>1949 NASH</b> 3 Dr. Sedan, Locally Owned, Low Mileage, Radio, Heater —Looks and Runs Good <b>Only \$1150.00</b>	<b>1950 CHEVROLET</b> 3 Dr. Sedan, Excellent Con- dition — Low Mileage <b>\$1617.00</b>
<b>1951 PLYMOUTH</b> Club Coupe—Looks New— Only 4350 Miles— Plymouth's Best Car Guaranteed <b>\$1806.00</b>	<b>1950 DESOTO</b> Custom Sedan—A Beautiful Sedan Driven only 18,350 By A Careful Couple —Fully Equipped With Heater, Defroster & Radio <b>For \$1895.00</b>
<b>1947 OLDSMOBILE</b> Sedan—A Maroon 4 Door Sedan, Radio, Set of Practically New Tires, Good Mechanically <b>For \$990.00</b>	<b>1948 MERCURY</b> Club Sedan—Extra Clean— Radio, Heater—Locally Owned <b>For \$1150.00</b>

---

**NICHOLSON BUICK CO.**  
216 MAGNOLIA AVENUE  
TELEPHONE 1634 SANFORD, FLORIDA

**SAMPLE PRIMARY ELECTION  
BALLOT  
DEMOCRATIC PARTY  
Tuesday, May 6, 1952  
SEMINOLE COUNTY**

**PRECINCT NUMBER** \_\_\_\_\_

**NAME A CROSS MARK (X) AFTER THE NAME OF THE  
CANDIDATE OF YOUR CHOICE**

<b>VOTE FOR ONE</b> FOR SECRETARY OF STATE VOTE FOR ONE FOR ATTORNEY GENERAL VOTE FOR ONE FOR COMPTROLLER VOTE FOR ONE FOR STATE TREASURER VOTE FOR ONE CIRCUIT COURT JUDGE 1st Judicial District VOTE FOR ONE STATE ATTORNEY 5th Judicial District VOTE FOR ONE FOR STATE SUPERINTENDENT OF PUBLIC INSTRUCTION VOTE FOR ONE FOR COMMISSIONER OF AGRICULTURE VOTE FOR ONE FOR RAILROAD COMMISSIONER VOTE FOR ONE FOR STATE SENATOR 37th SENATORIAL DISTRICT VOTE FOR ONE <b>Lloyd F. Boyle</b> <b>A. Max Brewer</b> FOR MEMBER OF THE HOUSE OF REPRESENTATIVES GROUP NO. 1 VOTE FOR ONE <b>Mack N. Cleveland, Jr.</b> <b>M. B. (T-Bone) Smith</b> FOR MEMBER OF THE HOUSE OF REPRESENTATIVES GROUP NO. 2 VOTE FOR ONE FOR CLERK OF THE CIRCUIT COURT VOTE FOR ONE FOR TAX COLLECTOR VOTE FOR ONE FOR COUNTY ASSESSOR OF TAXES VOTE FOR ONE FOR COUNTY JUDGE VOTE FOR ONE FOR COUNTY PROSECUTING ATTORNEY VOTE FOR ONE <b>Geo. A. Speer, Jr.</b> FOR SHERIFF <b>C. W. (Charlie) Beck</b> <b>J. L. Hobby</b> <b>J. Clay Williams</b> FOR COUNTY SUPERINTENDENT OF PUBLIC INSTRUCTION VOTE FOR ONE <b>T. W. Lawton</b> <b>Rayburn T. Milwee</b> FOR SUPERVISOR OF REGISTRATION VOTE FOR ONE FOR COUNTY COMMISSIONER DISTRICT NO. 1 VOTE FOR ONE <b>Earl Higginbotham</b> FOR COUNTY COMMISSIONER DISTRICT NO. 2 VOTE FOR ONE FOR COUNTY COMMISSIONER DISTRICT NO. 3 VOTE FOR ONE <b>John W. Melsch</b> FOR MEMBER OF BOARD OF PUBLIC INSTRUCTION VOTE FOR ONE FOR MEMBER OF BOARD OF PUBLIC INSTRUCTION VOTE FOR ONE FOR MEMBER OF BOARD OF PUBLIC INSTRUCTION VOTE FOR ONE FOR GOVERNOR VOTE FOR ONE FOR JUSTICE OF THE PEACE VOTE FOR ONE FOR JUSTICE OF THE PEACE VOTE FOR ONE FOR CONSTABLE VOTE FOR ONE FOR CONSTABLE VOTE FOR ONE FOR STATE REPRESENTATIVE COMMITTEEMAN	<b>VOTE FOR ONE</b> FOR COUNTY PROSECUTING ATTORNEY VOTE FOR ONE <b>Geo. A. Speer, Jr.</b> FOR SHERIFF <b>C. W. (Charlie) Beck</b> <b>J. L. Hobby</b> <b>J. Clay Williams</b> FOR COUNTY SUPERINTENDENT OF PUBLIC INSTRUCTION VOTE FOR ONE <b>T. W. Lawton</b> <b>Rayburn T. Milwee</b> FOR SUPERVISOR OF REGISTRATION VOTE FOR ONE FOR COUNTY COMMISSIONER DISTRICT NO. 1 VOTE FOR ONE <b>Earl Higginbotham</b> FOR COUNTY COMMISSIONER DISTRICT NO. 2 VOTE FOR ONE FOR COUNTY COMMISSIONER DISTRICT NO. 3 VOTE FOR ONE <b>John W. Melsch</b> FOR MEMBER OF BOARD OF PUBLIC INSTRUCTION VOTE FOR ONE FOR MEMBER OF BOARD OF PUBLIC INSTRUCTION VOTE FOR ONE FOR MEMBER OF BOARD OF PUBLIC INSTRUCTION VOTE FOR ONE FOR GOVERNOR VOTE FOR ONE FOR JUSTICE OF THE PEACE VOTE FOR ONE FOR JUSTICE OF THE PEACE VOTE FOR ONE FOR CONSTABLE VOTE FOR ONE FOR CONSTABLE VOTE FOR ONE FOR STATE REPRESENTATIVE COMMITTEEMAN
--	--



## Social Calendar

**MONDAY**  
A piano recital in memoriam Mrs. Fannie Crenshaw Munson will be held by pupils of the Fannie R. Munson Piano School in her studio at 603 Myrtle Avenue at 8:00 o'clock.

The First Baptist Training Union will hold its Workers' Council this evening at 7:00 p. m. A covered dish supper will be served.

**TUESDAY**  
The Pilot Club dinner meeting will be held at 6:30 o'clock at the Yacht Club.

The Chapel Choir will hold rehearsal tonight at the First Baptist Church at 6:45 p. m.

Men of the Presbyterian Church will meet at 7:00 o'clock in the recreation room. Supper will be served and Judge Douglas Stevenson will be the guest speaker. Election of officers will be held. Every man of the church is urged to attend.

There will be a Unity Truth Class meeting at 7:45 p. m. at the Valdez Hotel, Carolyn H. Parsons, minister and teacher. Subject: "Unity's Favorite Radio Talk." The public is invited.

**WEDNESDAY**  
The Prayer Meeting Service at the First Baptist Church will be at 7:30 p. m.

**THURSDAY**  
The Youth Choir will hold rehearsal at 6:45 p. m. at the First Baptist Church.

The annual silver tea of the Seminole County Federation of Women's Clubs will be held at the Azalea Lodge in Casselberry from 3:00 to 6:00 o'clock. The public is invited to attend.

**FRIDAY**  
The Sanford Council of United Church Women will observe the World Day of Prayer at the First Baptist Church at 3:30 o'clock. All are invited to attend.

## Visitor Is Honored By Mrs. Williams

Mrs. Volle Williams, Jr., entertained for Clyde Terwilliger of Spartanburg, S. C., with a bridge party at her home on Laurel Avenue Thursday evening.

Gerbera daisies and azaleas were used in varied arrangements in the party room where the guests assembled for bridge. Prizes were won by Mrs. Wally Phillips, Mrs. George Zick and Mrs. James Crappa. A hostess gift was presented to the honored guest, Mrs. Terwilliger.

Later during the evening refreshments were served and others who were present were Mrs. William Bush, Mrs. Dale Scott, Mrs. Donal Bishop, Jr., Mrs. Tom Holt, Mrs. Edward Shinnholzer, Mrs. McKay Truluck, Mrs. Edward Higgins and Mrs. James Higgins.

## Operas Scheduled At Ringling Theater

**SARASOTA, (Special)**—An event of unusual interest to art lovers and devotees of the classical theater will be held here tonight when the 18th Century Italian Theater of the John and Mable Ringling Museum of Art is opened to the public. It is the only theater of its kind in the United States and one of a handful in the world.

The opening will be celebrated by a week-long presentation of two 18th Century chamber operas in the manner and mode of the little, horse-shoe shaped theater's origin. For this unique "world premiere," Museum Director A. Everett Austin, Jr., has obtained the services of a cast of New York opera stars.

Laxzio Hahn, artistic director of the New York City Opera Company, will serve in that capacity for the two plays and Eugene Herman, painter and set designer for Metropolitan Opera and television operatic productions, has designed special scenery and costumes.

## Sanford Band Visits Campus At Stetson

**DELAND, (Special)**—Ten members of the Seminole High School band visited the Stetson University campus Thursday to use the Stetson Symphony Band as a clinic organization in the preparing for the state contest.

In previous years all bands in this area have visited Stetson on one day for the clinic, but this year the high school bands are taking advantage of the regular Stetson rehearsal periods to observe the parts played.

Stetson Director Richard M. Fennell, in inviting the bands of this area to take advantage of the opportunity, suggested that first chair players sit alongside the Stetson musicians as the concert numbers are played.

The Sanford band, directed by Ernie Cowley, a Stetson graduate, sent the following players to the clinic: Jimmy Whitley, Gene Weekenson, Louise Benton, Jeanne Miller, Bob W. Sabe, Claudette Watts, Dawn Marie Bishop, Marvin Goebel, Mickey Durak and Philip Toney.

The Diemel Swamp covers a half a million acres of water jungle in Virginia and North Carolina.

## PRAIRIE LAKE DRIVE-IN

New Showing  
Dorothy McGuire - Fred MacMurray - Howard Keel

"Calvary West" "Thelma"

111 West First Phone 1294

## Personals

Friends of Clyde Clause will be glad to know he is home for a 30 day leave after spending a year in the Pacific.

Friends of Mrs. Henry McLaulin will be glad to know that she has returned home after a stay in the hospital.

Friends of Mrs. Mary Kenis will regret to learn that she has entered the Orange Memorial Hospital in Orlando.

Seaman Clyde Clause and his sister Jean Clause of Wildwood were visitors last week of Mr. and Mrs. O. E. Clause.

Friends of Mrs. Helen Zitrower will be interested to learn that she is satisfactorily recovering from a recent operation at the Florida Sanitarium.

Mrs. C. O. Nelawander continues to improve after her recent illness at the home of her son-in-law and daughter, Mr. and Mrs. O. E. Clause.

Mrs. A. K. Shoemaker and Mrs. Frances McDougal spent the week end at the home of her son-in-law and daughter, Mr. and Mrs. O. E. Clause.

Mrs. and Mrs. Dickson Brossier and Mr. and Mrs. Stanley Gordon both of Orlando were recent guests of Mr. and Mrs. Berner Winn.

Mr. and Mrs. Roscoe T. Warren on Magnolia Avenue have as their guest, Mrs. Warren's sister, Mrs. W. L. Smith of Rock Hill, S. C. who will be here for about another week.

Mr. and Mrs. Floyd Hartel of Edinburg, Ill., were overnight guests of Mrs. C. O. Nelawander at the home of her daughter, Mrs. O. E. Clause on South Cameron Avenue.

Mrs. George A. Sline and her houseguests Mrs. Joseph F. Perry and Mrs. Jack McDavall of Charleston, W. Va., spent Friday at Bok Tower, Cypress Gardens and visiting in Winter Haven.

Cpl. Walter L. Dobson who is stationed at Camp Rucker, Ala., spent the weekend in Sanford visiting relatives. He is the son of Mrs. L. M. Himes.

Mr. and Mrs. R. C. Perkins and Mr. and Mrs. C. B. Strathy both of Virginia have been the weekend guests of Mr. and Mrs. D. L. Perkins.

Mrs. J. M. Cameron has returned to her home on Celery Avenue from the Fernald Loughlin Memorial Hospital where she was treated for injuries received in an automobile accident recently.

Arriving Saturday to be guests of Mr. and Mrs. S. O. Chase, Jr. were Mrs. Lane Cloward of Ormond Beach, Mr. and Mrs. M. Donald Lane of Kingston, N. Y., and Mrs. C. A. Lane of St. Michaels, Md.

Among the out-of-town guests who were here for the Turkel-Toll wedding were Mr. and Mrs. M. N. Solvick and son from Cocoa, Mr. and Mrs. M. Smith of Lake Mary, Mr. and Mrs. Louis Erikson of Deland, Mrs. H. Safronski of Philadelphia and Mrs. G. Lowenberg of New York City.

Among those from Orlando attending the Turkel-Toll wedding yesterday were Mr. and Mrs. Sam Martina, Mr. and Mrs. Louis Smith, Dr. and Mrs. Alvin Savage, Mr. and Mrs. Andrew T. Chandler, Mr. and Mrs. Gus Bear, Mr. and Mrs. M. H. Black, Mr. and Mrs. N. Wiltenstein.

Mr. and Mrs. Herman E. Morris and sons, Robert and Ernie, had as their guests over the weekend at their MQ Ranch near Osteen Professor and Mrs. Frank Philpot, Professor and Mrs. John Jones of the University of Florida. Other guests were Lynda Terry, Gay Echols, Henry Tooke and Richard Tison.

When you steam rice in a small amount of water bring quickly to a boil then cover and turn heat very low; don't remove the cover or stir the rice while it is cooking. Left-over rice may be used in muffin or pancake batter, in stuffings for poultry, or mixed with fruit and whipped cream for dessert.

eral other areas. Henderson is arranging to visit Stetson men and women in a total of 28 Florida cities.

## Miss Audrey Abigail Toll Becomes Bride Of Norman E. Turkel In Impressive Ceremony

Miss Audrey Abigail Toll, daughter of Mr. and Mrs. William J. Toll, became the bride of Norman E. Turkel, son of Mr. and Mrs. Harry Turkel of Omaha, Neb., in an impressive ceremony Sunday afternoon at 2:00 o'clock at the Mayfair Inn.

Honorable Mr. and Mrs. Jerome Siskind, president and Mrs. Siskind, presented the double ring ceremony before an altar flanked with greenery interspersed with white gladioli and snapdragons beneath a blossom and fern laden canopy flanked on either side by candelabra holding burning tapers.

A program of pre-nuptial music was presented by Roger Harris, pianist. Mrs. Bernard L. Harker, soprano, rendered "Ich Liebe Dich" by Grieg and "Because" by De Haveland. The traditional wedding marches were used.

The bride, given in marriage by her father, wore a length gown fashioned of white tulle featuring a form bodice applied with silver and lace flowers and short shirred sleeves. Her accessories were white kid gloves, white satin sandals and a low cloche cap with finger tip veil of bridal illusion net. The bridal bouquet was a white orchid with amaranthus and white freesias.

The matron of honor, Mrs. Roy W. Weinman, of Philadelphia, cousin of the bride, wore a gown of light gray organza silk with a bouffant skirt and bodice trimmed with pale yellow sash and a Portia collar. Her grey veil of nylon net was trimmed with a velvet ribbon in the back and she carried a bouquet of yellow tulips and blue iris.

Bridesmaids were Mrs. Melvin Siskind, Mrs. William Jacob and Mrs. Minnie Moskowitz who wore identical halterneck dresses of polka dot while not over ice blue tulle featuring ruffled necklines and blue tulle cloche hats with shoes to match. Their only jewelry was one strand of pearls and their bouquets were of yellow freesias, blue iris and yellow gerbera daisies.

Mrs. William Toll chose for her daughter's wedding a navy blue lace cocktail dress with matching satin shoes and gloves and a navy straw cloche hat trimmed with white flowers. Her accessories were pink carnations and rosebuds. Mrs. Turkel, mother of the groom, wore a light aqua silk shantung cocktail dress with a V neck line featuring same colored bugle beads trim on the bodice and a full skirt with panels of accordion pleats. Her flowered hat was of white and aqua with accessories to match and her corsage was of pastel feathered carnations.

The bridesmaids of the bride were Mrs. A. T. Meyer, Allenwood, Pa. Mr. and Mrs. B. Siskind, Jacksonville, Mr. and Mrs. A. Siskind, Mrs. Fayge Siskind and Day and Safrausk of Valhalla, N. Y. and others from Baltimore, Orlando, New York and Pennsylvania.

Among the more than 50 out of town guests were Mrs. E. J. Toll, Mrs. Ethel Ortt, Mrs. Martin Labert, Mrs. Esther Weiss, Mrs. Sarah Weiss, Mrs. Rose Long and Miss Helen Gordon all of Philadelphia. Also Mr. and Mrs. Jack Severin, Mr. and Mrs. J. Ortt and Mrs. John J. McGraw of Miami. Others were Mrs. E. Meyer, Allenwood, Pa. Mr. and Mrs. B. Siskind, Jacksonville, Mr. and Mrs. A. Siskind, Mrs. Fayge Siskind and Day and Safrausk of Valhalla, N. Y. and others from Baltimore, Orlando, New York and Pennsylvania.

At present the wedding plans are incomplete and will be announced at a later date.

## Three Act Comedy Stated At Stetson

**DELAND, (Special)**—Miss Betty Lynn of Jacksonville and Bill Holley of Jacksonville have been selected for leading roles in "Robin Hood" a comic opera in three acts by Reginald deKoven, which will be given in Slover Theatre Mar. 5, 6, 7 and 8 by the Stetson School of Music and the Department of Drama.

Harold Milne Giffin is conductor; Virginia E. Giffin is director; Kenneth Hallenger, Delores Kelly and Jack Collier are music coaches.

Miss Lynn plays Lady Marian Fitzwallter, a ward of the crown, who in the latter act is Maid Marian, Robert of Huntington, after whom "Robin Hood" is named by Holley. The scene is in England in the time of Richard I.

There is a chorus of 32 all members of the Glee Club, and a pit orchestra of 20 musicians from the Stetson Symphony Orchestra.

## Elder Springs By MARGARET TINDLE

**ELDER SPRINGS, (Special)**—The Ebenezer Methodist Church is holding an evangelistic program this week. Every night at 7:30 through Sunday with the Rev. W. C. Wattle of Sanford in charge.

Henry Schumacher, Sr., of Jersey City, N. J. is here for the winter, and plans to stay three or four months. Mr. Schumacher is the father of Henry Schumacher, Jr. of Lake Jessup. Mr. Schumacher, Sr. is a retired farmer of New York.

Mr. and Mrs. J. H. Wynn spent Wednesday in Orlando visiting their son in law and daughter, Mr. and Mrs. Glenn H. Townsend and family.

Mrs. A. E. Dobson is confined to her home because of illness. Mrs. O. P. Wade has as her guest, Mrs. Thomas Price, of Deland. Mr. Price will be remembered as the former Mrs. Middleton.

Mr. and Mrs. R. E. Soderblom, Mr. and Mrs. W. L. Johnson, and Mrs. O. P. Wade spent Monday in Daytona Beach visiting Mrs. C. G. Hanner.

Mr. and Mrs. Laitoch visited Mrs. Laitoch's brother, William.



Photo By The Essex Studio  
Miss Dorothy A. Von Herbulis, daughter of Mr. and Mrs. A. O. Von Herbulis, whose engagement to Robert W. Anthony of Parma, Ohio, was announced today.

## Miss Von Herbulis, R.W. Anthony To Wed

Mr. and Mrs. A. O. Von Herbulis announced today the engagement of their daughter Dorothy A. Von Herbulis to Robert W. Anthony, of Parma, Ohio.

Miss Von Herbulis is employed by the Sanford Herald and is a member of the Business and Professional Women's Club and Catholic Youth Club of which she is also in Mr. Dana and Sanford.

Mr. Anthony attended the Parma Schuyl High School in Parma, Ohio, and Antioch College in Yellow Springs, Ohio. He entered the Navy in February, 1951 and at present is stationed at the Sanford Naval Auxiliary Air Station in the personnel office. Mr. Anthony is one of the writers of the column "Shades in the News" which is a daily feature of the Herald.

At present the wedding plans are incomplete and will be announced at a later date.

## Meeting Is Held By Beta Sigma Phi

The Sanford Lambda Chapter of Beta Sigma Phi met Monday evening at the home of Mrs. William Conrad with Mrs. Walter McFarland as co-hostess.

Conducting the meeting was Mrs. Lauren Johnson, president, with Mrs. George A. Speer leading the discussion on the American cancer drive. Mrs. Charles Voloshin introduced the guest speaker, Mrs. A. B. Duxbury, who spoke on the history of ballet and dance.

After the program refreshments were served to other present who were Mr. H. L. Zimmerman, Mrs. Walter Turner, Mrs. David Galt, Mrs. John Morgan, Mrs. Volle Williams, Jr., Mrs. Robert Rickson, Mrs. John Dunn, Mrs. Ralph Wright, H. Mrs. Edward Wallink, Mrs. Donald Jones, Mrs. Lester Kirkley, Mrs. R. W. Williams, Mrs. Gerald Leasing, Mrs. W. G. Fleming and Mrs. Jean Sawyer.

Mr. and Mrs. R. E. Soderblom visited Mrs. Henry Jeff and family in Deland Sunday.

Mrs. Thomas Price is visiting her daughter-in-law and son, Mr. and Mrs. L. C. Smith. Mrs. Price will return to Deland, Ohio, in March.

Mrs. J. O. Andes of Sanford spent last weekend with Mr. and Mrs. J. H. Wynn.

New kitchen cabinets and countertops have a natural wood finish. Some of these have backgrounds of white painted in a velvety gray green.

**HAPPY BIRTHDAY**  
SATURDAY  
James Dunn  
Mrs. R. C. Jefferson  
SUNDAY  
Billy Johnson  
Mrs. Hester Davis  
MONDAY  
Stephen Zimmerman

## THE SANFORD HERALD

Mon. Feb. 25, 1952 Page 3

## Junior-Senior Prom Held Friday Night

Miss Linda Leonard, Junior class president presented the "Aloha," and Ed McKinley, Senior class president the "Response," at the annual Junior-Senior Banquet and Ball.

In poetic form Miss Leonard said farewell to the Seniors and wished them well from the Juniors. Mr. McKinley responded with a poem of appreciation for the banquet and work done for the Seniors by the class of '52.

There was a Hawaiian theme depicting the "Isle of Dreams" carried out this year in the decorations, banquet and program. Beginning at 7:30 with a buffet supper featuring Hawaiian delicacies which included cocoa opina, pallo pallo and low low sandwiches, came home lokut and homokompan, ukumukapan in surroundings of palm trees, moss, plants and flowers, the effect was that of a mystic island of dreams.

Tony Perez and his 7-piece orchestra furnished the music for the dancing with Herman Morris leading the grand march to start the program. Included in the floor show were a dance by Barbara Watson of Winter Park, a solo by Dickie Hickson of Winter Park, a dance by Kaye Andrews of Orlando and a solo by John Poellin also of Orlando.

Sponsors for the Junior class were Mrs. Edison Galt, Mrs. M. B. Smith, Mr. W. B. Wray and Fred Gamus. The supper was arranged for the presentation of Mrs. Robert Galtch assisted by a group of the mothers.

Mothers who assisted in making the dance possible were Mrs. Charles Wike, Mrs. O. K. Galt, Mrs. Henry McLaulin, Mrs. W. A. Morrison, Mrs. W. C. Rumbley, Mrs. Paul Brown, Mrs. Pete McCull, Mrs. L. Fletcher, Mrs. G. May Speer, Mrs. L. E. Reed, Mrs. C. K. Carter, Mrs. J. A. Wright, Mrs. L. F. Bule, Mrs. V. W. Bunting, Mrs. W. L. Raborn, Mrs. J. S. Moore, Mrs. R. V. Hutchison, Mrs. George Harlin, Mrs. Herman Jacobson and Mrs. J. Rogers.

The Four Seasons will be the theme of the program which will be highlighted by dances depicting Summer, Autumn, Winter and Spring.

May day at Huntington is the traditional Homecoming Day. Class reunions and the crowning of Mary Lou Bell of Decatur, as the May Queen will be features of the occasion. Each year May day at Huntington is the Huntington Campus thousands of alumni and other visitors.

The Four Seasons will be the theme of the program which will be highlighted by dances depicting Summer, Autumn, Winter and Spring.

Florida Methodists are completing their United Evangelistic Mission with a net new members in the new charges which conducted the intensive visitation and pupil evangelism program. Bishop Roy H. Short, resident bishop and general chairman of the state-wide campaign, announced today.

This is 100 less than the total increase for the Methodist Church in Florida last year, he declared. During the week 3,000 laymen went out from these churches and through interviews with 25,738 persons, won more than the 6,000 new members through personal evangelism of this total, 3,111 were first professions of faith in Christ, and 1,500 were by transfer of their membership from churches back home to local churches.

Report from the participating churches indicate that at least 100,000 persons attended the evangelistic campaign conducted in the participating churches.

In the Orlando district 1,885 visitors made 1,726 personal contacts, gaining 832 members. Out of first professions of faith and 467 by transfer, with church attendance at 98.97, according to District Superintendent Paul A. Fletcher.

A total eclipse occurs, when the moon comes between the earth and the sun.

**TROPEZAR**  
WHAT IS IT?  
WHERE IS IT?  
WHEN IS IT?

The program will further include the overture to "Lohengrin" of the prelude to "Pietro and Lucide" the introduction to the third act of "Lohengrin," and Strauss' "Till Eulenspiegel."

Mr. and Mrs. R. E. Soderblom visited Mrs. Henry Jeff and family in Deland Sunday.

Mrs. Thomas Price is visiting her daughter-in-law and son, Mr. and Mrs. L. C. Smith. Mrs. Price will return to Deland, Ohio, in March.

Mrs. J. O. Andes of Sanford spent last weekend with Mr. and Mrs. J. H. Wynn.

New kitchen cabinets and countertops have a natural wood finish. Some of these have backgrounds of white painted in a velvety gray green.

**HAPPY BIRTHDAY**  
SATURDAY  
James Dunn  
Mrs. R. C. Jefferson  
SUNDAY  
Billy Johnson  
Mrs. Hester Davis  
MONDAY  
Stephen Zimmerman

**WELCOME To Sanford**

You'll Like Our Town And -- You'll Like Our

**CASUAL WEAR**

Nationally Promoted Apparel For Men

**Jim Robson**

**MEN'S WEAR**

111 West First Phone 1294

Trim and Flattering

because it's done by Professionals!

"Professional care is best for the hair" —

**EVA-BESS Beauty Shop**

The Best In Workmanship And Materials  
"IN BUSINESS IN SANFORD SINCE 1931"

108 East Second Street Phone 563



# Jimmy "Swish" Smith Selected On All-EFC Cage Squad

## "Seminole Blues" Lead On Last Day Of Name Contest

Total Vote Reaches 6,256 Mark; Final Results To Be Aired Over WTRR Tonite

By KENT CHETLAIN

A tremendous 697 vote spurge pushed the "Seminole Blues" 214 votes out in front of the baseball naming contest over the weekend on the last day of balloting. The "Blues" now have 1,913 votes.

The "San Sems" came in with 170 votes to run its total to the 5,000 points for second place. The "Celery Feds" tallied 607 votes to make its total 1,281 for third spot.

The contest voting ended today at noon with the official results waiting a counting this evening. The final tabulation and announcement of winners will be broadcast this evening over WTRR beginning at 6:00 p.m. Results will be on air every fifteen minutes until the winners are declared.

A total of 2,335 votes poured in over the weekend to run the total vote up to 6,256 with more coming in prior to the deadline. The 6,256 total is less than 800 short of the all-time record vote for any political election in Seminole County. The record vote of 7,024 for the entire County was cast during the 1950 senatorial primary race when Claude Pepper and George Smathers were running against each other.

The all-time City vote was likewise cast in that election. The Sanford record total was 4,573 or 1,500 less than the contest vote total now.

The "Flies" moved up only slightly over the weekend from 417 to 481. The "Seminoles" picked up only three votes to register a total of 81.

This is the complete list of tabulations of the Herald press this morning:

Team	Score
Seminole Blues	1,913
San Sems	1,099
Celery Feds	1,281
Flies	481
Seminole Tigers	484
Seminole	81
Brown Sox	60
Clats	18
Generals	15
White Hawks	15
San Feds	13
Lookouts	12
Braves	4
Rattlers	2
Red Sox	2
Seminole Jets	2
Sandpiper	2
Clippers	2
Blons	1
St. Johnnies	1
Comets	1
Wildcats	1
Orphans	1
Citizens	1
Total	6,256

## Jimmy Krider Is Junior Varsity's Top Point Maker

Jimmy "Jack" Krider has been the big sledge gun among the Seminole High Junior Varsity cagers this season with 57 markers and a high 5.3 game average. The JV squad, coached by Bill Fleming, holds a respectable 7 win and six loss record for the season going into tonight's final with Leesburg.

Frank Stafford's late season scoring onslaught brought him from seventh high scorer to the No. 2 position with 51 markers. Frank has the second seeded scoring average per game with a 4.8 mark.

Ross Hannum, who alternated between the varsity and the JV, ran up the third highest average for the Flemingmen with 33 points for a 4.0 record. "Handy" Randy Reynolds' 50 points ranks him second in that department but is fourth in average with a 4.5.

Bubba Blasse is the high free throw shooter with 12 while Krider holds the lead in baskets with 21.

The Flemingmen started the season miserably by losing the first four games but a three-game winning surge, plus a four-game victorious skid at the end of the season, brought the JV over the 500 mark for the year.

SEMINOLE JV CAGERS HONORS

Player	Points	Rebounds	Assists
Jimmy Krider	57	21	12
Frank Stafford	51	18	10
Ross Hannum	33	15	8
Randy Reynolds	50	12	5
Bubba Blasse	45	10	4

SEMINOLE JV CAGERS HONORS

Player	Points	Rebounds	Assists
Jimmy Krider	57	21	12
Frank Stafford	51	18	10
Ross Hannum	33	15	8
Randy Reynolds	50	12	5
Bubba Blasse	45	10	4

SEMINOLE JV CAGERS HONORS

Player	Points	Rebounds	Assists
Jimmy Krider	57	21	12
Frank Stafford	51	18	10
Ross Hannum	33	15	8
Randy Reynolds	50	12	5
Bubba Blasse	45	10	4

SEMINOLE JV CAGERS HONORS

Player	Points	Rebounds	Assists
Jimmy Krider	57	21	12
Frank Stafford	51	18	10
Ross Hannum	33	15	8
Randy Reynolds	50	12	5
Bubba Blasse	45	10	4

SEMINOLE JV CAGERS HONORS

Player	Points	Rebounds	Assists
Jimmy Krider	57	21	12
Frank Stafford	51	18	10
Ross Hannum	33	15	8
Randy Reynolds	50	12	5
Bubba Blasse	45	10	4

SEMINOLE JV CAGERS HONORS

Player	Points	Rebounds	Assists
Jimmy Krider	57	21	12
Frank Stafford	51	18	10
Ross Hannum	33	15	8
Randy Reynolds	50	12	5
Bubba Blasse	45	10	4

SEMINOLE JV CAGERS HONORS

Player	Points	Rebounds	Assists
Jimmy Krider	57	21	12
Frank Stafford	51	18	10
Ross Hannum	33	15	8
Randy Reynolds	50	12	5
Bubba Blasse	45	10	4

SEMINOLE JV CAGERS HONORS

Player	Points	Rebounds	Assists
Jimmy Krider	57	21	12
Frank Stafford	51	18	10
Ross Hannum	33	15	8
Randy Reynolds	50	12	5
Bubba Blasse	45	10	4

SEMINOLE JV CAGERS HONORS

Player	Points	Rebounds	Assists
Jimmy Krider	57	21	12
Frank Stafford	51	18	10
Ross Hannum	33	15	8
Randy Reynolds	50	12	5
Bubba Blasse	45	10	4

SEMINOLE JV CAGERS HONORS

Player	Points	Rebounds	Assists
Jimmy Krider	57	21	12
Frank Stafford	51	18	10
Ross Hannum	33	15	8
Randy Reynolds	50	12	5
Bubba Blasse	45	10	4

SEMINOLE JV CAGERS HONORS

Player	Points	Rebounds	Assists
Jimmy Krider	57	21	12
Frank Stafford	51	18	10
Ross Hannum	33	15	8
Randy Reynolds	50	12	5
Bubba Blasse	45	10	4

## Covington Leads Seminole Scorers With 160 Points

Smith's 127 Is 2nd With Wise Hardin Following At 113

Gerald "Spider" Covington is the grand-stand leader in every scoring department for the Seminole High varsity cagers for the 1951-2 season. Covington has scored 160 points for an 11.4 average per game and has posted high marks of 61 field goals and 38 free throws.

Jimmy "Swish" Smith is second ranking point producer in every category with 127 buckets, 23 clutch losses, 127 total points and an 8.5 point average.

Center Wise "Dunker" Hardin is the only other Celery Fed scorer to top the century mark in scoring with 113 in 15 games for a 7.5 average.

The Seminole cagers have a poor record, as far as the win and loss statistics go with only four wins and 11 losses, but the team itself possesses great potentialities. Evidence of this was displayed when they slaughter New Smyrna Beach 59-23 in the East Florida Conference play-offs after losing to Smyrna twice in the regular season.

The class A Celery Fed High quintet amassed 500 points for a 70.3 average as compared to their opponents' 707 markers for a 47.1 percentage.

Outside of conference teams, the Gansmen whirled three of seven while against EFC teams they lost seven of eight. The individual high point man for a single game was Covington with 21 against New Smyrna in Daytona.

The Gansmen have two more games slated with the possibility of more depending on their progress in the Section 3 tourney to be held at Daytona Beach next Wednesday. The Celery Feds close their regular scheduled season with Leesburg tonight.

Wednesday night the Feds face Seabreeze, the EFC cage winners, in the opening tilt of the state championship play-off section.

SEMINOLE VARSITY CAGERS

Player	G	Pg	Pt	Av
Covington	14	160	11.4	
Smith	10	127	12.7	
Hardin	15	113	7.5	
Wise	12	100	8.3	
McCall	13	99	7.6	
Wheaton	10	85	8.5	
Wheaton	10	85	8.5	
Wheaton	10	85	8.5	
Wheaton	10	85	8.5	
Wheaton	10	85	8.5	

SEMINOLE VARSITY CAGERS

Player	G	Pg	Pt	Av
Covington	14	160	11.4	
Smith	10	127	12.7	
Hardin	15	113	7.5	
Wise	12	100	8.3	
McCall	13	99	7.6	
Wheaton	10	85	8.5	
Wheaton	10	85	8.5	
Wheaton	10	85	8.5	
Wheaton	10	85	8.5	
Wheaton	10	85	8.5	

SEMINOLE VARSITY CAGERS

Player	G	Pg	Pt	Av
Covington	14	160	11.4	
Smith	10	127	12.7	
Hardin	15	113	7.5	
Wise	12	100	8.3	
McCall	13	99	7.6	
Wheaton	10	85	8.5	
Wheaton	10	85	8.5	
Wheaton	10	85	8.5	
Wheaton	10	85	8.5	
Wheaton	10	85	8.5	

SEMINOLE VARSITY CAGERS

Player	G	Pg	Pt	Av
Covington	14	160	11.4	
Smith	10	127	12.7	
Hardin	15	113	7.5	
Wise	12	100	8.3	
McCall	13	99	7.6	
Wheaton	10	85	8.5	
Wheaton	10	85	8.5	
Wheaton	10	85	8.5	
Wheaton	10	85	8.5	
Wheaton	10	85	8.5	

SEMINOLE VARSITY CAGERS

Player	G	Pg	Pt	Av
Covington	14	160	11.4	
Smith	10	127	12.7	
Hardin	15	113	7.5	
Wise	12	100	8.3	
McCall	13	99	7.6	
Wheaton	10	85	8.5	
Wheaton	10	85	8.5	
Wheaton	10	85	8.5	
Wheaton	10	85	8.5	
Wheaton	10	85	8.5	

SEMINOLE VARSITY CAGERS

Player	G	Pg	Pt	Av
Covington	14	160	11.4	
Smith	10	127	12.7	
Hardin	15	113	7.5	
Wise	12	100	8.3	
McCall	13	99	7.6	
Wheaton	10	85	8.5	
Wheaton	10	85	8.5	
Wheaton	10	85	8.5	
Wheaton	10	85	8.5	
Wheaton	10	85	8.5	

SEMINOLE VARSITY CAGERS

Player	G	Pg	Pt	Av
Covington	14	160	11.4	
Smith	10	127	12.7	
Hardin	15	113	7.5	
Wise	12	100	8.3	
McCall	13	99	7.6	
Wheaton	10	85	8.5	
Wheaton	10	85	8.5	
Wheaton	10	85	8.5	
Wheaton	10	85	8.5	
Wheaton	10	85	8.5	

SEMINOLE VARSITY CAGERS

Player	G	Pg	Pt	Av
Covington	14	160	11.4	
Smith	10	127	12.7	
Hardin	15	113	7.5	
Wise	12	100	8.3	
McCall	13	99	7.6	
Wheaton	10	85	8.5	
Wheaton	10	85	8.5	
Wheaton	10	85	8.5	
Wheaton	10	85	8.5	
Wheaton	10	85	8.5	

SEMINOLE VARSITY CAGERS

Player	G	Pg	Pt	Av
Covington	14	160	11.4	
Smith	10	127	12.7	
Hardin	15	113	7.5	
Wise	12	100	8.3	
McCall	13	99	7.6	
Wheaton	10	85	8.5	
Wheaton	10	85	8.5	
Wheaton	10	85	8.5	
Wheaton	10	85	8.5	
Wheaton	10	85	8.5	

SEMINOLE VARSITY CAGERS

Player	G	Pg	Pt	Av
Covington	14	160	11.4	
Smith	10	127	12.7	
Hardin	15	113	7.5	
Wise	12	100	8.3	
McCall	13	99	7.6	
Wheaton	10	85	8.5	
Wheaton	10	85	8.5	
Wheaton	10	85	8.5	
Wheaton	10	85	8.5	
Wheaton	10	85	8.5	

SEMINOLE VARSITY CAGERS

Player	G	Pg	Pt	Av
Covington	14	160	11.4	
Smith	10	127	12.7	
Hardin	15	113	7.5	
Wise	12	100	8.3	
McCall	13	99	7.6	
Wheaton	10	85	8.5	
Wheaton	10	85	8.5	
Wheaton	10	85	8.5	
Wheaton	10	85	8.5	
Wheaton	10	85	8.5	

SEMINOLE VARSITY CAGERS

Player	G	Pg	Pt	Av
Covington	14	160	11.4	
Smith	10	127	12.7	
Hardin	15	113	7.5	
Wise	12	100	8.3	
McCall	13	99	7.6	
Wheaton	10	85	8.5	
Wheaton	10	85	8.5	
Wheaton	10	85	8.5	
Wheaton	10	85	8.5	
Wheaton	10	85	8.5	

SEMINOLE VARSITY CAGERS

Player	G	Pg	Pt	Av
Covington	14	160	11.4	
Smith	10	127	12.7	
Hardin	15	113	7.5	
Wise	12	100	8.3	
McCall	13	99	7.6	
Wheaton	10	85	8.5	
Wheaton	10	85	8.5	
Wheaton	10	85	8.5	
Wheaton	10	85	8.5	
Wheaton	10	85	8.5	

SEMINOLE VARSITY CAGERS

Player	G	Pg	Pt	Av
Covington	14	160	11.4	
Smith	10	127	12.7	
Hardin	15	113	7.5	
Wise	12	100	8.3	
McCall	13	99	7.6	
Wheaton	10	85	8.5	
Wheaton	10	85	8.5	
Wheaton	10	85	8.5	
Wheaton	10	85	8.5	
Wheaton	10	85	8.5	

SEMINOLE VARSITY CAGERS

Player	G	Pg	Pt	Av
Covington	14	160	11.4	
Smith	10	127	12.7	
Hardin	15	113	7.5	
Wise	12	100	8.3	
McCall	13	99	7.6	
Wheaton	10	85	8.5	
Wheaton	10	85	8.5	
Wheaton	10	85	8.5	
Wheaton	10	85	8.5	
Wheaton	10	85	8.5	

SEMINOLE VARSITY CAGERS

Player	G	Pg	Pt	Av
Covington	14	160	11.4	
Smith	10	127	12.7	
Hardin	15	113	7.5	
Wise	12	100	8.3	
McCall	13	99	7.6	
Wheaton	10	85	8.5	
Wheaton	10	85	8.5	
Wheaton	10	85	8.5	
Wheaton	10	85	8.5	
Wheaton	10	85	8.5	

SEMINOLE VARSITY CAGERS

Player	G	Pg	Pt	Av
Covington	14	160	11.4	
Smith	10	127	12.7	
Hardin	15	113	7.5	
Wise	12	100	8.3	
McCall	13	99	7.6	
Wheaton	10	85	8.5	
Wheaton	10	85	8.5	
Wheaton	10	85	8.5	



They felt they had held 11: most successful of the North Atlantic Council's nine meetings. It told Eisenhower for the first time just what forces he can count on to



Today under 1,000 fighters and bombers, mostly U. S., are in Europe. The year's goal is four times that.

Atomic weapons change  
out picture. There was an indirect  
hint of this in a temporary council  
committee report released Sunday.  
It recognized Allied strategic air  
power as already a powerful deterrent  
to aggression. Presumably the  
strategic aircraft could carry atom  
bombs if Europe's safety demand-  
ed.

**USE THE**

# CLASS

---

Real Estate For Sale

# CLASSIFIED

5 - ARTICLES FOR SALE  
 TUNED FEEDS Complete 1

**FOR RESULTS**

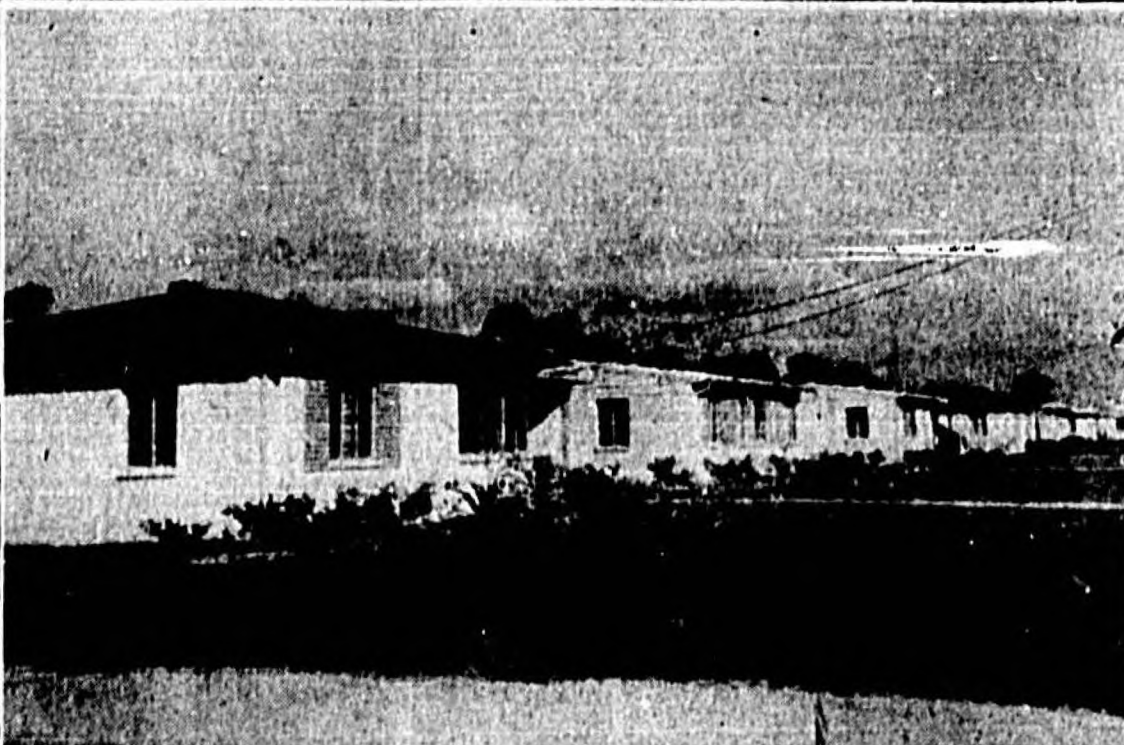
Use **UNPAID** 1— Real Estate For Sale —3 5— ARTICLES FOR SALE —4 12— SPECIAL SERVICES —  
**TUXEDO FEEDS** Complete line  
 All **TAPER** Rollmaker won  
 Many of the Nation's Best Feeds

100

100



# NEW HOMES IN SANFORD



Erected by the W. W. Dawson Construction Co., the dwelling of Mr. and Mrs. Roy Mann, 121 West Eighteenth Street, upper left, is admirably suited for Florida living. Mr. Mann is cashier of the Sanford Atlantic National Bank. Upper right, some of the attractive new homes built by Ozier-Weller Inc., in the Bel-Air section are seen. The firm

is about to erect 35 defense housing units. Lower left is the recently built home of Mr. and Mrs. C. E. Gormly, Jr., a Phillips' built house in the well shaded Wynwood Subdivision. More than 30 homes have already been built in this area and 50 more are planned. Mr. and Mrs. Theo Pate and family live in a pleasant home, lower right, at 120

West Eighteenth Street. Mr. Pate is associated with Jack Flynt, produce merchant, at the Sanford State Farmers Market. Fred A. Dyson was builder of the dwelling. By the doorway are Mr. and Mrs. Pate and son Harold.

## Blues In The News

By BOB ANTHONY and RALPH GASSMAN

Many trying hours of hard work have gone into this year's annual Rollins Edition which will enable the whole country to read about the wonders of Sanford and Central Florida. The men in blues salute the Sanford Herald for a job well done.

Last week the members of the Rollins College extension course in English Literature here aboard the station journeyed to the Rollins campus in Winter Park to attend a program of "Highlights in Shakespearean Drama". Since the men are in their second semester of English Literature and are now studying Shakespeare, the program was an appropriate one.

Mrs. Roland Dean, an authority on Southern Folklore, directed the program which was of an informal nature. The setting was the outside patio of Strong Hall and every effort was made to present a Shakespearean atmosphere. Included in the program were the balcony scene from Romeo and Juliet, Mark Anthony's famous speech from Julius Caesar, Elizabethan songs and many other well known passages from such plays as Hamlet and As You Like It.

Of the men that traveled to Rollins for the "Highlights", Fred Green particularly liked the balcony scene which was read by Howard Bailey, director of the college's Annie Russell Theater. "Bliss" DeLoe, Al Aldridge, Clarence Brown and your two reporters made the trip too. "Bliss" and Al liked the program as a whole and couldn't choose any one scene or reading as their favorite, while "Red" as all of his shipmates know, Clarence, liked Professor Dean's informal announcing best of all.

The next bit of news is reported here strictly by the Gassman end of this column. Bob made me make that statement since the news concerns wedding bells and Bob Anthony himself. Bob took the fatal step recently when he asked one of the local misses, Dottie Von Herbulis to be his partner for life. Being Leap Year, I'm not so sure that it was Bob that popped the question, but anyway the answer was "yes" and everyone was happy.

Bob had all of his friends guessing for a while about him and he but finally, when his visits to the Von Herbulis at 505 Myrtle became nightly happenings, the decision was made that Bob had entered the circle of the engaged. A look at the society page will prove that the news was right.

As was through this column and the Sanford Herald that Bob first told me so I want to be one of the first to offer my congratulations. Now, both of you, people and I, as do all your friends, that you will have the best always. May happiness to your favorite lady. (Anthony) Zucker bites the dust.

Charles Solenberger and Lloyd Jones both left the station recently on 12 day leaves. They both will be at Charles' home in Springfield, where Charles will be married. Lloyd will act as best man at the wedding. Lloyd will move to the west end of his leave home in Indianapolis, Ind. Lloyd's home is at 121 West Eighteenth Street.

## Building Permits

(Continued from page two)

and Mrs. Lowell Ozier, Mrs. John Ludwig, Joseph J. Kent, Mr. and Mrs. Morris Ferguson, Mrs. Louise Knowles, Mr. and Mrs. J. J. Weber, Mr. and Mrs. Scott Weller, Mr. and Mrs. Hoke Dugger and Mr. and Mrs. Richard Frank.

The home office of Ozier-Weller Homes, Inc. is in Champaign, Ill., from where the projects are directed in seven cities including Sanford. Scott Weller and Cecil R. Ozier, founders of the firm, visit the projects every few months. George Shoemaker is chief estimator and Harry S. Edbrooke, Sr. is advisory engineer. The local

ly from leaves spent in Brooklyn, N. Y., Savannah, Georgia, Evansville, Indiana and Buffalo, N. Y., respectively. Neil Fischer will be leaving the station today to go back to Savannah, Ga. but this time it will be of a more permanent nature. Neil is a member of the Naval Reserve and today was released to inactive duty.

That's it for now, but to keep up with the latest about the men at the Naval Air Station, be sure to read "Blues in the News" daily.

## office is headed by Lowell E. Ozier, vice-president, who is in charge of construction, and Marvin W. Ozier, secretary-treasurer in charge of sales and financing.

Mrs. Ruth N. Billheimer is office manager.

At the firm's lumber yard, the Ozeon Lumber Co., they dry and produce their lumber, millwork and other items. The firm, which builds more than 500 homes annually, is preparing to open another office at Cocoa.

Also contributing to the growth of Sanford is the Dawson Construction Company, Inc., which for the past three years has built some 36 homes.

Among the houses built by this company during the past year were homes for Mr. and Mrs. Sidney Ives, III, textile representative of Southern Mills, Mr. and Mrs. R. F. Mann, cashier of the Sanford Atlantic National Bank, Mr. and Mrs. J. Marion Harmon of Radio Station WTRB, Mr. and Mrs. Jack K. Morrison, owner of Seminole Tire Shop, Mr. and Mrs. J. W. Powell of Powell's Office Supply, Mr. and Mrs. J. W. Altman, vegetable buyer for Krueger of Chicago, Ill., Mr. and Mrs. A. H. Ferber, manufacturer of Fine Flavorings, and Mr. and Mrs. A. L. Wilson, owner of Wilson-Maier Furniture Company.

## At the present time, the Dawson Construction Co., Inc., has under construction homes for Dr. and Mrs. Harry S. Woodruff, Mr. and Mrs. M. T. Haynes, Mr. and Mrs. James F. Youngs, steward of the Mayfair Inn, and is constructing the Tourist Recreation Building for the City of Sanford.

This concern has contracts to build 12 homes in Sanford, in addition to seven jobs now being constructed.

The Dawson Construction Co., Inc. has earned through their craftsmanship the title of "Builders of Better Built Homes". The company is headed by W. W. Dawson, Jr., who has been engaged in the engineering and construction business for some 30 years. A. B. McRaney of Sanford is assistant to Mr. Dawson. The company offers to a discriminating public, complete construction services including assistance in obtaining property, and in the architectural department, preparing sketches and plans, arranging for financing as well as the construction of homes or buildings. The estimating and contract department is headed by James Hancock, formerly of Utica, N. Y., with bookkeeping and stenographic work headed by Mrs. Wallace Tyne. John E. Dobson formerly of Cincinnati, Ohio is superintendent of work in the field.

## E. C. Harper Wins National G. E. Prize

E. C. Harper, of Sanford Electric Company has been named a national winner in the General Electric Company's multi-million dollar "Road Race Jamboree" sales contest.

As a contest winner, Mr. cinnati, Ohio is superintendent of work in the field.

Harper has been awarded a four-day visit to San Francisco, Calif., with expenses paid by the General Electric Company.

The Sanford contestant won his award by selling well over the contest quota in eight of ten of the company's major appliance lines during the contest period, Sept. 1 through Nov. 30.

Lower California is approximately 810 miles long.



## REMEMBER

Your Stay In Sanford

With One Of

The Many Lovely Souvenir

Items At The

MONTEZUMA GIFT SHOP

300 Magnolia Avenue



## There Is No Finer Place To Dine

In a handful of cities you will find a restaurant whose name is known beyond state boundaries . . . where dining is always a great occasion and a leisurely visit the greatest compliment you can pay your out-of-town guests . . . where the preparation of food is a career and its service a fine art. There are such restaurants in New York, Boston, New Orleans, San Francisco. There is such a restaurant in Sanford.

Its name is —

MONTEZUMA DINING ROOM

300 Magnolia Avenue

In the Montezuma Hotel

# MONTEZUMA HOTEL



300 MAGNOLIA AVENUE

SANFORD, FLORIDA

• Fresh or Salt Water Fishing • Golfing • Hunting •

Let Us Help Make Your Stay a Pleasant One

• Free Parking •

• Reasonable Rates •

## GIFTS OF DISTINCTION

CAN ALWAYS BE FOUND  
IN OUR WONDERFUL COLLECTION

OF

- DIAMONDS • WATCHES
- STERLING SILVER • JEWELRY
- CHINA • CRYSTAL • POTTERY
- AND
- HUNDREDS OF NOVLTY GIFT ITEMS

William E. Kader, Jeweler

Sanford, Florida

112 South Park Avenue

112 South Park Avenue

Phone 357-W



