

ASSOCIATED PRESS LEASED WIRE

SANFORD, FLORIDA, FRIDAY, NOVEMBER 13, 1925

HOME EDITION

NUMBER 90

THE WEATHER Florida—Fair and slightly colder tonight; Saturday fair, fresh to southwest and west winds.

Soiled Flag



Jack Ball, 34 of Los Angeles, used an American flag as a rag to wash windows with. Now he's in jail, sentenced to a 250-day term, and on the wall before him is a nice new flag, which he'll have to look at every day until he gets out.

NEWS SUMMARY

FOREIGN Missing English Submarine M-1 is located... WASHINGTON Prosecution in Mitchell case... DOMESTIC Death list in wreck of two Pennsylvania trains... STATE Edward Yakes, 80, a Miami painter... LOCAL 'Mail Early Campaign' advocated...

3 STICK-UP MEN GET VALUABLES TOTALING \$2,000

'Penny Ante' Game At Home Is Disturbed By Shabbily Dressed Robbers Who Make Off With Jewelry, Money... Six Victims Locked In Room During Search... People's Lives Threatened By Thieves; Parther Store Also Robbed Of Some Cash...

Postmaster Hall Suggests Mail Early Campaign Here; Christmas Holiday Ordered

With the announcement recently that the United States postoffice employees will be given a full holiday on Christmas, 1925, as the result of experiment made during the past two years, postal authorities over the country are bending every effort to secure the cooperation of the citizens in the interests of a 'Mail Early Campaign' for timely shipping.

10 DEAD, 29 HURT IN TRAIN CRASH FIGURES SHOW

Death List Includes Several Employees Of General Electric And Westinghouse Companies; Porter Also Killed... All Of Those Killed Were in Rear Pullman... Engineer Of Train From St. Louis Is Blamed By Division Head For The Collision...

English Submarine Is Still Missing With Sixty-Eight Aboard

December 2 IS OPENING DATE OF NEW YACHT CLUB... Rescue Vessels With Searchlights Sent To Place Where Submarine Is Last Seen... Nothing Definite Given By Admiralty... Ill-Fated Ship Believed To Be Lying In 180 Feet Of Water... LONDON, Nov. 13.—(AP)—A radio received at Portland from the searching ships indicates, the Evening Star says, that the missing submarine M-1, has been located 12 miles off the starting point, Devonshire, at a depth which precludes diving operations and renders it practically impossible to raise her.

SANFORD Y.M.C.A. IS ORGANIZED BY CIVIC INTERESTS

Delegates Of Various Clubs Hold Conference Thursday Night With Officials Of The National Organization... George H. Morris Tells Lions Club Sanford Has Bright Future As One Of Most Important Cities Of State... Visiting Sanford for the first time in the interest of the Sinclair Oil Company, George H. Morris, superintendent for Florida, with headquarters in Jacksonville, told members of the Sanford Lions Club at their weekly meeting Thursday night...

TACOMA MAN IS IMPRESSED WITH CITY ON 1ST VISIT

George H. Morris Tells Lions Club Sanford Has Bright Future As One Of Most Important Cities Of State... Visiting Sanford for the first time in the interest of the Sinclair Oil Company, George H. Morris, superintendent for Florida, with headquarters in Jacksonville, told members of the Sanford Lions Club at their weekly meeting Thursday night...

Five Men Will Face Killing Charges In Duval County Soon

JACKSONVILLE, Fla., Nov. 13.—(AP)—Five men will face trial this month in criminal court on charges of manslaughter growing out of fatal automobile accidents in that vicinity. They are charged with the death of one woman, two girls, a young man and a small negro boy...

Chicago Gunman May Have Killed Himself By Jumping In River

CHICAGO, Nov. 13.—(AP)—Martin J. Durkin, automobile thief and slayer, may be drowned in the Chicago River, or he may have perpetrated a suicide hoax with blood-stained, short-torn clothing and a farewell letter to his mother...

Traffic Violations Lead Heavy Docket In Municipal Court

Twenty-two cases, 11 of which were for violations of various traffic laws, were heard before Judge W. E. White, in Municipal Court Friday morning, according to Police records... Names and disposition of those called to answer for alleged infractions while driving or parking in the city included R. H. Berg, violating parking law, \$5 bond estreated; W. A. Boyd, \$25 fine for reckless driving; Mrs. Joe Fernandez, reckless driving, dismissed; James Hoolahan, violating the parking laws, \$5 bond estreated; Elmore Newton, violation of the traffic ordinances, \$5 bond estreated; T. H. Landswick, illegally parking overnight, \$5 bond estreated; Anne Camiel, parking without light, \$10 fine.

MORE TROUBLE FOR FLORIDA NEW YORK, Nov. 13.—(AP)—Troubles seem to be multiplying for Florida Swanson. Just after her husband's title of marquis has been questioned she has been held in contempt for running off to Paris without testifying in Janet Beres's suit.

Another Half Hour Of Deliberation Would Have Freed Blazer, Says Juror

LITTLETON, Colo., Nov. 13.—(AP)—Another half hour of deliberation would have acquitted Dr. Harold Elmer Blazer, charged with slaying his 34-year-old, embezzle slayer as 'an act of love' and freed by dismissal of the charge, when the jury disagreed yesterday, when the jurymen said later, Dr. Blazer had said he should have leaving a note that his act was 'an act of love' to prevent his family from becoming a burden upon him from becoming a burden upon her family. He was in the hospital several days from slash his throat. Dr. Blazer has announced he will go to Cumbres, Colo., to work on his timber lease. He is 63 years old.

U. S. TO RETURN JEWELS

ASUNCION, Paraguay, Nov. 13.—(AP)—The U. S. is to return to Paraguay a sealed case of jewels given to Charles Ames Washburn, who fled during a war in 1865.

ZUPPKE WANTS JOB

Urbana, Ill., Nov. 13.—(AP)—Red Grange becomes a congressman, Bob Zuppke wants to be postmaster.

Resignation Confirmed

TALLAHASSEE, Fla., Nov. 13.—(AP)—Although Judge J. B. Gaines, assistant attorney general, has confirmed the report that he will resign to take up private practice next January, Attorney General Rivers Buford advised that he had not as yet received Judge Gaines' official resignation. Until he does, the attorney general said, no steps will be taken to find a successor. Judge Gaines plans to take up private practice at Leesburg.

SANFORD FACTS

BUILDING AND LOAN ASSOCIATION The Sanford Building and Loan Association was organized in this city on Oct. 1, 1908, by a group of local citizens interested in the development of the city. Originally capitalized at \$500,000, the organization has since increased the amount of capital stock to \$1,500,000. The record of the association shows but one foreclosure and no losses during the period. The association has been instrumental in the construction of over 500 homes in Sanford, and has under construction at the present time homes valued at \$135,000. The income of the association during October, 1925, was the largest ever recorded for one month, amounting to \$40,000. Paid up stock in the concern pays four percent dividend semi-annually.

Inspectors Appointed

TALLAHASSEE, Fla., Nov. 13.—(AP)—Thirteen additions to the citrus fruit inspection list were made in appointments announced at the governor's office. Those named included E. L. Linard, J. H. Lasher, C. L. Ivory, from November 3 to November 25; H. P. Ferris, P. G. Jefferson, E. D. Plowden, Bruno Lasher, and S. O. Crosby, from November 1-25; E. L. Bocher, D. C. Thrig, McCall Bush, October 21 to November 25; A. F. Burns, October 21 to November 25; H. H. Lawley, October 15 to November 25.

Gives View Of Football

BOSTON, Nov. 13.—(AP)—As to whether collegians like to play football Dr. Morton Prince, psychologist and Harvard graduate, contributes this: "Football is cock-fighting on a grand scale. Whether the birds enjoy the game they have not yet told us."

MOM'N POP

BY TAYLOR



MAKES FAT PEOPLE THIN

New York Physician Perfects Harmless Method of Reducing Weight. The loss of as much as a pound of excess fat a day with no harmful results is the record made by many patients of Dr. R. Newman...

IN THE CIRCUIT COURT OF THE SEVENTH JUDICIAL CIRCUIT OF FLORIDA, IN AND FOR SEMINOLE COUNTY, IN CHANCERY.

Joe Cameron, Complainant, vs. Robert Raymond Read, et al., Defendants. SUIT TO QUIET TITLE. Citation to Robert Raymond Read and wife...

any right, title or interest in and to the lands hereinabove described or any part or parcel thereof. It is hereby ordered that you and each of you be and appear before our said Circuit Court at the Court House at Sanford, Florida, on the 14th day of November, A. D. 1925...

J. H. JACKSON

Long Time Loans on Residences and Business Property. Easy Repayment Plan. Office in new Merriweather Building 2nd Street. Phone 611

SAVE and THRIVE in 1925. The Bright Lexicon of the dictionary of youth. But it is repeated many times in middle age where the fruits of the have been wasted. Regular saving in youth is the protection against failure in later life. Begin now to cultivate this habit count in the First National Bank. FIRST NATIONAL SANFORD, FLA. THE BUSINESS OF RUNNING AN EASIER BY THE ADVERTISEMENTS.

FORD IS ACTIVE IN MOVE TO REVIVE OLD DANCE STEPS

Auto King Leads Class That Meets Twice Monthly For Lessons In Waltz and Other Steps Popular Years Ago

DETROIT, Nov. 11.—(P)—St. Paul's Cathedral hall, which has seen the election of two bishops and the settlement of many slightly diocesan problems of the Methodist Episcopal church, has become a Mecca for those who believe, with Henry Ford, in the revival of the old-fashioned dances.

Mr. Ford has been one of the most active participants at the Cathedral parties, acting as instructor to matrons and misses alike. Mrs. Ford, too, is showing a lively interest, and the two are among the most accomplished of dancers.

The Ford orchestra is a strange contrast to the blatant, derided cornet, the bleating saxophone and the assertive tyrant of the modern "jazz" band. There are no crashing cymbals, no rippling and syncopated pianoforte. The orchestra consists of a Hungarian cymbalon, a dulcimer, a great horn like a tuba, a violin and a guitar—a quaint quintette that provides a fitting background for the modest steps danced to its music.

The music, too, is reminiscent. Here and there come melodies recognizable to those whose memories dip back into the nineties. "Nellie Gray" is there, as are many Stephen Foster's strains. Young faces remain impassive as these melodies sing forth, but old and young alike respond to the gleeful "Ta-ra-ra Boom de Ay."

Other dances include the older round dances, the square dances, the redown waltz, the valeta waltz, the heel-and-toe polka, the seaside polka, and several types of the schottische and gavotte.

St. Cloud—New sewer system to be installed, at cost of \$250,000.

Theford's BLACK-DRAUGHT Liver Medicine. Made from selected medicinal roots and herbs—Nature's own remedy for Constipation and Indigestion. Sold Everywhere.

REAL ESTATE INSURANCE

Make Money

in Sanford

FOR OVER 17 YEARS WE HAVE BEEN RENDERING 100 PER CENT SERVICE

to OUR CUSTOMERS

A. P. CONNELLY & SONS

Magnolia At Second Phone 48 LOANS INVESTMENTS

Subdivision L-O-T-S

ON

Palmetto Avenue

Magnolia Avenue

Park Avenue

Oak Avenue

One Block South of Geneva Street

\$550 up

Prices Advance \$50 per lot Nov. 16th.

Security Realty Co.

HARLAN W. KELLEY 510 Palmetto Avenue PHONE 313-J

SALES FORCE F. L. DAVIES D. G. THRIG

There is No Satisfaction like buying things well and knowing it

In purchasing real estate the investor cannot exercise too much care in selecting property well located and reasonably priced. But after making a purchase and then discovering that the property bought is even finer; of greater value, and the best obtainable, there is a certain feeling of gratification and satisfaction.

So it will be with those who invest now in

MARVANIA

They will buy at under-market prices. They will buy only after thoroughly investigating the merits of the property. Then they will find that Marvania was an exceptionally good buy and that the property values are greater than was at first realized.

Those in a position to know say that lots in the eastern section of Sanford will be almost unobtainable in the year. Even to day property owners in Mayfair don't want to sell. We have heard of no lot that can be bought in that subdivision for less than \$4,000. Others say that it won't be long before lots there are selling for as high as \$10,000.00.

Think what this means for those who buy in Marvania. Here the development will be carried out along the same plan as in Mayfair. The streets will be asphalt. A cement sidewalk one foot wider than the one in the neighboring subdivision, will be laid. Shrubbery and tropical foliage will be planted in the wide parkways, in fact nothing will be neglected in making Marvania as beautiful and as attractive a development as can be found in this part of Florida.

And think of the extremely low prices at which lots in Marvania may be purchased. With prices ranging from \$2,500 to \$3,650 we believe the purchasers of homesites in this development are immediately assured of greatly increased values.

Marvania lots are now on sale on terms of 20 per cent cash, and the balance payable at the rate of 10 per cent every three months. On such terms, and at such prices, those who buy now are certain of substantial profits.

We shall be glad to talk the matter over with you.

Marvania Investment Co.

SCRUGGS REALTY CO. SALES AGENTS

202 First Street Phone 735 Masonic Temple



Mrs. Housewife Becomes a Banker

SAY he is a Banker and at once a woman thinks of a busy man of affairs and perhaps envies him a little. Her work seems so monotonous. Just the same old thing day after day. Go to market, come home and prepare the food, only to see it quickly disappear if she has been skillful in the preparation.

Yet if she wishes, she may become a Banker herself. Her market is the concrete one seen as cans of food, bags of rice and bars of soap found in the grocery store, and if she knows values she can save herself time and money by skillful marketing methods.

If she goes to the same stores regularly, the grocer begins to watch for her to tell her of special values to be found on special days. Also in buying canned food he will give her three for less, or a reduction on a case. And if she is a regular customer he will often break or mix a case for her, so that she does not have to tie up all her month's dessert budget in canned pineapple, in order to save by buying a case at a time. She may get any assortment she may wish, as six cans of asparagus, corn, pineapple and tomatoes, and also get the benefit of the reduction.

Rice can be bought and kept in glass jars with tight lids. Soap if bought by the dozen is cheaper and saves the time consumed in going or sending for more. And, as every good housekeeper knows, it lasts longer if put away on the shelves to dry out.

One clever housekeeper simplified her banking and at the same time kept books very accurately by the following simple method. She took a piece of cardboard eight by twelve inches and divided it into portions, tied a long string to a pencil and fastened it to the pad. This she hung over the kitchen table. When she bought a case or half a dozen cans at a saving she listed them on the card along with the price she paid for them. But at the same time in another place she listed the regular market price. As she took a can from her shelves it was but the matter of a moment to make a straight mark opposite the listed can of food used. Reference to this list showed at a glance

Stock	Price Paid	Number Used	Reg. Price
12 Asparagus	30	11	35
24 Spaghettis	30	11	23
12 Sauerkraut	22	11	25
12 Spinach	25	11	28
24 Beans	13	11	15
24 Tomatoes	23	11	25

what stock of each commodity was on hand, and enabled her to determine what sales to take advantage of without the labor of handling the cans and counting what remained in the pantry. Then once a month she sat down to her book-keeping. She multiplied the price paid for a can by the number of cans used, thus getting the total amount spent for asparagus or

leaf as the case might be. Then she multiplied the current market price by the same number (of cans used) getting the total amount she would have had to pay had she bought singly. Then by subtracting the smaller sum from the larger, or the price paid from the current market price, she found the savings for that month.

On her way to the market she put the sum saved to her credit in the Savings Department to begin to earn for her. So that she felt that she was earning in two ways. She at home working and saving, and the savings in the bank earning for her. So that much desired piece of furniture or the fur coat was achieved without a noticeable expenditure from the family income.

A schedule of advertising for the semi-central section has been prepared, the report shows, and expenditures of the \$30,000 fund accumulated to support the campaign will be started at once. The counties included in the movement include, in addition to Seminole, Lake, Putnam, Volusia, Orange, Marion and Sumter.

COMMERCE BODY PLANS WELCOME FOR RAIL PARTY

Special Reception By City Fathers And Business Men Is Arranged For American Short Line Association

Gathering after the close of the regular session of the Sanford Chamber of Commerce at the Seminole Cafe Friday noon, members of the Tourist and Entertainment committee outlined a reception for the party of American Short Line Railroad Association members, who will spend Monday morning, Nov. 16, in this city.

According to J. G. Ball, chairman of the committee, arrangements will be made to transfer the cars occupied by the party to the tracks adjoining the City Hall building, where the 200 persons composing the party will be met by the reception committee.

Efforts will be made to secure the city administration officials to extend a welcome to the guests and to provide the members of the tourist party with motor cars for the purpose of escorting them about the city. This will be shown the various points of interest in the city before they depart to continue their inspection of the

During the regular session, J. N. Mouton, sales manager and director of the Orlando Development Corporation, which will shortly begin operations on a new poultry ranch project southeast of the city, explained to the local business men the aims, plans and purpose of the organization. He told of the success of similar ventures in other sections of the country, and elaborated upon the actual ideas embodied in the scheme.

In his talk, he stressed the fact that the Orlando concern has no brought a financial promotion development to Sanford, declaring that no stock or similar security will be offered for sale.

Harrison's Selection Announced
The appointment of F. E. Harrison, Jr., as head of the newly organized traffic bureau, to be maintained by the local trade body for the convenience of the members during the present rail congestion was officially announced at the meeting. Mr. Harrison has been actively engaged in his new duties this week, officers say, and is not present in Jacksonville in the interest of the local situation.

According to a report by Howard Hulick, the opening of the Hotel Forrest Lane, scheduled for the first of the year, is threatened with delay, due, he said, to the failure of all agencies to secure permits for the opening of turnpikes to be used at the new resort center. In the interests of the community, Mr. Hulick suggested that the attention of Mr. Harrison be directed to this matter. Favorably received, the suggestion was acted upon by the officers.

A resolution, petitioning the

designation of the cross country highway, linking Canada with Florida, known as the Black Bear Trail and Federal Road Number One, met the approval of the body. The resolution was prepared following a meeting held in Orlando recently, where it was explained that, to meet the requirements of the Bureau of Public Roads in Washington, certain connections in Florida, now part of the State Road system must be ordained as Federal Aid road. The resolution is addressed to Fona A. Hathaway, as head of the State Road Department, and requests that this action be taken to provide for the federal significance of the entire route as a unit.

Libel Suit Anticipated
Attention of the members was directed to a communication from the Clearwater trade body, regarding the proposed institution of libel proceedings against a chain of Northern newspapers indiscriminately slandering Florida through the medium of its columns. The support of the local body, solicited in the letter, was withheld at this time.

From a report of the Seminole County Publicity Committee it was learned that the Central Florida Advertising Campaign, in which this county is a participant, will be inaugurated within a few days.

Sanford's latest cleaning plant, was promised at the meeting by R. L. Christenberry, member of the corporation, who stated that no difficulty had been experienced in securing the delivery of machinery now under construction. According to Mr. Christenberry, the new enterprise will be in operation about Jan. 1, 1926.

Rev. Mortimer Glover, rector of the Holy Cross Episcopal Church, was introduced at the meeting. He responded with a brief talk, expressing his appreciation of the cordial welcome accorded him upon his arrival here a short time ago, and expressed a desire to personally aid in the plans of the Chamber of Commerce for the betterment of the community.

Bradenton—Approximately 12 miles hard-surface roads will be constructed in Sugar Bowl District of Manatee county.

Defense Scores As Widow's Testimony Is Declared Valid

WASHINGTON, Nov. 13.—(AP)—The prosecution in the Mitchell court martial today failed in an effort to throw out of court testimony given yesterday by Mrs. Margaret Lansdowne.

After hearing arguments by opposing counsel, the court overruled a prosecution objection that the evidence given by the widow of the Shennadoah's commander was irrelevant and incompetent. Mrs. Lansdowne's testimony included the statement that Captain Paul Foley, judge advocate of the navy's Shennadoah court of inquiry, sent her a memorandum in advance of her appearance before that board "falsely" describing her attitude, and the court today, in secret session, ruled that it should be made a part of the record.

After disposal of this question, J. Edward Casady, a colonel in the chemical warfare service reserve was called. Representative Frank R. Reed, the defense counsel then read extracts from testimony given a congressional committee by Brig. General Hugh A. Drum, of the army general staff in which he said the general informed the committee that 3,439,150 pounds of mustard gas would be required to materially affect a sixty-square-mile area, of 9,573,850 pounds to cause evacuation of a similar area. "Is that statement correct?"

Sanford To Be One Of Biggest Icing Centers In South, Avers Wells

WASHINGTON, Nov. 13.—(AP)—Within a month Sanford will be the greatest icing center in the south, according to an announcement made Thursday by L. C. Wells, superintendent of construction of the ice plant, in which he stated that the structure would be ready for operation by Jan. 1.

The plant is being constructed by E. W. Sproul Co., of Chicago for the Ball Ice Co., of St. Louis. Upon its completion, Sanford will have two ice plants producing more than 1,000 tons of ice daily, making the industry one of the largest of its kind in the world, it is declared.

A unique construction feat was performed in the building of the plant, according to Mr. Wells. The building is of reinforced concrete and steel construction, and the concrete walls of the storehouse were poured and shaped by the use of slip forms, a method which is said to have been employed on only three buildings in this country. The plant covers five acres along the Atlantic Coast Line tracks near the old city limits on West First Street.

ENGAGE IN FIGHT DUEL
LOUISVILLE, Nov. 13.—(AP)—Arrested at supper for alleged theft, William Martin engaged Sergeant Walter Smith in a fisticuff duel because the officer hurried his eating.

2nd Storm Warning Is Issued By Bureau

WASHINGTON, Nov. 13.—(AP)—The Weather Bureau today issued the following storm warnings: "Advisory 9:30 a. m., storm warning changed to south west, Delaware breakwater to East Port, Maine; disturbance of marked intensity over southern New England, moving northeastward with increasing intensity, will cause strong southwest and west winds and gales this afternoon and tonight."

Center Hill—Movement on foot for construction \$100,000 fifty-room hotel, here.

Markets
NEW YORK, Nov. 13.—(AP)—Cotton futures opened steady, December 20.00; May 19.52; July 19.00.
NEW ORLEANS, Nov. 13.—(AP)—Cotton futures opened steady; the citrus

Robert's Grocery

STAPLE AND FANCY GROCERIES
Phone 39
SERVICE, QUALITY MERCHANDISE, LOWER PRICES
A PHONE CALL WILL BRING YOUR GROCERY WANTS TO YOUR DOOR

SPECIALS FOR SATURDAY

Fresh Oysters, Clam Chowder in Cans, Brunswick Stew in Cans—Full line of fresh vegetables—String beans—New Potatoes—Squash—Fresh Tomatoes—Green Onions—Celery—Lettuce—Egg Plants—Peppers—New Fall Nuts—Fresh Cranberries—Also cranberry sauce in cans.

The Mystery Solved!
Folks wonder how it is possible for A&P Stores to sell such high quality merchandise at such low prices. Picture for yourself 14,000 red front stores—imagine the tremendous amount of goods required to stock all these stores—then you have the solution of the "mystery"—a buying power without an equal in the U. S. That's why A&P sells the best for less.

A&P

PEAS "Iona" Brand Tender, Select Quality	No. 1 Cans	12c
"Iona" Brand TOMATOES Delicious	No. 2 Cans	12c
"Iona" Brand LIMA BEANS Plump, Tender, Good	No. 2 Cans	19c
SULTANA BRAND		
TUNA FISH	For Delicious Salads, No. 1/2 Can	27c
Rider's Brand LYE	IONA SLICED PEACHES	
HOMINY	No. 2 Cans	27c
A&P BRAND		
PUMPKIN	No. 2 Can	15c
Red-Circle COFFEE Ground Fresh, Full Strength	TEA Thea Nectar Finest flavors blended by Experts Orange, Pekoe, India, Ceylon or Mixed Blends. 2 oz. pkg. 1/2 lb. pkg. 1/2 lb. pkg.	1b. 47c 13c 23c 45c

THE GREAT ATLANTIC & PACIFIC
JUST AROUND THE CORNER FROM EVERYBODY

Milane Friday Mac Lean
DOUGLAS
"7 Keys of Baldpate"
Geo. M. Cohan's Greatest Comedy.
It'll bring the grins from a wooden Indian! It'll raise the hair on a billiard ball!
The first of the Greater Douglas MacLean Paramount Comedies.

W. H. LO
410 Sanford Avenue

WESTERN PORK HAMS lb. 3
WESTERN Pot Roast OF BEEF 12 1/2
WESTERN PORK CHOPS lb. 3
DRESSED HENS lb. 3

PIGGLY WIGGLY
Did you ever stop to think of the buying power behind your neighbor's WIGGLY STORE?
PIGGLY-WIGGLY SELLS GROCERIES FOR LESS

Corn No. 2 Cans 2 cans 2
Peas No. 2 Cans 2 cans 2
Ritter's Pork and Beans 2 cans
Raisins 1503 Packages 2 Pkgs 2
Tomatoes No. 2 Cans each 1
Sliced Pineapple No. 2 can 2
Apples 3 lbs. Fancy 1

WHERE SANFORD TRADES

Sel-Rite
410 Sanford Avenue

Peaches No. 2 Easter 19c
Jelly Gibbs Apple 9c
Grits Post Package 2 for 19c
Tomatoes No. 2 Standard 10c
Beans No. 2 Stringless 2 for 29c

LOUISIANA AND FLORIDA RATES ARE COMPARED

J. Curtis Robinson, League Head, Cross Examined on Charges of Discrimination Against Florida Growers

Rail Statistician Is Also Questioned

Robinson Cites California Argument For Decrease in Charges Upon Perishables

ORLANDO, Fla., Nov. 13.—(AP)—Cross examination of J. Curtis Robinson, secretary manager of the Growers and Shippers League of Florida, and the preparation of a comparative rate exhibit of Louisiana and Florida strawberry shipments by J. H. Tench, rate clerk of the State Railroad Commission together with the testimony of G. W. Alver, independent railroad statistician, on the values and earnings of the railroads of the United States outside of Florida, as compared with the three lines of Florida, occupied the morning session of the line haul rate case being heard here by F. C. Hillyer, attorney-examiner of the Interstate Commerce Commission.

Mr. Tench testified that Florida was greatly discriminated against with reference to rates on straw-

berries to New York from Louisiana and from this state.

His contention was substantiated by exhibits showing that Independence, 236 miles farther from New York than Plant City, Fla., has a lower rate of both fruit and express shipments than Plant City.

It was shown that even the express rate from Independence, La., to New York (\$2.45 per 100 pounds) is lower than the freight rate from Plant City to New York (\$2.75 per 100 pounds). The same ratio of rates applies on shipments to Boston.

Florida Practically Eliminated According to the witness the Louisiana shipments overlap the Florida shipments from Starke and Sarge sections and the better rate enjoyed by Louisiana practically eliminated Florida from the eastern markets at that time.

Plant City, he said, was an early shipping point and did not suffer from the production but did suffer from the high rates.

The cross examination of Mr. Robinson was mostly devoted to technical questions on the exhibits presented by him yesterday.

In answer to a question by the attorney for the defendants, Mr. Robinson said that California used the establishment of an increased minimum loading as an argument for decreased rates. He agreed that

water competition along the coast of California perhaps influenced slightly the lowering of railroads but added that water shipments of California perishables were exceedingly small. He said that Florida was not asking for a blanket rate.

Rate Tabulation Requested Examiner Hillyer requested Mr. Robinson to prepare a tabulation of the rates on the various commodities to the different points in the United States and Canada from Florida points. This is to be presented to the commission in January.

Mr. Alver pointed out that while the actual amount earned per mile by the three Florida railroads was lower than the actual amount that earned by other railroads in 1923, the Florida roads were valued at less and their earnings showed 5.85 per cent profits and the outside roads earned 5.01 per cent. Earnings per mile on Florida railroads in 1923, the exhibit showed \$3,337 and the other lines showed \$1,102, but the value per mile of Florida roads was \$57,232 while that of other roads was \$81,303.

According to Mr. Alver's testimony the increase of earnings of Florida railroads for the nine months of 1925 ending September 30 last over the same period of

1924 was Florida East Coast 29 per cent; Atlantic Coast Line 30 per cent; Seaboard Air Line 12 per cent.

The increase for the eight months ending Aug. 31, last over the same period of 1924 for the other lines of the United States was given as 18 per cent.

The federal government, Dr. Smith wrote, has no funds for topographical surveys available, but that under the Temple Act, it is hoped that an appropriation will be made at the forthcoming session of Congress which would enable the U. S. Geological Survey to co-operate with any state having money available for topographical work.

The government, Dr. Smith stated, will be glad to co-operate with Florida in a topographical survey of the entire state, if the state legislature will appropriate funds to help the federal forces.

The state of Florida, Dr. Smith reminded Mr. Gunter, has a total acreage 58,666 square miles, with but 4,716 square miles topographically mapped, "or approximately 8 per cent, leaving 53,950 square miles to be completed." The average cost to finish the work, the U. S. director said, would be approximately \$35 per square mile, or a total expenditure of about \$1,880,000, or about \$300,000 for the state's share. With an annual appropriation of \$50,000 per year, the work could be finished in 18 years, he added.

MANILA, Nov. 13.—(AP)—A strong earthquake occurred at 8:15 o'clock tonight. The tremors continued for half an hour. The weather bureau estimated the center of the disturbance to be 300 miles from Manila. No damage was reported although buildings in Manila were shaken perceptibly.

Quake Believed Serious. WASHINGTON, Nov. 13.—(AP)—A serious earthquake, apparently centering at great distance left its record today on the seismograph of Georgetown University. It began at 6-12 a. m. eastern time, and still was in progress at 9:40. Another longer period of the instrument indicated the shock as very severe.

TO MAKE DEBUT SOON. NEW YORK, Nov. 13.—(AP)—Prince Alexis Obelensky, Russian basso, who took to the concert stage with the rise of the Bolshieviki, is going to make his debut at Mrs. Vincent Astor's house. Prince Serge Obelensky, cousin of Alexis, married Mrs. Vincent Astor's sister.

MARTIN COUNTY TO BE SURVEYED IF FUNDS ALLOW

Congress Will Be Asked to Aid State in Making Topographical Map of Newest County in State of Florida

TALLAHASSEE, Fla., Nov. 13.—(AP)—If state funds are made available by the legislature, the federal government will assist Florida in the topographical survey of Martin county next year, a letter from George T. Smith, director of the United States Geological Survey, to Herman Gunter, state geologist, stated.

Martin county, the newly-created

1924 was Florida East Coast 29 per cent; Atlantic Coast Line 30 per cent; Seaboard Air Line 12 per cent.

The increase for the eight months ending Aug. 31, last over the same period of 1924 for the other lines of the United States was given as 18 per cent.

The federal government, Dr. Smith wrote, has no funds for topographical surveys available, but that under the Temple Act, it is hoped that an appropriation will be made at the forthcoming session of Congress which would enable the U. S. Geological Survey to co-operate with any state having money available for topographical work.

The government, Dr. Smith stated, will be glad to co-operate with Florida in a topographical survey of the entire state, if the state legislature will appropriate funds to help the federal forces.

The state of Florida, Dr. Smith reminded Mr. Gunter, has a total acreage 58,666 square miles, with but 4,716 square miles topographically mapped, "or approximately 8 per cent, leaving 53,950 square miles to be completed." The average cost to finish the work, the U. S. director said, would be approximately \$35 per square mile, or a total expenditure of about \$1,880,000, or about \$300,000 for the state's share. With an annual appropriation of \$50,000 per year, the work could be finished in 18 years, he added.

MANILA, Nov. 13.—(AP)—A strong earthquake occurred at 8:15 o'clock tonight. The tremors continued for half an hour. The weather bureau estimated the center of the disturbance to be 300 miles from Manila. No damage was reported although buildings in Manila were shaken perceptibly.

Quake Believed Serious. WASHINGTON, Nov. 13.—(AP)—A serious earthquake, apparently centering at great distance left its record today on the seismograph of Georgetown University. It began at 6-12 a. m. eastern time, and still was in progress at 9:40. Another longer period of the instrument indicated the shock as very severe.

TO MAKE DEBUT SOON. NEW YORK, Nov. 13.—(AP)—Prince Alexis Obelensky, Russian basso, who took to the concert stage with the rise of the Bolshieviki, is going to make his debut at Mrs. Vincent Astor's house. Prince Serge Obelensky, cousin of Alexis, married Mrs. Vincent Astor's sister.



Study Location and Reason it out--

YOU WANT conditions about your home to be perfect. You want these same conditions to surround your investments. Location is paramount in bringing about these conditions, and that is why San Lanta is so eminently desirable.

- First, it is close to the center of the city.
 - Second, it is on the Dixie Highway
 - Third, it is within three minutes of all schools, churches and the business district.
 - Fourth, it is the closest-in highly restricted property in or near the City of Sanford that has carried out all its promises of development.
 - Fifth, prices in Section One will be advanced from 10 to 20 per cent on Dec. 1st, and there are only a few lots left in this section.
- Regardless of all future development in residential property, San Lanta must always dominate the situation.

SAN LANTA

The Property for Discerning People

Knight & MacNeill
SALES AGENTS

107-109 South Park Avenue
Phone 720

MRS. J. M. LeMOINE
Saleslady

R. O. BRINKMAN,
Mgr. Realty Dept.

Your Intelligence

is based on mental reasoning and experience. It is up to you to manage the hen and direct her instincts by supplying

RED COMB EGG MASH

which enables her to manufacture a complete egg.

DISTRIBUTED BY

Seminole Feed Store

Elm and Commercial Phone 94



SPECIAL SALE "Uneeda Bakers" SUGAR WAFERS

Anola--Festeno--Nabisco, 3 for .25c



Chocolate Cakes Assorted 2 for 25c

Assorted Sugar Wafers 17c each

Social Delights 30c each

Ass't. DeLux 30c each

Chocolate Cakes H. B. 40c each

Famous Sugar Cakes

Famous Ginger Cakes 30c each



Jones Dairy Farm sausage, lb. 50c
10 lbs. granulated sugar 65c
Nice fat Mackerel lb. 25c
Baltimore Oysters

McCuller Grocery Company

"AT THE BASKET" WE DELIVER

BOYS' ENCE CITY Vice-Pres Body Payment rida Deals ytona go Meet nism Of al In Face ng South H. Fla. Nov. r boys' are times more advere the interests of Emerson represent of ation of Real arrived here of this leading of the Middle ch has taken against Flor is ardian State eared to the eosing really aid, emphati- practice has er dash to erty more e agency. ate should e abolition. the long n contracts ment of 20 the opin- its in- stem as it e encourages it, en- d, fly-by- ated the re- illars are be- daily from of the Middle who are on eports undoubt- "Bankers- r, in fact, will bank deposits are being de- Florida boom, wonder at the h propaganda over the na- de that Solenn self, I would have as I did on my rida in July," he eby advanced dollars in those you see, I do not

Social Side of Sanford

HARLAN W. KELLEY, SOCIETY EDITOR

Residence Telephone 313-J

Personals

Mrs. Forrest Lake and daughter, Mrs. Monroe Hutton, motored to Orlando Tuesday.

Robert Hagan, George Cowan, R. L. Shipp, and John Huggens spent Armistice Day in Tampa.

Mrs. Rush St. Johns of Miami is visiting relatives in Sanford this week.

Mr. and Mrs. J. Woodruff and son, Jack, have taken a boat trip to Jacksonville. They will return today.

Mrs. D. T. Philyaw and son of Gainesville are the guests of Mr. and Mrs. Zachary at their home on Magnolia Avenue.

J. M. McKinnon, H. C. DuBose, Mr. Baldwin, and Mr. Brown represented the Presbyterian church at the laymen's convention at Lakeland this week.

Mrs. G. C. Cochran has as her guests, her mother, Mrs. Minnie B. Ward of Washington, Ga., and her sister, Mrs. Henry Power of Comer, Ga.

Thomas A. Cooke of New York City is in Sanford for a few days. He is a member of the Otter-Kelley Realty Co., and is here looking over his holdings. He states that Sanford appeals to him as about the most substantially progressive city he has seen in Florida.

LATEST FASHION HINTS FOR MILADY

BY MARY MARSHALL
Copyright McClure Syndicate

The Smartest to Wear Black This Season is Embellished With a Touch of Metal.

This is a season noted for its bright colors. Not since the war and several seasons of ante-bellum cheerfulness have women's clothes been so colorful. For a time it did seem as if women were going to emulate the men—wearing nothing but black for evening and only dark somber hues for daytime. But fortunately we soon pulled ourselves out of that depression and now we are wearing colors rich and rare and really beautiful.

And so having really established colors, having persuaded women that there is nothing crude or childish in wearing the most succulent of greens, the most flaming of reds, the mellowest of yellows and the winiest of purples—having thus instituted a revival of colors—fashion turns about and does something quite striking with all black. Quite often recently it has happened, in gatherings where well-dressed women were the rule rather than the exception, and where colors of all the most approved shades were represented, that the most notably well-dressed or the most strikingly fashionable person present has been dressed in black. But there is never anything dull or colorless about this new fashionable black. It must seem to be even more brilliant and radiant than colors to be really smart. Often black is combined with gold or silver to give this brilliant effect—sometimes with rhinestones or other brilliants.

I hear that so far in Paris no street costume has appeared that carried with it more chic and real smartness than one of all-black cloth. It was worn with an all-black hat, and the very sheer black stockings that are so much talked about yet so seldom worn. But it is only the very exceptional woman who wears such good advantage.

Sometimes a long tassel of gold

or silver is the note of brilliance about a black velvet afternoon frock, and sometimes gilded nutria gives the bright touch to an otherwise all-black coat or frock. Then too bright colors are often added to black. These may be introduced by way of full or flowing georgette sleeves.



The smart black costume here consists of black cloth coat and skirt worn with embroidered metallic blouse. The hat is black with metallic ornament.

Mrs. Bolly Entertains Merry Matrons' Club

Mrs. John Bolly entertained the Merry Matrons' Club at her home on Thursday with a spend-the-day party. At 1 o'clock the hostess served a delicious dinner. Those enjoying the most day were: Mrs. Henry Witte, Mrs. J. Gut, Mrs. Ralph Loising, Mrs. Fred Bolly, Mrs. E. Kaserman, Mrs. Morris Hill, Mrs. D. C. Barcliff, Mrs. C. Stoothoff, Mrs. H. M. Giles, Mrs. W. Price, and Mrs. Bernard Lake of Louisville, Ky.

Sarah and Edna Caldwell and George Carter of Bartow spent Wednesday in Sanford as the guest of the former's grandmother, Mrs. S. E. Gillon.

A VISITOR TO SANFORD
John R. Whitson of Toledo, O., is spending several days in Sanford. He represents a large manufacturing concern in Toledo and has been looking over Sanford with a view to establishing a

branch plant here. He is very favorably impressed with Sanford and expects to return north soon to bring his family down here for the winter.
Friends of Miss Allie Gillon will be sorry to learn that she is quite ill at her home.

City Taxes Due November 1st.

Tax books are now open for the payment of City Taxes. 2% discount allowed on all taxes paid in November, 1% on all paid in December. Tax books close April 1st.

Ellen Hoy, City Tax Collector.

Boudoir Floor Lamps and Jap Novelties

Special Price

On your lamps and shades for—

\$12.50

Mahogany Lamps

With beautiful silk shades, all colors.

\$19.00 to \$39.00 each



China Nut Set

Celery Sets
Mayonaise Sets
Fruit Bowls and Vases

\$1.00 to \$2.50

Boudoir Lamps

Fancy shapes with shades to match.

\$1.75 to \$3.50

Jap Table Lamps

Large size lamps, in all colors with silk shades trimmed with silk fringes.

\$19.00 to \$25.00



Luncheon Sets

Painted oil chalk sets with napkins to match. Asst designs.

\$1.75

Fancy Pillows

Made of high grade cotton, trimmed with nets and silk laces. All shapes.

\$3.50 to \$5.00

THE YOWELL COMPANY

PRE-SEASON SALE OF XMAS TOYS

Owing to the unusually large stock of furniture which we are carrying at this time and in order to make room for certain alterations in our building we are going to close out our entire stock of holiday toys etc., before December 1. We are offering this merchandise at prices 20 per cent lower than usual and we intend to move them within the specified time.

DOLLS AND DOLL CARRIAGES

That Every Girl Would Delight In

Dolls

All sizes, some that go to sleep. Priced—

\$1.00 UP

Carriages

Some with hoods—Reed, in ivory and brown.

\$2.25 UP



Kiddie Cars---Wagons

Best Quality Materials are found in these toys. They will delight any child. Priced from—

75c TO \$8.00



Wheel Barrows---Tricycles

With heavy rubber tires. Priced from—

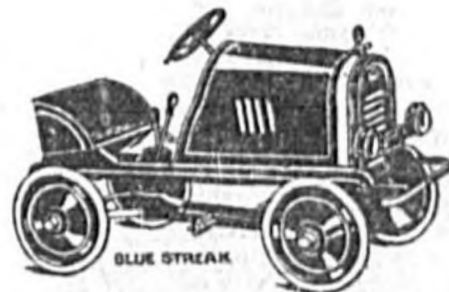
\$3.75 TO \$8.00



Autos

Nothing will give your boy more pleasure than one of these autos.

\$8.25 TO \$27.50



REDUCED

\$1.00 Every Day

Special built auto will be reduced \$1 each day until sold. See our window. Don't wait too late.

Fire Truck

Complete! Every boy would delight in it. Priced—

\$21.00



Smith Bros. Inc.

"QUALITY MERCHANDISE AT PRICES THAT APPEAL"
Nothing Charged - - - Nothing Reserved

INTERNAL FUND TRUSTEES FIND DUTIES SWELL

State Improvement Money Guardians Rise From Position of Oblivion to Place of Distinction In 15 Years

Real Estate Boom Explained as Cause

Body, Formed in 1908, Had Little to Do For Over Decade But Occupy Offices

TALLAHASSEE, Nov. 13.—(AP)—From an inactive body of men to one of the most important committees functioning for the state of Florida.

That explains the virtual metamorphosis of the committee of trustees of the Internal Improvement Fund.

Something like 15 years ago, according to some of the older officials of the State Capitol, trustees of the Internal Improvement Fund were called "trustees" only as a matter of form. Now, since Florida's great advancement in the realty world, members of the committee are "trustees" in every sense of the word.

It was in 1908, according to those who have followed the work of disposing of state lands, that Richard J. Bowles started the state and threw the trustees of the Internal Improvement Fund into a furor of excitement by purchasing several thousand acres of land. A few days ago the trustees sold nearly 25,000 acres in Palm Beach county, which brought nearly a million dollars into the treasury, according to the figures given out by the board's secretary.

Where 15 years ago a bidder for state land was somewhat of a rare sight, scores of them are seen in and around the board room of the governor's suite each Tuesday now, when the weekly land sales are held.

Where 15 years ago drainage work in Florida was greatly handicapped because of scarcity of funds, the report of J. C. Luning, state treasurer, recently revealed the fact that a comfortable balance is shown for the internal improvement work.

The question uppermost in the minds of those who have interested themselves in the sale of state lands is: "Where will the wild scramble for state lands now in program, end?" There is bound to be a limit to the state's holdings, they argue.

Hardly a day passes now without land sales aggregating thousands of dollars. The sale of a thousand acres of state lands is a commonplace occurrence at the weekly meetings of the board.

Incident with the Bowles sale, 15 years ago, was the recent oral argument in the State Supreme Court of a case wherein the heirs of Bowles are seeking a large portion of the land sold. The purchase was made at \$2 per acre, half of the funds derived being designated for the drainage department. In some manner later the Internal Improvement Fund trustees obtained a hold on the land, and the heirs are now contending that it was by a mortgage, while the trustees claim that it was by a straight deed.

Additional Society

Mrs. Frank Manning of Cleveland, N. Y., and Mrs. M. J. Corey of Syracuse, N. Y., stopped over in Sanford for a short visit while en route to St. Petersburg.

Mrs. Wragge and daughter, Edith, have returned from Fernandina, where they were called by the illness of Mrs. Wragge's sister.

Mrs. John M. Simmons of Mountville, S. C., is visiting her daughter, Mrs. Ned Chittenden, and her sister, Mrs. W. T. Langley, at the Welaka Apartments.

Mr. and Mrs. John A. Blount left Thursday for their home in Waynesboro, Ga., after a visit with their daughter, Mrs. Henry Purden at her home on Palmetto Avenue.

Miss Fannie Roba Munson and Miss Zoe Munson, of St. Petersburg are the guests of their aunt,

Mrs. Fannie Munson, for a few days.

C. C. Moys of Kissimmee is visiting friends and relatives in Sanford for a few days.

E. H. Chapman of Tampa spent Armistice Day in the city.

Miss Velina Kessler, Miss Doris Vernon, and Miss Jennie Allen of Osteen were the guests of Miss Thelma Eaton on Armistice Day.

E. Compton of Chicago, Ill., is expected in Sanford soon. He is contemplating establishing a lumber yard here.

T. H. Sanders has returned to his home in North Carolina after spending the past several days with Mr. and Mrs. D. D. Caldwell. R. W. Otter has returned to Sanford after a week's trip to West Palm Beach and Miami.

Will Meet On Mondays Presbyterian Circle

The circles of the Presbyterian Auxiliary will meet Monday in the following places:

Circle No. 1. Mrs. R. Davey, chairman, at the church at 3:30 o'clock.

Circle No. 2. Mrs. L. J. Frazier, chairman, at the home of Mrs. Brown Miller at 3:30 o'clock.

Circle No. 3. Mrs. Fred Walsman, chairman, luncheon at the home of Mrs. Walsman at 12:30 o'clock.

Circle No. 4. Mrs. Claude Howard, chairman, at the home of Mrs. C. B. Turner on East 13th Street at 3:30 o'clock.

Circle No. 5. Mrs. H. C. Long, chairman, at her home on Park Avenue at 3:30 o'clock.

Circle No. 6. Miss May Magill, chairman, at the church at 3:30 o'clock.

Circle No. 7. Mrs. Wm. McKinnon, chairman, at the home of Mrs. M. Nelson on Elm Avenue at 3:30 o'clock.

Circle No. 8. Mrs. J. D. Woodruff, chairman, at her home on Sanford Avenue at 3:30 o'clock.

EXTRADITION COMBATED

TALLAHASSEE, Fla., Nov. 13.—(AP)—The attorney general's office is in receipt of a notice of an appeal to the state supreme court by attorneys for W. L. Marks, of Miami, who are seeking a writ of habeas corpus, preventing Myers' extradition to Kentucky. Myers wanted in the Blue Grass state for converting stocks and bonds to his own use. Governor Martin recently

BALKS AT IDENTIFICATION

CHATTANOOGA, Tenn., Nov. 13.—(AP)—Identified by photographs sent police here, a man who lost his memory at Birmingham says he is from Missouri until he gets further proof that he is Walter P. Lawrence of Walkersville, Ohio.

tions of riff-raff that every normal child must have. A small toilet-room or bathroom adjoining adds much to the convenience of the room.

Scarf Collar



Here is a very attractive collar arrangement that serves as a scarf as well and gives the high neckline that all smart day frocks have. It is of black satin lined with beige georgette.

STATE EMERGING FROM CHAOS OF RAIL CONGESTION

Expansion of Rail Facilities By All Florida Roads Seen As Relief From Existing Conditions By Commission

TALLAHASSEE, Fla., Nov. 13.—(AP)—Florida is gradually emerging from the throes of the present railroad congestion by expanding and developing its railroad resources.

This, in substance, was an announcement by the railroad commission, in commenting upon the outlook for the lifting of any embargoes over the winter.

Here are some of the expansions and developments, as furnished the Railroad Commission by the American Railway Association:

Florida East Coast: The Bowden yard, at Jacksonville, is now and of 2,700 car length. Five units have been added within the past 60 days, in addition to the old yards. Putting in double track at Jacksonville.

sonville. It will be in operation by November 20.

Installing four freight tracks around the union station to expedite the freight movement, which would not interfere with the passenger movement.

Double track, St. Petersburg to Jacksonville will be completed about November 15.

Double track, St. Petersburg to New Smyrna to be in operation about December 15.

Double track, West Palm Beach to Miami, November 15.

Freight line around the city of

Miami, from Lemon City to Larkin, via Hialeah, including a 300-car length freight yard at Hialeah, in operation December 1.

Atlantic Coast Line: Adding 500-car length yard room to the yard at Jacksonville and Lake Cross.

Seaboard Air Line and Atlantic Coast Line.

Enlarging freight terminal yards at Tampa.

Tallahassee—Episcopalians planning to erect \$50,000 parish house at St. Johns Church.

We are Pleased to announce that MR. W. P. CURTIS, C. P. A. (Tenn.) has been attached to the staff of our Central Florida office

Hall, Pentland & McC

AUDITS - SYSTEMS - TAXES

Miami, Jacksonville, Tampa, Sanford.
317-18 First National Bank Building

S. G. GRAY, SANFORD

The New Boulevard will Pass through Sanford Grove

A WIDE and spacious boulevard will eventually run directly through the center of Sanford Grove. The city planning commission proposes to extend this boulevard, 120 feet in width, to completely encircle the city of Sanford. It is said the great highway will be about 15 miles in length and should prove a delightful motorway for Sanford people and for hundreds of winter tourists.

TUESDAY the necessary right-of-way through Sanford Grove was deeded to the county. The building of Seminole Boulevard, as it is now planned, will bring Sanford Grove even nearer the shores of beautiful Lake Monroe, the new Forrest Lake Hotel, the business district and various other important points.

AS DEVELOPMENTS in Sanford take place and as the city expands, those places which used to seem a long way out, build up so quickly, that we find them almost in town. A couple of miles make little difference today while a year or two back, it was back country. And so while Sanford Grove used to be considered way out, it is now daily coming closer to the city that is building out that way. Soon we may expect it to be a part of greater Sanford.

THOSE who know Sanford, know how substantial its growth has been, and realize what the present developments mean to all property adjacent or in close proximity to it.

\$400 will buy a well located lot in the first section of Sanford Grove. With 148 acres in the entire tract, and all of them to be developed, those who buy when the property is first put on sale, will most certainly reap big profits. The individual who is looking for well located homesites, in a rapidly growing section, can make no mistake by talking the matter over with us.

SANFORD GROVE

"AMID MAJESTIC PINES"

Bart Nason, Sales Director

FIRST NATIONAL BANK BLDG.

SANFORD, FLORIDA



Men's Fall Hats

In Wonderful Complete Assortment

Hats that set you off from commonplace — hats that say quality at a glance — hats that look as if they belonged to you — such are hats that are being offered in our complete fall display at moderate prices.

B. L. Perkins
"THE MAN'S STORE"
Welaka Building



To Women Who Tire Out Quickly

Is this your picture—tired out before noon—drowsy and listless all afternoon—and even cross and irritable and ready for bed before nine o'clock? Then you are eating too much—and yet starving your body. You need more energy—more vitality and more endurance. Cut down on your meats and other heavy foods and eat more Merita Bread. It gives your body plenty of carbohydrates and vitamins and these build energy, strength and endurance. Merita Bread is easy to digest, yet extra rich and very healthful. Two sizes, 10c and 15c.

MADE BY THE AMERICAN BAKERIES COMPANY



EXTRA RICH BREAD



Fresh daily from your grocer

WASHINGTON LETTER
CHARLES F. STEWART

South Africa will do. If, on investigation, it doesn't suit him, he'll go on to Beluchistan, in extreme northwestern India, where he's assured conditions are ideal for the work he's so much interested in.

FLORIDA FACTS

During the Spanish American War General Shaffer with his command and supplies were encamped near Tampa.

All his troops and supplies were placed on transports at the wharves at Port Tampa from whence he sailed to Cuba. These wharves had been constructed on the direction of Henry B. Plant, formerly president of the South Florida Railroad which was the first through railway service in the state. These wharves were constructed in 1887 when the South Florida Railroad was first extended to Port Tampa on Old Tampa Bay.

In 1887 there was a yellow fever epidemic and shotgun quarantine prevailed throughout the state for some time.

Henry B. Plant, Colonel Henry S. Haines, who came from Savannah, Georgia, and J. H. Ingraham, all of whom were associated together in the building of the railroads, studied the situation closely. They proposed to organize a state health board that would have charge of such affairs as spreading diseases and epidemics.

Mr. Plant instructed Mr. Ingraham to go to Tallahassee and interview the governor on the matter and to make proposal the proposal that if the executive would call an extra session of the legislature immediately that the South Florida Railroad and the Plant Investment Company would pay all the expenses.

The governor declined to accept the proposition. However at a regular meeting of the legislature held soon afterwards, a bill was passed authorizing the establishment of a state board of health.

Dr. J. Y. Porter, of Key West, was appointed state health officer. This appointment was considered by the assemblymen and the people at large to be most wise and timely.

Almost immediately upon the appointment of Dr. Porter, the shotgun quarantine was lifted. Since that time no serious epidemic of any nature has occurred in Florida.

General Henry S. Sanford, founder of the city of Sanford, and one of the pioneer developers of the central part of the state is quoted as saying: "Florida lies at the mouth of New York harbor (figuratively speaking) and will one day be the greatest state in the union, as its soil, its health, and its climate justify me in believing its resources for pleasure resorts and business are unlimited."

Fort Marion located at St. Augustine was formerly called Fort San Marco. It was built to protect the city against attacks of the Indians. Its construction was started in 1565 by Don Pedro Menendez and it required about 100 years to complete it. The federal government made additions to the fort in the year 1842.

Theford's
BLACK-DRAUGHT
Liver Medicine
Made from selected medicinal roots and herbs—Nature's own remedy for Constipation and Indigestion.
Sold Everywhere

**Double Your Money
In Ninety Days**

28 LOTS FOR \$16,000

Joins ROSE COURT on East.
Joins MAGNOLIA HEIGHTS on South.
Rose Court lots are among the most valuable in the city while the adjoining lots in Magnolia Heights sold out quickly at \$1500 each, or \$30.00 per front foot

We offer these lots at less than half the above price—in fact at less than acreage value.
The property is high—overlooking Rose Court. Fine bearing Orange trees on nearly all lots and magnificent Oaks on the balance.

If you're interested in making some money see these lots.
We own this property and can deliver. Title is good.
Terms on part. This price will hold good till November 20, unless sold sooner.

Packard Realty Company

209 Magnolia Avenue, Sanford
Rear Sanford Loan and Savings Co.

Beautiful Brick Home

Central and Palmetto—Five rooms, all modern improvements, south and East Exposure, lot 70x120 feet

GOOD TERMS
Best Home Buy In Sanford
Packard Corporation, Owner
Masons Bldg. Phone 72

"As-You-Like-It"

LINE OF
Hosiery

We have recently added this popular line of hosiery to our store. We have both chifton and heavy silk in stock. Full-fashioned and in all new shades. Priced from—
\$1.95 to \$2.50

Novelty Suggestions

We have unique novelty suggestions for both parties and the holiday seasons. Call and see them.

THE QUALITY SUGGESTION
106 Park Ave.

CHURCHWELLS'

Two Day Specials... Saturday and Monday



50 Ladies Silk Dresses \$9.95
100 Ladies' Silk Dresses \$11.95
95 Ladies' Silk Dresses \$16.95

\$4.00 Ladies' Hats	\$3.45
\$5.00 Ladies' Hats	\$3.98
\$6.00 Ladies' Hats	\$4.95
Men's Brown Dress Shoes or Oxfords	\$3.50
Ladies' Patent Leather or Satin One Strap Pumps	\$5.00
Boy's Brown Dress Shoes or Oxfords	\$3.50
Childrens Patent Leather One Strap Pumps Sizes 8 1-2 to 2	\$3.50
Infants' Soft Soles White Kid Shoes	\$1.00

54 Inch All Wool Flannel Per Yard	\$3.25
Best Grade 36 Inch Bleaching Per Yard	19c
36 Inch Nurse's Uniform Cloth Per Yard	29c
36 Inch Indian-Head Per Yard	29c
Ladies' Linen Suiting Dresses Sizes 36 to 52	\$2.50
Ladies' Happy Home House Dresses Made of Best Grade Amoskeg Ginghams	99c



Men's Three Piece All Wool Blue Serge Suits	\$27.50
Men's Three Piece All Wool Suits	\$30.00

What a Privilege to Live where
Wealth, Culture and Refinement Abound

LOCH-ARBOR

The very name reveals its charm

FLORIDA is filled with subdivisions. Whichever way one turns there are some lots that may be purchased. It is a simple matter to buy lots in Florida, and many of them are comparatively cheap. But it is not such a simple matter to find a place where everything that is desired may be found. In one place waterfronts may be lacking. In another there may be no foliage. The next subdivision may be lacking in restrictions, which everyone knows determine values.

IN Loch-Arbor a development out-of-the-ordinary is under way. Every feature that will provide property owners with satisfaction, is to be provided. Nothing will be left undone to bring to Loch-Arbor a setting found in no other place in Florida. It will have characteristics all its own. It will be the type of its development and the beauty of its landscape that will appeal to the most discriminating.

THERE will be nothing cheap about Loch-Arbor. Those developing the 800-acre tract are doing so in the belief that something different is wanted, something that will make Loch-Arbor stand out head and shoulders above all other developments. And so no money will be spared in making it the place of our dreams, a land where those desiring the best will be able to find it.

PROPERTY in Loch-Arbor will be highly restricted. There will be no shacks. Nothing but beautiful structures will be permitted. It will become known for its magnificent homes, its sunken gardens, its winding driveways, its silvery lakes, and for its people of wealth, culture and refinement.

FROM all over Florida will come the buyers of property in Loch-Arbor. They will be brought to Sanford in Palatial Pullman busses which are being purchased by this company. They will be brought from tourist centers, in the belief that once the property is viewed, it will be found so superior to other developments that home-sites will be selected on which to build winter homes. Sanford people who appreciate the character of the development of Loch-Arbor are already asking what they must do to become property owners in Loch-Arbor, Sanford's beauty spot.

HIGGINS-SMITH-WIGHT, INC.
Sales Agents

the World of Sport

Will "Song" Game

13.—(P)—Sings his iron that Illinois against

Golf Way

13.—(P)—at-amateur y, the ma-nual open Princess under way the leading play start- continued

STATE ROAD CONDITIONS

ROADS
13.—(P)—Sun- gassed the Cath- of Chica- to the
13.—(P)—Sun- gassed the Cath- of Chica- to the
13.—(P)—Sun- gassed the Cath- of Chica- to the

Unique Feat



Presenting Art Matsui, the Japanese quarterback of William and Mary College. When he made a touchdown against Harvard, he attained the unique distinction of having scored on every major eleven that his college has played in three years.

Weather Conditions May Affect Football Games Tomorrow

NEW YORK, Nov. 13.—(P)—Anxious eyes today were turned upon weather conditions by football teams of the east and muddy conditions were threatened for another week-end of stirring conflicts.

Followers of Dartmouth are especially perturbed over conditions at Chicago which threatened to hamper Dartmouth's swift running attack.

Critics believe that the heavy field at New Haven would help Yale against Princeton. Amherst and Williams are among the eastern teams which will wind up their schedules. Pennsylvania will get back to high ranking in the east by a victory over Pittsburgh tomorrow.

The Army plays Columbia at New York. Other feature clashes will be Harvard and Brown at Providence; Syracuse and Colgate at Syracuse; Georgetown and Centre at Washington; West Virginia and Penn State at Morgantown; Navy and Bucknell at Annapolis.

in fair shape. Take new road 3 miles east of Tallahassee to Monticella, thence to Aucilla River, good sand clay. Aucilla River to Greenville, sand clay road good. Greenville to Madison, Lee, Live Oak, Lake City, good sand clay. Lake City to Jacksonville, hard surface.

Road No. 2—Georgia Line to Ft. Myers: Georgia Line to Jasper, sand clay road in good condition. Jasper to White Springs, sand clay fair. White Springs through Lake City, High Springs and on to Gainesville, excellent asphalt concrete road. High Springs to Gainesville 25 miles of asphalt, excellent. First ten miles south of Gainesville asphalt surface very good. End of asphalt to Micanopy 5 miles rough. Micanopy to Lowell asphalt surface excellent. Lowell to Ocala, asphalt surface under construction. Detour about one mile in fair condition. Ocala, to Belleview and Leesburg excellent asphalt surface. Leesburg to Eustis and Mount Dora, good. Mount Dora to Ft. Myers generally in good condition. Four miles south of Zolfo is muddy in rainy weather.

Road No. 3—Georgia Line to Orlando: Wild's Landing to Yulee said clay road in good condition. Yulee to six miles south shell road in fair condition. From this point on into Jacksonville and Green Cove Springs paved road, brick and treated rock base. Green Cove

Springs to Palatka rough to end of brick at Rice's Creek, new road being graded but does not interfere with traffic. Brick road from Rice's Creek through Palatka to San Mateo to Dunn's Creek, fair. Asphalt surface from Dunn's Creek to Sisco, Crescent City, Pieron and Dadeon Springs. Springs, excellent. Delton Springs through Deland to Sanford and Orlando, fair. Detour between Deland and Sanford as good as possible to keep sand detours. Rough but entirely passable. Sanford through Seminole and Orange counties to Orlando, good.

Road No. 4—Georgia Line to Miami: Hard surfaced from St. Mary's River to Jacksonville with asphalt and brick, excellent. Road under construction by Duval county from Bayard to St. Johns county line. Duval county line to Bunnell, 62 miles 9 foot brick road with rock shoulders, fair. Bunnell to end Reilly's asphalt road 9 miles asphalt surface excellent. Volusia county line to Daytona, very good. Daytona to New Smyrna 15 miles, quarter mile detour, remainder paved. New Smyrna to Brevard county line 22 miles, two mile detour, remainder paved. Brevard county line to Titusville, 12 miles all paved. Titusville to Cocoa 18 miles all paved. Cocoa to Melbourne 21 miles all paved. Melbourne to Sebastian River, 17 miles, 5 miles shell road, remainder paved. Sebastian to Miami 150 miles all paved.

Road No. 5—High Springs to Newberry and Archer under construction, short detours. Archer to Williston and Romeo, fair. Romeo to Dunnellon, asphalt surface excellent. Dunnellon to Inverness and Brooksville rough with exception of 17 miles new base just completed near Inverness. Brooksville through Tampa, Bradenton and Sarasota to Punta Gorda, good except for 12 miles of road south of Six Mile Creek under construction. Traffic should take the Bayshore Road, Tampa to Bradenton. Punta Gorda to Ft. Myers, fair.

Road No. 8—Haines City to Ft. Pierce: Haines City through Frostproof, Sebring, Avon Park, etc., to Lake Annie good. Lake Annie to Okeechobee 33 miles, 9 miles under construction, 6 miles marl road, remainder paved. Okeechobee to Ft. Pierce, 39 miles, 4 miles under construction, remainder paved.

Road No. 23—Belleview to Plant City: This road is excellent in Marion, Sumpter, Hernando and Pasco counties with exception of three miles of rough base in Hernando county. This is the best road for travel to Tampa from Ocala. North line Hernando county through Dade City to Plant City, excellent road.

Have You Heard the News?

The Outlet is offering its entire stock of Quality Merchandise at sensational reduction prices—All the newest winter furnishings are included in this store-wide sale.—It will pay you to investigate our offerings, they will save you money.



Values Not to be Overlooked

Beautiful Coats

Trimmed and with flares, these models are Winter's favored styles in all the favored shades. A bargain at the prices of

\$19.95 to \$37.50

Wool Dresses

New styles embodying the long sleeves and the popular high necks. All the new fall shades in the best quality woolen fabrics. Priced at

\$8.95 to \$19.95

Pure Silk Hose

The famous and well-known line of Arrowhead silk hose. All the wanted shades. Only

89c

Men's Hats

Latest styles in the best quality felts and genuine velours. These are the type hats that add distinction to a man's outfit. Priced from

\$2.95 to \$5.95

Men's Shoes

These are priced to close out a broken line of men's solid leather shoes. The quality of these shoes cannot be duplicated for the price

\$1.95

Bell Bottom Trousers

Winter trousers for men that are exceptionally good values. All shades in plain colors and in stripes. Priced for this sale

\$3.95 to \$6.50

New Shipment of Winter Millinery has just arrived. The fashionable shapes are combined of velvet, with satin and taffeta. Also felts

THE OUTLET

OPPOSITE THE POST OFFICE

MARVANIA

An Ideal Site for Apartment Houses

Its proximity to the Hotel Forrest Lake, Sanford's tourist center, makes Marvania in a class by itself as a location where beautiful apartment houses may be constructed. There are no restrictions prohibiting this type of building in Marvania.

Already 11 lots have been sold, mostly to Sanford people, some of whom have signified their intention of erecting homes. The sale of the lake front lots at \$7500 each, to Sanford investors, is convincing argument of the relatively lot prices asked for the other lots which are offered at prices ranging from

\$2500 to \$3650

Marvania Investment Company

Scruggs Realty Co. Sales Agents

202 First St.

Phone 735

Masonic Temple

**Of Shoe And Tag
Prison Farm At
Hands Of Hunter**

to do something worthwhile in the world. An appropriation of \$200,000 was made at the last session of the legislature for the proposed penitentiary plants, and it now only remains for the state to approve the erection of a more stable structure at Raiford before the industrial features materialize.

**JAPS CABINET CALLED
IN URGENT SESSION**

LONDON, Nov. 12.—(AP)—Anticipating a coup by Feng Yu-Shiang the Christian Evening News reports that the Japanese cabinet was called in extraordinary session today to consider the protection of Japanese lives and property in the Chinese capital.

It is reported, the correspondent adds, that the navy is prepared for any emergency with fast cruisers ready to move at a moment's notice.

**IN THE CIRCUIT COURT OF THE
SEVENTH JUDICIAL CIRCUIT
OF FLORIDA, IN AND FOR SEMI-
NOLE COUNTY, IN CHANCERY.**

W. N. WHEELER and VIOLA H. DRYAN,
Complainants,
vs.
ANNIE L. WALKER et al.,
Defendants.

To Annie L. Walker; Bayard Dougherty, Trustee for Annie L. Walker; Bayard Dougherty and wife; Jennie Dougherty; James W. Dougherty, and wife; Arthur Dougherty, whose Christian name is unknown; William A. Dougherty, and wife; Dougherty, whose Christian name is unknown; William A. Dougherty, and wife; Dougherty, whose Christian name is unknown; Arthur Dougherty, whose Christian name is unknown; Lubbie Hallinger and husband, whose Christian name is unknown; Lubbie Hallinger and husband, whose Christian name is unknown; Lubbie Hallinger and husband, whose Christian name is unknown.

each of you, be and appear before our said Circuit Court at the Court House at Sanford, Florida, on the 17th day of November A. D. 1925, in and there make answer against you in this cause. It is further ordered that this for four consecutive weeks in the Sanford Herald, a newspaper published in Sanford, Seminole County, Florida.

Witness my hand and the seal of the Circuit Court of the Seventh Judicial Circuit of the State of Florida, in and for Seminole County, Florida, this 16th day of October, A. D. 1925.

V. E. DOUGLASS,
Clerk of the Circuit Court of the Seventh Judicial Circuit of Florida, in and for Seminole County, Florida.
(SEAL)

By A. M. WIEKES,
Deputy Clerk.
BOETTCHER & SPENCER,
Attorneys and Counsel for the Complainants.
Oct. 16-25-26, Nov. 6-13.

NOTICE OF SPECIAL LEGISLATION.
Notice is hereby given of intention to apply to the Legislature of the State of Florida to be convened in special session during the month of November, 1925, for the passage of an Act entitled:
AN ACT FOR THE PROTECTION OF FISH IN THE WATERS, CANALS, RIVERS, STREAMS, CREEKS, LAKES AND BAYETS OF SEMI-NOLE COUNTY, FLORIDA; REGULATING THE CATCHING OR PRODUCE OF FISH IN ANY OF SAID WATERS; REGULATING THE SALE OF FISH WITHIN THE TERRITORY OF SEMI-NOLE, FLORIDA; REGULATING THE TRANSPORTATION OF FISH WITHIN AND TO

POINTS BEYOND THE TERRITORY OF FLORIDA, PROVIDING THAT THE VIOLATION OF ANY OF THE TERMS AND PROVISIONS OF THIS ACT SHALL BE A MISDEMEANOR AND PRESUMING RULES OF EVIDENCE IN CRIMINAL PROSECUTIONS RESULTING FROM A VIOLATION OF ANY OF THE PROVISIONS OF THIS ACT.

The above Act was published in full in the issue of The Sanford Herald published September 11th, 1925 and reference can be had to said proposed Act upon inspection of the files of the Sanford Herald.
By order of the Board of County Commissioners of Seminole County, Florida.
Witness my hand as Clerk of said Board on this the 13th day of September, 1925.
V. E. DOUGLASS,
Clerk of the Circuit Court of Seminole County, Florida, and ex-officio Clerk of the Board of County Commissioners of Seminole County, Florida.
(SEAL)
Sept. 13-25 Oct. 2-9-16-23-30. Nov. 6-13.

Loans MONEY AVAILABLE Loans

For First Mortgage Loans on Liberal Valuation Basis at 7%
Consult us first when in the market for funds

Magnolia & Second A. P. CONNELLY & SONS

**Wintersmith's
Chill Tonic**
Chills and Fever, Dengue, Malaria.
A fine general tonic.
Used for Sixty Years

TO WHOM IT MAY CONCERN:

Notice is hereby given to St. John's River boatmen and all other concerned that, with the approval of the War Department, the draw span of the Florida East Coast Railway Bridge over St. John's River at Jacksonville, Fla., will be closed for replacement for forty-eight (48) hours from 12:01 A. M. Monday, November 23, 1925, until 11:59 P. M. Tuesday, November 24, 1925, to all river traffic requiring clearance or height of more than eight (8) feet thereunder. Boats capable of using the above clearances and desiring to pass the bridge will use the East channel under the through girder span.

Florida East Coast Railway Co.
H. N. RODENBAUGH, Vice-President

THE BETTER A PRODUCT IS THE SOONER YOU WILL SEE IT ADVERTISED.

MIAMI SHORES---America's Mediterranean



Just
a PROPERTY with
NATURAL ADVANTAGES



**Real
Georgia
Cane!**

Here's the touch of magic for hot cakes, waffles or just plain bread—good pure Georgia Cane Syrup! White Label Syrup has the familiar rich flavor that only the juice from full ripe cane can have.

White Label is the same wonderful country-made syrup you used to get down on the farm. Nothing finer for the children than this 100% pure cane juice—and how they like it! Ask for a can of White Label Syrup at your dealer's; he has it.

ROBINSON SYRUP COMPANY
CAIRO, GEORGIA

**WHITE
LABEL**
"Quality Counts"



FRIED CHICKEN

Fry chicken in Snowdrift and learn for yourself what a really frying fat Snowdrift is.

Choose tender chicken should be fried in Snowdrift. Singe, and remove the skin, clean and disjoint, as for fricassee. Soak pieces with salt and pepper, roll in flour, dip in a frying pan in sufficient Snowdrift to prevent sticking. The chicken should be fried only once, the frying accomplished slowly in about twenty minutes. Then place the chicken in a pan, dot it with a little extra Snowdrift, steam it for an hour and serve with a gravy made of the drippings in the frying pan. It will probably be necessary to add an extra tablespoonful of flour, a little more salt and pepper, and instead of water, as usual, pour in a cupful of very rich milk or light cream.

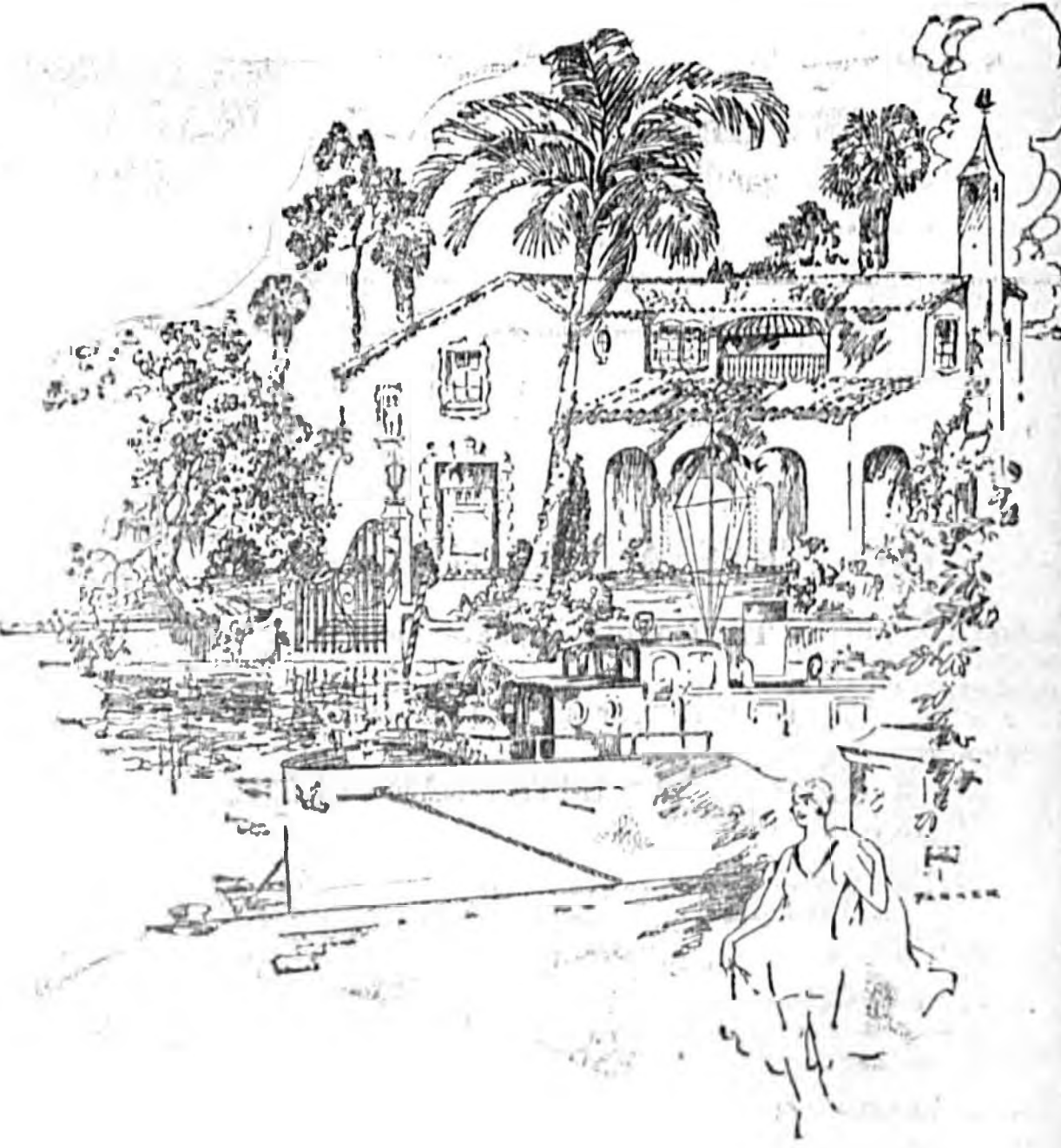
Snowdrift
is the ideal fat for all frying

COMPLETE accessibility---in the line of travel---traversed by the main highways from the north as they enter the city---overlooking Biscayne Bay---with an ambitious city improvement and building program and priced right.

**The Natural Result
of all this---**

is that the judgment of the great mass of people has caused them to buy MIAMI SHORES property in unprecedented quantities, based upon full knowledge and appreciation of the fundamental laws that go to make for sustained values and superlative profits.

MIAMI SHORES invites you to see MIAMI SHORES and check up these arbiters of values in MIAMI SHORES, all of which have had their part in making MIAMI SHORES one of the greatest successes in the development field anywhere in these United States.



MIAMI SHORES

AMERICA'S MEDITERRANEAN

Britt-Chittenden Realty Company,

District Managers,

210 East First St., Sanford, Fla.

The great 600-acre Miami Shores Island—which is the last section of Miami Shores to be offered to the buying public—is being rapidly sold out. When we announced the opening sale of Miami Shores, December 4th last year, we little dreamed that we would probably be celebrating our sold out, but it looks now as if this would probably be the case. Therefore, you would do well to investigate today. first anniversary this December 4th with Miami Shores

Today's Best Investment Opportunities

BETTER BUYS

Two Good Investments in Business Property on First Street 620 acres near Cheney Highway. This is a real money maker and there is not much land left at this price. Per acre.....\$100 Do you want a Home? I have them to suit anyone and at prices below the market value. Prices range from.....\$4,500 to \$20,000. I have a lot in San Lanta right by the entrance on Sanford Avenue and the price is only.....\$3,000 Lots in a good section of the city for.....\$1,000 If you are a developer, I have the best Lake Front Tract in this county and it is near the County Club.

I WILL APPRECIATE YOUR LISTINGS

R. W. LAWTON, Realtor

Real Estate and Investments. Phone 743. 203-205 Meisch Building

REAL ESTATE INVESTMENTS

KARL J. SCHULTZ

1st National Bank Bldg. Phone 744.

TEN CHOICE LOTS

In Bel-Air

Price \$7900

Notice These Terms

Only \$1,000 down, balance easy.

W. F. HOLBORN, Mgr.

3 large lots on Mellonville Ave., 1 1/2 blocks from ball park. \$8500.00. Contains 1 corner and 2 inside. Very good investment. Beautiful plot on Crystal Lake. Runs from Crystal Avenue, right to lake. 66x140 ft. This is a giveaway for \$1,500.00. Very easy to French Avenue, between 11th and 12th Streets. Eastern exposure. ing paid. 64x117. 50x117. These lots can be bought under the market prices. 5 beautiful, high lots, on Evans Street, including one corner and lots. At \$2,000 each. These cannot be duplicated. 1 exceptionally large lot on Sanford Avenue. 70x150. In a REAL-estate section. This is worth looking into. 5 room Bungalow, Corner Palmetto Avenue and 13th Street, with completely furnished. At the very low figure of \$6,250.00. Easy

OSCAR R. BROOKS

THE LOT KING—Phone 482-w

306 First National Bank Bldg. Licened Real Estate

"USE YOUR FORESIGHT"

TODAY'S BEST BUYS

Beautiful lot on Hughey Street between Park and Magnolia, only \$1900 for quick sale with good terms.

Large lot, 75x140 in Rose Court. Priced at \$2300 for quick sale.

Corner lot, eastern exposure on Twelfth and Laurel. Will sell for \$1900, if sold in the next few days.

Beautiful lot in Mayfair for only \$3750 with suitable terms. Act quick on this!

Block of six lots on Sanford Avenue, one block north of Rose Drive filling station, all for \$4,200 with terms.

Seven room house on Magnolia Avenue very close in. Every modern convenience. Priced for quick sale at \$11,000 with terms to suit.

Seven rooms and bath on beautiful corner on Sanford Heights with garage apartment and three garages on rear of lot. Every convenience. Priced \$16,000.

SEE US NOW!

McCALL & FOX
"The Firm Substantial"

113 1/2 Magnolia Ave. Phone 745

HOMES—LOTS—FARMS ACREAGE

—For Quick Sale, We Have—

Two lots in Franklin Terrace \$1250.00 each.

House completely furnished on Sanford Avenue, opposite Rose Court, \$8,500.00. Terms.

House and lot No. 1705 Magnolia lot size 63x130 for only \$4,500.00.

COLCLOUGH REALTY CO.

REAL ESTATE INSURANCE
311 First National Bank Bldg.
Sanford, Fla. Telephone 732

In and Near Enterprise, the Big Development

1593 Acres

\$87.50 PER ACRE

Half the price of adjoining land—Beautifully situated around and side of lakes,

BRYANT & HATHAWAY

Number 6 Ball Building, Opposite Post Office, Sanford, Fla.

20 Years Experience With Florida Land

Your Best Bank Is Selected Real Estate

—INVEST YOUR SURPLUS IN INCOME REAL ESTATE. LET US EXPLAIN.— We have three lots on Lee Avenue, on block from Forrest Lake Hotel. Come in and see us about them.

Two wonderful lots in Rose Court, facing on Sanford Avenue. One a corner lot on Grand View and Sanford, \$6,000.00. Half cash, balance 1 and 2 years. Act quick about this reasonable buy.

Two lots on Park Avenue and Central, 134x130 with a 14 ft alley. \$8,000 half cash, balance 1 and 2 years.

We have several lots in Franklin Terrace from \$1,000 and up. See us about them today and don't wait until tomorrow.

ALSO BUSINESS PROPERTY IN THE HEART OF SANFORD

Selling homes to home-seekers is a big feature of our business. We have property in all parts of the city.

FLETCHER-BULGER REALTY CO.

113 1/2 Magnolia. Phone 746

FOURTEEN LOTS IN WOODRUFF SUBDIVISION

All in one block. \$7,000.00. One-fourth cash, balance easy.

2 Modern Six Room Residences

In Edgewood, \$8,000.00 each.

Terms. Ready for occupancy December 1st.

A Beautiful Home
On Central Avenue, large lot
\$15,000.00. One-third cash.

Britt-Chittenden Realty Co., Inc.

REALTORS

210 E. 1st St.

Phone 708-709

"REAL BARGAINS"

Corner Lot (98x135) Union Avenue. Price.....\$8,000.00
This is near the Forrest Lake Hotel

One Lot Rose Court, Grand View Avenue.....\$2,000.00

Thirteen acres facing on Lake Monroe, 1200 feet front. Price.....\$100.00

Seven Lots fronting on Sanford Avenue between mercial and Seminole Boulevard. Price \$850.00 fr

R. C. TISDALE

REALTOR Real Estate Investment

236-238 Meisch Building. Phone 23.

CRYSTAL LAKE SHORES

The Beauty Spot for Homes

Look it over and be convinced.

CHOICE CITY LOTS NEAR CENTER

LAKE MARY DEVELOPMENT CO.

L. SIMMONS, Sales Mgr.

108 Magnolia Ave.

Phone 117

We Offer an Entire Block

Fronting on First Street just off Sanford Avenue business property is unexcelled by any in Sanford

Many real estate men say that we are offering cheap.

The price for a few days will be \$110,000. cash, balance over 4 year period. 5% binder for 30

SCRUGGS REALTY COMPANY

F. H. SCRUGGS, Mgr.

202 First Street

Phone 735

Mason

Close in, between 4th and 5th on Palmetto Avenue, nice home, must be sold in the next two weeks.

Fifty-three acre farm near Sanford at a price that will interest you, ask us about it.

Tamiami Land Company

Room 3-3 1/2 Ball Building
Phone 142

TWO HOMES

that can not be equalled for the money in the city.

One 5-room house with garage on a 50 foot lot for \$4,000.00 with terms.

One 4-room house, sleeping porch and garage, 50 foot lot

For \$3,000.00

With Terms. Near 3 subdivisions on French Ave.

PURVIS & WILCOX

Phone 766

5 Ball Bldg.

TO THE PEOPLE OF SANFORD

List your property with us. We have calls every day for homes, lots and business property.

You can depend on our entire corporation.

LAKE MONROE DEVELOPMENT CO.

Brumley Puleston Bldg.

E. F. ANDREWS - - - Manager

BARGAINS

Completely furnished Bungalow 5 rooms and sleeping porch, close to lake. \$7600

Beautiful corner lot, Mayfair \$4500

2 lots, Sanford Avenue, close to city \$900 each

One lot Fort Mellon.....

One lot Fort Mellon.....

One lot Palmetto Avenue, 52x120

E. E. PAGE

The Substantial Realty Broker

12-14 Garner-Woodruff Bldg

TELEPHONE 770

