



On the Road
Probably the hardest thing to do in sports, especially in basketball, is to play away from home. But to make three nine-plus hour trips in three weeks? That's almost unbearable. That scenario has faced the Seminole Community College women's basketball team this season.
Page 1B

SCC instructor honored
Seminole Community College mathematics instructor Bill Jordan was recently honored with the American Mathematical Association of Two-Year Colleges' (AMATYC) Teaching Excellence award at its recent annual conference in Toronto.

One of just seven two-year college mathematics instructors honored, Jordan was selected from all candidates nominated in the AMATYC Southeast Region and received an AMATYC Medallion and \$500 from Houghton Mifflin Faculty Development Programs.

Teaching effectiveness and support of students are the main criteria for the teaching excellence awards. Professional involvement, interaction with colleagues and service to one's college or department are also used in the selection process.

Jordan has been an SCC faculty member since 1974. After identifying the prerequisite skills for Basic Algebra he co-developed a spiral integrated arithmetic and algebra text and course. He was among the first in the nation to use computers and graphing calculators to teach mathematics. This is Jordan's twelfth award for excellence in teaching on the local, state or national level.

A student wrote, "He is the definition of 'teacher'... the person who creates the desire to learn. This is a man who makes learning exciting for me. Teachers everywhere could learn from him."

A colleague wrote, "... in the capacity of lab instructor, I could almost always pick out Bill's students because of their positive attitudes toward the learning of mathematics. In ten years I have yet to hear a negative comment about Bill. On the contrary, students sing his praises. As a part-time instructor, I found his door always open. (professionally he) is our link with the world of mathematics."



Jack Bond - Golf Tournament Volunteer

Jeanne Morris wins state school board award

From Staff Reports
On Thursday, Nov. 29, at the State School Board Conference in Tampa, Seminole County School Board Vice-Chairman, Jeanne Morris, won the "Pat Spengler Award."

The award is given annually to one board member in the state who is recognized by more than 360 other board members as being a leader in improving the lives of children and promoting educational issues statewide. Pat Spengler was a former school board member who, like Morris, was also an educational force in Tallahassee.

Before she was elected to the School Board in 1990, Morris was active in every level of the PTA, serving as president of three school PTA's, president of Seminole County Council of PTA's, and on the Florida PTA Board of Directors as Vice President, Legislation Chair, and Platform Chair. Since there was no paid lobbyist or director, she was responsible for all legislative activity, including testifying before the House and Senate on children's issues.

In addition to her PTA involvement, Jeanne served in leadership capacities in Girl Scouts, Boy Scouts, and church youth and adult leadership rolls. In the community she is currently serving on the Committees of the Sanford/Seminole Chamber of Commerce, League of Women Voters, the Board of Directors of the American Cancer Society, President of the Republican Women's Club, and on the Readiness Coalition, along with other educational organizations.
Her passion for improving education for all children and making their lives bet-
See Morris, Page 8A

Rapid expansion on Rinehart

This is the first in a series of articles that will look at development projects in Sanford — what's coming in, where it's going and what effects it may have on the community.
By Dan Ping
Editor

SANFORD — Motorists accustomed to the wide-open spaces along Rinehart Road will begin to see substantial changes in the next 18 months as eight major projects — including a Sam's Wholesale Club, a Wal-Mart Super Center and three new car dealerships — break ground for construction.

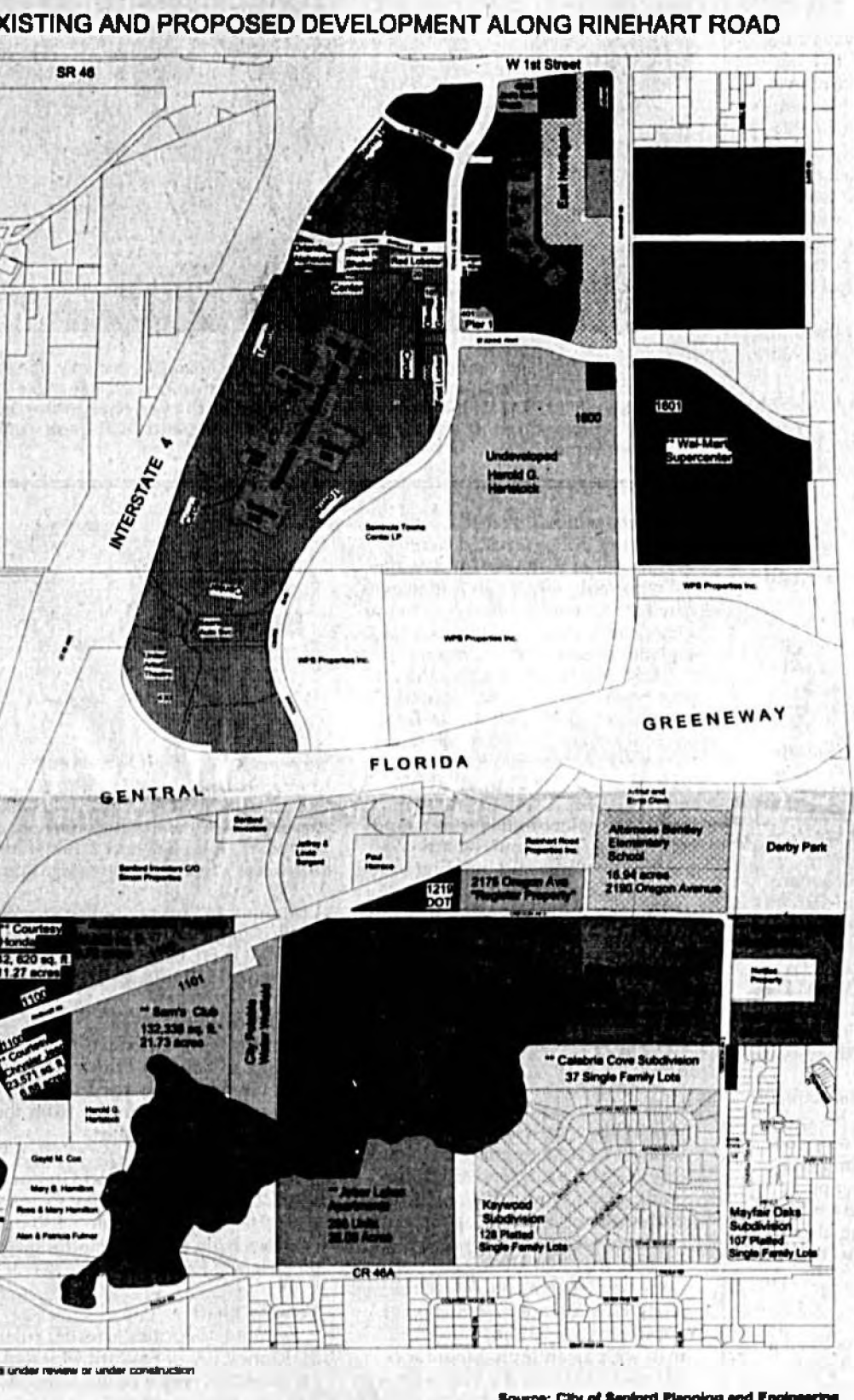
"Booming is the best word to describe it," said Jay Marder, director of planning and engineering for the city of Sanford. In addition to the commercial development, almost 1,900 new apartment units will be located within a mile of Rinehart Road between County Road 46A and Oregon Avenue. Add in the newly opened Altamere Bentley Elementary School on Oregon Avenue, and it's easy to understand Marder's description.

With all that development comes traffic and some officials are concerned that Rinehart Road will become as congested as State Road 436 in Altamonte Springs.

"We always knew that area was going to be a retail district," said Art Woodruff, District 1 City Commissioner. "However, I'm concerned that we're not setting the standard for level of service on our roads high enough."

Marder thinks the standards are high already, and he cites two key factors: increased landscaping requirements and better Rinehart, Page 8A

Development along Rinehart Road is "booming" according to Jay Marder, Sanford's director of planning and engineering. Eight major developments on Rinehart Road are either in the review stage or currently under construction.



Deputies close to hitting \$1M goal for park

By Christopher Patton
Staff Writer
LONGWOOD — Fifty golfers including local residents and members of the Seminole County Sheriff's Office hit the links Monday to honor Deputy Eugene "Stetson" Gregory who was killed July 8, 1998 in the line of duty.

The Sabal Point Country Club golf tournament fund-raiser is just one of many events initiated by Deputy Todd Moderson to help establish the Eugene Gregory Law Enforcement Park in Geneva. Estimated to cost more than a million dollars, the last two fund-raisers have pushed total donations for the project over \$850,000, said Moderson.

Three months after Gregory's death, Moderson said he had a vision for the memorial park. He identified a 20-acre parcel on Lake Harney in Geneva that routinely had been a problem for neighbors and deputies. In a two year period, more than 200 calls to the sheriff's office had been made for potential criminal activity at the site, said Moderson.

"I started thinking how can we improve the quality of life for the residents," he said. "It just seemed like a perfect place for a park and Geneva had been calling for a memorial to Gregory."

The vision started to become a reality not only with the donation of the land, but as Moderson learned Gregory had identified the same problems at the 20-acre site in the northeastern region of Geneva. Within a year Moderson said he expects
See Park, Page 10A

Eliza Pringle dies at age 83

By Marva Hawkins
Herald Correspondent

SANFORD — Eliza Courtney Pringle, retired educator and community activist, died at Central Florida Regional Hospital Saturday, Dec. 1, 2001. She was 83.

A native of Sanford, Pringle was introduced to the stage of life by the late Beatrice and Holly Courtney. After attending Seminole County Schools and graduating from Crooms Academy as salutatorian in 1937, she continued her education at Bethune-Cookman College. She received a bachelor of arts from BCC, a bachelor of Science from FAMC, and a master's degree in

elementary education from Florida A&M University, and more than 20 foreign countries.

Returning to Sanford, she was employed as a first-grade teacher at Midway Elementary School. Thus began a 40-year career in the education system of Seminole County. During her service as an educator, she also taught math and was a reading specialist at Monroe Wilson and Pine Crest schools. Pringle was a leader in her profession.

She retired to serve her community and travel to all 50 states and more than 20 foreign countries. Pringle served the community with grace and dignity, and she always had a smile for everyone. She put her heart into serving as an ardent member at Zion of Hope Missionary Baptist Church, where she was also the church financial director. She was a deeply committed Christian who served her Lord graciously. Pringle was active in a num-
See Pringle, Page 6A



Pringle

Christmas parade is Saturday



Herald photo by Tommy Vincent
Mary Lehmann, right, prepares to test the bowling lane she and her coworkers at Airport Lanes have constructed on their float for the Sanford Christmas Parade. Joining Lehmann are Enerchka Emihl, left, and John Berger, center. The parade is scheduled for 11 a.m. Saturday in downtown Sanford. Call 323-0197 for more information.

Seniors shop til they drop without the traditional hustle and bustle

By Michelle Jerla
Managing Editor

LAKE MARY — Joyce Schools and several of her neighbors from New Tribes Mission Homes love to shop. Nevertheless, they don't always enjoy the hustle and bustle that comes along with holiday shopping.

That's why the group took advantage Tuesday of Target Corporation's Senior Shopping Day, which is held every year for community members over the age of 55. For two hours, the store's older "guests" are invited to enjoy refreshments and entertainment during and after they shop for items at a 10 percent discount.

"This is my third year, and I love it," Schools said. "We like the discounts and the refreshments, but we really like to get out and shop."
Clowns, elves and Santa Claus greeted Schools and her fellow shoppers at the store's front doors Tuesday morning, handing out free refreshments, raffle tickets and balloon sculp-

tures. Before the guests left the store, Target employees also made sure they took advantage of the free gift wrapping center and received a house plant — a holiday gift for their older customers.
According to Target Team Relations member Oscar Bowen, every Target in the country sponsors Senior

Shopping Day each year before Christmas. The stores unofficially close for two hours so seniors can shop without fighting the normal holiday crowds.
"We give them a place where they don't have to battle other guests while shopping," Bowen said. "It's a time just for them."
See Shop, Page 10A

Index

Classified	68-78
Crossword	68
Dear Abby	2A
Legals	3B-3B
Obituaries	3A
Police Log	2A
Sports	1B-3B

SEMINOLE SUMMARY

A GLANCE AROUND OUR COUNTY

Bully's mean scheme rolls right out from under him

DEAR ABBY: I have read with interest the letters about bullies. They brought back the memory of an experience I had with our class bully. He wasn't too smart and had not been promoted.



Dear Abby

One day, as I was sitting on the fence, the bully walked over with a big smile on his face. He said, "I'm going to shove you off that fence and watch you tumble down the hill."

Before I could say anything, he pushed me. In desperation, I grabbed him, and as I fell off the fence I pulled him with me. He hit the ground first and I landed on top of him. As we slid down the steep hill, I rode him like he was a sled. By the time we had reached the bottom of the hill, his shirt was almost torn off and he was scratched all over.

He continued to bully some of the other boys, but he never bullied me again. In fact, he tried to avoid me.

MANSFIELD LATIMER, ROCK HILL, S.C.

DEAR MANSFIELD: The bully may have been a little slow, but on that day, he learned about the law of gravity.

DEAR ABBY: Excuse me, but did I miss something in the letter from "Cost-Conscious in San Francisco"? Why in the name of holy matrimony is he worried about the RESALE value of a diamond engagement ring? Is he planning to sell it or pawn it in the future? Does he expect to get it back in the event of a divorce? Does he think he will need the money for his retirement? What is this guy thinking? Hello?

An engagement ring is not a financial investment! It is an emotional investment in a lifetime relationship. If this guy is worrying about the cost of an engagement ring because he thinks the marriage won't last, then he should not be getting married in the first place.

Had he said he wanted to be nontraditional and choose another kind of ring, well — OK. But in that case, he should have signed his letter, "Already Married to My Portfolio in San Francisco."

DIAMONDS ARE FOREVER IN DALLAS

DEAR DIAMONDS: While many readers agreed with you, I think you — and they — are being unnecessarily hard on the guy. According to Dawn Moore, West Coast director of sales for Harry Winston Jewelers, his question is one that many men ask. Any way you cut it — round, emerald or pear-shaped — a diamond is a sizable investment. It's not unusual to experience some insecurity when buying something you know nothing about. Wise shoppers want to be educated so they are not taken advantage of.

DEAR ABBY: I have a problem. I received a thank-you note for a wedding gift, but was thanked for the wrong gift. Should I write and tell them about the mix-up? They do not live close, so I will not be seeing them.

WONDERING IN WEST BRANCH, IOWA

DEAR WONDERING: You should definitely write — or call — and explain the mix-up. Believe me, you'll be doing the newlyweds a favor. If you don't, someone else will also be thanked for the wrong gift.

Abby shares more than 100 of her favorite recipes in two booklets: "Abby's Favorite Recipes" and "More Favorite Recipes by Dear Abby." Send a business-size, self-addressed envelope, plus check or money order for \$10 (U.S. funds)

to: Dear Abby — Cookbooklet Set, P.O. Box 447, Mount Morris, IL 61054-0447. (Postage is included in price.)

Teddy bear Christmas



Herald photo by Tommy Vincent

The Ladies' Arts and Crafts Club of the Palm Valley community recently donated 300 stuffed teddy bears and handmade crafts to the Seminole County Sheriff's Office. The club members collect, make and restore stuffed toys every year to donate to the Sheriff's Office so the toys can be distributed to children through the Sheriff's Community Services Section the the Victim's Advocate Unit. The teddy bears are given to children who've been exposed to or whom were the victims of serious or violent crimes.

Robbery with a Firearm

Sanford police arrested Kenny Moore, 21, of Sanford Monday after he reportedly robbed an undercover law enforcement agent trying to purchase crack cocaine in the area of 10th Street and Orange Avenue.

Moore reportedly flashed the undercover agent his handgun and left in a vehicle, which the undercover agent said had another handgun on the seat. Moore evaded an officer at the stop sign on Celery Avenue and Bay Avenue. At a high rate of speed, Moore continued westbound on Celery Avenue until he lost control and hit a tree and building located at 510 Celery Ave.

Running through nearby residents' yards, Moore dropped a handgun and investigators finally made contact with the subject at 1305 Pine Avenue. The two guns were a loaded black 32-caliber Keltec handgun and a black Gamo model .177-caliber b.b. gun.

Moore was charged with robbery with a firearm, possession of a weapon by a convicted felon, weapon offense, aggravated assault, driving with a suspended license, eluding police, resisting an officer with violence and reckless driving.

Moore was also charged with a robbery that took place earlier the same day when a couple walking along Pine Avenue was robbed of approximately \$300 by a masked man with a handgun. Moore was charged with robbery with a firearm, possession of a weapon by a convicted felon and two counts of aggravated assault in the second case.

Burglary

Oviedo police arrested Amanda Cole, 19, of Geneva Monday for burglary and theft of a vehicle and possession of burglary tools. Police responded when residents called in a suspicious person checking car doors in a residential neighborhood. When police pulled Cole over she had seen compact discs and a car phone battery charger from another vehicle. She also had a hammer which she stated was to break out the car windows.

Retail Theft

Sanford police arrested Reka



Szerencsi, 25, of Sanford Monday for retail theft and fraud impersonation. She reportedly stole a pair of \$4.97 earrings from the Orlando Drive Wal-Mart. She also gave a fake name to officers during the investigation.

Altamonte Springs police arrested Bruce Tiger, 19, of Sanford Monday for retail theft. Tiger reportedly stole \$240 worth of Dillard's merchandise.

Sanford police arrested Mark Carr, 33, of Sanford Friday for retail theft. He reportedly tried to steal \$35 worth of merchandise from the Orlando Drive Wal-Mart.

Sanford police arrested Gregory Witz, 20, of Sanford Friday for retail theft. He reportedly stole a \$30 pair of shoes from the Ross clothing store on Orlando Drive.

Vehicle Theft

Seminole deputies arrested Justin McKinney, 18, of Sanford Monday for grand theft of a motor vehicle and resisting an officer.

Seminole deputies arrested Gerald Hansen, 32, of Sanford Tuesday for grand theft of a motor vehicle and driving with a suspended license.

Marijuana Possession

Longwood police arrested James Sanford, 40, of Winter Springs Tuesday for possession of marijuana and fraud impersonation.

Seminole deputies arrested Shayon Washington, 23, of Sanford for possession of marijuana.

Caught Stealing a Pig
Seminole deputies arrested Joseph England Sr., 19, of Sanford Friday

for grand larceny of livestock and trespassing. Reportedly on Nov. 16 England entered Larry Dale's property at 894 Osceola Road commonly known as the Boar's Nest and trapped a red female pig.

Cocaine Possession

Seminole deputies arrested Donald Zopp, 32, of Longwood Sunday for possession of cocaine.

Seminole deputies arrested Alexander Gordon, 39, of Sanford Friday for forgery, possession of cocaine and drug paraphernalia, driving with a suspended license and fraud impersonation. Gordon was originally stopped for failure to stop for a red light.

Trespassing

Sanford police arrested Emma Barker, 19, of Longwood Friday for trespassing and property damage.

Fraudulently Obtaining Drugs
Altamonte Springs police arrested Loren Stead, 51, of Lake Mary Friday for fraudulently obtaining medical drugs. Stead reportedly tried to pass a counterfeit prescription for Lorcet at the State Road 434 Wal-Mart pharmacy.

Driver's License Problems

Seminole deputies arrested Gabriel Ruiz, 24, of Sanford Friday for driving with a suspended license.

Seminole deputies arrested Steve Ambrose, 51, of Sanford for driving with a suspended license.

Seminole deputies arrested Olegio Lorenzo, 41, of Sanford Friday for driving with a suspended license.

Seminole deputies arrested Dennis Rudolph, 38, of Sanford Saturday for battery of an officer, resisting an officer, driving without a license and fraud impersonation.

Disorderly Intoxication

Sanford police arrested Kristopher Jenkins, 25, of Geneva Saturday for disorderly intoxication. He reportedly was causing a scene outside the Barn parking lot.

OUT & ABOUT

FRI 7

The Millennium Middle School bands will hold their winter concerts on Friday, Dec. 7, in the school's Millennium Hall.

The Beginning Band performance will take place at 8:30 p.m., and the Concert Symphonic and Jazz Band concert begins at 7:30 p.m. The concerts will showcase music the bands have been working on for a semester.

A donation of \$3 per ticket is requested. Tickets may be purchased from any MMS band student or at the door, if tickets remain.

Millennium Concert and Symphonic bands will also march in the Sanford Holiday Parade on Saturday, Dec. 8.

SAT 8

A band of wandering Celtic musicians called The Rogues from St. Lucie County will be the first act to perform at this Saturday night's Sanford Opry Holiday Spectacular at the Helen Stairs Theatre. The Dec. 8 holiday show begins at 7:30 p.m.

The Rogues, known for their Irish gigs and ballads, has four band members: Michael Fowler, Guitar; Brian Trew, Bodhran/Viola; David Olson, Jr., Violin; and Noel Trew, Flute, Penny Whistle and Vocal.

For ticket information, call the theater at 407-321-8111.

Crooms Reunion needs Crooms Academy or Crooms High School singers.

People are needed to sign up for the choir of the Crooms Reunion religious services. The first rehearsal is Saturday, Dec. 8, starting at 2 p.m. in Trinity United Methodist Church, located at 6th Street and Sanford Avenue.

For information, call 407-322-0369.

TUES 11

Seminole Community College will honor recent General Educational Development (GED) graduates 7:30 p.m. Tuesday, Dec. 11, in the college's Health Center, Building H.

Adults who have successfully completed the GED exam at SCC will be recognized.

For information, call 407-328-2153.

WED 12

Seminole Community College will honor recent college graduates during the 39th annual Fall Commencement Ceremony 8 p.m. Wednesday, Dec. 12, in the Health Center (Building H).

For more information, call 407-328-2050.

SAT 15

The Sanford Historical Society is hosting a St. Lucia Open House Saturday, Dec. 15, from 1 to 4 p.m., in the Sanford Museum.

The event is free and will include a holiday smorgasbord of delightful Scandinavian refreshments. For more information, contact the museum at 407-302-1000.

© 2001 UNIVERSAL PRESS SYNDICATE

Doug Fetzer
Publisher
Dan Ping
Editor

Administration
Betty Bennett

Display Advertising
John Coffman
Rozine Lavender

Classified Advertising
Ted Walker

Legal Advertising
Trudie Langford

Circulation
Wanda Kourpanos

Editorial
Republic Newspapers, Inc.

Michelle Jarla
Managing Editor
Doris Dietrich
Chris Patton
Marva Hawkins
Dean Smith
Tommy Vincent

Production
Becky Tibbetts
Rovana Davis

Ehwn Tyrrell, Jr.
Printing & Production Manager

Bill Egan
Press & Camera Staffing
Brian Kramarcik
Press & Camera Staffing
Cheryl Smith
Composing and Pre-Press

Mail Room
Becky Tibbetts
Rovana Davis

THE SEMINOLE HERALD

"Serving Seminole County Since 1908"

Wednesday, December 5, 2001 • Vol. 94, No. 31

Published every Wednesday and Saturday by Republic Newspapers, Inc. • 300 N. French Ave., Sanford, FL 32771
•Phone (407) 322-2611 •Fax (407) 323-9408

Periodical Postage Paid at Sanford, Florida and additional mailing offices.
USPS 481280
Postmaster: Send address changes to THE SEMINOLE HERALD
P.O. Box 1667
Sanford, FL 32772-1667

Subscription Rates

3 Months in Seminole County \$11.00
6 Months in Seminole County \$20.00
1 Year in Seminole County \$36.00
1 Year Other Florida County \$42.00
1 Year Out Of State \$52.00

We welcome and encourage your letters and comments. All letters must include your name, address and phone number to be published.

Write to us:

300 N. French Avenue
Sanford, FL 32771

E-Mail us:

editor@seminoleherald.com
csmith@seminoleherald.com

Advertising:

csmith@seminoleherald.com
Publisher:
samdoug@aol.com

Call us:
(407) 322-2611

Fax us:
(407) 323-9408

Obituaries

ALEC CAROS
Alec Caros, 69, of South Volusia Avenue, Orange City, died Friday, Nov. 30, 2001, in Florida Hospital Fish Memorial.
Born in Nashua, N.H., he moved to Central Florida from Fort Lauderdale in 1996. He served in the U.S. Army Air Corps and was an area manager for Ranch House Restaurant. He was a member of Holy Trinity Greek Orthodox Church. He enjoyed singing and was a Dallas Cowboys fan.
Survivors include a son, Jason Caros of Deltona; two daughters, Lydia Ayo-Caros of St. Paul, Minn., and Cindy Lee George of Nashua, N.H.; a brother, Anthony Alvanos of North Fort Lauderdale; a sister, Sandra Anderson of Minneapolis, Minn.; and four grandchildren.
Memorial donations may be made to Holy Trinity Greek Orthodox Church, 1217 Trinity Woods Lane, Maitland, FL, 32751.
Baldauff Family Funeral Home of Orange City is in charge of arrangements.

FLORIDO CHIAPPELLI
Florido Chiappelli, 79, of 24th Place, Sanford, died Wednesday, Nov. 28, 2001.
Born in Bruceton, Pa., he moved to Central Florida in 1982. He was a U.S. Coast Guard veteran, who served during World War II. He was a civil engineer and a member of the Dover Pleasure Club of Patterson, the Sporting Club of Patterson and the Lions Club of Tom's River. He was a member of Calvary Assembly of God.
Survivors include his wife, Nellie G. Chiappelli of Sanford; two sons, Joseph Chiappelli of Tom's River, N.J., and Lawrence Chiappelli of Cape May, N.J.; two daughters, Barbara Patterson of Arlington, Texas, and Dina Chiappelli of Hawthorne, N.J.; two brothers, Archie Chiappelli of West Patterson, N.J., and Raymond Chiappelli of Jackson, N.J.; a sister, Flora Muniz of Wayne, N.J.; and eight grandchildren.
National Cremation Society Beacon Chapter of Winter Park is in charge of arrangements.

VINCENT H. COOPER
Vincent H. "Spider" Cooper, 88, of Lansfield Drive, Deltona, died Friday, Nov. 30, 2001, in Mariner Healthcare of Orange City.
Born in Ela, N.C., he moved to Deltona from Asheville, N.C. He was a U.S. Army veteran who served in Normandy, Northern France, Rhineland and Central Europe. He received numerous military honors and medals. He was a retired accountant and a member of the American Legion.
Survivors include his wife of 20 years, Madeline Cooper; a daughter, Harriet Falcigno of Big Pine Key; and one grandchild.
Memorial donations may be made to Hospice of Volusia/Flagler, 3800 Woodbriar Trail, Port Orange, FL, 32119.
Baldauff Family Funeral Home of Orange City is in charge of arrangements.

EUNICE DANIELS
Eunice Daniels, 88, of Academy Place, Oviedo, died Thursday, Nov. 29, 2001.
Born in Oviedo, she was a lifelong resident of Central Florida. She was a homemaker. She was a member of Antioch Missionary Baptist Church of Oviedo.
Survivors include two sons, Woodrow Newton of San Diego, Calif., and Harold Newton of New York; and a sister, Amoryllin Griffin of Rochester, N.Y.
Golden's Funeral Home is in charge of arrangements.

JANIS B. ELLIS
Janis B. Ellis, 62, of San Miguel Court, Winter Springs, died Wednesday, Nov. 28, 2001.
Born in Leesburg, she was a lifelong resident of Florida. She was a music teacher in Central Florida for more than 30 years.
Survivors include two sons, Paul Ellis of Orlando and Chuck Ellis of Maitland; four sisters; and two grandchildren.
Baldwin-Fairchild Funeral Homes Oaklawn Chapel is in charge of arrangements.

BELLMAN 'TED' GIBSON
Bellman "Ted" Gibson, 54, of Blackstone Avenue, Sanford, died Friday, Nov. 30, 2001, in Florida Hospital, Orlando.
Born April 9, 1947, in Sanford, he was a U.S. Army veteran. He was a member of Rescue Church of God.
Survivors include his mother, Corrine Gibson of Sanford; his wife, Barbara G. Gibson of Sanford; two sons, Bellman J. Gibson of Deltona, and Antonio E. Gibson of Okinawa, Japan; two brothers, Willie J. Gibson Jr., and Terry J. Gibson, both of Sanford; two sisters, Pauline Johnson of Sanford



and Elaine Gibson of Rochester, N.Y.; and six grandchildren.
Wilson-Eichelberger Mortuary Inc., of Sanford is in charge of arrangements.

JANE TIMBERLAKE MCCARTHY
Jane Timberlake McCarthy, 80, of Hartley Avenue, Deltona, died Monday, Nov. 26, 2001, in Florida Hospital Fish Memorial, Orange City.
Born in Greenville, S.C., she moved to Central Florida in 1964. She was a retired second-grade teacher in the Seminole County School System. She was a member of Deltona Christian Church-Disciples of Christ.
Survivors include a daughter, Mary Lou McCarthy of Deltona and a brother, Jack Timberlake of London, Ky.
Memorial donations may be made to Deltona Christian Church-Disciples of Christ, 960 E. Normandy Blvd., Deltona, FL, 32725.
Baldauff Family Funeral Home of Orange City is in charge of arrangements.

MICHELLE ELAINE MCGOUGH
Michelle Elaine McGough, 31, of Maytown Road, Osteen, died Saturday, Dec. 1, 2001.
Born in Winter Park, she was a lifelong resident of Central Florida. She was a homemaker.

She was of the Baptist faith.
Survivors include her husband, Larry McGough of Osteen; a son, Kevin McGough of Osteen; a daughter, Rebecca D. McGough of Osteen; her father, James M. Walker of Roanoke Rapids, N.C.; her mother and stepfather, Sylvia and Arthur Thompson of Osteen; two brothers, Jon and David Knellinger of Bradenton; and two sisters, Glenda G. Walker of Lake County and Rhonda Knellinger of DeBary.
National Cremation Society Beacon Chapter of Winter Park is in charge of arrangements.

JULIA M. NIXON
Julia M. Nixon, 85, of Orienta Avenue, Altamonte Springs, died Friday, Nov. 30, 2001, in Life Care Center.
Born in Tallassee, Ala., she was a retired beautician who owned Julia's Beauty Shop in Tallassee. She was of the Presbyterian faith.
Survivors include her husband, Ernest Cecil Nixon of Altamonte Springs; a son, Ron Sargent of Altamonte Springs; three grandchildren; and three great grandchildren.
Banfield Funeral Home of Winter Springs is in charge of arrangements.

EDWARD HOLLY OWNBY
Edward Holly Ownby, 84, of Grandview Avenue, Sanford, died Sunday, Dec. 2, 2001, in Sanford.

Born June 27, 1917, in Lewisburg, Tenn., he moved to Sanford in 1994. He was a road crew supervisor for the state of Tennessee.
Survivors include a daughter, Jean Hodges of Longwood; three grandchildren; and four great grandchildren.
Gramkow Funeral Home of Sanford is in charge of arrangements.

RUTH E. PIERCE
Ruth E. Pierce, 79, of West Highland Street, Altamonte Springs, died Saturday, Dec. 1, 2001.
Born in Portland, Ind., she moved to Central Florida in 1984. She was a retired switchboard operator. She was a member of First Baptist Church of Warsaw, Ind.
Survivors include a daughter, Pamela K. Canada of Altamonte Springs; a sister, Thelma Firmani of Portland, Ind.; and two grandsons.

Woodlawn Carey Hand Longwood Chapel is in charge of arrangements.
LAWRENCE J. SCINTO
Lawrence J. Scinto, 81, of Nighthawk Circle, Winter Springs, died Saturday, Dec. 1, 2001.
Born in Bridgeport, Conn., he moved to Central Florida in 1980. He was a retired dentist and a U.S. Navy and U.S. Army veteran who served during World War II and the Korean War. He was a member of American Legion and the Knights of Columbus. He was of the Roman Catholic faith.
Survivors include his wife, Joyce Scinto; two sons, Daniel Scinto of Lake Mary and Thomas Scinto of Jamestown, N.C.; and three grandchildren.
Woodlawn Carey Hand Longwood Chapel is in charge of arrangements.

Banfield Funeral Home
Family Owned & Serving Central Florida For 10 Years
GUARANTEED LOWEST PRICES

Burial	Cremation	Transport Out Of State
\$1,495	\$450	\$795

We Accept Most Prearranged Funeral Plans
327-1500

BRISSON FUNERAL HOME
Seminole County's Most Experienced Funeral Home

A Combined Total Of 143 Years of Caring Service

L to R: Matt Heuber, Sherry Owen, Leo McDermott, Bobby Brisson

FULFILLING YOUR FUNERAL AND CREMATION NEEDS LOCALLY AND WORLDWIDE

905 Laurel Ave., Sanford
(407) 322-2131

Ambassadors Christian Life Academy

MEMBERS OF ACSI (Association For Christian Schools International)

NEEDS VOLUNTEERS:
Christian Teachers, For Special Disciplines and Programs

ALSO CONTRIBUTIONS
Furnishings, Computers, Media Equipment, Teacher and Student Desks and Chairs, File Cabinets, Other For Our New and Larger Facility.
Monetary Donations are welcomed.

CHURCHES, MERCHANTS, CORPORATIONS, PRIVATE INDIVIDUALS, INSTITUTIONS AND OTHERS

We Need Your Help In Accomplishing This Wonderful, Magnificent, Ordained Work of God

SEE OUR AD IN THE GREATER ORLANDO YELLOW PAGES.
CONTACTS: Dr. P.S. Mobley (407) 688-8740 or Dr. B. Silver (407) 330-2433

ACE Hardware **SEASON'S SAVINGS**
From Your Helpful Hardware Folks

6 OUTLET POWER STRIP ACE BRAND Add extra outlets where needed. Circuit breaker prevents overloading. UL listed. \$2.97 ea.	MINI LIGHTS 100 CT. 100 Light Set. Choose from clear or assorted. 9827007, 6009. String to String \$2.97 ea.	NET LIGHTS 16 sq. ft. net with 100 clear or multi-color lights. Safety fused. Indoor/outdoor use. 9867300, 326 Add-A-Set 100 Lights \$4.97 ea.	PRE-LIT 100 LIGHTS 3 Ft. Sierra Pre-lit Tree includes 100 clear mini bulbs pre-wired on tree. 9820044 3 ft. \$19.97 ea.
---	--	--	---

THERMAX Carpet Steam Cleaner Rental \$12⁰⁰ Per Day

POINSETTIAS 6" Pots. Locally Grown. Florist Quality. \$4.97 ea. SALE ENDS DEC. 25, 2001	EUREKA Superbroom® Lightweight & Powerful Bagless 1026871 Model #162 \$19.97 ea.	ANNUAL RYE GRASS SEED ANNUAL RYE GRASS SEED 50 lb. bag \$19.95 ea.	ACE QUALITY SHIELD FLAT LATEX HOUSE PAINT ACE BRAND 10 year durability One coat coverage Stain resistant Washable Custom Colors (1834) \$12.97 ea.
--	--	---	---

Pressure Washer Rental \$40⁰⁰ Per Day

PROPANE TANKS FILLED EVERY DAY
AmienGas While You Wait 20 lb. \$9.95 Tank
America's Propane Company

Proud Supporters of **Do The Zoo**
CENTRAL FLORIDA ZOOLOGICAL PARK
GIVE THE GIFT OF LIFE
Central Florida Blood Bank, Inc.

Saving All Your Hardware Needs Since 1978

ACE FOREST CITY 1122 W. Hwy 436 862-4323	ACE OVIEDO Hwy 434 & 426 365-6634
ACE LONGWOOD Hwy 434 & 427 339-4883	ACE SANFORD 207 E. 25th St. 321-0885
ACE CASSELBERRY Winter Park Dr. 339-7365	

Altman-Long FUNERAL HOMES and CREMATION CENTERS
Four Independent, Family Owned and Operated Funeral Homes Since 1914
(386) 668-8880 or (386) 860-0777

HUNT MONUMENT CO. DISPLAY YARD
Hwy. 17-92 - Maitland
Ph. 321-9908
Gene Hunt, Owner
Bronze, Marble & Granite

Lawn parasitic Nematodes: The invisible enemy to turfgrasses

Nematodes are among the most important and least well understood of the problems that affect turfgrasses. The sandy soils and the long growing season in Florida favor the development of very high nematode populations and cre-

ate conditions in which grasses can become susceptible to other organisms due to their feeding activity. What are nematodes?

Nematodes are tiny, unsegmented roundworms, generally transparent and colorless. Most are slender, with bodies from

1/100 to 1/8 inch long. They are essentially invisible to the unaided eye.

The cuticle is usually transparent, so that sufficient internal anatomy can be seen using a microscope to identify the organs.

Life Cycle

Plant parasitic nematodes have a simple life cycle, the egg, larvae, and adult. The first stage molts inside the eggshell to become a second-stage juvenile, which must feed before continuing to develop. The nematode molts three more times to become a fully developed adult.

Male and female nematodes occur in most species, and both may be required for reproduction, but some species are hermaphroditic (have both sexes). With the production of eggs, the cycle is complete.

The length of the life cycle varies considerably with each species, its host plant, and the temperature of its habitat. Minimum generation time is about four weeks for many nematodes under optimum conditions.

The number of eggs deposited by a female varies among species and is affected by the habitat. Most species produce between 50 and 500 eggs, but a few sometimes produce several thousand eggs per female. Eggs of some species can survive without hatching for years but

hatch quickly when a host plant grows near them.

Parasitism

Plant nematodes are aquatic animals that live in soil water or in plant fluids. They are obligate parasites that must feed on living plant tissues. All have some form of hollow oral stylet or spear, much like a hypodermic needle, which is used to puncture the host cell wall. Plant nematodes inject enzymes into the host cell before feeding.

These enzymes partially digest the cell contents before they are sucked into the gut. Most of the injury that nematodes cause to plants is related in some way to this feeding process. Feeding can cause root galls or stop growth of roots, causing stubby, swollen root tips and lateral root proliferation. Nematode induced wounds provide entrance for disease organisms to invade the roots.

The wounds and other effects caused by their feeding often cause physiological changes in plants, making them more susceptible to many plant diseases, sometimes even

breaking plant resistance to diseases.

Turf Nematodes

Many kinds of nematodes damage Florida turf, their feeding may alter root growth, cause small dead spots in the soft root tissues, or even kill the roots. Fungi often cause extensive rot of roots that have been injured by nematodes, and turf weakened by nematodes may be more susceptible to many kinds of diseases.

The Sting Nematode damages all grasses commonly grown in Florida. It is generally found only in very sandy soils. Where conditions favor this nematode, it is the most damaging nematode pest of turf in Florida. The Lance Nematode is a common turf pest because it attacks all commonly grown grasses, is easily distributed with sod and sprigs, adapts readily to many soil conditions, and is difficult to control with nematicides. It is the most important nematode pest of St. Augustinegrass in Florida. The Ring Nematode is widely distributed on most turfgrasses, but is rarely considered to be a major pest on any but centipedegrass and occasionally on others when they are under extreme stress from other factors such as cultural practices.

The Root-knot Nematode is widely distributed in Florida, found most frequently in St. Augustinegrass, zoysiagrass, and bermudagrass. It is assumed to be injurious when numerous, but its effect on turfgrasses is not well understood. The Spiral Nematode is frequently found on all grasses but is rarely a serious pest. The Awi Nematode is very damaging to turfgrasses in wet locations such as low land near lakes, ponds and canals.

The St. Augustinegrass Cyst Nematode, normally attacks only St. Augustinegrass, and high populations occasionally damage this grass.

Control
Most products for the control of nematodes are classified as "restricted" use pesticides.

Al Ferrer is Seminole County Urban Horticultural Inquiries may be directed to him at the Cooperative Extension service, 250 W. County Home Road, Sanford, FL 32773 or phone 905-6686. All Seminole County Cooperative Extension services are open to all regardless of race, color, sex, handicap or national origin.

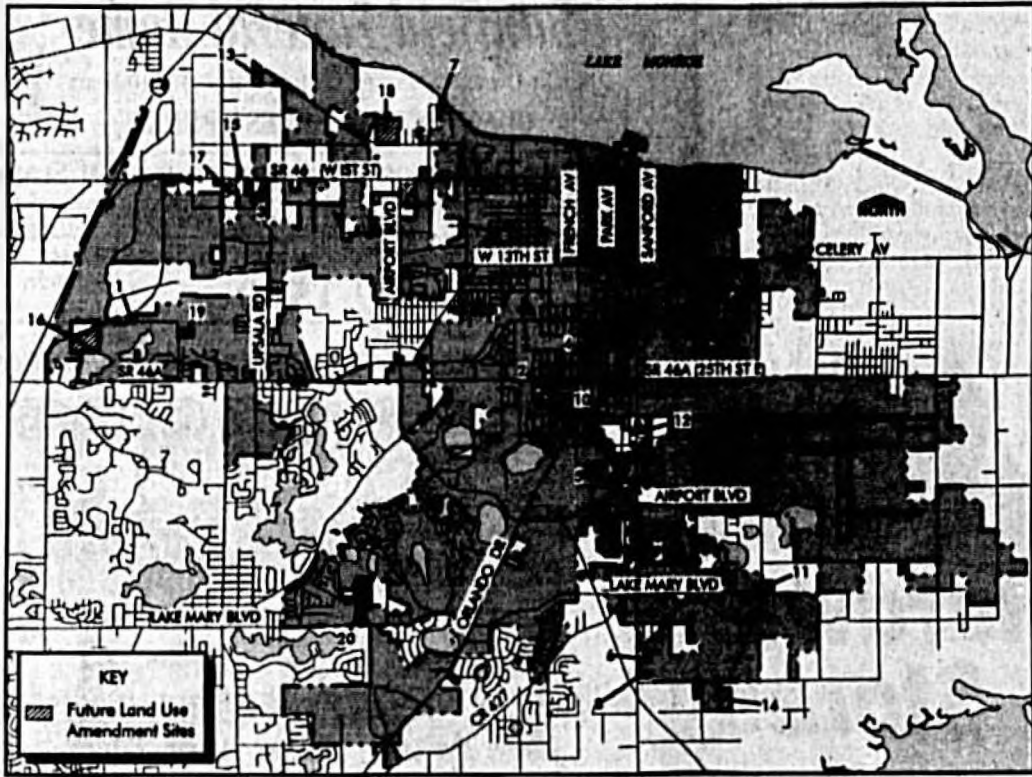
NOTICE OF CHANGE OF LAND USE

The City of Sanford proposes to adopt the following ordinance:

ORDINANCE NO. 3684

AN ORDINANCE OF THE CITY OF SANFORD, FLORIDA, AMENDING ORDINANCE NO. 3572 OF SAID CITY, SAID ORDINANCE BEING THE COMPREHENSIVE PLAN, SAID AMENDMENT BEING THE SECOND ANNUAL AMENDMENT; AMENDING THE FUTURE LAND USE ELEMENT; AMENDING THE FUTURE LAND USE MAP OF THE FUTURE LAND USE PLAN ELEMENT; ADDING PROPERTY ANNEXED INTO THE CITY TO THE FUTURE LAND USE MAP OF THE FUTURE LAND USE ELEMENT OF THE COMPREHENSIVE PLAN; PROVIDING FOR SEVERABILITY, CONFLICTS AND EFFECTIVE DATE.

Includes amendments to the text of the Future Land Use Element and the Future Land Use Map regarding property shown below:



City of Sanford, Florida

Summary of Map Amendments

Map No.	Acres	Existing Future Land Use Plan Map Designation	Proposed City Future Land Use Plan Map Designation
1	2.25	High Intensity Planned Development	High Intensity I-4
2	.22	Low Density Residential	Low Density Residential - Single Family
3	2.11	High Intensity Planned Development	High Intensity I-4
4	.39	Low Density Residential	Low Density Residential - Single Family
5	.16	Low Density Residential	Low Density Residential - Single Family
6	1.65	Low Density Residential	Low Density Residential - Single Family
7	.22	Low Density Residential	Waterfront/Downtown Business District
8	3.29	Low Density Residential	Low Density Residential - Single Family
9	.57	Low Density Residential	Low Density Residential - Single Family
10	.44	Low Density Residential	Low Density Residential - Single Family
11	4.95	Low Density Residential	Low Density Residential - Single Family
12	1.05	Low Density Residential Commercial	Low Density Residential - Single Family Commercial
13	6.91	High Intensity Planned Development	Westside Industry & Commerce
15	.92	High Intensity Planned Development	Westside Industry & Commerce
16	22.45	High Intensity Planned Development	High Intensity I-4
17	.37	High Intensity Planned Development	Westside Industry & Commerce
18	28.1	Conservation Industrial Suburban Estates	Resource Protection Waterfront Downtown Business District

Abbreviations:

HIP - High Intensity Planned Development
LDR SF - Low Density Residential - Single Family
WDBD - Waterfront Downtown Business District
I - Industrial
PSP - Public/Semi-Public
NC - Neighborhood Commercial
SE - Suburban Estates
WIC - Westside Industry and Commerce
RP - Resource Protection
MDR-10 - Medium Density Residential
10DU/A

A public hearing on the ordinance will be held on Monday, December 10, 2001, at 7:00 o'clock P.M. or as soon thereafter as possible, by the City Commission of Sanford, Florida, in the City Commission Room, City Hall, 300 North Park Avenue, Sanford, Florida.

Interested parties may appear at the meeting and be heard regarding the proposed ordinance. Interested parties may also submit written comments.

Copies of the proposed amendment to the Future Land Use Map of the Comprehensive Plan are available at the Department of Engineering and Planning and at the City Clerks Office, City Hall, Sanford, Florida, and may be inspected by the public.

ADVICE TO THE PUBLIC: IF A PERSON DECIDES TO APPEAL A DECISION MADE WITH RESPECT TO ANY MATTER CONSIDERED AT THE ABOVE MEETING, OR HEARING, HE MAY NEED A VERBATIM RECORD OF THE PROCEEDINGS, INCLUDING, THE TESTIMONY AND EVIDENCE, WHICH RECORD IS NOT PROVIDED BY THE CITY OF SANFORD. (FS 286.0105)

PERSONS WITH DISABILITIES NEEDING ASSISTANCE TO PARTICIPATE IN ANY OF THESE PROCEEDINGS SHOULD CONTACT THE HUMAN RESOURCES OFFICE ADA COORDINATOR AT 407-330-5626 48 HOURS IN ADVANCE OF THE MEETING.

Cynthia Porter

Cynthia Porter,
Deputy City Clerk

Best Western Marina Hotel Christmas Buffet

11:30 AM - 3:00 PM
Carving Station
Roast Beef ♦ Roast Turkey
Honey Glazed Ham ♦ Broiled Grouper

Full Salad Bar / Full Vegetable Bar
Cheese Platters / Deviled Eggs
Assorted Vegetable Trays

Fresh Fruits / Assorted Desserts
Pumpkin Pie

Coffee ♦ Iced Tea

\$13.95 Per Person

Children under 12 years old \$6.95
Children 4 years old and under (free)
Tax and Gratuity Not Included
For Reservations Call - (407) 323-1910
PIANO BY MARLENE


Join us to welcome back Chef Ernest Culbreth as he presents a traditional holiday buffet

5.40%

Guaranteed For 3 Years!

An enhanced three-year initial interest rate of 5.40% will be credited to all LifeStages® Single Premium Fixed Annuity policies with an initial premium of \$100,000 or more.

For premiums over \$50,000 but less than \$100,000, an enhanced three-year initial interest rate of 5.25% will be credited. For premiums over \$25,000 but less than \$50,000, an enhanced rate of 4.75% will apply.

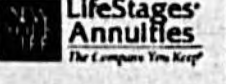


HERE'S YOUR WAKE-UP CALL

Call me today to see how you can take advantage of this rate

Neil R. Kindy, LUTCF
Agent
New York Life Insurance Company
120 International Parkway
Suite 220
Heathrow, FL 32746
(407) 444-0392

Rates are subject to change. After the first three years, the policy will receive a new interest rate every year equal to standard one year renewal rate the NYLIC is crediting on the product at that time.
Issued by New York Life Insurance and Annuity Corporation (A Delaware Corporation)
51 Madison Avenue, New York, NY 10010
In most jurisdictions, the policy form number for the LifeStages® Single Premium Fixed Annuity is 997-181



Food & Fun

Your guide to this falls coolest hot spots.

This Week's Feature

Uncle Nick's Oyster Bar & Grill



Look For This Weekly Feature Every Wednesday In The Midweek Edition of the Seminole Herald Featuring Stories And Photos Of Places To Go For "Food & Fun" in Seminole County.



Sitting in front of the oyster bar, from left: Nancy Corrao, kitchen manager; Paula Rossetti, bartender; Teresa Ouder Kirk, manager; and Angelique Chandhok, bartender.

3D'S 110 S. PALMETTO, DOWNTOWN SANFORD 407-321-6933

KARAOKE WITH RICK

THURSDAY & FRIDAY 8:30 TIL ?

REGGAE SATURDAY AND SUNDAY

Caribbean Cuisine • Beer & Wine
Come Party With Rick & Debbie (tabby)
DIVERSE CROWD...ALL WELCOME

THE BARN
1200 S. French avenue • Sanford, FL 32771
(407) 324-BARN (2276) • Wed.-Sat. 6pm-2am

The Best Country Bar In Central Florida Under New Ownership

Happy Hour Specials Every Night

Holiday & Office Party Space
Call For Info. (407) 324-BARN

The Barn now has the best of Country and the Best Club music for dancing from the 70's, 80's, 90's

WEDNESDAY THE 5th \$2.50 YOU CALL IT Beginner Line Dance Lessons with Hoss Marting 7-9 pm 50 Cent Drafts	THURSDAY THE 6th LADIES NIGHT Ladies Drink Free Well & Draft 9pm-12am Novice Line Dance Lessons w/Hoss Marting 7-9 pm
FRIDAY THE 7th Barn Band Night Live Music w/STAMPEDE Line Dance Lessons 7-9 PM w/Gloria Johnson Bud/Bud Lite Buckets all Night 8 to 10 Bud Longnecks FREE	SATURDAY THE 8th Barn Band Night Live Music w/STAMPEDE Line Dance Lesson 7-9 8-9 Couples ECS Lessons w/Hoss & Lorea. 2 for 1 Bud/Bud Lite Bottles 8-8 pm \$5 Bud/Bud Lite Pitchers 8pm-2am \$2.00 Longnecks all Night

Holiday & Office Party Space. Call For Info.

Come 'n' Get It!

J.D.'s HOME STYLE COOKING

BREAKFAST, LUNCH & DINNER

MONDAY Chicken-N-Dumplings Beef Tips-N-Gravy/Rice Meat Loaf Country Fried Steak w/Gravy	TUESDAY Roast Pork Chicken-N-Rice Turkey-N-Dressing Pork Chop	WEDNESDAY Baked Chicken Beef Tips-N-Gravy/Rice Baked Ham Salisbury Steak	THURSDAY Meat Loaf Chicken-N-Dumplings Pork Roast Country Fried Steak w/Gravy	FRIDAY Baked Fish Chicken-N-Rice Beef Tips-N-Gravy/Rice Baked Chicken	SATURDAY Meat Loaf Baked Ham Salisbury Steak Pork Chop	SUNDAY Pork Roast Turkey-N-Dressing Chicken-N-Dumplings Baked Chicken
---	--	---	---	--	---	--

COMPLETE HOME STYLE MEALS W/DRINK \$5.29 PLUS TAX

OPEN SUN: 7AM-2 PM • MON & TUES 6 AM - 2:00 PM • WED. thru SAT. 6AM-8 PM
Dining Room • Take Out • Drive-Thru
2506 S. French Ave., Sanford
(407) 323-1990 • Fax (407) 321-7226

UNCLE NICK'S Oyster Bar & Grill

2605 PARK DRIVE • SANFORD

DAILY FOOD SPECIALS

ALL DAY SUNDAY

30¢ OYSTERS 75¢ DRAFT

Prices Slashed!!

ALL DOMESTIC BEERS.. \$1.75

ALL WELL DRINKS..... \$1.75

ALL THE TIME!!

KARAOKE ON WEDNESDAY

LIVE ENTERTAINMENT • MEALS PREPARED FRESH ONBOARD

Take A Break...
MOTHER NATURE INSISTS!

RIVERSHIP ROMANCE CRUISES

FREE PER PERSON
AMERICAN VOLUNTEER COUNTY SERVICE

Must present coupon for this special. Valid not include holidays or any other special. Not valid with other offers or coupons. Expires 12/15/01

Located In Historic Sanford • 433 Palmetto Ave.
(Minutes from I-4, Exit 51) www.rivershipromance.com
(407) 321-5091 • 1-800-423-7401

RELAX ON THE WATERWAYS OF THE BEAUTIFUL ST. JOHNS RIVER

Try Our Delicious Home Cooking

Golden Lamb Restaurant

DAILY HOURS: 5 AM to 3 PM

Orders To Go **BREAKFAST \$1.29 AND UP** Specials Every Day

Lunch Special

SAT. & SUN. DINNER 11 TO 3:00
HAM, PORK, TURKEY, LEG OF LAMB, BEEF

HOMEMADE SOUP, SANDWICH AND FRENCH FRIES... **\$2.99**

2101 S. French Ave., Sanford, FL
OPEN 7 DAYS 5 AM - 3 PM
407-322-5863

Just In Time For Christmas

1/2 Price Newspaper Subscriptions

104 Issues of the Seminole Herald

Mailed To Your Home or Office

\$18.00 (REG. \$36)

For Just

*Must be Prepaid - Must be in Seminole County. (Call For Other Area Pricing) No Cancellations or Refunds. Offer Good on Renewals - But, Must Add Another Years Delivery.

ONE YEAR OF MAILED DELIVERY

THE SEMINOLE HERALD Twice a Week!

\$18.00 Name: _____
1/2 Price Address: _____
Limited Time Offer City: _____ State: _____ Zip: _____
 Check Enclosed Phone: _____
(Must Be Prepaid)

Bring or Mail: Seminole Herald • 260 N. French Ave., Sanford, FL 32771 • (407) 322-2011

2617 S. Orlando Ave. (17-92)
Sanford, FL 32771

His & Hers LOUNGE

407-328-8444

10AM-2AM MON-FRI Karaoke 10AM-2AM SAT & SUN

CROON YOUR HEART OUT!

Karaoke Seven Nights A Week

Karaoke Contest
Thurs. Night

Monday Is Ladies Night

75¢ Drafts

Happy Hour Prices 9 to 12

Pringle

Continued from Page 1A

ber of city of Sanford organizations, including the Sanford Chamber of Commerce Beautification Committee, the Community Redevelopment Agency, the Scenic Improvement Board, The Downtown Waterfront Development Board and the Sanford Cemetery Advisory Board.

She was also associated with a number of civic organizations, including the Pilot Club International of Sanford, Alliance for Retired Americans, Seminole County Retired Educators Association, Florida Retired Educators Association, Life Member of the National Association for the Advancement of Colored People, Life Member of the FAMU Alumni Association, Phi Delta Kappa Inc., Beta XI of Orlando, Voters League, Bethune-Cookman College Pacesetter, Seminole County Democratic Executive Committee, ABWA, AUWA,

AARP and PIC.

Former student Marlyn Mobley Jennings remembers Pringle fondly.

"She was a special, caring, dedicated and wise lady," Jennings said. "She was my first- and fifth-grade teacher at Midway Elementary School and taught us reading, writing, arithmetic, poetry, speaking and just plain old how to be a productive person."

"I remember her always greeting us with a show of love," Jennings added.

Art Harris remembers Pringle as a community leader who co-chaired with him the committee the mayor appointed to help build the Westside Center and to help get paved streets.

"The friendship I had with Eliza Pringle lasted for more than 50 years," Harris said.

Shirley Wynn Allen shared her thoughts about Pringle.

"She was an elegant lady, a woman of wisdom, a dignified Christian of grace and honor, and

a genuine leader," Allen said. "She was the lady with the smile."

Pringle is survived by her husband of 51 years, Clifford Pringle Sr. of Sanford; a son, Clifford Pringle Jr. and his wife, Rachel, of Arizona; and a grandson, Clifford Pringle III and his wife, Jessie, and their daughter Hailey of Arizona.

A memorial service for Pringle is 11 a.m. Saturday, Dec. 8, 2001 at Calvary Temple of Praise, 2020 McCracken Road, Wilson-Eichellberger Mortuary is in charge of the arrangements.

The Seminole County NAACP had originally scheduled its quarterly luncheon for Saturday, Dec. 6. Pringle was to have been honored at that luncheon. The event has been rescheduled for 11 a.m. Saturday, Dec. 22, at the Westside Boys and Girls Club.

Christopher Patton can be reached at cpatton@seminole-herald.com or 407-322-2811.

And the winner is ...

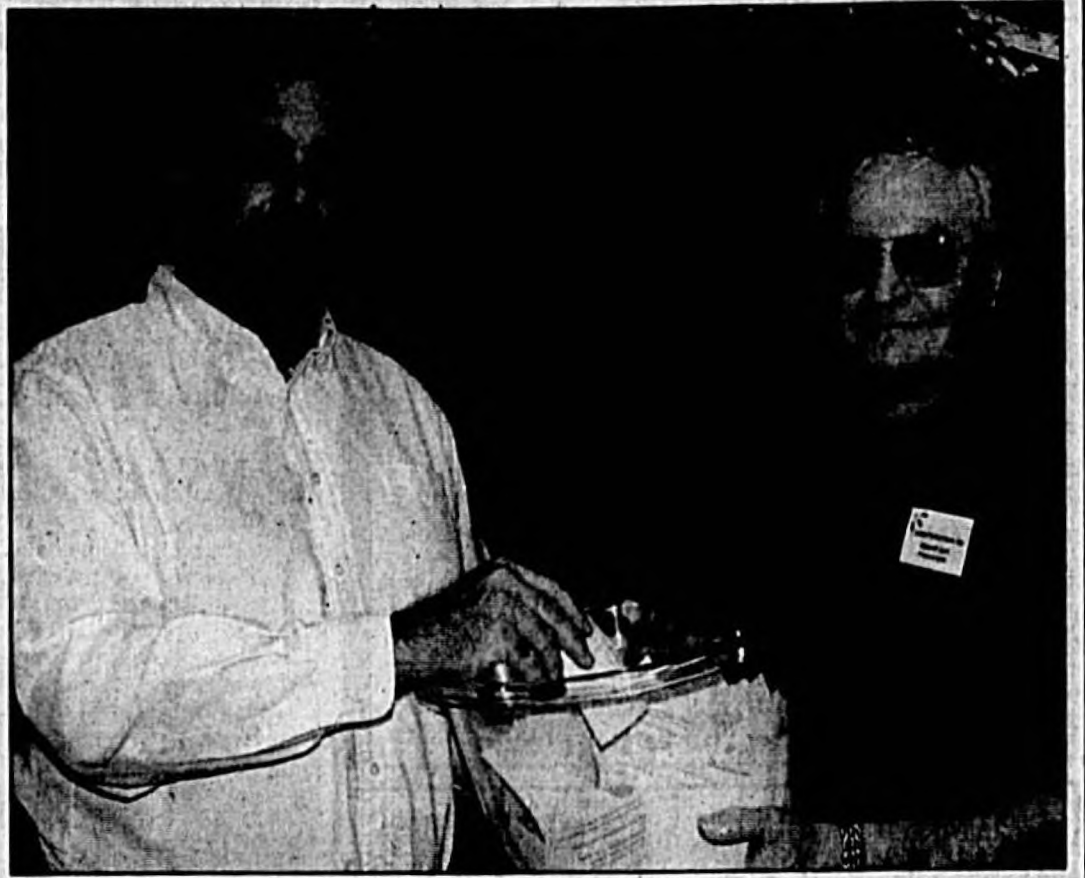


Photo submitted to the Herald
District 1 Sanford Commissioner Art Woodruff, left, and Russ Lord, president of the Sanford Historic Trust, pull the winning entry for the Sanford Historic Trust's grand prize. The winning entry for a romantic night for two at the Rose Cottage Inn on Park Avenue went to Kim Fratik of Lake Mary. The drawing brings to a close the Trust's 13th Annual Holiday Tour of Homes, the most successful on record in terms of number of visitors and image building for the town and association. A portion of this year's proceeds are earmarked for improvements to Centennial Park. The Trust wishes to take this opportunity to thank its many partners and volunteers in what has truly become a city-wide event.

Community Briefs

The Lake Mary Chapter of AARP No. 4878 will be celebrating the Holiday Season with a luncheon noon Tuesday, Dec. 18, in Timacuan Country Club on Reinhart Road in Lake Mary.

Tickets are \$20, which includes complete lunch, gratuities, tax, entertainment, door prizes and lots of fun.

Anyone wishing to attend, may do so by calling 407-333-3015 or 407-323-9249.

The Seminole High School Band is hosting its Winter Concert 7 p.m. Tuesday, Dec. 11, in the school's auditorium, located at 2701 Ridgewood Ave. A silent auction

will precede the concert.

The band, under the direction of P.L. Malcolm and Frank Taylor, will perform familiar favorites, including a piece narrated by Principal Karen Coleman.

The concert is free and open to the public. For more information, call 407-320-5161.

Christmas In Seminole And Other Places!

Holiday Gifts That Last Forever!

A1 Princess Royal of Spanglers Diamond Bridal Set in White Gold \$9595

A2 Diamond of Excellence Heart Pendant (diamond included) \$2195

A3 Diamond Fashion Ring 1 CT. \$399⁹⁵
1/2 CT. \$259⁹⁵
1/4 CT. \$149⁹⁵

A4 Diamond Fashion Ring 1 CT. \$439⁹⁵
1/2 CT. \$279⁹⁵
1/4 CT. \$164⁹⁵

A5 1 Diamond Cross Pendant (diamond not included) \$595

A6 Ladies Diamond Bridal Set \$2195

A7 Diamond of Perfection Fashion Ring \$5195

A8 Diamond Solitaire Earrings 1/4 CT. \$99⁹⁵
1/3 CT. \$199⁹⁵
1/2 CT. \$499⁹⁵

A9 Ladies Two-Tone Diamond Band 1 CT. \$1,099⁹⁵
1/2 CT. \$629⁹⁵
1/4 CT. \$399⁹⁵

A10 1 CT. Baguette Diamond Hoop Earrings \$999⁹⁵

A11 1/2 CT. Baguette Diamond Hoop Earrings \$539⁹⁵

A12 Girls Diamond Ring \$995

William Howard's Jewelers

Seminole Centre
3675 Orlando Drive
Sanford, FL 32773
407-321-3141

Store Hours:
Mon. - Fri. 10am-6pm
Saturday 10am-5:30pm
Sunday Noon-4pm

Interests Free Charge Accounts Layaway

Cool Beans Coffee
COFFEE • ICE CREAM • SMOOTHIES

Holiday Specials

BUY ONE - GET ONE FREE SMOOTHIES	BUY ONE - GET ONE FREE ICE CREAM SUNDAE ANY FLAVOR	BUY ONE - GET ONE FREE BANANA SPLIT
EXP. 1/15/02	EXP. 1/15/02	EXP. 1/15/02

LOCATED IN MAGNOLIA SQUARE - DOWNTOWN SANFORD

HERE WE GO A-CAROLING!

Join Your Friends and Neighbors For An Evening Of Old Fashioned Christmas Caroling

SATURDAY - DECEMBER 1st
6:00 pm - 8:00 pm

SANTA'S VILLAGE IN MAGNOLIA SQUARE
DOWNTOWN SANFORD

"CHRISTMAS THROUGH A CHILD'S EYES"

Light-up And Musical Program Featuring Exceptionally Talented Groups and Ensembles

Presented By The Downtown Business Association of Sanford.
Call Sara Jacobson (407) 323-0197 (407) 314-5745 For Details

Christmas In Seminole And Other Places!

DEDICATED TO THE HOBBY

**5,000 SQ. FT.
SUPER STORE OF TOYS!**

MAXIMUM VISUAL EXPERIENCE

- Over 1/4 Million Comics
- Discount Subscription
- Over 75,000 Action Figures
- Hottest Toys In Town
- Star Wars & Star Trek
- Sports/Non-Sports Cards
- Fast Food Collectibles
- Starting Line-ups

**WORLD FAMOUS
ACME
COMICS, CARDS &
COLLECTIBLES
EST. 1968**

We Collect Customers
Mon - Fri 11-7
Sat 10-7
Sun 12-5

Visit Us At
www.acmesuperstore.com

(407) 331-0433 FAX (407) 331-8422

101 E. S.R. 11 Suite 100 • Longwood • 1/2 Mile West of 17-92

New Ideas For Christmas Eve Dinners

To create the traditional Christmas Eve dinner you'll need to choose which fish dish will be the centerpiece of your feast. Many families lean toward shellfish, preparing lobster, crabs, crayfish and shrimp for their dinners. However, any number of other seafood options would make a nice presentation for the holidays.

Why not try a juicy cut of sal mon garnished with amustard glaze. Not only is salmon healthy - chock full of essential fatty acids, it is also a tasty dish that does not have an overwhelming "fishy" flavor, which may work well for finicky eaters. Enjoy this recipe for "Mustard-Glazed Salmon," courtesy of "Christina Ferrare's Family Entertaining" (St. Martin's Griffin) at this year's Christmas Eve celebration.



8 pieces
Additional olive oil
Salt and freshly ground pepper to taste
Lemon wedges for garnish

Preheat the broiler
In a small sauce pan over low heat, heat the oil and saute the garlic in it until soft. Stir in the mustard, wine and lemon juice until well combined. Remove from the heat. Arrange the salmon on an oiled broiler pan and rub lightly with olive oil. Season with salt and pepper. Broil for 2 minutes. Remove from the oven and brush the mustard mixture evenly over the salmon. Return to the oven and broil until the salmon is golden brown and cooked through, about 5 minutes. Serve with lemon wedges.

MUSTARD-GLAZED SALMON

Serves 6
1 tablespoon olive oil
2 to 4 tablespoons minced garlic
1/3 cup whole-grain Dijon mustard
1/4 cup dry white wine
1 tablespoon lemon juice
1 2-pound salmon fillet, cut into

Crafts • Fine Arts • Puppets • & Collectables
The Crafter's Eye Inc.



120 Park Ave. • Sanford Florida

The newest craft mall in Historic Downtown Sanford wishes you and yours a very Happy Holiday. We are open from 10am - 6:30pm Monday-Saturday and Sunday 11am - 5 pm On the corner of Park Ave. and 2nd Street. FREE PARKING

BIG HOLIDAY HITS

We can help you find the perfect gift for your sports fans.

**One Stop Card Shop
Non Sports & Sport Needs**

B & K Cards

183 North Hwy. 17-92 • Longwood, FL 32750
(407) 339-3484 bktwo1998@aol.com
Monday through Friday 11 a.m. - 7 p.m.
ALSO: Plaza World • Row C • Booths 22 thru 24

**Holiday Extravaganza
Handmade Crafts and Gift Stores**

101 + Crafters

**Great Gift Ideas &
Holiday Decorating Items**

Featuring

- Fine American Folk Art
- Contemporary Art
- Antiques
- Country Collectibles
- Hand Crafted Furniture
- Primitive Collectibles

3701 S. Orlando Drive • Sanford, FL
Adjacent to Walmart
407-327-1101

Dr. Woods' MUSIC CENTER

HAVE A KARAOKE HOLIDAY PARTY
Rent or Buy

851 E. Hwy. 434
Time Square Plaza
Longwood, FL 32750

407-767-2001 Phone
407-767-1600 Fax
www.createorlando.com/music/drwoods

Bring Them Home For The Holidays

Daniel Green.
THE QUALITY COMPANY SINCE 1882

Looking for a gift that will bring joy to their feet? Combining comfort and style that's all dressed up like a Christmas tree, Daniel Green slippers make perfect presents for everyone on your shopping list.

• GIFT WRAPPING • GIFT CERTIFICATES

Knight's SHOE STORE
208 E. First St., Sanford • 407-322-0204

Karen Chatterson, LMT MA0014491

**Avalon Center for
Therapeutic Massage** MA0002613

Our staff of licensed professionals are available to relieve your holiday stress and help you meet your New Years goals!

Holiday Specials

MASSAGE SPECIAL BUY 1 GET 1 FREE \$150 (\$200 VALUE)	FACIAL MASSAGE MANICURE PEDICURE \$120 (\$180 VALUE)	HYPNOSIS PACKAGE BUY 3-GET 1 FREE \$195 (\$290 VALUE)
--	---	---

THERAPEUTIC & STRESS MGT.
Karen Chatterson, LMT-MA0014491
Deborah Lea Stehl, LMT-MA0029226
NEUROMUSCULAR REFLEXOLOGY
Esmine Anthony, LMT - 0017008
DEEP TISSUE NEUROMUSCULAR
Tracy Davis, LMT - MA0033698
FACIAL & NAIL SPECIALIST
Cheryl Pack, LMT MA30925
NATIONALLY CERTIFIED HYPNOTIST
Elissa Mackintosh
ACUPUNCTURE PHYSICIAN
Board Certified
Donna Good

**NOW OFFERING WITH AD
2 FOR 1 NON-SURGICAL FACE LIFTS**

1400 S. Park Ave., Sanford
407-330-6807

**BRING YOUR HOLIDAY GUEST,
LEAVE THE COOKING TO US!**

**RIVERSHIP ROMANCE TRADITIONAL
CHRISTMAS DAY CRUISE**

CALL TO RESERVE YOUR SEATING
SPECIAL CHRISTMAS DAY MENU
NOON TO 4 P.M.

**LUNCH CRUISES DAILY 7 DAYS A WEEK
DINNER CRUISES FRIDAY & SATURDAY**

Located in Historic Sanford
433 Palmetto Ave. (Exit 51) • 407-321-5091
www.rivershipromance.com

There's Something
WILD
In Them There Woods!

COUNTRY CRAFTS • OUTDOOR FURNITURE
• CYPRESS LUMBER • SOUVENIRS
• CARVINGS • MULCH, CHIPS, PINE BARK

LAYAWAY NOW FOR CHRISTMAS!

CYPRESS THINGS
BY J&S CYPRESS

HOURS:
TUE-SAT 9-6, SUN 10-5
SAW MILL HOURS
MON-FRI 7-5, SAT 8-3

28625 SR 46
Sorrento, FL
(9 1/2 Miles West of I-4 on Right)

(352) 383-3864

**WRAP IT UP CLEAN WITH
NEAT-N-TIDY ALL CLEAN**

This year my true love thought it would be romantic to give me the 12 days of Christmas. What would I do with swans a swimmin' and maids a milkin' What I need is maids a cleanin' my house! "No problem" said my true love. "You'll get what you want and I'll still give you the twelve days of Christmas". I couldn't understand what he was going to do. You can imagine how surprised I was when he changed the final verse of my favorite song to:

12 rugs a vacuumed
11 floors a mopped
10 rooms a dusted

9 windows a washed
8 beds a made
7 bathrooms a scrubbed
6 kitchens a cleaned

with 5 YEARS OF EXPERIENCE by one of 4 cleaning crews in 3 hours time along with 2 window men leads to 1 Neat N Tidy holiday home. Neat N Tidy knows how valuable your time is, especially around the holidays. If you want a Neat and Tidy home before the days of Christmas are upon us, call (407) 324-1177 and set up your appointment today!

**ASK ABOUT OUR
HOLIDAY GIFT
CERTIFICATES**

**NEAT-N-TIDY
ALL CLEAN SERVICE**
(407) 324-1177
SATISFACTION GUARANTEED
LICENSED • BONDED • INSURED

HAY!
Don't miss our

**SANFORD MAINSTREET
FARMER'S
MARKET**

MAGNOLIA SQUARE
ON FIRST STREET
EVERY TUESDAY &
SATURDAY

LIVE ENTERTAINMENT
• FRUITS • VEGGIES
• PLANTS • AND MORE

For More Information Call
(407) 322-5600

Sanford Main Street, Inc.
Sanford, The Historic Heart Of Seminole County

Holiday Happenings

There was plenty to see this weekend as the Sanford Historic Trust hosted its annual Tour of Homes, and the Downtown Business Association kicked off the holiday season with a lighting ceremony in Magnolia Square. Herald photographer Tommy Vincent was on hand to capture the moments.



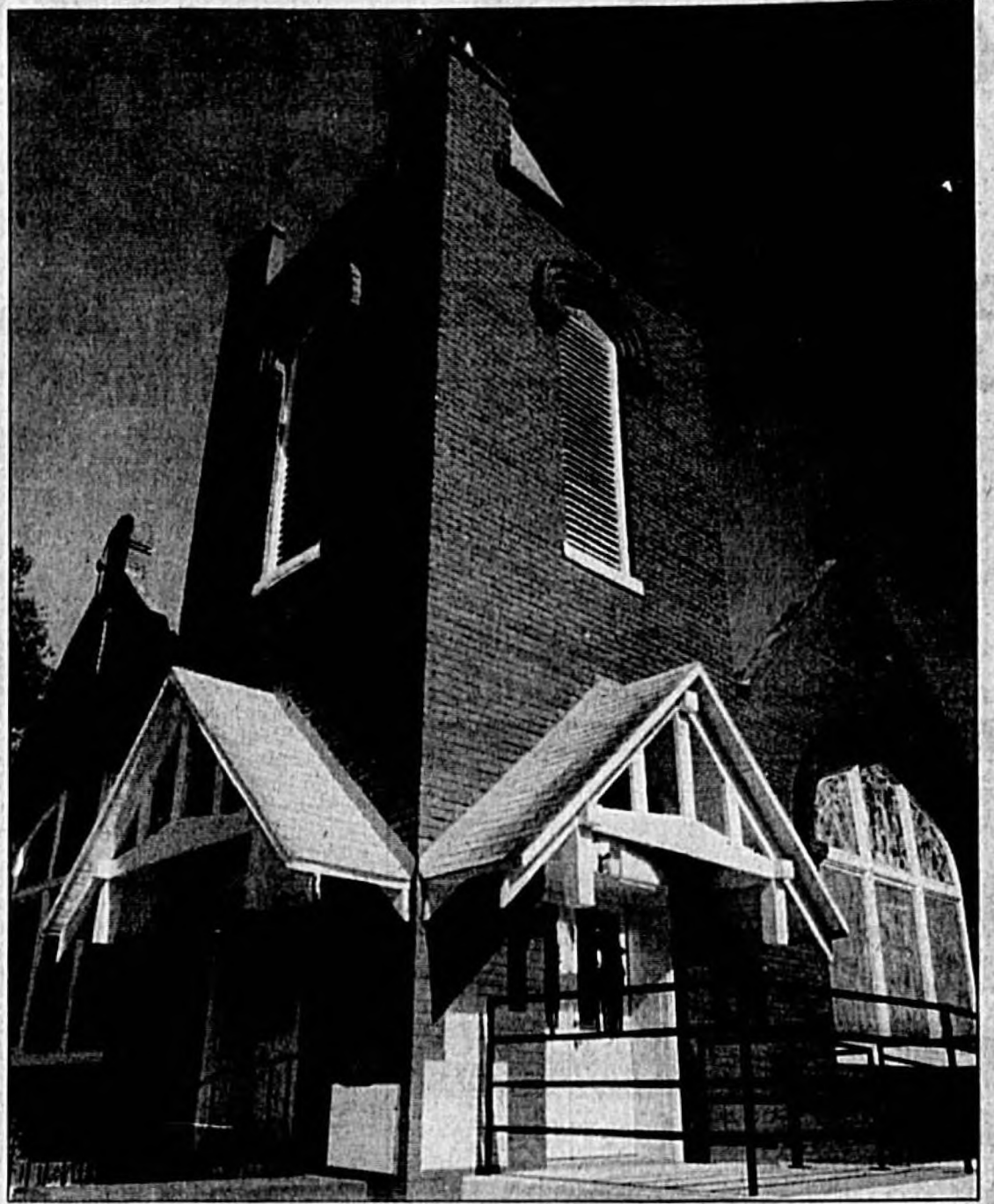
Cynthia Cassanova Brown belts out "God Bless America" during the lighting ceremony Saturday night.



11-year-old Jessica Morales charged up the crowd by singing "God Bless the USA."

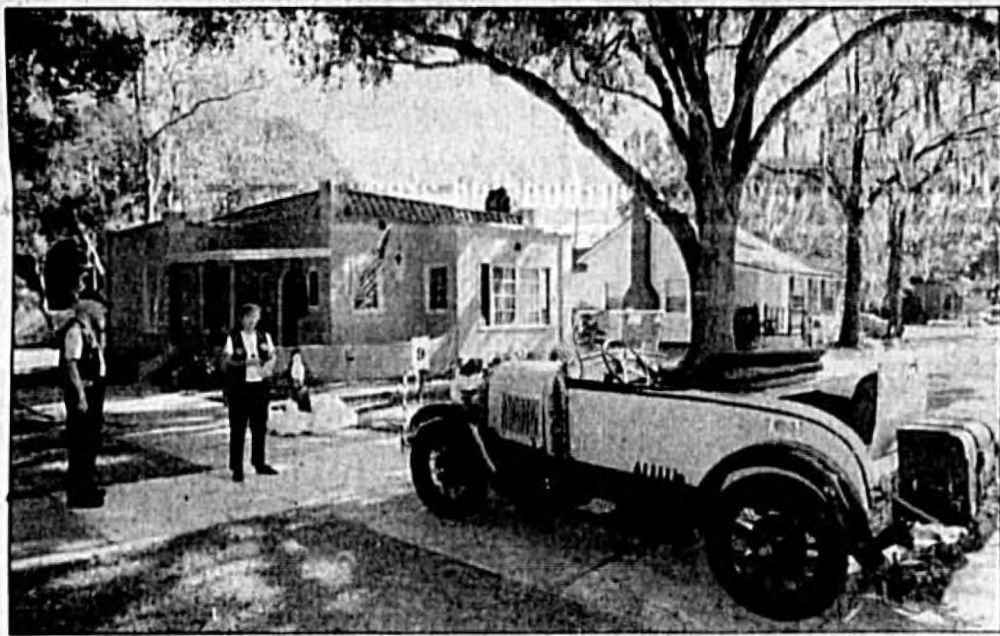


Sanford Mayor Brady Lessard and his son Thor join Sunniland Corporation's Delbert Abney in lighting the Christmas tree.



Herald photos by Tommy Vincent

St. James African Methodist Episcopal Church in the Georgetown community was one of the featured stops on this year's Sanford Historic Trust's 13th Annual Holiday Tour of Homes. The church was organized in 1867 and this structure was built between 1910 and 1913.



Richard and Myrna Hardman parked their 1928 Model A Ford at the Cooney home on Palmetto Avenue.



Marth McClennon dressed as Doris Williams, the oldest member of St. James AME Church until her death in 1995.



A crowd gathered in Magnolia Square for Saturday night's lighting ceremony.



Paula Cooney shows off her living room. Her Palmetto Avenue home was a popular stop.



Chris and Beth Conley's opened their home for the tour. The house is believed to have been ordered from a Sear and Roebuck Catalog in the early 1900s.



Kaley Rivard got to tell Santa her Christmas wish list during Saturday night's event.

Rinehart

Continued from Page 1A
 ter planning that restricts access along Rinehart Road.
 "You'll see a pretty good looking road in the future," Marder said.
 Marder noted that Rinehart Road is considered a gateway corridor into Sanford and development projects face stricter landscaping requirements.
 "The City Commission has beefed up the regulations in those areas," Marder said. "They wanted even bigger trees planted."
 Mayor Brady Lessard and Commissioners Randy Jones and Woodruff have been advocates of additional landscaping,

Marder said. At their request, developers in gateway corridors must plant trees that area at least 6 inches in diameter at chest level.
 "We've tried to emphasize the view from the street," Marder said. "With the heavy landscaping, larger buffer areas and all signage limited to 15-foot in height, that area is going to be attractive."
 While attractiveness is important to many residents, most motorists are concerned primarily with traffic congestion and delays. Traffic moves smoothly along Rinehart Road now, but will that continue as development is built out over the next two or three years?

Marder believes it will.
 "A four-lane road has a tremendous amount of capacity for traffic," Marder said. "It will be a will before we have a problem on that road."
 There are enough rights-of-way along Rinehart to expand the road to eight lanes, four in each direction, but Marder said he doesn't foresee that happening.
 "I do foresee six lanes sometime in the future, but probably not for 10 or 15 years," Marder said.
 Restricted access onto Rinehart will help prevent traffic congestion that requires wider roads, Marder said.
 "This is not the four-lane

road of the past with unlimited curb cuts, i.e. (State Road) 436 and (U.S. Highway) 17/92," Marder said. "Unlimited access creates numerous starts and stops and left-hand turns against heavy traffic flows. That's not an ideal situation."
 The alternative is to allow fewer curb cuts and force motorists wanting to turn left to do so at signalized intersections.
 "Limited access is the key, and you must have cross access between sites," Marder said. "That is, when you drive into a shopping center, you don't have to go back out on the main road to drive to the store next door. That's why you're

not going to see Rinehart Road become another 436."
 Woodruff isn't so sure. While he has advocated fewer curb cuts and more access roads between developments along State Road 46 and Rinehart Road, also believes the standards used to calculate road capacities don't always translate into less congestion for motorists.
 Coming Sunday: What kind of grading curve ranks a "D" higher than an "A"?"
 Dan Ping can be reached at dping@seminoleherald.com or 407-322-2811.

Morris

Continued from Page 1A
 ter has led to her participation on state wide task forces and commissions such as: Florida Special Education Council, Model Technology Schools Consortium, Textbook Selection Councils, and currently serving as Senator Toni Jennings' appointee to the Florida Education Finance Program Task Force. Her voice on the FEFP Task Force has been critical, representing all the children of Florida.
 As a school board member, Jeanne has served as chair and vice chair for Seminole County and has served on the Legislation Committee for FSBA every year. She spends much of her time lobbying for children's issues.

Society publishes book on history of the Swedes in Seminole County

By Grace Marie Stinecpher
Herald Correspondent

Dressed in an authentic Swedish costume, Teri Patterson, granddaughter of the recently deceased Sidney Vihlen Sr., presented the program at the recent Sanford Historical Society meeting. She, Charlie Carlson and Christine Best are authors of the just published "The History of the Swedes in Seminole County," which is a publication of the society.

Teri told the group some her experiences while researching the information and also gave a glimpse into the book's contents. Her most memorable experiences while researching were delving into the Chase Papers, which are housed at the University of Florida, and interviewing 100-year-old Eunice Tyler Martin, who now lives in Winter Haven.

The Chase Papers revealed much information about Henry Sanford's Bel Air Grove, which the Chase family later purchased. General Sanford brought the original Swedes to Sanford in 1871 to work in this experimental grove.

Mrs. Martin's grandparents came from Sweden in 1871 to help found the community of New Upsala. In the group were carpenters, masons, and those with other occupations, all needed in this new place.

Eunice Martin was born in New Upsala in 1901 and has many memories of growing up in this community.

She recalled that they had their own school and two churches. Mr. Vihlen's farm wagon was the first school bus. Soon after Seminole County was formed in 1913, a motor bus was provided. Olga Hunter was the first bus driver, receiving \$25 per month.

The Swedes overcame many hardships to become a part of America. They were also important to the founding and building up of the town of Sanford.

In addition to New Upsala, the book contains the history of other early Swedish settlements in the county. Much new material, never before published, is included so it is an important addition to the history of the area.

Teri also revealed plans for the upcoming St. Lucia Open House, which will be held Saturday, Dec. 15 from 1 p.m. to 4 p.m. at the Sanford Museum. There will be an authentic Swedish smorgasbord, Swedish Christmas decorations and entertainment. This is sponsored by the Sanford Historical Society, with help from the Seminole County Historical Society, and will be held to honor Sanford's Swedish descendants.

St. Lucia was declared a saint

Dyer talks to Democrats, GOP installs officers

The monthly meeting of the Seminole County Democratic Executive Committee is 7 p.m. Thursday, Dec. 13 at the Seminole County Public Library in Casselberry.

The guest speaker is state Sen. Buddy Dyer, a candidate for Florida Attorney General in 2002.

All present and prospective Seminole County Democrats are encouraged to attend. For more information, call 407-622-1783; 407-324-2776; or visit the DEC's Web site at www.seminoleDemocrats.com.

The monthly meeting of the Suburban Republican Women's Club is 11 A.M. Wednesday, Dec. 19 at Sweetwater Country Club.

Installation of officers for 2002 will be the main focus of the meeting. Also, a representative from Safehouse of Seminole, a shelter for abused women and children, will speak. The club asks all members and guest to bring a wrapped gift identifying age and gender to the meeting.

Reservations are requested by 5 p.m. Sunday, Dec. 16. For more information, call 407-862-6626, 407-830-4560, or 407-672-2556.

about the year 300, and a holiday is observed in her memory in Sweden every Dec. 13.

Invitations will be sent to Swedish descendants. If you don't receive one, contact the Sanford Museum.

The business meeting of the Society was conducted by vice president Carlton Jay Jacobs in the absence of president Christine Best, whose father-in-law had died the previous day.

The highlight of the meeting was the election of officers for 2002. The new officers are: Carlton Jay Jacobs, president; Bette Skates, vice president; Teri Patterson, recording secretary; Grace Marie Stinecpher, membership secretary; and Doug Fetzer, treasurer. The directors are Joe Hunt, Serena Fisher, Christine Best and Patty Swann. The new officers and directors will be installed at the annual meeting on Jan. 24.

Plans for the holiday reception

were finalized and all were encouraged to attend. There will be a bountiful array of refreshments, door prizes and enjoyable fellowship. The Museum will be decorated in a patriotic theme by Iris Hunt and the Museum Staff.

The members were reminded that the Sanford Museum will be the headquarters for the Holiday Tour of Homes, sponsored by the Sanford Historic Trust on Dec. 1 and 2. Plans for this were finalized and volunteers secured.

Debbie Reigle, representing the RSVP organization, gave information about this group and requested that the Society become an agency with them. This will be discussed later by the board.

It was announced that member Bill Tyre died Oct. 2, 2001.

Delicious refreshments were served to more than 45 members and guests by Gladys Stenstrom and Barbara Chapman.

GOT YOUR HANDS FULL? CALL...

NEAT-N-TIDY



ALL CLEAN SERVICE Residential Our Specialty

DEEP CLEAN SPECIAL \$75 HOUSE CLEANING 3 Bedroom • 2 Bath 2 Hour Cleaning w/coupon

25% OFF WINDOW PACKAGES WITH COUPON ALOHA CARPET CARE ALL CARPET & TILE CLEANING 407-496-1222

We Do It All!!

- Including
- DUSTING • VACUUMING
- MOPPING/WAXING FLOORS
- CEILING FANS
- ALL APPLIANCES CLEANED INSIDE & OUT
- CHANGE DIRTY LINENS

CALL TODAY!

- RESIDENTIAL • OFFICES
- APARTMENTS • COMMERCIAL • PREMIUM CLEANING
- EXCELLENT SERVICE
- AFFORDABLE RATES
- NEW CONSTRUCTION
- SATISFACTION GUARANTEED

NEAT-N-TIDY ALL CLEAN 407-324-1177

We Serve Sanford, Lake Mary, All Seminole County & surrounding areas.



SUPREME SOD

"We Sell Our Name"

Florata and Palmetto St. Augustine

- Buy direct from farm...save \$\$\$!
- Located in Osteen approx. 5 miles east of Deltona
- Close-in proximity saves time and freight costs

FLORATAM

Prices at the Farm:

- 1 - 4 pallets.....\$68 ea.
- 5 - 10 pallets.....\$64 ea.
- 11-17 pallets.....\$60 ea.
- 18+ pallets.....\$56 ea.

1411 Osteen Maytown Road • Osteen, FL 32764 407-328-4444

Farm Directions: To reach the farm to SR 415 in Osteen - turn east on Railroad Ave. (across from Tesaco) - turn left on New Brynne Blvd. (first street on left, approx 1/2 block) - turn right on Osteen Maytown Road. (approx. 1/2 block) - continue on Osteen Maytown Rd. approx. 4.5 miles to entrance to farm on right. Look for sign at entrance which is approx. 600' past Elizabeth Lane - open gate (please close behind you) and proceed to shop / equipment area (at yellow storage box)

BANKRUPTCY

CHAPTER 7.....\$750

Includes Filing Fees

PAYMENT PLANS AVAILABLE

Also practicing in the areas of Probate, Wills, Divorce, Modification, Child Support, Guardianship, Family Law, Domestic Injunctions, Landlord/Tenant Evictions.

LAW OFFICES OF PAMELA J. HELTON, PA

801 N. Magnolia Ave., Suite 407, Orlando, FL 32803 407-481-9564

The hiring of an attorney is an important decision that should not be based solely upon advertising. Before you decide, ask me to send you free written information about my qualifications and experience.

BUSINESS GALLERY

"Support These Local Businesses"

Advertise Your Service or Business On This Page Call John Coffman (407) 322-2611

The APPLIANCE STORE, Inc. 153 W SR. 434 • Winter Springs 407-327-3344 12 Mo. Warranty on refrigerators 2 yr. Warranty on Rebuilt W/D New Parts & Delivery Available

★ SPECIAL ★ Heavy Duty Rebuilt Washer & Dryer Matched Set \$299

WE ACCEPT VISA, MasterCard, Discover, American Express, All Major Credit Cards Accepted

Bring Your World Home

Keep up to date on local events, local sports, local business, local education and many other subjects with your newspaper. You'll also find entertaining features, like cartoons, columns, puzzles, reviews, and lots more.

Here in on the information you need. Read your newspaper.

Seminole Herald 300 North French Ave., Sanford 407-322-2611

Since 1979 SOUTHERN DISTRIBUTORS OF Orlando, Inc. TILE IN STOCK

- 30,000 SF 59¢ sq. ft.
- 40,000 SF 75¢ sq. ft.
- 80,000 SF 99¢ sq. ft.

New Outlet In Sanford 3159 Orlando Dr. 407-688-0227

LAKE MARY SUNRAY Store Away

Bigger & Better Storage Units. Very Clean & Affordable Personal and Commercial Storage

RESIDENT MANAGERS AL & JOLEEN BLUE

- Easy drive up access 365 days
- AC & Non Units • Rent month to month • No Deposit • Security Gate access • Fenced & Lighted Grounds
- Pest Control • Your Lock-Your Key

Easy Access to I-4 810 Rinehart Road Lake Mary, Florida (407) 333-4355

CALL US OR STOP IN FOR RATES AND SIZES

SANFORD ELECTRIC COMPANY, INC. Electrical Contractors

- REPAIRS • REMODELING
- NEW CONSTRUCTION

Serving Central Florida Since 1925 2522 S. Park Drive Sanford (407) 322-1562

KRC Exotic Birds Specializing in Time Hand-Fed Exotic Birds

WE DO GROOMING WE DO BOARDING

Full Line Bird Store Albertson's Center Corner of Hwy 17-92 & Hwy 434 (Next to Albertson's) 407-331-5466 Fax 407-331-0791 www.krcexoticbirds.com

NEW HOURS Open 8 Days A Week Mon-Sat 10-7

Park

Continued from Page 1A
to break ground on the park, which will also help deter criminal activity.

Construction is planned in two separate phases with the first wave including a sheriff's office substation, a group pavilion, paved driveway and parking area, benches and picnic tables, beach volleyball courts, and children's playground equipment. The second phase will include a boardwalk through the wooded wetland area, a pier and pavilion.

"It's been amazing how everybody came forward supporting this," Moderson said. "This is just a win-win situation for the community and county."

The sheriff's office substation will primarily serve the residents of Geneva who currently have to drive to Oviedo for the nearest law enforcement office. Although the new substation is not planned to be open full-time, it will still be a place where citizens can arrange meetings with deputies, said Moderson.

Recent debates over the need of a new substation and the park's progress have taken place at county commissioner meetings. Seminole County government has pledged \$140,000 to the construction of the park, but at a recent meeting commission-

ers refused to release that money without more detail of how the money will be used.

"They're pledging \$140,000, but they want to make sure where that money is going," Moderson said.

Commissioners did release a portion of the pledged money for an environmental study of the property. More than half of the property is believed to be in the 100-year flood plain, but Moderson said after speaking with residents who have lived in the area more than 50 years he does not foresee that being an issue.

Through civil engineering that issue will be addressed, but they will also try to keep much of it natural.

Donations can may be made at any Citizens Bank of Oviedo or Washington Mutual Bank. Checks should be made payable to "Law Enforcement Memorial Park Fund" and mailed to the Seminole County Sheriff's Office, District 4, ATTN: D/S Todd A. Moderson, Project Manager, 100 Bush Blvd. Sanford, FL 32773. Moderson is also available for questions at 407-977-6381.

Christopher Patton can be reached at cpatt@seminoleherald.com or 407-322-2611.

Shop

Continued from Page 1A
Seniors are notified about the Target event through invitations sent out to local churches, nursing homes, retirement communities and doctors' offices.

Some people, including Schools and her group of friends, have become regulars at the event and call the store to find out the exact time and day for the discount shopping and holiday celebration.

Target's Senior Day has grown in popularity during the past few years. On Tuesday, people were forming a line in front of the store by 7:30 a.m. waiting for its 8 a.m. opening.

Last year, Bowen said about 200 people took advantage of the two-hour event. By 9 a.m. Tuesday, more than 250 people had already passed through the store's doors for this year's Senior Shopping Day.

Many people had their shopping finished before the end of the first hour. Julia Frost and Mardell Enemark finished early so they could enjoy the refreshments provided by Target and Meals On Wheels.

"We shopped until we dropped," Enemark said.

Michelle Jeria can be reached at mdjeria@seminoleherald.com or 407-322-2611.



Julia Frost and Mardell Enemark enjoy a moment with Santa during Target's Senior Shopping Day. Herald photo by Tommy Vincent


STERLING SILVER
50% OFF REG. PRICE
BRACELETS AS LOW AS \$1.75 (1001-0189)
CHARMS AS LOW AS \$1.10 (1001-0811)
14K GOLD 50% OFF
EARRINGS AS LOW AS \$8.00 (1001-1881)
CANDLES, HOME-MADE BATH SALES & SOAP,
DOLLS, WIND CHIMES & MANY OTHER GIFTS

BOYD ENTERPRISES @ 101+ CRAFTERS
PH. 407-327-1101 WALMART PLAZA 17-92
NORTH OF LAKE MARY BLVD., SANFORD

All Transmission
Defects
Are Not Major
Problems -
Consult a
Specialist

**Harrell & Beverly
Transmissions**
289 W. 25th St., Sanford 322-8415
Since 1959...Same Location

There's a better way to buy insurance.
You can buy your insurance from a stranger at a **1-800 NUMBER** or from



RICHARD RUSSI
...a neighbor, someone you know, someone you can trust and respect.
Call today and talk to a real person who cares about your family's protection and security.

TONY RUSSI INSURANCE
Since 1968
2575 S. French Ave. Sanford (407) 322-0285

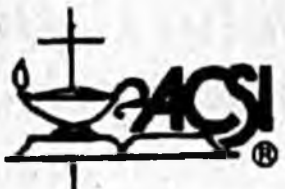
Auto-Owners Insurance
Life Home Car Business
The "No Problem" People

SCOTTY'S BARGAIN OUTLET
STORE CLOSING
SANFORD LOCATION ONLY!
40% - 70% off
ENTIRE STORE

GREAT GIFT IDEAS FOR CHRISTMAS!
SPORTING GOODS
TOYS TOYS TOYS NAME BRANDS
LUGGAGE BACK PACKS
HOME FASHIONS

TIME IS RUNNING OUT!
We're closing our Sanford location only!
700 French Avenue Mon-Sat 8am-7pm - Sun 9am-6pm
Please continue to shop Scotty's Do it Best Hardware stores. Over 60 locations throughout Florida.

Ambassadors Christian Life Academy, Inc.



Member of ACSI (Association For Christian Schools International)

Now Accepting Registration For The Winter Term
Starting: January 7, 2002
Grades: K-5 thru 12

Serving: Regular Student population
ESOL Students
Exceptional (Special Needs) Students
Adult and Continuing Education

Affordable Tuitions and Special Incentives and Discounts

Registration dates and time: **November:**
Daily: 11:00am to 5:00 pm 12th - 16th
Special Appointment Contact: 19th-21st & 26th-30th
Dr. P.S. Mobley @ (407) 688-8740 **December:**
or 3rd-7th, 10th-14th, 17th-21
Dr. B. Silver @ (407) 330-2433 **January:** 2nd - 4th

SEE OUR AD IN THE GREATER ORLANDO YELLOW PAGES

Sports

Inside:

CLASSIFEDS 6B-7B
CROSSWORD 6B

FWC to host public workshop concerning shrimping

Special to the Herald

TALLAHASSEE — The Florida Fish and Wildlife Conservation Commission has scheduled a public workshop concerning shrimping in the St. Johns River. The Commission wishes to receive comment on a proposal to open a specified area between the Fuller Warren and Buckman bridges on the St. Johns River to commercial shrimp trawling and harvest.

Interested persons are encouraged to participate at the workshop, which will take place on Monday, Dec. 10 from 5-7 p.m. at the Mandarin Public Library, The Hall, 3330 Kori Rd. in Jacksonville.

Any disabled person requiring special accommodations to participate in the workshop should advise the agency at least five calendar days before the workshop by contacting Cindy Hoffman, at (850) 488-6411. Hearing- or speech-impaired persons should contact the agency by calling (850) 488-9542.

OCALA RESIDENTS CHARGED WITH ALLIGATOR POACHING

OCALA — Two Marion County men were charged late last week with poaching alligators from the Ocklawaha River near Ocala. Steven James Kiser, 30, and Michael Dennis Sallengs, 20, both of Ocala, were each charged with two counts of taking or attempting to take an alligator, and one count of possession of live alligators.

A third person, Sherry Lee Harris, 23, also of Ocala, was charged with one count of possession of live alligators. Each charge is a second-degree misdemeanor which carries a penalty of up to a \$500 fine and or up to 60 days in jail.

Florida Fish and Wildlife Conservation Commission (FWC) Officer Brian Lambert arrested the three after discovering two live alligators in their boat, as well as a bow and arrow that was used to kill one alligator and wound another. The incidents occurred in the early morning hours of Oct. 17 and 18.

In a separate incident, FWC Officer Kevin Steinke arrested Wayne Charles Marshall, 33, of Ocala with possession of alligator or parts thereof, and failure to maintain venomous reptiles in locked cages. Both charges are second-degree misdemeanors.

Steinke responded to a call from the Ocala Police Department about midnight on Oct. 18, after police discovered the venomous reptiles and alligator parts in Marshall's apartment while responding to a fire in the apartment.

Steinke found six pygmy rattlesnakes and a cottonmouth snake all in improper cages. He also discovered two small live alligators in the bathtub, as well as an alligator hide and other alligator parts in the freezer and on the back porch.

The alligators and seven venomous snakes were seized and later released alive in the wild.

MARINE LIFE-FEEDING BAN IN EFFECT JAN. 1

TALLAHASSEE — After two years and five public See Outdoors, Page 2B

Altamonte flags Sanford champions

By Dean Smith
Sports Editor

ALTAMONTE SPRINGS — For the second consecutive year, the championship teams from the City of Sanford Recreation and Parks Department Youth Flag Football League recently traveled to Altamonte Springs' Eastmonte Park to take on All-Star teams from the Altamonte Springs Recreation Department Youth Flag Football League in exhibition games to continue the goodwill being developed between the two departments.

And for the second time, the Altamonte stars came out on top, but a good time was still had by all.

All-Star squads pull off double wins over SRD division winners

The Minor Division (7-to-9 year olds) game saw the Altamonte Springs squad roll to a 30-6 victory over the Sanford Jaguars behind the play of an exceptional quarterback.

"Their (Altamonte) quarterback was really good," said SRD Supervisor Jim Schaefer. "He could really pass the ball and we just weren't ready for that. In our league if you advance the ball 10 yards in four downs you get a first down, while in Altamonte they make you gain

20 yards to get a first down, so we have a tendency to run the ball more, while they usually throw the ball."

The Major Division (10-to-12 year olds) contest was much closer with Altamonte Springs holding off a late Sanford Cowboys rally to win 12-6.

In the Minor game: Two 25-yard pass plays sets up a 12-yard touchdown run by the Altamonte Springs quarterback to give the hosts a quick 6-0 lead.

Altamonte Springs then took control of the game after the ensuing kickoff as an Altamonte defender picked off a Jaguars pass on Sanford's first offensive play at the 10. The Jaguar defense made a big play for a five-yard loss, but the Altamonte Springs quarterback then found his intended target for a 15-yard score and the lead was now 12-0.

The Jaguars finally got an opportunity to get things going and went on a nice controlled drive behind the running of Shannon Smith, Von Eric Small and DeJuan Byrd to set up a two-yard touchdown run on a center sneak by Ian Daily to get Sanford right back into the game.

The visitors then missed a golden See Flag, Page 3B

Road warriors

SCC women getting tourney prepared

By Dean Smith
Sports Editor

NICEVILLE — Probably the hardest thing to do in sports, especially in basketball, is to play away from home.

But to make three nine-plus hour trips in three weeks? That's almost unbearable.

That scenario has faced the Seminole Community College women's basketball team this season, but instead of complaining, the squad has responded by getting better every week and getting itself ready for a tough Mid-Florida Conference schedule and a run at a National Championship.

The Raiders traveled to Niceville the weekend of November 23-24 to take part in the Comfort Inn Classic at Okaloosa-Walton Community College and played much better in splitting a pair of games against the same teams they played to open the road schedule.

On Friday (Nov. 23) SCC fell behind 43-31 at halftime and couldn't recover as it fell to host Okaloosa-Walton, 72-61. It was the second time this season the Raiders have lost to the former National Champions.

But SCC showed its See SCC, Page 3B



Herald photos by Jim Wentz

Heart and hustle, not to mention a strong defense, has always been the trademark of a Ken Patrick coached team and this year's Seminole Community College women's squad is no different. Sophomore All-State player Gabrielle Blankenfeld (top photo fighting for ball) and freshman Tiffany Vann (No. 11) hound an Indian River Community College player during a recent home game, while Vann and All-Conference player Yo Johnson (No. 13, right) double team a Pioneer player. The Raiders split in their most recent trip to the Panhandle and continue to get stronger and better prepared for the tough road ahead for the team as they look to win their second straight Mid-Florida Conference title, make another trip to the State Championships, and earn their first shot at a National Championship.



Crasharama a success despite rain

Special to the Herald

BITHLO — Even an hour-and-a-half long rain storm couldn't dampen the spirits of competitors Friday night (November 23) as Orlando Speedworld wrapped up the 2001 racing season with a night of craziness known as Crasharama.

Despite the rain, the track was dried out and the Florida Dwarf Car Federation took to the track first for a 20-Lap feature.

Alain Paradis took the lead at the drop of the green and never looked back as he outran his son Brian Paradis to the checkered flag. Brothers Mark and George Landis followed with Tennessee invader Doug Carrigan coming from 21st in the starting field of 26 to finish fifth.

Phil Krauthoff, Allen Davis, Stan Hope, Bob Quick and Daniel Rene rounded out the top 10.

Twenty-nine South 40 Motorsports Classic Auto Racing Series machines filled the track for the next event.

The 30-lap race was a wild affair with numerous tangles and spins and six different leaders before Maryville, Tennessee driver Larry Gibson took over and sped to the win.

Fellow Volunteer-state driver Gary Kelley came home second followed by Clermont driver Jim Rahman. Tennessee drivers Fred MacArthur and Brett Baer were fourth and fifth.

Al Hagan, Bud Spencer, Tom Rudder, Robbie Sands and E.T. McGhee rounded out the top 10.

The School Bus Figure Eight race featured 21 starters and a wild battle all the way to the finish.

Rusty Crews actually crossed the line first but was penalized a lap for cutting the corners too short.

Bryan Semone thus came home with the win followed by Matt "Concrete King" Griffin and Todd "Bodeen" Hutto.

The race for cars towing boats and pop-up campers was led all the way by Ray

Hindman, his third win in this type of race. Ray's brother William Hindman was second ahead of Chester Sutorus.

The wild race for cars towing full-sized camper trailers went to Billy Cuddy as he masterfully weaved his way through mounds of debris to score a popular win. Big Wes Railing was second and Doug "Frammin' and Bammin'" Samion was third.

Jim Froman was the last car running in the four-cylinder demo derby while the V-8 demo went to "Last Minute" Moe over a 23 car field.

As mentioned earlier in the story, Friday's action was the final one for the 2001 season and the track will be closed to both practice and racing until March 2002.

For more information on any local short track action, call the FASCAR offices at (407) 568-1367 (Orlando) or (386) 427-4129 (New Smyrna), or check the Internet site at WWW.NEWSMYRNASPEEDWAY.COM, or E-Mail at FASCARNOW@AOL.COM.

Ace girls gymnasts stand out in meets

By Dean Smith
Sports Editor

LONGWOOD — It's been a pretty good fall meet season so far for the Girls' Compulsory Teams from Ace Gymnastics in Longwood.

In their own BlackJack Invitational on September 1st, Ace Gymnastics Level 4 team finished second, while the Level 5 and Level 6 teams both finished third.

Individually, nine gymnasts finished first in different routines, with Haylie Walker (Level 4, Ages 6-8) and Sammie Musto (Level 6, Ages 11-12) both finishing first in the All-Around.

The teams then headed to Lefleur's in Largo for the Hurricane Invitational the weekend of September 22-23 and Ace's Level 4 Team returned to Longwood with the runner-up trophy.

Individually, Ashleigh Gnat (Level 4, ages 6-8) and Jordan Masluk (Level 4, ages 8-9) were All-Around Champions.

The teams then wound up the trifecta with the Level 4 Team placing sixth All-Around in the huge and prestigious Gemini Invitational at Long Center in Clearwater the weekend of October 6-7.

Masluk, competing in the Level 4 Age 8 group, was again the individual star for the local gym, winning another All-Around title.

Following are the results for the local gymnasts and teams from the three meets:

BLACKJACK INVITATIONAL

at Ace Gymnastics, Longwood

September 1

LEVEL 4

TEAM

All-Around - 2. 143.40 (Vault: 1. 37.00; Bars: 2. 36.70; Beam: 2. 35.525; Floor: 1. 36.175)

INDIVIDUALS

AGES 6-8

Vault - 2. Felicia Miranda, 9.25; 3. Ashleigh Gnat, 9.20; 4. Haylie Walker, 9.15; 5. Nicolette Noble, 8.60; Others - Jordan Masluk, 8.25.

Bars - 1. (tie) Ashleigh Gnat and Jordan Masluk, 9.20; 4. Haylie Walker, 8.75; Others - Felicia Miranda, 8.40; Nicolette Noble, 8.20.

Beam - 3. Jordan Masluk, 8.90; 4. Haylie Walker, 8.75; 5. Felicia Miranda, 8.40; 6. Nicolette Noble, 7.75; Others - Ashleigh Gnat, 7.70.

Floor - 1. Haylie Walker, 9.20; 2. Felicia Miranda, 9.075; 3. Ashleigh Gnat, 8.75; 4. Jordan Masluk, 8.65; 7. Nicolette Noble, 8.40.

All-Around - 1. Haylie Walker, 36.00; 3. Nicolette Noble, 35.125; 5. Jordan Masluk, 34.90; 6. Ashleigh Gnat, 34.85; Others - Nicolette Noble, 33.00.

AGES 9-10

Vault - 1. Destini Jones, 9.40; 9. Samantha Aguilera, 8.75.

Bars - 3. Destini Jones, 9.20; 5. Samantha Aguilera, 9.10.

Beam - 2. Destini Jones, 9.075; Others - Samantha Aguilera, 7.15.

Floor - 1. Destini Jones, 9.15; 10. Samantha Aguilera, 8.30.

All-Around - 2. Destini Jones, 36.825; 12. Samantha Aguilera, 33.30.

AGES 11-14

Vault - Julie Clark, 7.60.

Bars - 5. Julie Clark, 8.80.

Beam - 1. Julie Clark, 8.85.

Floor - 6. Julie Clark, 8.40.

All-Around - 8. Julie Clark, 33.65.

LEVEL 5

TEAM

All-Around - 3. 134.15 (Vault: 3. 34.60; Bars:

See Ace, Page 2B

Ace

Continued from page 1B

2, 33.10; Beam: 3, 32.80; Floor: 3, 33.65.

INDIVIDUALS

AGES 7-9

Vault - 5, Lauren Brown, 8.35.
Bars - 2, Lauren Brown, 8.70.
Beam - 2, Lauren Brown, 8.80.
Floor - 4, Lauren Brown, 8.60.
All-Around - 3, Lauren Brown, 34.45.

AGE 10

Vault - 3, Alexa Hartman, 8.95; 5, Siena Barkan, 8.45.
Bars - 3, Alexa Hartman, 8.80; 7, Siena Barkan, 8.35.
Beam - 3, Siena Barkan, 8.40; 7, Alexa Hartman, 7.70.
Floor - 4, Alexa Hartman, 8.60; Others - Siena Barkan, 8.00.

All-Around - 4, Alexa Hartman, 34.05; 6, Siena Barkan, 33.20.

AGES 11-12

Vault - 3, Caitlin Carver, 8.85.
Bars - Caitlin Carver, 7.25.
Beam - 7, Caitlin Carver, 7.90.
Floor - 5, Caitlin Carver, 8.45.

All-Around - Caitlin Carver, 32.45.

LEVEL 6

TEAM

All-Around - 3, 96.45 (Vault: 3, 25.60; Bars: 3, 20.90; Beam: 2, 24.55; Floor: 2, 25.40).

INDIVIDUALS

AGES 7-9

Vault - 1, Sammie Musto, 8.30.
Bars - 2, Sammie Musto, 8.75.
Beam - 1, Sammie Musto, 7.80.
Floor - 1, Sammie Musto, 8.85.

All-Around - 1, Sammie Musto, 31.90.

AGE 10

Vault - 2, Leah Rodgers, 8.60; 3, Britney Byfield, 8.50.
Bars - Britney Byfield, 7.30; Leah Rodgers, 6.85.

Beam - 1, Britney Byfield, 8.60; 4, Leah Rodgers, 8.15.
Floor - 2, Leah Rodgers, 8.35; 4, Britney Byfield, 8.20.

All-Around - 3, Britney Byfield, 32.60; 4, Leah Rodgers, 31.95.

HURRICANE INVITATION

at LeFlore's-Largo

September 22-23

LEVEL 4

TEAM

All-Around - 2, 181.05 (Vault: 4, 47.05; Bars: 1, 45.70; Beam: 1, 44.57; Floor: 43.75).

INDIVIDUALS

AGES 8-9

Vault - 1, Ashleigh Gnat, 9.50; 6, Felicia Miranda, 9.30; 7, Nicolette Noble, 9.25.
Bars - 1, Ashleigh Gnat, 9.10; 2, Felicia Miranda, 9.00; 4, Nicolette Noble, 8.70.
Beam - 1, Ashleigh Gnat, 9.05; 2, Felicia Miranda, 8.5; 4, Nicolette Noble, 8.15.
Floor - 1, Ashleigh Gnat, 8.75; 2, Felicia

Miranda, 7.95; 13, Nicolette Noble, 7.95.

All-Around - 1, Ashleigh Gnat, 36.60; 2, Felicia Miranda, 35.65; 4, Nicolette Noble, 34.05.

AGES 9-9

Vault - 3, Haylie Walker, 9.575; 9, Jordan Mashuk, 9.30.
Bars - 1, Jordan Mashuk, 9.40; 9, Haylie Walker, 8.65.

Beam - 1, Jordan Mashuk, 9.35; 3, Haylie Walker, 8.375.
Floor - 1, Jordan Mashuk, 9.15; 2, Haylie Walker, 8.90.

All-Around - 1, Jordan Mashuk, 37.20; 2, Haylie Walker, 35.50.

AGES 9-10

Vault - 4, Samantha Aguilera, 9.30.
Bars - 13, Samantha Aguilera, 7.95.
Beam - 7, Samantha Aguilera, 7.80.
Floor - 8, Samantha Aguilera, 8.15.

All-Around - 10, Samantha Aguilera, 33.20.

AGES 10-11

Vault - 7, Destini Jones, 9.40.
Bars - 1, Destini Jones, 9.30.
Beam - 2, Destini Jones, 8.95.
Floor - 5, Destini Jones, 8.40.

All-Around - 2, Destini Jones, 36.25.

AGES 11-UP

Vault - 13, Julie Clark, 8.95.
Bars - 4, Julie Clark, 8.60.
Beam - 5, Julie Clark, 8.375.
Floor - 13, Julie Clark, 7.75.

All-Around - 8, Julie Clark, 33.675.

LEVEL 5

TEAM

All-Around - 5, 95.00 (Vault: 3, 25.35; Bars: 6, 23.25; Beam: 6, 22.05; Floor: 4, 24.35).

INDIVIDUALS

AGES 7-9

Vault - 8, Amber Latham, 8.25; 9, Lauren Barton, 8.20.
Bars - 7, Lauren Barton, 7.60; 10, Amber Latham, 7.20.
Beam - 8, Lauren Barton, 7.45; 11, Amber Latham, 6.65.

Floor - 4, Lauren Barton, 8.35; 7, Amber Latham, 8.15.
All-Around - 6, Lauren Barton, 31.60; 10, Amber Latham, 30.25.

AGES 10-11

Vault - 7, Alexa Hartman, 8.90.
Bars - 8, Alexa Hartman, 8.45.
Beam - 10, Alexa Hartman, 7.95.
Floor - 11, Alexa Hartman, 7.86.

All-Around - 9, Alexa Hartman, 33.15.

LEVEL 6

INDIVIDUALS

AGES 8-10

Vault - 6, Leah Rodgers, 8.60; 7, Sammie Musto, 8.55.
Bars - 2, Leah Rodgers, 8.60; 4, Sammie Musto, 8.35.
Beam - 1, Sammie Musto, 8.675; 6, Leah Rodgers, 8.10.
Floor - 1, Sammie Musto, 8.60; 6, Leah Rodgers, 8.10.

All-Around - 3, Sammie Musto, 34.075; 5, Leah Rodgers, 32.95.

GEMINI INVITATIONAL

Long Center, Clearwater

October 6-7

LEVEL 4

TEAM

All-Around - 6, 181.975 (Vault: 10, 45.30; Bars: 7, 45.70; Beam: 4, 45.325; Floor: 4, 43.65).

INDIVIDUALS

AGES 8-8

Vault - 6, Ashleigh Gnat, 9.05; 15, Felicia Miranda, 8.65; 20, Nicolette Noble, 8.25.
Bars - 6, Ashleigh Gnat, 9.25; 15, Felicia Miranda, 8.50; 18, Nicolette Noble, 8.15.

Beam - 4, Ashleigh Gnat, 9.125; 5, Felicia Miranda, 9.025; 6, Nicolette Noble, 8.70.
Floor - 5, Felicia Miranda, 9.025; 8, Nicolette Noble, 8.75; 17, Ashleigh Gnat, 8.175.

All-Around - 7, Ashleigh Gnat, 35.60; 8, Felicia Miranda, 35.20; 14, Nicolette Noble, 33.65.

AGE 9

Vault - 4, (tie) Jordan Mashuk and Haylie Walker, 9.25.
Bars - 3, Jordan Mashuk, 9.25; 9, Haylie Walker, 9.05.

Beam - 3, Jordan Mashuk, 9.125; 6, Haylie Walker, 8.75.
Floor - 1, Haylie Walker, 9.425; 2, Jordan

Mashuk, 9.30.

All-Around - 1, Jordan Mashuk, 36.925; 3, Haylie Walker, 36.675.

AGES 9-9

Vault - 20, Samantha Aguilera, 8.30.
Bars - 10, Samantha Aguilera, 8.90.
Beam - 16, Samantha Aguilera, 8.20.
Floor - 25, Samantha Aguilera, 7.60.

All-Around - 21, Samantha Aguilera, 33.00.

AGE 10

Vault - 10, Destini Jones, 9.10.
Bars - 6, Destini Jones, 9.15.
Beam - 1, Destini Jones, 9.50.
Floor - 8, Destini Jones, 8.85.

All-Around - 3, Destini Jones, 36.40.

AGES 11-13

Vault - 26, Julie Clark, 7.25.
Bars - 8, Julie Clark, 9.05.
Beam - 8, Julie Clark, 8.70.
Floor - 8, Julie Clark, 8.05.

All-Around - 19, Julie Clark, 34.00.

LEVEL 5

TEAM

All-Around - N/A, 97.925 (Vault: 23.15; Bars: 23.10; Beam: 23.125; Floor: 26.375).

INDIVIDUALS

AGES 7-8

Vault - 14, Lauren Barton, 7.85; 26, Amber Latham, 6.90.
Bars - 8, Lauren Barton, 8.60; 14, Amber

Latham, 7.90.

Beam - 2, Lauren Barton, 8.45; 20, Amber Latham, 6.65.

Floor - 8, Lauren Barton, 9.075; 11, Amber Latham, 8.75.

All-Around - 7, Lauren Barton, 33.975; 17, Amber Latham, 30.00.

AGES 9-11

Vault - 12, Alexa Hartman, 8.60.
Bars - 8, Alexa Hartman, 8.80.
Beam - 13, Alexa Hartman, 8.025.
Floor - 15, Alexa Hartman, 8.55.

All-Around - 12, Alexa Hartman, 33.95.

LEVEL 6

TEAM

All-Around - N/A, 96.325 (Vault: 25.35; Bars: 19.70; Beam: 24.30; Floor: 26.875).

INDIVIDUALS

AGES 9-11

Vault - 12, Sammie Musto, 8.65; 17, Britney Byfield, 8.50; 18, Leah Rodgers, 8.28.

Bars - 18, Sammie Musto, 7.10; 22, (tie) Britney Byfield and Leah Rodgers, 6.35.

Beam - 3, Sammie Musto, 8.85; 18, Britney Byfield, 8.40; 21, Leah Rodgers, 7.05.

Floor - 5, Britney Byfield, 9.25; 7, Sammie Musto, 8.90; 10, Leah Rodgers, 8.725.

All-Around - 10, Sammie Musto, 33.65; 14, Britney Byfield, 32.60; 22, Leah Rodgers, 30.275.

Outdoors

Continued from page 1B

input and discussion sessions, the Florida Fish and Wildlife Conservation Commission (FWC) voted today to ban marine life feeding by divers.

The rule, which takes effect Jan. 1, also prohibits vessel-hire operators from transporting passengers "to any site to observe fish feeding."

The ban already faces a legal challenge by the dive industry. Four south Florida dive tour operators feature scuba diving excursions, during which operators introduce food into the water to attract sharks, rays, eels and barracudas for adventurous divers. During public input sessions, numerous individuals and groups have expressed concerns that the

practice modifies the natural feeding habits of marine predators and other marine life.

There is no known connection between their marine-life-feeding dives and the high-profile cases of shark attacks and bites on humans this year. Commissioners concluded any practice that modifies natural feeding habits of marine species is unacceptable, and practices that teach marine life to associate people with food is unhealthy for marine life as well as humans.

NEW COMMERCIAL MULLET WEEKEND CLOSURE HOURS NOW IN EFFECT
TALLAHASSEE — The Florida Fish and Wildlife

Conservation Commission advises fishermen that the weekend closure to the commercial harvest of mullet now begins at 12:01 a.m. on Saturday and ends at 12:01 a.m. on the following Monday from July 1 through Jan. 31 each year.

During that period, it is illegal for anyone to possess more than 50 mullet on state waters or to land more than 50 mullet during the 48-hour closure. Also, it's illegal to purchase, sell, exchange, or offer to purchase, sell or exchange any mullet harvested on any weekend during the 7-month closure period.

The complete text of the mullet rule is available at marine-fisheries.org/Ch68B-39 or by calling (850) 487-0554.

660R Raptor

\$300

IN FREE ACCESSORIES / APPAREL
When You Buy Select Yamaha Sport ATV's

#1 In Fast Fun

SEMINOLE POWERSPORTS

3401 N. Hwy. 17-92 • Longwood • 407-322-3253
1-800-843-8118

Yep, it's that special time of year again. And now we've got an exciting offer that's guaranteed to turn your holiday mood into a feast with all the trimmings. Simply buy any new 2002 or new prior year Raptor 660R, Warrior, Banshee or Blaster ATV from October 19th through December 31st, 2001, and receive \$300 in free accessories and/or apparel. Accessory offer subject to dealer participation. See dealer for details.

YAMAHA

St. Augustine Beach, a Resort on the Ocean

For our guests it is just steps to Anastasia State Park's pristine beaches & only 5 min. to historic downtown. Enjoy our 116 ft waterlides & bring the kids!

Howard's Oceanfront Resort
800-752-4037
(904) 471-2575

\$75 NIGHT RATES FROM

Includes one exciting dinner for two of St. Augustine

NEW ROOMS AND ONE OF THE LOWEST RATES ON THE BEACH!

Government Postal Jobs

Up to \$47,578. Now hiring. Full benefits, training and retirement.

For application & info, call 7 days/wk 8AM - 10PM:
(800) 337-9730
Dept. P-336

Just In Time For Christmas

1/2 Price Newspaper Subscriptions

104 Issues of the Seminole Herald

Mailed To Your Home or Office

For Just **\$18.00** (REG. \$36)

*Must be Prepaid - Must be in Seminole County, (Call For Other Area Pricing) No Cancellations or Refunds. Offer Good on Renewals - But, Must Add Another Years Delivery.

ONE YEAR OF MAILED DELIVERY

THE SEMINOLE HERALD Twice a Week!

\$18.00 1/2 Price Limited Time Offer

Check Enclosed (Must Be Prepaid)

Bring or Mail: Seminole Herald • 300 N. French Ave., Sanford, FL 32771 • (407) 322-2611

Name: _____
Address: _____
City: _____ State: _____ Zip: _____
Phone: _____



Briefs

GOLF TOURNEY WILL AID MADD

Sponsorships, players and volunteers are being sought for the 2nd Annual Mothers Against Drunk Driving Golf Tournament.

SCC

Continued from page 1B Improvement on Saturday, taking a 40-34 halftime lead and coasting past Pensacola Junior College, 79-67.

The game against O-W turned into a turnover fest, said SCC head coach Ken Patrick. "We had 23 turnovers to their 15 and you just can't do that against a good team."

The Raiders were on the road again this past weekend (Nov. 30 and Dec. 1), taking a southern route to play in the Port St. Joe Shootout hosted by Broward Community College.

SCC will stay on the road this weekend (Dec. 7-8) taking on two more Panhandle teams, Gulf Coast Community College and Tallahassee Community College.

"It's been tough playing all of these games on the road," added Patrick. "But we are becoming hardened to the difficulties and it should help us come tournament time."

Part of the problem for the

Sponsor packages range in price from \$150 to \$2,000 while the entry fee is \$125.

The entry fee includes greens fee, cart, range balls, golf clinic, breakfast, lunch, prizes, awards, T-shirt, goodie bag and much, much more.

The tournament will have a morning shotgun

start and mulligans will be available. The tournament will be played as a four-person scramble.

All proceeds from this event remain with MADD's Central Florida chapter. This support allows them to focus stronger on the area's victims of drunk driving crashes.

If you are a victim of a drunk driver and wish to contribute or participate in this event, or for more tournament information, to sign-up as a sponsor, player or volunteer, please contact Betsy Nein, Tournament Director, at 407-831-9991.

EARLY REGISTERING FOR ALTAMONTE SPRINGS BABE RUTH

Altamonte Babe Ruth Baseball will be holding early registration for the 2002 season on Saturday, December 15 at Eastmonte Park.

Registration will take place from 9 a.m. to 1 p.m.

Sign-ups will cover all age divisions from T-Ball (5 & 6 year olds) to Seniors (16-18 year olds).

For more information, please call the Altamonte Babe Ruth Baseball League Hotline at 407-263-7910.

Flag

Continued from page 1B opportunity to make a real game of it when a sure interception was dropped by the Jaguar defender.

The Altamonte Springs quarterback then broke loose for a 28-yard touchdown run and the lead was back to 12 points at 18-6.

Sanford shook off the disappointment to go on another beautiful drive, but unfortunately the effort ended on the six-yard line as the first half clock expired.

The Jaguar coaches made some adjustments to the defensive scheme in the second half and the changes helped as Ryan Dalley stopped one Altamonte Springs drive at the six with an interception and the defense again dropped a sure interception on the next series.

And just like in the first half, the drop was followed by a touchdown, this time on a 20-yard pass, and the score was an

HITTING/PITCHING CAMP

There will be a two-day condensed training camp held in Seminole County on December 21st and 22nd by the former owner of Baseball World and current head baseball coach at St. Leo College, Ed Stable.

Scouts will be invited. The camp is open to players ages 7-to-17 and all are welcome to enroll and receive evaluations. For more information please call 407-948-7395.

GATORADE HOLIDAY ROUNDBALL CLASSIC ANNOUNCED

Winning Ways Basketball is once again hosting the Gatorade Holiday Roundball Classic.

The Classic is open to all boys and girls teams ages 14 and under and is designed to allow coaches to gauge their team's strengths and weaknesses for the upcoming season.

The tournament will run from December 28-through-30. For more information or to register your team, please contact Winning Ways Basketball's Barry Mestel at 407-339-9053 or 1-877-808-HOOP (4667).

Raiders in the loss to Okaloosa-Walton was losing sophomore scorer Yo Johnson to an injury just 3:53 into the game. The All-Mid-Florida Conference performer did not score and only had three rebounds.

To make matters worse, sophomore Gabrielle Blankenfeld, the 2000 Florida Junior College Freshman of the Year, was having an off night, only making 4-of-10 shots from the floor and not getting to the free throw line, almost unheard of for a player who is known for her slashing and driving style.

Freshman center Yelena Leuchanka had another big game, scoring 17 points and grabbing 14 rebounds.

Also scoring in double figures was sophomore transfer Chamecia Bailey with 17 points and sophomore point guard Narumol Berggren with 12 points.

SCC was not about to lose twice to Pensacola and turned to Leuchanka to get the job done.

The 6-foot-5 center hit 10-of-16 shots from the floor and 3-of-4 free throws to score 23 points and for good measure pulled down nine rebounds and blocked five shots.

Blankenfeld bounced back from Friday's misadventures to hit 8-of-11 shots and 5-of-7 free throws to score 21 points.

Bailey, a guard who played at Gulf Coast last year, also had another big night, scoring 18 points and handing out five assists.

Johnson also came back from the injury to score 11 points and come up with six steals.

Berggren, who will play at Georgetown University next year, did her best Floor General imitation with five steals and nine assists.

COMFORT INN CLASSIC

at Niwille OW-RAIDERS 72, 8-RAIDERS 61

OW-RAIDERS 72, 8-RAIDERS 61 Seminole Community College 681 Berggren 5-11 0-0 12, Vann 0-0 0-0 0, Bradshaw 0-1 0-0 0, Johnson 0-0 0-0 0, Bailey 5-13 7-11 17, Johnson 0-0 0-0 0, Thompson 0-0 0-0 0, Blankenfeld 4-10 0-0 8, Richardson 2-3 3-4 7, Leuchanka 8-14 1-1 17, Totals: 24-40 11-16 61.

OW-RAIDERS 61, 8-RAIDERS 72 Seminole Community College 672 Hampill 0-0 0-0 0, Stubbfield 7-17 7-12 22, Ireland 0-0 0-0 0, Griffin 3-12 3-9 9, McGee 4-8 3-4 11, Lyons 0-0 0-0 0, Montout 0-3 0-0 0, Miles 0-0 1-2 1, Soto 3-8 0-0 6, Saylor 9-13 1-4 23, Totals: 24-44 14-25 72.

OW-RAIDERS 61, 8-RAIDERS 72 Seminole Community College 672 Hampill 0-0 0-0 0, Stubbfield 7-17 7-12 22, Ireland 0-0 0-0 0, Griffin 3-12 3-9 9, McGee 4-8 3-4 11, Lyons 0-0 0-0 0, Montout 0-3 0-0 0, Miles 0-0 1-2 1, Soto 3-8 0-0 6, Saylor 9-13 1-4 23, Totals: 24-44 14-25 72.

OW-RAIDERS 61, 8-RAIDERS 72 Seminole Community College 672 Hampill 0-0 0-0 0, Stubbfield 7-17 7-12 22, Ireland 0-0 0-0 0, Griffin 3-12 3-9 9, McGee 4-8 3-4 11, Lyons 0-0 0-0 0, Montout 0-3 0-0 0, Miles 0-0 1-2 1, Soto 3-8 0-0 6, Saylor 9-13 1-4 23, Totals: 24-44 14-25 72.

OW-RAIDERS 61, 8-RAIDERS 72 Seminole Community College 672 Hampill 0-0 0-0 0, Stubbfield 7-17 7-12 22, Ireland 0-0 0-0 0, Griffin 3-12 3-9 9, McGee 4-8 3-4 11, Lyons 0-0 0-0 0, Montout 0-3 0-0 0, Miles 0-0 1-2 1, Soto 3-8 0-0 6, Saylor 9-13 1-4 23, Totals: 24-44 14-25 72.

LEGALS

IN THE CIRCUIT COURT OF THE 18TH JUDICIAL CIRCUIT, IN AND FOR SEMINOLE COUNTY, FLORIDA

VS. RICHARD F. SMITH, III, IF LIVING, AND IF DEAD, THE UNKNOWN SPOUSE, HEIRS, DEVISEES, GRANTEES, ASSIGNEES, LIENORS, CREDITORS, TRUSTEES AND ALL OTHER PARTIES CLAIMING AN INTEREST BY, THROUGH, UNDER OR AGAINST RICHARD F. SMITH, III;

VS. MARY HAINES IF LIVING, AND IF DEAD, THE UNKNOWN SPOUSE, HEIRS, DEVISEES, GRANTEES, ASSIGNEES, LIENORS, CREDITORS, TRUSTEES AND ALL OTHER PARTIES CLAIMING AN INTEREST BY, THROUGH, UNDER OR AGAINST MARY HAINES;

VS. JOHN DOE AND JANE DOE AS UNKNOWN TENANTS IN POSSESSION

VS. MARYANNE MORSE CLERK OF THE CIRCUIT COURT SEMINOLE COUNTY, FLORIDA BY GERALDINE HARFORD Deputy Clerk

VS. MARYANNE MORSE CLERK OF THE CIRCUIT COURT SEMINOLE COUNTY, FLORIDA BY GERALDINE HARFORD Deputy Clerk

VS. MARYANNE MORSE CLERK OF THE CIRCUIT COURT SEMINOLE COUNTY, FLORIDA BY GERALDINE HARFORD Deputy Clerk

VS. MARYANNE MORSE CLERK OF THE CIRCUIT COURT SEMINOLE COUNTY, FLORIDA BY GERALDINE HARFORD Deputy Clerk

VS. MARYANNE MORSE CLERK OF THE CIRCUIT COURT SEMINOLE COUNTY, FLORIDA BY GERALDINE HARFORD Deputy Clerk

VS. MARYANNE MORSE CLERK OF THE CIRCUIT COURT SEMINOLE COUNTY, FLORIDA BY GERALDINE HARFORD Deputy Clerk

LEGALS

DEAD, THE UNKNOWN SPOUSE, HEIRS, DEVISEES, GRANTEES, ASSIGNEES, LIENORS, CREDITORS, TRUSTEES AND ALL OTHER PARTIES CLAIMING AN INTEREST BY, THROUGH, UNDER OR AGAINST MARY HAINES;

VS. JOHN DOE AND JANE DOE AS UNKNOWN TENANTS IN POSSESSION

VS. MARYANNE MORSE CLERK OF THE CIRCUIT COURT SEMINOLE COUNTY, FLORIDA BY GERALDINE HARFORD Deputy Clerk

VS. MARYANNE MORSE CLERK OF THE CIRCUIT COURT SEMINOLE COUNTY, FLORIDA BY GERALDINE HARFORD Deputy Clerk

VS. MARYANNE MORSE CLERK OF THE CIRCUIT COURT SEMINOLE COUNTY, FLORIDA BY GERALDINE HARFORD Deputy Clerk

VS. MARYANNE MORSE CLERK OF THE CIRCUIT COURT SEMINOLE COUNTY, FLORIDA BY GERALDINE HARFORD Deputy Clerk

VS. MARYANNE MORSE CLERK OF THE CIRCUIT COURT SEMINOLE COUNTY, FLORIDA BY GERALDINE HARFORD Deputy Clerk

VS. MARYANNE MORSE CLERK OF THE CIRCUIT COURT SEMINOLE COUNTY, FLORIDA BY GERALDINE HARFORD Deputy Clerk

VS. MARYANNE MORSE CLERK OF THE CIRCUIT COURT SEMINOLE COUNTY, FLORIDA BY GERALDINE HARFORD Deputy Clerk

VS. MARYANNE MORSE CLERK OF THE CIRCUIT COURT SEMINOLE COUNTY, FLORIDA BY GERALDINE HARFORD Deputy Clerk

LEGALS

AGAINST NAOMI SHEFFIELD, UNKNOWN SPOUSE OF NAOMI SHEFFIELD, IF ANY; CITIFINANCIAL MVA COMMERCIAL CREDIT CONSULTING SERVICES, INC.; MT. GREENWOOD COMMUNITY ASSOCIATION, INC.; JOHN DOE AND JANE DOE AS UNKNOWN TENANTS IN POSSESSION

VS. MARYANNE MORSE CLERK OF THE CIRCUIT COURT SEMINOLE COUNTY, FLORIDA BY GERALDINE HARFORD Deputy Clerk

VS. MARYANNE MORSE CLERK OF THE CIRCUIT COURT SEMINOLE COUNTY, FLORIDA BY GERALDINE HARFORD Deputy Clerk

VS. MARYANNE MORSE CLERK OF THE CIRCUIT COURT SEMINOLE COUNTY, FLORIDA BY GERALDINE HARFORD Deputy Clerk

VS. MARYANNE MORSE CLERK OF THE CIRCUIT COURT SEMINOLE COUNTY, FLORIDA BY GERALDINE HARFORD Deputy Clerk

VS. MARYANNE MORSE CLERK OF THE CIRCUIT COURT SEMINOLE COUNTY, FLORIDA BY GERALDINE HARFORD Deputy Clerk

VS. MARYANNE MORSE CLERK OF THE CIRCUIT COURT SEMINOLE COUNTY, FLORIDA BY GERALDINE HARFORD Deputy Clerk

VS. MARYANNE MORSE CLERK OF THE CIRCUIT COURT SEMINOLE COUNTY, FLORIDA BY GERALDINE HARFORD Deputy Clerk

VS. MARYANNE MORSE CLERK OF THE CIRCUIT COURT SEMINOLE COUNTY, FLORIDA BY GERALDINE HARFORD Deputy Clerk

VS. MARYANNE MORSE CLERK OF THE CIRCUIT COURT SEMINOLE COUNTY, FLORIDA BY GERALDINE HARFORD Deputy Clerk

LEGALS

copy of the notice of administration, within 30 days after the date of service of such copy of the notice on the creditor; and All objections by interested persons on whom notice was served that challenge the validity of the will, the qualifications of the personal representative, venue, or jurisdiction of the estate or the date of the first publication of the notice or 30 days after the date of the filing of a copy of the notice on the objecting party, or to be forever barred.

VS. MARYANNE MORSE CLERK OF THE CIRCUIT COURT SEMINOLE COUNTY, FLORIDA BY GERALDINE HARFORD Deputy Clerk

VS. MARYANNE MORSE CLERK OF THE CIRCUIT COURT SEMINOLE COUNTY, FLORIDA BY GERALDINE HARFORD Deputy Clerk

VS. MARYANNE MORSE CLERK OF THE CIRCUIT COURT SEMINOLE COUNTY, FLORIDA BY GERALDINE HARFORD Deputy Clerk

VS. MARYANNE MORSE CLERK OF THE CIRCUIT COURT SEMINOLE COUNTY, FLORIDA BY GERALDINE HARFORD Deputy Clerk

VS. MARYANNE MORSE CLERK OF THE CIRCUIT COURT SEMINOLE COUNTY, FLORIDA BY GERALDINE HARFORD Deputy Clerk

VS. MARYANNE MORSE CLERK OF THE CIRCUIT COURT SEMINOLE COUNTY, FLORIDA BY GERALDINE HARFORD Deputy Clerk

VS. MARYANNE MORSE CLERK OF THE CIRCUIT COURT SEMINOLE COUNTY, FLORIDA BY GERALDINE HARFORD Deputy Clerk

VS. MARYANNE MORSE CLERK OF THE CIRCUIT COURT SEMINOLE COUNTY, FLORIDA BY GERALDINE HARFORD Deputy Clerk

VS. MARYANNE MORSE CLERK OF THE CIRCUIT COURT SEMINOLE COUNTY, FLORIDA BY GERALDINE HARFORD Deputy Clerk

LEGALS

recording fees are required to be paid by the successful bidder at the sale. Full payment of an amount equal to the highest bid is due within 24 hours after the advertised time of sale. All payments shall be cash or guaranteed instrument, made payable to the Clerk of the Circuit Court.

VS. MARYANNE MORSE CLERK OF THE CIRCUIT COURT SEMINOLE COUNTY, FLORIDA BY GERALDINE HARFORD Deputy Clerk

VS. MARYANNE MORSE CLERK OF THE CIRCUIT COURT SEMINOLE COUNTY, FLORIDA BY GERALDINE HARFORD Deputy Clerk

VS. MARYANNE MORSE CLERK OF THE CIRCUIT COURT SEMINOLE COUNTY, FLORIDA BY GERALDINE HARFORD Deputy Clerk

VS. MARYANNE MORSE CLERK OF THE CIRCUIT COURT SEMINOLE COUNTY, FLORIDA BY GERALDINE HARFORD Deputy Clerk

VS. MARYANNE MORSE CLERK OF THE CIRCUIT COURT SEMINOLE COUNTY, FLORIDA BY GERALDINE HARFORD Deputy Clerk

VS. MARYANNE MORSE CLERK OF THE CIRCUIT COURT SEMINOLE COUNTY, FLORIDA BY GERALDINE HARFORD Deputy Clerk

VS. MARYANNE MORSE CLERK OF THE CIRCUIT COURT SEMINOLE COUNTY, FLORIDA BY GERALDINE HARFORD Deputy Clerk

VS. MARYANNE MORSE CLERK OF THE CIRCUIT COURT SEMINOLE COUNTY, FLORIDA BY GERALDINE HARFORD Deputy Clerk

VS. MARYANNE MORSE CLERK OF THE CIRCUIT COURT SEMINOLE COUNTY, FLORIDA BY GERALDINE HARFORD Deputy Clerk

LEGALS

recording fees are required to be paid by the successful bidder at the sale. Full payment of an amount equal to the highest bid is due within 24 hours after the advertised time of sale. All payments shall be cash or guaranteed instrument, made payable to the Clerk of the Circuit Court.

VS. MARYANNE MORSE CLERK OF THE CIRCUIT COURT SEMINOLE COUNTY, FLORIDA BY GERALDINE HARFORD Deputy Clerk

VS. MARYANNE MORSE CLERK OF THE CIRCUIT COURT SEMINOLE COUNTY, FLORIDA BY GERALDINE HARFORD Deputy Clerk

VS. MARYANNE MORSE CLERK OF THE CIRCUIT COURT SEMINOLE COUNTY, FLORIDA BY GERALDINE HARFORD Deputy Clerk

VS. MARYANNE MORSE CLERK OF THE CIRCUIT COURT SEMINOLE COUNTY, FLORIDA BY GERALDINE HARFORD Deputy Clerk

VS. MARYANNE MORSE CLERK OF THE CIRCUIT COURT SEMINOLE COUNTY, FLORIDA BY GERALDINE HARFORD Deputy Clerk

VS. MARYANNE MORSE CLERK OF THE CIRCUIT COURT SEMINOLE COUNTY, FLORIDA BY GERALDINE HARFORD Deputy Clerk

VS. MARYANNE MORSE CLERK OF THE CIRCUIT COURT SEMINOLE COUNTY, FLORIDA BY GERALDINE HARFORD Deputy Clerk

VS. MARYANNE MORSE CLERK OF THE CIRCUIT COURT SEMINOLE COUNTY, FLORIDA BY GERALDINE HARFORD Deputy Clerk

VS. MARYANNE MORSE CLERK OF THE CIRCUIT COURT SEMINOLE COUNTY, FLORIDA BY GERALDINE HARFORD Deputy Clerk

LEGALS

Payment of Sale fee, applicable documentary stamp taxes and recording fees are required to be paid by the successful bidder at the sale. Full payment of an amount equal to the highest bid is due within 24 hours after the advertised time of sale. All payments shall be cash or guaranteed instrument, made payable to the Clerk of the Circuit Court.

VS. MARYANNE MORSE CLERK OF THE CIRCUIT COURT SEMINOLE COUNTY, FLORIDA BY GERALDINE HARFORD Deputy Clerk

VS. MARYANNE MORSE CLERK OF THE CIRCUIT COURT SEMINOLE COUNTY, FLORIDA BY GERALDINE HARFORD Deputy Clerk

VS. MARYANNE MORSE CLERK OF THE CIRCUIT COURT SEMINOLE COUNTY, FLORIDA BY GERALDINE HARFORD Deputy Clerk

VS. MARYANNE MORSE CLERK OF THE CIRCUIT COURT SEMINOLE COUNTY, FLORIDA BY GERALDINE HARFORD Deputy Clerk

VS. MARYANNE MORSE CLERK OF THE CIRCUIT COURT SEMINOLE COUNTY, FLORIDA BY GERALDINE HARFORD Deputy Clerk

VS. MARYANNE MORSE CLERK OF THE CIRCUIT COURT SEMINOLE COUNTY, FLORIDA BY GERALDINE HARFORD Deputy Clerk

VS. MARYANNE MORSE CLERK OF THE CIRCUIT COURT SEMINOLE COUNTY, FLORIDA BY GERALDINE HARFORD Deputy Clerk

VS. MARYANNE MORSE CLERK OF THE CIRCUIT COURT SEMINOLE COUNTY, FLORIDA BY GERALDINE HARFORD Deputy Clerk

VS. MARYANNE MORSE CLERK OF THE CIRCUIT COURT SEMINOLE COUNTY, FLORIDA BY GERALDINE HARFORD Deputy Clerk

LEGALS

documentary stamp taxes and recording fees are required to be paid by the successful bidder at the sale. Full payment of an amount equal to the highest bid is due within 24 hours after the advertised time of sale. All payments shall be cash or guaranteed instrument, made payable to the Clerk of the Circuit Court.

VS. MARYANNE MORSE CLERK OF THE CIRCUIT COURT SEMINOLE COUNTY, FLORIDA BY GERALDINE HARFORD Deputy Clerk

VS. MARYANNE MORSE CLERK OF THE CIRCUIT COURT SEMINOLE COUNTY, FLORIDA BY GERALDINE HARFORD Deputy Clerk

VS. MARYANNE MORSE CLERK OF THE CIRCUIT COURT SEMINOLE COUNTY, FLORIDA BY GERALDINE HARFORD Deputy Clerk

VS. MARYANNE MORSE CLERK OF THE CIRCUIT COURT SEMINOLE COUNTY, FLORIDA BY GERALDINE HARFORD Deputy Clerk

VS. MARYANNE MORSE CLERK OF THE CIRCUIT COURT SEMINOLE COUNTY, FLORIDA BY GERALDINE HARFORD Deputy Clerk

VS. MARYANNE MORSE CLERK OF THE CIRCUIT COURT SEMINOLE COUNTY, FLORIDA BY GERALDINE HARFORD Deputy Clerk

VS. MARYANNE MORSE CLERK OF THE CIRCUIT COURT SEMINOLE COUNTY, FLORIDA BY GERALDINE HARFORD Deputy Clerk

VS. MARYANNE MORSE CLERK OF THE CIRCUIT COURT SEMINOLE COUNTY, FLORIDA BY GERALDINE HARFORD Deputy Clerk

VS. MARYANNE MORSE CLERK OF THE CIRCUIT COURT SEMINOLE COUNTY, FLORIDA BY GERALDINE HARFORD Deputy Clerk

Classifieds

GET THE JOB DONE!

Page 6B Wednesday, December 5, 2001

Call 322-2611
Seminoole Herald
Classified Dept.
To Place Your Ad

15—CEMETERY LOTS

WOODLAWN CEMETERY
1 LOT \$800
407-349-8844

27—NURSERY & CHILD CARE

Affordable Part time child care in your Sanford/Lake Mary home. Start at \$75/month. 407-302-2081.

Cart CPR Activities/Playroom
Lot of TLC/ Ex. Pets/Flas. rates
Call Deanna. 407-324-0888 99

LEARN TO DRIVE TRACTOR TRAILERS
NO EXPERIENCE NEEDED!



• 15 Day CDL Training
• Day & Weekend Classes
• Financial Assistance
• Carriers Hiring On Site

Truck Driver Institute
800-554-7364

ORLANDO'S #1 DATELINE

Men just dial these 5 digits **81145**
per additional min 65¢ 1st. min.

Circle (407) 1-800-446-2416 99¢/min.

Ladies Call FREE! (407) 786-TALK

Credit Card Billing
1-800-CITY-FLIX

Convenient Service 1-800-888-1111
Check out singles, men & girls.com
National 4-11. Photo. Ph. 19-11 Reg.
Long Distance Charges May Apply

Ladies Talk FREE to Men Nationwide 1-407-838-DATZ

55—BUSINESS OPPORTUNITIES

INVESTIGATE BEFORE YOU INVEST!

Always a good policy, especially for business opportunities and franchises. Call Florida Dept. of Agriculture & Consumer Services at 800-435-7352 or FTC-HELP for free information. Or visit our Web site at www.ftc.gov/biztop. Florida law requires sellers of certain business opportunities to register with Florida Dept. of Agriculture & Consumer Services before selling. Call to verify lawful registration before you buy.

M & M MARS ROUTE (2)
20 Local Vending sites,
no competition, 8 hrs/mo.
\$10,500 cash required.
1-800-288-6601 (24 hrs)
AIN99-007

Make \$400 or more weekly while working from home. For more info send \$3.00 in SASE to L. Hardly, 881 NE 207 Terrace 5-204, Miami, FL 33179.

Want to own your own business? Become an Avon Representative. Call Jonnie 407-424-9588

Work From Home
\$1200-\$1500/Mo PT
\$4,000-\$8,000/Mo FT
W/9 Train
FREE RECORDED INFO
24hr, 877-816-0154
www.successcycycle.com/repfor

Work From Home
Earn up to \$1k easily every time someone receives a MP refund. Call 407-626-9929.

57—OPPORTUNITIES

Women's Financial Support Group
Women that are interested in creating a better financial future. 407-320-9982

59—FINANCIAL SERVICES

Attention Readers!!

It's illegal for companies doing business by phone to promise you a loan and ask you to pay for it before they deliver. For more information, call toll-free 1-877-FTC-HELP (A public service message from The Seminoole Herald and the Federal Trade Commission)

61—MONEY TO LEND

Attention Readers!!

It's illegal for companies doing business by phone to promise you a loan and ask you to pay for it before they deliver. For more information, call toll-free 1-877-FTC-HELP (A public service message from The Seminoole Herald and the Federal Trade Commission)

71—HELP WANTED

Construction: Foam insulation company hiring installers. Clean dry license State wide travel in co. vehicle M.F. Paywork. Guaranteed minimum \$500/wk. Benefits, bonus & travel costs paid. 407-332-4948.

71—HELP WANTED

DRIVER TRAINERS NEEDED!
Bestway needs tractor trailer drivers NOW! No experience necessary! No CDL! No problem! CDL training is available! Call Now! Toll free 877-214-3624.

Easy Street Cafe needs a Ho stess. Five evenings & two lunches. 407-320-8100.

FLOORING INSTALLERS
Hardwood and Laminate Flooring Apprentices needed immediately for established, expanding, company. Great advancement opportunity. Call Jack at 407-321-5332 for Appl. Must have valid drivers license and pass background check.

Front Desk Associate: For all shifts, apply in person Best Western Marina Hotel, 530 N. Palmtoke Ave. Sanford

GLASSLOWERS WANTED:

If you or someone you know is seeking a challenging position as a quartz fabricator, you are in luck. We are an expanding company established 13 years as an authorized GE distributor, searching for skilled glassblowers to demonstrate their expertise on complex quartzware production projects, such as large diameter lathe work. We offer excellent health insurance benefits, an individual retirement plan, a merit bonus program and excellent working conditions in the beautiful countryside area of northwest New Jersey. If you are interested, please fax your resume to 973-209-8864 or call us at 973-209-8864. You can also email your resume to brink@unitedglass.com.

71—HELP WANTED

Horse Farm working student. Chores in exchange for riding lessons. 407-322-8778

HOUSEKEEPER

Full time position, excellent pay. Experience preferred. Club Esprit Apartments 407-331-3131

INVESTIGATE BEFORE YOU INVEST!

Always a good policy, especially for business opportunities and franchises. Call Florida Dept. of Agriculture & Consumer Services at 800-435-7352 or FTC-HELP for free information. Or visit our Web site at www.ftc.gov/biztop.

Florida law requires sellers of certain business opportunities to register with Florida Dept. of Agriculture & Consumer Services before selling. Call to verify lawful registration before you buy.

Help wanted Laborer: Steady, & dependable. Drivers license preferred. Good starting pay. Please call 407-416-9913. Ask for Mike.

LABORERS NEEDED FOR UNDERGROUND UTILITY CONTRACTOR
HEALTH INSURANCE AND RET. PLAN! One free meal. Apply at 500 Miller Drive, Altamonte Springs 407-280-8888.

Need Some ADVERTISING To Promote Your Business? Then Call Us About Flyers

We Will Print & Deliver For You To Our Readers For Only 9¢/Copy!!

We Have a Way You Can Cut That Cost In Half!

THE SEMINOLE HERALD ADVERTISING DEPT
407-322-2611

RMS & LPMS

Mental Health Technicians
\$Sign-On Bonus \$
Work available in your area!

Call Us Today!

407-647-4188
800-801-8082
EOE
Staffed Staffing Group

Sales Person/Collections: Full time, exp. a plus. Salary plus commission, Bedrock Furniture. 407-322-8240.

Wholesale Sales: Dream come true. Hundreds of walking daily. Average car sales \$4000. Exp help! 800-841-6553x123.

71—HELP WANTED

WORK FROM HOME
High Income Potential
Call For Free Booklet
1-800-287-8799

93—ROOMS FOR RENT

2 Story Victorian Home, Historic District, fpc, balcony, house privileges. \$100/wk, \$100 deposit. 407-328-5277

WEEKLY RENTALS

Starting @ \$22/wk.
Historic Downtown
407-336-4423

Fountain Lodge of Sanford has special rates for daily, weekly, & 5 day accommodations. Call 407-330-3135/323-8840 for details

Very nice, very clean turn m. Newly remodeled, all util. cable, A/C, indy. phone, kitchen use, sec. dr. resident owner. 2 bds from bus. Non smoker Preferred! Only drug free sober need apply. 407-338-7373.

Room For rent, cable, all utilities included, \$400/mo. \$50 deposit. 407-330-7158.

Room For Rent: Free cable, Lake Ave in Sanford. 407-688-7023

Room For Rent: Kitchen privileges, quiet house, \$75/wk. 407-330-1462.

Sanford/Osteen area: Large spacious home, very nice quiet setting. \$85-100/wk all included. Call for details. 407-324-8000.

Two Rooms For Rent. \$70-\$80 Per Week. One Week Deposit Required. Cable & Laundry included (407)888-1181

97—APARTMENTS - FURNISHED

Large 1BR, updates, very private, tile bath, set in kitchen. Utilities furnished. Just outside city. \$475 + deposit, no pets. 407-323-1917, after 6pm.

99—APARTMENTS - UNFURNISHED

AH NEATI 2BR apt, W 2nd St, CHA, stove, refrig, d. washer, \$475/month + \$800 dep. 407-324-3193.

Lake Mary/Sanford: 2/2

Washer/Dryer Hook-ups, Swimming Pool, No Pets, \$650. Randolph Court Apts. 407-330-1300.

MARINER'S VILLAGE
LAKESIDE BLDG. \$470/mo
2 BDRM, \$650/MO AND UP
Cable included
407-323-8870

ONE MONTH FREE!
(Limited Time Offer)
2 Bedrooms from \$539
3 Bedrooms \$634
We pay water/sewer.
Breakfast welcome.
Cedar Creek Apts
407-324-4334

Sanford Historic: 1BR \$375, most utilities. 407-321-8787

103—HOUSES- UNFURNISHED

Sanford Historic: 1BR \$375, most utilities. 407-321-8787

103—HOUSES- UNFURNISHED

Sanford Historic: 1BR \$375, most utilities. 407-321-8787

Country Lake Apts.

407-321-0759

2BR 1BA, Clean, FL room/bedroom, screen porch, wash rm, large yd \$610/month. 407-323-7113, after 4:30pm, or 407-417-7548.

Sanford: 3/2 with washer/dryer hookup. New refrigerator, stove, floor & paint. Lake view. \$1100/mo plus deposit. 407-112-2992.

DOYLE'S RENTALS

Sanfordwood Villas: 1BR/1BA Condo W/Water, Sewer & Garbage Included, New Paint, Community Pool, W/D Included. \$540-\$500/Dep.
Sanford: 2 Large Bdrms 1 1/2 BA, 2 Story Condo, New Tile & Paint, Kitchen & Dining Room, Community Pool \$625/\$400/Dep.
Sanford: 2BR/1.5 BA Duplex W/Screened Patio, Tile Floors, W/D Hook-Ups, New Paint & Carpet \$650/Dep.
Sanford: 3BR/1Bath With Dining Room & Living Room \$635/\$600/Dep.
Sanford: 3BR/2Bath W/Gas Fireplace, New CHA, Eat-In Kitchen. W/D Hook Ups \$675/\$650/Dep.
DOYLE REALTY, INC.
(407) 324-2495

WE RENT & BELL HOMES

103—HOUSES- UNFURNISHED

\$800 DOWN - WHY RENT??
3BR/2BA For Sale
With Down Payment Assistance Available. Cheaper than rent!
The Affordable Home Center
407-321-8338

Lake Mary 2/2: Central H & A

Garage, Fenced Yard, Clean, 123 North High Street. \$950/month. First Last & Security Deposit. 407-323-2120.

Lake Mary: Best schools, spotless 2 1/2 duplex, CHA, includes new carpet, fenced yard, 1/2 acre lot. \$925 plus \$400 dep. 407-888-0046.

Orange City: 4BR 1.5 Bath, \$800/mo \$800 sec. 407-328-0083/407-887-8410.

Sanford: 1BR 1BA house for rent. \$150/wk. \$375 deposit. Includes utilities, no pets or children 407-323-3481.

Sanford: 1BR/1BA, lg fenced lot. \$500/mo \$500 Sec. 407-328-0083/407-887-8410.

Sanford: 4/2/1 new home, no pets, \$995/mo 1 month sec., Section B. 407-333-8881.

Sanford: 4BR 1.5 BA, \$750/mo, \$750 security deposit. 407-328-0083, 407-887-8410

115—INDUSTRIAL RENTALS

Longwood, ON 17-82, Longdale Industrial Park. Great area! 3,500 sq ft, office, dock, \$1500/mo. Grant Properties. 407-771-4332

117—COMMERCIAL RENTALS

306 West 13th St, Office or Retail. +/- 1800 Sq Ft. Three Offices, One Large Open Bay Area & Kitchens. \$1087/3000 Dep. 2888 Park Dr., Office or Retail, 9 separate offices. Reception area. Lg Conference Rm. +/- 3,434 sq ft. \$1800/3000/Dep.
Doyle Realty, Inc.
407-322-2495

118—OFFICE SPACE FOR RENT

1 Office: One at \$460/mo. All have CHA & private bath. 407-322-8189.

141—HOMES FOR SALE

3/1.5, newly renovated, large fenced yard, carpet, tile, assist w/inance or rent to own. \$69,900. 407-699-1359.

Sanford: Pool home, 4/2, almost 1 acre lot, LR, FR, DR, Central AC, new carpet, tile, fixtures, roof, open porch, paint thru. No closing cost, \$3k dr. \$98k. 407-788-0888.

153—ACREAGE LOT FOR SALE

DELTONA 10 acres. Ideal for mobile homesite, horse, cattle, farming or nursery! Zoned agricultural. \$4,900/ACRE. 5m. down w/owner finance. 904-767-1772 or 888-767-8822

141—HOMES FOR SALE

3/2 located on quiet dead end street off Sanford Ave. Built in 1988, needs TLC. \$72,800. Doris Mathis @ Century 21, Oviedo Realty. 407-365-8403.

Cashberry: 4 BR, SSA, Brighten,

Fl rm, 2 car gar, laundry/work shop, lg shed, large pool, great location. 407-831-3375.

AFFORDABLE HOME VENTURE - PROPERTIES
\$888 DOWN! Rising up to \$16,888 free homeowners assistance fund. Buy a home with \$888 cash. Rent, Foreclosure, Repeat REFINABLE, SHARED, VOLUNTARY

Renovated Lake Nona: 3 BR, new paint throughout, new carpet, LR, DR, FR, over 1/4 acre. \$78,900

Over 1/4 Acre 3BR 1 Bath Lk dr, appls, heavy wood. Priced for quick sale. \$84,900

Pr at 11 acres: 3/1.5 w/gh Lk, Dr, Sc Porch, inground pool, garage on dead end cul-de-sac. \$95,900.

Renovated Lake Nona: 3/1, newly painted interior, exterior, new carpet, new A/C, scr, porch, \$78,500

PAUL OSBORNE

Historic old Sanford home with garage apt. 3BR, 2 ba house w/hardwood floors, oak kitchen, 2 fireplaces, 3 Central A/C's. Separate 1bd 1 bath apt. Must see to appreciate the character of this well maintained & expensive property. Only \$203,000. \$49-0100 X 247 week days or 822-0558 evenings/weekends.

HOUSES FOR SALE - 3 Bedrooms, 2 Bath, CHA, mature shade trees in large fenced yard, inside utility room. Avail. now \$78,900. 407-324-8848.

Innert: 3/2, tile, scr porch, LR, DR, fenced yard, close to Lake Mary Blvd & I-4. Many upgrades. \$124,800. 407-227-8333, FR.

Sanford: Historical 3/1, LR, FR, fireplace, new kitchen, bath, tile, Central AC, electric wiring, carpet, paint, appliances, front porch. No closing cost. \$1000 dr. \$880/month. 407-788-1080.

Sanford: Pool home, 4/2, almost 1 acre lot, LR, FR, DR, Central AC, new carpet, tile, fixtures, roof, open porch, paint thru. No closing cost, \$3k dr. \$98k. 407-788-0888.

Sanford: Pool home, 4/2, almost 1 acre lot, LR, FR, DR, Central AC, new carpet, tile, fixtures, roof, open porch, paint thru. No closing cost, \$3k dr. \$98k. 407-788-0888.

Sanford: Pool home, 4/2, almost 1 acre lot, LR, FR, DR, Central AC, new carpet, tile, fixtures, roof, open porch, paint thru. No closing cost, \$3k dr. \$98k. 407-788-0888.

Sanford: Pool home, 4/2, almost 1 acre lot, LR, FR, DR, Central AC, new carpet, tile, fixtures, roof, open porch, paint thru. No closing cost, \$3k dr. \$98k. 407-788-0888.

Sanford: Pool home, 4/2, almost 1 acre lot, LR, FR, DR, Central AC, new carpet, tile, fixtures, roof, open porch, paint thru. No closing cost, \$3k dr. \$98k. 407-788-0888.

Sanford: Pool home, 4/2, almost 1 acre lot, LR, FR, DR, Central AC, new carpet, tile, fixtures, roof, open porch, paint thru. No closing cost, \$3k dr. \$98k. 407-788-0888.

Sanford: Pool home, 4/2, almost 1 acre lot, LR, FR, DR, Central AC, new carpet, tile, fixtures, roof, open porch, paint thru. No closing cost, \$3k dr. \$98k. 407-788-0888.

Sanford: Pool home, 4/2, almost 1 acre lot, LR, FR, DR, Central AC, new carpet, tile, fixtures, roof, open porch, paint thru. No closing cost, \$3k dr. \$98k. 407-788-0888.

Sanford: Pool home, 4/2, almost 1 acre lot, LR, FR, DR, Central AC, new carpet, tile, fixtures, roof, open porch, paint thru. No closing cost, \$3k dr. \$98k. 407-788-0888.

Sanford: Pool home, 4/2, almost 1 acre lot, LR, FR, DR, Central AC, new carpet, tile, fixtures, roof, open porch, paint thru. No closing cost, \$3k dr. \$98k. 407-788-0888.

Sanford: Pool home, 4/2, almost 1 acre lot, LR, FR, DR, Central AC, new carpet, tile, fixtures, roof, open porch, paint thru. No closing cost, \$3k dr. \$98k. 407-788-0888.

Sanford: Pool home, 4/2, almost 1 acre lot, LR, FR, DR, Central AC, new carpet, tile, fixtures, roof, open porch, paint thru. No closing cost, \$3k dr. \$98k. 407-788-0888.

Sanford: Pool home, 4/2, almost 1 acre lot, LR, FR, DR, Central AC, new carpet, tile, fixtures, roof, open porch, paint thru. No closing cost, \$3k dr. \$98k. 407-788-0888.

Sanford: Pool home, 4/2, almost 1 acre lot, LR, FR, DR, Central AC, new carpet, tile, fixtures, roof, open porch, paint thru. No closing cost, \$3k dr. \$98k. 407-788-0888.

Sanford: Pool home, 4/2, almost 1 acre lot, LR, FR, DR, Central AC, new carpet, tile, fixtures, roof, open porch, paint thru. No closing cost, \$3k dr. \$98k. 407-788-0888.

Sanford: Pool home, 4/2, almost 1 acre lot, LR, FR, DR, Central AC, new carpet, tile, fixtures, roof, open porch, paint thru. No closing cost, \$3k dr. \$98k. 407-788-0888.

Sanford: Pool home, 4/2, almost 1 acre lot, LR, FR, DR, Central AC, new carpet, tile, fixtures, roof, open porch, paint thru. No closing cost, \$3k dr. \$98k. 407-788-0888.

Sanford: Pool home, 4/2, almost 1 acre lot, LR, FR, DR, Central AC, new carpet, tile, fixtures, roof, open porch, paint thru. No closing cost, \$3k dr. \$98k. 407-788-0888.

Sanford: Pool home, 4/2, almost 1 acre lot, LR, FR, DR, Central AC, new carpet, tile, fixtures, roof, open porch, paint thru. No closing cost, \$3k dr. \$98k. 407-788-0888.

Sanford: Pool home, 4/2, almost 1 acre lot, LR, FR, DR, Central AC, new carpet, tile, fixtures, roof, open porch, paint thru. No closing cost, \$3k dr. \$98k. 407-788-0888.

Sanford: Pool home, 4/2, almost 1 acre lot, LR, FR, DR, Central AC, new carpet, tile, fixtures, roof, open porch, paint thru. No closing cost, \$3k dr. \$98k. 407-788-0888.

Sanford: Pool home, 4/2, almost 1 acre lot, LR, FR, DR, Central AC, new carpet, tile, fixtures, roof, open porch, paint thru. No closing cost, \$3k dr. \$98k. 407-788-0888.

Sanford: Pool home, 4/2, almost 1 acre lot, LR, FR, DR, Central AC, new carpet, tile, fixtures, roof, open porch, paint thru. No closing cost, \$3k dr. \$98k. 407-788-0888.

Sanford: Pool home, 4/2, almost 1 acre lot, LR, FR, DR, Central AC, new carpet, tile, fixtures, roof, open porch, paint thru. No closing cost, \$3k dr. \$98k. 407-788-0888.

Sanford: Pool home, 4/2, almost 1 acre lot, LR, FR, DR, Central AC, new carpet, tile, fixtures, roof, open porch, paint thru. No closing cost, \$3k dr. \$98k. 407-788-0888.

Sanford: Pool home, 4/2, almost 1 acre lot, LR, FR, DR, Central AC, new carpet, tile, fixtures, roof, open porch, paint thru. No closing cost, \$3k dr. \$98k. 407-788-0888.

Sanford: Pool home, 4/2, almost 1 acre lot, LR, FR, DR, Central AC, new carpet, tile, fixtures, roof, open porch, paint thru. No closing cost, \$3k dr. \$98k. 407-788-0888.

Sanford: Pool home, 4/2, almost 1 acre lot, LR, FR, DR, Central AC, new carpet, tile, fixtures, roof, open porch, paint thru. No closing cost, \$3k dr. \$98k. 407-788-0888.

KIA LONGWOOD • MITSUBISHI LONGWOOD • KIA LONGWOOD • MITSUBISHI LONGWOOD • KIA LONGWOOD • MITSUBISHI LONGWOOD • KIA LONGWOOD • MITSUBISHI LONGWOOD



HOLLER



LONGWOOD *Se Habla Español*

Special rates as low as

0.0%

*You can only use one special offer at a time.

CLEARANCE SALE

UP TO **\$5,000** Discounts

UP TO **\$3,000** Cash Back

Special rates as low as

0.0%

*You can only use one special offer at a time.



HOLLER KIA LONGWOOD

1/2 Mile North of 434 on 17-92
(800) 639-6666
www.hollerkialongwood.com • Se Habla Español

\$0* **\$0*** **\$0***

DOWN INTEREST PAYMENT

UNTIL YEAR 2003

Lowest Price Guaranteed



\$159 A MONTH



\$237 A MONTH

Mitsubishi Galant

\$159 A MONTH

Stk# 1E190901

Stk# 1P003294

GUARANTEED FINANCING 1-800-570-0106**

*Closed end lease, 54 months, 3500 down, plus first months payment security deposit, tax tag & acquisition fee, W.A.C. from MMCA. All rebates assigned to dealer. Price and payment available day of publication only. **Severity of credit may affect downpayment and APR.

CREDIT FIXER! GUARANTEED FINANCING
1-800-570-0106
ALL APPLICATIONS ACCEPTED!

BAD CREDIT-UGLY CREDIT NO CREDIT NO PROBLEM!

HOLLER LONGWOOD

615 Hwy. 17-92
407-571-1234

MITSUBISHI MOTORS
wake up and drive™

See us online at www.hollermitsubishi.com

KIA LONGWOOD • MITSUBISHI LONGWOOD • KIA LONGWOOD • MITSUBISHI LONGWOOD • KIA LONGWOOD • MITSUBISHI LONGWOOD • KIA LONGWOOD • MITSUBISHI LONGWOOD

60 month
0% APR
FINANCING!

FACTORY AUTHORIZED "TRADE-IN" PROGRAM

CREDIT FIXER HOTLINE
(800) 570-0106

DEAR SEMINOLE HERALD READER,
During this **SPECIAL PROGRAM**, we will **GUARANTEE TO BUY BACK YOUR CURRENT VEHICLE AT 20% OR UP TO \$4,000 OVER N.A.D.A. USED CAR VALUE GUIDE!!!!***

Seminole Herald Readers, You are pre-approved for \$24,500

JUST SIGN AND DRIVE!

0

0

0

DOWN INTEREST PAYMENTS

Rebates up to **\$3000**

UNTIL JANUARY 2003!

Other Programs with **0% Financing for 60 months**

Plus Receive a \$300 Walmart Gift Certificate with the purchase of any vehicle.

DECEMBER 7-8-9 ONLY!



HOLLER



LONGWOOD

Se Habla Español

LONGWOOD
1/2 mile north of 434 on 17-92
www.hollerlongwood.com
(800) 639-6666

December 7th, 8th and 9th
10:15 am - 10:00 pm

Attached is your discount voucher in the amount of \$1500 which may be used toward the purchase of any pre-owned vehicle in stock

HOLLER MITSUBISHI KIA PRE-OWNED VEHICLE **CASH DISCOUNT VOUCHER**

Epires Dec. 10, 2001

*****One Thousand Two Hundred Fifty 00/100 Dollars

PAY TO THE ORDER OF	SEMINOLE HERALD READERS
AMOUNT	
\$1500	

NOT VALID FOR OVER \$1500
ZACK EMAMI
Authorized Signature
Valid on Pre-owned vehicle only.

*Trade-in allowance will be based on NADA book value plus the lesser of 20% or \$4,000. Deductions from allowance will be made for equipment failure, body/interior damage, reconditioning costs and/or excessive mileage. **Must be used within 30 days of purchase. First payment due 30 days and financing charges begin 30 days after contract date. Must be approved by MMCA and in compliance with any other program. All rebates assigned to dealer. Payments not including tax, title & documentation fee. Vehicles with less than 100,000 miles. KIA 0.9% on Sport, Spectra, Sportage 2001 for 60 months. Must be approved by KIA financial special rate plan. Mitsubishi 0.9% on Outlander and Diamante 2001 and 2002. Diamante for 60 months. Must be approved by MMCA special rate plan. All rebates assigned to dealer. Payments not including tax, title & documentation fee. **Severity of credit may affect down payment and APR. All rebates must be assigned to dealer. See dealer for details. May exclude some nationally protected, specialty and vintage vehicles. Each offer is considered an exclusive offer. One offer per purchase. See dealer for details.



Homecourt Heartbreaks

Things are getting pretty frustrating for Seminole Community College head men's basketball coach Stan Cromartie. He knows he has a good and very talented ballclub and for the most part has played well enough to win every game it has played this season. But for some reason this team has not learned how to win on a nightly basis and has continued to give away second half leads.

Page 1B



Ambassador to CRIMEA

In a few weeks, Margaret Collier's Millennium Middle School students will begin learning about the countries of the former Soviet Union, including the Ukraine. It will be a time when the geography teacher can close her textbook and teach from first-hand experience.

Page 1C



Jennifer D'Amato - UCF Intern at Millennium Middle School

Index

Table with 2 columns: Topic and Page Number. Includes Classified (5B-6B), Crossword (5A, 5B), Dear Abby (6A), Legals (3B-5B), LifeStyle (Section C), Obituaries (3A), Opinion (4A), Police Log (2A), Religion (4C-5C), Sports (1B-3B).

Sanford Marina attracts cruise line

By Dan Ping Editor

SANFORD — City Commissioners will decide Monday whether to allow a cruise line to dock overnight at the Sanford Marina during February and March.

The company, American Cruise Lines Inc., operates one- and two-week scenic cruises along the eastern seaboard. It wants to make Sanford the third stop on a

American Cruise Lines asks city for permission to dock overnight

7-day cruise that would include St. Marys, Ga., Fernandina Beach, Green Cove Springs and St. Augustine.

The ships carry a maximum of 49 guests and rates run from \$2,520 to \$3,430 for the cruise, which includes three meals

per day. "Most of our passengers are retired, though not all of them," said Tim Beebe, marketing director of the company. "They are well traveled and usually have been on cruises before."

American Cruise Lines wants to dock at the pier on the western side of Memorial Park and is asking for a hook-up to city water and trash collection.

"The ship is self-contained, and we don't need a lot of service," Beebe said. The water hook-up would be to top off the ship's water supply, he added, and trash collection would be an added convenience.

See Cruise, Page 10A

Meals on Wheels at Christmas

More than 200 attend annual event

By Michelle Jeria Managing Editor

LONGWOOD — More than 200 senior citizens gathered Friday in St. Stephen Lutheran Church to celebrate the holidays.

The annual Meals on Wheels Etc., Christmas event attracted participants from all seven sites of the organization's Congregate Meals program. Party-goers were treated to a turkey dinner, entertainment, presents and prizes during the festivities.

"During the holidays, many of these people don't have the opportunity to go to parties," Meals on Wheels Etc. Executive Director Sherry Fincher said. "So, this is their party."

Each week, the Congregate Meals program provides free meals, transportation and other services to more than 250 senior citizens. At the numerous sites throughout the county, including St. Stephen Lutheran Church, recreational activities, informative speakers and nutritional information is provided during the noonday meal.

"Many people in the program would otherwise sit at home and not eat well if we did not provide this service,"



Elinor Brownstein prepares to serve a tray of food to senior citizens at the annual Meals on Wheels Christmas luncheon.

Fincher said. "Besides offering them meals, we take them to the grocery store and to medical centers.

"If we were not here, many would have to go to nursing homes prematurely," she said.

Meals on Wheels Etc. has provided numerous services, including the Congregate Meals program, to the area's senior citizens for the past 27

years. According to Fincher, the average age of participants in the program is 84.

Currently, there is a waiting list at many of the Congregate Meal sites. However, Fincher said there are still open spots at several of the sites and encourages people interested in participating to call Meals on Wheels Etc..

"We only have so many

vans and so much funding," she said. "Unless we have funding from the community, we do have to cut our services."

Meals on Wheels receives funding from the United Way, Seminole County and the Older Americans Act. Three area municipalities, including

See Meals, Page 9A

County ponders mosquito program

By Christopher Patton Staff Writer

SANFORD — County commissioners could take the first steps Tuesday in securing the first permanent mosquito control program for unincorporated Seminole residents.

With a flurry of West Nile Virus medical alerts across the state, the county contracted for approximately three months of truck spraying this year to reduce the number of pests. Eleven human cases of West Nile were reported in the state with 55 of the 67 counties on medical alert for the virus.

A county staff presentation Tuesday will furnish commissioners with several options for developing an in-house, year-round mosquito control program. The three proposed mosquito programs range in price from \$460,000 to \$900,000.

Commissioners could also decide Tuesday to establish a mosquito control Municipal Service Taxing Unit to fund the program. If approved, a public hearing could be scheduled for Jan. 8 for the special taxing district.

Of the 54 mosquito control

See Mosquitoes, Page 9A

Commissioner says road standards for level of service don't make the grade

This is the second in a series of articles that will look at development projects in Sanford — what's coming in, where it's going and what effects it may have on the community.

By Dan Ping Editor

SANFORD — In a motorist's utopia, the lights are always green and traffic is nonexistent. In reality, stop lights and congestion are a way of life, particularly if you drive in Central Florida.

As more development moves into Sanford along State Road 46 and Rinehart Road, city planners will be charged with ensuring traffic congestion doesn't exceed the capacity of those roads. But how much traffic is too much?

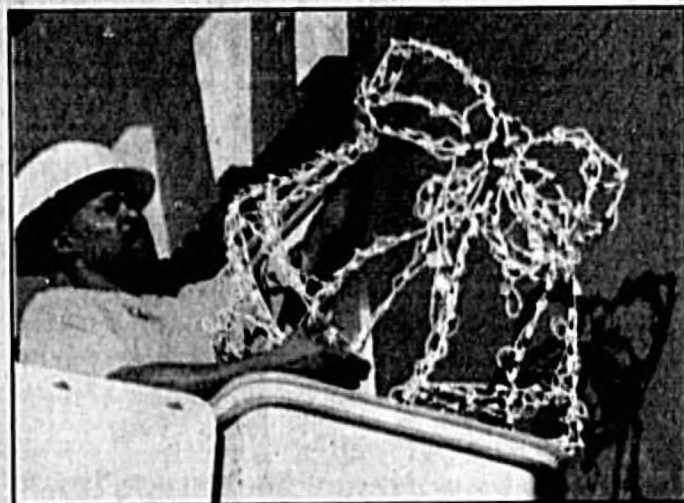
The Institute of Transportation Engineers created the Transportation and Traffic Engineering Handbook which establishes six classifications of service from 'A' to 'F'. An 'A' level of service is an ideal condition where "vehicles are completely

unimpeded." An 'F' level of service indicates traffic exceeds the road's capacity and "traffic flow has generally come to a stop but will have slight, but inconsistent movement." So what's the level of service planners aim for when designing roads?

Believe it or not it's 'D', and that concerns Sanford City Commissioner Art Woodruff, a high school physics teacher who doesn't think a 'D' is acceptable

See Roads, Page 10A

Decking the walls



Sanford Public Works employee Paul Parker hangs a Christmas decoration on a downtown building. The Downtown Business Association has decorated 1st Street with animated lights and decorations.

83-year-old Sanford woman shot during home invasion

By Christopher Patton Staff Writer

SANFORD — An 83-year-old Sanford woman was shot twice with her own gun Tuesday while trying to defend her home from a potential robber.

Minnie Dorsey of 1105 Willow Ave. was released Thursday from the Orlando Regional Medical Center with wounds to the left side of her forehead and right hand.

The incident occurred at approximately 9:30 p.m., when a black male entered through the rear porch stating "gimme your bags." In an effort to run the

intruder off, Dorsey grabbed her handgun. A struggle ensued between the two with her attacker eventually gaining control of the gun. The suspect shot several times hitting the woman once in the right thumb and again grazing her head just above the left eye.

"The constitution gives us the right to bear arms to protect ourselves," said Cleo Cohen, Sanford police spokeswoman. "People need to realize the same gun that defends you — if it ends up in the hand of perpetrator — could also be used to kill

See Invasion, Page 79A

Elderly man robs Lake Mary bank

By Christopher Patton Staff Writer

HEATHROW — Police believe a white elderly man who used a stolen bank card at a Heathrow bank three months ago returned to the same branch Wednesday as an armed robber.

At approximately noon, a man believed to be between 55 and 65 years old robbed the CNL Bank on International Parkway and Lake Mary Boulevard. The suspect reportedly approached a bank employee, produced a handgun and demanded money. Carrying a briefcase, the man got away with an undisclosed amount of cash. Witnesses describe the suspect as approximately six feet tall, 200 pounds and sporting a mustache and ball cap.

Investigators matched bank witnesses' descriptions to an Aug. 30 armed robbery at the

Bonus Dollar Store in Fern Park. A store clerk was held up by a

striking similar elderly man who also toted a handgun. The clerk was locked in the bathroom and her purse stolen. About 40 minutes later, the suspect's image was captured at the Heathrow bank as he was using the store clerk's ATM card.

"The investigator noticed similarities between the cases right away," said Steve Olson, Seminole County Sheriff's Office

spokesman. "He showed the picture to the witnesses and they said 'My God that's him.'"

Despite a lot of "coincidences" between the two armed robberies, the sheriff's office is still seeking the elderly suspect. Anybody with information is asked to call Crime Line at 1-800-423-8477.

Christopher Patton can be reached at cpattton@seminole-herald.com or 407-322-2611.



Sanford K-9 officer Robert Shull and his dog Mako search for the scent of a bank robber at the CNL Bank in Lake Mary.