











# The Social Side of Sanford

MISS ROSAMOND RADFORD, Society Editor.

Phone: Res. 425

## FLOWERS AND BOSKEY WEDDING IS SOLEMNIZED WEDNESDAY AT 6 P. M.

A wedding marked by arrogant simplicity, took place at the Methodist Church Wednesday evening at 6 o'clock, when Miss Elizabeth Margaret Flowers became the bride of James F. Boskey, of Winter Park.

The church was beautiful, carrying the color scheme of green and gold. Marigolds with dainty evergreens were used on pedestals and the choir loft. Over this scene of beautiful lighted candles cast a golden glow.

The impressive ring ceremony was performed by Dr. W. J. Carpenter of the Methodist Church. Only the most intimate friends of the young couple were present.

Four intimate girl friends of the bride acted as ushers, each presenting a picture of girlish loveliness in their dainty gowns. The ushers were Misses Dorothy Stokes, Martha Brown, Nonie Williams and Perry Lee Bell.

Miss Mildred Simmons presided at the organ. The natural beauty of Miss Simmons was accentuated by a peach colored flat crepe gown embroidered in gold, with this was a large picture hat of white and flesh georgette. Miss Simmons' flowers was a corsage of pink and yellow roses.

Just before the entrance of the bridal couple Miss Rosamond Radford sang "At Dawning" and "Oh Promise Me"—Miss Radford wore a grey gown of flat crepe embroidered in gold and varied colors. A

hat of silver cloth with bands of varied colored velvet. A corsage of pink and yellow roses were worn.

To the strains of Lohengrin's Wedding March the bride entered on the arm of the groom.

Miss Flowers wore an exquisite gown of blue poret will embroidered in gold braid made coat effect with an undertone of gold colored flat crepe. The girlish beauty of the bride was further offset with a hat of black velvet, in an off-the-face style. A corsage of golden roses with lilies-of-the-valley was worn making Miss Flowers a perfect picture.

During the ceremony "To a Wild Rose" was played softly on the organ. Mendelssohn's Wedding March was used as a recessional.

Mrs. Boskey is the eldest daughter of Mr. and Mrs. H. L. Flowers, of this city, where she spent her entire girlhood. Her natural beauty and charming personality have made her a favorite among her friends.

Mr. Boskey is the eldest son of Mr. and Mrs. L. Boskey, of Winter Haven, and for the past two years has held the position as agent for the Atlantic Coast Line at Winter Park.

Mr. and Mrs. Boskey left immediately in their car for Cuba, taking the train from an East Coast town. After Nov. 1 they will be at home to their friends in Winter Park.

## WELFARE DEPARTMENT OF WOMAN'S CLUB HOLDS INTERESTING MEETING

(By Mrs. E. A. Douglass)

The first meeting of the Welfare Department of the Woman's Club was held Wednesday afternoon with Mrs. J. G. Sharon presiding.

There was a good attendance and much interest shown in the work of this department. Mrs. W. A. Pitts read a communication from the Federation of Garden Clubs inviting Sanford to unite with them. Plans along the same lines are being worked out by the Welfare Department, but was not deemed advisable to go into the federation for a while.

Mrs. E. P. Morse, chairman of Park Committee reported work being carried on nicely, and donations of plants for the parks from Mrs. M. C. Aspinwall and Mrs. Owens. Mrs. Fred T. Williams also donated shrubs for the same purpose.

Mrs. A. Vaughan reported for the committee in charge of the club party at Robinson's Springs that "no trespassing" signs had been placed at the entrance to the park and that permanent markers consisting of boulders properly inscribed would be erected as soon as possible. An effort is being made to rid the park of all advertising signs.

Mrs. L. I. Frazier, chairman of public health and recreation read an interesting plan of work started along these lines.

A communication was read from the Garden Club of Halifax County at Ormond Beach, announcing that Mrs. Henry Wight had been placed on the list of bill board chairman with the Florida Development Board.

Mrs. Forrest Lake, chairman of Streets and Highways committee, stated that her committee recommended individual planting of ornamental trees and shrubs and palms on the various streets, especially the new streets being opened up, bringing out the fact that uniform planting of one plant selected on each street was more effective than using various things. It was suggested too, that different varieties of palms and other tropical plants be emphasized in this planting.

Mrs. W. H. Tunncliffe, chairman on safe of calendars, reported splendid work being done, which was very satisfactory, also stated that the State Beautification meet in Tampa last week heartily endorsed the calendars and urged the sale of them.

Mrs. E. P. Morse gave a most interesting report of the State Beautification meet in Tampa, stating that six members of the Sanford Woman's Club and two members of the Board of County Commissioners of Seminole County were in attendance.

Many expressions of disapproval of the unsightly road signs were heard and the chairman spoke of a movement to write the owners of some of the advertising signs that mar the highways, some of whom have contracted for space for these signs, urging them to remove them or not to renew contracts for space for them. Miss Mell Whitner was appointed to write these letters. Mrs. Forrest Lake volunteered to secure a list of owners of highways advertising signs in Seminole county.

Mrs. W. A. Pitts gave a most delightful talk on the culture of sweet peas, which was followed by one quick to sell. Arrangements are being made to have all the school children of the district see these fine paintings which are of a type

equally interesting on seed box planting, also roses adapted to local planting that could be obtained from Mrs. W. A. Ginn.

Mrs. Markell listed on the bulletin board a number of perennials that were adapted to this climate.

Welfare Department voted to hold monthly luncheons at 1 o'clock which would be followed by a business session. Business meeting adjourned, followed by most delightful social half hour, when refreshments were served by Mrs. Fred T. Williams, Mrs. H. J. Lehman, Mrs. Harry Ward and Miss May Magill.

John Blanton, of Orlando, spent Wednesday in the city calling on local merchants.

Mrs. A. C. Jones was taken to Robson's Sanitarium for an operation on Wednesday.

Simmons Siberia Refrigerators at Ball Hardware Co.



## ANNOUNCEMENT

THE CLOTHES THEY TALK ABOUT

for Men and Young Men

ARE HERE

You will never realize the great difference between these and the ordinary Clothes—until you have once worn a Suit or Overcoat with the Label shown above.

The Styles and Fabrics are distinctive, they give prestige and character to the wearer—they enhance your qualities and invite social and business opportunities seldom accorded to the ordinary dressed individual.

*The feeling of being becomingly and stylishly dressed gives you the assurance that carries accomplishment with it.*

Try on a Suit or Overcoat—A trial will convince you and convey more than all we can say.

Glad to Show you the New Models

no obligation to buy

You are more than welcome

### Woodruff & Watson

## A PIMPLY SKIN NEEDS SULPHUR

Any breaking out of the skin on face, neck, arms or body is overcome quickest by applying Mentho-Sulphur. The pimples seem to dry right up and go away, declares a noted skin specialist.

Nothing has ever been found to take the place of sulphur as a pimple remover. It is harmless, and inexpensive. Just ask any druggist for a small jar of Rowles Mentho-Sulphur and use it like cold cream. —Adv.

## FOR SALE

STOVE AND WOOD FIRE PLACE CUT TO SUIT SEE

J. D. DAVISON

Try Smith's Barber Shop for good barber work. Ladies welcome. Next to Valdez.

## Fresh Oysters

DAILY Fruits and Vegetables in Season Reasonable Prices ROYAL FRUIT CO. Next to Western Union

Mrs. C. T. Rainer, of New York City, and Mrs. Dina Mossin, of Norway, spent Tuesday and Wednesday in the city, the guests of the Montezuma Hotel.

BUY — SELL — RENT Clean—Repair TYPEWRITERS H. S. POND Sanford Bank & Trust Company Phone 225

## TIRES

To fit any Job on earth PRICES that you can afford to pay. BALLOONS for all Cars.

RAY BROS.,

Phone 548—Sanford

## ...PRINCESS THEATRE...

We've Got the Pictures

MATINEE DAILY FROM 3:00 TO 4:15 Evening Continuous From 7:30

Wednesday and Thursday

Viola Dana and Raymond Griffith in "OPEN ALL NIGHT"

It's a Paramount Comedy. "One At a Time" Pathe Review. Matinee 10c, 20c. Evening 20c, 30c. Friday—"The Lone Wagon"

Try A Herald Want Ad For Results

## Cash! — Cash!

Closing Out Special Lines For Cash Friday and Saturday

- One lot Shaeffer Fountain Pens, values to \$5.00, for \$1.00 each.
- One lot Eversharp Pencils, values to \$1.75, for 50c each.
- One lot Water Jugs, values to \$1.50, for \$1.00 each.
- One lot light Cut Glass Tumblers, value \$2.00, for \$1.00 set.
- One lot light Cut Glass Sherbets, value \$3.00, for \$1.50 set.
- One lot Baby Plates, value \$1.00, for 50c each.
- One lot Glass Coasters, value \$1.50, for \$1.00 set.
- One lot Giant Alarm Clocks, value \$4.00, for \$2.00 each.
- One lot Mahogany Candle Sticks, value \$1.60, for \$2.00 pair.
- One lot Baudoir Lamps, value \$4.00, for \$2.50 each.

### McLaulin, The Jeweler

212 E. FIRST STREET — SANFORD

Try A Herald Want Ad For Results

## Clever Frocks

Are important to the well dressed woman



At Baumel's you will find the season's most successful model in Cloths and Silks. For daytime wear and afternoon, the frocks are exquisitely beautiful in their simplicity. Black, brown and navy are the featured colors. Priced reasonably.

\$19.75

TC

\$29.50

New Flannel Dresses at \$16.75 and \$19.76

## Practical Coats

For Constant Usage

These Coats are fashioned of sturdy materials that will withstand the hard usage of a practical Coat. Soft pile fabrics are used with plain collars or with smart, luxurious fur collars and cuffs. Blacks, tans, browns and greys predominate.

Pleasingly priced

\$19.75

TO

\$39.50



## BAUMEL'S SPECIALTY SHOP.

THE POST OFFICE IS NEXT DOOR TO US

# In the World of Sport

## PLANT CITY IS NEXT OPPONENT HIGH GRIDDERS

### Sanford High School Football Team Goes to Plant City Tomorrow for Game With Barchan's Team; Peck Will Be Absent from Line-up; Team for Most Part Better

With one and perhaps two of its star players absent from the line-up because of injuries received in the Bartow game last week, the Sanford High School football team will face the fast Plant City Grid aggregation at Plant City tomorrow afternoon.

The team headed by Coach H. H. Welch and Stines will depart tomorrow morning by automobile for the Hillborough town. A large crowd of rooters is expected to accompany the team.

Advance word has it that the local team is going to find a tough foe in the Plant City team. Joe Barchan, former "Gator" grid luminary and Duval and Gainesville High mentor, has turned out one of the best teams in the history of Plant City football, it is said.

Plant City has already played several games and has been returned winner in each contest. Whether the down state team will add Sanford High to its conquests remains to be seen. The local boys declare not while newspaper accounts from Plant City declare that the team there is equally determined.

Lee Peck, quarterback and captain of the local team will be unable to participate in tomorrow's contest. An injured ankle is the reason. Joe Meach, Sanford's husky fullback, and who was playing like a horse a few days ago, was injured, and is in the line-up but it has not been definitely decided as yet.

The line has been indented somewhat during this week. Good weather has enabled the coaches to get in some good practices which will enable the local boys to put a better working machine against Plant City than they were able to against Bartow.

Whitfield, the big 200-pound guard on the local team, is expected to be a tower of strength for the team in tomorrow's contest. The big lad played a nice game last Saturday, time and again throwing his huge body against the foe with unrelenting determination to catch the tide of defeat. Spectators on the sidelines had nothing but praise for this lad's performance.

The coaches have been working up the offensive play and also working on a defense against a forward passing, in which the Plant City team is said to excel. Altogether the team look much better than it did last week, was the comment of the mentor.

Doctor: Your wife suffers from insomnia? Are there any serious consequences?

## JOHN RED DAVIS SAYS SANFORD BOYS ARE GAME

### Team Was Just Inferior in Playing Ability and Not Fighting Ability Saturday

In reply to a statement in The Herald in regard to the Summerlin-Highland High School football game on last Saturday, John "Red" Davis, sports writer for the Lakeland Star Telegram, has the following to say:

### How Sanford Wins

"On the eve of this game in Bartow, Coach Hant, who is the author of the sports-maniac article was being pumped full of: 'Protest on this fellow, protest on that fellow' by people on the sidelines, arch enemies to Summerlin. In the face of this propaganda, Coach Hant goes back to Sanford and tells his people that Sanford has no cause to feel ashamed of its boys, for even though they were outwitted, and outplayed, they played until they had to be carried off the field."

Sanford's gritty fullback, Jim Meach, only a barefoot boy when I knew him in Sanford in 1915, playing until he could play no longer. He had to be hit so hard by Summerlin's players, that the star retired from pure exhaustion. Then there was a certain Peck, Sanford's great little quarterback, who had stood the attack, until he, like his running mate, was carried off the field injured.

Football, it was meted-out to me. "While all this was going on, Summerlin had been playing clean football, it was just the fate of the game, that an inferior team in playing ability, but not fighting ability, had run against a top-notch side. In football it is the case of a big team, out of equipment and in making the tackle. Tom later time, Sanford was hit hard, but still managed to hold the stars, each Sanford player came back for his own team like a little man. It was an uphill fight just as Coach Hant says. But down in Sanford, in the game against Bartow, they were not so good. And they were not so good."

construction, reconstruction, paving and re-paving to be done in compliance with plans, specifications, profiles and estimates of said proposed improvement of Katie Street from Sanford Avenue west to Park Avenue, now on file in the office of the City Manager of the City of Sanford, Florida, which said plans, specifications, profiles and estimates have been heretofore approved by the City Commission and constitute the plans and specifications for said work, therefore.

**BE IT RESOLVED,** That the City Commission of the City of Sanford, Florida, deems it advisable, as a necessary public improvement to pave, re-pave, hard surface and re-hard surface with sheet asphalt on a 6 inch rock base, Katie Street from Sanford Avenue west to Park Avenue, a width of 24 feet; that all of said paving, re-paving, hard surfacing and re-hard surfacing of Katie Street, as aforesaid, shall be done in strict compliance with the plans, specifications, profiles and estimates therefor, now on file in the office of the City Manager of the City of Sanford, Florida, which said plans, specifications, profiles and estimates have been heretofore approved by the City Commission and constitute the plans and specifications for said proposed improvement of Katie Street between Sanford Avenue and Park Avenue, a width of 24 feet, and this Commission hereby declares the necessity for paving, re-paving, hard surfacing and re-hard surfacing of said portion of Katie Street as aforesaid, as a necessary improvement.

**BE IT FURTHER RESOLVED,** That a total expenditure not exceeding Six Thousand Six Hundred and Seven (\$6607.00) Dollars is hereby authorized to cover the cost of paving, re-paving, hard surfacing and re-hard surfacing of Katie Street between Sanford Avenue and Park Avenue, a width of 24 feet, which said sum of Six Thousand Six Hundred and Seven (\$6607.00) Dollars is the total estimated cost of said improvement.

that the entire cost of the improvement aforesaid, shall be assessed against all property abutting and fronting upon that portion of Katie Street between Sanford Avenue and Park Avenue to be so improved by the paving, re-paving, hard surfacing and re-hard surfacing of said portion of Katie Street, a width of 24 feet, and against all lots and lands adjoining and contiguous or bounding and abutting upon said improvement; that Six Thousand Six Hundred and Seven (\$6607.00) Dollars is the total estimated cost of said contemplated improvement in the paving, re-paving, hard surfacing and re-hard surfacing of said portion of Katie Street, to be specially assessed against all lots and lands adjoining and contiguous or bounding and abutting upon said improvement; the sum of \$4,2667 is the estimated cost per front foot for said improvement.

**BE IT FURTHER RESOLVED,** That it is the determination of this Commission that all lots and lands adjoining and contiguous or bounding and abutting upon Katie Street between Sanford Avenue and Park Avenue will be benefited by the improvement provided for by this resolution, and that the special assessments to be made and entered against all lots and lands adjoining and contiguous or bounding and abutting upon such contemplated improvement shall be made upon a frontage basis; that is to say, that in the preparation of the special assessment roll covering the contemplated improvement, such special assessments shall be determined and prorated according to the frontage of the respective properties specially benefited by said improvement.

**BE IT FURTHER RESOLVED,** That the Tax Assessor and the City Clerk of the City of Sanford, Florida, in accordance with the provisions of Sections 101 and 102 of the Charter of the City of Sanford, Florida, shall proceed without delay to make a special assessment roll, assessing the special benefits

to be received as the result of the improvement contemplated against all lots and lands adjoining and contiguous or bounding and abutting, such improvement, and upon the completion of said assessment roll to cause a copy thereof to be published two times consecutively, once each week, in a newspaper published in Sanford, Florida, attaching to said special assessment roll so published a notice directed to all property owners interested in said special assessments, stating in accordance with the provisions of the Charter of the City of Sanford, Florida, a definite time and place where complaints will be heard and when said special assessment roll will be finally confirmed by the City Commission sitting as an Equalizing Board.

**BE IT FURTHER RESOLVED,** That the special assessments provided for by this resolution to be made and entered against the property bounding and abutting upon said improvement shall be payable at the option of the property owners owning property bounding and abutting upon such improvement as follows: either in full within thirty days after said assessments shall stand equalized, approved and confirmed, or in ten equal annual installments with interest at the rate of eight per cent. per annum upon all deferred payments from and after the time said special assessments shall be and stand finally equalized, approved and confirmed, and.

**BE IT FURTHER RESOLVED,** That this resolution shall be and become effective immediately from and after its passage and adoption.

Adopted this 13 day of October, A. D. 1924.  
FORREST LAKE,  
S. O. CHASE,  
C. J. MARSHALL,  
As the City Commission of the City of Sanford, Florida.  
Attest: (Seal)  
L. R. PHILLIPS, City Clerk.

## BOYS

Get in touch with those interested in having experience in ring work. We want five good line-ups. See W. G. L. Earnest, 122 Palmetto Avenue.

## RESOLUTION NO. 183

**RESOLUTION PROVIDING FOR THE PAVING, RE-PAVING, HARD SURFACING AND RE-HARD SURFACING OF KATIE STREET FROM SANFORD AVENUE WEST TO PARK AVENUE, A WIDTH OF 24 FEET.**

Whereas the City Commission of the City of Sanford, Florida, deems it advisable, as a necessary public improvement to pave, re-pave, hard surface and re-hard surface with sheet asphalt on a 6 inch rock base, Katie Street from Sanford Avenue west to Park Avenue, a width of 24 feet, and this Commission hereby declares the necessity for paving, re-paving, hard surfacing and re-hard surfacing of said portion of Katie Street as aforesaid, as a necessary improvement.

**BE IT RESOLVED,** That a total expenditure not exceeding Six Thousand Six Hundred and Seven (\$6607.00) Dollars is hereby authorized to cover the cost of paving, re-paving, hard surfacing and re-hard surfacing of Katie Street between Sanford Avenue and Park Avenue, a width of 24 feet, which said sum of Six Thousand Six Hundred and Seven (\$6607.00) Dollars is the total estimated cost of said improvement.

## Who Wants to Be President?



Certainly little Billy Craig of New York doesn't. Billy is the mascot of the New York Giants, who have just won the fourth straight pennant, setting a new record. Billy knows all the players by their first names, gets to sit on the bench with McGraw, and doesn't have to pay a cent to see the big leaguers perform. Say, what's being president to a job like this, huh? Billy is posing with Jimmy O'Connell.

A pointer on tobacco:



If packed in tins

it would cost 5¢ more

but —

packed simply in heavy foil

it costs only 10¢



# Granger Rough Cut

—made and cut exclusively for pipes

LIGGETT & MYERS TOBACCO CO.

## TIRE SPECIAL!

FIRESTONE UTILITY CORDS

30 x 3 1/2	\$ 6.95
32 x 4	\$15.75
33 x 4	\$16.25

Note—New Essex 6 and others with 31-4 Rims Firestone Gum-Dipped Cords give you 20,000 miles on these cars.

Ray Bros.

WEST FIRST STREET

SANFORD, FLA.

# The new STUDEBAKER DUPL

—two cars in

For the first time an open and closed combined at strictly open car price

This combination of features found in no other car:

The New Duplex-Phaeton Body—it solves the closed-open car problem.

Genuine Balloon Tires—20 x 6.20 inches.

New Satin-Lacquer Finish.

Spanish chrome tanned leather upholstery.

New idea in ease of operation and control.

Vibrationless Engine; forced-circling system with new idea in oil supply.

Four-Wheel Hydraulic Brakes optional—totally unlike any other system on American cars. Automatic braking pressure.

Special Six DUPLIX-PHAETON \$1495

**AT LAST—THE DUPLIX!**  
An entirely new-type car created by Studebaker. By simply drawing down the roller side enclosures, it may be changed from an open car to an enclosed car in thirty seconds.

For the first time in history, a car which completely meets the requirements of year round motoring.

Use it rain or shine, winter or summer, twelve months in the year. It is like owning two cars!

And the price is no higher than the old-time open car.

Framed and shaped in steel, the upper section of the Duplex body is built integral with the lower part. Thus its beauty is permanent like that of a closed car.

Its long, low sweeping lines—

deeply crowned fenders and hood and radiator—harmonize. For its design and built Studebaker.

And with this design have Studebaker motor-unity which means an effortless operation—gear shifting—power-velvet clutch action and steering.

In addition there is of improvements and that brings a new sensation to motoring.

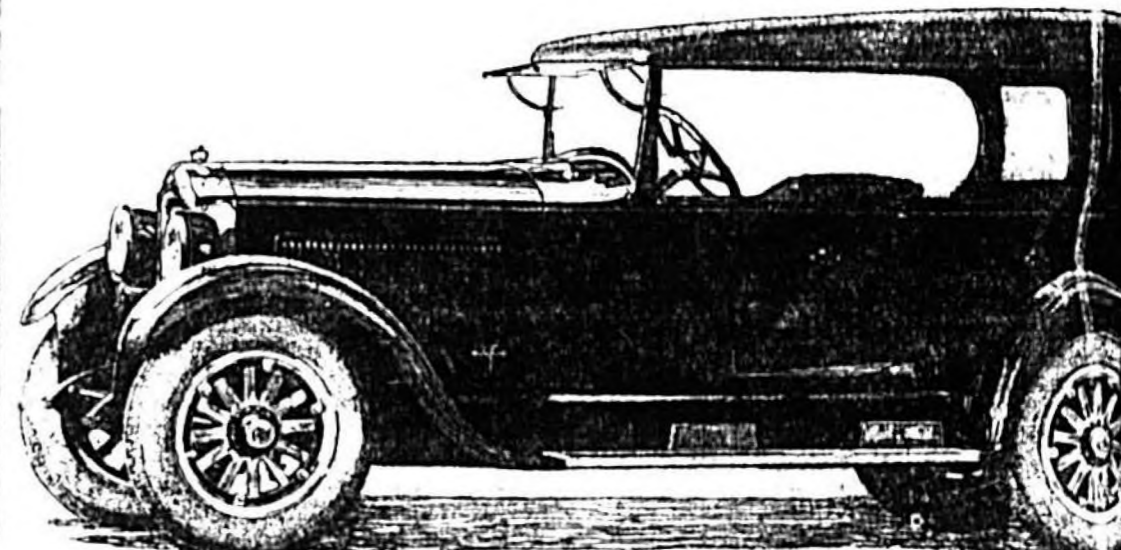
The Duplex model is available from no other Studebaker.

Come in and inspect Studebaker. See the opponent in motor cars.

STANDARD SIX	SPECIAL SIX	DUPLIX
113 in. W. B. 50 H. P.	120 in. W. B. 65 H. P.	122 in. W. B. 65 H. P.
5-Pass. Duplex-Phaeton \$1145	5-Pass. Duplex-Phaeton \$1495	7-Pass. Duplex-Phaeton \$1745
3-Pass. Duplex-Roadster 1125	3-Pass. Duplex-Roadster 1450	5-Pass. Coupe 1495
3-Pass. Coupe-Roadster 1195	4-Pass. Victoria 2050	5-Pass. Sedan 1505
5-Pass. Coupe 1495	5-Pass. Sedan 2150	5-Pass. Berline 1650
5-Pass. Sedan 1505	5-Pass. Berline 2225	4-wheel brakes, 4 disc wheels, \$60 extra
5-Pass. Berline 1650	5-Pass. Berline 2225	4-wheel brakes, 5 disc wheels, \$75 extra

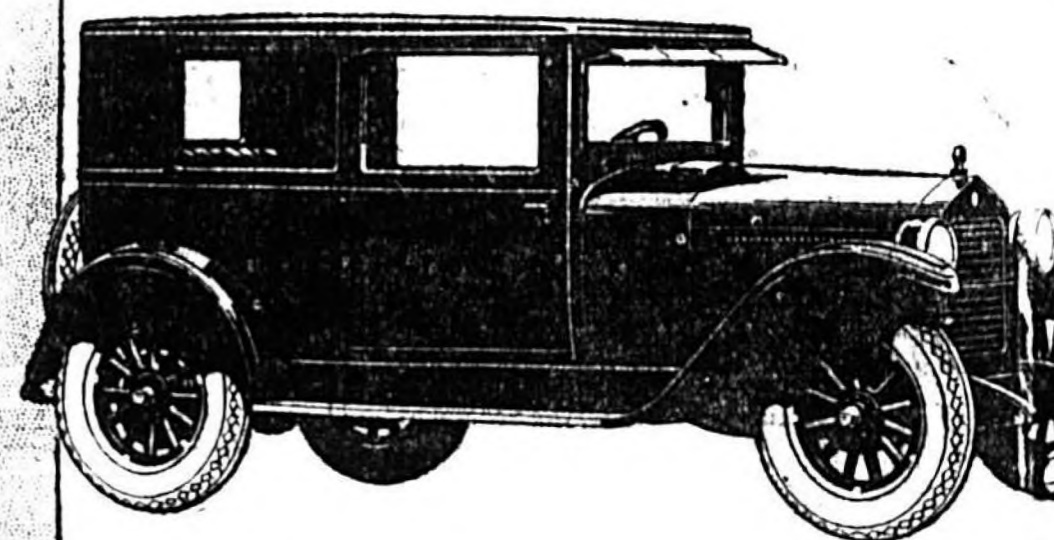
(All prices f. o. b. U. S. factories, and subject to change without notice.)

## SAN JUAN GARAGE CO



THIS IS A STUDEBAKER

Would You Save \$300 to \$400?  
—then Ride in This  
**ESSEX SIX**



It provides every comfort—every driving satisfaction. Its vibrationless motor, built on the famous Super-Six principle, means longer car life and greater riding comfort.

Thousands of former larger car owners recognize the wisdom of driving today's Essex Six. It saves \$300 to \$400 in purchase cost.

**Hudson Builds the Essex**  
**This Essex Six \$1000**

TOURING CAR \$900  
Freight and Tax Extra  
Balloon Tires Standard Equipment

SEMINOLE HUDSON-ESSEX CO.

Friendship, Goodwill, Confidence Are Expressed in These Want Ads

Classified Directory

Advertisement rates and terms for various categories including Real Estate, Lost and Found, and Help Wanted.

Lost and Found

FOUND—In front of Post Office. One pair tortoise rimmed glasses. Owner may have same by calling at Herald office...

Advertising

TAMPA MORNING TRIBUNE—Send in your subscription to the Tribune or hand it to your local dealer so you can read Florida's greatest newspaper...

Sanford Forum

(Continued from Page 4) DEMOCRATIS. (6) Affirms adherence to constitutional guarantees of religious tolerance. No mention of Klan. Clear evasion. PROGRESSIVE. (6) No mention...

Help Wanted

HELP FEMALE. Earn money weekly, spare time, addressing music circulars. Send 10c for music information. American Music Co., 1658 Broadway, Dept. Z, 87, New York.

Used Cars

EIGHT CYLINDER model 45, 7 passenger Oldsmobile in good condition. Very low price. Feltons Service Station, 1st and Elm. Phone 447L3.

Houses For Sale

FOR SALE—Large, roomy bungalow. Completely furnished with up-to-date furniture. This house was built for a home. Located on Magnolia Ave. between Twelfth and Thirteenth Streets...

Rooms For Rent

FOR RENT—2 or 3 rooms, 1st and 2nd floor. No objection to small children. 110 W. 3rd St. FOR RENT—2 very desirable furnished bed rooms. Apply 217 East Third Street...

Miscellaneous For Sale

SALE ON COOK STOVES From \$2.00 to \$10.00 saved on any cook stove bought for cash up till November 1st. Also save you money on heaters, both oil and wood. All new stock.

Wanted

WANTED—Customers to try our prompt service. The Matthews Press, Welaka Bldg. WANTED—Few private lessons in shorthand and touch system (typing). Address Box 236, or phone 306-W.

Waiting To Help You

There are very few persons who doubt the power of the little Herald Classified Ads. But those individuals who are skeptical of their value have only to watch other users profit in order to become convinced.

WRECKER

Advertisement for a wrecker service, offering day trips to any point.

WRECKER

Advertisement for a wrecker service, offering day trips to any point.

WRECKER

Advertisement for a wrecker service, offering day trips to any point.

WRECKER

Advertisement for a wrecker service, offering day trips to any point.

WRECKER

Advertisement for a wrecker service, offering day trips to any point.

WRECKER

Advertisement for a wrecker service, offering day trips to any point.

WRECKER

Advertisement for a wrecker service, offering day trips to any point.

WRECKER

Advertisement for a wrecker service, offering day trips to any point.

HERALD Classified Ads. ALWAYS THE SAME—IN SERVICE. ALWAYS DIFFERENT—IN OPPORTUNITY. By GEORGE McMANUS.