



UNITED STATES ARMY ACTIVITIES AS SEEN BY GENERAL PERSHING

By General John J. Pershing. The two great civilian components of the Army of the United States, as created by the National Defense Act of 1920, are the National Guard and Organized Reserves. These are the second and third lines—and the bulk of our defenses. The Organized Reserves with the Officers' Reserve Corps and the Enlisted Reserve Corps are new. In a sense even the National Guard as it exists today is new. The World War changed its character.

The National Guard is now organized into eighteen infantry divisions, four Cavalry divisions and certain additional companies still Coast Artillery. The Guard still has its dual capacity—belonging to the state normally and to the National Government only in abnormal times or emergencies. The World War was the last of these. Because of its organization, the National Guard will be capable of real and almost immediate national use when needed. It was never more efficient than at present and never such a strong element of national defense, as it is today.

The present aggregate strength of the National Guard is 160,636 officers and men. More than 100,000 of these will spend two weeks in field training this summer. The Regular Army assigns officers and enlisted men to the National Guard as instructor-officers. Before the World War these usually acted in their instructor capacity. Now they are acting mostly as instructors. The relations between the Regular Army and the National Guard are most harmonious and helpful to both.

The National Guard will devote its attention this summer, as during the last three, to the training of small units. Such training is basic and must needs be thorough. There will be no training of units larger than the battalion. The National Guard training system is progressive, beginning with the individual and going up through the squad, section, platoon and company to the battalion. Every effort is made to accomplish as much training as possible during the winter months, in order that the two weeks in camp may be given over to field exercises. This avoids duplication, wastes time and means a general speeding up of training. Target practice was completed by most units during the spring. These will no need to spend any part of their valuable time in the field on this time-consuming essential.

one Reserve regiment of each appropriate branch will be utilized at a Citizen's Military Training Camp in each of the nine corps areas. The first week will consist of a refresher course, and the second will be devoted to the actual work of inducing our boys into organizations and giving them preliminary instruction.

The Organized Reserves have been formed into the skeletons of twenty-seven Infantry and six Cavalry divisions and in addition have been assigned most of the corps organizations. Together with the Regular Army and the National Guard a major emergency would call forth.

The reserve organizations have been distributed over the United States according to population. They exist today only in skeleton form with the officers, and in a few instances, the noncommissioned officers assigned. The full enlisted strength will have to be inducted into the service and trained after the emergency is upon us, the young men of each community rallying to the organization allocated to their neighborhood.

There is difference between the Reserve Officers' Corps and the organized Reserves, which is not generally understood. The Reserve Officers' Corps is a great pool which in an emergency will supply officers to the Regular Army and National Guard as well as to the Organized Reserves. Some of these officers are now assigned to Regular Army and National Guard units. The Enlisted Reserve Corps will be a similar pool when it is developed.

Approximately 17,000 Reserve officers, or approximately one-sixth of the total number will receive two weeks of training this summer. Still another method will be that of local unit and combined unit camps. At first the Reserve officers and enlisted men of a regiment or smaller organization will assemble for practical study and tactical exercises. At the combined camps several units of different arms will join together for tactical training. In most instances these will be Infantry and Artillery organizations. They must work in the closest liaison.

Jacksonville—Peninsular Lumber company building finest lumber and building materials yard in Florida.

Fort Pierce—Bids requested for constructing all roads and bridges included in the \$845,000 bond issue project.

IN THE CIRCUIT COURT OF THE SEVENTH JUDICIAL CIRCUIT OF FLORIDA, IN AND FOR SEMINOLE COUNTY, IN CHANCERY.

WILLIAM G. AUDENRIED, et al. vs. J. W. CALPENTHER, et al. Citation to J. W. Carpenter and wife, M. P. Calpenter, et al.

IN THE CIRCUIT COURT OF THE SEVENTH JUDICIAL CIRCUIT OF FLORIDA, IN AND FOR SEMINOLE COUNTY, IN CHANCERY.

WILLIAM G. AUDENRIED, et al. vs. J. W. CALPENTHER, et al. Citation to J. W. Carpenter and wife, M. P. Calpenter, et al.

IN THE CIRCUIT COURT OF THE SEVENTH JUDICIAL CIRCUIT OF FLORIDA, IN AND FOR SEMINOLE COUNTY, IN CHANCERY.

WILLIAM G. AUDENRIED, et al. vs. J. W. CALPENTHER, et al. Citation to J. W. Carpenter and wife, M. P. Calpenter, et al.

IN THE CIRCUIT COURT OF THE SEVENTH JUDICIAL CIRCUIT OF FLORIDA, IN AND FOR SEMINOLE COUNTY, IN CHANCERY.

WILLIAM G. AUDENRIED, et al. vs. J. W. CALPENTHER, et al. Citation to J. W. Carpenter and wife, M. P. Calpenter, et al.

and P. 1-2 of SW 1-4 Sec. Thirty-four (34) Township Twenty (20) South, Range Twenty-nine East.

IN THE CIRCUIT COURT OF THE SEVENTH JUDICIAL CIRCUIT OF FLORIDA, IN AND FOR SEMINOLE COUNTY, IN CHANCERY.

WILLIAM G. AUDENRIED, et al. vs. J. W. CALPENTHER, et al. Citation to J. W. Carpenter and wife, M. P. Calpenter, et al.

IN THE CIRCUIT COURT OF THE SEVENTH JUDICIAL CIRCUIT OF FLORIDA, IN AND FOR SEMINOLE COUNTY, IN CHANCERY.

WILLIAM G. AUDENRIED, et al. vs. J. W. CALPENTHER, et al. Citation to J. W. Carpenter and wife, M. P. Calpenter, et al.

IN THE CIRCUIT COURT OF THE SEVENTH JUDICIAL CIRCUIT OF FLORIDA, IN AND FOR SEMINOLE COUNTY, IN CHANCERY.

WILLIAM G. AUDENRIED, et al. vs. J. W. CALPENTHER, et al. Citation to J. W. Carpenter and wife, M. P. Calpenter, et al.

IN THE CIRCUIT COURT OF THE SEVENTH JUDICIAL CIRCUIT OF FLORIDA, IN AND FOR SEMINOLE COUNTY, IN CHANCERY.

WILLIAM G. AUDENRIED, et al. vs. J. W. CALPENTHER, et al. Citation to J. W. Carpenter and wife, M. P. Calpenter, et al.

Admitted: Louise M. A. u d enried; Anna P. Audenried and Margaret W. Ramsey; and each and every of the above named defendants, if living; and if either, any or all of said defendants be dead, to all parties claiming interests under the following deceased defendants, to-wit: William G. Audenried and wife; Emma A. Audenried; Mary W. Audenried; Louise M. Audenried; Anna P. Audenried; and Margaret W. Ramsey; to all parties claiming interests under Michael Dwyer, deceased; George C. Bradley, deceased; Nicholas Wassiliou, deceased; and Robert H. Ramsey, deceased; or otherwise, in and to the following described lands, situate, lying and being in the City of Sanford, County of Seminole and State of Florida more particularly described as follows to-wit:

IN THE CIRCUIT COURT OF THE SEVENTH JUDICIAL CIRCUIT OF FLORIDA, IN AND FOR SEMINOLE COUNTY, IN CHANCERY.

WILLIAM G. AUDENRIED, et al. vs. J. W. CALPENTHER, et al. Citation to J. W. Carpenter and wife, M. P. Calpenter, et al.

IN THE CIRCUIT COURT OF THE SEVENTH JUDICIAL CIRCUIT OF FLORIDA, IN AND FOR SEMINOLE COUNTY, IN CHANCERY.

WILLIAM G. AUDENRIED, et al. vs. J. W. CALPENTHER, et al. Citation to J. W. Carpenter and wife, M. P. Calpenter, et al.

IN THE CIRCUIT COURT OF THE SEVENTH JUDICIAL CIRCUIT OF FLORIDA, IN AND FOR SEMINOLE COUNTY, IN CHANCERY.

WILLIAM G. AUDENRIED, et al. vs. J. W. CALPENTHER, et al. Citation to J. W. Carpenter and wife, M. P. Calpenter, et al.

IN THE CIRCUIT COURT OF THE SEVENTH JUDICIAL CIRCUIT OF FLORIDA, IN AND FOR SEMINOLE COUNTY, IN CHANCERY.

WILLIAM G. AUDENRIED, et al. vs. J. W. CALPENTHER, et al. Citation to J. W. Carpenter and wife, M. P. Calpenter, et al.

Lot Fifteen (15), Sixteen (16), Seventeen (17) Highway (14), Nineteen (19), and Twenty (20) of Block 2, on page 21, of the public records of Seminole County, Florida; also

IN THE CIRCUIT COURT OF THE SEVENTH JUDICIAL CIRCUIT OF FLORIDA, IN AND FOR SEMINOLE COUNTY, IN CHANCERY.

WILLIAM G. AUDENRIED, et al. vs. J. W. CALPENTHER, et al. Citation to J. W. Carpenter and wife, M. P. Calpenter, et al.

IN THE CIRCUIT COURT OF THE SEVENTH JUDICIAL CIRCUIT OF FLORIDA, IN AND FOR SEMINOLE COUNTY, IN CHANCERY.

WILLIAM G. AUDENRIED, et al. vs. J. W. CALPENTHER, et al. Citation to J. W. Carpenter and wife, M. P. Calpenter, et al.

IN THE CIRCUIT COURT OF THE SEVENTH JUDICIAL CIRCUIT OF FLORIDA, IN AND FOR SEMINOLE COUNTY, IN CHANCERY.

WILLIAM G. AUDENRIED, et al. vs. J. W. CALPENTHER, et al. Citation to J. W. Carpenter and wife, M. P. Calpenter, et al.

IN THE CIRCUIT COURT OF THE SEVENTH JUDICIAL CIRCUIT OF FLORIDA, IN AND FOR SEMINOLE COUNTY, IN CHANCERY.

WILLIAM G. AUDENRIED, et al. vs. J. W. CALPENTHER, et al. Citation to J. W. Carpenter and wife, M. P. Calpenter, et al.

less the East 40 feet for street purposes. Containing 2.5 acres, more or less, and also

IN THE CIRCUIT COURT OF THE SEVENTH JUDICIAL CIRCUIT OF FLORIDA, IN AND FOR SEMINOLE COUNTY, IN CHANCERY.

WILLIAM G. AUDENRIED, et al. vs. J. W. CALPENTHER, et al. Citation to J. W. Carpenter and wife, M. P. Calpenter, et al.

IN THE CIRCUIT COURT OF THE SEVENTH JUDICIAL CIRCUIT OF FLORIDA, IN AND FOR SEMINOLE COUNTY, IN CHANCERY.

WILLIAM G. AUDENRIED, et al. vs. J. W. CALPENTHER, et al. Citation to J. W. Carpenter and wife, M. P. Calpenter, et al.

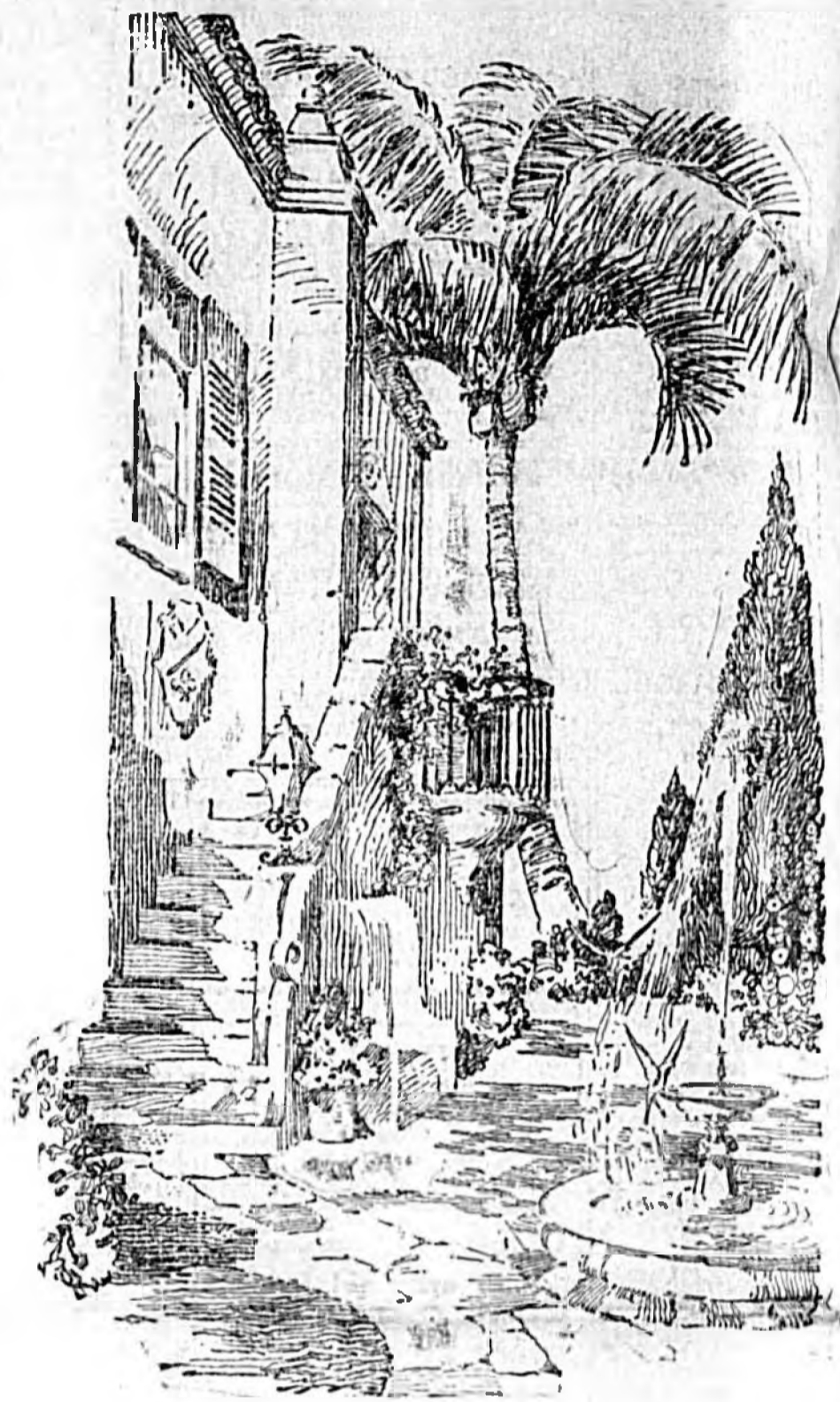
IN THE CIRCUIT COURT OF THE SEVENTH JUDICIAL CIRCUIT OF FLORIDA, IN AND FOR SEMINOLE COUNTY, IN CHANCERY.

WILLIAM G. AUDENRIED, et al. vs. J. W. CALPENTHER, et al. Citation to J. W. Carpenter and wife, M. P. Calpenter, et al.

IN THE CIRCUIT COURT OF THE SEVENTH JUDICIAL CIRCUIT OF FLORIDA, IN AND FOR SEMINOLE COUNTY, IN CHANCERY.

WILLIAM G. AUDENRIED, et al. vs. J. W. CALPENTHER, et al. Citation to J. W. Carpenter and wife, M. P. Calpenter, et al.

MIAMI SHORES



Six-Month Building Plans Reach \$27,526,799 Total

Table showing building plans for Miami Beach and Miami, totaling \$27,526,799.

There you are again!

"New Building Records Set Up"—and still some folks stand by in amazement and wonder what it is all about.

The folks who by their faith and business acumen are establishing through their composite efforts such staggering figures as the above have done it without careful analytical appraisal. Millions are not thrown away promiscuously, even in this Magic City, but have you ever stopped to think what the spending of these millions mean to you and to your modest investment.

If you are in a position financially to make an investment in the greater Miami District, the above records should remove definitely any doubt in your mind, and if you will take time to investi-

gate, you will soon realize that even this great building program will not begin to take care of the needs of Miami this winter.

All you have to do as a thinking man or woman is to take time to see the entire Greater Miami District—study carefully the natural trend of its development.

AND REMEMBER that at all times Biscayne Bay is the greatest arbiter of values, and that the main highways into Miami are the next greatest arbiters of values. If location means anything to you when deciding upon an investment—all we ask is that you see everything else first, then see MIAMI SHORES and the location of your investment will be settled.

MIAMI SHORES

Be our guest on a free inspection trip to Miami Shores. Make reservations today.

America's Mediterranean

Britt-Chittenden Realty Co.

210 E. First St., Sanford.

Wright, Warlow and Company

Are Now Receiving Application For

First Mortgage Loans

on improved Business and Residential Property in Sanford

Funds immediately available subject to title examination.

APPLICATIONS FOR APPRAISALS

SEE

DuBOISE AND HOLLER

112 Park Avenue

Structure Of Agricultural Distribution Depends On Quality Asserts Rhodes

DELAND, July 20.—The whole structure of agricultural distribution depends on quality and quantity of the products...

thing freshish. It is farmers applying their own sense to their own business for their own mutual benefit. It should be grown, raised and grown controlled...

Sanford St. Pete... PLAYS... Free! Free! Free! Baseball Ticket

HELP THE HOME TEAM TO WIN Attend The St. Petersburg Series. And star yourself on the goad to independence by making some real investments in Sanford dirt through Britt-Chittenden Realty Co., Inc.

FREE TICKETS READ THESE ADS

Monday, Tuesday and Wednesday July 20, 21, 22 These ads contain mispelled words or unnecessary letters which spell the name of a Sanford Baseball player...

FREE TICKETS READ THESE ADS. The Wise Are Making Their Trades Through Us RU Wise ...? Britt-Chittenden Realty Co.

PIGGLY WIGGLY Service With a Smile Dimple Times and Times and Proven their Superior Quality in Sanford Service...

Fellows Service Station For Quick, Courteous Service REMEMBER Service With a Smile...

Are You Saving for That Vacation? You Have Promised Yourself This Summer or Fall? A VACATION ACCOUNT IN THIS BANK WILL FINANCE YOU. SANFORD BANK & TRUST CO.

Before and After The Games Meet Your Friends at Laney's Fountain MODERN CHOICE REPAIRING

Routh's BAKERY AND DELICATESSEN Baked Ham—Baked Beans Fancy Cheese Bread, Cakes and Pie Hot Rolls, 11 a.m. and 4 p.m.

HOT CRISPY WAFFLES "The Kind That Melt in Your Mouth" BELL CAFE We have installed new electric waffle irons...

Millinery... For every Occasion ULTRA STYLES With Quality THE QUALITY SHOP

560 PHONE US YOUR PRESSING NEEDS SANFORD STEAM PRESSERY (Under New Management) This well established pressing Shop begs to announce...

The Basket Shops McCULLER GROCERY CO. Phone 671 671 Our patrons find it a pleasure to do their marketing here...

"Properties of Merit" BELL-AIR THE MAGAZINE FOR YOUR HOME Farring Information, Special Articles, Interesting Stories...

Chero-Cola The Refreshing Drink At the Ball Games "Think of it When Thirsty" "There's None So Good." Sanford Chero-Cola Bottling Co.

Hardware Headquarters SUMMER-TIME NECESSITIES Ice Cream Freezers Ice Chests Ice Picks Water Coolers Ice Shavers RODS REELS BAITES

Lee Bros. Market (At the Basket) Florida Trucker THE MAGAZINE FOR YOUR HOME Farring Information, Special Articles, Interesting Stories...

BODWELL REALTY CO., Inc. 214 East First Street

PINEHURST SWEET MILK Which stands the test of time. Every drop available food. Visitors always welcome. Come and see for yourself. PINEHURST DAIRY Phone 322-J

This Is Home To The Sanford Call Club Read These Sanford Ball Players Find the name of the Sanford Ball Player All ladies who play the concealed name will be given series tickets to the games. Lincoln Hotel Weekly Rates Phone 131

FIND THE NAME OF A SANFORD BALL PLAYER IN THESE ADS

Beach Property IS SCARCE AND GETTING SCARCE ALL THE TIME NOW IS THE TIME TO GET IN ON GROUND FLOOR

New Smyrna Beach For Further Information. Call at Montezuma Hotel. H. B. SCHULTE REALTY CO., Inc. MAKI. RESERVATION EARLY

Beach Property IS SCARCE AND GETTING SCARCE ALL THE TIME NOW IS THE TIME TO GET IN ON GROUND FLOOR

Advertisements tell you what the chance of business is doing for you. The Wise Are Making Their Trades Through Us RU Wise ...? Britt-Chittenden Realty Co.

CONCLUSION HAS TO STAY ENTENTISTS SAY Dr. Cole called attention to the fact that man closely resembles certain members of the animal world...

DARROW CITED FOR CONCEPT IN "APE" TRIAL "We plan to give special attention to marketing problems at Farmers' Market...

A Lot Bargain! Lot in Rose Court. Excellent location, southern exposure. Price \$1500.00. Lake Monroe Realty Co. 605 First National Bank Bldg.

Easy Terms Act Quick If Interested Standard Coastwise Passenger and Fast Freight Routes

SALES FORCE: W. C. Coleman, R. L. Grier, W. A. Adams

BRIAND WILL GET GERMAN NOTE ON SECURITY VIEWS

PARIS, July 20.—Germany's note on the subject of security will be delivered to Foreign Minister Briand Monday afternoon at 5 o'clock...

REX, THE WONDER DOG AT THE MILANE THEATRE

REX, the wonder dog, will appear in "The Black Cyclone" at the Milano Theatre, both matinee and night, today and Tuesday...

Miss Rogers Gained 15 Pounds in 6 Weeks Skinny Men and Women Gain Pounds in 30 Days or Money Back

NEW YORK Sea Trip Delightful Standard Coastwise Passenger and Fast Freight Routes

NEW YORK Sea Trip Delightful Standard Coastwise Passenger and Fast Freight Routes

NEW YORK Sea Trip Delightful Standard Coastwise Passenger and Fast Freight Routes

NEW YORK Sea Trip Delightful Standard Coastwise Passenger and Fast Freight Routes

Ordinance No. 97 AN ORDINANCE IMPOSING AN OCCUPATIONAL TAX FOR THE RECRUITING OF LABOR IN THE CITY OF SANFORD, FLORIDA.

Section 1. That no person, firm or corporation shall engage in, or manage, or conduct the business of an employment bureau or agency...

Ordinance No. 96 AN ORDINANCE PROVIDING FOR THE VACATING AND CLOSING OF THAT CERTAIN ALLEY RUNNING EAST AND WEST THROUGH A PORTION OF BLOCK TWO, TIER ONE, ACCORDING TO E. R. THAPFORD'S MAP OF SANFORD, FLORIDA.

Section 1. That that certain alley running East and West through a portion of Block Two (2), Tier One (1), according to E. R. Thapford's Map of Sanford, Florida...

For Rent! Brick building, 25x50, suitable for bottling works, candy or preserving factory. Box 468, Sanford, Fla.

Railroad Construction an Index to Florida's Progress RAILROAD construction in Florida on a major scale is not only an indication of the remarkable growth of the state...

ASSOCIATED DAILIES OF FLORIDA A cooperating group of the leading daily newspapers of the state

Clearwater Sun Daytona Journal Deland News Evansville Register Fort Myers Post Gainesville Sun Jacksonville Journal Jacksonville Times-Union Lakeland Ledger Miami Herald Miami Daily News Orlando Reporter-Palm Beach Post Palm Beach Post Panama City News-Paper St. Petersburg Independent St. Petersburg Times Tampa Times Winter Haven Chief

This advertisement, prepared by the Leisan-Carr Advertising Agency, is one of a series now appearing in advertising trade publications...

LIST YOUR Acreage in Country Places

with us. We have substantial buyers for any thing worth the money. Write, Phone, Wire or Call on THE MAITLAND REALTY CO., Inc. REALTORS Maitland, Orange County, Florida. Members Orlando Realty Board.

For Rent Ten Acre Celery Farm—Close to New Hotel E. F. LANE REALTOR Rooms 501-502. Phone 95 First National Bank Building. SALES FORCE M. M. STEWART DOUGLAS KING

Four Steamers a Week from Jacksonville TRIPS by SEA SUMMER EXCURSION FARES Round Trip Jacksonville to Baltimore \$49.64; to Philadelphia \$55.00; to Boston \$72.18...

For Rent! Brick building, 25x50, suitable for bottling works, candy or preserving factory. Box 468, Sanford, Fla.

Railroad Construction an Index to Florida's Progress RAILROAD construction in Florida on a major scale is not only an indication of the remarkable growth of the state...

ASSOCIATED DAILIES OF FLORIDA A cooperating group of the leading daily newspapers of the state

This advertisement, prepared by the Leisan-Carr Advertising Agency, is one of a series now appearing in advertising trade publications...



# The Social Side of Sanford

PHONE:—Office 148 MISS KATHRYN WILKEY, Society Editor. TELEPHONE:—Res. 428-J.

## Social Calendar

**Monday**  
Welchell will enter Monday night contest Eloise Brady of C.

**Tuesday**  
The Mallory Circle at the home of Mrs. A. Tuesday afternoon at 6 o'clock.

**Wednesday**  
The Wesley Class social meeting at 8 o'clock. Tuesday evening attending will leave at 6 o'clock.

**Thursday**  
Prayer meeting of Church will be held at home of Mrs. R. A. Teronilla Avenue, Wednesday at 8 o'clock.

**Friday**  
Temperance meeting on Friday.

## Personal

Mrs. George Saunders has returned from a brief visit to Jacksonville.

Mr. and Mrs. Cecil Frisbie spent the week-end pleasantly at Daytona Beach.

Claude Ogilvie of Fort Myers spent the past week end in Sanford with friends.

Mr. and Mrs. P. M. King and children spent yesterday pleasantly at Coronado Beach.

Miss Hilda Butler has as her guests Misses Naomi and Verla Wright of Lakeland.

Mrs. R. A. Newman and Mr. and Mrs. W. C. Hill left Saturday for Georgia in their car.

Mrs. W. B. Zachary and little son, Billy left Saturday for Jacksonville to spend several days.

Mrs. W. P. Fields and daughter, Miss Louise Fields are spending the week with friends in Daytona.

Sheriff Frank Kerell, Mrs. Kerell and son of Orlando were the guests of Mr. and Mrs. J. H. Wynn Sunday.

Dr. W. T. Langley, Miss Edith Teague and Ned Chittenden left Saturday to spend a short time in Alabama.

Miss Jessie Allen arrived Sunday night from Saratoga to be the guest of her sister, Mrs. Craig Thompson.

Mr. and Mrs. O. H. Hill of Bradenton were the week-end guests of Mrs. Hill's parents, Mr. and Mrs. T. B. Smith.

Miss Josephine Knight returned last week from Daytona Beach where she has been spending several weeks.

Mr. and Mrs. R. E. Pippin of Midland City, Ala., arrived Sunday to be the guests of Mr. and Mrs. L. H. Echols.

Miss Katherine Teague of Orlando spent the week end in Sanford, as the guest of her sister, Mrs. Edmund Meisch.

Mr. and Mrs. Shinholser and daughter Miss Lillian Shinholser left Sunday to spend several weeks in Macon, Ga.

Miss Patty Lyles returned Sunday afternoon from Philadelphia, where she has been in training to become a nurse.

Mr. and Mrs. J. E. Baker and baby and Mr. and Mrs. Leslie Went and Dr. Anna Call motored to Daytona Beach.

Joe Gonzalez of Ft. Lauderdale spent the past week-end here as the guest of his parents, Mr. and Mrs. F. J. Gonzalez.

Mrs. W. M. Thippen is spending a few days in Douglas, Ga., where she went to attend the marriage of Miss Helen Shelton.

Mrs. F. L. Crosby leaves today for Syracuse and Jamestown, N. Y., where she will be the guest of friends and relatives.

## She's to Marry German

Miss Louisa Fletcher, 22 of Indianapolis, is engaged to Ernest Von Schmettow of Berlin. When news dispatches bore news of the romance to this country, her father, Stoughton A. Fletcher, retired banker, at once cabled his consent to the match.

Mrs. L. P. Hagan, Miss Lena Bell Hagan and Miss Lucille Dutton of DeLand will leave Tuesday for Hendersonville, N. C.

Miss Elizabeth Irby of Anthony left for her home Sunday after spending some time here as the guest of Miss Sara Lou Priest.

Mr. and Mrs. Claude Hinchliff were called to Manchester, Ga., last week on account of the illness of Mr. Hinchliff's father.

Clifford Trombley returned last week from Palatka where he spent several days. Ed. Carpenter, of DeLand accompanied him home.

Mr. and Mrs. H. L. Gibson left Sunday in their car for points in the north and south Carolina. They will be gone about two weeks.

Mr. and Mrs. A. B. Mahoney, and little daughter, Frances, returned yesterday from Palatka where they were the guests of friends.

Mr. and Mrs. James Davis and little daughter, and Miss Hilda Butler spent a delightful week-end in Lakeland as the guests of friends.

Mr. and Mrs. Ralph Eugene Tittle returned Sunday from their honeymoon and will be at home to their many friends at 611 Myrtle Avenue.

Lewis Shipp, Robert Holly, Jr., and W. A. Adams left Sunday for Miami where they will remain a few days, combining business with pleasure.

Mr. and Mrs. David Speer, with their guests, Mr. and Mrs. C. P. Sieg of Jacksonville, left today for Lake Harney on a camping trip of two weeks.

The many friends of Mrs. Walter Hand will regret to learn that she is in the Fernald-Laughton Hospital, where she underwent an operation Sunday.

Mr. and Mrs. Clifford Bell, Miss Perry Lee Bell and her guest, Miss Mildred Campbell of Aberdeen, N. C., leave today in their car for points north.

Mr. and Mrs. J. W. Lindley of Tifton, Ga., were the guests of Mr. and Mrs. David Speer Sunday. Mr. and Mrs. Lindley will return to Florida in September to make their future home.

Mr. and Mrs. Ned Smith, Mrs. R. M. Mason, returned from Wrightsville, Ga., last week. Miss Bobbie Chapman and Miss Alma Blount accompanied them home and will remain as the guests of Mrs. Ned Smith.

Mr. and Mrs. E. W. Seig and family, Mr. and Mrs. O. E. Liggins and family, Mr. and Mrs. Albert Sikes and children of Americus, Ga., and Mr. and Mrs. F. F. Sieg of Savannah, Ga., are expected to arrive Tuesday to join a camping party on Lake Harney.

## State Weddings and Engagements

**Engagements**  
Miss Julia Gilbert of Monticello to Rev. D. D. Dieffenwerth, Monticello.

Miss Mary Capell of Hatworne to E. J. McMeekin of Jacksonville.

Miss Elizabeth Gallagher Sarasota to C. J. Jordan Fort Myers.

Miss Kathleen Phillips of Tampa to R. Moffitt of Tampa.

Miss Edith Robertson of Bradenton to G. E. Johnson of Bradenton.

Miss Mildred Bennett of Tampa to I. L. Juster of Tampa.

Miss Sarah Martin of Sarasota to F. M. Holden of Orlando.

Miss Edith Power of Jacksonville to K. E. Gardner of Jacksonville.

Miss Nell Milan of Tampa to W. N. Burnside of Tampa.

Miss Katherine Carter of Jacksonville to C. L. Martin of Jacksonville.

**Weddings**  
Miss Cora Sumner of Jacksonville to J. D. Freeman of Jacksonville.

Miss Mazie Peek of Madison to J. E. Fleming of Madison.

Miss Julia Montague of Jacksonville to R. W. Schell of Jacksonville.

Mrs. Evelyn Barton of Tampa to Dr. F. W. Rittenhouse of Philadelphia.

Miss Grace Calder of Jacksonville to J. E. Luff of Jacksonville.

Miss Virginia Quigg of Sanford to Paul Kautman of Sanford.

Miss Ann Gufford of Orlando to Lee Grant of Orlando.

Mrs. M. F. Perry of Orlando to J. F. Irving of Orlando.

Miss Marie DeLong of Orlando to E. P. Luens of Orlando.

Miss Elizabeth Crawford of Chicago to Leroy Starkey of St. Petersburg.

Miss Ruth Wells of Orlando to Fred Schultz of Orlando.

Miss Martelle Ferree of Lakeland to Wm. Price of Tampa.

Miss Mildred Smith of Lakeland to J. P. Brown of Lakeland.

Mrs. Mary Harris of East Tallahassee, Fla., to Walter Richardson of West Palm Beach.

Miss Julia Cutler of New London, Conn., to J. R. Tatum of Miami.

Miss Viola Whitman of Miami to E. O. Waggon of Miami.

Miss Betty Kaufman of Miami to H. C. Baldwin of Miami.

Miss Blanche Rogers of Sanford to Claude Hinchliff of Sanford.

Miss Anne Ausland of Sebring to N. H. Lane of Sebring.

Miss Dorothy Milburn of Jacksonville to Mr. C. W. Zann of Jacksonville.

Miss Mary Cawthorn of De Funiak Springs to Robert Brice of De Funiak Springs.

Miss Marjorie Stranahan of Fort Lauderdale to C. G. Hutcheson of Athens, Ga.

Miss Marian Stevenson of Tampa to J. O. Irwin of Tampa.

Miss Blanche Brown of Chattanooga to Fred Campfield of Tampa.



Miss Evelyn Collyer, one of the star women tennis players, stepping up for a swift and high one in a mixed net at the recent Wimbledon tournament. She's shown here, P. D. B. Spence of South Africa.

## FLORIDA FACTS RELATED BY ASSOCIATED PRESS

There are 1,012 special tax school districts in Florida.

Florida has no state debt, no inheritance tax and no income tax.

The present commission is composed of R. Hudson Burr, chairman; Lewis G. Thompson, secretary; M. S. Mathews and A. S. Wells.

The first railroad commission was composed of George G. McWhorter, chairman John G. Ward, secretary; E. J. Vann, and William Hines.

The soil of Florida will produce two and three crops annually with comparatively little cultivation, says a bulletin of the State Agriculture Department.

There are 250 different varieties of crops of fruits, vegetables and the like. The state agricultural department says Florida is and will be first of all an agricultural state.

The State Board of Vocational Education requires that every teacher of vocational agriculture in the consolidated rural schools be a graduate of an agricultural college.

The receipts during the year 1923-24 from a levy of from one to ten mills for school maintenance and special levies to take care of bond issues amounted to \$3,688,000.

The approximately fifty thousand farmers of Florida who cultivate something less than two million acres of land, put on the market annually about \$80,000,000 worth of produce.

The first Florida railroad commission held office from August 17, 1887 to June 13, 1891. The commission was abolished by an act of the legislature in 1891 but was re-established in 1897.

The governor and his elective cabinet of Florida constitute an executive body that performs more duties than are imposed upon any other similar body of officials of any state in the Union.

The interest on these bonds and time warrants amounts annually to \$75,000. The interest on the notes, both short and long time loans, secured to operate the schools until taxes are collected amounts annually to \$35,000.

On June 30, 1924 the indebtedness of special tax school districts amounted to \$15,000,000. Approximately \$14,000,000 of this amount was represented by bonds and time warrants and one million dollars by promissory notes.

The farmers of the state keep on hand about \$25,000,000 worth of stock cattle; \$14,000,000 worth of horses and mules; \$6,000,000 worth of hogs; \$2,500,000 worth of milk cows; and thoroughbred cattle worth about \$2,000,000.

Florida second railroad commission or the first commission under the re-establishment act of 1897 was composed of R. H. M. Davidson, chairman John L. Neely, secretary; John M. Bryan and John L. Morgan.

The department of education records statistics showing that of the farm boys and girls who attend the vocational agricultural schools fifty per cent of them return to the farm. It also shows that only two per cent of the boys and girls of the towns and cities who take this course go the farm.

The beginning of tourist travel to Florida in any considerable numbers was in 1887 when the Ponce de Leon hotel in St. Augustine was completed at cost of \$2,500,000 and nine new railroad companies were incorporated by the state.

Growers of fruits, vegetables, and other products in Florida are protected against becoming connected with dishonest or poorly rated commission merchants throughout the United States, Cuba, Canada and other foreign countries. This is done by the State Bureau of Marketing which maintains a complete record of the commission merchants of this and other countries. This service is free to the farmers and they can at any time find the rating of any commission merchant by asking the bureau.



Miss Louisa Fletcher, 22 of Indianapolis, is engaged to Ernest Von Schmettow of Berlin.

## For Rent!

Part of store for candy and confections.  
Phone 672 between 4 p. m. and 6 p. m.

## Wright, Warlow and Company

Are Now Receiving Application For

## First Mortgage Loans

on Improved Business and Residential Property in Sanford

Funds immediately available subject to title examination.

APPLICATIONS FOR APPRAISALS SEE

DuBOSE AND HOLLER

112 Park Avenue

THE BETTER A PRODUCT IS THE SOONER YOU WILL SEE IT ADVERTISED.

## Arrived Today ---50 Dresses

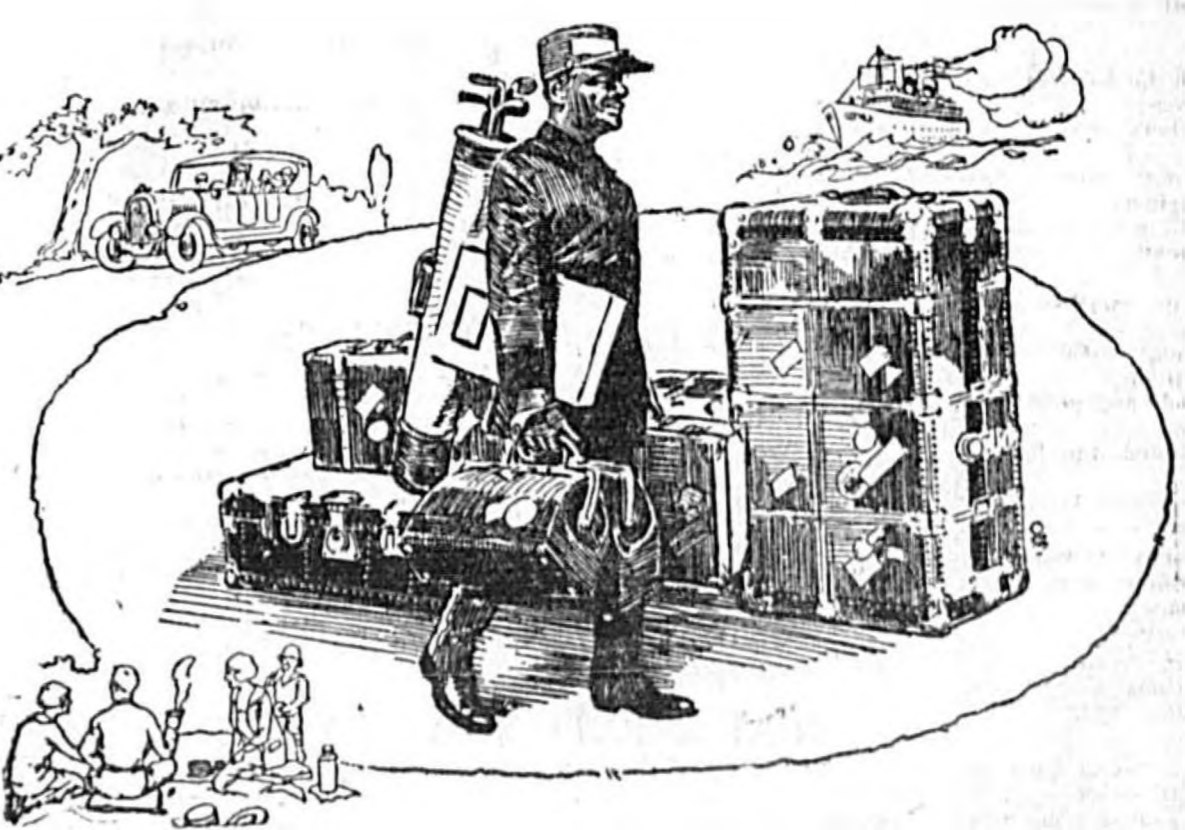
SPECIALLY PRICED FOR THE SALE

Come in and make your selection, by doing so you will save money. These Dresses are of satin faced cantons, heavy crepe de chine in all the leading shades, such as pansy green, powder blue. They are priced for this sale.

**\$9.50 to \$14.95**

**The Outlet**  
OPPOSITE THE POST OFFICE

## New Luggage for Vacations



Hand Bags, Suit Cases, Hat Boxes, and Wardrobe Trunks

### SUIT CASES

Brown, tan and black, 24 to 28 inches. Extra strong fiber and all leather. \$3.50 to \$17.50

All leather Hat Boxes. All black and tan trimmed. Round and square \$5.00 to \$8.50

### HAND BAGS

18 to 22 inches. All leather bags. Tan, dark brown, and black. Made of fine heavy cowhide. Single and double handed. \$10.00 to \$17.50

### WARDROBE TRUNKS

All sizes, extra heavy fiber, trimmed with extra heavy hardware. 12 suit hangers. \$40.00 to \$65.00

TRUNKS—Large size, three ply fiber packing trunks \$19.50 to \$22.00

## Benefit Dance To Be Given At City Hall On Wednesday Night

A baseball benefit dance, similar to the one given last week, will be given at the new city hall on Wednesday night by the officials of the Sanford ball club, it was announced today. The proceeds will go to the support of the local team as before.

A pool snun was realized from the dance last Thursday night and the local officials expressed hope this morning that even a larger amount would be realized from Wednesday. Good music will be furnished and a "good time to all" is promised those who attend.

Joe Rozenstein's orchestra, with George W. Brockhahn performing at the piano, has been secured to furnish the music, said President R. A. Newman, this morning.

The State of Florida received a total of 20,115,978.43 acres of swamp and overflow land from the United States government and disposed of 19,317,315.87 acres to railroads and canal companies and individuals, leaving a balance of 1,251,662 acres on January 1, 1925.



