

Job Openings Gain, But Unemployment Increases

Labor Trends Report

Total workers in non-farm jobs rose to an all time high here in mid-January with 8,700 workers, according to a new bulletin on Labor Market Trends issued this month by the Florida State Employment Service.

A total employment figure of 13,600 persons is listed for the Seminole County total with the seasonal peak of 14,000 due to fresh fruit shipping dropping off after Christmas, but with restaurants, food stores and automobile firms picking up.

However unemployment levels rose even higher than last year as the decline in agricultural forces began to be felt in the first of the year and out-of-state jobseekers continue to enter the area, causing a growing labor surplus.

Average employment in 1960 was 7,500 in non-agricultural fields and went up to 7,700 in 1961, a gain of five percent for the year with this increase in growth credited to manufacturing, service and government groups.

The Florida Unemployment Compensation Law is applicable to all non-farm establishments with four or more workers, except railroads, state and local government and nonprofit organizations.

Average monthly employment in covered firms amounted to 4,431 and payrolls from October 1960 through September 1961 totaled \$18,786,761. This figure represents almost half of the area's total wage and salary income of an estimated \$40 million for the period.

Major industries which accounted for the \$40 million annual payroll in Seminole County include manufacturing (food products) retail trade, services and miscellaneous, construction, wholesale trade, (farm products packing) transportation, communication and public utilities, Federal Gov't. and Finance, Insurance and real estate. These are standard industrial classifications.

However unemployment levels rose even higher than last year as the decline in agricultural forces began to be felt in the first of the year and out-of-state jobseekers continue to enter the area, causing a growing labor surplus.

Average employment in 1960 was 7,500 in non-agricultural fields and went up to 7,700 in 1961, a gain of five percent for the year with this increase in growth credited to manufacturing, service and government groups.

The Florida Unemployment Compensation Law is applicable to all non-farm establishments with four or more workers, except railroads, state and local government and nonprofit organizations.

Average monthly employment in covered firms amounted to 4,431 and payrolls from October 1960 through September 1961 totaled \$18,786,761. This figure represents almost half of the area's total wage and salary income of an estimated \$40 million for the period.

Major industries which accounted for the \$40 million annual payroll in Seminole County include manufacturing (food products) retail trade, services and miscellaneous, construction, wholesale trade, (farm products packing) transportation, communication and public utilities, Federal Gov't. and Finance, Insurance and real estate. These are standard industrial classifications.

Glee Club Gives Program Of Irish Music

By Mrs. Adam Muller

An Irish theme was chosen for song selections by the DeBary Glee Club at last Wednesday's meeting in the Community Center.

Taking part on the program directed by Mrs. H. Whitaker with Laura Platt Brown as accompanist were Emily Armstrong, Marion Roberts, Isabel Bearick and Robert McGee.

Hostesses for next Wednesday's meeting will be Mrs. Ralph Leonard, Sophia Sturtevant, Ruth Stone, Mrs. Frank Woodruff, Dr. May Anderson and Mrs. Harold Barry.

Noted Author Leads Alliance Conference Here

Arthur E. Bloomfield, author of numerous books on the prophetic Scriptures, is guest speaker for the Conference on Bible Prophecy being held this week at the Alliance Church, 1401 Park Ave. in Sanford.

Daily services, which open at 7:30 p. m., are open to the public. Subjects for the remainder of the week include What Will Happen to Russia and Who Will Do It, The Redemption of the Pur-

chase Possession and Invasion from Outer Space.

Bloomfield has pointed out interesting facts concerning the future of many nations as foretold by the Prophets of Israel which centered primarily in Eastern Europe and the Middle East.

In his talks he has advised that the new nation of Israel was foreseen and its future predicted. Prophecies concerning the spread of Egypt across North Africa are no less than amazing with probably the most sensational prediction being that of the

trend toward a World Government with an accompanying world prosperity that would make Solomon in all his glory seem like a pauper, the speaker relates.

He points out that success of the new free market idea in Europe is showing the world what could be done with world resources and advises that all of the basic elements are here for fulfillment of visions of both Old and New Testament prophets.

According to Bloomfield the prophets were so amazed at what they foresaw that

they used the most extreme words of expression.

"Yet, today, it would take only wise management to make all this a reality," he says.

Rev. C. C. Dees Jr. is pastor of the local church.



THE FAMOUS REBELS QUARTET will appear at Seminole High School Thursday at 8 p. m. under the sponsorship of the Anchor Club and the Key Club for the benefit of their civic projects.

Tickets for the performance of the gospel singers will be available at the box office of the Seminole High School auditorium, or from any members of the Anchor Club and the Key Club.

Sanford, NAS Officials Seen On TV Show

Last Friday thousands of residents of Central Florida watched the program "Date-line" on Channel 6 at 9:45 a. m. Bob Miller, the TV station's commentator, interviewed Capt. R. M. Ware, commanding officer, U. S. Naval Air Station, Sanford, Capt. J. M. Tully Jr., commander Heavy Attack Wing One, and John Krider, Seminole County Chamber of Commerce Manager.

They were interviewed on the progress of the county and the relationship existing between the U. S. Navy and the local citizens. The excellent relationship is said to rank among the highest anywhere in the nation.

At the beginning of the interview a space suit was exhibited and its functions very briefly explained.

Due to the short period of time allowed for the interview the station has asked Capt. Tully to return to the studio on next Tuesday to appear on "Date-line". At that time Capt. Tully will explain in more detail the aspects of Heavy Attack, and time permitting, will explain more about the space suit, similar to the one worn by Marine Col. Glenn on his triple orbit of the earth.

"There's nothing more of interest than that," declares an ad headline. How about garlic toast?

DeBary Civic Group Names New Entertainment Officers

By Mrs. Adam Muller

This month's meeting of the DeBary Civic Assn., Inc., was held on March 13 at the Community Center with James Duffy presiding.

Members named to the Entertainment Association for next Fall were Chester Reardon, president; Howard Sharp, vice president; Charles Hilliard, secretary and Mrs. Gus Deinger, treasurer.

Plans were made for dedication of the Center's new wing on April 6. Ceremonies, to begin at 2 p. m., will take place at the rear of the Plantation Estates Office on DeBary Dr.

A number of hands from the area will participate in a parade and in the evening the DeBary Concert Orchestra will present a benefit concert when a free will offering will be received towards expenses of building the new addition.

Capt. Deenan, representative of the Martin Co. Plant in Orlando, showed a film of the Bull Pup Missile and told of its development and of its ability to hit on target many miles away.

Howard Middleton operated the projector during showing of the film and for a cartoon satire for Americans on the subject of survival.

A question and answer period followed.

F. R. Lassiter Rites Thursday

Funeral services for Mr. Floyd Rufus Lassiter, 81, of 1441 Lake Dr., Casselberry, who died Tuesday in an Orlando hospital, will be held at 1 p. m. Thursday at the Fairchild Funeral home in Orlando.

Mr. Lassiter was a lineman for a power company and had moved to Casselberry from Orlando in 1956. He was a member of the Methodist Church and was affiliated with Local 608, Brotherhood of Electrical Workers.

Survivors include his wife, Louise; daughters, Mrs. Christine Hein, Cincinnati, Ohio, Mrs. Lillie Mae Meredith, Louisville, Ky.; brother, John W. Wrightsville, Ga.; sisters, Mrs. Loy Greene, Columbus, Ga., Mrs. John DeLoach, Plant City.

Enterprise P-TC Sets Meeting For Thursday

By Helen Snodgrass

The monthly meeting of the Enterprise Parent-Teacher Council, originally scheduled for Tuesday, will be held at 7:30 p. m. Thursday in the school cafeteria.

Entertainment for the evening will be a Circus Program presented by the second grade students.

John Jacobs Of DeLand, Candidate For State Senate, Spoke At National State And Local Governments At Last Thursday's Meeting Of The DeBary Republican Club At The Community Center.

Jacobs pointed out the need for a new State Constitution and advised that members of the Republican Party should familiarize themselves with all issues and be prepared to meet them.

The meeting opened with a musical program under the direction of Mrs. Beatrice Muller, entertainment chairman, which featured Florence St. Amand and Robert McGee with Adelaide Conte as accompanist.

The guest speaker was introduced by Ralph Withersall who also presided during the meeting.

Mrs. Arthur Power and Mrs. Burton Hayes were hostesses at the buffet table for the refreshment period.

New Hours Slated At Seminole Blood Bank

New hours for the Seminole County Blood Bank have been announced by Mrs. Louise Bauman along with an appeal for more regular donors.

The Blood Bank will be open on Mondays from 1 p. m. to 8 p. m. and on Tuesdays through Fridays from 8 a. m. to 1 p. m. The office will be closed on Saturdays and Sundays.

The Monday evening hours will make it possible for donors to come by after work in the evenings and the 8 a. m. opening hours will give office workers an opportunity to come in before business and offices begin work.

"It only takes from 20 to 30 minutes to complete a blood drawing," Mrs. Bauman said, "and refreshments are served."

"We always have good response in emergencies, but need to keep up the regular day to day supply," Mrs. Bauman emphasized.

Forecasting

First systematic experiments in weather telegraphy and forecasting began about 1860 and were conducted in England and France, as well as by the Smithsonian Institution, according to the Encyclopedia Britannica.

96% of cane grown in **FLORIDA** is refined into **Dixie Crystals** sugar.

ALL GOOD BRAND SUGAR CURED SLICED BREAKFAST BACON 1-Lb. Pkg. **39¢**
(2-Lb. Pkg. 75¢)

PERCH FILLETS 1-Lb. Pkg. **39¢**

SPANISH MACKERAL Lb. **29¢**

"SUPER-RIGHT" WESTERN QUARTER SLICED PORK LOIN

PORK CHOPS Lb. **59¢**

"SUPER-RIGHT" WESTERN PORK

Center Cut Chops Lb. **69¢** **"SUPER-RIGHT" WESTERN PORK**

First Cut Chops Lb. **39¢**

ARP OR BUNNYBROOK BRAND MEDIUM GRADE A EGGS 2 Doz. **79¢**

Fresh Fruits and Vegetables

WINEMAP APPLES 2 Lbs. **29¢**

CALIFORNIA AVOCADOS 2 For **29¢**

PLANT FOOD 4-7-5 - Lb. Bag **\$1.05**

WHITE OR COLORED FACIAL TISSUE SPECIAL!

SCOTTIES 2 Boxes Of 400 **49¢**

ASSORTED COLORS BATHROOM TISSUE

Soft Weve 4 rolls **49¢**

WAX PAPER

Cut-Rite 125-ft. rolls **2/49¢**

APPLE GRAPEFRUIT JUICE 4-46 oz. cans **89¢**

APPLE KEG

Apple Juice 46 oz. cans **4/\$1**

ANN PAGE

Tomato Ketchup 20 oz. btl. **25¢**

JANE PARKER FRUIT CAKE 3-lb. **\$1.89** 5-lb. **\$2.99**

ANN PAGE BALAD

Dressing qt. btl. **45¢**

ANN PAGE PURE DAMSON PLUM PRESERVES 2 lb. jar **39¢**

GREEN GIANT PEAS 4-17 oz. cans **79¢**

NEW YORK STATE COOKED CHEDDAR

Aged Cheese lb. **59¢**

DEL MONTE LIGHT MEAT

Chunk Tuna 6 1/2-oz. cans **3/\$1**

JANE PARKER FRESHLY BAKED CHERRY PIES 8-Inch Each **43¢**

JANE PARKER FRESH CHIPP POTATO CHIPS 10-Oz. Bag **39¢**

ANN PAGE BALAD DRESSING qt. btl. **45¢**

ANN PAGE PURE DAMSON PLUM PRESERVES 2 lb. jar **39¢**

GREEN GIANT PEAS 4-17 oz. cans **79¢**

NEW YORK STATE COOKED CHEDDAR

Aged Cheese lb. **59¢**

DEL MONTE LIGHT MEAT

Chunk Tuna 6 1/2-oz. cans **3/\$1**

DAILY, Fish, Regular Or Liver Dog Food 3 1-Lb. Cans **25¢**

Swifts Strained Baby Meats 2/49¢

Snow's Clam Chowder 15 Oz. **29¢**

Detergent

Sail gt. **53¢**

AP Super Markets

6 6-Oz. Cans **79¢**

Bleach

Clorox 1/2 gal. **39¢**

Vermont Maid Syrup 12 oz. **33¢**

Kraft French Dressing (8 Oz.) **27¢**

All Varieties Knorr Soup Mixes **39¢**

Magnolia at 2nd St.

Prices Effective Through Sat., March 24

Harrell & Beverley Automotive

209 W. 25th St. Phone FA 2-8415

Transmission Rebuilders
Engine Rebuilders
Wholesale Auto Parts

AUTOMOTIVE MACHINE SHOP SERVICE

LOANS UP TO \$600

Just tell us how much money you need to pay old bills, for all your seasonal expenses.

Cash You Receive	24 Monthly Payments	Cash You Receive	24 Monthly Payments
\$120.00	\$ 7.00	\$312.00	\$18.00
180.00	11.00	432.00	24.00
220.00	13.00	592.00	32.00

FAMILY FINANCE SERVICE, INC. of Sanford

125 South Park Ave. - FAIRfax 2-4612



ANNE CRAPPS (right), cheerleader captain, receives a bracelet for four years of cheerleading from cheerleader sponsor Anne Samuels at Tuesday's booster banquet. Story, other pictures on sports page. (Herald Photo)

Hospital Notes

MARCH 19
Admissions
 Louis Zanzig, Wabash, Ind.; Gertrude Hicks, DeBary; Mary Lane, Chuluota; Mary Nicely, Lake Mary; Phyllis May, DeBary; Agnes Eddleman, DeBary; Charles Parker, Cincinnati, Ohio; Sidney Ives, III, Lita Poehlman, Mary Lou Williams, Inez Sessions, Rosena Laubach, Bernice Parker, Minnie Keeling, Mary Parsons of Sanford.
Births
 Mr. and Mrs. Ronald Poehlman of Sanford, a boy
Discharges
 Rosemary Sloan, DeLand; Andrew Chavers, Osteen; Catherine Troutman, DeBary; Mrs. Gerald R. Craig and baby, Geneva; Eugene Giddens, Lyndell Freeman, Adrene Green, Rutheina Washington, Vanne Peterkin, Dorothy Poole, James Brindle, Bobby Brock and Mrs. Paul P. Dropechuk and baby of Sanford.

Adventists Meet For Conference

By Shirley Wentworth
 Some 600 delegates representing Seventh-day Adventist churches from all parts of the state attended last Sunday's 52nd Executive Session of the Florida Conference at the Sanitarium Church in Orlando.
 H. H. Schmidt was elected to his third two-year term as president of the Conference and will serve as Chairman of the Board for Forest Lake Academy. Schmidt is a resident of Beverly Terrace near Forest City.
 Others elected to membership on the Academy Board were William Fuchs, principal; Henry Wooten, treasurer and H. V. Hendershot, pastor.
 An Advisory Committee consisting of laymen from throughout the state was formed with more than 40 persons named to serve. Elected from the Forest City area were Dr. Kenneth L. Wendell and H. C. Lovett.
 About one-half the patients in U. S. veterans' hospitals are being treated for non-service-connected disabilities.

LOOK FOR THIS SIGN EXPERT SERVICE WORK From Coast-to-Coast

Firestone MOTOR TUNE-UP

WE DO ALL THIS... FOR ONLY

① Clean and adjust spark plugs.
 ② Clean and set points.
 ③ Set timing.
 ④ Adjust carburetor.
 ⑤ Check coil and condenser.
 ⑥ Check generator and voltage regulator.
 ⑦ Check battery.

666* any six cylinder car
888* any eight cylinder car
 *parts extra if needed

Firestone SPEEDWAY PROVED TIRES

Buy on Easy Payday Terms

\$1 Down \$1 A Week



COPYRIGHT - 1962 - WINN-DIXIE STORES, INC.
 Quantity Rights Reserved - Prices Good Thurs., Fri., Sat., Mar. 22, 23 & 24.

FREE 50 TOP VALUE STAMPS

WITH THIS COUPON AT YOUR NEAREST WINN-DIXIE STORE
 Void After March 24 Limit One Coupon to Adult With A \$5.00 or More Food Order

- Country Cured . . . Ham, Bacon or Sausage
- Talmadge Farms lb. 79¢
- Lenten Special
- Flounder Fillets lb. 39¢
- Pork . . .
- Boston Butts Roast lb. 39¢
- 2-oz. Size
- Cube Steaks 10 For \$1.
- Sunnyland . . . Bag
- Pork Sausage lb. 39¢
- Superbrand
- Cottage Cheese 1-lb. Cup 29¢

Lenten Specials

- Taste O' Sea Frozen
- Fish Sticks 3 10-oz. Pkgs. \$1.
- Gold King Frozen
- Hush Puppies 3 16-oz. Pkgs. \$1.
- Morton Frozen . . . Family Size
- Macaroni & Cheese Pkg. 39¢
- Taste O' Sea Frozen
- Fish Steaks 10-oz. Pkg. 39¢
- Southern Belle Frozen . . . 15-oz. Pkg. To Pkg. 99¢
- Devil Crabs 5 Pkg. 99¢

Special Savings

- Starkist Light Meat . . . Save 4¢ a Can No. 1/2 Can 29¢
- Blue Bay Light Meat . . . Save 3¢ a Can No. 1/2 Cans 49¢
- Deep South Strawberry . . . Save 10¢ a Jar
- Preserves 24-oz. Jar 39¢
- Astor Pure Vegetable . . . Save 2¢
- Shortening 3 Lb. Can 49¢
- Northern Bathroom
- Tissue 4 Rolls 39¢

50 50

REDEM THIS COUPON FOR 50 Top Value Stamps At Your Nearest Winn-Dixie In Addition To Those Regularly Earned When You Purchase ANY TWO

Palmetto Farms Salads

VOID AFTER MARCH 24TH

50 50

REDEM THIS COUPON FOR 50 Top Value Stamps At Your Nearest Winn-Dixie In Addition To Those Regularly Earned When You Purchase ONE 2-Lb. Pkg. JERSEY SEWELL Pkg.

Chicken Thighs

VOID AFTER MARCH 24TH

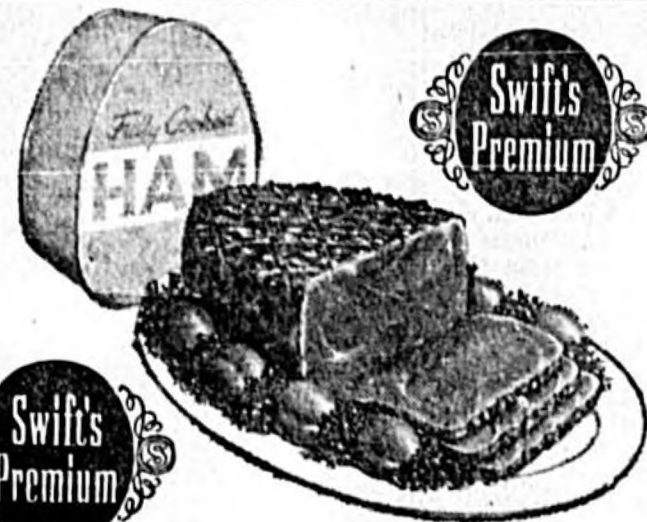
50 50

REDEM THIS COUPON FOR 50 Top Value Stamps At Your Nearest Winn-Dixie In Addition To Those Regularly Earned When You Purchase ONE FROZEN SOUTHERN

Chocolate Cake

VOID AFTER MARCH 24TH

BARGAIN ROUND-UP



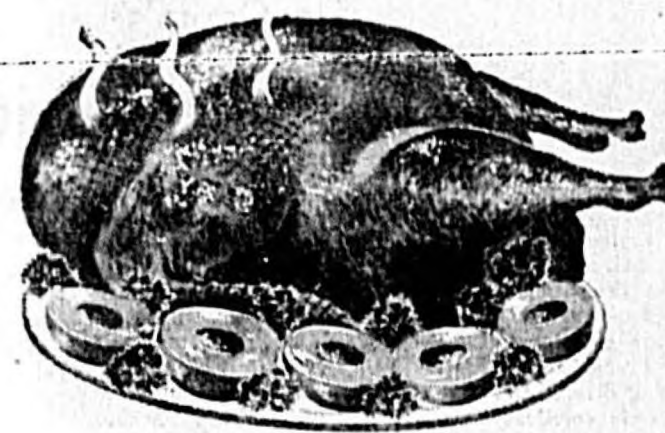
Swift's Premium Canned **HAMS**

4 lb. can \$2.99

TURKEY

BUTTERBALL
 or W-D BROAD BREASTED
 Grade "A" Quick Frozen
 10-12 Pound Average

39¢ lb.



SUNNYLAND BOB WHITE BREAKFAST

Sliced Bacon 2 lb. box 79¢

MORTON FROZEN . . . (All Varieties . . . 11-oz.)

Dinners 2 for 89¢

ASTOR FROZEN . . . (New Crop) . . . FLA. ORANGE

Juice 6 6-oz. Cans (6-PACK) 89¢

SWEET, CRISP APPLES

Winesaps 2 lbs. 39¢



All You Can Eat

AUNT JEMIMA PANCAKE DAY

Sponsored By Herbert A. Gibb Post 258 The American Legion

WHEN: Saturday, March 24, 1962 8:00 a. m. to 8:00 p. m.

WHERE: Fire House (Colombo Rd.) DeBary (Off 17-92)

PANCAKES and SAUSAGE

Fresh, Juicy Florida

ORANGES

5 lb. bag 29¢

SUPERBRAND QUARTERS

Margarine 2 1-lb. pkgs. 29¢

YOUR CHOICE . . . Limit one with \$7.00 food order.

FOLGER'S

ASTOR

Coffee . . . 1-lb. Can 39¢ (Save 31¢) 1-lb. Can 33¢ (Save 30¢)

POLY-UNSATURATED Limit one with food order. . . Save 20¢ . . . Extra Large Family Size

Wesson Oil 38-oz. bottle 49¢

YOUR CHOICE . . . DETERGENT Limit one with food order.

BLUE OR WHITE ARROW

Ivory Liquid 22-oz. BOT. 59¢ (Save 10¢) GIANT 49¢ (Save 10¢)

SPECIAL . . . O'SAGE FREESTONE . . . Limit four with food order. . . Save 8¢ a Can

Peaches . . . No-2 1/2 can 19¢

SPECIAL . . . LIBBY . . . Limit four with food order. . . Save 8¢ a Can . . . 46-oz.

Tomato Juice 4 CANS \$1.

GET EXTRA VALUE AND TOP VALUE STAMPS AT

WINN-DIXIE

Winners Names Listed By Merchants

Winners of the free gifts given away by Sanford merchants during Cracker Days last weekend have been announced.

Mrs. Charles A. Nichols, 510 W. First St., won the Florentine-finish diamond dinner ring given away by Gwainey Jewelers.

George G. Legg, 128 Columbia Rd., DeBary, won the Brownie Starflex Camera outfit, given by Wiebolt Camera Shop.

Ronnie Hall, 2300 Oak Ave., won the largest frying pan in Seminole County, given by Sweeney's. This cast-iron skillet measured two and a half feet in diameter with a two-foot handle.

No names of winners at other stores were recorded, as many other gifts were drawn from stock and awarded to lucky ticket holders throughout the two-day sale.

At Sanford Electric Co. several hundred children were treated to free popcorn and balloons, but no exact count was kept of the quantity given away.

Mass Baptism Held Saturday At Forest Lake

By Shirley Westworth

A Mass Baptism was held last Saturday at 2 p. m. in the auditorium of Forest Lake Academy by Seventh-day Adventist Churches attending the 32nd Executive Session of the Florida Conference at the Sanitarium Church in Orlando.

Officiating for this area for the baptism of 34 persons were Pastor H. V. Henderson of Forest City, Pastor Warren E. Strawn of Altamonte Springs and Winler Garden and A. C. Mote of Apopka.

Another baptism is planned for Saturday of this week.

Deadlines Set For Entries In Flower Show

By Mrs. Adam Muller

Mrs. John Chambers and Mrs. Angel Diaz, chairmen of the DeBary Flower Show to be held Friday at the Community Center, have announced that horticultural entries may be brought in between 1 p. m. and 4 p. m. on Thursday. Specimens and arrangements must be entered by 10 a. m. on Friday to allow time for judging.

In connection with the show, Mrs. Diaz showed colored and sound films of "Far Away Places," including Africa and New Zealand, in a benefit program at the Community Center on March 12.

The Christian Religion Should Be A Way Of Life For Believers

(This is the fifth in a series of Lenten articles by laymen on "What My Religion Means to Me.")

By Russell Scott

My religion is to me a way of life that is helpful at all times. When temptations of any kind come my way, I merely ask myself if this is something that Jesus would approve. Could I do this and not be ashamed to have my minister or my Christian friends know about it. When sorrow comes I ask God to grant me a greater faith to accept His will for my life, knowing full well that His is the only way of any value. When everything seems to be going "my way", I give thanks to God for all the many blessings that He has showered me with.

I believe that by accepting Jesus as the Christ and as my personal Saviour that I also have to accept His way of life and His teachings in all things. Not being as wise or as learned as Jesus is I cannot impose my views or my interpretations of the scriptures on anyone, but I am to discuss and attempt to teach His way to all with whom I come in contact. This means that my actions at work, at home or at play should be above reproach and an example that others should want to follow.

I also believe that all things that I consider "mine" are in reality God's and are only loaned to me for the short span of this life, and that I am to be a faithful steward of all things, including time, talent and treasure. My time is God's and I am to be constantly witnessing for Him. I am to serve Him through the church by attendance at all services, participation in programs of the church and many other ways.

My talent, however small or large, is given by God and should be used for His purpose at all times. I am to

BIG-CAR LUXURY '62 MERCURY MONTEREY



Routine maintenance only twice a year - protected against rust - never needs waxing, only washing. WELL WITHIN THE POPULAR-PRICE RANGE

ONLY \$2800²⁰

Delivered in Sanford, whitewalls extra

Hunt Lincoln-Mercury, Inc.
300 No. Palmetto Ave. Sanford, Fla.

BEST BACON

EVER HIT THE SKILLET

BETTER BECAUSE IT'S FRESHER! Sunnyland bacon is made here in the South every day and rushed to your store at the peak of its hickory-smoked, sweet goodness. Put real meat power in your breakfast tomorrow with fresh, delicious Sunnyland bacon!

"Flavor makes the difference!"



Thriftway's Spring SALE

OF EARLY BIRD VALUES

SMOKED PICNICS

Colonial Fully Cooked

29¢

Lb.

Fresh Ground Beef

5 Lbs. \$1⁹⁹

Fresh Pork Steak

1 lb. 49¢

B'ket Stew Meat

1 lb. 29¢

THRIFTWAY

Sliced Bacon

2 lb. pkg. 99¢

Sausage, Bologna, Wieners

3 lbs. \$1

LENTEN SPECIALS

Whiting Fish H & G --- 19c lb.
Ocean Perch --- 29c lb.
Deep Sea Scallops --- 69c lb.

Jiffy Steaks

10¢ Ea.

Veal Cutlets

10¢ Ea.

FROZEN FOODS

Breaded Shrimp

Singleton 2-89¢
10 Oz. Pkg.

Birdseye Vegetables

10 Oz. Pkg. 2/49¢

Fordhook Limas

CHOPPED OR LEAF SPINACH --- 2/39¢

French Beans

3 Oz. Pkg. --- 10¢

Chef's Waffles

--- 10¢

SUGAR

5 Lb. Bag Henderson Superfine 29¢

Limit 1 With \$7 Or More Order

GOLDEN KEY Evaporated Milk --- Tall Tin 7/99¢

DOLE Pineapple Juice --- 46 Oz. Tin --- 25¢

COFFEE

FOLGERS 1 Lb. Tin 39¢

Limit 1 With \$7 Or More Order

CHECK THESE EARLY BIRD DOLE VALUES

Sliced Pineapple No. 2 Tin 2-69¢

Crushed Pineapple No. 2 Tin 29¢

Mix or Match

Stokely 3 Sieve Peas

Stokely Cream Corn

Stokely Cut Beans

302 Tins 4 - 79¢

FLOUR

5 Lb. Bag Shurfine Enriched 29¢

Limit 1 With \$7 Or More Order

Wishbone Deluxe Salad Dressing

FRENCH 8 Oz. Jar 29¢

ITALIAN 8 Oz. Jar 39¢

Holsum Tartar Sauce 8 Oz. Jar 2-49¢

Friskies Dog Food 6 Cans 79¢

Giant Cheer

Limit 1 With \$7 Or More Order 59¢

FRESH VEGETABLES FROM OUR PRODUCE DEPT.

POTATOES

U. S. No. 1 White 15 Lb. Bag 49¢

Johnathan APPLES

4 Lb. Bag 39¢

Velda Duchess Ice Cream

Deluxe American, Pimento, Swiss 8 Oz. 1 Lb. Pkg. 59¢

Kraft Sliced Cheese --- 29¢

Food King Oleo --- 2/29¢

Thriftway

25th & PARK

50 FREE Gilt-Edge Stamps

Limit 1 Coupon Per Customer

With this Coupon and a \$5.00 or more food order—Expires March 24.

Quantity Rights Reserved



HAROLD J. MELLO, formerly of Sanford, is completing his first freshman quarter at the Palmer College of Chiropractic, Davenport, Iowa. He is enrolled in the four-year course leading to the degree, doctor of chiropractic. He retired last December after 20 years service in the U. S. Navy and entered the professional college in January. Mello is married to the former Grace Ruth Dickerhoff, daughter of Mrs. Lucinda Dickerhoff, of Sanford and Orlando. Their four children are Richard 12, Betty 10, Bonnie nine and William one.

**National FFA
President
Here Friday**

Victor Butler, national president of the Future Farmers of America, a native of Havana, Fla., will be the guest of honor and featured speaker at the annual Future Farmers Parent and Son Banquet to be held at Seminole High School, Friday.

The banquet will be a combined meeting of the Sanford Junior High Chapter and the SFS Chapter, meeting with the boys and their parents and teachers and representatives of agriculture and farming in Seminole County.

Butler is a past president of the Florida Assn. of the FFA in 1960-61 and has obtained the degree of American Farmer. He was a delegate to the state convention for four years and to the National convention for two years. He participated in the many committees and training courses and served as Tri-State Speaking Champion, and State State Farmer as well as winning many awards in judging and exhibiting livestock.

During his years in high school, where he served as secretary, vice-president and president of his chapter, he also won letters in baseball and basketball and played in the school band.

He served as Assistant Director of the Holy Land Friendship Project and was Counselor to his church area leadership camp.

He was acclaimed as the Outstanding Future Farmer in the State by the Quarter-horse Breeders Assn. and was awarded a quarter horse filly.

The Sanford Future Farmers Chapters are looking forward to the privilege of having their national president with them for this annual occasion.

The banquet will begin at 7 p.m. and yearly awards will be made at that time. Bill West is Voc-Ag teacher at Seminole High and Don Farrars at Sanford Junior High School.

**Azalea Sales
Bring \$653**
By Jane Caselberry
The Men's Club of the Caselberry Community Methodist Church has reported a profit of \$653 from three recent Azalea Plant Sales sponsored by the group.

Plants were sold to clear the lot adjacent to the church which it has purchased for future building expansion.

Know and obey the signs of life. These are the ones along the highways that tell you what to do for safety sake.



PRICES EFFECTIVE THRU
SATURDAY, MARCH 24

SAVORY, FLAVORY

Lenten Meals



Chunk Style
**STAR-KIST
TUNA**
3 6½-oz. cans **89¢**

All Grinds Maxwell House
COFFEE
1-lb. can **39¢**
Limit 1 per customer with purchases of \$7.00 or more

- Dole Pineapple-Grapefruit
Fruit Drink . 4 46-oz. cans \$1
- Orange, Grape or Florida Punch
Hi-C Drinks . 3 46-oz. cans \$1
- Flavorful F&P Bartlett
Pear Halves 4 #303 cans \$1
- Green Giant Whole Kernel
Nibl'ts Corn 3 12-oz. cans 49¢
- Shortening Special (limit 1)
Swift Jewel . 3-lb. can 49¢
- Swift's Assorted Flavors
Ice Cream half gal. 79¢
- Kraft's Old Fashion
Peach Preserves 18-oz. jar 41¢
- Tasty Luncheon Meat
Canned Spam 2 12-oz. cans 89¢
- Rave Brand (for diet cooking)
Peanut Oil half gal. \$1.29
- Pix Brand
Liquid Detergent 22-oz. size 39¢
- Duncan Hines Assorted
Cake Mixes 19-oz. pkg. 39¢
(white yellow, devil-food, lemon supreme)
- Kraft's Lenten Feature
Spaghetti Dinner reg. pkg. 27¢
- French's Handy to Serve
Instant Potatoes 7-oz. pkg. 33¢

• **lenten treats** •

- Tasty Lenten Seafood Treat
Deep-Sea Scallops . lb. 69¢
- Delicious Florida
Cooked Crawfish . . lb. 79¢
- Old Fashion Longhorn Style
Cheddar Cheese . . lb. 65¢
- Kraft's Deluxe Sliced
American Cheese . . 12-oz. pkg. 49¢
- Breakstone's Fresh
Cottage Cheese 1-lb. cup 29¢ 2-lb. cup 55¢

• **dairy specials** •

- Blue Bonnet Brand
Margarine 1-lb. ctn. 27¢
- Pillsbury's Delicious
Danish Rolls 9½-oz. pkg. 35¢
- Breakstone Temptee-Whipped
Cream Cheese 8-oz. cup 39¢

• **frozen foods** •

- Howard Johnson's
Coconut Cake 17-oz. pkg. 79¢
- Stokely's Quick-Frozen
Green Peas 2-lb. bag 59¢
- Southland Quick-Frozen
Whole Potatoes . . 2-lb. bag 39¢
- Singleton's Quick Frozen
Breaded Shrimp . . . 10-oz. pkg. 69¢
- Morton's Macaroni & Cheese, Spaghetti & Meat Sauce, or Chicken, Beef, Turkey Pies
Mix or Match . . . 4 pkgs. 89¢

PLASTIC ASST'D. COLORS

Reg. 49¢ Value

- COAT HANGERS 3 6-pack pkg. \$1.00**
- Serve with Cottage Cheese, Dole
 Sliced Pineapple 2 cans 37¢
- Assorted Popular Flavors
 Jell-O Puddings 2 4-oz. pkg. 21¢
- F.F.V. Coconut-Top
 Marshmallow Puffs reg. pkg. 29¢
- Entertaining? Serve Sunshine
 Tasty Cheez-Its 6¼-oz. pkg. 19¢

Lykes Sugar Creek Smoked
PICNICS
lb. **29¢**

Fresh Boston Butt
PORK ROAST
lb. **39¢**

- Fresh, Lean 'n Tasty
Pork Steak . lb. 49¢
- Tornow's Down-on-the-Farm
Wieners 12-oz. pkg. 35¢
- Swift's Premium Brown 'N Serve
Sausage 8-oz. pkg. 49¢
- Swift's Premium Tasty Sliced
Bologna 12-oz. pkg. 49¢

WHERE SHOPPING IS A PLEASURE

50 FREE 50 GREEN STAMPS
with this coupon and purchase of:
COLGATE TOOTH BRUSH adult 89¢
Expires Saturday, March 24, 1962

50 FREE 50 GREEN STAMPS
with this coupon and purchase of:
BAYER ASPIRIN TABLETS 100 73¢
Expires Saturday, March 24, 1962

50 FREE 50 GREEN STAMPS
with this coupon and purchase of:
SWIFT PREMIUM SLICED BOLOGNA 12-oz. pkg. 49¢
Expires Saturday, March 24, 1962

Luscious Florida Grown
STRAWBERRIES
3 pints **89¢**



- Genuine Idaho Baking
Potatoes 10-lb. mesh bag 65¢
- Yellow or White 8-Minute
Pop-Corn 2-lb. pkg. 19¢
- Fresh Crisp Western
Carrots 2 pkgs. 25¢

PUBLIX MARKET
YOUR SHOPPING IS A PLEASURE

50 FREE 50 Green Stamps
Free With Your Purchase Of \$5 Or More
This Coupon Expires Mar. 21, 1962. Limit One Per Family

PUBLIX MARKETS

MORE FOR YOU IN '62 WITH GREEN STAMPS!



Legal Notice

NOTICE OF SALE... EN PURSUANT TO PROVISIONS...

NOTICE OF PUBLIC HEARING... THE BOARD OF ADJUSTMENT...

NOTICE OF PUBLIC HEARING... THE BOARD OF ADJUSTMENT...

NOTICE OF PUBLIC HEARING... THE BOARD OF ADJUSTMENT...

NOTICE OF PUBLIC HEARING... THE BOARD OF ADJUSTMENT...

NOTICE OF PUBLIC HEARING... THE BOARD OF ADJUSTMENT...

NOTICE OF PUBLIC HEARING... THE BOARD OF ADJUSTMENT...

NOTICE OF PUBLIC HEARING... THE BOARD OF ADJUSTMENT...

Legal Notice

IN THE COURT OF THE COUNTY... JUDGE SEMINOLE COUNTY...

IN THE CIRCUIT COURT OF... THE NINTH JUDICIAL CIRCUIT...

IN THE CIRCUIT COURT OF... THE NINTH JUDICIAL CIRCUIT...

IN THE CIRCUIT COURT OF... THE NINTH JUDICIAL CIRCUIT...

IN THE CIRCUIT COURT OF... THE NINTH JUDICIAL CIRCUIT...

IN THE CIRCUIT COURT OF... THE NINTH JUDICIAL CIRCUIT...

IN THE CIRCUIT COURT OF... THE NINTH JUDICIAL CIRCUIT...

IN THE CIRCUIT COURT OF... THE NINTH JUDICIAL CIRCUIT...

Legal Notice

REGISTRATION OF... NOTICES OF PUBLIC HEARING...

IN THE CIRCUIT COURT OF... THE NINTH JUDICIAL CIRCUIT...

IN THE CIRCUIT COURT OF... THE NINTH JUDICIAL CIRCUIT...

IN THE CIRCUIT COURT OF... THE NINTH JUDICIAL CIRCUIT...

IN THE CIRCUIT COURT OF... THE NINTH JUDICIAL CIRCUIT...

IN THE CIRCUIT COURT OF... THE NINTH JUDICIAL CIRCUIT...

IN THE CIRCUIT COURT OF... THE NINTH JUDICIAL CIRCUIT...

IN THE CIRCUIT COURT OF... THE NINTH JUDICIAL CIRCUIT...

Legal Notice

IN THE CIRCUIT COURT OF... THE NINTH JUDICIAL CIRCUIT...

IN THE CIRCUIT COURT OF... THE NINTH JUDICIAL CIRCUIT...

IN THE CIRCUIT COURT OF... THE NINTH JUDICIAL CIRCUIT...

IN THE CIRCUIT COURT OF... THE NINTH JUDICIAL CIRCUIT...

IN THE CIRCUIT COURT OF... THE NINTH JUDICIAL CIRCUIT...

IN THE CIRCUIT COURT OF... THE NINTH JUDICIAL CIRCUIT...

IN THE CIRCUIT COURT OF... THE NINTH JUDICIAL CIRCUIT...

IN THE CIRCUIT COURT OF... THE NINTH JUDICIAL CIRCUIT...

Legal Notice

IN THE COURT OF THE COUNTY... JUDGE SEMINOLE COUNTY...

IN THE CIRCUIT COURT OF... THE NINTH JUDICIAL CIRCUIT...

IN THE CIRCUIT COURT OF... THE NINTH JUDICIAL CIRCUIT...

IN THE CIRCUIT COURT OF... THE NINTH JUDICIAL CIRCUIT...

IN THE CIRCUIT COURT OF... THE NINTH JUDICIAL CIRCUIT...

IN THE CIRCUIT COURT OF... THE NINTH JUDICIAL CIRCUIT...

IN THE CIRCUIT COURT OF... THE NINTH JUDICIAL CIRCUIT...

IN THE CIRCUIT COURT OF... THE NINTH JUDICIAL CIRCUIT...

Weather or No

Table with weather forecasts for various locations like Tucson, Phoenix, etc.

Answer to Previous Puzzle

Table with answers to a crossword puzzle, including words like 'CONQUER', 'SHAKESPEARE', etc.



CECIL TUCKER

Tucker Plans Talk, Program In North Orlando

By Ginny Skisak
The North Orlando Garden Club will sponsor a speech and program by Cecil Tucker, Seminole County agent, at the Village Recreation Center at 1:30 p.m. Thursday.

This first of a series of such programs planned for various communities in the county will bring the opportunity to residents of learning care of lawns and gardens.

Tucker's talk on grasses and their care will include choosing the variety, building a new lawn and maintenance of the lawn and will be followed by a question and answer period.

At this point, a 15-minute intermission will be provided in order that residents may get samples from their individual locations for soil analyses.

The second part of the program, entitled "Yardening and Gardening," will include a film on visual illustrations and a clinic on diseased plants.

For this, the county agent advises it will be sufficient to bring a leaf from a diseased plant for diagnosis. If grass samples are brought, he asks that the plug end with some dead and some live roots be provided. The runner should be at least one foot long and the plug three or four inches wide.

Tucker is presenting this program to help residents beautify their lawns and to establish successful gardens.

North Orlando Garden Club members urge all residents to join them in expressing their gratitude for the public service by attending the Thursday program.

School Art Show Slated

April 11 through 14 has been set aside as Seminole County Elementary Art Exhibit Days, when this year's works will be displayed in the old Firestone Store on First St.

Along with the County Art Exhibit, will be a display of the Rudolf Steiner Arts Foundation Exhibit, which includes works of children from 70 schools throughout the world.

Director of the show, Mrs. Mildred Babcock, county school art coordinator has said that all local exhibits must be ready to be picked up by art teachers by Monday and must bear the name of the child, teacher, school and grade.

Exhibits may be done by one child, a group of children or a whole class, and may sit, lie or hang, but are limited to only one exhibit from each class.

Originality, skill, craftsmanship, color, composition and neatness will be taken into consideration for the display and a wide variety of representation is expected.

Hours for the showing have been set from 9 a.m. to 5 p.m. on April 11, 12 and 14 and on the 13th (Friday) until 9 p.m.

DeBary C Of C To Hear Sanford Doctor

By Mrs. Adam Muller
Dr. C. L. Park Jr. of Sanford will be guest speaker at today's 7 p. m. dinner meeting of the DeBary Chamber of Commerce at the Stetson Union Building in DeLand.

Dr. Park's topic will be "Post Graduate Medical Training." A report also will be given at the meeting on the proposed DeBary Clinic.



PRICES GOOD THROUGH WEEKEND
QUANTITY RIGHTS RESERVED

2460 PARK AVE.
SANFORD, FLA.

PSG SLICED
BOLOGNA
LB PKG **49¢**

OSCAR MAYER ALL MEAT
FRANKS
LB CELLO **59¢**

Famous Blue Ribbon Seal of Quality Western Beef Boneless ROUND ROAST



LB **79¢**

GROUND ROUND LB 79¢
CHOPPED SIRLOIN LB 79¢
& ROUND CUBES LB 79¢

FLORIDA OR GEORGIA GOV'T INSPECTED FRESH DRESSED & DRAWN

FRYERS

QUARTER LEGS OR BREASTS **33¢**

MEATY FLAVORFUL FRESH
PORK BUTTS 39¢
SQUARE CUT SHOULDER
LAMB ROAST 29¢

FLAVORFUL MEATY LAMB SHOULDER CHOPS, 1/2 LB 49¢

Lenten Cheese and Seafood
MAYFAIR NEW & IMPROVED
COTTAGE CHEESE LB 29¢ 2 LB 55¢

CHEESE SPREAD MELLOW AGE 2 LB 69¢

SWISS CHEESE MAYFAIR SLICED 6 OZ 35¢

ROE MULLET FLORIDA WEST COAST LARGE LB 19¢

SPANISH MACKEREL KEY WEST LB 26¢

DEVILED CRABS GOLDEN SHORE 9 OZ PKG 49¢

MAXWELL HOUSE
6 OZ. INSTANT
COFFEE
LIMIT-1 WITH \$500 FOOD ORDER
69¢

PLASTIC PAILS
Reg. 69c Limited Supply **48¢**

BUFFET SIZE VEGETABLES

PEAS ROSEDALE SWEET	5	8 OZ CANS
CORN ROSEDALE CREAM OR WHOLE KERNEL	5	8 OZ CANS
LIMAS ROSEDALE ALL GREEN	49¢	
Succotach SARACEN (Corn & Limas)	49¢	

FOAM BACK RUG SALE
CHOOSE FROM OUR WIDE SELECTION OF HEAVY DUTY FOAM BACKED BROADLOOM RUGS. MANY SIZES AVAILABLE. BOUND ON ALL 4 SIDES FOR EXTRA STRENGTH CHOICE OF 5 TWEEDS

21" x 36" \$1.98 VALUE	97¢
24" x 72" \$2.99 VALUE	1.99
4 Ft. x 5 Ft. \$5.00 VALUE	3.99

BANQUET FROZEN
• FRIED CHICKEN • TURKEY • BEEF • HAM

DINNERS
2 11 OZ PKGS 89¢

LADY FAIR GOLDEN 12 OZ. CUT POUND CAKE REG 35¢ **29¢**
LADY FAIR LEMON OR COCONUT PIES REG 49¢ **39¢**

FRESH PICKED TENDER YOUNG
POLE BEANS 229¢ Lbs.

STRAWBERRIES 29¢
FRESH FLORIDA GROWN PINT

<p>FREE 50 MERCHANTS GREEN STAMPS WITH THE PURCHASE OF BOTTLE OF 50 TABLETS DRISTAN AT OUR REGULAR LOW PRICE EXPIRES 3-28-62</p>	<p>FREE 25 MERCHANTS GREEN STAMPS WITH THE PURCHASE OF 1 LB. GANTON MAYFAIR COT. CHEESE AT OUR REGULAR LOW PRICE EXPIRES 3-28-62</p>	<p>FREE 25 MERCHANTS GREEN STAMPS WITH THE PURCHASE OF PKG. OF 18 LADY FAIR GAKE DONUTS AT OUR REGULAR LOW PRICE EXPIRES 3-28-62</p>	<p>FREE 25 MERCHANTS GREEN STAMPS WITH THE PURCHASE OF PKG. OF FIDEL'S FROZEN CHOC. ECLAIRS AT OUR REGULAR LOW PRICE EXPIRES 3-28-62</p>
--	--	--	--

2nd WEEK

Libby's GREEN THUMB SALE

CORNED BEEF HASH LIBBY'S 15 OZ CAN	\$3	ANY FOR
CHILI With BEANS LIBBY'S 24 OZ CAN		
SPAGHETTI & MEAT BALLS LIBBY'S 24 OZ CAN	\$4	ANY FOR
PINEAPPLE HILLSDALE SLICED BIG #3 1/2 CAN		
TOMATO JUICE LIBBY'S 46 OZ CAN	\$5	ANY FOR
PEACHES SLICED LIBBY'S OR FYNE-TASTE 2 1/4 CANS		
PEACHES HALVES LIBBY'S 303 CAN	\$5	ANY FOR
BARTLETT PEARS LIBBY'S 303 CAN		
FRUIT COCKTAIL LIBBY'S 303 CAN	\$5	ANY FOR
SWEET PEAS LIBBY'S 303 CAN		
TOMATO CATSUP LIBBY'S 14 OZ BTL	\$5	ANY FOR
CUT GREEN BEANS LIBBY'S 303 CAN		

LIBBY'S CREAM STYLE CORN 6 1/2" 1" DRINKS 6 1/2" 1" BEETS 8 1/2" 1"

A SOFTER, SMOOTHER SKIN WITH
CAMAY SOAP
2 Reg Bars **21¢**

THE SOAP OF BEAUTIFUL WOMEN
CAMAY SOAP
2 Bath Bars **31¢**

THE FAMILY FAVORITE FOR BATH OR WASH-UP
IVORY SOAP
2 Large Bars **33¢**

CREAMY-LATHERING IVORY AGREES WITH YOU
IVORY SOAP
Med Bar **10¢**

THE PROVEN BEAUTY SOAP
IVORY SOAP
4 Personal Bars **27¢**

IT'S EASY TO BE LOVELY WITH
ZEST SOAP
2 2 1/2" Bars **29¢**

MAKES EVERY BATH A BEAUTY BATH
ZEST SOAP
2 Bath Bars **41¢**

GET THE SOAP THAT GETS THE DIRT OUT
LAVA SOAP
2 Med Bars **25¢**

THE HARD WATER SOAP THAT'S AMAZINGLY MILD
KIRKS SOAP
2 Reg Bars **19¢**

MAKES CLOTHES SOFTER DETERGENT
IVORY FLAKES
Large Box **35¢**

KEEPS WASHABLES LOVELY LONGER, DETERGENT
IVORY SNOW
Large Box **35¢**

DISHES SHINE WITHOUT WIPING, DETERGENT
DREFT
Giant Box **83¢**

GET WHITE THINGS WHITER, USE DETERGENT
OXYDOL
Giant Box **83¢**

SAFEST DETERGENT YOU CAN BUY
TIDE
Giant Box **77¢**

WITH A MIRACLE WHITENING AGENT IT'S DETERGENT
CHEER
Giant Box **77¢**

NOTHING CLEANS LIKE OUR DETERGENT
DUZ
Reg Box **59¢**

QUICK, EASY TO USE DETERGENT
DASH
Giant Box **79¢**

FAST, SAFE, EASY TO USE DETERGENT
CASCADE
Reg Box **45¢**

A WASHING MIRACLE DETERGENT
IVORY LIQUID
22 Oz Btl **69¢**

DISHES AND GLASSWARE SHINE
JOY LIQUID
22 Oz Btl **69¢**

LIQUID CLEANER THAT CLEANS EVERYTHING
MR. CLEAN
28 Oz Btl **69¢**

