

How good is Seminole Community College's production of *Public Enemy*?

Sanford Herald

88th Year, No. 130 - Sanford, Florida

Play review: Page 8A



Get out of jail free? Not quite free, but it's cheaper to bail out of jail in Seminole County

By VICKI DeSORMIER
Herald Senior Staff Writer

SANFORD — If you're going to get arrested, you might want to do it here in Seminole County rather than in neighboring Orange or Volusia counties. It's cheaper to bail out of jail in Seminole, bail bond officials say.

Undersheriff Steve Harriett of the Seminole County sheriff's office said judges in each county make an administrative decision each year, or as needed, as to the schedule of standard bond amounts.

At a glance
Defendants arrested for prostitution who post bond will pay \$500 in Orange County and \$115 in Seminole County.

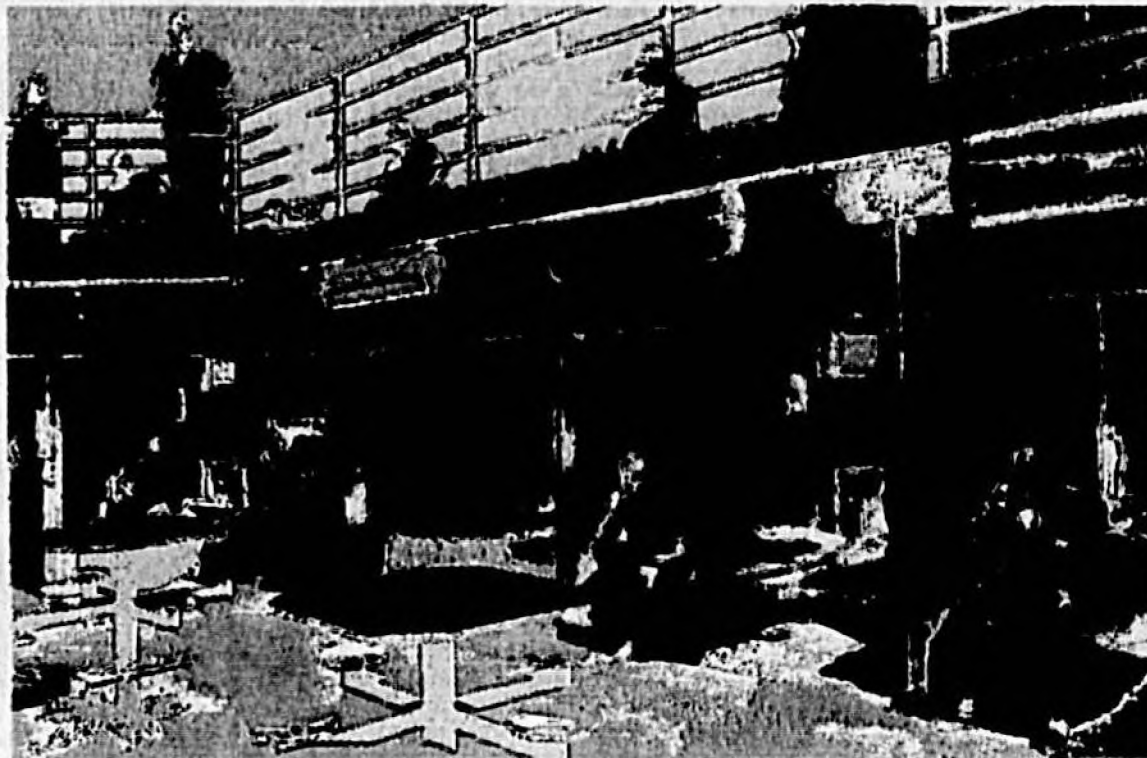
"It is up to the judges in the individual counties," said Harriett, who said the judges have certain parameters within which they need to set the bond amounts.

And, he added, the judge has the right to vary from the standard schedule in his courtroom if there are extenuating circumstances, such as the defendant is on probation for a previous crime or he lives out of state.

The farther away a defendant resides, the greater the likelihood he will "skip bond" and fail to appear in court.

Because Seminole is a smaller county with fewer annual arrests and fewer law enforcement and corrections officers than its neighbors to the north and south, bondsman Shelly Glenn said, the amount of bond is less.

See Ball, Page 8A



Herald illustration by Tammy Vincent and Bruce Perkins

Once arrested, inmates in the Seminole County jail await first appearance before a judge, at which time bond may be set. Bond insures the defendant will show up for subsequent court appearances.

TODAY



Seminole Today

Seminole County residents have a wealth of opportunities for work and play. The quality of life here is considered among the best in the state. Just how much progress have we made toward a better county? See our Special Section, *Seminole Today*, inside.



Cupid power

One 77-year-old bride tied the knot on Valentine's Day while another special lady was crowned Valentine queen of her sorority. See Doris Dietrich's column, Page 4B.

INDEX

Business	7A
Classifieds	6-9B
Comics	10B
Crossword	10B
Dear Abby	6B
Deaths	4A
Editorial	4A
Florida	2A
Health Fitness	7A
Horoscope	10B
Nation	6A
People	6-9B
Sports	1-3B
Television	6B
Weather	2A



Today: Mostly fair and cool. High in the mid 60s. Wind becoming northwest and increasing to 20 mph. Chance of rain 20 percent.

Now hear this

Guide dog is her master's ears

By VICKI DeSORMIER
Herald Staff Writer

SANFORD — Susie White has cute ears. They're on a sweet-faced little Jack Russell terrier named Pete.

Pete, you see, serves as the ears in a fast-paced, hearing-oriented world for a woman who hears poorly with a hearing aid in each ear and nothing without them.

"She (Pete, short for Petra, is a female) is so special," White said. "She hears all those things I just can't and lets me know about them."

In town, Pete lets White know when its safe to cross the street. If a car, not yet visible, is coming around the corner, Pete will not let White step into the intersection or out of the car.

At home, Pete hears the alarm clock and jumps on White's bed to rouse her from sleep. She takes her to the

See Ears, Page 5A



Herald Photo by Tammy Vincent

Susie White, accompanied by her "ears" Pete.

It's not too late to volunteer for river cleanup

By VICKI DeSORMIER
Herald Senior Staff Writer

SANFORD — It's coming down to the wire for the biggest cleanup effort ever undertaken on the St. Johns River and its tributaries.

The organizers are making final arrangements and thousands of volunteers are getting ready to roll up their pant legs and wade into the waters to get the trash out.

On Saturday, March 2, thousands of people who love the natural beauty of Florida will take part in the St. Johns River Celebration, an effort to return the water to its natural beauty.

"It's a chance to take a personal pride in the river," said Bill Graf, public outreach coordinator for the St. Johns River Water Management District, the driving force behind the cleanup effort. "Once you start cleaning it up, you take on sort of a feeling of ownership."

Graf said he spent about a half an hour pulling trash out of the river in preparation for the kickoff press conference for the event about a month ago.

"Now when I see someone throwing something in the water or letting their cups just blow overboard into the water," he said, "I take it personally."

Graf and other organizers hope that many people will take it personally and come out to help in two weeks.

"I think a lot of kids will bring their parents," said Sandra Gray, who is helping spearhead the event. "Kids are so environmentally aware. It's up to them to educate their parents."

There are 18 cleanup sites in Seminole County.

Sherry Newkirk, the county recycling coordinator, is organizing the effort in Seminole County. She said the plans are going well and response to the call for volunteers has been good, but there is still room for more people who want to help.

In Seminole County, which has more collection sites than most counties, the trash pulled from the river and connecting lakes, such as Lake Monroe and Lake Jesup in Sanford, will be divided into

See Cleanup, Page 5A

Poll: One-fifth say halt all immigration

By MICHELLE MITTELSTADT
Associated Press Writer

WASHINGTON — Nearly eight of every 10 Americans believe immigration rates should be dramatically scaled back — and fully one-fifth want a halt to all immigration, legal or not, a new poll suggests.

The Roper poll, commissioned by a small non-profit group that advocates a substantially decreased U.S. population, comes as Congress is poised to tackle bills seeking to thwart illegal immigration and make a dent in legal entries.

Seventy-nine percent of those polled for Negative Population Growth Inc. said the United States should allow 600,000 or fewer immigrants entry annually. Of that number, 70 percent favored immigration rates of 300,000 or less annually; 54 percent endorsing rates of 100,000 or less. Only 2 percent favored increasing immigration rates.

"This is clearly a mandate that people want low numbers of immigration," said NPG's Washington director, Sharon McCloe Stein, who provided the poll to The Associated Press.

See Immigration, Page 2A

AT&T raises basic long-distance rates

By JEANNINE AVERSA
Associated Press Writer

WASHINGTON — Most of AT&T's 80 million residential customers will see their basic long-distance rates go up by an average 40 cents a month starting yesterday.

The nation's largest long-distance company said Friday that the 4.3 percent increase — the first for residential customers in more than a year — is needed to bring prices closer to the cost of providing service.

AT&T spokesman Dan Lawler didn't know exactly how many residential customers would be affected by the increase, but said most of the 80 million customers would see their rates rise.

Brian Adamuk, an analyst with

the Yankee Group in Boston, predicted that the increase would not drive away AT&T customers and that other long-distance companies would follow suit.

Rivals MCI and Sprint had no comment.

Lawler would not say how much revenue the rate increase would generate.

The basic rate is what customers generally pay if they are not part of a discounted calling program.

Discounts offered through various AT&T calling plans would not be affected by the basic rate increase, Lawler said.

AT&T also said it is increasing the service charge on long-distance calls billed to credit cards other than AT&T's by 20 cents a call to reflect higher costs of such trans-

See Phone, Page 5A



Herald Photo by Bruce Perkins

Organizers of the statewide cleanup hope to restore the beauty of area waterways.

POLICE BRIEFS

Robbery

Two persons were arrested Thursday following the reported robbery of a woman leaving a bank on SR-434 in Longwood. According to the Longwood police arrest report, a woman had just obtained 25 \$20 bills from the ATM machine, and was driving off, when a man and a woman in another vehicle pulled in front of her.

She told police the couple exited the vehicle and approached her, asking for directions to the Altamonte Mall. She said the female then produced a knife, and demanded the woman turn over her money.

After obtaining the \$500, the couple returned to their vehicle and drove off. The victim was able to give police a description of the getaway vehicle. It was subsequently located in on SR-436 in Altamonte Springs and stopped.

The two in the vehicle were identified as Blair H. Carter, 21, of Apopka, and Carrie Beth Everett, 18. A search of the vehicle reportedly uncovered a controlled substance. The two were said to have over \$500 on their person.

Each was charged with armed robbery, grand theft, and possession of a controlled substance.

Gun theft

Danny Wayne Shepard, 19, of 452 Sand Cove Drive, was arrested by Sanford police at the police station Thursday. The arrest report said Shepard's father had reportedly returned two guns which had been reported stolen, to the victim of the theft. Police also discovered a VCR, also stolen in the burglary, had been pawned in Sanford.

Shepard was called to the police station, and following questioning regarding the case, was placed under arrest on charges of grand theft and dealing in stolen property.

Shepard was one of two persons who had been charged in the armed robbery Wednesday, at the Steak and Shake restaurant on Towne Center Circle in Sanford. He was out on bond at the time of Thursday's arrest.

Police indicated there may be additional charges filed if other persons can be connected with the theft of the guns.

Saw pawning

Sanford police, conducting a routine pawn shop inspection, determined that a \$915 concrete saw, reported stolen in Sanford, had been pawned on Oct. 28 of last year. The saw had apparently been sold to another person.

Lee Perry, 48, of 87 Lake Monroe Terrace in Sanford, subsequently turned himself in at the Sanford police station Thursday in connection with the case. He was charged with grand theft of property and dealing in stolen property.

Man down

Keith T. Smiley, 27, 2547 Clairmont Avenue, Sanford, was arrested by Sanford police at Central Florida Regional Hospital Thursday. Officers said they were called to the hospital in regard to a man possibly being struck by a car. Following an investigation, officers said they determined Smiley had been involved in an altercation with a female in the 1800 block of W. 25th Street, and when the woman attempted to drive away from the area, they said Smiley apparently jumped onto the car, but fell off striking the ground. He had been taken to the hospital for treatment of his injuries.

Police arrested him on charges of battery, domestic violence.

Sanford police reports

- An estimated \$1,800 in property, including \$1,400 in chrome wheels and tires were reported stolen Thursday from a vehicle parked in the 1800 block of Perimeter Avenue in Sanford.
- A \$125 bike was reported stolen Thursday from a shed in the 900 block of Santa Barbara Drive.
- A woman's purse containing an estimated \$300 in food stamps was reported stolen Thursday at a bus stop at Seminole Community College.
- An estimated \$500 in property was reported stolen Thursday from a vehicle parked at the baseball stadium at 806 Mellonville Avenue.
- A \$300 TV set was reported stolen from a room Thursday at the Marina Hotel, 530 N. Palmetto Avenue.
- A \$3,200 piece of machinery was reportedly stolen Thursday in the 1200 block of Elm Avenue in Sanford.
- A \$60 extension ladder was said to have been taken Thursday from a residence in the 700 block of Mulberry Avenue.

Oviedo Council agenda

From staff reports

OVIEDO - The Oviedo City Council meets Monday night. Among items to be discussed and considered are the Twin Rivers-Alafaya Woods area, and the First Baptist Church development plans.

As of this past week, the following items were listed on the agenda for the regular council meeting, scheduled to begin at 7 p.m.

- Opening ceremonies
- Public comments
- Ordinance 979 - Vacation of portion of Myrtle Street and alleys within the Alexandria Plan of Oviedo Subdivision, for First Baptist Church of Oviedo.
- Ordinance 982 - Regarding capital recovery charged for water utility service.
- Ordinance 983 - Regarding capital recovery charge for sanitary sewer service.
- Ordinance 984 - Elimination of Recreation Committee.
- Ordinance 985 - Regarding Twin Rivers-Alafaya Woods Special Neighborhood Improvement District (SNID) Board of Directors.
- Request - Special exception permit, Walter Schwartz, PCS Primeco, L.P.
- Consideration - Comprehensive plan amendment - 195.85 acres located north of Red Bug Lake Road and east of the City of Winter Springs, west of Seminole County GreeneWay, Viera Company, applicant.
- Request - Consensus regarding 20 foot variance to existing 50 foot parking setback from SR-434, Northeast corner of Mitchell Hammock Road and SR-434 for Eckerd's Drug Store.
- Discussion - Institutional planned unit development, First

Baptist Church, development agreement and conceptual development plan. (Located at northwest corner of SR-426 and SR-434).

- Selection of consultant to prepare corridor feasibility analysis for northern, southern, and Mitchell Hammock Road connector facilities.
- Consideration - Change of control of Western Waste Industries stock due to plan of merger of USA Waste Services Ind. and Western Waste Industries.
- Consideration - Offer from Evelyn Cloniger, trustee and representative, to sell parcel 32, Division Street Central, to city of Oviedo.
- Appointment - Three members to Alafaya Woods-Twin Rivers Special Residential Neighborhood Improvement District board of directors.
- Resolution - concerning sewer usage charges.
- Consent agenda
- Reports of mayor, councilmen, city attorney and city manager
- Additional items

Following the regular meeting a work session will be held. The following items were listed on the agenda for the work session:

- Code of Ordinances
- Light pollution control - alternative approaches to manage lighting in commercial properties
- City entry signs
- Land use density definition
- Telecommunications towers, regulations to limit number and location.

The Oviedo City Council will meet Monday, Feb. 19, beginning at 7 p.m., at city hall, 400 Alexandria Blvd., Oviedo.

Glimpse given of clinic shootings

By MICHAEL TYSON
Associated Press Writer

BOSTON - It was one of the days on which the Planned Parenthood of Greater Boston clinic performed abortions, so the usual half-dozen protesters were outside.

Receptionist Shannon Lowney sat at the front desk. Counselor Anjana Agrawal was in back with patients in the waiting rooms. Laura Silva and Brian Murray waited with friends, and Antonio Hernandez sat with his wife.

John C. Salvi III went on trial last week for puncturing that tableau of the clinic's usual routine with a hail of hollow-point bullets from his .22-caliber rifle fitted with a banana-shaped, large-capacity ammo clip.

He's charged with killing two receptionists and wounding five other people at Planned Parenthood and another clinic, Preterm Health Services.

In riveting testimony, prosecutors, victims and witnesses for the first time detailed Salvi's rampage through the clinics on Dec. 30, 1984.

Salvi's attorneys have acknowledged that their 23-year-old client was the shooter. They plan to present an insanity defense, while the prosecution is aiming for a first-degree murder conviction that could net Salvi a life term without possibility of parole.

Agrawal was standing near Lowney's desk as the receptionist pushed a buzzer to open

the front doors.

In walked a young man with black, puffy hair, later identified as Salvi, who approached Lowney as she laid open the window separating her from the patients. Salvi was dressed all in black.

In a hushed courtroom, Agrawal described what happened next.

Salvi made a "sudden movement, a downward movement, an upswing, and a rifle was pointed at the window. He pointed it directly at Shannon ... aimed and fired."

Lowney put her hands up, but two shots pierced her hands and neck, severing an artery, prosecutor John Kivian said.

As Agrawal tried to escape into the rear section of the clinic, she said, "He then moved to the left and pointed the gun directly at me ... and I took two bullets in my right side."

Assistant clinic coordinator Mary Hummel was in a rear room and thought she heard firecrackers. Other nurses yelled: "Shannon's been shot! Bring the emergency cart!"

Hummel went into the hallway, saw Agrawal coming toward her and put out her arms to catch the wounded woman as she fell.

Hummel then saw Lowney back into the hallway with her hands at her neck. She called her name and Lowney turned toward her.

"She gestured to me with her hands open in a gesture that looked like frustration,"

Hummel said. "Shannon crumpled over. I couldn't see any wounds because she was bleeding so heavily. There was blood everywhere."

Lowney died within three to seven minutes.

Salvi then spun around and sprayed the waiting rooms with bullets.

Murray pushed Silva to the floor when the shooting started.

"I remember a bullet whiz by me. It was right in front of me. I spun around and fell straight to the floor," Murray said.

He was shot in the left side. The bullet bounced off a rib and tore through his intestines, liver, stomach, spleen and pancreas before lodging near his right lung, where it remains.

While everyone else ducked,

Hernandez walked toward Salvi. He was shot in the left arm, back and abdomen and suffered a collapsed lung.

Then Salvi backed out of the clinic, jumped into his pickup that had a picture of a fetus on the rear window, and drove two miles up the street to Preterm Health, Kivian said.

There, he approached the reception desk, where 38-year-old Lee Ann Nichols was talking on the phone. He turned to bookkeeper Jane Sauer and asked: "Is this Preterm?"

After Sauer said it was, "He bent down ... I saw him just reach in his bag and pull out a gun. Then he took a step to his left, lifted his gun and shot me," Sauer said.

Finance Your Dealer's Last Trip?

Well then, it's time you waited up! Remember... we'd rather make a little bit from a lot of buyers than a lot of dollars from a few. Visit Us Before You Finance His Next Vacation!



Kaiser

PONTIAC-BUICK-OLDS TRUCK

1590 South Woodland Blvd., Deland
DELAND 984-776-6882 • DAYTONA 984-257-6888 • ORLANDO 687-829-6888
LOCATED AT THE CORNER OF HWY. 17-92 & HWY. 15A

YOU'D EXPECT
A GREAT RETURN POLICY
FROM A
DEPARTMENT STORE.

6.5%
APY

BUT FROM A BANK?

INTRODUCING OUR FIRSTRATE SAVINGS™ ACCOUNT.

At SunTrust, we're making an offer that's not only hard to believe, it's also hard to refuse. Act by February 23 to earn 6.5% APY through April 12 on accounts with balances of \$10,000 or greater in our all-new FirstRate Savings Account. Not only is this a great return, but FirstRate Savings has a lot more going for it - and you - than a traditional savings account. Provided you maintain a \$10,000 minimum balance, you can add or withdraw funds without interest penalty. And you have ATM access to your account whenever you like. Your account will continue to earn a high rate even after April 12, and each depositor is FDIC insured. So don't wait to take advantage of our exceptional return policy. Visit the SunTrust office nearest you.

Call 1-800-2-SWITCH (1-800-279-4824), 24 hours a day.

SUNTRUST

Be Ready For Life

At SunTrust, 6.5% APY accounts must be opened by February 23, 1988. Customers who deposit an account by February 23, 1988 will continue to earn 6.5% APY through April 12, 1988. Annual percentage yield is variable as of this publication date. The APY is subject to change after the account is opened. The advertised APY is for accounts with balances of \$10,000 or greater through April 12, 1988. Accounts with less than \$10,000 will earn an APY of 5%. There is a \$10,000 minimum to open the account. Funds may not be withdrawn from the account. This is a limited time offer for individuals in Georgia, Tennessee and Alabama only. Maximum deposit of \$10,000 per household is applicable. Personal accounts only. Member FDIC. ©1988 SunTrust is a registered service mark belonging to SunTrust Banks, Inc.



Science Project Night

Third graders at Pine Crest Elementary School in Sanford recently participated in Science Project Night. Parents, friends and family were invited to visit the 26 stations at which experiments were displayed, including mind teasers and projects using all five senses. Top left: Ismaniar Iswan, 8, and her mom, Ade, work with plant seeds. Center: Brittney Dupre, 8, her mom, Barb, and sister Shannon, 9, match sounds. Right: Teacher Miss Palumbo serves refreshments to the crowd. Bottom right: Robbi Sandkulla gets some help with her experiment on liquids from her dad, Richard, mom, Rebecca, and her brother Bradley, 4.

Herald Photos by Susan Wenner



BROADWAY
328-7212
GOLD & SILVER
ESTATE • PRE OWNED • CUSTOM
JEWELRY
JEWELRY REPAIR
WE BUY
GOLD • SILVER
DIAMONDS • COINS
ANYTHING OF VALUE
5 POINTS PLAZA
1 MILE SOUTH
OF FLEA WORLD

Investigators pick through train wreckage for clues

By **M. JOSEPH NEBERT**
Associated Press Writer

SILVER SPRING, Md. — A commuter train carrying Job Corps youths home on a snowy evening was crushed by an Amtrak train bound for Chicago, leaving at least 11 passengers dead. Investigators picked through the wreckage for clues.

Transit officials said there were only 17 passengers on the commuter train, and Job Corps officials said all were believed to be trainees from a West Virginia center, returning to the Washington, D.C., area for the weekend.

"We recovered 11 bodies," said Montgomery County Police Sgt. Wayne Jerman.

Labor Secretary Robert Reich, whose department administers the Job Corps program, said this was an especially "poignant tragedy" because the Job Corps participants "made a decision to make something more out of their lives."

It was not known immediately how the trains ended up on the same track in this Washington suburb. Maryland Mass Transit

Administration officials insisted their commuter train was stopped when it was struck.

Transportation Secretary Federico Pena, who visited the scene this morning, said he does not yet know whether it was a head-on collision.

"It's clear that the lead car of the MARC train was significantly sheared," he said. "Now I understand why we had so many fatalities. Clearly it was a very significant impact. The front car is sheared; half of it is gone."

The National Transportation Safety Board is looking at the signals, the communications system operated by CSX railroad, the weather and human error as possible factors, Pena said.

Pena stressed that overall the safety record for passenger trains has been the "best ever" the last two years.

Reich said at the scene that 17 Job Corps trainees were on the MARC train.

He said nine were unaccounted for, three were hospitalized, but are "believed to be in good shape," and five "are

fine." Reich said the trainees were headed to Washington for a three-day holiday weekend break to be with family and friends. They were mostly from the Washington area.

Claude Thomas, director of Job Corps center, near Harpers Ferry, W. Va., said two of the students on the train were females.

Marilyn Matchette at Amtrak Operations Center in Philadelphia said this morning that no trains in the busy Northeast Corridor had been canceled and that there were only minor delays.

The four-car Maryland Rail Commuter, or MARC, train was being pushed by a locomotive, and the cars bore the brunt of the collision.

The crash occurred on tracks owned by the CSX railroad, which operates the switches by remote control from its Jacksonville, Fla., headquarters.

Kelvin Williams, 19, of Seat Pleasant, Md., a passenger on the MARC train, told reporters there was no sign of trouble until "three conductors came out

screaming. 'Everybody get down! And then we crashed. Everybody was crying and screaming.'"

The resulting explosion sent a fireball into the sky and rattled a nearby apartment complex. At least 21 people were injured.

Kurtis Cross was one of the first to arrive. "We saw the conductor, he was pretty bloodied up," Cross said. "Another Amtrak official told us to back up because he thought it might explode."

Witnesses said rescue crews arrived quickly, but there was no hope for many commuters trapped in the twisted steel. None of the Amtrak passengers

was injured seriously, officials said.

"When the firefighters first arrived at the scene, there were people banging on the windows and trying to get out," said Lt. Denise Fox, spokeswoman for the Montgomery County, Md., fire department.

Fox said the victims died of multiple trauma and burns.

NTSB investigators were called to the scene. The Amtrak locomotive's front was demolished, its side torn with a gaping hole. Part of the commuter train was trapped underneath.

Stinecipher

Continued from Page 2A

Dr. Samuel Puleston

Dr. Puleston was considered by the writer of the article to be one of Sanford's formest physicians. It was stated that data from this doctor had not been received, but he was acclaimed to be a thoroughly prepared, skillful and eminently successful doctor. He also stood high socially and among businessmen. His office was in the National Bank Building.

Dr. T.A. Neal

Dr. T.A. Neal was born in Banks County, Ga. in 1874. His father was a captain in the Confederate Army.

This physician was graduated from the University of Georgia in Athens with an AB degree and taught school for four years before entering medical college in Atlanta. He graduated second in his class in 1903. His next year was spent as house physician and surgeon at Grady Hospital.

After looking the state of Florida over, he settled in Sanford in 1904. He had never regretted his decision and believed that Sanford was coming into its own.

Dr. Neal was married to Miss Olive Fitts of Sanford on June 14, 1906 and they had a charming daughter, aged two.

Dr. N.B. Wallace

Dr. Wallace was born in

Athens, Ala. on July 1, 1877. He received his literary education from the University of Alabama and then graduated from the St. Louis College of Physicians and Surgeons in 1899.

He had served in the old Plant System Hospital and was also the port physician at Port Tampa and city physician of Port Tampa City.

In 1902, he took over his father's practice in Athens, Ala. where he remained until coming to Sanford a few months ago on account of nasal catarrh. This climate was proving highly beneficial.

Dr. Charles E. Walker

Dr. Walker, homeopathic physician and surgeon, was born in Illinois, moving in early childhood to Massachusetts where he received his general education. His medical studies were taken in Philadelphia at the Hahnemann College, the oldest and best school of homeopathic medicine in this country. He received his degree in 1873.

After 10 years of successful practice in Massachusetts, he moved to Florida in 1883 where he continued his medical practice and also developed an orange grove. Just when he was beginning to get good returns from his grove, the freeze of 1895 took it away. He went up to Iowa, but returned to Florida after one winter. He selected Sanford in which to locate as there was a prosperous future for the city.

Dr. W.E. Housholder

Dr. Housholder, son of the Rev. A.E. Housholder, was born in Knoxville, Tenn. Jan. 8, 1882. His parents moved to Florida when he was a baby so received his early education in the Florida schools. He attended the Florida Conference College and received his degree from the Southern Dental College in Atlanta and graduated in Dentistry at the age of 22 in 1904. He had located in Sanford two years before.

Other dentists

There was a picture of Dr. C.G. Butt, dentist, with the information that his office was in the Hines block over Woodruff's Store.

There was also a photograph of Dr. R.M. Mason, D.D.S., seated in his office with a glimpse of his dentist's chair in the next room.

Further information wanted

If you are or know of a descendant of one of these doctors who currently lives in the area, let me know. And if you have further information on any of them, please contact me as some of their biographies were sketchy.

Also, if you have a copy of Dr. Jerome Bruce's novel "Studies in Black and White," let me know. I had never heard of this one!

UNIX & C/C++ TRAINING

Public Course Schedule

Unix Systems Security	27-29 February 1996
Introduction to OOP/C++ Programming	11-15 March 1996
Advanced Unix Programming	18-22 March 1996
Unix System Administration	25-29 March 1996

All Classes Held At The Florida Institute of Technology
Orlando Training Center

UNIX & OOP/C++ CERTIFICATE PROGRAM

Hands-On 8-Week Accelerated Learning Program

- ✓ Introduction to the Unix System
- ✓ Unix Shell Programming
- ✓ Unix System Administration
- ✓ Unix Network Administration
- ✓ Introduction to C Programming
- ✓ Advanced C Programming
- ✓ Software Development on Unix
- ✓ Introduction to OOP/C++ Programming

Enrollment for Day & Evening Classes Now Open
Free Information Session On 21 February, 1996

Inquire About Public Classes or Accelerated Learning Program From Either

TRAINIX, INC.
DeBary, FL 32713
(407) 668-8625

Florida Institute of Technology
Orlando Graduate Center
(407) 895-7007

Health/Fitness

IN BRIEF

Loss weight by donating a car

ORLANDO — Having trouble keeping that New Year's resolution to shed unwanted pounds? The National Kidney Foundation has created a satirical look at weight loss through its Kidney Cars Program. This program is available to help anyone remove 2,000 pounds and more by donating their unwanted vehicles to the National Kidney Foundation of Florida.

If you answer "yes" to any of the following questions, you need to use this program: Is your motor's diet saturated with oil? Have you lost the spring in your seat? Does your carb-hydrate? Do you have cholesterol-clogged fuel lines? Have you lost control when approaching a fork in the road? When you put your foot down, does your bottom drag? Does a broken grill mean you won't be eating out tonight?

This exciting new weight loss program helps clean up unsightly/unsafe "pounds" in your area and provides much needed funds to drive programs that save lives. The Kidney Cars program offers free towing, and the donor may be eligible for a tax deduction.

To donate a vehicle, call 1-800-488-CARS (2277). After the call, a packet will be mailed in which to mail back signed titles and odometer statements. Once the paperwork is completed and returned, the National Kidney Foundation will arrange for a free vehicle pick-up. If additional information is needed, contact the National Kidney Foundation of Florida at 1-800-927-9859.

New officers elected

SANFORD — Central Florida Regional Hospital's Board of Trustees has selected their new officers for 1996.

James E. Quinn, M.D. has been unanimously elected as chairman of Central Florida Regional Hospital's Board of Trustees. Dr. Quinn has been a family practitioner in Sanford since 1983, and is currently in private practice with Harvey Schefsky, M.D. He has served the hospital as chief of staff, and is serving his second term on the board of trustees. Dr. Quinn replaces Lee P. Moore, chairman of the board for Sunniland Corporation.

The Hon. Bettye D. Smith, mayor of Sanford, has been unanimously elected vice-chairman of the board. Mayor Smith is also serving her second term on the board and replaces Dr. Quinn.

In addition, Jesse W. Johnson, M.D., has been appointed as a member of the board of trustees. He is a board certified internist who has been in private practice in Seminole County since 1987. Dr. Johnson currently practices in Lake Mary with Dennis Abraham, M.D. at Central Florida Regional Hospital. He has twice served as chairman of the Quality Assurance Committee. Dr. Johnson was appointed to fill the vacancy created by the resignation of Gonzalo Huaman, M.D., who served for six years on the board.

Central Florida Regional Hospital is a 226-bed facility located in Sanford, with 700 employees and over 140 physicians on its medical staff. As one of 340 Columbia/HCA hospitals nationwide, Central Florida Regional Hospital offers a full range of medical services, including the only open-heart surgery center in Seminole County.

Local VNA receives commendation

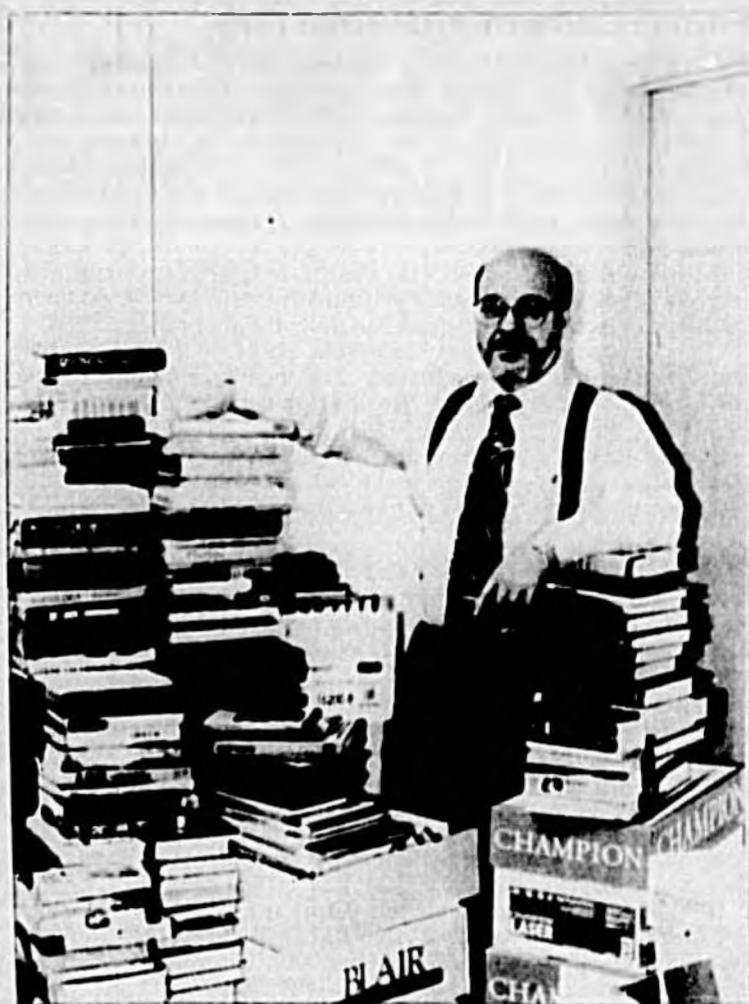
ORLANDO — The Visiting Nurse Association of Central Florida has received commendation by the National League of Nursing's Community Health Accreditation Program (CHAP) for 93 percent patient satisfaction rate. The Visiting Nurse Association surveys a cross-section of patients and former patients monthly to monitor patient satisfaction, and averaged 93 percent of the 2,251 respondents that were very pleased with the service received from VNA.

Home health care has evolved to include such high-tech services as in the home as chemotherapy, renal dialysis, respiratory services, parenteral

and enteral nutrition, and physical, speech, and occupational therapy. The cost of home care per day is approximately 95 percent less than the average hospital charge per day, and approximately 70 percent less than the daily cost of a skilled nursing facility (based on 1994 government figures).

The VNA of Central Florida remains a non-profit organization dedicated to community service and quality health care.

In honor of National VNA Week, they will be holding a book sale to benefit VNA patients in need Feb. 24 and 25 at Loch Haven Park Neighborhood Center.



VNA President Thomas Skemp prepares for VNA book sale

Study: teens don't understand Norplant

By The Associated Press

CHICAGO — Misconceptions about the safety and side effects of the contraceptive Norplant may prevent adolescents from using it, according to a new study. Norplant, also known as levonorgestrel implants, is a contraceptive device that is surgically implanted under the arm to prevent pregnancy for up to five years. Researchers from the University of Texas Medical Branch at Galveston surveyed 323 adolescents to find out about teen-age girls' willingness to try Norplant. "Although 64 percent of the

sample stated a willingness to consider using Norplant, 74 percent cited concerns about safety and possible side effects," say the authors who noted that 88 percent of teens feared that Norplant could cause cancer. Researchers say some of the other barriers to Norplant use included misinformation, fertility concerns and fear over the insertion process. "Health care providers must work to remove barriers ... by means of patient education and peer and family counseling so that young patients who wish to avoid pregnancy will view Norplant as a contraceptive alternative," the authors conclude.

Let us know

The Sanford Herald wants to publicize your events, classes and seminars that are available to the general public.

We'd like to have the information for your announcement at least a week in advance.

All items should be typed or written legibly and include information about who, what, when, where and even why your event is taking place. Be sure to include your name and a daytime phone number in case we have some questions about the information.

Business

IN BRIEF

Photo business

SANFORD — April Keniston Photography is setting up shop in downtown Sanford. The business will be located at 202 E. First Street, Suite 1, in Sanford.

A grand opening and ribbon cutting has been set for Friday, March 1 at the new location.

New industry

SANFORD — Bert Dy-Liaco, of Pizzuti Realty Inc., has completed the sale of an industrial building located on a five acre parcel in Sanford. Dy-Liaco, with 15 years experience in commercial real estate, represented the seller, H & H Partners of Sanford.

The 47,636 square foot building, formerly a manufacturing facility for automotive air conditioning components, was sold for \$1.1 million to Artercraft Industries.

Artercraft refurbishes restaurants, and is relocating and expanding its operation from south of downtown Orlando.

H H award

LAKE MARY — Word has been received that Higgins & Heath/Better Homes and Gardens, with offices in Lake Mary and Altamonte Springs will be the recipient of a national award for sales and marketing excellence by Better Homes and Gardens Real Estate Service.

The 17-year old full-service company will be recognized as the grand winner in Best of Show awards for "Outstanding local marketing ideas and program."

The award is to be handed on March 28 during the association's annual business conference and convention in Dallas.

Sales associate

ALTAMONTE SPRINGS — Fred Schaub, division president of Olympia Homes of Altamonte Springs has announced the appointment of Ann Landau as sales associate. Landau will be working out of the company's Pebble Point community.

Quantum design

LONGWOOD — Quantum Architecture has designed a 50,000 square foot production/warehouse addition for Transpo Electronics, in Orlando. Ground has been broken on the project, with a five month construction schedule.

Steve Cold, president of Quantum said, "We are pleased to be part of the growth of Transp and contribute to the development of clean, high technology industries."

Top listings

OVIDO — Coldwell Banker Residential Real Estate of West Central Florida has announced its top sales producers and top listing associates for January, 1996. Names as top sales producers were Bob Cardenas of the Ovido office, and Karen Jacobs of the Longwood office.

Top listing associates include Susan Burton of the Longwood office, and Lou Tulip of the Ovido office.

Coldwell has also announced Curt and Carol Wulfer, specialists in residential real estate, have been named Top Sales Associates for 1995. The Wulfer team reportedly generated over \$6.5 million in transactions. It is the sixth consecutive year Curt and Carol have been top producers for Trophy Real Estate located in Orange City.

Walking down the aisles with Target's Club Wedd

By SHARON BROOKS
Herald Staff Writer

LAKE MARY — Bridal registries have gone high-tech. It's not just china and silver anymore. Let's be practical; let's get the bride and groom something they can really use. At Target, this is a simple thing.

At any Target store in the country, shoppers can access the registered items of any bride or groom by means of a print-out. With this print-out, the gift buyer can easily find the item requested and purchase it. At that point, it is automatically taken off the list so there is no duplication.

All the happy couple has to do is go into their local Target, register their names and scan the codes of the items they want with a scanning gun. It's that easy and quick.

Target calls the program "Club Wedd," and while it has been available for a while now, the Lake Mary Target took the service one step further last

Saturday by inviting local businesses who cater to weddings to come to the store and display their wares. Booths with pink and white tablecloths were set up throughout the store and guest service team leader Ann DePaolis said there was quite a festive atmosphere.

Local businesses who took part in the Club Wedd celebration were Let's Travel, Sacino Formalwear, Ballon World, Cookies By Design, Special Favors By Midge, Joanie Cool Studios, Lake Mary Cheesecake and Antique Elegance Limousine.

DePaolis said the celebration, which was held from 1-5 p.m. on Feb. 4, was such a success, plans are moving ahead to hold Baby Fair, a celebration of Target's baby registry "Lullaby Club." The baby fair will be held Saturday, March 2, from 1-5 p.m.

There is no charge to sign up for either registry and information is available at anytime at the kiosk next to Guest Services, in the front of the store.

HomePlace in Sanford soon

By NICK PRIFAUF
Herald Staff Writer

SANFORD — In a press release sent throughout the area, a new fashion home superstore has been announced for "Orlando." Actually, the store will be at 221 Towne Boulevard, in the Gateway Plaza, in Sanford.

The announcement was made by co-founders Bob Hurwitz and Jim Monro. Hurwitz is credited with being the pioneer founder of the superstore concept in the office supply industry with the OfficeMax operation which was subsequently sold to the Kmart Corporation. Now, he is expanding the superstore concept into a similar version for the home industry through HomePlace.

"As home entertaining and the cooing phenomenon continue to gain momentum," he said, "people are looking

toward their homes rather than their clothes as a means of personal expression."

He continued, "The same buying public is looking for a combination of quality, value and stress-reduction from their shopping experience, and that's what HomePlace represents."

This will be the 31st HomePlace chain store to be opened since the two began this cooperative effort. The first store was opened in Dallas, Texas in the fall of 1994.

The new Sanford facility is expected to employ approximately 75 people in a 50,000 square foot store. Main features are to be housewares and textiles, small appliances and glassware. There will also be a separate Cookware Shop inside the facility, as well as a Glassware Shop, Dinnerware Shop, Bedding Shop, Bath Shop, Body Shop, and others.



Guest service team leader Ann DePaolis uses a scanner to register an item.

Allstate drops condo insurance

By The Associated Press

FORT LAUDERDALE — Allstate Insurance Co., Florida's second largest insurer, plans to drop all of its remaining policies with condominium associations in Florida, once they come up for renewal as of Feb. 1.

Allstate, which in November first said it would shed all of the 1,600 policies for commercial condominiums, said it was trying to reduce its exposure to hurricanes.

The first 600 notices went out last fall, but Allstate agreed to delay the nonrenewals until now to give insurance regulators time to find other insurance companies willing to take on the condo associations.

The policies at issue are for master condominium associations. Allstate insurance policies covering the interior of individual condo units are not affected by the move announced Tuesday by Allstate.

For Personal & Commercial Insurance



RICHARD RUSSI

TONY RUSSI INSURANCE

2575 S. French Ave.
Sanford

322-0285

Auto-Owners Insurance

Auto-Owners Insurance

Auto-Owners Insurance

Auto-Owners Insurance

Sports

B

IN BRIEF

LOCALLY

Grissom wins Goody's

DAYTONA BEACH — Steve Grissom lost the lead in a late-race pit stop, but regained it with drafting help and then used a perfect blocking maneuver on the final lap to win the Goody's 300 on Saturday.

Grissom used the draft from the lapped car of Jimmy Spencer to get by Dale Jarrett with five laps left.

Mark Martin's Ford was third, Larry Pearson was fourth in a Chevy, followed by the Pontiac of Curtis Markham, and the Chevys of Rodney Combs and Randy LaJole.

The Ford of Derrick Cope was eighth, followed by the Chevy of Bobby Labonte and Spencer's Ford. Defending race champion Chad Little was 19th in a Pontiac.

Babe Ruth coaches needed

SANFORD — Head coaches are needed for the Seniors (16-18) and assistant coaches are needed for the Juniors (13-15) for upcoming Sanford Recreation Department Babe Ruth Baseball Leagues.

Interested parties should call (407) 330-5697.

Babe Ruth Senior registration

SANFORD — The Sanford Recreation Department is taking registrations for the Babe Ruth Senior (16-18 year olds) Baseball League.

Tryouts will be either March 2nd or March 9th. For more information call 330-5697.

ASA umpires needed

SANFORD — Umpires are needed to umpire ASA (Amateur Softball Association) softball in Sanford and surrounding leagues.

A clinic will be provided. Interested people should call 321-2752 for more information.

Sanford Youth Baseball

SANFORD — The Sanford Recreation Department is still registering players for its upcoming youth baseball season. Kids ages 5 to 15 can sign up at the Downtown Youth Center located in the lower level of City Hall.

Your age on August 1, 1996 will determine which league you play in. The Sanford league's are: TEE-Ball (5-6), FEE-WEE (7-9), Little Major League (10-12) and Babe Ruth League (13-15).

All participants must pay a \$15 registration fee and non-Sanford residents must also pay an additional \$10 fee (\$15 for a family).

For additional information call: Sanford Recreation Department at 330-5697.

AROUND THE STATE

Marlins sign six

MIAMI — The Florida Marlins signed six players to one-year contracts Saturday, including last year's leading pitcher Pat Rapp.

The right-hander had 14 wins and went 11-2 with a .28 ERA in 15 starts after the break.

Also signed Saturday were: left-handed reliever Yorlvis Perez; catcher Bob Natal; right-handed pitchers Wilson Heredia and Terry Mathews; and outfielder Jesus Tavarez.

Heredia joined the Marlins from Texas as a trade for Bobby Witt.

Mathews led the Marlins bullpen last year with 82.2 innings as set up man for Robb Nen.

Tavarez replaced a struggling Chuck Carr during three stints with Marlins last year. The Marlins did not re-sign Carr. Natal also was called up three times, but spent most of the season with Triple A Charlotte.

USC edges Gators

GAINESVILLE — Jeff Inglin homered and Randy Flores pitched a complete game to lead Southern California over host Florida 3-1 in the 1996 Louisville Slugfest.

Inglin's solo home run over left field gave the Trojans (6-2) a 1-0 lead in the first inning. Florida answered in the second, as Eric Castaldo doubled in Matt Duncan to tie the game.

Florida starter John Kaufman got into trouble in the eighth inning, as Inglin singled and Jacques Jones doubled down the right-field line. Kaufman was replaced by Paul Rigdon, who allowed Chad Moeller a single up the middle to score both Inglin and Jones for a 3-1 lead.

Flores (2-0) scattered five hits and struck out three in his 14th career complete game. Kaufman fell to 2-1.



AUTORACING

11 a.m. — WCPX 6, Daytona 500 Prerace Special. (L)

noon — WCPX 6, Daytona 500. (L)

4 p.m. — WCPX 6, Daytona 500 Postrace Special. (L)

NATIONAL BASKETBALL ASSOCIATION

1 p.m. — WESH 2, Bulls at Pacers. (L)

3:30 p.m. — WESH 2, Rockets at Spurs. (L)

Rams rule hardwood

Boys win first ever 6A-4 title

By GARY COATMAN
Herald Staff Writer

WINTER PARK — Paul Belk and Jason Junker each scored 21 points Friday to lead Lake Mary past Lake Brantley 70-50 in the Class 6A, District 4 championship game at Lake Howell high school. The win gives the Rams their first-ever district 4 boys basketball championship.

"This has been a heck of a run," said Lake Mary coach Willie Richardson. "We played better defense and rebounded well. At the end of last season, we predicted that we would win the district. The kids worked hard and stayed focused. Lake Brantley has always challenged us, and they wouldn't." □ See Boys, Page 3B



Herald Photo by Mark Harris

Lake Howell's Christine Brunning looks for room to drive as Lake Mary's Ashlee Ballance moves to cover defensively during the Rams' 52-43 victory in the championship game of the Class 6A-District 4 tournament.

Girls use poise to survive

By TONY DESORMIER
Herald correspondent

LONGWOOD — Physical ability wins games but discipline and poise are the keys to championships.

The Lake Mary Rams, who proved their physical ability with a 22-2 romp through the regular season, showed they have the other important ingredients by beating the patient Lake Howell Silver Hawks, 52-43, for the 6A-District 4 girls' basketball championship Friday at Lyman High School.

"They (Lake Howell) were able to take us out of our game for a while," said Lake Mary coach Carl Brown. "That's what it came down to, being poised enough to run our game." □ See Girls, Page 3B



Herald Photo by Mark Harris

Lyman starter Steve Wojtowicz allowed three runs in four-plus innings Friday night.

Wildcats sweep Lyman Invite

By ROBERT SANDERS
Herald Correspondent

LONGWOOD — The Winter Park Wildcats scored two runs in the bottom of the sixth inning to beat Lyman High School 6-4 in the Lyman Invitational Championship game Friday night.

The win was the fourth without a defeat for the champs.

With the game tied 4-4, Wildcat third baseman Hutch Pinder, who led off the bottom of the sixth with a single, scored the go ahead run when center fielder Jamie Epperson followed through with his second hit of the game.

Lyman pitcher, Jason Dickey, who came on in relief after starting the game in right field, got the Greyhounds out of a bases loaded jam in the fifth inning, but was unable to produce in the sixth.

Aside from giving up the go ahead run, Dickey gave up three walks and a sacrifice fly to put the Greyhounds down by two.

"We had some inconsistent pitching tonight," Lyman Head Coach Bob McCullough said. "When you have sophomore pitching, your going to have sophomore mistakes."

The Wildcats took a one run lead in the bottom of the second after right fielder Eric Gonzalez knocked in

second baseman Bobby Brown. But the Greyhounds matched that in the top of the third when designated hitter, Danny Boggaja, knocked in second baseman Kevin Naas with a triple.

The Wildcats then took a 4-3 lead after five innings, before Dickey took an 0-2 pitch up the middle for a single, followed by an RBI single by Epperson that tied the game at 4-4.

"Our lineup is going to be OK," McCullough said. "We have some kids on the rise. It's our pitching that I'm worried about."

Lyman starting pitcher, Steve Wojtowicz, went four innings before being relieved by Ernesto Vasquez. The two pitchers combined, gave up four runs, six hits, and five walks, before giving way to Dickey with two out in the fifth.

Dickey took the loss after giving up two runs on two

innings. □ See Lyman, Page 3B

LYMAN INVITATIONAL
Championship game
WILDCATS 6, GREYHOUNDS 4

Lyman
Winter Park
Wojtowicz, Vasquez (5), Dickey (5) and Granort; Bridges, Incinelli (6) and Reun; WP — Bridges 1P — Dickey, Sava — none, 2B — Lyman, Moss; Winter Park, Williams, Brown, 2B — Lyman, Boggaja, Carr, HR — none. Records — Winter Park 4-0; Lyman 1-3

Lions get third at Lyman

By TONY DESORMIER
Herald correspondent

LONGWOOD — Jeremy Frost tripled home Richie Schneck in the bottom of the fifth inning to break a 4-4 tie and send the Oviedo Lions to a 13-4 come-from-behind win over the Spruce Creek Hawks in Friday's third-place game of the Lyman Invitational baseball tournament.

The win, Oviedo's second over Spruce Creek in as many days, ends the Lions' season mark at 2-2 heading into this week's Raminole Tournament. Spruce Creek falls to 1-3.

Junior left-hander Kenny Birch, who struck out the first five batters he faced, was touched for a run in the third and three more in the fourth as Spruce Creek built a 4-0 advantage.

Oviedo pulled even by scoring four times in the bottom of the fourth. Then, with two out in the bottom of the fifth, the Lions strung together four consecutive hits to take a 7-4 lead.

After Schneck singled and scored on Frost's triple, Andy Neufeld singled home Frost and David Divito doubled to right-center field to plate Neufeld.

The Lions added six runs — all coming after there were two out — in the sixth inning to turn the game into a rout.

□ See Lions, Page 3B

LYMAN INVITATIONAL
Third place game
LIONS 13, HAWKS 4

Spruce Creek
001 200 0 — 0 0 3
Oviedo
000 430 0 — 13 15 2
Schmidt, White (6) and Strickland Birch and Burger; Hodges (7) WP — Birch (10), LP — Schmidt (10); Sava — none; 2B — Spruce Creek, Strickland; Oviedo, Divito 3 1B — Spruce Creek, Barton, Oviedo, Ja. Frost HR — None. Records — Spruce Creek 1-3; Oviedo 2-2

WELL DONE



Winning football awards at Seminole High School were: (top photo, kneeling) Tim Raines Jr., Receiver; T.J. Martin, Pace Setter; Mike Magner, Scholar Athlete; (middle) Antoine Cassanova, JV Defensive Back; Bernard Smith, JV Scholar Athlete; D.D. Hampton, Running Back; Phillip Eubanks, Linebacker; Tim Byrd; Asst. Principal Bobby Lundquist; (back) Ron Moore, Defensive Lineman; Vince Butler, Peter Schall Award, Defensive Back; John Wilk, Offensive Line; Eric Smith, Achievement; Aaron Teemer.

Rev. Sidney Brock (left) from First Baptist Church presents the Pace Setter Award to T.J. Martin.

Herald Photos by Tommy Vincent



People

Hearts are trumps for bride, 77, and BSP queen

February, the month when love and romance run rampant, was meant for hearts and sweethearts of all shapes and ages.

Was it love at first sight when Melnease Evans and Otho Kimball met less than two months ago?

"Not quite," Melnease beamed, "but within three days." The couple met at a party at the home of the Rev. Cora Mae Powell and in keeping with the romance surrounding Valentine's Day, were married on Valentine's Eve at the Cultural Arts Center in Sanford.



SENIOR EDITOR

DORIS DIETRICH

Rev. Powell was the officiating clergyman for the double ring ceremony.

As tradition would have it, the bride chose for her vows a long ivory gown fashioned with

a V-shaped front and back lace bodice and long puffed sleeves. A floral headpiece held her short veil of imported illusion and she carried a sweetheart arrangement of roses. No young bride was more radiant than the 77-year-old Mrs. Kimball.

The bride has lived in Sanford since 1948. Her late husband was a developer and later owned and operated a tool and die shop in Lake Mary where she worked in the office. She has two daughters, Barbara Harrison and Donna Avery, seven grandchildren, 18 great grandchildren and one great great grandchild.

The bridegroom, a retired military veteran, is also retired from United Van Lines and is employed by Dealers Auto Auction in Sanford. He has one daughter, Edna Faye Gracey, and nine grandchildren.

Following the ceremony, a reception was held at the Cultural Arts Center. The newlyweds are making their home in Sanford and plan a May wedding trip.



Mr. and Mrs. Otho Kimball

Herald Photo by Phil Keston

Laurel crowned queen

For the Sanford chapters of Beta Sigma Phi, hearts were trumps in this year's Valentine Queen of Hearts competition.

At a Valentine luncheon on Feb. 10 at the Wayside Inn in Mt. Dora, Laurel Tromblay of Laureate Alpha Tau, emerged the winner.

Overwhelmed at capturing the coveted title, Laurel said, "It was a surprise because I didn't think

I would win. I cried and cried! It was such an honor to be selected."

Currently vice president of her chapter, Laurel has served in every office during her 21-year membership in the sorority. She has also been active in BSP City Council where she has held the offices of president, vice president, secretary and treasurer.

The queen's court includes: Faye Siler, Alpha Alpha Theta; Jean Carlson, Preceptor Delta Delta and Cathy McGuire, Laureate Gamma Delta.

Laurel works full time as a secretary and bookkeeper and lives in Sanford with her husband, Bob, and cat, Crystal.

She and her chapter have contributed gifts to Beta House for expectant mothers and infants. She is also a member of Eastern Star Seminole Chapter No. 2 and has been mother advisor to the Sanford Rainbow Girls.

During her year as queen, Laurel will reign as ambassador for the Sanford Chapters of Beta Sigma Phi and serve in official capacities.

Judging the competition were: Barbara Gorman, Ginny Hagen, Glenda Emerson and Suzanne Hall. The judging took place at a tea at the Deltona home of Nancy Hack on Jan. 27 and the results were given to Pat Provau, president of Beta Sigma City Council, for presentation at the Valentine Lunch in Mt. Dora.

This was the 30th annual BSP Valentine Queen coronation. Former queens attending were:

See Dietrich, Page 58



Herald Photo by Tammy Wilson

Mary Prokosch (left) and Pat Foster show two of the casual fashions they will model in the forthcoming fashion show on Feb. 29.



The 1996 Beta Sigma Phi Valentine Queen and her court are (from left): Jean Carlson, Preceptor Delta Delta; Laurel Tromblay, queen; Cathy

McGuire, Laureate Gamma Delta; and Faye Siler, Alpha Alpha Theta.



Former Beta Sigma Phi Valentine Queens attending the 30th coronation are (from left): Linda Keeling, Polly Smith, Mary Anne Cleveland, Helen

Hamner, Debbie Bowlin, Cathy Carlson and Pat Johnson.

Young musician a winner; AKA sorors take honors

Stanley L. Jones Jr. recently represented Sanford Middle School in both All State and All County performances. Stanley is a 2 1/2-year student of music on the trombone. He made third chair in All State Band where the top 120 students in the state come together in concert. He also made second chair in All County.

He is the pride and joy of his

parents, the Rev. S.L. Jones, pastor of Providence Church in Daytona Beach and his mother, Cynthia, a teacher at Pine Crest Elementary.

His mom says Stanley has achieved a lot by the grace of God in just a short time. He has risen from the rejection of not being allowed to play even the plastic recorder in elementary school because the music



SANFORD

MARVA HAWKINS

teacher said he had no potential. He has many people encouraging and helping him one of whom is Greg Barker, a private music instructor in Sanford who comes highly recommended. Dad says, "It's important to encourage our children and tell them that they can even when others tell them that they can't. God has the last word." Congratulations, Stanley!



Stanley L. Jones Jr.

Sorority honored

Kappa Sigma Omega Chapter Alpha Kappa Alpha Sorority, Inc. has been selected to be honored for their dedication and service to education, the community and their service to mankind.

We salute AKA's local chapter and officers: Basileus, Eddy Walden; Anti-Basileus, Lurlene Sweeting; Grammateus, Deloris Myles; Tamiochous, Bobria Alexander; Pecunious Grammateus, Virginia Wilson; Epistoleus, Vickie Smith; Hodegus, Narva Woodard; Philacter, Eloise Quinton; Parliamentarian, Deloris Anderson and Ivy Leaf Reporter, Faye Joyce Williams.

Alpha Kappa Alpha sisters are a credit to the community and mankind.

Amvets anniversary

The 24th anniversary of Gaines and Morgan American Amvets Auxiliary No. 17 will be observed on Sunday, Feb. 25 at 3 p.m. at Second Shiloh Baptist Church, 2150 Airport Blvd. The Rev. R.T. Davis is pastor; Beatrice Duncan, president; Eartha Melton, program chairman. The community is invited.

Play continues

The two-act play "Jagged Pieces of Black History," an

African-American folklore continues at The Seminole African American Academy of Arts, 1017 W. 13th St., Sanford.

The director/actor is Joseph Pinckney, formerly of Washington, D.C.

This play is a must-view; it will give you history, laughter and make you cry. It stars Sanford's own Latressa Haws, renowned actresses Linda McNear, Barbara Lewis, Roncasha Bell and Mike Davis. Performances are Friday and Saturday, Feb. 23 and 24, at 7 p.m. and today at 2 p.m.

Call 322-5418 for tickets and/or information.

University tour

A tour of Florida A&M University for new students will be offered Friday and Saturday, March 8 and 9. After the tour of the campus at Tallahassee, the group will be returning to the city. Students of local high schools, juniors and seniors, are invited to attend this educational and cultural experience. The cost is \$70 round-trip which includes one-night accommodations. Contact Cynthia Oliver at 322-5826 or Dr. Vilma Williams at 323-4347.



Herald Photo by Marva Hawkins

ENGAGEMENTS

Bruce-Patrick

LAKE MONROE — Edgar and Mary Ann Bruce of Lake Monroe announce the engagement of their daughter, Laura Kaye, to J. Scott Patrick, son of James and Barbara Patrick of Ocala.



Laura Kaye Bruce, J. Scott Patrick

granddaughter of Mrs. Anna Bukur of Sanford and the late Mr. Peter Bukur.

She is a 1982 graduate of Seminole High School, Sanford and a 1986 graduate of the University of Central Florida, Orlando.

Ms. Bruce is presently employed as inside sales/customer service supervisor at Herson Manufacturing, Sanford.

Her fiancé, born in Birmingham, Ala., is the maternal grandson of Mrs. Mary Jo Jenkins of Ocala, Fla. He is a 1980 graduate of Forest High School, Ocala and a 1980 graduate of the University of Florida, Gainesville. He was honorably discharged as a lieutenant from the U.S. Marine Corps.

Patrick is currently employed as client services manager, Inacom Information Systems, Maitland.

The wedding will be an event of March 16, 1996, at First Presbyterian Church of Orlando.

WEDDINGS



Mr. and Mrs. Toby Fernly Phillips

Elizabeth Williams becomes bride of Toby F. Phillips

MIAMI — Elizabeth Morrison Williams and Toby Fernly Phillips are announcing their marriage today. They were married Nov. 18, 1995, at 4:45 p.m., at Villa Woodbine, Miami. Rev. John Edward Smith performed the formal courtyard ceremony.

The bride is the daughter of Ted and Nancy Williams of Sanford. The bridegroom is the son of Mervyn and Moof Phillips of Adelaide, Australia.

Given in marriage by her father, the bride chose for her vows a formal, ivory gown of her own design. Thirty yards of ivory tulle were used for the skirt. The decollete neckline descended to a fitted bodice of ivory silk. Handmade French lace covered the bodice and the sheer, fitted sleeves which were trimmed with tiny pearls and rhinestone buttons. Her illusion shoulder-length veil was held by a pearl and rhinestone headband. She carried a large bouquet of white roses with white tulips, sprays of white orchids and greenery tied with strands of natural raffia.

Hollace McPhillips, the bride's sister, served as matron of honor. She wore a form-fitting black velvet gown with open back. She wore her hair in a French twist and

wore a pearl necklace and pearl earrings. She carried a smaller version of the bride's bouquet.

Bridesmaids were Linda Rogers, Michelle Ranall, Shannon Carlos and Angie Gamand. They wore knee-length black evening dresses each different in design and unique to each of them. They carried bouquets of six white roses with white tulips and sprays of white orchids tied with raffia.

Peter Perry of Sydney, Australia served the groom as best man.

The groom's brother, Bernard Phillips of Adelaide, served as usher.

Following the ceremony, cocktails and a five-course seated dinner were served followed by dancing under the stars on the grounds of the turn-of-the-century Italian villa on Biscayne Bay, Miami. As the couple departed in a 1982 pink convertible cadillac, the guests blew bubbles (wishing bubbles) to send them on their way.

After a wedding trip to Australia, the newlyweds are making their home in Los Angeles.

The bride is an interior designer and the groom is an international commercial film director.



Mr. and Mrs. Troy F. Deppen

Cynthia A. Davis, Troy F. Deppen exchange vows

CASSELBERRY — Cynthia Ann Davies and Troy Forester Deppen were married Jan. 27, 1996, at 3 p.m., at Casselberry Community Methodist Church, Casselberry. The Rev. Lester Ikes performed the traditional ceremony.

The bride is the daughter of Robert D. Davies Sr. of Orlando and Gayle Pallotta of Deltona.

The groom is the son of Thomas Deppen of Sanford and Betty LaRosa of Longwood.

Given in marriage by her father, the bride chose for her vows a formal ivory gown in the sheath style with a full-length train of ivory tulle. The round, high collar was decorated with seed pearls and sequins. A tear-drop cutout accented the fitted bodice. The bare-shouldered gown featured elbow-to-wrist fitted sleeves of ivory lace. Her fingertip illusion veil was held by an ivory headpiece. She carried a cascading bouquet of ivory and burgundy roses with baby's breath and greenery.

Matron of honor was Terrie Moore. She wore a burgundy velvet dress and carried a bouquet of ivory roses with burgundy accents.

Bridesmaid was Danielle Pallotta. She wore a burgundy velvet dress and wore an ivory hairpiece. She carried a bouquet of ivory roses with burgundy accents.

Tom Deppen, father of the groom, served as best man.

Ushers were Tim Deppen of San Francisco, brother of the groom, and Dennis Davies of Orlando, the bride's brother.

Paige Weiss served as flower girl.

Following the ceremony, a reception was held at the home of Betty LaRosa, mother of the groom, at Longwood.

After a wedding trip to New Smyrna Beach and St. Augustine, the newlyweds are making their home in San Francisco.

The groom is currently serving in the U.S. Coast Guard. The bride is a part-time college student and waitress working at Appleby's.

Dietrich

Continued from Page 4B

Polly Smith, 1968-69; Mary Anne Cleveland, 1971-72; Debbie Bowlin, 1977-78; Linda Keeling, 1983-84; Helen Hamner, 1986-87; Pat Johnson, 1990-91; and Kathy Carlson, 1992-93.

Guests were served a delightful luncheon of Chicken Cordon Bleu and vegetable medley or Seafest Salad with fresh fruit garnish, beverage, rolls and Grand Marnier Mousse, according to Jackie Dymond.

Garden club sets fashions, luncheon

The Sanford Garden Club and

Cafe Jake's will sponsor a fashion show and luncheon, "Leap into Fashions with Lunch at Jake's," on Thursday, Feb. 29, from 11:30 a.m. to 1:00 p.m., at Cafe Jake's.

Dress-up and sporty casual fashions will be shown by Lily Pad of Melbourne. Proceeds will be used by the garden club to help send two youths to a summer environmental camp.

A tomato stuffed with chicken salad, assorted fruits, rolls, dessert and beverage will be served for \$5. For information on tickets, call Anne Hoolehan, 322-8500, 03 the garden club, 322-9624.

ANNIVERSARIES

50th anniversary

Emma and Randy Risner of Sanford, celebrated their golden wedding anniversary on Jan. 20 with family and friends at the First Baptist Church of Osteen, where they are members. A catered dinner was enjoyed by all.

The couple have two children, five grandchildren and four great grandchildren.



Randy and Emma Risner

'Parisian orphan' visits book store

Despite the fact that she is celebrating her 50th birthday, Madeline didn't look a day over 10 when she visited Little Wing Books in Lake Mary. Madeline, the creation of Ludwig Bemelmans, is a Parisian orphan whose timeless stories will enchant today's children. The market place has grown in the past 50 years and Madeline has expanded with the market. No longer confined to books, Madeline now has her own movies and computer software. She also has her own paper dolls and toys.

Girls visiting the bookstore while Madeline was there enjoyed a tea party. They colored pictures of Madeline and wat-



LAKE MARY

MARY ROWELL

ched her movie "Madeline and the Easter Bonnet." They also got a chance to play pin the flag on the Eiffel Tower. The Eiffel Tower is, of course, in Paris. Madeline's hometown, so French flags were used. A couple of the younger visitors were a little put out by Madeline's size, but quickly got over it.

Job-shadowing

Cadettes from Troop 148 got a taste of what working in the real world was like this past week when they tried job-shadowing. Seven women professionals volunteered to let the girls come to work with them. Brittany Bolton went to work with Dr. Jody Katz of the Longwood Veterinary Clinic. Brittany got to see what it was like to work with patients who can't tell you where it hurts. She also saw surgery performed on a cat and a dog in the human medical field. Stephanie Rowell and Karima Clayton spent their time with pediatricians Dr. Kimberly Kilgore and Dr. Marisa Pastis. Stephanie enjoyed getting a peak at her own medical file and

finding out what shots loomed on her horizon.

Meredith Hoyer went to work with Denise Wadsworth of Results Marketing. Meredith really enjoyed learning about a job she'd never heard much about before. She enjoyed watching Denise work to make sure everything was perfect. Besides working full time, Denise is also a Daisy Girl Scout troop leader.

Brandi Aten learned about law when she shadowed attorney Sylvia Grunor. Sylvia and her partner own the only woman-owned law firm in the state of Florida. Jolea Parrish learned about law from a different source. She shadowed Sgt. Linda Bellmore of the Lake Mary Police Department. Patty DiGiuseppe learned about fire codes and their enforcement when she went on the job with Lake Mary Fire Marshall Lyn Wright.

Club sets field trip

The Lake Mary Garden Club will be taking their monthly meeting on the road for February. The club will be taking a field trip to Blue Springs State Park in Orange City. Members will meet at the Frank Evans Center at 11 a.m. on Thursday, Feb. 22. They will then car pool to the park. If you're not a member of the Garden Club, but would like to join, this would be a great first meeting for you to attend. Make sure you bring a lunch. For more information about joining the Garden Club, call 322-5797 or 322-8471.



Herald Photo by Mary Rowell

Madeline Seymour colors a picture of Madeline



Hannah Lovell is all smiles over getting to meet Madeline who is 50 years old but doesn't look a day over 10.



Herald Photo by Mary Rowell

Job-shadowing is interesting for Brittany Bolton (right) who learned about sick animals, including Rambo, from Dr. Jody Katz.

WE DELIVER!
No matter where you live, we bring you our area's #1 source of news and information. Call today for subscription.
322-2811
Sanford Herald

Fantastic Sams
No appointment necessary!
Family friendly prices

ADULT CUT \$7.95 Shampoo • Blow Dry Curling iron, set, finished style, design lines or specialty cuts extra	QUICK & EASY PERM \$21.95 Shampoo • Cut Price may vary by length or condition of hair. Design wraps extra	JUST FOR KIDS CUT 8c Shampoo • Blow Dry Curling iron, set, finished style, design lines or specialty cuts extra
ADULT CUT \$7.95 Shampoo • Blow Dry Curling iron, set, finished style, design lines or specialty cuts extra	QUICK & EASY PERM \$21.95 Shampoo • Cut Price may vary by length or condition of hair. Design wraps extra	JUST FOR KIDS CUT 8c Shampoo • Finished Style Price may vary with length or condition of hair. Haircut extra

MEMBERS Expires 3/30/96
MEMBERS Expires 3/30/96
MEMBERS Expires 3/30/96

Hours: Mon-Thurs 9am-6pm, Fri-Sat 10am-6pm

Legal Notices

IN THE CIRCUIT COURT OF THE EIGHTEENTH JUDICIAL CIRCUIT IN AND FOR SEMINOLE COUNTY, FLORIDA

CASE NO. 95-9966-CA 14-A TRUSTEE BANK, INC. vs. LORETTA V. HENDERSON

NOTICE OF SALE NOTICE IS HEREBY GIVEN that pursuant to a Final Judgment of Foreclosure rendered on February 2nd, 1996 in this Court in Case No. 95-9966-CA 14-A, I, MARYANNE MORSE, Clerk of the Circuit Court in and for Seminole County, Florida, will sell at public sale, to the highest and best bidder, for cash, at the West front door of the Seminole County Courthouse, in Sanford, Florida, between the hours of 11:00 A.M. and 2:00 P.M. on March 20th, 1996.

NOTICE OF SALE NOTICE IS HEREBY GIVEN that pursuant to a Final Judgment of Foreclosure rendered on February 2nd, 1996 in this Court in Case No. 95-9966-CA 14-A, I, MARYANNE MORSE, Clerk of the Circuit Court in and for Seminole County, Florida, will sell at public sale, to the highest and best bidder, for cash, at the West front door of the Seminole County Courthouse, in Sanford, Florida, between the hours of 11:00 A.M. and 2:00 P.M. on March 20th, 1996.

NOTICE OF SALE NOTICE IS HEREBY GIVEN that pursuant to a Final Judgment of Foreclosure rendered on February 2nd, 1996 in this Court in Case No. 95-9966-CA 14-A, I, MARYANNE MORSE, Clerk of the Circuit Court in and for Seminole County, Florida, will sell at public sale, to the highest and best bidder, for cash, at the West front door of the Seminole County Courthouse, in Sanford, Florida, between the hours of 11:00 A.M. and 2:00 P.M. on March 20th, 1996.

Invitation to Bid 95-345-00/303 Seminole County Health Unit Expansion/Remodeling

Invitation to Bid Term Contract Agreement Fire

Invitation to Bid Term Contract Agreement Fire

Invitation to Bid Term Contract Agreement Fire

Legal Notices

IN THE CIRCUIT COURT OF THE EIGHTEENTH JUDICIAL CIRCUIT IN AND FOR SEMINOLE COUNTY, FLORIDA

CASE NO. 95-1005-CA CIVIL ACTION GRACE PROPERTIES, LTD., LTD. vs. GRACE PROPERTIES LIMITED

NOTICE OF SALE NOTICE IS HEREBY GIVEN that pursuant to a Final Judgment of Foreclosure rendered on February 2nd, 1996 in this Court in Case No. 95-1005-CA, I, MARYANNE MORSE, Clerk of the Circuit Court in and for Seminole County, Florida, will sell at public sale, to the highest and best bidder, for cash, at the West front door of the Seminole County Courthouse, in Sanford, Florida, between the hours of 11:00 A.M. and 2:00 P.M. on March 20th, 1996.

NOTICE OF SALE NOTICE IS HEREBY GIVEN that pursuant to a Final Judgment of Foreclosure rendered on February 2nd, 1996 in this Court in Case No. 95-1005-CA, I, MARYANNE MORSE, Clerk of the Circuit Court in and for Seminole County, Florida, will sell at public sale, to the highest and best bidder, for cash, at the West front door of the Seminole County Courthouse, in Sanford, Florida, between the hours of 11:00 A.M. and 2:00 P.M. on March 20th, 1996.

NOTICE OF SALE NOTICE IS HEREBY GIVEN that pursuant to a Final Judgment of Foreclosure rendered on February 2nd, 1996 in this Court in Case No. 95-1005-CA, I, MARYANNE MORSE, Clerk of the Circuit Court in and for Seminole County, Florida, will sell at public sale, to the highest and best bidder, for cash, at the West front door of the Seminole County Courthouse, in Sanford, Florida, between the hours of 11:00 A.M. and 2:00 P.M. on March 20th, 1996.

NOTICE OF SALE NOTICE IS HEREBY GIVEN that pursuant to a Final Judgment of Foreclosure rendered on February 2nd, 1996 in this Court in Case No. 95-1005-CA, I, MARYANNE MORSE, Clerk of the Circuit Court in and for Seminole County, Florida, will sell at public sale, to the highest and best bidder, for cash, at the West front door of the Seminole County Courthouse, in Sanford, Florida, between the hours of 11:00 A.M. and 2:00 P.M. on March 20th, 1996.

NOTICE OF SALE NOTICE IS HEREBY GIVEN that pursuant to a Final Judgment of Foreclosure rendered on February 2nd, 1996 in this Court in Case No. 95-1005-CA, I, MARYANNE MORSE, Clerk of the Circuit Court in and for Seminole County, Florida, will sell at public sale, to the highest and best bidder, for cash, at the West front door of the Seminole County Courthouse, in Sanford, Florida, between the hours of 11:00 A.M. and 2:00 P.M. on March 20th, 1996.

Legal Notice

NOTICE OF ACTION TO SERVE DEEDS IN THE CIRCUIT COURT OF THE EIGHTEENTH JUDICIAL CIRCUIT, IN AND FOR SEMINOLE COUNTY, FLORIDA

GRACE PROPERTIES, NO. 7, LTD. vs. GRACE PROPERTIES LIMITED

NOTICE OF ACTION TO SERVE DEEDS IN THE CIRCUIT COURT OF THE EIGHTEENTH JUDICIAL CIRCUIT, IN AND FOR SEMINOLE COUNTY, FLORIDA

NOTICE OF ACTION TO SERVE DEEDS IN THE CIRCUIT COURT OF THE EIGHTEENTH JUDICIAL CIRCUIT, IN AND FOR SEMINOLE COUNTY, FLORIDA

NOTICE OF ACTION TO SERVE DEEDS IN THE CIRCUIT COURT OF THE EIGHTEENTH JUDICIAL CIRCUIT, IN AND FOR SEMINOLE COUNTY, FLORIDA

NOTICE OF ACTION TO SERVE DEEDS IN THE CIRCUIT COURT OF THE EIGHTEENTH JUDICIAL CIRCUIT, IN AND FOR SEMINOLE COUNTY, FLORIDA

Legal Notices

NOTICE OF PROPOSED EXCHANGE OF PROPERTY BELLSOUTH MOBILITY, INC. (BELLSOUTH) AND SEMINOLE COUNTY

NOTICE IS HEREBY GIVEN that the Board of County Commissioners of Seminole County, Florida, intends to exchange the following property:

NOTICE IS HEREBY GIVEN that the Board of County Commissioners of Seminole County, Florida, intends to exchange the following property:

NOTICE IS HEREBY GIVEN that the Board of County Commissioners of Seminole County, Florida, intends to exchange the following property:

NOTICE IS HEREBY GIVEN that the Board of County Commissioners of Seminole County, Florida, intends to exchange the following property:

NOTICE IS HEREBY GIVEN that the Board of County Commissioners of Seminole County, Florida, intends to exchange the following property:

Legal Notices

IN THE CIRCUIT COURT, EIGHTEENTH JUDICIAL CIRCUIT, IN AND FOR SEMINOLE COUNTY, FLORIDA

CASE NO. 95-9100-CA 14-A THE NATIONAL BANK OF CHICAGO, as Trustee of the M. Home Equity Loan Trust 1991-1.

NOTICE OF SALE Notice is hereby given that, pursuant to an Amendment to Summary Judgment of Foreclosure, I will sell the following described property located in Seminole County, Florida:

NOTICE OF SALE Notice is hereby given that, pursuant to an Amendment to Summary Judgment of Foreclosure, I will sell the following described property located in Seminole County, Florida:

NOTICE OF SALE Notice is hereby given that, pursuant to an Amendment to Summary Judgment of Foreclosure, I will sell the following described property located in Seminole County, Florida:

NOTICE OF SALE Notice is hereby given that, pursuant to an Amendment to Summary Judgment of Foreclosure, I will sell the following described property located in Seminole County, Florida:

Legal Notices

don't assume that the court claims within three months after the date of this notice.

ALL CLAIMS, DEMANDS AND OBJECTIONS NOT SO FILED WILL BE FOREVER BARRED.

NOTICE OF SALE Notice is hereby given that, pursuant to an Amendment to Summary Judgment of Foreclosure, I will sell the following described property located in Seminole County, Florida:

NOTICE OF SALE Notice is hereby given that, pursuant to an Amendment to Summary Judgment of Foreclosure, I will sell the following described property located in Seminole County, Florida:

NOTICE OF SALE Notice is hereby given that, pursuant to an Amendment to Summary Judgment of Foreclosure, I will sell the following described property located in Seminole County, Florida:

NOTICE OF SALE Notice is hereby given that, pursuant to an Amendment to Summary Judgment of Foreclosure, I will sell the following described property located in Seminole County, Florida:

CELEBRITY CIPHER by Luis Campos. Celebrity Cipher cryptograms are created from quotations by famous people past and present.

OFF THE LEASH By W.B. Park. Wonder what these things will bring at the corner pawn shop? A compulsive gambler looking for a stako.

United Way THE HEART OF FLORIDA logo.

BLONDIE by Chic Young

Panel 1: "THERE'S ONLY ONE PROBLEM WITH A REALLY GREAT AFTERNOON NAP..."
 Panel 2: "I DON'T FEEL LIKE DOING ONE BLODDY THING AFTER I WAKE UP."
 Panel 3: "EXCEPT THIS..."
 Panel 4: "ONE..."

BEETLE BAILEY by Mort Walker

Panel 1: "WELL, WHAT DID THE DOCTOR SAY ABOUT YOUR LIP?"
 Panel 2: "HE SAID TO APPLY ALCOHOL TO IT THREE TIMES A DAY."
 Panel 3: "ONE..."

THE BORN LOSER by Art Sanson

Panel 1: "WOOF, WOOF... WOOF... WOOF, WOOF!"
 Panel 2: "WHAT ON EARTH ARE YOU DOING, YOUNG MAN?"
 Panel 3: "WORKING ON A FOREIGN LANGUAGE!"

PEANUTS by Charles M. Schulz

Panel 1: "I KEEP WONDERING IF MOM'S PLANNING TO HAVE MORE CHILDREN..."
 Panel 2: "LATELY SHE'S BEEN REFERRING TO ME AS 'VOLUME ONE'."

EEK & MEEK by Howie Schneider

Panel 1: "HIT ME AGAIN, JOHN."
 Panel 2: "PAY FOR THE OTHER TWO FIRST..."
 Panel 3: "LET'S SEE IF WE CAN GET A BALANCED BUDGET BY TEN O'CLOCK TONIGHT."

TUMBLEWEEDS by T.K. Ryan

Panel 1: "I'VE EVIDENCE THAT SOME OF YOUR WAGES HAVE INFILTRATED OUR CATTLE DRIVE DISGUISED AS COMS!"
 Panel 2: "NONSENSE! WHERE'D YOU GET IT?"
 Panel 3: "THE ACME SLAUGHTERHOUSE IN KANSAS CITY!"

ARLO AND JANIS by Jimmy Johnson

Panel 1: "I MEAN, YOU'RE TOO CUTE A GUY TO BE TIED DOWN..."
 Panel 2: "I CAN'T BELIEVE IT! SUBAN'S BREAKING UP WITH ME!"
 Panel 3: "THAT MEANS..."
 Panel 4: "WE'VE BEEN GOING TOGETHER!"

FRANK AND ERNEST by Bob Thaves

Panel 1: "COMPULSIVE SHOPPERS SUPPORT GROUP ENROLL HERE ->"
 Panel 2: "WE CHARGE NO DUES TO JOIN, BUT BOY DO WE MAKE A BUNDLE SELLING OUR MAILING LISTS!"

GARFIELD by Jim Davis

Panel 1: "I RESOLVE TO BE MORE DECISIVE!"
 Panel 2: "HAVE YOU DECIDED WHAT YOU WANTED FOR DINNER LAST NIGHT?"

ANNIE

Panel 1: "...I DON'T SEEM TO BE WEARING ANYTHING UNDER THIS. WHO...?"
 Panel 2: "NEVER MIND, YOUR CLOTHES ARE OVER THERE. I'LL GET GOODAH READY!"
 Panel 3: "WE'RE LEAVING, TANYA LADY? I'VE UN-PEEN THINNING ABOUT THAT SUITCASE... LESS YOU THINK ABOUT IT THE BETTER!"

HOROSCOPE

Your Birthday
 Sunday, Feb. 18, 1996

In the year ahead you could be more fortunate than usual in ventures or enterprises conceived independently. You must throw the switch and then let a surrogate take over.

AQUARIUS (Jan. 20-Feb. 19) This will be a good time to disengage yourself from an unproductive involvement. Cut loose and let go without regrets. Replace it with a new endeavor. Aquarius, treat yourself to a birthday gift. Send for your Astro-Graph predictions for the year ahead by mailing \$2 and SASE to Astro-Graph, c/o this newspaper, P.O. Box 1758, Murray Hill Station, New York, NY 10156. Make sure to state your zodiac sign.

PISCES (Feb. 20-March 20) You can gain fresh insights into something you have been viewing only from an intellectual level by using your intuition today.

ARIES (March 21-April 19) This could be a fortunate period for you to launch a new endeavor. If you have a particular enterprise in mind, put the wheels in motion today.

TAURUS (April 20-May 20) You can achieve career goals that may have seemed impossible before in this new cycle. Do not drag your feet.

GEMINI (May 21-June 20) Useful knowledge can be acquired today through life experiences and dealings with others. This special knowledge can be used later for a specific advantage.

CANCER (June 21-July 22) Your chart shows that you might achieve success in joint endeavors at this time if you deal with an individual who specializes in a certain area.

LEO (July 23-Aug. 22) A situation will develop and bring you closer to an old friend. Your collective efforts can produce mutual benefits.

VIRGO (Aug. 23-Sept. 22) If you've contemplated a diet or exercise program, this will be a good day to start. Your chances of sticking to it are better than usual.

LIBRA (Sept. 23-Oct. 23) Do not despair if your love life hasn't been up-to-par lately. Cupid might have something very special in mind today that could make up for lost time.

SCORPIO (Oct. 24-Nov. 22) Constructive changes you've wanted to make in your basic lifestyle can be initiated today. Do not wait for outsiders to give you the go-ahead signal.

SAGITTARIUS (Nov. 23-Dec. 21) You can enhance your probabilities for success by developing a concise plan. You will see results within the next few weeks.

CAPRICORN (Dec. 22-Jan. 19) Financial trends will continue to look favorable. Start to hoe more rows and plant more seed, but don't expect an early harvest. Just keep nurturing the crop.

STUMPED? Call for Answers • Touch-tone or Relay Phones
 1-800-454-3636 ext. code 100 • 60¢ per minute

ACROSS
 1 How are you? — 7
 4 Calendar abbr. — 7
 7 Comedian — Hope
 10 Distinctive air 12 — Khayyam
 14 — out (stretch)
 15 Attention-getting sound
 16 Car
 17 — Tin Tin
 18 Position
 20 Reflection
 22 Word of opposite meaning
 24 Shaker Eric — 1
 26 Pull
 30 Italian women's title
 31 Liar's tool
 32 John's anthology
 33 Conjectured
 37 Spang factor
 39 In possession of

DOWN
 1 Bark's shrilly
 2 Expect
 3 — Major (consolation)
 4 Kitchen appliance
 5 Evening pit
 6 Home owner of home (2 wds.)
 7 Toy mass
 8 Migrant worker
 9 Aster

Answer to Previous Puzzle

HEFTY	MICRO
URANUS	POTARD
OLITCH	TRIPID
ORR	COOLS
ANA	JABERLO
UTAM	TIA
UIIB	RICO
RUVE	QUEE
EDGE	REST
ADD	SARR
PROSEY	SHRINES
ARE	AERIS
AAM	UNLAUT
PSEUD	RANBLT
YETTR	ASSES
PROSEY	PROSEY

WIN AT BRIDGE

Think, don't leap
 By Phillip Alder

Brooks Atkinson claimed, "The virtue of the camera is not the power it has to transform the photographer into an artist, but the impulse it gives him to keep on looking."

Bridge players suffer from the opposite problem. They see a good play and go for it. They don't pause momentarily to look for something better.

In today's deal, South was in four hearts. After West had led the spade five, how should East have planned the defense?

Two no-trump is the best opening bid with that South hand, despite the five-card major. It is too strong for one heart and unsuitable for a strong two-bid in hearts.

Realizing his partner had led a singleton, East won the first trick with the spade ace and returned the spade nine. True, partner ruffed, but that was the end of the defense. South won.

West's diamond switch and played a trump. East won with the ace and played another spade, but South ruffed high (he didn't know West was now out of hearts), drew East's last trump and claimed.

East was too impulsive. He should have paused for a moment to wonder where the fourth defensive trick was coming from. If he had, he would have seen the advantage in switching to his singleton club at trick two.

After winning in the dummy, declarer plays a trump, but East rushes in with the ace and leads the spade two, a suit-preference signal asking for a club return. West ruffs and returns the club as requested. East's ruff defeats the contract.

Be calm and thoughtful at the bridge table, not impulsive.

© 1996 by NEA Inc.

NORTH		02-17-96	
A	Q J 10 3		
K	J 10 9 5		
	8		
	Q J 8 4		
WEST		EAST	
A	5	A	9 8 8 4 2
	8 2		A 3
	10 9 7 6 5		K J 4 3
	10 9 6 5 2		A 7
SOUTH		Dealer: South	
	K 7		
	K Q 7 6 4		
	A Q 2		
	A K 3		
Vulnerable: North-South			
Opening lead: A 5			
South	West	North	East
2 NT	Pass	3	Pass
3	Pass	4	All pass

ROBOTMAN by Jim Meddick

Panel 1: "YOU SHOULD GET OUT AND MAKE SOME NEW FRIENDS..."
 Panel 2: "IT'S HARD TO MAKE FRIENDS WHEN YOU'RE A ROBOT. PEOPLE ARE AUTOMATICALLY WARY AND WITHDRAWN."
 Panel 3: "AHHH... YOU MUST SEEK OUT AND BEFRIEND THE NEIGHBORHOOD CHILDREN! A CHILD'S HEART IS UNSPOILED AND EMBRACES THE OUTCAST!"
 Panel 4: "THEY DECIDED THAT'S A SIGN OF ENDEARMENT? I FONDLY REMEMBER DECALING MY 'HAWAII FIVE-O' LUNCH BOX..."

ANNIE by Leonard Starr

Panel 1: "...THE WAY THE LIGHT'S HITTING THE WINDSHIELD, I CAN'T SEE WHO'S IN IT..."
 Panel 2: "I HATE TO STOP THIS CLOSE TO THE AMERICAN EMBASSY, BUT... IF THEY NEED HELP..."
 Panel 3: "...I KNOW — YOU'RE HEAD'S BUZZING, TRYING TO FIGURE OUT A WAY TO STOP ME! WELL..."

SEMINOLE TODAY

Sanford Herald, Sanford, Florida - Sunday, February 18, 1996

Bargain Hunter - Thursday, February 22, 1996

1996 Progress Report for Seminole County



Gateway Plaza just east of Interstate 4 in Sanford is just one of many new shopping venues available for bargain hunters in Seminole County.



It's not all work and no play in Seminole County. From canoeing on the beautiful waterways to

naturewalks to dancing in nightclub, there is something for everyone.



Denise Miller, an employee in the Community Involvement department at the Seminole County public schools, is all smiles on the job.



The newly-opened Seminole County Public Schools' Educational Support Center is the state-of-the-art heart of the school system's operations.



Learning is an active process in Seminole County schools. Students often get their lessons by becoming a part of what they are learning like these youngsters finding out about heraldry.

County seat Sanford is crowning glory in area of progressive growth

By NICK PFEIPAUF
Herald Staff Writer

SANFORD — Sanford as the seat of government for Seminole County reflects the growth Central Florida continues to experience.

Commercial growth and improvement of the city's image are becoming more and more prominent. Sanford Mayor Bettye Smith is especially optimistic.

"This past year has seen many millions of square feet of new construction or planned construction," she said. "It's a sure sign our growth is by no means slow."

"Of course there's a lot of growth coming in Sanford in the near future," she continued, "such as the proposed Canal Street Station near the Seminole Towne Center, and a number of other proposed developments which are going to be tax-producing for the city."

Among areas of major growth plans presently under way is Hill Dermaceutical, to be located at

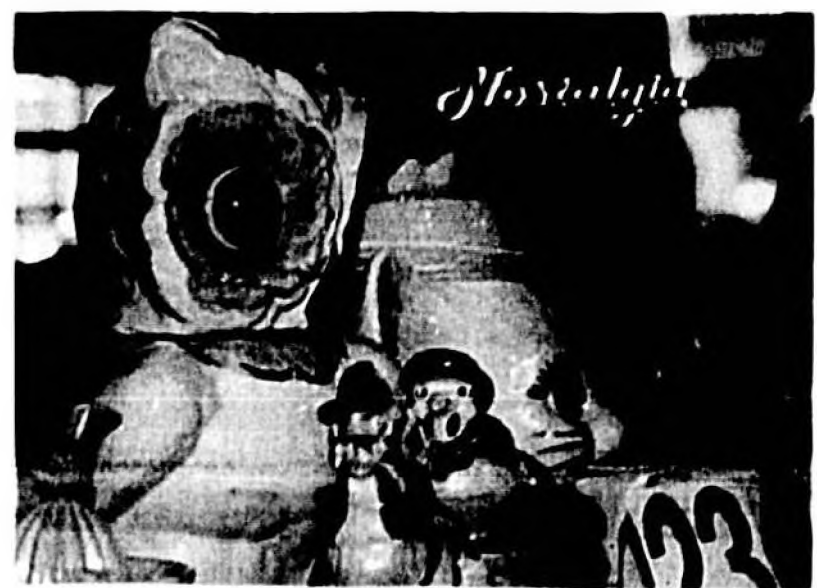
the Orlando Sanford Airport in Sanford. "While this is an airport property," she said, "it is still a local business that we will be considering it as our own."

Many new restaurants and additional stores and shops are also in the planning stage, especially in the area near the Seminole Towne Center. The major theater complex construction is well under way near the mall, and refurbishing is in full swing at older shopping centers especially along the U.S. Highway 17-92 corridor south of the city.

Mayor Smith said she has great expectations for development of the lakefront area, through the recently established CRA (Community Redevelopment Agenda). "I don't know how long this may take," she said, "but the people who are involved in all aspects of this are well chosen, and I believe they have the expertise and insight to bring this about within a very few years."

She also expressed a belief

See Sanford, Page 4



The semi-annual Sanlando Depression Era Glass Show and Sale brings collectors and browsers to the Sanford Civic Center each January and September for a colorful walk down memory lane.



Helen Stairs, president of the Ritz Community Theatre project, and Fred Rogers, chairman of theatrical productions at the Ritz, look at the theater which is being renovated to bring cultural arts back to downtown Sanford.



Members of various veterans organizations, including this one from Winter Springs, regularly take part in Sanford's annual

Veteran's Day Parade to salute those who served and those who died for their country in a peace and in war time.

Airport continues to serve as transportation link

By STEPHEN J. COOKE
Special to the Herald

In 1996, the Orlando Sanford Airport will host new airline charter operations primarily from United Kingdom tour operators. In addition to these new activities, we also anticipate growth in domestic charter activity. Last year our terminal handled approximately 50,000 passengers. This was an increase of approximately 10,000 passengers from the previous year. Numerous collateral infrastructure projects are currently under way which will assist the aforementioned development including the International Departure Building, runway improvements, a new FAA tower, additional heavily stressed aircraft taxiway and ramp, parking improvements and other airfield improvements. The Authority is currently working with the Florida Department of Transportation to more clearly sign roadways in Orange and Osceola counties to assist international passengers returning to Sanford. This project is important to provide



adequate directional information to international charter passengers and others using the airport.

In addition to the passenger activity at the terminal, the Authority plans to continue development of the industrial park. During 1995, a pharmaceutical plant was attracted to the west side of the industrial park. This is the first new building construction of primarily non-aviation development in this area since 1986. An important part of the industrial park development is demolition of old buildings. This has proceeded slowly due to funding considerations but will be accelerated in 1996. With respect to general aviation, the airport plans to host increasing numbers of corporate jets and

turbine aircraft in 1996. Flight training activity at the airport will continue to increase in 1996 with the primary generator being the COMAIR Aviation Academy. Total operations at the airport through the end of FY 1995 were approximately 256,000. Important related developments include the completion of the Missing Link connecting State Road 417 to I-4, the four laning of East Lake Mary Boulevard to better connect the terminal to the expressway and construction of a by-pass road around the airport connecting East Lake Mary Boulevard to State Road 415. The latter project is planned by Seminole County for completion by the year 2000.

Other activities which directly relate to international development this year include constructing an air cargo building, consideration of a foreign trade zone, and obtaining designated status from U.S. Customs to enable general aviation aircraft to return to Sanford without first-stop diversion to a South Florida airport.

Stephen J. Cooke, A.A.S. is Director of Aviation, Orlando Sanford Airport.



Orlando Sanford Airport Director Stephen Cooke anticipates increased activity.



Port of Sanford Manager Dennis Dolgner says the port maintains 96 percent occupancy.

Port of Sanford involved in a storm of progress

By MICK PFEIFFER
Herald Staff Writer

SANFORD — It isn't a matter of "any port in a storm." Rather it's the Port of Sanford, and it's involved in a storm of progress.

Nobody could be more excited about the port's recent past and future potential than port Manager Dennis Dolgner.

"We have in excess of 300,000 square feet of structures here," he said, "and even with that much, we presently have a 96 percent occupancy rate."

Dolgner said it was a tense moment last year, when one of the major tenants pulled out of port operations. "But we rebounded," he said. We now have Vantare International bus, and Thoroughbred Power Boats Inc. occupying that space, and we did it within just six months.

He said the loss could have been a damaging hit to the port authority's budget but the port actually finished this past year showing an excellent profit.

As for 1996, Dolgner says he projects it will be "an experience in business incubation."

"We are working hard going after small businesses, which may become involved in multi-business leasing of buildings," he said, "but by no means would we turn away any moderate or even large size business."

He said he expects the port may be seeing an expansion of possibly 125,000 square feet of new building. "But we'll probably be expanding by nibbles at a time," he said, "to keep in line with existing programs and projects for building utilization."

Dolgner said while the airport authority has some agreements on some adjacent land, he does not expect any expansion, at least in the immediate future, will require an expansion of the actual port property. Most of what the port features is adjacent to the St. Johns River, and other land would be to the west and south of the area.

"Let's consider the port now going into Phase I of expansions," he said. "This is where we are going to emphasize attracting small businesses to the port. Of course, any others that come along will also be welcomed with open arms."

The Port of Sanford, located to the west of the city, is owned by Seminole County.

KAMPF TITLE & GUARANTY CORP.

"Serving All Of Central Florida"

Thank You
Sanford
For 33 Years
Of Progress

Since 1963

322-9484

200 W. First Street
Sun Bank Building
Sanford

RUSSELL HEINLE
PRESIDENT

MARK WRIGHT
VICE PRESIDENT

GAS CUTS THE COST OF COMFORT.

and saves you \$300 to \$500 yearly.

Faced with the threat of blackouts here in Central Florida, your gas company, Florida Public Utilities, urges you to make these typical energy-saving comparisons between Natural Gas and Electric appliances. Dare to compare!

You'll also discover additional savings on your electric bill when using natural gas for heating your home, spa or pool. And, you'll be doing your part to reduce energy usage year 'round... without sacrificing comfort. Even FPL is urging its customers to make the switch to energy-saving, affordable appliances*.

Dare to compare! The more gas appliances you have, the more you save. Call Florida Public Utilities today for additional information or visit the showroom nearest you.

*FPL pamphlet R80-9103

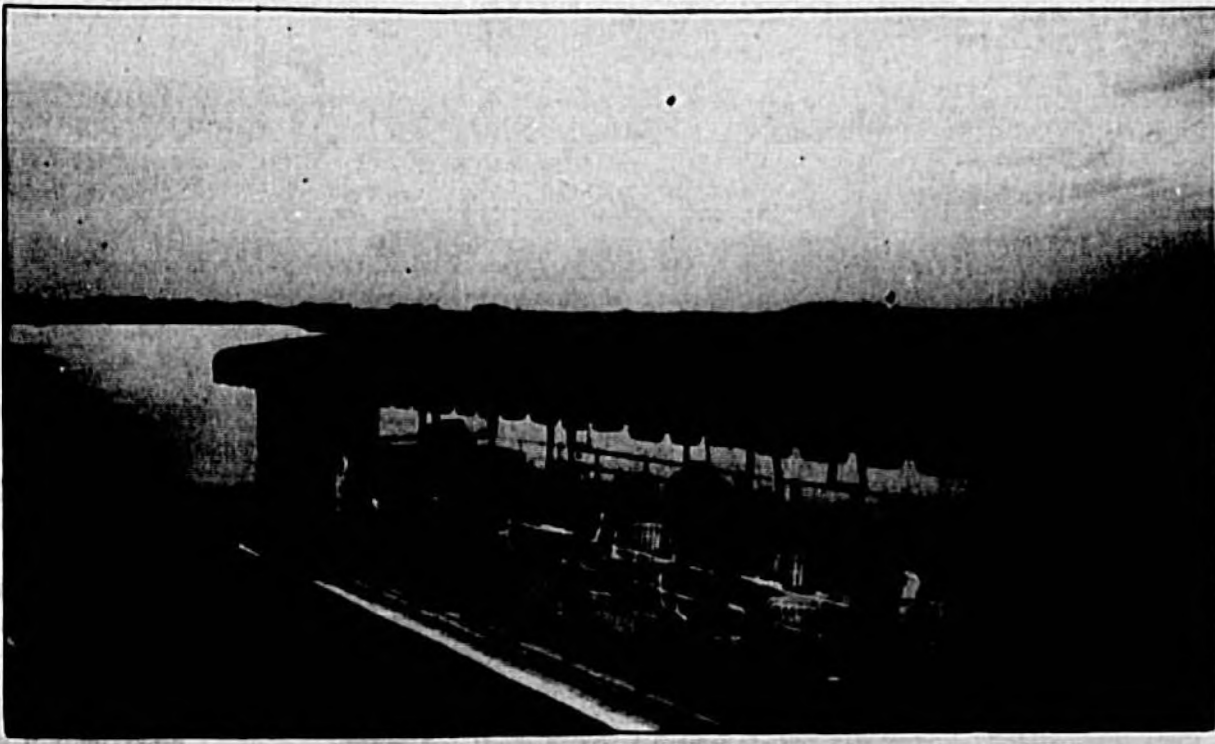
Natural or Propane Gas available everywhere!

Appliance	Gas		Electric	Savings
	Therms @ .556 \$ per month	Kwh @ .08 \$ per month		
Range	\$3.34	\$7.04	\$44.40	
Dryer	\$2.22	\$8.72	\$78.00	
Water Heater (30 gallon)	\$8.90	\$25.60	\$200.40	
Typical Average Savings				\$322.80

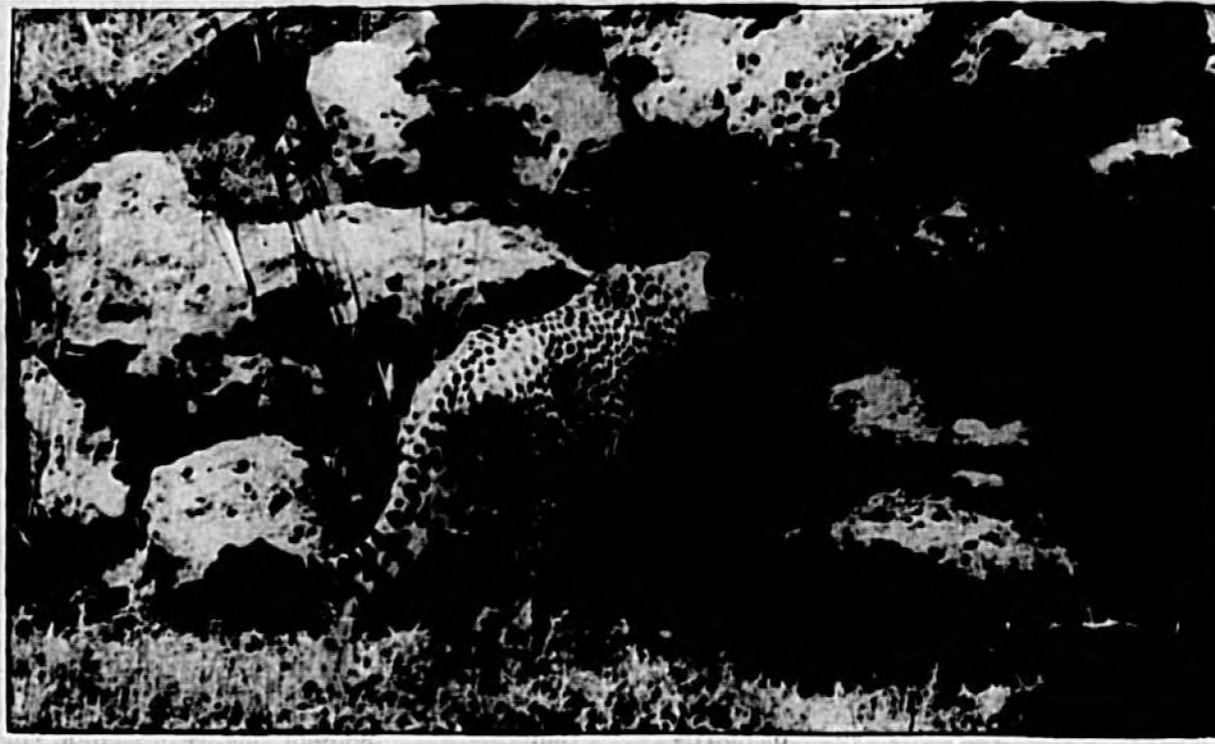
Sanford: 407-322-8733
530 West Sixth St.

DeLand: 904-734-1951
401 North Stone St.





A cruise along the St. Johns River is a refreshing change from the beach.



The cheetah exhibit at the Central Florida Zoo in Sanford is popular with families.

Day trips in county under \$25

By **NOELI REAGAN**
Herald Staff Writer

Jump up off the sofa-get the kids in the car and head for fun. If you are bored with the beach and tired of the tube, visit some of Seminole county's best spots for family entertainment. If you're born to be wild or enjoy things mellow and mild, you can find it in our area.

Anywhere you go for recreation nowadays can severely cripple your bank account and fatally wound your budget. The daytrips listed below are big fun and won't break your budget.

ST. JOHNS RIVER CRUISES AND GATOR LANDING

See Florida at it's best! Bob and Evie Hopkins and son, Robert, offer a beautiful cruise on the St. Johns river at two different times. (11am to 1pm and 1:30pm to 3:30pm.) You can truly see the animals, historical spots and genuine beauty of Florida's most famous river. It's a perfect time to relax and enjoy a quiet, peaceful boat ride with the family. You never know what wildlife you will see-owls, alligators, heron, eagles, maybe even a manatee. The boat is a covered 48-foot pontoon boat so a 2-hour trip does not mean a nasty sunburn, even a brief summer shower won't be a bother. Adult ticket prices are \$12, seniors \$10 and kids 3-12 only \$6. Be sure to call for reservations, you'll find a

friendly voice waiting to help you.

Now comes the good part... Bob and Evie have a neater than neat little restaurant called Gator Landing. There are tables for inside dining and a huge wrap around deck outside for "river watchers". The menu has Florida favorites (seafoods, fish and gator) plus the best-ever hamburger (no foolin') and curly fries. When company comes down take them to Gator Landing, do some fine eating and catch a great sunset. Restaurant hours are 11am to 7pm weekdays and 11am to 9pm Friday through Sunday. St. Johns River Cruises and Gator Landing are located at the east end of Celery Avenue at the Sanford Boat Works and Marina (near the Osteen bridge). The street address is 4359 Peninsula Avenue. Give Bob and Evie a call for any questions or just a chat at 407-330-1812.

KATIE'S WEKIVA RIVER LANDING

Can you canoe? This lovely landing on the Wekiva river offers you the use of a canoe all day for only \$20. You can't beat it! Katie's has been featured in several magazines including Southern Living, plus the landing has been filmed on the TV program Discovery. This spot on the Wekiva has been declared a Registered Archaeological Site.

It was a inhabited by the Seminole Indians. The unspoiled grandure of the Wekiva river and the solitude-truly are great stress busters. (Paddling about on the river is also a nifty way to exercise.) Katie's is not just canoes, they also have kayaks, a recent addition to boating fun at the landing. Fishing supplies from bait to licenses are available. The country store is well stocked with goodies to tempt you and last minute items you may have forgotten.

Stay for a weekend or spend your vacation with Katie and her crew. There are log cabins for rent at the landing, tent camping and 55 shady RV hookups. Katie's offers special canoe trips (\$5 daily) and special rates for groups. Wekiva means "clear" in the language of the Seminole Indians, and in some spots if you look down, you can see the fish glide under your canoe. You won't believe the sights you'll see along this river-it's like taking a step back in time. Quiet and primeval, on the Wekiva, at times you expect a dinosaur to come wading through the water. It's a nature lovers dream come true, turtles, birds (herons and egrets) and of course gators are abundant along the Wekiva. Katie's is so simple to get to, even I found it! From Sanford, go out West highway 48, way beyond the bustle of the new mall area just before the Wekiva river bridge-turn right

and you can't miss Katie's. To get real specific, Katie's is 4 1/2 miles after you go under I-4 on highway 48 at 190 Katie's Cove Rd. If you can't make heads or tails of these directions call the Landing at 322-4470, and one of the gang at Katie's can steer you right. Go have some fun now!

Please feel free to drop me a line with any "Cheap Thrills" - Day trips you can dream up! N. Reagan, P.O. Box 1867, Sanford, FL 32772-1867. Enjoy life, hey...it's all we've really got!

NATURE PRESERVE

If we all recycle cans, plastics and bottles, we can keep this land from becoming a landfill.

To find out how to help, call Take Pride on America at 1-811-U.S. PROUD

1800-U.S. PROUD
A Department of the State

Time Is On Our Side.

Why? Because we know that eventually you will tire of the tactics of all the others, and that is when you will visit us. Compare. (When you make honest comparisons... we win every time!)

Kaiser
PONTIAC-BUNCH-GMC TRUCK
1590 South Woodland Blvd., Deland
DELAND 904-734-6882 • DAYTONA 904-237-8348 • ORLANDO 407-629-8549
LOCATED AT THE CORNER OF HWY. 17-92 & HWY. 15A

HIDDEN HARBOUR MARINA
4370 Caraway Place • Port of Sanford
Sanford, Florida 32771
Marina: (407) 322-1810
Fax: (407) 322-1811

Facilities & Services

- Wet slips up to 70'
- Dry slips up to 26'
- Restaurant, Lounge & Deli
- Pool
- Special Key Lock Security
- Clean Restrooms & Showers
- Full-Service Yard
- 25 Ton Travel Lift
- Gasoline Dock
- Boat Sales & Rentals

SEMINOLE COMMUNITY COLLEGE

Where Central Florida Learns A Living!

Seminole Community College
100 Wekiva Boulevard, Sanford, FL 32773-6199
407 / 328-4722
An Equal Access / Equal Opportunity Community College

Castle
Cost \$50,000
or \$500,000?

Let
Crown Bank
Finance It
For You!

Lowest Rates In Years!
Call for an Appointment Today!
260-1003

Crown Bank
A FEDERAL SAVINGS BANK

105 Live Oaks Gardens
Casselberry, FL 32707

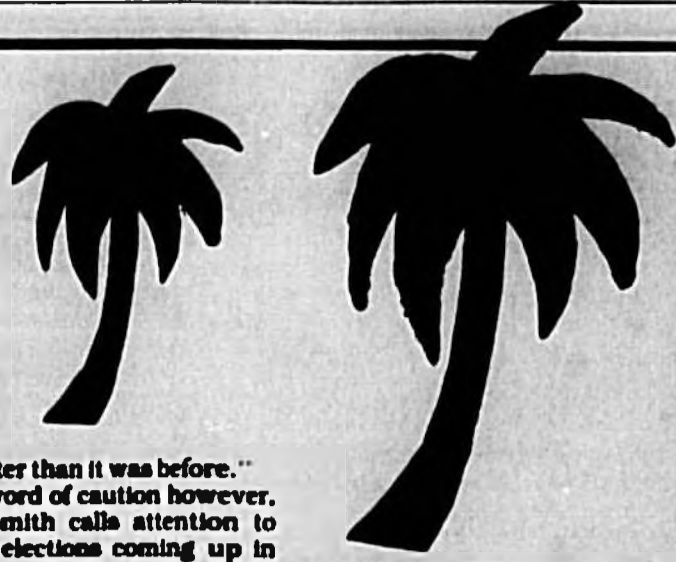
Sanford

Continued from Page 1

that lakefront development will also benefit the downtown business area of Sanford, especially through proposed walkways between the two areas, and the concept of having other expansions which will draw more people into the downtown/lakefront area.

She cited, with pride, the burst of wonderful antique stores in the downtown area, as well as some of the building refurbishing and other projects which are continuing to make the city attractive to not only visitors but residents as well.

"I remember some time back," she recalled, "when we were first starting plans for the Seminole Towne Center development, people were saying that once the mall is in operation, downtown Sanford will lose business, and deteriorate. On the contrary," she said, "the downtown area is doing relatively well. One long-time downtown merchant told me that business at his store now that the mall is operating, is



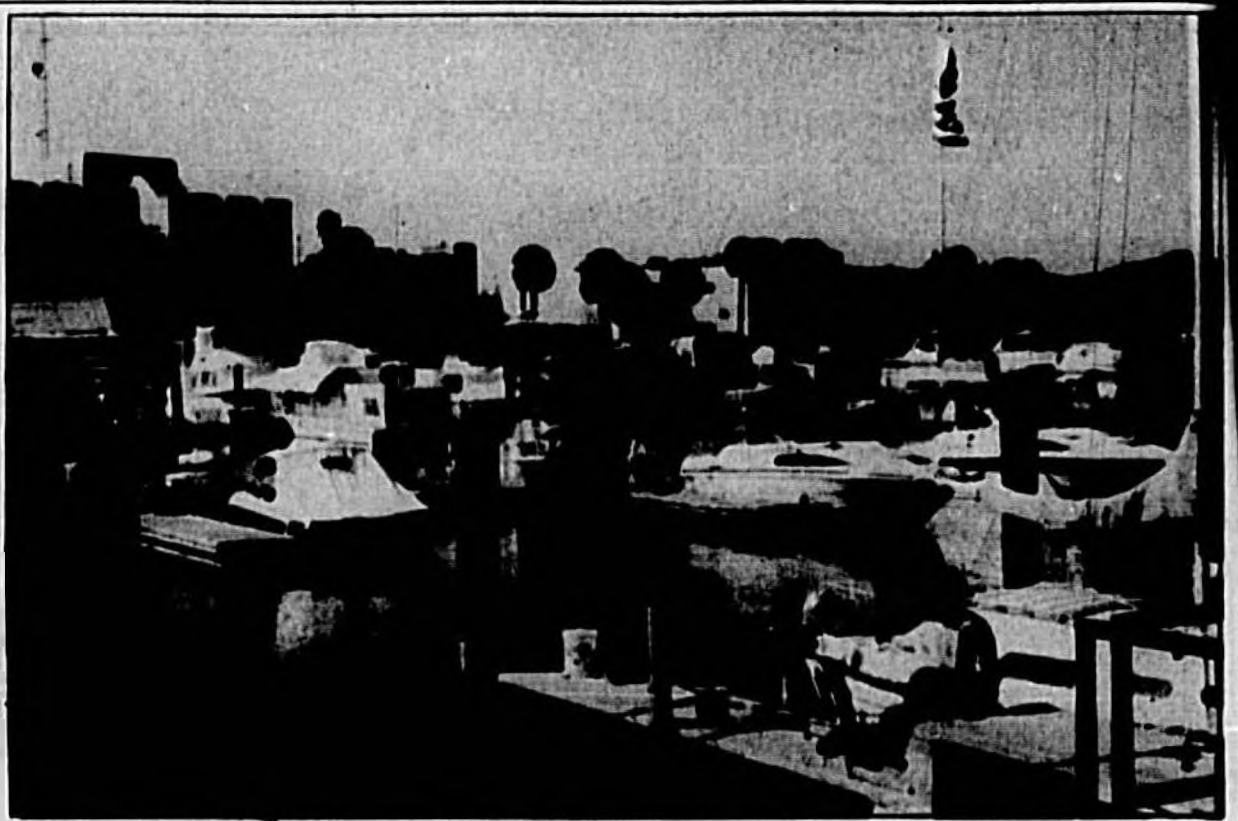
even better than it was before."

On a word of caution however, Mayor Smith calls attention to the city elections coming up in December of this year. "The citizens will possibly be restructuring the city commission," she said, "with three seats up for election." In addition to the mayor's seat, two commission seats will be on the ballot this year.

"When you add these, plus the changes to the city charter and perhaps other things to be voted on in December," she said, "you can easily see that this is possibly going to be a very im-

portant and critical year insofar as the future of the entire city is concerned.

In summing up the past year and looking ahead into the future, Smith observed, "Sanford has passed the point at which mere momentum is carrying it forward. We have become an attractive and desirable development community. We are moving ahead now, and I believe it is going to continue to do so."



Sanford marina borders the lakefront City Hall and county courthouse.

Herald Photo by Tommy Vincent

Spotlight continues to shine on Ritz Theater

Special to the Herald

The "stage lights" shine brighter for the old Ritz Theater, a "jewel" in Sanford Main Street's culture cluster in their downtown revitalization plan because of several new developments.

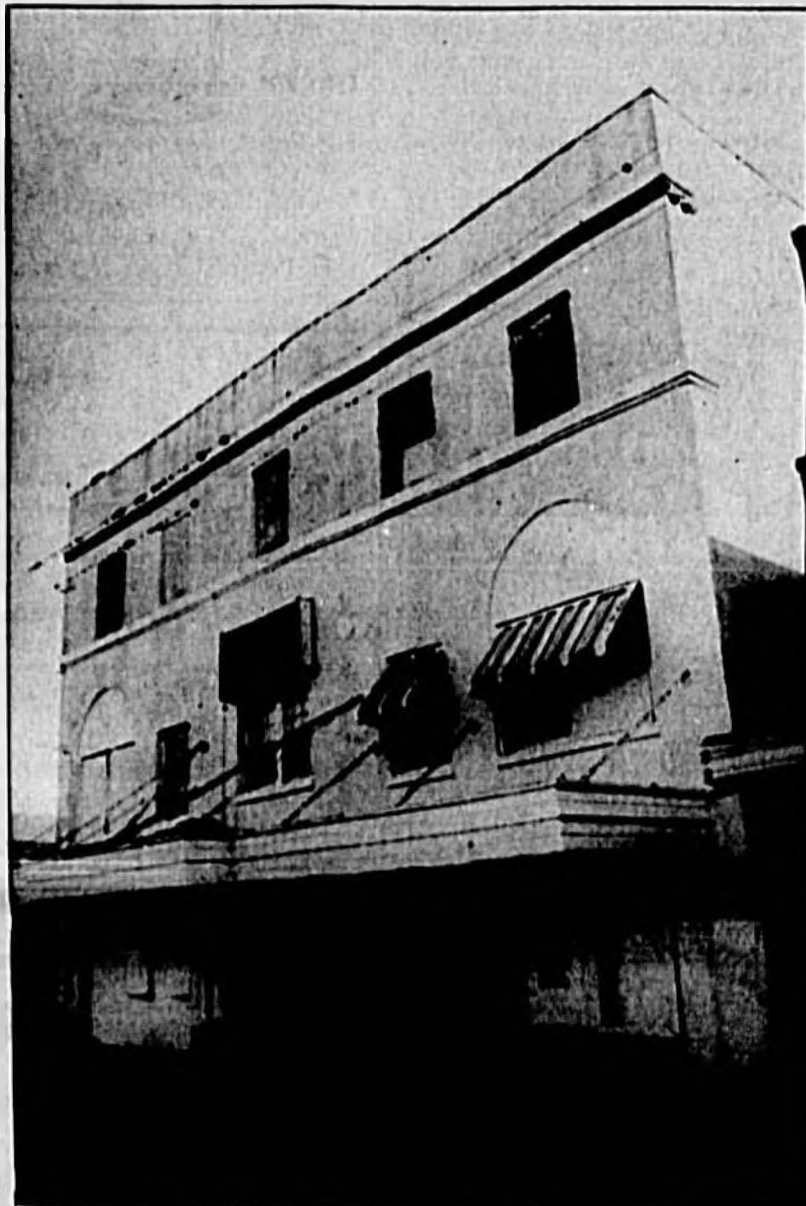
"With the purchase of the adjacent building to the Ritz by Kay Bartholomew for the non-profit First Street Gallery, we lay another block in the ever-growing resurgence of growth and vitality to the city of Sanford," said Helen Stairs, Main Street's Economic Development chairman.

This, in a sense, coupled with the Ritz, provides a strong anchor to the culture corridor which begins with Magnolia Square, one of four clusters projected in the redevelopment strategic plan cited in Main Street's market analysis.

That is not all. The heart of the Ritz, regardless whether the building is actually being restored, is in its presentations. That heat is much stronger than last year, due, in part, to the reopening of the gallery as that will be their temporary home.

"In early March and again in May, we plan more one-act plays — our Patio Dinner Theater — at Jake's Cafe on First Street," said Fred Rogers, co-chairman of the Ritz Production Committee. "But what is exciting is the original script on a period in Sanford's history that will be presented depending on when the First Street Gallery opens. Hopefully, early or mid April."

"And," he continued, "we are starting our children's productions with 'Cinderella,' April 13 and 20. There will be two shows a day, in the morning and early



Herald Photo by Tommy Vincent

Renovation work continues on the Ritz Theater in Sanford.

evening." The two buildings will be operated almost as one, allowing receptions for, before and after performances as well as being the stage for live productions

until the Ritz is ready.

Even actual restoration of the old theater that holds so many memories for so many people looks brighter.

"This year could possibly be the Ritz's year," declared Stairs. "Sandra Mortham, secretary of state, is making an all-out effort to have the Preservation Grants Budget passed at \$12 million. This is extremely important as the Ritz Community Theater Restoration Project Group has written four special categories grants, placing high each time, only to miss the mark three times before."

"However," she continued, "if the budget goes through, we have an excellent chance of being funded all or part of the \$68-plus thousand we asked for this year. This would come through in August."

"Imagine the excitement when this happens," she added. "The grant would allow the restoration group to have the building tented for termites, repair termite damage, install sprinkler system, scrape and paint the exterior, repair all of the old windows and put in regulation doors as well as replace the stage which has been destroyed by rain."

The group has already replaced the old rotted roof with a new one. In fact, the theater group has not been standing still. They have raised

\$121,306.30 through donations, live productions, sale of memorial bricks, Ritz pins, etc.

"But we have to do more," Stairs emphasized. We are starting a grass roots effort, asking any and everybody to write their representatives to vote for the full budget. As the secretary pointed out when she spoke at the advocacy rally last month in Tallahassee, for every \$1 of state funds spent on historic preservation for the arts, buildings and education, \$4 is returned to the community and the state.

"A strong beginning," Stairs added. "We now have a dance studio, the Ritz restoration project, the reopening of the First

Street Gallery, all contributing to the cluster core. And we have a new addition as well. Tajiri Arts is moving into the Little Red School House, just a few blocks away. Their activities will enlarge and expand the cultural horizon for not only Sanford but Seminole County.

Stairs, reflecting on her role as economic development chairman, concluded, "We have more storefronts and more space in the event that someone out there would like to join us — we will host an 'open house' at any time that a group or individuals have an interest in our projects. Sanford and the surrounding area is where the action is. It is very exciting."

HAIR FORMULA I

HAIR
NAILS — \$20
PER SET



321-6114

GET THE MESSAGE ON A JOB TRAINING PROGRAM THAT'S RIGHT FOR YOU

• Free Tuition at Local Community Colleges

• Classroom Training

• No Cost Computer Training

• Free Job Placement

• Non-traditional Training for Women

• Job Search Skills and Resume Writing Techniques

• Special Programs for Dislocated Workers

CALL TODAY 321-5627 Ext. 116

Please Ask for Message

520 W. Lake Mary Blvd. • Sanford, FL 32773

Becoming A Watson Associate Is More Than Just A Career In Real Estate



To many people, real estate is just another job. But at Watson Realty, each day can become an exciting new experience. As a Real Estate Associate at Watson Realty, you're part of the most successful real estate firm in North and Central Florida. The company is rated as the third largest real estate firm in Florida and 21st largest in the nation.

By being with such a successful firm, you're involved with some of the brightest, friendliest and knowledgeable people in the industry. And that success has been known to rub off on new Associates.

Financial rewards can be unlimited with the sales support you receive from Watson managers and the corporation's marketing efforts. Each year Watson Realty boasts of many multi-million dollar producers. As a matter of fact, Watson ranks 12th in the nation for the highest transaction per Associate.

At Watson Realty, the satisfaction of helping a young family find a home they can afford or working with a retired couple to sell their home at the best possible price is all in a day's work. If you want more out of a real estate career, join the company that gives you more than just a job.

Call Jacqi Giordano



(407) 774-6360
Director
Career Counseling



Watson Realty Corp., REALTORS®
Central Florida Regional Office
317 Wekiva Springs Road, Suite 200
Longwood, Florida 32779-3607

Community college turns 30

Classes offered in three areas



SCC serves the needs of the local community.

By GRACE OSWING
Special to the Herald

This year, Seminole Community College is celebrating 30 years of service to the Central Florida community. The college has expanded its delivery of services over the years to keep pace with the changing community. But, even with all of the growth and diversity, SCC has never forgotten its purpose — to provide an affordable, quality education. That's why SCC offers education and training in three distinct areas: College Credit, Vocational Credit and Adult and Continuing Education.

If you are interested in earning an associate in arts or an associate in science degree but don't want to get lost in the crowd at a large university — SCC is right for you. With an average class size of about 20 people, students receive individualized attention in a caring environment. And SCC students graduating with an A.A. are guaranteed admission to any of Florida's four-year universities because we are accredited by the Commission on Colleges of the Southern Association of Colleges and Schools to award associate degrees.

The Applied Technologies College Credit Division provides comprehensive training in career tracks leading to 35 Associate in Science degrees and five Technical Certificates. The Applied Technologies Vocational Credit Division provides students occupational training in 35 different career areas. Programs vary in length from one week to two years and culminate in a state-recognized, vocational-technical certificate. Several four-year apprenticeship programs also are available.

SCC also has Adult and Continuing Education programs offering support services to business and industry; to adults who want to learn to read; to anyone interested in earning a GED diploma; to anyone interested in taking computer classes; or to students who have left the public school system and still want to earn a high school diploma.

At SCC, a quality education is more than lectures, homework and exams. It's the opportunity to interact and learn from a culturally diverse group of faculty and staff. It's the opportunity to attend a variety of free educational, musical, film, theatrical and art gallery events. And it's the opportunity to grow emotionally and intellectually with students from diverse backgrounds.

Our middle name is community and offering classes at times and locations that are convenient to you is one of our goals. For example, SCC offers the Weekend College Fast Track Program for people who want to earn an associate in arts degree, but who have found it difficult to attend classes during the week. Friday evening and Saturday classes are held at SCC's main campus.

We're also branching out to other areas of the county as well as expanding current facilities. In the northeastern region, construction is underway on an instructional center which will house the college's public safety training programs. In southeast Seminole County, SCC will continue to offer evening classes

at Oviedo High School until a new East Center is available. And in west Seminole County, the SCC Hunt Club Instructional Center has expanded by 50 percent and is offering nearly 200 class sections every semester.

Providing an education to any and all residents of Seminole County is part of our mission. To that end, the SCC Foundation serves the college by providing support to students and faculty for scholarship and enrichment purposes. Over the years, hundreds of scholarships have been provided to SCC students. Typically, money is generated by fund-raising events such as the annual SCC Dream Auction: gifts from community-minded businesses and philanthropists; and SCC faculty and staff donations.

SCC is serious about your future. So whether you're a recent high school graduate starting your college career, a business professional needing recertification, or someone interested in earning your GED, "Do It Right" at SCC. Stop by the campus today, or call 328-4SCC (4722) for more information. SCC. Right Here! Right Now! Right for You!

BUSINESS ISN'T BUILT ON DREAMS ALONE

Dreams can be achieved with sound strategies. We're here to give support to your advertising needs. Call one of our advertising representatives today!

Sanford Herald 322-2611

CHECK THIS OUT!

3 NIGHTS STARDUST HOTEL

from \$339.

per person Dbl Occ

Includes: Roundtrip Air, Hotel on the Strip, Car Rental, Discount Coupons!

7 NITES - incl. RT Air, Hotel & Car Rental

from \$797.

Dbl occ restrictions. Cancellation fees apply. Prices vary by day & date of departure.

GOING ANYWHERE - SAVE BIG! LOW AIRFARES!

Sanford at a glance

Area — 17.4 square miles.
Population — 35,269.
Government — Mayor and four commissioners elected to four-year terms, with city manager appointed indefinitely.
City salaries — Mayor, \$3,600 annually; commissioners, \$3,000 annually.
City budget — General Fund (1986) \$16,421,378; Total, including enterprise funds and debt service (1986) \$41,736,182 million.
Property tax — 6.8759 mills per \$1,000 of assessed value, minus exemptions, including \$25,000 homestead exemption.
Schools — Goldsboro Elementary, Hamilton Elementary, Idyllwild Elementary, Midway Elementary, Pine Crest Elementary, Wilson Elementary, Crocena Academy (middle), Lakeview Middle, Sanford Middle; Seminole High School.
Sanford is the school district headquarters for Seminole County. Seminole Community College, a two-year college, also offers a complete vocational technical program.
Many private schools in and around Sanford.
Police, Fire — City: full-time fire department, 1319 S. French Ave., 322-4953. Full-time police department, 815 S. French Ave., 323-3030. County fire department, 4329 S. Orlando Drive, Sanford, 323-2500. Sheriff's Office, 1345 Sanford Airport, 330-6600.
Employment — The school system is one of the largest employers in the area, but in the actual city, local government is the largest. Light manufacturing is the primary source of private economic

productivity.
Attractions:
Central Florida Zoo — Home of several hundred native and exotic animals and birds, 3755 Highway 17-92 at Interstate 4 (exit 52), 323-4450. Hours: 9 a.m. to 5 p.m. every day. Closed Thanksgiving Day and Christmas Day. Admission is \$7 for adults; \$4 for seniors age 60 and over; children ages 3 to 12, \$3; children under 2 years of age, free. On Tuesdays, seniors get half price admission and free admission for zoo members.
Rivership Romance — Dining cruises on Lake Monroe and St. Johns River. Berthed at Monroe Harbour Marina, 321-5091.
Sanford Museum — The city's history, 520 E. First St., 330-5696.
Seminole County Historical Museum — The county's history, 321-2489.
Parks, Recreation — City Department of Parks and Recreation administers year-round recreational programs: 25 parks total more than 110 acres. Holiday lake on Lake Monroe has a marina with a capacity for more than 500 boats in wet and dry storage. Office is located at 401 E. Seminole Blvd., 330-5897.
Festivals — Historic Trust Tour of Homes, St. Johns River Festival, Golden Age Games, Winterfest (which includes Christmas Parade), Sanford Main Street's Chili Cookoff, Fall Festival of Arts, Crafts and Antiques, Family Fun in the Park, and Sallfest.
Hospital — Central Florida Regional Hospital, 1401 W. Seminole Blvd., 32771, 321-4500.

Dr. McGee tapped SCC president

By GRACE OSWING
Special to the Herald



Dr. Ann McGee

According to Webster, progress is "gradual betterment; especially, the progressive development of mankind." Progressive development of mankind is precisely what the Florida Legislature had in mind when it established Seminole Community College. Since the doors of SCC first opened to the community 30 years ago, hundreds of thousands of Central Floridians have developed and enriched their lives through classes or cultural activities offered by the college.

Since 1965, Seminole Community College has awarded nearly 16,000 associate degrees, more than 15,000 vocational certificates and approximately 17,000 GED and Adult High School diplomas. That's a lot of progress made by this community. And, SCC is committed to perpetuating that kind of progress by continuing to deliver educational classes and cultural programs designed to meet one's needs.

On Feb. 1, SCC entered a new and exciting era. Dr. E. Ann McGee assumed her duties as only the second president in the college's history. Last year, founding president Earl Weldon made public his plans to retire on Jan. 31, 1986. The SCC District Board of Trustees began a national search for Weldon's successor.

From a pool of 101 candidates representing 32 states, Dr. E.

Ann McGee was the unanimous choice of the trustees. Dr. McGee "brings a vast knowledge" of how higher education in Florida works, explained Beth Hatway, chairman of the trustees, "and we are very excited about the leadership and experience that she will bring to SCC and our county."

Dr. McGee is a community college graduate who was selected as the "Most Outstanding Graduate" at St. Petersburg Junior College in 1968. She completed her bachelor's and master's degrees at Florida State University where she was a member of the Debate Team, Phi Beta Kappa and also received a graduate fellowship.

Dr. McGee began her professional career 25 years ago as a faculty member at Florida Keys Community College. She went on to become the youngest Dean of Students in Florida's community college system.

Rich Plan of Florida is proud to be of service to the Central Florida Community for over 36 years.

Ever Wonder Why They Call it JUNK?

Now you can give your family the BEST foods... without the hassles of supermarket shopping.

MEATS • SEAFOOD • VEGETABLES • FRUITS & JUICES

CALL TODAY **WE CAN FEED YOUR FAMILY BETTER!**

407/322-FOOD (3663)
800/662-FOOD (3663)

RICH PLAN
HEALTHY FOOD • PERSONAL SERVICE

Serving Florida Families since 1960!

The McKibbin Agency

INSURING CENTRAL FLORIDA SINCE 1918

All Types of Businesses

322-0331

Highest Standards **TF** of Professional Service

Chamois Soft... Ultra Light... Remarkably Flexible...

Discover the most comfortable casual flat you've ever worn: Francie. Trotters'® best-seller is made with the softest, most supple leathers. Handsewn for quality and fit. And so lightweight, you might forget you're wearing shoes.

Ty on a pair and experience the latest in lightweight, comfortable shoe design.

TROTTERS®
For life's most comfortable occasions.™

Knights®
Shoe Store

208 E. First St., Sanford, FL 32771 (407) 322-0204

WE'RE DEDICATED TO YOUR HEALTH CARE



"SEMINOLE STROLL" (Mall Walking Program)

Sponsored by:
Seminole Towne Center Mall • Sanford Recreation Department • Senior Friends

Monday, Wednesday, & Friday

8:00 - 9:00 a.m.

Seminole Towne Center mall

Food Court Entrance

Seminole Stroll is supervised mall walking program that follows a designated walking route. Complimentary blood pressure screenings will be offered each Wednesday. Enjoy camaraderie and a climate controlled environment while walking your way to better health. Incentive prizes are awarded as walkers reach certain "milestone" distances.

For more information contact the Senior Friends office at (407) 321-4500 ext. 5784 or the Sanford Senior Center at (407) 330-5699.

Introducing a group so exclusive, it takes 50 years to get in! The National Association of Senior Friends, Central Florida Regional Hospital Chapter

If you are over 50 years of age, interested in meeting new friends and want to enjoy life to the fullest - the national Association of Senior Friends is for you!

Over 230,000 individuals have already joined this national, not-for-profit, wellness program which promotes healthy lifestyle changes through education, exercise programs, social events and health screenings. In addition, members are entitled to exclusive hospital privileges and discounts. The Central Florida Regional Hospital Chapter will operate under the direction of a full time Senior Friends Coordinator, Ellen Rollins.

Central Florida Regional Hospital sponsors 3 different fitness programs: Senior Aerobics, Water Aerobics (Spring) and Seminole Strollers (Mall Walking). Get fit with Senior Friends.

Looking for an exercise program geared specially for the mature exercise enthusiasts? Central Florida Regional Hospital's Senior Friends Program offers "Senior Aerobics", Water Aerobics, and "Seminole Strollers" to meet your exercise needs.

You can walk your way to better health on Monday, Wednesday and Friday mornings at 8:00 a.m. at the Seminole Towne Center, located on Towne Center Boulevard in Sanford. Walkers follow a designated route and distances are determined by the individual and their physician. Participants log their miles and receive incentive prizes after they have reached certain "milestones".

With an emphasis on Fitness, Flexibility and Fun, "Senior Aerobics" classes are taught by Ellen Rollins, an AFAA certified aerobics instructor with 8 years of senior aerobics experience. Participants meet at the Sanford Civic Center on Monday and Thursday at 9:00 a.m. Classes are free, although participants are encouraged to join the National Association of Senior Friends.

It pays to be a Senior Friend.

Your membership in Senior Friends gets you in on many discounts, hospital privileges and special events. Here are some of them:

V.I.P. Hospital Privileges: Should you require a stay in the hospital, you will find that a Senior Friends membership provides you with extra amenities that help make your hospital stay as comfortable as possible.

Complimentary Meal Plan: Your spouse or caregiver is entitled to a complimentary meal plan during your hospital stay.

Complimentary Room Upgrade: When available, you may receive a private room at a semi-private rate, for no additional charge - a savings of \$25 a day!

Medical Alert System: Upon discharge, you may receive one month's complimentary lease of the National Guardian Companion system. If you decide to keep the unit, the lease is \$20 per month.

Educational Seminars: Education is a key component to wellness. Central Florida Regional Hospital offers a variety of community education classes including "Dining with the Doctor", a monthly program featuring a different physician and topic each month. The physician lead a discussion and answers questions related to his/her specialty. Dinner is available to purchase in the Dining Room and Senior Friends members receive a 30% Discount.

Call the Senior Friends office at (407) 321-4500 (W. Volusia: 668-4441; Orlando: 628-8797), extension 5784, to make your reservation.

Social Events: Our monthly meetings and new member orientations are perfect ways to make new friends, renew acquaintances and enjoy guest speakers. Call the Senior Friends Office for more information on these events.

Health Screenings: On the first Friday of every month, beginning January 6, 1995, members can take advantage of a cardiac risk profile screening at a discounted price. This comprehensive test includes: Cholesterol, HDL, LDL, Risk Factor, and Triglycerides. Blood pressure and glucose screenings are also offered.

Discounts: Membership in an organization means the most when the benefits are meaningful and necessary. Whether saving money, taking advantage of a free service or enjoying new experiences, you'll be pleasantly surprised by how valuable your Senior Friends membership is to you.

Some of our exclusive discounts include: vision care and eye wear discounts, dining room discounts at Central Florida Regional Hospital, book discounts, car rental discounts and travel discounts.

Friends Magazine & Chapter Newsletter: As a member, you will receive a bi-monthly Friends magazine for free - \$2.50 per issue value! Plus, our informative chapter newsletter will keep you up to date on local events.

Membership Information: For more information, please contact your Senior Friends Advisor, Ellen Rollins at (407) 321-4500 (W. Volusia: 668-4441; Orlando: 628-8797), extension 5784, or fill out and return the coupon below.

Name _____ Mail To:
Central Florida Regional Hospital
National Association of Senior Friends
Address _____ 1401 W. Seminole Boulevard
Phone _____ Birthday _____ Sanford, FL 32771

Millie Weiss needed therapy for COPD (chronic obstructive pulmonary disease)

Millie Weiss chose Florida CORF

"I couldn't walk more than 10 to 15 feet without shortness of breath, or say one or two sentences without coughing or gasping for breath. I couldn't bend (over) or exert myself.

"After the Pulmonary Rehabilitation Program at Florida CORF, I can walk and talk 10 to 15 minutes without the cough or difficulty, move more freely, do more housework, get dressed more easily.

"I would recommend Florida CORF's Pulmonary Rehabilitation Program to anyone."

**STROKE PROGRAM ♦ ARTHRITIS PROGRAM ♦ AMPUTEE PROGRAM ♦ POST-POLIO
CHRONIC WOUND CLINIC ♦ PULMONARY PROGRAM ♦ PAIN MANAGEMENT**



**Florida
CORF**

**COMPREHENSIVE OUTPATIENT
REHABILITATION FACILITY**

with facilities located in DELTONA and SOUTH DAYTONA
call 1-800-790-2250 for information or an appointment

CARF-accredited for excellence in rehabilitation — since 1986



NARINDER S. AUJLA, M.D.

TRI-COUNTY ORTHOPAEDICS, P.A.

Are pleased to announce our recent
association with

NARINDER S. AUJLA M.D.

Bringing You, Our Patients, The Best Quality
Care Through our Continuing Growth.



JOHN SCHAEFFER, M.D.

Orthopaedics is the treatment of bone and tissues of the extremities and back. Broken bones, torn or sprained ligaments, hand and back problems, arthritis, and sport injuries are commonly treated by the orthopaedic surgeons at Tri-County Orthopaedics.

Specializing In Total
Joint Replacement

- Knee and Ankle Injury
- General Orthopaedics
- Foot Problems
- Sports Injuries



MICHAEL SMIGELSKI, M.D.

311 N. Mangoustine Ave.
Sanford, FL 32771
Phone: (407) 323-5843

317 N. Mangoustine Ave.
Sanford, FL 32771
Phone: (407) 323-2577

1133 Saxon Blvd.
Orange City, FL 32763
Phone: (904) 775-0222

521 W. Highway 434
Longwood, FL 32750
Phone: (407) 767-5565

Gynecologist

Robert L. Smith, M.D.

Phone 407-260-1055
for appointments

Located in the Medical Plaza
next to Florida Hospital Altamonte

Clyde H. Climer, M.D., P.A.

Salutes
Dr. Stephen Phillips
for 20 years of service
to Seminole County

Dr. Stephen Phillips

Obstetrics & Gynecology

Sanford 322-5611 Longwood 332-6611



When Exercise Leaves You Breathless...

Ⓢ If you have trouble catching your breath or cough excessively after physical exertion, you may have exercise-induced asthma (EIA) and not even realize it.

"Many people with EIA have no other symptoms of asthma; they only cough or wheeze after exercise," says Dr. Alan L. Plummer, associate professor of medicine, Emory University School of Medicine.

During nonstrenuous activity, air is inhaled through the nose, where it is warmed before reaching the lungs. As exercise intensity increases, air is inhaled through the mouth, which does not warm air as effectively. During exercise, large volumes of this colder air are inhaled.

The combination of heat/water loss and intake of cold air causes the muscles that line the respiratory tract to constrict, resulting in the symptoms of EIA, which are wheezing and shortness of breath. These symptoms usually begin about five to 10 minutes following a workout and may last up to 30 minutes.

MEETING OBSTACLES LUNGS-ON

"People with a history of exercise-induced asthma need to understand that the condition is not a reason to avoid physical activity," says Plummer. "As the body adapts to regular activity and exercise, the level of ventilation needed to maintain a particular level of activity decreases. This, in turn, raises the threshold at which symptoms occur."

THE WARM-UP

Before any physical activity, warm up with 15 to 30 minutes of stretching exercises, light jogging and breathing exercises, combined with pre-medication. This warm-up routine not only



prevents injury but also prepares your airways for the strain of activity, decreasing your chances of experiencing symptoms of EIA.

Other suggestions include:
• Monitor asthma daily with a peak expiratory flow meter. This handheld device measures the degree of airway obstruction. If your readings are

declining, alert your physician, coach or trainer, and take therapeutic action.

• On days when the pollen count or air pollution is high, consider shortening your outdoor workout routine or working out indoors.

• Ask your doctor about medication that can prevent episodes, and use it before your workouts.

• Cover your mouth and nose with a scarf or face mask on cold, dry days; this will warm and moisten the air as you breathe, before it enters your lungs.

THE NAME OF YOUR GAME

Although EIA should not limit your ability to participate in exercise, some activities, such as indoor swimming, are easier on the airways than others. In general, sports that require short bursts of energy, such as baseball or tennis, are ideal for the person with EIA who is interested in getting a good workout.

EIA is more prevalent when exertion is sustained over a long period; therefore, intense bouts of activity that last less than two minutes produce fewer symptoms than activities with longer duration, such as basketball, running and soccer.

For a free copy of "Living With Asthma: Guidelines for a Healthy Lifestyle" and "What Everyone Needs to Know About Exercise-Induced Asthma," write to The Asthma Information Center, P.O. Box 790, Springhouse, PA 19477-0790.

We'll Make Life Easier

We know the difficulty of choosing a new setting for a relative, a friend - or even for yourself. People see care away from home as a last resort. But, here at Hillhaven our guests maintain their independence and dignity while enjoying the graciousness, companionship, and safety that we're famous for. Our comfortable, stylish rooms, delicious meals, courteous service, and convenient location are all designed to provide health care with a just-like-home feeling. We would enjoy giving you a personal tour of our facilities new look. Ask about our enhanced services.

We Specialize in Rehabilitative Therapy and Restorative Nursing Care

950 Mellenville Ave. Sanford (407) 322-8566

HILLHAVEN
HEALTH CARE CENTER

Our topnotch health professionals treat every type of health concern effectively, while still treating you like a human being.

FAMILY PHYSICIANS

LAKE MARY FAMILY MEDICINE

Board Certified Internist and Family Physicians

- Eleanor F. Davina, D.O.
- Zaby Vyas, M.D.
- Lalitha Iyer, M.D.
- Vincent Mamone, D.O.
- Richard Shaffer, D.O.
- Clarence J. Bryant, M.D.

Are pleased to announce the Opening of our New Location

In Med Plex Center, Suite 225
4106 W. Lake Mary Blvd.

- Affiliated with major hospitals in the area
- Five Locations For Your Convenience and Care

We Accept Medicaid, Medicare Assignments and Most Major Insurances

NEW PATIENTS WELCOME

Apopka Family Medicine
205 Park Avenue
Apopka, FL 32703
880-0011

North Side Family Medicine
309 W. First Street
Sanford, FL 32771
324-5035

Lake Mary Family Medicine
4106 W. Lake Mary Blvd., Suite 225
Lake Mary, FL 32745
333-0449

Associated Family Medicine
895 Fox Valley Dr.
Longwood, FL 32779
788-4399

Associated Family Medicine
521 W. S.R. 434
Longwood, FL 32750
830-8600

A Mouth-Watering Answer to Dry Mouth Problems

Ⓢ Do you suffer from xerostomia? If you recognize this as the clinical name for dry mouth, the chances are you or someone you know has experienced this unpleasant condition at some time. Every day millions of people suffer from xerostomia, or reduced salivary gland function and, until now, there was not much they could do to relieve the symptoms without causing other problems, such as tooth decay. Salix, a new product recently introduced into the United States, promises to stimulate saliva production without damaging the teeth.

The symptoms of dry mouth include lack of saliva, problems in swallowing and even difficulty in speaking. What causes it?

The main causes break down into four kinds: a health problem, such as rheumatoid arthritis, diabetes or cancer. Or, it can be one of the side effects to certain types of medication. For example, drugs like tranquilizers, diuretics, antidepressants and antihistamines all cause dryness of the mouth — and xerostomia is all too frequently experienced by those receiving chemotherapy treatment. But it may also be a result of something we do to ourselves, like smoking; or just another of the irritating problems associated with aging.

Broadcasters, lecturers, salespeople

and others who have to use their voices a lot also know what it's like to suffer the discomfort and embarrassment of a dry mouth.

So what is the remedy? Unfortunately, there hasn't really been one. Sprays are



THE GENUS Salix or willow, to which the willow belongs, has been used for centuries in medicines. Now, it gives its name to a new remedy for dry mouth.

not very satisfactory, so most people seek relief from dryness of the mouth by sucking on hard candy but, at best, these offer only partial and very short-lived relief and the sugar content will cause tooth decay and gum disease. Hence the

need for a product like Salix, a lozenge that does an effective job of stimulating saliva and is pleasant-tasting, but which has been carefully formulated so as not to cause any orthodontal problems or other negative side effects.

Instead of sugar, Salix contains sorbitol and fruit acids, plus calcium phosphate to further protect teeth. So serious and numerous are the problems of tooth decay for people suffering from dry mouth, that the new saliva substitute tablets were welcomed by members of the dental profession in Sweden, where they were first developed. Clinical studies were carried out to measure the product's efficacy and to determine what, if any, detrimental effects the lozenges might have on tooth enamel.

One such study was conducted by a team from the Department of Dental Health Care in Karlstad, Sweden, who came to the conclusion after six months of study that Salix tablets successfully stimulated the salivary glands while causing no increase in tooth decay.

So if you have a dry-mouth problem, you may want to give this remarkable new remedy a try. Salix lozenges cost \$9.85 for 100 and can be found in Eckerd, Walgreens and many health food stores. For more information on the product or where to buy it, call toll-free 1-800-688-2276.

NEWMAN OB/GYN GROUP, P.A.

Delivering...

Healthcare

12 Years

for Generations to come

WILLIE B. NEWMAN, M.D.
Board Certified
Wishes To Announce His Association With
ELIE DUMENY JR., M.D.

Obstetrics, Gynecology & Infertility

Socorro V. Frongillo, ARNP
Rose M. Coolidge, ARNP
OB/GYN Nurse Practitioners

- New Patients Welcome • Some Same Day Appointments
- Most PPO's, HMO's, BCBS, Medicaid, Medicare

521 W. SR 434, Suite 200
LONGWOOD • (407) 260-0818

1403 Medical Plaza Dr., Suite 214
SANFORD • (407) 324-2500

Arts council brings higher quality of life to county

Special to the Herald

Economic development in Seminole County truly became multi-dimensional last year with the founding of the Seminole Cultural Arts Council.

The opening of the Seminole Towne Center, the expansion of the airport, the attraction of several corporations to the county and the bright prospects to build the missing link of the GreeneWay, all captured headlines.

Yet a vital dimension was quietly added to the "quality of life" factor in economic revitalization when the county commissioners voted unanimously to make the newly founded Arts Council the official arts agency for Seminole County.

Thus, the group will receive monies from the sale of the state's arts license plates that were introduced in 1995. Even though surrounding counties have had art agencies to develop and support cultural programs, Seminole has not.

"This steady source of funding has the potential to energize cultural and historical organizations in our area," said Dr. Karen Copp, arts coordinator for Seminole Community College where the council will open an office in the near future.

Already the council is getting recognition.

Kay Burk, director of the Florida Association of Local Art Agencies, lauded the group when she was here in January to introduce the council's charter board of directors at a gala reception held in Altamonte Springs.

"I am tremendously impressed with the progress the

group has made in this short time. This bodes well for the role the council will play in the development of the cultural plans for the county," she said.

Indeed, the council's strong impact on Seminole's cultural climate was forecast when the interim and the charter boards met earlier this month to lay the foundation for the future.

Members tentatively determined the percentages to be devoted to the various program categories to be funded by the license plate income. Subject to change when the group moves forward to implement actual programs, the following allocations were suggested.

Category I: Youth art/cultural organization grants - 40 percent. (These funds will be distributed to cultural/historical organizations for youth activities sponsored by these groups. By having the organizations working together, it is hoped that they will develop a sense of unity and an overall agenda.)

Category II: Education/educational outreach - 10 percent. (Suggested funds to be used for Special Arts, Artists in Residence, and Youth at Risk.)

Category III: Community Outreach - 15 percent. (Funds for programs in the community; i.e. Juvenile Justice programs, Boys and Girls Clubs of Seminole County.)

Category IV: Emerging Organizations Assistance - 25 percent. (Start-up assistance for new organizations.)

Category V: License plate marketing - 10 percent. As indicated, emphasis is being placed on youth activities, however, during the start-up period, one of the larger allocations is to be funneled to

emerging organizations which hopefully will promote innovation and help build a cultural identity for the county.

Obviously, marketing the license plate is essential to building support. The Division of Cultural Affairs distributes monies from the sale of the colorful plates quarterly. Seminole County will receive its first funds in March.

According to Dr. Copp, the state indicated funds for Seminole County totaled \$9,323 in November. It is estimated that this amount could climb to approximately \$12,000 by March.

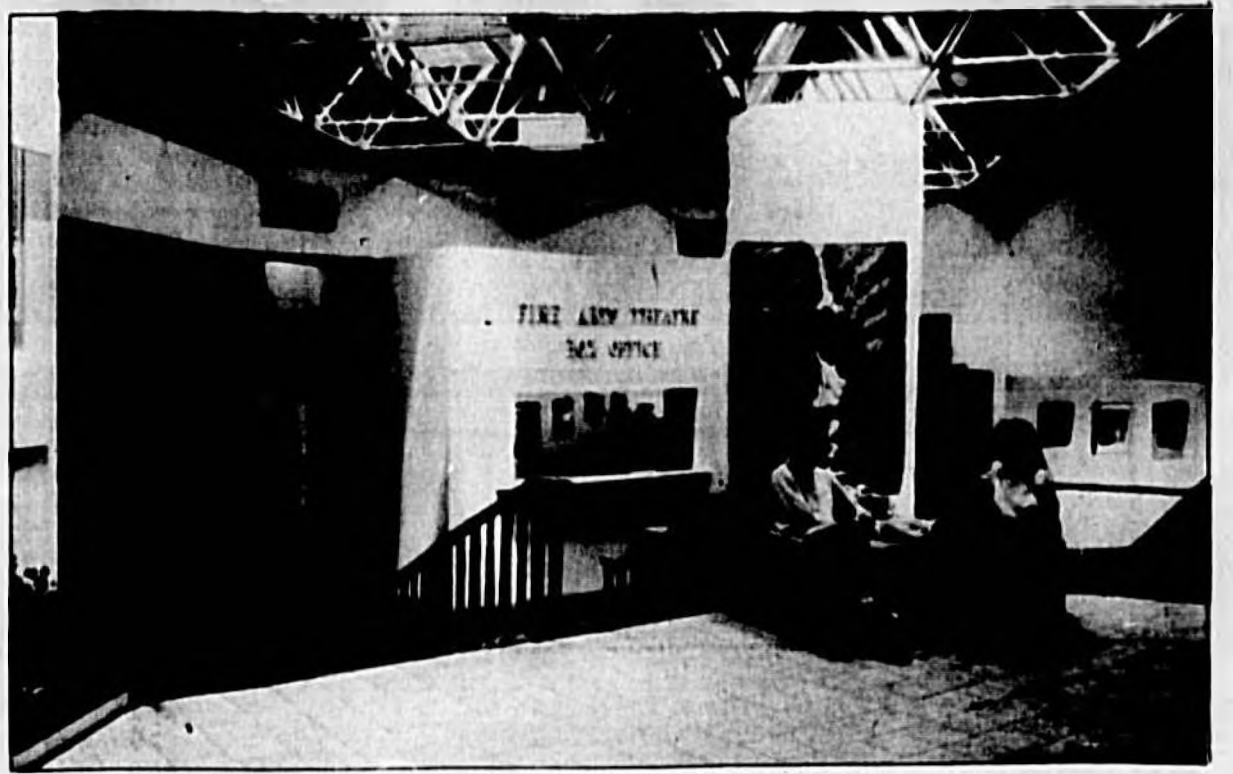
"We were pleasantly surprised by sales in Seminole as they compare favorably with other counties," Copp said. "And this without a marketing effort on our part."

Copp continued, "In November the larger counties had higher totals (Orange \$16,800; Dade, \$8,000; Broward, \$12,000) yet Seminole bested Ocala, \$2,000; Alachua, \$3,000 at that time."

The council expects to launch a marketing drive when the funds are received to make the 'State of the Arts' license plate a common sight in Seminole.

As one of the founding members of the council noted, "Although culture normally marches to the beat of a different drum, more and more marketing analysis reveals that culture as a "quality of life issue" is in the vanguard of factors considered in attracting new industry, emerging and innovative businesses, residents and, yes, even tourists."

It would appear that the Arts Council is making ready to be one of the leaders in the march to revitalize Seminole County.



Seminole Cultural Arts Council will open an office at Seminole Community College, where Dr. Karen Copp serves as arts coordinator.

Statistics paint local picture

By NICK PPEIFAU
Herald Staff Writer

SANFORD - Years ago, agriculture, including citrus, vegetables and cattle raising, was the main output of Seminole County. Today, with many citrus groves cut down in the name of progress and development, vegetable crops lower, cattle becoming fewer and fewer all the time, the county has taken on a new look.

One of the main indicators for Seminole County and as a comparison with the rest of the state, is the Florida County Rankings publication, published by the University of Florida College of Business Administration Bureau of Economic and Business Research.

The latest publication however, is the 1994 rankings, which were compiled through statistics available for the year 1993 and earlier. The 1995 rankings are not expected to be published until later this month, if not early in March.

According to the 1994 listings however, the following are the rankings in various categories for Seminole County:

● Citrus production - Seminole County is listed as 24th in the state, with a 1992-93 season output of 206,000 boxes.

● Commercial Dairy Production - No production was listed. Only 27 counties indicated commercial dairy production.

● Corn and Cotton - No listings in either category.

● Cropland acres - For the year of 1992, the latest figures released, Seminole County was shown to have 9,542 acres, listed 54th in the state. In addition, 1,206 acres were indicated for citrus cropland, 25th in the state.

● Farm land acres - Seminole was 63rd in the state, listed at 116,200 acres under farm production, including forestry or timber production, or, if idle, land used for such purposes within the last five years.

● Farms - For the year 1992, Seminole County was shown to

have 352 farms, 36th in the state. A 1992 listing also shows 29,512 acres devoted to pastureland.

The publication also lists economic factors connected with the construction and housing industries for the county.

Total Building Permit Value, 1993 - Seminole was 13th in the state with a total of \$417,759,000. Nonresidential building permit values in 1993 were \$64,062,000.

● Residential Building Permit Value - For 1993, Seminole County is listed 11th with \$321,080,000. This included 258 multifamily unit building permits and 2,423 single family units. For single family, Seminole ranked 10th in the state.

Regarding taxation, Seminole County was listed 40th in the fiscal year 1991-92 (latest figures compiled), in County Expenditures per capita. It showed an expenditure of \$755.5 for the year for Seminole. Orange County was 4th at \$1,657.2 per capita.

Yet Seminole County was listed 15th in expenditures of tax dollars for 1991-92 at \$231,085,000.

The incoming revenue for the same time period was 16th in the state, listed at \$247,692,000.

Other statistics
● Lottery sales - In Seminole County the Department of the Lottery figures show Seminole

County spending \$33,491,000 on tickets during fiscal year 1993-94, 16th in the state.

● Government employees - Seminole County 1993 local government employment was listed at 10,377, 14th in the state, and the lowest county with five-figure employment numbers.

● Manufacturing - For 1993, a reported 379 manufacturing companies showed a total payroll of \$23,513,000.

● Food stamps - Seminole County in fiscal 1992-93 is reported with 267,203 food stamp recipients, listed 15th in the state.

● Hospitals - A total of 774 hospital beds were listed in 1992, at five hospitals in the county.

● Wages - The average wage and salary listing for Seminole County residents in 1992 (latest figures available) was \$22,068, (per job), 13th highest in the state.

● Birthrate - Seminole was tied for 26th in the state with three other counties, at 13.7 births per 1,000 population. The total state average was 14 per 1,000.

● Death rate - This was the lowest listing in all categories in this publication. It showed Seminole County at 66th place, with 6.3 deaths per 1,000 population compared to 10.6 state average. Pasco County was highest at 15.7 per 1,000. Only Leon County at 6 per 1,000 was lower than Seminole.

**BETTY ANNE'S
UNISEX SALON**
and
1ST STREET TANNERY



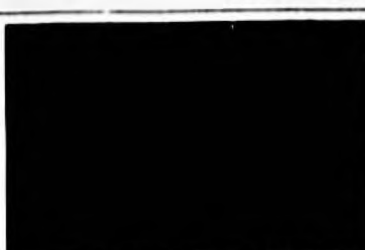
TYMOTHI HOWARD
Inspector Of The Past,
For The Look That Is New!
110 E. First St., Sanford
(407) 322-4913



Enjoy Delicious Southern Fare and the "REAL FLORIDA" While Relaxing in our Dining Room or on our Spacious Decks Overlooking the Scenic St. Johns River

JOIN US FOR LUNCH! DAILY SPECIALS!

"SPECIALTIES"
FRESH CATFISH • GATOR FRESH GROUPPER or MAHI MAHI
• BIG BURGERS • KEY LIME PIE
4255 PENINSULA POINT
(At the Oyster Bridge)
SANFORD, FLORIDA
Serving Hours: Tu-Thur 11 am - 7 pm
Fri-Sun 11 am - 8 pm - Closed Monday
(407) 330-1612



For more information call 1-800-717-3111
INTERNATIONAL ALLIANCE FOR WOMEN
OF PROFESSIONAL AND BUSINESS



There's Something **WILD**

In Them There Woods!

- Souvenirs • Collectibles
- Outdoor Furniture
- Picnic Tables • Carvings
- Cedar Chest
- And A Lot, Lot More!

CYPRESS THINGS BY J.S. CYPRESS
HOURS
TUE-SAT 9-4 SUN 11-5
SAW MILL HOURS
MON-FRI 7-5 SAT 8-1
28625 SR 46, Sorrento, FL
(9 1/2 Miles West of I-4 on Right)
(904) 383-3864

ECN MORTGAGE & LENDING ASSOC., INC.

★ NO APPLICATION FEE ★ LOW, LOW CLOSING COSTS!

RATES ARE LOW! NOW IS THE TIME TO REFINANCE IF YOU'RE PAYING 9% OR MORE.

OUR ECN AGENTS MAKE QUALIFYING EASY CALL 1-800-393-9374

OFFICE HOURS: MON. - FRI. 8:30 AM - 5:30 PM

SANFORD 407-330-9090 800 SOUTH FRENCH AVE.	DELTONA 407-574-4070 537 DELTONA BLVD.	PORT ORANGE 904-788-4979 4016 S. NOVA RD., SUITE F
---	---	---

STENSTROM, McINTOSH, COLBERT, WHIGHAM & SIMMONS, P.A.
ATTORNEYS AND COUNSELORS AT LAW

200 WEST FIRST STREET
SUITE 22 - SUNTRUST BUILDING (DOWNTOWN)
SANFORD, FLORIDA
407-322-2171

Established 1954

"Is Somebody Playing Doctor With Your Heating and Air Conditioning Repair Bills?"

When your heating equipment conks out, it needs to be fixed. Right away. The last thing you want to worry about is getting an honest answer to your repair problems. At...

KEN'S AIR, INC.
We've Got The Cure...
"If it ain't broke we won't fix it!"
HONEST • RELIABLE • DEPENDABLE
"WHAT MORE COULD YOU WANT?"

TRANE
It's Hard To Stop A Trane®

102 COMMERCIAL WAY
SANFORD
321 6515
322 0208
LIC #RA0032056

★ NOTICE TO HOMEOWNERS ★

The deadline for filing Homestead Exemption is March 1st! For your convenience in filing, we are accepting applications by mail. Applications will also be accepted in person, Monday - Friday at the following locations:

SEMINOLE COUNTY SERVICES BUILDING
1101 E. FIRST STREET - SANFORD
8:30 a.m. - 5:00 p.m.

TAX COLLECTOR'S OFFICE
WILSHIRE PLAZA
384 WILSHIRE BLVD - CASSELBERRY
8:30 a.m. - 1:00 p.m. / 2:00 p.m. - 5:00 p.m.

Any questions regarding property tax exemption should be directed to the Exemption Department at # (407) 321-1130, extension 7506.
There is no charge to file Homestead Exemption.
H.W. "BILL" SUBER
SEMINOLE COUNTY PROPERTY APPRAISER

SEMINOLE CENTRE

Your One Stop Shopping Center With All Your Favorite Stores!

Celebrating 10 Years of Service

SANFORD - One Sanford business that has really "seen" a lot of changes in the area since it first opened its doors celebrated its tenth anniversary recently.

Pearle Vision Center, located in Seminole Centre, adjacent to Wal-Mart and Ross, opened for business on Nov. 2, 1986, in the spanking new shopping center on the south end of town.

Rick Moses, manager of the Pearle franchise, has more than 25 years experience in the optical business and said the best thing about his store is that he knows most of his customers by name the moment they walk through the door.

While Sanford continues to grow, especially with the addition of the new mall, Moses said he plans to stay right where he is, "so that we can continue to provide personalized service to all of our customers."

Many of his customers agree. "I feel like a member of this family," Dr. Burt H. Perinchief, of Sanford, told optician Barbara Gleeson. Gleeson has been a part of the staff since 1989 and has 11 years experience in the business.

"I have never come in with any request and not had it cheerfully handled," said "Pappy" Boynton, also of Sanford.

Also on the staff is Julia Szucs, who has been in the Sanford store for two years, but practiced 20 years previously in Germany.



Dr. Stanley Pearle, founder of Pearle Vision Centers, with optician Julia Szucs (From Left), manager Rick Moses and optician Barbara Gleeson.

Gleeson said the youngest patient served at the location was 5 1/2 weeks old and the oldest, 100 years.

The Sanford store underwent a major remodel in 1990, allowing Moses to add many more frame styles and selections. The store currently stocks more than 1000 frames, as well as contact lenses and other optical aids. They specialize in children's eyewear.

Pearle Vision Centers, now operating on a world-wide basis, have been in existence for the past 35 years.

Register To Win A **BAHAMAS CRUISE**

NAME _____
ADDRESS _____
PHONE _____

No Purchase necessary

HOURS: M-F 9:30-6 • SAT. 10-3
Seminole Centre • Sanford
323-6000

PEARLE VISION CENTER

If you have a taste for the finer things...



"IT'S OUR PLEASURE!"

3609 Orlando Drive
Sanford



You'll Look Good In Our

LOGO'S

Treat Yourself To...

OAKLEY - NO FEAR - TWENTY SIX -
QUICKSILVER - BILLABONG -
LEVI'S - NIKE - VANS

PANTS USA

SEMINOLE TOWNE CENTER

SANFORD • (407) 328-8577

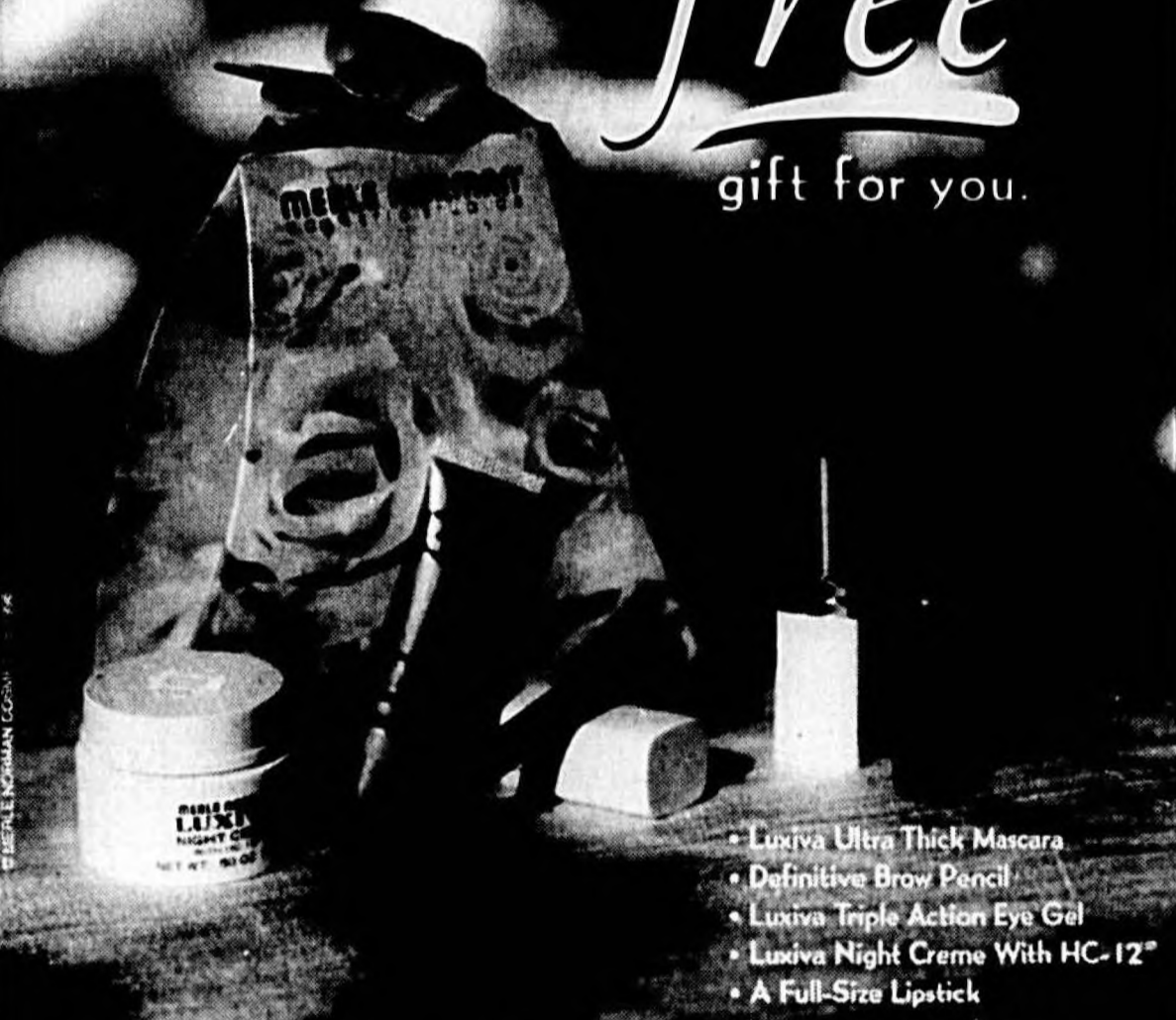
2 Locations To Serve You!

SEMINOLE CENTRE

SANFORD • (407) 321-3101

Merle Norman has a

free
gift for you.



- Luxiva Ultra Thick Mascara
- Definitive Brow Pencil
- Luxiva Triple Action Eye Gel
- Luxiva Night Creme With HC-12*
- A Full-Size Lipstick

*Your "Eye for Beauty" five-piece gift, with a retail value of over \$34, is free with the purchase of two or more Merle Norman cosmetic products.†

MERLE NORMAN
COSMETIC STUDIOS

The Place for the Beautiful Face.™

Lake Mary - Sanford
Walmart Center
323-6505

(M.A.D.D.)



*Cosmetic accessories not included. One per customer, while supplies last, at a participating Merle Norman Cosmetic Studio.

Spring '96 Color Collection For Make-Up and Fashion

By: Jill Gongwer

Colors and trends change continually - almost every season. And Spring '96 is no exception.

When choosing and organizing your wardrobe focus on the waist. Yes, ladies - the waistline is back. Crisp, tailored suits in linen and wool are cinched in with narrow belts. Jackets are cropped and fitted, cardigan style - or long with an inset half-belt in the back. Dresses are long, slinky, flowing and always fitted at the waist.

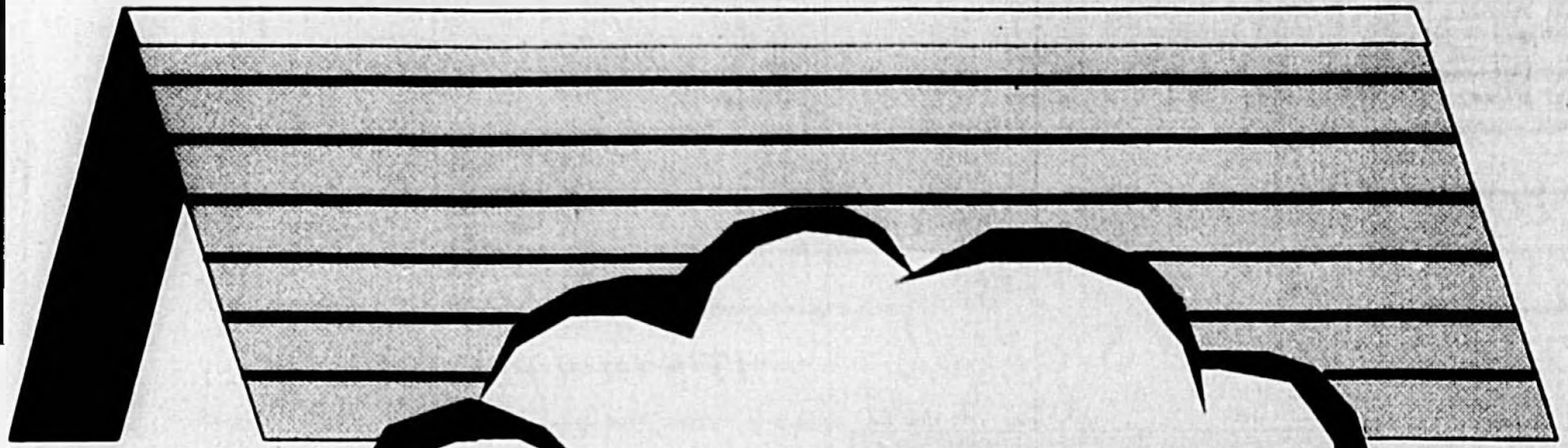
Pastels in gentle yellow, soft hues of blues, and aquas, curessing fabrics of minty green are all perfect for Spring '96. Classic colors of black, red, or white is still and always shall be in fashion.

Go through those closets, be creative with accessories, put outfits together using everything you have. And then, when you really look sharp - put a hat on that head, step outside, and enjoy the springtime because you look *real* good!

Make-up this spring continues to be glamorous and elegant, but not quite as bold as Fall '95: Its softer, simpler and uncomplicated, delicately romantic, naively feminine. The eyes are subtle and smoky. The cheeks are very soft, very gentle. But the lips can go either way - either softly sensual, or boldly inviting. Let them say, "I am woman and its finally O.K. to be female."



MERLE NORMAN
COSMETIC STUDIO



**From Your
Roofs...**

1884 - 1996

**To Your
Roots.**



P.O. Box 8001 • Sanford, FL 32772 • 800-432-1130

New home starts fuel growth of area

Communities to develop more than 800 homesites, new school

By **SHARON BRADY**
Herald Staff Writer

SANFORD — Acknowledged as one of the fastest growing counties in the state, Seminole County has seen a definite increase in new home starts over the past couple of years. The areas with the most activity have been Oviedo, along Alafaya Trail and Lake Mary, along Rinehart Road. But as the county grows, prime real estate around existing communities will become scarce. Some developers are already looking inward for new possibilities.

Three communities under development inside the Sanford city limits will bring close to 500 new homes into the area over the next couple of years. Another development, in the county but bordered by the city limits, has the potential of 350 more. These "in-fill" communities will have a big effect on the course of growth of north Seminole County.

"Sanford's time has come," said developer Craig Rouhier, of Orion Real Estate and Development. Rouhier's company is developing property off of Airport Boulevard that had originally been zoned for multi-family dwellings. The Orion development, being built by Maronda Homes, is adjacent to property on which a proposed elementary school will be built. It also abutts property which could be improved by the city for a passive park.

"It will be a community unto its own," Rouhier said of the new Placid Woods community. Children of families buying in the community will be able to walk to school. "We wanted to get people into homes not too far from where they work," Rouhier said the company looked at all of the potential growth factors in the Sanford area when they made the decision to buy the property. He said the new mall and the proximity to new businesses going in at Heathrow figured into the decision.

Maronda intends to begin construction on Phase I in June.

said company vice-president Jeff Logsdon. More than eighty homes will go into the first phase, with 152 homesites platted. There will be lakefront sites on Placid Lake.

Maronda has been a presence in the Sanford area since 1969, when Chase Groves, off of Old Lake Mary Road, was started. Maronda and Centex were the first builders in that community, with American Heritage now the owner of most of the homesites. Chase Groves developer Tom Shutts said 368 sites have been developed to date, with 350 remaining and 95 of those under development. Maronda sold 42 homes in Chase Groves in 1985. American Heritage came into the community in May of 1985 with 60 homesites. Sixteen are under construction and 12 lots remain to be sold.

Maronda opened model homes in Pamala Oaks, off Upsala Road, in July and sold 12 homes before the end of the year. Maronda will pre-sell homes for Placid Woods from their Pamala Oaks models, beginning in March, while closing out the remaining lots in that community.

The Pittsburgh-based company has four divisions in Florida, two of those in Orlando. Those two divisions sold 541 homes, from Deltona to Poinciana last year.

Down the road from Pamala Oaks, Masterpiece Homes is clearing land for Country Club Park. Bob Fitzsimmons said they expect to have their models completed by the end of March with Phases I and II, 147 homes, being built concurrently. There are 201 homesites platted in that community. Masterpiece is based in Orange City and sold 50 homes in Deltona in 1985.

Also under construction is Mayfair Oaks, at the corner of Oregon Avenue and State Road 46A, being built by Bovis Homes.

All of these homes are being built in an area of five miles, between Interstate 4 and U.S. Highway 17-92. Placid Woods, Pamala Oaks, Country Club

Park and Mayfair Oaks are all within Sanford city limits. Chase Groves, which actually has a Lake Mary address, is in the county. There has also been a second phase of Pamala Oaks approved.

Tying all of these properties together, like a ribbon on a package, is the the "Missing Link," the six-mile leg of the Central Florida GreenWay that will link I-4 and 17-92 and complete the expressway.

While Rouhier feels that the Placid Woods subdivision will draw homeowners who work in near-by businesses, the proximity of all of the neighborhoods to the GreenWay should make

□ See Homes, Page 16



Country Club Park, on Upsala Road, will open models in March

Herald Photo by Tommy Vincent



More than 100 homesites are under development at Chase Groves, off Old Lake Mary road.

Herald Photo by Tommy Vincent

25 Years Of Quality Home Building



The Future Is Now...

Maronda has been building homes for a quarter of a century and our commitment to quality is as strong now as ever. We are a part of the future of Sanford and Central Florida, with two new home communities now under development and another great community coming soon.

Pamala Oaks is surrounded by towering trees, an intimate enclave of 28 homes. Phase I offers an atmosphere of privacy, tranquility, safety and beauty. The close proximity to major roadways makes Pamala Oaks convenient to shopping and employment centers in any direction. In fact, you'll be just minutes from the brand new Seminole Towne Center Mall.

From \$69,900, Maronda offers eight floorplans to choose from. Three bedrooms. Four bedrooms. Vaulted ceilings. Arches. Loaded with standard features. All block construction. Engineered roof systems. Energy efficiency. Brand name products. In-house financing. And much, much more.

To find out more, please visit our Pamala Oaks model center off 46A. In just minutes you can discover how affordable a new home at Pamala Oaks can be. Visit our models today!

321-4185

Maronda Homes
An Easily Observable, Better Value!

EDITORIAL

Progress In the county—You bet!

As can easily be seen in the stories presented in this edition of the *Sanford Herald*, without a doubt, there has been a rash of progressive moves in northern Seminole County this past year. We expect to see many more during 1996 and in the remainder of the 90s.

While various government officials have spoken and written about the strong points of this area's progress, other points should be brought out, some of which have been the result of actions during this past year.

The proposal on the Seminole County Commission level to move the judicial facilities out of downtown Sanford to Five Points, was thwarted. While this may not be seen as progress to some, we believe it will be of significant advantage to others, if not possibly the majority of people.

Keeping the court facilities downtown has opened the way for proposed developments including a multi-level parking garage in the downtown area, the improvements in the Marina Hotel area on the lakefront, and additional businesses. The concept of a pedestrian walkway from the downtown area to the lakefront can also come back into the planning stage.

We would have expected that, if the court facility had been relocated, none of this would have come to fruition.

Also at the county level was a proposal to merge the Sanford Aviation Authority with the Seminole County Port Authority. This also failed to be successful. We suggest reading the articles in this publication from Steve Cooke, director of aviation at the airport, and from Dennis Dolgner, manager of the Port of Sanford.

In each case, potential growth is outstanding. While there may have been additional growth in the future because of the merger, what is transpiring at the present time may have ended up being delayed for possibly years, while paperwork is completed and financial obligations are determined. This is another case where a failed effort is, without a doubt, proving to be best for all concerned.

There are several plans which have been announced during the past year or so which we believe should also be looked upon with expectation by not only area residents, but visitors as well. These would include the oft-proposed citizen walkway along the lakefront. Initial plans were for it to extend from Melonville Avenue on the east, possibly as far west as to be near the Central Florida Zoological Park, or even Interstate-4.

This is going to take some investment, but we believe the potential of developing this is worth mentioning, and worth pursuing.

There have also been plans thrown back and forth regarding the possibility of building a major convention center/hotel complex somewhere in the downtown Sanford area. We see little doubt that this is needed.

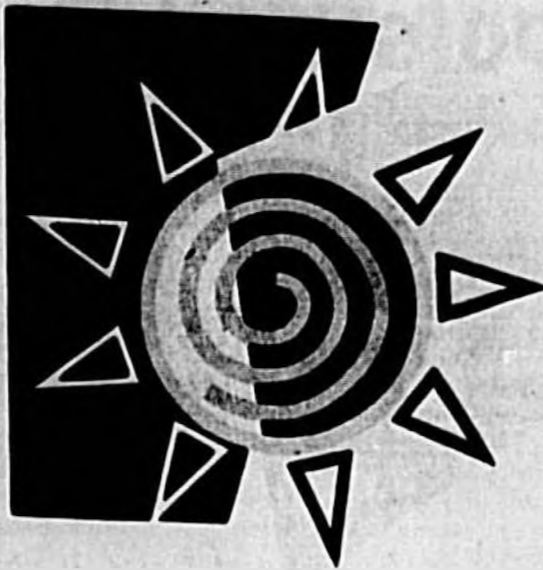
We are seeing too many occasions when local organizations must go to Altamonte Springs, Orlando, or other southerly locations, in order to hold large-scale events, special functions or meetings.

There have also been a number of things going on which some may have thought would never happen. The completion of the widening of Lake Mary Boulevard is one of the best examples. Others include the completion and opening this past year of the Seminole Towne Center, and since then, a number of outstanding business areas in the area surrounding the mall.

In the near future, we can expect a new major theater just south of the mall; as well as a number of new restaurants.

The area between Lake Mary and Sanford is also on the verge of seeing major developments which we suspect will eventually be one continuous line of outstanding business establishments.

Lake Mary and the Heathrow areas are also growing rapidly, as can be seen by the construction underway, especially along Interstate-4.



Lake Mary

Since 1974

The Future Is Bright

These Merchants Would Like To Thank You For Your Support

Clothes Horse Too
AN UPSCALE CONSIGNMENT BOUTIQUE
 Career, Casual & Formal Wear For The Lady With Champagne Taste But A Limited Budget.
 Lake Mary Centre
 3861 Lake Emma Rd.
 Lake Mary, FL 32748
 (407) 333-0808
 Thank You For 8 Great Years!

Cafe Sorrento
 Under New Ownership
GREAT CHICAGO STYLE PIZZA
 Lunch & Dinner
 Large Parties Accommodated
 Calzones, Burgers, Pasta
 Beer, Wine, Ice Cream
322-8633
 227 N. Country Club Road
 OPEN: Mon. thru Sat. 10-9:30

The Happy Elves Quality Child Care & Preschool
 We are Special!
 SERVING LAKE MARY AREA OVER 12 YEARS
 • Unique Infant & Toddler Programs
 • Educational Programs for 2-5 Year Olds
 • Nutritious Snacks & Lunches
 • Fenced Play Area • Individual Attention
321-2384
 MON. - FRI. • 6AM-6PM 26-113

LAKE MARY LAWN & GARDEN EQUIPMENT

Celebrating 16 Years In
 Historical Downtown Lake Mary
SERVICE / SALES / PARTS
 All Popular Brands of
MOWERS • TRIMMERS • BLOWERS
 • CHAIN SAWS
 125 E. CRYSTAL LAKE
 LAKE MARY
323-8885

For The Health Of It
DEBBIE'S HEALTH FOODS
 "WHEN QUALITY MATTERS"
RAINBOW TUESDAYS
 The First Tuesday of Every Month
 You Receive 20% Off Entire Stock
 Vegetarian and Vegan Foods
 Books! Books! Books!
 Ginkgo Biloba: Brain Food
 Melatonin: Nature's Sleeping Pill
 Immune System Boosters,
 Herbs, Vitamins,
 Sports Nutrition And
 much much more!!!
 NOW 3 LOCATIONS TO SERVE YOUR HEALTH FOOD NEEDS
 Lake Mary Center 128 N. Woodland Blvd. 816-2 Saxon Blvd.
 Lake Mary, Florida DeLand, Florida Orange City, Florida
 (Next to Albertson's) (Next to K-Mart)
(407) 333-3203 (904) 734-6502 (904) 775-7082

STENSTROM GENERAL FEED
 "Where Service Is Never A Chore."
 Feed & Supplies For Pets and Livestock
 Conveniently Located at
 109 N. Country Club Rd.
 Lake Mary
 (three blocks north of Lake Mary Blvd.)
323-1550
 OPEN MONDAY - SATURDAY 8:30AM-6:00PM

TIMACUAN
 GOLF AND COUNTRY CLUB

LONGHORN STEAKHOUSE
 We're For Real
 • Baby Back Ribs • Prime Rib
 • Shrimp
 • Salmon
 • Fresh - In-House Steaks
 3700 Lake Emma Road,
 Lake Mary
444-3001
 Open Monday thru Friday 11:30 am
 Open Saturday & Sunday at Noon
 Happy Hour Every Day Till 7 pm

Schools building toward future

By VICKI DeSOMMER
Herald Senior Staff Writer

SANFORD — The Seminole County school district is growing exponentially.

More and more students are crowding into the classrooms. The school district is doing all they can to ensure the quality of education does not suffer as the number of students increases.

Keeping track of the young scholars and preparing for their education is an increasingly difficult and technologically advanced job.

During the last year, the school board administrative staff moved toward the 21st century when they consolidated all their offices into the new Educational Support Center, 400 E. Lake Mary Boulevard.

The four-story state of the art facility has already had its share of problems, especially with the purchase and installation of a new telecommunications system, but the building offers the district more potential for growth than the aging Mellonville Avenue facility could.

"We are very pleased with the new Educational Support Center," said Supl. Paul Hagerly when the administrators moved in without fanfare over the Christmas break.

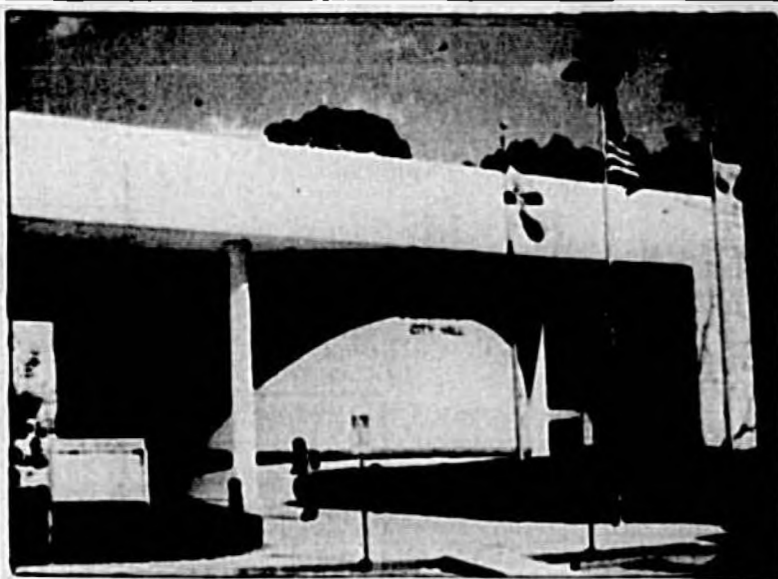
Officials who were scattered in offices all across the district are now all in one place. District officials hope the move will make the services delivered to schools and students more efficient.

"By consolidating all our services into one location, the quality of our services should be improved," Hagerly said.

The final touches are being



School board members break ground on a new district building project.



Casselberry: Seminole's Community Minded city

Area — 7 1/2 sq. miles.
Population — 24,150.

Government — Mayor (part-time) who is chairman of city commission, three-year term; four commissioners, three-year terms. City manager appointed indefinitely.

City salaries — Mayor, \$4,680 annually; commissioners, \$4,100 annually.

City budget — General fund, \$11.2 million.

Property tax — 5.05 mills per \$1,000 of assessed property value, minus exemptions including \$25,000 homestead exemption.

Schools — Casselberry Elementary, South Seminole Middle; Public schools in unincorporated county surrounding Casselberry are Red Bug Elementary, Sterling Park

Elementary, Tuskawilla Middle, Oviedo High, Lake Howell High and Lyman High.

Police, Fire — Full-time police department, 95 Triplet Lake Drive, 263-3940. One fire department, 2 fire stations, Station #21 at 95 Triplet Lake Drive, 831-1342 and Station #25, 1055 Red Bug Lake Road, 831-6192.

Parks, Recreation — Twelve parks which include a pool, tennis courts, ballfields, volleyball and racquetball courts, picnic areas and playground pavilions.

Festivals — 11th Annual Easter Egg Hunt, 3rd Annual Oktoberfest, Halloween Spooktacular and 3rd Annual Parent-Child Golf Tournament.

City Hall — 95 Triplet Lake Drive, 32707, 831-3551.



Quick as a Lynx

The Lynx bus system now offers transportation from south Sanford and downtown to the Seminole Towne Center mall. The kickoff ceremony brought out the Lynx himself to welcome riders.

THANK YOU SANFORD, FOR 24 YEARS OF CONTINUING SUCCESS!



Since May 1972 Famous Recipe Fried Chicken (now Lee's Country Chicken) has been serving the finest chicken found anywhere in the country. Jerry and Margurette Sullivan are very proud of their long time association with the food folks of the Sanford area. Michael Latzanch is our Sanford manager. He lives in DeBary with his wife Beth. They have 2 children. Assisting Michael is Ron Roan, he is responsible for the over-all flow of good service and Kris Griffin (Mr. & Mrs. Sullivan's grandson) rounds out the 3rd generation of the family business.

Mrs. Aurora Bradbury fills a very important position as assistant manager in charge of salads and other hot foods. Rachel DeSormeau provides professional customer service as cashier and company secretary. Jerry and Margurette



OWNERS: JERRY & MARGUERETTE SULLIVAN

are very happy about all the fine support given to their business over the last 24 years from their fine customers. They salute their employees, who have done their best to bring the highest quality of chicken (done 3-ways: pressure cooked, mild, crispy, open fried and oven roasted) and to their customers. The Sanford Famous Recipe Restaurant has enjoyed serving a Wednesday Family Special without interruption for 24 Years!! "Many Thanks to Sanford" from Famous Recipe!!

LEE'S Famous Recipe Chicken

1905 French Ave. (Hwy. 17-92) Sanford 323-3650

The Drive Is On To Support The Arts In Florida



Now you can help Florida stay on the road to success in the arts with the new "State of the Arts" license plate. Your tax-deductible contribution

will help to fund programs in your own county, including the visual arts, music, theater and dance. You can order this special license plate

at renewal time or anytime. Just call or stop by your local tag office for details, and let your support for the arts show wherever you go.

Now Available From Your Local Tag Office.
This Ad Made Possible By Seminole Cultural Arts Council, Inc.
100 Weldon Blvd., Sanford, FL 32773



Meeting Your Family's Every Need



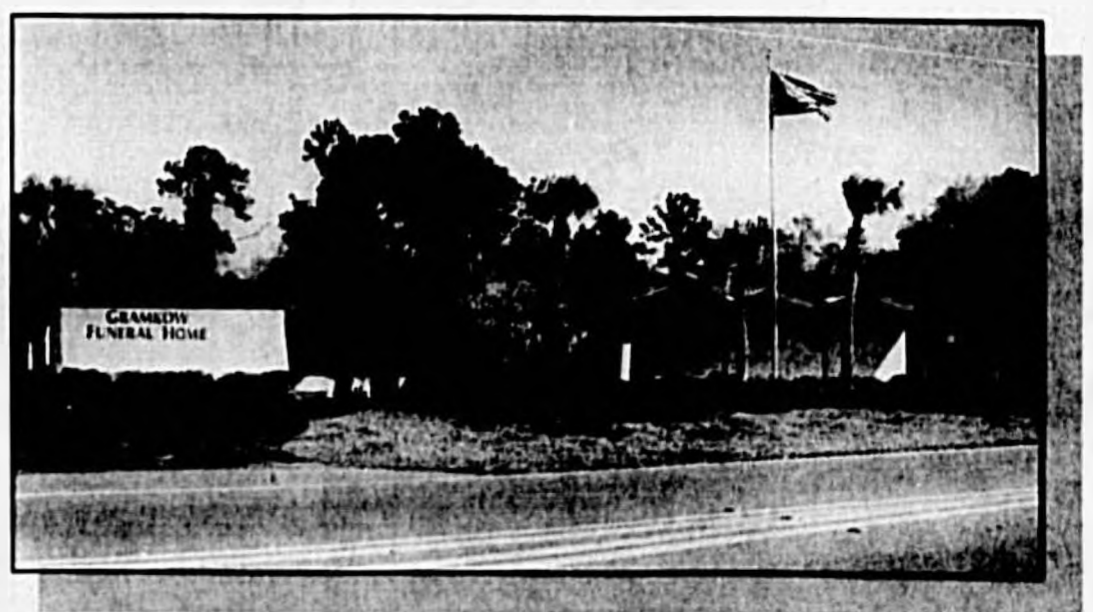
BETTE R. GRAMKOW



JAMES E. SCHUTTEVAN, L.F.D.



CHRISTOPHER D. NEAL, L.F.D.



with personalized care from our staff of Professionals



EVA SHELTON

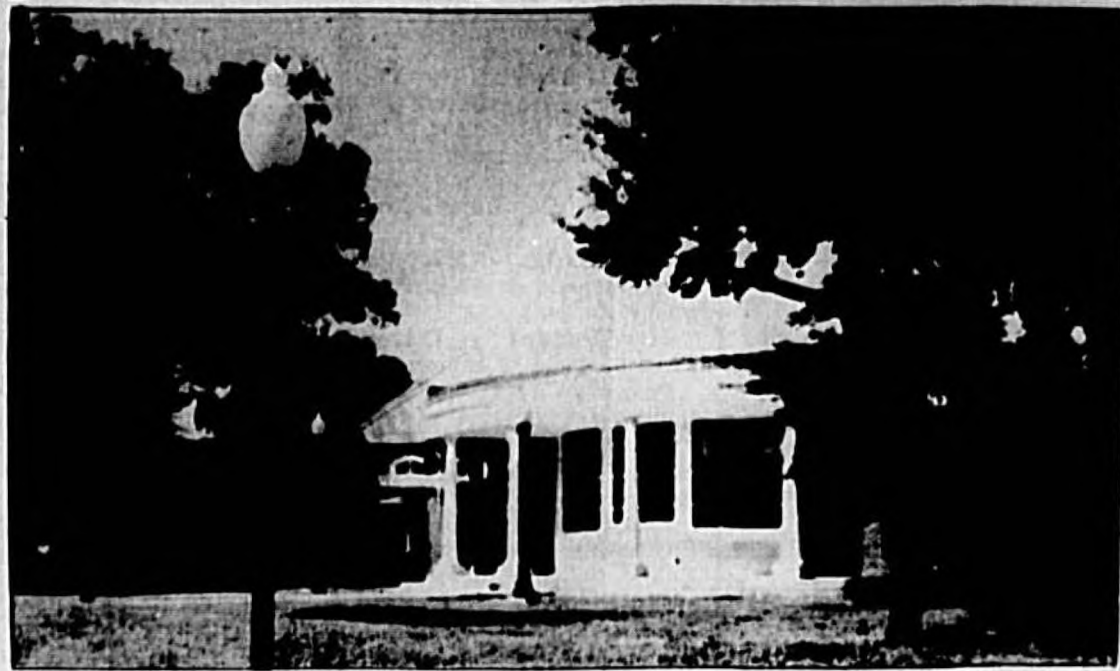
Celebrating 40 Years Of Service

Gramkow Funeral Home

500 East Airport Boulevard • Sanford, Florida • 322-3213

Lake Mary: the City of Lakes

Area - 9.5 sq. miles.
Population - 7,251.
Government - Mayor with four commissioners, each serves two-year terms. City manager appointed indefinitely.
City salaries - Mayor, \$8,000 annually; commissioner, \$4,800 annually.
City budget - General fund, \$5.1 million.
Property tax - 3.7648 mills per \$1,000 of assessed property value, minus exemptions including \$25,000 homestead exemption.
Schools - Lake Mary Elementary; public schools in unincorporated county surrounding Lake Mary are Heathrow Elementary, Greenwood Lakes Middle and Lake Mary High.
Police, Fire - Full-time police and fire departments, both located at the Public Safety Building, 235 Rinehart Road.
Parks, Recreation - Four major city parks, including a major sports complex, 10 neighborhood city parks which include tot lots with playground equipment.



Festivals - Lake Mary-Heathrow Annual Festival of the Arts and Old Lake Mary Days, sponsored by Lake Mary Historical Commission.
Organizations - Jaycees, Rotary Club, Forest Club.

Woman's Club, Boy Scouts, Stromberg Lions Club, Longwood-Lake Mary Lions Club, Lake Mary Seniors, Community Improvement Association, Garden Club, Cemetery Association.

Utilities - Lake Mary Water Department, 324-3048; Florida Power Corporation and Florida Power & Light Company.
City Hall - 100 N. Country Club Road, 32746, 324-3000.



Tempting shopping

The Seminole Towne Center mall has a variety of department and specialty stores for shoppers to choose from as they make their way around the beautiful facility.

Mayor sees good things in town

Lake Mary is a city on the rise

By MAYOR LOWRY ROCKETT
 Special to the Herald

The city of Lake Mary is a rapidly growing suburban community of more than nine square miles in area located between Longwood and Sanford with easy access to I-4 and Highway 17-92. A portion of the Heathrow International Business Center located on the west side of Interstate 4 is also within our city limits.
 Currently, the city boundaries are very uneven and one of the goals of this commission is to square them off so they are better defined for the benefit of businesses, residents and service activities.
 Primary targets are commercial developments along Lake Mary Boulevard. Residential enclaves are important but secondary since our goal is to broaden the city's tax base as well as reduce confusion.
 Lake Mary boasts an upscale

residential community and a growing commercial/office/industrial base. With its supreme accessibility, the city is also becoming the location of choice for corporate office relocations and light manufacturing offices. That is obvious when you compare our residential population of approximately 7,251 with a daytime population of over 40,000.

The Lake Mary area is drawing national attention for being a premier site for business relocation and investment in Central Florida. Lake Mary, in cooperation with Seminole County, the Lake Mary/Heathrow Chamber of Commerce and the Seminole County Economic Development Commission is actively developing a Target Industry District to support and promote the economic growth of the area.

The I-4 corridor has been targeted for over 8,000,000 square feet of office, commercial

and light manufacturing uses. Several planned commercial developments include Primera, North Point and the previously mentioned Heathrow International Business Center, all of which have current activity.

Over 700,000 square feet of commercial/office development has been approved within the city during the past year. AT&T is expanding their local offices by 83,000 square feet. Recoton Corporation is building their corporate headquarters with over 400,000 square feet of office and warehouse space, and WKCF TV-18, BellSouth Mobility and Holiday Inn Express are currently being reviewed.

Residential development has also been on the rise. Within the past two years, the city has approved more than 800 single-family homes for development with over 300 of them expected to be built this year. Large-scale builders such as Lennar, Pulte, Ryland, Olympia

and David Weekly Homes have moved into the city and are building moderate to upscale subdivisions.

The proximity to I-4, the uncongested local roadway network, good schools and low crime rate make Lake Mary an extremely attractive location appealing to home buyers. In addition, a new interchange at I-4 and State Road 46-A has already been funded and is currently in the design phase. That, coupled with completion of the "missing link" of the Greeneway, will make Lake Mary probably the most accessible city in Central Florida.

Despite the pressures of development, the city boasts the second lowest average municipal tax rate in the county. Lake Mary takes pride in its strong sense of community and its commitment to high standards of quality living. That's part of the reason Lake Mary is one of the fastest growing cities in Central Florida.

Oh give me a home

IN YOUR RANGE
ONE BEDROOM APARTMENTS
 Electric included in Studios Only • Energy efficient models • FURNISHED and UNFURNISHED
 • Single Story Design - no car parks or drive
 • Friendly, On-Site, Dependable Management
 • A/C Storage, private patios & balconies
 • Studios & 2 Bedrooms Available

Sanford Court APARTMENTS
 1121 W. Main St. 9-5:30, Sun 1-5:30
 3291 S. Sanford Ave. #103 • 323-3301

Proudly Serving Sanford Since 1956

Family Owned & Operated For 40 Years

SANFORD FLOWER SHOP

Historic Downtown
 209 East Commercial
 Sanford, Florida 32771
(407) 322-1822

"Quality Service Since 1956"
AWARD WINNING DESIGNERS

SHOP LIKE YOU MEAN IT®

More And More Choices! Amazing Quality!
 Big Savings!

Shop Burdines, Dillard's, JCPenney, Parisian, Sears
 and over 120 specialty stores and eateries.

Seminole Towne Center

Located on the Southeast corner of I-4 and SR 46 in Sanford.

A look at the city of Oviedo

Area - 15 sq. miles.
Population - 17,910.
Government - Mayor, two-year term; five council members, each two-year terms. City Manager, appointed indefinitely.
City salaries - Mayor and council members, \$3,600 annually.
City budget - \$8,043,685 million.
Property tax - 4.995 mills per \$1,000 of assessed value, minus exemptions including \$25,000 homestead exemption.
Schools - Lawton Elementary, Stenstrom Elementary, Partin Elementary, Jackson Heights Middle and Oviedo High.



Police, Fire - Full-time police department at 300 Alexandria Blvd., 977-6146; full-time fire department, 977-6100 with two fire stations located at 300 Alexandria Blvd. and 42 S. Central.
Parks, Recreation - Six

parks including sports complex (basketball courts), tennis courts, swimming pools, ballfields, picnic areas, playgrounds.
Festivals - Spring Arts and Craft Festival, Taste of Oviedo and Great Day in the Country.
City Hall - 400 Alexandria Blvd., 32765. There is no main number. Consult the blue pages of telephone book for each department listing.

Historic city of Longwood

Area - 6.4 sq. miles.
Population - 13,950.
Government - Five commissioners elected from districts for three-year terms. Mayor and deputy mayor elected from among them. Appointed city administrator and city clerk.
City salaries - Mayor and commissioners, \$4,200 annually.
City budget - General Fund, \$8,468,892 million.
Property tax - 5.0601 mills per \$1,000 of assessed value, minus exemptions including \$25,000 homestead exemption.
Schools - Longwood Elementary and Lyman High. Public schools in unincorporated county surrounding Longwood are Woodlands Elementary, Milwee Middle and Rock Lake Middle.
Police and Fire - Full-time police department, 260-3400.



Full-time fire department, 260-3490.
Parks and Recreation - Candyland Park, Highland Hills Park, Raven Park, Reiter Park, Sandalwood Park, Shadow Hill Park, Small World Park and Arbor Park. Parks have ballfields, picnic areas and tennis courts.
Festivals - Longwood Arts and Crafts Festival, 1st Annual Founder's Day (arts and crafts), Easter Egg Hunt, Fun Dog Show, and Christmas Tree Lighting Ceremony.
Hospital - South Seminole, 555 W. State Road 434, 767-1200.
City Hall - 175 W. Warren Ave., Longwood, 32750, 260-3440.

Altamonte: People who care about people

Area - 9 sq. miles.
Population - 40,000.
Government - Mayor and four commissioners. Mayor is elected for four-year term; commissioners, two-year terms. City Manager appointed indefinitely.
Mayor's salary - \$500 a month including \$100 vehicle mileage.
Commissioner's salary - \$400 a month including \$100

vehicle mileage.
City budget - General Fund, \$46 million.
Property tax rate - 5.18 mills per \$1,000 of assessed value, minus exemptions, including \$25,000 homestead exemption.
Schools - Spring Lake Elementary, Milwee Middle, Teague Middle, and Lake Brantley High.

Police, Fire - Full-time police department, 225 Newburyport Ave., 830-3816. Full-time fire department, 225 Newburyport Ave., 830-3845 with three fire facilities.
Parks, Recreation - 10 facilities offering ballfields, basketball courts, volleyball

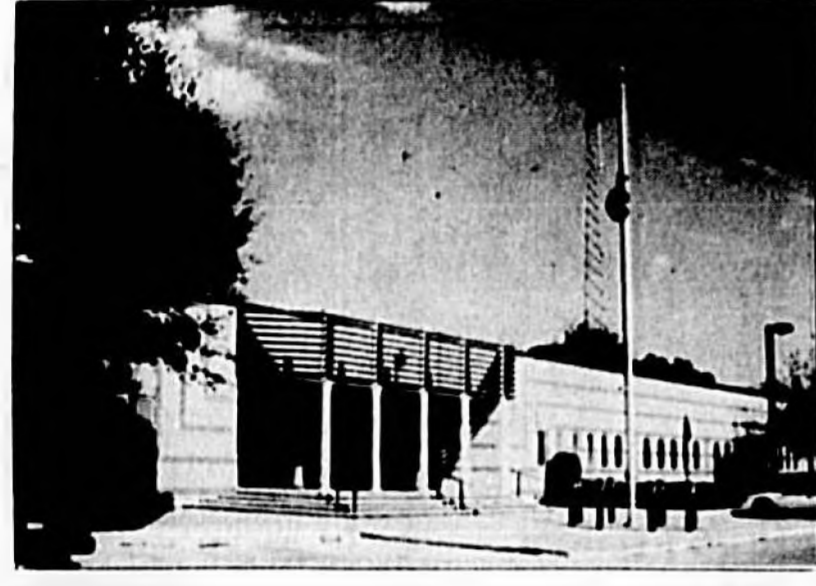
courts, tennis courts, swimming pools, picnic areas, playgrounds.
Festivals - Valentine's Day Serenade at Crane's Roost Park.
Hospital - Florida Hospital, 601 E. Altamonte Drive, 32701, 897-5700.
City Hall - 225 Newburyport Ave., 32701, 830-3801.

Homes

Continued from Page 11

the homes attractive to people who already work in Orlando but want to escape the congestion of the urban area. In the "Seminole Greenway News," published in January, the expressway au-

thority cites a ridership increase of 50 percent since May 1994. The newsletter also states traffic crossing Lake Jessup has doubled, "punctuating the travel demand between north Seminole County and other parts of Central Florida."



A view of Winter Springs

Area - 15 sq. miles.
Population - Approx. 26,000.
Government - Mayor (no voting power except to break a tie); five commissioners (three-year terms) and appointed city manager.
City salaries - Mayor, \$6,000 annually; Commissioners, \$4,320 annually.
City budget - General Fund, \$8.9 million.
Property tax - 3.7023 mills per \$1,000 of assessed property value, minus exemptions including \$25,000 homestead exemption.
Schools - Winter Springs Elementary, Keith Elementary, Indian Trails Middle.
Police, Fire - Full-time police department, 1126 E. State

Road 434; full-time fire department includes Fire Station #24, 102 N. Moss Road and Fire Station #26, 850 Northern Way.
Parks and Recreation - Bear Creek Nature Trail, Central Winds Park, Fruitwood Park, Moss Park, Ranchlands Park, Sam Smith Memorial Park, Sunshine Park and Trotwood Park.
Festivals - Winter Springs Art Festival and Easter Egg Hunt.
Organizations - Winter Springs Civic Association, Winter Springs Rotary Club, Winter Springs Civic Center, Winter Springs Senior Center, Local Historian: John Baker.
City Hall - 1126 E. State Road 434, 32708, (407) 327-1800.

DeBary Hall Mansion

built by Frederick DeBary in 1871

When fully refurbished this historic home will be a great addition to Central Florida. Tourist and Floridians alike will see Florida as it was in the early years. Make the dream come true.

DeBary Spring Festival
Mar. 16-17th, 10am-4pm

DeBary Hall Mansion
 200 Sunrise Blvd.
 DeBary
FREE ADMISSION

CASSELBERRY FURNITURE

ABE'S TREASURES FROM YESTERDAY
 (1 Mile North of Hwy. 436 on Hwy. 17-92)

• **BUY** •
 • **SELL** •
 • **TRADE** •

Quality Used Furniture • Glassware
 • Antiques • Clocks • Collectibles
 • Bric-a-Brac

We Buy Estates or Single Items

(407) 830-5340

Pickup and Delivery Available

OPEN 7 DAYS 9:30 am to 8:00 pm

10% OFF PURCHASE
 With This Coupon
 NOT VALID WITH ANY OTHER OFFER

3298 S. Hwy. 17-92 • Casselberry, FL 32707

Beautiful
 Lake View
 Apartment Homes

407-322-1051

- State-of-the-art Fitness Center • Screened Pool/Heated Spa • Adjacent to Lake Monroe • Lighted Tennis/Indoor Racquetball • Lakefront and Lake Views Available
- 1 & 2 Bedrooms Available • Gourmet, Island Kitchens with Dishwasher, Disposal, Microwave, Self-Cleaning Oven and Frost-Free Refrig/Icemaker • Ceiling Fans
- Screened Patios • Full-Size Washers/Dryers • Vaulted Ceiling, Fireplaces and Private Storage Available

EPICH MANAGEMENT INCORPORATED

1/4 East to Hwy. 17, travel east to 17-92 and turn left. Stay on right lane to stop sign and turn right. Sublease will be on your right.

SAILPOINTE

at Lake Monroe

401 West Seminole Blvd • Sanford • 32771

STENSTROM

Serving Central Florida
 For Over 39 Years

Sales • Rentals • Property Management
 New Homes • Relocation • Home Warranties

- RESIDENTIAL • WATER FRONT • INDUSTRIAL
- COMMERCIAL • ACREAGE

(407) 322-2420

2565 PARK DR., SANFORD, FL 32773

ORLANDO LAKE MARY

(407) 649-1070 (407) 321-2720

1520 EDGEWATER DRIVE ORLANDO, FL 32804 SUITE A
 3601 W. LAKE MARY BLVD., SUITE 123 LAKE MARY, FL 32746

Out of State Call Toll Free 1-800-323-3720
 Member of Greater Orlando Board of Realtors

Page Private School

88 Years of Quality Education
 Accredited by AISC
 Recognized by National Council for Private School Accreditation

University Park
 Age 2 thru grade 6
 10250 University Blvd.
 6:30 a.m. - 6:30 p.m.
 (407) 657-7277

Towne Center
 Age 2 thru grade 5
 100 Aero Lane
 6:30 a.m. - 6:30 p.m.
 (407) 324-1144

Seminole
 Age 2 thru grade 8
 650 E. Airport Blvd.
 6:30 a.m. - 6:30 p.m.
 (407) 323-6771

- Individual Attention
- Physical Education
- Computer Labs
- After School Program
- Strong Curriculum
- Music & Dance
- Traditional 3 R's
- Small Classes
- Field Trips
- Hot Lunches
- Arts & Crafts
- Swimming Pool
- Summer Camp

Transportation is available from our other campuses to our Seminole Campus for Middle School only.

GAINES

Carey Hand

Garden Chapel
 Funeral Home

FREDERIC F. GAINES, JR.
 FUNERAL DIRECTOR

Fulfilling a Service To Our
 Community In Time Of Need.

OFFERING AFFORDABLE PIEARRANGEMENTS

335-E. SR 434
 (Across from White Rose)
 LONGWOOD • 834-8550

A MEMBER OF THE CAREY HAND FUNERAL HOME TRADITION EST. 1860

FIRST UNITED METHODIST CHURCH
 9th and Park, Sanford
 Pastor Cliff Melvin
 322-4571

SUNDAY WORSHIP 8:25 AM & 10:55 AM
 SUNDAY SCHOOL 9:45 AM
 YOUTH GROUP 4:00 PM
 SUNDAY EVENING PROGRAM MONTHLY
Children's Sermon & Nursery at both services
 • Beautiful Historic Sanctuary
 • Contemporary Preaching

An active growing church with programs for children, youth, adults, couples, seniors and families. A place where visitors soon become friends.
Come Grow With Us

New Beginnings Christian Fellowship
 C.D. Ransom / Pastor
 "Yes, You Can Have A Life Of Winning"

Teaching Center 8:00 AM Sun.
 Sunday Worship Service & Children's Church 10:30 AM
 Sunday Evening Service 5:30 PM
 Mid-Week Service Wed. 7:00 PM
 Youth Bible Study / Activity Wed. 7:00 PM

A Phema Bible Training Center Graduate
 Riverboat Landing Plaza
 1678 W. Airport Blvd. • P.O. Box 888 • Sanford, FL 32772
 321-4863

ALL SOULS CATHOLIC CHURCH
 800 S. Oak Avenue
 Sanford
 (407) 322-3795

Father Richard Trout, Pastor

Saturday Mass 4 PM & 5:30 PM
 Sunday
 7:45 AM, 9:00 AM Spanish Liturgy
 10:30 AM, 12 Noon Mass

FIRST PRESBYTERIAN CHURCH
 SANFORD
 (In the heart of the city)

Between Park Ave. and Oak
 On 3rd and 4th Streets
 PH 322-2663
 Rev. Bruce B. Scott
 10:00 A.M. SUNDAY WORSHIP

9:00 A.M. SUNDAY SCHOOL FOR ALL AGES
 Youth Groups for all ages
 Wednesday night dinners and study
Come Join Us

Sanford Christian Church

SUNDAY SERVICES
 9:00am.....Bible School
 8:00am & 10:00am....Worship
 6:00pm.....Family Hour

WEDNESDAY
 7:00pm.....Adult & Youth

730 UPSALA ROAD. • 322-0980
 J.D. SEGROVES
 Sr. Minister
 JOE CAPUTO
 Youth Minister
 STEVE MARION
 Minister of education

A MINISTRY OF THE SANFORD CHRISTIAN CHURCH
 STEVE MARION, Administrator
 CLASSES OPEN FALL OF 1996
 CALL 322-0980

LEAVE A MESSAGE FOR A COMPLETE PACKET
 ACADEMY OFFICE OPEN THIS SUMMER

U.C.S.S. SPIRITUAL CENTRE
 102-A Aspen Ave.
 Orange City, FL 32763

ACROSS FROM BLUE SPRINGS AUTO WASH

SUNDAY
 Healing Service 10 am
 Regular Service 10:30 am

THURSDAY
 All Message Service
 7:30 pm
 Information on Church Functions and Spiritual Counseling

Rev. Margaret Ann Schmitt Pastor
 Call (904) 228-2222

Worship Together



Wekiva Assembly

SUNDAY
 Celebration Services..... 8 - 10:30 AM
 Sunday School.....9:30 AM

TUESDAY
 Strike Force (Youth).....7:00 PM

WEDNESDAY
 Family Services.....7:00 PM

Greg Freeman, Senior Pastor. Our goal is to reach, teach, equip, and send people into the Harvest.

774-0777
 774-9778 (fax)
 1675 Dixon Road
 Longwood 32779
 (Enter through Mandarin subdivision)

Grace United Methodist Church
 499 Country Club Rd.
 Lake Mary • 322-1472

Sunday School 9:30 am
 Morning Worship 10:30 am
 Youth Group 5:00 pm
 Nursery Provided for All Services

David A. Liddell, Jr. — Pastor

VICTORY DELIVERANCE CENTER

Early Morning Prayer Sat. 7 a.m.
 Sunday Wnship 11:30 - 2 p.m.
 Wed. Mid - Week Service 7 p.m.
 Wed. Youth Ministry 7 P.M.
 Friday Bible Class 7 p.m.
 *OUTREACH
 *YOUTH MINISTRY

407-330-2784
 1825 SECOND DRIVE (ROSELAND PARK) SANFORD, FL.
 CHARLES & MAUDE GRAMLM, PASTORS

LUTHERAN CHURCH of the REDEEMER
 Pastor E.A. Reuscher

322-3552 or 323-0610

SUNDAY MORNING SERVICES 10:30 am
 SUNDAY SCHOOL 10:30 am

2525 OAK AVE. • SANFORD
 (Across from Dairy Queen)

St. Peter's Episcopal Church

EXPERIENCE AND SHARE THE JOY & LOVE OF JESUS CHRIST

Sunday Services: 8am and 10 am
 Christian Education: 9 am (all ages)
 Nursery Care from: 9 am
 Children's Church: 10 am
 Wednesday Eucharist: 7 pm

Rev. B.L. Barge, Rector
 For Holiday & Summer Hours, Please Call
 700 Rinehart Rd. Lk. Mary..... 444-5673

Markham Woods Presbyterian Church
 5210 Markham Woods Rd., Lake Mary
 333-2030

Invites You To Come Worship With Us!

Sunday School All Ages 9:00 am
 Church Services 9:00 & 10:30 am
 NURSERY PROVIDED

Youth Group, Sunday 5:30 pm
 Pre-school Mon.-Fri. 9 to 12
 Monthly Family Night
 Supper 3rd Wed. 6:30 pm

Don T. DeBevoise
 Minister

First Baptist Church
 519 Park Avenue, Sanford
 322-6041

Rev. Jim Cornell
 Rev. Sidney Brink
 Rev. Tom Smith
 Cynthia Wolfe
 Melanie Taylor

Minister of Music
 Minister of Youth
 Minister of Senior Adults
 Director of Pre-school & Children
 Director of Daycare/Pre-school

Christian Daycare M-F 8:30 am - 6 pm
 Sunday School 9:15 am
 Morning Worship 10:30 am
 Discipleship Training 6:00 pm
 Evening Worship 7:00 pm
 Wed. Family Meal 5:30 pm
 Wed. Prayer Service/Youth & Children's Activities 6:30 pm
 Nursery Provided

SANFORD CHURCH OF GOD

801 WEST 22ND STREET
 SANFORD, FL 32771
 322-3642

Senior Pastor Rev. Wesley Baker
 Minister of Youth Rev. Sherri R. Shasteen
 Minister of Music Rev. James Jones

Sunday School 9:45 am
 Sunday Worship 10:45 am & 6:00 pm
 Wednesday Night Opportunities 7:00 pm

Adult Worship / Bible Study
 Nursery and Preschool Classes
 Girls and Boys Clubs (Grades 1-4)

"A Church anchored to the rocks and geared to the times"

FIRST CHRISTIAN CHURCH
 (Disciples of Christ)
 1607 Sanford Ave.
 Sanford, Fl.

Sunday School 9:45 am
 Worship 11:00 am

Everyone Is Welcome In Our Fellowship!

Nursery Provided, Handicap Access
 A FRIENDLY CHURCH FOR FRIENDLY PEOPLE

LONGWOOD CHURCH OF CHRIST
 1018 N. HWY. 17-92
 On The West Side Of 17-92
 (1 Mile North Of Hwy. 434)

SUNDAY WORSHIP 10:30 a.m.
 SUNDAY EVENING WORSHIP 6:00 p.m.

For Further Information:
 407-324-4338
 407-323-5830
 407-668-5762

VISITORS ALWAYS WELCOME

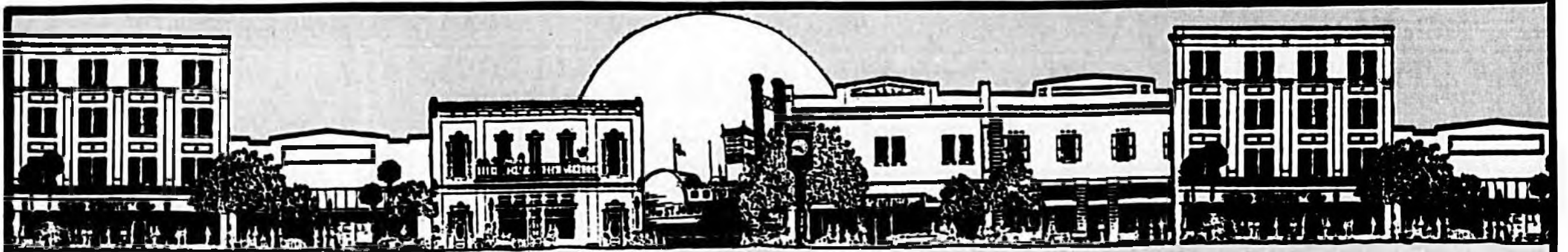
PAOLA WESLEYAN CHURCH

5650 Wayside Dr.
 Sanford, FL 32771
 323-0366

Michael C. Wilson, Pastor

Sunday School 9:45 AM
 Sunday Worship 11:00 AM & 6:00 PM
 Wednesday Service 7:30 PM

"The church that is big enough to serve you and small enough to know your name."



The Greater Sanford Chamber of Commerce Your Business Connection For Success!

1996 Committee Chairs

COMMUNITY ALLIANCE
Bobby Von Herbulis
McKee Construction

AMBASSADORS
Walter Padgett
Higgins House

ECONOMIC DEVELOPMENT
Louis Maire
Florida Public Utilities

EDUCATION
Ronald Lamb
Huntington National Bank

GOLF TOURNAMENT
Rick Russi
Tony Russi Insurance Agency

LEGISLATIVE AFFAIRS
Steve Coover
Hutchinson, Mamele & Coover

**SMALL BUSINESS COUNCIL
and
MINORITY BUSINESS COUNCIL**
Bob Parsell, Sanford Ace Hardware
Charles Rowe, City of Sanford

SPORTS HALL OF FAME
Wayne E. Albert
The Buying Office

MEMBERSHIP & RETENTION
Joan Turnbull
Sun Trust

TOURISM
Gail Hinton
Gail Hinton & Associates

TRANSPORTATION
Gerald N. Brinton
Seminole County Expressway Authority

1996 Officers

PRESIDENT
Bobby Von Herbulis
McKee Construction

VICE PRESIDENT
Sandra Glenn
Sun Travel Agency

TREASURER
Doug Sills
Central Florida Regional Hospital

PAST PRESIDENT
Brent Adamson
Rich Plan of Florida

From Our President...



BOBBY VON HERBULIS
McKee Construction

I want to take this time to thank Brent Adamson for his leadership in the past year, as well as thanks to all of the Board of Directors and Committee Chairpersons for their accomplishments.

I am very excited about our new Executive Director, Mrs. Wanda Kelly, and the direction that the Chamber is heading.

This year is going to take a lot of hard work and commitment from all of our members and Board of Directors to accomplish our goals, but together we can make an impact on this community for business success.

I am asking all of you for your commitment to this Chamber and to the community, because one person cannot accomplish these goals, but together we can make a difference. Thank you for what I know is going to be an exciting year.

Bobby Von Herbulis
1996 President

"Your Business Connection For Success"

1996 Board of Directors

Brent Adamson
Past President
Rich Plan of Florida

Jeff Bales
Sanford Motor Company

Tom Ball
Tom Ball Real Estate

Bill Barwick
Seminole National Bank

Arlene Calbert
Sprint/United Telephone

Karen Coleman
Principal
Crooms Academy

Johnny L. Cox
Heilig-Meyers Furniture Company

Dennis Dolgner
Seminole County Port
Authority

David Doudney
Doudney surveyors, Inc.

Bob Douglas
Sun Trust

Isalah S. Evans, Jr.
Barnet Bank

Sandra Glenn
Sun Travel Agency

Mike Good
Briar Corporation

Sarah Goodrich
Seminole Towne Center Mall

Kevin Greene
Kevin's Lock & Safe

Gail Hinton
Gail Hinton & Associates

Dick Heimbach
Canterbury Concepts, Inc.

Robert Hopkins
St. Johns River Cruises

Linda Johnson
William Howard's Jewelers

Linda Keeling
Keeling Insurance & Financial
Services

Carole Kirchhoff
Kirchhoff and Associates

Ronald R. Lamb
Huntington National Bank

Kerry Lyons
Commissioner
City of Sanford

Jay Marder
Planning & Development
City of Sanford

Jere Moore
Arts and Ends

Tom Moore
Sunland Corporation

Walter Padgett
Higgins House

Billy Painter
Colonial Room Restaurant

Robert Parsell
Sanford Ace Hardware

Harry G. Reid, III
Law Office of Harry G. Reid, III

Andy Roberts
President
First Union National Bank

Charles Rowe
Community Development
City of Sanford

Bill Royster
Greene & Dycus, P.A.

Dean Shoemaker
Shoemaker construction

Doug Sills
Central Florida Regional Hospital

Helen Stairs
Stairs property Management & Realty

Larry Strickler
Bell South

Bob Turk
Economic Development
Seminole County

Joann Turnbull
SunTrust



SANDRA GLENN
SUN TRAVEL



DOUG SILLS
CENTRAL FLORIDA
REGIONAL HOSPITAL



WANDA KELLY
EXECUTIVE DIRECTOR