



Fat Hardy serves grilled hot dogs to neighborhood kids. Just Being A Good Neighbor

Artis Hardy of 310 Magnolia Ave., Sanford, might be called one of those unusual people. Born and raised in Sanford, he believes in giving back to the community that has been so good to him. Calling himself "Fat" Hardy because of his portly appearance, he turned the calendar back and indulged in "being a good neighbor."

Learn To Take Tension-Break

DEAR ABBY: There is a lovely Negro spiritual by the name of "Slow Me Down, Lord." I heard that you once published a prayer by that title several years ago. Could that prayer have been stolen from the spiritual of the same name?



Will you please print the prayer and tell us who the author was and when it was published? JESSE IN W.VA. "Slow me down, Lord! Ease the pounding of my heart by the quieting of my mind. Steady my hurried pace with a vision of the eternal reach of time. Give me, amidst the confusion of my day, the calmness of the everlasting hills. Break the tensions of my nerves and muscles with the soothing music of the singing streams that live in my memory. Help me to know the magic restoring power of sleep. Teach me the art of making Minute Vacations—"

Advertisement for 'For Spring' clothing featuring a black and white dress with a white print. Text includes 'Black 'N White 90 Fashion Right' and 'Henry Lee uses a bold black 'n white print for a great fashion statement. Elegantly simple shift shaping with a surprise neckline, softened shoulders, briefest sleeves. A leather-look crushed wide belt to cinch the waist. As practical as it is pretty, cause it's 100% Polyester, of course.'

Rebekah Leader's Slogan: TNT—Today Not Tomorrow



Rebekah Leader's Slogan: TNT—Today Not Tomorrow

Lucile Ewell, president of the Rebekah Assembly of Florida, was honored with a dinner and meeting hosted by members of Seminole Rebekah Lodge Number 43, The Odd Fellows Hall was the setting for this dinner meeting. Highlight of the evening was the president's address. She told that her slogan was "TNT—Today Not Tomorrow." She spoke at length on the work being done throughout the state with young people. She stressed supporting the Visual Research Program and the Odd Fellow-Rebekah Disaster Fund.

St. Pat's Fete Planned

All Souls Home and School Association, Sanford, will sponsor the Annual St. Patrick's Day dinner and dance on March 15 at the school social hall. A buffet will start at 8 p.m., followed by dancing at 9 to the music of Three More at the BYOB event.

Buying A Tree Saturday? Ixora Gives Care Tips

For those who plan to take advantage of Ixora Garden Club's sale of flowering trees Saturday at the Chamber of Commerce, the following instructions are offered for the planting and care of these trees. The hole should be at least one foot wider and deeper than the current root system. Place the tree so that the soil-line (after setting) will be the same as it was when the tree was in the container.

Advertisement for MAE'S Fabrics Spring Opening. Features various fabric items like curtains, draperies, and upholstery. Text includes 'SALE STARTS FRIDAY' and 'FLORIDA'S BIGGEST NAME IN FABRICS'.



Bohsancurt Day Marked At Milwee

"Margaret Bohsancurt Day", was celebrated at Milwee Middle School Friday. The students, parents and teachers planned this special day to honor Margaret Bohsancurt, who chose to retire after dedicating 37 years of her life to the teaching profession. Fred Dudley, principal, said, "Margaret is the 'Mother Hen of Milwee' who will be missed by the entire staff, student body and parents."

TONIGHT'S TV

A detailed TV schedule table for Thursday, March 6, 1980. It lists programs such as 'Black Sheep Squadron', 'NBC News', 'The Tonight Show', 'The Dick Cavett Show', and 'The Price Is Right' with their respective start times.



Bohsancurt Day Marked At Milwee

"Margaret Bohsancurt Day", was celebrated at Milwee Middle School Friday. The students, parents and teachers planned this special day to honor Margaret Bohsancurt, who chose to retire after dedicating 37 years of her life to the teaching profession. Fred Dudley, principal, said, "Margaret is the 'Mother Hen of Milwee' who will be missed by the entire staff, student body and parents."

Advertisement for 'Friends of the Ballet Guild of Sanford-Seminole'. Includes text about a ribbon cutting and grand opening of their new office and headquarters at 201 Commercial Street, Suite 4 on Friday, March 7th from 5:00 to 7:30 P.M.

Advertisement for 'Annual Wallcovering Sale!' featuring 'Brighten Up Days' and 'Save 1/3 off on over 1300 Fashionable Patterns!'.

Advertisement for 'PIZZA BOY' featuring 'We serve the best. Check our Luncheon Specials-11 a.m. to 4 p.m.' and 'EXTRA LARGE PIZZA WITH 30 MORE TOPPINGS'.

Advertisement for 'Save 10% off on Step Ladders' and 'Save on Snap-off Blade Wallpaper Cutter!'.

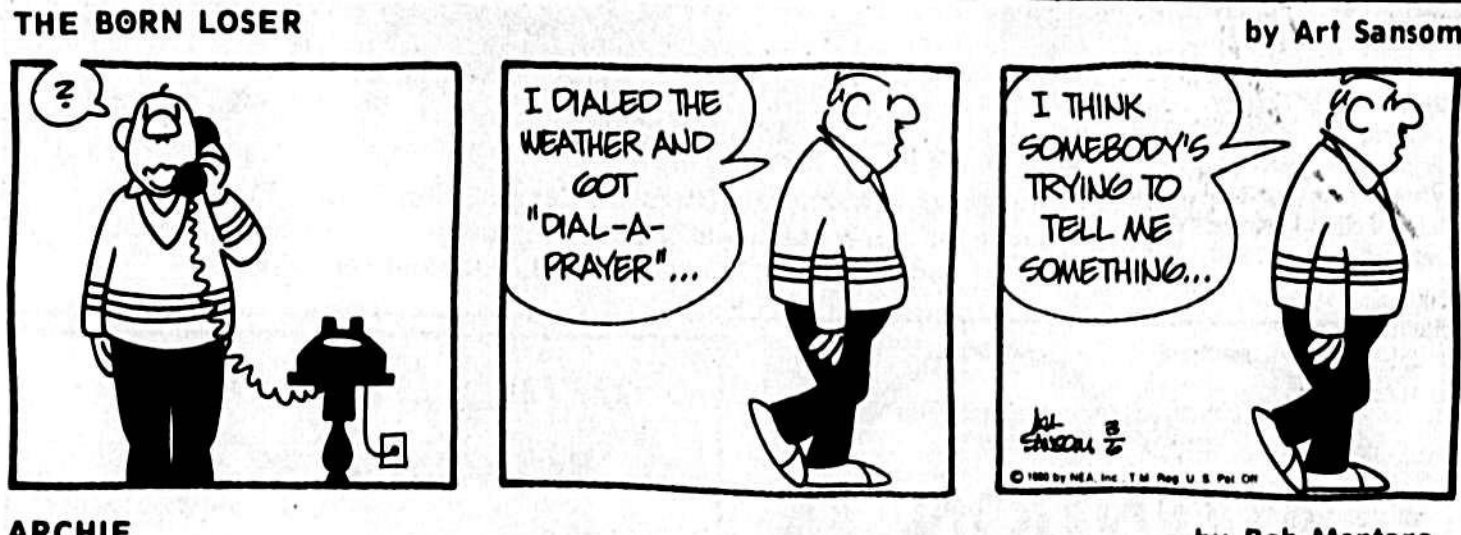
Advertisement for 'SHERWIN WILLIAMS' paint store, featuring 'A paint. A store. A whole lot more.' and 'Save on Heavy Duty Water Tray!'.



by Chic Young



by Mort Walker



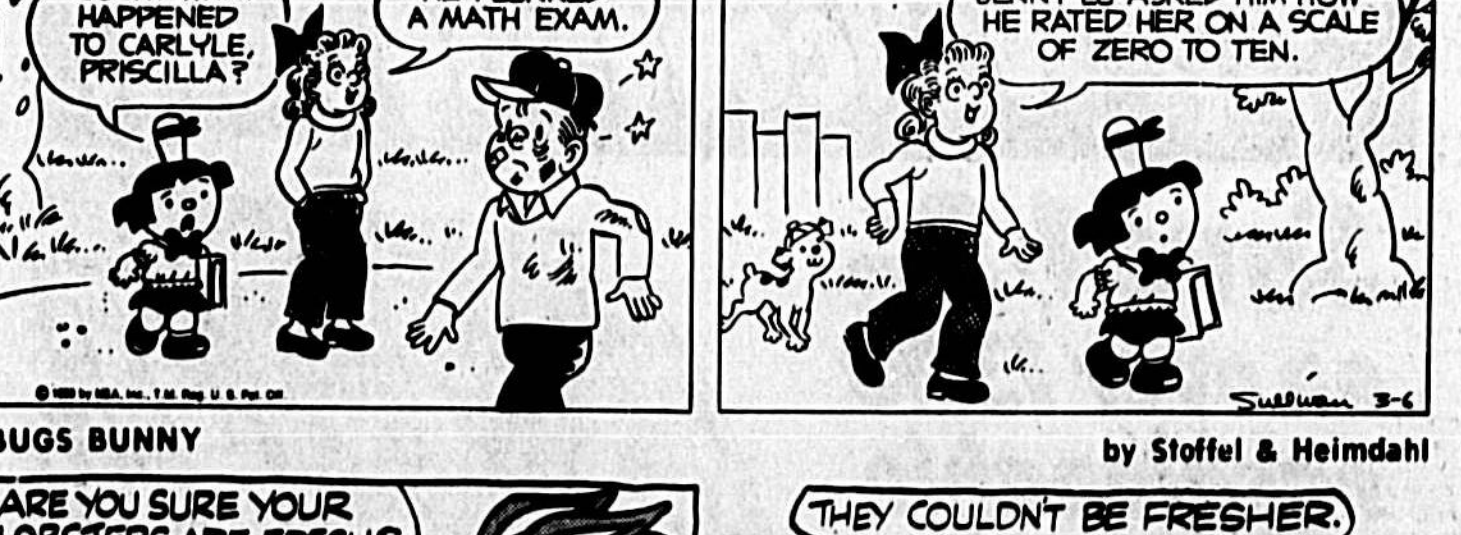
by Art Sansom



by Bob Montana



by Howie Schneider



by Ed Sullivan



by Stoffel & Heimdahl



by Bob Thaves



by T. K. Ryan

Break Diet Maze: Follow Basic Rules. DEAR DR. LAMB - I've read about so many different diets and now I'm concerned...

CROSSWORD puzzle grid with clues and answers.

HOROSCOPE For Friday, March 7, 1980. BY BERNICE BEDEOSOL. YOU'RE BIRTHDAY March 7, 1980...

WIN AT BRIDGE. The bidding was simple and straightforward. It occurred at almost every table...

ANIE. PUMPKIN BREAD? YOU! DON'T LET HIM GET TO YOU! AFTER THAT HE ASKS YOU TO BE HIS GIRLFRIEND...

ZOOPIES. HAPPY BIRTHDAY! THANKS FOR THE CAKE! IT'S AN UPSIDE-DOWN CAKE.

Auto Air Conditioning \$9.95 Spring Tune Up. Includes: Recharge System, Function Test System, Clean Condenser Fans.

SPORTS. Evening Herald, Sanford, FL. Thursday, March 6, 1980—1A

NCAA Tournament Gets Underway Tonight

By United Press International. In college basketball, seedings and rankings don't mean all that much since the national champion is determined by the NCAA playoffs...

Phillies Vote 40-0 To Strike

By United Press International. The San Francisco Giants, by appointing Manager Dave Bristol, are essentially ending the progress of Roger Metzger this spring...

Tide Wins NIT Opener

By United Press International. Wednesday night's NIT basketball matchup between Alabama and Penn State attracted a crowd of only 7,418 and very little noise of any kind...

Phoenix Drops Road Weary Sonics

By United Press International. The Seattle SuperSonics, forced to travel all night and able to get very little sleep...

Marcello Pitches 'Hounds Past Hawks

The Lyman Greyhounds took advantage of a sparkling mound performance by senior hurler Rick Marcello to defeat Spruce Creek 3-0 Wednesday in a Five Star Conference baseball contest...

All Attempting Return To Boxing

CHICAGO (UPI) - Standing in the wings preparing for still another comeback is former World Heavyweight Champion Muhammad Ali who apparently has agreed to fight John Tate in Taipei for the World Boxing Association crown...

Lake Mary's McNulty Captures 800 Meters

CAMBRIDGE - Lake Mary's Thad McNulty, Harvard's senior track captain and outstanding middle distance runner...

UCF Breaks Six Hoop Records

ORLANDO - Six Knight records were broken in the 1979-80 University of Central Florida basketball season as UCF finished with a 25-4 record...

SPORTS

HITTING ORE AGAIN? by Alan Mauer



RALPH MILLER, whose 10th Oregon hit was a home run, has been named as the best player in the nation...

Lake Mary's McNulty Captures 800 Meters

CAMBRIDGE - Lake Mary's Thad McNulty, Harvard's senior track captain and outstanding middle distance runner...

UCF Breaks Six Hoop Records

ORLANDO - Six Knight records were broken in the 1979-80 University of Central Florida basketball season as UCF finished with a 25-4 record...

Marcello Pitches 'Hounds Past Hawks

The Lyman Greyhounds took advantage of a sparkling mound performance by senior hurler Rick Marcello to defeat Spruce Creek 3-0 Wednesday in a Five Star Conference baseball contest...

All Attempting Return To Boxing

CHICAGO (UPI) - Standing in the wings preparing for still another comeback is former World Heavyweight Champion Muhammad Ali who apparently has agreed to fight John Tate in Taipei for the World Boxing Association crown...

Lake Mary's McNulty Captures 800 Meters

CAMBRIDGE - Lake Mary's Thad McNulty, Harvard's senior track captain and outstanding middle distance runner...

UCF Breaks Six Hoop Records

ORLANDO - Six Knight records were broken in the 1979-80 University of Central Florida basketball season as UCF finished with a 25-4 record...

A.O.K. TIRE MART. RETREAD SALE \$12.95. SHOCKS STANDARD \$4.95 HEAVY DUTY \$6.95. OK TIRE STORE. PH. 322.7480.



**Scotty's
Super
Spring**

Sale!

GAS GRILL
Heavy duty cast aluminum. Volcano rocks. 20 lb. tank included. No. GG6001-20.
9288 Each
Reg. Price 109.95
CHAR-BROIL
W. C. BRADLEY CO.

Utility SPRAYER
Galvanized 2 gal. sprayer capacity tank. Limited Time Offer 5.00 Factory Rebate. No. 67209.
Scotty's Sale **3389**
Price.....**5.00**
Factory Rebate.....**5.00**
Your cost.....**28.89**
(Ask your salesman for Rebate Coupon.)
Reg. Price 38.89

BATTERIES
General purpose. 1.5 volts, in packs of four. C and D sizes.
20¢ Each Battery
Reg. Price 25¢

Cotton WORK GLOVES
White, with knit wrists. No. 49A.
107 Piece
Reg. Price 1.17

2 x 4 x 8' No. 3 YELLOW PINE SPECIAL
107 Piece
Reg. Price 1.17

Postformed COUNTER TOPS
Available in Butcher Block, Golden Kid and White Nugget.
377 Lin. Ft.
Reg. Price 3.59
Add 3.50 for right or left miter cut.

CONCRETE MIX
40 lb. bag makes 1/3 cu. ft.
119 Bag
Reg. Price 1.39

Mopacote House PAINT
Exterior latex. For masonry, wood and metal surfaces. White or colors.
849 Gallon
Reg. Price 9.99

Coventry Latex PAINT
Interior. Dries in 24 hours. White or Colors.
699 Gallon
Reg. Price 8.49

3-Piece PAD KIT
Great for small and large trim jobs. 604-MPK-90.
299 Set
Reg. Price 4.99

Vinyl SHEET FLOORING
No-wax, inter-foam-cushioned. In decorator patterns and colors. 12' widths.
269 Sq. Yd.
Reg. Price 3.19

LIQUID NAILS
For installing paneling, etc. LN-801. 11 fl. oz. cartridge.
84¢ Each
Reg. Price 94¢

FLOOR TILE
Adhesive backed, vinyl asbestos floor tile. Patio/for design in 21 lovely colors. 12" x 12".
39¢ Each Tile
Reg. Price .45¢

WHEELBARROW
Big Four, heavy duty. Holds 4 1/2 cu. ft. No. KB-4.
3495 Each
Reg. Price 39.95

"Special Purchase" SUMMER SEQUENCE
Good quality synthetic turf in Green and Yellow stripes. 8' and 12' widths.
299 Sq. Yd.

Don't Miss These Super Values At Scotty's Regular Low Prices

Polyseamseal Adhesive CAULK
Resists mildew, stays flexible. White.
J-35 4 fl. oz. Squeeze Tube...**1.49**
J-20 11 fl. oz. Cartridge...**2.25**

CAULK
For a weather-tight seal inside or out. 11 fl. oz. cartridge.
59¢ Each

Butylold CAULK
Stays flexible. White or Gray. 11 fl. oz. cartridge.
179 Each

TUB and TILE CAULK
Mildew proof, stays flexible. Snow White. 6 fl. oz. tube.
79¢ Each

Organic COW MANURE
Odorless, won't burn your plants. 40 lb. bag.
149 Each

CEILING FAN
With prewired 4-speed control box and hanging hook. 36" fan in White or Brown. CF-138.
4995 Each

POWER TAPE
3/4" Yellow blade, plastic case with belt-clip.
4.99 8312 12'
5.79 8316 16'
6.59 8325 25'

Interior Wall-Cote LATEX PAINT
White
329 Gallon
Colors
399 Gallon

Super CAULK
Premium acrylic. 11 fl. oz. cartridge.
189 Each
199 Each

Pressure Treated PINE
2 x 4 x 8' (piece) **1.84**
2 x 4 x 10' (piece) **2.68**
2 x 4 x 12' (piece) **3.55**

WALL CABINETS
W2430 **55.50**
W3030 **60.00**
W3630 **66.00**
36" BASE CABINETS
B30 **65.00**
B36 **70.00**
SHINK BASE
B36S **65.50**

Belwood
unifront cabinetry
1129 2 Gallon Pail

Flu-Cote LATEX PAINT
Interior, exterior for wood, masonry or metal. Brilliant White.
1898 2 Gallon Pail

Self-Sealing ROOF SHINGLES
White or Colors
3-Tab No. 240 ASPHALT 15 Year Warranty Square **23.88** **7.96** Bundle
3-Tab FIBERGLASS 20 Year Warranty Square **24.99** **8.33** Bundle

Plywood HANDI-PANELS
Good one-side.
1/4" x 2' x 4' **3.87** Piece
1/2" x 2' x 4' **4.93** Piece
3/4" x 2' x 4' **6.89** Piece

Prices quoted in this ad are based on customers picking-up merchandise at our store. Delivery is available for a small charge. Management reserves the right to limit quantities on special sale merchandise.

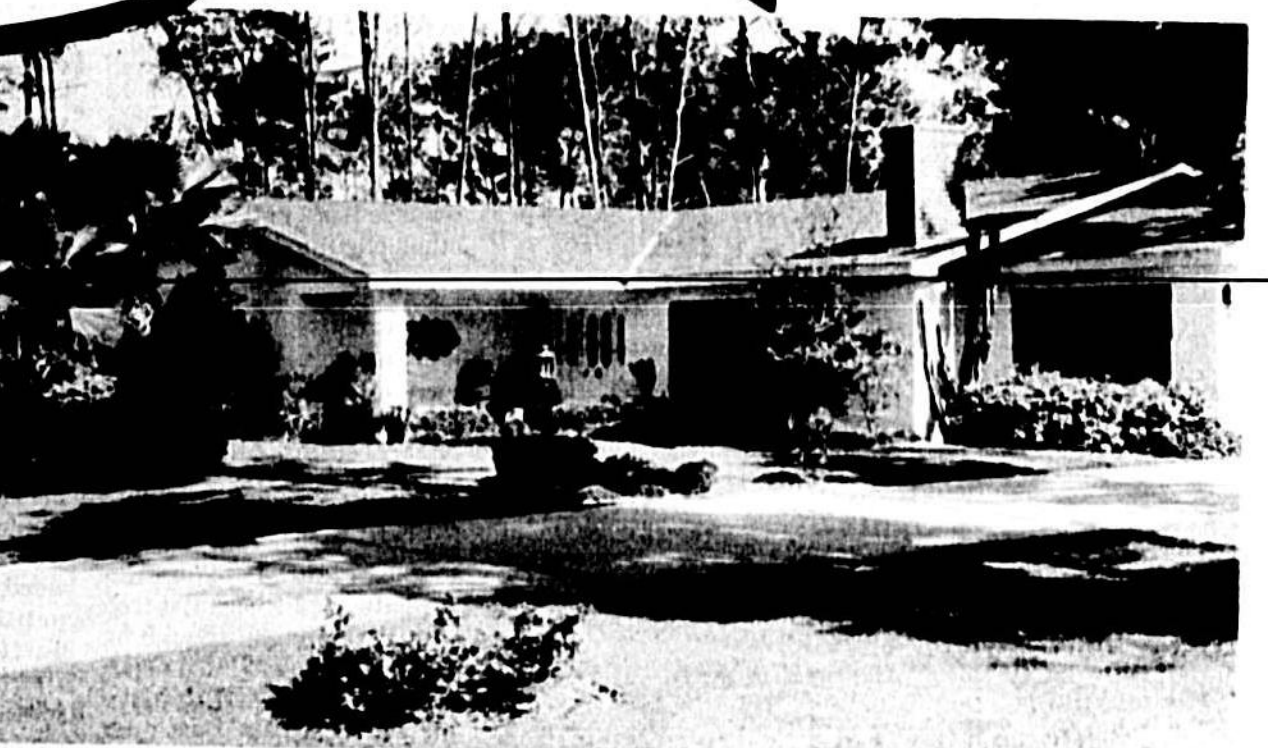
PRICES GOOD FRIDAY THRU MARCH 13
SANFORD
700 French Avenue
Ph: 323-4700
HOURS:
7:30 - 6:00 Monday thru Saturday
Closed Sunday

Enjoy That
SCOTTY'S
Do-it-yourself Feeling



**IT'S
SPRING
GARDENING
TIME**

Tips for
Home Decor,
Gardening
and
Home
Improvements



This beautiful home of Mr. and Mrs. John Farrell, 2081 Deborah Terrace, Dalton, was completely landscaped by Crystal Lake Nursery, Crystal Lake Drive in Lake Mary.

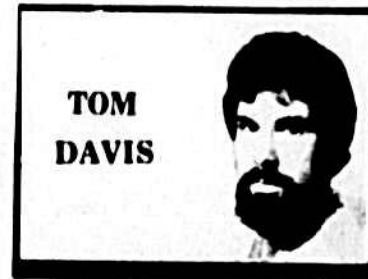
Evening Herald
Herald Advertiser
Thursday, March 6, 1980

Enjoy Fruits Of Labor: Grow Oranges

As most of you probably well know, commercial citrus production is one of Florida's major industries. However, you don't have to raise citrus commercially to enjoy the many varieties of fresh fruit. The idea of growing and including citrus in the landscape is constantly on the increase. Dooryard citrus not only provides you with fresh fruit but also with a very appealing ornamental plant as well. There are many varieties available that grow well in our area and the variety you select is largely based on personal preference.

Many varieties of citrus can readily be grown by the dooryard grower in central and south Florida. Some varieties, such as the satsuma mandarin and kumquat may be grown in warm locations of north and west Florida.

PRODUCTION: The number of fruit which set and mature is only a small fraction of the total number of flowers produced. A heavy drop of small fruit usually occurs for several weeks after bloom and again



TOM DAVIS

usually during the month of June. There is usually no cause for concern over fruit drop although water stress or nutritional deficiencies may accentuate droppage. Budded trees will sometimes produce a few fruit the year after planting. However, large yields should not be expected until the tree is four-to-seven years old. Yields will vary somewhat from variety to variety.

Seeding trees are very slow to bear and may not produce fruit for 10 to 15 years. Therefore, for the dooryard, budded trees are recommended.

SOILS: Citrus soils are generally of three types: The deep, well-drained sands; the poorly-drained flatwoods; and the alkaline marl or limestone soils. Citrus trees can be grown in all

three soils if proper preparation and aftercare is provided. The well-drained sands need little or no preparation other than removal of weeds and grass from the planting site prior to planting. The poorly-drained flatwoods soils will need to have drainage provided or the trees should be planted on large mounds approximately 12 feet in diameter and at least 18-24 inches high.

The calcareous or limestone soils may also need special preparation. In the limestone soils, a hole should be dug as large as is conveniently possible and filled with soil prior to planting. This will allow a maximum area for root development.

SPACING AND PLANTING YOUNG CITRUS: Spacing will vary with variety and desired density. If several trees are to be planted, they should be set at least 20-25 feet apart unless a vigorous pruning program is maintained to keep the trees from crowding each other.

Be sure to consider proximity to buildings or other plants as citrus is rather vigorous and will grow quite rapidly when well cared for. Full-sun areas are most desirable but septic tanks and drain fields should be avoided due to possible clogging of drains by the roots as well as damage to the tree from detergents and other chemicals.

Most dooryard citrus trees are purchased in containers and can be planted anytime of the year, although the preferred time is late winter or early spring. All grass and weeds should be removed from an area four to six feet in diameter where the tree is to be planted. The immediate area where the tree is to be planted should be thoroughly spaded to a depth of two to three feet. Remove the tree from the container and if pot-bound, make several vertical cuts in the ball of the roots to stimulate formation of new roots. Set the plant in the ground slightly (1/4 to one inch) higher than it grew in the container. Refill the hole around the plant about 1/3rd to 1/2-full and water and stamp the soil thoroughly to remove air pockets. Allow the water to settle, fill the hole 2/3rd-full of soil and rewater. Finish filling the hole and pack the soil firmly around the tree. Form a water basin around the tree at least three to four inches high and 30 inches in diameter. Water three times



Osteen's Paula Richardson examines an orange on a well-stocked tree. Many varieties of citrus can be grown by the dooryard grower in central Florida. The variety you select is largely based on personal preference.

until new growth appears — then apply only 1/2-pound of mixed fertilizer. Chelated iron should be supplied to citrus in alkaline soils at yearly intervals. Be sure to obtain chelated iron which is formulated specifically for alkaline soils and follow label directions.

CARE OF THE BEARING TREE: Fertilization is an important part of caring for the bearing citrus tree. For average soil conditions in Florida, the following fertilizer analysis will be generally satisfactory for dooryard citrus trees: N:8; P:6; K:6; Mg:4; Mn:0.75; Cu:0.25.

This mixture can be used for all applications throughout the year. Make three applications per year, generally in January or February, May of June, and October or November. Apply fertilizer to the entire rooting area, which usually extends well beyond the drip of the trees.

The amount of the application is an important factor. Over-fertilization tends to make the tree excessively vegetative, with a resulting reduction in quality and quantity of fruit. On the other hand, yellowing or lightness of color (other than that of immature growth) is a sign of hunger. To main-

tain foliage of a good dark-green color, a fairly safe rate in each application is one pound of the six percent nitrogen mixture per-year of age of the tree. A total of 90 pounds per year will suffice for trees 30 years old or older.

The pH (acidity or alkalinity) of the soil should be maintained between 6.0 and 7.0. An application of limestone or dolomite should be used to bring up the pH if it is too low (acid).

Again, weed control is not essential but is generally best to remove all weeds and sod grass from the area under the canopy of the tree. Above all, be sure to remove all weeds immediately adjacent to the trunk as these could harbor fungus organisms such as foot rot which could damage or kill the tree. If foot rot attacks the tree, soil should be removed from the affected area and the diseased portion of the plant cut away with a suitable tool. This area should then be treated with a good disinfectant tree paint to prevent future damage.

Fruit splitting may be a problem for some growers. This is a physiological problem of unknown origin. The problem is often accentuated just after a period of moisture stress followed by a heavy rain. Splitting will usually not be a serious problem if the trees are well cared for and furnished with adequate nutrition and irrigation.

INSECT AND DISEASE CONTROL: Citrus fruit can be successfully grown in most Florida dooryards without any insect or disease control sprays. Fruit produced in this manner, however, will rarely be of top external quality. There are several insects, mites and fungus diseases which may attack the fruit and render it somewhat unsightly. This lowering of eye appeal will usually have little effect on internal fruit quality. The appearance of the tree itself may suffer somewhat also if no sprays are applied but rarely will trees be seriously damaged by most citrus pests. Natural biological control will assist in keeping most pests to a low level.

However, if chemicals are required to control certain pests of citrus, malathion or ethion plus oil will control most insect problems and sprays of neutral copper will aid in controlling disease problems.

COUPON
GOOD THRU APRIL 1
10% off
SMITTY'S
SMITTY'S TURTLE MOWERS INC.
MOWER SALES & SERVICE
2841 PARK AVE. SANFORD, FLORIDA

LARGE VARIETY ANNUALS 39¢-69¢
SPECIAL 4" POT SPANROCKS \$1.59
Redlon Nursery
420 S. COUNTRY CLUB LAKE MARY

LAWN GARDEN NEEDS

TOOL TOTE & TOOLS \$5.99
Cultivator, dandelion digger, digging fork, trowel — in plastic tray.

19-INCH SERVESS® MOWER \$89.99
This 19-inch mower has 3 horsepower engine. Does big and small lawns. Has rear baffle and 6-inch plastic wheels. A great buy!

22" ROTARY MOWER \$129.99
3 1/2-hp engine and steel ball-bearing wheels ease the mowing task. Chromed folding handle adjusts to 4 positions. Deluxe throttle control.

34" VINYL-GUARD FENCE POSTS \$1.14
Smooth vinyl-coating posts. Smooth jugs. Special anchor plate for stability.

36" VINYL-GUARD FENCE POSTS \$1.44

GARD-N-GATE FENCE \$34.88
A lightweight, attractive fence. 3/4" O.D. galvanized tubing. Fabric not included.

TRU-TEST 75' NYLON REINFORCED GARDEN HOSE \$12.49

50' 2 PLY VINYL GARDEN HOSE \$6.99

SPRINKLER SOAKER \$3.99

TRU-TEST 75' NYLON REINFORCED GARDEN HOSE \$12.99

TRU-TEST 20-5-5 LAWN FERTILIZER \$4.49
20-5-5 A low cost formulation. Clean and free flowing. Provides quick green-up but does not contain the long-lasting nitrogen found in Tru-Test Supreme Lawn Food. Will not burn when used according to directions.

TRU-TEST 20-5-5 LAWN FERTILIZER \$4.49

True Value HARDWARE STORE
PHONE 322-0500
500 S. MAPLE AVE. SANFORD
OPEN MON. THRU FRI. 7:30-5 SAT. 7:30-4

'Map' Garden For Success

By TOM DAVIS
Urban Horticulturist

You wouldn't take a vacation trip without taking along a map. It's important to "map" your garden, too, before you do anything else. Then you'll know where you are going. To plan a garden, you should ask yourself these questions:

- which varieties are best?
- how much seed will I need?
- how far apart should the rows and plants be spaced?
- when is the best time to plant?
- have I had my soil

tested for the correct pH?
LOCATION: A garden spot handy to the house and kitchen is best. A good water supply, such as a spigot, should be nearby. Choose a spot where the soil is rich as possible and one which is not shaded, especially in the morning hours.

ARRANGEMENT: How you arrange the vegetables in the garden is important. Keep tall vegetables, such as corn, to one side and low-growing plants, as radishes, to the other side. Otherwise, the tall plants will shade the little ones.

Run the rows north and south so more sunlight can

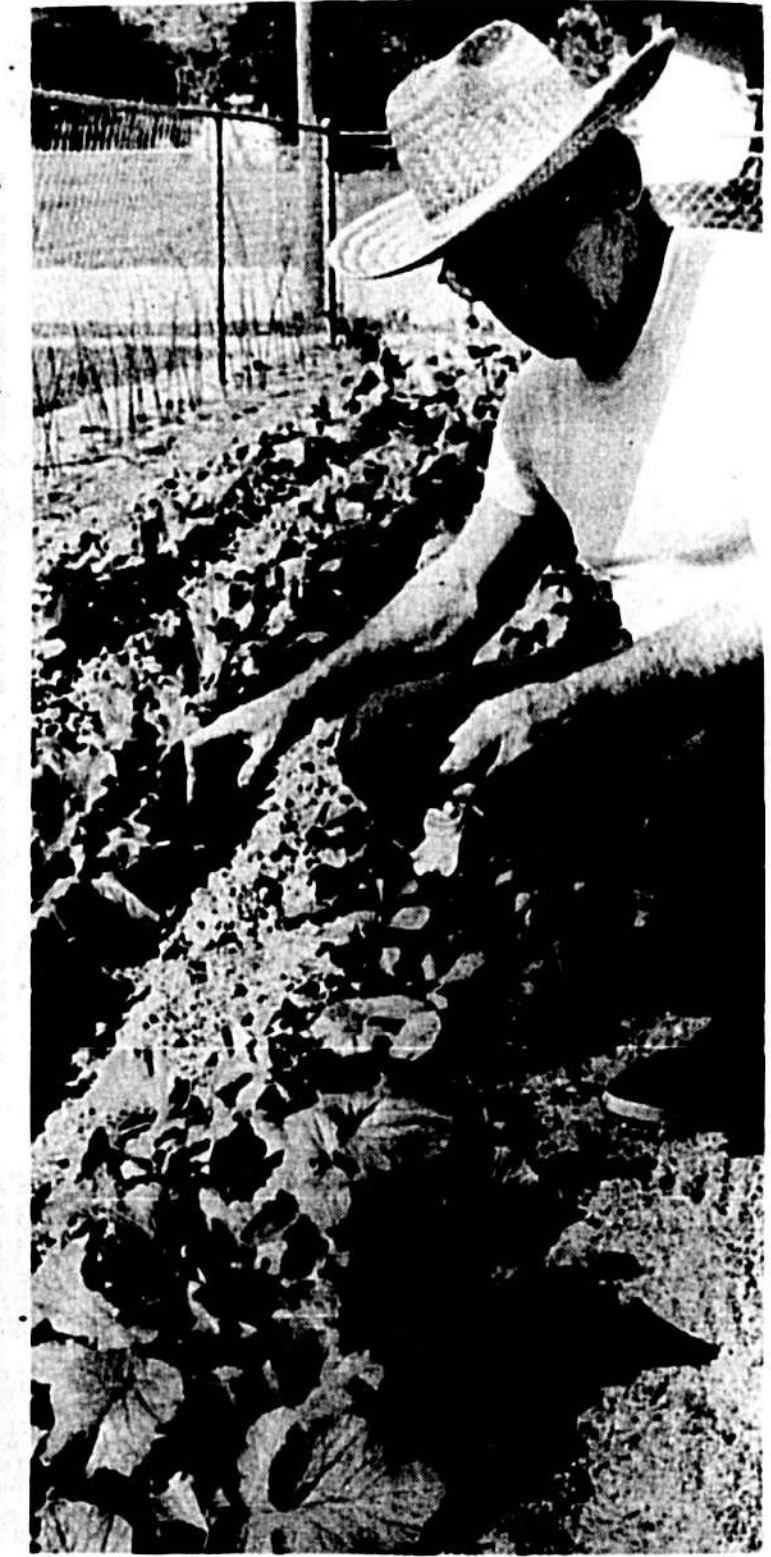
strike the plants.
SPADING: Two or three weeks before planting your seed, you must plow or spade your garden soil. This is done so the soil can be loosened and trash, such as weeds and grass, can be turned under. Be sure to turn the soil completely over when spading.

RAKING: Use rake to break clods and level the ground. Rake up and remove all woody weeds and trash from the plot. When you have finished preparing the soil, it should be smooth with no clods or trash showing. You now have the soil ready to fertilize and plant seed.

GARDEN LAYOUT: Use stakes, string, and a yardstick to lay off straight rows. Follow your previously prepared plan. Place a garden label at the head of each row. Information on the label should include the crop, variety, and planting date.

FERTILIZING: All plants must have food for growth. Plants can starve if they have no food. There is some plant food in most all soils. But most garden soils do not have enough. We must add plant food in the form of commercial fertilizer or manures. The fertilizer recommended for most garden soils is called a mixed fertilizer. It must be placed in the soil where plant roots can reach it. Commercial fertilizer should be added to the soil right before or at planting time.

Do not put fertilizer under the seed. It might burn the young roots. Instead, place the fertilizer on each side of the seed row. To do this, you must make two furrows about six inches apart and only two or three inches deep. Spread the fertilizer down the furrows, then, fill the furrows level with soil.



Hauser chooses varieties that grow best in local soil.

Raised Gardens Allow Soil Choice

Often a gardener will find that his garden soil won't support the plants or vegetables he wants to grow. With a raised bed he can select any type of soil mix he wishes.

But that's not the only advantage of raised bed gardening. Wood structures can beautify your garden, deck or patio. They also make gardening chores easier.

By building a seat along the sides, planting, weeding and harvesting can be done with a great deal less effort than is ordinarily the case. Building a raised bed is



Bill Hauser of Sanford maintains precise plant spacing in his garden at 403 Cherokee Lane.

Lawn and Garden Headquarters

FOR ALL OF YOUR GARDENING NEEDS

- BULK SEED • PESTICIDES
- FERTILIZERS
- HARDWARE FOR HOME & GARDEN
- NURSERY STOCK

EVERYTHING FOR THE ORGANIC GARDENER

NELSON ROSES GROWN ESPECIALLY FOR FLORIDA SOIL	BULK VEGETABLE SEED FLOWER SEED SEED POTATOES Available in Any Quantity
--	---

GardenLand

OPEN DAILY 8 AM-5 PM
1400 W. FIRST ST. 323-6630, SANFORD

ANDERSON NURSERY
8th Street and Lake Mary Blvd.
LAKE MARY, FLORIDA

Quality Plant Materials at Reasonable Prices
PATRONIZE A NURSERY WITH EXPERIENCE

TREES OUR SPECIALTY WE GROW OUR OWN!

Energy Checklist Saves You Money

Now that the energy crunch is a way of life, the National Institute of Building Sciences has teamed up with the Department of Energy to produce a "Checklist" of the ten best energy-saving tips.

1. Check weatherstripping and caulking. Up to 30 percent of a heating or cooling load is lost through cracks around closed windows or doors.
2. Check thermostat. Set at 65 degrees in winter and 78 degrees in summer.
3. Check water heaters. Lower heat setting and wrap with insulation.
4. Check heating and cooling systems. Clean filters; close vents in unused rooms. Seal cracks around air conditioners.
5. Check sunlight. Let it in during winter; keep it out in summer with drapes, awnings.
6. Check appliances, lighting, fully load washers,

turn off lights and other appliances.

7. Check attic insulation. Use recommended levels; seal doors.

8. Check floors and foundations. Check crawl space and foundation walls

for insulation.

9. Check windows and doors. Consider storm windows, doors or double-pane glass.

10. Check exterior walls. Consider adding insulation, especially if remodeling or re-siding.

The government is offering help. Income tax credits are available on energy-saving expenses. Deduct 15 percent of material costs from your income tax, up to \$300. Don't deduct labor.

Probably no item on the "Big Ten Checklist" will produce faster savings than the number one item—weatherstripping. For complete information on the "Big Ten Checklist" for saving energy around the home, or for further information on door and window weatherstrips, contact the Weatherseal Information Center, P.O. Box 2111, Rochester, NY 14622.

Ag Center In County

With the population of Seminole County on a constant increase, there are probably many newer residents who may not be familiar or aware of the services offered at the Agricultural Center, located at 4320 S. Orlando Drive (U.S. Highway 17-92) in Sanford.

The urban program is designed to help the residents of Seminole County with any agricultural related problems that may arise. These could pertain to lawns, vegetable gardens, fruit trees, ornamentals, as well as house plants or insect pests. All services are free to county residents.

Services offered include soil testing; seminars which are held once a month at the Agricultural Center; and advice on agricultural-related problems between the hours of 8:30 a.m. thru 5 p.m., Monday through Friday, either by phone or personal visits to our office. A monthly publication entitled "Seminole Green-thumb," which deals with current, local information on various gardening topics, and a wealth of information in the form of publications are free upon request. Call the office at 323-3233 for further information.

Hi Neighbor!

Our New Nursery Contemporary Gardens

LAKE MARY
IS JUST AROUND YOUR CORNER

WE'RE HERE TO HELP

- ★ Quality plants
- ★ Fertilizer & Chemicals
- ★ Garden statuary & fountains
- ★ Pottery
- ★ Professional sales people to advise you on your landscape needs.

271 W. LAKE MARY BLVD.
LAKE MARY • 323-6133

ALSO
2035 HWY. 17-92
MAITLAND 834-2080
OPEN SUNDAY 12:5-00

ferti-lome
 Complete LANDSCAPING AND IRRIGATION SERVICE AND SUPPLIES
COUNTRY CLUB NURSERY and GARDEN CENTER
 3753 Country Club Rd. Sanford (West 20th St.) Ph. 323-2842

Community Gardens

They're Economical To 2 Million In U.S.

Nearly 2 million Americans are involved in community gardening, according to a recent poll. One reason is that com-

munity gardens have compelling economic advantages. The average home or community vegetable plot nationwide in 1977 was 750 square feet, cost about \$25 to get started and yielded \$375 in savings on food bills. These figures come from the California Council for Community Gardens.

In addition, community gardens are educational, have a revitalizing effect on tired neighborhoods and provide nutritional, as well as psychological, benefits.

Community gardens take many forms. At one project, the gardener rents a plot of land about 15 by 25 feet on the grounds of a local elementary school. The charge is \$15 a year and the program is coordinated by the city parks and recreation department.

In another project, funded by the federal government, teenagers and senior citizens are brought together. The heavy work is done by the teenagers and the harvest is

used by the senior citizens. If you are interested in starting a community garden you can write to: Gardens For All, Box 371, Shelburne, Vt. 05482. This is an information clearing house on community gardens.

Locally, contact your Cooperative Extension Service. Look in your phone book under county listings.

There are pitfalls that should be avoided if you want your community garden to be a success. One of the biggest obstacles to a productive community garden is the quality of the soil.

Soil in urban areas is commonly poor, because in many cases topsoil was removed years before. So soil building should be high on the priority list, and the

cooperative extension agents can be particularly helpful in this regard. Consider installing permanent raised beds. One garden used 12-inch-high raised beds filled with good soil mix. Pathways between the beds were mulched with tree chips.

The plants grew beautifully, and the weed problem, which can often be demoralizing, was greatly reduced.

Have a plan for growing your vegetables. Make certain that there is an adequate water supply available. Good vegetables need plenty of water.

Finally, good organization is important. New gardens need at least one person willing to be responsible for coordinating work days and making sure help is available when necessary.

These traffic patterns which tie together the various parts of the garden are important for practical as well as aesthetic reasons. When you plan walks and paths for your home, or plan to remodel those you already have, there are practical points to consider.

For example, ask yourself how guests will get from the curb to the front door. Will it be convenient to carry groceries from the car to the kitchen?

If there is a paved surface for trash barrels, bikes, the lawnmower? Are there play areas? Is there a dog run?

In other words, sit and think for a moment about the various types of traffic that go on around the house

SEE IT TO BELIEVE IT
DIXON ZTR MOWERS
 Zero Turning Radius
 90 DAY FREE FINANCING
 The DIXON model 308 is 30" of Mowbilly, town-lawn size that saves up to half the time you've spent riding other mowers.
KERSHAW'S BIKE & MOWER
 Hwy. 434, LONGWOOD 339-3400

TUCKER'S FARM & GARDEN CENTER
 115 N. LAUREL AVE. PH. 322-1235 SANFORD

Lawn and Garden SALE

WEED 'n' FEED Bahia - St. Augustine **10% OFF**

6-6-6 FERTILIZER WITH MINORS 50 Lb. **\$3.29**

8-2-8 CITRUS FERTILIZER 50 Lb. **\$4.35**

COMPOSTED COW MANURE 25 Lb. **\$1.99** 50 Lb. **\$2.99**

CHLORDANE 44% gal. **'25"** 73% 1/2 gal. **'22"** 73% gal. **'36"**

SEED • FERTILIZER • TOOLS
 SOFTENER SALT • PESTICIDES •
 WESTERN WEAR • HATS • BOOTS •
 PURINA RED ROSE FEED • FENCING •
 BABY CHICKS •

OPEN MON. THRU SAT. 8-5:30

Tucker's Farm & Garden Center



Community gardens such as this one are popular throughout the U.S. A recent survey showed the average community garden measures 750 square feet, costs about \$25.



There are a number of advantages to beds. Wood structures, such as shown here, can beautify your deck, patio or garden.

Leads For Putting-Down A Better Garden Path

Unfortunately, many people give little thought to the walkways, paths, ramps and steps that provide access to and from the home and surrounding garden areas.

A simple thing such as the walkway from the curb to the front door can provide an inviting entrance and set the mood for your home. Or it can be an uninteresting, narrow stretch of concrete that can only be described as dull.

The back of the house can be given added drama by incorporating such things as brick ramps, granite steps and wrought-iron or wood railings.

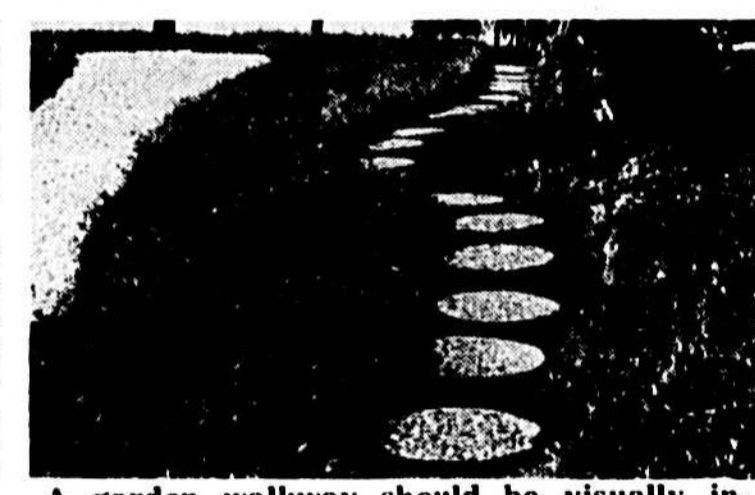
These traffic patterns which tie together the various parts of the garden are important for practical as well as aesthetic reasons.

When you plan walks and paths for your home, or plan to remodel those you already have, there are practical points to consider.

For example, ask yourself how guests will get from the curb to the front door. Will it be convenient to carry groceries from the car to the kitchen?

If there is a paved surface for trash barrels, bikes, the lawnmower? Are there play areas? Is there a dog run?

In other words, sit and think for a moment about the various types of traffic that go on around the house



A garden walkway should be visually interesting and inviting. Gentle curves function as well as a direct route and make for a better looking landscape. The heavy log cuts that curve through this garden make a practical walkway that is also pleasing to the eye.

function as well as a direct route and make for a better looking landscape. You also must take into consideration selection of materials, how suitable they will be for the area and their upkeep as well as original cost.

For example, the front walk might get a more expensive paving. Brick, flagstone and concrete with a special non-skid surface treatment would be good choices.

The reason for a more expensive front walk is that the square footage involved is relatively small. Therefore, it would not be that costly to provide a handsome entry to your home.

Container Gardening Can Be Rewarding

Gardening in containers is becoming increasingly popular in America.

But this form of gardening is not new. Plants have been cultivated in containers for centuries.

However, it's only in the last few years that the idea has really caught on.

Today there are plant shops, florists and nurseries in every section of the city.

The popularity of this form of gardening results in good part from the fact that people need living plants around them.

Plants help purify the atmosphere, they give us oxygen and they also absorb noise pollution. People also like the feeling being closer

to nature. You can get many satisfactions from container gardening. Putting a plant in a box, tub or pot immediately gives it new character. The plant changes from a mere bush to a shrub of distinction.

For example, a low growing juniper is just a ground cover in the garden. But it becomes a piece of art when it's elevated in a box, pinched and pruned for a windswept look.

Plants in containers also can be trained and led into new growth patterns. A clematis can climb to a height of 15 feet or more, be trained as a 3-foot-wide umbrella above a 12-inch

pot. Or ivy can be made to follow a curved wire and present a formal column.

But while container gardening can be easy and rewarding, it does require following certain procedures. First, you must give your plant the right environment to grow in. That means getting a good commercial soil mix and selecting a spot in the house where it will receive good light.

In addition, you must feed and water the plant regularly. And also protect it from invaders. Plants in containers are not immune from insect damage. Get a good spray to protect your plants

rent
 GARDEN AND YARD EQUIPMENT
TAYLOR RENTAL
 PH. 323-0910
 3159 ORLANDO DR. (Hwy. 17-92) SANFORD

GREEN THING
 VISIT US AND SEE OUR UNUSUAL AND EXOTIC INDOOR AND OUTDOOR PLANTS

HANGING BASKETS \$5.00 UP

GERBERA DAISIES \$2.35

AFRICAN VIOLETS \$5.00 UP

NELSON ROSES \$6.00 UP

FERTILIZERS ROSE FOOD INSECTICIDES PEAT

Jean Norris
 FERNS & EXOTIC PLANTS
 Specializing in Ferns, Hanging Baskets, African Violets (Standard & Trailings)
 401 Celery Ave. 322-3976 Sanford

SALE

RED BOUGANVILLEA SMALL \$3.95 LARGE \$8.49

LARGE 3 GAL. AZALEAS FORMOSA, PINK RUFFLE, PRESIDENT CLAY, G.G. GERBERING. REG. \$7.95 NOW \$5.95

ANNUALS ARE IN MANY VARIETIES

ASSORTED FLOWERING BUSHES

MULCH \$1.69

ASSORTED COLORS HIBISCUS \$2.95

FLOWERING BUSH DAISIES \$2.95

WE ALSO HAVE A LARGE SELECTION OF PALMS, TREES AND FERTILIZERS

Rhodes & Son
 NURSERY AND LANDSCAPING

QUALITY PLANTS ... SEE US!
 HWY. 17-92 LONGWOOD PH. 831-1245 or 329-3739 OPEN MON.-FRI. 9-5 SUN. 10-3



Thelma Smith, 1807 Palmetto Ave., Sanford, works at maintaining her yard, which accentuates the beauty of her house, trees, and shrubs and provides many other advantages.

A Well-Maintained Lawn Offers These Advantages

A healthy and well maintained lawn provides the ideal setting for any home. It is the living carpet which provides the background for your landscape and it accentuates the beauty of structures, trees, shrubs and flowers. A good lawn serves as a utility or recreational area, prevents erosion, reduces glare, lowers temperatures in the summer, maintains higher temperatures in the winter, reduces dust and increases property value.

The purely aesthetic value of a green well-manicured lawn is difficult to put in terms of dollars and cents; however, most people "want and appreciate a beautiful lawn."

Everyone would like a trouble-free or "perfect" lawngrass — one which always looks good but requires little or no maintenance. Unfortunately, no such lawngrass exists. In fact, few of the thousands of grasses in the world have qualities desirable for a lawngrass. A grass well-suited for lawn use will have several of the following assets: adaptability to the climate and soils of an area; good green color; fine texture; thickness; ability to withstand use and close mowing; resistance or at least some tolerance to insects, diseases and other pests; and finally, reasonable cost of planting and maintenance.

Six types of grasses have enough of these qualities to make them useful as lawngrasses in Florida. These grasses, listed in order of their state-wide popularity, are: St. Augustinegrass, Bahiagrass, Centipedegrass, Bermudagrass, Zoysiagrass and Carpetgrass.

These are the perennial, warm-season grasses used for permanent lawns in Florida. The best lawngrass is a matter of personal opinion.

At this time of year, most people become enthusiastic (or at least mildly concerned) about the condition of their yard. When do I fertilize? How to control all these weeds? How often

should I water? Which grass should I use to plant my lawn? Weeds are probably the most popular subject of lawn care. One should be aware that weeds are only an indication of an underlying problem. That problem is improper maintenance of a healthy turf. A healthy lawn resists weed encroachment. With proper lawn establishment and maintenance, most problems take care of themselves. Many people inherit turf problems when they purchase a new home that has an established lawn.

In that case, proper application of certain herbicides provide effective weed control and little turf injury. Accurate weed identification and knowledge of your turf's response to a given weed killer are essential in selecting the proper herbicide for the job.

Producing a healthy lawn requires a combination of practices such as maintenance of proper soil pH and nutrient level in the soil, control of plant diseases and insects, and proper watering and mowing practices. Some of these practices differ with the type of grass you have in your lawn. It is important to be familiar with the specific characteristics of your lawn grass.

Applications of beneficial dacthal granules in the spring are useful in preventing many grassy weeds (crabgrass, goosegrass, sandburs) and certain broadleaf weeds. Once weeds are already present, spray applications of 2,4-D dicamba or MCPP, coupled with a spreader stickler, should be applied depending on which turf species is present.

Other turf pests such as disease and insects can be controlled if proper identification of the offending organism is made. To summarize, the "best" lawngrass is that variety which is well adapted to your particular site, has the color, texture and density you desire, and can be kept in a healthy and attractive condition with the time, effort and money you are willing to spend.

Materials referred to in this article can be obtained at Tucker's Farm and Garden Center located at 1115 N. Laurel Ave. in Sanford.

Soil Test Wise Before Planting

If you plan to put in a lawn or any type of garden — or if you are having trouble with an established lawn or garden — it's wise to take a soil test.

It's easy to take a test and have it analyzed. The results will enable you to improve the soil for specific plants.

State universities offer test soil free of charge. If not, they charge only a nominal fee.

In the few states where this service is not available, contact a private soil test laboratory by looking in the yellow pages under "Laboratories — Testing."

If there is no listing call your county agricultural extension agent and ask for a recommendation.

Soils should not be sampled when they are wet, since it's difficult to mix the samples properly. According to the new book "All About Fertilizers, Soils and Water," a good rule to follow is this: If the soil is too wet to plow or cultivate, it's too wet for sampling.

Soil labs are set up in assembly line fashion, so they usually provide the customer with a written form, a pint carton for the sample and a shipping carton. Contact the laboratory before submitting the samples for instruction on

how they want them sent. The only tools you'll need are: a garden trowel, or a shovel and trowel, or a soil sampling tube.

You will also need a bucket and a pencil and notebook to record each sample. That way you can identify the samples when you get the lab report back.

When using a shovel and trowel, you push the shovel into the soil and then push the handle forward to open a wedge-shaped hole.

Scrape the sample from the side of the hole with the spoon — one stroke bottom to top.

If you are using a trowel, dig a small hole and then scrape soil from the side of the hole using one stroke, bottom to top. Scrape six to eight inches deep in garden soil, two to six inches deep in sod.

For lawn samples, take soil from 10 or more holes. For a new lawn, take soil from the top five to six inches. For an established lawn take samples from the top two to six inches of soil.

With trees or shrubs, take the soil from holes around the drip line that are six to eight inches deep. If only one or two plants are involved,

get soil from three different holes near each of the plants. If a number of plants are involved, get soil from one hole near each.

Sampling flower beds requires that you take soil from at least three or four holes in each 100 square foot area. The holes should be six

to eight inches deep. For vegetable gardens, take soil from 10 or more holes that are each six to eight inches deep.



Call Me First

If your house doesn't have air conditioning, but needs it. Or if you're thinking of replacing your old air conditioning system, call me first. I can save you money. The New Rheem® High-Efficiency Air Conditioning system can assist in saving you money on its operation. That's because it's energy efficient. It gives you more cooling power for every dollar you spend on energy to operate it. That's a savings you'll enjoy year after year. I can also probably save you money on installation.



HI-EFFICIENCY AIR CONDITIONING

Pays for itself with the energy it saves throughout the year.

The new Rheem Imperial Central Air Conditioning system is just what you need when the hot, muggy weather "blankets" our town. It's the most efficient system Rheem has ever built... so you know it will keep you and your family cool and comfortable.

SALES And SERVICE

A Complete Line Of Combination Heating And Cooling For Residential — Commercial & Industrial

322-6390

SANFORD HEATING & AIR-CONDITIONING

SINCE 1965
2609 SANFORD AVE.
SANFORD

Let it Bee SPRING

VISIT OUR GREENHOUSE

4 PK Tray ANNUALS & VEGETABLES **69¢**

3" Wax BEGONIA **99¢**

All Colors Ever Blooming

We Have One Of The Largest Selections Of Tropical And Exotic Plants In The Area We Invite You To Come In And Browse — Ask For A Free Lawn & Garden Book And Monthly Brochure

THE PRICES IN THIS AD ARE OUR EVERYDAY PRICES

HANGING BASKETS **\$2.50 UP**

AFRICAN VIOLETS **\$1.50**

Large Selection Of **OUTDOOR ORNAMENTALS**

Azalea — Gardenia — Ligustrum Viburnum — Podocarpus — Etc.

PELLETIZERS — SPRAYS INSECTICIDES — MULCH

NELSON ROSES
Grown Especially For Fla. Soil

\$6.00 AND UP

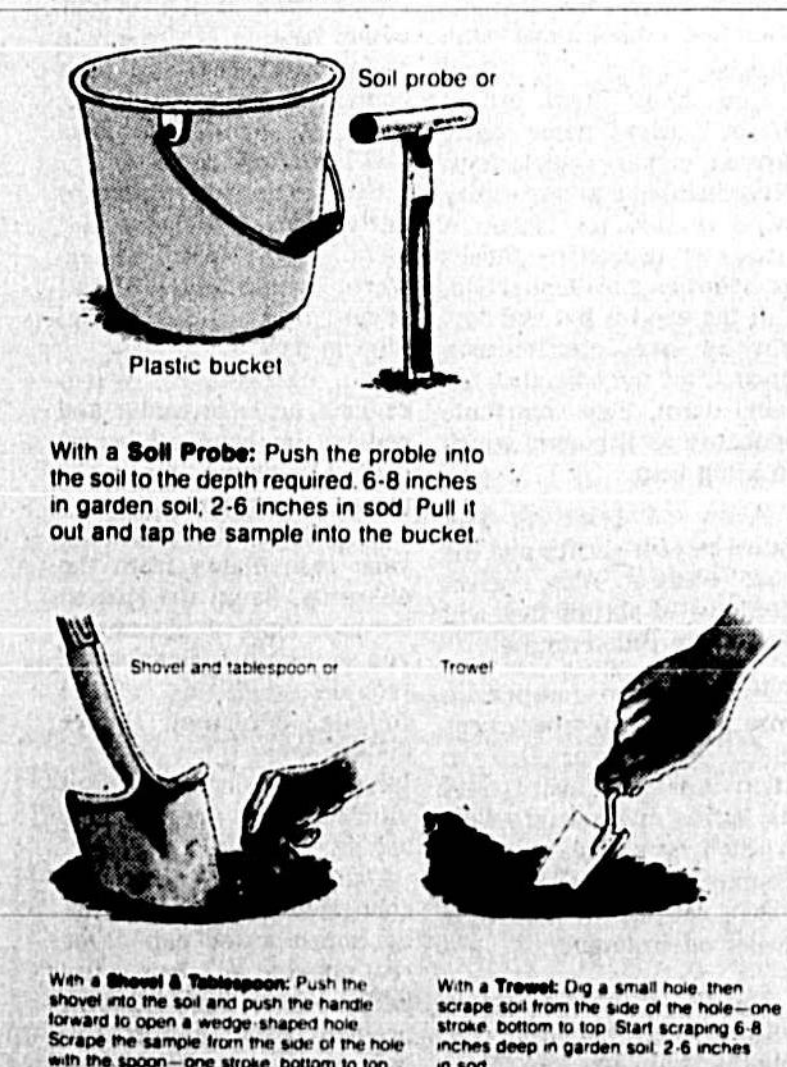
ALSO MINIATURE ROSES

CITRUS TREES ALL TYPES

Carefree Florist and Garden Center

OPEN MON. THRU SAT. 8:30-5:30
OPEN SUNDAY THRU MOTHER'S DAY
PH. 323-7150

2397 FRENCH AVE. (HWY. 17-92) SANFORD



SPRING SALE

1.99 DELUXE LAWN RAKE A new type rake with a special 4-way blade that rakes leaves, grass, and twigs into neat piles.	1.19 1.75 VALUE CRAWFORD'S YARD PRIDE LAWN RAKE A new type rake with a special 4-way blade that rakes leaves, grass, and twigs into neat piles.
88¢ 1.15 VALUE CRAWFORD'S YARD PRIDE LAWN RAKE A new type rake with a special 4-way blade that rakes leaves, grass, and twigs into neat piles.	7.88 19.95 VALUE NICHOLSON 6.99 7.50 VALUE NICHOLSON 5.88 7.50 VALUE NICHOLSON
4.88 6.75 VALUE LAWN RAKE A new type rake with a special 4-way blade that rakes leaves, grass, and twigs into neat piles.	4.99 6.25 VALUE WEED CUTTER A new type weed cutter with a special 4-way blade that cuts weeds, grass, and twigs into neat piles.
5.99 7.99 VALUE LAWN RAKE A new type rake with a special 4-way blade that rakes leaves, grass, and twigs into neat piles.	8.99 17.99 VALUE LAWN RAKE A new type rake with a special 4-way blade that rakes leaves, grass, and twigs into neat piles.
4.99 6.50 VALUE CULTIVATOR A new type cultivator with a special 4-way blade that cultivates soil, weeds, and twigs into neat piles.	11.99 14.25 VALUE POET HOLD DOORER A new type doorer with a special 4-way blade that holds doors open, weeds, and twigs into neat piles.
4.88 6.50 VALUE WEEDING HOE A new type weeding hoe with a special 4-way blade that weeds, grass, and twigs into neat piles.	7.99 10.00 VALUE LAWNSMOWER A new type lawnmower with a special 4-way blade that mows lawns, weeds, and twigs into neat piles.
5.99 7.99 VALUE GRASSMOWER A new type grassmower with a special 4-way blade that mows grass, weeds, and twigs into neat piles.	4.88 6.50 VALUE GARDEN HOE A new type garden hoe with a special 4-way blade that hoes gardens, weeds, and twigs into neat piles.
5.99 7.99 VALUE GRASSMOWER A new type grassmower with a special 4-way blade that mows grass, weeds, and twigs into neat piles.	5.99 7.99 VALUE GRASSMOWER A new type grassmower with a special 4-way blade that mows grass, weeds, and twigs into neat piles.

HOWE'S GLASS & SCREEN HARDWARE 323-1216
1401 S. French Avenue, Sanford

Although the rose is a hardy plant, it still requires protection. A hedge of protective shrubs provides a good shield against strong winds. If rose plants are suffering from black spots, powdery mildew or rust, they should be sprayed. A new liquid fungicide has been developed which will control these diseases.



Adaptable Rose Most Popular Flower

It's not hard to understand why the rose is our most popular flower. No other plant produces so many flowers over as long a period of time. No other plant family grows under so many different climatic and soil conditions.

Roses Tough

The rose is such a beautiful flower that many people mistakenly think it is also very delicate. The fact is it's tough and adaptable. If roses' tap roots sink deep enough, they will last for many years. Roses have been found growing on old abandoned farms that have been left neglected for as long as 50 years.

It's easy to revive old and uncared for roses. The first step, is to remove all broken, dead and diseased parts. Next, prune away weak, twiggy and inward-growing wood. Now, open up the center of the bush by pruning back to the vigorous outward-facing buds. Cut back the young wood to two to three buds. And then fertilize. Don't do any more than that or you might send the plant into shock.

Then when new growth begins in the spring, spray with a fungicide to control diseases such as black spot, rust and powdery mildew.

Best of all, they're easy to grow and you don't have to wait years for results, because most roses bloom the first year they're planted.

Shakespeare probably spoke for many gardeners when he wrote, "Of all the flowers, me thinks a rose is best."

While the rose is basically a hardy plant, it still requires protection. It will not demand a great deal of your time to give rose plants the care that will enable them to survive the elements and help them cope with disease.

The book "All About Roses" offers some basic tips on how to protect roses. Keep in mind that any strong wind is bad for roses. A hedge of protective shrubs provides an excellent shield. If the wind is hot and dry, shrubs are particularly good. They not only slow the wind down, they contribute moisture as it passes which is a big help.

Allow at least 10 feet between your shrubs and the rose bushes. Also, select deep-rooted shrubs that will do well in your climate.

Hot weather fatigues a rose plant. At temperatures above 90 degrees F., the plant uses food faster than its leaves can manufacture it. So if you live in a hot climate, don't prune roses as much as you would in a cooler environment. Don't forget that not enough water can cause wilt, too much water can cause rot, alkaline soil can cause yellow leaves. Make sure the problem is not a cultural one before you decide to spray.

For Lawns

How To Stop Insect Damage

Hundreds of types of insects live in the typical lawn. Many are hardly visible and do very little harm.

But there are some pests which can invade your lawn and do serious damage. For example, the sod webworm, grubs of various beetles and chinch bugs can destroy a lawn within a short time if conditions are right for their development.

The two important questions for the homeowner are: How can you tell if the lawn problem is being caused by insects? And if it is caused by insects, how can the damage be stopped?

To diagnose the problem, the first thing to do is look. Look very closely. If you get down on your hands and knees, chances are you will be able to spot the invader in action.

Some of these pests appear at night, others in sunny corners and still others in a shady spot. A book such as "All About Lawns," describes the habits and characteristics of the most common lawn pests and tells how to control them.

For example, sod webworms start working on a lawn in late spring. They chew grass blades off just above the thatch line. As a result there will be small dead patches about 1 to 2 inches in diameter.

If nothing is done to stop these pests, the damage will spread until the lawn is covered with large, irregular dead patches.

Sod webworms feed at night. Look for them by carefully breaking apart the damaged areas with your fingers. They can be forced to the surface of the grass by drenching a one square foot area with a gallon of soapy water.

To control these insects use an insecticide such as diazinon soil and turf insect control. It comes in ready-to-use granules and can be applied with a lawn spreader.

Another pest is the armyworm. Enough of them, and your grass can be eaten right down to the soil level.

Like the sod webworm, their calling cards are round, bare areas in the lawn.

They are yellowish white and can further be identified by an upsidown "V" on their heads. Control them with a product that contains Dursban.

Lawn damaging insects can be grouped according to where they are most active, above or below the ground, and the type of damage they do. Control methods are different for each group.

Chinch bugs, leafhoppers, spider mites and similar pests live above the soil surface and damage the lawn by sucking plant juices.

To control them, first mow the lawn and remove clippings. Then water heavily. Wait until the grass blades are dry and then apply the insecticide according to label directions. After the application, don't water for two days.

Sod webworms, cutworms, armyworms and fiery skipper larvae live at the soil surface and feed on the leaves.

To control, mow the lawn, remove clippings and water heavily. When the grass blades are dry, apply the insecticide according to label directions. It's best applied in late afternoon when the insects are active.

Grubs, wireworms and sod webworms live below the surface and feed on roots.

To control, mow the lawn and remove clippings. Apply insecticide according to label directions and water heavily after spraying. However, not so heavily that you wash away the insecticide. Fertilize to aid the recovery of the lawn if the season is appropriate.

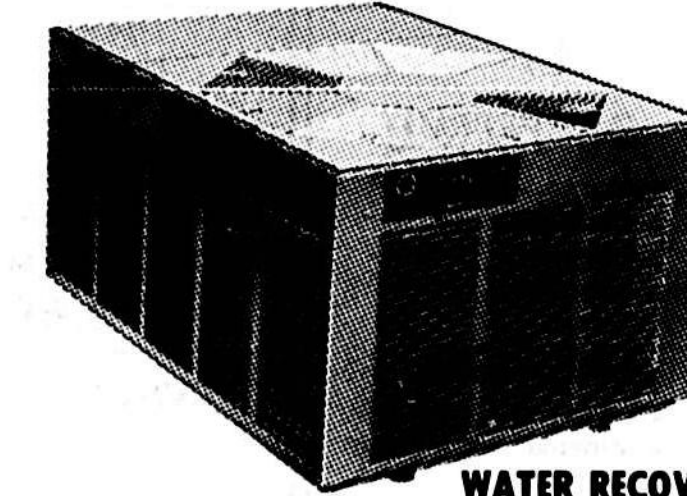
A final thing to remember: A healthy, well-maintained lawn is one of the best protections against insects since it will be less subject to serious damage.

Remodeling?

SAVE ENERGY!
install the



NEW DAY Heat Pump



WATER RECOVERY UNITS-ELECTRONIC AIR CLEANERS

All-season COMFORT

Rheem's New Day Heat Pump is designed to keep you cool in the summer, warm in the winter. For a new day in all season comfort and energy conservation, replace your present system with a new Rheem Heat Pump. Do it now... you'll be happier later.

NOTE: Rheem's New Day Heat Pump gives you as much as 2 1/2% useable heat for every penny's worth of electrical power input at ARI Standard rating point of 45 F. Get all the Rheem facts.

YES: I would like to get all the facts about Rheem New Day Heat Pumps. I understand that I am under no obligation.

NAME _____

ADDRESS _____

CITY _____ STATE _____ ZIP _____

PHONE _____



JACK FROST

COOLING & HEATING INC.

2620 IROQUOIS AVE. SANFORD

322-0208

TAKE A FLORIDA
ORANGE JUICE
BREAK

Inflation It Keeps Galloping

WASHINGTON (UPI) — Producer prices surged 1.5 percent in February as energy costs raced ahead at the fastest pace in six years, the government reported today.

With the exception of food, the cost of items at the wholesale level climbed sharply across the board, the Labor Department said in its new inflation survey.

February's large rise — which figures to a 19.1 percent compounded annual rate — followed a 1.6 percent price jump in January. Thus, the first two months of 1980 amounted to the highest back-to-back increases in inflation at the wholesale level since October-November, 1974.

"There isn't any evidence of anything getting better," said Labor Department economist John Early.

Interest Prime Rate Jumps

NEW YORK (UPI) — Citibank, the nation's second largest commercial bank, today raised the prime rate half point to a record 17 1/2 percent.

It was the sixth time the rate has been boosted this year and some analysts believe the key rate could climb to 20 percent. Citibank was the first major bank to reach the all-time high of 17 1/2 percent.

Chairman Walter Wriston said Citibank's current cost of funds indicated a need for a higher rate but it was restricting the increase to a half-point since it continues to base its rates on an average over time.

Because the prime, the rate charged the most creditworthy corporate customers, is a minimum rate, other borrowers can expect to pay much more

Jobs Rate Unchanged

WASHINGTON (UPI) — Despite widespread predictions unemployment will rise this year and next, the nation's unemployment rate was virtually unchanged in February, the Labor Department reported today.

The jobless rate fell from 6.2 percent in January to 6 percent last month, but analysts said that, with the rounding off of the numbers, the change was not significant.

The number of unemployed persons was 6.3 million in February, 100,000 fewer than the month before.

Economists, including the administration's economic advisers, have widely predicted a slowing of the economy — which some deem to be a recession — will push the jobless rate up by as much as 2 million persons during the next two years.

The Congressional Budget Office predicts a jobless rate of 6.3 percent to 7.3 percent later this year, rising to between 7 and 8 percent in 1981.

The latest figures do not contradict those predictions, since a rise in unemployment usually lags behind an economic slowdown. But they are one more clue the economy right now is performing better than many economists gloomily had predicted.

Jobless rates were virtually unchanged for most categories of workers. The February unemployment rate for adult men was 4.6 percent, adult women 5.7 percent, all teenagers 16.5 percent, whites of all ages 5.3 percent, blacks 11.5 percent.

12—Evening Herald & Herald Advertiser, Sanford, FL

Thursday, March 6, 1980

CRYSTAL LAKE NURSERY

Established in 1939
Owned and Operated
by the
SMITH FAMILY
for over
41 YEARS

IT'S LAWN AND GARDEN TIME

CRYSTAL LAKE NURSERY'S OWN
GREAT WHITE SHATTUCK GRAPEFRUIT
Largest of All Citrus \$9.95
Perfected over years of experimentation by the Smith Family

Your Choice

KEEFER PEAR	FLORIDA WHITE DOGWOOD	
ANNA APPLE (Red)	6' to 8' \$39.95 INCLUDES PLANTING	
INSHERE APPLE (Yellow)	5' to 6' \$8.88	
MULCH	CRYSTAL LAKE NURSERY POTTING SOIL	
Bushel Bag 96¢	Bushel Bag \$2.40	
JAPANESE BOXWOOD	DWARF OLEANDER	
6" to 8" 96¢	Pink Variegated \$2.88	
HYBRID CROTONS	SPRINGIER FERNS	
Gal Size \$2.38	Bushy Gal. Size \$1.92	
DWARF GARDENIA	ARDESA RED BERRY	
\$2.88	\$2.88	
CONFEDERATE JASMINE	MIXED CAMELLIAS	
Full and Bushy \$2.88	Gal. Size \$2.88	
DRACENA MARGINATA Tri-Color	ARECA PALM	FIGUS BENJAMINA "Weeping Fig"
5' to 4' \$9.95	5' to 4' \$9.95	3' to 4' Full \$3.84
PHOENIX ROEBELENI Pigmy Date Palm	NORFOLK ISLAND PINE	PONKANS Bearing Size
3 Gal. Size \$9.95	4' to 5' \$3.84	\$9.95
SAVANNAH HOLLY	VIBURNUM	STAGHORN FERN
4' to 5' \$9.95	Gal. Size \$1.92	Beautiful & Full \$9.95
BANANA SHRUB 3 Gal. Size	REGULAR BORDER GRASS	MONDO BORDER GRASS
\$5.95	If you need a lot we'll make you a real good deal!	\$1.92

1980 SPRING SALE

BEARING SIZE CITRUS TREES

ORANGE	TANGERINE	GRAPEFRUIT
• Pineapple • Temple • Navel • Parson Brown • Hamlin • Valencia • Satsuma	• Robinson • Dancy	• Marsh Seedless • Pink Seedless • Duncan • Red Seedless
SWEET KUMQUAT	YANGELO	LEMON
KEY LIME	• Nova • Mineola (Honey Bell) • Orlando	• Hyers • Ponderosa

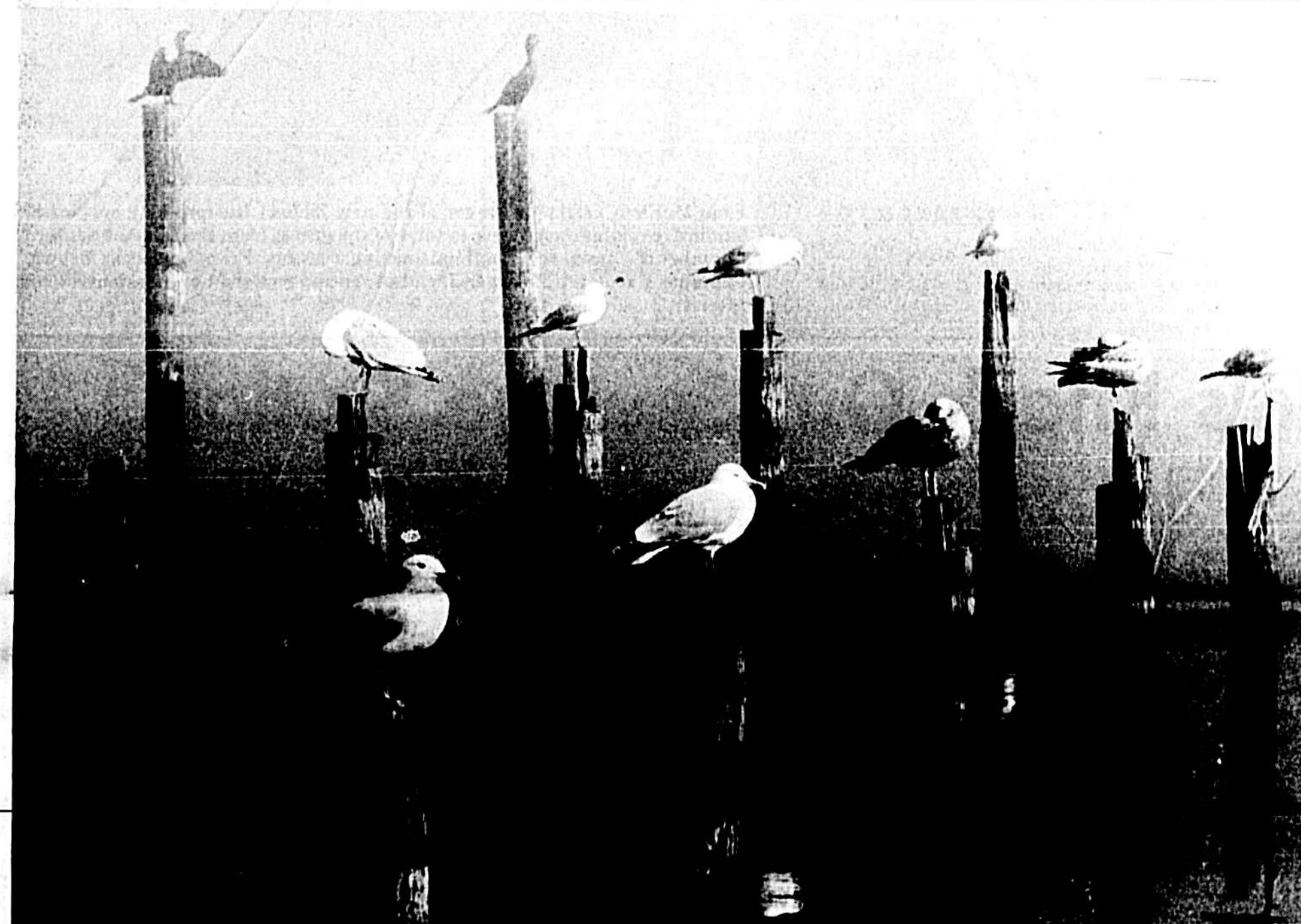
Your Choice **\$6.95**

OVER 18,000 AZALEAS TO CHOOSE FROM

FIELD GROWN DWARF AZALEAS RED RUFFLE	SWEETHEART SUPREME
and featuring the ever blooming	
\$2.88	\$2.88
CALIFORNIA SUNSET	
LARGE GROWING AZALEAS 3 and 4 Gal. Size 5 Colors \$5.95	DWARF AZALEAS 10 Colors \$1.44
FIELD GROWN LITTLE JOHN AZALEAS Thick and bushy with red foliage \$2.88	
EVERBLOOMING DUC DE ROHAN AZALEAS Large Gal. Size \$2.88	
LARGE GROWING LAVENDER FORMOSA AZALEAS Large Gal. Size \$1.92	

CRYSTAL LAKE NURSERY Lake Mary

WE GIVE YOU A SPECIAL SERVICE WITH ALL LANDSCAPING — VISIT US AT THE NURSERY FOR DETAILS.
OPEN 8 TO 5 TUESDAY THROUGH SUNDAY-RAIN OR SHINE-CLOSED MONDAY 322-2799



FINE FEATHERED FOG
You know the fog is thick when the birds are walking instead of flying but this morning along the Sanford waterfront, the seagulls were not even doing that. Perching on top of some old pilings was their favorite activity until the sun came out and burned off the fog. Although the National Weather Service posted travelers' warnings from 4 to 10 a.m., the Florida Highway Patrol reported no major accidents due to the fog.

Harassed Lake Mary Couple Gets Help

By DONNA ESTES
Herald Staff Writer

A couple, complaining that neighborhood harassment could wind up with someone being seriously hurt, received a promise of action from Lake Mary Mayor Walter Sorenson Thursday night.

Jack and Lorella Eltonhead, of 263 First St., told city councilmen that harassment, which began nearly a year ago, has intensified in recent weeks.

Eltonhead and his wife said persons who do not live on his street have adopted a number of dangerous practices including driving their cars straight at the couple as they are traveling down the street, veering just moments before impact. He said at least two drivers have also narrowly missed striking them as they walk across the street as well.

Mrs. Eltonhead said the harassment began last summer after stop signs were placed in the neighborhood as petitioned by her neighbors and her.

"It is getting to the point where I'm ready to pull one of them out of his car," Eltonhead said. Saying he is originally from Philadelphia and he saw tactics of this sort used in that large northern city, Eltonhead nevertheless refused to publicly identify the persons involved.

"It's getting bad and I don't want it to get worse," he said today, still refusing to identify the motorists involved.

Mrs. Eltonhead told the city council Thursday night the harassment began last summer after stop signs were placed in the neighborhood as petitioned by her neighbors and her.

Eltonhead said he likes Lake Mary and has tried to be a good citizen by participating in the volunteer fire department. Mrs. Eltonhead said she has talked to the parents of the drivers involved without success.

Councilman Francis Mark urged Sorenson to discuss the problem with Police Chief Harry Benson, seeking action. Sorenson said stop signs stolen from the street several times over the past months will be replaced.

"We may be able to get a stop sign that will remain," Sorenson told the couple, "but we can't make them love you."

Eltonhead suggested the city ask the sheriff's department to assist in patrolling the neighborhood.

In other business, the council gave Terry Bennett and his wife the 55 days time remaining in their building permit to correct deficiencies in the house they are building on Pine Circle Drive.

City Manager Phil Kulbes is to provide the couple with a new check list of construction deficiencies on Monday. Kulbes has been ill and away from his city hall office. Building Inspector Vince Butler told the councilman most of the 17 deficiencies noted earlier have been corrected.

Ex-Marine Is Used To Being A Hero

NEW YORK (UPI) — As flames licked the building, Russell Cunningham shouted five times for a frightened 10-year-old boy to jump from a second-floor window. The bodybuilding champ and ex-Marine braced himself and the boy plunged from the ledge.

"He was just a little kid about 100 pounds and I caught him," Cunningham said Thursday. The boy, who fell 25 feet, was unharmed.

Cunningham, 32, who has always wanted to be a firefighter, said he "just knew" he would save the boy.

"I didn't think about it," he said. "I was just helping out anybody."

It wasn't the first time for the 6-foot, 200-pound Cunningham, who once pulled a couple from a burning car and was shot on two occasions trying to rescue women from attackers.

About 11:30 a.m. Thursday, Cunningham was driving with two friends in Brooklyn when he saw the fire.

"We arrived in the nick of time. There were people there, no firemen, just people standing around doing nothing. We broke a first-floor window to let the smoke out and helped this little girl get out."

The girl told Cunningham that her brother, Andrew Gimali, was on the second floor. "I looked up and there was the kid," he said. "I yelled 'jump' five times before he jumped."

That was after Cunningham tried to run into the two-family house, but couldn't because of the flames.

Cunningham's uncle is a police officer in the South Bronx and his father is a firefighter in Brooklyn.

"I was very proud to hear of what my son has done, but I'm not very surprised," said Russell Sr., an 18-year veteran of the department.

The younger Cunningham was a corporal in the Marines and "when I got out two years ago, I got on the list to be a fireman. I missed the cop test."

Two years ago, he said, he and his friends pulled two people from a burning car wreck in Miami.

"That was two years ago," he recalled. "We saw this car turned upside down. We didn't think we just ran and pulled out the two people inside."

Eight months ago, while working as a bouncer in a Brooklyn disco, he rescued a girl who was being accosted by two men. One of the men pulled out a gun and "I smacked it out of his hand. But the other guy shot me in the chest." Cunningham wasn't seriously injured.

A few months before that, Cunningham was shot in the arm trying to defend a friend's girlfriend from four men who tried to attack her in a Brooklyn bar.

Cunningham's bravery is due, in part, to his physique. In 1976, he won the Mr. Staten Island, Mr. New York and Mr. Teenage America muscle-building contests.

"Before I was shot I had a 46-inch chest," he said. "I was in the hospital for awhile but now I'm ready to go back to the contests."

Iran Thinks About Moving The Hostages

By United Press International

Iranian Foreign Minister Sadegh Ghotbzadeh said today the 50 American hostages may be moved from the U.S. Embassy on Saturday to an undisclosed location where they could be interviewed by the U.N. commission investigating the regime of the deposed shah.

But a spokesman for the militants said they were certain Ayatollah Ruhollah Khomeini "would not permit the hostages to go to the United States until the shah comes back to Iran."

Thousands of Iranians demonstrated outside occupied U.S. Embassy compound today, shouting their support of the militants and imploring them not to turn the hostages over to the Revolutionary Council.

Asked about the public support, a militant spokesman said though the militants "favored this demonstration" and that "the support of the people can change many things," the militants still intended to turn the Americans over to the government.

The BBC reported from Tehran that a prayer meeting today passed a resolution that demanded the extradition of the shah "and the recovery of the riches he plundered. In carrying out this command of the Imam, we will not retreat a single step."

As for when the Americans might be released, the spokesman said, "We have not received any message from them (the Revolutionary Council), we have not received any formal decision so I can't say anything yet about it."

Asked if the militants were just awaiting word from the Revolutionary Council to turn over the hostages, the spokesman said, "Yes, yes, exactly. We are awaiting the Revolutionary Council to give us word."

Ghotbzadeh's statement that the hostages may be moved on Saturday was reported from Tehran by the British Broadcasting Corp. He did not say where they would be moved other than that it would be a location where the U.N. commission would talk to them.

U.N. Commission member Louis-Edmond Bechet of France, stopping in Rome, told NBC News that the commission would not be able to visit the Americans before Sunday "but perhaps later. Until Thursday, we were pessimistic and did not expect to see them at all. And then we got the good news."

The major breakthrough toward ending the 124-day-old crisis came Thursday when the militants suddenly decided to hand over custody of the hostages they have held since the occupied U.S. Embassy in Tehran.

Jurists on the U.N. panel trying to

arrange the hostages' release were packing their bags to leave when the Iranian ambassador announced a possible dramatic change of heart was announced.

"We ask the Revolutionary Council to take over the hostages — that is, the American spies — from us and deal with them in any way it deems appropriate," the militants said. "We regard our responsibility for the hostages as an end."

Tehran Radio reported crowds of people gathered in front of the U.S. Embassy afterwards and urged the students to continue to hold the Americans.

Officials in Washington and at U.N. headquarters in New York reacted with guarded optimism to news of the turnover, fearful that substantive comments could hurt delicate moves toward resolving the matter.

Informed diplomatic sources at the United Nations in New York said "if all goes well" an even more significant breakthrough could come long before the end of Iran's parliamentary elections in April, which has been mentioned by Ayatollah Ruhollah Khomeini as a possible date for the release of the hostages.

Without explaining, the sources said they were hopeful the hostages could be released perhaps as early as next week.

There was no definite word on when the turnover would take place or what would happen to the hostages afterward. But in West Germany, U.S. military sources said the Wiesbaden Air Force hospital, where female and black hostages released in December were taken, was being readied.

White House press secretary Jody Powell said President Carter met with top aides and "we've noted the reports from Tehran and we are watching the situation very carefully."

The dramatic development in Tehran came hours after the U.N. Commission investigating charges against the shah threatened to leave because its efforts to visit the hostages had been stymied. The commission was persuaded by Foreign Minister Sadegh Ghotbzadeh to give the Revolutionary Council another "two or three days" to arrange the visit.

The U.N. Commission's spokesman, Samir Sanbar, in a telephone interview from London, said "it was a logical assumption" the five-member panel would see the hostages within the three days set by Ghotbzadeh, but added cautiously, "I'd rather not say anything definite at the moment."

In Panama City, the deposed shah's private secretary, Robert Armas, said demands by a Panamanian lawyer for the former monarch's extradition to Iran have no basis in Panamanian law.

Longwood Rink Robbed

A lone thief knocked down the manager of a Longwood skating rink and made off with \$800 late this morning, deputies report.

An employee of Skate City, on Dog Track Road in Longwood, was attacked by a Panamanian lawyer for the former monarch's extradition to Iran while he was on duty at the rink.

The manager, who was on duty at 10:30 a.m. today, a lone man attacked, grabbing the employee's money bag filled with \$800 in cash.

Today

Action Reports	2A	Editorial	4A
Around The Clock	4A	Florida	4A
Bridge	4A	Horoscope	4A
Calendar	10A	Hospital	4A
Classified Ads	10-11A	Nation	2A
Comics	8A	Ourselves	8A
Crossword	8A	Sports	6-7A
Dear Abby	8A	Television	8A
Deaths	12A	Weather	2A
Dr. Lamb	8A	World	2A