

SANTA '70



Dear Santa Claus,
I want a play mini bike and a movie projector for Christmas.

My good friend,
Darrell Jerome Young,
1821 Lincoln Ave., Sanford
Dear Santa Claus,
I want a play mini bike for Christmas. And I also want a wagon that hauls something. Your pal and buddy,
Lee Young Jr., 3
1821 Lincoln Ave.
Sanford

Dear Darrell and Lee,
Be good boys and don't fight and I will try to bring the things you want.
Love, Santa

Dear Santa Claus,
I want that robot right there, that space ship with the door that opens and I want a Teddy bear. I want a Johnny Lightning racing truck. I want a tallie waffle. I want a toy car and a red car, and a dynamic wheel. I want a talking clock. I want some hot wheels. I will leave you some kind of food on the table. I like you. I love your deeds. I want to wish you a Merry Christmas. I am five years old.
Love,
Robby Phagan Sanford

Dear Robby,
You have a pretty long list and I have a lot of boys and girls to take care of, but I will try to bring something to make you happy Christmas morning. Thank you for the snack.
Love, Santa

P.S. Rudolph, Donner, Hiltz, and the rest send their love.

To Giovanni, I am 5 1/2 years old and I have been a good boy for one whole year. Every single day.
You get the most mail than anybody, so I want just a big go cart for Christmas, and new mittens. I have a baby sister. Her name is Dallas. Her name's walk, but her cat smile. Her cat's play with toys, maybe you can bring her a doggie that barks, a new live one, cause I don't have none. I want it outside and a moo cow thing, you put pictures on it. A new per board this side you found and this side you write and two chairs on it, and some paper and airplanes that stay in the sky by themselves. And that's all. I love you.
Love,
Dominick
Like my mommy has
Dear Dominick,
I am glad to hear you have been a good boy for a whole year. That is a long time for any little boy. So I'm sure you deserve some nice Christmas toys. I will remember your baby sister, Dallas, too.
Love, Santa

Dear Santa Claus,
I would like a Cresty doll with a blue dress, a new purse for Sunday School and an organ to share with my sister Lisa. To like a play camera and anything you'd like to bring me. I am 5 years old and live on Grandview Avenue.
I love you.
Melody Sanford

Dear Melody,
Thank you for your nice letter. Be a good girl and share with your sister, Lisa, and I will try to bring you the things you want.
Love, Santa

Dear Santa Claus,
I would like a wig. I would like a Barbie doll. I would like a record player. I would like anything else.
Love,
Cathy Byrd
599 First Street
Lake Mary

Dear Cathy,
You are learning to print very well. Thank you for your letter.
Love, Santa

Dear Santa,
I want some toys—a Baby Go By By and a Barbie, bicycle, and dog that barks.
Love, Santa

LINEOLEUM RUGS
Variety of Patterns \$2.99 5.99
ARMY - NAVY
SURPLUS STORE
310 S. Sanford Ave. 322-5791

AN INDOOR-OUTDOOR SEASON IN THE SOUTH
Winter wears many faces in the South. Consider skiing on firm-packed snow in the mountains of Tennessee... tracking winter games through the woodlands of Alabama and South Carolina... golf at famed coastal resorts in Georgia and Mississippi... fishing, boating and water-skiing in the gentle clime of Florida. And, anywhere and everywhere in the sun-drenched South, the continent's most cosmopolitan beaches are beckoning.

It's a pleasant scene. And your friends in the holiday industry are a part of it. Walker Truax, county finance officer and assistant superintendent, said Seminole had hired more teachers this year in an effort to reduce the ratio and added that the percentage had been reduced from 30 in the past few years by hiring additional teachers. Truax said Seminole just didn't have the money in each school district or county.

County statistics listed 792 teachers for the 19,608 pupils contained in the 28 schools. The state average was 23 pupils per teacher, according to Christian, who advised the class size varied from the state norm in each school district or county.

In determining the ratio, supervisors, principals, librarians, guidance, psychological and other non-teaching personnel were excluded.

The county with lowest teacher-pupil ratio was Glades County, which showed a low 17.85 percentage. Walker Truax, county finance officer and assistant superintendent, said Seminole had hired more teachers this year in an effort to reduce the ratio and added that the percentage had been reduced from 30 in the past few years by hiring additional teachers. Truax said Seminole just didn't have the money in each school district or county.

Christian listed two neighboring counties as much better with high ratios. These included Orange, which is fifth in the state with a 25.55 percentage, and Broward, with 24.14 average for the eighth highest spot.

The Sanford Herald
Wednesday, December 2, 1970 — Sanford, Florida 32711
63rd Year, No. 67
Price 10 Cents

County Teacher Load Near Tops

Seminole County had the second highest teacher to pupil ratio in the state during the 1969-70 school year. This was revealed in a compilation of information on the number of teachers in the state's schools released by State Education Commissioner Floyd Christian.

Only Baker County with an average of 25.73 pupils for every teacher is higher than Seminole's 25.64 percentage. Christian said 1,866,936 pupils were enrolled in the state with 68,014 teachers delegated to instruct them a year ago.

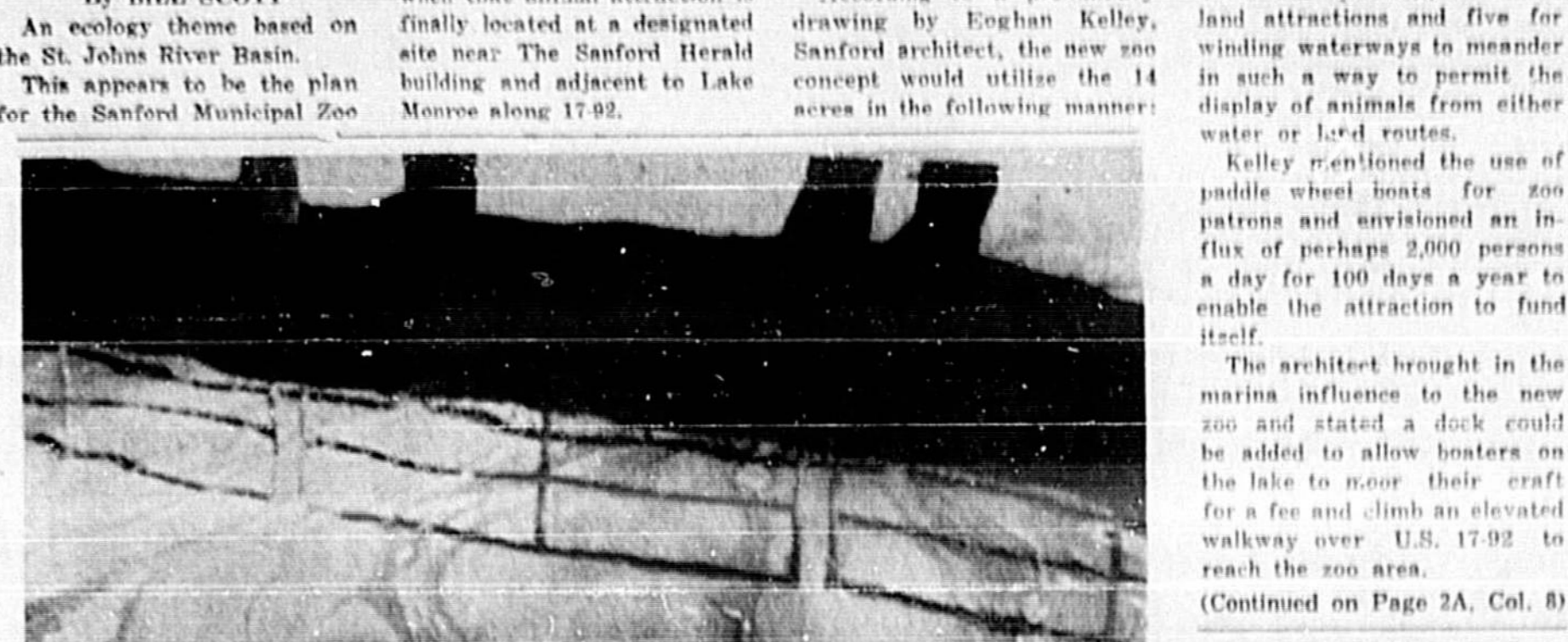
County statistics listed 792 teachers for the 19,608 pupils contained in the 28 schools. The state average was 23 pupils per teacher, according to Christian, who advised the class size varied from the state norm in each school district or county.

In determining the ratio, supervisors, principals, librarians, guidance, psychological and other non-teaching personnel were excluded.

The county with lowest teacher-pupil ratio was Glades County, which showed a low 17.85 percentage. Walker Truax, county finance officer and assistant superintendent, said Seminole had hired more teachers this year in an effort to reduce the ratio and added that the percentage had been reduced from 30 in the past few years by hiring additional teachers. Truax said Seminole just didn't have the money in each school district or county.

Christian listed two neighboring counties as much better with high ratios. These included Orange, which is fifth in the state with a 25.55 percentage, and Broward, with 24.14 average for the eighth highest spot.

St. Johns Ecology Tied In With Zoo



Mental Services Reported

Four for parking, five for land attractions and five for winding waterways to meander in spirit of a way to permit the display of animals from either water or land routes.

Kelley mentioned the use of public wheel boats for zoo patrons and envisioned an influx of perhaps 2,000 persons a day for 100 days a year to enable the attraction to fund itself.

The architect brought in the marina facilities to the new zoo and stated a dock could be added to allow boaters on the lake to moor their craft for a fee and climb an elevated walkway over U.S. 17-92 to reach the zoo area.

(Continued on Page 2A, Col. 8)

20 SHOPPING DAYS TO CHRISTMAS

Weber, Jaques Elected

By ANN RILEY
LONGWOOD — With the election Tuesday of Mrs. Agnes Weber, with 184 votes, the Longwood City Council now has its first woman member. Mrs. Sandra Thompson, elected last year, is the first woman to serve in that capacity.

Eugene Jaques was re-elected to the other council vacancy with 216 votes.

Robert Kallstroff, appointed for the office of mayor, received 319 votes, while Mrs. Onnie Shomate, city clerk, also without opposition, received 354.

Although no candidates filed for the office of tax collector, Roy Shomate, former tax collector, was elected by two writ-in-votes to the position of tax collector although by state law the duties of this office are now carried out by the county auditor. Shomate had previously resigned from the job when the council did away with the salary.



Mrs. Agnes Weber

Oviedoans Combat Litter

To aid the effort to combat litter, the Oviedo Chapter of the Cooperative Education Clubs of Florida (CECF) will have a bottle drive Saturday. The drive will be conducted at the Oviedo, Chulavita, Geneva, Goldenrod and Eastbrook areas of Seminole County.

Members of the Diversified Training Program of Oviedo High School, which make up the local chapter of CECF, will go from house to house during the morning to collect bottles which can be redeemed for cash from the various bottling companies.

The drive assured pickup contact one of the following people in your area: In Geneva and Chulavita call Rick at 369-3381; Mike at 365-2002; Joyce at 365-3381 or Daryl at 365-7919. In Goldenrod and Eastbrook call Ed at 671-5253; Debbie at 671-1485 or Linda at 365-5006. For additional information call Oviedo High School at 365-5251.

County Beats Dead Horse

By LARRY NEELY
taken Commissioner Greg Drummond and a Commission meeting by the carcass of a horse.

The situation arose when Drummond told Alexander that there had been a complaint to County Sanitarian Val Robbins that a horse had been struck by a car on SR 436 west of Ponce de Leon. The horse crawled off the highway right of way onto private property before it died.

Drummond said he considered it a health hazard and in that case the county sanitarian had the authority to order its removal. Alexander argued that it wasn't the county's business since it was on private property and if the county involved itself in this situation then it should involve itself in other areas.

Dr. Metz answered that the clinic has been in operation only since August and that amount would gradually increase.

Alexander disputed this remark with the contention that the center is presently nearing peak capacity, and yet the clinic is still collecting only a fraction of what was expected. He went on to note that county taxpayers' funds are involved in the operation of the center, and that with the extremely low collection when the case load is doubled, there will be a deficit in operation.

Sanford Tax Area's Top

Sanford property owners are paying the highest tax millage in Central Florida and perhaps the highest in the state, according to a breakdown of tax information.

The average Sanford millage is 19.20 mills assessed by Seminole County to the 16 mills assessed by the city, is paying 35.20 mills. The highest millage listed in the eight-county area is 35.20.

New Smyrna Beach is second highest in the area with a 15.2 city millage but Volusia County is assessing lower than Seminole by a mill to place the total millage paid by property owners of the beach city at 25.65 mills.

These figures include all debt service millages, district fire, mosquito and hospital millage.

An Orlando home owner is assessed 19 mills, which included with the 28.20 county millage, amounts to a 20.20 total assessment.

No Millage

Two Seminole County cities enjoy no millage assessments while two other cities are assessed among the lowest in the eight-county area that includes Orange, Brevard, Lake, Marion, Osceola, Polk, Seminole and Volusia.

They are Casselberry and North Orlando with no city assessments and Altamonte Springs and Longwood with five and 2.97 mills, respectively.

Other than New Smyrna Beach, other city assessments in Volusia County include Daytona Beach, 13.90; DeLand, 12, and Ormond Beach with 7.43 mills.

Properties owners in Ocala are assessed but six mills to include with the Marion County assessment of 16.93 for a total of 22.93.

Osceola Lowest

Figures disclose that Osceola County property owners are assessed less than any of the other seven counties with 11.79 mills.

This means that a Kissimmee property owner is assessed a total 19.79 mills, when his city assessment of 8.00 mills is included along with his county millage.

Brevard County is nearest Seminole with 15.92 county assessed mills but cities in Ocala, Cocoa Beach, Melbourne and Titusville assess far less than Sanford, with the first three less at 16 and Titusville even less at 8.7 mills.

WEDNESDAY Headlines Inside THE HERALD

World News

Pope Paul prays with Australian leaders of other faiths as a small band of militant Protestants parade outside in protest. (Page 12C)

South Vietnamese infantrymen advance through mangrove swamps and bamboo thickets on the edge of the U Minh forest in Vietnam's deep south. (Page 2A)

Sports World Thrillers

Seminole High cagers defeated in first outing by Lyman Greyhounds. (Page 1B)

S.C. wins again as Kearse leads scoring. (Page 2B)

Statewide Developments

Fraudulent travel and correspondence schools offering diplomas in trades and occupational courses are flourishing in Florida, State Sen. Frederick Karl tells a Federal Trade Commission. (Page 5A)

Associated Industries of Florida lobbyist Jack Lee reaches into his picnic cooler to pull out a frozen red snapper, purchased at a bargain price compared with state figures. (Page 5A)

Daily Features

Area deaths... Entertainment... Bridge... Calendar... Classified ads... Hospital notes... Public notices... Crossword puzzle... Society... Dear Abby... 10C-11C... 11C-12C... 12C-13C... 13C-14C... 14C-15C... 15C-16C... 16C-17C... 17C-18C... 18C-19C... 19C-20C... 20C-21C... 21C-22C... 22C-23C... 23C-24C... 24C-25C... 25C-26C... 26C-27C... 27C-28C... 28C-29C... 29C-30C... 30C-31C... 31C-32C... 32C-33C... 33C-34C... 34C-35C... 35C-36C... 36C-37C... 37C-38C... 38C-39C... 39C-40C... 40C-41C... 41C-42C... 42C-43C... 43C-44C... 44C-45C... 45C-46C... 46C-47C... 47C-48C... 48C-49C... 49C-50C... 50C-51C... 51C-52C... 52C-53C... 53C-54C... 54C-55C... 55C-56C... 56C-57C... 57C-58C... 58C-59C... 59C-60C... 60C-61C... 61C-62C... 62C-63C... 63C-64C... 64C-65C... 65C-66C... 66C-67C... 67C-68C... 68C-69C... 69C-70C... 70C-71C... 71C-72C... 72C-73C... 73C-74C... 74C-75C... 75C-76C... 76C-77C... 77C-78C... 78C-79C... 79C-80C... 80C-81C... 81C-82C... 82C-83C... 83C-84C... 84C-85C... 85C-86C... 86C-87C... 87C-88C... 88C-89C... 89C-90C... 90C-91C... 91C-92C... 92C-93C... 93C-94C... 94C-95C... 95C-96C... 96C-97C... 97C-98C... 98C-99C... 99C-100C... 100C-101C... 101C-102C... 102C-103C... 103C-104C... 104C-105C... 105C-106C... 106C-107C... 107C-108C... 108C-109C... 109C-110C... 110C-111C... 111C-112C... 112C-113C... 113C-114C... 114C-115C... 115C-116C... 116C-117C... 117C-118C... 118C-119C... 119C-120C... 120C-121C... 121C-122C... 122C-123C... 123C-124C... 124C-125C... 125C-126C... 126C-127C... 127C-128C... 128C-129C... 129C-130C... 130C-131C... 131C-132C... 132C-133C... 133C-134C... 134C-135C... 135C-136C... 136C-137C... 137C-138C... 138C-139C... 139C-140C... 140C-141C... 141C-142C... 142C-143C... 143C-144C... 144C-145C... 145C-146C... 146C-147C... 147C-148C... 148C-149C... 149C-150C... 150C-151C... 151C-152C... 152C-153C... 153C-154C... 154C-155C... 155C-156C... 156C-157C... 157C-158C... 158C-159C... 159C-160C... 160C-161C... 161C-162C... 162C-163C... 163C-164C... 164C-165C... 165C-166C... 166C-167C... 167C-168C... 168C-169C... 169C-170C... 170C-171C... 171C-172C... 172C-173C... 173C-174C... 174C-175C... 175C-176C... 176C-177C... 177C-178C... 178C-179C... 179C-180C... 180C-181C... 181C-182C... 182C-183C... 183C-184C... 184C-185C... 185C-186C... 186C-187C... 187C-188C... 188C-189C... 189C-190C... 190C-191C... 191C-192C... 192C-193C... 193C-194C... 194C-195C... 195C-196C... 196C-197C... 197C-198C... 198C-199C... 199C-200C... 200C-201C... 201C-202C... 202C-203C... 203C-204C... 204C-205C... 205C-206C... 206C-207C... 207C-208C... 208C-209C... 209C-210C... 210C-211C... 211C-212C... 212C-213C... 213C-214C... 214C-215C... 215C-216C... 216C-217C... 217C-218C... 218C-219C... 219C-220C... 220C-221C... 221C-222C... 222C-223C... 223C-224C... 224C-225C... 225C-226C... 226C-227C... 227C-228C... 228C-229C... 229C-230C... 230C-231C... 231C-232C... 232C-233C... 233C-234C... 234C-235C... 235C-236C... 236C-237C... 237C-238C... 238C-239C... 239C-240C... 240C-241C... 241C-242C... 242C-243C... 243C-244C... 244C-245C... 245C-246C... 246C-247C... 247C-248C... 248C-249C... 249C-250C... 250C-251C... 251C-252C... 252C-253C... 253C-254C... 254C-255C... 255C-256C... 256C-257C... 257C-258C... 258C-259C... 259C-260C... 260C-261C... 261C-262C... 262C-263C... 263C-264C... 264C-265C... 265C-266C... 266C-267C... 267C-268C... 268C-269C... 269C-270C... 270C-271C... 271C-272C... 272C-273C... 273C-274C... 274C-275C... 275C-276C... 276C-277C... 277C-278C... 278C-279C... 279C-280C... 280C-281C... 281C-282C... 282C-283C... 283C-284C... 284C-285C... 285C-286C... 286C-287C... 287C-288C... 288C-289C... 289C-290C... 290C-291C... 291C-292C... 292C-293C... 293C-294C... 294C-295C... 295C-296C... 296C-297C... 297C-298C... 298C-299C... 299C-300C... 300C-301C... 301C-302C... 302C-303C... 303C-304C... 304C-305C... 305C-306C... 306C-307C... 307C-308C... 308C-309C... 309C-310C... 310C-311C... 311C-312C... 312C-313C... 313C-314C... 314C-315C... 315C-316C... 316C-317C... 317C-318C... 318C-319C... 319C-320C... 320C-321C... 321C-322C... 322C-323C... 323C-324C... 324C-325C... 325C-326C... 326C-327C... 327C-328C... 328C-329C... 329C-330C... 330C-331C... 331C-332C... 332C-333C... 333C-334C... 334C-335C... 335C-336C... 336C-337C... 337C-338C... 338C-339C... 339C-340C... 340C-341C... 341C-342C... 342C-343C... 343C-344C... 344C-345C... 345C-346C... 346C-347C... 347C-348C... 348C-349C... 349C-350C... 350C-351C... 351C-352C... 352C-353C... 353C-354C... 354C-355C... 355C-356C... 356C-357C... 357C-358C... 358C-359C... 359C-360C... 360C-361C... 361C-362C... 362C-363C... 363C-364C... 364C-365C... 365C-366C... 366C-367C... 367C-368C... 368C-369C... 369C-370C... 370C-371C... 371C-372C... 372C-373C... 373C-374C... 374C-375C... 375C-376C... 376C-377C... 377C-378C... 378C-379C... 379C-380C... 380C-381C... 381C-382C... 382C-383C... 383C-384C... 384C-385C... 385C-386C... 386C-387C... 387C-388C... 388C-389C... 389C-390C... 390C-391C... 391C-392C... 392C-393C... 393C-394C... 394C-395C... 395C-396C... 396C-397C... 397C-398C... 398C-399C... 399C-400C... 400C-401C... 401C-402C... 402C-403C... 403C-404C... 404C-405C... 405C-406C... 406C-407C... 407C-408C... 408C-409C... 409C-410C... 410C-411C... 411C-412C... 412C-413C... 413C-414C... 414C-415C... 415C-416C... 416C-417C... 417C-418C... 418C-419C... 419C-420C... 420C-421C... 421C-422C... 422C-423C... 423C-424C... 424C-425C... 425C-426C... 426C-427C... 427C-428C... 428C-429C... 429C-430C... 430C-431C... 431C-432C... 432C-433C... 433C-434C... 434C-435C... 435C-436C... 436C-437C... 437C-438C... 438C-439C... 439C-440C... 440C-441C... 441C-442C... 442C-443C... 443C-444C... 444C-445C... 445C-446C... 446C-447C... 447C-448C... 448C-449C... 449C-450C... 450C-451C... 451C-452C... 452C-453C... 453C-454C... 454C-455C... 455C-456C... 456C-457C... 457C-458C... 458C-459C... 459C-460C... 460C-461C... 461C-462C... 462C-463C... 463C-464C... 464C-465C... 465C-466C... 466C-467C... 467C-468C... 468C-469C... 469C-470C... 470C-471C... 471C-472C... 472C-473C... 473C-474C... 474C-475C... 475C-476C... 476C-477C... 477C-478C... 478C-479C... 479C-480C... 480C-481C... 481C-482C... 482C-483C... 483C-484C... 484C-485C... 485C-486C... 486C-487C... 487C-488C... 488C-489C... 489C-490C... 490C-491C... 491C-492C... 492C-493C... 493C-494C... 494C-495C... 495C-496C... 496C-497C... 497C-498C... 498C-499C... 499C-500C... 500C-501C... 501C-502C... 502C-503C... 503C-504C... 504C-505C... 505C-506C... 506C-507C... 507C-508C... 508C-509C... 509C-510C... 510C-511C... 511C-512C... 512C-513C... 513C-514C... 514C-515C... 515C-516C... 516C-517C... 517C-518C... 518C-519C... 519C-520C... 520C-521C... 521C-522C... 522C-523C... 523C-524C... 524C-525C... 525C-526C... 526C-527C... 527C-528C... 528C-529C... 529C-530C... 530C-531C... 531C-532C... 532C-533C... 533C-534C... 534C-535C... 535C-536C... 536C-537C... 537C-538C... 538C-539C... 539C-540C... 540C-541C... 541C-542C... 542C-543C... 543C-544C... 544C-545C... 545C-546C... 546C-547C... 547C-548C... 548C-549C... 549C-550C... 550C-551C... 551C-552C... 552C-553C... 553C-554C... 554C-555C... 555C-556C... 556C-557C... 557C-558C... 558C-559C... 559C-560C... 560C-561C... 561C-562C... 562C-563C... 563C-564C... 564C-565C... 565C-566C... 566C-567C... 567C-568C... 568C-569C... 569C-570C... 570C-571C... 571C-572C... 572C-573C... 573C-574C... 574C-575C... 575C-576C... 576C-577C... 577C-578C... 578C-579C... 579C-580C... 580C-581C... 581C-582C... 582C-583C... 583C-584C... 584C-585C... 585C-586C... 586C-587C... 587C-588C... 588C-589C... 589C-590C... 590C-591C... 591C-592C... 592C-593C... 593C-594C... 594C-595C... 595C-596C... 596C-597C... 597C-598C... 598C-599C... 599C-600C... 600C-601C... 601C-602C... 602C-603C... 603C-604C... 604C-605C... 605C-606C... 606C-607C... 607C-608C... 608C-609C... 609C-610C... 610C-611C... 611C-612C... 612C-613C... 613C-614C... 614C-615C... 615C-616C... 616C-617C... 617C-618C... 618C-619C... 619C-620C... 620C-621C... 621C-622C... 622C-623C... 623C-624C... 624C-625C... 625C-626C... 626C-627C... 627C-628C... 628C-629C... 629C-630C... 630C-631C... 631C-632C... 632C-633C... 633C-634C... 634C-635C... 635C-636C... 636C-637C... 637C-638C... 638C-639C... 639C-640C... 640C-641C... 641C-642C... 642C-643C... 643C-644C... 644C-645C... 645C-646C... 646C-647C... 647C-648C... 648C-649C... 649C-650C... 650C-651C... 651C-652C... 652C-653C... 653C-654C... 654C-655C... 655C-656C... 656C-657C... 657C-658C... 658C-659C... 659C-660C... 660C-661C... 661C-662C... 662C-663C... 663C-664C... 664C-665C... 665C-666C... 666C-667C... 667C-668C... 668C-669C... 669C-670C... 670C-671C... 671C-672C... 672C-673C... 673C-674C... 674C-675C... 675C-676C... 676C-677C... 677C-678C... 678C-679C... 679C-680C... 680C-681C... 681C-682C... 682C-683C... 683C-684C... 684C-685C... 685C-686C... 686C-687C... 687C-688C... 688C-689C... 689C-690C... 690C-691C... 691C-692C... 692C-693C... 693C-694C... 694C-695C... 695C-696C... 696C-697C... 697C-698C... 698C-69

Editorial Comment

Bram Towers—Witness To Sanford's Growth

There is no better or more appropriate way to describe the announcement that Bram Towers, 14-story high-rise apartment, can now be built than "good news!"

Good news for the "elderly people of limited income" who will live in this Sanford building.

Good news for the downtown area of Sanford which will reap high dividends when the 160 apartments are filled with those who will be shopping in their home neighborhood.

Good news for the many dedicated and purposeful people who have striven for more than four years to bring this project to a successful conclusion.

Our congratulations go to the Rev. Leroy D.

Soper, who is president of Bram Towers and the co-operating Episcopal parishes of Holy Cross in Sanford and All Saints of Enterprise.

In itself this is a memorable and laudable achievement. But what it means to the future of our delightful lakefront city in fringe benefits may well exceed its immediate importance.

An area along First Street, stretching south to Second Street and bordered by Pine and Cypress Avenues, will be exhibit A of what can be done with other spots in the city which cry for such use.

Here is a witness to what can and should be done to meet the needs of people and develop the natural assets with which Greater Sanford abounds.

Rising up above the downtown area, every

apartment will have a view of beautiful Lake Monroe. Meeting the requirements of HUD financing, the residents will find that short walks will take them to the shops, the churches, the medical facilities (hospital and rest homes) and that apartments will be available at moderate rents.

It doesn't take much imagination to get aroused about the promise which the Bram Towers (named for Bishop Martin J. Bram of the Episcopal Diocese of South Florida) holds out for Sanford.

It might well be the top of an iceberg of accomplishment which needs only the initial exposure to reveal its breadth and depth.

Outsiders have been coming to Sanford for years, marvelled at its beauty and nice living climate,

and been somewhat puzzled at the lack of living facilities which these days and these times make a commonplace elsewhere.

This apartment project is an answer. An answer to those who would accept the self-defeating doctrine that "you can't do it in Sanford." We have never accepted that doctrine. We have been convinced that true growth, actual improvement and a brilliant future awaited action spurred by inspired leadership and hardened by stern resolve.

With all (and there have been many) entanglements straightened out and all signals set for "GO" we look forward to reporting in our news columns the project which, it was announced yesterday, will be visible within 90 days and completed during the early part of 1972!

Trial Run Only

Postmaster General Blount believes other governmental operations could profit from the same sort of reorganization undertaken in the mail service.

Explaining to business executives and postal employees in attendance at a National Postal Forum in Washington that "the purpose of postal reform is to make the mail system manageable in the traditional sense of good business," Mr. Blount added:

"More importantly we are modernizing and making one of our great institutions relevant to our times, a pattern which needs to be examined more thoroughly throughout government."

It may be. For while delivering the mail is not a natural governmental function and thus is more adaptable to the ways of private enterprises than is running the Department of Justice say, good business practices can be applied anywhere.

Mail delivery should improve under the new system which seeks to divorce it from political interference. But let's wait until it proves itself in actual operation before we gung ho for a complete overhaul of the federal establishment in the new postal image. — Wheeling (W. Va.) Intelligencer

Not Understood?

The Public Health Service termed surprising its discovery in a survey of 6,572 adults that nearly 60 per cent reported being fit and tense at times to the point of being both.

What is surprising is that the PHS was surprised. What's the matter with those people in that great big government agency? Don't they have children, drive in heavy traffic, know there's a war going on in Vietnam, worry about their health in a polluted environment, struggle with debt in an inflationary economy, and fear for their lives on dark streets at night?

What puzzles us is why that other 40 per cent of adults are not fit and tense.—Maccon (Ga.) Telegraph

The Sanford Herald

Telephone 322-2511 425-9738

300 N. French Ave. Sanford, Fla. 32771

WALTER A. SHELTON, EDITOR AND PUBLISHER

FRANK VOLTOLINE, Circulation - General Manager

JOHN A. SPOLSKI, Associate Editor

FRED VAN PELT, Managing Editor

JANE CASSELLBERY, County Editor

DORIS WILLIAMS, Society Editor

BILL VINCENT, JR., Staff Photographer

GARY TAYLOR, Sports Editor

CHARLES HAYS, Mechanical Supt.

WAYNE B. BOYLE, Advertising Director

ROY GREEN, Advertising Manager

HILL EDWARDS, Classified Manager

WINIFRED F. SHELTON, Comptroller

STAFFORD DERRY, Editorial Page

RAY STEVENS, Press Room Foreman

Subscription Rates: 36 Weeks \$1.50 Month; 12 Weeks \$1.00 Month; 12 Months \$12.00 1 Year.

U.S. Postal Regulations provide that all mail subscriptions be paid in advance.

Entered as second class matter October 27, 1910 at the Post Office at Sanford, Florida 32771.

The Herald is a member of the Associated Press which is entitled exclusively to the use for reproduction of all the text news printed in this newspaper.

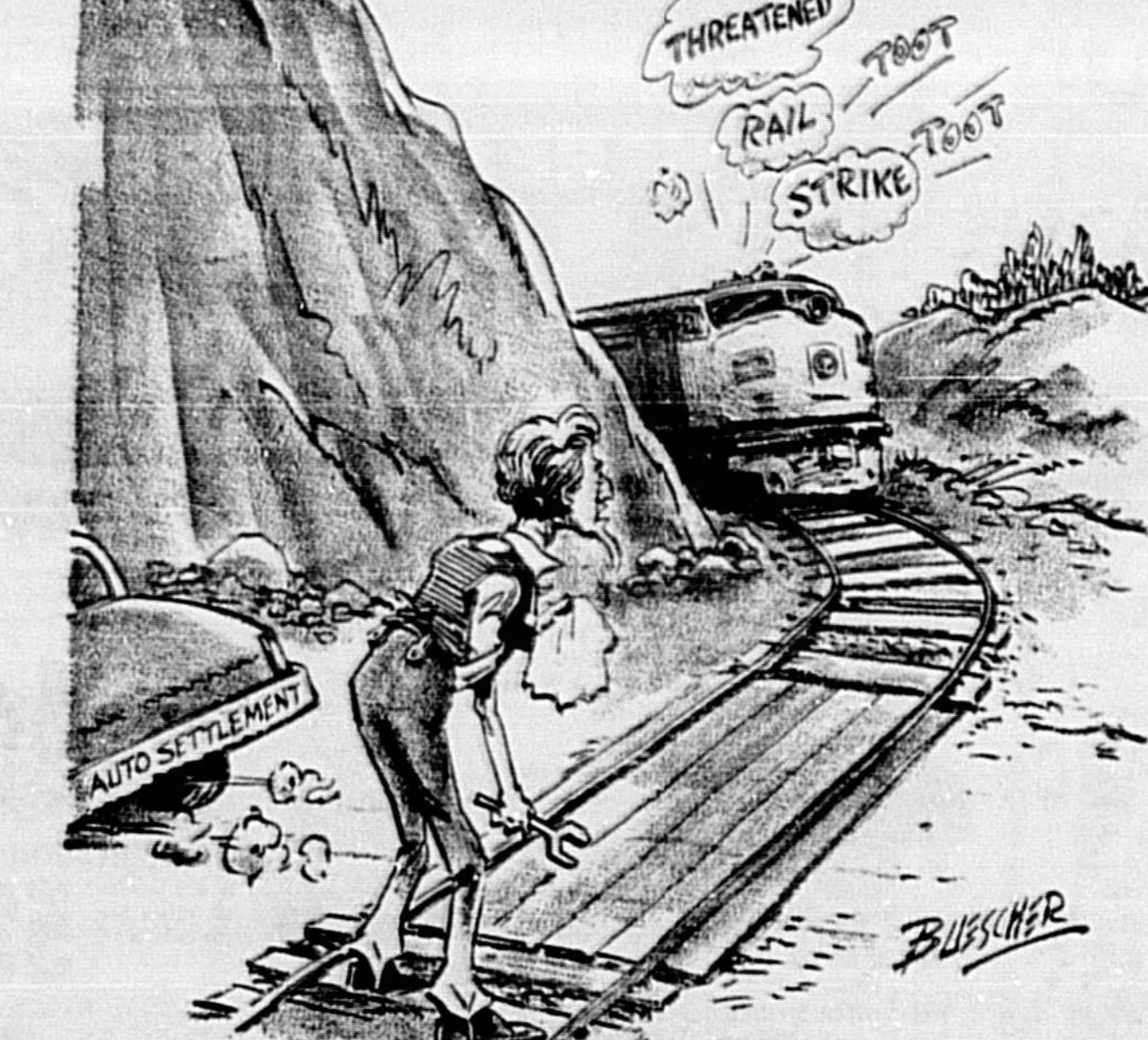
No part of any material, news or advertising in this edition of the Sanford Herald may be reproduced in any manner without written permission of the publisher of The Herald. Any individual or firm responsible for such reproduction will be held liable for damage under the law.

Published daily except Saturday, Sunday and Christmas; published Saturday morning Christmas.

Herald Area Correspondents

- Altamonte Springs: Mrs. Jane Casselberry, 238-5044 or 322-2611
- Bay Lake-Pepper City: Mrs. Maryann Miles, 838-2679
- Chuluota: Mrs. Lila Baker, 838-5207; Delaney-Delness, 838-5886; Mrs. Mildred Henry, 868-5631
- Orlando: Mrs. Joe E. Mathison, 349-6705
- Longwood: Mrs. Ann Tilley, 184 East Bay St., 838-7887
- Lake Mary: Mrs. Marie Bethus, 142 Upsala Road, 322-6635
- North Orlando: Mrs. Mary Hyatt, 838-5886
- Orlando: Mrs. Clarence Snyder, 322-4841

COMING 'ROUND THE MOUNTAIN



Global Comment:

Sakharov's Ideas For Soviet

By RAY CROMLEY, NEA Washington Correspondent

WASHINGTON—(NEA)—What kind of a man, then, is Andrei Dmitrievich Sakharov, apparent leader of the group of conservative, first-ranked physical scientists now questioning the policies of the Soviet government? And what does he want?

Among some, he is known as the father of the Soviet H-bomb. He became a member of the prestigious USSR Academy of Science at the age of 32. He is now 49. In scientific circles he is regarded as one of the great scientists of our day and, in Russia, only a notch below the famed Kapitza. He has been awarded the Order of Lenin and the Stalin Prize. He is a member of the Soviet elite and a successful, moderate man. He considers himself a dedicated socialist. He is a graduate.

From a study of his individual writings and letters he has prepared jointly with others, his principal aim can be expressed as follows:

- Greater freedom of information within the Soviet Union. He wants public discussion of public issues, first on a limited scale within selected circles and gradually discussion involving the whole population.
- He fears the long-range effects of a system of decision-making within Russia in which only a select few have the power to decide, plus the need to keep their actions from public view.
- He believes that incompetent censorship kills the living soul of Soviet literature and social thought, giving rise to stagnation, monotony and a complete absence of any fresh ideas.
- Sakharov says, deep thoughts can appear only in discussion, with the presence of opposition.
- But, he says, truthful information about "sharp" short-comings and negative phenomena is kept secret lest it be used by "hostile propaganda." Exchange of information with foreign countries is restricted out of fear of "penetration by hostile ideology." Theoretical conceptions and practical proposals which may seem to be bold to some are suppressed

Washington Window

Rogers Stepping Gingerly

By STEWART HENSLEY, UPI Diplomatic Correspondent

WASHINGTON (UPI)—Secretary of State William P. Rogers will tell the other NATO foreign ministers this week that the United States still is against accepting the proposal for an all-European security conference. At least, not until the Kremlin has shown greater evidence of good faith in Berlin and other critical issues in that area.

The United States took the position a year ago that an all-European conference with Moscow and its Warsaw Pact allies should be held only after NATO and the Communist alliance have come to some agreement on mutual reduction of military forces along the Iron Curtain.

Now that Soviet-American relations have been somewhat chilled by the disagreement on how to handle the Middle East crisis, the Nixon administration is displaying more caution than ever in its approach to the all-European security conference idea.

At this week's meeting of NATO ministers in Brussels, Rogers undoubtedly will seek to present the U.S. position in positive rather than negative

The Lighter Side

"Tongue-In-Cheek" Growing

By DICK WEST, WASHINGTON (UPI)—Although the economy as a whole has been limping rather badly this year, a few enterprises are flourishing. For example, nurseries.

"Business is definitely up," Robert F. Lederer, vice president of the American Association of Nurserymen, reported a few days ago.

"We've analyzed the reasons and find that in uncertain economic times Americans tend to put more time and money into improving their immediate surroundings. This is true even

in areas of heavy unemployment in the country.

"During the depression a lot of people grew their own food. This may be a similar expression of feelings and emotions when the going gets tougher, taking to the soil and getting enjoyment from watching things grow."

Lederer is so right. Like a month or so ago my wife suggested that I take the family out to a movie.

"There's a good film playing at the Bijour," she said.

"I'm really not in the mood for a movie and with economic conditions so uncertain I hesitate to invest in theater tickets anyway," I replied.

"But I'll tell you what I'll do. I'll drive out to the Eysian Nursery and buy a new flaxberry bush. Then we can put it in the soil and watch it grow."

My children jumped up and clapped their hands. "That's great, Dad!" one of them exclaimed. And the other one

said, "We would rather watch a flaxberry bush grow than go to a movie any day."

My wife said, "But where are you going to find room to plant it?"

"I was thinking of planting it next to that flaxberry bush I bought last week instead of taking you out to dinner," I told her.

She said, "Well, we all get a thrill out of watching the flaxberry bushes grow, but that is mainly a daytime activity. When I mentioned going to the movies I was thinking in terms of nighttime entertainment."

It is known that Sakharov and his colleagues believe that these ideas are shared to greater extent by a considerable portion of the Soviet intelligentsia, the advanced part of the working class and numbers of students and working youth.

But no man here is going to predict that something will come from these appeals.

Don Oakley Says: What's Special?

By DON OAKLEY, NEA Editor

The public's somewhat less than unimpressive confidence in the postal service received another jolt recently when it was charged that special delivery letters just aren't treated as very special. For various reasons, they are often delivered no sooner than they would have been without the 45-cent premium stamp attached.

For those willing to pay an even higher premium for really fast delivery, the U.S. Post Office and Western Union are experimenting with a new message service called a "Mailgram," which, as the name suggests, is somewhere between a letter and a telegram.

This is how it works: A customer of Western Union's Teletype Exchange Service (Telex) sends his message by Teletype to the Mailgram Computer Center, where it is automatically routed according to Zip Code to the appropriate destination post office.

If it is received on a similar Teletype, removed and inserted in a distinctive envelope and sent out by regular mail carrier on the next scheduled delivery.

Rates for the service average \$1.10 for 50 words, which is less than for a telegram.

So far, more than 98 per cent of 230,000 Mailgrams sent have been delivered on the next business day. Where distances are great and a two- or three-hour time difference exists, such as between New York and San Francisco, a telegram can be made the same day.

A big advantage Mailgram offers to businessmen is that it is not only fast, but, like a conventional letter, provides a written record copy.

Usage of the new service is presently limited to business firms, but by mid-1971 it will be made available to the public in a number of cities to test its general acceptability.

Inventory Of Lands Underway

TALLAHASSEE, Fla. (AP)—A coastal inventory of Florida is fine, but state officials should not forget there's a crucial inland area, says Conservation 70s Director Lyman Rogers.

Eighty-two per cent of elected members of the Legislature live in coastal areas. It's up to this council to point out to the Legislature over a period of time that it's the inland area of the state that supports the coastline," Rogers said Tuesday.

He made the remarks at the organizational meeting of the Florida Environmental Inventory Council, created by the 1970 Florida Legislature to make a statewide inventory of all natural resources.

Rogers and another council member, Dr. E. O. Frye, chairman of the Florida Game and Fresh Water Fish Commission, also agreed the Legislature needs to be told the council's \$50,000 operating budget isn't enough.

"It's a hell of an ambitious undertaking for \$50,000," Frye said.

Rogers said, "We're going to have to have more money to make the inventory more meaningful." Conservation 70s is a coalition of legislators, scientists, and private citizens concerned with environmental protection.

Randolph Hodges, director of sources and council chairman, said it's important for the group to get rolling — even though it has gotten no guidelines yet from incoming Democratic Governor-elect Reubin Askew.

The council met with Bruce Johnson, director of a similar group, the Coastal Coordinating Council, which is currently conducting a pilot inventory project of coastal areas in Escambia and Santa Rosa counties.

Second Time In A Month

WAUKEGAN, Ill. (AP)—Jim Todd, 18, a service station attendant, couldn't believe his eyes when he spotted a counterfeiter \$20 bill for the second time.

Todd, who had received a \$20 bogus bill earlier in the month, became suspicious of a customer after he purchased cigarettes and noted the car's license number.

When Todd compared the bill's serial number and found it identical with the earlier counterfeit, he notified police who apprehended the passer of the bill.

When Todd compared the bill's serial number and found it identical with the earlier counterfeit, he notified police who apprehended the passer of the bill.

BERRY'S WORLD



ROBERT W. HUGHES is the new principal at Lawton Elementary School at Oviedo, replacing Mrs. Frances Walton. He was formerly the assistant principal at Oviedo High School. He is married and he and his wife, Carole, are parents of a young son, almost two years old. (Liz Mathieu Photo)

Fraudulent Schools Flourishing

Florida Diploma Mills Hit By Solon

WASHINGTON (AP)—his deceptive practices in our diploma mills," Karl testified.

One section of the FTC's proposed regulations deals with the cancellation and refund policies of the schools.

The new rules would provide a three-day cooling-off period after a contract has been signed in a prospect's home and also requires salesmen to explain orally the school's refund policy.

The new regulations would seek to prevent a school misrepresenting its accreditation and operators are hurting good, accredited schools.

One bad practice of nationally accredited schools is selling franchises which allows inexperienced people to operate a facility under the parent school's name, he said.

Another Florida man testified before the FTC was Lee Wilcoxon, president of the Florida Professional Academy of Miami and Hialeah.

Wilcoxon said the fraudulent operators are hurting good, accredited schools.

One bad practice of nationally accredited schools is selling franchises which allows inexperienced people to operate a facility under the parent school's name, he said.

USED ARMY BOOTS

High Quality, Tough Soles, Perfect for hunting and outdoor work

6.99

ARMY - NAVY SURPLUS STORE

319 S. Sanford Ave. 322-5771

True Fish Value Sought By State

By JOHN VAN GIESEN, Associated Press Writer

TALLAHASSEE, Fla. (AP)—Associated Industries of Florida lobbyist Jack Lee reached into his picnic cooler Tuesday and pulled out a frozen red snapper.

"A red snapper cost us \$1.30," he told the Air and Water Pollution Control Board. "If we had paid your price, it would have been \$19."

Then Lee proceeded to introduce the board to a mullet, salmon, oysters, lobsters and speckled trout, all of which were purchased in local seafood stores.

"My fish dinner cost us \$7.20 retail at the local market," he said. "At your prices, we would have had to pay \$41.50."

The point of Lee's little demonstration was that the fish val-

ues were instructed to be sure that the values were in keeping with actual commercial and retail value.

Fred Waldinger, Air and Water Pollution Control Department biologist, urged the board to include considerations such as ecological damage and harm to fishermen in assessing the value of fish massacred by pollution.

Lee, however, said that to do so would hurt the board's position when it took polluters to court to seek punitive damages for fish kills.

The man say "your honor," this takes into account everything but the damage to the water itself because they've all ready taken those other values into consideration," he said.

DEPEND ON YOUR PHARMACIST

... whenever you want the best!

Whether you're shopping for sick-room supplies or medicines, you can count on us to provide quality!

GORDON'S DRUGS

Gordon Kallish—Owner

2533 PARK DR. PH. 322-0642 Sanford

Nothing new under the Christmas tree?



How about electric gifts?

Now there's a new idea to put under the good old Christmas tree! In fact, countless new ideas. You can go as far as you like with an electric gift—what about an electric outdoor barbecue? Or brighten Christmas with a gift they've always wanted—like an electric toothbrush, blender or color TV. Electrical gifts are practical... preferred... appreciated.

And there are hundreds to choose from.

FREE! Pick up your Treasury of Christmas Ideas. It's a 32-page booklet packed with party and gift tips. Get your free copy at stores selling electric appliances. Happy holidays!

ELECT JULIAN STENSTROM CITY COMMISSIONER

I pledge to represent only one special group... our citizens and taxpayers.

POLITICAL AID PAID FOR BY JULIAN STENSTROM

Dreuding-Baer Nuptials Spoken

By MARYANN MILES

Miss Martha Star Dreuding and Michael John Baer, were united in Holy Matrimony Sunday, Nov. 22, 1970, at the First Baptist Church of Winter Park.



MRS. MICHAEL JOHN BAER

The bride is the daughter of Mr. and Mrs. Herbert Allen Dreuding of Altamonte Springs and the bridegroom is the son of Mrs. Ariene Joyce Baer and the grandson of Mr. and Mrs. Raymond Turrill of Sanford.

Dr. James W. Parrish was the officiating clergyman for the double ring ceremony. The bride was given in marriage by her father and mother. She chose a pale blue brocade two piece street length dress for her wedding. Both the coat and dress were Empire styled and her coat featured a beaded Mandarin collar. She wore matching blue shoes, pill box hat and shoulder length veil. She carried a white Bible, a gift from her parents, with a lovely orchid corsage centered on the Bible.

Miss Linda Dorsey was maid of honor. Her dress was yellow and she wore a corsage of white roses. Karen Dreuding served as junior bridesmaid.

Jerrold Marshall Baer, brother

of the groom, served as his best man.

The table was overlaid in an antique lace cloth belonging to Mrs. C. H. Warren. Mrs. Randy Seamon assisted at the reception. Miss Karen and Miss Kim Taft also assisted with serving the guests.

Out-of-town guests included Mrs. Robert Taft, Mrs. Nelson Dreuding, grandmother of the bride and Mr. and Mrs. Fred Dreuding, all of Fort Myers, and Mr. and Mrs. William Baer of Miami.

The three-tiered wedding cake held a pair of doves, with a wedding ring in their mouths.

Grand Knight, Ted LaTour, announced that a 25th wedding anniversary celebration would be held in the K of C hall, for Past Grand Knight Gene Gilmartin and Florence. The New Year's Eve Ball also will be held in the hall.

Chairman of the birthday celebration was Joe Falignone, assisted by Vincent Melillo.

Knights Of Columbus Host Birthday Ball

Crowds swelled the halls of the Columbus building, on Oak Avenue, Nov. 21, while music by Eory Berguson and The Keynotes kept toes tapping all evening.

The event was in celebration of the annual birthday of Council 5507 of the Knights of Columbus.

Dignitaries from K of C Clubs in surrounding areas joined the Sanford group for the gala evening. The ladies wore lovely formal pantanite and flowing gowns, adding glamour to the occasion which featured in addition to dancing, a lavish buffet and door prizes.

Grand Knight, Ted LaTour, announced that a 25th wedding anniversary celebration would be held in the K of C hall, for Past Grand Knight Gene Gilmartin and Florence. The New Year's Eve Ball also will be held in the hall.

Chairman of the birthday celebration was Joe Falignone, assisted by Vincent Melillo.



JOE FALIGNONE, right, and Vincent Melillo, chairman and co-chairman of the recent Knights of Columbus Birthday Ball are shown with their wives at the gala event.



BOWING OUT in the glittering "long look" is Mrs. Dennis Brusman who is shown dancing with her husband at the Knights of Columbus Birthday Ball.

Santa's Greetings Sing Peace Songs

BY CAROLYN A. BOWERS
NEW YORK (UPI)—Christmas card sending has become one of America's most important holiday traditions.

This year, the 84th anniversary of the American Christmas card, it is estimated that 40 million American families will send their friends and loved ones more than two-and-a-half billion Christmas cards.

Christmas 1970 designs and illustrations will be more colorful than ever, reports the National Association of Greeting Card Publishers, whose members account for over 80 percent of all the Christmas cards produced. Not only are the designs and illustrations more exciting and unusual, the association said, but many of the cards are produced on a wide range of colored papers, including sparkling foils and other special materials.

Industry spokesmen agree that the most popular designs are still the traditional ones—Santas, Christmas trees, holly, snow scenes, wreaths, Christ-

mas bells and ornaments. The spokesman said, however, that more and more cards will feature religious themes in previous years.

The universal peace for "Peace on Earth," they report, are expressed by illustrations of numerous peace motifs such as the dove, the angel of peace, the lion and the lamb, children of different races, the olive branch, praying hands, and the peace symbol.

The words "Peace," "Love," "Hope," "Shalom" and "Brotherhood" are used interchangeably in many of the illustrations and in the greetings on the peace yule cards.

Man's first moon landing is presented in one design. It

joins the message "We came in peace for all mankind." The illustration shows the American flag planted on the moon's surface, the planet Earth in the distance and the Christmas star shining over all.

Another unusual design is a dove of peace cut-out in an attractive embossed crocheted effect with the simple message, "Wishing you the Peace and Joy of Christmas."

Popular religious scenes portraying the miracle of Christmas will again come alive this season. The greeting card publishers association estimated that one out of four cards will feature a religious motif with both traditional and modern art techniques used.

The most popular religious design will probably be the Madonna, but the Three Wise Men, the Christ Child, the Holy Family, the Angels and Shepherds, the Nativity Scene and the Star in the East will still be favorites.

The modern approach to ward the Holy season is expressed in design showing churchgoers attending Christmas services, surplised choirs singing joyous hymns, colorful stained glass windows, children caroling, church bells and lighted candles.

So, whatever you want your Christmas greeting to say, something reverent, something cheerful or something sentimental, there will be a new exciting and almost endless variety to meet the demand.



Realistic Introduces BULK 'N BODY PERM
ADDS BODY FROM WITHIN
ADDS BULK FROM WITHOUT
FEELS THE ADDED \$22.50 THICKNESS.

Betty Anne's
HAIR STYLING SALON
OPEN THURS. EVENINGS BY APPOINTMENT
PH. 322-4912
1202 S. Park Sanford



Christmas Ballet Set Sunday 'Enchanted Shoes' Rated 'G' For Great

If you are one of the many who check the movie ratings before you make a decision on which film to see, you'll be interested in the rating for the new Christmas Ballet to be presented by the Ballet Guild of Sanford-Seminole.

"The Enchanted Shoes" is rated G for Great family entertainment. The excitement of live performers whirling and leaping and spinning across the stage, the glitter of beautiful costumes, picturesque scenery and a delightful heart-

★ ★ ★ ★

A MYSTERIOUS STRANGER, Nancy Tomlinson, left, appears from out of nowhere and presents a deserving orphan, Vicki Accardi with a pair of shoes. From the moment the orphan slipped them on, an aura of magic emerged for the orphan and her "Enchanted Shoes".

warming Christmas story, all combine to make this rating appropriate.

The young Guild dancers have amazed audiences in the past with their spirit and proficiency and previous productions of B. G. S. have always left their audiences wanting more.

Well her it is, a wonderful way to start the Holidays with this Disney type story about a lonely orphan who is reunited through magic and fantasy with a beautiful loving mother.

"The Enchanted Shoes," a full length ballet, will be presented at Seminole High School Auditorium Sunday, Dec. 5, with a matinee performance at 2:30 p.m. and an evening performance at 8:00 p.m. Don't miss this chance to treat yourself and family to what will be truly an enchanting production.

Tickets are on sale now and may be purchased from any dancer-member of the Ballet Guild or at the Sanford Shoe Center, Florida State Bank or call Mrs. Neil Whittier at 322-1700.

Mutual Concert members are reminded that their M. C. A. Membership card entitles them to attend "The Enchanted Shoes" for a nominal fee when they present their M. C. A. season ticket at the box office.

Children's Home Needs Usable Items

By LIZA BAKER

"They'll Be Loved At Harvest Home" is the theme for Harvest Home for Children. The Home provides wholesome family life, relationship and personal attention for needy

children and is located one mile north of Plymouth on a 100 acre tract of farm and grove land.

Mr. and Mrs. Henry Long of Chulota are backed by the V.F.W. Club Post 10050 Casselberry, in a drive to raise money for the Harvest Home.

The Longs say that practically no home will accept children after reaching the age of 13. More than 90 boys and girls in the Central Florida area are in need of a home life atmosphere.

The Foster Home is a large existing house and will accommodate approximately 13 children immediately. Future plans include cottages for family type homes for a much larger number under Interdenominational non-profit organization incorporated under the provision of Chapter 417 of the Florida Statutes.

Director Paul Wilson is the main founder of Harvest Home and is opening a Thrift Shop to help further aid of needy children.

ing all folks in this area to donate anything of value for the Thrift Shop, even broken toys which the Longs will repair. Any one wishing to make donations of money, please make the check payable to Harvest Home and mail to Paul K. Wilson, Harvest

Home, Inc. 1115 South Bunby Ave. Orlando, call the Longs in Chulota 965-5203, or call the Post in Casselberry 831-2259. They will pick up anything you have to donate. The public is invited to take a tour of the Harvest Home in Plymouth.

PLANNING A PARTY?
VISIT OUR NEWLY DECORATED BANQUET ROOMS
LET US PUT THE FUN IN YOUR PARTIES
TRY OUR CATERING SERVICE
TROPHY
LOUNGE & RESTAURANT
180 Ours Rd. Sanford

Saturday's The Night For Champagne Revelers, Sports Fans To Celebrate

By DORIS WILLIAMS

Society Editor
"Yea team! Rah! Rah! Rah!"
"I could have danced all night."

With a big ball and also a big ball game scheduled Saturday night, it will truly be a hot time in the old town that night.

Fans of the Fighting Seminoles plan to attend the football game and observe the action when they meet Edgewater High in the Tangerine Bowl, Dec. 5, at 7:30 p. m.

Later that same evening, many of the same fans plan to celebrate the Seminoles' "Victory" by attending the sixth annual Champagne Ball, which begins at 8 p. m. at Sanford Civic Center.

For the early ball patrons, the free champagne hour will begin at 8, followed by dancing at 9 to the music of Renegade Brass Band.

An old-fashioned Southern breakfast will be served during the wee smalls in lieu of the usual dinner.

For those who plan to attend the ball game first, there will also be a free later champagne hour set aside for you with fresh hors d'oeuvres also awaiting your arrival from the game in Orlando.

Also, the late arrivals are expected to come in the attire worn to the game and not formal clothing. . . . in other words it's the night to celebrate

and the mood of the evening depends on the pace set by patrons. Everything goes!

For the ball patrons who do not get to the big game, Bill Beck of Radio Station WTRR will arrange for a Public Address system at Sanford Civic Center so everybody can keep up with the Fighting Seminoles during the evening.

In keeping with a theme surrounding the Old South, Mrs. Jack Burney chairman, and her decorating committee are combining pine and Magnolias to reflect the charm of a festive Southern setting.

Assisting Mrs. Burney are Mr. and Mrs. Joe Mathieux, Mrs. William Vellinek, Mrs. Thelma Lewis and Mrs. Boyd Coleman.

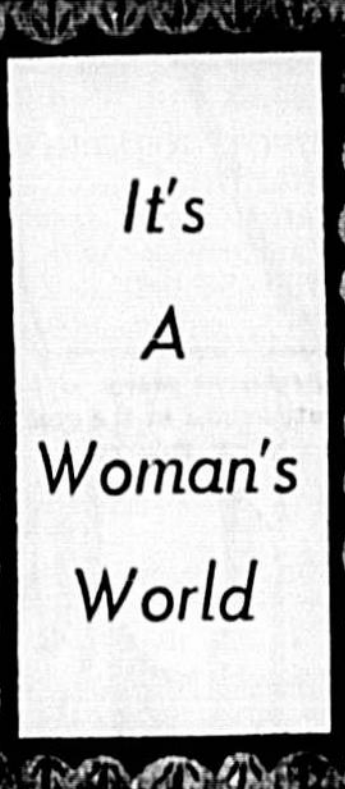
In charge of luscious hors d'oeuvres are Mrs. William L. Kirk and Mrs. Orville Barks.

Also a real professional touch will be added to the tid bit scene.

Mr. Lynn Parthen of Dell's Bakery fame will create and furnish dozens of exotic hors d'oeuvres for the ball patrons enjoyment.

Mrs. Roger Berry and Miss Shelly Mebane were in charge of announcements.

Reservations are in order and patrons will have all week to pick up tickets at Florida State Bank. For reservations, call Joan Ludwig, 322-2068.



It's A Woman's World

Penneys ALWAYS FIRST QUALITY true-to-life portraits IN COLOR



5x7 PORTRAIT, or a set OF 4 WALLET SIZE PHOTOS 1.49
2 CHILDREN PHOTOGRAPHED TOGETHER 2.98

Great color portraits, as only the "Pixy" photographers capture them. All portraits are delivered to you at our store. You have your choice of several poses. No mailing, handling, or other charges. Age limit, 12 years.

10 A.M. - 6 P.M., THURS., FRI., SAT., IN OUR INFANTS' DEPT., IN SANFORD PLAZA.



Any PHOTOGRAPH

appearing in The Sanford Herald is available to you in 8x10 reprint size for \$3.

DIAL 322-2611

COWAN'S ANNUAL CHRISTMAS PARTY

20% STOREWIDE DISCOUNT!

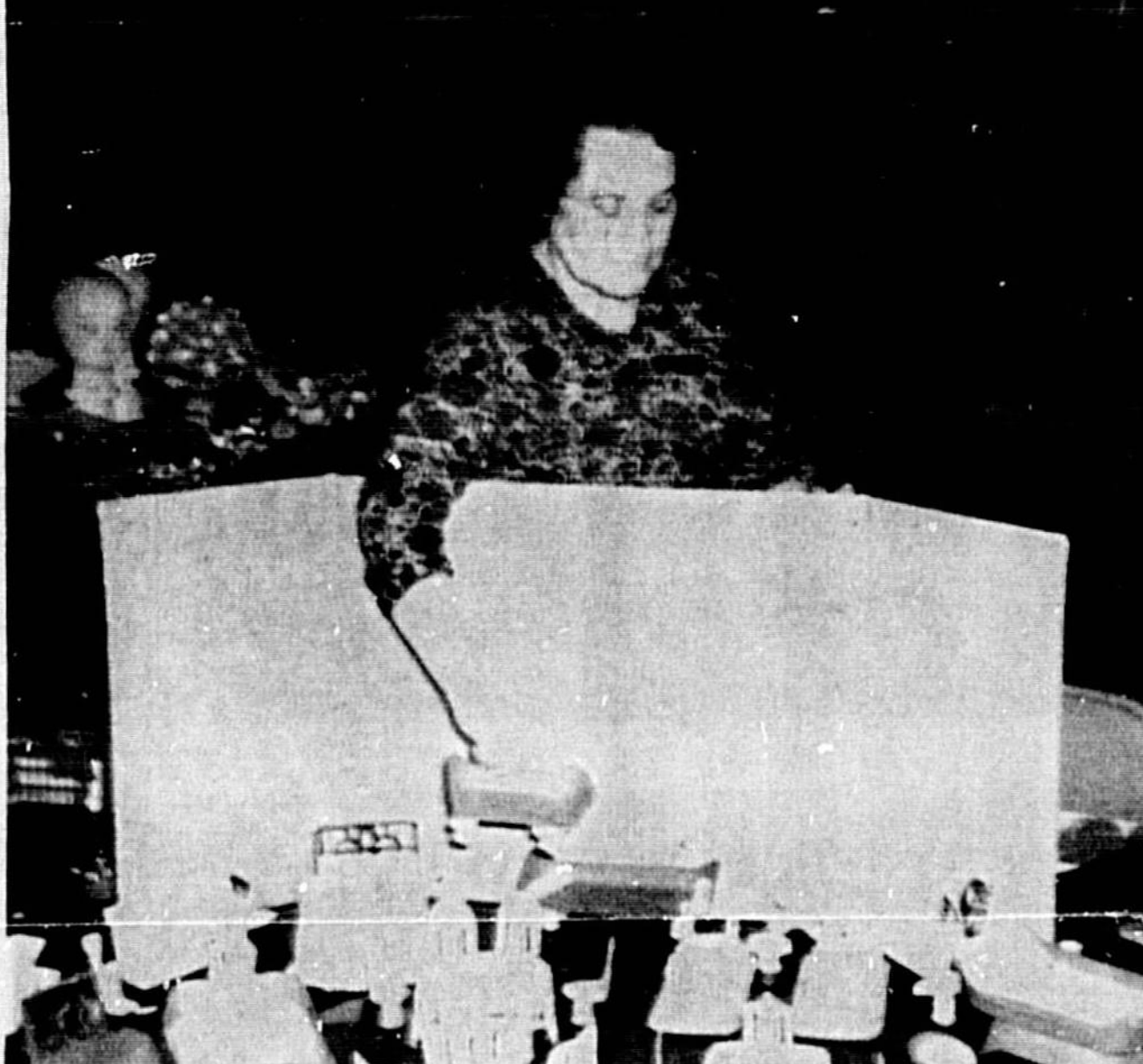
Thursday - Friday - Saturday
December 3rd., 4th., & 5th.

Save 20% on all Purchases! Shop for Christmas! Shop for winter! Shop for Savings All Day . . . 3 BIG DAYS!

We Gift Wrap Free! Shop Friday Night Until 8 P.M.

master charge

DIAL 322-4981 212 E. FIRST ST.



Gardeners Fete Set This Weekend

A FANTASYLAND of Holiday and festive tables representative of every month of the year will be on display Saturday, Dec. 5, from 10 a.m. to 8 p.m., and Sunday, Dec. 6, from 1-5 p.m., at Sanford Garden Club. The annual event is open to the public and tickets are available at the door. A Christmas bazaar will also be held during the festive table show. Mrs. E. R. Wood of Central Circle of Sanford Garden Club helped make this array of doll furniture, using discarded egg cartons and produce trays. Scraps of blanket material were used for blankets, pillows and cushions to complete the authentic appearance. It will be for sale at the annual bazaar. Items for sale will be suitable for adults and the small fry.

Christmas Hints

Preparing for Christmas sometimes invites small accidents. Take precautions against spot happenings: Spread a plastic sheet or tablecloth under the Christmas tree stand as carpet protector; rearrange furniture to leave valuable out of the heavy-traffic lanes; consider adding a stainproof finish to delicate furniture fabrics to form a shield against spots and spills; brush up the furnishings before the holiday guests arrive — it will be easier.

The face takes on a new focus. More color and more drama is expected for eyes, lips and even fingernails. The last-

PARADE DAY SPECIAL!

Tomorrow - One Day Only
9 A.M. to Start of Parade

CHRISTMAS GIFT WRAP 69¢

REG. 1.25

We Print Your Name Free On Christmas Box Cards! Choose From Over 100 Designs As Little As \$1 a box for 25 Cards

CHRISTMAS PARTY TIME

PARTY SUPPLIES DECORATIONS IDEAS FOREIGN LANGUAGE CARDS

210 E. FIRST ST. 322-4711

STAY WARM AND COZY

General Electric with CENTRAL HEATING

CALL PLUMBING & WALL HEATING, INC. 1007 S. Sanford 322-4542

Sonja Alexander Weds Airmen Jimmie L. Hill

By MRS. R. B. THOMAS JR.
Thanksgiving is over and we have given thanks for the many blessings we have had bestowed upon us this past year.

When we made promises that we will strive to live the acceptable type of life in today's rapidly changing society.

We have prayed for forgiveness where we have erred along the way.

When we speak of unity, we think of unity in the home.

We speak of unity in the schools where learning is essential and should be under-

As we approach the birth of the Christ Child, let us all rejoice His birth with love, peace and tolerance.



MISS SONJA ALEXANDER wedded Airmen Jimmie L. Hill.

FTU Granted Special \$ For Physics Program

FTU — Florida Technological University again has been granted funds from the National Science Foundation to conduct a special summer program in physics for high school teachers from around the country.

The 1971 program will be directed by Dr. John R. Bolte, Associate Dean for Academic Affairs and Professor of Physics, who inaugurated a similar session on the FTU campus this past summer.

Dr. Bolte announced today that NSF awarded a grant for \$42,282 for the 1971 summer physics institute.

The curricula at FTU will be geared specifically for teachers in the Harvard-initiated "Project Physics" program, developed during the past five years at selected high schools throughout the United States.

U. S. Builds Pressure On Hanoi; Expands Policy Of Air Attacks

By JOHN M. HIGHTOWER
WASHINGTON (AP) — The Nixon administration has expanded its policy on air attacks against North Vietnam in what appears to be a deliberate strategy of increasing pressure on the enemy while continuing U.S. troop withdrawals.

Officials report a toughening attitude by administration leaders toward North Vietnam over the past months. The reasons appear to include frustration over lack of progress in the Paris Peace talks, the prisoner of war issue, and a determination to prevent Hanoi from taking advantage of declining American troop strength in Southeast Asia.

The United States ended bombing of North Vietnam Oct. 31, 1968 and until earlier this year air strikes against the North were explained as retaliation for attacks on unarmed U.S. reconnaissance planes.

In recent months, however, Defense Department spokesmen have expanded the reasons to include "protective reaction" against North Vietnamese rocket batteries firing at planes over neighboring Laos, interdiction of supplies moving down to South Vietnam, Cambodia or Laos and retaliation for the shelling of South Vietnamese cities.

Furthermore, officials privately confirm the policy of expanding retaliatory strikes when possible to include other targets in the general area to destroy supply buildups.

Officials have also made clear that American combat planes flying protection for bombers operating against enemy positions in Laos can fire at missile bases in North Vietnam when they detect enemy radar locking on the bombers.

Neither President Nixon nor his spokesmen have pulled all these reasons together into any formal new policy statement on bombing the North.



"IT'S MINE," four basketball players seem to shout at one another as they battle for a rebound. The one (left to right) Billy Means, Wes Loumsa and Al Cicra, The Lyman Greyhounds topped Sanford 49-38 in the season last-litter for both teams.



ALL YOU HAVE TO do is wait for it to come down. The three players waiting are (left to right) Billy Means, Wes Loumsa and Al Cicra, The Lyman Greyhounds topped Sanford 49-38 in the season last-litter for both teams.



THERE'S A big pileup for the ball, as several Lyman and Seminole players battle to see who will get it. The result, a jump ball, Lyman came out on top as they defeated Seminole 49-38.

BOTTLED GAS \$7.50
NO INSTALLATION CHARGE
CALL 322-5733

Lyman Greyhounds Prove Too Much For Tribe

By GARY TAYLOR
Herald Sports Staff
Somebody misses Steve Nelson. It must be the Lyman Greyhounds basketball coach, Joe Mills, who would rip the nets for a 49-38 win over the Sanford Seminoles in the season last-litter for both teams.

Nelson Top Scorer

Lyman Greyhounds Prove Too Much For Tribe

Without the only two returnees from last year's team, and several other talented players, put on a last half scoring effort, but fell short.

Oviedo's Boosters Plan Projects

By LARRY NEELEY
Herald Sports Staff
At Monday night's meeting of the Oviedo High School Athletic Boosters, plans were announced for a fund raising spaghetti dinner to precede the December 11 Oviedo-Lakeview basketball game from 5 until 7 p.m.

Both the varsity and junior varsity cheerleaders will aid the boosters in their cushion sales and rentals, according to Dave Miller, who is heading up the project for the boosters.

Tickets for the dinner are being sold by the cheerleaders and varsity and junior varsity athletes at Oviedo. Tickets are also available from booster members and are available at the Oviedo High School administration office.

Miller noted that there were some 29 basketball games to be held in the Oviedo gym between December 4 and February 20, including nine FTU games.

President Ray Nesmith informed the group that the executive committee had met on several occasions during the previous month concerning a constitution and by-laws for the group to enable them to incorporate under Florida statutes.

Arrangements for transportation of the basketball players had to wait nearly two hours before they were due to dress out when they traveled with the junior varsity on the bus and if it was feasible it would be best if both the varsity and junior varsity players could be transported by car rather than bus.

Due to the Christmas holidays, there will be no December meeting of the boosters and the next meeting will be January 25.

The Seminole Gridiron Squad Prepares For Bowl Tilt

City Basketball Program Get Underway Saturday

The Sanford Recreation Department will open their 1970-71 Youth Basketball Season on Saturday, December 5, at the Seminole High School Gym.

The intermediate league will get underway in the afternoon with three games scheduled as follows:

1:15 P.M. - Jets vs Lions
2:15 P.M. - Rams vs Colts
3:15 P.M. - Eagles vs Vikings



STUDENTS of Mrs. Martha Power, Altamonte School, are learning about the many pretty shells to be found along the coast.



STAFF at the Forest City Head Start School, includes Mrs. Annie McDaniel, cook; Mrs. Sharon Edwards, assistant teacher (holding little Anthony Welborn, who with his mother, comes and helps out each day at lunch time), Mrs. Albert Welborn, and Mrs. Linda Perry, teacher at the school.

Christmas Gift Sale!

Reg. 4.98 Thermal Blankets 3.89
Reg. 98c Auto Litter Basket 59c
Reg. 8.98 Bookcase & Room Divider .. 5.98
Reg. 1.49 Fanny Farmer Chocolates .. 98c
Reg. 1.98 Auto Jumper Cables 98c
Reg. 2.29 Micrin 32-oz. 1.59
Reg. 7.95 Therapeutic Vitamins 5.95
Reg. 1.98 Vitamin C Tabs 63c

Radio 13.95
Dinnerware Set 2.98
Lamps 1.59
Electric Food Warmer 4.98
Toaster 9.88
Clocks 1/3 off

FAUST'S DRUG STORE

Prices Good thru Sunday
COSMETICS FOR CHRISTMAS
CHANEL COTY
CHANTILLY LANVIN
FABERGE DIOR
LOVE MATCHABELLI

STREET 201 W. 1st STREET SANFORD

STREET 201 W. 1st STREET SANFORD

Strikes And Spares

Get a couple of 'goodies' for you this week, folks. Oh yeah... way up in the professional status...

One happened two weeks ago in the City League action and the other notable was as recent as this past Tuesday during the competition of the Unprofessionals' League.

Alas, Serrano has been in a season-long slump of sorts, and finally found the "proper" strike release when he tied about seven of 'em together... plus a spare and then some more Xs for a tremendous 204 game. Coupled with his 191 and 181 games, his 636 set paced the Wall Plumbing five-man to a clean sweep over the Joe Keane squad.

Serrano found invaluable assistance from teammate Jr. Lewis who had a low game out of its set of a 191, the high a 212, plus a 202 for a fine 603 series.

On that same night, there were a couple of other gems who also had on their bowling shoes and scored extremely well... Clyde Pacey 221, Wayne O'Neal 202, 216/616, Jim Lamb 211, 221/623, Al Bowling 225 and Bob Steele 222.

Getting back to that hot score from the Unprofessionals... so who else? Well Jerry (the cigar) Farella. You talk about a guy being all over the lanes, this must be a classic example. As a matter of fact, I won't even mention his first score...

You figure it out. Farella's second game was a gigantic 254; his third a 232; and he finished with a 625 series.

Sec. 1 wouldn't dare mention that first score... but, 625 minus the total of his two announced scores (254 plus 222 equals 487).

See, that can't be right can it? A 1307? Nah, I must have made a mistake in my subtraction, eh?

While you're double-checking my math, let me shine the spotlight onto a couple of the other regulars who were enjoying one of their better nights, too... John Eldridge 208 and Ed Eldridge 203, Ray Robinson 202/361, Johnny Jones 221/561.

And here's another pleasant surprise from this same league. Bowling for the Oviedo Drags tournee, Hubert Ray set the pace with an opening 221, stayed right close to a 390 game with efforts of 392 and 391 for a respectable 604 series.

Phillips Cleaners split in their match with Faust Drug Store, thanks to the no-putting-of-Gil Filizetti's 263, Dick Lewis' 215 and a double 190 game for Joe Gazzi Jr.

The Daniels Standard team got some strong bowling from Coach C. B. Franklin as he finished his third game with a 205, two pins higher than his second game and an overall series of 699. Not too many pins behind were teammates Charles Elbery 203/560 and Will Prigden 204/561.

Maryland Fried Chicken Tourney

The Annual Maryland Fried Chicken Thanksgiving Classic will be bowled-off this Saturday, with both the A and B Divisions taking to the lanes at 1 p.m.

Each of the categories will have \$50 first place prize money, with eight bowlers vying for the honors.

Representing the A Division are Orville Touchton, Reggie Sigman, Wayne O'Neal, Bob Driscoll, Jerry Farella, Ron Urban, Jim Lamb and Don Witt.

For the B Division, it's Jim Carver, Gordon Lynch, Rod Mackley, George Ellis, Leonard Schweswacker, Joe Danzlik, Bobby Barbour and James Ray.

The public is cordially invited to come on out and watch the competition, and there will be open bowling lanes available. As a matter of fact, this will not interfere with the regular Moonlight Bowling promotion run each Friday and Saturday evening.

This certainly must have been the week for high games... look at Johnny Jacob's scores in the Monday evening Regier's League as an example. Jacob smashed home a league-high for the night at 294.

There were a couple of near-misses on the 'charmed circle' too... Ron Partridge's 196 and Larry Pyle's 291. And the 'old Pro' Pete Duggan unlimbered his arm for the first two games at least... and finally connected in the final game for a 213 score.

NAMES WE HAVEN'T had in print for quite some time... Al Waggoner of the Sanford Men's Doubles League checked in with a 193, Don Peacock 188, Wes Stoner 194, Tom Sawyer 183... DYNATRONICS LEAGUE - Jim Lamb 220, Dee Cashe 176, Ed Mallon 176, G. Williams 180, B. Beine 182.

Some Of The Other 'Stars'

SANFORD PLAZA MERCHANTS LEAGUE - Winston Jones 183/368, Polly Price 171, Alice Best 181, Bev Meeks 174, Rosie Robinson 202, Jim Carver 195 and 190/344, Kay Dalecki 195/305, Cliff Jones 122/238, Rod Mackley 186, Robert Gilbo 189.

Don't overlook the high scores that are registered in the Community United Methodist Church League. Plenty of 300-plus games this week... Al VanWormer 210/280 topped the list-parade. Jack Methvin rolled a 180, 191/346, Jess Methvin 186, Chuck Basinger 203/561, Jim McCullough 194, Larry McCrewe 196, Elch VanWormer 201/527, Frank VanStickle 175.

SEMINOLE MEMORIAL HOSPITAL LEAGUE... Jim Nader 191, Merle Bullard 169, Roger Merrill 168, Cami Meyers 156, Jim Gross 165, Bill Yelinek 166, Milton Hamner 163 and Mort Holley 160.

Kearse Top Scorer Again

Seminole Jr. College Stops Stetson Frosh

By JIM HICKENBACHER
Herald Sports Staff

Christmas time grows nearer and Seminole Junior College's winning streak continues to grow, along with the yuletide spirits.



Yes, the Raiders of Seminole Junior College made it four in a row as they downed a young and inexperienced Stetson freshman squad, 92-67, in a game that perhaps was overshadowed by the anxiety of the varsity opener at Stetson.

While you're double-checking my math, let me shine the spotlight onto a couple of the other regulars who were enjoying one of their better nights, too... John Eldridge 208 and Ed Eldridge 203, Ray Robinson 202/361, Johnny Jones 221/561.

And here's another pleasant surprise from this same league. Bowling for the Oviedo Drags tournee, Hubert Ray set the pace with an opening 221, stayed right close to a 390 game with efforts of 392 and 391 for a respectable 604 series.

Phillips Cleaners split in their match with Faust Drug Store, thanks to the no-putting-of-Gil Filizetti's 263, Dick Lewis' 215 and a double 190 game for Joe Gazzi Jr.

The Daniels Standard team got some strong bowling from Coach C. B. Franklin as he finished his third game with a 205, two pins higher than his second game and an overall series of 699.

Maryland Fried Chicken Tourney

The Annual Maryland Fried Chicken Thanksgiving Classic will be bowled-off this Saturday, with both the A and B Divisions taking to the lanes at 1 p.m.

This certainly must have been the week for high games... look at Johnny Jacob's scores in the Monday evening Regier's League as an example. Jacob smashed home a league-high for the night at 294.

NAMES WE HAVEN'T had in print for quite some time... Al Waggoner of the Sanford Men's Doubles League checked in with a 193, Don Peacock 188, Wes Stoner 194, Tom Sawyer 183... DYNATRONICS LEAGUE - Jim Lamb 220, Dee Cashe 176, Ed Mallon 176, G. Williams 180, B. Beine 182.

Some Of The Other 'Stars'

SANFORD PLAZA MERCHANTS LEAGUE - Winston Jones 183/368, Polly Price 171, Alice Best 181, Bev Meeks 174, Rosie Robinson 202, Jim Carver 195 and 190/344, Kay Dalecki 195/305, Cliff Jones 122/238, Rod Mackley 186, Robert Gilbo 189.

Don't overlook the high scores that are registered in the Community United Methodist Church League. Plenty of 300-plus games this week... Al VanWormer 210/280 topped the list-parade.

SEMINOLE MEMORIAL HOSPITAL LEAGUE... Jim Nader 191, Merle Bullard 169, Roger Merrill 168, Cami Meyers 156, Jim Gross 165, Bill Yelinek 166, Milton Hamner 163 and Mort Holley 160.

that the Raiders were displaying. The visitors turned a close first half contest into a complete rout in the closing half. How could one ignore the brilliant play of Greg Robinson, Dale Lambert, and the amazing Larry Kearse, not to mention Kenny Bryant.

Not so? Well the Raiders opened up the second half with a barrage of points that made the coaches and fans alike take notice.

First Ken Bryant hit a 10-foot jumper from the left side to up the Raiders lead to seven. The Hatters quickly cut the lead to three, only to have Kearse hit a jumper to make the deficit five points.

Stetson called time out with 14:44 remaining in the contest. At that junction, Kearse and Lambert took control of the trot and engineered a 15-

point spurge, while holding the home forces to four.

In just four short minutes, the damage had been done and the outcome of the game was clearly evident. Evident throughout the contest was the Raider superiority in the field and on the boards.

Dale Lambert, the Raider field general, wound up with 20 points for the night with many of them coming from the charity stripe.

Once again high point man for the Raiders was the ever-present Larry Kearse. Kearse tossed in 22 points, but his rebounding strength and shot-making ability were the Raider's key to victory.

Stetson's next opponent is Massey Tech and the visitors from Jacksonville had better come up with some outstanding play if they want to emerge victorious.

In all probability, the Raiders will make Thursday night's game number five in this year's campaign.

Lion Five Eyes Florida Military

By LARRY NEELY
Herald Sports Staff

Round ball action gets underway for the Oviedo High School Eagles Friday night in Deland as they clash with Florida Military. Hitting the floor for the Lions will be the tallest team ever.

Head member J. Miller is optimistic about this year's season. Miller lost all after his first year at Oviedo three years ago and has been building ever since.

According to Miller, this year Oviedo will be long on both talent and personnel. Plagued in recent years with the lack of ball players, Miller will have 12 men making up the varsity roster this season.

Miller and his new assistant, Charlie Hart, have been busy on fundamentals in January 1971. After the meeting an interesting colored film will be shown, demonstrating sport fishermen in action.

Refreshments will be served to men and women who are interested in the sport of fishing are invited and welcome to the meeting.

Refreshments will be served to men and women who are interested in the sport of fishing are invited and welcome to the meeting.

Refreshments will be served to men and women who are interested in the sport of fishing are invited and welcome to the meeting.

Refreshments will be served to men and women who are interested in the sport of fishing are invited and welcome to the meeting.

Refreshments will be served to men and women who are interested in the sport of fishing are invited and welcome to the meeting.

Refreshments will be served to men and women who are interested in the sport of fishing are invited and welcome to the meeting.

Refreshments will be served to men and women who are interested in the sport of fishing are invited and welcome to the meeting.

Refreshments will be served to men and women who are interested in the sport of fishing are invited and welcome to the meeting.

Refreshments will be served to men and women who are interested in the sport of fishing are invited and welcome to the meeting.

Refreshments will be served to men and women who are interested in the sport of fishing are invited and welcome to the meeting.

Refreshments will be served to men and women who are interested in the sport of fishing are invited and welcome to the meeting.

Refreshments will be served to men and women who are interested in the sport of fishing are invited and welcome to the meeting.



JERRY WEST (44) of the Los Angeles Lakers gets the treatment from Knute's Walt Frazer (left) and Dick Barnett (right). Said West: "I've got more fingerprints up and down my body than the FBI has in Washington."

Schooling Results

Forty-one races are on tap tonight as Sanford-Orlando Kennel Club moves into their third night of pre-season schooling races. Post time for the extended racing program is 7 p.m.

Some of the experienced veterans, as well as new pups, are entered tonight for their second round of prep action. Among the more popular starters will be Bang Bang Billy, the sensational come from behind runner for Lowland Kennels.

Bang Bang Billy has thrilled SOK racing fans in the area with his late speed style of racing. He won his first schooling race here this season by 19-lengths. His rivals in tonight's 13th race will be Follow Me, Pat Davis and Red Wally, all Grade A competitors at summer Greyhound racing tracks.

Schooling at the SOK will run through the remainder of this week and Monday and Tuesday of next week, as the track prepares for its 36th annual opening Friday, December 11.

When the regular season gets underway there will be nightly racing, except Sundays, and matinees on Wednesdays and Saturdays. All evening performances will start at 8 p.m., with the afternoon sessions slated for 1:45 p.m.

First Race: 5:16 - Gene's Skelter, Silver Coat, Little Wonderful - Time 21:16.

Second Race: 5:16 - Lark-Luster, Like Magic, Little Trinit - Time 21:84.

Third Race: 5:16 - Aunty Cleo, Betty Shamrock, L.B.'s Big Pro - Time 21:02.

Fourth Race: 5:16 - Miss

Parvale, Satirist, Gene's Flipper - Time 21:58.

Fifth Race: 5:16 - Racerific Mid Tex Shot, Modest Way - Time 21:88.

Sixth Race: 5:16 - Mad Legazy, Blue Maxine, Jessie James - Time 21:80.

Seventh Race: 5:16 - K'ed King Kong, Yarnes Branch, No Chit - Time 21:59.

Eighth Race: 5:16 - Dark Ratler, Nixon Dame, Dual Power - Time 22:08.

Ninth Race: 5:16 - Joey's Boy, Safari Chief, Record Speed - Time 21:03.

Tenth Race: 5:16 - Leo J. Pocket Tapper, Lets Hear It - Time 21:91.

11th Race: 5:16 - N1 son Franks, Westy Charm, Pine Lawn - Time 21:73.

12th Race: 5:16 - Austin Mick, Overlin, Dashben - Time 21:79.

13th Race: 5:16 - Margie Marina, Koney's Lou, Alta Short - Time 21:57.

14th Race: 5:16 - Deltona's Boy, Safari Chief, Record Speed - Time 21:79.

15th Race: 5:16 - Great Gain, T.G.'s Golden Boy, Brooklyn Sheila - Time 21:91.

16th Race: 5:16 - Value Top Spare, A Machine, Joan - Time 21:57.

17th Race: 5:16 - Gene's Dale, Jamaica Trans, K's Prince Of Scots - Time 22:16.

18th Race: 5:16 - O No Charlie, Joy's Cadillac, Val's Gal - Time 22:27.

19th Race: 5:16 - Sly Troubadour, Bill Cadde, Mickey Mop - Time 21:70.

20th Race: 5:16 - Silver Lady, Chevy Whizzer, K's Y - Time 22:70.

21st Race: 5:16 - High Meadows, Berkeley Fly, Berkeley

22nd Race: 5:16 - Gypsy Of Broadway, Rising Queen, H.E.V. - Time 21:65.

23rd Race: 5:16 - My Velvet Sue, Darvon, Mineola Way - Time 21:67.

24th Race: 5:16 - Mineola Badgitt, Tongue Lash, El Grande - Time 22:35.

25th Race: 5:16 - Arabian Mystery, Pawn Lida, L.R.'s Lucky Red - Time 22:46.

Techmen Trek To Daytona Tonight

By HERKY CUSH
Herald Sports Staff

Florida Tech's basketball team travels to Daytona Beach tonight for a variety on their schedule, a so-called "brudder" when they meet Embury-Riddle Aeronautical University.

In fact, tonight's game could very well be the last "brudder" on the Tech schedule and there were only two. And both times Embury-Riddle was the "case in point."

Tech opened the season with Embury-Riddle and after a slow start rolled to a convincing 111-37 triumph.

The Flyboys of Embury-Riddle jumped out to a 8-1 lead but it was mostly due to a cold hand on the part of the Black and Gold. Tech failed on its first seven shots from the floor while E.R. hit two of its first three.

Tech came back to knot the score at 5-5, went ahead 7-5 and after an 11-7 edge proceeded to outscore the Almen 44-14 the rest of the half.

Thanks to a full court press, led by Ed Smith, Tech vaulted to a 55 point lead, 82-27 with 12 minutes left in the second half and even with the four man bench playing a great deal the final count went to 111-37.

Embry-Riddle managed but seven hoops in the second half and four were tallied by their high scorer for the night, Larry Schilling. In fact, Schilling hit four of the last five shots for the E-R quint in the first meeting with Tech. His 16 points was nearly triple that of the next point producer on the E-R team.

Tech's wide margin of victory attributed Embury-Riddle to the defensive job which permitted only one player to hit double figures.

In their four games since that opener Tech has seen an average of four players on the opposing quint hit the twin count.

It's only because Tech has been able to put an average of five players in double figures that they've won two of five and were in the thick of all three defeats.

Mike Clark has taken over the scoring lead thanks to a 33 point spurge in the consolation game in the Gee Chee Classic in Savannah, Georgia last Saturday. Clark now has 89 points and is just a shade under 18 a game.

Rudi Jesse owns a 16.9 average for five games. Pat Fitzgerald has 16.4, Ed Smith has 15.9 and Mike LaLone is a shade under 13 a game.

Had it not been for a twisted ankle incurred by Fitzgerald and a budding head cold nearly flattening Clark the Black and Gold might have pulled an upset in the Gee Chee Classic opener with Charlotte College. Neither Clark nor Fitzgerald played at 100 per cent capacity

last night. Fitzgerald took a 21 point average into that game and finished with seven points. Clark ripped the nets for 33 markers, highest single game output by a Tech eager this season.

Also slightly under the weather for that Gee Chee tourney was Jim Flanagan, the 6-4, 240 pound "relief man" for Tech's board corps. Flanagan has been doing a fine job all year and his showing against Riddle in the opener was perhaps his best game. He hit ten points and had command of the boards.

Tech is at home with Patrick Schilling in Savannah, Georgia last Saturday. Clark now has 89 points and is just a shade under 18 a game.

Rudi Jesse owns a 16.9 average for five games. Pat Fitzgerald has 16.4, Ed Smith has 15.9 and Mike LaLone is a shade under 13 a game.

Had it not been for a twisted ankle incurred by Fitzgerald and a budding head cold nearly flattening Clark the Black and Gold might have pulled an upset in the Gee Chee Classic opener with Charlotte College. Neither Clark nor Fitzgerald played at 100 per cent capacity

last night. Fitzgerald took a 21 point average into that game and finished with seven points. Clark ripped the nets for 33 markers, highest single game output by a Tech eager this season.

Also slightly under the weather for that Gee Chee tourney was Jim Flanagan, the 6-4, 240 pound "relief man" for Tech's board corps. Flanagan has been doing a fine job all year and his showing against Riddle in the opener was perhaps his best game. He hit ten points and had command of the boards.

Tech is at home with Patrick Schilling in Savannah, Georgia last Saturday. Clark now has 89 points and is just a shade under 18 a game.

Rudi Jesse owns a 16.9 average for five games. Pat Fitzgerald has 16.4, Ed Smith has 15.9 and Mike LaLone is a shade under 13 a game.

Had it not been for a twisted ankle incurred by Fitzgerald and a budding head cold nearly flattening Clark the Black and Gold might have pulled an upset in the Gee Chee Classic opener with Charlotte College. Neither Clark nor Fitzgerald played at 100 per cent capacity

last night. Fitzgerald took a 21 point average into that game and finished with seven points. Clark ripped the nets for 33 markers, highest single game output by a Tech eager this season.

Also slightly under the weather for that Gee Chee tourney was Jim Flanagan, the 6-4, 240 pound "relief man" for Tech's board corps. Flanagan has been doing a fine job all year and his showing against Riddle in the opener was perhaps his best game. He hit ten points and had command of the boards.

Tech is at home with Patrick Schilling in Savannah, Georgia last Saturday. Clark now has 89 points and is just a shade under 18 a game.

Rudi Jesse owns a 16.9 average for five games. Pat Fitzgerald has 16.4, Ed Smith has 15.9 and Mike LaLone is a shade under 13 a game.

Had it not been for a twisted ankle incurred by Fitzgerald and a budding head cold nearly flattening Clark the Black and Gold might have pulled an upset in the Gee Chee Classic opener with Charlotte College. Neither Clark nor Fitzgerald played at 100 per cent capacity

last night. Fitzgerald took a 21 point average into that game and finished with seven points. Clark ripped the nets for 33 markers, highest single game output by a Tech eager this season.

Also slightly under the weather for that Gee Chee tourney was Jim Flanagan, the 6-4, 240 pound "relief man" for Tech's board corps. Flanagan has been doing a fine job all year and his showing against Riddle in the opener was perhaps his best game. He hit ten points and had command of the boards.

Tech is at home with Patrick Schilling in Savannah, Georgia last Saturday. Clark now has 89 points and is just a shade under 18 a game.

Rudi Jesse owns a 16.9 average for five games. Pat Fitzgerald has 16.4, Ed Smith has 15.9 and Mike LaLone is a shade under 13 a game.

Had it not been for a twisted ankle incurred by Fitzgerald and a budding head cold nearly flattening Clark the Black and Gold might have pulled an upset in the Gee Chee Classic opener with Charlotte College. Neither Clark nor Fitzgerald played at 100 per cent capacity

last night. Fitzgerald took a 21 point average into that game and finished with seven points. Clark ripped the nets for 33 markers, highest single game output by a Tech eager this season.

Also slightly under the weather for that Gee Chee tourney was Jim Flanagan, the 6-4, 240 pound "relief man" for Tech's board corps. Flanagan has been doing a fine job all year and his showing against Riddle in the opener was perhaps his best game. He hit ten points and had command of the boards.

Tech is at home with Patrick Schilling in Savannah, Georgia last Saturday. Clark now has 89 points and is just a shade under 18 a game.

Rudi Jesse owns a 16.9 average for five games. Pat Fitzgerald has 16.4, Ed Smith has 15.9 and Mike LaLone is a shade under 13 a game.

Had it not been for a twisted ankle incurred by Fitzgerald and a budding head cold nearly flattening Clark the Black and Gold might have pulled an upset in the Gee Chee Classic opener with Charlotte College. Neither Clark nor Fitzgerald played at 100 per cent capacity

last night. Fitzgerald took a 21 point average into that game and finished with seven points. Clark ripped the nets for 33 markers, highest single game output by a Tech eager this season.

Also slightly under the weather for that Gee Chee tourney was Jim Flanagan, the 6-4, 240 pound "relief man" for Tech's board corps. Flanagan has been doing a fine job all year and his showing against Riddle in the opener was perhaps his best game. He hit ten points and had command of the boards.

Tech is at home with Patrick Schilling in Savannah, Georgia last Saturday. Clark now has 89 points and is just a shade under 18 a game.

Rudi Jesse owns a 16.9 average for five games. Pat Fitzgerald has 16.4, Ed Smith has 15.9 and Mike LaLone is a shade under 13 a game.

Had it not been for a twisted ankle incurred by Fitzgerald and a budding head cold nearly flattening Clark the Black and Gold might have pulled an upset in the Gee Chee Classic opener with Charlotte College. Neither Clark nor Fitzgerald played at 100 per cent capacity

last night. Fitzgerald took a 21 point average into that game and finished with seven points. Clark ripped the nets for 33 markers, highest single game output by a Tech eager this season.

Also slightly under the weather for that Gee Chee tourney was Jim Flanagan, the 6-4, 240 pound "relief man" for Tech's board corps. Flanagan has been doing a fine job all year and his showing against Riddle in the opener was perhaps his best game. He hit ten points and had command of the boards.

Tech is at home with Patrick Schilling in Savannah, Georgia last Saturday. Clark now has 89 points and is just a shade under 18 a game.

FENCE SALE

Tues, Wed, Thur. Only

70¢

PHONE 831-1525

800 NORTH HIGHWAY 427 LONGWOOD, FLA.

AMERICAN STEEL FENCE COMPANY

Introducing Penneys Survivor.

A new radial ply tire that gives you a soft ride along with great mileage.

45⁹⁵

44 MONTHS GUARANTEE

WITH 200 MILES MILEAGE ALLOWANCE

Penneys Survivor is a new radial ply tire that gives you a soft ride along with great mileage. It's made with a two ply rayon cord body, reinforced with four belts of rayon. This gives the tire a tremendous strength and long wear (that's why we named it the Survivor). It gives you a truly soft ride, along with improved traction on slick roads, better cornering and handling than conventional tires. If you do a lot of driving, we urge you to try Penneys Survivor radial ply tires. They're well worth the price.

44 MONTHS GUARANTEE

WITH 200 MILES MILEAGE ALLOWANCE

Penneys Survivor is a new radial ply tire that gives you a soft ride along with great mileage. It's made with a two ply rayon cord body, reinforced with four belts of rayon. This gives the tire a tremendous strength and long wear (that's why we named it the Survivor). It gives you a truly soft ride, along with improved traction on slick roads, better cornering and handling than conventional tires. If you do a lot of driving, we urge you to try Penneys Survivor radial ply tires. They're well worth the price.

169"

8 track stereo tape deck with speakers

69⁹⁵

81 Tigris heater... 19.98

for racing or use on highways, sidewalks or streets.

Penneys

Charge it! Sanford Plaza Mon. - Sat. 8 A.M. to 9 P.M.

GREYHOUNDS RACING IN STYLE

Schooling Races November 30 thru December 8 Post Time 7 PM

Free Admission! Bring the kids!

SANFORD-ORLANDO KENNEL CLUB

Regular Season Opens Friday, December 11

Jaraloi

WORLD'S FASTEST GAME

RESULTS

Tuesday Night

1st GAME - Single - 5 Points

2nd GAME - Single - 5 Points

3rd GAME - Double - 1 Point

4th GAME - Double - 7 Points

5th GAME - Double - 5 Points

6th GAME - Double - 5 Points

7th GAME - Double - 5 Points

8th GAME - Double - 5 Points

9th GAME - Single - 5 Points

10th GAME - Single - 5 Points

11th GAME - Single - 5 Points

12th GAME - Single - 5 Points

13th GAME - Single - 5 Points

14th GAME - Single - 5 Points

15th GAME - Single - 5 Points

16th GAME - Single - 5 Points

17th GAME - Single - 5 Points

18th GAME - Single - 5 Points

19th GAME - Single - 5 Points

20th GAME - Single - 5 Points

21st GAME - Single - 5 Points

22nd GAME - Single - 5 Points

23rd GAME - Single - 5 Points

24th GAME - Single - 5 Points

25th GAME - Single - 5 Points

26th GAME - Single - 5 Points

27th GAME - Single - 5 Points

28th GAME - Single - 5 Points

29th GAME - Single - 5 Points

30th GAME - Single - 5 Points

31st GAME - Single - 5 Points

32nd GAME - Single - 5 Points

33rd GAME - Single - 5 Points

34th GAME - Single - 5 Points

35th GAME - Single - 5 Points

36th GAME - Single - 5 Points

37th GAME - Single - 5 Points

38th GAME - Single - 5 Points

39th GAME - Single - 5 Points

40th GAME - Single - 5 Points

41st GAME - Single - 5 Points

42nd GAME - Single - 5 Points

43rd GAME - Single - 5 Points

44th GAME - Single - 5 Points

45th GAME - Single - 5 Points

46th GAME - Single - 5 Points

47th GAME - Single - 5 Points

48th GAME - Single - 5 Points

49th GAME - Single - 5 Points

50th GAME - Single - 5 Points

51st GAME - Single - 5 Points

52nd GAME - Single - 5 Points

53rd GAME - Single - 5 Points

54th GAME - Single - 5 Points

55th GAME - Single - 5 Points

56th GAME - Single - 5 Points

57th GAME - Single - 5 Points

58th GAME - Single - 5 Points

5

DELICIOUS FRESH BOSTON BUTT Pork Roast per pound 49¢	BUTTERMILK OR SWEETMILK Ballard's Biscuits 8-oz. can 10¢	PUBLIX DAIRY-FRESH Cottage Cheese 2-1/2 lb. cup 69¢	SAVE 16¢ FOR FRYING OR BAKING Wesson Oil 24-oz. bottle 49¢	SAVE 14¢! CAMPBELL'S Tomato Soup tall can 10¢ LIMIT 6 PLEASE
---	---	--	---	--

PUBLIX MARKETS

CHRISTMAS IS ONLY A FEW BOOKS AWAY

Plan for Holiday gifting. If you save your S&H Green Stamps, come holiday time, you'll be able to get the finest gifts money can buy. (And you won't need the money!)

Medium Eggs
dozen
39¢

PRICES EFFECTIVE THURS., DEC. 3 THRU WED., DEC. 9, 1970.

NEEDS NO REFRIGERATION!
RATH'S BLACK HAWK BONELESS

Canned Hams
3-lb. can
\$2.99

Plus 100 S&H Green Stamps with coupon

- From Our Delicatessen Dept.**
- Delicious Sliced German Style Bologna 49¢
 - Tasty Sliced Lebanon Bologna 69¢
 - Old Fashion Flavor Baked Beans 39¢
 - Delicious Fresh-Taste Submarine Sandwich 49¢
 - Delicious Kitchentreat Potato Salad 39¢
 - Always a Healthy Favorite Bar-B-Q Fryers 79¢

- From Our Dairy Dept.**
- SAVE 10¢ With Stamp Regular Margarine ... 35¢
 - SAVE 7¢ With Stamp Soft Margarine 45¢
 - Delicious Sliced American 79¢
 - Delicious Kraft Cheese Treat Imported Gruyere 39¢
 - Wisconsin Cheese Bar Longhorn Cheese 98¢

- Fresh Pork Sale**
- Pork Picnics 39¢
 - Fresh Tasty Pork Steaks 59¢
 - Fresh Small Pork Spare Ribs 69¢
 - Delicious Fresh Pork Hocks 49¢
- SWIFT'S PREMIUM PROTEN GOV'T. INSPECTED HEAVY WESTERN BEEF SALE
- the BEEF that NEEDS LESS COOKING TIME!**
- Swift's Premium Bone-In Pot Roast 79¢
 - Swift's Premium Boneless Imperial Roast 99¢
 - Swift's Premium Boneless English-Cut Roast ... \$1.09
 - Swift's Premium Beef Short Ribs 59¢

PUBLIX MARKETS

From Our Dairy Dept. ASSORTED FLAVORS

Dairy-Fresh Yogurt
8-oz. cups
19¢

- QUANTITY RIGHTS RESERVED**
- Palm River Brand Tasty Sliced Bacon 55¢
 - Armour's Star Nutritious Sliced Beef Liver 69¢
 - Premium Label Reg. or Dinner Swift's Franks 69¢
 - Swift's Premium 3-Minute Sausage Brown 'N Serve 59¢
 - Swift's Premium Fully-Cooked Hostess Hams \$1.49
 - Swift's Premium Assorted Sliced Cold Cuts 49¢
 - (Cooked Salsami, Spiced Luncheon or Liver Cheese)
 - Copeland's Tasty Sliced Cooked Ham \$1.39
 - Seafood Treat, Small White Cocktail Shrimp 89¢
 - Seafood Treat, Ready-To-Eat Smoked Mullet 89¢

SAVE 10¢! F & P HALVED OR SLICED

Yellow-Cling Peaches
NO. 2 1/2 cans
3 89¢

ALL GRINDS FLAVORFUL COFFEE Maxwell House 1-lb. can 69¢	WITHOUT COUPON 17¢-31¢ PILL'S LIBBY'S ASSORTED FLAVORS Cake Mixes 4 \$1 1-oz. pkgs. PRICE APPLIES ONLY WHEN REDEEMED WITH COUPON LISTED IN OUR AD.	Down Produce Lane LARGE SIZE FRESH FLORIDA Navel Oranges per dozen 49¢	Down Produce Lane WESTERN FRESH, CRISP Iceberg Lettuce large head 25¢
--	--	--	---

- SAVE 16¢ F & P Barlett Pear Halves... 3 # 303 89¢
- SAVE 27¢ Green Giant Whole Kernel or Cream Style Golden Corn... 4 # 303 89¢
- SAVE 7¢ Cole Assorted Flavors Cat Food 4 1/2 oz. can 10¢
- SAVE 37¢ Libby's Green Sweet Peas... 4 # 303 89¢
- SAVE 18¢ Hunt's Tomato Ketchup 3 20 oz. bot. 99¢
- SAVE 29¢ Hearty Hormel Chili with beans .3 15 oz. cans \$1
- SAVE 96¢ Ass. White or Decorated Bounty Towels 3 2-roll pgs. 99¢
- SAVE 45¢ Assorted, White or Decorated Bounty Towels 4 large rolls 99¢

- Salad-Perfect Florida
- Avocados 4 for \$1.00
 - Salad-Perfect Florida Green Bell Peppers 3 for 23¢
 - All-Purpose Crisp 'n Juicy Rome Apples 4 lb. bag 49¢
 - Crisp Western Cello-Pack Carrots 2 1-lb. pgs. 29¢

JAY FREEMAN PERMANENT PRESS SHORT SLEEVE ASSORTED COLORS AND SIZES

Matching Shirt and Tie Sets
per set
\$2.49

DESSERT TREAT ASSORTED FLAVORS

Royal Gelatin
1099¢

- From Our Frozen Food Dept.**
- New! Makes A Half Gallon, Minute Mold Cons. Frozen Florida Orange Juice 16 oz. can 59¢
 - Flavorful Strawberry Halves .. 3 10 oz. pgs. \$1
 - Pepperidge Farm Apple or Coconut Cream Pie Tarts 3 pgs. \$1
 - Orville Frozen Tater Tots 2 lb. pgs. 49¢
 - Flavorful Tasty Frozen Mixed Vegetables 1 1/2 lb. bag 49¢
 - Green Giant Whole Kernel Golden Corn 10 oz. can 29¢
 - Miss Peck's Frozen Fried Flounder 8 oz. pgs. 59¢
 - Singapore's Frozen Cooked Shrimp 10 oz. pgs. 79¢
 - Sara Lee Frozen All-Butter Pound Cake 79¢
 - (Plus 20 Extra S&H Green Stamps with coupon)
 - Bird's Eye Non-Dairy Cool Whip large size 63¢
 - (Plus 100 Extra S&H Green Stamps with coupon)
 - Treasure Isle Brand Frozen Breaded Shrimp 1 1/2 lb. \$1.77
 - (Plus 100 Extra S&H Green Stamps with coupon)

- SAVE 13¢ Libby's Canned Pumpkin ... 2 # 303 cans 29¢
- SAVE 10¢ Lady Betty Prune Juice 40 oz. bot. 49¢
- SAVE 9¢ Delicious V-8 Cocktail Juice 2 46 oz. cans 89¢
- SAVE 17¢ Pink Detergent Liquid Texize 3 32 oz. bot. \$1
- SAVE 17¢ Hunt's Manwich Sauce 3 # 300 cans \$1
- SAVE 7¢ Pillsbury Pie Crust Mix 9 1/2 oz. pkg. 22¢
- Assorted Flavors Fruit Drinks Hi-C Drinks 3 46 oz. cans \$1

IT'S HERE & We've Got it on SALE! Family Size Gain 10 lb. 11 oz.

PUBLIX MARKETS

A Big Convenient Supply at a Low, Low Introductory Price

10-lb., 11-oz. NEW! WITH MICRO ENZYME ACTION

Gain Detergent
family size
\$1.98

LIMIT 1 PLEASE WITH OTHER PURCHASES OF \$3.00 OR MORE EXCLUDING CIGARETTES

PRICE APPLIES ONLY WITH THIS COUPON

12 oz. LOG CABIN SYRUP 29¢

Good at Public Markets (Expires Wed., Dec. 9, 1970)

PRICE APPLIES ONLY WITH THIS COUPON

Good at Public Markets (Expires Wed., Dec. 9, 1970)

12 oz. HEINZ 16 OZ. BARBECUE SAUCE 19¢

Good at Public Markets (Expires Wed., Dec. 9, 1970)

PRICE APPLIES ONLY WITH THIS COUPON

Good only at Public Super Markets Coupon (Expires Wed., Dec. 9, 1970)

Pillsbury's 2 LAYER CAKE MIXES
4 for \$1

PRICE APPLIES ONLY WITH THIS COUPON

Good at Public Markets (Expires Wed., Dec. 9, 1970)

PUBLIX MARKETS

Enjoy the Happy Difference... Where Shopping is a Pleasure

SANFORD PLAZA Hwy. 17-92 and Onora Rd. Sanford	HOURS: MON., TUES., WED., SAT. 8:30 - 7:00 THURS., FRI., 8:30-9:00 CLOSED SUNDAY	SEMINOLE PLAZA Casselberry	HOURS: MON. THRU SAT. 9 A.M. - 9 P.M. CLOSED SUNDAY
---	---	-------------------------------	---

APPRECIATION DAYS! YEAR'S BIGGEST SALE! APPRECIATION DAYS!
SUPER DISCOUNT SALE
A&P MART DISCOUNT FOODS

COMPARE DISCOUNT PRICES-SAVE MORE!

Sunnybrook Grade A Fresh Fla.
LARGE EGGS
 2.99
 CTN. OF 12
 YEAR'S BIGGEST SALE!

Bounty Paper
TOWELS 4 JUMBO ROLLS 99¢
 Marvel Vanilla, Chocolate, or Strawberry
ICE CREAM 2 1/2 GAL. CTNS. 99¢
 All Varieties
 Toastems 3 10-Oz. Boxes \$1.00
 Ann Page Red Kidney or Pork & Beans 3 37-Oz. CANS \$1.00

Tab, Sprite, Fresca or
COKE
 39¢
 CTN. OF 6
 10-OZ. BTL.
 PLUS DEP.
 SAVE REAL CASH!

MILD and MELLOW APPRECIATION DAYS!
EIGHT O'CLOCK COFFEE 1 LB. 59¢
 LIMIT 1 OF YOUR CHOICE WITH \$5 OR MORE FOOD ORDER

CAMPBELL'S SOUP
 6 10-OZ. CANS 99¢
 * Chicken with Rice
 * Cream of Chicken
 * Chicken Noodle

Rich's Frozen
COFFEE RICH
 39¢
 QT. CTN.
 WHY PAY MORE!

A & P
APPLE SAUCE 6 1-LB. CANS 99¢
 Wonderlic
Panty Hose Ea. 99¢
 Petroleum Jelly
Vaseline 2 8-OZ. Jars 99¢
 Dessert Flower Hand &
Body Lotion 18-Oz. Btl. 99¢
 A & P Red, Amber, or Green
Mouthwash 14-Oz. Btl. 39¢
 Planters Dry Roast
Peanuts 13-Oz. 59¢
 Chocolate
Nestles Quik 1-Lb. Size 45¢

25¢ OFF LABEL
CHEER
 99¢
 5 LB. 4 OZ. KING SIZE
 LIMIT 1 W/ \$5 OR MORE FOOD ORDER
 YEAR'S BIGGEST SALE!

MASTER BRANDS OF
YOGURT
 8-Oz. SIZE 25¢
 BUY 1-GET 1 FREE!

Giant Stokely Sale!!
 ★ Whole Green Beans 1-lb.
 ★ Cut Green Beans 1-lb.
 ★ French Green Beans 1-lb.
 ★ Golden Cream Style Corn 1-lb.
 ★ Gold W. K. Corn 1-lb.
 ★ Fruit Cocktail 1-lb.
 ★ Beanee Weenees 8-oz.
 Enjoy The Kiddie Rides In Our Parking Lot
4 CANS 99¢

A&P Frozen
ONION RINGS
 4 7-OZ. PKGS. 99¢

POPULAR PRICED
BALLANTINE BEER
 Carton of 12 oz. N.R. Bottles 89¢
 WHY PAY MORE!

All Varieties - Frozen
MORTON Cream Pies
 4 14 oz. pies 99¢
 YEAR'S BIGGEST SALE!

Ann Page Layer
CAKE MIXES
 4 PKGS. 99¢
 SAVE REAL CASH

Ann Page Quality
MAYONNAISE
 4 QT. JAR 39¢
 LIMIT 1 W/ \$5 OR MORE ORDER
 SAVE REAL CASH!

APPRECIATION DAYS! YEAR'S BIGGEST SALE!
 "Super-Right" Heavy Western Tender Bone-In-Blade Cut
CHUCK ROAST LB. 48¢
 COMPARE THIS DISCOUNT PRICE

A&P MART DISCOUNT FOODS
 GOOD AT SANFORD A-MART ONLY
 PINECREST SHOPPING CENTER
 17-92, SANFORD
 OPEN 9-9 MONDAY THRU FRIDAY
 OPEN 9-7 SATURDAY; 10-6 SUNDAY

SHOP WHERE THE BIG SAVINGS ARE - SAVE MORE

"Super-Right" 1/4 Pork Loin Sliced
PORK CHOPS
 58¢
 "Super-Right" Boneless Chuck or
SWISS STEAK LB. 98¢

Allgood Sugar Cured (Limit 2 Boxes w/ Food order)
SLICED BACON 2 LB. BOX 99¢
 "Super-Right" Round Bone Shoulder or Calif. Roast LB. 78¢
 Copeland All Meat Sliced Bologna 1 lb. Pkg. 67¢
 "Super-Right" Whole or Shank Half Fully Cooked Ham LB. 48¢
 "Super-Right" All Meat Skinless Franks 2 12 oz. pkgs. 95¢
 "Super-Right" Chunk Braunsweiger LB. 38¢
 Cap'n John's Frozen Perch or Haddock Dinners 2 9 oz. pkgs. 95¢

"Super-Right" Smoked Fully Cooked
HAM
 SHANK PORTION LB. 38¢
 YEAR'S BIGGEST SALE!

"Super-Right" Boneless Chuck or
SWISS STEAK LB. 98¢

Grade A Fresh Florida or Georgia
WHOLE BAGGED FRYERS 28 LB. 28¢
 CHECK & COMPARE
 LIMIT 1 BAG PLEASE

"Super-Right" Western Beef
CHUCK STEAK LB. 58¢

FOLGER'S INSTANT COFFEE
 10 oz. jar 99¢
 With Newspaper Coupon

Fresh Juicy
 * **PINEAPPLE** 3 Mix or Match 'Em 97¢
 Firm Ripe Carton
 * **TOMATOES** 3 Your Choice 97¢
 Fresh 3 lb. Bag
Yellow ONIONS

Luscious Golden Ripe
BANANAS
 9¢ LB.

Money Saving Coupon
 Instant Coffee (with coupon)
FOLGERS 10-OZ. JAR 99¢
 Coupon Effective Through Dec. 8, 1970

Compare These Discount Prices!
 Fannings Bread & Butter Pickles 3 14 oz. Jars 89¢
 Kraft Philadelphia Cream Cheese 3 8-oz. Pkg. \$1
 Pream Non Dairy Coffee Creamer 2 20 oz. Jars 99¢
 Ann Page Tomato Ketchup 4 20 oz. Btls. 99¢

Beautiful Scotch Pine
CHRISTMAS TREES \$5.49 And Up

R-C COLA
 8-16 Oz. Size 59¢ Plus Dep.

Heinz TOMATO SOUP
 10 oz. can 10¢
 YEAR'S BIGGEST SALE!

Jane Parker - Delicious
APPLE PIES
 22 oz. size 39¢
 WHY PAY MORE!

Jane Parker Enriched Reg.
WHITE BREAD
 5 20 oz. loaves \$1.00
 YEAR'S BIGGEST SALE!

Almond Chocolate W/Honey

By CECILY BROWNSTONE
AP Food Editor
EVENING REFRIGERATOR
Almond Chocolate Cake
with Honey Cream
Tea or Coffee

ALMOND CHOCOLATE CAKE
WITH HONEY CREAM
Frost this cake just before
serving.

- 2 3rd cup shortening
- 1 1/2 cups sugar
- 2 eggs, separated
- 2 cups sifted cake flour
- 2 teaspoons baking powder
- 1 teaspoon salt
- 2 3rd cup milk
- 1 teaspoon vanilla
- 1 cup sliced almonds, toasted
- 2 squares (each 1 ounce) sweet baking chocolate, grated
- 1 cup heavy cream
- 2 tablespoons honey
- 1/2 cup shortening and 1 cup of the sugar; beat in egg yolks. Sift flour with baking powder and salt and add to creamed mixture alternately with milk, beating after each addition. Mix in vanilla. 1/2 cup of the almonds and all of the chocolate. Beat egg whites until foamy; add remaining 1/2 sugar gradually and beat until soft peaks form; fold into batter. Pour into 2 greased and floured 8-inch cake pans. Bake in a preheated 350-degree oven for 30 minutes or until cake springs back when touched lightly in center. Cool on rack 10 minutes; remove from pans and cool thoroughly. Combine cream and honey; whip until stiff and spread about half between cake layers and remainder on top. Sprinkle top with remaining 1/2 cup almonds.

SATURDAY COCKTAIL PARTY

- Spreads:** Shrimp Pasta; Cream Cheese with Anchovies; Cheddar Cheese with Walnuts and Pimiento-stuffed Green Olives.
- Assorted Crackers Beverage**
- PETIT'S SHRIMP PASTA**
Delicious new concoction!
1 cup (16) medium-size cooked shelled and deveined shrimp
1/2 medium rib celery
1/4 cup thin strips onion, loosely packed
1/4 cup Russian dressing
1 teaspoon Worcestershire sauce
1 tablespoon bottled horseradish
Salt and white pepper to taste
Dash cayenne pepper
Put first 3 ingredients through chopper. Mix in remaining ingredients. Cover and chill. Serve as a spread for crackers or party bread.

THE BRIDE COOKS SUPPER

- Fried Scallops Potato Sticks
Garden Salad Crusty Rolls
Nesslebroe Pie Beverage
- GARDEN SALAD**
1/4 cup knife-sliced (fine) green cabbage, loosely packed
1/2 cup finely grated carrots, loosely packed
1/4 cup finely chopped celery
2 tablespoons finely chopped green pepper
1/4 cup finely chopped pared cucumber
1/4 teaspoon salt
1 tablespoon mayonnaise
1 teaspoon finely grated onion, pulp and juice
1 1/2 tablespoons sweet pickle relish
Thoroughly mix together all the ingredients. Makes 2 servings.

SUNDAY DINNER

- Beef Mushroom Rolls Noodles
Broccoli Bread Tray
Pineapple Pie Beverage
BEEF MUSHROOM ROLLS
A mainstay main dish.
1 pound thinly sliced round steak (about 3/4-inch thick)
1/4 cup butter or margarine
1/4 cup crumbled blue cheese
1 cup small dry pumpernickel bread cubes
2 tablespoons shortening
1 can (1 1/4 ounces) brown gravy (with onions)
2 cups sliced fresh mushrooms (about 1/2 pound)
Cut steak into 4 pieces, each about 4 by 4 inches. Pound with meat hammer. In a saucepan melt butter and cheese; toss with bread cubes. Place about 1/4 of the stuffing near center of each piece of meat. Roll up; tuck in ends; fasten with toothpicks or skewers. In skillet, brown rollups in shortening; pour off fat. Stir in gravy. Cover; cook over low heat 1 hour. Add mushrooms; cook 15 minutes more. Stir now and then. Makes 4 servings.

PARK AND SHOP



You'll Like the LOW PRICES

THESE ITEMS & PRICES GOOD ALL WEEK LONG
★ THURS., DEC. 3 THRU
★ WED., DEC. 9

SAVE on the COST of Wonderful Meals this Week!

YOUR CHOICE
FINE-GRANULATED SUGAR
"DIXIE CRYSTALS" 5-LB. BAG 47¢
"FLO-CANE" 5-LB. BAG 37¢
LIMIT: ONE OF YOUR CHOICE, PLEASE WITH OTHER PURCHASES OF \$10 OR MORE EXCLUDING CIGARETTES

EXTRA-LEAN! "MORRELL" BONELESS CANNED HAM
3-LB. CAN \$2.87

"MORRELL PRIDE" LEG O' LAMB
FRESH! LB. 97¢

DAIRY FOODS
FLA. GRADE "A" MEDIUM EGGS
2 DOZ. 89¢

"FRESH" LEANI PORK ROAST
LB. 37¢

"HICKORY SMOKED" SHOULDER PICNICS
LB. 29¢

"MRS. FILBERT'S" MARGARINE
LB. PKG. 25¢

"BUDGET" SLICED BACON
LB. PKG. 39¢

"CARNATION" SKIM MILK
TALL CAN 10¢

"FIELD TRIAL" DOG FOOD
25 LB. BAG \$2.69 | 25-LB. BAG \$2.39

"LYKES" CHILI & BEANS
NO. 300 CAN 29¢

"MUELLER'S" EGG NOODLES
10 OZ. PKG. 29¢

"GREEN GIANT" GREEN BEANS
4 CANS \$1.00

"JEFFERSON ISLAND" SALT
26 OZ. PKG. 5¢

"OH! BOY" SYRUP
NO. 5 JAR 49¢

"GEORGIA BOY" PEACHES
4 NO. 2 1/2 CANS \$1.00

"AJAX" ENZYME DETERGENT
GIANT BOX 47¢

"FOLGER'S" INSTANT COFFEE
WITH COUPON! 10 OZ. JAR 99¢
WITHOUT COUPON! 10 OZ. JAR \$1.39

FRESH! "100% PURE" GROUND BEEF
4 LBS. \$1.98

FAMOUS! "LAZY-AGED" BEEF STEAK
• DELMONICO LB. \$1.47

"FOLGER'S" INSTANT COFFEE
WITH COUPON! 10 OZ. JAR 99¢
WITHOUT COUPON! 10 OZ. JAR \$1.39

FAMOUS! "LAZY-AGED" BEEF STEAK
• SIRLOIN • CLUB LB. 97¢

FAMOUS! "LAZY-AGED" BEEF STEAKS
• ROUND • SWISS LB. 87¢

Chuck Roast
LB. 47¢

FAMOUS! "LAZY-AGED" BEEF STEAK
• RIB (OR) • FAMILY LB. 77¢

"CHUCK" POT ROAST
.. LB. 67¢

"TOASTY TREAT" WAFFLES
10 OZ. PKG. 10¢

DELICATESSEN
HOT BAR-B-QUE CHICKEN 89¢ LB.
HOT BAR-B-QUE SPARE-RIBS 98¢ LB.
BAKED BEANS... LB. 49¢

"LEAN 'N' MEAT" BEEF SHORT RIBS... LB. 47¢
"BAR-B-QUEING" BEEF RIBS... LB. 57¢
"LEAN 'N' TENDER" ALL MEAT STEW... LB. 77¢

"FROZEN" FRENCH FRIES
2 LB. PKG. 39¢

FROM OUR BAKERY
HOME BAKED FRESH FAMILY SIZE
BREAD... 19¢ LOAF
FRESH BAKED POUND CAKE... 39¢

"SUGAR CREEK" ALL MEAT WIENERS... 12 OZ. PKG. 49¢
"SUNNYLAND" FAMILY-PAK BREAKFAST LINKS... 2 1/2 LB. PKG. \$1.99
"LEAN 'N' TENDER" PORK CHOPS... LB. 67¢
FRESH! HOMEMADE SAUSAGE... LB. 57¢

U.S. "NO. 1" WHITE POTATOES
10 LBS. (VENT-VU BAG) 49¢

REG. \$1.99 VALUE! LOTION SHAMPOO "HEAD & SHOULDERS"
LARGE BTL. \$1.19

REG. 69¢ VALUE! TOOTH PASTE "CLOSE-UP"
MEDIUM TUBE 49¢

"SWEET" CALIF. RED EMPEROR GRAPES
LB. 27¢

"TASTY" CANADIAN RUTABAGA
LB. 9¢

"CRISP" JUICY JONATHAN APPLES
3 LBS. (CELLO BAG) 37¢

Swiss Cheese Quiche

By TOM ROOP
Associated Press Writer

When I began covering the councils of the United Nations 18 years ago, I decided to do a story on the exotic dishes consumed by diplomats from around the world as they relaxed after a day of debate. A check of the U.N. files showed that they carried plenty of offbeat liquors and cordials, but most delegates stuck to two standbys: martinis and whiskey and soda.

I learned something else that first year, besides deciphering diplomatic doubletalk. At the parties in the Delegates' Dining Room, there was a wide selection of appetizers ranging from caviar and sour cream served by the Soviet side states. In Asian curries and tibbits wrapped in grape leaves at Middle East receptions.

But there was always one dish that attracted diplomats, no matter what part of the world they came from: that classic French hoec d'oeuvre, Quiche Lorraine.

The high point of the evening came for most of us when a waitress swept into the room with a tray laden with portions of this mouth-watering concoction which some hostesses in Washington insist on calling cheese custard.

In the French province of Lorraine, the word quiche does refer to a custard tart, but more often than not it comes in pie-sized portions and is served as a luncheon or supper entree accompanied by a tossed green salad and a bottle of dry white wine.

Classically, the ingredients of a quiche are eggs, cream, bacon and French Gruyere or Swiss cheese poured into a pastry shell and baked until puffy and golden brown.

But the popularity of the quiche in France and other lands has led to many variations. There is, for example, a Roquefort quiche, a Camembert one made with onions, another with truffles. The versatile French also make varieties of quiche with mushrooms, leeks and spinach.

In Normandy, there is a seafood quiche made with crab, shrimp or lobster. In Provence, they have checked it with one made from tomatoes, anchovies and olives that seems to be straying into the realm of the pizza.

There has long been an amiable dispute about the origin of quiche. The people of Lorraine, whose province borders on Germany, always claim it as their credit for originating this bit of ambrosia, but their claim has been disputed by the citizens of neighboring Alsace. To further confuse matters, the word quiche derives from the German word kuchen or "cake." Whatever province quiche came from, France has made a major contribution to the world of fine food.

SWISS CHEESE QUICHE

- 8 oz. grated imported Swiss cheese
- 8 oz. crisp bacon cut into 1/2 inch pieces
- 2 eggs and 2 egg yolks
- 1 1/2 cups heavy cream
- 1/2 teaspoon salt
- Dash white pepper
- 1/2 cup Swiss powdered mustard
- 2 tablespoons butter in tiny dots

Place bacon bits in bottom of a pastry-lined 8-inch pie pan and sprinkle cheese atop. Beat other ingredients and pour over cheese, but take care not to come within less than 1/2 inch of rim of the pastry shell. Sprinkle top with dots of butter and bake about 30 minutes in preheated (375 degree F) oven or until puffed and browned. Cut into wedges and serve piping hot. Serves about six. Good with a dry white wine, well chilled.

Beer Record

TOPSHAM, England (UPI)—Gardener Fred Dinning, 78, thinks he's set a record for the most beer drunk in a lifetime. He estimates he has drunk 25,000 pints since he was 14 and all at the Lord Nelson pub here.

"I used to average about 13 pints a day, but I'm getting on now and I'm about my mark," said Dinning, who visits the pub each morning and evening.



WE CHECKED PRICES, MONEY AT OUR

THIS WEEK AT YOUR WINN-DIXIE YOU RECEIVE A GIGANTIC TRIPLE VALUE... OUR REGULAR CHECKED PRICES, A FANTASTIC "DEL MONTE SALE", PLUS EXTRA STAMPS JUST IN TIME FOR CHRISTMAS. WINN-DIXIE AGAIN LEADS THE WAY TO HELP YOU STRETCH YOUR BUDGET WHILE GIVING YOU THE BEST QUALITY FOODS.

WE ACCEPT FEDERAL FOOD STAMPS

PRICES GOOD THUR. DEC. 3 - WED. DEC. 9

ASTOR ALL GRINDS COFFEE Limit 1 of Choice W/ \$7.50 or More Purchase Etc. Ctg. 1-LB. CAN 59¢ SAVE 34¢	THRIFTY MAID ASSORTED SOUPS Limit 10 W/ \$7.50 or More Purchase Etc. Ctg. 10 10 1/2-oz. CANS \$1 SAVE 55¢	LAND O' SUNSHINE BUTTER Limit 2 LBS. W/ \$7.50 or More Purchase Etc. Ctg. 1-LB. PKG. (QTRS.) 69¢ SAVE 26¢	ALL VEGETABLE SHORTENING CRISCO Limit 1 of Choice W/ \$7.50 or More Purchase Etc. Ctg. 3 3-POUND CANS 59¢ SAVE 49¢
---	---	---	--

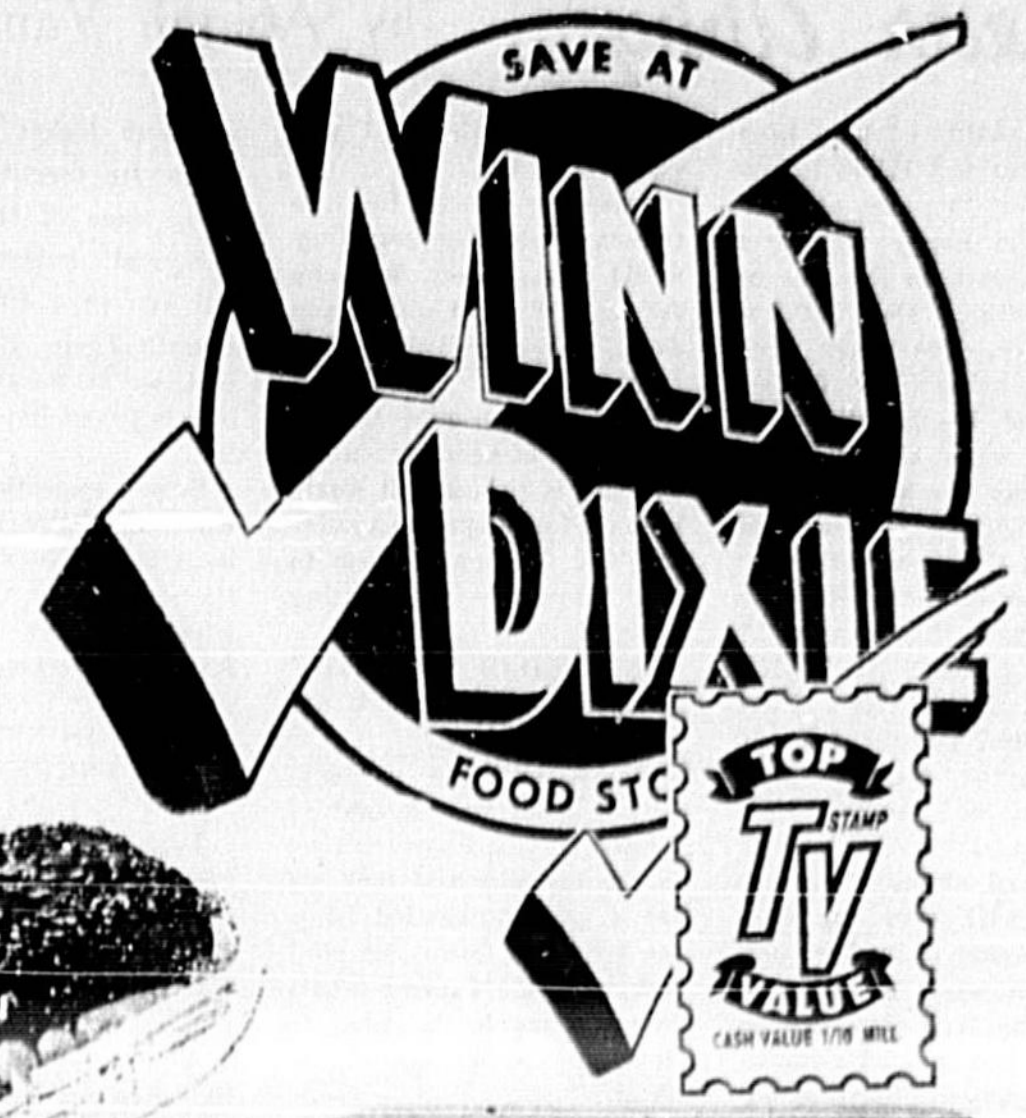
CORNED BEEF 2 12-oz. PKGS. \$1.00 PEACHES 2 29-oz. CANS \$1.00 ASPARAGUS 2 10 1/2-oz. CANS \$1.00 RAISINS 3 15-oz. PKGS. \$1.00	TISSUE 5 200-CT. PKGS. \$1.00 CHICKEN 3 3 1/4-LB. CANS \$1.00 TUNA FISH 3 No. 3 CANS \$1.00 CATSUP 3 20-oz. BTL. \$1.00	TOMATOES 2 8-oz. CANS 39¢ TOWELS 3 JUMBO \$1.00 GREEN BEANS 2 8-oz. CANS 37¢ CORN 2 16-oz. CANS 39¢	SPINACH 2 8-oz. CANS 37¢ COCKTAIL 2 8-oz. CANS 21¢ PEACHES 2 16-oz. CANS 35¢ PEACHES 2 16-oz. CANS 29¢
--	--	--	---

DEL MONTE CATSUP Limit 8 W/ \$7.50 or More Purchase Etc. Ctg. 26-oz. BOTTLES 3 \$1.43 SAVE 47¢	DEL MONTE SLICED OR HALVES YC PEACHES Limit 4 W/ \$7.50 or More Purchase Etc. Ctg. 29-oz. CANS 1 \$1.14 SAVE 56¢	DEL MONTE CREAM STYLE OR WHOLE KERNEL CORN Limit 5 W/ \$7.50 or More Purchase Etc. Ctg. 16-oz. CANS 1 \$1.16 SAVE 50¢	DEL MONTE FRUIT COCKTAIL Limit 5 W/ \$7.50 or More Purchase Etc. Ctg. 16-oz. CANS 1 \$1.15 SAVE 45¢
--	--	---	---

PINEAPPLE 1 23¢ LEMON JUICE 32-oz. BOTTLE 65¢ DRINK 3 46-oz. CANS \$1.00 TOMATOES 4 16-oz. CANS \$1.00 JUICE 4 46-oz. CANS \$1.00	VEGETABLE JUICE 24-oz. BTL. 39¢ BEANEE WENEES 8-oz. CAN 27¢ GREEN LIMAS 4 16-oz. CANS \$1.00 PINEAPPLE 4 15 1/2-oz. CANS \$1.00 CATSUP 5 14-oz. CANS \$1.00	GRAPE JELLY 24-oz. JAR 61¢ SYRUP 8-oz. BOTTLE 75¢ GREEN BEANS 4 16-oz. CANS \$1.00 GREEN BEANS 6 16-oz. CANS \$1.00 SPINACH 5 16-oz. CANS \$1.00	TURKEY RICE DINNER 4 10-oz. PKGS. 10¢ GRITS 5 16-oz. PKGS. 33¢ GREEN BEANS 4 16-oz. CANS \$1.00 GREEN BEANS 6 16-oz. CANS \$1.00 SPINACH 5 16-oz. CANS \$1.00
---	---	--	---

SOUP MIX 3 33¢ HORSEMEAT 2 57¢	CRACKERS 39¢	50 EXTRA TOP VALUE STAMPS 11-oz. PKG. BUTTER 11-oz. PKG. BUTTER 11-oz. PKG. BUTTER 11-oz. PKG. BUTTER	50 EXTRA TOP VALUE STAMPS 11-oz. PKG. BUTTER 11-oz. PKG. BUTTER 11-oz. PKG. BUTTER 11-oz. PKG. BUTTER	50 EXTRA TOP VALUE STAMPS 11-oz. PKG. BUTTER 11-oz. PKG. BUTTER 11-oz. PKG. BUTTER 11-oz. PKG. BUTTER	50 EXTRA TOP VALUE STAMPS 11-oz. PKG. BUTTER 11-oz. PKG. BUTTER 11-oz. PKG. BUTTER 11-oz. PKG. BUTTER	100 EXTRA TOP VALUE STAMPS 11-oz. PKG. BUTTER 11-oz. PKG. BUTTER 11-oz. PKG. BUTTER 11-oz. PKG. BUTTER
-----------------------------------	--------------	--	--	--	--	---

SO YOU SAVE DEL MONTE SALE!



FRESH PORK SHOULDER PICNIC SAVE 10¢ 1 LB. 39¢	USDA CHOICE W-D BRAND BONELESS BOTTOM ROUND ROAST SAVE 40¢ 1 LB. 89¢	SWIFT'S PREMIUM CANNED HAMS SAVE \$1.00 4 LB. CAN WHOLE \$2.99	W-D BRAND PURE GR. BEEF SAVE 70¢ 10 LBS. \$4.99	USDA CHOICE W-D BRAND BONELESS SHOULDER ROAST SAVE 20¢ 1 LB. 99¢
---	--	--	---	--

SLICED BACON 15-oz. PKG. 49¢ TURKEY ROAST 4 1/2-LB. SIZE \$3.69 BEEF LIVER 1 LB. 49¢ MEAT DINNERS 5 1/2-LB. PKG. 99¢	FISH FILLETS 1 LB. 59¢ FISH FILLETS 1 LB. 59¢ CHEESE 2 1/2-CUP 69¢ CHEESE 2 1/2-CUP 69¢	YOGURT 4 1/2-PINTS \$1.00 CREAM CHEESE 8-oz. PKG. 39¢ CHEESE FOOD 12-oz. PKG. 69¢ SLICED HAM 12-oz. PKG. \$1.39	BOLOGNA 1 LB. 69¢ SAUSAGE 1 LB. 99¢ SLAB BACON 1 LB. 39¢ KNUCKLES 1 LB. 39¢
---	--	--	--

VENT-VU POTATOES 10 POUND BAG 48¢	THRIFTY MAID ICE MILK OR SUPERBRAND SHERBET SAVE 38¢ HALF GALS. \$1.21	HI-ACRES DELICIOUS ORANGE JUICE SAVE 10¢ 6 6-oz. CANS 79¢	ALL PURPOSE APPLES 5 POUND BAG 59¢
--	--	---	---

FRESH CELERY 2 STALKS 39¢ LETTUCE 2 29¢ CUT CORN 5 10-oz. PKGS. \$1.00 DINNERS 3 11-oz. PKGS. \$1.00 POTATOES 5 16-oz. BAG 69¢ MEAT DINNERS 3 1/2-LB. PKG. 99¢	DELICIOUS APPLES 13 FOR \$1.00 AVOCADOS 5 FOR \$1.00 TOPPING 3 QT. \$1.00 SHRIMP 2 1/2-LB. PKG. \$2.79 CHICKEN 2 1/2-LB. PKG. \$1.89 SHRIMP 2 1/2-LB. PKG. 89¢	BUTABAGAS 1 LB. 8¢ ORANGE DRINK 2 HALF GALS. 89¢ PIZZA 13-oz. 59¢ POT PIES 5 11-oz. PKGS. \$1.00 CHOWDER 3 10 1/2-oz. CANS \$1.00 CHOC. CAKE 2 12-oz. FOR 99¢	INSTANT POTATOES 2 1-LB. PKGS. 69¢ POTATOES 20 1-LB. BAG 89¢ ENGLISH MUFFINS 4 1/2-oz. 19¢ CHERRIES 1 1/2-oz. 39¢ BEER OR ALE 1 1/2-oz. 89¢ GOLD DUCK 1 1/2-oz. \$1.99 CHAMPAGNE 1 1/2-oz. \$1.00 PEANUTS 4 1/2-oz. \$1.00 BREAD 4 1/2-oz. 88¢ ROLLS 2 1/2-oz. 39¢
---	---	--	--

100 EXTRA TOP VALUE STAMPS 11-oz. PKG. BUTTER 11-oz. PKG. BUTTER 11-oz. PKG. BUTTER 11-oz. PKG. BUTTER	100 EXTRA TOP VALUE STAMPS 11-oz. PKG. BUTTER 11-oz. PKG. BUTTER 11-oz. PKG. BUTTER 11-oz. PKG. BUTTER	100 EXTRA TOP VALUE STAMPS 11-oz. PKG. BUTTER 11-oz. PKG. BUTTER 11-oz. PKG. BUTTER 11-oz. PKG. BUTTER	100 EXTRA TOP VALUE STAMPS 11-oz. PKG. BUTTER 11-oz. PKG. BUTTER 11-oz. PKG. BUTTER 11-oz. PKG. BUTTER	100 EXTRA TOP VALUE STAMPS 11-oz. PKG. BUTTER 11-oz. PKG. BUTTER 11-oz. PKG. BUTTER 11-oz. PKG. BUTTER
---	---	---	---	---

EVERYDAY LOW PRICE!

SLICED AMERICAN CHEESE 79¢

EVERYDAY LOW PRICE!

FRESH PORK SHOULDERS 39¢

EVERYDAY LOW PRICE!

PAN READY DRESSED WHITING 33¢

EVERYDAY LOW PRICE!

HEAT AND SERVE FRIED FISH STICKS 2.79¢

EVERYDAY LOW PRICE!

PAINTER PRIDE SKINLESS FRANKS 45¢

EVERYDAY LOW PRICE!

FREEZER QUEEN 2.98¢

ASST MEAT DINNERS

2 LB PKG

EVERYDAY LOW PRICE!

SLICED 1/4 PORK LOIN CHOPS 59¢

1 LB

EVERYDAY LOW PRICE!

PORK CHOPS 39¢

LEAN MEATY 1ST CUT RIB

2 TO 3 LB PKGS

EVERYDAY LOW PRICE!

SPARE RIBS 49¢

LEAN MEATY WESTERN

3 TO 5 LBS

EVERYDAY LOW PRICE!

SLICED BACON 49¢

FYNE TASTE

1 LB PKG

EVERYDAY LOW PRICE!

FRESH FRYERS 29¢

FLORIDA GRADE 'A'

WHOLE BAGGED

SAVE 10¢ LB

EVERYDAY LOW PRICE!

ROUND STEAK 98¢

FULL CUT BONELESS OR BONELESS SHOULDER

1 LB

FOOD FAIR QUALITY DISCOUNT

WHY PAY MORE?

EVERY ITEM IN EVERY DEPARTMENT PRICED LOWER EVERYDAY!

EVERYDAY LOW PRICE!

VAN CAMP CHILI 3/97¢

EVERYDAY LOW PRICE!

ITALIAN SWISS COGNAC WINES 99¢

4.5th QUART

EVERYDAY LOW PRICE!

LANCER'S VIN ROSE 2.88

1.5th QUART

Over 7,000 Everyday Low Prices!

CHEER DETERGENT	87¢	MAXWELL HOUSE COFFEE	\$1.07
THRILL DISH DETERGENT	61¢	MAXWELL HOUSE COFFEE	85¢
DUZ DETERGENT	\$1.49	BOUNTY TOWELS	3/\$1.00
DREFT DETERGENT	87¢	BOUNTY TOWELS	44¢
IVORY SNOW	87¢	HF PEANUT BUTTER	49¢
BONUS DETERGENT	93¢	FOLGERS INSTANT COFFEE	97¢
OXYDOL DETERGENT	87¢		
TIDE DETERGENT	87¢		

Over 7,000 Everyday Low Prices!

CHEER DETERGENT	\$1.45	MAXWELL HOUSE COFFEE	87¢
DASH DETERGENT	\$2.39	MAXWELL HOUSE COFFEE	\$1.07
BOLD DETERGENT	\$1.45	BOUNTY TOWELS	85¢
SALVO DETERGENT	77¢	BOUNTY TOWELS	3/\$1.00
IVORY LIQUID	83¢	BOUNTY TOWELS	44¢
CASCADE	77¢	HF PEANUT BUTTER	49¢
JOY LIQUID	59¢	FOLGERS INSTANT COFFEE	97¢

EVERYDAY LOW PRICE!

PORK CHOPS 39¢

LEAN MEATY 1ST CUT RIB

2 TO 3 LB PKGS

EVERYDAY LOW PRICE!

SPARE RIBS 49¢

LEAN MEATY WESTERN

3 TO 5 LBS

EVERYDAY LOW PRICE!

SLICED BACON 49¢

FYNE TASTE

1 LB PKG

EVERYDAY LOW PRICE!

FRESH FRYERS 29¢

FLORIDA GRADE 'A'

WHOLE BAGGED

SAVE 10¢ LB

EVERYDAY LOW PRICE!

ROUND STEAK 98¢

FULL CUT BONELESS OR BONELESS SHOULDER

1 LB

FOOD FAIR QUALITY DISCOUNT

WHY PAY MORE?

EVERY ITEM IN EVERY DEPARTMENT PRICED LOWER EVERYDAY!

EVERYDAY LOW PRICE!

LANCER'S VIN ROSE 2.88

1.5th QUART

EVERYDAY LOW PRICE!

FRISKIES SAUCE CUBES 50¢ OFF

25 LB BAG

Over 7,000 Everyday Low Prices!

CHEER DETERGENT	\$1.45	MAXWELL HOUSE COFFEE	87¢
DASH DETERGENT	\$2.39	MAXWELL HOUSE COFFEE	\$1.07
BOLD DETERGENT	\$1.45	BOUNTY TOWELS	85¢
SALVO DETERGENT	77¢	BOUNTY TOWELS	3/\$1.00
IVORY LIQUID	83¢	BOUNTY TOWELS	44¢
CASCADE	77¢	HF PEANUT BUTTER	49¢
JOY LIQUID	59¢	FOLGERS INSTANT COFFEE	97¢

Over 7,000 Everyday Low Prices!

CHEER DETERGENT	\$1.45	MAXWELL HOUSE COFFEE	87¢
DASH DETERGENT	\$2.39	MAXWELL HOUSE COFFEE	\$1.07
BOLD DETERGENT	\$1.45	BOUNTY TOWELS	85¢
SALVO DETERGENT	77¢	BOUNTY TOWELS	3/\$1.00
IVORY LIQUID	83¢	BOUNTY TOWELS	44¢
CASCADE	77¢	HF PEANUT BUTTER	49¢
JOY LIQUID	59¢	FOLGERS INSTANT COFFEE	97¢

EVERYDAY LOW PRICE!

BILTMORE LUNCH LOAF 4/\$1

12oz CANS

EVERYDAY LOW PRICE!

ALPO CAT FEAST 10¢

6.75oz CAN

EVERYDAY LOW PRICE!

CHOCOLATE NESTLE'S QUIK 79¢

2LB BOX

EVERYDAY LOW PRICE!

Oak Hill TOMATO JUICE 4/\$1

46oz CANS

EVERYDAY LOW PRICE!

LESUEUR EARLY JUNE PEAS 4/\$1

17oz CANS

WHY PAY MORE?

Choose about the beef you buy? Choose U.S. Choice!

EVERYDAY LOW PRICE!

CHUCK ROAST 48¢

1 LB

EVERYDAY LOW PRICE!

SIRLOIN STEAKS 1.09

1 LB

BONUS BUY!

CHUCK STEAK 58¢

1 LB

EVERYDAY LOW PRICE!

GROUND BEEF 55¢

LEAN TENDER

3 LBS & OVER

EVERYDAY LOW PRICE!

BEEF LIVER 39¢

TENDER SLICED QUICK FROZEN

2 TO 3 LB PKGS

EVERYDAY LOW PRICE!

LIBBY'S CORN OR BEANS 5/95¢

17oz CR. STYLE OR WH. KERNEL

EVERYDAY LOW PRICE!

ORANGE JUICE 8/\$1

12oz CANS 4/ \$1.00

EVERYDAY LOW PRICE!

COLD DUCK CHAMPAGNE 1.99

4/5th QUART

EVERYDAY LOW PRICE!

RICH-N READY PUDDINGS 4 49¢

ASST FLAVORS. E-Z OPEN CANS

EVERYDAY LOW PRICE!

NESCAFE INSTANT COFFEE 1.29

10oz JAR

COMPARE!

Skimless Franks	28 OZ PKG	89¢	\$1.09	20¢
Smoked Sausage	28 OZ PKG	89¢	\$1.09	20¢
Pizza Pies	PIZZA PIES • 14 OZ SIZE	69¢	79¢	10¢
Plumrose Cooked Ham	4 OZ PKG	59¢	69¢	10¢
Chipped Sliced Meats	1/2 LB PKG	35¢	39¢	4¢
Devonshire Shrimp	10 OZ PKG	89¢	\$1.09	20¢
Shrimp Cocktail	4 OZ JARS	3/79¢	\$1.00	21¢

COMPARE!

Hair Spray	10 OZ	49¢	59¢	10¢
White Rain Hair Spray	13 OZ CAN	99¢	\$1.28	29¢
Get Set Hair Spray	10 OZ	49¢	59¢	10¢
Peanut Butter	4 OZ JAR	99¢	\$1.09	10¢
Halo Hair Spray	15 OZ CAN	49¢	59¢	10¢
Holsum Peanut Butter	15 OZ CAN	69¢	79¢	10¢
Right Guard	DEODORANT • 3.3 OZ CAN	2/\$1	\$1.38	38¢

Over 7,000 Everyday Low Prices!

THRILL DISH DETERGENT	22 OZ	61¢
DUZ DETERGENT	11 OZ	\$1.49
DREFT DETERGENT	11 OZ	87¢
IVORY SNOW	11 OZ	87¢
BONUS DETERGENT	11 OZ	93¢
OXYDOL DETERGENT	11 OZ	87¢
TIDE DETERGENT	11 OZ	87¢

Holiday Gift Certificates

CALL NOW! 384-7511

EVERYDAY LOW PRICE!

FRESH PORK BUTTS 49¢

EVERYDAY LOW PRICE!

SMOKED PORK SHOULDER 45¢

EVERYDAY LOW PRICE!

BAKING BENS 39¢

EVERYDAY LOW PRICE!

PURE PORK SAUSAGE 39¢

EVERYDAY LOW PRICE!

SLICED BOLOGNA 59¢

EVERYDAY LOW PRICE!

CORNED BEEF STEW 3/97¢

EVERYDAY LOW PRICE!

SHRIMP MINIATURES 1.69

EVERYDAY LOW PRICE!

FRENCH FRIES 2.29

EVERYDAY LOW PRICE!

Isoprophyll ALCOHOL 10¢

EVERYDAY LOW PRICE!

HAI KARATE 99¢

Discount Prices on All Health and Beauty Aids!

EVERYDAY LOW PRICE! SHICK PLUS PLATINUM BLADES 5'S \$97¢	EVERYDAY LOW PRICE! GERITOL IRON ENRICHED TABLETS 14'S \$97¢	EVERYDAY LOW PRICE! SCHICK KNOX-CHROME DOUBLE-EDGE BLADES 4'S \$75¢
EVERYDAY LOW PRICE! LISTERINE ANTISEPTIC MOUTHWASH 32oz. BTL \$1.29	EVERYDAY LOW PRICE! SCHEIC SUAVE HAIR SPRAY 12oz. CAN \$49¢	EVERYDAY LOW PRICE! GIANT PUNCH ENZYME DETONANT ONLY... \$68¢
EVERYDAY LOW PRICE! CREST REG. & MINT TOOTH PASTE FAMILY SIZE \$77¢	EVERYDAY LOW PRICE! TWICE AS NICE SHAMPOO 7oz. NORMAL DRY OR OILY \$1.25	EVERYDAY LOW PRICE! LILT SPECIAL PERMANENT WAVE LOTION \$1.59
EVERYDAY LOW PRICE! SOMINEX TABLETS 8'S \$73¢	EVERYDAY LOW PRICE! DEMURE LIQUID 4oz. \$95¢	EVERYDAY LOW PRICE! ENDEN SHAMPOO CLEAR OR TONIC 8oz. \$85¢
EVERYDAY LOW PRICE! COMPARRE! Scott Place Mats 35¢ 39¢ 46¢ Charcoal Lighter Fluid 35¢ 39¢ 46¢ Grapefruit Sections 4/97¢ \$1.00 3¢ Mandarin Oranges 4/1 \$1.16 16¢ Gatorade 3/89¢ 3/51 11¢ Pantry Pride Orange Juice 3/51 \$1.17 17¢ Loving Care By Clairol \$1.39 \$2.00 41¢ Nice 'N Easy By Clairol \$1.39 \$1.69 30¢ Del Monte Garden Peas 11 oz. CAN 4/51 \$1.08 8¢ Red Dart Sweet Peas 11 oz. CAN 6/51 \$1.26 26¢	EVERYDAY LOW PRICE! RAPID SHAVE MINI TUBE CAN \$68¢	EVERYDAY LOW PRICE! 9-TIPS COTTON SWABS 170'S \$77¢

The Sanford Herald

Thursday, December 3, 1970 — Sanford, Florida 32771
63rd Year, No. 68 Price 10 Cents

Rifles And Ammo Stolen At Armory

Burglars last night entered the Sanford National Guard armory and escaped with at least five .22 caliber rifles and 8,000 rounds of ammunition for the stolen guns, according to Sanford police. The thieves entered the building by prying off a portion of screening that covered a window leading to armory restrooms, according to Det. Sgt. William Lykens.

Lykens, Det. Roy Williams and other police investigators were waiting for the arrival of Federal Bureau of Investigation agents before continuing an investigation since the armory is U.S. government property.

Sgt. Lykens said three M-1 rifles were left in the fenced yard behind the building. These had the bolt actions removed previously by guard personnel and, therefore, cannot be used.

A full complement of police laboratory technicians were on the scene led by Sgt. Vern Brewster but, according to the identification officer, the FBI had instructed that nothing be disturbed until they arrived for an investigation.

Therefore, it is probable that other arms may have been removed in the entry that was discovered this morning by Paula Higgins, who works in the driver's license office, which uses armory facilities.

Would 'Save Taxpayers' Dollar' Canal Critic Hits Public Spending

By MARION BETHA

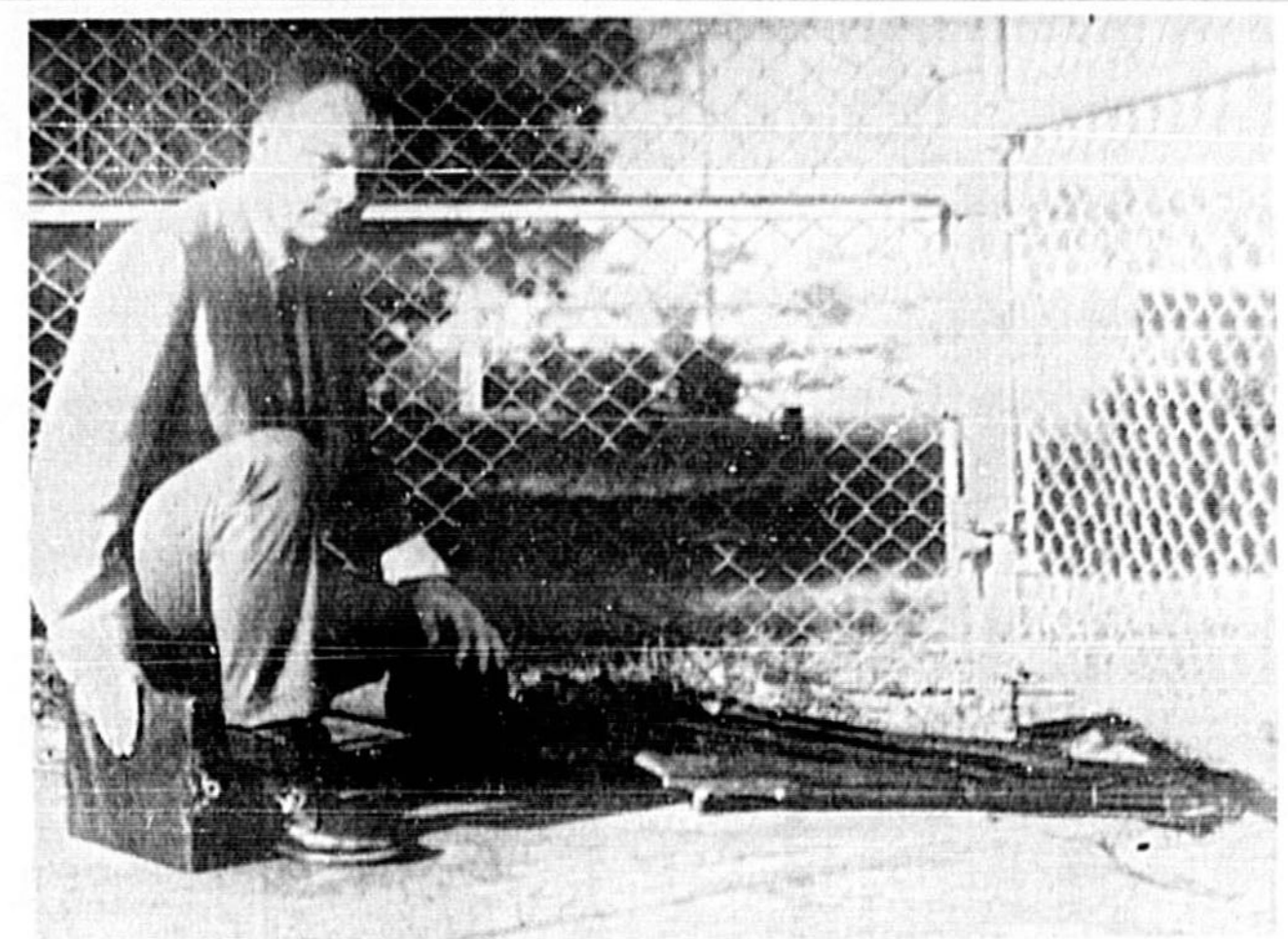
S. B. (Jim) Crowe, member of the Seminole County long range planning committee for recreation and the St. Johns River advisory committee, and long time critic of the St. Johns-Indian River Canal, has directed a letter to County Commission Chairman John Alexander relative to the matter. Crowe asserts that he was not able to "get a place on the agenda."

Crowe has stated that the subject he wishes to pursue is the "saving of the taxpayers dollar and the erosion of the power of the board over the public purse." Crowe further contends that the present survey by the U.S. Army Corps of Engineers upon the canal will take between four and six years, and that Congress has not appropriated the entire sum for this survey.

Crowe alleges that Alexander told him that the board can not declare a moratorium on payments to the St. Johns-Indian River Canal District because of the way the law (Florida Statutes Chapter 45.70) is written. Crowe has requested that Alexander poll the board to ascertain if it is in favor of saving the taxpayers' dollar and retaining power over the public purse.

Should the response be favorable, Crowe submits that the board should request that the state legislative delegation amend this statute, section 7, to read that the said Board of County Commissioners shall have the power to withhold or declare a moratorium on the giving of any county funds to said district at their discretion. "This statute presently reads as follows: 'For the purpose of organizing and financing the operation and administration of the district each county included in the district is hereby authorized and directed to contribute an amount not exceeding \$2,500 per year to pay administrative expenses incurred and approved by the directors of the district.'"

Crowe further submits that the words "without limitations" should be struck from Section 4, Paragraph 5 of Chapter 45.70. The statute reads: "To employ said district's employees; all necessary personnel including without limitation engineers, attorneys, auditors and consultants..." Crowe suggests that the words "at present rates for these trades and professions" should be added after the present wording and also "and fix their compensation." Crowe also feels that Section 4, Paragraph 8, which presently reads, "To do any and all things necessary to carry out the purposes of this chapter," should be amended to read "To do any and all things necessary to carry out the purposes of this chapter, and to retain power over the public purse."



ABANDONED M-1 rifles are examined by Det. Sgt. William Lykens in the yard of the National Guard armory on East First Street this morning. (Bill Scott Photo)

College Student Incarcerated On Narcotic Charge

Casselberry Police have arrested a 21-year-old Winter Park college student and confiscated 11 bags of marijuana, according to Chief Don Brumley.

Chief Brumley said Jamille Haddad was arrested by four Casselberry policemen, including Lt. David Smothers and Patrolman Steve Bangle. Roy Kelley and Timothy McEvers and reserves, as he sat in his car.

Haddad was later transferred to Seminole County jail in lieu of \$2,000 bond.

Brumley also advised that a cache of drugs in a bag had been found stored in a house under construction in Casselberry.

He said workman relayed the information to Clayton Reath, the firm in charge of the building and the information was given to police.

Brumley advised the items appeared to have been stolen from a dentist's office since it contained the type of drugs usually administered by a dentist for relief of pain. The bag was given to police.

Mrs. Norma Evans, 43-year-old Sanford woman, hospitalized after a Nov. 21 traffic accident at the Sanford Avenue-25th Street intersection, died Dec. 1, according to information released by the Sanford police department today.

Mrs. Evans was a passenger in an auto driven by John E. Evans, her husband when it was in collision with a car operated by Billy Glenn Rawson, of Bonita Springs, records disclose.

Mrs. Evans was removed to Seminole Memorial Hospital after the mishap, while Rawson was charged by Lt. Edward Hayden, police investigator, with failure to yield right-of-way and improper license tag.

According to the statement by Rawson, the traffic light at the street intersection was not working and he (Rawson) did not see the other car.

The Evans vehicle was traveling on Sanford Avenue and Evans, the driver, stated he was moving on the green light.

Injured Woman Expires

Mrs. Norma Evans, 43-year-old Sanford woman, hospitalized after a Nov. 21 traffic accident at the Sanford Avenue-25th Street intersection, died Dec. 1, according to information released by the Sanford police department today.

Mrs. Evans was a passenger in an auto driven by John E. Evans, her husband when it was in collision with a car operated by Billy Glenn Rawson, of Bonita Springs, records disclose.

Mrs. Evans was removed to Seminole Memorial Hospital after the mishap, while Rawson was charged by Lt. Edward Hayden, police investigator, with failure to yield right-of-way and improper license tag.

According to the statement by Rawson, the traffic light at the street intersection was not working and he (Rawson) did not see the other car.

The Evans vehicle was traveling on Sanford Avenue and Evans, the driver, stated he was moving on the green light.

On Closing Area

County Hassles On Landfill

By MARION BETHA

Although County Commissioner Greg Drummond has contended that the Sanlando landfill is smoldering from underground spontaneous combustion and "holding out clouds of wet corruption," his motion to declare a moratorium on use of the landfill died for lack of a second. Drummond alleges that people in the area will "continue to live in stench" if the landfill is utilized.

Chairman John Alexander told Drummond that there is no basis to restrict the road department from carrying out its responsibilities of taking clay out of this area, which was purchased and identified as a clay pit. He went on to say that if there were a moratorium declared that the road superintendent could not fulfill his schedule, which would seriously impair building and repair of roads.

Alexander noted that no one wants a landfill in his area, which was solemnly illustrated in the protests of residents of Geneva and Oviedo to the central sanitary landfill being located at Oviedo airport.

Drummond shot back that the road would not be impaired since there is shell available at Orceola and that he felt that the county is not moving in an expedient manner. He further stated that the longer clay is taken from Sanlando landfill the longer it will take for its ultimate closing. Alexander, however, noted that the county cannot maintain the roads with shell and that Sanlando is the only clay deposit which the county has.

Drummond then injected that in this case the county should purchase more new land. Alexander countered that Road Supt. J. C. Lavender could not find any land within the amount of money budgeted to his department, and he further maintained that in regard to the smoldering of the Sanlando landfill that he would request an evaluation of the situation for possible elimination but that he could not "close down the road department because of complaints." Drummond called this statement an "exaggeration."

Commissioner Robert Parker entered the verbal affair with the statement that to close Sanlando landfill would be "to cut off our nose to spite our face." Lavender contended that the shell deposits at Orceola are being utilized to dig trenches at the central landfill and that the present stockpile will be depleted in a short time. Drummond injected that the county should undertake to use a dragline to stockpile more shell, to which Lavender answered that the trenches were being dug in union and that if the pits were not the water could not be controlled.

Drummond purchased the road department through an additional clay pit, and if the county needed to allocate more money that this be effected, since he saw no need of "one segment of the population in misery."

Commissioner Sid Vidlen asked why the burning could not be controlled and Drummond answered that this had been done in the last four years, but the location is inappropriate in the beginning since it is high to the broadside of the road. According to the announcement made that another POW will be featured tonight, it was initially placed in the dump in the least populous area.

For further information, listeners may contact Miss MacDougal at 322-1866.

Water Resources Study Funds Are In Jeopardy

By LARRY NEELY

The East Central Florida Regional Planning Council (ECFRPC) may lose federal funds for a water resources study if some firm commitment is not made for supporting funds from the member counties of ECFRPC. According to Seminole County Planner David Farr pressure has been put on the Winter Park office of the United States Geological Survey to get commitments from the counties by January 1 or lose federal funds. Farr made the statements at Tuesday's County Commission meeting.

The ECFRPC requested \$3,000 from Seminole County to aid in the funding of the water survey project. Farr told the Commissioners that to date he was aware of commitments from only Orange and Brevard counties. The Commission directed the Seminole County representative to ECFRPC inform the group that Seminole County would be willing to pay in proportion to its population relative to all counties participating.

In other business pertaining to the Planning and Zoning office the Commission authorized the Zoning Department to swear out a warrant for Carl Cabanni for violation of a county ordinance regulating junk vehicles.

The Commissioners also by motion directed the County Prosecuting Attorney to take appropriate legal action against the owners of the Post Tim Lounge near the dog track for debris left around area.

The Commission set December 22 as the date for a public hearing concerning a request for water service extension by Southern States Utilities Company.

THURSDAY Headlines Inside THE HERALD

World News
Enemy rocket and mortar attacks in Vietnam taper off. (Page 1B)

Around The Nation
The Supreme Court is about to take up a voting case from Indiana that could force major changes in the way 38 states elect their legislators. (Page 7A)

Sports World Thrillers
SJC Raiders at home tonight against Massey Tech. (Page 1C)
FTU beats Embury-Riddle. (Page 2C)

Statewide Developments
A massive oil slick threatens 50 miles of north Florida beaches as state officials aim their wrath at the U.S. Navy for allegedly dumping more than 500,000 gallons of the black fuel in the Atlantic coastal waters. (Page 4A)

The recent rash of bomb threats and general concern over security will prompt some new wrinkles in deployment of security officers for Gov.-elect Reubin Askew's inauguration officials report. (Page 4A)

WEATHER — Yesterday's high 81 low 52. Generally fair through Friday.

Afternoon highs in the low 80s and low tonight 56 to 62.

Unseasonably mild weather favored most of the eastern two-thirds of the nation again today while more rain and snow fell on sections of the Far West.

Daily Features
Area deaths 2A
Entertainment 7B
Horoscope 6B
Calendar 2A
Hospital notes 2A
Classified ads 4C-5C
Fax: If On 2A
Comics 6B-7B
Public notices 4C
Crossword puzzle 7B
Society 2B-5B
Dr. Crane 6B
TV 6B
Sports 1C-4C
Wear Ably 6B
Editorial Comment 6A
Letters to Santa 8B

Freshness Costs Less... EVERY DAY!

BREAD 20oz LOAVES, "IT'S IN THE BAG." 4/88¢	YELLOW ONIONS FANCY NEW 3 LB BAG \$28¢	BANANAS FANCY GOLDEN RIPE 9 LB \$9¢
COMPARE! Scott Place Mats 35¢ 39¢ 46¢ Charcoal Lighter Fluid 35¢ 39¢ 46¢ Grapefruit Sections 4/97¢ \$1.00 3¢ Mandarin Oranges 4/1 \$1.16 16¢ Gatorade 3/89¢ 3/51 11¢	ALL PURPOSE APPLES EATING OR COOKING 4 LB BAG \$45¢	YELLOW CORN U.S. NO. 1 FANCY BONUS BUT 6 EAR \$6¢
FOOD FAIR LAYER CAKES 8" \$79¢	COMPARE! Scott Place Mats 35¢ 39¢ 46¢ Charcoal Lighter Fluid 35¢ 39¢ 46¢ Grapefruit Sections 4/97¢ \$1.00 3¢ Mandarin Oranges 4/1 \$1.16 16¢ Gatorade 3/89¢ 3/51 11¢	EVERYDAY LOW PRICE! LAYER CAKES 8" \$79¢
EVERYDAY LOW PRICE! LAYER CAKES 8" \$79¢	EVERYDAY LOW PRICE! CAKE DONUTS 12 \$29¢	EVERYDAY LOW PRICE! CARROTS 12 \$12¢

YOU CAN SHOP EARLY, TOO

IF YOU JOIN OUR 1971 CHRISTMAS CLUB NOW!

The SANFORD-ATLANTIC

All Kids! All Ages! Christmas Parade! 7:30 Tonight!