

Whatever Happened To April Fools' Day?

By **ALBERT BRASS**
AP Wire Columnist
What ever happened to April Fools' Day?
Who can recall the last April he stepped to pick up a wallet or discover it was hidden in a scolding lead by a youngster ready to yank it away? Do you remember innocently opening an envelope, wrapped parcel which you never have heard of the street or on a bus only to find it was empty? When was the last time in school you were with an auto-watched hand on April Fools' Day—and you received an electric shock from a hidden buzzer?

Time was when pranks and practical jokes lasted 94 days ahead of their one day of merit. No one was immune. Kids would fill sugar bowls with salt at the breakfast table and hope that their parents had not heeded the calendar.

Secretaries would go to lunch, leaving the boss a message to call Mr. McStutt at a number which turned out to be that of the local mental hospital or psychiatric ward.

In bygone days, rustic were dispatched to the village bookstores for "A History of Eve's Grandmother," to the grocer for a pint of pigeon milk or to the cobbler for strap oil. Innocents were sent on a multitude of errands—their variety depended only on the prankster's imagination.

If you were wise enough not to fall for the wild goose or "goose hunt," as the Scots call it, you might just forget and admire a bootmaker on a fellow worker's lapel only to discover that it spoiled water.

Schoolteachers, if they had their wits about them, called in sick on April 1. No one could imagine what mischief their little charges had dreamed up for the occasion. Prankster and gag store items abounded.

Today's April Fools' Day is passing fast and furious. A spokesman for a national retail chain distributor was surprised to find a reporter asking for information about special items or party gags carried for the day. He stated that as far as his company was concerned, April 1 has no particular import. They have had no special requests for gag items for that day for several years.

Several gag items manufacturers queried concurred; they reported that their products sell year-round—there is no extra demand for them before April 1. Card manufacturers, trying to revive this dying holiday, have

connected a special line of cards for the occasion. A typical verse reads, "This Foolish Day Reminds Me of You." Another hallmark card lists four April Fool tricks to beware of, followed by an arrow directing "name to come." But the card doesn't open. "On you, I forgot to tell you about the greeting card that won't open trick!"

Even the sun has experienced a decrease in April Fools' Day calls. Although the Bronx Zoo's phone are still monitored by a special telephone company operator on THAT day, statistics prove that the number of people who find delight in phoning a Mr. Fox, Mr. Lyons, Mr. Wolf or Mr. Bear (in that order of popularity) are on the down-grade. A telephone company spokesman reported that in the 1950s, 9,000 or so crank calls were not unusual. By 1966 the number had declined to 3,700 and last year, only 2,800 pranksters attempted to get through the operator on THAT day.

The spokesman did note that the day the holiday falls on makes a great deal of difference. Saturday and Sunday attract the least number of callers—about half what a weekday will bring in, suggesting that many calls result from people leaving the number for fellow employees to call back.

The only vestige of April Fools' Day that remains with us is the April 1 superstition. folklore says that if you are a bachelor, to be fooled by a pretty girl means that you will marry her. To lose your bumper when sent out on a foolish errand brings bad luck. To get married on this day indicates that the lady will wear the pants and the man will play second fiddle.

Despite its decline as a popular holiday, however, April Fools' Day this year is sure to land a few more "poison d'Avril" or April fishes as the French call an April fool. Will you be one of them?

24 HOURS SALE

Buy One Get One FREE

PRICES GOOD THRU SATURDAY! WHILE GIANT STOCK LASTS

ECKERD DRUGS

NATIONALLY ADVERTISED MERCHANDISE • TERRIFIC SAVINGS!
NOT EVEN ONE EXTRA CENT MORE FOR THE SECOND ITEM!

JUST WONDERFUL HAIR SPRAY 2 FOR 99c REG. 99c - Limit 2	WORLD'S FINEST PHARMACEUTICALS FROM THE LABORATORIES OF THE DUPRE CO. CHECK THESE PRICES BELOW!	EXCEDRIN 100 TABLETS 2 FOR 159 REG. \$1.59 - Limit 2
IPANA TOOTH PASTE 2 FOR 79c REG. 79c - Limit 2	VITAMIN C 2 FOR 99c	TOOTHBRUSH 2 FOR 69c REG. 69c - LIMIT TWO
LISTERINE MOUTHWASH 2 FOR 145 REG. \$1.45 - Limit 2	IRON & YEAST 2 FOR 17c	OLD SPICE AFTER SHAVE 2 FOR 150 REG. \$1.50 - Limit 2
BAN ROLL-ON DEODORANT 2 FOR 75c LARGE - REG. 75c - Limit 2	SWEETA LIQ. 2 FOR 69c	Q-TIPS COTTON SWABS 2 FOR 39c REG. 39c - Limit 2
POND'S COLD CREAM 2 FOR 89c REG. 89c - LIMIT 2	WILKINSON 2 FOR 69c	Vitalis HAIR TONIC 2 FOR 83c REG. 83c - LIMIT TWO
POND'S DEEM FLOWER 2 FOR 67c REG. 67c - LIMIT 2	CURITY COTTON BALLS 2 FOR 69c	SYLVANIA LIGHT BULBS 2 FOR 25c REG. 25c - LIMIT TWO
PRELL LIQUID 2 FOR 65c REG. 65c - LIMIT 2	CURAD PLAIN PLASTIC BANDAGES 2 FOR 53c	BATTERIES 2 FOR 25c REG. 25c - LIMIT 2
ELMER'S GLUE 2 FOR 29c	MAN POWER 2 FOR 100	ZIPPO LIGHTER FLUID 2 FOR 29c
SCARVES 2 FOR 49c	OLD SPICE SHAVE BOMB 2 FOR 100	ZIPPO 12 COUNT FLINTS 2 FOR 25c
NAIL CLIPPER WITH KEY CHAIN 2 FOR 25c	POND'S DRY SKIN CREAM 2 FOR 100	
STP OIL ADJUSTIVE 2 FOR 135	POND'S DREAMFLOWER DUST POWDER 2 FOR 100	
MOTH BALLS 2 FOR 49c	POND'S ANGEL SKIN LOTION 2 FOR 59c	
KIWI SHOE POLISH 2 FOR 59c		
3 INCH REEL RECORDING TAPE 2 FOR 49c		
PLASTIC FISHING WORMS 2 FOR 10c		

HELP STAMP OUT STRANGERS

Stamp out efforts to change the character of the city, or the character of the people who live in it. Stamp out efforts to change the character of the city, or the character of the people who live in it.

WENDY PETERSON

P. O. Box 1314
Sanford
HELEN DEWEES
434-3113
S. Melbourne
MILDA BACHMANN
688-8821
Dunedin
BOBBY RABIN
444-0188
Dunedin

Wendy Wagner

'68 HOME AND GARDEN ANNUAL '68

The Sanford Herald

Page 1C — THE SANFORD HERALD — Thursday, March 28, 1968



THE BEAUTIFUL WORLD OF FLOWERS

Eager to have a thing of beauty like this growing around your home? Well, you can. Update your knowledge by following the recommendations and suggestions inside this Home and Garden Annual, then go see your favorite Nurseryman.

EASTER SUNDAY, APRIL 14

FREE: WIN A 1968 PONTIAC FIREBIRD FROM "SCOTT'S" — SEE PAGE 5

FOR YOUR PATIO PARTIES AND SUMMER COOKOUTS

FOLDING TABLES

GEORGE STUART
PHONE TOLL FREE 1-800-347-7211

For Beauty in your dining area or office we recommend the IMPERIAL WALTER NUT laminate plastic top tables (same price as the fan items top tables). Imagine... a premium table at the price of a regular plastic top folding table.

*Your choice: Tan Linen, or Imperial Granite laminate top.

Handbook of folding tables on hand in our Orlando Warehouse for immediate delivery.

FOLDING CHAIRS

(Retail Value \$6.15 each) Only \$3.45 each

In quantities of 100 chairs (Packed 4 to a Carton)

QUANTITY PRICES
4 to 11 \$3.95 each
48 to 99 \$3.65 each
100 or more \$3.45 each

All prices f.o.b. Orlando, Florida.

- Top quality tubular steel
- Ten-year warranty
- Rust-resistant enamel finish
- Beige, Mist Green, Azure Grey

IMMEDIATE DELIVERY FROM OUR ORLANDO WAREHOUSE.

BEIGE FRAME FOLDING TABLES WITH MASONITE TOPS

Model NE-8, Size 30" x 72"	(Reg. \$34.00)	SPECIAL \$27.75
Model NE-8, Size 30" x 96"	(Reg. \$40.00)	SPECIAL \$33.75
Model WE-8, Size 36" x 72"	(Reg. \$40.00)	SPECIAL \$33.75
Model WE-8, Size 36" x 96"	(Reg. \$48.70)	SPECIAL \$32.95

BEIGE FRAME FOLDING TABLES WITH PLASTIC TOPS

Model NE-8, Size 30" x 72"	(Reg. \$42.00)	SPECIAL \$35.75
Model NE-8, Size 30" x 96"	(Reg. \$48.00)	SPECIAL \$41.75
Model WF-8, Size 36" x 72"	(Reg. \$45.00)	SPECIAL \$38.95
Model WF-8, Size 36" x 96"	(Reg. \$55.00)	SPECIAL \$45.95

BEIGE FRAME FOLDING TABLES WITH MASONITE TOPS

Model NE-8, Size 30" x 72"	(Reg. \$42.00)	SPECIAL \$35.75
Model NE-8, Size 30" x 96"	(Reg. \$48.00)	SPECIAL \$41.75
Model WF-8, Size 36" x 72"	(Reg. \$45.00)	SPECIAL \$38.95
Model WF-8, Size 36" x 96"	(Reg. \$55.00)	SPECIAL \$45.95

GEORGE STUART OFFERS THE LOWEST PRICES. DELIVERED ORLANDO, ON TOP QUALITY FOLDING TABLES — FOR OFFICE, CHURCH, OR SCHOOL. Call us today!

Quantities limited at these prices.

PHONE TOLL FREE 1-800-347-7211
133 EAST ROBINSON ORLANDO, FLORIDA

CHARGE TO SANFORD PLAZA

OPEN 10 A.M. TO 7 P.M.
MONDAY AND SATURDAY

Save \$98... on 7 HP ride-on mower
Penncraft's 7 HP. Apollo ride-on mower with 3 speed transmission. Easy to operate. Fuel efficient and easy to maintain.

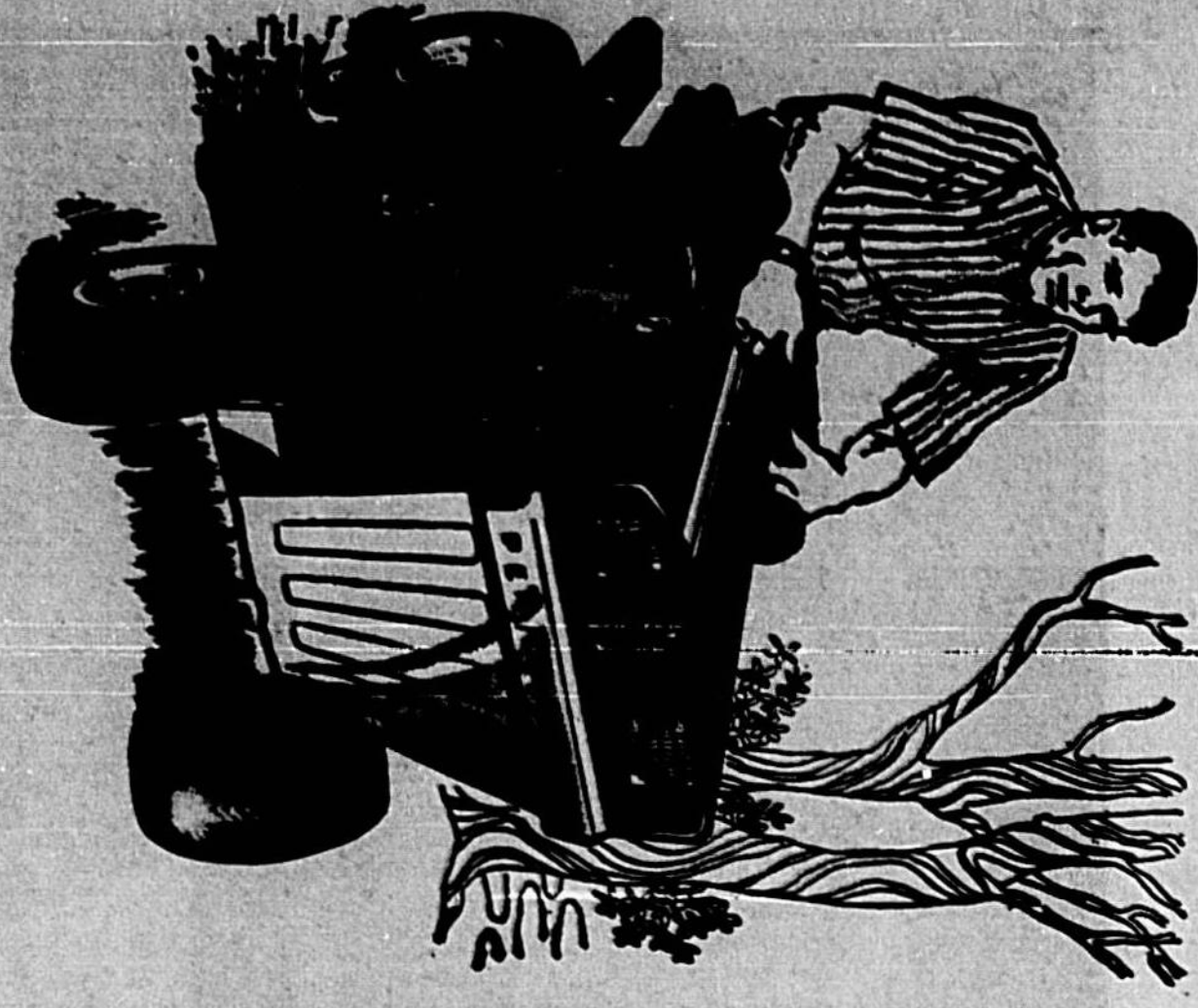
now \$49.95

Save \$50... Penncraft's electric start 7 HP ride-on mower
now \$79.95

now \$29.95

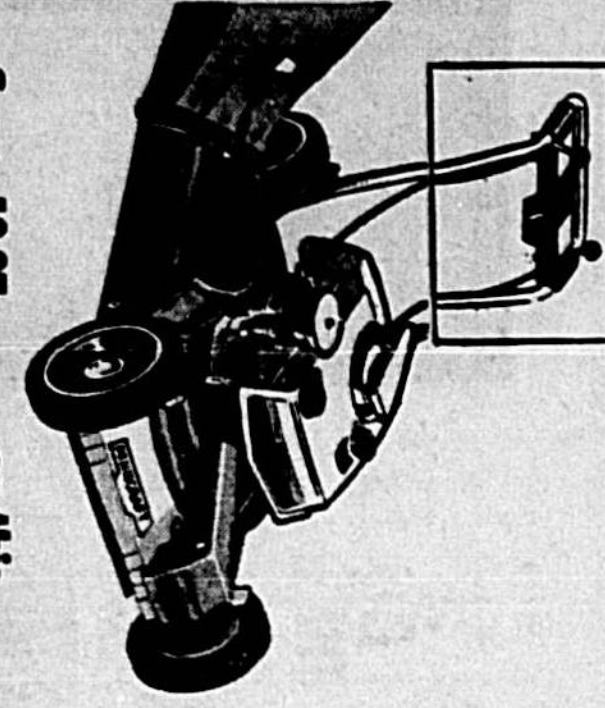
Save \$67... Penncraft's 2 1/2 HP rotary mower
now \$9.88

Great buy on this powerful Apollo 2 1/2 HP rotary mower. It's easy to operate. Fuel efficient and easy to maintain. It's the best value in rotary mowers.



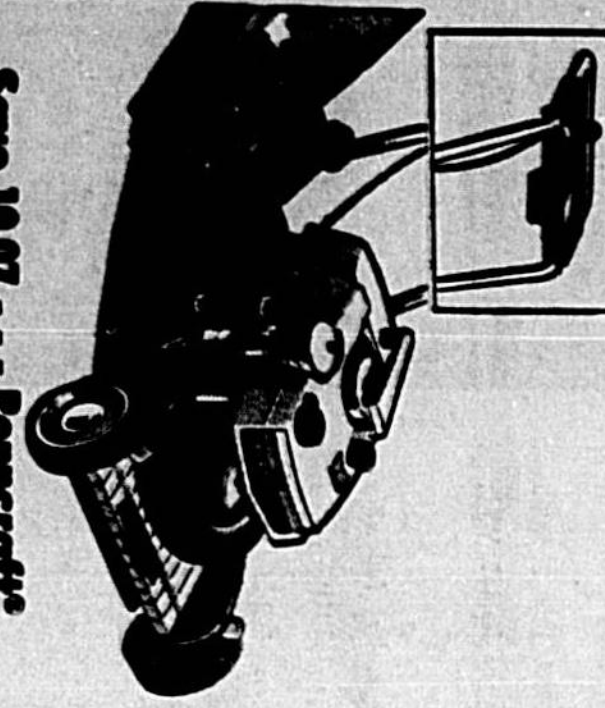
REDUCED THRU SATURDAY ONLY! Penncraft Mowers!

ALWAYS FIRST QUALITY



Save 10.97... on this Penncraft's 2 1/2 power propelled rotary mower
now \$19.88

Big lawn mower done on fast! Powerful 3/4 HP. Apollo design with easy to push handles. The engine and fully ground front wheel drive ball bearing steel wheels. Fully a remarkable buy!



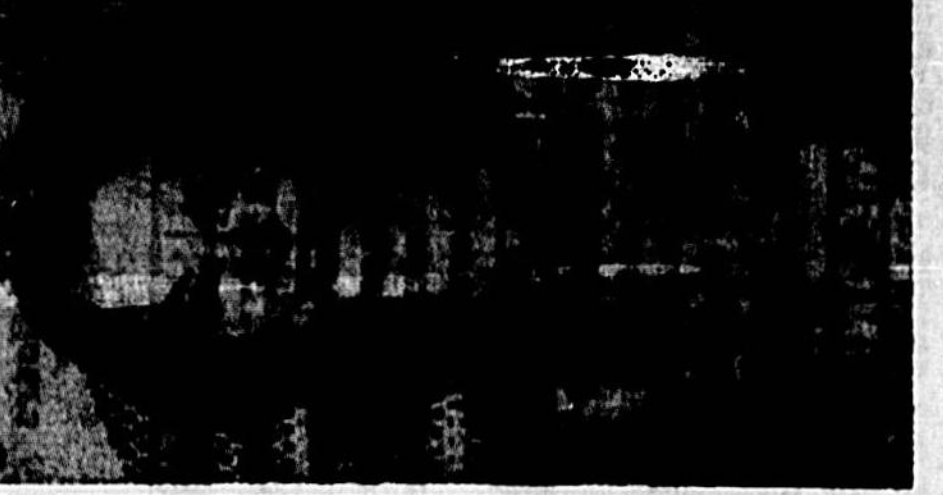
Save \$98... on 7 HP ride-on mower
now \$49.95

Foliage Festival Starts Tomorrow Apopka Expects 50,000 Visitors

APOPKA—Lovely Peggy McGrath, 21-year-old Tampa beauty, will judge at Queens over the Fourth Annual Florida Foliage Festival, which gets underway here Friday.

Our Thanks...
To the following for their assistance in putting the 1st Home & Garden Annual together:

- Carl Baker, N. County Agent, Southside County
- L. S. McHenry, Greenway Nursery
- Bill Pope, Cypress Gardens
- The Merchants who made the Annual Possible.



AFCO Comfort-maker
Heat Pumps
For Year Around Air Conditioning
Economical Electric Heating and Cooling
Air Circulation • Humidity Control

Visit or Call your AFCO Dealer.
SANFORD HEATING & AIR CONDITIONING
241 S. FRENCH PH. 322-6789

TRADE UP TO YAZOO
... THE ALL-AMERICAN POWER MOWER ...

Call for Free Literature
1. Lumber Products Association
2. B&B Printing
3. Lewis Sales & Service
2817 W. Country Club Rd.
PH. 322-7969

Commissioner of Agriculture Doyle Conner leads a list of state and county notables expected to attend the festival estimated to attract some 50,000 visitors.

IT'S "HONEY DO" TIME!

HILL LUMBER AND HARDWARE is located quarters for all these "Honey Do" jobs.

- PAINT • PANELING
- LAWN and GARDEN SUPPLIES
- TOOLS • GARDEN HOSE
- SCREENING and DOORS

ARAB
U-S-Q-IT - KILLS TERMITES WOOD
"3 IN 1" STAIN-PRESERVES WOOD

HILL LUMBER AND HARDWARE COMPANY
222 W. 24 ST.
LANCANA PH. 322-6269

SEE GREENWAY NURSERY NOW

OVER 15 YEARS ON WINDOR ROAD, BETWEEN FARMBANKS & LEE ROAD, W. P.

NO. 1444 GREENWAY PLAZA ORPH. HIREWAY 548 TO 549 CASH AND CARRY PHONES

"ORTHO" SPRING SPECIALS
NOW "ORTHO" LIQUID FERTILIZERS ARE MORE EFFECTIVE, EASIER TO USE
1c SALE ON GAL. ORTHO LIQUID FERTILIZERS

One Gallon Regular
ANY 2 GALLONS FOR 4.99 PLUS S & H

YOU SEE MORE AND SAVE MORE AT GREENWAY-PLUS S & H GREEN STAMPS

ROSE FOOD • AZALEA-CAMERILLA	1.19 GA. 2 for 1.98
LIQUID FERTILIZERS	17% NITROGEN
NEW ORTHO DAY	FERTILIZERS
5 LB. TWIN PACK	MIX OR MATCH
ORTHO'S NEW	MULTI-PURPOSE GARDEN SPRAY
FOR ALL SHRUBBERY, TREES, FLOWERS, VEGETABLES	CAN BE USED WITHIN ECONOMY 91. 222 478
ROSE SPRAY	15 GAL. SIZE
HOSE SPRAY	NO. 148
SALE PRICE	2.98
25 LB. - 9.98	
ROSE LIQUID FERTILIZER	10 LB. - 4.98
ORTHO ROSE	COMBINATION AND INSECTICIDE FERTILIZER
ROSE CARE	5 LB. - 2.98
	10 LB. - 4.98
GREENWAY-PLUS S & H	GREEN STAMPS

20 Easy Ways To Kill Your Plants

1. Planting too deep or too shallow.
2. Digging hole too deep and too large.
3. Damage root system when removing plant from container.
4. Do not plant in cans.
5. Do not loosen or remove burlap from "burlap-burlap" plants.
6. Do not put fertilizer, fresh manure or dried leaves in hole when planting.
7. Overwatering at time of planting.
8. Failure to maintain water retarding ring around plant.
9. Plant damage caused by dogs. Move plants are killed by dogs than people realize.
10. Bad soil conditions.
11. Lack of water to point of starvation or over-watering.
12. Lack of fertilizer to point of starvation or over-fertilizing.
13. Planting in wrong location, too much shade or too much sun.
14. Don't plant on drip line under roof.
15. Failure to control insects and diseases.
16. Improper spacing.
17. Failure to protect plants during cold weather.
18. Never dig around your plants.
19. Inorganic wetting. Shallowly and trees should be hose watered. Never play a strong stream of water into the root system.

Only for a Queen

When they crown the queen of flowers at Cypress Gardens a garden of dew drops is used... To grow beautiful roses like this one you have to fight the dangers - aphids, black spots, mildew, etc. Now is the time to outsmart 'em. See your nurseryman.

FERTILIZER CHART

Recommended

TYPE	ANALYSIS OF FERTILIZER	AMOUNTS TO USE	AREA COVERED
SHRUBS	6-6-6 with 25% to 50% organic nitrogen. Chilled manure and other organic materials.	4 level cups or a full 1-lb. coffee can. 6 level cups or 1 1/2 lb. coffee can.	100 sq. ft. or 100-foot row.
HOUSE PLANTS	Liquid or soluble fertilizers	Use in watering program according to manufacturer's instructions.	
POTTED PLANTS	6-6-6 with at least 25% to 50% organic nitrogen and secondary plant foods.	6 level cups or 1 1/2 lb. coffee can. 10 level cups or 2 1/2 lb. coffee can.	Per inch of trunk diameter for 100 sq. ft. of area. Per inch of trunk diameter for trees OVER 6" in diameter.
"TREES"			

PLANTS AND TREES

TYPE	ANALYSIS OF FERTILIZER	AMOUNTS TO USE	AREA COVERED
IMPROVED BERMUDA	10-5-10/20 lbs.	6 to 10	2-3-2 ratio of nitrogen, phosphorus and potash such as 10-5-10, 8-4-8 or 7-3-7
SAINT AUGUSTINE	8-4-8/25 lbs.	4 to 6	50% organic nitrogen, iron, nitrogen, and secondary plant food.
ZOYSIA	7-3-7/30 lbs.	4 to 6	1-1-1 ratio such as 6-6-6
CENTPEDE	6-6-6/35 lbs.	2	enriched containing 35% to 50% organic nitrogen magnesium, iron and secondary plant foods.
BAHIAS	2 1/2" - 3"	4	

*CHECK WITH YOUR NURSERY FOR RECOMMENDED ANALYSIS FOR PALMS, CITRUS AND OTHER FRUIT TREES.

Good Soil Is The Key To Success

In producing a good soil, the gardener must first understand the soil. Without it, little else avails. And to be a good soil it must be rich in nutrients. Fertilizer, well mixed, is made of particles which are classified as particles. Water tends to run through easily with no results and they are not really added to the soil.

At least one inch of compost, peat, soil or other organic matter and mix it in thoroughly. This will greatly increase its water-holding capacity. For the best results, the soil should be moist at the time of planting.

Good soil is the key to success. It is the foundation of a good garden. It is the key to a successful crop. It is the key to a healthy plant. It is the key to a beautiful garden.

LAWN INSECTS AND PESTS CONTROL

INSECTS	LAWNS AFFECTED	CONTROL
Chinch bugs	St. Augustine	VC19, Diazinon, Trifluralin, Ethion, Aspon, & Zytron (liquid or granular form)
Army worms	All	Toxaphene-DDT and Sevin
Sod webworms	All	Kepon, Chlordane and Heptachlor
Mole crickets	Bermuda	Malathion, oil and spruzolac
Scale	All	Nemagon, VC 13 and Fumazone
Nematodes	All	PCMB, Thiom, Komad and Mercury
Brown patch	All	Thiom, Cadmium compounds and Mercury
Dollar spot	St. Augustine, Bahia, Bermuda, zoysia	Thiom, or mercury
Fairy ring (leaf spot)	All	Caplan
Pythium	All	

LAWN WEED CONTROL

HERBICIDE	LAWNS THAT CAN BE SAFELY TREATED	WEEDS CONTROLLED
Dieldrum methyl antracene (DSMA)	Bermuda	Bullgrass, crabgrass, sandspur, sedges, goose-like weeds.
Azinphos	Zoysia	St. Augustine, zoysia, many broadleaf weeds as well as grass-like weeds.
Simazine	Bermuda	Broadleaf weeds including dandelions, black medic, carpet weed, spurge.
2,4-D and 2,4,5-T	Bermuda, Zoysia	

Weight-Watchers
These are the best of all the pre-flavored syrups available at the grocery store. These syrups are low in calories and low in sugar. They are the perfect solution for those who are watching their weight.

Juice Lowdowns
Orange beverages: These are the best of all the pre-flavored syrups available at the grocery store. These syrups are low in calories and low in sugar. They are the perfect solution for those who are watching their weight.

The Kilgore Seed Company
DIVISION OF ASHLOW SEED COMPANY
SAFONOR, FLORIDA 32771
PHONE 322-1811

TRIO VEGETATION KILLER
• Kills in one week
• Use as a spray or a granular
• Great for lawns, driveways, sidewalks, etc.
1 lb. 8 1/2 oz. Container 1 1/4 lb. Container 1.49

NEW ORTHO PRODUCTS FOR 1968

ANNUAL SALE
Special Greenway lawn with zinc, copper and potassium...
Use on all Florida lawns, ornamentals, Azaleas, Hibiscus, Gladioli and Camellias.

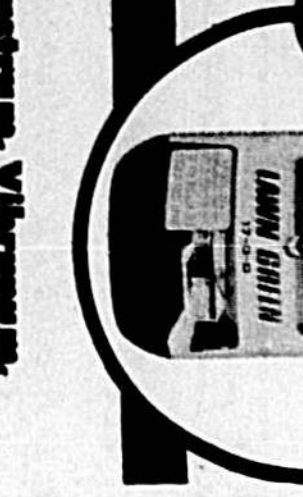
LIMITED TIME ONLY
ORTHO 6-20 PLANT FOOD
12-4-4 with potassium...
Use on all plants, vegetables, citrus, lawns, trees, berries...

MIX OR MATCH
LIQUID ROSE FOOD
LIQUID ROSE FOOD
LIQUID ROSE FOOD

PICK A PAIR
AZALEA & CAMELLIA FOOD
Also feeds Gardenias, Gingers, Ligustrum, Viburnum, Magnolias, Ixora, Hibiscus, Azaleas, Poinsettias, Rubber Plants, Caladiums, Gloxinias and Aroids.
Correct Iron Chlorosis

LAWN GREEN FERTILIZER
17% Liquid Nitrogen for All Florida Lawns
Will give you the Greenest Lawn in 36 Hours
One Gallon covers 2000 Square Feet

ORTHO SAVANNAH
1 GALLON \$4.98
2nd GALLON .01
2 Gallons \$4.99



THE SANFORD HERALD - Thursday, March 28, 1968 - Page 40

Fastest Growing 'Elm'

"THE WONDER TREE"

Call it what you may — "Siberian Elm" or "Chinese Elm" — it is truly a remarkable tree, and leaf-out earlier in Spring. It is a clean tree, practically no trash, no litter, no ugly pods or messy raking problems," McLarry concluded. Nursery, Winter Park. He is referring to the "Wonder Tree," fastest growing shade tree in the South.

"The tree is freezeproof, and will grow almost anywhere. It is adaptable to most soils and conditions, high or low land, heavy or sandy soil, coast to coast," McLarry elaborates.

"It is tolerant to wind and salt air when established. A very deep trouble-free root system, the tree transplants easily with reasonable watering and care. It is highly resistant to most insects and diseases.

"The Wonder Tree" is deciduous only a short time in Winter. Holds foliage longer in Winter and leaf-out earlier in Spring. It is a clean tree, practically no trash, no litter, no ugly pods or messy raking problems," McLarry concluded.

According to McLarry, the "Wonder Tree" is truly a "Siberian Elm" and known by many common names such as Fingertail Elm, Pele Elm; Hardy Elm; Dwarf Elm, Weeping Elm, etc. All of which tend to describe or apply to some feature or characteristic of the Elm Tree family... but correctly named... "Siberian Elm." It grows 40 ft tall, with a spread of 30 feet... Greenway Nursery is the largest grower of freeze-proof shade trees in Central Florida, and are grown at the company's farms on the outskirts of Sanford.

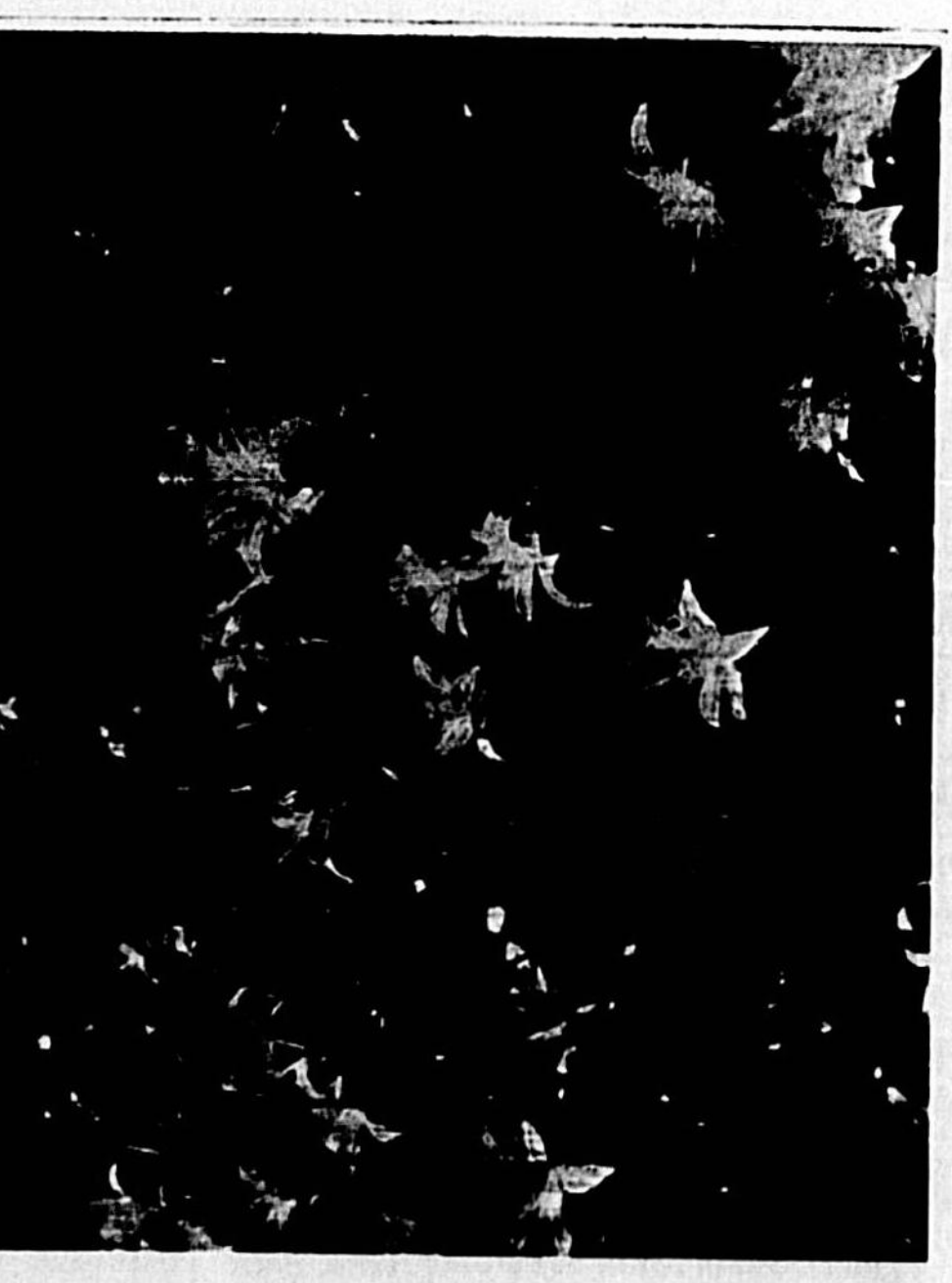
Gardinas

A magic name wherever flowers are grown... Truly a favorite in garden circles... Blooms early April through June... Some bloom all Summer... Freeze proof... Plant anytime... Grafted Gardinas are recommended for planting as they are immune to root rot.

THE SANFORD HERALD - Thursday, March 28, 1968 - Page 50

Daylilies Most Popular

Easy To Grow In All Areas



By GENE A. TUCKER, Horticulturist, Seminole County Agricultural Agent

The daylily is the most popular because it can be grown in all parts of the state. Of course, this wide adaptability is not the only reason for its popularity. Daylilies are long-lived plants, surviving with a minimum of care, and have no serious insect or disease problems.

These characteristics are fine for the casual gardener. Daylilies are also an interesting challenge for the more serious and avid hobbyist. In the case of the average homeowner, propagation from seeds is recommended. It takes from 10 days to two weeks. Freshly harvested seeds should be planted in flats or pots of sterilized covarated soil. The soil should be kept moist and in a shaded place during germination. Covering the bed with glass will prevent rapid drying of the soil and also keep rodents away from the seeds.

Plants may be transplanted to another location and re-spaced as soon as they are established. They may be planted in rows in nursery beds or rows. This will be when leaves are about four to six inches long. The plants should be spaced 18 to 24 inches apart by the time they are transplanted to a greenhouse during the winter and set seedlings the following spring.

It is generally best to produce plants from seeds from the first year. Plants can also be accomplished by dividing parent plants, and this is the only certain method of producing a true clone of selected clones.

Division of the clump is accomplished by cutting it into as many sections as there are fans, and leaves should be cut back to within four to six inches of the crown. Broken roots should be discarded. The crown should be divided into as many sections as possible. The best time for dividing is right after flowering.

Daylilies Are Good Landscaping Plants

Food Quality Better



Always use fertilizer with organic and synthetic... Super Nitro 40's... Feed your lawn steadily for six months!

DO-IT-YOURSELF HEADQUARTERS
FOR HOME & GARDEN
RE-NEW and RE-DO Gardens or Paths with RIVER ROCK Large or Small Brown or White
DIAL 322-7898
B. EDWARDS Builders Supplies
903 W. 3rd Sanford, Fla.

ACE HARDWARE
700 FRENCH AVE.
ROYD COLEMAN, OWNER
OPEN ALL DAY SATURDAY 9 A.M. TO 5 P.M.
322-7121

ELECTRICAL APPLIANCES
10% OFF
KITCHEN WARE 10% OFF
20% OFF ALL ACE-TONE PAINT

SPYING LAWN & GARDEN HOUSEWARES PAINT
"WE'RE BLOOMING WITH BARGAINS!"
GARDEN HOE \$1.48
Post Hole Diggers \$2.25
Wheelbarrow \$1.99
Wheabarrow \$1.99
Garden Sprayer \$1.25
ROUND POINT SHOVEL \$1.88

THE SANFORD HERALD - Thursday, March 28, 1968 - Page 50

THE SANFORD HERALD - Thursday, March 28, 1968 - Page 50

Sewage Disposal Plan Concerns Officials

By DONNA ESTES
Does or does not the water and sewerage plan for the Orange-Seminole area, a section of which was presented to the two county joint planning commission Thursday, include provision for effluent from all of Orange to dump into the Ecnlockhatchee River?

W. Beck and Associates, engineers, who are conducting the study.
Representing Seminole on the Commission are voting members A. K. Shoemaker Jr. and County Commissioner Robert Parker. At the same time A. R. Peterson Jr. and R. C. Conklin are serving on the Citizens Advisory Committee on water and sewer for the Commission.
Peterson told The Herald today that the oral report given "getting more and more to the point of not permitting dumping of the effluent into the Ecn." The written report does not show this same indication however.
The report says in part, "In view of the almost certain heavy dependence in the future upon Orange and Seminole Counties as sources of ground water it appears that irrigation or land spreading of treated water in order to supplement natural recharge would help to maintain ground water levels as well as providing a means of water waste disposal. . . . It is believed that land spreading is perhaps the most economical means of tertiary treatment currently known."
"In view of the presence of relatively large areas of sands known to have a high capacity for absorbing and filtering water, it appears that these procedures have a considerable promise as a possible solution to the problem of waste disposal in the Orange-Seminole area," the report declares, but goes on to say, "Following treatment in the advanced sludge plant the wastes will be chlorinated and discharged into a two to three day stabilization pond followed by a combination of discharge of limited amounts of treated effluent into the Ecnlockhatchee River and disposal by land spreading and ground water recharge or irrigation."
"In addition to disposal by irrigation or land spreading, there is no reason why a certain amount of treated effluent from this plant could not be discharged into the Ecnlockhatchee River in proportion to the flow in the river. . . . Based on the current requirements of the Florida State Board of Health, it is probable that up to 25 per cent of the treated effluent could be disposed of by this method for as much as six months of the year on an average basis."
According to the report the area being planned for the irrigation method of disposal is "in a large area of St. Lucie sand located southwest of Geneva." Peterson today noted his concern that the irrigation method being planned for the Geneva area. He said that while this method for as much as six months of the year on an average basis. According to the report the area being planned for the irrigation method of disposal is "in a large area of St. Lucie sand located southwest of Geneva." Peterson today noted his concern that the irrigation method being planned for the Geneva area. He said that while this method for as much as six months of the year on an average basis.

Bulletin

One man was killed at about noon today when his truck crashed into a pillar on Interstate 4, the State Highway Patrol reported. Herald reporters Jane Caselberry and Carol Jaques, on the scene, said the driver was proceeding toward Orlando when he apparently lost control and crashed into a pillar supporting the overhead highway. The vehicle was crushed and the driver was killed. Details were lacking at press time as the trooper on the scene without information pending arrival of the coroner. The driver was planned in the 17-02 south of Sanford.

Trooper Finds Liquor Loot From Burglary

Migrants Held For Theft

By JUDY WELLS
A cache of stolen goods valued at more than \$700 was recovered by the Florida Highway Patrol and Sheriff's deputies following an accident involving the automobile in which it was being transported.

Called to a minor collision on Highway 17-83 just south of the Onora Road intersection, FHP Trooper R. W. Lovring found one of the cars to be one he had been "watching" for more than a week.
The driver, Albert Lee A. Hampton, was held on charges of improper change of lanes. Four passengers in the car, Emmitt Farrow, Henry Blanton, John Gilyard and Samuel Gillyard also were retained until the car could be removed from the highway and searched.
Lovring and Deputies Joe Jenkins and Jack Bushor found a .22 caliber pistol in the glove compartment, more than 150 half-pints and six fifth of assorted brands of liquor, two commercial tire radiators, and at least \$20 worth of copper wire.

The liquor was identified by Sarah Reese, owner of the Club 2 Spot in Midway, as part of that taken from her place of business early Wednesday.
The men, all migrant workers 17 to 20 years old from Northwest Florida, were jailed on charges of breaking and entering.
The liquor was identified by Sarah Reese, owner of the Club 2 Spot in Midway, as part of that taken from her place of business early Wednesday.
The men, all migrant workers 17 to 20 years old from Northwest Florida, were jailed on charges of breaking and entering.

On the way to work this morning shortly before 6 (that's 6 a.m.), R. E. Porter observed State Sen. John Mathews heading out Mellenville Avenue, in the direction of Jim Crowe's fishing camp. Sure enough, Jim says Jack and his Mrs. came from Jacksonville to do some speck fishing. . . . and their offspring are coming in later to do some shad fishing. Wonder if Jack and Jim have a "hotline" to let the Senator know when the fish are biting.

And Jim Crowe says the shad don't know their spawning season is over (by the calendar) . . . says fishermen still are seeing them in . . .
A deer crossing the highway on SR 426 between Geneva and Oviedo late last night caused an Oviedo man to lose control of his car, break a power pole before, and clip down a number of fence posts. Roosevelt McFadden, driver of the car, was treated at Seminole Memorial Hospital for glass cuts and the face and on his hands following the mishap. Damages to his car were estimated at approximately \$600.

It is a bit incongruous: The wire services tell us that in Texas, the great cow country, its space age city of Houston is offering \$500,000 for Elvin Hayes' basketball talent for three years. And the other half of the "whaddya know" bit is that in New York, renowned for its high regard for sports capability, a Holstein cow brought \$400,000 at an auction. And Hayes goes to San Diego to play in the back yard of his rival hoopster, Lew Alcindor. Tak Tak.

Someone said that this is "The Year of the Bull" (in a China closet, maybe is what he meant). Call it the "age of dissent."
We commend the "We Care" merchants and their auxiliary: "THE SISTERS" group on their drive to pretty-up and re-activate the downtown shopping center.

Only 7 Days To Register

Seminole County **** on the St. Johns River **** "The Nile of America"

The Sanford Herald

Phone 322-2611 or 425-9938 Zip Code 32771
WEATHER: Thursday 81-48; cloudy and warm weekend.
VOL. 60, NO. 160 - AP Leased Wire - Established 1908 - FRIDAY, MARCH 20, 1968 - SANFORD, FLORIDA - Price 10 Cents



FRED Galloway, newcomer to politics, today announced his candidacy on the Democratic ticket for constable, district 4.



HARVEY Coulter, Forest City, has qualified as a Democrat to seek nomination for justice of the peace, district 6. (Related article on page 32A.)



WILLIAM J. Phillips, Republican, today qualified as a candidate to succeed himself as school superintendent. (Related article on page 1B.)



ROBERT Carroll announced today that, because of reasons of health, he will not be a candidate to succeed himself as constable, district 4.



WAYNE Foucher, former minister and ex-radio commentator, qualified today as a Republican candidate for U. S. House of Representatives.

GOP Candidates Lag In Filing

Wharton (incumbent) district two is facing Ray Slator, former school trustee and James Birkenmeyer, incumbent district three, in vying with Pat Hule, political newcomer from Longwood.
Running so far with no opposition are incumbents Arthur Beckwith Jr., county clerk; G. Troy Ray Jr., tax collector; Camilla Bruce, supervisor of election; A. C. Doudney, county surveyor, and B. A. Johnson, district three peace justice.

Doctors Honored

Area physicians will be guests at a "Doctors Day" dinner at 7:30 this evening, with the Seminole County Medical Society Auxiliary as hostess at Seminole Memorial Hospital auditorium.
Dr. Robert Swenson will speak of his experiences as a medical officer with the U. S. Foreign Department and Mrs. T. F. McDonald, Mrs. Edwin Epstein, Mrs. William Rape and Mrs. John Johnson.

Criticism Of City Aides Withdrawn

Last week, the Mayor suggested to the board the need to look into a number of criticisms received by him that the people of the city were "not getting their money's worth" out of the three named officers.
Wednesday night's statements by the entire Council apparently put the matter to rest once and for all.
In other business, Council set public hearings for 7:30 p.m. April 17 on requested zoning of the back half of four lots facing Robin Road and Oriole Drive to permit construction of a double duplex.
Authorized City Attorney S. Joseph Davis Jr. to prepare proper documents setting forth the procedures to be used by the Planning and Zoning Commission.
Scheduled regular Council meetings for the first and third Wednesdays of the month rather than weekly meetings beginning after April 17.
Refunded \$69 to Greater Construction Company as its share of the money not needed by the county for improving Spring Lake Road. The project has been a participation one between the city and the county and the city and the construction company.
Authorized the city attorney to prepare a resolution of rules and regulations for collection of trash and garbage.
Accepted resignation of Councilman Rogers from the Utility Commission and appointed Swafford to the post.

Deadline For Taxes

Courthouse and branch offices of the county tax collector's office will be open from 9 a.m. till noon tomorrow to accept last minute payment of taxes. Trooper Ray reported today.
Taxes not paid before Monday will be delinquent. However, Ray said that taxes mailed and bearing a postmark prior to April 1 will be accepted as current by his office next week.

Charge Filed In Fatality

Charges of improper overtaking have been placed by Florida Highway Patrolman Richard B. Yates, of DeLand, against Mrs. Lorena Dingman of Sanford, driver of the station wagon involved in the two-car accident last Tuesday afternoon in which Sanford Fireman R. E. White Jr. was killed.
The accident is still being investigated by Trooper C. L. Tomlinson, of Sanford, according to FHP headquarters in DeLand which said that reports White was driving without headlights would be a contributing factor in the investigation.
Traffic safety laws call for lights to be turned on within 30 minutes after sunset.



Front page story today points out the Republicans are lagging in qualifying to run for public office. Sheriff Peter Millot says he definitely will qualify on Monday, as a Republican, to succeed himself. E. Pope Bassett says a full slate of GOP candidates will qualify before the deadline Tuesday noon. . . . and that rumors are false a "deal" has been made with the Democrats to not give opposition to certain Democratic incumbent officeholders.

On the way to work this morning shortly before 6 (that's 6 a.m.), R. E. Porter observed State Sen. John Mathews heading out Mellenville Avenue, in the direction of Jim Crowe's fishing camp. Sure enough, Jim says Jack and his Mrs. came from Jacksonville to do some speck fishing. . . . and their offspring are coming in later to do some shad fishing. Wonder if Jack and Jim have a "hotline" to let the Senator know when the fish are biting.

It is a bit incongruous: The wire services tell us that in Texas, the great cow country, its space age city of Houston is offering \$500,000 for Elvin Hayes' basketball talent for three years. And the other half of the "whaddya know" bit is that in New York, renowned for its high regard for sports capability, a Holstein cow brought \$400,000 at an auction. And Hayes goes to San Diego to play in the back yard of his rival hoopster, Lew Alcindor. Tak Tak.

Someone said that this is "The Year of the Bull" (in a China closet, maybe is what he meant). Call it the "age of dissent."
We commend the "We Care" merchants and their auxiliary: "THE SISTERS" group on their drive to pretty-up and re-activate the downtown shopping center.

Only 7 Days To Register

Only 7 Days To Register

Nothing "Bugs" a Plant Lover Like a Bug Or Bugs

Grammy's Fried Caterpillars

Sanford Lad Names Mystery Dish at Nurseries' Fete

Nurseries from all over Florida attended a Pioneer Day celebration recently at Dunwoody West, Fla. in the beautiful new Miami, and Miami Beach, Fla. at the beginning of the nursery industry in Florida. Recognized as the oldest nurseryman in the state, Julius J. Thomas of Lake Worth, who at 81 has been a nurseryman for 42 years, gave the address. He was accompanied by Bob Fryer, president of the Florida Nurseries & Gardeners Assn., president of the same 500 person to the affair, which was highlighted with folk music and a caterer named, Wanda H. Slaughter III, of Sanford named the mystery dish as "skip sliver" actually it was fried caterpillars.



Sanford Ed Fryer and Wanda H. Slaughter III preside at Nurseries' fete.



Orlando Merchandiser Offers Versatile Folding Table

A versatile folding table that has more uses than any other, is making the name of merchandiser, offering you a free package of 5000 uses to help beautify your home. You may pick them up at our bank.

UNITED STATE BANK
of Sanford... SANFORD, FLORIDA

Dear Customer:

Our bank believes in civic beautification. We are, therefore, offering you a free package of 5000 uses to help beautify your home. You may pick them up at our bank.

This is our way of encouraging you to help beautify Sanford and Seminole County.

Spring is the time to plant up, clean up and fix up. If you plan to do any remodeling this year and need money . . . remember, we have it.

April is "Home Improvement Month" here at the bank and perhaps we can help you. We would certainly like to try. Our home improvement loans are made for any worthwhile improvement to your property. Whether you do it yourself or hire it done, we loan up to \$5,000.00 with payments added to suit your budget for up to five years. No down payment is required and there are no closing costs.

We would like to assist you with your financial matters. We hope you enjoy the flowers. If you wish more, come see us.

Sincerely yours,

John T. Anderson
Executive Vice President

NO MONEY DOWN
ON YOUR APPROVED LOT
Make Money For Your Future!
Investment Opportunity
Call for details
TERENCE HOMES
P.O. Box 1000
Sanford, Florida

US
Sincerely yours,
John T. Anderson
Executive Vice President

YOU ALWAYS SEE MORE AND SAVE MORE AT GREENWAY

AZALEAS LARGEST SELECTION IN CENTRAL FLORIDA
BEST DWARF VARIETIES 49¢ for 3
SUN OR SHADE VARIETIES 89¢ for 2" or 98¢ for 2"
LARGER SIZES 1.25 • 2.00 • 3.00

CLEARANCE SALE ON 3 TO 5 FT. SIZE
GREEN WEEPING WILLOW
GOLDEN WEEPING WILLOW
FLOWERING PEACH
PURPLE LEAF PLUM
LILLY OF THE VALLEY
SWEET GUM
Regular Price 1.49 to 2.95
NOW ONLY 88¢

GUARANTEE REPLACEMENT CARD WITH PLANTING DIRECTIONS ATTACHED TO ALL POTENTIAL BARE ROOT FRUIT AND SHADE TREES

SHADE AND FRUIT TREES
ON THESE POPULAR FRUIT AND SHADE TREES
PEAR TREES - 3 VARIETIES, ORNAMENT, PINEAPPLE, KEEPER.
BLUE DAMSON AND RED METHLEY PLUM TREES, FLOREANWON AND FLORIDASHIN PEACH TREES, SUNSHED WINTERHANE TREES, MAPLE, RED BUD, STYCAMORE, WILLOW AND OTHER SHADE TREES.

ARBOR VITAE EVERGREENS
18 TO 24" SIZE 2.99 NOW 1.75
FIELD GROWN
BLUE VASE 2" 3"
JUNIPER 2.4" 2.6" 2.8"

GRAPES BLUE LAKE LAKE BIRRAL PKGS. OF 2 FOR 98¢

CAMPOR TREES
4"
NORFOLK ISLAND PINES 18"
CONFERATE JASMINE VINE EXTRA THICK FREEZEPROOF 1" 4 FOR 6"

FAST, EASY GROWING HEDGE PLANTS
THICK, BUSHY, FIELD GROWN SIZES
LIGUSTRUM 1.92 EA 1.69
VIBURNUM 1.92 EA 1.69

GARDENIAS SHAPED BUSHES 1.75 TO 6"
SHORE JUNIPER 4" 2.11

ANNUALS AND VEGETABLE PLANTS
NEW VARIETY "BEARSS" LEMON TREES
VERY SIMILAR TO CALIFORNIA LEMONS 4.49
WHITE DOGWOOD TREES 1.69
5 1/2 FT. GOLDEN RAIN TREES 4.98
50 LB. BAG GROWN TOBACCO 2.19
EUCALYPTUS TREES 98¢

BLOOMING BOTTLE BRUSH
5 TO 6 FT. EXTRA THICK, BUSHY 6.50 TO 24.50
FIELD GROWN SIZES

Dolomite Limestone 50 LB. SWEETEN'S SOIL AND MAKES LAWN & SHRUBBERY GROW BETTER 98¢

FREE WIN A PONTIAC PRINCE FROM "SCOTT'S"
NOTHING TO BUY, JUST FILL OUT ENTRY BLANK AND DEPOSIT IN BOX IN OUR STORE

WE GIVE S&H GREEN STAMPS WITH ALL PURCHASES

NOW'S THE TIME TO FERTILIZE WITH GREENWAY HIGH-POTENCY NITRO-GENIC FERTILIZERS
WHY BUY LOW QUALITY FERTILIZER?
WHEN YOU CAN GET THE BEST "GROWER FORMULATIONS" AT THESE LOW PRICES
100% PURE • NO INACTIVE FILLERS • NO SAND • NO SLAG
"YOUR LAWN, SHRUBBERY AND TREES WILL SHOW YOU THE DIFFERENCE!"

6-6-6 ORGANIC WITH IRON 50 LB. 1.99
6-6-6 NITRO-80% ORGANIC WITH 50 LB. 1.99
6-6-6 ORGANIC IRON AND MANGANESE 50 LB. 2.99
6-6-6 CITRUS MANGANESE 50 LB. 2.99
BLACK OBSIDIAN 100% ORGANIC 50 LB. 2.99
ACTIVATED SLUDGE 4 1/2" IRON SPREADER LOADED PINE WITH 200 LB. ABOVE

30% ORGANIC WITH IRON 50 LB. 1.99
6-6-6 ORGANIC WITH IRON AND MANGANESE 50 LB. 2.99
10-10-10 BROWN 50 LB. 2.99
8-4-4 ORGANIC WITH IRON 50 LB. 2.99
SPREADER LOADED WITH 100 LB. ABOVE

ABELIA THICK BUSHY 1"

SEE GREENWAY NURSERY & GARDEN CENTER NOW
OVER 18 YEARS ON WYMORE ROAD BETWEEN FAIRBANKS & LEE ROAD IN WINTER PARK
NO MAIL ORDERS PLEASE OPEN EVERY FRIDAY 8:00 TO 5:30 CASH AND CARRY PRICES

THE SANFORD HERALD - Thursday, March 28, 1968 - Page 1

SAVE NOW!
Special Purchase from Chrysler Leasing Corp.
EXEC. LEASE CARS
• Dart • Monaco • Charger • Polara • Coronet
Save Hundreds of Dollars

Hugh Duncan has joined our staff of salesmen. He invites all of you to come and see him and to save money.

SEMINOLE COUNTY MOTORS
1801 W. 1st St. - Phone 322-0414
"HOME OF THOSE GOOD GUYS"