

**For VACATION
MERRY-MAKING
IN FLORIDA . . . GO**



OLDSMOBILE



ST. AUGUSTINE

Visit The Old Fort For A Thrill You Will Never Forget. Riding There In Your New Oldsmobile Will Be Another Thrill To Remember.

MARINELAND

One Of The Many Wonders The Entire Sea Kingdom Before Your Eyes. And All Eyes Will Be On Your New Cadillac.



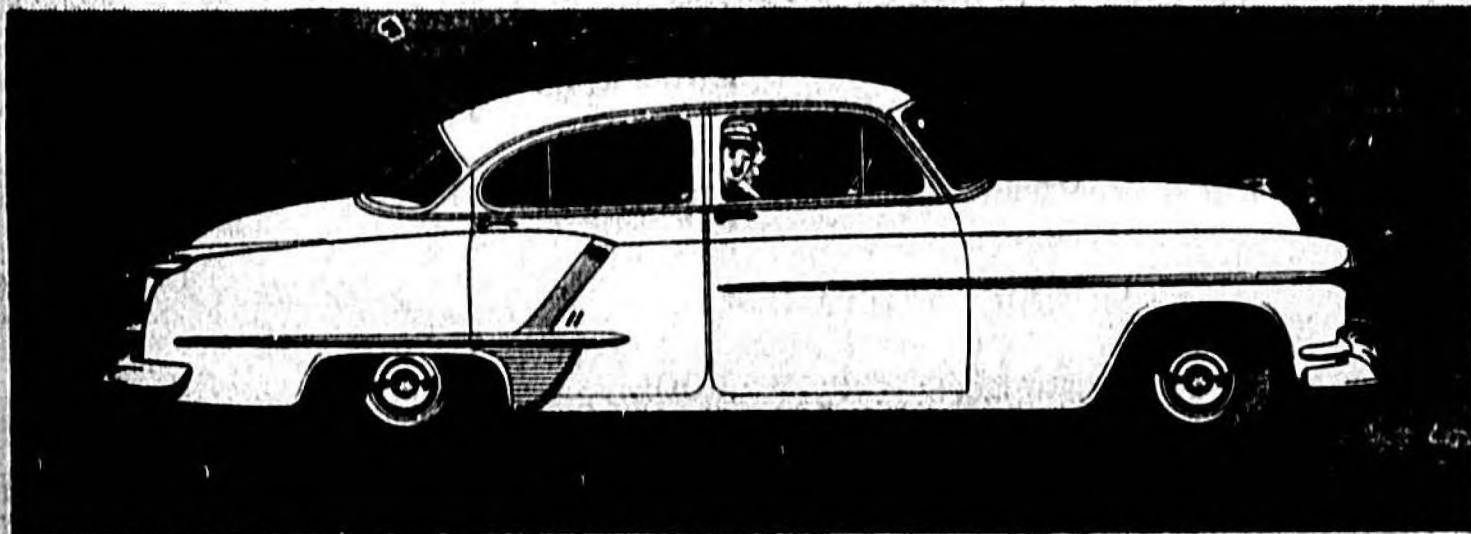
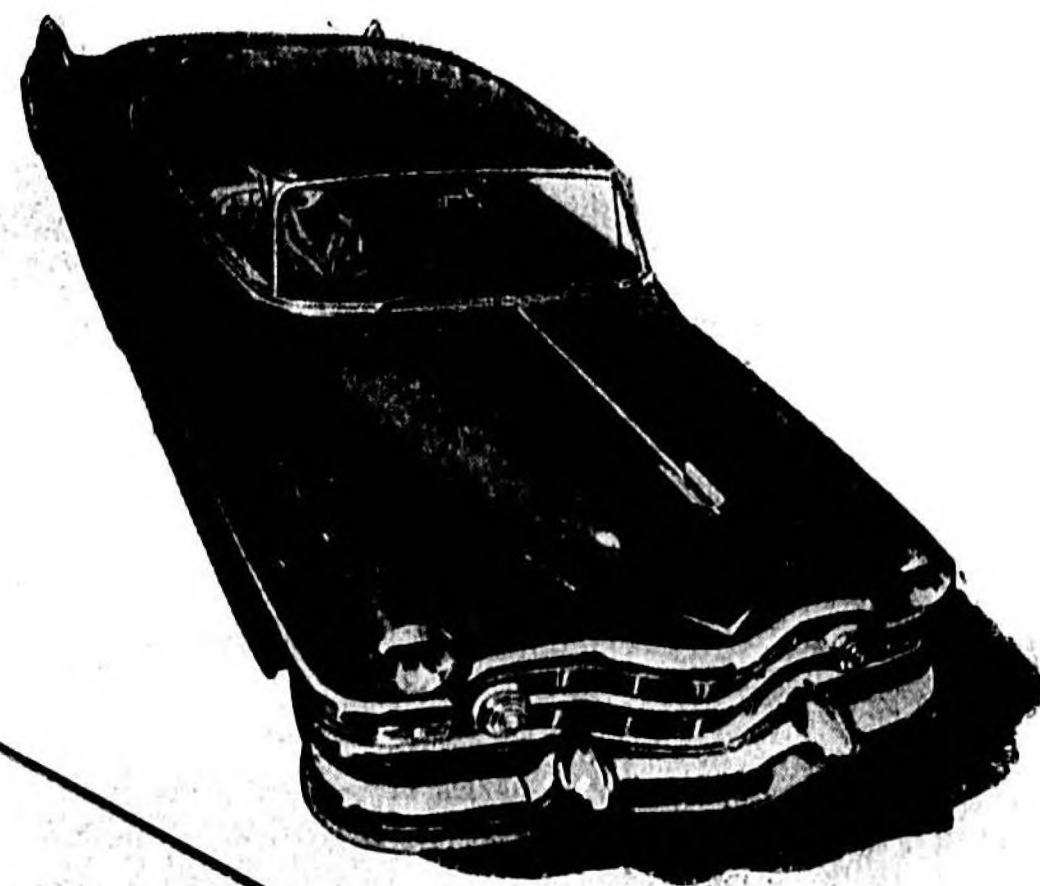
SILVER SPRINGS

Florida's Under Water Playground. New And Always Exciting. Exciting Too Is The Feel Of Your Wonderful Chevrolet.

**SEE ALL POINTS
OF INTEREST
IN CENTRAL FLORIDA
FROM**

SANFORD

"The Celery City"
In Your Own
Smooth Riding, Low Priced
Exquisitely Beautiful
CHEVROLET



CYPRESS GARDENS

Beautiful Flowers All Kinds, Colors And Sizes. No Matter How Long You Stay You Cannot See It All. But You Will Be Able To See At Once The Many Advantages Of A 1952 Chevrolet.

BOK TOWER

Lovely Grounds And Gardens. Concerts From The Tower That Cannot Be Equalled. Just As The 98 Oldsmobile Cannot Be Equalled.

MIAMI

Enjoy Winter Swimming. Only A 6 Hour Drive From Sanford. And It Is All Smooth Riding In A 1952 Cadillac.

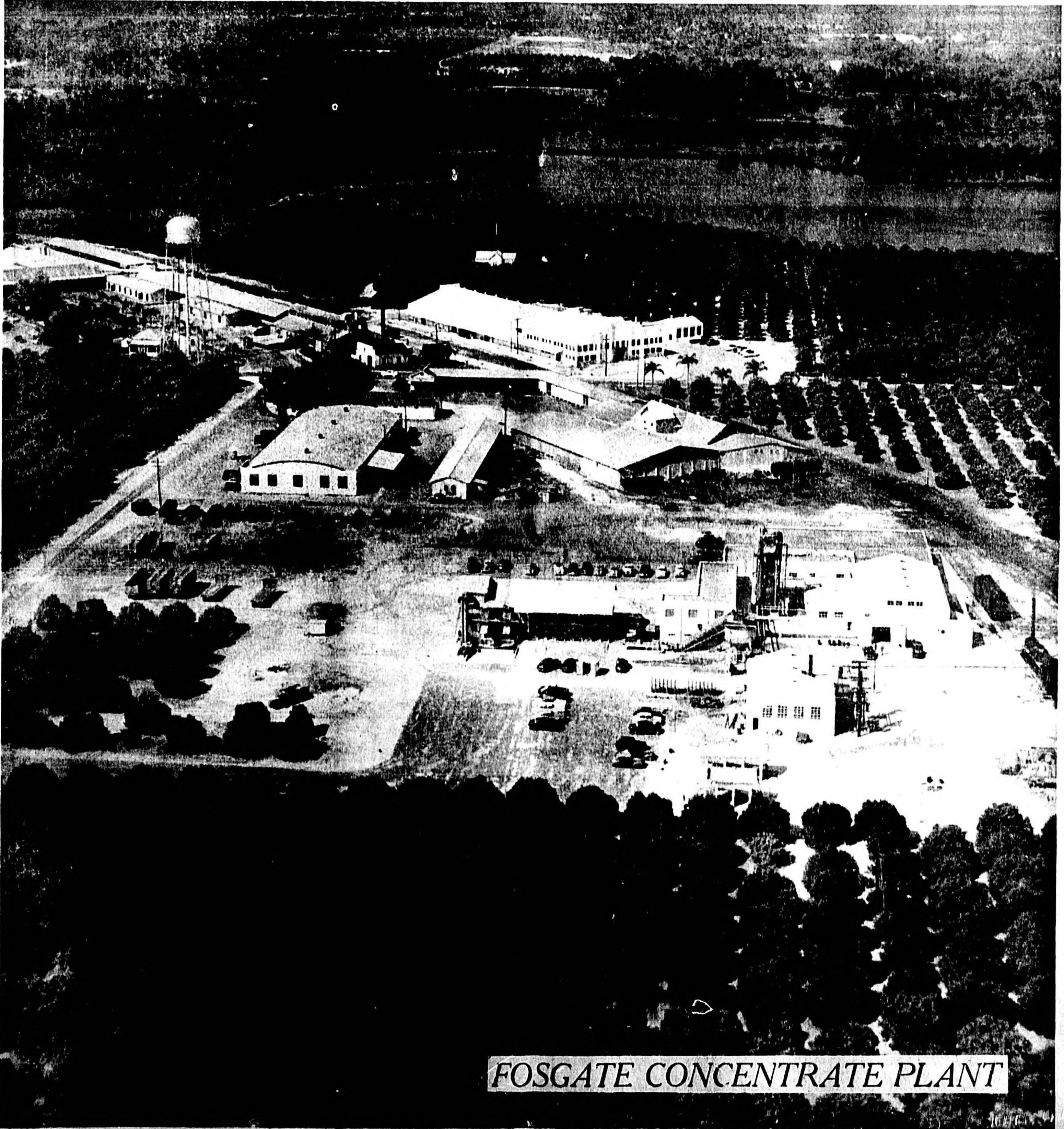
CENTRAL FLORIDA ★ THE PLACE TO WORK & PLAY

HOLLER MOTOR SALES

CORNER SECOND and PALMETTO

SANFORD, FLORIDA

PHONE 1234



FOSGATE CONCENTRATE PLANT

Opened for operation only last March, additional facilities necessary to almost double its production have been installed at the frozen juice plant of Fosgate Citrus Concentrate co-operative in Forest City.

The nine-building plant, when opened, had a capacity of more than 8,000 six ounce cans of concentrate per hour and to this production system has been added a huge new evaporator and new in-line juice extractors.

Altogether, the co-op estimates an expenditure of about \$500,000 was necessary to keep the manufacturing process on a par with

consumer demand, a demand that has mushroomed through extensive advertising campaigns and through wide public acceptance of the Cinderella product—frozen concentrate orange juice.

Most of the machinery of the plant was built by Food Machinery Corporation, with Florida headquarters in Lakeland. C. E. Howard and the Carrier Corp., manufactured some of the refrigeration and cooling units. The entire installation, including the outdoor type evaporators, is said to be the most modern in America.

Although most attention during the past year has been centered

on the concentrate co-op's activities, other products under the Fosgate banner have likewise shown progress.

The Chester C. Fosgate Company's jelly and marmalade factory, housed in a brand new structure, also added new machinery at considerable expense during the year.

Under direction of Jack Fosgate, vice-president, additional packing and labeling assembly lines were installed and the output of the popular "Fozz" brand of table delicacies shows a large percentage in gain over the previous 12 months.

Chester C. Fosgate, a native of Boston, first became inter-

ested in Florida citrus as a youngster of 16 when he was associated with his father on the Boston commission market handling fruits and vegetables.

Early in his career he learned all phases of the business and in 1919 began operations in this state as the Chester C. Fosgate Company which he soon built into the largest packing and shipping house in Florida. His was the first plant to pack and ship one million boxes of fruit in a single season and for years was known as the leading house.

(Continued On Page Six)

7,000 Carloads Of Fruits And Vegetables Shipped By ACL Railroad From Sanford

Seminole County Is Ranked Second In Florida In Vegetable Shipments

Approximately 6,950 carloads of produce grown in this area, including 5,677 cars of vegetables and 1,273 cars of citrus fruits, were shipped to northern markets during the 1950-51 season by rail from Seminole County, the north or portion of which was handled by Atlantic Coast Line Railroad, according to the Florida State Marketing Bureau.

This is an increase of 772 cars over the 6,187 carloads of produce shipped from this section to the markets of the north during the 1949-50 season. During that season vegetable rail shipments were 5,000 and citrus, 1,187 cars.

In the shipment of vegetables by rail last season, Seminole County was second in the state being exceeded only by the much larger Palm Beach county with its 10,470 cars. Seminole ranked 10th in rail shipments of citrus. This county stood in first place, however, in the rail shipments of celery, its major vegetable crop, with 5,975 cars. Palm Beach county was second with 8,040 cars and Sarasota was third with 1,715 cars.

Cabbage is rapidly growing in favor in Seminole County which placed third last season in rail shipments with 808 cars compared to 3,094 for Palm Beach and 3,325 cars for St. Johns county. Seminole was also third in celery with 105 cars to Palm Beach's 482 and Orange county's 115 cars. In green corn, 166 cars, Seminole was exceeded only by Palm Beach and Orange county.

Sanford is important as the headquarters of the Jacksonville division, and O. V. Horace, division superintendent, has his office here. Shops for the repair of locomotives are maintained here.

The freight office and warehouse are located on West First Street and Frank Weatherbee is local freight agent.

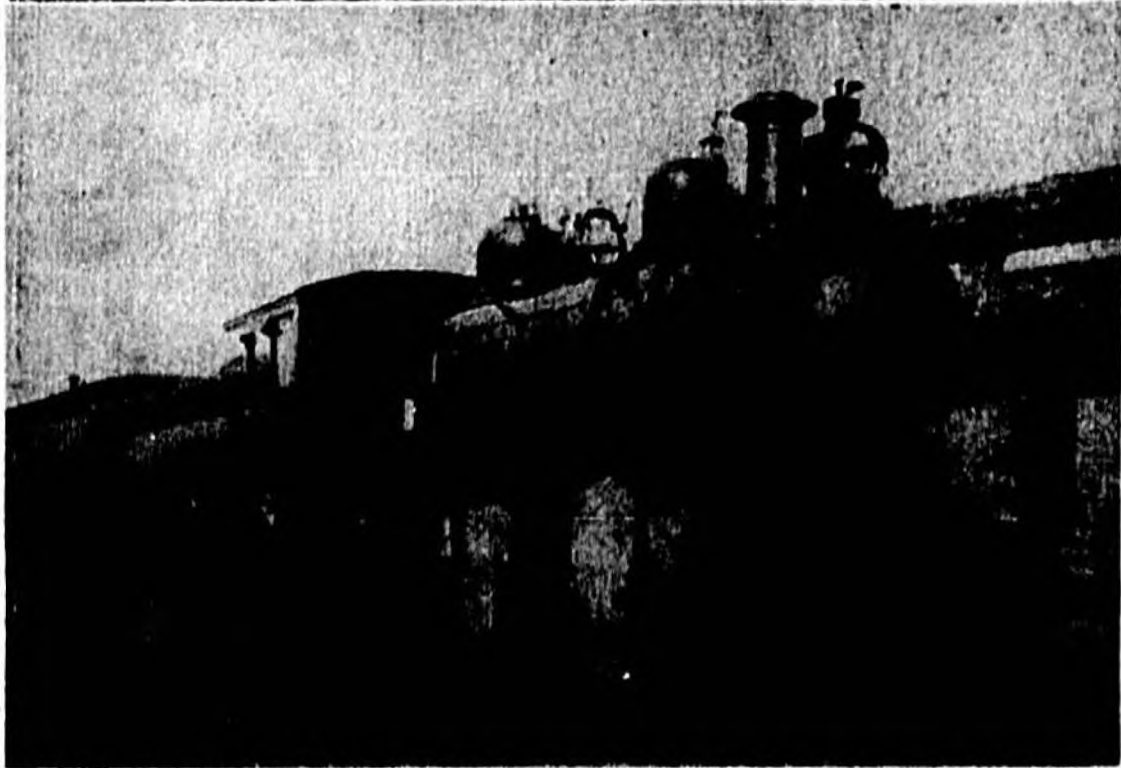
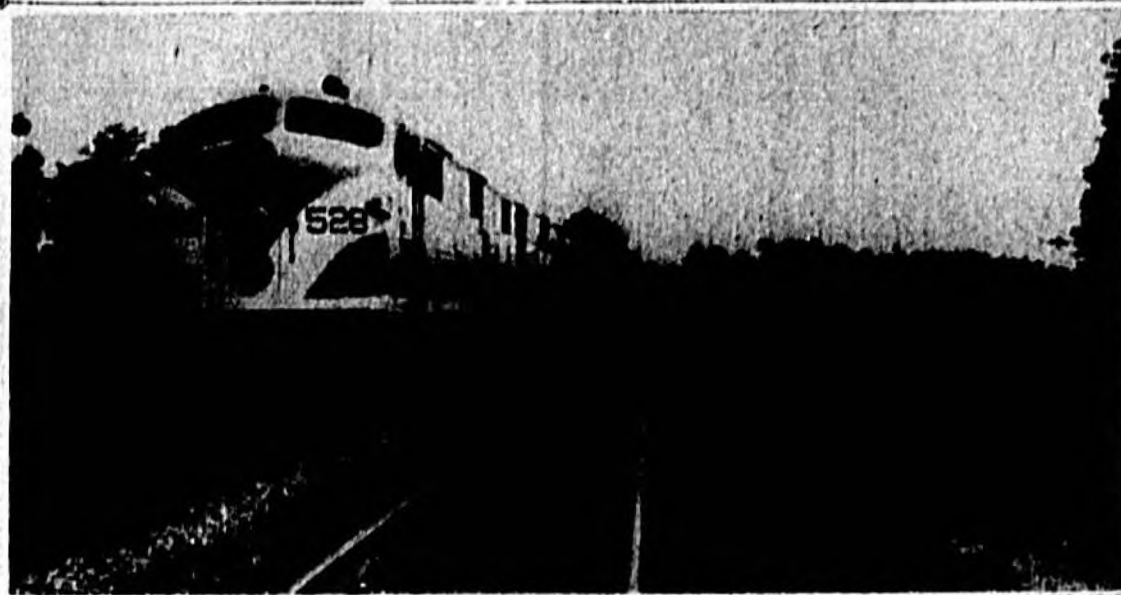
In order to further facilitate the large movement of freight cars in the Sanford area, the A. C. L. last year built a six mile short cut freight route from Sanford Sliding on the West Side, to a point south of Sanford and about three miles north of Lake Mary.

Since 1939 the Coast line has acquired 202 units of Diesel motive power of all types, 125 lightweight passenger train cars and 15,911 freight cars.

The program of rehabilitating and modernizing roadway and track structures began in late 1948, when 131-pound rail was adopted as standard for principal main line tracks.

The Atlantic Coast Line Railroad comprises some 5,500 miles of rail road tracks, extending from Richmond through Jacksonville into the Florida peninsula, where a network of branches is operated. It represents the unification of more than 100 small separate railroads, and the oldest constituent railroad in the ACL as now formed, is the Petersburg Railroad, chartered by act of the General Assembly of Virginia on Feb. 10, 1830, and by special act of the North Carolina legislature on Jan. 1, 1851. It was opened in 1833, and extended from Petersburg to Blakely, N. C., along the north bank of the Roanoke River.

In Florida, the ACL acquired the Plant System in 1908. This railroad was built by the late Henry B. Plant, pioneer developer of the west coast of Florida. Champion McDavis, president of



At top is one of the crack Diesel streamliners of the Atlantic Coast Line Railroad, typifying the modern era in rail transportation. Below is the "Gopporhead", which in 1910 drew the "Tampa Special" No. 95 to the old depot which still stands on Commercial Avenue. In the group of engineers, left to right, are Ira Bass, Mike Minarik, Link Grow, unidentified person, Paul Krupp, Fred Miot, Bill Shelley, G. H. Key, an unidentified fireman and Bill Parker. The latter died Jan. 21 at Stuart at the age of 84.

the Atlantic Coast Line Railroad Co. in a recent pamphlet devoted to fragments of history of the line, stated, "In 1879 and 1880, Mr. Plant acquired the Charleston and Savannah and the Atlantic and Gulf Railroad, and thereafter, began building a transportation system which at the time of its acquisition by the Coast Line in 1902, operated a network of railroads within the Florida peninsula and also operated steamship lines."

At Sanford the first railroad began was the South Florida Railroad, a narrow gauge road of the early '80s which was later to be replaced by the Atlantic Coast Line.

President U. S. Grant turned the first spadeful of earth for the building of this railroad, according to the writings of Frederick H. Rand, who at that time was president of the First National Bank here, and who had extensive land holdings between Sanford and Orlando.

Mr. Rand was in Longwood when the first train from Sanford arrived there in June, 1880. In October of that year the first train reached Orlando from Sanford.

Daily operations of trains began on Nov. 15, 1880. According to the late W. H. O'Neal of Orlando, the population of Orange county, which then included Sanford and what

(Continued On Page Three)

Over \$2 Million Gain In Deposits Shown By Banks

All Time High Of \$13 Million Reached On December 31, 1951

A one-year increase of \$2,181,701 in deposits of Seminole County's three leading banks, the Sanford Atlantic National Bank, Florida State Bank and Citizens Bank of Oviedo, is revealed in statements made at the close of business, Dec. 31, 1951.

This definitely indicates growing prosperity in the County, and is nearly double the 1950 increase over 1940 which was \$1,226,416. Deposits reached an all time high in 1951 of \$11,255,323 or six times the 1940 figure of \$2,233,403. At the close of 1950 the deposits had reached the then all time record of \$11,072,532.

The Florida State Bank led in deposit gain of \$1,183,254 over the \$4,421,608 of last year, and had total 1951 deposits of \$5,604,897.

At the Sanford Atlantic National Bank, 1951 deposits were

\$5,827,088, an increase of \$543,628 over the 1950 figure.

At the Citizens Bank of Oviedo the deposit gain at the end of 1951 was \$454,929. Total deposits were \$1,823,338 compared with deposits of \$1,368,409 at the close of 1950.

Total assets of the Sanford Atlantic National Bank were reported at \$6,218,455 for 1951. Substantial additions to the undivided profits and reserve accounts, were made, it was announced by J. H. Ingley, president. Semi-annual dividends of 6 percent were declared and the bank gave its officers and employees a Christmas bonus of 10 percent.

More than 3,000 new loans were made in 1951, for a total of more

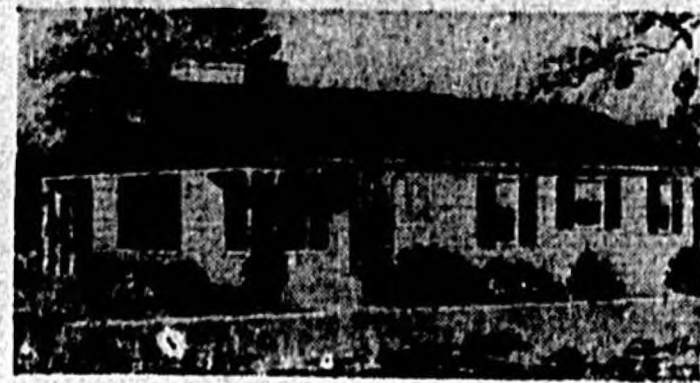
THE SANFORD HERALD
Page 2
Mon. Feb. 25, 1952
than \$2,000,000, the largest number and amount of loans ever

made in the bank's history. The volume of over-the-counter deposits this year amounted to \$50,000,000, the highest on record. J. B. Roston, former assistant

cashier, was elected vice-president and manager of the loan department. H. H. Coleman, division manager of the Florida Power and Light Co., and Ira E. Southward of

the Southward Fruit Co., were elected to the board of directors which also included the following re-elected directors: George D. (Continued On Page Seven)

WELCOME.



We invite you to make your permanent home in Sanford, and select your place to retire in the sun-filled, healthful climate where you can enjoy the great outdoors all year round.

Sanford is a community which prides itself on its friendly people and ideal location . . . and where living costs are at a minimum.



"The Oldest Lumber and Builders' Supply Yard in Seminole County"

Hill Lumber & Supply Yard

213 West Third Street

Sanford, Florida

Compliments of The Ox Fibre Brush Company



Home of the RED BREAST WHISK BROOM

JAMES A. WRIGHT, MANAGER

BALL
REAL ESTATE
Inquire About Our Good Listings On
HOMES-FARMS-GROVES-ACREAGE
BUSINESS OPPORTUNITIES
All Lines of Insurance
RAYMOND M. BALL
REALTOR AND AGENT
INSURANCE
Phone 960
SANFORD

Petite Paris Is Back In Business Despite Big Fire

Albert Fitts, Young Sanford Businessman, Heads Firm

Albert Fitts is a hustling young businessman not easily discouraged. When a disastrous fire last October wiped out the entire physical assets of a mushrooming business and also almost took his own life — this young man spent no time in mourning his loss, nor did he bewail the fate that dumped almost overwhelming obstacles in the path of recovery. Instead, he whirled into action even before the ashes of the flames which had destroyed his factory were cold and a day after the fire, Petite Paris Lingerie Corporation was back in business again.

Fitts, president and manager, says that despite the 14 day setback in production, the company tripled its business (for the fiscal year) over that of the previous 12 months. More than three times the number of workers were employed, too, and now plans are under way for expansion of this new Sanford industry which only first began operations in 1948.

Petite Paris was launched in 1948 by Martha Fitts Yelvington upon her return to Sanford after a number of years overseas. The dainty undergarments of her design have attained popularity throughout the nation and customers now are being added from Honolulu, Japan, Switzerland, England, Sweden, Canada, Venezuela, Alaska and from such far away places as Saudi Arabia and the Belgian Congo valley of Africa.

While virtually all of the business is through mail orders, Petite Paris has wholesale distributors in Chicago, Miami, Hollywood and in Texas and Iowa.

New outlets are planned for this year through Post Exchanges of the military and naval establishments in this country and abroad. A traveling representative has been added to the staff to handle this phase of the business. The expert firm of R. J. Mayer & Company, New York, has been retained to handle foreign trade.

After the fire, Fitts procured new machinery and material manufacture of his goods almost immediately because he had many orders on hand, from his oldest and best customers. Although many of his records were destroyed and some of the essentials required for operation were not on hand, he nevertheless rented space in a downtown building and set the factory humming.

National advertising has expanded on Petite Paris products to include such widely known and slick magazines as Mademoiselle, Charm, Glamour, Esquire, True, Modern Screen and Photoplay.

Paris is not of the rare to riches type, it is a remarkable achievement of a young woman who, intrigued by the lovely lingerie found in the stores, decided that other American girls would love these dainty underthings just as much as she did.

And she did something about it, too. What she did is cleverly recorded in an interview with Eve Bacon, editor of the magazine Industrial Florida. Paris of this interview, published last May, are reprinted here by permission of Mrs. Bacon.

"At the close of the war Martha returned to Sanford, bringing with her some choice bits of the famous Parisienne items. When the frou-frou began to wear out, she tried to replace them, but found nothing of the kind could be purchased in this country. Determined to have one favorite garment replaced, and remembering her mother had made all the children's clothes when they were in school, she asked her, 'Can you copy this?' Mrs. Fitts could, and later presented her daughter with an exact fairy-etched replica of the garment.

"Martha's delight at the reproduction sparked an idea which has grown into today's flourishing business. Why wouldn't other American girls love these bits of gossamer, she thought — and so in 1948 Petite Paris Lingerie was launched.

"Martha admits laughingly today she had had any idea then of the difficulties ahead, she would never have had the courage to begin. But utterly lacking in experience of any kind, she barged in. She sent an ad to Mademoiselle magazine and was amazed to dis-

MAKERS OF FANCY LINGERIE



Albert Fitts, center, is president of a fast growing local business, Petite Paris, Inc., makers of lingerie which is nationally advertised in leading magazines. At left, Miss Dorothy Tirrell, office clerk, displays a strapless nightgown made by the firm which recently moved from West Twenty-fifth Street to the First Federal Savings and Loan Building on First Street. Mrs. Ira Thompson at right, is an assistant clerk.

Photo by Essex Studio

cover she not only had to have copy in two months in advance of date of issue, but also had to pay cash in advance. She luckily borrowed the necessary money, utilizing the time until the ad would appear to set the sewing machine going to get a stock of garments ahead. She was equally adept in ordering materials. Nothing of the type or quality needed could be bought locally, so she wrote to the importers, H. Bates & Company, in New York City for three bolts of material, black, white and pink. Startling as it may seem to an experienced buyer the three bolts of cloth were shipped by return mail, but their faith will never buy materials anywhere else, if they can supply me."

"With the ordered material in hand, Martha and her mother, Mrs. Alice Fitts, went to work with one pair of scissors and a sewing machine, in the attic of their home. Their first ad brought eight orders the first week. Production was started with only two items, to simplify costs. "Orders began to pour in and to purchase more materials, and she put up \$500 and became a silent partner. Martha's brother, Albert Fitts, a graduate of the University of the South, Seawanee, Tenn., who was teaching school in Alabama, received letters from home about the new project and decided business was more inviting than teaching the young idea to sprout. Home he came to pick in and help.

"By January there was enough money ahead for another ad. Five women were employed to help with the stitching and Martha began detailing other items for lady's lingerie wardrobe. "By this time materials from the attic workroom had spilled over into their entire house and still more space was needed. Mr. Fitts came into the picture then by providing a tenant house on the property to be used as a stockroom. The five-room building was moved to the backyard of the Fitts home, scrubbed, painted and papered. More sewing machines were bought and two more women added to the staff.

"By now Petite Paris had increased its advertising and orders were beginning to pour in from all over the world. Using sisters, girls and cousins for models, Martha designed other items to add to her growing list of customer appeals. Mrs. Fitts adapted patterns and produced exquisite and beautifully fitting slips and gowns for a discriminating client.

A. C. L. Railroad

(Continued From Page Two) was later to be Seminole County, was 6,018.

In his "Memoirs of a Pioneer," Mr. O'Neal wrote, "The men who had the vision of the state which was to be, built the South Florida, the Florida Midland, Jacksonville, Tampa and Key West, and the Orange Belt, all now a part of the Atlantic Coast Line Railroad. They not only had the faith, but they contributed their time, money and talents to the developing of the state. Most of them were in middle life when they began this work."

"These included Hench, Chase, Crafts, Swipe, Haskell, Ingram, Sweetapple, Jenschon, Demaus and MacLeod. They were men of education, training and wealth. "The narrow gauge South Florida Railroad was continued to Lakeland, and the late S. O. Chase was there when it was started. The road was continued to Tampa to haul logs to a fertilizer plant. The road remained narrow gauge until 1885.

In 1886, the Jacksonville, Tampa and Key West Railroad reached Sanford from Jacksonville. The road was taken over by the Plant System in 1899.

Jay Beck, pioneer Sanford citizen, recalls that as a boy, he saw workmen driving the first piling for a drawbridge for the J. T. and K. W. Railroad across the St. Johns River at Minnow.

This was completed, he said, in the fall of 1883. The late W. F. "Bill" Shelley was the first engineer in April, 1887 to bring a train from Jacksonville to Sanford. He had a whistle of unusual power on his locomotive, and everyone within hearing distance, whether in Jacksonville or Sanford, knew him by the whistle.

Robert Ernest Tular, engineer who retired in 1915, revealed that his first job was with the J. T. and K. W. Railroad, now known as the north end between Sanford and Jacksonville.

"I was given a job firing a yard engine," he declared. "Later, I was promoted to main line service between here and Jacksonville. "At that time there were no coal burning engines in service, and all tele."

So much for the origin of Petite Paris as recorded by Industrial Florida. A payroll of approximately \$35,000 is a sound addition to the economy of Sanford — and an addition that promises to grow in future years.

Early in the summer Mrs. Fitts and Mrs. Yelvington are retiring from the business, although the latter will continue to design all the garments for the company. H. Ewing Dean Jr., will join the organization in June and will become vice-president and assistant manager.

528 Customers In Year Is Gain Of F. P. & L. Co.

Coleman Reveals '51 Was Banner Year In Company's History

In gaining 528 new customers for the year just past, bringing its total at the end of 1951 to 3,849 users of electricity in this area, the Florida Power & Light Company records show more than a 100 per cent increase during the past decade.

H. H. Coleman, Sanford company division manager, points to this banner year as the best in the company's operations here and said that the records are indicative of the sound and prosperous growth enjoyed by the whole area.

At end of 1950, some 5,461 customers were being served, while 414 new ones had been added. The gain during 1951, he estimates, is in the neighborhood of 25 per cent.

The Florida Power & Light also extended its service during 1951 a total of 12 miles. Facilities were installed from Osteen to the Lake Ashby area, eight miles, and to the Lemon Bluff region, a total of four miles. This program called for expenditure of many thousands of dollars, entailed many months of work but brought power to areas heretofore only in "kerosene territory."

The company now has approximately 232 miles of rural and urban distribution electric lines in operation in the Sanford district.

It estimates that about 21,000 of the area population is now served with electric power.

Employees of the company in the Sanford district, including those in the huge generating plant on the north shore of Lake Monroe, total 100, several having been added during 1951.

H. C. Moore is distribution supervisor and in charge of all overhead lines in the territory. Mr. L. A. Young is superintendent of the generating plant at Lake Monroe. Heading the office staff in Sanford is W. O. Livingston, chief clerk who supervises all accounting work for the district. The commercial department is headed by C. K. Carter.

In explaining extension of service to rural sections of this and adjoining counties Mr. Coleman cites the progress which results from opening up new territory for the use of electric power.

"Development always follows in the farm areas," he said. More land is cleared for cultivation, intensive and modern agricultural methods are made possible, productivity of this vast, rich land is soon accelerated and — the backwoods as such, are no more. "And as Florida grows," Mr. Coleman says, "so does industry — and Florida Power & Light is keeping up with the tremendous increase in population and in all phases of the economic life of the State and this area."

One of the major events of the year there is the annual Christmas party when children of employees receive many gifts which Santa Claus is there to bestow, and tasty cookies and refreshments are served by Florida Power and Light Co., culinary experts.

The company encourages a recreation program and a number of the employees are members of the City Bowling League. A large recreation room at the electrical generating plant is available for meetings of employees and for social gatherings.

One of the major events of the year there is the annual Christmas party when children of employees receive many gifts which Santa Claus is there to bestow, and tasty cookies and refreshments are served by Florida Power and Light Co., culinary experts.

The company encourages a recreation program and a number of the employees are members of the City Bowling League. A large recreation room at the electrical generating plant is available for meetings of employees and for social gatherings.

One of the major events of the year there is the annual Christmas party when children of employees receive many gifts which Santa Claus is there to bestow, and tasty cookies and refreshments are served by Florida Power and Light Co., culinary experts.

The company encourages a recreation program and a number of the employees are members of the City Bowling League. A large recreation room at the electrical generating plant is available for meetings of employees and for social gatherings.

One of the major events of the year there is the annual Christmas party when children of employees receive many gifts which Santa Claus is there to bestow, and tasty cookies and refreshments are served by Florida Power and Light Co., culinary experts.

The company encourages a recreation program and a number of the employees are members of the City Bowling League. A large recreation room at the electrical generating plant is available for meetings of employees and for social gatherings.

One of the major events of the year there is the annual Christmas party when children of employees receive many gifts which Santa Claus is there to bestow, and tasty cookies and refreshments are served by Florida Power and Light Co., culinary experts.

The company encourages a recreation program and a number of the employees are members of the City Bowling League. A large recreation room at the electrical generating plant is available for meetings of employees and for social gatherings.

One of the major events of the year there is the annual Christmas party when children of employees receive many gifts which Santa Claus is there to bestow, and tasty cookies and refreshments are served by Florida Power and Light Co., culinary experts.

The company encourages a recreation program and a number of the employees are members of the City Bowling League. A large recreation room at the electrical generating plant is available for meetings of employees and for social gatherings.

One of the major events of the year there is the annual Christmas party when children of employees receive many gifts which Santa Claus is there to bestow, and tasty cookies and refreshments are served by Florida Power and Light Co., culinary experts.

The company encourages a recreation program and a number of the employees are members of the City Bowling League. A large recreation room at the electrical generating plant is available for meetings of employees and for social gatherings.

One of the major events of the year there is the annual Christmas party when children of employees receive many gifts which Santa Claus is there to bestow, and tasty cookies and refreshments are served by Florida Power and Light Co., culinary experts.

The company encourages a recreation program and a number of the employees are members of the City Bowling League. A large recreation room at the electrical generating plant is available for meetings of employees and for social gatherings.

One of the major events of the year there is the annual Christmas party when children of employees receive many gifts which Santa Claus is there to bestow, and tasty cookies and refreshments are served by Florida Power and Light Co., culinary experts.

The company encourages a recreation program and a number of the employees are members of the City Bowling League. A large recreation room at the electrical generating plant is available for meetings of employees and for social gatherings.

One of the major events of the year there is the annual Christmas party when children of employees receive many gifts which Santa Claus is there to bestow, and tasty cookies and refreshments are served by Florida Power and Light Co., culinary experts.

The company encourages a recreation program and a number of the employees are members of the City Bowling League. A large recreation room at the electrical generating plant is available for meetings of employees and for social gatherings.

One of the major events of the year there is the annual Christmas party when children of employees receive many gifts which Santa Claus is there to bestow, and tasty cookies and refreshments are served by Florida Power and Light Co., culinary experts.

The company encourages a recreation program and a number of the employees are members of the City Bowling League. A large recreation room at the electrical generating plant is available for meetings of employees and for social gatherings.

THE SANFORD HERALD Mon., Feb. 25, 1952 Page 3

Using campaigns sound facts and figures relating to the growth of the state and to its possibilities.

Its charts show that Florida is the fastest growing state in the union; that during the period 1940-1950 an increase of 86 per cent in population was recorded. In 1940 alone, the company says that of 37 Eastern states, Florida led in total building contracts with \$127 per capita in residential building contracts. The State showed an expenditure of \$92.09 dollars per capita — far ahead of its nearest competitor, Maryland.

The company here maintains five crews comprising approximately 50 men who are engaged in maintaining service facilities including three sub-stations. These men maintain overhead lines and handle the extensions of electrical service to the many new homes in the city and county. In the event of tropical storms, many crews and men are brought in from other areas to repair any damage to the lines.

The company encourages a recreation program and a number of the employees are members of the City Bowling League. A large recreation room at the electrical generating plant is available for meetings of employees and for social gatherings.

One of the major events of the year there is the annual Christmas party when children of employees receive many gifts which Santa Claus is there to bestow, and tasty cookies and refreshments are served by Florida Power and Light Co., culinary experts.

The company encourages a recreation program and a number of the employees are members of the City Bowling League. A large recreation room at the electrical generating plant is available for meetings of employees and for social gatherings.

One of the major events of the year there is the annual Christmas party when children of employees receive many gifts which Santa Claus is there to bestow, and tasty cookies and refreshments are served by Florida Power and Light Co., culinary experts.

The company encourages a recreation program and a number of the employees are members of the City Bowling League. A large recreation room at the electrical generating plant is available for meetings of employees and for social gatherings.

One of the major events of the year there is the annual Christmas party when children of employees receive many gifts which Santa Claus is there to bestow, and tasty cookies and refreshments are served by Florida Power and Light Co., culinary experts.

The company encourages a recreation program and a number of the employees are members of the City Bowling League. A large recreation room at the electrical generating plant is available for meetings of employees and for social gatherings.

One of the major events of the year there is the annual Christmas party when children of employees receive many gifts which Santa Claus is there to bestow, and tasty cookies and refreshments are served by Florida Power and Light Co., culinary experts.

The company encourages a recreation program and a number of the employees are members of the City Bowling League. A large recreation room at the electrical generating plant is available for meetings of employees and for social gatherings.

One of the major events of the year there is the annual Christmas party when children of employees receive many gifts which Santa Claus is there to bestow, and tasty cookies and refreshments are served by Florida Power and Light Co., culinary experts.

The company encourages a recreation program and a number of the employees are members of the City Bowling League. A large recreation room at the electrical generating plant is available for meetings of employees and for social gatherings.

One of the major events of the year there is the annual Christmas party when children of employees receive many gifts which Santa Claus is there to bestow, and tasty cookies and refreshments are served by Florida Power and Light Co., culinary experts.

The company encourages a recreation program and a number of the employees are members of the City Bowling League. A large recreation room at the electrical generating plant is available for meetings of employees and for social gatherings.

One of the major events of the year there is the annual Christmas party when children of employees receive many gifts which Santa Claus is there to bestow, and tasty cookies and refreshments are served by Florida Power and Light Co., culinary experts.

The company encourages a recreation program and a number of the employees are members of the City Bowling League. A large recreation room at the electrical generating plant is available for meetings of employees and for social gatherings.

One of the major events of the year there is the annual Christmas party when children of employees receive many gifts which Santa Claus is there to bestow, and tasty cookies and refreshments are served by Florida Power and Light Co., culinary experts.

The company encourages a recreation program and a number of the employees are members of the City Bowling League. A large recreation room at the electrical generating plant is available for meetings of employees and for social gatherings.

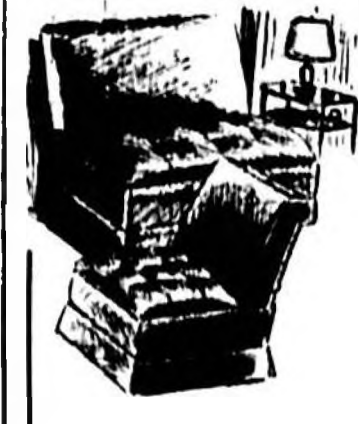
One of the major events of the year there is the annual Christmas party when children of employees receive many gifts which Santa Claus is there to bestow, and tasty cookies and refreshments are served by Florida Power and Light Co., culinary experts.

The company encourages a recreation program and a number of the employees are members of the City Bowling League. A large recreation room at the electrical generating plant is available for meetings of employees and for social gatherings.

One of the major events of the year there is the annual Christmas party when children of employees receive many gifts which Santa Claus is there to bestow, and tasty cookies and refreshments are served by Florida Power and Light Co., culinary experts.

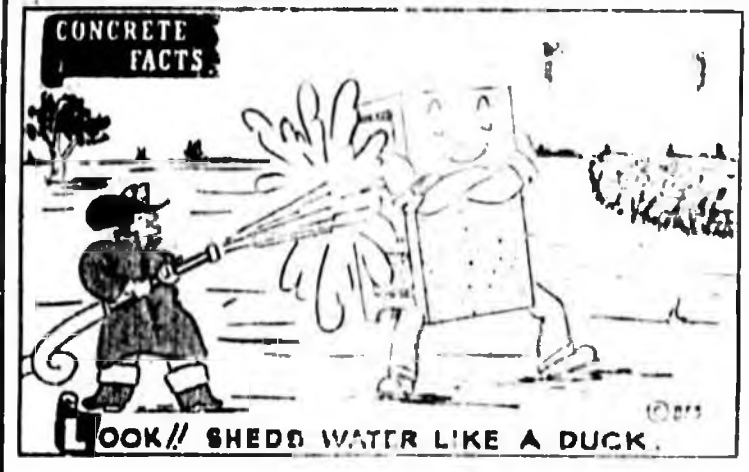
The company encourages a recreation program and a number of the employees are members of the City Bowling League. A large recreation room at the electrical generating plant is available for meetings of employees and for social gatherings.

One of the major events of the year there is the annual Christmas party when children of employees receive many gifts which Santa Claus is there to bestow, and tasty cookies and refreshments are served by Florida Power and Light Co., culinary experts.



For Spring Home Fashioning Let Us Bring The New Look Into Your Home

EXPERT UPHOLSTERING SERVICES ADAMS UPHOLSTERING SHOP 113 SANFORD AVENUE PHONE 1196-W



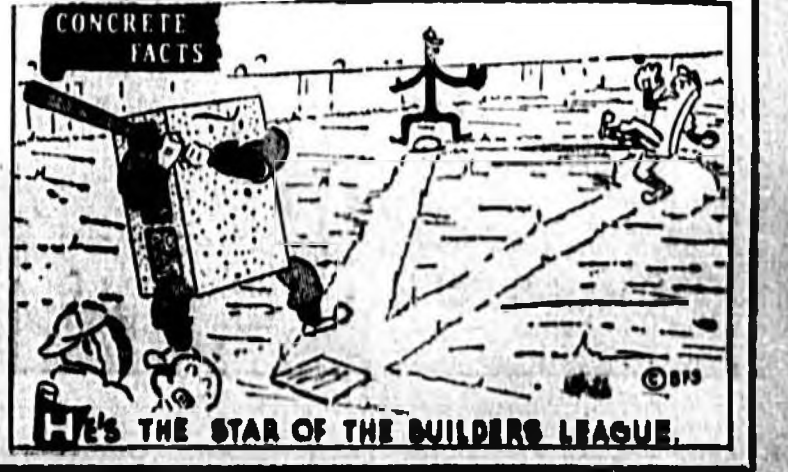
LOOK!! SHEDD WATER LIKE A DUCK.

Water from the hose or nature's rain . . . neither affects tough blocks which resist destructive insects, fire, corrosion, time and weather. Call us TODAY for information . . . you never will regret it.

CHAPMAN Concrete Products

106 NORTH ELM PHONE 1192

Blocks are a superior performer because they have the STRENGTH! For Better building, learn about blocks from us . . . telephone or come in personally.



LET'S THE STAR OF THE BUILDERS LEAGUE.

Whether You Dine IN OR OUT YOU'LL ALWAYS RETURN TO ANGEL'S 2548 Sanford Avenue

BUSINESS, INDUSTRY, AND AGRICULTURE



FLORIDA POWER & LIGHT CO.



SANFORD STATE FARMERS MARKET



FLORIDA STATE BANK



SANFORD ATLANTIC NATIONAL BANK



FLORIDA STATE BANK

Assessed Value Of Property In County Is Raised

Increase Of Nearly \$2 Million Places Total At New High

The total assessed value of all property in Seminole county, exempt and non exempt, is \$40,048,381, according to Sanford F. Dochow, county tax assessor.

This represents an increase of \$1,743,333 over the 1950 valuation of \$38,305,048 and indicates that there is much new construction and improvement of properties.

Contributing to this increased value was an estimated gain of more than 5,000 in the County's population during 1951 bringing the total to more than 31,000.

This growth was a factor in the demand by local groups, including the Seminole County Farm Bureau, for a change in the five Commissioners' Districts, changing old boundaries and creating districts more nearly equal in population.

After much study and research the five man County Commission, with J. P. McClelland as chairman, worked out the re-districting last October. A new district No. 2 was carved out of the center of Sanford in an area east and west of Park Avenue.

District No. 5, from which W. K. Kilbee, Geneva cattleman was elected and who will continue to serve until Jan. 1, 1953, was limited, the north portion above Econohatchee Creek going to District No. 1, now represented by E. B. Pope and the south portion around Chulohota to District No. 4 in which B. C. Dodd is county commissioner.

Mr. Dodd, an amateur dairy and cattleman of imposing stature with a liking for cowboy hats, bright shirts and ties, was elected chairman of the County Commission at the beginning of 1952 to succeed Mr. McClelland, and presides with a "booming" voice.

In the re-districting a small slice of O. E. Fouraker's District No. 3, comprising Precinct No. 14 in the Fern Park, assembly area, was added to Mr. Dodd's more sparsely populated district.

The old district No. 2 which elected Mr. McClelland, a former Sheriff, became District No. 3, and is a bit smaller due to the portion in Sanford going to the new No. 2 district.

On Feb. 3 of this year the Commission passed a resolution for the County Housing Authority to apply for a preliminary loan of \$10,750 from the Public Housing Administration to conduct a survey

A. C. L. Railroad

(Continued From Page Three)
1898 from Sanford to St. Petersburg. The mail clerks at that time included R. D. Millholland, J. C. Jenkins and W. Meacham. By 1898, however, the line terminated at Talley and Mr. Millholland was the sole railway mail clerk. Conductors on the line were Capt. Dunn and Capt. Scruggs.

At that time, according to Mr. Beck, there was a narrow gauge railroad from Longwood to Apopka, the Florida Midland Railroad.

The Orange Belt Railroad was first built from Lake Monroe to Winter Garden, he added. A station was built in Sanford on Third Street near where the present Seminole County Laundry is located. This was later moved north of First Street near where the Kilgore Seed Co. is now located.

The Plant Investment Co., owners of the Plant System, occupied at one time the upper floor of the Welaka Building, now used for apartments. The old depot still stands and is used as a Girl Scout headquarters and as a polling place for west side residents during elections. Near it on Commercial Avenue is the old Pico Building, owned by the Takach family which at one time operated the largest restaurant between Jacksonville and Tampa there.

The present depot on West Ninth Street was opened on Jan. 1, 1913. One of the first passengers to arrive on that day was the Rev. K. P. Brownlee who came to preach in Sanford's First Presbyterian Church.

Records of the Atlantic Coast Line Railroad reveal that on Mar. 10, 1893, the Savannah, Florida and Western Railway Co. absorbed the South Florida Railroad Co., which on the same day had absorbed the Sanford and Indian River Railroad Co. On June 6, 1893 the Savannah, Florida and Western purchased the railroads of the Jacksonville and St. Johns River Railway Co., extending from Jacksonville to Sanford with branches to Deland and Enterprise.

On Mar. 10, 1903 the line took over operation of the line from Sanford to Port Tampa, and a branch from Sanford to Lake Charm, Oviedo. Effective on July 1, 1908 this company was consolidated with the Atlantic Coast Line.

Other records show that the Jacksonville, Tampa and Key West Railway Co. began the construction of a line from Tampa to Kissimmee on Feb. 25, 1897, but sold out to the South Florida Railroad before work had progressed very far. On May 1, 1897 this company absorbed the Sanford and Lake Kissimmee Railway Co., thereby extending the railroad from Sanford to Tavares in Lake county.

On Apr. 8, 1893, the J. T. and K. Co., with the exception of the Sanford and Lake Kissimmee Division, was acquired by the Plant System, the Plant Investment Co. The latter, on June 6, 1898 conveyed the property to the Jacksonville and St. Johns River Co. which in turn was taken over by the Savannah, Florida and Western Railway.

The Orange Belt Railroad started operation from Monroe to Oakland (Continued On Page Seven)

CITY COMMISSION



Members of the City Commission include, Mayor William H. Stempert, seated at center, and the following other commissioners: left to right, Andrew Caraway, a former mayor; John Kader, a new commissioner; Randall Chase, and John Long. They are the governing board of the City of Sanford.

and pay other planning costs for construction of 100 low rent housing units in the Oviedo and Geneva areas.

George H. Williams is director, and Gordon Bradley, assistant director of the County Housing Authority.

Among the main projects which occupy much of the time of the County Commission are road maintenance and construction. With the aid of State representatives V. Williams, Jr. and M. B. Smith and Senator L. F. Boyle, who serves as attorney for the Board, the Commission plans the primary road program to be submitted annually to the State Road Department.

Securing of rights-of-way for both primary or State roads, and secondary or County roads, is another function of the Commission. They recently pledged aid to the City of Sanford in obtaining the rights-of-way for the widening of French Avenue into a six-lane, a farm to market highway.

Delegations regularly appear before the Commission to request cooperation in improvement of roads and ditches in various parts of the County. Problems of drainage are often dealt with. Supervision of the County Home, Welfare and Health Unit is another responsibility.

O. P. Herndon, clerk of the Circuit Court, has served as clerk for the Commission for a number of years, and he, in turn, is prescribed by law to advise the Commission whenever county bills presented for their consideration are scheduled for the following celebration and approval. They meet on the first Monday of the month, except when holidays make change necessary.

City meetings are held on the first Tuesday after the first Monday of the month, except when holidays make change necessary.

Among the main projects which occupy much of the time of the County Commission are road maintenance and construction. With the aid of State representatives V. Williams, Jr. and M. B. Smith and Senator L. F. Boyle, who serves as attorney for the Board, the Commission plans the primary road program to be submitted annually to the State Road Department.

Securing of rights-of-way for both primary or State roads, and secondary or County roads, is another function of the Commission. They recently pledged aid to the City of Sanford in obtaining the rights-of-way for the widening of French Avenue into a six-lane, a farm to market highway.

Delegations regularly appear before the Commission to request cooperation in improvement of roads and ditches in various parts of the County. Problems of drainage are often dealt with. Supervision of the County Home, Welfare and Health Unit is another responsibility.

O. P. Herndon, clerk of the Circuit Court, has served as clerk for the Commission for a number of years, and he, in turn, is prescribed by law to advise the Commission whenever county bills presented for their consideration are scheduled for the following celebration and approval. They meet on the first Monday of the month, except when holidays make change necessary.

Assessed Value In Sanford Set At \$15 Million

Rate Is Figured At 60 Percent Of Real Value Of Property

Sanford's assessed value is now \$15,000,000, as compared with \$14,273,734 last year, according to H. N. Gilson, city clerk.

The percentage of assessed value to real value is 60 percent. The value of homes and improved property is based on the national index of 1941, replaced last year by depreciation.

The ad valorem tax rate is 1.4 mills of which 9 mills is levied for debt service and 2.1 mills for operation of the city government.

Sanford's bonded indebtedness is \$1,100,000 or \$60,000 less than at this time last year. Taxes are due on Nov. 1 of each year with a 4 percent discount if paid during that month; 3 percent if in December; 2 percent in January and 1 percent in

February. The books close on April 1.

A five man City Commission headed by Mayor William H. Stempert, west side grocer and Stetson University graduate, is the governing body of Sanford, which also has an acting city manager, John Gillon, who heads the executive department.

Mr. Stempert was elected mayor on Jan. 8 by a vote of the City Commission in its first taking his oath of office for a second term. He succeeded Fred Tyson, contractor.

Elected to the first time in November was John Kader, new rider and World War II veteran who was seated at the same meeting. Another commissioner for the term, was Randall Chase, produce company executive elected to fill the unexpired term of Sam Martin, who had resigned.

The commissioners are elected for three year terms on the staggered system which means retaining part of the old Commission at all times.

The other commissioners are Andrew Caraway, insurance agent and former mayor, and John Levy, shoe merchant.

Mr. Gillon was appointed acting city manager following the resignation of Clifford McKibbin who on Jan. 1, accepted a post with a Jacksonville engineering firm. Former building

inspector for more than ten years, Mr. Gillon serves as administrative head of the City government under the direction and supervision of the City Commission.

Mayor Stempert presides at all meetings of the Commission which are regularly held on the 2nd and 10th Mondays of each month. He usually votes only in the event of a deadlock. He signs official documents and orders of the City government for all communal purposes.

Sanford's charter was approved in 1927 by the State Legislature which since then has added a number of amendments through its present enactment.

In 1925 a commission headed by James Maxwell H. Jones, Esq. was appointed to study a plan of city government, submitting the plan in 1927. The plan consisted of the following: a council of five members elected for a period of one year for a new charter.

The first board of a political convention was the Republican meeting in Sanford on June 19, 1927.

The family of the Ara Khan, Moslem leader, came to Sanford from India in 1848. The prophet Mohammed

COMPLIMENTS OF

Andersen Nursing Home

601 ELM AVENUE TEL. 11-1111

CONVALESCENTS AND
SEMI-INVALIDS
SPECIAL ATTENTION
GIVEN TO DIETS

SERVING SANFORD

and SURROUNDING AREA...

COAST LINE'S recognition of existing and expanding industrial, agricultural and tourist opportunities in Sanford and the surrounding community is shown by its continuing program of modernization and improvement of both main and branch line facilities serving the area. These improvements, including almost complete Dieselization of passenger and freight train service, have enabled the Coast Line to render Sanford and its thriving adjoining agricultural community a dependable, expeditious and modern type of rail transportation service.

ATLANTIC
COAST LINE
RAILROAD

"the only DOUBLE TRACK ROUTE BETWEEN THE EAST AND FLORIDA"

More Than 400 New Phones Are Installed In '51

14 Miles Of New Wires Laid To Elder Springs, Lake Mary

At beginning of the new year, 1952, there were 4,130 telephones in service here, a total of 413 more than in use at the same date last year, according to E. J. Turner, Sanford manager for Southern Bell Telephone and Telegraph Company. This figure, Mr. Turner said, is an increase of approximately 11 per cent for the year.

In addition to installation of the large number of new telephones, service throughout the county has been improved through addition of more wire and cable and through several major projects, three of which were laying 14 miles of new lines to Lake Mary, Highland Park and to Elder Springs.

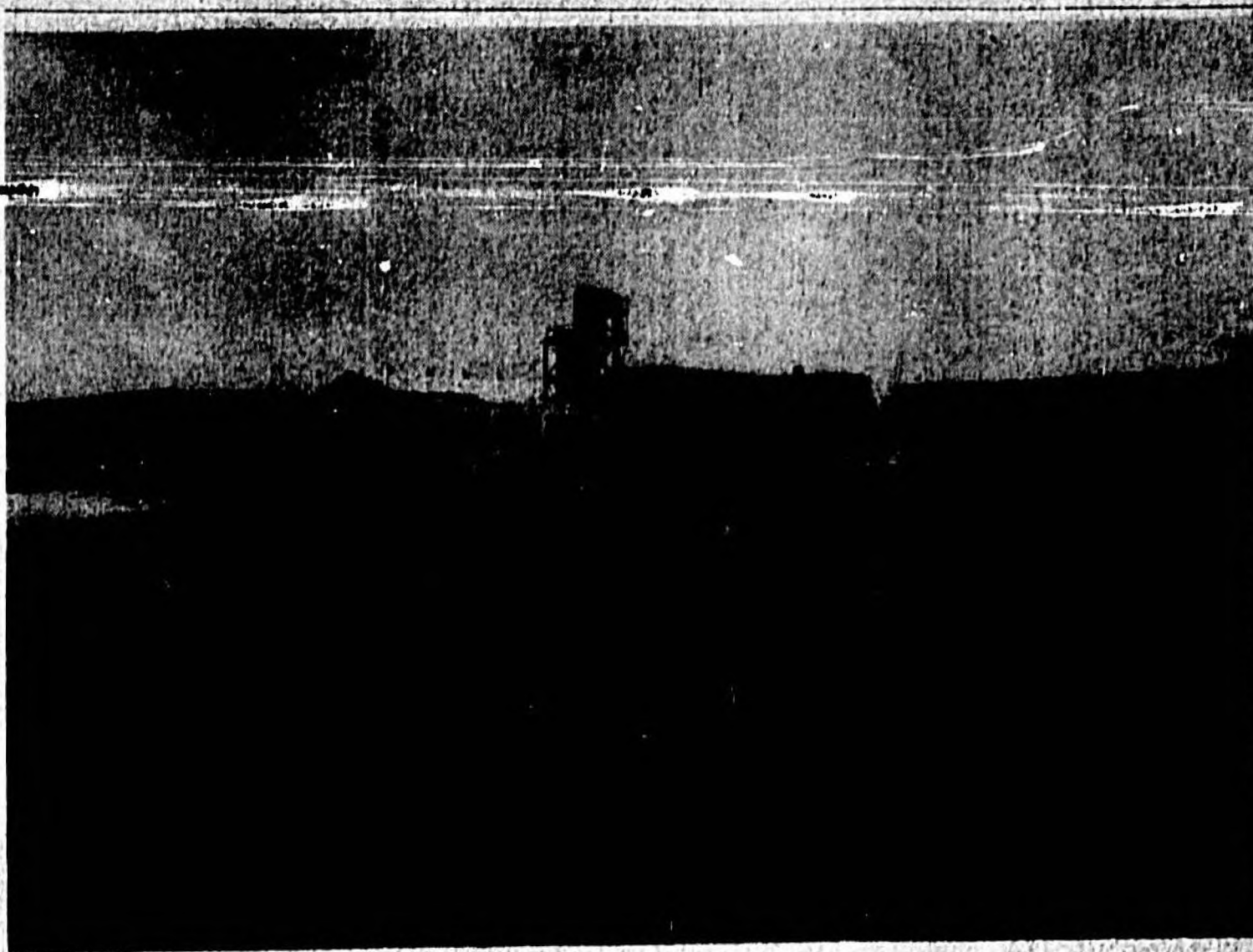
To top off this new service, another 100 telephones have been installed at the Sanford Naval Auxiliary Station Air Base and are in almost continuous operation by personnel of the base. Total number of phones now in use through the Sanford exchange is approximately 200 per cent more than at the end of World War II, Mr. Turner said.

Expansion work in Sanford, he pointed out, is a part of the huge program for the state in 1951. Altogether Southern Bell spent \$21,000,000 in Florida during the year. Rapid growth of the rural network is responsible for the addition of 16,237 phones in farm homes in the past year.

Pointing out that within another month his company expects to install at least 200 more phones in the city and adjacent areas, Mr. Turner said that there yet remained many applications awaiting action. "We are working hard at the job of meeting full telephone service needs," he added.

During the year just past, 14 new employees were added to the payroll of Southern Bell in this city. Others are to be put to work in the immediate future, according to the local manager.

FOSGATE CONCENTRATE PLANT



The new million dollar concentrate plant of Fosgate Concentrate Co-Operative at Forest City is shown above. It was opened last March and since that time several additions have been made, notably that of another evaporator, similar to the one shown towering over the plant above.

ing to the local manager. In commenting on the program completed in 1951, Mr. Turner said that the company's activities were carried forward in a year in which the greatest military defense demands since the war were also met. Accurately reflecting the growth of this area, he said, is the increase from only 1,480 phones in 1940 to the number of 4,139 at the end of 1951. Southern Bell's part in the Florida program for 1951 was

installation of 51,480 more phones, bringing the state's total to 503,778, twice the number in service six years ago. Mr. Turner is proud of a new gold star recently awarded him upon entering his 45th year with the company. He was one of three persons in the nine-state southern area to receive this award, but he also is proud of the long length of service boasted by other members of the Sanford office. Assistant manager of the local office is W. F. Penner who has

been here 14 years. Chief operator is Mrs. Lois Smiley, who was transferred to Sanford four years ago from Jacksonville. Each has a long and enviable record in Southern Bell service. The Dismal Swamp, a half million acres in Virginia and North Carolina, has a permanent population of just one family. Lafayette Square in Washington, D. C., is named for the Marquis de Lafayette.

Fosgate Plant Has Capacity Of Over 8,000 Cans

(Continued From Page One)

From the original company here has grown the huge Fosgate Growers' Co-operative, one of the largest organizations of its kind in the South. The plant fruit shipments and single-strength juice output of the growers' co-op carry the well-known brands of Ace High, Fidelity and Criterion.

Fosgate also operates its own fertilizer plant as a co-op and the grove service under the same name lends to every phase of citrus growing for hundreds of grower-members. This service includes clearing, planting, watering, fertilizing, spraying, discing, blowing, picking, packing and marketing. The concentrate co-op is barely a year old but its products are now sold the nation over. Ace High frozen juice and the famous Duncan Hines are the leaders.

The Duncan Hines label alone calls for a one million box load of frozen juice. The Hines-Parks Company, for years purveyors of fine foods, selected Fosgate to do their packing because of the new modern plant and because of the high standards of quality Fosgate insists on producing.

The Fosgate Fertilizer Co-operative operates its own plant at Forest City—producing custom built, prescription prepared fertilizer for the type soils of the individual grower. In charge of pest control for the co-operative members is Dr. W. Yothers, well-known entomologist and scientist who is recognized as a national authority in that field. Dr. Yothers is associated with Dr. Meier, a chemist and veter-

bran of 18 years service with the growers' co-op laboratory, is a graduate of Houma College and the University of Florida and was the first full-time chemist employee by a fertilizer plant in Florida. His soil analysis and fertilizer formulas have been largely instrumental in making the co-op fertilizer plant the largest in Florida.

Production last year reached 15,000 tons, a new record—and that mark is to be exceeded this year, officials say. The main behind the success in the huge Fosgate enterprise is Claude O. Merahon, general manager of the growers' co-operative and vice president and general manager of the concentrate co-op. Mr. Merahon joined the Fosgate Company in 1932, when fresh out of Orlando High School. He rose from gas boy to truck driver, to paymaster, to assistant manager of the packing house and then jumped to management of the fertilizer plant.

Next came jobs as fertilizer salesman and responsibility of heading the firm's grove care-taking and production department. When the Fosgate packing house was sold to the growers' co-op, Mr. Merahon stayed on as assistant general manager. After the fertilizer and production departments came under co-op control, he was elected general manager in 1948. Mr. Merahon was active in

promoting and launching the Growers' concentrate co-operative and is now its general manager and vice-president. Member of the board of directors, United Growers & Shippers, he is also on the advisory committee of Florida Citrus Mutual. Among other executives of the big citrus empire are Howard Sweett, sales manager for the concentrate co-op; William Gore, sales manager for the fresh fruit division; W. E. Hancock, who heads the growers' relations

service; and J. M. Fluke, president of the grove care units; Phil Carroll, plant superintendent; concentrates, and J. M. Fluke, production manager. Williams Chambers is in charge of quality control at the grove juice plant with Bob Rabon as assistant. Verne D. Dale is superintendent of the fertilizer plant.

Among the Fosgate directors are two Sanford men, W. A. Patrick and Harry E. Tooke, Jr. and the following other widely known business men and growers of this area: Clarence C. Dubage, W. H. Gibb, Edward N. Mitchell, W. A. Price, Jr., Fred G. Tegner, and Milford White.

During 1951 a total of 10,850,000 proof gallons of Scotch whisky will be exported overseas, according to the Scotch Whisky Association.

WELCOME To CENTRAL FLORIDA

A. K. Rossetter, Florist
WHOLESALE AND RETAIL
MEMBER F. T. D.

Outstanding
For Its Mild
Climate And Beautiful
Scenery

Outstanding
For Its Wonderful Golf
Course And Golf Association

Outstanding
FOR FINE PRINTING
SINCE 1920

Outstanding
For Its Many Other Forms
Of Recreation
Bowling — Baseball
Skating — Swimming —

CELERY CITY PRINTING COMPANY
OFFICE OUTLETTERS
126 SOUTH PARK AVENUE SANFORD, FLORIDA TELEPHONE 340
"If It's Worth Printing—It's Worth Printing Right"

THERE'S MORE TO FLORIDA
THAN MEETS THE EYE!

FAST GROWING FLORIDA'S sound and expanding economy offers matchless opportunities in commerce and industry. So enjoy your vacation, but check these advantages which Florida offers to alert businessmen:

- ★ 3 EXPANDING MARKETS OF HIGH BUYING POWER—Local, Southeastern, Latin American
- ★ TAXES AND GOVERNMENT FAVORABLE TO BUSINESS
- ★ HIGH HEALTH LEVELS FOR MAXIMUM EMPLOYE-PRODUCTIVITY
- ★ BETTER LIVING CONDITIONS TO FOSTER HIGH WAGES—HIGHER
- ★ PLENTY OF ELECTRIC POWER FROM PROGRESSIVE BUSINESS-MANAGED UTILITIES

Many of Florida's successful businessmen came to play... decided to stay... "for keeps." You're cordially invited to profit by their example!

FLORIDA POWER & LIGHT COMPANY

P. O. Columbia, Memphis
200 East First St., Sanford, Fla.

Western Union Has Best Year In Its History

Manager Tharp Tells Of Growth Of Com- pany In Sanford

"Best year in this history of our Sanford operation," was the comment by Lester Tharp, local manager of the Western Union Telegraph Company, in discussing 1951 business with a representative of the Herald.

While the company does not permit figures to be published about its annual business, Mr. Tharp was enthusiastic in letting it be known that the company was extremely pleased with the very satisfactory boost in revenue it enjoyed.

Much of this increase was due to the hundreds of thousands of words filed in the Sanford office by baseball writers who last Spring accompanied the many farm clubs of the New York Giants' system to their training base here. Although the Giant outfits will not be back this Spring, at least one other minor league club will be here, and next season a flock of them from the St. Louis Brown's organization is expected.

Improvements in the telegraph company have made during the past year have vastly accelerated the movement of wire communication, Mr. Tharp says.

He told of simplified methods recently installed which make it possible for a single operator to handle double the amount of business previously possible.

New methods of transmission from origin to destination of telegraph messages without manual handling has greatly increased volume.

The magnetic beam system is another modern achievement the company has recently perfected and is now installing on all its lines of the South.

Mr. Tharp is a former Associated Press operator, of the days before the teletype. He first came to Sanford as manager for the Western Union in 1925 and with exception of a brief period in West Palm Beach, he has headed the local office.

On the staff here are three other longtime employees of the company. They are Mrs. Tharp, with a record of 18 years service; Miss Mary Louise Smith and Mrs. Tony Fakes, each with seven years to her credit.

Beauty contests were a feature of the official town fair, held twice a year in 18th Century Williamsburg, Va.

Bank Deposits

(Continued From Page Two)

Bishop, L. I. Frazier, J. C. Hutchison, J. L. Ingley, R. A. Newman, H. B. Pope and J. W. Shands. Officers re-elected were J. W. Shands, chairman of the board, J. L. Ingley, president, R. F. Mann, cashier; O. C. McBride, assistant cashier; and the Secretary of Mr. Roxton, the installment loan department made loans of more than \$900,000 in 1951.

The Florida State Bank re-elected its four officers and all directors at its annual meeting. These included E. G. Kilpatrick, president; T. E. Tucker, vice president and personal loan officer; W. J. Penock, Jr., cashier, and Miss Mary Lynd Ross, assistant cashier.

The returning board of directors included C. R. Clontz, Forrest Gatchel, W. A. Patrick, Mr. Kilpatrick, and Mr. Tucker. C. H. McNulty, head of the McNulty chain of banks, retains his post as chairman of the board.

During 1951, the Florida State Bank enjoyed the greatest volume of business since it was founded on June 2, 1899. A 10 percent dividend was declared. All employees received bonuses at Christmas. Total assets of the

bank were reported to be \$5,582,921 for 1951.

A popular innovation in banking service was the addition of the drive-in annex to the bank, which eliminates parking problems of customers. Its convenience is proved by the fact that the bank handled 10,939 cars from Jan. 9 to the end of 1951.

The Citizens Bank of Oviedo, which serves the citrus, poultry and vegetable growing section, reported assets of \$1,920,451 at the close of the year. Loans and discounts totalled \$292,408. Capital accounts totalled \$94,113. Bank personnel includes Charles G. Shaffer, cashier, and the directors are R. W. Estes, B. F. Wheeler and C. R. Clontz.

The First Federal Savings and Loan Association, in its annual report, showed an increase in 1951 of \$807,407 in home ownership accounts, according to George Touhy, vice-president, and Mrs. B. E. Chapman, secretary-treasurer. These accounts grew from \$1,396,633 in 1950 to \$2,064,130 in 1951.

The upward trend was also disclosed in the association's savings deposits which showed nearly a \$500,000 increase from \$1,722,527 in 1950 to \$2,004,130 in 1951. Reserves rose almost 40 percent in 1951 and were \$116,813 as com-

pared to \$82,551 in 1950.

The association's saving accounts paid \$15,415 in dividends in 1951 at a rate of 3 percent.

At the annual meeting on Jan. 10, it was reported that assets rose from \$1,816,105 in 1950 to \$2,468,580 in 1951, an increase of 31 percent.

All officers and directors were re-elected, including Howard Frazier, president; George T. Lutz, executive vice president; E. C. Harper, first vice president; S. F. Doudney, second vice president; Mrs. B. E. Chapman, secretary-treasurer and A. Edwin Shinholser, attorney.

Sanford F. Doudney and E. C. Harper were re-elected as directors. The other directors are Mr. Frazier, Mr. Shinholser, Mr. Touhy, J. H. Van Hoy and H. James Gut. It was reported that gross income had shown a 38 percent increase, rising from \$79,751 to \$110,029. Savings account dividends totalled \$55,425.

A. C. L. Railroad

(Continued From Page Five)

In 1951, from Oakland to St. Petersburg in 1925 and from Monroe to Sanford in 1928. On Jan. 3, 1951, it was decided in foreclosure sale to the Sanford and St. Petersburg Railway Co.

VACATION Perfect



TO BE
HER GUEST

FLORIDA

INVITES
YOU



Water's Fine

This Year And Every Year

McREYNOLDS'

Drug Store

2500 Sanford Avenue

Phone 90



A Dream
of Beauty

"Pour La Femme qui desire
la plus Belle . . . elle serait
ravissante"

Lingerie . . . so ravishingly beautiful, so exquisitely
feminine . . . designed as only the French know how to
design it . . . with a delicate air and luxury trims of
misty dreamy lace on beautiful imported French net chiffon and crepe. Made
right here in Sanford and sent, by special order, anywhere.

Petite Paris Lingerie, Inc.

P. O. Box 71

Write for free catalog

Sanford, Fla.

ACE HIGH



FRESH FRUIT • GIFT BOXES • QUICK FROZEN CONCENTRATE • SINGLE STRENGTH JUICES

A great name in the citrus industry carrying
the rich, full flavored goodness of Florida citrus
to leading markets throughout the country.

FOSGATE GROWERS COOPERATIVE

FOSGATE CITRUS CONCENTRATE COOPERATIVE

ORLANDO, FLORIDA

P. O. Box 2673

Phone Orlando 2-0751 or Winter Park 26-2701



We Invite You To Seminole County
In The "Land Of The Sun"....

To Tarry For Awhile - or To Stay Forever!

Seminole County offers A Diversity
Of Opportunities That Are Amazing...

- CITRUS GROVES
- COMMERCIAL FISHING
- FLORACULTURE
- CATTLE RANCHES
- PORT TERMINAL
FOR WATER TRANSPORTATION
- DIRECT RAIL TRANSPORTATION
- CANDY MANUFACTURE
- DRESSES • PARISIAN LINGERIE
- FARMING

And Many Other Investment Opportunities For Those Who Wish To Live In The Beautiful
Sunny Climate Of Florida At Its Best...

For Any Information You Desire Regarding The Fascinating Joy Of Living Under Our Benign Tropical Sun

Write To

SEMINOLE COUNTY
CHAMBER of COMMERCE

P. O. Box 1501—Sanford, Florida

SANFORD CIVIC ORGANIZATIONS



SANFORD MERCHANTS ASSOCIATION



SEMINOLE COUNTY CHAMBER OF COMMERCE



JUNIOR CHAMBER OF COMMERCE



ROTARY CLUB



KIWANIS CLUB



LIONS CLUB



AMERICAN LEGION

The Sanford Merchants Association is a progressive group with a program designed to benefit local business. Officers and directors, front row, left to right are C. L. Redding; Jack Hall; Earl Faust, vice-president; Miss Dorothy Powell, secretary; Andrew Stine, immediate past president; M. L. Raborn, president; Ned Smith; W. A. Morrison. Second row, left to right, E. L. Harper, John Kader, David Gatchel, John Pope, William Peacock, John Senharik and B. L. Perkins, Jr.

Seminole County has a live wire Chamber of Commerce composed of aggressive and far-sighted business men. Left to right are, Miss J. L. Ingley, treasurer; Forrest Breckenridge, manager; Jack Hall, president; and G. W. Spencer, vice-president. Directors and committee chairmen in back row are Henry Simpson, industrial; R. L. Dean, publicity; Gus Schmah, agriculture; C. L. Redding, commercial; Al W. Lee, waterways; L. F. Boyle, legislation and national affairs, and Andrew Carraway, membership.

The Seminole County Junior Chamber of Commerce was in-

fused with new vitality, enthusiasm and ambition by the return of many veterans from World War II, and has promoted many civic projects. Front, left to right, James B. Gut, treasurer; Richard Farrell, second vice-president; Tim Crawford, president; W. H. Stemper, immediate past president; Robert Rohl and Carl Prisco, standing, are directors.

Sanford's Rotary Club is an active unit of Rotary International, combines good fellowship with ideals of accomplishment and civic betterment, and meets Mondays at noon at the Yacht Club. Its leaders, front, left to right, are: G. W. Spencer, director; Walter Haynes, treasurer; Jack Ratigan, president; Dr. R. W. Ruprecht, secretary; H. H. Coleman, director. Directors in the back row are Dr. A. W. Epps, Jr.; B. L. Perkins, Jr.; R. L. Dean; J. W. Powell, J. L. Ingley and Orville Touchton, immediate past president.

Kiwanis, with its slogan, "We Build" and an active membership of nearly 80, has a program strongly slanted toward youth betterment and sponsors the Key Club of the Seminole High School

and a Boy Scout troop. It meets Wednesdays at noon at the Yacht Club, and is highly rated for its singing and appetite for Mrs. M. D. Gatchel's fine cooking. Officers, front, left to right, are: J. Martin Stineciper, president; P. P. Campbell, treasurer; and Ralph A. Smith, secretary. In the rear are Oscar Harrison, financial secretary; Earl Higginbotham, vice-president; Douglas Stenstrom, second vice-president and Joel Field, immediate past president.

The roar of the Lions Club every Wednesday noon at the Yacht Club can be heard above the growls of lions in the nearby Zoo. Aid to the blind and sponsorship of the blood bank program are among their activities. In front, left to right, are: Edward S. McCall, vice-president; Ben Wade, Lion tamer; Jack Stemper, tail twister; Clarence Welsh, vice-president. In back are Henry Witte, deputy district governor; Cecil Carlton, president; Malcolm MacNeill; Harry Robson, past president; Joe Barnes, vice-president; Clyde Ramsey, and James N. Robson, Jr., treasurer.

United in fellowship by the memory of two world wars,

the Sanford Post 53 of the American Legion with membership of more than 500 is a powerful force for combatting subversive isms, sponsoring aid to veterans and promoting an annual county fair. At front, left to right, are George Maybury, vice-commander; E. A. Monforton, chaplain; J. Denver Godell, commander; Karlyle Housholder, immediate past commander; James Singletary, adjutant and James Q. Galloway, past commander and fair chairman. In rear row are James F. Benton, first vice-commander; L. F. Boyle, service officer; Capt. Earle T. Loucks, historian; Joel Field, past post and district commander; Harry Russell, sergeant at arms and R. Z. Johnson.

Sanford also has a number of active fraternal organizations including Lodge No. 1241 of the Benevolent and Protective Order of Elks, on East Second Street, with its aid to crippled children program, donation of a public playground, and annual Christmas party for underprivileged children. At the Masonic Temple Sanford

(Continued On Page Two)