



## Leaders See First Break In GMC Strike

Union, Corporation Agree To Open Negotiations Monday In Detroit Confab

## Workers Leave After Long 'Siege'

15-Day Conference Is Guaranteed By 2 Parties Involved

The first break in the giant General Motors strike came today in the shape of management and union agreement to begin negotiations in Detroit Monday, with the sit-down strikers in the meanwhile leaving factories they have occupied and the Corporation agreeing not to try resuming operations. Both sides advised Governor Frank Murphy of Michigan of their concurrence in the truce, which provided settlement efforts would go on for a minimum of 15 days unless consummated sooner. General Motors promised there would be no discrimination against union workers.

An Associated Press survey indicated the strike, involving jobs of more than 114,000 persons, already cost the Corporation and employees about \$10,000,000 in wages and profits. This did not take into consideration the loss of trade by neighboring states—Missouri, Tennessee, Indiana, New Jersey and Wisconsin cities where workers were made idle.

## Ten Percent File Requests For Tax Exempt Residences

Approximately ten percent of persons eligible for 1937 homestead exemptions have filed application for the tax-free benefits, it was reported today by Sanford F. Doudney, County tax assessor. About the same percentage have entered intangible tax returns also, the assessor said. Deadline for filing both forms Apr. 1, and if established customs prevail, there will be no extension due to the months of work required in making up a tax roll. Mr. Doudney said failure to file a homestead exemption application automatically waives the right to the exemption. Further, he announced, the request to free homesteads of taxation up to \$5,000 value must be entered each year with the tax assessor of the County.

## McClelland Heads R. And S. M. Lodge Of Local Masons

Five elected officers and five official appointees of the Sanford Council No. 29, R. and S. M., were installed for a year's service when the organization conducted ceremonies last night in the Masonic Temple. Officers-takers elected by popular vote were J. F. McClelland, T. I. M.; C. R. Rump, D. M.; Charles Dunn, principal conductor of work; G. E. McKay, treasurer; and John Gove, recorder. Appointive posts were filled as follows: L. B. Hodgins, captain of the guard; W. A. Routh, conductor of council; W. A. Stansfield sentinel; and R. B. Chapman, chaplain. Installation ceremonies were conducted by Mr. Chapman, acting T. I. M.; Mr. McKay, acting grand marshal, and Mr. Gove, acting grand chaplain. The fraternal body announced plans for the observance of its 10th anniversary in May.

## City Fathers Talk Waterplant Changes

City Commissioners last night held an informal discussion on proposed changes to the Municipal Waterworks which would equip the plant to meet future demands as the City grows. Power problems were the chief items of interest as the body talked electric motors and Diesel engines.

## COLD MENACES WESTERN CITRUS



Heavy damage was done to citrus fruit and other crops when the coldest weather in 15 years brought sub-freezing temperature to the semi-tropical regions of southern California. Verne Jobe, one of the many fruit growers who kept smudges pots burning in numerous orange groves near Covina, Calif., is shown receiving a mid-night lunch from his wife and daughter. (Associated Press Photo)

## Health Officer Studies Method Of Colder Cities

City Health Inspector G. P. Paxton today was on an inspection trip through the Haines City citrus section seeking a practical method by which a wave of pest flies, current here, might be controlled. He said he planned to visit several packing houses and canning plants, then confer with health officials in the cities where these industries are located. Dr. W. A. McPhaul of the State Board of Health stopped here yesterday, listened to details of the prevailing menace, and recommended to County Commissioners that hulle of citrus fruits, after going through local canneries, be buried. While the City Inspector believed the proposal to be one of merit as regards the control of volume pests, he said he doubted if it would completely eliminate the nuisances. "One of the best control methods we have available," he said, "is the co-operation of citizens in spraying garbage cans with kerosene or used motor oil. Either of the two oils will saturate any decaying refuse left in the receptacle and make it impossible for the flies to breed."

## Judge Sharon Named Principal Speaker At Woodmen's Rites

Sanford Woodmen of the World last night named Judge J. G. Sharon as principal speaker at a monument unveiling ceremony, in honor of a deceased fraternal brother, to be held Sunday afternoon near Winter Garden. G. W. Snow, is to act as master of ceremonies, and D. C. Hinchliff will fill the post of captain. The Woodmen's Circle will put forward Mrs. Alice Anles as regular, while Mrs. Mary Ruth Rudd and Miss Bernice Edmondson are to sing a duet. The regular Thursday night session of Woodmen saw the admission of a new member, Billy Ward, who was given the protection degree by Mr. Hinchliff's degree team.

## Tourists Interested In Celery-Growing And Farm Marketing

Tourists stopping at the Chamber of Commerce within the past ten days have been interested chiefly in seeing a celery field or the State Farmers' Market. Secretary Ralph Hagwell said today. He said a goodly percentage of the visitors were identified with agricultural interests in the north and exhibited considerable interest in the farms and citrus groves of Central Florida. Secretary Hagwell reported that an average of 20 to 30 automobiles stopped each day and their occupants inquired of farming. Other tourists, he said, also call at the Chamber and show interest in recreational facilities and other activities.

## Silverware Display Seen At McLaulin's

A formal silverware table setting is on display today and tomorrow at the Park Avenue jewelry store of Henry McLaulin, a display arranged for Sanford Girl Scouts. Mothers of Girl Scouts and others interested are invited to see the exhibit.

## Ex-Convict Is Questioned In Kidnap Death

Former Prisoner Surrenders As Police Seek Man, Woman In Further Probe

TACOMA, Jan. 15.—(AP)—Fred Orrin Haynes, ex-Folsom, Calif., convict sought for questioning in the Charles Matson kidnaping case, surrendered here today and was questioned in Detective Capt. Marshall Stratford's office. The detective said Haynes came into the police station early today while State police were seeking a man and woman who disappeared from a four-room furnished cottage five miles north of Seattle Wednesday—two days after the body of the ten-year-old boy was discovered near Everett, Washington. Another man, Lee Haskell, 36, was held in the County Jail at Bellingham, Washington. The jail was blockaded while Federal officers interrogated him.

## CITY NEWS BRIEFS

Saturday's tides, Tidal Station, Ocean Pier, Daytona Beach: low, 4:15 o'clock; high, 10:10 o'clock.

The Taylor Commandery No. 28, Knights Templar, will assemble at 7:30 o'clock tonight in the

Sanford Legionnaires and members of the Legion Auxiliary look forward today to the opening of the mid-winter Florida Legion conference in Orlando. Lloyd F. Hoyle, local commander, said a representative delegation from this City would be present. Harry M. Johnson of West Palm Beach, department commander, and C. Howard Rowton of Palatka, department adjutant, are in charge of the program for the conference. The program for the conference, which will be held at the Hotel Florida, will be assisted by Mrs. Helen Johnson of Bartow, department secretary, in arranging Auxiliary activities. Watson B. Miller, director of the American Legion national Rehabilitation Commission, will be the guest of honor in the Legion assembly, while Mrs. Jeanne Hardy of Mississippi, national vice-president, is to be the Auxiliary's honored guest. Registrations will be received at 3 P. M. in the San Juan Hotel. The Forty and Eight Legion food collection, will meet in the luncheon session at 7:30 P. M. A Legion luncheon session will begin at 9:30 A. M. Sunday. Social events include a Saturday night dance at the San Juan. Delegates also will be guests of the Flamingo on the same evening. A joint session of the Legion and the Auxiliary will follow the business sessions of each unit Sunday morning. Miller will deliver his address before the body. At 2 P. M. Sunday a distinguished guests luncheon is scheduled for the Chamber of Commerce building.

## County Home Clubs Entering Exhibits At Orange Festival

A citrus exhibit produced by nine Seminole County home demonstration clubs was forwarded today to Winter Haven for exhibition at the Orange Festival, opening Monday and continuing until Jan. 23. Miss Josephine Boydston, County home demonstration agent who supervised the exhibit's collection, said canned fruits, preserved fruits, marmalades and syrups comprise the local display. It was announced that the exhibit will compete for State prizes against entries from all other Florida counties. Each of the nine demonstration clubs in this County are represented in the local exhibit, Miss Boydston declared.

## Postmaster Warns Local Businessmen Of Stolen Drafts

Postmaster R. J. Holly today warned Sanford businessmen not to cash any postal moneyorders issued at Lakeland and bearing any number from 8115 to 8200, inclusive. These drafts, he said, were stolen several days ago from the Lakeland postmaster and several passed two days ago in Daytona Beach. The postmaster reported that while the moneyorders carried the printed name of Lakeland in their date line position, they bore the rubber stamp of Orlando, where a stamp was stolen. Mr. Holly asserted that none of the negotiable instruments had turned up here, but said it was a good idea for commercial interests to be on the lookout for them.

## AGAIN SEEKS DIVORCE

HOLLYWOOD, Jan. 15.—Judith Allen screen actress yesterday filed her second suit for divorce against Jack Doyle, crossing Irish prize fighter. Miss Allen sued last year but on Aug. 24 announced they had become "reconciled."

# State Highway Commission Abolishes Road Patrol At Desire Of Governor Cone

## Soil Plan To Leave Less Than \$600 Not Claimed To J. L. Whitley; Probe Under Way

Final Session Of County Conservation Committee Slated For Monday; Checks To Arrive Soon

## Sanford Legion Members Looking To Florida Meet

Legionnaires, Auxiliary To Convene In Orlando Hotel

Sanford Legionnaires and members of the Legion Auxiliary look forward today to the opening of the mid-winter Florida Legion conference in Orlando. Lloyd F. Hoyle, local commander, said a representative delegation from this City would be present. Harry M. Johnson of West Palm Beach, department commander, and C. Howard Rowton of Palatka, department adjutant, are in charge of the program for the conference. The program for the conference, which will be held at the Hotel Florida, will be assisted by Mrs. Helen Johnson of Bartow, department secretary, in arranging Auxiliary activities. Watson B. Miller, director of the American Legion national Rehabilitation Commission, will be the guest of honor in the Legion assembly, while Mrs. Jeanne Hardy of Mississippi, national vice-president, is to be the Auxiliary's honored guest. Registrations will be received at 3 P. M. in the San Juan Hotel. The Forty and Eight Legion food collection, will meet in the luncheon session at 7:30 P. M. A Legion luncheon session will begin at 9:30 A. M. Sunday. Social events include a Saturday night dance at the San Juan. Delegates also will be guests of the Flamingo on the same evening. A joint session of the Legion and the Auxiliary will follow the business sessions of each unit Sunday morning. Miller will deliver his address before the body. At 2 P. M. Sunday a distinguished guests luncheon is scheduled for the Chamber of Commerce building.

## Citizens Invited To Annual Session Of Home Society

Seminole County persons interested in the work of the Children's Home Society of Florida were invited today to attend the 35th annual meeting of the organization in Jacksonville on Jan. 28. Marcus C. Fagg, superintendent, issued the invitation. The session, to be held in the George Washington Hotel, will feature a brief address by Gov. Fred Cone, who, according to Mr. Fagg, has long been interested in the care of humanity, especially unfortunate children. Superintendent Fagg said the Society was organized in 1902 by the Rev. D. W. Constock, a retired clergyman who had come to Florida for his health. Here he found no agency for the care of homeless babies under three years of age, and the efforts he exerted resulted in the foundation of the present home. Friends from every section of the State are expected to attend the Jacksonville meeting, it was announced by Mr. Fagg.

## Relative Of Captain Mellon Will Attend Sanford Centennial

J. A. Mellon, a distant relative of Capt. Mellon who founded the original site on which Sanford now stands, will attend Founder's Day exercises here Feb. 8, Mrs. J. H. Lehman of the Daughters of the American Revolution, announced today. He will present an informal paper on the life and activities of the captain, who was killed in battle beside Lake Monroe on Feb. 8, 1837. Mrs. Mellon will accompany the captain's relative. Mrs. Lehman said that John Sanford, a distant cousin of the City's namesake, has been invited to witness the ceremonies and participate if he cares to do so. His residence is in West Palm Beach. The Sally Harrison Chapter of Daughters of the American Revolution are sponsors of Founder's Day.

## County Commission Approves Jury List Of 400 Individuals

A jury list for 1937, containing nearly 400 names, was approved by County Commissioners in a short session at the Court House yesterday afternoon. The board also voted an allocation of an extra \$25 to be placed in the County welfare fund. In a morning session, Commissioners re-employed Mrs. Samuel Puleston and W. Theo Langley as County physician and assistant County physician respectively after the two medical men had been notified Saturday their services were to have been terminated today.

## Levy Home Totally Destroyed By Fire

The seven-room home of D. B. Levy, Geneva, was completely destroyed by fire early Monday morning, it was reported here today by friends of Mr. Levy. An oil heater was said to have originated the blaze which, besides burning the entire building, also burned all articles of furniture and clothing inside. Mr. and Mrs. Levy and two children were in the structure when it began to burn.

## Farm Club Hears Marketing Talks

Clifford Hatt, County farm agent of Lake County, and J. H. Gunguis, State director of markets, last night told members of the Seminole County Agriculture Club of marketing methods used by growers in Lake County. They said a co-operative plan is in use and is successful for both producer and purchaser with benefits moving as far down the line as the consumer.

## Crash Is Fatal To J. L. Whitley; Probe Under Way

Coroner's Jury Billed To Continue Investigation Today

A coroner's jury was scheduled to have resumed deliberations at 3:30 o'clock this afternoon into an accident yesterday which resulted in the death last night of John Leonard Whitley, 39. The assembly in Justice of the Peace Robert's office opened the investigation this morning but had failed to reach a verdict when it adjourned at noon. Mr. Whitley died late Thursday night in a local hospital where he was taken after his truck and another vehicle driven by Paul Jones collided at Nineteenth Street and Elm Avenue. It was reported that the crash occurred on the first trip made by Mr. Whitley on his first day of employment as a truck driver for the Eckerson Canning Company. The deceased was a native of Ocala, Fla., and had been a resident of Sanford for seven years.

Surviving are the widow, Mrs. Alberta Whitley and two children, Roscoe Whitley and Alice Ruth Whitley, all of Sanford; the father, George Whitley of Ocala; three sisters, Mrs. W. M. Portier, Mrs. J. H. Harper, both of Ocala, and Mrs. E. L. Dunn of Sanford; four brothers, all of Ocala, H. B. Whitley, H. N. Whitley, A. Whitley and Clyde Whitley. Funeral services will be held at 2:30 o'clock Saturday afternoon from the Erickson Funeral Home. The Rev. W. P. Brooks, Jr., pastor of the First Baptist Church is to officiate. Interment will be in Evergreen Cemetery.

## Commissioner Lodge Sells First Block Of Benefit Tickets

City Commissioner M. J. Lodge today became the first member of the general committee on the President's Birthday Ball to sell his entire block of benefit tickets. The municipal official made his report to R. L. Glenn, general chairman of the ball, and turned in the \$5 collected. Thirty percent of the amount will be sent to Warm Springs Foundation to fight infantile paralysis. The remaining 70 percent will go to the Harry Ann Home for Crippled Children in Dunell. Committee members assembled in the Chamber of Commerce Wednesday night and received about 200 dance tickets which are not on sale. It is expected that a greater number than those originally distributed will be sold. Sanford Elks are sponsoring the social event this year. It will be held at the Mayfair Hotel on Jan. 30. Two first time parachute jumpers, H. H. Kawood and Bill Keifer, who were slated to jump over Municipal Airport last Sunday and were prevented because no 'chutes were packed, will go through their performance Sunday. Hines of Bob O'Dell, parachute packer, halted last Sunday from swollen ankles. O'Dell is sufficiently recovered to supervise the packing of a 'chute although he is in a condition to do the job himself. Firman Church, airport operator, today announced that weekly meetings of the Sanford Flying Club, recently organized, will be started next week. A clubroom has not been selected.

## Resolution Banning Group Of Motor Officers Adopted Without Discussion

May Ask Statute Authorizing Unit Organization Instituted By Sholtz For 'Protection'

TALLAHASSEE, Jan. 15.—(AP)—Governor Cone's Highway Commission today abolished the State Road Patrol, ordering it out of existence Jan. 30 "in accordance with the Governor's wish." Board members estimated the move would save about \$150,000 annually. There was no discussion at the Commission's hearing. A. B. Brooks Bateman, member from Palatka, offered the abolishing resolution and it was adopted unanimously. Automobiles, motorcycles and other equipment used by 52 men in the patrol will be concentrated "at some place" Chairman A. B. Hule said, until a decision is reached on the disposition of it. It may be stored, he said, to await possible action by the Legislature next April to establish a patrol by legislative enactment. Governor Sholtz, who presided, once established the highway patrol and put its operations under the direction of the State Highway Department. He said at that time the patrol was established as a means of protecting highways by preventing overloaded motor vehicles. Members of the patrol were assigned by Governor Sholtz for two winter seasons to State border stations to turn back jobless transients who sought to enter the State. He said the border patrol was necessary to protect Florida residents and winter visitors from persons who because of a lack of finances might turn to criminal acts after entering the State. Cone criticized the patrol in his inaugural address, saying he was proud of it but that it should be authorized by the Legislature. (Continued on Page Three)

## Tag Window Will Remain Open Late On Saturday Night

Windows of the automobile license department in the County tax collector's office will remain open until 9 P. M. Saturday for the convenience of persons unable to buy vehicle tags during regular business hours. Tax collector Jno. B. Jenkins announced today. An executive order issued yesterday by Gov. Fernalde extended the expiration date on 1936 plates from today until Feb. 1, according to the Associated Press. Despite the additional 15 days of grace, Mr. Jenkins' office was doing an abnormal business today as the number of tag sales soared near the 1,000 mark. The collector said extension of the time limit will not alter his office's offer to assist persons in securing data sufficient to issue a new license—provided last year's tag was purchased at the Seminole County office, and provided a motorist's registration and title certificate cards are not conveniently available.

## LOCAL WEATHER

	High	Low	Moist
12	72	59	80
11	73	59	80
10	76	61	80
9	81	64	80
8	86	67	80
7	90	71	80
6	93	74	80
5	96	77	80
4	99	80	80
3	102	83	80
2	105	86	80
1	108	89	80
0	111	92	80
24	114	95	80
23	117	98	80
22	120	101	80
21	123	104	80
20	126	107	80
19	129	110	80
18	132	113	80
17	135	116	80
16	138	119	80
15	141	122	80

**The Sanford Herald**  
Published every afternoon except  
Sundays at 100 North Florida  
Street, Sanford, Fla.

Published by the Sanford Herald  
Company, Inc., 100 North Florida  
Street, Sanford, Fla.

Subscription Rates: Annual, \$3.00  
Six Months, \$1.75  
Three Months, \$1.00  
Single Copies, 10 Cents

Advertising Rates: First Insertion, 10 Cents  
Continuing Advertisements, 7 Cents  
Special Advertising Rates, on Application

Copyright 1937 by Sanford Herald  
Company, Inc.

Printed at the Sanford Herald  
Press, Sanford, Fla.

Sanford, Fla., Jan. 15, 1937

**Business Employment**

Just how important is "big business" in our American scheme of things? We hear a great deal about the bigness of "big business" these days and how the captains of industry are regimenting the whole country into squadrons of plants and factories all of which are controlled by a handful of men at the top, that statisticians of the Twentieth Century Fund decided it would be interesting to find out for sure just how important these "big businesses" really are.

Well, they discovered that in certain particular lines "big business" is just about all the business there is. For instance, when it comes to the manufacture of cigarettes, they found that 91.4 percent of all the wage earners employed in the making of cigarettes work for one or another of just four companies. In other words in the cigarette industry four big corporations practically cover the entire field. Big business is about all there is to it.

On the other hand, these same statisticians further discovered that when it comes to the manufacture of women's clothing the six largest manufacturers in the country employ only 3.7 percent of all the wage earners making such clothing. In other words "big business" in the clothing industry doesn't amount to much. Most of the clothes in the country are made by the little fellows. A law requiring "big business" to pay big wages, then would not help much in the clothing industry.

The survey was extended to include eighty-four of this country's most important industries. Among the industries in which employment was found to be concentrated in a few large companies were typewriter manufacture, with 94.8 percent of the workers in four corporations; asphalted felt-base floor coverings, with 78.8 per cent employed by the three largest concerns; copper refining and smelting, with 71.6 per cent of the workers employed by the three largest companies and 90.5 per cent by the six largest.

In corn syrup manufacture, 62 percent were employed by the three largest and over 90 percent by the seven largest companies; in sewing machine manufacture, there were more than 90 per cent of the workers, and in photographic apparatus manufacture there were 88.7 per cent, employed by six or fewer concerns. The six largest concerns manufacturing matches, explosives, firearms, watch cases, cash registers, rayon and beet sugar, respectively employ between 80 and 90 per cent of all the wage earners in those industries.

Relatively little concentration was found in textile dyeing and finishing, fruit and vegetable canning, confectionery, paper, stamped ware, silk and rayon, furniture, clothing and planing mill products. In several of America's largest industries the degree of concentration fell into neither extreme. The three largest motor vehicle manufacturers employed 63.9 percent of all workers in the industry; the three largest tire manufacturers, 62 per cent; the three largest cane sugar refiners, 60.6 percent, and the three largest tin can manufacturers, 62.8 percent.

And so in speaking of "big business" it is important to remember that while industry one is talking about in some of them "big business" is exceedingly unimportant.

**Home Construction**

The City of Miami ranked high among the largest cities in the country for the construction of homes during the past year, and for the month of November, according to a report just released by the Federal Housing Administration, Miami ranked seventh of all the cities in the country in the construction of modern one and two story family residences.

Three cities in the United States show activity in the home construction field exceeding \$2,000,000 for the month of November, the Federal Housing Administration's analysis of figures gathered by the Bureau of Labor Statistics shows.

Except for one month, the cities of Los Angeles, New York, and Detroit have maintained this figure for the last eight months. In May the Los Angeles total was only \$1,898,000. In October, however, the California city's total was \$2,886,000, leading New York's record of \$2,873,000.

The November records show Los Angeles leading with a total of \$2,507,814, New York second with \$2,275,850, and Detroit third with \$2,005,600. Other high-ranking cities, with their totals, are: Washington, D. C., \$887,700; Houston, Tex., \$816,345; Chicago, Ill., \$637,200; Miami, Fla., \$597,695; Baltimore, Md., \$554,000; San Francisco, Calif., \$552,830; and Philadelphia, Pa., \$529,580.

THERE ONCE LIVED in England a devotee of beauty. Regarding beauty as the visible revelation of God, he devoted himself with the apostle's fervor to the task of arousing the British public to a love of beautiful things. But in the midst of his career he turned aside to become a Social reformer. We find him trying to reclaim slums, organizing a gang of street-sweepers. To many this seemed an unaccountable shift. To Ruskin's mind the two were intimately associated. He had learned that a people cannot lift their souls to the clouds while their feet are stuck in the mire of hunger and overwork.—Thomas Jefferson Wertenbaker in Scribner's Magazine.

**SANFORD TWENTY YEARS AGO**

Miss Nelle Elder is having a delightful visit with friends and relatives at Leesburg where she is receiving many charming social attentions.

Mr. and Mrs. T. J. Price of Lancaster, Ky., are the guests of the sister, Mrs. G. F. Smith. Miss Grace Way of Jacksonville arrived yesterday for a visit with Mrs. Henry McLaughlin and other friends in the city. Miss Way and her family were residents of Sanford for a number of years.

**Governor Hopes For Full Payment Of School Fund**

TALLAHASSEE, Jan. 15.—(AP)—Governor Cane and his Cabinet today expressed their hope for full payment of the State's \$10,500,000 appropriation for public schools this year.

The subject was discussed at the State's full Cabinet meeting today. Cane's inauguration, Jan. 15, was brought up by Celia English, new Superintendent of Education, who also came into office, Jan. 5.

English said counties wanted some estimate of the amounts they would receive from the State this year, if there appeared reason to believe the full amount would not be paid. Four payments, totaling \$4,000,000 were made before Governor Cane's term expired.

"We'll go ahead and plan for it all," said Governor Cane, "and if any borrowing has to be done, we'll borrow for the schools."

"But I do want the schools to be sure of income for the next 18 months until I get by this old age pension, and then I believe we'll have all the money we need."

A constitutional amendment ratified last year authorized the Legislature to appropriate State funds for pensions and relief. Governor Cane estimated about \$5,000,000 annually would be required.

He said surpluses in other State funds could be transferred to schools if necessary to carry out the Legislature's appropriation for salaries of teachers and bus drivers.

The Governor said he had not decided whether to order an extension of time to buy automobile license tags. If there is no extension, 1936 licenses expire Friday. Revenue from tags, about \$2,000,000 annually, goes to public schools.

Tag collections so far total \$1,100,000. Payments to schools so far total \$2,000,000 in the current school year. Another payment of \$1,100,000 is due Feb. 1. Comptroller J. M. Lee said he believed there would be sufficient money to make it.

**Florida Missionary Choir Will Assemble For Orlando Session**

ORLANDO, Jan. 15.—The Florida Chain of Missionary Assemblies convenes in Orlando, Jan. 30 to Feb. 4 inclusive. All sessions will be in the First Presbyterian Church.

Speakers from many foreign countries will be on the program. Nations now re-writing the history of the world will be represented by speakers of international note. Missionary laymen, educators and preachers are scheduled to speak during the assembly.

Miss Yoake Harte, the beautiful Japanese young woman with a heavier-than-air craft. Height recorded was 49.94 feet.

**Penney's White Goods Features**

DOUBLE BED SIZE SHEETS 69c

NEW SHIPMENT CURTAINS 49c

SPECIAL VALUE PRINTED CRASH 21c

FULL DOUBLE BED SIZE BLANKETS 49c

J. C. Penney Co. DEPARTMENT STORE

**Seamen and Licensed Radio Operators Wanted**

To Sail Foreign

American Flag Ships

Union Conditions

Seamen joining our vessels are given clearance by International Seamen's Union, affiliated with American Federation of Labor

Men interested call at office or telegraph collect for information, giving their experience, kind of discharge held, and present address.

LYKES BROS. STEAMSHIP CO. TAMPA

**Play Golf at Sanlando Golf and Country Club**

The sporting and most scenic golf course in Central Florida

18 Holes

18th Hole

18th Hole

18th Hole

18th Hole

18th Hole

18th Hole

18th Hole

18th Hole

18th Hole

18th Hole

18th Hole

18th Hole

18th Hole

18th Hole

18th Hole

18th Hole

18th Hole

18th Hole

18th Hole

18th Hole

18th Hole

18th Hole

18th Hole

18th Hole

18th Hole

18th Hole

18th Hole

18th Hole

**Beauty By PLASTIQUE MASQUE**

is the type of facial that you have always wanted. Not only does it stimulate the tissues but as well lifts out all the impurities, and leaves the skin exquisitely soft, clear and youthful. Get this treatment here—NOW.

PERMANENT including \$3.50 Shampoo and To setting of wave, \$7.00

For Appointment Phone 400

P. PAUL'S BEAUTY SALON

110 MAGNOLIA AVE.

110 MAGNOLIA AVE.

110 MAGNOLIA AVE.

110 MAGNOLIA AVE.

110 MAGNOLIA AVE.

110 MAGNOLIA AVE.

110 MAGNOLIA AVE.

110 MAGNOLIA AVE.

110 MAGNOLIA AVE.

110 MAGNOLIA AVE.

110 MAGNOLIA AVE.

110 MAGNOLIA AVE.

110 MAGNOLIA AVE.

110 MAGNOLIA AVE.

110 MAGNOLIA AVE.

110 MAGNOLIA AVE.

110 MAGNOLIA AVE.

110 MAGNOLIA AVE.

110 MAGNOLIA AVE.

110 MAGNOLIA AVE.

110 MAGNOLIA AVE.

110 MAGNOLIA AVE.

110 MAGNOLIA AVE.

110 MAGNOLIA AVE.

110 MAGNOLIA AVE.

110 MAGNOLIA AVE.

Just the good things...

and here they are...

Aromatic tobaccos from the districts of Xanthi, Cavalla, Smyrna and Samos in Turkey and Greece, the tobaccos of richest aroma

... blended with

Mild ripe home-grown tobacco—Bright tobacco from the Carolinas, Georgia and Virginia; Burley tobacco from Kentucky and Tennessee; and tobacco from southern Maryland

... and rolled in

Champagne Cigarette paper of the finest quality. This paper, specially made for Chesterfield cigarettes, is pure and burns without taste or odor.

For the good things smoking can give you... Enjoy Chesterfields

**Wrist Watches**  
ELGIN GENUINE SWISS  
SPECIAL PRICES  
McLain's, Jeweler  
110 N. Park Ave.

# Social And Personal Activities

MISS MARGARET PETERS, Society Editor Telephone 148

## Social Calendar

**MONDAY.**  
The Co-ed Class of the First Methodist Church will meet at 8:00 P. M. at the home of Mrs. Oscar Price, Monroe Road, with Mrs. Price, Mr. and Mrs. C. E. Bell, and Mr. and Mrs. J. J. Carver as hosts.

The Dependable Class of the First Methodist Church will meet at 7:30 P. M. at the home of Mrs. M. J. Dickert, 904 Park Avenue, with Mrs. Dickert and Mrs. O. B. Toler as hostesses.

Prayer band of the Presbyterian Auxiliary will meet at 3:00 P. M. at the church. Monthly inspirational meeting at 3:30 P. M. Monthly meeting of the Woman's Missionary Society of the First Baptist Church will take place at 3:00 P. M. at the church.

The Sunbeam Band of the First Baptist Church will meet at 3:30 P. M. at the church with Mrs. Edward Kelsey in charge.

Monthly meeting of the Woman's Missionary Society of the First Methodist Church will take place at 3:00 P. M. at the church.

**WEDNESDAY**  
The Social Department of the Woman's Club will have a bridge party at 2:30 P. M. at the club house for all club members. Mrs. James L. Ingley, Mrs. Herman Morris, and Mrs. George B. McCall are hostesses.

The Ladies' Auxiliary of the Temple Beth Israel are giving their annual subscription bridge at the Jewish Community Center, on the corner of Sixteenth Street and Magnolia Avenue at 8:00 P. M.

## Personals

Mrs. R. F. Crenshaw spent Thursday in Orlando with Mrs. Earl Crenshaw.

Mrs. G. E. McKay spent Thursday in Orlando with Mrs. Mamie Bardwell and Mrs. Lillian Sloan.

Miss Alleen Perry and her mother of Ocala were the guests yesterday of Mr. and Mrs. C. P. Herndon, Magnolia Avenue.

Miss Dorothy Pope, a student at Stetson University, is spending the week-end with her parents at their home on Sanford Avenue.

Mr. and Mrs. Harlan W. Kelly will leave tomorrow for Sheboygan, Wis. after spending a few weeks here with Mr. and Mrs. John M. Kelly, Paola Road.

Friends of Bobby Johnson will regret to learn that he is ill at the home of his parents, Mr. and Mrs. Paul Johnson, on East Twentieth Street.

Mrs. L. Grow, Mrs. P. A. Howell, and Braxton Huntley attended the funeral of Mrs. Hannah B. Courier in Palatka on Wednesday. Mrs. Courier was the mother of Mrs. Earl E. Grow who resided in Sanford for many years.

Joe McCallin left yesterday for Jacksonville where he will receive treatment at the Riverside Hospital. Dr. and Mrs. H. F. McCallin accompanied him. Dr. McCallin returned to Sanford last night while Mrs. McCallin remained in Jacksonville.

Russia is spending four billion dollars on re-armament this year, an increase of thirty-five percent over last year.

**REAL VALUES**  
in HOUSEDRESSES!



Some pick them for comfort... some pick them for style... and all women agree that they're values at this special price! Sun fast, tub fast colors... closely woven fabrics... many popular styles to choose from at only—

**98c**

There are styles for every woman... many of them smart enough for shopping and afternoons! Sizes for women and misses are included.

**PURCELL'S**  
208 East 1st Street

**LOOK here.**



**FOLIES CAPRICE**  
A Super - Stage Show  
GLORIFIED G-I-R-L-S!  
G-I-R-L-S!  
GIRLS!  
STARLETS FROM Hollywood  
A GREAT SHOW AT BARGAIN PRICES at the

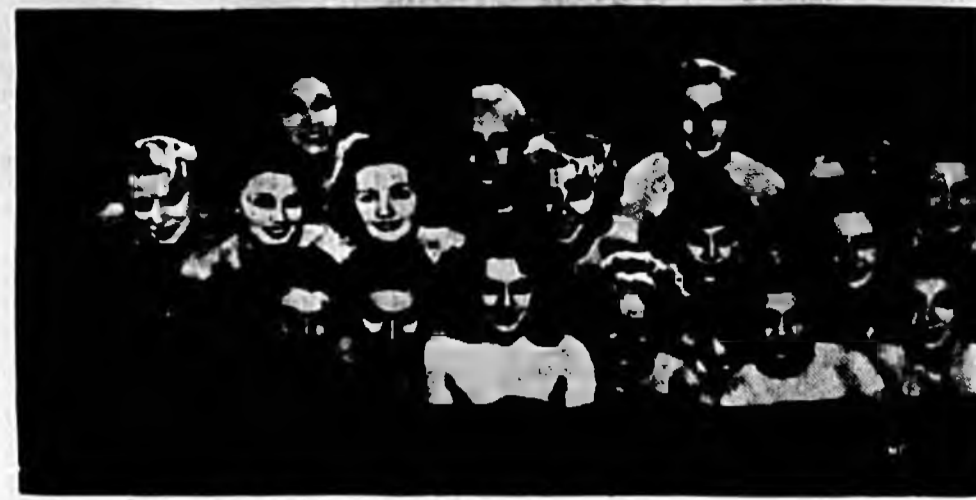
**RITZ MONDAY**

Bargain Hour From 2 to 3 P. M. 15c and 25c

Matinee Prices From 3 To 5 P. M. 25c and 40c

After 5 P. M. 35c and 55c Tax Included

## SEVENTEEN EYEFULLS—COMING TO THE RITZ



The carload of pulchritude shown above will be unloaded here next week at the Ritz. Theater. Seventeen beauties (count 'em) are just part of the Folles Caprice, billed for one afternoon and two evening shows at the local playhouse Monday. A regular feature film is included on the bill.

### Mrs. Charles Kanner Entertains Auxiliary

The members of the Ladies' Auxiliary of the Temple Beth Israel had a social and business meeting Thursday evening at the home of Mrs. Charles Kanner, Sanford Avenue.

Detailed plans were made for the annual subscription bridge party to be given at the Jewish Community Center on Wednesday evening Jan. 20. After the business session bridge was enjoyed until a late hour. High score prize was awarded to Mrs. Dan Kay and Mrs. M. Block received low score prize.

Refreshments were served to the following guests: Mrs. Pearl Moss, Mrs. M. Moses, Mrs. A. Jacobson, Mrs. E. J. Toll, Mrs. H. Jacobson, Mrs. B. Borisko, Mrs. M. Block, Mrs. P. Hirsch, Mrs. M. Fleischer, Mrs. Dan Kay, Mrs. J. H. Toll, Mrs. M. Jacobson, and Mrs. J. H. Dingfelder.

### Mrs. S. D. Fletcher Named Circle Head

At the regular meeting of Circle Number Two of the Methodist Church on Monday afternoon Mrs. S. D. Fletcher was elected chairman for the new year.

The circle met at the home of Mrs. R. W. Turner, Park Avenue, with Mrs. Z. B. Ratliff and Mrs. Turner as hostesses. After a devotional program Mrs. Turner presided over the business meeting at which time the following officers were elected: Chairman, Mrs. S. D. Fletcher; Vice-chairman, Mrs. A. D. Shoemaker; Secretary, Mrs. John Vaughan; Connectional-treasurer, Mrs. J. B. Crawford; Local-treasurer, Mrs. A. D. Zachary; Sunshine Chairman, Mrs. Georgia Hart; Wagon and Means Chairman, Miss Beale Zachary; Mission Study, Mrs. E. Inskeep; Asst. Mission Study, Mrs. R. W. Turner; Christian Social Relations, Mrs. Z. B. Ratliff; World Outlook and Publicity, Mrs. Brodie Williams.

### Less Than \$600 To Remain Unclaimed In Soil Payments

The Department set Jan. 28 for a meeting to hear delegates seeking road construction this year.

W. M. Miles of Tampa was elected secretary effective Feb. 1.

The clearing away of the 1936 conservation plan, the local farm office is looking toward the 1937 program, a part of which have not yet been announced.

Mr. Dawson reported that a meeting of Central Florida farm agents is slated for the latter part of the month. At that time agricultural interests will discuss needs of the new endeavor and goals of the plan.

### Regular Meet Held By Baptist Alatheans

On Thursday evening the Alathean Church of the First Baptist held its regular meeting in the annex of the church. After a short business session presided over by Mrs. G. E. Rollins, games and contests were participated in by the guests.

The hostesses for the evening were: Mrs. Rollins, Mrs. L. V. Bunklett, Mrs. M. S. Nelson, and Mrs. R. D. Hawkins. At the conclusion of the meeting they served refreshments to the following members: Mrs. C. C. Cox, Mrs. G. S. Selman, Mrs. J. P. Newby, Mrs. J. W. Kay, Mrs. W. H. Hand, Mrs. B. G. Methvin, Mrs. R. O. McWether, Mrs. J. B. Oviatt, Mrs. R. N. Messer, Mrs. R. E. Purifoy, Mrs. T. C. Pitchford, Mrs. E. C. Harper, Mrs. O. C. Gibbs, Mrs. O. C. Raller, Mrs. S. H. Harrison, Mrs. A. B. Lovejoy, and Mrs. J. E. Page.

### Resolution Banning Group Of Motor Officers Adopted Without Discussion

The new Road Board today also announced net obligations of \$1,902,000 were incurred against anticipated 1937 income of about \$7,500,000.

Alex H. Stewart, new chief auditor said the obligations incurred by the outgoing Board against

## Reading And Writing

By JOHN BELBY

Probably you don't feel much like reading anything except the label on a bottle of pick-me-up. If you do want a book today, it's a fairly safe bet you want a light one. Perhaps a murder story?

Cortland Fitzsimmons knows the market; was in fact, a book salesman before he became a mystery writer much in demand at rental libraries and in Hollywood. For "The Whispering Window" he has dug out a most amusing old lady named Miss Ethel Thomas to tell the story of her contact with six murders, the first of which occurs as she is on her way to a business conference in the department store in which she owns considerable stock. Miss Thomas does a grand job of clue-solving; don't be surprised if you see Edna May Oliver playing the role in the movies. Or perhaps it's already been produced with somebody else.

If you can endure Edna Phillips and his incredibly slow manner of telling a story, try "The Anniversary Murder." This is not properly a mystery, or at any rate, the mystery element is very small. The story of two murders exactly seven years apart in time, the first un-planned, the second carefully prepared, is told by a particularly poisonous young physician named, of all things, Hector McDoctrich.

And if "The Anniversary Murder" is not for you, turn to Helen Reilly's "Dead Man Control." Miss Reilly rarely misses her mark, and this time is no exception. When Inspector McKee

gets back to New York he finds Katherine Kingston all but convicted of the murder of her husband. She was found unconscious in the room with his body, her door bolted on the inside, her fingerprints on the pistol and motive enough for the deed is supplied by the character of the husband himself.

Just the same, Inspector McKee doesn't believe Katherine did the deed, and against the opposition of his numerous superiors, Inspector McKee starts out to prove his theory. Inspector McKee is a rattling good prover, too.

"The Whispering Window," by Cortland Fitzsimmons (Stuba); "The Anniversary Murder," by Helen Phillips (Dutton); "Dead Man Control," by Helen Reilly (Crime Club).



**WIP**

Last Call!  
Final Day!  
A Word to the Alert  
Buyers is Sufficient

**Sweeping Clearance**

Will be Past and Gone  
Tomorrow Night—Hurry!

SURPRISING SAVINGS  
on Entire Stock  
Apparel for the Family  
All Dry Goods, Etc.

A Reminder:  
SPECIAL HOUR SALE  
Saturday — 9 A. M.

Plaid, Wool  
**BLANKETS** \$1.29  
"Mill Seconds" \$2.50 Value

Double Blankets—For Full Beds

If You Fail To Come Tomorrow  
Your Greatest Opportunity  
Will Be Gone Beyond Recall

**The YOWELL Co.**  
SANFORD

**TRICKS**  
10c and 25c  
TODAY ONLY

**FUGITIVE IN THE SKY**

ALSO  
**STARBUCK TAYLOR**

TOMORROW AND SUNDAY

**BROWN**

AND

**Black Cat**

TONIGHT ONLY  
**Play S-C-R-E-E-N-O Play**

THRILLS! LAUGHS!  
**MAD HOLIDAY**  
with EDWIN LOWE ELISSA LANDI

SATURDAY and SUNDAY  
A Paramount Silver Jubilee Show

Youth and Romance on a Grand Scale...  
With the World's Five Funniest Comedies!  
**COLLEGE HOLIDAY**  
JACK BENNY  
GURIS-ALLEN  
MANY BOLAND  
MARTHA RAY

**RITZ** 10c and 35c

### America's Biggest Prison About To Discard Rating

#### San Quentin Shows Drop Of 500 in Population, Believed Indication Of Better Times

By SAM JACKSON  
**SAN QUENTIN, Calif., Jan. 15.**—The biggest penitentiary in the country is about to discard its rating and is glad of it. A drop of nearly 500 in the population of the California State Prison here is hailed by Warden Court Smith as a sure sign of better times and more jobs.

The inmates are now down to 10,000 after running well over 12,000 during the worst of the depression, and San Quentin happens to stand at the rank of "number one" in the State Prison system. New York, Illinois and California have more convicts on their respective prison systems, but they are all up among more institutions.

California has only two places for main felon, San Quentin for the former, Folsom for repeat.

Despite the celebrity of Alcatraz, which lies out in the bay from the State Prison, San Quentin is the "Devil Island" of the State Prison system. It is a small island, all enclosed with the "big business" of the State Prison.

The latter requires two inmates dining rooms, one seating 2,000 men, the other 2,000, to be built. No cafeteria delays meals. The prisoners are waited on at their tables and an orchestra plays for them each evening.

Once each day the diners get their food. This is not an economy but is demanded by the large population of Mexican convicts.

It takes three free employees to run the mess hall, which uses 125 pounds of beef a day, 1,000 loaves of bread a day.

At night some 2,000 men sleep in the largest single cell block in the world, containing 1,000 cells.

The students open car shops on school courses, taking their choices of 250 in the prison curriculum. One hundred and twenty better educated convicts have jobs as instructors.

It takes five doctors and two dentists to look after the health of San Quentin's inmates, although the administration is proud of the fact the hospital list average only 75.

Principal industry at San Quentin is a jute mill, which imports the raw plant from India and turns out 20,000 sacks a day. They are sold direct to farmers, scrupulously kept out of the hands of middlemen.

Departments of what prison job he eventually falls into, every newcomer has his head clipped and spends his first 15 months in the jute mill.

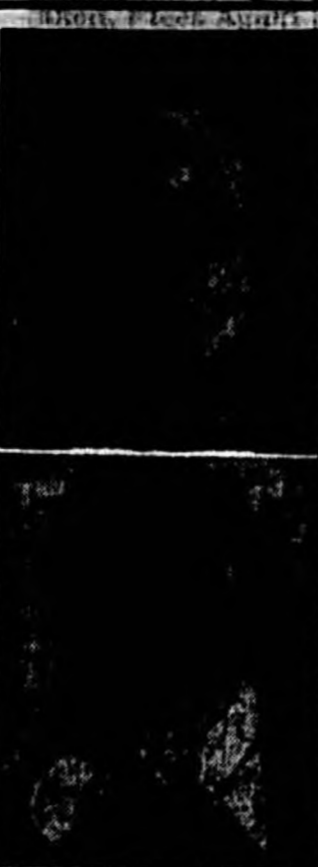
Under Warden Smith, the dungeon has been closed and the most extreme punishment inflicted is solitary confinement. Desires to work up into a "good job" in one of the prison's shops or in its farms or gardens is credited chiefly with keeping the prisoners in line. There are 275 guards.

A safety valve is provided by Warden Smith, who patiently interviews any convict who wishes to see him. In cases of prison grudges, he lets the two opponents put on boxing gloves and go after each other in view of their fellows.

San Quentin's strategic position on a peninsula jutting out into San Francisco Bay was chosen largely by accident. In the gold rush days convicts were kept on a prison ship under private contract. As the lure of easy money brought in riffraff from the seven seas, it became necessary to house some on shore, and these first buildings formed the nucleus of what is now a big walled city.

Even if economic conditions do not erase its undesired pre-eminence, San Quentin is due to drop the word "biggest" in the course of a few years. California has decided to build a second prison in the Los Angeles area and the prison population will be divided.

### Alabama Fugitive Taken, Plans Again



Captured in a Chicago suburb three months after he escaped from an Alabama prison where he was serving a 60-year sentence for murder, Edward McNamee (top) was delivered to William G. Anthony (below), Alabama officer. He asked Anthony's permission to enter a club for a drink of beer—and now they're looking for him again. McNamee was convicted of killing William Walter Lambert, Alabama radio entertainer, in 1933. (Associated Press Photos)

### Queen Of Skates Responsible For Hollywood Cycle

#### Seals' Heats Creates New Fad For Stars Of Silver Screen

By HENRY COONS  
**HOLLYWOOD, Jan. 15.**—Snowy had preview critics of "One in a Million" began to find before Hollywood was thoroughly convinced Seals' Heats may not be entirely responsible for the first film to feature skating and may also credit for creating a cycle on ice and rollers.

Jack Dunn, whose rink scenes have been waiting at Universal for their opportunity, will get more, and a contemplated feature of the new Fred Astaire-Ginger Rogers picture is a dance on skates. There also is a skating chorus or two spotted in other

### Queen Of Skates Responsible For Hollywood Cycle

films, and it is a matter of course that Seals' Heats will make another picture.

Before the preview this seemed a major rather for conjecture. The blonde Norwegian Olympic champion was not exactly "picture material," you know. One picture mention was frosty predicted for her. But not! The picture reveals a chubby, dimpled creature, most fetching aside from the girl's well-known prowess on the ice.

Excuse for her skating, surrounded by elaborately ice ballets, is provided by a comedy built on the sure-fire formula of "King, Baby, Sing." There are Adolphe Menjou, the Ritz brothers, Berah Mianovich, Arline Judge, Joan Marsh, Don Ameche, Dixie Dunbar and several others, most of them slightly mad in behavior. But when Seals dances on skates, you can forget everything else. She is more graceful than a bird in flight, and less earthbound.

Burner stuff is this year's companion piece to "The Informer." It is "The Plough and the Stars" from Sean O'Casey's play, directed by the same John Ford who made "The Informer" memorable.

The setting again is the Irish rebellion, in the spring of 1916. There is a love story between Barbara Stanwyck and Francis Foxor.

Deriving its title from the flag of the rebellion, the film tells of the uprising against war-harassed Britain the brief triumph, the losing struggle, the ultimate failure. Courage, heroism, great deeds mingle in the streets with comic quirks of emotion, truculence and petty thievery. The masses are living, laughing, fighting small fights, and the living and laughing and fighting of small fights go on, however inconvenienced by the bullets and bombs from the big fight. When the shooting is over, Foxor is still there as the Irish idealist, and Miss Stanwyck still weeps beside him—for a future of waiting while he fights again.

Ten of the eleven players named on The Associated Press 1936 Big Six conference all-star team were seniors.

**WERT-TO-JEWELRY**  
 Diamonds and Watches  
 Fine Work and Supply Jewelry  
 Diamond Setting and Repair  
 Watch Repair and Jewels  
 205 N. First St. Phone 1000

**"Get It All Under One Roof"**

Prescriptions	Magnesium
Drug Needs	Aspirin
Toiletries	Saline
Smokes	Breakfast
Smoker's Supplies	Linum
Papers	Shampoo

**LANEY'S DRUG**  
 Phone 100  
 Phone Orders Given Prompt Attention

### Lake City Vets Ask Guard Investigation

**LAKE CITY, Jan. 15.**—The Lake City Chapter of Veterans of Foreign Wars yesterday called upon other Florida chapters to join in a request that Congress, the State Legislature and Federal Government investigate the administration of the Florida National Guard.

The chapter held an investigation of the Guard based on the report of General John McNamara made at the 1936 convention.

### EDITOR FREED

**SAN HOSE, Calif., Jan. 15.**—The case against P. Milton Smith, elderly Mountain View editor, accused of libeling President Roosevelt in an editorial, was dismissed Wednesday because of "insufficient evidence."



These world-famous artists will entertain you in your own home at the low price of ONE CENT for one hour's performance:

Jack Benny	Bing Crosby	Gracie Allen
Robert Ripley	Fred Waring	Dick Powell
Jack Pearl	Rubinoff	Major Bowes
Ben Bernie	Lawell Thomas	March of Time
Ed Wynn	Joe Penner	Lily Pons
Clem McCarthy	Eddie Cantor	Al Jolson
Fred Astaire	Kate Smith	Graham McNamee

The new, modern radios—with greater tone selectivity and wider range—bring the great of the earth to your door. And, thanks to electric service, the cost is only one penny per hour. (The average radio costs only a cent an hour to operate.)

**WORTH SO MUCH COSTS SO LITTLE**

See the new radio models on display at your electrical dealer's.

**PHILCO LEADS IN VALUE AND SALES!**

**TONE-POWER-FOREIGN RECEPTION**

The New 1937 Philcos give you every worth-while feature in Radio! Performance that brings you finer reception of foreign programs—plus greater enjoyment of American broadcasts. Tone that thrills with its naturalness and beauty. Cabinets that reflect the craftsman's skill. See them—hear them—compare their prices!

DON'T MISS THE SPLENDID PROGRAMS FROM ABROAD!

**MATHER FURNITURE CO.**  
 -Good and Bad Furniture-

110 Mission Ave. Phone 127

Worms reported many cases of scrofula in deer in the Davis county section of Texas this year. The worms were the same type that afflict cattle and sheep.

The Rev. Virgil E. Hamton, manager of the transportation department of a Dallas, Tex., hotel during the day, conducts revival services in a self-built mission church at night.

# WHILE THEY LAST



**LICENSE PLATE FASTENER**  
No. 40 Best  
EACH  
Choice of red or green. Only 4 to a customer.

**MANOLA RADIOS**  
A sensational value! Long and short wave.

**EXHAUST EXTENSION**  
37¢

**GOODRICH TIRES**  
Yes! That's our new low price on genuine Goodrich Chief-Ain Tires. Don't miss out. Others also proportionately low!

**McKee Auto Supply**  
100 West 1st Street Phone 135

**PETER PEN**

**THE EARTH GENIE IS COMING WITH HIS BLACK CLOUDS**

**OLD RUMBLE!**

**YES, HE IS TERRIBLY CROSS!**

**OH, CAN'T SOMEONE MAKE HIM SMILE?**

**WELL! That's what a hrm! But how are we going to cure hrm's headache?**

**TRY, TO KNOW!**  
We can talk about pop, smoothness, extra-mileage; but it won't mean a thing—(til) you t-r-y, and thrill to, our great Gas! One tankful will show you more than a newspaper page can describe. Almost all our trade came to us on this "Show me!" basis—and continued as our regular, amazingly delighted customers.  
Phone 9121

## French Lead To Poland Seen As Step To Peace

### Hitler Fails In Efforts To Get New European Ally

NEW YORK, Jan. 13. — (AP) — Conclusion of the 963,000,000 loan to Poland by France, and the reaffirmation of the Franco-Polish alliance of 1921 for mutual defense represent a momentous political development, and one which may go far towards preserving peace in that section of Europe.

It means that Poland finally has cast her lot definitely with France, and that Adolf Hitler has failed in his efforts to win Poland over to the side of Germany, which is anti-French, anti-Russian and anti-Czechoslovakian.

It means that the possibility of Germany attacking Russia, now revealed, Poland is Germany's natural gateway to Russia, but the Germans would have to be willing to Germanize allies if the gate were to be open.

Until a comparatively recent date Marshal Edward Rydz-Smigly, who has dictatorial powers in Poland, had the world guessing as to which way his country might turn.

The major portion of the French loan is to be used to strengthen Poland's military defenses. The latest available figures give the standing army at totaling 225,000, with 1,722,000 trained reserves. That is to say, the effective immediately available exceed 2,000,000. The equipment is said to be excellent.

Thus Poland is in the position of being a strong friend or a formidable foe. Even powerful Germany would look twice before challenging Warsaw.

French Foreign Minister Yvon Delbos, in announcing the acceptance of the French terms for the loan, stated that Poland had given France a guarantee to aid Czechoslovakia if the latter were attacked by Germany — an eventuality which the Czechs have been fearing. There has been an authoritative Polish denial of this guarantee, although such a promise seemed like a logical development, despite the fact that the relations between Poland and neighboring Czechoslovakia have not been good.

France and Czechoslovakia are firm allies, the latter long a member of the Little Entente which France inspired just after the war as a protection against Germany.

France has been fighting to hold this group together in the face of German efforts to break it. Relations between Germany and Czechoslovakia, which lives in constant fear of aggression by her big neighbors, have been bad. It would be natural for France to ask that Poland bolster up the position by lending aid to Czechoslovakia if the latter were attacked.

Poland has let it be known that she intends to be neutral in any conflict not affected by agreements such as she has with France. Under the Franco-Polish alliance Poland is bound to come to the aid of France if the latter is attacked without giving provocation; France is similarly pledged.

## Sanford Market Report

**SANFORD MARKET REPORT**  
No. 30  
Friday, Jan. 13, 1937. Phone 41  
Daily report of sales of Florida produce and vegetables at the Sanford State Farmers' Wholesale Market to truckers, carlot assemblies and other dealers for a 24 hour period ending at 6:30 A. M. today as reported by J. O. Michael, Manager to the Federal State Market News Service.

**APPLES**—Fla. and Mich. 1.00-1.25, 1/2 bu. bags, 1.15-1.25, 1/2 bu. bags, 1.15-1.25, 1/2 bu. bags, 1.15-1.25, 1/2 bu. bags, 1.15-1.25.

**BANANAS**—Fla. and Mich. 1.00-1.25, 1/2 bu. bags, 1.15-1.25, 1/2 bu. bags, 1.15-1.25, 1/2 bu. bags, 1.15-1.25.

**CANTALOUPE**—Fla. and Mich. 1.00-1.25, 1/2 bu. bags, 1.15-1.25, 1/2 bu. bags, 1.15-1.25, 1/2 bu. bags, 1.15-1.25.

**CARROT**—Fla. and Mich. 1.00-1.25, 1/2 bu. bags, 1.15-1.25, 1/2 bu. bags, 1.15-1.25, 1/2 bu. bags, 1.15-1.25.

**CUCUMBER**—Fla. and Mich. 1.00-1.25, 1/2 bu. bags, 1.15-1.25, 1/2 bu. bags, 1.15-1.25, 1/2 bu. bags, 1.15-1.25.

**EGG**—Fla. and Mich. 1.00-1.25, 1/2 bu. bags, 1.15-1.25, 1/2 bu. bags, 1.15-1.25, 1/2 bu. bags, 1.15-1.25.

**LETTUCE**—Fla. and Mich. 1.00-1.25, 1/2 bu. bags, 1.15-1.25, 1/2 bu. bags, 1.15-1.25, 1/2 bu. bags, 1.15-1.25.

**POTATTO**—Fla. and Mich. 1.00-1.25, 1/2 bu. bags, 1.15-1.25, 1/2 bu. bags, 1.15-1.25, 1/2 bu. bags, 1.15-1.25.

**SPINACH**—Fla. and Mich. 1.00-1.25, 1/2 bu. bags, 1.15-1.25, 1/2 bu. bags, 1.15-1.25, 1/2 bu. bags, 1.15-1.25.

**TOMATO**—Fla. and Mich. 1.00-1.25, 1/2 bu. bags, 1.15-1.25, 1/2 bu. bags, 1.15-1.25, 1/2 bu. bags, 1.15-1.25.

**WATERMELON**—Fla. and Mich. 1.00-1.25, 1/2 bu. bags, 1.15-1.25, 1/2 bu. bags, 1.15-1.25, 1/2 bu. bags, 1.15-1.25.

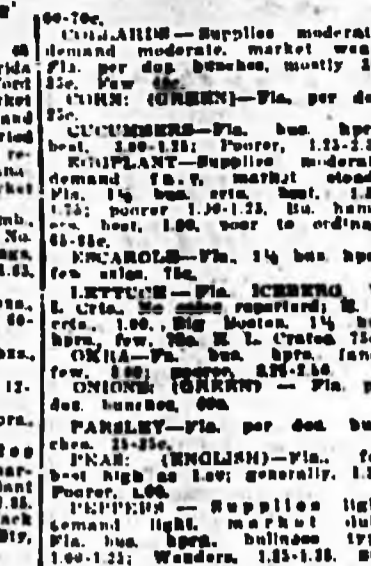
## Governor Cone Praises Efforts Of County Fair

Continued from Page One  
Gov. Cone's communication was one of praise for efforts which made the fair possible, and, similar to Cone's letter, pointed out the advantages of exhibitions in publicizing the resources of a section.

Yesterday Gov. D. L. M. Lamm, attorney-general, praised the endeavor being put forth by localities in an attempt to make the '37 an epochal year for Florida.

Sanford files are sponsoring the entire event which includes a midway, automobile shows, poultry exhibitions, live stock shows and other attractions designed to attract tourists from many sections of Florida.

## Play Director



DELAND, Jan. 13.—Edna "Sunny" Alderman of Lakeland will direct one of the four one-act plays which Stetson Players will give in the Little Theater on the University campus tonight at 7:30.

## Call For Teachers Of Economics Is More Than Supply

TALLAHASSEE, Jan. 13.—Of the 250 home economics teachers in Florida's public high schools, 14 percent are graduates of Florida State College for Women.

This information is seen from a check made by the college placement bureau on the official list of home economics teachers of Florida just announced recently by the State department of public instruction.

Florida State College with its 111 graduates who are home economics teachers in Florida has some economic teachers in 59 of the 67 counties in the State.

"Demand for home economics teachers in Florida is greater than the supply," according to Dr. Margaret Reiter Sandel, dean of the School of Home Economics here.

In addition to the teachers of home economics, many other home economics graduates of Florida State College now hold responsible places in school and hospital dietary positions, with public utilities in Florida and other states, and in retailing positions and in administrative positions in the field of nursing.

There are 247 students enrolled in the School of Home Economics this year out of a total enrollment of approximately 1,785, which is the college's largest in history for this time of year.

Miss Annette Sullivan of Oviedo, is a Florida State College graduate teaching Home Economics in Seminole County.

## 60,000 Wanderers Involved In Fight For Chinese Lands

By J. D. WHITE  
PEKING, Jan. 13.—(AP)—The 60,000 wandering Mongol tribesmen who live in Chahar province are unwilling participants in the struggle between invaders from the east and the Chinese defenders of Suiyuan province to the west.

Their ancestral territory has been converted into a battleground as forces of irregular drive southward — supported, China declares, by the Japanese for the purpose of extending Nippon's continental empire.

The country north of Changpei, on the edge of the 5,000-foot-high Inner Mongolian plateau, is today forbidden territory to all but Mongols, Manchukuo troops, and Japanese military officers.

Chinese influence does not extend beyond Changpei, and no travelers except Japanese and Mongols are allowed north of that point. All missionaries have had to leave as the Japanese nucleus at Dolonur, gateway to Jehol on the east, has expanded during the past two years to include the northern two-thirds of Chahar province.

Economically speaking, Chahar is a poor prospect, all except the southern fringe being unfit for intensive farming. Mongol shepherds and cattle, horses and camels raise more than their food and the high herds today just as they did 700 years ago. The land will not support anything above such a pastoral economy.

But it is a far cry from the "modern" Mongol to his fierce ancestor whom not even the great wall of China could stop.

Ridden by disease, dominated economically by Japanese, bossed politically by Japanese, virtually leaderless and held in ignorance by the thousands of superstitious lama-priests who in some districts compose 25 percent of the adult population, the Mongol today is but a helpless shadow of his forefather.

Once a wealthy region owing to the vast caravan trade which passed through it, Inner Mongolia is today isolated from the world, and its pastoral inhabitants have fallen far behind the advance of civilization.

With the caravan trade gone, the Mongols are reduced to sheep and cattle raising. Being nomads, they prefer to let Chinese who have settled along the southern fringe of Chahar raise what goods they need. They have little to sell and live in constant poverty. After a hard winter such as that of last year which killed off 90 percent of the stock in some districts, they suffer untold hardships from famine.

## Robert's Grocery and Meat Market

Phone 39 223 E. 1st St. Free Delivery

Fresh Oysters—Fla. and Baltimore  
Fresh Dressed Hens and Fryers  
Our Own Brand Coffee, ground fresh while you wait

Fig, Pears & Peaches	25c	STEW	Pound	18c
Bartlett PEARS	15c	HAMS	Pound	20c
"SMACKLETS" Can	10c	ROAST	Pound	21c
Kipper Snacks Can	5c	ROAST	Pound	21c
ROAST	Pound	BACON	Pound	29c
ROAST	Pound	LIVER	Pound	25c
STEW	Pound			

## TARIFF OFFICIAL DIES

WASHINGTON, Jan. 13.—(AP)—Thomas Page, 70, vice chairman of the Tariff Commission, died Wednesday at the University of Virginia Hospital at Charlottesville.

## ENGLISH'S GULF STATION

1st and French  
"Where Service Counts"

The Gas that has the Power

TRY, TO KNOW!  
We can talk about pop, smoothness, extra-mileage; but it won't mean a thing—(til) you t-r-y, and thrill to, our great Gas! One tankful will show you more than a newspaper page can describe. Almost all our trade came to us on this "Show me!" basis—and continued as our regular, amazingly delighted customers.  
Phone 9121

## Dozier & Gay's Quality Paints

"Best For The South"

You'll be surprised at how economically you can paint your home with Dozier & Gay's Quality products. They give you the greatest paint value for your dollar.

Stanley-Rogers Hardware Co.  
214 Sanford Avenue

## McKee Auto Supply

100 West 1st Street Phone 135

## Robert's Grocery and Meat Market

Phone 39 223 E. 1st St. Free Delivery

Fresh Oysters—Fla. and Baltimore  
Fresh Dressed Hens and Fryers  
Our Own Brand Coffee, ground fresh while you wait

Fig, Pears & Peaches	25c	STEW	Pound	18c
Bartlett PEARS	15c	HAMS	Pound	20c
"SMACKLETS" Can	10c	ROAST	Pound	21c
Kipper Snacks Can	5c	ROAST	Pound	21c
ROAST	Pound	BACON	Pound	29c
ROAST	Pound	LIVER	Pound	25c
STEW	Pound			

## TARIFF OFFICIAL DIES

WASHINGTON, Jan. 13.—(AP)—Thomas Page, 70, vice chairman of the Tariff Commission, died Wednesday at the University of Virginia Hospital at Charlottesville.

## ENGLISH'S GULF STATION

1st and French  
"Where Service Counts"

The Gas that has the Power

TRY, TO KNOW!  
We can talk about pop, smoothness, extra-mileage; but it won't mean a thing—(til) you t-r-y, and thrill to, our great Gas! One tankful will show you more than a newspaper page can describe. Almost all our trade came to us on this "Show me!" basis—and continued as our regular, amazingly delighted customers.  
Phone 9121

## Dozier & Gay's Quality Paints

"Best For The South"

You'll be surprised at how economically you can paint your home with Dozier & Gay's Quality products. They give you the greatest paint value for your dollar.

Stanley-Rogers Hardware Co.  
214 Sanford Avenue

# Seminole Cagers Meet Orlando Here Tonight

## Celery Feds Out To Score Fourth Consecutive Win

### Battle Will Be First For Visitors; B's Play Preliminary

With three consecutive wins chalked up for their record in 1937, the Seminole High School basketball team will take to the boards of the Celery Feds tonight at 8:00 o'clock in a battle which promises to be a hot one. The Orlando High School team, coached by Coach Leonard McLucas, will meet the Celery Feds in a preliminary game at 7:30 o'clock.

The McLucas-coached team, after opening the season by defeating the Ocala Wildcats by a 20-20 score and then trouncing Winter Park on the latter's court by a 27-20 margin, the Celery Feds followed up with a 25-23 win over Sarasota in the local contest.

Should the local combination prove this evening's test successful, they should go through the season undefeated, according to the belief of the majority of their followers. However, with Orlando presenting a veteran squad, and considering the fact that a bitter local rivalry exists all the harder, the Celery Feds may get their first taste of the bitter drugs of defeat tonight.

It will be the first contest for the state champions of last year who have two members of the team remaining, Hagar and Wadsworth. Coach Walter B. Cooper is planning to use Chinky Cooper and Monday Arnold at centers, Jack Hagar at center, and Williams and Wadsworth as guards in his starting lineup. He may call on Keilhen or Trapp, Edwards, Ibell, center, or Robinson or Hanson, guards, to fill one of the starting positions in a last minute change.

Coach Leonard McLucas will

# Eckersons Top Lake Mary To Keep Leadership

## St. Johns Down Guardsmen 19-8, In City League Contest

### Rivermen's Five Edge Into Second Place Of Floor Loop Here

which calls for contests every Wednesday and Friday evening. Next Wednesday's slate lists the St. Johns against the league leading Eckersons in the first game while the National Guards face another tough test in the form of the High school U squad in the second contest.

Last night's lineup: St. Johns—F. J. White, F. Altman, C. E. Eola, C. G. Kelly, G. Hester. Eckersons—F. J. White, F. Altman, C. E. Eola, C. G. Kelly, G. Hester.

The St. Johns and the Guards tangled in the first game of the evening with the rivermen coming out on the long end of a 19-8 count after a nip and tuck first half battle.

After playing scoreless in the first few minutes, the team finally broke the ice as the Guards scored from the field but the latter could not hold their lead, trailing 6-3 at the end of the quarter. The second period saw the Guardsmen outscoring the St. Johns, five to two, to send the count to 8-7 with the latter leading.

In the third quarter, the Guardsmen, playing their first game with an inexperienced squad, failed to stand the pace and were outscored seven to one to give the rivermen a 15-8 edge after which the latter counted four times in the last quarter to end the scoring.

Whitten and Altman, with eight points each, led the victors while three men took care of all the scoring for the losers as Echols and Howell each scored three points and Strauss two.

A rough and tumble battle resulted in a 22-13 win for the Eckersons over the St. Johns. Mary team as Eckerson himself led his crew to victory by scoring 13 of the 22 points in the victorious aggregation.

Leading 7-4 at the end of the first quarter, the Eckersons fell down in the second period as the visitors came within one point of a tie, trailing 9-8 at half time.

Bursting loose with shots from all portions of their court, the Eckersons managed to acquire an 18-10 advantage over the opposition in the third quarter, but were held evenly in the last frame, each club scoring three points.

Morrisette with five points and Hatch with four, were the main scoring cogs of the Lake Mary club.

City league teams will not see action again until next Wednesday evening when they begin playing their regular schedule.

## Spotlights of Sport

This week's issue of the St. Louis Sporting News, baseball's more or less official newspaper, carries a single column picture of Eddie Gilliland, who resigned as president of the Florida State League to take a post with the St. Louis Browns. The News carries a nice little story concerning Eddie's past work, giving him a nice send-off. Eddie's official title will be vice-president of the San Antonio Club as well as any other farms which the Browns may acquire. In the averages of the Sally League, just published this week, we note the names of a few of the boys whom we know in the north when they played for members of the Penn State Association. One in particular, Lee Gamble, who played for Jeannette in the Keystone state's loop, rated third in batting in the Sally.

## Don J Noses Out Favorites In Ninth Race At Longwood

Hardly managing to outpace Saur Sing in the last stretch while Ann Faith, racing with a loose muzzle was closing in fast, Don J, four-year-old son of Hamarian and Miss July, came through with honors in the featured ninth, the future, at the Longwood track of the Sanford-Kennel Club last night.

My Granna, in good position at the back stretch, was outpaced on the final turning, having waited too long to get to the final spurt.

Favored in the ninth tonight are Flying Toll, Speedy James and Big Boy Blue while the only double favorites are U. S. Honda and Ramona G.

## Don Budge Favored To Cop Honors In TampaNet Tournery

TAMPA, Jan. 15.—Tennis fans of Florida will have an opportunity to witness the nation's highest ranking net stars here Saturday and Sunday when the thirteenth annual Dixie Tournament, singles and doubles, goes into the semi-final and final stages.

Donald Budge, Oakland, California, ranked number one among America's net stars, is favored to cop the title.

The tournament, with thirty-two entries, began here on the beautiful Davis Islands clay courts Tuesday.

Finals in both singles and doubles will be played beginning at 2 P. M. Sunday.

## Slain Bride

Mrs. Mary Robinson Case (above), 25-year-old bride, was found dead in the bathtub in her New York apartment—the victim of a vicious assault who beat and strangled her. (Associated Press Photo)

## Don J Noses Out Favorites In Ninth Race At Longwood

### Winner Outqueezes Saur Sing And Ann Faith In Feature

Hardly managing to outpace Saur Sing in the last stretch while Ann Faith, racing with a loose muzzle was closing in fast, Don J, four-year-old son of Hamarian and Miss July, came through with honors in the featured ninth, the future, at the Longwood track of the Sanford-Kennel Club last night.

My Granna, in good position at the back stretch, was outpaced on the final turning, having waited too long to get to the final spurt.

Favored in the ninth tonight are Flying Toll, Speedy James and Big Boy Blue while the only double favorites are U. S. Honda and Ramona G.

### Announcing SANFORD FLYING 2 CLUB

You can now learn to fly at greatly reduced rates by using the CLUB PLAN

Rates as low as \$2.25 Per Lesson

Further Details can be obtained at the Sanford Airport

### Homer's Soda Shoppe

First and Sanford Ave. (Formerly Baggett's)

SPECIALS THIS WEEK

Pure Apple 29¢  
Tooth Brush 29¢  
(Any Style)

Rubbing Alcohol qt. 23¢  
Alcohol qt. 23¢  
Milk of Magnesia 1/2 pt. 20¢  
Micro 65¢  
(Pt. 40¢)

Complete Eveready Flashlights 59¢  
Chromium Plated Watches (Guaranteed) 1.00

Curb Service We Deliver Phone 9117

### Classified Advertisements

1—Announcements  
2—Lost & Found  
3—Automobiles  
4—Real Estate  
5—Miscellaneous for Sale

### ICE CREAM for lunch

A Malted Milk with lunch today will give you more pep to meet the p. m. push. In fact, a Malted Milk is a great accompaniment for lunch all day long.

### ICE CREAM at 3 o'clock

Recess, ICE CREAM RECESS, time out for a 5-cent or a 10-cent a 3, gives you what it takes to finish the day strong. Make it a habit. Begin today with "The Pick-up That Never Lets You Down."

### ICE CREAM on the way home

Don't forget the family... Nothing else so good as a good thing home their favorite kind. It will make a party out of dinner.

### ICE CREAM in the evening

Don't forget the family... Nothing else so good as a good thing home their favorite kind. It will make a party out of dinner.

### KILL THE COLD WHERE IT LIVES

Get the RED CROSS COLD KIT

RED CROSS COLD KIT

### 666 PREVENTION

LIQUID - TABLETS - SALVE - NOSE DROPS USE AS A PREVENTION

Place 666 Salve or 666 Nose Drops in nostrils night and morning and take 666 Liquid or 666 Tablets every morning.

### 666 PREVENTION

LIQUID - TABLETS - SALVE - NOSE DROPS USE AS A PREVENTION

Place 666 Salve or 666 Nose Drops in nostrils night and morning and take 666 Liquid or 666 Tablets every morning.

### LEGAL NOTICE

IN CIRCUIT COURT, NINTH JUDICIAL CIRCUIT, SEMINOLE COUNTY, STATE OF FLORIDA.

GEORGE E. BLACK, Plaintiff.

W. J. VARN and ANNA D. VARN, his wife, VIRGINIA-CAROLINA CHEMICAL COMPANY, Corporation, Defendants.

NOTICE OF MARSHY'S SALE. Notice is hereby given that under a decree of foreclosure and final decree of foreclosure and sale entered in the Circuit Court of Seminole County, Florida, dated 6th day of January 1937, wherein George A. Black as Plaintiff, and W. J. Varn and Anna D. Varn, his wife, Virginia-Carolina Chemical Company, a Corporation, Frank E. Holmes and A. Smith, General Liquidator of the Bank of Orlando, are the defendants, the undersigned Special Master will on Monday, the 1st day of February 1937, offer for sale and sell during the legal hours of day, in front of the Court House

### NICK'S Liquor Store

309 E. 1st St.

The Best In LIQUORS GINS WINES WHISKIES

A Complete Variety To Select From

### SEMIMOLE CREAMERY CO.

315 East 1st St. Phone 634

