











# Dear Abby:

By Abigail Van Buren

**DEAR ABBY:** I have a question about my fiancée's behavior. She has been very kind to me, but she has a habit of making me feel like I am not good enough. I have been told that this is a sign of a neurotic personality. I am not sure if I should break off the engagement or not. Please advise me.

**DEAR ABBY:** I have a question about my fiancée's behavior. She has been very kind to me, but she has a habit of making me feel like I am not good enough. I have been told that this is a sign of a neurotic personality. I am not sure if I should break off the engagement or not. Please advise me.

# Horoscope Forecast

**General Forecasts:**  
Aries: A week of peace and quiet, but a storm is brewing. Be careful of your investments.  
Taurus: A week of peace and quiet, but a storm is brewing. Be careful of your investments.  
Gemini: A week of peace and quiet, but a storm is brewing. Be careful of your investments.  
Cancer: A week of peace and quiet, but a storm is brewing. Be careful of your investments.  
Leo: A week of peace and quiet, but a storm is brewing. Be careful of your investments.  
Virgo: A week of peace and quiet, but a storm is brewing. Be careful of your investments.  
Libra: A week of peace and quiet, but a storm is brewing. Be careful of your investments.  
Scorpio: A week of peace and quiet, but a storm is brewing. Be careful of your investments.  
Sagittarius: A week of peace and quiet, but a storm is brewing. Be careful of your investments.  
Capricorn: A week of peace and quiet, but a storm is brewing. Be careful of your investments.  
Aquarius: A week of peace and quiet, but a storm is brewing. Be careful of your investments.  
Pisces: A week of peace and quiet, but a storm is brewing. Be careful of your investments.

# Jacoby On Bridge

# Jacoby and Son

South's three diamond opening in the V.A. was a surprise. It was effective in setting up a trick for the ace of clubs. South was not sure if it was the best, but it was a good try. North's ace of clubs was a surprise. It was effective in setting up a trick for the ace of clubs. South was not sure if it was the best, but it was a good try. North's ace of clubs was a surprise. It was effective in setting up a trick for the ace of clubs. South was not sure if it was the best, but it was a good try.

# Polly's Pointers

# By Polly Cramer

**DEAR POLLY:** I have a question about my fiancée's behavior. She has been very kind to me, but she has a habit of making me feel like I am not good enough. I have been told that this is a sign of a neurotic personality. I am not sure if I should break off the engagement or not. Please advise me.

**DEAR POLLY:** I have a question about my fiancée's behavior. She has been very kind to me, but she has a habit of making me feel like I am not good enough. I have been told that this is a sign of a neurotic personality. I am not sure if I should break off the engagement or not. Please advise me.

# New Laws Discussed For C of C

**By Violet Beckhorn**  
New traffic safety laws passed recently by the State Legislature were discussed by Hal Lee of the Florida Highway Patrol at the April meeting of the Lake Mary Chapter of Commerce.



# The Outdoor Season Is Here. Sell Outdoor Equipment With Herald Want Ads!

**BORN LOSER**  
WELL, I SUPPOSE IF YOU PUT IT THAT WAY...

**1. Male Help Wanted**  
Wanted for immediate employment. Call 1-800-555-1212.

**2. Home For Sale**  
Beautiful home in the suburbs. Call 1-800-555-1212.

**3. Jobs**  
Various positions available. Call 1-800-555-1212.

**4. Real Estate**  
Properties for sale in various areas. Call 1-800-555-1212.

**5. Services**  
Professional services available. Call 1-800-555-1212.

**6. Vehicles**  
Cars and trucks for sale. Call 1-800-555-1212.

**7. Education**  
Courses and classes available. Call 1-800-555-1212.

**8. Health**  
Medical services and products. Call 1-800-555-1212.

**9. Entertainment**  
Books, movies, and music. Call 1-800-555-1212.

**10. Miscellaneous**  
Various other items for sale. Call 1-800-555-1212.

**11. Real Estate**  
Properties for sale in various areas. Call 1-800-555-1212.

**12. Jobs**  
Various positions available. Call 1-800-555-1212.

**13. Services**  
Professional services available. Call 1-800-555-1212.

**14. Vehicles**  
Cars and trucks for sale. Call 1-800-555-1212.

**15. Education**  
Courses and classes available. Call 1-800-555-1212.

**16. Health**  
Medical services and products. Call 1-800-555-1212.

**17. Entertainment**  
Books, movies, and music. Call 1-800-555-1212.

**18. Miscellaneous**  
Various other items for sale. Call 1-800-555-1212.

**19. Real Estate**  
Properties for sale in various areas. Call 1-800-555-1212.

**20. Jobs**  
Various positions available. Call 1-800-555-1212.

**21. Services**  
Professional services available. Call 1-800-555-1212.

**22. Vehicles**  
Cars and trucks for sale. Call 1-800-555-1212.

**23. Education**  
Courses and classes available. Call 1-800-555-1212.

**24. Health**  
Medical services and products. Call 1-800-555-1212.

**25. Real Estate**  
Properties for sale in various areas. Call 1-800-555-1212.

**26. Jobs**  
Various positions available. Call 1-800-555-1212.

**27. Services**  
Professional services available. Call 1-800-555-1212.

**28. Vehicles**  
Cars and trucks for sale. Call 1-800-555-1212.

**29. Education**  
Courses and classes available. Call 1-800-555-1212.

**30. Health**  
Medical services and products. Call 1-800-555-1212.

**31. Entertainment**  
Books, movies, and music. Call 1-800-555-1212.

**32. Miscellaneous**  
Various other items for sale. Call 1-800-555-1212.

**33. Real Estate**  
Properties for sale in various areas. Call 1-800-555-1212.

**34. Jobs**  
Various positions available. Call 1-800-555-1212.

**35. Services**  
Professional services available. Call 1-800-555-1212.

**36. Vehicles**  
Cars and trucks for sale. Call 1-800-555-1212.

**37. Education**  
Courses and classes available. Call 1-800-555-1212.

**38. Health**  
Medical services and products. Call 1-800-555-1212.

**Beauty After Forty**  
Edith Thompson's skin cream.

**Beauty After Forty**  
Edith Thompson's skin cream.

**FOR SALE**  
5,000 SQUARE FEET  
CHOICE DOWNTOWN LOCATION  
FORMER LOCATION OF THE SANFORD HERALD  
NEXT DOOR TO  
FLORIDA STATE BANK  
204 WEST FIRST STREET  
SEE YOUR BROKER

### TB Unit Planning Confab

Second Florida Conference on Employment and Air Pollution, sponsored by the Florida Tuberculosis and Respiratory Disease Association and its medical section, the Florida Tuberculosis Society, will be held Saturday at Tampa. Mrs. Lorraine L. Graham, program administrator for the Central Florida TBDA, announced today.

The keynote address entitled, "Employment and Air Pollution: The State of the Nation," will be given Saturday, at 9 a. m., by Dr. Robert L. Yeager, medical director of Summit Park Hospital, Panama, N. Y., and president of the American Tuberculosis Society.

Other featured speakers at the Saturday opening session will be Dr. Gerald L. Eaton, chief of Pulmonary Section B at the Veterans Administration Hospital in Cleveland, Ohio, and associate professor of medicine at Case Western Reserve University School of Medicine.

GEORGE CAMPER is a leading salesman at Bryan Motors.



WADE PERKINS is proud of the Ford Thunderbird.



JOHN BRUCE demonstrates the Ford Mustang.

### Grand Jury Ends; Seeks Law Passage

Seminole County grand jury after meeting for the past six weeks adjourned Friday with a request to the legislative dele-

### Scientific Study

JOHANNESBURG (AP) — Scientists have begun a study of selected ethnic groups in South Africa as part of the five-year International Biological Program in which 40 countries are taking part. They will examine the various stages of the group in transition from peasant rural life to urban industrial existence.

### Neovices

PITTSBURGH, Pa. (AP) — The burglars who broke into a restaurant safe recently must have been novices. They burned through the safe wall all right but burned the \$100 inside. They did flee with about \$100 in coins.

gation to help pass a new law "clearly" calling for mileage payments for each and every trip made by grand jurors.

In a report on the findings of the citizen jury they "request the local legislative delegation move for passage of a law clarifying wording in Florida Statutes 40.24 concerning payment of mileage for the jury to make it clearly read that mileage will be paid for each and every trip that a juror must make to the court house during his service and requests that the mileage rates, per diem rate be increased to a rate more commensurate with today's standards.

The jury convened March 4 and met on that day, March 5, and 6, reconvened March 19 and met March 20, 22, 26, 27 and April 8 and 12.

According to the report employees of the County Clerk's office and the sheriff's office were sworn to secrecy with regard to all witnesses subpoenaed.

### 'Crises'

PENSACOLA (AP) — The manager of the Panama City Airport and Gov. Claude Kirk's former father-in-law, Clyde Stokes, 77, remained in critical condition early Tuesday morning after suffering a stroke.

The average weight of the St. Bernard dog may be anywhere between 185 and 190 pounds.

**RENT**

A BRAND NEW VICTOR ELECTRIC ADDRESS MACHINE

Add. Subscr. Multi. Also. Total \$199.99

**PRICE \$99.50 ONLY**

**\$10 PER MONTH**

Apply Rental Toward Purchase if Desired

**george stuart**

123 East ROBINSON WILMINGTON, FLORIDA

PURE PARKING — OPEN SATURDAY

Phone Toll FREE from Sanford 688-4428

### Auxiliary Honors Citizen

The Auxiliary to the Delany Fireman's Association honored Mrs. Kathleen Blackford, who with her husband recently became a naturalized American citizen, at the monthly meeting in the Fireman's Recreation Hall.

Mrs. Pierson Little, Americanism chairman, was in charge of the program. Decorations were in red, white and blue.

Mrs. Blackford and her husband and family are new residents of the Delany area, coming here from England.

Members of the auxiliary also conducted a judged Easter Hat Show. Judges were Alice Beatrice Tyson, Mrs. Mattie Gales and Mrs. May McCarthy.

Winners and the various categories were Mrs. Mary Calleri, most practical; Mrs. Tomm Nielsen, prettiest; Mrs. Alice Heibert, fluffiest, and Mrs. Kay Lynn, funniest.

It was announced that Mrs. William Ogden is ordering vanilla for a sales project and that anyone wishing to make purchases should contact her.

Mrs. Cliff Little was welcomed as a new member. Refreshments were served under direction of Mrs. Harry Freeman and Mrs. Thomas Morrissey and the committee, Mrs. Stella Gilbert, Mrs. Sophia Stauderstein, Mrs. Olive Gendel and Mrs. L.E. Freeman. Mrs. Mary Hartwig and Mrs. Gilbert joined.

After the meeting, games were played under direction of Mrs. Thomas Howard and Mrs. Tillie Vetter.

British hunters applied the word jungle—originally Sanskrit—to almost any place they sought game. In India jungle came to refer to rain forests.

Whalen, zone president. A buffet luncheon will be served at noon and following the afternoon session, a tour of Latheran Haven is scheduled.

**Sad Farewell**  
DURBAN, South Africa (AP) — Arthur Reeve was 25 when he took brand new trolley bus number 59 out for its first trip in Durban. Thirty years and a half out for his last run, a sentimental journey down to the beach a million miles later he took it front and back to town.

The bus is to be towed 60 miles to Johannesburg where it will stand in the St. James Hall Museum of Transport. "I shall miss the old girl. I don't mind admitting it—we got a lump in my throat," said Reeve as he climbed down from the cab for the last time.

**Sad**  
Mrs. Marie Torrington, of the Comprehensive Medicine Group at the University of Cape Town, said the family is scattered through the country under at least 25 different surnames.

Each person had to undergo examination of the colon for wart-like growths which indicate cancer will occur between the ages of 45 and 60. Surgery is generally a 100 per cent effective cure, she said. "With the news I bring them, they realize they are no longer the helpless victims of what many regarded as a curse on the family," said Mrs. Torrington.

## Come to Chevron Island.



Answer the call. Chevron Island is just over the horizon. Keep a sharp lookout for the red and blue Chevron pumps. They're full of "Young Ho" spirit for your car. Discover a whole new world of driving pleasure. Fill up with Chevron gasoline. Enjoy extra power, extra performance. That's what a difference it makes wherever you drive. Set your course now for the nearest Chevron Island, south of the Standard sign. You'll find the natives are friendly.

# '68 AUTO SHOW

APRIL 17 - 18 - 19

on display on

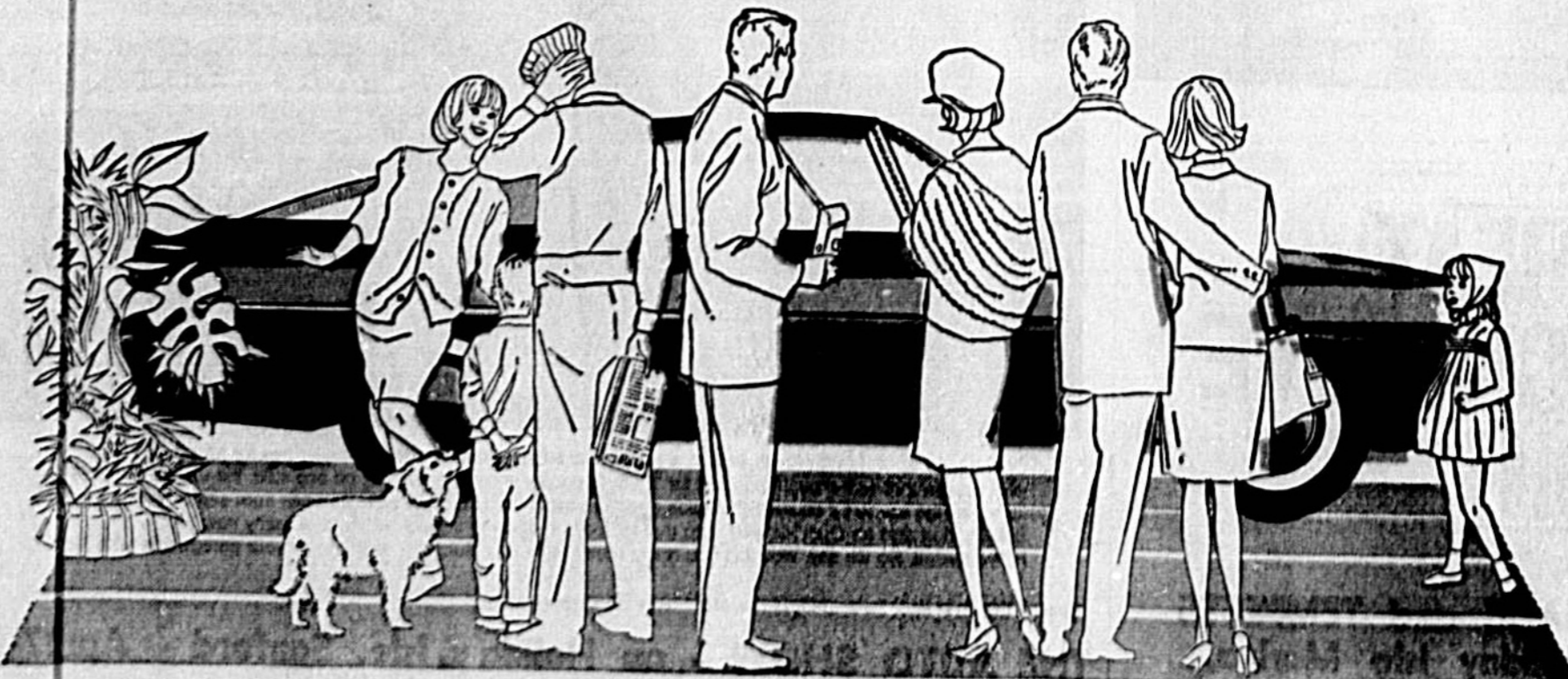
*Holiday Isle*



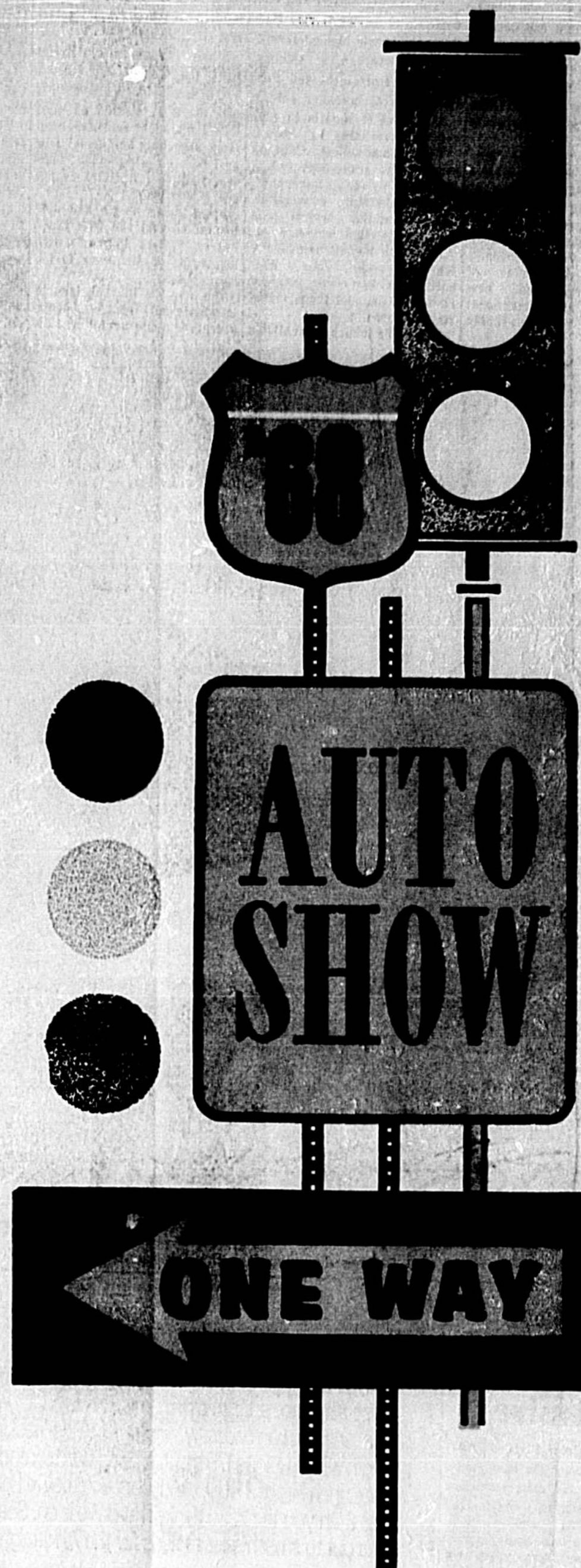
SANFORD'S NEW MILLION DOLLAR MARINA

PRESENTED BY:

## The Sanford Automobile Dealers Association:



- ELLINOR VOLKSWAGEN
- HEMPHILL PONTIAC-BUICK
- HUNT LINCOLN-MERCURY
- JOE CREAMONS INC., CHEVROLET-OLDS-CADILLAC
- ECONOMY CARS — TOYOTA
- SEMINOLE COUNTY MOTORS DODGE
- YOUR RAMBLER DEALER
- STRICKLAND-MORRISON FORD
- JIM LASH CHRYSLER-PLYMOUTH



# The 1968 Pontiac Line Story

The safety, comfort and convenience of driving a new Pontiac are at their highest level in the 1968 line. A General Motors vice president and Pontiac's general manager said.

A new hardtop coupe represents the Grand Prix series. A smaller vertical Pontiac vee crest mounts on the bold center section of the bumper. The Grand Prix front end features twin horizontally mounted headlights that become visible when the lights are turned on.

All parking lamps are below the bumper and are teamed with side marker lamps in one housing to share a common lens that wraps around for side visibility. The parking lamps will be on when the headlights are turned on.

From every angle the 1968 Pontiacs reveal the look which has established Pontiac's styling trends as the ones to follow.

The new peripheral bumper integrates all front and corner lights into one uncluttered design unit. Dual headlights are placed horizontally within the bumper and appear wider apart with the new recessed, adjustable ribbed design of the grille.

A smaller vertical Pontiac vee crest mounts on the bold center section of the bumper.

The Grand Prix front end features twin horizontally mounted headlights that become visible when the lights are turned on.

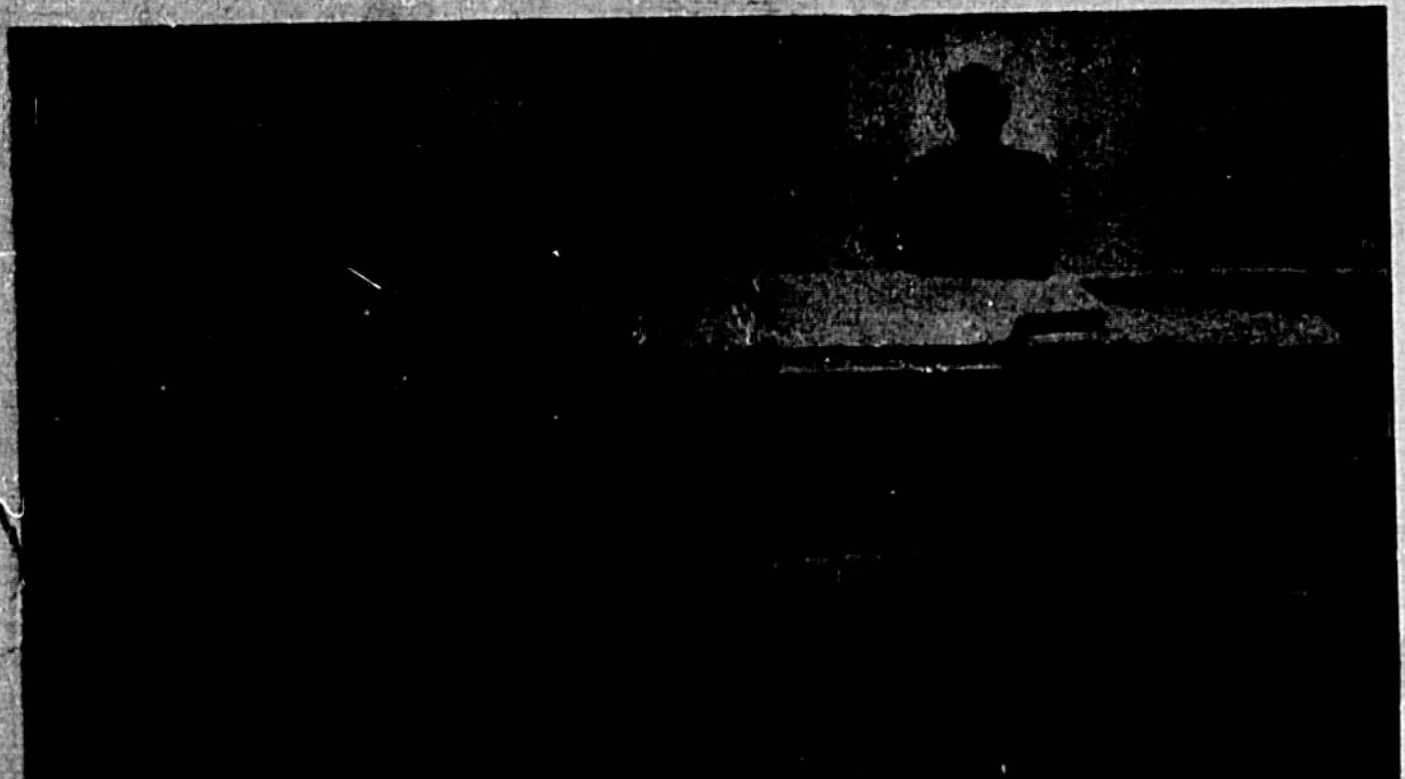
All parking lamps are below the bumper and are teamed with side marker lamps in one housing to share a common lens that wraps around for side visibility. The parking lamps will be on when the headlights are turned on.

From every angle the 1968 Pontiacs reveal the look which has established Pontiac's styling trends as the ones to follow.

The new peripheral bumper integrates all front and corner lights into one uncluttered design unit.



RAY HERRON studies with the Pontiac GTO hardtop coupe.



DAVID SMITH demonstrates the Pontiac Grand Prix.

## Tempest Styling Extensive

Pontiac Motor Division's 1968 Tempests enter the new model year with the most extensive styling changes, engineering improvements and built-in safety since this popular series was introduced seven years ago.

An exclusive energy-absorbing front bumper for the GTO, separates wheelbases for two-door models, increased engine displacement and a new level of interior comfort and protection head a long list of 1968 Tempest, Tempest Custom, LeMans, Safari and GTO features.

For the first time the Tempest will be built on two wheelbases. All two-door coupes and convertibles will have a 112-inch wheelbase and the four-door models and station wagons will be built on a 116-inch base. The wide track has been increased to 56 inches at both the front and rear.

The Pontiac-inspired styling places particular emphasis on the vertical shape, accentuating the long hood, short deck profile. A blending of new roof lines into the rear adds new grace to the overall styling.

Thick absorbing padding across the instrument panel, windshield pillars and along the top of the front seat backs are standard on every model.

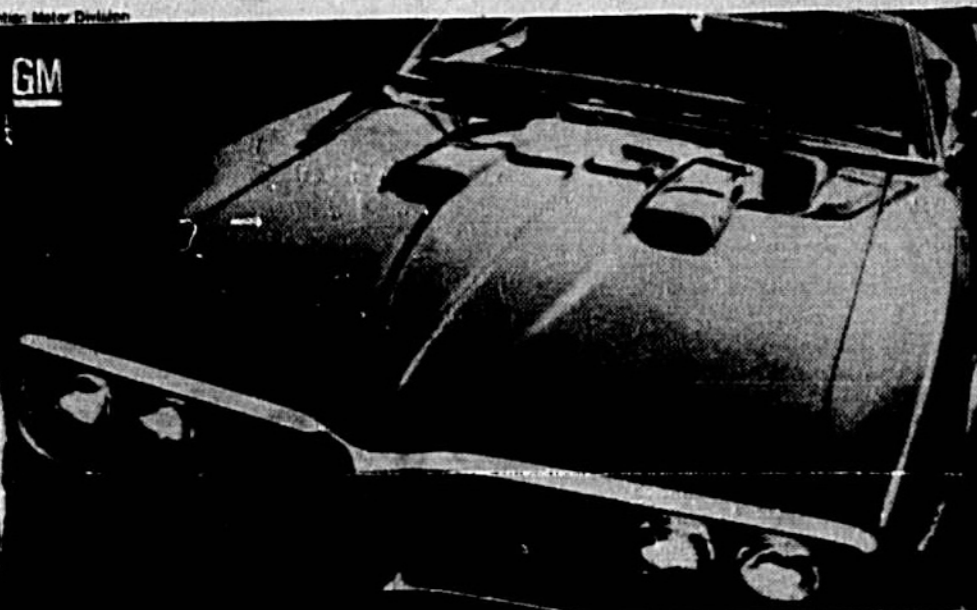
A new sports car atmosphere surrounds our 1968 Tempest. John F. DeLorean, a General Motors vice president and Pontiac's general manager said.

There are 15 models in the four Tempest series. A sports coupe and four-door sedan make up the Tempest series.

The Tempest Custom series offers a sports coupe, hardtop coupe, four-door sedan, four-door hardtop and convertible.

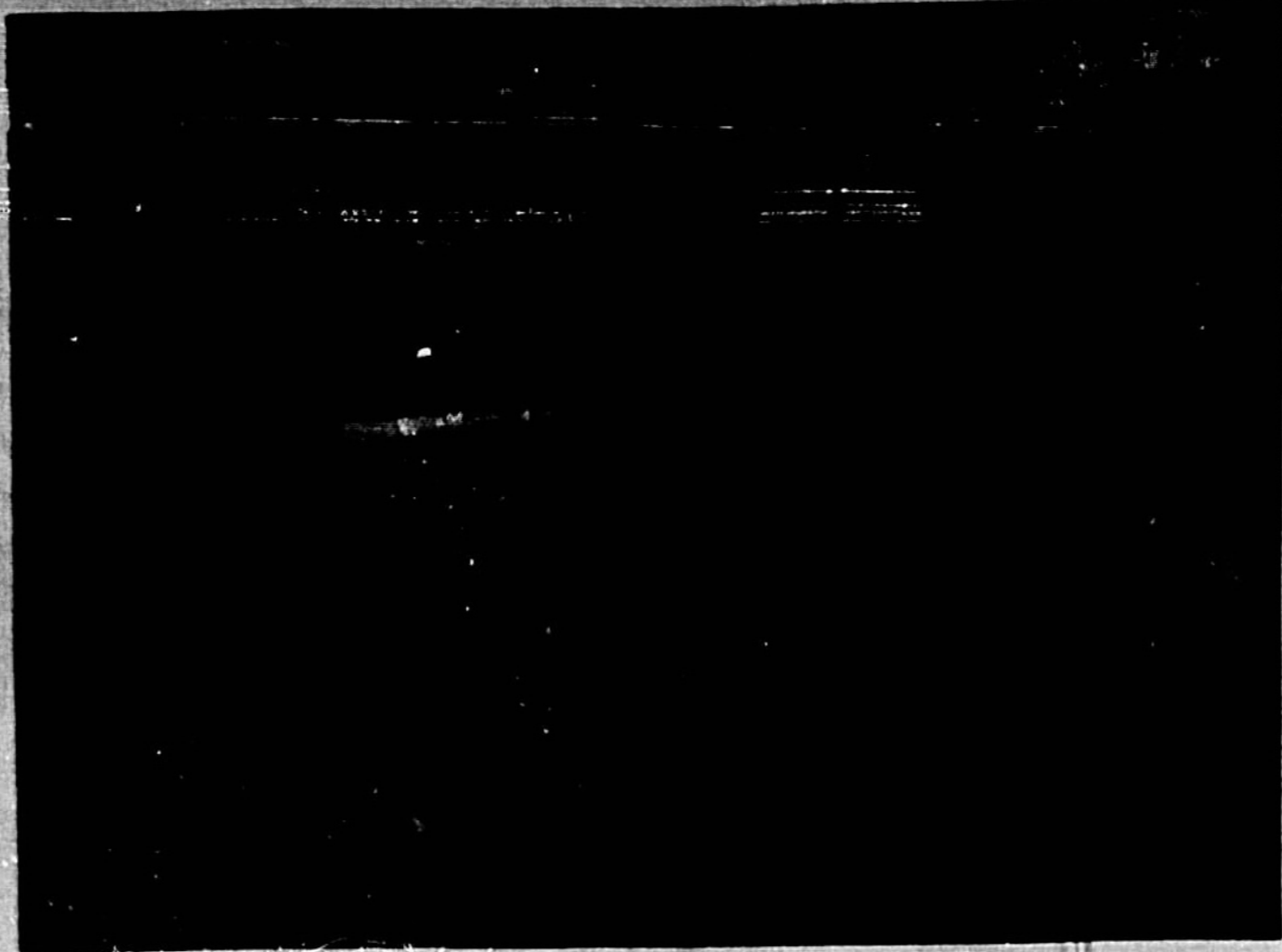
A separate series is the four-door, two-seat Tempest Safari station wagon.

One of the joys of Wide-Tracking in a Pontiac is that it doesn't cost any more than ordinary driving. And with 35 kinds of Pontiacs, you can choose your way of Wide-Tracking. Our five Firebirds begin with a unique 175-hp Overhead Cam six and escalate to the 400 cubic inch Firebird 400. And, because they're Pontiacs, Firebirds cost less than you think. So think. The drive is on. See your Pontiac dealer. He's out to smash sales records for the 7th straight year!

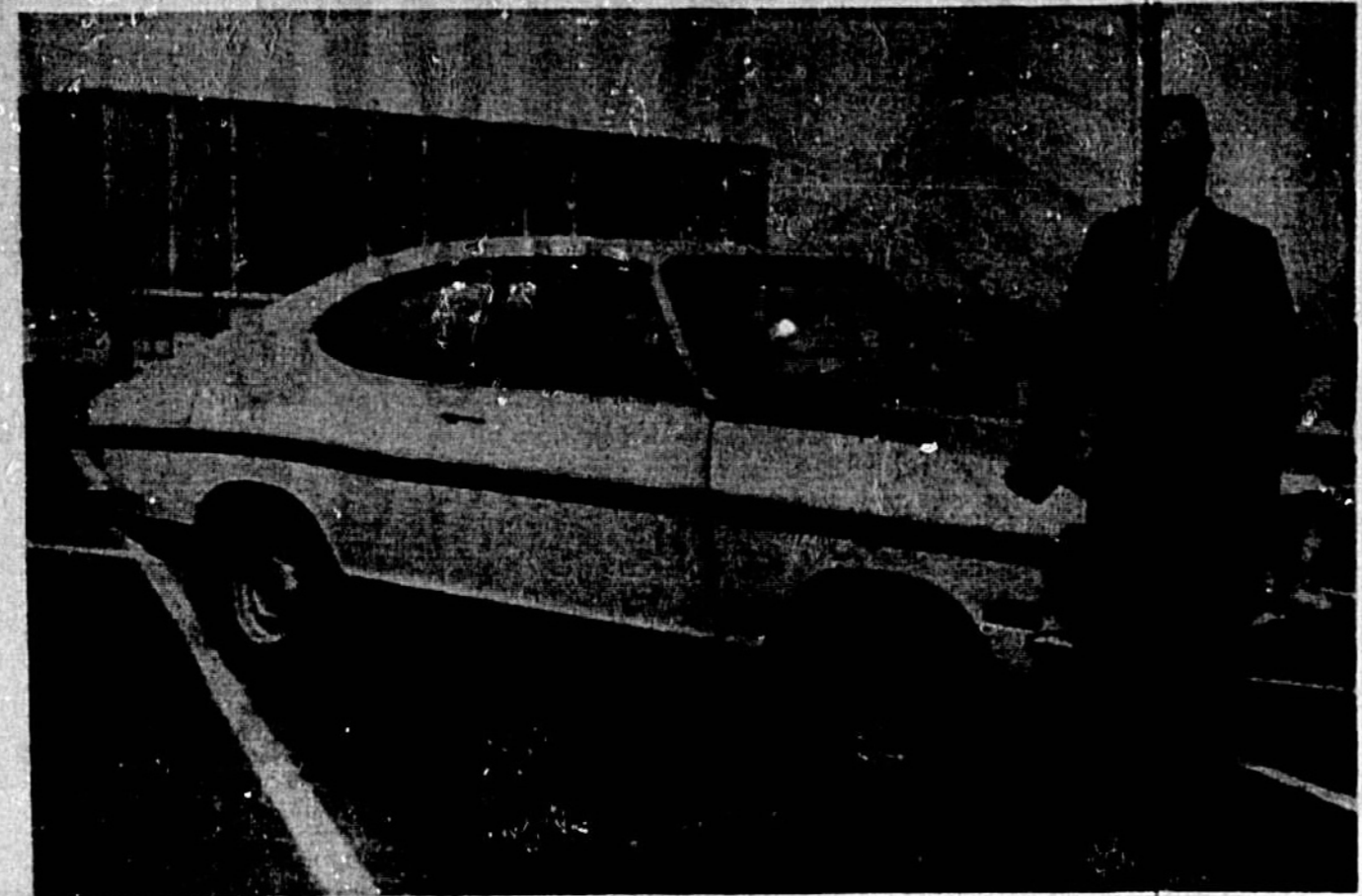


## THE GREAT WIDE-TRACK DRIVE IS ON!

See all the 1968 PONTIACS and TEMPESTS at the AUTO SHOW, Holiday Isle Marina, April 17-19.



WILLIAM HEMPHILL demonstrates the 1968 Buick Riviera.



RICHARD BOWES displays the Opel Rallye Kadett.

# The best way to fill any two-car garage in the country.



Opel Kadett and the new Buick Riviera are a couple suggestions your Buick dealer has for giving your garage that well-thought-out look for 1968. Economy and dependability on one side, the ultimate in personal luxury on the other. Of course the choice doesn't stop at that. You can pick your pair from eight new Buick series and an Opel Kadett lineup that includes everything from a wagon to a flashy new Rallye Kadett. So we say: Wouldn't you really rather have your Buick/Opel dealer fill your garage this year?

See all the new Buicks and Opel Kadetts—now on display at: THE AUTO SHOW - on Holiday Isle, Sanford - April 17-19.

# 1968 Buick Exhibit Is 'Whole Auto Show In Itself'

Buicks in the Auto Show represent so close to the full range of the industry-wide choice of 1968 models, that knowledgeable visitors can shop the Buick exhibit as a whole auto show in itself.

The display represents Buick's full line of 20 models which last year represents about 10 percent of the 387 U. S. models introduced at the start of the '68 model year. Buick's 35 models represent, too, the whole price range covering more than eight of ten owners who will buy new '68 cars.

These Buicks bring completely new bodies for all intermediate-size models and a wide array of new safety and styling features throughout the line.

New styling for Special Deluxe, Skylark and GS models features the contoured sweep-line introduced on the upper series last year, longer hoods and shorter decks, with a shorter wheelbase for two-door models.

Riviera has a new look, front and rear, and Electra, Wildcat and LeSabre have new grilles, hoods, taillights, bumpers, instrument panels and interiors.

All '68 Buicks have new side-marker lamps that turn on and off with headlights and all series have their own styling headlights.

The Special Deluxe's all-new body with new front, rear and side treatment readily distinguishes this series from others in the line. Side marker lamps and identification script and the longest set of hood and front fenders ever used on this series complete a design predominantly the Buick sweep-line.

The Skylark's all-new body emphasizes a shorter rear deck and a longer hood, and the sculptured sweepline predominates the side view. Grille is a continuous loop design, and a new rear bumper, offering impact protection and smarter styling, encloses the taillights. Skylark Custom models have distinguishing ornamentation, rear wheels enclosed in fender skirts.

The GS 400 and the GS 350, because of their shorter wheelbase, have a more compact look to body area and longer hood appearance. Open wheel caps, bordered by chrome molding, are featured. Styling identification for either is immediate through ornamentation.

The Sport Wagon has a new grille; a sleek new roof line with added glass area which makes it look over lower, and a fresh new appearance from distinctive taillamp and a rear-bumper treatment. The popular wood-grain side treatment has been continued as an option and a new combination roof rack and back-window air deflector is offered as a dealer option.

The LeSabre has new front-end treatment — two separate horizontal grilles with the hood extension as the divider unique to this series. Taillamps are extended and wrapped around the edge of the rear fenders to provide more dramatic day or night identification.

The Wildcat features new grilles, hoods, bumpers, and a new rear treatment, its appearance



**HEMPHILL Pontiac - Buick**  
Invites You To Attend The  
**AUTO SHOW**  
SANFORD'S HOLIDAY ISLE  
**APRIL 17-18-19**

See the exciting  
**1966 PONTIAC & BUICK DISPLAY**  
Hardtops, Sedans, Convertibles! Economy Cars — Luxury Cars! We Got 'Em All!  
They're Here For Your Viewing Pleasure and Available For Immediate Delivery To You!

INTRODUCING OUR SALES STAFF AND SERVICE MANAGERS

  
**BILL HEMPHILL**  
President

  
**HAROLD WHITTIER**  
Sales Manager

  
**RAY HERRON**  
Salesman

  
**DICK BOWES**  
Salesman

  
**DAVID SMITH**  
Salesman

  
**BURNELLE BALL**  
Paris Manager

  
**JESSE HARRIS**  
Service Manager

... A team that assures you of courteous and competent service from selection and purchase to the regular care any good automobile deserves.

AFTER THE SHOW . . . VISIT US AT OUR NEW LOCATION:  
**1501 W. FIRST ST. PH. 322-0321**

THE HOME OF  
**UNEXCELLED SERVICE**  
**HEMPHILL**  
PONTIAC  
BUICK  
TEMPEST/Specialty  
OPEL

"We Care About You . . .  
We Care About Your Car"

FAMOUS LEGS of Marlene Dietrich are mostly covered by boots although minkskirt reveals knees. The actress was Australia for an Arts Festival.



# Montego Highlights Show



ED HUNT (right) delivers the keys to this 1968 Lincoln to George Gonyea, formerly of Sanford.

The Mercury Montego — a new name for a new car — is the lowest priced luxury car in the Mercury family. It's a full line of 23 models. The Montego and all other Lincoln-Mercury cars will be introduced to the public in dealerships on September 22.

"Lincoln-Mercury Division enters the 1968 model year with new products designed to accelerate the surge which is carrying us to an all-time model year sales record," said E. F. (Gene) Lane, Ford Motor Company vice president and Lincoln-Mercury Division general manager.

"We look to even greater acceptance of our new cars in 1968, with the new Montego line supplying a great deal of impetus," Mr. Lane said. "New and sporty Mercury sweep-back hardtops, new excitement from the Cougar with four models, and fresh appeal in the Lincoln Continental should propel us to even greater sales success in the year ahead," he said.

Led by the distinctive Lincoln Continental, Lincoln-Mercury's Division's cars are designed and equipped specifically for today's luxury-oriented market. With 18 models in the standard Mercury line, the new Montego line, four Cougars and two Continentals, the Lincoln-Mercury Division line-up presents a total of 35 new models, all with the fine car touch.

Three new two-door hardtops with sporty, sweeping roof lines highlight the standard Mercury line. Mercury's relationship to the Lincoln Continental is dramatized by the similarity of its crisp, die-cast grille and power thrust hood to that of the Continental.

Front and rear seat belts are standard on all vehicles. Two front seat shoulder belts with convenient storage clips are standard on all models, except convertibles.

Vehicle side markers — lights on the front fenders and reflector plaques or lights at the rear — to help define the car sides at night are an integral part of all models for 1968.

All vehicles are equipped with an exhaust emission control system, either Thermactor or IMCO (Improved Combustion), to reduce substantially the emission of hydrocarbons and carbon monoxide gas.

Anti-theft provisions include a serial number identification



OLD GLORY American Legion Post 783 named Chris Butterworth (right) as delegate to Boys State and Alan Clark as alternate. With them is L. L. Cox post chaplain. (Herald Photo)



MARK MURLEY and Elaine Dutz, reigned as king and queen at recent Hobo Day sponsored by student council at St. Luke's Christian Day School in Shullsburg.

The success car of the year — Mercury Cougar — stabs an even larger share of the specialty car market with four models and a subtle but effective upgrading for 1968. Newest Cougar on the gravel is the 7.0 Liter GT-2, designed with the luxury appointments of a grand touring car and the muscular appeal of a competition car.

A distinctive, more formal roof on the Lincoln Continental Coupe, new front end, exciting instrumentation and luxurious interiors give a fresh appeal to the Lincoln Continental without violating the car's traditional continuity of design. Acknowledged to be America's most distinguished motor car, the Lincoln Continental presents a four-door sedan and the Coupe for 1968.

Ford Motor Company's Life-guard Design Safety Features are incorporated in all Lincoln-Mercury Division's new cars. These include new energy-absorbing steering columns and steering wheel and safety-designed arm rests and door handles. Dual hydraulic brake system and warning light, introduced last year, are continued.

The striking resemblance which the Montego bears to the standard Mercury is emphasized by its forward-thrusting power dome hood, full-width grille and dual horizontal headlights. The rear design relates directly to the Mercury family, with traditional Mercury taillamp assemblies.

The Montego line has two different two-door hardtop designs — one with formal roof and a contemporary rear quarter window which give a sleek appearance to the roof line. The other is a fastback design featured by the Cyclone. The side windows on both of the hardtops and the convertible are ventless.

The sporty Cyclone and Cyclone GT fastbacks have a shorter, squared-off rear design that conveys unmistakably the message "performance preview." The Cyclone has its own distinctive grille and a V-8 engine as standard.

A wide range of engine and transmission combinations is offered by Montego, ranging from the standard 200-cubic-inch six to a 47-cubic-inch V-8. Ford Motor Company's new 302-cubic-inch engine with two-barrel carburetion is the base V-8.

The Montego line offers a total of eight two-door hardtops including a Comet Sports Coupe and the Cyclone and Cyclone GT fastbacks, three four-door sedans, a convertible and a station wagon.

The classic appearance of the Mercury for 1968 is complemented by a distinctive new vertical parking and turn signal lighting unit especially designed to perform also as a side marker lamp.

In addition to the new, sweeping two-door hardtop roofline in the Park Lane, Montclair and Monterey series, Mercury also offers a two-door hardtop with formal, vinyl-covered roof in the top-of-the-line Marquis.

Attractive trim schemes and new styles using both cloth and vinyl and all-vinyl upholstery enhance Mercury's reputation for a distinctively high level of luxury. The Broughams have twin-comfort lounge front seats, individually adjustable.

The outstanding success of the Mercury Cougar in its first year has resulted in the opening of a second assembly line to build the 1968 models. The new line will be in Ford Motor Company's plant at San Jose, Calif., to give better delivery to West Coast customers. Cougars will continue to be built at the Dearborn, Mich., assembly plant, only source for the 1968 model.

The clean line Cougar ranks third among the industry's 32 specialty cars and U. S. sales will exceed 125,000 by the end of the model year.

The Cougar has a new, broad stance with E7614 wide tread steel standard. Optional deluxe

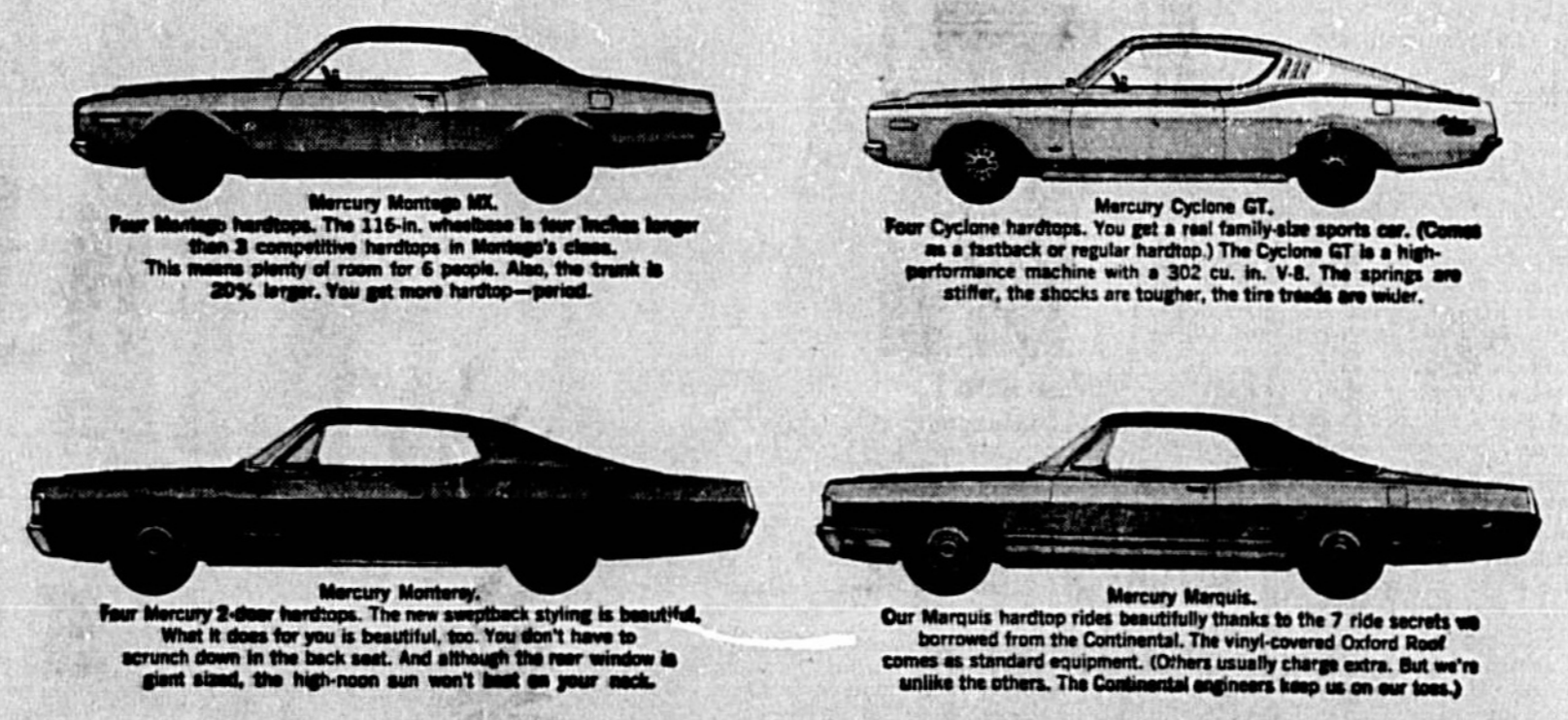


JACK LIVERLY drives the Mercury Parklane Brougham.



JIM BENTON displays the Cougar.

## Mercury's got it. The biggest choice of 2-door hardtops in its class.



The Fine Car Touch inspired by the Continental.

See Mercury at the Auto Show — Sanford's Holiday Isle — April 17-18-19.

**HUNT Lincoln-Mercury, Inc.**  
"THE HOME OF CHAMPIONS"  
109 N. Palmetto Ave. Sanford

# Pride of the '68 SHOW!

Continental Mark III  
From the Lincoln-Mercury Division of  
**FORD MOTOR CO.**

*"The most authoritatively styled decisively individual motor car of this generation"*

THIS MAGNIFICENT AUTOMOBILE HAS BEEN MANUFACTURED FOR US, HAS BEEN SHIPPED AND IS ON ITS WAY TO SANFORD. ABSOLUTELY TOP QUALITY TESTS DELAYED ITS DEPARTURE, BUT WE HOPE IT ARRIVES IN TIME FOR THE SHOW.

SHOULD IT NOT ARRIVE ON TIME, IT WILL BE ON DISPLAY IN OUR DOWNTOWN SHOWROOM MONDAY, TUESDAY, AND WEDNESDAY, APRIL 22-24.

At the Show - see our display, including

Lincoln  
THE ALL NEW MERCURY  
Montego Series

MERCURY  
Cougar  
ALL NEW FULL SIZE  
Mercury Line

EDWIN HUNT  
General Manager

Please accept my personal invitation to see all of these fine cars at the 1968 Auto Show, along with many others we will have on display there.

1968  
**AUTO SHOW**  
AT SANFORD'S  
**HOLIDAY ISLE**  
APRIL 17-18-19

INCLUDES:  
WHITE SIDEWALL TIRES  
DELUXE ALL WEATHER INTERIOR  
TINTED GLASS  
HEATER  
BACKUP LIGHTS  
PADDED INSTRUMENT PANEL  
SEAT BELTS FRONT AND REAR  
DISAPPEARING HEADLIGHTS  
SEQUENTIAL TURN INDICATOR

# \$2700<sup>00</sup>

AT THE AUTO SHOW ONLY

**HUNT LINCOLN INC.**  
"HOME OF CHAMPIONS"  
109 N. PALMETTO AVE. SANFORD  
PH. 322-4884 W. PARK 644-0209

# Safety Products Now Standard In '68 Oldsmobiles

A number of important safety products have been incorporated into the new Oldsmobiles. The new Oldsmobiles are equipped with a variety of safety features. The new Oldsmobiles are equipped with a variety of safety features. The new Oldsmobiles are equipped with a variety of safety features.

The new Oldsmobiles are equipped with a variety of safety features. The new Oldsmobiles are equipped with a variety of safety features. The new Oldsmobiles are equipped with a variety of safety features.

The new Oldsmobiles are equipped with a variety of safety features. The new Oldsmobiles are equipped with a variety of safety features. The new Oldsmobiles are equipped with a variety of safety features.

The new Oldsmobiles are equipped with a variety of safety features. The new Oldsmobiles are equipped with a variety of safety features. The new Oldsmobiles are equipped with a variety of safety features.

The new Oldsmobiles are equipped with a variety of safety features. The new Oldsmobiles are equipped with a variety of safety features. The new Oldsmobiles are equipped with a variety of safety features.

The new Oldsmobiles are equipped with a variety of safety features. The new Oldsmobiles are equipped with a variety of safety features. The new Oldsmobiles are equipped with a variety of safety features.

The new Oldsmobiles are equipped with a variety of safety features. The new Oldsmobiles are equipped with a variety of safety features. The new Oldsmobiles are equipped with a variety of safety features.



FIRST PLACE winners from each den in Pack 642's Pinewood Derby are shown with cars and awards. Front row: Robert Risner and Don Jackson, back row: Carmer Davis, Steve Orzi and Cubmaster Arthur Maheu. (Herald Photo)



## Forest Fire Situation 'Critical'

Sheriff Peter Millot reminds all residents of Seminole County that the present forest fire situation is critical. The woods are dry and the winds are high. Due to the rather low humidity and lack of adequate rainfall, the county's forests are much like a powder keg waiting to be lit. All it takes is for one person to carelessly throw a cigarette out of the car window or leave a trash or campfire burning to ignite a destructive wildfire.

CUB SCOUTS of Pack 642, Luke Mary, held a Pinewood Derby recently. Overall winner Robert Risner is shown with his father, L. Risner and Cubmaster Arthur Maheu.



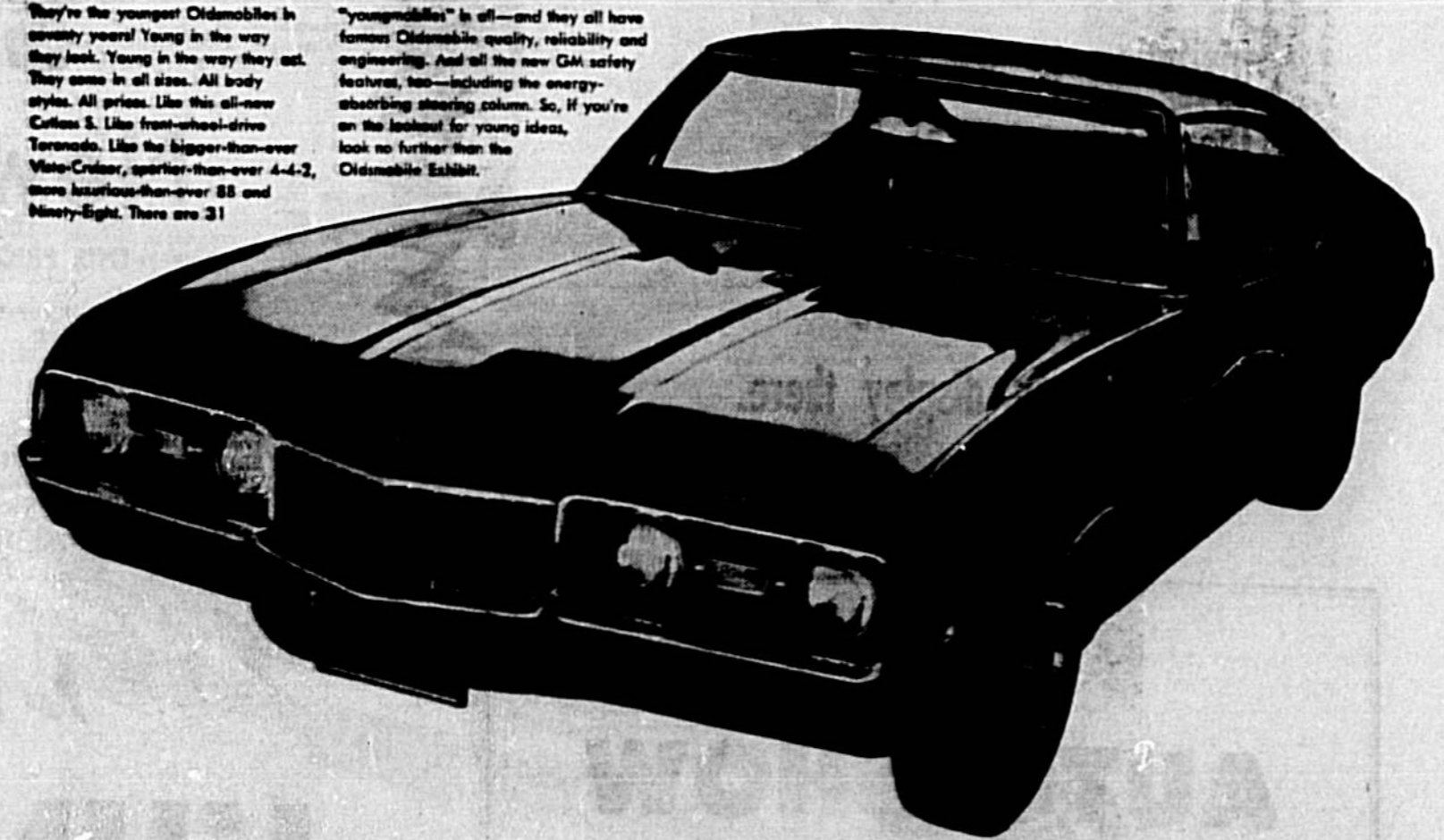
CROWD watches expectantly as cars line up at starting line for Pinewood Derby. Racers are made by Cub Scouts themselves from block of wood. (Herald Photo)



BUCK BUXTON shows off the Impala by Chevrolet.

# Youngest ideas at the Auto Show!

# See the '68 "youngmobiles" from Oldsmobile.



See the Olds Exhibit at THE AUTO SHOW  
 SANFORD'S HOLIDAY ISLE  
 APRIL 17-18-19  
**JOE CREAMONS, Inc.**  
 2215 W. FIRST ST. SANFORD, FLORIDA



# CHEVROLET OLDSMOBILE CADILLAC

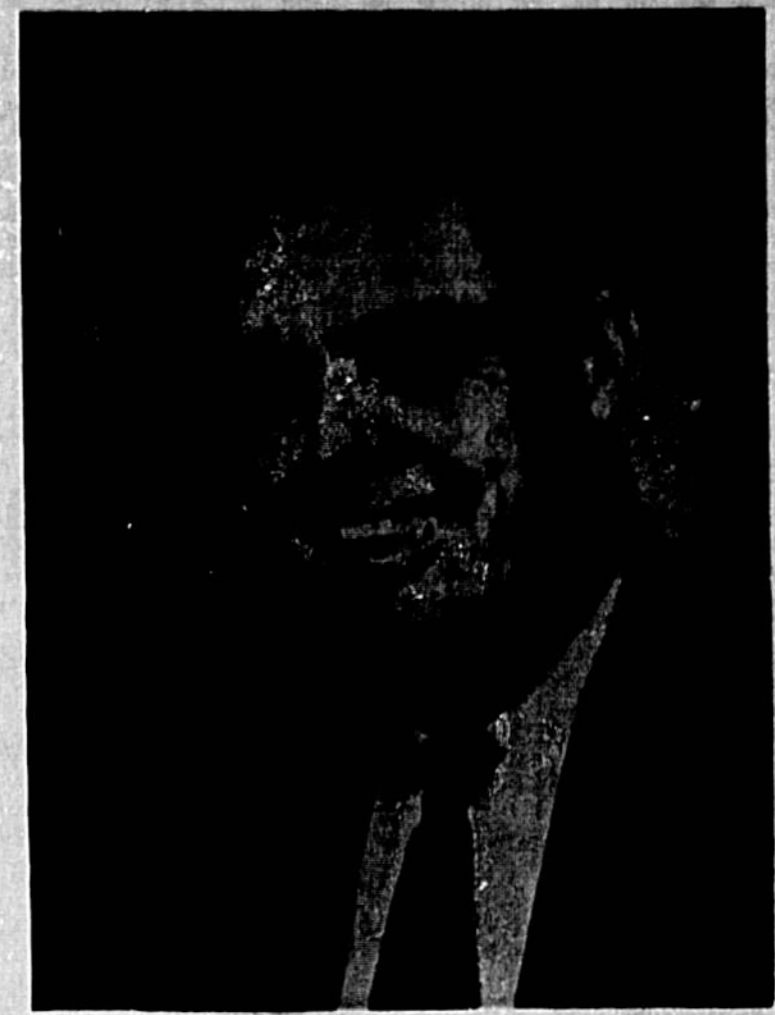
# AUTO SHOW

**JOE CREAMONS, Inc.**  
 SANFORD, FLORIDA



DAVE BARKLEY, General Manager

ORLANDO 831-1700

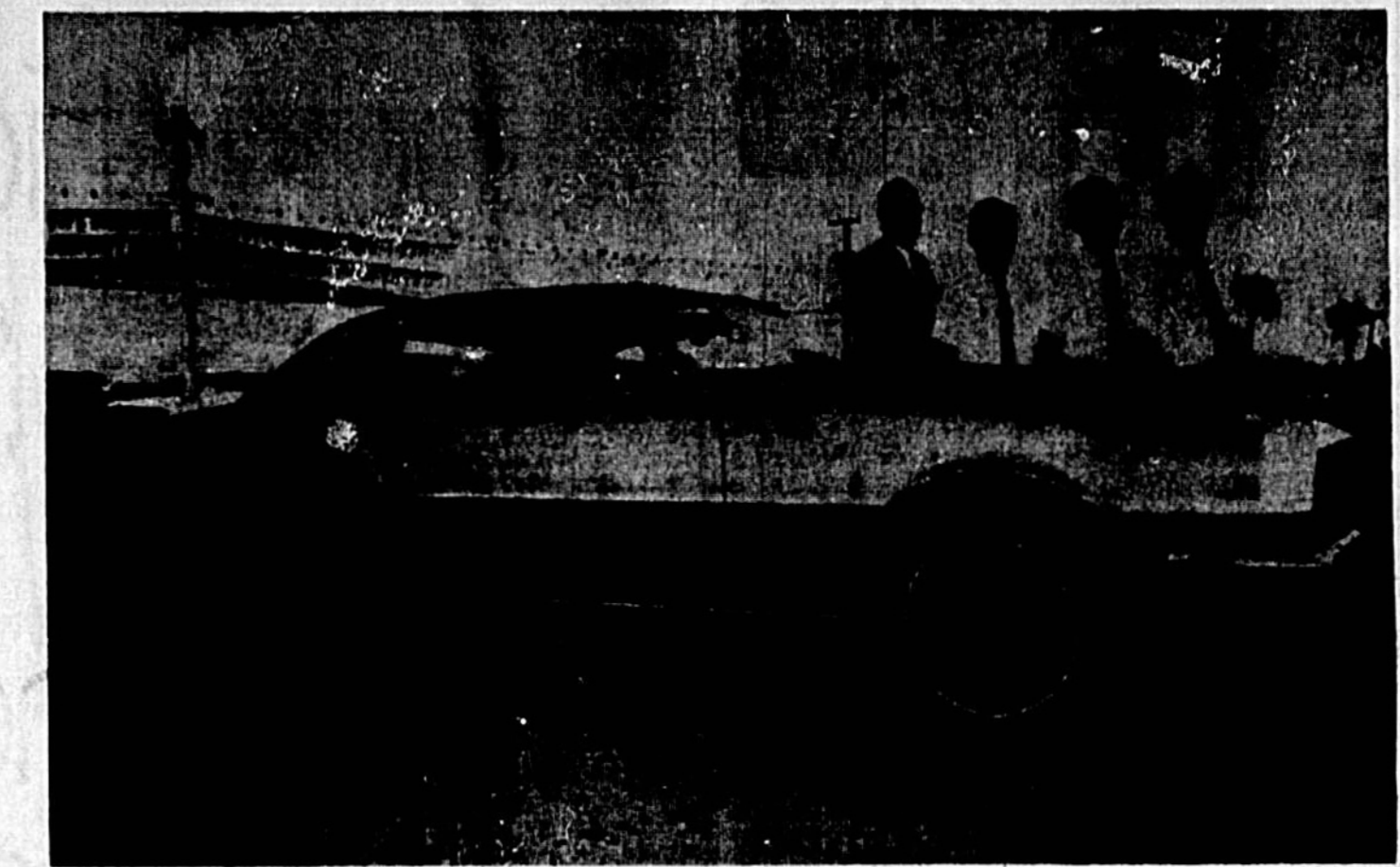


JOE CREAMONS, President

SANFORD 322-6231

WINTER PARK 322-6232

25  
 USED  
 CARS  
 IN  
 STOCK



Left to Right: Claude Mittell, Bill Hathaway, Fred Brison, Bob Young display Camaro 2 Door Sport Coupe

TRUCKS  
 OF  
 ALL  
 MODELS



DON FERGUSON  
 Salesman



CORKY BARKLEY  
 Salesman



HOWARD HOOD  
 Salesman



CLAUDE MITTELL  
 Salesman



BUCK BUXTON  
 Salesman



FRED BRISON  
 Salesman



FRED CLARK  
 Service Mgr.



BILL HATHAWAY  
 Salesman



JOE "SHORTY" HAYNES  
 Salesman



BOB YOUNG  
 Salesman



KEN LANIER  
 Used Car Service Mgr.

**JOE CREAMONS, Inc.** Chevrolet, Oldsmobile, Cadillac of Sanford

Invites you to come to the Auto Show at Holiday Isle, April 17-18-19

# Chevrolet's 'Distinct Personality' Highlights Auto Show

The distinct personality of Chevrolet's 1968 line is the result of the "distinct personality" for the Chevrolet and Chevy II.

The balance and diversity of lines, sizes, colors, power windows, automatics and air conditioning in the 44 models offered by Chevrolet makes customer choice easy for a custom tailor-made car built to meet particular needs.

"The 1968 Chevrolet line," says E. H. Bates, general manager, "is the most complete line of cars ever produced."

Highlights of the 1968 Chevrolet line for 1968:

**REGULAR CHEVROLET** — The industry's big selling car is offered in 20 models in four series — Caprice, Impala, Bel Air and Blazer — in a 118-hp V-8 engine which was regular equipment in 1967.

**CORVETTE** — New aerodynamic styling along the lines of the exciting Malibu Shark II is provided by a 130-hp V-8 engine which was Chevrolet's only mass-produced sports car. The Corvette, in its 18th year on the market, is more than seven inches longer and two inches lower than before, retaining its 98-inch wheelbase. The Corvette is offered in both a convertible and "hard-

top" provided by a 300-cubic-inch V-8 engine and five different V-8's. The base V-8 engine is increased to 207 cubic inches, developing 300 horsepower, and a 327 cubic inch engine which was regular equipment is introduced.

**CHEVROLET** — Seventeen models in four series are offered in the Chevrolet line, the sales leader in its class. More appeal is provided by its first all-steel body since introduction in 1964. Chevrolet has two distinct sizes for 1968 — wheelbases of 118 and 112 inches.

**SEDANS AND STATION WAGONS** — Major wheelbase increases are 100 to 118 inches. Chevrolets and convertibles have 112-inch wheelbase which

emphasizes the long hood, short deck design. Two six-cylinder engines and six V-8's are offered with a horsepower range from 140 to 330.

**CAMARO** — Styling refinements, more luxury for 118-hp sedans and classic improvements highlight the Camaro, which climbed to second place in sales among all domestic small cars during its first year on the market.

The Camaro is offered in a sport coupe and convertible on a 108-inch wheelbase with a wide variety of options, accessories and "packages" to allow the customer to individualize his car. Two six-cylinder engines and four V-8's with horse-

power from 140 to 330 are available.

**CHEVY II** — Its first all-steel body since introduction in 1960 gives the Chevy II more length and width and less height. The popular small handy car comes in two and four-door Nova models on an 111-inch wheelbase, one inch longer than previously. Like the Camaro, the Chevy II is available with a wide range of interior and exterior options.

Engines include a four-cylinder or two six and three V-8's.

**CORVETTE** — Chevrolet's rear-engine Corvair, in its ninth year, again is designed and engineered for the motorist who appreciates its air-cooled engine,

distinctive rear-engine traction and sport driving and handling features. Three six-cylinder engines, from 95 to 140 horsepower, are available in two sport coupes and a convertible.

**ROAD SHOW PROGRAM** — Chevrolet's exhibit at the auto show here is part of a program which attracts more visitors annually than big league baseball and football combined.

Approximately 21 million men, women and children will visit Chevrolet displays, exhibits and shows this year at dealerships, civic auditoriums, shopping centers and fairs.

Stages of the big shows rival the best of Broadway.

Twenty-one distinct units make up Chevrolet's traveling show program, each starting a 14-day touring tour of the 1968 Chevrolet line.

In the year's run the Chevrolet shows will log a half million miles in 33 huge tractor-trailers, filling more than 600 show dates ranging from one-night stands to two-week bookings. Their dates range from the world's biggest automobile shows to small county fairs in every section of the land.

Fourteen station wagons are offered by Chevrolet for 1968 in the regular Chevrolet line and seven Chevrolet selections.

With the almost infinite variety available in the new 1968 Chevrolet line, the industry for the first time has made it possible to tailor a Chevrolet to fit the needs of almost any individual.

Important developments within the Chevrolet passenger car "family" for '68 include: advanced design bodies for Chevrolet, Chevy II and Corvair; a longer, more luxurious regular Chevrolet and new versions for Camaro. Safety improvements, exhaust emission controls and anti-lock provisions are standard equipment on all models.

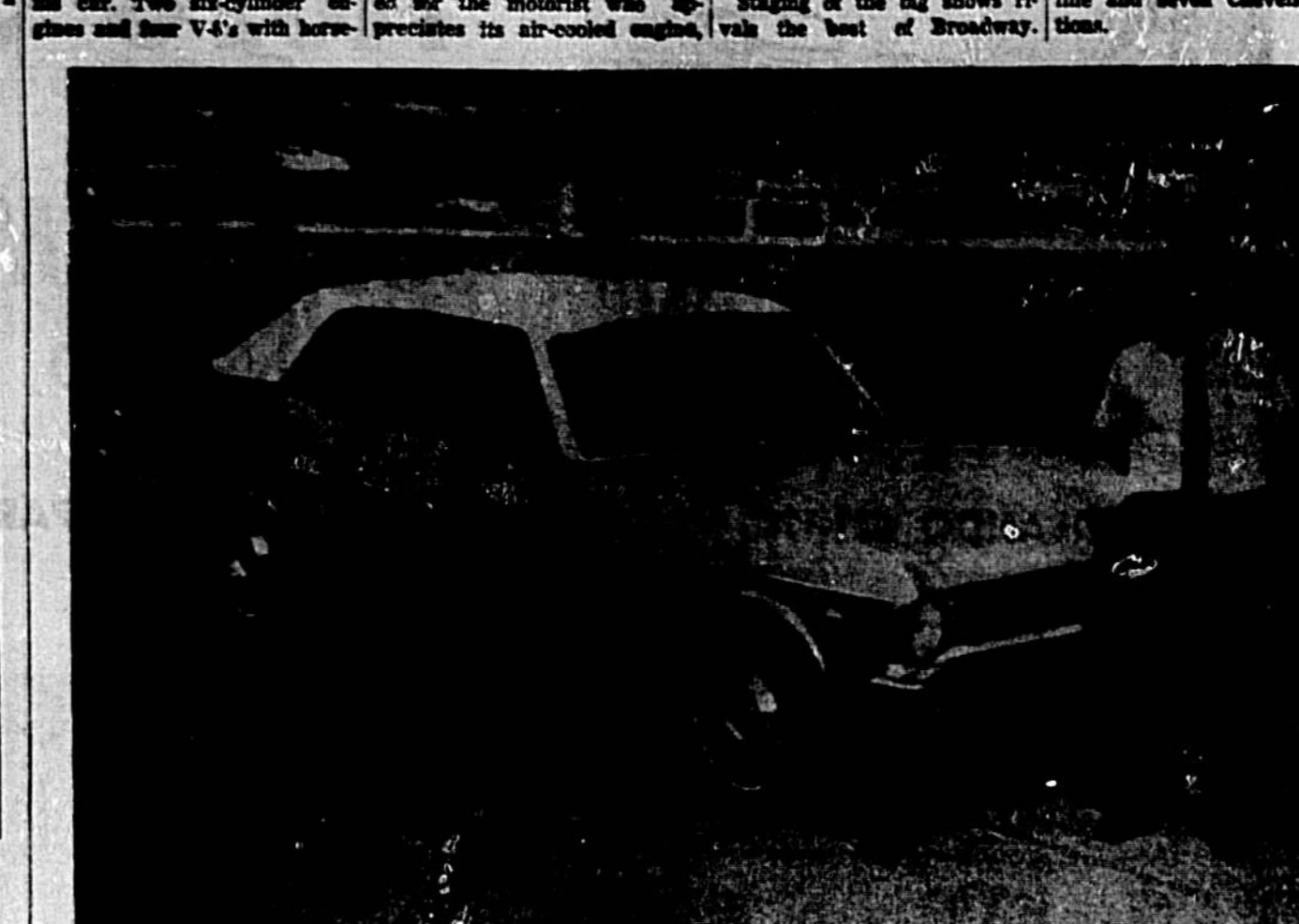
A lot of more than 60 options and accessories offered on the '68 models includes a light monitoring system which tells the driver at a glance if important front and rear lights and signals are working, a power door lock system which allows the driver or front seat passenger to lock all doors si-



CLAUDE HITTELL demonstrates the Oldsmobile Dynamic 88.



RON FERGUSON is happy with the Malibu sports coupe.



BOB YOUNG displays the Chevelle 4-dr. sedan.

**'68 Savings Explo:**

**Chevrolet gives you a lot more for a lot less.**

Impala Custom Coupe

The roomiest 4-door sedan anywhere near its price	The silent ride of quality	A wider, surer road stance	A wider choice of power teams and custom features
---	----------------------------	----------------------------	---

Now get more value for less on all 48 Chevrolets and Chevies. Save five big ways on popular V-8s, automatic transmissions, power assists, sporty items. Better hurry, though. Offer's limited. See your Chevrolet dealer right away during his '68 Savings Explo!

Happening now at your Chevrolet dealer's, a tremendous explosion of extra buying power. Only the leader could make it happen.

**NEW CAR FINANCING!**

**PRE-ARRANGE YOUR AUTO LOAN**

**4 1/2%**

SEE EITHER OF THESE MEN AT FLORIDA STATE

Ralph Pasold

Jim Deucette

**NEW CAR LOANS \$4.50 PER \$100 PER YEAR**

Select The Car You Want At **THE 1968 AUTO SHOW**

"Where You Finance Does Make A Difference"

**FLORIDA STATE BANK** MEMBER F.D.I.C.

**HOLIDAY ISLE**  
Plays host to more than one hundred new Automobiles!

**1968 AUTO SHOW**

**WED., THURS., FRI., APRIL 17 - 18 - 19**

**4 BIG DAILY PRIZES** GIVEN AWAY AT 8:30 P.M. NIGHTLY

SPONSORED BY THE **SANFORD AUTOMOBILE DEALERS ASSOCIATION**

2:00 P.M.-7:00 P.M. **EVERYONE IS INVITED**

CONTINUOUS BACKGROUND MUSIC • LIGHTING AND SHOW AREA COOPERATION

SID VILLEN ELECTRIC FLORIDA POWER AND LIGHT  
HOUSE OF STEAKS CITY OF SANFORD HOLIDAY INN

GUY THORNTON ECONOMY CARS TOYOTA	GARY HUDSONS STRICKLAND-BRESDIN, INC. FORD
BO HUNT HUNT LINCOLN-MERCUARY LINCOLN-MERCUARY	JIM LASH JIM LASH CHRYSLER-PLYMOUTH CHRYSLER-PLYMOUTH
BILL WEMPPELL PORTACORP	FRED ELLIMOR VOLKSWAGEN
BEN HOWLAND SEMINOLE COUNTY MOTORS DODGE	JOE CREAMONE JOE CREAMONE, INC. CHEV - OLDS - CAD

MEMBERS OF THE SANFORD AUTOMOBILE DEALERS ASSOCIATION

BE SURE TO REGISTER  
HOUSEHOLD ELECTRIC APPLIANCES  
TOASTERS  
CAN OPENERS  
KNIVES-ETC.  
Will be given away each Nite of show!

**FREE PRIZES**

**Before you invest in any new car, find out why a quarter-million Ford and Chevy owners switched to Plymouth**

**Take the Unbeatable Test Drive**  
There's only one way to find out why so many thousands of people who used to be happy with other cars are switching to Plymouth: get behind the wheel. You can see the good looks. You can feel the comfort and luxury, but you've got to drive Plymouth to find out how different cars can be. The secret? Chrysler Corporation. And it makes all the difference in the world. They don't call us the Unbeatable for nothing.

**Unbeatable**

**JIM LASH CHRYSLER-PLYMOUTH, INC. • 2613 Orlando Drive**



# Dodge Show Features 'Something For All'

"Something for everybody" is the slogan of Dodge cars on exhibit at the annual auto show.

There will be models representing the new line of Dodge cars including Dart, Coronet, Charger, Polara and Monaco.

The Dodge Corporation will hold a complete demonstration of all the new features available, with the technical staff on hand to explain the operation of the new features.

Performance enthusiasts will find the members of the Dodge Dart family — Dart GT, Coronet R/T and Charger R/T — of special interest while those of a more conservative bent will find the Dart and Coronet models and their interiors especially appealing.

A total of 20 sedans, hardtops, and station wagons are offered in the Dart, Coronet, Charger, Polara and Monaco lines, including a new body style for Coronet and a two-door coupe for the Dart.

Robert B. McCurry, Dodge general manager, commented: "The styling of the new line of cars is a youthful appeal in the form of broad new hardtop, convertibles, and a 4-door even sportier looking station wagon."

"We have the best line of cars and trucks in our history. Every car line is a leader in its market section."

"We have the cars, the trucks, the styling, the factory staff, the dealers, the financing, the maintenance to make 1968 the best year in Dodge's history."

The Dodge Dart — the most popular full-size compact in America — gets a new model for 1968 and combines a balance of style, performance and economy. The new Dart is completely restyled for 1968.

There are new two-door coupes with hardtop styling and wood-grained side panels, double-hinged tailgate and a rear window washer.

There are racing stripes, big hood scoops for the enthusiasts, and six-cylinder engines and low rear axle ratios for the economy-minded. It is expected that this stylish, family-size car will account for even more sales in 1968.

The Polara, Dodge's entry in the traditional low-price market, has been tastefully restyled for 1968. The appointments are more luxurious. Style leader of the line is the new four-door hardtop.

The Monaco, Dodge's medium-priced car, has also been restyled both inside and out, for 1968. Options include such luxuries as automatic temperature control, stereo-tape, and a fine 383-cubic inch engine.

Highlighting the Dodge style parade is the exciting, all-new Charger.

The Charger is a family-sized sports car. It is proved that you can have dramatic, sharp-looking styling and still have enough room for six adults.

The standard and two optional steering wheels are available in the Charger. The Dart and Coronet Dodge Dart line for 1968. The top wheel features a wood-grain rim mounted to a stainless steel center and is available in the GT, GTS, and 370 models.

Popular aerodynamic and styling themes are evident in the styling of the Charger. Charger is something very special in looks, in comfort and in performance. It is a major member of the Dodge family. An added touch on the R/T is the availability as an option of the Charger instrument panel with tach and gauges casted to the driver.

A choice of the standard Dodge 440-cubic-inch Magnum or optional 426-cubic-inch Hemi is offered. Heavy-duty brakes and heavy-duty suspension with sway bar are standard.

Engines for Coronet, other than the previously mentioned 440 and 426 for the R/T, include the 225-cubic-inch V-6 with two or four barrel carburetion. The 1968 Coronet is available in a variety of six interior and seven exterior colors.

The Dodge Polara and Monaco lines expand their market coverage for 1968 by moving into the traditional low price market with the Polara and Monaco, while maintaining their medium priced position with a distinguished and upgraded Monaco and Monaco 300.

"In a declining market during the 1967 sales period, the Dodge Polara and Monaco outperformed every other medium priced car in the industry," M. McCurry stated.

"To enhance this favorable sales trend, Dodge introduces a Polara and Monaco 300 with a lower priced 318-cubic-inch engine as standard equipment in all 1968 models. The 383-cubic-inch engine will remain standard on all Monaco and Monaco 300 models."

A cornering light that illuminates the roadway to the right or left side of the car whenever turn signals are applied is standard on the Monaco four-door hardtop and Monaco 300.

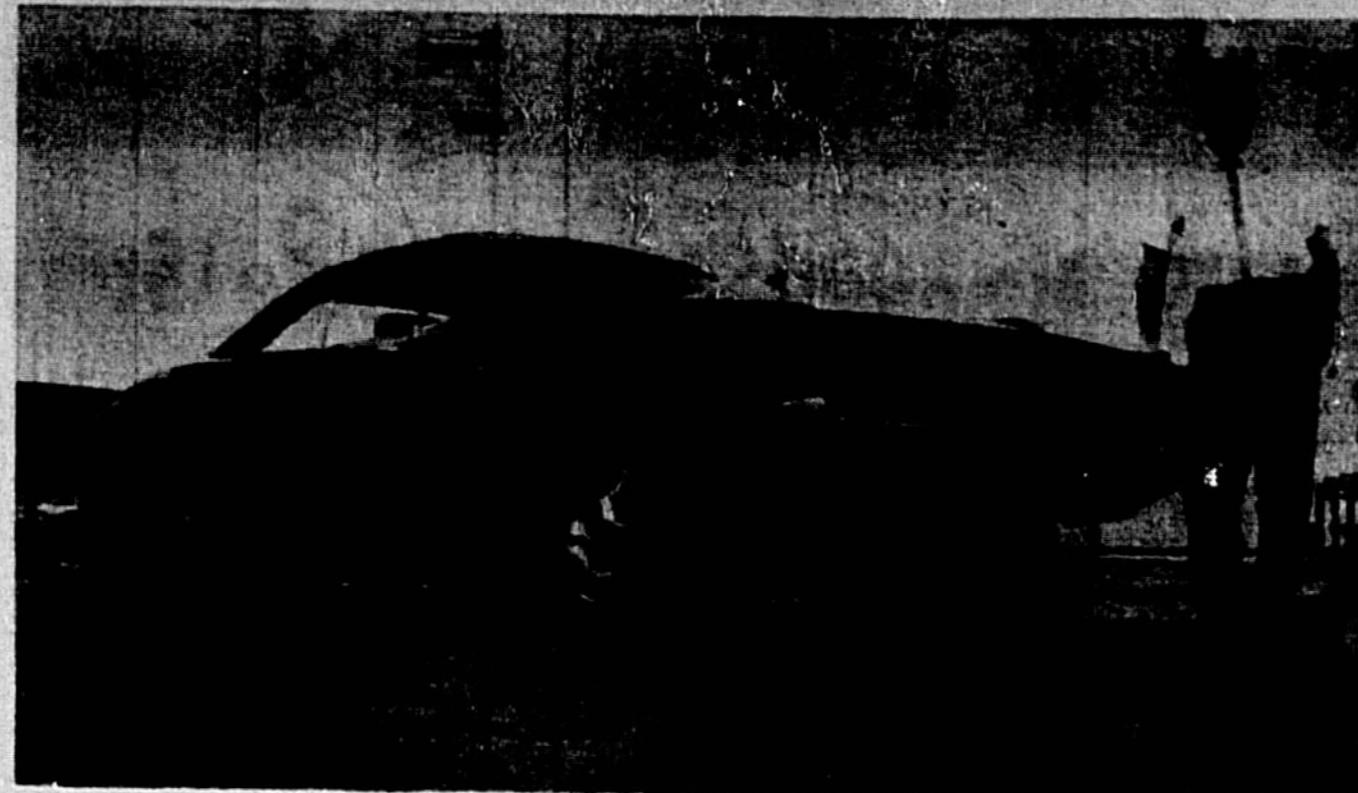
Interiors on both the Polara and Monaco have been substantially upgraded over their 1967 counterparts. Green will be the feature color for 1968 with three exterior shades, matching interiors, vinyl roofs, and convertible tops.

Cloth codes have been added to the Monaco four-door hardtop and Monaco 300 to a growing request for these fabrics in seats of more expensive and sportier models.

BOB THOMAS, sales manager, with the Polara 4-dr. hardtop.



GEORGE WOOD smiles over the 1968 Monaco.



DON GAIR displays the Dodge Charger.



Here's where the show starts...and ends!

And the best place to enjoy the show is right inside Dodge Charger. That's where you take command of the shape that's attracting crowds everywhere. And the seats are choice. Beautiful, foam-padded bucket seats. Performing under the hood, a mighty V8 engine, standard. Other Charger attractions include door pockets for handy storage and disappearing headlights. Why not stop at the Dodge display right now? You'll see all the new ways to catch Dodge Fever... Dart, Coronet, Polara, Monaco and Charger. (If there's too big a crowd, go see your Dodge Dealer. He can show you why catching Dodge Fever is fun.)

And now that you've got **DODGE fever** put the show on the road.

See the AUTO SHOW — on Sanford's Holiday Isle — April 17-18-19.

**SEMINOLE COUNTY MOTORS, INC. • 1801 W. First Street**

# Coronet Is Bread-Butter Car

Coronet, Dodge's bread and butter car, has an all-new look for 1968 and a "something-for-everybody" theme.

There is a new two-door coupe with a hardtop roof styling to replace the two-door sedan. Station wagons have wood-grained side panels, double-hinged tailgate and a rear window washer-wiper.

There are racing stripes, high performance V-8's and hood scoops for the sports car enthusiast. For the economy-minded there are six-cylinder engines and low axle ratios.

"Coronet, which totaled 36 per cent of all Dodge sales when it was introduced in 1965, accounted for 34 per cent in 1967. We expect this stylish, 117-inch-wheelbase, family-size car will account for even more sales in 1968," said Robert B. McCurry, Dodge general manager.

The styling theme for 1968 incorporates soft flowing surfaces, with attention focused on the quarter panel to achieve an aerodynamic, forward motion look. Top curvature and tapering of body metal in the quarter area bears a family resemblance to the semi-fastback 1968 Charger.

Adding to the design are the gull-wing-shaped backlight, lower windshield and fast-angle roof line, which contribute to a lower silhouette. The grille is deeply recessed in keeping with the aerodynamic theme.

Larger bumpers are used as a styling plus in the new Coronet 300 station wagon. A simulated high riser hood and backup lights are Delta shaped to identify the car as a member of the Dodge family.

Other exterior items include the distinctive grille, rear end, and hood include bumble bee racing stripes across the door and down the quarter panel, and standard F-70 wide tires with either red or white side walls.

An added touch is the availability as an option of the Charger instrument panel with tach and gauges casted to the driver.

A choice of the standard Dodge 440-cubic-inch Magnum or optional 426-cubic-inch Hemi is available. Heavy-duty brakes and heavy-duty suspension with sway bar are standard.

Station wagons feature a new tailgate that opens as a door or in the conventional tailgate manner. The rich-looking wood grain side paneling, previously available in only the high-line Monaco station wagon, is now standard as a styling plus in the new Coronet 300 station wagon.

A simulated high riser hood and backup lights are Delta shaped to identify the car as a member of the Dodge family.



CHIEF MYERS offers the Monaco 2-dr. hardtop.

# 'Charger' Leads Dodge Parade

Dodge's all-new, second generation Charger, featuring semi-fastback design and jet-age aerodynamic styling, was unveiled to the nation's press today by Robert B. McCurry, Dodge general manager.

Designed as a full-size sports car, the new Charger represents a radical departure from the fastback styling of the Charger introduced in 1966, but carries on its performance lineage.

And for the new year, the two-door hardtop Charger has a special performance model — the Charger R/T (Road and Track).

Wedge-form design places styling emphasis over the rear wheel with the design tapering forward to convey a forward thrusting look.

A recessed backlight has been added for improved visibility and curved side glass of 60-inch radius hints of aircraft cockpit styling. Instruments casted to the driver continue the aircraft theme.

"We aimed for a unique, yet highly functional design for the discriminating driver," said McCurry. "We believe that the '68 Charger has achieved this with its fine balance of comfort, styling, performance and handling characteristics."

The 117-inch-wheelbase Charger features a longer, lower hood line and a wind spoiler that is an integral part of the rear deck.

Head lights are set in the grille and concealed by an eyelid type door that automatically moves up and out of the way when the lights are turned on.

The grille has a bright decorative aluminum moulding.

Charger's integrated bumper with vertical bumper guards blends with the design of the car and still accomplishes its functional assignment.

Other performance and styling features in the new Charger include simulated waste gates in the hood and body sides; a large quick-fill gas cap located at the quarter panel, and bumper-mounted parking lights that resemble rally-type road lights.

Charger R/T is equipped with the high performance 440-cubic-inch V-8, heavy duty suspension and brakes, dual exhausts and wide tread tires.

"Wrap-around 'bumble bee' stripes accent the R/T's sporty flavor. The stripes run across the rear deck and down the quarter panels.

Charger's all new six passenger interior features front seats with an optional center cushion console in an exclusive all-vinyl design.

A new rallye clock and the addition of convenient map pockets on both doors are also new innovations.

Standard engine in the Charger is the 318-cubic-inch V-8. Options include the 383-cubic-inch V-8 two-barrel, 383-cubic-inch V-8 four-barrel, the 438 1/2 in 1 and the 440 Magnum.

Charger for '68 incorporates many new exterior and interior safety features. The glove box door is hinged at the top so that it cannot fall open and downward. All window cranks are made of soft plastic formed into a tulip shape that will yield in the event of impact.

The top of the front seat backs incorporate a corrugated metal structure covered by a pad of energy-absorbing foam.

Instrument panel padding has also been extended around the lower portion of the dash for added leg and knee protection.

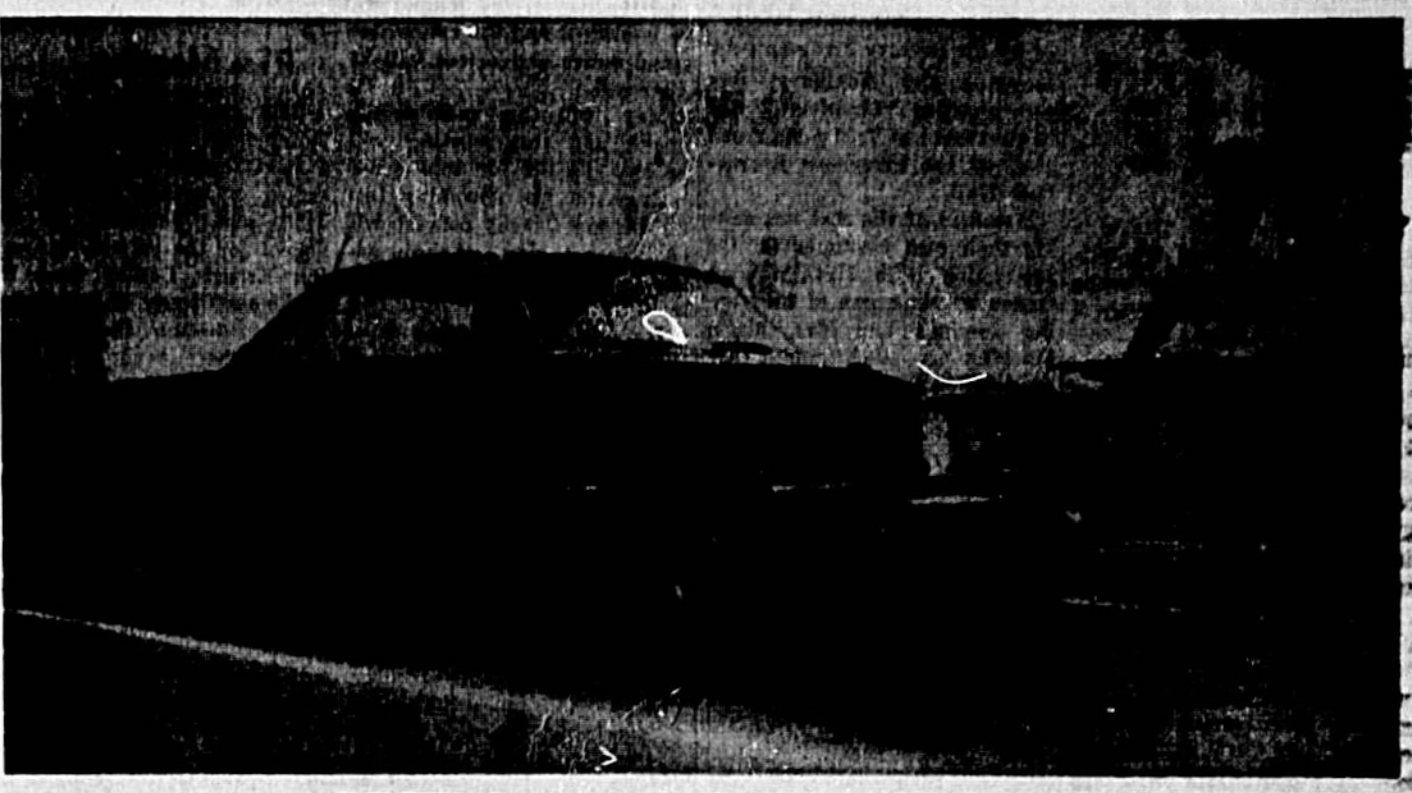
Side marker lights are located at the front and rear of the Charger. Amber lights are used at the front while red lights designate the rear.

Fold-down front seats will offer manually operated seat back latches to prevent any forward pitch.

Other standard Charger safety features include recessed instrument panel ash trays and a power window safety lockout — a child protection feature which requires the ignition switch to be turned to either the ignition or accessory side in order for the power switches to be activated.

Optional safety equipment includes front seat head restraints, lap belts for center seat passengers, shoulder belts for front and rear outboard passengers, padded steering wheel, and a factory-installed rear window defogger.

The 1968 Charger is offered in a choice of six attractive interior and 17 exterior colors.



JOE HILL demonstrates the Dodge Dart GT hardtop.

**YOU'RE INVITED**

TO SEE THE GOOD GUYS

AT THE

**AUTO SHOW**

HOLIDAY ISLE  
APRIL 17-18-19

1968 CHARGER, an aerodynamic family-size sports car that is one of the favorites this year. Rallye type suspension is matched with a variety of five V-8 engines to provide a fine balance of handling, performance, and comfort. Aircraft-type instruments.

**CARS TRUCKS**

**RENAULT DAUPHINE**

**SEMINOLE COUNTY MOTORS, INC.**  
1801 W. FIRST ST. SANFORD, FLORIDA

**Welcome to Holiday Isle and the 1968 AUTO SHOW**  
APRIL 17, 18, 19

**HOUSE OF STEAK**

**RESTAURANT** featuring... **HEAVY NEBRASKA BEEF**  
Open Every Day 6:30 a.m. to 10:30 p.m.

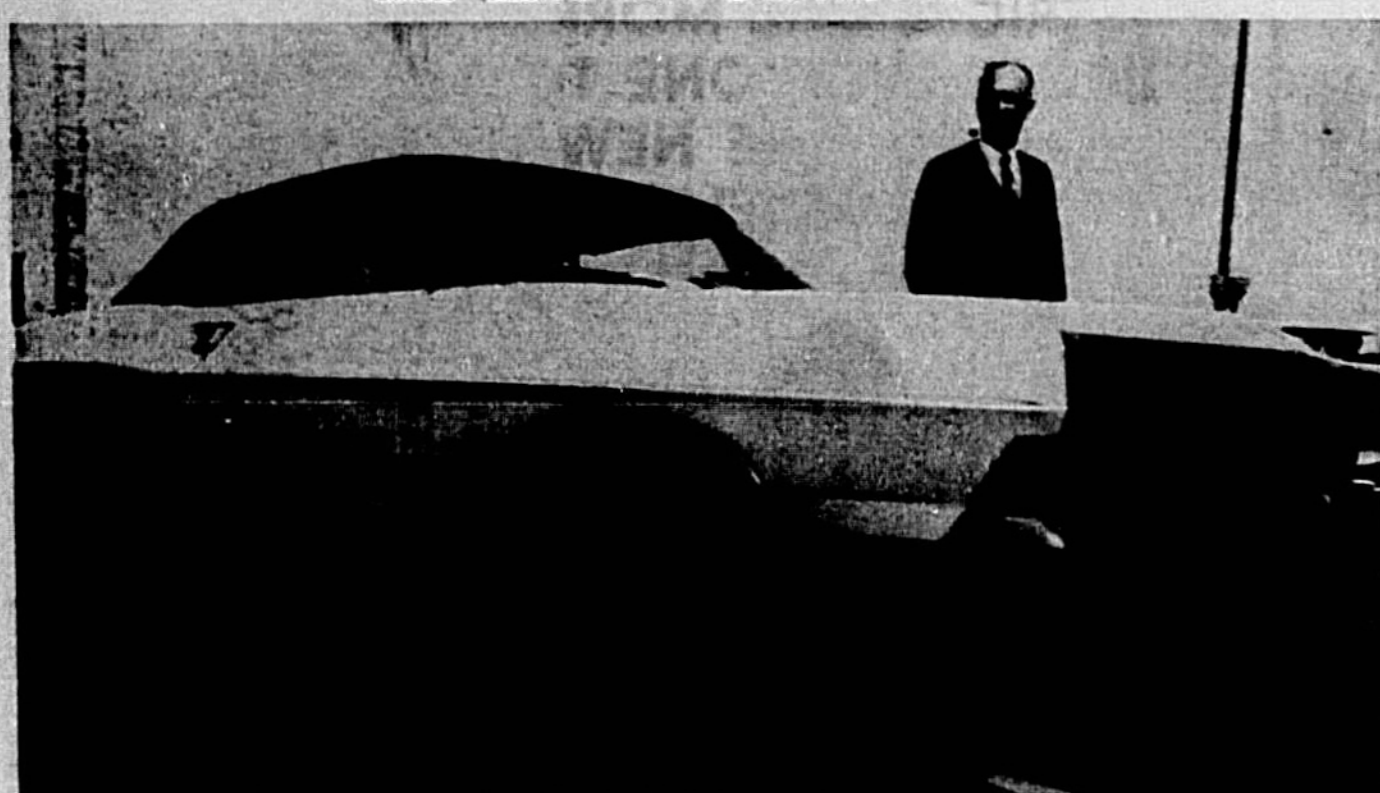
**STEER LOUNGE** featuring... **EXPERT MIXOLOGIST**  
Open Every Day 11:30 a.m.-11:45 p.m.

**Holiday Inn Holiday Isle Sanford, Fla.**  
Wine and Dine overlooking Beautiful Lake Monroe... Entertainment Sunday Evenings





JACK BENTON shows off the Ford Torino GT.



E. S. RICHARDSON displays the Ford LTD.



RICHARD WHITE is showing the Ford Torino.

## Fords Completely Redesigned In, Out

Faced by a new, top-of-the-line Torino series, Fairlane for 1968 is completely redesigned inside and out and has fastback body style available for the first time.

To excel in the highly competitive intermediate car market, this entry by Ford is bigger, more luxurious and has a greater variety of power and comfort options than ever. The number of models has been increased from 12 to 14.

"The real battleground for sales in 1968 is going to be the intermediate field," said M. S. (Max) McLaughlin, Ford Motor Company vice president and Ford Division general manager. "That's why we have created an all-new Fairlane for 1968."

"With the Torino we bring a new kind of luxury to this area of the market just as we did with our LTD in the Ford line three years ago. We also offer models that will appeal to everyone from the performance enthusiast to the suburban housewife."

The 1968 intermediate car bears no resemblance to its predecessors. The car is four inches longer overall (although the wheelbase remains 116 inches) and has completely new sheet metal. The simple "straight-thru" styling approach results in a low, long, clean appearance. All hardtop models have ventless glass in the doors.

The Torino series features a luxury interior with nylon-faced, solid tone fabrics. Its appointments are comparable to the Ford LTD. Models in the series are a formal-roof hardtop, a four-door sedan and the Square wagon. The sportier Torino GT

includes a formal-roof hardtop, fastback hardtop and convertible.

The Torino GT fastback is easily distinguished by dual, tapering side stripes. It comes with a standard 302-cubic-inch V-8 engine, bucket seats, wide oval tires, styled steel wheels with trim rings and floor-mounted Cruise-O-Matic transmission when equipped with the optional center console.

The Fairlane and Fairlane 500 series are continued with a wide range of engine and trim options. The 300-cubic-inch six cylinder engine remains standard in all series except the Torino GT. However, a complete range of engines up to an hydraulic lift version of Ford's famous 427-cubic-inch V-8 is offered.

Engineering innovations for 1968 include a new front suspension to give better steering and handling, and an optional, newly designed power front disc brakes which combine better braking with improved cooling characteristics.

New options available include an AM/FM stereo radio with separate speakers in the front cowl panels and optional dual rear speakers; a Comfort Stream Ventilation system; rear window defogger adjustable front head rests and radial ply tires.

All Fairlane engines are equipped with other Ford's improved Combustion System (IMCO) or Thermactor Emission Control System to reduce the emission of hydrocarbons and carbon monoxide in engine exhausts. IMCO is used on all engines teamed with a Cruise-O-Matic transmission except

the 390 4V GT and the 427. These engines plus all those teamed with a standard transmission employ the Thermactor system. An expanded list of safety equipment is standard on all models as well.

Although its 116-inch wheelbase has been retained, new sheet metal increases overall length by four inches and helps to give the 1968 Fairlane a new image of size and grace.

The length of the body panels is accentuated by a full-length, sculptured character line extending from front to rear. Wheel cut-outs are larger to expose more of the wheel area and create a sportier look.

An integrated grille-dual headlamp dominates the front of the Fairlane. Grille sections basically are horizontal - line in character, and along with the contoured front bumpers create an air-scoop appearance. The hood section has a distinctive raised center panel.

Rear-end treatment on sedans and formal hardtops features a short rear deck. Large, vertical taillights are tucked behind the rear quarter panel. Fastback rear styling presents the chopped look found on most racing GT cars. Taillights are set within the concave rear panel.

Distinguishing the Torino GT series from other models are tapered GT stripes on the fastback model and straight-through, narrow-wide-arrow stripes on the rocker panels of the formal hardtop and the convertible. Bright-finish wheels have trim rings and bolt GT insignia on the hubs.

Year's lowest prices on Ford XL's... Mustang Sprints... Fairlane hardtops!

Ford's See-the-light Sale!



Save on Ford XL's with air conditioning! Talk about cool deals! You won't see the likes of this one again if you wait all year. Our top-of-the-line XL Fastback is now on sale with:

- Factory-installed air conditioning
- Tinted windshield and windows
- 302-cu. in. V-8 • High-performance axle
- Disappearing headlamps • Die-cast grille
- GT stripes • Quiet ride of a great road car.

The supply of these XL's is limited. So hurry!

Save on Mustang Sprints! Here's your chance to get the best selling sporty car in the world... loaded with special equipment you never could get at this price before:

- GT stripes • Pop-cock gas cap • Wheel covers • Sporty trim. On V-8 and also save on:
- Wide-oval tires • Styled steel wheels
- GT fog lamps • Buckets, floor-mounted stick, carpeting come at no extra cost! But hurry! These Mustang Sprints are going fast!

Save on Fairlane Hardtops! Special savings, too, on America's most popular intermediate. Specially equipped hardtops with:

- Vinyl roof • Sporty wheel covers • White side-wall tires • Smart accent side moldings • Pleated vinyl upholstery

See the Light! The way to get to Ford is to see the Light!

**STRICKLAND-MORRISON, INC.**  
3786 S. ORLANDO DRIVE SANFORD, FLA.

## See and enjoy the... '68 AUTO SHOW

select the one you'd like to own and finance it with us!

# AUTO LOAN

COMPARE THESE FIGURES INCLUDING LIFE INSURANCE:

AMOUNT BORROWED	24 Mo.	30 Mo.	36 Mo.
\$1,000	\$46.63	\$38.26	\$32.70
2,000	93.05	76.38	65.23
3,000	139.51	114.55	97.91

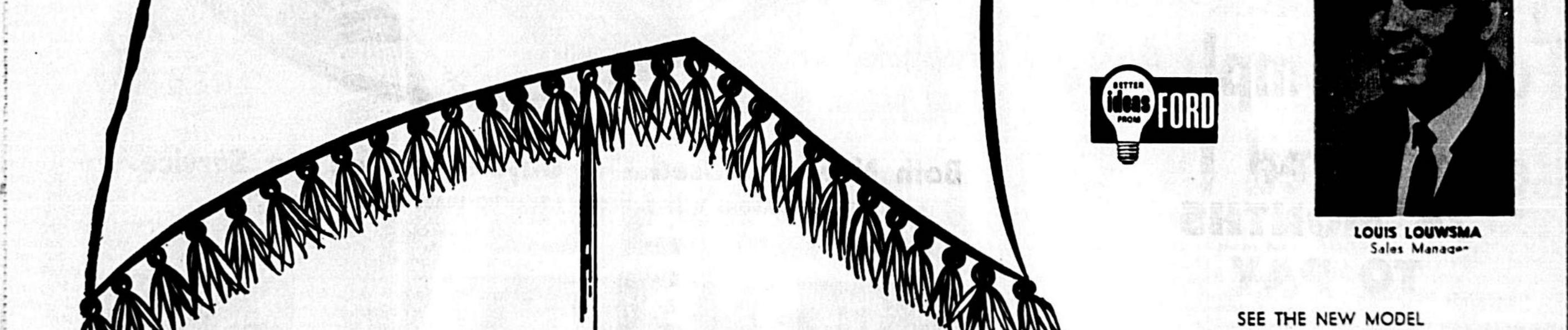
4 1/2% (\$4.50 PER \$100 PER YEAR)

**US BANK WITH US** **UNITED STATE BANK of Seminole... SANFORD, FLORIDA**  
PH. 323-1776 MEMBER F.D.I.C. SANFORD PLAZA  
FULL BANKING SERVICE DAILY 'TIL 4:00 P.M.

# AUTO SHOW

The Banners Are Out  
**SEE THE 1968 AUTO SHOW ON HOLIDAY ISLE**  
APRIL 17 - 18 - 19

# Come see the 68's



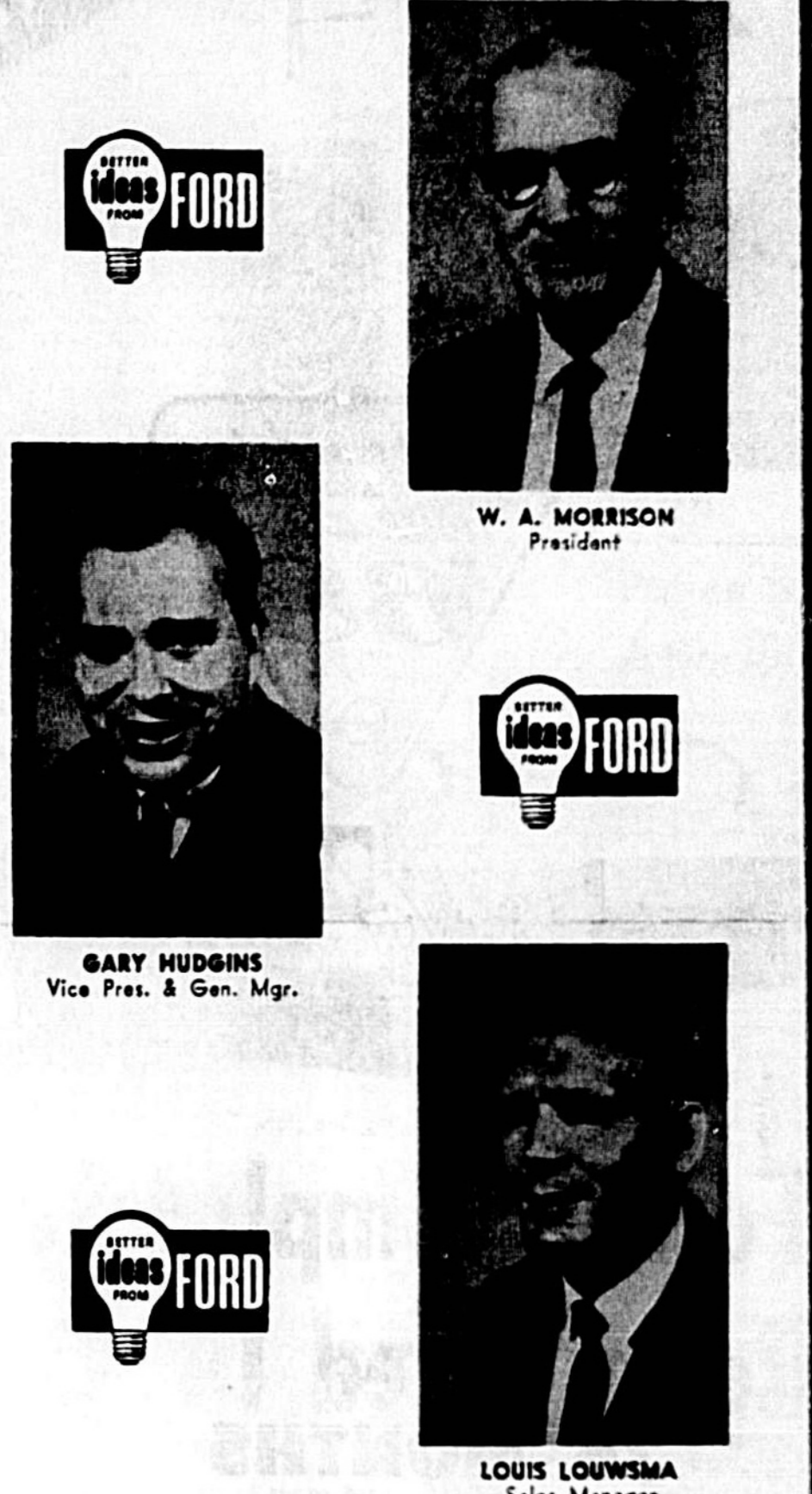
**WE HAVE A LARGE SELECTION OF 1968 FORDS TO CHOOSE FROM**

**MUSTANG 2-DR HARDTOP**  
AS LOW AS 1/4 DOWN \$2369  
36 MONTHS TO PAY AT \$59.86 per month

**TORINO GT FASTBACK**  
AS LOW AS 1/4 DOWN \$2495  
36 MONTHS TO PAY AT \$46.51 per month

**Strickland - Morrison**  
HWY. 17-92 & LAKE MARY BLVD. SANFORD PH. 322-1481

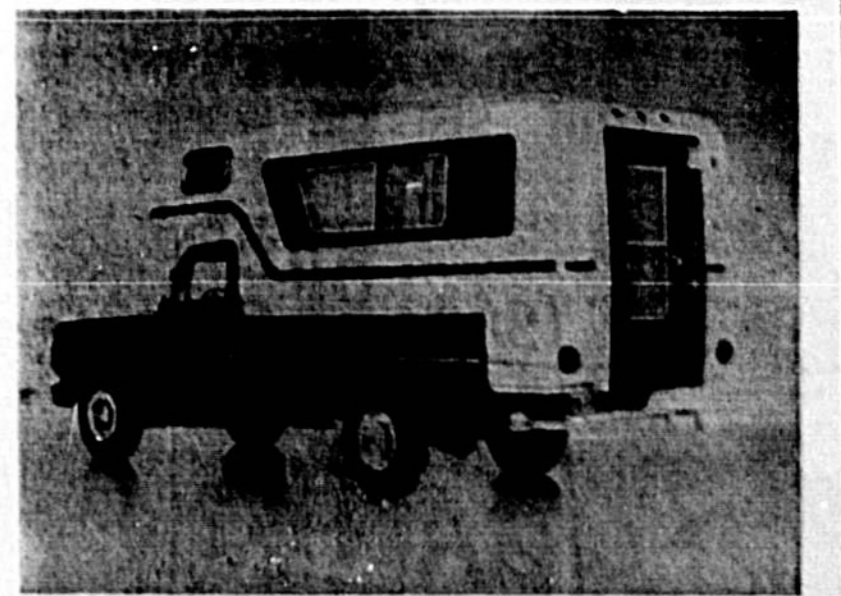
**STRICKLAND-MORRISON URGES EVERYONE TO SEE ALL THE NEW MODELS**



**W. A. MORRISON**  
President

**GARY MUDDINS**  
Vice Pres. & Gen. Mgr.

**LOUIS LOUWSMA**  
Sales Manager



SEE THE NEW MODEL **GOLDLINE PICK-UP CAMPER** FOR YEAR ROUND FUN

