

# WE SALUTE THE 57th ANNIVERSARY of the BOY SCOUTS

## BOY SCOUT WEEK . . . FEBRUARY 7-13

### A SCOUT IS TRUSTWORTHY

A Scout's honor is to be trusted. If he were to violate his honor by telling a lie, cheating, or not doing a given task entrusted to his honor, he is not being a true Scout!

**Chase & Company**  
SINCE 1884

### A SCOUT IS LOYAL

He is loyal to all whom loyalty is due, his Scout leader, his home and parents, his country. He shows respect to grown-ups, to the flag and helps in community projects.

**A. J. LOSSING**  
Transfer & Storage  
601 East Third Sanford, Fla.

### A SCOUT IS HELPFUL

He must be prepared at any time to save a life, help injured persons, and share in his own duties. He must do at least one Good Turn for somebody every day.

**FLORIDA STATE BANK**  
Member F.D.I.C.  
"Serving You Is Our Pleasure"

### A SCOUT IS FRIENDLY

He is a friend to all and a brother to every other Scout. He meets people with a sincere smile on his face and an outstretched hand. His friendliness is contagious.

**CHARLES KAMPF**  
KAMPF TITLE and GUARANTY CORP.  
Title Closings — Title Insurance — Escrow Service  
204 N. Park Phone 322-9484

### A SCOUT IS COURTEOUS

He is polite to all, especially to women, children, old people, and the weak and helpless. He must not take pay for being helpful or courteous. He shows appreciation.

**THE SANFORD AUTOMOBILE DEALER'S ASSOCIATION**

- HOLLER MOTOR SALES • SEMINOLE CO. MOTORS
- HEMPHILLS • STRICKLAND-MORRISON
- PONTIAC BUICK
- HUNT LINCOLN-MERCUARY • ELMORE VOLKSWAGEN
- JIM LASH CHRYSLER-PLYMOUTH

### A SCOUT IS KIND

He is a friend to all animals. He will not kill nor hurt any living creature needlessly, but will strive to save and protect all harmless or courteous. He shows appreciation.

**Hill Lumber & Hardware**  
213 W. 3rd St. Sanford Ph. 322-5581

### A SCOUT IS OBEDIENT

He obeys his parents, Scoutmaster, patrol leader, policemen, and all other duly constituted authorities. A Scout must learn to obey before he can learn to lead.

**ORLANDO IVEY'S WINTER PARK**  
WINTER PARK 644-8511 ORLANDO 424-8511

### A SCOUT IS CHEERFUL

He smiles whenever he can. His obedience to orders is prompt and cheery. He never shirks nor grumbles at hardships. His cheerful outlook helps those around him.

**The SANFORD-ATLANTIC NATIONAL BANK**  
MEMBER F. D. I. C.

### A SCOUT IS THRIFTY

He works faithfully, wastes nothing, and makes the best use of his opportunities. He saves his money so that he can pay his way. He is generous to those in need.

**HLH PRODUCTS**  
SANFORD, FLORIDA

### A SCOUT IS BRAVE

He has the courage to face danger in spite of fear. He will stand up for right against the coaxing of friends or the tears and threats of his enemies. He scorns defeat.

**Penneys**  
ALWAYS FIRST QUALITY  
SANFORD PLAZA

### A SCOUT IS CLEAN

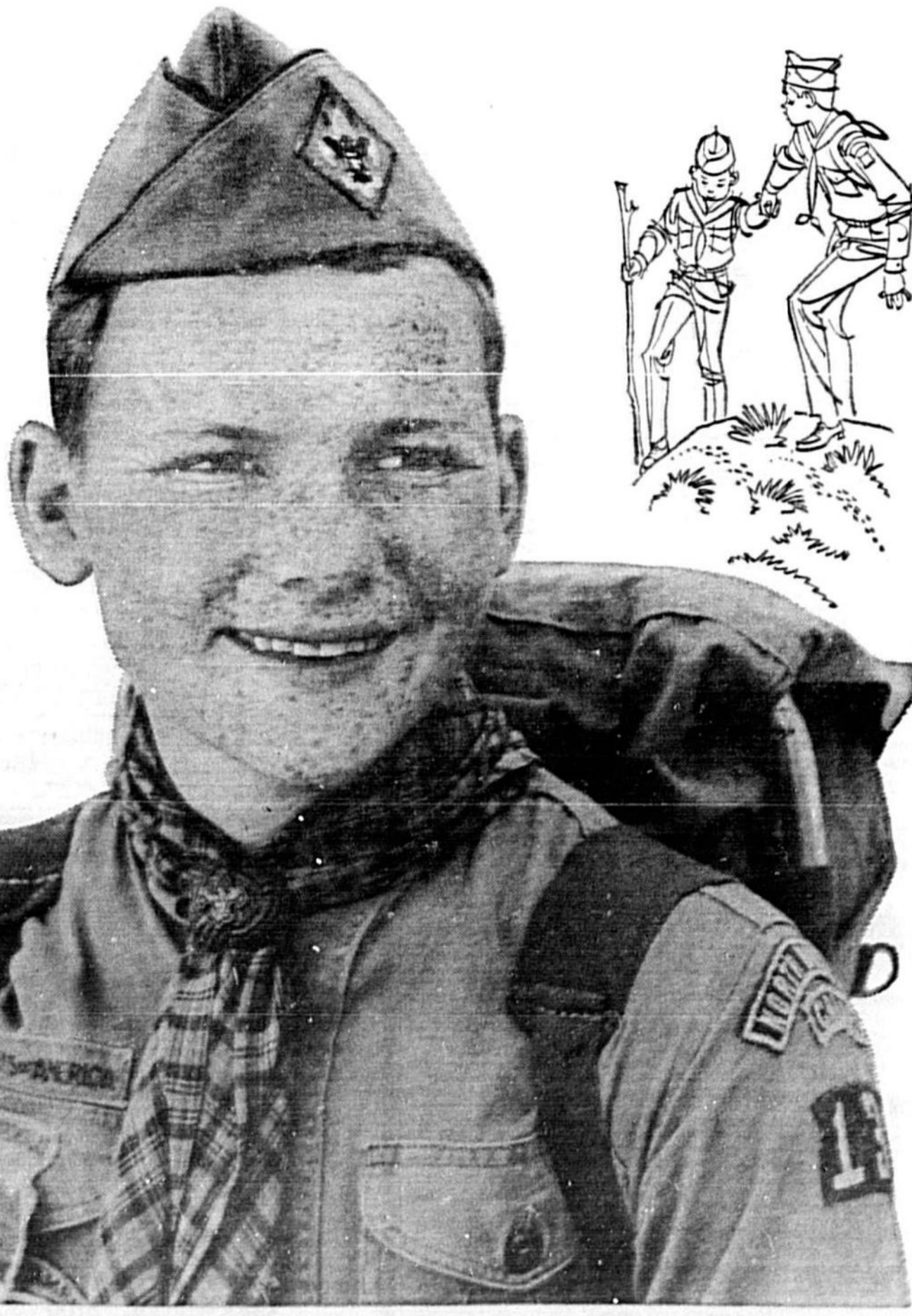
He keeps clean in body and thought; stands for clean speech, clean habits; and travels with a clean crowd. He practices clean sportsmanship and a clean outlook.

**WALL PUMPING - HEATING AIR CONDITIONING**  
1007 SANFORD AVE. PH. 322-6562

### A SCOUT IS REVERENT

He is reverent toward God, faithful in his religious duties, respects the convictions of others in matters of custom and religion. He serves God in his everyday actions.

**DELTONA THE MACKLE BROS. INC.**  
SANFORD 466-4456 ORLANDO 425-7144  
DELAND 734-7303 DAYTONA B'CH 255-1041



## Scouting rounds a guy out

Scouting rounds a guy out, makes him a bigger guy than he was before — stronger, taller, more self-reliant, better with people, better with himself — helps him be as BIG as he can be. Scouting challenges him to be more than he thought he could be!

## AROUND THE CLOCK

### JP Audit Rapped By State

A Justice of the Peace and two former JPs were criticized for exceeding their jurisdiction in cases in state audit report received by the office of the circuit court clerk.

**HUGH DUNCAN**

Overcollection of fees by JP W. Hugh Duncan, and former JP Elmer Ashley and Linton Cox during the five and one-half year audit period totaled \$8,411.87.

Major portion of overpayment was made to Duncan with \$7,046.60. Overcollection by Ashley was \$48.95 and by Cox \$316.32.

Breakdown of the overpayment to Duncan was exceeding jurisdiction, \$5,620.25; exceeding jurisdiction in juvenile cases, \$180.70; duplicate costs, \$70.60; coroner fee over-charged, \$8.00 and excess income not returned to county, \$2,976.16.

The report points out the deficit in Duncan's accounts were not shown on his records. Overcollection was also noted from Constable R. E. Carroll, Carroll's records, too, did not indicate the overpayment. It was also found during necessary audit adjustments.

It was noted Carroll owes the county \$1,834.01.

Audit reports of all the fee officers named as well as accounts of JPs R. A. Johnson, and Al Davis and Constables George Kelsey and Grady Hall criticized the handling and lack of safeguards of the public money.

The fact the County Commission was not notified of the audit was also pointed out.

**WAGGING ITS TAIL**  
Mrs. Louise Altman, of Casselberry, had her car case right behind her, although she was sure she had parked it behind the curb, as she entered the laundromat at the Forest City shopping center.

**Meets Moon**  
PANAMA, Calif. (AP) — Lunar Orbiter 1 meets the moon today to begin a circling search for the best landing spots for the rough lunar surface for U.S. astronauts.

**U. S. Judge Throws Out Suit Against Hunt Co.**  
The firm has made payment of back wages due its employees and has also stipulated current and future compliance with the minimum wage, overtime pay, record-keeping and shipping provisions of the FLSA. Defendant was taxed with cost of the action.

**Judges Urge More Courthouse Space**  
The need for creation of a criminal court of record in the county in the next five years when the population reaches 100,000.

**Fire Dept. Neglected, Bates Tells Casselberry**  
Charges the lack of a meeting place for the Casselberry Fire Department is "crippling the department" were leveled by Fire Chief Paul Bates at a public hearing on the budget held by the City Council Tuesday evening.

**McIntosh Terms Water Rate Hike 'Illegal'**  
The recent announced increase in water rates of Casselberry Utility Company was termed "illegal" by City Attorney Kenneth W. McIntosh at a meeting of the council Tuesday evening.

**Port Authority 'Language' Hit By Swofford**  
The "language" in the requested local legislation for the Port Authority was hit by County Commissioner W. Lawrence Swofford Wednesday.

**Chamber Opens Join-Up' Drive**  
Start of the three-day drive for increased membership by the Seminole County Chamber of Commerce commenced with a lively, purposeful breakfast in the Civic Center today. It was short on words, long on determination. Two teams competing for a prize of juicy steaks at a cookout heard their captain—Ken McIntosh and Art Beckwith—outline the procedure.

**Lottery Draft**  
WASHINGTON (AP) — The National Commission on Selective Service will recommend to President Johnson next week a lottery draft and the induction of younger men retaining the office as elective.

## How Weatherman Goofed!

The weatherman goofed! Hallelujah!

On Tuesday he just about scared everyone in these parts into "long johns" with emphatic and quite frequent reports via newspapers, radio and television that possibly a freeze and for sure a heavy frost was to blanket the area before daylight today.

As you know by now, it was a balmy 55 degrees at dawn today . . . far from a freezing 32 degrees, or even a light frost. Temperatures did dip into the 20s in the panhandle around Pensacola this morning, result of a cold front that moved down from Canada.

But a warm front moving in off the Gulf of Mexico held off the cold front in the rest of Florida today.

Six thousand vacationers at Miami had to cancel return trips by airlines today because of a cold front that moved down from Canada.

Weather forecast for today: Mostly cloudy through Thursday with occasional rain. High today in the 50s. Low tonight in the 30s. Probability of rain 90 per cent.

Weather forecast for today: Mostly cloudy through Thursday with occasional rain. High today in the 50s. Low tonight in the 30s. Probability of rain 90 per cent.

Seminole County \*\*\* on the St. Johns River \*\*\* "The Nile of America"

# The Sanford Herald

Phone 322-2611 or 425-5938 Zip Code 32771

WEATHER: Some rain, cool thru Thursday.

VOL. 59 NO. 123 — AP Leased Wire — Established 1908 — WEDNESDAY, FEB. 8, 1967 — SANFORD, FLORIDA — Price 10 Cents

### Courthouse Amended Complaint Filed

The words public notice were substituted for public hearing in an amended complaint in the courthouse injunction suit filed by Harlan Tuck, attorney, today.

Tuck represents three South Seminole County residents in the class injunction suit to prohibit the county from expending further funds on the new courthouse.

It was brought out by Circuit Judge Roger Dykes in a hearing last week that a public hearing is not required before commencing such a project.

Precedents cited by Tuck at the time reported, however, public notice of the County Commission's intent to consider building a new facility is required. The law, as stated at that time, said public notice must be published 30 days in advance of such consideration.

The remaining wording of the complaint was left much the same as the original one.

It still is charged Sanford is only the temporary county seat. A motion was filed Tuesday in the Sand Lake Road injunction suit requesting the court to dismiss the action. Suit was filed by residents of the south side of Sand Lake Road.

Motion of dismissal charges the complaints have failed to show a cause of action that abuse of discretion by the County Commission has not been shown.



## Plans To Abolish Fee System Appears Doomed



In an electric atmosphere with the feeling of hostility in the air, the County Commission, yesterday afternoon, abandoned whatever plans it may have had to eliminate the fee system in Seminole County.

The decision to leave the fee system as it was made following a straw vote by the commissioners which showed three members of the board opposed to tampering with the fee system at this time. Opposing any change at the workshop meeting were Commissioners W. Lawrence Swofford, Robert Parker and Edward Yarbrough.

Thoroughly discussed by the board and the three major fee officials present was the possibility of changing the fee system to bring the officials under control of the County Commission budget-wise.

Singled out for attack by Arthur Beckwith Jr., Troy Ray and Mary Earle Walker was the possibility of making the office of clerk of the circuit court, tax collector and tax assessor appointed positions rather than elected ones.

Beckwith declared, "How can five part-time commissioners sell three full-time officials how to more efficiently run their offices. This smacks of Big Brother and more centralized government when the people showed in the last election they are opposed to this type of thinking. What makes you think you can appoint more qualified officials than the people can elect?"

Ray warned, "Change for the sake of change is not good policy. Change must be approached with caution and prudence if government is going to serve the people properly. However, I have full confidence in the people and if this is what they want, I will be for it too."

"I can find no reason in government today," Commission Chairman John Alexander said, "why the economic business approach can't not be applied to these offices. The fee office budgets should be reviewed in the same light by the County Commission as those of the other office holders here at home, not in Tallahassee."

Yarbrough said, "These kids should also be provided with an area where they can get out in the fresh air periodically," he said.

Chairman Alexander said, "Further, to the architects of the desirability of a special ward for juvenile offenders on the north side of the present jail."

"Placing the juveniles away from the adult criminals is particularly close to my heart," Yarbrough said. "These kids should also be provided with an area where they can get out in the fresh air periodically," he said.

The County judge recommended, further, to the architects of the desirability of a special ward for juvenile offenders on the north side of the present jail.

Yarbrough said, "These kids should also be provided with an area where they can get out in the fresh air periodically," he said.

### GARBAGE BLUES

Watch for the state to clamp down on burning at the County dump on Upland Road . . . If not allowed . . . County Commission Chairman John Alexander denies burning of garbage . . . He calls it controlled trash fires . . . How about the stench and smoke? . . . Meanwhile at City Hall the city will continue to use the county dump . . . As landfill until the seagulls get out of here . . . Did you know it cost us taxpayers almost three-quarters of a million dollars because of those pesky birds? . . . Seagull got stuck in a NAS jet last week . . . and the plane was crippled . . .

### City Will Start Crackdown

on rate schedules for taxis in Sanford . . . Seems they charge a different rate at night than they do in the daytime . . .

### At Association Here is Foundering

. . . What's the good of being a member if you don't attend meetings? . . . Microfilming all county records will cost in the neighborhood of \$50,000 in case anyone is interested . . .

### I hate to be a bore but where

was the high price help of Community Action when the County Commission was discussing minimum housing codes recently and a workable program for Seminole to clean up slums? . . . They could have put those statistics to good use . . . and that's what gets me so mad about waste . . .

### City putting new road on the Civic Center . . . Cost set at \$1,490.

### A CONVERSATION WITH A DEAD INDIAN:

(Scene - Indian Mound Village near the Osteen Bridge.)  
REPORTER - Why are you making such a fuss?  
INDIAN - We care about all this dirt but at least they could put this place on the tax roll.

Crews are leveling off the mounds by the waterfront . . . getting near construction time . . .

The other day a little girl was hit by a car on 27th Street and Sanford Avenue . . . What happened to those speed limit signs? . . .

One day I'll get mad and write about how easy it is for youngsters to get booze and beer in Sanford and Seminole County . . . Right now, I don't feel like walking up our law enforcement officers' . . .

One fee officer called our County Commissioners "Paw Time" . . . so how come we pay them over \$31,000 in salaries? . . .

Close to 70 people gave blood to Linda Robson since our plea . . . It's the only nice thing that happened to me in four months.

There is talk around about starting (perhaps that's the wrong word) a "Greater Sanford Chamber of Commerce" . . . more so this later.

The second floor of City Hall has been called a safety hazard and yet every Monday night Junior Achievement youngsters meet there . . . Is the fire department going to do anything about it? . . .

City will start cracking down on rate schedules for taxis in Sanford . . . Seems they charge a different rate at night than they do in the daytime . . .

At Association here is foundering . . . What's the good of being a member if you don't attend meetings? . . .

Microfilming all county records will cost in the neighborhood of \$50,000 in case anyone is interested . . .

I hate to be a bore but where was the high price help of Community Action when the County Commission was discussing minimum housing codes recently and a workable program for Seminole to clean up slums? . . .

City putting new road on the Civic Center . . . Cost set at \$1,490.

A CONVERSATION WITH A DEAD INDIAN:

(Scene - Indian Mound Village near the Osteen Bridge.)

REPORTER - Why are you making such a fuss?

INDIAN - We care about all this dirt but at least they could put this place on the tax roll.

Crews are leveling off the mounds by the waterfront . . . getting near construction time . . .

The other day a little girl was hit by a car on 27th Street and Sanford Avenue . . . What happened to those speed limit signs? . . .

One day I'll get mad and write about how easy it is for youngsters to get booze and beer in Sanford and Seminole County . . . Right now, I don't feel like walking up our law enforcement officers' . . .

One fee officer called our County Commissioners "Paw Time" . . . so how come we pay them over \$31,000 in salaries? . . .

Close to 70 people gave blood to Linda Robson since our plea . . . It's the only nice thing that happened to me in four months.

There is talk around about starting (perhaps that's the wrong word) a "Greater Sanford Chamber of Commerce" . . . more so this later.

The second floor of City Hall has been called a safety hazard and yet every Monday night Junior Achievement youngsters meet there . . . Is the fire department going to do anything about it? . . .

City will start cracking down on rate schedules for taxis in Sanford . . . Seems they charge a different rate at night than they do in the daytime . . .

At Association here is foundering . . . What's the good of being a member if you don't attend meetings? . . .

Microfilming all county records will cost in the neighborhood of \$50,000 in case anyone is interested . . .

I hate to be a bore but where was the high price help of Community Action when the County Commission was discussing minimum housing codes recently and a workable program for Seminole to clean up slums? . . .

City putting new road on the Civic Center . . . Cost set at \$1,490.

A CONVERSATION WITH A DEAD INDIAN:

(Scene - Indian Mound Village near the Osteen Bridge.)

REPORTER - Why are you making such a fuss?

INDIAN - We care about all this dirt but at least they could put this place on the tax roll.

Crews are leveling off the mounds by the waterfront . . . getting near construction time . . .

The other day a little girl was hit by a car on 27th Street and Sanford Avenue . . . What happened to those speed limit signs? . . .

One day I'll get mad and write about how easy it is for youngsters to get booze and beer in Sanford and Seminole County . . . Right now, I don't feel like walking up our law enforcement officers' . . .

One fee officer called our County Commissioners "Paw Time" . . . so how come we pay them over \$31,000 in salaries? . . .

Close to 70 people gave blood to Linda Robson since our plea . . . It's the only nice thing that happened to me in four months.

There is talk around about starting (perhaps that's the wrong word) a "Greater Sanford Chamber of Commerce" . . . more so this later.

The second floor of City Hall has been called a safety hazard and yet every Monday night Junior Achievement youngsters meet there . . . Is the fire department going to do anything about it? . . .

City will start cracking down on rate schedules for taxis in Sanford . . . Seems they charge a different rate at night than they do in the daytime . . .

At Association here is foundering . . . What's the good of being a member if you don't attend meetings? . . .

Microfilming all county records will cost in the neighborhood of \$50,000 in case anyone is interested . . .

I hate to be a bore but where was the high price help of Community Action when the County Commission was discussing minimum housing codes recently and a workable program for Seminole to clean up slums? . . .

City putting new road on the Civic Center . . . Cost set at \$1,490.

A CONVERSATION WITH A DEAD INDIAN:

(Scene - Indian Mound Village near the Osteen Bridge.)

REPORTER - Why are you making such a fuss?

INDIAN - We care about all this dirt but at least they could put this place on the tax roll.

Crews are leveling off the mounds by the waterfront . . . getting near construction time . . .

The other day a little girl was hit by a car on 27th Street and Sanford Avenue . . . What happened to those speed limit signs? . . .

One day I'll get mad and write about how easy it is for youngsters to get booze and beer in Sanford and Seminole County . . . Right now, I don't feel like walking up our law enforcement officers' . . .

One fee officer called our County Commissioners "Paw Time" . . . so how come we pay them over \$31,000 in salaries? . . .

Close to 70 people gave blood to Linda Robson since our plea . . . It's the only nice thing that happened to me in four months.

There is talk around about starting (perhaps that's the wrong word) a "Greater Sanford Chamber of Commerce" . . . more so this later.

The second floor of City Hall has been called a safety hazard and yet every Monday night Junior Achievement youngsters meet there . . . Is the fire department going to do anything about it? . . .

City will start cracking down on rate schedules for taxis in Sanford . . . Seems they charge a different rate at night than they do in the daytime . . .

At Association here is foundering . . . What's the good of being a member if you don't attend meetings? . . .

Microfilming all county records will cost in the neighborhood of \$50,000 in case anyone is interested . . .

I hate to be a bore but where was the high price help of Community Action when the County Commission was discussing minimum housing codes recently and a workable program for Seminole to clean up slums? . . .

City putting new road on the Civic Center . . . Cost set at \$1,490.

A CONVERSATION WITH A DEAD INDIAN:

(Scene - Indian Mound Village near the Osteen Bridge.)

REPORTER - Why are you making such a fuss?

INDIAN - We care about all this dirt but at least they could put this place on the tax roll.

Crews are leveling off the mounds by the waterfront . . . getting near construction time . . .

The other day a little girl was hit by a car on 27th Street and Sanford Avenue . . . What happened to those speed limit signs? . . .

One day I'll get mad and write about how easy it is for youngsters to get booze and beer in Sanford and Seminole County . . . Right now, I don't feel like walking up our law enforcement officers' . . .

One fee officer called our County Commissioners "Paw Time" . . . so how come we pay them over \$31,000 in salaries? . . .

Close to 70 people gave blood to Linda Robson since our plea . . . It's the only nice thing that happened to me in four months.

There is talk around about starting (perhaps that's the wrong word) a "Greater Sanford Chamber of Commerce" . . . more so this later.

The second floor of City Hall has been called a safety hazard and yet every Monday night Junior Achievement youngsters meet there . . . Is the fire department going to do anything about it? . . .

City will start cracking down on rate schedules for taxis in Sanford . . . Seems they charge a different rate at night than they do in the daytime . . .

At Association here is foundering . . . What's the good of being a member if you don't attend meetings? . . .

Microfilming all county records will cost in the neighborhood of \$50,000 in case anyone is interested . . .

I hate to be a bore but where was the high price help of Community Action when the County Commission was discussing minimum housing codes recently and a workable program for Seminole to clean up slums? . . .

City putting new road on the Civic Center . . . Cost set at \$1,490.

A CONVERSATION WITH A DEAD INDIAN:

(Scene - Indian Mound Village near the Osteen Bridge.)

REPORTER - Why are you making such a fuss?

INDIAN - We care about all this dirt but at least they could put this place on the tax roll.

Crews are leveling off the mounds by the waterfront . . . getting near construction time . . .

The other day a little girl was hit by a car on 27th Street and Sanford Avenue . . . What happened to those speed limit signs? . . .

One day I'll get mad and write about how easy it is for youngsters to get booze and beer in Sanford and Seminole County . . . Right now, I don't feel like walking up our law enforcement officers' . . .

One fee officer called our County Commissioners "Paw Time" . . . so how come we pay them over \$31,000 in salaries? . . .

Close to 70 people gave blood to Linda Robson since our plea . . . It's the only nice thing that happened to me in four months.

There is talk around about starting (perhaps that's the wrong word) a "Greater Sanford Chamber of Commerce" . . . more so this later.

The second floor of City Hall has been called a safety hazard and yet every Monday night Junior Achievement youngsters meet there . . . Is the fire department going to do anything about it? . . .

City will start cracking down on rate schedules for taxis in Sanford . . . Seems they charge a different rate at night than they do in the daytime . . .

At Association here is foundering . . . What's the good of being a member if you don't attend meetings? . . .

Microfilming all county records will cost in the neighborhood of \$50,000 in case anyone is interested . . .

I hate to be a bore but where was the high price help of Community Action when the County Commission was discussing minimum housing codes recently and a workable program for Seminole to clean up slums? . . .

City putting new road on the Civic Center . . . Cost set at \$1,490.

A CONVERSATION WITH A DEAD INDIAN:

(Scene - Indian Mound Village near the Osteen Bridge.)

REPORTER - Why are you making such a fuss?

INDIAN - We care about all this dirt but at least they could put this place on the tax roll.

Crews are leveling off the mounds by the waterfront . . . getting near construction time . . .

The other day a little girl was hit by a car on 27th Street and Sanford Avenue . . . What happened to those speed limit signs? . . .

One day I'll get mad and write about how easy it is for youngsters to get booze and beer in Sanford and Seminole County . . . Right now, I don't feel like walking up our law enforcement officers' . . .

One fee officer called our County Commissioners "Paw Time" . . . so how come we pay them over \$31,000 in salaries? . . .

Close to 70 people gave blood to Linda Robson since our plea . . . It's the only nice thing that happened to me in four months.

There is talk around about starting (perhaps that's the wrong word) a "Greater Sanford Chamber of Commerce" . . . more so this later.

The second floor of City Hall has been called a safety hazard and yet every Monday night Junior Achievement youngsters meet there . . . Is the fire

**WE SALUTE THE 57th ANNIVERSARY**  
**of the**  
**BOY SCOUTS**  
**BOY SCOUT WEEK . . . FEBRUARY 7-13**

**A SCOUT IS TRUSTWORTHY**

A Scout's honor is to be trusted. If he were to violate his honor by telling a lie, cheating, or not doing a given task entrusted to his honor, he is not being a true Scout!

**A SCOUT IS LOYAL**

He is loyal to all whom loyalty is due, his Scout leader, his home and parents, his country. He shows respect to grown-ups, to the flag and helps in community projects.

**A SCOUT IS HELPFUL**

He must be prepared at any time to save a life, help injured persons, and share in his own duties. He must do at least one Good Turn for somebody every day.

**A SCOUT IS FRIENDLY**

He is a friend to all and a brother to every other Scout. He meets people with a sincere smile on his face and an outstretched hand. His friendliness is contagious.

**A SCOUT IS COURTEOUS**

He is polite to all, especially to women, children, old people, and the weak and helpless. He must not take pay for being helpful or courteous. He shows appreciation.

**A SCOUT IS KIND**

He is a friend to all animals. He will not kill nor hurt any living creature needlessly, but will strive to save and protect all harmless or courteous. He shows appreciation.

**A SCOUT IS OBEDIENT**

He obeys his parents, Scoutmaster, patrol leader, policemen, and all other duly constituted authorities. A Scout must learn to obey before he can learn to lead.

**A SCOUT IS CHEERFUL**

He smiles whenever he can. His obedience to orders is prompt and cheery. He never shirks nor grumbles at hardships. His cheerful outlook helps those around him.

**A SCOUT IS THRIFTY**

He works faithfully, wastes nothing, and makes the best use of his opportunities. He saves his money so that he can pay his way. He is generous to those in need.

**A SCOUT IS BRAVE**

He has the courage to face danger in spite of fear. He will stand up for right against the coaxing of friends or the jeers and threats of his enemies. He scorns defeat.

**A SCOUT IS CLEAN**

He keeps clean in body and thought; stands for clean speech, clean habits; and travels with a clean crowd. He practices clean sportsmanship and a clean outlook.

**A SCOUT IS REVERENT**

He is reverent toward God, faithful in his religious duties, respects the convictions of others in matters of custom and religion. He serves God in his everyday actions.

**Chase & Company**  
 SINCE 1884

**A. J. LOSSING**  
 Transfer & Storage  
 601 East Third Sanford, Fla.

**FLORIDA STATE BANK**  
 Member F.D.I.C.  
 "Serving You Is Our Pleasure"

**CHARLES KAMPF**  
 KAMPF TITLE and GUARANTY CORP.  
 Title Closings — Title Insurance — Escrow Service  
 204 N. Park Phone 322-9484

**Hill Lumber & Hardware**  
 213 W. 3rd St. Sanford Ph. 322-5581

**ORLANDO IVEY'S WINTER PARK**  
 TELEPHONES  
 WINTER PARK 644-8511 ORLANDO 424-8511

**HLH PRODUCTS**  
 SANFORD, FLORIDA

**Penneys**  
 ALWAYS FIRST QUALITY  
 SANFORD PLAZA

**WALL PUMPING - HEATING AIR CONDITIONING**  
 1007 SANFORD AVE. PH. 322-6562

**DELTONA THE MACKLE BROS. INC.**  
 SANFORD 648-4458 ORLANDO 425-7146  
 DELAND 734-7303 DAYTONA 8'CH 255-1041

**Scouting rounds a guy out**

Scouting rounds a guy out, makes him a bigger guy than he was before — stronger, taller, more self-reliant, better with people, better with himself — helps him be as BIG as he can be. Scouting challenges him to be more than he thought he could be!

**AROUND THE CLOCK**  
**JP Audit Rapped By State**

A Justice of the Peace and two former JPs were criticized for exceeding their jurisdiction in cases in state audit report received by the office of the circuit court clerk.

Overcollection of fees by JP W. Hugh Duncan, and former JPs Elmer Ashley and Linton Cox during the five and one-half year audit period totaled \$8,411.97.

Breakdown of the overpayment went to Duncan with \$7,046.69. Overcollection by Ashley was \$48.95 and by Cox \$416.23.

Breakdown of the overpayment to Duncan was exceeding jurisdiction, \$5,630.23; exceeding jurisdiction in juvenile cases, \$100.70; duplicate cost bills, \$70.60; coroner fee overcharged, \$8.00 and excess income not returned to county, \$282.17.

The report points out the deficit in Duncan's accounts were not shown on his records but was revealed after auditing adjustments made to income accounts.

Overcollection of fees was also noted from Constable R. E. Carroll. Carroll's records, too, did not indicate the overpayment. It was also found during necessary audits.

It was noted Carroll owes the county \$1,154.01.

An audit reports of all the fees officers named as well as accounts of JPs R. A. Johnson, and Al Davis and Constables George Keley and Grady Hall criticized the handling, and lack of safeguards of the public money.

The fact the County Commission had not provided insurance protection of the public money was also pointed out.

**WAGGING ITS TAIL:**  
 Mrs. Louise Altman of Casselberry, had her car come right behind her, although she was sure she had parked it behind the curb, as she entered the laundromat at the Forest City shopping center.

The second floor of City Hall has been called a safety hazard and yet every Monday night Junior Achievement youngsters meet there. . . is the fire department going to do anything about it?

City will start cracking down on rate schedules for taxis in Sanford. . . Seems they charge a different rate at night than they do in the daytime. . .

Art Association here is fonder. . . What's the good of being a member if you don't attend meetings?

Microfilming all county records will cost in the neighborhood of \$50,000 in case anyone is interested.

I hate to be a bore but where was the high price help of Community Action when the County Commission was discussing minimum housing codes recently and a workable program for Seminole to clean up slums? . . . They could have put those statistics to good use. . . and that's what gets me so mad about waste.

City putting new roof on the Civic Center. . . Cost set at \$1,400.

**A CONVERSATION WITH A DEAD INDIAN:**  
 (Scene — Indian Mound Village near the Osteen Bridge.)  
 REPORTER — Why are you making such a fuss?  
 INDIAN — Me no care about all this dirt but at least they could put this place on the tax roll.

Crews are leveling off the mounds by the lakefront. . . getting near construction time.

The other day a little girl was hit by a car on 27th Street and Sanford Avenue. . . What happened to those speed limit signs?

One day I'll get mad and write about how easy it is for youngsters to get loose and beer in Sanford and Seminole County. . . Right now, I don't feel like waking up our law enforcement officers.

One fee officer called our County Commissioners "Part-Timers" . . . so how come we pay them over \$1,000 in salaries?

Close to 70 people gave blood to Linda Robson since our plea. . . It's the only nice thing that happened to me in four months.

**How Weatherman Goofed!**

The weatherman goofed! Hallelujah!

On Tuesday he just about scared everyone in these parts into "long Johns" with emphatic and quite frequent reports via newspapers, radio and television that possibly a freeze and for sure a heavy frost was to blanket the area before daylight today.

As you know by now, it was a balmy 55 degrees at dawn today. . . far from a freezing 32 degrees, or even a light frost. Temperatures did dip into the 30s in the p.m. around Pensacola this morning, result of a cold front that moved down from Canada.

But a warm front moving in from the Gulf of Mexico held off the cold front in the rest of Florida today.

Six thousand vacationers at Miami had to cancel return trips by airlines today because the winter's biggest snow chok-off runways at airports in the north. (Detailed story on page 1A.)

Weather forecast for today: Mostly cloudy through Thursday with occasional rain. High in the 60s. Low tonight in the 50s. Probability of rain 60 per cent.

Seminole County \*\*\* on the St. Johns River \*\*\* "The Nile of America"

**The Sanford Herald**  
 Phone 322-2611 or 425-5938 Zip Code 32771  
 WEATHER: Some rain, cool thru Thursday.

**Plans To Abolish Fee System Appears Doomed**

In an electric atmosphere with the feeling of hostility in the air, the County Commission, yesterday afternoon, abandoned whatever plans it may have had to eliminate the fee system in Seminole County.

The decision to leave the fee system as it was made following a straw vote by the commissioners which showed three members of the board opposed to tampering with the fee system at this time. Opposing any change at the workshop meeting were Commissioners W. Lawrence Swofford, Robert Parker and Edward Yarborough.

Thoroughly discussed by the board and the three major fee officials present was the possibility of changing the fee system to bring the officials under control of the County Commission budget-wise.

Single out for attack by Arthur Beckwith Jr., Roy Ray and Mary Earle Walker was the possibility of making the offices of clerk of the circuit court, tax collector and assessor appointed positions rather than elected ones.

Beckwith declared, "How can five part-time commissioners tell three full-time officials how to more efficiently run their offices. This smacks of Big Brother and more centralized government when the people showed in the last election they are opposed to this type of thinking. What makes you think you can appoint more qualified officials than the people can elect?"

Ray warned, "Change for the sake of change is not good policy. Change must be approached with caution and prudence if government is going to serve the people properly. However, I have full confidence in the people and if this is what they want, I will be for it too."

"I can find no reason in government today," Commission Chairman John Alexander said, "why the economic business approach can't be applied to these offices. The fee office budgets should be reviewed in the same light by the County Commission as those of the other office holders here at home, not in Tallahassee."

Commissioner John Fitzpatrick advised his position is elimination of the fee system, but retaining the offices as elective.

**Port Authority 'Language' Hit By Swofford**

The "language" in the requested local legislation for the Port Authority was hit by County Commissioner W. Lawrence Swofford Wednesday.

The bill which has been recommended by the Port would authorize allocation of \$50,000 annually from race track funds for a period not to exceed 20 years. It would also give the authority power, at its discretion, to return money which it deemed surplus to the county general fund.

The Authority should remain under the budgeting power of the County Commission and all its revenues should go into the general fund, who is to determine which funds are surplus," Swofford asked.

Francis E. Roumillat, authority director, explained the bill in its present form is only a "working copy." He said, however, "All funds would be evidenced in the budget. If the commission did not approve the budget, we would not operate."

**Chamber Opens 'Join-Up' Drive**

Start of the three-day drive for increased membership by the Seminole County Chamber of Commerce commenced with a lively, purposeful breakfast in the Civic Center today.

It was short on words, long on determination. Two teams committed for a prize of juicy steaks at a cookout behind the courts—Ken McIntosh and Art Beckwith—outlined the procedure to this type of thinking.

Dewitt T. Mathews Jr., chamber president, spoke of the "enthusiasm of the chamber during January which has been a whirlwind" and told the workers that "the life-blood of the chamber is in your hands for the next three days."

This Chamber of Commerce starts a drive to retain its present members, re-enroll old members who have let their memberships lapse and invite all of those in Seminole County who are ready to move ahead to "join-up!"

**Judges Urge More Courthouse Space**

The county judge recommended, further, to the architects the desirability of a special wing for juvenile offenders on the north side of the present jail.

"Placing the juveniles away from the adult criminals is particularly close to my heart," Housholder said. "These kids should also be provided with an area where they can get out in the practices in other counties and report back," he said.

The county judge recommended, further, to the architects the desirability of a special wing for juvenile offenders on the north side of the present jail.

Housholder discussed the possibility of requesting enactment of punitive legislation to prevent the county to create a separate juvenile judge and another county judge when it becomes necessary. "I'll look into the practices in other counties and report back," he said.

The county judge recommended, further, to the architects the desirability of a special wing for juvenile offenders on the north side of the present jail.

Housholder made the same recommendation for additional space in the probation and parole department.

Judge Williams also foresaw the need for creation of a criminal court of record in the county in the next five years when the population reaches 100,000.

Housholder discussed the possibility of requesting enactment of punitive legislation to prevent the county to create a separate juvenile judge and another county judge when it becomes necessary. "I'll look into the practices in other counties and report back," he said.

**McIntosh Terms Water Rate Hike 'Illegal'**

The recent announced increase in water rates of Casselberry Utilities Company was termed "illegal" by City Attorney Kenneth W. McIntosh at a meeting of the council Tuesday evening.

"The notification of rate increase after March 1 is an illegal increase of water rate," McIntosh said.

"Action of the company in the last 36 hours rescinding the rate increase confirms the company's understanding of its former action. The company lost sight of the contract the city has with them," McIntosh stated.

The attorney recommended and council agreed to begin immediately negotiations with the utility concerning all phases of the water system.

Named to the negotiation committee by the council were Council Chairman Edith Duerr, Mayor Arthur Wheatley and Councilman Charles Woodruff.

Dr. Duerr promised the recommendations would be given consideration by council.

**Meets Moon**

Lunar Observer 5 meets the moon today to begin a strolling search for the best landing spots for the moon lunar surface for U.S. astronauts.

**U.S. Judge Throws Out Suit Against Hunt Co.**

The firm has made payment of back wages due its employees and has also stipulated current and future compliance with the minimum wage, overtime pay, record-keeping and shipping provisions of the FLSA. Defendant was taxed with cost of the action.

**Fire Dept. Neglected, Bates Tells Casselberry**

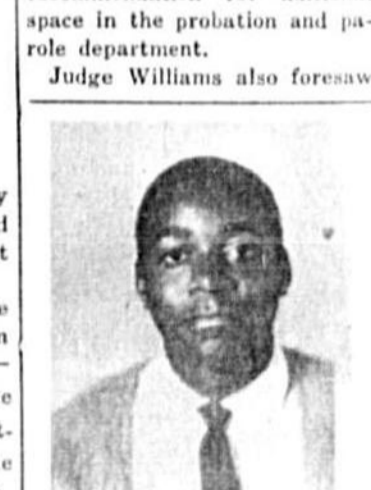
Charges the lack of a meeting place for the Casselberry Fire Department is "cripping the department" were leveled by Fire Chief Paul Bates at a public hearing on the budget held by the City Council Tuesday evening.

The hearing, which is required by the city charter, gave citizens of the town an opportunity to state their feelings on the proposed \$124,508 budget.

Bates in his presentation pointed out the fire department willingly gave up its meeting room to the police department months ago. "Now, we have no place to meet, no place to show films, no place to receive instructions," he said.

Bates informed the board he had in his possession an executed deed from Mr. and Mrs. Hubbard Casselberry for a parcel of property adjacent to the present city hall. "Allocate some money for a new fire hall, we have the property for it," he said.

He compared the police department's budget of \$2,723. "I am not opposed to the po-



**CURTIS HAYES** is being honored at a fund-raising rally this afternoon at Crooms High School. A ninth grader and member of the junior varsity squad, Curtis was injured during a football game last Nov. 17 and has been confined at Winter Park Memorial Hospital since. (Detailed story on page 10.)

**Dial 322-1611 for a low-cost 4 1/2% auto loan.**

CONSULT THIS SAMPLE PAYMENT SCHEDULE When You Shop For Your Car

Amount of Loan	Monthly Payments Without Life Insurance	Monthly Payments With Life Insurance
\$1,500	\$47.90	\$48.27
\$2,000	\$63.30	\$63.32
\$2,500	\$78.15	\$81.94
\$3,000	\$94.95	\$98.50

FLORIDA STATE BANK

# U. S. Recon Plane Downed After New Year Truce Start

SAIGON, South Vietnam (AP) — A U.S. reconnaissance plane was downed in North Vietnam and more than a score of shooting incidents were reported in South Vietnam following the start of the lunar new year truce today.

Most of the incidents were small, and both sides appeared disposed to hold their fire.

The American reconnaissance plane went down at noon, five hours after the truce took effect, and presumably was the victim of Communist gunfire. The pilot bailed out and a U.S. destroyer rescued him from the Gulf of Tonkin 15 miles north of Dong Hoi.

It was the 47th U.S. plane reported lost over North Vietnam.

Of 22 incidents reported by the U.S. and South Vietnamese military commands in the first 10 hours of the truce, eight were classified as significant. Most were exchanges of fire by mortars or sniper fire at helicopters.

WASHINGTON (AP) — The United States apparently is keeping an open mind to the possibility of extending the four-day lunar new year ceasefire that began today in Vietnam.

Robert J. McCloskey, State Department press officer, declined to speculate Tuesday on whether the truce might be extended. He said "we will see what happens" if the Communists remain silent after the end of the four-day period.

The Viet Cong and North Vietnamese have called for a seven-day truce. The United States and South Vietnam have agreed so far only on the shorter period.

Meanwhile, U. S. officials — responding to a story written by The Associated Press by Assistant Secretary of State William Walker, Seminoles County tax assessor, warns with little more than seven weeks remaining before the deadline to file homestead exemption applications, less than half of the qualified property owners in the county have filed their applications.

It had been expected that 15,000 applications would be filed, but little more than 7,000 have been filed to date.

Forms were mailed to all those who applied last year.

Persons who were the record owners of property and were living in a house on property on Jan. 1 are eligible to file for homestead exemption. Applicants must also have Florida tags on automobiles and possess a Florida driver's license.

Redeemer Sets Lenten Series

In observance of the Lenten season, special mid-week Lenten services will be held each Wednesday, 7:30 p.m., starting today, at the Lutheran Church of the Redeemer, W. 25th Place, according to the announcement of Rev. Heister W. Goers, pastor.

This year's meditations will be based on Pilate's questions to Jesus: The Question of Guilt; The Question of Identity; The Question of Contempt; The Question of Speculation; the Question of Origin.

The public is invited to worship and meditate with the congregation.

Assessor Warns Of Exemptions

Mrs. Mary Earle Walker, Seminoles County tax assessor, warns with little more than seven weeks remaining before the deadline to file homestead exemption applications, less than half of the qualified property owners in the county have filed their applications.

It had been expected that 15,000 applications would be filed, but little more than 7,000 have been filed to date.

Forms were mailed to all those who applied last year.

Persons who were the record owners of property and were living in a house on property on Jan. 1 are eligible to file for homestead exemption. Applicants must also have Florida tags on automobiles and possess a Florida driver's license.

Day Of Prayer Slated Friday

When millions of persons in 27 countries, including those in Sanford, unite in prayer on the same day, it is a remarkable event. This occasion, World Day of Prayer, will take place Friday, sponsored by United Church Women who invite all of the community to join in the observance.

The local service will be at 10 a.m. at the Church of the Covenant, Presbyterian, 3776 S. Orlando Highway, Mrs. W. L. Rowland in program chairman.

No barriers of race, denomination, or culture are recognized when women come together for this prayer day, which has a history of nearly 80 years. Not do the women stop at supplication. They bring monetary gifts to help support Christian interdenominational colleges and literature and literacy programs in many countries abroad and to support national projects such as educational, recreational, and child-care help for migrant workers and services to Indian youth.

More than a program, World Day of Prayer is planned primarily for the purpose of leading the participants into an active experience of prayer. It is always observed on the first Friday of Lent and each year extends beyond more national and religious lines in concern for the needs of all people for the message of the Christian gospel.

Hospital Notes

FEBRUARY 7, 1967

Admissions

Frances King, Jean Pittard, Laura C. Replato, Beverly Harris, Donna J. Nye, Wilma C. Naylor, Virginia McQuatters, Minnie Khelick, Sherman Manning, Iukie Lee Bellinger, Jessie Collins, Jeffrey Schaeuring, William Cooper, Mary Soderholm, Lena Ferguson, Dorothy Bryant, Joyce Island, Jean M. Braselton, Sanford, Edna Waggoner, Attamonte Springs; Mabel West, Delary, Peter Viator, Sanford; Mary Donaldson, Bernice Sobock, Lake Mary; Adele Fortson, Apopka; Rose Latzkowsky, Edgewater.

Births

Mr. and Mrs. William E. McQuatters, Sanford, a boy; Mr. and Mrs. Joseph Braselton, Sanford, a girl; Mr. and Mrs. James G. Naylor, Sanford, a girl.

Discharges

Elijah Williams Jr., Mattie Benson, Brian Knight, Albert Ford, Joyce Beckham, Bonnie Link, Larry E. Helms, Martha Morton, Michael Pinkney, Linda Gales and baby girl, Earl H. Bourquard, Lilly Williams, Sanford, John Woods, Casselberry, Serena Fender, Marie Meeking, Delary; William Bowes, Deltona; Joseph Mark Calhoun, Lake Monroe, Dora Huff, Osteen; Donald Rimabarger, Orange City.

Funeral Notice

Funeral services for Mrs. Edna W. Rowland, 61 of Sanford, who died Monday, will be at 2 p.m. Thursday at Central Baptist Church with Rev. Freddie Smith and Rev. H. Earl officiating. Burial will be in Oaklawn Memorial Park. Grambow Funeral Home in charge.

Scouts To Have Public Program

An exhibition on camping to be open to the public all day Saturday will be given by Boy Scout Troop 242 at the Scout Hut in Lake Mary.

Many items made by the boys will be on display at this time. The troop members will cook their own food on the grounds as part of the day's activities.

On Sunday morning, in observance of Boy Scout Week, the troop will attend the Community Presbyterian Church in Lake Mary where three of their members, Stanley Howell, Mike Parkinson, and Gary Omev, will be awarded the God and Country medal during the regular 11 o'clock worship service.

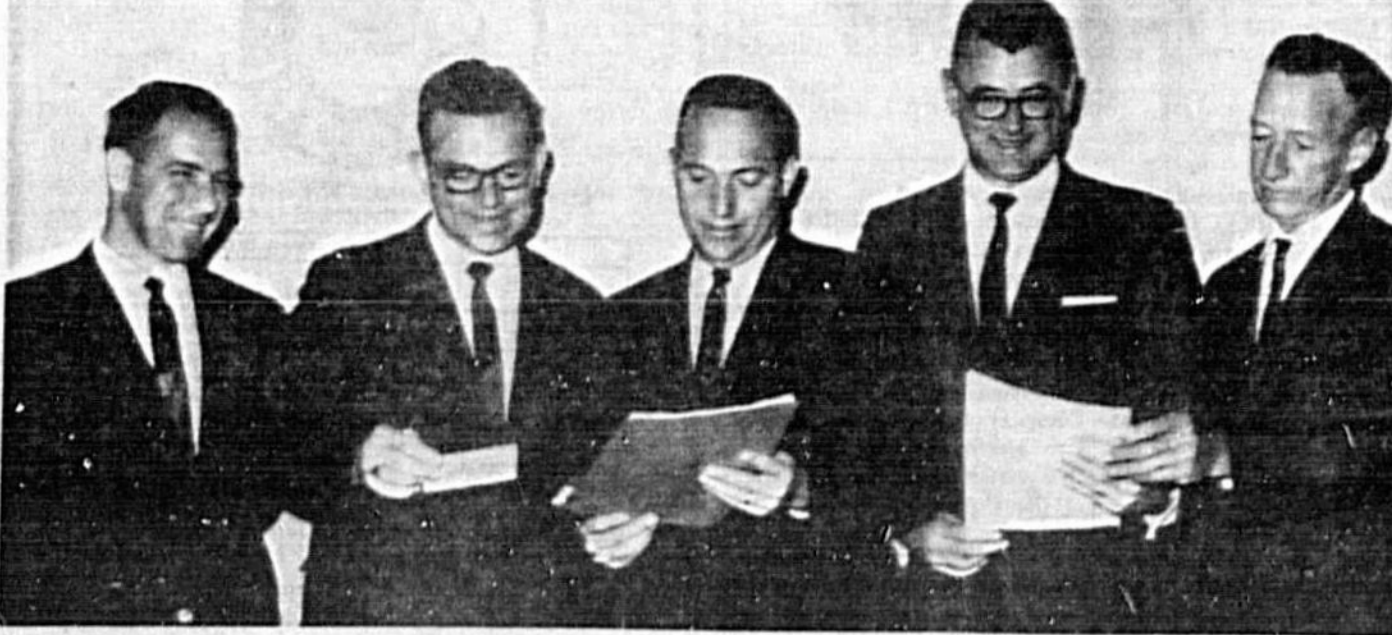
Town To Name Judge And Chief

Appointment of a police chief and town judge is expected to be made by the mayor and confirmed by the council at a meeting of the Altamonte Springs Town Council scheduled for 8 p.m. today.

It is expected Franklin George will be named police chief and Gene R. Stimpson as city judge.

Funeral Notice

Funeral services for Mrs. Edna W. Rowland, 61 of Sanford, who died Monday, will be at 2 p.m. Thursday at Central Baptist Church with Rev. Freddie Smith and Rev. H. Earl officiating. Burial will be in Oaklawn Memorial Park. Grambow Funeral Home in charge.



KICK-OFF BREAKFAST this morning launched the annual one-day membership drive of the Seminoles County Chamber of Commerce. From left: Ben Ward, William Fraass, Kenneth McIntosh, Clyde Long and W. A. Adams. (Related picture and story on page 1.) (Herald Photo)



DeBary Mansion Sale To State In Plan Stage

Eventual transfer of DeBary Mansion House, now owned and used as headquarters of Florida Federation of Art, Inc., to the Florida Park Board of Historical Memorials was announced today pending approval of the 1967 State Legislature.

Negotiations for the transfer have been underway for the past 18 months between the two boards with Mrs. George Brooks of DeBary, immediate past president of the federation, heading the committee representing her group.

In a statement to the federation board of directors, Mrs. Brooks reported all necessary legal steps have been completed and the board of parks has included purchase of the Mansion and its five acres of surrounding lands in its 1967 budget which will be presented in full to the State Legislature in April for approval.

HEART FUND MONTH is being observed during February, according to a proclamation by Mayor Joe R. Baker today. Pictured with the Mayor (center) are Eoghan N. Kelley (left), campaign chairman, and David J. Wilson, campaign treasurer.

(Herald Photo)

26 Dead In Montgomery Fire; Church Of God Hq. Destroyed

MONTGOMERY, Ala. (AP) — A fire which began as tiny flickers in a cloakroom raged through a fashionable rooftop dining room in downtown Montgomery Tuesday night, leaving at least 26 persons dead, including a former state official who was indicted Tuesday.

Water pouring from the blackened ruins of Dale's Penthouse restaurant atop the 11-story building, known as Bible Place, were saved. They included the main headquarters, the Tabernacle, the visual department and the book store.

Three of the state's biggest industries were blackened ruins — a brewery, a carbide company and a big fish cannery.

The fire broke out shortly before midnight in the three-story brick building, built in 1947 at a cost of \$250,000. Officials said it apparently started in the third-floor radio department and quickly spread.

Other buildings in the complex, known as Bible Place, were saved. They included the main headquarters, the Tabernacle, the visual department and the book store.

Three of the state's biggest industries were blackened ruins — a brewery, a carbide company and a big fish cannery.

The fire broke out shortly before midnight in the three-story brick building, built in 1947 at a cost of \$250,000. Officials said it apparently started in the third-floor radio department and quickly spread.

Other buildings in the complex, known as Bible Place, were saved. They included the main headquarters, the Tabernacle, the visual department and the book store.

Florida Tech Move Opposed By Chamber

Opposition to any proposal to place Florida Technological University at any site other than the Adams site three miles south of Orlando, was voiced today by the Seminole County Chamber of Commerce in a telegram to the State Board of Regents, at Tallahassee.

Douglas Stinson, chairman of the Chamber's long range planning committee, said the telegram followed a published report that the Board of Regents was moving FTU to the proposed Disney World project, south of Orlando.

The telegram reads: "Seminole County Chamber of Commerce strongly opposes consideration by the Board of Regents of changes of site location for Florida Technological University."

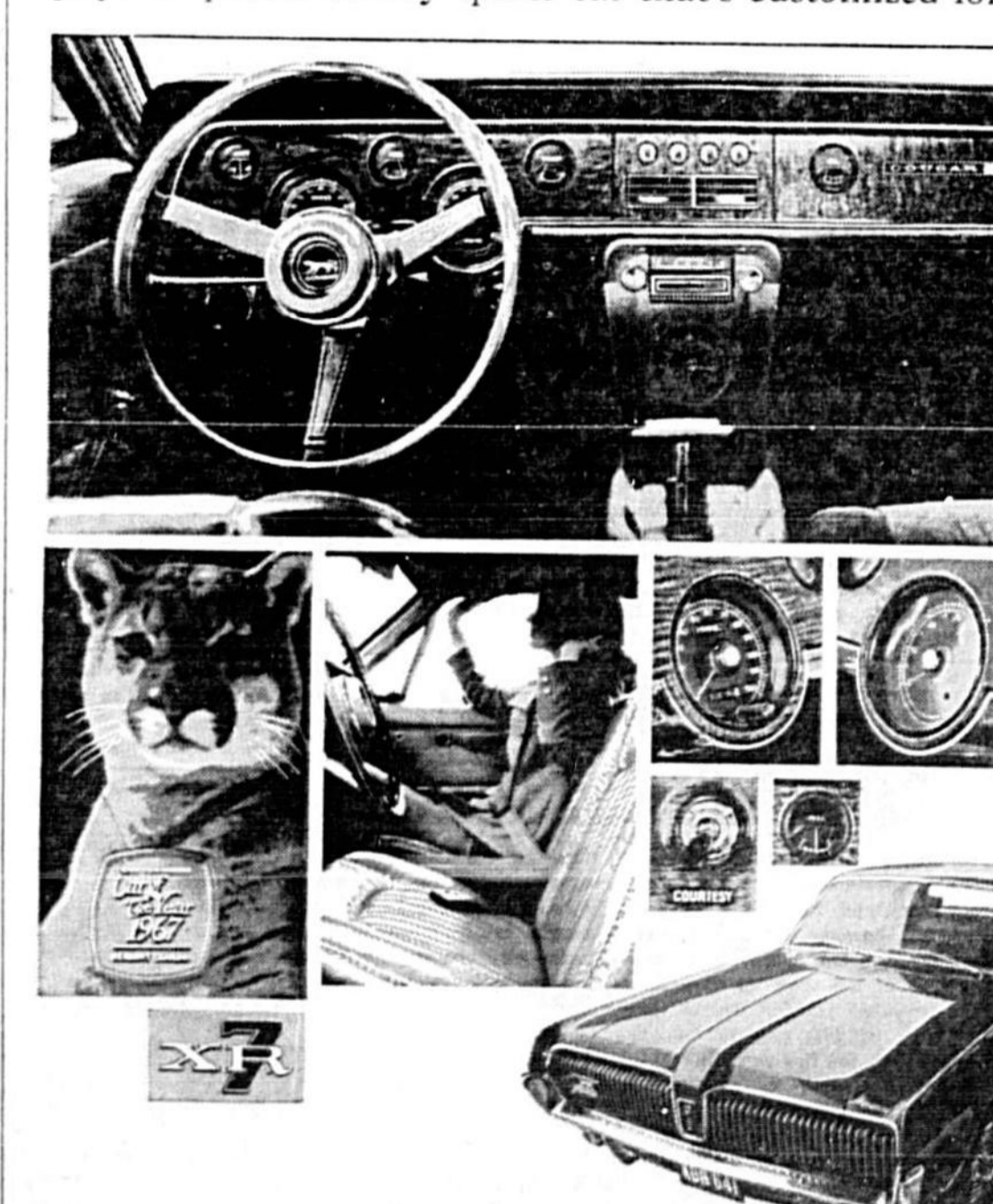
"After months of study in 1962, and with very carefully established criteria, the present site was chosen in consideration of both the population center of the area to be served and the space center needs at the Cape."

"The coming of the Disney projects, which are welcomed by all, does not alter the basic reasons for the soundness of the decision for the location of FTU south of Orlando and its location."

"We urge the Board to immediately discard any further consideration of a potential change of the location of Florida Tech."

Just arrived! New Cougar XR-7.

European elegance comes to Cougar Country in Mercury's Car of the Year. Soft glove leather! Walnut-grained vinyl panels. Dials you can read! Overhead console! Hidden headlamps! Powerful V-8 engine. And all as standard equipment. Come drive Cougar XR-7—the first popular-priced luxury sports car that's customized for you.



Mercury Cougar, Car of the Year.

Now on display at:

**HUNT LINCOLN-MERCURY, INC.**

109 NORTH PALMETTO AVE. SANFORD, FLORIDA

Florida Tech Move Opposed By Chamber

Opposition to any proposal to place Florida Technological University at any site other than the Adams site three miles south of Orlando, was voiced today by the Seminole County Chamber of Commerce in a telegram to the State Board of Regents, at Tallahassee.

HEART FUND MONTH is being observed during February, according to a proclamation by Mayor Joe R. Baker today. Pictured with the Mayor (center) are Eoghan N. Kelley (left), campaign chairman, and David J. Wilson, campaign treasurer.

26 Dead In Montgomery Fire; Church Of God Hq. Destroyed

MONTGOMERY, Ala. (AP) — A fire which began as tiny flickers in a cloakroom raged through a fashionable rooftop dining room in downtown Montgomery Tuesday night, leaving at least 26 persons dead, including a former state official who was indicted Tuesday.

Florida Tech Move Opposed By Chamber

Opposition to any proposal to place Florida Technological University at any site other than the Adams site three miles south of Orlando, was voiced today by the Seminole County Chamber of Commerce in a telegram to the State Board of Regents, at Tallahassee.

Just arrived! New Cougar XR-7.

European elegance comes to Cougar Country in Mercury's Car of the Year. Soft glove leather! Walnut-grained vinyl panels. Dials you can read! Overhead console! Hidden headlamps! Powerful V-8 engine. And all as standard equipment. Come drive Cougar XR-7—the first popular-priced luxury sports car that's customized for you.

# WINN-DIXIE HAS THE... LOWER PRICES

WINN-DIXIE FOOD STORES

SAVE AT WINN-DIXIE FOOD STORES

THE SMART PLACE TO GO... FOR GOOD THINGS TO EAT

QUANTITY RIGHTS RESERVED—PRICES GOOD THRU FEB 11

<b>ASTOR COFFEE</b> 1-LB. CAN <b>38¢</b>	<b>MAXWELL HOUSE COFFEE</b> 1-LB. CAN <b>48¢</b>	<b>ASTOR Shortening</b> 3-LB. CAN <b>48¢</b>	<b>SHORTENING CRISCO</b> 3-LB. CAN <b>58¢</b>
<b>SUPERBRAND</b> GR. 'A' FRESH FLORIDA ALL WHITE <b>LARGE EGGS</b> 2 DOZEN <b>79¢</b>	<b>ALL BRANDS Cigarettes</b> REGULAR, KING or FILTER CARTON <b>\$2.74</b>	<b>GERBER OR BEECHNUT</b> STRAINED <b>Baby Food</b> 4 1/2-oz. JARS <b>10¢ for 1</b>	<b>Dixie Crystal Colonial - Hershey</b> <b>SUGAR</b> 5-LB. BAG <b>38¢</b>
<b>SOUTHERN BISCUIT</b> Plain or Self-Rising 5-Lb. Bag <b>FLOUR 38¢</b>	<b>GOLD MEDAL</b> Plain or Self-Rising 5-Lb. Bag <b>FLOUR 55¢</b>	<b>Reg. 27¢ JUMBO ARROW Paper Towels 3/69¢</b>	
<b>Florida or Georgia Gr. 'A' Dr. &amp; Dr. Fresh CUT-UP or WHOLE FRYERS</b> LB. <b>29¢</b>	<b>Fryer Breast</b> LB. 59¢	<b>Fryer Thighs</b> LB. 59¢	<b>Fryer Wings</b> LB. 39¢
<b>Fryer Legs</b> LB. 59¢	<b>Round Roast</b> LB. 98¢	<b>Gr. Stew</b> LB. 79¢	<b>Beef</b> 5 LB. \$1.99
<b>Stew</b> 3 LB. 87¢	<b>Burgers</b> ... \$1.99	<b>Stew</b> 3 LB. 87¢	<b>Burgers</b> ... \$1.99
<b>PORK HAMS</b> ... LB. 69¢	<b>BISCUITS</b> ... 2/39¢	<b>CHEESE</b> ... 79¢	<b>BOLOGNA</b> 59¢
<b>FRANKS</b> ... 39¢	<b>CHEESE</b> ... 79¢	<b>FISH STICKS</b> .99¢	<b>FISH STICKS</b> .99¢

**FRESH PRODUCE**

<b>Potatoes</b> 10 LB. BAG 48¢	<b>Corn</b> ... 8/59¢
<b>Pole Beans</b> LB. 15¢	<b>Cabbage</b> 2 HDS. 29¢
<b>Apples</b> ... LB. 19¢	<b>Grapes</b> ... LB. 19¢
<b>Potatoes</b> ... 49¢	<b>Drink</b> ... 3/1.
<b>ORANGE JUICE</b> ... 8 FOR \$1.00	<b>POT PIES</b> ... 5 FOR \$1.00
<b>Deviled Crabs</b> 79¢	<b>Coffee Ring</b> ... 69¢
<b>Fish Sticks</b> ... 59¢	<b>Oysters</b> ... \$1.09
<b>Fry Potatoes</b> . 3/1.	<b>Blackeye Peas</b> 2/1.
<b>Sirloin Steaks</b> 89¢	<b>Baby Limas</b> . 2/1

**The Smart Place To Go... For Good Things To Eat**

Highway 17-72, Longwood French Ave. & 25th Palmetto Ave. & 3rd St. 400 E. First St. Deltona

# "On My Honor . . ."

"On my honor . . ." These words mean much to Americans as they continue the battle of life. They mean more to our boy scouts.

Check your memory. How many true Boy Scouts have you known who have "gone bad"?

"We believe you will say 'not many'."

For boy scouts have special training from special men. They learn comradeship, how to live and work together. The scout laws are a model for all to follow. There are only 12 of them and once learned they remain indelibly in our mind.

A scout is trustworthy, loyal, helpful, friendly, courteous, kind, obedient, cheerful, thrifty, brave, clean and reverent.

Think of those words for a minute. Roll them around in your mind. See what a wonderful world we'd have if all of us followed just those 12 simple, easy to understand words.

Years ago a man was umpiring a baseball game. He stood behind the home plate and heaved for the first time. The umpire asked him if it was a fair ball. "Yes Sir," came the reply.

"Are you sure?" the umpire inquired.

"I'm a boy scout!" closed the discussion.

This week scouts and their leaders are observing their own special Boy Scout Week. It's scouting's 57th anniversary.

We hope everyone in Seminole County, in Central Florida will give a silent doff of their cap to the boys.

For each of them we give the salute of "well done."

**James Marlow**

## Analysis Of The News

## Dig This, Daniel Boone!

The new note in fashions is furs for men. **3 FURS FOR MEN!**

Coon-skin caps? Fur-lined mittens? A revival of the Joe College raccoon coat circa 1920s?

Don't be uncouth, PLEASE. The new masculine fur pieces are such sophisticated garments as a dinner jacket of black American broadtail at \$450, a hip-length coat of red fox fur for \$595, or a full-length dream in unplucked beaver for \$790.

Or, for cuddly togetherness, his and hers minks for \$6,000 the pair.

Sale of such coats, the Fur Information and Fashion Council happily reports, brisk. Men like them because they are a status symbol and are, of course, warm—and therefore practical.

So no unfurred hum should be too flip in cracking wise on the mazy garment of the real hip fellows who wear them. Nevertheless, the first guy who appears in public in a fur stole or neck-piece had better come out fighting!

# BUT DOC . . .



**Bruce Blosser - Ray Cromley**

## Dr. Crane's Worry Clinic

Prof. Lance wants Americans to wake up to the grim threat that in one more generation can destroy our superb "free enterprise" system.

Study this Case Record. Then discuss it at luncheon and women's club meetings. Send for the booklet below and get it into your high schools at once. For time is running out!

GASE B-857: Lance G., aged 28, is a professor of practical psychology.

"Dr. Crane," he began, "I use your textbook, 'Psychology Applied,' with my class in Business Psychology.

"And the students have been shocked by your book on Page 679 that shows how fast the survival of the unfit is threatening America.

"I think it is timely for you to reveal these data to the entire nation via your daily column.

Fit vs. Unfit

Until about 1850, the "fit" as well as the "unfit" both had large families.

But more of the children of the "fit" survived the many childhood diseases, poor food and polluted water.

Then a change occurred, thanks in part to our lofty religious concepts.

The "unfit" were screened out by psychological tests so they couldn't go to war and have their bodies scattered over France or Germany, Korea and Vietnam.

Those "unfit" were also mediated free, at taxpayer's expense, so they would survive to bring their genes into your high schools at once!

(Always write to Dr. Crane in care of this newspaper, enclosing a long stamped, addressed envelope and 20 cents for copy typing and printing costs when you send for one of his booklets.)

OVER 35 YEARS AS First (Alongside post office)

### Sanford Furniture Co.

• Carpets • Furniture • Pillows • Rentals Beds

## What's All Noise About Told By Flyer

Roar of the Navy's Vigilante planes over Sanford has a new meaning for members of the Sanford Lions Club, who were given a frank, clear explanation by Lt. Cdr. Patrick Gallagher, RVAH 9, at the club's meeting in the Civic Center Tuesday.

These \$2-14 million airplanes are prime instruments to build up intelligence through unbelievably accurate photographic performance which bases the entire national defense program, Commander Gallagher pointed out. Each plane is armed with cameras which sweep the horizon. At present are engaged in the specific requirements of the Vietnam war. But the mission is broader than any one section of the world.

"We must be prepared for any intelligence need," said the experienced flyer who cited flights which are made along the southeast coast of the United States when electronically acquired data spotting such key installations as radio stations and computer operations into tapes for any future need. Such intelligence resources exist in the shape of similar facilities along the coasts of England and Canada. For, the Navy officer pointed out, should present friendly nations fall under communist control such information would be greatly needed but then unobtainable.

This key weapon in our defense, however, is useless without the man to fly, maintain and service the planes. And it is this man, Gallagher addressed most of his remarks.

The life of a squadron falls into about three sections. First, the return home after nine months of carrier duty; second, the immediate inspection and repair of the aircraft; and third, the retraining at the base, the preliminary carrier practice in the Caribbean and the final inspection preceding return to a carrier for duty.

The most difficult maneuver was the retraining aids at the Sanford base, plus carrier landings

## NATIONS IN ARMS

UNITED STATES	SOVIET UNION	CHINA
3,334,000	3,165,000	2,486,000

The United States now has the largest regular armed force in the world, having passed the Soviet Union in total manpower at the close of 1966. The current U.S. Army-Air Force-Navy total is 484,000 higher than a year ago, according to Pentagon figures. Soviet military forces are reported to have shown a "very slight" increase during the same period. Red China, ranking third in combined military manpower, still has the largest army—2.25 million men of last report. Most of the U.S. buildup has been in the Army, scheduled to go from 1 million men in 1966 to 1.5 million if Congress approves President Johnson's budget message request for increasing the armed forces to 3,464,000 by June 1968.

## SOCIAL SECURITY

### Questions and Answers

Q. My husband is retired from service and will draw his retirement for the rest of his life. If he lives to retirement age, will he also be eligible for social security?

A. There is no restriction against drawing both military retirement and social security. If your husband's military retirement was not based on the length of time he was in service, or if he had active service after December 31, 1956, he can receive credit under social security for portions of his military service, in addition to any civilian employment he had under social security.

Q. I was born February 18, 1902, am getting railroad pension of \$190.70. My wife gets \$748.00. I have been repaid on my clock-repairing in any year equals or exceeds \$400, you should report this income for purposes of social security. In this way, you may qualify for social security benefits in addition to railroad retirement. At your age, you require two

## Happy (?) Day! Income Tax Time Again

Excuses are starting to run out for stalling on making out your 1967 income tax returns.

By now all earnings statements—known as W-2 slips by Internal Revenue Service—have been received. The law for employers to get them into the hands of all salaried workers and hourly paid employees, if you don't have yours yet you had the right to demand it of your employer or former employer.

January 21 was the deadline, too, for corporations, banks, savings and loans to mail out notices of dividends and interest paid during 1966.

While all original copies of your W-2 slips must be attached to your return when you file it—one for each employer you may have had last year—it is not necessary to retain your original and interest interest.

Internal Revenue Service will have reports identical to yours, however, on all that interest and dividend income which you are checking to make sure it is reported on your return.

Remember that this is the year that every return in the nation will be computer-audited. Double-check your return not only for mathematical accuracy but also to make certain that no item for taxable income has been omitted.

Internal Revenue's computers will not accept a return with errors or omissions. Failure to list all taxable income probably will result at a minimum with correspondence with IRS and a possibility you will be called for an explanation.

## Chuluota Lake Access Road Is Protested

Complaints of a delegation of residents from Chuluota on opening of Cherry Street into Lake Mills by private citizens were heard at a meeting of the Board of County Commissioners Tuesday. The matter was referred to Commissioner Robert Parker for investigation and recommendation.

The street was opened by the citizens after receiving permission from the board to open it to provide access to the lake. The work was done at no expense to the county.

John Hargrove, one of the citizens present, complained of opening of the road to the lake would bring an "undesirable element" into that area.

John Alexander, commission chairman, remarked, "It would be hard put to deny the public use of a public right-of-way."

In other action, the board: Authorized the road superintendent to purchase a filing cabinet for his department out of budgeted current office expense with cost not to exceed \$50. Agreed to provide emergency maintenance on 30 or 60 feet of Mitchell Hammock Road east of SR 530, on the approach to the property of the Baptist Mission in Chuluota, and on an approach on Wynore Road.

Instructed the county engineer to complete an estimate of costs of paving and drainage in Mobile Manor with view toward the residents there participating with the county in cost of the improvements.

Noted to provide emergency maintenance where needed on roads in Mobile Manor.

## Annual Art Exhibit Slated In November

Regional chairman and the board of directors of the Florida Federation of Art have voted that paintings entered in the November (1967) annual exhibit will be hung at DelRay.

Manuscript, federation headquarters for judging. Thirty entries will be selected for the exhibit show and an additional 100 for the show at the annual convention, if space is available. Announcements from the

Federation's board of directors report that two new art groups have been formed, the Indian River Federation Art Group and the South Dade Art Group of Miami.

Mrs. Ruby Con has been named scholarship chairman and Mrs. Dorothy Cain is the new publicity chairman.

There will be displays of furniture, primitives, dolls, silver and linens, orientals, jewelry, paintings and antique bric-a-brac (both bought and cut) and fine china, by dealers from Vermont to Wisconsin to Florida. All items on display will be for sale.

### Quick Quiz

Q—When did the first baseball World Series take place?

A—On Oct. 1, 1903, the first Series got under way at Boston as the Boston Americans and the Pittsburgh Nationals started a competition of not more than nine games. When the Series ended on Oct. 13, Boston had won with five victories to Pittsburgh's three.

Q—Do bananas grow on trees?

A—The banana plant grows from 10 to 25 feet tall, and looks much like a tree, but it is not a tree. It has no wood trunk or boughs.

Q—When did the Executive Mansion or the President's House become known as the "White House"?

A—The gray sandstone walls were painted white to cover smoke staining after the building was burned during the War of 1812, and thereafter it began to be popularly known as the "White House." This name was first used on the president's stationery during the administration of President Theodore Roosevelt.

### Top Favorites

TOP FAVORITES of every newspaper are those thoughtful customers who show appreciation for his good service by always paying him the very first time he calls to collect.

THEY REALIZE that because he's in business for himself, he needs prompt collections for several important reasons: To pay his newspaper bill on time, to obtain full profits from his efforts, and to minimize call-backs—thus giving him more time free for school work, sports and other activities in a busy boy's life.

ALSO THEY realize that the newspaper itself is wonderfully enjoyable and helpful for every reader, a really big bargain for the small sum the carrier collects each time!

### ALASKAN BIRTHDAY

ALASKAN BIRTHDAY is commemorated on a special eight-cent stamp to be issued March 30, first day of ceremonies observing the 100th anniversary of Alaska from Russia. The vertical stamp reproduces an Indian totem, and is a fine drawing in white on a dark brown background.

### NOTICE OF NAMES OF PERSONS APPEARING TO BE OWNERS OF ABANDONED PROPERTY

Pursuant to Section 12 of Chapter 211, Florida Statutes, entitled "Florida Disposition of Abandoned Property Act," notice is hereby given that the persons listed below appear to be the owners of unclaimed personal or intangible property presumed abandoned.

Account Number—4-6967-8802; Apparent Owner—Seminole Meat and Provisions, 119 West 2nd Street, Sanford, Fla.

Account Number—4-6720-8901; Apparent Owner—Wolfe's Information concerning the amount of the bona fide claim for the Property and the name and address of the claimant should be addressed to: Fred O. Dickinson, Jr., State Comptroller as Administrator, Abandoned Property Disposition Chapter 211, Florida Statutes, Tallahassee, Florida. Be sure to mention account number, name and address, as published in this notice. Unless prior proof of ownership is presented to the Auditor by April 23, 1967, the property will be delivered to the administrator. Thereafter, all further claims must be directed to the Administrator, FRED O. DISKINSON, JR., State Administrator, Public Feb. 8, 13, 22 & Mar. 12, 1967. DDK-22

Washington (AP)—President Johnson's program for a nationwide war on crime, which the federal government footed a good bit of the bill, had hardly reached Congress before Republican leaders attacked it.

Johnson's proposal would not make the federal government boss of crime control but would give the government a major role in it by being a big help and a guiding force.

But the Republican House leader, Gerald R. Ford of Michigan, said the best way to finance a nationwide attack on crime would be through federal tax-sharing. Tax-sharing has been a much talked-of way to bail out states.

As usually discussed, tax-sharing would have the federal government turn over to the states—without strings and therefore without control—billions of dollars from federal revenue.

Under such an arrangement the states could suit themselves, or how they used the money. With this latitude some states, perhaps most, could decide none of the federal money would be used for crime prevention.

### HERALD AREA CORRESPONDENTS

Altamonte Springs Mrs. Julia Hartos 858-1318	Geneva Mrs. J. E. Matheux 340-8205
Bear Lake Forest City Mrs. Maryann Miles 838-9678	Lake Mary Mrs. Frank Weaver 322-6219
Casselberry Mrs. Jane Casselberry 285-5192	Lake Monroe Mrs. R. L. Johnson 322-4722
Chuluota Mrs. Lisa Baker 255-5192	Longwood Mrs. Donna Eato 858-3317
Delray Mrs. John Leone 668-4852	North Orlando Mrs. Marjorie Peterson 322-9891
Deltona Mrs. Wilfred Haney 680-5281	Oviedo Mrs. Clarence Snyder 322-4841
Enterprise Mrs. Elsie Harris 668-5834	Orlando Miss Ruth Davidson 365-7651

### Sanford Furniture Co.

• Carpets • Furniture • Pillows • Rentals Beds

**LEGAL NOTICE**

IN THE COUNTY JUDGES COURT OF SANFORD COUNTY, FLORIDA IN PROBATE

No. 208

IN RE: ESTATE OF DANIEL H. SPORFORD, Deceased.

TO ALL Creditors and All Persons who have Claims or Demands Against the Estate of DANIEL H. SPORFORD, Deceased, of Seminole County, Florida, who are named herein, or who may claim to be named herein, in duplicate and as provided in Section 232, Florida Statutes, in his office in the County Courtroom, Seminole County, Florida, within six calendar months from the date of the first publication hereof, or the same will be barred forever.

Dated at Sanford, Florida, this 19th day of February, A.D. 1967.

/s/ Emily M. Spoford,  
Atty. for E. M. Spoford,  
1247 Altide Blvd.,  
Miami, Florida  
Public Feb. 8, 13, 22 & Mar. 12, 1967.  
DDK-22

### BERRY'S WORLD

What's the latest on George and Lynn Bird?

### INSURANCE

Personal Commercial Industrial Bonds

Cumley-Rumley-Orteith, Inc.

500 W. First St. 322-0375 Sanford

### Your Carrier Loves Prompt Payers!

TOP FAVORITES of every newspaper are those thoughtful customers who show appreciation for his good service by always paying him the very first time he calls to collect.

THEY REALIZE that because he's in business for himself, he needs prompt collections for several important reasons: To pay his newspaper bill on time, to obtain full profits from his efforts, and to minimize call-backs—thus giving him more time free for school work, sports and other activities in a busy boy's life.

ALSO THEY realize that the newspaper itself is wonderfully enjoyable and helpful for every reader, a really big bargain for the small sum the carrier collects each time!

### The Sanford Herald

Page 4 Sanford Herald Feb. 8, 1967

WALTER A. MCELROY, EDITOR AND PUBLISHER  
LARRY VERNHEIL, MANAGING EDITOR  
LARRY VERNHEIL, ASSOCIATE MANAGING EDITOR  
DONALD W. HARRIS, BUSINESS MANAGER  
JOHN W. FOLEY, CIRCULATION MANAGER  
M. J. ORLANDO, COUNTY EDITOR

Published weekly except Saturdays, Sundays and Christmas; published Monday preceding Christmas.

Home Delivery	SUBSCRIPTION RATES	6c week
By Mail	SEMINOLE COUNTY	ALL OTHER MAIL
1 Year	\$11.00	\$14.00
6 Months	\$6.00	\$7.50
3 Months	\$3.00	\$3.75
1 Month	1.00	1.25

The Herald is a member of the Associated Press which is entitled exclusively to the use for reproduction of all the local news printed in this newspaper.

Registered as second class matter October 21, 1919 at the Post Office of Sanford, Florida, under the Act of Congress of March 3, 1879.

No part of any material herein or advertising of this edition of the Sanford Herald may be reproduced in any manner without the written permission of the publisher. The Sanford Herald assumes no responsibility for loss of correspondence or for return of unsolicited material.

© 1967 by Jim Berry, Inc.

### ADD TO YOUR LIFE... A VENTURE IN FAITH

THE METHODIST CHURCHES OF FLORIDA

The Methodist churches of Florida will hold special services to help you gain the reassurance that the answers to the problems we face in today's world can be found through faith . . . Faith in the certainty that God loves all men . . . Faith in Christ that can show the way to greater depth of meaning to your life. Plan now to attend the services in your nearby Methodist Church.

**FEBRUARY 5-10**

**AT ALL METHODIST CHURCHES IN THIS AREA**

**FLORIDA STATE BANK**

200 WEST FIRST STREET • SANFORD, FLORIDA

means 1 column by 2 inches. Too small for an ad to be noticed or effective? You're reading this one!

### CAREFUL PLANNING CAN KEEP AN "ADDITION" TO YOUR HOME FROM BECOMING A SUBTRACTION

What starts out to be an "addition" to your home can end up being a subtraction. But, this need not be the case. You can protect your home improvement dollar. The key is careful planning.

Here are four considerations in planning your home improvement that can greatly reduce the chance of your "addition" ending up a "subtraction":

1. Make sure the improvement you're considering will satisfy your needs. What problem or discomfort are you trying to overcome? The more accurately you can pinpoint what you want from your home improvement, the better your plans will be. For instance, if you plan for a family room to keep the "formal" living area of your home cluttered by children's toys, it's doubtful that it will do the job if it is tied directly into the "traffic pattern" of your formal living area. A separate game room might better fill your needs.
2. Evaluate your plans to make sure your home improvement won't be clumsy. Whether you're adding a patio, converting a spare closet into a new bathroom, or rebuilding your kitchen, the improvement should be natural and convenient.
3. Good improvement or addition will fit so naturally into the floor plan of your home that it will feel as though it always should have been there. For instance, a bedroom added to your house that requires traveling through "L" -ing room to get to the bathroom will probably be awkward. Try this: Make a sketch of your existing house. (Make 1/4 inch equal a foot.) Add your proposed improvements to scale. Mentally "walk through" your home with the improvements and evaluate whether they're convenient or clumsy. Then, make whatever changes you feel are appropriate.
4. Make complete plans. Your home improvement is important to you. Get detailed plans on paper. If you aren't qualified to make working drawings, have them made by an architect or building contractor. You'll pay a fee for them, but plans drawn by an architect or contractor can save you money.

Detailed plans can do at least three things for you: (1) They'll give you a final check-point to evaluate whether the improvement will give you what you want; (2) The plans will make it possible for you to get firm quotations on the work; (3) Having fixed-price contracts makes it easier for you to control the cost of the project. Complete plans will also make it possible to: (4) Make sure your addition or improvement doesn't look like one. Your improvement should blend with the rest of your home. Poor styling will make it obvious and obtrusive. In short, make sure the improvements you plan complement or match the existing styling of your home. Never settle for a "tacked on" appearance. —Bill Allen

### DON'T SHIVER!

GET General Electric WeatherTreat & Furnaces CALL WALL Plumbing, Inc. 1007 Sanford Ave. 322-6542

JAYCEES will kick-off their annual fertilizer sale Feb. 25 in Sanford. Shown above are chairman Ralph Frame (left) and Harold Highsmith, the Jaycees will have a van at Sunbird Plaza selling fertilizer. Anyone wanting fertilizer is asked to call the Jaycee Information Center. (Herald Photo)

**FLORIDA STATE BANK**

200 WEST FIRST STREET • SANFORD, FLORIDA

AN ANONYMOUS face of stone has started at generations of youngsters at Huntington elementary school in Brockton, Mass. The school would appreciate any help as to the identity of the person used as a model for the statue.  
(NEA Telephoto)

**Father-Son  
Pilot Team In  
Coast Guard**

NEW YORK (AP) — When Steve Goldhammer was 11 years old, he used to watch his father, a Coast Guard pilot, flying around in a helicopter. "We always lived near the base and he used to fly over the house and wave," Steve recalls. "Everytime he flew over I wished I was up there."

Ensign Steve Goldhammer, now 22, is up there these days flying with his father, Lt. Cmdr. Walter R. Goldhammer, 47, among several other pilots. Cmdr. Goldhammer says he believes he and Steve are the only father and son on active flight duty in the Coast Guard. The father has 27 years service. The son won his wings and engine's bars Jan. 26, a day after he turned 22.

"It was a good birthday present for me," Steve said today. The Goldhammers are based at Floyd Bennett Field in Brooklyn. They live in the New York suburb of East Meadow on Long Island.

As a matter of routine, officers are permitted to list references for duty assignments. Steve put down Floyd Bennett Field and got it. Cmdr. Goldhammer enlisted in the Coast Guard in 1939, and served as an enlisted pilot guarding convoys in World War II. He won his commission as an officer in 1945, and has 4,000 hours flying experience in both fixed-wing aircraft and helicopters.

He and Steve have had training missions together, but Steve does not always fly with his father on these missions. The commander is one of several senior pilots helping Steve make the transition into the new HH32 single-engine, jet-turbine amphibious helicopter.

Steve says his father did not pressure him into becoming a Coast Guard pilot. "It was my own desire," he explained. "When I was 11 I decided I'd like to make that my career."

Steve wanted to fly so much that he dropped out of Miami University of Ohio after two years to enlist in the Coast Guard and eventually win acceptance into the Coast Guard aviation cadet program, which was begun in 1964.

"My prime interest in enlisting was becoming a pilot," he said. "This is the only reason I quit school."

Cmdr. Goldhammer, who went to the Pensacola Naval Air Training Station to pin wings on his son when he was graduated, says today: "I was proud of him. I was glad to see him do it."



**You'll love these Buys  
at Thriftway**

QUANTITY RIGHTS RESERVED

Open Sunday 8 a.m. to 6 p.m.

**STORE HOURS**  
MON. — THURS. 8 A.M. - 7 P.M.  
FRIDAY 8 A.M. - 9 P.M.  
SATURDAY 8 A.M. - 8 P.M.

ALL BRANDS — REG. OR KING  
**CIGARETTES**  
CARTON OF 10 PKGS. **\$2.68**

FLORIDA FRESH GRADE "A"  
**EGGS**  
2 DOZ. **89¢**

"MAXWELL HOUSE"  
**COFFEE**  
LB. CAN **47¢**  
(LIMIT: 1 WITH \$5.00 ORDER)

"JUNIPER" LONG GRAIN  
**RICE**  
3-LB. PKG. **29¢**



**SAVE MONEY, NOT STAMPS.**

THESE PRICES GOOD THROUGH WEDNESDAY, FEBRUARY 15th

"LEAN 'N TENDER" (SAVE 11c) **All Meat STEW** LB. **78¢**  
"LEAN" WESTERN (SAVE 11c) **SPARE RIBS** LB. **48¢**  
"OLD FASHIONED" COUNTRY THICK SLICED (SAVE 16c) **BACON** LB. **58¢**

**DAIRY FOODS**  
"FOOD KING" QUARTERS **OLEO** 1-LB. PKG. **19¢**  
"SHURFRESH" **BISCUITS** 5 8-OZ. CANS **39¢**

**FROZEN FOODS**  
"SEALD SWEET" **ORANGE JUICE** 8 6-oz. cans **\$1.00**  
"MASTER CHEF" **FRENCH FRIES** 9-oz. pkg. **9¢**  
"MCKENZIE" **GREENS** 2 16-oz. poly bags **59¢**

**Farm Fresh PRODUCE**  
"CRISP 'N GREEN" **CABBAGE** LB. **6¢**  
GOLDEN RIFE **BANANAS** LB. **9¢**  
"CRISP 'N JUICY" JONATHAN **APPLES** 4-LB. CELLO BAG **49¢**  
"U.S. NO. 1" WHITE **WHITE POTATOES** 5-LB. CELLO BAG **39¢**  
"FRESH 'N TENDER" **GREEN BEANS** LB. **19¢**

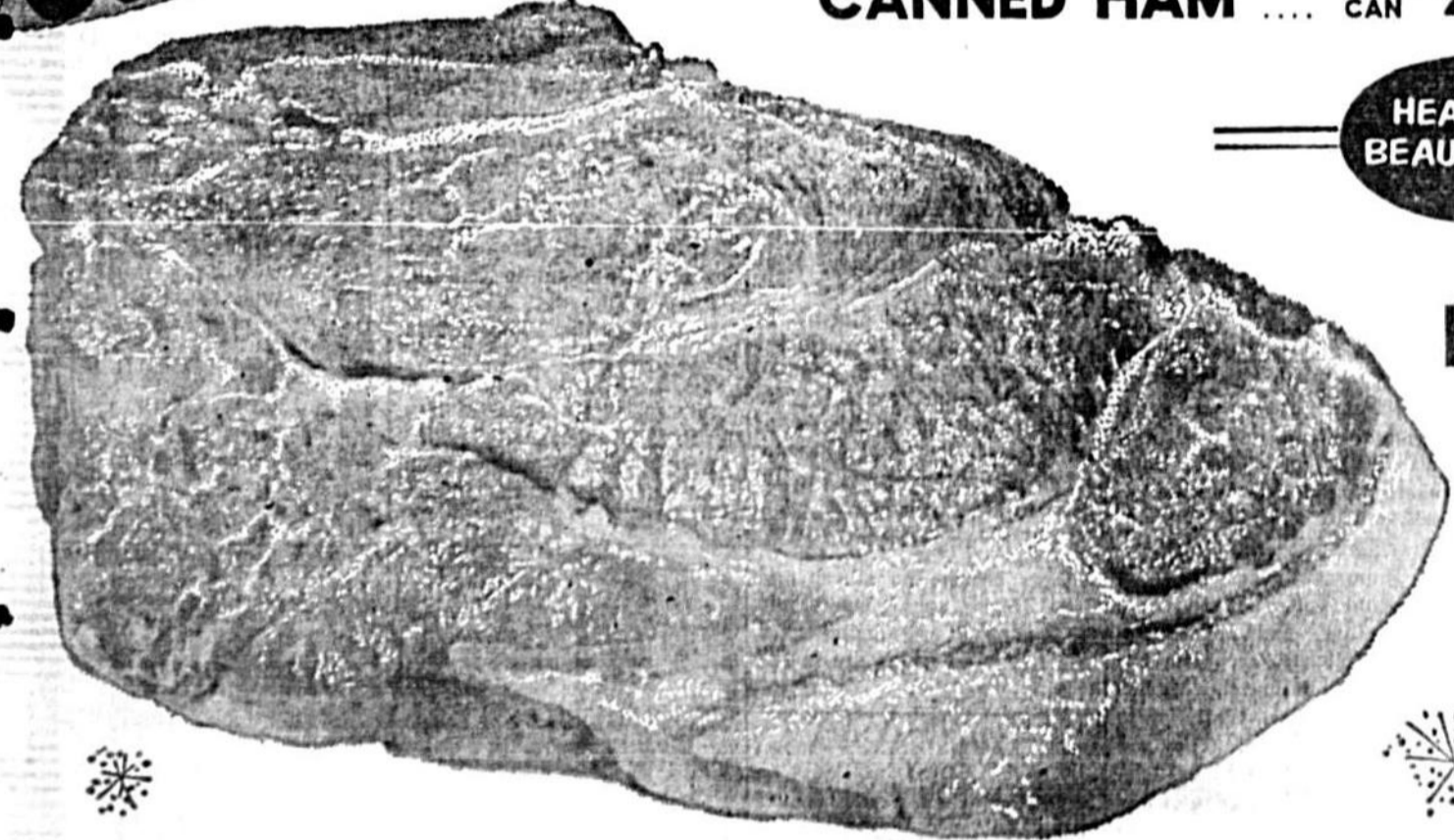
**STEAK**

LAZY AGED **BEEF**  
SIRLOIN-CLUB-SWISS-ROUND  
SAVE 16¢ **83¢** LB.  
CHUCK (SAVE 15c) **53¢** LB.  
RIB-FAMILY (SAVE 15c) **73¢** LB.

"O'SAGE"  
**PEACH HALVES**  
**19¢**  
(LIMIT: 2 WITH \$5.00 ORDER)

PARK AVE. at 25th St.  
**PICNICS**  
"LYKE'S" SUGAR CURED  
LB. **33¢**

**MEATS**  
"DUBUQUE" **CANNED PICNIC** (SAVE 31c) 3-LB. **\$1.98** CAN  
FLA. GRADE "A" FAMILY-PAK **FRYERS** (SAVE 17c) 5-LB. **\$1.98** PKG.  
"COPELAND" ALL MEAT **BOLOGNA** (SAVE 11c) 10-OZ. **39¢** PKG.  
"PALM RIVER" **WIENERS** (SAVE 11c) 12-OZ. **38¢** PKG.  
"LEAN" WESTERN PORK **SHOULDER ROAST** (SAVE 11c) LB. **38¢**  
"RED PIG" SMOKED **SAUSAGE** (SAVE 11c) LB. **58¢**  
"MARHOEFFER" **CANNED HAM** (SAVE 21c) 3-LB. **\$2.78** CAN



**KRAFT OIL** 32-oz. bottle **59¢**  
SHORTENING **VEGETOLE** 3-lb. can **69¢**  
"EVERFRESH" **POTATO CHIPS** 9-oz. twin-pak **38¢**  
"CAMPBELL'S" **TOMATO SOUP** 10¢  
"LARA LYNN" **SALTINES** lb. pkg. **19¢**  
"FLO-CANE" **SUGAR** 5-lb. bag **49¢**  
"SUNLITE" **TOMATOES** no. 303 cans **7/51.00**  
"EVERFRESH" CREAMED **COTTAGE CHEESE** 2-lb. cup **39¢**  
"DOUBLE LUCK" **CUT GREEN BEANS** no. 303 cans **7/51.00**  
"SHOWBOAT" **PORK & BEANS** no. 300 can **10¢**

"OLD MILWAUKEE"  
**BEER**  
12-oz. cans  
6 PAK **89¢**

"FRESH"  
**GROUND BEEF**  
4 LBS. **\$1.88**  
(SAVE 28c)

"LAZY AGED" **BEEF ROAST!**  
CHUCK ROAST (SAVE 12c) LB. **43¢**  
SHOULDER ROAST (SAVE 12c) LB. **63¢**  
POT ROAST (SAVE 12c) LB. **53¢**  
ROUND ROAST (BONELESS (SAVE 11c)) LB. **68¢**  
RIB ROAST (SAVE 11c) LB. **78¢**

"KLEENEX" JUMBO **TOWELS**  
ASSORTED COLORS ROLL **29¢**

"QUICK FROZEN" GRADE "A" TURKEY (SAVE 11c) **LEGS OR WINGS** LB. **28¢**  
"U.S. CHOICE" (SAVE 30c) **LEG-O-LAMB** LB. **49¢**

"REVLON" **Hair Spray** REGULAR CAN (REG. 78c VALUE) **63¢**  
"BAYER" **ASPIRIN** 100 CT. BOTTLE (REG. 89c VALUE) **60¢**

"AJAX" **LAUNDRY DETERGENT** (LIMIT: ONE WITH \$5 ORDER) **47¢**



LOOKING LIKE the glamor girl she has played in the movies so often, lovely Lana Turner here is actually taking a call in her own business office. She is a lady executive—president of Elite Productions.

**Area Methodists  
To Host World  
Day Of Prayer**

World Day of Prayer will be observed with a service at 10 a.m. Friday at Casselberry Community Methodist Church with all area churches and the public invited to attend. This day has been designated for the purpose and opportunity for Christians in 135 countries around the world to unite together in prayer. Plans for this year's program is "Of His Kingdom There Shall Be No End."

The program to be used was written by the late Queen Salote of the Tonga Islands before her death. World Day of Prayer has been observed in the islands since 1949 and the queen took a prominent part. The nearest country to the International Date Line, the Tonga Islands will again be the first to observe the day using the service which was one of the last gifts from the queen to them and the Christians of the world.

Mrs. Frank Masalle is chairman of the program. She is spiritual life secretary of the Woman's Society of Christian Service.

Rev. Delmas Copeland of Community Methodist and Rev. Lucas Gille of Westminster Presbyterian will be taking part. Others participating in the program will be Mrs. Elton P. Richards, Mrs. Nelson Bunnell, Mrs. Robert Denson, Mrs. Delmas Masalle, Mrs. Phyllis Caswell, Mrs. John Edinger, Mrs. L. L. Wazley, Mrs. Thomas Gallickson, Mrs. Charles Martinez, Mrs. Leonard Knight, and Mrs. Phyllis Marston of Community Methodist, and Mrs. Fred Kruehan, Mrs. Donald Nye, Mrs. Edward Sout, and Mrs. Ivaue Humphreys of Westminster.

**Moose To Have  
Gala Dance**

A gala Valentine Dance is scheduled by Scottish Lodge 1341, Local Chapter of Moose for 9 p.m. on Saturday at the Moose House, 504 Palmtoe Avenue.

Miss Williamson, entertainment chairman, has engaged the "Harmonizers," well known group around the Central Florida area, to provide the music. With the theme on hearts and flowers, Governor Joe Sinko states, "I would like to see all Brothers with their favorite Valentines at the dance."

Another of the Lodge's special door prizes will be awarded. Public expression of appreciation has been given by Past Governor Ralph Moore, chairman of the barbecue dinner, Sunday for the wonderful turn-out for the Valentine's special. Another of the Women of the Moose who helped prepare the food served with the barbecued chicken.

**Gets Post**  
W. Floyd McPae, erstwhile Sanfordite, has been named president of the Illinois Central Mills, Inc., Paris, Ill., it was learned here today by his sisters, Mrs. George Maffett, of Pointsettia Avenue, and Mrs. C. W. Hault, of West 10th St.







PRINCESS Irene of Greece, an accomplished pianist, is making a six-week tour of the United States. Many of her stops in major cities will include a look at musical activities. (NEA Telephoto)

### Firemen Plan Annual Dinner In Lake Mary

The annual chicken barbecue sponsored by the Lake Mary Volunteer Firemen will be Saturday, Feb. 18, from 4:30 to 7 p. m., in the Fire Hall. The menu will include cold roast, baked beans, rolls and coffee, prepared by the women's auxiliary.

Advance sale of tickets are going fast, reports Harvey Pugh, they expect to serve 1,000 people this year. The building has been enlarged, and although not finished yet, the additional space will be usable.

The men who are working toward having the new kitchen ready for service. The dining area will not be so crowded and the tables used will not be as high as in previous years. Tickets may be purchased from Bobby Fuzate, ticket chairman, or any fireman, and they also are available any time at the Amoco Station in Lake Mary.

Seattle, Spokane and Tacoma, three major cities of Washington, are all named after Indian chiefs.

### Legal Notice

PETITION NAME NOTICE is hereby given that I am interested in the estate of the late J. M. Sanford, Seminoles County, Florida, and am desirous of having my name added to the list of beneficiaries of the estate as provided in the will of the decedent, and that I intend to register said will with the circuit court, Seminoles County, Florida, in accordance with the provisions of the Florida Statutes, Section 732.32, Florida Statutes 1967. Witness my hand this 1st day of February, 1967.  
SIGNED: JEAN G. CARTERS  
Publishers Feb. 1, 8, 15, 22, 29, 1967. DDK-1



### NO HAPPY HELLO...

...is ever quite equal to the warm welcome extended to newcomers by the Welcome Wagon Hostess.  
Her smile may be no brighter, her greeting no more cheerful, but she's made them come more a work of art than in her meeting. Her hospitality with a galaxy of gifts and helpful information on schools, churches, shops and community facilities.  
So when a new neighbor moves in, follow up your happy hello with a Welcome Wagon greeting. A Hostess awaits your call!

- VIRGINIA PETROSKI  
P. O. Box 1214  
Sanford
- HELEN DEVRIS  
E. Seminoles  
KATY TOOLE  
Lake Mary  
P. O. Box 1214  
Sanford
- MILDEED HANLEY  
648-2821  
Sanford
- SOPHIE HAINES  
648-4149  
DeBary

Welcome Wagon

# NO STAMPS... SAVE MONEY INSTEAD!

LOW PRICES ON LAZY AGED WESTERN BEEF

**BONUS BUY!**  
"BU-GAME"  
SUGAR  
5-LB. BAG  
49¢

**BONUS BUY!**  
FLORIDA GRADE "A" MED.  
EGGS  
2 DOZ.  
87¢

ROUND—CLUB—SWISS—SIRLOIN

**STEAK** SAVE 16¢ **83¢** LB.

**RIB OR FAMILY STEAK** SAVE 15¢ **73¢** LB.

**SHOULDER ROAST** SAVE 12¢ **63¢** LB.

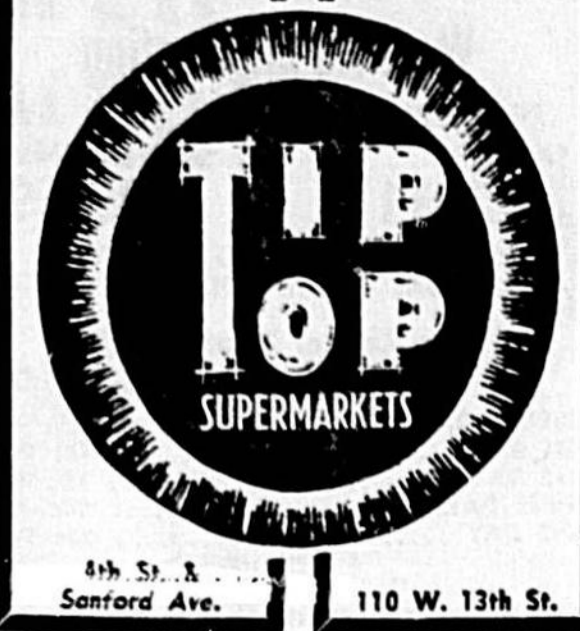
**RIB ROAST** SAVE 11¢ **78¢** LB.

**CHUCK STEAK** SAVE 12¢ **53¢** LB.

**POT ROAST** SAVE 12¢ **53¢** LB.

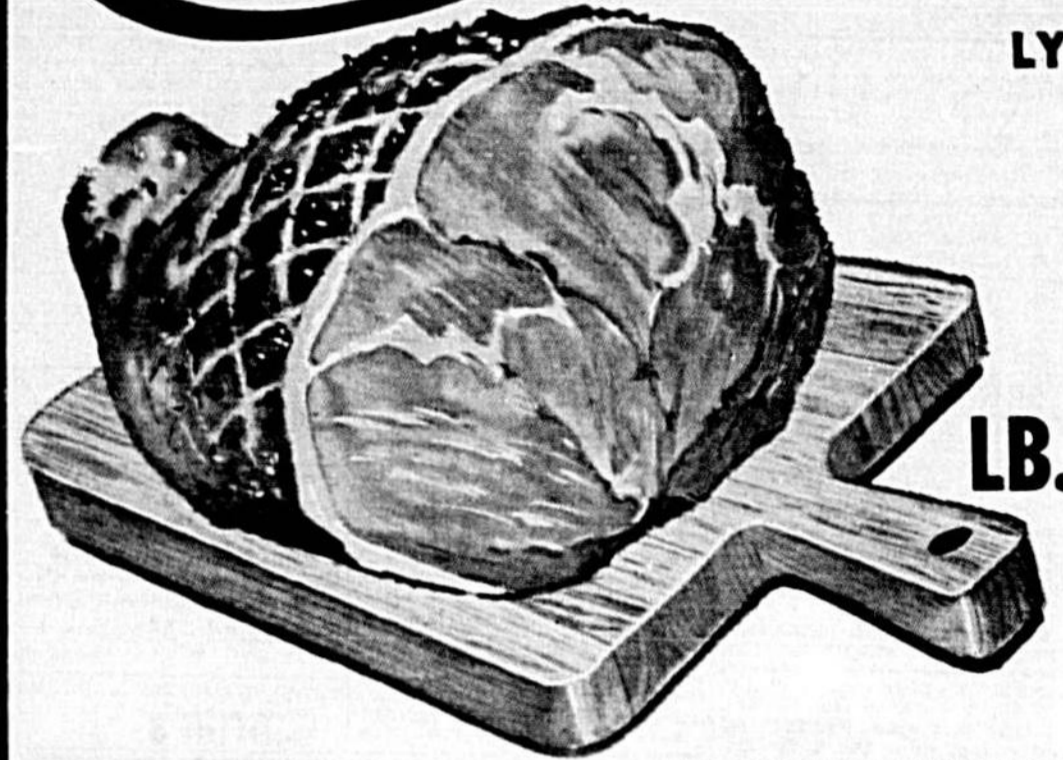
**BONELESS ROUND ROAST** SAVE 11¢ **78¢** LB.

**CHUCK ROAST** SAVE 12¢ **43¢** Lb.



Quantity Rights Reserved  
PRICES GOOD THRU WED. FEBRUARY 15

LYKE'S SUGAR CREEK SMOKED



**PICNIC GROUND BEEF**  
LB. **33¢**

FRESH 100% PURE  
4 LBS. **\$1.78**

COPELAND ALL MEAT BOLOGNA 10-oz. pkg. **39¢**  
SAVE 11¢

PALM RIVER WIENERS 12-oz. pkg. **38¢**  
SAVE 11¢

**BONUS BUY!**  
KLEENEX JUNBO TOWELS  
ASSORTED COLORS  
**29¢**

**BONUS BUY!**  
"EVERFRESH"  
CREAMED COTTAGE CHEESE  
2-LB. CUP  
**39¢**

**BONUS BUY!**  
U.S. NO. 1 WHITE POTATOES  
20 LBS.  
**89¢**

**BONUS BUY!**  
MAXWELL HOUSE COFFEE  
ALL GRINDS  
1-LB. CAN  
**47¢**  
(LIMIT: 1 WITH \$5 OR MORE FOOD ORDER)

FLA. GRADE "A" FAMILY PACK FRYERS 5 LB. PKG. **\$1.98**  
SAVE 17¢

Lean 'N Tender All Meat STEW **68¢** Lb.  
Lean Western Pork Shoulder ROAST **38¢** Lb.  
Lean Western SPARE RIBS **48¢** Lb.  
Old Fashioned Country Thick Sliced BACON **58¢** Lb.

Lean Western Pork Shoulder ROAST **38¢** Lb.  
Red Pig Smoked SAUSAGE **58¢** Lb.  
Marlhofer Canned HAM **\$2.78** 3-Lb. Can

QUICK FROZEN GRADE "A" TURKEY LEGS or WINGS LB. **28¢**  
SAVE 11¢

### FARM-FRESH PRODUCE

JONATHAN APPLES 4 LBS. **39¢**  
FRESH ORANGE • GRAPEFRUIT OR ORANGE • PINEAPPLE JUICE FULL QUART 3 FOR **87¢**  
HOME GROWN LETTUCE 2 HEADS **39¢**  
CRISP TENDER CARROTS 1-LB. BAG **10¢**  
GOLDEN RIFE BANANAS LB. **10¢**

"OSSAGE" (LIMIT: 3 with \$5.00 Order) PEACHES... NO. 2 1/2 CAN **19¢**  
"OLD MILWAUKEE" BEER 12 Oz. Can 6 Pack **89¢**  
"BAYER" ASPIRIN 100 Ct. Bottle **58¢**  
"REACT" OIL 32 Oz. Bottle **59¢**  
"VEGETOLE" SHORTENING 3-Lb. Can **69¢**  
"MONOGRAM" RICE 3-Lb. Pkg. **39¢**  
"EVERFRESH" POTATO CHIPS 9 Oz. Tin/Pkg. **38¢**  
"CAMPELLE'S" TOMATO SOUP 7 1/2 Lb. Can **10¢**  
"LARA LYN" SALTINES 1-Lb. Pkg. **19¢**  
"SUNLITE" TOMATOES 6 FOR **\$1.00** No. 300 Can  
"DOUBLE LUCK" CUT GREEN BEANS 7 FOR **\$1.00** No. 303 Can  
"SHOWBROT" PORK & BEANS 10 FOR **\$1.00** No. 300 Can

### DELICIOUS DAIRY DISHES

"SHURFRESH" Biscuits 6 8-OZ. CANS **49¢**  
"FOOD KING" QUARTERS OLEO LB. **19¢**

### FROZEN FOOD BUYS

"MASTER CHEF" FRENCH Fries 1-LB. PKG. **19¢**  
"GOLDEN GEM" ORANGE JUICE 8 6-OZ. CANS **\$1.00**  
"MCKENZIE" GREENS 2 18-OZ. PKGS. **59¢**

# 39 Deaths Attributed To Paralyzing Blizzard In East

NEW YORK (AP) — Bitter cold hampered the massive snow removal job as the East...



RECORD DIVE — Robert Croft, USN, plunged deep into the Atlantic Ocean off Fort Lauderdale this morning and claimed a new world's record for free-diving of 206 feet. He was down two minutes, six seconds. (NEA Telephoto)

struggled today to return to normal after a paralyzing blizzard. The cold spread into the East from the Midwest and plunged overnight temperatures to below zero on the heels of the worst Eastern snowstorm in two years.

At least 39 deaths were attributed to the blizzard. In New York City, where the mercury dropped to 11 degrees at 2:30 a.m., more than 100 persons took refuge in state armories opened by Gov. Nelson A. Rockefeller to house the snow-bound and others whose apartments and homes had no heat.

Business did a booming business Tuesday night.

Most schools were closed again today all along the coast, including those in New York, the nation's largest city.

In New Jersey, Gov. Richard J. Hughes declared today a banking holiday.

Major airports in the East remained closed overnight as crews worked to clear runways at least a limited resumption of operations. These included Kennedy and LaGuardia airports in New York and Philadelphia and Philadelphia International Airport.

### Apportionment Tangle In New Hearing Today

MIAMI (AP)—Three federal judges, the state attorney general, a clutch of lawyers and even a population expert gathered today for a hearing on what is Florida's tangled legislative apportionment problem.

The population expert, Dr. C. O. Osterbird of the University of Florida, was to testify about how he arrived at his estimates for the state's growth from 1960 to 1965.

Three federal judges who have been overseeing Florida's efforts to apportion on one-man, one-vote lines—Warren Jones and William McRae of Jacksonville and David Dyer of Miami—indicated they were worried about the problems at the last hearing.

Using 1965 figures, the state's latest effort at apportionment—the U.S. Supreme Court, said special session last month—would be off by as much as 32 per cent.

Dan Paul, the Miami lawyer who successfully attacked Florida's 1966 apportionment before the U.S. Supreme Court, said he invited Osterbird down from Gainesville to explain his figures.

Paul said it didn't matter to him which figures—the 1960 census or the 1965 estimates—were used.

The census figures are easier to defend legally, Paul said Tuesday in an interview. Just in case, the three-judge court in the U.S. Supreme Court, he filed an amended version of his 32-senator, 68-representative plan using the 1965 figures.

Paul also filed a brief opposing weighted voting, a solution the Florida Senate offered as a stop-gap measure.

Paul's brief said weighted voting violated the State Constitution, the Federal Constitution and was not a permanent solution. He also said that other federal district courts have rejected similar plans in other states.

However, State Sen. Robert Shubin petitioned the court to put the weighted voting plan into effect by decree and let the state wait until 1970 to come up with a more normal plan. He said that would save the state \$2 million.

Under this proposal, the number of legislators would remain the same as in the 1966 apportionment knocked down by the U.S. Supreme Court Jan. 9—48 senators and 117 representatives.

But each lawmaker would cast a vote proportionate to the level of the responsibility and the population. For instance, Doral and Palm Beach County senators would have one and one-tenth vote each.

Senators from the presently over-represented districts, such as the Okaloosa-Walton Holmes grouping, would cast only 45 votes.

The court also had a mountain of other briefs before it. Proposed the 1966 apportionment, an avowed that appeared open on first reading of the Supreme Court's Jan. 9 decision. Later, lawyers said they believed the court would not go along with any attempt to justify the 1966 plan.

And the three-judge court, at the previous hearing on Jan. 25, made clear it would take no chances on being reversed by the Supreme Court once more.

### J. Wayne Reitz Quits As Prexy Of U of Florida

GAINESVILLE, Fla. (AP)—J. Wayne Reitz plans to step down Sept. 1 after 17 eventful years as president of University of Florida.

The 58-year-old head of the state's largest university cited "presidential fatigue" Tuesday in disclosing he had resigned.

Reitz said his action was prompted by reasons entirely personal and unrelated to other factors, such as a threatened holdover on the university budget by Gov. Claude Kirk. He said he dated his letter of resignation Jan. 17 but at his request it was kept secret until he gave the word for its release.

Reitz in the past has jousted with the state Board of Regents, and the Board of Control before its funds for University of Florida and its faculty.

In his announcement Tuesday, however, the university president expressed "deep appreciation" to the regents for their willingness to give so freely their time and ability in the furtherance of higher education in Florida—and for the pleasant working relationship enjoyed with them. He made no reference to finances.

Chester Ferguson of Tampa, chairman of the Board of Regents, said Florida had become an outstanding university because of Reitz's leadership.

"There was no acrimony," Ferguson said. "He tells me he is proud of the responsibility and believes the university is entitled to fresh leadership.

"We feel that on this basis we should accept his resignation with deep and profound regret."

Ferguson said he knew nothing of Reitz's plans except that he would remain the job until a successor is found.

The lanky, unassuming Reitz started life as a farm boy in Olathe, Kan., and worked his way through Colorado Agricultural and Mechanical College.

He won a master's degree at University of Illinois and became a doctor of philosophy at University of Wisconsin.

In 1934 Reitz joined University of Florida's faculty as an assistant professor of agricultural economics. He served Florida in several other assignments—with time out for service with the Office of Price Administration and other government agencies—and became university president in 1956.

In Philadelphia, where 14 inches of snow fell, the city pressed a snow melting machine into duty on an experimental basis but freezing temperatures proved it ineffective. The machine sucks up snow, melts it and pumps the water onto the street to run into sewers. But the water froze before it could run off. The city planned to use salt to combat the blizzard.

The blizzard dumped 13 inches of snow in New York City, 10 in Washington, D.C., and 9 in Boston. The snowfall in New York was the heaviest in six years.

The storm cut deeply into businesses in major cities, as they came to a practical standstill by noon. Factories, banks, offices and department stores closed. Restaurants and stores were virtually deserted.

"Business was very, very bad," said John Blum, senior vice president of R. H. Macy's, which employs 5,000 persons in nine New York area stores.

Persons working in New York tried to soften the economic impact of the blizzard by fighting through drifts to their jobs. Some leaped over piles of snow to reach the sidewalks. Some fell.

New York City's Commerce and Industry Association reported that more than 20 per cent of New York workers made it to their offices and factories, although most of those were dismissed early. The association, however, said that the normal absentee rate was about 10 per cent.

The Weather Bureau said a zero degree line early this morning encircled an area from Maine across Ohio and Illinois to North Dakota. Freezing extended deep into Dixie.

A scattering of snow fell around the Great Lakes and across the Plains. Fair skies were dominant westward to the Pacific.

The Weather Bureau said sunny but cold weather was in store for the bulk of the nation. Snow flurries were forecast for the north central and southwest Texas, with a chance of flurries from the Dakotas through the Great Lakes. Some moderation of temperature is slated for the Midwest.

Early morning temperatures in New York City were in the 20's and 30's, N.Y., to 70 at Key West, Fla.

28¢ VALUE  
**KLEENEX TISSUES** 200 DOUBLE SHEETS **17¢**

REG. 33¢  
**TIDE DETERGENT** Reg. Size Box **23¢**

50¢ VALUE  
**KOTEX SANITARY NAPKINS** Box of 12 **25¢**

79¢ VALUE  
**BORDEN'S Glacier Club ICE CREAM** 43¢

79¢ VALUE  
**GILLETTE SUPER STAINLESS BLADES** Dispenser of 5 **44¢**

57¢ VALUE  
**ALKA SELTZER** 25 Tablets **37¢**

**CLEANING & STORAGE SAVINGS!**

30¢ VALUE  
**PLASTIC PAIL** 19¢

REG. 49¢  
**LAUNDRY BASKET** 29¢

VALUES TO \$1.49  
**PLASTIC HOUSEWARES** 99¢

REG. 79¢ Disposable  
**VACUUM CLEANER BAGS** 49¢

4-GUP SIZE  
**CERAMIC WATER HEATER** \$1.49

**YOU'LL LOVE THESE VALENTINE VALUES**

**BRACH'S HEART BOX CHOCOLATES** One Pound, Assorted Centers. **99¢**

REG. 39¢  
**CONVERSATION HEARTS** Pure sugar made with molasses. 1 Lb. **33¢**

REG. 24.95  
**SCHRAFF'S HEART BOX CHOCOLATES** One Pound **\$1.66**

REG. 29¢  
**BRACH'S DELUXE HEART CHOCOLATES** One Pound **\$1.69**

FAMOUS DELICIOUS  
**WHITMAN SAMPLER** One pound box **\$1.66**

**FOR HER** REG. 2 PR. 89¢  
**NYLONS** 4 pr. **\$1**

**FOR HIM** REG. 2 PR. 89¢  
**JADE EAST** 4 Oz. Bottle **\$3.00**

**DANA'S FANUSH AMBUSH COLOGNE** 2 1/2 Oz. 2 OZ. CONTAINER **\$2.50**

REG. 5.00  
**DANA'S FANUSH AMBUSH COLOGNE** 2 1/2 Oz. 2 OZ. CONTAINER **\$5.00**

REG. 37.50  
**ZIPPO LIGHTER** **\$2.75**

REG. 5.00  
**CIGARS** KING EDWARD **\$2**

REG. 2.50  
**YARDLEY SOAP** 4 1/2 POUNDS **\$1.18**

**TOBACCO**

**Polaroid Dutch Auction**

These cameras will be reduced one dollar each day. Buy when the price suits you.

**BUT DON'T WAIT TOO LONG!**

Model—List Tomorrow's Price  
104 — \$59.95 — \$42.88  
101 — \$34.95 — \$26.88  
101 — \$124.95 (Flash included) \$88.88

ONLY WHILE PREVIEW STOCK LASTS!  
All prices with trade of any Polaroid.  
Change available if you prefer.

**Wibolde Camera Shop**  
710 SOUTH 16th AVE., SANFORD, FLORIDA

**SANFORD**  
2438 French Ave.  
Hwy. 17-92 Next to Winn-Dixie  
PHONE 322-8270

Store Hours:  
MON. THRU SAT.  
9 A.M. 'TIL 9:30 P.M.  
SUN. 10 A.M.-7 P.M.

**MORE DEEP CUT SPECIALS**

39¢ VALUE, 7 OZ. SIZE  
**LYSOL SPRAY** **69¢**  
\$1.10 SIZE, 2 1/2 OZ. TUBE

**HEAD & SHOULDERS** **69¢**  
\$2.00 SIZE, OLAIROL

**NICE 'N EASY** **\$1.18**  
HAIR COLORING

\$2.00 VALUE, REG. GENTLE, SUPER  
**TONI** **\$1.19**

HOME PERMANENT

\$1.39 SIZE, 19 OZ. BOTTLE  
**MICRIN** **89¢**  
ORAL ANTISEPTIC

30¢ VALUE, 13 OZ., REG. OR WITH IRON  
**ENFAMIL INFANT FORMULA** 5-**\$1.00**  
98¢ VALUE, 3 1/4 OZ. BOTTLE

**VICKS FORMULA 44** **59¢**  
\$3.29, BOTTLE OF 100

**CHOCKS** **\$1.89**  
CHECKABLE VITAMINS

**SENIOR CITIZENS BEWARE**



# 10% cash refund on



## COMPARE!

CAMPBELL'S VEG. BASE SOUPS	30oz CANS	7:11	1.09	9¢
LINDSAY SELECT RIPE OLIVES	TALL CAN	3:17	1.17	17¢
SCOTT PLACE MATS	30x	3:17	1.17	17¢
SOFT WEVE BATHROOM TISSUE	2 ROLL PKG	4:17	1.16	16¢
A-1 BATHROOM TISSUE	4 ROLL PKG	4:17	1.16	16¢
9" WHITE PAPER PLATES	100 COUNT	99	1.19	20¢
CUT RITE WAX PAPER	100 FOOT ROLL	4:17	1.16	16¢
ALUMINUM FOIL	36 FOOT ROLL, PACKER LABEL	4:17	1.32	32¢
PINT PLASTIC FREEZER BAGS	50 COUNT	29	59¢	30¢

**LEAN TENDER FRESH PORK  
PICNICS**  
Fresh  
6 TO 8 LBS  
SAVE 11¢ LB  
**38¢ LB**

**every day low price!**  
16% every day!  
**Libby's DEEP BROWN PORK & BEANS**  
WITH MOLASSES OR TOMATO SAUCE  
15oz CANS **75¢**

**every day low price!**  
16% every day!  
**Libby's PINEAPPLE**  
SLICED CRUSHED CHUNKS  
15oz CANS **45¢**

**every day low price!**  
13% every day!  
**BANQUET DINNERS**  
FROZEN ALL VARIETIES  
2 FOR **87¢**

**every day low price!**  
16% every day!  
**Libby's POTTED MEAT**  
8 ST 16 ELSEWHERE  
3oz CANS **85¢**

**every day low price!**  
8% every day!  
**ORANGE JUICE**  
FROZEN FROM FLORIDA  
6oz CAN **10¢**

**every day low price!**  
50% every day!  
**KING SIZE COLD POWER DETERGENT**  
1 1/2gal ELSEWHERE  
**99¢**

## COMPARE!

CAMPBELL'S MEAT BASE SOUPS	10oz CANS	6:11	1.11	11¢
CAMPBELL'S TOMATO SOUP	10oz CANS	9:99	1.17	18¢
<b>LIBBY PEACHES</b>	3 2oz SLICES			<b>89¢</b>
<b>DEL MONTE GOLDEN CORN</b>	10oz CANS CREAM STYLE	4:18	1.26	3¢
<b>CUT GREEN BEANS</b>	PACKER LABEL 15oz CANS	9:99	1.30	31¢
<b>LIBBY PINEAPPLE DRINK</b>	3 8oz CANS			<b>89¢</b>
<b>DEL MONTE CUT GREEN BEANS</b>	10oz CANS	4:11	1.08	8¢
<b>PACKER'S LABEL ASS'T GREENS</b>	10oz CANS	9:99	1.13	14¢
<b>PEAS or LIMAS</b>	6 16oz CANS			<b>\$1</b>
<b>LESUEUR TINY TENDER PEAS</b>	10oz CANS	3:89	1.09	10¢
<b>BLACKBURN WAFFLE SYRUP</b>	12oz BTL	19	25¢	6¢

## COMPARE!

PURE STRAWBERRY PRESERVES	GOLD CUT, 2oz JAR	39	49¢	10¢
DOLE SLICED PINEAPPLE	2oz CANS	45	49¢	4¢
SUN-MAID GRAPE JELLY	2oz JAR	29	39¢	10¢
SUN-MAID APPLE JELLY	2oz JAR	29	39¢	10¢
HUNT'S TOMATO CATSUP	1/2 GAL, ALL FLAVORS	3:69	1.75	6¢
OCEAN SPRAY CRANBERRY SAUCE	1/2 GAL	4:11	1.08	8¢
HOLSUNG PEANUT BUTTER	2oz JAR	69	79¢	10¢
CROWN BAR-B-QUE SAUCE	1/2 GAL	4:11	1.56	56¢
PLYMOUTH GRAPEFRUIT JUICE	1/2 GAL	4:11	1.56	56¢
DEL MONTE TOMATO CATSUP	1/2 GAL	3:69	1.75	6¢
FRENCH WORCESTERSHIRE SAUCE	1/2 GAL	4:11	1.16	16¢
GOLD ARROW MUSTARD	2oz JAR	19	29¢	10¢
JUNE BOY FRESH KOSHER DILLS	3oz JAR	39	45¢	6¢
BUDDY BOY PEANUT BUTTER	1/2 GAL	93	99¢	6¢
ROSEDALE PEACHES	2oz CANS HALVES OR SLICES	3:79	1.87	8¢
JUNE BOY SWEET MIXED PICKLES	2oz JAR	49	53¢	4¢
SUN-MAID SEEDLESS RAISINS	1oz PKG	2:55	1.58	3¢
OIL SARDINES	1/2 GAL	8:11	1.16	16¢

## COMPARE!

FORMULA 409 CLEANER	2oz BOTTLE	79	89¢	10¢
JUMBO DASH LAUNDRY DETERGENT	2oz BOTTLE	51	2.39	40¢
GIANT SURF DETERGENT	2oz BOTTLE	59	70¢	11¢
GIANT TIDE DETERGENT	2oz BOTTLE	69	85¢	16¢
GOLD SEAL GLASS WAX	2oz CAN	3:11	1.65	65¢
ROSEDALE BARTLETT PEARS	2oz CANS	3:11	1.17	17¢
BILTMORE LUNCHEON LOAF	2oz CANS	3:89	1.17	28¢
LIBBY'S PINEAPPLE	10oz CANS - SLICED CRUSHED OR CRACKED	3:79	1.87	8¢
HERSHEY'S CHOCOLATE SYRUP	10oz CANS	5:11	1.15	15¢
LIBBY FROZEN LEMONADE	6oz CANS	9:99	1.30	31¢
LIBBY FROZEN LIMEADE	6oz CANS	9:99	1.30	31¢
FROZEN FRENCH FRIES	10oz PKGS	10:11	1.65	65¢
GOLDEN FLEET BREADED SHRIMP	1/2 GAL	97	1.19	22¢
FROZEN FRENCH FRIES	2oz BAGS	3:11	1.17	17¢
SWEET 10 LIQUID SWEETENER	1oz BTL	5:11	1.69	10¢
LIBBY JUICE DRINK	2oz CANS PINEAPPLE GRAPEFRUIT	5:11	1.25	25¢
CALIFORNIA PURPLE PLUMS	1/2 GAL	4:11	1.40	40¢
MUSSELMAN'S APPLE JUICE	2oz CANS	5:11	1.45	45¢

<b>ROYAL PIE MIX</b>	3 9oz PKGS			<b>\$1</b>
<b>TRAPPEY'S BANANA PEPPERS</b>	1oz JARS	19	29¢	10¢
<b>CHOCOLATE JUMBO PIES</b>	6oz PKGS	3:11	1.17	17¢
<b>LIPTON TEA BAGS</b>	48 COUNT			<b>59¢</b>
<b>DEL MONTE ZUCCINI</b>	10oz CANS	4:11	1.08	8¢
<b>PANTRY PRIDE POTATO CHIPS</b>	7oz PAK	38	59¢	21¢
<b>SIoux BEE HONEY</b>	2oz JAR	88	1.09	21¢

<b>WORTZ SALTINES</b>	1lb BOX			<b>19¢</b>
<b>CLAPP'S STRAINED BABY FOODS</b>	REG. JARS	6:55	1.59	4¢
<b>JOHNSON'S PRIDE</b>	1oz BTL	75	79¢	4¢
<b>SCOTTOWELS</b>	5 ROLL PKG			<b>88¢</b>
<b>FYNE-TASTE CLING PEACHES</b>	2oz CAN	3:79	1.89	10¢
<b>FOOD FAIR MAYONNAISE</b>	2oz JAR	49	59¢	10¢
<b>FOOD FAIR PEANUT BUTTER</b>	2oz JAR	48	65¢	17¢

<b>JUMBO PIES</b>	3 BOXES			<b>\$1</b>
<b>BANQUET FROZEN DINNERS ALL VARIETIES</b>		2:87	1.00	13¢
<b>MILANI GREEN GODDESS DRESSING</b>		3:11	1.17	17¢
<b>MASHED YAMS</b>	17oz CAN			<b>10¢</b>
<b>LAVERIS MOUTHWASH</b>	1oz BOTTLE	52	65¢	13¢
<b>CLAIROL LOVING CARE ALL SHADES</b>		5:22	1.75	52¢
<b>CHOCK'S CHILDREN'S VITAMINS</b>	1oz PKG	5:11	2.00	32¢

**every day low price!**  
35% every day!  
**JELLIES, JAMS & PRESERVES**  
SUN-MAID PEACH PINEAPPLE OR BLACKBERRY PRESERVES BLACKBERRY JELLY CANS 4oz OR ORANGE MARMALADE  
3 18oz JARS **35¢**

**every day low price!**  
21% every day!  
**POTATO CHIPS**  
PANTRY PRIDE BRAND  
TWIN PAK **38¢**

**every day low price!**  
10% every day!  
**FYNE-TASTE SALAD DRESSING**  
7oz ELSEWHERE  
32oz JAR **39¢**

**every day low price!**  
30% every day!  
**DOW BATH CLEANER**  
7oz ELSEWHERE  
17oz **49¢**

**every day low price!**  
52% every day!  
**COLGATE INSTANT SHAVE**  
11oz REG. OR MENTHOL  
**47¢**

**every day low price!**  
22% every day!  
**SUAVE HAIR SPRAY**  
9oz ELSEWHERE  
13oz CAN **77¢**

**EVERYDAY LOW PRICE!**  
SAVE 30¢  
**BUFFERIN TABLETS**  
BOTTLE OF 100  
**\$1.09**  
\$1.39 ELSEWHERE

**EVERYDAY LOW PRICE!**  
SAVE 40¢  
**LISTERINE Antiseptic**  
14oz BOTTLE  
**69¢**

**EVERYDAY LOW PRICE!**  
SAVE 17¢  
**S. S. S. TONIC**  
10oz BOTTLE  
**\$1.33**

**EVERYDAY LOW PRICE!**  
SAVE 6¢  
**SCHICK Stainless Inj. Blades**  
75  
**73¢**  
79¢ ELSEWHERE

**EVERYDAY LOW PRICE!**  
SAVE 20¢  
**DRISTAN TABLETS**  
BOTTLE OF 24  
**99¢**  
\$1.19 ELSEWHERE

**EVERYDAY LOW PRICE!**  
SAVE 22¢  
**SCORE HAIR DRESSING**  
KING SIZE  
**87¢**  
**EFFERDENT DENTAL TABLETS**  
30%  
**53¢**  
59¢ ELSEWHERE

**EVERYDAY LOW PRICE!**  
SAVE 11¢  
**ANACIN TABLETS**  
BOTTLE OF 50  
**78¢**  
89¢ ELSEWHERE

**EVERYDAY LOW PRICE!**  
SAVE 12¢  
**STANBACK POWDERS**  
PKG OF 24  
**57¢**  
69¢ ELSEWHERE

# grocery bill.

UP TO \$3.00 CASH REFUND GET DETAILS IN STORE.

**FOOD FAIR**  
QUALITY DISCOUNT  
2460 PARK AVE  
HOURS: Mon., Tues., Wed. OPEN 'TIL 7; Thurs. 8; Fri. 9 Saturday 8  
PRICES EFFECTIVE THROUGH THE WEEKEND - QUANTITY RIGHTS RESERVED

FOOD FAIR MEAT USDA CHOICE Beef Sale!

U.S. CHOICE BEEF CHUCK  
**ROAST**  
SAVE 20¢ LB EVERY DAY!  
**45¢ LB**

SAVE 20¢ LB CENTER CUT  
**RIB ROAST**  
**79¢ LB**

SAVE 20¢ LB  
**ROUND BONE ROAST**  
**69¢ LB**

SAVE 10¢ LB  
**CALIF. ROAST**  
**69¢ LB**

**every day low price!**  
10% every day!  
**SLICED BACON**  
HICKORY RANCH BRAND  
1lb PKG **49¢**

**every day low price!**  
6% every day!  
**SOLID OLEO**  
FINE-SPRED  
2 LBS **29¢**

**every day low price!**  
11% every day!  
**SKINLESS FRANKS**  
FARMER GRAY BRAND  
12oz PKG **38¢**

**every day low price!**  
10% every day!  
**PURE PORK SAUSAGE**  
MORRELL PRIDE  
1lb ROLL **39¢**

**every day low price!**  
10% every day!  
**BEEF LIVER**  
TENDER SLICED  
1lb **39¢**

**every day low price!**  
10% every day!  
**Fresh FLORIDA OR GEORGIA GRADE 'A' WHOLE FRYERS**  
1lb **29¢**

## COMPARE!

CAMPBELL'S VEG. BASE SOUPS	30oz CANS	7:11	1.09	9¢
LINDSAY SELECT RIPE OLIVES	TALL CANS	3:17	1.17	17¢
SCOTT PLACE MATS	30x	3:17	1.17	17¢
SOFT WEVE BATHROOM TISSUE	2 ROLL PKG	4:17	1.16	16¢
A-1 BATHROOM TISSUE	4 ROLL PKG	4:17	1.16	16¢
9" WHITE PAPER PLATES	100 COUNT	99	1.19	20¢
CUT RITE WAX PAPER	100 FOOT ROLL	4:17	1.16	16¢
ALUMINUM FOIL	36 FOOT ROLL, PACKER LABEL	4:17	1.32	32¢
PINT PLASTIC FREEZER BAGS	50 COUNT	29	59¢	30¢
TRAPPEY'S BANANA PEPPERS	1oz JARS	19	29¢	10¢
CHOCOLATE JUMBO PIES	6oz PKGS	3:11	1.17	17¢
CROWN BAR-B-QUE SAUCE	1/2 GAL	4:11	1.56	56¢
PLYMOUTH GRAPEFRUIT JUICE	1/2 GAL	4:11	1.56	56¢
DEL MONTE TOMATO CATSUP	1/2 GAL	3:69	1.75	6¢
FRENCH WORCESTERSHIRE SAUCE	1/2 GAL	4:11	1.16	16¢
GOLD ARROW MUSTARD	2oz JAR	19	29¢	10¢
JUNE BOY FRESH KOSHER DILLS	3oz JAR	39	45¢	6¢
BUDDY BOY PEANUT BUTTER	1/2 GAL	93	99¢	6¢
ROSEDALE PEACHES	2oz CANS HALVES OR SLICES	3:79	1.87	8¢
JUNE BOY SWEET MIXED PICKLES	2oz JAR	49	53¢	4¢
SUN-MAID SEEDLESS RAISINS	1oz PKG	2:55	1.58	3¢
SUN-MAID SEEDLESS RAISINS	1oz PKG	2:55	1.58	3¢

## COMPARE!

<b>DRESSED WHITING</b>	1lb	25¢
<b>HYGRADE CHEESE LOAF</b>	2 1/2 LB LOAF	69¢
<b>LUNCH MEAT</b>	12oz	39¢
<b>STEAKS</b>	1lb	95¢
<b>TURKEY ROAST</b>	1 1/2 to 2 lbs	\$2.99
<b>SAUSAGES</b>	1 1/2 lbs	49¢

## COMPARE!

WHITE POTATOES	10oz BAG	8:11	1.16	16¢
CHARCOAL LIGHTER FLUID	2oz CANS	3:11	1.17	17¢
STOKELY'S TOMATO SAUCE	10oz CANS			13¢ 3¢

**YOUNG TENDER PLUMP MUSHROOMS**  
1lb **59¢**

**SAVE 20¢ EVERYDAY CAKE DONUTS**  
PKG OF 12 **27¢**

## COMPARE!

<b>GREENDELL BEEF CUBE STEAKS</b>	2oz PKG	89	99	10¢
<b>ALL MEAT SLICED BOLOGNA</b>		49	59	10¢
<b>SLICED BEEF LIVER</b>		39	49	10¢
<b>QTR. SLICED PORK LOIN CHOPS</b>		68	79	11¢
<b>LEAN MEATY SPARERIBS</b>		49	59	10¢
<b>FIRST CUT RIB PORK CHOPS</b>		49	59	10¢
<b>CORNISH HENS QUICK FROZEN GRADE A</b>		45	49	4¢
<b>REGULAR GROUND BEEF</b>	3 LB PKG	51	59	20¢
<b>HEAT &amp; EAT FISH STICKS</b>		49	59	10¢
<b>CHUNK BOLOGNA 2 1/2 TO 3 LBS</b>		39	49	10¢
<b>MORRELL PRIDE PORK SAUSAGE 1lb ROLL</b>		39	49	10¢
<b>NEOPOLITAN PIZZA PIE 16oz</b>		59	69	10¢
<b>SLICED AMERICAN CHEESE</b>		69	79	10¢
<b>SKINLESS FRANKS 12oz PKG</b>		38	49	11¢
<b>SKINLESS FRANKS 2 1/2 LB BAG</b>		99	11	20¢
<b>SMOKED SAUSAGE 2 1/2 LB BAG</b>		99	11	20¢

**VIGORO PELLETTED** 50 LB BAG **\$1.89**  
**6-6-6 PELLETTED** 50 LB BAG **\$1.29**

**FRESH SWEET LUSCIOUS STRAWBERRIES**  
3 PINTS **98¢**

**POLE BEANS** 1lb **19¢**  
**PASCAL CELERY** STALK **12¢**

**every day low price!**  
10% every day!  
**YELLOW GLOBE ONIONS**  
3 LB BAG **35¢**

**every day low price!**  
11% every day!  
**IRISH POTATOES**  
10 LB BAG **48¢**

**every day low price!**  
10% every day!  
**Fresh ROME BEAUTY APPLES**  
4 LB BAG **49¢**

**every day low price!**  
5% every day!  
**Fresh CELLO WRAPPED CARROTS**  
1lb PKG **10¢**

**every day low price!**  
3% every day!  
**Fresh GOLDEN RIPE BANANAS**  
1lb **12¢**

**every day low price!**  
3% every day!  
**Fresh FIRM GREEN CABBAGE**  
1lb **7¢**

**everyday low price! Libby's FROZEN FOODS**

Green Peas	24oz BAGS	2/87¢	Cut Corn	10oz PKGS	5/95¢
Mixed Veggies.	24oz BAGS	2/87¢	Cream Corn	10oz PKGS	5/95¢
Cut Corn	24oz BAGS	2/87¢	Cut Broccoli	10oz PKGS	5/95¢
Lima Beans	24oz BAGS	2/87¢	Green Peas	10oz PKGS	5/95¢

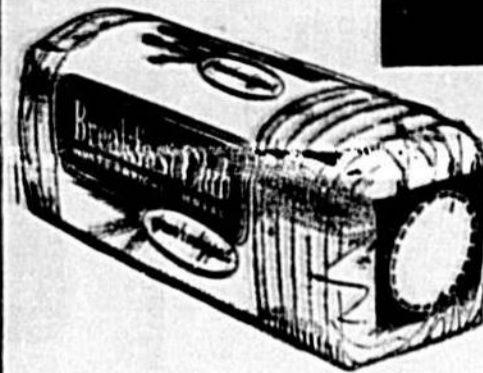


BREAKFAST CLUB FAMILY-SIZE

**White Bread**

LARGE LOAF  
**19¢**

WITH COUPON BELOW THE NEW  
**Crisco oil**  
24-oz. bot.  
**39¢**



BREAKFAST CLUB GRADE A FLORIDA

**Large Eggs**

**39¢**  
doz.

SAVE 7¢! WHITE OR COLORED TISSUE

**Soft-Weave**

**2 19¢**  
roll pack



**SAVE 8¢**  
LIMIT ONE WITH THIS COUPON  
**39¢**  
REDEEMABLE ONLY AT  
**PUBLIX MARKETS**  
limit one with this coupon  
**SAVE 8¢**

**health & beauty aids**  
List Price 99¢ MacLams family size 78¢  
List Price \$1.39! (15¢-off label) Antiseptic Listerine 20-oz. bot. 93¢

SAVE 20¢! Swift's Premium Assort. Flavors Featuring Cherry Chocolate Chip  
**Ice Cream** . . . . . half gal. **79¢**  
SAVE 36¢! Dale Pineapple - Pink Grapefruit  
**Fruit Drink** . . . . . 4 46-oz. cans **99¢**  
SAVE 17¢! Yellow Cling Halved or Sliced  
**F&P Peaches** 4 #2 1/2 cans **99¢**  
SAVE 21¢! Serve with Pork Roast, Lucky Leaf  
**Apple Sauce** . . . . . 4 25-oz. jars **99¢**  
SAVE 12¢! Campbell's New Chicken Stars, Chicken With Rice, Chicken Noodle  
**Soups** . . . . . 6 tall cans **99¢**  
SAVE 6¢! Heinz (new extra-large size) Tomato  
**Ketchup** . . . . . 26-oz. bot. **39¢**  
SAVE 11¢! Chicken Of The Sea  
**Chunk Tuna** . . . . . 6 1/2 cans **89¢**  
SAVE 10¢! Libby's Family Size  
**Beef Stew** . . . . . 24-oz. can **49¢**  
SAVE 6¢! White or Colored  
**Scot Towels** . . . . . big roll **29¢**

**SAVE 36¢ LADY BETTY Prune Juice**  
32-oz. jars  
**399¢**  
LIMIT 3 PLEASE

**SAVE 26¢ WITH BORAX Giant Fab**  
5-lb. pkg.  
**49¢**  
LIMIT 1 PLEASE WITH OTHER PURCHASES OF \$5.00 OR MORE

**SAVE 34¢ ALL GRINDS Folger Coffee**  
1-lb. can  
**49¢**  
LIMIT 1 PLEASE WITH OTHER PURCHASES OF \$5.00 OR MORE

**POTATOS SPECIAL!**  
**Potato Salad**  
REG. 49¢  
**LB. 39¢**  
(SANFORD PUBLIX ONLY)

**100 Green Stamps**  
EXTRA  
Swift's Polished Vigoro Lawn Food  
50 lb. bag \$1.89  
(Expires Sat. Feb. 11, 1967)

**100 Green Stamps**  
EXTRA  
Sta-Flo Spray Starch  
22 oz. can 59¢  
(Expires Sat. Feb. 11, 1967)

**100 Green Stamps**  
EXTRA  
Vitalis Hair Dressing  
12 oz. bot. \$1.28  
(List price \$1.54)  
(Expires Sat. Feb. 11, 1967)

**100 Green Stamps**  
EXTRA  
Sweet's Granules, Packets  
50 count 49¢  
(Expires Sat. Feb. 11, 1967)

**100 Green Stamps**  
EXTRA  
Escodrin Tablets  
100 ct. \$1.18  
(List price \$1.49)  
(Expires Sat. Feb. 11, 1967)

**50 Green Stamps**  
EXTRA  
Singleton's Breaded Oysters  
1 lb. pkg. \$1.19  
(Expires Sat. Feb. 11, 1967)

Red, Yellow, Low-Cal  
**Hawaiian Punch** 3 46-oz. cans **51¢**  
SAVE 8¢! Progresso  
**Tomato Paste** . . . . . 3 6-oz. cans **39¢**  
SAVE 4¢! Kraft's Smoked or Plain  
**Bar-B-Q Sauce** . . . . . 18-oz. bot. **39¢**  
Scott Colorful  
**Viva Napkins** . . . . . 2 50 ct. **55¢**  
SAVE 7¢! Per Enriched  
**Evaporated Milk** . . . . . 6 tall cans **99¢**  
SAVE 8¢! Libby's  
**Corned Beef Hash** . . . . . 15 1/2-oz. can **39¢**  
Greenwood (with onions) Whole  
**Pickled Beets** . . . . . #303 jar **22¢**  
SAVE 36¢! Smuckers Strawberry  
**Preserves** . . . . . 3 12-oz. jars **99¢**

**Chun King New Year Festival**

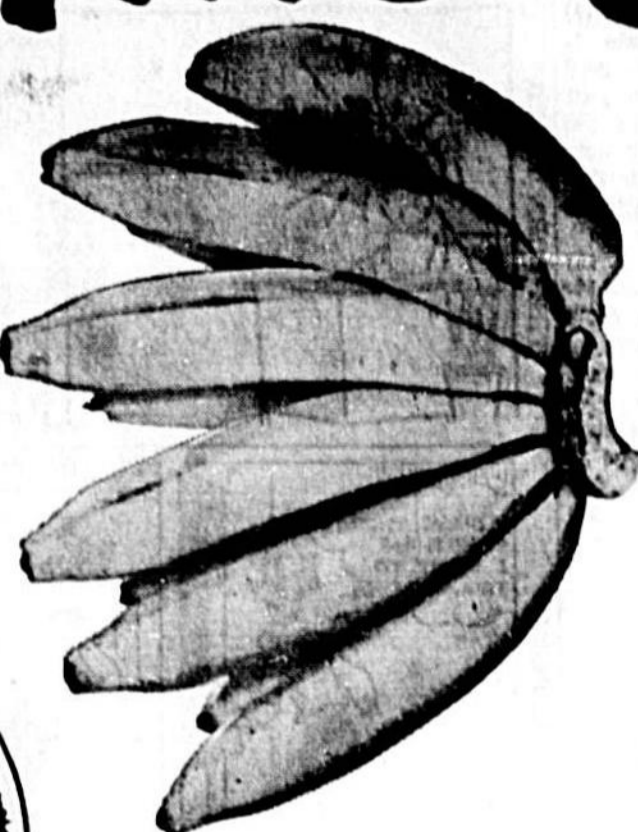
Chun King Divider Pack large can 98¢  
Chun King Divider Pack large can 98¢  
Chun King Divider Pack comb. pack 69¢  
Chun King With Noodles comb. pack 69¢  
Chun King Chicken Chow Mein #303 can 59¢  
Chun King Mixed Vegetables #303 can 31¢  
Chun King Noodles #214 can 29¢  
Chun King Soya Sauce 5-oz. bot. 19¢

top job liquid cleaner 26-oz. bot. **69¢**  
zest deodorant soap 2 bars **45¢**  
downy fabric softener 33-oz. bot. **85¢**  
ideal dog food 3 cans **49¢**

# Valentine Specials



• down produce lane •  
Fancy Red Ripe  
**Tomatoes** . . . . . basket of ten **39¢**  
Sweet and Juicy  
**D'Anjou Pears** 10 for **39¢**  
Juicy Florida Pineapple  
**Oranges** . . . . . per doz. **19¢**



**GOLDEN RIPE Bananas**  
1-b. **10¢**

• dairy specials •  
Min. Fibers (14¢-off label) Soft  
Margarine . . . . . 1-lb. can 45¢  
Lucky Whip  
Dessert Topping . . . . . 9 1/2-oz. can 49¢  
Clearfield Corn  
Meal Mush . . . . . 2-lb. pkg. 29¢  
Kraft's Velvets  
Cheese Spread . . . . . 1-lb. loaf 69¢  
PRICES EFFECTIVE THURS., FRI., SAT., FEB. 9, 10, 11, 1967

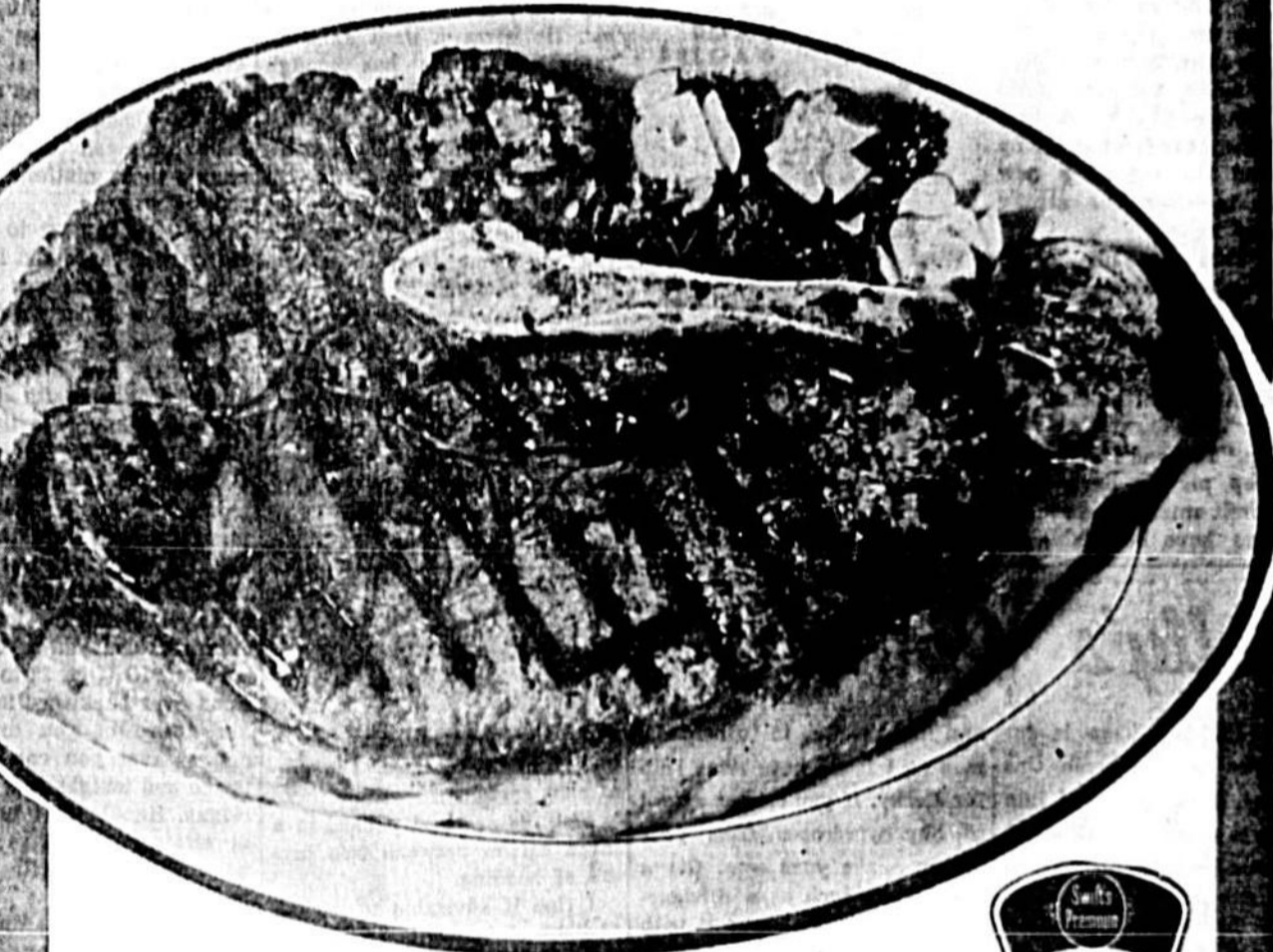
• cheese treats •  
Kraft's Cracker Barrel  
**Sharp Cheddar**  
10 oz. **69¢**  
Wisconsin Cheese Bar  
**Mild Cheddar**  
per lb. **79¢**  
Wisconsin Cheese Bar  
**Longhorn Cheese**  
per lb. **79¢**

**STEAK SALE**  
SWIFT'S PREMIUM PROTEIN GOVT. INSPECTED HEAVY WESTERN BEEF  
**Steak Sale**  
SIRLOIN, T-BONE, KEY CLUB OR BONELESS TOP ROUND  
1-lb. **99¢**

Swift's Premium  
**Sliced Bacon** . . . . . 1 lb. pkg. **69¢**  
Swift's Premium Sausage  
**Brown 'N Serve** . . . . . 8 oz. pkg. **59¢**  
Swift's Lazy Maple  
**Bag Sausage** . . . . . 1 lb. **69¢**  
Swift's Premium Tasty  
**Corned Beef** . . . . . per lb. **79¢**  
Cook-Quick Cubed Or  
**Pepper Steaks** . . . . . 20 oz. pkg. **89¢**  
Copeland's Tasty Stick Style  
**Braunschweiger** . . . . . per lb. **59¢**  
Tarnov's Fresh Sliced  
**Bologna** . . . . . 6-oz. 10-oz. 16-oz. **29¢ 45¢ 59¢**  
Delicious Fancy Frozen  
**Cod Fish Fillets** . . . . . per lb. **49¢**  
Seafood Delicacy! Pasteurized Clow  
**Crab Meat** . . . . . per lb. **59¢**

• frozen foods •  
Minute Maid Conc. Florida Freeze  
**Orange Juice** . . . . . 3 12-oz. cans \$1  
SAVE 10¢! Sausage Brand Assorted  
Frozen Dinners . . . . . per pkg. **39¢**  
Star-Kraft Frozen  
Tuna Casserole . . . . . 2 7-oz. pkgs. **49¢**  
Southland Frozen  
Green Beans . . . . . 1 1/2-lb. **39¢**  
SAVE 10¢! Green Giant (in butter sauce) Medium  
Sweet Peas . . . . . 3 10-oz. pkgs. **89¢**  
Sara Lee All Butter  
Pound Cake . . . . . 12-oz. pkg. **79¢**  
Morton's Assorted Frozen  
Cream Pies . . . . . 3 14-oz. pkgs. \$1  
Gorton's Frozen  
Fish Puffs . . . . . 8-oz. pkg. **49¢**  
Mrs. Paul's Frozen  
Fish Sticks . . . . . 1-oz. pkg. **39¢**

**"Fresh Pork Sale"**  
Delicious Fresh  
**Pork Picnics** . . . . . lb. **33¢**  
Serve With Apple Sauce, Fresh  
**Pork Hams** . . . . . lb. **65¢**  
Fresh Boston Butt  
**Pork Roasts** . . . . . lb. **45¢**  
Try These Delicious Fresh  
**Pork Steaks** . . . . . lb. **55¢**  
Great For Bar-B-Queing! Fresh Pork  
**Spare Ribs** . . . . . lb. **59¢**  
Serve With Cabbage! Fresh  
**Pork Hocks** . . . . . lb. **35¢**



SWIFT'S PREMIUM PROTEIN GOVERNMENT INSPECTED HEAVY WESTERN BEEF SALE!  
**the BEEF that NEEDS LESS COOKING TIME!**

Swift's Premium Protein  
**Chuck Steaks** . . . . . lb. **69¢**  
Delicious Swift's Premium Boneless  
**London Broil** . . . . . lb. **\$1.09**  
Swift's Premium Bone-In  
**Pot Roast** . . . . . lb. **59¢**  
Swift's Protein Boneless  
**Imperial Roast** . . . . . lb. **79¢**  
Boneless English Cut  
**Beef Roast** . . . . . lb. **89¢**  
Swift's Premium Beef  
**Short Ribs** . . . . . lb. **49¢**

WHERE SHOPPING IS A PLEASURE

**PUBLIX MARKETS**

SANFORD PLAZA  
Hwy. 17-92 and Onora Dr., Sanford

SEMINOLE PLAZA  
Casselberry

HOURS:  
MON., TUES., WED., SAT.: 8:30-7:00  
THURS., FRI.: 8:10-9:00

HOURS:  
MON. THRU SAT. 9 A.M.-9 P.M.

**"An American Way of Thrift Since 1896"**

## Dear Abby:

By Abigail Van Buren

DEAR ABBY: My married daughter lives 30 miles from me. She has a wonderful husband and a year-old child. She has a nice, new apartment and everything to do with, but whenever I visit her, the place is a mess and she is usually in her robe. There is never a place to put anything or to sit down. How can my son-in-law stand it? It's beyond me. I know his mother, and she is an immaculate housekeeper. How can I make my daughter see the shame of it? When I walk in and see the mess, she doesn't even act embarrassed. She and her husband get along like two lovers, but I'm afraid if she doesn't start keeping house properly it won't last.

DEAR ABBY: My husband and I are in our 40s. He is a doctor and I am a secretary. We have a nice home, a car and a good income. But we are having a hard time getting along. He is a very vain man and he is always bragging about his car and his job. I feel like I am just an accessory to his life. How can I make him see that I am just as important as he is?

DEAR ABBY: I have been married for 25 years and my wife and I are having a hard time getting along. She is a very vain woman and she is always bragging about her looks and her social life. I feel like I am just an accessory to her life. How can I make her see that I am just as important as she is?

## Jacoby On Bridge

Jacoby and Son

Jim: "In the first days of contract everyone played limit raises so that if your partner opened one spade and you raised him to three you were making a strong manufacturing bid." Overbid: "This was logical but there was one weakness. We jumped to four to show a very good raising hand and this made slam bidding so difficult that we got around to forcing jump raises and the use of a new suit bid to show the strong manufacturing raise."

NORTH ♠ K J 7 5 3 2 ♥ 10 8 7 6 5 4 3 2 ♦ 10 9 8 7 6 5 4 3 2 ♣ K Q 10 9 8 7 6 5 4 3 2  
EAST ♠ 10 8 7 6 5 4 3 2 ♥ A K Q J 10 9 8 7 6 5 4 3 2 ♦ A K Q 10 9 8 7 6 5 4 3 2 ♣ A K Q 10 9 8 7 6 5 4 3 2

## Polly's Pointers

Polly Cramer

DEAR POLLY: This is for Becky, who wanted those tips on moving. Having moved into 25 homes in a long and ill-spent life I have learned that there is only one rule which never is broken. As soon as the beds are in place in the new home make them up. If the new home is in a nice neighborhood it is well to take complete sets of bedding to the new home the night before and store them on the closet shelves in each bedroom so as to know just where they are. Unless this rule is firmly enforced this humor job will be postponed in favor of more exciting things, such as arranging furniture, unpacking cartons, arriving looks and hanging pictures until that point when you return after about 10 days to find out how the new home is coming along.

DEAR POLLY: No one seems to wear the small square silk scarves any more and I must have two dozen cluttering up my dresser drawer. They are so pretty and I am sure they could be put to some good use, but what? Any ideas, anybody?—LUCILLE

DEAR POLLY: I would like to know what you would do with a pile of old coats and hats. I have a pile of old coats and hats that I don't wear any more. I would like to know what you would do with them.

DEAR POLLY: I would like to know what you would do with a pile of old coats and hats. I have a pile of old coats and hats that I don't wear any more. I would like to know what you would do with them.

DEAR POLLY: I would like to know what you would do with a pile of old coats and hats. I have a pile of old coats and hats that I don't wear any more. I would like to know what you would do with them.

DEAR POLLY: I would like to know what you would do with a pile of old coats and hats. I have a pile of old coats and hats that I don't wear any more. I would like to know what you would do with them.

DEAR POLLY: I would like to know what you would do with a pile of old coats and hats. I have a pile of old coats and hats that I don't wear any more. I would like to know what you would do with them.

DEAR POLLY: I would like to know what you would do with a pile of old coats and hats. I have a pile of old coats and hats that I don't wear any more. I would like to know what you would do with them.

DEAR POLLY: I would like to know what you would do with a pile of old coats and hats. I have a pile of old coats and hats that I don't wear any more. I would like to know what you would do with them.

DEAR POLLY: I would like to know what you would do with a pile of old coats and hats. I have a pile of old coats and hats that I don't wear any more. I would like to know what you would do with them.

## Horoscope

Forecast  
THURSDAY, FEB. 8, 1967  
GENERAL TENDENCIES:

Unit room much confusion is in effect and you need to make sure you do not let outside influences affect you. Do not let others' opinions sway you. Do not let others' opinions sway you. Do not let others' opinions sway you.

OUT OF IDEAS: Keep giving him hints and pack rubber gloves! CONFIDENTIAL TO H.E.G.: Relax and be yourself. "The most amusing thing in life is being inescapable." (Anne Lindbergh)

DEAR OUT: Keep giving him hints and pack rubber gloves! CONFIDENTIAL TO H.E.G.: Relax and be yourself. "The most amusing thing in life is being inescapable." (Anne Lindbergh)

DEAR ABBY: I've been married for 25 years and my wife and I are having a hard time getting along. She is a very vain woman and she is always bragging about her looks and her social life. I feel like I am just an accessory to her life. How can I make her see that I am just as important as she is?

DEAR ABBY: I've been married for 25 years and my wife and I are having a hard time getting along. She is a very vain woman and she is always bragging about her looks and her social life. I feel like I am just an accessory to her life. How can I make her see that I am just as important as she is?

DEAR ABBY: I've been married for 25 years and my wife and I are having a hard time getting along. She is a very vain woman and she is always bragging about her looks and her social life. I feel like I am just an accessory to her life. How can I make her see that I am just as important as she is?

DEAR ABBY: I've been married for 25 years and my wife and I are having a hard time getting along. She is a very vain woman and she is always bragging about her looks and her social life. I feel like I am just an accessory to her life. How can I make her see that I am just as important as she is?

DEAR ABBY: I've been married for 25 years and my wife and I are having a hard time getting along. She is a very vain woman and she is always bragging about her looks and her social life. I feel like I am just an accessory to her life. How can I make her see that I am just as important as she is?

DEAR ABBY: I've been married for 25 years and my wife and I are having a hard time getting along. She is a very vain woman and she is always bragging about her looks and her social life. I feel like I am just an accessory to her life. How can I make her see that I am just as important as she is?

DEAR ABBY: I've been married for 25 years and my wife and I are having a hard time getting along. She is a very vain woman and she is always bragging about her looks and her social life. I feel like I am just an accessory to her life. How can I make her see that I am just as important as she is?

DEAR ABBY: I've been married for 25 years and my wife and I are having a hard time getting along. She is a very vain woman and she is always bragging about her looks and her social life. I feel like I am just an accessory to her life. How can I make her see that I am just as important as she is?

DEAR ABBY: I've been married for 25 years and my wife and I are having a hard time getting along. She is a very vain woman and she is always bragging about her looks and her social life. I feel like I am just an accessory to her life. How can I make her see that I am just as important as she is?

DEAR ABBY: I've been married for 25 years and my wife and I are having a hard time getting along. She is a very vain woman and she is always bragging about her looks and her social life. I feel like I am just an accessory to her life. How can I make her see that I am just as important as she is?

DEAR ABBY: I've been married for 25 years and my wife and I are having a hard time getting along. She is a very vain woman and she is always bragging about her looks and her social life. I feel like I am just an accessory to her life. How can I make her see that I am just as important as she is?

DEAR ABBY: I've been married for 25 years and my wife and I are having a hard time getting along. She is a very vain woman and she is always bragging about her looks and her social life. I feel like I am just an accessory to her life. How can I make her see that I am just as important as she is?

DEAR ABBY: I've been married for 25 years and my wife and I are having a hard time getting along. She is a very vain woman and she is always bragging about her looks and her social life. I feel like I am just an accessory to her life. How can I make her see that I am just as important as she is?

DEAR ABBY: I've been married for 25 years and my wife and I are having a hard time getting along. She is a very vain woman and she is always bragging about her looks and her social life. I feel like I am just an accessory to her life. How can I make her see that I am just as important as she is?

DEAR ABBY: I've been married for 25 years and my wife and I are having a hard time getting along. She is a very vain woman and she is always bragging about her looks and her social life. I feel like I am just an accessory to her life. How can I make her see that I am just as important as she is?

DEAR ABBY: I've been married for 25 years and my wife and I are having a hard time getting along. She is a very vain woman and she is always bragging about her looks and her social life. I feel like I am just an accessory to her life. How can I make her see that I am just as important as she is?

DEAR ABBY: I've been married for 25 years and my wife and I are having a hard time getting along. She is a very vain woman and she is always bragging about her looks and her social life. I feel like I am just an accessory to her life. How can I make her see that I am just as important as she is?

DEAR ABBY: I've been married for 25 years and my wife and I are having a hard time getting along. She is a very vain woman and she is always bragging about her looks and her social life. I feel like I am just an accessory to her life. How can I make her see that I am just as important as she is?

DEAR ABBY: I've been married for 25 years and my wife and I are having a hard time getting along. She is a very vain woman and she is always bragging about her looks and her social life. I feel like I am just an accessory to her life. How can I make her see that I am just as important as she is?

DEAR ABBY: I've been married for 25 years and my wife and I are having a hard time getting along. She is a very vain woman and she is always bragging about her looks and her social life. I feel like I am just an accessory to her life. How can I make her see that I am just as important as she is?

DEAR ABBY: I've been married for 25 years and my wife and I are having a hard time getting along. She is a very vain woman and she is always bragging about her looks and her social life. I feel like I am just an accessory to her life. How can I make her see that I am just as important as she is?

DEAR ABBY: I've been married for 25 years and my wife and I are having a hard time getting along. She is a very vain woman and she is always bragging about her looks and her social life. I feel like I am just an accessory to her life. How can I make her see that I am just as important as she is?

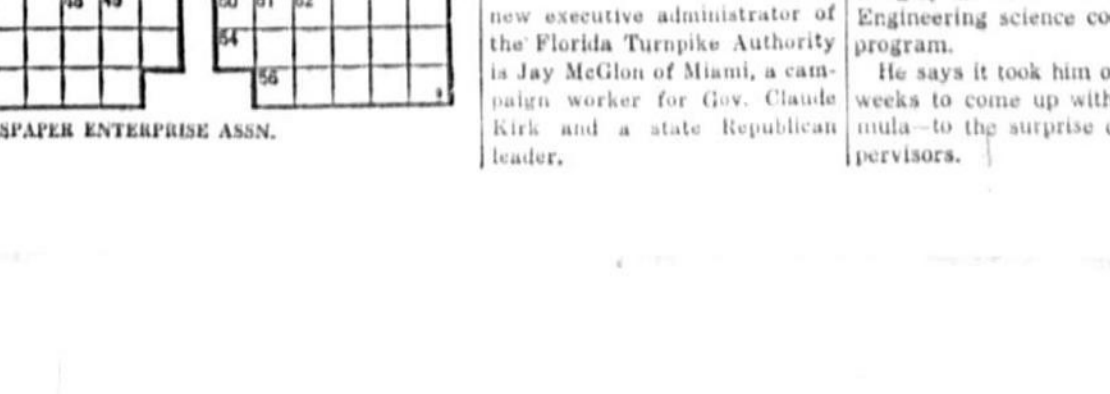
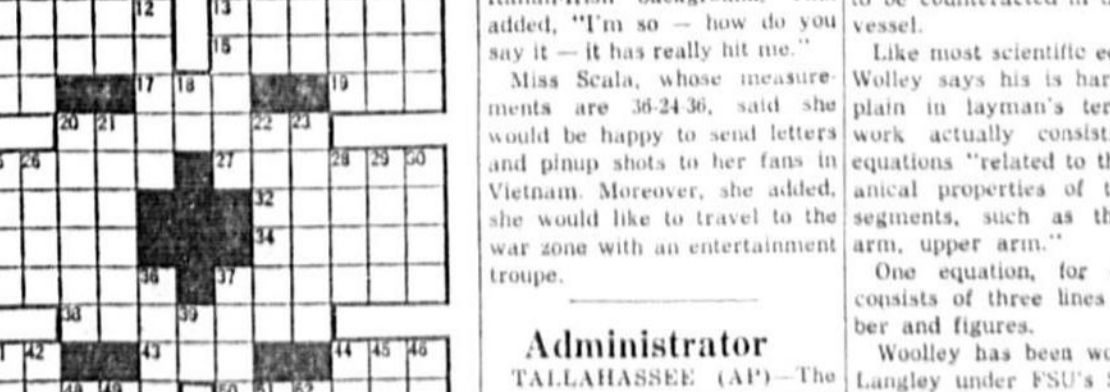
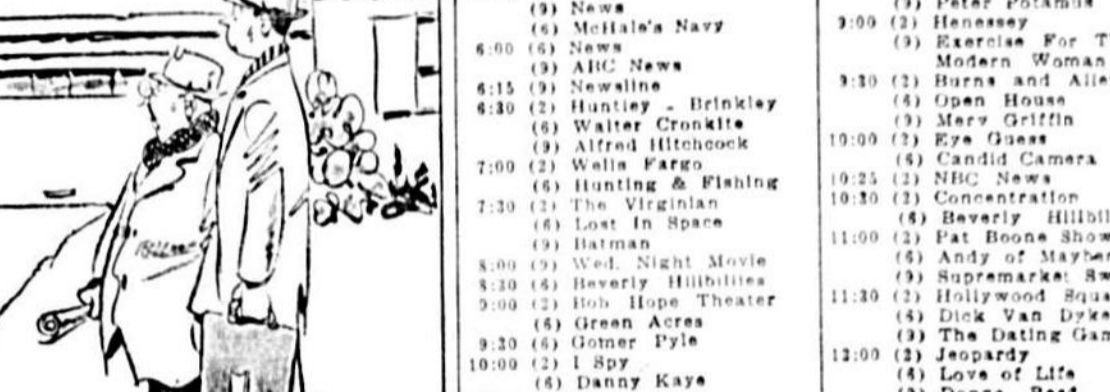
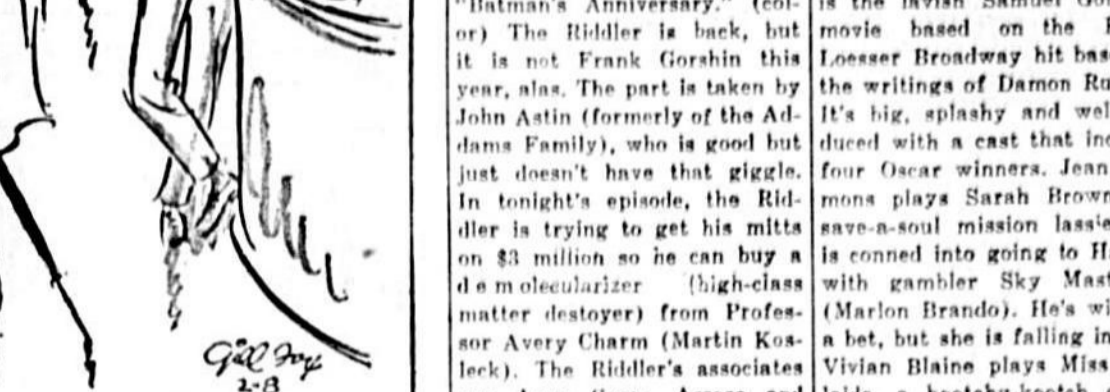
## OUR BOARDING HOUSE



## SIDE GLANCES



## OUR BOARDING HOUSE



## We The Women:

By Ruth Millett

Ever since Mrs. Kennedy moved into the White House as the First Lady of the land, her understated elegance and her low heels, still recently

American women impressed by her impeccable taste in dressing, have copied her hairdo, her understated elegance, her low heels, still recently

she has been a fine fashion leader for the American woman who is not a fashionista but who is not a follower.

But judging from recent newspaper pictures of the First Lady, it is not so much the woman who is not a fashionista but who is not a follower.

They were not only the women who were not a fashionista but who is not a follower.

They were not only the women who were not a fashionista but who is not a follower.

They were not only the women who were not a fashionista but who is not a follower.

They were not only the women who were not a fashionista but who is not a follower.

They were not only the women who were not a fashionista but who is not a follower.

They were not only the women who were not a fashionista but who is not a follower.

They were not only the women who were not a fashionista but who is not a follower.

They were not only the women who were not a fashionista but who is not a follower.

They were not only the women who were not a fashionista but who is not a follower.

They were not only the women who were not a fashionista but who is not a follower.

They were not only the women who were not a fashionista but who is not a follower.

They were not only the women who were not a fashionista but who is not a follower.

They were not only the women who were not a fashionista but who is not a follower.

They were not only the women who were not a fashionista but who is not a follower.

They were not only the women who were not a fashionista but who is not a follower.

They were not only the women who were not a fashionista but who is not a follower.

They were not only the women who were not a fashionista but who is not a follower.

They were not only the women who were not a fashionista but who is not a follower.

They were not only the women who were not a fashionista but who is not a follower.

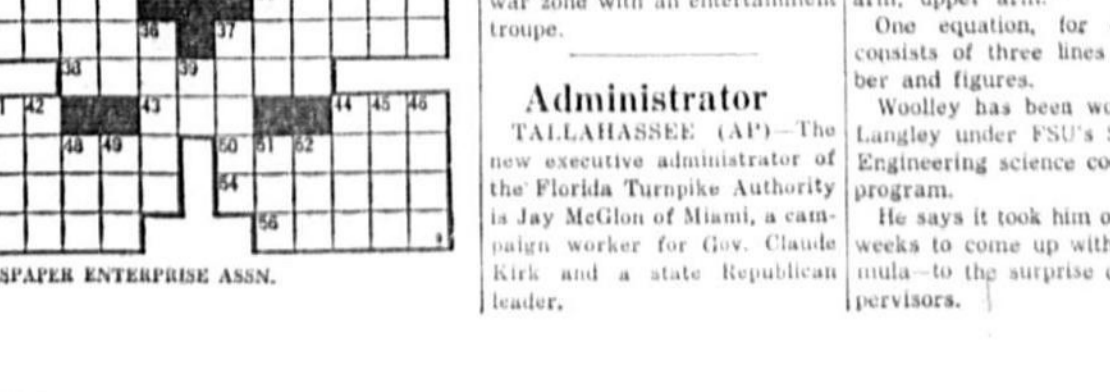
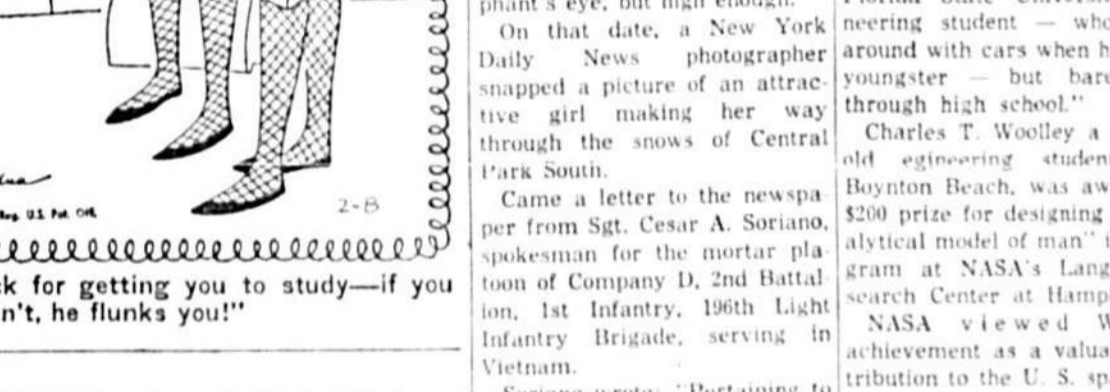
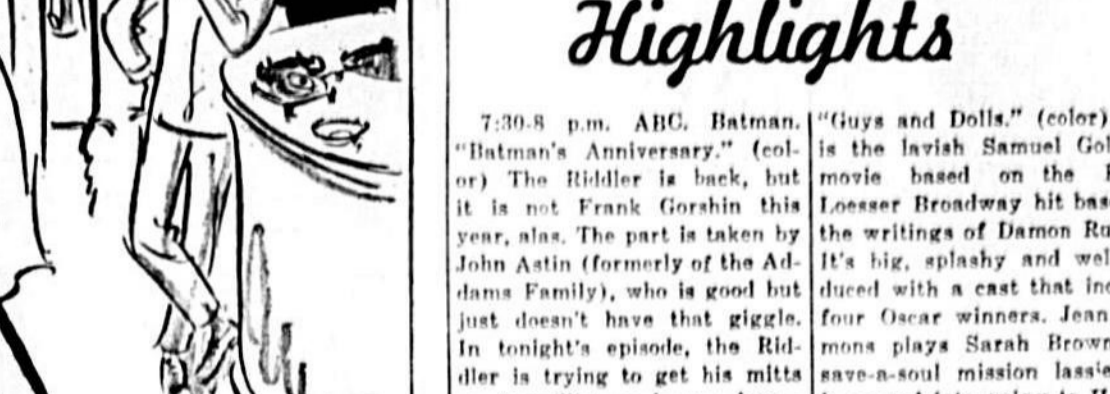
They were not only the women who were not a fashionista but who is not a follower.

They were not only the women who were not a fashionista but who is not a follower.

They were not only the women who were not a fashionista but who is not a follower.

They were not only the women who were not a fashionista but who is not a follower.

## Casual Clothes



## Highlights

7:30-8 p.m. ABC. Batman ("Batman's Anniversary") (cont. The Ridler is back, but it is not Frank Gorshin this time, alas. The part is taken by John Astin (formerly of the Adams Family), who is good but not great. He is teamed in tonight's episode, The Ridler is trying to get his mitts on \$1 million so he can buy a...)

8:00-8:30 p.m. NBC. Bob Hope presents "Blind Man's Bluff" (cont. A chilling, excellent murder thriller tonight, starring Robert Cummings as Robert Silley, a charming brilliant English playwrite who is warped by his blindness. His young wife, Vivian Blaine plays Miss Adair, a loopy-kooky actress who has become a single with Silley's wife Helen (Susan Clark), and Silley arranges...)

8:30-9 p.m. NBC. Bob Hope presents "Blind Man's Bluff" (cont. A chilling, excellent murder thriller tonight, starring Robert Cummings as Robert Silley, a charming brilliant English playwrite who is warped by his blindness. His young wife, Vivian Blaine plays Miss Adair, a loopy-kooky actress who has become a single with Silley's wife Helen (Susan Clark), and Silley arranges...)

9:30-10 p.m. CBS. "The Defiant" (cont. This week's episode of CBS' new western series...)

10:00-10:30 p.m. NBC. "The Defiant" (cont. This week's episode of CBS' new western series...)

10:30-11 p.m. NBC. "The Defiant" (cont. This week's episode of CBS' new western series...)

11:00-11:30 p.m. NBC. "The Defiant" (cont. This week's episode of CBS' new western series...)

11:30-12:00 a.m. NBC. "The Defiant" (cont. This week's episode of CBS' new western series...)

12:00-12:30 a.m. NBC. "The Defiant" (cont. This week's episode of CBS' new western series...)

12:30-1:00 a.m. NBC. "The Defiant" (cont. This week's episode of CBS' new western series...)

1:00-1:30 a.m. NBC. "The Defiant" (cont. This week's episode of CBS' new western series...)

1:30-2:00 a.m. NBC. "The Defiant" (cont. This week's episode of CBS' new western series...)

2:00-2:30 a.m. NBC. "The Defiant" (cont. This week's episode of CBS' new western series...)

2:30-3:00 a.m. NBC. "The Defiant" (cont. This week's episode of CBS' new western series...)

3:00-3:30 a.m. NBC. "The Defiant" (cont. This week's episode of CBS' new western series...)

3:30-4:00 a.m. NBC. "The Defiant" (cont. This week's episode of CBS' new western series...)

4:00-4:30 a.m. NBC. "The Defiant" (cont. This week's episode of CBS' new western series...)

4:30-5:00 a.m. NBC. "The Defiant" (cont. This week's episode of CBS' new western series...)

5:00-5:30 a.m. NBC. "The Defiant" (cont. This week's episode of CBS' new western series...)

5:30-6:00 a.m. NBC. "The Defiant" (cont. This week's episode of CBS' new western series...)

6:00-6:30 a.m. NBC. "The Defiant" (cont. This week's episode of CBS' new western series...)

6:30-7:00 a.m. NBC. "The Defiant" (cont. This week's episode of CBS' new western series...)

7:00-7:30 a.m. NBC. "The Defiant" (cont. This week's episode of CBS' new western series...)

7:30-8:00 a.m. NBC. "The Defiant" (cont. This week's episode of CBS' new western series...)

8:00-8:30 a.m. NBC. "The Defiant" (cont. This week's episode of CBS' new western series...)

8:30-9:00 a.m. NBC. "The Defiant" (cont. This week's episode of CBS' new western series...)

9:00-9:30 a.m. NBC. "The Defiant" (cont. This week's episode of CBS' new western series...)

9:30-10:00 a.m. NBC. "The Defiant" (cont. This week's episode of CBS' new western series...)

10:00-10:30 a.m. NBC. "The Defiant" (cont. This week's episode of CBS' new western series...)

10:30-11:00 a.m. NBC. "The Defiant" (cont. This week's episode of CBS' new western series...)

11:00-11:30 a.m. NBC. "The Defiant" (cont. This week's episode of CBS' new western series...)

11:30-12:00 p.m. NBC. "The Defiant" (cont. This week's episode of CBS' new western series...)

12:00-12:30 p.m. NBC. "The Defiant" (cont. This week's episode of CBS' new western series...)

12:30-1:00 p.m. NBC. "The Defiant" (cont. This week's episode of CBS' new western series...)

1:00-1:30 p.m. NBC. "The Defiant" (cont. This week's episode of CBS' new western series...)

1:30-2:00 p.m. NBC. "The Defiant" (cont. This week's episode of CBS' new western series...)

2:00-2:30 p.m. NBC. "The Defiant" (cont. This week's episode of CBS' new western series...)

2:30-3:00 p.m. NBC. "The Defiant" (cont. This week's episode of CBS' new western series...)

3:00-3:30 p.m. NBC. "The Defiant" (cont. This week's episode of CBS' new western series...)

3:30-4:00 p.m. NBC. "The Defiant" (cont. This week's episode of CBS' new western series...)

4:00-4:30 p.m. NBC. "The Defiant" (cont. This week's episode of CBS' new western series...)

4:30-5:00 p.m. NBC. "The Defiant" (cont. This week's episode of CBS' new western series...)

5:00-5:30 p.m. NBC. "The Defiant" (cont. This week's episode of CBS' new western series...)

5:30-6:00 p.m. NBC. "The Defiant" (cont. This week's episode of CBS' new western series...)

6:00-6:30 p.m. NBC. "The Defiant"



BRIAN A. SNOW, former Longwood fire chief (second from left), was gifted with a cocktail shaker...

Girl Staters Guest Speakers In Altamonte

Girls State representatives, Donna Lou Prate of Altamonte Springs and Linda Cote of Casselberry, were guests speakers for the February meeting of the Altamonte Springs Civic Club.

Ex-Fire Chief Snow Feted At Longwood

Longwood School cafeteria was the site of a surprise banquet in honor of former Fire Chief Brian A. Snow.

Altamonte Club To Hear Talk On Medicare

A Chinese auction conducted following the business meeting of the Altamonte Club...

School Kids

Members on the sick list are Mrs. Edna Nelson, who is confined to Florida Sanitarium and Hospital after undergoing surgery...

SHOP The store that cares...about you! Super-Right Meats - Great Buys During Our Celebration!

'Super-Right' Heavy Western Tender Beef CHUCK ROAST BONE-IN CLOSE TRIMMED Lb. 48c

2ND BIG WEEK! 'SUPER-RIGHT' QUALITY FREEZER BEEF SALE! WHOLE BEEF HINDS 155 To 170 Pound Avg. Lb. 59c

Extra Special! Iona Halves or Sliced Yellow Cling PEACHES 4 1-LB. 13-OZ. CANS 99c

GERBERS OR BEECHNUT STRAINED Baby Food 4 1/2-OZ. JAR 10c

SPECIAL! A&P FRESH Inst. Coffee 10-OZ. JAR 99c

Special Value! A&P Frozen Concentrated Fla. ('The Real Thing') ORANGE JUICE 6 10-OZ. CANS 69c

FRESH, GOLDEN RIPE, FIRM BANANAS PER POUND 10c

Prices in this ad are good through Saturday, February 11. PINECREST SHOPPING CENTER HWY. 17-92 S. SANFORD

AROUND THE CLOCK GOP Ready Mack Cleveland Jr. Seminole and Orange County Republicans were beginning to scramble this morning with the view of running for election to unseat Democrats in the Legislature...

Will Cleveland, MacDonald Run Again?

Orange and Seminole County Democratic legislators were in a huddle today at Orlando in an effort to lay plans for "lining up" for a new election under the federal court's reappointed Florida Legislature.

Senate Beth Johnson and William Carter are the other two Orange senators. A disgruntled MacDonald said the courts were "taking over" the rights of the people to operate their own state affairs...

The Sanford Herald

Phone 322-2611 or 425-5938 Zip Code 32771 WEATHER: Rain 1.5 inches; cooler tonight and Friday.

World News In Brief Favorable LAS CRUCES, N. M. (AP) - Gen. Maxwell D. Taylor, a former U. S. ambassador to South Vietnam, says conditions for a negotiated peace in Vietnam have become more favorable.

Swofford, Altamonte Rapped On Pay Raises

Recent increases in the compensation paid to members of the Altamonte Springs Town Council and the mayor were severely criticized by an Altamonte couple at the meeting of council Wednesday night.



ROY WRIGHT JR. Mom's March Nets \$2,000 Preliminary windup totals from the Mother's March in the annual March of Dimes campaign have reached some \$2,000.

Chamber Drive Picks-Up Steam

Opening day of the Seminole County Chamber of Commerce's three-day concentrated drive for new members brought in 50 memberships, team captains Ken McIntosh and Art Deckwith reported today.

Dabbs Says 'No' Sanctions For Seminole County Teachers

George Dabbs, president of the Florida Education Association told The Herald today it is not true that he and his colleagues are taking no position on the NEA investigation of Florida educators...



Gas Prices Jump Up 1 Cent In Seminole Increased costs were given as the reason today for the 1¢ per gallon raise in the price of gasoline at major oil companies and the Seminole County.

Mrs. Bruce Gets Kingsized Headache

Seminole County's election supervisor has been handled a kingsized headache: special court ordered election for the Legislature.



Besserer Answers Hospital Critics

A candid report on the present status of Seminole Memorial Hospital and an informed look into the immediate future was given the Sanford Kiwanis Club by Robert T. Besserer, hospital administrator, at its weekly meeting in the Civic Center yesterday.

Safety Standards DITCHTOWN (AP) - Informal sources in the auto industry said today that federal auto safety requirements "most assuredly" will be among factors in the decision on whether to raise the price of cars.

Around The Moon PASADENA, Calif. (AP) - Lunar Orbiter 3 swooped swiftly around the moon in an oblong orbit today, preparing to shoot close-up pictures of the rugged lunar surface.

To Clarify WASHINGTON (AP) - West German Foreign Minister Willy Brandt's talks with President Johnson and other U.S. officials reportedly clarified most of the "no" countries on the proposed nuclear nonproliferation treaty, but failed to eliminate their differences.

Hurt Chances WASHINGTON (AP) - A House committee looking into Adam Clayton Powell's qualifications to be seated said today they think the Harlem Democrat has hurt his chances by refusing to answer some of its questions.

Set Meet On Canal Grant Approval of a Department of Housing and Urban Development contract to provide \$54,000 for design and updated feasibility study of the St. Johns-Indian River Canal District will take place at a meeting of the officers and board of directors of the District scheduled for 11 a.m. Friday.

And The Rains Came ... That nice, steady drizzle of much needed rain mounted up to 1.5 inches between Wednesday morning and 8:30 this morning.

On the intensive care unit, which exists, unnamed in the hospital, Besserer explained that the equipment had been bought with donations for that purpose.

On the intensive care unit, which exists, unnamed in the hospital, Besserer explained that the equipment had been bought with donations for that purpose.

On the intensive care unit, which exists, unnamed in the hospital, Besserer explained that the equipment had been bought with donations for that purpose.

On the intensive care unit, which exists, unnamed in the hospital, Besserer explained that the equipment had been bought with donations for that purpose.

On the intensive care unit, which exists, unnamed in the hospital, Besserer explained that the equipment had been bought with donations for that purpose.

On the intensive care unit, which exists, unnamed in the hospital, Besserer explained that the equipment had been bought with donations for that purpose.

On the intensive care unit, which exists, unnamed in the hospital, Besserer explained that the equipment had been bought with donations for that purpose.

On the intensive care unit, which exists, unnamed in the hospital, Besserer explained that the equipment had been bought with donations for that purpose.

On the intensive care unit, which exists, unnamed in the hospital, Besserer explained that the equipment had been bought with donations for that purpose.

On the intensive care unit, which exists, unnamed in the hospital, Besserer explained that the equipment had been bought with donations for that purpose.

On the intensive care unit, which exists, unnamed in the hospital, Besserer explained that the equipment had been bought with donations for that purpose.

On the intensive care unit, which exists, unnamed in the hospital, Besserer explained that the equipment had been bought with donations for that purpose.

On the intensive care unit, which exists, unnamed in the hospital, Besserer explained that the equipment had been bought with donations for that purpose.

On the intensive care unit, which exists, unnamed in the hospital, Besserer explained that the equipment had been bought with donations for that purpose.

On the intensive care unit, which exists, unnamed in the hospital, Besserer explained that the equipment had been bought with donations for that purpose.

On the intensive care unit, which exists, unnamed in the hospital, Besserer explained that the equipment had been bought with donations for that purpose.

On the intensive care unit, which exists, unnamed in the hospital, Besserer explained that the equipment had been bought with donations for that purpose.

On the intensive care unit, which exists, unnamed in the hospital, Besserer explained that the equipment had been bought with donations for that purpose.

On the intensive care unit, which exists, unnamed in the hospital, Besserer explained that the equipment had been bought with donations for that purpose.

On the intensive care unit, which exists, unnamed in the hospital, Besserer explained that the equipment had been bought with donations for that purpose.

On the intensive care unit, which exists, unnamed in the hospital, Besserer explained that the equipment had been bought with donations for that purpose.

On the intensive care unit, which exists, unnamed in the hospital, Besserer explained that the equipment had been bought with donations for that purpose.

On the intensive care unit, which exists, unnamed in the hospital, Besserer explained that the equipment had been bought with donations for that purpose.

On the intensive care unit, which exists, unnamed in the hospital, Besserer explained that the equipment had been bought with donations for that purpose.

On the intensive care unit, which exists, unnamed in the hospital, Besserer explained that the equipment had been bought with donations for that purpose.

THE SANFORD ATLANTIC ANNOUNCES NEW INTEREST INCREASE 5% TO PER ANNUM