

First Home Game

November 23, 1971

Seminole Junior College "Raiders"

-VS-

Lake Sumter Junior College
"Lakers"

1971 - 72
Away Games

1971 - 72
Home Games

DATE	OPPONENT	TIME
11-23	Lake Sumter J.C.	8:00
11-30	French Martinique	8:00
12-2	Sterson J.V.	8:00
12-4	Open	
12-8	F.S.U. Freshmen	8:00
12-17, 18	Tournament - Miami Dade	
1-15	Lake City J.C.	8:00
1-20	Florida J.C.	8:00
1-22	Jacksonville Freshmen	8:00
1-26	Central Florida J.C.	8:00
2-2	St. Leo J.V.	8:00
2-16	Bullins J.V.	8:00
2-19	St. Johns J.C.	8:00
2-23	Valencia J.C.	8:00

11-14	Florida Bible College	8:00
11-20	North Florida J.C.	8:00
11-26, 27	Tournament	
12-11	St. Johns J.C.	8:00
1-5	Rellins J.V.	4:00
1-8	St. Leo J.V.	4:00
1-10	Fia. Institute of Tech.	4:00
1-12	Lake Sumter J.C.	8:00
1-24	Florida Southern J.V.	4:00
1-28	Jacksonville	8:00
2-5	Lake City J.C.	8:00
2-9	Florida J.C.	8:00
2-12	Central Florida J.C.	8:00
2-26	Sterson J.V.	1:30
3-2, 3, 4	State Tournament	
	Winter Haven	



The Sanford Herald

Tuesday, November 23, 1971 — Sanford, Florida 32771
6th Year, No. 67 Price 10 Cents

Sunday Alcoholic Beverage Sales Are Eased For Sanford Restaurants

By BILL SCOTT

It is a lesser sin to sell alcohol on Sunday than the rest of the week?

This question involving religion and philosophy was raised at Monday night's City Commission meeting when that panel was called on to take action to a request from a downtown restaurant, to be allowed to sell beer and wine on Sunday.

Acting Mayor J. H. Crapps, utilizing what he called the "Crapps rules of order," ruled

a two-to-one vote approved a motion that amended an action approved two weeks ago allowing the sale of alcoholic beverages on Sunday by eating establishments with seating capacities of 200 persons or more.

The new act permits Sunday sales at eating places with 50 capacity or more.

Action came after John Capko, operator of 'Fig n' Whistle, 25th Street at Park Avenue, asked for permission to sell beer and wine with meals on Sundays.

Commissioner Gordon Meyer argued he could not change "in the middle of a stream," explaining the same position he took two weeks ago when the Commission approved Sunday sales to 200 capacity restaurants.

Also on hand to press for Commission approval was Richard Williams, of Cook's Corner, 3517 Orlando Drive, who complained the city allows bars to remain open until 2 a.m. but forces beer and wine establishments to close at midnight, thus

forcing customers to go to the bars if they want beer.

Crapps, serving in the absence of Mayor Lee P. Moore, changed seats with Commissioner W. Vincent Roberts to second Meyer's motion to lower the capacity to 50 seats and serving food.

Roberts and Julian Stenstrom voted against the motion but with Meyer and Crapps voting "yes," Crapps declared the motion passed.

This brought on a roar from Roberts and Stenstrom, who

complained that a tie vote killed the motion. It was pointed out by William Hutchinson, city attorney, the Commission never adopted Roberts' rules of order and the action could be legal.

Meyer pointed out the ordinance must still be approved on reading, thus allowing another vote on the proposal by a full five-man Commission.

Roberts and Stenstrom indicated they would seek to rescind the previous action on Sunday alcohol sales at next Commission meeting.

Thermal Pollution Crack Down Seen

ORLANDO (AP) — Faced with a mounting threat from thermal pollution, state officials proposed guidelines that would force power companies to build all new generating plants along Florida's Atlantic Coast.

The proposed regulations, which limit the temperature of water discharged by electric generating plants, would make it difficult for utilities to achieve the required degree of cooling anywhere but along the Atlantic.

The new guidelines would require extensive and very costly cooling systems for any plants constructed on rivers, estuaries or shallow bays.

The guidelines, proposed by the state pollution control board, would permit cooling water to increase surrounding water by only four degrees during the winter and 15 degrees in the summer.

Only along the Atlantic coast are the ocean waters deep enough and with enough tidal action to handle large volumes of hot water discharge and still maintain temperatures within the guidelines, the officials said.

David Scott, chief of the Department of Pollution Control's planning division, said Florida is the only state which does not place specific limits on hot water discharges.

He said the regulations would discourage utilities from building plants along shallow estuaries such as South Biscayne Bay near Miami.

Florida Power and Light Company's new nuclear plant being built on the bay is far behind schedule because of environmental problems caused by a controversy over its system for cooling hot water.

Dr. Charles Tarwell of the federal Environmental Protection Agency said such controls were necessary because "the relationship of temperature to marine life is so close that even a small change can have far reaching effects."



By JOHN A. SPOLSKI

Let's all hear it for the "little guys" . . . seriously!

Wendel Wagner, a student at the New College (near Sarasota) is only 4 feet-10 1/2 inches tall and he wants some recognition for fellows like himself.

So . . . he posted his demands on the bulletin board: a course on the history of short people, redesigned library bookshelves for shorties, bodyguards for short people to ward off assault by tall people and an end to "other attempts to ridicule us, such as giving us mail boxes too high to reach."

And don't laugh, either, buddy! (Now if I can only get the boss to give me a higher chair to reach this keyboard. . .)

For the record . . . Bralley Odham has been one of the bright spots in this area for many, many years. He was saying and doing things 10 years ago that have proven him a successful clairvoyant.

His housing developments have been used as models, and copied by his competition.

So, forget all about the City Commission hassle of last night, folks. Just a misunderstanding to say the least. . .

By the way, that same meeting didn't conclude until well past 11:30 last night . . . with many other items still to be debated, but unfortunately no time! Nothing to do but wait two more weeks for the next meeting, too.

Glad to hear that at the next meeting, Councilman Vince Roberts will officially present a motion to schedule the Sanford City Commission meetings on a weekly basis . . . signs of progress!

Say a prayer, friends . . . this am., while trying to cross the heavily-travelled Sanford intersection at 25th Street and Highway 17-92, the traffic signal was AGAIN malfunctioning.

"Taking life in hand, I darted across 17-92 . . . against the blinking red light!"

I'll gamble on occasion . . . but what about that loaded school bus which was coming in the opposite direction? Do we really have to wait until there is a fatality before we get that factory to replace the defective power unit in that signal?

If and when that happens, I'd hate to spend the nightmare some of our elected officials must anticipate sharing. . . SHAME! . . .

Not being much of a coffee drinker, I wasn't too impressed on hearing that from the "new products department" there are three flavored instant coffees available in envelopes containing four one-serving foil packets. They are cafe orange and spice, cafe cinnamon and cafe anise.



OFFICIATING AT THE RIBBON-CUTTING OPENING THE AMERICAN LEGION-SPONSORED SEMINOLE COUNTY FAIR LAST NIGHT WERE (FROM THE LEFT) LEGIONNAIRE FRANK LUECKER, COUNTY COMMISSIONER SIDNEY VILHIN JR., AND SANTA CLAUS. (DON VINCENT PHOTO)

Developer, City At Odds Over Ditch

Bralley Odham, developer of the Sanora planned unit development (PUD) located south of Onora Road and east of Sanford Avenue, vowed to halt plans to construct the estimated \$20 million city addition if he is required to pipe a drainage ditch designed to carry water from the PUD to an off-site location. He made the statement last night to the City Commission.

Odham, developer of Sanford's Pineroot subdivision and Suncadia Estates, said the cost of piping the ditch would take his houses out of the \$22,000 price range, making it economically unfeasible for him to go ahead with the planned construction of 450 housing units in the first 50-acre phase.

City Engineer Mack Lazenby said it would be a mistake not to resolve the drainage problems at the site before allowing development.

Odham said he planned to construct a wall between the existing drainage ditch and the houses and stressed he could not use the land unless the ditch problem was resolved.

He said paving the ditch would cost \$50,000 and disclosed he had an agreement with H. L. Hunt, from whom he is buying the property, to drain the water onto his land.

Lazenby said the wall proposed by Odham would obscure the view of mothers from the children who might fall into the ditch.

The city engineer suggested chain link fences instead of a wall.

City Manager W. E. Knowles said, "It boils down to will the city accept an open ditch of adequate design to take the runoff; the rest is nuts and bolts that engineers can resolve."

Commissioner Gordon Meyer said he would like to see the city and Odham work out a solution.

In further action at last night's regular meeting, Councilman Thomas Napier increased the city's area by adopting an annexation ordinance covering three parcels. One parcel contains 35 acres and is located on the east side of SR 435 and south of Lake Howell Lane, a second is approximately 22 acres and lies on the west side of SR 435 and south of Lake Howell Lane. The third parcel is a lot on Concord

(Continued on Page 1B, Col. 1)

Prisoners 'Strike'

Sheriff John Polk disclosed today that 48 county jail prisoners in four cell blocks, are on a "hunger strike," refusing to eat the Monday evening and Tuesday morning meals.

One of the cell blocks, containing 12 men described as "hard core" threw their food trays against the floors and walls Monday night as a protest demonstration to call attention to a list of prisoner demands. "I don't know what their demands are, but I am checking today to find out," Polk said.

The Herald learned Monday that food complaints head the list of grievances drawn up by inmates.

Monday night's jail menu consisted of meat loaf, mashed potatoes, gravy, green beans and a soft drink, Polk said.

So True, So True!

WASHINGTON (AP) — Senate Democratic Leader Mike Mansfield didn't understand why senators laughed when he announced the Senate schedule and intoned: "Bringing up the rear will be the nomination of Mr. Butz."

Butz is Earl L. Butz, President Nixon's nominee to be secretary of agriculture.

Senate Republican Leader Hugh Scott did understand and replied: "Can envision the headlines — 'Senate Sits on Butz' — which is what we've been doing all year."

BULLETIN

WASHINGTON (AP) — The Senate judiciary committee approved today President Nixon's nomination of Lewis F. Powell Jr. and William F. Rehnquist to fill two vacancies on the Supreme Court.

Headlines

Inside THE HERALD

WINTER PARK — A woman hears her son's cries for help as police try in vain to free the young prisoner from a smoke filled cell whose door was welded shut by the flames. (Page 1B)

WASHINGTON — Five ranking officers face demotions or reprimands as a result of a devastating attack on a U.S. firebase in Vietnam. (Page 6C)

WASHINGTON — Chances of averting a heated Democrat-Republican collision on Phase 2 legislation appear improved. (Page 8A)

WEATHER — Yesterday's high 66 low 46. Partly cloudy and warmer today. Considerable cloudiness with chance of showers tonight and Wednesday.

Highs in mid 70s and low tonight in mid 50s.

A blanket of snow covered the nation's midsection today as freezing temperatures and snow accumulations dipped as far south as Oklahoma and Arkansas.

Say a prayer, friends . . . this am., while trying to cross the heavily-travelled Sanford intersection at 25th Street and Highway 17-92, the traffic signal was AGAIN malfunctioning.

"Taking life in hand, I darted across 17-92 . . . against the blinking red light!"

I'll gamble on occasion . . . but what about that loaded school bus which was coming in the opposite direction? Do we really have to wait until there is a fatality before we get that factory to replace the defective power unit in that signal?

If and when that happens, I'd hate to spend the nightmare some of our elected officials must anticipate sharing. . . SHAME! . . .

Not being much of a coffee drinker, I wasn't too impressed on hearing that from the "new products department" there are three flavored instant coffees available in envelopes containing four one-serving foil packets. They are cafe orange and spice, cafe cinnamon and cafe anise.

Protest Meals

Sheriff John Polk disclosed today that 48 county jail prisoners in four cell blocks, are on a "hunger strike," refusing to eat the Monday evening and Tuesday morning meals.

One of the cell blocks, containing 12 men described as "hard core" threw their food trays against the floors and walls Monday night as a protest demonstration to call attention to a list of prisoner demands. "I don't know what their demands are, but I am checking today to find out," Polk said.

The Herald learned Monday that food complaints head the list of grievances drawn up by inmates.

Monday night's jail menu consisted of meat loaf, mashed potatoes, gravy, green beans and a soft drink, Polk said.

Crime Rate Increasing

Sheriff 'Keeping The Peace'

By MARION BETHA (One of a Series)

Prominent on the desk of Seminole County Sheriff John Polk is the Bible, opened to the 90th chapter of Psalms, and one of the verses seems appropriate to the environment. . . "Thou hast a mighty arm . . . strong is thy hand."

Quoted if there were any particular significance to the opened Bible, Sheriff Polk replied that he read passages daily but that "you'd be surprised how many people come into my office and begin to pick up the Bible and read it."

Perhaps this philosophy gives an insight into the character of the man charged with "keeping the peace" within a burgeoning county in which even the most optimistic would agree faces an increasing of the crime rate.

Polk obviously is a dedicated man and, in stating that his working day averages 14-16 hours, noted, "I feel like I'm being paid for 24 hours, and that I should be available to the people upon that basis."

Dedicated

Personnel Up

The uniform division has been increased from 15 to 32. Two men serve civil papers, two are in the identification section. Radio operators have been increased from three to four; confinement officers from four to seven. There are two book keepers. The clerical staff has been increased from four to eight. Six cadets have been added with the cadet program. Of these cadets, two work in the ID section filing; one works in the criminal division; one in the civil department; one is in the chief deputy's office and one with Capt. J. Q. Gallaway in the detective division.

Patrol cars have been increased from 17 to 28. The salaries of the deputies have received an increment from a starting pay of \$337 to \$352. Two salary increased from \$422 to \$483.

Polk has initiated the practice of shift supervisors, with a lieutenant and sergeant assigned to each shift. Previously there were only deputies performing this function, with three sergeants on each shift, with each assigned to a section.

Polk has increased the black personnel in the department from one to four men, one of whom is a detective.

The rising crime rate is evident with each of the officers in the county jail literally "bulging at the seams," particularly the

(Continued on Page 1A, Col. 1)

SAIL ON TO VICTORY

SANFORD NATIONAL ATLANTIC BANK

MEMBER ATLANTIC BANCORPORATION Member F.D.I.C.

Go for the BIG WIN!

Sobik's SANDWICH SHOP

SIT or TAKE

Altamonte Springs • Sanford Orlando • Soon Open on Silver Star Rd.

We're BANKING on YOU!

"RAIDERS"

FLORIDA STATE BANK

Member F.D.I.C.

"Serving You Is Our Pleasure"

Best Wishes For A Great Season...

ELMER L. HELMS Architectural Stucco Plastering

Ph. 838-2099

JUMP UP TO A WIN!

Security Federal Savings

WINTER PARK MALL WINTER PARK, FLA.

Raiders Are Always Tops

NELSON & CO. WHEELER FERTILIZER

OVIEDO, FLORIDA

Our Compliments Team . . .

AMERICAN WOOD PRODUCTS

LONGWOOD, FLA.

Roll On To Victory

SKATE CITY ROLLER RINK

John Mikler, Owner

Off Hwy. 17-92 On Dog Track Road FOR PARTY RESERVATIONS PHONE 838-2474

Champs Always

WINN-DIXIE FOOD STORES

"THE BEEF PEOPLE"

MAITLAND • LONGWOOD • SANFORD

Eat 'Em Up, Raiders

ART BROWN PEST CONTROL SERVICE

2562 Park Ave. S. Sanford, Fla. 322-8865

Corral 'em Raiders!

Ranch House Restaurants

Maitland • Orlando • Sanford

Bend 'em Your Way!

NICK'S PAINT & BODY SHOP

300 O'Brien Rd. Fern Park, Fla. Ph. 838-5989

Go Raiders Go . . .

at BURGER CHEF

PH. 323-1990 "We Always Treat You Right!" 2506 FRENCH AVE. SANFORD, FLA.

Raiders, Let's Make It!

"THE WINNERS CIRCLE"

The Sanford-Orlando Kennel Club

Dial Direct! Shoot Direct!

SCORE!

WPT The Winter Park Telephone Company

Our Money's On You . . .

US UNITED STATE BANK of Seminole . . . SANFORD, FLORIDA

MEMBER F.D.I.C.

IMPORTED Still to!

save you money!

No matter what you come up with in the way of lugged, imported and exotic cars, you can't beat the economy of a Toyota. When you buy you don't buy to have on loan. . . you buy to get good dependable transportation at the best possible price. That's what you get at . . .

TOYOTA ECONOMY CARS OF SANFORD, INC.

Hwy. 17-92 & Onora Rd. Dial 322-8501

Dear Abby: By Abigail Van Buren

DEAR ABBY: I am a Hindu from India, who reads your column in the Birmingham Press. My comment on the letter from a young man whose best friend (Bill) invited him to try to get his wife (Sue) pregnant because Bill had been unsuccessful? The young man declined, and you indicated that he had made a wise decision.

I will agree with the proposal of Bill and his wife Sue. Our ancient religious books, "The Vedas," permitted such a thing in unusual circumstances, as laid down below:

"When the husband has been away from the house for a certain length of time for the purpose of trade, or for other reasons, and the wife is allowed to live temporarily with some respectable man only for the purpose of becoming pregnant. And after that has taken place, these temporary relations shall be severed and the wife shall go back to her husband's home and continue to wait for his return."

Thank you, Yours truly, PREM AGARWAL. DEAR PREM: Thank you for illustrating a point which is in the Western world are apt to forget. We repress a very small part of the world, and what is considered "immoral" or "unethical" is not necessarily immoral or unethical.

Jacoby On Bridge

The public believes that top-flight bridge is enormously complicated. They are right to the extent that every expert pair has developed ways to handle as many unusual bidding situations as possible. Some of these bidding situations are listed, but most of the time they are right down the middle.

In today's hand, South has 17 high-card points and 4-4-5-2 distribution. Beginners are taught to open this hand with one no-trump. Experts make the same bid. The rule is: When your hand meets all requirements for a no-trump opening, then open no-trump.

Worry Clinic

By GEORGE W. CRANE, Ph. D., M. D. CASE 5326: Harry D., aged 20, is a psychology major. "Dr. Crane," he began, "I am to write a theme for my social psychology class. The theme is chiefly a social function. Like language, it would be very rare in a person who was isolated on a deserted island, a Robinson Crusoe. This, would you expect?" children to laugh as much at jokes or understand the prevailing humor of their generation as would kiddies reared in a big family of brothers and sisters?

Henry James' Works

ACROSS DOWN 1 The Golden 2 In 3 What Maisie 4 Love 5 Decorative 6 The 7 Plans of 8 My family 9 Change 10 My like wife 11 Bilingual 12 Love 13 Theological 14 Degree (adj.) 15 Boston 16 French 17 Hermit 18 Black (poet) 19 House 20 Districts 21 The 22 The 23 Soviet peasant 24 Portrait of 25 Inquisitive 26 Drunkard 27 Detective 28 Marc's 29 Written 30 Old Bible 31 Translation 32 A. P. 33 Musical 34 Animal 35 Drama (novel)

Horoscope Forecast

WEDNESDAY, NOV. 24, 1971 GENERAL TENDENCIES: An unusually good day to look ahead and see what can be done to reach a better position with those who can be helpful in humanitarian work which could aid you to present well being.

Polly's Pointers

DEAR POLLY: I am answering R. L. who works for a florist and wonders what they can do with an accumulation of tall white candles left from weddings. After my sister wedding, the florist melted all their left-over candles and made one big one which he presented to the couple to use as an anniversary candle—MRS. E. L.

Highlights TV Time Previews

- 7:30-8:30 NBC "Ironside" Good Samaritan. Michael Callen guests in this episode as a GI who saves Sergeant Brown's life, but refuses any thanks. He proves to be AWOL, and wanted for the murder of a WAC. Brown takes up the Vietnam veteran's case, with the help of Ironside, naturally, and meets many strange GI buddies and a beautiful Army nurse. 7:30-8:30 ABC "Mad Squad" And a Little Child Shall Bled. Milton Berle, who barged into everyone's act on his own TV variety show, has some scenes stolen from him this time. Berle's co-star guest star is his 9-year-old son, William Michael Berle, playing the son of a circus clown (Millan) whose life is endangered for mysterious reasons. Uncle Bob is the target of an exploding balloon, but not seriously injured. However, the Mad Squad moves in when a second attempt is made on his life. Kerwin Wynn also is featured in a guest role. 8:30-9:30 CBS "Hawaii Five-O" A gangland thraill to mess up the beautiful Hawaiian island which businessmen try to move in on an uneasy lease that has settled among the four "families" that control island racketeering: a D organized crime. A messenger from state-side is found dead, and McGarrett justifiably suspects that war will break out if mainlanders carry out their threat to invade the local underworld. The drama ensues as McGarrett moves to head it off. 9:30-10:30 CBS "Cannon" The story centers around an elusive Nevada multi-millionaire (Norma) like a family missing figure named Guthrie Haskell. Cannon wants to talk to Haskell about a possible heir, Blake Nolan, who has disappeared under mysterious circumstances. Nolan's sister has gone to Cannon to track down her brother. But Cannon, hoping to get information from the elusive Haskell, runs into an obstinate judge (guest star Arthur O'Connell). 9:30-10:30 NBC "James Garner Is Nichols" James Garner is hot on the trail of silver. He works his way into an old mining town in "The One-Eyed Man's Time Has Come," and runs into a number of obstacles, including an earthquake which sends him crashing into a cellar of an old mansion where he is trapped, along with a mule and a strange young man (guest star Kristoffer Tabori). 10-11 ABC "Marcus Welby, M.D." "A Yellow Bird" When a divorced neighbor (Byke Aubrey) guest-stars in the role of a comatose, nurse Constance Lopez cares for her 16-year-old son, becomes attached to the boy and considers adopting him. Dr. Welby advises Constance about the step, a wise counseling since the boy's father subsequently returns. 10:30-11:00 CBS "The Dick Van Dyke Show" 11:00-11:30 CBS "The Mary Griffin Show" 11:30-12:00 CBS "The Dick Van Dyke Show" 12:00-12:30 CBS "The Mary Griffin Show" 12:30-1:00 CBS "The Dick Van Dyke Show" 1:00-1:30 CBS "The Mary Griffin Show" 1:30-2:00 CBS "The Dick Van Dyke Show" 2:00-2:30 CBS "The Mary Griffin Show" 2:30-3:00 CBS "The Dick Van Dyke Show" 3:00-3:30 CBS "The Mary Griffin Show" 3:30-4:00 CBS "The Dick Van Dyke Show" 4:00-4:30 CBS "The Mary Griffin Show" 4:30-5:00 CBS "The Dick Van Dyke Show" 5:00-5:30 CBS "The Mary Griffin Show" 5:30-6:00 CBS "The Dick Van Dyke Show" 6:00-6:30 CBS "The Mary Griffin Show" 6:30-7:00 CBS "The Dick Van Dyke Show" 7:00-7:30 CBS "The Mary Griffin Show" 7:30-8:00 CBS "The Dick Van Dyke Show" 8:00-8:30 CBS "The Mary Griffin Show" 8:30-9:00 CBS "The Dick Van Dyke Show" 9:00-9:30 CBS "The Mary Griffin Show" 9:30-10:00 CBS "The Dick Van Dyke Show" 10:00-10:30 CBS "The Mary Griffin Show" 10:30-11:00 CBS "The Dick Van Dyke Show" 11:00-11:30 CBS "The Mary Griffin Show" 11:30-12:00 CBS "The Dick Van Dyke Show" 12:00-12:30 CBS "The Mary Griffin Show" 12:30-1:00 CBS "The Dick Van Dyke Show" 1:00-1:30 CBS "The Mary Griffin Show" 1:30-2:00 CBS "The Dick Van Dyke Show" 2:00-2:30 CBS "The Mary Griffin Show" 2:30-3:00 CBS "The Dick Van Dyke Show" 3:00-3:30 CBS "The Mary Griffin Show" 3:30-4:00 CBS "The Dick Van Dyke Show" 4:00-4:30 CBS "The Mary Griffin Show" 4:30-5:00 CBS "The Dick Van Dyke Show" 5:00-5:30 CBS "The Mary Griffin Show" 5:30-6:00 CBS "The Dick Van Dyke Show" 6:00-6:30 CBS "The Mary Griffin Show" 6:30-7:00 CBS "The Dick Van Dyke Show" 7:00-7:30 CBS "The Mary Griffin Show" 7:30-8:00 CBS "The Dick Van Dyke Show" 8:00-8:30 CBS "The Mary Griffin Show" 8:30-9:00 CBS "The Dick Van Dyke Show" 9:00-9:30 CBS "The Mary Griffin Show" 9:30-10:00 CBS "The Dick Van Dyke Show" 10:00-10:30 CBS "The Mary Griffin Show" 10:30-11:00 CBS "The Dick Van Dyke Show" 11:00-11:30 CBS "The Mary Griffin Show" 11:30-12:00 CBS "The Dick Van Dyke Show" 12:00-12:30 CBS "The Mary Griffin Show" 12:30-1:00 CBS "The Dick Van Dyke Show" 1:00-1:30 CBS "The Mary Griffin Show" 1:30-2:00 CBS "The Dick Van Dyke Show" 2:00-2:30 CBS "The Mary Griffin Show" 2:30-3:00 CBS "The Dick Van Dyke Show" 3:00-3:30 CBS "The Mary Griffin Show" 3:30-4:00 CBS "The Dick Van Dyke Show" 4:00-4:30 CBS "The Mary Griffin Show" 4:30-5:00 CBS "The Dick Van Dyke Show" 5:00-5:30 CBS "The Mary Griffin Show" 5:30-6:00 CBS "The Dick Van Dyke Show" 6:00-6:30 CBS "The Mary Griffin Show" 6:30-7:00 CBS "The Dick Van Dyke Show" 7:00-7:30 CBS "The Mary Griffin Show" 7:30-8:00 CBS "The Dick Van Dyke Show" 8:00-8:30 CBS "The Mary Griffin Show" 8:30-9:00 CBS "The Dick Van Dyke Show" 9:00-9:30 CBS "The Mary Griffin Show" 9:30-10:00 CBS "The Dick Van Dyke Show" 10:00-10:30 CBS "The Mary Griffin Show" 10:30-11:00 CBS "The Dick Van Dyke Show" 11:00-11:30 CBS "The Mary Griffin Show" 11:30-12:00 CBS "The Dick Van Dyke Show" 12:00-12:30 CBS "The Mary Griffin Show" 12:30-1:00 CBS "The Dick Van Dyke Show" 1:00-1:30 CBS "The Mary Griffin Show" 1:30-2:00 CBS "The Dick Van Dyke Show" 2:00-2:30 CBS "The Mary Griffin Show" 2:30-3:00 CBS "The Dick Van Dyke Show" 3:00-3:30 CBS "The Mary Griffin Show" 3:30-4:00 CBS "The Dick Van Dyke Show" 4:00-4:30 CBS "The Mary Griffin Show" 4:30-5:00 CBS "The Dick Van Dyke Show" 5:00-5:30 CBS "The Mary Griffin Show" 5:30-6:00 CBS "The Dick Van Dyke Show" 6:00-6:30 CBS "The Mary Griffin Show" 6:30-7:00 CBS "The Dick Van Dyke Show" 7:00-7:30 CBS "The Mary Griffin Show" 7:30-8:00 CBS "The Dick Van Dyke Show" 8:00-8:30 CBS "The Mary Griffin Show" 8:30-9:00 CBS "The Dick Van Dyke Show" 9:00-9:30 CBS "The Mary Griffin Show" 9:30-10:00 CBS "The Dick Van Dyke Show" 10:00-10:30 CBS "The Mary Griffin Show" 10:30-11:00 CBS "The Dick Van Dyke Show" 11:00-11:30 CBS "The Mary Griffin Show" 11:30-12:00 CBS "The Dick Van Dyke Show" 12:00-12:30 CBS "The Mary Griffin Show" 12:30-1:00 CBS "The Dick Van Dyke Show" 1:00-1:30 CBS "The Mary Griffin Show" 1:30-2:00 CBS "The Dick Van Dyke Show" 2:00-2:30 CBS "The Mary Griffin Show" 2:30-3:00 CBS "The Dick Van Dyke Show" 3:00-3:30 CBS "The Mary Griffin Show" 3:30-4:00 CBS "The Dick Van Dyke Show" 4:00-4:30 CBS "The Mary Griffin Show" 4:30-5:00 CBS "The Dick Van Dyke Show" 5:00-5:30 CBS "The Mary Griffin Show" 5:30-6:00 CBS "The Dick Van Dyke Show" 6:00-6:30 CBS "The Mary Griffin Show" 6:30-7:00 CBS "The Dick Van Dyke Show" 7:00-7:30 CBS "The Mary Griffin Show" 7:30-8:00 CBS "The Dick Van Dyke Show" 8:00-8:30 CBS "The Mary Griffin Show" 8:30-9:00 CBS "The Dick Van Dyke Show" 9:00-9:30 CBS "The Mary Griffin Show" 9:30-10:00 CBS "The Dick Van Dyke Show" 10:00-10:30 CBS "The Mary Griffin Show" 10:30-11:00 CBS "The Dick Van Dyke Show" 11:00-11:30 CBS "The Mary Griffin Show" 11:30-12:00 CBS "The Dick Van Dyke Show" 12:00-12:30 CBS "The Mary Griffin Show" 12:30-1:00 CBS "The Dick Van Dyke Show" 1:00-1:30 CBS "The Mary Griffin Show" 1:30-2:00 CBS "The Dick Van Dyke Show" 2:00-2:30 CBS "The Mary Griffin Show" 2:30-3:00 CBS "The Dick Van Dyke Show" 3:00-3:30 CBS "The Mary Griffin Show" 3:30-4:00 CBS "The Dick Van Dyke Show" 4:00-4:30 CBS "The Mary Griffin Show" 4:30-5:00 CBS "The Dick Van Dyke Show" 5:00-5:30 CBS "The Mary Griffin Show" 5:30-6:00 CBS "The Dick Van Dyke Show" 6:00-6:30 CBS "The Mary Griffin Show" 6:30-7:00 CBS "The Dick Van Dyke Show" 7:00-7:30 CBS "The Mary Griffin Show" 7:30-8:00 CBS "The Dick Van Dyke Show" 8:00-8:30 CBS "The Mary Griffin Show" 8:30-9:00 CBS "The Dick Van Dyke Show" 9:00-9:30 CBS "The Mary Griffin Show" 9:30-10:00 CBS "The Dick Van Dyke Show" 10:00-10:30 CBS "The Mary Griffin Show" 10:30-11:00 CBS "The Dick Van Dyke Show" 11:00-11:30 CBS "The Mary Griffin Show" 11:30-12:00 CBS "The Dick Van Dyke Show" 12:00-12:30 CBS "The Mary Griffin Show" 12:30-1:00 CBS "The Dick Van Dyke Show" 1:00-1:30 CBS "The Mary Griffin Show" 1:30-2:00 CBS "The Dick Van Dyke Show" 2:00-2:30 CBS "The Mary Griffin Show" 2:30-3:00 CBS "The Dick Van Dyke Show" 3:00-3:30 CBS "The Mary Griffin Show" 3:30-4:00 CBS "The Dick Van Dyke Show" 4:00-4:30 CBS "The Mary Griffin Show" 4:30-5:00 CBS "The Dick Van Dyke Show" 5:00-5:30 CBS "The Mary Griffin Show" 5:30-6:00 CBS "The Dick Van Dyke Show" 6:00-6:30 CBS "The Mary Griffin Show" 6:30-7:00 CBS "The Dick Van Dyke Show" 7:00-7:30 CBS "The Mary Griffin Show" 7:30-8:00 CBS "The Dick Van Dyke Show" 8:00-8:30 CBS "The Mary Griffin Show" 8:30-9:00 CBS "The Dick Van Dyke Show" 9:00-9:30 CBS "The Mary Griffin Show" 9:30-10:00 CBS "The Dick Van Dyke Show" 10:00-10:30 CBS "The Mary Griffin Show" 10:30-11:00 CBS "The Dick Van Dyke Show" 11:00-11:30 CBS "The Mary Griffin Show" 11:30-12:00 CBS "The Dick Van Dyke Show" 12:00-12:30 CBS "The Mary Griffin Show" 12:30-1:00 CBS "The Dick Van Dyke Show" 1:00-1:30 CBS "The Mary Griffin Show" 1:30-2:00 CBS "The Dick Van Dyke Show" 2:00-2:30 CBS "The Mary Griffin Show" 2:30-3:00 CBS "The Dick Van Dyke Show" 3:00-3:30 CBS "The Mary Griffin Show" 3:30-4:00 CBS "The Dick Van Dyke Show" 4:00-4:30 CBS "The Mary Griffin Show" 4:30-5:00 CBS "The Dick Van Dyke Show" 5:00-5:30 CBS "The Mary Griffin Show" 5:30-6:00 CBS "The Dick Van Dyke Show" 6:00-6:30 CBS "The Mary Griffin Show" 6:30-7:00 CBS "The Dick Van Dyke Show" 7:00-7:30 CBS "The Mary Griffin Show" 7:30-8:00 CBS "The Dick Van Dyke Show" 8:00-8:30 CBS "The Mary Griffin Show" 8:30-9:00 CBS "The Dick Van Dyke Show" 9:00-9:30 CBS "The Mary Griffin Show" 9:30-10:00 CBS "The Dick Van Dyke Show" 10:00-10:30 CBS "The Mary Griffin Show" 10:30-11:00 CBS "The Dick Van Dyke Show" 11:00-11:30 CBS "The Mary Griffin Show" 11:30-12:00 CBS "The Dick Van Dyke Show" 12:00-12:30 CBS "The Mary Griffin Show" 12:30-1:00 CBS "The Dick Van Dyke Show" 1:00-1:30 CBS "The Mary Griffin Show" 1:30-2:00 CBS "The Dick Van Dyke Show" 2:00-2:30 CBS "The Mary Griffin Show" 2:30-3:00 CBS "The Dick Van Dyke Show" 3:00-3:30 CBS "The Mary Griffin Show" 3:30-4:00 CBS "The Dick Van Dyke Show" 4:00-4:30 CBS "The Mary Griffin Show" 4:30-5:00 CBS "The Dick Van Dyke Show" 5:00-5:30 CBS "The Mary Griffin Show" 5:30-6:00 CBS "The Dick Van Dyke Show" 6:00-6:30 CBS "The Mary Griffin Show" 6:30-7:00 CBS "The Dick Van Dyke Show" 7:00-7:30 CBS "The Mary Griffin Show" 7:30-8:00 CBS "The Dick Van Dyke Show" 8:00-8:30 CBS "The Mary Griffin Show" 8:30-9:00 CBS "The Dick Van Dyke Show" 9:00-9:30 CBS "The Mary Griffin Show" 9:30-10:00 CBS "The Dick Van Dyke Show" 10:00-10:30 CBS "The Mary Griffin Show" 10:30-11:00 CBS "The Dick Van Dyke Show" 11:00-11:30 CBS "The Mary Griffin Show" 11:30-12:00 CBS "The Dick Van Dyke Show" 12:00-12:30 CBS "The Mary Griffin Show" 12:30-1:00 CBS "The Dick Van Dyke Show" 1:00-1:30 CBS "The Mary Griffin Show" 1:30-2:00 CBS "The Dick Van Dyke Show" 2:00-2:30 CBS "The Mary Griffin Show" 2:30-3:00 CBS "The Dick Van Dyke Show" 3:00-3:30 CBS "The Mary Griffin Show" 3:30-4:00 CBS "The Dick Van Dyke Show" 4:00-4:30 CBS "The Mary Griffin Show" 4:30-5:00 CBS "The Dick Van Dyke Show" 5:00-5:30 CBS "The Mary Griffin Show" 5:30-6:00 CBS "The Dick Van Dyke Show" 6:00-6:30 CBS "The Mary Griffin Show" 6:30-7:00 CBS "The Dick Van Dyke Show" 7:00-7:30 CBS "The Mary Griffin Show" 7:30-8:00 CBS "The Dick Van Dyke Show" 8:00-8:30 CBS "The Mary Griffin Show" 8:30-9:00 CBS "The Dick Van Dyke Show" 9:00-9:30 CBS "The Mary Griffin Show" 9:30-10:00 CBS "The Dick Van Dyke Show" 10:00-10:30 CBS "The Mary Griffin Show" 10:30-11:00 CBS "The Dick Van Dyke Show" 11:00-11:30 CBS "The Mary Griffin Show" 11:30-12:00 CBS "The Dick Van Dyke Show" 12:00-12:30 CBS "The Mary Griffin Show" 12:30-1:00 CBS "The Dick Van Dyke Show" 1:00-1:30 CBS "The Mary Griffin Show" 1:30-2:00 CBS "The Dick Van Dyke Show" 2:00-2:30 CBS "The Mary Griffin Show" 2:30-3:00 CBS "The Dick Van Dyke Show" 3:00-3:30 CBS "The Mary Griffin Show" 3:30-4:00 CBS "The Dick Van Dyke Show" 4:00-4:30 CBS "The Mary Griffin Show" 4:30-5:00 CBS "The Dick Van Dyke Show" 5:00-5:30 CBS "The Mary Griffin Show" 5:30-6:00 CBS "The Dick Van Dyke Show" 6:00-6:30 CBS "The Mary Griffin Show" 6:30-7:00 CBS "The Dick Van Dyke Show" 7:00-7:30 CBS "The Mary Griffin Show" 7:30-8:00 CBS "The Dick Van Dyke Show" 8:00-8:30 CBS "The Mary Griffin Show" 8:30-9:00 CBS "The Dick Van Dyke Show" 9:00-9:30 CBS "The Mary Griffin Show" 9:30-10:00 CBS "The Dick Van Dyke Show" 10:00-10:30 CBS "The Mary Griffin Show" 10:30-11:00 CBS "The Dick Van Dyke Show" 11:00-11:30 CBS "The Mary Griffin Show" 11:30-12:00 CBS "The Dick Van Dyke Show" 12:00-12:30 CBS "The Mary Griffin Show" 12:30-1:00 CBS "The Dick Van Dyke Show" 1:00-1:30 CBS "The Mary Griffin Show" 1:30-2:00 CBS "The Dick Van Dyke Show" 2:00-2:30 CBS "The Mary Griffin Show" 2:30-3:00 CBS "The Dick Van Dyke Show" 3:00-3:30 CBS "The Mary Griffin Show" 3:30-4:00 CBS "The Dick Van Dyke Show" 4:00-4:30 CBS "The Mary Griffin Show" 4:30-5:00 CBS "The Dick Van Dyke Show" 5:00-5:30 CBS "The Mary Griffin Show" 5:30-6:00 CBS "The Dick Van Dyke Show" 6:00-6:30 CBS "The Mary Griffin Show" 6:30-7:00 CBS "The Dick Van Dyke Show" 7:00-7:30 CBS "The Mary Griffin Show" 7:30-8:00 CBS "The Dick Van Dyke Show" 8:00-8:30 CBS "The Mary Griffin Show" 8:30-9:00 CBS "The Dick Van Dyke Show" 9:00-9:30 CBS "The Mary Griffin Show" 9:30-10:00 CBS "The Dick Van Dyke Show" 10:00-10:30 CBS "The Mary Griffin Show" 10:30-11:00 CBS "The Dick Van Dyke Show" 11:00-11:30 CBS "The Mary Griffin Show" 11:30-12:00 CBS "The Dick Van Dyke Show" 12:00-12:30 CBS "The Mary Griffin Show" 12:30-1:00 CBS "The Dick Van Dyke Show" 1:00-1:30 CBS "The Mary Griffin Show" 1:30-2:00 CBS "The Dick Van Dyke Show" 2:00-2:30 CBS "The Mary Griffin Show" 2:30-3:00 CBS "The Dick Van Dyke Show" 3:00-3:30 CBS "The Mary Griffin Show" 3:30-4:00 CBS "The Dick Van Dyke Show" 4:00-4:30 CBS "The Mary Griffin Show" 4:30-5:00 CBS "The Dick Van Dyke Show" 5:00-5:30 CBS "The Mary Griffin Show" 5:30-6:00 CBS "The Dick Van Dyke Show" 6:00-6:30 CBS "The Mary Griffin Show" 6:30-7:00 CBS "The Dick Van Dyke Show" 7:00-7:30 CBS "The Mary Griffin Show" 7:30-8:00 CBS "The Dick Van Dyke Show" 8:00-8:30 CBS "The Mary Griffin Show" 8:30-9:00 CBS "The Dick Van Dyke Show" 9:00-9:30 CBS "The Mary Griffin Show" 9:30-10:00 CBS "The Dick Van Dyke Show" 10:00-10:30 CBS "The Mary Griffin Show" 10:30-11:00 CBS "The Dick Van Dyke Show" 11:00-11:30 CBS "The Mary Griffin Show" 11:30-12:00 CBS "The Dick Van Dyke Show" 12:00-12:30 CBS "The Mary Griffin Show" 12:30-1:00 CBS "The Dick Van Dyke Show" 1:00-1:30 CBS "The Mary Griffin Show" 1:30-2:00 CBS "The Dick Van Dyke Show" 2:00-2:30 CBS "The Mary Griffin Show" 2:30-3:00 CBS "The Dick Van Dyke Show" 3:00-3:30 CBS "The Mary Griffin Show" 3:30-4:00 CBS "The Dick Van Dyke Show" 4:00-4:30 CBS "The Mary Griffin Show" 4:30-5:00 CBS "The Dick Van Dyke Show" 5:00-5:30 CBS "The Mary Griffin Show" 5:30-6:00 CBS "The Dick Van Dyke Show" 6:00-6:30 CBS "The Mary Griffin Show" 6:30-7:00 CBS "The Dick Van Dyke Show" 7:00-7:30 CBS "The Mary Griffin Show" 7:30-8:00 CBS "The Dick Van Dyke Show" 8:00-8:30 CBS "The Mary Griffin Show" 8:30-9:00 CBS "The Dick Van Dyke Show" 9:00-9:30 CBS "The Mary Griffin Show" 9:30-10:00 CBS "The Dick Van Dyke Show" 10:00-10:30 CBS "The Mary Griffin Show" 10:30-11:00 CBS "The Dick Van Dyke Show" 11:00-11:30 CBS "The Mary Griffin Show" 11:30-12:00 CBS "The Dick Van Dyke Show" 12:00-12:30 CBS "The Mary Griffin Show" 12:30-1:00 CBS "The Dick Van Dyke Show" 1:00-1:30 CBS "The Mary Griffin Show" 1:30-2:00 CBS "The Dick Van Dyke Show" 2:00-2:30 CBS "The Mary Griffin Show" 2:30-3:00 CBS "The Dick Van Dyke Show" 3:00-3:30 CBS "The Mary Griffin Show" 3:30-4:00 CBS "The Dick Van Dyke Show" 4:00-4:30 CBS "The Mary Griffin Show" 4:30-5:00 CBS "The Dick Van Dyke Show" 5:00-5:30 CBS "The Mary Griffin Show" 5:30-6:00 CBS "The Dick Van Dyke Show" 6:00-6:30 CBS "The Mary Griffin Show" 6:30-7:00 CBS "The Dick Van Dyke Show" 7:00-7:30 CBS "The Mary Griffin Show" 7:30-8:00 CBS "The Dick Van Dyke Show" 8:00-8:30 CBS "The Mary Griffin Show" 8:30-9:00 CBS "The Dick Van Dyke Show" 9:00-9:30 CBS "The Mary Griffin Show" 9:30-10:00 CBS "The Dick Van Dyke Show" 10:00-10:30 CBS "The Mary Griffin Show" 10:30-11:00 CBS "The Dick Van Dyke Show" 11:00-11:30 CBS "The Mary Griffin Show" 11:30-12:00 CBS "The Dick Van Dyke Show" 12:00-12:30 CBS "The Mary Griffin Show" 12:30-1:00 CBS "The Dick Van Dyke Show" 1:00-1:30 CBS "The Mary Griffin Show" 1:30-2:00 CBS "The Dick Van Dyke Show" 2:00-2:30 CBS "The Mary Griffin Show" 2:30-3:00 CBS "The Dick Van Dyke Show" 3:00-3:30 CBS "The Mary Griffin Show" 3:30-4:00 CBS "The Dick Van Dyke Show" 4:00-4:30 CBS "The Mary Griffin Show" 4:30-5:00 CBS "The Dick Van Dyke Show" 5:00-5:30 CBS "The Mary Griffin Show" 5:30-6:00 CBS "The Dick Van Dyke Show" 6:00-6:30 CBS "The Mary Griffin Show" 6:30-7:00 CBS "The Dick Van Dyke Show" 7:00-7:30 CBS "The Mary Griffin Show" 7:30-8:00 CBS "The Dick Van Dyke Show" 8:00-8:30 CBS "The Mary Griffin Show" 8:30-9:00 CBS "The Dick Van Dyke Show" 9:00-9:30 CBS "The Mary Griffin Show" 9:30-10:00 CBS "The Dick Van Dyke Show" 10:00-10:30 CBS "The Mary Griffin Show" 10:30-11:00 CBS "The Dick Van Dyke Show" 11:00-11:30 CBS "The Mary Griffin Show" 11:30-12:00 CBS "The Dick Van Dyke Show" 12:00-12:30 CBS "The Mary Griffin Show" 12:30-1:00 CBS "The Dick Van Dyke Show" 1:00-1:30 CBS "The Mary Griffin Show" 1:30-2:00 CBS "The Dick Van Dyke Show" 2:00-2:30 CBS "The Mary Griffin Show" 2:30-3:00 CBS "The Dick Van Dyke Show" 3:00-3:30 CBS "The Mary Griffin Show" 3:30-4:00 CBS "The Dick Van Dyke Show" 4:00-4:30 CBS "The Mary Griffin Show" 4:30-5:00 CBS "The Dick Van Dyke Show" 5:00-5:30 CBS "The Mary Griffin Show" 5:30-6:00 CBS "The Dick Van Dyke Show" 6:00-6:30 CBS "The Mary Griffin Show" 6:30-7:00 CBS "The Dick Van Dyke Show" 7:00-7:30 CBS "The Mary Griffin Show" 7:30-8:00 CBS "The Dick Van Dyke Show" 8:00-8:30 CBS "The Mary Griffin Show" 8:30-9:00 CBS "The Dick Van Dyke Show" 9:00-9:30 CBS "The Mary Griffin Show" 9:30-10:00 CBS "The Dick Van Dyke Show" 10:00-10:30 CBS "The Mary Griffin Show" 10:30-11:00 CBS "The Dick Van Dyke Show" 11:00-11:30 CBS "The Mary Griffin Show" 11:30-12:00 CBS "The Dick Van Dyke Show" 12:00-12:30 CBS "The Mary Griffin Show" 12:30-1:00 CBS "The Dick Van Dyke Show" 1:00-1:30 CBS "The Mary Griffin Show" 1:30-2:00 CBS "The Dick Van Dyke Show" 2:00-2:30 CBS "The Mary Griffin Show" 2:30-3:00 CBS "The Dick Van Dyke Show" 3:00-3:30 CBS "The Mary Griffin Show" 3:30-4:00 CBS "The Dick Van Dyke Show" 4:00-4:30 CBS "The Mary Griffin Show" 4:30-5:00 CBS "The Dick Van Dyke Show" 5:00-5:30 CBS "The Mary Griffin Show" 5:30-6:00 CBS "The Dick Van Dyke Show" 6:00-6:30 CBS "The Mary Griffin Show" 6:30-7:00 CBS "The Dick Van Dyke Show" 7:00-7:30 CBS "The Mary Griffin Show" 7:30-8:00 CBS "The Dick Van Dyke Show" 8:00-8:30 CBS "The Mary Griffin Show" 8:30-9:00 CBS "The Dick Van Dyke Show" 9:00-9:30 CBS "The Mary Griffin Show" 9:30-10:00 CBS "The Dick Van Dyke Show" 10:00-10:30 CBS "The Mary Griffin Show" 10:30-11:00 CBS "The Dick Van Dyke Show" 11:00-11:30 CBS "The Mary Griffin Show" 11:30-12:00 CBS "The Dick Van Dyke Show" 12:00-12:30 CBS "The Mary Griffin Show" 12:30-1:00 CBS "The Dick Van Dyke Show" 1:00-1:30 CBS "The Mary Griffin Show" 1:30-2:00 CBS "The Dick Van Dyke Show" 2:00-2:30 CBS "The Mary Griffin Show" 2:30-3:00 CBS "The Dick Van Dyke Show" 3:00-3:30 CBS "The Mary Griffin Show" 3:30-4:00 CBS "The Dick Van Dyke Show" 4:00-4:30 CBS "The Mary Griffin Show" 4:30-5:00 CBS "The Dick Van Dyke Show" 5:00-5:30 CBS "The Mary Griffin Show" 5:30-6:00 CBS "The Dick Van Dyke Show" 6:00-6:30 CBS "The Mary Griffin Show" 6:30-7:00 CBS "The Dick Van Dyke Show" 7:00-7:30 CBS "The Mary Griffin Show" 7:30-8:00 CBS "The Dick Van Dyke Show" 8:00-8:30 CBS "The Mary Griffin Show" 8:30-9:00 CBS "The Dick Van Dyke Show" 9:00-9:30 CBS "The Mary Griffin Show" 9:30-10:00 CBS "The Dick Van Dyke Show" 10:00-10:30 CBS "The Mary Griffin Show" 10:30-11:00 CBS "The Dick Van Dyke Show" 11:00-11:30 CBS "The Mary Griffin Show" 11:30-12:00 CBS "The Dick Van Dyke Show" 12:00-12:30 CBS "The Mary Griffin Show" 12:30-1:00 CBS "The Dick Van Dyke Show" 1:00-1:30 CBS "The Mary Griffin Show" 1:30-2:00 CBS "The Dick Van Dyke Show" 2:00-2:30 CBS "The Mary Griffin Show" 2:30-3:00 CBS "The Dick Van Dyke Show" 3:00-3:30 CBS "The Mary Griffin Show" 3:30-4:00 CBS "The Dick Van Dyke Show" 4:00-4:30 CBS "The Mary Griffin Show" 4:30-5:00 CBS "The Dick Van Dyke Show" 5:00-5:30 CBS "The Mary Griffin Show" 5:30-6:00 CBS "The Dick Van Dyke Show" 6:00-6:30 CBS "The Mary Griffin Show" 6:30-7:00 CBS "The Dick Van Dyke Show" 7:00-7:30 CBS "The Mary Griffin Show" 7:30-8:00 CBS "The Dick Van Dyke Show" 8:00-8:30 CBS "The Mary Griffin Show" 8:30-9:00 CBS "The Dick Van Dyke Show" 9:00-9:30 CBS "The Mary Griffin Show" 9:30-10:00 CBS "The Dick Van Dyke Show" 10:00-10:30 CBS "The Mary Griffin Show" 10:30-11:00 CBS "The Dick Van Dyke Show" 11:00-11:30 CBS "The Mary Griffin Show" 11:30-12:00 CBS "The Dick Van Dyke Show" 12:00-12:30 CBS "The Mary Griffin Show" 12:30-1:00 CBS "The Dick Van Dyke Show" 1:00-1:30 CBS "The Mary Griffin Show" 1:30-2:00 CBS "The Dick Van Dyke Show" 2:00-2:30 CBS "The Mary Griffin Show" 2:30-3:00 CBS "The Dick Van Dyke Show" 3:00-3:30 CBS "The Mary Griffin Show" 3:30-4:00 CBS "The Dick Van Dyke Show" 4:00-4:30 CBS "The Mary Griffin Show" 4:30-5:00 CBS "The Dick Van Dyke Show" 5:00-5:30 CBS "The Mary Griffin Show" 5:30-6:00 CBS "The Dick Van Dyke Show" 6:00-6:30 CBS "The Mary Griffin Show" 6:30-7:00 CBS "The Dick Van Dyke Show" 7:00-7:30 CBS "The Mary Griffin Show" 7:30-8:00 CBS "The Dick Van Dyke Show" 8:00-8:30 CBS "The Mary Griffin Show" 8:30-9:00 CBS "The Dick Van Dyke Show" 9:00-9:30 CBS "The Mary Griffin Show" 9:30-10:00 CBS "The Dick Van Dyke Show" 10:00-10:30 CBS "The Mary Griffin Show" 10:30-11:00 CBS "The Dick Van Dyke Show" 11:00-11:30 CBS "The Mary Griffin Show" 11:30-12:00 CBS "The Dick Van Dyke Show" 12:00-12:30 CBS "The Mary Griffin Show" 12:30-1:00 CBS "The Dick Van Dyke Show" 1:00-1:30 CBS "The Mary Griffin Show" 1:30-2:00 CBS "The Dick Van Dyke Show" 2:00-2:30 CBS "The Mary Griffin Show" 2:30-3:00 CBS "The Dick Van Dyke Show" 3:00-3:30 CBS "The Mary Griffin Show" 3:30-4:00 CBS "The Dick Van Dyke Show" 4:00-4:30 CBS "The Mary Griffin Show" 4:30-5:00 CBS "The Dick Van Dyke Show" 5:00-5:30 CBS "The Mary Griffin Show" 5:30-6:00 CBS "The Dick Van Dyke Show" 6:00-6:30 CBS "The Mary Griffin Show" 6:30-7:00 CBS "The Dick Van Dyke Show" 7:00-7:30 CBS "The Mary Griffin Show" 7:30-8:00 CBS "The Dick Van Dyke Show" 8:00-8:30 CBS "The Mary Griffin Show" 8:30-9:00 CBS "The Dick Van Dyke Show" 9:00-9:30 CBS "The Mary Griffin Show" 9:30-10:00 CBS "The Dick Van Dyke Show" 10:00-10:30 CBS "The Mary Griffin Show" 10:30-11:00 CBS "The Dick Van Dyke Show" 11:00-11:30 CBS "The Mary Griffin Show" 11:30-12:00 CBS "The Dick Van Dyke Show" 12:00-12:30 CBS "The Mary Griffin Show" 12:30-1:00 CBS "The Dick Van Dyke Show" 1:00-1:30 CBS "The Mary Griffin Show" 1:30-2:00 CBS "The Dick Van Dyke Show" 2:00-2:30 CBS "The Mary Griffin Show" 2:30-3:00 CBS "The Dick Van Dyke Show" 3:00-3:30 CBS "The Mary Griffin Show" 3:30-4:00 CBS "The Dick Van Dyke Show" 4:00-4:30 CBS "The Mary Griffin Show" 4:30-5:00 CBS "The Dick Van Dyke Show" 5:00-5:30 CBS "The Mary Griffin Show" 5:30-6:00 CBS "The Dick Van Dyke Show" 6:00-6:30 CBS "The Mary Griffin Show" 6:30-7:00 CBS "The Dick Van Dyke Show" 7:00-7:30 CBS "The Mary Griffin Show" 7:30-8:00 CBS "The Dick Van Dyke Show" 8:00-8:30 CBS "The Mary Griffin Show" 8:30-9:00 CBS "The Dick Van Dyke Show" 9:00-9:30 CBS "The Mary Griffin Show" 9:30-10:00 CBS "The Dick Van Dyke Show" 10:00-10:30 CBS "The Mary Griffin Show" 10:30-11:00 CBS "The Dick Van Dyke Show" 11:00-11:30 CBS "The Mary Griffin Show" 11:30-12:00 CBS "The Dick Van Dyke Show"

WANT TO QUIT SMOKING?
Break the "habit" the EASY WAY thru
SELF-HYPNOSIS
Other functional problems such as NERVOUS
INDIGESTION, MIGRAINE, INSOMNIA, OVER-
WEIGHT, etc. can also be alleviated or
eliminated.
free consultation * * * Phone 322-5758
Seminole County's ONLY
LICENSED CONSULTANT IN ETHICAL HYPNOSIS

SAVE MONEY . . .
GET THE BEST FOR LESS
Duda Auto Parts
OVIEDO TRACTOR CO.
WHOLESALE & RETAIL
• Auto Parts & Accessories
• Lawn & Farm Equipment
ROUTE 246 PH. 365-3248 OVIEDO

DeBARY MANOR
NURSING, CONVALESCENT
REHABILITATION AND
RETIREMENT LIVING.
Phone 668-4426
Hwy. 17-92, DeBary, Florida
We Believe in GOOD Patient Care
Medicare Approved

Call an Expert! 323-3807 or 831-8047
Licensed • 25 Yrs. Experience
24 Hour Service • Satisfaction Guaranteed
CRAWFORD & SHEPPARD
HEAT-AIR AND
REFRIGERATION SERVICE
Ralph Crawford OWNERS Allen Sheppard

Pre-Christmas Special
FREE ENGRAVING
on All Ident. Bracelets
Purchased Nov. 14 thru Nov. 30
GWALTNEY Jewelers
204 S. PARK AVE.
OPEN SATURDAYS THRU CHRISTMAS
Watch & Jewelry Repair Free Gift Wrap
LAY-AWAY PH. 322-8509 MASTER CHARGE

The Most Beautiful Furniture.
The Most Modest Prices.
The Entrance to Elegant Living
Romel's
Open Sun 1-5; Mon. - Fri. 9:30-9; Tues., Wed., Thurs. 9:30-6
360 Longwood Plaza 831-7272

Furniture Stripping
We remove old finishes.
We also repair—glue—refinish.
Bix Service Company
549 Hwy. 17-92 Ph. 831-2808 Fern Park, Fla.

The Bigger The Damage
The Better We Like It.
We Have The Experience
And Equipment To
Handle Any Job.
INSURANCE CLAIMS
OUR SPECIALTY
Seminole Paint & Body
DAVID REDWINE—OWNER—115 YES IN AREA
2540 S. Myrtle Ph. 323-5163 Sanford

Country Quick
SUPER MARKET—WESTERN WEAR
Tom Bowser & Sons
Located in Oviedo Shopping Center
DUBUQUE IOWA BEEF
Arrives Weekly—USDA Choice Beef
Cut and Frozen Wrapped
10¢ PER POUND ABOVE
OUR INVOICE COST
DISCOUNT PRICES ON CASE & 1/2 CASE GROCERY ITEMS
SR 419 at 426 — Oviedo Ph. 365-3498

YOU CAN WASH YOUR CLOTHES FOR 40% LESS MONEY Than You Pay Anywhere Else In Sanford, When You Wash At WES-KAY WASHETERIAS
2010 FRENCH AVE. 111 WEST 27th ST.

Sanford Record Shop
309 E. 1st. Ph. 323-0960 Sanford
• 8 TRACK TAPES
• Top 100 45 RPM's
• The Latest LP's
• Patches & Posters
TOP LP—MEATY-BEATY-BIG & BOUNCY—THE WHO

Tres Chic WIG and BEAUTY SALON
710 W. First St. Sanford
Wigs get frizzy, lose their glow, curl get droopy, you feel lousy; bring them in for expert care, take them home with lots more wear.
Large Selection Wigs & Hair Pieces
OPEN MONDAY THRU SATURDAY
9 A.M. TIL 7 P.M.
PHONE 323-1760

ACTION auto parts
WHERE THE ACTION IS
Hwy. 17-92 — Longwood
1 Mi. South of Big Tree
PH. 831-3433
Engines, Transmissions
Steers, — Fenders — Doors
Tires — Wheels Etc.
CAR HEATERS
Full Selection Available
Any Make or Model
FREE Parts Location Service
Throughout The Southeast
24 HOUR WRECKER SERVICE

BURGERS — DOGS — SUBS — SHAKES
SHRIMP BASKET
21 SHRIMP FRENCH FRIES \$1.25
THE BIG DIP
2439 French Ave. Ph. 322-0199 Sanford

B. T. Udee Says...
WINTER Heating SUMMER Cooling
YOU GET BOTH WITH **SINGER** Climate Control
Singer's new Air Conditioning
It's an efficient, quiet, compact central system that provides comforting warmth in winter—refreshed cool air in summer. You'll enjoy living in your house all year.
CALL 322-6390 FOR FREE ESTIMATE
SANFORD HEATING & AIR CONDITIONING
2619 S. FRENCH AVE. SANFORD

FAST FRIENDLY SERVICE
Experienced Mechanics
Wash, Wax & Polish Jobs
Tires — Batteries — Accessories
KING CARTRUCK WAITING ROOM WITH T.V.
DEKLE'S SERVICE
2518 S. French Ave. Ph. 322-4924

Mr. Muffler Shop
PROMPT PROFESSIONAL SERVICE
LIFETIME GUARANTEE
2421 S. French Sanford Ph. 323-2811
SCHOOL RINGS FOR CHRISTMAS GIVING
We Have Them For All Local Schools—Order Your Favorite Student's Rings Now!
Cash & Save Jewelers
Your Times Repair Center
OPEN TIL 8 P.M. PH. 831-2285
398 Longwood Plaza Longwood

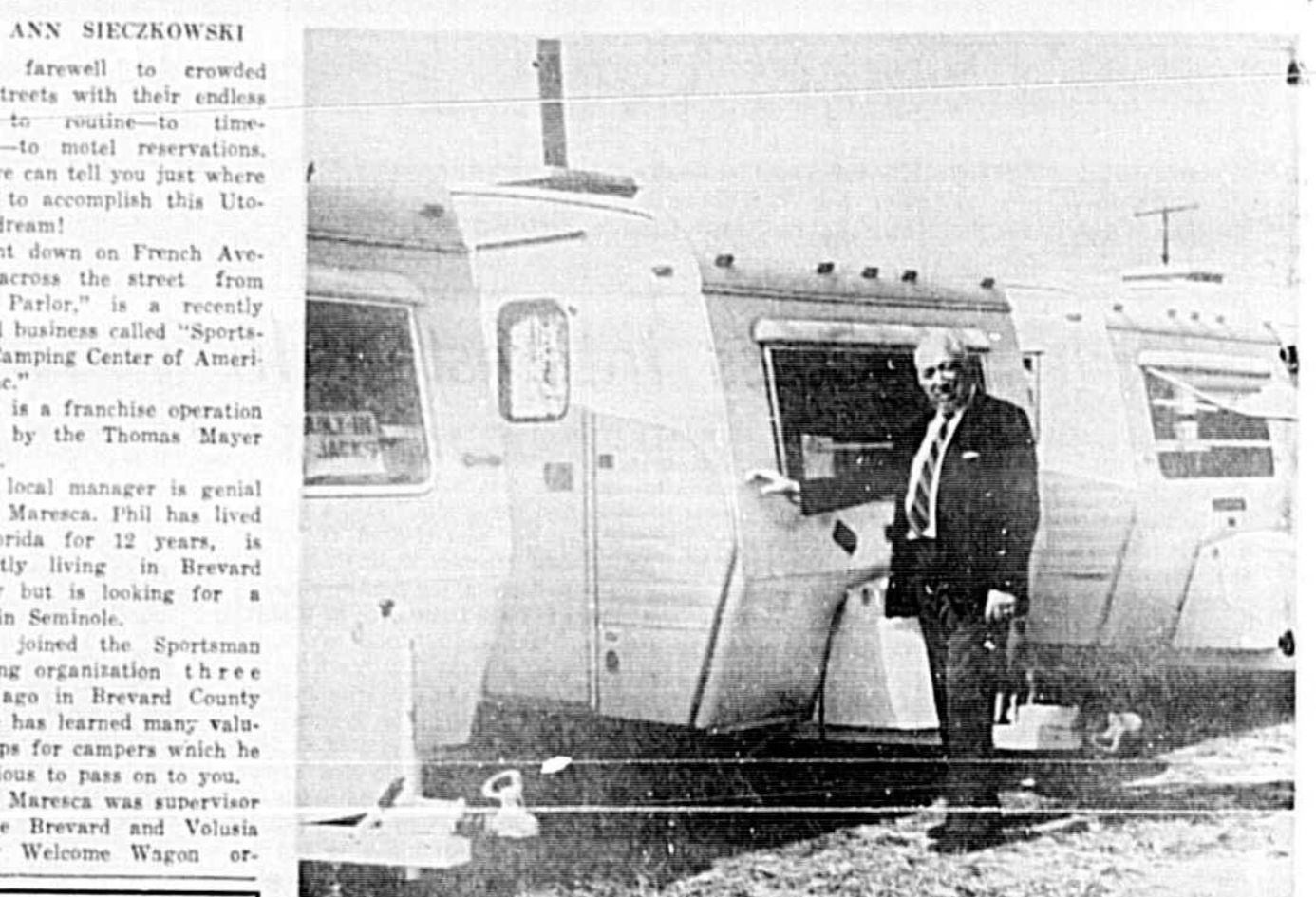
John Schlenk
There are many places that would bring enchantment to its visitors. If you go direct to any airline, steamship, or other transportation company for information, they have complete data on their services alone. The one place where you get ALL the answers about air, bus, train, Red Sea resort and attractive thousands of tourists who are keen on scuba diving. For those on shore there are many outdoor cafes, restaurants and night clubs. These are busy but many tourists prefer the camping, and sleepers on the beach. Americans who visit this Red Sea port are quite satisfied with their choice.

HELPFUL HINT
Always carry some spare black and white passport photos.

HERALD BUSINESS REVIEW

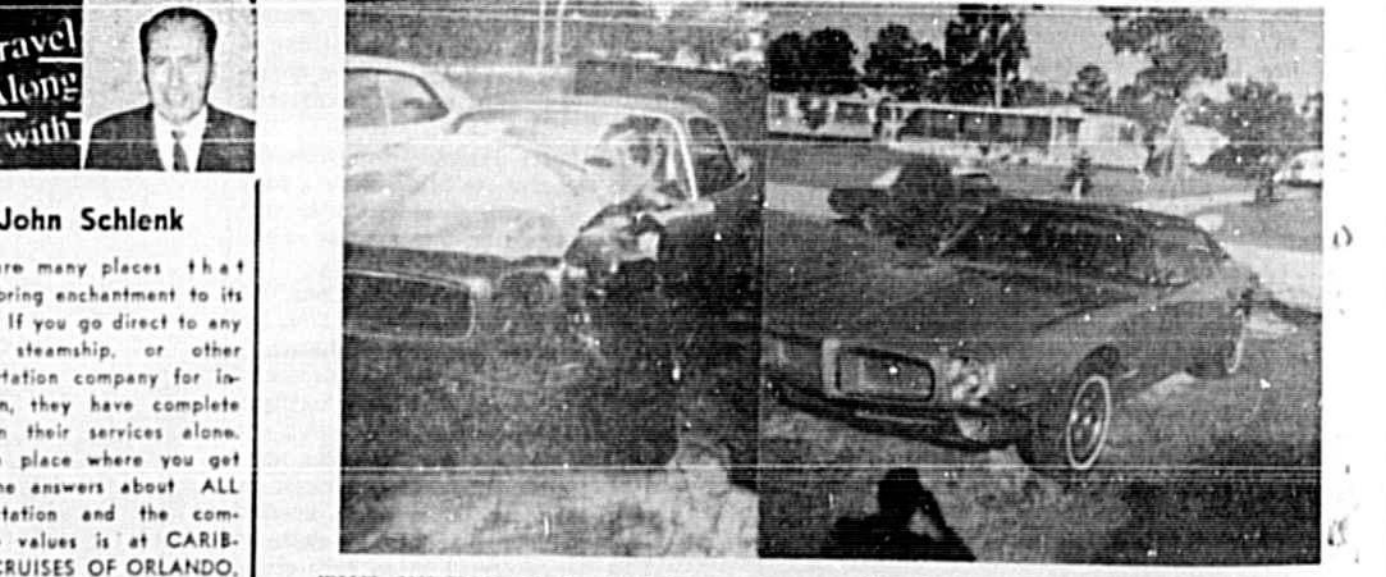
ASK ABOUT OUR STORY & PICTURE FEATURE For Information Phone 322-2611 Phone 425-5938

Let Seminole Camping Center Put Some Spark In Your Life



PHIL MARESCA, manager of Sportsman Camping Center, cordially invites everybody to visit the new facility at 2400 French Avenue. If you've tried everything else to "get away from it all" with no avail, camping just may be the successful outlet. A Sprite camper is an ideal Christmas gift for the entire family.

PHI joined the crowded city streets with their endless noise—to routine—to time-table-to motel reservations. And we can tell you just where to go to accomplish this Utopian dream!
Right down on French Avenue across the street from "The Parlor," is a recently opened business called "Sportsman Camping Center of America, Inc."
This is a franchise operation owned by the Thomas Mayer family.
The local manager is genial Phil Maresca. Phil has lived in Florida for 12 years, is currently living in Brevard County but is looking for a home in Seminole.
Phil joined the Sportsman Camping organization three years ago in Brevard County and he has learned many valuable tips for campers which he is anxious to pass on to you.
Mrs. Maresca was supervisor for the Brevard and Volusia County Welcome Wagon organization as well as working as a real estate agent. Phil served for some time as Administrative Assistant to the Brevard County Commissioners. These two folks are going to be a very real asset to Seminole.
We want to tell you about one of the models of campers which you can find at Sportsman Center. It is the SPRITE CARAVAN. Each Sprite camper offers plenty of light and space for the entire family, complete with a fully equipped kitchen area that allows you to prepare meals quickly and easily.
These campers afford you the most luxurious "roughing it" experience you could wish for. And there are several different sizes—suited to your specific needs.
The first thing you notice about towing one of these jewels is that you DON'T tie it. Modern materials, combined with "new" design ideas and engineering skills make the Sprite caravans easy to tow— which unique quality makes it the top selling recreational brand in the world.
Inside a Sprite, new materials and design ideas permit appliances, accessories and fixtures that are lightweight, convenient and serviceable. All the essentials for comfortable living are always at your fingertips.
Sportsman Center has rental arrangements to fit the needs of those who like weekend or short vacation trips. Local financing is available if you wish to purchase.
And listen, there are so many really wonderful camp sites in Seminole and Florida. At Sportsman Center, you'll find brochures on most of these sites and for others, ask Phil—he has a great big book listing these camp grounds all over the United States.
Aw—why don't we just cut this short and go on down to Sportsman Camping Center on French Avenue. Find good old Phil and arrange for a camper and get out of town in a while.
You know it is not too late to plan a Thanksgiving weekend of camping fun and of course, now is the time to start planning for those Christmas holidays.
Hey gals, wouldn't a camper be just the most divine gift for that sweet hubby of yours at Christmas?



THE WRECK (left photo) emerges a gleaming late model car under the specialty service guaranteed at Seminole Paint and Body Shop, 2540 South Myrtle Avenue. Your auto will be better than new under the expert craftsmanship at the body shop . . . and the price is right!

It's Wise To ADVERTISE IN THE SANFORD HERALD
For Your Story And Pictured Featured On This Page CALL "JAN" 322-2611 or 831-9993

Be The Belle of The Ball in a Beautiful Coiffure From Coquettes
No Appointment Needed
Coquette Styles
• Operators • Open Evenings • By Appointment
316 Commercial Ph. 323-0561 Sanford

THE DRY COPIER \$395
Check with George Stuart
131 EAST ROBINSON ORLANDO Phone 322-1341
Check with George Stuart

Christmas Puppies Available At Care-O-Sell • Deluxe Grooming Salon Has It All

By DORIS WILLIAMS
Arf! Arf!
How much is that doggie in the window?
Arf! Arf!
What doggie in what window?
Just head South on French Avenue until you approach the traffic light at 20th Street. Gaze toward the Stemp Agency and cast your eyes toward the red and white striped carousel sign-effect which captures a merry-go-round of activity under the big top, Care-O-Sell Pet Palace, the area's most fashionable and ultra-modern doggie grooming salon and boutique.
Yes, it's CARE and SELL!
It's all there for your beloved pet . . . whether a pedigreed champion (Phylax) or a lovable mutt (Fido).
Care-O-Sell completely beautifies all breeds including P.O.-D.-L.-E.-S., every terrier line, Airedales, and all others.
By beautify, I mean the full V.P. treatment including car cleaning, pedicure, any pattern of your choice, precision scissor-finish and of course matching polish and ribbons.
At Care-O-Sell, we don't TRANQUILIZE . . . we SO-CALMZE and FRATERNIZE. Yes Sirs, we talk to them dog! They love it and we love them!
In command of the operation at Care-O-Sell is Larry D. Blair who has a Veterinary Medicine background, is a petologist from "word 'go" and has an extensive background in the wonderful world of animals with 16 doggies of his own . . . need I say more?
Proof of Larry's work . . . which exceeds the master of masters . . . is a recent performance from the throngs of delighted patrons who request an encore, so thank you and it's our pleasure to serve you devoted and fastidious pet owners who want the very best for your pet.
Care-O-Sell is not an ordinary shop just so don't expect ordinary or mediocre services. We feature exceptional, professional services in a refined atmosphere. Larry has a gentleness which wins over the most aggressive of pets or relaxes the shy ones.
This guy is great . . . and it really isn't that I'm prejudiced . . . but the patrons are constantly commenting on their canine's coiffure and care. If your doggie doesn't require grooming, then have Care-O-Sell serve your pet with a glamor, moisturizing shampoo which also features a fluff brush-out. To rid your pet of those pesky critters (ticks and fleas) which cause misery, a soothing, relaxing dip at Care-O-Sell does the trick.
Arriving just in time for Christmas are luxurious jeweled collars for luxury doggie and tailored ones for his Majesty to add the crowning glory after a refreshing retreat at Care-O-Sell.
That doggie in the window is for real!
One of Care-O-Sell's registered miniature has delivered a bundle of beautiful babies . . . oops, a litter of fluffy puddle puppies just in time for Christmas . . . what a splendid gift for that favorite person on your list who has everything . . . or a deserving child who would like nothing better than a real live doggie in his stocking Christmas morning.
Pamper yourself and your precious pet . . . discover Care-O-Sell today by calling 323-4540 today!



ROUNDING UP all canines and welcoming them to a family affair operation are Doris Williams (aboard the family Silver Standard, Judit) and her son-in-law, Larry Blair, co-owners of Care-O-Sell Pet Palace, 1915 French Avenue. The fashionable canine grooming salon and beauty boutique is expertly equipped to serve all breeds and sizes, from the pedigreed champion (Phylax) to the lovable mutt (Fido). Registered puddle puppies have now arrived in time for Christmas . . . make your selection today. (Don Vincent Photo)

Expert Repair Work Offered 'At Seminole Paint & Body

Seems that today everybody is looking for a specialist for one thing or another. And it is a very good thing that specialists in different fields are available.
With today's traffic situation what it is — with every corner a potential hazard, it is a comforting thing to know that a specialist in the thought . . . if you ever do need a specialist in automotive repair, especially repairs of heavy wrecks — there is a shop near by with expertly trained men to take care of your needs and quickly.
Of course, we refer to Seminole Paint and Body Shop located at 2540 South Myrtle Ave. in Sanford, telephone 323-8183.
The enterprising and handsome young owner of this shop is "David Redwine. He is a graduate of Lyman High School and for most of his life has lived in Seminole County. He and his family live in Lake Mary.
For 15 years, David has performed body work in this area. At one time, he ran the Ford Body Shop in Sanford.
David's shop is especially geared to the repair of wrecked cars as we stated before — and there just isn't an ill he can't cure (hardly any, anyway).
He can do all the work, from straightening out the bent fenders to polishing off the interior of its former nifty look.
"Quick service is stressed. Satisfaction is guaranteed," David said.
And somehow, you know he was serious and you could believe him.
Insurance jobs can be handled at Seminole Paint and Body Shop. David is well informed with the requirements of the confusing insurance papers and of course he is confident that his work will more than satisfy the strictest inspections of the insurance adjusters.
The shop itself has the most sophisticated equipment available to do the best, most economical, complete and efficient job for you that can be done.

FREIGHT DAMAGED FURNITURE 1/2 OFF OR BETTER
NOLL'S FREIGHT DAMAGED FURNITURE SALES
HWY. 17-92 CASSELLBERRY

WE BUY WE SELL
GUNS ACCESSORIES
• Watches • Jewelry
• Radios • Guitars
• Gun Supplies
• Stereo—Televisions
• Redfins—Stereo Components
SAVE ON UNREDEEMED MERCHANDISE
LONGWOOD PAWN SHOP
Sandy Mathews
Licensed Pawn Broker
PH. 818-8307
201 E. Hwy. 17-92
opposite Wind-Diva
LONGWOOD

Call Now 831-8183 FOR TV REPAIRS
HOUSE CALLS
• FREE ESTIMATES
• PICK-UP & DELIVERY
• STEREO REPAIRS
All Work Reasonable and Guaranteed
Open Daily 10 a.m.-9 p.m.
Sat. 10 a.m.-6 p.m.
Stereos—Televisions
Redfins—Stereo Components
SALES & SERVICE
PH. 831-8183
Vernon House
TV & APPLIANCES
Behind Party Time
747 HWY. 17-92
1/2 MI. North Dog Track Rd.
CASSELLBERRY-LONGWOOD

BAKED GOODS
fresh Baked PIES
Pumpkin—Mince
Sweet Potato
Decorated Cakes
PLACE YOUR ORDER NOW
PH. 322-7596
LEN'S PASTRY SHOP
2470 S. PARK
(Near To Food Fair) Sanford

QUICK QUALITY SERVICE 14 YEARS EXPERIENCE
ELECTRIC MOTORS
REWIND & REPAIR
• Report Repairs on Water Pumps • Power Tools • Battery Chargers
ELECTRIC MOTOR SALES & SERVICE
PH. 323-5068
2619-D S. French Ave. Sanford

PANTY HOSE HOSIERY OUTLET
Open 10 a.m.-6 p.m.
CLOSED MONDAY
2510-B South Oak
(behind Herald & Beverly)
Ph. 323-5170 Sanford

Care-O-Sell Pet Palace
COMPLETE GROOMING SERVICE
• Pickup & Delivery Service
• All Breeds • Large & Small
• Scissor Finishing
• Dip & Bath
OPEN 8 A.M. EVENINGS BY APPT.
Hwy. 17-92 Phone Shop
323-3845 323-4540
1915 French Sanford

Ann Marie
FASHIONS, INC.
176 Oxford Road
Fern Park
(behind Jai-Alai) Fontana

YARN BY THE POUND ON GONE
1,000 yds. or more to choose from
\$1.50 YARN BARN
Open Mon. - Sat.
10 a.m. - 5:30 p.m.
Ph. 834-1544
218 N. Hwy 17-92
(near to Community Center)

OPEN SUNDAY 9 a.m.-2 p.m. DAILY 8 a.m.-6 p.m.
WE STOCK IMPORT AND SPEED PARTS
• ENGINE REBUILDING
• COMPLETE VALVE WORK
• HEAD & BLOCK RESURFACING
• ENGINE REBORING
MIXON AUTO PARTS AND MACHINE SHOP
222 MAGNOLIA AVE. SANFORD
PHONE 322-8088

Decoupage Classes
Every Monday
9:30 a.m. - 12:30 p.m.
For Information
PH. 831-8877
Regular Workshop
Thurs. 9:30 a.m. - 12:30 p.m.
Wed. 7 p.m. - 8:30 p.m.
Joy Lu' Frans
ARTS & CRAFTS SUPPLIES
100 N. Hwy. 17-92
CASSELLBERRY

SAVE UP TO 60%
famous name brand LADIES SHOES
Shoe Rack
HIDDEN AWAY IN THE LONGWOOD PLAZA
Hwy. 17-92 Longwood

DINE OUT
Dining Room Open
5:30 P.M. TIL 11 P.M.
Live Entertainment By LAS VEGAS
★ LOUNGE OPEN 10 a.m. TIL 2 a.m.
★ HAPPY HOUR DAILY 5 p.m. TIL 7 P.M.
THE PARLOR
PH. 322-9968
2401 FRENCH AVE.

Vale's Junior Shoeland
LONGWOOD PLAZA
HWY. 17-92 — LONGWOOD
PH. 831-7252

YOUR CRUISE HEADQUARTERS
3 DAYS 3 MONTHS
Authorized Agents For All Airlines
SUN TRAVEL Agency
NO CHARGE FOR OUR SERVICE
Open Thursday Nights
By Appointment
2017 S. FRENCH AVE. SANFORD, FLA. 32711
TEL. 323-4610

Rent A Caravan
for as low as \$7.00 Per Day
Caravans for sale as well as large selection of camping supplies.
Sportsman CAMPING CENTERS
Ph. 323-2780
2400 French Ave. Sanford, Fla.

RENT CARPET SHAMPOOER \$1 a day
purchase of **BLUE LUSTRE**
SEMINOLE HARDWARE & WESTERN SUPPLIES
The Store of Friendly Service
298 Highway 17-92
Longwood Plaza, Fla.
Ph. 838-5823

LIVE BETTER WITH LESS!
Mobile home living is more convenient, less expensive and so comfortable for the whole family. Come out to GREGORY and see for yourself how easy it is to have a home of your own.
• BARRINGTON • STAR
• SKYLINE • GALAXIE
• CHICKASHA
LOCAL BANK FINANCING
GREGORY Mobile Homes
Located in The Gator's Ace Hardware
Ph. 322-7121
201 S. Elm Ave. Sanford

Gifts By Nan
Unusual and elegant gifts moderately priced from 89¢ to \$65
Free Gift Wrap
• CANDLES • CANDLE HOLDERS
• WALL PLAQUES • FIGURINES
• FANTASTIC LAMPS & NIGHT LIGHTS
• MONKEY POD • VENETIAN GLASS
• CANDY DISHES • BOOK-ENDS
• FONDUE DISHES • CHEESE BOARDS
• DECORATOR ASHTRAYS
Located in The Gator's Ace Hardware
Ph. 322-7121
201 S. Elm Ave. Sanford

Editorial Comment

Major Moves In Economic Struggle Take Place

Any realistic hope that the Nixonomics which created the historic 90-day wage-price freeze last August...

Free enterprise, as has been generally pointed out, was cut short by the belated and surprising change in the Nixon game plan...

We have strongly supported the need for widespread, general and actual public and voluntary acceptance of the second phase of Nixonomics...

Unfettered Press

Ralph Nader has headed down a track of dizzying twists and turns since he began testing the brakes on cars some years ago...



Don Oakley Says: Phase II Success Or Inflation

According to Prof. Milton Friedman, wage-price controls are 'deeply and inherently immoral'...

By DON OAKLEY. The economist notes the President's appeal to patriotism asks: How do patriotism and judgment determine that the price of a widget may rise 2.8 per cent...

By DONNA ESTES. NORTH ORLANDO — The former controller of the City of Tampa has been retained as financial advisor by the Village Council...

Our Moon View

At the most, only about 50 per cent of the surface of the moon is visible; the other side is permanently away from the view of earth.

Helen Fuller Says: Off-Beat Candidates Are Stars

WASHINGTON — At the moment it's the off-beat candidates of both national political parties who are hogging center stage in the 1972 contest...

Point Of View

By DON FREEMAN. HOLLYWOOD — Could this be the Howard Cosell who is known for, er, loved by all? But where was the old-time sportsman's abrasiveness?

The Sanford Herald advertisement containing contact information, subscription rates, and staff listings.

Domestic Commentary

Efforts To Help Poor Fizzle

WASHINGTON (NEA) — In private meetings, some key men in the Office of Economic Opportunity are now willing to say quite frankly: 'We don't have any good, valid ideas for moving people out of poverty...'

Berry's World

By RAY CROMLEY. WASHINGTON (NEA) — In private meetings, some key men in the Office of Economic Opportunity are now willing to say quite frankly: 'We don't have any good, valid ideas for moving people out of poverty...'

Legal Notice

NOTICE TO CREDITORS. In re: Estate of JAMES H. BERRY, deceased. Notice is hereby given that the undersigned, as executor of the estate of the above-named decedent...



SIGNING UP new members for the Lyman High School PTSA was a joint effort at the November meeting. Left to right, Cheryl Starling, student; Karen Warder, teacher; and Grace Burka greet Mrs. Ardethne Knight.

By North Orlando

Fiscal Agent Retained

By DONNA ESTES. NORTH ORLANDO — The former controller of the City of Tampa has been retained as financial advisor by the Village Council...

Brown To Run

NORTH ORLANDO — Mayor Granville Brown announced Monday night he will seek reelection as chief executive of the municipality...

Haughty Howard Gets Mellow?

By DONNA ESTES. LONGWOOD — More than 60 voters of the community turned out Monday night to listen to candidates in the Dec. 7 municipal election...

Sheriff Polk 'Keeping The Peace'

By RAY CROMLEY. SANFORD — Sheriff Polk said today he is for bonding, which is set up as a capital offense involving the arrest of a person...

Legal Notice

NOTICE TO CREDITORS. In re: Estate of JAMES H. BERRY, deceased. Notice is hereby given that the undersigned, as executor of the estate of the above-named decedent...

Legal Notice

NOTICE TO CREDITORS. In re: Estate of JAMES H. BERRY, deceased. Notice is hereby given that the undersigned, as executor of the estate of the above-named decedent...

Legal Notice

NOTICE TO CREDITORS. In re: Estate of JAMES H. BERRY, deceased. Notice is hereby given that the undersigned, as executor of the estate of the above-named decedent...

Legal Notice

NOTICE TO CREDITORS. In re: Estate of JAMES H. BERRY, deceased. Notice is hereby given that the undersigned, as executor of the estate of the above-named decedent...

Legal Notice

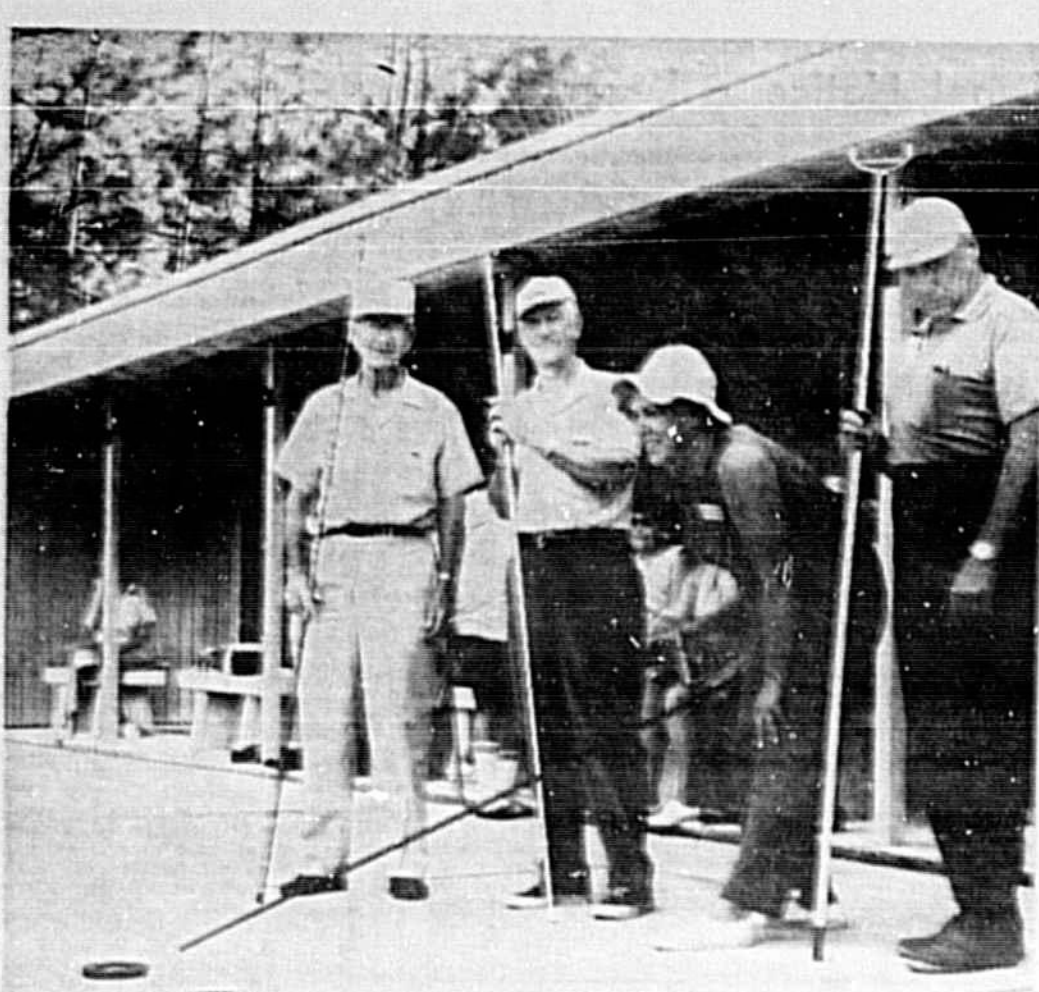
NOTICE TO CREDITORS. In re: Estate of JAMES H. BERRY, deceased. Notice is hereby given that the undersigned, as executor of the estate of the above-named decedent...

Legal Notice

NOTICE TO CREDITORS. In re: Estate of JAMES H. BERRY, deceased. Notice is hereby given that the undersigned, as executor of the estate of the above-named decedent...

Legal Notice

NOTICE TO CREDITORS. In re: Estate of JAMES H. BERRY, deceased. Notice is hereby given that the undersigned, as executor of the estate of the above-named decedent...



DELTONA COULDN'T LOSE!—The recent shuffleboard tournament when the two local clubs met in competition. The Deltona Shuffleboard Club recently hosted the 36-game meet at the Elgrove Courts, with the Campbell Park Club as guest. Total games won were Deltona Shuffleboard 21 vs. Campbell Park 15. In the playoff match following, Fred Martinis, left, and his partner Dick David scoring 51, lost to their opponents Irene Logan and Fred Drey of the host club, scoring 101. Playoff referees included Joe Poirier and Mike Goodman and Al Poirier was official scorekeeper. (Dot Drew Photo)

Connally Smooths Phase 2 Tension

By EDMOND LEBERTON
Associated Press Writer
WASHINGTON (AP)—Chances of averting a head-on Democratic-Republican collision on Phase 2 legislation appear improved as a result of Treasury Secretary John H. Connally's hints at possible accommodations.
Connally talked at a broad cast news conference Monday about the legislation to underpin the new phase of economic controls. He discussed specifically two issues on which Democratic majority members of congressional committees have been at odds with President Nixon's Republican administration: retroactive payment of increases and interest controls.
The administration has fought hard against an amendment adopted by the House Banking Committee to require retroactive payment of wage increases provided for in previously negotiated contracts but cut off during the 90-day freeze.
Nixon wanted this determination left to the Pay Board, and his spokesmen contended that even the committee's proviso that grossly disproportionate increases could be disallowed was not enough.

Three Persons Held On Varied Charges

County Det. Sgt. Johnny Wright disclosed the arrest of three persons, including a woman, in the solution of three felonies.
Wright said he charged Edward A. Jackson, alias Miller Sipes, with grand larceny of a TV set stolen from the Lake Monroe home of James Brewell Jr. Jackson's bond was listed at \$500.
Joe Henry Tompkins, 28, Altamonte Springs, was arrested by Wright on an aggravated assault charge after he is alleged to have used a 28 caliber pistol to beat Freddie Bush, 27, Sanford. Tompkins bond was placed at \$1,000.

Senate Fattening Huge Tax-Cut Bill

WASHINGTON (AP)—The Senate has passed a fattened \$7-billion tax-cut bill designed to stimulate the economy after attaching an amendment allowing the federal treasury to bankroll presidential campaigns.
More than half the Republican senators voted against the measure, largely because of the Democratic-sponsored plan to make available up to \$20.4 million in federal funds to the major-party nominees in the 1972 campaign.
The bill was passed 64 to 30 Monday night and sent into conference with the House. The conference committee is expected to do at least a trimming.

Some Republicans said they will urge President Nixon to veto the entire bill if the final version still carries the campaign-financing provision.
The final Senate bill contains many provisions asked by Nixon to benefit business, encourage modernization of plants and equipment, and give a boost to export sales.
It provides tax cuts for individuals going beyond the President's recommendations. These are expected to raise purchasing power and benefit especially low-income families.
As an example of the individual tax cuts in the Senate bill, a married couple with two children and \$10,000 annual income would receive a \$10 cut in 1971 taxes—same as in the House version—and a \$35 cut in 1972.

ANNOUNCEMENT

The following
INSURANCE AGENTS
WILL BE CLOSED

Thurs., Nov. 25th and
Fri., Nov. 26th
Ball Realty & Insurance
Boyd - Wallace Insurance
Crumley - Montiehl Inc.
Farm Bureau Insurance
Karns Insurance Agency
The McKibbin Agency
Powell's Insurance Agency
Irving Pryor Insurance
Tony Russi Insurance Agency

WE TAKE YOU THERE

Trailways BUS SYSTEM
201 S. Park Ave. 322-4520

THANKSGIVING

ABC LIQUOR SALE
AMERICA'S LARGEST WINE & SPIRITS DEALER

ABC LIQUOR SALE

AMERICA'S LARGEST WINE & SPIRITS DEALER

ABC LIQUOR SALE

AMERICA'S LARGEST WINE & SPIRITS DEALER

ABC LIQUOR SALE

AMERICA'S LARGEST WINE & SPIRITS DEALER

ABC LIQUOR SALE

AMERICA'S LARGEST WINE & SPIRITS DEALER

ABC LIQUOR SALE

AMERICA'S LARGEST WINE & SPIRITS DEALER

ABC LIQUOR SALE

AMERICA'S LARGEST WINE & SPIRITS DEALER

THANKSGIVING

ABC LIQUOR SALE

THANKSGIVING

ABC LIQUOR SALE

THANKSGIVING

ABC LIQUOR SALE

THANKSGIVING

ABC LIQUOR SALE

THANKSGIVING

ABC LIQUOR SALE

THANKSGIVING

ABC LIQUOR SALE

THANKSGIVING

ABC LIQUOR SALE

Salfi: 'Maybe We've Caught You In Time'

By MARION BETHEA
"Maybe we have caught you in time."
These were the words of Circuit Judge Dominick Salfi this morning as Larry Poole, found guilty by a Circuit Court jury on July 6 charges of sale and possession of marijuana, stood before the court for sentencing.

Poole's attorney, Mack Cleveland Jr., told the court that Poole was "seared to death" and that he would refer to the court the sentiments which Poole had expressed to him.
Cleveland said the youth deserved an opportunity to prove that he can be a good citizen. Continuing, he said that the defendant had spent 4 1/2 months in jail but that this had not caused hostility to the system.
Relating to the drug factor, Cleveland noted that Poole "doesn't want any further association with persons involved with narcotics."
Cleveland said this was the first offense for the youth, whose wife and parents have continued their faith in him. Poole told the court that "I want to do better... I won't get in any more trouble if you give me a chance... I have no more desire for drugs."
Judge Salfi, studying the youth's record, said he had no previous record of felonies or misdemeanors, or any other arrests, but was "lying on the borderline of a very serious problem."
Judge Salfi continued that the record indicated a good attitude and that Poole was a "small time" drug operator.
Castigating the youth, the judge said, "Looks at the embarrassment you have caused your parents and wife. You have reason to be proud of your parents."

Annexation Complaint Postponed By Council

City Commission Monday night delayed until Dec. 7 action regarding complaints by poverty owners, across from Sanford Plaza, that their holdings were annexed into the city without being properly informed.
J. B. Cain, of Super Trading Post; Albert Phelps, of Phelps Restaurant and a man identified only as Mr. Carter appeared to the Commission to "de-annex" these since they never signed annexation petitions.
City Manager W. E. Knowles said 51 percent of the property owners in the area had signed petitions for annexation but Cain pointed out they were picked from "pockets" that were not contiguous.
"People north of us were not annexed," Cain added.
Phelps said the city's action amounted to "germy mandering" to obtain a needed number of persons to obtain annexation.
When asked why the annexation was never made known to them by either letter or advertisement, City Attorney W. C. Hutchison said the city is not required to advertise.
Commissioner Gordon Meyer said he did not like the way it was handled but said he would not vote to change the annexation ordinance.

County Asked To Help Casselberry Paving Job

County Det. Sgt. Johnny Wright disclosed the arrest of three persons, including a woman, in the solution of three felonies.

County Asked To Help Casselberry Paving Job

County Det. Sgt. Johnny Wright disclosed the arrest of three persons, including a woman, in the solution of three felonies.

County Asked To Help Casselberry Paving Job

County Det. Sgt. Johnny Wright disclosed the arrest of three persons, including a woman, in the solution of three felonies.

County Asked To Help Casselberry Paving Job

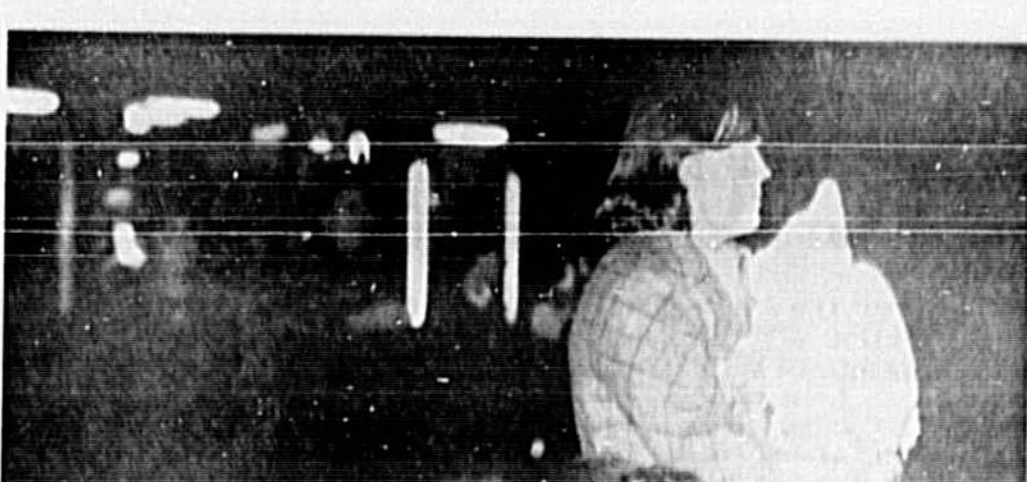
County Det. Sgt. Johnny Wright disclosed the arrest of three persons, including a woman, in the solution of three felonies.

County Asked To Help Casselberry Paving Job

County Det. Sgt. Johnny Wright disclosed the arrest of three persons, including a woman, in the solution of three felonies.

County Asked To Help Casselberry Paving Job

County Det. Sgt. Johnny Wright disclosed the arrest of three persons, including a woman, in the solution of three felonies.



ENTERTAINMENT was provided for the innocent (above) but none for the glibble (below) at the opening of the American Legion-sponsored Seminole County Fair last night. The little girl (left above, with her mother and family) was caught dancing to the music of the U. S. Army band. County Capt. J. Q. Galloway (below) closed a milk-bottle-pitcher contest, along with some other concessions. Contest was to knock over three milk bottles with balls and a kiewpie. Galloway found the "milk bottles" were loaded with lead, weighed eight pounds.

County Asked To Help Casselberry Paving Job

County Det. Sgt. Johnny Wright disclosed the arrest of three persons, including a woman, in the solution of three felonies.

County Asked To Help Casselberry Paving Job

County Det. Sgt. Johnny Wright disclosed the arrest of three persons, including a woman, in the solution of three felonies.

County Asked To Help Casselberry Paving Job

County Det. Sgt. Johnny Wright disclosed the arrest of three persons, including a woman, in the solution of three felonies.

County Asked To Help Casselberry Paving Job

County Det. Sgt. Johnny Wright disclosed the arrest of three persons, including a woman, in the solution of three felonies.

County Asked To Help Casselberry Paving Job

County Det. Sgt. Johnny Wright disclosed the arrest of three persons, including a woman, in the solution of three felonies.

County Asked To Help Casselberry Paving Job

County Det. Sgt. Johnny Wright disclosed the arrest of three persons, including a woman, in the solution of three felonies.

County Asked To Help Casselberry Paving Job

County Det. Sgt. Johnny Wright disclosed the arrest of three persons, including a woman, in the solution of three felonies.

Police Chief Resigns At N. Orlando

By DONNA ESTER
NORTH ORLANDO (AP)—Resigning as a deputy sheriff, in effect he had been the object of constant and petty harassment during his six months as chief law enforcement officer of the village and that City Council had "tied his hands" to a degree, Police Chief Walter Bachler submitted his resignation to County Commissioner Charles Howell last night.
The resignation, to take effect as soon as possible, was immediately accepted by the four members of Council present. City Commissioner Charles Howell was absent from the meeting. Bachler defined the words "as soon as possible" as Nov. 30 at the latest.
The chief's resignation was tendered after the Council, following a 30-minute discussion, voted to instruct Bachler to conduct his police activity to the village and turn over increasing numbers of felonies to the sheriff's department.
Much of the discussion between Bachler and the Council prior to the vote consisted of a current investigation of a felony which the chief asked be kept "off the record." He requested Council to authorize hire of a temporary replacement while he concluded court appearances and other legal technicalities in the prosecution of a felony.
The chief said several days absence from the village might be required in court appearances, visits to sheriff's department and the state attorney's office.
Councilman Troy Pindland stated Bachler had been hired to enforce laws in the village and turn over increasing numbers of felonies to the sheriff. He questioned the propriety of hiring another man to take the chief's place while the chief acted as a deputy sheriff, in effect he had been the object of constant and petty harassment during his six months as chief law enforcement officer of the village and that City Council had "tied his hands" to a degree, Police Chief Walter Bachler submitted his resignation to County Commissioner Charles Howell last night.

County Asked To Help Casselberry Paving Job

County Det. Sgt. Johnny Wright disclosed the arrest of three persons, including a woman, in the solution of three felonies.

County Asked To Help Casselberry Paving Job

County Det. Sgt. Johnny Wright disclosed the arrest of three persons, including a woman, in the solution of three felonies.

County Asked To Help Casselberry Paving Job

County Det. Sgt. Johnny Wright disclosed the arrest of three persons, including a woman, in the solution of three felonies.

County Asked To Help Casselberry Paving Job

County Det. Sgt. Johnny Wright disclosed the arrest of three persons, including a woman, in the solution of three felonies.

County Asked To Help Casselberry Paving Job

County Det. Sgt. Johnny Wright disclosed the arrest of three persons, including a woman, in the solution of three felonies.

County Asked To Help Casselberry Paving Job

County Det. Sgt. Johnny Wright disclosed the arrest of three persons, including a woman, in the solution of three felonies.

County Asked To Help Casselberry Paving Job

County Det. Sgt. Johnny Wright disclosed the arrest of three persons, including a woman, in the solution of three felonies.

Seminole Calendar

- Nov. 22-27 Seminole County Fair, American Legion grounds.
- Nov. 23 WOV supper, 6:30 p.m., 116 South Park Avenue; election of officers.
- Dec. 1 Book sale, hazard, to benefit South Seminole Community Library, 10 a.m., Altamonte Springs Community Home.
- Dec. 7 Sanford Tourist and Shuffleboard Club, covered dish supper, 6 p.m., business meeting, 7 p.m., at the clubhouse on the lake-front.

MADAME KATHERINE PALMIST

PAST - PRESENT - FUTURE
HELPFUL ADVICE ON ALL AFFAIRS
• LIFE • LOVE • HOME
• IN PRIVACY OF BUSINESS
HOURS: 8 A.M. TO 7 P.M. 7 DAYS
17-92 7 miles South of Sanford—Next to Niles's
(\$5.00 Reading for \$1.00 With This Ad.)

Canvas Cots

Regular \$7.00
Now \$4.99
ARMY - NAVY SURPLUS STORE
310 S. Sanford Ave. 322-3791

MADAME KATHERINE PALMIST

PAST - PRESENT - FUTURE
HELPFUL ADVICE ON ALL AFFAIRS
• LIFE • LOVE • HOME
• IN PRIVACY OF BUSINESS
HOURS: 8 A.M. TO 7 P.M. 7 DAYS
17-92 7 miles South of Sanford—Next to Niles's
(\$5.00 Reading for \$1.00 With This Ad.)

Deaths In The Area

ANDREW ARNOLD
Andrew Lofton Arnold, 74, of 10220 Acapulca Way, Orlando, died Sunday in a local hospital. He was born in Kentucky and came to this city six years ago from Morgansville, Ky. He was a Baptist and a deacon at Forest City Baptist Church. He was a restaurant owner.
Survivors include his wife, Mrs. Blanche R. Arnold, Orlando; daughter, Colleen Dallas, Tallahassee, Ala., and four grandchildren: Mrs. Ledyce Caldwell, Shreveport, La.; son, Charles Gregory Purr, Tallahassee; brother, Robert T. Robertson, Southeast, Tenn.; sister, Mrs. Sara Seale, Selma, Ala.
Seminole Funeral Home, 430 E. SR 436, Altamonte Springs, in charge of arrangements.

MRS. VIRGINIA FURR
Mrs. Virginia R. Furr, 62, of 2101 Germaine Trail, Maitland, died Sunday in a local hospital. She was the widow of Rev. Mr. and Mrs. John L. Miller, formerly of Sanford and now of Sarasota.
Survivors include her husband, Charles L. Furr, Maitland; daughter, Mrs. Lynn Hammett of Venice; Mrs. Sherron Postovint, Altamonte; Mrs. Springs, Mrs. Ledyce Caldwell, Shreveport, La.; son, Charles Gregory Purr, Tallahassee; brother, Robert T. Robertson, Southeast, Tenn.; sister, Mrs. Sara Seale, Selma, Ala.
Seminole Funeral Home, 430 E. SR 436, Altamonte Springs, in charge of arrangements.

MRS. ANITA KELLY
Mrs. Anita (Gimenez) Kelly, 41, of 216 Polk Avenue, Cape Canaveral, died Sunday. She was a native of Sanford and a member of Our Saviour Catholic Church, Cocoa Beach.
Survivors are her husband, Lawrence C. Kelly of Cape Canaveral; two sons, Lawrence S. Kelly and Michael J. Kelly, both of Cape Canaveral; five brothers, Rene A., Roger A., William A. all of Sanford and Arthur P. Jimenez of Annapolis, Maryland; Horace A. Jimenez, San Paulo, Brazil; three sisters.

CHARLES HENRY
Charles Henry died Nov. 4 at his home in West Palm Beach. He is survived by his wife, the former Jeanne Lane Miller, of Sanford, and a daughter, Mrs. Ledyce Caldwell, Jacksonville. Willie Cox, of Sanford, is also a son. He was a member of the First Baptist Church of Sanford and was a housewife.
Survivors include his wife, Mrs. Blanche R. Arnold, Orlando; daughter, Colleen Dallas, Tallahassee, Ala., and four grandchildren: Mrs. Ledyce Caldwell, Shreveport, La.; son, Charles Gregory Purr, Tallahassee; brother, Robert T. Robertson, Southeast, Tenn.; sister, Mrs. Sara Seale, Selma, Ala.
Seminole Funeral Home, 430 E. SR 436, Altamonte Springs, in charge of arrangements.

When Service Matters
BRISSON FUNERAL HOME
OLDEST FUNERAL HOME IN SEMINOLE COUNTY — FIRST ESTABLISHED IN 1835

Prisoner Suffocated In Winter Park Fire

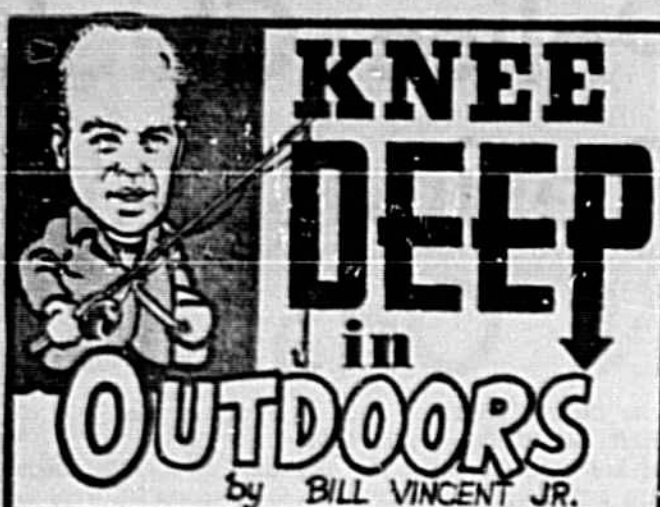
WINTER PARK, Fla. (AP)—"Oh, my God. That's my son, my poor, poor son," screamed a woman as policemen tried in vain to free a young prisoner from a smoke-filled cell whose door was welded shut by the flames.
Mrs. Strawler Moore arrived at the Winter Park jail Monday just as policemen wearing gas masks were dragging prisoners from the cells in the rear of the station.
Michael Moore, 21, and DeWayne Paige, 18, had been arrested the night before on charges of trespassing at Hollins College, and Moore's mother wanted to arrange bail.
When the door finally opened, Paige was alive. Moore was dead, police said.
When rescuers reached Moore's eight man cell, they said they found the door sealed shut. Fireman Bob (lines said the door was welded shut by the flames.)
Mrs. Strawler Moore arrived at the Winter Park jail Monday just as policemen wearing gas masks were dragging prisoners from the cells in the rear of the station.
Michael Moore, 21, and DeWayne Paige, 18, had been arrested the night before on charges of trespassing at Hollins College, and Moore's mother wanted to arrange bail.
When the door finally opened, Paige was alive. Moore was dead, police said.
When rescuers reached Moore's eight man cell, they said they found the door sealed shut. Fireman Bob (lines said the door was welded shut by the flames.)

When Service Matters
BRISSON FUNERAL HOME
OLDEST FUNERAL HOME IN SEMINOLE COUNTY — FIRST ESTABLISHED IN 1835

When Service Matters
BRISSON FUNERAL HOME
OLDEST FUNERAL HOME IN SEMINOLE COUNTY — FIRST ESTABLISHED IN 1835

When Service Matters
BRISSON FUNERAL HOME
OLDEST FUNERAL HOME IN SEMINOLE COUNTY — FIRST ESTABLISHED IN 1835

When Service Matters
BRISSON FUNERAL HOME
OLDEST FUNERAL HOME IN SEMINOLE COUNTY — FIRST ESTABLISHED IN 1835



The speck fishing has slowed down to a steady pace because of the moon, but you can look for the fishing to pick up in the next three weeks when the moon starts to fill out.



BIG BASS fisherman Bob Ball of the Western Auto Store in Sanford holds up a nice string of bass he and his son Stevie caught this past week in the St. Johns River.

A few bass, with some school bass, have been biting in the old river area on the mirror lake and the flager impact. A big catch of bass was reported caught in the St. Johns River by Bob Ball and his son Stevie. The balls caught 15 bass, weighing a total of 25 pounds, using artificial lures while fishing around the lily pads two miles north of the Lake Monroe bridge.

We were out this past weekend and got into a lot of finger-baiting bass that were a lot of fun to catch, but we tossed most of them back. We also noticed some nice wood ducks in the northeast corner of Lake Monroe around the Lake Bethel area, and there were a few nice size mallards also in this area.

We showed up on Purple Lake and there is some duck activity in this area also, with several big flocks of teal and a number of wood ducks. Don't forget that duck hunting starts Thursday and you have to have a duck stamp along with your hunting license.

Hunters are warned to close gates on the Farnham and Tomoka Wildlife Management Areas. All gates on the areas are supposed to be kept closed except while a vehicle is entering or leaving the area, according to Major J. W. Bickerstaff, Central Region Manager for the Game and Fresh Water Fish Commission.

Cow owners have grazing rights on portions of the management areas, and when the gates are left open the cows get out on the main roads and create a hazard to vehicles.

Commission personnel posted signs at all gates, however someone continually tears the signs down. This kind of malicious destruction is not conducive to good landowner-hunter relations that is so essential if we are to continue to acquire private land for public usage, Bickerstaff said.

Throughout Florida, sportsmen will be afield on Thanksgiving. In this land, wildlife belongs to the people and provides a hunting tradition that is a far cry from the European custom where a landowner also owns the game and the exclusive right to hunt.

Thanksgiving is a time when hunting is in full swing and the season opens for just about all game birds and animals. For sportsmen, Thanksgiving is a time when hunting and the chance to harvest the crop of wildlife that has been cultivated during the summer.

Thanksgiving is a special time for sportsmen to give thanks for the privilege of living in a nation where an individual might own and share a wildlife and sporting heritage and for the inalienable right to own and use sporting firearms.

On the special day, Florida sportsmen are reminded that they should respect the land on which they are hunting, and say thanks to the landowner for making the trip affordable possible.

Host Lake-Sumter Lakers SJC Open Home Cage Season Tonight

By GARY TAYLOR
Herald Sports Editor
No one can remember the last time the Seminole Junior College Raiders took a game on their home court. As far as coach Joe Sterling is concerned, he wants to keep the home record intact. The Raiders will set out in defense of that record tonight with the home lid-lifter at 8 p.m. at the Seminole High gym.

The Lake-Sumter Junior College Lakers of Leesburg will be the opponents when the Raiders take to the court tonight. Sterling's Raiders will be attempting to get back on the winning track after they dropped their records to 1-1 Saturday by losing to North Florida 115-111. The Raiders finished the game with North Florida with only four players on the floor. The Seminoles attempted 70 foul shots and made 51 of them. Six Raiders fouled out and another was ejected for a flagrant foul. None of the five starters, Willie Paulk, Comer Copeland, Don Patton, Bob Hurst or Larry Kearsa were around for the end of the game. Hurst set the pace for the Raiders while he was around, scoring 24 points and hauling down 16 rebounds.

Paulk had 23 points and Patton had 20. Kearsa, a Seminole High graduate, had 18 points. The other starter, Copeland, was also in double-figures with 10 points. Two players came off the bench to reach double-figures. Joe Carter had 16 and George Goodman had 11 coming off the bench.

Entering the 1971-72 campaign, the Raiders and Sterling are on their way to their second hundred wins. The Raiders reached the century mark last season and entered this season with a 119-21 record during five years of competition.

This Friday and Saturday the Raiders will be in Tampa for a Thanksgiving Tournament. Temple Terrace will host Seminoles, St. Joseph, Lake Sumter and Florida Junior College for the two-day event.

Three of those same teams will compete in the Christmas Tournament which SJC will host this year. The tourney will be December 17-18 and will feature Seminoles, St. Joseph, Miami-Dade South and Florida Junior College.

Basketball Classic Friday

Area basketball fans are in for a treat this weekend as Seminole High School will host the First Annual Seminole Basketball Classic. The action will be Friday and Saturday at the Seminole High gym with two games each night. Action will get underway at 7 and 8:30 p.m. each night.

The opening game will pit the Edgewater Eagles against Ocala Forest at 7 p.m. Friday night. That will be followed by the seminoles meeting Tallahassee Godby at 8:30 p.m. The losers will clash in the first game Saturday night with the championship game to follow.

Several area business and financial institutions have teamed together to assure the success of the event. First Federal Savings and Loan, Chase and Company, Florida State Bank, United State Bank of Seminole, Celery City Printers and The Sanford Herald are helping to sponsor the event.

The Herald sports department will name an All-Tournament team and The Herald is helping to present the award to the school to be named to the team.

The Mills' Fighting Seminoles will be looking to post their third consecutive winning season when they open the slate with the tournament. Mills had been at Seminole four years and he's never had a losing year. He had records of 12-12 and 13-18 for his first two years but then put together a record year that saw the Seminoles post 20 wins and take the District Tournament. Before Mills came to Seminole, there had only been one winning season in the history of the school.

Ricky Grant and Ricky Smith are expected to be the top performers for the Seminoles, though Clifford Martin will also be a strong addition after he completed his obligations to the football team.

Junior Frank Sloan will likely start the tournament at center and hold that position until when Martin arrives on the scene. When Martin takes over the center position, Sloan will alternate as backup at both center and forward. Grant and Greg Mitchell will start at forwards. Smith will be one of the guards with sophomore Pat Crimmins a strong contender for the other guard position.

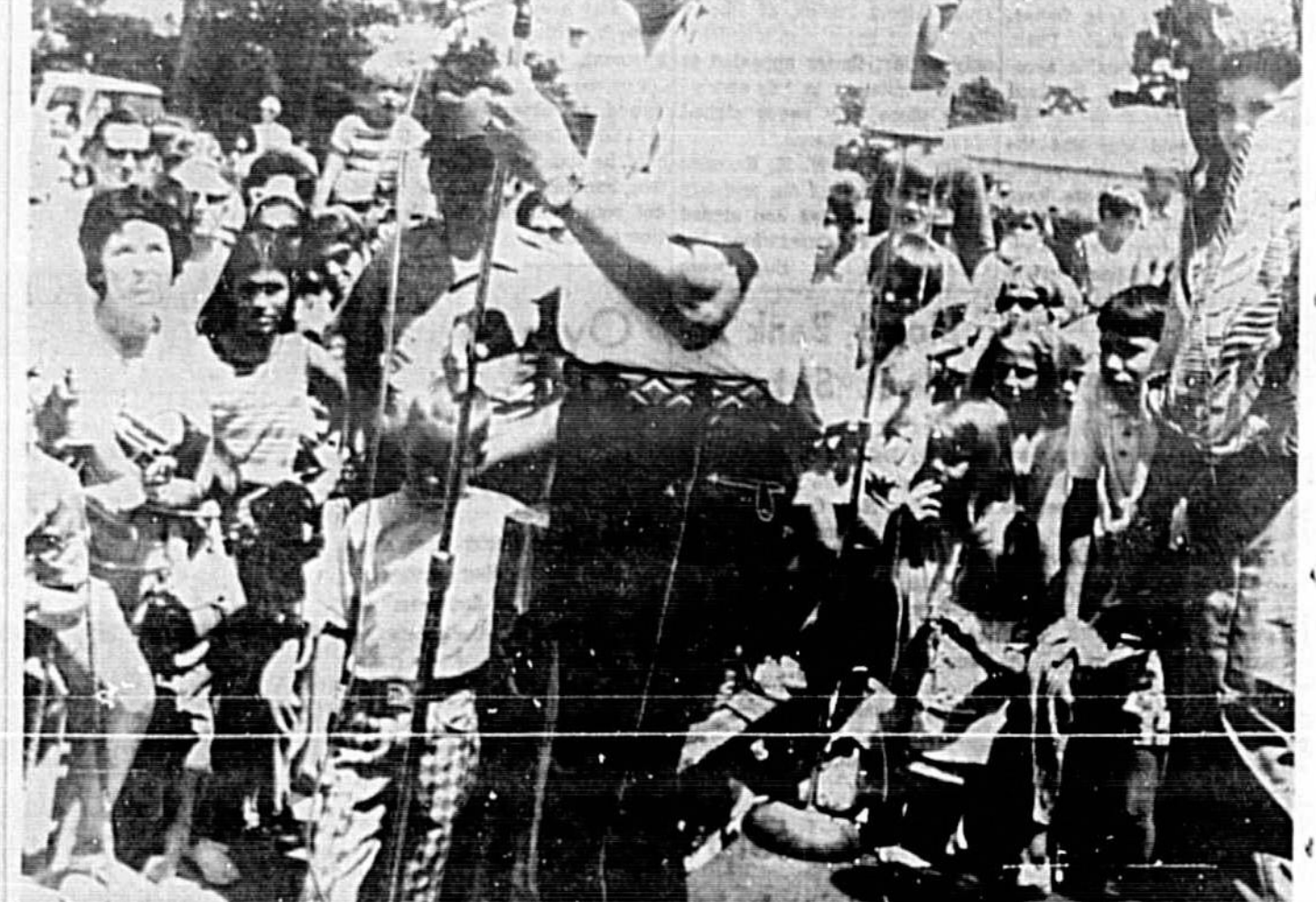
Starting at Wichita of the class AAA American Association, a high berth for a first-year player. Chambliss won the batting title with a .342 average and was named the league's top rookie.

He wasn't on the Indians roster at the start of the 1971 season, but with starting first baseman Ken Harrelson talking about retirement, Cleveland called Chambliss up from the minors May 14.

Fifteen days later he was in the starting lineup, and three weeks after that, Harrelson, a former American League Most Valuable Player, had left baseball to give professional golf a whirl.

Chambliss hit a solid .275 in 111 games, with nine home runs and 48 runs batted in. As an indication of the Indians' recent fortunes, Chambliss hit in his first rookie of the year since Herb Score won the honor in 1955, the year after their latest pennant.

But the young first baseman was hopeful. "I'd like to see us take the whole thing," he said. He received 11 votes in the balloting to five for Milwaukee pitcher Bill Parsons, four for Oakland outfielder Andy Matusz, and three for Boston second baseman Doug Griffin, and one of Kansas City pitcher Paul Splittorff.



POPULAR as ever Roy Rogers is shown here surrounded by his many fans during his last appearance in Orlando which was a promotional affair. This week all "happy trails" will lead to Orlando Sports Stadium where Rogers and wife, Dale Evans, will be one of the feature attractions at the RCA Championship Rodeo playing this Thursday through Sunday. Also appearing will be the Sons of the Pioneers. (Gary Taylor Photo)

Wednesday Night In DeLand Seminoles In 'Turkey Bowl' Tilt

The Fighting Seminoles of Seminole High will tilt to DeLand tomorrow night for the annual "Turkey Bowl" tilt with the DeLand Bulldogs. One old timer, when asked how long the two teams had been playing the game on Thanksgiving Eve, replied, "Since the year One." It comes almost as natural as the cranberry sauce. Kickoff is 8 p.m.

The Bulldogs enter the game with a "perfect" record. It's not just known who will be the starting quarterback for the Seminoles when they take to the field tomorrow night. Senior signal-caller Ronnie Howell didn't dress out for the Tampa game as he was suffering with a sprained wrist. Sophomore Brent Carl came in and did a fantastic job for the Seminoles as he kept them in the game until he had to leave the game with an injury late in the contest and the Terriers put together three consecutive scores.

Carl proved his capability earlier in the season against Evans when he brought the Tribe from a 13-13 halftime deficit to a strong 25-13 win when Howell had to be rushed to the hospital with severe stomach pain.

Fullback Clifford Martin, a strong candidate for all-state honors, suffered from much pain due to a shoulder separation during the Tampa game, and was also seen limping off the sideline. It is hoped that he will be back at full strength for the DeLand clash.

Also in the backfield will be Billy Jimenez and Mark Carl, a pair of junior halfbacks that could hold the key to the success of the Seminoles next year.

Kim Johnson and Dana Henry, both of Sanford, were among the local riders to sparkle in the Thomas Stables Horse Show held this past weekend in Sanford. Entries came from as far as Jacksonville for the show.

Riding Lord Greystone, Kim Johnson took top honors in the Hunter Warm Up. She then teamed with Dana Henry to capture top laurels in the double bareback.

Other fine finishes for the 15 year old lass came in the Hunter Seat for quotation classes where she placed fifth and sixth and fifth in the obedience class.

Dana Henry, up on Top o' the Morning, managed a fourth place finish in the pony working hunter class. Ruth Henry finished fifth in adult equitation.

Sweet William carried Mark Webb of Longwood to a fifth place finish in the Hunter Warm Up. Oviedo's Lars White, riding Satan's Whisper, took a second place in the Pony Hunter Warm Up and a fifth in Pony Working Hunter class.

Another Oviedo entry, Doug White, finished sixth in the Dapper Dandy in the Open Pleasure Pony class.

Other classes and the winners were:

Bowling Standings

HANTAMS BOWLING LEAGUE

Team	W	L
Chicago Teddy Bears	22	9
Kellys Heroes	31	9
Bowling Balls	26	14
Giri Watchers	25	14
Pin Crockers	24	16
Hot Shots	22	18
Cousins	20	20
Guess Who's	18	22
Lane Droppers	17	23
Pin Point Pros	15	25
Funky Phantoms	15	25
Gutter Dusters	13	27
Go - Go's	11	29
Three Pins	10	30

POINTING FOR THE BIG ONE



DeVaney: 'Most Interesting'

By BOB DEVANEY
Nebraska Football Coach
For The Associated Press
LINCOLN, Neb. (AP) — From the standpoint of preparation, this Oklahoma game Thursday is the most interesting I have had the opportunity to be involved in as a coach. Oklahoma's widebore offense is different from any we have faced this year, and we have ideal personnel to counter it. Jack Midren is a quarterback, a good runner, and a good passer. Their halfbacks—Greg Pruitt, Joe Wylie and Roy Bell—have fine speed. A great back all year with tremendous speed and agility.

Fairbanks: 'Proud To Be Part Of It'

By CHUCK FAIRBANKS
Oklahoma Football Coach
For The Associated Press
NORMAN, Okla. (AP) — Thursday's game will be a rarity in college football history.

Thomas Horse Show Attracts Big Field

Salt water fishing in the Halifax area has many ups and downs as a by-product of the week as changes in the wind and weather caused alternate spells of excellent sport then fell off to practically nothing for the weekend.

Reports from the "Fishin' Hole" tackle shop in Daytona showed drum biting well from all shores in that area with trout hitting best on live shrimp from the Orange Avenue, Ormond and Seabreeze spans.

Party boats from Inlet Harbor went out Saturday and found big Amberjacks in goodly numbers along with a few tripletails and a few snappers. Their trips short as the wind became uncomfortably strong off shore.

Inside the inlet, around the jetties, sheepshead were accumulating to the tune of 40 to 50 to each boat. Bluefish, a few channel bass, drumfish, and a couple of Redfish (channel bass) while fishing in the Homomassa River last week. They were visiting Williams mother, who lives on the river. John stated that he didn't leave the back yard to get this nice catch. Trout and Spanish mackerel are biting well on the flats off shore in the Homomassa-Crystal River area.

That old bug-a-boo about a fishing license for all salt water anglers is due to come up again in the next session of the state legislature, according to Delbert Egan of Sanford. Egan, who lives at 301 East 10th Street, was instrumental in having this same bill killed in committee in the last session and would appreciate support of all anglers in this part of the state to stop it again. Call him at 322-4423 for further information on this and some other detrimental proposed bills. This cool spell should put the trout in the deeper holes along the Indian River so watch the weather reports and — LET'S GO FISHING!

Anything Can Happen In NFL West

By MIKE HARRON
Associated Press Sports Writer
ATLANTA (AP) — It's a three-team race in the National Football League's West Division now and the Atlanta Falcons feel that anything can happen.

The Falcons jumped right into the fight with a 28-21 victory over the Green Bay Packers in Monday night's nationally televised NFL game. They now trail the division-leading Los Angeles Rams by one game and the second place San Francisco 49ers by just a half game.

"Anything can happen now," said Atlanta's defensive end John Zook, who along with the rest of Atlanta's front four made it hot for Green Bay quarterback Scott Hunter all night in the 31-drive western.

"We just have to win our own games, not worry about the other teams," Zook, end Glen Gooden and tackle Glen Coenen and John Small each sacked Hunter once for a total of 31 yards and then Zook hit him in the end zone with just over a minute to go. Hunter fumbled out of the end zone for a safety, icing the Falcons' victory.

Prior to Monday night's game, Packer quarterback Tom Green Bay had only been dumped six times in 26 years this season. However, Falcon mistakes, especially in the kicking game, helped the Packers in the contest. Green Bay tackle Bob Brown blocked two placement attempts by Bill Bell, one on the first Atlanta extra point try and the other on a 37 yard field goal attempt. Cornerback Doug Hart picked up the ball and raced 57 yards for a touchdown to give Green Bay a 7-6 lead in the second quarter.

With Atlanta leading 24-14 in the final period, Art Malone fumbled and Ray Pittschke recovered for the Packers at the Atlanta 24. On the next play, John Brockington raced around the right side for 24 yards to put Green Bay right back in the game, 26-21.

But the Falcons' Tony Plummer knocked a Billy Lottzidge punt out of bounds on the Packer new-year line with 1:04 remaining and on the next play Zook hit Hunter for the safety. The Packers led 14-13 at halftime, but Jim "Cannonball" Hunter returned the second-half kickoff 82 yards to the Green Bay 19. Four plays later quarterback Bob Berry hit tight end Jim Mitchell for three yards and the goahead touchdown.

Following the match with Georgia Tech, like the next day, the Knights continue on their road trip, stopping in Athens for a bout with the University of Georgia. And the very next day, if they are not pored over by then, the Tech matmen will be in Tennessee for a clash with the University of Tennessee at Chattanooga.

Then comes the always rugged Georgia Tech Invitational which attracts the top teams in the Southeast. That is scheduled for Dec. 22 and 23 in Athens.

By the time the Knights make their first home appearance of next year, the meet, if held, is ticketed for the Tech campus.

Norbert St. Clair was given an "end of the semester" present in the FTU soccer team last week when they stunned Shelton College 6-5. It was the final match of the fall quarter.

In a previous encounter between the two schools Shelton walked to a 12-1 triumph over the Tech soccer team.

That victory may well put Tech's soccer "fever" at a record high.

FTU's newly formed Archery Club brought three trophies back from the Southeastern Inter-Collegiate Championships in DeLand last week.

Tech's women's team captured top honors in their division. Members of that team included Dena Pickens, Lynanne Harvey and Mo Watson.

Second place place went to the Tech team. Dena Pickens and Lynn Harvey joined Mark Grossbacher and Jeff Morten in forming the mixed outfit.

Pickens and Harvey also took the spotlight in the free style category for women. Pickens finished first while the second place trophy went to Harvey. The top finishes in the Free Style event entitles the two FTU marksmen (or is it women) to journey to the National Archery Championships to be held at San Bernardino (Calif.) Valley State College.

The achievements of the Tech team are magnified by the fact they have been practicing as a team for a little over a month. Among the "targets" in site for Tech's plans to host a state archery meet sometime in April.

Butler got the second Atlanta touchdown on a two-yard run and Malone got the other two on one-yard plunges.

Hunter hit Donny Anderson for a 14 yard Green Bay score in the second quarter, set up by his 49 yard pass to Carroll Dale.

Berry, playing his first full game since recovering from a patella reconstructing which kept him out of action for 16 complete games, completed 16 of 31 pass attempts for 191 yards and a touchdown. He had a good game, deeper into the Central Division cellar, Atlanta now is 5-4.

FTU's Mat Coach Sees Improvement In Slate

By HERKY CUSH
Herald Sports Writer
Working along the lines of the Florida Tech basketball schedule, Jerry Tech basketball mat coach has lined up a tough date for his 'Knights of the 1971-72 FTU mat schedule is all that is needed to get the idea Geogley is trying to get across.

Geogley has lined up several outstanding prospects for this year's team and feels his FTU team will represent on the mats.

While reflecting upon this year's schedule, which opens with the Rockledge Open Federation Tournament at Rockledge High School this Saturday, Geogley is not highly optimistic over his team's chances.

And a quick scanning of the 1971-72 FTU mat schedule is all that is needed to get the idea Geogley is trying to get across.

After the Rockledge tourney the Knights journey to Atlanta (Dec. 1) for a clash with the Rambling Wreck of Georgia Tech. Tech's present coach has been there for 30 years which sheds a little light on their type of program.

Following the match with Georgia Tech, like the next day, the Knights continue on their road trip, stopping in Athens for a bout with the University of Georgia. And the very next day, if they are not pored over by then, the Tech matmen will be in Tennessee for a clash with the University of Tennessee at Chattanooga.

Then comes the always rugged Georgia Tech Invitational which attracts the top teams in the Southeast. That is scheduled for Dec. 22 and 23 in Athens.

By the time the Knights make their first home appearance of next year, the meet, if held, is ticketed for the Tech campus.

Norbert St. Clair was given an "end of the semester" present in the FTU soccer team last week when they stunned Shelton College 6-5. It was the final match of the fall quarter.

In a previous encounter between the two schools Shelton walked to a 12-1 triumph over the Tech soccer team.

That victory may well put Tech's soccer "fever" at a record high.

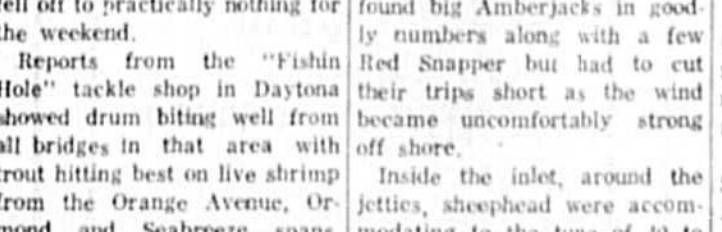
FTU's newly formed Archery Club brought three trophies back from the Southeastern Inter-Collegiate Championships in DeLand last week.

Tech's women's team captured top honors in their division. Members of that team included Dena Pickens, Lynanne Harvey and Mo Watson.

Second place place went to the Tech team. Dena Pickens and Lynn Harvey joined Mark Grossbacher and Jeff Morten in forming the mixed outfit.



SENDING HER horse through its paces at the Thomas Horse Show is Laura Smith. The show was held in South Sanford just off SR 419. Many entries in each of 22 classes compete for awards. (Don Vincent Photo)



By Saturday, the wind shift off to West and Northwest, muddying the surf and slowing the fishing to a virtual standstill.

Party boats from Inlet Harbor went out Saturday and found big Amberjacks in goodly numbers along with a few tripletails and a few snappers. Their trips short as the wind became uncomfortably strong off shore.

Inside the inlet, around the jetties, sheepshead were accumulating to the tune of 40 to 50 to each boat. Bluefish, a few channel bass, drumfish, and a couple of Redfish (channel bass) while fishing in the Homomassa River last week. They were visiting Williams mother, who lives on the river. John stated that he didn't leave the back yard to get this nice catch. Trout and Spanish mackerel are biting well on the flats off shore in the Homomassa-Crystal River area.

That old bug-a-boo about a fishing license for all salt water anglers is due to come up again in the next session of the state legislature, according to Delbert Egan of Sanford. Egan, who lives at 301 East 10th Street, was instrumental in having this same bill killed in committee in the last session and would appreciate support of all anglers in this part of the state to stop it again. Call him at 322-4423 for further information on this and some other detrimental proposed bills. This cool spell should put the trout in the deeper holes along the Indian River so watch the weather reports and — LET'S GO FISHING!

CAPTAIN Bob Orrell and his mate of the "Miss Behavin'" display a recent catch of 16 Amberjacks made from the boat. Also in the catch are Triggerfish and a Red Snapper. The "Miss Behavin'" is one of the many boats out of Inlet Harbor.

AMERICAN STEEL

70c

Phone 831-1525

We're On One Highway in the Heart of the South

DAYTONA BEACH, FLA.



CONTEST

CASH PRIZES

TO BE ANNOUNCED EACH WEEK

First Prize \$10
Second Prize ... \$6
Third Prize \$4

MAIL or
BRING ENTRY TO: Contest Editor c-o Sanford Herald
300 N. French Ave., Sanford, Fla.

—1ST PRIZE—\$10—
Joe Smith
2417 Key Ave.
SECOND PRIZE—\$6
Jimmy N. Hanna
401 Temple Dr.
THIRD PRIZE—\$4
Hazel Durzo
315 E. Crystal Dr.

NOTHING TO BUY—NO OBLIGATION
THIS CONTEST PAGE WILL
APPEAR EACH WEEK DURING
THE FOOTBALL SEASON!

CONTEST RULES

- 15 football games this weekend are played. One in each ad on this page. Indicate winner by writing in the name of team opposite the advertiser's name on the Entry Blank. No scores. Just pick winners.
- Pick a number you think will be the highest number of points scored in any one game on this page and place this number in the space provided in Entry Blank. This will be used to break ties.

One entry blank only to each contestant. Entries must be brought to the office of this paper or postmarked no later than Friday Noon, November 26.

OFFICIAL ENTRY BLANK

(Reasonable Facsimile Also Accepted)

My name is	Address
H.I.S. store for men	Winner
Jet Lanes	Winner
Hal Spragins Lincoln-Mercury	Winner
George's Tavern	Winner
Burger In	Winner
Lul Club	Winner
Zale's	Winner
Mayfair Country Club	Winner
Florida State Bank	Winner
Mary Carter Paints	Winner
McRoberts Tire	Winner
Sanford Herald	Winner
Dekle's Gulf Service	Winner
Penny's	Winner
Faust's Drugs	Winner
I think	will be the most points scored in any one game.

The Herald

Bargain Section

Tuesday, November 23, 1971, Sanford, Florida
THE SANFORD HERALD PAGE 1C

Food Fair Sales Up

PHILADELPHIA — With sales for the first 12 weeks of the 16-week first fiscal quarter running 10.5 ahead of last year, Food Fair Stores, Inc., large diversified retailing chain, expects to increase its annual volume by 50 per cent to \$3 billion in the next four years, shareholders were told at the annual meeting.

To reach this goal, Louis Stein, chairman, and Jack Friedman, president, said the company will continue to place heavy emphasis on discount merchandising in the majority of its 344 supermarkets and all of its 77 J. M. Fields department stores.

The Food Fair officials said the company plans to open 25 supermarkets and 10 to 12 department stores in the current fiscal year which ends July 29. Some 65 conventional supermarkets will be converted to discount operations during the year, they added. These discount food stores are known as Pantry Pride and Food Fair Quality/Discount.

This Is The Way Of Bureaucracy

By JAMES CARV
Caply News Service

WASHINGTON — A four-agency array of government employees growing toward an intended maximum of 4,000 will administer the Phase II wage-price machinery of President Nixon's new economic stabilization program.

They will be attempting to cut inflation in half to a 2.5 to 3 per cent annual rate of increase — a task a much larger bureaucracy under the World War II Office of Price Administration (OPA) was unable to accomplish 29 years ago.

The agencies involved in the new effort are the Cost of Living Council, the Pay Board, Price Commission and Internal Revenue Service.

Their assignment is so new, their course so uncharted and procedures still so incompletely defined that there is no indication of the expected cost.

But in no case is it expected to approach the peak \$185,792,300 outlay the OPA incurred in 1945, its next to last year of operation.

Economists hasten to point out that the economy today is not under nearly the inflationary pressure that was generated between 1941 and 1945 when U.S. production almost doubled and taxes only topped up \$13 billion of \$321 billion in war costs.

The new wage-price control machinery being created consists of the following:

1. An 11-member Cost of Living Council with a staff of 75 employees. It will set general policy and provide overall guidance in attempting to curb the wage-price surge.
2. A 15-member Pay Board authorized to employ a staff of 100 persons. About half have already joined the agency. It is possible an additional 25 persons may eventually join the staff, bringing it to 125.
3. A seven-member Price Commission with a staff of 90 already on board. The staff is to be built up to between 300 and 400.
4. Three thousand agents of the Internal Revenue Service, who will be assigned to the 369 IRS offices and will investigate actual wage-price complaints and issues. They will operate under Price Commission supervision.

Altamonte Considers Annexation Petitions

By MARION BETHA
ALPAMONTE SPRINGS

In an effort to include all annexation petitions within the city limits by the close of the year, City Council will consider three such petitions at a 4:30 p.m. meeting today.

Included is an annexation petition from Piedmont Development Company upon property located at I-4 and SR 436, to be zoned C-1. The developers plan to utilize the property for a motel and restaurant complex on an estimated cost of \$1.5 million. Some weeks ago, the developers requested water and sewer service from the city, agreeing to pay the cost of extension of the lines from the city limits to the property.

Another parcel in which annexation is requested is 151 acres owned by Irving Berger. The proposed subdivision to be known as "Grand Green" is located behind the La Florida subdivision. Berger has stated that he plans to build single family residences in the \$15,000 price range.

A third parcel is located at Lake Oriata behind Maitland Avenue, and annexation is requested on a "chunk" owned by four individuals.

The total annexation requested in petitions which have been forwarded to the city is over 400 acres.

Mayor Lawrence Swofford will report to council upon his recent trip to Jacksonville to meet with officials of the state Air and Water Pollution Control agency.



CHRISTMAS CLUB checks for Sanford Herald employees totaled in excess of \$11,000. Frank Voltoline, general manager gives Santa a hand in making the distribution to two of the eager recipients, Anna Jardine and Clyde Walls. (Staff Photo)

Eckerd Directors Re-elected

CLEARWATER — Shareholders of the Jack Eckerd Corporation re-elected seven directors of the corporation at the corporation's annual meeting in this city.

Re-elected were Jack M. Eckerd, chairman; Harry F. Roberts, president; Stewart Turley, senior vice president; Herbert G. Brown, J. Rex Farrior, Charles H. Kellstadt and James W. Wain.

Eckerd, Roberts and Turley constitute the executive committee. Roberts is president of the Jack Eckerd Drug Company and Turley is president of the Jack Eckerd Allied Company.

The Jack Eckerd Corporation, with more than 10,000 shareholders, is listed on the New York Stock Exchange. Since beginning operations in Clearwater in 1952 with three drug stores and 39 employees, the corporation has grown to an organization with more than 7,000 employe associates.

American TV And Com. Stock Offered

NEW YORK — Paine, Webber, Jackson & Curtis, as manager of the underwriting group, announces today the public offering of 65,000 shares of American Television and Communications Corporation common stock at \$19.625 per share.

Of the shares being offered, 450,000 are being sold for the accounts of selling stockholders, and ATC will not receive any of the proceeds.

Net proceeds from the sale of the 200,000 shares being offered by ATC will be added to general funds to be available for working capital and for acquisition or construction of CATV and microwave systems.

Holiday Flights Scheduled

MIAMI — National Airlines has scheduled 58 extra flights between November 23 and December 25, including a "steak preview" of the carrier's new DC-10 wide-bodied aircraft.

Beginning Friday, 20 southbound extra sections will provide an additional 4,000 seats to handle the traditional holiday rush by vacationers from the northeast. Two flights Nov. 24 will be DC-10s between Kennedy Airport and Miami, one via West Palm Beach.

The DC-10s enters regularly-scheduled service Dec. 15. National's DC-10s will be the first to operate into Florida.

State Shorted On Gasoline Tax

JACKSONVILLE — Florida received more than \$74 million in federal highway funds last year but this was only a little more than half of the funds collected from state motorists in federal gasoline taxes during 1970, the Florida State Chamber of Commerce reports.

The State Chamber said in its Weekly Business Review that the federal gasoline tax of four cents per gallon cost Florida motorists \$129 million during 1970. U.S. Department of Transportation figures show Florida receiving only \$74,000,000 of that money back in highway funds.

"For the amount of traffic coming from other states and the high mileage needs for better transportation facilities in the state, Florida should get a better return on its federal highway user dollar," said Ronald S. Spencer, executive vice president of the State Chamber.

Florida Gas Earnings Up

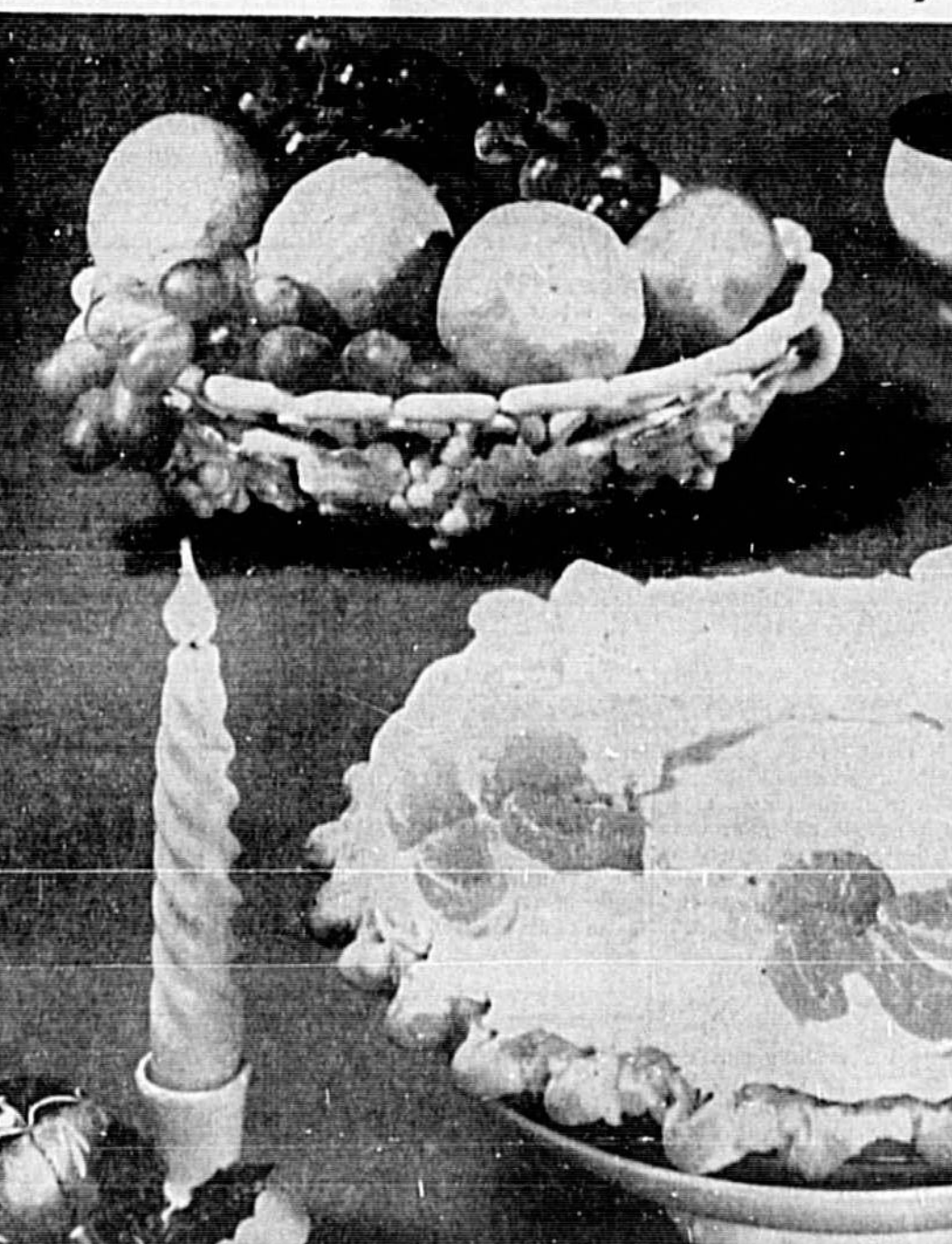
WINTER PARK — Florida Gas Company has announced that consolidated earnings applicable to common stock for the nine months ending Sept. 30, 1971, were \$9,655,000 or \$1.56 per share before giving effect to a special dividend of \$1.00, which reduced earnings to \$8,655,000 or \$1.42 per share. The special charge resulted from the write-down of certain assets related to the company's modular home subsidiary. Without the special charge, earnings per share increased 29 per cent compared with the first nine months of 1970 when earnings were \$6,625,000 or \$1.20 per share.

More Quality Motels

SILVER SPRING, Md. — Quality Motels said today it will have seven motels containing more than 1,500 rooms in operation in the Walt Disney World area by the summer of 1973.

Leonard Dostak, director of franchise operations for the nation-wide motel system, said the company has issued franchises for five new Quality Motels near Disney World. Two of these are now under construction, a third will get underway next week and the others are expected to be under construction early in 1972. Dostak said.

Delicious In Bavarian Pie Tangerine Is The Typical 'Holiday Fruit'



PIE YOUR TANGERINES, the gay holiday fruit, in a pretty Fresh Tangerine Bavarian Pie.

Tangerines are as much a sign of the holidays as holly and Santa Claus. In fact, tangerines are called "the holiday fruit."

Tangerines fit into the busy holiday season in many ways. The United Fresh Fruit and Vegetable Association reminds their zipper skin and bite size sections are convenient features, courtesy of Mother Nature. The bright orange of tangerine jewels the holiday fruit bowl with color. The little fruit is great to eat out of hand.

Fresh Tangerine Bavarian Pie is an unusual way to use flavorful tangerines. Cut-up sections distribute the sweet taste of this luscious dessert. Whipped cream and beaten egg whites give the custard-based filling height and richness while unflavored gelatine helps keep it light and firm. The pie is garnished with sunburst swirls of tangerine sections.

Tangerine Cream Pudding is another way to feature the juicy fruit. This smooth-textured pudding is laced with tangerine sections and grated rind for extra character and flavor. It's bound to satisfy all pudding lovers, and it's a fine ending to a family meal.

Tangerine desserts can be showy as well as delicious. Fresh Tangerine Ice served in the fruit's shell will look quite dramatic at each place setting. The fruit ice is partially frozen, so it's held with beaten egg whites, and then placed in the tangerine shells to be frozen until firm. A very special dessert!

Cut tops off tangerines. With spoon or fingers, gently scoop out fruit sections. Reserve shells and tops. Remove seeds from sections. Extract juice by pressing sections in potato ricer or sieve. Use additional tangerine sections, if necessary, to make 2 cups juice. Combine water, 1 cup of the sugar and corn syrup and boil briefly 3 minutes. Add grated tangerine rind and cool. Add tangerine and lemon juices; color pale orange with red and yellow coloring, if desired; strain through fine sieve and pour into ice cube trays. Freeze until partially frozen. Beat egg whites with remaining 2 tablespoons sugar until stiff. Fold into tangerine mixture. Fill tangerine shells with tangerine ice, then cover with tangerine tops. Freeze until firm. Makes 12 servings.

FRESH TANGERINE ICE
12 tangerines
2 cups water
1 cup plus 2 tablespoons sugar, divided
2 tablespoons corn syrup
2 tablespoons grated fresh tangerine rind
2 tablespoons fresh lemon juice
Red and yellow food coloring, optional
2 egg whites

Cut tops off tangerines. With spoon or fingers, gently scoop out fruit sections. Reserve shells and tops. Remove seeds from sections. Extract juice by pressing sections in potato ricer or sieve. Use additional tangerine sections, if necessary, to make 2 cups juice. Combine water, 1 cup of the sugar and corn syrup and boil briefly 3 minutes. Add grated tangerine rind and cool. Add tangerine and lemon juices; color pale orange with red and yellow coloring, if desired; strain through fine sieve and pour into ice cube trays. Freeze until partially frozen. Beat egg whites with remaining 2 tablespoons sugar until stiff. Fold into tangerine mixture. Fill tangerine shells with tangerine ice, then cover with tangerine tops. Freeze until firm. Makes 12 servings.

Tangerines are as much a sign of the holidays as holly and Santa Claus. In fact, tangerines are called "the holiday fruit."

Tangerines fit into the busy holiday season in many ways. The United Fresh Fruit and Vegetable Association reminds their zipper skin and bite size sections are convenient features, courtesy of Mother Nature. The bright orange of tangerine jewels the holiday fruit bowl with color. The little fruit is great to eat out of hand.

Fresh Tangerine Bavarian Pie is an unusual way to use flavorful tangerines. Cut-up sections distribute the sweet taste of this luscious dessert. Whipped cream and beaten egg whites give the custard-based filling height and richness while unflavored gelatine helps keep it light and firm. The pie is garnished with sunburst swirls of tangerine sections.

Tangerine Cream Pudding is another way to feature the juicy fruit. This smooth-textured pudding is laced with tangerine sections and grated rind for extra character and flavor. It's bound to satisfy all pudding lovers, and it's a fine ending to a family meal.

Tangerine desserts can be showy as well as delicious. Fresh Tangerine Ice served in the fruit's shell will look quite dramatic at each place setting. The fruit ice is partially frozen, so it's held with beaten egg whites, and then placed in the tangerine shells to be frozen until firm. A very special dessert!

Tangerines are as much a sign of the holidays as holly and Santa Claus. In fact, tangerines are called "the holiday fruit."

Tangerines fit into the busy holiday season in many ways. The United Fresh Fruit and Vegetable Association reminds their zipper skin and bite size sections are convenient features, courtesy of Mother Nature. The bright orange of tangerine jewels the holiday fruit bowl with color. The little fruit is great to eat out of hand.

Fresh Tangerine Bavarian Pie is an unusual way to use flavorful tangerines. Cut-up sections distribute the sweet taste of this luscious dessert. Whipped cream and beaten egg whites give the custard-based filling height and richness while unflavored gelatine helps keep it light and firm. The pie is garnished with sunburst swirls of tangerine sections.

Tangerine Cream Pudding is another way to feature the juicy fruit. This smooth-textured pudding is laced with tangerine sections and grated rind for extra character and flavor. It's bound to satisfy all pudding lovers, and it's a fine ending to a family meal.

Tangerine desserts can be showy as well as delicious. Fresh Tangerine Ice served in the fruit's shell will look quite dramatic at each place setting. The fruit ice is partially frozen, so it's held with beaten egg whites, and then placed in the tangerine shells to be frozen until firm. A very special dessert!

Tangerines are as much a sign of the holidays as holly and Santa Claus. In fact, tangerines are called "the holiday fruit."

Tangerines fit into the busy holiday season in many ways. The United Fresh Fruit and Vegetable Association reminds their zipper skin and bite size sections are convenient features, courtesy of Mother Nature. The bright orange of tangerine jewels the holiday fruit bowl with color. The little fruit is great to eat out of hand.

Fresh Tangerine Bavarian Pie is an unusual way to use flavorful tangerines. Cut-up sections distribute the sweet taste of this luscious dessert. Whipped cream and beaten egg whites give the custard-based filling height and richness while unflavored gelatine helps keep it light and firm. The pie is garnished with sunburst swirls of tangerine sections.

Tangerine Cream Pudding is another way to feature the juicy fruit. This smooth-textured pudding is laced with tangerine sections and grated rind for extra character and flavor. It's bound to satisfy all pudding lovers, and it's a fine ending to a family meal.

Tangerine desserts can be showy as well as delicious. Fresh Tangerine Ice served in the fruit's shell will look quite dramatic at each place setting. The fruit ice is partially frozen, so it's held with beaten egg whites, and then placed in the tangerine shells to be frozen until firm. A very special dessert!

Tangerines are as much a sign of the holidays as holly and Santa Claus. In fact, tangerines are called "the holiday fruit."

Tangerines fit into the busy holiday season in many ways. The United Fresh Fruit and Vegetable Association reminds their zipper skin and bite size sections are convenient features, courtesy of Mother Nature. The bright orange of tangerine jewels the holiday fruit bowl with color. The little fruit is great to eat out of hand.

Fresh Tangerine Bavarian Pie is an unusual way to use flavorful tangerines. Cut-up sections distribute the sweet taste of this luscious dessert. Whipped cream and beaten egg whites give the custard-based filling height and richness while unflavored gelatine helps keep it light and firm. The pie is garnished with sunburst swirls of tangerine sections.

Tangerine Cream Pudding is another way to feature the juicy fruit. This smooth-textured pudding is laced with tangerine sections and grated rind for extra character and flavor. It's bound to satisfy all pudding lovers, and it's a fine ending to a family meal.

Tangerine desserts can be showy as well as delicious. Fresh Tangerine Ice served in the fruit's shell will look quite dramatic at each place setting. The fruit ice is partially frozen, so it's held with beaten egg whites, and then placed in the tangerine shells to be frozen until firm. A very special dessert!

Tangerines are as much a sign of the holidays as holly and Santa Claus. In fact, tangerines are called "the holiday fruit."

Tangerines fit into the busy holiday season in many ways. The United Fresh Fruit and Vegetable Association reminds their zipper skin and bite size sections are convenient features, courtesy of Mother Nature. The bright orange of tangerine jewels the holiday fruit bowl with color. The little fruit is great to eat out of hand.

Fresh Tangerine Bavarian Pie is an unusual way to use flavorful tangerines. Cut-up sections distribute the sweet taste of this luscious dessert. Whipped cream and beaten egg whites give the custard-based filling height and richness while unflavored gelatine helps keep it light and firm. The pie is garnished with sunburst swirls of tangerine sections.

Tangerine Cream Pudding is another way to feature the juicy fruit. This smooth-textured pudding is laced with tangerine sections and grated rind for extra character and flavor. It's bound to satisfy all pudding lovers, and it's a fine ending to a family meal.

Tangerine desserts can be showy as well as delicious. Fresh Tangerine Ice served in the fruit's shell will look quite dramatic at each place setting. The fruit ice is partially frozen, so it's held with beaten egg whites, and then placed in the tangerine shells to be frozen until firm. A very special dessert!

Tangerines are as much a sign of the holidays as holly and Santa Claus. In fact, tangerines are called "the holiday fruit."

Tangerines fit into the busy holiday season in many ways. The United Fresh Fruit and Vegetable Association reminds their zipper skin and bite size sections are convenient features, courtesy of Mother Nature. The bright orange of tangerine jewels the holiday fruit bowl with color. The little fruit is great to eat out of hand.

Fresh Tangerine Bavarian Pie is an unusual way to use flavorful tangerines. Cut-up sections distribute the sweet taste of this luscious dessert. Whipped cream and beaten egg whites give the custard-based filling height and richness while unflavored gelatine helps keep it light and firm. The pie is garnished with sunburst swirls of tangerine sections.

Tangerine Cream Pudding is another way to feature the juicy fruit. This smooth-textured pudding is laced with tangerine sections and grated rind for extra character and flavor. It's bound to satisfy all pudding lovers, and it's a fine ending to a family meal.

Tangerine desserts can be showy as well as delicious. Fresh Tangerine Ice served in the fruit's shell will look quite dramatic at each place setting. The fruit ice is partially frozen, so it's held with beaten egg whites, and then placed in the tangerine shells to be frozen until firm. A very special dessert!

Tangerines are as much a sign of the holidays as holly and Santa Claus. In fact, tangerines are called "the holiday fruit."

Tangerines fit into the busy holiday season in many ways. The United Fresh Fruit and Vegetable Association reminds their zipper skin and bite size sections are convenient features, courtesy of Mother Nature. The bright orange of tangerine jewels the holiday fruit bowl with color. The little fruit is great to eat out of hand.

Fresh Tangerine Bavarian Pie is an unusual way to use flavorful tangerines. Cut-up sections distribute the sweet taste of this luscious dessert. Whipped cream and beaten egg whites give the custard-based filling height and richness while unflavored gelatine helps keep it light and firm. The pie is garnished with sunburst swirls of tangerine sections.

Tangerine Cream Pudding is another way to feature the juicy fruit. This smooth-textured pudding is laced with tangerine sections and grated rind for extra character and flavor. It's bound to satisfy all pudding lovers, and it's a fine ending to a family meal.

Tangerine desserts can be showy as well as delicious. Fresh Tangerine Ice served in the fruit's shell will look quite dramatic at each place setting. The fruit ice is partially frozen, so it's held with beaten egg whites, and then placed in the tangerine shells to be frozen until firm. A very special dessert!

Tangerines are as much a sign of the holidays as holly and Santa Claus. In fact, tangerines are called "the holiday fruit."

Tangerines fit into the busy holiday season in many ways. The United Fresh Fruit and Vegetable Association reminds their zipper skin and bite size sections are convenient features, courtesy of Mother Nature. The bright orange of tangerine jewels the holiday fruit bowl with color. The little fruit is great to eat out of hand.

Fresh Tangerine Bavarian Pie is an unusual way to use flavorful tangerines. Cut-up sections distribute the sweet taste of this luscious dessert. Whipped cream and beaten egg whites give the custard-based filling height and richness while unflavored gelatine helps keep it light and firm. The pie is garnished with sunburst swirls of tangerine sections.

Tangerine Cream Pudding is another way to feature the juicy fruit. This smooth-textured pudding is laced with tangerine sections and grated rind for extra character and flavor. It's bound to satisfy all pudding lovers, and it's a fine ending to a family meal.

Tangerine desserts can be showy as well as delicious. Fresh Tangerine Ice served in the fruit's shell will look quite dramatic at each place setting. The fruit ice is partially frozen, so it's held with beaten egg whites, and then placed in the tangerine shells to be frozen until firm. A very special dessert!

SATURATED COVERAGE WITH The Herald Bargain Section

25,000 copies are distributed to more than 100,000 readers throughout the area. Including: Sanford, Deltona, Ocoee, DeBary, Deltona, Orange, Longwood, Casselberry, North Orlando, Forest Park, Altamonte Springs, Orlando, Chuluota, Forest City, Galveston, part of Winter Park, Maitland and Geneva.

We're Open Sundays 1-6 P.M.

UNTIL CHRISTMAS LAYAWAY NOW!

HIS Store for Men

SANFORD PLAZA
ALL MAJOR CREDIT CARDS WELCOME
M.C. & A.E. DINERS
Alabama vs. Auburn

Free Lessons

on bowling — Saturday Mornings 11:30
Bowling is fun — Improve your average.

Jet Lanes

322-7542
DELICIOUS FOOD AND BEVERAGES
Trophy Lounge 322-8022
ONORA ROAD
Army vs. Navy

For YOUR Convenience, Our SERVICE DEPT. Is Now OPEN

Thursday Nights, and Saturday Till Noon.

Hal Spragins LINCOLN-MERCURY, INC.

109 N. Palmetto 322-4884
"The New Cut in Town"
Baylor vs. Rice

GEORGE'S TAVERN

1011 French, Sanford
BAR & PACKAGE

LIQUORS & WINES

All Your Favorite Brands At A Price You're Glad To Pay
SPECIAL LOW PRICES BY THE CASE
WATCH FOOTBALL WITH US—ON COLOR TV!

Seeson College vs. Holy Cross

See you after the game!

WHERE THE ACTION IS!

GNASH INTO A "SUPER" NO BETTER BURGER ANYWHERE!
NEW! AIR CONDITIONED DINING ROOM!

For Take-Out Orders 322-4151

Burger In

2109 FRENCH SANFORD
Clemson vs. S. Carolina

lulii

Football Special! SATURDAY AFTERNOON AND MONDAY NITE—DURING THE GAME Drinks 50c

Daily Luncheon Specials 95c to \$1.35
Dance to the sound of "MIAMI" Thursday & Saturday
FSU vs. Pittsburgh

Enjoy your Class Ring Now!

\$5 DOWN AS LITTLE AS \$29!
Open A Student Account Now — At Zale's In Sanford Plaza!

Zale's Jewelry, Clocks, Watches, Cameras, Binoculars, Musical Instruments, and more.
Any graduating Year — No Extra Charge!
Open Mon., Thurs., Fri. 11-9
Florida vs. Miami

Enjoy a great course!

Mayfair Country Club

SANFORD
Louisville vs. Cincinnati

TRADING HOME CARS IMPROVEMENT

Bank Financing

COSTS YOU LESS!
FLORIDA STATE BANK

We can handle all your banking needs.
Morgan State vs. Rutgers

LIQUID GLASS ENAMEL

Marine Paint 2.39 QT.
Mary Carter's Liquid Glass ENAMEL

MARY CARTER PAINTS

815 ELM AVE. 322-3649
Oklahoma vs. Okla. State

Your Best Buy! DUNLOP TIRES

COMPARE OUR GUARANTEE

- Wheel Alignment • Shocks
- Batteries • Front End Repair
- Brake Service • Wheel Balance

McROBERTS TIRES

JOHN DICKEY, OWNER
405 W. FIRST ST. 322-9431
SMU vs. TCU

Get the news that affects YOU and your county!

Read The Sanford Herald
322-2611 831-9993
South Mississippi vs. W. Texas St.

DEKLE'S GULF SERVICE

OPEN 24 HOURS DAILY
Watch television in our air conditioned waiting room while we service your car.

GULF PRODUCTS
• Tires • Batteries • Accessories
Experienced Mechanics
Expert Wash, Polish and Wax Jobs.

KING TRUCK—ALL NEW CAR RENTALS

TWO LOCATIONS
2518 S. French 322-4924
Sanford Airport 322-4821
Tennessee vs. Vanderbilt

We're Open Sunday

12:30 to 5:30 now till Christmas!
JCPenney
The values are here every day.

SANFORD PLAZA 10-9 MON-SAT.
VMI vs. Virginia Tech

Prescriptions always at discount prices

Faust's DRUG STORE

DAILY LUNCHEON SPECIAL 96c
DOWNTOWN SANFORD 407 E. 1st ST. SHOPPING PLAZA 322-0784
Wichita St. vs. Tulsa

Carpet Has To Be Judged On Merit

By JOYCE HOARK
Caply News Service

Carpets are as varied as the people that buy them, each having its good points and its bad points.

Since no carpet is perfect, you can only evaluate each on its merits and pick the one that best satisfies your needs.

The durability of a carpet is dependent on the fiber used for the pile, the construction of the backing and the density, height and tightness of the pile.

The most durable fibers for a carpet will be resistant to abrasion or wear. They won't crush or pack down. They should be flame resistant. At some time, something will be spilled on a carpet, so it's nice to have one that won't stain and cleans easily.

Balls of fuzz forming on the surface of a carpet can be a problem if they are hard to remove. Static electricity can hold dirt to the pile and "gray" the carpet.

The backing of a carpet is very important. Its water resistance is most vital to a carpet's life. Cotton is best but also expensive. Linen is less affected by moisture than is jute (burdy).

If a carpet is to be used in an entrance hall, family room, basement—or wherever there is a lot of moisture—it's particularly important it get a backing that will not rot if it gets wet. Try to find a carpet backing made of polyurethane if your carpet is to be used in such an area.

Ply yarns are stronger and wear longer than single yarns. The weave should be as tight as possible. To compare weaves in the store, count the number of yarns in an inch. The carpet with the most yarns in an inch is the better one.

The longest pile is not necessarily the most durable. A long pile tends, resulting in wear on the sides and ends of the yarns. A short pile will only wear at the ends.

A highly twisted pile will resist crushing better than a pile that has little or no twist.

A carpet should be colorfast to sunlight and cleaning. Ask the salesperson for a demonstration on stain resistance, fading resistance, etc. Be sure to get a written guarantee that the carpet you purchase will not fade from the sunlight, will not change color after soiling and will not look "gray" after cleaning.

Tangerines are at their peak now. Select those that are heavy for their size and with the characteristic deep orange, almost red, color. A puffy appearance is normal. After purchase, keep tangerines at their best by refrigerating them. An average size tangerine provides 43 per cent of the daily recommended allowance of vitamin "C" for an adult. Tack advantage of the good supply of tangerines at your market now.

TANGERINE CREAM PUDDING

2 tablespoons cornstarch
3 tablespoons sugar
1/4 teaspoon salt
2 cups milk
1 1/2 cups grated fresh tangerine rind
1 1/2 cups halved, seeded tangerine sections

Mix together cornstarch, sugar and salt in saucepan. Gradually stir in milk. Place



DUANE Elmore, formerly office manager of Sanford Heat and Air Conditioning at 2519 French Avenue, A. native of Tampa, he will make his home in Sanford.

A DAY of THANKSGIVING

WE WILL BE CLOSED THANKSGIVING

Holiday Greetings To our many customers Apple, Dick Beale, and Willie

Cook's Corner PH. 322-9791 2417 S. ORLANDO DR. SANFORD

Enter Into The Holiday Spirit

It Is Time To Think About Fruitcake

By CECILY BROWNSTONE Associated Press Food Editor

This fruitcake has several recommendations. First, from one batch of batter you get three cakes—two for giving and one to keep. Second, its texture is sturdy and that means it cuts well. Third, it has beguiling flavor, due in part to the sherry that goes into the batter and that is sprinkled on the baked cakes during storage. If you make this cake expect a light-colored result. The red glaze cherries and golden raisins included dot slices with pretty color. The coconut added hardly shows but it contributes to the texture and flavor.

SHERRIED FRUITCAKE
1 pound butter
1 1/2 cups sugar
2 teaspoons vanilla
5 eggs
5 1/2 cups sifted flour
2 teaspoons baking powder
2 teaspoons nutmeg
1 cup sweet sherry
1 1/2 cup unswetened canned pineapple juice
1 cup (8 ounces) red glaze cherries, halved

1 cup (8 ounces) dried candied orange peel
1 cup (8 ounces) sliced candied pineapple
3 cups (8 ounces) shredded coconut
4 cups (16 ounces) walnuts, coarsely chopped
3 1/2 cups (14 ounces) golden raisins
Grease and flour 3 loaf pans (each about 8 1/2 by 4 1/2 by 2 1/2 inches).

In a very large mixing bowl cream the butter, sugar and vanilla; add eggs one at a time, beating after each addition. Turn into prepared pans. Bake in a preheated 350-degree oven until cake tester inserted in center comes out clean—1 1/2 hours. Cool partially. With a small metal spatula loosen edges; turn out on wire rack; turn right side up. Cool completely.

Sprinkle cakes with sherry and wrap in sherry-soaked cheesecloth; wrap again in foil or transparent plastic wrap or place in a tightly closed plastic bag. Store in refrigerator. If cake dries, sprinkle with more sherry.

Decorate with remaining almonds and fruits.

HAPPY HOLIDAYS
CLOSED THANKSGIVING
THE BIG DIP
2439 FRENCH AVE. SANFORD PH. 322-0199

It's How You Put It Together



By CECILY BROWNSTONE AP Food Editor
MORNING COFFEE
Scrambled Eggs and Bacon
Minicmeat Wreaths
Fruit Cup
Beverage
MINCMEAT WREATHS
Almonds go into the dough and are also used for the decoration.

1 package (18 1/2 ounces) hot roll mix
2 1/2 tsp. granulated sugar
1/2 teaspoon grated lemon rind
1/2 cup dried roasted almonds
2 cups prepared minicmeat
Melted butter
1 cup sifted confectioners' sugar
Dash of salt
1 1/2 tablespoons milk
1/4 cup mixed dried candied fruits
Prepare hot roll mix as package directs, adding granulated

Bill & Betty's Restaurant
Owned & Operated by Bill & Betty Hart
CLOSED THANKSGIVING
Open Mon. thru Fri. 11 a.m. - 8 p.m.
CLOSED SAT. & SUN.
2511 SANFORD AVE. PH. 322-9798

We Will Be CLOSED THANKSGIVING
HAVE A HAPPY THANKSGIVING
Fiesta!
Open 10 A.M. TO 2 A.M.
Mary & Chuck Rowell—Owners
HWY 17-92 PH. 831-9321
1 Mile South Big Top, Longwood

Thanksgiving BUFFET \$195
ALL YOU CAN EAT
CHOICE OF ANY OR ALL
HOMEMADE SOUP—TURKEY & DRESSING—HAM—CHICKEN
MEAT BALLS—BRATWORST—TENDERLOIN TIPS
3 HOT VEGETABLES—7 SALADS
SERVING 12 NOON TIL 9 P.M.
OTTO'S HOFBRAU HAUS
2544 PARK DRIVE PH. 322-9716 SANFORD

FAMILY STYLE Thanksgiving FEAST
CHICKEN SOUP
• GOLDEN ROAST TURKEY with giblet corn bread dressing
• BAKED VIRGINIA HAM with pineapple
• LAMB with mint jelly
• ROAST BEEF with natural gravy
ALL THE TRIMMINGS
Cranberry or Sauce • String Beans • Candied Yams • Creamed Corn
Mashed Potatoes and Gravy • Raisin, Carrot and Cabbage Salad
DESSERT
Pump. Pudding or Pumpkin Pie
CHILDREN'S (under 12) PORTION 1/2 PRICE
ALA CARTE
STEAK • PRIME RIB AU JUS • FRESH FLA. SHAPPER

Holiday Inn Of Sanford
PHONE 323-1910 OVERLOOKING THE ST. JOHNS SANFORD

Deltona Observes 9th Birthday; Has 9,000 Population



DIGNITARIES at Deltona's Ninth Anniversary Founders Day Dinner staged recently in the Woman's Clubhouse, pictured standing are Harris Saxon, (left) County Councilman; the Rev. H. Wight Kirtley, Deltona Methodist Church; Judge Douglas Stenstrom, former state senator from Sanford, principal speaker; and Harry Jesse, president of the Kiwanis Club and master of ceremonies. Seated, same order, Mrs. Stenstrom, Mrs. Kirtley and Mrs. Jesse.

By DOT DREW

DELTONA — Deltona's ninth anniversary was commemorated at a "Founder Day Dinner" staged in the Woman's Clubhouse on Normandy Boulevard. Tracing its brief history back to 1962 when the visionary Mackle Brothers welcomed its first 100 families, the elapsed nine years witnessed a tremendous phenomenal growth to its present population of almost 9,000 and a total of approximately 250 miles of roads in three housing areas.

A capsule biographical sketch covering activities and progress up to the present showed the erection of the Deltona Junior High School in 1966 to meet the ever growing needs for expanded educational facilities. Its other assets include six houses of worship, with property allocated for the erection of two additional schools. Shopping facilities have expanded over the past years since the erection of its prime shopping center located in the Deltona Plaza in the first housing area and now includes two additional sites located in each of the other housing areas. Other facilities also include two banking institutions and numerous service stations. In addition to the special adult education program offered, residents are justly proud of an active Civic Association, Kiwanis Club, numerous state clubs, and veterans' organizations. Shopping facilities have expanded over the past years since the erection of its prime shopping center located in the Deltona Plaza in the first housing area and now includes two additional sites located in each of the other housing areas. Other facilities also include two banking institutions and numerous service stations. In addition to the special adult education program offered, residents are justly proud of an active Civic Association, Kiwanis Club, numerous state clubs, and veterans' organizations.

Folklore Shamed By Hypno-Analyst

CHARLOTTESVILLE, Va. — (AP) — Folklore has it that when the hypnotist starts casting his spell, he closes in on his subject and says persuasively, "Look into my eyes..." Truth often shames folklore. Dr. William Chapman is a blind hypnotist. Chapman recently retired from a position unique in America and perhaps unique in the world. He is the only blind hypnotist known to the American Medical Association or the American Psychiatric Association.

Chapman amply compensates for, ignores, rarely mentions and leads you to forget his blindness. "People are generally easy to hypnotize especially once they have experienced it," he says. "I can tell when they're asleep by listening to the breathing or feeling pulse. Just a gentle touch on the arm is enough to tell." Posthypnotic suggestion is the strongest psychiatric tool in hypnosis. Reliving the patient as he will upon his mind and let his troubles tumble out is another important use, the doctor explained.

Island Crime Rises; Attorneys Now Needed

MIAMI (AP) — The encroaching Westernization of Micronesia has resulted in a rising crime rate on the sleepy Pacific islands and where their crime attorneys are sure to follow. Heeding the docket call of the tropics in this case are Michael Jonas and Arthur Rothenberg, both former assistant public defenders in Miami.

The two young attorneys were among the 43 interviewed by the Federal Government to defend the natives of the 220 tropical islands that make up the South Pacific chain, strung out over three million miles of ocean. Rothenberg, 28, will become public defender in the 20 inhabited islands of Yap, where Jonas will hold a similar post in the Truk District, 1,100 miles to the east.

There were 23 violent crimes reported last year in what will be Rothenberg's area. Five murders were reported in the entire chain in 1970, but no sex crimes. Jonas said there's been a rise in delinquency and petty thefts "with the coming of western economics, which makes material possessions important but gives the natives no means to acquire them."

Moving to the other side of the world will boost the attorneys' salaries from the \$112,000 they now make to \$118,000 a year. But the real change will be in their lifestyles. No more crowded courts and daily caseloads of 20 or more. Rothenberg, a bachelor, will live on Yap island, a 45-square-mile piece of hell where women wear nothing from the waist up and ancient stone money is still used. He said if the living conditions were right he'd consider his fiancée "and we'll get married under a papaya tree."

A New York born, University of Miami graduate, Rothenberg says he's glad he's been assigned to Yap because he has a poor sense of direction "and on this island all I have to do is walk a straight line and I'll get to a beach." Rothenberg said he accepted the assignment "so I'll gain perspective. What happens in Dade County is not the end of the world."

PLAZA BOOKING ONLY
—LAST 2 DAYS—
My Fair Lady
2:30 7:30
9:00
WINNER OF 8 ACADEMY AWARDS
AUDREY HEPBURN - REX HARRISON
LASHANGLING SUPER PANAVISION 70
2:30 Matinee Mon-Fri. 7:5c

MOVIE LAND Drive-In Theatre
ENDS TONITE 7:00 P.M.
"THE FEMALE BUNCH"
"WEEK-END WIVES"
STARTS TOMORROW "OP" IS IT POSSIBLE? WITCH CRAFT IN CALIFORNIA
"THE BROTHERHOOD OF SATAN"
"FRAGMENT OF FAT"
7:00
FIRST SANFORD SHOWING

700 French Ave. Sanford Ph. 323-4700
CASH BUYS MORE AT SCOTTY'S home builders supply
Scotty's Brand GARDEN TOOLS
YR20
AS248F
AS248F
YR20 Leaf Rake \$ 9.99
YR20 Garden Hoe \$22.99
AR248F Open Back Square Shovel \$22.99
AR248F Open Back Round Shovel \$22.99
RHTE Turf Edger \$29.99

What's Happening At Home

Who's Getting Married?
The recipe is special because although the dessert has the attributes of steamed pudding, it's baked in a mold in the oven instead of being cooked over boiling water. To achieve its particular texture and flavor, the mold is covered.

Who's Winning in Sports?
If someone you know is away at college, why don't you treat him or her to a regular visit with the names, places and events making the news in The Sanford Herald.

ONLY \$1.50 a month sends each issue!
Fill out the attached coupon and drop it in the mail... or phone 322-2611.

The Sanford Herald
P.O. Box 1657
Sanford, Fla. 32771
Please begin delivery of The Sanford Herald today.
Name _____ Street _____
City _____ State _____ Zip Code _____

Tasty Thanksgiving Treat This Fig Pudding Is Special

by CECILY BROWNSTONE Associated Press Food Editor
To round off a holiday dinner featuring roast turkey, you may want to serve this fig pudding. The recipe is special because although the dessert has the attributes of steamed pudding, it's baked in a mold in the oven instead of being cooked over boiling water. To achieve its particular texture and flavor, the mold is covered.

FIG PUDDING
2 cups un sifted flour
1 teaspoon baking soda
1 teaspoon cinnamon
1/2 teaspoon nutmeg
1/2 cup (4-pound stick) butter
1 cup firmly packed light brown sugar
1 cup buttermilk
2 cups chopped dried figs
1 cup coarsely chopped walnuts
On a piece of wax paper thoroughly stir together the flour, baking soda, cinnamon and nutmeg.
In a large mixing bowl cream butter and sugar. Add dry ingredients and buttermilk; beat until smooth and thoroughly blended. Fold in figs and walnuts.
Turn into a greased 2-quart mold; spread evenly. Cover mold with the greased lid or a piece of greased aluminum foil; if foil is used, make sure it tightly covers mold.
Bake in a preheated 350-degree oven until a cake tester inserted in the center comes out

clean — 1 1/2 hours.
Uncover mold and let pudding cool in mold for 15 minutes. Tap to loosen pudding, or with a small metal spatula loosen edges, and invert on serving plate. Serve hot with Hard Sauce.
Makes 12 servings.
NOTE: If pudding is made ahead, unmold and cool; wrap in foil and place in a preheated 325-degree oven until hot through—about 45 minutes.

SUPPER FOR FOUR
Fish Amandine Potatoes
Green Peas
with Mushroom Salad
French Pastry Beverage
FISH AMANDINE
An American version of a French recipe.
4 (about 1 pound each) whole fish, cleaned and trimmed
Salt and pepper
1/2 cup (4-pound stick) corn oil margarine
1/2 cup sliced almonds
Lemon wedges and parsley

THANKSGIVING DAY PACKAGE STORE
Open 9 a.m. - 12 p.m.
LOUNGE
Open 5 p.m. - 2 a.m.
Club Lui
Center of Commercial & Palmetto Ave., Sanford

CHRIS and AGGIE PORTEWIG
with their friends and customers a Happy Holiday.
CLOSED
THANKSGIVING DAY
BURGER IN
2109 French Ave. Sanford



SHADES OF HI HO SILVER — Nothing delights a youngster as a pony ride. Kenny, age seven and his sister Beth, children of Dr. and Mrs. Frederick Weigand of Deltona, enjoyed this favorite pastime a highlight of the recent Deltona Woman's Club "Holiday Bazaar." (Dot Drew Photo)

'Failure To Insure Defenses' Five To Face Army Discipline

By ROBERT A. DORRIN AP Military Writer WASHINGTON (AP) — A two-star general and four other high-ranking officers have been told they will be demoted or reprimanded as a result of the most devastating attack on a U.S. firebase during the Vietnam war. It has been learned. The five, including Maj. Gen. James L. Baldwin, former commander of the 11th Airborne American Division, received letters three weeks ago notifying them of the proposed administrative action approved by Army Secretary Robert F. Froehike. Each was given 60 days to present evidence that could change the secretary's mind regarding the punishment, which does not require trial by court-martial. The Army refused comment until final action on the case is completed.

Team-Work Cited

By DONNA ESTES CASSELLBERY — "The days of procrastination, perfunctory whims and 'let's wait and see' can no longer be tolerated in Casseberry city government," according to Owen Sheppard, candidate for the City Council in the Dec. 7 municipal elections. Active in municipal politics since settling in the city in early 1969, Sheppard is currently a member of the city's planning board. "Although our city lies within the shadows of a large urban area, it still retains much of the tranquility, orderliness, and perspective of a non-urban community. It has vitality, character, dignity and beauty," the candidate said. Praising the "extremely capable and professional full-time city manager, the zoning and planning boards, served by talented men (ed.) to the order of the city and many other highly capable city employees," Sheppard said all



OWEN SHEPPARD

Hospital Notes

MONDAY, NOVEMBER 22, 1971 Admissions Lillian B. Vickery, Belinda D. Brown, Geneva Wright, Frank Forrie, Annie Wilder, Ellen J. McBratner, Lela Mae King, William Casten, Deltona, Cora Gallagher, Deltona, Ethel M. DeGolia, Deltona, Leonard Oliver, Deltona, Samuel Puskas, Deltona. Discharges Mary J. Rayfuse, DeBary, Ruth M. Lee, New Smyrna Beach, Anna Durdik, DeBary. Lost 11 Years MELBOURNE (AP) — A 10-year-old boy returned to his home last night, 143 miles northwest of Melbourne, after an absence of 11 years. His legband showed it was a bird that was released on a 350-mile homing flight from South Australia in 1960.



ARRANGING bulletin board (for American Education Week) at Idyllwild School to demonstrate the importance of "Bridging the Gap" between administration, community, students, teachers and parents, are Mrs. Ruby Hendrix, (left) remedial reading teacher, and Miss Nellie Schweigart, guidance counselor. (Staff Photo)

Pre-Holiday Cleanup

GREAT SAVINGS. HURRY IN FOR THESE BARGAINS WHILE THEY LAST.

23 Pr. Only Girls' Boots now 3.88 • ZIPPER SIDES • WHITE, BLACK & BROWN	15 Pr. Only Women's Boots now 4.88 • ZIPPER SIDE • WHITE, BLACK & BROWN	50 Sets Only Hot Wheels Sizzler Laguna Oval • COMPLETE WITH JUICE MACHINE & SIZZLER CAR • ORIG. 4.88, NOW 2.44
1 Only Reduced Modern Sofa & Chair ORIG. \$308 now \$259 • GOLD TONE • MODERN STYLE	4 Only Reduced Tables ORIG. \$39.95 now \$18 • WALNUT FINISH • SAVE PLENTY	44 Only Reduced Print Blankets ORIG. \$5.88 now 3.88 • TWIN OR FULL SIZE • MACHINE WASHABLE
88 Yds. Reduced Double Knit ORIG. \$5.98 now 2.88 yd. • FASHION COLORS • 58/60 INCHES WIDE	300 Packages Reduced Sewing Trims now 1/2 price • WIDE SELECTION • SAVE PLENTY	106 Pr. Reduced Boys' Pants & Jeans ORIG. 2.55 now 4.95 • ASSORTED STYLES & COLORS • PINK-PIRETT®
20 Only Reduced Girls' Skirts ORIG. \$4 now 2.88 • ASSORTED STYLES & COLORS • SIZE 7-14	88 Pr. Only Girls' Corduroy Slacks now 1.29 • MACHINE WASHABLE • SIZE 4-4X	1 Only Reduced Mini Bike ORIG. \$129 now \$55 • 2 1/2 HORSEPOWER • BLUE COLOR
500 Special Buy Men's Knit Shirts now 4.95 • SHORT SLEEVES • STRIPES • FASHION COLLAR & CREW NECK • SIZE S-M-L-XL	37 Only Reduced Men's Sport Coats ORIG. TO \$25 now \$13 • SINGLE & DOUBLE BREASTED • SOLIDS & FANCY PATTERNS	21 Only Women's Girdles now 2.93 • PASTEL COLOR • SIZE S-M-L
55 Only Bra Slips ORIG. \$5 now 2.93 • WHITE & PASTEL • SIZE 32-34	10 Cases Only Dove Load Shells now \$1.99 box • HUNTER'S SPECIAL • SAVE PLENTY	59 Reduced Women's Wigs ORIG. \$14.88 now 4.88 • ASSORTED STYLES & COLORS • SAVE PLENTY

OPEN SUNDAY 12:30 - 5:30

JCPenney
The Christmas Place

SANFORD PLAZA MONDAY - SATURDAY 10 A.M. - 9 P.M.

The Sanford Herald

Wednesday, November 24, 1971 — Sanford, Florida 32771
64th Year, No. 68 Price 10 Cents

Florida's Power Says \$ Ouch \$

ORLANDO (AP) — Florida's power industry charged Tuesday that proposed state restrictions on hot water discharged by electrical generating plants will cost producers as much as \$6 billion in 30 years. "You're trying to legislate or rule us into submission," Florida Power Corporation vice president Joel T. Rodgers told members of the pollution control board at a hearing in Orlando. "The proposed standards lead me to believe that the waters of this state would be more protected than man himself," said Rodgers. Rodgers described himself as the spokesman for "one hundred per cent of Florida's electrical suppliers." He said establishing a rigid temperature standard for the entire state would add "untold millions" to the cost of the public without sufficient benefits to the environment. It would impose "severe and improper operating limits on our plants and our ability to produce electricity," Rodgers added. State Department of Pollution Control staff members have suggested permitting power plant discharges to be limited to four degrees above normal averages, and only 1.5 degrees above normal during summer months. Marine biologists have warned that temperatures only a few degrees above normal levels can kill or harm a wide variety of marine organisms.

Headlines Inside THE HERALD

WASHINGTON — President Nixon has proposed Congress buy more than a half million acres of the Big Cypress Swamp in South Florida to prevent "the loss of a treasure trove" of natural resources. (Page 6B)

WINTER PARK — Winter Park police chief says he has a witness who saw Michael Moore borrow a pack of matches from another prisoner and ignite a pile of mattresses in his cell starting a blaze that claimed his life. (Page 6B)

INDIA-PAKISTAN — Pakistani forces claim an Indian assault in the Comilla district repelled with 157 killed. (Page 1B)

WASHINGTON — President Nixon must decide whether to invoke the Taft-Hartley act to order striking longshoremen back to work. (Page 1B)

WEATHER — Yesterday's high 78 low 57. Partly cloudy through Thursday. Chance of a few showers. High today 75 to 80. Low tonight in low 60s.

Heavy rain or snow covered most of the nation's midsection and parts of the Pacific Northwest today and travel warnings were posted in the Ohio Valley, Alabama and Tennessee.

'Just For Meanness' Prisoners Destroy Electric Fans

By MARION BETHA (Editor's note: This is a second of a series on the judicial system, including law enforcement, in Seminole County.)

There are no disciplinary problems which Sheriff John Polk has encountered similar to those experienced in other penal institutions. However, Polk did note the fans for which he had worked so hard to procure for the prisoners had been destroyed by the inmates just for "meanness." There is no television available, and visiting hours for prisoners are on Wednesday and Sunday from 1:30 p.m. to 3 p.m. Visitors include only the immediate family of the inmate unless he has no family in the area, in which case he submits one or two names. Mail is censored except from the court and attorneys. The jail is equipped to handle 82 inmates, with allocation being one, three or four to a cell. Two are not placed in cells due to the possibility of homosexual activity, which Polk feels is less likely if there are more in a cell. Two such incidents have occurred during Polk's tenure. The individuals involved in the case have received prison sentences or are awaiting trial. There have been no suicides since Polk took office.

Bad Debts Collection Pushed Hospital Boosts Room Rates

By BILL SCOTT

Seminole Memorial Hospital trustees voted Tuesday night to increase room rates by an average of \$2.25 per room and will turn bad debts over to the Small Claims Court to recoup some of a \$250,000 deficit. The action, which will become effective in 60 days, will boost the present room charges for wards from \$28 to \$30 a day; semi-private facilities will increase from \$37 a day to \$40; private rooms will jump in price from \$39 to \$42 and de luxe private room rates will be changed from \$43 a day to \$46. Robert Bessner, hospital administrator, said the change in rates will place the Sanford hospital in the middle and lower middle range as compared with nearby hospitals. In checking with hospitals located in Orange County, which are utilized by Seminole residents, particularly those living in the South Seminole area, The Herald learned the changes will put Seminole Memorial Hospital's rates 12 less than the \$42 a day for semi-private rooms charged at Orange Memorial and Florida Hospital, but the local hospital's semi-private rate will be \$1 higher than Winter Park Memorial Hospital's \$39 a day charge.



COURT OF HONOR . . . IN CIRCUIT COURT received their Eagle Scout Award at a Court of Honor held in the courtroom of the courthouse. They are the sons of Scoutmaster and Mrs. Earl Edwards. (Staff Photo)

SR 436 Congestion Protested Traffic Relief Is Pushed

ALTAMONTE SPRINGS — Resolution directed to Gov. Reubin Askew, State Department of Transportation, the Board of County Commissioners and the various Seminole County municipalities affected was adopted by the City Council Tuesday. (Editor's note: Related story from Casseberry on page 11B.)

night asking that studies be conducted and plans developed for "immediate implementation to relieve the congested traffic conditions" on SR 436. The resolution also asks that the governmental authorities, unit and units of government further develop and implement long range plans to meet the constant and continuing traffic problems, avoiding future dangerous conditions as exist today in the county. Specifically requested is that the governor and the agencies responsible for providing safe and convenient traffic conditions undertake a joint effort cooperatively to relieve the danger-

Few SJC Students Will Protest War

Several Seminole Junior College (SJC) students are planning a 12-hour fast beginning at midnight Wednesday to protest the Vietnam War. Dean Robert A. Schreiber said the group, calling itself "Vietnam for Peace," obtained permission to sit in the lobby between the breezeway and college science building. Dean Schreiber said, "There are only about two or three involved in this and I don't believe they will have too many supporters joining them." He explained the fast was tried previously but, because of poor turnout, failed.

BULLETIN

WASHINGTON (AP) — President Nixon will meet with French President Georges Pompidou in the Azores, Dec. 12 and 14 to discuss current international issues prior to his China and Moscow trips. While there the President also plans to meet with Portugal's prime minister, Dr. Marcello Caetano.

Best Wishes at THANKSGIVING

... We hope that you and yours enjoy a Thanksgiving abounding in both material and spiritual blessings. May we say "Thank you" for letting us serve you.

Open 7:14 P.M. Saturdays

MAKER CHARGES

GREGORY LUMBER

Telephone 322-0500

520 S. Maple Ave. Sanford, Florida