

Sanford Is The Only Central Florida City Affording Rail, Highway, and Water Transportation

The Sanford Herald

Seminole County Produces More Fruit And Vegetables Than Any Similar Area In America

WEDNESDAY, MARCH 13, 1940 Member Associated Press SANFORD, FLORIDA, THURSDAY, MARCH 14, 1940 Established In 1908 NUMBER 173

C Refuses Re-Opening Of Freight Case

Important Victory Is Won By South In Fight For Rates Parity With North

Pepper Assaults Hatch Proposal

Amendment Offered By Florida Solon Is Rejected 50 To 28

WASHINGTON, Mar. 14. (AP)—The Interstate Commerce Commission today refused to reopen for re-argument its decision in the long-fought South-to-North freight rate case, in which the South won an important victory.

The Commission also ordered the reductions put into effect June 1.

The report said after careful consideration of petitions and review of evidence the ICC found no reason warranting re-opening of proceedings.

In its original decision the board ordered reductions in rates on 18 commodities from the South to the North to a basis approximating that within the North.

Meanwhile at Capitol Hill Senator Claude Pepper (D-Fla.) led an assault against the broadening Hatch anti-politics law, offering an amendment which was rejected 50 to 28.

If the pending legislation to extend the restrictions to state employees is passed by State House, Pepper's amendment would have permitted such employees to take active part in political campaigns.

Pepper's amendment would have permitted such employees to take active part in political campaigns.

Senator Democratic whip Sherman Minton of Indiana, and Senator John K. Bankhead, directed yesterday's assaults, none of them successful.

Bankhead offered an amendment which would have classified political contributions of \$1,000 or more by individuals and corporations as "pernicious political activity."

It was defeated 45 to 36, with Republicans voting in a solid phalanx with Senator Carl Hatch, (D-N. M.), author of the act, and other Democrats, against it.

Minton, who had lunched with President Roosevelt and sought unsuccessfully to win his support, denounced the Republicans and said "we're trying to get some decency into this thing, but we can't get their help."

Gatchel's Pleased With Recent Sales; Ads Receive Credit

Expressing the opinion that the Sanford Herald offers the merchants the medium of advertising that cannot be duplicated, Eloy Delgado, manager of Gatchel's Grocery, has written this newspaper to report the successful staging of that store's recent sale.

The letter is as follows: March 12, 1940 Mr. George Dean, Business Manager, Sanford, Florida.

This is to advise you that our sale was a great success. We had a record sale for us and we are very pleased with the results.

We are very pleased with the results of our sale and we are very grateful to you for the advertising space you have given us.

We are very pleased with the results of our sale and we are very grateful to you for the advertising space you have given us.

We are very pleased with the results of our sale and we are very grateful to you for the advertising space you have given us.

We are very pleased with the results of our sale and we are very grateful to you for the advertising space you have given us.

We are very pleased with the results of our sale and we are very grateful to you for the advertising space you have given us.

FEMINE INS AND OUTS OF POLITICS



Mrs. Thomas E. Dewey, left, wife of the candidate for the Republican presidential nomination, pictured chatting with Mrs. Franklin D. Roosevelt at a stunt party in Washington.

Educators Favor Statutory Term Of Nine Months

Seminole County educators joined school superintendents and principals from four other Central Florida counties at a meeting in Kissimmee yesterday.

Advocating that a nine months school year for both elementary and high schools be made a statutory term through the state, Supt. T. W. Lawton, who was one of those attending from Seminole County, said today.

This was contained in a motion passed by the group in which it was pointed out that a shorter school year would mean a loss of school standards and that it was not economical to attempt to cover the year's course in less time.

In connection with a study and discussion of instructional problems, the 60 educators present also recommended in a second motion that the same salaries, based on professional training and experience, should apply to elementary and high school teachers, Mr. Lawton said.

Participating in the sessions were school teachers and officials from Seminole, Brevard, Orange, Polk and Osceola counties. Attending from this county in addition to Mr. Lawton were G. E. McKay, H. E. Morris, Mrs. Stella P. Arrington, R. F. Cooper, W. J. Welles, C. W. Isbell, W. L. Selig and two members of the State Teachers Association.

The meeting, they will attempt to sell the State Department of Education was presided over by Osceola County Superintendent of Education Sam Brammer who introduced Colin English, State superintendent of education. He outlined the State program, which is to be the object of Summer conferences of 800 Florida teachers, principals and county school superintendents attending summer courses at both State institutions of higher learning. Working with the State department and educational leaders, they will attempt to develop teaching material for the entire State, adaptable to local school conditions.

Discussions were led by T. George Walker, manager of the State Text Book Service, Paul Eddy, State Transportation Supervisor, Joe Hall, State Director of Health and Supervisor of Certification.

Parallel Parking Is Considered By City

Are there any objections to the introduction of parallel parking of cars on the streets of Central Florida?

The question for which Chief of Police Roy G. Williams is now seeking an answer.

The question for which Chief of Police Roy G. Williams is now seeking an answer.

The question for which Chief of Police Roy G. Williams is now seeking an answer.

The question for which Chief of Police Roy G. Williams is now seeking an answer.

The question for which Chief of Police Roy G. Williams is now seeking an answer.

The question for which Chief of Police Roy G. Williams is now seeking an answer.

The question for which Chief of Police Roy G. Williams is now seeking an answer.

The question for which Chief of Police Roy G. Williams is now seeking an answer.

The question for which Chief of Police Roy G. Williams is now seeking an answer.

The question for which Chief of Police Roy G. Williams is now seeking an answer.

25 Killed In Auto-Train Crash Today

Truck Load Of Fruit Pickers Die When Passenger Train Smashes Vehicle

MC ALLEN, Tex., Mar. 14.—(AP)—Twenty-five fruit pickers, mostly of Mexican extraction, were killed today in their orchard-bound truck which was struck squarely in the center at a grade crossing by a Missouri-Pacific passenger train.

Seventeen others were injured. It was the most disastrous wreck in Texas history.

The train carried the vehicle for about 600 yards, scattering the bodies along the track. The truck burst into flames under the impact of the crash. The victim was being sent when the train had stopped.

McAllen is in the center of the rich citrus fruit area.

Patterson Is Seriously Ill From Stroke

Trainmaster Remains Unconscious After Attack This Morning

J. G. Patterson, 58, Atlantic Coast Line trainmaster of this city, was reported critically ill at the St. Luke's hospital today following a cerebral hemorrhage on a Jacksonville street this morning, according to local officials of the railroad.

The hemorrhage reportedly had caused a paralysis of the right side of his body and he had not regained consciousness upon the latest advice to local officials early this afternoon.

Mr. Patterson was found by Jacksonville Police shortly before 8:00 o'clock this morning lying unconscious on a downtown street and was immediately taken to the St. Luke's hospital where his condition was said to be extremely serious, local officials said.

Mr. Patterson left Sanford yesterday afternoon for a routine business trip to Jacksonville and planned to return home today. He was thought to have been returning to the Union Depot when he collapsed.

He began his career with the railroad as a young man and has been in continuous service since that time.

Smith Announces His Candidacy For County Commission

M. B. "T-Bone" Smith, East Side celery farmer, today announced his candidacy for the post of county commissioner from District One subject to the will of the voters in the May 7 primary election.

Mr. Smith, who is married and lives with his wife at 436 E. Seventh street, came to Sanford in 1922 from Albany, Ga., and for five years was connected with the Sanford Bulk Co. He then took up farming and since has been engaged in that occupation.

In making his announcement, Mr. Smith, who has never held political office, declared he looked upon the duties of a county commissioner in the same light as he looked upon the duties of a director of a 20 to 30 million-dollar corporation, to which he likened the County government.

Mr. Smith belongs to the Baptist Church, is a Mason, a Shriner, and is a member of the Chamber of Commerce. He said he was strongly in favor of working "harmoniously" with the City government for the "best interests of all."

Three Candidates Qualify For Races

With the deadline drawing near for candidates to pay their qualifications for the office of County Clerk D. F. Herndon, three candidates have qualified.

They are G. J. Pope, candidate for the office of County Clerk, and J. E. Lewis, candidate for the office of County Clerk, and J. E. Lewis, candidate for the office of County Clerk.

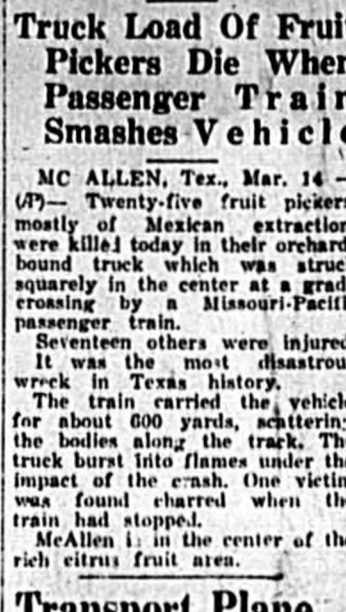
They are G. J. Pope, candidate for the office of County Clerk, and J. E. Lewis, candidate for the office of County Clerk, and J. E. Lewis, candidate for the office of County Clerk.

They are G. J. Pope, candidate for the office of County Clerk, and J. E. Lewis, candidate for the office of County Clerk, and J. E. Lewis, candidate for the office of County Clerk.

They are G. J. Pope, candidate for the office of County Clerk, and J. E. Lewis, candidate for the office of County Clerk, and J. E. Lewis, candidate for the office of County Clerk.

They are G. J. Pope, candidate for the office of County Clerk, and J. E. Lewis, candidate for the office of County Clerk, and J. E. Lewis, candidate for the office of County Clerk.

HERE'S WHAT PEACE COST FINLAND



This map summarizes the price Finland paid for peace after a bitter three-and-a-half month struggle with Soviet Russia. She paid a higher price than was demanded by her gigantic neighbor before hostilities began.

Disputes Result In Declaration Of Martial Law

Oklahoma Governor Sends Guards To Site Of Big Dam

DISNEY, Okla., Mar. 14.—(AP)—Seventy Oklahoma national guardsmen moved toward here last night to seize the \$2,000,000 Grand river dam under a martial law decree issued by Governor Phillips.

Phillips, determined that state roads and bridges in the 52,000-acre reservoir in northwestern Oklahoma shall not be flooded until the Public Works Administration puts up the cost or posts bond for relocation expense, also turned to the courts.

The cigar-chomping executive directed Attorney General Williamson to seek an injunction to state court to prevent "closing the last gap in the dam."

Phillips, declaring martial law on the area occupied by the mill-and-a-quarter long span, announced he would permit the builders to "finish as far as possible."

Appropriate Observance Of National Girl Scout Week Is Planned By Troop

The week of Mar. 12-18 has been designated as National Girl Scout Week and during this week emphasis is being placed on the work of the Sanford troop, local Girl Scout officials announced today.

As a part of the observance of the week a display has been placed in the window of the Yowell Company store in which the troop recently took part in connection with Health and Safety, Arts and Crafts, Dramatics, Out of doors, and Community life may be seen. These exhibits were in position and each was a prize winner.

Activities of the week include a special program prepared for the parents on Friday, a trip to the County Home by the Scout orchestra and special services on Sunday.

Outlining the history of the organization, local scout leaders said that "The Girl Scouts is a national organization for girls, founded in 1912 to develop initiative, self-control, self-reliance, and service to others, and to provide recreation in the lives of young girls. To become a Girl Scout a girl must be at least ten years old, pass the tenderfoot test and be willing to observe the Scout Promise of duty to God and country, and the Scout Law of honor, courtesy, loyalty, helpfulness, obedience, thrift, cleanliness and cheerfulness."

"Since a strong body is necessary for a useful life, the Girl Scout must learn to swim, hike, camp, and learn to find her way through the woods; she studies plants, birds, and animals, and she becomes proficient in sailing, canoeing, and other outdoor sports."

"A girl needs knowledge of home-making, so the Girl Scout must learn sewing, cooking, bed-making, care of children, and first aid to injured persons. She must be able to take care of her own person and her own home."

Preparations for the participation in the statewide convention of the American Legion on its tenth anniversary, which will be held in the Chamber of Commerce building Friday night at 7:30 o'clock. All winter visitors and residents are invited.

City News Briefs

The Mather Furniture Company has been granted a building permit to make alterations to its store in the Arcade Building at an estimated cost of \$100.

Dr. and Mrs. F. L. Ware of Warrenton, Ore., are the guests of Judge and Mrs. R. W. Ware. Dr. Ware is a brother of Judge Ware. They will visit here for a week.

The regular meeting of the Card and Checkers Club will be held in the Chamber of Commerce building Friday night at 7:30 o'clock. All winter visitors and residents are invited.

A business sponsored jointly by the Orlando Women's Club and the Oviedo Lions Club will be held in Brewster Park in Oviedo tonight. All political candidates and residents of the entire county have been invited to attend.

Finland, Norway, Sweden Planning Defense Alliance

Philadelphia Is Preparing For G. O. P. Session

Conclave Headquarters Will Accommodate 15,000 People

PHILADELPHIA, Mar. 14.—(AP)—The estimated 15,000 persons, including delegates, who will witness the nomination of a Republican presidential candidate next June 21, will not occupy the commodious Philadelphia Municipal auditorium.

Some of most of the 1940 G. O. P. national convention's activity, the gigantic structure designed in Italian Renaissance style, will accommodate 15,000 persons comfortably, without temporary structural change, which probably will be made before the conclave opens.

A main auditorium, 200 feet long and 226 feet wide, with a classic vaulted ceiling stretching an average of 88 feet above the floor, will provide seating accommodations for 14,500 spectators, while 1500 more will be seated on the spacious stage, which is 116 feet wide and 54 feet deep.

A feature of the hall is a complete lack of supporting columns. Its balconies are of the hanging type and not a single pillar obstructs the view of any spectators in any part of the auditorium.

While seats in the balconies are permanent, the main floor is equipped with seats removable to make space for dancing, basketball, ice hockey, and other indoor sports. The main floor provides 230,639 square feet of exhibition space, with facilities for electricity, compressed air, hot and cold water, live steam and telephone service available for scores of small booths.

In addition to the main convention hall, there are 68 adjacent meeting rooms, the largest of which the ballroom, seats 1800 persons and is complete with stage and theatrical facilities.

Convention delegates will be entertained by among other things—a \$60,000 pipe organ, considered one of the finest instruments of its type in the country. Capable of reproducing the sound of any musical instrument, the organ has three consoles one for theatrical music and a reproducing console.

The restaurant, on the floor below the main arena, is a complete modern culinary unit. The structure is complete with modern air conditioning apparatus, which will serve convention delegates, and the hardships of a Philadelphia June.

One of the newest of the nation's great halls, the Municipal auditorium was opened in June, 1931, when the American Mechanical society held its annual convention and exhibition there. Greatest of all its meetings to date was the 1936 Democratic National convention, all thousands of which were met by the hall's facilities.

Other projects of this committee include an appropriate observance of the National Boy's and Girl's Week which is set aside for Apr. 27 to May 4.

New Members Enroll For Sales Classes

At least 10 new members enrolled in the second of a series of salesmanship classes held at the Chamber of Commerce building last night, Chamber officials said today.

A large amount of interest is being shown in the sessions which are conducted by Mrs. Juanita D. Beymer and those attending declare that many helpful pointers on "Sales Practices and the Problems of Retail Clerks" have been given by the instructor.

The classes are made possible through the State Department of Trade and Industrial Education and are financed through State and Federal funds. Those attending are required to pay no fees and all who are in any way connected with retail selling were extended an invitation to attend next week's session on Wednesday night.

LOCAL WEATHER

Mostly cloudy, with light rain and east portions tonight and some rain south portion Friday. Moderate cold in north and east portions and slightly warmer in south portion Saturday.

Forecast for the 1940 World's Fair: "The 1940 World's Fair will be a great success."

The 1940 World's Fair will be a great success. The 1940 World's Fair will be a great success. The 1940 World's Fair will be a great success.

The 1940 World's Fair will be a great success. The 1940 World's Fair will be a great success. The 1940 World's Fair will be a great success.

The 1940 World's Fair will be a great success. The 1940 World's Fair will be a great success. The 1940 World's Fair will be a great success.

The 1940 World's Fair will be a great success. The 1940 World's Fair will be a great success. The 1940 World's Fair will be a great success.

The 1940 World's Fair will be a great success. The 1940 World's Fair will be a great success. The 1940 World's Fair will be a great success.

The 1940 World's Fair will be a great success. The 1940 World's Fair will be a great success. The 1940 World's Fair will be a great success.

The Sanford Herald

Established in 1908... Published every afternoon except Sunday at Sanford, Florida... 111 Magnolia Avenue

ROSLAND L. DEAN Editor... HOBSON DEAN Business Manager

SUBSCRIPTION RATES... Single Copies 10c... 3 Months \$2.50... 6 Months \$4.50... 1 Year \$8.00

ALL ordinary notices, cards of thanks, resolutions and notices of appointments for the purpose of advertising... will be charged for at regular advertising rates.

Inland Newspaper Representatives... The Sanford Herald is a member of the Associated Press which is a news-gathering organization...

The Herald is a member of the Associated Press which is a news-gathering organization... authorized to use the name of the Associated Press...

THURSDAY, MARCH 14, 1940

BIBLE VERSE FOR TODAY

GOD ANTICIPATES OUR TRUE NEEDS: And it shall come to pass before they call, I will answer; and while they are yet speaking, I will hear.—Isaiah 65:1

DEDICATION

(From The Lyric) What should I dedicate to you but light? To you these lamps I read by night by night? To you my lantern and my flashlight too...

—ROBERT FRANCIS

Be sure you are qualified to vote in the May primaries.

The Russians may have won the Finnish war, but they know they've been in a fight.

Milton has oodles and gobs of thinkers and planners but darned few doers and go-getters.

An alleged Russian spy has been arrested in Miami. He was trying to find out how much has been contributed to the Finnish Relief Fund.

The funny thing about it is that with all the income in tax, the government still is unable to meet its expenses.

The Wauchula Herald is glad to don't have to put up with the Legislature this year. No, this is the year the voters will make the mistakes.—Fort Myers News Press.

The FBI is under fire from all directions these days. It seems that in adding the country of the Dillingers, Barkers, Floods, and other well known Public Enemy No. Ones, it has stepped on somebody's toes.

It seems odd, but no graduate of the University of Florida has ever been elected governor of the state.—Ocala Morning Banner.

Perhaps the graduates of the University would prefer to work for their living.

Democrats in New Hampshire want President Roosevelt to run for a third term. But is that any reason why he should do so? Suppose they wanted him to become king, or climb into a baking oven, or wouldn't do that, would he?

Servy Carter has been in town two days and has spoken by reliable estimate, 999,999 words.—Tampa Tribune.

Harold Cole made a splendid speech in Sanford the other night to his audience full of new members for Florida's future.

Some of the living went up one cent last month, it is reported on the National Industrial Conference Board. So if you did not get a one percent increase in your monthly pay, you were a loser.

Some of the living went up one cent last month, it is reported on the National Industrial Conference Board. So if you did not get a one percent increase in your monthly pay, you were a loser.

Always Too Late

Now that the war in Finland is over and the Russo-Anti-Comintern Pact-Alliance has won another victory, Prime Minister Chamberlain's government is being roundly condemned...

Lealie Hore-Bellaha, who it will be recalled resigned as war minister only a short time ago under circumstances which indicated he very strongly disapproved of the passive manner of waging warfare...

At the same time David Lloyd George, who is himself not without knowledge of how to conduct a war, since he was British Prime Minister during the World War, also condemned the dilatory tactics of the Chamberlain government.

Certainly Lloyd George's criticism is well deserved. There may be some merit in not rushing in where angels fear to tread, but so far there has been no merit in the results which Chamberlain has achieved...

What a different Europe it would be today, what a different world, if Britain had sanctioned decisive action at the time the Japs invaded Manchuria...

It was in connection with the civil war in Spain that the "appeasement policy" and its twin-sister the "non-intervention policy" reached the heights of the absurd.

What a different Europe it would be today if Chamberlain had followed the French advice and intervened in Spain to save that country from domination by the fascist powers.

Lesson In Democracy

The teacher decided to drive home a little lesson in democracy. So she addressed the children in this vein: "Did you know that Robert's father is a very important man?"

"And Mary's father is a very important man. He's a doctor, and when people are sick he cures them and so they don't die."

"And William's father is a very important man. He sells meat and groceries, so people can get enough to eat."

"And Myrtle's father is a very important man! He's a hod carrier, and carries bricks so that houses can be built that people can live in."

We plumbed the depths of human misery the other day. Here, in Stuart, believe it or not, we met a woman who had not painted her fingernails a dripping red, whose hair was not all frizzed up like a Congo belle's...

250 Memberships Reported On 1st Day of Campaign

(Continued from Page One) R. A. Newman is chairman in leading the list of campaign workers, reporting a total of 78 members to date.

The committee of which H. H. Coleman, J. L. Ingley and E. V. Turner are members was second with a total of 35 memberships.

Mr. Endor Curlett headed the list of those reporting from the rural communities with 11 members in the Geneva and Decatur sections.

As the committees turn in the names of those who have joined the organization, they are posted on the billboard on the north side of the City Theatre...

Some of the living went up one cent last month, it is reported on the National Industrial Conference Board. So if you did not get a one percent increase in your monthly pay, you were a loser.

Some of the living went up one cent last month, it is reported on the National Industrial Conference Board. So if you did not get a one percent increase in your monthly pay, you were a loser.

ANYTHING THAT LOOKS LIKE ANOTHER SEABISCUIT?



WEEKLY NEWS COLUMN

By JOE HENDRICKS

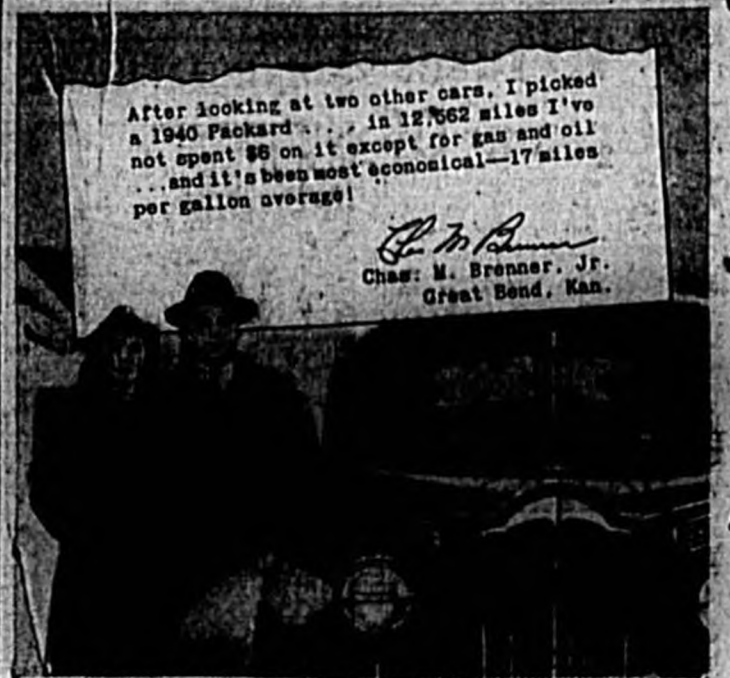
COMPLIMENT TO FLORIDA — One Member buttonholed me in the Speaker's Lobby recently and said, "I think that one of the finest compliments that I can remember is that all investigating agencies have chosen this particular time to investigate Florida. The FBI is in Miami, agents of the Dies Committee are in Tampa and WPA investigators are all over the State."

GENERAL MORATORIUM — I have recently had letters from many of my constituents begging, or rather almost demanding that we pass legislation declaring a general moratorium on loans under the Federal Land Bank and the Farm Credit and Farm Security Administrations.

RELIEF — BREVARD COUNTY — Quite often a department of the Government requests that a municipality or county go to some expense in cooperating with them to secure some property or some franchise that they desire for the purpose of the Federal Government. Of course the municipality or county is informed that the negotiations are not to be considered a contract until a contract is actually signed by the Department.

Company, Stanley-Rogers Hardware Company and Palmetto Grocery. Martin's Paint Store, City Drug Company, Dr. Wade H. Garner, D. K. McNair, Hill Lumber Company, W. J. Pell, Andrew Curraway, Henry McLain, Jr., J. H. Colclough, Henry McLain, Sr., I. L. Talbot, C. C. Whittington, Bruce A. Palmer, Mark J. Palmer, R. J. Palmer, A. Wisbold, L. T. Doss, Randall Chase, S. O. Chase, J. W. A. Everhard, Cinderella Shop, H. M. Papworth, W. J. Talbot, W. C. Erickson, Mrs. W. C. Erickson, R. G. Brisson, Preston E. Sherrill, E. M. Armistead, and James Maguire, Alex. Valdes Hotel, G. D. Workman and Mrs. G. D. Workman. The Sanford Herald, R. L. Dean, and W. G. Dean. Perveral Gatchell's Cash Grocery, Sanford, Atlantic National Bank, A. L. Batts, A. F. Collins, J. E. Gatchell, J. L. Ingley, Margaret Ingley, R. P. Mann, C. O. McNeill, Ruth E. Scott, Nancy White and Ray Wright. Sanford Gas Company, J. W. Hall, N. G. Gatchell, G. O. O'Connell, A. G. Gatchell, G. O. O'Connell, Florida Bank Service Company, J. L. Galloway, Mrs. C. E. Galloway, E. D. Galloway, Sanford...

ers should not worry but should be prepared to pay as promptly as they have sold their crops. CIVIL SERVICE EXAMINATIONS — Announcement of the following exams have been received. Chief, Research and Statistical Service, Office of Education, \$5,600; Assistant Myco-



PROOF THAT PACKARD MILES ARE THRIFTY. OWNERS in every state share Mr. Brenner's enthusiasm for 1940 Packard thriftiness. Ask any of them—or, better still, get the facts firsthand! Drive a 1940 Packard. Compare it yourself for economy as well as value! Get your Packard dealer to show you that Packard service charges are right in line with those of even much smaller cars. And THEN you'll know why Packard, of all manufacturers, has the largest-growing family of owners in America!

SEMINOLE GARAGE 206 Magnolia Avenue—Sanford, Florida. Is Your Local PACKARD Dealer

Advertisement for Vanti Sparkling Pa-Pi-A. The headline reads 'HERE'S YOUR NEW TASTE THRILL!' and 'Vanti SPARKLING PA-PI-A'. It features illustrations of a man and a woman drinking the beverage. Text includes 'NEW! Boy I never tasted anything so swell!', 'TROPICAL! Made from golden juices and luscious fruit of papaya!', and 'REFRESH! What a flavor! What a mixer in your favorite tall drink!'.

Social And Personal Activities

LILLIAN ADAMS, Society Editor

Social Calendar

THURSDAY
A Klipp will continue the...
Methodist United...
First Methodist Church...

FRIDAY
Post Office Auxiliary and...
Miss Muller on Elm Avenue...

Methodist United For Action...
Review of John R. Mott's book...

Methodist United For Action...
Review of John R. Mott's book...

Methodist United For Action...
Review of John R. Mott's book...

Methodist United For Action...
Review of John R. Mott's book...

Methodist United For Action...
Review of John R. Mott's book...

Methodist United For Action...
Review of John R. Mott's book...

Methodist United For Action...
Review of John R. Mott's book...

Methodist United For Action...
Review of John R. Mott's book...

Methodist United For Action...
Review of John R. Mott's book...

Miss Faircloth Is Honored At Shower

Miss Wynelle Faircloth, whose marriage to Pat Lanier will be solemnized this Saturday, was complimented last evening with a surprise miscellaneous shower at the home of Mrs. Ted Wright on Second Street and Avenida Avenue with Mrs. Hoyt Woodward and Miss Louise Packard as co-hostesses.

As a surprise miscellaneous shower at the home of Mrs. Ted Wright on Second Street and Avenida Avenue with Mrs. Hoyt Woodward and Miss Louise Packard as co-hostesses.

One-Act Play Given At Womans Club

As the feature of the program on Wednesday afternoon, the Womans Club presented a one-act play, "Box and Cox," before a most interested and appreciative audience.

Before the presentation, Mrs. R. C. Maxwell explained some of the old-fashioned ideas of comedy which this farce illustrated.

The scene of the play was laid in a rooming house in London, owned by the landlady, Mrs. Bonner, played "most convincingly" by Mrs. J. E. Alken.

The next play to be presented by the department will be a modern one-act drama, which will be an interesting contrast to "Box and Cox."

NOTICE
Ruth Gordon Wright Spring Dance Revue will be presented on Wednesday and Thursday nights of next week, Mar. 20 and 21, at the Ritz Theatre.

NOTICE
Gladola Woodmen Circle 287 will meet in the Woodmen Hall at 8:00 P. M. with Mrs. A. G. Madden, guardian, presiding over the meeting.

NOTICE
A ducking stone was used to punish shrews in England in 1745.

to attend are requested to telephone Mrs. Ralph Chapman at 837.

SATURDAY
Cecilian Music Club will meet at 8:15 P. M. at the Fannie H. Munson Studios on 603 Myrtle Avenue.

Personals

Mrs. Fred Olson and Mrs. O. C. Gibbs are spending today in Orlando.

Miss Sue Ganitt has accepted a position in Gainesville where she will make her future home.

Mrs. W. M. Haynes left today for Jacksonville where she will visit relatives for the remainder of this week.

Mrs. Mary Forrester has returned from Gainesville where she visited for the past two weeks.

Mrs. Jack Hall is expected to return today from Alexander City, Ala., where she has visited for the past two weeks with relatives.

Mr. and Mrs. William Moye have as their guest, the latter's mother, Mrs. Jolner, of Waycross, Ga.

Mrs. Sadie Moses has as her guest, Mrs. Nathan Zelnovitch, of Okaloosa, who will visit her for several days.

Friends of A. M. Gordnier will regret to learn that he underwent an operation yesterday in the Fernald-Laughton Memorial Hospital.

Friends of A. H. Hatcher will be glad to learn that he has recovered from a recent attack of influenza and is now able to return to his work.

Friends of Miriam Joyce and Arthur Hatcher, Jr., will be glad to learn that they have recovered from chicken pox and Elizabeth Hatcher from influenza at their home on East Sixth Street.

Dr. and Mrs. Ralph F. Spence and Mr. and Mrs. Sidney R. Hadden, of Hudson, N. Y., who have been visiting as the guests of Dr. S. Puleston, plan to leave Sunday to spend a week at Miami Beach.

Mrs. J. M. Busbee of Vienna, Ga., and Mrs. William Hale, Jr., and son, William, III, who have been visiting as the guests of Mr. and Mrs. Jack McDonald, plan to leave Sunday on a trip to Miami.

Church Council Of Church Has Meet

The Woman's Missionary Council of the Assembly of God Church held its quarterly "Gentlemen's Night" in connection with the regular meeting Monday evening at the home of Mr. and Mrs. Henry Benton on the old Orlando Highway.

The living room of the house was decorated with sweet peas and fern. An Easter motif was carried out in the dining room where yellow and green were the predominant colors.

Present with Ruby and Robert were Katherine Cullum, June Harriet, Jeannette Harriet, Beverly Cameron, Betty Rathel, Betty Jean Sheppard and Arthur Hatcher, Jr. Assisting Mrs. Stenstrom in serving an ice course with the birthday cake was Mrs. A. H. Hatcher.

Present with Ruby and Robert were Katherine Cullum, June Harriet, Jeannette Harriet, Beverly Cameron, Betty Rathel, Betty Jean Sheppard, Miriam Hatcher, Betty Sue Hatcher, Joyce Hatcher and Elizabeth Hatcher.

Present with Ruby and Robert were Katherine Cullum, June Harriet, Jeannette Harriet, Beverly Cameron, Betty Rathel, Betty Jean Sheppard, Miriam Hatcher, Betty Sue Hatcher, Joyce Hatcher and Elizabeth Hatcher.

Present with Ruby and Robert were Katherine Cullum, June Harriet, Jeannette Harriet, Beverly Cameron, Betty Rathel, Betty Jean Sheppard, Miriam Hatcher, Betty Sue Hatcher, Joyce Hatcher and Elizabeth Hatcher.

Present with Ruby and Robert were Katherine Cullum, June Harriet, Jeannette Harriet, Beverly Cameron, Betty Rathel, Betty Jean Sheppard, Miriam Hatcher, Betty Sue Hatcher, Joyce Hatcher and Elizabeth Hatcher.

Present with Ruby and Robert were Katherine Cullum, June Harriet, Jeannette Harriet, Beverly Cameron, Betty Rathel, Betty Jean Sheppard, Miriam Hatcher, Betty Sue Hatcher, Joyce Hatcher and Elizabeth Hatcher.

Present with Ruby and Robert were Katherine Cullum, June Harriet, Jeannette Harriet, Beverly Cameron, Betty Rathel, Betty Jean Sheppard, Miriam Hatcher, Betty Sue Hatcher, Joyce Hatcher and Elizabeth Hatcher.

Present with Ruby and Robert were Katherine Cullum, June Harriet, Jeannette Harriet, Beverly Cameron, Betty Rathel, Betty Jean Sheppard, Miriam Hatcher, Betty Sue Hatcher, Joyce Hatcher and Elizabeth Hatcher.

Present with Ruby and Robert were Katherine Cullum, June Harriet, Jeannette Harriet, Beverly Cameron, Betty Rathel, Betty Jean Sheppard, Miriam Hatcher, Betty Sue Hatcher, Joyce Hatcher and Elizabeth Hatcher.

Present with Ruby and Robert were Katherine Cullum, June Harriet, Jeannette Harriet, Beverly Cameron, Betty Rathel, Betty Jean Sheppard, Miriam Hatcher, Betty Sue Hatcher, Joyce Hatcher and Elizabeth Hatcher.

Pair Are Honored At Birthday Party

Ruby and Robert Stenstrom were honored Tuesday afternoon with a birthday party in celebration of their sixth anniversary by their mother, Mrs. N. J. Stenstrom, at their home on Palmetto Avenue.

The living room of the house was decorated with sweet peas and fern. An Easter motif was carried out in the dining room where yellow and green were the predominant colors.

Present with Ruby and Robert were Katherine Cullum, June Harriet, Jeannette Harriet, Beverly Cameron, Betty Rathel, Betty Jean Sheppard and Arthur Hatcher, Jr. Assisting Mrs. Stenstrom in serving an ice course with the birthday cake was Mrs. A. H. Hatcher.

Present with Ruby and Robert were Katherine Cullum, June Harriet, Jeannette Harriet, Beverly Cameron, Betty Rathel, Betty Jean Sheppard, Miriam Hatcher, Betty Sue Hatcher, Joyce Hatcher and Elizabeth Hatcher.

Present with Ruby and Robert were Katherine Cullum, June Harriet, Jeannette Harriet, Beverly Cameron, Betty Rathel, Betty Jean Sheppard, Miriam Hatcher, Betty Sue Hatcher, Joyce Hatcher and Elizabeth Hatcher.

Present with Ruby and Robert were Katherine Cullum, June Harriet, Jeannette Harriet, Beverly Cameron, Betty Rathel, Betty Jean Sheppard, Miriam Hatcher, Betty Sue Hatcher, Joyce Hatcher and Elizabeth Hatcher.

Present with Ruby and Robert were Katherine Cullum, June Harriet, Jeannette Harriet, Beverly Cameron, Betty Rathel, Betty Jean Sheppard, Miriam Hatcher, Betty Sue Hatcher, Joyce Hatcher and Elizabeth Hatcher.

Present with Ruby and Robert were Katherine Cullum, June Harriet, Jeannette Harriet, Beverly Cameron, Betty Rathel, Betty Jean Sheppard, Miriam Hatcher, Betty Sue Hatcher, Joyce Hatcher and Elizabeth Hatcher.

Present with Ruby and Robert were Katherine Cullum, June Harriet, Jeannette Harriet, Beverly Cameron, Betty Rathel, Betty Jean Sheppard, Miriam Hatcher, Betty Sue Hatcher, Joyce Hatcher and Elizabeth Hatcher.

Present with Ruby and Robert were Katherine Cullum, June Harriet, Jeannette Harriet, Beverly Cameron, Betty Rathel, Betty Jean Sheppard, Miriam Hatcher, Betty Sue Hatcher, Joyce Hatcher and Elizabeth Hatcher.

Present with Ruby and Robert were Katherine Cullum, June Harriet, Jeannette Harriet, Beverly Cameron, Betty Rathel, Betty Jean Sheppard, Miriam Hatcher, Betty Sue Hatcher, Joyce Hatcher and Elizabeth Hatcher.

Present with Ruby and Robert were Katherine Cullum, June Harriet, Jeannette Harriet, Beverly Cameron, Betty Rathel, Betty Jean Sheppard, Miriam Hatcher, Betty Sue Hatcher, Joyce Hatcher and Elizabeth Hatcher.



MRS. FRANK D. MOOR, of Tallahassee, state alumnae president, who will accompany Dr. Kathryn T. Abbey and will speak at the Sanford Alumnae Club banquet at the Mayfair Hotel Friday night.

Another of the series of all-day excursions on the St. Johns River will be held for the winter visitors tomorrow. The Yacht Club will leave the Municipal Pier Friday morning at 10:00 A. M. and return at 6:00 P. M.

Another of the series of all-day excursions on the St. Johns River will be held for the winter visitors tomorrow. The Yacht Club will leave the Municipal Pier Friday morning at 10:00 A. M. and return at 6:00 P. M.

Another of the series of all-day excursions on the St. Johns River will be held for the winter visitors tomorrow. The Yacht Club will leave the Municipal Pier Friday morning at 10:00 A. M. and return at 6:00 P. M.

Another of the series of all-day excursions on the St. Johns River will be held for the winter visitors tomorrow. The Yacht Club will leave the Municipal Pier Friday morning at 10:00 A. M. and return at 6:00 P. M.

Another of the series of all-day excursions on the St. Johns River will be held for the winter visitors tomorrow. The Yacht Club will leave the Municipal Pier Friday morning at 10:00 A. M. and return at 6:00 P. M.

Another of the series of all-day excursions on the St. Johns River will be held for the winter visitors tomorrow. The Yacht Club will leave the Municipal Pier Friday morning at 10:00 A. M. and return at 6:00 P. M.

Another of the series of all-day excursions on the St. Johns River will be held for the winter visitors tomorrow. The Yacht Club will leave the Municipal Pier Friday morning at 10:00 A. M. and return at 6:00 P. M.

Another of the series of all-day excursions on the St. Johns River will be held for the winter visitors tomorrow. The Yacht Club will leave the Municipal Pier Friday morning at 10:00 A. M. and return at 6:00 P. M.

Another of the series of all-day excursions on the St. Johns River will be held for the winter visitors tomorrow. The Yacht Club will leave the Municipal Pier Friday morning at 10:00 A. M. and return at 6:00 P. M.

Another of the series of all-day excursions on the St. Johns River will be held for the winter visitors tomorrow. The Yacht Club will leave the Municipal Pier Friday morning at 10:00 A. M. and return at 6:00 P. M.

Another of the series of all-day excursions on the St. Johns River will be held for the winter visitors tomorrow. The Yacht Club will leave the Municipal Pier Friday morning at 10:00 A. M. and return at 6:00 P. M.

Past Matrons Club Sponsors Card Party

A subscription bridge and Chinese checkers party was sponsored by the Past Matrons Club of the O. E. S. Tuesday evening in the Elks Hall. Other games enjoyed were mahjongg and rummy.

Door prize was won by Mrs. H. E. Turner; sceneo prize, Mrs. S. C. Dickerson; rummy, Mrs. W. C. Clemon, ladies, and R. W. Turner, gentlemen; Chinese checkers, Mrs. E. M. Bunn and Ford Russell; bridge, Mrs. E. H. Altman and F. S. Lamson and second, Mrs. Otto Caldwell and T. L. Sullivan; mahjongg, Mrs. Brodsky.

Past Matrons present were Mrs. Harry Kent, Mrs. J. O. Huff, Mrs. L. M. Tyre, Mrs. G. E. McKay, Mrs. Betha Jinks, Mrs. A. J. Routh, and Mrs. R. F. Crenshaw.

Guests included: Mrs. C. P. Henderson, Mrs. Clyde Dickerson, Mrs. J. E. Stemper, Mrs. Ted Rathel, Mrs. O. G. Roller, Mrs. F. K. Smith, Mrs. Sam Maddox, Mrs. Grover Williams, Mrs. F. J. Willink, Mrs. H. E. Turner, Mrs. J. B. Crawford, Mrs. Otto Caldwell, Mrs. J. E. Abernathy, Mrs. E. H. Altman, and Mrs. John Sparkman.

Also, Mrs. H. A. McFarland, Mrs. Burke Steele, Mrs. R. A. Cobb, Mrs. G. W. Bailey, Mrs. O. J. Pope, Mrs. J. E. Courier, Mrs. Glenn E. McKay, Mrs. Roy Tillis, Mrs. J. W. Hall, Mrs. J. Rose Adams, Mrs. C. E. Proctor, Mrs. W. M. Haynes, Miss Martha Telford, Mrs. Byron Squires, Mrs. W. R. McCracken, Miss Lillian Thornley, and Mrs. W. L. Gray.

Also, Mrs. C. C. Welch, Mrs. I. Crosby, Mrs. M. J. Miller, Mrs. Harry Heeren, Mrs. J. A. Toll, Mrs. Manuel Jacobson, M. C. East, Mrs. Lulu Sanford, Mrs. R. A. Cameron, Mrs. Paul Pradol, Mrs. Anne Sanoval, Mrs. Peter Bercoe, Mrs. B. Brodsky.

Also, Mrs. C. C. Welch, Mrs. I. Crosby, Mrs. M. J. Miller, Mrs. Harry Heeren, Mrs. J. A. Toll, Mrs. Manuel Jacobson, M. C. East, Mrs. Lulu Sanford, Mrs. R. A. Cameron, Mrs. Paul Pradol, Mrs. Anne Sanoval, Mrs. Peter Bercoe, Mrs. B. Brodsky.

Also, Mrs. C. C. Welch, Mrs. I. Crosby, Mrs. M. J. Miller, Mrs. Harry Heeren, Mrs. J. A. Toll, Mrs. Manuel Jacobson, M. C. East, Mrs. Lulu Sanford, Mrs. R. A. Cameron, Mrs. Paul Pradol, Mrs. Anne Sanoval, Mrs. Peter Bercoe, Mrs. B. Brodsky.

Also, Mrs. C. C. Welch, Mrs. I. Crosby, Mrs. M. J. Miller, Mrs. Harry Heeren, Mrs. J. A. Toll, Mrs. Manuel Jacobson, M. C. East, Mrs. Lulu Sanford, Mrs. R. A. Cameron, Mrs. Paul Pradol, Mrs. Anne Sanoval, Mrs. Peter Bercoe, Mrs. B. Brodsky.

Also, Mrs. C. C. Welch, Mrs. I. Crosby, Mrs. M. J. Miller, Mrs. Harry Heeren, Mrs. J. A. Toll, Mrs. Manuel Jacobson, M. C. East, Mrs. Lulu Sanford, Mrs. R. A. Cameron, Mrs. Paul Pradol, Mrs. Anne Sanoval, Mrs. Peter Bercoe, Mrs. B. Brodsky.

Also, Mrs. C. C. Welch, Mrs. I. Crosby, Mrs. M. J. Miller, Mrs. Harry Heeren, Mrs. J. A. Toll, Mrs. Manuel Jacobson, M. C. East, Mrs. Lulu Sanford, Mrs. R. A. Cameron, Mrs. Paul Pradol, Mrs. Anne Sanoval, Mrs. Peter Bercoe, Mrs. B. Brodsky.

Also, Mrs. C. C. Welch, Mrs. I. Crosby, Mrs. M. J. Miller, Mrs. Harry Heeren, Mrs. J. A. Toll, Mrs. Manuel Jacobson, M. C. East, Mrs. Lulu Sanford, Mrs. R. A. Cameron, Mrs. Paul Pradol, Mrs. Anne Sanoval, Mrs. Peter Bercoe, Mrs. B. Brodsky.

Baptist Circle Has Meet At Ware Home

Circle Three of the Baptist Woman's Missionary Society held its monthly meeting Monday afternoon at the home of Mrs. R. W. Ware on Palmetto Avenue with Mrs. C. C. Cox leading the devotional and Mrs. W. E. Kader giving the opening prayer.

The Bible study, "When Shall I Give My Life to Jesus?" was given by Mrs. C. A. Anderson, Jr., and the mission study on "Mission Work in Our Home Land" was discussed by Mrs. W. D. Brooke, Jr. Mrs. S. C. Edwards spoke to the group on "Tithing" and Mrs. Brooks gave the closing prayer.

Refreshments were served by the hostesses to the following members present: Mrs. W. E. Kader, Mrs. Edward Kelsey, Mrs. B. R. Beck, Mrs. E. L. Parks, Mrs. John Cullum, Mrs. S. C. Graham, Mrs. S. C. Edwards, Mrs. Jack Stempfer, Mrs. W. P. Brooks, Jr., Mrs. C. A. Anderson, Jr., Mrs. S. A. Edfield, Mrs. C. C. Cox, Mrs. R. W. Ware, and Mrs. O. C. Gibbs.

Refreshments were served by the hostesses to the following members present: Mrs. W. E. Kader, Mrs. Edward Kelsey, Mrs. B. R. Beck, Mrs. E. L. Parks, Mrs. John Cullum, Mrs. S. C. Graham, Mrs. S. C. Edwards, Mrs. Jack Stempfer, Mrs. W. P. Brooks, Jr., Mrs. C. A. Anderson, Jr., Mrs. S. A. Edfield, Mrs. C. C. Cox, Mrs. R. W. Ware, and Mrs. O. C. Gibbs.

Refreshments were served by the hostesses to the following members present: Mrs. W. E. Kader, Mrs. Edward Kelsey, Mrs. B. R. Beck, Mrs. E. L. Parks, Mrs. John Cullum, Mrs. S. C. Graham, Mrs. S. C. Edwards, Mrs. Jack Stempfer, Mrs. W. P. Brooks, Jr., Mrs. C. A. Anderson, Jr., Mrs. S. A. Edfield, Mrs. C. C. Cox, Mrs. R. W. Ware, and Mrs. O. C. Gibbs.

Refreshments were served by the hostesses to the following members present: Mrs. W. E. Kader, Mrs. Edward Kelsey, Mrs. B. R. Beck, Mrs. E. L. Parks, Mrs. John Cullum, Mrs. S. C. Graham, Mrs. S. C. Edwards, Mrs. Jack Stempfer, Mrs. W. P. Brooks, Jr., Mrs. C. A. Anderson, Jr., Mrs. S. A. Edfield, Mrs. C. C. Cox, Mrs. R. W. Ware, and Mrs. O. C. Gibbs.

Refreshments were served by the hostesses to the following members present: Mrs. W. E. Kader, Mrs. Edward Kelsey, Mrs. B. R. Beck, Mrs. E. L. Parks, Mrs. John Cullum, Mrs. S. C. Graham, Mrs. S. C. Edwards, Mrs. Jack Stempfer, Mrs. W. P. Brooks, Jr., Mrs. C. A. Anderson, Jr., Mrs. S. A. Edfield, Mrs. C. C. Cox, Mrs. R. W. Ware, and Mrs. O. C. Gibbs.

Refreshments were served by the hostesses to the following members present: Mrs. W. E. Kader, Mrs. Edward Kelsey, Mrs. B. R. Beck, Mrs. E. L. Parks, Mrs. John Cullum, Mrs. S. C. Graham, Mrs. S. C. Edwards, Mrs. Jack Stempfer, Mrs. W. P. Brooks, Jr., Mrs. C. A. Anderson, Jr., Mrs. S. A. Edfield, Mrs. C. C. Cox, Mrs. R. W. Ware, and Mrs. O. C. Gibbs.

Refreshments were served by the hostesses to the following members present: Mrs. W. E. Kader, Mrs. Edward Kelsey, Mrs. B. R. Beck, Mrs. E. L. Parks, Mrs. John Cullum, Mrs. S. C. Graham, Mrs. S. C. Edwards, Mrs. Jack Stempfer, Mrs. W. P. Brooks, Jr., Mrs. C. A. Anderson, Jr., Mrs. S. A. Edfield, Mrs. C. C. Cox, Mrs. R. W. Ware, and Mrs. O. C. Gibbs.

Refreshments were served by the hostesses to the following members present: Mrs. W. E. Kader, Mrs. Edward Kelsey, Mrs. B. R. Beck, Mrs. E. L. Parks, Mrs. John Cullum, Mrs. S. C. Graham, Mrs. S. C. Edwards, Mrs. Jack Stempfer, Mrs. W. P. Brooks, Jr., Mrs. C. A. Anderson, Jr., Mrs. S. A. Edfield, Mrs. C. C. Cox, Mrs. R. W. Ware, and Mrs. O. C. Gibbs.

Refreshments were served by the hostesses to the following members present: Mrs. W. E. Kader, Mrs. Edward Kelsey, Mrs. B. R. Beck, Mrs. E. L. Parks, Mrs. John Cullum, Mrs. S. C. Graham, Mrs. S. C. Edwards, Mrs. Jack Stempfer, Mrs. W. P. Brooks, Jr., Mrs. C. A. Anderson, Jr., Mrs. S. A. Edfield, Mrs. C. C. Cox, Mrs. R. W. Ware, and Mrs. O. C. Gibbs.

Refreshments were served by the hostesses to the following members present: Mrs. W. E. Kader, Mrs. Edward Kelsey, Mrs. B. R. Beck, Mrs. E. L. Parks, Mrs. John Cullum, Mrs. S. C. Graham, Mrs. S. C. Edwards, Mrs. Jack Stempfer, Mrs. W. P. Brooks, Jr., Mrs. C. A. Anderson, Jr., Mrs. S. A. Edfield, Mrs. C. C. Cox, Mrs. R. W. Ware, and Mrs. O. C. Gibbs.

Bits
LAST TIMES TODAY
A. J. CROONIN'S and...
THE CITADEL
LOMBARD
AHERNE-SHERLY
VIGIL IN THE NIGHT
RKO RADIO Picture.

Friday & Saturday Double Program
THE HOUSE OF FEAR
GIRL IN THE NIGHT
RKO RADIO Picture.

FREE FREE!
In Conjunction With...
AIRPLANE RIDE

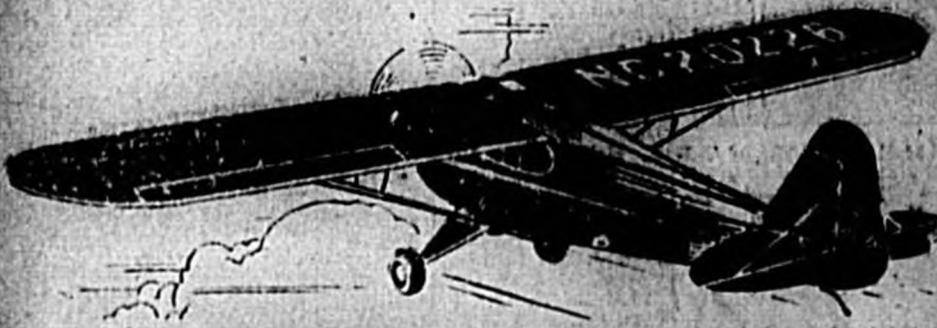
TO SELL
EM-TELL
With An Ad

MOTHERS! REGISTER YOUR BABY IN THE SEMINOLE COUNTY PRIZE BABY SHOW
Sponsored by the Campbell-Lossing Post, Unit No. 53—American Legion Auxiliary
Registrations Begin Tomorrow Friday, March 15th through Thursday, March 21st.
MOTHERS! REGISTER YOUR BABIES IN THE INFANTS' DEPARTMENT FROM 9 A. M. TO 6 P. M. IT IS NOT NECESSARY TO BRING BABY ALONG. NO ENTRANCE FEE IS REQUIRED AND ALL BABIES UNDER FIVE YEARS OF AGE MAY BE REGISTERED.
FREE PHYSICAL EXAMINATIONS! An appointment will be made for each baby to receive a thorough physical examination. Score cards filled in by doctors will be returned to parents.
SILVER LOVING CUPS! Silver Loving Cups will be awarded to the baby kings and queens... and health certificates and blue ribbon diplomas will be awarded scoring winners in the various classes. Special Cups for redheads and twins.
CORONATION PAGEANT! The most beautiful of the girls, and the handsomest boy will be chosen at the Baby Beauty Show... and the Baby Kings, Baby Queens, Princesses and Princes will be Crowned at the—
PAGEANT AT THE SEMINOLE HIGH SCHOOL AUDITORIUM Monday, April 15th—7:00 to 9:00 P. M.
REGISTRATION GIFTS FOR FIRST FIFTY BABIES
Sorry, No Registrations by Telephone
THE YOWELL CO. Sanford, Florida

For the Easter Parade
Hollywood Fashions
In Rose—Blue—Navy \$3.98
An exciting collection of "Dressy" Dresses for the Easter Parade. All the new fashions, jacket dresses, lace combinations with tulle, lace, lingerie trims; fine detailed tucking. Heavenly Pink, Mist Blue, and Navy. Sizes 12 to 14.
Sheer—Frilly—Lacy BLOUSES \$1.00 - \$1.98
A new dress-up blouse in a "must" for Easter. See these new styles in sheer, frilly, lacy combinations. White and soft pastels. Long and short sleeves. Sizes 12 to 14.
Plaid Jackets \$2.98
Soft Spring plaid. Classic style in "Corduroy" for your casual spring wardrobe. Sizes 12 to 16.
for Easter! Select beautiful Hollywood Hose 79c pr.
NO. 303—Sheer 3-Thread Hose in Easter Shades! Exciting, Enticing, Lively.
2-Thread Crepe \$89c pr
3-Thread Luxura \$1 pr
Lingerie For Your Easter Outfit Lace Trimmed SLIPS \$1.00
Cantolite slips for your sheer blouses. Lovely fitted lace on beautiful underfilament crepe. Bias cut or 4-way stretch. Tealose and white. Sizes 22 to 34.
New Spring GOWNS \$1.00
Spring-like flowered prints on soft pastel backgrounds. Fine rayon crepe, or sheer cotton.
Hollywood Shops

FREE RIDE ON THE BIG 12 PASSENGER AIR-LINER

TICKET GIVEN WITH PURCHASES OF \$1.00 OR MORE
Plenty Of Tickets - Plenty Of Thrills



Triple "S" Groceteria

FRIDAY & SATURDAY MARCH 15th & 16th

HERBERT'S SUGAR 23¢	3 LBS. FRESH FLA. LIL EGGS doz. 23¢	4 Lb. Carton LARD 35¢
BABY GA. BEEF STEW 3 lbs. 25¢	ROASTS 15¢	3 Lbs. Best Honduras RICE 21¢
GA. SUGAR CURED COUNTRY BACON lb. 15¢	STEAKS 19¢	

SWANSDOWN PLAIN

FLOUR

20 lbs. 95¢	10 lbs. 49¢	5 lbs. 25¢	Box Cake 25¢
-------------	-------------	------------	--------------

GOLDEN KEY MILK	3 Tall Cans 17¢
-----------------	-----------------

All 10c Bread 2 for 17¢

Home Like Salad Dressing 25¢	14¢	10¢	NO. 2 CAN. IT IS THE BEST Blue Label CORN 10¢
NO. 10 BOX MATCHES 4 for 10¢			CORN BEEF 2 for 29¢
NO. 8 CAN GRAPE FRUIT JUICE 5c			Carrots bu. 5c; Celery 5c
APPLE JUICE 10¢			Lettuce 5c; Turnips bu. 5c
PINEAPPLE JUICE 29¢			CHALK & SANDORN COFFEE 23¢
TOMATO JUICE 10¢			NO. 3 CAN G. N. BROWN ENGLISH PEAS 10¢
NO. 3 CAN Grapefruit HEARTS 10¢			

Get A Thrill—Spend & Get Free Ticket. Follow The Crowd To Sanford Air Port Friday, Saturday or Sunday afternoon.

Breakfast Sl. lb. 19¢	Best White lb. 12½¢	Bolling Bacon lb. 5c	NO. 1 CAN ALL Good APRICOTS 10¢
CORN BROOM 39¢	Pure Ga. SYRUP 29¢	TOILET TISSUE 7¢	NO. 2 CAN STRAWBERRY BLUE BERRIES 12½¢
	VERMONT MAID SYRUP qt. 39¢	NEW GOLD BERRY ORANGES doz. 19¢	

FULL SIZE SHREDDED WHEAT 10¢

Southern Beach To Be Transplanted To World's Fair

WORLD'S FAIR, N. Y., Mar. 13.—While snow and ice were wreaking their vengeance at the World's Fair of 1939 in New York, the fragments of orchids and orange blossoms drifted north out of the tropics with the announcement that visitors to the Florida Exhibit this year will stroll down "Orange Blossom Lane" to a real southern beach amazingly transplanted to the shores of Liberty Lake.

Alternated orange and palm trees will form an enchanting vista from the Empire State Bridge to the state pavilion. "These are two major innovations designed to make Florida the most popular exhibit at the Fair," said Earl W. Brown, manager.

Beautiful girls in slacks will parade through palmetto shelters and living palms dotting an authentic beach covered with tons of Florida sand, said Mr. Brown. A smart Cabana Club with two air play decks will command the simulated southern beach scene. Bule of native cypress, the club will be decorated in pastel shades. Hostesses will dispense Florida grapefruit juice and orange sherbet.

Forster Barnes, landscape architect, has designed a whole new area typifying a popular Florida resort. Caribbea of Florida sand will be brought north to identify the tropical atmosphere. Shelters woven of real palmetto fiber by Seminole Indians in the Everglades will rise against a background of palms, palmettos, sea grapes and other foliage indigenous to the Florida coast. A boardwalk breaths the beach area.

Superb specimens of tropical fish will hang along a typical southern pier extending into Liberty Lake. Tied to the dock will be fishing boats with tackle, rods, reels and lines suitable for Florida fishing. Experts in bait casting will give demonstrations here.

Iron wrought lamps will throw a soft light over the beach at night while fire and water pyrotechnics will project Florida scenes on Liberty Lake. The Florida beach will be an ideal spot to witness the magnificent fireworks display nightly scheduled by the Fair.

Flood-lights will illuminate the rare beauty of Orange Blossom Lane at night. Forty-five orange and palm trees will be staggered to form an aisle approaching the Florida Pavilion. Citrus trees for this purpose were taken from the patio garden were taken from the groves last Spring and carefully protected through recent freezes at the stat houses of the Florida exhibit in Deland. The trees will be shipped north May 1.

MENUS

By Mrs. Alexander George
Dinner Menu
Oysters Bettina, Buttered Spinach, Dressing, Flum, Orange Marmalade, French Dressing, Banana-Scotch Pudding and Coffee.

OYSTERS BETTINA
3 racks (battered out) 3 table-spoons butter, 1-2 cup sliced mushrooms, 1 teaspoon minced onions, 1 tablespoon minced celery, 1 tablespoon flour, 2-3 cup small oysters, 2 cups milk, 1 egg, butter, 1-3 teaspoon salt, 1-4 teaspoon paprika.

Butter inside of racks and bake until lightly browned. Mashed butter and add mushrooms, onions and celery. Simmer five minutes, blend with flour. Add oysters and milk. Cook slowly and stir constantly until creamy. Add other ingredients, mix thoroughly and serve in hot racks. Surround with cooked seasoned larded beef.

ASPARGUS SALAD
1 cup cooked asparagus, 1 cup finely chopped celery, 2 table-spoons chopped sweet pickles, 2 table-spoons chopped pimientos, 1-4 teaspoon salt, 1-3 cup thick milk dressing.

Chill ingredients. Arrange asparagus on top of other blended ingredients in a small dish.

BANANA SCOTCH PUDDING
1 cup dark brown sugar, 1-3 cup flour, 2 egg yolks, 1-3 teaspoon salt, 2 cups milk, 1 teaspoon vanilla, 1 cup sliced bananas, 3 egg whites, beaten, 3 table-spoons granulated sugar, 1-4 teaspoon grated lemon rind.

Mix brown sugar and flour. Add rind, salt and milk. Cook slowly on stovetop until creamy. Add vanilla. Pour into a buttered, shallow baking dish. Spread with bananas. Sprinkle granulated sugar and rind into beaten whites. Beat until creamy. Cover bananas and bake 15 minutes.

Get It Last For...

FRIDAY SPECIALS

Hockless Picnic Hams 13¢



FRIDAY SPECIALS

TRIN ANELL PECANS 2lbs. 25¢
GR. MINOR White Salad DRESSING 27¢

Economy Department

ARMOUR'S STAR Pure LARD 3 lbs. 21¢	FANCY BABY BEEF Club 2 lbs. 19¢	Stew 2 lbs. 19¢
	Round lb. 23¢	Sirloin lb. 23¢
	Chuck lb. 17¢	T-Bone lb. 25¢
FRESH DRESSED GA. PORK Shoulders lb. 9¢	Sides lb. 8½¢	Liver lb. 8½¢
	Pig Heads lb. 5¢	Neck Bones lb. 5¢
BACKBONE lb. 13¢	BEST MADE WETTER WHITE BACON 3 lbs. 25¢	HAMBURGER OR FRANKFURTERS 2 lbs. 25¢
REAL SMOKE Georgia BACON lb. 10½¢	FANCY WINESAP APPLES 4 LBS. 25¢	CAL. LEMONS DOZ. 19¢
GREEN Cabbage 1½¢	Strawberries 2 pints 29¢	HUBBARD SQUASH 4½¢
CARROT BEETS, LETTUCE 2 for 9¢	Fresh COCONUTS each 4¢	Fcy. York APPLES 5 lbs. 19¢
NO. 1 MAINE COBBLER POTATOES 10 lbs. 22¢	NICH Yellow BANANAS 4 lbs. 15¢	Yellow ONIONS 5 lbs. 15¢
JEWELL 35¢	MEAL 4 lbs. 7¢	BOBBI PINEAPPLE JUICE 47 oz. 25¢
NO. 1 EQUINE FRUIT COCKTAIL 10¢	FLAKES 10¢	PHILLIPS PORK BEANS 3 for 25¢
NO. 1 DEL MONTE TINY BEANS 9½¢	NO. 1 HARBIN GIFT PEAS 3 for 25¢	TANG 12 oz. 23¢
Wheaties 10¢	PILLBURY'S SHO SUNDY Cake Flour 25¢	KETCHUP 16¢
Meat Balls 29¢	GOLD MEDAL FLOUR 6 lb. 27¢	FLOUR 87¢
CHEESE lb. 25¢	WHEAT 10¢	CATSUP 19¢

Quality Department

LARGE SELECTION ASSORTED COLD CUTS lb. 19¢	Fancy Western Branded BEEF T-Bone lb. 35¢	Stew lb. 19¢
	Sirloin lb. 29¢	Roast lb. 19¢
	Round lb. 32¢	Brisket lb. 12½¢
GENUINE SPRING LAMB Legs lb. 25¢	Rib Chops lb. 29¢	Stew lb. 12½¢
	Shoulders lb. 15¢	Chops lb. 35¢
LIVER lb. 29¢	Premium HAMS lb. 22½¢	DRESSED HENS each 59¢
WILSON'S LAUREL Sliced BACON lb. 17½¢	PECANS lb. 17¢	CANADIAN Rutabagas 3¢
FANCY CELERY 6½¢	NICH JUICY ORANGES 15¢	SNOWBALL Cauliflower 10¢
DANDY LINK MILK tall 6¢	BALLY ANN BREAD lge. 7¢	No. 1 Campbell's Assort. SOUPS 2 for 17¢
NO. 1 Franco Amer. Spag. MACARONI 25¢	NO. 2 PIR CHERRIES 10¢	Honey 5 lbs. 39¢
Jumbo Mince Fresh Cuke PICKLE 17½¢	ASST. JELLO OR Jello Pudding 5¢	No. 2 Assorted Grapefruit JUICE 4 for 25¢
BLEACH 10¢	W. B. RIDGER'S G. B. CORN 3 for 25¢	OLD DUTCH CLEANSER 15¢
KISS'S HANDWASH SOAP 4¢	PARKAY OLEO lb. 15¢	NO. 1 PRAGE PEAN MIX 3 for 25¢
ALL IN FAMILY GUM 3 for 10¢		

SUGAR 5 LBS. 17¢

COFFEE 22½¢

RICE 13¢

PEACHES 11½¢

OXYDOL LGE. 17¢ SMALL 7½¢ GIANT 59¢

SPAGHETTI 303 APPLE SAUCE 303 LIBBY'S CUT BEETS 2½ HOMINY 2 FOR 15¢

SCOTT TOILET TISSUE 6½¢

TOILET TISSUE 3 for 13¢

SCOTT TOWELS 3 for 25¢

NORTHERN BEANS 5¢

SHAMROCK FLOUR 19¢ 35¢ 77¢

CHIPS 23¢ 25¢

BUTTER 31¢

School Heads To Meet In Kiesimnee

TALLAHASSEE, Mar. 14.—Twenty Superintendent T. W. ...

FLORIDA HIGHLIGHTS



WILLIAM R. DUVAL, 2ND GOVERNOR OF FLORIDA, WHEN SIXTEEN YEARS OF AGE WAS ORDERED BY HIS FATHER TO GET A BAKED LOG FOR THE FIRE. HE WENT FOR IT BUT ONLY LOG FOR THE FIRE. HE WENT FOR IT BUT ONLY LOG FOR THE FIRE...

Finland, Norway, Sweden Planning Defense Alliance

Continued From Page One. territory north of Lake Ladoga, would prevent a reputation of the Prague's story.

FRESHLY ROASTED COFFEE. 8 O'clock 3 lb. bag 39c. Red Circle 35c. Bokar 19c. Condor 23c.

JANE PARKER Light Flaky Plain or Sugared DOUGHNUTS. BOX OF 1 DOZEN 12c.

NECTAR TEA. Blended Packed & Guaranteed By A & P. 13c 25c.

WHITE HOUSE MILK 3 for 18c. GRAPE JUICE pt. bt. 10c qt. bt. 19c. Sunlight OATMEAL 3 lb. box 15c. Mayonnaise pt. jar 19c qt. jar 35c. STRINGLESS BEANS No. 2 cans 15c. SALAD DRESSING 17c 27c. TUB or PRINT BUTTER, lb. 33c.

Potatoes 10 lbs. 23c. Apples 3 lbs. 17c. Broccoli lb. 10c. Carrots bunch 5c. Potatoes 4 lbs. 15c. Coconuts each 5c. Cabbage lb. 2c. Pineapple each 10c.

CORN 9c. PEAS 29c. JEWEL 10c 39c. WHEAT 15c. WHEAT 10c. BUTTER 13c. POWDER 10c. JUICE 17c.

Save Cash. Buy dexo. It works like magic, making delicious, digestible foods every time. 41c.

PRUNES Pound 5c. RAISINS 15 oz box 10c.

SNOWDRIFT 19c 51c. NIBLET EARS 19c. DEVILED HAM 15c. BEE FIG BARS lb. 10c. NUTRILY OLEO lb. 10c.

CRACKERS- 1 lb. pkg. 20c. PINWHEELS lb. 19c. CRACKERS 2 pkgs. 17c. SOAP POWDER 10c 4c. SOAP FLAKES 10c. OCTAGON SOAP bar 4c. OCTAGON 25c 19c.

NATIONAL 3-MINUTE OATS. ONLY THE PICK OF THE CROP IS USED TO MAKE THESE DELICIOUS FLAKY OATS.

KRAFT CHEESE SALE and DEMONSTRATION. PIGGLY WIGGLY STORE. MAMMOTH CHEDDAR 29c. MAMMOTH SWISS 33c.

Hardrock Men Of Alta Are All For Ghost Of Riley

SALT LAKE CITY, Utah, Mar. 14.—The Hardrock men of Alta will let their \$100,000 dollar on the ghost of Eddy Riley.

Disputes Result In Declaration Of Martial Law

Continued From Page One. possible but not desirable policy.

PIGGLY WIGGLY LOVETTS. 201 E. First St. 219 Sanford Ave. Rib or Loin End Western Pork LOINS lb 15c LARD 3 lbs 25c. PICNIC HAMS MORRELL'S PRIDE! 6 to 10-lb. size—Pound— 12 1/2c.

Chase & Sanborn Dated Coffee—lb 18c. RICE 5 lbs 15c. FLOUR 20 lbs 59c. COCKTAIL no 1 can 10c. BEANS 3 lbs 15c. PICKLES qt 10c.

SUGAR 5 lb 21c. BUTTER 1 DAY ONLY FRIDAY 25c.

CARROTS ONLY! 2 bchs 5c. FRIDAY ONLY! 2 bchs 5c.

SELOX 14 1/2c. SHAMPOO 23c. Chipso 9c. LUX TOILET SOAP 3 for 19c. OXYDOL (3 mod. 27c) Large Size 18 1/2c.

Nashville To Play Five Exhibition Games In Sanford

Regulars Due To Report For Work By This Sunday

The Nashville Vols will play a Spring exhibition games this week, five of them here in Sanford, Manager Larry Gilbert said today in announcing the schedule of the Vols.

The five games in Sanford will be with Jersey City, Milwaukee, St. Paul, Minneapolis and St. Paul. The other games will be played at the state at Daytona Beach, Sebring and Ocala.

Gilbert said 18 men had already reported for early training and that the rest of the team, mostly regulars, should arrive by Sunday when training would be in earnest. He praised the Municipal Ball Park declaring that it was one of the best he had

seen in the state.

Those players who have already reported for work include mainly pitchers and catchers. Only one infielder and two outfielders have arrived.

The roster: pitchers — Ace Adams, Joe Childress, Joe Hatten, Russel Meers, Jack Paterson, Olie Harris, Buford Goodwin, Leo Twardy, George Jeffcoat, John Rain, John Papiel; catchers — Ted Pawlick, Marvin Felderman, Alex Getway, Adamaki; infielders, John Nook; outfielders, Augustine Dugas and Bernard Lutz.

The squad practices daily at 10:30 o'clock in the mornings while the Sanford squad takes the field at 1:00 o'clock in the afternoon.

The schedule:

March 25, Minneapolis at Daytona Beach.

March 26, St. Paul at Leesburg.

March 28, Jersey City at Sanford.

March 29, Milwaukee at Sanford.

March 31, Sanford at Sanford.

April 2, Minneapolis at Sanford.

April 3, Milwaukee at Ocala.

April 4, St. Paul at Sanford.

April 5, Nashville at Macon.

April 6, Nashville at Americus.

April 7, Nashville at Anniston.

April 9, Nashville at Osdaden.

April 10, Nashville at Anniston.

April 12, Season opens in Atlanta.

Sid Hudson Will Pitch Against Detroit Tigers

ORLANDO, Mar. 14 — (AP) — Sid Hudson, the prize rookie of Washington's 1940 Spring training camp, will take the mound at Tinker Field again Sunday afternoon for a three-inning trick against the Detroit Tigers, Manager Bucky Harris disclosed yesterday.

Harris, in naming the pitchers that will work the three games scheduled for Washington in the Grapefruit League over the weekend, said that Hudson would work the last three innings against the Tigers Sunday afternoon.

"I had a chance to observe Sid under fire at the beginning of a game last Sunday. He did remarkably well, under the circumstances. Now I want to see him work the last three innings. It is an entirely different situation often," he explained.

Paul Gehman, who went the

Kennel Club To Hold Special Night For Crippled Children

ORLANDO, Mar. 14 — The management of the Sanford-Orlando Kennel Club has announced that one night next week will be designated as Harry-Anna Home for Crippled Children Night.

The track management, working in conjunction with the State Elk's organization, sponsors of the Harry-Anna Home at Umatilla, will announce the date for this special night program over the weekend.

Feature of that night's races will be the Harry-Anna Home Handicap, it was disclosed.

The headline attraction of tonight's 11 race program, according to Racing Secretary Pat Meets, is a futurity event in which eight evenly-matched, the second-flight feature race contestants, will compete.

E. O. Edward's Born Black and Bob Skelton's Happy Career loom as probable favorites for this night race event.

The remainder of the entries are Lucky Joker, Fair Speed, Cracker Lad, Blenny Colin, Ted's Choice and Mornington.

The races get under way at 8:15 o'clock, with quinella windows for the first race closing promptly at the starting time.

GREYHOUND RESULTS

FIRST RACE—Futurity: 22 1-2		SECOND RACE—Futurity: 20 3-4	
NAME	PP OFF Str. Fin.	NAME	PP OFF Str. Fin.
Spanish Dan	1 1 1 1	Sahara Fox	1 1 1 1
Miss Balaris	2 2 2 2	Log Roller	2 2 2 2
H. shot	3 3 3 3	Joyful Morn	3 3 3 3
Spanish Dan 7.40, 4.20, 3.70		Log Roller 7.40, 3.40, 3.20	
Balaris 7.40, 3.40, 3.20		Joyful Morn 7.40, 3.40, 3.20	
QUINELLA, 5-2, Paid \$11.00.			
THIRD RACE—1-16 Mile: 22 1-2		FOURTH RACE—Futurity: 20 3-4	
NAME	PP OFF Str. Fin.	NAME	PP OFF Str. Fin.
Masked K	1 1 1 1	Autumn Leaf	1 1 1 1
City Judge	2 2 2 2	Dr. Toy	2 2 2 2
Cit Judge	3 3 3 3	Autumn Leaf	3 3 3 3
Masked K 7.40, 3.40, 3.20		Dr. Toy 7.40, 3.40, 3.20	
Cit Judge 7.40, 3.40, 3.20		Autumn Leaf 7.40, 3.40, 3.20	
DAILY DOUBLE, 1-2, Paid \$24.00.			
FIFTH RACE—1-16 Mile: 22 1-2		SIXTH RACE—Futurity: 20 3-4	
NAME	PP OFF Str. Fin.	NAME	PP OFF Str. Fin.
Ida Willard	1 1 1 1	Red Willy	1 1 1 1
Autumn Leaf	2 2 2 2		
Ida Willard 7.40, 3.40, 3.20			
Autumn Leaf 7.40, 3.40, 3.20			
QUINELLA, 5-2, Paid \$11.00.			

last three innings against the Giants last Sunday, will open against the Tigers here Sunday afternoon at 3:00 o'clock.

Joe Krakaukas, the fastball left-hander, will again work the middle trick.

The Nat regulars will leave tomorrow morning by bus for Fort Myers, where they play Oscar Vitt's Cleveland Indians tomorrow afternoon.

The Nats return to Winter Haven for a second game with the Giants Saturday afternoon.

Newton Jacobs, a right-hander with Springfield last season, Earl Wynn and Gilbert Torres, right-handers with Charlotte last year, were named to hurl against the Cleveland club.

Joe Haynes, Gene Montegudo and Walter Masterson will divide the pitching assignment against the New York Giants.

VOTE for Fred H. Harrison

County Commissioner
District No. 2

In The May 7th Democratic Primary

I Will Sincerely Appreciate Your Vote And Influence.

—PAID POLITICAL AD.

GRAPEFRUIT LEAGUE

STANDINGS

Washington	10
New York Yankees	9
Brooklyn Tigers	8
Brooklyn Dodgers	7
New York Giants	6
St. Louis Cardinals	5
Philadelphia Phils	4
Boston Bees	3
Cleveland Indians	2
St. Paul Saints	1

YESTERDAY'S RESULTS

Cleveland Indians, 7; St. Louis Cardinals, 1.

New York Yankees, 5; Brooklyn Dodgers, 2.

Boston Red Sox, 7; New York Giants, 1.

Detroit Tigers, 6; Boston Bees, 1.

Palatka Surrenders State Loop Franchise

PALATKA, Mar. 14 — (AP) — Officials of the Palatka baseball club announced yesterday that they had surrendered their franchise in the Florida State League to President Henry L. Gray of Gainesville.

The decision to give up the franchise was made after a pending deal with W. Walker of Jacksonville had fallen through, President Ed Kummer stated.

In surrendering the franchise to the loop president, local officials asked that a bidder be obtained to keep the club here and promised that their cooperation and that of city officials.

PARIS, Mar. 14 — (AP) —

Members of the French Chamber of Deputies have asked the government to increase the fighting in Paris and other large cities to halt the rise in accidents which has resulted from the nightly blackouts. While no official figures are available, insurance experts estimate the blackouts have tripled the number of accidents.

The More Folks You Tell The More Goods You Sell

ADVERTISE HERE

DRESSMAKING ALTERATIONS BUTTONHOLES ALL KINDS OF SEWING

THE KATIE SHOP

112 W. First St.

Don't Forget — Friday Is Fish Day!

FRESH SEA FOODS QUALITY GROCERIES & MEATS

At Unusually Low Prices.

SANFORD FISH & GROCERY CO.

Experts say the age of a rattlesnake cannot be estimated accurately by the number of rattles on his tail because sometimes a snake will acquire three or four rattles, instead of only one, a year, and that a snake seldom rattles more than 10 to 12 rattles because added ones usually are broken off.

"EASY COME... EASY GO..."



A Palm Beach suit "comes easy" at \$16.75... and it "goes easy" into a week-end bag with plenty of room to spare for slacks, sports coats and all the trimmings. For Spring and Easter as well as the hot summer days ahead, we'd recommend a white, a blue, a pair of slacks or two and a sports coat. Cool, correct, washable, lastingly shapely. Total weight of wardrobe: about 100 ounces. Total cost: about \$50. We're experts at concocting the cleverest color combinations... and we're specialists in 1940's

Palm Beach Suits and Sportswear

PALM BEACH SUITS \$16.75—PALM BEACH SLACKS \$3.95
PALM BEACH SPORTS COAT \$11.75

YOWELL Co.

Confucius, he Say--

—For man to feel well— man must eat well.

Forrest Gatchel, he say: We have good food to eat—

JEWEL 10c

1 Lb. Ctn.

Shredded WHEAT 10c

GOLDEN KEY MILK CANS 17c

FIG B-A-R-S lb. bag 13c

DESSERT 9c

OAKITE 25c

IN OUR MARKET

SWIFT PREMIUM 1/2 LB. BACON 16c

HEAVY SPARK RIBS lb. 15c

FRESH PORK Shoulder lb. 17c

PAY - PASTY EV. WV. HENS lb. 23c

REP OR BROWN STEW 2 lbs. 25c

OPPELAND SAUSAGE 29c

C-A-T-S-UP

MINUTE (LARGE SIZE) OATS BOX 27c

MACARONI 2 LBS. 25c

BISCUITS 10 to pkg. 10c

CHASE AND SANBORN COFFEE LB. 19c

IVORY FLAKES

IVORY SNOW 23c

CAMAY 9c

SAUSAGE 17c

Garrett's Corned Beef 19c

Potted Meats 15c

VIENNA SAUSAGE 3 cans 25c

ANDREW CARRAWAY AGENCY

"INSURANCE PLUS SERVICE"

FIRE CASUALTY

1008 PARK AV. TELEPHONE 10

Consult Your Doctor AS YOU WOULD YOUR DOCTOR

PALMOLIVE SOAP

With Oatmeal 2 For 7

BLUE PKG. SUPER SUDS

With Oatmeal 2 For 20

ONLY 1c

Ted Shawn Made Ballet Dancing For Men Popular

No Stigma Attached For Participation In Ballet By Men

By JOHN KELLY
NEW YORK, Mar. 14.—(AP)—In 1930 Ted Shawn, even then a "veteran" as dancers go, announced to a somewhat skeptical world that he expected to make ballet dancing "respectable" for men. It took ten years, but he has done it.

In 1930, he explains, a boy who aspired to a career as a ballet dancer faced, at best, a certain number of raised eyebrows. Even in such organizations as the Ballet Russe and its successors, the Nijinskys were the exception and the state of dancing for men had fallen so low that mostly they were used as props to hold up twirling ballerinas.

Through the years there has been a steady improvement in the programs arranged for male dancers. Men are at least on terms of equality with women in the professional arena. Some, such as Paul Hanlon, have even crashed Broadway as dancing stars, using serious dance technique.

More important, according to Shawn, is the fact that there is a well-developed movement in the major (and some minor) colleges to provide classes in dancing for men. Some of these are overcrowded, and the attitude toward the art has so changed that in most instances the recruits have come from the athletic contingent rather than from the consciously "arty" group.

Professionally the situation is similar. A recent census of a group in New York's phenomenally successful Ballet Theatre showed that without exception, the men of the group had an athletic background and that practically all the women had some athletic interest. High jumpers predominated.

The University of North Carolina was one of the first to offer dancing as an elective for men. A number of professionals of standing, notably Foster Fitz-Simon and Fred Howard, have come out of that school.

Berea College, in the mountains of Kentucky, was also a pioneer. So many asked admission there that the class had to be limited because it was unwieldy. The University of Omaha, the University of Wisconsin, Syracuse University and many others have established groups of male dancers.

Shawn thinks he may have had a good deal to do with this because he deliberately went to an extreme, and in 1931 began conducting the raised-eyebrow department with a group of ten strapping dancers—all men.

Since then the group has danced more than 1,000 programs, has done practically all the stage work in connection, and has conveyed itself from date to date in motor cars, averaging a little better than 125 miles of travel a day over the whole year. The group is dancing 135 dates this winter—more, probably, than any American touring dance group of the decade.

Shawn calls this success, and minimizes the hard work. He thinks, too, that the swing of the pendulum toward dancing for men is merely a return to conditions which were standard through most of recorded history.

"Until the classic ballet overruled the trend, dancing was always, he says, a masculine art. The religious dancers of antiquity were invariably men until the temple services had been corrupted. Most folk dancers were mainly masculine, and even on the North American continent the Indian men did the dancing. Sometimes their women were put to death if caught dancing.

The primary misconception has been that dancing, for women as well as men, is among the archaic, effeminate arts, Shawn and others feel.

"Actually," he declares, "any one of my company spends more energy in one performance than any athlete in any activity has. One of the beginning difficulties with college classes in dancing for men is that even the athletes find the work tough."

And the point of it all is not, Shawn thinks, to turn out a large number of professional male dancers, for whom the market could never be extensive.

"I believe in educating the whole man," he declares. "It seems to me that in modern life men whose bodies are as well educated as their minds have a better chance. And I know of no better, or more pleasant, training than dancing when studied intelligently."

Shawn himself is proof of his theories. He is 49, he says, and he has the body of a youth. He's tall, narrow, with the graceful, athletic well-developed muscles which make possible, and are kept in good condition, by his group, though he is twice the age of most of them.

DEFENDS PROPOSED EXTENSION OF HATCH ACT



It's a safe bet these three senators are discussing phases of the Hatch "No-Politics" act, extension of which to state employees paid in whole or in part with federal funds has been proposed by Sen. Carl Hatch (center, D. N. M.). In the Senate at Washington he defended the constitutionality of his proposal. Above (left-right), Senators Sherman Minton (D. Ind.), Hatch, and John E. Miller (D. Ark.).

Aid To Dependent Children Reaches Top, Board Says

JACKSONVILLE, Mar. 14.—Florida's Aid to Dependent Children program has attained its ceiling, under present appropriations, it was announced here today from the offices of the State Welfare Board.

In Seminole County 24 families of 90 children received \$963.10 during February. Grants totalling \$66,779 were made during February, according to official records of the Board, which is slightly in excess of the \$66,000,000 made available monthly by state and federal appropriations of \$800,000 apiece for this purpose. Beneficiaries numbered 2,626 families or 6,951 children. The average grant per family was \$25.13, and the average grant per child

was \$2.87. The State Welfare Act limit on state participation in the AID program is \$100,000 per month and a recent amendment to the Social Security Act requires the federal government to match this on a fifty-fifty basis. The total dollar parity with federal funds used in matching state funds to the payment of AID is \$100,000,000. Previously, federal matching funds had been available only at a ratio of one dollar for every two dollars of state funds.

DRESSING FOR MEAT
French dressing in a new role as a dressing for meats and vegetables, when they are broiled, the dressing gives extra flavor and helps out with the broiling.

CURTAIN PRESERVER
Faded and dingy cotton and linen curtains look best and stay longer when slightly starched.

New 1940 Model—Advertising Special
SENSATIONAL SALE OF NATIONALLY ADVERTISED
GENUINE DELUXE ELECTRIC

\$15 Underwood Shaver
IVORY CUSHION GRIP

Just Received Only 100 to Be Sold At This Price. Buy by arrangement with the manufacturer of this nationally advertised \$15 dry shaver, we are positively limited to 100 only.

GET YOURS IMMEDIATELY
LIMIT 2 TO A COUPON. USE SALE ONLY

WHITE IVORY CASE. PIG-SKIN POUCH

NO CATCH TO THIS. JUST PAY UP AND TAKE YOURS.

You'll get the thrill of your life when you use the new Underwood Dry Shaver. Just plug in socket and shave. No water, blades, soap or lather. Will pay for itself, nothing else to buy. This Underwood Dry Shaver will be sold for the regular price of \$15.00 after Friday, March 15.

If You Can't Attend This Sale, Leave Money Behind
Sale and Shaver Will Be Held For You

CITY DRUG CO.
LIFETIME GUARANTEE BY MANUFACTURER 204 EAST FIRST ST. PHOENIX, ARIZ.

FRIDAY MARCH 15TH
\$1.99

Fastest Shaving Razor

Limit 2 to a Coupon

Brazil has the largest standing army in South America but it has the largest number of trained reserves.

for **EASIER**

TOPPER COATS

In **ISLE TWEEDS**
And **Wool Flannels**
NEW SPRING SHADES

\$5.95
TO
\$16.95

**Miss Plaza
Martha Manning
Wendy Hale
AND
Jane Evans
DRESSES**
SIZES 12 TO 32

Spun Rayons
DuPont Crepes
Silk Jersey
Serenade Crepes

\$3.95
TO
\$12.95

HALF SIZES FOR STOUTS

PURCELL CO.
"We Clothe The Family—We Furnish The Home"
146 Sanford Avenue Sanford, Fla.

BARGAIN COUNTER—

IN YOUR KITCHEN!

FINDING a bargain is fun—even when it means a little overcrowded stores. But the biggest bargain of all is in your kitchen—when you take advantage of "step-down" electric rates and use electric cookery, refrigeration and water heating. Because the rate goes down with increased use, each major appliance added to a home has an immediate service for the average home.

Your all-electric kitchen will bring you a bargain every month in more service at less cost—and there's an extra dividend of leisure hours because of the speed and cleanliness of electric acts. It's simple, safe, dependable.

Call on us today and let our representatives show you the way to better living, waiting for you on the electric bargain counter!

SERVICE SAM SAYS:
"See modern, labor-saving, electric appliances at your electric dealer's".

ELECTRICITY IS CHEAP!

CONSOLIDATED ELECTRIC COMPANY
H. E. Coleman, Manager

