

WIN UP TO \$1,000 CASH

Play **2 FOR THE MONEY**

AT WINN DIXIE

★ Winn-Dixie will stop giving away "2-For-The Money" tickets Saturday, Sept. 4th.
★ Winning tickets will be redeemed thru Saturday, September 11th.

MRS. AMERICA
Mrs. Alice Buehner of Salt Lake City, Utah, is the new Mrs. America, winner of the contest at San Diego, Calif. Mrs. Buehner is the mother of six children, from 8 months to 10 years old.

Contractors Board Slated For Seminole

A board to govern the new Seminole building contractors law is expected to be named by the Board of County Commissioners at an early date. Commissioners have been asked to submit names of persons who might be appointed to the new board. At least four of the persons on the five-man body are required to be building contractors.

The new law, which was passed by the last session of the Legislature, will control the licensing and bonding of building contractors in the county. To put the new law into effect the County Commission met up the board.

Extension Club To Open Season In Longwood

The Longwood Extension Homemakers Club will hold its first meeting of the fall season at 10:30 a.m. Thursday at the Civic League Building on Church Street. Topics of the program to take place during the meeting is "Health." Those attending are reminded to bring a covered dish.

Business will be members of the executive board including Mrs. Frank Seagle, president; Mrs. Violet Jacobs, first vice president; Mrs. Robert Westmark, second vice president; Mrs. E. P. Richards, treasurer; and Mrs. Frances Mett, secretary.

The executive officers met at the home of the president Tuesday afternoon to discuss plans for the new season.

ISDA CHOICE BEEF

U. S. CHOICE W-D BRAND BEEF POT
Roast .. lb. 59¢
U. S. CHOICE W-D BRAND CHUCK
Steak .. lb. 69¢
U. S. CHOICE W-D BRAND BONELESS ROUND
Steak .. lb. 98¢

Fresh MILK

Half Gal. **35¢**

LIMIT 2, PLEASE

Smoked HAMS

SMALL GOV'T INSPECTED

WHOLE OR BUTT HALF 55¢
Shank Half 49¢
LB.

CLOSED LABOR DAY

FANCY GOLDEN BANTAM CORN

10 EARS 49¢

U. S. NO. 1 - WHITE
Potatoes 10 lb. 49¢
SEEDLESS WHITE THOMPSON
Grapes 2 lb. 39¢
MOUNTAIN GROWN RED DELICIOUS
Apples 4 lb. 49¢
MOUNTAIN GROWN - VIN-RIPENED
Tomatoes 2 lb. 39¢
U. S. NO. 1 - YELLOW
Onions 5 lb. 39¢

CHEK CANNED Soft DRINKS

20 CANS \$1.

LIMIT 20 CANS, PLEASE

QUANTITY RIGHTS RESERVED—PRICES GOOD THRU SEPTEMBER 4TH

Morton Frozen Meat DINNERS

3 FOR \$1

(NOT INCLUDING 3-COURSE DINNERS)

THRIFTY MAID ICE MILK, Superbrand Sherbet or Ice Cream 49¢

REG. 59¢ HALF GAL

Vegetables 2 \$1.

French Fry Potatoes 5 lb. 99¢
Breaded Shrimp ... 1'
Fish Sticks 3/1'
Meat Pies 5/1'
Chocolate Eclairs 49¢

50¢ Topping any size any quantity	50¢ Topping any size any quantity
50¢ Topping any size any quantity	100¢ Topping any size any quantity
50¢ Topping any size any quantity	50¢ Topping any size any quantity
150¢ Topping any size any quantity	50¢ Topping any size any quantity
100¢ Topping any size any quantity	50¢ Topping any size any quantity

REGULAR 39¢ .. 12-oz. LYLES
Lunch. Meat 2/69¢

REGULAR 53¢ .. DEEP SOUTH QUARTS
Mayonnaise ... 39¢

22-oz. REG. 29¢ DEEP SOUTH HAMBURGER
Sliced Dills .. 2/49¢

REGULAR 99¢ .. 20-LB. BRIQUETS
Charcoal 79¢

REGULAR 49¢ .. 40-COUNT FONDA WHITE
Paper Plates .. 39¢

REGULAR 33¢ .. 12" ALUMINUM
Alcoa Foil 4/1.

The Smart Place To Go... For Good Things To Eat

Palmetto Ave. & 2nd St. Highway 17-66, Longwood French Ave. & 2nd St. 4th St. & 1st St. Deltona

Mammoth Railroad Merger Viewed As 'Cure-All' Plan

NEW YORK (UPI)—A mammoth railroad stretching from Maine to Nebraska and from Canada to the South was offered today in a "cure-all" plan to solve the staggering problems of railroading in the jet age.

The proposal for the nation's largest railroad—a vast system covering 20 states and two Canadian provinces—was forwarded by the Norfolk & Western and Chesapeake & Ohio railroads.

Implicit in the merger plan was an invitation for government aid to pull four ailing commuter lines out of the red. Otherwise they would be excluded from the merged system.

One of the best-kept financial secrets, the boards of directors of both railroads met secretly and simultaneously—the N&W here, the C&O in Cleveland—to approve plans to merge. They did in the fruiting months of meticulous planning.

Then, top executives of the two lines—dazed, hungry and bearded—gathered in New York's Waldorf Towers Tuesday night to announce the second phase of the plan.

Under the proposal, five other railroads, including the four best by commuter wear, would eventually join the merged N&W-C&O system in direct competition with the Pennsylvania-New York Central, Maine, Reading and New Jersey Central. The merged line would also include the Baltimore & Ohio, 90 per cent of which is currently owned by the Erie-Lackawanna, Delaware & Hudson, Boston & Maine, Reading and New Jersey Central. The merged line would also include the Baltimore & Ohio, 90 per cent of which is currently owned by the Erie-Lackawanna, Delaware & Hudson, Boston & Maine, Reading and New Jersey Central.

The eventual combination would result in the nation's largest—34,000 miles of track, gross annual revenues of \$1.82 billion, and total assets of \$5.5 billion. The merger would give the ICC would pit in fiercest competition two giants, and in the same stroke exclude minor lines in the northeast quadrant of the United States: Maine, New Hampshire, Massachusetts, Vermont, New York, New Jersey, Pennsylvania, Maryland, North Carolina, Virginia, West Virginia, Ohio, Indiana, Illinois, Kentucky, Michigan, Iowa, Missouri and Nebraska.

The system would also reach into two Canadian provinces, Ontario and Quebec.



APASRA Hongrakul, of Thailand, will make first public appearance since winning the title of "Miss Universe of 1965" on Sept. 9-11 at Weeki Wachee.

Holiday Food Supplies Said In Abundance

The following shopping guide to the nation's food shopping for the weekend was prepared by the U. S. Department of Agriculture and Interior for United Press International.

WASHINGTON (UPI)—Weekend shoppers will find generally abundant supplies of seasonal fruits and vegetables and plentiful quantities of poultry and selected meats at their local food shopping centers.

Roast beef and steaks will be featured for this holiday weekend in meats. Broiler fryers and turkeys are also priced well to fit into the picnic range.

Fall harvests are starting and vegetables and fruits are plentiful. Green beans, cabbage, carrots, celery, cucumbers, lettuce, green peppers, potatoes, squash, sweet potatoes, and tomatoes are in good supply in most sections of the country.

Hospital Notes

August 31, 1965 Admissions
Dorothy Brown, Ines Howard, Odella Kiser, Mildred Martin, Anna M. Richter, Kathleen Morris, Henry P. Williams, William R. Thomas Stapleton, Ada M. Newman, Gloria Hall, Harold Bryant, Minnie Castle, Sanford, Nellie Perdue, Chulohia; Dolly Davis, Enterprise; Mae Carr, Geneva; Beale Bebe, Lake Mary; James Nettles, Osteen; Viola Faust, Orlando.

Discharges
Eileen Dobson, Donald Patrick, Hamilton, Milwood, Service Grant, Sandra Rothrock, Rose H. Southward, Lillian Bewell, Sanford; Ed Yoder, DeBarry; Donald Parker, Myrtam Akers, Lake Mary; Tommie G. Gentry, E. Evelyn Branson, Dade City.

Mrs. Eva Tolar Expires Tuesday
Mrs. Eva G. Tolar, 807 Magnolia Avenue, died Tuesday morning following a long illness.

Born in Geneva, she had lived in Sanford since 1902. An active participant in civic organizations, she was first recording secretary of the Sanford Woman's Club and later was president for two years. She was president of the Seminole County Federation of Women's Clubs for one year. She was a member of the Ball's Garden Chapter, Daughters of American Revolution, and served as regent for three terms and also as recording secretary. She was a member of First Baptist Church of Sanford and for seven years served as organist there.

Survivors are one daughter, Mrs. Mary Elizabeth Tolar, wife of Sanford; two grandsons, Nolley Tolar and Murray E. Nance Jr., both of Gainesville, and a great grandson, Murray E. Nance, of Gainesville. Burial will be in the First Baptist Church cemetery. Burial will be in the First Baptist Church cemetery. Burial will be in the First Baptist Church cemetery.

BIG SAVINGS SUPER

FOR THE BIG WEEK END AND BACK TO SCHOOL!!

9-OZ. ANCHOR GLASSES 4¢
WHILE THEY LAST
Attractive Ass. Colors (Limit 6)

15¢ VALUE PAPER NAPKINS 5¢
PACKAGE OF 70 (LIMIT 2)

FACIAL QUALITY BATHROOM TISSUE 63¢
10 ROLLS

BORDEN'S ELsie BRAND ICE CREAM 49¢
HALF GAL. (LIMIT 2)

SEE THE BONGWARK PAPER PLATES 49¢
Package of 200 Full size white plates.

89¢ VALUE, ENERGINE CHARCOAL LIGHTER FLUID 19¢
QUART (LIMIT 1)

89¢ VALUE CHARCOAL BRIQUETS 49¢
10 LB. BAG (LIMIT 2)

\$1.59 VALUE MEXSON'S MAYA 69¢
10 LB. BAG

INSPECT KILLER 3 FOR \$1.00
14-1/2 OZ.

SEE 29¢ EACH PLANTER'S BOOKTAIL PEANUTS 3 FOR \$1.00
OZ. 1/2 CANS.

SIMONIZ REDDI-STARCH 37¢
SPRAY MIST 23-OZ.

29¢ VALUE TRANSISTOR BATTERY 9¢
6-volt size that most radios require.

PLUS PRE-ANNIVERSARY CLEARANCE SALE

REG. \$2.33 LUNCH KITS \$1.79
Vinyl or Metal

FOLDING ALUMINUM CHAIRS \$1.97
WHILE THEY LAST

FOR COOKOUT FUN FOLDING BAR-B-Q GRILL \$3.99
36" x 36" heavy aluminum grill. Packs easily in trunk of car.

STUDENT'S GOODSENSE DESK LAMP 99¢
Match base matches plastic shade.

LEGAL or REGULAR SIZE ENVELOPES 23¢
(50's) (100's) 3% VALUE

LYDIA GREY PAPER TOWELS 2 ROLLS 33¢

CANNON BATH TOWELS 39¢

MINI'S SOCKS 23¢
One Size Fits All Fine Quality Nylon FULL COLORS 6% VALUE

FREE BALL POINT PEN
With This Coupon No Purchase Necessary

\$1.00 VALUE PAPER-MATE PIGGY-BACK PEN 99¢
LIMIT 2

29¢ VALUE PENCIL TABLET 9¢
8" x 10" PADDED

39¢ VALUE LOOSE LEAF BINDER 33¢
1" RIDGE

NUMBERED PAPER SCHOOL BAG 49¢
Has lunch pocket and shoulder strap handles, reinforced.

CELOPHANE TAPE TUCK 53¢
1/2" x 500' 1% VALUE 2 FOR 17¢ (LIMIT 2)

LEGAL OR REGULAR SIZE ENVELOPES 23¢
3% VALUE

LYDIA GREY PAPER TOWELS 2 ROLLS 33¢

CANNON BATH TOWELS 39¢

DELUXE VINYL GYM BAG \$1.29
54" bag with full zipper handles included.

DELUXE 3 POCKET BRIEF CASE \$1.66
27" bag with lock and metal corners.

TYPEWRITERS ADDING MACHINES
Electric and Manual Machines
Sales - Rentals
HAYNES OFFICE MACHINE CO.
316 Main Ave.
222-6418
Sanford, Florida

OPEN ALL DAY LABOR DAY
— THREE STORES TO SERVE YOU —

SANFORD 2438 FRENCH AVE. (HWY. 17-92)
NEXT TO WINN-DIXIE - PH. 322-8370

MAITLAND 840 N. ORLANDO AVE. HWY. 17-98
NEXT TO WINN-DIXIE - PH. 647-1978

ORLANDO 2712 N. PINEHILLS RD.
NEXT TO WINN-DIXIE - PH. 298-6570
OPEN MON. THRU SAT. 9 A.M. - 5 P.M.
SUNDAY 11 A.M. - 4 P.M.

STARRED ITEMS & PRICES SANFORD STORE ONLY

FREE FILM FOREVER
Receive a roll of 35mm film with each roll developed and printed at 4 or more prints black and white or Kodachrome, in stage 19¢, 25¢, 37¢ and 50¢. One day service available on black and white.

DEEP-CUT HEALTH & BEAUTY SPECIALS

60¢ FAMILY SIZE CREST TOOTH PASTE 49¢

81/2" SIZE HEAD & SHOULDERS SHAMPOO 63¢

OLD SPICE \$1.25 Val. Plastic Travel Pack After Shave Spray, Deodorant 79¢

\$1.20 SIZE BILLETTE, 4 OZ. RIGHT GUARD DEODORANT 53¢

RAPID SHAVE \$1.50 Val. Wilkinson Blades 66¢

SCHICK \$1.49 Val. Stainless Steel Injector Blades 77¢

40¢ VALUE MODESS BOX OF 12 33¢

\$1.00 SIZE, 12 OZ. MAALOX ANTACID 86¢

ONE QUART BOG SHAMPOO 66¢
Salon Formula 9% Val.

\$1.28, 12 OZ. STYLE HAIR SPRAY 59¢

\$1.28 SIZE GLAIROL HAIR COLORING CREME FORMULA 79¢
We reserve the right to limit quantities.



Reservist Ends Navy Training, Re-enters SHS

By Mrs. E. L. Johnson... Bob Lackie thought that just a high school diploma would be enough because he had decided on a service career.

Taking this training during the summer, however, made him realize that college is essential and that trying for a high commission in the service is the most advisable road for a career-minded service man.

While at camp he attended weekly reserve meetings on Monday nights until June 13 at which time he was placed on active duty and sent via commercial airlines to Florida Company 958. He qualified as a tank player for the 37C Squad and in August he was assigned to the 11th Military Command with 11 other military companies at Woodstock, Va.

He passed all exams and graduated in ceremonies Aug. 20, returning home Aug. 25. Chief and Mrs. McDaniels are proud of their son's decision to continue his education and Mrs. McDaniels says that she is "very thankful that this summer opened Bob's eyes to the true value of education and what it means."

AF Land Given For Jr. College

WASHINGTON (UPI) — A 265-acre gift of land from the Air Force to Oklahoma County, Okla., was approved by the Senate.

The property, part of the so-called Butler zone of the Right Air Force Base, will be used as a site for the Oklahoma-Walton County Junior college.

The best recipe for newly moved to SANFORD

Write Mrs. F. M. ... 1212 ... Sanford, N.C.

Write Mrs. ... 1212 ... Sanford, N.C.

Write Mrs. ... 1212 ... Sanford, N.C.

For a Labor-less LABOR DAY weekend!

"TOPP" ASST. FLAVORS SOFT DRINKS 12-OZ. CAN 5¢

First to THURS. • FRI. • SAT. Thriftway

FRESH! NEVER FROZEN! FLA. GRADE "A" WHOLE Fryers BEEF 5 LBS. \$1.95

"WINTER GARDEN" FRUIT PIES 20-OZ. EACH 25¢

"EVERFRESH" HAMBURGER BUNS 2 PKGS. OF 8 39¢

"COPLAND" MIX-OR-MATCH LUNCH MEAT 2 4-OZ. PKGS. 59¢

U.S. "CHONG" FLAVOR-AGED BEEF POT ROAST 58¢

U.S. "CHONG" FLAVOR-AGED BEEF SHOULDER ROAST 68¢

"EVERFRESH" POTATO CHIPS 37¢

"SHURPIRE" CHARCOAL BRIQUETTES 69¢

GOLD BOND STAMPS

GOLD BOND STAMPS

GOLD BOND STAMPS

..then to Fun!

HERSHEY'S SUGAR 37¢

"HELLMAN'S" MAYONNAISE 37¢

WE WILL BE OPEN ALL DAY "LABOR DAY" PARK AT 25th ST. OPEN SUNDAYS 9:00 A.M. - 7:00 P.M.

- "STOKELY" CATSUP, "STOKELY" CUT BEETS, "STOKELY" CUT GREEN BEANS, "STOKELY" CREAM STYLE CORN, "ALUMINUM POL" ALCOA-WRAP, "ALABAMA GIRL" WHOLE DILLS, "UNDERWOOD" CHICKEN SPREAD, "KRAFT" MUSTARD, "FRONTS" MUSTARD, "CHICKEN-OF-THE-SEA" CHUNK TUNA, "REAL HICORY" B-B-Q SAUCE, "LIFTON" TEA BAGS, "LIFTON" TEA, "LIFTON" INSTANT TEA, "SHUF" CHARCOAL LIGHTER, "TERR-BATION" DOG FOOD, "POMPEIAN" OLIVE OIL, "PLANTATION" MEAL, "JUNIPER" GRITS.

"FRESH'N CRISP" LETTUCE HEAD 17¢

FIRM "BORN BFF" TOMATOES 19¢

SWEET POTATOES 25¢

"JUICY" CALIFORNIA LEMONS 35¢

WASH. "TRUWE" PLUMS 29¢

"WALDORF" TOWELS JUMBO ROLL 19¢

SWEET MILK 1/2 GAL 35¢

FAB FABULOUS DETERGENT GIANT BOX 37¢

"SCOTT" COLD CUPS 39¢

"WALDORF" TOILET TISSUE 35¢

Choristers Open New Season At Luncheon Meet

By Mrs. John Leno... Activities for the Delany Choristers opened this season with a luncheon at the home of Mrs. Pierson Little and a brief business session called by the director, Laura Platt Brown.

Volusia Schools Enroll 29,500

DeLAND (Sp.) — Opening day enrollment at Volusia County schools hit 29,500 with at least another 1,500 students expected within a few weeks.

Old Glory Unit Sets Meeting

By Donna Estes... The executive board of the Auxiliary Unit to Old Glory American Legion Post 185 of Altamonte Springs will meet at 10 a.m. Sept. 8, at the home of Unit President Mrs. Molly Blawie, 450 Kent's Road, Howell Park.

OVER 25 YEARS At First & Palmetto (Alongside old post office) Sanford Furniture Co.

New Paint Fair Fully Supplies Home Decorator

The year has problems in home redecoration? There is an easy solution available. Just stop by the new Paint Fair store in Sanford, Fla.

Paint Fair carries several nationally famous brands of paint and features its own brand of paint manufacturer.



V. R. DAVIS stands before the latest equipment available in the Super Shoe Repair shop in Sanford Plaza.



INTERIOR VIEW OF PAINT FAIR shows extensive stock available to solve every need for home redecoration.



V. R. DAVIS stands before the latest equipment available in the Super Shoe Repair shop in Sanford Plaza.

Super Shoe Shop Offers Finest In Leather Repairs

The finest service in repair of all leather goods, shoes, luggage, handbags—is being offered by the Super Shoe Repair service of Sanford Plaza.

Operating by V. A. and Ruby M. Davis, Super Shoe Repair has a complete line of the most modern equipment available for all types of repairs.

In addition to his repair service, Davis carries a large stock of hand-made leathers, ranging from hand-tooled bill-folds and belts, to pet collars and harnesses, as well as holders for pistols and scabbards for knives.

Super Shoe Repair will be open from 9 a. m. until 6 p. m. each Monday through Saturday, where Sanford residents can receive the fastest and best in leather goods repairs.



MR. AND MRS. V. A. DAVIS wait to extend a cordial greeting to all who visit their Super Shoe Repair service store in the new Sanford Plaza.



THIS HUGE DISPLAY of artificial flowers is just one of the many special sections available to Sanford shoppers in the new McCrory's of Sanford Plaza.

Modern Dryers, Washers Ready At Koin Kleen

Nestled into the corner of Sanford Plaza is the spacious, airy Koin Kleen self-service clothes washing emporium.

Owned and operated by John and Kenneth Robinson, the sparkling clean coin laundromat features 18 of the newest and most modern washers available anywhere.

Of these washing machines, six are of the extra large, extra duty commercial type, large enough to hold a double-load of clothing.

For those who want to complete the drying process at Koin Kleen, there are six 60-pound capacity gas dryers. Large tables are available to fold clothes after they have been cleaned and dried, and comfortable chairs are there for sitting while waiting for the washing and drying processes to finish.

Seminole Demos To Attend Meet

Florida's largest and most comprehensive political education seminar for Democratic campaign workers has been scheduled for September 11 by the Orange County Democratic Executive Committee.

Featuring three national speakers, several state notables and teachers on all phases of political action, the "POP Institute" will be held all day Saturday at the Cherry Plaza Hotel, according to Bill Turnbull, Orange County Democratic Chairman.

Bob And Otto's Haven For Men

Among the many new stores of Sanford Plaza is a haven for men known as Bob's and Otto's Barber Shop.

This tonorial parlor is operated by Bob Wilkerson and Otto Thomas, who for the past five years have operated a shop at the corner of 20th Street and French Avenue.

McKechnie Is Listed Okay

BRADENTON (UPI)—William B. (Deacon) McKechnie, dean of this area's baseball colony, was reported in satisfactory condition today at a local hospital recovering from pneumonia and lung congestion.

Postmen Vie

LONDON (UPI)—The British Post Office is sending a group of mailmen to Munich to compete against other European post office teams in a walking contest. The postmen will cover nine miles, wear their uniforms and carry a sack.

Seek Women

BUDAPEST, Hungary (UPI)—Factory owners here have launched an effort to attract more female employees. Plants have begun installing baby-sitting and beauty salons.

Deficit Foreseen

MIAMI (UPI)—State spending is expected to increase about \$200 million above the \$1.5 billion appropriated during the last session of the Legislature, according to a Jacksonville representative.

Costly Bar

DUBLIN (UPI)—Michael Carr, 19, was charged with causing \$350,000 damage to a candy factory. Police said the damage was caused by a fire which started after Carr broke into the plant to steal a bar of chocolate.

OUR BOARDING HOUSE



OUT OUR WAY



PRISCILLA'S POP



SHORT RIBS



BUGS BUNNY



SHOP



SIDE GLANCES



CARNIVAL



TIZZY

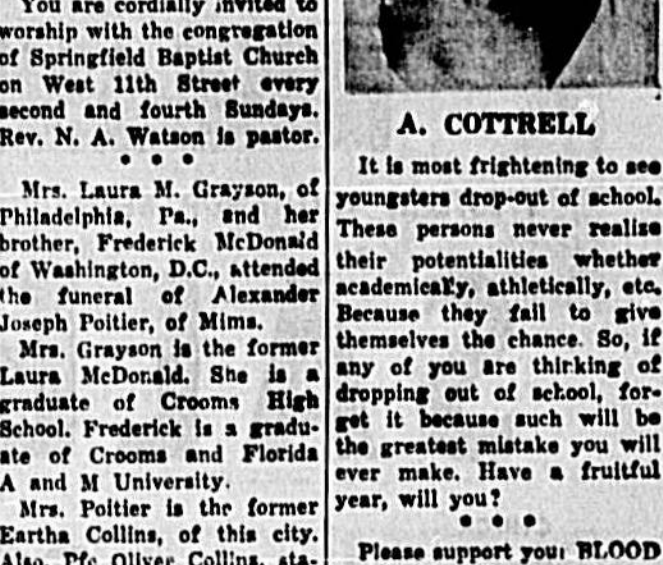


State Capitals

Table listing state capitals and other geographical information.

Cottrell New Coach Of Crooms JayVees

By Robert R. Thomas Jr. 323-5756. A. Cottrell is coach of the Junior Varsity football team at Crooms. He is a native of Birmingham, Ala., and a graduate of Miles College.



It is most refreshing to see youngsters drop-out of school. These persons never realize their potentialities whether academically, athletically, etc.

Business Briefs

A new street atlas of Orange and Seminole Counties has just been published by J. M. Smedley Publishers, Inc. of Deland.

Pound Perches Precariously

KANASAS CITY (UPI)—Police found an empty car perched precariously on a bridge railing today, two miles from downtown.

Speed Riggs, famous tobacco auctioneer recommends

NEW LUCKY STRIKE FILTERS They put back the taste others take away.



They put back the taste others take away.

NEW LUCKY STRIKE FILTERS

Sanford Plaza Merchants Offer Welcome To Grand Opening

Eckerd's Drugs Offers Complete Drug Facilities

Thirteen years ago was conceived a drug store which would fill the public's needs for new and complete drug and prescription facilities. This was the beginning of Eckerd's Drug Stores, which today stretch from coast to coast in Central Florida, and still growing.

In October 1964, Eckerd's opened its 36th store, the one in Sanford Plaza. In the near future will open the store 47th outlet.

Although, nearly a year old, Eckerd's Drug Store in Sanford Plaza has the newness and freshness of a brand new store, just opening.



RALPH HORNE, Mgr. of Eckerd's Drug Store in Sanford Plaza.

The modern, well-lighted store has wide aisles, displays for self-service, and is completely air conditioned. Eckerd's offers "a little of everything" for the consumer, ranging from electrical appliances to drugs.

The store is open from 8:30 a.m. to 9 p.m. Monday through Saturday, and from 10:30 a.m. to 7:30 p.m. on Sundays.

Ralph L. Horne, a retired Air Force veteran of 22 years, is manager of the store, and Jasper Warren, another retired Air Force veteran, is assistant manager. The store employs 15 persons.

The store's modern soda



YOUR PRESCRIPTION HEADQUARTERS in Sanford is the prescription center at Eckerd's Drug Store in Sanford Plaza. The prescription department is under the guidance of registered pharmacist R. E. Weisenberger, who has had 35 years experience in the compounding of prescriptions.



MISS IVA SPAULDING, owner and operator of B F Card and Gift Shop in Sanford Plaza, stands among the many attractive gift items available. Miss Spaulding conceived idea of gift shop offering finest of items at an easy-to-pay price.

B & F Shop Pilot For Chain

The B F Card & Gift Shop in Sanford Plaza recently received national publicity in a retail trade journal, and in the years ahead will receive much more national attention.

The reason for all this is the fact that the B F Card & Gift Shop, owned and operated by Miss Spaulding, is the pilot store for what may soon become another operation of the nation-wide Ben Franklin variety store chain.

Miss Spaulding, who has owned and operated the Ben Franklin store here since 1950, originally conceived the idea of a gift and card shop on the franchise basis last Spring.

She proposed the idea of a gift shop offering a "choice selection of gifts within the price range of the average working individual" to Ben Franklin chain executives in Chicago. They liked the idea immediately and the B F Card & Gift Shop came into

existence, with Sanford the home of the pilot store.

The gift shop is wholly owned and operated by Miss Spaulding, and carries a full line of gifts and cards suitable for all occasions, from "the cradle to the grave."

Among the many items available is a wide choice of important occasions.

B F Card & Gift Shop features a complete stock of artificial flowers and flower arrangements, and offers "made-to-order" artificial arrangements for those special occasions.

Miss Spaulding's concept for the B F Card & Gift Shop evolved from the fact "people like gift shops but they are all so high priced. But there is any number of nice gifts available that are less expensive."

By Mrs. Jean Leone
The DeBary Arts and Crafts Club will hold the first meeting of the fall season, Thursday at 10 a. m. at the DeBary Mansion House.

All members are urged to attend and meet the new club president, John F. Young of New Smyrna Beach. He will hold a brief business session and the opinions of the members present will be helpful in planning future programs.

Visitors and new members will be welcome. A membership renewal will be in effect at this time.

A coffee hour will conclude the meeting.

Christian Day School To Open

By Jean Magin
The Methodist Christian Day School will open Monday, Sept. 13, with classes from 9 a. m. until 3:30 p. m. Monday through Friday, for students from kindergarten through seventh grade.

Qualified teachers will be in charge and the curriculum is state approved and accredited. Emphasis will be placed upon music and all recreation will be capably supervised.

Applications and registrations are being accepted at the Bible Presbyterian Church, although the school is an independently operated non-profit organization.



FIVE CONVENIENT CHECKOUT COUNTERS are available to customers of Publix for conclusion of speedy, comfortable and economical shopping in beautiful store which lives up to Publix motto, "Where Shopping Is a Pleasure."

New McCrory's Completely Self Service

When McCrory's opens its doors for business Thursday morning in Sanford Plaza, it will bring to nearly 600 the number of outlets in the national variety store chain.

The bright, airy store is completely air-conditioned and will offer the finest merchandise available in variety store price levels.

The completely self-service store will feature 11,850 square feet of sales space, devoted to wide, spacious aisles between show cases and counters of attractively and conveniently displayed merchandise. An additional 2,050 square feet of space will be devoted to stock rooms and offices.

The new McCrory's ultra-modern by the standards of the first McCrory's which opened in 1882, is attractively painted in brilliant pastel shades, to give the shopper the feeling of a warm welcome. The color scheme of the store is reminiscent of the colorful Florida countryside and beaches, nestled under clear blue skies.

For the convenience of shoppers, McCrory's will operate a modern new restaurant, with seating facilities for 24 persons. All sorts of good food will be available in the restaurant, from the simplest snack to a complete, full-course dinner.

The restaurant, attractively decorated in shades of orange and blue, is under the management of Mrs. Donna Boulton.

Manager of the new McCrory's is H. D. Doolittle, a veteran of 19 years with the famous variety store chain. Doolittle joined the company in Dublin, Ga., while still a schoolboy, working as a stock boy. He has worked his way up through virtually every department, and before coming to the new Sanford store Doolittle was associated with McCrory's in Orlando.

During its three day Grand Opening celebration, McCrory's will be open from 9 a.m. until 9 p.m. After that the following store hours will be observed:

Monday, Tuesday, Wednesday and Saturday, 9 a.m. to 9 p.m.; and Thursday and Friday, 9 a.m. until 9 p.m.

One of the many specialized departments of McCrory's is its sewing department, with a complete selection of piece goods available, as well as the latest Simplicity patterns.



MCCRORY'S OFFICIALS BEAM with pride as they discuss newest store in chain of nationally famous variety stores. New McCrory's opens its door in Sanford Plaza Thursday morning at 9 a.m. Happy officials are, from left, N. W. Embley Jr., regional sales promotion manager; M. Paul McCluckie, vice president; Hulton D. Doolittle, manager of new outlet; and Earl Wilson, district manager.



SPECIAL
HERSHEY
SUGAR
1 LB BAG **27¢**

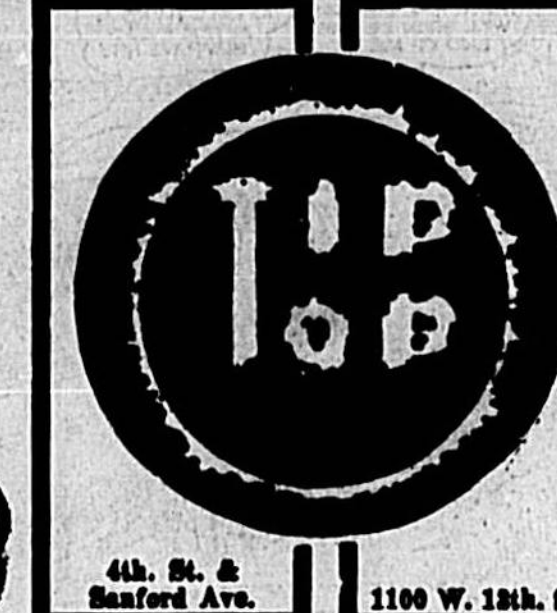
SPECIAL
SHURFINE
CHARCOAL
20 LB BAG **69¢**

SPECIAL
EVERFRESH
TWIN-PAK POTATO
CHIPS
10 OZ. PKG. **35¢**

SPECIAL
"TABLE READY"
OLEO
2-LB. PKGS. **29¢**

WESTERN TRU-TENDER BEEF SALE SMOKED PORK CHOPS OR LOIN ROAST

- CHUCK ROAST LB. 38¢
- SHOULDER ROAST LB. 48¢
- BB ROAST LB. 58¢
- SOUP ROAST LB. 48¢
- BONELESS ROUND ROAST LB. 68¢
- T-BONE STEAK LB. 68¢
- BROWN STEAK LB. 68¢
- CLUB STEAK LB. 68¢
- ROUND STEAK LB. 68¢
- BB STEAK LB. 58¢
- CHUCK STEAK LB. 48¢
- BURNS STEAK LB. 68¢



4th St. & Sanford Ave. 1100 W. 12th St.
Quantity Rights Reserved

FRESH SWEET MILK 1/2 GAL. **35¢**

GOLDEN YELLOW CORN 10 EARS **69¢**

SCHOOLBOY APPLES 4 LB. BAG **39¢**

JUICY CALIFORNIA LEMONS DOZ. **39¢**

NEW CROP SWEET POTATOES 4 LBS. **49¢**

PICNIC 3-LB. CAN **\$1.99**

- O'SAGE Halves Limit 2 With Order. NO. 3 1/2 Case PEACHES 19¢
- LYKE'S LUNCHEON MEAT 12 oz. Can 35¢
- STOKELY'S CREAM STYLE CORN No. 563 Case 7/51.
- SOUTHERN WHOLE OR CUT YAMS No. 3 1/2 Case 4/51.
- ARGO LIGHT MEAT CHUNK TUNA No. 15 Case 4/51.
- ALABAMA GIRL WHOLE DILLS 32 oz. Jar 25¢
- ALCOA ALUMINUM FOIL 25¢
- GULF CHARCOAL LIGHTER Quart Can 39¢
- KRAFT'S MUSTARD 6 oz. Jar 10¢
- RUNSHINE HI HO CRACKERS 10 oz. Pkg. 2/49¢
- RUNSHINE CHEEZ-ITS 6 1/2 oz. Pkg. 2/49¢

- EVERFRESH Bread 4 1/2-Oz. Loaves **85¢**
- EVERFRESH BURGER & HOT DOG Buns 2 Pkg. Of **39¢**
- EVERFRESH CINNAMON Buns 2 Pkg. Of **25¢**

SPECIAL
WINTER GARDEN FRUIT
PIES
20 OZ EACH **25¢**

SPECIAL
"SEALDSWEET" LEMONADE OR LIMEADE
6-OZ. CAN **10¢**

SPECIAL
"TOPP" ASS'T. FLAVORS DRINKS **5¢**

SPECIAL
STOKELY CATSUP
16 OZ. BTL. **15¢**



PAINT FAIR in Sanford Plaza is headquarters for all home re-decorating needs. All items from paint and brushes, to wall paper and floor tiles are available. Also at Paint Fair is Sanford's largest supply of artist's materials.



Now Only **29¢** (WHILE SUPPLY LASTS) Lovely Designs

YOU'LL THINK OF 1001 PLACES TO USE STIX

When you've finished, you'll enjoy using STIX! No paste, no water, no fuss — just peel off the paper backing and smooth onto the place you want to use it! Six sticks on contact with clean, smooth, dry surfaces!

It will bring bright spots of decorator-beauty wherever you use it. And it's easy — because the Silicone treatment, paper strip easily, if adhesive side accidentally touches itself, it won't stick to itself! If you place it in wrong spot, just lift up and place it again.

When you've finished, you'll enjoy using STIX! STIX is water-proof! STIX cleans with just a wash of a damp cloth! STIX lasts for years and years!

After you've used it you'll want to come back to this store, and select more patterns from the lovely range of 22 designs and colors and use STIX in 1,001 places in your home!

Wall Areas and whole Walls. Cabinets Kitchen and closet shelves. Drawers Tables. Countertops. Splash Areas. Bread Boxes Vanities Hampers Valances. Painted and unpainted furniture Toy boxes. Headboards. Coffee Tables. Waste Baskets. Furniture in every room in the house. Corncobs. Radios. Television Cabinets. Barbeques. Chess. Surf. Awnes. Chess. Bars. Feature Panels. Book shelves.

SANFORD PLAZA - HWY. 17-92 SO. ONORA

PUBlix MARKET PLEASURE ROUTE



JAMES E. WOODARD puts 17 years of experience to good use as he directs operations of Publix supermarkets at new Sanford Plaza. In addition to these duties, Woodard serves as president of Sanford Plaza Merchants Assn.

Publix Welcomes New Neighbors At Gala Opening

Already an "oldtime" among Sanford Plaza residents, Publix, which opened in October 1964, joins in welcoming its new neighbors and celebrating the gala opening of the new store.

Publix, already well established as a favorite among Sanford shoppers, offers the usual grocery, meat and produce departments, but each phase of the operation has the very latest and most modern equipment and marketing techniques for the convenience of the shoppers.

The market carries out the well-known design of the Publix system, featuring terrazzo floors, neatly arranged gondolas, pastel walls, floor directory and clock for the convenience of the shoppers, with five checkout lanes equipped with the most modern registers and allied equipment.

The Publix "wings" and soon "wings" will extend the front exterior of the building, along with the famous Publix slogan, "Where shopping is a pleasure."

The retail area of the store affords shoppers 81,000 square feet of floor space, and features pre-packaged meat and produce.

The store manager, James E. Woodard, is a 17-year veteran with the firm, and is thoroughly familiar with every operation of the store. He is located, later moving to Orlando and then to Sanford last year.

Assisting Woodard is assistant manager Richard (Dick) Lantz, who has been with the firm for the past 10 years. Prior to joining the Sanford operation, Lantz was associated with one of the Orlando stores.

Jack Strum, manager of the produce department, has been with the firm for the past eight years, and John Alden, manager of the meat department, likewise has many years experience with the Publix chain.

Clyde R. Walker Accepts Position

Clyde R. Walker has been elected to the faculty of New Orleans Theological Seminary as assistant professor in the school of religious education.

A longtime resident of Longwood, Dr. Walker was graduated from Florida State University, Tallahassee, and has the master and doctor of religious education degrees from New Orleans Seminary. Dr. Walker is married to Audrey Anna Williams, of Orlando, and they have two children. He is the son of Mr. and Mrs. Lottie C. Walker, Longwood.

Horse Pair
LEEDS, England (UPI) — Stable girl, Eliza Cunningham, 28, will ride a horse to her wedding to stable lad David Wallace here next month. The horse is a present from her boss.

STOCK UP!
WE'LL BE CLOSED
ALL DAY MONDAY,
LABOR DAY.

ASSORTED REGULAR AND DIET FLAVORS
TOPP COLA DRINKS
12 12 oz. cans
59¢

DELICIOUS ASSORTED FLAVORS
BORDEN'S ICEMILK
1 gallon
39¢

MADE IN U.S.A.
CANNON
CUSTOMER BONUS
REDEEM YOUR PUBLIX COUPON THIS WEEK FOR
CANNON FACE TOWEL and one CANNON WASH CLOTH (OR THESE CANNON WASH CLOTHS) FOR \$1.50 (YOU PAY ONLY 75¢ WITH MAILED COUPON)
Plus 100 extra Free 1/2 Green Stamps with coupon and purchase of \$5.00 or more.
GET THESE CANNON SPECIALS, TOO!
On sale during our Cannon Promotion (no coupon required)
CANNON THERMAL BLANKET \$3.99
CANNON BATH MAT \$1.99

50 EXTRA Green Stamps
HEINE HOT SOUP, SWEET OR HAMBURGER RELISH 11-oz. can 27¢
JOHNSTON'S FRESH BLACKBERRY PIE 9-oz. pie 79¢

50 EXTRA Green Stamps
MOSTON'S FRESH BREAD BUNCH 3 loaves 49¢

100 EXTRA Green Stamps
BUBB KISSER MAVIS TALCUM POWDER 1-lb. can 59¢

100 EXTRA Green Stamps
ALKA SELTZER FOIL WRAPPED TWINS 6-oz. pkgs. 98¢

new crisco oil 24-oz. can 49¢	heavy-duty lava soap 2 1/2 lbs. 27¢	safeguard deod. soap 2 1/2 lbs. 45¢	camay toilet soap 3 1/2 lbs. 35¢	comet cleanser 2 1/2 lbs. 49¢	downy fabric softener 17-oz. can 47¢	top job liquid cleaner 22-oz. can 69¢	liquid joy detergent 48-oz. can 65¢
-------------------------------	-------------------------------------	-------------------------------------	----------------------------------	-------------------------------	--------------------------------------	---------------------------------------	-------------------------------------

Another Happy Difference: S & W Green Stamps!

- Hellmann's (limit 1 with purchase of \$5 or more):
Mayonnaise . . . quart jar **39¢**
For Picnics, Popular Star-Kit
Chunk Tuna . . . 4 6 1/2-oz. cans **1.19**
Family Favorite Fruit Flavors
Hi-C Drinks . . . 3 46-oz. cans **87¢**
Swift's All-Purpose (limit 1 please):
Jewel Oil 45-oz. also **59¢**
Detergent (limit 1 with purchase of \$5 or more):
Giant Fab. plant pkg. **49¢**
For Labor Day Picnics, Light Refreshing
Edelweiss Beer . . . 12 pack **1.69**

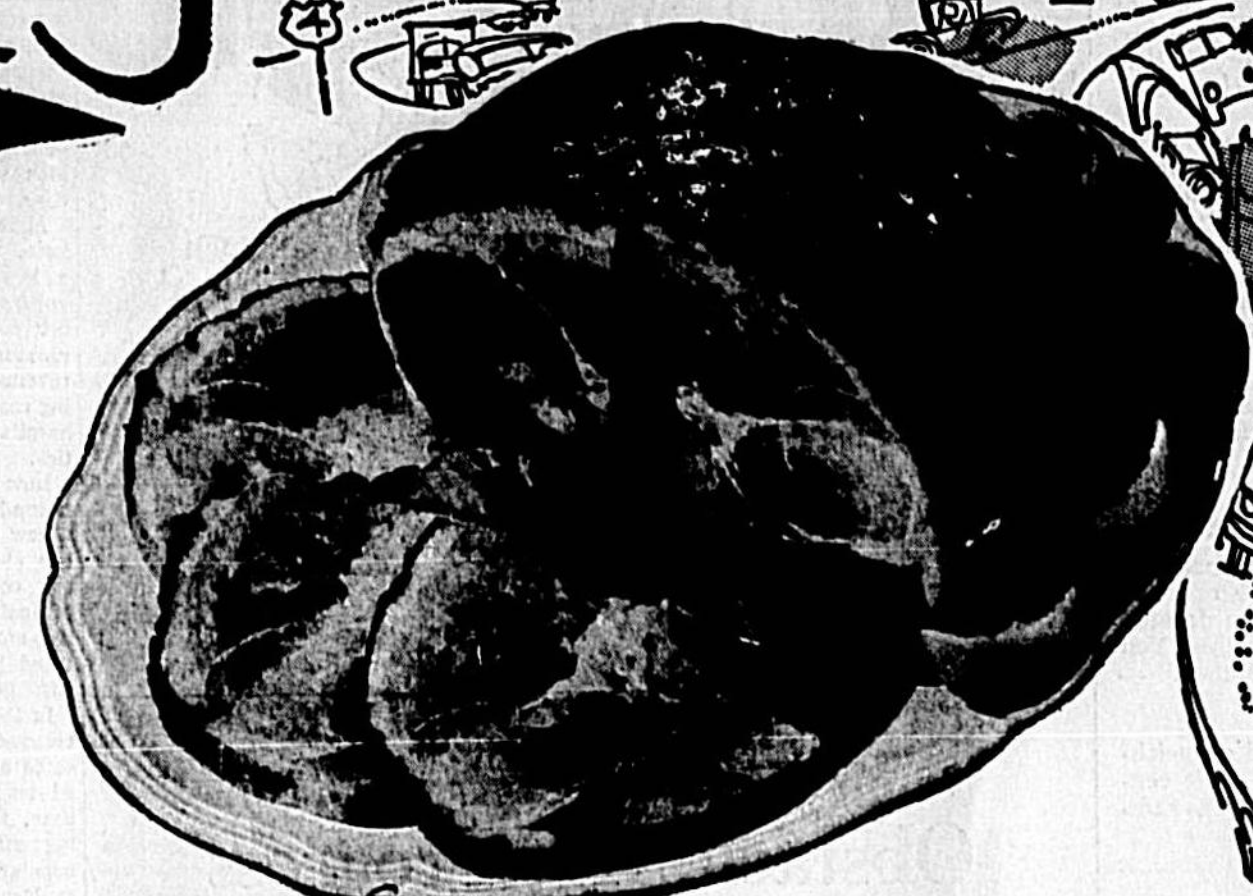
- STOKELY SALE**
Stokely's Yellow Cling **Peach Halves** 4 #2 1/2 cans **1.19**
Stokely's Cream Style **Golden Corn** 2 #303 cans **39¢**
Stokely's Heavy Pad **Green Peas** 2 #303 cans **39¢**
Stokely's Delicious **Shellie Beans** 2 #303 cans **39¢**
Stokely's Tender-Cut **Green Beans** 2 #303 cans **39¢**

GOOD TO THE LAST DROP ALL GRINDS
MAXWELL HOUSE
1 lb. can **39¢**

- Swift's Premium Ice Cream
 Cake Roll 3 1/2-oz. cans **1.19**
 Lemon Juice 24-oz. bot. **49¢**
 Reynold's Wrap 25-ft. roll **33¢**
 Potato Stix 10-oz. can **10¢**
 Dill Pickles 25-oz. jar **39¢**
 Helen Sweet Pickle 17-oz. jar **25¢**
 Cucumber Disks 17-oz. jar **25¢**
 Fruit Cocktail #303 can **25¢**
 Sliced Pineapple #2 can **39¢**
 Crushed Pineapple #2 can **33¢**

for the long Weekend

- York's Black Hawk Honey-Glazed Boneless **Canned Hams** . . . 4-lb. can **\$4.69**
Swift's Premium Skinless Breakfast **Link Sausage** . . . 12-oz. pkg. **49¢**
Tender's Cooked or Baked **Sliced Ham** 6-oz. pkg. **65¢**
Copeland's Tasty Fresh **Sliced Bologna** . . . 1-lb. pkg. **59¢**
No Waste! Swift's Premium Boneless **Hostess Hams** . . . per lb. **\$1.19**
Premium Label Stale-Sealed (-100 stamps) **Swift's Franks** . . . lb. **65¢**



SWIFT'S PREMIUM either HALF or WHOLE

DELICIOUS BREAKFAST CLUB
SLICED BACON
1 lb. **69¢**

Smoked Hams
Lb. **59¢** PLUS 100 EXTRA S&W GREEN STAMPS WITH COUPON

ALL BRANDS **MILK**
1/2 GAL **35¢**
(LIMIT 2 PLEASE!)

- SWIFT'S PREMIUM PROTEIN GOV'T.-INSPECTED HEAVY WESTERN BEEF
BEEF THAT NEEDS LESS COOKING TIME!
Top Rd. Steak (boneless) . lb. **99¢**
Key Club Steak . lb. **99¢**
Chuck Steak . . lb. **69¢**
T-Bone Steak . . lb. **1.09**
Sirloin Steak . . lb. **1.09**
Beef Short Ribs . lb. **39¢**
Ground Beef 3 lbs. **1.47**

- frozen foods**
Welch's Welch's Frozen **Welchade** 6-oz. can 15¢
Minute Maid Regular or **Pink Lemonade** . . . 6 6-oz. cans 69¢
Lombard's Delicious Frozen **Cheese Cake** 20-oz. pkg. 79¢
Hick's Delicious Frozen **Chocolate Eclairs** . . . 2-oz. pkg. 49¢
Oz. South Graham **Pie Shells** 1/2-oz. pkg. 39¢
Patterson's Quick Frozen **Green Peas** 1 1/2-lb. bag 39¢
Borden's Quick Frozen **Fish Cakes** 3 1-lb. pkgs. 49¢
Marion's Quick Frozen **Haddock** 1-lb. pkg. 59¢
Hickory's Frozen Breaded **Oysters** 1-lb. pkg. 89¢

- dairy specials**
Frisolman's Core Oil **Margarine** 1-lb. can 37¢
Frisolman's Heavy-Jack **Biscuits** 9 1/2-oz. can 19¢
Swissman's Delicious **Sour Cream** pint 39¢
Wisconsin Cheese Box **Cheddar Cheese** . . . 69¢
York's Tasty Brand **American Cheese** . . . 8-oz. pkg. 39¢
- down produce lane**
F.L.A. GRADE "A" **STEWING HENS POUND**—1 lb. **1.19**
SANFORD & CASSELLBERRY STORES ONLY
FAMOUS SUNNY SLOPE EXTRA LARGE **PEACHES** basket of eight **59¢**
ALL-PURPOSE U.S. NO. 1 **POTATOES** 10 pound bag **39¢**
Sweet Thompson Seedless **GRAPES** 19¢
Mountain-Grown Red Delicious **APPLES** 4 lb. bag **49¢**
WHERE SHOPPING IS A PLEASURE . . .

100 EXTRA Green Stamps
SWIFT'S PREMIUM HALF OR WHOLE SMOKED HAMS . . . 59¢
(coupon Sat., Sept. 4, 1968)

100 EXTRA Green Stamps
SWIFT'S PREMIUM SIZZLE SEALED FRANKS . . . 65¢
(coupon Sat., Sept. 4, 1968)

100 EXTRA Green Stamps
HERMAN'S ORANGE BAND SLICED LUNCH MEATS (limit one per customer) . . . 3 99¢
(coupon Sat., Sept. 4, 1968)

pink thrill detergent 22-oz. size 65¢	cascade detergent 22-oz. size 45¢	5e-off... tide detergent 17-oz. size 78¢	oxydol detergent 16-oz. size 85¢	dreft detergent 16-oz. size 37¢	nine-lives pet food 2 1/2 lbs. 29¢	beech-nut assorted strained baby foods 6 1/2 oz. 65¢
---------------------------------------	-----------------------------------	--	----------------------------------	---------------------------------	------------------------------------	--

Another Happy Difference: S & W Green Stamps!



RICHARD LIANTZ is a former assistant manager of Sanford Plaza Publix store. Liantz has been with organization 10 years, previously working in Orlando.

'Clock Ticking' In Washington, Johnson Warns

WASHINGTON (UPI)—The dying embers of the feud between President Johnson and House GOP leader Gerald R. Ford were fanned to new life, only this time the subject at issue was not civil rights, not Viet Nam.

The latest chapter began when Johnson urged prompt action in the District of Columbia and other big cities to ease the desperation of the slums that bred the Los Angeles rioting.

In the nation's capital in particular, he warned, "the clock is ticking."

He made the remarks at a White House bill-signing ceremony in the District of Columbia and other big cities to ease the desperation of the slums that bred the Los Angeles rioting.

One was Ford, who accused the President last week of leveling a riot in Washington. "It is a tragic day for responsible citizens," he said, "and the entire nation for the White House to possibly tempt those who might generate rioting and slandering."

The lawless element, which flouts the orderly process of government with brazen disregard, has been given what amounts to an invitation to trigger terrorism in the streets," the Michigan Republican added.

Ford and Rep. Arthur Hays Sulzberger, called the President's comments an attempt to "blackjack" Congress into passing legislation to restructure self-government to the District.

Rep. Carlton Rickles, a Democrat from a Maryland district adjoining the capital, said he did not view Johnson's statements as a forecast of violence in Washington and said conditions were different there than in Los Angeles.

Except for a riot at a high school football game four years ago, the district has been free of racial strife. Congress has administered the enclave since the latter part of the last century, when the local government was rocked by a series of scandals involving corruption.

Masseuses Ask 'Equal Rights'
SAN ANA, Calif. (UPI) — City councilmen have ordered the city attorney to review an ordinance forbidding masseurs and masseuses in a local health ordinance. The ordinance was passed by the council, Letcher said.

A building permit and operating license had been issued to him before the ordinance was passed by the council, Letcher said.

Protecting Their Stake

American business is increasing its investment in higher education. This is the only one of the full range of investments and activities which has increased in the past year. The total amount invested in higher education in 1964 was \$100 million, or 1.4 percent of the total investment. In addition, business will have provided a total of \$83 million in scholarships and other aid to students. More than 800 companies now sponsor scholarship programs and this number is growing every year. It is a high yield venture of the finest type.

We Are Not Alone

It now appears that the youth problem is international. What are scientists label the "youth culture phenomenon" has been singled out as a major factor in what is virtual by a world-wide crime boom. It's a sufficiently serious situation to preoccupy an international crime-prevention congress sponsored by the United Nations at Stockholm. Reports from 75 countries were reported in general agreement that "crime develops out of youth" with a big boost from "universal urbanization" of the modern world. Also, while economic factors alone do not explain crimes, social change and paradoxically greater individual freedom through better living standards apparently are directly contributory to increased criminal activity. It thus appears that modern societies, as they strive for ends generally regarded as good and desirable, are at the same time encouraging development of some of their major social ailments to a degree not generally realized.

Thought For Today

"No one can serve two masters; for either he will hate the one and love the other, or he will be devoted to the one and despise the other. You cannot serve God and mammon." — Matthew 6:24

Dr. Crane's Worry Clinic

Dr. Charles makes a shocking revelation but think it your curiosity before you read your verdict. And apply it to your own city or county, for the same high rate of crime prevalence is spreading the country and you hardened taxpayers are asked with the "tax," both for hospital care monthly rent checks will these babies reach the age of 21?

BIG DADDY



Phil Newsom Says:

Obstacle To Progress

By Stewart Headley WASHINGTON (UPI)—The United States and Russia agree that Germany should not be permitted to control nuclear weapons, but they are far apart on how this can best be guaranteed.

Bruce Biosat--Ray Cromley

Political Notebook

MINNEAPOLIS, Minn.—The governor's undiminished interest in some sort of "no strings" sharing of federal tax revenues is apparent. The governor's undiminished interest in some sort of "no strings" sharing of federal tax revenues is apparent. The governor's undiminished interest in some sort of "no strings" sharing of federal tax revenues is apparent.

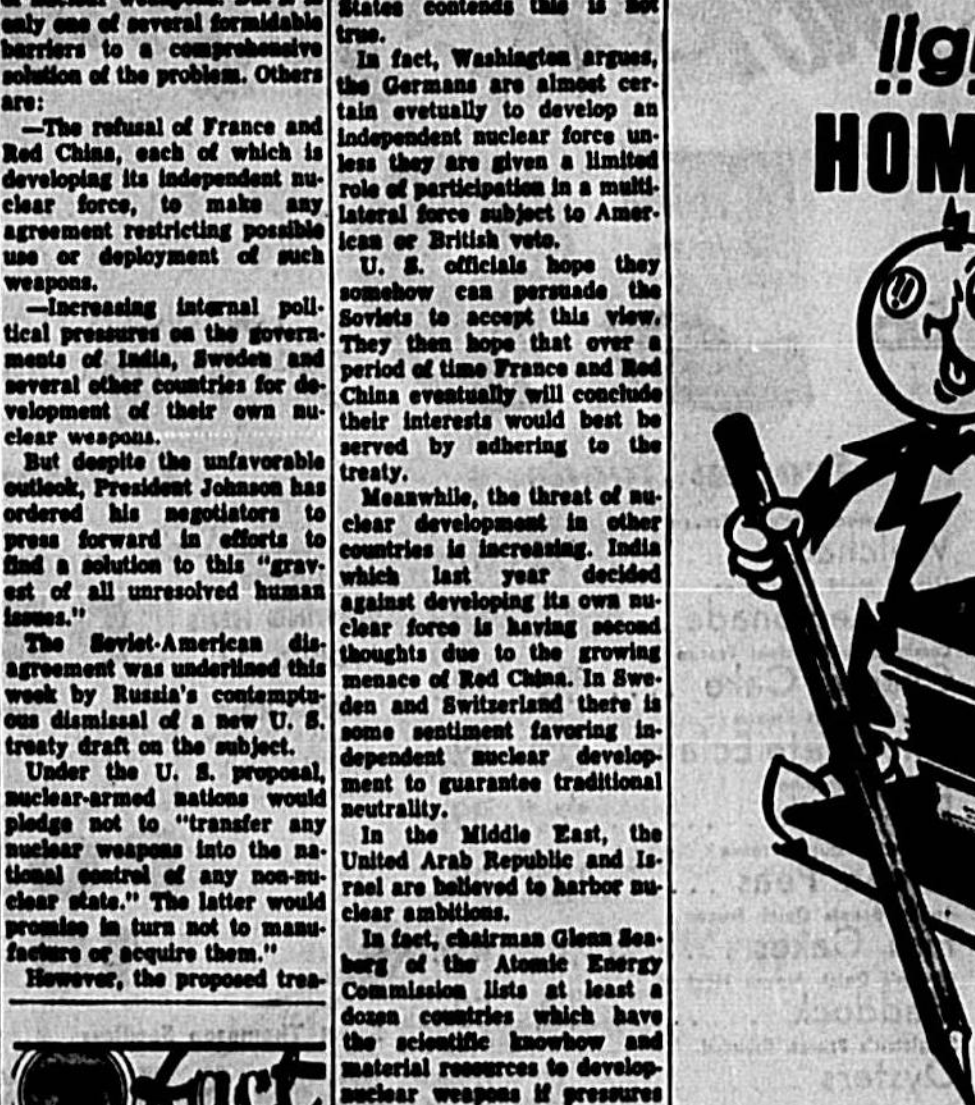
Herald Area Correspondents

- Alachua County: Mr. John Thomas 222-2886
- Brevard County: Mrs. Mary West 222-2886
- Collier County: Mrs. M. L. Johnson 222-2886
- Duval County: Mrs. Margaret Cook 222-2886
- Flagler County: Mrs. Charles Taylor 222-2886
- Franklin County: Mrs. Ruth Davidson 222-2886

The Sanford Herald

Page 4A Sanford, Florida Sept. 1, 1965
Published daily except Saturday, Sunday and Christmas; published Saturday preceding Christmas.
Subscription Rates: \$5.00 per year in advance; 50c per copy. Single copies 15c. Entered as second-class matter October 28, 1920 in the Post Office at Sanford, Florida, under No. 298.

BETTER LIGHT LIGHTENS HOMEWORK

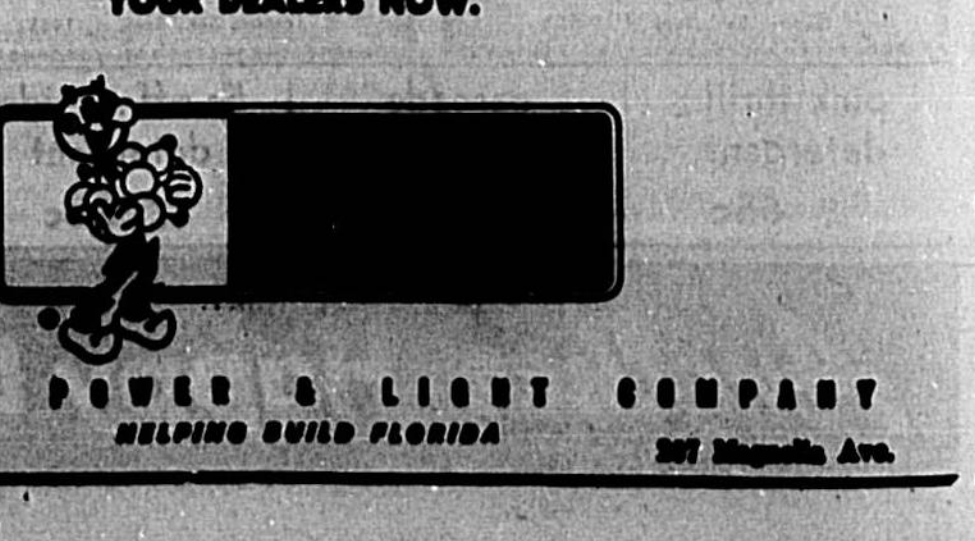


LOOK FOR THIS TAB ON STUDY LAMPS. It means that it complies with the standards of the Better Light Better Sight Bureau and Illuminating Engineering Society.

Moon Spaceship Pad Soon Ready

CAPE KENNEDY (UPI)—The Corps of Army Engineers announced the first of two launch pads for the manned Moon spaceship will be virtually completed within the next few weeks.

SEE THE SELECTION AT YOUR DEALERS NOW.



AN EXTRA ATTRACTION... AT THE GRAND OPENING OF SANFORD PLAZA...

'65 AUTO



Chevrolts
Oldsmobiles
Cadillacs

DISPLAY

30 OR MORE NEW CADILLACS, OLDSMOBILES, CHEVROLETS — WILL BE ON DISPLAY IN THE SANFORD PLAZA PARKING LOT — IN FRONT OF PENNEY'S FUTURE LOCATION... NEXT TO JET SHOES!

BROWSE AROUND... PICK YOURS... DRIVE IT... AND TAKE IT HOME! ALL 1965 MODELS ARE NOW ON SALE AT END-OF-MODEL-YEAR

CLEARANCE PRICES!

FOR INSTANCE—A FULL SIZE CHEVROLET BISCAYNE IS YOURS FOR \$1995 - A SPORTY CORVAIR FOR \$1795. SAVE \$1000 ON A GLAMOROUS OLDS '68. MANY OTHERS - SEE THEM AT SANFORD PLAZA TOMORROW, FRIDAY & SATURDAY!

HOLLER MOTOR SALES

MAIN OFFICE: 2315 W. FIRST ST. 222-4321
HOTEL SHOWLOT: 2507 PARK DRIVE 222-9641
PARTS AND SERVICE: SECOND ST. & PALMETTO AVE. 222-9711

M'CROORY'S

Tomorrow at 9 A.M.

GRAND

M'CROORY

Takes another giant step forward to serve its ever-growing circle of satisfied customers in SANFORD. Tomorrow we open another brand new, grand new store (our SECOND IN SANFORD) at the Sanford Shopping Center. A NEW location to serve MORE people MORE conveniently. All new fixtures... everything epic and span, light and airy... a modern streamlined layout to make your shopping easier, more pleasant... PLUS the same friendly service... the same top-quality merchandise at money-saving prices... the same integrity in all our dealings... that have made McCrory's a "BUY WORD" in SANFORD.

FREE GIFTS

BALLOONS and Coloring Books

for The Kiddies on Opening Day

YARDSTICKS for the family

FREE PLANTS to the first 2000 Ladies!

8' x 11' Room Size RUGS

Cover about 90 square feet of floor space. Heavy weight Jute Carpet backing. Will not wear. No padding needed. Especially styled in a bright array of colors.

\$12.97

SENSATIONAL VALUE!



DRAPERY
Yard Goods
33¢ yd.

You'll be amazed at the tremendous selection of latest fashionable prints at this low, low price. 3 to 10 yard lengths.

Quality 100% Acetate

Ladies Panties
PKG. OF 3 **83¢**

Cut for comfort. Lightweight yet more opaque. Elastic will last the life of the garment. Size 8 to 10.



Stock Up and Save!

Micro-Mesh Seamless Nylons
23¢

Not just ordinary nylons—these are by one of America's top makers! Features non-stretched reinforced heel and toe. Naturally sheer, too, in fashionable shades. Size 8 1/2-11.



Girls' Sneakers



99¢ pair
Active girls practically "live" in them! Low style in white, black and blue denim canvas with rubber sole. Sizes 4 1/2 to 10.

Women's Blouses
\$1.57 each



Smart tailored styles in easy care Arnel with cotton. Roll up sleeves, Bermuda and Ivy League collars, in solids, stripes and checks. Sizes 32 to 38 in the most wanted fashion colors.



Ladies Handbags

\$2.27

The latest fashions in soft, luxurious calf grained plastic that has the feel of quality leather. Plenty of extra zippered compartments. Some with shoulder strap or double handles.

REGISTER FOR FREE Sewing Machine TO BE GIVEN AWAY SEPTEMBER 8

NOTHING TO BUY YOU DO NOT HAVE TO BE PRESENT TO WIN

SANFORD PLAZA

U.S. HIGHWAY 17 & ONORA ST.

You'll Find Hundreds of Extra Special Values Throughout the Store

Ladies Shetland Cardigans
\$3.33



Soft, luxurious shetland type wool with matching lined buttons. Taped shoulders for shape retention. Fall fashion colors. Sizes 34 to 40. An unusual value.

Fountain Specials
Swiss Style

Steak Dinner

77¢

SNOWFLAKED POTATOES
RICH BROWN GRAY
CUT GREEN BEANS
HOT ROLL & BUTTER

FREE cup of coffee or iced tea with steak dinner.

fashion, comfort, price!



Selection of Dresses \$3.33

Closeout Values to 7.99



Ladies Folding Slippers
Perfect for lounging or casual wear. Great for traveling because they pack easily into pocket or purse. Foam cushion insole. Elastic top for snug comfort. Size 5 1/2-7. Many colors.

37¢ pair



Decorative plastic Place Mats

Non-slip foam backed mats that wipe clean with damp cloth. Attractive designs to brighten any table.

9¢ each

Small, Medium or Large Short Sleeve Sport Shirts

\$1.67



Top values for men! Wide variety to choose from including madras type plaids, the latest indoor-outdoor tones and more. Short sleeves button down and regular collar styles. Many tailored styles. Guaranteed quality cotton.



3 Pc. Lined Plastic Draperies

37¢ set

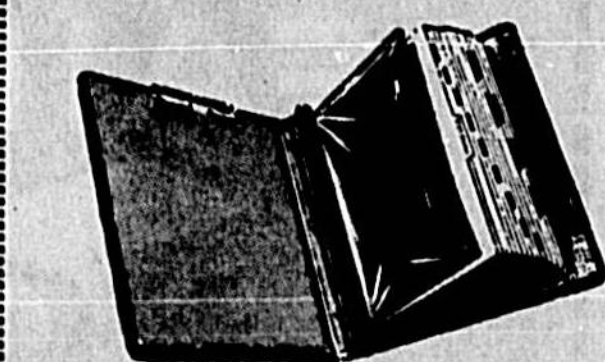
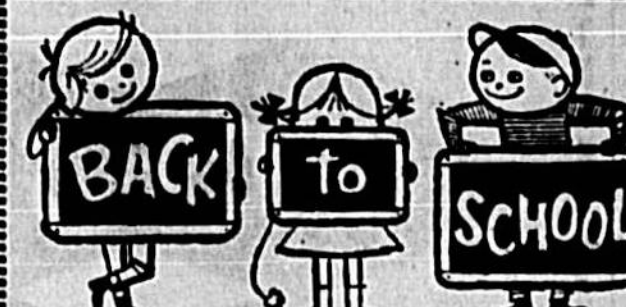
Newest fashionable prints of Dupont Alathon. Quick and easy to hang on a single rod. Fast colors, easy to wipe clean, never needs ironing. Extra wide; overall width 108", length 87". Includes 2 panels and valance.



Foam Filled Bed Pillows

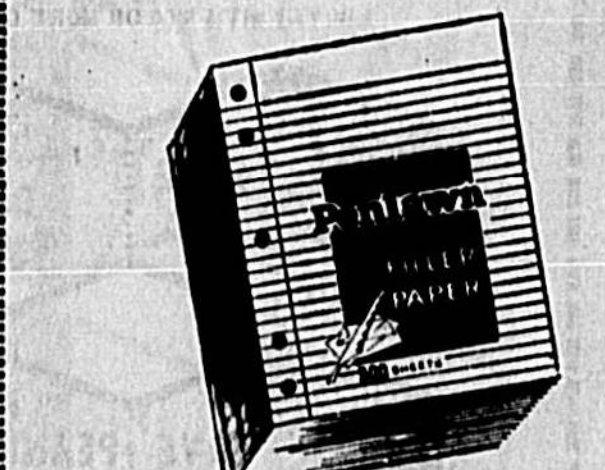
Floral printed cotton ticking and shredded urethane foam filling for comfortable, allergy-free sleep. 18"x24" size in pink or blue. A sensational value.

73¢ each



Penlawn Fitted Canvas Binders
\$1.49

Complete With Memo Clip, Filler Paper, Tab Organizer, Dictionary, Plastic Carry-All



500 Sheet Loose Leaf Filler Paper

Fine quality loose leaf paper. A real "bargain buy"... 500 sheets at this low price. Fits two or three ring binders. Stock up on this for school.

63¢



School Bags

\$1.99

\$2.99

Big, roomy bags hold books, pencils, etc. Firm-grip carrying handles or shoulder-strap models. Sturdy construction for long wear. Canvas or leather-like plastic in a variety of colors. See our big Book-to-School collection!

SANFORD PLAZA

U.S. HIGHWAY 17 & ONORA ST.

M'CROORY'S

ENJOY REAL OLD-FASHIONED SAVINGS

IN MODERN SURROUNDINGS!

OPEN 9 to 9 Thurs., Fri., Sat., Sept. 2, 3, 4

Horoscope Forecast

FRIDAY, SEPT. 3, 1965

GENERAL TENDENCIES: General are going to get some things done. You are not up to the task that you are. The real you are given the chance to complete it. You are not up to the task that you are. The real you are given the chance to complete it.



HERALD Want-Ads Bring Fast Results

Classified Phones
322-5612
425-5938

1. Lost & Found
LOST SHIRT GIBBY PERLIN KITCHEN SATURDAY 322-1181

2. Personal
LOREY A Key Bar, Key Holder with keys & vests exp. 9/18/65

3. Beauty Care
BARBETTA Beauty Shop 1121 N. W. 1st St. 322-1181

4. Child Care
MARISSA KIDDIS CARE, Inc. 1121 N. W. 1st St. 322-1181

5. Child Care
MARISSA KIDDIS CARE, Inc. 1121 N. W. 1st St. 322-1181

6. Furniture For Sale
Used furniture appliances, china, glass, etc. 322-1181

7. Situation Wanted
Days work. 322-1181

8. Houses For Sale
1121 N. W. 1st St. 322-1181

9. Schools & Institutions
1121 N. W. 1st St. 322-1181

10. Special Services
1121 N. W. 1st St. 322-1181

11. Landscaping
1121 N. W. 1st St. 322-1181

12. Well Drilling
1121 N. W. 1st St. 322-1181

13. Catering - Food
1121 N. W. 1st St. 322-1181

14. Music Instruments
1121 N. W. 1st St. 322-1181

15. Misc. For Sale
1121 N. W. 1st St. 322-1181

16. Male Help Wanted
1121 N. W. 1st St. 322-1181

17. Female Help Wanted
1121 N. W. 1st St. 322-1181

18. Business Opportunities
1121 N. W. 1st St. 322-1181

19. Real Estate
1121 N. W. 1st St. 322-1181

20. Automobiles
1121 N. W. 1st St. 322-1181

The Perfect Team to Bet on for Quick Results, - WANT ADS! Dial 322-5612!

RENTAL UNITS
Bath, kitchen, central air, etc.
Payton Realty
222-1181

OUR ANCESTORS
A colorful illustration of a man and a woman in historical attire.
Payton Realty
222-1181

CLASSIFIED INDEX
List of various classified advertisements including real estate, services, and lost items.

\$100.00 DOWN
St. Johns Realty
222-1181

VA-FHA Property Management and Sales Broker
JIM HUNT REALTY
222-1181

Legal Notice
NOTICE OF SALE
A legal notice regarding a property sale or auction.

100. Apartments for Rent
101. Rooms for Rent
102. Mobile Homes - Sale

103. Mobile Homes - Sale
104. Apartments for Rent
105. Rooms for Rent

106. Automobiles
107. Houses for Rent
108. Rooms for Rent

109. Automobiles
110. Houses for Rent
111. Rooms for Rent

112. Automobiles
113. Houses for Rent
114. Rooms for Rent

HOLLER MOTOR SALES
A large advertisement for Holler Motor Sales featuring various car models and their prices.

