

WE NEED CASH THIS IS AN EMERGENCY SALE!

OUR BILLS ARE DUE AND
WE HAVE TO RAISE CASH TO
PAY THEM AT ONCE...IN THE
NEXT 7 DAYS...COME IN...
MAKE US AN OFFER!

NAME BRAND FURNITURE AT DISCOUNT PRICES

Sofas	\$97	Bedroom Suites 4-Pc.	\$199
Chairs	\$48	Mattresses	\$39
Love Seats	\$79	Hide-A-Beds	\$158
Recliners	\$78	Dinettes	\$59

E-Z TERMS • LOW DOWN PAYMENT

NAME BRAND FREIGHT SALES

550 N. HWY. 17-92, LONGWOOD, FLORIDA
• mile north of Hwy 133 •
OPEN Mon-Fri 9-7 Sat 9-6 Closed Sun
Phone: 339-3366



Seminole's Information Service Being Forced Out Of Business

By GEOFFREY POUNDS
Herald Staff Writer

The yellow street sign outside the tiny Information and Referral Service office at the Five Points complex tells the whole story: dead end.

The three-year operation of the agency was dead-ended recently when the Seminole Board of County Commissioners nixed last minute appeals by I&R advocates seeking continued funding for 1979-80.

As a result, Margaret Barnes, 30, will be out of a job Sept. 30. In addition, Ms. Barnes said, about 400 persons each month who call on one of the two phone lines for help will have to go elsewhere.

"We don't handle the dramatic calls like suicides. What we do is provide information about services that persons or other agencies need and don't know where to find," Ms. Barnes said.

But the county commissioners decided that the other agencies were, in fact, doing their own referrals. The I&R service was a convenience but not a necessity, they

reasoned. With limited funds available, conveniences such as I&R became expendable, inevitable victims of a limited budget.

"You have to look at two things. First, are we losing a service? And second, what do the priorities have to be in meeting the areas of deficiency?" said commissioner Dick Williams.

"The service can be performed without the agency. It is being performed. The black community turns to Seminole Community Action when they have questions. The senior citizens look to one of the senior citizens groups. The veterans have their own contact person. There are numerous youth groups, and so forth.

"In terms of priorities, I think there are deficiencies that must be met — transportation, fire protection and police protection," he said.

According to Williams, when the I&R service was started three years ago its purpose was to provide human service consumers with one central number they could call and be directed to the right source for

help. He said I&R service then became a convenience for the agencies themselves rather than an aid to the consumers, he said.

But Mickey Adams, who organized the initial I&R agency and coordinates a similar service in Orange

County, said the commissioners don't understand the function of I&R.

"There seems to be the idea that all the other agencies do what we do. They don't. We are the only comprehensive information center. If we close, there is going to be a definite gap in services to the people of the county," Ms. Adams warned.

"If we close, there is going to be a definite gap in services"

Ms. Barnes agrees. She said the calls she receives every day often come from those who have tried to get help from one source or another, but were unsuccessful.

Many people who have problems with the government have no idea which agency to call, or even what agencies exist, Ms. Barnes said. Typical, she said, are the poor or the elderly with medical bills beyond their means — they don't know where to turn. Also common are those who have had their utilities cut off and need help, she said.

"Something that will be lost when we close is the ability to update our referral numbers," she said.

The I&R service is not just a matter of making referrals to one agency or another, Ms. Barnes said. There are many groups or services that are quasi-formal, perhaps run by one person out of their own home, she said. Numbers and names of those sources change constantly.

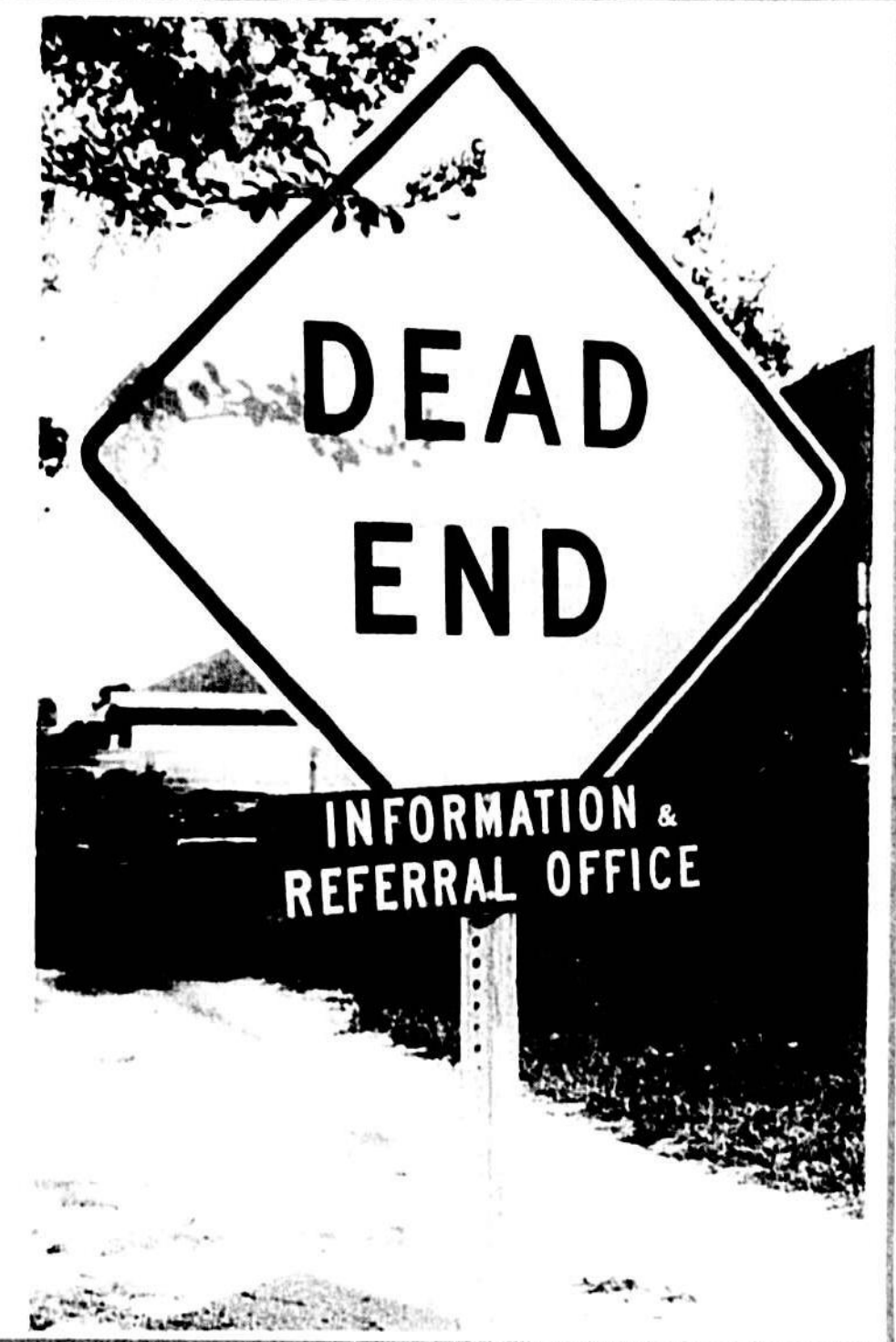
For example, Ms. Barnes said, she has made referrals to such little-known groups as the Florida Society for Autistic Children, the Florida Council for the Hard of Hearing and Deaf, the Lupus Foundation and others.

Ms. Barnes took the job with I&R in July after county commissioners gave preliminary indication that the agency would lose its funding for the coming year.

"I knew we'd probably be going out of business when I took the job, although there was some hope we might get other funds," she said.

The \$12,000 received by I&R last year goes to pay the salary of Ms. Barnes, operating expenses and administrative fees. The other member of the staff, a clerk-typist, is paid through CETA funds, also due to expire.

For the next month, Ms. Barnes said, she is not going to worry about where she'll be working next. The real question, she said, will be determining who will receive the thousands of indexed referral cards, booklets, pamphlets and miscellaneous information packets when her agency closes down.



Don't Push Panic Button On Cuba, Cautions Carter

By HELEN THOMAS
WASHINGTON (UPI) — President Carter, urging Americans not to push the panic button, says the presence of a Soviet combat brigade in Cuba calls for "firm diplomacy" and a "sense of proportion."

In an attempt to head off a backlash on Capitol Hill that threatens Senate ratification of the Strategic Arms Limitation Treaty and to calm the nation, Carter made a brief televised statement Friday in the White House press room.

To some extent it may have worked. Sen. Dennis DeConcini, D-Ariz., telephoned Carter in the Oval Office to say he was withdrawing a proposed resolution to delay the debate on SALT II.

Carter said the Soviet combat unit "is not an assault force ... and does not have any weapons capable of attacking the United States."

At the same time, he said, the purpose of the brigade 90 miles from Key West, Fla., is not yet clear, and warned relations between the two superpowers "inevitably will be adversely affected" unless the issue is resolved.

The Russians' initial response, according to an official, has been to indicate they are "willing to sit down and talk about it," leaving the door open in the opinion of Carter's advisers.

Secretary of State Cyrus Vance was awaiting the return of Soviet Ambassador Anatoly Dobrynin to Washington following the funeral of his father. An official said the United States has "let it be known" it considers the matter important and the Soviets should send an alternate emissary if Dobrynin cannot make an early return to Washington.

Carter gave no hint of what further steps he contemplates, or whether he would demand the withdrawal of the Soviet force. He said it is a "serious matter" and "this status quo is not acceptable."

"We are confident about our ability to defend our country or any of our friends from external aggression," he said. "The issue posed is of a different nature. It involves the stationing of Soviet combat troops here in the Western Hemisphere in a country which acts as a Soviet proxy in military adventures in other areas of the world, like Africa."

County School Social Workers

They Help Children To Function

By SHARON CARRASCO
Herald Staff Writer

They deal with virtually every situation, from child abuse to youngsters who can't go to school because they have no shoes.

Sometimes they want to scream in frustration, but they say a simple thank you often seems to make it all worthwhile.

"The social workers program for Seminole County schools was started almost 10 years ago to serve as a conduit between the parental community and the school system," said Marie Taylor, chief social worker in an interview.

The program's chief aim is to help the child function well as a student and deal any problems that may hinder that goal, she explained. Problems vary, she

said from poverty to a need for a special instruction to treat a learning disability.

Ms. Taylor, a silver-haired woman with warm eyes, says the program was founded in 1970 with one social worker, herself, to serve the entire school system. Since then, five more social workers have been added and another one may be hired in the near future.

"We saw a need of involving parents in these types of situations," Marie says. "It's always better to have the parents involved where they understand what is going on with their child."

Since the program began, the needs of parents and children for the help of social workers has heightened, she noted. During the 1978-79 school year alone, social workers visited

2,266 homes, helped 555 families in crisis situations, and screened 271 children for child abuse or neglect.

Social workers also made 4,325 telephone calls, traveled 25,488 miles in performing their job and worked 350 hours overtime for no compensation, she said.

Asked the most prevalent problem among children, Gladys Wilson said she couldn't pinpoint one saying they tend to be multi-faceted.

Ms. Wilson, who has worked with the program seven years, recalled talking with a mother last year about her child who was having learning problems.

"Just through our conversation, I realized the father was out of work," Ms. Wilson said. "So, we stopped and got some food for the family."

The salaries of the school's six certified social workers are paid through the Seminole County school district. The district also allots a contingency fund of \$2,000 annually to the program for clothing, food stuffs and other expenses for needy families. Other monetary support and material items come from civic



School social workers Marie Taylor (at desk) and Gladys Wilson

organizations and local churches. Ms. Taylor added, "We have more help around Thanksgiving and Christmas. People are more generous." (See THEY, Page 2A)

GRIDIRON DANCE? Disco on the gridiron? Nope! Just John Hammond of Lake Brantley grabbing Jeff Williams on pass play Friday night, kicking off high school football season in Seminole County. Colonial won, 6-0. For rundown on games, plus photos, see Pages 7A and 8A.

Lake Mary Police Officer Got His Wires Crossed

What's the difference between a telephone line and an electrical wire?

Lake Mary police officers will get a chance to find out before another hurricane comes near Seminole County. They are to

receive instructions on the issue.

Necessity for the instructions came to light this week when a Lake Mary policeman accidentally cut a telephone line in the mistaken belief it was a dangerous electrical wire.

"All I can say is, it won't happen again," Police Chief Harry Benson said.

The cutting of the telephone line left seven Lake Mary families without telephone service for 24 hours, according to a Southern Bell Telephone

Co. spokesman.

The story of what happened according to Mrs. Arthur Short of 188 W. Wilbur goes like this: At about 3 p.m. during the rainstorms Monday from Hurricane David, Mr. and Mrs. Short said a telephone pole

near their home came loose and "sassed down on our fence."

They called the telephone company to inform it about the pole and that service was disrupted. The company representative said service personnel would be out Tuesday

to repair the pole. "We laid the line along the fence and everything was fine," Mrs. Short said.

"The next thing we knew a police car had pulled up front and an officer using a long

handled pruning hook had cut the line and let it drop right across the driveway," Mrs. Short said. "Our telephone service was out 24 hours."

The story as related by Chief Benson from information given to him by the officer is:

The officer while on patrol saw what he believed to be a power line hanging down into the driveway at the Short home.

"He clipped the wire for the safety of residents of the home and the neighborhood," Benson said.

WORLD IN BRIEF

Carter, Kennedy Discuss 'Areas Of Mutual Interest'

WASHINGTON (UPI) — President Carter and Sen. Edward M. Kennedy, D-Mass., discussed areas of "mutual interest" at a private lunch at the White House Friday, a White House source said today.

Pvt. Slovik's Widow Dies

DETROIT (UPI) — Antonette Slovik's long battle to win a pardon for her husband, the only U.S. soldier executed for desertion during World War II, and to collect his GI insurance benefits has ended.

Columbus Busing 'A Success'

COLUMBUS, Ohio (UPI) — The first two days of court-ordered busing in Columbus went as smoothly as school officials are calling the desegregation program a success.

Stay Of Execution Continued

WASHINGTON (UPI) — Justice William Rehnquist has continued a stay of execution for convicted Nevada killer James Bishop until the entire Supreme Court can consider the question later this month.

Frederic Hovers Over Cuba

MIAMI (UPI) — Former hurricane Frederic continued to hover over Cuba as a tropical depression, but forecasters said it passes over the island today and moves out over the water it could regain tropical storm strength.

House Fire Damage Set Near \$100,000

Damage to two-story home in Sanford destroyed by fire Wednesday has been estimated at about \$100,000. Mike Jackson, 31, Route 4, Box 106, Sanford, told Seminole County deputies the structure was insured for \$100,000, and was a 95-percent loss.

Action Reports

*** Fires**
*** Courts**
*** Police Beat**

SUITS STOLEN
Someone took a large cardboard box of suits from the carport of a Casselberry home, according to Seminole County deputies.

Flotilla HQ To Move Into Lake Mary

The Seminole County flotilla of the Coast Guard Auxiliary will be moving its headquarters into Lake Mary as soon as details are worked out with the city council there.



GARY MASSEY

Councilman Harry Terry suggested denial of the request, saying the property will be of more value to the community if it were commercially zoned.

No Trace Of Missing Teen Computer Whiz

EAST LANSING, Mich. (UPI) — Investigators who explored a dark mass of steam tunnels beneath the Michigan State University campus say they found no trace of a missing teen-age computer whiz.

homosexual ties or involvement in a faculty game group, or died accidentally — possibly in the tunnels.

written by someone else. He also said Egbert's mother felt he had been "somewhat upset and distraught" recently

They Help Students

(Continued From Page 1A) giving in spirit, but the children have to come to school nine months out of the year."

Now Open! Med-Care

Surgical Supply Co.
SALES AND RENTALS
HOSPITAL BEDS — OXYGEN BATH EQUIPMENT — COMMODORES
PRESSURE BED PADS
PATIENT LIFTERS
★ WE BILL MEDICARE ★
24 HOUR EMERGENCY PHONE
904-724-1076
322-8855

Heart Attack Is Fatal To Local Accident Victim

Mrs. Harriet Louise Jones, 79, of 745 Sembole Circle, Longwood, died Thursday at Seminole Memorial Hospital.

FLORENCE DENTURE CLINICS, INC.
NOW IN ORLANDO, FLA.
(WINTER PARK)
PHONE (305) 644-1753
ST. PETERSBURG, FLA.
PHONE (813) 541-6664

\$100,000 Nugget Found

STYDNEY, Australia (UPI) — One of the most beautiful and most valuable pieces of jewelry ever found in a bank vault.

FLORIDA IN BRIEF

Allstate Insurance Raises Its Auto Rates 8 Percent

TALLAHASSEE, Fla. (UPI) — Allstate Insurance Company has raised its rates 8 percent effective immediately, the auto insurer's first hike in premiums since 1976.

Lid On Property Tax Eyed

PORT RICHEY, Fla. (UPI) — The Silver Haired Lobby and Florida "67" have joined the Lee County Taxpayer's League in a drive to have a constitutional amendment putting a ceiling on property taxes placed on the general election ballot in November, 1980.

Only 3 Months With Baby

ORLANDO, Fla. (UPI) — Convicted shoplifter Barbara Allen has three months to get acquainted with her newborn baby before she must return to jail.

Tourism Has Rebounded

TALLAHASSEE, Fla. (UPI) — Tourism has rebounded and Florida is looking to a good winter season, state officials say.

Helping Paralyzed Cop

ST. PETERSBURG, Fla. (UPI) — Police department personnel will be able to donate their holiday pay to help a fellow officer who is paralyzed from the neck down, thanks to a plan worked out by city officials.

PSC May Cut Phone Rates

TALLAHASSEE, Fla. (UPI) — The Public Service Commission intends to cut Southern Bell Telephone Co.'s rates by \$60 million a year now that negotiations over a voluntary reduction have broken down.

Was Drug Case Mishandled?

JACKSONVILLE, Fla. (UPI) — The U.S. Justice Department Friday branded as "meritless" a state prosecutor's allegations that the FBI mishandled a drug smuggling case two years ago at Sandy Creek that resulted in four deaths.

Pelican-Torturing Charged

TAMPA, Fla. (UPI) — Two men who moved to Tampa a week ago from Warren, Mich., will have a preliminary hearing Thursday on charges they tortured and killed a brown pelican.

Kmart THE SAVING PLACE
SUN. MON. PRICE BREAKERS
Shop Orlando and Sanford daily 9:30-9:30, Sun. 12-6
K mart ADVERTISED MERCHANDISE POLICY
Our first intention is to have every advertised item in stock on hand. However, we reserve the right to purchase quantities of any advertised item that are not available or to substitute a comparable quality item at our discretion. We reserve the right to change prices without notice.

SAVE 266
Our Reg. 3.57
Misses' Classic Short-sleeved Pointelle Tops
No-iron polyester pointelle for casual or sports-active wear!
Our 3.96 Full Figure Tops, 40-44 2.96

2 FOR \$1
Choice of Hangers
Pkg. of 6 vinyl-coated, drip-dry hangers or 5-bar, plastic slack rack. Save.

257
3-pc. Saucepan Set
White, brown, or yellow enameled steel with black trim. Note savings.

"GOOF PROOF" PHOTOFINISHING
10¢ PRINT PLUS DEVELOPING
PRINT AND DEVELOP
Negatives and slides super 8 & 8mm
24 exp. slides 1.97
34 exp. slides 2.07

66¢
Non-fiction Paperbacks
Crafts, history, sociology, more! Enjoy!
Save now at K mart.

497
Lantern and 6-V Battery
Floating lantern with 4 1/2" lens, gives off powerful steady beam. With spring-type, 6-V battery.

77¢
Doritos Chip Choice
Tortilla corn-taste chips. 7-oz. flavored or 8-oz. regular. Save now.

134
24x45" Scatter Rug
All-purpose rug for kitchen or hall. 14.99. Reversible, washable. Save.

3.96
6-Pr. Pack, Men's Socks
Cushion-foot cotton/stretch nylon crew socks. White and white with stripes. Flt. 10-13.

1237
Teen Slumber Bag
Cotton print reverses to solid color brushed terry. Polyester fill. 100" zipper. Opens for 68x30" cot. Comforter.

127
14-oz. Spray Pledge
2-oz. "d-Con" Mouse-Prufe 1.38
1-lb. "d-Con" for Rats, 1.28

157
YOUR CHOICE
4000
Sale Price
Choice Of Sealed Beans
12-V sealed beans. Your choice of upper or lower. Shop at Kmart. Our Reg. 2.78 HiLo Beam ... 1.68

1237
Wake 'n Warn II Fire Detector
Fire/smoke detector has solid state electronic horn, 9-V carbon zinc battery, LED.

2.96
Handy Latex Gloves
Pink or yellow. Small, medium, large.

1237
Teen Slumber Bag
Cotton print reverses to solid color brushed terry. Polyester fill. 100" zipper. Opens for 68x30" cot. Comforter.

1237
Teen Slumber Bag
Cotton print reverses to solid color brushed terry. Polyester fill. 100" zipper. Opens for 68x30" cot. Comforter.

BUSINESS IN BRIEF

New SCC Class Topic: Securities, Investments

The Office of Community Services at Seminole Community College will be offering a personal development class on securities and investments beginning Tuesday.

The course will include explanations of how stock exchanges operate and how they evolved, explanations of the different types of securities available today (common stocks, preferred stocks, corporate bonds, government bonds and municipal bonds) and the inherent risks and rewards of each type of investment. Other topics included will be: how to read the financial page of the newspaper, how to read financial reports and how to determine personal investment objectives.

David W. Zimmerman will be the instructor. Class will run through Oct. 15, from 7 to 9 p.m., on Tuesday evenings. Registration will be held the first class meeting. Location is at Executive Point Towers, 151 Wymore Road, 14 and 436, Room 311, Altamonte Springs.

Cited As Sales Leader

Michael A. Bernat of 203 Sweetgum Court, Winter Springs, was honored by the John Hancock Mutual Life Insurance Co. recently as a regional sales leader.

A member of the company's Orlando District Office, Bernat was among 146 representatives from the company's South Atlantic region who qualified to attend the Regional Honor Club conference at the Diplomat Hotel, Hollywood, Fla.

John Hancock District Agency representatives from 21 offices in the region were cited at the four-day conference for their sales achievements.

'Quick Cash' For Aluminum

Sanford citizens can pick up some quick cash this month.

Reynolds Aluminum is offering the public 23 cents a pound for clean all-aluminum beverage cans and other all-aluminum products brought to their recycling mobile unit. The unit will be at Public Supermarket in Sanford Plaza, 1080 W. State St., every Wednesday during September from 2 to 3 p.m.

Reynolds also will accept aluminum items such as siding, gutters, storm door and window frames, provided these items aren't mixed with beverage cans, are cut to three-foot lengths, and are clean and free of all foreign material.

Florida Gas Co. Merges

Merger of Florida Gas Company of Winter Springs into the Continental Group Inc. has been approved by the firm's stockholders. It was announced recently.

Florida Gas will be re-named Continental Resources Co. and become a wholly owned subsidiary of the New York-based conglomerate, which has holdings in financial services, packaging and natural resources.

The Continental Group had earnings of \$126.2 million last year, on sales of \$3.9 billion. Florida Gas had earnings of \$26.2 million on operating income of \$268.8 million.

Florida Gas stockholders will receive 20 of a share of noncumulative \$1.50 Class C cumulative preferred stock in Continental Group for each common share held plus \$32.50 in cash.

Expansion At An End?

Despite the continued strength of a number of sectors in the economy, the expansion phase of Central Florida's current business cycle appears at an end. This is American Federal's, a division of First Federal of Miami, latest assessment of business conditions in Orange, Seminole and Osceola counties.

Although the Central Florida Economic Index inched up to a new high of 71 in May, the advance was slight and entirely attributed to inflation. In June, the index dropped 15 percentage points, the sharpest decline in almost three years, it was reported recently.

Discotheques: Music, Lights And Money

NEW YORK (UPI) — Pounding music, kaleidoscopic light effects, the outlandish outfits of dancers and onlookers are one aspect of the discotheque craze. The other is money: it can be a lucrative business indeed.

There are an estimated 15,000 discos throughout the country with revenues ranging between \$4 billion and \$8 billion a year.

No one knows the exact figures since most of the clubs are privately owned but the popularity of discos is attracting large investors sensing a good prospect.

"A properly conceived, planned and managed discotheque can be a highly profitable business," says Bjorn Hanson, a leisure-time industry specialist for the Philadelphia-based accounting firm of Laventhol & Horwath.

Compiling statistics from the firm's experience with major discos, particularly the more lavish ones in New York City, Hanson figures that a large club can get going for about \$1.5 million. If it clicks with the right crowd, the original investment can be repaid in less than a year and a half.

"Major discotheques, such as New York's Studio 54 and Xenon, range in project cost from \$1 million to \$2 million in a leased building with a capacity of 1,000 to 1,500 guests," Hanson says in an analysis in Laventhol and Horwath's Perspective magazine.

The biggest chunk of the start-up costs, 40 percent, goes to structural improvements. The all-important sound system takes 15 percent and interior decoration another 15 percent.

Lighting, other visual effects and the dance floor represent another 10 percent and the final 20 percent goes into pre-opening costs such as advertising, payroll and rent.

Now ready for business, Hanson says the major disco will obtain two-thirds of its revenue from cover charges, typically \$10 a head. A big club open seven days might attract 6,000 customers a week, half of them Friday and Saturday nights, Hanson figures. Annual membership fees are charged by some clubs.

The other third of the disco's income is provided by the bar where beverage prices usually are well above those in nearby restaurants and bars.

On the expense side, bar costs run less than 9 percent. The biggest item is payroll at 27 percent and other operating costs, another 23 percent. That still leaves plenty for rent, insurance and finance and other charges.

Before rushing to cash in on the disco goldmine, however, investors should be aware of the risks involved. "Disco is a very short and very volatile market," Hanson says while discos are a fad to some extent, their type of entertainment is likely to remain popular.

"Obviously," says Hanson, "there are a variety of businesses with a large financial stake in keeping the phenomenon alive and prospering."



Teen-agers dance to the beat of the music at Casselberry discotheque. *Herald Photo by Tom Hovet*

FHA Insures Loans For Home Purchases

Question: What is an FHA-insured loan?

Answer: Although the Federal Housing Authority (FHA) insures loans for the construction of low-income housing and the purchase of income property, the majority of the loans are made under Section 203, which covers loans for the purchase of one-to-four-family residences.

Under the procedures set forth by the Federal Housing Administration, institutional lenders may apply to the FHA for insurance of a mortgage loan to finance the borrower's home. Technical requirements established under congressional authority must be met before the FHA will grant the insurance. Four of these are as follows:

1. The interest charged on the loan cannot exceed the maximum authorized by law to be charged on FHA-insured loans, which currently is 10 percent. This rate is set from time to time by the Secretary of Housing and Urban Development.
2. In addition to interest, the borrower is charged one-half percent per year of the outstanding loan amount as a premium for the FHA insurance (known as the mortgage insurance premium, or MIP), which protects the lender from loss.
3. The mortgaged real estate must be appraised by an approved FHA appraiser, and the ratio of possible mortgage debt to the appraised value of the property decreases as the appraised value of the property increases. The minimum down payment on an FHA-insured loan amounts to 3 percent of the first \$25,000 and 5 percent of the remainder. This means that a family using an FHA-insured loan to purchase a home appraised at \$40,000 must make a down payment of \$1,500 or 3 percent of \$25,000 (\$750), 5 percent of the remaining \$15,000. The maximum loan that the FHA will insure for a single family residence is \$40,000. FHA regulations require that both the buyer and the seller sign a statement indicating that they have examined the FHA appraisal.

standards for type and construction of buildings, quality of neighborhood and credit requirements of borrowers.

A buyer cannot assume that a property is physically sound, however, just because the FHA inspects it and agrees to finance its purchase. The Department of Housing and Urban Development (HUD) has approved the use of forms to be executed by the buyer and seller. These include such statements and warranties as: (1) buyer has examined the entire premises; (2) a property is sold "as is"; and (3) no special fees or kickbacks have been paid other than the customary commission or charges.

The FHA changes its regulations from time to time.

Your Real Estate STEVE RIGGS

and current provisions should be ascertained from the local FHA office.

MORTGAGE MONEY...

THE PRESIDENT — 4 Bedrooms — 2 Baths

no problem when Jim Walter builds!

Regardless of what you've heard or read in the news, if you own property, mortgage financing is no problem when Jim Walter builds for you. Jim Walter has PLENTY of readily available dollars to build new homes for his customers. In addition, to help keep the cost of owning a new home as low as possible, Jim Walter does NOT add "points" or "closing costs" that others charge to further inflate the price you pay.

Jim Walter offers more than 20 LOW-COST homes that can be built on your property to almost any stage of finish, from the shell home to one that is 90% complete. This means that you'll have an opportunity to cut an already low price even more, simply by doing some of the inside finishing work yourself. Do the electrical work, install the plumbing, finish the wallboard. You'll see how much you would like to do. The more you do, the more money you'll save. And, with today's high spiraling costs, everyone wants to save money.

Get complete information and cost of building on your property. Get the facts about our INSTANT mortgage financing that takes only a day or two instead of the usual weeks or sometimes months for credit approval. Let us tell you about Jim Walter custom construction methods. We want you to see the homes we build and tell you about all of the money-saving options offered to you. We want you to know your cost first hand and what your monthly mortgage payment would be to build any one of the more than 20 models on your property to the stage of completion you wish. We want you to have ALL the facts about building the Jim Walter way. Call, stop by or send the coupon to our nearest display party. WE DO IT RIGHT!

FREE FULL-COLOR CATALOG! Fill out and mail. No obligation.

JIM WALTER HOMES (not to be confused with Jim Walter's name)

I would like to receive more information and the cost of building on my property. I understand there would be no obligation to buy and that you would give me your best price of charge.

Name _____ Address _____ City _____ State _____ Zip _____

Telephone (or teletype) _____ If send return please give directions _____ I own property in _____ County, _____

Learn to Prepare Income Taxes

• Accurate with figures?
• Like to meet the public?
• Want to earn extra money?

Enroll in the H & R Block Income Tax Course beginning soon in your area and learn to prepare income taxes for yourself, your friends and as a source of income. Job interviews available for best students! Send for free information and class schedules today.

Classes begin Sept. 16 and will be held in 4 Area locations.

H & R BLOCK

CONTACT THE OFFICE NEAREST YOU

SANFORD: 1001 W. STATE ST. SANFORD, FL 32701-4400
ORLANDO: 1001 W. STATE ST. ORLANDO, FL 32701-4400
MIAMI: 1001 W. STATE ST. MIAMI, FL 33136-4400

Please send me free information about your tax preparation course. I understand there is no obligation.

Name _____ Address _____ City _____ State _____ Zip _____

CLIP AND MAIL TODAY

no problem when Jim Walter builds!

Regardless of what you've heard or read in the news, if you own property, mortgage financing is no problem when Jim Walter builds for you. Jim Walter has PLENTY of readily available dollars to build new homes for his customers. In addition, to help keep the cost of owning a new home as low as possible, Jim Walter does NOT add "points" or "closing costs" that others charge to further inflate the price you pay.

Jim Walter offers more than 20 LOW-COST homes that can be built on your property to almost any stage of finish, from the shell home to one that is 90% complete. This means that you'll have an opportunity to cut an already low price even more, simply by doing some of the inside finishing work yourself. Do the electrical work, install the plumbing, finish the wallboard. You'll see how much you would like to do. The more you do, the more money you'll save. And, with today's high spiraling costs, everyone wants to save money.

Get complete information and cost of building on your property. Get the facts about our INSTANT mortgage financing that takes only a day or two instead of the usual weeks or sometimes months for credit approval. Let us tell you about Jim Walter custom construction methods. We want you to see the homes we build and tell you about all of the money-saving options offered to you. We want you to know your cost first hand and what your monthly mortgage payment would be to build any one of the more than 20 models on your property to the stage of completion you wish. We want you to have ALL the facts about building the Jim Walter way. Call, stop by or send the coupon to our nearest display party. WE DO IT RIGHT!

FREE FULL-COLOR CATALOG! Fill out and mail. No obligation.

JIM WALTER HOMES (not to be confused with Jim Walter's name)

I would like to receive more information and the cost of building on my property. I understand there would be no obligation to buy and that you would give me your best price of charge.

Name _____ Address _____ City _____ State _____ Zip _____

Telephone (or teletype) _____ If send return please give directions _____ I own property in _____ County, _____

WE'LL BUILD ON YOUR PROPERTY TO ANY STAGE OF FINISH FROM THE SHELL UP TO 90% COMPLETE.

SPORTS

Jacobs, Carlson Spark Lake Howell Victory

Bishop Moore Falls, 26-0 In Weir Debut

You gotta like Sammy Weir's game, lapping up the pats on the back from these success-ful Hawks those some very lean years. But the first-year coach at the South Seminole high school pointed a finger at his kids leading for the dressing room, and said, "don't look at me."



Scott Smith rambles up middle for Brantley. *Herald Photos by Tom Vincent*

Oviedo Shocks Taylor

PIERSON—Oviedo High School opens the season on a note that left everyone cheerful Friday night—except the host Taylor High Wildcats.

Oviedo went 53 yards with the game-opening drive, scored three touchdowns and a field goal. Taylor went 10 yards and scored one touchdown.

Oviedo staged a ball-control drive in the last quarter which spanned 98 yards, and more importantly, chewed up most of the clock in the final stanza.

A key play of the drive was a pass from Nese to Terry Griffin. Mike Scott went the final 10 yards, scoring the touchdown.

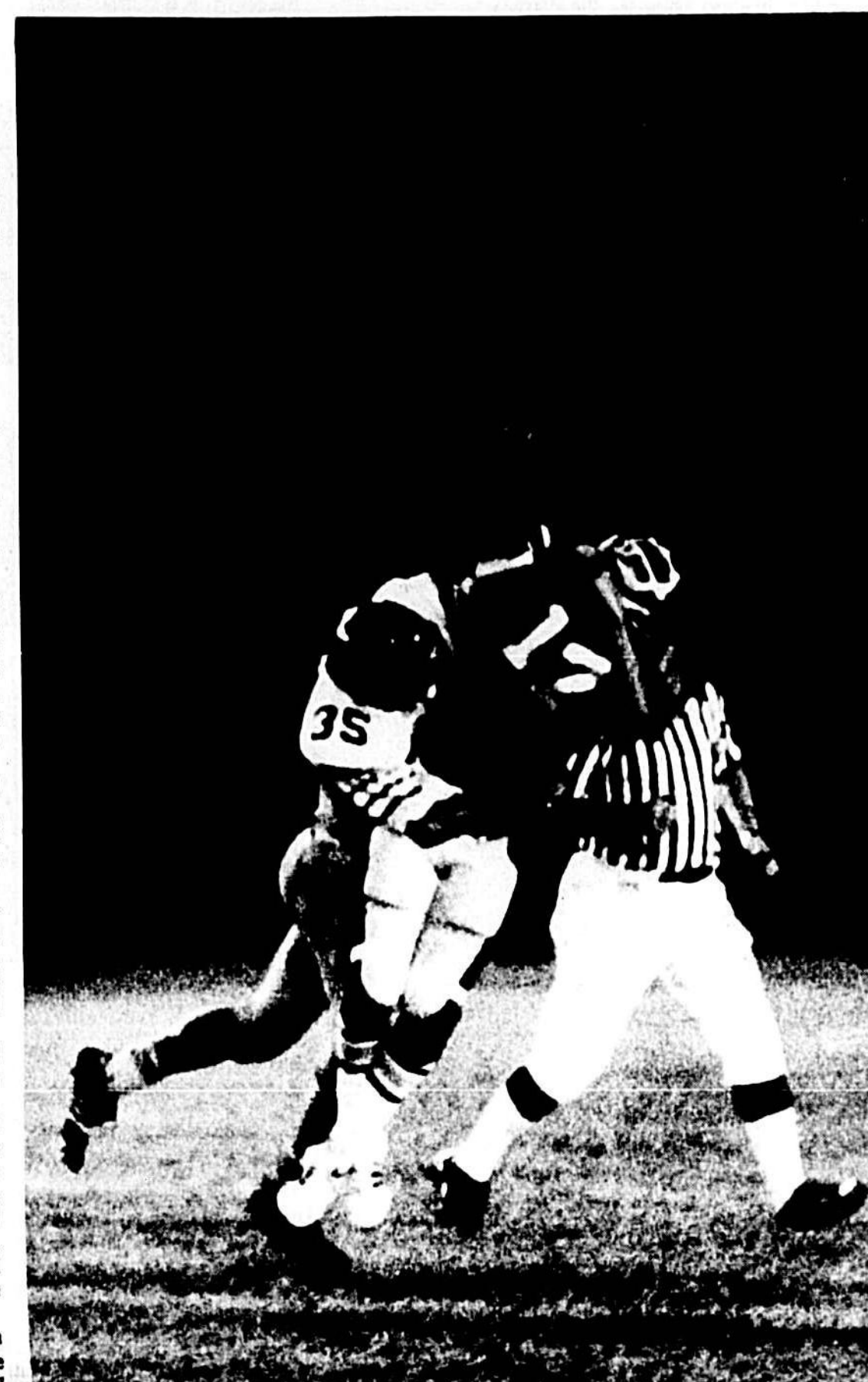
Oviedo coach Joe Montgomery was pleased with the victory, but noted his club had room for improvement.

"Maybe that will come next week against St. Cloud," he said with a wrinkle in his eye.

Hull Mulls Move To U.S.A.

WINNIPEG (UPI)—Veteran Bobby Hull said Friday he is moving back to the United States and will permanently end his 26-year hockey career if he does not play with the Chicago Black Hawks.

"Things are getting a little bit late and I just wonder if anything will ever be resolved," Hull said of the negotiations between Chicago and the Winnipeg Jets over the playing rights to the 40-year-old left-winger. Jets' General Manager John Ferguson said this week he was prepared to let the NHL name a mediator to decide what compensation Winnipeg should get for Hull if he returns to Chicago.



Bob Capobianco takes it on chin after pass.

Defense Saves Day For Lyman, 14-0

ORLANDO—Bill Scott talks about D just like it was one of his family.

And to an extent, the Scott family is expanded from September through Thanksgiving in order to include that very tangible football commodity known as "defense."

"The big D strikes again," said Scott after watching his Lyman High Greyhounds slip past Boone by a 14-0 score Friday night, marking the season opener for both teams.

Boone, expected to be something of a doormat in the Metro Conference this season, gave Lyman something to think about holding the Greyhounds scoreless until the fourth quarter when two touchdowns settled matters in a hurry.

Lyman gained an emotional lift when Audie Cleveland, the squad's star halfback, entered for the first time in the last quarter, and came up with 30 yards in nine carries. Cleveland is recovering from a bruised TD Kurlit, set up a 10-yard TD run by Cleveland for an insurance score.

"I'll give our kids a big lift, no doubt," said Scott. "Audie is a very popular player."

"But if you want to know what kept us in the game it was the defense. What a job! We had our backs to the wall. But hell, you can't ask any more."

Quarterback Jeff Meyer broke the scoreless deadlock with nine minutes left in the game, scampering 18 yards to a touchdown.

A key pass interception and 49-yard return by Lyman's Steve Kurth, set up a 10-yard TD run by Cleveland for an insurance score.

Twins Debut Tickets

BLOOMINGTON, Minn. (UPI)—Baseball Commissioner Bowie Kuhn has authorized the Minnesota Twins to print tickets for the American League playoffs and the World Series, the Twins announced Friday.

Other American League teams that have been told to prepare tickets are the Baltimore Orioles, California Angels and Kansas City Royals. In the National League, printing has authorized ticketing by the Pittsburgh Pirates, Montreal Expos, Houston Astros and Cincinnati Reds.

And... It's Three Strikes For Reggie Jackson

NEW YORK (UPI)—That's three strikes for Reggie Jackson, and according to all the rules of baseball, as well as George Steinbrenner's rules, he's out.

"With two more years to go on his contract, plus an option year, Jackson would like nothing more than to be traded by the Yankees. He has told Steinbrenner that more than once and told it to his family."

All things being equal, he'll get his wish this winter, and if I had to pick the club which has the best chance of getting him I'd say it would be the California Angels.

Back in 1977, after Jackson was voted the World Series MVP, he was brought back as manager this past summer. He made a personal present of the award to him.

A lot of things have happened since. Jackson, for example, had some harsh things to say to the Yankee owner about being among the last to be informed when the club was brought back as manager this past summer. Then, when Al Rosen left the Yankees in July, Jackson ripped Steinbrenner up and down verbally.

And now, two months later, you have the third strike with Jackson wanting Steinbrenner to shut him out by calling him "burr" during their June 19 confrontation.

Sports Parade

By MILTON RICHMAN

I'll say this for George Steinbrenner: he has faults but I've never found him to be a racist.

Curtis Tullin, the Yankees' vice president, was present at the June 19 meeting and he looked "in a tizzy," was Steinbrenner's remark to Jackson intended as a racial slur. Here's Tullin's version of what took place:

"Jackson told George that he would refuse to play for Billy Martin because he had no respect for the man and demanded to be traded."

"George then got mad and told Reggie, 'When I'm ready for you to tell me who is going to manage the ball club, I'll call you. In the meantime, you'd better get your head screwed on straight, boy.'"

"But in no way was it meant as a racial slur."

As for Jackson's charge that Steinbrenner slurred him, the Yankees owner refused to dignify the story.

"I feel sorry for Reggie Jackson and for what he said," says Steinbrenner.

All of which quite likely adds up to Jackson playing for some other club next year.

The Dave Bristol Story

Bob Lurie, the San Francisco Giants' owner, and Spec Richardson, the general manager, ran into a little bit of a surprise when they made the managerial switch from Joe Altobelli to Dave Bristol in Cincinnati early Thursday morning.

As recently as 10 days before, they had pretty much agreed among themselves that the club's nosebleed this year wasn't entirely Altobelli's fault and they would give him another chance next year. But then when the Giants simply fell apart completely by four years this time, it'll be five or six.

Now where do you ever hear confidence like that these days? —

They called Bristol after midnight to tell him they were letting Altobelli go and would like him to run the club.

Bristol listened as Lurie and Richardson told him they wanted him to take over the Giants.

"You mean an interim basis?" he asked them.

"Yes," they said.

And right there was where they got their surprise.

"That wasn't my thinking," Bristol said to them.

"I like working for the Giants," he went on. "Nobody knows their personnel better than I do. Nobody, I know the things that have to be done and I'd like to keep working for the Giants, but if you're thinking of me only in terms of an interim manager, that could hurt my chances of getting a regular manager's job for next year with some other club."

Lurie and Richardson didn't expect that kind of response. They told Bristol they'd get back to him and that was where the matter was left for the time being.

"I'm not overly worried about being an interim manager," Bristol assured his two bosses. "The last time a man made me interim manager (Bill DeWitt of the Reds in 1966), it turned out to be four years. This time, it'll be five or six."

Brantley Comes Close, Loses 6-0 Cliffhanger To Colonial

By GEORGE SHRIVER
Herald Correspondent

Rain and lightning failed to dampen the spirits of the Lake Brantley Patriots, but the bomb in the lightning and rain pre-game rush to get to the stadium for what may have been the most exciting game of the season in Seminole County.

The fans filed into the stadium with their many colored umbrellas and rain gear confident that the weather would not stop the game.

There was a 45-minute delay in getting the game started as the officials wanted to make sure that there would be no danger to the players from the weather. The fans waited patiently with none leaving the packed arena. With the lightning fading into the horizon and the rain becoming an annoying mist the stadium lights came on signaling the game to start.

Both teams took a fifteen minute warm-up being careful not to give away their game plans. Colonial won the toss of the coin and elected to receive. Dan Smith of Colonial returned the kickoff five yards to his 20 and then Kemal Hall moved the ball to the 43 yard line with a well executed endrun. The Patriots defense then latched up and forced the Colonials to punt.

The Patriots were held to four downs when Tony Constantine failed to connect on his first pass attempt.

The Colonials then penetrated their deepest into Patriot territory but a fumble and a penalty moved them back into their own ground and then Sanchez passed to Dan Smith and the Patriots failed to connect with his first pass attempt and the Colonials had to kick the ball away. Jeff Williams snagged an interception to take the ball away from the Patriots on the second possession of the game.

The Colonials drove to the Patriots 14 but could not overcome the outstanding defense effort put forth by the Patriots. The balance of the first half was played near the 30 yardlines with neither team able to overcome its opponent's defensive efforts.

Brantley senior line backer Paul Orofino sparked the Patriots' deepest drive in the third quarter when he intercepted a Sanchez pass on the Colonial 31 and the Patriots moved his first 14 yardline but a motion penalty set them back to the 19 where two incomplete passes into the end zone ended the Patriots' last serious scoring attempt.

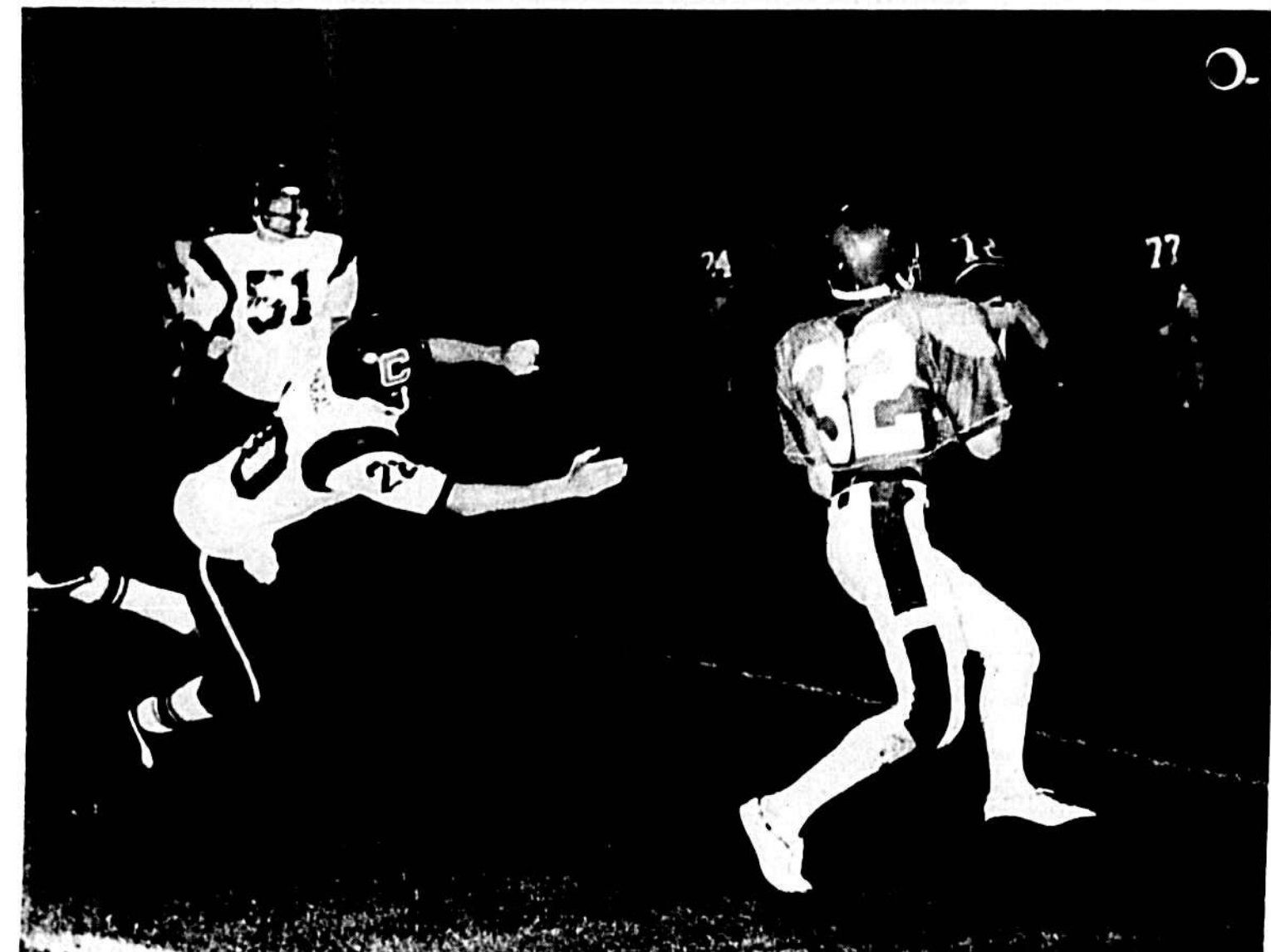
With 11:10 left in the ball game the Colonials scored from the Patriots 39 with a pass from Sanchez to Laminin. The extra point attempt by Vance Broome was wide to the right of the uprights leaving the score 6-0 where it was to remain for the balance of the game with both teams resuming play in the middle of the field.

A disappointed Coach Jim Haley quickly recovered his composure to discuss with reporters how this was a great game and it was a shame one team had to lose. He said both teams played good football and that he could not pick an outstanding player but considered his entire defensive squad as outstanding.

Coach Haley confidently coached the Patriots to victory. He said that the Lyman-Brantley game next week that the Patriots would bring home a victory from that encounter.

Raley was also very proud of his newly refurbished football field which has been rain soaked for nearly an hour before the game was able to start and when play was finished it still looked nearly new. The field had drained well and was like a dry turf with virtually no sliding or falling that would be expected on a rain-soaked gridiron. "It's the best field in the state," quipped Haley, as he tucked into the dressing room.

Colonial 6 0 0 0 6-0
Brantley 0 0 0 0 0-6
C—Laminin 36 pass from Sanchez (kick failed)



Patriot fans bundle up against rain. Grenadiers

Robert Carollo zeroes in on Brantley aerial, Steve Laminin defends

Seminole Shocked In Season Opener, 22-14 Evans Spoils Seminoles' Plans

By BARRY DILLON
Herald Correspondent

"The first game of the season is always the toughest," said Seminole head coach Jerry Posey before the opening kickoff Friday night.

His prediction came true when Seminole played its first game of the season against Evans and lost, 22-14.

After the game, Posey said, "Evans has a much stronger team than it had last year and I know it. Our team was slow getting started."

Seminole was trailing at the half by 15-0. In the second possession of the game, Seminole was held by the seemingly invincible Evans' defense.

Early in the game with a 2-0 lead, Evans' offense was in good field position at the Seminole 36-yard line. Later, Dave McCoy took advantage of the field position and made the score 8-0 with a pass reception from seven yards out. The kick by Scott Consohl was good.

The Evans' defense again held Seminole and forced it to return the ball at the Evans 49-yard line. The Trojans offensive charge brought them to the Seminole eight-yard line. That drive was halted and Evans punted to Seminole, giving it poor field position.

Evans and lost, 22-14. After the game, Posey said, "Evans has a much stronger team than it had last year and I know it. Our team was slow getting started."

Seminole was trailing at the half by 15-0. In the second possession of the game, Seminole was held by the seemingly invincible Evans' defense.

Early in the game with a 2-0 lead, Evans' offense was in good field position at the Seminole 36-yard line. Later, Dave McCoy took advantage of the field position and made the score 8-0 with a pass reception from seven yards out. The kick by Scott Consohl was good.

The Evans' defense again held Seminole and forced it to return the ball at the Evans 49-yard line. The Trojans offensive charge brought them to the Seminole eight-yard line. That drive was halted and Evans punted to Seminole, giving it poor field position.

Evans and lost, 22-14. After the game, Posey said, "Evans has a much stronger team than it had last year and I know it. Our team was slow getting started."

Seminole was trailing at the half by 15-0. In the second possession of the game, Seminole was held by the seemingly invincible Evans' defense.

Early in the game with a 2-0 lead, Evans' offense was in good field position at the Seminole 36-yard line. Later, Dave McCoy took advantage of the field position and made the score 8-0 with a pass reception from seven yards out. The kick by Scott Consohl was good.

The Evans' defense again held Seminole and forced it to return the ball at the Evans 49-yard line. The Trojans offensive charge brought them to the Seminole eight-yard line. That drive was halted and Evans punted to Seminole, giving it poor field position.

Gerulaitis, Tanner In Major Open Battle

By United Press International
NEW YORK (UPI)—Roscoe Tanner may still be flying high from his stunning upset of Super Swede Bjorn Borg Wednesday but as far as Venus Gerulaitis is concerned, Tanner simply made everybody else's job easier.

Gerulaitis, who topped South Africa's Johan Kriek Thursday to set up the first all-American U.S. Open tennis semifinal in 20 years, meets the giant-slapper today, followed by a confrontation between defending champion Jimmy Connors and John McEnroe.

In the opener, Martina Navratilova, the two-time Wimbledon champion who has never reached the finals here, takes on 16-year-old Tracy Austin. The winner will attempt to dethrone four-time champion

Chris Evert Lloyd in Sunday's final. "He's made a lot of guys happy," said Gerulaitis of Tanner's win over Borg. "I feel a little sorry for Bjorn. He is the only player who had a chance at the Grand Slam, but..."

But, quite frankly, the 25-year-old, who has won the Open three times, needs a victory here to dispense the notion he's past his prime, having fallen to Borg in straight sets at Wimbledon and suffering a number of other surprising defeats this year.

Neither he nor McEnroe, his 26-year-old opponent who scored one of those embarrassing upsets last winter, have been tested here so anything can happen.

Friday, Evert reached the finals by whipping Billie Jean King, 6-1, 6-0, in a reversal of their first U.S. Open semifinal eight years ago.

King, who managed to advance to the doubles finals later in the day despite a painfully stiff neck, won only 26 points in the 24-year-old Evert ended the match in 50 minutes.

That was not the old Billie," said a rather disappointed Evert. "She wasn't there, she didn't have the old spirit."

King spent hours in treatment before and after she and Navratilova disposed of Julie Anthony and Sherry Jucker, 6-2, 7-5. She refused to meet the press and make excuses, saying only, "I woke up today with a stiff neck. I thought I'd be able to play after I warmed up," as she walked to the training room.

NEW YORK (UPI)—The New York Mets have recalled four pitchers and an infielder from their Tidewater farm club in the International League.

The pitchers, all right-handers, are Dwight Bernard, Roy Lee Jackson, Mike Scott and Kevin Chapman. The infielder is Felder Bruce Boisclair who had been sidelined for more than a month with fractured right hand.

Let's hope the Oakland Raiders have read the National Football League's 1979 version of the rule book before they take the field at San Diego Stadium Sunday.

The Chargers, who have posted eight victories in their last nine regular season games dating back to Oct. 29, 1978, seemed to have a 20-14 victory sewed up against the opportunistic Raiders, but a controversial final fielder Bruce Boisclair who had been sidelined for more than a month with fractured right hand.

Let's hope the Oakland Raiders have read the National Football League's 1979 version of the rule book before they take the field at San Diego Stadium Sunday.

The Chargers, who have posted eight victories in their last nine regular season games dating back to Oct. 29, 1978, seemed to have a 20-14 victory sewed up against the opportunistic Raiders, but a controversial final fielder Bruce Boisclair who had been sidelined for more than a month with fractured right hand.

NEW YORK (UPI)—The New York Mets have recalled four pitchers and an infielder from their Tidewater farm club in the International League.

The pitchers, all right-handers, are Dwight Bernard, Roy Lee Jackson, Mike Scott and Kevin Chapman. The infielder is Felder Bruce Boisclair who had been sidelined for more than a month with fractured right hand.

Let's hope the Oakland Raiders have read the National Football League's 1979 version of the rule book before they take the field at San Diego Stadium Sunday.

The Chargers, who have posted eight victories in their last nine regular season games dating back to Oct. 29, 1978, seemed to have a 20-14 victory sewed up against the opportunistic Raiders, but a controversial final fielder Bruce Boisclair who had been sidelined for more than a month with fractured right hand.

Let's hope the Oakland Raiders have read the National Football League's 1979 version of the rule book before they take the field at San Diego Stadium Sunday.

The Chargers, who have posted eight victories in their last nine regular season games dating back to Oct. 29, 1978, seemed to have a 20-14 victory sewed up against the opportunistic Raiders, but a controversial final fielder Bruce Boisclair who had been sidelined for more than a month with fractured right hand.

Let's hope the Oakland Raiders have read the National Football League's 1979 version of the rule book before they take the field at San Diego Stadium Sunday.

The Chargers, who have posted eight victories in their last nine regular season games dating back to Oct. 29, 1978, seemed to have a 20-14 victory sewed up against the opportunistic Raiders, but a controversial final fielder Bruce Boisclair who had been sidelined for more than a month with fractured right hand.

NEW YORK (UPI)—The New York Mets have recalled four pitchers and an infielder from their Tidewater farm club in the International League.

The pitchers, all right-handers, are Dwight Bernard, Roy Lee Jackson, Mike Scott and Kevin Chapman. The infielder is Felder Bruce Boisclair who had been sidelined for more than a month with fractured right hand.

Let's hope the Oakland Raiders have read the National Football League's 1979 version of the rule book before they take the field at San Diego Stadium Sunday.

The Chargers, who have posted eight victories in their last nine regular season games dating back to Oct. 29, 1978, seemed to have a 20-14 victory sewed up against the opportunistic Raiders, but a controversial final fielder Bruce Boisclair who had been sidelined for more than a month with fractured right hand.

Let's hope the Oakland Raiders have read the National Football League's 1979 version of the rule book before they take the field at San Diego Stadium Sunday.

The Chargers, who have posted eight victories in their last nine regular season games dating back to Oct. 29, 1978, seemed to have a 20-14 victory sewed up against the opportunistic Raiders, but a controversial final fielder Bruce Boisclair who had been sidelined for more than a month with fractured right hand.

Let's hope the Oakland Raiders have read the National Football League's 1979 version of the rule book before they take the field at San Diego Stadium Sunday.

The Chargers, who have posted eight victories in their last nine regular season games dating back to Oct. 29, 1978, seemed to have a 20-14 victory sewed up against the opportunistic Raiders, but a controversial final fielder Bruce Boisclair who had been sidelined for more than a month with fractured right hand.

NEW YORK (UPI)—The New York Mets have recalled four pitchers and an infielder from their Tidewater farm club in the International League.

The pitchers, all right-handers, are Dwight Bernard, Roy Lee Jackson, Mike Scott and Kevin Chapman. The infielder is Felder Bruce Boisclair who had been sidelined for more than a month with fractured right hand.

Let's hope the Oakland Raiders have read the National Football League's 1979 version of the rule book before they take the field at San Diego Stadium Sunday.

The Chargers, who have posted eight victories in their last nine regular season games dating back to Oct. 29, 1978, seemed to have a 20-14 victory sewed up against the opportunistic Raiders, but a controversial final fielder Bruce Boisclair who had been sidelined for more than a month with fractured right hand.

Let's hope the Oakland Raiders have read the National Football League's 1979 version of the rule book before they take the field at San Diego Stadium Sunday.

The Chargers, who have posted eight victories in their last nine regular season games dating back to Oct. 29, 1978, seemed to have a 20-14 victory sewed up against the opportunistic Raiders, but a controversial final fielder Bruce Boisclair who had been sidelined for more than a month with fractured right hand.

Let's hope the Oakland Raiders have read the National Football League's 1979 version of the rule book before they take the field at San Diego Stadium Sunday.

The Chargers, who have posted eight victories in their last nine regular season games dating back to Oct. 29, 1978, seemed to have a 20-14 victory sewed up against the opportunistic Raiders, but a controversial final fielder Bruce Boisclair who had been sidelined for more than a month with fractured right hand.

NEW YORK (UPI)—The New York Mets have recalled four pitchers and an infielder from their Tidewater farm club in the International League.

The pitchers, all right-handers, are Dwight Bernard, Roy Lee Jackson, Mike Scott and Kevin Chapman. The infielder is Felder Bruce Boisclair who had been sidelined for more than a month with fractured right hand.

Let's hope the Oakland Raiders have read the National Football League's 1979 version of the rule book before they take the field at San Diego Stadium Sunday.

The Chargers, who have posted eight victories in their last nine regular season games dating back to Oct. 29, 1978, seemed to have a 20-14 victory sewed up against the opportunistic Raiders, but a controversial final fielder Bruce Boisclair who had been sidelined for more than a month with fractured right hand.

Let's hope the Oakland Raiders have read the National Football League's 1979 version of the rule book before they take the field at San Diego Stadium Sunday.

The Chargers, who have posted eight victories in their last nine regular season games dating back to Oct. 29, 1978, seemed to have a 20-14 victory sewed up against the opportunistic Raiders, but a controversial final fielder Bruce Boisclair who had been sidelined for more than a month with fractured right hand.

Let's hope the Oakland Raiders have read the National Football League's 1979 version of the rule book before they take the field at San Diego Stadium Sunday.

The Chargers, who have posted eight victories in their last nine regular season games dating back to Oct. 29, 1978, seemed to have a 20-14 victory sewed up against the opportunistic Raiders, but a controversial final fielder Bruce Boisclair who had been sidelined for more than a month with fractured right hand.

NEW YORK (UPI)—The New York Mets have recalled four pitchers and an infielder from their Tidewater farm club in the International League.

The pitchers, all right-handers, are Dwight Bernard, Roy Lee Jackson, Mike Scott and Kevin Chapman. The infielder is Felder Bruce Boisclair who had been sidelined for more than a month with fractured right hand.

Let's hope the Oakland Raiders have read the National Football League's 1979 version of the rule book before they take the field at San Diego Stadium Sunday.

The Chargers, who have posted eight victories in their last nine regular season games dating back to Oct. 29, 1978, seemed to have a 20-14 victory sewed up against the opportunistic Raiders, but a controversial final fielder Bruce Boisclair who had been sidelined for more than a month with fractured right hand.

Let's hope the Oakland Raiders have read the National Football League's 1979 version of the rule book before they take the field at San Diego Stadium Sunday.

The Chargers, who have posted eight victories in their last nine regular season games dating back to Oct. 29, 1978, seemed to have a 20-14 victory sewed up against the opportunistic Raiders, but a controversial final fielder Bruce Boisclair who had been sidelined for more than a month with fractured right hand.

Let's hope the Oakland Raiders have read the National Football League's 1979 version of the rule book before they take the field at San Diego Stadium Sunday.

The Chargers, who have posted eight victories in their last nine regular season games dating back to Oct. 29, 1978, seemed to have a 20-14 victory sewed up against the opportunistic Raiders, but a controversial final fielder Bruce Boisclair who had been sidelined for more than a month with fractured right hand.

NEW YORK (UPI)—The New York Mets have recalled four pitchers and an infielder from their Tidewater farm club in the International League.

The pitchers, all right-handers, are Dwight Bernard, Roy Lee Jackson, Mike Scott and Kevin Chapman. The infielder is Felder Bruce Boisclair who had been sidelined for more than a month with fractured right hand.

Let's hope the Oakland Raiders have read the National Football League's 1979 version of the rule book before they take the field at San Diego Stadium Sunday.

The Chargers, who have posted eight victories in their last nine regular season games dating back to Oct. 29, 1978, seemed to have a 20-14 victory sewed up against the opportunistic Raiders, but a controversial final fielder Bruce Boisclair who had been sidelined for more than a month with fractured right hand.

Let's hope the Oakland Raiders have read the National Football League's 1979 version of the rule book before they take the field at San Diego Stadium Sunday.

The Chargers, who have posted eight victories in their last nine regular season games dating back to Oct. 29, 1978, seemed to have a 20-14 victory sewed up against the opportunistic Raiders, but a controversial final fielder Bruce Boisclair who had been sidelined for more than a month with fractured right hand.

Let's hope the Oakland Raiders have read the National Football League's 1979 version of the rule book before they take the field at San Diego Stadium Sunday.

The Chargers, who have posted eight victories in their last nine regular season games dating back to Oct. 29, 1978, seemed to have a 20-14 victory sewed up against the opportunistic Raiders, but a controversial final fielder Bruce Boisclair who had been sidelined for more than a month with fractured right hand.

NEW YORK (UPI)—The New York Mets have recalled four pitchers and an infielder from their Tidewater farm club in the International League.

The pitchers, all right-handers, are Dwight Bernard, Roy Lee Jackson, Mike Scott and Kevin Chapman. The infielder is Felder Bruce Boisclair who had been sidelined for more than a month with fractured right hand.

Let's hope the Oakland Raiders have read the National Football League's 1979 version of the rule book before they take the field at San Diego Stadium Sunday.

The Chargers, who have posted eight victories in their last nine regular season games dating back to Oct. 29, 1978, seemed to have a 20-14 victory sewed up against the opportunistic Raiders, but a controversial final fielder Bruce Boisclair who had been sidelined for more than a month with fractured right hand.

Let's hope the Oakland Raiders have read the National Football League's 1979 version of the rule book before they take the field at San Diego Stadium Sunday.

The Chargers, who have posted eight victories in their last nine regular season games dating back to Oct. 29, 1978, seemed to have a 20-14 victory sewed up against the opportunistic Raiders, but a controversial final fielder Bruce Boisclair who had been sidelined for more than a month with fractured right hand.

Let's hope the Oakland Raiders have read the National Football League's 1979 version of the rule book before they take the field at San Diego Stadium Sunday.

The Chargers, who have posted eight victories in their last nine regular season games dating back to Oct. 29, 1978, seemed to have a 20-14 victory sewed up against the opportunistic Raiders, but a controversial final fielder Bruce Boisclair who had been sidelined for more than a month with fractured right hand.

NEW YORK (UPI)—The New York Mets have recalled four pitchers and an infielder from their Tidewater farm club in the International League.

The pitchers, all right-handers, are Dwight Bernard, Roy Lee Jackson, Mike Scott and Kevin Chapman. The infielder is Felder Bruce Boisclair who had been sidelined for more than a month with fractured right hand.

Let's hope the Oakland Raiders have read the National Football League's 1979 version of the rule book before they take the field at San Diego Stadium Sunday.

The Chargers, who have posted eight victories in their last nine regular season games dating back to Oct. 29, 1978, seemed to have a 20-14 victory sewed up against the opportunistic Raiders, but a controversial final fielder Bruce Boisclair who had been sidelined for more than a month with fractured right hand.

Let's hope the Oakland Raiders have read the National Football League's 1979 version of the rule book before they take the field at San Diego Stadium Sunday.

The Chargers, who have posted eight victories in their last nine regular season games dating back to Oct. 29, 1978, seemed to have a 20-14 victory sewed up against the opportunistic Raiders, but a controversial final fielder Bruce Boisclair who had been sidelined for more than a month with fractured right hand.

Let's hope the Oakland Raiders have read the National Football League's 1979 version of the rule book before they take the field at San Diego Stadium Sunday.

The Chargers, who have posted eight victories in their last nine regular season games dating back to Oct. 29, 1978, seemed to have a 20-14 victory sewed up against the opportunistic Raiders, but a controversial final fielder Bruce Boisclair who had been sidelined for more than a month with fractured right hand.

NEW YORK (UPI)—The New York Mets have recalled four pitchers and an infielder from their Tidewater farm club in the International League.

The pitchers, all right-handers, are Dwight Bernard, Roy Lee Jackson, Mike Scott and Kevin Chapman. The infielder is Felder Bruce Boisclair who had been sidelined for more than a month with fractured right hand.

Let's hope the Oakland Raiders have read the National Football League's 1979 version of the rule book before they take the field at San Diego Stadium Sunday.

The Chargers, who have posted eight victories in their last nine regular season games dating back to Oct. 29, 1978, seemed to have a 20-14 victory sewed up against the opportunistic Raiders, but a controversial final fielder Bruce Boisclair who had been sidelined for more than a month with fractured right hand.

Let's hope the Oakland Raiders have read the National Football League's 1979 version of the rule book before they take the field at San Diego Stadium Sunday.

The Chargers, who have posted eight victories in their last nine regular season games dating back to Oct. 29, 1978, seemed to have a 20-14 victory sewed up against the opportunistic Raiders, but a controversial final fielder Bruce Boisclair who had been sidelined for more than a month with fractured right hand.

Let's hope the Oakland Raiders have read the National Football League's 1979 version of the rule book before they take the field at San Diego Stadium Sunday.

The Chargers, who have posted eight victories in their last nine regular season games dating back to Oct. 29, 1978, seemed to have a 20-14 victory sewed up against the opportunistic Raiders, but a controversial final fielder Bruce Boisclair who had been sidelined for more than a month with fractured right hand.

NEW YORK (UPI)—The New York Mets have recalled four pitchers and an infielder from their Tidewater farm club in the International League.

The pitchers, all right-handers, are Dwight Bernard, Roy Lee Jackson, Mike Scott and Kevin Chapman. The infielder is Felder Bruce Boisclair who had been sidelined for more than a month with fractured right hand.

Let's hope the Oakland Raiders have read the National Football League's 1979 version of the rule book before they take the field at San Diego Stadium Sunday.

The Chargers, who have posted eight victories in their last nine regular season games dating back to Oct. 29, 1978, seemed to have a 20-14 victory sewed up against the opportunistic Raiders, but a controversial final fielder Bruce Boisclair who had been sidelined for more than a month with fractured right hand.

Let's hope the Oakland Raiders have read the National Football League's 1979 version of the rule book before they take the field at San Diego Stadium Sunday.

The Chargers, who have posted eight victories in their last nine regular season games dating back to Oct. 29, 1978, seemed to have a 20-14 victory sewed up against the opportunistic Raiders, but a controversial final fielder Bruce Boisclair who had been sidelined for more than a month with fractured right hand.

Let's hope the Oakland Raiders have read the National Football League's 1979 version of the rule book before they take the field at San Diego Stadium Sunday.

The Chargers, who have posted eight victories in their last nine regular season games dating back to Oct. 29, 1978, seemed to have a 20-14 victory sewed up against the opportunistic Raiders, but a controversial final fielder Bruce Boisclair who had been sidelined for more than a month with fractured right hand.

SCOREBOARD

Major League

Baseball

National League

East	W	L	Pct.	GB
Pittsburgh	44	56	.440	—
Montreal	37	63	.369	7
St. Louis	34	66	.341	10
Chicago	26	74	.259	18
San Diego	20	80	.200	24
New York	14	86	.140	30

West

W	L	Pct.	GB	
Houston	40	62	.391	—
Cincinnati	37	65	.363	3
Los Ang.	37	65	.363	3
San Fran	30	72	.291	10
San Diego	26	76	.250	14
Atlanta	15	87	.149	25

Friday's Results

Chicago 6, Philadelphia 3
San Diego 6, Atlanta 0
Los Angeles 5, Pittsburgh 4
Pittsburgh 6, N.Y. 4
St. Louis 4, Montreal 4
San Francisco 5, Houston 2

Today's Games

Atlanta @ Pittsburgh
San Diego @ Los Angeles
San Francisco @ Houston
St. Louis @ Cincinnati
Philadelphia @ Montreal
Los Angeles @ San Diego
San Francisco @ Houston
St. Louis @ Cincinnati
Philadelphia @ Montreal

American League

East	W	L	Pct.	GB
Baltimore	42	64	.396	—
Toronto	38	68	.355	4
Detroit	37	69	.347	5
Cleveland	27	79	.254	15
Chicago	26	80	.238	16
Calif.	14	92	.130	28

West

W	L	Pct.	GB	
Seattle	42	64	.396	—
Los Angeles	38	68	.355	4
Oakland	37	69	.347	5
Minnesota	27	79		

CALENDAR



SATURDAY, SEPTEMBER 8
 Sanford AA Women's Group, 3 p.m., 1201 W. First St.
 Casseberry AA, closed, 8 p.m., Ascension Lutheran Church.
 The Eagles CB Club, 8 p.m., Sanford Chamber of Commerce.
 VFW Post 18108 of Sanford, Past Commander-Past President's dinner, 6:30 p.m., log cabin post home.
 Senior Citizens Tour to see "Music Man" at Once Upon a Stage, Leave Sanford Civic Center at 11 a.m. with pick up at Leeds, Casseberry at 11:30 a.m.

SUNDAY, SEPTEMBER 9
 Ballroom and round dancing, 8 p.m., Temple Shalom Providence and Elkam Boulevards, Deltona.
 Seminole AA, 8 p.m., open speaker, Halfway House, 591 Lake Minnie Drive, Sanford.

MONDAY, SEPTEMBER 10
 Monday Movers Toastmasters Club, 7:15 a.m., Holiday Inn, Wynore Road, Altamonte Springs.
 Weight Watchers, 10 a.m., Ascension Lutheran Church Casseberry; 7 p.m., Florida Federal, Altamonte Springs.
 Diet Workshop, 10 a.m. and noon, Carlton Union Building, Stetson University, Deland; 7:30 p.m., First Presbyterian Church, Deland; 7 p.m., Montegony Ward, Interstate Mall, Altamonte Springs.
 Sanford Rotary, noon, Civic Center.
 South Seminole AA, noon, mental health center, Robin Road, Altamonte Springs.
 Sanford AA, 8 p.m., First United Methodist Church, Sanford.
 Sanford AA, 8 p.m., 1201 W. First St.
 Lakeview Middle School Advisory Committee, 7:30 p.m., at the school.
 TOPS Chapter 79, 7 p.m., over Baptist Church, Crystal Lake and County Club, Lake Mary.
 Altamonte-South Seminole Jaycees, 7:30 p.m., Waffle Stop, Altamonte Springs.
 Deltona Area Chamber of Commerce, board of directors, 7:30 p.m.

TUESDAY, SEPTEMBER 11
 VFW 18108 Ladies Auxiliary, 8 p.m., log cabin post home, Sanford.
 Sanford Seriana, 7 a.m., Sambo's Winter Springs Seriana, 7:30 a.m., Community Center, N. Edgemon Ave.
 Sanford Lions, noon, Holiday Inn.
 Longwood Seriana, noon, Quality Inn, 14 and SR 434.
 Tri-County Road Runners CB Club, 7:30 p.m., Sanford Chamber of Commerce.
 Weight Watchers, 7 p.m., Sanford Woman's Club, 309 S. Oak Ave.; 7 p.m., Summit Apts., Casseberry.
 Overeaters Anonymous, 7:30 p.m., Florida Power & Light, Sanford.
 Aviation Modelers, 7:30 p.m., Hobby Depot, Sanford.
 Seminole AA, 8 p.m., open discussion, Halfway House, 591 Lake Minnie Drive, Sanford.
 Parents Anonymous, 7:30 p.m., Community United Methodist Church, Casseberry.
 Second-4-Seminole Chapter Sweet Adelines, 8 p.m., St. Andrews Presbyterian Church, Bear Lake Road, Forest City.

WEDNESDAY, SEPTEMBER 12
 Casseberry Rotary, 7:30 a.m., Woman's Club, 250 Overbrook Drive, Casseberry.
 Orlino Rotary, 7:30 a.m., the Town House.
 Geneva Homeowners, 10 a.m., Community Hall.
 Sanford Optimist, noon, Holiday Inn (Lake Monroe).
 Recovery, Inc. for former and nervous mental patients, 11:30 p.m., 100 Robin Rd., Altamonte Springs.
 Sanford Seriana senior citizens dance, 2:30 p.m., Sanford Civic Center.
 Sanford-Seminole Jaycees, 7:30 p.m., Jayce building, French Ave.
 Overeaters Anonymous, 7:30 p.m., Altamonte Mall, Sears.
 Midnight Toastmasters, 8 p.m., DeBary Community Center, Shell Road.
 Free SCORE Small Business Seminar, 7:30 p.m., First Federal S&L Friendship Room, 145 S. Magnolia Ave., Orlando. For persons planning to go into business.
 AARP directors' meeting, 2 p.m., Greater Sanford Chamber of Commerce building.

FRIDAY, SEPTEMBER 14
 Polish National Alliance Lodge 3216 5th Anniversary Dance, 8 p.m. to midnight, Winter Park Civic Center, Winter Park.
 Apollo Barbers Chapter DAB, 2:30 p.m., home of Mrs. F.E. Remmel, 80 S. Palmisto Ave., Sanford.
 Free concert by United States Army Field Band and Solid Soldiers' Chorus of Washington, D.C., 8 p.m., Eola Park Bandshell, Orlando.
 Council of Arts & Sciences annual President's Luncheon for incoming and outgoing presidents of member organizations, noon, Bayway Hotel, Orlando.

SATURDAY, SEPTEMBER 15
 Two-day workshop on problems of the deaf for teachers, counselors, law enforcement officials, medical personnel and family members, University of Central Florida, Call 278-6100.
 Dinner for single over 18 sponsored by Belle and Bruce of Orlando, 8 p.m. to midnight, Winter Park Civic Center, 2001 Winter Park, Live band.
SUNDAY, SEPTEMBER 16
 Church and family programs for the week, 7:30 p.m., Ascension Lutheran Church, Deltona. Open to all in program with choir opportunities.
TUESDAY, SEPTEMBER 18
 Three-day workshop for parents of students in Title I program, 8 a.m. to 5 p.m., Volusia Instructional Center, 100 Ponce de Leon Ave., Sanford.
WEDNESDAY, SEPTEMBER 19
 Free 100 courses to occupational businessmen with free tax free seminars available from the Revenue Act of 1978, 8:30 a.m. to noon, VCF College of Continuing Education.

AREA DEATHS

MISS MARY ELLEN She is survived by two sons, David E. and Robert E., both of whom are in the U.S. Navy. She is also survived by her husband, Robert E. and her daughter, Betty E. She was a member of the Methodist Episcopal Church.

MISS FLORENCE She is survived by two sons, David E. and Robert E., both of whom are in the U.S. Navy. She is also survived by her husband, Robert E. and her daughter, Betty E. She was a member of the Methodist Episcopal Church.

25% off infants' and tots' needs. It's Baby Week at JCPenney.

Sale 2.39
Reg. 3.19. Infants' knit pajamas. Fits up to 18 lbs.

Sale \$3
Reg. \$4. Infants' knit sacque and party set in polyester. Gift boxed. Fits up to 18 lbs.

Sale 1.64
Reg. 2.19. Infants' knit sacque in polyester. Prints and solids. Fits up to 18 lbs.

Sale 2.69
Reg. 3.59. Printed cotton receiving blanket is 30"x40". Package of 2.

Save 25% on all crib needs. Blankets, sheets, mattress pads, pillowcases and more.

Sale 3.97
Reg. 5.29. Crib blanket is Orion acrylic with nylon binding. 36"x50".

Sale 2.47
Reg. 3.29. Printed crib sheet is 100% cotton with elastic ends.

Sale 6.75
Reg. \$9. Polyester/cotton cotter is polyester filled. Converts to sleeping bag. 34"x45".

Sale 3.59
Reg. 4.79. Fitted crib blanket.

Sale \$3
Reg. 4.00. Fitted crib mattress protector.

Sale 4.49
Reg. 5.99. Screen printed diaper bag is tough cotton canvas.

Sale 2.32
Reg. 3.09. Tots' short sleeve pullover is 100% cotton. Package of 3. Size S-M-L-XL.

Sale 5.24
Reg. 6.99. Flat heavy-weight cotton gauze diapers.

Sale 5.47
Reg. 7.99. Pre-washed heavy-weight cotton gauze diapers.

Special 4.44
Baby's sleepers.
 Cozy sleepers for infants and tots are screen-printed polyester with elastic waistbands, reinforced toe caps. Gripper waist sizes 1, 2, 3. Boxer waist sizes 4, 5, 6.

Special 4.44
Tots' pant sets.
 Toddler boys' pant sets team striped-up tunics with brushed denim elastic-waist jeans. Easy-care polyester/cotton. Sizes 2, 3, 4.

Save on disposable diapers.
 Economy packs of pinless, Toddler's diapers.
Sale 3.97
 Newborn 80's, reg. 4.99
 Toddler 40's, reg. 3.29
 Sale 3.97

This JCPenney

SANFORD-LAZA
 1201 W. First St.
 SANFORD, FL 32751

ORLANDO DOWNTOWN
 201 E. Orange Ave.
 ORLANDO, FL 32801

WINTER PARK MALL
 1001 W. Winter Park Blvd.
 WINTER PARK, FL 32789

OURSELVES

Briefly

ICF Workshop To Explore Child Development

A four-hour Saturday workshop for parents, teachers and others who work with young children in learning situations will be conducted Sept. 22 at the University of Central Florida. Entitled "The Child: Identification and Remediation of Deficits," the course will explore the relationship between motor deficits and the total development of the child. The workshop will begin at 8:30 a.m. in the UCF Education Center. The \$10 registration fee includes all instructional material. As class size is limited, early registration is encouraged by contacting the UCF College of Extended Studies, 275-2122.

Art Show Seeks Exhibits

The Florida Arts Guild will sponsor the First Annual Arts Festival to be held in conjunction with the People's Gasparilla Festival - Art Festival, Feb. 9-10, 1980, at Riverfront Park downtown Tampa. This festival, which will become a regular feature of the People's Gasparilla, is not to be confused with the Gasparilla Festival Art Show which is always held in March of every year. The festival hopes to bring quality art to the Tampa Bay area from all over Central Florida. Applications are now being accepted by sending a self-addressed, stamped envelope to: Florida Fine Arts Guild, c/o The Story, 4475 Gandy Blvd., Tampa, FL 33611.

ICF Women Slate Coffee

Mrs. Trevor Colbourn will host the University of Central Florida Women's Club annual welcoming coffee on Tuesday, Sept. 10, at 10:00 a.m. in the Village Center. Following the coffee, club president Mrs. Larry (Mary Ann) Cottrill, will preside over a short business meeting. The club plans for 1979-80 will be announced and members will have the opportunity to sign up for various interest groups.

Guitar Classes Offered

The Leisure Time Program at Seminole Community College is offering a beginner course in "Class Guitar," scheduled to begin Sept. 19. Class will meet every Wednesday from 7 to 8:30 a.m. for ten weeks. "Class Guitar I" will cover basic music theory, chord progressions, accompaniment, and the development of a chord-melody solo. The \$29 fee provides for the instructional cost of the course. For more information, call the Leisure Time Program at SCJ. This class is self-supported by student fees at no expense to the taxpayers.

Choral Group Needs Singers

Orlando Singers, a community choral group, is being reorganized. Though all voices are needed, sopranos and basses are especially being sought. Prospective members are asked to attend any 7:30 Tuesday night rehearsal during September at the Calvary Presbyterian Church on Lee Road, Winter Park. The choral group will focus on a variety of music, including Broadway, jazz, and classical selections. Performances will be scheduled in the near future. For further information, contact Daisy Parivovskiy at 285-7180 or Bob Maguire, director, at 323-8813, Sanford.

Exhibit Features Photography

An innovative photography-dance exhibit, which will feature 60 black and white photographs by Joe Baran Farmer, will open the fall exhibit schedule on Sept. 18 and continue through Oct. 11 at the Cornell Fine Arts Center Museum of Rollins College. A native of Atlanta, Georgia, Farmer spent the past year in New York on tour with the internationally prominent Louis Falco Company capturing the dances on film. He is currently working on a book of representative dance photography highlighting the Louis Falco Dance Company. The museum is open from 10 a.m. to 5 p.m., Tuesday through Friday and from 1 to 5 p.m. Saturday and Sunday. There is no charge for admission.

Adelines Holding Guest Night

The Sound of Sunshine Chapter of Sweet Adelines will hold a membership guest night on Sept. 28, Thursday at 8:00 p.m., at St. Andrews Presbyterian Church, Bear Lake Road, Forest City. An Action Quartet Contest will entertain, as well as a few songs by the "ETCETERA." Refreshments, a bar, and a hot committee. For information call Betty Fisher, 648-0801.

KF Drive To Begin

The Kidney Foundation of Central Florida will be having its 1979-80 "KF Drive" to raise money for research and education. Volunteers in each neighborhood will be calling on their neighbors, distributing door cards, information on the Kidney Foundation, kidney disease, and accepting donations.

Photography Course Starts

The Leisure Time Program at Seminole Community College is offering a new evening course in Photography scheduled to begin Sept. 10. For information call Betty Fisher.

Marketing Chapter Forming

A chapter of the Florida Marketing Council is being formed in Sanford. The chapter will be held in conjunction with the Florida Marketing Council's annual meeting in Orlando, Florida, Oct. 15-17, 1979.



Ruth Waldon, left, gets the hamburger patties ready while Bertha Keller sprinkles buns with cheese in preparation for serving cheeseburgers to thousands of students.



School Kitchens Seem Designed To Feed Giants

By SHARON CARRASCO
 Herald Staff Writer

The 16 kitchens in Seminole County schools look like they've been designed to feed the Jolly Green Giant and his entire family. On a tour of one kitchen at Seminole High School, Helen Constantine, production center manager, points out a 60-quart mixer for kneading bread dough, a kettle that can brown 80 pounds of ground beef at a time and a pot for steaming 70 pounds of vegetables. At one end of the kitchen, Bertha Keller swiftly sprinkles cheese on the buns of would-be cheeseburgers that fill a full-length table. Asked if she makes these burgers for her kids at home, Mrs. Keller makes a sour face and says "sometimes I don't even feel like cooking." During school year 1978-79, approximately 2,853,000 full lunches were served out of the county school kitchens, says Charlotte Whitmore, director of food service for Seminole County public schools. To serve the thousands of lunches daily, some kitchen personnel get their stations as early as 3 a.m. to prepare the large amounts of food, she says.

Like a typical family budget, the food service budget has been increased this year to keep up with the rising prices. The total food service budget last year was \$3,446,000 compared with this year's budget of \$3,715,000, Mrs. Whitmore says. Of these figures, \$1,400,000 was spent last year on food, whereas \$1,726,000 is budgeted for food supplies for the 1979-80 school year. To help cut costs, the food service personnel buy food items in bulk for storage in the warehouse in Sanford, says D. F. Kirkpatrick, assistant director of food service. As a precaution against hungry burglars, the warehouse is equipped with a silent alarm that automatically notifies police. The warehouse, which has storage space of 5,000 square feet, houses anything from sports (a

small combination of a spoon and a fork) to cases of boxed chicken and dry milk, Kirkpatrick says. "Seminole County school district saves some money by cooperative bidding for foods with Volusia and Putnam counties, he adds. "For just half of the school year alone, we (Seminole County) are buying 12,000 beef patties from the same distributor," Kirkpatrick explains. The school district also saves money by delivering the food stuff to each of the 16 schools itself. Some supplies are delivered literally to the warehouse's back door by train on a 350-foot railroad track owned by the school district, he said. "There are a total of 41

Free Health Education Classes Offered

Center Serves All Medical Indigents



By TOM NETSEL
 Herald Staff Writer
 Her son's ear started hurting on the bus ride from South Florida. Just a little at first—but as they neared Sanford she could tell it was getting worse. She tried to comfort the 4-year-old as best she could but there was little she could do until they reached the migrant camp on the outskirts of the city. This woman, who pretends to remain anonymous, had worked the fields here before and although she and her family had little money she knew her son would get help. While her family unpacked their belongings she called the Central Florida Migrant and Community Health Center, 211 S. Oak Ave., Sanford. She explained the problem and made an appointment for her son. Stating that she needed transportation, the clinic informed her that they would send a minibus. Each year the clinic and its satellite in Orlando provide primary and preventative health care to many of the estimated 7,000-8,000 migrants who pass through Seminole county, but its services are not restricted to migrants only. Services include general medical care, family planning, prenatal and postnatal care, Montegony, MPH, anyone who is in need of care is eligible for medical services. "From January to June, just reporting for that period, we've had 4,700 medical users," Miss Montgomery said. Many of these were medical indigents as well as seasonal farm workers and migrants. Payment for the care is based on the size of the family and its income, according to Miss Montgomery. A sliding fee from zero to 100 percent is charged based on a chart supplied from the Bureau of Health Services in Rockville, Md. For a non-farm family of four with earnings between \$6,878 and \$8,399 they would only be required to pay for 40 percent of the bill, according to the center's figure. The center's medical team is composed of physicians, a family nurse practitioner, a registered pharmacist, a registered nutritionist, a medical technologist, a lab technician, registered nurses, a licensed practical nurse, community health workers and aides. Services include general medical care, family planning, prenatal and postnatal care, Montgomery, MPH, anyone who is in need of care is eligible for medical services. "From January to June, just reporting for that period, we've had 4,700 medical users," Miss Montgomery said. Many of these were medical indigents as well as seasonal farm workers and migrants. Payment for the care is based on the size of the family and its income, according to Miss Montgomery. A sliding fee from zero to 100 percent is charged based on a chart supplied from the Bureau of Health Services in Rockville, Md. For a non-farm family of four with earnings between \$6,878 and \$8,399 they would only be required to pay for 40 percent of the bill, according to the center's figure. The center's medical team is composed of physicians, a family nurse practitioner, a registered pharmacist, a registered nutritionist, a medical technologist, a lab technician, registered nurses, a licensed practical nurse, community health workers and aides. Services include general medical care, family planning, prenatal and postnatal care, Montgomery, MPH, anyone who is in need of care is eligible for medical services. "From January to June, just reporting for that period, we've had 4,700 medical users," Miss Montgomery said. Many of these were medical indigents as well as seasonal farm workers and migrants. Payment for the care is based on the size of the family and its income, according to Miss Montgomery. A sliding fee from zero to 100 percent is charged based on a chart supplied from the Bureau of Health Services in Rockville, Md. For a non-farm family of four with earnings between \$6,878 and \$8,399 they would only be required to pay for 40 percent of the bill, according to the center's figure. The center's medical team is composed of physicians, a family nurse practitioner, a registered pharmacist, a registered nutritionist, a medical technologist, a lab technician, registered nurses, a licensed practical nurse, community health workers and aides. Services include general medical care, family planning, prenatal and postnatal care, Montgomery, MPH, anyone who is in need of care is eligible for medical services. "From January to June, just reporting for that period, we've had 4,700 medical users," Miss Montgomery said. Many of these were medical indigents as well as seasonal farm workers and migrants. Payment for the care is based on the size of the family and its income, according to Miss Montgomery. A sliding fee from zero to 100 percent is charged based on a chart supplied from the Bureau of Health Services in Rockville, Md. For a non-farm family of four with earnings between \$6,878 and \$8,399 they would only be required to pay for 40 percent of the bill, according to the center's figure. The center's medical team is composed of physicians, a family nurse practitioner, a registered pharmacist, a registered nutritionist, a medical technologist, a lab technician, registered nurses, a licensed practical nurse, community health workers and aides. Services include general medical care, family planning, prenatal and postnatal care, Montgomery, MPH, anyone who is in need of care is eligible for medical services. "From January to June, just reporting for that period, we've had 4,700 medical users," Miss Montgomery said. Many of these were medical indigents as well as seasonal farm workers and migrants. Payment for the care is based on the size of the family and its income, according to Miss Montgomery. A sliding fee from zero to 100 percent is charged based on a chart supplied from the Bureau of Health Services in Rockville, Md. For a non-farm family of four with earnings between \$6,878 and \$8,399 they would only be required to pay for 40 percent of the bill, according to the center's figure. The center's medical team is composed of physicians, a family nurse practitioner, a registered pharmacist, a registered nutritionist, a medical technologist, a lab technician, registered nurses, a licensed practical nurse, community health workers and aides. Services include general medical care, family planning, prenatal and postnatal care, Montgomery, MPH, anyone who is in need of care is eligible for medical services. "From January to June, just reporting for that period, we've had 4,700 medical users," Miss Montgomery said. Many of these were medical indigents as well as seasonal farm workers and migrants. Payment for the care is based on the size of the family and its income, according to Miss Montgomery. A sliding fee from zero to 100 percent is charged based on a chart supplied from the Bureau of Health Services in Rockville, Md. For a non-farm family of four with earnings between \$6,878 and \$8,399 they would only be required to pay for 40 percent of the bill, according to the center's figure. The center's medical team is composed of physicians, a family nurse practitioner, a registered pharmacist, a registered nutritionist, a medical technologist, a lab technician, registered nurses, a licensed practical nurse, community health workers and aides. Services include general medical care, family planning, prenatal and postnatal care, Montgomery, MPH, anyone who is in need of care is eligible for medical services. "From January to June, just reporting for that period, we've had 4,700 medical users," Miss Montgomery said. Many of these were medical indigents as well as seasonal farm workers and migrants. Payment for the care is based on the size of the family and its income, according to Miss Montgomery. A sliding fee from zero to 100 percent is charged based on a chart supplied from the Bureau of Health Services in Rockville, Md. For a non-farm family of four with earnings between \$6,878 and \$8,399 they would only be required to pay for 40 percent of the bill, according to the center's figure. The center's medical team is composed of physicians, a family nurse practitioner, a registered pharmacist, a registered nutritionist, a medical technologist, a lab technician, registered nurses, a licensed practical nurse, community health workers and aides. Services include general medical care, family planning, prenatal and postnatal care, Montgomery, MPH, anyone who is in need of care is eligible for medical services. "From January to June, just reporting for that period, we've had 4,700 medical users," Miss Montgomery said. Many of these were medical indigents as well as seasonal farm workers and migrants. Payment for the care is based on the size of the family and its income, according to Miss Montgomery. A sliding fee from zero to 100 percent is charged based on a chart supplied from the Bureau of Health Services in Rockville, Md. For a non-farm family of four with earnings between \$6,878 and \$8,399 they would only be required to pay for 40 percent of the bill, according to the center's figure. The center's medical team is composed of physicians, a family nurse practitioner, a registered pharmacist, a registered nutritionist, a medical technologist, a lab technician, registered nurses, a licensed practical nurse, community health workers and aides. Services include general medical care, family planning, prenatal and postnatal care, Montgomery, MPH, anyone who is in need of care is eligible for medical services. "From January to June, just reporting for that period, we've had 4,700 medical users," Miss Montgomery said. Many of these were medical indigents as well as seasonal farm workers and migrants. Payment for the care is based on the size of the family and its income, according to Miss Montgomery. A sliding fee from zero to 100 percent is charged based on a chart supplied from the Bureau of Health Services in Rockville, Md. For a non-farm family of four with earnings between \$6,878 and \$8,399 they would only be required to pay for 40 percent of the bill, according to the center's figure. The center's medical team is composed of physicians, a family nurse practitioner, a registered pharmacist, a registered nutritionist, a medical technologist, a lab technician, registered nurses, a licensed practical nurse, community health workers and aides. Services include general medical care, family planning, prenatal and postnatal care, Montgomery, MPH, anyone who is in need of care is eligible for medical services. "From January to June, just reporting for that period, we've had 4,700 medical users," Miss Montgomery said. Many of these were medical indigents as well as seasonal farm workers and migrants. Payment for the care is based on the size of the family and its income, according to Miss Montgomery. A sliding fee from zero to 100 percent is charged based on a chart supplied from the Bureau of Health Services in Rockville, Md. For a non-farm family of four with earnings between \$6,878 and \$8,399 they would only be required to pay for 40 percent of the bill, according to the center's figure. The center's medical team is composed of physicians, a family nurse practitioner, a registered pharmacist, a registered nutritionist, a medical technologist, a lab technician, registered nurses, a licensed practical nurse, community health workers and aides. Services include general medical care, family planning, prenatal and postnatal care, Montgomery, MPH, anyone who is in need of care is eligible for medical services. "From January to June, just reporting for that period, we've had 4,700 medical users," Miss Montgomery said. Many of these were medical indigents as well as seasonal farm workers and migrants. Payment for the care is based on the size of the family and its income, according to Miss Montgomery. A sliding fee from zero to 100 percent is charged based on a chart supplied from the Bureau of Health Services in Rockville, Md. For a non-farm family of four with earnings between \$6,878 and \$8,399 they would only be required to pay for 40 percent of the bill, according to the center's figure. The center's medical team is composed of physicians, a family nurse practitioner, a registered pharmacist, a registered nutritionist, a medical technologist, a lab technician, registered nurses, a licensed practical nurse, community health workers and aides. Services include general medical care, family planning, prenatal and postnatal care, Montgomery, MPH, anyone who is in need of care is eligible for medical services. "From January to June, just reporting for that period, we've had 4,700 medical users," Miss Montgomery said. Many of these were medical indigents as well as seasonal farm workers and migrants. Payment for the care is based on the size of the family and its income, according to Miss Montgomery. A sliding fee from zero to 100 percent is charged based on a chart supplied from the Bureau of Health Services in Rockville, Md. For a non-farm family of four with earnings between \$6,878 and \$8,399 they would only be required to pay for 40 percent of the bill, according to the center's figure. The center's medical team is composed of physicians, a family nurse practitioner, a registered pharmacist, a registered nutritionist, a medical technologist, a lab technician, registered nurses, a licensed practical nurse, community health workers and aides. Services include general medical care, family planning, prenatal and postnatal care, Montgomery, MPH, anyone who is in need of care is eligible for medical services. "From January to June, just reporting for that period, we've had 4,700 medical users," Miss Montgomery said. Many of these were medical indigents as well as seasonal farm workers and migrants. Payment for the care is based on the size of the family and its income, according to Miss Montgomery. A sliding fee from zero to 100 percent is charged based on a chart supplied from the Bureau of Health Services in Rockville, Md. For a non-farm family of four with earnings between \$6,878 and \$8,399 they would only be required to pay for 40 percent of the bill, according to the center's figure. The center's medical team is composed of physicians, a family nurse practitioner, a registered pharmacist, a registered nutritionist, a medical technologist, a lab technician, registered nurses, a licensed practical nurse, community health workers and aides. Services include general medical care, family planning, prenatal and postnatal care, Montgomery, MPH, anyone who is in need of care is eligible for medical services. "From January to June, just reporting for that period, we've had 4,700 medical users," Miss Montgomery said. Many of these were medical indigents as well as seasonal farm workers and migrants. Payment for the care is based on the size of the family and its income, according to Miss Montgomery. A sliding fee from zero to 100 percent is charged based on a chart supplied from the Bureau of Health Services in Rockville, Md. For a non-farm family of four with earnings between \$6,878 and \$8,399 they would only be required to pay for 40 percent of the bill, according to the center's figure. The center's medical team is composed of physicians, a family nurse practitioner, a registered pharmacist, a registered nutritionist, a medical technologist, a lab technician, registered nurses, a licensed practical nurse, community health workers and aides. Services include general medical care, family planning, prenatal and postnatal care, Montgomery, MPH, anyone who is in need of care is eligible for medical services. "From January to June, just reporting for that period, we've had 4,700 medical users," Miss Montgomery said. Many of these were medical indigents as well as seasonal farm workers and migrants. Payment for the care is based on the size of the family and its income, according to Miss Montgomery. A sliding fee from zero to 100 percent is charged based on a chart supplied from the Bureau of Health Services in Rockville, Md. For a non-farm family of four with earnings between \$6,878 and \$8,399 they would only be required to pay for 40 percent of the bill, according to the center's figure. The center's medical team is composed of physicians, a family nurse practitioner, a registered pharmacist, a registered nutritionist, a medical technologist, a lab technician, registered nurses, a licensed practical nurse, community health workers and aides. Services include general medical care, family planning, prenatal and postnatal care, Montgomery, MPH, anyone who is in need of care is eligible for medical services. "From January to June, just reporting for that period, we've had 4,700 medical users," Miss Montgomery said. Many of these were medical indigents as well as seasonal farm workers and migrants. Payment for the care is based on the size of the family and its income, according to Miss Montgomery. A sliding fee from zero to 100 percent is charged based on a chart supplied from the Bureau of Health Services in Rockville, Md. For a non-farm family of four with earnings between \$6,878 and \$8,399 they would only be required to pay for 40 percent of the bill, according to the center's figure. The center's medical team is composed of physicians, a family nurse practitioner, a registered pharmacist, a registered nutritionist, a medical technologist, a lab technician, registered nurses, a licensed practical nurse, community health workers and aides. Services include general medical care, family planning, prenatal and postnatal care, Montgomery, MPH, anyone who is in need of care is eligible for medical services. "From January to June, just reporting for that period, we've had 4,700 medical users," Miss Montgomery said. Many of these were medical indigents as well as seasonal farm workers and migrants. Payment for the care is based on the size of the family and its income, according to Miss Montgomery. A sliding fee from zero to 100 percent is charged based on a chart supplied from the Bureau of Health Services in Rockville, Md. For a non-farm family of four with earnings between \$6,878 and \$8,399 they would only be required to pay for 40 percent of the bill, according to the center's figure. The center's medical team is composed of physicians, a family nurse practitioner, a registered pharmacist, a registered nutritionist, a medical technologist, a lab technician, registered nurses, a licensed practical nurse, community health workers and aides. Services include general medical care, family planning, prenatal and postnatal care, Montgomery, MPH, anyone who is in need of care is eligible for medical services. "From January to June, just reporting for that period, we've had 4,700 medical users," Miss Montgomery said. Many of these were medical indigents as well as seasonal farm workers and migrants. Payment for the care is based on the size of the family and its income, according to Miss Montgomery. A sliding fee from zero to 100 percent is charged based on a chart supplied from the Bureau of Health Services in Rockville, Md. For a non-farm family of four with earnings between \$6,878 and \$8,399 they would only be required to pay for 40 percent of the bill, according to the center's figure. The center's medical team is composed of physicians, a family nurse practitioner, a registered pharmacist, a registered nutritionist, a medical technologist, a lab technician, registered nurses, a licensed practical nurse, community health workers and aides. Services include general medical care, family planning, prenatal and postnatal care, Montgomery, MPH, anyone who is in need of care is eligible for medical services. "From January to June, just reporting for that period, we've had 4,700 medical users," Miss Montgomery said. Many of these were medical indigents as well as seasonal farm workers and migrants. Payment for the care is based on the size of the family and its income, according to Miss Montgomery. A sliding fee from zero to 100 percent is charged based on a chart supplied from the Bureau of Health Services in Rockville, Md. For a non-farm family of four with earnings between \$6,878 and \$8,399 they would only be required to pay for 40 percent of the bill, according to the center's figure. The center's medical team is composed of physicians, a family nurse practitioner, a registered pharmacist, a registered nutritionist, a medical technologist, a lab technician, registered nurses, a licensed practical nurse, community health workers and aides. Services include general medical care, family planning, prenatal and postnatal care, Montgomery, MPH, anyone who is in need of care is eligible for medical services. "From January to June, just reporting for that period, we've had 4,700 medical users," Miss Montgomery said. Many of these were medical indigents as well as seasonal farm workers and migrants. Payment for the care is based on the size of the family and its income, according to Miss Montgomery. A sliding fee from zero to 100 percent is charged based on a chart supplied from the Bureau of Health Services in Rockville, Md. For a non-farm family of four with earnings between \$6,878 and \$8,399 they would only be required to pay for 40 percent of the bill, according to the center's figure. The center's medical team is composed of physicians, a family nurse practitioner, a registered pharmacist, a registered nutritionist, a medical technologist, a lab technician, registered nurses, a licensed practical nurse, community health workers and aides. Services include general medical care, family planning, prenatal and postnatal care, Montgomery, MPH, anyone who is in need of care is eligible for medical services. "From January to June, just reporting for that period, we've had 4,700 medical users," Miss Montgomery said. Many of these were medical indigents as well as seasonal farm workers and migrants. Payment for the care is based on the size of the family and its income, according to Miss Montgomery. A sliding fee from zero to 100 percent is charged based on a chart supplied from the Bureau of Health Services in Rockville, Md. For a non-farm family of four with earnings between \$6,878 and \$8,399 they would only be required to pay for 40 percent of the bill, according to the center's figure. The center's medical team is composed of physicians, a family nurse practitioner, a registered pharmacist, a registered nutritionist, a medical technologist, a lab technician, registered nurses, a licensed practical nurse, community health workers and aides. Services include general medical care, family planning, prenatal and postnatal care, Montgomery, MPH, anyone who is in need of care is eligible for medical services. "From January to June, just reporting for that period, we've had 4,700 medical users," Miss Montgomery said. Many of these were medical indigents as well as seasonal farm workers and migrants. Payment for the care is based on the size of the family and its income, according to Miss Montgomery. A sliding fee from zero to 100 percent is charged based on a chart supplied from the Bureau of Health Services in Rockville, Md. For a non-farm family of four with earnings between \$6,878 and \$8,399 they would only be required to pay for 40 percent of the bill, according to the center's figure. The center's medical team is composed of physicians, a family nurse practitioner, a registered pharmacist, a registered nutritionist, a medical technologist, a lab technician, registered nurses, a licensed practical nurse, community health workers and aides. Services include general medical care, family planning, prenatal and postnatal care, Montgomery, MPH, anyone who is in need of care is eligible for medical services. "From January to June, just reporting for that period, we've had 4,700 medical users," Miss Montgomery said. Many of these were medical indigents as well as seasonal farm workers and migrants. Payment for the care is based on the size of the family and its income, according to Miss Montgomery. A sliding fee from zero to 100 percent is charged based on a chart supplied from the Bureau of Health Services in Rockville, Md. For a non-farm family of four with earnings between \$6,878 and \$8,399 they would only be required to pay for 40 percent of the bill, according to the center's figure. The center's medical team is composed of physicians, a family nurse practitioner, a registered pharmacist, a registered nutritionist, a medical technologist, a lab technician, registered nurses, a licensed practical nurse, community health workers and aides. Services include general medical care, family planning, prenatal and postnatal care, Montgomery, MPH, anyone who is in need of care is eligible for medical services. "From January to June, just reporting for that period, we've had 4,700 medical users," Miss Montgomery said. Many of these were medical indigents as well as seasonal farm workers and migrants. Payment for the care is based on the size of the family and its income, according to Miss Montgomery. A sliding fee from zero to 100 percent is charged based on a chart supplied from the Bureau of Health Services in Rockville, Md. For a non-farm

Adventist

THE SEVENTH DAY ADVENTIST CHURCH... Pastor... 11:30 a.m. 7:30 p.m.

Assembly Of God

FIRST ASSEMBLY OF GOD CHURCH... Pastor... 11:30 a.m. 7:30 p.m.

Baptist

COUNTRYSIDE BAPTIST CHURCH... Pastor... 11:30 a.m. 7:30 p.m.

FIRST BAPTIST CHURCH... Pastor... 11:30 a.m. 7:30 p.m.

Catholic

ALL SOULS CATHOLIC CHURCH... Pastor... 11:30 a.m. 7:30 p.m.

Christian

FIRST CHRISTIAN CHURCH... Pastor... 11:30 a.m. 7:30 p.m.

SANFORD CHRISTIAN CHURCH... Pastor... 11:30 a.m. 7:30 p.m.

Church Of Christ

FIRST CHURCH OF CHRIST... Pastor... 11:30 a.m. 7:30 p.m.

Church Of God

CHURCH OF GOD... Pastor... 11:30 a.m. 7:30 p.m.

Church Of God

CHURCH OF GOD... Pastor... 11:30 a.m. 7:30 p.m.

TRUTH CHURCH OF GOD... Pastor... 11:30 a.m. 7:30 p.m.

YOU CAN FEATURE... CALL 322-3611

ATLANTIC NATIONAL BANK... Howard H. Hodges and Staff

CELESTY CITY PRINTING CO., INC... Mal Dekle and Employes

DEKLES GULF SERVICE... Mal Dekle and Employes

BIBLE BOOK CENTER... Zayre Plaza 323-3900

The Following Sponsors Make This Church Notice And Directory Page Possible

FLAGSHIP BANK OF SEMINOLE AND STAN... 200 W. First St. 3000 S. Orlando Dr.

GREGORY LUMBER of Sanford

HARRELL & BEVERLY TRANSMISSION... David Beverly and Staff

KNIGHT'S SHOE STORE... Downtown Sanford Don Knight & Staff

THE MCKIBBIN AGENCY Insurance

PANTRY PRIDE DISCOUNT FOODS and Employes

WINN-DIXIE STORES and Employes

J. C. PENNEY COMPANY E. C. Elsea and Staff

L. D. PLANTE, INC. Oviedo, Florida

PUBLIX MARKETS and Employes

SENKARIK GLASS & PAINT CO., INC. Jerry & Ed Senkarik and Employes

STENSTRON REALTY Herb Stenstrom and Staff

WILSON FICHELBERGER MORTUARY Eunice Wilson and Staff

WILSON-MAIER FURNITURE CO. Mr. and Mrs. Al Wilson

WINN-DIXIE STORES and Employes



...THE HOPE OF OUR COMMUNITY,

The Church...

OUR NATION!

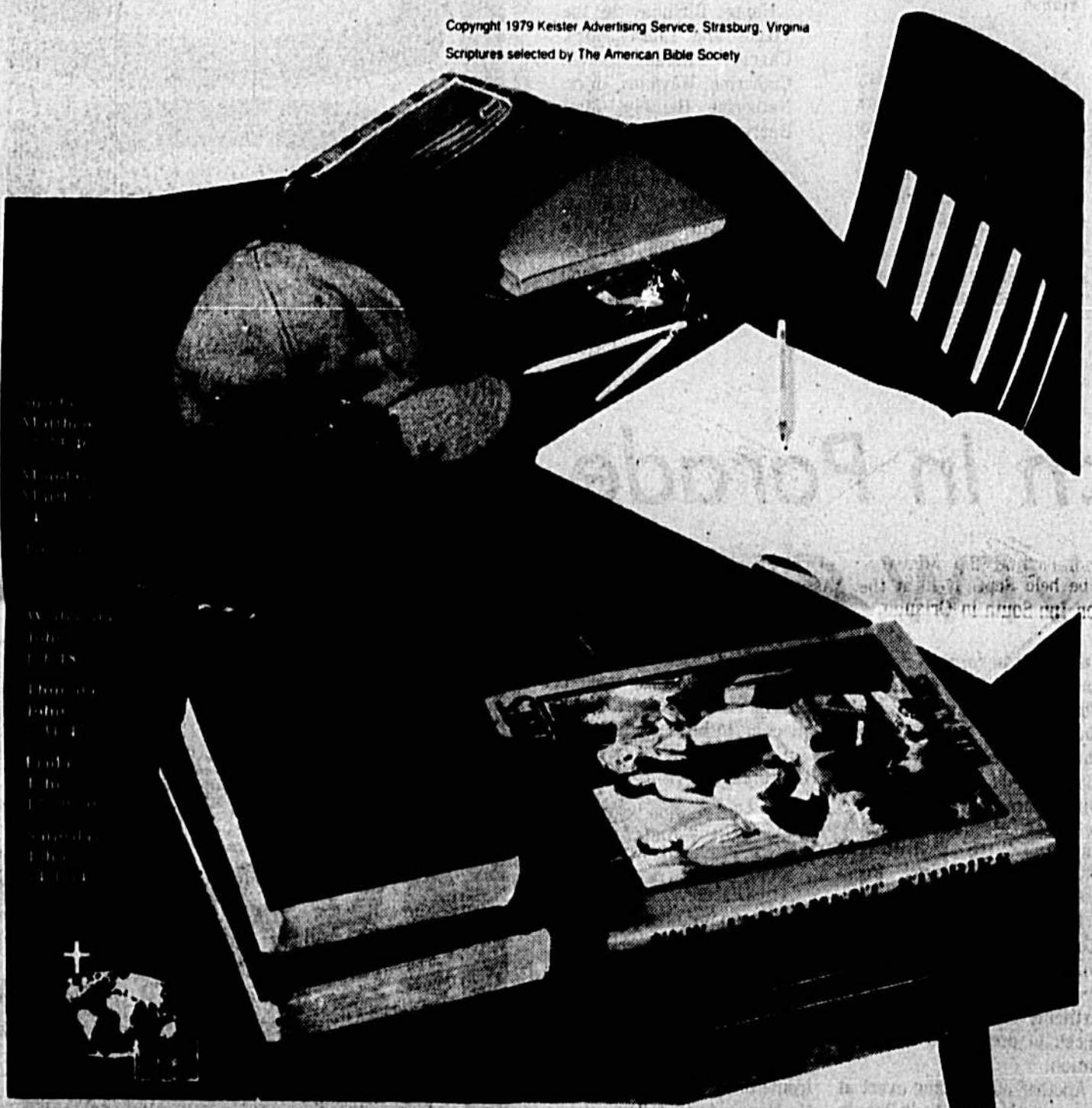
The Busy Life

Is there anyone so busy as a ten-year-old? Our Joey isn't in this picture. Called to the phone, you know! Something extremely important like the Cub Scout picnic or the Little League meeting. Decisions that can't wait... even for homework. Or so we are told!

But if you'll note the items on Joey's desk you'll see that FAITH hasn't been crowded out of our boy's busy life. Sunday School is just one of his pressing weekly "appointments." But it is one that has as prominent a place in his growing up as it has in his desk.

And don't think it is merely parental pride when I tell you that Joey is already revealing some fine traits of Christian character in his attitude toward responsibilities—and toward people. His mother and I planned it that way when we made the Church an important part of our own lives.

Copyright 1979 Walter Advertising Service, St. Louis, Mo. Scriptures selected by The American Bible Society.



Congregational

COMMUNITY UNITED METHODIST CHURCH... Pastor... 11:30 a.m. 7:30 p.m.

Episcopal

THE REDEEMER EPISCOPAL CHURCH... Pastor... 11:30 a.m. 7:30 p.m.

Evangelical

CONGREGATIONAL CHURCH... Pastor... 11:30 a.m. 7:30 p.m.

Lutheran

LUTHERAN CHURCH OF THE REDEEMER... Pastor... 11:30 a.m. 7:30 p.m.

Methodist

REDEEMER LUTHERAN CHURCH... Pastor... 11:30 a.m. 7:30 p.m.

Presbyterian

COVENANT PRESBYTERIAN CHURCH... Pastor... 11:30 a.m. 7:30 p.m.

United Methodist

UPPALA PRESBYTERIAN CHURCH... Pastor... 11:30 a.m. 7:30 p.m.

Worship

WINTER SPRINGS PRESBYTERIAN CHURCH... Pastor... 11:30 a.m. 7:30 p.m.

Worship

WINTER SPRINGS PRESBYTERIAN CHURCH... Pastor... 11:30 a.m. 7:30 p.m.

Worship

WINTER SPRINGS PRESBYTERIAN CHURCH... Pastor... 11:30 a.m. 7:30 p.m.

RELIGION

Evening Herald, Sanford, Fla. Sunday, Sept. 9, 1979-58

Briefly

Refugee Family Sponsored By Local Lutheran Churches

The Refugee Committee from Good Shepherd and Redeemer Lutheran Churches in Sanford is expecting a second family of Hmong refugees from Laos to arrive this month in Sanford. They Yang family is composed of a husband and wife, three young sons and a 79-year-old grandmother.

Youth Services Resume

Youth Education services resume this Sunday at 10:30 a.m. at Winter Park Church of Religious Science under the direction of Mrs. Marcia Hull, Junior Church for ages 5-13 meets at the Religious Science Center at 1834 W. Fairbanks Ave., Winter Park; the Youth Group, 12-18, meets in the west lobby of the Park East Theater at Highway 17-2 and Lee Road; and the nursery service continues for infants and toddlers at the theater. Church services are held at 10:30 a.m. at the theater with Dr. Roy Graves, minister, speaking on "Peace As a Way of Life."

Choral Art Society

The Choral Art Society, a community chorus formed to offer residents of Central Florida an opportunity to perform significant choral music, will begin rehearsals for its new season Monday, Sept. 17, at 7:30 p.m. at Aubury United Methodist Church, Maitland.

Sponsored by the Adult Education program of the Orange County Public Schools, the Society is under the direction of Dr. George McLoughlin. A December performance featuring the "St. Paul" oratorio by Felix Mendelssohn is planned. Singers who have had some experience in school, college, community or church choirs are invited to join.

Promotion-Rally Day

Grace United Methodist Church, 118 W. Alport Boulevard, Sanford, will observe Sunday School Promotion and Rally Day, Sunday, Sept. 9 at 9:45 a.m. and with a dinner in the fellowship hall following the 11 a.m. service.

School Days Family Night

Community United Methodist Church of Casselberry will salute active and retired school teachers who attend the church at a "School Days" Family Night Sunday, beginning with a covered dish supper at 6 p.m. The program will feature a Bible Quiz, singing and teacher recognition.

Teacher Appreciation

A Teacher Appreciation Banquet will be held at Community United Methodist Church, Casselberry, Sept. 14 at 7 p.m. in fellowship hall for all Sunday school teachers and helpers. A teacher fellowship meeting will be held Friday, Sept. 14 at 7:30 p.m. at the paragon on Pine Ridge Road.

Annual Picnic

Redeemer Lutheran Church of Sanford will hold its annual picnic for Sunday School children and their parents Sunday beginning at 3:30 p.m. on the church grounds. The Sunday School will provide hamburgers, hot dogs, buns and drinks. Those attending may bring complimentary dishes. Food will be served at 5:30 p.m.

Rally Day

Altamonte Community Church, Altamonte Springs, will celebrate Rally Day this Sunday. There will be a service of dedication for church school teachers during the 10 a.m. service. Sunday School will include classes for nursery through junior high age children. A chicken barbecue prepared by the Fishers of Men Club will be held at noon. Children will attend church with their families until after the dedication when they will go to their classes to participate in the ABC (Always Be a Christian) program.

Family Night At Altamonte

Altamonte Community Church will hold a family night supper Tuesday with many activities beginning at 6:30 p.m. Those attending are asked to bring their own table service plus a covered dish. Suppers and activities for all ages are planned each Tuesday evening throughout the fall.

United Methodist Women Meet

The DeBerry United Methodist Women will hold their first meeting of the 1979-80 year Tuesday at 1:30 p.m. at the DeBerry Community United Methodist Church. Following the general meeting, Mrs. Dana Hamrick will open the program with devotions and Mrs. Marie Pohl and Mrs. Ellen Morse will report on the 1979 School of Missions held at Lakeland. The Esther Group will be in attendance at a tea after the meeting.

The Hebrew Super Bowl

Sunday at 5 p.m. all youth seventh through 13th grades are invited to join the new Youth Choir at Community United Methodist Church in Casselberry. The choir will rehearse weekly Sunday at 5 p.m. on its first project, a mini-concert entitled "The Hebrew Super Bowl." This mini-concert will feature and Danish pop music and drama.

National Catholics Found Parish

St. Andrew's National Catholic Church, a new Parish established as "a place to go to be able to retain our" Anglicanism and Catholicity" was received and organized Aug. 22 as the third "Episcopal" Parish of the Polish National Catholic Church in the Diocese of the Holy Cross. Temporary Meeting place for the Church will be at Redeemer Episcopal Church in Goldenrod. The parish expects to be in its permanent building at Goldenrod by the end of the year. The Rev. Fr. Joseph J. P. ...

Rumors To The Contrary Persist

Religious Broadcasting Is Secure

By TOM TEEDE
AUSTIN, Tex. (NEA)—The Commission guarantees people the right to petition their government for redress of grievances. And that's just what they're doing these days. Washington agencies report a barrage of complaints regarding fuel shortages, bureaucratic rigidity, inflation and all the rest.



MADALYN O'HAIR

But the biggest petition grumble of all may have nothing to do with the popular controversies. According to the FCC, a spokesman for the principal agency in the nation in the highly emotional worry that new laws are being prepared to prohibit Christian programming on radio and television.

What, you've never heard of the problem? Well, Washington Christians are commended to the Federal Communications Commission says an army of people has become convinced that Texas atheist Madalyn Murray O'Hair is trying to outlaw religious broadcasting, and they think the FCC is about to honor her demands.

Out of hand, indeed. The FCC regularly receives as many as 60,000 complaints a day on the issue. And the mail at one point has "filled" several large rooms. "No one has been able to keep a precise count of the cards, letters and phone calls, but Perattino believes the total is in excess of 10 million."

Perattino believes the fears grew out of a 1974 incident. That year the FCC has received significant one-sentence expressions of outrage, and awesome tomes citing scriptural admonitions. Even people who should know better have written in; officers of the DAR, VFW and Boy Scouts, for example, have renounced.

Many of complaints are carried on form letters clipped from church bulletins. Typically, they condemn O'Hair as much as the rumor: "Our minister has advised us of this terrible conspiracy," reads one of the forms. "How can you allow this hateful woman to dictate the radio and TV programs?"

Some letters use more strenuous adjectives than hateful. Four letter words are common, perhaps, as one FCC aide says, "because they can't spell the 12 letter ones." A few of the notes have demanded that O'Hair be jailed. At least one wants her burned alive — when the fuel crunch is over, to be sure.

And it's all a bum rap. O'Hair says she wouldn't think of censoring religious broadcasting. It could be counter-productive, for one thing; she thinks preachers who use the media to stamp and holler, and to endlessly beg for donations, probably turn as many listeners to atheism as to Christianity.

Humbar Expanding TV Evangelism

By DAVID E. ANDERSON
Radio and television preacher Rex Humbar has a dream: fulfilling the Biblical "Great Commission" in which Christians are commanded to go into all the world teaching the gospel.

Humbar, who pastors the Cathedral of Tomorrow in Akron, Ohio, thinks he knows how to do it — with radio and television ministry and what is often called "the electronic church," and he believes that by greatly expanding that ministry the whole world can be reached with the Christian message.

"We're going to evangelize the world by electronics because there is no other way to reach them," he said.

In an interview, Humbar said he plans to kick off a large fund raising campaign at New York's Madison Square Garden in November designed at raising \$10 million for the expansion of his ministry. "Over half the world still hasn't heard," Humbar said. "The radio, the TV, the short-wave are the media by which it can be done."

Humbar said he believed it could — and must — be done in the next three years. At that time, he added, he will be celebrating his 50th year as an evangelist.

More importantly, he added, conditions in the Third World — poverty, hunger and their resultant political instability — make it necessary to do the evangelizing now.

"The hunger situation is going to be so tremendous three years from now it will develop a political situation where there is going to be a lot of negative feeling," he said. "Now we have doors open to us all over the world."

Humbar said his operations now run on a budget of \$30 million a year and some religious commentators have been less than kind in their criticisms of the fast-paced, fast-turning business operations, including at one time a giraffe factory.

"I believe in churches," Humbar said, "but I think we need to share. We need to reach out there ourselves and if we're not going to do it ourselves, we need to support someone who is."

Humbar said his radio and television programs are currently heard on every continent. "We have a track record," he said. "It took 27 years to go to half the world. Now we've got to do the other half and I feel God gave us this opportunity."

"Our duty is not for everybody to believe," he said, "but to preach the message."

Humbar said he believed it could — and must — be done in the next three years. At that time, he added, he will be celebrating his 50th year as an evangelist.

More importantly, he added, conditions in the Third World — poverty, hunger and their resultant political instability — make it necessary to do the evangelizing now.

"The hunger situation is going to be so tremendous three years from now it will develop a political situation where there is going to be a lot of negative feeling," he said. "Now we have doors open to us all over the world."

Humbar said his operations now run on a budget of \$30 million a year and some religious commentators have been less than kind in their criticisms of the fast-paced, fast-turning business operations, including at one time a giraffe factory.

"I believe in churches," Humbar said, "but I think we need to share. We need to reach out there ourselves and if we're not going to do it ourselves, we need to support someone who is."

Humbar said his radio and television programs are currently heard on every continent. "We have a track record," he said. "It took 27 years to go to half the world. Now we've got to do the other half and I feel God gave us this opportunity."

"Our duty is not for everybody to believe," he said, "but to preach the message."

Humbar said he believed it could — and must — be done in the next three years. At that time, he added, he will be celebrating his 50th year as an evangelist.

More importantly, he added, conditions in the Third World — poverty, hunger and their resultant political instability — make it necessary to do the evangelizing now.

"The hunger situation is going to be so tremendous three years from now it will develop a political situation where there is going to be a lot of negative feeling," he said. "Now we have doors open to us all over the world."

Humbar said his operations now run on a budget of \$30 million a year and some religious commentators have been less than kind in their criticisms of the fast-paced, fast-turning business operations, including at one time a giraffe factory.

"I believe in churches," Humbar said, "but I think we need to share. We need to reach out there ourselves and if we're not going to do it ourselves, we need to support someone who is."

Humbar said his radio and television programs are currently heard on every continent. "We have a track record," he said. "It took 27 years to go to half the world. Now we've got to do the other half and I feel God gave us this opportunity."

"Our duty is not for everybody to believe," he said, "but to preach the message."

Humbar said he believed it could — and must — be done in the next three years. At that time, he added, he will be celebrating his 50th year as an evangelist.

More importantly, he added, conditions in the Third World — poverty, hunger and their resultant political instability — make it necessary to do the evangelizing now.

"The hunger situation is going to be so tremendous three years from now it will develop a political situation where there is going to be a lot of negative feeling," he said. "Now we have doors open to us all over the world."

Humbar said his operations now run on a budget of \$30 million a year and some religious commentators have been less than kind in their criticisms of the fast-paced, fast-turning business operations, including at one time a giraffe factory.

Humbar said he believed it could — and must — be done in the next three years. At that time, he added, he will be celebrating his 50th year as an evangelist.

More importantly, he added, conditions in the Third World — poverty, hunger and their resultant political instability — make it necessary to do the evangelizing now.

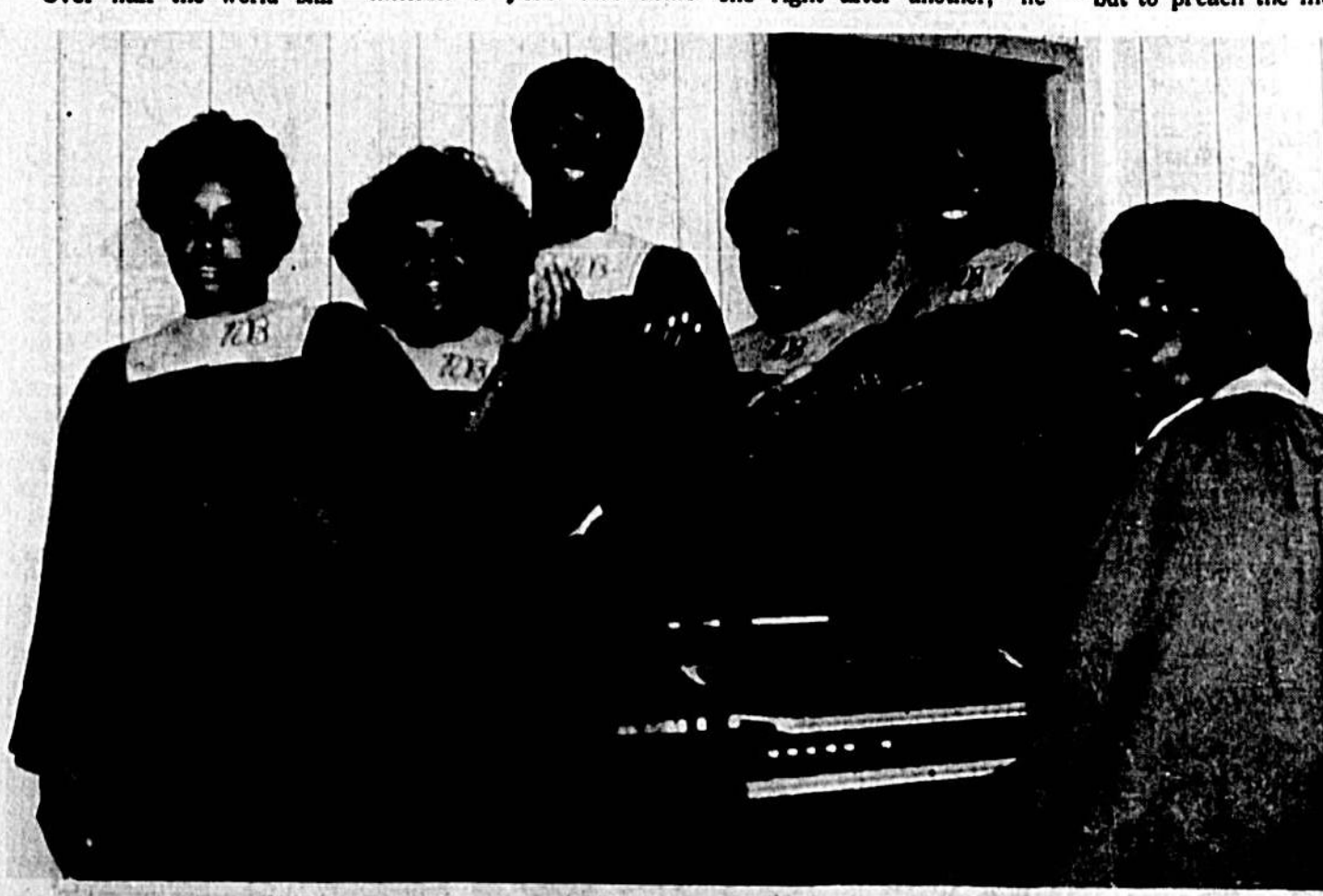
"The hunger situation is going to be so tremendous three years from now it will develop a political situation where there is going to be a lot of negative feeling," he said. "Now we have doors open to us all over the world."

Humbar said his operations now run on a budget of \$30 million a year and some religious commentators have been less than kind in their criticisms of the fast-paced, fast-turning business operations, including at one time a giraffe factory.

"I believe in churches," Humbar said, "but I think we need to share. We need to reach out there ourselves and if we're not going to do it ourselves, we need to support someone who is."

Humbar said his radio and television programs are currently heard on every continent. "We have a track record," he said. "It took 27 years to go to half the world. Now we've got to do the other half and I feel God gave us this opportunity."

"Our duty is not for everybody to believe," he said, "but to preach the message."



GOSPEL CHOIR SETS CONCERT... New Bethel AME Church Gospel Choir and DeLand Cantileers will be in concert Sept. 15, at 8 p.m. at New Bethel Church, Sanford. From left, Donna J. Williams, Patricia Hudley, Bernard Hudley, Junette Johnson, Edna Warren and Marlow Smith, Director. Rev. Marcus H. Burke is pastor.

Wife Gives Away His Life Savings

QUESTION: The other day I told my wife that I was going to withdraw more than \$50,000 I had saved over the years to fulfill my dream of buying me a house and retiring to Florida. To my surprise, she informed me that she had gradually given away almost all my hard-earned cash to various agencies. She wanted me to forgive her, but she thought of what she did repeatedly over my anger. What do you do when you just can't forgive?

ANSWER: Sometimes I hear words to Matthew 18:18 (RSV) "I forgive you brother from now on, I mean too hard for us to bind. We lack that authority on earth to bind what we bind on earth to reach down and put the love you need into your heart — not just any kind of money, with Christmas approval, but the love of God which is shed abroad in our hearts by the Holy Spirit" (Romans 5:5).

God's love is stronger than any hatred our hearts may have. You'll find your love through me. "I did the only thing you can do when you can't forgive. I prayed, 'God, I can't handle this. If he's going to be forgiven, You'll have to forgive him through me.'"

"He said, a wonderful thing happened. God gave me the ability to forgive him genuinely some years ago a multi-millionaire came to see me and my friends. He told us about his intention of going to Israel as a missionary and asked us to go along. We left our jobs and took the little savings that we had and spent everything in his hand preparation for the trip. Then our hearts by the Holy Spirit abandoned without much

provision. I had three youngsters, no job, no place to go. I could not forgive that man. "Then I did the only thing you can do when you can't forgive. I prayed, 'God, I can't handle this. If he's going to be forgiven, You'll have to forgive him through me.'"

"He said, a wonderful thing happened. God gave me the ability to forgive him genuinely some years ago a multi-millionaire came to see me and my friends. He told us about his intention of going to Israel as a missionary and asked us to go along. We left our jobs and took the little savings that we had and spent everything in his hand preparation for the trip. Then our hearts by the Holy Spirit abandoned without much

provision. I had three youngsters, no job, no place to go. I could not forgive that man. "Then I did the only thing you can do when you can't forgive. I prayed, 'God, I can't handle this. If he's going to be forgiven, You'll have to forgive him through me.'"

"He said, a wonderful thing happened. God gave me the ability to forgive him genuinely some years ago a multi-millionaire came to see me and my friends. He told us about his intention of going to Israel as a missionary and asked us to go along. We left our jobs and took the little savings that we had and spent everything in his hand preparation for the trip. Then our hearts by the Holy Spirit abandoned without much

provision. I had three youngsters, no job, no place to go. I could not forgive that man. "Then I did the only thing you can do when you can't forgive. I prayed, 'God, I can't handle this. If he's going to be forgiven, You'll have to forgive him through me.'"

"He said, a wonderful thing happened. God gave me the ability to forgive him genuinely some years ago a multi-millionaire came to see me and my friends. He told us about his intention of going to Israel as a missionary and asked us to go along. We left our jobs and took the little savings that we had and spent everything in his hand preparation for the trip. Then our hearts by the Holy Spirit abandoned without much

provision. I had three youngsters, no job, no place to go. I could not forgive that man. "Then I did the only thing you can do when you can't forgive. I prayed, 'God, I can't handle this. If he's going to be forgiven, You'll have to forgive him through me.'"

"He said, a wonderful thing happened. God gave me the ability to forgive him genuinely some years ago a multi-millionaire came to see me and my friends. He told us about his intention of going to Israel as a missionary and asked us to go along. We left our jobs and took the little savings that we had and spent everything in his hand preparation for the trip. Then our hearts by the Holy Spirit abandoned without much

Back-To-School Days Call For Healthy Foods

The back-to-school blues or jitters should be about over by this time, with a settling in acceptance that school days will be the "in thing" for the next nine months.

Healthy, nutritious foods are vital to students of all ages. Try some of the following recipes for quick, easy foods.

APPLESAUCE NUGGETS
2 cups flour
1/2 teaspoon cinnamon
1/2 teaspoon nutmeg

1/2 teaspoon allspice
1/2 teaspoon cloves
1/2 cup corn-oil margarine
1 cup brown sugar, firmly packed
1 cup applesauce
1 teaspoon baking soda
1 egg, well beaten
(6-ounce) package butter-salt pieces
1 cup broken walnuts
Measure flour and spices onto waxed paper.
Cream margarine and sugar until light and fluffy.

Add baking soda to applesauce, then add spices and egg to creamed shortening and sugar.
Add dry ingredients, stirring to incorporate evenly. Add butter-salt pieces and walnuts.
Drop by teaspoonfuls about 2 1/2 inches apart on greased cookie sheet. Bake at 375 degrees 12 to 15 minutes. This kitchen-tested recipe makes about 4 dozen cookies.

VEGETABLE POTPOURRI
1 (10 1/2-ounce) can condensed vegetarian vegetable soup
1 soup can water
1 cup cabbage, cut in long thin shreds
1 slice bacon, cooked and crumbled
Arrange cheese on bread. Place bread on broiler pan. Broil 6 inches from heat 3 minutes or until cheese just melts.
Add tomatoes. Broil 2 minutes more. Top with

CHEESE AND BACON SANDWICHES
4 slices (about 4 ounces) process cheese
2 thick slices tomato
2 very thin slices whole-wheat bread, toasted
1 slice bacon, cooked and crumbled
Arrange cheese on bread. Place bread on broiler pan. Broil 6 inches from heat 3 minutes or until cheese just melts.
Add tomatoes. Broil 2 minutes more. Top with

bacon.
CHUCK WHITE CHICKEN SALAD
1 (6-ounce) can chunk white chicken
1/2 cup creamed cottage cheese
1/4 cup shredded carrot
1/4 cup sliced radishes
1/2 teaspoon seasoned salt
2 slices melba toast in bowl, combine all ingredients except toast. Serve with toast. This kitchen-tested recipe makes 1 cup.



SAVE 60¢
WESTERN CORN FED PINKY PIG FRESH ECONOMY **PORK CHOPS**
LB. **99¢**
FULL 1/4 FRESH OR SMOKED PORK LOINS SLICED INTO PORK CHOPS . . . \$1.49

SAVE 19¢
BLUE BAY TUNA FISH
Limit 2 with \$8.00 or more purchase excluding cigs.
6 1/2-oz. CAN **48¢**
DEEP SOUTH SWEET RELISH 99¢

W-D BRAND REGULAR OR ALL BEEF GRILL FRANKS
2-LB. PKG. **\$2.69**
W-D BRAND - ALL VARIETIES 12-oz. PKG. \$1.49

W-D BRAND USDA CHOICE CENTER CUT 7 BONE CHUCK STEAK
LB. **\$1.59**
BEEF BONELESS ROLLED CHUCK Cubed Steak . . . \$2.59

SAVE 40¢
PREMIUM GRADE FRESH FRYER BREASTQUARTER OR LEGQUARTER **59¢**
LB. FRESH FRYER NECKS & BACKS 29¢

SAVE 30¢
PREMIUM GRADE GOVERNMENT INSPECTED TURKEY LEGQUARTERS **39¢**
LB. PREMIUM GRADE GOVERNMENT INSPECTED Turkey Wings . . . 49¢

SAVE 22¢
W-D BRAND TWELVE 4-oz. PATTIES **BEEF PATTIES**
(9.1-11 LB.) **3 \$3.57**
LB. BOX SONNIE MAID BEEF VEAL & Pork Patties . . . \$1.99

SAVE 31¢
DIXIE HOME TEA BAGS
Limit 1 with \$8.00 or more purchase excl. cigs.
48-CT. PKG. **48¢**
THRIFTY MAID Lemon Juice . . . 69¢

SAVE 6¢
THRIFTY MAID UNSWEETENED GRAPEFRUIT JUICE
46-oz. CAN **58¢**
THRIFTY MAID SECTIONS Grapefruit . . . 2 cans \$1.00

SAVE 31¢
CHUCK FULL O'NUTS COFFEE
LIMIT 1 PLEASE
1-LB. CAN **\$2.48**
ASTOR COFFEE Creamer . . . \$1.99

SAVE 21¢
PABST BLUE RIBBON BEER
6 \$1.68
PACK 12-oz. CANS CRACKIN' GOOD STICKS & RINGS Pretzels . . . \$1.00

SAVE 14¢
THRIFTY MAID CATSUP
32-oz. BTL. **79¢**
COUNTRY FRESH DRY ROASTED Peanuts \$1.99

HARVEST FRESH RED DELICIOUS APPLES
4 LB. BAG **99¢**
HARVEST FRESH REDLESS WHITE OR Green 79¢

HARVEST FRESH LETTUCE
HEAD **49¢**
HARVEST FRESH YELLOW Outlets 5 bags 99¢

SAVE 19¢
SUPERBRAND FUDGE BARS OR TWIN POPS
12-PK. PKGS. **2 \$1.59**
ALL FLAVORS THRIFTY MAID Ice Milk 99¢

SAVE 30¢
MAY HARMON'S MORTON POT PIES
3 8-oz. PKGS. **99¢**
SAVE \$4 ON 3 - ALL FLAVORS MORTON Cream Pies . . . \$1.99

SAVE 78¢
SUPERBRAND SOUR CREAM
2 16-oz. CUPS **\$1**
SAVE \$6 ON 2 - SUPERBRAND SWISS CHEESE (THREE 8-oz. CUPS) . . . \$1.99

DELICATESSEN SPECIALS
CRACKIN' GLAZED DOUGHNUTS **\$1.29** DOZ.
5-PKCS. PACKETS OF CRACKIN' FRESH CHICKEN \$3.99
BARBECUE CHICKEN \$1.99
MACARONI SALAD 69¢



PLEASE CLAIM YOUR PATTERN RESERVATION ON *Esquishe Fine Cheese* BEFORE SEPTEMBER 22, 1979

Sunday Herald
September 9, 1979
SANFORD, FLORIDA

COMICS

DOONESBURY

by Garry Trudeau

MANY OF YOU ARE PROBABLY WONDERING WHAT WE'RE DOING ON OUR OWN GOAL LINE. THE ANSWER IS SIMPLE: UNBELIEVABLY SLOPPY TEAMWORK!

UH, EXCUSE ME, B.D. I DON'T MEAN TO BE DEFENSIVE, BUT I DON'T THINK THAT'S THE PROBLEM.

GO EASY ONK. HE MAY NOT BE OUT IN THE OPEN, THERE'S A BREACH OF LEADERSHIP HERE, AND B.D. SHOULD KNOW ABOUT IT.

NO, NO, IT'S TIME TO GET IT OUT IN THE OPEN. THERE'S A BREACH OF LEADERSHIP HERE, AND B.D. SHOULD KNOW ABOUT IT.

A BREACH OF WHAT??

I TOLD YOU HE WASN'T READY.

FACE IT, B.D. WHAT WE HAVE IS A CRISIS OF CONFIDENCE! YOU'RE NOT LEADING THIS TEAM, YOU'RE MANAGING IT!

ZIMMER'S RIGHT, B.D. YOUR IDEAS DON'T SEEM TO BE AFFECTING OUR PROGRESS. WE'VE GOT TO MOVE FORWARD AGAIN!

IF YOU DON'T DO SOMETHING DRAMATIC, CAPTAIN, YOU'RE NEVER GOING TO GET THIS TEAM MOVING AGAIN!

YOU'RE RIGHT, YOU'RE BOTH OUT FOR THE SEASON.

TOO DRAMATIC. SAME OLD, QUICK FIX.

Prince Valiant

Our Story: THE SUN IS SETTING AS GALAN AND HIS RANGED COMPANION RETURN TO THE CASTLE. HE TELLS HER AS PAGE IN THE DINING HALL, SHE TO WORK IN THE SCULLERY.

BUT FIRST GALAN TALKS TO THE COOK, AND LATER SERVES HONEY-GROUSE TO LADY END, MUCH TO HER DELIGHT. NOW HE MUST TELL HER ALL ABOUT THE HUNT.

WITH ALL THE ENTHUSIASM OF YOUTH, HE TELLS OF THE WINTER FOREST, GALAN IS SO ELOQUENT THAT LADY END PLANS A HUNT FOR THE NEXT DAY.

BUT THE SNOW COVERS MANY A PITFALL. THE LADY'S MOUNT FINDS ONE. SHE IS THROWN AND THE HORSE SUFFERS A BROKEN LEG AND ON FURTHER INSPECTION, SO HAS LADY END.

AN AWESOME RESPONSIBILITY NOW RESTS ON THE SHOULDERS OF A VERY YOUNG PAGE. GALAN MUST PUT THE FOOT HORSE OUT OF ITS MISERY. HE THEN PUTS THEIR CLAMPS AND THE SADDLE BLANKETS OVER LADY END.

AFTER MAKING A WINDBREAK OF BOUNDS, GALAN MOUNTS HIS OWN HORSE AND SETS BACK HIS TRAIL BACK TO THE CASTLE, SPURRED ON BY THE Distant HOWLING OF THE EVER-HUNGRY WOLVES.

BY GOOD FORTUNE, HE MEETS LORD AND HIS 15 SENT GALLOPING BACK ON GALAN'S TRACKS.

THE WOLVES ARE GROWING BOLDER. THE DEAD HORSE IS LOSING ITS WARMTH. THE BLANKETS ARE BECOMING WET AND LADY END'S LEG IS PAINFUL. THE HOURS PASS SLOWLY.

© 1979 King Features Syndicate, Inc. World rights reserved.

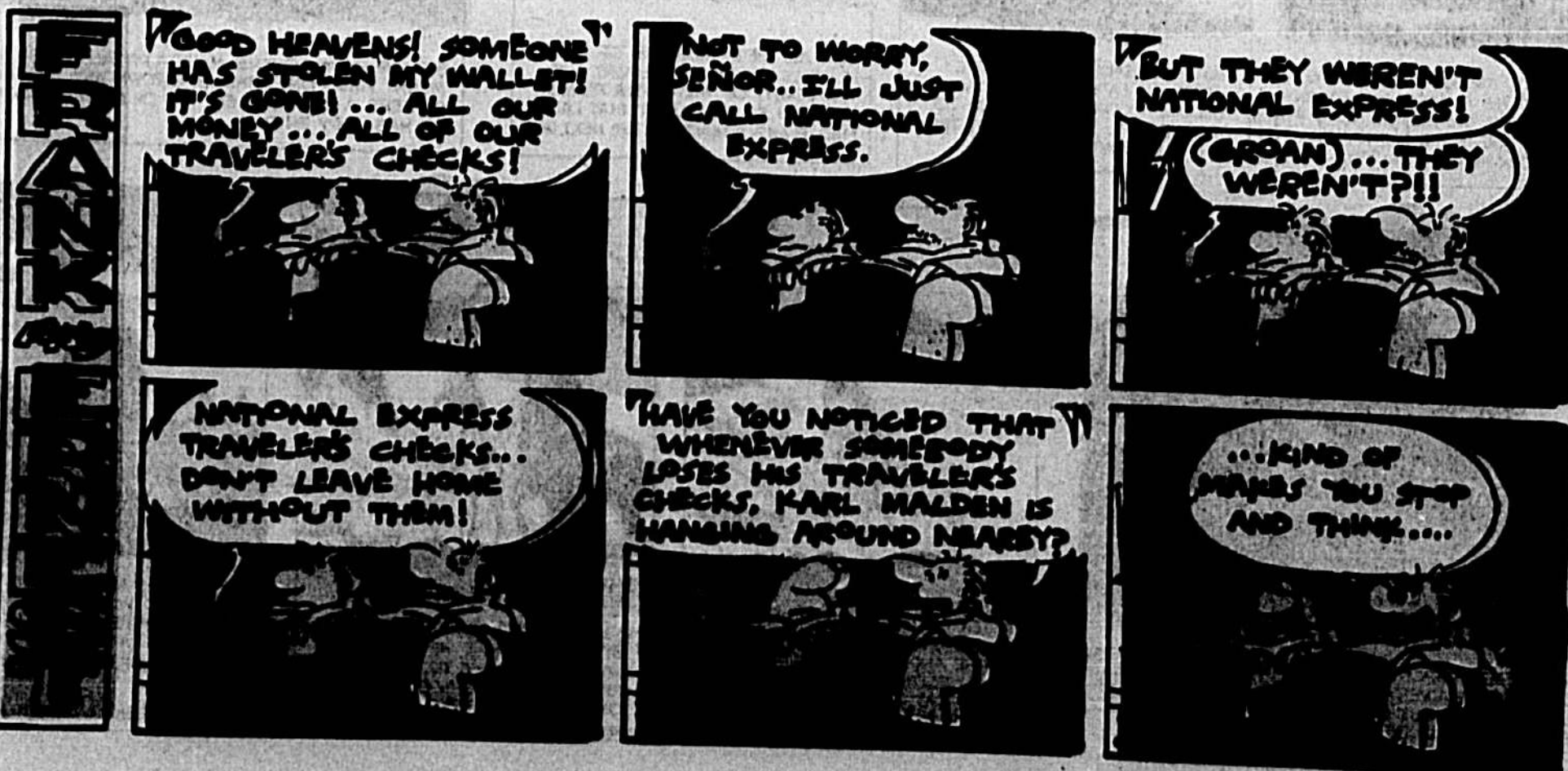
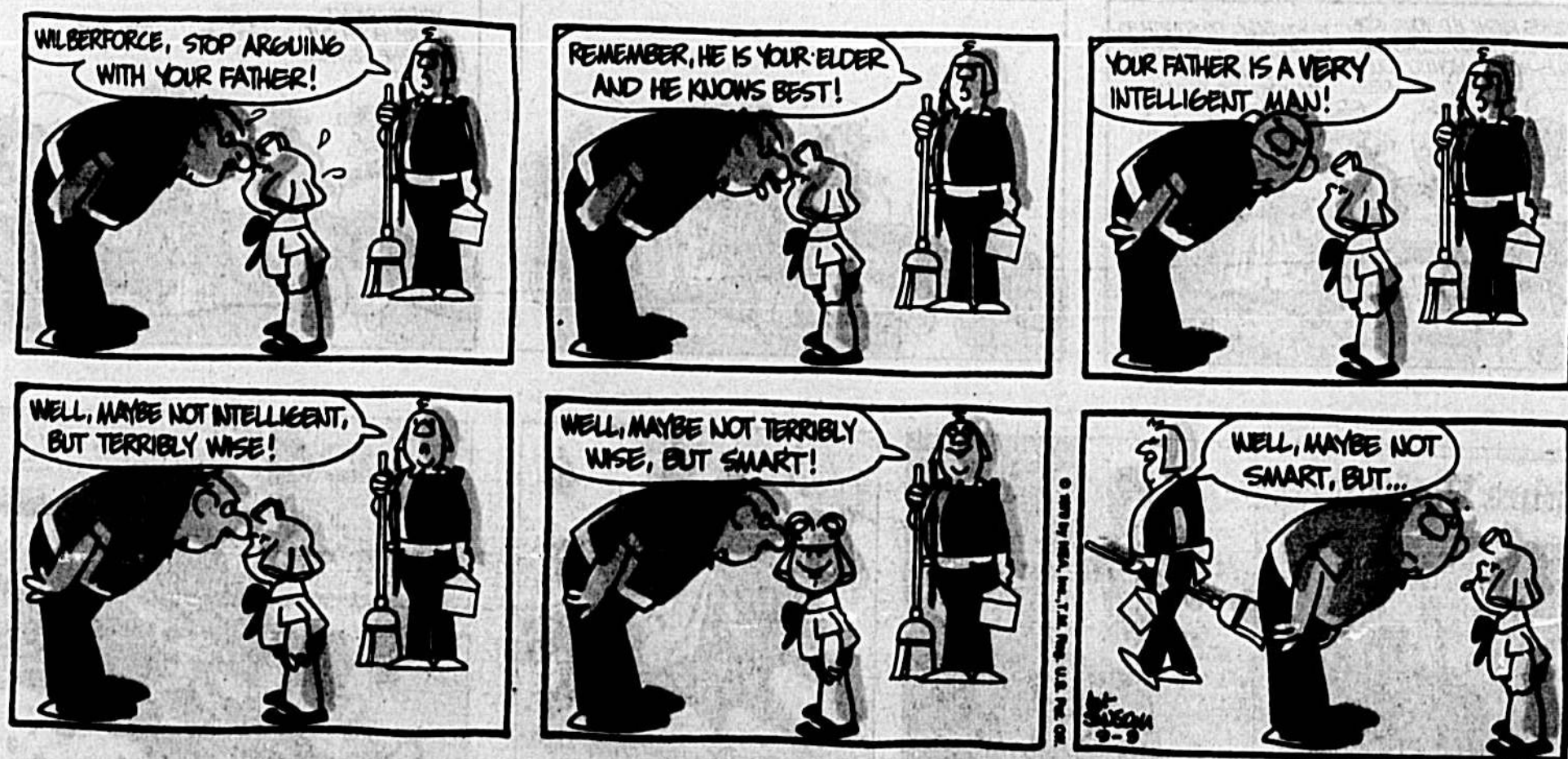
2322. NEXT WEEK - Just in Time! 9-9

THEY'LL DO IT EVERY TIME



THE BORN LOSER

by Art Sansom



Heloise

DEAR FRIENDS:
 When I was a college student, books cost a lot and were a big investment (they still are!). Instead of just putting my name on the inside of the book, I used a felt tip pen and printed my name on the outside of the pages, along the edge of the book.
 Close the book and press the pages together, and mark out your name.
 I even do this now on my books, and when someone borrows a book, they don't ever forget whom it belongs to.
 Hugs, Heloise

HOLD ON TO THIS!
DEAR HELOISE:
 My pot holder drawer, near the oven, was cluttered with darling little squares that my children had woven for me on little looms.
 They were in beautiful colors, measured about 4 inches square, and were really too small to use as pot holders. Still, they were too pretty to discard.
 I got the bright idea of overcasting them together to use at the dinner table under hot casseroles and next to the stove for hot pans and pies.
 They are so practical and wash so well. They also remind me of the loving fingers that made them years ago.
 My cabinet drawers are neater, too.
 Anita Anderson

ALL IN A DAY!
DEAR HELOISE:
 When all these little piles of things to do become mountains, such as mending a garment, sewing on buttons, making a long-delayed telephone call, or writing a letter to Heloise, I set aside one day and get them all caught up.
 Brings a greater feeling of relief than doing the laundry.
 Mrs. Grace A. Reed

DEAR READER:
 This is your column. If you'd like to share a hint, ask a question or make a suggestion, write me care of this newspaper.
 Hugs, Heloise

Just for Kids

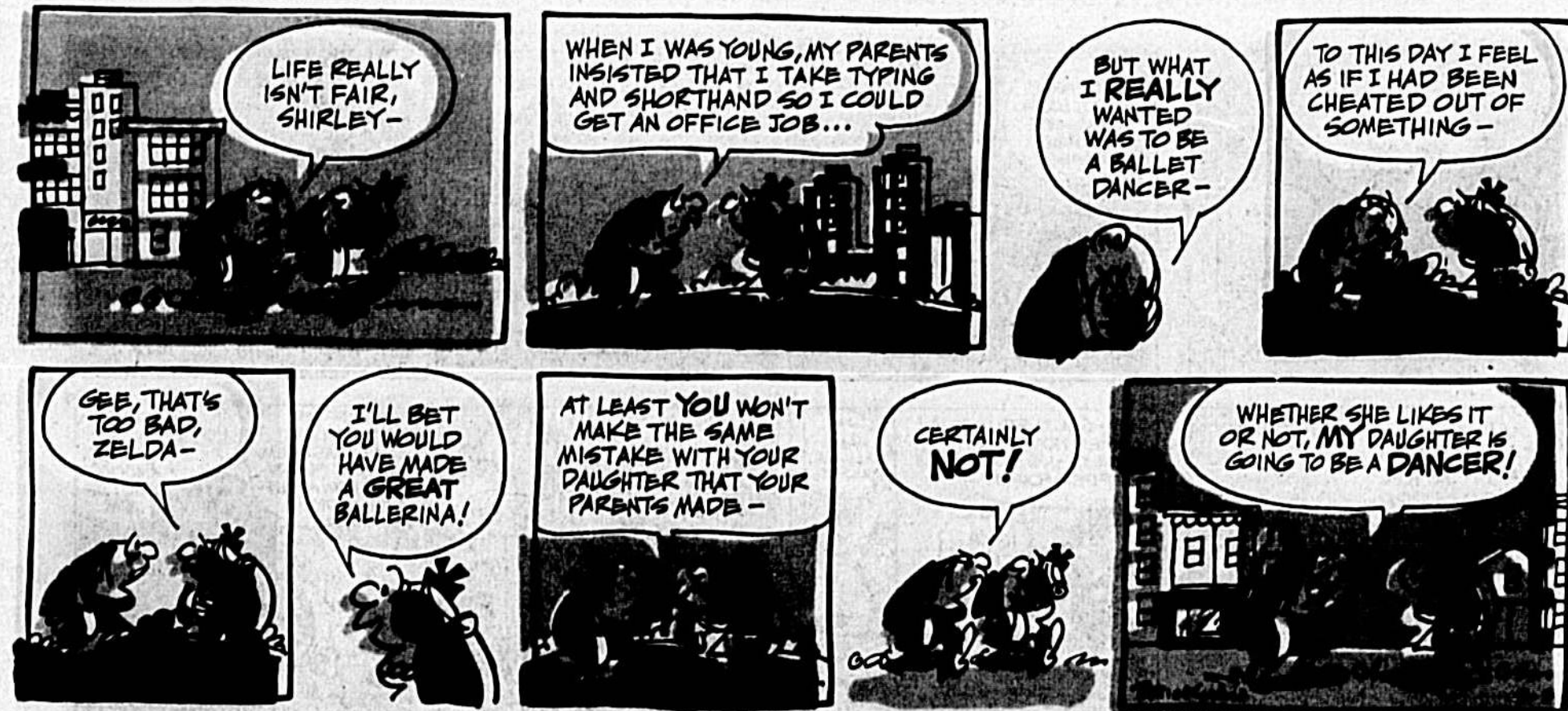
IT'S ON AT SEVEN, NIGEL!

DEAR HELOISE:
 Sometimes my mom and dad go out for dinner, leaving us with a sitter.
 Before they leave, they mark the things we may watch on TV.
 This way, there's no arguments, plus they know we are watching good shows.
 Nigel King, Age 8

YOU CAN SO SAVE MONEY!
 I found a cute trick on saving some money.
 First, you find an empty coffee can, decorate it with old wrapping paper or tin foil, wrapping it around the can and taping the ends.
 Put a hole in the top plastic so you can put the change in it. If you wish, put some old cloth on the bottom so you don't make noise when money is put in.
 If you put a nickel in each day for a year, the total is \$18.25. A dime a day for a year is \$36.50.
 Doreen, Age 13 1/2
 © 1979 King Features Syndicate, Inc.

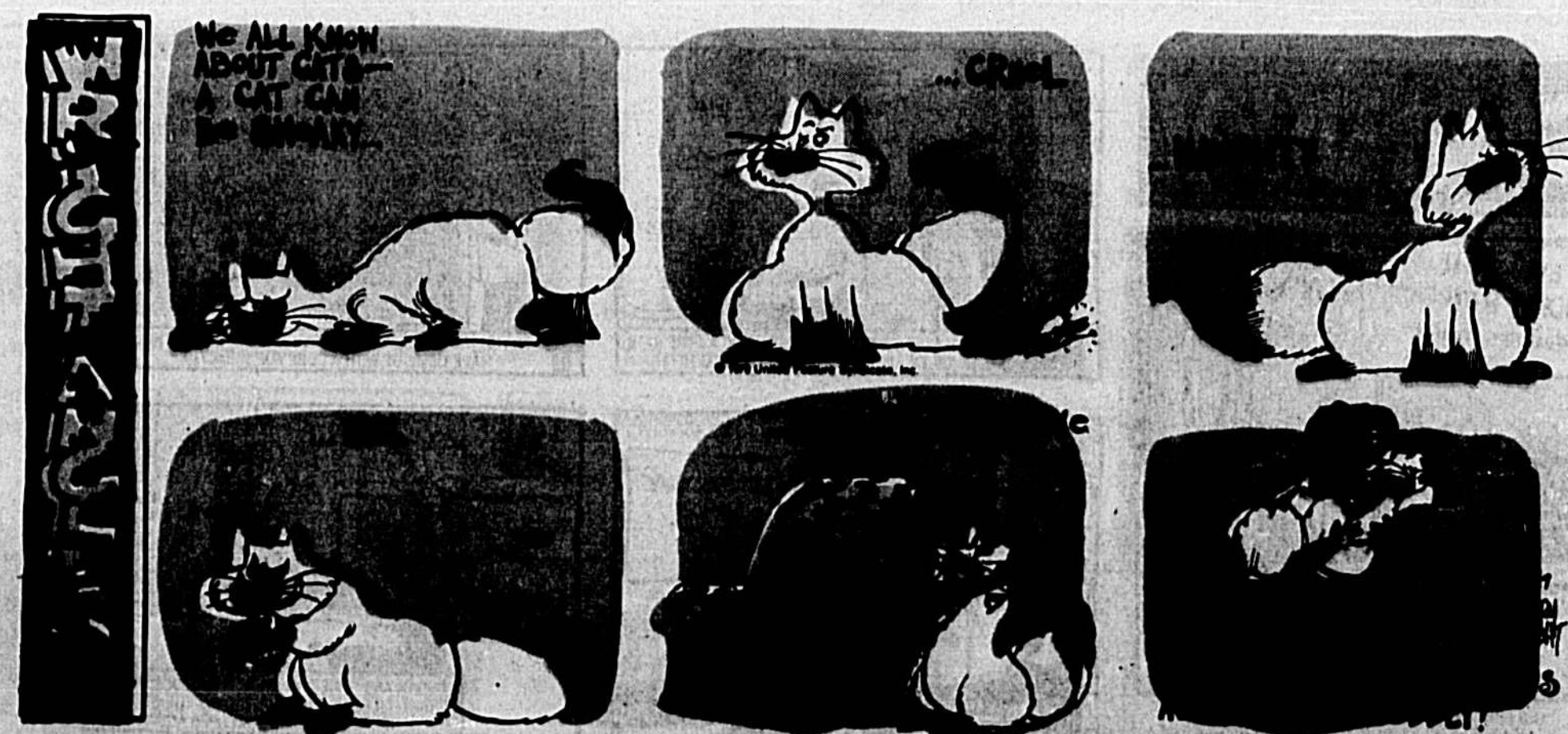
the small society

by brickman



ALLEY OOP

by Dave Graue



HUBERT

by Dick Wingert



TUMBLEWEEDS

by Tom K. Ryan



WEE PALS - kid power

by Morrie Turner



Arson Team Probes \$3 Million Fire

By GEOFFREY POUNDS AND JANE CASSELLBERRY
Herald Staff Writers

Arson investigators from the state fire marshal's office and the Seminole County Department of Public Safety today began examining the charred debris of three rented buildings at Highway 17-92 and Seminole Boulevard.

The buildings, destroyed by an early Sunday morning fire, include the showroom and the factory outlet of the Factory Liquidation Store and the Tompkins Land and Housing office, a real estate firm. Factory Liquidation sold men's and women's clothing.

Investigators said the preliminary damage estimate was \$3 million. However, both the building's tenant and the building owner today declined to confirm that estimate.

Raymond Tompkins, whose county address is listed as 2349 Tamarine Road, leased the three buildings from Raymond Savarese, 1111 Howell Creek Drive, Winter Springs. Tompkins was in Tampa today and said he would return Tuesday to assess the damage to the contents of the building. Savarese said he has not yet surveyed the entire scene.

"So far all we have been able to determine is that the fire started in the warehouse area

in the rear of the building," said Seminole County investigator Raymond Pippin.

The heat from the blaze was so intense that it melted the steel beams and a nearby cyclone fence out of shape, Pippin said. He said there will probably be at least two days before a preliminary indication as to the cause of the fire could be established.

With Pippin at the scene this morning were Deputy State Fire Marshal Ernie Wright, Bob O'Connor of the Seminole County Sheriff's Department

and Don Frits of the Altamonte Springs Police Department.

Investigators were unable to examine the probable starting point of the fire until a collapsed roof of the building could be removed. A crane was being brought in by insurance representatives this morning to pull away the roof.

Firemen from Longwood and Altamonte Springs joined Seminole County firefighters in working three hours to ex-

tinguish the blaze. Firemen said the fire was reported at shortly after 2 a.m.

The firefighters' efforts were slowed for about 20 minutes when a Sanford woman, Cynthia Irene Savarese, 21, drove her car over a fire hose, cutting off the main water supply. Sheriff's deputies said Ms. Savarese had pulled away from a nearby restaurant when she drove over the hose. She was issued a traffic citation.

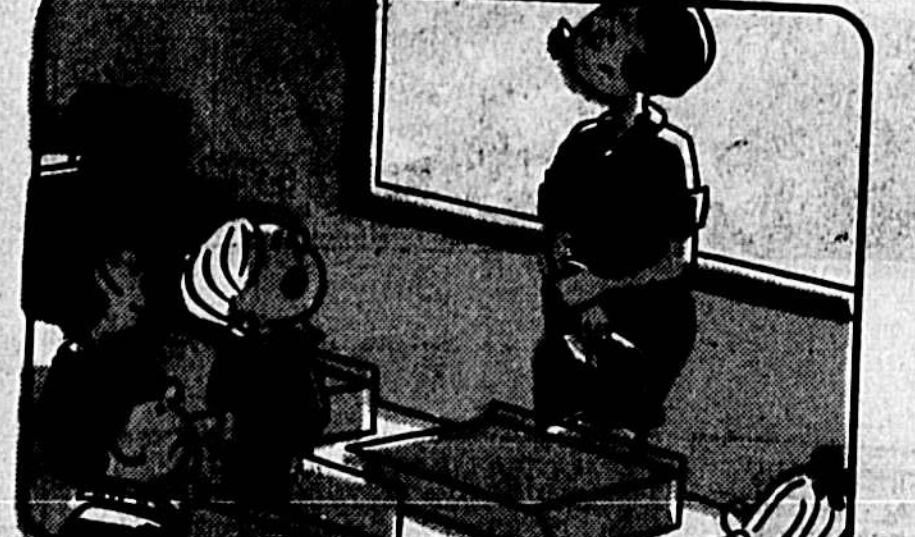
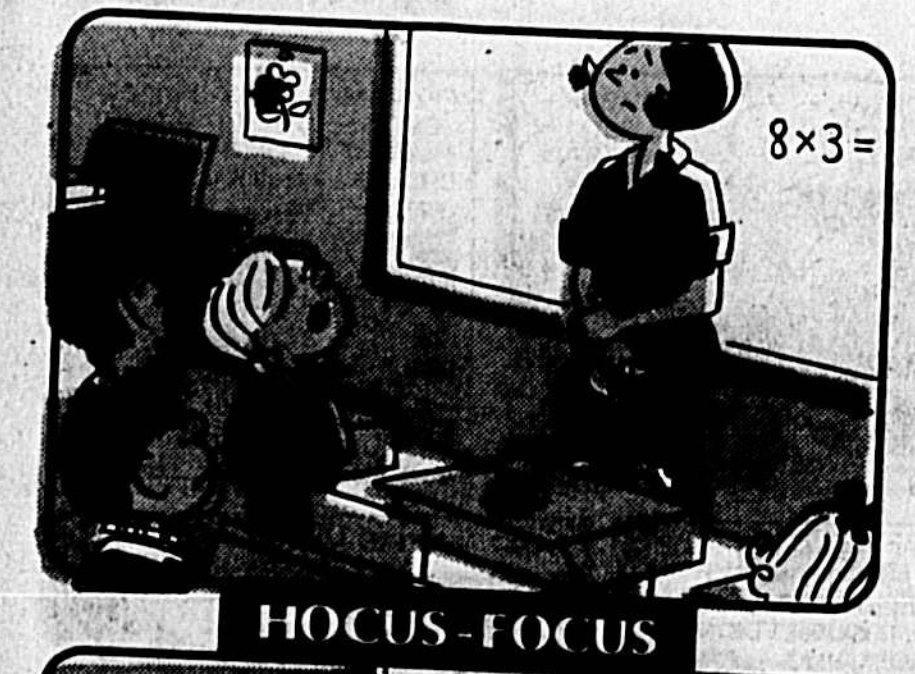
The building housing Factory Liquidation previously had been leased by Nature World, a beauty and cosmetics business that listed well-known entrepreneur Glen Turner, creator of the "Dare-To-Be-Great" financial pyramid scheme.

However, Savarese today said there are no lingering ties with either Nature World or Turner.

"They were just tenants," Savarese said of Nature World. Pippin said the arson task force called into the investigation is a new concept in Seminole County. He said the team goes into operation automatically when there is a fire involving a sizeable loss. He said the activation of the team does not necessarily mean there is arson involved. He said there is no immediate reason to suspect that the fire was deliberately set.



Investigators waded through wreckage at Factory Liquidation Store on Highway 17-92 near Longwood after \$3 million blaze. Herald Photo by Tom Vincent



CAN YOU TRUST YOUR EYES? There are at least six differences in drawing details between top and bottom panels. How quickly can you find them? Check answers with those below.

Junior Whirl

by Hal Kaufman

● **OPEN LINES!** Mastery of words may also mean knowing when not to speak, or as Tupper put it: "WEL LTIM EDS ILEN CEHA THMO REE LOUQNE TNA NSPE ECH." Rearrange cap-letter spacing for sense.

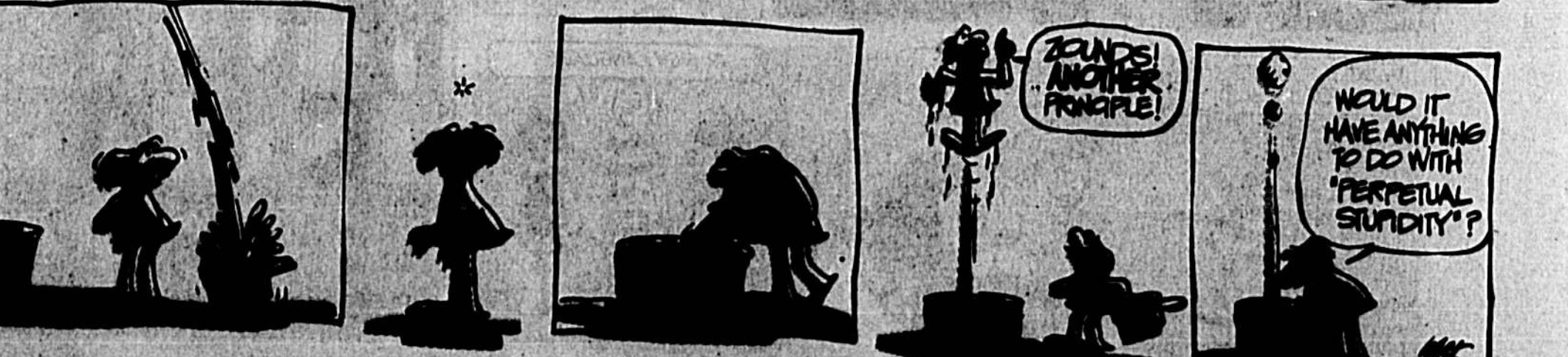
● **One's a Cat!** In each grouping of three, one is a cat: 1. Deer bear lion. 2. Tapir tiger tarpon. 3. Lemur lynx. Which are the cats?

● **Goose Grasse!** Two geese in front of a goose, two geese behind a goose, and one goose in the middle. How many geese altogether?

● **Riddle-Me-This!** Who is the stingiest football player? The fight end. How long have men played practical jokes? Since anti-quity.



WHAT'S DOT? What can you draw to complete this curious scene? Simply add missing lines, dot to dot, to find out.



An informal count after the selection process was completed showed six delegates favoring Texas Gov. John Connally, one favoring Tennessee Sen. Howard Baker and one favoring former U.N. Ambassador George Bush.

Among those keeping their choice secret were Mrs. Helen, State Committee member Fred Streetman and local party chairman Bill McCollum.

The three were automatic appointments as delegates according to the constitution set down by the state GOP committee. However, all three in the past have supported former California Gov. Ronald Reagan.

Connally is a delegate to the 1980 Republican Party Con-

On Proposed Tax Hike

Lake Mary, Winter Springs Voters Set For Referenda

By DONNA ESTES

The voters in Winter Springs and Lake Mary will go to the polls Tuesday to consider whether to raise or lower property tax increases for the 1979-1980 fiscal year beginning Oct. 1.

In Winter Springs the city council is asking approval from its 2,000 qualified electors to raise property taxes from \$2.14 per \$1,000 assessed valuation to \$3.30. The Lake Mary City Council is asking its 1,128 qualified electors to approve an increase from \$2 to \$4.25.

Lake Mary's city officials are saying failure by the voters to approve the tax increase will require a cut in the police force from nine full-time sworn personnel to five and elimination of the emergency dispatching service.

The four police officers and four-person dispatching service have been paid for by the federally funded Comprehensive

Employment Training Act (CETA). Federal funding for the Lake Mary CETA personnel, according to Brenda Donnan, senior planner at the Seminole County Manpower Division, is set to expire under federal regulations on Sept. 30.

But, Miss Donnan said, the county's prime sponsor advisory committee last week approved submission of a waiver request to the U.S. Department of Labor (DOL) to extend the funding into the new fiscal year.

Under the plan submitted, Miss Donnan said, federal money for the officers would be phased out over each quarter of the new fiscal year.

The funding would stop during the transition period for one officer at the end of each quarter of the year so that by the end of fiscal year on Sept. 30, 1980 the city would pay the salaries for each officer, or would fire them.

City officials appealed to U.S. Sen. Lawton Chiles to use his influence with the DOL to get special consideration for the city. Normally CETA funding expires after 78 weeks for a project, Miss Donnan said.

The polling place for Lake Mary's special election is the city hall council chamber, said City Clerk Conie Major today. Chairman of the election board is former-city councilman Virginia Mercer with Lillian Burke, Pat Christie, Millie Murray and Arlyn True as inspectors of the election.

Mrs. Major said the absentee ballots will be counted and the election canvassed by the election board and Councilmen Cliff Nelson and Pat Southward and the city clerk immediately after the polls close at 7 p.m.

Predicting a 60 percent turnout at the polls, Mrs. Major said that 30 absentee ballots were applied for, a record for a city election, and all but eight or nine have been returned.

In Winter Springs seven absentee ballots have been applied for and six have been returned. "It's hard to say what the turnout will be. It's very quiet here with few questions being asked about the election," said City Clerk Mary Norton.

Mrs. Norton said the city's voters will cast their ballots at three locations.

Voters in precinct 13 will vote at city Fire Hall #1 at 102 N. Moss Road. Election clerk will be Mrs. Ruth Layo with inspectors Norma and Charles Lang and Clara Colce. Those in precinct 24 will vote at the Seventh Day Adventist Church on South Moss

Road. Voting officials there will be Denise Norton, Helen Green, Charlotte Dickson and Kitty Strunk. Voters in precinct 50 Tusawilla area will cast their ballots at Fire Station 2 on Northern Way. Election officials there will be Patricia Lombardy, Carrie Maupin, Marguerite Elliott and Robert Swartz.

City officials have said the tax increase in Winter Springs is necessary to provide a reserve fund to handle emergency expenditure needs during the year.

'Hidden' Choice

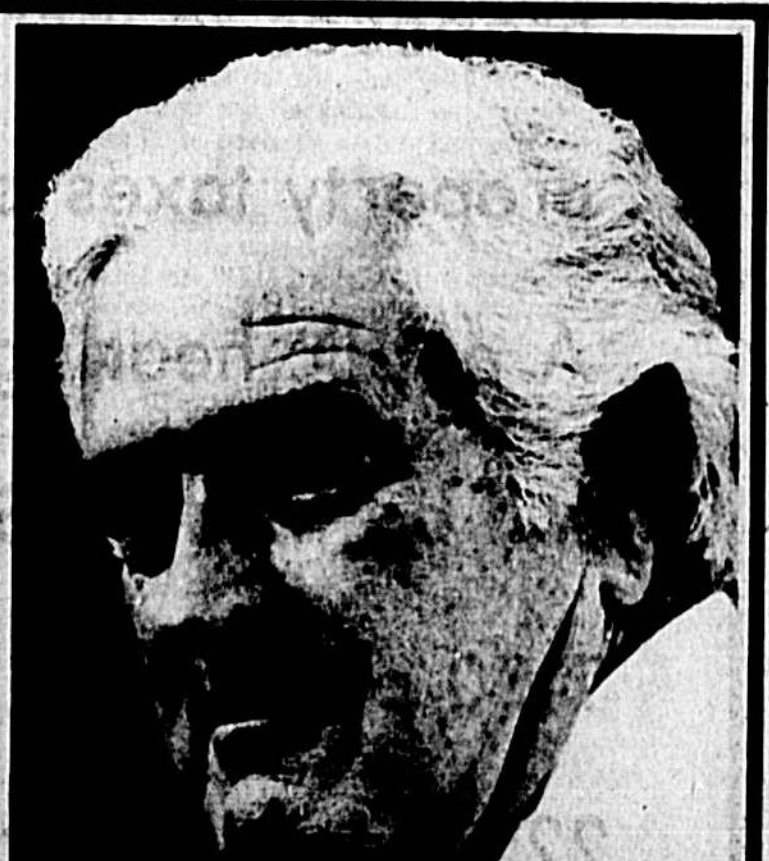
Fifteen of Seminole County's 35-member delegation to the GOP presidential nominating convention in Orlando in November were keeping a "view of silence" today on who their preference is.

Seminole's Republican State Committee Chairman Mary Ann Moran, prior to the caucus Saturday when 18 of the delegates were chosen by lot, urged silence on choices, saying it would "make the convention more interesting."

An informal count after the selection process was completed showed six delegates favoring Texas Gov. John Connally, one favoring Tennessee Sen. Howard Baker and one favoring former U.N. Ambassador George Bush.

Among those keeping their choice secret were Mrs. Helen, State Committee member Fred Streetman and local party chairman Bill McCollum.

The three were automatic appointments as delegates according to the constitution set down by the state GOP committee. However, all three in the past have supported former California Gov. Ronald Reagan.



JOHN CONNOLLY
...Picks Up Delegates

No straw ballots of presidential preference were taken at the delegates selected. Representatives of presidential candidates were permitted to sit in tables at the event. Connally was represented by Mrs. Mark (Ann) Connolly, the wife of a Connally son.

The mini-convention is scheduled for Nov. 17 at the Hyatt House near Disney World.

Locals will be involved in the campaign to elect a Reagan will be broadcast

With Measles Vaccinations Medical Teams Hit County

Beginning this week two health teams will visit all private and public high schools in Seminole County to provide measles vaccine to all students who need it.

According to Jorge Deju, medical director of the Seminole County Health Department, the teams will use jet-guns to shoot either a vaccine for simple measles or an injection to counteract measles, mumps and rubella. These visits will be at least the third attempt by the health department to halt a further outbreak of red measles, health

department officials said. Last school year individual cases of measles broke out in the state of Florida, which caused some concern among health officials. Students in grades 9 through 12 who were thought immune became susceptible because the vaccine administered to them in 1969 did not provide a lasting immunity, according to Tom Cook, area immunization coordinator for Health Rehabilitative Services.

Immunization of Seminole County high school students were conducted in May. For the

Noxious Fumes Kill Boy, 12

A 12-year-old Altamonte Springs boy died Saturday after being found Friday night unconscious with a plastic bag over his face, Altamonte Springs police said.

Jimmy Whalen, 721 Little Wekiva Road, died at 2:31 p.m. at Florida Hospital.

According to a Seminole County medical examiner who performed an autopsy Sunday the boy died as a result of inhaling noxious fumes. The accident occurred while the boy was cleaning his skateboard in the family garage, police said.

The police said that the mother recalled Whalen was wearing the plastic bag to keep from inhaling fumes of a solvent he was using in the cleaning. The boy's father, William, a former fire-fighter, performed mouth-to-mouth resuscitation on his son until rescue personnel arrived.

The boy's physician, Dr. Dennis R. Gross, said Whalen

Final Budget Hearing Set Today

Only two persons have shown up at the two previous public hearings on the budget and tax rate to protest the ordinance. The tax rate of 97.00 represents an 18 cents per \$1,000 assessed valuation property tax increase.

Around the Clock	4-A	Heritage	4-B
Bellevue	4-B	Hospital	5-A
Comics	4-B	Obituary	5-A
Crossword	4-B	OURSELVES	1-B
Editorial	4-B	Sports	4-A
Dear Abby	1-B	Television	1-B
Dr. Lame	4-B	Weather	4-A