

Venezuela Deemed As Good Business Friends of The U.S.

JACKSONVILLE, Feb. 25 (AP)—Venezuela was pictured here yesterday as a good friend of the United States.

Thomas J. Maloney, first secretary of the American embassy at Caracas, drew the picture at a conference at the Commerce Department offices in the interest of improved industrial exchange between the two countries.

He said the needs of Venezuela are varied since the chief product of its people was agriculture. But, he added, 40,000 of a 4,000,000 population were employed in the oil industry, which plays an important part in the economy of the country.

"Judged by the value of exports, oil contributes about 90 percent toward government revenues," he said. "It finances sufficient foreign exchange to enable the country to pay for the goods it needs, including food, cotton, rayon and woolen yarns, equipment for their fabrication and other machinery, automotive vehicles and chemicals."

"America has long been the principal supplier for Venezuelan needs, and during war years we sent into the country as much as 84 percent of its total imports. Oil should be expected to be produced at the rate of 1,250,000 barrels about one-fourth States, if drilling costs and other expenses can be limited so that it can compete on the petroleum market with other oil expected to reach the international market shortly."

Earl Long

"(Continued from Page One)"

means of a trash can placed under the window, and the thief entered and walked across the bed of Mr. Levy's son, who was out for the evening. The tiled handbags were found on the window ledge, according to Sheriff office soon himself. The new Long regime, Earl indicated today, will seek to outdo the previous one in action but probably not in showmanship.

"We'll improve on everything Huey did," Earl declared, sitting in his home with a few friends receiving election returns.

"The roads he built were good roads for their day—but now our roads must carry five times the traffic."

His "number one project," he said, will be raising old-age pensions to \$50 a month.

"The way those old people pulled at me and looked at me during the campaign," he recalled. "The way they asked me, 'Can we count on those \$50 checks, sure?' 'I'd hate to die without having made good on my promise to those people.'"

Huey pursued his spectacular career to the slogan of "Share the wealth" and "Every man a king." Earl said his slogan would be something quieter—"service to the people."

He explained his comeback, after being beaten for governor in 1940 and lieutenant governor in 1944, this way: "I think maybe the Lord decided I could make a better governor at 52 than at 45."

Yesterday was Earl Long's only statewide victory except for election as lieutenant governor in 1936, the year after Huey's death. He became governor in 1939 when Richard W. Leche resigned. He was governor about 11 months.

The new governor will have a new house of representatives to work with and perhaps a new senate. More than half of the 100 house seats and at least 15 of the 39 senate places went to newcomers.

Escaped Convict

"(Continued from Page One)"

P. A. Mero, who was first called to the scene of the robbery.

The next morning, shortly before 9 o'clock, Irwin came to the U. S. and A. Department Store, according to Ben Katz, manager, and began talking at length with Irwin, who was wearing a dark suit, a white shirt, a tie, and a hat.

At about 1:00 o'clock, while Patrolman Patterson was at the store questioning Mr. Katz about the moneyed negro, Irwin walked into Irwin in order to get the old clothes he had left there. He donned his new attire, Patrolman Patterson then arrested him for questioning, according to Chief Williams.

Irwin was put into the police car by Patterson and attempted to escape from the car on First Street, but was seized by which Patrolman H. M. Young before he could get far.

Articles found on the negro were identified as having been stolen from guests at the party, said Sheriff Mero this morning. A complete investigation is being made of the case by Assistant State Attorney George A. DeCottis, Chief Williams asserted.

NO ADMISSION

AUSTIN, Tex., Feb. 25 (AP)—Herman Marvin Sweet, Houston negro, today lost another chance of his court right to gain admission as a law student in the University of Texas.

The third court of civil appeals upheld a lower court's refusal to grant Sweet a writ of habeas corpus. A complete investigation is being made of the case by Assistant State Attorney George A. DeCottis, Chief Williams asserted.

War Crimes Issue

"(Continued from Page One)"

tioned the interview.

She telephoned the information to Deane. On Saturday Miss Turner entered the press wire-leas office in Frankfurt and asked for Foust's copy. The girl employed there gave it to her. She dictated it to Deane in Nuernberg. The rebuttal by Taylor then was prepared.

Miss Turner said this version was correct. She denied a report that she represented herself as Foust's secretary to obtain the copy.

Taylor said he had been misinformed that the story would be published Saturday morning.

Asked if he believed it is legal to intercept newspaper copy, Taylor said he did not think he should comment on that. However he intimated that what would be illegal in the United States might not be in occupied Germany.

The difference here, the general said, is that the stories are filed over Army signals rather than commercial private circuits. His public relations office keeps a record of everything sent out over the Army signal channels.

"I take full responsibility for what my employees did," Taylor said. "Judge Wenneidstrum made a statement designed for publicity. He made charges against the prosecution. I merely answered them."

Deane said he instructed Miss Turner in Frankfurt to "keep her eyes and ears open." She said her action was taken "as an individual."

County Candidates

"(Continued from Page One)"

President of Schools and County Tax Collector. Tomorrow the Sanford view will vibrate with the political views of 41 more aspirants who wish to "serve" as members of the Seminole County Board of Public Instruction, Board of County Commissioners, Tax Assessor and Sheriff.

March 9, when the regular County Commission convenes, has been set by the Jaycees as the date when winning candidates will "serve in office." On March 11, said Mr. Odham, the winners of county officials and principals will be guests of the Jaycees at the dinner meeting at the Mayfair Inn.

Czech Capitulation

"(Continued from Page One)"

signed last week in a deepening crisis and two Social Democrats who declined to go along today with the left wing.

The new cabinet retained Jan Masaryk, non-party man and son of Thomas Masaryk, the nation's first president, as foreign minister. Masaryk has preached cooperation with the west. But his retention was viewed here largely as an astute Communist move trading on the name of the beloved father of the country.

The new cabinet includes 11 other Communists besides Gottwald, two National Socialists, two Catholic People's Party members and one Slovak Democrat, all of these friendly to the Communist program. Thus the opposition in the minor parties is not actually represented.

The Social Democrats in the cabinet represent the party which has been a key to the current crisis. It swung back to the support of the Communists this week after several months of estrangement, and with switch, Zdenek Fierlinger vaulted to power again. Fierlinger, a pro-Communist who was deposed as party chairman last year, becomes minister of industry in the new cabinet.

Long before the official announcement from Hradany, the presidential palace, the government radio announced that the President had capitulated to Communist demands. This announcement gave the impression that the last obstacle to iron Communist control of the nation had been swept aside.

Some 60,000 persons clogged the business section of the city for a Communist demonstration as the announcement came in time to call off a general strike threatened by the Communists.

Gottwald himself made the announcement.

"The decision was not easy," the Premier said in an address over a loudspeaker system, "but in the end he (Deane) accepted the will of the people."

The crowd interrupted with cries of "Long live Beneš! Long live Gottwald!"

The Premier went on: "We must be grateful to President Beneš that he decided for the will of the people in something that was not in complete accordance with his own wishes."

"Reaction, which planned an attack on the new Czech Democracy, has been beaten. Go back to work and let us complete our tasks on the two-year plan."

NO PAPER

COLUMBUS, Ga., Feb. 25 (AP)—The Enquirer failed to make its appearance for the third straight morning today as its pressmen ignored a second demand from their national union chief that they return to work.

Twice ordered by International President George L. Berry to report for duty, the pressmen have refused to cross the picket line of striking printers.

Neither the Enquirer nor the afternoon Ledger have been published since Monday.

Anti-Lynch Bill

"(Continued from Page One)"

However, no payment would be due if there was no negligence by peace officers in efforts to protect the victim.

The bill was introduced by Rep. Case (R-N.J.).

The vote by which the bill was approved was not announced officially. Members reported privately it was three to two. Rep. Cravena (D-Ark.), a committee member, said he voted against it.

Other members of the subcommittee are Representatives Case (R-N.J.), Fellows (R-Maine), DeWitt (R-Minn.), Byrne (D-N.Y.), and Feighan (D-Ohio). One of them presumably refrained from voting.

The full Judiciary Committee may consider the legislation at its next meeting, tentatively scheduled for tomorrow.

The legislation defines lynching as:

"An organized effort not to punish the persons lynched but also to terrorize the groups, in the community or elsewhere, of which the persons lynched are members by reason of their race, creed, color, national origin, ancestry, language, or religion, and thus to deny to all members of such groups, and to prevent them from exercising the rights guaranteed to them by the Constitution and laws of the United States."

Meanwhile 74 House Democrats have signed the Southerners' pledge to "oppose to the finish" President Truman's program for anti-lynching, anti-poll tax, and anti-segregation laws.

The count in this mobilization for war against his "civil rights" measures was disclosed today as some Dixie party rebels talked of broadening their campaign. These rebels not only to beat Mr. Truman's program but to keep him from getting the Democratic presidential nomination.

The Southerners' pledge is the one some 50 House Democrats drew up at a meeting last Friday. All who were there signed it, but many names were made public because they wanted to wait and let other Southerners have a chance to add their names.

Among other things, the signers promised to cooperate with Southern governors who are battling the Truman program. A committee of governors saw Democratic Chairman J. Howard Pate use his influence to get the President's recommendations withdrawn from Congress. McGrath said, no.

There are 74 House Democrats who signed the Southerners' pledge to "oppose to the finish" President Truman's civil rights program:

Mississippi—Reps. Colmer, Whitten, Whitten, and Allen. Texas—Gossett, Fisher, Pickett, Waggoner, Wilcox, Pogue, West, Beckwith and Lucas. Georgia—Cox, Brown, Vinson, Davis, Wood, Wheeler, Camp, Lanham, Pace and Preston. Alabama—Hobbs, Battle, Jarmon, Jones, Boykin, Rains, Grant and Adams. Florida—Sikes, Price, Smathers, Peterson and Rogers. Tennessee—Murray, Priest, Courtney. Kentucky—Gregory. South Carolina—Born, Richards, McMillan, Ellis, Bryson, and Rivers. North Carolina—Clark, Harden, Bonner. Virginia—Smith, Gary, Harrison, Hardy, Almond, Bland, Stanley.

7 Perish

"(Continued from Page One)"

Helen Marie, 11; James Allen, 8; Doris Ann, 4; Thomas, 4; Mary Kay, 3; David, 18 months.

Source: Waterhouse farm in near Prairie Grove, a small community 10 miles northwest of here.

HOLLYWOOD, Feb. 25 (AP)—Fire destroyed a lumber yard and a half dozen other businesses in a square block early today. The flames shot swiftly through the Lounsbury and Harris Lumber Co. yard which runs through the center of a block bounded by Santa Monica Boulevard, Lexington and Las Palmeras Avenues and Seward Street.

Besides the lumber yard, a chemical company, cleaning plant and photography shop on Santa Monica Boulevard and a saah and doo plant, electric concern and salvage company in Lexington Avenue were burned. Numerous other establishments were endangered.

Georgia Man

"(Continued from Page One)"

nounced dead upon arrival. His head had been broken, according to Patrolman C. B. Sparks and Max Bass who investigated the accident.

N. W. Beard and D. J. Planners, who were riding with Mr. Miller, were not reported seriously injured. Jack Williams, negro passenger with Noble, was not reported hurt. The Chevrolet truck was reported to have turned over three times, following the collision underneath the traffic light. Both wrecked cars were taken to Railroad place.

The Brunswick men were on their way to Orlando to demonstrate electrical equipment for the Orlando Morning Sentinel.

Wheat Straw Pulp May Be Supplement Newsprint Source

WASHINGTON, Feb. 25 (AP)—It may not be long before you are writing those love notes on wheat straw pulp.

The Agriculture Department said today its technicians have developed what promises to be an economical and practical way to convert straw into fine papers. Earlier processes have been too costly.

Most paper now is made from wood.

If put to use, the new method could make use of the more than 95,000,000 tons of wheat straw that is burned and wasted yearly.

That much straw would make about 20,000,000 tons of cellulose pulp, the raw material from which paper is made. The department said that would meet the country's annual needs.

There still is one hitch. A method must be found to clean the straw when it is collected from fields. Farm machinery manufacturers are working on this problem at the department's regional laboratory at Peoria, Ill.

The department said straw pulp should find its "logical" use as a blend with wood pulp to produce magazine, book, writing, litho, offset, and several kinds of specialty papers.

"The process is now ready for mill-scale trials," the department said. It added that successful use of straw should help relieve current paper shortages and ease the price situation. A number of domestic paper companies were said to be interested in the new process.

Pilots Club

"(Continued from Page One)"

relations and world peace. Miss Mattinger stressed the importance of the nursing books and told of receiving letters from friends who are nursing in Japan and Greece who wrote of the crying need for nurses in these and other foreign countries.

Mrs. W. E. Hollyhead, Milk Bank chairman, reported that only \$24 is left in the fund for milk which is furnished to needy families in the neighborhood. County, both white and colored.

It was announced that several other civic organizations and church groups are contributing to this fund. Anyone desiring to contribute is asked to contact Mrs. Hollyhead.

Mrs. Mary Rawlins, finance chairman, announced that the total of \$100.41 had been realized from the sale of Christmas cards and also announced that another rummage sale will be held in the near future for the purpose of raising funds for worthwhile projects.

Mrs. Rawlins, Mrs. Lourine Beal and Mrs. A. H. Henson appeared before a nominating committee for officers in district four, Pilot International. A nominating committee for the local officers was also appointed, including Mrs. Rawlins, Mrs. R. C. Maxwell and Mrs. M. B. Smith.

Miss Helene Stevens appeared before the group in the interest of the American Legion Auxiliary for sponsors for Girls State in June. Mrs. Joel B. Field, president, revealed that \$30 had been set up in the budget to sponsor a girl again this year to Girls State. Last year the club sponsored Miss Barbara Chapman.

A free will offering was taken for the "True Course Ever" fund, a loan fund maintained by International for Pilot Club members.

Anti-Truman

"(Continued from Page One)"

refuse to support any presidential nominee who did not stand for states' rights on such issues as race segregation, poll tax laws, anti-lynching laws and state FEPC.

In the event the Democratic National Convention adopted a platform embodying the President's Civil Rights Program, McCortey said the presidential electors could cast their votes for some outstanding Democrat of the type of Senator Byrd of Virginia or Senator George of Georgia.

Such a plan, McCortey said, would follow the strategy outlined by Senator Eastland of Mississippi. This strategy calls for the South to withhold its electoral votes from the Democratic Party nominee and throw the election into the House of Representatives.

PRICE FIXING

WASHINGTON, Feb. 25 (AP)—Pointing to the steel price rise, Senator Kilgore (D-W.Va.) said today it shows Congress should vote President Truman power to fix prices. Kilgore brought out this argument as official criticism of the price boom mounted and government officials hunted for signs of a new inflationary spiral.

Rent Controls

"(Continued from Page One)"

threat of "collapse and Communism in Europe."

And Ernest T. Weir, chairman of the National Steel Corp., added that a depression is sure to come if vast sums "wasted through inefficient spending abroad" are heaped atop the "fantastic cost of government at home."

Weir made it clear he does not oppose any aid to Europe. But he said he could not subscribe to the position that anything less than precisely \$4,000,000,000 between now and July, 1949, would be money "poured down a rat-hole."

The Senate was ready to discuss a motion by Senator Lucas (D-Ill.) to reconsider a resolution giving the Senate expenditures an additional \$125,000,000 to finance general investigations.

Meanwhile there were these other developments at the capitol:

Rep. Bender (R-Ohio), chairman of a House Subcommittee studying war contracts, announced plans for full investigation after the general accounting of "unprecedented" fraud in settlement of the contracts. Bender said that "millions of dollars of the taxpayers' money has been wasted in billions given to war contractors."

Rep. Shafer (R-Mich.) proposed free insurance for all members of the armed services and all war veterans. He said he thought the government would save money giving the insurance rather than paying for collecting the premiums.

Stock Market

NEW YORK, Feb. 25 (AP)—Favored industrial stocks sparked a moderate rally in today's market.

Some of the oils were sharply higher. Railroads, motors, steels and rubbers provided early leadership, although morning gains were not fully maintained in many instances. Volume of dealings expanded somewhat over the previous session, totaling around 800,000 shares. Near the close predominant advances were in a range of fractions to a point or more.

Rails benefited from additional favorable earnings and dividend news. While support for many issues was provided by short covering and professional bidding for quick-turn profit in a technical rally, commission houses said customers stood aside because of uncertainty over tax revision and business prospects.

Carrier bonds were steady. Commodities were mixed. At Chicago wheat finished up 1/4 to 3/4 cents a bushel, corn 1/4 to 3/4 higher and oats down 1/4 to 1/2. Cotton near the finish was 35 cents to \$1.05 a bale lower.

MARKETS AT A GLANCE

NEW YORK, Feb. 25 (AP)—Stocks—Higher; industrials lead slowly.

Bonds—Steady; selected rails improve.

Cotton—Irregular; mill buying, profit taking.

Chicago: Wheat—Firm; cash house buying.

Corn—Firm; good demand cash.

St. Louis: Mixed; deferred contracts eased.

Hogs—75 cents to \$1.00 higher; practically up \$23.75.

Cattle—Unevenly 60 cents lower to 25 cents higher; top \$33.00.

Livestock Market

THOMASVILLE, Feb. 25 (AP)—(CUBA)—Livestock arrivals totaled 400 cattle, 100 calves and 1,000 hogs at eight major points in the state today. Most of the cattle came from Florida, Georgia, Louisiana, Alabama, and Jacksonville and Tallahassee.

The market on hogs was fairly active and at mostly steady prices. Composite quotations at eight points were as follows: Medium to choice grade barrows and gilts, 100-150 lbs., 12-13; 150-160 lbs., 11-12; 160-170 lbs., 10-11; 170-180 lbs., 9-10; 180-190 lbs., 8-9; 190-200 lbs., 7-8; 200-210 lbs., 6-7; 210-220 lbs., 5-6; 220-230 lbs., 4-5; 230-240 lbs., 3-4; 240-250 lbs., 2-3; 250-260 lbs., 1-2; 260-270 lbs., 1/2-1; 270-280 lbs., 1/4-1/2; 280-290 lbs., 1/8-1/4; 290-300 lbs., 1/16-1/8; 300-310 lbs., 1/32-1/16; 310-320 lbs., 1/64-1/32; 320-330 lbs., 1/128-1/64; 330-340 lbs., 1/256-1/128; 340-350 lbs., 1/512-1/256; 350-360 lbs., 1/1024-1/512; 360-370 lbs., 1/2048-1/1024; 370-380 lbs., 1/4096-1/2048; 380-390 lbs., 1/8192-1/4096; 390-400 lbs., 1/16384-1/8192; 400-410 lbs., 1/32768-1/16384; 410-420 lbs., 1/65536-1/32768; 420-430 lbs., 1/131072-1/65536; 430-440 lbs., 1/262144-1/131072; 440-450 lbs., 1/524288-1/262144; 450-460 lbs., 1/1048576-1/524288; 460-470 lbs., 1/2097152-1/1048576; 470-480 lbs., 1/4194304-1/2097152; 480-490 lbs., 1/8388608-1/4194304; 490-500 lbs., 1/16777216-1/8388608; 500-510 lbs., 1/33554432-1/16777216; 510-520 lbs., 1/67108864-1/33554432; 520-530 lbs., 1/134217728-1/67108864; 530-540 lbs., 1/268435456-1/134217728; 540-550 lbs., 1/536870912-1/268435456; 550-560 lbs., 1/1073741824-1/536870912; 560-570 lbs., 1/2147483648-1/1073741824; 570-580 lbs., 1/4294967296-1/2147483648; 580-590 lbs., 1/8589934592-1/4294967296; 590-600 lbs., 1/17179869184-1/8589934592; 600-610 lbs., 1/34359738368-1/17179869184; 610-620 lbs., 1/68719476736-1/34359738368; 620-630 lbs., 1/137438953472-1/68719476736; 630-640 lbs., 1/274877906944-1/137438953472; 640-650 lbs., 1/549755813888-1/274877906944; 650-660 lbs., 1/1099511627776-1/549755813888; 660-670 lbs., 1/2199023255552-1/1099511627776; 670-680 lbs., 1/4398046511104-1/2199023255552; 680-690 lbs., 1/8796093022208-1/4398046511104; 690-700 lbs., 1/17592186044416-1/8796093022208; 700-710 lbs., 1/35184372088832-1/17592186044416; 710-720 lbs., 1/70368744177664-1/35184372088832; 720-730 lbs., 1/140737488355328-1/70368744177664; 730-740 lbs., 1/281474976710656-1/140737488355328; 740-750 lbs., 1/562949953421312-1/281474976710656; 750-760 lbs., 1/1125899906842624-1/562949953421312; 760-770 lbs., 1/2251799813685248-1/1125899906842624; 770-780 lbs., 1/4503599627370496-1/2251799813685248; 780-790 lbs., 1/9007199254740992-1/4503599627370496; 790-800 lbs., 1/18014398509481984-1/9007199254740992; 800-810 lbs., 1/36028797018963968-1/18014398509481984; 810-820 lbs., 1/72057594037927936-1/36028797018963968; 820-830 lbs., 1/144115188075855872-1/72057594037927936; 830-840 lbs., 1/288230376151711744-1/144115188075855872; 840-850 lbs., 1/576460752303423488-1/288230376151711744; 850-860 lbs., 1/1152921504606846976-1/576460752303423488; 860-870 lbs., 1/2305843009213693952-1/1152921504606846976; 870-880 lbs., 1/4611686018427387904-1/2305843009213693952; 880-890 lbs., 1/9223372036854775808-1/4611686018427387904; 890-900 lbs., 1/18446744073709551616-1/9223372036854775808; 900-910 lbs., 1/36893488147419103232-1/18446744073709551616; 910-920 lbs., 1/73786976294838206464-1/36893488147419103232; 920-930 lbs., 1/147573952589676412928-1/73786976294838206464; 930-940 lbs., 1/295147905179352825856-1/147573952589676412928; 940-950 lbs., 1/590295810358705651712-1/295147905179352825856; 950-960 lbs., 1/1180591620717411303424-1/590295810358705651712; 960-970 lbs., 1/2361183241434822606848-1/1180591620717411303424; 970-980 lbs., 1/4722366482869645213696-1/2361183241434822606848; 980-990 lbs., 1/9444732965739290427392-1/4722366482869645213696; 990-1000 lbs., 1/18889465931478580854784-1/9444732965739290427392; 1000-1010 lbs., 1/37778931862957161709568-1/18889465931478580854784; 1010-1020 lbs., 1/75557863725914323419136-1/37778931862957161709568; 1020-1030 lbs., 1/151115727451828646838272-1/75557863725914323419136; 1030-1040 lbs., 1/302231454903657293676544-1/151115727451828646838272; 1040-1050 lbs., 1/604462909807314587353088-1/302231454903657293676544; 1050-1060 lbs., 1/1208925819614629174706176-1/604462909807314587353088; 1060-1070 lbs., 1/2417851639229258349412352-1/1208925819614629174706176; 1070-1080 lbs., 1/4835703278458516698824704-1/2417851639229258349412352; 1080-1090 lbs., 1/9671406556917033397649408-1/4835703278458516698824704; 1090-1100 lbs., 1/19342813113834066795298816-1/9671406556917033397649408; 1100-1110 lbs., 1/38685626227668133590597632-1/19342813113834066795298816; 1110-1120 lbs., 1/77371252455336267181195264-1/38685626227668133590597632; 1120-1130 lbs., 1/154742504910672534362390528-1/77371252455336267181195264; 1130-1140 lbs., 1/309485009821345068724781056-1/154742504910672534362390528; 1140-1150 lbs., 1/618970019642690137449562112-1/309485009821345068724781056; 1150-1160 lbs., 1/1237940039285380274899124224-1/618970019642690137449562112; 1160-1170 lbs., 1/2475880078570760549798248448-1/1237940039285380274899124224; 1170-1180 lbs., 1/4951760157141521099596496896-1/2475880078570760549798248448; 1180-1190 lbs., 1/9903520314283042199192993792-1/4951760157141521099596496896; 1190-1200 lbs., 1/19807040628566084398385987584-1/9903520314283042199192993792; 1200-1210 lbs., 1/39614081257132168796771975168-1/19807040628566084398385987584; 1210-1220 lbs., 1/79228162514264337593543950336-1/39614081257132168796771975168; 1220-1230 lbs., 1/158456325028528675187087900672-1/79228162514264337593543950336; 1230-1240 lbs., 1/316912650057057350374175801344-1/158456325028528675187087900672; 1240-1250 lbs., 1/633825300114114700748351602688-1/316912650057057350374175801344; 1250-1260 lbs., 1/1267650600228229401496703205376-1/633825300114114700748351602688; 1260-1270 lbs., 1/2535301200456458802993406410752-1/1267650600228229401496703205376; 1270-1280 lbs., 1/5070602400912917605986812821504-1/2535301200456458802993406410752; 1280-1290 lbs., 1/10141204801825835211973625643008-1/5070602400912917605986812821504; 1290-1300 lbs., 1/20282409603651670423947251286016-1/10141204801825835211973625643008; 1300-1310 lbs., 1/40564819207303340847894502572032-1/20282409603651670423947251286016; 1310-1320 lbs., 1/81129638414606681695789005144064-1/40564819207303340847894502572032; 1320-1330 lbs., 1/162259276829213363391778010288128-1/81129638414606681695789005144064; 1330-1340 lbs., 1/324518553658426726783556020576256-1/162259276829213363391778010288128; 1340-1350 lbs., 1/649037107316853453567112041152512-1/324518553658426726783556020576256; 1350-1360 lbs., 1/1298074214633706907134224022305024-1/649037107316853453

Farm Bureau Aids Welfare On Incomes

The Seminole County Farm Bureau is co-operating with the State Welfare Board in furnishing accurate, current information regarding income of recipients, Mrs. Janis J. Colle, supervisor, announced today.

At a recent meeting, the Farm Bureau pledged co-operation in furnishing this assistance to the Welfare Board, and Dr. John W. Wilson, secretary of the Bureau, is advising all growers and shippers of the action of the group, said Mrs. Colle.

The program of public assistance and the responsibility of the Welfare Board to administer assistance only to those persons eligible for the various types, was explained by Mrs. Colle to the Farm Bureau members.

This aid is to the blind, to dependent children and to elderly people. Mrs. Colle pointed out that the grants given are to supplement other resources or income and that persons who are able to help themselves through employment, are encouraged to do so. The agency must, however, verify all income, and it was in this area that the County Farm Bureau pledged co-operation to facilitate.

INAUGURATION

GAINESVILLE, Feb. 26, (AP)—J. Thomas Gurney, Orlando attorney, and chairman of the board of control, representing the state of Florida, will install Dr. J. Willis Miller as president of the University of Florida in ceremonies here on Mar. 5.

Legal Notice

IN THE CIRCUIT COURT, NINTH JUDICIAL CIRCUIT OF FLORIDA, IN AND FOR SEMINOLE COUNTY, IN CHANCERY.

ELIZABETH S. MARTIN, Complainant.

JOHN WATKINS MARTIN, Defendant.

ORDER OF PUBLICATION

TO: JOHN WATKINS MARTIN, Attesting: 201

1123 South Magnolia

Los Angeles 6, California

It is ordered that you appear to the sworn bill of Complaint herein filed, on or before the 22nd day of March, 1948, or else a default judgment will be entered for divorce. The nature of this suit is one for divorce. The suit has been instituted in the above styled Court.

WITNESS the hand of the P. Herndon, Clerk of the Circuit Court of Seminole County, Florida, and the seal of the Court at the Court House in Sanford, Florida, this 15th day of February, 1948.

G. P. Herndon, Clerk of the Circuit Court

By: O. L. Hunt, D. C.

BY: O. L. Hunt, D. C.

BY: O. L. Hunt, D. C.

BY: O. L. Hunt, D. C.

BY: O. L. Hunt, D. C.

BY: O. L. Hunt, D. C.

BY: O. L. Hunt, D. C.

BY: O. L. Hunt, D. C.

BY: O. L. Hunt, D. C.

BY: O. L. Hunt, D. C.

BY: O. L. Hunt, D. C.

BY: O. L. Hunt, D. C.

BY: O. L. Hunt, D. C.

BY: O. L. Hunt, D. C.

BY: O. L. Hunt, D. C.

BY: O. L. Hunt, D. C.

BY: O. L. Hunt, D. C.

BY: O. L. Hunt, D. C.

BY: O. L. Hunt, D. C.

BY: O. L. Hunt, D. C.

BY: O. L. Hunt, D. C.

BY: O. L. Hunt, D. C.

BY: O. L. Hunt, D. C.

BY: O. L. Hunt, D. C.

BY: O. L. Hunt, D. C.

BY: O. L. Hunt, D. C.

BY: O. L. Hunt, D. C.

BY: O. L. Hunt, D. C.

BY: O. L. Hunt, D. C.

BY: O. L. Hunt, D. C.

BY: O. L. Hunt, D. C.

BY: O. L. Hunt, D. C.

BY: O. L. Hunt, D. C.

BY: O. L. Hunt, D. C.

BY: O. L. Hunt, D. C.

BY: O. L. Hunt, D. C.

BY: O. L. Hunt, D. C.

BY: O. L. Hunt, D. C.

BY: O. L. Hunt, D. C.

BY: O. L. Hunt, D. C.

BY: O. L. Hunt, D. C.

BY: O. L. Hunt, D. C.

BY: O. L. Hunt, D. C.

BY: O. L. Hunt, D. C.

BY: O. L. Hunt, D. C.

BY: O. L. Hunt, D. C.

BY: O. L. Hunt, D. C.

BY: O. L. Hunt, D. C.

BY: O. L. Hunt, D. C.

BY: O. L. Hunt, D. C.

BY: O. L. Hunt, D. C.

BY: O. L. Hunt, D. C.

BY: O. L. Hunt, D. C.

BY: O. L. Hunt, D. C.

BY: O. L. Hunt, D. C.

BY: O. L. Hunt, D. C.

BY: O. L. Hunt, D. C.

BY: O. L. Hunt, D. C.

BY: O. L. Hunt, D. C.

BY: O. L. Hunt, D. C.

BY: O. L. Hunt, D. C.

BY: O. L. Hunt, D. C.

BY: O. L. Hunt, D. C.

BY: O. L. Hunt, D. C.

BY: O. L. Hunt, D. C.

BY: O. L. Hunt, D. C.

BY: O. L. Hunt, D. C.

BY: O. L. Hunt, D. C.

BY: O. L. Hunt, D. C.

BY: O. L. Hunt, D. C.

BY: O. L. Hunt, D. C.

BY: O. L. Hunt, D. C.

BY: O. L. Hunt, D. C.

BY: O. L. Hunt, D. C.

BY: O. L. Hunt, D. C.

BY: O. L. Hunt, D. C.

MARGARET ANN

LOW EVERYDAY PRICES!
RED HOT BUYS

HOME CONTROLLED

201 East First Street
Sanford, Florida

FOR THE WEEK-END

4 Can Limit! Del Monte Early Garden

PEAS NO. 2 CAN 15c

Libby's Home Style

PICKLES 16-oz JAR 19c

4 Can Limit! Hunt's Fancy Sliced or Halves

PEACHES NO. 2 1/2 CAN 21c

Chase & Sanborn All Grinds

COFFEE lb. 47c

Dennison's Fancy

CATSUP 14-oz BTL 15c

PARKAY lb. ctn. 35c

Brookfield Grade A Medium Shipped Minnesota

Margaret Ann Fresh Florida Grade A

EGGS doz. 55c EGGS doz. 65c

Factory Packed

SUGAR

(10 lb Limit Please)

5 lbs. 41c

In Our MEAT DEPT.

Cudahy's Edgemere Sliced Bacon lb. 49c
Gold Coin Sliced Bacon lb. 63c

A Grade Western Spring Lamb lb. 59c
Shankless Legs lb. 45c
Half or Whole Shoulders lb. 55c
Rib Lamb Chops lb. 55c

Georgia Shipped, Dressed and Drawn Grade A
Fryers lb. 65c
Hens lb. 58c
Roasters lb. 68c

Western Pork BOSTON BUTTS lb 47c
Western Pork LOINS lb 45c
End Cut CHOPS or ROAST lb 59c
Center Cut CHOPS lb 39c
Western Pork SPARE RIBS lb 39c

Streak O Lean White Bacon, Any Cut lb. 39c
Smoked Breakfast Strip BACON lb 48c

Margaret Ann Quality A Grade Medium Heavy Stall Fed Western Beef
STEAKS:
CLUB or RIB lb 59c
SIRLOIN lb 65c
ROUND or T-BONE lb 69c

ROASTS:
SQUARE CUT CHUCK lb 53c
RUMP or SHOULDER lb 57c
STANDING PRIME RIB lb 59c

In Our Self Service Case
Wisconsin DAISY CHEESE lb 55c
Pure Pork SAUSAGE, In Cartons lb 39c
COTTAGE CHEESE 12-oz ctn 19c

SAMPLE PRIMARY ELECTION

BALLOT

DEMOCRATIC PARTY
Tuesday, May 4, 1948
SEMINOLE COUNTY
PRECINCT NUMBER

MAKE A CROSS MARK (X) AFTER THE NAME OF THE CANDIDATE OF YOUR CHOICE

FOR GOVERNOR VOTE FOR ONE:	FOR SHERIFF VOTE FOR ONE:
Dan McCarty	J. Ross Adams
W. A. (Bill) Shands	E. E. Brady
Fuller Warren	R. J. (Jack) Hickson
J. Tom Watson	Percy A. Mero
FOR SECRETARY OF STATE VOTE FOR ONE:	Lewis A. Tate
FOR ATTORNEY GENERAL VOTE FOR ONE:	E. E. (Ed) Walker
FOR COMPTROLLER VOTE FOR ONE:	C. E. (Carl) Williams
FOR STATE TREASURER VOTE FOR ONE:	FOR COUNTY SUPERINTENDENT OF PUBLIC INSTRUCTION VOTE FOR ONE:
CIRCUIT COURT JUDGE 9th Judicial Circuit VOTE FOR ONE:	T. W. Lawton
STATE ATTORNEY 9th Judicial Circuit VOTE FOR ONE:	FOR SUPERVISOR OF REGISTRATION VOTE FOR ONE:
FOR STATE SUPERINTENDENT OF PUBLIC INSTRUCTION VOTE FOR ONE:	Lourine A. Beal
FOR COMMISSIONER OF AGRICULTURE VOTE FOR ONE:	FOR COUNTY COMMISSIONER District No. 1 VOTE FOR ONE:
FOR RAILROAD COMMISSIONER VOTE FOR ONE:	Jay H. Beck
FOR STATE SENATOR 9th SENATORIAL DISTRICT VOTE FOR ONE:	H. B. Pope
Lloyd P. Boyle	FOR COUNTY COMMISSIONER District No. 2 VOTE FOR ONE:
FOR MEMBER OF THE HOUSE OF REPRESENTATIVES Group No. 1 VOTE FOR ONE:	H. S. (Lew) Arnold
M. B. (T-Bone) Smith	L. T. (Les) Bryan
FOR MEMBER OF THE HOUSE OF REPRESENTATIVES Group No. 2 VOTE FOR ONE:	O. E. Fourakre
J. R. Lyles	B. J. (Ben) Overstreet
J. Brailley Odham	FOR COUNTY COMMISSIONER District No. 3 VOTE FOR ONE:
FOR CLERK OF THE CIRCUIT COURT VOTE FOR ONE:	W. G. Kilbee
O. P. Herndon	FOR MEMBER OF BOARD OF PUBLIC INSTRUCTION District No. 4 VOTE FOR ONE:
FOR TAX COLLECTOR VOTE FOR ONE:	FOR MEMBER OF BOARD OF PUBLIC INSTRUCTION District No. 5 VOTE FOR ONE:
John L. Galloway	FOR MEMBER OF BOARD OF PUBLIC INSTRUCTION District No. 6 VOTE FOR ONE:
E. C. (Ned) Smith	FOR JUSTICE OF THE PEACE District No. 4 VOTE FOR ONE:
FOR COUNTY ASSESSOR OF TAXES VOTE FOR ONE:	FOR JUSTICE OF THE PEACE District No. 5 VOTE FOR ONE:
FOR COUNTY JUDGE VOTE FOR ONE:	FOR JUSTICE OF THE PEACE District No. 6 VOTE FOR ONE:
Karlyle Housholder	FOR CONSTABLE District No. 4 VOTE FOR ONE:
John G. Leonardy	Herman L. Brumley
James G. Sharon	R. L. (Mickey) O'Neill
O. Douglas Stenstrom	FOR CONSTABLE District No. 5 VOTE FOR ONE:
R. W. Ware	W. A. (Bill) Lewis
FOR COUNTY PROSECUTING ATTORNEY VOTE FOR ONE:	FOR STATE DEMOCRATIC COMMITTEEMAN VOTE FOR ONE:
Geo. A. Spence	

OXYDOL
Lge Pkg 33c

FUJI CHINESE FOOD
1 lb. 33c
HEAD MOLASSES ea 17c
3 oz. 1st Chop
SUEY SAUCE 2 lbs 25c
No. 2
BEAN SPRTS can 15c
No. 300 Can Chow
MEIN NOODLES 17c
No. 300 can Mixed
VEGETABLES 20c

DREFT
Lge Pkg 33c

DUZ DOES EVERYTHING
2 Sm 29c
Lge 35c

Spic & Span
Lge. Pkg. 21c

Sweet Heart
Toilet Soap
2 Bars 19c

Gator
Ranch Hives
Sm. 13c Lge. 29c


Clorox
Quart Bottle
15c

Pillsbury's Best or Gold Medal Kitchen Tested
FLOUR 5 lbs. 45c 10 lbs. 87c
25 lb. bag \$2.10

STOKELY'S or OMIO FANCY GRAPEFRUIT JUICE no. 2 can 5c
EXQUISITE BRAND CRANBERRY SAUCE no. 1 tall can 15c
MILK BLOSSOM TIME 3 tall cans 39c

Stokely's No. 2 1/2 can Kraut 2 cans 25c
Genesee Valley Cut Green Beans 2 303 cans 25c
Fancy Prune No. 2 1/2 Plums can 17c
Del Monte Early Garden Asparagus can 27c
King Cole Gr. and White No. 303 Limas can 19c
Stokely's cr. st. Golden No. 303 can Corn 2 cans 35c
Trellis Brand Peas No. 2 can 10c
Swift's Lunch Meat Prem 12-oz can 45c
Pure Grape Jam 2 lb jar 39c
French's Fancy Grade Black 1 1/2 oz Pepper can 10c
Regular Quaker or Mothers Oats pkg 15c
Gulfsat Sweet No. 2 1/2 Potatoes 2 for 25c

Heinz Soup
Psa. or Vegetable
Can 14c

PRODUCE

Bananas
3 lbs 35c
Fancy Iceberg Lettuce Head 9c
No. 1 Cobbler Potatoes 10 lbs. 39c
York Imperial Apples 5 lb. Mesh Bag 41c
California Sunkist Lemons Doz. 19c
Georgia Kiln Dried Yams 3 lbs. 25c
Home Grown Cabbage lb. 2 1/2c
Pascal Celery, Ripe When Green
2 Large Stalks 15c
Red Emperor Grapes lb. 19c
Western Delicious Apples 3 lbs. 33c

Dressing
Lady Betty Salad
8 Oz. Btl. 17c
Pint 29c

EVERBEST
Seedless Blackberry
lb Jar 39c

Peter Pan
Peanut Butter
12 Oz. Jar 32c

Sterling
SALT
3 Pkg 25c

LUX
TOILET SOAP
Lge Bar 14c

Chiffon
Soap Flakes
Pkg. 29c

Woodbury
Facial Soap
Bar 11c

NIBLETS

CORN
12-oz Can
2 for 35c

It is estimated that a well managed farm pond can produce as much meat per acre as the same area devoted to pasture.

Although only 11 per cent of U. S. farms had electricity in 1935, more than 61 per cent have electricity today.



Jane Parker
Fruit Cake
3 lbs \$1.50
5 lbs \$2.49

Warwick Asst. 59c
Chocolates

Garden Fresh! Fruits & Vegetables!

Washington Winesap	
APPLES	2 lbs 25c
Fresh Green	
CABBAGE	4 lbs 10c
Pascal	
CELERY	stalk 6c
Fresh Crisp	
CARROTS	beh 10c
California	
CAULIFLOWER	head 29c
U. S. No. 1 Red Bliss	
POTATOES	5 lbs 29c
Canadian	
RUTABAGAS	lb 6c
Large Juicy	
GRAPEFRUIT	3 for 11c
Iceberg	
LETTUCE	2 heads 25c

Super -- Right Beef	
CHUCK ROAST	lb 57c
Sunnyfield	
SLICED BACON	lb 75c
Cudahy Breakfast	
SLAB BACON	lb 67c
Streak O' Lean	
WHITE BACON	lb 45c

FISH FILLETS	
FILLETS of HADDOCK	lb 43c
FILLETS of COD	lb 35c
FILLETS of WHITING	lb 31c
FILLETS of PERCH	lb 40c

Iona	Delta
Tomato Juice	Syrup 17-oz 18c
46 oz. Can 21c	Ann Page 14-oz 21c
	Ketchup 21c
	Soft-A-Bilk 21c
	Cake Flour pkg 42c
	Plumite 20c
A & P	Staley Cube 6c
Apple Sauce	Starch 6c
No. 2 Can 15c	Swiftning \$1.20
	Bath Size
	Lux Soap 14c
Am Page	Lifebuoy 2 for 19c
Peach Preserves	Rinsol 1ge pkg 36c
1 lb. Jar 23c	Spry 3 lb can \$1.25
	Lux Flakes 36c

A & P Cream Style	
Golden Corn No. 2 Can	19c
Ann Page Chocolate	25c
Ice Cream Dessert Pkg.	5c
Iona Y. C. Sliced	
Peaches No. 2 1/2 Can	25c
Palmetto	
Guava Jelly 5 lb. Can	\$1.33
Talco	
Growing Mash 25 lb. bag	\$1.39
Talco	
Egg Mash 25 lb. bag	\$1.43
Talco	
Scratch Feed 25 lb. bag	\$1.43

A&P SUPERMARKETS
200 Magnolia Avenue Sanford, Fla.

State's Building

(Continued from Page one)
completed and in use here and at the various institutions are: South wing of Capitol \$625,000; Infirmary at Chattahoochee State Hospital \$590,000; Florida A. and M. College for negroes library \$340,000; branch hospital at Dorr and Carlstrom fields \$300,000; University of Florida emergency housing units \$1,000,000; A. and M. College emergency housing \$400,000; Florida State University dormitory \$840,000; University of Florida sewage disposal system \$400,000; Deaf and Blind School library and classrooms \$250,000; and two dormitories at A. and M. College \$902,000.

Major projects now under construction and the percentage of completion in addition to the Supreme Court, State Road Department and Industrial commission buildings here are:

University of Florida gymnasium and auditorium \$1,650,000; one-third completed; university utilities system \$875,000; 75 per cent completed; university cafeteria and kitchen \$800,000; 40 per cent.

Longwood Hotel

Just off Rt. 17-92, midway between Orlando and Sanford
FEATURES DAILY
Full Course Dinners, including Smorgasbord and French Onion Soup, from \$1.50
COMFORTABLE ROOMS
American or European
Priced Most Reasonably
Phone LONGWOOD 26



WILLIAM C. FOSTER

UNDERSECRETARY of Commerce
William C. Foster tells members of the House Interstate Commerce Committee in Washington that a proposed ban on the exporting of oil supplies might be "very dangerous." The committee had recommended the ban in a report on the nation's fuel crisis. Foster noted that the U. S. imports more oil than it exports.

Nylon yarn is far more elastic than yarn of wool or silk, but when the same yarns have been made into plain knit fabrics the wool or silk fabric is more elastic than the nylon fabric.

I like the RECLOSE top that fits back on
Dixie Crystals Sugar
LIGHT BROWN

YARDLEY VENETIAN BLINDS
America's Most Beautiful
Aluminum -- Cedar -- Polished Aluminum
Ask Me For Free Estimate
P. W. STEVENS -- 617 W. Robinson -- Orlando
Phone 2-0729

JOIN THE CROWD AT THE
ROYAL AMERICAN SHOWS
CENTRAL FLORIDA EXPOSITION
SIX BIG DAYS AND NIGHTS
FEBRUARY 23 TO FEBRUARY 28
Everybody's going to Central Florida's BIG SHOW! You'll see colorful displays, educational exhibits and enjoy midway amusements... there's fun and excitement for all every day and night!
EDUCATIONAL ENTERTAINMENT FOR ALL
CHILDREN 10c... ADULTS 30c... ALL TIMES
EXPOSITION PARK ORLANDO

The Anchor
Orlando Highway at French Avenue
Sunday Feb. 29
Our Dining Room Will Be Open
4 to 8 P. M.
Serving A Buffet Supper
Assorted Relishes
Baked Ham Raisin Sauce
Lobster ala Newburg
Fried Chicken
Scalloped Potatoes Candied Sweets
Cabbage Salad
Peas Beets
Coffee Ice Cream
Adults-- \$2.00 Children under 12-- \$1.00
Week Days the Dining Room is Open from 5 to 11

Florida State News In Brief

OPENS CAMPAIGN

FORT PIERCE, Feb. 25, 1918-- Dan McCarty will open his stump campaign for the governorship of Florida at a hometown rally here tonight.

FORCED LANDING

Cocoa, Feb. 25, 1918-- The Buella, a B-29 with a crew of 14, made a forced landing at the Cocoa-Cocoa airport at 8 A. M. today while en route from the Azores to its home field, MacDill Field. The crew told airport attaches strong headwinds diminished the gas supply.

WORKERS SURVEY

TAMPA, Feb. 25, 1918-- A survey will be begun Monday to determine accurately for the first time how many migratory workers are in Florida, the specific crop they now are working and the kind of employment for which they are best fitted.

Plans for the survey were made here at the first farm placement meeting in Florida since the Florida State Employment Service resumed charge of the Agricultural Placement Program Jan. 1.

CIRCUIT JUDGE BID

TALLAHASSEE, Feb. 25, 1918-- Circuit Judge W. May Walker of Tallahassee announced today he will be a candidate to fill the unexpired term of Justice Rivers H. Buford on the Florida Supreme Court.

REAL ESTATE SLUMP

BABSON PARK, Feb. 25, 1918-- Continued good business over the country generally, and Florida real estate prices, in the short-term, are being forecast today at the conclusion of the Webster College business conference.

It was the 21st annual conference held by Robert W. Babson, economist, and his associates. Babson also these people are making a leveling off of prices.

Pressure for lower prices, and Real estate prices are shifting from large city to small urban areas.

Station WTRR---1400 Kilocycles

THURSDAY P. M.
6:00 News
6:10 Local Sports
6:20 The Valley Boys
6:30 The Valley Boys
6:40 The Valley Boys
6:50 The Valley Boys
7:00 The Valley Boys
7:10 The Valley Boys
7:20 The Valley Boys
7:30 The Valley Boys
7:40 The Valley Boys
7:50 The Valley Boys
8:00 The Valley Boys
8:10 The Valley Boys
8:20 The Valley Boys
8:30 The Valley Boys
8:40 The Valley Boys
8:50 The Valley Boys
9:00 The Valley Boys
9:10 The Valley Boys
9:20 The Valley Boys
9:30 The Valley Boys
9:40 The Valley Boys
9:50 The Valley Boys
10:00 The Valley Boys
10:10 The Valley Boys
10:20 The Valley Boys
10:30 The Valley Boys
10:40 The Valley Boys
10:50 The Valley Boys
11:00 The Valley Boys
11:10 The Valley Boys
11:20 The Valley Boys
11:30 The Valley Boys
11:40 The Valley Boys
11:50 The Valley Boys
12:00 The Valley Boys
12:10 The Valley Boys
12:20 The Valley Boys
12:30 The Valley Boys
12:40 The Valley Boys
12:50 The Valley Boys
1:00 The Valley Boys
1:10 The Valley Boys
1:20 The Valley Boys
1:30 The Valley Boys
1:40 The Valley Boys
1:50 The Valley Boys
2:00 The Valley Boys
2:10 The Valley Boys
2:20 The Valley Boys
2:30 The Valley Boys
2:40 The Valley Boys
2:50 The Valley Boys
3:00 The Valley Boys
3:10 The Valley Boys
3:20 The Valley Boys
3:30 The Valley Boys
3:40 The Valley Boys
3:50 The Valley Boys
4:00 The Valley Boys
4:10 The Valley Boys
4:20 The Valley Boys
4:30 The Valley Boys
4:40 The Valley Boys
4:50 The Valley Boys
5:00 The Valley Boys
5:10 The Valley Boys
5:20 The Valley Boys
5:30 The Valley Boys
5:40 The Valley Boys
5:50 The Valley Boys
6:00 The Valley Boys
6:10 The Valley Boys
6:20 The Valley Boys
6:30 The Valley Boys
6:40 The Valley Boys
6:50 The Valley Boys
7:00 The Valley Boys
7:10 The Valley Boys
7:20 The Valley Boys
7:30 The Valley Boys
7:40 The Valley Boys
7:50 The Valley Boys
8:00 The Valley Boys
8:10 The Valley Boys
8:20 The Valley Boys
8:30 The Valley Boys
8:40 The Valley Boys
8:50 The Valley Boys
9:00 The Valley Boys
9:10 The Valley Boys
9:20 The Valley Boys
9:30 The Valley Boys
9:40 The Valley Boys
9:50 The Valley Boys
10:00 The Valley Boys
10:10 The Valley Boys
10:20 The Valley Boys
10:30 The Valley Boys
10:40 The Valley Boys
10:50 The Valley Boys
11:00 The Valley Boys
11:10 The Valley Boys
11:20 The Valley Boys
11:30 The Valley Boys
11:40 The Valley Boys
11:50 The Valley Boys
12:00 The Valley Boys
12:10 The Valley Boys
12:20 The Valley Boys
12:30 The Valley Boys
12:40 The Valley Boys
12:50 The Valley Boys
1:00 The Valley Boys
1:10 The Valley Boys
1:20 The Valley Boys
1:30 The Valley Boys
1:40 The Valley Boys
1:50 The Valley Boys
2:00 The Valley Boys
2:10 The Valley Boys
2:20 The Valley Boys
2:30 The Valley Boys
2:40 The Valley Boys
2:50 The Valley Boys
3:00 The Valley Boys
3:10 The Valley Boys
3:20 The Valley Boys
3:30 The Valley Boys
3:40 The Valley Boys
3:50 The Valley Boys
4:00 The Valley Boys
4:10 The Valley Boys
4:20 The Valley Boys
4:30 The Valley Boys
4:40 The Valley Boys
4:50 The Valley Boys
5:00 The Valley Boys
5:10 The Valley Boys
5:20 The Valley Boys
5:30 The Valley Boys
5:40 The Valley Boys
5:50 The Valley Boys
6:00 The Valley Boys
6:10 The Valley Boys
6:20 The Valley Boys
6:30 The Valley Boys
6:40 The Valley Boys
6:50 The Valley Boys
7:00 The Valley Boys
7:10 The Valley Boys
7:20 The Valley Boys
7:30 The Valley Boys
7:40 The Valley Boys
7:50 The Valley Boys
8:00 The Valley Boys
8:10 The Valley Boys
8:20 The Valley Boys
8:30 The Valley Boys
8:40 The Valley Boys
8:50 The Valley Boys
9:00 The Valley Boys
9:10 The Valley Boys
9:20 The Valley Boys
9:30 The Valley Boys
9:40 The Valley Boys
9:50 The Valley Boys
10:00 The Valley Boys
10:10 The Valley Boys
10:20 The Valley Boys
10:30 The Valley Boys
10:40 The Valley Boys
10:50 The Valley Boys
11:00 The Valley Boys
11:10 The Valley Boys
11:20 The Valley Boys
11:30 The Valley Boys
11:40 The Valley Boys
11:50 The Valley Boys
12:00 The Valley Boys
12:10 The Valley Boys
12:20 The Valley Boys
12:30 The Valley Boys
12:40 The Valley Boys
12:50 The Valley Boys
1:00 The Valley Boys
1:10 The Valley Boys
1:20 The Valley Boys
1:30 The Valley Boys
1:40 The Valley Boys
1:50 The Valley Boys
2:00 The Valley Boys
2:10 The Valley Boys
2:20 The Valley Boys
2:30 The Valley Boys
2:40 The Valley Boys
2:50 The Valley Boys
3:00 The Valley Boys
3:10 The Valley Boys
3:20 The Valley Boys
3:30 The Valley Boys
3:40 The Valley Boys
3:50 The Valley Boys
4:00 The Valley Boys
4:10 The Valley Boys
4:20 The Valley Boys
4:30 The Valley Boys
4:40 The Valley Boys
4:50 The Valley Boys
5:00 The Valley Boys
5:10 The Valley Boys
5:20 The Valley Boys
5:30 The Valley Boys
5:40 The Valley Boys
5:50 The Valley Boys
6:00 The Valley Boys
6:10 The Valley Boys
6:20 The Valley Boys
6:30 The Valley Boys
6:40 The Valley Boys
6:50 The Valley Boys
7:00 The Valley Boys
7:10 The Valley Boys
7:20 The Valley Boys
7:30 The Valley Boys
7:40 The Valley Boys
7:50 The Valley Boys
8:00 The Valley Boys
8:10 The Valley Boys
8:20 The Valley Boys
8:30 The Valley Boys
8:40 The Valley Boys
8:50 The Valley Boys
9:00 The Valley Boys
9:10 The Valley Boys
9:20 The Valley Boys
9:30 The Valley Boys
9:40 The Valley Boys
9:50 The Valley Boys
10:00 The Valley Boys
10:10 The Valley Boys
10:20 The Valley Boys
10:30 The Valley Boys
10:40 The Valley Boys
10:50 The Valley Boys
11:00 The Valley Boys
11:10 The Valley Boys
11:20 The Valley Boys
11:30 The Valley Boys
11:40 The Valley Boys
11:50 The Valley Boys
12:00 The Valley Boys
12:10 The Valley Boys
12:20 The Valley Boys
12:30 The Valley Boys
12:40 The Valley Boys
12:50 The Valley Boys
1:00 The Valley Boys
1:10 The Valley Boys
1:20 The Valley Boys
1:30 The Valley Boys
1:40 The Valley Boys
1:50 The Valley Boys
2:00 The Valley Boys
2:10 The Valley Boys
2:20 The Valley Boys
2:30 The Valley Boys
2:40 The Valley Boys
2:50 The Valley Boys
3:00 The Valley Boys
3:10 The Valley Boys
3:20 The Valley Boys
3:30 The Valley Boys
3:40 The Valley Boys
3:50 The Valley Boys
4:00 The Valley Boys
4:10 The Valley Boys
4:20 The Valley Boys
4:30 The Valley Boys
4:40 The Valley Boys
4:50 The Valley Boys
5:00 The Valley Boys
5:10 The Valley Boys
5:20 The Valley Boys
5:30 The Valley Boys
5:40 The Valley Boys
5:50 The Valley Boys
6:00 The Valley Boys
6:10 The Valley Boys
6:20 The Valley Boys
6:30 The Valley Boys
6:40 The Valley Boys
6:50 The Valley Boys
7:00 The Valley Boys
7:10 The Valley Boys
7:20 The Valley Boys
7:30 The Valley Boys
7:40 The Valley Boys
7:50 The Valley Boys
8:00 The Valley Boys
8:10 The Valley Boys
8:20 The Valley Boys
8:30 The Valley Boys
8:40 The Valley Boys
8:50 The Valley Boys
9:00 The Valley Boys
9:10 The Valley Boys
9:20 The Valley Boys
9:30 The Valley Boys
9:40 The Valley Boys
9:50 The Valley Boys
10:00 The Valley Boys
10:10 The Valley Boys
10:20 The Valley Boys
10:30 The Valley Boys
10:40 The Valley Boys
10:50 The Valley Boys
11:00 The Valley Boys
11:10 The Valley Boys
11:20 The Valley Boys
11:30 The Valley Boys
11:40 The Valley Boys
11:50 The Valley Boys
12:00 The Valley Boys
12:10 The Valley Boys
12:20 The Valley Boys
12:30 The Valley Boys
12:40 The Valley Boys
12:50 The Valley Boys
1:00 The Valley Boys
1:10 The Valley Boys
1:20 The Valley Boys
1:30 The Valley Boys
1:40 The Valley Boys
1:50 The Valley Boys
2:00 The Valley Boys
2:10 The Valley Boys
2:20 The Valley Boys
2:30 The Valley Boys
2:40 The Valley Boys
2:50 The Valley Boys
3:00 The Valley Boys
3:10 The Valley Boys
3:20 The Valley Boys
3:30 The Valley Boys
3:40 The Valley Boys
3:50 The Valley Boys
4:00 The Valley Boys
4:10 The Valley Boys
4:20 The Valley Boys
4:30 The Valley Boys
4:40 The Valley Boys
4:50 The Valley Boys
5:00 The Valley Boys
5:10 The Valley Boys
5:20 The Valley Boys
5:30 The Valley Boys
5:40 The Valley Boys
5:50 The Valley Boys
6:00 The Valley Boys
6:10 The Valley Boys
6:20 The Valley Boys
6:30 The Valley Boys
6:40 The Valley Boys
6:50 The Valley Boys
7:00 The Valley Boys
7:10 The Valley Boys
7:20 The Valley Boys
7:30 The Valley Boys
7:40 The Valley Boys
7:50 The Valley Boys
8:00 The Valley Boys
8:10 The Valley Boys
8:20 The Valley Boys
8:30 The Valley Boys
8:40 The Valley Boys
8:50 The Valley Boys
9:00 The Valley Boys
9:10 The Valley Boys
9:20 The Valley Boys
9:30 The Valley Boys
9:40 The Valley Boys
9:50 The Valley Boys
10:00 The Valley Boys
10:10 The Valley Boys
10:20 The Valley Boys
10:30 The Valley Boys
10:40 The Valley Boys
10:50 The Valley Boys
11:00 The Valley Boys
11:10 The Valley Boys
11:20 The Valley Boys
11:30 The Valley Boys
11:40 The Valley Boys
11:50 The Valley Boys
12:00 The Valley Boys
12:10 The Valley Boys
12:20 The Valley Boys
12:30 The Valley Boys
12:40 The Valley Boys
12:50 The Valley Boys
1:00 The Valley Boys
1:10 The Valley Boys
1:20 The Valley Boys
1:30 The Valley Boys
1:40 The Valley Boys
1:50 The Valley Boys
2:00 The Valley Boys
2:10 The Valley Boys
2:20 The Valley Boys
2:30 The Valley Boys
2:40 The Valley Boys
2:50 The Valley Boys
3:00 The Valley Boys
3:10 The Valley Boys
3:20 The Valley Boys
3:30 The Valley Boys
3:40 The Valley Boys
3:50 The Valley Boys
4:00 The Valley Boys
4:10 The Valley Boys
4:20 The Valley Boys
4:30 The Valley Boys
4:40 The Valley Boys
4:50 The Valley Boys
5:00 The Valley Boys
5:10 The Valley Boys
5:20 The Valley Boys
5:30 The Valley Boys
5:40 The Valley Boys
5:50 The Valley Boys
6:00 The Valley Boys
6:10 The Valley Boys
6:20 The Valley Boys
6:30 The Valley Boys
6:40 The Valley Boys
6:50 The Valley Boys
7:00 The Valley Boys
7:10 The Valley Boys
7:20 The Valley Boys
7:30 The Valley Boys
7:40 The Valley Boys
7:50 The Valley Boys
8:00 The Valley Boys
8:10 The Valley Boys
8:20 The Valley Boys
8:30 The Valley Boys
8:40 The Valley Boys
8:50 The Valley Boys
9:00 The Valley Boys
9:10 The Valley Boys
9:20 The Valley Boys
9:30 The Valley Boys
9:40 The Valley Boys
9:50 The Valley Boys
10:00 The Valley Boys
10:10 The Valley Boys
10:20 The Valley Boys
10:30 The Valley Boys
10:40 The Valley Boys
10:50 The Valley Boys
11:00 The Valley Boys
11:10 The Valley Boys
11:20 The Valley Boys
11:30 The Valley Boys
11:40 The Valley Boys
11:50 The Valley Boys
12:00 The Valley Boys
12:10 The Valley Boys
12:20 The Valley Boys
12:30 The Valley Boys
12:40 The Valley Boys
12:50 The Valley Boys
1:00 The Valley Boys
1:10 The Valley Boys
1:20 The Valley Boys
1:30 The Valley Boys
1:40 The Valley Boys
1:50 The Valley Boys
2:00 The Valley Boys
2:10 The Valley Boys
2:20 The Valley Boys
2:30 The Valley Boys
2:40 The Valley Boys
2:50 The Valley Boys
3:00 The Valley Boys
3:10 The Valley Boys
3:20 The Valley Boys
3:30 The Valley Boys
3:40 The Valley Boys
3:50 The Valley Boys
4:00 The Valley Boys
4:10 The Valley Boys
4:20 The Valley Boys
4:30 The Valley Boys
4:40 The Valley Boys
4:50 The Valley Boys
5:00 The Valley Boys
5:10 The Valley Boys
5:20 The Valley Boys
5:30 The Valley Boys
5:40 The Valley Boys
5:50 The Valley Boys
6:00 The Valley Boys
6:10 The Valley Boys
6:20 The Valley Boys
6:30 The Valley Boys
6:40 The Valley Boys
6:50 The Valley Boys
7:00 The Valley Boys
7:10 The Valley Boys
7:20 The Valley Boys
7:30 The Valley Boys
7:40 The Valley Boys
7:50 The Valley Boys
8:00 The Valley Boys
8:10 The Valley Boys
8:20 The Valley Boys
8:30 The Valley Boys
8:40 The Valley Boys
8:50 The Valley Boys
9:00 The Valley Boys
9:10 The Valley Boys
9:20 The Valley Boys
9:30 The Valley Boys
9:40 The Valley Boys
9:50 The Valley Boys
10:00 The Valley Boys
10:10 The Valley Boys
10:20 The Valley Boys
10:30 The Valley Boys
10:40 The Valley Boys
10:50 The Valley Boys
11:00 The Valley Boys
11:10 The Valley Boys
11:20 The Valley Boys
11:30 The Valley Boys
11:40 The Valley Boys
11:50 The Valley Boys
12:00 The Valley Boys
12:10 The Valley Boys
12:20 The Valley Boys
12:30 The Valley Boys
12:40 The Valley Boys
12:50 The Valley Boys
1:00 The Valley Boys
1:10 The Valley Boys
1:20 The Valley Boys
1:30 The Valley Boys
1:40 The Valley Boys
1:50 The Valley Boys
2:00 The Valley Boys
2:10 The Valley Boys
2:20 The Valley Boys
2:30 The Valley Boys
2:40 The Valley Boys
2:50 The Valley Boys
3:00 The Valley Boys
3:10 The Valley Boys
3:20 The Valley Boys
3:30 The Valley Boys
3:40 The Valley Boys
3:50 The Valley Boys
4:00 The Valley Boys
4:10 The Valley Boys
4:20 The Valley Boys
4:30 The Valley Boys
4:40 The Valley Boys
4:50 The Valley Boys
5:00 The Valley Boys
5:10 The Valley Boys
5:20 The Valley Boys
5:30 The Valley Boys
5:40 The Valley Boys
5:50 The Valley Boys
6:00 The Valley Boys
6:10 The Valley Boys
6:20 The Valley Boys
6:30 The Valley Boys
6:40 The Valley Boys
6:50 The Valley Boys
7:00 The Valley Boys
7:10 The Valley Boys
7:20 The Valley Boys
7:30 The Valley Boys
7:40 The Valley Boys
7:50 The Valley Boys
8:00 The Valley Boys
8:10 The Valley Boys
8:20 The Valley Boys
8:30 The Valley Boys
8:40 The Valley Boys
8:50 The Valley Boys
9:00 The Valley Boys
9:10 The Valley Boys
9:20 The Valley Boys
9:30 The Valley Boys
9:40 The Valley Boys
9:50 The Valley Boys
10:00 The Valley Boys
10:10 The Valley Boys
10:20 The Valley Boys
10:30 The Valley Boys
10:40 The Valley Boys
10:50 The Valley Boys
11:00 The Valley Boys
11:10 The Valley Boys
11:20 The Valley Boys
11:30 The Valley Boys
11:40 The Valley Boys
11:50 The Valley Boys
12:00 The Valley Boys
12:10 The Valley Boys
12:20 The Valley Boys
12:30 The Valley Boys
12:40 The Valley Boys
12:50 The Valley Boys
1:00 The Valley Boys
1:10 The Valley Boys
1:20 The Valley Boys
1:30 The Valley Boys
1:40 The Valley Boys
1:50 The Valley Boys
2:00 The Valley Boys
2:10 The Valley Boys
2:20 The Valley Boys
2:30 The Valley Boys
2:40 The Valley Boys
2:50 The Valley Boys
3:00 The Valley Boys
3:10 The Valley Boys
3:20 The Valley Boys
3:30 The Valley Boys
3:40 The Valley Boys
3:50 The Valley Boys
4:00 The Valley Boys
4:10 The Valley Boys
4:20 The Valley Boys
4:30 The Valley Boys
4:40 The Valley Boys
4:50 The Valley Boys
5:00 The Valley Boys
5:10 The Valley Boys
5:20 The Valley Boys
5:30 The Valley Boys
5:40 The Valley Boys
5:50 The Valley Boys
6:00 The Valley Boys
6:10 The Valley Boys
6:20 The Valley Boys
6:30 The Valley Boys
6:40 The Valley Boys
6:50 The Valley Boys
7:00 The Valley Boys
7:10 The Valley Boys
7:20 The Valley Boys
7:30 The Valley Boys
7:40 The Valley Boys
7:50 The Valley Boys
8:00 The Valley Boys
8:10 The Valley Boys
8:20 The Valley Boys
8:30 The Valley Boys
8:40 The Valley Boys
8:50 The Valley Boys
9:00 The Valley Boys
9:10 The Valley Boys
9:20 The Valley Boys
9:30 The Valley Boys
9:40 The Valley Boys
9:50 The Valley Boys
10:00 The Valley Boys
10:10 The Valley Boys
10:20 The Valley Boys
10:30 The Valley Boys
10:40 The Valley Boys
10:50 The Valley Boys
11:00 The Valley Boys
11:10 The Valley Boys
11:20 The Valley Boys
11:30 The Valley Boys
11:40 The Valley Boys
11:50 The Valley Boys
12:00 The Valley Boys
12:10 The Valley Boys
12:20 The Valley Boys
12:30 The Valley Boys
12:40 The Valley Boys
12:50 The Valley Boys
1:00 The Valley Boys
1:10 The Valley Boys
1:20 The Valley Boys
1:30 The Valley Boys
1:40 The Valley Boys
1:50 The Valley Boys
2:00 The Valley Boys
2:10 The Valley Boys
2:20 The Valley Boys
2:30 The Valley Boys
2:40 The Valley Boys
2:50 The Valley Boys
3:00 The Valley Boys
3:10 The Valley Boys
3:20 The Valley Boys
3:30 The Valley Boys
3:40 The Valley Boys
3:50 The Valley Boys
4:00 The Valley Boys
4:10 The Valley Boys
4:20 The Valley Boys
4:30 The Valley Boys
4:40 The Valley Boys
4:50 The Valley Boys
5:00 The Valley Boys
5:10 The Valley Boys
5:20 The Valley Boys
5:30 The Valley Boys
5:40 The Valley Boys
5:50 The Valley Boys
6:00 The Valley Boys
6:10 The Valley Boys
6:20 The Valley Boys
6:30 The Valley Boys
6:40 The Valley Boys
6:50 The Valley Boys
7:00 The Valley Boys
7:10 The Valley Boys
7:20 The Valley Boys
7:30 The Valley Boys
7:40 The Valley Boys
7:50 The Valley Boys
8:00 The Valley Boys
8:10 The Valley Boys
8:20 The Valley Boys
8:30 The Valley Boys
8:40 The Valley Boys
8:50 The Valley Boys
9:00 The Valley Boys
9:10 The Valley Boys
9:20 The Valley Boys
9:30 The Valley Boys
9:40 The Valley Boys
9:50 The Valley Boys
10:00 The Valley Boys
10:10 The Valley Boys
10:20 The Valley Boys
10:30 The Valley Boys
10:40 The Valley Boys
10:50 The Valley Boys
11:00 The Valley Boys
11:10 The Valley Boys
11:20 The Valley Boys
11:30 The Valley Boys
11:40 The Valley Boys
11:50 The Valley Boys
12:00 The Valley Boys
12:10 The Valley Boys
12:20 The Valley Boys
12:30 The Valley Boys
12:40 The Valley Boys
12:50 The Valley Boys
1:00 The Valley Boys
1:10 The Valley Boys
1:20 The Valley Boys
1:30 The Valley Boys
1:40 The Valley Boys
1:50 The Valley Boys
2:00 The Valley Boys
2:10 The Valley Boys
2:20 The Valley Boys
2:30 The Valley Boys
2:40 The Valley Boys
2:50 The Valley Boys
3:00 The Valley Boys
3:10 The Valley Boys
3:20 The Valley Boys
3:30 The Valley Boys
3:40 The Valley Boys
3:50 The Valley Boys
4:00 The Valley Boys
4:10 The Valley Boys
4:20 The Valley Boys
4:30 The Valley Boys
4:40 The Valley Boys
4:50 The Valley Boys
5:00 The Valley Boys
5:10 The Valley Boys
5:20 The Valley Boys
5:30 The Valley Boys
5:40 The Valley Boys
5:50 The Valley Boys
6:00 The Valley Boys
6:10 The Valley Boys
6:20 The Valley Boys
6:30 The Valley Boys
6:40 The Valley Boys
6:50 The Valley Boys
7:00 The Valley Boys
7:10 The Valley Boys
7:20 The Valley Boys
7:30 The Valley Boys
7:40 The Valley Boys
7:50 The Valley Boys
8:00 The Valley Boys
8:10 The Valley Boys
8:20 The Valley Boys
8:30 The Valley Boys
8:40 The Valley Boys
8:50 The Valley Boys
9:00 The Valley Boys
9:10 The Valley Boys
9:20 The Valley Boys
9:30 The Valley Boys
9:40 The Valley Boys
9:50 The Valley Boys
10:00 The Valley Boys
10:10 The Valley Boys
10:20 The Valley Boys
10:30 The Valley Boys
10:40 The Valley Boys
10:50 The Valley Boys
11:00 The Valley Boys
11:10 The Valley Boys
11:20 The Valley Boys
11:30 The Valley Boys
11:40 The Valley Boys
11:50 The Valley Boys
12:00 The Valley Boys
12:10 The Valley Boys
12:20 The Valley Boys
12:30 The Valley Boys
12:40 The Valley Boys
12:50 The Valley Boys
1:00 The Valley Boys
1:10 The Valley Boys
1:20 The Valley Boys
1:30 The Valley Boys
1:40 The Valley Boys
1:50 The Valley Boys
2:00 The Valley Boys
2:10 The Valley Boys
2:20 The Valley Boys
2:30 The Valley Boys
2:40 The Valley Boys
2:50 The Valley Boys
3:00 The

The Sanford Herald

Established in 1904
Published daily except
Sundays and holidays at
Sanford, Florida
111 Magnolia Avenue

Entered as second-class matter
March 27, 1918, at the Post Office
at Sanford, Florida, under the Act
of Congress of March 3, 1879.

ROBERT L. DEAN
Editor
GORDON DEAN
Business Manager

SUBSCRIPTION RATES
By Carrier \$ 2.50
One Month 1.00
Three Months 2.50
Six Months 4.50
One Year 8.00

All ordinary notices cards of
thanks resolutions and notices of
entertainment for the purpose of
raising funds, will be charged for
at regular advertising rates.

Insured Newspaper Representatives,
Inc., represents The Herald in the
national field of advertising. Offi-
ces are maintained in the largest
cities in the country with headquar-
ters in Chicago and New York.

The Herald is a member of the
Associated Press which is entitled
exclusively to the use for publica-
tion of all the local news printed
in this newspaper, as well as all
AP news dispatches.

THURSDAY, FEB. 26, 1948

JINGLE VERSE FOR TODAY
ALL EXISTENCE IS A BAT-
TLE. DON'T BE A COWARD
EVEN THOUGH YOU MAY BE
WOUNDED SOLELY.—1 Ch. 19:

Senator Taylor of Idaho is to
be Henry Wallace's running mate
on the Third Party ticket. And,
as the Tampa Tribune so aptly
puts it, "The Senator from Idaho
has proved himself to be one of
the prize catchpots on the na-
tional scene."

From the "head gardener at
the Mayfair" comes a magnificent
bouquet of petunias in recogni-
tion of our recent tribute to the
Mayfair's petunias. What a pleas-
ant world this would be if every-
body understood that you can
catch more flies with petunias
than you can with bricks!

Governor Duff of Pennsylvania
is on mighty solid ground in ur-
ging big business to lead the fight
against inflation by starting a
drive to, roll back prices. If retail
prices do not come down, big
labor will persist in its demands
for higher and higher wages,
which would eventually cost big
business more than a cut in prices
would now. And a cut in prices
would cut the ground right out
from under big labor's new wage
demands.

J. A. Murray, Tampa Tribune
staff writer, whose peripatetic
around the state we have been
following with the closest interest,
seems to believe that Fuller War-
ren at the moment is out in front
in the race for governor, and will
likely be high man in the first
primary. However, he does not
concede him an easy victory in the
runoff against any of two or
three other candidates likely to be
in there with him. The English
Shands, McCarthy support is not
likely to turn to Warren.

We are glad to see the "powers"
that be in Sanford getting after
the "Cuba" and "bolita" gamblers
in this section whose racket has
flourished during the war years
to an unprecedented extent. Now
that conditions are getting back
to normal, there are not many
people who can afford to lose the
thousands of dollars which have
been going to the operators every
week. And, as indicated in this
week's police docket where one
white man, 19 negroes were fined
most of the selling is done to ne-
groes who can least afford to lose.

The Communists have taken
over complete control in the his-
toric democratic nation of Czecho-
slovakia in a systematic procedure
following routine Communist par-
ty tactics. First they demand a
"voice" in government affairs.
Then given a "voice" by the in-
nocents, they use it to deny a
voice to others. And the first
thing you know they are the only
voice that can be heard. That
has happened in Poland, Yugo-
slavia, Bulgaria, Rumania, Hun-
gary, and now Czechoslovakia,
all since the recent war ended.
And yet there are some people in
this country who are so fat-head-
ed that they still insist the Com-
munists mean no harm.

We hope that every Sanford
person read the story in Tuesday
night's Herald on the present
needs of American education. Five
billion dollars a year more than
is now being spent is needed to
give our children the kind of an
education they ought to have, the
president of the American As-
sociation of School Administrators
says. That is almost twice what
we are now spending. But when
we see how dilapidated some of
our school buildings in Seminole
county are, how over crowded
and understaffed they all are, how
much is needed in the way of
libraries, scientific laboratories and
recreational facilities, then we
realize that for the nation as a
whole five billion dollars more
cannot be too much.

Red Cross Drive

The Seminole County campaign for the American Red Cross takes place next week with the Advanced Gifts Committee already contacting prominent citizens for their annual contributions. The goal this year is \$7,199, and over 60 percent of it will be spent right here in Seminole County, only about \$2,805 going to the national organization.

Sanford has been very fortunate in the past in not having any real disasters which called for large expenditures of money for rehabilitation work, but we cannot count too heavily on luck in this respect continuing indefinitely. One never knows when disaster will strike home and it is the better part of foresight to be prepared for it.

Florida itself was not so fortunate last year. On account of hurricanes which were followed by exceedingly destructive flood conditions lasting for many weeks, immediate relief was needed to provide for thousands of homeless persons and to help repair their damaged houses. As a result, more than \$750,000 was spent by the Red Cross in Florida last year, though this state had contributed only \$300,000 to the national organization.

When such disasters strike, there is no time to put on a drive to raise funds, to gather experienced relief crews and trained personnel. Something has to be done at once, or people will starve, suffer from cold and disease, and die of exposure. The American Red Cross is the only agency organized on a national scale, fully equipped and adequately financed to cope with such situations.

During the first ten months of last year the American Red Cross spent over eight million dollars providing help and assistance to 95,600 persons in 312 disasters including 161 fires, 50 floods, 37 tornadoes and 18 other storms and covering 46 states, the District of Columbia and Alaska. The Red Cross also assisted 2,029,000 veterans and their families and gave them financial aid amounting to \$6,411,000.

The various activities of the Red Cross are far broader than we can cover here but a few of them include the blood plasma program, First Aid instruction, water safety and accident prevention, home nursing, Junior Red Cross, Gray Lady service, Nurse's Aide, and the production and supply service. Over 346,000 First Aid certificates were issued last year, and over 470,000 water safety certificates for the completion of life saving and swimming courses.

But the American Red Cross cannot continue to carry on its great and far-reaching humanitarian activities unless it receives your support. Give and give generously.

Army And Liquor

"From the way some mothers talk, you would think the army had invented sex." This hurried remark with which a War Department official relieved his feelings might have included drunkenness as well. Teetotalers are admittedly not common in the army; but official figures suggest that the military establishment is not doing a bad job with the alcohol problem. In fact, the Army may be doing better than civil life.

Alcoholism, the army reports, dropped from 4.61 per 1,000 men in 1936 to 1.66 in 1945. The civilian figure reported for 1945 was 8.57 per 1,000. Does this mean that to cure the evils of liquor, we should put everyone into uniform?

Certainly not. But it does take some of the ground away from one argument against Universal Military Training. Young men in military training learn many useful things about living. In civil life the use of alcohol is too often handled on purely moral grounds: it's wicked or pious to drink or not to drink. Learning a little from the scientific point of view about wise uses and dangerously unwise abuses of more things than alcohol never hurt a young man yet.

The Old Constellation

If you want to chip in to save the historic frigate, Constellation, the Navy is allowed to receive your gift. This is by terms of a bill which has just passed the Senate, and now goes to the House. In this economical fashion Congress expresses its willingness to save a famous relic of early American naval history.

The Constellation, built in 1798, had its greatest glory in the war with France. (How many Americans know that there was a short-lived naval war with France at the end of the 18th century?) Later she fought against the Barbary pirates of Tunis and Algiers. During the War of 1812, when she might have added to her laurels, she was laid up. Now she lies in the Boston navy yard, which also shelters the more famous Constitution ("Old Ironsides," as Oliver Wendell Holmes' poem christens her). Unless something is done to preserve her, she will eventually rot away.

It will be interesting to see what the response is from lovers of gallant ships. Pennsylvania has already asked to have the Constellation moved to the Delaware River, where she was built.

Historians Seek Origin Of Ancient New England Mill

AP Newsfeatures

NEWPORT, R. I.—Historians are arming themselves to storm a tower that has never surrendered its secret in hundreds of years.

The old stone mill—whose ancient silence on a hill in Tour park has challenged generations of New England questioners—is soon to face a full battle line of science, archeologists and historians who seek what lost hands braced its arches and set its stones.

A familiar picture in American schoolbooks, the "strange tower"—which may be the oldest structure in the land—has for years never given the answer to these two questions of its origin:

1. Was it built by Vikings as their church or stronghold against savages of the 12th century new world?

2. Was it built on order of Gov. Arnold, first colonial governor of Rhode Island, between 1603 and 1608?

In New England historians and householders have chosen sides on these two explanations for generations and now for the first time a direct study will dig for the answer.

The newly formed Newport Preservation Society, headed by Mrs. George Henry Warren, Jr., and sponsored in this project by railroad magnate Robert E. Young, has at least been authorized by the Newport Park Commission to make excavation.

In its present state the lower

stands like a hollow silo, its roof gone, and its grey fieldstone bulk supported by arches with eight columns.

Schoolboys know of it, too, from Longfellow's poem "Skele-ton in Armor" in which the poet writes of the tower as the refuge of a Norse warrior.

Chief spokesman of the Norse theory was the late archeologist, Philip Alnsworth Means of Pomfret, Conn., whose book, published in 1942, declared flatly that the tower "is the nave of a round Norse church erected in the 12th century by men sent out by Bishop Eric Gnupson, bishop of Greenland and Vinland."

The opposing school scoffs at the Vikings and quotes Gov. Arnold's reference in his will to his "stone built windmill." They argue, too, that Arnold's mention of such a structure was the only reference to it from the time of Newport's founding in 1639.

Once, historians claim, the tower had two floors and there were traces of a fireplace in it.

Pilgrim records show that the old mill was used as a powder house in the Indian wars. Up the years it served as a corn mill, a lookout tower and a hay mow. Means called the tower "this most enigmatic and puzzling single building in the United States."

MILK PROBE

WASHINGTON, Feb. 25, (AP)—The Justice Department today announced the indictment of two dairy companies and six individuals "for conspiracy to fix the price of fluid milk in the St. Louis, Mo. area." Clark also has ordered grand jury investigation of local milk prices in Chicago and Washington, D. C.

THE WORLD TODAY

By DEWITT MACKENZIE
AP Foreign Affairs Analyst

Secretary of State Marshall says that so far as he knows there's nothing in reports that the Russians have been putting out peace feelers in Berlin for a settlement of the "cold war" with the U.S.A.

Well, if the general doesn't know about them it's a safe bet there haven't been any, because he would be about the first man informed of any such momentous development. As a matter of fact it's hard to see what possible basis there could be for thinking Moscow was making peace overtures.

Why should Russia want peace? By waging a carefully planned "cold war" of aggression (and sometimes not so cold, at that) she has brought virtually all of Eastern Europe and part of Central Europe under Soviet domination. At the same time she has extended her influence over Manchuria and a great section of Northern China, and just now has virtually annexed Northern Korea.

Meantime in other countries, not excluding the United States, Soviet agents and native adherents to the cult of the clenched fist have been giving demonstrations of what Communist intensive organization can do. So, taking it the world around, the Bolsheviks would seem to have done fairly well for themselves—on paper. Why, then, should they suddenly sue for peace?

In answering this question, we must remind ourselves again that the cold war wasn't of spontaneous origin. As this column has pointed out before, it is a part of Bolshevism's thirty year old program of world revolution for the establishment of Communism. It is a project which never will cease until either (1) Communism succeeds in overrunning the world, or (2) the Red advance is halted by a material barrier—like the Marshall Plan, for example.

In Europe the Communist drive has slowed down to a crawl. However, this is due to the fact that Moscow already has taken over all the countries in which it had armed forces and thus is in complete control.

The Russian empire now includes everything up to the Stettin-Adriatic line, which is the frontier of demarcation between Red Eastern Europe and Democratic Western Europe. The Russians can't employ their troops to the west of that line, and as must depend on the usual Communist strong-arm tactics to create situations out of which Soviet regimes may be established. It is to prevent the success of these tactics, of course, that the Marshall Plan was devised.

But we have a far different picture in the Orient. Russian fighting forces are widely scattered in strategic positions which must encourage Moscow to believe that the Soviet has a good chance of bringing Manchuria and Northern China within its orbit of control, along with Northern Korea. The Bolsheviks have double encouragement in the fact that the Chinese Communists, in their revolutionary efforts to establish themselves in Northern China and Manchuria, are in effect fighting Russia's battle for her.

No, I don't believe Moscow is for peace.

SORRELLS DIES

NEW YORK, Feb. 25, (AP)—John H. Sorrells, 62, executive editor of the Scripps-Howard newspapers, died of a heart ailment at his home here early today.

His wife, Ruth, was at his bedside. Sorrells also was president of the Memphis Publishing Company which publishes the Memphis (Tenn.) Commercial Appeal and the Press Scimitar.

SKYRIDER

Shoes
for
Boys



- TANS
- SPORT-SHOES
- LOAFERS

\$4.75 to \$8.95

DERKINS-ROBSON
Coronet Model 100

"WEEP NO MORE MY LADY"



ICE PICK AFFAIR

NEW YORK, Feb. 25, (AP)—Brooklyn police today sought a young husband accused of a second attack on his wife with an ice pick.

Bob Stevenson, 21, arrived in New York Sunday after being discharged recently from a Memphis, Tenn., hospital. Yesterday he went to the Brooklyn rooming

house where his wife, Frances, 21, and 11-month-old Bob, Jr., had been living. They had planned to hunt an apartment.

Mrs. Stevenson was reported in serious condition at Wyckoff Heights Hospital. Police said the attack was Stevenson's second on his wife. He had been committed to the Memphis hospital, they said, after he broke three bottles on her head in a Memphis hotel.

Steel Sash Glazing

SENKARIK GLASS &
PAINT COMPANY
113 W. 2nd St. Ph. 320

GONE TOO FAR

WASHINGTON, Feb. 26 (AP)—Senator McCarran (D-Nev.) said today the federal government is about to admit it "has gone all too far" in claiming ownership of land under coastal waters.

A Florida State Theatre

Phone 83
RITZ
14c 40c 44c
Opens 12:45 P. M.
Today & Friday!

HE'S AN ANGEL...

LOOKING
FOR AN
ANGLE!

Robert
CUMMINGS
Brian
DONLEVY
Marjorie
REYNOLDS

Heaven
Only
Knows

JORJA CURTIGHT
BILL GOODWIN
EDGAR KENNEDY
STUART ERWIN

On The Stage

TONITE -- 9:00 P. M.
"TALENT OF
TOMORROW"

30 Minute Broadcast
Over WTRR
Sponsored By
Wert Jewelry Store

Only NEW CHEVROLET ADVANCE-DESIGN TRUCKS FOR '48 have all these new and finer features

Here is Advance-Design that provides the cab that "breathes,"* Uniweld all-steel cab construction, fully adjustable seat, all-round visibility with rear-corner windows,* extra-durable frames, specially designed brakes, and many other features.

CHEVROLET
and ONLY Chevrolet
IS FIRST!



*Fresh air heating and cooling system and rear window wiper optional at extra cost.

HOLLER MOTOR SALES

Corner Second Street & Palmolive Avenue

Phone 1234

NEW CHEVROLET 4-SPEED SYNCHRO-MESH TRUCK TRANSMISSION



Chevrolet-developed Synchro-Mesh transmission provides new ease and efficiency.

NEW CHEVROLET ADVANCE-DESIGN GEARSHIFT CONTROL



Steering column gearshift on models with 3-speed transmission provides new ease and efficiency.

NEW FOOT-OPERATED PARKING BRAKE



Chevrolet's foot-operated parking brake on models with 3-speed transmission provides new clear floor area.

NEW IMPROVED CHEVROLET VALVE-IN-HEAD ENGINE



The world's most economical engine for its size. Has greater durability and operating efficiency.

NEW MULTIPLE-FEATURE DEVELOPMENTS



New uprated rear-axle shaft attachment to wheel hubs in heavy-duty models... Heavier springs... New poppet shaft bearing design.

Social And Personal Activities

Social Calender

THURSDAY

The Seminola Releah Lodge No. 43 will meet at 8:00 P. M. in the I. O. O. F. hall.

FRIDAY

A chicken pie supper will be held from 5:30 to 8:00 P. M. in Methodist Church annex.

MONDAY

Chapters of the Women's Auxiliary of Holy Cross Episcopal Church will meet at 3:00 P. M. as follows: St. Agnes, Mrs. G. D. Bishop, 1916 Hibiscus Drive, with Mrs. P. H. Fuller, Jr. as co-hostess; St. Ann, Mrs. H. L. Perkins, 806 Magnolia Avenue, with Mrs. Sadie Brouse as co-hostess; St. Catherine at the Parish House.

The Philanthropic Class of the First Presbyterian Church will meet at the home of Mrs. Francis Meriwether on Celery Avenue at 8:00 P. M.

The W. M. U. of the First Baptist Church will hold a prayer meeting honoring Annie W. Armstrong, missionary, at 3:30 P. M. The topic will be "Message of Love" with Circle No. 2, Mrs. J. T. Hardy, leader, in charge.

Circle No. 8 of the W. S. C. S. of the First Methodist Church will meet at the home of Mrs. Clarence L. Wynn, 2606 Grandview Avenue, at 8:00 P. M.

The board of the Presbyterian Women's Auxiliary will meet at the church at 3:30 P. M.

Circle No. 7 of the W. S. C. S. of the First Methodist Church will meet at the home of Mrs. W. W. Tyne, 1109 Oak Avenue, at 3:30 P. M.

TUESDAY

The Friendship League of the Congregational Church will meet at 3:00 P. M. at the home of Mrs. Joe Meisch on West First Street.

The W. M. U. of the First Baptist Church will hold a prayer meeting honoring Annie W. Armstrong, missionary, at 3:30 P. M. The topic will be "Message of Faith" with Mrs. R. T.

Red Cross Sunday Will Be Observed

Saturday and Sunday have been designated, respectively, as Red Cross Sabbath and Red Cross Sunday. It was announced today by A. Edwin Shinholtzer, chapter chairman of the Red Cross in Seminole County.

This period has been observed in by the Federal Council of Churches of Christ in America, the Executive Board of the Synagogue Council, and the National Catholic Welfare Conference.

Mr. Shinholtzer pointed out that during 1947 State Chapters contributed \$300,000 to the national organization, and during the same year, the National Red Cross sent back into the State for disaster assistance approximately \$750,000.

Baptist WMU Has All-Day Meeting

The Women's Missionary Union of the First Baptist Church held an all-day meeting on Monday at the church with mission study chairman in charge of the program. Thirty-five members were present for the meeting luncheon served buffet style at noon.

The topic of the program was a book, "Spiritual Frontiers" by Courts Redford, under the direction of Mrs. W. D. Gardiner. Eight chapters of the book were taught by Mrs. R. F. Cooper, Mrs. J. T. Hardy, Mrs. C. A. Anderson, Mrs. H. W. Rucker, Mrs. Forrest Gatchell, Mrs. George Dixon, Mrs. M. N. Cleveland and Mrs. W. P. Brooks, Jr.

GARDEN CLUB CALLED MEET The board of the Sanford Garden Club will have a call meeting on Friday morning at 10:00 A. M. at the Garden Center on the lake-front.

HAPPY BIRTHDAY

Mrs. C. F. Proctor, Sr.
Mrs. Albert Zinser

Thomas as leader.

The Daughters of Wesley of the First Methodist Church will meet at the annex at 8:00 P. M. Hostesses for the meeting are Mrs. J. H. Anderson, Mrs. F. A. Rowland, Mrs. R. A. Futrell, Mrs. Ruth Lundquist and Mrs. M. D. Smith.

The Seminole High School Parent Teachers Association will meet at the school at 8:00 P. M. The theme of the month is leadership and responsibility. Rev. J. E. McKinley will speak to the group on parent cooperation and Rev. W. P. Vesley will have school cooperation as his subject.

WEDNESDAY
The monthly business meeting and luncheon for members of the Sanford Woman's Club will be held at the club house on Oak Avenue at 12:30 P. M. Reservations must be made not later than Tuesday noon with Mrs. Fred Williams, phone 308; Mrs. A. M. Phillips, 360, or Mrs. J. C. Russell, 167-J.

Personals

Alfred Robson of Atlanta, Ga. is spending a few days with his parents, Dr. and Mrs. J. N. Robson.

H. E. Nutting of New York City is visiting his sister, Mrs. Arthur Branan at her home on Magnolia Avenue.

Mr. and Mrs. Roy Holler had as their guest over the past weekend, Isaac S. Kibrick, a nationally known lecturer on life insurance.

Mrs. Russell Siemens of Adel, Ga. has arrived in Sanford to spend a few days with her parents, Mr. and Mrs. P. N. Whitehurst.

Mrs. C. M. Richardson of Orlando is the guest of Mr. and Mrs. J. M. Cameron and W. P. Stone at their home on Celery Avenue.

Mrs. J. N. Burdick plans to leave this weekend for St. Augustine where she will visit with her son and daughter-in-law, Mr. and Mrs. Philip D. McRae.

Friends of W. P. Stone will be interested to learn that he has returned from the Sanitarium in Orlando where he received treatment for three weeks. He is much improved.

Mrs. W. J. Morrison left today for Jacksonville to visit her daughter, Mrs. Ralph Wight, II. Friends will be glad to learn that Mrs. Wight is getting along nicely at the Riverside Hospital.

Mr. and Mrs. Bernard Wilke and Mr. and Mrs. Charles Wilke have as their guests Mr. and Mrs. John Aarand and Mr. and Mrs. C. Wilke of Staten Island, N. Y. They plan to return to New York some time next week.

Mrs. Virginia Burney, worthy matron, O.E.S., and Leslie T. Sheppard, worthy patron, of Seminole Chapter have been invited to serve as grand page and assistant grand sentinel respectively, at a grand chapter meeting to be held in Tampa in the near future, sentinel meeting to be held in Tampa in the near future.

MIAMI REDS
WASHINGTON, Feb. 26 (AP)—The House Un-American Activities Committee will investigate Communist activities in Miami. Rep. Vahl (R-Ill.) has been appointed to conduct the investigation. He plans to go to Miami next week, accompanied by Robert S. Stripling, the committee's chief counsel.

HOGAN HOT
ST. PETERSBURG, Fla., Feb. 26 (AP)—Ben Hogan's flashy shooting on the first nine of the St. Petersburg Open Golf Tournament today set him up as the one to beat in the \$10,000 72-hole event. Hogan shot a six-under-par 30 for the nine holes. He fired birdies on the first five holes and the seventh.



Photo by Raymond Studios
Miss Elizabeth Fanning Thurmond, daughter of Mr. and Mrs. John Paul Thurmond, whose engagement to Charles Rodrick Bowes, son of Mr. and Mrs. Marcus William Bowes of Miami, is being announced today. Miss Thurmond attended local schools and Huntington College in Montgomery, Ala. She is at present employed as secretary in the law offices of George A. Speer, Jr., local attorney. Mr. Bowes served during the recent war as a member of the United States Marine Corps and is the Central Florida distributor for Bowes "Seal Fast" Corporation. Plans for the wedding will be announced at a later date.

Miss Thurmond Will Wed Charles Bowes

Mr. and Mrs. John Paul Thurmond announced today the engagement and approaching marriage of their daughter, Elizabeth Fanning, to Charles Rodrick Bowes, youngest son of Mr. and Mrs. Marcus William Bowes of Miami.

Miss Thurmond was born in Washington, Ga., and moved to Florida at an early age. She attended local schools and was graduated from Seminole High School as valedictorian of her class. During her senior year she was president of the girl's H.Y. and a member and later sponsor of the local chapter of the Sub-Deb Club. Following her graduation from high school she attended Huntington College in Montgomery, Ala., where she was a member of the Freshman Commission and pledged to Pi Kappa, a dramatic club. For the past several years she has been employed in the law offices of George A. Speer, Jr.

Mr. Bowes attended Andrew Jackson High School in Miami prior to entering the United States Marine Corps in World War II. While serving in the armed forces he was attached to the First Marine Division for four years, 27 months of which were spent in the South Pacific theater. Mr. Bowes participated in campaigns on Guadalcanal and Cape Gloucester, New Britain. Following his discharge from the Marine Corps he attended Indiana University at Bloomington, Ind., for two years. For the past year he has made his home in Sanford and is the Central Florida distributor.



Dr. J. Ellis Miller, who will be installed as fourth president of the University of Florida at inauguration ceremonies Mar. 4 and 5. Prominent features of the two-day ceremonies will be a meeting of Southern Governors, and a Regional Conference on Educational Planning. Prominent educators from colleges and universities throughout the nation will attend the ceremonies, the most significant in the history of the University.

Eighteenth Annual Animated Magazine Presented Yesterday At Woman's Club

With an outstanding program of art, talent and speakers the eighteenth annual edition of the Animated Magazine was presented yesterday afternoon by the literature division of the Fine Arts Department of the Sanford Woman's Club. Mrs. A. M. Phillips served as editor-in-chief and had chosen as the theme for the magazine "The Brotherhood of Man."

The large room of the club house was effectively decorated with Formosa araleas and white plum blossoms. At one side of the stage stood the magazine, the cover of which was a painting of the hand shell and pier done by Mrs. W. M. Scott. Also on the stage was the large grand piano upon which was played the prelude, a new feature for the magazine, by Helen Hutchinson Tucker. About the room were hung the attractive paintings in blond wood frames contributed for display by the Centre Street Gallery in Winter Park. Arrangements for the display were under the direction of Charles Dawson.

Mrs. H. W. Rucker turned the pages of the magazine and welcomed the large number of members and guests present. She gave a brief history of the Animated Magazine from its conception among a group of Women's Club members about 20 years ago and its presentation 18 years ago with Mrs. E. D. Brownlee as editor-in-chief. Mrs. Rucker announced that the present edition of the magazine was dedicated to Mrs. O. P. Herndon, who was presented with an aralea plant.

Mrs. Phillips told of the program for the afternoon and stated that she hoped it would leave the guests with a feeling of brotherhood and peace. A. E. Shinholtzer, young Sanford attorney, who followed Mrs. Phillips on the program, stated that the "Brotherhood of Man" is not new and never has been a voluntary proposition.

"We in the United States consider ourselves superior in all ways to nations of the world, but we are actually not responsible for our success," stated Mr. Shinholtzer. "The credit should go to the hard work of our forefathers. For this reason we should not try to make others conform to our ideas, but should be tolerant of the ideas and ideals of other nations."

Mr. Shinholtzer closed his talk by saying, "When we are prepared to offer opportunities and advantages that are ours, to recognize the rights of others and not try to force our ideas on others, then we are truly of the brotherhood of man."

The Benedictions were sung by Dick Aiken, accompanied by Mrs. George Tooley, after which Mrs. Sylvia Verdin, the guest speaker for the afternoon, was presented. Miss Verdin, a native of Mexico

and an honor student at Rollins College, had as her subject "Our Neighbors to the South." She pointed out that peace can be obtained by education through better understanding among nations. For better education, Miss Verdin said, we must have leaders from the colleges. She told of the adult education classes at Rollins in the form of lectures and motion pictures.

Mentioning the American School Foundation in Mexico, she said that this school is considered an example to be followed in other foreign lands. She described the school's founding and stated that teachers were recruited from all over Mexico and the United States. From this college, she said, students are sent to the United States on a plan of individual recognition. In closing she said that America is entering an era of new opportunities culturally and commercially and will meet the challenge to build a greater world.

For the musical portion of the program Miss Catherine Soney and Miss Ann Lovell of Rollins ably rendered vocal and violin solos. Following Miss Soney and Miss Lovell was a presentation by Les Soeurs, the junior division of the Woman's Club. The Misses Maryanna Springer, Jo Ann Williams, Margaret Partin, June Rose Dutton and Barbara Chapman told of their experiences at Girl's State held in Tallahassee from July 15 to 19 from the instructional and recreational viewpoints.

Making up one of the main attractions of the magazine was "The Jewel Song" from Faust rendered by Mrs. Charles E. Ann, accompanied by Mrs. P. H. Fuller at the piano. Mrs. Ann, in a Dutch costume, gave a beautiful rendition of the song in Italian.

Last on the program was the advertising portion announced by Mrs. W. M. Phillips. The novel presentation of the ads was participated in by Mona Jobe, Diana Fleischer, Gene Elsberry, Tommy Russell, Cynthia Roomuliat, Wallace Phillips, Jr., Sandra Knier, Kay Ivey, John Ivey, Jr., Harriet Redding, Dorothy Williams and Sally Robb.

GRIMES WITH YANKEES

NEW YORK, Feb. 26 (AP)—Harleigh Grimes, former major league pitcher and Brooklyn Dodgers manager, will join the New York Yankees' coaching staff for spring training in Florida.

Grimes, a Yankee scout for several seasons, will report at St. Petersburg Sunday and work exclusively with pitchers.

The average brass contains about 30 per cent copper and 70 per cent zinc, although other brasses are made with different proportions.

Florida Teachers Pay Is Hot Issue During Campaigns

TALLAHASSEE, Feb. 26 (AP)—Everybody seems to be waiting for someone else to make the best move in the fight over Florida school teachers' summer salaries.

Circuit Judge Ross Williams of Miami heard arguments Monday in a Dade county teachers' suit for immediate payment of salaries for the vacation months of last July and August.

But he didn't rule specifically. He said he was waiting to see whether the State Board of Education will make a decision.

In Tallahassee, however, there is no indication the cabinet board will take any action until the courts have had their say.

James I. Graham, director of finance for the State Department of Education, said there has been no recent request for the board to make a ruling. He said he knows of no plan to bring it before the board.

It's a toughy issue to arise during an election campaign in which many school and county officials concerned are candidates. The 1947 school law provides that teachers who work 10-month terms shall be paid in 12 equal monthly installments. It went into effect last July 1, while teachers were on vacation.

TRUMAN ON RENT

KEY WEST, Feb. 26 (AP)—President Truman will set this week on a stop-gap bill extending rent control to Apr. 1 and another measure extending certain wartime maritime controls for control over shipping. He is expected to sign both.

PHOTO PROCESS

COLUMBUS, Ga., Feb. 26 (AP)—The Columbus Ledger and Enquirer announced they would resume publication of afternoon and morning papers today with a photo-engraving process. Printers on the two newspapers walked out Sunday after new working conditions were posted. Pressmen refused to cross picket lines.

Dr. C. L. Persons

OPTOMETRIST
PROMPT COMPLETE
OPTICAL SERVICE
Glasses prescribed, dispensed
Repairs and adjustments made
Hours 9-12 — 1-5
Sat. 9-12
Phone 296
Atlantic National Bank Bldg.
Sanford, Florida

ANNA MILLER
CIRCLE
MEETS
EVERY
FRIDAY
8:00 P. M.
ELK'S LODGE

You'll Fall in Love

with

Gorham
STERLING



ONCE YOU SEE the Gorham Sterling collection at our store — you'll want "the loveliest silver in the world" for your home. A few place-settings in your favorite pattern are so easy to afford... so exciting to match and add to... so enjoyable to use every day.

WM. E. KADER
Jeweler

112 South Park Avenue Phone 357-W

McGREGOR
Sportswear

New Coolness —
Top Quality —
COMPLETE
WASHABILITY
... The Sporteca
Sport Shirt...
in famous
Tecu Blend
Rayon.

\$3.50

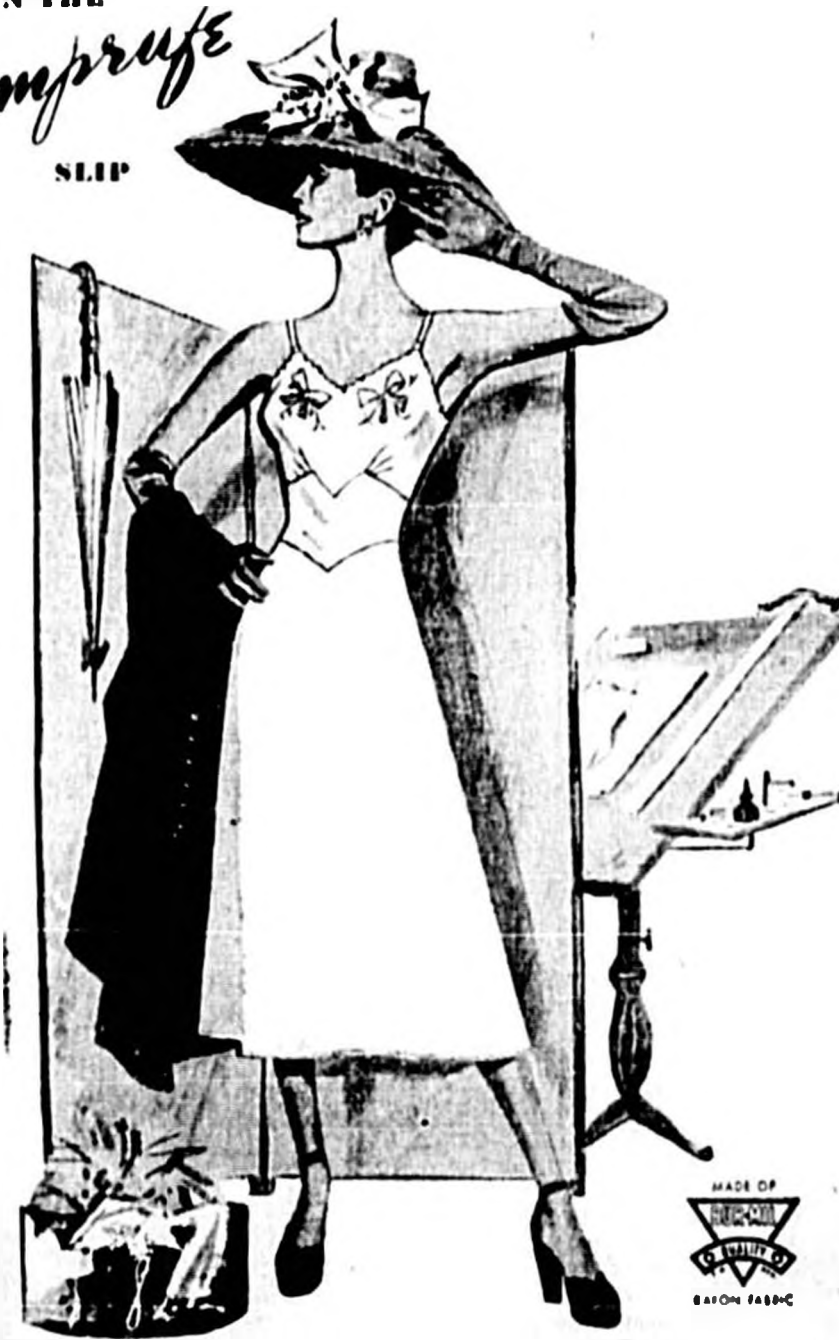
Cool, soft, rich — and with the masterful touch of McGregor tailoring. The Sporteca — a brilliant new sport shirt with a brilliant and companionable future — for you. A superb new sport shirt — color-fast — washable, and in a new range of live solid tones! Short sleeves.

Yowells



THE GIRL IN THE
Seamprufe
SLIP

graces
the pages
of the
latest
fashion
magazines



She's more than a model of beauty... she's a symbol of smartness. She knows that her Seamprufe® Figure Proportioned Slip flatters the nipped-in waist. She loves its scalloped top, embroidered design and straight cut. She knows, too, that Seamprufe's proportionate sizing assures her of perfect comfortable fit. Fashioned in Dur-Mil® quality rayon. In shell pink and white. Sizes 32 to 40.

HOLLYWOOD
Signs

\$4.98

New York Giants Baseball School Comes To Close At Airport Site

The New York Giants 1948 baseball school is nearly at the end of the session, Carl Hubbell, director of the Giants farm system stated yesterday.

The Giants returned nearly 40 youngsters to their homes yesterday afternoon, leaving but a dozen aspirants in the Municipal Airport camp.

"We have signed some mighty good looking players from the school, but we are not sure that any of them will make the grade," Manager Hal Gruber of the Sanford Giants entry in the Florida State League said today.

The youngsters signed will be brought back to the Giants spring training camp and will be given additional instruction and assistance from the many instructors, coaches and scouts, who will be here to conduct the spring drills.

Eddie Montague, Giants scout, said that he likes the looks of several of the youngsters signed to Sanford contracts, and they will be of great assistance to the Sanford club when the baseball wars are on this summer.

"We are looking to get several players optioned to the Sanford club after the spring drills open," Gruber stated. "You know there will be a lot of fellows who are not ready to play A or B ball and will be sent to teams of lower classification. We hope to get our share of these players," Gruber added.

Announcement Of Louis - Walcott Bout Is Expected

CAMDEN, N. J., Feb. 26 (AP)—To the surprise of nobody, the return bout between Heavyweight Champion Joe Louis and Jersey Joe Walcott probably will be announced officially tonight.

The announcement that Walcott has agreed to the terms set down by the Twentieth Century Sporting Club is expected to be made at the presentation of the Police Gazette's "Heavyweight Championship Belt" to Jersey Joe in a public ceremony at Convention Hall.

The Police Gazette considers that Jersey Joe whipped the champion in their first encounter last December and is reviving its custom of years ago in awarding a belt to the titleholder.

But when Champion Joe and Challenger Jersey Joe meet in the Yankee Stadium June 23 over the 15-round route, it'll be Louis that'll get the titleholder's share of the purse.

Oklahoma Mentor Has Inside Track To Yale Position

NEW HAVEN, Conn., Feb. 26 (AP)—The latest candidate reported as having the "inside track" for the vacant football coaching job at Yale is Charles (Bud) Wilkinson, coach at Oklahoma University.

At Oklahoma City, Dr. George L. Cross, O. U. president, said last night:

"It is my understanding that Bud has been offered the job."

The Daily Oklahoman was more specific. It said an unidentified member of the Yale alumni board had told Wilkinson:

"If you want the job, it's yours, we will recommend you to the school and the recommendation will be accepted."

Edwin P. Blair, chairman of the Yale graduate football committee, declined to confirm or deny that the Sooner coach had been offered the post left vacant by Horio Odell's departure for the University of Washington.

Said Blair:

"All I can say is, 'No comment.'"

The Daily Oklahoman said Wilkinson had been offered a five-year contract with "many concessions." The coach himself did not deny the report, but said he planned no trip east to confer with Yale officials.

The report that Wilkinson is now the favored candidate came shortly after Norman J. Daniels of Wesleyan became the third football coach to express himself as unwilling to take the Yale job.

The Panama Canal is 51 miles long.

Four New Pitchers Sign Contracts For Local Club

Four pitchers have signed contracts from the New York Giants baseball school being held at the Municipal Airport, it was announced today by Manager Hal Gruber of the Sanford Giants entry in the Florida State League.

The pitchers are an righthanded flinger and include Donald Unasid, 21, from Maplewood, N. J.; Jim McKenna, 20, from New York City; Charles Spinks, 20, address unknown; and Joseph Schultz, 19, from Flushing, L. I., New York.

Half-Way Point Is Reached In 90 Day Greyhound Season

The half-way point in the 90-day greyhound racing meet will be reached tonight at the Sanford-Orlando Kennel Club when the 45th program of the current season will be offered.

It was announced today by Robert G. Baird, general manager of the Kennel Club, that the State Racing Commission had extended the racing season to benefit for the loss of seven running nights throughout the state and the track operators.

Under the new dates granted, Mr. Baird said the Sanford-Orlando track season would extend through Apr. 19, instead of Apr. 10 as originally allotted.

Tonight's program of 10 events is scheduled to begin at 8 P. M.

First Race—Patrolty
O'Fallon Boy, Silver Clyde, Doggie Boy, Judy Sprague, K. C. Dug, Puss Buttons, Bunch Branch, Jimmie Shindler.

Second Race—Patrolty
Dutch Iron, Puss, Speed Hammer, Flying Butler, Royal Reporter, Doc's Girl, Lee's Motion, Minnie Lee.

Third Race—3-16 Mile
Philly, Left, Whirlie, Baby, Mac's Red Night, Sharon Malone, Atlas Max, Bright Lady, Blue Lash, Lash's Horse—Patrolty.

Fourth Race—Patrolty
Tang, Kist, Flying Hickeys, Red Lady, Chans Ma Porter, Little Miss Big, Spunk, Lash, Chumrock, Hand Maurice Evans.

Fifth Race—3-16 Mile
Jenna's Bones, Tippy Guide, Sir Sandy, Fast Fred, Slicky, Phil, Miss Jean Sir, Vaseur, Coming and Going.

Sixth Race—Patrolty
Rock Island, Red, Home, Flying Crocker, Close Quarters, Bunchy, Mr. Frankie Hippo, With Pleasure, Zip City.

Seventh Race—3-16 Mile
Tang, Kist, Kops, Tension, Just, Miss, Bunchy, Bunchy, Woodland Guide, Captain Bunchy, My Jelly Bean.

Eighth Race—3-16 Mile
Blue Spunk, Toss Boy, Red Head, Drury Judgment, Lucky Ida, Miss Chicago, Hufines, Sharp Avery.

Ninth Race—3-16 Mile
Half Label, Brave Life, Spanish Matron, Golden Matron, Hand Out, Duddy's Girl, Grand Old, Tunny's Master.

Tenth Race—3-16 Mile
Daddy Spunk, Black Cherry, Big Guide, Kid, PPhlarity, Tap, Road, Scatterfire, Rube Harbor, Palace Lady.

Baroudi's Manager Says He Is Through With Fight Game

NEW YORK, Feb. 26 (AP)—The manager of fighter Sam Baroudi, who died after a bout in Chicago last Friday, says he is through with the game.

Mike Spinelli gave his resignation to the New York Boxing Managers' Guild yesterday at the organization's request, and added that "I am abandoning management of boxers."

The Guild's board of governors met with Spinelli yesterday, reports he attempted to leave Chicago as the fighter was dying in a hospital after a bout with Edward Charles.

Spinelli said he had intended to stop off in Akron, Ohio, and leave Baroudi's share of the \$5,000 purse with the fighter's father. He said Baroudi's father had empowered him to collect the money.

Muskats are important fur animals in hot Louisiana and frigid Alaska.

Advertisements

From where I sit... by Joe Marsh

Where Does Your Money Go?

Read the other day where country folks and farmers spend more money, proportionately, on their homes than city dwellers do.

Doesn't seem hard to believe when you think it over. Take the folks in our town, for instance. They're home-loving people—who'd rather spend an evening by the fire with a mellow glass of beer than go out in search of entertainment or diversion.

Joe Marsh

COMMENTS from the SIDELINES

By ARTHUR BECKWITH, JR.
Herald Sports Editor

Hal Gruber, manager of the Sanford Giants' entry in the Florida State League, has received eight signed contracts from players who attended the New York Giants' baseball school here.

The players include two left-handed pitchers, one righthanded pitcher, one infielder, two outfielders and one catcher.

Those signed include Frank Giordano and Connie Kavakis, outfielders; Len Matte, catcher; Bob Peppers and Bob Marshall, righthanded pitchers; Lyman Peck and Don Greasy, left-handed pitchers; and George Streit, who is a first baseman.

Manager Gruber has also sent contracts to six of the 1947 players. Those contracts were sent to Buddy Lake, Martin Zula, Johnny McManus, Tim Tyler, Jack McCannum and Johnny Tomat.

Gruber has also announced that Walt Harrington has been sold to the Julee club of the Canadian-American League.

This list brings up to date on the signing of players for the Sanford club.

None of the contracts sent to players of the 1947 squad have been received by Manager Gruber.

We want to impress on the fans, who boost the Sanford club, that not any one man signed to a Sanford contract has "nailed down" a berth on the '48 edition of the Feds.

All of these men are going to be brought to the Sanford camp and given a thorough trial. Then, if they prove to the Giants and have the ability to play good baseball, then they will stay.

These boys will be given stiff inspections and will be "eyed" by all of the scouts in the Giants' organization. They will have to be pretty fair prospects, or they will not be kept here.

The Giants are going to do everything they can to give us a winner in Sanford. Last year they had 23 farm clubs in their organization and 16 of them finished the season above the fifth slot, or in simple words, in the first division. Sixteen of their farm clubs were in the Shaughnessy playoff series. That is a pretty fair showing for any organization.

Johnny Toneroff
The status of Johnny Toneroff, who shipped the Palatka Azaleas last season is still uncertain as the 1948 Florida State League season draws near. Ray Ryan, general manager of the A's is expected to give a yes or no on Toneroff shortly, however.

Palatka was an independent ball club during the 1947 campaign and will remain in the same category for 1948.

Thus far they have announced that Al Pirtle and Bill Loveys will return for the '48 season, and the return of Toneroff will certainly aid the sagging Palatkas.

Ryan has signed a number of rookie prospects, but little is known of their ability to play in the FSL competition.

Among those signed by Ryan are Harold Harbort, an 18-year-old righthanded pitcher, twirled last season in the Western Ohio League and Ryan rates the 197-pound chunker highly; Frank Knowlton, 22, who pitched semi-pro ball at Athens, Ohio; Tom Tabb, 21, University of Kentucky rookie, is ticketed for shortstop; Ray Ridenhour, University of Miami (Ohio) shortstop; Dan Brennan, University of Cincinnati catcher; Al Schulze, 190-pound rookie third baseman, and Rookie Outfielders Robert Ryan of Pocahontas, Va., and Walter Kowalski of West Virginia.

Less than half of one per cent of inter-city passenger travel in the United States in 1940 was by boat.

GREYHOUND RACING

10 RACES NIGHTLY
(Except Sunday)
RAIN or SHINE
POST TIME 8:00 P. M.
Season Extends Thru April 10th

COME and ENJOY

the "SPORT of QUEENS"

Sanford-Orlando Kennel Club

Midway between Sanford and Orlando on Highway 17—Turn at Red Arrow

Advertisements

Advertisements

Advertisements

Advertisements

Advertisements

Advertisements

Advertisements

Six Conference Titles Set In College Basketball In Country

NEW YORK, Feb. 26 (AP)—The 1948 parade of college basketball champions has started. Six conference titles already have been decided. The list is expected to double by Saturday.

The six already decided: Southwest Conference—Baylor. Rocky Mountain Conference—Colorado State.

Southwest Border Conference—Arizona. Central Conference—Iowa Teachers.

Mason-Dixon Conference (season play)—Baltimore Loyola. Vermont Conference—Vermont.

Assured of at least a tie and expected to take it all are the Oklahoma Aggies in the Missouri Valley Conference; California in the southern division of the Pacific Coast Conference and Brigham Young in the Skyline Six.

Kentucky, in the Southwest Conference, and North Carolina State, in the Southern Conference, finished on top in season play, but they still must win their league post-season tournament before officially gaining recognition as champs.

The Big Nine, Big Seven, Eastern Intercollegiate and the northern division of the Pacific Coast Conference still are doubtful, but may be decided by Sunday.

Hockey Executive Wants To Talk To Convicted Robber

DETROIT, Feb. 26 (AP)—Professional hockey's top executive, determined to unearth specific facts in a reported link between players and gamblers, resubmitted his efforts today to talk to the imprisoned man he believes may tell him the full story.

Falling in his first attempts to contact high Michigan officials, National Hockey League President Clarence Campbell sought again to find some means of talking to James (Doc) Tamer.

The 36-year-old Tamer, a convicted bank robber now back in Southern Michigan prison as a parole violator, "Would be the man who could give us the information we need," Campbell said.

The hockey executive said he would try to reach Michigan's Governor Miller this morning in an attempt to get on the trail of concrete evidence.

Among such evidence might be some mysterious wire recordings reportedly made of Tamer's telephone conversations with two National Hockey League players.

The hockey executive said he would try to reach Michigan's Governor Miller this morning in an attempt to get on the trail of concrete evidence.

28 Phillies Signed For 1948 Season

CLEARWATER, Fla., Feb. 26 (AP)—Twenty-eight of the Philadelphia Phillies have signed their 1948 contracts.

The latest batch of five was received yesterday. They came from Al Lirish and Oscar Judd, veteran pitchers; Walt Dubiel, 27-year-old pitcher, who has been up with New York Yankees; Charlie Gilbert, infielder, and Rookie Hurler George Thomas.

NEURALGIA

Nothing is more quickly effective for the relief of neuralgia and other nerve pains than Liquid CAPUDINE. Also soothes upset nerves due to the pain. Use only as directed.

Liquid CAPUDINE

How To Relieve Bronchitis

Circulation relieves promptly. It is the only medicine that goes right to the seat of the trouble to help loosen and expectorate phlegm, and aid nature to soothe a hot, raw, inflamed, irritated, bronchial mucous membrane. Tell your druggist to sell you a bottle of Circulation with the understanding you must use the way it is quickly alleviates the cough or you are so have your money back.

CREOMULSION

for Coughs, Chest Colds, Bronchitis

Bathing is forbidden among many of the inhabitants of Tibet.

The six already decided: Southwest Conference—Baylor. Rocky Mountain Conference—Colorado State.

Southwest Border Conference—Arizona. Central Conference—Iowa Teachers.

Mason-Dixon Conference (season play)—Baltimore Loyola. Vermont Conference—Vermont.

Assured of at least a tie and expected to take it all are the Oklahoma Aggies in the Missouri Valley Conference; California in the southern division of the Pacific Coast Conference and Brigham Young in the Skyline Six.

Kentucky, in the Southwest Conference, and North Carolina State, in the Southern Conference, finished on top in season play, but they still must win their league post-season tournament before officially gaining recognition as champs.

The Big Nine, Big Seven, Eastern Intercollegiate and the northern division of the Pacific Coast Conference still are doubtful, but may be decided by Sunday.

Hockey Executive Wants To Talk To Convicted Robber

DETROIT, Feb. 26 (AP)—Professional hockey's top executive, determined to unearth specific facts in a reported link between players and gamblers, resubmitted his efforts today to talk to the imprisoned man he believes may tell him the full story.

Falling in his first attempts to contact high Michigan officials, National Hockey League President Clarence Campbell sought again to find some means of talking to James (Doc) Tamer.

The 36-year-old Tamer, a convicted bank robber now back in Southern Michigan prison as a parole violator, "Would be the man who could give us the information we need," Campbell said.

The hockey executive said he would try to reach Michigan's Governor Miller this morning in an attempt to get on the trail of concrete evidence.

Among such evidence might be some mysterious wire recordings reportedly made of Tamer's telephone conversations with two National Hockey League players.

The hockey executive said he would try to reach Michigan's Governor Miller this morning in an attempt to get on the trail of concrete evidence.

28 Phillies Signed For 1948 Season

CLEARWATER, Fla., Feb. 26 (AP)—Twenty-eight of the Philadelphia Phillies have signed their 1948 contracts.

The latest batch of five was received yesterday. They came from Al Lirish and Oscar Judd, veteran pitchers; Walt Dubiel, 27-year-old pitcher, who has been up with New York Yankees; Charlie Gilbert, infielder, and Rookie Hurler George Thomas.

NEURALGIA

Nothing is more quickly effective for the relief of neuralgia and other nerve pains than Liquid CAPUDINE. Also soothes upset nerves due to the pain. Use only as directed.

Liquid CAPUDINE

How To Relieve Bronchitis

Circulation relieves promptly. It is the only medicine that goes right to the seat of the trouble to help loosen and expectorate phlegm, and aid nature to soothe a hot, raw, inflamed, irritated, bronchial mucous membrane. Tell your druggist to sell you a bottle of Circulation with the understanding you must use the way it is quickly alleviates the cough or you are so have your money back.

CREOMULSION

for Coughs, Chest Colds, Bronchitis

HIG TRADE
WEST PALM BEACH, Feb. 26 (AP)—The Florida International Baseball League Indians have sent Pitcher Pete Stein and Catcher Mike Fedunjak to Anniston in a swap for two pitchers.

The Indians will get Pitchers Bill Rogers and Ben Harrel from the Southeastern League team.

ZINN TO COACH LOOKOUTS
LITTLE ROCK, Ark., Feb. 26 (AP)—Veteran Jimmy Zinn, who pitched for many years in the majors, said last night he will coach this season for the Chattanooga Lookouts of the Southern Association.

Zinn was a coach for Sacramento of the Pacific Coast League last year. Since 1937 he has been a minor league manager or coach.

GIANTS GO WEST
NEW YORK, Feb. 26 (AP)—An advance party of the New York Giants will leave New York today for spring training camp at Phoenix, Ariz.

UNCLE SAM Grades Our BEEF

Just Look At These Low Prices!

Sirloin, Round or Club

STEAKS Lb **69c**

Juicy Rib Roast Lb **59c**
Brisket Boiling Beef Lb **35c**
Chuck Roast Lb **49c**
Fresh Ground H'b'rger Lb **39c**

Tender, Sliced Beef Liver Lb **45c**
Swift's Smoked Beef Tongues Lb **39c**

TABLE SUPPLY
LOVETT'S
PIGGLY WIGGLY

Quantity Rights Reserved
Grocery Prices Good Thru Wednesday, March 3
Meat & Produce Prices Good Thru Sat., Feb. 28.

Smo. Hams Half or Whole 15-20-lb. Avg. pound 49c	Willco Breakfast Sli. Bacon Lb 52c	Oysters Pt 69c	Baking Mize Red Sea Bass Lb 33c
Picnics 10-15-lb. Avg. lb. 43c	Bacon Piece , Lb 49c	King Mackerel Steaks Lb 43c	Florida Spanish Mackerel Lb 25c
Swift Premium Rolled Veal Roast Lb 59c	Tails Lb 39c	New Pak Salt Mullet Lb 25c	Lobster Cooked Lb 45c

A-Jax New Cleanser Reg 11c	New Chiffon Soap Flakes 12 1/2-oz Pkg 39c	Modess With Deodorant 2 Reg 65c	"Junket" Rennet Powders 2 Reg 25c
GREEN GIANT PEAS No 303 Can 15 1/2c	FLOUR 5 Lbs 45c	Libby Vienna Sausage 1/2's 17c	Horden's Hemo Powder , 16-oz 64c
COFFEE 1-Lb 51c	LIMAS 2 No 2 Cans 33c	Staley Cream Corn Starch 1-Lb 12 1/2c	Nabisco Premium Crackers 1-Lb 25c
Ultra-Refined Clorox 1/2-Gal 27c	Redi-Mixt Oleo Solid-Lb 49c Qtrs-Lb 51c	Muselman Apple Butter 28-oz 23c	Use Daily—Lifebuoy Soap of Stars Lux Soap 10c
Harris Roach Tablets 4-oz 39c	Florida Grade A Large PINEBREEZE EGGS Dozen 63c	Superbrand Oleo Lb 39c Oleo Lb 35c	The Sweet Soap Sweetheart! Reg Ck 10 1/2c
Beraxo 8-oz 17c	Heart of Calif. Halves Peaches No 2 1/2 21c	Rich, Ripe Fruit Gocktail No 2 1/2 33c	For Fine Fabrics Lux Flakes 2 Sm 20c 1 Lge 36c
All Popular Brands Cigarettes 1 77	MarVELOUS Vel Large Pkg 29c	Swan Soap Pure & Mild 11c	Woodbury Facial Soap 3 Cks 34c
Washington Winesap Apples 3 Lbs 35c	Wash. Red Delicious Apples 2 Lbs 23c	Florida Celery 2 Stalks 13c	Bites While You Wash! Elm-White Chips Reg 9c
New Florida Red Bliss Potatoes 10 Lbs 34c	York Cooking Apples 3 Lbs 29c	Florida Green Cabbage Lb 3c	
Mild Rutabagas Lb 5 1/2c	Kiln Dried Sweet Potatoes 5 Lbs 39c	Fresh Calif. Dates 14-oz Pkg 29c	
Juicy Lemons 2 Lbs 25c			



From where I sit... by Joe Marsh

Where Does Your Money Go?

Read the other day where country folks and farmers spend more money, proportionately, on their homes than city dwellers do.

Doesn't seem hard to believe when you think it over. Take the folks in our town, for instance. They're home-loving people—who'd rather spend an evening by the fire with a mellow glass of beer than go out in search of entertainment or diversion.

Joe Marsh

may not have too much to spend—but it goes for those permanent, abiding comforts that make home a nicer place to be.

And from where I sit, that budget calls for some of the niceties of home life too—like cider and popcorn for the kids from time to time, and a friendly glass of beer for Mom and Dad... things that belong with what we mean when we say "Home."

Joe Marsh

Copyright 1948, United States Brewery Foundation

Classified Advertisements

FOR RENT
OFFICE space in Melach Building. Large lighted offices, newly decorated, all utilities, heat and janitor service furnished. Call 843-W. H. A. Dept. Store.

RECORD PLAYERS and radios for rent. By day or week. The Music Box, 119 W. 1st St. Phone 953.

MONTEZUMA HOTEL
Comfort without extravagance. Reasonable rates.
Daily, Weekly or Month.
Single room: \$1.75. Double—\$8.00.
Room double bed two in room \$3.00 day—\$12.00 week.
Double bed private bath: \$2.50 single—\$3.50 two—\$15.00 week.
Twin beds, private bath: \$4.00 two, \$18.00 weekly.
Phone 9107.
Magnolia Ave. and 3rd St.

WANTED TO RENT
1 or 2 Bedroom furnished house or apartment. W. J. McGinnis, Jr., Phone 730 or P. O. Box 734.

REAL ESTATE FOR SALE
REAL ESTATE—INSURANCE
F.H.A. MORTGAGE LOANS
RAYMOND M. BALL, Realtor
Rm 1 Florida State Bank Bldg.
BUILDING LOTS FOR SALE
1 1/2 lots for sale, cleared and ready for building. Phone 135-7493. After 7:30 P. M.
Real Estate Investments
W. R. WILLIAMS, Realtor
110 N. Park Ave. Tel. 1120
F.H.A. Long Term Loans G.I.
HERE'S a four bedroom home with a large ventilating fan, four lots, garage, on paved road in Lake Mary. Nicely landscaped, has several bearing orange trees, barbecue pit and fish pond. Priced at less than \$6,000.
RAYMOND M. BALL, Realtor
Sam Higleyman, Associate
Beatrice Huffman, Associate
Phone 960
Room 1, Fla. State Bank Bldg.
255 Feet on 17 & 92—Half way between Sanford & Orlando.
1 1/2 Acres with a large beautiful lake at rear.
Two brand new cottages, furnished, including electric ranges and hot water heaters. Deep well with plenty pure water. One cottage now rented for enough to pay monthly payments. You can move into either at once. An ideal location for more cottages and trailers. You can secure this for only \$4,500.00 cash, balance monthly.
RAYMOND M. BALL, Realtor
Sam Higleyman, Associate
Beatrice Huffman, Associate
Sanford, Fla. Phone 960
COUNTRY HOME—Small cottage with large screened porch and bath, \$3,800. May be purchased with 3 acres of good grove for \$4,500. 618 Park Ave. Phone 572-W.
Grocery store, 801 Locust Avenue, Phone 1366-W.
NEW FOUR room bungalow—\$5,900. Box 304 Geneva. C. E. Wilkcamp.
GOOD small furnished house with metal roof, outside city limits, combination living-dining room, 2 bedrooms, modern bathroom, large screened front porch, garage, located on 4 acres of ground with some fruit trees and garden area. Furnishings consist of gas stove, hot water heater, gas heater in bathroom, room heater and fluorescent lighting and other miscellaneous items. Well worth the money at \$4,500.00.
NEARLY COMPLETED garage apartment, garage and living room downstairs, kitchen, bath and 2 bedrooms upstairs. Gas stove, hot water heater, room heater, refrigerator and other household equipment included in sale. Priced at \$4,500.00. Located in Mayfair Section on 2 large lots.
THREE-BEDROOM house in good condition inside and out, electric stove, table, metal cabinets and hot water heater, on large lot with garage, located in good neighborhood and a good buy at \$7,500.00.
FRED W. BENDER, REALTOR
Florida State Bank Bldg.
Room No. 2 Phone 1030

ARTICLES FOR SALE
CUT FLOWERS, Floral Designs, Stewart the Florist, 814 Myrtle Ave. Phone 200-W.
SEWING MACHINES
SALES AND SERVICE
Bert's Sewing Mach. Shop
115 S. French Ph. 1190
PLANS for small southern homes, inexpensive, FHA approved. 110 N. Park Ave.
FOR AVON PRODUCTS
Phone 621-J
Mrs. D. E. Norwood, Agent
15 sq. ft. Corrugated Aluminum roofing, 10 ft length—\$10.00. Inquire across from San Ordo Club Highway 92.
NOTICE to our regular customers: our car of coal just arrived. Order now & be sure of delivery. J. H. Payne & Son, Ph. 72.
Tomato Plants 40 cents hundred. 1716 W. 13th St. Phone 290-M.
TABLE TOP Hot Point Electric range \$85. Phone 039-X-W.
REAL bargain now \$200 for coat and hat \$60. 1513 1/2 Palmetto Ave.
Restaurant Equipment. Inquire at Spar Station, 1001 French Ave. or Phone 215.
6 pc. bedroom suite, 4 pieces living room furniture very reasonable, 4 miles out Sanford Ave. across Grey Shadows Nursery.
DINING ROOM table, mahogany drop leaf, Box D, c/o Herald.
New Coleman Oil burning Floor Furnace, model 888, \$125.00. Phone 1318 or 1119-W.
Baby Carriage, Whitney folding. Must sell immediately. \$25.00. Contact W. Shorlock, Barracks No. 7, Fellowship Front.
1 yd. Portable Dump Body. Fits in any pickup body. Ideal for Nursery, Farm, Dairy or Grocer.
HOLLER MOTOR SALES
2nd & Palmetto Phone 1231
HOT PLATE LUNCH—Served from 11:30 to 2 at Homer's.
VACUUM CLEANER—The New Look! World's fastest home rug cleaner. See it in your home. Pre-war price. Today Price. Call 1291-3, Glenn C. Ut.
FRIED SHRIMP DINNERS
Every Night at Homer's
GIRL'S bicycle, practically new, size 28. Phone 426 between 6:00 and 6:00 P. M.
ARTICLES WANTED
Highest cash price paid for used furniture. T. J. Davis Furniture Co. 811 E. 1st Ph. 958.
I'LL BUY your car regardless of age or condition. Roy Roel, 304 W. 2nd St.
SCRAP IRON, metals, batteries, etc. Bills, 917 W. 13th St. Phone 1270.
GOOD USED sewing machine. Phone 1162-W.
7 Pets, Livestock, Supplies
FOR SALE: 45 Muscovy Ducks \$1.50 each. Manuella's Tavern, Highway 17-92.
FOR SALE—Hogs, all sizes, prices; also milk cow, B. H. Biles, Lake Monroe.
HELP WANTED
GIRLS WANTED. Laney's Drug Store.
WANTED: Experienced cashier. Touchton Drug Co.
WORK WANTED
FLOOR SANDING & finishing cleaning & waxing. Our power unit enables us to work where there is no electric connection available. 21 years experience. H. M. Gleason, Lake Mary, Fla. Billings, phone 1585.
STENOGRAPHIC work, full or part time. Experienced in legal work. Mrs. James Pearson, phone 1057-J.
Business Opportunities
APPLY your spare time to operating Candy Bar machines dispensing Hersheys and other nationally known candy. Excellent profits. Cash investment required \$245.00. Give phone number and address. Will call in person. Write Box T.P.D. Care Herald.
SPECIAL SERVICES
DODGE - PLYMOUTH PARTS AND SERVICE
100 Palmetto Ave. Phone 1011
RADIATOR cleaning, repairing. New Radiators, new cores. We take off & install Jimmie Cowan's Sheet Metal Works. Phone 616.
MODERNIZE YOUR KITCHEN with specially built cabinets. Complete estimates, plumbing, painting, ready for use. P. M. Campbell, Oviedo, phone 2861.
WELL DRILLING. We specialize in small diameter deep wells, 2 1/2 & 3 inch at \$1.25, \$1.55 & \$1.95 per foot. Casing furnished. Well and Pump can be installed on P.H.A. plan. Nothing down, 36 months to pay. Call or write P. F. French, Longwood, Fla. Phone 6.

SPECIAL SERVICES
DIAPER SERVICE
For details of the safest "maid service" now in Sanford call or write HARRY VALET, Daytona Beach. Diapers supplied.
FOR RENT—Floor sander. Easy operation. Reasonable rates. Sanford Paint & Glass Co. Phone 503.
Refrigeration & Air Conditioning service. G. H. Ponce, P. O. Box 171, Longwood, Fla. All work guaranteed.
ORLANDO Morning Sentinel Orlando Evening Star. Call Ralph Ray, 1165-J.
Cohen's Radiator Shop for complete radiator service. 100 Sanford Ave. Phone 254-W.
AUTO REPAIRING. Hall's Garage, Sanford and Celery Avenues. Phone 1090-M.
Expert Radio Repairing. Fred Myers, 311 E. 2nd St.
UPHOLSTERING
TAPESTRY, Velours, Imitation Leather and Plastic materials. Guaranteed workmanship. Sabin's Upholstery, 110 W. First St. Phone 1253.
AUTO REPAIRS
All makes cars & trucks. Expert mechanics guaranteed work. Easy monthly payments.
GENERAL TRUCK & EQUIPMENT CO.
204 W. First Street
Income tax returns prepared for individuals business etc. Reasonable rates. Harry A. Doshell, P. O. Box 258, Sanford, Fla.
KNOW the true condition of the house you plan to purchase. Confidential surveys. Contact P. M. Campbell, Oviedo, phone 2861.
EXPERT WATCH and Clock Repairing. G. C. Fellows, 170 Sanford Ave. Phone 1143-J.
For Dependable REFRIGERATION REPAIRS Call GANAS REFRIGERATION SERVICE Phone 570-W.
SEE US FOR MIMOGRAPH PRINTING AND TYPING CREDIT BUREAU OF SANFORD 116 N. Park Phone 180
SLIP COVERS. Upholstering of all kinds. Expert workmanship. R. Carmichael, Sanford Upholstery, 1165 N. Park, Phone 1112. Prompt Delivery.
RENT A CAR DRIVE IT PHONE 503
STICKLAND-MORRISON DRIVE-IT, INC.
Washing machine and Electric Range repairs. Genuine Maytag and Hotpoint parts. Randall Electric Co.
CALL 517 for Battery, Generator and Starter service. Swain's Battery Service, 301 W. First St.
Help-Self Self Service Laundry Drivers Ironing 106 W. 13th St. Phone 1389
C. J. GANTT will build cabinets for you. Phone 770-W.
NOTICES—PERSONAL
VERVINA BEAUTY SALON Expert Permanent Waving \$6.50 to \$25.00. Styling, manicuring. Closed Mondays. Open evenings by appointment. 205 Melach Bldg., phone 1585.
LOST & FOUND
LOST: Black Shaffer fountain pen with the name of Rose Stonecipher in the Post Office. Finder return to the Sanford Herald. Reward.
AUTOS FOR SALE
1939 Packard "60" for sale. In A-1 condition throughout. New motor, radio, heater and overdrive. A good buy for the right kind of price. 1209 Magnolia.
1940 Buick 4 door, excellent condition 1005.
1940 Oldsmobile tudor, excellent condition \$950.
1941 Ford 1 1/2 ton long wheelbase, 2 speed, \$750.
1942 Chevrolet tractor & trailer, excellent condition.
HOLLER MOTOR SALES 2nd & Palmetto Phone 1231

ARTICLES FOR SALE
CHECKBOARD-Purina Feeds, Touchton & Watson, across from ball park.
BLEACHING paper and wire for four acres of celery, will sell cheap. L. E. Mann, Lake Monroe, Fla. Phone No. 833-R.
TUXEDO FEEDS—complete line Hunt's Tuxedo Feed Store.
Marion Market Cabbage plants, L. E. Mann, Lake Monroe, Fla. Phone 833-R.
LIQUSTRUM PLANTS. Why wait 3 years to grow a hedge when L. E. Mann, Lake Monroe, Fla. can put you in a ready grown hedge in a few hours. Call 833-R.
2 1/2 Acres Land, 5 room house, 4 outbuildings also 1836 Packard sedan. S. Durand, Rt. 2, Box 144, Sanford.

Legal Notice

IN THE UNITED STATES DISTRICT COURT FOR THE SOUTHERN DISTRICT OF FLORIDA
United States of America,
Petitioner.

vs.
As. No. 247-Orlando CIVIL.
Eight (8) Tracts of Land in Seminole County, Florida.
et al.

Defendants.

NOTICE OF CONDEMNATION PROCEEDINGS

TO WHOM IT MAY CONCERN: WHEREAS, a Petition for Condemnation has been filed on January 9, 1948 in the above entitled Court, whereby the UNITED STATES OF AMERICA, as Petitioner, prayed for the condemnation upon just compensation of a perpetual easement to enter upon, dig, cut, away and remove any and all of the land hereinafter described, as may be required for the construction and maintenance of the improvement to be known as the Jacksonville to Lake Harney Cut-off Channel via Woodruff Creek and adjacent lands, and removed as a part of the navigable waters of the United States, and to enter upon, use and enjoy the portions of the land not so cut away and converted and that public navigable waters for the deposit of dredged materials, together with such other purposes as may be needed for the preservation and maintenance of the improvement to be known as the Jacksonville to Lake Harney Cut-off Channel via Woodruff Creek and adjacent lands, and removed as a part of the navigable waters of the United States, and to enter upon, use and enjoy the portions of the land not so cut away and converted and that public navigable waters for the deposit of dredged materials, together with such other purposes as may be needed for the preservation and maintenance of the improvement to be known as the Jacksonville to Lake Harney Cut-off Channel via Woodruff Creek and adjacent lands, and removed as a part of the navigable waters of the United States, and to enter upon, use and enjoy the portions of the land not so cut away and converted and that public navigable waters for the deposit of dredged materials, together with such other purposes as may be needed for the preservation and maintenance of the improvement to be known as the Jacksonville to Lake Harney Cut-off Channel via Woodruff Creek and adjacent lands, and removed as a part of the navigable waters of the United States, and to enter upon, use and enjoy the portions of the land not so cut away and converted and that public navigable waters for the deposit of dredged materials, together with such other purposes as may be needed for the preservation and maintenance of the improvement to be known as the Jacksonville to Lake Harney Cut-off Channel via Woodruff Creek and adjacent lands, and removed as a part of the navigable waters of the United States, and to enter upon, use and enjoy the portions of the land not so cut away and converted and that public navigable waters for the deposit of dredged materials, together with such other purposes as may be needed for the preservation and maintenance of the improvement to be known as the Jacksonville to Lake Harney Cut-off Channel via Woodruff Creek and adjacent lands, and removed as a part of the navigable waters of the United States, and to enter upon, use and enjoy the portions of the land not so cut away and converted and that public navigable waters for the deposit of dredged materials, together with such other purposes as may be needed for the preservation and maintenance of the improvement to be known as the Jacksonville to Lake Harney Cut-off Channel via Woodruff Creek and adjacent lands, and removed as a part of the navigable waters of the United States, and to enter upon, use and enjoy the portions of the land not so cut away and converted and that public navigable waters for the deposit of dredged materials, together with such other purposes as may be needed for the preservation and maintenance of the improvement to be known as the Jacksonville to Lake Harney Cut-off Channel via Woodruff Creek and adjacent lands, and removed as a part of the navigable waters of the United States, and to enter upon, use and enjoy the portions of the land not so cut away and converted and that public navigable waters for the deposit of dredged materials, together with such other purposes as may be needed for the preservation and maintenance of the improvement to be known as the Jacksonville to Lake Harney Cut-off Channel via Woodruff Creek and adjacent lands, and removed as a part of the navigable waters of the United States, and to enter upon, use and enjoy the portions of the land not so cut away and converted and that public navigable waters for the deposit of dredged materials, together with such other purposes as may be needed for the preservation and maintenance of the improvement to be known as the Jacksonville to Lake Harney Cut-off Channel via Woodruff Creek and adjacent lands, and removed as a part of the navigable waters of the United States, and to enter upon, use and enjoy the portions of the land not so cut away and converted and that public navigable waters for the deposit of dredged materials, together with such other purposes as may be needed for the preservation and maintenance of the improvement to be known as the Jacksonville to Lake Harney Cut-off Channel via Woodruff Creek and adjacent lands, and removed as a part of the navigable waters of the United States, and to enter upon, use and enjoy the portions of the land not so cut away and converted and that public navigable waters for the deposit of dredged materials, together with such other purposes as may be needed for the preservation and maintenance of the improvement to be known as the Jacksonville to Lake Harney Cut-off Channel via Woodruff Creek and adjacent lands, and removed as a part of the navigable waters of the United States, and to enter upon, use and enjoy the portions of the land not so cut away and converted and that public navigable waters for the deposit of dredged materials, together with such other purposes as may be needed for the preservation and maintenance of the improvement to be known as the Jacksonville to Lake Harney Cut-off Channel via Woodruff Creek and adjacent lands, and removed as a part of the navigable waters of the United States, and to enter upon, use and enjoy the portions of the land not so cut away and converted and that public navigable waters for the deposit of dredged materials, together with such other purposes as may be needed for the preservation and maintenance of the improvement to be known as the Jacksonville to Lake Harney Cut-off Channel via Woodruff Creek and adjacent lands, and removed as a part of the navigable waters of the United States, and to enter upon, use and enjoy the portions of the land not so cut away and converted and that public navigable waters for the deposit of dredged materials, together with such other purposes as may be needed for the preservation and maintenance of the improvement to be known as the Jacksonville to Lake Harney Cut-off Channel via Woodruff Creek and adjacent lands, and removed as a part of the navigable waters of the United States, and to enter upon, use and enjoy the portions of the land not so cut away and converted and that public navigable waters for the deposit of dredged materials, together with such other purposes as may be needed for the preservation and maintenance of the improvement to be known as the Jacksonville to Lake Harney Cut-off Channel via Woodruff Creek and adjacent lands, and removed as a part of the navigable waters of the United States, and to enter upon, use and enjoy the portions of the land not so cut away and converted and that public navigable waters for the deposit of dredged materials, together with such other purposes as may be needed for the preservation and maintenance of the improvement to be known as the Jacksonville to Lake Harney Cut-off Channel via Woodruff Creek and adjacent lands, and removed as a part of the navigable waters of the United States, and to enter upon, use and enjoy the portions of the land not so cut away and converted and that public navigable waters for the deposit of dredged materials, together with such other purposes as may be needed for the preservation and maintenance of the improvement to be known as the Jacksonville to Lake Harney Cut-off Channel via Woodruff Creek and adjacent lands, and removed as a part of the navigable waters of the United States, and to enter upon, use and enjoy the portions of the land not so cut away and converted and that public navigable waters for the deposit of dredged materials, together with such other purposes as may be needed for the preservation and maintenance of the improvement to be known as the Jacksonville to Lake Harney Cut-off Channel via Woodruff Creek and adjacent lands, and removed as a part of the navigable waters of the United States, and to enter upon, use and enjoy the portions of the land not so cut away and converted and that public navigable waters for the deposit of dredged materials, together with such other purposes as may be needed for the preservation and maintenance of the improvement to be known as the Jacksonville to Lake Harney Cut-off Channel via Woodruff Creek and adjacent lands, and removed as a part of the navigable waters of the United States, and to enter upon, use and enjoy the portions of the land not so cut away and converted and that public navigable waters for the deposit of dredged materials, together with such other purposes as may be needed for the preservation and maintenance of the improvement to be known as the Jacksonville to Lake Harney Cut-off Channel via Woodruff Creek and adjacent lands, and removed as a part of the navigable waters of the United States, and to enter upon, use and enjoy the portions of the land not so cut away and converted and that public navigable waters for the deposit of dredged materials, together with such other purposes as may be needed for the preservation and maintenance of the improvement to be known as the Jacksonville to Lake Harney Cut-off Channel via Woodruff Creek and adjacent lands, and removed as a part of the navigable waters of the United States, and to enter upon, use and enjoy the portions of the land not so cut away and converted and that public navigable waters for the deposit of dredged materials, together with such other purposes as may be needed for the preservation and maintenance of the improvement to be known as the Jacksonville to Lake Harney Cut-off Channel via Woodruff Creek and adjacent lands, and removed as a part of the navigable waters of the United States, and to enter upon, use and enjoy the portions of the land not so cut away and converted and that public navigable waters for the deposit of dredged materials, together with such other purposes as may be needed for the preservation and maintenance of the improvement to be known as the Jacksonville to Lake Harney Cut-off Channel via Woodruff Creek and adjacent lands, and removed as a part of the navigable waters of the United States, and to enter upon, use and enjoy the portions of the land not so cut away and converted and that public navigable waters for the deposit of dredged materials, together with such other purposes as may be needed for the preservation and maintenance of the improvement to be known as the Jacksonville to Lake Harney Cut-off Channel via Woodruff Creek and adjacent lands, and removed as a part of the navigable waters of the United States, and to enter upon, use and enjoy the portions of the land not so cut away and converted and that public navigable waters for the deposit of dredged materials, together with such other purposes as may be needed for the preservation and maintenance of the improvement to be known as the Jacksonville to Lake Harney Cut-off Channel via Woodruff Creek and adjacent lands, and removed as a part of the navigable waters of the United States, and to enter upon, use and enjoy the portions of the land not so cut away and converted and that public navigable waters for the deposit of dredged materials, together with such other purposes as may be needed for the preservation and maintenance of the improvement to be known as the Jacksonville to Lake Harney Cut-off Channel via Woodruff Creek and adjacent lands, and removed as a part of the navigable waters of the United States, and to enter upon, use and enjoy the portions of the land not so cut away and converted and that public navigable waters for the deposit of dredged materials, together with such other purposes as may be needed for the preservation and maintenance of the improvement to be known as the Jacksonville to Lake Harney Cut-off Channel via Woodruff Creek and adjacent lands, and removed as a part of the navigable waters of the United States, and to enter upon, use and enjoy the portions of the land not so cut away and converted and that public navigable waters for the deposit of dredged materials, together with such other purposes as may be needed for the preservation and maintenance of the improvement to be known as the Jacksonville to Lake Harney Cut-off Channel via Woodruff Creek and adjacent lands, and removed as a part of the navigable waters of the United States, and to enter upon, use and enjoy the portions of the land not so cut away and converted and that public navigable waters for the deposit of dredged materials, together with such other purposes as may be needed for the preservation and maintenance of the improvement to be known as the Jacksonville to Lake Harney Cut-off Channel via Woodruff Creek and adjacent lands, and removed as a part of the navigable waters of the United States, and to enter upon, use and enjoy the portions of the land not so cut away and converted and that public navigable waters for the deposit of dredged materials, together with such other purposes as may be needed for the preservation and maintenance of the improvement to be known as the Jacksonville to Lake Harney Cut-off Channel via Woodruff Creek and adjacent lands, and removed as a part of the navigable waters of the United States, and to enter upon, use and enjoy the portions of the land not so cut away and converted and that public navigable waters for the deposit of dredged materials, together with such other purposes as may be needed for the preservation and maintenance of the improvement to be known as the Jacksonville to Lake Harney Cut-off Channel via Woodruff Creek and adjacent lands, and removed as a part of the navigable waters of the United States, and to enter upon, use and enjoy the portions of the land not so cut away and converted and that public navigable waters for the deposit of dredged materials, together with such other purposes as may be needed for the preservation and maintenance of the improvement to be known as the Jacksonville to Lake Harney Cut-off Channel via Woodruff Creek and adjacent lands, and removed as a part of the navigable waters of the United States, and to enter upon, use and enjoy the portions of the land not so cut away and converted and that public navigable waters for the deposit of dredged materials, together with such other purposes as may be needed for the preservation and maintenance of the improvement to be known as the Jacksonville to Lake Harney Cut-off Channel via Woodruff Creek and adjacent lands, and removed as a part of the navigable waters of the United States, and to enter upon, use and enjoy the portions of the land not so cut away and converted and that public navigable waters for the deposit of dredged materials, together with such other purposes as may be needed for the preservation and maintenance of the improvement to be known as the Jacksonville to Lake Harney Cut-off Channel via Woodruff Creek and adjacent lands, and removed as a part of the navigable waters of the United States, and to enter upon, use and enjoy the portions of the land not so cut away and converted and that public navigable waters for the deposit of dredged materials, together with such other purposes as may be needed for the preservation and maintenance of the improvement to be known as the Jacksonville to Lake Harney Cut-off Channel via Woodruff Creek and adjacent lands, and removed as a part of the navigable waters of the United States, and to enter upon, use and enjoy the portions of the land not so cut away and converted and that public navigable waters for the deposit of dredged materials, together with such other purposes as may be needed for the preservation and maintenance of the improvement to be known as the Jacksonville to Lake Harney Cut-off Channel via Woodruff Creek and adjacent lands, and removed as a part of the navigable waters of the United States, and to enter upon, use and enjoy the portions of the land not so cut away and converted and that public navigable waters for the deposit of dredged materials, together with such other purposes as may be needed for the preservation and maintenance of the improvement to be known as the Jacksonville to Lake Harney Cut-off Channel via Woodruff Creek and adjacent lands, and removed as a part of the navigable waters of the United States, and to enter upon, use and enjoy the portions of the land not so cut away and converted and that public navigable waters for the deposit of dredged materials, together with such other purposes as may be needed for the preservation and maintenance of the improvement to be known as the Jacksonville to Lake Harney Cut-off Channel via Woodruff Creek and adjacent lands, and removed as a part of the navigable waters of the United States, and to enter upon, use and enjoy the portions of the land not so cut away and converted and that public navigable waters for the deposit of dredged materials, together with such other purposes as may be needed for the preservation and maintenance of the improvement to be known as the Jacksonville to Lake Harney Cut-off Channel via Woodruff Creek and adjacent lands, and removed as a part of the navigable waters of the United States, and to enter upon, use and enjoy the portions of the land not so cut away and converted and that public navigable waters for the deposit of dredged materials, together with such other purposes as may be needed for the preservation and maintenance of the improvement to be known as the Jacksonville to Lake Harney Cut-off Channel via Woodruff Creek and adjacent lands, and removed as a part of the navigable waters of the United States, and to enter upon, use and enjoy the portions of the land not so cut away and converted and that public navigable waters for the deposit of dredged materials, together with such other purposes as may be needed for the preservation and maintenance of the improvement to be known as the Jacksonville to Lake Harney Cut-off Channel via Woodruff Creek and adjacent lands, and removed as a part of the navigable waters of the United States, and to enter upon, use and enjoy the portions of the land not so cut away and converted and that public navigable waters for the deposit of dredged materials, together with such other purposes as may be needed for the preservation and maintenance of the improvement to be known as the Jacksonville to Lake Harney Cut-off Channel via Woodruff Creek and adjacent lands, and removed as a part of the navigable waters of the United States, and to enter upon, use and enjoy the portions of the land not so cut away and converted and that public navigable waters for the deposit of dredged materials, together with such other purposes as may be needed for the preservation and maintenance of the improvement to be known as the Jacksonville to Lake Harney Cut-off Channel via Woodruff Creek and adjacent lands, and removed as a part of the navigable waters of the United States, and to enter upon, use and enjoy the portions of the land not so cut away and converted and that public navigable waters for the deposit of dredged materials, together with such other purposes as may be needed for the preservation and maintenance of the improvement to be known as the Jacksonville to Lake Harney Cut-off Channel via Woodruff Creek and adjacent lands, and removed as a part of the navigable waters of the United States, and to enter upon, use and enjoy the portions of the land not so cut away and converted and that public navigable waters for the deposit of dredged materials, together with such other purposes as may be needed for the preservation and maintenance of the improvement to be known as the Jacksonville to Lake Harney Cut-off Channel via Woodruff Creek and adjacent lands, and removed as a part of the navigable waters of the United States, and to enter upon, use and enjoy the portions of the land not so cut away and converted and that public navigable waters for the deposit of dredged materials, together with such other purposes as may be needed for the preservation and maintenance of the improvement to be known as the Jacksonville to Lake Harney Cut-off Channel via Woodruff Creek and adjacent lands, and removed as a part of the navigable waters of the United States, and to enter upon, use and enjoy the portions of the land not so cut away and converted and that public navigable waters for the deposit of dredged materials, together with such other purposes as may be needed for the preservation and maintenance of the improvement to be known as the Jacksonville to Lake Harney Cut-off Channel via Woodruff Creek and adjacent lands, and removed as a part of the navigable waters of the United States, and to enter upon, use and enjoy the portions of the land not so cut away and converted and that public navigable waters for the deposit of dredged materials, together with such other purposes as may be needed for the preservation and maintenance of the improvement to be known as the Jacksonville to Lake Harney Cut-off Channel via Woodruff Creek and adjacent lands, and removed as a part of the navigable waters of the United States, and to enter upon, use and enjoy the portions of the land not so cut away and converted and that public navigable waters for the deposit of dredged materials, together with such other purposes as may be needed for the preservation and maintenance of the improvement to be known as the Jacksonville to Lake Harney Cut-off Channel via Woodruff Creek and adjacent lands, and removed as a part of the navigable waters of the United States, and to enter upon, use and enjoy the portions of the land not so cut away and converted and that public navigable waters for the deposit of dredged materials, together with such other purposes as may be needed for the preservation and maintenance of the improvement to be known as the Jacksonville to Lake Harney Cut-off Channel via Woodruff Creek and adjacent lands, and removed as a part of the navigable waters of the United States, and to enter upon, use and enjoy the portions of the land not so cut away and converted and that public navigable waters for the deposit of dredged materials, together with such other purposes as may be needed for the preservation and maintenance of the improvement to be known as the Jacksonville to Lake Harney Cut-off Channel via Woodruff Creek and adjacent lands, and removed as a part of the navigable waters of the United States, and to enter upon, use and enjoy the portions of the land not so cut away and converted and that public navigable waters for the deposit of dredged materials, together with such other purposes as may be needed for the preservation and maintenance of the improvement to be known as the Jacksonville to Lake Harney Cut-off Channel via Woodruff Creek and adjacent lands, and removed as a part of the navigable waters of the United States, and to enter upon, use and enjoy the portions of the land not so cut away and converted and that public navigable waters for the deposit of dredged materials, together with such other purposes as may be needed for the preservation and maintenance of the improvement to be known as the Jacksonville to Lake Harney Cut-off Channel via Woodruff Creek and adjacent lands, and removed as a part of the navigable waters of the United States, and to enter upon, use and enjoy the portions of the land not so cut away and converted and that public navigable waters for the deposit of dredged materials, together with such other purposes as may be needed for the preservation and maintenance of the improvement to be known as the Jacksonville to Lake Harney Cut-off Channel via Woodruff Creek and adjacent lands, and removed as a part of the navigable waters of the United States, and to enter upon, use and enjoy the portions of the land not so cut away and converted and that public navigable waters for the deposit of dredged materials, together with such other purposes as may be needed for the preservation and maintenance of the improvement to be known as the Jacksonville to Lake Harney Cut-off Channel via Woodruff Creek and adjacent lands, and removed as a part of the navigable waters of the United States, and to enter upon, use and enjoy the portions of the land not so cut away and converted and that public navigable waters for the deposit of dredged materials, together with such other purposes as may be needed for the preservation and maintenance of the improvement to be known as the Jacksonville to Lake Harney Cut-off Channel via Woodruff Creek and adjacent lands, and removed as a part of the navigable waters of the United States, and to enter upon, use and enjoy the portions of the land not so cut away and converted and that public navigable waters for the deposit of dredged materials, together with such other purposes as may be needed for the preservation and maintenance of the improvement to be known as the Jacksonville to Lake Harney Cut-off Channel via Woodruff Creek and adjacent lands, and removed as a part of the navigable waters of the United States, and to enter upon, use and enjoy the portions of the land not so cut away and converted and that public navigable waters for the deposit of dredged materials, together with such other purposes as may be needed for the preservation and maintenance of the improvement to be known as the Jacksonville to Lake Harney Cut-off Channel via Woodruff Creek and adjacent lands, and removed as a part of the navigable waters of the United States, and to enter upon, use and enjoy the portions of the land not so cut away and converted and that public navigable waters for the deposit of dredged materials, together with such other purposes as may be needed for the preservation and maintenance of the improvement to be known as the Jacksonville to Lake Harney Cut-off Channel via Woodruff Creek and adjacent lands, and removed as a part of the navigable waters of the United States, and to enter upon, use and enjoy the portions of the land not so cut away and converted and that public navigable waters for the deposit of dredged materials, together with such other purposes as may be needed for the preservation and maintenance of the improvement to be known as the Jacksonville to Lake Harney Cut-off Channel via Woodruff Creek and adjacent lands, and removed as a part of the navigable waters of the United States, and to enter upon, use and enjoy the portions of the land not so cut away and converted and that public navigable waters for the deposit of dredged materials, together with such other purposes as may be needed for the preservation and maintenance of the improvement to be known as the Jacksonville to Lake Harney Cut-off Channel via Woodruff Creek and adjacent lands, and removed as a part of the navigable waters of the United States, and to enter upon, use and enjoy the portions of the land not so cut away and converted and that public navigable waters for the deposit of dredged materials, together with such other purposes as may be needed for the preservation and maintenance of the improvement to be known as the Jacksonville to Lake Harney Cut-off Channel via Woodruff Creek and adjacent lands, and removed as a part of the navigable waters of the United States, and to enter upon, use and enjoy the portions of the land not so cut away and converted and that public navigable waters for the deposit of dredged materials, together with such other purposes as may be needed for the preservation and maintenance of the improvement to be known as the Jacksonville to Lake Harney Cut-off Channel via Woodruff Creek and adjacent lands, and removed as a part of the navigable waters of the United States, and to enter upon, use and enjoy the portions of the land not so cut away and converted and that public navigable waters for the deposit of dredged materials, together with such other purposes as may be needed for the preservation and maintenance of the improvement to be known as the Jacksonville to Lake Harney Cut-off Channel via Woodruff Creek and adjacent lands, and removed as a part of the navigable waters of the United States, and to enter upon, use and enjoy the portions of the land not so cut away and converted and that public navigable waters for the deposit of dredged materials, together with such other purposes as may be needed for the preservation and maintenance of the improvement to be known as the Jacksonville to Lake Harney Cut-off Channel via Woodruff Creek and adjacent lands, and removed as a part of the navigable waters of the United States, and to enter upon, use and enjoy the portions of the land not so cut away and converted and that public navigable waters for the deposit of dredged materials, together with such other purposes as may be needed for the preservation and maintenance of the improvement to be known as the Jacksonville to Lake Harney Cut-off Channel via Woodruff Creek and adjacent lands, and removed as a part of the navigable waters of the United States, and to enter upon, use and enjoy the portions of the land not so cut away and converted and that public navigable waters for the deposit of dredged materials, together with such other purposes as may be needed for the preservation and maintenance of the improvement to be known as the Jacksonville to Lake Harney Cut-off Channel via Woodruff Creek and adjacent lands, and removed as a part of the navigable waters of the United States, and to enter upon, use and enjoy the portions of the land not so cut away and converted and that public navigable waters for the deposit of dredged materials, together with such other purposes as may be needed for the preservation and maintenance of the improvement to be known as the Jacksonville to Lake Harney Cut-off Channel via Woodruff Creek and adjacent lands, and removed as a part of the navigable waters of the United States, and to enter upon, use and enjoy the portions of the land not so cut away and converted and that public navigable waters for the deposit of dredged materials, together with such other purposes as may be needed for the preservation and maintenance of the improvement to be known as the Jacksonville to Lake Harney Cut-off Channel via Woodruff Creek and adjacent lands, and removed as a part of the navigable waters of the United States, and to enter upon, use and enjoy the portions of the land not so cut away and converted and that public navigable waters for the deposit of dredged materials, together with such other purposes as may be needed for the preservation and maintenance of the improvement to be known as the Jacksonville to Lake Harney Cut-off Channel via Woodruff Creek and adjacent lands, and removed as a part of the navigable waters of the United States, and to enter upon, use and enjoy the portions of the land not so cut away and converted and that public navigable waters for the deposit of dredged materials, together with such other purposes as may be needed for the preservation and maintenance of the improvement to be known as the Jacksonville to Lake Harney Cut-off Channel via Woodruff Creek and adjacent lands, and removed as a part of the navigable waters of the United States, and to enter upon, use and enjoy the portions of the land not so cut away and converted and that public navigable waters for the deposit of dredged materials, together with such other purposes as may be needed for the preservation and maintenance of the improvement to be known as the Jacksonville to Lake Harney Cut-off Channel via Woodruff Creek and adjacent lands, and removed as a part of the navigable waters of the United States, and to enter upon, use and enjoy the portions of the land not so cut away and converted and that public navigable waters for the deposit of dredged materials, together with such other purposes as may be needed for the preservation and maintenance of the improvement to be known as the Jacksonville to Lake Harney Cut-off Channel via Woodruff Creek and adjacent lands, and removed as a part of the navigable waters of the United States, and to enter upon, use and enjoy the portions of the land not so cut away and converted and that public navigable waters for the deposit of dredged materials, together with such other purposes as may be needed for the preservation and maintenance of the improvement to be known as the Jacksonville to Lake Harney Cut-off Channel via Woodruff Creek and adjacent lands, and removed as a part of the navigable waters of the United States, and to enter upon, use and enjoy the portions of the land not so cut away and converted and that public navigable waters for the deposit of dredged materials, together with such other purposes as may be needed for the preservation and maintenance of the improvement to be known as the Jacksonville to Lake Harney Cut-off Channel via Woodruff Creek and adjacent lands, and removed as a part of the navigable waters of the United States, and to enter upon, use and enjoy the portions of the land not so cut away and converted and that public navigable waters for the deposit of dredged materials, together with such other purposes as may be needed for the preservation and maintenance of the improvement to be known as the Jacksonville to Lake Harney Cut-off Channel via Woodruff Creek and adjacent lands, and removed as a part of the navigable waters of the United States, and to enter upon, use and enjoy the portions of the land not so cut away and converted and that public navigable waters for the deposit of dredged materials, together with such other purposes as may be needed for the preservation and maintenance of the improvement to be known as the Jacksonville to Lake Harney Cut-off Channel via Woodruff Creek and adjacent lands, and removed as a part of the navigable waters of the United States, and to enter upon, use and enjoy the portions of the land not so cut away and converted and that public navigable waters for the deposit of dredged materials, together with such other purposes as may be needed for the preservation and maintenance of the improvement to be known as the Jacksonville to Lake Harney Cut-off Channel via Woodruff Creek and adjacent lands, and removed as a part of the navigable waters of the United States, and to enter upon, use and enjoy the portions of the land not so cut away and converted and that public navigable waters for the deposit of dredged materials, together with such other purposes as may be needed for the preservation and maintenance of the improvement to be known as the Jacksonville to Lake Harney Cut-off Channel via Woodruff Creek and adjacent lands, and removed as a part of the navigable waters of the United States, and to enter upon, use and enjoy the portions of the land not so cut away and converted and that public navigable waters for the deposit of dredged materials, together with such other purposes as may be needed for the preservation and maintenance of the improvement to be known as the Jacksonville to Lake Harney Cut-off Channel via Woodruff Creek and adjacent lands, and removed as a part of the navigable waters of the United States, and to enter upon, use and enjoy the portions of the land not so cut away and converted and that public navigable waters for the deposit of dredged materials, together with such other purposes as may be needed for the preservation and maintenance of the improvement to be known as the Jacksonville to Lake Harney Cut-off Channel via Woodruff Creek and adjacent lands, and removed as a part of the navigable waters of the United States, and to enter upon, use and enjoy the portions of the land not so cut away and converted and that public navigable waters for the deposit of dredged materials, together with such other purposes as may be needed for the preservation and maintenance of the improvement to be known as the Jacksonville to Lake Harney Cut-off Channel via Woodruff Creek and adjacent lands, and removed as a part of the navigable waters of the United States, and to enter upon, use and enjoy the portions of the land not so cut away and converted and that public navigable waters for the deposit of dredged materials, together with such other purposes as may be needed for the preservation and maintenance of the improvement to be known as the Jacksonville to Lake Harney Cut-off Channel via Woodruff Creek and adjacent lands, and removed as a part of the navigable waters of the United States, and to enter upon, use and enjoy the portions of the land not so cut away and converted and that public navigable waters for the deposit of dredged materials, together with such other purposes as may be needed for the preservation and maintenance of the improvement to be known as the Jacksonville to Lake Harney Cut-off Channel via Woodruff Creek and adjacent lands, and removed as a part of the navigable waters of the United States, and to enter upon, use and enjoy the portions of the land not so cut away and converted and that public navigable waters for the deposit of dredged materials, together with such other purposes as may be needed for the preservation and maintenance of the improvement to be known as the Jacksonville to Lake Harney Cut-off Channel via Woodruff Creek and adjacent lands, and removed as a part of the navigable waters of the United States, and to enter upon, use and enjoy the portions of the land not so cut away and converted and that public navigable waters for the deposit of dredged materials, together with such other purposes as may be needed for the preservation and maintenance of the improvement to be known as the Jacksonville to Lake Harney Cut-off Channel via Woodruff Creek and adjacent lands, and removed as a part of the navigable waters of the United States, and to enter upon, use and enjoy the portions of the land not so cut away and converted and that public navigable waters for the deposit of dredged materials, together with such other purposes as may be needed for the preservation and maintenance of the improvement to be known as the Jacksonville to Lake Harney Cut-off Channel via Woodruff Creek and adjacent lands, and removed as a part of the navigable waters of the United States, and to enter upon, use and enjoy the portions of the land not so cut away and converted and that public navigable waters for the deposit of dredged materials, together with such other purposes as may be needed for the preservation and maintenance of the improvement to be known as the Jacksonville to Lake Harney Cut-off Channel via Woodruff Creek and adjacent lands, and removed as a part of the navigable waters of the United States, and to enter upon, use and enjoy the portions of the land not so cut away and converted and that public navigable waters for the deposit of dredged materials, together with such other purposes as may be needed for the preservation and maintenance of the improvement to be known as the Jacksonville to Lake Harney Cut-off Channel via Woodruff Creek and adjacent lands, and removed as a part of the navigable waters of the United States, and to enter upon, use and enjoy the portions of the land not so cut away and converted and that public navigable waters for the deposit of dredged materials, together with such other purposes as may be needed for the preservation and maintenance of the improvement to be known as the Jacksonville to Lake Harney Cut-off Channel via Woodruff Creek and adjacent lands, and removed as a part of the navigable waters of the United States, and to enter upon, use and enjoy the portions of the land not so cut away and converted and that public navigable waters for the deposit of dredged materials, together with such other purposes as may be needed for the preservation and maintenance of the improvement to be known as the Jacksonville to Lake Harney Cut-off Channel via Woodruff Creek and adjacent lands, and removed as a part of the navigable waters of the United States, and to enter upon, use and enjoy the portions of the land not so cut away and converted and that public navigable waters for the deposit of dredged materials, together with such other purposes as may be needed for the preservation and maintenance of the improvement to be known as the Jacksonville to Lake Harney Cut-off Channel via Woodruff Creek and adjacent lands, and removed as a part of the navigable waters of the United States, and to enter upon, use and enjoy the portions of the land not so cut away and converted and that public navigable waters for the deposit of dredged materials, together with such other purposes as may be needed for the preservation and maintenance of the improvement to be known as the Jacksonville to Lake Harney Cut-off Channel via Woodruff Creek and adjacent lands, and removed as a part of the navigable waters of the United States, and to enter upon, use and enjoy the portions of the land not so cut away and converted and that public navigable waters for the deposit of dredged materials, together with such other purposes as may be needed for the preservation and maintenance of the improvement to be known as the Jacksonville to Lake Harney Cut-off Channel via Woodruff Creek and adjacent lands, and removed as a part of the navigable waters of the United States, and to enter upon, use and enjoy the portions of the land not so cut away and converted and that public navigable waters for the deposit of dredged materials, together with such other purposes as may be needed for the preservation and maintenance of the improvement to be known as the Jacksonville to Lake Harney Cut-off Channel via Woodruff Creek and adjacent lands, and removed as a part of the navigable waters of the United States, and to enter upon, use and enjoy the portions of the land not so cut away and converted and that public navigable waters for the deposit of dredged materials, together with such other purposes as may be needed for the preservation and maintenance of the improvement to be known as the

THE WEATHER

Partly cloudy, continued warm
this afternoon, tonight and Satur-
day. Showers Saturday afternoon.

Anti-Poll Tax Bill Given Approval By Senate Sub-Group

**Demands Of Southern
Senator For Hear-
ings Brushed Aside;
7 States Affected**

RICHMOND, Va., Feb. 27. (AP)—A House of Delegates Committee today approved unanimously Governor William M. Tucker's plan to keep President Truman's name, if he is renominated, off the presidential ballot in Virginia. The bill was amended in two major particulars before being approved by the house privileges and elections committee.

One change would permit minor parties not on the Virginia ballot four years ago to get on the ballot if they qualify in ten other states, thus making it possible for the party of Henry A. Wallace to appear. A second amendment provided that only the state convention of a party may instruct its electors how to cast the vote of the state for President. Originally, the bill would have permitted this power to be delegated by the convention to the state committee.

WASHINGTON, Feb. 27. (AP)—Anti-poll tax legislation was approved today by a Senate Rules Subcommittee which brushed aside a southern senator's demand for hearings. The measure would let voters ballot in federal elections whether or not they have paid state poll taxes. It is one of the laws President Truman has asked as part of his "civil rights" program.

Many southern party leaders are rebelling against the program which also includes anti-lynching, anti-job discrimination and anti-union laws.

The anti-poll tax bill already has been approved by the House. The Senate subcommittee's action sends it along to the full committee, advancing it one step toward the Senate floor.

Senator Stennis (D-Miss.) appeared before the subcommittee and asked for hearings. Chairman Jenner (R-Ind.) said Senator Bricker (R-Ohio) and Myers (D-Pa.) voted with him that there is no need for hearings.

This matter has been explored fully by Congress in the past. (Continued on Page Three)

Negro Cleared By Jury In Accident Death Of Miller

A verdict that Jonathon R. Miller, Brunswick, Ga. electrical worker, came to death Tuesday evening as the result of an accident involving his truck and another vehicle, was returned yesterday afternoon by a coroner's jury summoned by Justice of the Peace W. E. Watson.

Clarence Noble, negro farm hand, whose automobile was involved in the collision Tuesday evening at Park Avenue and Twenty-fifth Street that resulted in the death of Mr. Miller, was released from County Jail where he had been held, pending the jury's verdict.

The jury of which Jack Ratigan was chairman, stated that the negligence of Mr. Miller was the direct cause of the accident, but that "his negligence was not criminal due to conditions at the scene at the time."

The jury further recommended that the "authorities take immediate steps to change the light used for traffic control at the intersection, to one which will adequately warn and control traffic from all directions, and that caution signs about the light be placed on north and south approaches."

The jury included Mr. Ratigan, D. R. McNab, W. B. Ellerbe, J. L. Thornley and John M. Benharik.

THE WEATHER

LAKELAND, Feb. 27. (AP)—The Federal State Frost Warning Service forecast for peninsular Florida tonight and Saturday was partly cloudy and warm with no frost seen through Monday.

Atlantic City	35
Boston	29
Baltimore	30
Cleveland	31
Detroit	30
Philadelphia	31
Pittsburgh	30
Washington	33
Winnipeg	1
Orlando	56

Senate Group Supports Cut In RFC Funds

**House Committee Pro-
poses Foreign Aid
of 4 1/2 Billions For
First 12 Months**

WASHINGTON, Feb. 27. (AP)—The Senate Banking Committee voted unanimously today to curtail the Reconstruction Finance Corporation's lending powers and continue the agency 10 years beyond June 30.

The committee approved a bill that would put a \$1,000,000,000 limit on the RFC's loan and investment authority. The present limit is \$2,000,000,000.

The measure would reduce the agency's surplus from \$550,000,000 to \$50,000,000. Capitalization would be cut from \$425,000,000 to \$100,000,000.

This \$725,000,000 would be returned to the Treasury. Senator Buck (R-Del.), chairman of a subcommittee which drafted the bill, said he favors applying this on the national debt.

Meanwhile a special House committee on foreign aid proposed that European recovery be started with \$4,500,000,000 (B) in aid the first 12 months.

It recommended another \$2,000,000,000 to combat disease and unrest in Japan, Korea, China (Continued on Page Three)

Greeks Launch 16 Mile Front Attack, Guerrillas Routed

ATHENS, Feb. 26. (AP)—Press reports said today the Greek army had launched an offensive on a 16-mile front northwest of Ioannina near the Albanian border. Guerrillas were reported fleeing in disorder and offering no resistance.

Five towns fell, the accounts said. These were Vissani, Delvinaki, Meropi, Palaopyrrhon and Kato Meropi.

The dispatches said the front is between the Aous River and the highway between Kalkapi and Kakkavia. The drive was pointed toward Kinalva. The reports said large quantities of food and supplies were captured.

Earlier dispatches from Epirus said the Greek army was conducting an offensive in the Zagoria district northeast of Ioannina. The accounts said the Greeks captured Skamneli and Franghesdes. Fifteen guerrillas were killed and six captured.

A Salonika dispatch said guerrillas had shelled the town of Didymoteikhon, 20 miles north of Alexandroupolis and killed two civilians.

Results Of Election On Radio Tonight

Seminole County schools are seeking today with political excitement as pupils cast their votes for mythical candidates for county offices, and final reports are scheduled to be announced over Radio Station WTRR this evening shortly after 7:00 o'clock, Brayley Oulham, school superintendent, announced today.

The voting is part of the Jaycee sponsored Youth Government program among white pupils in schools throughout the county. Preliminary returns, said Mr. Oulham, indicate that voters are solidly behind their favorites.

Attorney General Says FBI Finds No Bribery In Capone Men Parole

WASHINGTON, Feb. 27. (AP)—Attorney General Tom Clark says Federal Bureau of Investigation agents have found no bribery involved in the paroling of four former Al Capone gangsters.

The Federal Parole Board released the men last August after they had served about one-third of their 10-year sentences for an alleged conspiracy to extort \$1,000,000 from the motion picture industry.

Telling a House Appropriations Subcommittee the paroles had been "seriously criticized," Clark said "the charge that was made was that someone had been bribed."

"The FBI found no such evidence, although we put a considerable number of agents on it and they contacted some 300 people, including persons in and out of the penitentiary."

His testimony was made public today as the Appropriations Committee sent to the House a bill to finance the Justice Department in the year starting July 1.

The paroling of the four ex-convicts, Paul Ricca, Louis Cammarone, Philip D'Andrea and George Pagan, has been under investigation for months by a sub-

Protest Civil Rights Program



DEMOCRATIC NATIONAL CHAIRMAN J. Howard McGrath (seated) is shown with four of the five southern Democratic governors who conferred with him in Washington after declaring their opposition to the Administration's anti-discrimination legislation. Standing (l. to r.) are Ben T. Laney of Ark., R. Gregg Cherry of North Carolina, William Preston Lane Jr. of Maryland and J. Strom Thurmond of South Carolina. The governors warned that the Solid South is no longer "in the bag" after McGrath refused to have the legislation withdrawn (International)

CIO Auto Union House Group Cuts Says Political \$84,417,168 From Ban Is Invalid Sum Truman Asks

**Groundwork Is Laid
For Labor Action
In Drive For Votes**

WASHINGTON, Feb. 27. (AP)—The CIO United Auto Workers went to federal court here today attacking the Taft-Hartley Act's ban on union political spending. The suit contends the ban is unconstitutional and asks that the court issue an injunction to prevent the Justice Department from prosecuting the UAW for any part CIO invited criminal prosecution and the provision be declared unconstitutional.

CIO President Philip Murray was indicted Feb. 11.

Today's move on behalf of the UAW, President Walter Reuther, and Secretary Treasurer Emil Mazey is a civil suit.

It asks for a "declaratory judgment" that the provision violates the constitutional guarantees of free speech, press, assembly and petition.

It also serves notice that the UAW intends to take part in the 1948 political campaign in many ways—through newspapers, public meetings, radio broadcasts, paid advertisements in daily newspapers, handbills and pamphlets.

Tampa Track Winner Being Trained Here

"Misty B." Florida quarter horse champion, who romped away with another victory by outspeeding all competition at the Sunshine Park at Tampa yesterday, will be among the nine quarter horses being trained here who will compete in a race week from Sunday at the Dusty Boots track at the Municipal Airport, Jack Sassard, president of the Dusty Boots Riding Club announced today.

Cecil Cowart of Sanford has trained "Misty B." which is owned by "Geech" Partin of Kissimmee. The nine race horses are kept in stables built near the track during the early part of the racing season.

In addition to the quarter horses there will be cow pony races here, said Mr. Sassard. He revealed that as the result of publicity given the Sanford track in Cattleman's Magazine, Ted Wagner, Pennsylvania horse breeder, had brought two fast quarter horses here for training.

SEVEN DISMISSED WASHINGTON, Feb. 27. (AP)—The Army announced today the dismissal of seven employees in St. Louis for reasons of national security.

In addition, the Army said it has turned over to the FBI an unspecified number of other cases for investigation under President Truman's order for a loyalty check on government employees.

The discharged employees were dropped from the finance section of the Army administration center in St. Louis. The center handles records, including those of former soldiers.

FIRE DECREASE TALLAHASSEE, Feb. 27. (AP)—A 55 percent reduction in woods fires on protected land this winter was reported today by the Florida Forest Service.

Benes Predicts Evil Results For Czechs; Tension Grips Finns

**Moscow Offers Hel-
sinki Treaty For
Mutual Defense;
Swedes Informed**

HELSINKI, Feb. 27. (AP)—Prime Minister Stalin has informed Finland she should sign a pact with the Soviet Union similar to those linking Russia and its other neighbors, sources close to the government said tonight.

PARIS, Feb. 27. (AP)—Foreign Minister Georges Bidault said today the Communist seizure of Czechoslovakia means the liberty of the rest of Europe. He told the national assembly, the events in Prague pushed Europe back to where it was when Adolf Hitler was climbing to power. "An event of incalculable consequence has now rendered futile all the efforts made to liquidate Europe from an intense tyranny," he said.

HELSINKI, Finland, Feb. 27. (AP)—Tension suggesting an atmosphere of government crisis pervaded Finland today with the announcement that Moscow has sent Helsinki a proposal for a new treaty.

The foreign ministry announced Russia has sent a letter direct to President Juho K. Paasikivi. The ministry did not say what kind of pact was intended.

It is well known that Finnish leaders for some time have been studying closely the agreements the Soviet Union has made one after another with the Balkan countries, a network of pacts linking those countries closely to Russia.

An authoritative source said Karl August Fagerholm, speaker of Parliament, would go to Stockholm, perhaps to inform the Swedish government of the Russian proposal.

Diplomatic quarters said the Russian letter was a "Soviet program declaration." Reports persisted that high-level discussions were under way in the Finnish government concerning a "new development in Russian-Finnish relations."

The cabinet met with the President this morning. Its discussion (Continued on Page Three)

Britain Sends Second Cruiser To Guatemala

LONDON, Feb. 27. (AP)—Britain is sending a second cruiser to British Honduras in a show of strength.

The admiralty announced today the cruiser Devonshire, with troops aboard, will join the cruiser Sheffield at Belize, the capital of the Devonshire. It is going from Jamaica, the Sheffield from the Ionian Islands.

The central American colony is claimed by Guatemala, whose officials said dispatch of the first cruiser, announced yesterday, was a hostile act. The Guatemalan foreign ministry announced last night the country is willing to submit to a dispute to mediation.

The British said the cruisers were dispatched "because of possible incidents staged by irresponsible elements in neighboring Guatemala." The Guatemalan foreign ministry called this a pretext.

Democrats Check To GOP Congress Problem Of Farm Prices Support

WASHINGTON, Feb. 27. (AP)—The Democratic Administration today checked to the Republican Congress the problem of what to do about supporting farm prices after Dec. 31.

Unless Congress acts in the meantime, price supports for many farm commodities will be ended on that date.

This prospect might become an important issue in farm states in the coming presidential campaign.

Secretary of Agriculture Anderson outlined the Administration's position in letters to Senator Capper and Rep. Hope, Kansas Republicans who head the Senate and House Agriculture Committees.

Anderson wrote that he had asked Congress more than a year ago to pass new price support legislation, but that it had failed to do so. He said he does not want to take the responsibility for saying what those policies should be after the present law expires.

That law makes most farm products eligible for price supports at not less than 90 percent of parity until the end of

Russian Plan Is Rejected By U. S.

WASHINGTON, Feb. 27. (AP)—The State Department indicated today the United States will reject Russia's proposal that Poland, Yugoslavia and Czechoslovakia be consulted before the western powers decide anything about Germany's future. At a conference in London, the United States, Britain and France are now trying to work out plans for the economic unity of Western Germany. They met with out Russia because they couldn't reach any agreement with Russia for unification of all Germany.

2 Christian Poles Die In Palestine's Partition Clashes

**Jews Believe Men To
Be British By Their
Accent, Profanity**

JERUSALEM, Feb. 27. (AP)—Two Christian Poles were found slain in Jerusalem today and police said they believed the men were "executed" by Jews convinced they had aided Arabs.

Their names were not available. One was a former Polish consular employee and the other a freelance journalist.

The deaths raised the death toll in communal fighting since the partition of Palestine was voted by the United Nations last Nov. 29 to 1,431.

The Holy City was quiet during the morning after a night during which gunfire was heard almost constantly for seven hours.

The Jewish agency's independent investigation of the Ben Yehuda street bombing Sunday, in which 51 persons were known dead, opened today before a three-man board.

Two Jews who named a road block through which the persons believed to have done the bombing entered the area, told the board.

We are convinced the men (Continued on Page Three)

Editor And Reporter Fined For Contempt

NEWBURGH, N. Y., Feb. 27. (AP)—The news editor and a reporter for the Newburgh News were fined \$100 each and sentenced to 10 days in jail today for contempt in refusing to tell an Orange County grand jury where they obtained "numbers" lottery tickets reproduced in the paper.

They paid their fines and immediately were taken to jail.

The news editor, Douglas V. Clarke, 33, and the reporter, Charles L. Leonard, 27, refused to disclose their sources because it would violate a confidence, and in the newspaper business a confidence is a sacred thing.

Clarke appeared before the grand jury Wednesday and Leonard Thursday.

Communists Take Rap- id Action In Re- organizing Nation's Politics, Economics

PRAGUE, Feb. 17. (AP)—President Benes today swore in a new government loaded with Communists, a cabinet he is reported to have said "could have only evil results."

The trait, weary President received Communist Premier Klement Gottwald and the 12 new members of the cabinet at the presidential palace and told them "the decision to accept you was difficult personally for me."

The meeting was polite and stuffy formal. As the President spoke, Communists throughout the country were going ahead with their determination to reorganize the country's entire industrial, educational and everyday life.

A presidential secretary said Benes had not required, but decided to make any further comment for the time being.

The ministry of interior ordered Communist-inspired action committees to fill vacancies in local and regional national front groups whose members have resigned or been fired in the growing purge.

The government radio carried an account of what happened at Hradcany Palace today. It said Gottwald promised the President his government would be "constitutional, democratic and parliamentary," and that he thanked Benes "for your confidence."

A close friend of the President said last night Benes had told Gottwald this new government could have only evil results and that he wished to Communist pressure only because he feared (Continued on Page Three)

Registration For Lion's Baseball League Is Mar. 10

Registration for the Lions Club's Junior Baseball League will take place on Mar. 10, practice will start at the lake-front softball diamond and the first game of the season for the four team league will be on Mar. 15, it was announced today by Jack Morrison, league manager, at the Lions meeting at the Tourist Center today.

Plans were made to furnish players with T-shirts bearing Lions insignia last year between 60 and 70 boys reported for initial practice and at the end of the playing season about 45 boys on the teams, said Mr. Morrison. Games will be played at 4:15 o'clock on afternoons with Lions officiating as umpires.

Harry Robson announced that 175 small T-shirts with studs had been delivered to Supt. W. W. Lawton and that formal presentation of the flags, one for each teacher's desk, will be made in the near future. President W. O. Livingston announced that the state Lions convention will be held in St. Augustine on May 9 through the 11th. Application of Frank Swarthous for membership was announced. Eugene E. Paulson of Liberty, Mo., was a guest.

SCOUT TROOP 31 There will be a reorganization meeting of Boy Scout Troop No. 31 at 7:30 Monday evening at the Methodist Church Annex. All members are urged to be present.

LEMMERE TESTIFIES WASHINGTON, Feb. 27. (AP)—Harold H. Lemmere testified today that Major General Bennett E. Meyers stopped his \$125 monthly dividend in a joint government bond deal after Lemmere told Senate investigators about Meyers' business deals.

Lemmere told a federal jury about multimillion dollar purchasing of government bonds by Aid Corporation, a holding company owned by Meyers and his wife.

METEOR DERAILED RALEIGH, N. C., Feb. 27. (AP)—Eight cars of the Seaboard Airline Railroad's Florida to New York passenger train, the north-bound Silver Meteor, were derailed in the heart of Raleigh about 1 A. M. today.

Seaboard officials said the train was traveling at slow speed in preparation to stopping at Raleigh and that none of the approximately 350 passengers was injured.