

### Casselberry Council Decides

# Golf Course Puzzle To Voters

By BATHY NIBLACK

CASSELBERRY — The dilemma of the Land 'O Lakes golf course and country club, and the question of how to keep it in a long term, has been thrown into a long term puzzle for the city council. The council is to decide this week to authorize a referendum on this matter. The purpose of the referendum will be to let the citizens of Casselberry decide if they are willing to pay an ad valorem tax in order to purchase the course.

The question of what to do with the golf course has come up many times in the past several years. Concern has been especially great recently since the mayor, Douglas Grimes, has indicated his wish to sell the golf course property to a private owner. Dr. John Zacco, who is a relatively new member of the council, presented a proposal this week for the city's purchase of the golf course. Zacco pointed out that "many people have tried to determine what the future of the golf course would be." He went on to say that the future of the course "affects every one in the city" since it is not merely a golf course, but "184 acres of land through a residential area." Zacco's proposal for funding the purchase provides

for the lifting of the tax on utilities to a straight 10 per cent beginning in 1973, the proceeds of the city's cigarette tax to purchase, and the sale of certain lots from the total property area. The sale price of the course is \$2,000,000, and there would be a \$400,000 interest for the first five years, and \$68,000 per year for 15 years after that.

There was a great deal of opposition from other council members to this plan. Councilman Harry Sambrook pointed out that as the population increases, the city's other financial needs will increase. Council Chairman Edith Duerr was concerned about the cigarette tax, saying the city could not operate if it was pledged to another cause.

Zacco claimed that the sale of 27 lots from the total area would provide for the city's needs. Herb Licht, a local developer, has already indicated his interest in these lots at \$5,000 each, but made it clear that this would be conditioned upon the availability of city water and sewer, and upon the city's agreement to place the lots.

A large number of citizens were on hand at the work session on the golf course, and several expressed their feelings about it. These expressions seem to indicate that the citizens of Casselberry are interested in keeping this golf course for several reasons.

The golf course is important not only for its recreational

value, but for its ecological value, for the fact that it provides a "green belt" throughout the city. Citizens are also greatly concerned that the land will be sold for apartments and condominiums. According to Zacco, "if the city does not make a major commitment, it is in for the biggest apartment house development in the area."

Ed Yokely expressed his concern in this matter, saying, "This problem is all over the nation. We have concrete jungles in every city. We are in the midst of the same thing in this area. Several other citizens expressed concern over the possibility of this land going for apartment development. The subject of ad valorem taxes came up rather early in the meeting, and by the end

of the meeting, the council decided to place the matter on a referendum, and attempt to find the feeling of the other citizens toward this. Council will authorize the referendum at regular meeting on Monday night, and it will take at least 45 days before the referendum is ready to place before the citizens.

### Diehard Opposition Won't Stop Plan OK

TALLAHASSEE, Fla. (AP) — Diehard opposition to a reapportionment plan creating a 120-member house with districts of six members is not likely to stop approval of the plan today.

Democratic leaders had the votes to pass the plan Wednesday night, but a rule that keeps bills off final consideration with a two-thirds vote halted proceedings for a day.

However, the 68-43 vote to go

to third reading was a reliable barometer of support for the reapportionment plan.

The Senate, which passed its 60 member reapportionment plan 28-1 Wednesday, was to consider claims bills and a measure extending the power of the state's planning agency.

Meanwhile, Senate President Jerry Thomas said a five-day extension of the session, due to end Friday, is necessary to complete work on appropriations and reapportionment.

The 15 world cities with more than a million phones include: New York City, Baltimore, Detroit, Chicago, Los Angeles, Minneapolis-St. Paul, Philadelphia, London, Moscow, Rome, Madrid, Tokyo, Paris, Montreal, Sydney, Australia.

## Gabbiest Nation In Entire World

By FRANK MACOMBER Copy News Service

Americans are the most talkative people in the world — telephone-wise, that is.

Each U.S. resident uses the telephone an average of 770 times a year, or roughly twice a day. And that doesn't count how many times the phone user answers someone else's call.

Canada is second in the world with an average of 720 calls per person, still slightly above the two-day average. Sweden is next with 674 calls per person on the average.

These are some of the statistics gathered over a 12-month period by the American Telephone & Telegraph Co., in a report, "The World's Telephones," with the help of telephone companies all over the globe.

Around the globe, the number of phones had climbed to 272.7 million by Jan. 1, 1971, a 17.6 million increase of 6.9 per cent over the previous year and in line with the rapid growth pattern established during the decade of the 1960s.

Even with this sharp advance, the number of nations with more than half a million phones has reached only 20. It is the latest country to reach the half-million mark.

Still leading the world in the number of phones as of Jan. 1, 1971, was the United States with 130.2 million in service, with 15 million more second and West Germany, with 11.1 million, next. While the figures are not comparable, the ratings are the same.

Fifteen cities in the world have more than a million phones. Of these, seven are in the United States.

At the world average in terms of international communications during the 1960's the volume of overseas calls climbed accordingly. Hence the number of international phone circuits from the United States mounted more than 500 per cent in the '60s to meet the accelerated demand.

In 1970, for example, there were more than 26 million phone messages to and from the United States — more than seven times the number reported in 1960.

Reflecting the phenomenal 30-year growth of global telephone communications, in 1971 the world had a population of nearly 3 billion. There were slightly less than 25 million phones. By 1971, when there were about 3 1/2 billion people on earth, the telephone population had soared to 272.7 million.

So, while world population fell just short of doubling in a half-century, the number of phones increased by more than 10 times.

## The Herald Bargain Section

Thursday, March 30, 1972  
THE SANFORD HERALD PAGE 1B

# Business Mirror Bonds, Like Stock, Also Risk

By JOHN CUNIFF AP Business Analyst  
NEW YORK (AP) — One of the oldest, most persistent generalizations about the securities markets is that stocks involve risk and bonds do not; that if you want to conserve your investment in the latter, avoiding the former.

The seed is implanted in the mind despite the harsh environment of contemporary inflation and college economic courses. It cannot be dislodged in adult life even by the evidence.

But bonds do involve risk. For example: A bond is purchased at a market value of \$100, scheduled to mature in 25 years. No doubt about the company's guarantee. It will pay \$100 in 1971 and 5 per cent dividends in the interim.

In the meantime, however, the trading price dips to \$80. That's all the market will pay. The owner is confident that he will get his \$100 at maturity, but he can wait that long? He finds he must sell, and so takes a \$15 loss.

This is only a simple example, but it happens often. And now there is another reason why the purchase of bonds is hardly the wise way to seek conservation of capital: Inflation.

In a massive but clear and erudite loose-leaf volume called "Q-V-T—The Three Keys to Stock Market Profits," John Winthrop Wright, one of the nation's most consistently successful investment advisers, writes: "Inflation has become a permanent factor in the economy of every nation, including the U.S.A. Therefore, ownership of fixed-income and deferred-dollar payment obligations is always a losing proposition for the investor."

Nothing startling about such an observation. Others have told us the same thing in other words, that it is wiser to be a borrower than a lender in times of inflation. Curiously though, we didn't apply this to the bond market.

Wright is a fundamentalist whose market philosophy is based on quality, value and timing—Q-V-T. His statements are always backed by masses of data rather than by subjective observations. A sample: Real Value Common Stocks 1949-1959 1960-1961 1962-1963 1964-1965 1966-1967 1968-1969 1970-1971 1972-1973

Real Value Corporate Bonds 1949-1959 1960-1961 1962-1963 1964-1965 1966-1967 1968-1969 1970-1971 1972-1973

Real Value Common Stocks 1949-1959 1960-1961 1962-1963 1964-1965 1966-1967 1968-1969 1970-1971 1972-1973



Walter Johnson, "I am proud of the fact that we have grown and opened up space in this city. It behooves us to do everything in our power to keep this golf course."

Dr. Harold J. McElrath, "I would hate to see this golf course come to a close. Dr. Zacco's method of increasing revenue looks like it will be a good one."

Paul McClure, "I hope I don't have to see this golf course leave. There would be no problem getting the money if we go for ad valorem taxes."

## Jack Prosser Ford can't say no!

**SPECIAL FORD GALAXIE 500 PACKAGE DEAL**  
NO POWER FOR VINYL ROOF  
AND CHARGE FRONT DISC BRAKES  
(A \$125\* VALUE!) WHEN YOU BUY IT ALSO EQUIPPED WITH...

- Special Color Glow Paint
- Accent Stripes and Body-side Molding
- Deluxe Wheel Covers
- Woodgrain Instrument Panel
- Factory Air Conditioning & Tinted Glass
- Automatic Seat Back Release (2-door only)
- Intermittent Windshield Wipers
- Bumper Guards
- Deluxe Seat Belts

(Standard equipment: Cruise-O-Matic and Power Steering)

Specialty equipped Ford Galaxie 500 \$3945

## Ford's got it and Chevy hasn't!

# A car with these extras and a package price reduced up to \$125.\* Plus a deal that puts you even further ahead!

**New Sprints... muscle-car look for less**  
Special red, white and blue Ford Pintos, Mavericks, Mustangs. Made up for fun-driving with unique hood treatments, accent stripes, dual racing mirrors, deluxe 2-spoke steering wheels, luxury interiors, much more!

**Pinot Runabout with Special Decor Option Group \$2195**

**Maverick 2-Door Sedan with Special Decor Option Group \$2375**

\*Based on reduction of wholesale price to dealers of package "B."

## JACK PROSSER FORD

3786 Hwy. 17-92 South Sanford, Florida  
Sanford Phone 322-1481 Winter Park Phone 644-8916

## Publix Aide Is Promoted

George W. Jenkins, president of Publix Super Markets, Inc., announced the promotion of G. Allen Tidwell to the new position of center director, effective April 15.

Tidwell, 52, is an Andalusia, Ala., native, graduated from Orlando High School. He served two years with the Marine Corps during the Korean conflict and then joined Publix some 23 years ago. He has served as vice president of the Melbourne Chamber of Commerce, a member of the board of directors of the Melbourne Rotary Club, a member of Lakeview Baptist Church in Tallahassee, he is a 33-degree Scottish Rite member of Jackson Lodge No. 1, F.&M., and is married to the former Annell Rogers of Orlando. The Tidwells have four children and will establish residency in Lakeland.

### Dr. Pepper Posts Record

Dr. Pepper posted record national gallonage sales during February with an increase of nearly 16 per cent over a same month last year. Cumulative gains for the two months were better than 15 per cent with February the company's 130th consecutive monthly increase.

The company's main thrust through advertising and promotion is getting under way and new packaging, including popular family sizes, is being introduced in many areas throughout the country.

The company has just announced that 1971 earnings were up about 20 per cent — 73 per cent share compared with 61 cent the previous year.

### Hughes Splits Stock

Stockholders of Hughes Supply, Inc., approved a 3-for-1 split of the corporation's stock. The action was taken at a special meeting of the stockholders. The split will be effective for holders of record on Feb. 23, 1972. Certificates for the newly issued shares will be mailed to stockholders on or about March 1.

At the meeting, Harry C. Hughes, president, also introduced the corporation's newest director, H. Clifford M. Hames, senior vice president and trustee of the First National Bank at Orlando.

### Tropicana Splits

BRADENTON — Anthony T. Rossi, president and chairman of the board of Tropicana Products, Inc., announced the corporation's stock split. The split will be effective for holders of record on Feb. 23, 1972. Certificates for the newly issued shares will be mailed to stockholders on or about March 1.

At the meeting, Harry C. Hughes, president, also introduced the corporation's newest director, H. Clifford M. Hames, senior vice president and trustee of the First National Bank at Orlando.

### Bank Merger Agreed

Edward W. Lane Jr., president of Atlantic Bancorpan, holding company for the Atlantic Group of Banks in Florida, and John R. DeBerry, chairman of the board of the Bank of New Smyrna, New Smyrna Beach, announced that management of the respective groups has reached an agreement in principle of the affiliation of the two groups. Subject to approval of the regulatory authorities, Atlantic Bancorpan proposes to issue 2.6 of its shares for each of the 50,000 outstanding shares of the New Smyrna Beach bank.

As of year end, the Bank of New Smyrna, which was chartered in 1936, reported deposits in excess of \$24 million and total capital of \$1.8 million.

### Name Change Announced

Food Fair Properties, Inc., plans to change its corporate name to Antlers Development, Inc. The name change has been approved by the directors of the real estate development company and will be recommended for approval by shareholders at the annual meeting in Philadelphia May 2.

### Radcliff Elects

Manager of Radcliff Materials, Inc., announced the election of John F. Weldon and Robert B. Callahan as vice presidents. Weldon is head of the gravel division of Radcliff and Callahan heads the construction materials division.

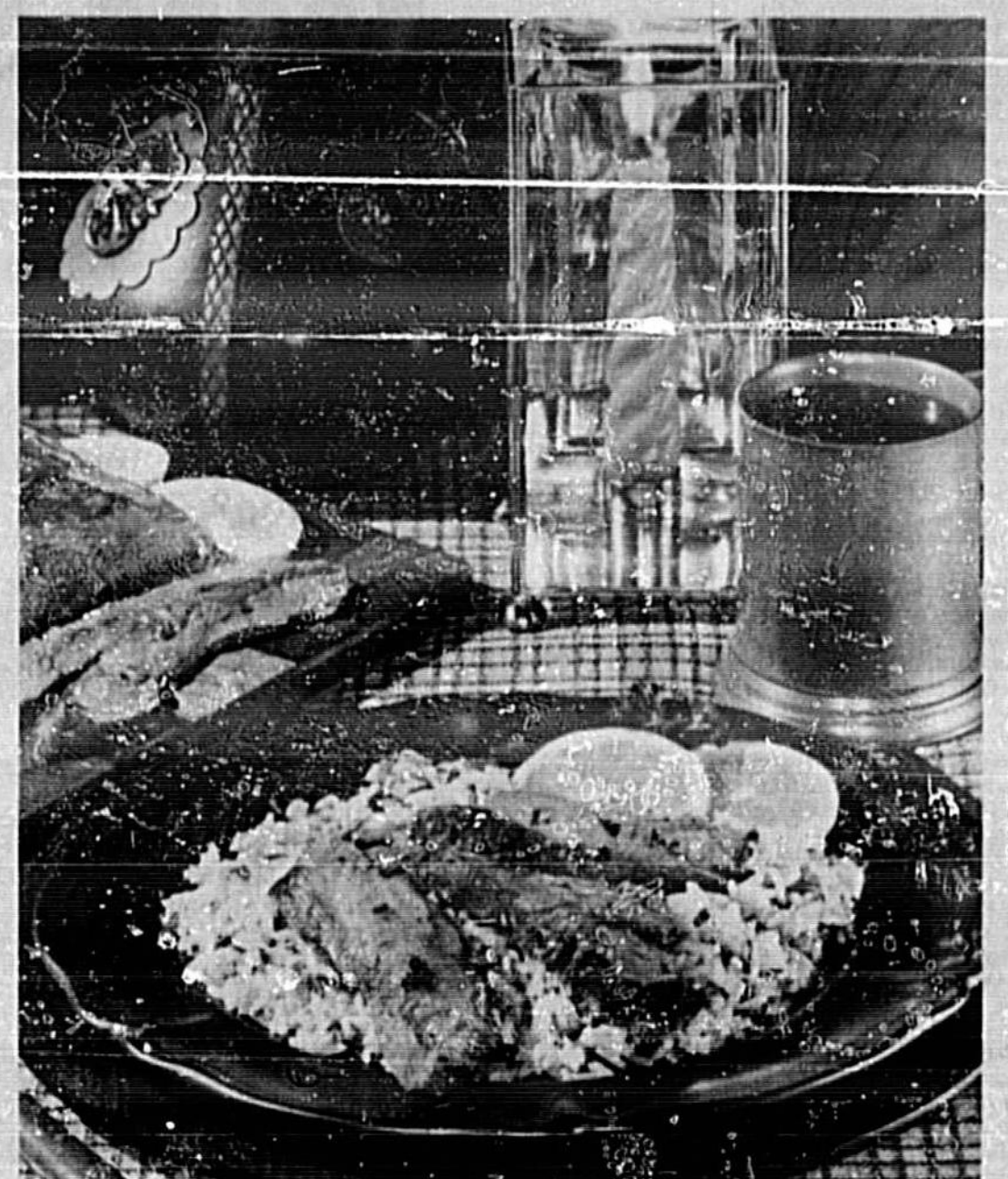
Radcliff Materials is a subsidiary of Southern Industries Corporation and has facilities in Maryland, Texas, Louisiana, Florida and Alabama.

### Airline Sets Record

MIAMI — National Airlines had record January net income of \$2,535,000, or 30 cents per share, as operating revenues reached an all-time one-month high of \$32,326,000. E. F. Delaney, vice president-finance, reported.

The figures compare with net income of \$61,000, or one cent per share, on operating revenues of \$20,066,000 in January 1971.

In the seven months of the current fiscal year, net income totalled \$17,607,000 to \$16,761,000, equal to \$1.27 per share. The comparable year earlier figures were a net loss of \$7,095,000, or 84 cent per share.



GLAMOR ENTREE — London broil with wild almondine rice is a glamor entree without an extravagant price tag.

## Flank Steak, Rice Easy To Prepare

By SUSAN DELIGHT Copy News Service

Flank steak, one of the lower priced of the beef cuts, can be one of the most flavorful meats when properly prepared. And it can star at a party just as prestigiously as one of the higher priced cuts.

Flank steak, which adjoins the short loin of the beef, is flat and oblong, is usually boneless and weighs a pound or so. It chapticks and a drying rack should be finely scored on both sides at the market when desired for braising or broiling. It may also be cut for stew and makes excellent hamburger.

The two flank steak recipes which follow gain their prestige from their presentation and accompaniments. Either one can impress party guests.

The California beef tempura combines the meat with mushrooms and onions. Slices of beef are dipped into a thin batter made with ice water which forms a crust the minute it hits the hot oil. The vegetables receive the same treatment.

Partially freezing the beef will make it easier to slice.

The tempura method of cooking is enjoying a surge of popularity in the West. A tempura set usually consists of a tempura pan, a skimmer, chopsticks and a drying rack. However, your own skillet and slotted wooden spoon will also do the job nicely.

London broil with wild almondine rice is quick and easy to prepare, but impressive in taste and eye appeal. The meat is flavored with slivered almonds and sherry wine.

**LONDON BROIL WITH WILD ALMONDINE RICE**  
1 pkg. (6 oz.) long grain and wild rice

2 cups water  
1/2 cup butter or margarine  
1/4 cup sherry  
1/4 cup toasted slivered almonds  
1 flank steak (1 lb.)  
1 cut clove garlic  
2 tbsp. melted butter or margarine  
1 tsp. lemon juice  
2 tpsps. chopped parsley  
2 tsp. Worcestershire sauce  
Cook contents of rice and seasoning packets with water and butter as directed on package, substituting sherry for 1/2 cup of the water called for. Add almonds; keep warm.

About 10 minutes before rice is done, rub steak on both sides with garlic. Brush with some of the melted butter; sprinkle with lemon juice. Broil in preheated broiler, 1 1/4 inches from heat, 5 minutes on each side. Cut in thin slicing slices.

Add parsley, Worcestershire and meat juices (from slicing steak) to remaining melted butter. Serve as sauce over meat and rice. Make over servings.

**CALIFORNIA BEEF TEMPURA**  
1 beef flank steak  
Green onions, mushrooms, parsley  
1/4 cup flour  
2 tpsps. cornstarch  
2 tpsps. vegetable oil  
1 egg, lightly beaten  
3/4 cup ice cold water  
2 tpsps. milk  
Peas or corn oil  
Sweet and sour sauce  
Soy dipping sauce

Trim fat from flank steak. Cut beef into thin diagonal slices, 1/4 to 1/2 inches long. Cut green onions, including tops into short lengths. Slice mushrooms. Break parsley into strips. Combine flour, cornstarch, vegetable oil and dipping sauce. Beat well. Dip each slice of beef into batter. Do not stir too much. Dip a few pieces of beef into batter, coating lightly. Slip into hot oil. After a minute or two add other bits of beef and vegetables, dipping first in batter. Cook until golden brown, remove from oil and drain on paper. For best results do not crowd more than half the cooking surface with food and keep the temperature of oil constant. Serve at once.

## Computer Combats Phony Phone Calls

By ANASTASIA MAURITZ AP Assisted Press Writer  
SAN FRANCISCO (AP) — A computer programmed to say "no" in a feminine voice has been enlisted by the telephone company to stop fraudulent credit card calls.

The computer, in a secret location in California, has prevented completion of some 500,000 bogus credit card calls since it began tipping off operators in January, says Ben Dial, assistant vice president for operations of Pacific Telephone Co.

The only equipment of its kind in the United States, the computer was developed to combat a mounting credit card fraud problem in California, Dial said.

"This machine will put a stop to it," he said.

When a credit card call is placed, the operator keypunches the card number into the computer circuit. If the number checks out, the operator hears a recorded female voice say "Okay." If the number is a phony, the voice says "No," repeats the number and says "No" again.

The process takes 22 seconds. A caller who gives a false card number is offered the option of paying for the call or hanging up.

Pacific Telephone was hit with a surge of credit card fraud in 1971 when under-ground newspaper publishers suggested for making up credit card numbers. bogus calls worth \$6 million were placed, mostly at coin telephones.

"We had to stop it at the source because once a fraudulent call is placed, you don't find out about it for some time," Dial said.

The computer check is entered automatically around Hollywood and the larger universities, where most of the phony calls occur, Dial said.

"California, in fact, accounts for half the fraudulent credit card calls in the country last year," he said.

"There may be some people who feel that real money is not involved," he said.



DR. CHARLES MILLICAN (left), president of Florida Technological University, was greeted by School Superintendent John Angel when Millican spoke at the dedication of W. A. Teague Middle and Forest City Elementary Schools.

## Tips On 3 Spanish Dishes

By THE BASCOMES Copy News Service

MARBELLA, Spain — The Costa del Sol lies peacefully between the Mediterranean and the Sierra Morena mountains in this beautiful country.

Blending most suitably with its natural surroundings here is a new resort hotel — the Andalusia Plaza. In architectural design it is reminiscent of classical Spanish 15th Century buildings. Its four centuries leading from the hotel to the garden are faithful reproductions of those of the majestic Plaza buildings in Seville.

From the Bodegón de Sancho Pansa kitchen, here offerings:

**GALAXACHO**  
1 1/2 lbs. fresh tomatoes, peeled and coarsely chopped (peeled and cleaned)  
1 large onion, peeled and chopped  
1 medium to large cucumber, peeled and chopped  
1 medium green pepper, deribbed, seeded, and chopped  
2 tpsps. chopped fresh garlic  
1/4 cup red wine vinegar  
2 tpsps. salt  
4 tpsps. olive oil

Mix all ingredients in a bowl, about two cups at a time. Put into blender and mix at high speed about two minutes on each side. Take out hunk and put in heat-resistant casserole. In the same oil, add the garlic, parsley, clams, shrimp, and fry over medium heat for about two minutes.

Add all this and any juice on top of the hake. Spread the peas around the casserole. Chop up the hard-boiled egg and sprinkle over top of dish. Slice the sweet pepper and arrange in strips alternating with the asparagus tips.

**HEARTS OF ARTICHOKES ROMANA**  
6-12 artichoke hearts  
Flour  
Olive oil  
Salt  
Pepper

Roll the artichoke hearts in the flour. Heat a thin layer of olive oil in a frying pan (medium heat). Fry until the hearts become golden brown. Lower heat if they burn too fast. Do not overload frying pan or they will stick together. Salt and pepper to taste.

**MERLUZE A LA VASCA**  
(For two people)  
About 1/2 lb. hake (or cod) in slices  
About 20 tiny clams  
About 10 small shrimp (peeled and cleaned)  
2 tpsps. baby green peas  
2 tpsps. olive oil  
1 large garlic clove, finely chopped  
1/2 tsp. chopped parsley  
1 hard-boiled egg  
1 red sweet pepper  
4 asparagus tips  
Sau

Lightly flour the hake. Heat olive oil in frying pan, saute hake for about two minutes on each side. Take out hake and put in heat-resistant casserole. In the same oil, add the garlic, parsley, clams, shrimp, and fry over medium heat for about two minutes.

Add all this and any juice on

**SATURATED COVERAGE WITH The Herald Bargain Section**

25,000 copies are distributed to more than 100,000 readers throughout the area, including: Sanford, Forest City, Enterprise, DeBary, Deltona, Osteen, Longwood, Casselberry, North Orlando, Fern Park, Altamonte Springs, Oviedo, Chuluota, Winter Park, Maitland and Geneva.

# Clothes Tips To Elderly

By JOYCE FOARK  
Copley News Service

Since we live in a youth-oriented society, people over 65 have problems in selecting clothes that are appropriate to them. The elderly have specific clothing needs that differ from the rest of us.

The senior citizens have undergone a physical change. They have become shorter, there's a stiffening of the joints, and a shifting of body fat (enlarged waistline, etc.).

The abdomen and hips broaden, the legs and arms get thinner, and they are much more susceptible to temperature changes.

The skin yellows, hair grays, and the blood vessels become more visible. The vision is sensitive to light, and it is dimmer. If you are a senior citizen or if you are shopping for one, keep these suggestions in mind:

Garments should open down the front. It's best if the garment does not have to be pulled over the head.

Avoid yellow, red, blue, blue-violet and purple garments. Bright colors are best and an older person should be avoided.

Low necklines are not attractive. Clothes should be soft and have a minimum of seams. Comfort is most important.

Dresses should be designed with little accent on the bustline. The waist should be larger than normal and the design should emphasize it. There should be a definite waistline or none at all. Avoid raised or lowered waistlines on garments.

Men's trousers should be shortened in the back, and the waist should be increased in size.

Clothes for elderly people should be light in weight to reduce the pressure on the shoulders. Heavy clothing can create fatigue.

DOLL SHOP owner played by Carmen Miller tries to raise the rent for the mean landlord played by Joseph Picone in play presented by third graders at Pinecrest Elementary School. (Staff Photo)

## Busing In Reverse Teachers Come To Kids

By FRANK MACOMBER  
Copley News Service

The folks in Myrtle Creek, Ore., got tired of reading and hearing about the pros and cons of school busing, the teacher shortages, etc. So their school authorities decided to do something about it.

Now, instead of hundreds of kids going to kindergarten, the teachers come to the kids, in their homes. The teachers, by the way, are bus drivers.

The reverse system is working well, school officials claim. All might catch on in other school districts in the state and eventually the nation.

### WORLD ALMANAC FACTS



Calvin Coolidge became president after the death of Warren Harding and was elected president in 1924. Coolidge gained national prominence in 1919, the World Almanac recalls, when as governor of Massachusetts he sent the militia to Boston during a police strike, declaring that there is no right to strike against the public safety by anyone, anywhere, any time.

charge to operate public school kindergartens.

On the subject of kids, an encouraging number of the nation's high school students still are interested in space projects, even if Congress is growing tired of financing them.

Last year the federal space agency asked high school students to submit experiments and demonstrations which might be conducted during the three Skylab earth-orbiting missions scheduled for next year. The agency's aim was to stimulate interest in science and technology by involving students in space research.

Some of the most attractive features of the teachers-to-buses concept is that it cuts out \$169 per pupil each year instead of the \$309 per pupil.

Student response to the Skylab contest is one of the largest in the more than 20 years the National Science Teachers' Association has been sponsoring such competitions, says Mrs. Dorothy Gilbert, NSTA assistant executive secretary for student programs. The association is a co-sponsor with the National Aeronautics and Space Administration of the Skylab student contest.

Some of the experiment proposals are promising, NASA officials say. The 25 contest finalists will be selected in April and experiments to be carried on Skylab missions will be chosen in May.

Ever since the automobile was invented there have been silly jokes about women's question marks behind the wheel. Women's Lib hasn't got around yet to hollerin' about

**JOIN SUN TRAVEL**  
On A Completely Escorted  
**TWO WEEK TOUR OF SWITZERLAND AND ITALY**  
Rome  
Florence  
Milan  
Lucerne  
Zurich

Leaves May 18—Returns June 1  
Round Trip Air And Land  
Arrangements From And To Orlando

**\$804.00** Per Person  
Double Occupancy

Based On 15 People  
For Further Information Stop In Or  
CALL 323-4650

**SUN TRAVEL Agency**  
2017 S. French Ave. Sanford

**WARREN STANLEY SHOE STORE**  
1411 BEELINE HWY. 5520 E. COLONIAL DRIVE  
ONE BLOCK E. OF ORANGE BLOSSOM TRAIL ONE BLK. W. OF LAKE BARTON RD. HWY. #436

**LADIES' FAMOUS BRANDS**  
• JOYCE  
• SELBY  
• POPPAGALLO  
• RED CROSS  
• BAMBOLINOS  
• AND MANY MORE

**Ladies' Spring SANDALS**  
Value to \$30  
**\$5.99**  
Value to \$25  
**\$4.99**

**MEN'S FAMOUS NAME BRANDS DRESS SHOES**  
• WETTERS • HORN BUSH  
• SWISS MASTERS • FREEMAN  
• HANBY by FREEMAN

Values \$22 to \$40  
**\$12.00**  
to  
**\$18.99**

Older White Patents and Black Patents — Boys' Black Leather Oxfords  
Appl. Special  
**\$5.99**  
to \$11.99  
VALUE

**DOES**  
A HAND BILL tell about Mrs. Jones' new baby?

**DOES**  
A CIRCULAR tell about Mary Smith's wedding?

**DOES**  
A SIGNBOARD tell about Joe's fishing trip?

**DOES**  
A "SHOPPER" tell about the Greyhounds, Lions, Saints, Raiders, Seminoles and Knights winning?

**DOES**  
A MAILER tell about the community organizations?

**DOES**  
A BROCHURE tell about the school and village board?

**The Sanford Herald**

## That's Why ...

The folks in this entire area read the Herald each day.

## That's Why ...

The business places use The Sanford Herald as their prime and most effective advertising medium!

EVERY DOLLAR OF ADVERTISING SPENT IN "THE SANFORD HERALD" is returned to the community in news and pictures, too!

## The WEEDERS GUIDE

By EARL ARONSON  
AP Newsfeatures

This year is the 100th anniversary of Arbor Day, which takes on special significance in the light of emphasis on the nation's environment.

In many parts of the United States, there will be tree planting ceremonies to commemorate the efforts of a New York native to forest the land.

Julius Sterling Morton is the man honored on this day. He was educated in Michigan and settled in Nebraska, on a treeless, 160-acre plot of prairie.

Nebraska observes Arbor Day on April 23, Morton's birthday, and it is a legal holiday there. In other states the observance varies because of climatic conditions. All states except Alaska now observe Arbor Day.

The winds carried off the black, fertile topsoil from Morton's Nebraska farm and he received now fertile prairie on the land in Michigan and New York. He began planting trees and shrubs, adding more as he saw the rewarding results. He convinced neighbors to plant windbreakers and to begin reforestation projects.

As editor of the Nebraska City News, he used his newspaper to expose his cause, writing: "Our seedling forests will nurse great timbers from which will come sails and joists to build the homes of thousands of new Nebraskans."

The Nebraska Dept. of Agriculture, which was a member, urged proclamation of the first Arbor Day in 1872. It authorized Morton to plant the first tree on April 10 that year. One million trees were planted in that state.

A year later, the governor officially designated the second Wednesday in April as Arbor Day. In 1875 the date was changed to April 22.

Nebraska became known as "The Tree Planter's State" for its early leadership in tree planting.

Morton served as U.S. secretary of agriculture in the late

1800's and as president of the American Forestry Association.

**Cavitation of Roses**  
The 80th annual American Rose Society National Convention and Rose Show will be held in Dallas, Tex., April 28-29.

On the basis of medal certificate reports to American Rose Society headquarters for 1971 shows, First Prize was the top hybrid tea winner with 265 points. American Rose magazine reports 41 varieties of roses among the winners, 11 hybrid teas, 76 floribundas, 38 grandifloras, 20 polyanthas, 38 miniatures, 25 climbers, 10 singles and semi-doubles and 74 miscellaneous.

Other winners: Singles and semi-doubles: Dainty Bess; floribundas: European, grandifloras: Glendora, subsantas; Mary's Kiss; miniatures: Starna; climbers: Don Juan; miscellaneous: Golden Wings.

**Winter Injury**  
A vertical split in the trunk of your tree could be a frost crack, a winter injury. The daytime sun rays heat the south or southwest side of trees, causing sap to rise a little. After sundown, the thermometer sinks, sap freezes, causing the trunk to split, with a bang. The cracks, which permit entry of fungi, may be laced together, but will do little harm otherwise.

Susceptible are Norway maple, sweetgum, elm, birch, oak, gingko, maple and linden trees are among the hardier trees. More resistant flowers include perennials, petunias and gladioli.

Some plants are more resistant to pollution, such as smog, than others.

Lacust, oak, gingko, maple and linden trees are among the hardier trees. More resistant flowers include perennials, petunias and gladioli.

**Stamps in The News**  
AP Newsfeatures  
By SYD KRONHIS

Hawaii's historic and mystic "City of Refuge" — an ancient sanctuary of taboo breakers — will be commemorated on a new 1-cent stamp in the National Park Series. It will be issued with appropriate ceremonies at Honolulu, Hawaii on May 1.

The park series of U.S. stamps started on March 1 with the Yellowstone Park commemorative. Other stamps to follow the Hawaii adhesive will honor Cape Hatteras, Mt. McKinley and Westray Farm, all administered by the National Park Service.

The design of the new stamp features a wooden statue of one of the old gods of Hawaii in the background is a palisaded temple. The vertical stamp is multi-colored with the lettering "City of Refuge, Hawaii" across the bottom in black.

As ancient Hawaiian history relates, large wooden gods — like the one portrayed on the stamp — protected the disturbed people who came to the City of Refuge. Sometimes they were in flight from enemies, but more often they had broken the "kapa" — an aboriginal ten Commandments — seeking purification from the temple priests. The taboo breakers stayed only a few hours then returned home in peace, according to legend.

The City of Refuge was protected on two sides by the ocean and on two sides a great wall believed to have been built in 1550.

Collectors desiring first day covers may send requests to "City of Refuge Stamp, Postmaster, Honolulu, Hawaii 96726." Be sure to include the proper remittance of 11 cents per stamp (no money order) with postmark no later than May 3.

**National Parks Centennial**

U.S. 11c

City of Refuge, Hawaii

Part III of West Germany's "Safety First" series highlights humorous designs to call attention to its safety campaigns, notes the World Post Office.

The new country of Bangladesh now uses the "Taka" as its main unit of currency. Thus, in order to reflect this change over, a definitive issue of postage stamps consisting of 15 values has been issued. The stamps show the spelling of "Bangladesh" as one word where previously it was two words — Bangla Desh. Five of these stamps feature the flag of independence, five show a map of Bangladesh, while the remaining five bear a portrait of Sheikh Mujibur Rahman.



**SPRING FEVER** — As the experts see it, faces will be casual by day, exotic, dramatic and elegant by night. Interpretations on top, from left, are the wide-eyed look by Germaine Monteil, the romantic by Serge Lutens for Christian Dior and Cover Girl's "happy face." From left on bottom are an evening '40s vamp by Christian Dior, Hevlon's China doll, and Estee Lauder's regal Tiarina, inspired by the newly released film "Nicholas and Alexandra."

## Think Pretty Pick The Look You Like

By PEGGY WALKER  
Copley News Service

Eyes go one color for spring and softly darker.

"Eyes are brightly shaded, multicolored."

"The mouth is the focal point" ... "Play up the eyes."

"Frosted are out!" ... "Frosted are in!"

"Gone are the no-color faces of the '60s" ... "Natural is back."

Continued:

"Don't be there's only one sure thing about beauty for spring — the options are many and as diverse as the tongue, narcissus, crocus, hyacinth and lily of the valley, popping up on hillsides. You pick the look you like."

Makeup, like art, is a matter of personal taste. The artists are overflowing with ideas. You pick your own style for the selections that best suit your surrounding and life-style. To help you choose, here's a look at how some of the experts interpret use different faces of spring:

Serge Lutens for Christian Dior sees it as a time for a quiver of color, a slight shimmer of shine and the natural, fragile paleness of a morning beauty.

He takes the Victorian look and enlivens it with moody, charcoaled eyes and a mouth of rich red or r-brown.

Eyes go one color and softly dark, according to Lutens. "There are no more shading effects, no nice hard lines." He diffuses shadow from the base of the eyelash into a pale softness up to the brows in somber shades of charcoal, avocado, chestnut, midnight blue.

At Elizabeth Arden they are saying, "None are the no-color faces of the '60s."

Instead, sleeked-back hair and flipped-brimmed hats leave a clear field for focus on the face.

Pablo, Arden's creative director, focuses in with shiny, bright red lips and cheeks and green eye shadow. He calls it

## Orange Crop Lags 19 Million Boxes

ORLANDO — (Sp1) — Florida's orange harvest is 19 million boxes behind last season with the early and midseason crop in its dying stage, United Grocers said today.

Gen. Mgr. Wilson McGee, of the Orlando-based grower organization, said short crop pick-ups had been a "great disappointment" to industry leaders, who hoped the crop would exceed USDA estimates.

"Despite a slight increase in seasonal yield of gallons per box, orange concentrate pack is 11.5 million gallons under last year. Fewer boxes and heavy sales will lower Nov. 30 carry-over under the minimum 36-30 million gallons needed to keep trade pipelines filled until new crop in its dying stage," McGee said.

The United spokesman again called for a wholesale price increase from the \$1.88 a dozen 6-oz. can equivalents to "the only way to slow sales and keep inventory at a manageable level."

"We have the unexpected complication of a late orange season which means we will have to stretch supply until volume pack replacement starts probably in mid-January, 1973."

## The Understated double knit suit.



Most don't write about this. The Drangate suit by a name. So you can have all the great advantages of a 100% polyester suit with the softness and drape of wool. The suit is tailored in a soft, fluid construction which Drangate is famous for. It's the perfect proportion to live in. It's a real suit. It's a real suit. It's a real suit.

**WORLD ALMANAC FACTS**

A "white elephant" is a term used to describe something whose upkeep costs more than its worth. The World Almanac notes that many of the land are said to have made gifts of sacred albino elephants to noblemen who had become too powerful or influential, which eventually led to their bankruptcy.

**YOUR BANKMERCARD AND MASTER CHARGE ARE WELCOME**

**Capp's Men's Store**  
205 W. First Street SANFORD Dial 322-4571

**END-OF-MONTH STOREWIDE FURNITURE SALE**

NOW THRU SATURDAY — SAVE ON EVERYTHING!

**Slertski's**  
THE SOUTH'S LARGEST QUALITY HOME FURNISHERS

100 FRENCH AVENUE SANFORD OPEN 9:30 TO 5:30 327-7853

SUMMER FOOTWEAR (for year-round wear in Sunny Florida) is displayed by Dr. Harrison Taylor at his Shoe Tree shop in Seminole Plaza at Casselberry. Come in for Easter bargains.

**RENT an OLIVETTI Electric Adding Machine**

\$10 a month

and apply rental toward purchase

**george stuart**  
122 East Robinson PALM BEACH, FLA.

**PRECIOUS POLYESTER FABRIC SALE**

**SPORTSWEAR PRINTS**  
45" Wide Prints and Florals. Machine Washable. 100 per cent Cotton  
**99¢ YD.**

**POLYESTER THREAD**  
Extra strong 100% polyester thread in 225 yds. spool in your choice of black or white. Yours at great saving. No hurry!  
**19¢**

**100% POLYESTER DOUBLE KNITS**  
Choose from crepe and jacquard double knits in wonderful 100% polyester. Carefree, machine wash & dry. Permanent press and 60" wide. Of course at half price.  
**2.97**

**MULTI-COLORED GINGHAMS**  
45" Wide Prints over Checks. Need a Granny Dress, Pants Suit or Hip Hugger? This is the fabric for you!  
**\$7.59 YD.**

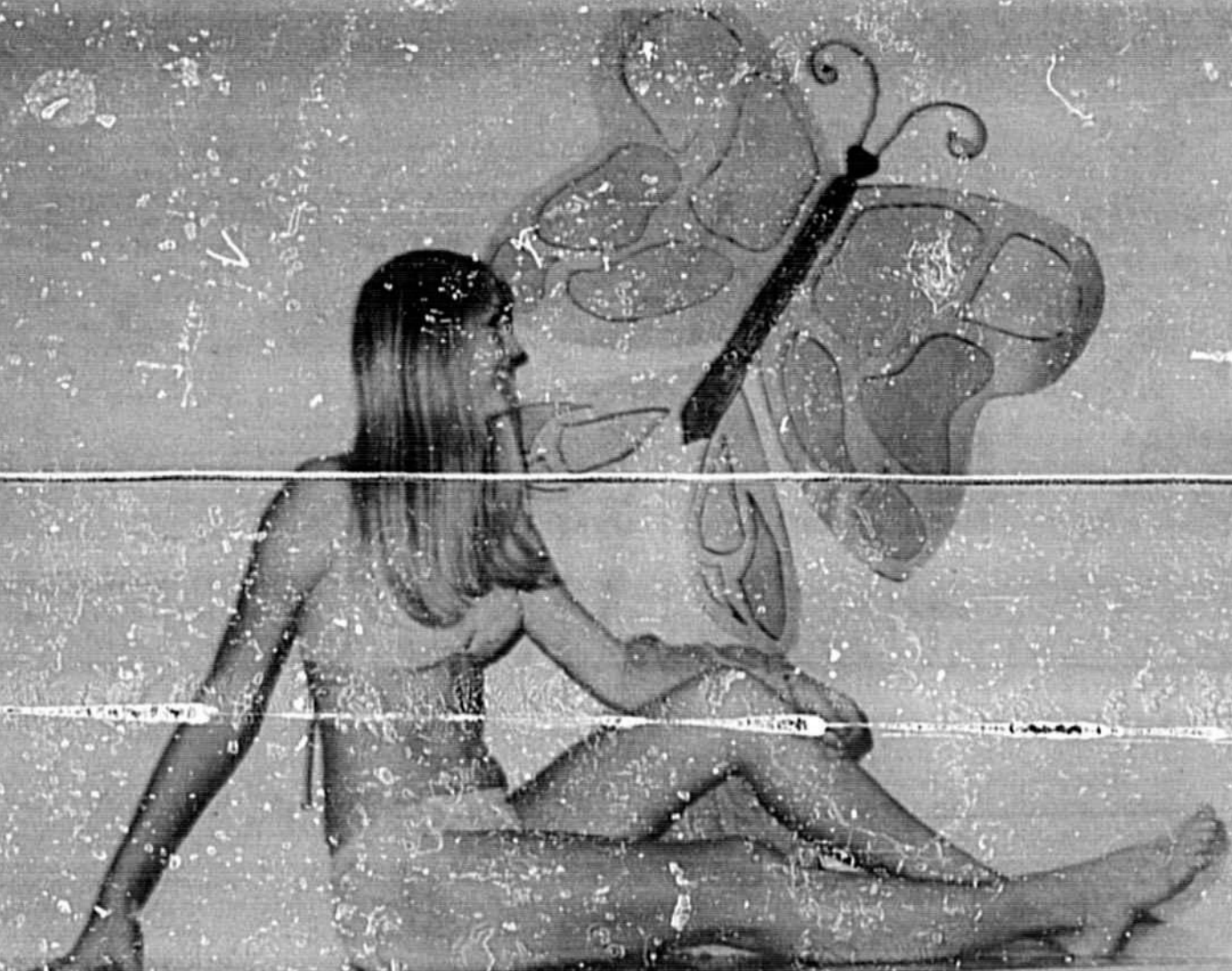
**POLYESTER PRINTS**  
Creative 100% polyester print in 45" wide, 60" wide and 72" wide on bolts.  
**\$7.77**

**COLORADO PEARLS**  
Unbelievable savings in 3 1/2 yards in a wide variety of spring fashions. Choice of light or dark shades to complement any ensemble. Like tinge, unicolor, basketweave, etc. Sewall!  
**3.97**

**POLYESTER & COTTON SPORTSWEAR**  
Muscle polyester permanent press sportswear prints in beautiful spring colors. A great variety.  
**7.99**

**Pacific FABRIC CENTERS**  
SALE STARTS FRI. — OPEN SUN. 11:00  
Sanford — Pinecrest Center  
Next to Sears  
Maitland — North of Underpass,  
161 S. Orlando Ave.

# Lyman Fashions Focus On Nature Study



Ecology is the thing with the "in" generation. It was even the theme of a recent fashion show at Lyman High School.

Mrs. Ruth Gaines' sixth period sewing class went all out with beautiful decorations akin to nature including giant butterflies, mammoth mushrooms and standard sized bees. All shared the spotlight with lovely girls and colorful flowers.

Animal prints were the leaders in the fashion parade.

Chairman for the most delightful afternoon was Miss Melissa Miller along with Donna Priser, Marilyn Sutton and Jan Collins.

\*\*\*

Feature Photos

By Ann Riley

\*\*\*

WOW! JUST TAKE a look at the mammoth butterfly! What butterfly? The girl? Oh, yes, the girl! She is lovely Jan Collins for those who might not have noticed. Her "outfit" is a bikini, "barely" fashioned with ring accents.

This Way Please

PRINCIPAL Carlton Henley helps Donna Priser off the stage. She is modeling her own creation, a lavender and purple cotton knit rain afternoon dress.



LOOK, LOOK, LOOK! See the appetizing mushrooms! Shame, shame for referring to the two glamour gals in hot pants and boots as mushroom. They are for real and are Bonnie Jones and Sharon Horton, who created their nature outfits.

## Fashion Tips

**Back Interest**  
The popularity of backless dresses has created a new fad. It's jewelry to go with it. And they look like necklaces worn backward, which is just what they are.

**Bonnette Brightening**  
Hand-painted leather bonnettes will brighten up those curly heads for spring. They

rettes may be purchased without any design so you can paint your own creations.

**Lighten Eyebrows**  
You can lighten eyebrows that seem too dark for your hair color without bleaching them. Simply apply make-up base on the brows, going against the hair.

**Animal Print Knickers**

WANDA WILSON shows off with pride her cotton animal print knickers. The mode features long puffed sleeves and a key hole neck. It is complemented with crinkle patent boots.

**Easter Finery for teens, by contempas**



IN WHITE \$14.95

Other Styles From Ladies 51223-4-12

"If It Walks — We Fit It"

**SANFORD SHOE CENTER**

224 E. FIRST ST.

**The diamond solitaire: beautiful enough to stand alone.**

**ZALES**  
My, how you've changed

Use one of our convenient charge plans

Open Mon., Thur., Fri., Sat. Services Phone 322-1000

**gingiss FORMALWEAR CENTER**

formalwear center

IN SHAPE FOR '72

The shape is the newest thing taking the men's formalwear industry by storm. Gingiss Formalwear Centers are setting the pace with the most complete selection of tuxedos and dinner jackets featuring this look. Visit your Gingiss Formalwear Center at 901 S. Orlando Avenue, Winter Park, Florida 32759, and get in the shape.

PHONE 644-6331

3 STOP LIGHTS SOUTH OF WINTER PARK MALL

**Shop The Town... You'll be Convinced Your Dollar Buys MORE at GILBERG'S**

DACRON COTTON DOTTED SWISS 66¢ YD.

100% POLYESTER DOUBLE KNIT \$1.99 YD.

10% OFF TOTAL PURCHASE (Clip Coupon)

Must Present Coupon — Expires 4-1-72

SANFORD PLAZA Phone 323-6525 Open 10 to 6 Daily open 11 to 9 p.m. Monday and Friday Closed Sunday

**gilberg's** A DIVISION OF GILTEX CORPORATION

**Tassaway**

BETTER THAN NAPKINS, BETTER THAN TAMPONS.

Because you never have to change more than twice in 24 hours.

Tassaway — developed by a gynecologist and medically tested — is a revolutionary new menstrual product. It's a soft, pliable cup that conforms perfectly to the shape of your inner body. So it seals out odors and prevents leakage. And it holds almost 4 times as much as any tampon or napkin.

It's as easy to dispose of as a tampon, too.

No accidents. No odor. And you'll never have to change more than twice in 24 hours.

Tassaway — a completely new idea in total protection.

**ECKERD DRUGS**



MR. AND MRS. LARRY EDWIN CORDELL

**In Candlelight Church Ceremony... Patricia Kirtley Bride Of Larry Cordell**

In an impressive candlelight ceremony at the Deltona United Methodist Church on Friday, Feb. 23, 1972, at 8:00 p.m., Mary Patricia Kirtley, daughter of Rev. and Mrs. H. Wright Kirtley of Deltona, and Larry Edwin Cordell, son of Mr. and Mrs. Jackson Lee Cordell, also of Deltona, were united in Holy Matrimony.

The vows were exchanged amid palms and baskets of white gladioli and chrysanthemums placed on tall pedestals at strategic points at the altar area. There were also four nine-branched candlesticks and an arc of fifteen candles which illuminated the setting.

The bride entered the sanctuary on the arm of her father, who escorted her to the altar and then participated in the remainder of the service along with Rev. W. Thomas Parsons Jr., of Lake Worth, godfather of the bride.

The bride wore a formal gown of white silk organza, the bodice and sheer bishop sleeves were of Schiffl embroidery in a lattice design. The high neckline and cuffs were trimmed with the same embroidery. Her train was attached at the waistline and fell softly in a chapel sweep.

Her veil of silk illusion was held by a cannelot cap of organza and alcon lace and embellished with ivory seed pearls. She wore a silver monogrammed pin at the neckline, a gift of the groom.

Her Victorian bouquet of white roses, tuberoses and baby's breath was entwined with ivy from her paternal grandmother's garden, the late Margaret Wright Kirtley of Sanford, and was tied with a white satin bow with streamers. She carried a handkerchief which had belonged to her maternal great grandmother, the late Worley Dare Alday of Gainesville.

Matron of honor, Mrs. John H. Green, Jr., sister of the groom from North Orlando, wore a deep Avacado green slipper satin floor length gown, mid-Victorian in design, with high neckline, empire waist, long sleeves with ruffles, buttoned cuffs, complete with bustle back and for her hair, a tiara of self.

Little Miss Kimmy Johnson was flower girl and wore a floor length gown identical to that of the matron of honor. She carried a basket of rose petals and preceded the bride down the aisle.

For her daughter's wedding, Mrs. Kirtley chose a blue and for her hair, a tiara of self.

Miss Pam Kirtley, sister of the bride, and Miss Debbie Keyes of Deltona. They wore floor length gowns of Avacado satin brocade patterned after that of the matron of honor. Their bouquets were identical to that of the bride.

Immediately following the ceremony a reception was held in the Fellowship Hall of the Church. The party rooms were decorated in a yellow and white color scheme. The party tables were skirted in yellow and overlaid with white sheer silk organza.

The wedding cake was decorated with Lily-of-the-Valley and soft white butterflies and topped with two yellow satin wedding bells.

The punch table was elegant with an arrangement of yellow and white tulips, chrysanthemums, greenery and candles in a silver eggcage. Silver appointments complimented each table.

Punch, sandwiches, nuts, buns in the shape of wedding bells and hearts were served to approximately 400 guests. Those assisting in serving were the Misses Barbara Giese, Genevieve Richardson, Eleanor Stris and the Misses, Earl Langworthy, Alan Johnson, Paul Parnesky, Angelo Mercorelli, Harry Powell, Emmett Dougherty, Orietta Corneil, Blanche Walker, Millie Musselman and Carol Cray.

For traveling the bride selected a turquoise corduroy and she wore an orchid corsage. After a wedding trip to Silver Springs, Fla., the couple now are at home at Lake Jennie Apartments, No. 33, 1311 Santa Barbara Drive, Sanford.

The bride is a teller at the First National Bank of Deltona and the groom is employed at Monroe Harbour, Inc., Sanford.



KATHY KINNEY, Melanie Howe, Donna Collins, bride-elect, and Mrs. Lenore Greene share happiness at a bridal shower.

(Ann Siczkowski Photo)

**Decorate Easter Dinner Plates To Form Baskets**

By LIZA BAKER

Pickle beets with hard boiled eggs the night before, giving the eggs time to absorb the red from the beet juice.

Prepare purple cabbage as desired.

Drain liquid from egg whites and arrange around the outer edge of each plate (this creates the grass). In the circle of the green noodles, arrange the colorful vegetables along with your chosen meat.

Center the table with a colorful relish dish of red radishes, carrot curls, sweet pickles (whole), olives and stuffed celery.

This dinner is especially exciting for the children. Try it, they will like it!

**Lingerie for Easter!**

Choose from frilly or tailored in the loveliest fabrics: Peignoirs, Gowns, Sleepshirts, Pajamas

FREE Gift Wrapping

**mary/esther's**

BankAmericard Master Charge

202 N. Park Ave., Sanford, Fla.

**Society Deadline**

Attention, please! Tell us your story. We welcome your news!

Engagement and wedding forms, available at The Herald office, should be accompanied by a black and white glossy studio photo at least five days before desired publication date.

Requests for women's news and photo coverage (parties, clubs, etc.) should be made at least a week in advance.

Area correspondents are listed daily on the editorial page.

Doris Williams, Society Editor

**Betrothed Couple Honored**

The lovely Lake Mary home of Mrs. Lenore Greene was the scene of a colorful bridal shower honoring Miss Donna Collins, daughter of Mr. and Mrs. Clarence Collins and granddaughter of Mrs. L. B. Mason.

The reception area was festively decorated with Spring flowers of rainbow hues. On the dining table was an arrangement of white pompon chrysanthemums, gladioli, and pink-tinted baby's breath.

The cake was decorated in a pink and green color scheme and inscribed, For Franci and Steve, "Happiness Is Love".

A lime sherbet float in fruit punch was served with the cake, and favors were tiny silver baskets of candy Easter eggs.

Hostesses were Mr. Priests' daughters, Mrs. G. H. Sims, Mt. Dora, and Mrs. A. C. Brockman, and Mrs. R. D. Priest, Sanford.

Guests enjoying the occasion with the honorees were Mr. and Mrs. Joe Osteen, Mrs. Walter Oller, R. Earl Kipp, Mitche Varn, Miss Sandy Myers and Lenny Varn, all of Orlando.

Mrs. K. L. Wiley, Kissimmee, and George R. Sims, Mt. Dora. Also, Mrs. Edith Rodgers, Miss Zella Varn, A. Clyde Brockman, Randall D. Priest and the Misses Louise and Emily Priest, all of Sanford.

Hostesses will be Mrs. Kenneth Green, Mrs. Lois Enderle and Miss Ellen Yeager.

**FOR PORCH, PATIO, or YARD... IMAGE '71 by Carolina Forge**

**EASTER WEEK SPECIAL**

4" Table with 4 Chairs Patina, (Antique Green) & Black (Including Seat and Back Cushions) **124.95**

**The Orlando Forge, Inc.**

711 N. Orange Ave., Winter Park 647-2534

"Where Orange Meets Fairbanks"

**PLM '72 PROM LIBERATION MOVEMENT! JOIN! TO THE 'NOW' THING IS FORMAL DRESS FOR THE SPECIAL PROM AFFAIR.**

FROM THE MOVEMENT TO THE ORDINARY INTO SOMETHING SPECTACULAR IN CRUSHED VELVET OR BROCADE OR PATTERNS WITH RUFFLES AND FLARES.

ORLANDO 2615 North Orange Avenue Telephone 422-2456 4888 S. Orange Blossom Tr. Telephone 833-9140

MAITLAND 863 N. Orlando Avenue Telephone 647-8820

**Mitchells** TUXEDO RENTALS AND SALES

**REVIVAL**

MARCH 26 — APRIL 2

FIRST UNITED PENTECOSTAL CHURCH

561 F. ORANGE AVE. LONGWOOD, FLORIDA

SUNDAY 7 P.M. NIGHTLY 7:30 P.M.

"O, Come Let Us Worship The Lord"

Pastor E. Ruiz Grant Ph. 826-5069

Evangelist, Paul Rogers Ph. 371-1958

**Photos**

appearing in The Sanford Herald are available to you in 8x10 reprint size for \$3.

DIAL 322-2611 or 631-9993

**Easter Accents from Rojey**

Accent your shapely legs with Rojey's perfect fit hose and panty-hose in the newest spring shades! Fully proportioned to fit, they cling, cling, cling!

Master Charge and BankAmericard 228 E. First Street Dial 322-352

Answers to Previous Puzzles
ACROSS: 1. ... 2. ... 3. ...
DOWN: 1. ... 2. ... 3. ...

Dear Abby

No one proposed this proposed marriage

DEAR ABBY: About a week ago my friend and I finally set our wedding date. Nobody was surprised because we had been going together nearly three years.

Then we got into a big discussion, and I told her that nobody proposed to anybody, we decided a long time ago to be married.

DEAR ABBY: I do not want to go to my funeral! I have decided the following plan to avoid it:

DEAR ABBY: Our 13-year-old son is our problem. He refuses to participate in any sports. My husband says his coordination is good and he could do well in sports if he tried.

DEAR ABBY: I am with those of your family who do NOT think you are "nuts".

DEAR ABBY: As I see it, the problem in your husband's life is his eagerness to have his wife become an outstanding athlete.

DEAR POLLY: I do hope some reader has a solution for my problem. Is there some way to transport or clean brass that has rusted and corroded?

DEAR POLLY: I am answering Mrs. L. McK. who has trouble keeping her three rug rats off her washing.

DEAR POLLY: I am answering Mrs. L. McK. who has trouble keeping her three rug rats off her washing.

DEAR POLLY: I am answering Mrs. L. McK. who has trouble keeping her three rug rats off her washing.

DEAR POLLY: I am answering Mrs. L. McK. who has trouble keeping her three rug rats off her washing.

DEAR POLLY: I am answering Mrs. L. McK. who has trouble keeping her three rug rats off her washing.

DEAR POLLY: I am answering Mrs. L. McK. who has trouble keeping her three rug rats off her washing.

DEAR POLLY: I am answering Mrs. L. McK. who has trouble keeping her three rug rats off her washing.

DEAR POLLY: I am answering Mrs. L. McK. who has trouble keeping her three rug rats off her washing.

Highlights

8-9 NBC: Flip Wilson Show (Rerun). Johnny Cash comes aboard, and helps Flip recreate the legend of Cash Jive.

Television

THURSDAY 7:00 (1) Dream of a Century (4) Family Affair (4) Bewitched (4) Love of Life

FRIDAY MORNING 6:15 (1) TV Classroom (4) Sunshine Almanac (9) Silm Mills (6) 30 Sunrises Semester

Mike Douglas is a natural clown

This man is more brilliant than many of the people whom he interviews. Why do we say this? His Marxist liberalism is the dazzling star.

Discard Doms Game Bid

who held the seven of hearts. Could Porhus hold it? Very unlikely for two reasons. One is that Porhus held five hearts to the ace-queen-jack.

Legal Notice

NOTICE is hereby given that I am engaged in business as a public hearing to consider approving a side yard setback variance.

DOG RACING

21 NIGHTS LATE SEASON ENDS APRIL 24 Matinees: Monday, Wednesday & Saturday. Play Times 1:45 p.m. and 8 p.m.

Legal Notice

NOTICE IS HEREBY GIVEN THAT THE BOARD OF ADJUSTMENT will conduct a public hearing to consider approving a special exception in a C-3 Commercial Zone to allow a trailer.

IN THE CIRCUIT COURT FOR SEMINOLE COUNTY, FLORIDA CIVIL ACTION NO. 73-343

NOTICE OF PUBLIC HEARING The Board of Public Hearing of Seminole County is holding a public hearing in the County Commission Chambers.

IN THE CIRCUIT COURT OF THE EIGHTEENTH JUDICIAL CIRCUIT IN AND FOR SEMINOLE COUNTY, FLORIDA.

NOTICE OF PUBLIC HEARING The Board of Adjustment will conduct a public hearing to consider approving a request for a fish pond.

NOTICE OF PUBLIC HEARING The Board of Adjustment will conduct a public hearing to consider approving a request to remove the walls from the property.

NOTICE OF PUBLIC HEARING The Board of Adjustment will conduct a public hearing to consider approving a request to remove a wall from the property.

NOTICE OF PUBLIC HEARING The Board of Adjustment will conduct a public hearing to consider approving a request to remove a wall from the property.

NOTICE OF PUBLIC HEARING The Board of Adjustment will conduct a public hearing to consider approving a request to remove a wall from the property.

NOTICE OF PUBLIC HEARING The Board of Adjustment will conduct a public hearing to consider approving a request to remove a wall from the property.

NOTICE OF PUBLIC HEARING The Board of Adjustment will conduct a public hearing to consider approving a request to remove a wall from the property.

NOTICE OF PUBLIC HEARING The Board of Adjustment will conduct a public hearing to consider approving a request to remove a wall from the property.

NOTICE OF PUBLIC HEARING The Board of Adjustment will conduct a public hearing to consider approving a request to remove a wall from the property.

NOTICE OF PUBLIC HEARING The Board of Adjustment will conduct a public hearing to consider approving a request to remove a wall from the property.

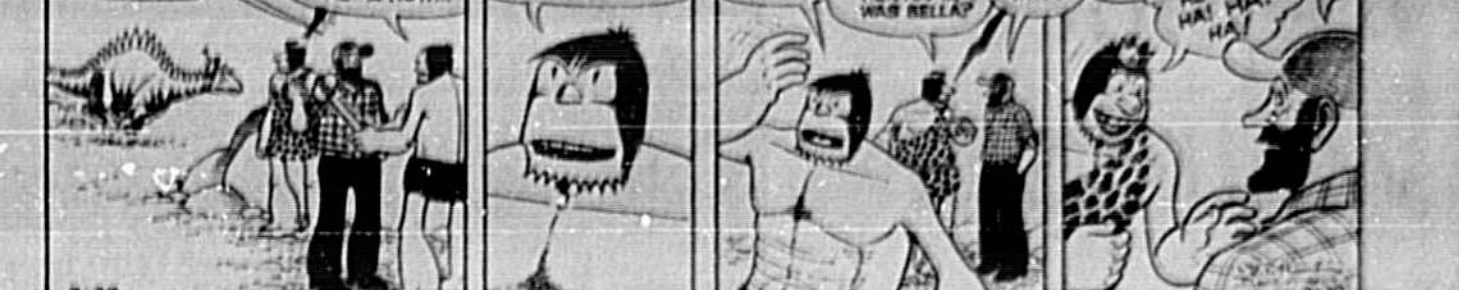
NOTICE OF PUBLIC HEARING The Board of Adjustment will conduct a public hearing to consider approving a request to remove a wall from the property.

NOTICE OF PUBLIC HEARING The Board of Adjustment will conduct a public hearing to consider approving a request to remove a wall from the property.

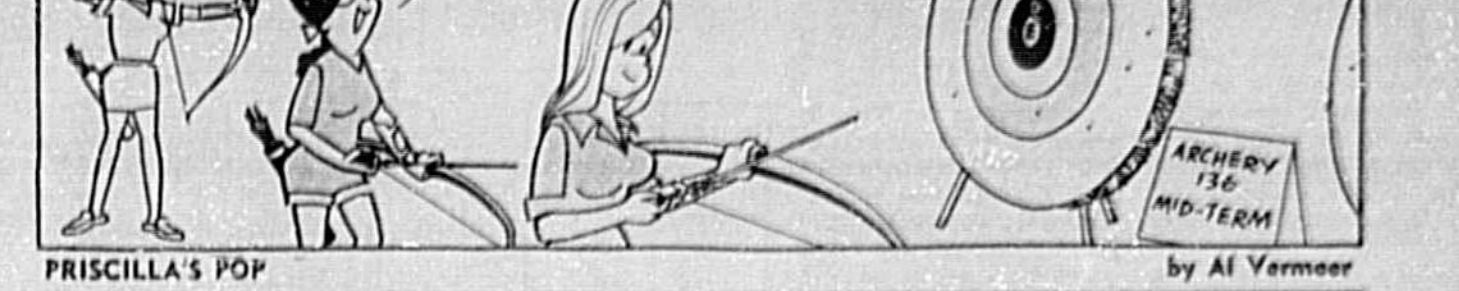
NOTICE OF PUBLIC HEARING The Board of Adjustment will conduct a public hearing to consider approving a request to remove a wall from the property.

NOTICE OF PUBLIC HEARING The Board of Adjustment will conduct a public hearing to consider approving a request to remove a wall from the property.

ALLEY OOP



CAMPUS CLATTER



PRISCILLA'S POP



THE RAGDUG GUYS



CAPTAIN ABE



LANCELOT



BLONDE



BEETLE BAILEY



THE PHANTOM



# Fireplace, Walls Stir Questions

By BARBARA HASTUNG  
Copley News Service

Q. Recently we purchased a new home and now we are trying to decorate it. Currently the problem is the living room: what color shall we paint, paper or panel the walls, and what type and color draperies shall we select? Our furniture includes a love seat and sofa, a floral bed, heavy and pair green chairs and a large rug.

A. I would think that either a light gold paint for walls or a honey gold wood paneling would be delightful with draperies to match the wall color if you paint in a light gold (otherwise tone lighter than the carpeting) with a green thread woven through. In your fireplace architecturally quite fine — do you wish to call attention to it or do you wish to have it blend with the background? If the latter, paint it the wall color. If the former, you might

## Current Best Sellers

- (Compiled by Publishers' Weekly)
- FICHTER**  
"The Winds of War," Wolk  
"Wholly," Halley  
"The Day of the Jackal," Forsyth  
"The Executioner," Blatty  
"The Mirror," Robbins
- NONFICTION**  
"Bury My Heart at Wounded Knee," Brown  
"Eleanor and Franklin," Last  
"Tracy and Heyburn," Kamin  
"The Game of the Foxes," Farago  
"The Defense Never Rests," Bailey with Aronson

**The TOP TEN**

Best-selling records of the week based on the Cash Box Magazine's nationwide survey

"A Horse With No Name," America  
"Heart Of Gold," Young  
"Puppy Love," Diamond  
"Mother And Child Reunion," Simon  
"Heckle Robin," Jackson  
"Jungle Fever," The Chantones  
"The Ballin' Dramatics"  
"I Gotcha," Ten  
"Loo Sleeps Tonight," John  
"Way Of Love," Cher

**SCOTT'S** home builders supply

700 French Ave.  
Ph. 323-4700  
Sanford

**Do-It-Yourself INSTRUCTION BOOKS**

**Scotty's Brand CARPETING**

Instruction books to help with all your do-it-yourself projects. See the large selection at your Scotty's store.

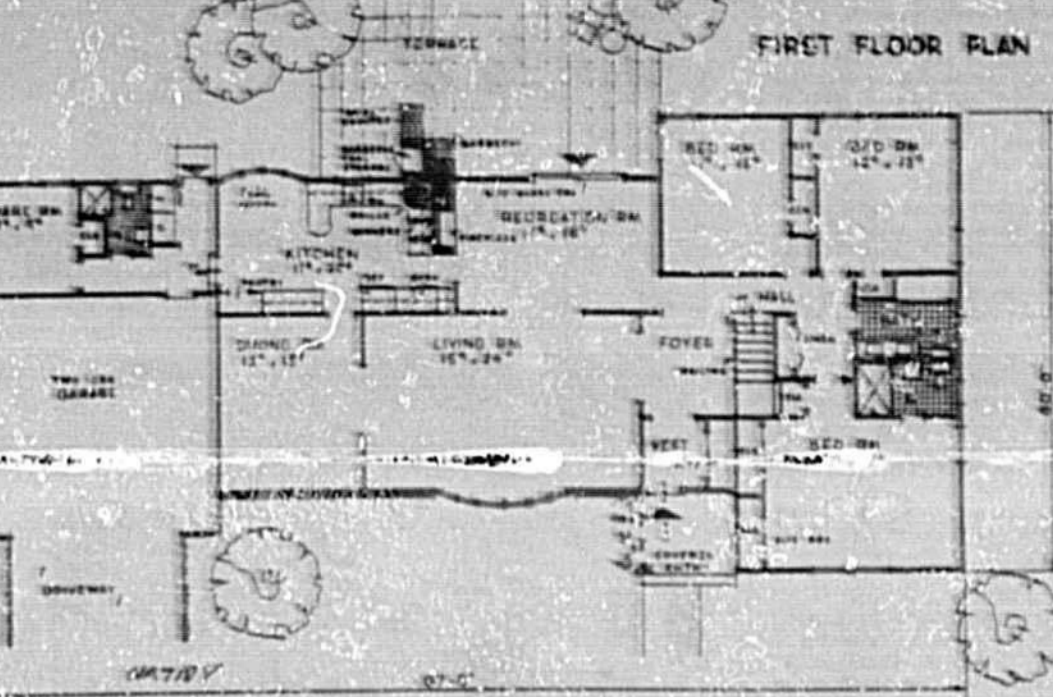
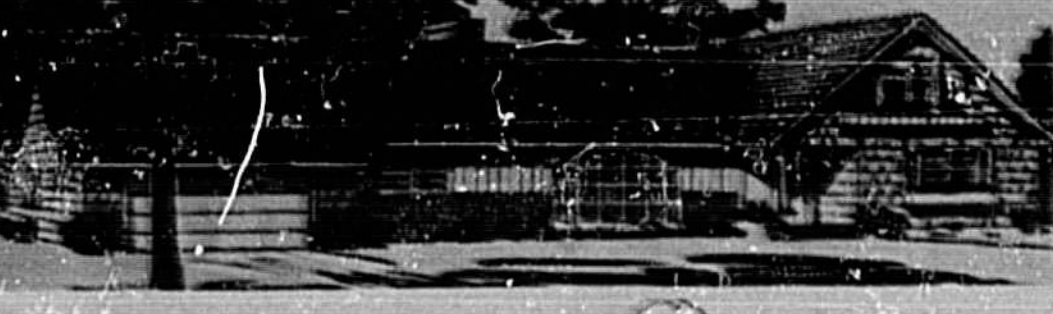
Scotty's Price \$9c to \$2.29 from \$3.29 to \$4.99

Scotty's first quality carpets are purchased from one of America's leading manufacturers in full roll lots. Choose from more than 75 sparkling colors. Priced the all-year front.

OPEN FRI. 9-5 P.M.

204 E. FIRST ST. SANFORD 323-4014

## HOMES FOR AMERICANS



**EXPANSION RANCH:** Three to six bedrooms are available in this design which has 2,312 habitable square feet, plus garage, on the first floor. Stairway to optional attic sleeping area is located between front bedrooms and foyer. This HOUSE was designed by architect Herman H. Nock, 3044 141st Street, Jamaica, N.Y. 11422. Information on blueprints may be obtained by writing the architect.



By ANDY LANG  
AP-Newsfeatures

Strange indeed is the closet where three places for storage — the shelf, the clothes rod and the floor — aren't jammed to capacity.

Q. I have heard that material can be laminated to a window shade. Can you please tell me how this can be done and what type of shade should be used? — L.M.

A. There may be several different methods, but the one I am most familiar with is Stauffer Chemical Co.'s window shade laminating kit which contains a roller, slat, shade pull, mounting brackets, screws and either an opaque or a translucent shade cloth. You iron your fabric onto the specially made shade cloth with a warm iron and the heat of the iron activates the adhesive. Stauffer Chemical Co., 228 Park Ave., New York, N.Y. 10017, can advise you about local availability.

Please send questions for Decor Scene in Copley News Service, P.O. Box 2482, Station A, La Mesa, Calif. 92041.

## Here's How Beauty Old Floors with Colorful Paint

By VIVIAN BROWN  
AP-Newsfeatures Writer

The art of cover-up is an interesting aspect of the current resurfacing do-it-yourself movement.

If you cannot afford to replace walls and floors, you find another solution and sometimes the inventive substitute proves to be more attractive than the original.

For example, old gouged floors always have been at aesthetic detriment to the beautification of old houses. But people buy these dwellings good floors or not, and then put their imaginations to work treating the problem in new ways.

Some people even replace old pine boards by making new ones look old. One man left two random-width floor boards out all winter. They he treated them with creosote until they had almost the exact finish of the original board.

Many of the painted floors in old houses are so bright that they may be repainted in bright colors to liven the decorative scheme. If one owns the house with bad floors one must decide whether the floors will be improved by the treatment.

Painting floors is done when the owners contemplate putting in new floors some day.

But painted floors have become so popular that many interior designers use such finishes on the best of floors. White is popular in the bowling alleys, but some use blue, pink, yellow, green, and there are designers who like dark brown-black lacquered floors.

On bad floors in an old house the inclination may be to do something drastic on them — an eye arrester, but it is better to look at the project as a lasting one. You might change it in a few years, but then again, perhaps you may not.

One couple put red over brown floors, but they regret it. It was called because they hadn't sanded the floors. They got another coat over it, but still did not like it. They finally covered the hallway with a carpet and bought area rugs for the bedrooms.

Here are some ideas for painting floors:

For best results, the floors should be sanded "in get a smooth" as they say in the floor trade. Once this sanding procedure the adhesive quality of the paint may be used for good results and these are available in grays, browns, green and brick, but other colors also can be formulated in most paint stores. A vinyl sealer should be used.

CHIFFER SWAPPER  
A U.S. Air Force C-6 Galaxy flew three Army CH-47 Chinook helicopters from Pennsylvania to Vietnam and picked up three damaged Chinooks and returned them to Pennsylvania. All within 72 hours.

## STOP LICKING STAMPS

Use POSTAFIX



FAST — automatically feeds, meters and applies up to 60 stamps per minute.

CONVENIENT — light and easy to hold. Accommodates all denominations of stamps in rolls of 50 and 100.

ECONOMICAL — costs only \$18.95. A valuable alternative to expensive postage meters.

PRACTICAL — can be used in home, office, school, travel.

Stamp letters AND packages.

Deluxe black with white ink.

Rolls of POSTAFIX postage stamp dispensers at \$14.95 ea.

Name \_\_\_\_\_  
Address \_\_\_\_\_  
City \_\_\_\_\_  
State \_\_\_\_\_  
Zip \_\_\_\_\_

Use your Master Charge or BankAmericard. Add 4% state sales tax and 50¢ for postage and handling.

Send order to:  
**George Stuart**  
123 East Robinson  
RICHMOND, VIRGINIA 23286

**TG&Y** after **FABRIC SPECIALS**

100% POLYESTER DOUBLE KNIT \$1.99  
100% POLYESTER DOUBLE KNIT \$2.99

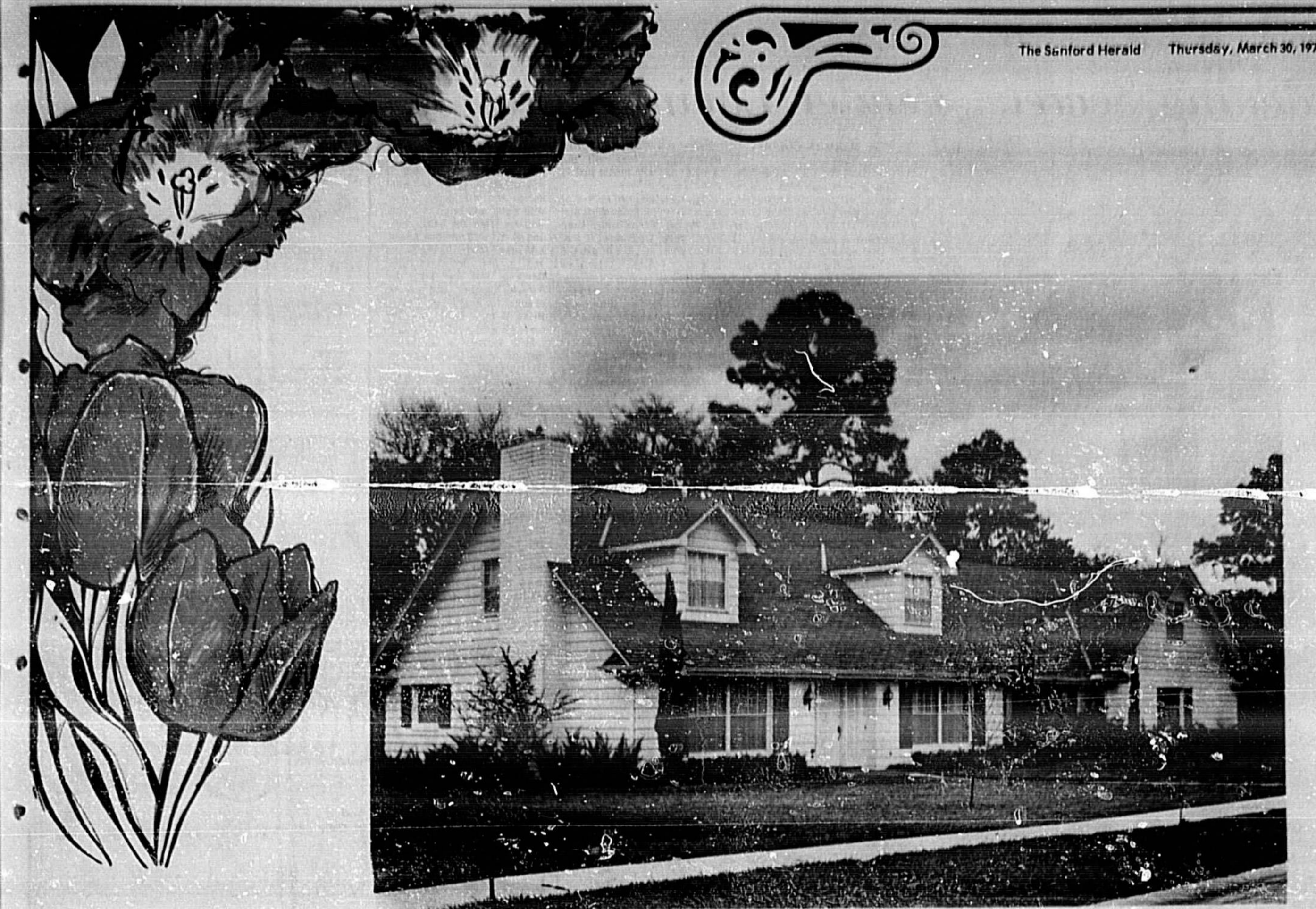
100% Acrylic "Acrylic" KNIT PRINTS \$2.33  
100% Cotton KNIT PRINTS \$2.33

STITCH WITCHERY \$1.00  
Fresh Air CREPE \$2.29  
WOVEN POLYESTER \$3.32

PLAYWEAR 100% Cotton \$2.77  
DUCK PRINTS \$2.77  
SHIRTING PRINTS \$2.77

**LONGWOOD** 11-21 and 424  
Open Sunday 10 a.m. - 7 p.m.  
Mon., Tues., Wed. 9 a.m. - 8 p.m.  
Thurs., Fri., Sat. 9 a.m. - 9 p.m.

**SANFORD** 422 E. First St.  
Open Sunday 10 a.m. - 7 p.m.  
Mon., Tues., Wed., Thurs. & Sat. 9 a.m. - 9 p.m.



The Sanford Herald  
SECOND ANNUAL

# HOME AND GARDEN SECTION

**George Stuart**  
123 East Robinson  
RICHMOND, VIRGINIA 23286

Holmes Yard A Show Place

Gardening Secret: Tender Loving Care



By MARILYN GORDON

Somewhere in Seminole County there may be a yard as pretty as the one belonging to Oliver and Mildred Holmes, of Fern Park. But nowhere could there be a prettier yard.

It is so perfectly landscaped that no matter where your eyes fall they see a complete picture.

Nice years ago when the Holmeses decided to make Cal. all Florida their home they had to start from scratch with their yard. Trees were the only thing green coming with the house and the Holmeses even improved there. They put out palms, oak and fruit trees.

Almost everything was started from either seed or plants which friends and neighbors gave them.

"The secret," explained Mrs. Holmes, "is tender loving care. We put in a sprinkler system and water it about 15 to 20 minutes every day. I try to work three full days a week in the yard."

She advised couples landscaping their first Florida home to remember that everything is different in Florida. "Start with plants that do not freeze. Do not be afraid to start with small plants. They grow very fast in Florida. When shopping look for healthy plants that do not have insects under the leaves. Landscaping is a matter of personality. Our plants around the house are low. We like to be able to see the lake from the back and the neighborhood from the front. It is a matter of trial and error," she advised. "To be a successful gardener you have to love plants. I

consider it a challenge to grow something. Success will not come to one who plants just to make the neighbors.

"We keep the lawn mowed at a level to cut the grass short and try to cut at the same time every week. Of course, if you cut too short you will bruise the grass," Mrs. Holmes cautioned.

"We also put racks all around the house so that there is a walkway and also so that when the time comes to paint the house we will not have to remove or injure any plants. None of our plants touch the

house.

"Once for a lark I made mint jelly from dry mint plants. It was delicious. Crush the mint leaves and the stems. Cover with water and bring to a boil. Remove from the heat, cover and let sit for 10 minutes. Strain. Add green food coloring to tint and a few drops of mint flavoring. Put your juice and Sure-Jel together. Add one cup of sugar for every cup of juice. Bring it to a hard boil. We served it with meat," she said.

Mrs. Holmes is an active member of the South Seminole Garden Club.

Springtime Is Here

By LOUISE L. GILL

New knowledge and new technological information is rapidly increasing. We are bringing much that enhances our day-to-day lives. The answers cannot be found in the past — and we cannot see very far into the future. What we can walk into tomorrow, then, we found to help meet these challenges. From community resources, among which are those offered by the Florida Extension Service.

Extension programs in Florida are involved with many areas of human relationships. Some topics currently being studied and explored by extension groups include improving family communications; the enacting roles of men and women; the relationships of parent, child and school; living with teenagers; being a parent; and

using guidance and discipline to help children grow.

Two of the most important subjects to be taken up — make or female — are choosing a life partner and raising children. Should we not expect to put as much considered effort into good performance here as in other areas of living? No one is born with human relationship skills. They are learned, practiced, evaluated and improved.

EVERYTHING FOR YOUR Yard & Garden

BEDDING PLANTS

ANNUALS VEGETABLE PLANTS

CALADIUM BULBS 1 1/2" per Doz.

SHADE-FRUIT AND CITRUS TREES

FREE LANDSCAPING ESTIMATE

OPEN MON THRU SAT. P.A.M. - 5 P.M.

Mansfield Nursery

Cor. W. 25th & Old Lake Mary Road PHONE 322-5314



is on the way, and it's time to get your lawn and garden spots in condition with Chase & Company Products.

SUNNILAND GARDEN SUPPLIES

FERTILIZERS INSECTICIDES FUNGICIDES

Made Locally For Best Results In Florida Soils

Pick Up Your Free Copy Of Our

Sunniland Gardener at better Garden Stores Throughout Florida.



Available At All Sunniland Products Dealers

GROWING SINCE 1884



Plants Important With Environment

The events in the last decade, particularly man's journey to the moon, have sharpened the awareness of the relationship between man and his environment. We depend on our understanding of ecology and environment to show the way to a quality existence. Quality existence must include open space and pleasant surroundings.

The goal of conservation is now also directed toward this ideal of encouraging and building of pleasing man-made environments which is the purpose of landscaping and proper use of plants. The most fragile of the existing natural resources are the open spaces, greenery, waters and choice scenery. They are the outdoors that we use for recreation — they are the charm of the countryside. The well groomed city street and the picture-perfect landscaped home.

Plants play a very important role in the improvement of our environment. As engineering elements, plants provide acoustical control, sounds can be deadened, deflected and absorbed by foliage. Glare, reflection of sun and light can also be controlled by plant use. Erosion control and traffic control are provided by plants. The transpiration and

respiration of plants cool the environment acting as natural air conditioners and at the same time produce life giving oxygen while consuming unwanted carbon dioxide.

Plants act as natural light filters, absorbing harsh rays and heat. Air currents are directed, obstructed and filtered by trees and foliage. Rain and other forms of precipitation are slowed by foliage, protecting soils. Shade provided by plants controls soil temperature and reduces oxidation of valuable organic matter. Air temperatures are modified by groups of trees and foliage. Plant roots and organic matter from plants provide the reservoir that holds the valuable fresh water needed for human use.

These are some physical effects of plants in the environment. What plants do for our mental well being is difficult to measure. But these nebulous benefits from plants in the environment are probably the most important. Greenery and flowers tend to relax us and lift our spirits. Even if a person is not a gardener, the effects are noticeable. Plants affect life in more ways that are unknown or not understood probably than those we do understand.

Plant use then is not only ornamental but environmental as well.

"I have just moved to Seminole County from plants in the North and have no idea how to grow plants in this area. Where can I find information to help me garden in Florida?" This question is heard over and over again.

There are a number of sources of gardening information for the new homeowner or gardener. A good place to start is with a visit to the local garden supply store or plant nursery.

Add Charm & Personality To Your Home

with a beautifully framed mirror, hand crafted to compliment your particular decor.

Or, let our experts help you select the correct frame to display your favorite portraits to their best advantage. We Also Have A Very Good Selection Of — ART SUPPLIES and WALLPAPER



Senkarik Glass & Paint 210 MAGNOLIA AVE. DIAL 322-4622



The ultimate in interior decor is portrayed by the custom designed Aero draperies installed by Jane and Wally Phillips in the new home of Mr. and Mrs. James Blythe Jr.

The luxury of rich citrus green antique satin is captured in the window treatment created with flowing draperies enhanced with matching soft cornices, contrasting turquoise tasseled fringe and delicate pale lime sheers throughout the living and dining areas.

You too can enjoy the luxury of custom made draperies at a price more reasonable than you'd ever dream.

SHOP AT HOME PHONE 322-3315 NEVER A CHARGE OR OBLIGATION

Philips Cleaners Laundry & Fur Storage 319 WEST 13th SANFORD, FLORIDA



FLOWERS in a sidewalk planter add color to the front of the First Federal Savings and Loan Association on West First Street.

Cactus Numbers 1,500 Species

The cactus family (Cactaceae) contains more than 1,500 species and subdivisions. These plants can be divided into two groups — those indigenous to the desert and those native to the tropics. Cacti that grow in warm climates but a few are cold hardy. They vary in size from small plants less than an inch high to tree-like forms 30-60 feet high. Their habit of growth varies from upright, spreading or vine types. Some have thorns or spines, others do not.

All cacti require full sun and some are fast growing, while others are extremely slow growing. Cacti usually produce large showy flowers and their fruit is an edible berry. You cannot identify the plant unless it has typical cactus spines or you know the botanical structure of the flower and then see the plant in bloom. Many of the plants we call cactus are not. These include agave, agave-like and many others that resemble cacti.

Cacti may be grown in flower pots, glass containers or ground beds. Regardless of where they are grown, they should be planted in a well drained soil. Grave, coarse sand or broken clay pots may be used for soil drainage in containers or outdoor locations. Plants should be planted at the same depth at which they were grown. Deep planting may cause rot of the base of the plant.

The soil should be a mixture of one-third sand, one-third leaf mold or peat moss, and one-third soil. Sand may be omitted from the mixture if the soil is already very sandy.

Cacti do not require the amount of water given leafy plants. The amount required varies with climatic conditions — a drier atmosphere means large amounts of water. Plants may be watered once every two to six weeks during the growing and flowering season and little water is required thereafter. A good rule is: keep soil moist but not wet.

With proper culture, cacti have few insect or disease problems with rot being the most common. Rot may be the result of poor drainage and over watering or injury. If rot has just started, cut away the infected tissue.

Mealy-bugs, scale and mites may become a problem. They can be controlled with malathion.

**DISSTON**  
Cactus Electric  
HEDGE TRIMMER  
Light, compact design, 14" double-edged, non-stick coated blade. Fully rechargeable 12V batteries. Delivers 2,200 powerful strokes per minute. All controls conveniently located in the handle.  
Comes complete with charger.  
WAS \$64.99  
**\$59.99**

**DISSTON**  
Cactus Electric  
UPRIGHT GRASS SHEAR  
1 1/2 hp 12V motor. Fully rechargeable. Fully automatic. Fully adjustable. Fully adjustable. Fully adjustable. Fully adjustable.  
WAS \$24.99  
**\$29.99**

**DISSTON**  
Cactus Electric  
GRASS SHEAR  
1 1/2 hp 12V motor. Fully rechargeable. Fully automatic. Fully adjustable. Fully adjustable.  
WAS \$24.99  
**\$19.99**

**GATORS ACE HARDWARE**  
Boyd Coleman—Owner  
Phone 322-7121  
301 S. ELM AVE. SANFORD

SUMMER IS "SIMMERTIME" BUT YOU CAN BE Comfort Ready AND Beat the Heat WITH SINGER

I played it smart and got Singer American Furnace year around Air Conditioning. Now at our house we eat-sleep-work and play in comfort 24 hours a day.

COMFORTMAKER COOLING SANFORD HEATING & AIR CONDITIONING  
2619 S. FRENCH AVE. PHONE 322-6397 SANFORD

**\$5000 CASH REFUND**  
direct from General Electric to early purchasers of a **WEATHERTRON HEAT PUMP**

(OFFER APPLIES TO IMMEDIATELY BY EXISTING HOMES ONLY.)

**ONE COMPACT UNIT HEATS AND COOLS**

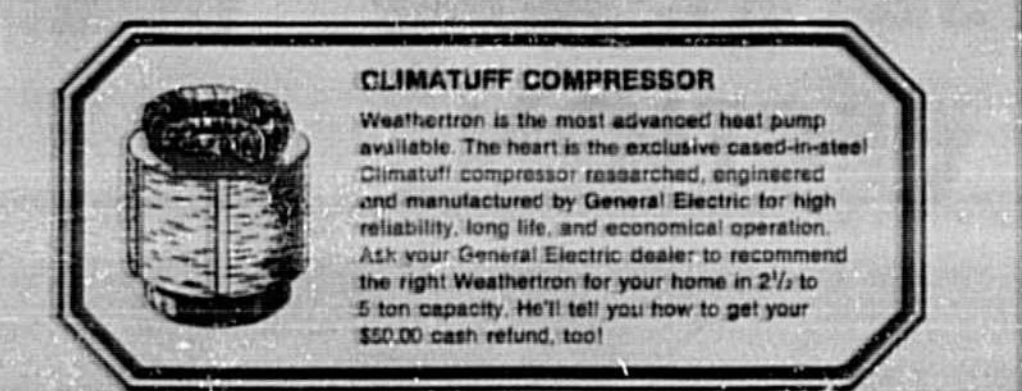
A high reliability unit that switches automatically from heating to cooling with "Set and Forget" Comfort Control.

**COOLS IN THE SUMMER** With its unique Climatuff compressor, this unit provides all the advantages of summer air conditioning. Also helps clean air of soot and dust.

**HEATS IN THE WINTER** General Electric Weathertron with its unique Climatuff compressor brings new safety and convenience to your home. No fuel, fumes, smoke, soot or flames.

**CLIMATUFF COMPRESSOR**  
Weathertron is the most advanced heat pump available. The heart is the exclusive cast-iron Climatuff compressor researched, engineered and manufactured by General Electric for high reliability, long life, and economical operation. Ask your General Electric dealer to recommend the right Weathertron for your home in 2 1/2 to 5 ton capacity. HE'll tell you how to get your \$50.00 cash refund, too!

\*REFUND OFFER Buy a 2 1/2 to 5 ton Weathertron during the prescribed offer period. Complete a refund claim form obtainable from any participating Dealer and General Electric will pay your refund direct to you. Limit one refund per unit purchased.



HURRY! TAKE ADVANTAGE OF THIS SPECIAL OFFER NOW! OFFER ENDS APRIL 30.

**WALL PLUMBING & HEATING, INC.**  
1007 E. SANFORD AVE. PH. 322-6562 SANFORD

**EAGLE EXTERMINATING COMPANY**  
INVITES YOU TO CALL **647-3864**

AND FIND OUT: JUST EXACTLY HOW LITTLE PEST PROTECTION SHOULD AND WILL COST YOU.

AND FIND OUT: THE COMPLETE FACTS ON OUR EOM (every other month) PEST CONTROL SERVICE, A CENTRAL FLORIDA FIRST.

AND FIND OUT: ALL ABOUT OUR UNIQUE "CLOSED CIRCUIT" TV TERMITE INSPECTION - WHERE YOU WATCH THE INSPECTION FROM YOUR OWN LIVING ROOM.

**DO IT NOW!**  
YOU INVEST ONLY IN A 5 MIN. PHONE CALL. YOU MAY SAVE THOUSANDS OF DOLLARS!

**EAGLE EXTERMINATING CO.**  
2490 Temple Dr. Winter Park, Fla. (Serving all of Central Florida)

**SEMINOLE GARDEN CENTER Garden Specials**

OPEN MON. - FRI. 8 - 5:30 - FRI. TIL 9  
CLOSED ALL DAY SUNDAYS  
PHONE 838-8791

**CYPRESS BARK MULCH** 3 cu. ft. BAG **\$1.49**

**AZALEAS IN BLOOM FULL - BUSHY** **\$1.69**

**NELSON'S FLA. ROSES** \$2.95 TO \$4.50

**CITRUS TREES** **\$5.95**  
MANY VARIETIES

**COLD HARDY JUNIPER** \$1.69 to \$9.95

**LANDSCAPING SPRINKLER SYSTEMS**  
● PATIO STONE  
● STATUARY  
● POTTERY

**SEMINOLE GARDEN CENTER**  
HWY. 17-92 LONGWOOD  
ONE MILE NORTH LONGWOOD PLAZA

**Grow Green Lawns Fast with SUNNILAND 16-4-8 SUPER NITRO 40**  
GET YOUR FREE FACT-FILLED 28-PAGE SUNNILAND GARDENER

**PEAT MOSS**  
CANADIAN PEAT  
2 CU. FT. . . . . \$2.95  
4 CU. FT. . . . . \$4.95  
6 CU. FT. . . . . \$5.95

**COMPRESSED BALE**

**BULBS**  
Buy Florida's Finest... **SUNNILAND 100% ORGANIC 0-0-0**  
● Makes Florida Soil More Fertile  
● Lasts Longer  
● Great For Anything That Grows.

### Home Furnishings

## The Natural Look Is In

By MARIE STANTON  
Copy News Service

WANTED: Lively family needs furniture, practical fabrics, more versatility, accessories to pick up tired old houses. Must be priced for second-hand market.

Sound familiar? If so, take heed. Help is on the way. Because the lively, busy person's or family's needs have been reflected in the home furnishings market and the nation's manufacturers are beginning to offer a livelier look to home furnishings.

New designs shown at the Los Angeles Home Furnishings Mart offer a lively look to home furnishings.

New designs shown at the Los Angeles Home Furnishings Mart offer a lively look to home furnishings.

fashions for the buyer concerned with aesthetics, function and price. Here are a few general observations from manufacturers showing at the Los Angeles market where retail furniture store representatives go to buy.

The natural look is here. Ecology seems to have brought influence and that goes for color as well as material and design. Nature's colors are seen everywhere. Earth, sky and sea inspired many of the color combinations, perhaps the most refreshingly used: brown, blue and white. This combination was treated in a variety of ways, from stylized floral prints to traditional upholstery or contemporary stripes or geometrics on modern pieces.

The soft sky and ocean blue were a foil for basic brown—

seen extensively. There were deep, polished brown-blacks, rich chocolates, rusty terra cotta shades and honey-toned camel colors with all manner of shading in between. They are seldom pale beige, however. More frequently they're often in color, although the shade may be fairly light.

Green can hardly be ignored as an important home fashion color. However, it's color that has become so earthy. It's often hard to distinguish from brown.

In many cases, avocado is giving way to olive, and olive to a greenish brown.

Gold is still an important home fashion color and its range from palest honey to deep mustard.

Noticeable in all colors—and

one does see red, orange and purple, too—the colors are as natural. They seldom shriek. As one observer put it, "Color is well-behaved in this market."

Prints in fabric are an important factor in furniture design as they have been for several markets. However, like the intensity of color, prints have become just slightly less bold. In fact, geometric, floral, plaids and stripes are beginning to be influenced rather heavily by folk arts and handcrafted looks.

Naturally, the Oriental rug has long enjoyed prominence in floor design in the finest interiors. It is interesting to note the feeling of the Oriental in a number of fine woven upholstery fabrics—some in natural fibers and some in man-made ones.

The small floral design of the "C" rug is characteristic of deep, rich colors, is sometimes seen as well as a more geometrically oriented design which well might have been derived from Oriental rugs originally woven in the Caucasus region.

Sophisticated geometrics obviously borrowed from the American Indians as well as provincial styles from such countries as Poland and other Middle European nations are making their way into the upholstery market and are shown on both traditional and modern styling, depending greatly on their color combinations.

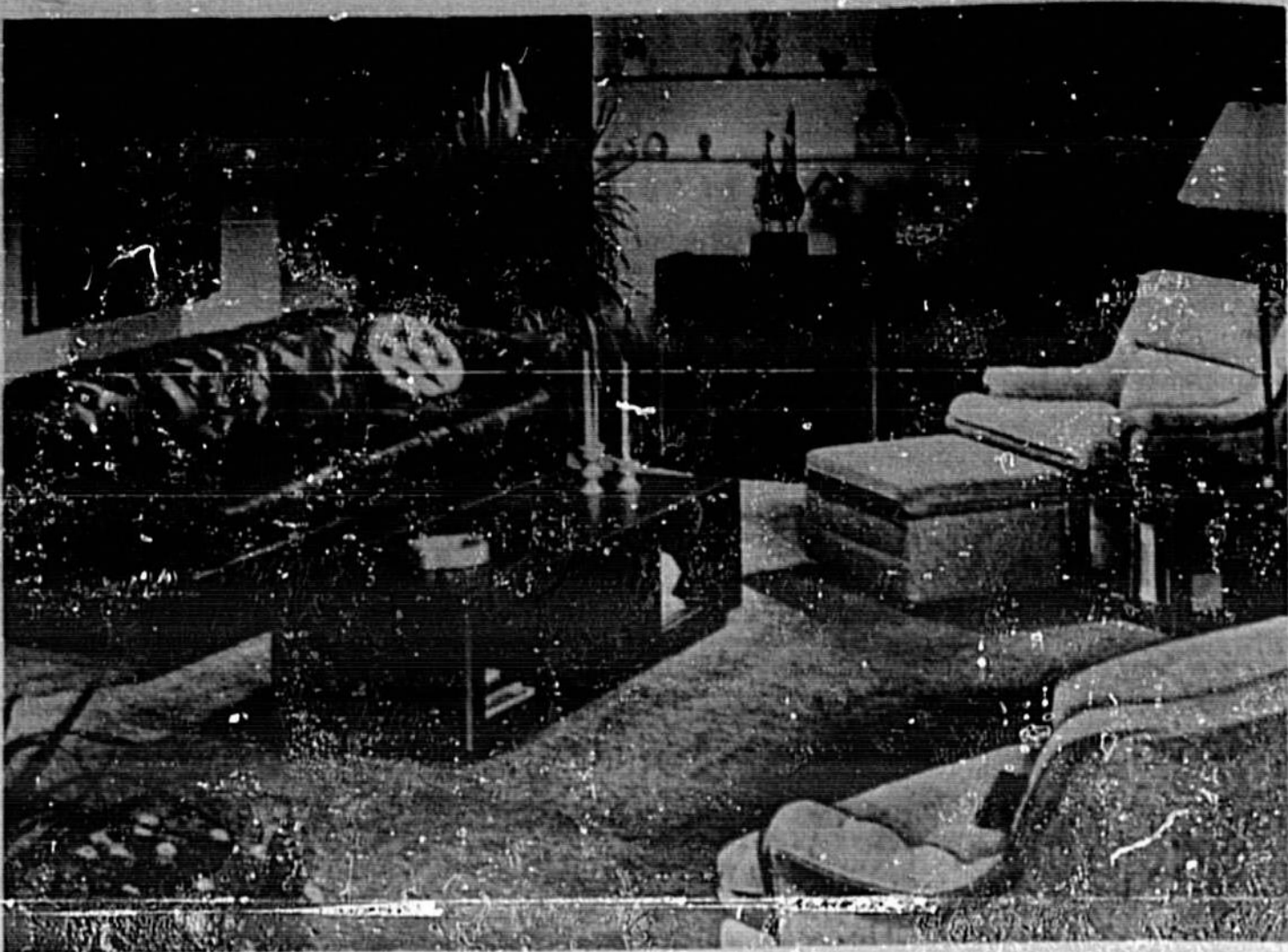
Handcrafted articles—rugs, occasional tables and seats, particularly lamps—are increasing in the middle-price home furnishings field. An especially appealing example was Sunset Lamp Corp.'s design for lamp bases on crochery.

"We're definitely committed to a more natural look," explained Sunset's marketing director, C. W. Butler. "And people are becoming more sophisticated. They expect a lamp to be more than just a lamp. It needs to be an interesting and attractive accessory."

Illustrating his point further is his firm's collection of lamp bases inspired by African sculptures and those taken from the designs of the American Indian.

America's interest in handcrafted materials for the home, in some ways, is related to the people's interest in natural quality today. Many fabrics for draperies, upholstery, walls and floors provide terrific textural interest. Sensoons in nature are the large number of homespun-looking fabrics, soft velvets (both printed and cut), soft leather-like vinyls and long-pile nylon in a furry look.

Most everyone is familiar with the common Pigweed that infests our garden, but there is a beautiful variety sometimes referred to as Summer Poinsettia. This plant produces a striking effect against a green or white background. The young leaves are flaming, rosy



PERSONAL COMFORT—A sepia brown urethane-coated fabric covers an eight-foot sofa which is combined with matching chairs and ottoman covered in heavy linen. A carpet fabric covers the walls.

## Summer Annuals Color Gardens

There isn't too much you can do about toadstools. They are going to appear and reappear as the summer showers progress. Now is the time to think about increasing your shrubs. You may want to put in a few air layers on your Rubber trees or on Crotons.

New growth on the Cuban Laurel at this time of year may become infested with thrips. Thrips cause a distorted lip growth only on the Cuban Laurel.

Summer flowering annuals are almost in the minority when it comes to choice. Here are a few that will be available from your local nursery and garden supply store. Zinnias, many forms and types. Marigolds both dwarf and tall growing varieties. The Washbone flower is ideally suited to shady locations. Gomphrena is another summer annual that looks much like a red flower. It is everlasting and thrives on hot weather. Don't overlook Hosta. If you have a hot dry sunny place this little plant can form a beautiful carpet all summer long. It is related to the Cockscomb family. The plant produces a mass of foliage and as it matures the top becomes a flaming red. Give Fireball plenty of room and full sun. It grows to a height of 4 to 5 feet.

A few rain showers during this month may bring out an abundance of toadstools. Don't gamble on eating them unless you are a qualified botanist.

## HOMEOWNERS BORROW \$1,000 TO \$10,000

Group all of your bills together and lower your monthly payments. Your home need not be paid for.

ORLANDO 988 Woodcock Rd. CALL 894-3711

## EASTER PLANTS IN FULL GORGEOUS BLOOM

ASSORTED 89¢ 3 FOR 2.49. AZALEAS PURPLE, PINK, WHITE 1" - 4" FOR 6". BLUE VASE BEAUTIFUL EVERGREENS JUNIPER 1" & 4" 18 to 24" DWARF GOLD TIP 2 FOR 1.99. ARBOR VITAE 3 1/2" 6". PFITZER "SPREADING" JUNIPER 1" & 3 1/2" 3 FT. BUSHY BAKER'S ARBOR VITAE 4 1/2" 8". Hetzi "Spreading" Juniper 4 1/2" SHORE JUNIPER 1" And 4".

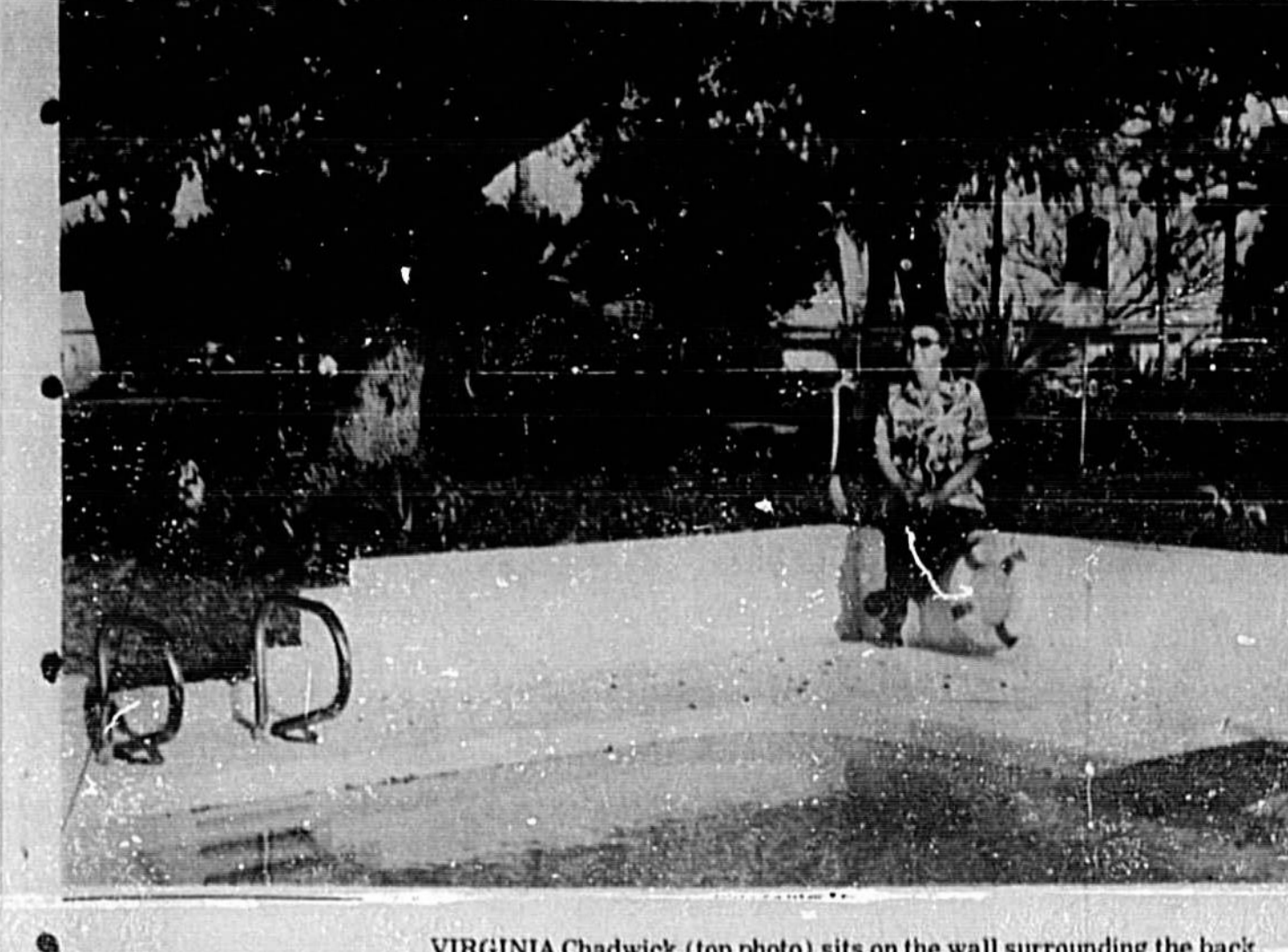
Onion Sets-Seed Potatoes-Petunias-Begonias-Marigolds-Salvia VIBURNUM HEDGE PLANTS 5 For 1.00 WHITE LACE PLANTS 49¢ 2 to 6 FL. OLEANDER 69¢ to 50¢ TOMATO PLANTS BEST VARIETIES

BLOOMING ROSES CONTAINER GROWN 19¢ SPECIALS 6pc to 1.50 Value TREES & SHRUBS GLADIOLUS BULBS 98¢ DOZ. 3 cu. ft. CYPRESS MULCH 1 1/2" BAG

Artificial Plants SALE 5 Ft. - 11.95 BAMBOO 7.95 7 Ft. - 24.50 BAMBOO 18.95 3 Ft. - 17.95 CHINESE FAN PALM 14.95 4 1/2 Ft. - 16.95 PALMETTO PALM 12.95 3 Ft. - Two-Trunk BOSTON FERN 12.49 4 Ft. - 6.50 SCHEFFLERIA 4.95 2 Ft. - 5.98 KENTHIA PALM CLUMP 4.49 7 Ft. - 29.95 PHLODENDON 22.95 6 Ft. - 24.95 PINK CAMELLIA 19.95 6 Ft. - 29.95 BOSTON TREE FERN 24.50 6 Ft. - 5 TRUNK DRACENA 16.95 4 Ft. - 3 TRUNK DRACENA 6.95 5 Ft. - 3 TRUNK YUCCA WITH BROOMS 19.95 5 Ft. - 27.50 MAGNOLIA TREE 29.95 4 1/2 Ft. 24.95 RED+GREEN TI PLANT

GREENWAY HIGH-POTENCY NITRO-GAMIC FERTILIZERS 6-6-6 POTENCY WITH IRON 50 lb. 1 1/2" 100% ORGANIC 2 1/2" IRON 50 lb. 2 1/2" 6-6-6 NITRO 50% ORGANIC 50 lb. 1 1/2" 6-6-6 GREEN-ALL IRON AND GAMIC Iron Manganese 50 lb. 2 1/2" 8-4-4 ORGANITE 2% IRON 50 lb. 2 1/2" BLACK ORGANITE 50 lb. 2 1/2" SPREADER LOANED FREE WITH 100 LBS. ABOVE SPREADER LOANED FREE WITH 200 LBS. ABOVE

GREENWAY NURSERY OPEN SEVEN DAYS A WEEK 8:00 TO 5:30—NO MAIL ORDERS Over 20 Years on Wymora Rd., Between Fairbanks & Lee Road, Winter Park



Shade Trees Prized VIRGINIA Chadwick (top photo) sits on the wall surrounding the back of her swimming pool at her home in Chuluota. Beside her is a "Rebecca job." In the background is a water oak tree, with attractive bird feeders and bird bath. A unique piece of driftwood with bromeliads, better known as tropical American air plant, growing from the driftwood, along with wild orchids and a yellow ceramic Persian cat sitting in front of the driftwood is located in the Chadwick patio garden (lower photo).

Cherry laurel is a fast growing, cold-hardy evergreen tree or large bush. In a good growing atmosphere, the plant may reach a height of 40 feet. Its leaves are glossy green with a few teeth around the margins. Leaf arrangement on the stem is alternate.

Clusters of small, white, fragrant flowers, about one-eighth inch in diameter are produced in the spring. The fruit that develops is about one-half inch in diameter, round in shape, with a stone or pit, and black when mature.

This plant grows well in a sunny or shaded location, and will tolerate slight salt air. The plant's foliage is considered poisonous and should not be eaten by humans or animals. Cherry laurel prefers a rich, well-drained, fertile soil for best growth. Poor soils should be improved by the addition of organic matter, such as peat moss, leaf-mold, manures or sludge.

Container-grown plants are available at nurseries. The can should be cut and removed from the plant before planting.

Container-grown plants may be planted at anytime during the year. Field-grown plants are generally dug with a ball of soil around their roots and wrapped in burlap—thus, the term "balled and burlapped." This type plant will recover best if set out during the cool months of the year.

Cherry laurel are useful as tall hedges or screen plantings. They also are effective as a trimmed hedge.

The tree also suckers to some extent and may be trained into a clump, leaving the desired trunks intact. Lower branches may be removed to give an attractive top canopy. The tree may find use close to its house or where a small shade tree is wanted.

The live oak is one of our most prized and desirable shade trees. Its wide spreading horizontal branches and shape make this tree one of the most picturesque trees for landscape use. This tree will attain a height of 50 feet or more, and a spread of 100 or more feet. Its trunk is short, stout and deeply furrowed. The older trees will have a diameter of three or four feet.

The leaves are thick, leathery, smooth above, pale and silvery white beneath, and edges slightly rolled under. The live oak is an evergreen tree, but loses most of its leaves for about a week or ten days in late winter. New leaves quickly replace the fallen ones.

Live oaks are excellent trees for street plantings, parks, and as specimen trees for homegardens. They will withstand strong winds with little damage or limb breakage. Because of its tremendous spread, it should be used along the property line—preferably in corners of the lot—wherever dense shade is desirable. However, you should be aware that it is not impossible to grow a good lawn or shrub beneath the dense shade of this tree. Keep this in mind when setting out a live oak tree.

Oaks purchased from nurseries are grown in containers or balled and burlapped. These plants can be set out any time during the year. Bare rooted plants dug from field or woods should be planted only during the cooler months—late November through February.

## Many Flowers Suitable

Every Florida garden should have some annual or perennial flowers. With our abundant sunshine, there is no reason why we should not take advantage of the colorful display provided by a wide range of flowers suitable to this area.

Special preparation of the soil is usually necessary if thrifty plants which produce large numbers of flowers of good substance are expected. If the soil is light, sandy and low in organic matter, it should be built up by using food quantities of rotted manure, rotted leaves, hummock soil, or peat. If the soil, on the other hand, is low and subject to flooding, adequate drainage should be provided. Beds raised about 12 inches with ditches between them should be satisfactory. Much evidence points to the value of mulching after the plants are set where they are to bloom. A layer of peat, rotted manure, or oak leaves will sequester moisture, keep the roots cool, and discourage weed growth.

After the plants have been growing in their permanent positions for about six weeks and are well established, a schedule of regular feeding may be started. A balanced fertilizer which contains nitrogen, phosphorus, and potassium together with traces of the minor elements should be used to insure robust plants and an abundance of blooms. A light sprinkling of this balanced fertilizer every two or three weeks is much preferred over

heavier feedings at great intervals. If the flowers are growing under a much of leaves, the fertilizer can be sprinkled on top and watered in. If you are using a hoe for clean cultivation, the fertilizer should be lightly hoed in, followed by ample irrigation.

Special preparation of the soil is usually necessary if thrifty plants which produce large numbers of flowers of good substance are expected. If the soil is light, sandy and low in organic matter, it should be built up by using food quantities of rotted manure, rotted leaves, hummock soil, or peat. If the soil, on the other hand, is low and subject to flooding, adequate drainage should be provided. Beds raised about 12 inches with ditches between them should be satisfactory. Much evidence points to the value of mulching after the plants are set where they are to bloom. A layer of peat, rotted manure, or oak leaves will sequester moisture, keep the roots cool, and discourage weed growth.

After the plants have been growing in their permanent positions for about six weeks and are well established, a schedule of regular feeding may be started. A balanced fertilizer which contains nitrogen, phosphorus, and potassium together with traces of the minor elements should be used to insure robust plants and an abundance of blooms. A light sprinkling of this balanced fertilizer every two or three weeks is much preferred over

heavier feedings at great intervals. If the flowers are growing under a much of leaves, the fertilizer can be sprinkled on top and watered in. If you are using a hoe for clean cultivation, the fertilizer should be lightly hoed in, followed by ample irrigation.

Special preparation of the soil is usually necessary if thrifty plants which produce large numbers of flowers of good substance are expected. If the soil is light, sandy and low in organic matter, it should be built up by using food quantities of rotted manure, rotted leaves, hummock soil, or peat. If the soil, on the other hand, is low and subject to flooding, adequate drainage should be provided. Beds raised about 12 inches with ditches between them should be satisfactory. Much evidence points to the value of mulching after the plants are set where they are to bloom. A layer of peat, rotted manure, or oak leaves will sequester moisture, keep the roots cool, and discourage weed growth.

After the plants have been growing in their permanent positions for about six weeks and are well established, a schedule of regular feeding may be started. A balanced fertilizer which contains nitrogen, phosphorus, and potassium together with traces of the minor elements should be used to insure robust plants and an abundance of blooms. A light sprinkling of this balanced fertilizer every two or three weeks is much preferred over

heavier feedings at great intervals. If the flowers are growing under a much of leaves, the fertilizer can be sprinkled on top and watered in. If you are using a hoe for clean cultivation, the fertilizer should be lightly hoed in, followed by ample irrigation.

Special preparation of the soil is usually necessary if thrifty plants which produce large numbers of flowers of good substance are expected. If the soil is light, sandy and low in organic matter, it should be built up by using food quantities of rotted manure, rotted leaves, hummock soil, or peat. If the soil, on the other hand, is low and subject to flooding, adequate drainage should be provided. Beds raised about 12 inches with ditches between them should be satisfactory. Much evidence points to the value of mulching after the plants are set where they are to bloom. A layer of peat, rotted manure, or oak leaves will sequester moisture, keep the roots cool, and discourage weed growth.

After the plants have been growing in their permanent positions for about six weeks and are well established, a schedule of regular feeding may be started. A balanced fertilizer which contains nitrogen, phosphorus, and potassium together with traces of the minor elements should be used to insure robust plants and an abundance of blooms. A light sprinkling of this balanced fertilizer every two or three weeks is much preferred over

heavier feedings at great intervals. If the flowers are growing under a much of leaves, the fertilizer can be sprinkled on top and watered in. If you are using a hoe for clean cultivation, the fertilizer should be lightly hoed in, followed by ample irrigation.

Special preparation of the soil is usually necessary if thrifty plants which produce large numbers of flowers of good substance are expected. If the soil is light, sandy and low in organic matter, it should be built up by using food quantities of rotted manure, rotted leaves, hummock soil, or peat. If the soil, on the other hand, is low and subject to flooding, adequate drainage should be provided. Beds raised about 12 inches with ditches between them should be satisfactory. Much evidence points to the value of mulching after the plants are set where they are to bloom. A layer of peat, rotted manure, or oak leaves will sequester moisture, keep the roots cool, and discourage weed growth.

After the plants have been growing in their permanent positions for about six weeks and are well established, a schedule of regular feeding may be started. A balanced fertilizer which contains nitrogen, phosphorus, and potassium together with traces of the minor elements should be used to insure robust plants and an abundance of blooms. A light sprinkling of this balanced fertilizer every two or three weeks is much preferred over

heavier feedings at great intervals. If the flowers are growing under a much of leaves, the fertilizer can be sprinkled on top and watered in. If you are using a hoe for clean cultivation, the fertilizer should be lightly hoed in, followed by ample irrigation.



WISHING WELL, with Mrs. Jessie Knight, decorates the yard of the Knights' home fronting on spring Lake in Chuluota. (Liza Baker Photo)

## Time To Plant Summer Annuals

Spring is opening up, but you still have time to plant summer annuals according to Florida Nurserymen and Growers Association (FNGA). If you have no success in planting seeds that require no seedling already started from your nursery or garden supply store. Here are some that will perform admirably for you during the summer months. In Zinnias, there are many new varieties available. Most of them are a far cry from the old fashioned flowers that grandma grew. You may want to try the Mexican Zinnia, or the Persian Carpet. Don't overlook the Thunbergias. These are ideal for pots, low beds and edgings.

Some of the larger varieties, of course, are ideal for cut flowers. The new hybrid variety Zinnia make excellent cut flowers growing to a height of two and a half feet. For an outstanding bright color try Firecracker Red. The new super giants are a very doubled flower and may have pastel colors with two and three tone effects.

Most everyone is familiar with the common Pigweed that infests our garden, but there is a beautiful variety sometimes referred to as Summer Poinsettia. This plant produces a striking effect against a green or white background. The young leaves are flaming, rosy crimson and attain a height of three feet. Other summer annuals that you might find highly desirable are Marigolds. These too come in new shapes, heights and colors. Don't overlook planting Coleus.

Most everyone is familiar with the common Pigweed that infests our garden, but there is a beautiful variety sometimes referred to as Summer Poinsettia. This plant produces a striking effect against a green or white background. The young leaves are flaming, rosy

Most everyone is familiar with the common Pigweed that infests our garden, but there is a beautiful variety sometimes referred to as Summer Poinsettia. This plant produces a striking effect against a green or white background. The young leaves are flaming, rosy

## Our Loan People

PASS THE BUCK!

OUR "PASSER" IS WENDELL AGEE CALL 322-1776

UNITED STATE BANK of Seminole SANFORD PLAZA A FULL SERVICE BANK MEMBER F.D.I.C.

Keep Bugs SCREENED OUT! OF PORCHES, PATIOS AND YOUR POOL, SWIMMING POOL. Tropicana SCREENS 709 HAROLD ST., WINTER PARK for a FREE estimate... phone 644-3939

Keep Bugs SCREENED OUT! OF PORCHES, PATIOS AND YOUR POOL, SWIMMING POOL. Tropicana SCREENS 709 HAROLD ST., WINTER PARK for a FREE estimate... phone 644-3939

## Last 3 days. Save 10% on all our air conditioners. Buy now. Begin payments June 1st.

Sale 116<sup>95</sup> Reg. 17.95, Penncrest Custom 5,000 BTU 2 speed air conditioner. Features adjustable vertical louvers for cooling where you want it. Two speed fan and cooling power, washable Scott foam filter. Ten position thermostat control maintains desired temperature. \$8 a month.\*

6,000 BTU, 2 speed, Reg. 144.95, Sale 129.95 8,000 BTU, 2 speed, Reg. 179.95, Sale 161.95 10,000 BTU, 2 speed, Reg. 209.95, Sale 188.95 28,000 BTU, 3 speed, Reg. 359.95, Sale 323.95

Sale 179<sup>95</sup> Reg. 199.95, Penncrest Imperial 8,000 BTU 3 speed air conditioner. Auto-Aire motorized horizontal louvers for wall-to-wall cooling. Ten position thermostat control maintains desired temperature. Permanent, washable Scott foam filter. Three speed fan and cooling power. \$9 a month.\*

Sale 207<sup>95</sup> Reg. 229.95, Penncrest Custom 11,500 BTU 2 speed air conditioner. Features tilt-out filter for easy cleaning, permanent Scott foam filter. Adjustable air directors for cooling where you want it. Air exchanger exhausts stale air, brings in fresh air. 2 speed fan and cooling power. \$9 a month.\*

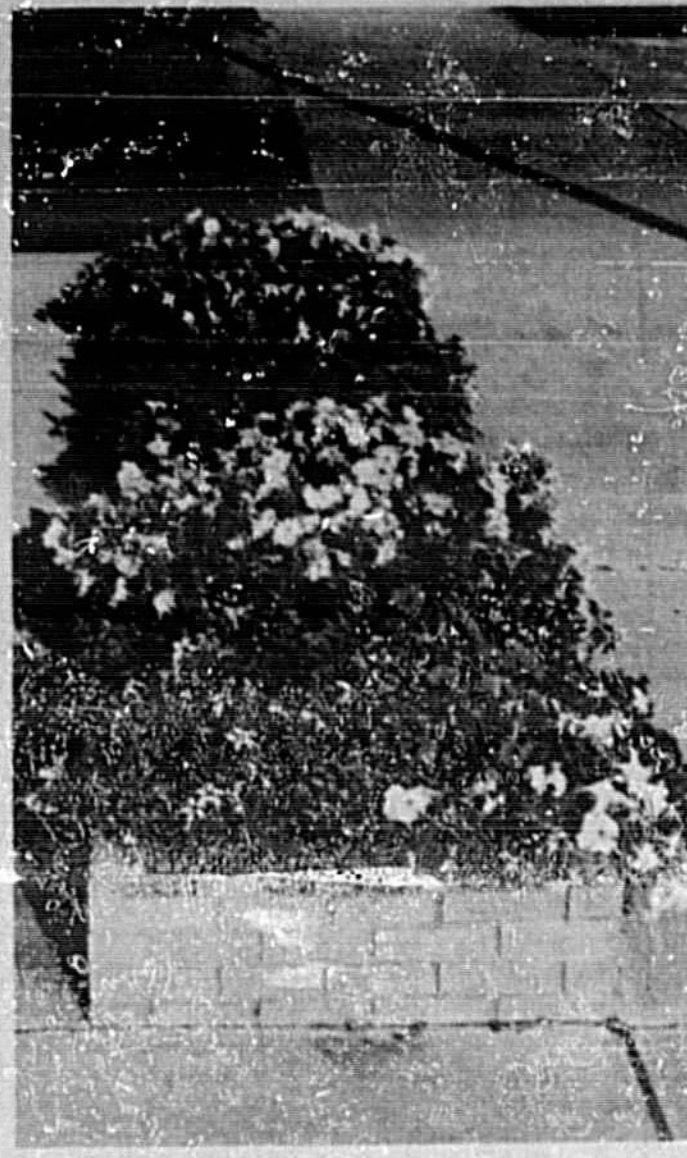
15,000 BTU, 2 speed, Reg. 229.95, Sale 204.95 18,000 BTU, 2 speed, Reg. 269.95, Sale 242.95 24,000 BTU, 2 speed, Reg. 319.95, Sale 287.95 Sale prices effective through Saturday.

\*This amount represents the required minimum monthly payment under Penncrest's Time Payment Plan for the purchase of the selected item. NO FINANCE CHARGE will be incurred if the balance of the account in the first billing is paid in full by the closing date of the next billing period. When incurred FINANCE CHARGES will be determined by applying periodic rates of 1 1/2% (ANNUAL PERCENTAGE RATE 1 1/2%) on the first \$500 and 1% (ANNUAL PERCENTAGE RATE 1%) on the portion over \$500 of the previous balance without deducting payments or credits. JCPenney service It's all part of the value. SANFORD PLAZA Open 10 A.M. to 9 P.M. MON.—SAT.

# Springtime . . . And Yard Work . . . Come To Seminole County



MRS. MARGARET POINT TRIMS CHERRY LAUREL



PLANTER IN DOWNTOWN SANFORD



MR. AND MRS. IRVING PRYOR WITH ORCHIDS

## The WEEDERS GUIDE

**By EARL ARONSON**  
AP Newsfeatures  
Take your plants to the night football or baseball game with you. It will do them good. Mercury metal halide lamps, used to illuminate sports fields and warehouses—have increased plant growth up to 60 per cent in greenhouse culture.

The Weed Science Society of America recently was told at St. Louis, Mo., by Prof. William B. Duke, an agronomist at the New York State College of Agriculture at Cornell University, "the prime advantage of this lighting system is that plants exposed to mercury lamps more closely resemble field-grown crops than any we have observed before."

This includes plants grown in refined growth chambers, he added, explaining that plants grown under conventional greenhouse light normally differ from those grown in open fields in that they are tall and spindly. Plants he grew under mercury lamps had sturdy stems and heavier leaves.

Unlike the fluorescent and incandescent lamps normally used, the mercury halide lamps emit a continuous spectrum similar to that of natural sunlight. Duke related other advantages listed were increased light intensity and less lampage (strength of electrical current) in the greenhouse.

Because of this heightened intensity the lights can be held at a higher level, Duke added. "This, combined with the fact that fewer banks of lights are needed, decreases shading and permits more natural sunlight to filter to the plants."

There is one disadvantage. Weeds such as quackgrass, wild mustard and green foxtail showed a growth increase of 60 per cent, while the growth rate of corn, soybeans and alfalfa

climbed 40 per cent in greenhouses with mercury halide lamps.

Do organic fertilizers, derived from composts, animal manures and plant residues give any unique nutritional qualities to food crops? A Cornell University soil scientist says not.

Prof. William H. Allaway says that "although the addition of organic matter is beneficial for soil management and conservation, the plants produced on organically fertilized soil are not necessarily of higher nutritional quality than plants grown with inorganic or commercial fertilizers."

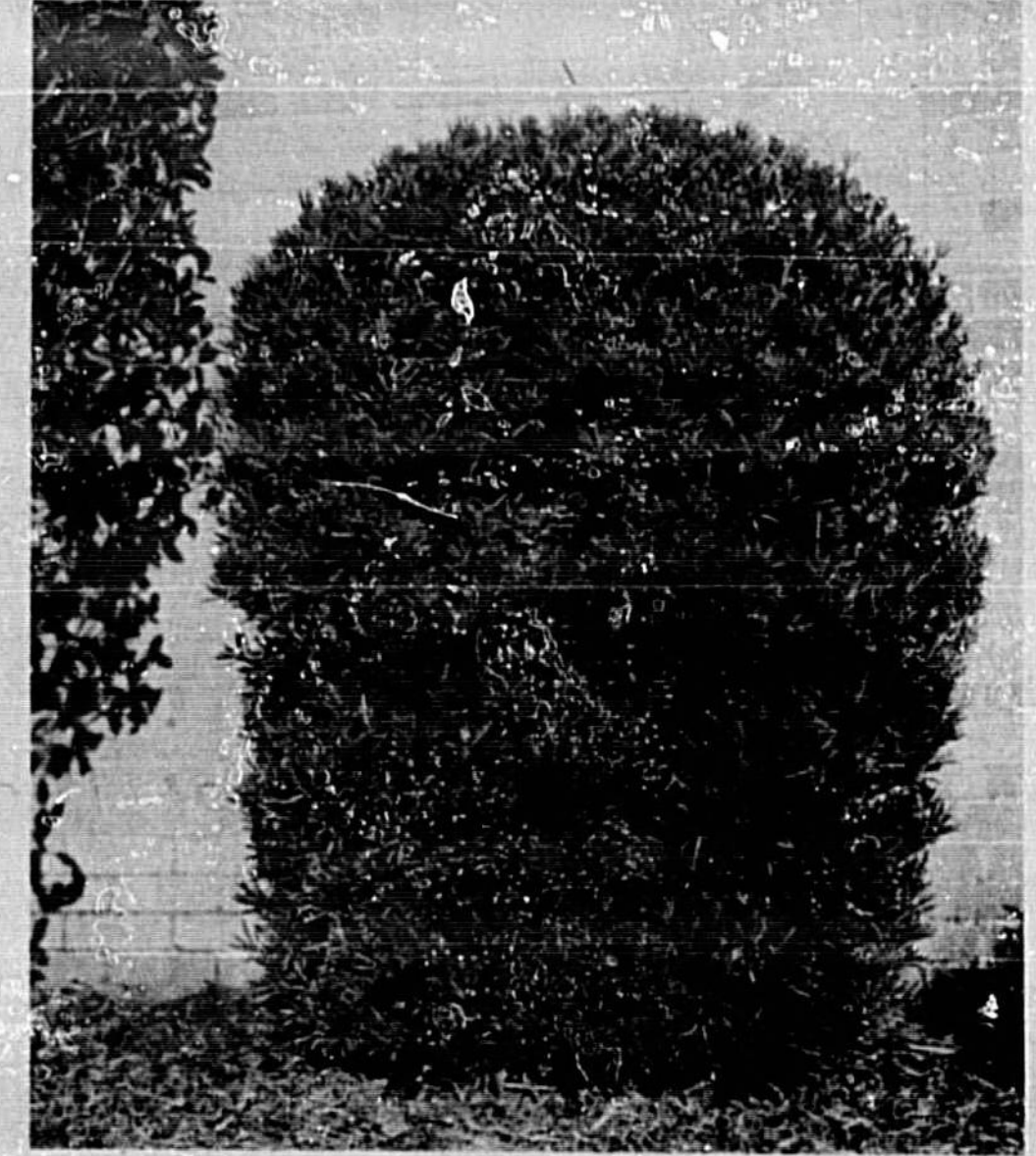
In explanation, he said, the elements essential to plant growth for the most part enter plants in inorganic form. "When organic matter is added to the soil," he added, "it is broken down by soil microorganisms and the plant nutrients in the organic matter are converted to simpler inorganic compounds. Plants use these inorganic compounds of nitrogen, phosphorus, potassium, sulphur and trace elements as sources of the substances needed for plant growth."

"Within the plant, and in the human that eats the plant, these elements have the same effect, regardless of whether they were added to the soil in organic or commercial fertilizers."

The professor said there was no laboratory test, or animal feeding trial, that will infallibly distinguish plants grown with organic fertilizers from those grown with commercial ones. But he did stress that soils with a high amount of organic matter have many desirable physical properties. And he urged farmers to use all practical means to conserve the organic content of their soil.



ORIENTAL FLOWERING CABBAGE



PROPERLY TRIMMED, MULCHED PODOCARPUS

### SANDERSON'S

FERTILIZER SALE		HYDROPONIC TOMATOES	
6-6-6	40 PER CENT ORGANIC WIRON 175	COMPLETE WITH SHAVINGS & FERTILIZER \$1.92	ARGENTINE BAHIA GRASS SEED 99¢ lb. . . . 10 lb. 8.95 REG. \$1.19 lb.
8-4-8-4	CITRUS 175		
10-6-6	PELLETS 2.49	SEE OUR SELECTION FINEST FOR FLORIDA FORTUNEANA ROOTSTOCK ROSES	CYPRESS MULCH 3 Cu. Ft. Bag 1.49 REG. 1.79
6-6-6	100 PER CENT ORGANIC 2.79		
4-8-6	AZALEA & CAMELLIA SPECIAL 2.15		

THESE PRICES GOOD THURS., FRI., SAT., SUN., MARCH 30 THRU APRIL 3  
SORRY, NO DELIVERIES AT THESE PRICES

### SANDERSON'S

NURSERY & GARDEN CENTER 3730 SO. ORANGE AVE. PHONE 839-3701

ALOMA GARDEN KING 2462 ALOMA AVE. WINTER PARK PHONE 671-2113

## LUCITE® CHEER-UP Sale

If the "WINTER WEARIES" have you down... CHEER-UP—brighten up your whole house with a fresh coat of LUCITE® Paint

**LUCITE® House Paint**  
Proven best by test. Most durable of the leading brands Du Pont tested. Built in primer, dries fast, water clean-up.

**CHEER-UP \$9.98** SALE PRICE (GALLON)

**LUCITE® Wall Paint**  
The Paint that Really covers. Whatever LUCITE covers wet stays covered when it dries. Fast drying, easy to use.

**CHEER-UP \$8.98** SALE PRICE (GALLON)

COME IN TODAY

213 W. 3rd SANFORD HILL LUMBER and HARDWARE CO. PHONE 322-5581

## Steamatic

CARPET, FURNITURE & DRAPES  
Cleaned on Location!

Your carpet isn't only clean... It stays clean.

The Steamatic Process gets your carpet nearly as clean as when you first bought it. And because it's so much cleaner than shampooing, you have to clean it less often. The fact is for every few times you'd normally have your carpet shampooed, you only have to Steamatic once. Look what we took out of a rug that had just been shampooed.

USE BankAmericard or MasterCard Measurably different...  
CALL FOR FREE ESTIMATE  
425-5541 66 West Robinson St., Orlando



A. J. CALHOUN HOME ON MELLONVILLE AVENUE

WOOD GATE, CONCRETE FENCE ASSURE PRIVACY

## Here's How Lightening Panel Not Easy

**By GENE GARY**  
Copley News Service  
Q. We have a deal on to sell our house. But the prospective buyer thinks the paneling in the living room is far too dark and asks if it could be lightened. Since it seems to be a certain sale, I agreed to have the job done. Can you tell me the best way to go about it? If necessary, I will hire a professional in the refinishing business. — Arthur M.

A. I can give you instruction. Then, if the job seems too difficult, you could hire a painter. To lighten the tone of the paneling, the present finish must be removed. Even before the stain can be bleached, any existing wax on the present finish must be removed. If you decide to go ahead with this complete process of removing the finish and starting over, first thoroughly clean the surface. If it is waxed, try washing down an inconspicuous area with turpentine to learn if past wax has previously been used. If liquid self-polishing wax was used, try a wax remover.

of the canyon and our recreation room is on the lower or basement level, below grade. We are having trouble with the floor, which is a concrete slab that has been painted with porch enamel. It seems to be constantly dusty, even though we first treated it with a sealer. It looks terrible. Is there any way we can correct this condition? — Mrs. Helen F.

A. The fact that your floor is dusty indicates that either your paint is flaking or that the floor was not properly prepared in the first place. Conventional paints and enamels are not suited for application to concrete for the reason that natural alkali in

## CARPET CLEANED

Spring Special any living room and hall (Regardless of Room Size)

**\$14.95** Right In Your Own Home

ANY LIVING ROOM DINING ROOM (or dining area) CLEANED (Regardless of Size) **\$24.95** THIS WEEK ONLY

20% off Patio Roofs Screen Rooms Vinyl Windows

40% off Cornet Awnings (3 or more)

CALL NOW FOR APPOINTMENT **671-5453**  
NOT DELIGHTED - DON'T PAY!

WE'LL CLEAN 1 BEDROOM RUG FOR ONLY 99¢ WITH EITHER OF THE ABOVE SPECIALS. (TRAFFIC AREA ONLY)

**GUARANTEE CARPET CLEANING CO.**  
3090 ALOMA AVE., WINTER PARK 671-5453

WARRANTY... Our expert crew will clean your carpeting BETTER than you have ever seen before, or your money is returned IN FULL. Upholstered furniture, area and Oriental carpets included in this package.

## Decor Score

# Kimono Wall Hangings

**By BARBARA HARTUNG**  
Copley News Service

Q. My husband who is in the Navy was recently given a very old and heavily embroidered Japanese kimono as a gift by a family with whom we have become acquainted. It is in colors of deep blue, two shades of yellow and some peach shades. I would like to use the kimono in our living room and I have thought of using it as an upholstery fabric or for pillows. However, the fabric looks rather delicate and so I don't think it would hold up well. What might I do with it? N.C.R.

A. I think it would be sad to cup up an old and beautiful kimono especially if it is in fairly good condition. Why not treat the kimono as a painting and hang it on your wall like a work of art which it probably is. A Japanese kimono can make a handsome wall hanging and a dramatic one as well. The most common and surely one of the most handsome ways of displaying a kimono is to obtain a large piece of bamboo and insert it through the arms and across the shoulders of the kimono so the kimono is flat and the embroidery can be appreciated.

Q. We are moving into a new house. The living room has shade carpeting that is three shades of green — light to medium. The draperies are eggshell and white sheers. Our sofa is avocado, two matching chairs are orange and gold print. The organ, stereo and tables are walnut. What color should we paint the walls? Also, what colors for throw pillows? N.N.

A. The color probably should be decided taking into consideration the exposure of the room as well as what you like. If you want a warm look to the room, choose a pale gold. If you want a cool room, choose a pale green. If you want a neutral, choose an eggshell. They all would look well with what you describe.

If you can get, still have or can match the sofa and chair fabrics, I'd use those — the print pillows on the sofa and the plain on the chairs, as well as

## LANDSCAPE

Home Owners - Contractors Businesses

By request we will furnish a sketch of your property professionally landscaped with suggested trees, plants and shrubs. Nominal fee includes installation.

All Plants Guaranteed 1 Year Complete Sodding & Maintenance Available

APRIL SPECIAL  
**1 FREE PLANT**  
Will Be Given With Every Signed Contract

For Quick Courteous Service Call 831-2023

### SEMSAN

1011 S. SANFORD AVE. SANFORD

# NEED SPRING THINGS?

## Our Money Is a Great Buy

A new season always seems to call for many new things. There's no need to put an added strain on the old budget or disturb your savings, use our money. It's here and it's a good buy this spring or any season.

## The Sanford Atlantic National Bank

MEMBER THE ATLANTIC GROUP OF BANKS IN FLORIDA MEMBER F.D.I.C.



VISIT OUR STORE AT 133 EAST ROBINSON IN DOWNTOWN ORLANDO



**george stuart**

FLORIDA'S LARGEST  
SINCE 1938  
SECURITY SUPPLY DEPARTMENT STORE



**New 3M Copier**

Model #031... **\$179.00**

The successor to the famous 3M Thermofax machine. Uses the new 3M Dual Spectrum copy paper. Takes only 12 1/2 x 18 1/2" on your desk. Weighs only 19 lbs. so it's easy to move from one desk to another or take home at night. Copies from letters, spec sheets, pages bound in books, colors... in fact most any mark you can read on a piece of paper. Copies originals up to 8 1/2 x 14", or larger sheets in sections. Makes overhead projection transparencies and addresses gummed labels. Completely dry—no liquids, chemicals, powders, toners.



**The "Executive" Swivel Chair**

George Stuart's Price

**\$57.65**

Choice of Black, Gold, Green, Sandalwood or Tanagerine

Colorful, impressive... the last word in beauty. Heavy steel frame and sculptured swivel base. Tilt seat with adjustable tension and height. Polyurethane foam seat 19" x 16 1/2" x 4". Designed for the utmost in comfort. Model 9825NE. Nationally advertised at \$90.60.



**Secretarial Posture Chair**

George Stuart's Price

**\$38.25**

Choice of Tangerine, Gold, Black, Ginger or Green upholstery.

Designed to help eliminate fatigue, correct improper posture. Beautifully styled. Spring back. 5-Way adjustment. Thick foam rubber seat. Aluminum colored frame. Great for use at home too, at the desk, the sewing machine, ironing board... anywhere you need a good, comfortable chair. Model 9810E. Regular \$50.40.



**"Kik-Step"**

makes you a safe 14" taller

George Stuart's Price

**\$17.95**

The safe, easy way to climb at home, in the office, the library, warehouse... anywhere you want to reach something on a high shelf. Step on Kik-Step... the casters retract and it locks securely to the floor. Step off and "kik" it out of the way—in whatever direction you want. Nationally advertised at \$24.00.

**Typing Stand**

George Stuart's Price

**\$17.85**

Heavy gauge steel stand, has drawer for pencils, clips, erasers, paper... any supplies you need. Handy shelf for books. Typewriter desk height, 39" wide, 17" deep. Easy to assemble. Tan Finish. Made by Cole Division of Litton Industries. Model 759. Regular Price \$22.10.

**Illuminated Reader**

**\$11.95**

Light floods magnified area with this illuminated reader... gives shadowless light from miniature bulb just below 3 1/2" x 2" lens. For the professional, or for the person who needs to read fine print. A great gift for Grandma! In black or beige.

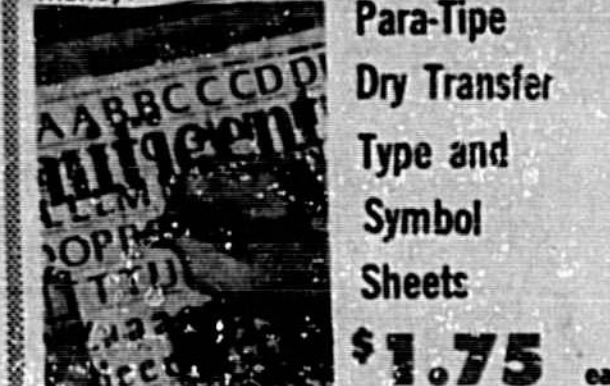


**Stop Licking Stamps! Use Postafix \$14.95**



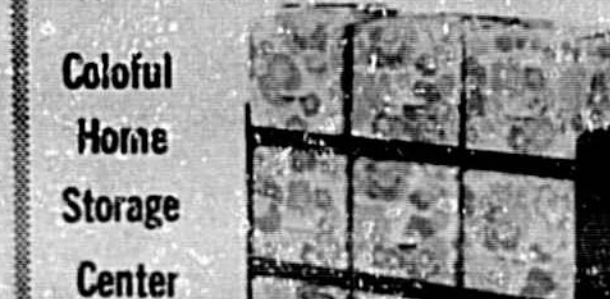
**Mini-Mark Price Labeling Kit \$29.95**

Brand new labeling machine. Compact. Easy to use. Prints up to 5 digits on pressure-sensitive labels. Fingertip setting. Instant reloading. Kit contains pricing machine, 2,000 white price labels, pricing ink, handy storage box. Saves time, labor, money.



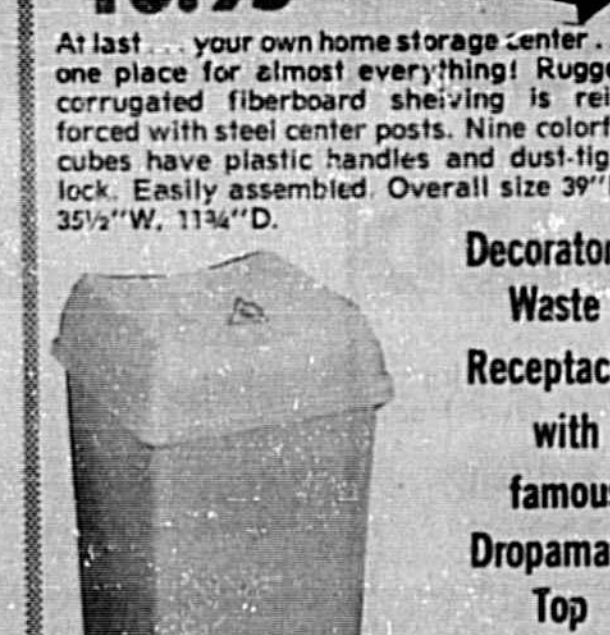
**Para-Type Dry Transfer Type and Symbol Sheets \$1.75 ea.**

Easy-to-use Para-Type—available in the most popular type styles. For comps, finished art, maps, charts, etc. Reproducible—provides camera ready copy. \$1.75 per sheet.



**Colorful Home Storage Center \$10.95**

At last... your own home storage center... one place for almost everything! Rugged corrugated fiberboard sheathing is reinforced with steel center posts. Nine colorful cubes have plastic handles and dust-tight lock. Easily assembled. Overall size 39" H, 35 1/2" W, 11 3/4" D.



**Decorator Waste Receptacles with famous Dropmatic Top \$17.50**

For offices, restaurants, hospitals, schools, industry—wherever good housekeeping is desired. Easily cleaned. No springs or hinges to wear out. Complete closure every time, eliminating flies, odors and that "stuffed" look of conventional receptacles. In gold, orange, avocado.

Model SC140 14 1/2 x 14 1/2 x 22" Regular \$21.00  
George Stuart's Price **\$17.50**

Model SC180 — 18 1/2 x 14 1/2 x 22" Regular \$24.50  
George Stuart's Price **\$20.00**

Model SC400 — 18 1/2 x 18 1/2 x 24" Regular \$34.00  
George Stuart's Price **\$31.50**

This Week Only!

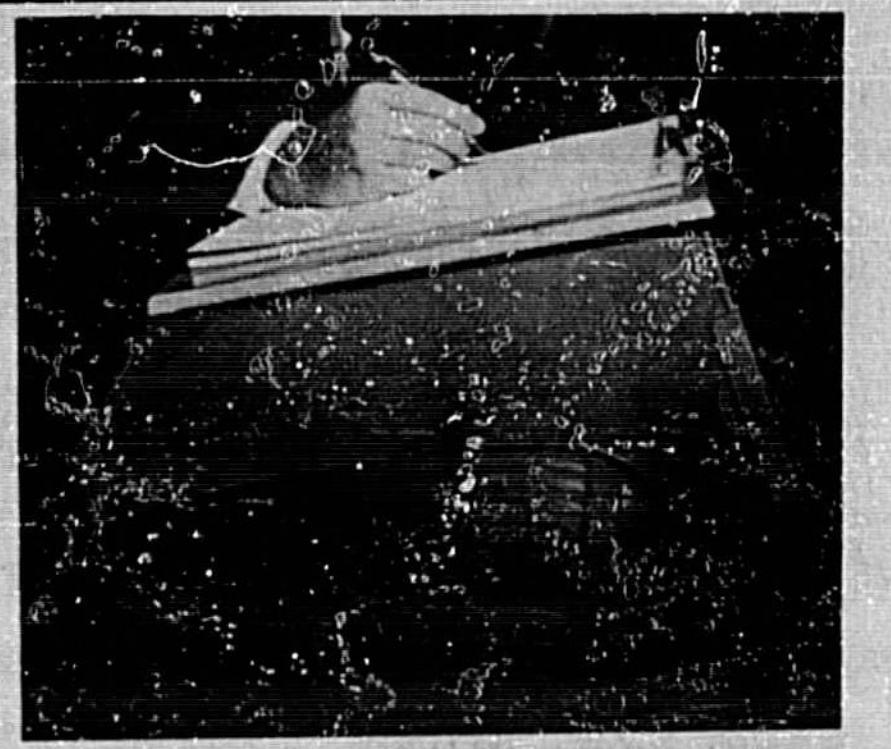


**New! Royal Office Master**

ELECTRIC ADDING MACHINE

George Stuart's Price **\$69.95**

Large capacity — totals to \$9,999,999.99. It adds, subtracts, multiplies by repeat addition, gives automatic credit balance, total, and subtotal. Has 2-color ribbon — prints in large, easy-to-read figures. For all types of figure work at the office. Balance your check book, budget at home. Regular \$109.95.



**The Car Porta-Desk**

ORGANIZES YOUR PAPER WORK ON THE ROAD

Only **\$24.95**

For the salesman, patrolman... anyone whose car is his office. Fits over car seat — gives firm 12 x 15" writing surface. Filling compartment holds files and papers up to legal size. Storage space keeps car from looking "cluttered." Can be carried easily from car to house.



**Look What's Happened TO DRAWING TABLES**

Model 9209 — 24 x 36" **\$51.95**

A beautiful, functional drawing table. Square tube base in black, blue, orange, or honey gold supports the new AERO-CORE top in grand style! Warp-proof super-smooth drawing surface. Quick, limitless variations of drawing height and angle. Non-skid leveling glides, chromed steel hardware, solid black knobs. Easily set up.

Top Size 31 x 42" ..... \$54.95    Top Size 36 x 48" ..... \$61.50

ACCESSORIES

Tool Drawer ..... \$21.50    Book Shelf ..... \$ 8.50

**The Sanford Herald**

Friday, March 31, 1972—Sanford, Florida 32771  
64th Year, No. 160 Price 10 Cents

**Christians Observe Good Friday Rites**

By THE ASSOCIATED PRESS

Christian pilgrims flocked to Jerusalem today to retrace Christ's final footsteps along the Via Dolorosa - The Way of Sorrows - to the traditional scene of the Crucifixion.

Thousands of visitors from abroad passed through the narrow lanes of Jerusalem for the annual Good Friday pilgrimage of mourning to Calvary.

Warm spring breezes swept the city as the pilgrims, some of them carrying 2-foot wooden crosses on their backs, began the mile-long procession through Jerusalem's bazaars.

It was the fifth Good Friday in Jerusalem since Israel captured the old city from Jordan in the 1957 war.

In Berlin, a massive Good Friday flow of Westerners crossed the wall into East Berlin and East Germany.

West Berlin police reported crowds at all nine border crossing points. "Processing continues quick but the crowds apparently have overburdened the Eastern facilities," they said.

Cars carrying West Berliners into the East German countryside for the first time in 20 years were lined up as much as two miles at the three main access points.

In the Philippines, several hundred flagellants underwent their annual torture rituals to recall the sufferings of Christ and atone for their own sins.

With some wearing head-pieces of vines, they were whacked on the back with wooden bats covered with razor sharp glass, then flogged with whips of bamboo rods.

"When it was over they fell to their knees and prayed, then washed off their wounds in nearby rivers."

**Split Sanford For Council Has Support**

By BILL SCOTT

By a five-to-four vote, the Greater Sanford Chamber of Commerce legislative and national affairs committee this morning approved a resolution offered by George Crosley to request the city commission to ask the voters of Sanford to decide whether to divide the city into four districts.

In a battle between proponents of districting and those committee members opposing change from the present system of having four commissioners and the mayor-commissioner run-at-large, the motion was finally passed by Robert Daehn, chairman, voted "yes."

With Crosley asking that the people be given the right to vote on whether they want commissioners to reside in city districts, much opposition was generated by Clifford McKibbin and Andrew Carraway.

McKibbin disclosed that several businessmen had expressed opposition to districting. "The chamber will alienate some of its own members with this thing, and I would like to drop it," McKibbin advised.

In a districting plan drawn a week ago by the committee, one district would comprise nearly all of Goldboro, a predominantly black area.

Under questioning from Crosley, McKibbin explained that certain people were of the opinion that blacks could not adequately represent them.

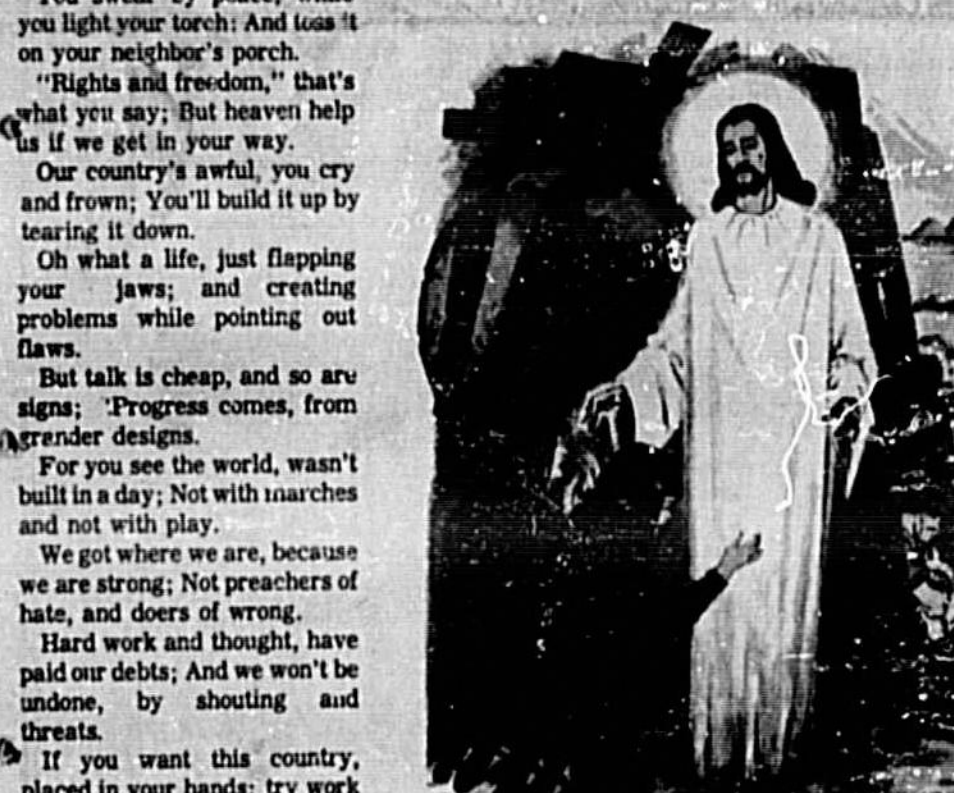
"That's incredible, just incredible," was Crosley's reply.

Carraway shot back, "You're not supposed to do that because you are catering to a minority." Carraway explained that by limiting to districts, the quality of people to serve is also limited.

City Commissioner Gordon Meyer, giving an indication of how the City Commission may approach the issue, stated he felt another recommendation to the Commission from the chamber should be from the entire Chamber.

Walter Giesow warned that in Orange County, the people had to circulate petitions to allow a charter change to come before the people for vote.

"If the city is divided into four districts, the people are asking is that the people be given the right to vote on the question."



**EASTER EXPLOSION**

By The Guardian Angel Palmist of DeBary  
Recorded by Ed Bodin, Retired Reporter  
Exclusive to Sanford Herald

The Tomb of Jesus Christ can symbolize the truth beyond man's scientific eyes. Explosion in that Tomb was cosmic force. To prove the death of Christ was not a loss. Christ's mortal body fashioned instantly. From flesh to highest radiant energy. Like oxygen in water changed by death. To gaseous atmosphere for cosmic breath. Then Christ appeared in mortal form to show True body of the spirit men shall know.

Thus goal of death let every man behold. With many missions Jesus Christ foretold. The Father's House exists out there in space. So wipe the tears, my children from your face.

You get the feeling that some of those running for the Presidential nomination fit into the mold described above?

I'm sure that the writer did not intend for this poem to limit itself to those wearing long hair and beads.....

Seems strange... why would somebody wait until 11 p.m. go out and burn cancelled checks for 1970 and 71... an isolated area south of SR 427.

Some didn't burn completely... the name is that of a very recent traffic fatality.....

Why??

If you wanted to get rid of something like that, why not in the privacy of your own backyard?

And the police and firemen responded to the call; but it didn't appear on any blotter! Makes you wonder why?????

He is wise who can instruct us and assist us in the business of daily virtuous living.

Thomas Carlyle

**AF Thunderbirds Will Perform**  
(Story On Page 3A)

**North Orlando, Longwood Hit Tornado Rips County**

A tornado touched — down in Seminole County early this morning, striking the Village of North Orlando first and then hop-scotching into the Longwood area, along Highway U.S. 192.

No injuries were reported at any of the damaged sites, the only two reported to the Seminole County sheriff's office.

In North Orlando, the twister tore apart a utility shed and also flipped a travel-type camper onto its side. Also, power lines were ripped from the poles and telephone communications were disrupted.

In Longwood, the home of Mr. and Mrs. John Cox, on George Street, had part of the roof torn off. A six-year old daughter, Christine, was asleep in her bedroom when the bow of the boat came sailing through her window. She was uninjured. (Related Photos Pgs 3A and 7A)

Also in the home was John Jr., age 2, who said he was awakened by the "terrible noise and lightning." The family said when it heard the loud noise outside, "We knew a tornado had arrived."

The Longwood fire department was the first on the scene, having received the call at 5:18 a.m.

While the firemen were busy covering the gaping hole in the roof of the Cox home, Elnora Lommer, wife of the Longwood fire chief, was preparing coffee to be served to the men.

In her anxiety, Mrs. Lommer fell, fracturing a couple of ribs and was rushed to Winter Park Hospital.

The Longwood fire department also responded at 7:37 a.m. to put out a fire at the Woodland subdivision where an exploding gas water heater caused minor damage.

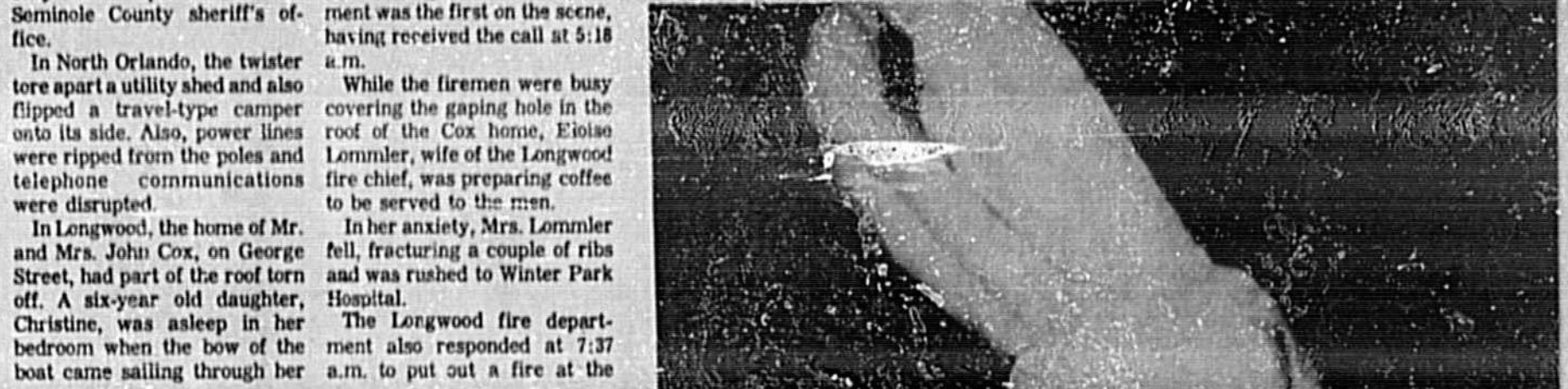
The estimated damage to the Cox home is in excess of \$6,000 with water more than ankle deep throughout the house.

It was noted that a "technically" was overlooked in that this storm-damaged Longwood city units but this did not deter the firemen in making haste to the scene.

The Coxes' neighbor reported that some time during the height of the blowing wind, their power mower was "lifted" from its storage space. Prior to press time, it still had not been found.

At Creel's Mobile Home Sales, one of the mobile homes was overturned by the high winds.

The Longwood police and fire departments were on the scene. Cont'd On Pg. 3A Col. 5'



**Split Sanford For Council Has Support**

By BILL SCOTT

By a five-to-four vote, the Greater Sanford Chamber of Commerce legislative and national affairs committee this morning approved a resolution offered by George Crosley to request the city commission to ask the voters of Sanford to decide whether to divide the city into four districts.

In a battle between proponents of districting and those committee members opposing change from the present system of having four commissioners and the mayor-commissioner run-at-large, the motion was finally passed by Robert Daehn, chairman, voted "yes."

With Crosley asking that the people be given the right to vote on whether they want commissioners to reside in city districts, much opposition was generated by Clifford McKibbin and Andrew Carraway.

McKibbin disclosed that several businessmen had expressed opposition to districting. "The chamber will alienate some of its own members with this thing, and I would like to drop it," McKibbin advised.

In a districting plan drawn a week ago by the committee, one district would comprise nearly all of Goldboro, a predominantly black area.

Under questioning from Crosley, McKibbin explained that certain people were of the opinion that blacks could not adequately represent them.

"That's incredible, just incredible," was Crosley's reply.

Carraway shot back, "You're not supposed to do that because you are catering to a minority." Carraway explained that by limiting to districts, the quality of people to serve is also limited.

City Commissioner Gordon Meyer, giving an indication of how the City Commission may approach the issue, stated he felt another recommendation to the Commission from the chamber should be from the entire Chamber.

Walter Giesow warned that in Orange County, the people had to circulate petitions to allow a charter change to come before the people for vote.

"If the city is divided into four districts, the people are asking is that the people be given the right to vote on the question."

**Near McCoy AFB B-52 Crashes**

Sanford police radio reported there was a nuclear weapon aboard the B52 bomber.

Firefighting and other equipment was dispatched from Sanford Airport to the crash scene.

By Gary Taylor

A military aircraft, a B-52 bomber, crashed near McCoy Air Force Base at approximately 11:30 a.m. today. According to Herndon, the Air Force base, there was a "tremendous explosion." The plane burned following the explosion and every available fire truck and emergency vehicle was called to the area. "Several persons were killed in the crash."

The Florida Highway Patrol could not confirm any fatalities in the crash but the radio dispatcher said, "It's safe to say there are some." According to the dispatcher, there was a "tremendous explosion." The plane burned following the explosion and every available fire truck and emergency vehicle was called to the area. "Several persons were killed in the crash."

Emergency workers had to fight the traffic to get to the scene. The Highway Patrol put out urgent pleas over radio and television, asking people to stay away from the site of the crash. Every available state trooper was sent to the scene to help control traffic.

One report from the scene of the crash stated, "People are just everywhere." A cameraman, fighting the traffic to make his way to the scene, said people in the area were estimating the number of fatalities, but emphasized at the time, "This is strictly hearsay."

It was not known if there were any civilian deaths.

Bart Forster, a spokesman for McCoy Air Force Base, where the plane was based, said it carried a crew of seven when it exploded and burned about a quarter-mile northwest of the base.

The base is just south of Orlando.

Witnesses said the bomber still was burning about an hour after the crash and that residents of homes around the crash site were being evacuated because one wing of the aircraft still was filled with fuel.

**SHS Narcotic Charge Denied By Principal**

A statement that 75 per cent of all Seminole High School students are using some kind of drugs was dropped before the Friday meeting of the Greater Sanford Chamber of Commerce legislative and national affairs committee but drew a vigorous denial from Jack Redding, principal.

George Crosley, committee vice chairman, said he was quoting Det. Sgt. Ralph Russell, of the city "narc squad" in asking the chamber of assistance to police in the drug fight.

Crosley quoted Russell as saying that the drug heroin can be purchased easily in the city.

Informed of the allegation, Redding retorted, "It's a damn lie." Redding added added, "Even if it were true it should not be quoted."

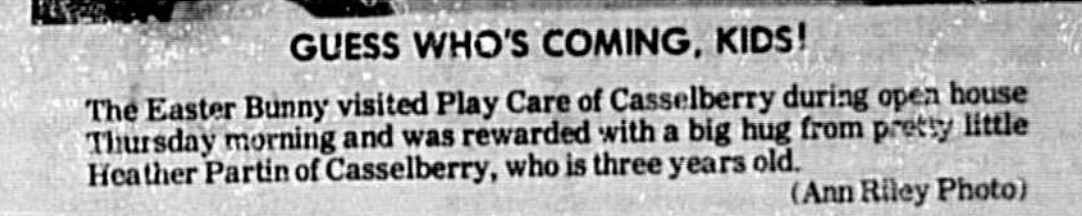
Robert Daehn, committee chairman, told Crosley he would appoint a sub-committee to investigate his proposal.

Later The Herald contacted Det. Eddie Hubbs, until a few weeks ago a member of the city's "narc squad," and questioned him about the high amount of drugs used at the high school.

Hubbs agreed that drug use is extremely high at the school and opined that the majority of students are taking drugs. He said the type being used ran the gamut from marijuana to "acid" and heroin.

**Herald Index**

Area deaths	3A
Bridge	11A
Calendar	7A
Church directory	14A
Church news	2A
Classified ads	12A-13A
Comics	12A
Crossword puzzle	11A
Dr. Crane	7A
Dear Abby	11A
Editorial comment	4A
Entertainment	Guide
Farm news	11A
Horoscope	11A
Hospital notes	7A
Public notices	6A
Society	11A
TV	6A-9A
Vegetable market	6A



GUESS WHO'S COMING, KIDS!  
The Easter Bunny visited Play Care of Casselberry during open house Thursday morning and was rewarded with a big hug from pretty little Heather Partin of Casselberry, who is three years old.  
(Ann Riley Photo)

**Near McCoy AFB B-52 Crashes**

Sanford police radio reported there was a nuclear weapon aboard the B52 bomber.

Firefighting and other equipment was dispatched from Sanford Airport to the crash scene.

By Gary Taylor

A military aircraft, a B-52 bomber, crashed near McCoy Air Force Base at approximately 11:30 a.m. today. According to Herndon, the Air Force base, there was a "tremendous explosion." The plane burned following the explosion and every available fire truck and emergency vehicle was called to the area. "Several persons were killed in the crash."

The Florida Highway Patrol could not confirm any fatalities in the crash but the radio dispatcher said, "It's safe to say there are some." According to the dispatcher, there was a "tremendous explosion." The plane burned following the explosion and every available fire truck and emergency vehicle was called to the area. "Several persons were killed in the crash."

Emergency workers had to fight the traffic to get to the scene. The Highway Patrol put out urgent pleas over radio and television, asking people to stay away from the site of the crash. Every available state trooper was sent to the scene to help control traffic.

One report from the scene of the crash stated, "People are just everywhere." A cameraman, fighting the traffic to make his way to the scene, said people in the area were estimating the number of fatalities, but emphasized at the time, "This is strictly hearsay."

It was not known if there were any civilian deaths.

Bart Forster, a spokesman for McCoy Air Force Base, where the plane was based, said it carried a crew of seven when it exploded and burned about a quarter-mile northwest of the base.

The base is just south of Orlando.

Witnesses said the bomber still was burning about an hour after the crash and that residents of homes around the crash site were being evacuated because one wing of the aircraft still was filled with fuel.

**END-OF-MARCH SALE!!**

72 PINTO 2000 CC Engine, Automatic, w/Decor and Protection Group	\$2095	44 PONTIAC TEMPEST, w/Column Shift, This is a Nice One	\$795
78 VW Fastback, Low Mileage, Green	\$1995	44 MERCURY MONTE-REY, Loaded, A Real Extra Special	\$395
78 VW 113 Beetle, This One is	\$1695	45 MERCURY MONTE-REY, Loaded, Another Extra Special	\$395
75 SEABREEZE CABIN CRUISER, 18 ft. 55 HP, Chrysler Eng. w/Tilt Trailer	\$1195	44 and 45 VW's, Four to Choose from, All in Good Running Condition	each \$495
49 FORD Galaxie 300 Fully Equipped	\$1695	43 VW Sunroof, It's Red, and a Very Nice Car	\$495
47 VW 113 Beetle, Two Sharp Ones To Choose From	each \$1195		

**BILL BAKER Volkswagen, Inc.**

"NOW TWO LOCATIONS TO SERVE YOU!"

SANFORD  
2218 Hwy. 179E South  
Sanford, Fla. 32733  
Orlando Ph. 444-8114

DELAND  
S. Hwy. 17-92 & Truex Rd.  
Deland, Fla. 32725  
Sanford Ph. 323-3340