

### Minerals

ACROSS

- 1 Native mineral
- 4 Stone (semiprecious)
- 9 Ore measure
- 12 Cathedral
- 13 Wings
- 14 Exist
- 15 Shade tree
- 16 Legible
- 17 Label
- 18 Vowel board
- 20 Spools for rope
- 22 Greek letter
- 24 Masculine
- 25 Demoted
- 26 Redact
- 30 Combustible mineral
- 32 To ask (Latin)
- 35 To engage
- 37 Blow on head ( slang)
- 39 Boy's name
- 41 Meadow
- 42 Prayer ending

DOWN

- 1 Poems
- 2 Poem
- 3 Mad's name
- 4 Dynamite user
- 5 Card game
- 6 Belonging to ( slang)
- 7 Spot akin ( slang)
- 8 Precious ones
- 9 London gallery
- 10 Verbal
- 11 Bird beaks
- 12 Tullurium (symbol)
- 13 Lower
- 14 Order
- 15 Of merit (abbr.)
- 16 Crystalline
- 17 Basic metal
- 18 Grafted (verb)
- 19 Cut of meat
- 20 Musical (variable) (pl.)
- 21 Composer
- 22 Spices (rank)
- 23 Malthease
- 24 Single thing

### HOROSCOPE

By BERNICE BEDE OSOL

For Saturday, March 6, 1976

**ARIES (March 21-April 19)**  
Do your good deeds secretly today. Others will tout your horn for you later on, when the facts are revealed.

**TAURUS (April 20-May 20)**  
Something that might be to your business or career could be brought up at a social gathering today. It may be told in confidence.

**GEMINI (May 21-July 22)**  
Conditions in general should be quite favorable for you today. Something beneficial may be developing that you're unaware of.

**AQUARIUS (Jan. 20-Feb. 19)**  
You may receive some good news today you've been hoping for regarding a matter affecting your material security.

**LEO (July 23-Aug. 22)**  
You have more control over today's events than you're apt to give yourself credit for. Think optimistically, act positively.

**PISCES (Feb. 3-March 20)**  
Partnership situations should prove lucky today. Things you may not have been able to accomplish alone can be done in tandem.

**LIBRA (Sept. 23-Oct. 23)**  
The coming year should be an active and interesting one. It's likely you'll be much on the go. You may be able to take some of the short trips you've been putting off.

**YOUR BIRTHDAY**  
March 6, 1976

Each coming year should be an active and interesting one. It's likely you'll be much on the go. You may be able to take some of the short trips you've been putting off.

### WIN AT BRIDGE

By OSWALD and JAMES JACOBY

with two club tricks and shifts to a heart or diamond. South wins the trick and cashes the three top trumps. He doesn't mind about the failure of the jack to fall since he is going to run diamonds until such time as East elects to trump in.

The score for bidding and making four spades is 620. The score for bidding and making five diamonds is 600.

That 20 points is worth its weight in gold in match play. It is just the merest trifle in rubber bridge.

**ASK THE JACOBY'S**

An Oregon reader wants to know how often you will expect the defenders six cards in a suit to break 3-3.

The answer is that a suit breaks 3-3 a trifle under 36 per cent of the time. It divides 4-2 just over 48 per cent of the time. 5-1 splits 14.5 per cent and all six show up in one hand or the other 1.5 per cent of the time.

For a copy of JACOBY MODERN, send \$1 to "Win at Bridge," c/o his newspaper, P.O. Box 489, Radio City Station, New York, N.Y. 10019.

### BIRTHDAY CELEBRATION

Sanford Southern Bell employees are celebrating two birthdays this year — America's 200th and the telephone's 100th. For a look at the telephone's century of growth, see Seminole Magazine, Pages 4 and 5-D.

### Dr. Lamb

By Lawrence E. Lamb, M.D.

DEAR DR. LAMB— Would you do me and my people with a service by writing about bad breath.

I know there are many causes for it other than teeth, but most people are affected and too embarrassed to ask.

With people who wear dentures as we do, I do not feel that just brushing the dentures or soaking them as some product call for does the whole job. I feel the mouth should be cleaned also, but how? We use a mouth-wash and gargle it to help, but wonder if that is enough. When away from home are candy type breath pleasers any help?

DEAR READER— You're asking about a common problem and one that is most noticeable only to those who do not have bad breath. Breath odors are a part of life.

The teeth can be the cause and of course the point here is as much cleanliness as possible. For those who still have all their teeth that means cleaning all of the bases of the teeth and between the teeth.

Any breath odors that come from taste disturbances in the body far removed from the lungs, mouth or teeth area. This is why a simple mouth-wash of any type isn't going to solve the problem. The same can be said for those breath pleasing mints that you speak of. You can't clean the blood stream and alter the body chemistry by swishing around a flavorful mouthwash or chewing a mint.

People who have bad breath should have a good dental checkup. If that's not the problem they should have an evaluation of the sinuses and an examination for basic body disturbances.

For information on how your lungs need 50 cents for The Health Letter, number 24. Keeping Your Lungs Fit. Enclose a long, stamped, self-addressed envelope for mailing. Address your letter to me in care of this newspaper, P.O. Box 1561, Radio City Station, New York, N.Y. 10019.

### CARNIVAL

by Dick Turner

For someone majoring in sociology I'd certainly think he'd be a lot more sociable, wouldn't you?

### DOONESBURY

by Garry Trudeau

YES, MR. CHURMAN WITH THE EXCEPTION OF HIS LIVED EVERY MINUTE OF IT!

OH, SURE, MY VISIT HAS BEEN MOST ENJOYABLE. BUT I'VE BEEN MOST PLEASED TO MEET YOU.

THE CHURMAN HAS HEARD THAT YOU HAVE A LOVELY WIFE, AND HE REMINDS HER WITH YOU NOT BRING HER WITH YOU TO CHINA.

MY WIFE? OH, OH, NO.

SHE COULDN'T MAKE IT, BUT I'VE BEEN MOST PLEASED TO MEET YOU.

I FORGOT AGAIN... (SHE)

# SUNDAY EDITION

## Evening Herald

68th Year, No. 169—Sunday, March 7, 1976 Sanford, Florida 32711—Price 20 Cents

### On Nation's Political Future Florida Faces Big Decisions



MIAMI (AP)— Ronald Reagan's immediate political future and the upper hand among the fragmented Democratic party's moderate-conservative wing will be decided Tuesday when Florida voters tell the nation who they think should be president.

Reagan's Republican challenge to President Ford built an impressive early lead in the state's 67 counties and was considered slipping in recent weeks — apparently so badly that now the candidate and his state organization chiefs talk openly about the possibility of defeat.

A Reagan loss in Florida following the former California governor's New Hampshire, Vermont and Massachusetts defeats could put his campaign on the ropes and give Ford the chance to deliver a knock-out punch in Illinois March 16.

On the Democratic side, only non-liberals George Wallace, Jimmy Carter, Henry Jackson and Milton Shapp have campaigned in Florida — a conservative state that the party's liberal faction has ignored.

Wallace won big in Florida in 1972, winning 42 per cent of the popular vote in a 10-candidate Democratic field. He carried the state's 67 counties and won 75 of its 81 convention delegates. In part, his performance Tuesday will be judged in light of that showing four years ago.

Reagan's Republican challenge to President Ford built an impressive early lead in the state's 67 counties and was considered slipping in recent weeks — apparently so badly that now the candidate and his state organization chiefs talk openly about the possibility of defeat.

A Reagan loss in Florida following the former California governor's New Hampshire, Vermont and Massachusetts defeats could put his campaign on the ropes and give Ford the chance to deliver a knock-out punch in Illinois March 16.

On the Democratic side, only non-liberals George Wallace, Jimmy Carter, Henry Jackson and Milton Shapp have campaigned in Florida — a conservative state that the party's liberal faction has ignored.

Wallace won big in Florida in 1972, winning 42 per cent of the popular vote in a 10-candidate Democratic field. He carried the state's 67 counties and won 75 of its 81 convention delegates. In part, his performance Tuesday will be judged in light of that showing four years ago.

Reagan's Republican challenge to President Ford built an impressive early lead in the state's 67 counties and was considered slipping in recent weeks — apparently so badly that now the candidate and his state organization chiefs talk openly about the possibility of defeat.

A Reagan loss in Florida following the former California governor's New Hampshire, Vermont and Massachusetts defeats could put his campaign on the ropes and give Ford the chance to deliver a knock-out punch in Illinois March 16.

On the Democratic side, only non-liberals George Wallace, Jimmy Carter, Henry Jackson and Milton Shapp have campaigned in Florida — a conservative state that the party's liberal faction has ignored.

Wallace won big in Florida in 1972, winning 42 per cent of the popular vote in a 10-candidate Democratic field. He carried the state's 67 counties and won 75 of its 81 convention delegates. In part, his performance Tuesday will be judged in light of that showing four years ago.

### But Local Campaigns Not Highly Visible Candidates Have Different Ideas About Seminole

Sanford area — were picked out because they had high percentages of Democratic voters and good turnout in recent elections. Carter's analysts also looked at how well Wallace ran in '72 in each precinct.

Those precincts are also the ones Carter supporters will be watching Tuesday night to get an idea how well their man will do in the state contest, said Keen, an Altamonte Springs resident.

Door-to-door canvassing in the target precincts is backed by telephone calls and mailings all over Seminole, as well as newspaper notices at shopping centers.

Carter's corps of volunteers is composed of Keen says, a wide variety of students, housewives, blacks and businessmen, including more than 100 residents of the Sanford area.

Keen is optimistic about Carter's chances in Seminole County and Florida. "Carter is the only candidate who's really put together an organization," he said. And if members of volunteers and hours of work translate into votes on Tuesday, Jimmy Carter should do well in Seminole.

But over at Carter's national headquarters at Orlando's Carlton House Hotel, Seminole isn't exactly on the top of priority lists. "Seminole County? Where's that?" asked one of the national staffers.

"About 15 miles north of where you are," he was told. "Oh."

Strangely enough, the closest Seminole has to a President is the classic grassroots campaign for Gerald Ford.

"We don't have the real clout of the Republican Party in Seminole," Seminole County Chairman Jerry Grimes said. "The Seminole County Republican organization is leaning toward Reagan. We're the underdog here."

The President's supporters count Seminole as an uphill battle, but they, too, are optimistic. Working out of an office on SR-436 in Casselberry, Ford campaigners are concentrating on telephoning registered Republicans and setting up a ride campaign to get voters to the polls Tuesday.

Grimes, a relative newcomer to local politics, says volunteers have been searching out the Ford campaign.

"I'm really surprised how many people are just coming out of the woodwork," he said. The campaign corps includes "everyone from students to attorneys to housewives," Grimes said, and even some visitors to the area.

Ford's grassroots operation — just grown up by itself — is probably indicative of a good-sized, but unorganized, base of support for the President.

In the 1972 campaign, George Wallace clobbered the rest of the 11-man field in Seminole, collecting 46 per cent of vote, and scored a knock-out over eventual Democratic nominee George McGovern, who only

have been searching out the Ford campaign.

"I'm really surprised how many people are just coming out of the woodwork," he said. The campaign corps includes "everyone from students to attorneys to housewives," Grimes said, and even some visitors to the area.

Ford's grassroots operation — just grown up by itself — is probably indicative of a good-sized, but unorganized, base of support for the President.

In the 1972 campaign, George Wallace clobbered the rest of the 11-man field in Seminole, collecting 46 per cent of vote, and scored a knock-out over eventual Democratic nominee George McGovern, who only

### Seminole To Eye Comptroller Bill

with the duties, turning over all the accounting and recording functions related to the board to the comptroller.

On the other side, the board feels the time has come to hire a professional to handle the accounting functions of the \$18 million-a-year business called county government.

Beckwith is an elected officer. The comptroller would be appointed and subject to removal by the board. However, board members point out the comptroller — if approved — could be ousted only for a valid reason such as misfeasance or malfeasance in office, which is basically the same guidelines state employees currently serve under.

Beckwith has charged it (Continued on Page 3-A)

challenge of the referendum question, Attorney General Robert Shavin supports it. The amendment would fund as far as the Seminole-Brevard county line. The river's headwaters are still under the control of the Central and Southern Florida Flood Control District — dulling the impact of the St. Johns District programs.

Authority over the headwaters was scheduled to be transferred last July, but has been delayed. St. Johns District staffers say it probably will be delayed again if Tuesday's referendum fails.

The proposed amendment would allow four of the state's five water management districts to levy a tax up to one mill — \$1 for each \$100 of assessed valuation. The Northwest Florida District in the Panhandle would be allowed to

### Voters To Decide Future Of St. Johns, Other Rivers

before it really got started.

The authority of the St. Johns District extends upstream only as far as the Seminole-Brevard county line. The river's headwaters are still under the control of the Central and Southern Florida Flood Control District — dulling the impact of the St. Johns District programs.

Authority over the headwaters was scheduled to be transferred last July, but has been delayed. St. Johns District staffers say it probably will be delayed again if Tuesday's referendum fails.

The proposed amendment would allow four of the state's five water management districts to levy a tax up to one mill — \$1 for each \$100 of assessed valuation. The Northwest Florida District in the Panhandle would be allowed to

### Today

Tuesday, March 9, is the day of the Presidential preference Primary election in Florida. There is more to the voting than the selection of a presidential candidate, however. For instance, there are the controversial comptroller bill and the water management bill referendums. For the convenience of Evening Herald readers, all precincts in Seminole County are listed on Page 8-A and on the same page is a chart for the reader to follow the progress of the election as reports of results filter in through the media. Also see the editorials on Page 6-A.

**INDEX**

Around the Clock ..... 4-A  
Bridges ..... 4-C  
Calendar ..... 12-A  
Comics ..... 12-A  
Crossword ..... 4-C  
Editorial ..... 4-A  
Dear Abby ..... 3-C  
Dr. Lamb ..... 12-A  
Horoscope ..... 4-C  
Hospital Notes ..... 11-A  
Obituaries ..... 11-A  
Sports ..... 13-B  
Television ..... 6-B  
Women ..... 11-C

**WEATHER**

Saturday's high 87, today's low 64.  
Partly cloudy and continued warm.  
Details and tides on Page 11-A.



Tim Wilson's eyes may have been bigger than his stomach but he was ready to dig into a big stack of pancakes at the Sanford Kiwanis Club's annual pancake day Saturday. The 13-year-old is the son of Mr. and Mrs. J. Fred Wilson of 67 Elliott Ave., Sanford. (Herald Photo by Tom Vincent)





**WE WELCOME FEDERAL FOOD STAMPS**

PRICES GOOD MARCH 7-10

W-D BRAND U.S. CHOICE FEDERALLY GRADED HEAVY WESTERN AGED BEEF

**LARGE EGGS**  
Limit two doz. with \$5.00 or more purchase excluding cigarettes

DOZ. **59¢**

**LIBBY CORNED BEEF**

12-oz. PKG. **89¢**

Fisher Black Pepper . . . . . 69¢

**COLA ROOT BEER AND GRAPE CHEK DRINKS**  
Limit 3 with \$5.00 or more purchase excluding cigarettes

48-oz. BTL. **3 \$1**

Crackin' Good Potato Sticks 2 1/2 CANS **89¢**

Quantity Rights Reserved  
WINN-DIXIE STORES, INC. COPYRIGHT - 1976

PRICES GOOD IN THESE COUNTIES ONLY...

**Superbrand MARGARINE**

1-LB. PKGS. **3 99¢**

Superbrand Soft Bowl Margarine . . . . . 59¢

ORANGE, SEMINOLE, OSCEOLA, LAKE, CITRUS, BEYARD, COLLIER AND VOLUSIA

**THRIFTY MAID TOMATOES**

16-oz. CANS **4 \$1**

Thrifty Maid Rice . . . . . 3 BAG **79¢**

**FRENCH ANCHOVRE 1000 ISLAND KRAFT DRESSING**

16-oz. BTL. **79¢**

**NEW STORE HOURS**  
MONDAY - SATURDAY  
**9 a.m. - 9 p.m.**  
SUNDAY  
**9 a.m. - 6 p.m.**

THE FOLLOWING STORES NOW CLOSED SUNDAY  
419 E. FIRST ST. - SANFORD 1410 EDGEWATER DR. - ORLANDO  
284 DELANEY ST. - ORLANDO GOLDEN TRIANGLE SHOPPING CENTER  
117 SOUTH ROSHUN - ORLANDO MT. DORA

**SIRLOIN STEAKS**

LB. **\$1.79**

Bony Ann Potato or Macaroni Salad or Cole Slaw . . . . . 59¢

Beef Loaf T-Bone Steak . . . . . \$1.29

**BONELESS STEAK**

LB. **\$1.29**

Boneless Beef Steaks

**W-D BRAND USDA CHOICE BEEF CHUCK STEAK**

LB. **89¢**

**W-D BRAND HANDI-PAK PURE GROUND BEEF**

3-LB. PKG. **\$1.99**

3-LB. PKG. Cheese . . . . . 99¢

Ground Chuck . . . . . \$1.19

**BORDEN'S ORANGE JUICE**

52-oz. CTNS. **4 \$1**

**DRESSEL'S STRAWBERRY SHORTCAKE 14-oz. CHEESE CAKE 16-oz. CHOCOLATE FUDGE CAKES**

EACH **99¢**

Superbrand Whipped Topping . . . . . 2 CUPS \$1.00

**TWIN POPS OR FUDGE BARS**

12-PK. PKG. **79¢**

Superbrand Ice Cream Sandwiches or Bars . . . . . 12 PKG. \$1.99

**HARVEST FRESH PRODUCE**

**HARVEST FRESH JUMBO CELERY**  
STALK **39¢**

**HARVEST FRESH FLORIDA GREEN CABBAGE**  
LB. **10¢**

**HARVEST FRESH YELLOW ONIONS**  
5 LB. BAG **89¢**

**HARVEST FRESH FLORIDA YELLOW CORN**  
8 EARS **99¢**

**HARVEST FRESH FLORIDA STRAWBERRIES**  
3 PINTS **\$1.49**

**HARVEST FRESH IDAHO POTATOES**  
10 LB. BAG **\$1.49**

**HARVEST FRESH FLORIDA CARROTS**  
4 2-LB. BAGS **99¢**

**HARVEST FRESH LETTUCE ROMAINE**  
LB. **29¢**

**HARVEST FRESH FLORIDA ORANGES OR GRAPEFRUIT**  
8 LB. **99¢**

**BONELESS CHUCK**

LB. **89¢**

Boneless Beef 3-lb. or More Stew Meat . . . . . \$1.19

Boneless Beef, Fine for Braising Eye Steak . . . . . \$1.69

**BEEF CHUCK BONELESS ROAST**

LB. **99¢**

Breakstone-Slay N' Shope Fruit Flavored Yogurt . . . . . 29¢

Calif. Roast . . . . . \$1.29

**W-D BRAND U.S. CHOICE**

Skipped & Deboned Sliced Calf Liver . . . . . \$1.39

Singleton Stuffed Flounder . . . . . 69¢

French Fried Pith, Flounder or Shrimp Patties . . . . . 89¢

Flounder, Cod or Haddock Fish Fillet . . . . . \$1.29

W-D Brand Cooked Picnic or Ham . . . . . \$1.99

**W-D Brand Spiced Luncheon, Salami or Olive Leaf** . . . . . 69¢

W-D Brand Spiced Luncheon or Clear Mayer Regular or Star-Fit Low Fat Salami . . . . . \$1.39

Hygrade West Virginia Brand Sliced Bacon . . . . . \$1.79

Jimmy Dean Bag Sausage . . . . . \$1.39

Smyland Cheese Leaf, Sausage or Bologna . . . . . 59¢

**Hillshire Farm Smoked Regular or Polish Sausage** . . . . . \$1.69

Clear Mayer Regular or Star-Fit Low Fat Franks . . . . . \$1.29

Palmetto Farm (12-oz. Cup 59¢) Pim. Cheese . . . . . 99¢

Superbrand Reg. or Star-Fit Low Fat Cottage (1-lb. 75¢) Cheese . . . . . \$1.39

Pillsbury Chocolate Chip Cookies . . . . . \$1.09

**TASTE O' SEA PERCH FILLET**

16-oz. PKG. **99¢**

MRS. SMITH'S DUTCH APPLE OR CHERRY PIE . . . . . 89¢

26-oz. PIE

**SALUTO SAUSAGE PIZZA**

23-oz. PKG. **\$2.49**

**COLE'S GARLIC BREAD**

16-oz. LOAF **69¢**

**ASTOR PEAS OR CUT CORN**

10-oz. PKGS. **3 \$1.00**

**FRENCH FRY POTATOES**

5 LB. BAG **\$1.39**

**W-D BRAND U.S. CHOICE**

**CUBE STEAKS**

LB. **\$1.89**

Superbrand Sour Cream . . . . . 79¢

Beef Chuck Short Ribs . . . . . 89¢

**HICKORY SWEET SLICED BACON**

1-LB. PKG. **\$1.29**

CapeLands Skinless Breakfast Link Sausage . . . . . \$1.49

Hickory Sweet Sliced Bacon 2 . . . . . \$2.55

**JIFFY CORN MUFFIN MIX**

8 1/2-oz. PKGS. **5 \$1**

Sunshine (with Root) Turnips . . . . . 4 \$1.00

**THRIFTY MAID ELBOW MACARONI**

8-oz. PKGS. **4 \$1**

**ASTOR INSTANT POTATOES**

32-oz. PKG. **\$1.49**

French's Brown Gravy Mix . . . . . 23¢

**DEL MONTE CATSUP**

38-oz. BTL. **89¢**

Deep South Hamburger Dill Chips . . . . . 2 \$1.00

**LILAC JUMBO TOWELS**

Limit two d. packs with \$5.00 or more purchase excl. cig.

3 FOR **\$1**

Blue Arrow Cleanser . . . . . 4 2 1/2 CANS \$1.00

**THRIFTY MAID HALVES OR SLICED PEACHES**

29-oz. CANS **2 89¢**

**WESTERN CORN FED FULL 1/4 LOIN SLICED INTO PORK CHOPS**

LB. **\$1.39**

Hornel Little Sizzlers . . . . . 99¢

Fresh Pork Shoulder Boston Butt Pork Roast . . . . . \$1.19

**USDA GRADE 'A' FRESH FROZEN WHOLE FRYERS**

4-DCT. PKG. **49¢**

Fryer Necks and Backs . . . . . 19¢

**PORK SHOULDER ARM WHOLE HICKORY SMOKED PICNICS**

LB. **69¢**

Sliced Picnic . . . . . 79¢

**USDA GRADE 'A' FRESH FRYER THIGHS**

LB. **79¢**

(10-Ct.) Crackin' Good Sweetrolls or Butterrolls Biscuits . . . . . 6 CANS 79¢

**CUTEX HERBAL AND LEMON POLISH REMOVER**

4-oz. BTL. **59¢**

**FOIL BONUS PACK ALKA-SELTZER**

4-DCT. PKG. **99¢**

**TOOTHPASTE**

6.4-oz. TUBE **98¢**

**9 VOLT RAYOVAC RADIO AND COMPUTER BATTERY**

EACH **49¢**

**MR. COFFEE FILTERS**

50-CT. PKG. **48¢**

**ANACIN TABLETS**

100-CT. PKG. **\$1.23**

**FABERGE SHAMPOO OR CONDITIONER**

16-oz. BTL. **89¢**

**SEAN ROLL-ON UNSCENTED OR SCENTED ANTIPERSPIRANT**

11-oz. PKG. **\$1.17**

**ROOBYN ULTIMATE HOLD AND EXTRA HOLD HAIR SPRAY**

7-oz. CAN **\$1.33**

Jim Dandy Instant Grits . . . . . 67¢

Morton Lite Salt . . . . . 29¢

Lasagna . . . . . 53¢

Meatball Stew . . . . . \$1.09

Chief Boy-Ar-Dee Spaghetti with Meat Dinner . . . . . 85¢

Chief Boy-Ar-Dee Spaghetti with Mushroom Dinner . . . . . 87¢

Chief Boy-Ar-Dee with Meat Spaghetti Sauce . . . . . 55¢

Chief Boy-Ar-Dee with Meat Spaghetti Sauce . . . . . 55¢

Double Mustard . . . . . 29¢

Chief Boy-Ar-Dee Beef Ravioli . . . . . 49¢

Hilly Trench Can Liners . . . . . \$1.19

Sanhase Kinky Salfines . . . . . 65¢

**DEL MONTE CREAM STYLE OR WHOLE KERNEL CORN**

17-oz. CANS **3 \$1**

**ASTOR OIL**

48-oz. BTL. **\$1.39**

Thrifty Maid Self-Rising Meal . . . . . 5 BAG 79¢

**FISCHER BEER**

Limit two d. packs with \$5.00 or more purchase excluding cigarettes

PACK 12-oz. CANS **6 89¢**

Crackin' Good Pretzels . . . . . 3 PKGS \$1.00

**THRIFTY MAID CUT GREEN BEANS**

16-oz. CANS **5 \$1**

**CRACKIN' GOOD BOX LINE COOKIES**

9-oz. PKGS. **3 \$1**

Crackin' Good Saltines . . . . . 2 BAG \$1.00

**SALTINES**

**CRACKIN' GOOD SALTINE CRACKERS**

16-oz. PKGS. **2 \$1**

**HARVEST FRESH FLORIDA CARROTS**

4 2-LB. BAGS **99¢**

**HARVEST FRESH LETTUCE ROMAINE**

LB. **29¢**

**HARVEST FRESH FLORIDA ORANGES OR GRAPEFRUIT**

8 LB. **99¢**

**WINN-DIXIE**

**WE WELCOME FEDERAL FOOD STAMPS**

**THE BEEF**

**PEOPLE**

**WINN-DIXIE**

Quantity Rights Reserved  
WINN-DIXIE STORES, INC. COPYRIGHT - 1976

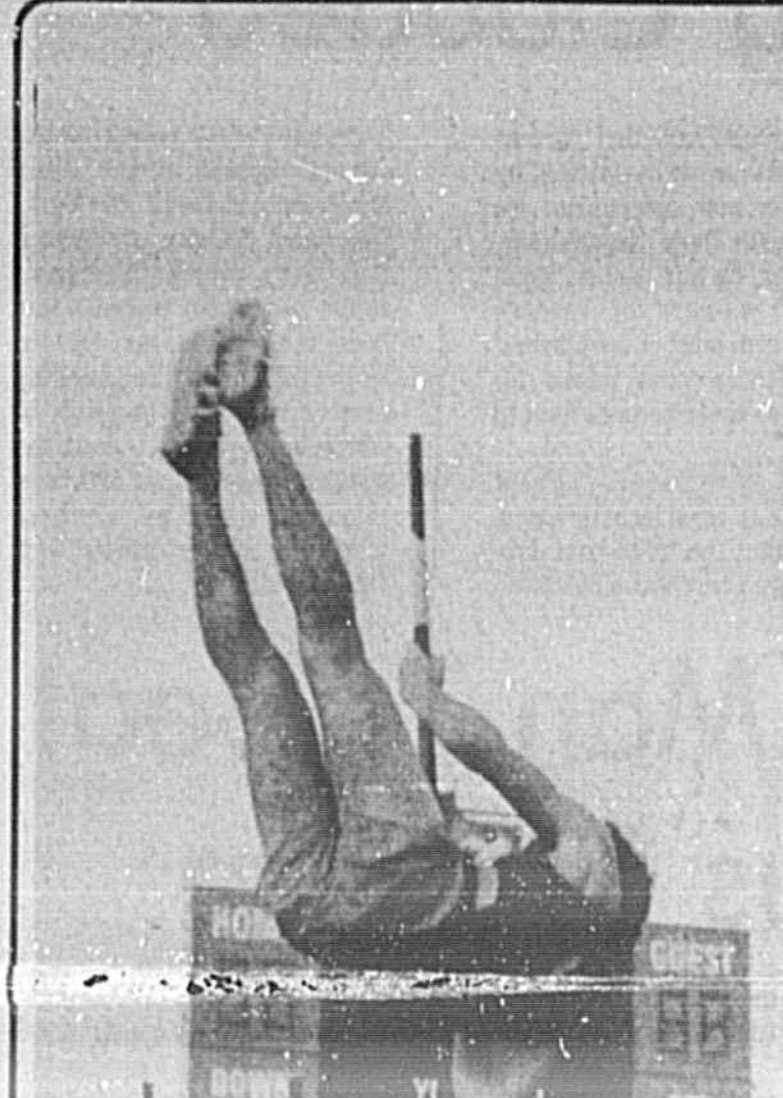
FRENCH AVE. & 25th ST. SANFORD 419 E. FIRST ST.

FRENCH AVE. & 25th ST. SANFORD 419 E. FIRST ST.









Lyman's George Dorlier high hurdles



Howell's Randy Pruitt long jumps

Some 17 high schools sent boys and girls teams to the Lyman Invitational Friday. There were a lot of winners, but the top individual standouts were Oak Ridge's Cyril Wyatt among the boys and Lyman's Anita Cleveland for the girls. Wyatt ran a 9.5 second 100 yard dash...

BOYS: Oak Ridge (OR) 47, Winter Haven (WH) 36, Lyman (L) 36, Winter Park (WP) 34, Colonial (C) 24, Apopka (A) 24, Evans (E) 22, Jones (J) 22, Mainland (M) 20, Boone (B) 20, Seminole (S) 19, Bishop Moore (BM) 16, Edgewater (E) 15, Seabree (SB) 15, Prep (P) 4, DeLand (D) 3, Lake Brantley (LB) 2, Spruce Creek (SC) 1, Lake Howell (LH) 0, Oviedo (O) 0.

SHOT - 1. Sparks (S) 50.0; 2. Whitaker (W) 50.0; 3. Starks (J) 50.0; 4. White (WH) 50.0; 5. Stapp (S) 50.0; 6. Howell (H) 50.0; 7. Lyman (L) 50.0; 8. Boone (B) 50.0; 9. Seminole (S) 50.0; 10. Bishop Moore (BM) 50.0; 11. Edgewater (E) 50.0; 12. Seabree (SB) 50.0; 13. Prep (P) 50.0; 14. DeLand (D) 50.0; 15. Lake Brantley (LB) 50.0; 16. Spruce Creek (SC) 50.0; 17. Lake Howell (LH) 50.0; 18. Oviedo (O) 50.0.

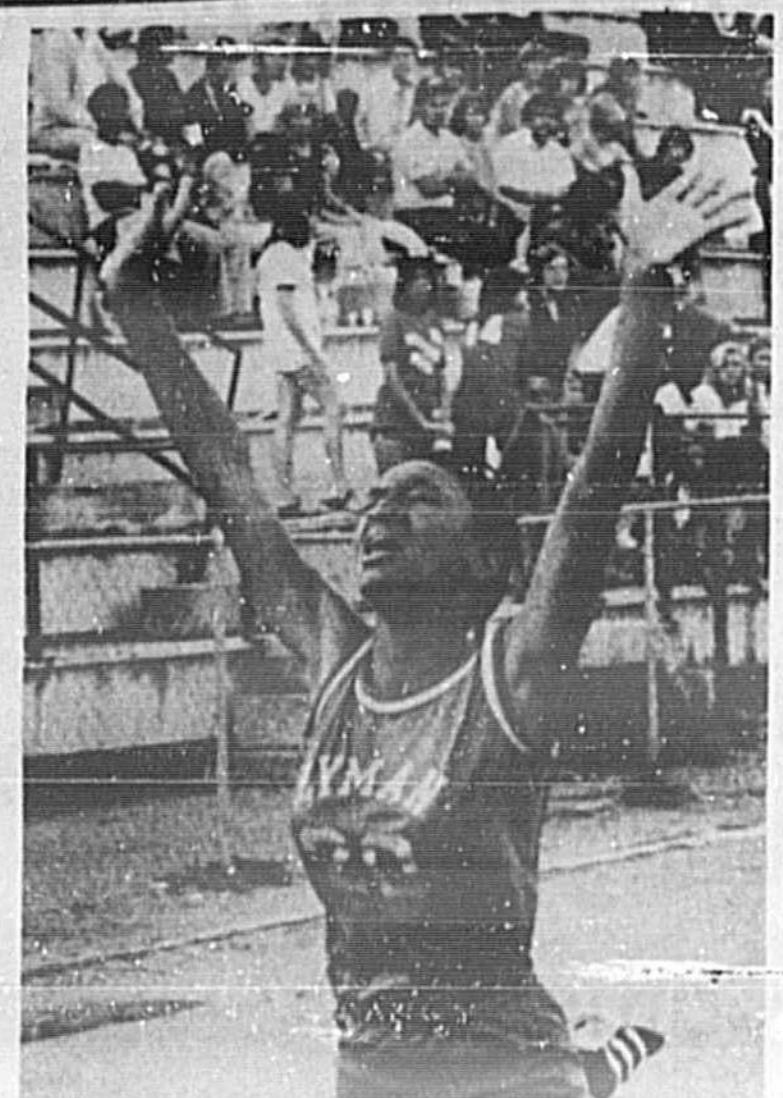
Up goes Lyman's Doug Peters. A photograph showing a young boy, Doug Peters, performing a high jump.

Girls: Lake Howell (LH) 75, Lake Brantley (LB) 64, Lyman (L) 62, Winter Park (WP) 46, Boone (B) 36, Mainland (M) 42, 80-1, Seminoles (S) 30, Bishop Moore (BM) 26, Edgewater (E) 16, Spruce Creek (SC) 16, Evans (E) 15, DeLand (D) 10, Oak Ridge (OR) 8, Colonial (C) 6.

Howell's Kathy Stiedle with discs. A photograph showing a young girl, Kathy Stiedle, performing a discus throw.

Wet heat for 100-yard dashers. A photograph showing several young boys competing in a 100-yard dash race.

Trinity's Carol Curtis, right, first. A photograph showing a young girl, Carol Curtis, performing a high jump.



Anita Cleveland runs 220 for Lyman

Marina Lake fishermen are concentrating on the Sanford Shad Derby but a few bass are being reported for schooling bass in that area.

Another run of big bluefish up to 15 pounds has come into Ponce Inlet while pompano are more plentiful than in several years. Standees are the standard and many anglers are using cut clams to entice the big ones.

Amberines (small amberjack) are so thick off the Daytona Coast party boat anglers are getting them on bottom rigs and trawlers are finding them willing to hit king mackerel lures.

Shook are hitting off the Daytona bridges in the early morning hours, trout and weakfish, mangrove snapper and a few channel bass are being landed in the Halifax River.

Shook are hitting off the Daytona bridges in the early morning hours, trout and weakfish, mangrove snapper and a few channel bass are being landed in the Halifax River.

Shook are hitting off the Daytona bridges in the early morning hours, trout and weakfish, mangrove snapper and a few channel bass are being landed in the Halifax River.

Shook are hitting off the Daytona bridges in the early morning hours, trout and weakfish, mangrove snapper and a few channel bass are being landed in the Halifax River.

Shook are hitting off the Daytona bridges in the early morning hours, trout and weakfish, mangrove snapper and a few channel bass are being landed in the Halifax River.

Outdoors

Bass, Redbreast, Bluegill

Wekiva River fishing continues to improve with good catches of bass, redbreast and bluegill beamed reported from both Wekiva Landing and Wekiva River Haven camps.

Spice Fishermen's Tables

The best year on speckled perch since 1969, was the word from Hiley's Fish camp on Lake Jessup. Lowell Hiley, camp owner, told of a limit catch of 200 landed by a four man party on Monday and consistent catches numbering 25 to 35 per boat has been the average all week.

Amberines, Kings Biting

Amberines (small amberjack) are so thick off the Daytona Coast party boat anglers are getting them on bottom rigs and trawlers are finding them willing to hit king mackerel lures.

Warriors To Gain Another Top Pick

NEW YORK (AP) - The Golden State Warriors will get another No. 1 pick in the college basketball draft as a result of losing Cassie Russell.

Howell Wins Swim Pair

Lake Howell took a double win in its dual swim meets with Umattilla Friday, as both boys and girls won by wide margins of victory, 104-68 and 125-48, respectively.

L. Brantley Wins Meet

Lake Brantley captured top honors in their three-way golf meet at Rolling Hills in Friday's local prep circuit. It defeated Avon Park and Lake Howell 155-168-182.

ACC Finale: N.C., Virginia

The Cavaliers, who finished sixth in the seven-team league during the season, beat the second nationally-ranked team in two nights with a 73-66 whipping of No. 9 Maryland. They trimmed No. 17 North Carolina State 75-63 in Thursday's opening round.

Dorothy Hamill Eyes Title; Scouts Waiting In Wings

GOETEBORG, Sweden (AP) - Olympic champion Dorothy Hamill, bent on returning the ladies figure skating world championship title to the United States after eight years in other hands, landed arch-rival Diane De Leeuw Saturday with ice show talent scouts waiting in the wings.

Where Can You Buy

Where can you buy AMOCO Gasoline for only 55¢ a gallon? ONLY AT Williams & Son Amoco. Corner of Hwy. 17-92 and Lake Mary Blvd. 322-9823. DON'T FORGET YOUR FREE CAR WASH WITH A \$5.00 OR MORE PURCHASE.



Harness Races All For Charity

ORLANDO - Some of the most outstanding horseflesh in the world will go to the post in two harness racing cards at the Sanford-Kennel Club on March 13 and 20.

Scoreboard

Table with columns for College, Prep Basketball, Dog Results, and Pro Hockey. It lists various sports events and their outcomes.

Triple-Main Event On Stadium Card Tuesday

Pete Ashlock has put together one of his strongest shows for this Tuesday night at the Orlando Sports Stadium when the promoter will present a "Triple Main Event."

Hooks And Jabs

Watkins is currently the hottest 136-pound fighter in the world and it was only an unfortunate accident that got him on Tuesday night's card.

Howell Wins

Lake Howell took a double win in its dual swim meets with Umattilla Friday, as both boys and girls won by wide margins of victory, 104-68 and 125-48, respectively.

Warriors To Gain Another Top Pick

NEW YORK (AP) - The Golden State Warriors will get another No. 1 pick in the college basketball draft as a result of losing Cassie Russell.

Amberines, Kings Biting

Amberines (small amberjack) are so thick off the Daytona Coast party boat anglers are getting them on bottom rigs and trawlers are finding them willing to hit king mackerel lures.

Warriors To Gain Another Top Pick

NEW YORK (AP) - The Golden State Warriors will get another No. 1 pick in the college basketball draft as a result of losing Cassie Russell.

Howell Wins

Lake Howell took a double win in its dual swim meets with Umattilla Friday, as both boys and girls won by wide margins of victory, 104-68 and 125-48, respectively.

Warriors To Gain Another Top Pick

NEW YORK (AP) - The Golden State Warriors will get another No. 1 pick in the college basketball draft as a result of losing Cassie Russell.

Advertisement for Sanford-Orlando Kennel Club featuring dog racing events. It includes details about the 'NOW DOG RACING' and lists various race events.





# GIRL SCOUT WEEK

MARCH 7-13



## If She's 7 to 17, What Can Scouting Do For Her?

These are her most impressionable years. She'll need to be guided...to feel a sense of responsibility, belonging.

She needs to learn to love and respect other people, the environment, and most important... herself.

She'll learn this and more with Scouting.

Let's support the Girl Scouts.



**The Sign**  
It Symbolizes The Girl Scout Promise...

*Joel and Jane Kruse*

**The Big Dip**  
Ice Cream • Sandwiches • Take Out  
Steak • Ham • Seafood  
2439 French Ave. Ph. 322-0199 Sanford

**Learning to Work Together**

Girl Scouts Learn to work and play with others. Sharing...caring!

**SKATE CITY ROLLER RINK**  
Phone Now For Girl Scout Rates During April & May  
Ph. 339-2474 Off 17-92 on the Dog Track Rd.

**Girl Scouts... Right On Target**

Dedicated to helping others

**Auto Glass & Seat Cover Co.**  
304 W. 2nd Sanford, Fla. Ph. 322-8032

**A Respect For Life... Beauty!**

Girl Scouts tend to all their projects with tender loving care.

**CHASE COMPANY** SINCE 1884

Girl Scouts Show Respect For Their Environment

**FIDET FEDERAL SAVINGS AND LOAN ASSOCIATION OF MID-FLORIDA**  
DeBARY OFFICE | DELTONA OFFICE | SANFORD

**Girl Scouts Moving Ahead**

Hiking, Camping  
Enjoying Nature—Protecting It!  
Let's all support them

**Celery City PRINTING COMPANY INC.**  
221 Magnolia 322-2581

Scouting Is—Self-Expression

Learning through discovery—Whether it be at an easel or on a nature trail!

**Barnett Bank** Barnett Bank of Seminole County, N.A.  
Member FDIC 441 Altamonte Dr., Altamonte Springs

**GIRL SCOUTING... OPENS A WORLD OF OPPORTUNITIES**

For our daughters and our community. We are proud to support them.

**A. Duda & Sons**  
Slavia, Fla.

We Salute You

You're an asset to our growing community

**Senkarik PAINT CO. INC.**  
Benjamin Moore paints  
271 Magnolia Ph. 322-6622 Sanford, Fl.

**GIRL SCOUTS**

We're Proud Of You

**JCPenney**  
HEADQUARTERS FOR OFFICIAL SCOUT UNIFORMS AND EQUIPMENT  
SANFORD PLAZA

Girl Scouts Going Places

Count on them to be out front—working to better our community

**The McKibbin Agency**  
"INSURE WITH CONFIDENCE"  
Dial 322-0331 Downtown Sanford

Do A Good Turn Daily

We are proud of the girl scouts 64 year record of service

**Eldridge's Gulf Service**  
Road Service • Repairs  
668-6917  
Free Pickup and Delivery  
799 Deltona Blvd. Deltona, Fla.

# WOMEN

## Staffers Remember First Days

# Hospital Marks 20 Years

By JEAN PATTESON  
Women's News Director

Twenty years have come and gone, but Miss Betty Robinson, Miss Betty Robertson, Mrs. Ellen Renfrow and Mrs. Clara Van Dusen are still members of Seminole Memorial Hospital's nursing department.

"I moved in the night it opened," said Mrs. Van Dusen, night relief supervisor since Feb. 1, 1956. The registered nurse has been working nights for even longer than that—28 years all told—and says it suits her very well. A native of Sanford, she lived in Ohio for a number of years, but returned to her home town in time for the opening of the then-new hospital. She has two sons and a daughter.

During her service at Seminole Memorial Hospital, Mrs. Van Dusen has seen many changes, including the addition of the East and West Wings in 1962 and 1966 respectively.

She has also noticed nurses' uniforms inch above the knees, or change completely to pants suits over the past two decades!

Mrs. Ellen Renfrow, another native of Sanford, got in the hospital in 1956 and, after three years after the institution opened, she became a nurse aide.

"I like being around the patients, especially the older patients who can't do much for themselves," said Mrs. Renfrow. "I like to make them comfortable."

Mrs. Renfrow lives in Sanford with her retired husband, Willie. Of her 20 years at the hospital, she says, "I sure have seen a lot of changes—all those new wards they've added."

Miss Betty Robertson, central supply room supervisor, is a registered nurse who trained in New York State, and came to Sanford for the year before Seminole Memorial Hospital opened.

For the first 11 years, she worked as night supervisor—"that meant I was admissions clerk, emergency room nurse and everything else," smiled Miss Robertson.

"Now they have emergency covered 24 hours. There are special night admissions clerks and in house doctors all night."

Following an injury to her wrist, Miss Robertson transferred to the supply room, from whence she supervises the cleansing and distribution of all sterile equipment throughout the hospital. She is also charged with issuing patient comfort items and linen.

Miss Robertson, whose brothers and sisters also live in Sanford, has a home on Lake Markham. She

enjoys golf, sailing and canoeing in her time away from the hospital.

Miss Robinson has been operating room supervisor at Seminole Memorial Hospital since it opened—and an operating room nurse for several years prior to that.

Her job entails supervising the nurses in the operating rooms and buying equipment and supplies.

In the 20 years she has worked at the hospital, Miss Robinson says the operating rooms have gone "from a Model T to a Cadillac model."

When she started, about 45 operations were performed a month; today the number exceeds 300. "I was running one room in those days; today there are five." She says regular workshops and seminars keep her current with advances in the world of surgery, and next week will attend the annual conference of the National Association of Operating Nurses in Miami.

Over the years, Miss Robinson has seen anesthesia become more sophisticated; techniques improve immensely; and the hospital undertake a wider variety of surgery.

Her free time is spent relaxing with a fishing pole or swimming.

Not only the nursing department, but the hospital board of trustees has a long-standing member also—John Evans, presently chairman of the board.

Evans was serving as secretary-treasurer of the old Fernald Lawton Hospital in 1952, and before Seminole Memorial Hospital was erected, had been on the board ever since, except for one period, 1970 to late 1972.

The board of five trustees is appointed by the Governor. It serves four-year staggered terms. This board and the 20-year employees have seen



Hospital administrator Robert Besserer and Director of Nurses Helen Bradley (top, center) congratulate 20-year employees in the nursing department (top) Ellen Renfrow and Clara Van Dusen; (bottom) Betty Robinson and Betty Robertson.

The hospital capacity increase from 65 beds to 125 beds when the East Wing was added, and to 199 beds with the addition of the West Wing.

In 1972, a new laboratory and outpatients department were added, and the intensive care facility enlarged from four to eight beds.

Two years later, the hospital bought the Seminole Lodge nursing home on Bay Avenue, south of the hospital, but the additional 35 beds there are not yet in use.

The hospital is into the second phase of enlarging and adding equipment to its X-ray department, and runs a small X-ray school at the facility. It also maintains a LPN program in conjunction with Seminole Community College.

Currently, there are about 41 doctors on the active medical staff. One of them, Dr. Edwin Epstein remembers well the opening of Seminole Memorial Hospital. It occurred on his birthday.



The hospital's last home, in this weatherbeaten house on the corner of Fifth Street and Oak Avenue, had its charms. The operating room was in the front hallway—which still continued to function as a hallway. And doctors had to haul their patients upstairs on a hand-operated elevator.

## Hospital's Last Home Just That -- A Home

Anniversaries are times for reminiscing. Persons associated with Seminole Memorial Hospital have been thinking back, during the month of February, to that day, 20 years ago, when the hospital opened its brand new doors for the first time.

Dr. Charles Park Sr., who retired in 1975 after serving the Sanford community for 51 years, has spent the first months of his retirement thinking back even further than 20 years.

Charged with writing the history of the Seminole County Medical Society (founded in 1927), he has been reminiscing about times when there was no Seminole Memorial Hospital—only the old Fernald Lawton Hospital.

Dr. Park, who was first chief of staff at Seminole Memorial Hospital, can clearly recall the old Fernald Lawton Hospital on the corner of Fifth Street and Oak Avenue, an old house that was given to the people of Seminole County by two families, the Fernalds and the Lawtons.

It was a beautiful old two-story home, with two large mirrors, one in the hall, another in the parlor, which reflected images from one to the other. Dr.

Park remembers. There were five bedrooms in the house, and with a small addition in the back, the "hospital" could accommodate 35 beds.

The operating room was in the hall of the old house. An elevator, operated by a rope pull, connected directly with the operating room. Prior to surgery, the surgeon would haul on the rope to lower the patient into the room, and after operating for up to three hours, would have to haul the patient back upstairs.

"Not very convenient!" was Dr. Park's comment.

In addition, the only access to the back of the hospital, was through the operating room, and the surgeons were plagued with worries about contamination as their surgery doubled as a public thoroughfare.

The ambulance entrance was via the elevator, so in times of emergency surgery was often disrupted as the emergency patient was hustled through the operating room to the elevator.

The hospital is into the second phase of enlarging and adding equipment to its X-ray department, and runs a small X-ray school at the facility. It also maintains a LPN program in conjunction with Seminole Community College.

Currently, there are about 41 doctors on the active medical staff. One of them, Dr. Edwin Epstein remembers well the opening of Seminole Memorial Hospital. It occurred on his birthday.

The hospital was run as a private institution by a board of directors appointed by the Fernald and Lawton families.

The hospital opened in 1919 with Miss Myrtle Palmer (Mrs. Luther Frazier) as superintendent of nurses—a job which entailed running the hospital and supervising the operating room. Mr. T. W. Lawton was appointed hospital superintendent.

There were three day nurses and usually one night nurse, assisted by practical nurses—women whose experience often was limited to having nursed family members in their own homes.

## Women In The News



MS. ALFREDA WALLACE

## Organizing Not New To Alfreda Wallace

For Alfreda Wallace, her role as chairperson of the Black Program Committee of the Seminole County Bicentennial had its beginnings in Sunday school classes.

Sanford born and raised, Ms. Wallace is a member of the First Shiloh Church in this city. "We were always having programs, and there was always some of the older people at your side to train you right," she recalled.

"From as far back as I can remember, there was always a program being arranged, and often as not they'd say, 'Alfreda, you be chairperson.'"

"So my training as an organizer started many years ago when the older people—many of them gone now—taught you how to do it."

Never, until the idea of a special program to commemorate the Bicentennial during Black Awareness Week was conceived, had Ms. Wallace chaired quite so ambitious a project.

Entitled "We Also Ran," the Black Awareness Week program spanned the week Feb. 28 through March 4. Featured events held nightly except Sunday in the Sanford Civic Center included talks on the part played by blacks in American history, their current achievements and future goals, as well as a variety of musical numbers by both soloists and mass choirs.

The idea for the Black Bicentennial Program came to Ms. Wallace more than a year ago. "I was watching television and they had one of those ads about the Bicentennial. And I said to myself, why not a Black Bicentennial!"

So Ms. Wallace sat down and put together a program to commemorate the nation's 200th birthday. It met with such enthusiasm that she was encouraged to draw up a program for an entire week.



On the final night of the Black Awareness Week program, Alfreda Wallace (second, right) was presented a trophy in recognition of her contributions. Back Program Committee members, including from left: Mrs. Sady B. Kelly, Rev. and Mrs. Herbert Ross, and Mrs. Grace Brewer. Photo by Marva Hawkin.

"I did just that, and took it to Jack Horner (chairman of the Sanford Bicentennial Committee). He was elated, and sent me on to Ernie Harrell (chairman of the County's Bicentennial Committee).

Thus the Black Bicentennial Committee, became the Black Program of the Seminole Bicentennial Committee.

And Alfreda Wallace set to work, organizing the proposed week-long program.

She was amazed at the cooperation she received. "I'd say, 'Look, I've got your name on a program.' They'd say, 'What program?'"

"And when I told them, they all said sure, they'd do it." Ms. Wallace, an attractive young woman with a winning

personality, was able to infuse her own enthusiasm for the project into all the hundreds of people who participated.

Ever modest, she places the success of Black Awareness Week on the efforts of the community.

"How can I thank a community for so much? It overwhelms me, all they have done," she said.



MS. DEBORAH WILLIAMS

## Deborah Williams Aims For New Career

Debbie, is similar to pre-law, but not as political. Her subjects run the gamut from criminal to civil procedures; property law; legal research and domestic relations.

A paralegal (also called legal aide or paraprofessional) is a relatively new concept. Generally, the work entails working in a law office, or in some other office, such as unemployment, in a legal capacity.

"Lawyers have such a lot of routine paper work, so much researching to do. A paralegal can do it for them," explained Miss Williams.

"Only we can't act as lawyers—that's a no-no!" she added. "A paralegal," she continued, "is a kind of assistant to a lawyer, able generally to do more advanced work than a legal secretary."

There are a lot of lawyers who have not yet accepted the concept, Miss Williams said, but she believes the paralegal is here to stay and will rapidly gain wide acceptance.

Currently, while attending classes at FTU, Miss Williams is working parttime in the Public Defender's Office, Sanford.

Most of her time is spent with Tom Scarpellio, an investigator in the office. She is gaining experience interviewing clients when they are first assigned to the public defender—and according to her work colleagues, Miss Williams has a talent for conducting a thorough and penetrating interview.

Debbie claims to be "in and out of jail all day!"

Ultimately, Debbie would like to go on to do a law degree—"But I want to major in the law field I can fall back on," she added. "I'd like to work as a paralegal for a few years, then maybe go to law school."

Miss Williams reports her paralegal class at FTU is comprised about equally of men and women.

Most of the men in the class are aiming for law school; a lot of the women, particularly the older ones, plan to return to the law firms where they have been working, but in a higher capacity—and higher salary bracket.

# 'Snowbirds' Ready To Fly Back North

A pot luck supper was enjoyed by residents — (permanent and temporary) — of the Park Avenue Mobile Home Park, Sanford, on Feb. 27 as farewells to the campers preparing to leave Florida and return to their northern home for the summer.

## At Luncheon Ganas Honored

Miss Elizabeth Ann Sweeney, who became the bride of Greg Ganas on Feb. 28, was honored at a bridal luncheon Feb. 21 hosted by Mrs. James G. Lee and Linda Lee at their home, 113 W. 13th St., Sanford.

## SCC Art Classes Continue

The Division of Adult and Continuing Education at Seminole Community College is offering the following art classes: "Beginning Watercolors," March 15 through May 3, 7 to 10 p.m.

## Marriage Applications

Wm. A. Paskauskas, 21, Waukegan, Ill., Carla R. Tierce, 22, 500 E. 24th Pl., Victor A. Johnson, 20, 1169 W. 25th St., Patricia M. Fraai, 20, 123 1/2 Dot Dr.

## Dissolutions of Marriage

Gregory W. Walker & Ethel L. Lee Edw. Oluch & Mary Jo. Marie Florence Rivers & Francisco Roy.

## Annie Russell Offers 'Little Foxes' Play

Lillian Hellman's famous play in family-in-fighting over money, "The Little Foxes," will be the Annie Russell Theatre's next attraction, opening March 18 through 27.



FTU Chamber Singers include Melba (left) and Theresa Dandel of Winter Springs and Randy Paster of Orlando.



## Fabulous Funshine Fashions

Fashions for fun in the sunshine — Funshine Fashions — was the theme of the spring styles show sponsored by the Maillard Art Center Auxiliary and presented by Robinson's in the Altamonte Mall, Thursday.

## Embroider Yourself A 'Real Gem' Design

If you have a small treasure you'd like to show off, why not incorporate it into your next embroidery and let your stitches create an unusual setting for it?

## FTU Chamber Singers Slate First Concert

The FTU Chamber Singers will appear in their season inaugural, accompanied by members of the university's orchestra in an afternoon performance on March 11.



Performing for Sanford Woman's Club Wednesday were Foreman Heard as Ben Franklin (seated) and standing, from left: Bill Ellmore as John Adams, Laurel Ellmore as Abigail Adams and Chip Johnson as Thomas Jefferson. (Herald Photo by Doris Dietrich)

## 'Don't Stop All Fatherly Affection

By ABIGAIL VAN BUREN DEAR ABBY: Lately you have had letters in your column about fathers sexually molesting their growing daughters.

## Art Winners Announced

For weeks, several women have been combing the area looking for lovely framed paintings on easels or tributed by local artists, in the interest of Sanford Woman's Club Civic Improvement Project and other benevolent projects undertaken by the club.

## Sefried, Lee Engaged

Mr. and Mrs. Paul Sefried, 2800 S. Park Ave., Sanford announce the engagement of their daughter, Cheryl Lee, to Michael Dale Lee, son of Mrs. Patricia Lee of Eastis and Richard Lee of Bloomington, Ind.

## Club Notes

Winettes depicting the struggles and hardships of writing and signing the Declaration of Independence were presented by Act III Players for Sanford Woman's Club at the March luncheon meeting, Wednesday at the Clubhouse.

## In And Around Chulotoa

### Lake Mills Park Dedicated

It was a big weekend for Chulotoa, Sunday, at the Lake Mills Park dedication. The Jackson Heights Middle School band played the national anthem while County Commissioner Mike Hattaway and Lennie Ryder, of the Florida Division of Parks officially opened the park.

## In And Around Winter Springs

### Coffee Filmed For British TV

Mrs. Helene von Domm, private secretary to presidential candidate Ronald Reagan, was guest of honor at a coffee held recently at the home of Mr. and Mrs. Marcel Snyder, 2500 W. 10th St., Winter Springs.

## Sanford Plaza

Artists and winners of the paintings are as follows: Ashby Jones, Nellie Coleman, E. B. Snowe, Pat Foster, Ruby King, Jonnie Eason, Troy Ray Sr., P. E. Armond, Mildred Babcock and Charlotte Adams.

## A Diamond Solitaire

One of many you'll find at The Diamond Store. 96 Carat diamond solitaire. 14 karat gold. \$1550. Layaway now for Christmas. 8 Convenient Ways To Buy ZALES The Diamond Store.



KATHERINE JONES DIAL 365-3283

goodies are the things that they will be selling. We are all happy to hear that Rose Phillips' heart surgery is over and that she is out of intensive care.

## Junior Police

The Winter Springs Junior Police held a meeting on March 2, 1976, at 7:30 p.m. in the ready room of the Fire Station on Moss Road.

## Next Saturday

The Sportsman's Club will have its 'trash or treasure' sale at Peterson's Lumber Company, SR 419 and 7th Street.

## Local artist

Maize's career is on the upswing. His latest achievement is a one-man show of his works at the Beaf and

## Fairway Laundromat

Dry Cleaning at budget prices and color laundry service in a pleasant atmosphere. Open 7 a.m. daily. Located at ...

## Fairway Plaza

On Hwy. 17-92 at 127th St. 322-9229. Try it you'll like it!

## Life Stride

Almost flat and flexible as can be! Life Stride's wood wedged sandal follows in your footsteps...no matter how much you run and bend! Crepe 'n leather 'n plenty of flex...from Life Stride for you. 1499 Brown or White. Sizes 5 to 10, AAAA - B widths.

Advertisement for Life Stride shoes, featuring an image of a sandal and the text: 'Almost flat and flexible as can be! Life Stride's wood wedged sandal follows in your footsteps...no matter how much you run and bend! Crepe 'n leather 'n plenty of flex...from Life Stride for you. 1499 Brown or White. Sizes 5 to 10, AAAA - B widths. FREE PARKING IN SHOPPING ROJAY. 218-220 E. FIRST ST. PH. 322-3524.'

# SALE

REFRIGERATOR 19 CU. FT. TOP FREEZER Frostless-Right or Left Hand Doors White-Avocado Harvest Gold Limited Quantities \$416

HOME APPLIANCE CENTER Ph. 322-3883 1700 West First St. Sanford

### BEETLE BAILEY

Fun-y... I know the general isn't in today. BUT I SURE FEEL LIKE HE'S IN.

Mort Walker

### THE BORN LOSER

That's getting warm... aren't you going to drink it? NO? I've even lit up for Lent.

by Art Sansom

### CAMPUS CLATTER with BIMO BURNS

Are you uptight about something son? A life of a TV set is mostly a bore. You think life is a bore, how do you feel? You're prime time... I'm old reruns!

by Larry Lewis

### BUGS BUNNY

Need some help kid? The combs are over here. I'm looking for a specific article on the configuration of molecular energy relative to cosmic infinity.

by Stoffel & Heimdahl

### BLONDIE

I'm so mad at Edna! She's having a party today but I'm not going. Because you're so mad at her? No—because she didn't invite me!

Chic Young

### FRISCALLA'S POP

A new underwear for FRISCALLA? It's a present from GRANDMA! Like to try it? Let me out!

by Al Vermeer

### ARCHIE

Have you an entrepreneurial systems? I would like to purchase an entry-denial system. Can I help Mrs. Lodge with this system to help?

by Bob Montana

### FRANK AND ERNEST

We fly you anywhere! Fly us back to the 1950's!

by Bob Thaves

### TUMBLEWEEDS

This month the coveted black feather goes to the tribes juggler. Gee, I've always wanted to be a juggler like come, pres—out with it. Where do you guys buy those slow balls?

by T. K. Ryan

### On Tour

Answer to Previous Puzzle

ACROSS: 1. Agra's... 2. Cornwell... 3. Lima is its capital... 4. Capt. or Man... 5. e.g. 6. Fabric... 7. 12. 13. 14. 15. 16. 17. 18. 19. 20. 21. 22. 23. 24. 25. 26. 27. 28. 29. 30. 31. 32. 33. 34. 35. 36. 37. 38. 39. 40. 41. 42. 43. 44. 45. 46. 47. 48. 49. 50. 51. 52. 53. 54. 55. 56. 57. 58. 59. 60. 61. 62. 63. 64. 65. 66. 67. 68. 69. 70. 71. 72. 73. 74. 75. 76. 77. 78. 79. 80. 81. 82. 83. 84. 85. 86. 87. 88. 89. 90. 91. 92. 93. 94. 95. 96. 97. 98. 99. 100.

### WIN AT BRIDGE

By OSWALD and JAMES JACOBY

WEST: ♠ 4 Q 10 9 ♥ A 8 7 ♦ A 7 6 5 ♣ 10 9 8 7 6 5 4 3 2

EAST: ♠ 10 9 8 7 6 5 4 3 2 ♥ K J 10 9 8 7 6 5 4 3 2 ♦ K J 10 9 8 7 6 5 4 3 2 ♣ A K Q J 10 9 8 7 6 5 4 3 2

South vulnerable

West North East South  
Pass 2 N 1 Pass 3 ♠  
Pass 4 ♠ Pass 5 ♠  
Pass 6 ♠ Pass 7 ♠  
Opening lead—7 ♣

### Horoscope

By BERNICE EDEGOL

For Sunday, March 7, 1976

ARIES (March 21-April 19) Remarks won't slip out that another may be interested, even though you did intend them to be so.

TAURUS (April 20-May 20) It's possible that you could be carelessly today in small financial transactions. Count your change. Keep sales slips.

GEMINI (May 21-June 20) Today you could feel you want to dominate the conversation. Remember: We also learn by listening.

CANCER (June 21-July 21) It may contents that he has a headless, leafy, cucumber-like to hold back from repeating some information told you in confidence. Best you don't.

LEO (July 22-Aug. 22) So you would be bored to learn that you avoid the company of a friend who does a lot of talking but seldom has anything to say.

VIRGO (Aug. 23-Sept. 22) It won't be the big things today that others will find fault with. It could be something trivial that may hurt your image.

LIBRA (Sept. 23-Oct. 22) Before announcing your plans prematurely, stop and consider whether you're really talking with should know

### Horoscope

For Monday, March 8, 1976

ARIES (March 21-April 19) Ready or rash judgments could be your downfall today. Allow more time to collect your thoughts before making important moves.

TAURUS (April 20-May 20) Prudent management of resources is a must today, especially if you're involved in an enterprise with friends. Shun extravagance.

GEMINI (May 21-June 20) It would be unwise to take on more than you can handle today, competitively. Size-up your opposition realistically.

CANCER (June 21-July 21) Being shy or too shrewd when dealing today could misfire and not produce the results you hope for. Be candid and open.

LEO (July 22-Aug. 22) Don't volunteer advice today, but if your opinion is asked be sure you know what you're talking about or you may cause a problem.

VIRGO (Aug. 23-Sept. 22) Allies who are usually helpful may not be there when you need them today. Don't bank too heavily on others to get you out of tight spots.

LIBRA (Sept. 23-Oct. 22) Try not to bring up issues today with associates that could lead to a Pandora's box.

### SEEK & FIND

HODGE POGGE "DA"

L I D M U H S H C A D A M S O N D D D  
D A F F O D I S E D A L L E R V A A D  
A I D A R Y I S I A D S T A R D S A  
G R F N E E H S A G G A R V A H O H Z  
C Q U I L E U V G D A N C I C U  
D A R L D A O T R I A I Q U O R H I  
A D A N I E H L O A P O U I H U R  
S D D A R T I A L G R A S E T A R  
H A U O G O C F L L G A Q E T A N R  
E J B G O H R F I E S I D N V T O U  
I N F S B O N S M A D N A U S E F T  
N A F H I A D L A D I A L A D S O A A  
D A Q U I R I U R A V R E J A O R D  
D N S Y A R U R I U Q I N T A D I A M  
U A L S R U D U D I T A T A M

### CARNIVAL

by Dick Turner

"So he got a bit finger!" He told me himself that this might hurt a little!

### DOONESBURY

by Garry Trudeau

"(HE IS MAKING INDICATES ABOUT VICE PREMIER THIS.)"

"(GASP) WHO? OH, OKAY!"

### Real Estate Investments

BY LARRY SAXON

Dear Mr. Saxon, I'm thinking of buying a business. How do I determine if the asking price is fair?

Mrs. E. L.

### Real Estate Investments

BY LARRY SAXON

Dear Mrs. E. L., I'm thinking of buying a business. How do I determine if the asking price is fair?

Mrs. E. L.

### Real Estate Investments

BY LARRY SAXON

Dear Mr. Saxon, I'm thinking of buying a business. How do I determine if the asking price is fair?

Mrs. E. L.

### Real Estate Investments

BY LARRY SAXON

Dear Mr. Saxon, I'm thinking of buying a business. How do I determine if the asking price is fair?

Mrs. E. L.

### Real Estate Investments

BY LARRY SAXON

Dear Mr. Saxon, I'm thinking of buying a business. How do I determine if the asking price is fair?

Mrs. E. L.

### Real Estate Investments

BY LARRY SAXON

Dear Mr. Saxon, I'm thinking of buying a business. How do I determine if the asking price is fair?

Mrs. E. L.

### Real Estate Investments

BY LARRY SAXON

Dear Mr. Saxon, I'm thinking of buying a business. How do I determine if the asking price is fair?

Mrs. E. L.

### Real Estate Investments

BY LARRY SAXON

Dear Mr. Saxon, I'm thinking of buying a business. How do I determine if the asking price is fair?

Mrs. E. L.

### Real Estate Investments

BY LARRY SAXON

Dear Mr. Saxon, I'm thinking of buying a business. How do I determine if the asking price is fair?

Mrs. E. L.

### How To Feed Feathered Friends

## Housewife's Recipes Are For The Birds

By VIVIAN BROWN

AP Newsfeatures Writer

The birds are working night and day to clear the air for you. If they want in exchange is a little food and shelter when the going gets tough, says Irene Cosgrove, a Connecticut housewife and bird-watcher.

She has published with the help of her husband, Ed, and his illustrations and business acumen, a book, "How To Feed Feathered Friends: Housewife's Recipes Are For The Birds." It's a little book, but it's a big one. It's a little book, but it's a big one. It's a little book, but it's a big one.

### HOME

Evening Herald, Sanford, FL Sunday, March 7, 1976—5C

### County Land Transactions Are Recorded

Deeds, mortgages, leases, and other land transactions are recorded in the County Clerk's Office.

### Activity in the Seminole County real estate market was up 35 per cent during the period of 1975. Recorded real estate conveyances totaled \$4,301,783 compared with \$3,041,466 in the same year one ago.

### Real estate conveyances in 1976 to date total \$4,349,501.

### Here's the Answer

Do this a couple of times a day for several days. This "curing" process will keep the concrete and masonry from cracking.

### OUR GARDEN HOME has it all together.

At Woodmere we can show you exactly what you're getting...

### OUR GARDEN HOME has it all together.

At Woodmere we can show you exactly what you're getting...

### OUR GARDEN HOME has it all together.

At Woodmere we can show you exactly what you're getting...

### REAL ESTATE

Selma Williams

A deed is a contract between buyer and seller, which binds the two parties according to their mutual consent. The term mutually consent is the most important aspect here. It means that all of the particulars of the contract are understood by both parties, and that these particulars are totally acceptable to both parties.

### REAL ESTATE

Selma Williams

A deed is a contract between buyer and seller, which binds the two parties according to their mutual consent. The term mutually consent is the most important aspect here. It means that all of the particulars of the contract are understood by both parties, and that these particulars are totally acceptable to both parties.

### REAL ESTATE

Selma Williams

A deed is a contract between buyer and seller, which binds the two parties according to their mutual consent. The term mutually consent is the most important aspect here. It means that all of the particulars of the contract are understood by both parties, and that these particulars are totally acceptable to both parties.

### REAL ESTATE

Selma Williams

A deed is a contract between buyer and seller, which binds the two parties according to their mutual consent. The term mutually consent is the most important aspect here. It means that all of the particulars of the contract are understood by both parties, and that these particulars are totally acceptable to both parties.

### REAL ESTATE

Selma Williams

A deed is a contract between buyer and seller, which binds the two parties according to their mutual consent. The term mutually consent is the most important aspect here. It means that all of the particulars of the contract are understood by both parties, and that these particulars are totally acceptable to both parties.

### REAL ESTATE

Selma Williams

A deed is a contract between buyer and seller, which binds the two parties according to their mutual consent. The term mutually consent is the most important aspect here. It means that all of the particulars of the contract are understood by both parties, and that these particulars are totally acceptable to both parties.

### REAL ESTATE

Selma Williams

A deed is a contract between buyer and seller, which binds the two parties according to their mutual consent. The term mutually consent is the most important aspect here. It means that all of the particulars of the contract are understood by both parties, and that these particulars are totally acceptable to both parties.

### REAL ESTATE

Selma Williams

A deed is a contract between buyer and seller, which binds the two parties according to their mutual consent. The term mutually consent is the most important aspect here. It means that all of the particulars of the contract are understood by both parties, and that these particulars are totally acceptable to both parties.

### REAL ESTATE

Selma Williams

A deed is a contract between buyer and seller, which binds the two parties according to their mutual consent. The term mutually consent is the most important aspect here. It means that all of the particulars of the contract are understood by both parties, and that these particulars are totally acceptable to both parties.



**MAE'S** DISCOUNT FABRICS

**ZAYRE PLAZA**  
2944 ORLANDO DR.  
SANFORD

SALE STARTS SUNDAY

PRE-Grand Opening  
PRICE EXPLOSION

NEW SHIPMENT!  
POLYESTER/COTTON  
**SHEETS**  
TWINS & FULLS  
FITTED  
• NO-IRON  
MILL IRREG. WHITE  
**99¢** each  
WHILE LIMITED QUANTITIES LAST

CELEBRATING OUR 24th STORE OPENING IN ARCADIA!

POLYESTER/COTTON  
CONCORD MILLS  
DESIGNER  
CO-ORDINATES  
PRINTS & SOLIDS  
YOU'LL FLIP OVER!  
**\$1.29** yd.

100% ACRYLIC  
DOUBLE KNIT  
• 60" WIDE  
• MACH. WASH  
• NO-IRON  
**59¢** yd.

EXTRA SPECIAL!  
TOP & BOTTOM WEIGHTS  
• CALCUTTA  
• INDIAN GAUZE  
• BEGGARS CLOTH  
• POVERTY CLOTH  
• EARTH CLOTH  
"THE LATEST KRINKLE FABRICS BY KLOPMAN/BURLINGTON & CONCORD FABRICS!"  
• POLYESTER/COTTON • MACH. WASH  
• NO-IRON  
**89¢** yd.

GREAT FOR SPRING!  
100% NYLON  
JERSEY  
SOLID COLORS  
FABRIC OF A MILLION USES!  
• MACH. WASH  
• NO-IRON  
**59¢** yd.

ALL NEW SHIPMENT!  
100% POLYESTER  
DOUBLE KNITS  
• TREVIRA CO-ORDINATES • CREPE STITCH  
• 2 & 3 COLOR FANCIES • INTERLOCKS  
MACH. WASH  
NO-IRON  
**88¢** yd.

CANNON MILLS  
HEAVY-WEIGHT • EXTRA-JUMBO  
TERRY VELOUR  
BATH TOWELS  
COMPARE AT \$1.50 each  
SAVE 25%  
ENTIRE STOCK OF OUR  
FINEST FIRST-QUALITY  
ARNEL/NYLON  
VELOURS  
• MACH. WASH  
• NO-IRON  
FORMER DISCOUNT PRICE \$1.29 yd.  
**99¢** yd.

NEWEST ARRIVAL!  
"THE FABULOUS"  
100% NYLON  
QIANA  
INTERLOCK  
SPECIAL INTRODUCTORY PRICE!  
• 60" WIDE  
• MACH. WASH  
GREAT COLORS FOR SPRING  
**\$1.98** yd.

OLD WORLD LACE  
100% VINYL  
PLACE MATS  
4 for \$1.00

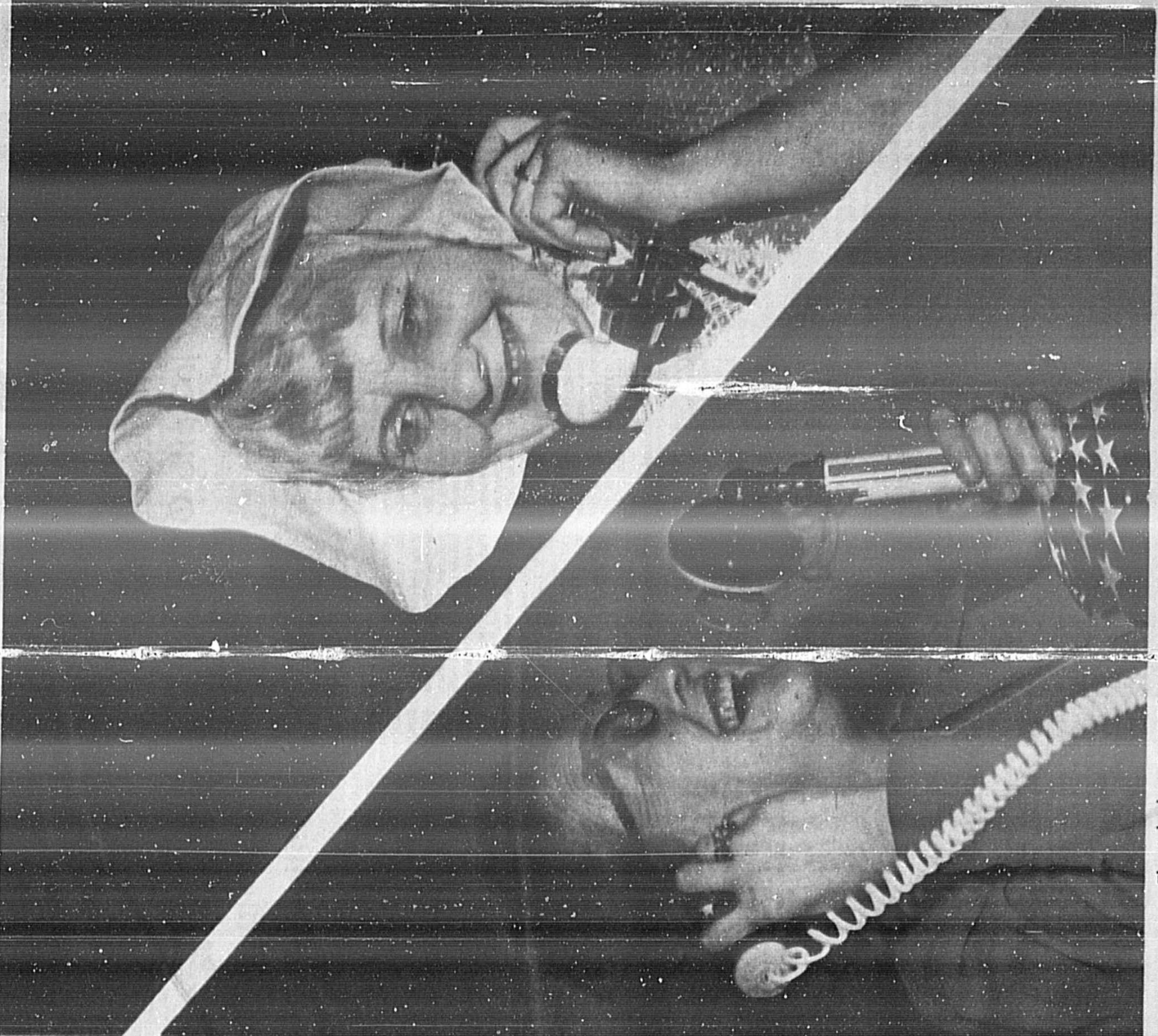
HERCULON/OLEFIN®  
UPHOLSTERY  
"BEAUTIFY YOUR HOME AT HALF THE COST!"  
• TWEEDS  
• PLAIDS  
• STRIPES  
**\$1.98** yd. AND UP

POLYLOCK DRAPERY  
CASEMENT  
FORMER DISCOUNT PRICE \$1.69 yd.  
**99¢** yd.

SUPER FOR SPRING!  
5 OZ. WEIGHT  
DISTRESS CLOTH  
"JUNIOR CALCUTTA"  
45" WIDE  
MACH. WASH  
**\$1.39** yd.

NEW SHIPMENT!  
100% POLYESTER  
WHITE-UNIFORM-WHITE  
DOUBLE KNITS  
60" WIDE • MACH. WASH  
ASST. JACQUARD PATTERNS  
**66¢** yd.

Seminole

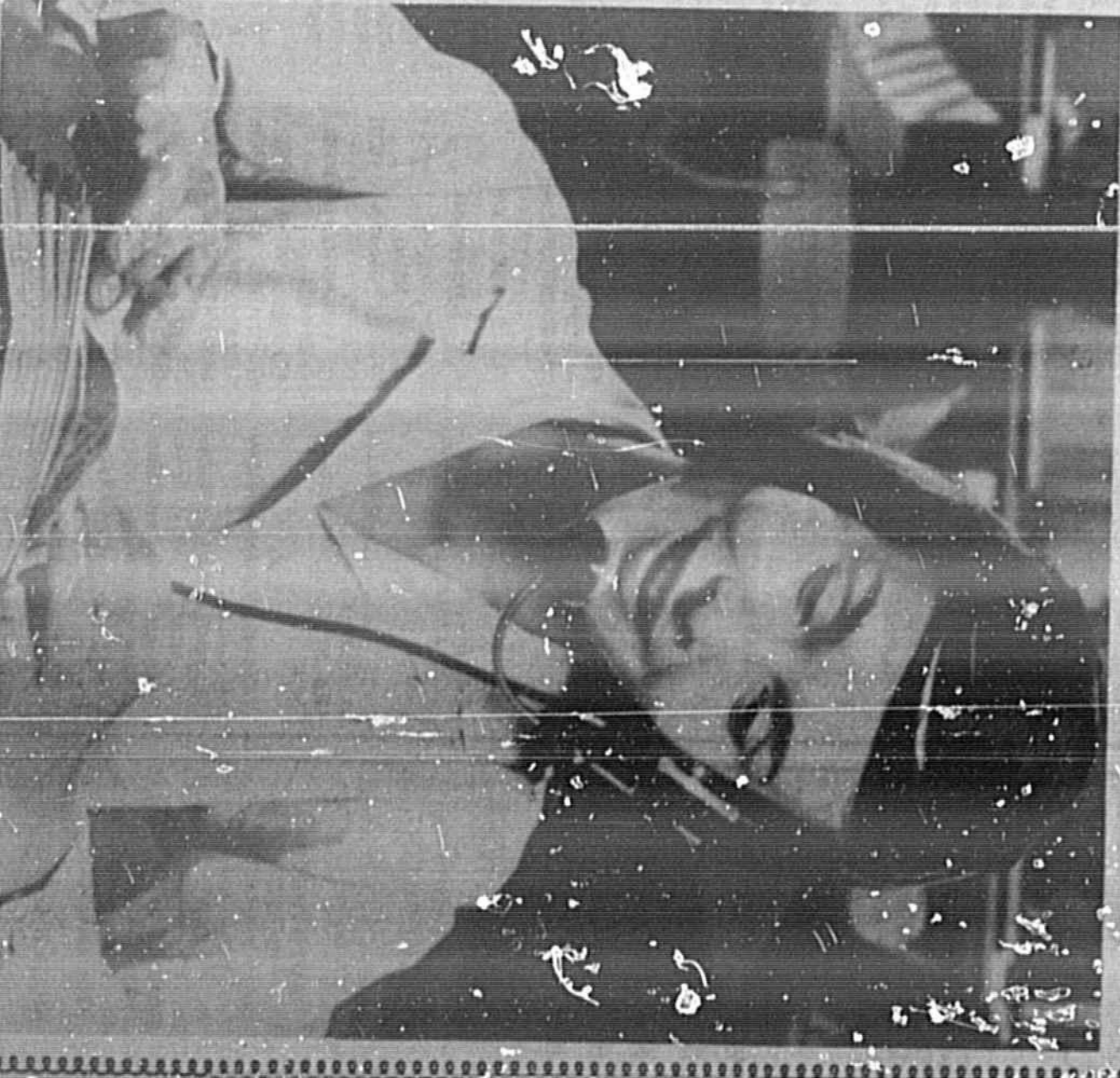


The telephone's 100th birthday marks growth and change. Story, page 4 and 5-D.  
Jean Wilson (top) and Virginia Wallace. (Herald Photos by Bill Vincent Jr.)

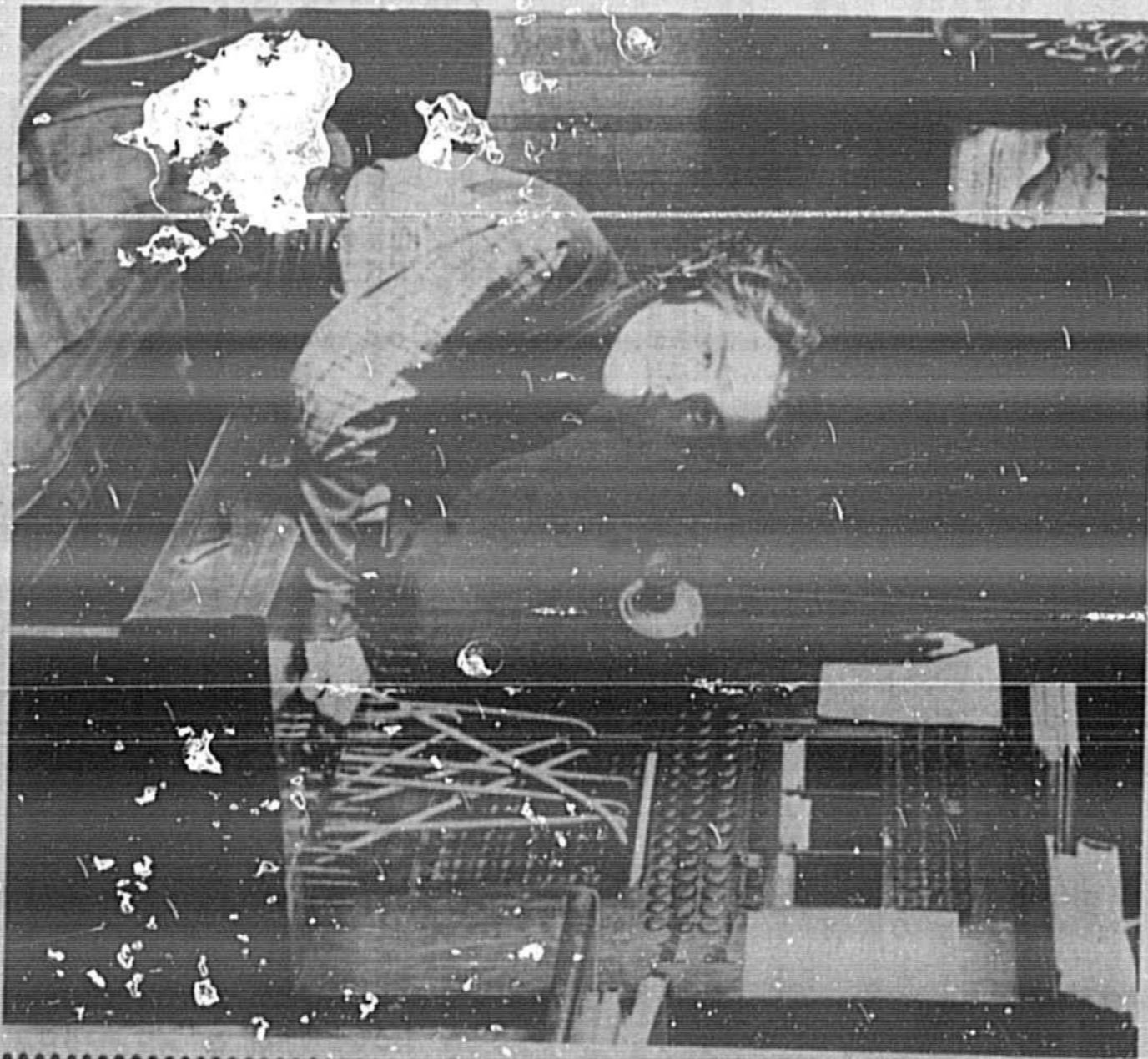
Daily Television Programming

Day	Time	Program
Friday	6:00	THE 700 CLUB
	6:30	THE MENTALIST
	7:00	THE MENTALIST
	7:30	THE MENTALIST
	8:00	THE MENTALIST
	8:30	THE MENTALIST
	9:00	THE MENTALIST
	9:30	THE MENTALIST
	10:00	THE MENTALIST
	10:30	THE MENTALIST
	11:00	THE MENTALIST
	11:30	THE MENTALIST
Saturday	6:00	THE MENTALIST
	6:30	THE MENTALIST
	7:00	THE MENTALIST
	7:30	THE MENTALIST
	8:00	THE MENTALIST
	8:30	THE MENTALIST
	9:00	THE MENTALIST
	9:30	THE MENTALIST
	10:00	THE MENTALIST
	10:30	THE MENTALIST
	11:00	THE MENTALIST
	11:30	THE MENTALIST
Sunday	6:00	THE MENTALIST
	6:30	THE MENTALIST
	7:00	THE MENTALIST
	7:30	THE MENTALIST
	8:00	THE MENTALIST
	8:30	THE MENTALIST
	9:00	THE MENTALIST
	9:30	THE MENTALIST
	10:00	THE MENTALIST
	10:30	THE MENTALIST
	11:00	THE MENTALIST
	11:30	THE MENTALIST





Today



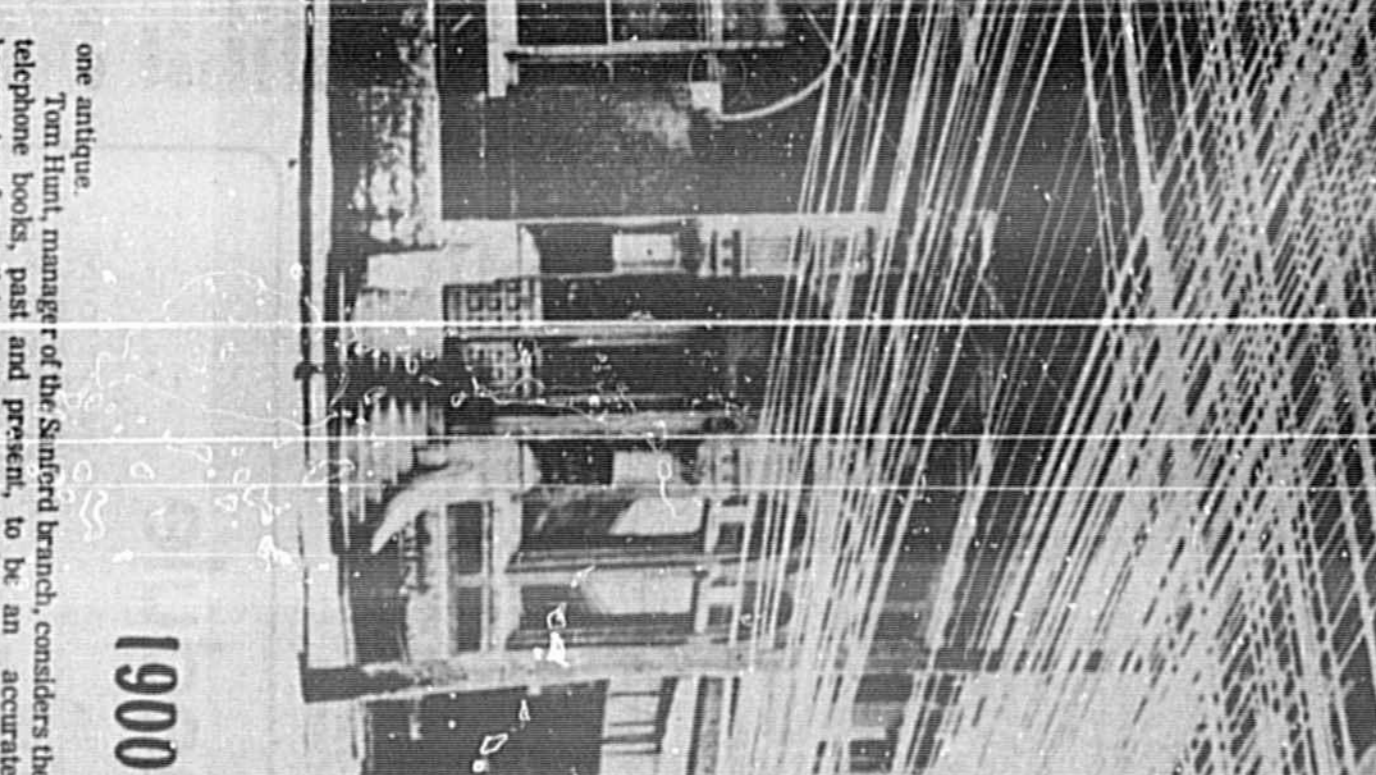
1909

"Operator, May I help you?"

Evening News of Sanford, Fla. Sunday, March 7, 1976



1917



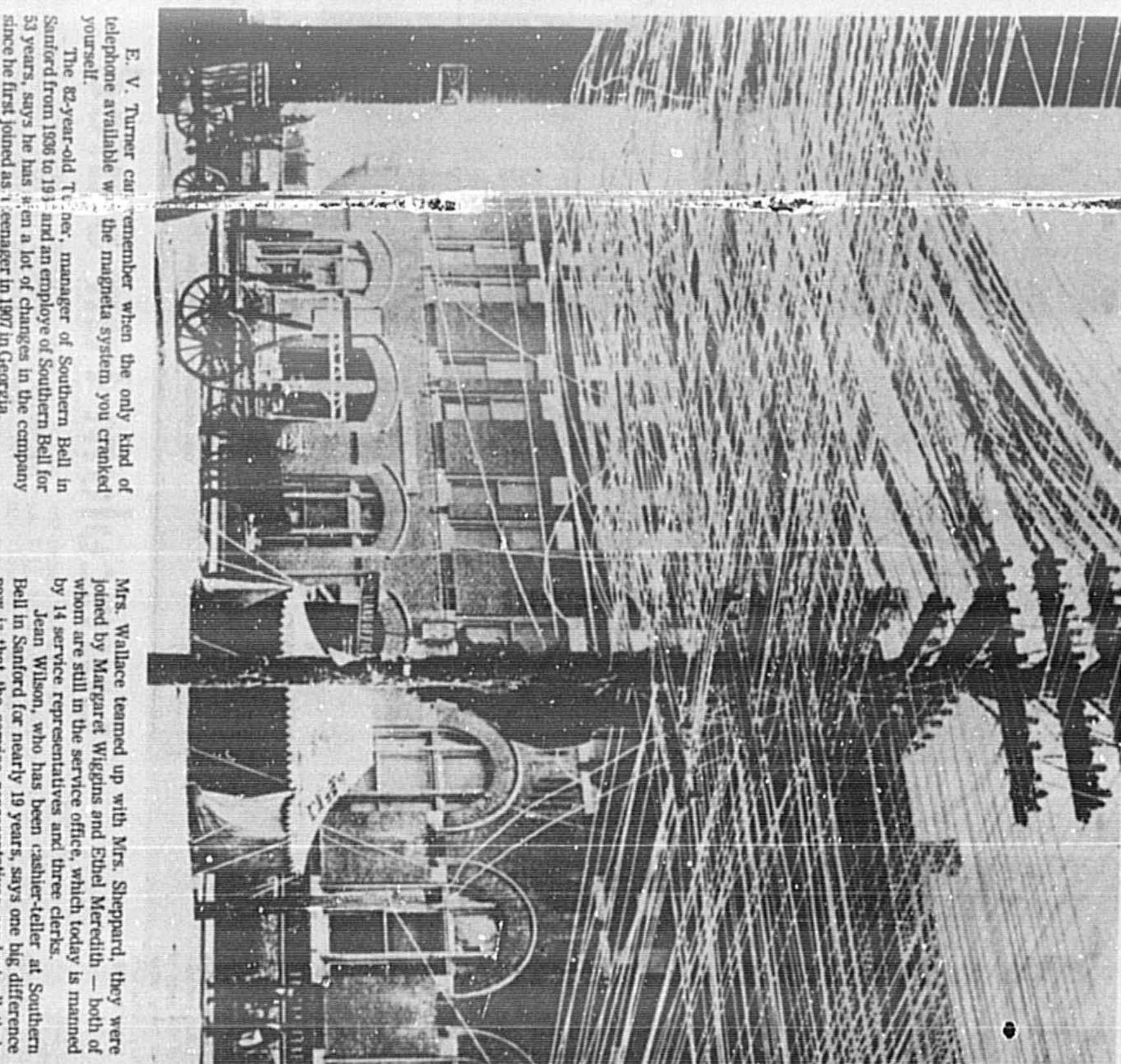
1900

"Operator, May I help you?"

Evening News of Sanford, Fla. Sunday, March 7, 1976



1917



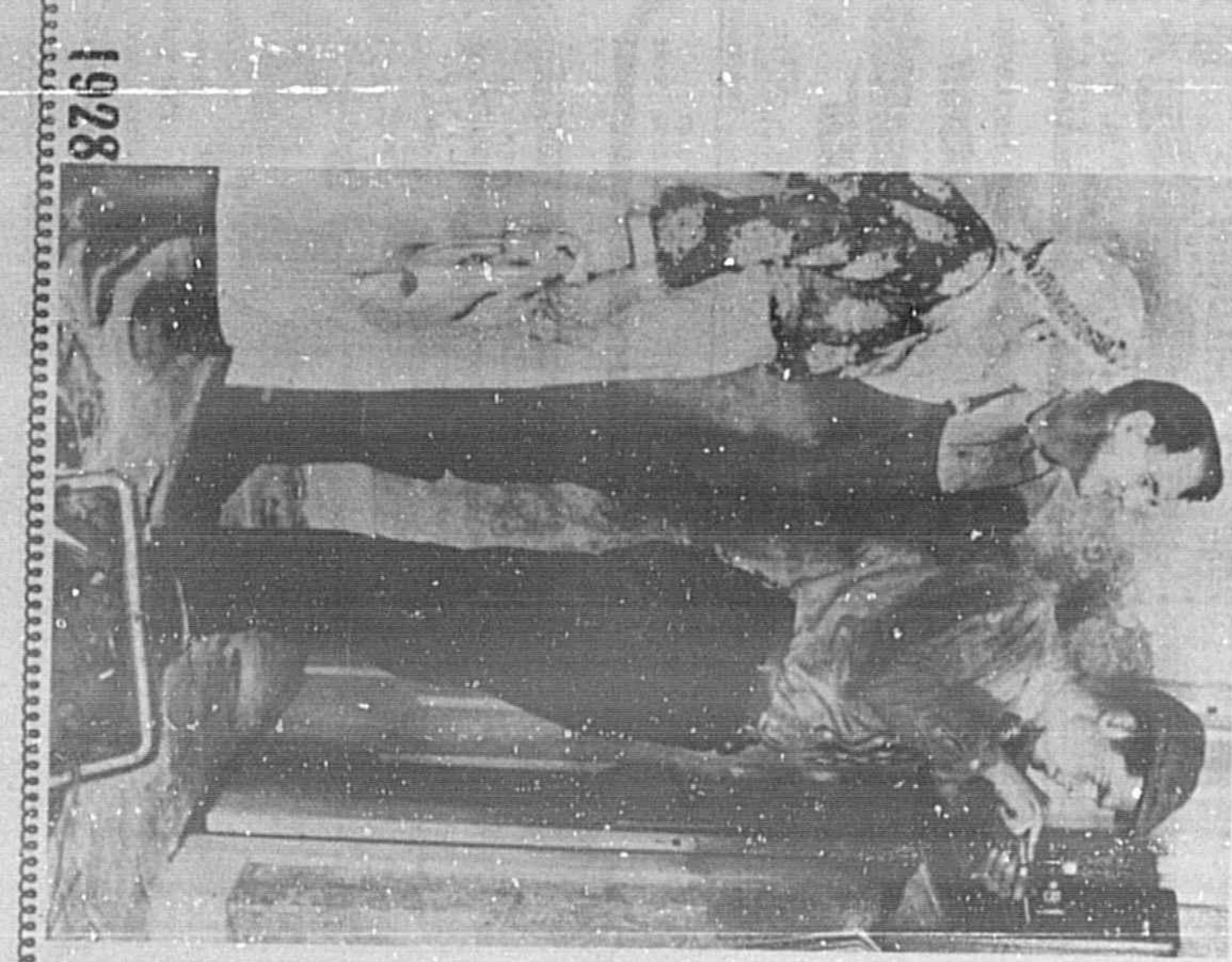
Mrs. Walker teamed up with Mrs. Sheppard; they were joined by Mr. Hill in the service office, which today is known as the telephone office. Mrs. Walker, who has been in the service office for 14 years, says she has seen a lot of changes in the company since she first joined as a telephone operator in 1917 in Georgia. She says she has seen a lot of changes in the company since she first joined as a telephone operator in 1917 in Georgia. She says she has seen a lot of changes in the company since she first joined as a telephone operator in 1917 in Georgia.

1928



Yesterday and beyond: the telephone's 100th year

ARTICLE BY JEAN PATTESON



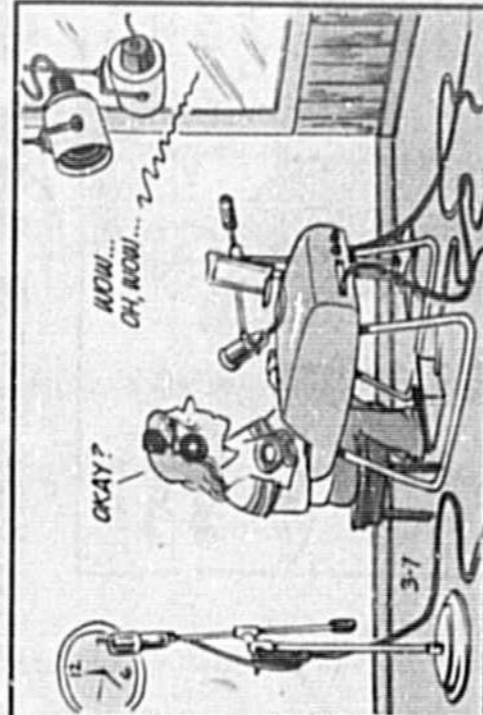
1928

# COMICS

Sunday Herald  
MARCH 7, 1976  
SANFORD, FLORIDA

## DOONESBURY

by Garry Trudeau



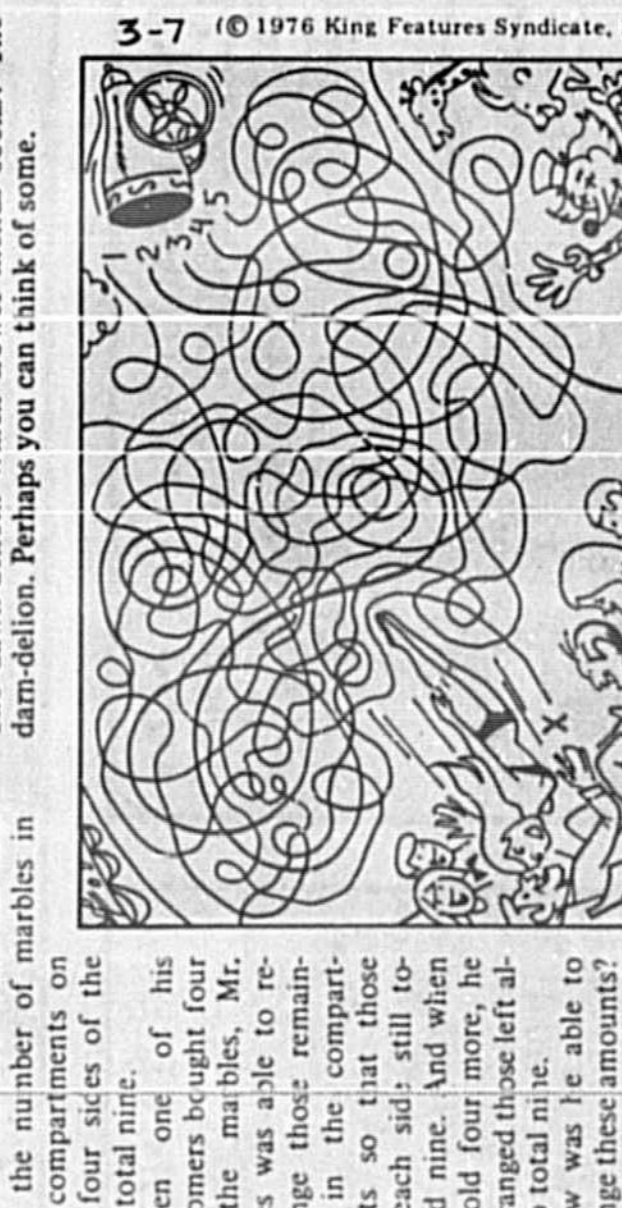
## HOCUS-FOCUS



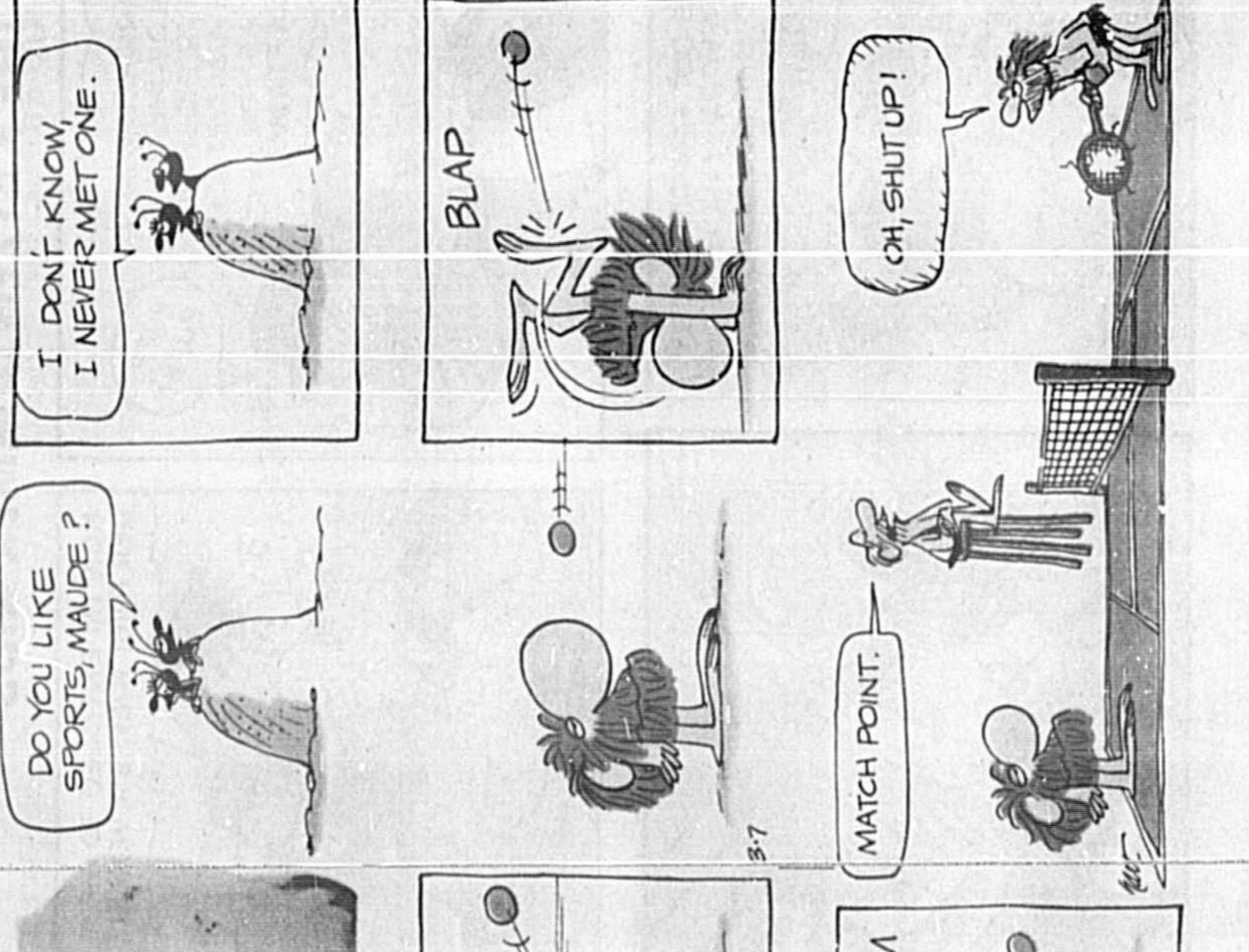
CAN YOU TRUST YOUR EYES? There are at least six differences in drawing details between top and bottom panels. How quickly can you find them? Check answers with those below.

## Junior Whirl

**BULLETIN BOARD**  
● XYZ AFFAIR: Check the letters X, Y, and Z in conversation. One says: "It's okay to X for a sample." "Y, of course, it is. Z for yourself."  
● AI is 35 years old today and his friend Bill is 20. In what year was Bill half AI's age?  
● City Slicker: Rearrange letters to find the names of the following: 1. SIX VE GALS. 2. SHOUT ON. 3. UP LAST.  
● Flower Show: Which flower is an early bloomer? The dawn-dew-dew. Which flower mends socks? The dam-dellion. Perhaps you can think of some.



ALL'S WELL that ends well, says our tuman cannonball friend above. Can you trace her route from upper right?





by Dick Winger



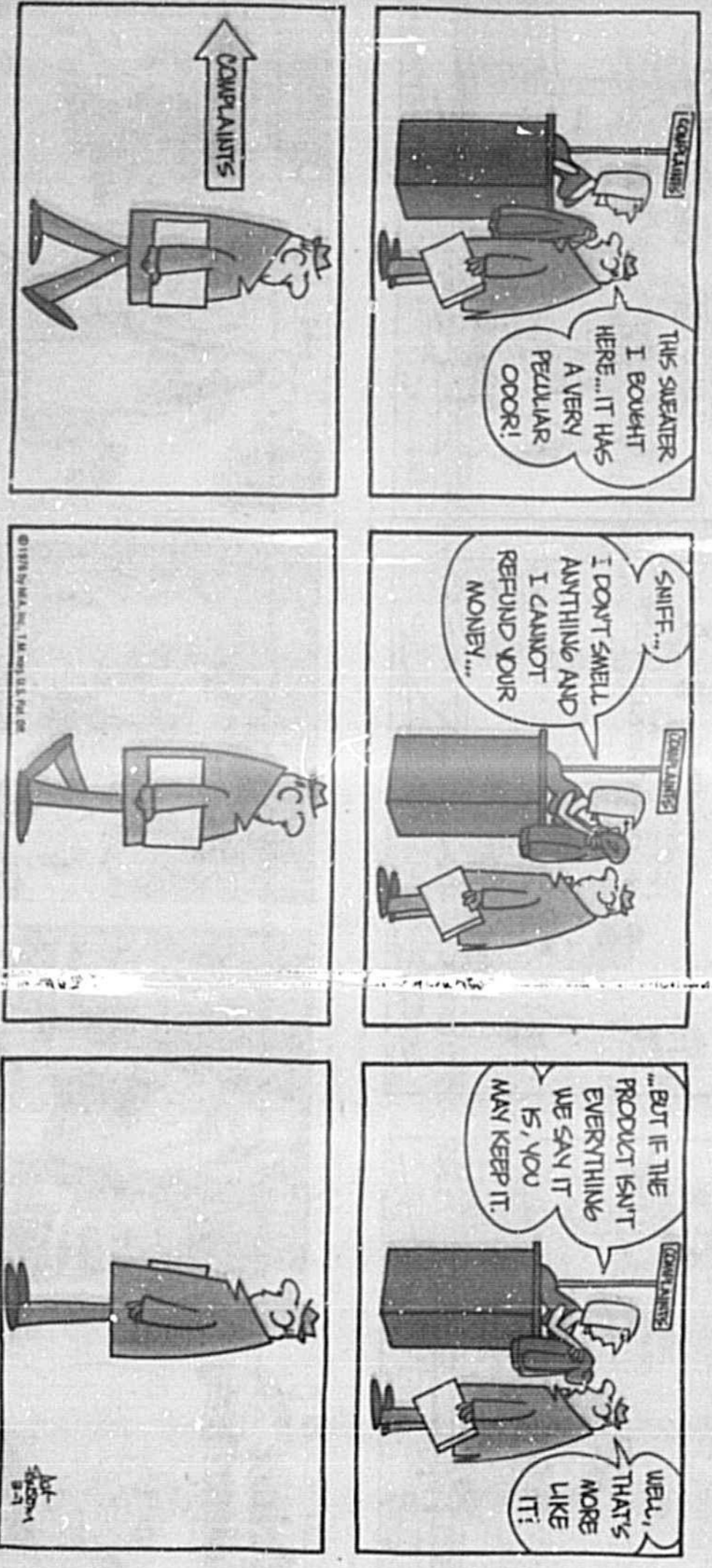
by Joe Musci

HUBERT

THE KATZENJAMMER KIDS

the small societ

brickman



by Art Sansom

THE BORN LOSER



TUMBLEWEEDS by Tom K. Ryan



ALLY OOP

by Dave Graue



WEE PALS - kid power

by Morrie Turner



OUT OUR WAY

by Ed Sullivan

The Willies





## Only Minor Injuries Aboard Sanford-Bound Train 14 Auto-Train Cars Derailed; 6 Into Water

By RICHARD LONG  
Herald Editor



Fourteen cars of a 53-car Auto-Train bound for Sanford were derailed at Quantico, Va., early last night, just minutes after it left its northern terminal at Lorton, Va.

Six of the derailed cars, five auto carriers containing 40 automobiles, and a stream generator car toppled into the Potomac River, a large waterway that flows into the Potomac Bay.

Other cars, all carrying passengers, were derailed along the tracks on the north side of the creek and a number of automobiles and personal effects were scattered along its banks. The remainder of the train, carrying passengers, continued on to Sanford after a two-hour delay.

Only three minor injuries were reported, according to Richard Long, the train's vice president of Auto-Train. Unidentified, they

were reported to be two crewmen and a woman passenger the latter who was burned by hot coffee.

The three injured persons were reportedly taken from the train and treated during a stop at Richmond, Va., some 70 miles south of the accident. The deralement was in almost exactly the same spot. Officials of the Richmond, Fredericksburg and Potomac Railroad, that is responsible for rail operations between Washington, D.C., and Richmond, Va., reported that no cause for the deralement could be determined.

The train was reportedly traveling at about 65 miles per hour when the deralement occurred.

One Auto-Train crew member was quoted as saying that it appeared that a cap had come off one of the tanks containing diesel fuel causing the fuel to leak along the tracks. Railroad officials could not confirm this report.

However, it was confirmed that diesel fuel leaking from the submerged steam generator car was posing a pollution threat to the Potomac River, according to Virginia Water Control Board authorities who said that some 1,000 gallons had leaked into the Quantico Creek. Goldstein said, however that the train was carrying only 700-800 gallons.

Witnesses said that the first car to leave the tracks was the steam generator car, the one immediately to the rear of the passenger section.

Goldstein confirmed reports that the last car of the passenger section was the push private car of Auto-Train President Eugene K. Garfield, who was making one of his frequent trips to Florida. Garfield, according to Goldstein, set up a "temporary headquarters in a motel near the crash scene to direct salvage operations."

Tom Blayney, director of corporate affairs for Auto-Train, was heading to a nearby assigned group of Auto-Train employees, in Sanford as they prepared for

the 346 passengers who were scheduled to arrive here this morning, minus automobiles, clothing and personal effects. Goldstein said that passengers would be provided rental automobiles, emergency funds and Auto-Train's insurance adjusters would be on the scene to assist the passengers.

Despite the recent difficulties of tourists in obtaining rental cars in the area, Blayney said that he had made arrangements for 85 cars which he believed to be sufficient to accommodate the passengers. In addition, he had arranged for 91 rooms at the Sheraton Inn and the Holiday Inn in Sanford.

Jack Horner, executive manager of the Greater Sanford Chamber of Commerce, said that he was contacting Auto-Train officials to offer the services of the Chamber and its quarters to assist the passengers.

According to Goldstein, a crew was attempting to load automobiles that were not extensively damaged onto a special train at the crash scene. This train will be sent to Sanford and is expected to arrive at about 6 p.m.

Goldstein said that the damaged vehicles will be returned to the Auto-Train terminal in Lorton, Va. At the

(Continued On Page 3-A)

## Bewildered Passengers Just 'Happy To Be Alive'

By JEAN PATTESON  
Herald Staff Writer

"We're still alive. That's all that matters." That comment by one person aboard the passenger section of an Auto-Train that arrived in Sanford at noon today seemed to sum up the feeling of the 346 bewildered passengers, many who lost their cars and personal possessions in a Virginia deralement last night.

As the passenger section of the train pulled into the Sanford terminal, most passengers expressed bewilderment and concern. Most were vacation-bound tourists who suddenly found their holiday turned into a nightmare as all 14 cars carrying their automobiles were derailed and six of them plunged into an inlet to the Potomac River.

Passengers were high in their praise of Auto-Train officials, but many expressed concern that they had not been told just what would happen to them when they arrived here without their cars and personal possessions. One passenger said they were told only that upon arrival in Sanford, things would be "sorted out."

As soon as the train pulled into the terminal, Auto-Train officials and insurance adjusters boarded the train to distribute forms to the passengers.

Lowe's brother, W. B. Lowe said, "You've got to say how great people on the train have been. We're doing great because the Auto-Train people have been fantastic."

Lowe said that there was a "series of jerks" when the accident occurred. "It didn't come to a screeching halt exactly."

Lowe said, "It was not all that thrilling. We didn't know what happened until we looked back and saw waves in the river. Then we got to thinking 'something must have caused those waves, and we saw three or four cars in the river. There was no panic. Not too many people were thrown around."

Scott McDonald, 6, of Long Island, N. Y., said he was a "little scared" and grabbed a handrail to keep from falling when the accident occurred. "This is my first vacation on a train, but I guess so long as no one was hurt I can always get another car."

Mr. and Mrs. Anthony Iannello of New York City admitted to being concerned about their car and all their new vacation clothes.

Mrs. Emma Dorderian and her daughter, Lisa, of Long Island, said there were a "lot of rumors circulating on the train. One artist was crying because all of her paintings were in her car and she thought they were lost."

A male passenger commented that after the initial shock was over, some people "got a pillow and went to sleep. Some others had a lot to drink and went to sleep. Others drank coffee and wondered what was in store for them when they arrived in Sanford the following morning."



Scott McDonald, 6, prepared for all emergencies with water bottle strapped around his waist, demonstrated for passengers Mrs. Emma Dorderian and daughter, Lisa, how he grabbed a handrail so as not to fall when part of Auto-Train derailed. (Herald Photo by Jean Patteson)

## Reagan Says Economic News May Be Calm Before Storm

MIAMI (AP)—Ronald Reagan, battling to refute his Republican challenge to President Ford, is winding up his Florida presidential primary campaign with assertions that signs of an economic upturn may be only the election-year calm before a new storm of unemployment and inflation.

While Ford campaigned from the White House and said he thinks he has gained strength in Florida because his economic policies "have begun to show real progress," Reagan questioned the significance of the figures that show employment up and inflation down.

"I disagree with the idea that prosperity is evidently at hand," the former California governor said. He also said that things may get worse after they get better during the presidential campaign year.

Democrats Jimmy Carter, Henry M. Jackson and George C. Wallace also were at their campaign tasks today, the eve of the year's fourth presidential primary election.

Carter, campaigning in Tampa Sunday, said Wallace can't possibly win the Democratic presidential nomination and Jackson "can't get elected in Florida."

## Deadline Announced For Ballots

TALLAHASSEE (AP)—When voters cast ballots Tuesday for their presidential favorites, they also will have a chance to vote for a state constitutional amendment that would affect Florida's water supply and the taxpayers' pocket.

## Approval Could Mean New Taxes

Sen. Kenneth MackKay, D-Ocala, is against the amendment, saying it won't solve the real problems and "would be like telling the water districts we don't know exactly what we want you to do or how to do it, but here's the money."

## Vote On Amendment Would Affect Water Supply

"Right now, the only way we can force these things out into the open is to kill the amendment," MackKay said.

## Commissioners To Hear Center Plans

A representative of the Central Florida Federation of Senior Citizens Clubs is scheduled to present plans for a new senior citizens center in Fort Mellon Park at tonight's meeting of the city commission, slated for 7 p.m. at City Hall.

## Today

Made today has won the \$40,000 first prize in the 11th annual Florida Citrus Open, played for the past week at Rio Pinar Country Club in Orlando. For details on his feat, see Page 6-A.

INDEX

- Around The Clock ..... 4-A
- Bridge ..... 4-B
- Calendar ..... 5-A
- Comics ..... 4-B
- Crossword ..... 4-B
- Editorial ..... 4-A
- Dear Abby ..... 4-B
- Dr. Lamb ..... 4-B
- Horoscope ..... 4-B
- Obituaries ..... 5-A
- Sports ..... 6-7-A
- Television ..... 4-B
- Women ..... 1-B

WEATHER

Sunday's high 81, today's low 57.

Partly cloudy through Tuesday. Chance of showers through Tuesday.

Details and tides on Page 5-A

### BUGS BUNNY

TO LIVE A LONGER THAN SPACEDS AND BEEN CHECKED. WHAT ELSE IS NEW?

HERE'S ONE VA NIGHT LIKE I LOOKS VERY ATWANTIVE.

HOW MUCH WILL AN UNDERWORLD UNDEVELOPABLE

IT SEEMS LIKE A NICE HERE WE GO TO BENDONKINS

SEE WHAT I MEAN?

OMG!

by Ettoffel & Heindahl

### TIGER

THAT HORNS IS STILL TOO LOUD!

I CAN HEAR THE OTHERS BACKUP STILL MORE HUGO

HUGO YOU'RE RAVING THAT HORNS TOO LOUD!

BACKUP JUST A FEW STEPS MORE HUGO

BACKUP UP SOME MORE HUGO

by Bud Blake

### PONYTAIL

GOOD MORNING WANDA!

HI!

OH YES NICE!

OH YES NICE!

WELL I'M READY FOR ANOTHER DAY!

LIKE HURRY UP WE SOMEWHERE ABOUT SCHOOL BOYS BE LATE!

BY LEE HOLLEY

### DEAR HELOISE:

Our family uses the large plastic trash bags for our garbage. I found that by grabbing the bag together and putting on instead of one tie in the top, we could get more garbage into the bag.

DEAR HELOISE:

My grandson lives far away from frequent visits. I wanted him to know I cared about his problem. So, I made a large stuffed rabbit from red nylon. I put a squeaking dog toy in the department of a store, bought a squeaking dog toy in the shape of a hot-water bottle, attached this toy hot-water bottle to the rabbit, and the rabbit with two hands, one hand on each corner, tie, and it is the best dog toy I've ever seen. The hot-water bottle, as easily either because the weight of the garbage is more balanced.

DEAR HELOISE:

I'll bet, if you could just staple across the top of the bag, you could get even more garbage into it.

DEAR HELOISE:

How many of you are it with paper bags that tear apart when you pick them up in old spare pillowcases. I used a heavy

DEAR HELOISE:

My husband and I are great been the one who designed the vacuum cleaner to pick up the spilled cat litter from the cat box that got all over my

DEAR HELOISE:

There is a super idea for businessmen, children, or anyone who wants to bring up a

All you need to do is from it very carefully with a steam iron. It takes all the wrinkles

DEAR HELOISE:

Take the back of the shirt and iron it. This will give it a nice, flat, and a small safety pin on the vestment in the back.

DEAR HELOISE:

SECRET THE ISSUE

DEAR HELOISE:

My daughter said she was going to get a new dress. I told her to get a dress that she could wear to school, work, or to a party. She got a dress that she could wear to school, work, or to a party.

DEAR HELOISE:

My husband and I are great been the one who designed the vacuum cleaner to pick up the spilled cat litter from the cat box that got all over my

DEAR HELOISE:

There is a super idea for businessmen, children, or anyone who wants to bring up a

All you need to do is from it very carefully with a steam iron. It takes all the wrinkles

DEAR HELOISE:

Take the back of the shirt and iron it. This will give it a nice, flat, and a small safety pin on the vestment in the back.

DEAR HELOISE:

SECRET THE ISSUE

### CARNIVAL

ARE YOU DEAF? I YELLED FORE!

DO YOU HAVE SOMETHING IN WASH-AND-WIPE?

BRIDE SHOP

DELAUGHTESSEN

HOW COME EVERYTHING I LIKE YOU SAY CAUSES TUMORS IN MICE?

DEAR HELOISE:

ALL WEATHERED OUT!

DEAR HELOISE:

There is a super idea for businessmen, children, or anyone who wants to bring up a

All you need to do is from it very carefully with a steam iron. It takes all the wrinkles

DEAR HELOISE:

Take the back of the shirt and iron it. This will give it a nice, flat, and a small safety pin on the vestment in the back.

DEAR HELOISE:

SECRET THE ISSUE