

The Sanford Herald

AN INDEPENDENT NEWSPAPER

Sanford Is The Only Central
Florida City Affording Rail, Highway
And Water Transportation

Sanford County Produces
More Fruit And Vegetables Than Any
Other Area In America

VOLUME XXXII Member Associated Press SANFORD, FLORIDA, WEDNESDAY, MAY 29, 1940 Established In 1908 NUMBER 238

ANDREWS, HOLLAND WIN EASILY

Brady, Hand And Speer Are Also Nominated

FLORIDA'S NEXT GOVERNOR

W. E. Watson Defeats
Sidney Nix In Race
For Peace Justice

Pope, Thrasher
Receive Tie Vote

Robert Moya Leads In
City Precincts To
Defeat Chorpene

E. E. Brady, C. M. Hand,
and George A. Speer, Jr.
were winners in yesterday's
primary election run-off,
according to unofficial
returns compiled last night
by The Herald.

In the race for county
commissioner, O. J. Pope
and E. L. Thrasher, fur-
nished a tie vote in the
county.

Robert Moya, who was
running for city commis-
sioner, led in the city
precincts, but was de-
feated by Chorpene.

W. E. Watson, who was
running for peace justice
commissioner, defeated
Sidney Nix in the race.

Ed E. Bentley, who was
running for attorney gen-
eral, was defeated by
J. Edgar Larson.

W. M. Wainwright, who
was running for governor,
was defeated by Spensard
Holland.

W. M. Wainwright, who
was running for governor,
was defeated by Spensard
Holland.

W. M. Wainwright, who
was running for governor,
was defeated by Spensard
Holland.

W. M. Wainwright, who
was running for governor,
was defeated by Spensard
Holland.

W. M. Wainwright, who
was running for governor,
was defeated by Spensard
Holland.

W. M. Wainwright, who
was running for governor,
was defeated by Spensard
Holland.

W. M. Wainwright, who
was running for governor,
was defeated by Spensard
Holland.

W. M. Wainwright, who
was running for governor,
was defeated by Spensard
Holland.

W. M. Wainwright, who
was running for governor,
was defeated by Spensard
Holland.

W. M. Wainwright, who
was running for governor,
was defeated by Spensard
Holland.

W. M. Wainwright, who
was running for governor,
was defeated by Spensard
Holland.

W. M. Wainwright, who
was running for governor,
was defeated by Spensard
Holland.

W. M. Wainwright, who
was running for governor,
was defeated by Spensard
Holland.

W. M. Wainwright, who
was running for governor,
was defeated by Spensard
Holland.

Volusia Gives Whitehair 99 Vote Majority

4,000 Lead In Given
Holland In Orange;
Senator Rose Ekes
Out 68-Vote Margin

Spensard L. Holland, leading
gubernatorial candidate, polled a
majority of nearly 4,000 over his
opponent in the run-off primary
election in Orange County yester-
day, while Francis Whitehair of
DeLand took the lead in his
home county of Volusia by a 99-
vote margin, on the basis of un-
official complete returns from
the two neighboring counties.

Although the vote for the
various Volusia county precincts
could not be obtained, the count
revealed that Mr. Holland car-
ried the precincts in the vicinity
of Daytona Beach while Mr.
Whitehair polled a majority in
the other two large precincts of
DeLand and New Smyrna Beach.

The unofficial tabulation of the
returns from Orange County gave
Holland 11,353 and Whitehair 7,371
while in Volusia county Hol-
land got 7,235 and Whitehair
7,334.

In the state treasurer race, J.
Edwin Larson was high in Volu-
sia county with 6,153 while W.
M. Wainwright received 5,972 in
Orange County. Larson received
7,345 while Wainwright got 7,275.

In the various races for coun-
ty offices in Orange County, in-
cumbent State Senator Walter
Rose won a narrow victory over
his opponent, George Chorpene.
Rose received 5,127 and Chorpene
5,099.

Edna G. Fuller, incumbent
member of the House of Repre-
sentatives from Orange County,
was defeated by Spensard Hol-
land who got 6,235 votes as compared
with 5,127 for Mrs. Fuller.

The incumbent, Mrs. Fuller,
lost her seat by a vote of 5,127
to 6,235. Mrs. Fuller received
5,127 and Spensard Holland re-
ceived 6,235.

In the race for county com-
missioner, O. J. Pope and E. L.
Thrasher, who were running for
the office, furnished a tie vote.
Pope received 5,127 and Thrasher
5,127.

In the race for attorney gen-
eral, J. Edgar Larson was high
in Volusia county with 6,153
while W. M. Wainwright re-
ceived 5,972 in Orange County.

Larson received 7,345 while
Wainwright got 7,275. In the
various races for county offices
in Orange County, incumbent
State Senator Walter Rose won
a narrow victory over George
Chorpene.

Rose received 5,127 and Chorpene
5,099. Edna G. Fuller, incum-
bent member of the House of
Representatives from Orange
County, was defeated by Spensard
Holland who got 6,235 votes as
compared with 5,127 for Mrs.
Fuller.

The incumbent, Mrs. Fuller,
lost her seat by a vote of 5,127
to 6,235. Mrs. Fuller received
5,127 and Spensard Holland re-
ceived 6,235.

In the race for county com-
missioner, O. J. Pope and E. L.
Thrasher, who were running for
the office, furnished a tie vote.
Pope received 5,127 and Thrasher
5,127.

In the race for attorney gen-
eral, J. Edgar Larson was high
in Volusia county with 6,153
while W. M. Wainwright re-
ceived 5,972 in Orange County.

Larson received 7,345 while
Wainwright got 7,275. In the
various races for county offices
in Orange County, incumbent
State Senator Walter Rose won
a narrow victory over George
Chorpene.

Rose received 5,127 and Chorpene
5,099. Edna G. Fuller, incum-
bent member of the House of
Representatives from Orange
County, was defeated by Spensard
Holland who got 6,235 votes as
compared with 5,127 for Mrs.
Fuller.

SETS PRECEDENT



Spensard L. Holland, gubernatorial candidate, is shown in a portrait. He is a man with dark hair, wearing a suit and tie, looking slightly to the side.

The current incumbent of Le-
opold III, King of the Belgians
(above), "in full battle" was de-
clared by Premier Reynaud of
France to be a fact without
precedent in history. Leopold's
current government, especially the
Belgians and Belgians in Paris
and London, are now in a state
of confusion.

SENATOR

	Andrews	Carter
Sanford	1084	223
3 Sanford	1311	268
City Total	2395	491
2 Monroe	120	62
4 Polk	88	19
5 Osceola	198	61
6 Geneva	99	53
7 Chuluota	81	15
8 Goldenrod	59	17
9 Longwood	108	20
10 Lake Mary	100	39
11 Altamonte	116	34
12 Forest City	39	19
13 Slavia	30	3
14 Fern Park	79	13
15 Osceola	82	7
16 Deer Lake	77	7
County Total	3229	406
Grand Total	3088	903

GOVERNOR

	Holland	Whitehair
Sanford	634	801
3 Sanford	847	750
City Total	1481	1551
2 Monroe	111	120
4 Polk	82	50
5 Osceola	120	142
6 Geneva	50	104
7 Chuluota	17	32
8 Goldenrod	24	54
9 Longwood	104	125
10 Lake Mary	47	82
11 Altamonte	64	84
12 Forest City	25	36
13 Slavia	25	3
14 Fern Park	44	14
15 Osceola	28	14
16 Deer Lake	8	25
County Total	2285	2429
Grand Total	2907	3429

LEGISLATURE

	Holland	Whitehair
Sanford	1084	223
3 Sanford	1311	268
City Total	2395	491
2 Monroe	120	62
4 Polk	88	19
5 Osceola	198	61
6 Geneva	99	53
7 Chuluota	81	15
8 Goldenrod	59	17
9 Longwood	108	20
10 Lake Mary	100	39
11 Altamonte	116	34
12 Forest City	39	19
13 Slavia	30	3
14 Fern Park	79	13
15 Osceola	82	7
16 Deer Lake	77	7
County Total	3229	406
Grand Total	3088	903

CITY NEWS BRIEFS

The regular meeting of the
Citizens Club will be held in the
Valley Hotel building at 7:00
o'clock.

There will be a meeting of
the Executive Committee of the
Sanford County Chamber of Com-
merce in the Chamber build-
ing, this afternoon at 2:00. George
Henderson is chairman of the com-
mittee.

Leopold III, King of the Belgians
is shown in a portrait. He is a man
with dark hair, wearing a suit and
tie, looking slightly to the side.

Whitehair Is Given Margin In Seminole

Andrews Carries All
Precincts To Gain
Three To One Edge
On Jerry Carter

Senator Andrews carried Sem-
inole County in his campaign for
re-election to the United States
Senate by an even greater ratio
than the state as a whole voted
for him, while Spensard Holland,
candidate for gubernatorial nom-
ination, carried the city of San-
ford by 40 votes though the coun-
ty as a whole reversed the trend
established by him throughout the
state and went for Francis
Whitehair.

Unofficial returns compiled by
The Sanford Herald showed there
were 4501 votes cast in Seminole
County in the Senate race, 3008
of which were for Andrews, giv-
ing him a majority over Jerry
Carter, his Townsend-sponsored
opponent, of 578. Andrews car-
ried every precinct in the county
while his vote in Sanford was
3008 to 1441 for Carter.

Holland's vote in Sanford was
1441 while his opponent received
1441, but throughout the county
precincts it was Whitehair every-
where. The only county precincts
which Holland carried were Paola,
Slavia and Osceola. Whitehair al-
so carried Precinct 3 in the city
by 57 votes, but Holland's ma-
jority of 97 votes in Precinct 2
gave the Bartow candidate a lead
in Sanford of 40 votes.

The tabulation of the county
precincts showed Holland had 726
votes and Whitehair 988, giving
the latter a lead of 262 which
proved too much for Holland to
overcome by his narrow majority
in the city. The grand total for
Seminole County was 3207 for
Holland, 2429 for Whitehair.

Tom Watson of Tampa carried
Seminole County in his race for
Attorney General and J. Edgar
Larson won over W. M. Wain-
wright by a narrow margin for
State Treasurer. Watson got 2307
votes as compared with 1736 for
E. R. Bentley, his Lakeland op-
ponent, while in the city of San-
ford the count was 1408 for Wat-
son and 1154 for Bentley.

Larson received 2006 votes and
Wainwright 1987 giving the for-
mer a majority of only 18 votes.
In Sanford Larson received 1234
votes as compared with 1217 for
Wainwright.

In the first primary Seminole
County's vote in the Governor's
race was as follows: Whitehair
1287, Holland 1249, Warren 555,
Barber 521, Wilson 221, Pate 274,
Prater 128, Schoen 79, Maples
19, Clahery, 5, and Van Roy 2.



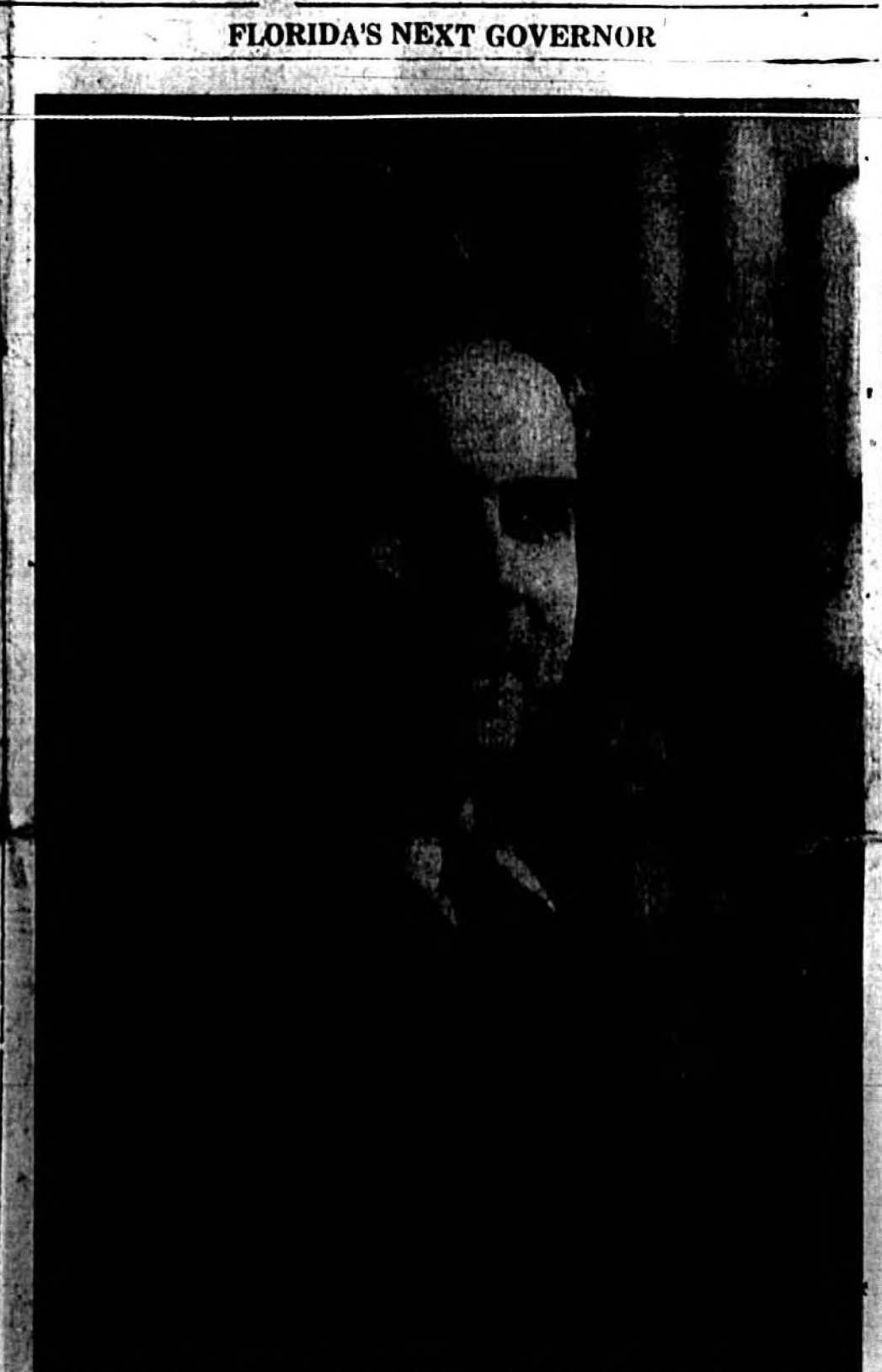
Spensard L. Holland, gubernatorial candidate, is shown in a portrait. He is a man with dark hair, wearing a suit and tie, looking slightly to the side.

A life in an election campaign
is about as infrequent as a
straight flush in a poker game.
When the same two candidates
are in the vote both in the first
and second primary elections
it is hardly any parallel.

That was the case in race for
County Commissioner for Dis-
trict One between the incumbent
Pope and a former member
of the Board, D. L. Thrasher.
Both polled 5000 votes in yester-
day's election.

Thrasher led the incumbent
by a narrow margin, accord-
ing to the unofficial returns of
the primary in which the
county as a whole voted in yester-
day's election.

In the race, M. R.
Holland, who was running for
governor, was defeated by
Spensard Holland.



Spensard L. Holland of Bartow received the Democratic nomination for Governor of Florida on Tuesday as a result of a second primary election in which he received in excess of 60,000 votes more than his opponent, Francis P. Whitehair, of DeLand. Nomination by the Democratic party in Florida is tantamount to election.

Pope, Thrasher Again Tie For Commissioner

Absentee Votes Or
Demo Group Will
Decide Nomination

In three pulverizing smashes,
the Nazi legions stormed Ypres,
the famed World War battle-
field—and captured Lille and
Ostend, the high command an-
nounced today, to tighten the
steel-jawed trap on 600,000 Al-
lies encircled in Flanders.

The Allies are now retreating to
the channel—seeking that means
of escape from the German "sur-
round or die" onslaught rather
than attempting to break through
the German salient to the South.
London sources said the British
force was fighting a "stiff rearguard action" to cover the
withdrawal.

Quantities of war materials will
have to be destroyed to keep
them from falling into German
hands.

Lille is a manufacturing city,
about 15 miles southeast of
Ypres.

Ostend is a strategic Belgian
channel port, and one of the main
ports of supplies for the Al-
lies. It has been captured by
the Nazis.

The Nazi high command has
announced that it has
captured Ypres.

Mrs. Rines Sees Friend For First Time In 47 Years

A remarkable record in friend-
ship was revealed here today
when a Herald reporter learned
that Mrs. P. P. Rines, City il-
lustrator and a familiar figure
around town, was visited over
the week-end by a college room
mate whom she had not seen for
47 years!

Mrs. W. H. Meadows of Bir-
mingham, Ala., in the state tour-
ing with her husband, Dr. Mes-
dows, made a special trip to San-
ford to visit her friend.

Although Mrs. Rines and Mrs.
Meadows were room mates for
only one year at Peabody College
at Nashville, Tenn., they formed
an enduring friendship in that
time, and have corresponded regu-
larly since parting.

"If I hadn't had some late pic-
tures of Mrs. Meadows," Mrs.
Rines said, "I don't believe I'd
have recognized her."

Dr. and Mrs. Meadows contin-
ued their tour of the state, leav-
ing Sanford Monday to travel by
Daytona and Jacksonville on their
way home.

Nazi Legions Take Lille And Ostend And Tighten Trap

Britains Announce
The Capture Of
Narvik Ore Port

In three pulverizing smashes,
the Nazi legions stormed Ypres,
the famed World War battle-
field—and captured Lille and
Ostend, the high command an-
nounced today, to tighten the
steel-jawed trap on 600,00 Al-
lies encircled in Flanders.

The Allies are now retreating to
the channel—seeking that means
of escape from the German "sur-
round or die" onslaught rather
than attempting to break through
the German salient to the South.
London sources said the British
force was fighting a "stiff rearguard action" to cover the
withdrawal.

Quantities of war materials will
have to be destroyed to keep
them from falling into German
hands.

Lille is a manufacturing city,
about 15 miles southeast of
Ypres.

Ostend is a strategic Belgian
channel port, and one of the main
ports of supplies for the Al-
lies. It has been captured by
the Nazis.

The Nazi high command has
announced that it has
captured Ypres.

Two Major Candidates In Primary Crush Opponents Under Avalanche Of Votes

J. Edgar Larson Leads Wainwright

Race For Attorney-
General Is Close;
790 Vote Difference

For Senator

Andrews	291,488
Carter	129,570

For Governor

Holland	297,346
Whitehair	194,006

By Associated Press

Senator Charles O. An-
drews of Orlando and Spensard
Holland of Bartow won
crushing victories at the
polls in Tuesday's runoff
Democratic primary which
saw their Townsend-endorsed
opponents drop behind in the
early counting and hopelessly
eliminated before the night
was half over.

It was a landslide for Senator
Andrews whose ultimate victory
was never in any doubt and
who today with 1772 of
Florida's 1429 precincts, ac-
counted for had a lead of 162,008
over his opponent. Andrews was
ahead in every section of the
state and had gathered a total
of 291,488 votes to 129,570 for
Carter.

Holland also took the lead in
the early counting and by mid-
night his election had been es-
tablished by the DeLand candidate.
With 1976 precincts of 1429 re-
porting, Holland had increased
his majority today to over 60,
000 votes and was leading by
257,346 to Whitehair's 194,006.
J. Edgar Larson appeared safe
in his race for State Treasurer.
With 1326 precincts reporting,
he had 191,735 votes to 187,657
for W. M. Wainwright, his op-
ponent, or a majority of 24,078.

The race for Attorney Gen-
eral was close, and at 2:00
o'clock this afternoon was still
undetermined. E. R. Bentley of
Lakeland had 176,859 votes
while his opponent was leading
him by 790 for a total of 177,
649.

In the third congressional dis-
trict Sikes was leading Mays for
representative with 35,501 votes
to 32,801.

Whitehair carried his home
county of Volusia by 99 votes,
getting 7938 to Holland's 7839.
On the lower East Coast Holland
was victorious, polling 31,761 in
Duval county to Whitehair's 28,
786. In Palm Beach county Hol-
land outpolled his opponent nearly
two to one. The vote there was
10,065 for Holland and 5,191 for
Whitehair.

Duval county gave Holland a
big majority. His vote there was
25,411 compared with 17,223 for
Whitehair. Much the same story
came from the west coast where
Holland got 24,622 votes in El
Borough to 16,452 for Whitehair
and in Pinellas county where Hol-
land's vote was 14,235 to 6,246
for Whitehair. In Escambia coun-
ty 30 out of 53 precincts gave
Holland 6,108 and Whitehair 4,
084.

Whitehair carried his home
county of Volusia by 99 votes,
getting 7938 to Holland's 7839.
On the lower East Coast Holland
was victorious, polling 31,761 in
Duval county to Whitehair's 28,
786. In Palm Beach county Hol-
land outpolled his opponent nearly
two to one. The vote there was
10,065 for Holland and 5,191 for
Whitehair.

Duval county gave Holland a
big majority. His vote there was
25,411 compared with 17,223 for
Whitehair. Much the same story
came from the west coast where
Holland got 24,622 votes in El
Borough to 16,452 for Whitehair
and in Pinellas county where Hol-
land's vote was 14,235 to 6,246
for Whitehair. In Escambia coun-
ty 30 out of 53 precincts gave
Holland 6,108 and Whitehair 4,
084.

Whitehair carried his home
county of Volusia by 99 votes,
getting 7938 to Holland's 7839.
On the lower East Coast Holland
was victorious, polling 31,761 in
Duval county to Whitehair's 28,
786. In Palm Beach county Hol-
land outpolled his opponent nearly
two to one. The vote there was
10,065 for Holland and 5,191 for
Whitehair.

Duval county gave Holland a
big majority. His vote there was
25,411 compared with 17,223 for
Whitehair. Much the same story
came from the west coast where
Holland got 24,622 votes in El
Borough to 16,452 for Whitehair
and in Pinellas county where Hol-
land's vote was 14,235 to 6,246
for Whitehair. In Escambia coun-
ty 30 out of 53 precincts gave
Holland 6,108 and Whitehair 4,
084.

Whitehair carried his home
county of Volusia by 99 votes,
getting 7938 to Holland's 7839.
On the lower East Coast Holland
was victorious, polling 31,761 in
Duval county to Whitehair's 28,
786. In Palm Beach county Hol-
land outpolled his opponent nearly
two to one. The vote there was
10,065 for Holland and 5,191 for
Whitehair.

Duval county gave Holland a
big majority. His vote there was
25,411 compared with 17,223 for
Whitehair. Much the same story
came from the west coast where
Holland got 24,622 votes in El
Borough to 16,452 for Whitehair
and in Pinellas county where Hol-
land's vote was 14,235 to 6,246
for Whitehair. In Escambia coun-
ty 30 out of 53 precincts gave
Holland 6,108 and Whitehair 4,
084.

Whitehair carried his home
county of Volusia by 99 votes,
getting 7938 to Holland's 7839.
On the lower East Coast Holland
was victorious, polling 31,761 in
Duval county to Whitehair's 28,
786. In Palm Beach county Hol-
land outpolled his opponent nearly
two to one. The vote there was
10,065 for Holland and 5,191 for
Whitehair.

Duval county gave Holland a
big majority. His vote there was
25,411 compared with 17,223 for
Whitehair. Much the same story
came from the west coast where
Holland got 24,622 votes in El
Borough to 16,452 for Whitehair
and in Pinellas county where Hol-
land's vote was 14,235 to 6,246
for Whitehair. In Escambia coun-
ty 30 out of 53 precincts gave
Holland 6,108 and Whitehair 4,
084.

Whitehair carried his home
county of Volusia by 99 votes,
getting 7938 to Holland's 7839.
On the lower East Coast Holland
was victorious, polling 31,761 in
Duval county to Whitehair's 28,
786. In Palm Beach county Hol-
land outpolled his opponent nearly
two to one. The vote there was
10,065 for Holland and 5,191 for
Whitehair.

Duval county gave Holland a
big majority. His vote there was
25,411 compared with 17,223 for
Whitehair. Much the same story
came from the west coast where
Holland got 24,622 votes in El
Borough to 16,452 for Whitehair
and in Pinellas county where Hol-
land's vote was 14,235 to 6,246
for Whitehair. In Escambia coun-
ty 30 out of 53 precincts gave
Holland 6,108 and Whitehair 4,
084.

Whitehair carried his home
county of Volusia by 99 votes,
getting 7938 to Holland's 7839.
On the lower East Coast Holland
was victorious, polling 31,761 in
Duval county to Whitehair's 28,
786. In Palm Beach county Hol-
land outpolled his opponent nearly
two to one. The vote there was
10,065 for Holland and 5,191 for
Whitehair.

Duval county gave Holland a
big majority. His vote there was
25,411 compared with 17,223 for
Whitehair. Much the same story
came from the west coast where
Holland got 24,622 votes in El
Borough to 16,452 for Whitehair
and in Pinellas county where Hol-
land's vote was 14,235 to 6,246
for Whitehair. In Escambia coun-
ty 30 out of 53 precincts gave
Holland 6,108 and Whitehair 4,
084.

Whitehair carried his home
county of Volusia by 99 votes,
getting 7938 to Holland's 7839.
On the lower East Coast Holland
was victorious, polling 31,761 in
Duval county to Whitehair's 28,
786. In Palm Beach county Hol-
land outpolled his opponent nearly
two to one. The vote there was
10,065 for Holland and 5,191 for
Whitehair.

News Of The World In Pictures



Making use of every circumstance that speeded their drive through the Low Countries, Germans were little delayed by natural obstacles such as this Dutch canal. Photo, obtained by the United States, shows how a long canal barge was used as support for an important bridge, over which German bicycle troops are coming.



Single railroad tracks, which are not high enough to support a train, were used by the Germans to transport their heavy tanks. Photo, taken by the United States, shows the tracks being used for this purpose.



German tanks, which are not high enough to support a train, were used by the Germans to transport their heavy tanks. Photo, taken by the United States, shows the tracks being used for this purpose.

German tanks, which are not high enough to support a train, were used by the Germans to transport their heavy tanks. Photo, taken by the United States, shows the tracks being used for this purpose.

German tanks, which are not high enough to support a train, were used by the Germans to transport their heavy tanks. Photo, taken by the United States, shows the tracks being used for this purpose.

German tanks, which are not high enough to support a train, were used by the Germans to transport their heavy tanks. Photo, taken by the United States, shows the tracks being used for this purpose.

German tanks, which are not high enough to support a train, were used by the Germans to transport their heavy tanks. Photo, taken by the United States, shows the tracks being used for this purpose.

By FRED HARMA

OUT WITH IT TELL A / WHO HIRED YOU TO KILL US?

I AIN'T TALKIN!

DON'T HANG ME! I TALK... IT WAS THREEFINGER!

DON'T HANG ME! I TALK... IT WAS THREEFINGER!

DON'T HANG ME! I TALK... IT WAS THREEFINGER!

By V. T. HAMLIN

THERE SHE IS, RIGHT DOWN—HEY! GOOD GOSH, WHAT TH HECK IS GOIN ON DOWN THERE?

