

Lawmakers Look Forward To Wednesday Adjournment

TALLAHASSEE (AP)—A 48-senator, 118-representative adjournment plan was emerging as Florida's Legislature today headed for a hoped-for Wednesday adjournment.

With constitution revision temporarily a moot question, reapportionment committees labored over the weekend to ready seating plans so lawmakers could act on them and adjourn.

The strain of last week's confusion was indicated by House Speaker pro-tem James L. Walker's comments that "freshmen legislators were about to panic" and "many veterans be crying for adjournment."

Emphasis of adjournment strategy was to, first, convince the federal district court that the present 48-117 plan was fair and population variances justifiable.

Second, have a substitute plan ready should the court reject the 48-117, but plea that it not be put into effect until November 1968. Otherwise, it would mean special elections.

A senate seating plan was given preliminary approval by a 74-vote of the Reapportionment Committee. It would take away single-county districts or Orange and Brevard.

Orange would be joined with Ocala for a three-senator district and Brevard would join Indian River, Okeechobee, St. Lucie and Martin counties in a two-senator district.

It would also mean shuffling Washington, Jackson and Gulf counties in north Florida. Eight seats would be up for election in 1968 in addition to those 24 which would normally be on the ballot anyway.

But moves were afoot to substitute that plan, designed by Sen. Reuben Askew of Pensacola, with either of two others.

One, prepared by Sen. Hal Davis of Quincy, would join Orange with Brevard county and Escambia and Santa Rosa counties (1st district) with Okaloosa, Walton, Holmes and Washington counties (2nd district), with three senators running throughout the six-county area.

Another, proposed by Sen. John McCarly of Fort Pierce, would modify Askew's to avoid joining Brevard with Indian River, Okeechobee, St. Lucie and Martin. Instead Gladie would be thrown in with the latter four.

Each of three proposed house plans would add one seat, with the net effect being a gain in representation for Polk County. Proposals called for adding one representative to the four-representative, single-county district or joining Polk with Pasco (one representative) to make a six-representative district.

The Senate appeared to be a little further ahead of the House in its work. Sen. John Mathews of Jacksonville said there was a possibility of floor consideration of the present plan in a Jan. 25 hearing before the three-judge court in Miami.

The resolution, authored by former speaker William Chappel of Ocala, also would ask that the federal court allow the Legislature to apportion itself rather than putting a court-selected plan into effect and, in the meantime, to allow the Legislature to consider constitution revision.



Delay Moving Of N.A.S.?

The Sanford Herald

Seminole County *** on the St. Johns River *** "The Nile of America"

Phone 322-2611 or 425-5938 Zip Code 32771

WEATHER: Cloudy and warmer thru Wednesday.

VOL. 59 NO. 107 — AP Leased Wire — Established 1908 — TUESDAY, JAN. 17, 1967 — SANFORD, FLORIDA — Price 10 Cents

Hint Base May Stay Here Until 1970

Rumors were rife between Sanford and Washington this morning that the Pentagon had decided to delay the closing of Sanford Naval Air Station until July 1, 1970, if not longer.

Congressman A. S. Herlong Jr., by telephone from Washington, informed The Herald just before noon that he had received word from the Navy Department early today an announcement of the delay on the phase-out would be forthcoming later in the morning.

However, just before noon, Herlong said the Defense Department said it was holding up any announcement.

It was first brought out by the Sanford City Commission meeting last night that a "possible" announcement might be forthcoming that the Navy had decided to delay closing of SNAS for two years, if not longer.

Commissioner Earl Higginbotham reported that he had received "reliable information" the base would not be closed in 1968. He would not elaborate on his source of information but said that a "possible" announcement might be forthcoming that the Navy had decided to delay closing of SNAS for two years, if not longer.

Request of the City of Sanford for participating with the interagency with the current revenue position of secondary funds (the only funds available for such a project) can be determined.

It was pointed out, however, by Commissioner Edward Yarborough that better places could be found, in his opinion, to spend \$17,000 on street lighting. It also was reported an additional \$40,000 would be needed to light the interchange.

The board voted to request the State Road Department to straighten out and improve SR 42B.

Commissioner John Fitzpatrick was reappointed to a special term on the Port Authority and George Andrew Spear was appointed to the Fred R. Wilson Memorial Law Library committee representing Seminole County Bar Association.

Appointed to the Lake Monroe Advisory Committee were C. M. M. 1124 213. Yarborough, John Alexander and Jack Bolt. Scott Burns was named to the committee representing Florida Power and Light Company.

Representatives of Frank C. Brown and Company of Miami began the job classification and pay study of all county employees, the clerk informed.

Okay Given For Branch Tax Office

Taxes can be collected at the branch office, Troy Ray, tax collector, has been informed by the attorney general, it was announced at the meeting of the County Commission today.

The opinion pointed out that the tax collector will be responsible for taking precautions for safeguarding the funds collected at the branch office.

City Hears Chamber Presentation

Industrial Board Proposed

A greater Sanford area Industrial Commission was proposed to the City Commission at an informal meeting last night.

Although no figure was given indications are that from \$40,000 to \$50,000 will be requested at the next City Commission to establish the commission.

Chamber of Commerce President DeWitt Mathews said he will appear before the Commission Monday night asking the board to "expedite" establishing the commission.



AWARD WINNERS at the South Seminole Jaycees' Banquet are congratulated by Tom Pratt, president. Left to right, W. Lawrence Swofford, winner of the Good Government Award, Pratt, and C. L. Cooper, Distinguished Service Award recipient.



OTHERS RECOGNIZED for their accomplishments by the South Seminole Jaycees included, left to right, John Brewer, Physical Fitness Award; Robert Hattaway, Outstanding Young Farmer Award; and Merle Lilliquist, Outstanding Young Educator Award.

Cooper, Swofford Honored By South Seminole Jaycees

The Distinguished Service Award was bestowed on C. L. Cooper of Casselberry by the South Seminole Jaycees at their Second Annual DSA Banquet and Bosses Night held Monday at the Trade Winds Cafeteria in Seminole Plaza.

Cooper was praised for his work with the youth of South Seminole through Little League, Optimist Club, YMCA, and Boy Scouts. He was recipient of the

Mayor of Altamonte Springs and county commissioner. In presenting the award, Robert Hattaway pointed out that Swofford had been active in town government as a councilman and mayor for 15 years and as a commissioner had worked for equal taxation and zoning.

Cecil Tucker, county agent presented the Outstanding Young Farmer Award to Robert Hattaway, Altamonte Springs ornamental plant nurseryman. Though only 30 years old, Hattaway has been a grower for 10 years. He was forced to rebuild his business last March, following a disastrous fire which destroyed his greenhouses. He is a member of the board of directors of the Farm Bureau, representing his industry.

He thanked his fellow Jaycees for giving him a helping hand after the fire in cleaning up the debris.

On The Job MONTGOMERY, Ala. (AP)—Gov. Larrison Walker, the first woman to govern a state in three decades, buckles down to the task today.

Clifford McKibbin, chairman of the industrial committee of the Chamber of Commerce listed a five point program to push industrial potential only at the Sanford Naval Air Station when the base is phased out but for the entire Sanford area.

Among his recommendations were: 1. That an industrial commission be established and that 2. That the charter and by-laws of the Orlando Utilities Commission be used as a guide. Station when the base is phased out but for the entire Sanford area.

Several board members (Mayor or Joe Baker requested that the names of commissioners not be used in the story as they could talk freely to promote areas only in the city limits.

One commissioner emphasized that since the city of Sanford was footing the bill, they should reap the majority of the benefits.

The commission he created by a special act of the Legislature. This would give the commission needed stature

appointed to 11 advisory boards and positions by Casselberry and Mayor Arthur Wheatley and confirmed by council at a meeting of the board Monday evening.

The action was taken by Wheatley immediately after his oath of office. Wheatley was

appointed to fill the unexpired term of L. E. Woodhams, who resigned last week. Officials appointed were Kenneth W. McIntosh, city attorney; Mrs. Mary Hawthorne, city clerk; Thomas Freeman, municipal judge; Kenneth Triplett, police chief; Paul Bates, fire chief and Herman Joyce, assistant fire chief.

Herald Index

- Area Deaths 2
- Classified Ads 11
- Comics 9-10
- Dear Abby 10
- Editorial Page 4
- Entertainment 9-10
- Society 8
- Sports 6-7
- TV 9

Wheatley Takes Over Council

Twenty-seven citizens were appointed to 11 advisory boards and positions by Casselberry and Mayor Arthur Wheatley and confirmed by council at a meeting of the board Monday evening.

The action was taken by Wheatley immediately after his oath of office. Wheatley was

appointed to fill the unexpired term of L. E. Woodhams, who resigned last week. Officials appointed were Kenneth W. McIntosh, city attorney; Mrs. Mary Hawthorne, city clerk; Thomas Freeman, municipal judge; Kenneth Triplett, police chief; Paul Bates, fire chief and Herman Joyce, assistant fire chief.

FIRST OF THE WEEK SPECIALS

PRICES EFFECTIVE MON., TUES., WED. JANUARY 16-17-18 1967

SAVE 17¢ START YOUR DAY A LITTLE BIT BETTER

Post Toasties

2-oz. 8-pkgs. **29¢**

LIMIT 2 PLEASE WITH OTHER PURCHASES OF \$3.00 OR MORE

- Swift's Premium Pure Beef Franks 12 oz. 59¢
 - Tarrow's Skinless Smoked Sausage 12oz. 59¢
 - Herman's Orange Band Breakfast Link Sausage 8 oz. 39¢
 - Swift's Premium Boneless Smoked Daisies lb. 99¢
 - Swift's Premium Sliced Cold Cuts 3 6 oz. 87¢
- (Braunschweiger, Bologna, Olive & Pimento) (Plus 100 Extra Green Stamps With Coupon)

Leg O' Lamb lb. 69¢

Lamb Chops lb. 59¢

Lamb Roast lb. 49¢

Prune Juice 24 oz. 25¢

Hawaiian Punch . 3 46 oz. 51¢

Tomato Soup tall can 10¢

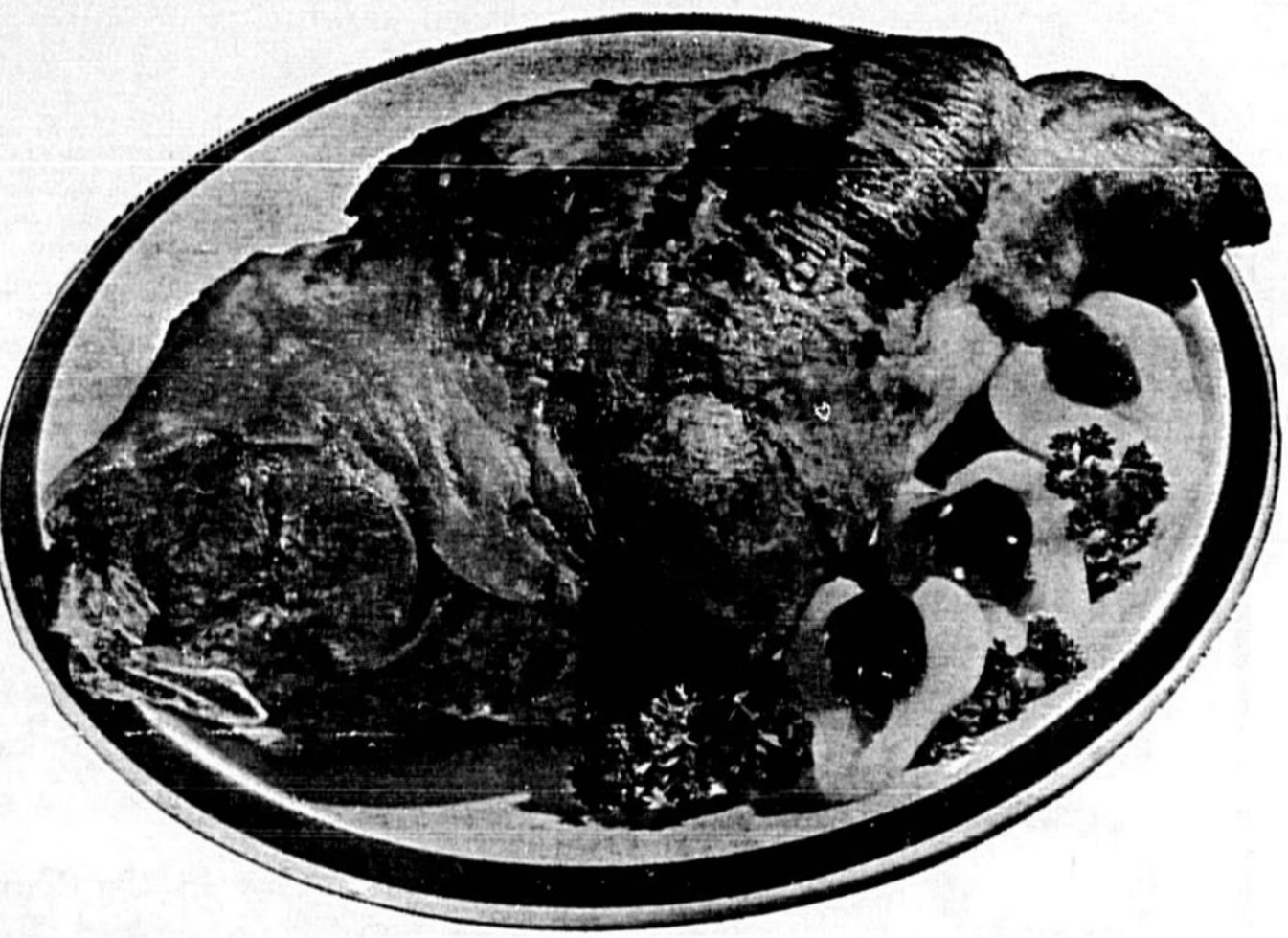


SAVE 40¢ NEW HEFTIER BREW

Instant Nescafe

6 oz. jar **49¢**

LIMIT 1 PLEASE WITH OTHER PURCHASES OF \$3.00 OR MORE



• down produce lane • Firm Western Iceberg

Lettuce

2 heads **29¢**

SAVE 18¢ F & P Elberta

Peach Halves 3 #2 1/2 \$1

SAVE 18¢ F & P Fruit

Cocktail 3 #2 1/2 \$1

SAVE 4 1/2¢ Libby's

Cut Beets 303 cans 10¢

SAVE 16¢ Heinz

Pork & Beans 4 16 oz. cans 49¢

SAVE 10¢ Mrs. Bell's

Peanut Butter 2 lb jar 59¢

Schimmel's Tasty

Grape Jelly . 2 lb. jar 49¢

100 EXTRA Green Stamps

Swift's Premium Sliced Cold Cuts Three 6 oz. pkgs. 87¢ (Braunschweiger, Bologna, olive & pimento) (Expires Wed. Jan. 18, 1967)

dairy specials

Yogurt half pint 19¢

Meal Mush 2 lb. 29¢

frozen foods

Apple Juice 12 oz. can \$1

Souffle 12 oz. 39¢

Corn Toasties 4 pkgs. \$1

where shopping is a pleasure!

SANFORD PLAZA

Hwy. 17-92 and Onora Dr., Sanford

HOURS: MON., TUES., WED., SAT., 8:30-7:00 THURS., FRI., 8:30-9:00

150 EXTRA Green Stamps

(your choice) Glade Room Deodorizer 7 oz. can 59¢ (Expires Wed. Jan. 18, 1967)

50 EXTRA Green Stamps

Nestle's Cocoa 1 lb. pkg. 49¢ (Expires Wed. Jan. 18, 1967)

50 EXTRA Green Stamps

Kaiser (12 inch) Aluminum Foil 25 ft. roll 30¢ (Expires Wed. Jan. 18, 1967)

50 EXTRA Green Stamps

Hefty Plastic Bags 30 qt. pkg. 49¢ 15 gal. pkg. 49¢ (Expires Wed. Jan. 18, 1967)

Dear Abby:

By Abigail Van Buren

DEAR ABBY: Last summer I fell in love with a swell guy. I was on leave (I thought) from the service, but he seemed to be staying around for an awfully long time. Then it turned out he was A.W.O.L. I told him if he didn't get back we were through. He went back and faced the ordeal which wasn't as bad as I had expected for being A.W.O.L. for 58 days.

To make a long story short, five days after he squared himself for his first A.W.O.L., he went A.W.O.L. again and now he is in the stockade at Fort Bragg, N. C. I understand he will be there for quite a while.

When I planned on getting married as soon as he gets out of the stockade, my problem is, should I go through with those plans? He is really a swell guy. GOING TO PIECES

DEAR ABBY: My problem is, should I go through with those plans? He is really a swell guy. GOING TO PIECES

DEAR ABBY: My problem is, should I go through with those plans? He is really a swell guy. GOING TO PIECES

DEAR ABBY: My problem is, should I go through with those plans? He is really a swell guy. GOING TO PIECES

DEAR ABBY: My problem is, should I go through with those plans? He is really a swell guy. GOING TO PIECES

Horoscope Forecast

WEDNESDAY, JAN. 17, 1967
GENERAL TENDENCIES
 The morning is no time to make any drastic changes nor is it good for stating your viewpoints in too sharp a manner; the evening is very adverse for taking any chances with your money, property and possessions. Use today and show others you can analyze with care whatever faces you.

ARIES: (Mar. 21 to Apr. 19) You seem to have difficulty getting personal matters nicely handled in A.M. since others are too demanding or vice versa. Calm down. Keep out of arguments. Then you can increase security appreciably.

TAURUS: (Apr. 20 to May 20) Forget that secret anxiety party of you can't do it. You are gradually working himself out of a job by making himself progressively unnecessary.

GEMINI: (May 21 to June 21) Avoid falling into that trap that a friend is mischievously working out for the fun of it and you get all straightened out nicely. Avoid anything that takes you away from important work ahead of you or social affairs that are vital.

MOON CHILDREN: (June 22 to July 21) Accept with calmness any outside duties which do not depend on a pal later who is in a rather peculiar mood. Omar Sharif opened with the canard bid of one spade. Benito gathered in the first two tricks. Omar Sharif opened with the canard bid of one spade. Benito gathered in the first two tricks. Omar Sharif opened with the canard bid of one spade. Benito gathered in the first two tricks.

Jacoby On Bridge

Newspaper Enterprise Assn. The bidding system used by Benito Garozzo and Omar Sharif in the Neapolitan Club plus certain variations developed by Garozzo.

Like many European systems it uses what is known as canape bidding. One bid the shorter of two suits first and the longer one later on.

We cannot see any real advantage in this style of bidding even though it does produce some swings in its favor.

When today's hand was played in the Men's Pairs at the Pittsburgh Nationals, the normal American bidding started with one diamond by South. Benito responded one spade. Most pairs proceeded to four spades all the way to six.

In all instances East made his normal opening lead of the queen of hearts and the defense gathered in the first two tricks. Omar Sharif opened with the canard bid of one spade. Benito gathered in the first two tricks. Omar Sharif opened with the canard bid of one spade. Benito gathered in the first two tricks.

Polly's Pointers

DEAR POLLY:—When I will not be at home today the dry cleaner is to deliver a strong ruler saves the day. I hold the ruler half in and the other half in the door of the opened screen or screen door and then close the door (it will not shut all the way until the ruler is secured and able to sustain weight. Besides serving as a rod for the just delivered clean clothes, I hang these 12-point pointers on the door.

(POLLY'S NOTE:—This door should be protected from the snow stains? The pointers are to who just might be tempted.)

Often I have given myself a pedicure and need to get to my housework before the polish is dry. Now I keep a pair of beach towels with my manicure equipment, slip them on, put hair and cotton under the toe of the opened screen or screen door and then close the door (it will not shut all the way until the ruler is secured and able to sustain weight. Besides serving as a rod for the just delivered clean clothes, I hang these 12-point pointers on the door.

Beauty after Forty

Remember when you had a "matinee" hair? The handsome actors had their ardent fans and who didn't scream and try to get their autograph? We worshipped them from across the footlights. Now there is a new idol whom the after-40 ladies simply adore—their Zoltan Melita, the young musical conductor who was born in Bombay, India.

An conductor of two orchestras, Zoltan Melita has traveled across the skies, from Montreal to Los Angeles. He is the permanent conductor of the Los Angeles Philharmonic and guest conductor of orchestras around the world. He is conducting in Montreal and will appear at the Expo '67 World's Fair in Montreal.

When questioned about conducting for music, the dynamic young maestro says that "Women after-40 in all American cities give so much of their time raising money to help musical causes."

He says they are the "women behind the scenes." And I was immensely pleased when he called the American women who conduct virtually everything from memory, even concert accompaniments.

"Tomorrow," Women Slimmer, Men Heavier!

Thieves Steal Safe And All

MIAMI (AP)— Burglars will then be definitely in Miami, Fla., with a well safe containing \$40,000 worth of jewelry and cash after a break-in at a home that once belonged to heavy-weight boxing champion Rocky Marciano, police said.

The present owner of the house, Stephen Nester, said he discovered the theft after returning with his wife from a downtown restaurant.

The Nesters' watching apparition was located out of the bedroom, where the safe was hidden in a closet wall, while the thieves were peeping said.

Maryland's geographic center is 4 1/2 miles northwest of Davidsonville, Anne Arundel County.

Beauty after Forty
 by Edyth Thornton McLeod

Remember when you had a "matinee" hair? The handsome actors had their ardent fans and who didn't scream and try to get their autograph? We worshipped them from across the footlights. Now there is a new idol whom the after-40 ladies simply adore—their Zoltan Melita, the young musical conductor who was born in Bombay, India.

Polly's Pointers
 By Polly Cramer

Remember when you had a "matinee" hair? The handsome actors had their ardent fans and who didn't scream and try to get their autograph? We worshipped them from across the footlights. Now there is a new idol whom the after-40 ladies simply adore—their Zoltan Melita, the young musical conductor who was born in Bombay, India.

The Sanford Herald
The Horn
Morty Murrell
The Willies
The Phantoms

Legal Notice

REPORT OF CONDITION OF THE FLORIDA STATE BANK
 OF AND FOR THE STATE OF FLORIDA
 AT THE CLOSE OF BUSINESS ON DEC. 31, 1966

ASSETS	
Cash balances with other banks and cash items in process of collection	1,647,912.79
United States government obligations	1,050,119.10
Direct and guaranteed obligations of States and political subdivisions	1,674,947.52
Securities of Federal agencies and other securities (including U.S. Government securities)	24,500.00
Federal funds sold	None
Other loans and discounts	8,021,479.20
Bank premises, furniture and fixtures, and other assets representing bank premises	28,577,131.18
Real estate owned other than bank premises	None
Customers' liability to this bank on acceptances outstanding	None
Other assets	11,821.41
TOTAL ASSETS	18,053,989.17
LIABILITIES	
Demand deposits of individuals, partners, clubs, and corporations	3,234,384.67
Time and savings deposits of individuals, partnerships, and corporations	6,085,947.42
Deposits of United States government	1,252,841.40
Deposits of States and political subdivisions	1,674,947.52
Deposits of foreign governments and international institutions	None
Deposits of commercial banks and certified and officers checks, etc.	11,821.41
TOTAL DEPOSITS	13,259,942.02
(a) Total demand deposits	3,234,384.67
(b) Total time and savings deposits	8,724,414.33
Federal Reserve Bank	None
Other liabilities for borrowed money	None
Acceptances of Federal agencies and other banks and outstanding	None
Other liabilities (including U.S. Government securities and other real estate)	21,742.42
TOTAL LIABILITIES	13,259,942.02
CAPITAL ACCOUNTS	
(a) Preferred stock—total par value	None
(b) Common stock—total par value	240,000.00
(c) Common stock—total book value	240,000.00
No. shares outstanding 10,000	
Surplus	100,000.00
Undivided profits	141,117.10
Reserve for contingencies and other special reserve	None
TOTAL CAPITAL ACCOUNTS	141,117.10
MEMORANDA	
Average of total deposits with call date	12,220,711.58
Average of total deposits with call date	12,220,711.58
Loans as shown in Item 2 of "Assets"	217,468.68
Securities as shown in Item 2 of "Assets"	None
After deduction of valuation reserves of	None

I, Harold M. Brooks, Assistant Cashier of the above-named bank, do hereby certify that this report of condition is true and correct to the best of my knowledge and belief.

Harold M. Brooks, Assistant Cashier

Publ. Jan. 17, 1967

Your "Don't Want" Could Be Someone's "Do Want"

BEK & MEEK
 15. Special Services
 16. Misc. For Sale
 17. Real Estate Wanted
 18. Real Estate - Sale
 19. Real Estate Exchange
 20. Mobile Homes - Sale
 21. Automobile Service
 22. Auto Glass
 23. Boat & Motors
 24. Auto Parts
 25. Auto Repairs
 26. Auto Wash
 27. Auto Detailing
 28. Auto Insurance
 29. Auto Leasing
 30. Auto Sales
 31. Auto Storage
 32. Auto Tinting
 33. Auto Towing
 34. Auto Upfitting
 35. Auto Washing
 36. Auto Waxing
 37. Auto Wrapping
 38. Auto Yards
 39. Auto Zapping
 40. Auto Zapping

It Pays To Use The Herald Want Ads

REPORT OF CONDITION OF THE FLORIDA STATE BANK
 OF AND FOR THE STATE OF FLORIDA
 AT THE CLOSE OF BUSINESS ON DEC. 31, 1966

ASSETS	
Cash balances with other banks and cash items in process of collection	1,647,912.79
United States government obligations	1,050,119.10
Direct and guaranteed obligations of States and political subdivisions	1,674,947.52
Securities of Federal agencies and other securities (including U.S. Government securities)	24,500.00
Federal funds sold	None
Other loans and discounts	8,021,479.20
Bank premises, furniture and fixtures, and other assets representing bank premises	28,577,131.18
Real estate owned other than bank premises	None
Customers' liability to this bank on acceptances outstanding	None
Other assets	11,821.41
TOTAL ASSETS	18,053,989.17
LIABILITIES	
Demand deposits of individuals, partners, clubs, and corporations	3,234,384.67
Time and savings deposits of individuals, partnerships, and corporations	6,085,947.42
Deposits of United States government	1,252,841.40
Deposits of States and political subdivisions	1,674,947.52
Deposits of foreign governments and international institutions	None
Deposits of commercial banks and certified and officers checks, etc.	11,821.41
TOTAL DEPOSITS	13,259,942.02
(a) Total demand deposits	3,234,384.67
(b) Total time and savings deposits	8,724,414.33
Federal Reserve Bank	None
Other liabilities for borrowed money	None
Acceptances of Federal agencies and other banks and outstanding	None
Other liabilities (including U.S. Government securities and other real estate)	21,742.42
TOTAL LIABILITIES	13,259,942.02
CAPITAL ACCOUNTS	
(a) Preferred stock—total par value	None
(b) Common stock—total par value	240,000.00
(c) Common stock—total book value	240,000.00
No. shares outstanding 10,000	
Surplus	100,000.00
Undivided profits	141,117.10
Reserve for contingencies and other special reserve	None
TOTAL CAPITAL ACCOUNTS	141,117.10
MEMORANDA	
Average of total deposits with call date	12,220,711.58
Average of total deposits with call date	12,220,711.58
Loans as shown in Item 2 of "Assets"	217,468.68
Securities as shown in Item 2 of "Assets"	None
After deduction of valuation reserves of	None

I, James W. Alesh, Vice President and Cashier of the above-named bank, do hereby certify that this report of condition is true and correct to the best of my knowledge and belief.

James W. Alesh, Vice President and Cashier

Publ. Jan. 17, 1967

TOUGH TO DEAL WITH? NOT US

OLE CHARLIE SMITH'S
 THE S O F T E S T
 TOUGH IN SEMINOLE COUNTY!

'66 PLY. Belvedere 1, 4 Dr. 15, 17,000 Miles.
 '64 Chevy. 14,000 Miles.
 '65 Buick Wildcat. 14,000 Miles.
 '63 Falcon Square Station. 14,000 Miles.
 '60 Corvair 4 Dr. 2,995
 '62 Chevy 4 Dr. 2,995

G and J MOTORS
 2507 PARK SANFORD, FLA. PH. 322-5462

