

APRIL 1,-  
JUNE 30, 1937



# The Sanford Herald

AN INDEPENDENT DAILY NEWSPAPER

Seminole County Produces  
More Fruits And Vegetables Than  
Similar Area In America

Member Associated Press

SANFORD, FLORIDA, THURSDAY, APRIL 1, 1937

Established in 1908

NUMBER 137

## Strike Proceeding In Detroit Firm

Men Reported  
Back At Work In  
General Motors  
Michigan Plants

## Walkouts Seen In Spot

Not Gained Off  
As Men Quit  
In Pontiac Shop

DETROIT, Apr. 1.—(AP)—The sudden outbreak of a strike in General Motors plants that effected 12,000 men had reported to work in the Fishers Island plant at Cleveland.

DETROIT, Apr. 1.—(AP)—The sudden outbreak of a strike in General Motors plants that effected 12,000 men had reported to work in the Fishers Island plant at Cleveland.

DETROIT, Apr. 1.—(AP)—The sudden outbreak of a strike in General Motors plants that effected 12,000 men had reported to work in the Fishers Island plant at Cleveland.

DETROIT, Apr. 1.—(AP)—The sudden outbreak of a strike in General Motors plants that effected 12,000 men had reported to work in the Fishers Island plant at Cleveland.

DETROIT, Apr. 1.—(AP)—The sudden outbreak of a strike in General Motors plants that effected 12,000 men had reported to work in the Fishers Island plant at Cleveland.

DETROIT, Apr. 1.—(AP)—The sudden outbreak of a strike in General Motors plants that effected 12,000 men had reported to work in the Fishers Island plant at Cleveland.

DETROIT, Apr. 1.—(AP)—The sudden outbreak of a strike in General Motors plants that effected 12,000 men had reported to work in the Fishers Island plant at Cleveland.

DETROIT, Apr. 1.—(AP)—The sudden outbreak of a strike in General Motors plants that effected 12,000 men had reported to work in the Fishers Island plant at Cleveland.

DETROIT, Apr. 1.—(AP)—The sudden outbreak of a strike in General Motors plants that effected 12,000 men had reported to work in the Fishers Island plant at Cleveland.

DETROIT, Apr. 1.—(AP)—The sudden outbreak of a strike in General Motors plants that effected 12,000 men had reported to work in the Fishers Island plant at Cleveland.

DETROIT, Apr. 1.—(AP)—The sudden outbreak of a strike in General Motors plants that effected 12,000 men had reported to work in the Fishers Island plant at Cleveland.

DETROIT, Apr. 1.—(AP)—The sudden outbreak of a strike in General Motors plants that effected 12,000 men had reported to work in the Fishers Island plant at Cleveland.

DETROIT, Apr. 1.—(AP)—The sudden outbreak of a strike in General Motors plants that effected 12,000 men had reported to work in the Fishers Island plant at Cleveland.

DETROIT, Apr. 1.—(AP)—The sudden outbreak of a strike in General Motors plants that effected 12,000 men had reported to work in the Fishers Island plant at Cleveland.

DETROIT, Apr. 1.—(AP)—The sudden outbreak of a strike in General Motors plants that effected 12,000 men had reported to work in the Fishers Island plant at Cleveland.

DETROIT, Apr. 1.—(AP)—The sudden outbreak of a strike in General Motors plants that effected 12,000 men had reported to work in the Fishers Island plant at Cleveland.

DETROIT, Apr. 1.—(AP)—The sudden outbreak of a strike in General Motors plants that effected 12,000 men had reported to work in the Fishers Island plant at Cleveland.

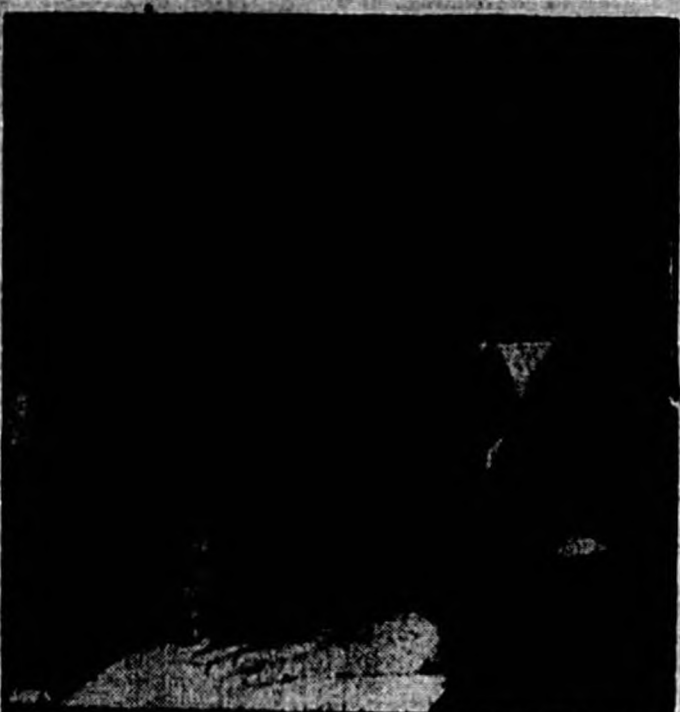
DETROIT, Apr. 1.—(AP)—The sudden outbreak of a strike in General Motors plants that effected 12,000 men had reported to work in the Fishers Island plant at Cleveland.

DETROIT, Apr. 1.—(AP)—The sudden outbreak of a strike in General Motors plants that effected 12,000 men had reported to work in the Fishers Island plant at Cleveland.

DETROIT, Apr. 1.—(AP)—The sudden outbreak of a strike in General Motors plants that effected 12,000 men had reported to work in the Fishers Island plant at Cleveland.

DETROIT, Apr. 1.—(AP)—The sudden outbreak of a strike in General Motors plants that effected 12,000 men had reported to work in the Fishers Island plant at Cleveland.

## GLASS FLAYS COURT REVISION



Taking to the air in his first important radio broadcast since he urged President Roosevelt's election in 1932, Senator Carter-Glass of Virginia denounced the Chief Executive's court reorganization plan as an "abominable" attempt to "replace representative government with an autocrat." He is shown speaking into the microphone in Washington. (Associated Press Photo)

## Cone's Efforts May Cost \$1,500 To County Pupils

Sanford building for the first quarter of 1937 tumbled \$1,500 below the mark established for the same period in 1936, according to a report issued today by city building inspector G. P. Paxton.

## Local Building For '37 Quarter

Sanford building for the first quarter of 1937 tumbled \$1,500 below the mark established for the same period in 1936, according to a report issued today by city building inspector G. P. Paxton.

## Lawton Explains Use Of Supplementary Texts In Schools

Sanford building for the first quarter of 1937 tumbled \$1,500 below the mark established for the same period in 1936, according to a report issued today by city building inspector G. P. Paxton.

## Plan Probe Of Fascist U.S. Action

Senator Asserts He  
Knows 125 Spies In  
America Working  
For Nazi Employers

WASHINGTON, Apr. 1.—(AP)—A proposal or an inquiry into an American propaganda agent chiefly at a reported Fascist movement in this country today won the approval of the House Rules Committee.

## Farm Agent Begins 1937 Government Soil Program

County Agent C. R. Dawson moved his office staff to the Altamonte Springs Community House today to take the first work sheets of the year under the 1937 Federal Soil Conservation Program.

## Chamber Expects 100 Will Attend Baseball Banquet

More than 100 persons will attend the "Baseball Day" banquet tonight at the Episcopal Church Parish House, according to an estimate made by the Chamber of Commerce, sponsors of the event.

## Miss Takach May Represent City In Festival Of Music

Miss Daphne Takach, piano soloist, probably will represent Sanford in the Florida State Music Festival at the University of Tampa April 22-24. Miss Zella Williams instructor in music at Seminole High School, said today.

## Rev. Summer Billed In Featured Talk By Townsend Club

The Rev. W. H. Hulse Summer will be principal speaker Friday night when the Sanford Townsend Club assembles at 6:30 p.m. in the Welaka Building clubroom for a regular weekly meeting.

## Postal Receipts Of 1937 March Quarter Increase Over 1936

Receipts of the Sanford post-office for the first quarter of 1937 totaled \$10,832.50, according to a report issued today by Postmaster R. J. Holly. This figure was \$294.16 above the \$10,538.34 receipts of the first 1936 quarter.

## Loyal Troops Push Rebels On 3 Fronts

Spreading Of Revolt  
To Other Sections  
Of Insurgent Ter-  
ritory Reported

By The Associated Press  
Spain's Government troops pushed their pursuit of Generalissimo Francisco Franco's insurgents on three widely separated fronts today.

## Two European Nations Open Race Of Arms

England And France,  
World War Allies,  
Back Up Might Of  
Sea Fleet, Army

## Davis' Efforts Received Coldly

LONDON, Apr. 1.—(AP)—Great Britain and France embarked on a joint armament race today to back up the allied might of the British fleet and the French army with at least 3,000 additional fighting planes in the next 12 months.

## City Police Nab Two Negroes In Death Of Woman

Body Of Negress Is  
Found On Porch Of  
Sanford Residence

## Adams Selected Lion's Delegate To State Confab

Sanford Lions last night selected Clarence Adams, Club secretary, as their official delegate to the State convention in West Palm Beach June 13-15, and named Volie Williams as alternate.

## Workmen To Finish Airport Operation Within Four Days

Harrowing and rolling operations at Municipal Airport will be completed within four days, City Aviation Committee Volie Williams said today.

## Blind Flower Sale Postponed 1 Week

A flower sale for the assistance of the blind in America, originally scheduled for Saturday, has been postponed until Apr. 10, Miss L. L. Bolz, in charge of finances, announced today.

## HER 'SEX-MAD' KILLER SOUGHT

Pretty Veronica Geddon, 20-year-old model whose choked and beaten body was found with those of her mother and a man roomer in New York City, is shown in a pensive pose for a photographer.



Pretty Veronica Geddon, 20-year-old model whose choked and beaten body was found with those of her mother and a man roomer in New York City, is shown in a pensive pose for a photographer.

## City Police Nab Two Negroes In Death Of Woman

Body Of Negress Is  
Found On Porch Of  
Sanford Residence

## Adams Selected Lion's Delegate To State Confab

Sanford Lions last night selected Clarence Adams, Club secretary, as their official delegate to the State convention in West Palm Beach June 13-15, and named Volie Williams as alternate.

## Workmen To Finish Airport Operation Within Four Days

Harrowing and rolling operations at Municipal Airport will be completed within four days, City Aviation Committee Volie Williams said today.

## Blind Flower Sale Postponed 1 Week

A flower sale for the assistance of the blind in America, originally scheduled for Saturday, has been postponed until Apr. 10, Miss L. L. Bolz, in charge of finances, announced today.

## LOCAL WEATHER

High	Low
52	40
54	42
56	44
58	46
60	48
62	50
64	52
66	54
68	56
70	58
72	60
74	62
76	64
78	66
80	68
82	70
84	72
86	74
88	76
90	78
92	80
94	82
96	84
98	86
100	88



**Standard Herald**  
 Published by the Standard Herald Publishing Co., Inc.  
 115 North Broadway, Sanford, Fla.  
 Telephone 2-1111  
 Second Class Post Office No. 100  
 Post Office at Sanford, Fla., established April 2, 1937  
 Acceptance for mailing at special rate of postage provided for in Section 1103, Act of October 3, 1917, authorized on April 2, 1937  
 Paid in Advance  
 One Year \$12.00  
 Six Months \$7.00  
 Three Months \$4.00  
 Single Copies 10 Cents

### Railroad Crossing Accidents

Although campaigns have been waged by the railroads for years to "cross crossings cautiously," and although various safety organizations, public speakers, and the newspapers have been fighting for this end with ever increasing intensity, fatalities from railroad crossing accidents were greater last year than in any previous year since 1931.

According to reports recently issued by the Safety Section of the Association of American Railroads, 1,796 persons were killed in highway-railroad grade crossing accidents in 1936. This was an increase of 108 compared with the number of fatalities from that cause in 1935, and a gain of 232 compared with 1934. In 1931 there were 1,511 fatalities.

Persons injured in such accidents in 1936 totaled 4,360, compared with 4,263 in 1935, and 4,350 in 1934. Accidents in 1936 involving casualties totaled 4,277, an increase of 344 compared with 1935, and a gain of 549 compared with 1934.

During the month of December fatalities resulting from highway-railroad grade crossing accidents totaled 225, an increase of five compared with the same month in 1935, while persons injured totaled 590, compared with 508 in the corresponding period of the preceding year. Reports showed 535 accidents at such crossings in December, an increase of ten compared with December, 1935.

In the past five years there has been an almost constant increase in the number of fatalities resulting from accidents at grade crossings, although the number of such fatalities is somewhat less than the annual average for the period from 1923 to 1930, inclusive, in each of which years more than 2,000 persons lost their lives.

That the extensive safety campaigns conducted in recent years by the railroads, as well as motor and other organizations, have brought about an improvement in the situation in respect to grade crossing accidents is nevertheless shown by the fact that, whereas the number of fatalities resulting from highway-railroad grade crossing accidents in the six-year period from 1925 to 1930, inclusive, was 14,141, (the total for the six-year period from 1925 to 1930, inclusive, was 14,141, the total for the six-year period from 1931 to 1936, inclusive, was 9,867.

### Census Report On Hotels

During 1935 there were in operation in the eight South Atlantic States and the District of Columbia 3,159 hotels reporting 144,059 guest rooms and \$79,058,000 total operating receipts, it was revealed recently by Director William L. Austin, of the U. S. Bureau of the Census. These establishments employed an average of 33,505 persons during the year and paid \$18,973,000 annual payroll. The 3,159 hotels include 38 in Delaware, 76 in the District of Columbia, 374 in Georgia, 217 in Maryland, 391 in North Carolina, 203 in South Carolina, 410 in Virginia, 282 in West Virginia, and 1,178 in Florida. Establishments reporting a total of less than six guest rooms, or receipts from room rentals amounting to less than \$500 for a full year's operation, are excluded from the present Census.

The following table presents summary information for each of the South Atlantic States and the District of Columbia:

State	Number of Hotels	Total Number of Guest Rooms	Receipts (add 000)	Active Producers and Firm Members	Average Number of Employees	Total Pay Roll (add 100)
South Atl. States	3,159	144,059	\$79,058	2,830	33,505	\$18,973
Delaware	38	1,253	1,186	29	432	267
District of Col.	76	12,033	15,544	34	5,079	4,570
Florida	1,173	62,393	21,761	930	7,848	4,212
Georgia	374	16,158	7,656	313	4,301	1,762
Maryland	217	9,177	6,207	185	2,710	1,600
North Carolina	391	16,660	7,459	306	4,019	1,838
South Carolina	203	7,654	3,435	161	1,864	767
Virginia	410	17,011	10,091	331	4,778	2,423
West Virginia	282	11,720	5,610	237	2,755	1,535

### SANFORD TWENTY YEARS AGO

Bidney Chase who has been home since Friday for the Spring vacation returns to Kester today for the Spring term. Miss Maude Jenkins returned on Tuesday last from a few days visit with friends in Tampa and St. Petersburg. Mrs. Ed. Smith who has been the guest of her sister, Mrs. J. B. Hay has returned to her home in Ocala. Mrs. B. H. Herndon has returned from a visit to St. Petersburg. Mr. and Mrs. J. H. Stirling entertained charmingly with a small party on Wednesday that was truly delightful. Music was the keynote of the evening's pleasure, a number of vocal selections being rendered by Mrs. James Taylor whose songs always charm. Other guests were Dr. and Mrs. O. J. Miller, Mr. Taylor and Mr. Haven of Jacksonville. Miss Edith Stewart delightfully entertained the members of the Pipe Organ Society on Monday at her home on Union Avenue. This being the social meeting of the society was much enjoyed, for Miss Stewart is a gracious hostess. Those present were Mrs. James Taylor, Mrs. Forrest Gatchel, Mrs. Thomas Gitzon, Mrs. Ernest Betts and Misses Stewart, Clara Miller, Martha Fox, Effie and Ruth Whitte.

### Parrot Takes Nips Like Old Soak; Is Boss Of Liquor Bar

ATLANTIC CITY, N. J., Apr. 1.—(AP)—Jimmy, a pint-sized parrot that spends his days and nights parading up and down the bar of a saloon must have his nip of beer every few minutes. For three years Jimmy has been virtual boss of Jimmy's bar, a side-street saloon here. Jimmy drinks like an old soak, and rarely gets drunk nowadays. When he first began his iniquitous career, he used to fall of the bar and fly into the big mirror behind, knocking glasses and bottles from the shelves. Jimmy often takes a nip from a customer's beer or cocktail with or without invitation. He climbs upon shoulders, and likes to explore overcoat pockets. One tipsy customer carried Jimmy away in his overcoat pocket a couple of years ago. Maynard Calmus, the proprietor, traced Jimmy and his escort from one

### Guinea Pigs Join Unemployed Ranks

COLUMBIA, Mo., Apr. 1.—(AP)—Guinea pigs, long the prima donnas of the scientific laboratory are losing their star roles—'it's bacteria that now holds the interest of scientists. "We've thrown the guinea pig over," says Dr. W. A. Albrecht at his University of Missouri laboratory. "When we want to test spinach for certain beneficial nutrients we feed it to a few million tiny animals less temperamental than guinea pigs." Soviets say the number of individual depositors in the State bank in Moscow now exceeds a million, their savings amounting to \$54,800,000 rubles.

### HE NEEDS A 'TRUSTWORTHY' ACT TOO!



### 'TOO LATE TO CLASSIFY'

By RUSSELL KAY

With another session of the legislature comin' along I figured maybe it might be a good idea to run up to Tallahassee and do a little snoopin' so I took a couple of days off last week to roam the red clay hills of Leon. Considerin' the number of legislatures that have come and went you'd think the natives would be gettin' used to it by now, but as far as I could see they are just as excited as if it was something that never happened before. But a circus always draws a good crowd no matter how many times you've seen the show you always want to go again. As usual they've been dumpin' different ideas out on their delegates. Merchants have put in a nice stack of knick-knacks, housewives have fixed up the spare room and others are arrangin' to have Willie sleep with Grandpa for the next two months and are figurin' they can make enough off a boarder or two to provide a nice job of vacation money for next summer. The first couple of hours after I arrived in town I felt like a strange dog in a new alley. Everyone I'd meet would circle 'round and sniff me over, ask what I was doin' there and all I could do was stand still and wag my tail. I guess a lot of 'em got bones buried around and they just naturally won't trust a newcomer. After spendin' a few hours around the hotel lobbies and drug stores I figured there wasn't any use goin' back to cover the session. Accordin' to the guys that KNOW about such things: Fred's got the legislature eatin' right out of his hand. All this talk you hear to the contrary is just a lot of pea soup. You can take it from me this legislative bunch is organized—they know just what they're gonna do an' Fred can go along with them or it will be just too bad! They're gonna take the ad valorem tax off and put on a sales tax and if Fred votes it they'll pass it over his head, but you don't need to think they'll ever pass a sales tax, I'm tellin' you that's out, not a chance this session. What they're gonna do is pass the recovery act, but they're not gonna bother the chain stores. They're gonna lower the price of auto tags and make up the difference by passin' a driver's license law and they'll put back the road patrol and the fee officers are gonna catch hell this session. I understand they're gonna do away with the justices of the peace. They may nail some of the fee officers to the cross but they can't touch the justices, they are in the Constitution. Well, I listened to that kind of chatter for a few hours and then I went to my room and took a large glass of Milk of Magnesia, not that I don't appreciate all the confidential information but I've learned that it pays to beat the old headache to the punch if you can. Another thing I learned was that some folks are all upset over the kind of language the Governor uses. It seems they object to triple negatives like "We didn't never have no such nonsense when I was in the legislature," but just the same I haven't found anybody that's had the least bit of trouble understandin' what Fred is talkin' about. The real trouble as I see it is he makes it too darn plain. They can rate and carry on all they like about the Governor sayin' "Ain't," but that's not what's worryin' 'em. It's the way he says "NO" that gets under their skin. They can say what they want

### The Sanford Factor

Editor The Herald:  
 Much is being said concerning the Supreme Court, and very little about the provision that is to be made for underprivileged children.  
 It seems that a large number of our people were of the belief that if whiskey was sold legally there would be less drinking, but we have only to look over the court records and see that it is not true.  
 Before whiskey and beer came back as it is now, we who work down town hardly ever at all saw a drunk person, and now on the urduy nights it is a most sickening sight. Men and women, white and black, staggering about the streets.  
 After they have spent the money that should have gone for groceries and other necessities for themselves and families, some of them are picked up and put in jail. If they can by any means raise a few dollars to pay a fine they get out, if not, they go on the road, and their families struggle along somehow until the unfortunate comes home—very likely no wiser for the experience.  
 Perhaps the men and women who sell the stuff think that they are very much above the so called weaker fellow who has to be locked up, but really and truly, are they?  
 We know that they are not. If there is any difference, "they are worse."  
 We should hang our heads in shame when we think of what we have done with our freedom. Our forefathers suffered and died that we might have liberty. To them, there was something sacred about one's freedom. No doubt in their heart and minds they dreamed of a nation that would consider seriously the meaning of freedom and liberty.  
 I have looked upon such a scene and I could not keep back the tears.  
 Of course, you will see, too, the hunky, clean, robust looking boys and girls, all moving in together.  
 The contract will make you think, "if anything can."  
 "Our President is not seeking to glorify himself nor is he seeking to glorify the material and financial.  
 There are many pictures before him. Millions for highways and bridges, public buildings of all kinds, implements of war, ammunition boats and planes—there are some less important—but the picture that he has looked long and earnestly upon is the picture of suffering humanity. "May we look upon it with him," and heed the cry out of the wilderness.  
 Surely it is a time when the light shall be first.  
 MRS. W. A. HOPKINS

### Soft Coal And Hay Devoured By Swine In College Tests

COLUMBIA, Mo., Apr. 1.—(AP)—Do hogs eat hay? Professor L. A. Weaver of the Missouri College of Agriculture says he would like to settle the question once and for all that they do.  
 The animal husbandry professor explains the hogs may eat snooty at times, however, and demand that nice hay, because they be shipped up for them, but they eat it.  
 "Legume hay is an essential part of feeding hogs, especially if they are fastened up in a dry pen," Professor Weaver says. "And while on the subject," he adds, "raisers should throw in big rations a quantity of bone meal and salt. It supplies phosphorus and calcium."  
 "When hogs don't get these valuable substances they sometimes eat soft coal. There's no case for hogs to eat good brand coal."

### Government Films Colossal Success

WASHINGTON, Apr. 1.—(AP)—The United States Bureau of Mines has no Clark Gables or Claudette Colberts but it boasts that its own motion pictures are a "colossal" success.  
 A total of 9,252,000 fans saw educational films on the manufacture and utilization of minerals in the last year. The "gains" was the largest in the bureau's history. There was no box office but that was offset by the fact that the bureau had no production costs, these being borne by co-operating industrial concerns.  
 A central depot for the distribution of mother's milk to children needing such milk has been started in Hillsington. Mothers receive 25 marks per liter of milk.  
 A bass fishing club maintains a pier on San Francisco bay 2,500 feet long.

# U. S. Senator Hitchcock says: "Luckies please both my taste and my throat"



"For close to fifty years I have been a regular smoker, so I think I know what constitutes a good cigarette. Luckies please me on two scores. I like their fine flavor, but even more important is the fact that they are a light smoke, easy on my throat. At any rate, it's results that count, and a light smoke pleases both my top and my throat."

Herbert Hitchcock  
 HON. HERBERT E. HITCHCOCK  
 U.S. SENATOR FROM SOUTH DAKOTA

In a recent independent survey, an overwhelming majority of lawyers, doctors, lecturers, scientists, etc., who said they smoked cigarettes, expressed their personal preference for a light smoke. Senator Hitchcock's statement verifies the wisdom of this preference and so do leading artists of radio, stage, screen and opera, whose voices are their fortunes, and who choose Luckies, a light smoke. You, too, can have the throat protection of Luckies—a light smoke, free of certain harsh irritants removed by the exclusive process "It's Toasted". Luckies are gentle on your throat.



**A Light Smoke**  
**"It's Toasted"—Your Throat Protection**  
 AGAINST IRRITATION—AGAINST COUGH



# Social And Personal Activities

FRANKLIN FRANKSON, Society Editor  
Telephone 148

### Calendar

**MONDAY**  
The Annual Junior High School will be held at the school at 8:00 P. M.  
The Annual Junior High School will be held at the school at 8:00 P. M.  
The Annual Junior High School will be held at the school at 8:00 P. M.

### Mrs. Don Butler Honors Recent Bride

Mrs. Don Butler entertained with a miscellaneous shower at her home Monday evening in honor of Mrs. Woodrow Stribling, a recent bride of this city.

### Personals

Friends of Mrs. C. W. Speer will regret to learn that she is ill at her home on Laurel Avenue.

### Young People Enjoy St. Johns River Trip

A boat party on the St. Johns River was enjoyed by a group of Sanford young people and their guests last evening.

### Program Presented By School Pupils

The pupils of room seven of the Sanford Grammar School presented "Mrs. Wiggs of the Cabbage Patch" by Alice Hegan Rice at the regular chapel hour in the school auditorium yesterday.

### Adams Selected Lion's Delegate To State Confab

Adams was announced with teams and managers as follows: Seminole, R. A. Cobb; Cuba, Jack Fennell; Glades, James Rowland; Pirates, Maxwell Stewart; Yankees, John Ivey; Red Sox, Ed Meisch.

### Local Building For '37 Quarter In Small Slump

The average solar temperature has been estimated at 12.00 degrees F.

### KILL RATS NOW!

STEARNS' ELECTRIC PASTE  
Kills rats, mice, snakes, ants, etc.

# DOLLAR DAYS

Bring Savings You'll Remember  
SO BE ON HAND EARLY

## Friday & Saturday - April 2nd. and 3rd.

<b>LADIES BLOUSES \$1</b> Half, linen in all the spring shades. \$1.25 Value	<b>Women's Shorts and STEPINS \$1</b> Choice of Tea rose and white—2 For	<b>Batiste Printed GOWNS and Pajamas \$1</b> Assorted styles and colors. All sizes. \$1.25 value Special	<b>One Table Of SILKS \$1</b> Values up to 70c yard. Special for \$1.00 day. 2 Yards For	<b>Ladies' Hand BAGS \$1</b> Lovely new assortment. White and colors. Special, Each
--	---	--	--	---

### LADIES' ALL SILK Full-Fashioned Chiffon HOSE \$1

Ringless construction. New spring shades.  
2 Pcs. For

### One Special Group Women's and Misses WINTER Dresses \$5.00

Values to \$19.75  
Creme silks etc. Broken sizes for misses and women. All sales final—  
Children's Frocks \$1  
In pastel and printed dimity, organdy and batiste.  
Size 1 to 6 1/2 years  
Dollar Day, Each



### Ladies Slips \$1

Shadow panel, with adjustable straps. Tailored and lace trimmed. Size 34 to 44.  
\$1.25 Value  
Special

### SCRIM CURTAINS \$1

Ruffle and tailored styles 69c Value  
2 Pairs For

### SCRIM CURTAINS \$1

Tailored and ruffle styles also cottage sets for kitchen and breakfast rooms.  
\$1.25 Value—Per Pair

### WEARWELL SHEETS \$1

Laundered ready for use. 81 x 99 72 x 99  
Worth \$1.35 each. One to customer.  
Each

### Wash Fabric \$1

4 Yds. of wash fabric Dotted Swiss, printed voiles, dimity or batiste.  
4 Yards For

### Bath Towels \$1

of good material. White and colors. Excellent value.  
4 FOR

### Best Grade Percale PRINTS \$1

Best grade percale prints (new) spring patterns. 25c a yard value, 5 yards for

### Men's Socks \$1

New Patterns in Solid colors and fancies. Regular length and elastic top.  
3 Pairs . . .

### Kotex Special 25c a Box — 5 Boxes for \$1.00

### Men's Underwear \$1

Shorts with covered elastic sides, full cut, unusually well made. Undershirts of fine combed yarn. Swiss rib. Shirts or shorts  
3 For 1



### POLO SHIRTS \$1

Men's and Boys' new short sleeve Polo Shirts. Silks and Cottons. Solid colors, also fancies.  
Each . . .

### MEN'S SHIRTS \$1

fancy prints and broadcloths, button down and regular collars. Worth up to \$1.49 each. Sizes 14 to 17 1/2.  
Dollar Day . . .

# The Yowell Co.

Sanford, Florida

### Fascinating New Frocks

Here now in all their glory



New Redingotes with printed frocks  
New Chiffons  
New Evening Dresses in Crisp and new  
Newest Lingerie  
New Frocks

Size 12 to 20's  
Price \$5.95 to \$15.95

### Tonight - Last Showing

## ESPIONAGE

FRIDAY

Her husband's secretary

Also Return Showing



10c—35c



### Young Inventors Perfect Device To 'Land Blind'

#### Air Pilot Follows Radio Beam Into Airport Safety

By STEPHEN J. McDONOUGH  
WASHINGTON, Apr. 1.—What many radio engineers hold the answer to the problem of safe blind landings for aircraft has been developed by two young scientists, who turned down an offer from a foreign government after the United States dismissed them.

The instrument, perfected by Dr. Frank G. Kear and Gomer L. Davies, enables a pilot to slide his plane down a curved glide path from a height of 3,000 feet to a smooth contact with the ground. It may go far, the inventors believe, toward avoiding accidents near airports such as those which have occurred recently.

Following it in fair weather or foul is a comparatively simple job of maneuvering the craft until two instrument needles are squarely crossed, then holding them in that position. Development of the device became possible when the two men discovered how to project radio waves in a pencil-like beam curving upward from a point on the airport runway.

When the economy act of 1933 came along Kear and Davies were hard at work in the radio laboratories of the national bu-

reau of standards and had brought the instrument to the point of testing it in flight. A few days later they found themselves on the sidewalk.

Several foreign scientists had become familiar with their work, but they refused an offer from one foreign government—which they will not name—and took less lucrative jobs with a new organization, the Washington Institute of Technology.

The institute projected a new idea in the relation between science and its application for human betterment—it employed men to work in pure science, leaving the mass production of instruments and devices they perfected to manufacturing organizations.

One of the first of these is the blind landing device. Both men have much to their credit in improving air navigation. While in government service Davies discovered the "multiple-beam" effect in the radio range beacons, a phenomenon which in mountainous country resulted in the projection of several false beams in addition to the true one and which is believed to have been the cause of several fatal accidents.

Dr. Kear is credited with perfecting an antenna system for the radio range beacons which made them useful for the first time at night. Previous to that work they were useless after dark because of "fade effect," a fading due to changes in the layers of air high above the earth which reflect radio waves back to the ground.

In addition Dr. Kear was one of the group of scientists at the Massachusetts Institute of Technology which developed about 10

### Hike Of Gold Price Re-Opens Mines In Black Hills Area

KEYSTONE, S. D., Apr. 1.—(AP)—With the price of gold still more than \$35 an ounce, many small gold mines in the Black Hills of South Dakota have been reopened after being abandoned for more than a score of years.

Typical of the workings coming back to life is a small mine near Keystone, closed since 1907 because the low grade of the ore and the comparatively small fixed price of the precious metal made mining a doubtful venture. When the government hiked the price of gold, however, many of the smaller shafts were put in shape for operation. The one near here is undergoing extensive repairs and will have a small stamp mill to crush the ore.

Samples from the mine show the vein assays \$5 to \$25 a ton. Owners envision a profitable enterprise in view of the high price.

#### TEACHERS TO TEEN

EMPORIA, Kas., Apr. 1.—(AP)—For the first time in five years, Emporia Teachers' college will enter a golf team in the collegiate competition this spring. Everett (Gus) Fish, freshman football and basketball coach, will be in charge of the team.

years ago a "mechanical brain" capable of solving problems involving six different integrations simultaneously.

### The World of Stamps

By QUINTON JAMES

When Adolf Hitler's portrait goes on a postage stamp, he will become the second head of the German government to be so honored while living. The other was President Paul von Hindenburg.

The Hitler issue is due Apr. 20, his forty-eighth birthday. It is intended to replace the present von Hindenburg stamps bearing the late president's head in profile facing left. These have been in use since 1932, undergoing various color and water mark changes.

Only within recent years have individuals, living or dead, been pictured on German stamps. Even during the reign of Kaiser Wilhelm, as well as for several years before and after his reign, no person was pictured. Von Hindenburg achieved a philatelic honor never paid the Kaiser.

One of the most familiar empire designs was the allegorical female figure of Germania, a head-and-shoulders view, which was printed from 1890 to the formation of the German republic after the World War in 1919.

The republic continued the policy of impersonal designs and portraits until 1924. These included the inflation issues of 1924, with the large numeral value in the center. The sets had as their highest value a \$5,000,000,000 mark denomination.

That set up another precedent for the living, although the von Stephan issue was followed in 1926 by a set illustrating German music masters who had passed on.

When a new regular postage issue was decided upon in 1928, von Hindenburg's portrait again was used. It was alternated with

that of former President Ebert, whose death had been followed in 1925 by von Hindenburg's election.

Then came the 1932 change in design, the stamps issued primarily to commemorate Hindenburg's eighty-fifth birthday. Upon his death in 1934, a number of these stamps were printed with black borders as a mourning issue.

The forthcoming Hitler issue no doubt will be put into general use for both domestic and foreign mail, including that coming to this country. The number of stamps in the issue probably will be the same as those now in current use—17 denominations running from 5 to 100 pfennigs.

bearing the portrait of an individual and were printed. That was the Universal Postal Union issue, commemorating the 25th anniversary of its founding. The design on these stamps was Dr. Heinrich von Stephan, founder of the union. He died in 1907.

But it was not until 1927 that the then living von Hindenburg appeared on a semi-postal stamp. The issue marked the leg field marshal's eightieth birthday. The stamps, in four values—5, 15, 25, and 50 marks—bore the date 1927-1927.

That set up another precedent for the living, although the von Stephan issue was followed in 1926 by a set illustrating German music masters who had passed on.

When a new regular postage issue was decided upon in 1928, von Hindenburg's portrait again was used. It was alternated with

that of former President Ebert, whose death had been followed in 1925 by von Hindenburg's election.

Then came the 1932 change in design, the stamps issued primarily to commemorate Hindenburg's eighty-fifth birthday. Upon his death in 1934, a number of these stamps were printed with black borders as a mourning issue.

### Human Skull Bowls Have Feature Place In Bone Collecting

CHICAGO, Ill., Apr. 1.—Among the curiosities in the Field museum here are bowls, tambourines and trumpets made by Tibetans from human skulls.

The bowls, made of human craniums, were used for drinking in honor of Lama gods. Some of them are elaborately decorated with brass or gilded copper and fitted with finely chased metal lids.

The tambourines are made from human skulls and were shaken while reciting prayers. For the trumpets the chagras of criminals or persons who had a violent death were preferred. These instruments were consecrated by the priests and used to dispel evil spirits.

Among the curiosities in the Field museum here are bowls, tambourines and trumpets made by Tibetans from human skulls.

The bowls, made of human craniums, were used for drinking in honor of Lama gods. Some of them are elaborately decorated with brass or gilded copper and fitted with finely chased metal lids.

The tambourines are made from human skulls and were shaken while reciting prayers. For the trumpets the chagras of criminals or persons who had a violent death were preferred. These instruments were consecrated by the priests and used to dispel evil spirits.

Freshly Roasted— Freshly Ground— <b>COFFEE</b> EIGHT O'CLOCK 19c Mild and Mellow lb. 21c RED CIRCLE lb. 25c Rich and Full Bodied BOKAR Vigorous and Winey	<b>A &amp; P Baker's</b> <b>BREAD</b> Plain or Sliced—Always Fresh 14 OZ. PULLMAN LOAF 6c 14 OZ. PULLMAN LOAF 10c
---	---

POP-OVERS <b>Cracker-Jack</b> 5c MARVIN'S — FITTED Dates pkg. 10c GORTON'S Fish Roe can 15c Wilson's or Armour's No. 1 Can Corned Beef 17c FINE UNBLENDED Corn Meal 5 lbs. 15c	Iona—With Pork and Tomato Sauce <b>BEANS</b> 16 oz. can 6c Iona—Tender String <b>BEANS</b> No. 2 Can 10c Iona—Sweet, White <b>CORN</b> No. 2 Can 10c
---	---

<b>IONA BRAND</b> Red Ripe—Full-Pack <b>TOMATOES</b> 3 No. 2 Cans 20c	Ann Page—Sparkle <b>PUDDING</b> 4 pkgs. 19c Iona—Luscious, Yellow Cling <b>PEACHES</b> No. 2 1/2 Can 15c
--	---

BANANAS 3 lbs. 10c U. S. No. 1 Potatoes 10 lbs. 29c TENNIS STAMPED <b>BEEF ROAST</b> Lb. 18c CHICKEN SA. <b>CLUB STEAK</b> Lb. 19c WESTERN <b>SPARE RIBS</b> Lb. 19c	<b>YELLOW ONIONS</b> 4 lbs. 15c WESTERN PINK <b>LOIN ROAST</b> Lb. 23c HIGGINS' SMOKED <b>BACON</b> Pound 25c NATH'S <b>BACON</b> Squares Lb. 23c
---	---

Raths' <b>HAMS</b> Swift's Black 27c lb. Peanut Hawk Half or Whole Brand	Pork Neck Bones 3 Lbs. 25c White Boiling <b>BACON</b> Lb. 15c
--	--

Ann Page—Pure, Delicious, Quince <b>JELLY</b> 8 Oz. Jar 12c A Real Spread <b>NUCOA</b> lb. 20c Toilet Soap <b>Palmolive</b> Bar 5c Soap or Powder <b>Octagon 5</b> Small Pkgs. 10c Toilet Tissue <b>Waldorf 4</b> rolls 17c	ANN PAGE—Delicious Rich Cocoa 1/2 lb. can 8c OUR OWN BLEND Tea 1/2 lb. pkg. 23c SUNNYFIELD 8-OZ. PKG. Corn Flakes 6c SUNNYFIELD—Quick Cooking 1 1/2 Lb. PKG. Oatmeal 9c DOG FOOD Ken'l Rations 25c
--	--

**A & P Food Stores**  
SANFORD, FLA.

<b>YELLOW RIPE BANANAS</b> 10 lbs. 19c	<b>RILEY'S</b> FRI. and SAT. MON. TO WED. THUR. TO FRI. APR. 2-3 WE LEAD—OTHERS FOLLOW	<b>COUNTRY CURED SMOKED SHOULDERS</b> WHILE 15 1/2c THRY LAST LB.
---	--	--

<b>IN PRODUCE DEPARTMENT</b> SNOW WHITE <b>Cauliflower</b> lb. 10c U. S. NO. 1 <b>Potatoes</b> 10 lbs. 26c FRESH HOME GROWN <b>Beans</b> 2 lbs. 19c	<b>IN MEAT DEPARTMENT</b> COUNTRY CURED SMOKED <b>HAMS</b> lb. 22c COUNTRY CURED SMOKED <b>BACON</b> IN THE STRIP lb. 19c WESTERN LOIN OR CLUB <b>STEAK</b> lb. 19c PIG PORK HAMS <b>LEAN PORK CHOPS</b> lb. 18c COUNTRY BACKBONE
---	--

STARK'S DELICIOUS <b>Apples</b> 3 lbs. 25c NANCY HALL SWEET <b>Potatoes</b> 5 lbs. 17c HOME GROWN YELLOW <b>Squash</b> 2 lbs. 15c LARGE BUNCHES <b>BEETS &amp; CARROTS</b> 2 for 9c NORTHERN <b>Rutabagas</b> lb. 21c	FISH DEPARTMENT <b>SPANISH MACKEREL</b> 2 lbs. 25c FRESH <b>MULLET</b> 2 lbs. 15c SALT WATER <b>TROUT</b> Lb. 18c RED SNAPPER <b>STEAK</b> Lb. 23c WHOLE RED <b>SNAPPERS</b> Lb. 18c	PORK <b>SIDES</b> Lb. 15c COUNTRY CURED <b>STEW</b> 3 lbs. 25c FRESH HOME DRESSED <b>HENS</b> lb. 23c MAN <b>BOLOGNA</b> lb. 15c LARGE <b>FRANKS</b> lb. 15c CHOICE WESTERN BABY BEEF POT JUICY and TENDER <b>ROAST</b> 15c FRESH SMOKED <b>RABBITS</b> ea. 25c LARGE FRESH <b>OYSTERS</b> qt. 39c PORK <b>Shoulders</b> 15c COUNTRY CURED <b>Sausage</b> Lb. 10c FRESH GROUND <b>BEEF</b> 2 Lbs. 25c PORK <b>SAUSAGE</b> 25c
--	---	--

14 Oz. Std. <b>CATSUP</b> 10c COUNTRY HILL <b>BUTTER</b> Lb. 37c WHITTE HOFER <b>APPLE SAUCE</b> 3 for 25c Pks. Freedom Grape <b>JUICE</b> 15c LARGE P. and G. SOAP 3 for 12c W. G. G. FINE GA. <b>CANE SYRUP</b> 29c Reg. Oatgen Powders or <b>SOAP</b> 5 for 10c NO. 1 CAN STD. <b>CHERRIES</b> 15c LARGE <b>SUPER-SUDS</b> 19c 1 Lb. Riley's <b>Coffee</b> 17	BULK <b>SUGAR</b> 5 lbs. 18c WITH PURCHASE OF 1 LB. BULK TEA 20c L. L. B. SHAMROCK HELP BIKING <b>FLOUR</b> 85c L. L. B. CAN STD. <b>CORNED BEEF</b> 15c NO. 2 CAN STD. <b>TOMATOES</b> 6c PHILIP'S ASSORTED <b>SOUPS</b> 3 Cans 14c NO. 26 CAN <b>HOMINY</b> 2 for 17c NO. 3 1/2 CAN STD. FRESH <b>PRUNES</b> 10c NO. 26 CAN <b>APPLE BUTTER</b> 2 for 29c STD. FRESH WHITE LIMAS NO. 2 SPRINGTIME CORN CAN STD. PEAS <b>OXYDOL</b> 3 for 25c 23c Lg. Size <b>IVORY SOAP</b> 2 for 13c 10c Lg. Size	3 LB. CAN <b>CRISCO</b> 59c MILKMAID CORN <b>FLAKES</b> 2 Pkgs. 15c SUNNYFIELD <b>MATCHES</b> 2 Pkgs. 15c Water Ground <b>Meal</b> 4 lbs. 12c NO. 1 CAN BLENDED GRAPEFRUIT <b>JUICE</b> 2 for 15c 3 LB. CAN BRACON <b>COCOA</b> 10c Phillips Pork and <b>BEANS</b> 5c PALLADIUM <b>SOAP</b> 5c FANPA MADE MACARONI or <b>SPAGHETTI</b> 3 for 10c Toll Carnation or Pot <b>Milk</b> 3 for 20c
---	---	---







# Probing Blasts Is Special Job Of USDA Member

## Explosion Of Dust, Gas Attracts Eye Of David Price

By MORGAN M. BEATTY (AP Feature Service Writer) WASHINGTON, Apr. 1.—When David J. Price picks up a headline screaming "explosion," he packs his bag for a quick plane ride to the scene.

The chief of the agriculture department's bureau of chemical research is recognized as the world's outstanding "explosion detective" when it comes to tracking down the source of a blast.

With his staff, he follows up "clues" to past explosions to avert future ones.

The quick-witted specialist is not interested in what in plain dynamite or nitro-glycerine. But any natural explosion of dust or gas makes his brown eyes sparkle. His pores over photographs of the scene carried in newspapers, and calls it "finding the fundamentals." Studying such fundamentals back in 1917 brought the discovery with colleagues in the bureau of mines that coal dust is as great an enemy of the coal miner as coal gas.

Price also was an early discoverer of the mounting danger of dust explosions in the industrial age. As a result he has helped design buildings that vent the dust and avoid ignition.

Once a great industrialist chanced upon an article describing Price's work, and recalled he had had a new plant with a possible dust hazard opening within 24 hours. He sent for Price.

"You'll have a dust explosion within a day after you open this plant," Price told the man.

"How can we prevent it?"

"You can't do that immediately, but you can remove a serious danger to your workmen."

Engineers recommended opening the plant, believing Price was blowing off a lot of empty theory. But they did take his advice to vent the plant by replacing a big section of roofing in a dust laden condition with...

Within 24 hours the explosion. Price predicted had occurred but it vented itself harmlessly through the cloth roofing. Then they called him in again and he showed them how to pipe waste carbon dioxide gas from their furnaces in vulnerable spots in the plant. They have had no trouble since, because carbon dioxide gas is death to fire.

Natural explosions are simple enough. They are merely sudden inflames of inflammable materials by gas or fine particles. The resulting gases require expansion within a fraction of a second or else an explosion like the New London, Tex., school disaster follows.

Price does not wait for explosions to occur naturally to give him new problems to study. He makes his own at an "explosive gallery" he has built in Arlington, Va.

Price likes to tell how his men stopped the fire in the flood zone last spring—fires that were caused by water.

Farmers were puzzled when their barns started burning down after the waters receded in West Virginia and Ohio. Price told them to stick a thermometer in their



**SPEND SATURDAY PAINTING DRIVE A NEW CAR SUNDAY**

Make your old car beautiful today with WATERSPAR AUTO ENAMEL. This 1-coat finish dries fast—keeps its high luster month after month. All the latest popular colors are available.

USE WATERSPAR AUTO ENAMEL For Low Luster Beauty

**PITTSBURGH PAINTS**

Snow's Paint and Glass Co., Inc. 117 Park Ave. Phone 383

# Physician a Victim Of Family Killing



Dr. Charles E. Mackey (above), prominent Boston physician and state committee member, and two of his servants, Paul and Alice Costa, were killed by shots which police say were fired by the doctor's brother, Jeremiah Mackey. Later Jeremiah's body was found in an alley and authorities decided he committed suicide. (Associated Press Photo)

# Florida Farm Topics

**FORT PIERCE, Fla., Apr. 1.—**(AP)—Tomato shipments from the Fort Pierce area are increasing weekly and indications point to an excellent season for St. Lucie county's 1,600 acres planted in tomatoes.

Fifteen carloads were shipped last week and 12 the previous week. So far, 35 cars have been shipped from the spring crop and the movement should be well under way in the next few days.

**LAKELAND, Fla., Apr. 1.—**(AP)—An outline of plans for the world poultry congress to be held this summer were outlined at a meeting here of civic leaders and farmers by Prof. James E. Rice of Cornell university and Dr. E. C. Elford of Canada.

The meeting was sponsored by the Associated Poultrymen of Polk county and was attended by a large group of citizens interested in the poultry industry.

# Two Large Rivers Just Disappear In Dry Sands Of Texas

**AUSTIN, Tex., Apr. 1.—**(AP)—Texas has two big rivers which disappear! Not small, obscure creeks which occasionally dry up, but large streams—the Nueces and the Brazos—which sometimes flow only to a certain spot and then strangely stop.

N. P. Turner, Jr., engineer for the Texas planning board, credits the phenomena to porous ground formations which absorb the flow.

"As these two rivers cross the Balcones fault zone along the northern line of Uvalde county, they sometimes are swallowed up," Turner says. "Within a distance of three miles they lose as much water that at low stages the entire flow of both sinks into the sands and disappears.

"No one is sure where this water goes."

# Asks For Talkies In Federal Court

**WASHINGTON, Apr. 1.—**(AP)—Sound pictures might be shown before the Supreme Court under a bill introduced in Congress by Representative Hobbs of Selma, Ala.

Hobbs' measure would authorize federal district judges, at discretion, to have pictures and sound recordings made of proceedings before them. The pictures would be available for showing in higher courts.

hay and call a fire department to scatter it when the temperature reached 200 degrees Fahrenheit. They did and the barns stopped burning.

The answer is that bacteria in water-soaked hay caused fermentation, and that started heat in the heart of the stack.

# Wrist Watches

ELGIN GRUEN BULOVA SPECIAL PRICES  
McLaurin, Jeweler 119 E. Park Ave.

# SANFORD MARKET REPORT

**Thursday, Apr. 1, 1937** Phone 123  
Daily report on prices of various fruits and vegetables at the Sanford State Farmers' Wholesale Market to truckers, carter assemblers and other dealers for a 24 hour period ending at 1:30 A. M. today as reported by J. O. Hutchins, manager, to the Federal State Market News Service.

**ORANGES**—Fla. and hsa. Comb. 225. 2 1/2 bu. boxes, 1.10-1.15; 2 1/2 bu. comp. 1.00-1.10; 1 1/2 bu. comp. No. 2a etc. hsa. 1.10-1.15; 1 1/2 bu. comp. 1.10-1.15.

**GRAPEFRUITS**—Fla. and hsa. Comb. 1.50-1.60; 1/2 bu. boxes, 1.50-1.60; 1/2 bu. comp. 1.50-1.60.

**TANGERINES**—Fla. and hsa. Comb. 1.50-1.60; 1/2 bu. boxes, 1.50-1.60; 1/2 bu. comp. 1.50-1.60.

**PEACHES**—Eastern, Yorks. fair quality, bus. hskt. 1.00-1.15; hsa. 1.10-1.25; 1 1/2 bu. comp. 1.10-1.25; 1 1/2 bu. comp. No. 2a etc. hsa. 1.10-1.25; 1 1/2 bu. comp. 1.10-1.25.

**PEARS**—(SNAPP)—Supplies light, demand moderate, market steady. Fls. bus. hskt. 1.10-1.25; 1 1/2 bu. comp. 1.10-1.25; 1 1/2 bu. comp. No. 2a etc. hsa. 1.10-1.25; 1 1/2 bu. comp. 1.10-1.25.

**POTATOES**—Supplies moderate, demand moderate, market firm. Fls. bus. hskt. 1.10-1.25; 1 1/2 bu. comp. 1.10-1.25; 1 1/2 bu. comp. No. 2a etc. hsa. 1.10-1.25; 1 1/2 bu. comp. 1.10-1.25.

**CABBAGES**—(GREEN)—Supplies light, demand good, market dull, price to quality, 1.00-1.15; 1 1/2 bu. comp. 1.00-1.15; 1 1/2 bu. comp. No. 2a etc. hsa. 1.00-1.15; 1 1/2 bu. comp. 1.00-1.15.

**CARROTS**—Supplies light, demand light, market steady. Fls. per doz. bunches, acc. to quality and condition, 10-15c; few best, 16-20c.

**CANTALOUPE**—Fla., scarce 10-15c.

**PEPPERS**—Eastern, Yorks. fair quality, bus. hskt. 1.00-1.15; hsa. 1.10-1.25; 1 1/2 bu. comp. 1.10-1.25; 1 1/2 bu. comp. No. 2a etc. hsa. 1.10-1.25; 1 1/2 bu. comp. 1.10-1.25.

**PUMPKINS**—Fla. and hsa. Comb. 1.50-1.60; 1/2 bu. boxes, 1.50-1.60; 1/2 bu. comp. 1.50-1.60.

**EGGS**—(ENGLISH)—Fla. bushel hpr ordinary quality, 10, av. 12c.

**EGGS**—(GREEN)—Supplies moderate, demand moderate, market steady. Fls. bushel hpr. 1.10-1.25; 1 1/2 bu. comp. 1.10-1.25; 1 1/2 bu. comp. No. 2a etc. hsa. 1.10-1.25; 1 1/2 bu. comp. 1.10-1.25.

**EGGS**—(RED)—Supplies light, demand light, market steady. Fls. per doz. bunches, acc. to quality and condition, 10-15c; few best, 16-20c.

**EGGS**—(WHITE)—Supplies light, demand light, market steady. Fls. per doz. bunches, acc. to quality and condition, 10-15c; few best, 16-20c.

**EGGS**—(YELLOW)—Supplies light, demand light, market steady. Fls. per doz. bunches, acc. to quality and condition, 10-15c; few best, 16-20c.

**EGGS**—(BROWN)—Supplies light, demand light, market steady. Fls. per doz. bunches, acc. to quality and condition, 10-15c; few best, 16-20c.

**EGGS**—(BLACK)—Supplies light, demand light, market steady. Fls. per doz. bunches, acc. to quality and condition, 10-15c; few best, 16-20c.

**EGGS**—(GREY)—Supplies light, demand light, market steady. Fls. per doz. bunches, acc. to quality and condition, 10-15c; few best, 16-20c.

**EGGS**—(PINK)—Supplies light, demand light, market steady. Fls. per doz. bunches, acc. to quality and condition, 10-15c; few best, 16-20c.

**EGGS**—(PURPLE)—Supplies light, demand light, market steady. Fls. per doz. bunches, acc. to quality and condition, 10-15c; few best, 16-20c.

**EGGS**—(ORANGE)—Supplies light, demand light, market steady. Fls. per doz. bunches, acc. to quality and condition, 10-15c; few best, 16-20c.

**EGGS**—(RED)—Supplies light, demand light, market steady. Fls. per doz. bunches, acc. to quality and condition, 10-15c; few best, 16-20c.

**EGGS**—(WHITE)—Supplies light, demand light, market steady. Fls. per doz. bunches, acc. to quality and condition, 10-15c; few best, 16-20c.

**EGGS**—(YELLOW)—Supplies light, demand light, market steady. Fls. per doz. bunches, acc. to quality and condition, 10-15c; few best, 16-20c.

**EGGS**—(BROWN)—Supplies light, demand light, market steady. Fls. per doz. bunches, acc. to quality and condition, 10-15c; few best, 16-20c.

**EGGS**—(BLACK)—Supplies light, demand light, market steady. Fls. per doz. bunches, acc. to quality and condition, 10-15c; few best, 16-20c.

**EGGS**—(GREY)—Supplies light, demand light, market steady. Fls. per doz. bunches, acc. to quality and condition, 10-15c; few best, 16-20c.

**EGGS**—(PINK)—Supplies light, demand light, market steady. Fls. per doz. bunches, acc. to quality and condition, 10-15c; few best, 16-20c.

**EGGS**—(PURPLE)—Supplies light, demand light, market steady. Fls. per doz. bunches, acc. to quality and condition, 10-15c; few best, 16-20c.

**EGGS**—(ORANGE)—Supplies light, demand light, market steady. Fls. per doz. bunches, acc. to quality and condition, 10-15c; few best, 16-20c.

**EGGS**—(RED)—Supplies light, demand light, market steady. Fls. per doz. bunches, acc. to quality and condition, 10-15c; few best, 16-20c.

**EGGS**—(WHITE)—Supplies light, demand light, market steady. Fls. per doz. bunches, acc. to quality and condition, 10-15c; few best, 16-20c.

**EGGS**—(YELLOW)—Supplies light, demand light, market steady. Fls. per doz. bunches, acc. to quality and condition, 10-15c; few best, 16-20c.

**EGGS**—(BROWN)—Supplies light, demand light, market steady. Fls. per doz. bunches, acc. to quality and condition, 10-15c; few best, 16-20c.

**EGGS**—(BLACK)—Supplies light, demand light, market steady. Fls. per doz. bunches, acc. to quality and condition, 10-15c; few best, 16-20c.

**EGGS**—(GREY)—Supplies light, demand light, market steady. Fls. per doz. bunches, acc. to quality and condition, 10-15c; few best, 16-20c.

**EGGS**—(PINK)—Supplies light, demand light, market steady. Fls. per doz. bunches, acc. to quality and condition, 10-15c; few best, 16-20c.

**EGGS**—(PURPLE)—Supplies light, demand light, market steady. Fls. per doz. bunches, acc. to quality and condition, 10-15c; few best, 16-20c.

**EGGS**—(ORANGE)—Supplies light, demand light, market steady. Fls. per doz. bunches, acc. to quality and condition, 10-15c; few best, 16-20c.

**EGGS**—(RED)—Supplies light, demand light, market steady. Fls. per doz. bunches, acc. to quality and condition, 10-15c; few best, 16-20c.

**EGGS**—(WHITE)—Supplies light, demand light, market steady. Fls. per doz. bunches, acc. to quality and condition, 10-15c; few best, 16-20c.

**EGGS**—(YELLOW)—Supplies light, demand light, market steady. Fls. per doz. bunches, acc. to quality and condition, 10-15c; few best, 16-20c.

**EGGS**—(BROWN)—Supplies light, demand light, market steady. Fls. per doz. bunches, acc. to quality and condition, 10-15c; few best, 16-20c.

**EGGS**—(BLACK)—Supplies light, demand light, market steady. Fls. per doz. bunches, acc. to quality and condition, 10-15c; few best, 16-20c.

**EGGS**—(GREY)—Supplies light, demand light, market steady. Fls. per doz. bunches, acc. to quality and condition, 10-15c; few best, 16-20c.

**EGGS**—(PINK)—Supplies light, demand light, market steady. Fls. per doz. bunches, acc. to quality and condition, 10-15c; few best, 16-20c.

**EGGS**—(PURPLE)—Supplies light, demand light, market steady. Fls. per doz. bunches, acc. to quality and condition, 10-15c; few best, 16-20c.

**EGGS**—(ORANGE)—Supplies light, demand light, market steady. Fls. per doz. bunches, acc. to quality and condition, 10-15c; few best, 16-20c.

**EGGS**—(RED)—Supplies light, demand light, market steady. Fls. per doz. bunches, acc. to quality and condition, 10-15c; few best, 16-20c.

**EGGS**—(WHITE)—Supplies light, demand light, market steady. Fls. per doz. bunches, acc. to quality and condition, 10-15c; few best, 16-20c.

**EGGS**—(YELLOW)—Supplies light, demand light, market steady. Fls. per doz. bunches, acc. to quality and condition, 10-15c; few best, 16-20c.

**EGGS**—(BROWN)—Supplies light, demand light, market steady. Fls. per doz. bunches, acc. to quality and condition, 10-15c; few best, 16-20c.

**EGGS**—(BLACK)—Supplies light, demand light, market steady. Fls. per doz. bunches, acc. to quality and condition, 10-15c; few best, 16-20c.

**EGGS**—(GREY)—Supplies light, demand light, market steady. Fls. per doz. bunches, acc. to quality and condition, 10-15c; few best, 16-20c.

**EGGS**—(PINK)—Supplies light, demand light, market steady. Fls. per doz. bunches, acc. to quality and condition, 10-15c; few best, 16-20c.

**EGGS**—(PURPLE)—Supplies light, demand light, market steady. Fls. per doz. bunches, acc. to quality and condition, 10-15c; few best, 16-20c.

**EGGS**—(ORANGE)—Supplies light, demand light, market steady. Fls. per doz. bunches, acc. to quality and condition, 10-15c; few best, 16-20c.

**EGGS**—(RED)—Supplies light, demand light, market steady. Fls. per doz. bunches, acc. to quality and condition, 10-15c; few best, 16-20c.

**EGGS**—(WHITE)—Supplies light, demand light, market steady. Fls. per doz. bunches, acc. to quality and condition, 10-15c; few best, 16-20c.

**EGGS**—(YELLOW)—Supplies light, demand light, market steady. Fls. per doz. bunches, acc. to quality and condition, 10-15c; few best, 16-20c.

**EGGS**—(BROWN)—Supplies light, demand light, market steady. Fls. per doz. bunches, acc. to quality and condition, 10-15c; few best, 16-20c.

**EGGS**—(BLACK)—Supplies light, demand light, market steady. Fls. per doz. bunches, acc. to quality and condition, 10-15c; few best, 16-20c.

**EGGS**—(GREY)—Supplies light, demand light, market steady. Fls. per doz. bunches, acc. to quality and condition, 10-15c; few best, 16-20c.

**EGGS**—(PINK)—Supplies light, demand light, market steady. Fls. per doz. bunches, acc. to quality and condition, 10-15c; few best, 16-20c.

**EGGS**—(PURPLE)—Supplies light, demand light, market steady. Fls. per doz. bunches, acc. to quality and condition, 10-15c; few best, 16-20c.

**EGGS**—(ORANGE)—Supplies light, demand light, market steady. Fls. per doz. bunches, acc. to quality and condition, 10-15c; few best, 16-20c.

**EGGS**—(RED)—Supplies light, demand light, market steady. Fls. per doz. bunches, acc. to quality and condition, 10-15c; few best, 16-20c.

**EGGS**—(WHITE)—Supplies light, demand light, market steady. Fls. per doz. bunches, acc. to quality and condition, 10-15c; few best, 16-20c.

**EGGS**—(YELLOW)—Supplies light, demand light, market steady. Fls. per doz. bunches, acc. to quality and condition, 10-15c; few best, 16-20c.

**EGGS**—(BROWN)—Supplies light, demand light, market steady. Fls. per doz. bunches, acc. to quality and condition, 10-15c; few best, 16-20c.

**EGGS**—(BLACK)—Supplies light, demand light, market steady. Fls. per doz. bunches, acc. to quality and condition, 10-15c; few best, 16-20c.

**EGGS**—(GREY)—Supplies light, demand light, market steady. Fls. per doz. bunches, acc. to quality and condition, 10-15c; few best, 16-20c.

**EGGS**—(PINK)—Supplies light, demand light, market steady. Fls. per doz. bunches, acc. to quality and condition, 10-15c; few best, 16-20c.

**EGGS**—(PURPLE)—Supplies light, demand light, market steady. Fls. per doz. bunches, acc. to quality and condition, 10-15c; few best, 16-20c.

**EGGS**—(ORANGE)—Supplies light, demand light, market steady. Fls. per doz. bunches, acc. to quality and condition, 10-15c; few best, 16-20c.

**EGGS**—(RED)—Supplies light, demand light, market steady. Fls. per doz. bunches, acc. to quality and condition, 10-15c; few best, 16-20c.

**EGGS**—(WHITE)—Supplies light, demand light, market steady. Fls. per doz. bunches, acc. to quality and condition, 10-15c; few best, 16-20c.

**EGGS**—(YELLOW)—Supplies light, demand light, market steady. Fls. per doz. bunches, acc. to quality and condition, 10-15c; few best, 16-20c.

**EGGS**—(BROWN)—Supplies light, demand light, market steady. Fls. per doz. bunches, acc. to quality and condition, 10-15c; few best, 16-20c.

**EGGS**—(BLACK)—Supplies light, demand light, market steady. Fls. per doz. bunches, acc. to quality and condition, 10-15c; few best, 16-20c.

**EGGS**—(GREY)—Supplies light, demand light, market steady. Fls. per doz. bunches, acc. to quality and condition, 10-15c; few best, 16-20c.

**EGGS**—(PINK)—Supplies light, demand light, market steady. Fls. per doz. bunches, acc. to quality and condition, 10-15c; few best, 16-20c.

**EGGS**—(PURPLE)—Supplies light, demand light, market steady. Fls. per doz. bunches, acc. to quality and condition, 10-15c; few best, 16-20c.

**EGGS**—(ORANGE)—Supplies light, demand light, market steady. Fls. per doz. bunches, acc. to quality and condition, 10-15c; few best, 16-20c.

**EGGS**—(RED)—Supplies light, demand light, market steady. Fls. per doz. bunches, acc. to quality and condition, 10-15c; few best, 16-20c.

**EGGS**—(WHITE)—Supplies light, demand light, market steady. Fls. per doz. bunches, acc. to quality and condition, 10-15c; few best, 16-20c.

**EGGS**—(YELLOW)—Supplies light, demand light, market steady. Fls. per doz. bunches, acc. to quality and condition, 10-15c; few best, 16-20c.

**EGGS**—(BROWN)—Supplies light, demand light, market steady. Fls. per doz. bunches, acc. to quality and condition, 10-15c; few best, 16-20c.

**EGGS**—(BLACK)—Supplies light, demand light, market steady. Fls. per doz. bunches, acc. to quality and condition, 10-15c; few best, 16-20c.

**EGGS**—(GREY)—Supplies light, demand light, market steady. Fls. per doz. bunches, acc. to quality and condition, 10-15c; few best, 16-20c.

**EGGS**—(PINK)—Supplies light, demand light, market steady. Fls. per doz. bunches, acc. to quality and condition, 10-15c; few best, 16-20c.

**EGGS**—(PURPLE)—Supplies light, demand light, market steady. Fls. per doz. bunches, acc. to quality and condition, 10-15c; few best, 16-20c.

**EGGS**—(ORANGE)—Supplies light, demand light, market steady. Fls. per doz. bunches, acc. to quality and condition, 10-15c; few best, 16-20c.

**EGGS**—(RED)—Supplies light, demand light, market steady. Fls. per doz. bunches, acc. to quality and condition, 10-15c; few best, 16-20c.

**EGGS**—(WHITE)—Supplies light, demand light, market steady. Fls. per doz. bunches, acc. to quality and condition, 10-15c; few best, 16-20c.

**EGGS**—(YELLOW)—Supplies light, demand light, market steady. Fls. per doz. bunches, acc. to quality and condition, 10-15c; few best, 16-20c.

**EGGS**—(BROWN)—Supplies light, demand light, market steady. Fls. per doz. bunches, acc. to quality and condition, 10-15c; few best, 16-20c.

**EGGS**—(BLACK)—Supplies light, demand light, market steady. Fls. per doz. bunches, acc. to quality and condition, 10-15c; few best, 16-20c.

**EGGS**—(GREY)—Supplies light, demand light, market steady. Fls. per doz. bunches, acc. to quality and condition, 10-15c; few best, 16-20c.

**EGGS**—(PINK)—Supplies light, demand light, market steady. Fls. per doz. bunches, acc. to quality and condition, 10-15c; few best, 16-20c.

**EGGS**—(PURPLE)—Supplies light, demand light, market steady. Fls. per doz. bunches, acc. to quality and condition, 10-15c; few best, 16-20c.

**EGGS**—(ORANGE)—Supplies light, demand light, market steady. Fls. per doz. bunches, acc. to quality and condition, 10-15c; few best, 16-20c.

**EGGS**—(RED)—Supplies light, demand light, market steady. Fls. per doz. bunches, acc. to quality and condition, 10-15c; few best, 16-20c.

**EGGS**—(WHITE)—Supplies light, demand light, market steady. Fls. per doz. bunches, acc. to quality and condition, 10-15c; few best, 16-20c.

**EGGS**—(YELLOW)—Supplies light, demand light, market steady. Fls. per doz. bunches, acc. to quality and condition, 10-15c; few best, 16-20c.

**EGGS**—(BROWN)—Supplies light, demand light, market steady. Fls. per doz. bunches, acc. to quality and condition, 10-15c; few best, 16-20c.

**EGGS**—(BLACK)—Supplies light, demand light, market steady. Fls. per doz. bunches, acc. to quality and condition, 10-15c; few best, 16-20c.

**EGGS**—(GREY)—Supplies light, demand light, market steady. Fls. per doz. bunches, acc. to quality and condition, 10-15c; few best, 16-20c.

**EGGS**—(PINK)—Supplies light, demand light, market steady. Fls. per doz. bunches, acc. to quality and condition, 10-15c; few best, 16-20c.

**EGGS**—(PURPLE)—Supplies light, demand light, market steady. Fls. per doz. bunches, acc. to quality and condition, 10-15c; few best, 16-20c.

**EGGS**—(ORANGE)—Supplies light, demand light, market steady. Fls. per doz. bunches, acc. to quality and condition, 10-15c; few best, 16-20c.

**EGGS**—(RED)—Supplies light, demand light, market steady. Fls. per doz. bunches, acc. to quality and condition, 10-15c; few best, 16-20c.

**EGGS**—(WHITE)—Supplies light, demand light, market steady. Fls. per doz. bunches, acc. to quality and condition, 10-15c; few best, 16-20c.

**EGGS**—(YELLOW)—Supplies light, demand light, market steady. Fls. per doz. bunches, acc. to quality and condition, 10-15c; few best, 16-20c.

**EGGS**—(BROWN)—Supplies light, demand light, market steady. Fls. per doz. bunches, acc. to quality and condition, 10-15c; few best, 16-20c.

**EGGS**—(BLACK)—Supplies light, demand light, market steady. Fls. per doz. bunches, acc. to quality and condition, 10-15c; few best, 16-20c.

**EGGS**—(GREY)—Supplies light, demand light, market steady. Fls. per doz. bunches, acc. to quality and condition, 10-15c; few best, 16-20c.

**EGGS**—(PINK)—Supplies light, demand light, market steady. Fls. per doz. bunches, acc. to quality and condition, 10-15c; few best, 16-20c.

**EGGS**—(PURPLE)—Supplies light, demand light, market steady. Fls. per doz. bunches, acc. to quality and condition, 10-15c; few best, 16-20c.

**EGGS**—(ORANGE)—Supplies light, demand light, market steady. Fls. per doz. bunches, acc. to quality and condition, 10-15c; few best, 16-20c.

**EGGS**—(RED)—Supplies light, demand light, market steady. Fls. per doz. bunches, acc. to quality and condition, 10-15c; few best, 16-20c.

**EGGS**—(WHITE)—Supplies light, demand light, market steady. Fls. per doz. bunches, acc. to quality and condition, 10-15c; few best, 16-20c.

**EGGS**—(YELLOW)—Supplies light, demand light, market steady. Fls. per doz. bunches, acc. to quality and condition, 10-15c; few best, 16-20c.

**EGGS**—(BROWN)—Supplies light, demand light, market steady. Fls. per doz. bunches, acc. to quality and condition, 10-15c; few best, 16-20c.

**EGGS**—(BLACK)—Supplies light, demand light, market steady. Fls. per doz. bunches, acc. to quality and condition, 10-15c; few best, 16-20c.

**EGGS**—(GREY)—Supplies light, demand light, market steady. Fls. per doz. bunches, acc. to quality and condition, 10-15c; few best, 16-20c.

**EGGS**—(PINK)—Supplies light, demand light, market steady. Fls. per doz. bunches, acc. to quality and condition, 10-15c; few best, 16-20c.

**EGGS**—(PURPLE)—Supplies light, demand light, market steady. Fls. per doz. bunches, acc. to quality and condition, 10-15c; few best, 16-20c.

**EGGS**—(ORANGE)—Supplies light, demand light, market steady. Fls. per doz. bunches, acc. to quality and condition, 10-15c; few best, 16-20c.

**EGGS**—(RED)—Supplies light, demand light, market steady. Fls. per doz. bunches, acc. to quality and condition, 10-15c; few best, 16-20c.

**EGGS**—(WHITE)—Supplies light, demand light, market steady. Fls. per doz. bunches, acc. to quality and condition, 10-15c; few best, 16-20c.

**EGGS**—(YELLOW)—Supplies light, demand light, market steady. Fls. per doz. bunches, acc. to quality and condition, 10-15c; few best, 16-20c.

**EGGS**—(BROWN)—Supplies light, demand light, market steady. Fls. per doz. bunches, acc. to quality and condition, 10-15c; few best, 16-20c.

**EGGS**—(BLACK)—Supplies light, demand light, market steady. Fls. per doz. bunches, acc. to quality and condition, 10-15c; few best, 16-20c.

**EGGS**—(GREY)—Supplies light, demand light, market steady. Fls. per doz. bunches, acc. to quality and condition, 10-15c; few best, 16-20c.

**EGGS**—(PINK)—Supplies light, demand light, market steady. Fls. per doz. bunches, acc. to quality and condition, 10-15c; few best, 16-20c.

**EGGS**—(PURPLE)—Supplies light, demand light, market steady. Fls. per doz. bunches, acc. to quality and condition, 10-15c; few best, 16-20c.

**EGGS**—(ORANGE)—Supplies light, demand light, market steady. Fls. per doz. bunches, acc. to quality and condition, 10-15c; few best, 16-20c.

**EGGS**—(RED)—Supplies light, demand light, market steady. Fls. per doz. bunches, acc. to quality and condition, 10-15c; few best, 16-20c.

**EGGS**—(WHITE)—Supplies light, demand light, market steady. Fls. per doz. bunches, acc. to quality and condition, 10-15c; few best, 16-20c.

**EGGS**—(YELLOW)—Supplies light, demand light, market steady. Fls. per doz. bunches, acc. to quality and condition, 10-15c; few best, 16-20c.

**EGGS**—(BROWN)—Supplies light, demand light, market steady. Fls. per doz. bunches, acc. to quality and condition, 10-15c; few best, 16-20c.

**EGGS**—(BLACK)—Supplies light, demand light, market steady. Fls. per doz. bunches, acc. to quality and condition, 10-15c; few best, 16-20c.

**EGGS**—(GREY)—Supplies light, demand light, market steady. Fls. per doz. bunches, acc. to quality and condition, 10-15c; few best, 16-20c.

**EGGS**—(PINK)—Supplies light, demand light, market steady. Fls. per doz. bunches, acc. to quality and condition, 10-15c; few best, 16-20c.

**EGGS**—(PURPLE)—Supplies light, demand light, market steady. Fls. per doz. bunches, acc. to quality and condition, 10-15c; few best, 16-20c.

**EGGS**—(ORANGE)—Supplies light, demand light,



### Jack Cop Wins Semi-Final Elimination Last Evening

#### Speedy Event In Show Position After Bad Start In Feature

Jack Cop won the first derby semi-final event at Sanford-Ocala Kannel Club last night but he had a terrific battle with Joe Show Em before he squeaked out a victory by half a length. Coming into the stretch, just Show Em, a 15 to 1 shot, was on top by a head but Jack Cop turned on just enough steam to trip him at the wire.

Speedy event, an odds-on favorite, had trouble on the first turn but closed fast to take show money.

Night Laddie was the fourth dog to finish and will also be entered in the \$1,000 Central Florida Derby April 7.

#### RESULTS LAST NIGHT (Track Post)

FIRST—3-16 mile, time, :19 2-5	
Light Traffic	6.00 2.40
Light Day Flyer	1.10 2.00
Don Doland	2.30
SECOND—3-16 mile, time, :19	
Joe J	6.00 2.20
Traffic Director	2.60 4.20
Jack's Mission	4.80
DAILY DOUBLE—3-4, Sea 3-1	
Perfect Play, 8121.26	
THIRD—Futurity, time, :20	
Perfect Play	20.40 4.00 4.20
King Sing	2.30 2.90
Stan Mark	4.90
FOURTH—5-16 mile, time, :22	
All Eyes	10.20 5.10 3.20
Comanche Jack	4.60 2.80
Dyno	4.20
FIFTH—3-16 mile, time, :19 2-5	
War Cutter	8.00 3.80 2.20
Dedication	2.80 4.10
War Howler	2.80
SIXTH—Futurity, time, :20	
Ben's Sonnet	8.20 4.80 2.80
Joe Hollow Blue	6.00 3.20
Joe Hollow Blue	4.20
SEVENTH—5-16 mile, time, :22	
Tron Ann	10.00 5.20 3.40
All Myrtle	4.40 2.20
Crutch Prince	2.80
EIGHTH—Futurity, time, :20	
Light Traffic	6.60 3.10 2.40
Joe Hollow Blue	4.60 3.40
Just Snow	2.20
NINTH—5-16 mile, time, :22 1-1	
Jack Cop	1.60 3.10 2.40
Joe Show Em	2.80 2.60
Crutch Prince	2.40
TENTH—5-16 mile, time, :22 1-1	
Light Traffic	6.50 3.10 2.40
Joe Hollow Blue	4.60 3.40
Just Snow	2.20

### DeLand Will Open Training Season Monday Morning

DELAND, Apr. 1.—The DeLand Reds will begin their 1937 training season at Conrad Field here Monday morning, it was said yesterday by Business Manager W. J. Page as he reported the signing of four more players. They are: Arthur M. Sheton, catcher who will accompany Manager Pat Patterson to DeLand from their home in Peoria, Ill. this week-end; Joey Ardo, third sacker, Long Island; Harold Williams, catcher, Waterville, Me.; Jim Larney second baseman, Brooklyn.

### Youth Will Swap Salary Of Future For An Education

WORCESTER, Mass., Apr. 1.—(AP)—Twenty-year-old Howard Stanley will give 10 per cent of his life earnings to anyone who will finance his college education.

"Every time I look for a job a prospective employer asks 'Are you a college graduate?' he explains. The son of a rug salesman, Stanley says family finances can't stand the strain of a college education and he fears that even if he could get a scholarship he couldn't earn enough to pay additional expenses. "It's a gamble," he says, "but I'm certain my benefactor would realize on his investment. I can make good." Interested in journalism and radio, Stanley, who limps as a result of infantile paralysis in his childhood, edited publications in the Lincoln High school in Jersey City, N. J., from which he was graduated in 1936, and did radio announcing for his school programs. Stanley's high school annual listed him as the wildest student and the member of his class "most likely to succeed." Chamol leather is tanned in oil.

### Lizzie Tactician Favorite Tonight In Feature Event

Favored to win the ninth race on tonight's program is the feature event over a futuristic distance, is Lizzie Tactician, who is given an edge over Bottle Capper and Blondie Omen, both of whom are rated as money finishers with the former given choice for the place position and the latter a good show selection.

In the first race, Mistep Chance, Powerful Al and Play Early are favored with Copper Coin, Betty Daring and Black Favorite good in the second race; Traffic Chance, Mystic Holiday and Cavetl Maid in the third; Royal Sussie, Skinny Barney and Dusty Lightning in the fourth; Glorione, Joy Sing and Last Tiger in the fifth; Trinket, Miss Phillips and Daquiri in the sixth; Ann True, Ann Will and Blondie Meadows in the seventh; Pflaca Park, Myrtle Count and Dexter Park in the eighth and Westy Careful, Mystic Melody and Miss Lita Meyers in the finale.

#### TO-WINNERS' ENTRIES

FIRST RACE—3-16 mile, Mistep Chance, Powerful Al, Play Early, Bottle Capper, Blondie Omen, Royal Sussie, Skinny Barney, Dusty Lightning, Glorione, Joy Sing, Last Tiger in the fifth; Trinket, Miss Phillips and Daquiri in the sixth; Ann True, Ann Will and Blondie Meadows in the seventh; Pflaca Park, Myrtle Count and Dexter Park in the eighth and Westy Careful, Mystic Melody and Miss Lita Meyers in the finale.

### MARION MILEY WINS AT AUGUSTA



Marion Miley (left), Lexington, Ky., amateur, is congratulated by Babe Didrikson, Beaumont, Tex., professional, after winning the Women's Invitation Golf tournament at Augusta, Ga. She beat Miss Didrikson 6 to 4 in the finale. (Associated Press Photo)

### Beer Sign Is Barred From Wrecked Ship

SAN FRANCISCO, Apr. 1.—(AP)—The steamer Oklaian is being towed on the rocks of the Golden Gate, but in the eyes of a renegade sailor still has some dignity. Promoters approached William J. Mitchell, who has bought the ship for salvage, and proposed a bill board advertising beer be placed on the deck. Said Mitchell: "That's those guys—'She's still a ship, rock or no rocks, and no sign of an old beer business can be had but there's still a U.S. sentiment in the old frame." In the "fifty nineties," most United States senators wore Prince Alberts. The freak coat was a symbol of statesmanship and a brand was the mark of a man of maturity and substance.

### Postage stamps were first used in the United States in 1847.



### Spotlights of Sport

By A. F. STRAUSS

Here and there in the days of sports news... Dizzy Dean will donate half the money he earns from the Cardinals this year to the Association of Charities for Crippled Alligators... Clyde Milan, manager of the Chattanooga Lookouts, is strong in his belief when he says he will pitch and win at least 35 games for the Lookouts this season... Clark Griffith, president of the Senators, says he'll go to the States, says he'll go to the States, says he'll go to the States... "Dynamite" Cooper, local dusky heavyweight, has signed to fight Joe Louis in Miami next month... An exhibition baseball game scheduled for yesterday in St. Petersburg was called off because of snow... Cal Griffith, president of the Chattanooga team, ate up all the peanuts sold in the ball park here last Monday to keep certain sports writers from throwing them at his and his friends... Cal adored

### to have his picture snapped with a host of gals around him so that his lady fan back up that can see them!

Henry Watson wants to resign as president of the local ball club because the outfit wants to pay him \$200 more this season than he received last year... And if you don't know what this is all about by this time, we'll tell you... Or rather, just look at your calendar and get a circle around the First of April... April Fool!

NOTICE OF APPLICATION FOR... That JAMES THOMAS, holder of Tax Certificate No. 317, issued the 27th day of August, A. D. 1932, do hereby certify that the following certificate embodies the following conditions: The County of Seminole, State of Florida, to-wit: Lots 41, 42 & 43 Three Pines... The assessment on the said property listed was in the name of GEORGE H. PUGH... The certificate shall be redeemed according to law, the property described therein will be sold to the highest bidder at the first public sale in the month of May, 1937, which is the 31st day of May, 1937.

## WE'LL BET YOU DIDN'T KNOW THIS ABOUT TIRES

THE least of all expenses in running a car today is the best tires you can buy — Goodyear Tires! So say the nation's largest fleet operators.

Their accurate expense records show that repairs and garaging alone cost three times as much per mile — gasoline five times as much — as a full set of Goodyear costs you!

**A price for every purse**

Goodyear Tires are most economical to buy because they give the most miles for your money. Goodyear's are priced today in several different classes—enabling you to buy exactly the amount of tire-service that fits your need!

Choose any Goodyear with confidence, for all are built to protect your good name. All have the greater grip and safety of center traction. All have the quick-stopping All-Weather tread. All are built with Superstarch Cord in every ply—the finest blowout protection in any tire!

Why take chances on worn out rubber when safe new Goodyears—the world's best tires—are the smallest expense in operating your car?

**SPRUCE UP YOUR CAR FOR SPRING!**

You can buy GOODYEAR Quality and Value in these timely needs:

AUTO POLISH	RADIATOR HOSE	and more
TOP DRESSING	POLISHING CLOTHS	other
TOUCH UP ENAMEL	UNDER FENDER ENAMEL	accessories
RUBBER BOARD MATS	FLOOR MATS	and more
FAN BELTS	SPARK PLUGS	There's a Goodyear Battery near!

EVERYONE BUITS TO THE GOODYEAR STANDARD—THE HIGHEST STANDARD OF QUALITY AND VALUE IN THE WORLD.

GOODYEAR 6.30 WEATHER \$9.85

GOODYEAR SPEEDWAY \$5.55

GOODYEAR PATHFINDER \$6.40

Look for this sign WHERE TO BUY

If a nearby Goodyear dealer or Goodyear Service Station is not listed, look in the Yellow Pages under "Automobile Tires" or "Tires."

**GOOD YEAR TIRES**

Phone 265 **ROCKEY TIRE SHOP** 111 S. Park Ave. Sanford, Fla.

### Baggett's Liquor Store

FEATURING THE VERY BEST

PHONE 788-J Arcade Bldg. FREE DELIVERY Sanford, Fla.

### Attention! Dairyman Cattle Owners

## Suni-Citrus Pulp

(They Moo For More) MADE RIGHT HERE IN FLORIDA Better and Cheaper Than Bee Pulp

A brand new Roughage Food which increases the Milk Supply.

### Sanford Amco Feed Store

Local Distributor Sanford, Fla. 207 W. 1st Street

### You Get at HOMER'S

and DRINKS of the very best sort.

Have you tried our Fountain Drinks? If not, you have a treat ahead of you. Come in now. You can get most anything you want. Of course—in our line HOMER'S SODA SHOPPE Car Sanford and 1st St. Watch for our Week-end Specials!

### Classified Advertisements

1—Automobiles. HAVE YOUR Watch repaired by one who really knows how. Briggs, Jeweler, Magnolia Ave.

MEN! GET VIGOR AT ONCE! NEW Ostrich Tonic Tablets contain raw ostrich invigorates and other stimulants. One dose pep up organs, glands. If not satisfied, money refunded, few cents paid. Call, write McRayolds Drug Company.

2—Automobiles. ON SALE: 1929 closed cab, Ford pick-up truck, new tires. Price \$150. Reel & Sons.

3—Help Wanted. WANTED—YOUNG woman with good personality. Good sales-lady. Year round. Open April. Phone 338-W.

WANTED: Colored female cook. Apply 317 Palmetto Avenue.

MEN WANTED to qualify for jobs, estimating, installing, servicing, and repairing electric refrigerators and air conditioning systems. Experience unnecessary. If accepted you must spend some spare time in training. Write Refrigeration and Air Conditioning Training Corporation. Box ACT, Herald.

16—Flowers and Plants. TOMATO PLANTS for sale—See G. O. Johnson at Montezuma Hotel or E. F. Evans, Orange Avenue, Route 2.

FOR SALE: Flowers, 18 varieties of annual plants, 15c doz. Phone 3408.

17—Miscellaneous. LADY DRIVING Chicago wants passenger share expenses. Box M. L. Herald.

18—Apartments for Rent. FOR RENT: Garage apartment 113 West 6th St.

FOR RENT: Furnished Palmetto

Apartment, Park and 6th St. Phone 290.

FOR RENT—4 furnished rooms. Lights, bath, garage. In Paola B. T. Tiller.

16—Houses For Rent. 6-ROOM house. Furnished complete with Electric Refrigeration. Phone 884-W.

26—Miscellaneous for Sale. ATTENTION TO Farmers. Look over your farm tools and if they need repairing bring them to the Hill Implement Company.

SEEK HILL Implement Company for all grades rail roofing, corrugated iron and channel drain roofing. We deliver and our prices are right.

SCREEN WITH Galvanized and Bronze—all widths—at the right prices. Stanley Rogers Hardware Company.

GOLD FISH. New Shipment just received. Bog Plants, Water Lilies, W. C. Hartline, phone 339-W, West First Street.

FOR SALE—4-Wheel Truck. Trailer for hauling. New Tires. Welded Body. 508 Myrtle.

19—Houses for Sale. FOR SALE—A delightful modern country home, Poultry, Bees, Oranges and Store. For quick sale at very low price. See it at once. B. T. Tiller, Paola.

Money For Roads? Seekers Spend All OKLAHOMA CITY, Okla., Apr. 1.—(AP)—W. F. Grisso, Oklahoma highway commissioner, has suggested a new way to get enough money to solve the state's road troubles. "If all the gasoline money spent by delegations coming up here to ask for roads was just sent to the commission," he said, "our financial worries would be over."

### PETER PEN

BOYS! CALL OUT TO POLICE AND THE FIREMEN AT ONCE!

DING DONG

NOW FOLLOW THE BEES!

THE BLACK BEES ARE DOBBING KING JOLLY'S HIVE.

STOP thief! Stop thief!

Bibbers flying off with honey bags full.

STOP thief! Stop thief!







## Cone Puts Foot On More Taxes; Says 'Not Needed'

**Governor Estimates State Collection Will Total 48 Million In This Year**

**'Be Economical' Advice Of Fred**

**New Assessments Are Hindrance To Florida Progress**

TALLAHASSEE, Apr. 2.—(AP)—The collection of \$48,000,000 by Florida's Government this year was predicted by Governor Cone today.

He said this morning: "We don't need any new taxes; we don't need any sales taxes or any taxes on every item you buy. We are having prosperity."

"Times are better now than they were last year. That's the time when we ought to think about cutting taxes instead of putting on new taxes. The only pet hobby I have is keeping off new taxes, because new taxes will hurt Florida more than all the good you could do with advertising."

"We will have plenty of money if we will be reasonably economical—not miserably—just reasonably economical."

## Coroner's Jury To Probe Negro Death In Afternoon Meet

James "Shorty" Johnson, negro, was arrested yesterday afternoon by City police as the third person involved in the suspicious death of Ernestine Rouch, negro woman who succumbed yesterday morning after she was found half-dressed and unconscious on the front porch of her home.

Johnson joined Jacob Dargan and Willie Mae White, both negro, in the County jail where they are being held.

A coroner's jury yesterday assembled to view the body of the dead negro but adjourned immediately. It was scheduled to have reconvened at 3 o'clock this afternoon with Judge J. C. Roberts presiding.

## Danner Compliments Local Legion Post For Co-Operation

Chester Danner, Daytona Beach, vice-commander of the Fourth American Legion District of Florida, today addressed a message of thanks and appreciation to the Sanford Legion Post "for its wonderful co-operation and work during the past year."

Danner's statement came as he prepared to attend the State Legion Convention in Lakeland this month where new officers will be elected.

In the district with Sanford are the following 15 other posts: Jacksonville, South Jacksonville, St. Augustine, Fernandina, Daytona Beach, Apopka, Hastings, New Smyrna, DeLand, Orlando, Winter Garden, Winter Park, Kissimmee, St. Cloud, and Palatka.

## Dr. Ruben Mason Funeral Services To Be Saturday

**Retired Dentist Is Dead After Illness Of 1 Week**

Funeral services for Dr. Ruben M. Mason Sr., who died early today at his home, 606 Palmetto Avenue, will be held at 3 P. M. Saturday from the First Methodist Church. The Rev. A. H. Cole is to officiate.

Dr. Mason succumbed after an illness of about one week. He was 73 years old and had been a resident of the Sanford vicinity for about 50 years.

He came to Florida at the age of 17 years, living for some time in Arcadia before moving to Sanford. While his parents resided here, he attended dental college for about 5 years.

Dr. Mason practiced dentistry for 34 years, retiring eight years ago.

Master Masons are asked to meet in the Masonic Hall at 3:15 P. M. tomorrow to attend the funeral of Dr. Ruben M. Mason.

ago. He resumed his residence here, broken by his term of college, 42 years ago.

Dr. Mason was born in Wrightsville, Ga. He was a member of the Masonic Order and former member of the old Sanford City Council.

Surviving are the widow, Mrs. Fann's Bryan Mason of this city; a daughter, Mrs. E. C. Smith, Jr., of Sanford; two sons, Ruben M. Mason Jr., of Sanford, and Robert B. Mason of St. Petersburg; a brother, C. A. Mason, of Mt. Vernon, Ga.; and a nephew, M. E. Moy, of Sanford.

Active pallbearers are Dr. B. D. Caswell, Dr. H. H. McCaslin, Dr. H. W. Rucker, Dr. A. W. Epps, Homer Little and J. B. Brie.

Honorary pallbearers are W. A. Zachry, S. O. Shindler, O. J. Pope, L. R. Phillips, L. P. Hazan and W. E. Watson.

The Masonic fraternity will have charge of services in Evergreen Cemetery where interment is to be.

Erickson Funeral Home is in charge of arrangements.

## Betty Akin Will Direct 25 Girls In Army Campaign

Twenty-five Seminole High School girls under the direction of Miss Betty Akin, gym teacher, will canvas Sanford tomorrow in one of the final efforts of the Salvation Army to raise its \$1,500 fund for 1937 operation.

Capt. Fred Fern, commander of the Army here, announced that Sanford Doudney and Luther Hevkey have volunteered to assist in contacting the remainder of prospects who were listed on cards at the beginning of the campaign.

The captain said donations should be left at the Army home on Second Street.

At noon today, collections had totaled \$2,026.

## Baptist Attendance At Special Service Reported Excellent

Splendid attendance at the special week-day night services in the Baptist Church throughout the entire week was reported today by the Rev. E. H. Jennings, conducting the series, and the Rev. W. P. Brooks, pastor of the church.

Last night the Rev. Jennings spoke on "The Church's Outlook." Tonight he will address his congregation on "Broken Vows."

## Copper, Steel Is Too Costly, President Says

**Asserts Government Should Cease Encouraging Purchase Of Metals**

WASHINGTON, Apr. 2.—(AP)—President Roosevelt told his press conference today the price of durable goods such as steel and copper is too high.

He added the time had come for the Government to discourage federal expenditures for such goods and encourage expenditures for consumer goods. The stock market took quick cognizance of the criticism with wave of selling which forced prices down by from \$1 to \$5 in a few minutes.

The President said he told five House Democrats who called on him yesterday that future PWA expenditures should go, not for steel bridges and other such permanent structures, but for channel dredging and earthen dams.

## Benson Springs? No, Enterprise!

Benson Springs, just across Lake Monroe from Sanford, is no longer Benson Springs, strange as it may seem.

The little community is officially known today as Enterprise, a name which it bore before some boom time developer figured "Benson Springs" would sound more attractive to prospective land buyers.

A petition circulated recently in the town authorized the change of names which came through the United States Post-office Department.

## Homestead Blanks For 1937 Exceed Number Last Year

The legal deadline for accepting applications for homestead exemptions fell yesterday afternoon with about 2,000 on file—approximately 100 more than were turned in last year—Tax Assessor Sanford Doudney announced today.

He emphasized that exemption from taxes holds only on homesteads in the case of levies assessed for operating expenses of the Government. All bond or debt assessments must be paid, since there are no provisions for exemptions in these cases.

Applications received this year will be entered on the 1937 tax roll, Mr. Doudney said.

As the final day for filing tax exemptions closed, the deadline fell also on the filing of widows and veterans' exemptions.

## Seven Sanfordites Initiated By WOW At State-Wide Meet

Seven Sanfordites were among the 108 initiates who last night were inducted into the order of Woodmen of the World in the Gay El Rivers (Ga.) class at a State-wide meeting of the fraternity in Lakeland.

Local men receiving the prostration degree were C. J. Jones, C. C. Matthews, C. E. McClarrow, C. C. Davis, A. C. Madden, Virgil Metts and A. Bacon.

Woodmen attending were C. C. Collins, C. B. Radd, C. L. Collins, James G. Sharon, E. F. Caraway, R. R. Floyd, J. R. Burner, Peter Thurston, O. G. Hall, E. C. Hinchiffe, J. M. Vining, J. W. Snow, Fred Parlin, O. R. Smith, and C. P. Horton.

Notables present, other than Gov. Rivers, included Secretary of State (Fla.) R. A. Gray, and National Woodman Director W. M. Crawford of Birmingham, Ala.

## Last Rites Held For Samuel Teston

Last rites for Samuel F. Teston, 54, retired railroad engineer who died Wednesday at his home, 2001 French Avenue, were held this morning in Evergreen Cemetery. The Rev. W. S. Queen officiated.

Mr. Teston succumbed after an illness of 11 weeks. He had been a resident of Sanford for the past six years. Erickson Funeral Home had charge of arrangements.

## CLAIM CAPTURE OF ITALIANS



The problem of neutrality on the part of European nations concerning the Spanish civil war flared to a dangerous peak when government loyalists claimed the capture of Italian soldiers near Madrid served to prove Premier Mussolini is giving increasing help to the insurgents. Some of the captives are shown in a cell in Madrid. (Associated Press Photo)

## Griffith Praises Sanford As Ideal Training Site

**Chamber Fetes Chattanooga Baseball Club At Banquet; Localites Lauded For Constructive Efforts**

One of the two fastest and most of baseball last night, Sanford was named as one of the best spring training sites of Florida.

He is Clark Griffith, president of the Washington Senators, who spoke to about 75 persons in the Episcopal church Parish House where the Chamber of Commerce staged its first "Baseball Day" banquet to fetter the Chattanooga Lookouts, their officials and fans of the Washington club.

Griffith, one of the true balltimers of the national pastime, had his baseball audience in a breathless silence as he retold scenes, which he personally witnessed or had a part in, that have made baseball history.

He made Milan, manager of the Lookouts, was cast in the role of a comedian, rolling off lads after lads of somewhat doubtful ability but which never failed to draw loads of laughter. With an air of the fliker of a switch, Milan accepted a title from his boss, Griffith.

On the serious side of his address, the Lookout chief pointed out the following items were placed on the list:

Edith Bales, Evelyn Cates, Helen Chapman, Pauline Dale, Doris Dornier, Marian Estridge, Winifred Hutchins, Mary Frances Lott, Edith Merritt, Dorothy Mitchell, Jean Moran, Arline Richter, Edith Singletary, Dorothy Stewart, Minnie Strange, Elizabeth Tuten, Elizabeth Whittington James, Harold Wilbur Nolan, Clyde Perry and Herbert Prester.

Jonors Ann Benson, Jacqueline Campbell, Virginia Davis, Doris Lake, Donna Morgan, Mildred Rattick, Nancy Rossetti, Daphne Takach, Margaret Tenber, Margaret Van Ness, Milton Adams, Arthur Weinberg and Walter Stovall.

Sophomores—Helen Alderman, Helen Anderson, Nancy Brooks (continued on Page Three)

## Tuberculosis Unit Will Meet Monday

The Seminole County Tuberculosis and Health Association will meet Monday afternoon at 3:30 o'clock in the home of Mrs. Dorothy Lamb, 1801 Park Avenue.

One of the principal subjects of discussion will be methods of raising money to keep Seminole County patients in the new tuberculosis hospital nearing completion just outside of Orlando.

## Vance E. Douglass Granted Pardon By State, Effective On July 3rd

Vance E. Douglass, former clerk of the Seminole County Circuit Court, who was sentenced in 1936 to three years imprisonment on a charge of embezzlement, today was granted a conditional pardon by the State Pardon Board, the Associated Press reported.

Mr. Douglass' release is scheduled for July 3, it was announced. The former circuit clerk took office in 1924, succeeding his father at the post. He served

## Land, Air Attacks Opened By Loyalists On Insurgent Troops

### Inspection Of School Invited By Prof. McKay

**Says Visitors Will Be Cordially Received At Any Time**

Seminole High School is always open to the inspection of any person doubtful of the building's safety as regards fire. Prof. G. E. McKay, principal, declared today.

His statement followed the publication of several letters in the Sanford Herald forum which set forth charges that the structure contained fire hazards.

"We do not answer these charges because we have no desire to make a controversy of nothing," Prof. McKay said. "The only answer we have is an invitation to inspect the building. Anyone caring to make such an inspection will be cordially received at any time during the day."

A scheduled fire drill, however, was not held in the classrooms.

Within two days, The Herald was figuratively "snowed under" with letters from many students who replied to the statements of the teacher.

### 2 Local Officers Of National Guard To Attend Confab

Col. J. C. Hutchison, commander of the Sanford National Guard Unit, and Lt. Karl Nordgren will attend the second annual convention of the Florida National Guard in Jacksonville tomorrow.

Approximately 100 officers from a score of outfits will be present at the confab.

Among the prominent military men to attend are Adjutant General Vivian Collins; Gen. Sumner L. Lowry, Jr., commander of the 56th field artillery brigade; Col. J. H. Spangler, U. S. property and disbursing officer and commander of the 106th quarter master regiment; Col. Preston Ayres, commander of the 124th infantry; Col. Homer W. Hesterly, commander of the 116th field artillery; Col. James P. Coombs, commander of the 106 engineers;

May P. L. Wall, commander of the 25th coast artillery; and Lt. Col. Ralph E. Stevens, commander of the 16th medical regiment.

Election of officers for another year will hold a featured place on the program.

### 6 Locals Back From Caribbean Conclave Of Rotary In Cuba

Three Seminole County Rotarians and their wives had returned today from Havana where they attended the Caribbean Conference of Rotary Clubs.

They are Mr. and Mrs. Herbert B. Pope, Mr. and Mrs. W. A. Leffler and Mr. and Mrs. B. F. Haines of Altamonte Springs.

The party left Miami by boat last Friday, arriving in Cuba on Saturday. In the general assembly of Rotarians, they were welcomed by President Irujo of Cuba.

Approximately 500 civic club members attended.

The Caribbean Conference was composed of clubs in states or nations touching the Gulf of Mexico or the Caribbean Sea.

The engines will be of the 4-8-1 type, the news service said, and are to be propelled by steam.

### Poultrymen Form Permanent Unit; Elect Officers

**Hendricks Is Chosen Group President; Market Discussed**

A permanent Seminole County Poultrymen's Association was formed last night in Seminole High school building and D. L. Hendricks of Lake Monroe its first president.

D. L. Waters of Lake Monroe was chosen vice president, while Alex H. Johnson of Sanford became secretary treasurer. Directors are J. H. Doughton, Lake Mary, B. T. Tiller, Paola; and William Walters, Lake Monroe.

F. N. Pardy of Sanford was elected delegate to the State Poultrymen's Association.

The unit voted annual membership dues at 50 cents per member and announced a drive to seek the affiliation of as many poultry producers as possible this season.

Poultry education is one of the principal objectives of the association.

Charles Corley of Orlando informally discussed possible marketing plans for the Association, explaining a method whereby areas producing a poultry surplus would ship their products into areas where production was below consumption.

He pointed out that the State Association will assist in keeping each individual Association in formed of marketing conditions.

Plans were laid to name a marketing director whose duties would be to keep a constant eye on the (continued on page three)

### Landscape Artist In Discussion On Lakefront Project

Herbert Flynn, Winter Park, landscape architect, was scheduled this afternoon to have met a number of local citizens interested in beautification for an open forum discussion of the proposed lakefront project.

City Clerk Frank Lamson said the meeting was designed to hear the public's view of the proposed beautification which Mr. Flynn has planned for the Lake Monroe Shore between Sanford Avenue and the Mayfair Hotel.

Criticism were to be invited and suggestions for improvements were to be asked, the clerk said.

The plan of Mr. Flynn has met with favor in the City Commission which inspected it some time ago.

### Saturday Is Final Day For Payment Of 1936 Poll Tax

Sanford citizens expecting to qualify for the special City Commission election Apr. 13 must have paid their 1936 poll tax by 5:30 P. M. tomorrow, County Tax Collector Jno. D. Jenkins said today.

The collector's office will remain open Saturday afternoon as a convenience to those who wish to vote in the election but who have not had the opportunity to obtain their '36 poll tax receipt, a requisite of the City charter section governing municipal voting.

Mr. Jenkins reported that at noon 797 persons in the entire County had paid their tax, and the greater number of these were understood to have been Sanfordites.

Students Hear Talk On Hawaiian Islands

### Rebels Launch Move Against Capital Of Basques In Northern Spain

Government seeks To Cut Highway

Stock Market Drops Indicate Power Of Franco Is On Wane

Spanish Government troops launched land and air attacks at insurgent supply bases today, while insurgents advanced upon the Basque capital, Bilbao, in Northern Spain.

Government planes bombed Cordoba, chief supply base of General Francisco Franco's southern army, leaving many dead and wounded.

The town Ovejo, six miles south of Cordoba, momentarily was expected to fall into the hands of the rebels, according to a bulletin northwest from Cordoba seeking to cut the main highway and isolate that provincial capital and valuable supplies from the forces commanded by General Queipo de Llano.

Government militiamen also pressed on Penaroga in the heart of a rich mining sector now held by the insurgents.

In Paris, a drop in Spanish insurgent securities on the stock exchange was interpreted as an indication of confidence in financial circles that Franco's regime was waning.

### Future Farmers To Hold Annual Fete In Local School

About 125 persons are expected to attend the parent and son banquet of the Seminole Chapter, Future Farmers of America, scheduled for 7 o'clock tonight in the cafeteria of Seminole High School.

Featured speakers not affiliated with the chapter are Walter Henshaw, sales manager of the Sanford Orleto Truck Growers Association, Dr. E. W. Garita, agricultural teacher trainer from Gainesville, and the Rev. C. E. Elmore, pastor of the Christian Church.

A lovin' cup, first award in the crop judging contest at the Tampa Fair in January, will be officially presented the chapter by Dr. Garita.

A review of activity of the current year and an outline of future programs will be given by chapter members. The unit's string band is to furnish music.

### Students Hear Talk On Hawaiian Islands

A lecture on Hawaii, illustrated with stereoscopic slides, entertained students at Seminole High School yesterday. The program was given by W. G. Ross.

A teacher in a Hawaiian college for a year and a half, Mr. Ross pictured his experiences in the islands and told of the plants and the strange volcanic formations of which the islands are made.

### LOCAL WEATHER

High	Low	Wind
75	63	SE
74	62	SE
73	61	SE
72	60	SE
71	59	SE
70	58	SE
69	57	SE
68	56	SE
67	55	SE
66	54	SE
65	53	SE
64	52	SE
63	51	SE
62	50	SE
61	49	SE
60	48	SE
59	47	SE
58	46	SE
57	45	SE
56	44	SE
55	43	SE
54	42	SE
53	41	SE
52	40	SE
51	39	SE
50	38	SE
49	37	SE
48	36	SE
47	35	SE
46	34	SE
45	33	SE
44	32	SE
43	31	SE
42	30	SE
41	29	SE
40	28	SE
39	27	SE
38	26	SE
37	25	SE
36	24	SE
35	23	SE
34	22	SE
33	21	SE
32	20	SE
31	19	SE
30	18	SE
29	17	SE
28	16	SE
27	15	SE
26	14	SE
25	13	SE
24	12	SE
23	11	SE
22	10	SE
21	9	SE
20	8	SE
19	7	SE
18	6	SE
17	5	SE
16	4	SE
15	3	SE
14	2	SE
13	1	SE
12	0	SE
11	0	SE
10	0	SE
9	0	SE
8	0	SE
7	0	SE
6	0	SE
5	0	SE
4	0	SE
3	0	SE
2	0	SE
1	0	SE
0	0	SE

15 14 13 12 11 10 9 8 7 6 5 4 3 2 1 0