

League Of Women Voters Recognized

The League of Women Voters of Seminole County has been granted national recognition after completing 18 months of study as a provisional league. Mrs. Sarah Bildebeck, president, reports.

Long Hairs
NORWALK, Conn. (AP) — Boys suspended from Brewster Mason high school for letting their hair hang over their eyes, were or collars have enlisted the aid of the American Civil Liberties Union.

"With full recognition the Seminole League may now take positions on issues and policies in the public interest," Mrs. Bildebeck said. "The non-partisan policy, the League does not oppose or support any political party or candidate."

Letters of congratulations have been received by the local League from Mrs. Robert J. Stuart, president of the LWV of the United States; Mrs. Walter R. Churchill, president, LWV of Florida; and Mrs. Grant Steton, advisor on the state board.

Mrs. Bildebeck announced additional recognition was given to the League by an article in the State League publication commending its school survey in Seminole County.

Beer Says No
TUSCALOOSA, Ala. (AP) — Bear Bryant, Alabama football coach, said Tuesday night he has "no political ambitions" and will not be a candidate for the U.S. Senate.

CARRAWAY & MCKIBBIN

INSURE WITH CONFIDENCE

114 N. PARK AVE.
Downtown Sanford

DIAL 325-4331

Sanford Woman Dies In Home Fire

Husband Discovers Flames

Seminole County *** on the St. Johns River *** "The Nile of America"

The Sanford Herald

Phone 322-2611 or 425-5938 Zip Code 32771
WEATHER: Thursday 88-92; warm and wet weekend.

VOL. 60 NO. 120 — AP Leased Wire — Established 1908 — FRIDAY, FEBRUARY 2, 1968 — SANFORD, FLORIDA — Price 10 Cents

Mrs. Doris Rouse, of 107 Anderson Circle, Country Club Manor, lost her life this morning in a fire apparently caused from a dropped lighted cigarette.

Peace Justice Alfred Davis, acting as coroner, is holding the body pending investigation to determine the cause of death.

The burning house was discovered by the dead woman's husband, Chief James O. Rouse, U. S. Navy, when he returned home at 5:30 a.m. before his planned departure for Camp Lejeune, N. C., where he had been assigned.

Sanford Fire Department was called to the scene.

Rouse said he had been out most of the night visiting friends before his planned departure. When he arrived at his home along with a Marine, who was going to accompany him to North Carolina, he discovered the fire and broke in windows and the front door.

He said he discovered his wife's body seated in a chair near the door.

Rouse said his wife had been dependent on late and in severe pain as a result of burns she received last October in a fire in their home, which was started by a cigarette.

The sailor has been in the service for the past 25 years and has served in Korea and Hawaii and other locations overseas. He has been stationed at Sanford Naval Air Station for the past 18 months.

Mrs. Rouse was pronounced dead at 6:45 a.m. by Lt. Gerald Trovay, M. D., from SNAS.



FIRE claimed the life of Mrs. Doris Rouse this morning when she suffocated as flames swept her home at 107 Anderson Circle. Asst. Fire Chief William Galley points to a charred davenport for Coroner Alfred Davis as Chief George Harriet looks on.

At Longwood Gerald Pierce Named Chief

By DONNA ESTES

Efforts of a group of loyal supporters of H. D. Shinn, who have been working door to door in the City of Longwood circulating petitions requesting the ex-police chief's reinstatement, were to no avail with action of the City Council last night in appointing Gerald L. Pierce as permanent police chief of the South Seminole municipality.

The appointment was made on recommendation of Mayor A. R. Lormann, Councilman Eugene Jaques, a constant supporter of Shinn, abstained from voting on the matter.

Petitions said to contain over 100 signatures were presented to the Board by Jaques and promptly ruled out of order with a rap of the gavel by City Attorney Gene R. Stephenson.

Standing room only was available at the City Hall for the meeting. Crowd of citizens which began arriving for the meeting before 7:30 swelled to more than 125 in numbers. When the Council Chamber was full, the doors were opened to permit the people standing on the porch to hear the proceedings.

Council Chairman E. E. Williamson told of meeting "with a couple of the councilmen and the mayor this afternoon and asking if I should speak a few words."

Harvey Coulter and W. Thomas Lovett have represented the southside owners in the suit. While County Attorney Harold Johnson has defended the council and Mack N. Cleveland Jr. entered the case on behalf of northside owners.

"Since no one knows where the true location of the road should be because of the dispute to the true action going on," he said, "it would be an injustice to the southside owners to realize the road."

Harvey Coulter and W. Thomas Lovett have represented the northside owners in the suit since 1953 until very recently a tract of land on the north side changed hands and an grab several feet of land at the expense of the landowners on the south.

"I don't know one knows where the true location of the road should be because of the dispute to the true action going on," he said, "it would be an injustice to the southside owners to realize the road."

Harvey Coulter and W. Thomas Lovett have represented the northside owners in the suit since 1953 until very recently a tract of land on the north side changed hands and an grab several feet of land at the expense of the landowners on the south.

Sand Lake Road Dispute Settled

The south is victorious in Sand Lake Road, that is — with the road was laid out by the county surveyor in 1953 in its present location and the people on both sides of the road accept the location of the road.

The suit, which has been in the courts for more than a year, was filed by southside owners when the county announced its intent to relocate the road in its latest survey right-of-way.

In a letter to opposing attorneys in the dispute, Judge Akridge said, "Inasmuch as the road was laid out by the county surveyor in 1953 in its present location and the people on both sides of the road accept the location of the road, it would be inequitable to permit the county to change its location so that land owners on the north side (who have acquiesced in its present location since 1953 until very recently a tract of land on the north side changed hands) can grab several feet of land at the expense of the landowners on the south."

"I don't know one knows where the true location of the road should be because of the dispute to the true action going on," he said, "it would be an injustice to the southside owners to realize the road."

Harvey Coulter and W. Thomas Lovett have represented the northside owners in the suit since 1953 until very recently a tract of land on the north side changed hands and an grab several feet of land at the expense of the landowners on the south.

Sewer Money Confab Slated

Pre-application conference for federal grants and loans for the planned sewerage system for the City of Altamonte Springs has been scheduled for officials of the City and the Department of Housing and Urban Development in Atlanta next Friday.

It is expected Mayor W. Lawrence Swofford, City Attorney S. Joseph Davis Jr., Councilman Keith Nixon, D. Kirk Gandy, fiscal agent, and Harold Radcliffe, city engineer, will attend the conference.

Stolen Auto Recovered

A Sanford Navy man's late model sports car, stolen Saturday from near Sanford Naval Air Station, was found yesterday afternoon abandoned three miles north of Titusville on the Enterprise Road.

Constable Irving Valno Jr., of Osteen, who located the stolen vehicle, said although the car had been turned over and stripped, papers and credentials belonging to H. B. Holmover of RVAA, owner of the car, were found intact. The matter is under investigation.

Fire Unit Re-elects Secrest

Commissioners of the Forest City Fire Control District last night re-elected Walter Secrest of Forest City as chairman of the board.

Also re-elected were Chauncey Pentz, vice chairman, and Harvey Coulter, secretary. Motion was made and carried to include all necessary items to complete the new fire station under construction in Forest City and announcement was made that the building is expected to be ready for occupancy by March 1.

A new alarm system, to be installed in the near future, (fill ring in the home of each of the 17 volunteer firemen when a call is sounded. It also was agreed that fire hose up to \$500 worth, would be purchased.

Eugene MacGree, fire chief, reported in the call during the month of January.

Next meeting of the commissioners will be at 8 p.m., March 7, at Coulter's office in 123 Forest City Shopping Center. All meetings of the board are open to the public.

CRANE'S ROOST, west of Longwood, as well as in the Lake Howell area.

Planning for additional facilities on Lake Monroe and Lake Jesup was urged. "Neither lake may ever be safe for swimming but they should be preserved for fishing and boating," he said.

Lauded was the current policy of the county of providing neighborhood recreation at school sites.

During a highway report presented by Harlan Hanson, director, it was reported traffic counts of Interstate 4 through Seminole and projections to 1985 appear well within the range of its existing capacity.

Water Pollution Survey Launched

An intensive study of water pollution problems existing within Seminole County, pinpointing all pollution areas for inclusion in proposed water control legislation, will be conducted by the Seminole County Sportsman's Association at the request of the State Legislature.

Sidney Vihlen Jr., president of the association, said today request for the study was received from Rep. Ray Mattox, Winter Haven, chairman of the air and water pollution committee and vice chairman of the natural resources and conservation committee of the state's House of Representatives.

Mattox requested the results of the study be forwarded to these legislative committees for immediate observation and action.

Vihlen appointed S. B. (Jim) Crowe as chairman of the association's water control committee, saying Crowe is knowledgeable regarding such problems. Crowe's committee will initiate this research activity immediately.

The committee will meet at 7:00 p.m. Tuesday at Sanford Atlantic National Bank. Vihlen urged attendance of all county residents who are familiar with existing pollution problems.

As an added service The Herald offers this bit of historical information: On this date in 1790 George Washington was elected the first president of the United States.

Look for a Park and Shop appliance shop to move into that storefront at First and Magnolia.

Groundhog Cooperates

LANCASTER, Pa. (AP) — The groundhog of Oriole Creek, poked "his weather-beaten" body from a burrow at the crack of dawn today. But he failed to see his shadow, meaning an early spring is on the way.

As usual, members of the Shumberger Groundhog Lodge were on the scene to see if their favorite groundhog would see his shadow.

If he had according to legend, he would be frightened back inside and winter would rage for another six weeks.

Lodge members failed to say how they can reconcile the groundhog's performance today with the calendar, which shows at least six more weeks of winter.

Lyman Hi Review Slated

Construction plans for the new Lyman High School plant will be completed by Feb. 16 and reviewed by the School Board at its 5 p.m. Feb. 26 meeting.

The plans then will be taken to Tallahassee for state approval and, it is expected, bids for the contract will be opened at 8 p.m. April 11.

Current school term ends May 28. Graduation day will be May 30 for Crooms, Lyman, Oriole and Seminole High Schools. Question whether there will be accelerated services. Schools want to discontinue them because graduating seniors... but... a spokesman for the Ministerial Association says to continue with them. School Board will decide.

Four Per Cent

TALLAHASSEE (AP) — Democratic leaders, contending Gov. Claude Kirk's tax program "out-rocket Rockefeller" today said they hope to keep the sales tax rate down to 4 per cent.

Erika Is Expecting

TALLAHASSEE (AP) — Gov. Claude Kirk announced today that Florida's first lady is expecting a child.

The governor personally walked through news offices of the sub-basement of the Capitol distributing a brief announcement saying "The event is expected to take place in early August."

Kirk smiled and received congratulations as he confirmed rumors started when Mrs. Kirk's six-year-old daughter, Adriana, spilled the news to her kindergarten classmates.

Longwood Is Hard Up Financially

Longwood is hard up financially. Councilman Eugene Jaques requested the purchase of six tires for the city fire truck. Councilman B. H. Ferrell reported "the city lacks 90 cents of having enough funds to pay its current bills."

Overboard downtown: "City Commissioner Lee Moore is a good, strong thinker and one who will develop into an important political voice in the future," Ferrell refreshing, too, considering that Lee's a novice at politics.

4 OZ. FAMILY TUN
LUSTRE CREME PINK SHAMPOO
REG. \$1.25 - Limit One
96¢

4 OZ. BOURJOIS FRENCH LACE DUSTING POWDER
REG. \$1.25 - Limit One
53¢

3 OZ. PEPSODENT FAMILY SIZE TOOTH PASTE
REG. 99¢ - Limit One
57¢

13 OZ. 8 1/2 HARD TO HOLD
STYLE HAIR SPRAY
REG. 99¢ - Limit One
49¢

1 OZ. JERGENS SKIN LOTION
EXTRA RICH
REG. 78¢
59¢

1 OZ. PHILLIPS MILK OF CALABAR
REG. 54¢
54¢

14 OZ. SIZE LISTERINE MOUTHWASH
REG. \$1.19 - Limit One
59¢

1 OZ. AERO SHAVE
REG. 49¢
49¢

1 OZ. NEO-SYNEPHRINE
REG. 57¢
57¢

3 FOR 9¢
CANDY GUM or MINTS

TOASTMASTER BROILER
COMPARE AT \$16.50
11.99

PERCOLATOR
COMPARE AT \$4.99
4.99

PRESTO CAST ALUMINUM PRESSURE COOKER
COMPARE AT \$11.99
11.99

PERSONNA STAINLESS STEEL BLADES
DOUBLE EDGE 5 1/2"
REG. 79¢ - Limit One
29¢

30" UNPAINTED BAR STOOL
COMPARE AT \$4.95
3.99

FOLDING BED WITH MATTRESS
COMPARE AT \$14.95
8.88

5 SHELVES STEEL SHELVING
COMPARE AT \$6.99
6.99

CHILDREN'S SNEAKERS
CANVAS - WITH RUBBER SOLES - ASSORTED COLORS AND SIZES
COMPARE AT \$11.95
9.99

EVEREADY FLASHLIGHT BATTERIES
2 For
29¢

SIX PC. STEAK KNIFE SET
WITH STAG HANDLES
SAVE NOW
COMPARE AT \$11.99
7.8¢

EVEREADY ALL PLASTIC FLASHLIGHT
ASSORTED COLORS - WITH BULK BATTERIES NOT INCLUDED
LIMIT ONE
58¢

10 TRANS RADIO
COMPARE AT \$11.99
6.99

2 FOR 1 Kodak Film & Film Prints

SLIP-ON SHOES
COMPARE AT \$1.99
1.99

SINGLE MIRACH GRILLS
COMPARE AT \$3.99
3.99

IDEAL HOOK ASSORTMENT
COMPARE AT \$1.99
1.99

SPRAY PAINT
COMPARE AT \$1.99
1.99

ZIBCO ROD AND REEL SET
COMPARE AT \$5.99
5.99

PAINT TRAY & ROLLER SET
COMPARE AT \$1.99
66¢

STYLING BRUSH
COMPARE AT \$2.99
2.99

TOOTHBRUSHES
COMPARE AT \$2.22
2.22

RID-X
COMPARE AT \$9.99
9.99

PAR & COVER SET
COMPARE AT \$2.99
2.99

CITY GOVERNMENT

is the topic of conversation of members of the eighth grade civic club at All South Parochial School and Sanford City Commissioner M. L. Raborn. With the commissioner are (left to right) Deborah George, Brenda Belitto, Paula Ceynowa, Teresa Ryan and Jennifer Burke. (Herald Photo)

W. A. MYERS, scoutmaster

of the newly formed Geneva Boy Scout Troop 509 and Cub Scout Pack, stands by sign of the emblem which has been erected at First Methodist Church of Geneva, scout sponsor, where weekly meetings of boys are held at 7:30 p.m. each Wednesday. (Herald Photo)

DR. GEORGE BECKWITH

optometrist who opened offices Thursday in Deltona Medical Arts Building, checks patient. Presently a resident of Daytona Beach, he has had special work in motor perceptual training in children's vision. He has announced all patients more than 40 years old will receive a routine glaucoma check at no extra charge. (Herald Photo)

A-Missile Warheads In Need Of Much Work

WASHINGTON (AP) — The United States disclosed today much work remains to be done on its newest nuclear missile warheads.

But officials voiced confidence that "real, reliable hardware" would be ready for production when newly expanded plants are opened to handle the work.

Word that further, non-nuclear development work remains to be done on the warheads came out only two days after the Atomic Energy Commission revealed plans for a major new expansion of eight of its weapons production plants.

In the earlier disclosure, the AEC said the expansion was designed to produce nuclear warheads for the Sentinel antiballistic missile system, a defense against any Red Chinese nuclear threat. Other advanced weapons systems, including the submarine-launched Poseidon and the land-based Minuteman 3, also will be produced in the expanded plants.

"The word" of these missiles are not real "come out after a report asked the AEC for amplification of a letter reference to the commission's annual report today to Congress, declaring:

"A major effort (in weapons development) is being devoted to the development of new nuclear warheads required by the Department of Defense."

One AEC weapons official said prototypes of all the new missiles "have been tested successfully, and we are sure of the concepts, but details of design remain to produce 'real, reliable hardware' capable of being readily used by the armed forces."

Expansion of the weapons

Now NEVER CLEAN YOUR TOILET AGAIN
DuraSan

Sanitizes, disinfects, deodorizes, and kills germs. Kills 99.9% of all germs. Kills 99.9% of all germs. Kills 99.9% of all germs.

U. V. F. COMPANY
CHULUOTA, FLA. 32936

DOUBLE HIRACH GRILLS
COMPARE AT \$7.99
7.99

TOOTHBRUSHES
COMPARE AT \$2.22
2.22

SPRAY PAINT
COMPARE AT \$1.99
1.99

RID-X
COMPARE AT \$9.99
9.99

History Of Hats Highlights Club Coffee In Lake Mary

By VERA BROWN
 With a history of hats in the background, the members of the Lake Mary Women's Club gathered for a meeting at the home of Mrs. M. J. Jones, president of the club, on Tuesday, Feb. 11, to discuss the history of hats.

Following the coffee, Jerry Smith, program chairman, introduced Mrs. Victoria Gable of Jacksonville, who presented an interesting history of hats, dating back from 1880 to the present time.

Mrs. Gable's presentation was followed by a presentation by Mrs. M. J. Jones, who presented a collection of hats from the 1880s to the 1950s. The hats were displayed in the room. They were the latest spring styles from J. C. Penney.

Mrs. Gable's presentation was followed by a presentation by Mrs. M. J. Jones, who presented a collection of hats from the 1880s to the 1950s. The hats were displayed in the room. They were the latest spring styles from J. C. Penney.

Mrs. Gable's presentation was followed by a presentation by Mrs. M. J. Jones, who presented a collection of hats from the 1880s to the 1950s. The hats were displayed in the room. They were the latest spring styles from J. C. Penney.

Mrs. Gable's presentation was followed by a presentation by Mrs. M. J. Jones, who presented a collection of hats from the 1880s to the 1950s. The hats were displayed in the room. They were the latest spring styles from J. C. Penney.

Mrs. Gable's presentation was followed by a presentation by Mrs. M. J. Jones, who presented a collection of hats from the 1880s to the 1950s. The hats were displayed in the room. They were the latest spring styles from J. C. Penney.

Mrs. Gable's presentation was followed by a presentation by Mrs. M. J. Jones, who presented a collection of hats from the 1880s to the 1950s. The hats were displayed in the room. They were the latest spring styles from J. C. Penney.

Mrs. Gable's presentation was followed by a presentation by Mrs. M. J. Jones, who presented a collection of hats from the 1880s to the 1950s. The hats were displayed in the room. They were the latest spring styles from J. C. Penney.

Mrs. Gable's presentation was followed by a presentation by Mrs. M. J. Jones, who presented a collection of hats from the 1880s to the 1950s. The hats were displayed in the room. They were the latest spring styles from J. C. Penney.

Mrs. Gable's presentation was followed by a presentation by Mrs. M. J. Jones, who presented a collection of hats from the 1880s to the 1950s. The hats were displayed in the room. They were the latest spring styles from J. C. Penney.

Miss Powell Engaged To Mr. Hodges

Mr. and Mrs. Vernon L. Powell of Inglewood, Texas, are announcing the engagement and approaching marriage of their daughter, Laura Jean, to Joseph L. Hodges Jr., son of Mrs. Joseph L. Hodges of Sanford and the late Mr. Hodges.

Miss Powell attended schools in Texas, Austria, and is a 1967 graduate of Inglewood High School. She is presently a student at Del Mar College, Inglewood.

Mr. Hodges, a 1968 graduate of Seminole High School, entered the Army in January, 1967, and is currently stationed with a Parachute Unit near Stuttgart, Germany. He is the grandson of Mr. and Mrs. A. B. Egan of Sanford and Mr. John D. Hodges, all of Martinsville, Va.

The wedding will be an event of Feb. 11, at 4 p.m. at Southside Baptist Church, Sanford, Texas.

Mrs. Powell attended schools in Texas, Austria, and is a 1967 graduate of Inglewood High School. She is presently a student at Del Mar College, Inglewood.

Mr. Hodges, a 1968 graduate of Seminole High School, entered the Army in January, 1967, and is currently stationed with a Parachute Unit near Stuttgart, Germany. He is the grandson of Mr. and Mrs. A. B. Egan of Sanford and Mr. John D. Hodges, all of Martinsville, Va.

The wedding will be an event of Feb. 11, at 4 p.m. at Southside Baptist Church, Sanford, Texas.

Mrs. Powell attended schools in Texas, Austria, and is a 1967 graduate of Inglewood High School. She is presently a student at Del Mar College, Inglewood.

Mr. Hodges, a 1968 graduate of Seminole High School, entered the Army in January, 1967, and is currently stationed with a Parachute Unit near Stuttgart, Germany. He is the grandson of Mr. and Mrs. A. B. Egan of Sanford and Mr. John D. Hodges, all of Martinsville, Va.

The wedding will be an event of Feb. 11, at 4 p.m. at Southside Baptist Church, Sanford, Texas.

Mrs. Powell attended schools in Texas, Austria, and is a 1967 graduate of Inglewood High School. She is presently a student at Del Mar College, Inglewood.

Rebekahs Conduct Initiation Rites

By MRS. CLARENCE ENDER
 A new member, Theodore Schneider, of Orange City, was initiated into the Rebekah Lodge No. 45 at the first meeting under the new officers for 1968. Mrs. Myrtle Wallis, noble grand, presided at the regular meeting.

A special degree staff presided for the initiation with Mrs. Eileen Rector as noble grand and Mrs. Virginia Roche as vice grand.

Mrs. Wallis named her committee for the coming year. They are finance, Mrs. Bertha Snyder; Mrs. Virginia Roche and Mrs. Eva Williams; initiation and floor work, Mrs. Eileen Rector; courtiers, Mrs. Ebel Moore; flowers, Mrs. Bertha Snyder; publicity, Virginia Roche and Bertha Snyder; ex-amining, Nell Patrell, Aileen Ganes and Hazel Gilhilly; auditing, Hazel Gilhilly, Elizabeth Hamm and Henrietta Helms.

The ceremony was presided over by Mrs. Eileen Rector, left, as acting Noble Grand for the initiation ceremony for Seminole Rebekah Lodge. With her, left to right, are Theodore Schneider, assistant guardian of Rebekahs of Florida; Mrs. Schneider, new member who was initiated at this meeting and Mrs. Myrtle Wallis, Noble Grand of Rebekah Lodge No. 45.

Mrs. Eileen Rector, left, as acting Noble Grand for the initiation ceremony for Seminole Rebekah Lodge. With her, left to right, are Theodore Schneider, assistant guardian of Rebekahs of Florida; Mrs. Schneider, new member who was initiated at this meeting and Mrs. Myrtle Wallis, Noble Grand of Rebekah Lodge No. 45.

Mrs. Eileen Rector, left, as acting Noble Grand for the initiation ceremony for Seminole Rebekah Lodge. With her, left to right, are Theodore Schneider, assistant guardian of Rebekahs of Florida; Mrs. Schneider, new member who was initiated at this meeting and Mrs. Myrtle Wallis, Noble Grand of Rebekah Lodge No. 45.

Mrs. Eileen Rector, left, as acting Noble Grand for the initiation ceremony for Seminole Rebekah Lodge. With her, left to right, are Theodore Schneider, assistant guardian of Rebekahs of Florida; Mrs. Schneider, new member who was initiated at this meeting and Mrs. Myrtle Wallis, Noble Grand of Rebekah Lodge No. 45.

Mrs. Eileen Rector, left, as acting Noble Grand for the initiation ceremony for Seminole Rebekah Lodge. With her, left to right, are Theodore Schneider, assistant guardian of Rebekahs of Florida; Mrs. Schneider, new member who was initiated at this meeting and Mrs. Myrtle Wallis, Noble Grand of Rebekah Lodge No. 45.

Mrs. Eileen Rector, left, as acting Noble Grand for the initiation ceremony for Seminole Rebekah Lodge. With her, left to right, are Theodore Schneider, assistant guardian of Rebekahs of Florida; Mrs. Schneider, new member who was initiated at this meeting and Mrs. Myrtle Wallis, Noble Grand of Rebekah Lodge No. 45.

Mrs. Eileen Rector, left, as acting Noble Grand for the initiation ceremony for Seminole Rebekah Lodge. With her, left to right, are Theodore Schneider, assistant guardian of Rebekahs of Florida; Mrs. Schneider, new member who was initiated at this meeting and Mrs. Myrtle Wallis, Noble Grand of Rebekah Lodge No. 45.

Mrs. Eileen Rector, left, as acting Noble Grand for the initiation ceremony for Seminole Rebekah Lodge. With her, left to right, are Theodore Schneider, assistant guardian of Rebekahs of Florida; Mrs. Schneider, new member who was initiated at this meeting and Mrs. Myrtle Wallis, Noble Grand of Rebekah Lodge No. 45.

Ground Force Reserves Call Not Imminent, Military Say

WASHINGTON (AP)—Military officials say they do not foresee any imminent call-up of ground force reserves as the United States reads today a message to recover the USS Pueblo through talks with her North Korean captors.

These were the major developments in the ongoing Asia crisis: —The State Department announced Thursday U.S. military officials say they do not foresee any imminent call-up of ground force reserves as the United States reads today a message to recover the USS Pueblo through talks with her North Korean captors.

These were the major developments in the ongoing Asia crisis: —The State Department announced Thursday U.S. military officials say they do not foresee any imminent call-up of ground force reserves as the United States reads today a message to recover the USS Pueblo through talks with her North Korean captors.

These were the major developments in the ongoing Asia crisis: —The State Department announced Thursday U.S. military officials say they do not foresee any imminent call-up of ground force reserves as the United States reads today a message to recover the USS Pueblo through talks with her North Korean captors.

These were the major developments in the ongoing Asia crisis: —The State Department announced Thursday U.S. military officials say they do not foresee any imminent call-up of ground force reserves as the United States reads today a message to recover the USS Pueblo through talks with her North Korean captors.

These were the major developments in the ongoing Asia crisis: —The State Department announced Thursday U.S. military officials say they do not foresee any imminent call-up of ground force reserves as the United States reads today a message to recover the USS Pueblo through talks with her North Korean captors.

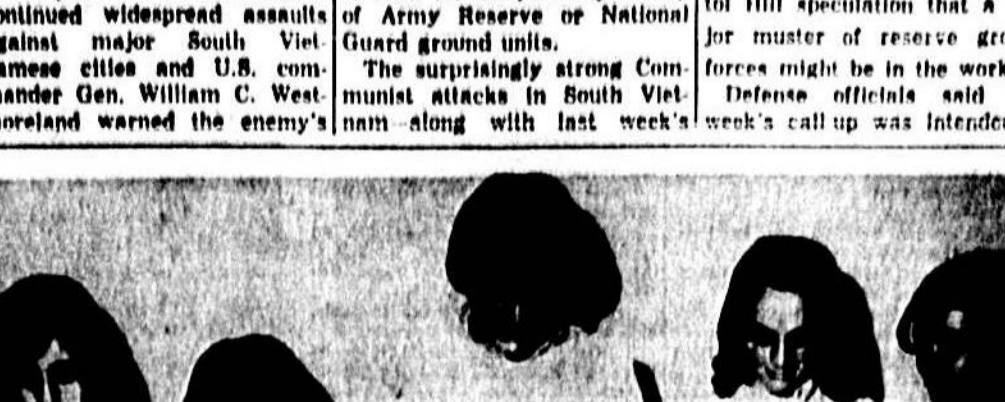
These were the major developments in the ongoing Asia crisis: —The State Department announced Thursday U.S. military officials say they do not foresee any imminent call-up of ground force reserves as the United States reads today a message to recover the USS Pueblo through talks with her North Korean captors.

These were the major developments in the ongoing Asia crisis: —The State Department announced Thursday U.S. military officials say they do not foresee any imminent call-up of ground force reserves as the United States reads today a message to recover the USS Pueblo through talks with her North Korean captors.

These were the major developments in the ongoing Asia crisis: —The State Department announced Thursday U.S. military officials say they do not foresee any imminent call-up of ground force reserves as the United States reads today a message to recover the USS Pueblo through talks with her North Korean captors.

These were the major developments in the ongoing Asia crisis: —The State Department announced Thursday U.S. military officials say they do not foresee any imminent call-up of ground force reserves as the United States reads today a message to recover the USS Pueblo through talks with her North Korean captors.

These were the major developments in the ongoing Asia crisis: —The State Department announced Thursday U.S. military officials say they do not foresee any imminent call-up of ground force reserves as the United States reads today a message to recover the USS Pueblo through talks with her North Korean captors.



STUFFING envelopes for Seminole-DeBary Heart Association to the tunes of foot-tapping rhythms, these Sanford Junior High seventh graders met at the home of Melony Siockowski (right) for afternoon of work followed by "cook your own" hamburger supper. Others in the "assembly line" are (from left) Francine Williams, Cecilia Stapleton, Wanda Watkins and Brenda Griggs.

STUFFING envelopes for Seminole-DeBary Heart Association to the tunes of foot-tapping rhythms, these Sanford Junior High seventh graders met at the home of Melony Siockowski (right) for afternoon of work followed by "cook your own" hamburger supper. Others in the "assembly line" are (from left) Francine Williams, Cecilia Stapleton, Wanda Watkins and Brenda Griggs.

STUFFING envelopes for Seminole-DeBary Heart Association to the tunes of foot-tapping rhythms, these Sanford Junior High seventh graders met at the home of Melony Siockowski (right) for afternoon of work followed by "cook your own" hamburger supper. Others in the "assembly line" are (from left) Francine Williams, Cecilia Stapleton, Wanda Watkins and Brenda Griggs.

STUFFING envelopes for Seminole-DeBary Heart Association to the tunes of foot-tapping rhythms, these Sanford Junior High seventh graders met at the home of Melony Siockowski (right) for afternoon of work followed by "cook your own" hamburger supper. Others in the "assembly line" are (from left) Francine Williams, Cecilia Stapleton, Wanda Watkins and Brenda Griggs.

STUFFING envelopes for Seminole-DeBary Heart Association to the tunes of foot-tapping rhythms, these Sanford Junior High seventh graders met at the home of Melony Siockowski (right) for afternoon of work followed by "cook your own" hamburger supper. Others in the "assembly line" are (from left) Francine Williams, Cecilia Stapleton, Wanda Watkins and Brenda Griggs.

STUFFING envelopes for Seminole-DeBary Heart Association to the tunes of foot-tapping rhythms, these Sanford Junior High seventh graders met at the home of Melony Siockowski (right) for afternoon of work followed by "cook your own" hamburger supper. Others in the "assembly line" are (from left) Francine Williams, Cecilia Stapleton, Wanda Watkins and Brenda Griggs.

STUFFING envelopes for Seminole-DeBary Heart Association to the tunes of foot-tapping rhythms, these Sanford Junior High seventh graders met at the home of Melony Siockowski (right) for afternoon of work followed by "cook your own" hamburger supper. Others in the "assembly line" are (from left) Francine Williams, Cecilia Stapleton, Wanda Watkins and Brenda Griggs.

STUFFING envelopes for Seminole-DeBary Heart Association to the tunes of foot-tapping rhythms, these Sanford Junior High seventh graders met at the home of Melony Siockowski (right) for afternoon of work followed by "cook your own" hamburger supper. Others in the "assembly line" are (from left) Francine Williams, Cecilia Stapleton, Wanda Watkins and Brenda Griggs.

STUFFING envelopes for Seminole-DeBary Heart Association to the tunes of foot-tapping rhythms, these Sanford Junior High seventh graders met at the home of Melony Siockowski (right) for afternoon of work followed by "cook your own" hamburger supper. Others in the "assembly line" are (from left) Francine Williams, Cecilia Stapleton, Wanda Watkins and Brenda Griggs.

STUFFING envelopes for Seminole-DeBary Heart Association to the tunes of foot-tapping rhythms, these Sanford Junior High seventh graders met at the home of Melony Siockowski (right) for afternoon of work followed by "cook your own" hamburger supper. Others in the "assembly line" are (from left) Francine Williams, Cecilia Stapleton, Wanda Watkins and Brenda Griggs.

Although saying the United States is willing to talk to North Korea, administration authorities revealed it took a year of negotiations for two U.S. helicopter pilots who strayed across the armistice line into North Korea to be returned.

The two American aviators were captured by the North Koreans on May 17, 1963. The pilots, Capt. Carl W. Volz, told Thursday they were held in a camp in North Korea.

One of the pilots, Capt. Carl W. Volz, told Thursday they were held in a camp in North Korea. He said they were held in a camp in North Korea.

One of the pilots, Capt. Carl W. Volz, told Thursday they were held in a camp in North Korea. He said they were held in a camp in North Korea.

One of the pilots, Capt. Carl W. Volz, told Thursday they were held in a camp in North Korea. He said they were held in a camp in North Korea.

One of the pilots, Capt. Carl W. Volz, told Thursday they were held in a camp in North Korea. He said they were held in a camp in North Korea.

One of the pilots, Capt. Carl W. Volz, told Thursday they were held in a camp in North Korea. He said they were held in a camp in North Korea.

One of the pilots, Capt. Carl W. Volz, told Thursday they were held in a camp in North Korea. He said they were held in a camp in North Korea.

One of the pilots, Capt. Carl W. Volz, told Thursday they were held in a camp in North Korea. He said they were held in a camp in North Korea.

One of the pilots, Capt. Carl W. Volz, told Thursday they were held in a camp in North Korea. He said they were held in a camp in North Korea.

One of the pilots, Capt. Carl W. Volz, told Thursday they were held in a camp in North Korea. He said they were held in a camp in North Korea.

Chuluota Club Invites Public To Exhibition

Mrs. Thomas Angle, newly elected president of Chuluota His and Her Garden Club, announced that the Feb. 5 meeting of the group will be held at the Community Building, through the courtesy of the Greater Chuluota Community Club.

The 7:30 p.m. business meeting will be followed by an exhibition of obedience trained dogs at 8 p.m. Residents of the community are cordially invited to attend the exhibition.

The dogs in different stages of training from beginners to dogs which have earned their American Kennel Club U.S. degree (Utility Dog) will be from classes of the Orlando Poodle Club and of the Orlando Dog Training Club, an all breed club.

"Our meetings usually are held at the homes of our members," Mrs. Angle said, "but we thought this February program would be of interest to all residents of the community and we will try to accommodate as many as possible."

The handlers and their dogs will demonstrate the advantages of having a happy, obedient dog and show they are a joy to own and good neighbors.

The handlers and their dogs will demonstrate the advantages of having a happy, obedient dog and show they are a joy to own and good neighbors.

The handlers and their dogs will demonstrate the advantages of having a happy, obedient dog and show they are a joy to own and good neighbors.

Woman's Club Sets Meeting

The Sanford Woman's Club will meet Wednesday, Feb. 7, for a luncheon, business and program meeting.

Mrs. Douglas Stromstrom and her committee will be in charge of the luncheon at 12 noon. All members desiring to come for luncheon are asked to contact Mrs. James M. Egan at 222-7470 or any other member of the reservation committee.

Mrs. Henry H. Carleton, state president of Florida Federation of Women's Clubs will be the guest speaker.

Ladies who have not turned in their recipes for the cook book that the club is having printed, must do so on this date.

Ladies who have not turned in their recipes for the cook book that the club is having printed, must do so on this date.

Ladies who have not turned in their recipes for the cook book that the club is having printed, must do so on this date.

Ladies who have not turned in their recipes for the cook book that the club is having printed, must do so on this date.

Ladies who have not turned in their recipes for the cook book that the club is having printed, must do so on this date.

Mrs. Jeff Elliott Honored

By CAROL JAGUES
 Mrs. Jeff Elliott was guest of honor at a surprise party given Monday evening at the Longwood home of Mrs. Mary Mobley. Mrs. Arva Barnes was co-hostess for the event.

The large assortment of gifts was placed in a basket, decorated with a ruffled skirt of white and blue tulle. The gifts included a large sheet cake, embossed in pastel pink and blue, accented by tall blue tapers. At one end of the table was a crystal punch bowl.

Other guests included Mrs. Ruth Elliott, mother-in-law of the honoree; Mrs. Harry West, sister of the honoree; Mrs. Wayne Morris, Mr. and Mrs. Stan D. Trahan, Mr. and Mrs. William Gerice, Mr. and Mrs. Paul E. Crause, Mr. and Mrs. Earle Oakley, Mr. and Mrs. Jack Miller, Mr. and Mrs. Robert Keys and the hostess, Mrs. Carl Fowler and Mrs. and Mrs. Raymond Kimball.

Other guests included Mrs. Ruth Elliott, mother-in-law of the honoree; Mrs. Harry West, sister of the honoree; Mrs. Wayne Morris, Mr. and Mrs. Stan D. Trahan, Mr. and Mrs. William Gerice, Mr. and Mrs. Paul E. Crause, Mr. and Mrs. Earle Oakley, Mr. and Mrs. Jack Miller, Mr. and Mrs. Robert Keys and the hostess, Mrs. Carl Fowler and Mrs. and Mrs. Raymond Kimball.

Other guests included Mrs. Ruth Elliott, mother-in-law of the honoree; Mrs. Harry West, sister of the honoree; Mrs. Wayne Morris, Mr. and Mrs. Stan D. Trahan, Mr. and Mrs. William Gerice, Mr. and Mrs. Paul E. Crause, Mr. and Mrs. Earle Oakley, Mr. and Mrs. Jack Miller, Mr. and Mrs. Robert Keys and the hostess, Mrs. Carl Fowler and Mrs. and Mrs. Raymond Kimball.

Other guests included Mrs. Ruth Elliott, mother-in-law of the honoree; Mrs. Harry West, sister of the honoree; Mrs. Wayne Morris, Mr. and Mrs. Stan D. Trahan, Mr. and Mrs. William Gerice, Mr. and Mrs. Paul E. Crause, Mr. and Mrs. Earle Oakley, Mr. and Mrs. Jack Miller, Mr. and Mrs. Robert Keys and the hostess, Mrs. Carl Fowler and Mrs. and Mrs. Raymond Kimball.

Other guests included Mrs. Ruth Elliott, mother-in-law of the honoree; Mrs. Harry West, sister of the honoree; Mrs. Wayne Morris, Mr. and Mrs. Stan D. Trahan, Mr. and Mrs. William Gerice, Mr. and Mrs. Paul E. Crause, Mr. and Mrs. Earle Oakley, Mr. and Mrs. Jack Miller, Mr. and Mrs. Robert Keys and the hostess, Mrs. Carl Fowler and Mrs. and Mrs. Raymond Kimball.

Other guests included Mrs. Ruth Elliott, mother-in-law of the honoree; Mrs. Harry West, sister of the honoree; Mrs. Wayne Morris, Mr. and Mrs. Stan D. Trahan, Mr. and Mrs. William Gerice, Mr. and Mrs. Paul E. Crause, Mr. and Mrs. Earle Oakley, Mr. and Mrs. Jack Miller, Mr. and Mrs. Robert Keys and the hostess, Mrs. Carl Fowler and Mrs. and Mrs. Raymond Kimball.

Student Government at SJC Holding Elections

The Student Government at SJC is holding elections for its 20th straight year. The election will be held on Thursday, Feb. 14, at 8:00 p.m. in the Student Center.

The Student Government at SJC is holding elections for its 20th straight year. The election will be held on Thursday, Feb. 14, at 8:00 p.m. in the Student Center.

The Student Government at SJC is holding elections for its 20th straight year. The election will be held on Thursday, Feb. 14, at 8:00 p.m. in the Student Center.

The Student Government at SJC is holding elections for its 20th straight year. The election will be held on Thursday, Feb. 14, at 8:00 p.m. in the Student Center.

The Student Government at SJC is holding elections for its 20th straight year. The election will be held on Thursday, Feb. 14, at 8:00 p.m. in the Student Center.

The Student Government at SJC is holding elections for its 20th straight year. The election will be held on Thursday, Feb. 14, at 8:00 p.m. in the Student Center.

The Student Government at SJC is holding elections for its 20th straight year. The election will be held on Thursday, Feb. 14, at 8:00 p.m. in the Student Center.

The Student Government at SJC is holding elections for its 20th straight year. The election will be held on Thursday, Feb. 14, at 8:00 p.m. in the Student Center.

Birthday Of 16th President Unobserved In Southland

By ARLEEN ABRAHAM
 AP News Service
 "This is the South, son," replied John Wessels, aide to the governor of Virginia, when asked if Virginia celebrates the Feb. 12-Abraham Lincoln's birthday—as a legal holiday.

Neither does Alabama, Arkansas, Florida, Georgia, Louisiana, North Carolina, South Carolina, Mississippi, Tennessee, Texas and Virginia. Lee, regarded by many military authorities as the ablest strategist during the Civil War, actually loved the Union and was forced to make a difficult decision as to where his loyalty lay.

Neither does Alabama, Arkansas, Florida, Georgia, Louisiana, North Carolina, South Carolina, Mississippi, Tennessee, Texas and Virginia. Lee, regarded by many military authorities as the ablest strategist during the Civil War, actually loved the Union and was forced to make a difficult decision as to where his loyalty lay.

Neither does Alabama, Arkansas, Florida, Georgia, Louisiana, North Carolina, South Carolina, Mississippi, Tennessee, Texas and Virginia. Lee, regarded by many military authorities as the ablest strategist during the Civil War, actually loved the Union and was forced to make a difficult decision as to where his loyalty lay.

Neither does Alabama, Arkansas, Florida, Georgia, Louisiana, North Carolina, South Carolina, Mississippi, Tennessee, Texas and Virginia. Lee, regarded by many military authorities as the ablest strategist during the Civil War, actually loved the Union and was forced to make a difficult decision as to where his loyalty lay.

Neither does Alabama, Arkansas, Florida, Georgia, Louisiana, North Carolina, South Carolina, Mississippi, Tennessee, Texas and Virginia. Lee, regarded by many military authorities as the ablest strategist during the Civil War, actually loved the Union and was forced to make a difficult decision as to where his loyalty lay.

Neither does Alabama, Arkansas, Florida, Georgia, Louisiana, North Carolina, South Carolina, Mississippi, Tennessee, Texas and Virginia. Lee, regarded by many military authorities as the ablest strategist during the Civil War, actually loved the Union and was forced to make a difficult decision as to where his loyalty lay.

Neither does Alabama, Arkansas, Florida, Georgia, Louisiana, North Carolina, South Carolina, Mississippi, Tennessee, Texas and Virginia. Lee, regarded by many military authorities as the ablest strategist during the Civil War, actually loved the Union and was forced to make a difficult decision as to where his loyalty lay.

INSURANCE SERVICE CRUMLEY-MONTEITH, INC.

500 W. First St. Sanford 122-0378

A&P INSTANT COFFEE

10-oz. JAR 89¢

FULLY COOKED HAMS

49¢ 39¢

MILK 1-GAL \$1.09

A&P Spinach 10c

POTATOES 10 LB. BAG 59¢

Penneys
 ALWAYS FIRST QUALITY

SPECIAL BUY!
 Whipped Cream® crepe shifts
 Pretty reminders of spring!
 ONLY 5.99 EACH

Especially fit this cool Penney-low priced Cream Whipped Cream® (Dairy) polyester crepe shifts have a marvelous texture... a rich feel! They machine wash and drip-dry ready to go again! Plenty of styles to choose from in misses and half-size. Lots of pastel prints.

CHARGE IT! LAY-A-WAY! in Sanford Plaza OPEN 10 A.M. TO 9 P.M. MONDAY THROUGH SATURDAY

Betty Anne's
 Hair Styling Salon

OPEN 26 YEARS
 At Four & Palm
 (Across from the bank)

Sanford Furniture Co.
 • Carpets • Rugs
 • Drapes • Blinds
 • Upholstery

Wesley Class
 Meets Monday

The Daughters of Wesley Sunday School Class of the First Methodist Church will meet for their regular lesson and social meeting in Fellowship Hall at 2:30 p.m. Feb. 5. Mrs. V. B. Jennings and her committee will serve as hostesses.

Wesley Class
 To Finalize Plans For Card Benefit

Final plans for the benefit concert party to be held at 12:30 p.m. Feb. 13, will be made by the Wesley Class of the First Methodist Church. The concert will be held at the clubhouse on Overlook Drive.

Wesley Class
 To Meet Tonight

Members of the Wesley Class will meet for their regular lesson and social meeting in Fellowship Hall at 2:30 p.m. Feb. 5. Mrs. V. B. Jennings and her committee will serve as hostesses.

Allies Crashing Commie Offenses; Red Control Hue

South Vietnamese officials said today their forces were crushing the biggest Communist offensive of the war with skyrocketing losses to the enemy. But the troops were reported in control of much of Hue, the ancient imperial capital, and South Vietnamese dive-bombers still roared over the streets of Saigon attacking Viet Cong hideouts.

Associated Press correspondent

John Temple reported from Hue that the weekly record of 371 last May, during a period of heavy shelling of Marine posts below the DMZ.

Fighting in Saigon raged around the capital's biggest hospital, Cho Ray, the race track and the southwestern section and the South Vietnamese armored headquarters in the northwest. A government police station was reported overrun. The Viet Cong had cut the

roads around Saigon, and food shortages were becoming a critical problem for the city's 3 million residents and refugees from the suburbs.

Machine-gun fire rained around the hospital, which was already crowded with casualties. The hospital's American staff was evacuated. Helicopters bringing emergency food supplies were fired on by Viet Cong snipers. Another hospital reported treating 300 civilian

casualties in the last 48 hours. U.S. troops repulsed an attack on a supply company depot near the dock area. On the main highway from Saigon to Hue, they recaptured a bridge and reported killing 11 Viet Cong.

Scattered sniper fire was reported during Thursday night at Tan Son Nhut airbase. The air port was open to traffic, but U. S. officials said snipers had canceled flights into Saigon.

Reliable sources reported the Viet Cong had seized some American and Vietnamese police jeeps and were driving around shooting from them.

Elsewhere, fierce fighting was reported at the airfield in the provincial capital of Vinh Long, 70 miles south of Saigon in the Mekong Delta. A U.S. Navy base for river patrol boats was evacuated and a company of U.S. 9th Infantry Division troops was flown in. About 400 enemy

troops were reported inside the city.

Fighting also continued at My Tho, the delta's biggest city 30 miles south of Saigon. South Vietnamese troops reported killing 180 Viet Cong just outside the city.

Attacks were reported for the first time on Baria, 30 miles southeast of Saigon, and Phung Thiep, 30 miles north of the capital.

Communist troops were reported to have made their way into Moc Hoa, a provincial capital 80 miles southwest of Saigon.

Reports from Dalet, the mountain resort 140 miles north of Saigon, said enemy forces still were in the town.

In the far north, U.S. spokesmen reported Quang Tri, 19 miles south of the demilitarized zone, was back in allied hands after two days of heavy fighting.

Sanford Vegetable Report

Shipping point information for Thursday, Feb. 1. All sales FOB for stock of generally good quality unless otherwise stated. Precooling charges extra.

Sanford-Dixie-Edgewood districts:

Cabbage—Practically no demand. Harvesting light. Top sales to establish a market. Few booked open.

Celery—Offerings light. Top end washed, mesh bags, 25 lb. mesh, 40 lb. mesh, 50 lb. mesh, 60 lb. mesh, 70 lb. mesh, 80 lb. mesh, 90 lb. mesh, 100 lb. mesh, 110 lb. mesh, 120 lb. mesh, 130 lb. mesh, 140 lb. mesh, 150 lb. mesh, 160 lb. mesh, 170 lb. mesh, 180 lb. mesh, 190 lb. mesh, 200 lb. mesh, 210 lb. mesh, 220 lb. mesh, 230 lb. mesh, 240 lb. mesh, 250 lb. mesh, 260 lb. mesh, 270 lb. mesh, 280 lb. mesh, 290 lb. mesh, 300 lb. mesh, 310 lb. mesh, 320 lb. mesh, 330 lb. mesh, 340 lb. mesh, 350 lb. mesh, 360 lb. mesh, 370 lb. mesh, 380 lb. mesh, 390 lb. mesh, 400 lb. mesh, 410 lb. mesh, 420 lb. mesh, 430 lb. mesh, 440 lb. mesh, 450 lb. mesh, 460 lb. mesh, 470 lb. mesh, 480 lb. mesh, 490 lb. mesh, 500 lb. mesh, 510 lb. mesh, 520 lb. mesh, 530 lb. mesh, 540 lb. mesh, 550 lb. mesh, 560 lb. mesh, 570 lb. mesh, 580 lb. mesh, 590 lb. mesh, 600 lb. mesh, 610 lb. mesh, 620 lb. mesh, 630 lb. mesh, 640 lb. mesh, 650 lb. mesh, 660 lb. mesh, 670 lb. mesh, 680 lb. mesh, 690 lb. mesh, 700 lb. mesh, 710 lb. mesh, 720 lb. mesh, 730 lb. mesh, 740 lb. mesh, 750 lb. mesh, 760 lb. mesh, 770 lb. mesh, 780 lb. mesh, 790 lb. mesh, 800 lb. mesh, 810 lb. mesh, 820 lb. mesh, 830 lb. mesh, 840 lb. mesh, 850 lb. mesh, 860 lb. mesh, 870 lb. mesh, 880 lb. mesh, 890 lb. mesh, 900 lb. mesh, 910 lb. mesh, 920 lb. mesh, 930 lb. mesh, 940 lb. mesh, 950 lb. mesh, 960 lb. mesh, 970 lb. mesh, 980 lb. mesh, 990 lb. mesh, 1000 lb. mesh, 1010 lb. mesh, 1020 lb. mesh, 1030 lb. mesh, 1040 lb. mesh, 1050 lb. mesh, 1060 lb. mesh, 1070 lb. mesh, 1080 lb. mesh, 1090 lb. mesh, 1100 lb. mesh, 1110 lb. mesh, 1120 lb. mesh, 1130 lb. mesh, 1140 lb. mesh, 1150 lb. mesh, 1160 lb. mesh, 1170 lb. mesh, 1180 lb. mesh, 1190 lb. mesh, 1200 lb. mesh, 1210 lb. mesh, 1220 lb. mesh, 1230 lb. mesh, 1240 lb. mesh, 1250 lb. mesh, 1260 lb. mesh, 1270 lb. mesh, 1280 lb. mesh, 1290 lb. mesh, 1300 lb. mesh, 1310 lb. mesh, 1320 lb. mesh, 1330 lb. mesh, 1340 lb. mesh, 1350 lb. mesh, 1360 lb. mesh, 1370 lb. mesh, 1380 lb. mesh, 1390 lb. mesh, 1400 lb. mesh, 1410 lb. mesh, 1420 lb. mesh, 1430 lb. mesh, 1440 lb. mesh, 1450 lb. mesh, 1460 lb. mesh, 1470 lb. mesh, 1480 lb. mesh, 1490 lb. mesh, 1500 lb. mesh, 1510 lb. mesh, 1520 lb. mesh, 1530 lb. mesh, 1540 lb. mesh, 1550 lb. mesh, 1560 lb. mesh, 1570 lb. mesh, 1580 lb. mesh, 1590 lb. mesh, 1600 lb. mesh, 1610 lb. mesh, 1620 lb. mesh, 1630 lb. mesh, 1640 lb. mesh, 1650 lb. mesh, 1660 lb. mesh, 1670 lb. mesh, 1680 lb. mesh, 1690 lb. mesh, 1700 lb. mesh, 1710 lb. mesh, 1720 lb. mesh, 1730 lb. mesh, 1740 lb. mesh, 1750 lb. mesh, 1760 lb. mesh, 1770 lb. mesh, 1780 lb. mesh, 1790 lb. mesh, 1800 lb. mesh, 1810 lb. mesh, 1820 lb. mesh, 1830 lb. mesh, 1840 lb. mesh, 1850 lb. mesh, 1860 lb. mesh, 1870 lb. mesh, 1880 lb. mesh, 1890 lb. mesh, 1900 lb. mesh, 1910 lb. mesh, 1920 lb. mesh, 1930 lb. mesh, 1940 lb. mesh, 1950 lb. mesh, 1960 lb. mesh, 1970 lb. mesh, 1980 lb. mesh, 1990 lb. mesh, 2000 lb. mesh, 2010 lb. mesh, 2020 lb. mesh, 2030 lb. mesh, 2040 lb. mesh, 2050 lb. mesh, 2060 lb. mesh, 2070 lb. mesh, 2080 lb. mesh, 2090 lb. mesh, 2100 lb. mesh, 2110 lb. mesh, 2120 lb. mesh, 2130 lb. mesh, 2140 lb. mesh, 2150 lb. mesh, 2160 lb. mesh, 2170 lb. mesh, 2180 lb. mesh, 2190 lb. mesh, 2200 lb. mesh, 2210 lb. mesh, 2220 lb. mesh, 2230 lb. mesh, 2240 lb. mesh, 2250 lb. mesh, 2260 lb. mesh, 2270 lb. mesh, 2280 lb. mesh, 2290 lb. mesh, 2300 lb. mesh, 2310 lb. mesh, 2320 lb. mesh, 2330 lb. mesh, 2340 lb. mesh, 2350 lb. mesh, 2360 lb. mesh, 2370 lb. mesh, 2380 lb. mesh, 2390 lb. mesh, 2400 lb. mesh, 2410 lb. mesh, 2420 lb. mesh, 2430 lb. mesh, 2440 lb. mesh, 2450 lb. mesh, 2460 lb. mesh, 2470 lb. mesh, 2480 lb. mesh, 2490 lb. mesh, 2500 lb. mesh, 2510 lb. mesh, 2520 lb. mesh, 2530 lb. mesh, 2540 lb. mesh, 2550 lb. mesh, 2560 lb. mesh, 2570 lb. mesh, 2580 lb. mesh, 2590 lb. mesh, 2600 lb. mesh, 2610 lb. mesh, 2620 lb. mesh, 2630 lb. mesh, 2640 lb. mesh, 2650 lb. mesh, 2660 lb. mesh, 2670 lb. mesh, 2680 lb. mesh, 2690 lb. mesh, 2700 lb. mesh, 2710 lb. mesh, 2720 lb. mesh, 2730 lb. mesh, 2740 lb. mesh, 2750 lb. mesh, 2760 lb. mesh, 2770 lb. mesh, 2780 lb. mesh, 2790 lb. mesh, 2800 lb. mesh, 2810 lb. mesh, 2820 lb. mesh, 2830 lb. mesh, 2840 lb. mesh, 2850 lb. mesh, 2860 lb. mesh, 2870 lb. mesh, 2880 lb. mesh, 2890 lb. mesh, 2900 lb. mesh, 2910 lb. mesh, 2920 lb. mesh, 2930 lb. mesh, 2940 lb. mesh, 2950 lb. mesh, 2960 lb. mesh, 2970 lb. mesh, 2980 lb. mesh, 2990 lb. mesh, 3000 lb. mesh, 3010 lb. mesh, 3020 lb. mesh, 3030 lb. mesh, 3040 lb. mesh, 3050 lb. mesh, 3060 lb. mesh, 3070 lb. mesh, 3080 lb. mesh, 3090 lb. mesh, 3100 lb. mesh, 3110 lb. mesh, 3120 lb. mesh, 3130 lb. mesh, 3140 lb. mesh, 3150 lb. mesh, 3160 lb. mesh, 3170 lb. mesh, 3180 lb. mesh, 3190 lb. mesh, 3200 lb. mesh, 3210 lb. mesh, 3220 lb. mesh, 3230 lb. mesh, 3240 lb. mesh, 3250 lb. mesh, 3260 lb. mesh, 3270 lb. mesh, 3280 lb. mesh, 3290 lb. mesh, 3300 lb. mesh, 3310 lb. mesh, 3320 lb. mesh, 3330 lb. mesh, 3340 lb. mesh, 3350 lb. mesh, 3360 lb. mesh, 3370 lb. mesh, 3380 lb. mesh, 3390 lb. mesh, 3400 lb. mesh, 3410 lb. mesh, 3420 lb. mesh, 3430 lb. mesh, 3440 lb. mesh, 3450 lb. mesh, 3460 lb. mesh, 3470 lb. mesh, 3480 lb. mesh, 3490 lb. mesh, 3500 lb. mesh, 3510 lb. mesh, 3520 lb. mesh, 3530 lb. mesh, 3540 lb. mesh, 3550 lb. mesh, 3560 lb. mesh, 3570 lb. mesh, 3580 lb. mesh, 3590 lb. mesh, 3600 lb. mesh, 3610 lb. mesh, 3620 lb. mesh, 3630 lb. mesh, 3640 lb. mesh, 3650 lb. mesh, 3660 lb. mesh, 3670 lb. mesh, 3680 lb. mesh, 3690 lb. mesh, 3700 lb. mesh, 3710 lb. mesh, 3720 lb. mesh, 3730 lb. mesh, 3740 lb. mesh, 3750 lb. mesh, 3760 lb. mesh, 3770 lb. mesh, 3780 lb. mesh, 3790 lb. mesh, 3800 lb. mesh, 3810 lb. mesh, 3820 lb. mesh, 3830 lb. mesh, 3840 lb. mesh, 3850 lb. mesh, 3860 lb. mesh, 3870 lb. mesh, 3880 lb. mesh, 3890 lb. mesh, 3900 lb. mesh, 3910 lb. mesh, 3920 lb. mesh, 3930 lb. mesh, 3940 lb. mesh, 3950 lb. mesh, 3960 lb. mesh, 3970 lb. mesh, 3980 lb. mesh, 3990 lb. mesh, 4000 lb. mesh, 4010 lb. mesh, 4020 lb. mesh, 4030 lb. mesh, 4040 lb. mesh, 4050 lb. mesh, 4060 lb. mesh, 4070 lb. mesh, 4080 lb. mesh, 4090 lb. mesh, 4100 lb. mesh, 4110 lb. mesh, 4120 lb. mesh, 4130 lb. mesh, 4140 lb. mesh, 4150 lb. mesh, 4160 lb. mesh, 4170 lb. mesh, 4180 lb. mesh, 4190 lb. mesh, 4200 lb. mesh, 4210 lb. mesh, 4220 lb. mesh, 4230 lb. mesh, 4240 lb. mesh, 4250 lb. mesh, 4260 lb. mesh, 4270 lb. mesh, 4280 lb. mesh, 4290 lb. mesh, 4300 lb. mesh, 4310 lb. mesh, 4320 lb. mesh, 4330 lb. mesh, 4340 lb. mesh, 4350 lb. mesh, 4360 lb. mesh, 4370 lb. mesh, 4380 lb. mesh, 4390 lb. mesh, 4400 lb. mesh, 4410 lb. mesh, 4420 lb. mesh, 4430 lb. mesh, 4440 lb. mesh, 4450 lb. mesh, 4460 lb. mesh, 4470 lb. mesh, 4480 lb. mesh, 4490 lb. mesh, 4500 lb. mesh, 4510 lb. mesh, 4520 lb. mesh, 4530 lb. mesh, 4540 lb. mesh, 4550 lb. mesh, 4560 lb. mesh, 4570 lb. mesh, 4580 lb. mesh, 4590 lb. mesh, 4600 lb. mesh, 4610 lb. mesh, 4620 lb. mesh, 4630 lb. mesh, 4640 lb. mesh, 4650 lb. mesh, 4660 lb. mesh, 4670 lb. mesh, 4680 lb. mesh, 4690 lb. mesh, 4700 lb. mesh, 4710 lb. mesh, 4720 lb. mesh, 4730 lb. mesh, 4740 lb. mesh, 4750 lb. mesh, 4760 lb. mesh, 4770 lb. mesh, 4780 lb. mesh, 4790 lb. mesh, 4800 lb. mesh, 4810 lb. mesh, 4820 lb. mesh, 4830 lb. mesh, 4840 lb. mesh, 4850 lb. mesh, 4860 lb. mesh, 4870 lb. mesh, 4880 lb. mesh, 4890 lb. mesh, 4900 lb. mesh, 4910 lb. mesh, 4920 lb. mesh, 4930 lb. mesh, 4940 lb. mesh, 4950 lb. mesh, 4960 lb. mesh, 4970 lb. mesh, 4980 lb. mesh, 4990 lb. mesh, 5000 lb. mesh, 5010 lb. mesh, 5020 lb. mesh, 5030 lb. mesh, 5040 lb. mesh, 5050 lb. mesh, 5060 lb. mesh, 5070 lb. mesh, 5080 lb. mesh, 5090 lb. mesh, 5100 lb. mesh, 5110 lb. mesh, 5120 lb. mesh, 5130 lb. mesh, 5140 lb. mesh, 5150 lb. mesh, 5160 lb. mesh, 5170 lb. mesh, 5180 lb. mesh, 5190 lb. mesh, 5200 lb. mesh, 5210 lb. mesh, 5220 lb. mesh, 5230 lb. mesh, 5240 lb. mesh, 5250 lb. mesh, 5260 lb. mesh, 5270 lb. mesh, 5280 lb. mesh, 5290 lb. mesh, 5300 lb. mesh, 5310 lb. mesh, 5320 lb. mesh, 5330 lb. mesh, 5340 lb. mesh, 5350 lb. mesh, 5360 lb. mesh, 5370 lb. mesh, 5380 lb. mesh, 5390 lb. mesh, 5400 lb. mesh, 5410 lb. mesh, 5420 lb. mesh, 5430 lb. mesh, 5440 lb. mesh, 5450 lb. mesh, 5460 lb. mesh, 5470 lb. mesh, 5480 lb. mesh, 5490 lb. mesh, 5500 lb. mesh, 5510 lb. mesh, 5520 lb. mesh, 5530 lb. mesh, 5540 lb. mesh, 5550 lb. mesh, 5560 lb. mesh, 5570 lb. mesh, 5580 lb. mesh, 5590 lb. mesh, 5600 lb. mesh, 5610 lb. mesh, 5620 lb. mesh, 5630 lb. mesh, 5640 lb. mesh, 5650 lb. mesh, 5660 lb. mesh, 5670 lb. mesh, 5680 lb. mesh, 5690 lb. mesh, 5700 lb. mesh, 5710 lb. mesh, 5720 lb. mesh, 5730 lb. mesh, 5740 lb. mesh, 5750 lb. mesh, 5760 lb. mesh, 5770 lb. mesh, 5780 lb. mesh, 5790 lb. mesh, 5800 lb. mesh, 5810 lb. mesh, 5820 lb. mesh, 5830 lb. mesh, 5840 lb. mesh, 5850 lb. mesh, 5860 lb. mesh, 5870 lb. mesh, 5880 lb. mesh, 5890 lb. mesh, 5900 lb. mesh, 5910 lb. mesh, 5920 lb. mesh, 5930 lb. mesh, 5940 lb. mesh, 5950 lb. mesh, 5960 lb. mesh, 5970 lb. mesh, 5980 lb. mesh, 5990 lb. mesh, 6000 lb. mesh, 6010 lb. mesh, 6020 lb. mesh, 6030 lb. mesh, 6040 lb. mesh, 6050 lb. mesh, 6060 lb. mesh, 6070 lb. mesh, 6080 lb. mesh, 6090 lb. mesh, 6100 lb. mesh, 6110 lb. mesh, 6120 lb. mesh, 6130 lb. mesh, 6140 lb. mesh, 6150 lb. mesh, 6160 lb. mesh, 6170 lb. mesh, 6180 lb. mesh, 6190 lb. mesh, 6200 lb. mesh, 6210 lb. mesh, 6220 lb. mesh, 6230 lb. mesh, 6240 lb. mesh, 6250 lb. mesh, 6260 lb. mesh, 6270 lb. mesh, 6280 lb. mesh, 6290 lb. mesh, 6300 lb. mesh, 6310 lb. mesh, 6320 lb. mesh, 6330 lb. mesh, 6340 lb. mesh, 6350 lb. mesh, 6360 lb. mesh, 6370 lb. mesh, 6380 lb. mesh, 6390 lb. mesh, 6400 lb. mesh, 6410 lb. mesh, 6420 lb. mesh, 6430 lb. mesh, 6440 lb. mesh, 6450 lb. mesh, 6460 lb. mesh, 6470 lb. mesh, 6480 lb. mesh, 6490 lb. mesh, 6500 lb. mesh, 6510 lb. mesh, 6520 lb. mesh, 6530 lb. mesh, 6540 lb. mesh, 6550 lb. mesh, 6560 lb. mesh, 6570 lb. mesh, 6580 lb. mesh, 6590 lb. mesh, 6600 lb. mesh, 6610 lb. mesh, 6620 lb. mesh, 6630 lb. mesh, 6640 lb. mesh, 6650 lb. mesh, 6660 lb. mesh, 6670 lb. mesh, 6680 lb. mesh, 6690 lb. mesh, 6700 lb. mesh, 6710 lb. mesh, 6720 lb. mesh, 6730 lb. mesh, 6740 lb. mesh, 6750 lb. mesh, 6760 lb. mesh, 6770 lb. mesh, 6780 lb. mesh, 6790 lb. mesh, 6800 lb. mesh, 6810 lb. mesh, 6820 lb. mesh, 6830 lb. mesh, 6840 lb. mesh, 6850 lb. mesh, 6860 lb. mesh, 6870 lb. mesh, 6880 lb. mesh, 6890 lb. mesh, 6900 lb. mesh, 6910 lb. mesh, 6920 lb. mesh, 6930 lb. mesh, 6940 lb. mesh, 6950 lb. mesh, 6960 lb. mesh, 6970 lb. mesh, 6980 lb. mesh, 6990 lb. mesh, 7000 lb. mesh, 7010 lb. mesh, 7020 lb. mesh, 7030 lb. mesh, 7040 lb. mesh, 7050 lb. mesh, 7060 lb. mesh, 7070 lb. mesh, 7080 lb. mesh, 7090 lb. mesh, 7100 lb. mesh, 7110 lb. mesh, 7120 lb. mesh, 7130 lb. mesh, 7140 lb. mesh, 7150 lb. mesh, 7160 lb. mesh, 7170 lb. mesh, 7180 lb. mesh, 7190 lb. mesh, 7200 lb. mesh, 7210 lb. mesh, 7220 lb. mesh, 7230 lb. mesh, 7240 lb. mesh, 7250 lb. mesh, 7260 lb. mesh, 7270 lb. mesh, 7280 lb. mesh, 7290 lb. mesh, 7300 lb. mesh, 7310 lb. mesh, 7320 lb. mesh, 7330 lb. mesh, 7340 lb. mesh, 7350 lb. mesh, 7360 lb. mesh, 7370 lb. mesh, 7380 lb. mesh, 7390 lb. mesh, 7400 lb. mesh, 7410 lb. mesh, 7420 lb. mesh, 7430 lb. mesh, 7440 lb. mesh, 7450 lb. mesh, 7460 lb. mesh, 7470 lb. mesh, 7480 lb. mesh, 7490 lb. mesh, 7500 lb. mesh, 7510 lb. mesh, 7520 lb. mesh, 7530 lb. mesh, 7540 lb. mesh, 7550 lb. mesh, 7560 lb. mesh, 7570 lb. mesh, 7580 lb. mesh, 7590 lb. mesh, 7600 lb. mesh, 7610 lb. mesh, 7620 lb. mesh, 7630 lb. mesh, 7640 lb. mesh, 7650 lb. mesh, 7660 lb. mesh, 7670 lb. mesh, 7680 lb. mesh, 7690 lb. mesh, 7700 lb. mesh, 7710 lb. mesh, 7720 lb. mesh, 7730 lb. mesh, 7740 lb. mesh, 7750 lb. mesh, 7760 lb. mesh, 7770 lb. mesh, 7780 lb. mesh, 7790 lb. mesh, 7800 lb. mesh, 7810 lb. mesh, 7820 lb. mesh, 7830 lb. mesh, 7840 lb. mesh, 7850 lb. mesh, 7860 lb. mesh, 7870 lb. mesh, 7880 lb. mesh, 7890 lb. mesh, 7900 lb. mesh, 7910 lb. mesh, 7920 lb. mesh, 7930 lb. mesh, 7940 lb. mesh, 7950 lb. mesh, 7960 lb. mesh, 7970 lb. mesh, 7980 lb. mesh, 7990 lb. mesh, 8000 lb. mesh, 8010 lb. mesh, 8020 lb. mesh, 8030 lb. mesh, 8040 lb. mesh, 8050 lb. mesh, 8060 lb. mesh, 8070 lb. mesh, 8080 lb. mesh, 8090 lb. mesh, 8100 lb. mesh, 8110 lb. mesh, 8120 lb. mesh, 8130 lb. mesh, 8140 lb. mesh, 8150 lb. mesh, 8160 lb. mesh, 8170 lb. mesh, 8180 lb. mesh, 8190 lb. mesh, 8200 lb. mesh, 8210 lb. mesh, 8220 lb. mesh, 8230 lb. mesh, 8240 lb. mesh, 8250 lb. mesh, 8260 lb. mesh, 8270 lb. mesh, 8280 lb. mesh, 8290 lb. mesh, 8300 lb. mesh, 8310 lb. mesh, 8320 lb. mesh, 8330 lb. mesh, 8340 lb. mesh, 8350 lb. mesh, 8360 lb. mesh, 8370 lb. mesh, 8380 lb. mesh, 8390 lb. mesh, 8400 lb. mesh, 8410 lb. mesh, 8420 lb. mesh, 8430 lb. mesh, 8440 lb. mesh, 8450 lb. mesh, 8460 lb. mesh, 8470 lb. mesh, 8480 lb. mesh, 8490 lb. mesh, 8500 lb. mesh, 8510 lb. mesh, 8520 lb. mesh, 8530 lb. mesh, 8540 lb. mesh, 8550 lb. mesh, 8560 lb. mesh, 8570 lb. mesh, 8580 lb. mesh, 8590 lb. mesh, 8600 lb. mesh, 8610 lb. mesh, 8620 lb. mesh, 8630 lb. mesh, 8640 lb. mesh, 8650 lb. mesh, 8660 lb. mesh, 8670 lb. mesh, 8680 lb. mesh, 8690 lb. mesh, 8700 lb. mesh, 8710 lb. mesh, 8720 lb. mesh, 8730 lb. mesh, 8740 lb. mesh, 8750 lb. mesh, 8760 lb. mesh, 8770 lb. mesh, 8780 lb. mesh, 8790 lb. mesh, 8800 lb. mesh, 8810 lb. mesh, 8820 lb. mesh, 8830 lb. mesh, 8840 lb. mesh, 8850 lb. mesh, 8860 lb. mesh, 8870 lb. mesh, 8880 lb. mesh, 8890 lb. mesh, 8900 lb. mesh, 8910 lb. mesh, 8920 lb. mesh, 8930 lb. mesh, 8940 lb. mesh, 8950 lb. mesh, 8960 lb. mesh, 8970 lb. mesh, 8980 lb. mesh, 8990 lb. mesh, 9000 lb. mesh, 9010 lb. mesh, 9020 lb. mesh, 9030 lb. mesh, 9040 lb. mesh, 9050 lb. mesh, 9060 lb. mesh, 9070 lb. mesh, 9080 lb. mesh, 9090 lb. mesh, 9100 lb. mesh, 9110 lb. mesh, 9120 lb. mesh, 9130 lb. mesh, 9140 lb. mesh, 9150 lb. mesh, 9160 lb. mesh, 9170 lb. mesh, 9180 lb. mesh, 9190 lb. mesh, 9200 lb. mesh, 9210 lb. mesh, 9220 lb. mesh, 9230 lb. mesh, 9240 lb. mesh, 9250 lb. mesh, 9260 lb. mesh, 9270 lb. mesh, 9280 lb. mesh, 9290 lb. mesh, 9300 lb. mesh, 9310 lb. mesh, 9320 lb. mesh, 9330 lb. mesh, 9340 lb. mesh, 9350 lb. mesh, 9360 lb. mesh, 9370 lb. mesh, 9380 lb. mesh, 9390 lb. mesh, 9400 lb. mesh, 9410 lb. mesh, 9420 lb. mesh, 9430 lb. mesh, 9440 lb. mesh, 9450 lb. mesh, 9460 lb. mesh, 9470 lb. mesh, 9480 lb. mesh, 9490 lb. mesh, 9500 lb. mesh, 9510 lb. mesh, 9520 lb. mesh, 9530 lb. mesh, 9540 lb. mesh, 9550 lb. mesh, 9560 lb. mesh, 9570 lb. mesh, 9580 lb. mesh, 9590 lb. mesh, 9600 lb. mesh, 9610 lb. mesh, 9620 lb. mesh, 9630 lb. mesh, 9640 lb. mesh, 9650 lb. mesh, 9660 lb. mesh, 9670 lb. mesh, 9680 lb. mesh, 9690 lb. mesh, 9700 lb. mesh, 9710 lb. mesh, 9720 lb. mesh, 9730 lb. mesh, 9740 lb. mesh, 9750 lb. mesh, 9760 lb. mesh, 9770 lb. mesh, 9780 lb. mesh, 9790 lb. mesh, 9800 lb. mesh, 9810 lb. mesh, 9820 lb. mesh, 9830 lb. mesh, 9840 lb. mesh, 9850 lb. mesh, 9860 lb. mesh, 9870 lb. mesh, 9880 lb. mesh, 9890 lb. mesh, 9900 lb. mesh, 9910 lb. mesh, 9920 lb. mesh, 9930 lb. mesh, 9940 lb. mesh, 9950 lb. mesh, 9960 lb. mesh, 9970 lb. mesh, 9980 lb. mesh, 9990 lb. mesh, 10000 lb. mesh, 10010 lb. mesh, 10020 lb. mesh, 10030 lb. mesh, 10040 lb. mesh, 10050 lb. mesh, 10060 lb. mesh, 10070 lb. mesh, 10080 lb. mesh, 10090 lb. mesh, 10100 lb. mesh, 10110 lb. mesh, 10120 lb. mesh, 10130 lb. mesh, 10140 lb. mesh, 10150 lb. mesh, 10160 lb. mesh, 10170 lb. mesh, 10180 lb. mesh, 10190 lb. mesh, 10200 lb. mesh, 10210 lb. mesh, 10220 lb. mesh, 10230 lb. mesh, 10240 lb. mesh, 10250 lb. mesh, 10260 lb. mesh, 10270 lb. mesh, 10280 lb. mesh, 10290 lb. mesh, 10300 lb. mesh, 10310 lb. mesh, 10320 lb. mesh, 10330 lb. mesh, 10340 lb. mesh, 10350 lb. mesh, 10360 lb. mesh, 10370 lb. mesh, 10380 lb. mesh, 10390 lb. mesh, 10400 lb. mesh, 10410 lb. mesh, 10420 lb. mesh, 10430 lb. mesh, 10440 lb. mesh, 10450 lb. mesh, 10460 lb. mesh, 10470 lb. mesh, 10480 lb. mesh, 10490 lb. mesh, 10500 lb. mesh, 10510 lb. mesh, 10520 lb. mesh, 10530 lb. mesh, 10540 lb. mesh, 10550 lb. mesh, 10560 lb. mesh, 10570 lb. mesh, 10580 lb. mesh, 10590 lb. mesh, 10600 lb. mesh, 10610 lb. mesh, 10620 lb. mesh, 10630 lb. mesh, 10640 lb. mesh, 10650 lb. mesh, 10660 lb. mesh, 10670 lb. mesh, 10680 lb. mesh, 10690 lb. mesh, 10700 lb. mesh, 10710 lb. mesh, 10720 lb. mesh, 10730 lb. mesh, 10740 lb. mesh, 10750 lb. mesh, 10760 lb. mesh, 10770 lb. mesh, 10780 lb. mesh, 10790 lb. mesh, 10800 lb. mesh, 10810 lb. mesh, 10820 lb. mesh, 10830 lb. mesh, 10840 lb. mesh, 10850 lb. mesh, 10860 lb. mesh, 10870 lb. mesh, 10880 lb. mesh, 10890 lb. mesh, 10900 lb. mesh, 10910 lb. mesh, 10920 lb. mesh, 10930 lb. mesh, 10940 lb. mesh, 10950 lb. mesh, 10960 lb. mesh, 10970 lb. mesh, 10980 lb. mesh, 10990 lb. mesh, 11000 lb. mesh, 11010 lb. mesh, 11020 lb. mesh, 11030 lb. mesh, 11040 lb. mesh, 11050 lb. mesh, 11060 lb. mesh, 11070 lb. mesh, 11080 lb. mesh, 11090 lb. mesh, 11100 lb. mesh, 11110 lb. mesh, 11120 lb. mesh, 11130 lb. mesh, 11140 lb. mesh, 11150 lb. mesh, 11160 lb. mesh, 11170 lb. mesh, 11180 lb. mesh, 11190 lb. mesh, 11200 lb. mesh, 11210 lb. mesh, 11220 lb. mesh, 11230 lb. mesh, 11240 lb. mesh, 11250 lb. mesh, 11260 lb. mesh, 11270 lb. mesh, 11280 lb. mesh, 11290 lb. mesh, 11300 lb. mesh, 11310 lb. mesh, 11320 lb. mesh, 11330 lb. mesh, 11340 lb. mesh, 11350 lb. mesh, 11360 lb. mesh, 11370 lb. mesh, 11380 lb. mesh, 11390 lb. mesh, 11400 lb. mesh, 11410 lb. mesh, 11420 lb. mesh, 11430 lb. mesh, 11440 lb. mesh, 11450 lb. mesh, 11460 lb. mesh, 11470 lb. mesh, 11480 lb. mesh, 11490 lb. mesh, 11500 lb. mesh, 11510 lb. mesh, 11520 lb. mesh, 11530 lb. mesh, 11540 lb. mesh, 11550 lb. mesh, 11560 lb. mesh, 11570 lb. mesh, 11580 lb. mesh, 11590 lb. mesh, 11600 lb. mesh, 11610 lb. mesh, 11620 lb. mesh, 11630 lb. mesh, 11640 lb. mesh, 11650 lb. mesh, 11660 lb. mesh, 11670 lb. mesh, 11680 lb. mesh, 11690 lb. mesh, 11700 lb. mesh, 11710 lb. mesh, 11720 lb. mesh, 11730 lb. mesh, 11740 lb. mesh, 11750 lb. mesh, 11760 lb. mesh, 11770 lb. mesh, 11780 lb. mesh, 11790 lb. mesh, 11800 lb. mesh, 11810 lb. mesh, 11820 lb. mesh, 11830 lb. mesh, 11840 lb. mesh, 11850 lb. mesh, 11860 lb. mesh, 11870 lb. mesh, 11880 lb. mesh, 11890 lb. mesh, 11900 lb. mesh, 11910 lb. mesh, 11920 lb. mesh, 11930 lb. mesh, 11940 lb. mesh, 11950 lb. mesh, 11960 lb. mesh, 11970 lb. mesh, 11980 lb. mesh, 11990 lb. mesh, 12000 lb. mesh, 12010 lb. mesh, 12020 lb. mesh, 12030 lb. mesh, 12040 lb. mesh, 12050 lb. mesh, 12060 lb. mesh, 12070 lb. mesh, 12080 lb. mesh, 12090 lb. mesh, 12100 lb. mesh, 12110 lb. mesh, 12120 lb. mesh, 12130 lb. mesh, 12140 lb. mesh, 12150 lb. mesh, 12160 lb. mesh, 12170 lb. mesh, 12180 lb. mesh, 12190 lb. mesh, 12200 lb. mesh, 12210 lb. mesh, 12220 lb. mesh, 12230 lb. mesh, 12240 lb. mesh, 12250 lb. mesh, 12260 lb. mesh, 12270 lb. mesh, 12280 lb. mesh, 12290 lb. mesh, 12300 lb. mesh, 12310 lb. mesh, 12320 lb. mesh, 12330 lb. mesh, 12340 lb. mesh, 12350 lb. mesh, 12360 lb. mesh, 12370 lb. mesh, 12380 lb. mesh, 12390 lb. mesh, 12400 lb. mesh, 12410 lb. mesh, 12420 lb. mesh, 12430 lb. mesh, 12440 lb. mesh, 12450 lb. mesh, 12460 lb. mesh, 12470 lb. mesh, 12480 lb. mesh,

Highlights

8:30-9:30 p.m. NBC. Star... "A Private Life" (CBS)...

Television Tonight

- 8:00 (8) NBC. Star... 8:30 (8) NBC. Star... 9:00 (8) NBC. Star...

TV Time Previews

L. Marvin Stars At Drive-In

A pair of brand new movies... "Point Blank" starring Lee Marvin and Angie Dickinson...



SERGEANT TROY (Terence Stamp) awakens his new bride, Bathsheba (Julie Christie), with a kiss in "Far From the Madding Crowd" now showing at the Seminole Plaza Theatre.



A TENSE ANGLE Dickinson listens as Lee Marvin and Carroll O'Connor "yak" in "Point Blank," opening Sunday at the Movieland Drive-In Theatre.

Beth Gore In Pageant

By LARRY KEELY... Miss Beth Gore, chosen Oviedo Junior Miss in a mid-December pageant sponsored by the Greater Oviedo Jaycees...

X-Ray Unit Sets Visits

The Christmas Seal mobile X-ray unit will be in nine different locations in Seminole County next week to serve the public...

Camping Trip Held By Scouts

Scout Girl Scout Marjorie Troop 838 of Casselberry held a joint weekend camping trip with the Bear Lake Scout group...

Passion Play In 16th Year

The dramatic story of Christ's last days on earth will be presented in Lake Wales for the 16th successive year...

Girl Scouts Follow Trail

By MARTANN HELES... Girl Scouts from Boy Scout Troop 838 of Casselberry recently enjoyed a "Follow the Trail" which was set up by a group for remainder of the members...

Office Spaces Near Ready

Two additional office spaces under construction in Sanford... Plans to comply with requests for "smaller offices" will be completed within two-three months...

How Do You Rate These News Programs?

Alongside each program write one of these opinions: Excellent, Fair, Average, Good, Excellent.

ROBERTSON, III. (AP) - Nearly 50 years ago, Sgt. Fred C. Schroeder, serving with the American Expeditionary Force...

Guard Duty Extended

ROBERTSON, III. (AP) - Nearly 50 years ago, Sgt. Fred C. Schroeder, serving with the American Expeditionary Force...

Post 256 And Unit Set Meet

American Legion Post 256 of Casselberry and the Auxiliary will meet at 8 p.m. Monday at the Woman's Club of Casselberry on Overland Drive.

Office Spaces Near Ready

Two additional office spaces under construction in Sanford... Plans to comply with requests for "smaller offices" will be completed within two-three months...

Office Spaces Near Ready

Two additional office spaces under construction in Sanford... Plans to comply with requests for "smaller offices" will be completed within two-three months...

Office Spaces Near Ready

Two additional office spaces under construction in Sanford... Plans to comply with requests for "smaller offices" will be completed within two-three months...

For Dividend Vacations

MEXICO CITY TO HAWAII... City Councilman Mateo Takahashi adds that Salvat feels that such an service would be a logical link for tourists who wish to visit both Mexican and Hawaiian resorts.

REX HARRISON... SAMANTHA ANTHONY... DOCTOR DOLITTLE... PARK EAST THEATRE

"BEST PICTURE OF THE YEAR!"

"THE DARLING" OF "DOCTOR ZHIVAGO" meets the "GEOGRAPHY GIRL" OF "ALL TIME!"

"A BIG PICTURE in the 'HOME WITH THE WIND' - 'DOCTOR ZHIVAGO' THEATRICALS - COSMOPOLITAN MAGAZINE

Julie Christie

MATHEWS SHOW, NEW SAT. 11:30... JULIE CHRISTIE... TERENCE STAMP... PETER FINCH... ALAN RATES

Julie Christie

MATHEWS SHOW, NEW SAT. 11:30... JULIE CHRISTIE... TERENCE STAMP... PETER FINCH... ALAN RATES

It's a Date in '68!

... to see ALL of Florida's Greatest Annual Attractions! ... PLUS THESE SPECIAL EVENTS!

- Stirpe-O-Rama - Feb. 6... WYOU Radio's "All-Star Country Music Show" - Feb. 10, 6:30 p.m. and 8:30 p.m....

Entertainment IN THE GREATER SANFORD AREA

DINE HERE FOR JUST PLAIN GOOD LIVING... REMLEY'S FAMILY RESTAURANT... PLATE LUNCH DAILY \$1.00

THE TOWN HOUSE RESTAURANT... DAILY MENU STEAKS-SEAFOOD CHICKEN

FRIDAY NIGHT HONOLULU ALL YOU CAN EAT \$1.35... MONDAY NIGHT CHICKEN ALL YOU CAN EAT \$1.50

REAL HOMEMADE PASTRIES... DAILY LUNCHEONS 85¢... PINECREST INN

TROPHY LOUNGE AND JET LANES... LADIES' NIGHT TUESDAY AND THURSDAY Drinks 1/2 Price

Live Entertainment Fri. & Sat. THE FOUNTAIN Bar & Lounge

Budget-watchers... dine at the TRADE WINDS CAFETERIAS

1968 State... It's a Date in '68! ... see ALL of Florida's Greatest Annual Attractions!

Tony's Pizza... 17-92 AT PARK PARK PIZZA & SPAGHETTI

TONY'S HOME TOWN COUNTRY CLUB... THE HOUSE OF BEEF

Evening Out Can Be Fun!

By DORIS WILLIAMS AND JAM McCLUNG... Dining designed for every taste is now available at SCANDIA HOUSE Smorgasbord and Sandwich Bar in Fields Plaza...

JOHNNY CARLTON... SMITH, personally supervises the preparation of the delicious foods prepared here...

EVERYBODY join in on the good food and entertainment at OTTO'S HOF BRAUHAUS... ENJOY A DIFFERENT LUNCHEON HERE DAILY and return for dinner when you will be served a genuine German dinner or favorite of America...

Go West, Young Man... And Be A Cowboy... PHOENIX (AP) - Some Arizona ranchers are using banknotes and lawyers as weekend cowboys and are glad to get them.

Profits Drop... NEW YORK (AP) - U. S. Steel Corp., the biggest steelmaker, has reported a 21 per cent drop in profits in 1967 from the 1966 level.

WORTH DRIVING ACROSS TOWN FOR! Scandia House SMORGASBORD AND SANDWICH BAR... THREE GREAT DINING PLEASURES

TONY'S HOME BASE TAVERN... THE NIGHT FUN... HOMEMADE PIZZA... Hot Italian Sausage Sandwich... Stuffed Man on a Pie... BEER - WINE... TONY'S HOME BASE TAVERN

Scandia House SMORGASBORD AND SANDWICH BAR... THREE GREAT DINING PLEASURES... ALL NEW SANDWICH BAR SERVING THE FINEST IN TOWN!

TONY'S HOME BASE TAVERN... THE NIGHT FUN... HOMEMADE PIZZA... Hot Italian Sausage Sandwich... Stuffed Man on a Pie... BEER - WINE... TONY'S HOME BASE TAVERN

Scandia House SMORGASBORD AND SANDWICH BAR... THREE GREAT DINING PLEASURES... ALL NEW SANDWICH BAR SERVING THE FINEST IN TOWN!

WHERE THE ROYAL ROYAL SUPREMACY... Scandia House SMORGASBORD AND SANDWICH BAR

OTTO'S HOF BRAUHAUS... 2344 PARK DR. PH. 322-7116

TOUCHTON'S RXALL DRUG... "THE PRESCRIPTION OUR PRIMARY CONCERN"

TOUCHTON'S RXALL DRUG... "THE PRESCRIPTION OUR PRIMARY CONCERN"

TOUCHTON'S RXALL DRUG... "THE PRESCRIPTION OUR PRIMARY CONCERN"

TOUCHTON'S RXALL DRUG... "THE PRESCRIPTION OUR PRIMARY CONCERN"

TOUCHTON'S RXALL DRUG... "THE PRESCRIPTION OUR PRIMARY CONCERN"

TOUCHTON'S RXALL DRUG... "THE PRESCRIPTION OUR PRIMARY CONCERN"

TOUCHTON'S RXALL DRUG... "THE PRESCRIPTION OUR PRIMARY CONCERN"

TOUCHTON'S RXALL DRUG... "THE PRESCRIPTION OUR PRIMARY CONCERN"

TOUCHTON'S RXALL DRUG... "THE PRESCRIPTION OUR PRIMARY CONCERN"

AK SERVICE
 All types of auto repairs...
AK SERVICE
 All types of auto repairs...
AK SERVICE
 All types of auto repairs...

Your Purse Need A "TONIC"? - Try a Herald Classified Today!

12. Special Notices
 13. Special Services
 14. Real Estate
 15. Automobiles
 16. Business
 17. Legal
 18. Miscellaneous
 19. Wanted
 20. Help
 21. Real Estate
 22. Automobiles
 23. Business
 24. Legal
 25. Miscellaneous
 26. Wanted
 27. Help
 28. Real Estate
 29. Automobiles
 30. Business
 31. Legal
 32. Miscellaneous
 33. Wanted
 34. Help
 35. Real Estate
 36. Automobiles
 37. Business
 38. Legal
 39. Miscellaneous
 40. Wanted
 41. Help
 42. Real Estate
 43. Automobiles
 44. Business
 45. Legal
 46. Miscellaneous
 47. Wanted
 48. Help
 49. Real Estate
 50. Automobiles
 51. Business
 52. Legal
 53. Miscellaneous
 54. Wanted
 55. Help
 56. Real Estate
 57. Automobiles
 58. Business
 59. Legal
 60. Miscellaneous
 61. Wanted
 62. Help
 63. Real Estate
 64. Automobiles
 65. Business
 66. Legal
 67. Miscellaneous
 68. Wanted
 69. Help
 70. Real Estate
 71. Automobiles
 72. Business
 73. Legal
 74. Miscellaneous
 75. Wanted
 76. Help
 77. Real Estate
 78. Automobiles
 79. Business
 80. Legal
 81. Miscellaneous
 82. Wanted
 83. Help
 84. Real Estate
 85. Automobiles
 86. Business
 87. Legal
 88. Miscellaneous
 89. Wanted
 90. Help
 91. Real Estate
 92. Automobiles
 93. Business
 94. Legal
 95. Miscellaneous
 96. Wanted
 97. Help
 98. Real Estate
 99. Automobiles
 100. Business
 101. Legal
 102. Miscellaneous
 103. Wanted
 104. Help
 105. Real Estate
 106. Automobiles
 107. Business
 108. Legal
 109. Miscellaneous
 110. Wanted
 111. Help
 112. Real Estate
 113. Automobiles
 114. Business
 115. Legal
 116. Miscellaneous
 117. Wanted
 118. Help
 119. Real Estate
 120. Automobiles
 121. Business
 122. Legal
 123. Miscellaneous
 124. Wanted
 125. Help
 126. Real Estate
 127. Automobiles
 128. Business
 129. Legal
 130. Miscellaneous
 131. Wanted
 132. Help
 133. Real Estate
 134. Automobiles
 135. Business
 136. Legal
 137. Miscellaneous
 138. Wanted
 139. Help
 140. Real Estate
 141. Automobiles
 142. Business
 143. Legal
 144. Miscellaneous
 145. Wanted
 146. Help
 147. Real Estate
 148. Automobiles
 149. Business
 150. Legal
 151. Miscellaneous
 152. Wanted
 153. Help
 154. Real Estate
 155. Automobiles
 156. Business
 157. Legal
 158. Miscellaneous
 159. Wanted
 160. Help
 161. Real Estate
 162. Automobiles
 163. Business
 164. Legal
 165. Miscellaneous
 166. Wanted
 167. Help
 168. Real Estate
 169. Automobiles
 170. Business
 171. Legal
 172. Miscellaneous
 173. Wanted
 174. Help
 175. Real Estate
 176. Automobiles
 177. Business
 178. Legal
 179. Miscellaneous
 180. Wanted
 181. Help
 182. Real Estate
 183. Automobiles
 184. Business
 185. Legal
 186. Miscellaneous
 187. Wanted
 188. Help
 189. Real Estate
 190. Automobiles
 191. Business
 192. Legal
 193. Miscellaneous
 194. Wanted
 195. Help
 196. Real Estate
 197. Automobiles
 198. Business
 199. Legal
 200. Miscellaneous
 201. Wanted
 202. Help
 203. Real Estate
 204. Automobiles
 205. Business
 206. Legal
 207. Miscellaneous
 208. Wanted
 209. Help
 210. Real Estate
 211. Automobiles
 212. Business
 213. Legal
 214. Miscellaneous
 215. Wanted
 216. Help
 217. Real Estate
 218. Automobiles
 219. Business
 220. Legal
 221. Miscellaneous
 222. Wanted
 223. Help
 224. Real Estate
 225. Automobiles
 226. Business
 227. Legal
 228. Miscellaneous
 229. Wanted
 230. Help
 231. Real Estate
 232. Automobiles
 233. Business
 234. Legal
 235. Miscellaneous
 236. Wanted
 237. Help
 238. Real Estate
 239. Automobiles
 240. Business
 241. Legal
 242. Miscellaneous
 243. Wanted
 244. Help
 245. Real Estate
 246. Automobiles
 247. Business
 248. Legal
 249. Miscellaneous
 250. Wanted
 251. Help
 252. Real Estate
 253. Automobiles
 254. Business
 255. Legal
 256. Miscellaneous
 257. Wanted
 258. Help
 259. Real Estate
 260. Automobiles
 261. Business
 262. Legal
 263. Miscellaneous
 264. Wanted
 265. Help
 266. Real Estate
 267. Automobiles
 268. Business
 269. Legal
 270. Miscellaneous
 271. Wanted
 272. Help
 273. Real Estate
 274. Automobiles
 275. Business
 276. Legal
 277. Miscellaneous
 278. Wanted
 279. Help
 280. Real Estate
 281. Automobiles
 282. Business
 283. Legal
 284. Miscellaneous
 285. Wanted
 286. Help
 287. Real Estate
 288. Automobiles
 289. Business
 290. Legal
 291. Miscellaneous
 292. Wanted
 293. Help
 294. Real Estate
 295. Automobiles
 296. Business
 297. Legal
 298. Miscellaneous
 299. Wanted
 300. Help
 301. Real Estate
 302. Automobiles
 303. Business
 304. Legal
 305. Miscellaneous
 306. Wanted
 307. Help
 308. Real Estate
 309. Automobiles
 310. Business
 311. Legal
 312. Miscellaneous
 313. Wanted
 314. Help
 315. Real Estate
 316. Automobiles
 317. Business
 318. Legal
 319. Miscellaneous
 320. Wanted
 321. Help
 322. Real Estate
 323. Automobiles
 324. Business
 325. Legal
 326. Miscellaneous
 327. Wanted
 328. Help
 329. Real Estate
 330. Automobiles
 331. Business
 332. Legal
 333. Miscellaneous
 334. Wanted
 335. Help
 336. Real Estate
 337. Automobiles
 338. Business
 339. Legal
 340. Miscellaneous
 341. Wanted
 342. Help
 343. Real Estate
 344. Automobiles
 345. Business
 346. Legal
 347. Miscellaneous
 348. Wanted
 349. Help
 350. Real Estate
 351. Automobiles
 352. Business
 353. Legal
 354. Miscellaneous
 355. Wanted
 356. Help
 357. Real Estate
 358. Automobiles
 359. Business
 360. Legal
 361. Miscellaneous
 362. Wanted
 363. Help
 364. Real Estate
 365. Automobiles
 366. Business
 367. Legal
 368. Miscellaneous
 369. Wanted
 370. Help
 371. Real Estate
 372. Automobiles
 373. Business
 374. Legal
 375. Miscellaneous
 376. Wanted
 377. Help
 378. Real Estate
 379. Automobiles
 380. Business
 381. Legal
 382. Miscellaneous
 383. Wanted
 384. Help
 385. Real Estate
 386. Automobiles
 387. Business
 388. Legal
 389. Miscellaneous
 390. Wanted
 391. Help
 392. Real Estate
 393. Automobiles
 394. Business
 395. Legal
 396. Miscellaneous
 397. Wanted
 398. Help
 399. Real Estate
 400. Automobiles
 401. Business
 402. Legal
 403. Miscellaneous
 404. Wanted
 405. Help
 406. Real Estate
 407. Automobiles
 408. Business
 409. Legal
 410. Miscellaneous
 411. Wanted
 412. Help
 413. Real Estate
 414. Automobiles
 415. Business
 416. Legal
 417. Miscellaneous
 418. Wanted
 419. Help
 420. Real Estate
 421. Automobiles
 422. Business
 423. Legal
 424. Miscellaneous
 425. Wanted
 426. Help
 427. Real Estate
 428. Automobiles
 429. Business
 430. Legal
 431. Miscellaneous
 432. Wanted
 433. Help
 434. Real Estate
 435. Automobiles
 436. Business
 437. Legal
 438. Miscellaneous
 439. Wanted
 440. Help
 441. Real Estate
 442. Automobiles
 443. Business
 444. Legal
 445. Miscellaneous
 446. Wanted
 447. Help
 448. Real Estate
 449. Automobiles
 450. Business
 451. Legal
 452. Miscellaneous
 453. Wanted
 454. Help
 455. Real Estate
 456. Automobiles
 457. Business
 458. Legal
 459. Miscellaneous
 460. Wanted
 461. Help
 462. Real Estate
 463. Automobiles
 464. Business
 465. Legal
 466. Miscellaneous
 467. Wanted
 468. Help
 469. Real Estate
 470. Automobiles
 471. Business
 472. Legal
 473. Miscellaneous
 474. Wanted
 475. Help
 476. Real Estate
 477. Automobiles
 478. Business
 479. Legal
 480. Miscellaneous
 481. Wanted
 482. Help
 483. Real Estate
 484. Automobiles
 485. Business
 486. Legal
 487. Miscellaneous
 488. Wanted
 489. Help
 490. Real Estate
 491. Automobiles
 492. Business
 493. Legal
 494. Miscellaneous
 495. Wanted
 496. Help
 497. Real Estate
 498. Automobiles
 499. Business
 500. Legal
 501. Miscellaneous
 502. Wanted
 503. Help
 504. Real Estate
 505. Automobiles
 506. Business
 507. Legal
 508. Miscellaneous
 509. Wanted
 510. Help
 511. Real Estate
 512. Automobiles
 513. Business
 514. Legal
 515. Miscellaneous
 516. Wanted
 517. Help
 518. Real Estate
 519. Automobiles
 520. Business
 521. Legal
 522. Miscellaneous
 523. Wanted
 524. Help
 525. Real Estate
 526. Automobiles
 527. Business
 528. Legal
 529. Miscellaneous
 530. Wanted
 531. Help
 532. Real Estate
 533. Automobiles
 534. Business
 535. Legal
 536. Miscellaneous
 537. Wanted
 538. Help
 539. Real Estate
 540. Automobiles
 541. Business
 542. Legal
 543. Miscellaneous
 544. Wanted
 545. Help
 546. Real Estate
 547. Automobiles
 548. Business
 549. Legal
 550. Miscellaneous
 551. Wanted
 552. Help
 553. Real Estate
 554. Automobiles
 555. Business
 556. Legal
 557. Miscellaneous
 558. Wanted
 559. Help
 560. Real Estate
 561. Automobiles
 562. Business
 563. Legal
 564. Miscellaneous
 565. Wanted
 566. Help
 567. Real Estate
 568. Automobiles
 569. Business
 570. Legal
 571. Miscellaneous
 572. Wanted
 573. Help
 574. Real Estate
 575. Automobiles
 576. Business
 577. Legal
 578. Miscellaneous
 579. Wanted
 580. Help
 581. Real Estate
 582. Automobiles
 583. Business
 584. Legal
 585. Miscellaneous
 586. Wanted
 587. Help
 588. Real Estate
 589. Automobiles
 590. Business
 591. Legal
 592. Miscellaneous
 593. Wanted
 594. Help
 595. Real Estate
 596. Automobiles
 597. Business
 598. Legal
 599. Miscellaneous
 600. Wanted
 601. Help
 602. Real Estate
 603. Automobiles
 604. Business
 605. Legal
 606. Miscellaneous
 607. Wanted
 608. Help
 609. Real Estate
 610. Automobiles
 611. Business
 612. Legal
 613. Miscellaneous
 614. Wanted
 615. Help
 616. Real Estate
 617. Automobiles
 618. Business
 619. Legal
 620. Miscellaneous
 621. Wanted
 622. Help
 623. Real Estate
 624. Automobiles
 625. Business
 626. Legal
 627. Miscellaneous
 628. Wanted
 629. Help
 630. Real Estate
 631. Automobiles
 632. Business
 633. Legal
 634. Miscellaneous
 635. Wanted
 636. Help
 637. Real Estate
 638. Automobiles
 639. Business
 640. Legal
 641. Miscellaneous
 642. Wanted
 643. Help
 644. Real Estate
 645. Automobiles
 646. Business
 647. Legal
 648. Miscellaneous
 649. Wanted
 650. Help
 651. Real Estate
 652. Automobiles
 653. Business
 654. Legal
 655. Miscellaneous
 656. Wanted
 657. Help
 658. Real Estate
 659. Automobiles
 660. Business
 661. Legal
 662. Miscellaneous
 663. Wanted
 664. Help
 665. Real Estate
 666. Automobiles
 667. Business
 668. Legal
 669. Miscellaneous
 670. Wanted
 671. Help
 672. Real Estate
 673. Automobiles
 674. Business
 675. Legal
 676. Miscellaneous
 677. Wanted
 678. Help
 679. Real Estate
 680. Automobiles
 681. Business
 682. Legal
 683. Miscellaneous
 684. Wanted
 685. Help
 686. Real Estate
 687. Automobiles
 688. Business
 689. Legal
 690. Miscellaneous
 691. Wanted
 692. Help
 693. Real Estate
 694. Automobiles
 695. Business
 696. Legal
 697. Miscellaneous
 698. Wanted
 699. Help
 700. Real Estate
 701. Automobiles
 702. Business
 703. Legal
 704. Miscellaneous
 705. Wanted
 706. Help
 707. Real Estate
 708. Automobiles
 709. Business
 710. Legal
 711. Miscellaneous
 712. Wanted
 713. Help
 714. Real Estate
 715. Automobiles
 716. Business
 717. Legal
 718. Miscellaneous
 719. Wanted
 720. Help
 721. Real Estate
 722. Automobiles
 723. Business
 724. Legal
 725. Miscellaneous
 726. Wanted
 727. Help
 728. Real Estate
 729. Automobiles
 730. Business
 731. Legal
 732. Miscellaneous
 733. Wanted
 734. Help
 735. Real Estate
 736. Automobiles
 737. Business
 738. Legal
 739. Miscellaneous
 740. Wanted
 741. Help
 742. Real Estate
 743. Automobiles
 744. Business
 745. Legal
 746. Miscellaneous
 747. Wanted
 748. Help
 749. Real Estate
 750. Automobiles
 751. Business
 752. Legal
 753. Miscellaneous
 754. Wanted
 755. Help
 756. Real Estate
 757. Automobiles
 758. Business
 759. Legal
 760. Miscellaneous
 761. Wanted
 762. Help
 763. Real Estate
 764. Automobiles
 765. Business
 766. Legal
 767. Miscellaneous
 768. Wanted
 769. Help
 770. Real Estate
 771. Automobiles
 772. Business
 773. Legal
 774. Miscellaneous
 775. Wanted
 776. Help
 777. Real Estate
 778. Automobiles
 779. Business
 780. Legal
 781. Miscellaneous
 782. Wanted
 783. Help
 784. Real Estate
 785. Automobiles
 786. Business
 787. Legal
 788. Miscellaneous
 789. Wanted
 790. Help
 791. Real Estate
 792. Automobiles
 793. Business
 794. Legal
 795. Miscellaneous
 796. Wanted
 797. Help
 798. Real Estate
 799. Automobiles
 800. Business
 801. Legal
 802. Miscellaneous
 803. Wanted
 804. Help
 805. Real Estate
 806. Automobiles
 807. Business
 808. Legal
 809. Miscellaneous
 810. Wanted
 811. Help
 812. Real Estate
 813. Automobiles
 814. Business
 815. Legal
 816. Miscellaneous
 817. Wanted
 818. Help
 819. Real Estate
 820. Automobiles
 821. Business
 822. Legal
 823. Miscellaneous
 824. Wanted
 825. Help
 826. Real Estate
 827. Automobiles
 828. Business
 829. Legal
 830. Miscellaneous
 831. Wanted
 832. Help
 833. Real Estate
 834. Automobiles
 835. Business
 836. Legal
 837. Miscellaneous
 838. Wanted
 839. Help
 840. Real Estate
 841. Automobiles
 842. Business
 843. Legal
 844. Miscellaneous
 845. Wanted
 846. Help
 847. Real Estate
 848. Automobiles
 849. Business
 850. Legal
 851. Miscellaneous
 852. Wanted
 853. Help
 854. Real Estate
 855. Automobiles
 856. Business
 857. Legal
 858. Miscellaneous
 859. Wanted
 860. Help
 861. Real Estate
 862. Automobiles
 863. Business
 864. Legal
 865. Miscellaneous
 866. Wanted
 867. Help
 868. Real Estate
 869. Automobiles
 870. Business
 871. Legal
 872. Miscellaneous
 873. Wanted
 874. Help
 875. Real Estate
 876. Automobiles
 877. Business
 878. Legal
 879. Miscellaneous
 880. Wanted
 881. Help
 882. Real Estate
 883. Automobiles
 884. Business
 885. Legal
 886. Miscellaneous
 887. Wanted
 888. Help
 889. Real Estate
 890. Automobiles
 891. Business
 892. Legal
 893. Miscellaneous
 894. Wanted
 895. Help
 896. Real Estate
 897. Automobiles
 898. Business
 899. Legal
 900. Miscellaneous
 901. Wanted
 902. Help
 903. Real Estate
 904. Automobiles
 905. Business
 906. Legal
 907. Miscellaneous
 908. Wanted
 909. Help
 910. Real Estate
 911. Automobiles
 912. Business
 913. Legal
 914. Miscellaneous
 915. Wanted
 916. Help
 917. Real Estate
 918. Automobiles
 919. Business
 920. Legal
 921. Miscellaneous
 922. Wanted
 923. Help
 924. Real Estate
 925. Automobiles
 926. Business
 927. Legal
 928. Miscellaneous
 929. Wanted
 930. Help
 931. Real Estate
 932. Automobiles
 933. Business
 934. Legal
 935. Miscellaneous
 936. Wanted
 937. Help
 938. Real Estate
 939. Automobiles
 940. Business
 941. Legal
 942. Miscellaneous
 943. Wanted
 944. Help
 945. Real Estate
 946. Automobiles
 947. Business
 948. Legal
 949. Miscellaneous
 950. Wanted
 951. Help
 952. Real Estate
 953. Automobiles
 954. Business
 955. Legal
 956. Miscellaneous
 957. Wanted
 958. Help
 959. Real Estate
 960. Automobiles
 961. Business
 962. Legal
 963. Miscellaneous
 964. Wanted
 965. Help
 966. Real Estate
 967. Automobiles
 968. Business
 969. Legal
 970. Miscellaneous
 971. Wanted
 972. Help
 973. Real Estate
 974. Automobiles
 975. Business
 976. Legal
 977. Miscellaneous
 978. Wanted
 979. Help
 980. Real Estate
 981. Automobiles
 982. Business
 983. Legal
 984. Miscellaneous
 985. Wanted
 986. Help
 987. Real Estate
 988. Automobiles
 989. Business
 990. Legal
 991. Miscellaneous
 992. Wanted
 993. Help
 994. Real Estate
 995. Automobiles
 996. Business
 997. Legal
 998. Miscellaneous
 999. Wanted
 1000. Help

Legal Notice
 Notice is hereby given that...

Legal Notice
 Notice is hereby given that...

Legal Notice
 Notice is hereby given that...

Legal Notice
 Notice is hereby given that...

Legal Notice
 Notice is hereby given that...

Legal Notice
 Notice is hereby given that...

Legal Notice
 Notice is hereby given that...

Legal Notice
 Notice is hereby given that...

Legal Notice
 Notice is hereby given that...

Legal Notice
 Notice is hereby given that...

Legal Notice
 Notice is hereby given that...

Legal Notice
 Notice is hereby given that...

Legal Notice
 Notice is hereby given that...

Legal Notice
 Notice is hereby given that...

Legal Notice
 Notice is hereby given that...

Legal Notice
 Notice is hereby given that...

Legal Notice
 Notice is hereby given that...

Legal Notice
 Notice is hereby given that...

Legal Notice
 Notice is hereby given that...

Legal Notice
 Notice is hereby given that...

Your "Don't Want" Could Be Someone's "Do Want"

BORN LOSER

...and a speech bubble saying 'GOOD MORNING!'

123. Bonta & Motors
NOW OPEN
 MONROE HARBOR
 LOCATED AT HILTONIA IS A COMPLETE...
 Phone 322-1111

124. Bonta & Motors
 WINTER HARBOR
 17' PONTIAC...
 Phone 322-1111

125. Bonta & Motors
 FORD GLORIA...
 Phone 322-1111

126. Bonta & Motors
 ATTENTION...
 Phone 322-1111

127. Bonta & Motors
 FURNISHED...
 Phone 322-1111

128. Bonta & Motors
 APARTMENT...
 Phone 322-1111

129. Bonta & Motors
 FURNISHED...
 Phone 322-1111

130. Bonta & Motors
 FURNISHED...
 Phone 322-1111

131. Bonta & Motors
 FURNISHED...
 Phone 322-1111

132. Bonta & Motors
 FURNISHED...
 Phone 322-1111

133. Bonta & Motors
 FURNISHED...
 Phone 322-1111

134. Bonta & Motors
 FURNISHED...
 Phone 322-1111

135. Bonta & Motors
 FURNISHED...
 Phone 322-1111

136. Bonta & Motors
 FURNISHED...
 Phone 322-1111

137. Bonta & Motors
 FURNISHED...
 Phone 322-1111

138. Bonta & Motors
 FURNISHED...
 Phone 322-1111

139. Bonta & Motors
 FURNISHED...
 Phone 322-1111

140. Bonta & Motors
 FURNISHED...
 Phone 322-1111

ANNOUNCING
NEIGHBORHO

The Sanford Herald

Phone 323-2611 or 425-5838 Zip Code 32771

WEATHER: Sunday 74-86; showers tonight, warm tomorrow.

VOL. 80 NO. 121 — AP Leased Wire — Established 1908 — MONDAY, FEBRUARY 5, 1968 — SANFORD, FLORIDA — Price 10 Cents

Attend Church This Sunday

"I am the resurrection and the life; he who believes in me, even if he dies, shall live and whoever lives and believes in me, shall never die."
John 11:25-26

Adventist
Seminole County Church of Christ
1111 Park Ave., Sanford, Fla.
Sundays 10:00 a. m. and 7:00 p. m.
Prayer Service 7:00 p. m.

Baptist
Seminole County Baptist Church
1111 Park Ave., Sanford, Fla.
Sundays 10:00 a. m. and 7:00 p. m.
Prayer Service 7:00 p. m.

Alliance
Seminole County Alliance
1111 Park Ave., Sanford, Fla.
Sundays 10:00 a. m. and 7:00 p. m.
Prayer Service 7:00 p. m.

Assembly Of God
Seminole County Assembly of God
1111 Park Ave., Sanford, Fla.
Sundays 10:00 a. m. and 7:00 p. m.
Prayer Service 7:00 p. m.

Christian
Seminole County Christian Church
1111 Park Ave., Sanford, Fla.
Sundays 10:00 a. m. and 7:00 p. m.
Prayer Service 7:00 p. m.

Baptist
Seminole County Baptist Church
1111 Park Ave., Sanford, Fla.
Sundays 10:00 a. m. and 7:00 p. m.
Prayer Service 7:00 p. m.

Church of Christ
Seminole County Church of Christ
1111 Park Ave., Sanford, Fla.
Sundays 10:00 a. m. and 7:00 p. m.
Prayer Service 7:00 p. m.

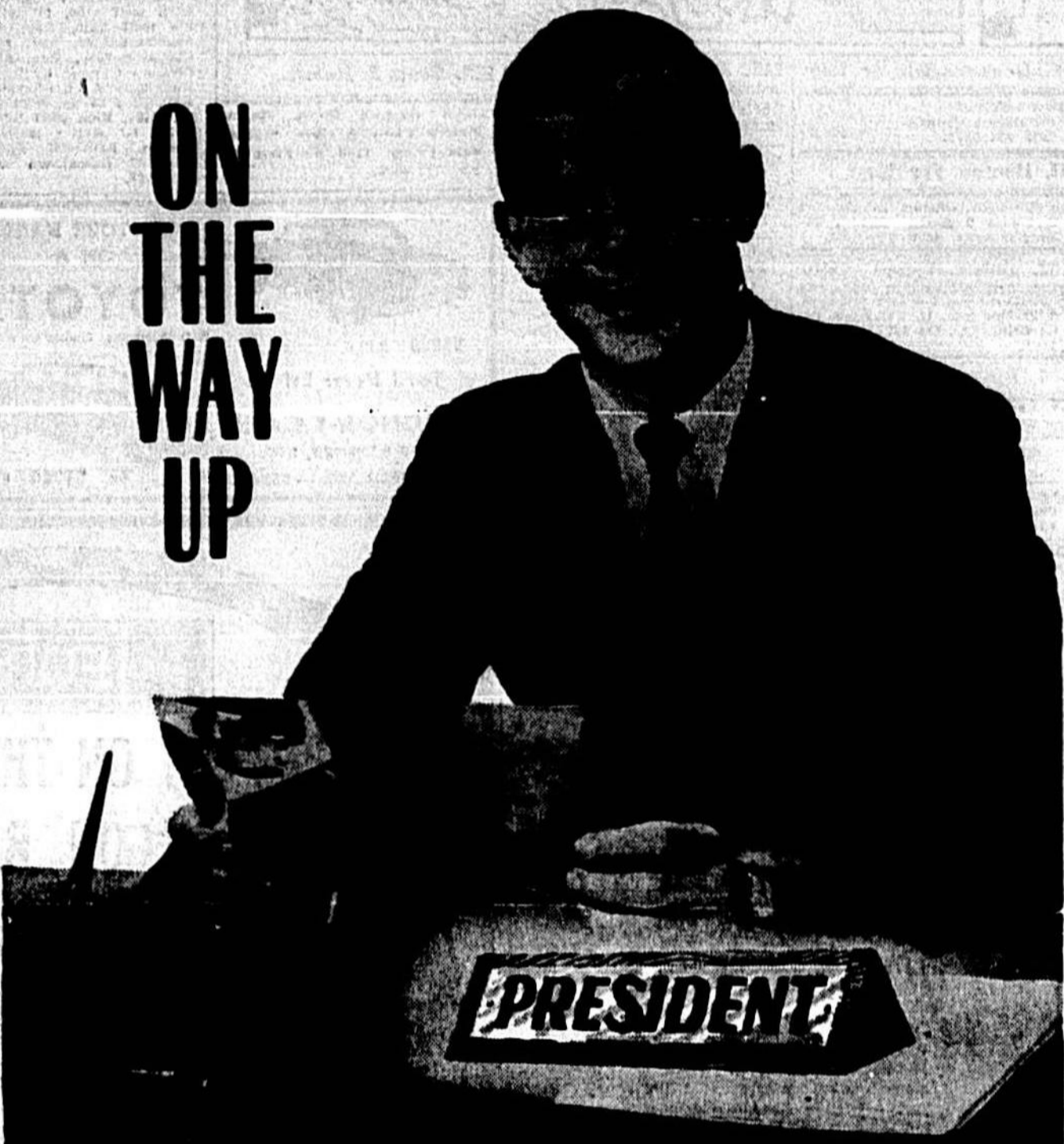
Episcopal
Seminole County Episcopal Church
1111 Park Ave., Sanford, Fla.
Sundays 10:00 a. m. and 7:00 p. m.
Prayer Service 7:00 p. m.

Lutheran
Seminole County Lutheran Church
1111 Park Ave., Sanford, Fla.
Sundays 10:00 a. m. and 7:00 p. m.
Prayer Service 7:00 p. m.

Methodist
Seminole County Methodist Church
1111 Park Ave., Sanford, Fla.
Sundays 10:00 a. m. and 7:00 p. m.
Prayer Service 7:00 p. m.

Moravian
Seminole County Moravian Church
1111 Park Ave., Sanford, Fla.
Sundays 10:00 a. m. and 7:00 p. m.
Prayer Service 7:00 p. m.

Nazarene
Seminole County Nazarene Church
1111 Park Ave., Sanford, Fla.
Sundays 10:00 a. m. and 7:00 p. m.
Prayer Service 7:00 p. m.



ON THE WAY UP

Four years out of college... assistant to a department head... the junior executive considered most likely to succeed.

Fifteen years from now—or twenty—do you think he'll be president of the company? We haven't the slightest idea. All we know is that, right now, he's on the way up.

Many things determine a man's potential for positions of responsibility and trust; one of them is character.

Character isn't easy to define—it is much easier to recognize.

This man goes to church every Sunday... not because he is seeking character... but because he is seeking God.

And the people who know him best figure that is one of the clearest marks of his character.

Sunday	Monday	Tuesday	Wednesday	Thursday	Friday	Saturday
41:28-36	41:37-49	29:17	8:5-13	19:1-27	2:1-7	2:1-8

The Following Sponsors Make This Church Notice And Directory Page Possible

Jim Leah Chrysler-Plymouth
Auto Sales

FOOD FAIR STORES, INC.
Robert Schmitt and Employees

PROGRESSIVE PRINTING CO.
J. O. (Jim) Smith and Staff

WINN DIXIE STORES
and Employees

SANFORD ATLANTIC NATIONAL BANK
Howard H. Hodges and Staff

COMA BOATS
Boatwrights Products, Inc.
Harold Sims and Employees

FLORIDA STATE BANK AND TRUST

STRICKLAND-MORRISON, INC.
and Staff

WILSON-MAIER FURNITURE CO.
Mr. and Mrs. A. L. Wilson

SEMINOLE COUNTY AREA CHURCH DIRECTORY

Church Name	Address	Phone
Adventist Church of Christ	1111 Park Ave., Sanford, Fla.	323-2611
Baptist Church	1111 Park Ave., Sanford, Fla.	323-2611
Church of Christ	1111 Park Ave., Sanford, Fla.	323-2611
Episcopal Church	1111 Park Ave., Sanford, Fla.	323-2611
Lutheran Church	1111 Park Ave., Sanford, Fla.	323-2611
Methodist Church	1111 Park Ave., Sanford, Fla.	323-2611
Moravian Church	1111 Park Ave., Sanford, Fla.	323-2611
Nazarene Church	1111 Park Ave., Sanford, Fla.	323-2611

Church of Christ
Seminole County Church of Christ
1111 Park Ave., Sanford, Fla.
Sundays 10:00 a. m. and 7:00 p. m.
Prayer Service 7:00 p. m.

Christian Science
Seminole County Christian Science
1111 Park Ave., Sanford, Fla.
Sundays 10:00 a. m. and 7:00 p. m.
Prayer Service 7:00 p. m.

Church of God
Seminole County Church of God
1111 Park Ave., Sanford, Fla.
Sundays 10:00 a. m. and 7:00 p. m.
Prayer Service 7:00 p. m.

Episcopal
Seminole County Episcopal Church
1111 Park Ave., Sanford, Fla.
Sundays 10:00 a. m. and 7:00 p. m.
Prayer Service 7:00 p. m.

Lutheran
Seminole County Lutheran Church
1111 Park Ave., Sanford, Fla.
Sundays 10:00 a. m. and 7:00 p. m.
Prayer Service 7:00 p. m.

Methodist
Seminole County Methodist Church
1111 Park Ave., Sanford, Fla.
Sundays 10:00 a. m. and 7:00 p. m.
Prayer Service 7:00 p. m.

Moravian
Seminole County Moravian Church
1111 Park Ave., Sanford, Fla.
Sundays 10:00 a. m. and 7:00 p. m.
Prayer Service 7:00 p. m.

Nazarene
Seminole County Nazarene Church
1111 Park Ave., Sanford, Fla.
Sundays 10:00 a. m. and 7:00 p. m.
Prayer Service 7:00 p. m.

Pentecost
Seminole County Pentecost Church
1111 Park Ave., Sanford, Fla.
Sundays 10:00 a. m. and 7:00 p. m.
Prayer Service 7:00 p. m.

Presbyterian
Seminole County Presbyterian Church
1111 Park Ave., Sanford, Fla.
Sundays 10:00 a. m. and 7:00 p. m.
Prayer Service 7:00 p. m.

Episcopal
Seminole County Episcopal Church
1111 Park Ave., Sanford, Fla.
Sundays 10:00 a. m. and 7:00 p. m.
Prayer Service 7:00 p. m.

Lutheran
Seminole County Lutheran Church
1111 Park Ave., Sanford, Fla.
Sundays 10:00 a. m. and 7:00 p. m.
Prayer Service 7:00 p. m.

Methodist
Seminole County Methodist Church
1111 Park Ave., Sanford, Fla.
Sundays 10:00 a. m. and 7:00 p. m.
Prayer Service 7:00 p. m.

Moravian
Seminole County Moravian Church
1111 Park Ave., Sanford, Fla.
Sundays 10:00 a. m. and 7:00 p. m.
Prayer Service 7:00 p. m.

Nazarene
Seminole County Nazarene Church
1111 Park Ave., Sanford, Fla.
Sundays 10:00 a. m. and 7:00 p. m.
Prayer Service 7:00 p. m.

Pentecost
Seminole County Pentecost Church
1111 Park Ave., Sanford, Fla.
Sundays 10:00 a. m. and 7:00 p. m.
Prayer Service 7:00 p. m.

Presbyterian
Seminole County Presbyterian Church
1111 Park Ave., Sanford, Fla.
Sundays 10:00 a. m. and 7:00 p. m.
Prayer Service 7:00 p. m.

Episcopal
Seminole County Episcopal Church
1111 Park Ave., Sanford, Fla.
Sundays 10:00 a. m. and 7:00 p. m.
Prayer Service 7:00 p. m.

Lutheran
Seminole County Lutheran Church
1111 Park Ave., Sanford, Fla.
Sundays 10:00 a. m. and 7:00 p. m.
Prayer Service 7:00 p. m.

Methodist
Seminole County Methodist Church
1111 Park Ave., Sanford, Fla.
Sundays 10:00 a. m. and 7:00 p. m.
Prayer Service 7:00 p. m.

Moravian
Seminole County Moravian Church
1111 Park Ave., Sanford, Fla.
Sundays 10:00 a. m. and 7:00 p. m.
Prayer Service 7:00 p. m.

Nazarene
Seminole County Nazarene Church
1111 Park Ave., Sanford, Fla.
Sundays 10:00 a. m. and 7:00 p. m.
Prayer Service 7:00 p. m.

Pentecost
Seminole County Pentecost Church
1111 Park Ave., Sanford, Fla.
Sundays 10:00 a. m. and 7:00 p. m.
Prayer Service 7:00 p. m.

Presbyterian
Seminole County Presbyterian Church
1111 Park Ave., Sanford, Fla.
Sundays 10:00 a. m. and 7:00 p. m.
Prayer Service 7:00 p. m.

Episcopal
Seminole County Episcopal Church
1111 Park Ave., Sanford, Fla.
Sundays 10:00 a. m. and 7:00 p. m.
Prayer Service 7:00 p. m.

Lutheran
Seminole County Lutheran Church
1111 Park Ave., Sanford, Fla.
Sundays 10:00 a. m. and 7:00 p. m.
Prayer Service 7:00 p. m.

Methodist
Seminole County Methodist Church
1111 Park Ave., Sanford, Fla.
Sundays 10:00 a. m. and 7:00 p. m.
Prayer Service 7:00 p. m.

Moravian
Seminole County Moravian Church
1111 Park Ave., Sanford, Fla.
Sundays 10:00 a. m. and 7:00 p. m.
Prayer Service 7:00 p. m.

Nazarene
Seminole County Nazarene Church
1111 Park Ave., Sanford, Fla.
Sundays 10:00 a. m. and 7:00 p. m.
Prayer Service 7:00 p. m.

Pentecost
Seminole County Pentecost Church
1111 Park Ave., Sanford, Fla.
Sundays 10:00 a. m. and 7:00 p. m.
Prayer Service 7:00 p. m.

Woods Fire Warning Issued



It sounded good when we reported that Seminole motels are booked solid because of the heat fishing and the Daytona races... but we found we "goofed." It was only a temporary booking as the result of a spot survey. "Bookings are good," say the motel owners, "but we can accommodate anyone who comes in."

Rangers Offer Aid

County Ranger James Marquis has appealed to residents to take precautions to protect their property from woods fires in the face of the threat of expected drought conditions and windy weather, which may result later in a ban on burning.

Brush Fires Sweep County

Smoke filled South Seminole counties Sunday as forest and brush fires fanned by the wind kept firefighters busy into the night.

State Educators Updating Survey

A team of state educators will meet tonight at 8 p.m. to begin work on updating an existing Seminole County school facilities survey.

CofC Drive Set Tuesday

A "one-punch" membership drive will be conducted by the Seminole County Chamber of Commerce with a kick-off drive at 8 a.m. tomorrow at the Sanford Civic Center.

Record Sales Hit By Sheriff

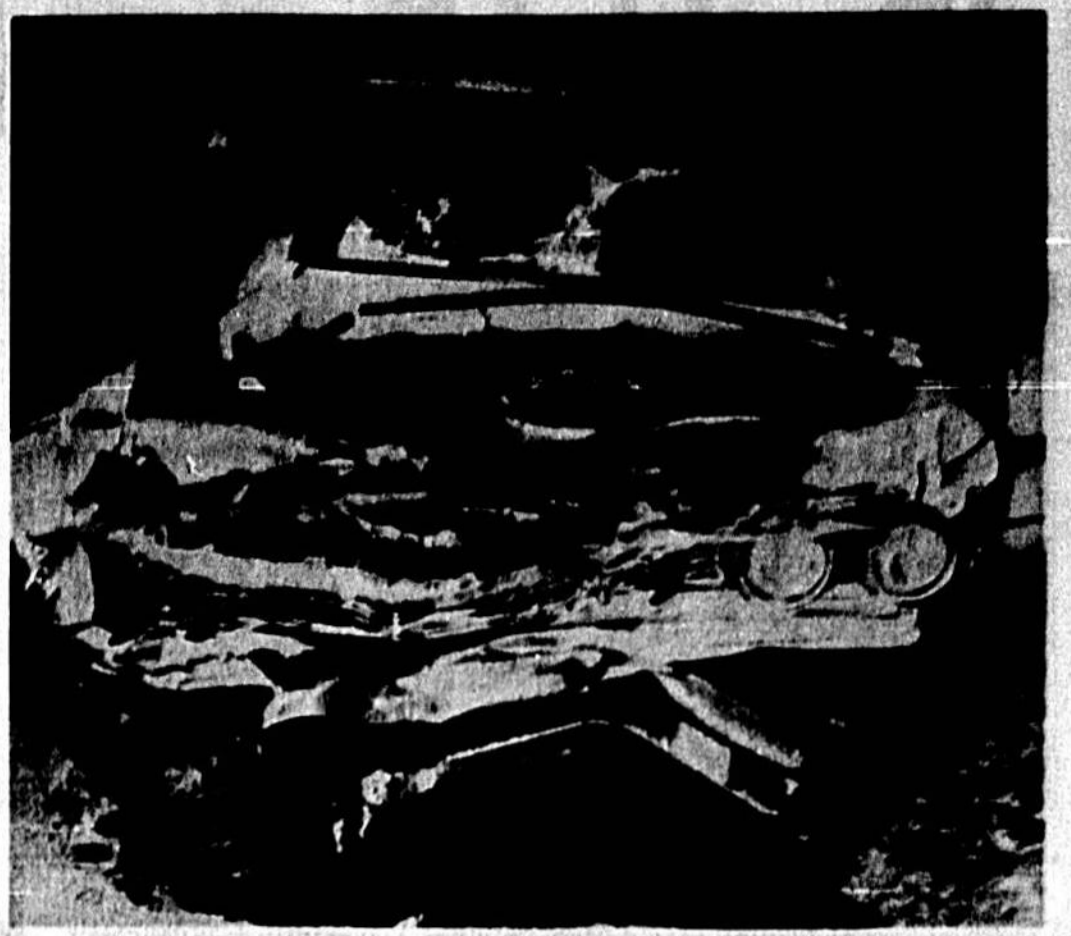
The sheriff's department has received indications that a "fly-by-night" organization is circulating throughout the County, selling records door to door.

Oviedo Moves To Sell Bonds

Resolution to put the machinery in motion for the sale of \$200,000 plus worth of bonds for the City of Oviedo is expected to be adopted at the meeting of the City Council at 7:30 p.m. today at City Hall.

Homecoming Queen at Seminole Junior College for 1968 is Miss Jody Miller

Homecoming Queen at Seminole Junior College for 1968 is Miss Jody Miller, pictured above receiving a trophy and roses from "Miss B.C.C." Bonnie Todd. Left to right, Miss Miller and her escort, Ray Youngblood, along with Miss Todd and her escort, Doug Triplett.



THOMAS D. FRIDDLE, of Longwood, was fatally injured late Friday when his automobile (above) and a Seaboard Coast Line freight train collided at SR 434. (Herald Photo)

Two Seminole Men Die In Weekend Accidents

Two Seminole County men were killed in separate traffic accidents over the weekend.

Dead are Thomas D. Friddle, 46, of Longwood, and Harry B. Starr, 63, of Altamonte Springs. Friddle was the driver of a 1964 Ford 2-door hardtop which was involved in a collision with a northbound train at the Sandal Springs railroad crossing on State Road 434.

County's Attitude On Public Utilities: 'All Or Nothing'

"All or nothing" is the attitude taken by the Board of County Commissioners concerning proposed local bills to place regulating of private utilities in the county under the Florida Public Service Commission.

Courthouse Schematics Up Again

Schematics for the proposed courthouse for Seminole County are expected to be approved at the meeting of the Board of County Commissioners at 9 a.m. Tuesday.

WE'RE BURSTING WITH PRIDE!

PONTIAC WINS "MOTOR TRENDS CAR OF THE YEAR" AWARD FOR 1968

See all of the Pontiacs
A WINNING COMBINATION
WE'RE PROUD OF OUR DEALERS

TRADE NOW!
1801 W. FIRST ST.
SANFORD, FLORIDA 32703

NEW CHEF
North Orlando Village Council will administer the official oath of office to Thomas R. Hennigan, new police chief, at today's 7:30 p.m. meeting in the village offices.

Routine business matters and reports are only other items on the agenda, according to Mrs. Helen Green, village clerk.