









Majors Go After Sanford Boy



By JOHN SPOLSKI Herald Sports Editor

Don't get caught in all that out-of-town traffic at the Sires house on French Avenue. Rick Sires (center) answers another call from one of the many major league scouts while his mother and father get ready to "coach" their son on contract negotiations. Sires is the son of Mr. and Mrs. George Sires of 2631 French Avenue. (HOTTON) The 6' 3" right-hander pitcher is also an excellent hitter carrying a .400 batting average. (Herald Photos)

SANFORD'S HOT LINE

... leads to the Sires' home on French Avenue. Rick Sires (center) answers another call from one of the many major league scouts while his mother and father get ready to "coach" their son on contract negotiations. Sires is the son of Mr. and Mrs. George Sires of 2631 French Avenue. (HOTTON) The 6' 3" right-hander pitcher is also an excellent hitter carrying a .400 batting average. (Herald Photos)

STANDINGS

Table with 3 columns: Rank, Team, and Record. Includes 'Women's Scratch League' and 'High Games - Series'.

Cassius Throws One More 'Desperate' Punch

HOUSTON (AP) — Cassius Clay and his lawyers... one final desperate punch today in an effort to block the heavy-weight champion's induction into the Army.

A Pitcher's Day

By THE ASSOCIATED PRESS Bob Aspromonte has lined up with one-shot villains Elston Howard and Jim Fregosi on the pitchers union's unwanted list. But the Houston third baseman rates a special spot — alongside ex-teammate Joe Altamonte — on Al Jackson's personal ledger.



TONY OLIVA

You Just Can't Walk Oliva - It Hurts!

By THE ASSOCIATED PRESS Yankees took over first place by trouncing the Chicago White Sox 11-2, Baltimore nipped California 2-1, Detroit blanked Kansas City 5-0 and Boston whalloped Washington 9-3.

Super Bowl To Miami?

MIAMI, Fla. (AP) — Pete Rozelle, commissioner of the National Football League, conferred with Orange Bowl officials Tuesday and said Miami is strongly being considered for the 1969 Super Bowl football game.

Advertisement for Seminoe Downs racing featuring a horse and rider image and text: 'RACING Nightly at 7:45'.

Strikes... Spares

On behalf of all the kids who had themselves one "check-of-ball" during the past two weekends with their own Annual Tournament, I'd like to thank all of you adults who helped as servers and to those others who just wanted to come on out and "root" for their favorites.

Casselberry Slams Altamonte In Little Loop

The Casselberry Indians, behind the sparkling two-hit pitching of Terry Baker, white-washed the Altamonte Senators 9-0 last night in Seminole Senior League play at Cooper Field in Casselberry.

Tillis' Arm Gives Cobia Win In Metro Loop

Danny Tillis led the Cobia Boats team to an extra inning win over Modern Mobile Boats 10-6 last night in the Metro Softball League. Harold Telas was the winning pitcher and the loss was charged to Don Hunter.



BANTAM DOUBLES CHAMPS... Front row (left to right) David Olmstead and David Mathews. Back row, Marion Magee, Assistant Coach and runners-up Wesley Jones and Harold Johnson.

Call 'em In, Fans

In order to facilitate coverage of Little League games and scores in the south end of the county, coaches and managers are encouraged to call Herald Sports Editor Jim Bacchus at 838-4306.

Big Duel Highlights Down's Race

Under a patient ride by Joe Key Gale Hatcher, H. R. Caple's Gallopino Rose accounted for the first race on this ladies night at Seminoe Downs yesterday.



A Big Day For Kitty O'Gara

It was a big day for Kitty O'Gara in the Wednesday Night Officers' Wives League as she rolled a 42 high series, including a high single game of 23.



GUESS WHICH ONE... Will probably say, 'Mr. Ump, that pitch was a mile wide.' (Well, you count just THREE.) Front row (left to right) John Barker, David Bennett, Jeff Thurston, Jack Cheney, Billy Echols and Kirt Palmer of the Delaney Little League Team. Back row (left to right) Mike Edwards, Jimmy Cook, John Fudgett, Kevin Laughlin, Joe Bruce, Joey Brenner, Glen Urban and Johnny Watson.

TYPING

Minimograph, letters, legal typing, resumes, church work, fish work, etc. SANFORD SECRETARIAL 401 Tucker Dr. 322-9211

Large advertisement for Goodyear tires and brake adjustment services. Features 'Any Size - One Price PAIR SALE' and '21.95 FOR' text. Includes a Goodyear logo and contact information for Sanford.

SHS Has 8 Firsts And Still Loses

How do you take eight out of 11 first places and still not win the meet? This is the question which Coach Grey Boyles of the Seminole High Swim team is asking himself today after his girls' team dropped a close one 46-45 to Ocala yesterday, here in Sanford.

Arguillus' Hit Lifts Middies Past Ocoee, 8-5

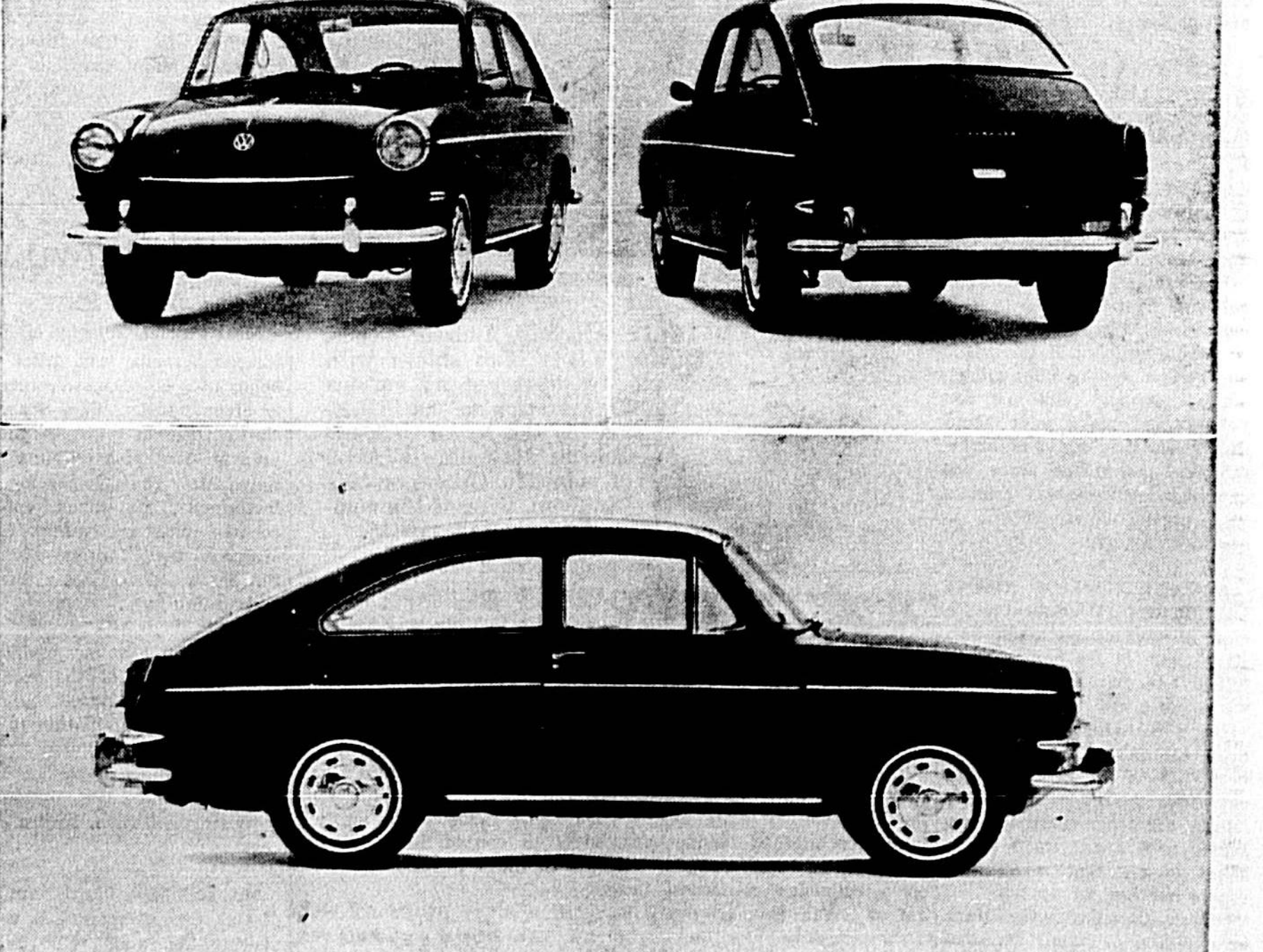
The Sanford Naval Academy clubbed Ocoee yesterday 8-5, collecting 12 hits, most of them in the productive seven-run fifth inning.

Updraft Top Choice

This could be the year that Dr. Ed Updraft finally wins the Men's North and South Amateur Golf Tournament. The 45-year-old Turson, Ariz., is the man everyone was keeping an eye on as today's third and fourth round began.

Back Signs

DALLAS (AP) — Phil Clark, defensive back for the Dallas Cowboys, was signed Tuesday by the Dallas Cowboys of the National Football League. The 6-foot-7, 215-pound Clark was one of the Cowboys' first draft choices.



Advertisement for Volkswagen Beetles with text: 'Make sure you like it before you buy it. You know how long Volkswagens last.' Includes a list of Volkswagen dealers.

Advertisement for Ellinor Motor Company with text: 'ELLINOR MOTOR COMPANY HIGHWAY 17-92 JUST SOUTH OF SANFORD'.

JUNIOR DOUBLES CHAMPS

David Penick (left), Assistant Coach Margie Reiderman, and Patsy Terry. Here's another name to add to our list of "Stars of the Week." I'm speaking of John Pappas who bowled 121 pins over his average this Saturday evening and capped the title.

Toronto Cops Bruising Win In Cup Play

TORONTO (AP) — "Us old warhorses are better in a longer race," said a happy Marcel Pronovost. The veteran Toronto defenseman was in the Maple Leafs' dressing room, resting up from his club's bruising 3-2 marathon victory over Montreal Tuesday night in the final Stanley Cup playoff round.

Mikita Wins Hockey Award

TORONTO (AP) — Stan Mikita of the Chicago Black Hawks was named winner today of the Hart Memorial Trophy as the National Hockey League's most valuable player and the Lady Byng Trophy for sportsmanship and superior performance.

Optioned

ATLANTA (AP) — Picher Don Schwaus has been optioned by the Braves to Richmond of the International League. Schwaus, obtained from Pittsburgh over a trade for Billy O'Dell, had appeared in only one game this season.

Baseball Standings

Table with 3 columns: Team, W, and L. Includes 'National League' and 'American League' standings.





### Oviedo Jaycees Confirm Support Gi Sowers

By LARRY NEELY  
The Greater Oviedo Jaycees confirmed their support of Dr. Gary Sowers of Maitland in his campaign for president of the Florida Jaycees at their general meeting Monday night in the Town House Restaurant in Oviedo.

WINNER of bicycle in bean-guessing contest in Forest City was Garin Gridley, who makes her home with her grandmother, Mrs. W. C. Gridley at Orange Court, Forest City. Shown with her is L. G. Stubbs, contest sponsor. (Herald Photo)

### U.S. Viet Tactics -- Bomb--Bomb, Bomb

WASHINGTON (AP) — The tactic is bomb, bomb, bomb — and U.S. planes are doing it over North and South Vietnam at the incredible rate of more than 3,000 pounds a minute around the clock.

In March, as the administration quipped in a drumbeat of explosive persuasion against Communist targets in the two countries, American planes unleashed 77,000 tons of bombs — a one-month record for the war.

This total is just short of the 80,000 tons dropped in Europe during the average month of the peak year of bombing in World War II.

With the recent intensification of raids over the North and widening of the approved target list, the April tonnage seems likely to exceed the World War II rate.

Secretary of Defense Robert S. McNamara often points to the bomb tonnage as proof that the magnitude of air operations in Southeast Asia "is just unbelievable. . . fantastic in size against any previous standards."

The 77,000 tons in March compares with 29,000 tons per month spilled against the Japanese at the height of World War II operations in the Pacific, and with 17,000 tons a month dropped during the Korean War.

The bulk of the effort is directed at North Vietnam, although airpower is used on an unprecedented scale to support ground operations in the South.

In various configurations and sizes — from 250 pounds to one-tonners, plain impact types to delayed fuses — bombs are hitting virtually anything directly or indirectly associated with Communist operations in South Vietnam.

This includes roads, highways, bridges, railroads, trucks, boats, barges, fuel tanks — and most recently major power plants and MIG fields in North Vietnam.

Although no administration official has ever stated publicly that U.S. planes are being used to terrorize North Vietnam, Air Force Secretary Harold Brown said pointedly in a major policy speech last December:

"All of these targets are hostages to U.S. airpower which operates over North Vietnam every day. That power can be increased to a much higher level if it is concluded, on balance, that this will contribute to the attainment of our objectives. . . It is also a constant and visible reminder to the people of North Vietnam that their leaders cannot avoid the cost of aggression."

Internal vice president Walter Duda presided over the business meeting and announced that the Oviedo Jaycees were only three visits away from completing their visitation program in Central Florida. The three remaining organizations are Kissimmee, Apopka, and Orlando.

Officers for the coming year will be elected at the next dinner meeting, May 8. The newly elected officers, along with other members, will attend the State Jaycee Convention next month.

Officers for the coming year will be elected at the next dinner meeting, May 8. The newly elected officers, along with other members, will attend the State Jaycee Convention next month.

Officers for the coming year will be elected at the next dinner meeting, May 8. The newly elected officers, along with other members, will attend the State Jaycee Convention next month.

Officers for the coming year will be elected at the next dinner meeting, May 8. The newly elected officers, along with other members, will attend the State Jaycee Convention next month.

Officers for the coming year will be elected at the next dinner meeting, May 8. The newly elected officers, along with other members, will attend the State Jaycee Convention next month.

Officers for the coming year will be elected at the next dinner meeting, May 8. The newly elected officers, along with other members, will attend the State Jaycee Convention next month.



FIELD TRIP through The Sanford Herald newspaper plant was made this afternoon by pupils of Mrs. LaVica Gustafson's second grade class at West Side School. The party included Virginia Bratton, Phyllis Edwards, Charlene Entzinger, Kathy Freeman, Debbie Gladden, Karla Hanson, Elizabeth Langston, Wanda Lee, Patricia McKinney, Pamela Oldaker, Cecilia Presley, Melinda Reynolds, Faye Rowe, Carolyn Syples, Ruth Ann Swiger, Robert Brasher, Thomas Ernst, Grady Legett, Billy McCalley, David Selph, Billy Tatum, Timothy Stevenson and Jerome Verlinde.

Mr. Visiting Businessman — PLEASE NOTE!



From Duluth to Darien. Crisp and green, tasty and tossable, those salad makin' ows their color and flavor to the Florida Sun. Florida supplies a healthy percentage of the goodness in salad bowls across the country. Over 40% of the nation's green peppers, for example.

Other important Florida-grown salad staples include tomatoes, celery, lettuce, romaine, cucumbers, carrots and chicony. (And that's just *salads*.) Furthermore, since winter is just another growing season in the Sunshine State, Florida provides an even greater proportion of these important foods for cold-weather antipastos.

And, thanks to Florida's modern transportation network, these crops reach customers in northern markets within 24 hours of harvesting!

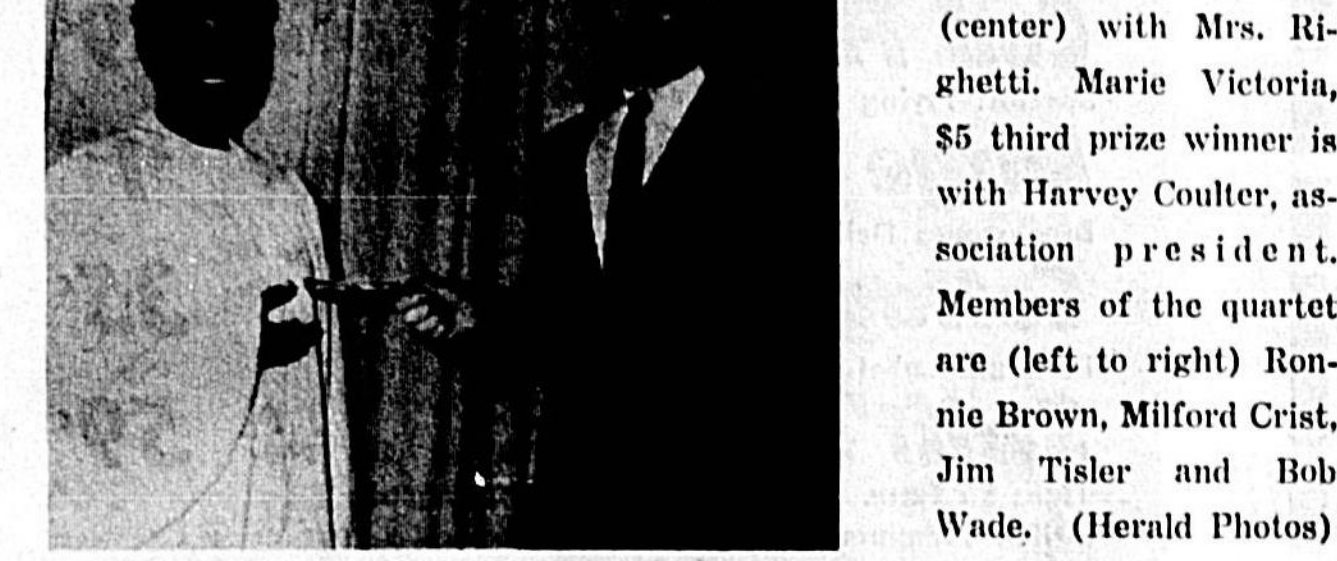
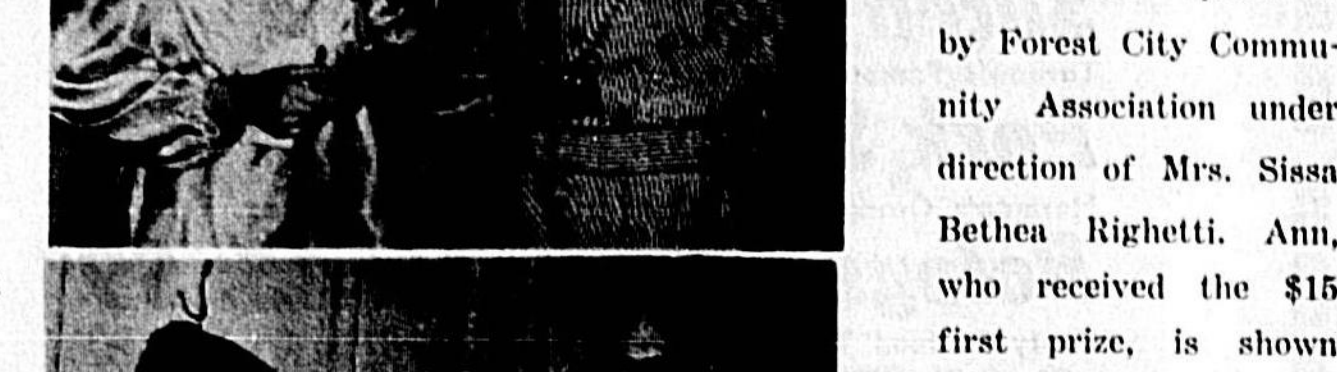
The Florida sun keeps business and industry green, too. The tax climate—both business and individual—is as favorable as the weather. . . and the source of dependable, low-cost electric power is as bountiful as the sunlight. So if you and your firm are looking for growing space, think of Florida. You'll be in good company. From tomatoes to transistors, business takes to Florida. So close the manpower that business needs, from unskilled to executive. So do growing families, like yours.

And you won't even have to wait 24 hours for a garden-fresh salad.

FLORIDA POWER & LIGHT COMPANY. HELPING BUILD FLORIDA. W. Scott Burns, Mgr. 207 Magnolia Ave.



DRAMATIC readings by Ann Shelton and Marie Victoria Kelsey and a vocal number by the Messengers Quartet were prize winners in recent talent show sponsored by Forest City Community Association under direction of Mrs. Sissa Bethea Righetti. Ann, who received the \$15 first prize, is shown (center) with Mrs. Righetti, Marie Victoria, \$5 third prize winner is with Harvey Coulter, association president. Members of the quartet are (left to right) Ronnie Brown, Milford Crist, Jim Tisler and Bob Wade. (Herald Photos)



### How Christian Churches Aid The Depressed In Viet

By word and by picture the work of the Christian churches among the distressed, displaced and physically hurt people of Viet Nam was shown to the members of Sanford Lions Club at the weekly meeting in the Civic Center yesterday.

Rev. Vernon Fuller presented the film strip and explained it with commentary before and after the showing. Prior to the program the Lions elected the men who will lead the club after taking office on July 1. They are George DeMatto, president; John Dickey, 1st vice president; Thomas Freeman, second vice president; Jim Doucette, third vice president; W. H. Duncan, secretary; and Roy Wright, treasurer.

Reverend Fuller explained the financing of the work of the Christian Churches as being the result of the national "One Great Hour of Sharing" held in all the churches once a year. The operations in Viet Nam, he explained, was under the direct supervision of the World Council of Churches.

Scenes shown in the film strip depicted in graphic form the almost unbelievable amount of help needed by the non-military victims of the war. Food for the hungry, clothing for the destitute, healing for the hurt and—above all—the outward expression of the love and compassion which should characterize all Christian endeavors.

Three main locations where the work is being done are in Saigon, Nhatam and Pleiku. The squad, overcrowded conditions, makeshift housing, filth which contrast sharply with the modern official buildings in Saigon was one area which drew intense attention from the Lions. Shown in color were the clinics, the operating rooms in Nhatam and Pleiku where white and Vietnamese nurses work side by side to help the injured.

In a recorded commentary it was explained that the problems of health and sanitation in Viet Nam would have been a great challenge for science to meet, but with the added tragedies of war the need is impossible to exaggerate. Especially were the scenes which showed the hordes of refugees from the battle zone, many of whom were casualties of war actions, attention getters and holders. When the program was ended the Reverend Fuller explained that

There will be a total of 200 hand students playing in the band students playing in the band students playing in the band. . . .

WE CARRY ONLY TOP QUALITY U.S. "GOOD" BEEF  
**Wade's SUPREX**  
7 INCH CUT RIB STEAK LB. 78¢  
BONED & ROLLED CHUCK ROAST LB. 78¢  
ALL MEAT STEW . . . . . LB. 68¢  
GROCERY 509 E. 7th ST.  
MEMBER FLORIDA RETAIL OWNED GROCERS

GOOD EATIN'  
**CHUCK STEAK**  
Lb. 45¢

ARMOUR BEEF LIVER LB. 49¢  
FIRST CUT PORK CHOPS LB. 49¢  
CHITTERLINGS 5-LB. BUCKET \$1.29  
Fla. Grade "A" Large EGGS . . . . . 2 Doz. 78¢  
"Hunt's" Hickory Flavored CATSUP . . . . . 14-Oz. Bottle 15¢  
"Hunt's" Pizza Flavored CATSUP . . . . . 14-Oz. Bottle 15¢  
"Blackburn" Made SYRUP . . . . . Half Gallon 49¢  
"Lyke's" Luncheon MEAT . . . 2 12-Oz. Cans 89¢  
"Lyke's" Beef STEW . . . 2 24-Oz. Cans 89¢  
F. A. G. Long Grain RICE . . . . . 3-Lb. Bag 39¢  
Assorted Colors "Scott" Softwee Bathroom TISSUE . . . . . Pkg Of 2 Rolls 23¢  
"Morton's" Pot PIES . . . . . 3 FOR 59¢

DETERGENT TIDE GIANT SIZE 47¢  
(Limit: One With \$5.00 Order)

MAXWELL HOUSE COFFEE 1-LB. CAN 39¢  
(Limit: One With \$5.00 Order)

PILLSBURY FLOUR 5-LB. BAG 49¢  
(Limit: One With \$5.00 Order)

GOLDEN RIFE Bananas LB. 10¢  
U.S. NO. 1 YELLOW Onions . . . 3 LB. BAG 29¢  
RED EMPEROR Grapes . . . LB. 19¢  
LARGE SIZE RED DELICIOUS Apples . . . 5 FOR 49¢

"RITZ" CANNED DRINKS ASSORTED FLAVORS 15 12-OZ. CANS \$1.00

SOLID OLEO MARGARINE 1-LB. 15¢

WE GIVE NO TRADING STAMPS — JUST HIGH QUALITY FOOD AT LOW PRICES!  
THESE PRICES GOOD THROUGH APRIL 29 WE RESERVE THE RIGHT TO LIMIT QUANTITIES  
Phone 322-7159

"BUS DRIVERS," a comedy skit presented by Seminole County school bus drivers, was added attraction at recent Talent Show sponsored by Forest City Community Association. Herbert Muse, supervisor of the county school bus transportation system, played the driver. Regular drivers playing the part of students were Eileen Broomfield, Elsie Carter, Geneva Layter, Dee Morris, Juanita Gian, Betty Gilbert, Barbara Higgins, Barbara Rannau, Edith Ray and Eula Scott. (Herald Photo)

WALTER BISTLINE, son of Mr. and Mrs. Fred Bistline of Longwood, has been selected by American Legion Old Glory Post 183 of Altamonte Springs to attend Boys State in Tallahassee, July 9-16. He is a Junior at Lyman High School and an Eagle Scout.

DIED IN OFFICE  
Four presidents of the United States died natural deaths while in office — William Henry Harrison, Zachary Taylor, Warren G. Harding and Franklin D. Roosevelt.

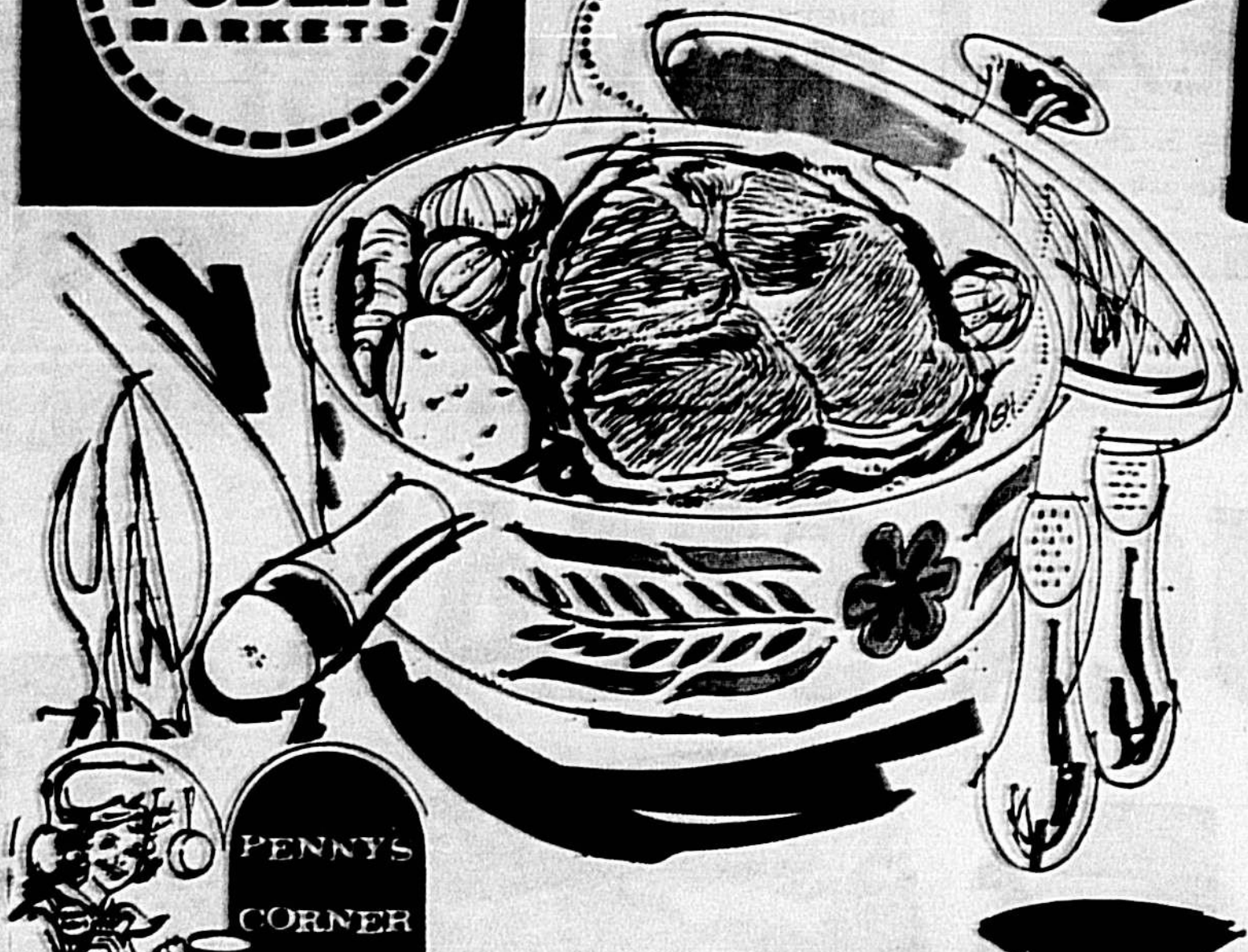
NEW OPEN RATE LIST Available  
The Navy Recruiting Office in Orlando has just received the new open rate list. Chief Jacobs, the Recruiter in Charge, stated that prior Navy men who have been separated or discharged from active duty over 90 days may now be able to reenlist in the same Pay Grade at which they were discharged.

The open rate list is reviewed and up-dated every six months, so those who were not qualified at time of discharge may now be eligible. For further information on this program and other progress for prior Navy men, contact your local Navy recruiter.

THE YOUNGER GENERATION NEEDS SUGAR FOR ENERGY  
Wite Crystals Sugar



# Dutch POT ROAST



**SWIFT'S PREMIUM PROTEN BONE-IN Beef Pot Roast**  
per lb. **59¢**

**How one-dish meals are tastier than good, old-fashioned pot roast.** Here's an old stand-by recipe for hearty Dutch Pot Roast. Why not give it a try?

**Dutch Pot Roast**

- 3/4 cup flour
- 1/2 teaspoon salt
- 1/2 teaspoon pepper
- 5 or 6 pound beef pot roast
- 1/4 cup shortening
- 1 can (1 1/2 oz.) tomatoes
- 1/4 cup water
- 1 peppercorn
- 1 bay leaves
- 5 onions, quartered

Mix flour with salt and pepper and rub into all sides of the roast. Heat shortening in a heavy kettle or Dutch oven. Add roast and cook over medium heat, turning to brown on all sides. If desired, slip a rack under the meat. Then add tomatoes, water, peppercorns, bay leaves, and two of the quartered onions. Cover tightly and simmer gently about 4 hours, or until almost tender. (If rack is not used, turn meat occasionally to insure even cooking.) If needed, add a little more hot water during cooking. Then add remaining onions and the carrots. Continue cooking about 30 minutes longer, or until meat and vegetables are tender. Remove meat and vegetable to platter to keep warm. Then make gravy. Makes 8 to 10 servings.

To make gravy: Skim off excess fat from liquid in kettle or Dutch oven; remove bay leaves and peppercorns. Thicken liquid with a flour and water paste. (For each cup of liquid, use 1/2 tablespoon flour and mix to a smooth paste by gradually adding 3 tablespoons water.) Season with salt and pepper.

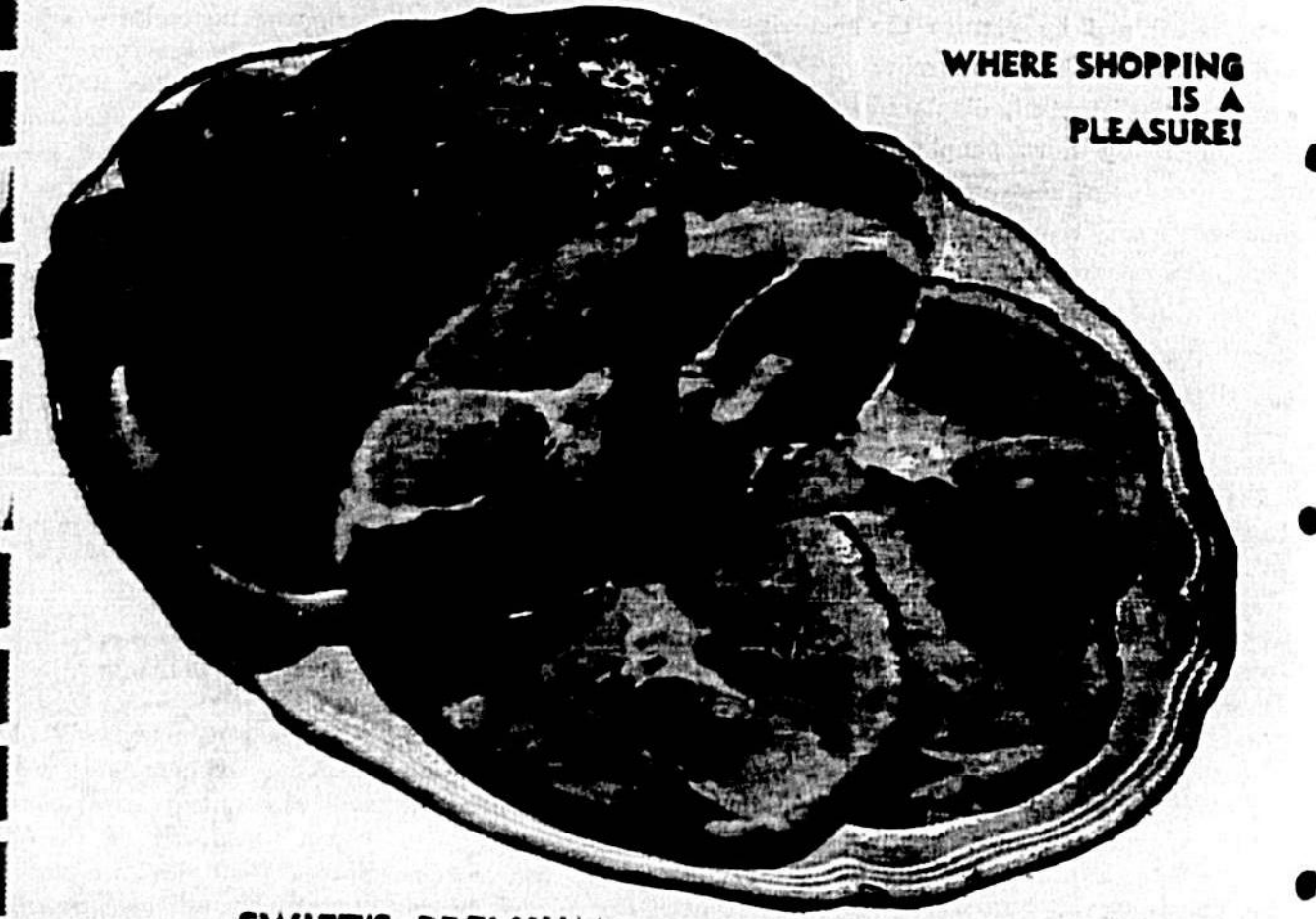
Sometimes to add a little zip, I cut up green peppers - about two - to brown lightly with the onions. Let them cook right along with the meat for added flavor.

And if you have some of the roast and gravy left-over, add about a half a cup of red wine or cooking sherry to the gravy as you serve it. Serve with rice and a piquant salad. Your family will think they're dining on a whole new dish. Mitee doo!

- Swift's Premium Proten Boneless Imperial **Roast** . . . . . lb. **79¢**
- Swift's Premium Boneless English Cut **Beef Roast** . . . . . lb. **89¢**
- Swift's Premium Tasty **Chuck Steaks** . . . . . lb. **69¢**
- Delicious Steak Treat!**
- London Broil** . . . . . lb. **\$1.09**
- Swift's Premium Beef **Short Ribs** . . . . . lb. **49¢**
- Swift's Premium Fresh **Ground Beef 3** . . . . . lbs. **\$1.47**

- the BEEF that NEEDS LESS COOKING TIME!*
- down produce lane**
- FLORIDA TENDER YELLOW
- Sweet Corn** 10 full ears **49¢**
- Florida-Grown Red Bliss **Potatoes** . . . . . 10-lb. **49¢** 20-lb. **89¢**
- Selected Perfect Luscious **Cherry Tomatoes** . . . . . pint **29¢**
- Florida-Grown Tender **Yellow Squash** . . . . . lb. **15¢**

- Swift's Premium Flavorful **Sliced Bacon** . . . . . 1 lb. pkg. **65¢**
- Swift's Premium Chipped Beef, **Ham or Turkey 3** . . . . . 3 oz. pkg. **\$1.**
- Capeland's Cooked or Baked **Sliced Ham** . . . . . 5 oz. pkg. **59¢**
- Tornow's Famous Whole Hog **Pork Sausage** . . . . . 1 lb. pkg. **69¢**
- Herman's Orange Band Sliced **Bologna** . . . . . 6 oz. 10 oz. 16 oz. **25¢ 45¢ 59¢**
- Tasty Seafood Treat!
- Cod Fillets** . . . . . lb. **39¢**
- Special! Frying Size **Large Shrimp** . . . . . lb. **\$1.39**
- Breakfast Delicious **Cottage Cheese** . . . . . 1 lb. cup **35¢**
- Premium Label All Meat **Swift's Franks** . . . . . 1 lb. pkg. **59¢**
- (Plus 50 Extra Green Stamps with coupon)
- Swift's Premium Sausage **Brown 'n' Serve** . . . . . 8 oz. pkg. **59¢**
- (Plus 50 Extra Green Stamps with coupon)
- Swift's Premium Assorted Sliced **Cold Cuts** . . . . . 6 oz. pkg. **87¢**
- (Plus 100 Extra Green Stamps with coupon)



SWIFT'S PREMIUM EITHER END OR WHOLE

**SMOKED HAMS**

lb. **49¢**

FULLY-COOKED

comet cleanser 2 cans 51¢	alpo dog food 2 cans 59¢	superose sweetener 1 lb. 69¢	ronco elbow macaroni 2 cans 31¢	ronco thin spaghetti 12 cans 23¢	comet cleanser 2 cans 35¢
---------------------------	--------------------------	------------------------------	---------------------------------	----------------------------------	---------------------------

Another Happy Difference: **S&H Green Stamps!**

**100 EXTRA Green Stamps**

Swift's Premium Assorted Sliced Cold Cuts Three 6 oz. pkgs. 87¢ (Braunschweiler, Bologna, Pickle & Pimento) (Expires Sat. April 28, 1967)

**50 EXTRA Green Stamps**

Premium Label Swift's Franks 1 lb. pkg. 59¢ (Expires Sat. April 28, 1967)

**50 EXTRA Green Stamps**

Swift's Premium Sausage Brown 'n' Serve 8 oz. pkg. 59¢ (Expires Sat. April 28, 1967)

**50 EXTRA Green Stamps**

Kitchen-Fresh Potato Salad per lb. 49¢ (Expires Sat. April 28, 1967)

# savoury one-dish meal



- Delicatessen TREATS**
- Extra Lean Sliced **Cooked Ham** . . . . . half pound **69¢**
  - Swift's Premium Tender-Grown Government Inspected, Shipped, D&D, Fresh Not Frozen **Bar-B-Q Fryers** . . . . . lb. **69¢**
  - Kitchen Fresh **Potato Salad** . . . . . per lb. **49¢**
  - (Plus 50 Extra 50H Green Stamps with coupon)
  - health & beauty aids**
  - SAVE 25¢ List Price 79¢ Stripe **Tooth Paste** . . . . . king size **54¢**
  - SAVE 29¢ Oral Antiseptic **Micrin** . . . . . 12 oz. bot. **59¢**
  - \*\*\*
  - F.F.V. Cookie Treat **Fudge Cremes** . . . . . 1 1/2 oz. pkg. **29¢**
  - Sritemann's **Pecan Sandies** . . . . . 14 oz. box **49¢**
  - F&P Flavorful **Pineapple Juice** . . . . . 4 4 1/2 oz. can **51¢**

**STARKIST LIGHT MEAT Chunk Tuna**  
6 1/2 oz. cans **4 for \$1**

- Green Giant Cut **Asparagus** . . . . . 21 can **33¢**
- Lipton's Brisk **Bulk Tea** . . . . . 1/2 lb. pkg. **45¢**
- Pure Vegetable Oil **Kraft Oil** . . . . . 48 oz. decanter **99¢**

- dairy specials**
- Breakfast Club Grade "A" Florida **Medium Eggs** . . . . . 2 dozen **69¢**
  - Pillsbury's Popple Fresh **Cinnamon Rolls** . . . . . 9 1/2 oz. can **27¢**
  - Blue Bonnet Regular **Margarine** . . . . . 1 lb. **29¢**
  - Wisconsin Cheese Bar Sliced **American Cheese** . . . . . 12 oz. **59¢**

- frozen foods**
- Howard Johnson's **Fried Clams** . . . . . 7 oz. **69¢**
  - Chow King Chicken **Chow Mein Dinner** . . . . . 11 oz. **59¢**
  - On-the-Border **French Fries** . . . . . 3 1/2 lb. **89¢**
  - Blind Eye Chopped or **Leaf Spinach** . . . . . 2 10 oz. **39¢**
  - Boon's Famous **Haddock Fillets** . . . . . 1 lb. **69¢**
  - Mrs. Paul's Family Size **Deviled Crabs** . . . . . 15 oz. **99¢**
  - Mr. Frary's Breaded **Stuffed Flounder** . . . . . 8 oz. **59¢**

Morton's mix or match sale  
Morton's Chicken, Beef or Turkey Pot Pies, Macaroni & Cheese, or Spaghetti & Meat Sauce Dinners  
**5 8 oz. 51¢**

- SAVE 33¢! Red, Yellow, Low-Cal Hawaiian **Punch** . . . . . 4 46 oz. cans **\$1**
- SAVE 32¢! Del Monte Halved or Sliced **Peaches** . . . . . 4 #2 1/2 cans **\$1**
- SAVE 25¢! F&P Solid Pack **Tomatoes** . . . . . 5 #303 cans **\$1**
- SAVE 18¢! Salad Dressing **Miracle Whip** . . . . . quart jar **49¢**
- SAVE 40¢! Del Monte **Catsup** . . . . . 4 20 oz. bot. **\$1**
- SAVE 16¢! Facial Tissue **Scotties** . . . . . 4 200 ct. pkgs. **\$1**
- SAVE 8¢! Bathroom Tissue **Soft Weave** . . . . . 4 2 roll pkgs. **\$1**
- (white, pink, blue, green, yellow)
- SAVE 20¢! Plain or Self-Rising Pillsbury **Flour** . . . . . 5-lb. pkg. **49¢**

Prices are effective Thurs., Fri., Sat., April 27, 28, 29 1967

**ALL GRINDS MOUNTAIN GROWN Folger's Coffee**  
1-lb. can **38¢**

LIMIT 1 PLEASE WITH OTHER PURCHASES OF \$5.00 OR MORE

**CUSTOMER BONUS!**

**Samsonite** (expires June 7)  
WOODGRAIN FINISH  
**\$3.99**  
With \$15.00 worth of Register Tapes

- CELEBRATING THE GRAND OPENING OF OUR 134th PUBLIX... KISSIMMEE, FLORIDA
- SAVE 20¢! Swift's Premium Assorted Flavors **Ice Cream** . . . . . half gal. **79¢**
  - SAVE 16¢! Lady Betty **Prune Juice** . . . . . 40 oz. bot. **39¢**
  - SAVE 29¢! Del Monte Bartlett **Pear Halves** . . . . . 3 #2 1/2 cans **\$1**
  - SAVE 16¢! Colo **Dog Food** . . . . . 8 tall cans **\$1**
  - White, Yellow, Pink, Turquoise
  - Scot Towels** . . . . . 3 large rolls **\$1**
  - SAVE 20¢! Every Day **White Plates** . . . . . 80 ct. pkg. **59¢**

All Brands of **Homogenized Milk**  
glass or carton  
half gal. **39¢**  
(limit 2 please)

**new '67 edition**

"Let's go to the races"

WIN UP TO \$500.00

WFLA, Channel 8, Tampa St. Petersburg 5:30 to 6:00 PM  
WDBO, Channel 6, Orlando 5:00 to 5:30 PM

**SWIFT'S BROOKFIELD Swift's Butter**  
1-lb. ctn. **48¢**

LIMIT 1 PLEASE WITH OTHER PURCHASES OF \$5.00 OR MORE

**100 EXTRA Green Stamps**

Cleasil Medication med. size 79¢ (Expires Sat. April 28, 1967)

**100 EXTRA Green Stamps**

Right Guard Spray Deodorant 7 oz. size 89¢ (Expires Sat. April 28, 1967)

**100 EXTRA Green Stamps**

Adult Tooth Brushes any brand (Expires Sat. April 28, 1967)

**50 EXTRA Green Stamps**

Chef-Boy-ar-Dee Pizza with sausage 13 1/2 oz. pkg. 75¢ (Expires Sat. April 28, 1967)

**50 EXTRA Green Stamps**

7-Scos Creamy Russian Dressing 8 oz. bot. 45¢ (Expires Sat. April 28, 1967)

7-Scos Coach House Dressing 8 oz. bot. 45¢ (Expires Sat. April 28, 1967)

**PUBLIX MARKET**

SANFORD PLAZA SEMINOLE PLAZA  
Hwy. 17-92 and Onora Dr., Sanford Casselberry

HOURS:  
MON., TUES., WED., SAT.: 8:30-9:00  
THURS., FRI., 8:30-9:00  
MON., THUR. SAT. 9 A.M.-9 P.M.

Another Happy Difference: **S&H Green Stamps!**



**Co-op Student,  
Sponsor Leave  
For Convention**

By JANE CASSELLBERRY  
Lynman High School Distribu-  
tive Education student, John  
Causley, and his DE Coordina-  
tor, Lloyd Barnes, left today by  
plane for Chicago to attend the  
national convention of Dis-  
tributive Education Clubs of  
America at the Conrad Hilton  
Hotel.

They are traveling with the  
34 member delegation from  
Florida.  
John is state parliamentarian  
and will represent Florida on  
the parliamentary board, which  
will consider all proposed boards  
to come before the convention.  
He also is campaign manager  
for Ty Phillips, Florida's candi-  
date for vice president of the  
Southern Region.  
The Florida delegates will dis-  
tribute 25 barrels of oranges  
donated by Florida Citrus Mut-  
ual. An estimated 3,000 stu-  
dents will attend from 46 states.  
Barnes has expressed his ap-  
preciation to the Beta Club,  
Para-Medical Club, Pep Club,  
and South Seminoles Jaycees for  
donating time and money to  
raise funds to send him and  
John to Chicago.  
They will return home Sunday  
night.

**It's Spring:  
Guidelines For  
Girl Watchers**

NEW YORK (AP) — It's  
molting season for both birds  
and girls and so the American  
Society of Girl Watchers issued  
guidelines today for its 4,000  
members.

They are:  
"Don't oggle."  
When passing a girl going the  
same direction, don't turn the  
head around and stare.  
"Don't use binoculars — except  
at races."  
Don't whistle, pinch, whisper  
or commit any other overt act.  
Maintain eye-ball control at  
all times.

"We don't have any particular  
season," said Don Sauers of  
Eastchester, N.Y., founder of  
the society. "In fact, some of  
our best card-carrying mem-  
bers think all parts in Vermont  
are sicker than bilkins in Miami  
or miniskirts in Los Angeles.

"But this is the molting sea-  
son when the girls all take off  
their heavy over clothing and  
get closer to nature. Our spring  
season starts the middle of  
April. At this time 7th Avenue  
—between 42nd Street and Central  
Park — becomes the girl  
watchers' paradise of the  
world."

The society started as a gag  
out of the head of Sauers and  
grew into an institution.  
Sauers, 44, father of five, was  
sitting around at lunch with  
some Madison Avenue pals  
about 10 years ago and a hip-  
swinging miss swung by the  
window. Sauers was suddenly  
struck with an idea.  
"Bird watchers" have their  
own organization — the Audu-  
bon Society. I suggested there  
are more girl watchers than  
bird watchers. Girls are more  
fun to watch. They all agreed."  
The society now occupies  
quite lush, four-story headquar-  
ters on 38th Street just off Park  
Avenue. It has members in 45  
states and several foreign coun-  
tries.

It has its own guide book, au-  
thored by Sauers; its own theme  
song, "Music to Watch Girls  
By," a popular ditty used by a  
soft drink firm; a lapel pin, just  
like the Elk's, and a nine-article  
constitution.  
The society is an affiliate of  
the Professional Sports Manage-  
ment Corp. "After all, there is  
no greater sport than girl  
watching," says the current  
president, Ray Baur, 46, of  
Westport, Conn., father of six.  
Sauers says the purpose of the  
organization is to improve the  
climate of girl watching.  
"A survey shows that the  
girls, 100 per cent of them, like  
to be watched," the founder  
added.

Sauers said one of the rules is  
not to watch girls in restau-  
rants. "That's like watching  
birds in a zoo," he said. "They  
should be watched in their natu-  
ral habitat — walking on the  
streets."

**Thriftway's  
PARK  
AND  
SHOP**

OPEN 7 DAYS A WEEK!  
25th AND PARK AVE.

GIANT PACKAGE  
DETERGENT  
**ENERGY**  
37¢

"DEL MONTE"  
**CATSUP**  
20-OZ. BOTTLE  
25¢

"DEL MONTE" LIGHT CHUNK  
**TUNA**  
3 — NO. 1/2 CANS  
89¢

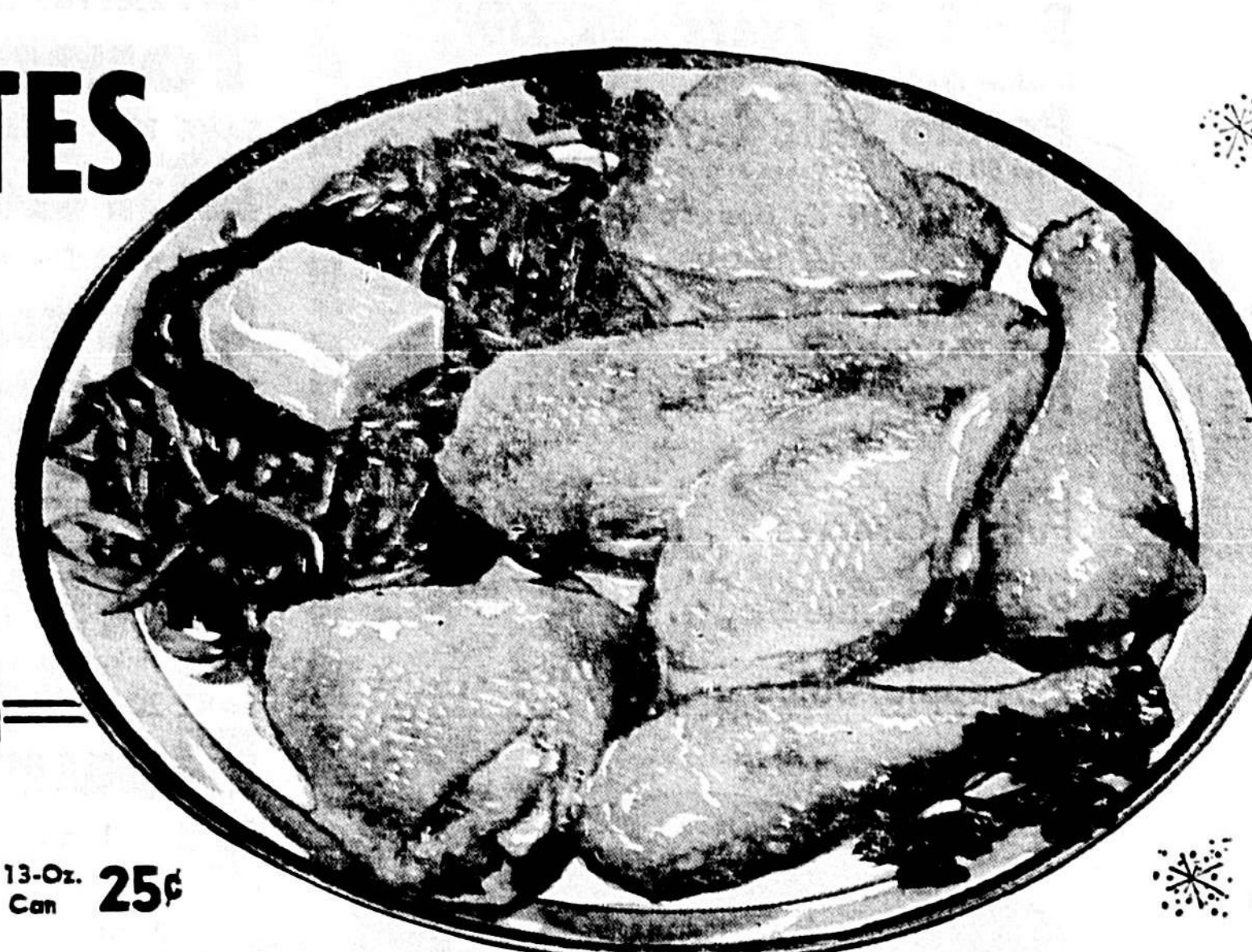
"THRIFTY"  
**GRAPE JAM**  
18-OZ. JAR 29¢  
**MARMALADE**  
18-OZ. JAR 29¢  
**"THRIFTY" STRAWBERRY  
PEACH OR PINEAPPLE  
PRESERVES**  
18-OZ. JAR 29¢

THESE PRICES  
GOOD THRU  
WED., MAY 3  
(Quantity Rights Reserved)

**CIGARETTES**

ALL BRANDS  
CARTON **\$2.69**  
VALUES  
GALORE

- Baby Formula "Similac" 13-Oz. Can 25¢
- "Juniper" 3-Lb. Bag 39¢
- Rice "Campbell's" Tall Can 10¢
- Tomato Soup Tall Can 14¢
- "Shurfin" Tall Can 14¢
- Milk "Vegetal" 3-Lb. Can 69¢
- Shortening "Showboat" No. 300 Can 10¢
- Pork & Beans "Hot Shot" 13-Oz. Can 79¢
- Bug Killer Bomb "Del Monte" Whole Tomatoes 4 No. 303 5.00
- "Del Monte" Tomato Sauce 10 8-Oz. Cans 5.00
- "Del Monte" Cream Style Corn 5 No. 303 5.00
- "Del Monte" Whole Kernel Corn 5 12-Oz. Cans 5.00
- "Del Monte" Cut Green Beans 5 No. 303 5.00
- "Del Monte" Pineapple-Grapefruit Drink 4 4-Oz. 5.00
- "Copeland" Jar Lard 2 1/2-Lb. Jar 48¢
- "Nabisco" Sugar Honeymaid Grahams Lb. Box 39¢



**STEAKS**  
"LAZY-AGED"  
Beef Steaks  
FAMILY & RIB LB. 73¢  
CHUCK LB. 58¢  
SIRLOIN  
ROUND  
CLUB  
SWISS **83¢** LB.

GOLDEN YELLOW  
**CORN**  
10 EARS **59¢**  
U.S. NO. 1 WHITE POTATOES 20 LB. BAG 69¢  
SWEET JUICY WATERMELONS LB. 79¢  
FRESH 'N CRISP CARROTS LB. BAG 7¢  
FRESH 'N TENDER STRING BEANS LB. 19¢

**Food Prices**  
with  
**DOWN**  
We've saved the frills to cut your bills!

FLORIDA GRADE "A" WHOLE  
**FRYERS**  
Lb. **28¢**

CHUCK ROAST . . . . . LB. 43¢  
SHOULDER ROAST . . . . . LB. 63¢  
POT ROAST . . . . . LB. 53¢  
"Boneless" POT ROAST LB. 68¢  
RIB ROAST . . . . . LB. 78¢

FRESH 100% PURE  
**GROUND BEEF** 4 LBS. **\$1.88**  
"ARMOUR STAR"  
**HAM** 3 LB. CAN **\$2.78**

FLA. GRADE "A" LARGE  
**EGGS** 2 Doz. 69¢  
"LEAN" WESTERN PORK STEAKS Lb. 58¢  
FLA. GRADE "A" FAMILY PAK FRYERS 5-Lbs. \$1.00  
"LEAN 'N TENDER" ALL MEAT STEW Lb. 68¢  
"BAR-B-QUEING" BEEF SHORT RIBS Lb. 48¢  
"COPELAND" ALL MEAT BOLOGNA Lb. 58¢  
"COPELAND" ALL MEAT WIENERS 12-Oz. Pkg. 45¢  
"KANSAS QUEEN" FLOUR 5 LB. BAG 45¢

LEAN WESTERN PORK SHOULDER ROAST Lb. 38¢  
QUICK FROZEN TURKEY WINGS OR WINGS Lb. 28¢  
HOME MADE SAUSAGE Lb. 49¢  
FLA. GRADE "A" PAK STEWING HENS 5-Lbs. \$1.00  
OLD FASHIONED THICK SLICED BACON Lb. 58¢

Fresh from Our  
**BAKERY**  
"EVERFRESH" COFFEE Ring 12-OZ. EA. 35¢  
"EVERFRESH" Bread 3 20-OZ. LOAVES 69¢  
"TABLE READY" SOLID Oleo LB. PKG. 15¢

Quality  
**MEATS**



"WINTER GARDEN" CREAM  
**PIES**  
EACH **25¢**

HOOD'S "33"  
**BLEACH**  
HALF GALLON  
**29¢**

SHURFRESH  
**Biscuits**  
5 8 OZ. CANS **39¢**  
**SUGAR**  
5-LB. BAG  
Flo-Cane **37¢**  
(LIMIT: ONE WITH \$5.00 ORDER)

"WISE" POTATO  
**CHIPS**  
9 1/2-OZ. TWIN-PACK  
**38¢**

**FROZEN FOODS**  
"MASTER CHEF" FRENCH FRIES 19¢  
"PET RITZ" PKG. OF 2  
PIE SHELLS 39¢  
"McKENZIE" Vegetables 2/24-OZ. BAGS 79¢

• Cream Pies • Stew Vegetables  
• Cut Green Beans • Beans • Corn



**Joy Circle  
Has Meeting  
At Church**

The April meeting of the Joy Circle of the Grace Methodist Church's Women's Society of Christian Service was held recently at the church.  
Mrs. Lamar Williams opened the meeting and welcomed visitors Mrs. Elmer Strunk, Mrs. Frances Menden, Mrs. Vera Butler, Mrs. Floyd Young, Mrs. Ray Walker and Mrs. Robert M. Temple Jr., guest from Zephyr Grove, Mrs. Roy Wall gave the devotion, and reports were given by the various officers. The birthday program was passed to Mrs. John L. Martin.

Under old business, Mrs. John L. Martin reported an Easter basket and clothing had been taken to the needy family the circle is sponsoring. Mem-  
bers volunteering for the Vinta-  
tion Project this time were Mrs. Robert Bennett, Mrs. Alvera Kelly, Mrs. Malcolm Logan, Mrs. Samuel Greene and Mrs. Lamar Williams.

Announcements were made of the Annual Pledge Service at the church, May 10; May Fellowship Day at Grace Methodist Church, 10 a.m. - 2 p.m.; May 20 and Leadership Training Day, May 21 at First Methodist Church.

The program was given by Mrs. Temple from the book, "Christian Service and Being a Study Commentary on James 1 and 1 Peter."  
Proceeding the meeting, Mrs. Robert Bennett, hostess, served coffee and breakfast rolls to the 12 members and six visitors attending.

**School Board  
Opposes Bills**

Seminole County Board of Public Instruction went on record Monday evening opposing a bill before the Legislature requiring "mandatory negotia-  
tion" between a yet-to-be designated teachers group and the school boards.  
The bill also is being opposed by the Florida School Board Association. Under the bill, school boards would be required by law to negotiate every phase of personnel conditions, including salaries and working conditions, with a group designated by local teachers.

Board members pointed out it already negotiates with the teachers. John Evans, who made the motion opposing the bill, stated his particular objection to the bill's mandatory provisions.

The board further went on record opposing elimination of district millage elections and elimination of the board of trustees. Both proposed laws are being supported by the Florida School Board Association.  
R. T. Milwee, superintendent of public instruction, reported his support of proposed laws to place educational television under state jurisdiction.

**NOT PERMITTED HERE**  
Canned by Sea-Can is a town which backs television antennas, house numbers, home mail delivery and billboards, according to National Geographic.

More?

Why Pay?

EVERY DAY LOW PRICES! KING SIZE RINSO, AJAX OF COLD POWER 99c

EVERYDAY LOW PRICES! TOMATO JUICE 4/51, RICE 39c

EVERYDAY LOW PRICES! CHUCK ROAST 45c, ROUND STEAK 88c

EVERYDAY LOW PRICES! BACON 49c, FRYERS 29c

COMPARE! BARBASOL SHAVE CREAM 37c, ORANGE JUICE 10c

COMPARE! CORN 5c, APPLE PIES 38c

COUPON BUY SLICED BACON 29c, CHAIRS \$3.77

COMPARE! BANANAS 10c, POTATOES 43c

FOOD FAIR QUALITY DISCOUNT

2460 PARK AVE. Deltona, FL

EVERYDAY LOW PRICES! CHUCK ROAST 45c

EVERYDAY LOW PRICES! PORK LOIN 59c

SMOKED PICNICS 35c

COMPARE! ROLL SAUSAGE, BREADED VEAL STEAKS

CORN 5c

COMPARE! BANANAS 10c

APPLE PIES 38c

Winn-Dixie Food Stores logo

Vertical text: ZONE THINKS CHILDREN'S 27c, PICNIC JUG \$1.88, THERMOS BOTTLE \$1.59, ICE CHEST \$1.29, ICE CHEST \$1.88

WINN-DIXIE HAS THE... LOWER PRICES Plus... TOP VALUE STAMPS

COFFEE SPECIALS ALL 3 GRINDS FOLGER'S POUND TIN 38c ASTOR POUND TIN 28c

Butter . . . 58c, Astor Oil . . . 33c, Wesson Oil . . 38c, Mayonnaise . . 39c

FLOUR SPECIALS GOLD MEDAL PLAIN OR SELF-RISING 5-LB. BAG 48c, SOUTHERN BISCUIT 5-LB. BAG 38c

Choc. Chip Twirls 4/1, Cinnamon Buns 29c, Green Peas . . 4/1, Peanut Butter . . 79c

COUPON BUY SWIFT'S PREMIUM SLICED BACON 29c

BONELESS ROUND Steak . . . LB. 88c, Cube Steak . . . LB. 98c

FRESH FANCY GOLDEN BANTAM CORN 10 Ears 58c, WATERMELONS each 99c

SUNNYLAND SMOKED HAMs lb. 48c

SLICED CHEESE . . . 29c, COTTAGE CHEESE . . . 59c

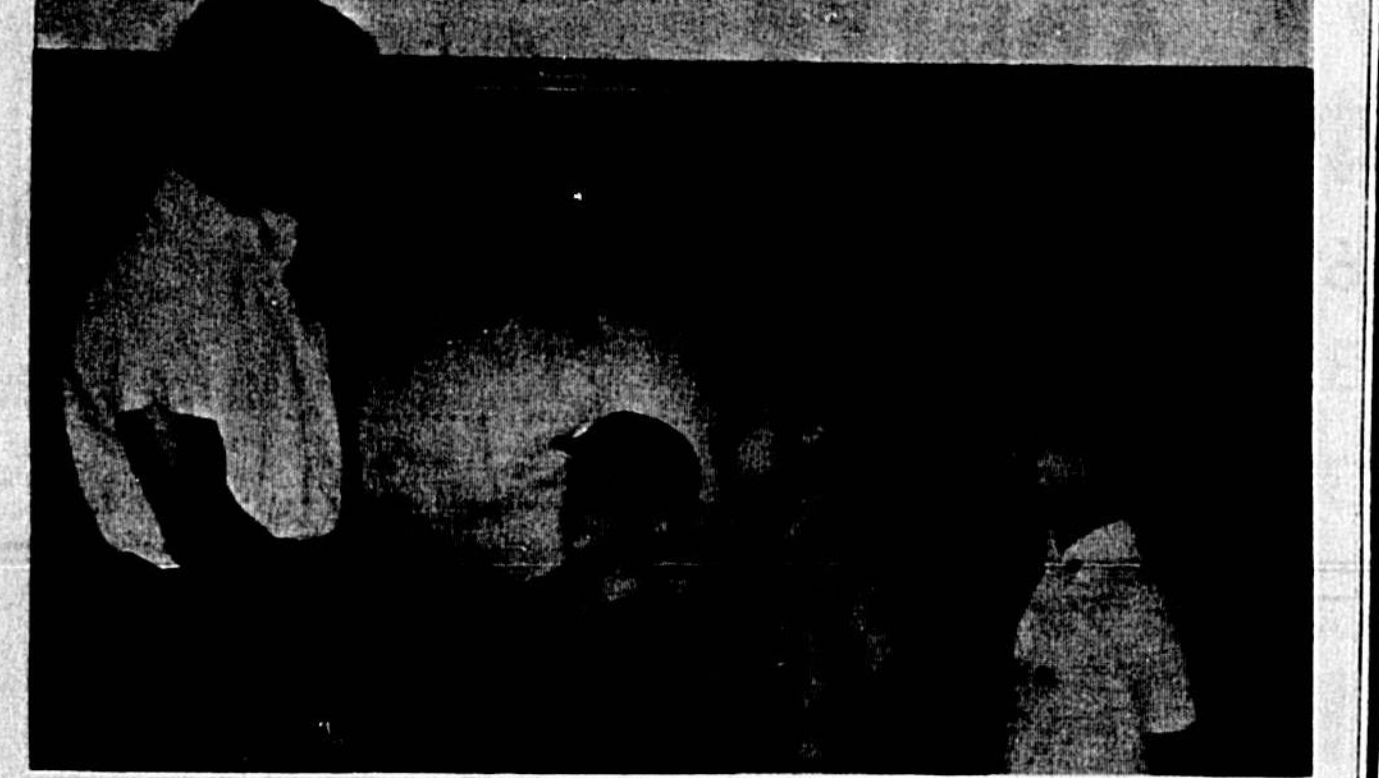
The Smart Place To Go... For Good Things To Eat

Highway 17-92, Longwood French Ave. & 25th Palmetto Ave. & 3rd St. 400 E. First St. Deltona





FIREMEN Bill Horrell (left, top) and Bob Cross gave program on snakes and showed how they are milked for venom for Cub Scout Pack 240 of St. Mary-Magdalena Parochial School in Altamonte Springs.



Will Florida Legislature Act On School Prayer Amendment?

TALLHASSEE (AP)—A Penacola lawmaker predicts the Florida Legislature will become the first in the Union to petition Congress for a constitutional convention to enact a school prayer amendment.



SMILING from "ear to ear," Barbara Ann Hickford, three-year-old granddaughter of Mr. and Mrs. Robert Haney of Deltona, and little brother, Robert, 18 months, proudly display basket of oranges they picked at "Grandma's Florida House."

SHOP The store that cares...about you!

'Super-Right' Meats! 'Super-Right' Delicious, Fully Cooked HAM Shank Portion LB. 39c

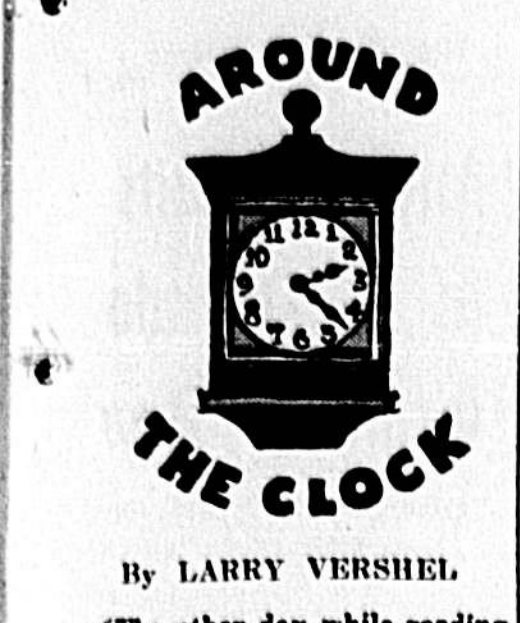
DEPENDABLE GROCERY BUYS! Coffee 2 LB. CAN \$1.29 SUGAR 5 LB. Bag 39c

Mammoth Drink Sale! ALL FLAVORS HAWAIIAN PUNCH - H-C DRINKS and A&P DRINKS and JUICES.

FRESH TENDER Corn 10 EARS 59c Tomatoes 29c Onions 3 LB. BAG 29c Pears 19c

WATERMELON 20-LB. AVG. EACH 99c Jane Parker Peach or Dutch Apple Pie 39c

PINECREST SHOPPING CENTER HWY. 17-92 S. SANFORD 50 EXTRA 25 EXTRA 25 EXTRA



By LARRY VERSHEL (The other day while reading the Herald I noticed Abigail Van Buren's column and these words stuck in my mind: 'You have the world being trotting you?')

DEAR ABBY — I am a man in my 30s and in the newspaper game. Life for me is a desert empty of comfort.

DEAR BROKEN-HEARTED — What are you trying to say? I like this town...

DEAR BROKEN-HEARTED — Play up the positive... 'Tone down the Negative...'

DEAR ABBY — I walk by City Hall late at night and see Pete Knowles burning the midnight oil almost every night.

DEAR BROKEN-HEARTED — Play up the positive... 'Tone down the Negative...'

DEAR BROKEN-HEARTED — Play up the positive... 'Tone down the Negative...'

DEAR BROKEN-HEARTED — Play up the positive... 'Tone down the Negative...'

DEAR BROKEN-HEARTED — Play up the positive... 'Tone down the Negative...'

DEAR BROKEN-HEARTED — Play up the positive... 'Tone down the Negative...'

Port Bill--No Tax Increase

Proposed legislation in support of Seminole County Port Authority will mean an increase in ad valorem taxes, it was stated here this morning by John Alexander, chairman of the Seminole County Commission.

Alexander explained: "First, the new bill earmarks \$9,000,000 in rate funds for port financing, and it calls for a corresponding reduction in the one-half mill maximum ad valorem tax levy. We are not asking for authority to levy more ad valorem taxes."

Francis E. Roumillat Jr., administrator of the Port, said today: "The Port Authority does not propose an increase in ad valorem taxes. I intend to clarify this to the legislative delegation at the earliest possible moment."

The Sanford Herald

Phone 322-2611 or 425-5938 Zip Code 32771 WEATHER: Scattered showers, cooler thru Friday.

Milwee Hits Kirk Plan

R. T. Milwee, superintendent of public instruction warned yesterday that the plan calling for a deposit on paperback textbooks would be the first step toward the purchase of textbooks by parents.

"No mention was made of capital improvements in the governor's address. The state average last year was 25 to one and the average here has been 24.63 to one."

Ernest Cowley, president of the Seminole Education Association today termed Gov. Claude Kirk's fiscal plan for a state budget "disappointing."

Misinformed--Weldon 'Disappointing' Says SEA

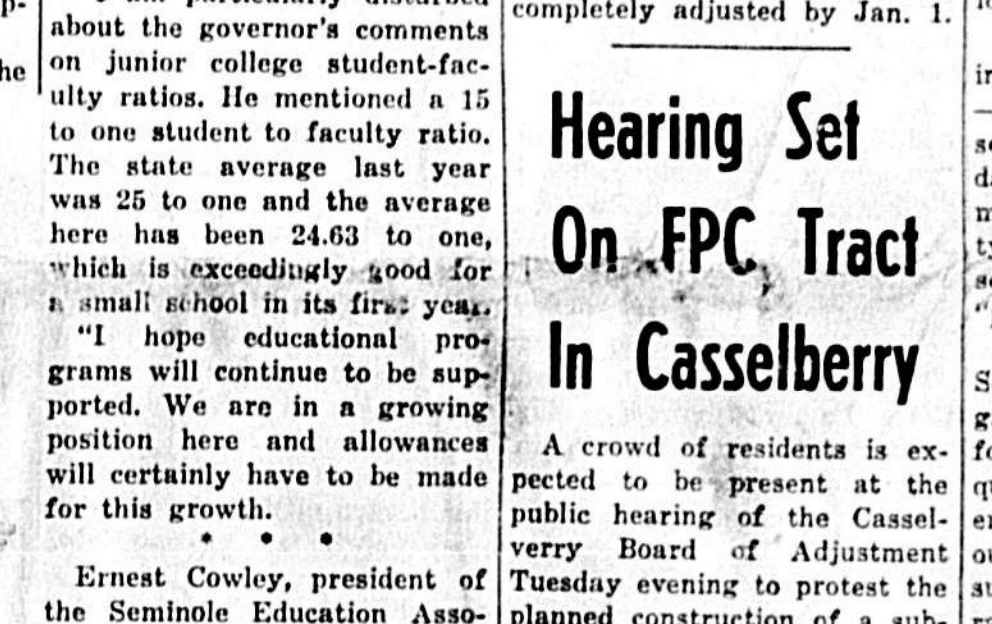
Dr. Earl Weldon, president of Seminole Junior College said today while expressing his "concern" about the cut of \$20 million Gov. Claude Kirk announced last night would be made statewide in higher education.

"I am particularly disturbed about the governor's comments on junior college student-faculty ratios. He mentioned a 15 to one student to faculty ratio."

Ernest Cowley, president of the Seminole Education Association today termed Gov. Claude Kirk's fiscal plan for a state budget "disappointing."



DR. EARL WELDON



ERNEST COWLEY

Schools Set Bid Opening On Mobile Rooms

The School Board plans to open bids on 27 portable buildings at an estimated cost of \$12,000 the last week in May.

Gifts, Sales Galore For Sidewalk Sales

Sanford's "Sidewalk Sales" Friday and Saturday will be highlighted Saturday afternoon by the dropping of gift certificates valued at more than \$1,000 during an exciting "balloon bombing" of the downtown area.

17 Deputies To Get Pay Raise Monday

Seventeen deputies will receive raises in salary ranging from \$8 to \$87 per month beginning Monday, Sheriff J. L. Hobbs reported today.

Hearing Set On FPC Tract In Casselberry

A crowd of residents is expected to be present at the public hearing of the Casselberry Board of Adjustment Tuesday evening to protest the planned construction of a substitution of zoning measures from Seminole County.

City Meeting On Slum Plan

The City Commission is meeting informally this afternoon on the "Demonstration City" project in higher institutions, he compared Florida, the ninth largest state in the nation, with three larger states—Ohio, New York and Pennsylvania.

Sires Signs

Rick Sires, 20-year-old Sanford boy has signed to play baseball with the New York Mets. Full details on tomorrow's sports page.

'Action' Meet Set 'Tonight' WASHINGTON (AP)—The Senate Ethics Committee presented to the Senate today its unanimous recommendation that Sen. Thomas J. Dodd (D-Conn.), be censured.

It's Rush, Rush At Tallahassee

By FRED VAN PELT TALLHASSEE—It's "rush-rush-rush" here as state lawmakers attempt to do in 60 days what members of Congress at Washington accomplish in six months.

State legislators now halfway through the usual holiday session in every two years, probably will be required to



SEN. ROBERT H. ELROD ... delegation chairman

stay over for another 30 days in order to "clean up" all the legislation facing them from local and state levels.

Ten of the 11-member Seminole-Orange County delegation — Sen. Kenneth Plante was absent—spent most of Wednesday pouring over proposed measures from Seminole County, approving some, passing some for "future" study, and "piggy-backing" others.

The delegation also approved a measure which would permit the distribution of road and bridge taxes. The county presently levies such tax and returns half to the municipalities.

Another hearing has been scheduled for 8 p.m. at the Women's Club Building on Overbrook Drive.

The delegation also approved a measure which would permit the School Board to purchase property located one block north of SR 436 off Winter Park Drive from residential to commercial.

The delegation also approved a measure which would permit the School Board to purchase property located one block north of SR 436 off Winter Park Drive from residential to commercial.

The delegation also approved a measure which would permit the School Board to purchase property located one block north of SR 436 off Winter Park Drive from residential to commercial.

The delegation also approved a measure which would permit the School Board to purchase property located one block north of SR 436 off Winter Park Drive from residential to commercial.

The delegation also approved a measure which would permit the School Board to purchase property located one block north of SR 436 off Winter Park Drive from residential to commercial.

MODERNIZE YOUR HOME Borrow Up To \$5,000 THESE AND MANY MORE IMPROVEMENTS ACCEPTABLE!