

Sanford Herald

#2nd Year, No. 30 - Sanford, Florida

NEWS DIGEST

INSIDE

Florida

Flood victims begin cleanup

JACKSONVILLE — Residents here are mopping up in the wake of weekend flash flooding that killed two people and left numerous homes and businesses damaged.

Officials say a dollar amount estimate on damage won't be available until tomorrow. One relief plan has city officials suggesting local banks provide low-interest loans to many of the flood victims.

See Page 2A

Sports

It ain't easy being a winner

TAMPA — After two wins in its first three outings, the Tampa Bay Buccaneers have a problem — trying to figure out how to deal with success.

Having lost 74 of their last 96 games, winning is something entirely new to the boys on the bay. The last time Tampa Bay started with a 2-1 record was nine years ago.

See Page 1B

Cash player of the week

SANFORD — A Seminole County team has cashed in on a good deal.

Seminole High School's Brandon Cash caught four passes for 124 yards to lead the Seminoles to a 20-7 victory over Titusville last week.

For his aerial acrobatics, Cash has earned honors as the Sanford Herald Player of the Week.

See Page 1B

BRIEFS

Two die in post office shooting

MIAMI — Two people were killed in an apparent murder-suicide Tuesday in the parking lot of the South Miami Post Office branch, police said.

The shooting occurred at 7:05 a.m., before the office opened to customers.

School board to accept land

SANFORD — At their 2 p.m. meeting tomorrow, the Seminole County School Board will officially accept a 45-acre parcel of land on Markham Woods Road from The Heathrow/Arvida Land and Development Corporation. The board will use the land as the site of a future elementary and middle school.

The land includes 40 buildable acres. It is located in an area that the developers have named The Pinery.

A recent educational plant survey completed for the district suggested that twenty elementary schools and five middle schools needed to be built within the next two decades.

The meeting will be in the board chambers at 1211 Mellonville Ave. in Sanford.

Tree donated to city

SANFORD — Harold Christensen made two requests of the city last night: permission to trim oaks on Oak and to move a magnolia from Magnolia.

After the city commission tabled Christensen's request to trim oak trees drooping over Oak Avenue, he offered to donate a \$1,000 magnolia tree to the city. He said the tree, which is rooted on his vacant lot at 1718 Magnolia Ave., is 50 inches in diameter and is worth \$1,000. He said a tree surgeon assured him the tree is in good health and can be moved.

The commissioners paused silently after his offer before Mayor Bettye Smith said, "I'm not sure I can accept a tree."

City Manager Frank Faison said city staff would decide if the tree may be moved to city property.

From staff and wire reports

INDEX

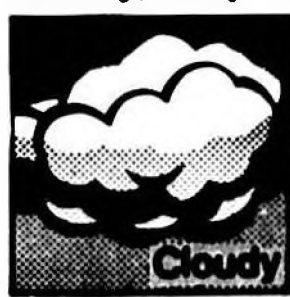
Classifieds.....4B	Horoscope.....6B
Comics.....6B	Nation.....5A
Crossword.....6B	People.....3B
Dear Abby.....3B	Police.....3A
Deaths.....3A	Sports.....1B
Editorial.....4A	Television.....3B
Florida.....2A	Weather.....2A

TOMORROW

Get ready for tons of recipes

Valena Harsh of Longwood, our Cook of the Week, literally has a library of recipes, and she knows right where every recipe for sweets is.

Cloudy, rainy today



Cloudy today with a 70 percent chance of rain. High in the mid to upper 80s. Cloudy tonight with a 40 percent chance of rain and a low in the low 70s. Cloudy tomorrow with a 50 percent chance of rain. High in the 80s.

Feds ax SHA plan

By LAURA L. SULLIVAN
Herald staff writer

SANFORD — The federal government has rejected a contract for private management of the Sanford Housing Authority.

An official in the U.S. Department of Housing and Urban Development area office in Jacksonville said in a Sept. 20 letter to the authority the contract between SHA and the Furt Company of Coral Gables does not meet federal government guidelines for professional services contracts with public housing authorities.

James R. Walker, HUD housing management director in Jacksonville, said the SHA board

needs to address the concerns of Linda Williams, interim executive director for the authority. The board should present to HUD its position on each of her concerns, he said.

Williams wrote SHA commissioners Sept. 7 after she learned the contract had been negotiated and forwarded to HUD without board approval Sept. 5. She said the six percent supervisory fee and 10 percent fee on all modernization work could bankrupt the authority within five years, and expressed concern that many of the contract terms did not meet HUD guidelines.

Bill Furt, company president, said he could not comment on whether his company would be

willing to reduce proposed management fees and renegotiate contract terms. He said he did not discuss the possibility of HUD rejecting the contract with SHA attorney James Sweeting III during negotiation.

"We never anticipated that it would not be approved," Furt said.

SHA Chairperson Terri Buratti said she could not comment on the HUD decision until she has seen Walker's letter.

Walker said the contract is not acceptable because SHA has not determined the total cost and feasibility of professional management. The six percent fee on gross monthly operating

See SHA, Page 2A



Leo Salvani (right) presents commissioners subdivision residents, opposing the 22 percent tax hike.

City budget approved, property tax bills to increase 22 percent

By LAURA L. SULLIVAN
Herald staff writer

SANFORD — City property tax bills will go up 22 percent as of Oct. 1, the city commission decided last night. The commission adopted the \$20.9-million budget by a 3-to-2 decision.

The tax increase from 5.84 mills to 6.87 mills will add about \$30 to the \$200 tax bill for the typical \$50,000 home with a \$25,000 homestead exemption.

In other business, the commission:

- Unanimously approved a lease agreement with the Boys and Girls Club of Central Florida. The agreement will turn the city's Westside Recreation Center over to the agency Oct. 1 to provide recreation and counseling at the Persimmon Avenue facility.
- Appointed Jim Young, manager of the

Sanford First Union National Bank, to the airport authority board. Young will replace Jim Daganough whose term expires Sept. 30. The commission earlier appointed Developer Bob McKee to replace John Merrett, whose resignation is effective Sept. 30.

• Approved revised membership requirements for the city Historic Preservation Board. The revision will allow as many as two non-city residents serve on the board. HPB member Jerry Mills had requested the revision to draw architecture, design and preservation experts to serve on the volunteer board.

After hearing opposition from one homeowners association during the second and final public hearing on the budget, Mayor Bettye Smith and Commissioners Bob Thomas and Lon Howell voted to adopt the budget

See Budget, Page 2A

Longwood OKs budget; no tax hike this year

By SANDRA BOUCHANINE
Herald staff writer

LONGWOOD — The city's 1990 budget that calls for no property tax increase was adopted unanimously by the city commission last night. Monthly sewer rate increases, however, met with some opposition from residents and was adopted on a split vote.

The \$10.7 million budget highlights parks and recreation and capital improvement projects.

The millage rate will remain at \$1.15 per \$1,000 of assessed property value but will bring in \$54,518 more revenue than last year, according to City Administrator Michael Abels. This includes one mill to be used solely for street improvements.

After discussion and comments from residents, the commission voted 3-2 in favor of an ordinance to raise monthly sewer rates by \$1.77 to \$32.97 for residential and commercial users. The rate increase, the second one in a year, will affect about 620 sewer customers and will be effective in the city after Oct. 1.

See Longwood, Page 2A

Work on \$6 million Midway drainage project slated to begin in two weeks

By J. MARK BARFIELD
Herald staff writer

MIDWAY — After more than 10 years of planning and studies and nearly a year's delay, work is expected to begin within the next two weeks on the first portion of the county's \$6 million Midway drainage project.

The project was slated to begin last fall but appraiser's estimates for 18 parcels were too high and were reappraised, said Buddy Balagia, county community development planner. The reappraisals are complete and the strips of land needed for the project have been bought, Balagia said.

Speagle Construction Co. of Cocoa Beach is scheduled to begin after Oct. 1, Balagia said. Speagle planned to begin in mid-August, but has had problems in getting enough pipe for the project.

"We knew there might be some problems, but we didn't foresee this," Balagia said. "None of our other CDBG (community development block grant) projects have had nearly the problems this has."

A total of \$600,000 has been allocated to the project from county CDBG money. It has been the county's top-ranked CDBG project since the federally-funded program began three years ago. A county study issued

See Project, Page 2A

Tipster says suspects pose as fake cops; police not sure of that claim

By SUSAN LODEN
Herald staff writer

ALTAMONTE SPRINGS — Acting on a tip, Altamonte Springs police have arrested two suspected burglars the tipster accused of being robbers who have posed as police to rob at least two Seminole County houses this month.

The house where police arrested the two men on Sunday belongs to a man who has been in jail on drug charges since Friday. Stephen A. Sepe, 29, 345 Lakepointe Drive

#103, Altamonte Springs, was in the Seminole County jail charged with trafficking in and possession of and sale of cocaine and possession of more than 20 grams of marijuana at the time of the break-in to his house and car, police said.

Altamonte Springs police spokesman Jeff Hawkins said today police haven't yet identified the captured burglary suspects as suspects in the fake police raiders cases. "We have to wait and see," he said. The police did report, however, they received a tip that the

gang of men who planned to rob the house Sunday were the same men who posed as police to force entry this month to two houses, one in Winter Springs and one in rural Winter Park, to demand drugs and valuables.

Police captured Wiley Columbus Vaughn, 39, 740 Willow Drive, Winter Springs, and Jerry Dale Gross, 28, 803 Mark David Blvd., Casselberry, outside Sepe's house at about midnight Sunday. A third suspect ran from police and

See Cops, Page 2A

POLICE BRIEFS

Man charged with stealing microwave

LAKE MONROE — A local man was charged Friday with stealing a microwave oven from a recreational vehicle Sept. 18 after a Seminole County sheriff's investigator reported seeing the oven on the man's kitchen table after he was invited inside the home.

John Edward Dawson, 47, 35 Dana Drive, was charged with burglary and grand theft following his arrest at his home shortly after 7:15 p.m. Friday. Bond was set at \$2,000.

A sheriff's investigator reported residents of the Town and Country Recreational Vehicle Park on Orange Avenue in Lake Monroe told him they saw Dawson take the oven from the vehicle Sept. 18.

The vehicle's owner, Carol Cronk, reported the thefts of the \$450 microwave oven, a \$300 stereo and a \$350 video tape recorder, which resulted in the investigator visiting Dawson.

Woman arrested on drug charges

ALTAMONTE SPRINGS — Marianne Loder, 33, 752 Howland Drive, Altamonte Springs, was charged with possession of crack cocaine Friday night after Seminole County deputies report finding a white powder in her purse.

A deputy report seeing Loder's car parked on Depugh Street with a man leaning in the passenger window talking to Loder and a passenger. After the deputy was spotted, the man left and the car drove off, reports show. The car was stopped on State Road 436 nearby and a search revealed a powder that tests showed to be crack, the deputy reported. Bond was set at \$3,000.

Sanford man accused of gun threat

SANFORD — A man who allegedly threatened a woman with a shotgun at 76 Seminole Gardens was arrested by Sanford police after he fled from the scene and then returned to try to flee again at about 8 p.m. Saturday.

Titus Manning, 18, of 1011 Holly Ave., is charged with aggravated assault, use of a firearm in a felony and possession of a short barrel shotgun. He was arrested after police recovered a shotgun believed to have been used in threats against Lavender Williams. The gun was found in woods where Manning allegedly fled when police were first called to the scene.

Trusty prisoner accused in attack

SANFORD — A trusty prisoner at the Seminole County jail was charged with two counts of battery on the same jail guard after allegedly refusing that guard's order to work Saturday and then resisting giving up his trusty's badge and returning to his cell.

Seminole County sheriff's deputies report arresting Homer Joseph Wells, 19, of 1807 W. 12th Place, Sanford, at the jail on Sunday afternoon.

Eight arrested on DUI charges

SANFORD — The following persons face a charge of driving under the influence in Seminole County:

• Thomas Randolph Sears, 32, of 2611 Orlando Drive #5, Sanford, was arrested at 4:23 a.m. Sunday after his vehicle almost sideswiped a police car on Lake Mary Boulevard, Lake Mary.

• Brian Keith Chaffin, 21, of 105 Hickory Trail Road, Longwood, was arrested at 3:22 a.m. Sunday after his car reportedly almost hit a city policeman on Rhinehart Road, Lake Mary. He was also charged with careless driving.

• Richard Lee Staltz, 37, of Orlando, was arrested at 12:39 a.m. Sunday after his car was in an accident on State Road 436, Altamonte Springs.

• William James Hilde, 19, of Miami, was arrested at 1:30 a.m. Sunday after he was seen driving erratically on State road 436, Altamonte Springs.

• Ronald Delbert Cunningham, 52, of 221 Tides Road, Winter Springs, was arrested at 11:44 p.m. Saturday after his car was clocked speeding on Interstate 4 near Maitland.

• James Arthur Inman, 39, of 305 Baytree Court, Sanford, was arrested at 9:06 p.m. Sunday after his weaving car was clocked traveling 57 mph in a 45 mph zone on Lake Mary Boulevard, Lake Mary.

• James Franklin Mason, 25, 1258 Milky Way, Winter Springs, was charged with driving under the influence of alcohol Friday at about 8:30 p.m. after a Winter Springs policeman reported seeing him speeding and crossing the center line while eastbound on State Road 434. Mason was also charged with failure to maintain a single lane. Bond was set at \$500.

• Alan Supak Jr., 23, 1367 Laura St., Casselberry, was charged with DUI by a Florida Highway Patrol trooper at about 3:30 a.m. Friday following an accident in the parking lot of the Lake Kathryn Food Store. Bond was set at \$500.

Man charged with kidnapping, robbery

WINTER PARK — Police have arrested a man who allegedly entered a rural Winter Park house Sept. 6, forced the resident to write a \$2,500 check and bound the victim before leaving with an additional stolen \$75.

Seminole County sheriff's deputies report charging Robert Leo Fayette Jr., 32, of no address, with kidnapping and strong arm robbery. He was arrested in Winter Park at 4 p.m. Monday.

Suspect reportedly didn't pay bill

LONGWOOD — A man who reportedly took his truck from Seminole Tire and Car Care in Longwood without paying a \$1,000 repair bill April 19, was charged with theft of services after he was jailed Friday on an unrelated charge.

At the county jail Monday, Seminole County sheriff's deputies arrested David Alan Shirley, 30, 2812 Windy Hills Drive, Sanford, for the alleged theft of services.

MONDAY
 09:34 a.m. — 904 E. 10th St., medical call, woman, 89, transported to Central Florida Regional Hospital.
 09:57 a.m. — 207 S. Orlando Drive, trauma call, woman, 74, transported to Central Florida Regional Hospital.
 11:25 a.m. — 180 Pine Ave., medical call, man, 21, transported to Central Florida Regional Hospital.
 01:02 p.m. — 500 Sanford Ave., boys locked in car, unchoked door.
 01:52 p.m. — 1512 W. 13th St., boys locked in car, unchoked door.
 02:14 p.m. — 301 N. Park Ave., courthouse, alarm sounded, no fire.

03:02 p.m. — 2316 Hornum Ave., medical call, woman, 76, transported to Central Florida Regional Hospital.
 04:25 p.m. — 110 S. William Clark Court, pan of oil burning on stove, no fire loss.
 04:28 p.m. — 1511 W. 10th St., wire arcing, stood by for Florida Power & Light.
 04:49 p.m. — 1800 W. 12th Place, wire down, stood by for Florida Power & Light.
 07:21 p.m. — 12th Street and French Avenue, auto accident, man, 74, and boy, 17, transported to Central Florida Regional Hospital.

Control Florida Regional Hospital

Sanford:
 Anita C. Harrison
 Joseph J. Hyatt
 Tammy J. Jernigan
 Helmut Rander
 Senia Rose Sheppard
 Isaac T. Stephens
 Lewis Watson
 Rachel Young
 Lewis Butler, Daytona
 George Burns, Daytona
 Anthony N. Criss, Daytona
 Cecil Gaynor, Daytona
 Katherine T. Harwell, Daytona
 Arthur Haysburg, Daytona
 Andrea E. Hoxley, Daytona
 Ampie M. Wilkerson, Daytona
 Barbara Rivera, Fern Park
 James T. Robertson, Longwood

Joseph Turner, Maud Dora

Charles W. Edwards, Orange City
 Danna M. Kendall, Casselberry, Tenn.
DISCHARGES
Sanford:
 Vickie Carthen
 Jessie Doolley
 Harold Johnson
 Harry L. Davis, Casselberry
 Sidney Emanuel, DeBary
 Minnie S. Grant, Daytona
 Robert J. Perry Jr., Daytona
 Louis Parnell, Daytona
 Shirley Latham, Enterprise
 Mary E. Jackson, Lake Monroe
 Debra Cornell and baby boy, Sanford

BIRTHS
 Central Florida Regional Hospital
 Tammy Jernigan, a baby boy, Sanford
 Andrea E. Hoxley, a baby boy, Daytona
 Rosario P. Rivera, a baby girl, Fern Park

New lab helps cops in drug war

By SUSAN LODEN
 Herald staff writer

SANFORD — Sheriff's deputies are calling a new in-house lab designed to analyze suspected narcotics and to perform tests on other types of evidence a big step forward.

"It's a tremendous leap for us to have this capability to benefit everyone involved in a case, particularly drug cases," said Lt. Marty LaBrusciano, head of the department's technical services division. "Judges will not have to continue cases to await test results."

Department chemist Chris Alt, formerly of the Florida Department of Law Enforcement Crime Lab in Orlando, last week began conducting her first analysis on contraband samples of suspected narcotics. The bulk of Alt's work, she said, will center on testing cocaine samples, although she can test for all types of narcotics.

Such tests must be performed to make a court case against a narcotics suspect. Until now the sheriff's department relied on the FDLE Crime Lab in Orlando to conduct those tests.

Alt said it takes the FDLE from one week to six months to get around to performing these tests, which in some cases has caused trials to be delayed too long and cases lost. Alt said she should be able to complete her analyses in one week or less, or in rush cases in one hour. She estimates she will perform about 100 tests for the department each month, with the work load increasing when the service is offered to Seminole County's city police departments.

In addition to receiving test results more quickly, LaBrusciano said there will be greater



Herald Photo by James Wright Jr.

Sheriff's chemist Chris Alt injects chemical into machine for analysis.

quality control over the tests and the evidence involved, by using in-house testing, which will reduce the number of people who handle such evidence.

The sheriff's lab can also test urine and blood for chemicals, including alcohol. The equipment can be used to analyze evidence in arson cases, saving the costs of sending arson evidence to a state lab in Ocala.

LaBrusciano said.

The ability to do in-house urine analysis, LaBrusciano said, means that if a sheriff's department employee is asked to take a test to determine if he or she has used narcotics, the department can have test results within one hour.

Several years ago, Seminole County Sheriff John Polk asked the County Commission for

money for an in-house lab for his department because of the backlog of work for the FDLE lab.

The commission decided to not invest in a lab for Seminole County. But LaBrusciano said the lab fell into place when the county recently closed its environmental services lab and offered some test equipment to the sheriff's department.

EILEEN PERRY CURRY

Eileen Perry Curry, 42, Apt. 89 Lake Monroe Terrace, Sanford, died Monday, Sept. 25, at Central Florida Regional Hospital, Sanford. She was born May 5, 1947 in Samula. She was a homemaker and a Protestant.

Survivors include husband, Raymond; sons, Raymond Jr., Johnathan, Tony and Bryant, all of Sanford; mother, Aimee Perry, Sanford.

Wilson-Eichelberger Mortuary, Sanford, in charge of arrangements.

DANNY BUTTS FUGUAY

Danny B. Fuguy, 75, 1016 Willow Ave., Sanford, died Friday, Sept. 22, at Central Florida Regional Hospital, Sanford. Born Aug. 6, 1914, in Dublin, Ga., she moved to Sanford in 1944 from Chauncey, Ga. She was a homemaker and a member of New Bethel Missionary Baptist Church.

Survivors include husband, Otis; daughters, Juanita McFarlin, Ineda-Jackson both of Boston, Mass.; sister, Beatrice Hunt, Sparta, Ga.; brothers, Johnnie Butts, Chauncey, Theodore Butts, Brooklyn, N.Y.

Wilson-Eichelberger Mortuary, Sanford, in charge of arrangements.

CHARLES S. GRZYCH

Charles S. Grzych, 73, 100 Short Drive, Longwood, died Monday at Winter Park Memorial Hospital. Born Feb. 2, 1916, in Dudley, Mass., he moved to Longwood from there in 1980. He was a retired optical worker for American Optical and retired from the Air Force.

Survivors include wife, Mary Walek; sons, Richard C., Jacksonville, Ronald T., Southbridge, Mass.; daughters, Barbara Jean Dion, Southbridge, Marra Sak-Modico, Longwood, Theodora J., West Palm Beach; brothers, Walter, Dudley, Joseph, Thompson, Conn., Felix, Columbia, Conn.; sisters, Emily Forand, Dudley, Louise Skypulowski, Clara Cournoyer, both of Southbridge; 10 grandchildren; one great-grandchild.

Baldwin-Fairchild Funeral Home, Altamonte Springs, in charge of arrangements.

ELIZABETH F. HAY

Elizabeth F. Hay, 65, 603 Mimosa Terrace, Sanford, died Sunday at her residence. Born June 19, 1924, in Tewksbury, Mass., she moved to Sanford from there in 1953. She was a homemaker and a member of First Methodist Church of Sanford. She was a member of Wednesday Morning Ladies Match Point Bowling League.

Survivors include husband, John "Jock"; daughters, Tracy

Cowart, Altamonte Springs, Elaine Myers, Jacksonville, Ill.; brothers, Roger Wentworth, Derry, N. H., Robert, Charles, Philip, all of North Andover, Mass.; sisters, Virginia Wentworth, Shirley Montanaro, Mary Noone, all of North Andover; two grandchildren.

Gramkow Funeral Home, Sanford, in charge of arrangements.

THERESA RAWLS KNIGHT

Theresa Rawls Knight, 61, 1445 N.W. 1st Ave., Miami, died Friday at Jackson Memorial Hospital, Miami. Born in Lake City, she was a former resident of Sanford, moving to Miami in 1966. She was a homemaker and a member of Mt. Sinai Missionary Baptist Church, Sanford.

Survivors include daughter, Connie, Miami; sons, Reginald and Calvin, both of Miami; sisters, Mary Ruth Carter, Sanford, Eva Mae Wilson, Miami; brother, Claude, New York City; three grandchildren.

Sunrise Funeral Home, Sanford, in charge of arrangements.

JEANETTE R. SCHWERDT

Jeanette R. Schwerdt, 81, 410 E. 5th St., Chuluota, died Sunday at Central Florida Regional Hospital, Sanford. Born June 7, 1908, in Brooklyn, N.Y., she moved to Chuluota in 1959 from DeBary. She was a homemaker and a Lutheran.

Survivors include daughter, Marilyn Kelsey, Sanford; four grandchildren; five great-grandchildren.

Brisson Guardian Funeral Home, Sanford, in charge of arrangements.

SHANE DAVID STANLEY

Shane David Stanley, 18, 144 Shadow Trail, Longwood, died Saturday as the result of an automobile accident on Markham Woods Road in Long-

wood. Born Aug. 3, 1971, in Harlan, Iowa, he moved to Longwood from there in 1979. He was a student and a member of Messiah Lutheran Church.

Survivors include parents, David and Elaine; brother, Corey, Lake Mary; sister, Leona Johnson, Kimballton, Iowa, Baldwin-Fairchild Funeral Home, Altamonte Springs, in charge of arrangements.

MAY, ELIZABETH S.

Funeral services for Mrs. Elizabeth S. May, 44, of Sanford, who died Sunday will be 10 o'clock Thursday morning at Grambow Funeral Home Chapel with Rev. William J. Boyer officiating. Interment will be private. Friends may call at Grambow Funeral Home Wednesday evening from 6-8 p.m. For those who wish memorial contributions are suggested to: Juvenile Diabetes Foundation, P.O. 28, Fern Park, FL 32730. Arrangements by Grambow Funeral Home, Sanford.

LATCH KEY CARE
 for
 HAZARDOUS SITUATIONS
 & FIREWORKS
 SERVICE & AFTER SCHOOL
 ONLY 90¢ A WEEK
 Call (407) 323-3943

KNIGHT, THERESA RAWLS
 Funeral services for Mrs. Theresa Rawls Knight, 61, of 1445 N.W. 1st Ave., Miami, who died Friday will be held 1 o'clock Saturday at Second Shishu Missionary Baptist Church, with the Rev. Benjamin Adams Jr., officiating. Burial will be in the Bethelton Cemetery. Viewing will be from 4-6 p.m. Friday. Sunrise Funeral Home, Sanford, in charge of arrangements.

BATCLIFFE, JOHN E.
 Funeral services for Mr. John E. Batcliffe, 85, of Sanford, who died Saturday will be 10 o'clock Wednesday morning at Grambow Funeral Home Chapel with Rev. Jeffrey S. Kraft officiating. Interment will be in Evergreen Cemetery. Friends may call at Grambow Funeral Home 10 p.m. evening (Tuesday) from 6 to 8 p.m. Arrangements by Grambow Funeral Home, Sanford.

BANKRUPTCY
 — IS IT FOR YOU?
 FEDERAL LAW MAY HELP...
 • HAVE OUT CREDITS • HELP YOUR PROPERTY
 • OBTAIN BILLS • STOP COLLECTION THREATS
 • STOP FORECLOSURE AND LAW SUITS
FIVE LICENSURED, DIVERSIFIED
ROBERT N. PFLUGER
 ATTORNEY AT LAW
 • CALL FOR
 FREE CONSULTATION **336-3822**
 Suite 102 • 577 Mulford Ave.
 Altamonte Springs
 FL 32714 • 9:00 a.m. to 5:00 p.m.

TRANSMISSION TROUBLE?
 See!
HARRELL & BEVERLY TRANSMISSIONS
 200 W. 25th Street • Sanford
322-8415
 29 Years Same Location
 FAMILY OWNED

CAR CARE
 A complete guide to fall automotive care coming
Wednesday, September 27
Sanford Herald

Editorials/Opinions

Sanford Herald

(USPS 481-200)
300 N. FRENCH AVE., SANFORD, FLA. 32771
Area Code 407-322-2611 or 831-9993

Wayne D. Dwyer, Publisher
Ronald W. Hoole, Executive Editor
Laura Sellen, Advertising Director

SUBSCRIPTION RATE:
3 Months \$19.50
6 Months \$39.00
1 Year \$78.00

EDITORIALS

Break the cycle

Natural farming techniques, long regarded as unorthodox by Washington's policymakers, took a confident step toward the mainstream of American agriculture recently when the National Academy of Sciences reported the results of a five-year study.

The report concluded that crops grown with little or no chemicals are usually as productive as crops grown with copious amounts of artificial fertilizers and protected with heavy spraying of pesticides.

The nation's pre-eminent scientific body recommended changes in federal policy and in research to encourage more farmers to adopt natural farming practices. It is estimated that about 5 percent of the nation's 2.1 million farmers already use such techniques.

Official response to the report has been swift and surprisingly positive. The Department of Agriculture, which has placed natural farming almost in the same category as witchcraft for the past 20 years, greeted the study enthusiastically saying the time was right to consider changes in the direction of American agriculture.

The department's stunning change of heart coincides with the start of debate in Congress over a new farm policy law. Pressure for changes has been building up amid nationwide anxiety over the cost of farm subsidies (more than \$136 billion since 1980), combined with consumer concern about pesticides in food and pollution from agricultural chemicals.

In California, the nation's largest agricultural producer, the transition of natural farming techniques is already well under way. In fact, many of the trends now evident in California, particularly among fruit and vegetable farmers, are expected to spread to the rest of the nation during the next decade.

This year, some of the state's largest farms began to grow crops without using synthetic pesticides. In the Imperial Valley, smaller farmers have begun using fewer chemicals, relying more on organic fertilizers and sophisticated biological pest management. Fruit growers are using wasps and other beneficial insects to kill crop destroyers.

In the Salinas Valley, lettuce growers have developed self-driven vacuum machinery that sucks caterpillars from the plants instead of killing them with toxic sprays. And everywhere in California, farmers are reducing their use of pesticides by counting harmful insects trapped in the field and spraying only when absolutely necessary.

As the policy debate gathers momentum in Washington, opposition to change will undoubtedly be heard from grain growers in the Middle West and the Great Plains. During the past 40 years, researchers and bureaucrats have encouraged Grain Belt farmers to turn their diverse farming operations into large specialized farms that raise the same two or three crops year after year with help of large amounts of fertilizer and pesticides.

To break the cycle would take decades and require profound changes in agricultural policy and economics, but the debate that springs from the Academy of Sciences report is a healthy beginning. If, as the report suggests, natural farming can feed the nation without the undesirable byproduct of environmental hazards and without driving farmers bankrupt, it is a goal we dare not fail to pursue.

Berry's World

WELCOME TO THE ART WORLD
A SHADY AND
MANIPULATIVE
PLACE ...



ARNOLD SAWISLAK

No big deal in GOP Florida victory

WASHINGTON — The Republicans made much of their recent victory in the contest for the Florida congressional seat held from its creation until his death by Democratic Rep. Claude Pepper, but truth be told there still is no real sign that a political realignment is under way.

When Ronald Reagan won the presidency in 1980 and brought a GOP Senate in on his coattails for the first time in a quarter century, there was high hope among Republicans that the long-running Democratic dominance of Congress was ending.

The Democratic reign began with the 1932 election and with the exception of two congressional sessions in the House and three in the Senate, the Republicans have been the minority party on Capitol Hill.

However, White House control has been much more evenly divided during that same time: the Democrats have held the presidency for 32 years, the Republicans 26 years since 1932.

The figure is skewed toward the first 20 years of the period when Franklin Roosevelt and Harry Truman held the presidency. Thus the GOP has been in the White House 26 of the last 36 years since Dwight Eisenhower won the presidency.

But the Republicans, able to dominate post

World War II national elections, cannot seem to sustain progress in the smaller state and congressional district contests. They did manage to win one-session control of the Senate and

House in the 1948 and 1952 elections and the Senate alone in 1980, but the rest of the time, even with GOP presidential landslides, they have been second in a two party contest. It is of some significance that the Democrats also have held majorities in state and local executive and legislative offices during the same period.

A succession of Republican leaders have declared ambitious programs intended to increase GOP strength in Congress. Some inroads have been made — Democratic majorities are nowhere

near the size they were in the 1930s and 1940s — but there is only the faintest indication that the GOP is riding an upward trend.

Students of congressional politics have noted that only about 100 of the 435 House seats have changed party hands in recent elections and that on the basis of the record, more than 75 percent of the seats are safe for the party now holding them. On top of that, the percentage of incumbent members of Congress re-elected in recent years has been above 90 percent.

No wonder then that the Republicans were ecstatic when Ileana Ros-Lehtinen captured the Florida 18th District seat Pepper had held since it was created in 1962.

She beat a liberal Democrat, so the GOP leadership in Washington proclaimed an upset victory, a claim that lost a good deal of its sheen when several facts about the district were examined.

First, the district is full of conservative Cuban-Americans, who, while returning Pepper to the House by huge margins, also gave Reagan a 60-40 landslide in 1984.

In replacing Pepper, Ros-Lehtinen did not fill the shoes of a typical liberal. Pepper was one of a kind and certainly not one who could be cloned.



They have been second in a two party contest.



"Quick! While everything's covered with snow and ice. Get a shot of how thorough the cleanup looks!"

GEORGE F. WILL

What, me a Communist?

WASHINGTON — Hungary's new ambassador has not been here long enough to have gotten the hand of the Washington art of using words to conceal thoughts. When, in a Sunday morning television interview, he was accused of giving an evasive answer to a question, Ambassador Peter Varkonyi said with unfeigned cheerfulness, "It is, it is. I should be evasive on that."

Having been blindsided by the ambassador's treacherous resort to candor, the interviewers fell to badgering him about philosophy: Is Hungary moving away from communism? The ambassador allowed a look of puzzlement, mingled with injured pride and sorrow about the confusions besetting mankind, to steal over his suddenly woeful countenance. Then he said, in effect:

"What's that you are suggesting? That Hungary has ever been — what was that peculiar word you used? — 'Communist'?" How do such odd rumors get started? Who is saying these hurtful things?

The ambassador's actual words were: "As a matter of fact, we are not — we never called ourselves a Communist country. We called ourselves a Socialist country...the Communist Party was called the Hungarian Socialist Workers Party, and it was not called the Communist Party."

The new party line in parts of Eastern Europe is that there has been an amusing mix-up — a silly misunderstanding, really: There never has been a Communist Party. In the current issue of National Review, Radek Sikorski, a Polish emigre, recounts his return to Warsaw where, in the inner recesses of the Communist Party's headquarters (where the night porter was watching "Miami Vice" dubbed in Polish), he asks a party official to pose for a photograph in front of the portrait on the wall:

"No, not under Lenin!"
"But aren't you a Communist?"
"No, I'm not a Communist."
"But you are one of the top leaders of the Communist Party."

"It's not a Communist Party. It's called the United Workers Party, and comprises two traditions, Communist and Socialist. I regard myself as a Social Democrat."

What is — was? — a Communist (person, nation)? It is, truth be told, hard to say because the Master was himself tantalizingly vague about that (you would have thought) crucial matter.

Marx was so busy predicting capitalism's collapse, he forgot to describe what would come next. Aside from the withering away of the state (it, being by definition an instrument of class oppression, would disappear when classes die), all he said was: Under capitalism man is a hunter or a fisherman or a shepherd

or a critic, whereas in a Communist society he can be a hunter in the morning, a fisherman in the afternoon, raise cattle in the evening and be a critic after dinner.

Marx certainly did not burden his disciples with a too-detailed blueprint. But now we know that in a Communist society everyone does the same thing most of the time: They stand in queues. Or they go to Hungary and head west.

To the list of 19th-century theories slain by 20th-century facts, add one 20th-century theory now deceased: Twenty-five years ago

there was a cottage industry among academics manufacturing variants of the theory that the Soviet and American systems were "converging." The former was supposed to "mellow" and the latter "progress" toward some mild social democracy, two bland leviathans living happily ever after.

Today, the Soviet Union is desperately in need of the book no one thought to write. As a Russian recently said, "There have been many books written on the transition from capitalism to socialism, but not one on the transition from socialism to capitalism."

Consider two stunning facts: East Germany, from which the highly skilled and educated young — tomorrow's elites — are fleeing, is the most productive and materially modern East European nation. And last week Boris Yeltsin (the "populist" described as the Soviet Union's Huey Long; actually he is their Imelda Marcos, a shop-till-you-drop communist) came to America: "All my impressions of capitalism, of the United States, of Americans that have been pounded into me over the years...all of them have been changed 180 degrees in the day and a half I have been here."

And where was the "here" where he had this epiphany about the commodious life and the sweetness of our people? New York City, believe it or not.

Today, East Germans, residents of what supposedly was communism's closest approximation to a success story, are "voting with their feet."



There has been an amusing mix-up...There never has been a Communist Party.

JACK ANDERSON

Research fraud often ends up unpunished

WASHINGTON — A Colorado doctor gives an overdose of an experimental drug to three patients and one of them dies. The doctor is allowed to continue practicing, and the Food and Drug Administration simply tells him he can't test new drugs anymore.

Evidence is uncovered that three California doctors tampered with the results of their study of a pain killer. All three are allowed to continue testing drugs with some precautions, even though one eventually pleads guilty to submitting false data to the government.

A Washington, D.C. doctor admits that some people in his study had a violent reaction to an experimental drug, and he hid the information. He cuts a deal with the FDA to continue testing drugs under supervision.

These cases and many more have been exhaustively documented by inspectors from the FDA's Scientific Investigation Division. But unless some U.S. attorney with nothing better to do decides to prosecute, doctors accused of research fraud have little to fear.

A doctor, hired by a drug company to test drugs, with the permission of the FDA, may alter the findings or hide sloppy procedures, and the worst that he or she can expect is prosecution for submitting false data or mail fraud. Much of the time, the cases are so complex and the penalties so low, that prosecution is a waste of time. Only 16 doctors have ever been hauled into court for research fraud, according to FDA authorities. In the vast majority of cases, the FDA settles for a slap on the wrist. The doctor loses the right to test or is allowed to continue testing under supervision.

A bill, expected to be filed today by Rep. Pete Stark, D-Calif., will raise the risks significantly for lab-coated criminals. Stark's proposal would ban Medicare payments to doctors who violate drug testing rules and endanger their patients.

Few doctors make their living on research alone. Their private practices count on Medicare patients. Dr. Alan Lisook, branch chief at the FDA's Scientific Investigation Division, says the Stark bill will hit those doctors where it hurts, in the wallet.

The good news is that, even without the bill, bogus research appears to be on the wane. Lisook told our associate Stewart Harris, Ten years ago, roughly 10 percent of all random inspections turned up some irregularities in drug testing. Now only 6 percent of the inspections point to research fraud.

In some of those cases the patients didn't even know they were guinea pigs. Stark's bill will cover researchers who can't prove that they obtained the consent of their patients. Records of investigations we obtained show the problem of uninformed patients is widespread and pernicious. One researcher crushed an experimental pill and fed it to a patient in her apoplexy after she said she wanted out of the drug study, according to an FDA investigation. Stark penned his bill because a constituent, Mike Rego, complained about being an unwitting guinea pig. Rego's skin condition was treated with a highly toxic experimental drug at a Veterans Administration hospital in San Francisco. An investigation of the files of his doctor, Herschel Zackheim, turned up no consent form for Rego.

Zackheim says all of his patients were told about the drug experiment, although he concedes that consent forms can't be found for all of them. Now Rego suffers from a nerve disorder which at least one doctor has linked to the use of the drug.



Doctors accused of research fraud have little to fear.



House begins debate on deficit bill

WASHINGTON — The House was set to open debate on a key revenue and deficit cutting bill that includes a reduction in the capital gains tax sought by President Bush but opposed by Democratic leaders in Congress.

Survey: Junior high coke use rising

WASHINGTON — Fewer high school students are using cocaine but an increasing number of students in grades six through eight are using the drug, a survey showed today.

From United Press International reports

Inmate uprising quelled

United Press International

NEW YORK — Some 200 inmates barricaded themselves into four dormitories at Rikers Island's largest jail early today before guards fired tear gas to quell a 2 1/2-hour uprising that injured a dozen people, officials said.

Guards fired tear gas into two dormitories at the Anna M. Kroes Center and inmates gave up by 4:30 a.m., said corrections department spokesman Ruby Ryles. More than 200 corrections officers were dispatched to the jail shortly after inmates took over the dormitories about 2 a.m., she said.

The inmates apparently rioted because they believed a fellow prisoner was wrongly accused of fighting with another man on Monday, Ryles said.

The uprising began when prisoners barricaded themselves inside the dorm where the fight occurred and began setting fires. Inmates in adjoining dormitories erected barricades to keep guards out, Ryles said.

Jail officials said six inmates and six guards suffered cuts, bruises and other injuries. One guard was hospitalized in stable condition for cuts after he was hit with fluorescent light, Ryles said.

Teacher corps law proposed

United Press International

WASHINGTON — Democratic senators announced plans to introduce legislation today that would give college students scholarships in return for joining a "Teacher Corps" of educational troubleshooters.

The idea is a centerpiece of the \$300-million Excellence in Teaching Act, which would also grant paid sabbaticals to current teachers, set up teacher training academies and recruit minority and bilingual teachers.

"Teaching today is a profession in crisis," said Sen. Edward Kennedy, D-Mass., co-sponsor with Sen. Claiborne Pell, D-R.I., of the legislation being introduced before President Bush's education summit this week.

"Teachers endure unacceptably low salaries and low status, and the results are hardly surprising. It is becoming harder to recruit teachers and harder to retain them," Kennedy said.

There are now 2.3 million public school teachers in kindergarten through 12th grade.

Legal Notices

IN THE CIRCUIT COURT FOR SEMINOLE COUNTY, FLORIDA PROBATE DIVISION File Number 89-74-CP IN RE: ESTATE OF MARYLYN JEANETTE TODD AUSTIN, Deceased.

NOTICE OF ADMINISTRATION

The administration of the estate of Marilyn Jeanette Todd Austin, deceased, File Number 89-74-CP is pending in the Circuit Court for Seminole County, Florida, Probate Division, the address of which is P.O. Drawer C, Sanford, Florida 32778-9459. The name and address of the personal representative and of the personal representative's attorney are set forth below.

All interested persons are required to file with this court, WITHIN THREE MONTHS OF THE FIRST PUBLICATION OF THIS NOTICE: (1) all claims against the estate and (2) any objection by an interested person on whom this notice is served that challenges the validity of the will, the qualifications of the personal representative, venue, or jurisdiction of the court.

Publication of this Notice has begun on September 19, 1989. Personal Representative: Karen Annette Austin 220 Turquoise Trail Longwood, Florida 32750 Attorney for Personal Representative: Rebecca M. Miller, Esquire 21st Floor, New World Tower 180 North Biscayne Boulevard Miami, Florida 33132 Telephone: (305) 377-2661

IN THE CIRCUIT COURT OF THE 15TH JUDICIAL CIRCUIT IN AND FOR SEMINOLE COUNTY, FLORIDA. CASE NO. 89-205-CA-09-L FEDERAL NATIONAL MORTGAGE ASSOCIATION, Plaintiff, vs. WILLIAM LYNN ESPENSCHEID, ET AL., Defendants.

NOTICE OF FORECLOSURE SALE

NOTICE IS HEREBY GIVEN pursuant to a Summary Final Judgment of Foreclosure dated September 19, 1989 and entered in Case No. 89-205-CA-09-L of the Circuit Court of the 15th Judicial Circuit in and for Seminole County, Florida, where FEDERAL NATIONAL MORTGAGE ASSOCIATION, Plaintiff, and WILLIAM LYNN ESPENSCHEID, ET AL., are defendants.

Legal Notices

NOTICE IS HEREBY GIVEN pursuant to a Summary Final Judgment of Foreclosure dated September 19, 1989 and entered in Case No. 89-205-CA-09-L of the Circuit Court of the 15th Judicial Circuit in and for Seminole County, Florida, where FEDERAL NATIONAL MORTGAGE ASSOCIATION, Plaintiff, and WILLIAM LYNN ESPENSCHEID, ET AL., are defendants.

Together with all structures and improvements now and hereafter on said land and the rents, issues, and profits of the said described property, and all fixtures now or hereafter attached to or used in connection with the premises herein described and in addition thereto the following described household appliances, which are, and shall be deemed to be, fixtures and a part of the realty.

Range Refrigerator Dishwasher Dryer Water-Wall Carpeting DATED this 22nd day of September, 1989. MARYLYN MORSE, Clerk Circuit Court By: Jane E. Jasovic Deputy Clerk Published: September 26, October 3, 1989 DE1-56

NOTICE OF FICTITIOUS NAME Notice is hereby given that I am engaged in business at 2508 S. French Ave., Sanford, Seminole County, Florida under the Fictitious Name of W.T.L. SERVICES, and that I intend to register said name with the Clerk of the Circuit Court, Seminole County, Florida in accordance with the Provisions of the Fictitious Name Statutes, To-Wit: Section 865.09 Florida Statutes 1987. Harry T. Lachay Jr. Published: September 12, 19, 26, October 3, 1989 DE1-116

Legal Notice

LEGAL NOTICE NOTICE OF CHANGE OF LAND USE PUBLIC HEARING TO BE HELD OCTOBER 24, 1989

Notice is hereby given that the Board of County Commissioners (BCC) of Seminole County will conduct a public hearing on October 24, 1989 at 9:00 a.m., or as soon thereafter as possible, in the County Services Building, 1101 East First Street, Sanford, FL, Room W122. The purpose of this second of two public hearings is to receive any new or additional public input and take final action on requested Small Scale amendments to the Seminole County Comprehensive Plan. Small scale amendments are defined as residential land uses of five acres or less with a density of five units per acre, or other land uses of three acres or less. (Land Use amendments on property containing three acres or less and wetland areas remain subject to the applicable Conservation land use designation and zoning classification and the provisions relating thereto). Should the BCC adopt the proposed amendments to the Comprehensive Plan, an ordinance will be adopted to accomplish this purpose. The title of the ordinance is:

SEMINOLE COUNTY, FLORIDA AN ORDINANCE AMENDING ORDINANCE 87-14, AS AMENDED, KNOWN AS THE SEMINOLE COUNTY COMPREHENSIVE PLAN; AMENDING THE FUTURE LAND USE ELEMENT AND FUTURE LAND USE MAP OF THE SEMINOLE COUNTY COMPREHENSIVE PLAN AS TO THOSE PROPERTIES DESCRIBED HEREIN; PROVIDING FOR EXCLUSION FROM THE SEMINOLE COUNTY CODE; PROVIDING FOR SEVERABILITY; AND PROVIDING FOR AN EFFECTIVE DATE. Land use amendments and rezonings to be considered by the BCC are as follows:

REBEETH WRIGHT — Amendment from Medium Density Residential to Commercial (located in Township 21 South, Range 29 East, and 100 ft. of width 200 ft. of Southeast 1/4 of Southeast 1/4 south of Old Forest City-Palm Springs Road, further described as located on the south side of Old Forest City-Palm Springs Road (also known as Old Palm Springs Road), approximately 1800 feet southeast of the intersection of S.R. 434 and Old Forest City-Palm Springs Road, approximately 200 feet north of Jamestown Boulevard (170 Palm Springs Road), containing approximately 1.3 acres. (BCC District 3)

FRED TOCHTERMAN — Amendment from Low Density Residential to High Density Residential (located at Lot 3 and the west 20 feet of Lot 2, Block A, Trim Acres, according to the plat thereof, as recorded in Plat Book 16, page 26, of the Public Records of Seminole County, Florida, further described as located on the north side of Mayflower Lane, approximately 120 feet west of the intersection of Bear Lane and Mayflower Lane (2021, 2225 & 2227 Mayflower Lane), containing approximately 0.4 acres. (BCC District 3)

DIANE HAMILTON — Amendment from Low Density Residential to Medium Density Residential (located at Lot 3 (less west 20 feet and road), Block A, Trim Acres, according to the plat thereof, as recorded in Plat Book 16, page 26, of the Public Records of Seminole County, Florida, further described as located at the northwest corner of Bear Lane and Mayflower Lane (2021, 2225 & 2227 Mayflower Lane), containing approximately 0.4 acres. (BCC District 3)

This hearing may be continued from time to time as found necessary. Interested parties may appear at this hearing and be heard regarding the subject amendments. Those in attendance will be heard and written comments may be filed with the BCC c/o "Planning Director", 1101 East First Street, Sanford, FL 32771, telephone (407) 211-1128, extension 371. Information regarding the proposed amendments is available for public inspection at the address above, Room N207, between the hours of 9:00 a.m. and 5:00 p.m., Monday through Friday.

Persons are advised that if they decide to appeal any decision made at this hearing, they will need a record of the proceedings, and for such a purpose, they may need to ensure a verbatim record of the proceedings is made, which record includes the testimony and evidence upon which the appeal is to be made. Florida Statutes, Section 205.016, BOARD OF COUNTY COMMISSIONERS, BY: ANTHONY VANDERWOP, PLANNING DIRECTOR. Published: September 26, October 17, 1989 DE1-230



Doctors killed in Colombia bombing

BOGOTA, Colombia — A powerful bomb ripped through an American-owned hotel in the resort city of Cartagena, killing two doctors attending a convention there and wounding one person, police said today.

A second blast Monday night rocked a Cartagena branch of Colombia's Agrarian Bank, wounding three people, police said, and a government-affiliated energy company was bombed about the same time in the capital Bogota, reducing the building to rubble.

No injuries were reported in the Bogota blast, but the impact damaged about 50 residences in the city's northwestern sector. Local radio reports said the blasts were believed to be part of a wave of at least 90 bombings and assassinations carried out in the past month by terrorist hit squads linked to Colombia's notorious Medellin and Cali cocaine cartels.

OPEC can't agree on increased quotas

GENEVA — OPEC oil ministers today tried for a fourth day to raise the cartel's combined production ceiling in what appeared to be the last chance for a compromise solution.

An expected last session scheduled for Monday night was postponed at the last minute after three ministers rejected an arrangement to hike the current 19.5 million-barrel-a-day ceiling by 7.7 percent to 21 million barrels.

The rescheduled session began 50 minutes late Tuesday morning with ministers declining comment as they entered a conference room at their hotel.

From United Press International reports

Lebanese peace will be discussed

United Press International

BEIRUT, Lebanon — Rival Lebanese parliamentarians agreed to convene in Saudi Arabia to discuss an Arab League peace plan that could end the bitter civil war between Christians and Muslims in Lebanon.

Arab League envoy Lakhdar al Ibrahim met Monday with House Speaker Husein Huseini and said all 73 Lebanese parliament members, both Muslim and Christian, will travel to Saudi Arabia Sept. 30 for a special session to discuss the Arab League plan.

The Lebanese parliament has been unable to meet in full session for more than a year because of the fighting in Beirut. At its last meeting, on Aug. 18, 1988, only 42 members, all Muslims, showed up.

Ibrahim said meeting in Saudi Arabia would give the parliamentarians their first real chance to conduct business in a safe, neutral atmosphere and give new impetus to the goal of national reconciliation.

Huseini confirmed the agreement to meet and said it was a national duty for parliamentarians to attend.

"We will keep on working until we agree on a National Charter," he said.

Earlier in the day, Ibrahim was pinned down by intense bombing that sent him scurrying into an underground shelter at a Christian resort town outside Beirut, security officials said.

The officials said Ibrahim was sleeping at the Boustan Hotel in the summer resort town of Beit Meri, 6 miles east of Beirut, when shelling started to blast around the hotel and crashed near his room.

When the bombardment intensified, the Arab envoy rushed along with other residents of the hotel to the underground shelter as shells hit the multi-story building, the officials said.

Legal Notice

NOTICE OF PUBLIC HEARING DETERMINATION OF SUBSTANTIAL DEVIATION HEATHROW INTERNATIONAL BUSINESS CENTER DEVELOPMENT OF REGIONAL IMPACT

Notice is hereby given that the Seminole County Board of County Commissioners (BCC) will conduct a public hearing on October 24, 1989 beginning at 9:00 a.m., or as soon thereafter as possible, in the County Services Building, 1101 East First Street, Sanford, Florida, Room W122. The purpose of the hearing is to determine whether the proposed changes by the applicant to the previously approved Heathrow International Business Center Development of Regional Impact (DRI) (see legal description and map below) constitute a substantial deviation under the provisions of Section 205.06 (1)(f), Florida Statutes and would, accordingly, require further Development of Regional Impact review. The legal description of the property is set forth as follows:

The South 1/4 of the Northwest 1/4 of the Southeast 1/4 of Section 2, Township 20 South, Range 29 East, as recorded in ORS 1068, page 28 of the Public Records of Seminole County, Florida, containing approximately 19.4 acres (BCC District 2).



These in attendance at the public hearing desiring to present input will be heard and written comments may be filed with the Board of County Commissioners at the public hearing, or by mailing same to the address below, c/o "Planning Director". The hearing may be continued from time to time as found necessary. Further information pertaining to this development may be obtained from the Office of Planning, Room N207, Seminole County Services Building, 1101 East First Street, Sanford, FL 32771, telephone (407) 211-1128, extension 371, from 9:00 a.m. to 5:00 p.m., Monday through Friday.

Interested parties may appear at this hearing and be heard regarding the proposed changes to the DRI. Those in attendance will be heard and written comments may be filed with the BCC. This hearing may be continued from time to time as found necessary. Further information pertaining to this development may be obtained from the Office of Planning, 1101 East First Street, Sanford, Florida, Room N207, or by telephoning (407) 211-1128, extension 371. Persons are advised that if they decide to appeal any decision made at this hearing, they will need a record of the proceedings, and for such a purpose, they may need to ensure a verbatim record of the proceedings is made, which record includes the testimony and evidence upon which the appeal is to be made. Florida Statutes, Section 205.016, BOARD OF COUNTY COMMISSIONERS, SEMINOLE COUNTY, FLORIDA, BY: ANTHONY VANDERWOP, PLANNING DIRECTOR. Published: September 26, 1989 DE1-230

Legal Notice

NOTICE OF PUBLIC HEARING DETERMINATION OF SUBSTANTIAL DEVIATION HEATHROW INTERNATIONAL BUSINESS CENTER DEVELOPMENT OF REGIONAL IMPACT

Notice is hereby given that the Seminole County Board of County Commissioners (BCC) will conduct a public hearing on October 24, 1989 beginning at 9:00 a.m., or as soon thereafter as possible, in the County Services Building, 1101 East First Street, Sanford, Florida, Room W122. The purpose of the hearing is to determine whether the proposed changes by the applicant to the previously approved Heathrow International Business Center Development of Regional Impact (DRI) (see legal description and map below) constitute a substantial deviation under the provisions of Section 205.06 (1)(f), Florida Statutes and would, accordingly, require further Development of Regional Impact review. The subject property is described as follows:

A tract of land being a portion of Section 12, Township 20 South, Range 29 East, Seminole County, Florida, being more particularly described as follows:

Commence at the Southeast corner of Section 12; thence North 89 degrees 01' 00" West along the East line of Section 12 for a distance of 814.85 feet; thence South 89 degrees 01' 00" West along the West line of the South 1/4 of Section 12 for a distance of 126.50 feet to the P.C. of a curve concave to the Northwest having a radius of 1173.34 feet; thence along the arc of said curve through a central angle of 19 degrees 36' 00" for a distance of 264.76 feet to the P.C.C. of a curve concave to the Northwest having a radius of 1173.34 feet; thence along the arc of said curve through a central angle of 13 degrees 01' 00" for a distance of 297.76 feet to the P.C.C. of a curve concave to the Northwest having a radius of 1173.34 feet; thence along the North line of the Northwest 1/4 of Section 12 for a distance of 158.50 feet to the P.C. of a curve concave to the Northwest having a radius of 1173.34 feet; thence along the arc of said curve through a central angle of 19 degrees 36' 00" for a distance of 264.76 feet to the P.C.C. of a curve concave to the Northwest having a radius of 1173.34 feet; thence along the West line of the South 1/4 of Section 12 for a distance of 126.50 feet to the P.C. of a curve concave to the Northwest having a radius of 1173.34 feet; thence along the arc of said curve through a central angle of 19 degrees 36' 00" for a distance of 264.76 feet to the P.C.C. of a curve concave to the Northwest having a radius of 1173.34 feet; thence along the West line of the South 1/4 of Section 12 for a distance of 126.50 feet to the P.C. of a curve concave to the Northwest having a radius of 1173.34 feet; thence along the arc of said curve through a central angle of 19 degrees 36' 00" for a distance of 264.76 feet to the P.C.C. of a curve concave to the Northwest having a radius of 1173.34 feet; thence along the West line of the South 1/4 of Section 12 for a distance of 126.50 feet to the P.C. of a curve concave to the Northwest having a radius of 1173.34 feet; thence along the arc of said curve through a central angle of 19 degrees 36' 00" for a distance of 264.76 feet to the P.C.C. of a curve concave to the Northwest having a radius of 1173.34 feet; thence along the West line of the South 1/4 of Section 12 for a distance of 126.50 feet to the P.C. of a curve concave to the Northwest having a radius of 1173.34 feet; thence along the arc of said curve through a central angle of 19 degrees 36' 00" for a distance of 264.76 feet to the P.C.C. of a curve concave to the Northwest having a radius of 1173.34 feet; thence along the West line of the South 1/4 of Section 12 for a distance of 126.50 feet to the P.C. of a curve concave to the Northwest having a radius of 1173.34 feet; thence along the arc of said curve through a central angle of 19 degrees 36' 00" for a distance of 264.76 feet to the P.C.C. of a curve concave to the Northwest having a radius of 1173.34 feet; thence along the West line of the South 1/4 of Section 12 for a distance of 126.50 feet to the P.C. of a curve concave to the Northwest having a radius of 1173.34 feet; thence along the arc of said curve through a central angle of 19 degrees 36' 00" for a distance of 264.76 feet to the P.C.C. of a curve concave to the Northwest having a radius of 1173.34 feet; thence along the West line of the South 1/4 of Section 12 for a distance of 126.50 feet to the P.C. of a curve concave to the Northwest having a radius of 1173.34 feet; thence along the arc of said curve through a central angle of 19 degrees 36' 00" for a distance of 264.76 feet to the P.C.C. of a curve concave to the Northwest having a radius of 1173.34 feet; thence along the West line of the South 1/4 of Section 12 for a distance of 126.50 feet to the P.C. of a curve concave to the Northwest having a radius of 1173.34 feet; thence along the arc of said curve through a central angle of 19 degrees 36' 00" for a distance of 264.76 feet to the P.C.C. of a curve concave to the Northwest having a radius of 1173.34 feet; thence along the West line of the South 1/4 of Section 12 for a distance of 126.50 feet to the P.C. of a curve concave to the Northwest having a radius of 1173.34 feet; thence along the arc of said curve through a central angle of 19 degrees 36' 00" for a distance of 264.76 feet to the P.C.C. of a curve concave to the Northwest having a radius of 1173.34 feet; thence along the West line of the South 1/4 of Section 12 for a distance of 126.50 feet to the P.C. of a curve concave to the Northwest having a radius of 1173.34 feet; thence along the arc of said curve through a central angle of 19 degrees 36' 00" for a distance of 264.76 feet to the P.C.C. of a curve concave to the Northwest having a radius of 1173.34 feet; thence along the West line of the South 1/4 of Section 12 for a distance of 126.50 feet to the P.C. of a curve concave to the Northwest having a radius of 1173.34 feet; thence along the arc of said curve through a central angle of 19 degrees 36' 00" for a distance of 264.76 feet to the P.C.C. of a curve concave to the Northwest having a radius of 1173.34 feet; thence along the West line of the South 1/4 of Section 12 for a distance of 126.50 feet to the P.C. of a curve concave to the Northwest having a radius of 1173.34 feet; thence along the arc of said curve through a central angle of 19 degrees 36' 00" for a distance of 264.76 feet to the P.C.C. of a curve concave to the Northwest having a radius of 1173.34 feet; thence along the West line of the South 1/4 of Section 12 for a distance of 126.50 feet to the P.C. of a curve concave to the Northwest having a radius of 1173.34 feet; thence along the arc of said curve through a central angle of 19 degrees 36' 00" for a distance of 264.76 feet to the P.C.C. of a curve concave to the Northwest having a radius of 1173.34 feet; thence along the West line of the South 1/4 of Section 12 for a distance of 126.50 feet to the P.C. of a curve concave to the Northwest having a radius of 1173.34 feet; thence along the arc of said curve through a central angle of 19 degrees 36' 00" for a distance of 264.76 feet to the P.C.C. of a curve concave to the Northwest having a radius of 1173.34 feet; thence along the West line of the South 1/4 of Section 12 for a distance of 126.50 feet to the P.C. of a curve concave to the Northwest having a radius of 1173.34 feet; thence along the arc of said curve through a central angle of 19 degrees 36' 00" for a distance of 264.76 feet to the P.C.C. of a curve concave to the Northwest having a radius of 1173.34 feet; thence along the West line of the South 1/4 of Section 12 for a distance of 126.50 feet to the P.C. of a curve concave to the Northwest having a radius of 1173.34 feet; thence along the arc of said curve through a central angle of 19 degrees 36' 00" for a distance of 264.76 feet to the P.C.C. of a curve concave to the Northwest having a radius of 1173.34 feet; thence along the West line of the South 1/4 of Section 12 for a distance of 126.50 feet to the P.C. of a curve concave to the Northwest having a radius of 1173.34 feet; thence along the arc of said curve through a central angle of 19 degrees 36' 00" for a distance of 264.76 feet to the P.C.C. of a curve concave to the Northwest having a radius of 1173.34 feet; thence along the West line of the South 1/4 of Section 12 for a distance of 126.50 feet to the P.C. of a curve concave to the Northwest having a radius of 1173.34 feet; thence along the arc of said curve through a central angle of 19 degrees 36' 00" for a distance of 264.76 feet to the P.C.C. of a curve concave to the Northwest having a radius of 1173.34 feet; thence along the West line of the South 1/4 of Section 12 for a distance of 126.50 feet to the P.C. of a curve concave to the Northwest having a radius of 1173.34 feet; thence along the arc of said curve through a central angle of 19 degrees 36' 00" for a distance of 264.76 feet to the P.C.C. of a curve concave to the Northwest having a radius of 1173.34 feet; thence along the West line of the South 1/4 of Section 12 for a distance of 126.50 feet to the P.C. of a curve concave to the Northwest having a radius of 1173.34 feet; thence along the arc of said curve through a central angle of 19 degrees 36' 00" for a distance of 264.76 feet to the P.C.C. of a curve concave to the Northwest having a radius of 1173.34 feet; thence along the West line of the South 1/4 of Section 12 for a distance of 126.50 feet to the P.C. of a curve concave to the Northwest having a radius of 1173.34 feet; thence along the arc of said curve through a central angle of 19 degrees 36' 00" for a distance of 264.76 feet to the P.C.C. of a curve concave to the Northwest having a radius of 1173.34 feet; thence along the West line of the South 1/4 of Section 12 for a distance of 126.50 feet to the P.C. of a curve concave to the Northwest having a radius of 1173.34 feet; thence along the arc of said curve through a central angle of 19 degrees 36' 00" for a distance of 264.76 feet to the P.C.C. of a curve concave to the Northwest having a radius of 1173.34 feet; thence along the West line of the South 1/4 of Section 12 for a distance of 126.50 feet to the P.C. of a curve concave to the Northwest having a radius of 1173.34 feet; thence along the arc of said curve through a central angle of 19 degrees 36' 00" for a distance of 264.76 feet to the P.C.C. of a curve concave to the Northwest having a radius of 1173.34 feet; thence along the West line of the South 1/4 of Section 12 for a distance of 126.50 feet to the P.C. of a curve concave to the Northwest having a radius of 1173.34 feet; thence along the arc of said curve through a central angle of 19 degrees 36' 00" for a distance of 264.76 feet to the P.C.C. of a curve concave to the Northwest having a radius of 1173.34 feet; thence along the West line of the South 1/4 of Section 12 for a distance of 126.50 feet to the P.C. of a curve concave to the Northwest having a radius of 1173.34 feet; thence along the arc of said curve through a central angle of 19 degrees 36' 00" for a distance of 264.76 feet to the P.C.C. of a curve concave to the Northwest having a radius of 1173.34 feet; thence along the West line of the South 1/4 of Section 12 for a distance of 126.50 feet to the P.C. of a curve concave to the Northwest having a radius of 1173.34 feet; thence along the arc of said curve through a central angle of 19 degrees 36' 00" for a distance of 264.76 feet to the P.C.C. of a curve concave to the Northwest having a radius of 1173.34 feet; thence along the West line of the South 1/4 of Section 12 for a distance of 126.50 feet to the P.C. of a curve concave to the Northwest having a radius of 1173.34 feet; thence along the arc of said curve through a central angle of 19 degrees 36' 00" for a distance of 264.76 feet to the P.C.C. of a curve concave to the Northwest having a radius of 1173.34 feet; thence along the West line of the South 1/4 of Section 12 for a distance of 126.50 feet to the P.C. of a curve concave to the Northwest having a radius of 1173.34 feet; thence along the arc of said curve through a central angle of 19 degrees 36' 00" for a distance of 264.76 feet to the P.C.C. of a curve concave to the Northwest having a radius of 1173.34 feet; thence along the West line of the South 1/4 of Section 12 for a distance of 126.50 feet to the P.C. of a curve concave to the Northwest having a radius of 1173.34 feet; thence along the arc of said curve through a central angle of 19 degrees 36' 00" for a distance of 264.76 feet to the P.C.C. of a curve concave to the Northwest having a radius of 1173.34 feet; thence along the West line of the South 1/4 of Section 12 for a distance of 126.50 feet to the P.C. of a curve concave to the Northwest having a radius of 1173.34 feet; thence along the arc of said curve through a central angle of 19 degrees 36' 00" for a distance of 264.76 feet to the P.C.C. of a curve concave to the Northwest having a radius of 1173.34 feet; thence along the West line of the South 1/4 of Section 12 for a distance of 126.50 feet to the P.C. of a curve concave to the Northwest having a radius of 1173.34 feet; thence along the arc of said curve through a central angle of 19 degrees 36' 00" for a distance of 264.76 feet to the P.C.C. of a curve concave to the Northwest having a radius of 1173.34 feet; thence along the West line of the South 1/4 of Section 12 for a distance of 126.50 feet to the P.C. of a curve concave to the Northwest having a radius of 1173.34 feet; thence along the arc of said curve through a central angle of 19 degrees 36' 00" for a distance of 264.76 feet to the P.C.C. of a curve concave to the Northwest having a radius of 1173.34 feet; thence along the West line of the South 1/4 of Section 12 for a distance of 126.50 feet to the P.C. of a curve concave to the Northwest having a radius of 1173.34 feet; thence along the arc of said curve through a central angle of 19 degrees 36' 00" for a distance of 264.76 feet to the P.C.C. of a curve concave to the Northwest having a radius of 1173.34 feet; thence along the West line of the South 1/4 of Section 12 for a distance of 126.50 feet to the P.C. of a curve concave to the Northwest having a radius of 1173.34 feet; thence along the arc of said curve through a central angle of 19 degrees 36' 00" for a distance of 264.76 feet to the P.C.C. of a curve concave to the Northwest having a radius of 1173.34 feet; thence along the West line of the South 1/4 of Section 12 for a distance of 126.50 feet to the P.C. of a curve concave to the Northwest having a radius of 1173.34 feet; thence along the arc of said curve through a central angle of 19 degrees 36' 00" for a distance of 264.76 feet to the P.C.C. of a curve concave to the Northwest having a radius of 1173.34 feet; thence along the West line of the South 1/4 of Section 12 for a distance of 126.50 feet to the P.C. of a curve concave to the Northwest having a radius of 1173.34 feet; thence along the arc of said curve through a central angle of 19 degrees 36' 00" for a distance of 264.76 feet to the P.C.C. of a curve concave to the Northwest having a radius of 1173.34 feet; thence along the West line of the South 1/4 of Section 12 for a distance of 126.50 feet to the P.C. of a curve concave to the Northwest having a radius of 1173.34 feet; thence along the arc of said curve through a central angle of 19 degrees 36' 00" for a distance of 264.76 feet to the P.C.C. of a curve concave to the Northwest having a radius of 1173.34 feet; thence along the West line of the South 1/4 of Section 12 for a distance of 126.50 feet to the P.C. of a curve concave to the Northwest having a radius of 1173.34 feet; thence along the arc of said curve through a central angle of 19 degrees 36' 00" for a distance of 264.76 feet to the P.C.C. of a curve concave to the Northwest having a radius of 1173.34 feet; thence along the West line of the South 1/4 of Section 12 for a distance of 126.50 feet to the P.C. of a curve concave to the Northwest having a radius of 1173.34 feet; thence along the arc of said curve through a central angle of 19 degrees 36' 00" for a distance of 264.76 feet to the P.C.C. of a curve concave to the Northwest having a radius of 1173.34 feet; thence along the West line of the South 1/4 of Section 12 for a distance of 126.50 feet to the P.C. of a curve concave to the Northwest having a radius of 1173.34 feet; thence along the arc of said curve through a central angle of 19 degrees 36' 00" for a distance of 264.76 feet to the P.C.C. of a curve concave to the Northwest having a radius of 1173.34 feet; thence along the West line of the South 1/4 of Section 12 for a distance of 126.50 feet to the P.C. of a curve concave to the Northwest having a radius of 1173.34 feet; thence along the arc of said curve through a central angle of 19 degrees 36' 00" for a distance of 264.76 feet to the P.C.C. of a curve concave to the Northwest having a radius of 1173.34 feet; thence along the West line of the South 1/4 of Section 12 for a distance of 126.50 feet to the P.C. of a curve concave to the Northwest having a radius of 1173.34 feet; thence along the arc of said curve through a central angle of 19 degrees 36' 00" for a distance of 264.76 feet to the P.C.C. of a curve concave to the Northwest having a radius of 1173.34 feet; thence along the West line of the South 1/4 of Section 12 for a distance of 126.50 feet to the P.C. of a curve concave to the Northwest having a radius of 1173.34 feet; thence along the arc of said curve through a central angle of 19 degrees 36' 00" for a distance of 264.76 feet to the P.C.C. of a curve concave to the Northwest having a radius of 1173.34 feet; thence along the West line of the South 1/4 of Section 12 for a distance of 126.50 feet to the P.C. of a curve concave to the Northwest having a radius of 1173.34 feet; thence along the arc of said curve through a central angle of 19 degrees 36' 00" for a distance of 264.76 feet to the P.C.C. of a curve concave to the Northwest having a radius of 1173.34 feet; thence along the West line of the South 1/4 of Section 12 for a distance of 126.50 feet to the P.C. of a curve concave to the Northwest having a radius of

Dena's Exclusive Pets
 • FULL LINE PET SHOP
 GROOMING
 BATH, DIP, DRY \$7.50
 (Short Hair, 20 lbs. or less)
 M-F 10:00
 Sat. 10:5
321-2957
 3200 N. Hwy. 17-82
 Longwood
 (Corner of 427 & 17-82)
 THIS WEEK'S PET: GERBILS \$99 each

Business Review
 Prepared by the Advertising Dept. of the
Sanford Herald
 Call 322-2611 Now!
 PUT YOUR BUSINESS ON THE MOVE

FREE EVALUATION
DON'T LET YOUR FAMILY GROW APART. LET US HELP
 • LACK OF COMMUNICATION
 • LOW SELF ESTEEM
 • ADOLESCENT ISSUES
 • TENSION/ARGUMENTS
 Phyllis Olive
 Human Services & Resources & Associates
 Please Call **767-0039**

Have A Love Affair With Yourself...
 ...Let us be YOUR EYE TO BEAUTY
 • PERMS • WAVES
 • CURLS • SUPPLIES
322-9838 or 323-7212
 901 W. 13th ST., SANFORD



Jeff Saadat of On Vacation Home Services takes good care of your pets and your home.

On Vacation Home Services takes good care of your pets

On Vacation Home Services offers a unique service to vacationing Orange and Seminole County residents by combining daily pet care and home security service to your household. Many people dislike taking their pets to kennels but, until now, have had no other choice. On Vacation Home Services was formed on the idea that pets are much happier in their own environment rather than being locked up in a cage all day. On Vacation Home Services visits your home once or twice a day to feed and water your pets. "We care for all pets," owner Jeff Saadat said, "from tropical fish to champion breed dogs. All of our customers are special and pets deserve the extra attention we give them while their owners are away." Along with daily pet care, On Vacation Home Services waters indoor plants, brings in your mail and newspapers and checks your refrigerator and freezer to make sure everything is working OK. Lights in the home are adjusted to your specific instructions for security. Doors and windows are also inspected. "We want people to enjoy their days off, not having to worry about their pets and their home," Jeff said. "People are often surprised at the money they save by getting better service." For more information or to set up an appointment for service call 331-8730 today.

SWANKY'S
 STRIPPING FURNITURE RESTORATION RE-FINISHING
 STRIP & FINISH KITCHEN & DINING ROOM CHAIRS **\$59.95**
 FREE ESTIMATES
323-7353 EACH PIECE

SUBS USA
FREE SUB
 Buy One & Two Medium Soft Drinks and Receive Another of Equal or Lesser Value FREE!
 With Coupon Thru 10-31-89
99¢ SUB
 Buy Any 6" Sub and Receive Another of Equal or Lesser Value For 99¢
 With Coupon Thru 10-31-89
 Call Ahead for Faster Service
OPEN 7 DAYS - 11am to 10pm

BEAT INFLATION AT MacTavish DISCOUNT CARPETS
 • DAILY SPECIALS •
 • QUALITY CARPETING •
 • LOW, LOW PRICES •
PH. 322-4694
 283 MAGNOLIA AVE. SANFORD

Jay & Marie's Hair Studio
SPECIAL OF THE WEEK
 • Revlon's Retainer Touchup (includes Gel & Conditioner) ... \$19.00
 • Hair Cut & Hot Curl ... \$ 9.00
 • Carefree Curls ... \$37.00
 Expires 10-3-89
 New Location
 2818 S. Sanford Ave., Sanford **323-5227**

SEND HER ROSES
JUST BECAUSE YOU LOVE HER!!
 Flowers by Gaynelle
322-9998 614 S. Sanford Ave. Sanford, Florida

SERIO'S DELICATESSEN & CATERING, INC.
 Imported Italian Foods
 Imported Exotic Cheeses
 Home-made Party Platters
 Call for Party Menu
Delicious Sandwiches & Subs To Eat or Take Out
 Featuring Complete Line of Beer & Hard Drinks
 Oak Shopping Center
 348 West Lake Mary Blvd.
 Lake Mary, Florida 32746 **322-1793**

KRYSTAL KLEEN Professional House Cleaning
RESIDENTIAL & COMMERCIAL CLEANING
 Bonded and Insured
 Call For Free Estimate
323-8763

Try Us... You Will Love Us
HAIRSTYLES For Your Lifestyle
BUY 2 STYLE CUTS - 4" & 8" GET 1 FREE!
 Bring Your Family and Friends
 WALK-INS WELCOME • CALL FOR APPOINTMENT
 Call For A Free Consultation
HAIR FORMULA I
 3478 Airport Blvd. (County Club Square)
 PH. 321-6114 SANFORD
 You Get What You Want Not What You Get!

SPECIALS
 Laminated Hair \$55.00
 Hair Color \$65.00
 Keratin Treatment \$95.00
 LYNNE FURNELL - Owner/Stylist
SOUTHWEST ROAD BEAUTY SALON
 Curls - Perms - Cuts - Color
 2418 SOUTHWEST RD., SANFORD

Frame factory
 • CUSTOM FRAMING •
 • DO IT YOURSELF •
 641 W. Lake Mary Blvd. Suite 121
 Lake Mary, FL 32748
 Lake Mary Village Public Shopping Center
PH. (407) 322-1012

SPECIAL 20% DISCOUNT
 On All Fabrics With This Ad
 CALL FOR FREE ESTIMATE
MAL'S UPHOLSTERY & WOODWORK
 422 SANFORD AVE. SANFORD, FLA. **(407) 321-4994**



Curtice Malcolm of Mal's Upholstery displaying another finely finished piece of furniture.

Mal's Upholstery makes old furniture look new again

Hi, I'm Mal of Mal's Upholstery. In February of 1989, I relocated my upholstery business from Fargo, North Dakota to 422 S. Sanford Ave. In Sanford. I have been in business for 12 years. I take pride in offering quality work at low prices. We also have a selection of rebuilt furniture to meet your specific needs. Call (407) 321-4994 or stop by 422 S. Sanford Ave. in Sanford. Thank you very much! Curtice A. Malcolm, Proprietor.

"ASK US"
WE'RE LANDSCAPE EXPERTS
 FREE ESTIMATES!!
 • LANDSCAPE DESIGN • FULLY APPOINTED SERVICE VEHICLES
 • TREE INSTALLATION/REPLACEMENT • FAST SERVICE, PROFESSIONAL
 • TREES, SHRUBS • BULBS • INSTALLATION
 • RESIDENTIAL, LUXURY HOMES • REPAIRS, MAINTENANCE
 • COMMERCIAL • LICENSED, BONDED, INSURED
321-2625 25th ST. Landscaping & Irrigation
 PAGER 622-3768 2400 WEST 28th ST. • SANFORD

 LEARN SELF-DEFENSE, ALSO WITH SELF-DEFENSE
 Classes from ages 5 & up on Mon. & Tues 6:30 a.m. - 8:30 p.m., Wed. Thurs. Fri. 6:30 a.m.-11:30 a.m., 10:30 p.m.-11:30 p.m., Sat. 10:30 a.m.-11:30 a.m.
MENEZES'S MARTIAL ARTS ACADEMY
 CALL: (407) 321-9395
 288 S. FRENCH AVE., SANFORD, FL.

Foot Pain?
 Bunion Hammer toe/ Corn Bunionette
We Can Help You... LAKE MARY PODIATRY
 Call 323-2566

MADAME KATHERINE VOTED BEST PSYCHIC
 in Central Florida in 1984
& MADAME SYLVIA
 Tells you the past, present, and future, reunites the separated, asks no questions, helps you fine the right employment.
HELPFUL ADVICE ON ALL PROBLEMS
LONGWOOD
 Between SR 434 & Dog Track Rd. on Hwy. 17-82
 Call for appt. **695-7895** 9 am - 9 pm
\$5.00 Off Palmist Reading Day 100 or More

Permanent Savings!
15 Perms
 GOOD THESE DAYS. Cut & Style Included
 Reg. \$95
321-8077
 Thom, Christy or Brent
 Open 7 Days
 Center Mall, SANFORD
 (Across From Burger King)

LAKE MARY BEAUTY SALON
PH. 322-9300

BLAIR AGENCY
YOUR ONE-STOP INSURANCE AGENCY "IT MAKES SENSE"
 • AUTO • BOAT • HOME • BUSINESS • LIFE • HEALTH • GROUP • DEATHLY • WORKER'S COMPENSATION • IMPAIRED RISK • SENIORS • ANNUITIES
Blair Since 1960
 Guidance and Protection
 2546 1st St. 17-82 Hwy. 10 Hwy. 17-82
 Sanford, FL 32771-0400 Lake Mary, FL 32746-0400 Lake Mary, FL 32746-0400
 (407) 321-7710 (407) 321-7710 (407) 321-7710
 Free Home Visitation from 9:00 AM Saturday & Sunday for Your Convenience

Sports

INSIDE:
■ People, Page 3B
■ Comics, Page 6B
■ Classified, Page 4B

B

IN BRIEF

AMERICAN LEAGUE

Harnish, O's eliminate Brewers

MILWAUKEE — Pete Harnish allowed one hit over six innings Monday night to lift Baltimore to a 5-3 victory over the Milwaukee Brewers, keeping the Orioles within one game of first place in the American League East.

Harnish, 5-9, allowed only a leadoff single to Bill Spiers over the first six innings before giving up a double to Paul Mollitor and a two-run homer to Greg Brock in the seventh. The rookie right-hander, who allowed three runs and three hits in 6 1-3 innings, struck out five and walked one.

Gregg Olson pitched the ninth for his 27th save, his 20th straight scoreless appearance.

Baltimore's triumph, combined with Toronto's 2-0 victory over Detroit, eliminated the third-place Brewers from the AL East race.

In other American League action Monday it was Boston downing New York 7-4; Toronto shutting out Detroit 2-0; Chicago clubbing Minnesota 10-2; and Texas trimming Oakland 3-2 in 10 innings.



COLLEGE FOOTBALL

Irish looking better each week

NEW YORK — Notre Dame remained the overwhelming choice as No. 1 in United Press International's college football rankings Monday, the day No. 5 Colorado mourned the death of its quarterback.

Miami stayed No. 2 and Nebraska broke its tie for third with Auburn, which was idle and slipped to No. 4.

Colorado, also idle, stayed No. 5 on the day it mourned the weekend death of quarterback Sal Aunese, whose battle with cancer and attempt to tutor replacement Darian Hagen inspired his surging team. The Buffaloes, 3-0 and at their highest position since 1977, have dedicated their season to him and next play Washington, the only school to drop from the Top 10 this week.

A spokesperson at Colorado said condolences have been received from several colleges and the NFL's Kansas City Chiefs.

Breeder's Cup to be showdown

BOSSIER CITY, La. — Horse of the Year honors will come down to a November showdown in the Breeder's Cup between Sunday Silence and Easy Goer.

Sunday Silence staked his bid with a convincing six-length victory over Big Earl in Sunday's Louisiana Downs Super Derby. Jockey Pat Valenzuela did not have to put the whip to the Kentucky Derby and the Preakness winner.

"He ran one of his good races but he's never run a bad one," trainer Charlie Whittingham said after he and co-owners Arthur Hancock III and Dr. Ernest Gaillard collected the derby trophy and \$800,000 for the first-place finish.

"This will set up a Horse of the Year meeting with Easy Goer in the Breeder's Cup (Nov. 6 at Gulfstream Park, Fla.). He's as good as Easy Goer."

Sunday Silence lost the Belmont to Easy Goer, then finished second in the Swap Stakes, leading some to doubt whether he could recapture the early spark.

NATIONAL LEAGUE

Giants lose, but clinch tie

LOS ANGELES — Mike Scioscia drove in four runs and rookie John Wetteland posted his first victory as a starter in almost two months Monday night, helping the Los Angeles Dodgers stall San Francisco's drive to the NL West title with a 5-2 triumph over the Giants.

Despite the loss, San Francisco was guaranteed at least a tie for the division crown when second-place San Diego lost 5-3 to Cincinnati. One more San Francisco win or San Diego loss will give the Giants their second NL West flag in three seasons.

Scioscia hit his career-high 10th homer and a two-run single before squeezing home an insurance run in the eighth.

Wetteland, 5-8, who had lost his last five decisions and had not won as a starter since Aug. 4, lasted seven-plus innings.

In other action Pittsburgh tripped St. Louis 4-3; Philadelphia toppled New York 2-1; Montreal edged Chicago 4-3 in 10 innings; and Atlanta bested Houston 5-3.



BEST BETS ON TV

BASEBALL
7:30 p.m. — WGN, Chicago Cubs at Montreal Expos. (L)

Dr. Phillips drills hosts

Lake Howell, Lake Mary get clawed by Panthers

By MARK BLYTHE
Herald sports writer

LAKE MARY — Dr. Phillips was a rude guest Monday night as it entered Seminole County and upended both Lake Howell and Lake Mary in prep girls' volleyball action at Lake Mary High School.

Dr. Phillips improved to 6-3 overall and will return to action today at home against Colonial. Lake Mary fell to 11-5 and will play today at Seminole; Lake Howell fell to 7-4 and will travel to DeLand today.

"I'm shocked," Dr. Phillips coach Laura Smith said. "We played well, but both teams we played are much better than they showed tonight."

The Panthers weren't dominating play but managed not to make as many mistakes as their opponents to win each match.

"We just kept the ball in play in both matches," Smith said. "In the game against Lake Mary, we scored 30 points and 10 of them may have been earned. The others were their mistakes."

In the opening match, Dr. Phillips downed Lake Howell 15-10, 17-15 as it used a strong service game along with fine play at the net.

Lake Howell could never find a rhythm until late in the second game. Everytime the Silver Hawks started to get some momentum, they committed a mental error that shifted the momentum to the Panthers' favor.

"Everytime a team got going, they had a breakdown," Lake Howell coach Jo Luciano said. "When I got late in both games they did the kind of things it takes to win, they

didn't make the mistakes."

Lake Howell jumped out to an early lead in both games and ended up battling back in both but could come up with the big plays late in the match.

Dr. Phillips used the play of Jodie Jackie! at the net and Jennifer Beck at the net along with the outside hitting of Marie Bonilla and Moetta Williams.

"It was back and forth until late in the match," Luciano said. "We made to many unforced errors throughout the match."

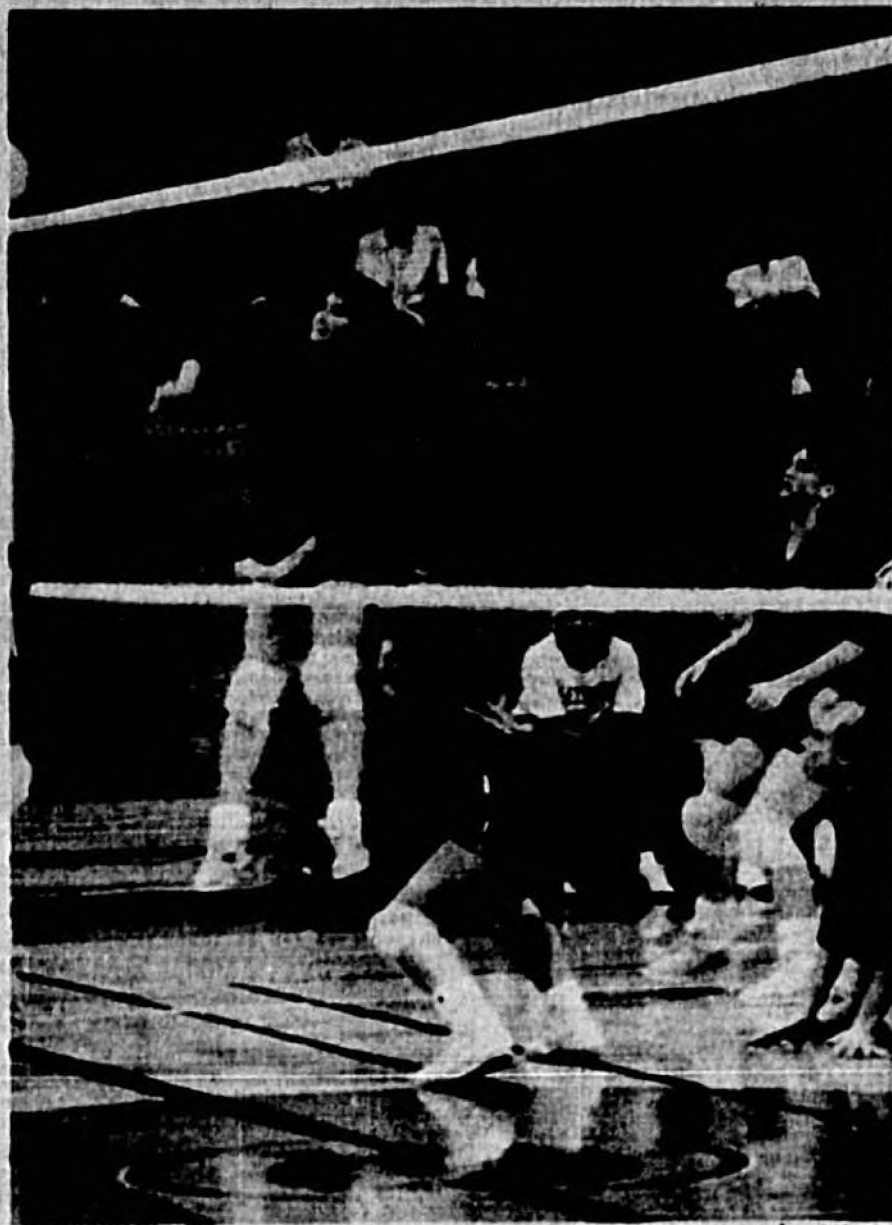
Lake Mary could not come up with any kind of attack as Dr. Phillips totally dominated the match. The Rams, who came off an impressive three wins last week, seemed to slip in their level of play against the Panthers.

"Just when I thought we were starting to turn the corner," Lake Mary coach Cindy Henry said. "We looked so good last week and now we're back at step one. I'm glad we learned our lesson in a non-conference game."

Dr. Phillips whipped Lake Mary 15-2, 15-8 as the Rams could do nothing right. Everytime Lake Mary appeared to come out of their lackadaisical phase they made another mistake to sink them even further.

The Panthers were led by the serving of Whitney Garwood and the all-around play of Bonilla, who came up with some big hits and nice sets.

Garwood served 10 consecutive points to put the Panthers up 10-0 and in control of the first game. The Rams tried but failed to get on track. **See Volleyball, Page 2B**



Melissa Mau (in air) and her Lake Mary teammates had a tough time on Monday night as the visiting Dr. Phillips Panthers handed them a 15-2, 15-8 defeat. The Rams will try to get back on track tonight when they visit Seminoles.

SANFORD HERALD PLAYER OF THE WEEK

Cash a big catch for Seminoles

By MARK BLYTHE
Herald sports writer

Seminole's Brandon Cash caught four passes for 124 yards in the Tribe's 20-7 victory over Titusville Friday night to earn the Sanford Herald Player of the Week honors.

Cash, a senior wide receiver, increased his season stats to nine catches for 168 yards and three touchdowns. Cash scored the first TD Friday night to get Seminole moving in the right direction.

Other's considered for Player of the Week honors were Lake Howell place kicker Steve Munnell, who booted a 41-yard field goal and was perfect on three extra point attempts. Lyman's Kennis Morse who rushed for 85 yards on 14 carries. Oviedo's Brian MacInness who passed for 117 yards and a touchdown while rushing for another, and Lake Brantley's Eroy Dantzier who rushed for 87 yards on 17 carries.

"Brandon made things happen for us," Seminole coach Emory Blake said. "He got us going with an early touchdown."

Blake said that Cash is the type of player that will sacrifice himself for the team and is looking for anything to help the Tribe win.

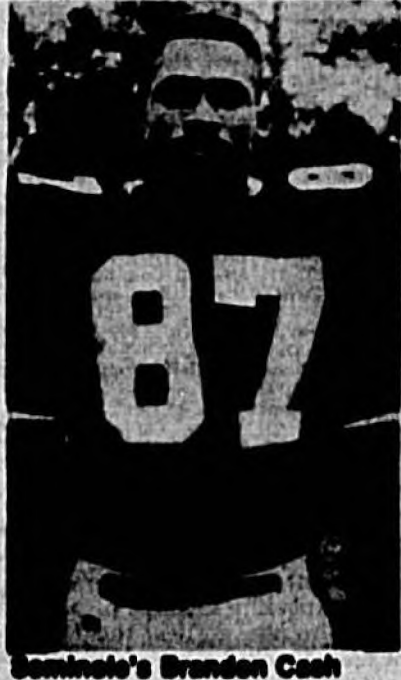
"Today he was asking if he could kick extra points," Blake said. "We need him for our offense, that's all we want his mind to be on."

Seminole has had trouble with its kicking game, but Blake and the rest of the coaching staff is looking

to turn that around. Cash is a brilliant athlete and could play most anywhere for Seminole. He's big, quick and can do things with and without the football.

"Brandon's a great raw athlete," Blake said. "He can catch the ball, run with it and block also. He could play any position we wanted him to. He has the size and speed to allow him to be able to do that."

Cash, who was voted as the team's player of the week, is the receiver Seminole goes to when



Seminole's Brandon Cash

they're in tough situations. Cash has become the big play man in the scheme of the Tribe's high-powered offensive attack.

"He's our clutch receiver," Blake said. "He can catch a short pass and turn into a long gain. He's the person we want to throw the ball to when we need a big play."

Seminole will take on Lyman next week in a Seminole Athletic Conference game and the team, along with Cash, is looking to sharpen its skills before heading into district action against Leesburg and Edgewater.

Rams, Pats take lead in SAC bowling

From staff reports

FERN PARK — Lake Mary's boys and Lake Brantley's girls took slim leads in the team standings after Monday night's competition in the Seminole Athletic Conference bowling league at Indian Hills Fair Lanes.

Lake Mary has a total of 44 1/2 points followed by Seminole 39. Lake Brantley with 38, Lake Howell with 28 1/2 (and a total pin fall of 9,830), Lyman 28 1/2 (7,808), Oviedo with 26 and DeLand with 20 1/2.

In boys' action Monday, Lake Mary whipped DeLand 10-5, led by Tony Cory's match-high game of 227, the best game of the day, and series of 553. DeLand was led by Jeff Castle, who had a team-high 223 game and 578 series.

Seminole drilled Lyman 10-5 with Chris Rottinghaus leading the way with a 210 game and a match-high series of 554. Regan Donohue led Lyman with a match-high game of 226 and team-high series of 550.

Lake Brantley downed Lake Howell 10-5 as Pete Cory rolled a high game of 203 and a match-high series of 594, the day's best. Brian Patterson led Lake Howell with a match-high game of 205 and a high series of 587.

Oviedo trimmed Deltona 8 1/2-6 1/2 in non-conference action with John Wagner leading Oviedo with a 226 game as Ray Valazquez contributed a 472 series. Louie Moscato led Deltona with a 212 game and a 822 series. **See Bowling, Page 2B**

Tampa trying to keep perspective

United Press International

TAMPA — Accustomed to coping with ineptitude, the Tampa Bay Buccaneers returned to work Monday trying to deal with success.

The Buccaneers entered the 1989 season with 74 losses in their last 95 games. After opening with a 23-21 triumph at Green Bay, the Buccaneers dropped a 20-16 decision to San Francisco in the final minute before rebounding Sunday with a 20-10 victory against New Orleans.

Disregarding the 1987 strike season, Tampa Bay is off to its first 2-1 start since 1980. Only the Bears and Giants have allowed fewer points in the NFC and the pass rush — which registered just 20 sacks last year — has already dropped quarterbacks nine times.

"Monday's are different right now," said left outside linebacker Kevin Murphy, who has four sacks after notching just one in all of 1988. **See Buccaneers, Page 2B**

Miami at a loss over late folds

United Press International

MIAMI — The Miami Dolphins are at a loss to figure out why they are folding in the final minutes, but they don't think they are getting outconditioned. Coach Don Shula said Monday.

The Dolphins led the New York Jets by 11 points with less than four minutes to go Sunday, but lost 40-33. In the opener three weeks ago, Buffalo staged a similar comeback and downed the Dolphins 27-24 in the last play of the game.

Even at New England — a 24-10 Dolphin victory on the road — the Patriots tried to stage a late rally.

"You have to look at each situation," Shula said at his weekly news conference. "The Buffalo game certainly and New England — we had that pretty much put away but they did **See Dolphins, Page 2B**

Cincinnati wins 'Battle of Ohio'

United Press International

CINCINNATI — Boomer Esiason fired three touchdown passes and a swarming Cincinnati defense shut down Cleveland inside the 10-yard line twice in the final eight minutes Monday night to pace the Bengals to a 21-14 victory over the Browns in the "Battle of Ohio."

Esiason, who had thrown only one touchdown pass in his previous six games against Cleveland, fired TD passes of 8 and 16 yards to Rodney Holman to help Cincinnati gain a 14-14 halftime tie and then threw a 19-yarder to James Brooks in the third quarter.

Cleveland mounted substantial drives trying for a tying touchdown twice in the closing eight minutes, but was stopped twice by the Cincinnati defense on fourth-down plays.

With 7:52 remaining, Tim Manon was stopped by virtually the entire Cincinnati line for no gain **See Bengals, Page 2B**

STATS & STANDINGS

JAI-ALAI

Al Orlando Seminals Monday night First game

2 Pete Jones 12.00 4.00 3.00
 3 Mike Wayne 4.00 2.00 2.00
 8 Caberio-Ryne 4.00 2.00 2.00
 Q (2-3) 25.00 P (2-3) 72.00 T (2-3-4) 600.00

Second game

1 Wayne 10.00 4.00 3.00
 3 Lachy 4.00 2.00 2.00
 8 Elmer II 4.00 2.00 2.00
 Q (1-3) 25.00 P (1-3) 126.00 T (1-3-4) 607.00
 DD (2-1) 126.00

Third game

3 Pete-Chimela 10.00 4.00 3.00
 1 Caberio-Lachy 4.00 2.00 2.00
 3 Caberio-Ryne 4.00 2.00 2.00
 Q (1-3) 25.00 P (2-1) 65.10 T (2-1-3) 217.00

Fourth game

8 Brock 11.00 10.00 4.00
 4 Chimela 11.00 4.00 3.00
 2 Mike 4.00 2.00 2.00
 Q (4-8) 25.00 P (4-4) 69.00 T (4-4-1) 225.00
 (4-4-1) 225.00

Fifth game

7 Irigoyen-Peruria 10.00 4.00 3.00
 4 Marcol-Chimela 7.00 3.00 2.00
 8 Pinen-Elmer II 4.00 2.00 2.00
 Q (2-1) 25.00 P (2-1) 35.10 T (2-1-3) 201.00

Sixth game

1 Nichol-Arrevalo 11.00 4.00 3.00
 4 Ricardo-Sab 4.00 2.00 2.00
 3 Armando-Oyari 4.00 2.00 2.00
 Q (1-4) 25.00 P (1-4) 247.00 T (1-4-5) 270.00

Seventh game

4 Reyes 10.00 4.00 3.00
 1 Faruria 4.00 2.00 2.00
 7 Pita 4.00 2.00 2.00
 Q (1-4) 44.00 P (4-1) 117.00 T (4-1-7) 727.00
 (4-1-7) 727.00

Eighth game

1 Solo-Peruria 10.00 4.00 3.00
 3 Durango-Angel 3.00 2.00 2.00
 8 Ricardo-Angel 4.00 2.00 2.00
 Q (1-3) 25.00 P (1-3) 114.00 T (1-3-4) 603.00

Ninth game

3 Pita-Oyari 10.00 4.00 3.00
 1 Edward-Angel 4.00 2.00 2.00
 1 Edward-Sab 4.00 2.00 2.00
 Q (2-5) 25.00 P (2-5) 64.00 T (2-5-1) 209.00

Tenth game

2 Pinen 10.00 4.00 3.00
 6 Ocho 11.00 4.00 3.00
 3 Arrevalo 4.00 2.00 2.00
 Q (2-4) 45.00 P (2-4) 172.00 T (2-4-3) 261.00

11th game

1 Pinen-Farah 9.00 4.00 3.00
 2 Irigoyen-Tim 3.00 2.00 2.00
 8 Liam-Reyes 10.00 4.00 3.00
 Q (1-2) 41.00 P (1-2) 112.00 T (1-2-3) 201.00

12th game

3 Eduardo-Peruria 21.00 4.00 3.00
 3 Solo-Tim 4.00 2.00 2.00
 6 Ricardo-Sab 4.00 2.00 2.00
 Q (2-5) 27.00 P (2-5) 74.00 T (2-5-1) 261.00

13th game

7 Eduardo-Farah 20.00 6.00 4.00
 1 Liam-Angel 12.00 7.00 4.00
 4 Charles-Tim 4.00 2.00 2.00
 Q (1-7) 45.00 P (1-7) 129.00 T (1-7-4) 284.00
 QD (2-5-6-7) 284.00

14th game

4 Uruguay 4.00 2.00 2.00
 7 Solo 4.00 2.00 2.00
 8 Ricardo 4.00 2.00 2.00
 Q (2-7) 47.00 P (2-7) 87.00 T (2-7-3) 275.00
 (2-7-3) 275.00

A-1, 173; H-105, 312

Young 5-9, 10:55 p.m.
 Kansas City (Sabarhagen 21-4) at California (Abbott 10-11), 10:20 p.m.
 Wednesday's Games
 New York at Boston, night
 Toronto at Detroit, night
 Minnesota at Chicago, night
 Baltimore at Milwaukee, night
 Cleveland at Seattle, night
 Texas at Oakland, night
 Kansas City at California, night

NATIONAL LEAGUE

East

W	L	Pct.	GB	
Chicago	89	68	367	-
St. Louis	86	78	341	4
New York	82	70	356	9 1/2
Pittsburgh	81	70	356	9 1/2
Philadelphia	65	94	281	24

West

W	L	Pct.	GB	
San Francisco	91	66	369	-
San Diego	86	71	343	5
Houston	85	74	329	8
Los Angeles	74	85	271	17
Cincinnati	73	84	268	18
Atlanta	68	89	249	23

2-inched a tie for division title
 Monday's Results
 Pittsburgh 4, St. Louis 2
 Philadelphia 2, New York 1
 Montreal 6, Chicago 3, 10 p.m.
 Cincinnati 5, San Diego 3
 Los Angeles 5, San Francisco 3
 Tuesday's Games
 (All times EST)

St. Louis (100) 7-13 at Pittsburgh (Pittsburgh 8), 7:05 p.m.
 Philadelphia (80) 1-21 at New York (New York 7), 7:35 p.m.
 Cincinnati (100) 9-12 at Montreal (Montreal 10-4), 7:35 p.m.
 Atlanta (80) 1-11 at Houston (Houston 10-10), 8:05 p.m.
 Cincinnati (Armstrong 2-5) at San Diego (San Diego 9-10), 8:05 p.m.
 San Francisco (Downs 4-4) at Los Angeles (Los Angeles 5-4), 7:35 p.m.

Wednesday's Games
 Chicago at Montreal, night
 St. Louis at Pittsburgh, night
 Philadelphia at New York, night
 Atlanta at Houston, night
 Cincinnati at San Diego, night
 San Francisco at Los Angeles, night

Major League Leaders

Through Games of Sept. 23

American League Batting
 (Minimum 400 AB-Bats)

Player	W	L	Pct.
Putchar, Min	612	79	288
Lanier, Oak	592	79	287
Sega, Bos	603	100	231
Soy, NY	623	100	229
Yount, Mil	576	100	218
Selma, Tex	579	100	218
Prince, Tex	588	100	216
Waller, Mil	588	100	216
Storvick, Min	618	100	215
Greenwell, Bos	579	100	215
Brown, Cle	579	100	215
Kelly, NY	494	68	128

Home Runs
 McBritt, Tor 34; Carter, Cal 34; Johnson, KC and McGuire, Oak 31 and Beatty, Bos 31

Runs Batted In
 Starns, Tor 125; Montague, NY 102; Easley, Bos 104; Carter, Cal 100 and Bell, Tor 91

Stolen Bases
 Sega, Bos 52; Puckett, Min 41; Bell, Tor 41; Bonds, San 40 and Yount, Mil 39

Errors
 Starns, Tor 14; White, Cal 12; Brody, San 10 and White, Cal 10 and Reynolds, Bos 9

Fielding Percentage
 Henderson, Oak 10; White, Cal 41; Ealy, Tor 41; Puckett, Min 39 and N.Y. 39

Home Runs
 Henderson, Cal 11; Sega, Bos 10; Starns, Tor 10 and Yount, Mil 10

Errors
 McBritt, Tor 10

Putchar, Min 207; Sox, NY 202; Sega, Bos 201 and Yount, Mil 200

Fielding Percentage
 Garretts, SF 2.30; Nordmark, LA 2.28; Langston, Mon 2.04; Rousche, SF 2.04 and Wilton, SD 2.04

Wins
 Scott, Hou 20; Maddux, Chi 18; Magrane, Mil 18 and Betsch, Chi and Beckett, SF 17

Saves
 Davis, SD 42; Williams, Chi 35; Francis, Cin 31; Burke, Mon 31 and Howell, LA 31

Complete Games
 Hurst, SD 11 and Browning, Cin, Scott, Hou, Seitzer, LA and Magrane, SF, 7

Shutouts
 DeLeon, SD 10; Seitzer, LA 10; Fernandez, NY 10; Cox, NY 10 and Hurst, SD 10

Strikeouts
 Seitzer, LA 7; Glavin, Atl, Horvath, LA and Langston, Mon 4 and Betsch, Chi, Gross, Mon, Grubbs, PH and Magrane, SF, 2

LA Times ESPY

Best

W	L	Pct.	PP	PA	
Buffalo	2	1	0	257	92
NY Jets	1	2	0	200	89
Miami	1	2	0	200	77
Indianapolis	1	2	0	200	70
New England	1	2	0	200	69

Control

W	L	Pct.	PP	PA	
Cleveland	1	0	0	257	100
Chickson	1	0	0	257	61
Houston	1	0	0	257	17
Pittsburgh	1	0	0	257	106

Wins
 Denver 3 0 0 1,200 100 30
 LA Raiders 1 2 0 200 60 60
 San Diego 1 2 0 200 60 60
 Kansas City 1 2 0 200 70 70

Control
 Chicago 3 0 0 1,200 100 40
 Tampa Bay 3 0 0 400 50 51
 Green Bay 1 2 0 200 60 60
 Seattle 1 2 0 200 60 60
 Denver 0 2 0 200 50 57

LA Rams 3 0 0 1,200 100 70
San Fran. 3 0 0 1,200 80 60
San Diego 1 2 0 200 70 70
Atlanta 1 2 0 200 50 57

Sunday's Results
 Indianapolis 16, Atlanta 9
 Buffalo 10, Houston 10 (OT)
 Chicago 27, Detroit 27

Strasbourg
 Ryan, Tex 300; Clemens, Bos 230; Sabarhagen, KC 175; Gubicka, KC and Beale, Mil 172.

Strasburg
 Blyleven, Cal and McCashitt, Cal 4 and Clemens, Bos, Seitz, Cle, Sabarhagen, KC and Moore, Oak 1.

National League Batting

Clark, SF 50 103 170 320
Owens, SD 50 103 170 320
L. Smith, Atl 47 89 151 316
Green, Cin 38 72 136 312
Guerrero, Mil 38 69 172 312
Wilson, Chi 48 64 128 299
Mitchell, SF 27 103 125 294
Quinn, Mil 54 85 128 291
Thompson, SD 38 57 123 291
Herr, Phi 38 64 141 290

Home Runs
 Mitchell, SF 47; Johnson, NY 33; Davis, Cin 24; Davis, Hou 23 and Sandberg, Chi 19

Runs Batted In
 Mitchell, SF 120; Guerrero, Mil 113; Clark, SF 109; Davis, Cin 100 and Johnson, NY 97

Stolen Bases
 Wainwright, Mon 4; Johnson, NY and Guerrero, Mil, 40; Clark, SF 36 and Hamilton, LA and Beale, PH 25

Errors
 Thompson, SF 11 and Beale and Van Slyke, PH, Clark, SF and Coleman, Mil, 7

Complete Games
 Coleman, Mil 42; Johnson and Samuel, NY and Owens, SD 40 and Raines, Mon 20

Carl, SF 102; Sandberg, Chi 101; Johnson, NY and Mitchell, SF 98 and Butler, SF 97

Wins
 Owens, SD 19; Clark, SF 19; Sandberg, Chi and Guerrero, Mil 173 and Beale, PH 10

Fielding Percentage
 Garretts, SF 2.30; Nordmark, LA 2.28; Langston, Mon 2.04; Rousche, SF 2.04 and Wilton, SD 2.04

Wins
 Scott, Hou 20; Maddux, Chi 18; Magrane, Mil 18 and Betsch, Chi and Beckett, SF 17

Saves
 Davis, SD 42; Williams, Chi 35; Francis, Cin 31; Burke, Mon 31 and Howell, LA 31

Complete Games
 Hurst, SD 11 and Browning, Cin, Scott, Hou, Seitzer, LA and Magrane, SF, 7

Shutouts
 DeLeon, SD 10; Seitzer, LA 10; Fernandez, NY 10; Cox, NY 10 and Hurst, SD 10

Strikeouts
 Seitzer, LA 7; Glavin, Atl, Horvath, LA and Langston, Mon 4 and Betsch, Chi, Gross, Mon, Grubbs, PH and Magrane, SF, 2

NEW YORK

The United Press International Board of College Top 25 college football ratings, with record and first place votes in parentheses. Last place (based on 15 points) for first place, 14 for second, etc., and last week's ranking.

1. Notre Dame (23) (28) 714 1
2. Miami (4) (24) 638 2
3. Nebraska (1) (26) 607 3
4. Auburn (1) (28) 590 4
5. Colorado (3) 495 5
6. Clemson (4) 445 6
7. Michigan (1) 422 7
8. Arkansas (2) 377 8
9. West Virginia (4) 316 9
10. Southern Cal (3) 343 10
11. Southern Cal (3) 302 11
12. Tennessee (2) 199 12
13. Alabama (2) 183 13
14. N.C. State (4) 128 14
15. Arizona (3) 71 15
16. Washington State (4) 47 16
17. Washington (2) 43 17
18. Georgia (2) 37 18
19. Air Force (4) 34 19
20. Florida State (2) 19 20

MSLSS Hammer Eastern Open

(Listed below: National, non-tel records and top-100 club totals)

1. Luciano Barretto, Oklahoma City, Okla., 2-3, 4:07.1
2. Alan Siff, Dearborn, Mich., 7-1, 4:04.2
3. Leo Wagner, Pompano, Fla., 4-4, 5:07.4
4. Mary Morris, Columbia, Springfield, Ill., 3-3, 5:22.7
5. Nilsa Gonzalez, Vallejo, Calif., 3-3, 5:25.1
6. Cheryl Daniels, Detroit, Mich., 4-4, 5:27.2
7. Stacy Rider, Lakeland, Calif., 7-1, 5:51.1
8. Robin Roman, Van Nuys, Calif., 2-5, 5:52.9
9. Lela Wagner, Annapolis, Md., 4-4, 5:56.1
10. (Ho) Kim Terrett, Daly City, Calif., 2-2, 5:57.3
11. Lorie Nichols, Algonquin, Ill., 2-4, 5:59.5
12. Wendy Macpherson, San Diego, Calif., 3-3, 5:57.2
13. (Ho) Carol Giamelli, Perth, Australia, 2-2, and Larone Ravenna, St. Clair Shores, Mich., 2-3, 5:54.3
14. Lita Lunde, Youngstown, Ohio, 2-2, 5:58.7
15. Sharon Owen Todd, Bowling Green, Ky., 2-2, 5:58.2
16. Joanne Mendenhall, Ohio, 2-2, 5:58.7
17. Betty Morris, Houston, Calif., 4-4, 5:54.4
18. Marilee Serr, Kalamazoo, Mich., 4-4, 5:57.2
19. St. Michaels Station, Mahan, Ill., 2-2, 5:54.4

LA Times ESPY

Best

W	L	Pct.	PP	PA	
Buffalo	2	1	0	257	92
NY Jets	1	2	0	200	89
Miami	1	2	0	200	77
Indianapolis	1	2	0	200	70
New England	1	2	0	200	69

Control

W	L	Pct.	PP	PA	
Cleveland	1	0	0	257	100
Chickson	1	0	0	257	61
Houston	1	0	0	257	17
Pittsburgh	1	0	0	257	106

Wins
 Denver 3 0 0 1,200 100 30
 LA Raiders 1 2 0 200 60 60
 San Diego 1 2 0 200 60 60
 Kansas City 1 2 0 200 70 70

Control
 Chicago 3 0 0 1,200 100 40
 Tampa Bay 3 0 0 400 50 51
 Green Bay 1 2 0 200 60 60
 Seattle 1 2 0 200 60 60
 Denver 0 2 0 200 50 57

LA Rams 3 0 0 1,200 100 70
San Fran. 3 0 0 1,200 80 60
San Diego 1 2 0 200 70 70
Atlanta 1 2 0 200 50 57

Sunday's Results
 Indianapolis 16, Atlanta 9
 Buffalo 10, Houston 10 (OT)
 Chicago 27, Detroit 27

Pittsburgh 27, Minnesota 14
 Tampa Bay 10, New Orleans 10
 NY Giants 25, Phoenix 7
 San Francisco 29, Philadelphia 20
 Seattle 24, New England 3
 Washington 25, Dallas 7
 NY Jets 46, Miami 20
 LA Rams 41, Green Bay 30
 San Diego 31, Kansas City 4
 Denver 31, LA Raiders 31

Monday's Results
 Cincinnati 21, Cleveland 14
 Sunday, Oct. 1
 Indianapolis at NY Jets, 1 p.m.
 Atlanta vs. Green Bay at Milwaukee, 1 p.m.
 Cincinnati at Kansas City, 1 p.m.
 Denver at Cleveland, 1 p.m.
 Miami at Houston, 1 p.m.
 New England at Buffalo, 1 p.m.
 Pittsburgh at Detroit, 1 p.m.
 Washington at New Orleans, 1 p.m.
 Tampa Bay at Minnesota, 1 p.m.
 NY Giants at Dallas, 4 p.m.
 LA Rams at San Francisco, 4 p.m.
 San Diego at Phoenix, 4 p.m.
 Seattle at LA Raiders, 4 p.m.

Tuesday, Oct. 2
 Philadelphia at Chicago, 9 p.m.

COLLEGE FOOTBALL

The United Press International Board of College Top 25 college football ratings, with record and first place votes in parentheses. Last place (based on 15 points) for first place, 14 for second, etc., and last week's ranking.

1. Notre Dame (23) (28) 714 1
2. Miami (4) (24) 638 2
3. Nebraska (1) (26) 607 3
4. Auburn (1) (28) 590 4
5. Colorado (3) 495 5
6. Clemson (4) 445 6
7. Michigan (1) 422 7
8. Arkansas (2) 377 8
9. West Virginia (4) 316 9
10. Southern Cal (3) 343 10
11. Southern Cal (3) 302 11
12. Tennessee (2) 199 12
13. Alabama (2) 183 13
14. N.C. State (4) 128 14
15. Arizona (3) 71 15
16. Washington State (4) 47 16
17. Washington (2) 43 17
18. Georgia (2) 37 18
19. Air Force (4) 34 19
20. Florida State (2) 19 20

MSLSS Hammer Eastern Open

(Listed below: National, non-tel records and top-100 club totals)

1. Luciano Barretto, Oklahoma City, Okla., 2-3, 4:07.1
2. Alan Siff, Dearborn, Mich., 7-1, 4:04.2
3. Leo Wagner, Pompano, Fla., 4-4, 5:07.4
4. Mary Morris, Columbia, Springfield, Ill., 3-3, 5:22.7
5. Nilsa Gonzalez, Vallejo, Calif., 3-3, 5:25.1
6. Cheryl Daniels, Detroit, Mich., 4-4, 5:27.2
7. Stacy Rider, Lakeland, Calif., 7-1, 5:51.1
8. Robin Roman, Van Nuys, Calif., 2-5, 5:52.9
9. Lela Wagner, Annapolis, Md., 4-4, 5:56.1
10. (Ho) Kim Terrett, Daly City, Calif., 2-2, 5:57.3
11. Lorie Nichols, Algonquin, Ill., 2-4, 5:59.5
12. Wendy Macpherson, San Diego, Calif., 3-3, 5:57.2
13. (Ho) Carol Giamelli, Perth, Australia, 2-2, and Larone Ravenna, St. Clair Shores, Mich., 2-3, 5:54.3
14. Lita Lunde, Youngstown, Ohio, 2-2, 5:58.7
15. Sharon Owen Todd, Bowling Green, Ky., 2-2, 5:58.2
16. Joanne Mendenhall, Ohio, 2-2, 5:58.7
17. Betty Morris, Houston, Calif., 4-4, 5:54.4
18. Marilee Serr, Kalamazoo, Mich., 4-4, 5:57.2
19. St. Michaels Station, Mahan, Ill., 2-2, 5:54.4

LA Times ESPY

Best

W	L	Pct.	PP	PA	
Buffalo	2	1	0	257	92
NY Jets	1	2	0	200	89
Miami	1	2	0	200	77
Indianapolis	1	2	0	200	70
New England	1	2	0	200	69

Control

W	L	Pct.	PP	PA	
Cleveland	1	0	0	257	100
Chickson	1	0	0	257	61
Houston	1	0	0	257	17
Pittsburgh	1	0	0	257	106

Wins
 Denver 3 0 0 1,200 100 30
 LA Raiders 1 2 0 200 60 60
 San Diego 1 2 0 200 60 60
 Kansas City 1 2 0 200 70 70

Control
 Chicago 3 0 0 1,200 100 40
 Tampa Bay 3 0 0 400 50 51
 Green Bay 1 2 0 200 60 60
 Seattle 1 2 0 200 60 60
 Denver 0 2 0 200 50 57

LA Rams 3 0 0 1,200 100 70
San Fran. 3 0 0 1,200 80 60
San Diego 1 2 0 200 70 70
Atlanta 1 2 0 200 50 57

Sunday's Results
 Indianapolis 16, Atlanta 9
 Buffalo 10, Houston 10 (OT)
 Chicago 27, Detroit 27

AUTO RACING

2 p.m. - ESPN, CART Beach Sprint Grand Prix
 6 p.m. - ESPN, NASCAR, Advance Auto Parts 100
 7 p.m. - ESPN, NASCAR, Goody's 100

BASEBALL
 7 p.m. - St. St. St. Louis Cardinals at Pittsburgh Pirates, 11:30 a.m. of 2 p.m.
 7:30 p.m. - CN, Chicago Cubs at Montreal Expos (L)
 7:30 p.m. - OR, Philadelphia Phillies of New York Mets (L)
 8 p.m. - St. St. Texas Rangers at Oakland A's (L)
SOFTBALL
 7:30 p.m. - ESPN, Brett Lally vs. Tomas Perez Junior Middletrough (L)
FOOTBALL
 6 p.m. - CTV, College, Newberry at Central Florida
 7:30 p.m. - SC, College, Miami at Missouri State
BASEBALL
 7:30 p.m. - WBSZ-AM (1270), Philadelphia Phillies at New York Mets

PREP LEADERS FOOTBALL

KEY - Seminole (S); Lake Mary (LM); Lyman (LY); Oviedo (O); Lake Brantley (LB); Lake Howell (LH).

Rushing
 Marquette Smith (LM).....41, 475 8.0
 Frank Diaz (O).....42, 272 6.3
 Elroy Dentzer (LB).....60, 390 6.5
 Cedric Bouyer (L).....43, 220 5.1
 Marvin Reed (L).....33, 145 4.4
 Dennis Morris (L).....23, 129 5.6
 Dana Allen (O).....19, 127 6.7
 Clint Johnson (LB).....17, 125 4.8
 Chris Harty (LM).....16, 100 6.8
 Chris Witherspoon (O).....16, 98 6.8
 Bob Menello (LM).....23, 97 4.2
 Jeff Williams (S).....14, 88 6.3
 Carter Graves (LM

People

IN BRIEF

4-H leader needing youth

Kerrie Walraven, a Sanford 4-H leader, needs children aged 8-16 for 4-H meetings.

The group will meet on Monday nights from 6:30-7:30 p.m. at her home.

4-H trains youth in leadership and knowledge of different fields, from dairy and horses to cooking and automotive, Walraven said.

For more information, call her at 321-8752 (evenings).

Seminar on trees, shrubs to be free

A free seminar on "Fall Selection, Planting and Care of Trees and Shrubs" will be held on Thursday, Sept. 28, from 2-3:30 p.m. at the Seminole County Agricultural Center, located at 250 W. County Home Road, across from Flea World in Sanford. Urban Forester Mike Martin will speak on selection of appropriate trees for landscapes, and Urban Horticulturist Celeste White will speak on planting and care of trees and shrubs.

The program is open to the public. For more information, call Celeste White at 323-2500, ext. 181.

Right to Life to meet

The Central Florida Right to Life will hold a special educational meeting at 7:15 p.m. on Thursday, Sept. 28, at the Orlando downtown library. A film will be shown. For more information, call 678-LIFE.

CALENDAR

Serenaders' Dance scheduled

The Serenaders' Senior Dance takes place each Wednesday at the Sanford Civic Center from 2:30-4:30 p.m. Those aged 55 and older are welcome to the dance, which features a live band. No reservations are needed, and donations are \$1. For more information, call John or Minnie Kane at 322-8549.



Don't tell me it's not Halloween

He may seem gruesome, but it's all a charade created by Dr. E. Reid Gilbert, a nationally known specialist in stage movement. Gilbert gave a free lunchtime performance of mime titled "Twist Tears and Laughter" on Wednesday at Seminole Community College. The school is sponsoring the residency of Gilbert and Robin Lea Pyle, who specializes in theater and dance.

Seminars, film to aid the newly widowed

Those recently widowed are invited to attend a series of seminars designed to provide fellowship, understanding of the grief process, developing coping skills, and an introduction to community resources.

Beginning Oct. 5, the group will meet every Thursday afternoon from 1-3 p.m. through Dec. 21 at Ascension Lutheran Church, 351 Ascension Drive, Casselberry.

Baldwin Cemeteries and Funeral Homes, which is sponsoring the program, will also sponsor the showing of "The Amche Story," a documentary film on the grief process.

The film portrays the personal

struggles of family members' grief in response to the sudden, tragic death of son Paul, age 22.

The film will be presented at the following times and locations:

—Oct. 3, 7:30 p.m., fellowship hall, Central Christian Church, 250 W. Ivanhoe Blvd., Orlando.

—Oct. 4, 7:30 p.m., library, St. John Vianney Catholic Church, 6220 S. Orange Blossom Trail, Orlando.

—Oct. 5, 7:30 p.m., library, St. Mary Magdalen Catholic Church, 681 Maitland Ave., Altamonte Springs.

For more information, call 677-5061 between 8:30 a.m. to 4:30 p.m.

Car, art classes slated

SANFORD — Leisure Programs at Seminole Community College, Sanford, announces that the following classes will begin during the week of Oct. 2:

Becoming Intimate With Your Car — Class gives basic instruction in the care and maintenance of cars. Students will learn about the functions of the various components of the automobile and will get involved with some "hands-on" experience on their vehicles. (Oct. 2 to Nov. 13, Mondays, 7-10 p.m., \$5/person)

Assertiveness Training I — Designed to help participants identify present-day, non-

effective communication skills, this course includes teaching alternative assertiveness communication techniques and skills. (Oct. 5 to Nov. 9, Thursdays, 5-7 p.m.; \$5/person)

Oil and Acrylic Painting — Course teaches basic to advanced techniques in acrylic and oil painting with emphasis on use of color, composition and perspective as applied to portrait, figure, still life and landscape painting. (Oct. 6-27, Fridays, 9:30 a.m. to 12:30 p.m.; \$25/person)

For more information or to enroll, call Fay C. Brake at 323-1450, ext. 664.

Pearl Harbor memorial to remember patriots in stone

DEAR ABBY: The year 1991 marks the 50th anniversary of the bombing of Pearl Harbor, and the 11th Bombardment Group (H) Association Inc. (a non-profit organization formed in Ohio in 1961) is in the process of building a large bronze memorial tablet with the names of those men killed in action on Dec. 7, 1941, inscribed on it. The tablet will be installed on Hickam Field, which is adjacent to Pearl Harbor.

I have spent considerable time and effort visiting the different Air Force bases, checking their records for the names of those killed or missing on Hickam Field, Dec. 7, 1941. The names of all men killed on Hickam Field will be on this tablet, not just those of men of the 11th Bombardment Group (H).

We do not want to overlook anyone whose name should be on this memorial tablet, so because your column is so widely read, we are appealing to you to help us locate any and all family members who had loved ones on Hickam Field that day who were killed, or listed as



ADVISE

ABIGAIL VAN BUREN

missing and not accounted for. **ROBERT E. MAY, EXECUTIVE DIRECTOR, GROUP (H) ASSOCIATION**

DEAR MR. MAY: Glad to be of help.

Readers: If you have information about military personnel who were either killed or listed as missing in action, please write to: Group (H) Association Inc., P.O. Box 637, Seffner, Fla. 33584.

DEAR ABBY: Our daughter just told us that she is planning to get married this winter. We gave her a good education, and

now she is a high-salaried professional woman. She's 27 years old and has been on her own for four years.

Her fiancé is also highly successful. He's 35 years old. Our daughter and this fellow have been living together for more than a year, against our wishes, and now they want a church wedding, followed by a big dinner for all the relatives—paid for by us! What are our obligations?

We personally feel that they have already danced to the music, and now they should pay the fiddler. Please answer in the paper, but do not use our name or town. Her grandparents would be crushed to learn that their granddaughter would live with someone before marriage! **DAD AND MOM**

DEAR DAD AND MOM: You are under no obligation to foot the bill for your daughter's wedding regardless of whether she and her fiancé lived together prior to their marriage. Just hand your daughter this column if you lack the courage to deliver this message verbally.

IN THE SERVICE

Pvt. First Class Michael F. Light, son of George C. and Barbara M. Light of Longwood, has completed basic training at Fort Jackson, S.C.



During the training, students received instruction in drill and ceremonies, weapons, map reading, tactics, military courtesy, military justice, first aid, and Army history and training.

Light graduated in 1982 from Lyman High School, Longwood, and received an associate degree in 1987 from Tallahassee Community College.

Cadet Rebecca M. Bott, daughter of Lewis M. and Jennifer L. Durak of Sanford, received practical work in military leadership at the U.S. Army ROTC advanced camp, Fort Bragg, N.C.

The six-week camp, attended by cadets normally between their third and fourth years of college, includes instruction in communications, management and survival training.

Successful completion of the advanced camp and graduation from college results in a commission as a second lieutenant in either the U.S. Army, Army Reserve or National Guard for the cadet.

Her husband, Jonathon, is the son of Daniel F. Bott of Lake Mary.

The cadet is a 1985 graduate of Lake Mary High School, and a 1988 graduate of Wofford College, Spartanburg, S.C.

Cadet Jon P. Hansen, son of Robert W. and Trivia A. Mitchell of DeBary, received practical work in military leadership at the U.S. Army ROTC advanced camp, Fort Riley, Kan.

The six-week camp, attended by cadets normally between their third and fourth years of college, includes instruction in communications, management and survival training.

Successful completion of the advanced camp and graduation from college results in a commission as a second lieutenant in either the U.S. Army, Army Reserve or National Guard for the cadet.

Hansen is a 1986 graduate of DeLand High School.

Cadet Anthony C. Brown, son of Ulysses Brown and Deloris Jenkins, both of Sanford, received practical work in military leadership at the U.S. Army ROTC advanced camp, Fort Riley, Kan.

The six-week camp, attended by cadets normally between their third and fourth years of college, includes instruction in communications, management and survival training.

Successful completion of the advanced camp and graduation from college results in a commission as a second lieutenant in either the U.S. Army, Army Reserve or National Guard for the cadet.

Brown graduated in 1985 from Seminole High School, and received an associate degree in 1988 from Seminole Community College, Sanford.

Theodore A. Prickel of Sanford recently enlisted in the Army's Delayed Entry Program.

According to Sgt. Steve Roche of the Sanford Army Recruiting Station, Prickel has been guaranteed training as a calibration specialist.

John Brandon Hendricks of Sanford recently enlisted in the

Army's Delayed Entry Program. According to Sgt. Steve Roche of the Sanford Army Recruiting Station, Hendricks has been guaranteed training as an electronics warfare signal interceptor.

Sharon D. Leatherman, daughter of Mattie L. and Theodis Jones of Altamonte Springs, has been promoted in the U.S. Army to the rank of sergeant.

Leatherman is a personnel management specialist with the 17th Area Support Group in Japan.

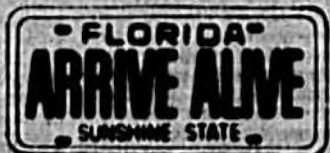
Her husband, Army Staff Sgt. Cristobal Leatherman, is the son of Jack L. and Maria D. Leatherman of Michigan City, Ind.

She is a 1984 graduate of A.E. Beach High School, Savannah, Ga.

Air Force Senior Airman Michael T. Luster, son of Charlie and Christine Luster of Sanford, has arrived for duty at Mountain Home Air Force Base, Idaho.

Luster is a security specialist with the 366th Security Police Squadron.

The airman is a 1986 graduate of Seminole High School, Sanford.



Florida Theatres

MONDAY thru FRIDAY 5:30 p.m. thru 8:30 p.m.

SUNDAY 6:00 A.M. thru 10:00 A.M.

"SAME DAY DELIVERY IS OUR GOAL"

Channel	Time	Program	Channel	Time	Program
1	7:00	News	11	7:00	News
2	7:00	News	12	7:00	News
3	7:00	News	13	7:00	News
4	7:00	News	14	7:00	News
5	7:00	News	15	7:00	News
6	7:00	News	16	7:00	News
7	7:00	News	17	7:00	News
8	7:00	News	18	7:00	News
9	7:00	News	19	7:00	News
10	7:00	News	20	7:00	News
11	7:00	News	21	7:00	News
12	7:00	News	22	7:00	News
13	7:00	News	23	7:00	News
14	7:00	News	24	7:00	News
15	7:00	News	25	7:00	News
16	7:00	News	26	7:00	News
17	7:00	News	27	7:00	News
18	7:00	News	28	7:00	News
19	7:00	News	29	7:00	News
20	7:00	News	30	7:00	News

Who's cooking?

The Sanford Herald welcomes suggestions for cooks of the week.

Do you know someone whose food is always the highlight of company picnics, church potlucks, receptions or covered-dish luncheons?

It might be an acquaintance who has won a cooking contest or invented a new twist to the peanut-butter-and-jelly sandwich.

Novice cooks and ethnic cooks, as well as experienced cooks and master chefs, add a different dimension to dining.

Who is your choice? Maybe it's your mother, father, brother, sister, son, daughter, spouse, friend or boss.

Submit your nominations for Cook of the Week to the Herald People editor at 322-2611, ext. 34.

The Cook of the Week feature is published in this section on Wednesdays.

For 24-hour ratings, see TV Week issue of Friday, Sept. 22

Legal Notices

IN THE CIRCUIT COURT OF THE EIGHTEENTH JUDICIAL CIRCUIT IN AND FOR SEMINOLE COUNTY, FLORIDA

CASE NO. 89-3132-CA-91 DIVISION I

GMAC MORTGAGE CORPORATION OF IOWA F/K/A NORWEST MORTGAGE, INC.

Plaintiff VS. ALBERT P. DECESARE, ETAL

NOTICE OF FORECLOSURE SALE

NOTICE IS HEREBY GIVEN pursuant to a Final Judgment of foreclosure dated September 19, 1989, and entered in Case No. 89-3132, of the Circuit Court of the Eighteenth Judicial Circuit in and for Seminole County, Florida wherein GMAC MORTGAGE CORPORATION OF IOWA F/K/A NORWEST MORTGAGE, INC. is the Plaintiff, and ALBERT P. DECESARE, JOHN DOE, JANE DOE are the Defendants. I will sell to the highest and best bidder for cash the WEST FRONT DOOR OF THE SEMINOLE COUNTY COURT HOUSE IN SANFORD, Florida at 11:00 a.m. on the day of October 19, 1989, the following described property as set forth in said Final Judgment.

DEED 31; WEKIVA CLUB ESTATES SECTION SEVEN, ACCORDING TO THE PLAT THEREOF AS RECORDED IN PLAT BOOK 23, PAGE 1, PUBLIC RECORDS OF SEMINOLE COUNTY, FLORIDA.

103 CHURCH DRIVE LAKELAND, FLORIDA 32779

WITNESS my hand and the seal of this Court on September 26, 1989

(SEAL)

HONORABLE MARYANNE MORSE Clerk of the Circuit Court

By: J. E. Jasevic Deputy Clerk

Published: September 26, 1989 DE1-343

IN THE CIRCUIT COURT OF THE EIGHTEENTH JUDICIAL CIRCUIT IN AND FOR SEMINOLE COUNTY, FLORIDA

CASE NO. 89-3207-CA-98 Home Savings of America, F.A., Plaintiff,

vs. Michael W. Chaunoy, a single man, and Jane/John Doe, fictitious names representing tenants in possession.

Defendants.

NOTICE OF FORECLOSURE SALE

NOTICE IS HEREBY GIVEN that pursuant to a Final Judgment of foreclosure dated September 19, 1989, and entered in Case No. 89-3207-CA-98, of the Circuit Court of the Eighteenth Judicial Circuit in and for Seminole County, Florida wherein Home Savings of America, F.A., Plaintiff, and Michael W. Chaunoy, a single man, is the Defendant, I will sell to the highest and best bidder for cash the West Front Door of the Seminole County Court House in Sanford, Florida at 11:00 o'clock A.M. on the 31st day of October, 1989, the following described property as set forth in said Final Judgment:

The West Front Door of the East 4th Street of Lot 2, Block A, NORTH ORLANDO RANCHES, SECTION 1, according to the Plat thereof as recorded in Plat Book 12, Page 3 of the Public Records of Seminole County, Florida, more particularly described as follows: Block A, North Orlando Ranches, Section 1, of the North Orlando Ranches, Section 1, as recorded in Plat Book 12, Page 3 of the Public Records of Seminole County, Florida, run South 99 degrees 56 minutes 51 seconds West 250 feet; thence South 89 degrees 56 minutes 51 seconds East 102.70 feet; thence South 89 degrees 56 minutes 51 seconds East 319.75 feet to the Point of Beginning, containing 1.9999 acres more or less.

Together with all interest which Borrower now has or may hereafter acquire in or to said property and in and to: (a) all easements and rights of way appurtenant thereto; and (b) all buildings, structures, improvements, fixtures and other personal property now or hereafter placed thereon, including, but not limited to, all appliances and equipment, whether or not physically affixed to the land or any building, used to provide or supply electricity, air conditioning, heating, refrigeration, ventilation, laundry, drying, dishwashing, garbage disposal or other services; and all waste vent systems, antennas, pool equipment, window coverings, drapes and drapery rods, carpets and floor coverings, awnings, ramps, ovens, water heaters and attached cabinets; it being intended and agreed that such items be conclusively deemed to be affixed to and to be part of the real property; and (c) all water and water rights (whether or not appurtenant) and shares of stock pertaining to such water or water rights, ownership of which affects said property; and (d) the rents, income, issues and profits of all property.

DATED this 25th day of September, 1989.

CLERK OF THE CIRCUIT COURT

By: Jane E. Jasevic Deputy Clerk

Published: September 19, 26, October 3, 1989 DE1-344

CLASSIFIED ADS Seminole Orlando - Winter Park 322-2611 831-9993

CLASSIFIED DEPT. PRIVATE PARTY RATES

HOURS 18 consecutive times... 59¢ a line 7 consecutive times... 67¢ a line 3 consecutive times... 87¢ a line

8:00 A.M. - 6:00 P.M. MONDAY thru FRIDAY SATURDAY 9 - Noon

NOW ACCEPTING VISA MasterCard

Prices above reflect a \$1.50 cash discount for prompt payment. Scheduling may include Herald Advertiser at the cost of an additional day. Cancel when you get results. Pay only for days your ad runs at rate earned. Use full description for fastest results. Copy must follow acceptable typographical form.

DEADLINES Noon The Day Before Publication Sunday - 11 A.M. Saturday Monday - 11:30 A.M. Saturday

ADJUSTMENTS AND CREDITS: In the event of an error in an ad, the Sanford Herald will be responsible for the first insertion only and only to the extent of the cost of that insertion. Please check your ad for accuracy the first day it runs.

17-Cemetery

FOR SALE - In Evergreen Municipal Cemetery, 2 burial plots in Section E, lot 31, spaces 1 & 2. Pk. \$350 ea. Will sell both for \$600. 322-1779

21-Personals

MEET-BY-PHONE Listen To Talking Personals! \$2 per call charge to ph. bill

0 976-3251 0 976-3234 0 976-3232 0 976-3235 0 976-3233 0 976-3236 To Leave Message Free. 644-5532

23-Lost & Found

FOUND - 9/24/89. Small black & white dog near Sanford Circle K. Call 322-3777

LOST - Tibetan Spaniel, male, 17 lbs. tan w/white front feet, lost near Lake Mary middle school. Answers to Kimba. Reward \$200-3361

25-Special Notices

BECOME A NOTARY For Details: 1-800-432-4254 Florida Notary Association

27-Nursery & Child Care

Child Care in my Home, Christian family, 123 Club Rd. Sanford. 321-3993

INFANT & TODDLER CARE - Mayfair Meadows home. Lots of TLC! Res. rates! 321-3253

SANFORD - Christian, Resp. Care! Love, food & supervised fun for your child! Ph. 329-1244

SANFORD AREA - Loving child care. References available. Meals & snacks. Lbs. 350-9002

Legal Notice

IN THE CIRCUIT COURT OF THE 15TH JUDICIAL CIRCUIT, IN AND FOR SEMINOLE COUNTY, FLORIDA

CASE NO. 89-6025-CA-91-L MICHIGANA FINANCIAL SERVICES, Plaintiff,

vs. AUTOMOTIVE SALES SPECIALIST, INC., an Alabama corporation; LEVON TURNER and WILLIAM A. JOHNSON, JR., Defendants.

NOTICE OF ACTION TO: LEVON R. TURNER, Individually and as Registered Agent for Automotive Sales Specialist, Inc. Highway 98, POB 1917 Doane, Alabama 36526

AND WILLIAM A. JOHNSON, JR. 152 Maitland Avenue Altamonte Springs, FL 32701

YOU ARE NOTIFIED that an action to foreclose a mortgage on the following property in Seminole County, Florida: Condominium Unit Number 152, LAKE VILLAS CONDOMINIUM, a Condominium according to the Declaration of Condominium Ownership of Lake Villas Condominium dated August 14, 1972 and recorded in O.R. Book 905, page 262. Public Records of Seminole County, Florida, together with an undivided share of the common elements as set forth in said Declaration of Condominium and said Exhibit "C" thereto, has been filed against you and you are required to serve a copy of your written defenses, if any, to it on DONALD F. WRIGHT, ESQUIRE, the Plaintiff's attorney, Wright, Fuller & Howard, P.A., whose address is Post Office Box 2008, Orlando, Florida, 32802, on or before the 23rd day of October, 1989, and file the original with the Clerk of this Court either before service on the Plaintiff's attorney or immediately thereafter; otherwise, a default will be entered against you for the relief demanded in the complaint.

DATED on the 14th day of September, 1989.

MARYANNE MORSE CLERK OF THE CIRCUIT COURT

By: Jennifer P. Price Deputy Clerk

Published: September 19, 26, October 3, 1989 DE1-344

CELEBRITY CIPHER

C E R N G A N S W H M I L I A G W I B H V G I V K F A C A G W I D I V S L F S C D N V A I N G - K I A I L M J J B

PREVIOUS SOLUTION: "A man can't be too careful in the choice of his enemies." - Oscar Wilde

DON'T FORGET! Call Classified

When buying or selling - remember to turn to classified for fast money-saving results!

322-2611 Classified Advertising Department

Standard Herald

71-Help Wanted

A.S. DICK/RYOBI PRINTERS Exp'd. Full time, benefits! Pip Printing, 6255 Edgewater Dr Apply in person/call 1-299-8689

ALARM INSTALLER \$5 Great opportunity with an unlimited future! Truck and tools provided! Great benefits! Hiring now! AAA EMPLOYMENT 700 W. 20th St. 322-5176

CAFETERIA WORKER DAYTIME HOURS Mon-Fri, company benefits Call for appointment 322-9299 ext. 148

CASHIERS DELI CLERKS FLEXIBLE HOURS New Store + sev. other locations! Exc. pay & benefits! Apply: 268 E. 25th St., Sanford

CHILD CARE TEACHER Exp'd. Full & prt. time. Contact Paula 322-9126, bet. 9-6

CNA'S OR EXP'D. NA'S Willing to take test for certification. Excellent working conditions! Superior-rated facility! Friendly people! DEBARA MAJOR 46 N. Hwy. 17 & 9th, Osceola, FL 34908, Mon-Fri. 9AM to 5PM. 352-4238 EEO

CNA'S & NA'S FULL/PART-TIME POSITIONS AVAILABLE ALL SHIFTS! EXPERIENCE PREFERRED. EXCELLENT BENEFITS. STEADY & DEPENDABLE PEOPLE. MUST APPLY! Without Health Care Center 322-8866 EOE/M

COMPUTER OPERATOR Full training with national company! DEC system! Grab this opportunity now! Schooling is all that's needed! AAA EMPLOYMENT 700 W. 20th St. 322-5176

CONSTRUCTION WORKERS Painter/welder/heavy equipment operators/laborers. Up to \$17.15 per hour. Experienced or will train. Start today! 1-291-2089

CONSTRUCTION WORKER Mechanical contracting labor. In state travel. Pay based on experience. Call 268-4294.

COOKS \$14.00 to \$16.00. Excellent benefits. opportunity for advancement! Apply in person, Bill Knappes, 1111 Douglas Blvd., Altamonte Springs. Call 889-8888 EOE

COOKS & CASHIERS FULL TIME Hourly wage plus bonus! Apply at: Amco, 489 W. SR 44, Sanford, or 828 W. Lake Mary Blvd., Lake Mary, FL. CUSTODIAL & GENERAL

PART TIME MAINTENANCE Control Florida Research and Education Center 322-4324 EOE/AFirm. Action Employer

DENTAL CHAIRSIDE ASSISTANT Experienced, full time. Mon-Fri. Call 322-9174

DENTAL DENTAL HYGIENIST Our office, which centers on quality and needs of the patient is seeking a hygienist for a full or part time career position. We offer top salary and benefits and place the hygienist as a valued member of our team. If you are skilled at communicating and motivating patients then please send resume to: 2428 S. Volusia, #208 Orange City, FL 32763

DENTAL ASSISTANT Dental office with a personalized, humanistic approach is offering a dynamic opportunity to join our team. Top salary and benefits including paid vacation and health insurance. If you are enthusiastic, caring, independent and hard working then please send resume to: 2428 S. Volusia, #208 Orange City, FL 32763

LANDSCAPERS & IRRIGATION INSTALLERS Experienced preferred, good pay, full time work. 322-5123

LANDSCAPE/NURSERY LABOR - Positions available now. Must have valid Florida drivers lic., transp. & be willing to work hard. Tan Social Landscaping 322-5245

MANAGERS/DRIVERS/ASSISTANTS Needed for 2nd shift with a growing company. Benefit package available. Call for appointment. 322-1689

MANAGEMENT TRAINEE POSITION Good starting pay, great company benefits, great opportunity for advancement. Call 624-2263

MEDICAL REGISTERED NURSE 7AM to 3PM shift, part time. Apply in person. 8AM-4PM. Labovitz Nursing Center 919 E. 2nd St., Sanford

POSITION FILED IN 3 DAYS Mr. S. C. of Sanford was very pleased with the response to his Sanford Herald classified ad. Scheduled to run on the 10-Day Special, all he had to do was call & cancel to stop its continuing. Something you need to advertise at low cost & achieve record-breaking results? Try our Special 10-Day rate & eliminate the number of days to run an ad! It is the lowest rate in the area for 10 consecutive days. Advertisers can cancel when results are reached & can also take advantage of our NEW indexing format Classified Advertising 322-9611

RECYCLED PAPER Delivery Driver/Counter Person needed. Apply in person at 2913 Orlando Drive, Sanford. Ask for Mike. Just say NO to Minimum Wage! Women 21 to 60 with car and telephone, let us train you to earn big hourly rate. Chase YOUR hours. No investment. Don't say no to a proven way to higher earnings. 321-0281 or 322-3022

REYES P.L.A., INC., Realtors, buys tuition to Real Estate School! Call 322-3288

LABORER FULL TIME Small town print company Capamlin, Inc. 321-3121

LANDSCAPERS & IRRIGATION INSTALLERS Experienced preferred, good pay, full time work. 322-5123

LANDSCAPE/NURSERY LABOR - Positions available now. Must have valid Florida drivers lic., transp. & be willing to work hard. Tan Social Landscaping 322-5245

MANAGERS/DRIVERS/ASSISTANTS Needed for 2nd shift with a growing company. Benefit package available. Call for appointment. 322-1689

MANAGEMENT TRAINEE POSITION Good starting pay, great company benefits, great opportunity for advancement. Call 624-2263

MEDICAL REGISTERED NURSE 7AM to 3PM shift, part time. Apply in person. 8AM-4PM. Labovitz Nursing Center 919 E. 2nd St., Sanford

POSITION FILED IN 3 DAYS Mr. S. C. of Sanford was very pleased with the response to his Sanford Herald classified ad. Scheduled to run on the 10-Day Special, all he had to do was call & cancel to stop its continuing. Something you need to advertise at low cost & achieve record-breaking results? Try our Special 10-Day rate & eliminate the number of days to run an ad! It is the lowest rate in the area for 10 consecutive days. Advertisers can cancel when results are reached & can also take advantage of our NEW indexing format Classified Advertising 322-9611

RECYCLED PAPER Delivery Driver/Counter Person needed. Apply in person at 2913 Orlando Drive, Sanford. Ask for Mike. Just say NO to Minimum Wage! Women 21 to 60 with car and telephone, let us train you to earn big hourly rate. Chase YOUR hours. No investment. Don't say no to a proven way to higher earnings. 321-0281 or 322-3022

REYES P.L.A., INC., Realtors, buys tuition to Real Estate School! Call 322-3288

LABORER FULL TIME Small town print company Capamlin, Inc. 321-3121

LANDSCAPERS & IRRIGATION INSTALLERS Experienced preferred, good pay, full time work. 322-5123

LANDSCAPE/NURSERY LABOR - Positions available now. Must have valid Florida drivers lic., transp. & be willing to work hard. Tan Social Landscaping 322-5245

MANAGERS/DRIVERS/ASSISTANTS Needed for 2nd shift with a growing company. Benefit package available. Call for appointment. 322-1689

MANAGEMENT TRAINEE POSITION Good starting pay, great company benefits, great opportunity for advancement. Call 624-2263

MEDICAL REGISTERED NURSE 7AM to 3PM shift, part time. Apply in person. 8AM-4PM. Labovitz Nursing Center 919 E. 2nd St., Sanford

POSITION FILED IN 3 DAYS Mr. S. C. of Sanford was very pleased with the response to his Sanford Herald classified ad. Scheduled to run on the 10-Day Special, all he had to do was call & cancel to stop its continuing. Something you need to advertise at low cost & achieve record-breaking results? Try our Special 10-Day rate & eliminate the number of days to run an ad! It is the lowest rate in the area for 10 consecutive days. Advertisers can cancel when results are reached & can also take advantage of our NEW indexing format Classified Advertising 322-9611

RECYCLED PAPER Delivery Driver/Counter Person needed. Apply in person at 2913 Orlando Drive, Sanford. Ask for Mike. Just say NO to Minimum Wage! Women 21 to 60 with car and telephone, let us train you to earn big hourly rate. Chase YOUR hours. No investment. Don't say no to a proven way to higher earnings. 321-0281 or 322-3022

REYES P.L.A., INC., Realtors, buys tuition to Real Estate School! Call 322-3288

LABORER FULL TIME Small town print company Capamlin, Inc. 321-3121

LANDSCAPERS & IRRIGATION INSTALLERS Experienced preferred, good pay, full time work. 322-5123

LANDSCAPE/NURSERY LABOR - Positions available now. Must have valid Florida drivers lic., transp. & be willing to work hard. Tan Social Landscaping 322-5245

MANAGERS/DRIVERS/ASSISTANTS Needed for 2nd shift with a growing company. Benefit package available. Call for appointment. 322-1689

MANAGEMENT TRAINEE POSITION Good starting pay, great company benefits, great opportunity for advancement. Call 624-2263

MEDICAL REGISTERED NURSE 7AM to 3PM shift, part time. Apply in person. 8AM-4PM. Labovitz Nursing Center 919 E. 2nd St., Sanford

POSITION FILED IN 3 DAYS Mr. S. C. of Sanford was very pleased with the response to his Sanford Herald classified ad. Scheduled to run on the 10-Day Special, all he had to do was call & cancel to stop its continuing. Something you need to advertise at low cost & achieve record-breaking results? Try our Special 10-Day rate & eliminate the number of days to run an ad! It is the lowest rate in the area for 10 consecutive days. Advertisers can cancel when results are reached & can also take advantage of our NEW indexing format Classified Advertising 322-9611

RECYCLED PAPER Delivery Driver/Counter Person needed. Apply in person at 2913 Orlando Drive, Sanford. Ask for Mike. Just say NO to Minimum Wage! Women 21 to 60 with car and telephone, let us train you to earn big hourly rate. Chase YOUR hours. No investment. Don't say no to a proven way to higher earnings. 321-0281 or 322-3022

REYES P.L.A., INC., Realtors, buys tuition to Real Estate School! Call 322-3288

LABORER FULL TIME Small town print company Capamlin, Inc. 321-3121

LANDSCAPERS & IRRIGATION INSTALLERS Experienced preferred, good pay, full time work. 322-5123

LANDSCAPE/NURSERY LABOR - Positions available now. Must have valid Florida drivers lic., transp. & be willing to work hard. Tan Social Landscaping 322-5245

MANAGERS/DRIVERS/ASSISTANTS Needed for 2nd shift with a growing company. Benefit package available. Call for appointment. 322-1689

MANAGEMENT TRAINEE POSITION Good starting pay, great company benefits, great opportunity for advancement. Call 624-2263

MEDICAL REGISTERED NURSE 7AM to 3PM shift, part time. Apply in person. 8AM-4PM. Labovitz Nursing Center 919 E. 2nd St., Sanford

POSITION FILED IN 3 DAYS Mr. S. C. of Sanford was very pleased with the response to his Sanford Herald classified ad. Scheduled to run on the 10-Day Special, all he had to do was call & cancel to stop its continuing. Something you need to advertise at low cost & achieve record-breaking results? Try our Special 10-Day rate & eliminate the number of days to run an ad! It is the lowest rate in the area for 10 consecutive days. Advertisers can cancel when results are reached & can also take advantage of our NEW indexing format Classified Advertising 322-9611

RECYCLED PAPER Delivery Driver/Counter Person needed. Apply in person at 2913 Orlando Drive, Sanford. Ask for Mike. Just say NO to Minimum Wage! Women 21 to 60 with car and telephone, let us train you to earn big hourly rate. Chase YOUR hours. No investment. Don't say no to a proven way to higher earnings. 321-0281 or 322-3022

REYES P.L.A., INC., Realtors, buys tuition to Real Estate School! Call 322-3288

71-Help Wanted

Earn Money typing at home. \$30,000/year income potential! Details: 1-855-687-6000 Ext. B 8172

ELECTRICIANS & HELPERS \$5 Paid schooling provided! Excellent benefits and good job security! Hiring today! AAA EMPLOYMENT 700 W. 20th St. 322-5176

EXP. EVENING WAITRESS Cafe Sorrento, Lake Mary. Call: 322-8825, between 9-11 am.

EXP'D. DIESEL MECHANIC Own tools required. Apply Metal Manufacturing 391 Colacco Way, Sanford

FULL OR PART TIME JANITORIAL SUPERVISORS & FLOOR MAN For evening shift. 3 years minimum exp. Good pay and benefits. Call: 322-4098.

FULL/PART TIME SECURITY OFFICERS 10 positions available in the Lake Mary area. Pay starting at \$1.50 to \$4.00 following probation period. Must have experience, & be physically fit. Call Orlando, 894-4153

GENERAL OFFICE CLERK \$200 wk! Challenging position with growth opportunity! Basic skills are all that's needed here! Hurray! AAA EMPLOYMENT 700 W. 20th St. 322-5176

GOOD WORKERS NEEDED! DAILY WORK... DAILY PAY! Call Bob for details. 322-7881

HAIR STYLIST NEEDED! With following! Sanford area Call 321-1887

HEAVY CONSTRUCTION Ft. Puerto Rico, Virgin Islands. \$10.00 to \$45 hr. 1-877-209-7ALENT BUILDERS

HELP WANTED No experience necessary. Must be at least 18 years of age with reliable transportation. Call for appointment. A & B Roofing 322-9417

HOUSEKEEPERS Competitive salary, good benefits. 40 hour work week. Apply in person. Village On The Green 300 Village Place, Longwood

POSITION FILED IN 3 DAYS Mr. S. C. of Sanford was very pleased with the response to his Sanford Herald classified ad. Scheduled to run on the 10-Day Special, all he had to do was call & cancel to stop its continuing. Something you need to advertise at low cost & achieve record-breaking results? Try our Special 10-Day rate & eliminate the number of days to run an ad! It is the lowest rate in the area for 10 consecutive days. Advertisers can cancel when results are reached & can also take advantage of our NEW indexing format Classified Advertising 322-9611

RECYCLED PAPER Delivery Driver/Counter Person needed. Apply in person at 2913 Orlando Drive, Sanford. Ask for Mike. Just say NO to Minimum Wage! Women 21 to 60 with car and telephone, let us train you to earn big hourly rate. Chase YOUR hours. No investment. Don't say no to a proven way to higher earnings. 321-0281 or 322-3022

REYES P.L.A., INC., Realtors, buys tuition to Real Estate School! Call 322-3288

LABORER FULL TIME Small town print company Capamlin, Inc. 321-3121

LANDSCAPERS & IRRIGATION INSTALLERS Experienced preferred, good pay, full time work. 322-5123

LANDSCAPE/NURSERY LABOR - Positions available now. Must have valid Florida drivers lic., transp. & be willing to work hard. Tan Social Landscaping 322-5245

MANAGERS/DRIVERS/ASSISTANTS Needed for 2nd shift with a growing company. Benefit package available. Call for appointment. 322-1689

MANAGEMENT TRAINEE POSITION Good starting pay, great company benefits, great opportunity for advancement. Call 624-2263

MEDICAL REGISTERED NURSE 7AM to 3PM shift, part time. Apply in person. 8AM-4PM. Labovitz Nursing Center 919 E. 2nd St., Sanford

POSITION FILED IN 3 DAYS Mr. S. C. of Sanford was very pleased with the response to his Sanford Herald classified ad. Scheduled to run on the 10-Day Special, all he had to do was call & cancel to stop its continuing. Something you need to advertise at low cost & achieve record-breaking results? Try our Special 10-Day rate & eliminate the number of days to run an ad! It is the lowest rate in the area for 10 consecutive days. Advertisers can cancel when results are reached & can also take advantage of our NEW indexing format Classified Advertising 322-9611

RECYCLED PAPER Delivery Driver/Counter Person needed. Apply in person at 2913 Orlando Drive, Sanford. Ask for Mike. Just say NO to Minimum Wage! Women 21 to 60 with car and telephone, let us train you to earn big hourly rate. Chase YOUR hours. No investment. Don't say no to a proven way to higher earnings. 321-0281 or 322-3022

REYES P.L.A., INC., Realtors, buys tuition to Real Estate School! Call 322-3288

LABORER FULL TIME Small town print company Capamlin, Inc. 321-3121

LANDSCAPERS & IRRIGATION INSTALLERS Experienced preferred, good pay, full time work. 322-5123

LANDSCAPE/NURSERY LABOR - Positions available now. Must have valid Florida drivers lic., transp. & be willing to work hard. Tan Social Landscaping 322-5245

MANAGERS/DRIVERS/ASSISTANTS Needed for 2nd shift with a growing company. Benefit package available. Call for appointment. 322-1689

71—Help Wanted

WELCOME HOSTESS
To promote Longwood, Casselberry or Oviedo area...

WELDERS TO \$16 HR
Have gear ready, will train...

73—Employment Wanted

CNA - will care for elderly in my home or your home...

THE COUNTY IS OUT!
Need a scare for Halloween?

91—Apartments/Houses to Share

FEMALE ROOMMATE WANTED!
New complete 2/2, \$250 mo. + 1 util. Lk. Mary area...

93—Rooms for Rent

Country home with pool, \$70 per week includes utilities.

DELTONA - Clean private room for rent...

LONGWOOD - Labrator home, room with priv. \$250/mo.

SANFORD - Conv. location, of fidelity furn. color TV, pool table...

TRUCKER'S SPECIAL! 1 bdrm., bk., place to park big truck, \$250/mo.

97—Apartments Furnished / Rent

SANFORD - Huge 3 bdrm., close to downtown, complete priv. \$180/mo.

FURNISHED STUDIOS AVAILABLE
CALL 323-3301

GENEVA - 1 BEDROOM
For 1 or 2 persons \$250 + deposit...

NEAR SEMINOLE HIGH
3 bdrm., 2 ba., newly carpeted & clean!

SANFORD - 3 BR/2 BA
2 car gar., cul de sac, nice area!

A BETTER PLACE
2 bdrm., 2 baths, pool. Fully equipped kitchen.

ATTRACTIVE 3 bdrm! Carpet, fenced yard, quiet area, 900 wk. plus \$200 sec.

EFFICIENCY APT. - Close to bus & train! Convenient! \$45 w/utl. \$20-177/leave message

FRANKLIN ARMS - 1130 Florida Ave. 1 bedroom apts., \$330 to move in, central H/A, pool, laundry. No deposit!

106—Duplex/Triplex / Rent
DELUXE DUPLEX
Quiet and spacious 2 bedroom

SANFORD - Clean, 1 bedroom. Adults, no pets \$299/mo.

SPACIOUS 2 UNIT DUPLEX
Close to downtown, easy access to I-4, \$485/485 mo.

1081 McCallum Rd. Sanford
3/1, \$375 mo. + sec. fee. yard!

2321 Magnolia Ave.
Rent or sell, real bargain! 2 bdrms, modern, adult discourt., leave msg. 321-1817

107—Mobile Homes / Rent
ELDER SPR. OFF HWY 427
1, 2, & 3 bedrooms - \$70 to \$95 per wk. 321-8114 or 774-1249

99—Apartments Unfurnished / Rent

SANFORD - 3 bdrm., air, stove & ref., \$325 plus dep. No pets. Call... 323-9794 after noon.

SANFORD - Near 2 bdrm. apt. C/H/A, carpeted, kitchen equipped, \$340/mo. Includes utilities exc. elect. Call 321-6112

SENIOR SPECIAL!
Studio & 1 bedroom apartments 90 Deposit for 30 & over 323-3301 Ext. 505

1200 W. 20th St. SANFORD
3 bed, 2 bath, screened patio, large fenced yard, kitchen appliances included \$450/mo + \$350/deposit. Call 323-6412

101—Houses Furnished / Rent
2 bdrm. furnished mobile home, central H/A, washer, quiet & clean. \$400/mo. 323-3556

103—Houses Unfurnished / Rent
DELTONA - 3/2, quiet cul de sac, lge. eat in kit., gr. rm., liv. rm., ceiling fans, vert. & minis. \$480 mo., 1st/last \$1800 sec. Avail. 10/11 Call. 860-7281

NEED HOMES TO RENT!
15 years experience managing single family homes in Seminole county. Call today for a free quote!

RENTED IN 2 DAYS!
Mrs. June B. of Sanford rented her house within 2 days of her ad's scheduled 10 Day Special and was very satisfied with the quick response...

NEAR SEMINOLE HIGH
3 bdrm., 2 ba., newly carpeted & clean! Central H/A, family room, fireplace, 1 car garage, fenced back yard w/storage bldg., 1 yr. lease & references required. Call 323-1238

WASHINGTON OAKS, 3 bedrooms, 1 1/2 baths, new carpeting, \$475 mo. Call 860-7287

SANFORD - 3 bdrm., fireplace, separate garage, porch. Call Joyce, 323-2680

SANFORD, 3 BR/2 BA
2 car gar., cul de sac, nice area! New carpet, \$380/mo. Call 323-2680

A BETTER PLACE
2 bdrm., 2 baths, pool. Fully equipped kitchen. RANDOLPH COURT APTS. 323-1380

ATTRACTIVE 3 bdrm! Carpet, fenced yard, quiet area, 900 wk. plus \$200 sec. Call 321-4947

EFFICIENCY APT. - Close to bus & train! Convenient! \$45 w/utl. \$20-177/leave message

FRANKLIN ARMS - 1130 Florida Ave. 1 bedroom apts., \$330 to move in, central H/A, pool, laundry. No deposit!

106—Duplex/Triplex / Rent
DELUXE DUPLEX
Quiet and spacious 2 bedroom

SANFORD - Clean, 1 bedroom. Adults, no pets \$299/mo.

SPACIOUS 2 UNIT DUPLEX
Close to downtown, easy access to I-4, \$485/485 mo.

1081 McCallum Rd. Sanford
3/1, \$375 mo. + sec. fee. yard!

2321 Magnolia Ave.
Rent or sell, real bargain! 2 bdrms, modern, adult discourt., leave msg. 321-1817

107—Mobile Homes / Rent
ELDER SPR. OFF HWY 427
1, 2, & 3 bedrooms - \$70 to \$95 per wk. 321-8114 or 774-1249

107—Mobile Homes / Rent

WINDY HILL MO PARK
1 & 2 bedrooms. 323-2906

111—Resort/Vacation Rentals
FRANKLIN RD. CAROLINA!
Country home! Sleeps 4! \$330 wk. Available now! 323-9148

KEY WEST
DELUXE 46 FT. HOUSEBOAT
321-1653

115—Industrial Rentals
AAA BUSINESS CENTER
New office/warehouse, 800 ft. to 1,495 ft. Bays with w/o offices starting at \$250/mo. Hwy. 17/92 & SR 427. Call... 323-9236

FORECLOSURE
Lots you steal this 150x130 ft. lot (north of Rt. 46) with 1,100 sq. ft. home, pole bldg., sepe rate 12X24 ft. storage bldg. \$12,500 down or lease/option. Call 865-6172

I-4 & SR 46
3,800 sq. foot with office. Ground level, overhead lighting 3 phase power, fire sprinklers. Only \$5.33 per sq. foot. (water). 323-1250

117—Commercial Rentals
Office or retail space, 1911 French, (Hwy 17) \$330 per month. High traffic area, newly renovated. 323-6460

PRIME OFFICE SPACE!!!
Lake Mary Blvd! From \$230/month! Call for details!!

RETAIL STORE
Approx. 2,000 sq. foot. Corner of Park Dr. & Myrtle Ave. \$750.00 \$23.163. M.F. & S. WORKSHOP/STORAGE AREA Electric & sewage available! Call 323-1777/leave message

121—Condominium Rentals
Deltona, by week/month/year. Lakeview Properties Realty. Call Hanson. 864-720-2420

SANFORD/PINE RIDGE CLUB
3 bedrooms, 2 baths, 2nd floor and unit. All facilities, including washer/dryer. \$425/mo. + dep. Call. 324-2367

127—Office Rentals
BRAND NEW! Office Bldg. Palfon Center, 685 Palfon St. \$250.00 \$23.163. M.F. & S. 7 out of 22 lot! Get out of the old lot! Call for details!!

OFFICE FOR RENT
Two 200 sq. foot or all, 400 sq. foot. Very reasonable. In Sanford. Call 321-9968

4 TOWNS INTERSECTION!
Orange City Waterpark Plaza. \$1,000.00 \$23.163. M.F. & S. Call collect!! 407-953-1934

141—Homes for Sale
A BEAUTIFUL BARGAIN!
By owner. Winter Springs. 3/2 split plan, living, family and formal dining rooms, paddle fans, newly decorated, lg. screened patio, pool. Outdoor covered bar-b-q w/sink, cabinets & shower. Everything beautifully landscaped yard! A bargain at \$99,000! 327-2801

A GOVT REPOSSESAL INFORMATION - 323-7377
BOB M. GALL, JR. P.A.C.S.M. LAKE MARY REALTY 323-2118

ADORNABLE 2 BDRM!
New McCallum! C/H/A, tree shaded lot! \$44,900.

DUPLEX REDUCED
Sanford! 2/1 each side. Assumable FHA loan! \$73,000. Yeoman & Kidd Realty, Inc. CALL 774-0445

ASSUMABLE, NO QUALIFYING OR LESS THAN \$2500 CASH INCLUDING CLOSING COST
3 & 4 bdrm. homes in Sanford, Deltona/DuBary/Lk. Mary/Longwood/Altamonte. Mary/Longwood/Altamonte. Mary/Longwood/Altamonte. Mary/Longwood/Altamonte.

OWNER FINANCING
\$5,500 down for 3 bdrm., 1 bath. Home carport, wood g/l. Plenty of room to park your boat and Winnebago! 4 bdrm., 3 baths, 4 car garage, 22 ft. x 21 ft. game room. Almost 3,400 sq. ft. Fireplace, pool with diving board and slide plus much more! Only \$29,500. Call Mike Hays at 323-9991. Emergent Realty Group, 323-2320

Builder's Discounted Models Available Immediately!
Purchase/Special terms. E-mailing Areas. \$180's to mid \$200's. Call 323-6276, noon to 6pm

BATEMAN REALTY
Lic. Real Estate Broker 8400 Sanford Ave. 321-6790 321-2257

BEAUTIFUL TILED ESTATE
Sanford, 3 bdrm., wood g/l. Plenty of room to park your boat and Winnebago! 4 bdrm., 3 baths, 4 car garage, 22 ft. x 21 ft. game room. Almost 3,400 sq. ft. Fireplace, pool with diving board and slide plus much more! Only \$29,500. Call Mike Hays at 323-9991. Emergent Realty Group, 323-2320

Builder's Discounted Models Available Immediately!
Purchase/Special terms. E-mailing Areas. \$180's to mid \$200's. Call 323-6276, noon to 6pm

COUNTRY SETTING & All new interior, 3/2, lg. acre corner lot, 2 car garage, 2500 Narcissus, Sanford, FHA/VA financing available. 662-2000

CUSTOM BUILT EXECUTIVE HOME, 3 bdrm., 2 bath, family rm., fireplace, huge screened porch, study, dbl. garage. \$11,000 down, Assume. No Qualify! \$790 per month. Many Extras! EXCELLENT TERMS! 3 bdrm., 1 1/2 bath, Con. H.A. family room, garage, huge Oaks, beautiful area, quality! Only \$48,000. 323-5774

KIT N' CARLYLE by Larry Wright



141—Homes for Sale
SANFORD - 3 bdrm., 1.5 ba. Con. H/A, new roof, paint & carpet!! \$46,900. Call 534-3613. Days or 679-4777 even

SANFORD
Live almost free! 2 houses on 1/2 ac. lot. Assumable financing, no quality. Owner, \$20,000. Winter Springs - Clean 2/1/1, central H/A. \$37,500. W. McCallum Blvd. Realtor 323-7292

1119 MAGNOLIA DR., SANF.
Totally renovated 3 bedroom, 1 bath, dining room plus more. Hardwood floors, fireplace, garage. \$49,800. Call owner 679-9461

153—Acreage/Lots/Sale
DEBARY LOTS FROM 999 DR. LARRY NERMAN, BROKER 323-4280 ext. hrs. 323-9888

DEBARY 1/2 B/L OFF 17-92
Wooded lot on paved street, 134' x 100', nice neighborhood. \$12,800. By owner. 660-8813

HAVE YOUR OWN RANCH
5+ acres, Myrtlewood Road, 10 miles from Ocala. \$29,900. Good terms!

CALL BART
REALTOR
REALTOR 323-7000

OCALA NATIONAL FOREST
Wooded lots, River access. \$4500 each. No money down! \$65.41 monthly. Owner (904) 336-4979 or (904) 622-3428

OSTEEN - 2 LOTS
110 x 125, residential, 9000 cash. Appr. \$10,000. 323-3306

QUET COUNTRY LIVING
5 high & wooded acres, zoned agricultural. 323-5173

155—Condominiums Co-Op / Sale
HIDDEN LAKE VILLAGES
2 bdrm., 2 bath, fireplace, low cash down, 2nd mortgage or lease/option. Call 323-6774

NORTHLAKE VILLAGES, Lk. Mary, 2/2, blinds, appl., lg. Bergein, \$47,900. Assume for qualified buyer. 626-2863, evgs.

157—Mobile Homes / Sale
Longwood
1900 model close-out 2 bdrm., 2 bath Double Wide on your lot, open all! Will match your down payment up to 37%!

LONGWOOD
Extra clean 3/2, large tract fenced lot. Close in. \$58,800. WALLACE CRENS REALTY 321-0677

ONLY \$2,650 DOWN
3/2 with fireplace, above ground pool, large fenced back yard. Ready to move in! Low payments!

163—Waterfront Property / Sale
ST. JAMES RIVER
100 ft. riverfront with dock! 2 main house + guest house. MORTIN LYNN REALTY 323-2027

181—Appliances / Furniture
ANYWISE ICE CREAM PABLO TABLE - With 2 chairs (original). 995/offer. 321-2220

Baby Bed, Jenny Lind style. \$85. 323-6746

Baby High Chair, 2 in 1 - converts to potty chair & table & chair. Very good condition. \$45 All wood. 323-1234

BJ'S RESALE
Furniture & Collectibles, Buy & Sell, 2995 S. Sanford Ave. Call 323-9469

CHILDREN'S CRYOLA TABLE - And 2 chairs. Sturdy, excellent cond. \$35. Phone 323-2899 evenings.

Country Loveseat, w/sofa, rocker, ottoman & coffee table. Must see. \$150. 323-2020

BEK - BANGORIAN
5 ft. ft. wide x 30" deep. Approx. 20 yr. old, & drawer, glass top. \$250. Call... 321-7267.

Blending Room Set - Queen Anne style, cherry. Table, 6 chairs & hutch. \$880/offer. 321-6233

FREEZER - Kelvinator chest. Comm. style, glass sliding doors, exc. cond. \$250. 323-2189

FRIGIDAIRE - Built-in oven w/stainless steel finish w/window in door. 22 1/2" wide x 24" deep. \$6" high. \$85.90. 321-7025

181—Appliances / Furniture

Hotpoint range with hood vent, good condition. \$75/offer 660-6130

"SOLD IN 2 DAYS!"
Mrs. D. Johnson sold her furniture within 2 days of her ad's scheduled 10 Day Special Rate. She told her Sanford Herald Classified Consultant that she received a great response. Something you need to advertise at low cost & achieve record-breaking results? Try our Special 10-Day Rate & eliminate the guesswork over the number of days to run an ad. It is the lowest cost per line for that many consecutive days. Classified Department 323-3611

LARRY'S MART, 215 Sanford Ave. New/Used furn. & appl. Buy/Sell/Trade. 323-4132

LIKE NEW! LOVESEAT, Easy Chair, Solid oak coffee & end tables, Oak hutch, Microwave, lady's golf clubs Call... 323-4480

Organic, electric, Magic Chef. Avocado. \$60. 321-6232

ROLL TOP DESK - 30" wide, 41" high. \$75. Call 323-1093

SECTIONAL SOFA
Brick red, coffee table, very good condition. \$300. 669-6769

187—Sporting Goods
CAMPING TENT - 6'X12', heavy duty canvas, blue and yellow, moisture proof floor, like new. \$75. 323-1292

EXCELLENCE HUNTING!!
Buy, lease, rent, or trade! Air cond. large only 4 hrs. away! Guest privileges available! 360-7864 days/260-0851 evgs

Huffy Boreham Backboard - All fiberglass, includes hoop & net. Paid \$75, will sell for \$30. Call 695-0881

HUNTING LEASE
Southwest Georgia, 1,300 acres, agricultural. \$800 per month. 660-1167 or 321-4654

191—Building Materials
ALL STEEL BUILDINGS of dealer invoice, 3,000 to 20,000 sq. ft. Call 291-6201 collect

CABINETS FOR ALL NEEDS
Whse. Clearance. Up to 65% off! Cabinet Dist., Inc. 323-6432, M-F

195—Machinery/Tools
MOVING SALE!
16" Newmark jointer, 10" Dewalt radial arm saw, drill, press, Dayton 10 generator, 10" Delta table saw, 36" Delta lathe, 50 drawer tool chest cabinets, all types of office furniture. MUST SELL! Call 323-2264

199—Pets & Supplies
ARC RES. PERMITS
2 Male. Gray with black mask & red with black mask. 3 1/2 yr. old. Pedigree. Great dog! \$1000.00. Call 323-2594

PROFESSIONAL PUP!
Great, young female, 1st shot, dewormed, 80 yr old. Needs loving indoor home. \$10. 323-4817 weekdays

200—Registered Pets
ARC SCOTTY PUPS
3 male, 3 female, 6 weeks. \$250. 667-3251/leave message

CPA PERSIAN KITTENS!
Colors: Avail. 10/1, gr. shag, blue, cream, dapp. \$250. \$150/mo. 660-5252

CHINESE SHAR-PEI 8 wks., 4 males, 2 to get 2 females & 2 to get 2 males & 2 to get 2 males & 2 to get 2 males. \$100. 323-2020

SHIN-TZUI! Female, 13 wks. Black & white, papers, shots. \$225/offer. Call... 660-6240

210—Horses
HORSEBACK RIDING, with or without guide. Lots of room to ride. Well trained horses. 667-23-2026

207—Swap Corner
STRADE - Relay 7-day hunt permit for Farmion 9-day hunt permit. Call 323-6334. Days. 323-1214 evening and weekends.

211—Antiques / Collectibles
BRIDES & SON ANTIQUE MALL
Open 10-5 (7 days/week!) Special focus on collectibles. AUCTION THURS. 7 PM 300 HWY. 40 W. SANFORD 1 1/2 miles S.W. of Hwy 17. Lk. Mary 327 & Al 67

WOODEN FLOW PLANE - Very old. Marked "W.A. Foley" \$85. Call... 323-2018.

215—Boats and Accessories
Boston Whaler 15 ft. with 1985 15 HP Mariner motor and trailer. Excellent condition! \$990. Come and test drive! 323-6118

13 foot aluminum V-bottom boat, 6100 lbs. 125' after 6PM

219—Wanted to Buy
50 Aluminum Can. Newspaper Non-Ferrous Metals. Glass KODAK. 323-1188

OLD MUSICAL INSTRUMENTS, WATCHES & TOYS WANTED. Good prices paid. 667-21-7272

WANTED: Good used furniture and antiques. CASH PAID. 323-9666

223—Musical Merchandise
GUNNY CLARINET - With latching case & cleaning kit. \$75. Call... 323-2987

223—Miscellaneous
BUY/SELL/TRADE
MUEY'S CROWN PAINW 407-323-9764

223—Miscellaneous

ALL TRASH HAULING - And light moving! Reasonable & Reliable! Call Staff. 321-2906

Carving Carnale Dinner Ware Service for 8 with extra pieces. \$4 pieces total. New condition. \$38 329-4711 evgs & weekends

668 GRILL, New never used. \$25. 323-8827

HARDYMAN over 23 yrs. experience. No job too small! 9AM-7PM, Sanford. 323-3625

HEAVY ALUMINUM ANVILING, good condition, freshly painted. \$30 323-9263

Hotpoint Electric Range, gold, good cond. \$60; Atari 800 computer, w/extras 322-4480

ROWING MACHINE - Great for exercise! \$25. Call... 323-2394

Rug, oval braided "Life Time" Shades of white and green 11X14 ft. \$100 349-5492

SHOP EARLY FOR X-MAS! AVON - THE PERFECT GIFT! Call 679-0913 for our special gift list and prices!

OWSEL CHAIR - (Folding) Good condition. \$100. 323-0272

231—Cars
Audi 5000 S
'85, low mi., loaded! Sunroof! Super cond. \$7,700. 660-323-1181

BUNICK GRAND NATIONAL
'87, Black, low miles, immaculate, built-in radar detector, special tires! Custom car! \$14,900/offer. Call... 321-2143

BUICK CENTURY - '85, 4 dr. Auto, Xtra Clean! \$4300 Dealer... 323-6100 ext. 1

BUICK REGAL
'79, V-6, runs good, am/pm. Must sell! \$11,200. 346-0887

CADILLAC BROUGHAM
'87, White/white, Blue leather interior, \$65,000. Perfect condition! \$16,900. Call 321-6857/day or 323-2561/nite.

CHEVY CAPRICE CLASSIC
'83, auto, 4 dr., am/pm, a/c. Two-tone blue, yellow interior, good tires, runs excellent! Clean! \$1,995. Call 774-9192

CHEVY BLAZER - '87, V-6, Tonneau, Loader. \$10,400 Dealer... 323-6100 ext. 1

BUICK - 2002
'76, California Custom wedge paint job, new tires, struts, needs minor mechanical repairs. Interior in exc. condition. Must see to appreciate! \$2,900. Call Mike at 760-7623

DODGE 600ES - '82, Auto, A/C, 48,000 mi. \$2730 Dealer... 323-6100 ext. 1

FORD TAURUS
'86, loaded, 4 dr., \$4,800. mi. Never than new! Never smother in. Must sell! \$4,300. 660-2615

HONDA ACCORD - '81, 4 dr., A/C, Runs great! \$1800 Dealer... 323-6100 ext. 1

HONDA CIVIC DX - '86, 4 dr., A/C, AM/FM case. \$2400 Dealer... 323-6100 ext. 1

HONDA ACCORD LX
'88, 6,000 mi. Loaded! Burgandy. Asking \$12,300 or serious payments. \$10,400

HYUNDAI, GLS - '86

