

Evening Herald

78th Year, No. 149, Thursday, February 13, 1986—Sanford, Florida

Evening Herald — (USPS 481-260) — Price 25 Cents

Debate Boils Over At Board Meeting

Who'll Be In Schools' Kitchen?

By Paul Schaefer
Herald Staff Writer

Seminole County food service employees turned out en masse Wednesday to tell the school board in no uncertain terms they don't want strangers in their kitchens.

Last year it was proposed that the schools' food service might be contracted out to a private firm with better results. Students weren't buying as many hot lunches in the past and the program was losing money. In 1984-85 the food service program lost about \$250,000, according to Assistant Superintendent for Business and Finance Carey Ferrell.

Wednesday, school board member Bill Kroll asked for more time to study options, but audience members

cheered when his motion for a two month delay died for lack of a second.

The end result was the scheduling of a one-item agenda meeting Wednesday to address the issue and make a decision.

At that meeting, Superintendent of Schools Robert Hughes said he will recommend "we run with the current framework and present management for another year."

Kroll contended after Wednesday's meeting that Hughes in some way orchestrated the appearance of a large number of food service employees, who, he said, apparently would feel uncomfortable working for outside management.

Hughes denied the allegation. "I did not invite them or direct

them to attend," he said. "Their attendance was not initiated by me."

Ferrell also said the accusation was "untrue."

"The food service managers had a regular meeting Tuesday, and decided they would come to the meeting. They're just genuinely concerned," Ferrell said.

Kroll said he would mobilize students and parents within the school system to attend the 7:30 p.m. meeting Wednesday to counter the appearance of the food service employees.

Kroll disputes recently released figures by Ferrell on the food service operation.

Since the current in-house food

See KITCHEN, page 6A



Herald Photo by Tommy Vincent

Food service employees cheer as operate the food service program next school year fails.

Marcos Takes Lead

Fraud Called Blatant

MANILA, Philippines (UPI) — The National Assembly began its official vote count today, with President Ferdinand Marcos taking a heavy early lead over challenger Corason Aquino. Marcos appealed for national reconciliation in the wake of the fraud-tainted voting.

The nation's Roman Catholic bishops met to discuss ways of peacefully containing nationwide outrage over the election and the repeated delays in counting the ballots.

Today's official count was repeatedly interrupted and delayed by opposition objections to the election reports submitted by the nation's provinces, cities and regions.

The first returns chalked on the blackboard in the National Assembly building showed Marcos receiving 77,316 votes in northern Abra province, compared with 3,764 for challenger Corason Aquino. As the counting progressed, Marcos's lead grew to 416,640 votes.

Two unofficial vote counts showed the election, tainted by charges of fraud, was neck-and-neck. A tally by a private monitoring group showed Aquino leading by a large margin, while a government commission said Marcos was ahead.

Marcos said in a broadcast over nationwide radio and television he did not want violence in the streets and urged his followers "to take the first step" in reconciliation with the opposition.

The 68-year-old president said he had been surprised by "exaggerated" reports by the foreign press that he was a dictator and "unwanted" by the people.

"If I were a dictator, there would be no election like this," he said, adding that he would hold no grudges against those who castigated him, hoping to calm "an already tense situation."

"I don't want any disturbances in the streets," he said. "We don't want any civil disturbances that will tear up the civility of this country."

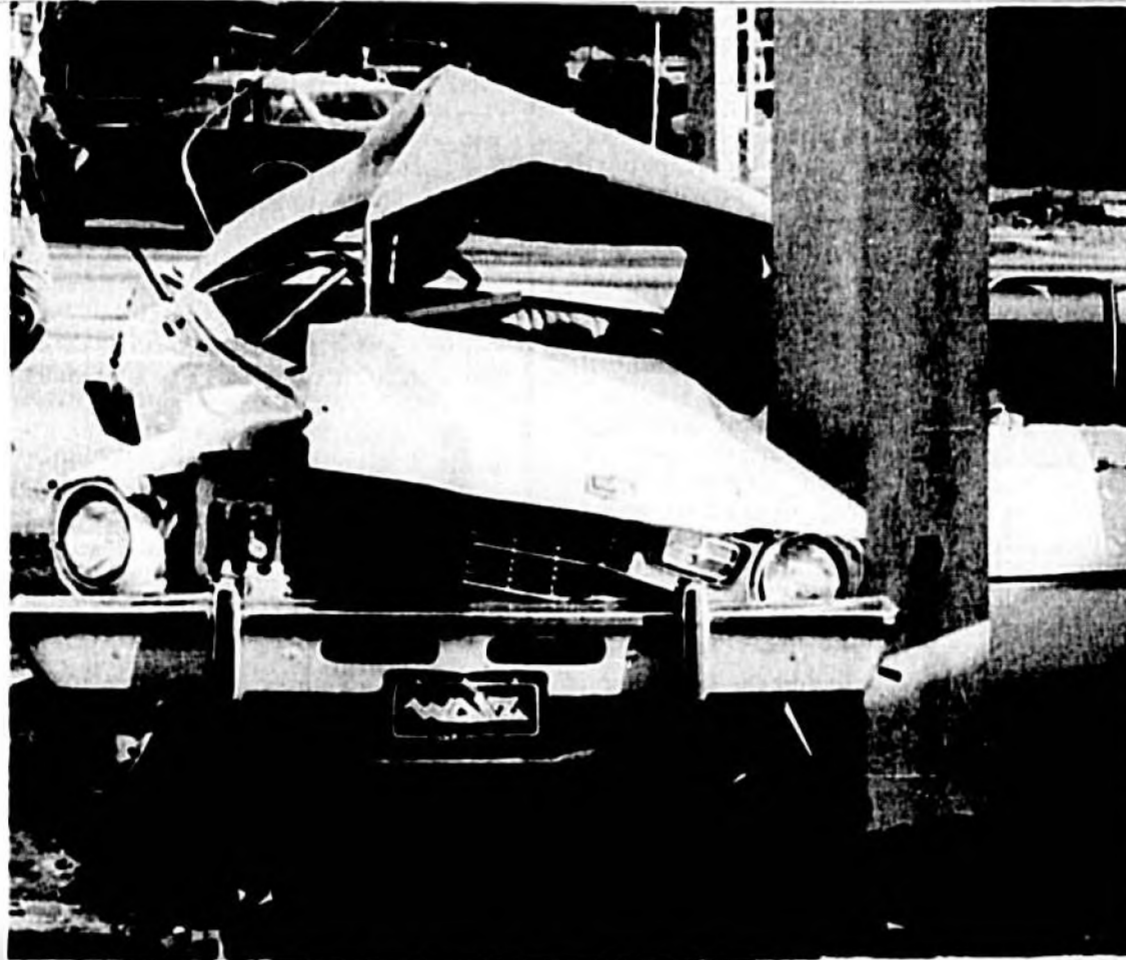
Marcos' appearance closely followed an impromptu funeral cortege through the streets of Manila for Evelio Javier, a key Aquino supporter murdered Monday in the central province of Antique.

Opposition supporters met his flag-draped coffin at the Manila airport and followed the hearse through to Baclaran Church, where Aquino, widow of slain opposition leader Benigno Aquino, delivered a tearful eulogy to about 2,000 mourners.

"He died a meaningful death," she said of her former regional campaign manager. "Perhaps this is one way of telling us there will be more sacrifices for all of us."

Holiday Closings

Federal offices, banks and post offices will be closed Monday for Washington's Birthday, called President's Day in some states. Schools will be open. State and Seminole County offices and city halls will also remain open.



Car driven by injured driver ended up crushed against a concrete pole.

Ambulance Hits Car

A man received serious injuries during an ambulance-car accident early today at 25th St. and Sanford Ave., Sanford.

The driver was taken to Central Florida Regional Hospital where he was receiving emergency room treatment early today.

A Plymouth Volare driven by Robert Kolodzeski, age and address not yet reported, was struck by a Rural-Metro Am-

Herald Photos by Tommy Vincent



The ambulance with crumpled hood is towed.

bulance at 7:48 a.m. at the intersection. He was alone in the car.

Paramedics in the ambulance received minor injuries. They were not transporting anyone at the time, although they could have been responding to an emergency call, according to initial police reports.

According to preliminary reports, the ambulance was eastbound on 25th Street when it struck the car which was southbound on Sanford Avenue.

Further details about the collision are pending investigation. The victim was knocked out but became conscious and was responding to paramedics' questions before he was transported to the hospital, according to police.

The ambulance may have been responding to a call at Cardinal Industries, east of the accident, police said. In that incident a woman reportedly had a miscarriage.

—Deane Jordan

School Board Joins Suit Against State

The School Board of Seminole County will join at least 12 other school districts in pursuing legal action against the State of Florida in an effort to adjust what they see inequities in the state funding of public schools. The board approved Wednesday a recommendation from Assistant Superintendent for Business and Finance Carey E. Ferrell that Seminole County join the action.

The board will also be represented

in a coalition of all interested school districts which will institute a coordinated and intensive lobbying effort to seek legislative correction to the problem of the inequities.

A group of school districts expressed an interest in joining the legal action and coalition during a meeting in Tampa on Jan. 30. School districts represented included Duval, Hillsborough, Polk, Lake Marion, Alachua, Taylor, Pasco, Clay, Orange, Escambia, and

Seminole, according to a report by Ferrell.

Hillsborough and Escambia counties are said to be coordinating the effort.

That group decided that their action would be two fold.

First, they would file an action in the Circuit Court of Leon County, asking the court to issue an Advisory Opinion (Declaration of Rights) on whether or not the Florida Education Funding System provides a "un-

iform system of free public schools" as required by the Constitution.

Ferrell noted lobbying efforts for their side of the issue "have been largely uncoordinated," while those opposed to further equalization "have been very organized and coordinated in their efforts."

The goal of the group is to get the legislature to pass a law providing equitable allocation, as well as going

See SUIT, page 6A

Police To Get Evidence Expert

The Sanford Police Department will bolster its tactical approach to solving crime by adding an evidentiary technician to its nine man investigative unit. The department will also obtain a two-wheel drive utility vehicle to assist the unit's efforts.

The measures, recommended by Sanford Police Chief Steve Harriett, were approved by the city commission Monday night. The new officer will come on board this spring, with \$9,894.56 in salary and benefits to be paid by the city's contingency fund through the end of the fiscal year.

The \$11,379 crime unit vehicle will be funded through the city's law enforcement trust fund, which is utilized solely for the purchase of police equipment.

The departmental reinforcements "will greatly enhance our investigative capabil-

ities and contribute much to the identification of criminals and the solving of crimes in the city," Harriett said.

The new staffer will supplement the investigative unit's "crime scene technical work," Harriett said.

These efforts involve major crimes such as homicides, rapes, robberies, aggravated assaults, burglaries and arsons. The unit participates in on-scene gathering and preserving of evidence and then follows up with in-house analysis of its findings.

The unit's exacting efforts, which include taking photos and fingerprints, can often lead to airtight cases against criminals, Harriett said.

"Thorough and timely crime scene processing is essential for the making of a successful investigation," according to

See POLICE, page 6A

County Eyes Fewer Meetings

By Sarah Nunn
Herald Staff Writer

Seminole County commissioners are considering conducting county business at two rather than three meetings each month.

Normally, the commission meets the first, second and fourth weeks each month. It holds a county administrator's briefing and work session on Monday afternoon. On Tuesdays, the commission holds regular morning and evening meetings, and conducts work sessions in the afternoon if necessary.

County Commissioner Bill Kirchhoff has recommended the commission meet two times a month on Tuesdays, when it could hold a morning work session and public hearings at 1:30 and 7 p.m.

He suggested the Monday work sessions be eliminated

because Monday is a "catchup day" for county staff for handling public requests.

Also, Kirchhoff said the county is in a position to go to two meetings because the number of public hearings on land use requests have decreased with the passage of the new state growth management law. The legislation allows the county to amend its comprehensive land use plan twice per year.

Deputy County Attorney Bob McMillan said legally there is nothing to prevent the commission from meeting twice a month.

Commissioners said they could start the new policy next month. If the need for more work sessions or public hearings arises, they indicated they would go back to the schedule they now use.

See FEES, page 6A

TODAY

Action Reports.....3A	Florida.....2A
Bridge.....4B	Horoscope.....4B
Calendar.....3A	Hospital.....2A
Classifieds.....2B,3B	Nation.....2A
Comics.....4B	People.....1B
Crossword.....4B	Sports.....7A-9A
Dear Abby.....1B	Television.....1B
Deaths.....6A	Weather.....2A
Dr. Gott.....4B	World.....6A

Inside

- Teacher wins \$2.5 million in fight for academic standards for athletes, 2A
- Disaster panel travels to spaceport, 2A

City's Yankee Lake Legal Fees Top \$40,000—So Far

By Karen Talley
Herald Staff Writer

Sanford has authorized payment of \$40,822.20 in legal fees for its Yankee Lake condemnation bid that began in October and led to dismissal Monday. The figure does not include fees beyond December for the city's law firm or billing from one of two additional attorneys the city retained to bolster its condemnation effort.

On Monday night, commissioners authorized payment of \$32,648.50 in Yankee Lake attorneys fees. When added to the \$8,173.70 commissioners paid the city's law firm in October and November for its role in negotiating for purchase of the

property and then preparing the condemnation suit, Sanford's bill for Yankee Lake site acquisition tops the \$40,000 mark.

Monday night's payment involves \$24,788.50 for Yankee Lake condemnation effort undertaken in December by the city's law firm, Stenstrom, McIntosh, Julian, Colbert and Whigham, and \$7,860 in charges from attorney Marcia Lippincott for her services through January.

Last month the commissioners retained the services of Ms. Lippincott at \$100 an hour and Miami attorney Thomas Julin at \$115 an hour. Julin has yet to submit a

voucher for his efforts, City Manager Frank Falsen said today.

And, although the ownership bid was invalidated, the city's case is not closed, according to City Attorney William Colbert, who said counsel is reviewing Sanford's legal options as follow up to the dismissal.

Also, Colbert, Julin and Ms. Lippincott will defend the city against a \$28-million civil action that stemmed from the condemnation effort. The multi-million dollar claim alleges the condemnation suit hampered Seminole County's ability to meet the contractual obligations it assumed when purchasing Yankee Lake from Jeno Paulucci. The suit

was filed Jan. 27, by Paulucci's Heathrow Utilities and Heathrow Land and Development Corporation.

Colbert said counsel will seek the suit's dismissal.

Colbert and Ken McIntosh have been the city law firm's chief representatives for the Yankee Lake land dispute. The firm's December billing addresses 343.35 hours of Yankee Lake condemnation effort at payment of \$65 an hour.

This \$22,317.75 charge represents time spent with Sanford representatives during their depositions to defense attorneys, time spent pre-

See FEES, page 6A

ALTAMONTE SPRINGS GRAND OPENING

THE EYEWEAR STORE OF TOMORROW IS OPEN IN ALTAMONTE SPRINGS TODAY



ONLY EYELAB MAKES YOU THESE PROMISES:

1. SAVE 20 TO 50%.

Eyelab offers designer eyeglasses for 20-50% below ordinary retail. If, within 30 days after you make a purchase, you find the exact same glasses selling anywhere for less, bring us proof. We'll gladly refund the difference.

RETAIL FRAME \$39.99
eyelab FRAME \$14.95

2. YOUR GLASSES READY WHEN PROMISED.

At Eyelab, most glasses can be ready in less than 2 hours. If for any reason your glasses are not ready when we say they will be, we will give you a \$5.00 gift certificate, absolutely free.

3. WE PROMISE 100% SATISFACTION.

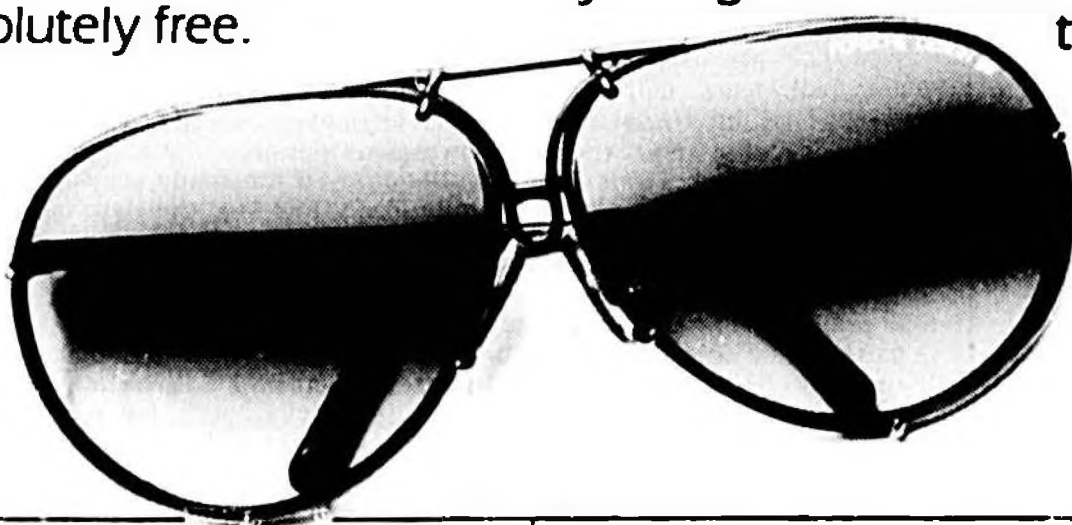
Eyelab wants you to be completely satisfied. With every purchase, we offer a 30-day unconditional guarantee. If for any reason you don't love your new glasses, bring them back. We will either adjust them or replace them absolutely free.

4. NO ONE HAS MORE DESIGNER FRAMES.

At Eyelab we stock up to 10,000 designer frames; ten times more frames than most eyewear stores. We promise you a greater selection of frames than you ever thought existed.

10121

PORSCHE CARRERAS AT EYELAB PRICES.



EYE EXAM:

Eyelab recommends the eye exam facility for your convenience in the Eyelab building. This facility offers both state-of-the-art computerized testing equipment as well as a personalized evaluation of your eyecare needs. Call: (305) 834-9727

Dr. Marc Gannon & Dr. Steven M. Weprin, Optometrists & Associates P.A. Independent Doctors of Optometry

CONTACTS:

The contact lens facility utilizes only first quality contact lenses and products. You will receive the finest professional care, great contact lens prices and a huge selection of quality lenses. Of course, this facility always has extended wear soft lenses, astigmatic soft lenses and the new daily wear color tinted lenses in stock. Call: (305) 834-9729

eyelab™

THE WORLD'S FIRST EYEWEAR DEPARTMENT STORE.

HOURS:
MON.-SAT.
9:30 AM-9:30 PM
SUN. 12 NOON-5:00 PM
Altamonte Springs Only

AMERICAN EXPRESS & ALL MAJOR CREDIT CARDS

ALTAMONTE SPRINGS
600 EAST ALTAMONTE DRIVE
SUITE 1000
ALTAMONTE SPRINGS, FL
(305) 834-6554
JUST EAST OF
ALTAMONTE MALL

FT. LAUDERDALE
 2598-A East Sunrise Blvd.
 Ft. Lauderdale, FL
(305) 565-6700
 At The Galleria below Saks
 outside entrance

HALLANDALE
 600 E. Hallandale Beach Blvd.
 Hallandale, FL
(305) 454-5600
 In The "Gulfstream Promenade"

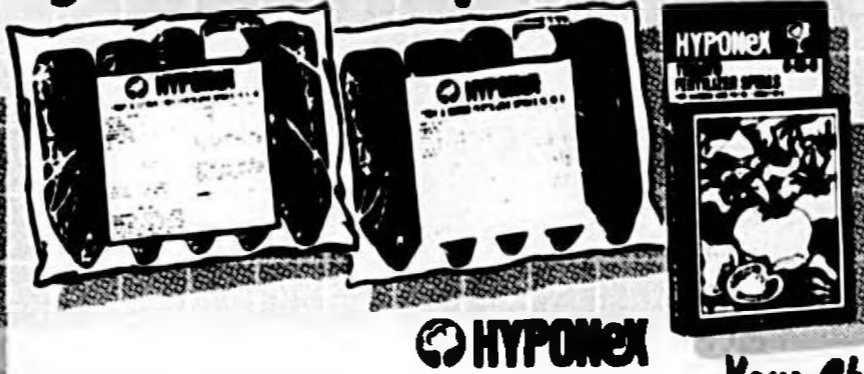
OTHER LOCATIONS
 NEW YORK, NEW JERSEY,
 FLORIDA, GEORGIA,
 ILLINOIS, MARYLAND,
 MASSACHUSETTS,
 PENNSYLVANIA,
 VIRGINIA

Scotty's SAVINGS GALORE

From your helpful Home Improvement Store!

LOWEST AD PRICES GUARANTEED
 or We'll give you **10% OFF**
 Anybody's Ad Price
 • No Hassle!
 • No Cards!

We guarantee our prices to be as low or lower than any other price. Compare our advertised price to the lowest price elsewhere. If you find a lower price elsewhere, we'll match it. We'll even give you an extra 10% off the difference. This offer is available only for cash and carry sales.

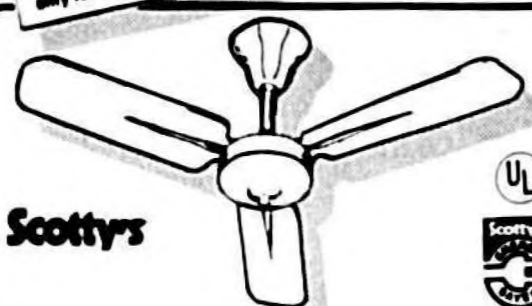


FERTILIZER SPIKES
Fruit and Citrus
 A convenient method specially formulated to feed fruit and citrus trees for an entire year. Bag of 5 spikes. No. 60323000. (415434)
Tree and Shrub
 Fertilizes trees and shrubs for a full year. Pack of 5 spikes. No. 60320000. (414204)
Tomato
 An easy method of feeding garden and patio tomatoes. 12 spikes. No. 60030000. (415427)

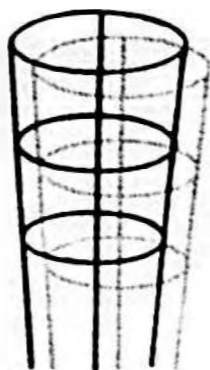
Your Choice:
Save 33%
 Reg. 1.49
99¢

SPECIAL FERTILIZERS
 Choose from 6-6-6 plus iron, palm food, rose food, azalea, gardenia and rhododendron food, tomato and vegetable food or citrus food. 5 lb. bag. (413209)

Scotty's
Save 35%
 Reg. 1.39
89¢



Scotty's
36" Bayshore CEILING FAN
 Three white metal blades with white housing. Single speed. (Accepts optional light kit). (151431)
\$15.88



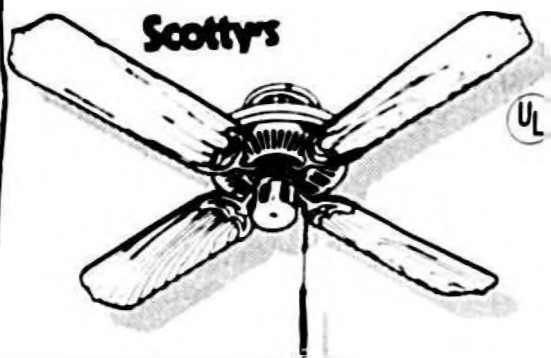
Galvanized T-MATO BASKET
 3 ring, 33" high and 3 legs. No. 33-3. (481602)
\$59¢
 Reg. 99¢



Scotty's Best 27-3-3 Lawn FERTILIZER
 Contains slow release nitrogen that develops thick green lawn. Covers 5,000 sq. ft. 18 lb. bag. (414809)
\$4.59
 Reg. 6.59



Scotty's 6-6-6 FERTILIZER
 50 lb. bag. (415271)
\$2.57
 Reg. 3.57



Scotty's
42" Shalimar CEILING FAN
 Four blades with bright brass housing. 3-speed motor. Pull chain. Light adaptable, with reversing switch. (151447)
\$39.95
 Reg. 44.99



Fan Type Leaf RAKE
 Metal tines, wood handle 18". No. 8041. (429206)
\$1.99



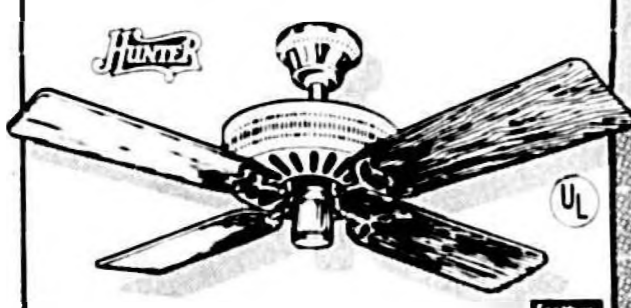
12" BOW SAW SET
 Comes with three replacement blades. No. BS12-SCT. (420891)
\$3.88



CAMP AXE
 Hardwood handle. No. 02022. (440373)
\$3.99



14" Electric CHAIN SAW
 2 hp 12 amp motor. 120V AC only. Built in chain catch, bar tension adjustment and oil level indicator. No. 5014. (421978)
\$65.50
 You Pay
\$60.50
 After Rebate



52" Studio CEILING FAN
 3-speed motor is electrically reversible. In bright brass or antique brass motor housing. Real wood walnut finish blades. (151447)
\$86.00



Assorted Bedding PLANTS
 4" plants in 4" pots. (423872)
79¢



Hickerson Flowers
CHRYSANTHEMUM
 in 6" pots. (423349)
\$2.97



ROSES
 Assorted colors. 6 1/2" to 7" dormant canes. Bag No. WR-95. (423477)
\$1.47

Gerbera DAISIES
 in 6" pots. (423484)
\$1.99

Just In Time!
 Beautiful flowers and plants at prices you can't resist!



Scotty's
Indoor-Outdoor CARPET
 In green, mystic gray, blue-green, cocoa and Mexican orange. 12" width. (151447)
\$1.59
 Reg. 1.99 Sq Yd



Scotty's
Sun N' Surf Synthetic Turf CARPET
 In tweed colors. 12" width. (151447)
\$2.88
 Reg. 3.69 Sq Yd

PRICES GOOD THRU FEBRUARY 15

OPEN till 9 PM

ORANGE CITY
 2323 S. Volusia Ave.
 Highway 17 and 92
 Phone 775-7268

ALTAMONTE SPRINGS
 1029 E. Allamonte Dr.
 (Highway 436)
 Phone 339-8311

ALTAMONTE SPRINGS
 875 West Highway 436
 Phone 862-7254

OPEN till 6 PM

SANFORD
 700 French Avenue
 Phone 323-4700

OPEN MON - SAT. 7:30 AM SUNDAY 8 AM - 5 PM

Prices quoted in this ad are based on customers picking up merchandise at our store. Delivery is available for a small charge. Management reserves the right to limit quantities on special sale merchandise.



Scotty's 1986

by Chic Young



BEETLE BAILEY

by Mort Walker



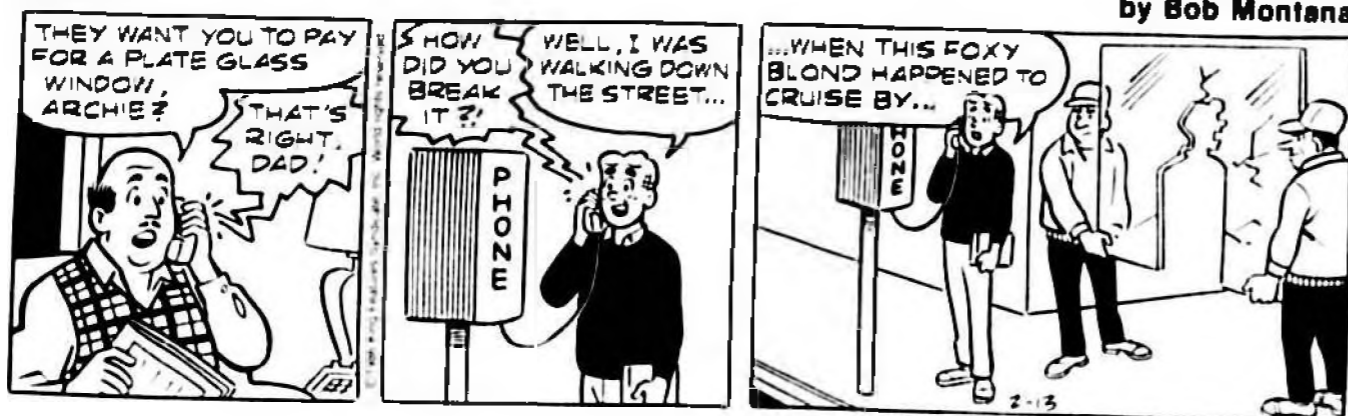
THE BORN LOSER

by Art Sansom



ARCHIE

by Bob Montana



EKK & MEKK

by Howie Schneider



MR. MEN AND LITTLE MISS

by Hargreaves & Sellers



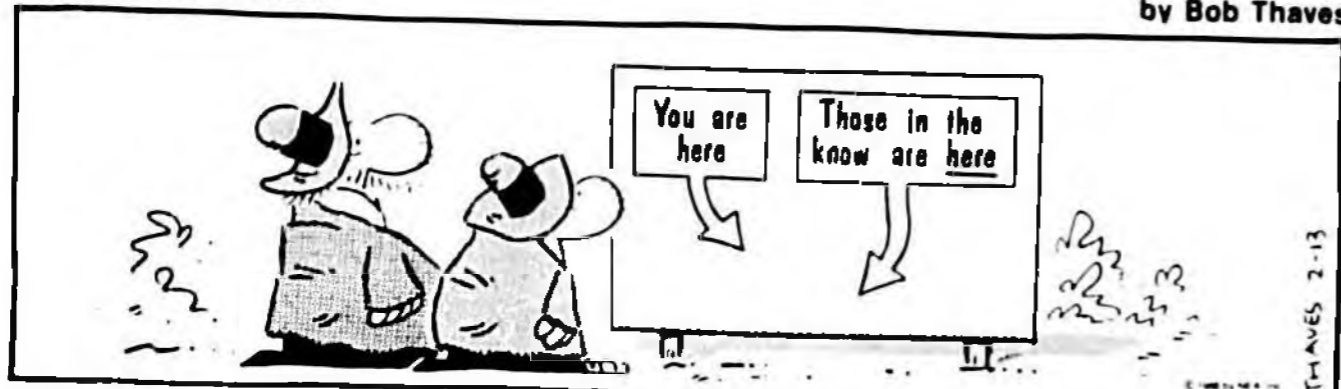
BUGS BUNNY

by Warner Brothers



FRANK AND ERNEST

by Bob Thaves



GARFIELD

by Jim Davis



TUMBLEWEEDS

by T. K. Ryan



High Heels Can Cause Circulation Problems



Dr. Gott

DEAR DR. GOTT — I'm 69, and in the past year have had some trouble urinating. I no longer have a free flow; it is released in spurts. Could this be a warning of coming prostate problems?

DEAR READER — It's more than a warning of coming problems; your problem has arrived. Your trouble probably is due to an enlarged prostate. However, there may be other sources of obstruction within your lower urinary tract, so check with a urologist for an accurate diagnosis.

To give you more information, I'm sending you a free copy of my Health Report on THE PROSTATE GLAND. Other readers who would like a copy should send 75 cents plus a long self-addressed, stamped envelope in care of this newspaper to P.O. Box 2597, Cincinnati, OH 45201. Be sure to mention the title.

DEAR DR. GOTT — I suffer from pain in my knees down, especially when I go to bed. My doctor said it was caused by poor circulation, but the medicine he gave me didn't help. It's worse when I wear high heels. What causes this?

DEAR READER — Circulatory problems in the legs can be most troublesome at night or during exercise. I suspect that in your case, the high heels are a factor because you are on your feet when you wear them. Sometimes women's high heels can result in back ailments that cause leg pains.

However, if your doctor believes your pain is due to poor circulation, you may need to have further testing to determine where the blood flow to your legs is blocked. When such an obstruction is present, less blood reaches your leg muscles; cramps and spasms can be produced. In severe cases, unresponsive to medicine, surgery may be necessary to re-establish bloodflow by removing the obstruction.

DEAR DR. GOTT — My sister developed a disease called polymyositis. She was hospitalized for several weeks and was swollen terribly. The doctors could not tell her what

caused it or the cure for it. Can you give us some information?

DEAR READER — Polymyositis is an inflammation of muscles. No one knows what causes it, although many experts believe it is an autoimmune disease. Patients actually become allergic to themselves; their immune systems try to destroy their own tissues. There is no cure, but cortisone and related drugs can

bring the symptoms under control. You can obtain more information by questioning your doctors or researching the subject in the library of your local hospital.

Send your questions to Dr. Gott at P.O. Box 91428, Cleveland, Ohio 44101.

ACROSS

- 1 Burgle
- 4 Broad
- 8 Champagne
- 12 Same (comb. form)
- 13 Novelist Hunter
- 14 Route
- 15 Of complete ignorance
- 17 Cross inscription
- 18 One-tenth (comb. form)
- 19 Explosive device
- 21 Spawn
- 24 Heartbeat chart (abbr.)
- 25 Haste
- 29 Scary
- 33 Men's nickname
- 34 Maple genus
- 36 Sets up
- 37 Set of two
- 39 Concetti
- 41 Clean a floor
- 42 Speak
- 44 Place for art exhibit
- 46 Astronauts' "all right" (comp. wd.)
- 48 Cereal grain
- 49 Radioactive element
- 53 Card
- 57 Take the bus
- 58 Some homes
- 61 Mark of a wound
- 62 Actor Kristofferson
- 63 Miner's find
- 64 Ethereal
- 65 First-rate (2 wds.)
- 66 Nurse deity

DOWN

- 1 Peel
- 2 Biblical prophet
- 3 Pear
- 4 Chinese river
- 5 Possess (cont.)

Answer to Previous Puzzle

W	Y	N	N	W	I	T	S	W	O	E
I	S	E	E	I	D	E	E	H	I	T
P	E	R	E	N	I	A	L	A	B	E
E	R	O	D	E	O	R	A	C	L	E
S	T	A	T	H	R	E				
W	O	N	H	O	S	S	O	B	E	D
R	O	O	F	E	R	N	A	P	O	L
I	N	V	E	R	T	U	P	S	A	L
T	A	I	L	A	L	F	A	T	E	L
E	O	S	A	F	R	O				
G	Y	M	N	A	S	T	A	G	I	L
N	O	B	W	E	E	R	I	R	E	S
A	Y	R	E	T	N	A	V	A	T	S
T	O	E	D	A	T	A	E	N	T	E

- 6 Mid expletive
- 7 Between (Fr.)
- 8 Laundry appliance
- 9 Inner Hebrides island
- 10 Fragrant ointment
- 11 Songstress Ad-ams
- 16 Glossy fabric
- 20 Supplement
- 22 Chilean Indian
- 23 Behold (Lat.)
- 25 Pakistan language
- 28 Send flying
- 27 Small fly
- 28 Safecracker (sl.)
- 30 White frost
- 31 Composer
- 32 Perceive
- 35 Lion's cry
- 38 University residence
- 40 Crafty
- 43 King (Fr.)
- 45 Latvian
- 47 Contemporary painter
- 49 Bear (Lat.)
- 50 Cereal grass
- 51 Hebrew month
- 52 Contemporary painter
- 54 Turnout
- 55 Weird
- 56 River in Flanders
- 59 Alcoholic beverage
- 60 Compass point

WIN AT BRIDGE

By James Jacoby

Rubber bridge is like a sea journey. As you navigate your bridge ship through shoals and narrows, avoiding sand bars and reefs, you should keep in the back of your mind to stay away from reefs. You certainly don't want to go down like the Titanic.

Today's South found himself in four hearts doubled. He ruffed the opening spade lead and happy in the knowledge that four hearts doubled was going to make on all 3-1 heart divisions, smugly led a trump. East demonstrated the appropriateness of my father's old saying ("When one's crazy" has been picked up the remaining trumps. Since West had held on to all his spades, the resulting carnage was down seven, 2000 points, with the additional indignity of East's 100 honors heaped on poor South's head.

Declarer was indeed unlucky, but he should have sharply limited his losses. It was in fact quite conceivable that East would hold all four trumps. And so, after the opening ruff, South should play a diamond to dummy's ace, ruff another spade, play a club to dummy, and then ruff a third spade. Now trumps can be led in the hope that they are not 4-0. East wins the first trump but since he has no more spades to play, all the defenders will take four heart tricks for down one. Minus 300 is not a great result (remember the 100 honors), but it's a darn sight better than down 2100.

NORTH 2-13-86												
♦ J 9 2												
♥ 9 8 6 4												
♠ A												
♣ K J 10 7 3												
WEST												
♦ K Q 10 8 7 6 5												
♥ 10 8 4												
♠ 9 8 2												
EAST												
♦ A 4 3												
♥ A K Q J												
♠ 9 7 6 5 2												
♣ 5												
SOUTH												
♦ 10 7 5 3 2												
♥ K Q J 3												
♠ A K 8 4												
Vulnerable North-South												
Dealer South												
West North East South												
3 Pass 1 Pass Dbl Pass												
Opening lead: ♦ K												

HOROSCOPE

What The Day Will Bring...

YOUR BIRTHDAY FEBRUARY 14, 1986

Your possibilities for major achievements in the year ahead are better than they have been for the past several years. It's up to you to make hay while the sun shines.

AQUARIUS (Jan. 20-Feb. 19) Your possibilities for success are strong today, but self-doubts could dull the edge of what you have going for you. Think positive. Know where to look for romance and you'll find it. The Astro-Graph Matchmaker set instantly reveals which signs are romantically perfect for you. Mail \$2 to Matchmaker, c/o this newspaper, Box 1846, Cincinnati, OH 45201.

PISCES (Feb. 20-March 20) Make your needs known to others today in a gentle, round-about manner. You won't receive their help if you demand

they do this or that for you.

ARIES (March 21-April 19) Commercial transactions must be analyzed carefully if you hope to come out on the plus side of the ledger. Your deal may only be good up to a point.

TAURUS (April 20-May 20) Most of your personal relationships should prove pleasant for you today. But you might have to contend with someone extremely difficult.

GEMINI (May 21-June 20) You'll be conscientious today about attending to your responsibilities and duties, yet you may still sweep something distasteful under the rug.

CANCER (June 21-July 22) Someone who does not get along well with your other friends shouldn't be included in your social arrangements today. His presence could spoil a fun event.

LEO (July 23-Aug. 22) Keep your real objective in focus today and don't let any emotional side issues get you off track. A big achievement is possible if you're not derailed.

VIRGO (Aug. 23-Sept. 22) As long as everything goes your way today, you'll be delightful person to be around. Try not to become Mr. Hyde if it doesn't.

LIBRA (Sept. 23-Oct. 23) Joint ventures will work out well today, provided neither you nor the other party involved behave selfishly. Each must show a willingness to give.

SCORPIO (Oct. 24-Nov. 22) You have a faculty today for taking the mediocre ideas of others and transforming them into something far better. But give credit to the originator.

SAGITTARIUS (Nov. 23-Dec. 21) People in the position to do so will be as helpful as possible to you today, but they still might not be able to lift one of your major burdens.

CAPRICORN (Dec. 22-Jan. 19) Today if friends start bad-mouthing another pal who isn't present, don't put in your 2-cents worth. When word gets back, it'll be your remarks that are remembered.

ANNIE

