

Evening Herald

78th Year, No. 304, Wednesday, August 13, 1986—Sanford, Florida

Evening Herald — (USPS 481-200) — Price 25 Cents

County Borrowing OKd

**By Paul C. Schaefer
Herald Staff Writer**
Seminole County may borrow up to \$39 million for county projects as the result of action taken by county commissioners Tuesday night.

The approvals came despite protests from a county commission candidate, which a commissioner called "political garbage."

A loan of up to \$8 million for the purchase and installation of a new radio communications

system, the possible purchase of property near the County Services Building, and additions to the Seminole County Jail was approved.

The commission also authorized county attorney Nikki Clayton to prepare final documents for two other loans: one for up to \$6 million for a 2,000 foot long expressway extension from the Orange County line where the East-West Expressway ends; and another loan of up to \$25 million for

expansion of county water and sewer treatment facilities.

County commission candidate Robert Desmond, Jr., Sanford, who is opposing commission chairman Bob Sturm, Lake Mary, in the September Republican primary, said the loans represented "unacceptable fiscal management" which would encumber present and future taxpayers. He also objected to the loans being considered as "add-on" agenda items, and

See COUNTY, page 12A

Lake Mary Approves Church Site

**By Angela Woodhull
Herald Staff Writer**
The Lake Mary Planning and Zoning Board Tuesday tentatively approved the site plans for the construction of St. Peter's Episcopal Church on Rinehart Road.

Board members recommended that the church alter some of its plans in the interest of saving trees. It also recommended the church build a retention pond to help prevent pollution.

Board member Jim Talmadge suggested changing drain field and septic tank locations to help save trees.

Motion to approve the final subdivision review was initiated by board member Penny Gunn. Gunn previously had suggested church officials consider more landscaping on the site.

The measure passed 2-1 with

See CHURCH, page 12A

Happy Birthday Maude



Herald Photo By Louis Raimondo

Trainer Phil Bryant watches as children from Kid's World help Maude celebrate her birthday with an elephant-size hay cake. She still has to blow out her one candle. The kids also gave Maude a present of feed, then enjoyed zoofric rides around the Central Florida Zoo.

Reagan Rejects Harder Line On South Africa



Pres. Reagan

WASHINGTON (UPI) — President Reagan, rejecting economic sanctions as useful only to "the most radical" forces in South Africa, has served notice to congressional critics that his policy of quiet diplomacy to end apartheid will not change.

On a day that began with a trip to the Illinois State Fair and promises of aid for farmers, Reagan used a prime-time news conference Tuesday night to reject calls for a harder U.S. line toward South Africa.

"I just think that up on the Hill there, well-intentioned though they may be, they're asking for something that would not be helpful."

See REAGAN, page 12A

Clayton: City Act Probably Illegal

Seminole County Will Sue Sanford Over Annexation

**By Paul C. Schaefer
Herald Staff Writer**
The city of Sanford's Monday annexation of a parcel of land in Seminole County near the intersection of Interstate 4 and State Road 46 "is probably illegal" according to county attorney Nikki Clayton.

The Board of County Commissioners authorized Ms. Clayton to challenge the city's annexation during their Tuesday night session on a 3-2 vote.

Commissioners also voted 3-2 not to challenge two other annexations approved by the city Monday.

The property may be found not to be contiguous, or connected to other property within the city limits, if the county wins a suit over a previous annexation east of the newest parcel. If the county's suit over the previous annexation fails, then the new land acquisition will create an enclave, or island of county land surrounded by land in the city, which is against state law, Ms. Clayton said.

The property, reported to be about 20 acres, is owned by James and Carole McCall, deputy county attorney Bob McMillan said. McMillan said the city's annexation was "clearly illegal."

Commissioner Fred Streetman made the motion to challenge the annexation, which was also supported by Commissioners Bill Kirchhoff and Bob Sturm.

Commissioners Sandra Glenn

and Barbara Christensen voted against the challenge.

The parcel annexed, which consists of two lots, is at the western edge of about 230 acres which Sanford annexed from the county last year. The county is challenging that annexation in court as well. The county's challenge on the previous annexation is reportedly because the 230 acres is surrounded by county land, and the county says the finger-like extension of Sanford land is not contiguous to other city boards.

County officials asked the city to delay Monday night's approval of the annexations, but were denied.

Two other parcels annexed

Monday night won't be challenged by the county however.

On identical 3-2 votes, the commission decided not to authorize Ms. Clayton to battle for two other parcels the city wants.

Commissioners Glenn, Streetman, and Christensen voted against the challenge, while Commissioners Sturm and Kirchhoff voted to go to court.

The county will continue to try to gain ownership of one of those two parcels through condemnation. That land is needed for county water retention, near the intersection of Country Club Road and County Road 46A, and

See SUE, page 12A

City Upholds P&Z, Nixes Rooming House Site Plan

**By Karen Talley
Herald Staff Writer**
Sanford commissioners Monday upheld a Planning and Zoning Board site plan denial which prevents continued operation of a seven unit rooming house at 311 Park Ave.

Rooming house operation is a permitted use in the zone the home is located in, although the structure also lies two lots north of an area Sanford redistricted two years ago to curb multi-unit operations.

Although a permitted use, the home was not licensed for rooming house operation, a situation its new owner was not aware of when he purchased the structure earlier this year and began repairing it without first securing necessary building permits.

The home's unlicensed status was discovered when city staff learned of the repair efforts.

Neither the home's owner, nor the realtor who represented him during the P&Z session showed up for Monday's appeal.

The motion to uphold the P&Z decision was made by City Commissioner John Mercer and carried with the exception of Commissioner Bob Thomas.

Thomas did not offer reason for his opposition Monday. In commenting on his vote today, Thomas pointed to an endorsement city staff had given the site plan and said he felt the property owner "should have been given a fair shake: a chance to follow-through with his plans to bring the home up to standard."

Approval of the repair efforts

through submission of a site plan was required before the structure would be allowed to continue operation. Factored into the P&Z's site plan denial were concerns about provisions of sufficient on-site parking and fire safety measures, as well as the home's proximity to the rezoned district. Site plan review by city police, fire, engineering, public works and zoning staff, prior to the P&Z session, had determined the proposed efforts would bring the home into compliance with all city codes, according to records.

In regard to parking, the owner's reported purchase of a lot near the home met the city's requirements, according to building staff.

However, before moving to

See CITY, page 12A

Food Pours In But Funds Run Short For Group Out To Feed The Hungry

**By Jane Casselberry
Herald Staff Writer**
A ministry providing lunch and groceries for the hungry in Sanford is desperately in need of funds, according to Manna Haven secretary Barbara West.

She said the increase in the number of hungry families and individuals showing up to be fed has added to operational expenses.

Although local businessmen and farmers continue to donate food to Manna Haven, cash contributions are also needed to meet

operating costs, such as garbage collection, utilities, and the purchase of additional stainless steel cooking utensils, she explained.

There were 2,280 persons served during July as compared to 1,600 in June, she said. On July 31 alone, 120 persons were fed.

Manna Haven, located at 519 Palmetto Ave., is open for lunch Monday through Friday from 11 a.m. to 1 p.m. and on Sunday, 1-3 p.m.

The "soup kitchen" operation was opened in mid-April and through the month of May served 965 people.

Mrs. West credits the increase partly to school children — who would ordinarily receive a noon lunch at school — being on summer vacation, and partly because more people are learning about the existence of the facility.

Some of the hungry are repeaters while others are new, such as a family with 13

See FOOD, page 12A

TODAY

Action Reports.....3A	Florida.....12A
Calendar.....7A	Hospital.....2A
Classifieds.....4B,5B	Nation.....2A
Comics.....4B	People.....1B,2B
Dear Abby.....2A	Sports.....9A-11A
Deaths.....12A	Television.....3B
Editorial.....4A	Weather.....2A

Thursday

The Evening Herald begins running Seminole County school bus schedules Thursday with timetables for all elementary schools. Middle school and high school lists will run in their entirety in subsequent issues.

Selph Charged With DUI

**By Deane Jordan
Herald Staff Writer**
A driving under the influence charge was lodged against State Rep. Carl Selph R-Casselberry, Tuesday stemming from a traffic accident May 13 in Tallahassee.

Leon County State Attorney Willie Meggs said the DUI charge was filed after prosecutors became aware through news media reports of witnesses to events after the incident including those who said Selph was drunk.

Selph, however, told the Evening Herald today that he was not drunk at the time of the incident but was extremely tired from "an 18-hour day."

He accused other news media of making

something out of nothing of the incident and indicated its reporting may be connected with his bid for reelection. He said he will plead not guilty to the charge.

The charge, one of four following the early-morning accident outside the Tallahassee Hilton, carries a usual penalty, if Selph is convicted, of a \$250 fine, six months' suspension of the driver license, and a year of probation.

According to reports, a car hit a parked vehicle two blocks from the hotel around 2 a.m. A lobbyist, Ken Powell of Orlando, who lobbied for a bill Selph backed in the 1986 legislative session, first said he was the driver, then said he was not. He then

See SELPH, page 12A



Bill Kirchhoff
...Sue



Sandra Glenn
...Don't Sue



Herald Photo by Tommy Vincent

Watching The Cars Go By
LaTeisha Carter, left seated, and Chris Barrow, city summer workers, gather data on downtown parking and traffic circulation for Sanford in cooperation with the Greater Sanford Development Corp. They're at First St. and French while others worked at different intersections.

Diplomat U

Institute Is Boot Camp For Foreign Service Officers

By Iris Krasnow
UPI Feature Writer
WASHINGTON (UPI) — Before they set foot overseas to represent the United States, new foreign service officers are put through boot camp in the mythical country of "Z".

The students journey into "Z" during the intensive 28-day Basic Consular Training, one of a group of mandatory entry courses taught at the State Department's Foreign Service Institute in Rosslyn, Va., across the Potomac River from Washington.

A "Consular General Rosslyn" plaque marks "Z's" place in a modern building that houses the Foreign Service Institute, the government's principal school for foreign affairs. Incoming troops call the course "Con Gen Rosslyn".

Instead of a starchy classroom format, "Con Gen" gives students a chance to role play aspects of diplomatic life, a life that can mean hobnobbing with royalty one day and getting U.S. citizens out of Third World prisons the next.

It can also mean detecting, and dodging, terrorism.

"Z" is supposed to be a relatively developed Third World country 500 miles west of South America with a population of roughly 14 million people. Its two neighbors are "X" and "Y," with whom "Z" maintains strained diplomatic relations.

In a dark, gray "cell" complete with bars and graffiti, two students are acting out a prison scene. The young woman "prisoner" wrapped in a disheveled sheet is actually crying as she explains her situation to a visiting U.S. consular officer.

"I was kicked and beaten," says the woman in a near-hysterical voice. "They do awful things to me — electric." She huddles down in her chair.

The student officer demonstrates the compassion of a psychologist as he tries to pry enough information out of the frightened American to help notify her father and eventually gain her release. When he is finished, an instructor in the room will critique his performance.

"People break into tears regularly for the jail scene," says Leo Wollemborg, coordinator of consular training and the former Deputy Chief of Mission in Mauritius.

He says exposing them to this drama is essential.

"Unfortunately, dealing with American prisoners is very common. There are approximately 1,500 Americans currently under detention around the world."

Foreign Service officers have a legal responsibility to visit every American who is arrested.

As for electric shock torture, or prisoners hung by their feet, Wollemborg admits it's extreme.

"A person might not encounter something that drastic during his or her entire career. Or, they may encounter it during their first month. In Turkey, Spain and Mexico, we've had (torture) cases like that, and starvation."

Students are also briefed on the full body of laws and regulations pertaining to consular work, such as overseas citizen services and immigration.

They practice issuing visas and passports, another setting for convincing role-playing.

One new officer, Jeff Feltman, is scrutinizing a visa form. His first consular assignment, to Haiti, is what he calls a "problem post" because of the high incidence of Haitians using counterfeit documents to gain entry into the United States. To detect this, he must bone up on how to spot the phonies.

Wollemborg says the 10-year-old Basic Consular Training is more realistic preparation than the initiation he went through when entering the Foreign Service in 1970.

"When I came in, the consular training program was three weeks of straight talking-head lectures and working with the regs (regulations). Now you're talking role plays and self-instructional guides, so people come away with much more reality. This is more humanistic."

He says his training was inadequate for the disaster that awaited him at his first post.

"Within three weeks of arriving in Sri Lanka, we had a mini-revolution," recalls Wollemborg. "They tried to overthrow the government. My training was not very relevant for this."

Paul Kolbe, a junior officer assigned to Indonesia, is in Day 20 of "Con Gen". He sits in a small room thumbing through a fat manual with a weary look on his face.

"Within three weeks of arriving in Sri Lanka, we had a mini-revolution," recalls a veteran of the foreign service. "They tried to overthrow the government. My training was not very relevant for this...Now people come away with much more reality."

"It's a lot of information in a short amount of time," he says. "There are a few books like this, and there is no way in 26 days you could take in all this."

Stuart Symington Jr., a junior officer assigned to Honduras, keeps from getting frazzled by hamming it up. The son of the late senator from Missouri wears a rubber monster mask to provide comic relief for the other students while applying for a visa.

Fledgling diplomats are joined at the FSI by mid-level and senior officers who return throughout their tenure to train for career advancement.

"Somebody can feasibly come back here five or six times during a 30-year career," says Stephen Low, FSI director. The School of Language Studies, a facet of the Institute, offers instruction in 40 languages.

New officers indicate countries they wish to be assigned to, but due to popularity of certain regions, requests aren't always granted.

"The most popular countries are usually not the ones you expect," according to Low, a 30-year veteran of the Foreign Service who started as vice-counsel in Uganda and rose to become ambassador to Zambia

and Nigeria.

"Most people ask to go to Africa, not Paris. You know, you're young, you're adventuresome, so Africa, the Far East, Russia — that's where people want to go."

Applicants must pass a written and oral exam, after which time they chose to enter the service in one of four "cones of duty" — consular, administrative, economic or political. Nearly all new officers begin with a consular assignment, "or work involving people, rather than governments," explains Low.

Once assignments are given, new officers take a two-week familiarization course on the region to which they are headed.

Unlike the lily-white Old Boy network that dominated the Foreign Service through most of its history, of the 280 junior officers who entered in 1985, 107 were women and 27 were minorities. Women and blacks are still scarce in the top levels of the service.

The average age of entry has moved from 25 to 31.

"What we're getting now is an older, more experienced population who may have done another career," says Wollemborg, adding that some incoming officers are in their mid-40s.

In order to be granted tenure in the Foreign Service, a career that can exceed 30 years, it is a statutory requirement to do a minimum of one year of consular work within the first four years of duty.

Only a tiny fraction of officers rise to the top slots of the Foreign Service.

"It's a very highly competitive business," says Low. "There are only 141 ambassadorships, and most young, ambitious people want one. The majority won't even get into the senior Foreign Service."

Some 35 percent of officers do ascend to the senior tier, which pays around \$70,000 a year. The entry salary is \$20,000. Beyond the base pay, there are perks to the overseas service.

"Generally, you get an education allowance for your children," says Wollemborg. "You either get housing or a housing allowance. You will get a differential if it is a 'hardship' post with poor medical facilities, and danger pay in countries where there is high risk of officers and their families being physically harmed."

"If you're assigned here in Washington, you don't get a thing beyond your salary," he adds.

Competition with peers isn't the only battle officers face. Low notes that President Reagan is appointing 40 percent of ambassadors from outside the career service.

"It's the highest percentage since (President Roosevelt)," he says, admitting "it is frustrating."

The competition starts the day

Unlike the lily-white Old Boy network that dominated the Foreign Service through most of its history, of the 280 junior officers who entered in 1985, 107 were women and 27 were minorities.

a candidate writes in for information. Of the approximately 26,000 people who applied to take the Foreign Service exam for 1985, 280 were accepted.

The recent outburst of terrorism aimed at U.S. embassies hasn't made a dent in the allure of the profession.

"Applications are going up, not down," says Low. "It's one thing to say the Americans are afraid to go to Europe on vacation. But when it comes to choosing what you want to do with your life, people want something that's exciting."

They may get more excitement than they can handle.

So far this year, there have been bombings at embassies and consulates in Lima, Peru; Santiago, Chile; San Jose, Costa Rica; Mexico City; and Tunis, Tunisia. None were fatal.

William Calkins, a Foreign Service communicator in Khartoum who was shot in the head on April 15 remains in serious condition. Arthur Pollick, also a communicator, was shot in the shoulder while in the Yemen Arab Republic ten days later and is recovering.

The fate of senior officer William Buckley is still un-

known, according to a State Department spokeswoman. He was kidnapped in March 1985 from the U.S. Embassy in Beirut, and although his captors claimed to have executed him, his body has not been recovered.

"We've got more violence in Sri Lanka today than there is in Beirut," continues Low. "There's not a spot in the world where we don't consider there is a good possibility of a violent act of terrorism on our embassies. We're very much on the alert all over the world."

Low says of the \$4 billion dollars the State Department requested from Congress to beef up embassy security, \$1.1 billion was appropriated.

"We're getting some money, but that's not going to assure our people aren't going to get shot."

In his more than three-decade career, he has witnessed the diversification of the Foreign Service, yet much remains the same.

"You are still representing the United States in trying to influence events abroad. You are involved in high policy. There hasn't been a dull moment in the 31 years I've been here."

MAJOR APPLIANCE

TV - STEREO - VIDEO

30 to 70% OFF

LIQUIDATION

30 to 70% OFF

SALE STARTS THURSDAY, AUG. 14th 10:00 A.M.

SCRATCH AND DENT - CUSTOMER RETURNS - CLOSEOUTS - CURRENT MODELS - SHOWROOM SAMPLES - DISCONTINUED MODELS - ETC.

STEREO AND AUDIO EQUIPMENT

JVC, FISHER, PIONEER, AKAI, YAMAHA, MITSUBISHI, PANASONIC, TECHNICS, RCA, ZENITH, MAGNAVOX, TOSHIBA, HITACHI, ETC.

CBD PLAYER, AMP, EQUALIZERS, CASSETTE DECKS, TUNERS, TURNTABLES, TIMERS, SPEAKERS, RACKS, COMPLETE SOUND SYSTEMS **30 TO 70% OFF**

REFRIGERATORS, WASHERS, DRYERS, DISHWASHERS, AIR CONDITIONERS, AMANA, G.E., WHIRLPOOL, GIBSON, WESTINGHOUSE, MAYTAG, HOTPOINT, MAGIC CHEF, WHITE, ETC.

OVER 900 VCR'S AND CAMERAS

JVC, MITSUBISHI FISHER, RCA, ZENITH TOSHIBA, PANASONIC TEKNIKA, ETC.

30 to 70% OFF

A SMALL PERCENT OF INTENTORY IS NOT BOXED

ALL OF THIS UNDER ONE ROOF - AND ON DISPLAY OVER 12,000 PC.

OVER 700 ASSORTED TV'S

RCA, JVC, TEKNIKA, MITSUBISHI, ZENITH, PANASONIC, SHARP, SONY, MGA, TOSHIBA, MAGNOVOX, ETC.

LARGE ASSORTMENT FROM 2" TO 27" SCREENS, PORTABLES, TABLE MODELS, CONSOLES

30 to 70% OFF

OVER 2,000 PC. OF PORTABLE RADIOS, TV'S ANSWERING MACHINES, PHONES, CLOCK RADIOS, TYPEWRITERS, CLOCKS, CASSETTE PLAYERS.

CASH - MASTERCARD - VISA

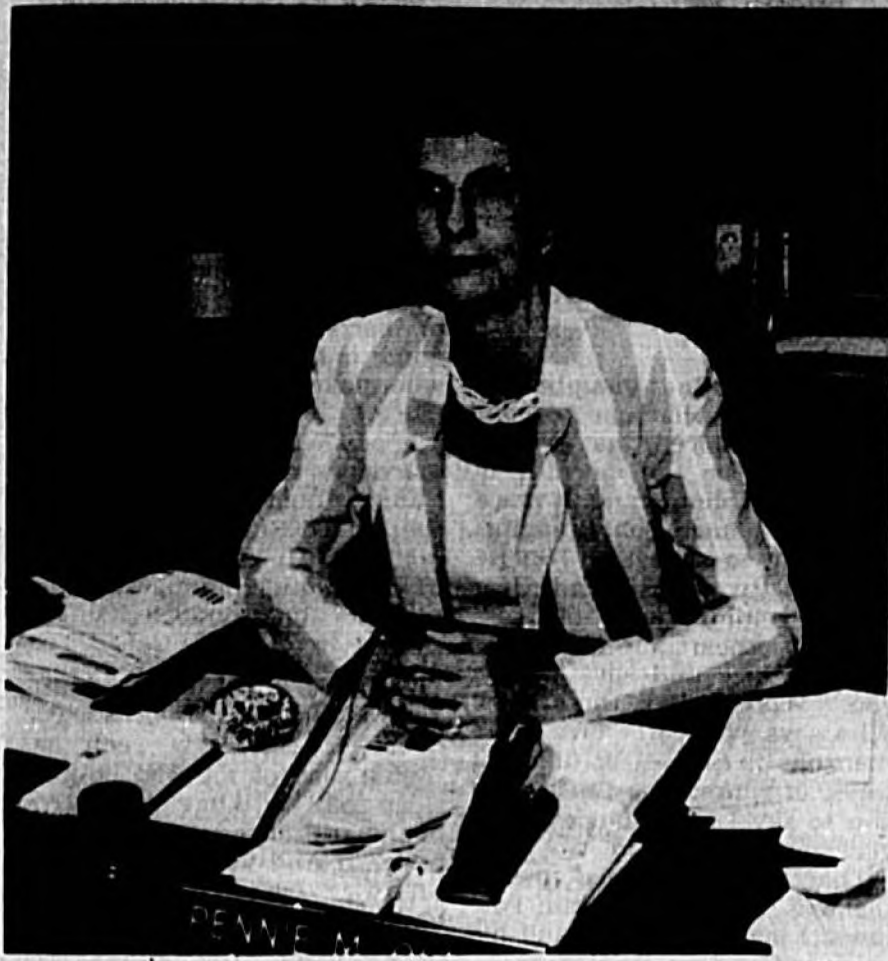
ASSIGNED LIQUIDATORS
OUR FIRM HAS BEEN ORDERED TO DISPOSE OF THIS EXTREMELY LARGE INVENTORY WITHIN 90 DAYS \$2,000,000 IN VALUE WILL BE SOLD AT UNBELIEVABLE PRICES.

MOVED TO THIS LOCATION DISCOUNT WAREHOUSE

265 HWY. 17-92
LONGWOOD, FLA. - 1 BLOCK NORTH OF 434
STORE HOURS
MON. - SAT. 10-7 p.m.
SUN. 1-6 p.m.
CASH & CARRY NO DELIVERY

PEOPLE

Evening Herald, Sanford, Fl. Wednesday, Aug. 12, 1986—1B



Pennie Olliff was one of the first two employees when Citizens Bank of Oviedo opened its doors 40 years ago. And Mrs. Olliff has no plans to retire. "I love it," she says.

Bank, Banker Celebrate '40; Still Counting

By Susan Loden
Herald Staff Writer

The Citizens Bank of Oviedo is celebrating its 40th anniversary and that means that Pennie Olliff is also celebrating her 40th year on the job at that financial institution.

Mrs. Olliff, who said she's almost a Florida native having been transplanted from Georgia at age 1, became a banker when someone knocked on her door and offered her a job.

In the beginning she and the late Charles Shaffer were the only two employees of the bank. "We did everything," she said. Shaffer's official title was cashier and Mrs. Olliff said, "I was a teller, I guess."

Over the years as the bank grew Mrs. Olliff advanced in her career. She is now a senior vice president and said that her success isn't based so much on skill with dealing with figures, but on her love of people.

"I love it," she said. Mrs. Olliff added that she is a woman pioneer in banking and when she was made a vice president in 1973 there were only two other women in the area filling bank officers slots. She became a senior vice president in 1984.

"It's very definitely a good field for women. The opportunities are there if you're willing to work and take advantage of the opportunities," she said.

Mrs. Olliff said most of her "daylight" hours are spent on the job, leaving her little time for golfing.

She also enjoys reading history and fiction.

Mrs. Olliff married her Oviedo High School sweetheart, Leon Olliff, 41 years ago and they have a son, Larry, and a daughter, Linda Cliburn.

Olliff is a barber in Oviedo.

At one time, Mrs. Olliff said she knew every one in Oviedo, but times have changed. Over the years the Independent Citizens Bank, located at 156 Geneva Drive, has grown with the community. This year the bank opened its first branch at 10 Alafaya Woods Blvd.

The Citizens Bank is owned by about 350 stockholders, many of them local people. Mrs. Olliff said the bank, which now has \$50 million in assets had \$704,000 in deposits on its first day of operation in 1946.

The bank and Mrs. Olliff will be celebrating their anniversaries at the bank Friday Aug. 15, with refreshments and cash door prizes totalling \$700 to be given throughout the banking day from 9 a.m. to 6 p.m.

There will also be a historic display of photos and scrapbooks in the lobby.

Mrs. Olliff said that when the Citizens Bank celebrated its 10th and 25th anniversaries, she celebrated her personal career anniversary, which just happens to total the same as the bank's. They're now at 40 and still counting. Mrs. Olliff said she's made no retirement plans. She's still rolling out the red carpet to the citizens of Oviedo.

Cook Of The Week

Indian Country Native Recalls Kitchen Duty As 1 Of 13 Kids Down On The Farm

By Dorothy Greene
Herald Correspondent

Oklahoma, where 'the corn is as high as an elephant's eye,' is the state to thank for giving us our Cook Of The Week. Myrtle Meeks. This sweet lady is not only a seasoned cook, but keeps a great deal of American history stored away in her memory.

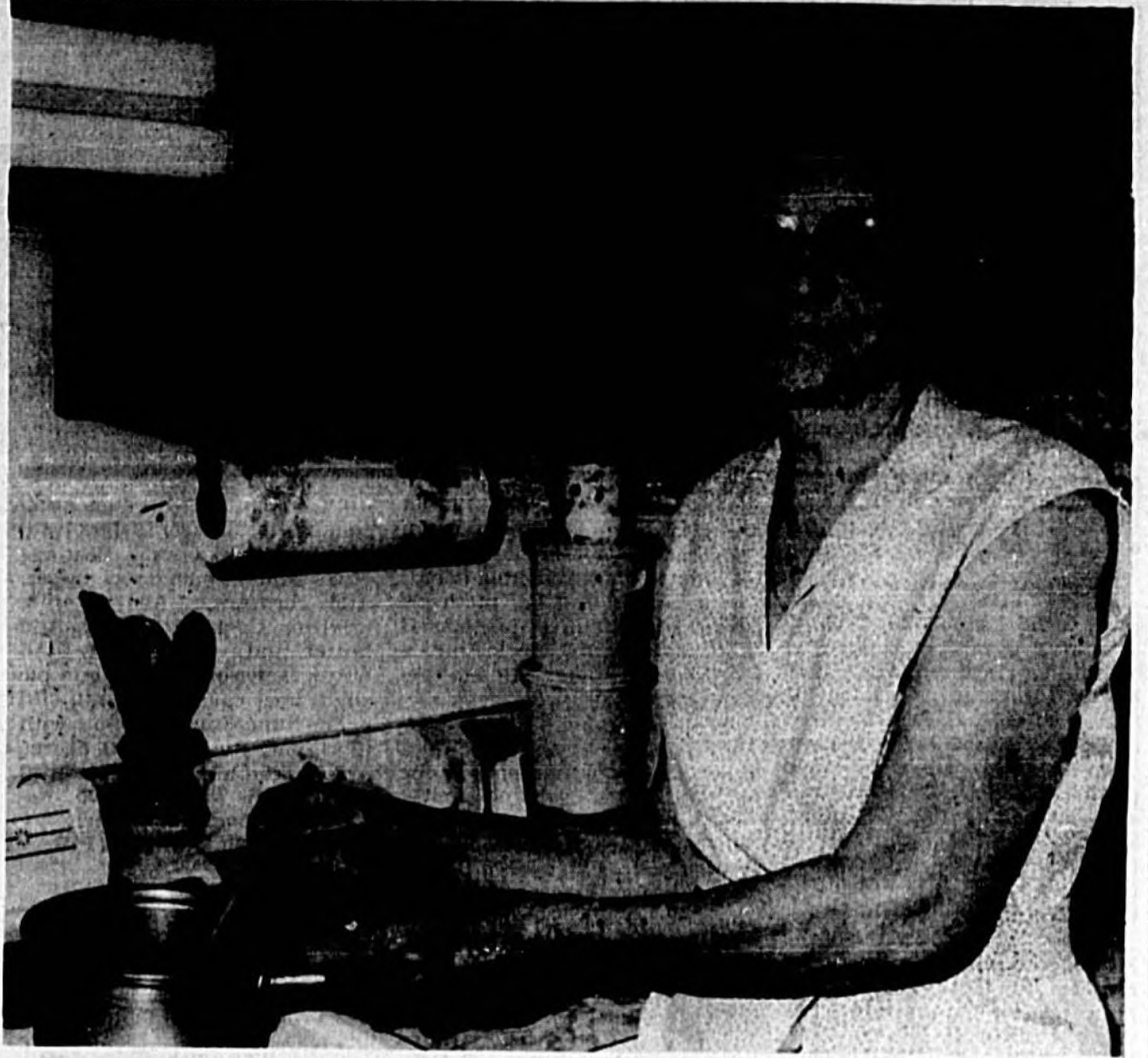
Born and raised in Indian country, Shawnee, Okla., Mrs. Meeks is one of 13 children, and has vivid recollections of how times were back then. "We had Indians all around us," she says. They weren't wild Indians, emphasizes Mrs. Meeks, she recalls going to school with the children. "They dressed in their style, long dresses and beads. A lot of people wouldn't accept them," says Mrs. Meeks, "but I felt sorry for them, so I would play with them. They had things we didn't have."

"My father was a farmer when I was young, but he went into the contracting business when I got a little older, about ten. Sometimes we moved to places closer to his work, but we always came back to the farm. My father and grandfather homesteaded there," Mrs. Meeks lovingly remembers being "raised in a Christian home. We were raised to be married," she says. "Everybody had their jobs to do. We worked in the fields if we were big enough to. We kids got along well, and we had the dearest parents in the world. We were the largest family in the community, but we had the best Daddy in the world; he provided well for us. He was very ambitious."

When Mrs. Meeks was about 10 years old, she remembers moving to Bristow, Okla., where her father ran a dairy before he went into the contracting business. "It was an oil boom town in those days," she says. "That's the first time we ever had electricity. Oil boom towns were rough. Rough people. We never went uptown at night. We'd go to the theater once in a while, but never at night."

With so much pioneering history in her background, Mrs. Meeks' nephews and nieces are researching the family tree. Her grandfather fought with Gen. Custer at Little Big Horn, and worked as a surveyor for the railroad before the territories became states. He was instrumental in surveying the Tulsa area before Tulsa was even a town, she said.

With two older sisters who were married by the time Mrs. Meeks was 9 years old, and with four brothers in between, "It was the kitchen for me," she smiles. "And we sang a lot. In the winters, after supper we'd have to be in the house, so we talked and sang. Dad was a very jolly



Herald Photo by Edie Scott

Myrtle Meeks specializes in stick-to-the-ribs meals.

person and an interesting talker. The times that we had while growing up, and how sweet and patient our parents were during our illnesses are memorable. If any of us kids got sick, Dad would go get us a bottle of grape juice, and that bottle of grape juice was our very own. I always thought that was really sweet. Things like that in a big family were a treat."

Recalling fun times in the kitchen, Mrs. Meeks tells about the time she and her sister cooked chicken. "The boys were working in the field," she says. "It was summertime, and we proceeded to kill a chicken, then plucked the feathers off, then cut it up as we had watched Mother do so many times. We washed it, and I know we didn't flour it. The fat popped and it popped, all over mother's spotless floor, and after dinner I scrubbed and I scrubbed to get the grease spots up."

Mrs. Meeks continues, "Now my mother was a fabulous cook. She was the best cook that I've ever eaten after. It was what you might say, plain home cooking. She cooked things and made it her own way. She canned everything imaginable. We had a big storm cellar — they had tornadoes out there — with shelves on all three sides, and it was always full." The smoke house was originally the log

cabin home that Mrs. Meeks' father had built for his bride trees and every fruit you could when they got married. "And we

See COOK, 2B

Penultimate Pencils. Outrageous Offer.

For Lips. For Eyes. Our Color Complements Offer For Fall. From August 10 through September 30, these four coordinated color pencils—Warm Rose, Cense, Goldspice, Slate—a \$27 value, are yours for only \$1.50 with a \$12 minimum purchase of Merle Norman cosmetics.



Woman to Woman

MERLE NORMAN

Bring this ad into one of the following Merle Norman Studios. Limit one per customer. While supplies last.

Connie's

Seminole Centre

Sanford

323-2631

Microwave Magic

Kitchen Gift Ideas

At this time of the year I frequently receive requests for special preserving recipes, those that can be used for bazaars or gifts from the kitchen. I guess it isn't too early to be thinking about Christmas.

Of course the preserves and jams that were in this column a week or two ago are always welcome and these for pickles, relishes and spiced fruit are good too.

Use the attractive cut glass jars available with ribbons and calicoes and your bazaar table will be "sold out" quickly.

These recipes are for small "batches" that can safely be done in the microwave oven. This kind of preserving is really good for many of us because our gardens are producing slowly now and we just want to spend a little time.

I brought some peaches back from North Carolina and used this recipe for a few spiced ones. They're so good with roast pork or turkey.

QUICK SPICED PEACHES
3 large or 4 small peaches
1/2 cup cider vinegar
1/2 cup sugar
1/4 t. ginger
1 stick cinnamon
6 whole cloves
Combine vinegar, sugar, and spices in a deep bowl. Cover with plastic wrap and microwave on



Midge Mycoff

Home Economist
Seminole Community College

100% power for 4 minutes or until sugar dissolves, stirring several times. Add fruit and stir to coat with syrup. Recover and microwave on 100% power 6 minutes or until fruit is tender. Cool and refrigerate overnight to blend flavors. Will keep in the refrigerator up to a month. Remove spices after a week. Can also be processed.

This meat accompaniment can be made from just two peppers and two onions.

ONION PEPPER RELISH
1 small sweet red pepper
1 small sweet green pepper
2 onions, chopped
1/2 cup vinegar
1/4 cup sugar
1/2 t. salt
1/4 t. crushed red pepper
1 bay leaf
Wash, seed and dice peppers. Stir all ingredients together in a deep bowl. Cover and microwave on 100% power for 5 minutes. Stir, reduce power to 70% and microcook covered for 10 minutes longer. Let stand, cov-

ered 5 minutes. Remove bay leaf, stir and store in the refrigerator or process.

FRESH CORN RELISH
1 1/2 cups fresh-cut corn
1/2 cup finely diced celery
1 T. chopped green pepper
3 T. vinegar
2 T. sugar
1/2 t. salt
1/4 t. pepper
3 T. chopped onion
1/2 t. turmeric (optional)
1 T. chopped canned pimento
Cook corn by microwaving covered on 100% power 2-5 minutes. Add all remaining ingredients except pimento and microwave on 100% power to heat thoroughly. It is not necessary to boil mixture. Add pimento. Cool and refrigerate. This makes a colorful side dish. Allow flavors to blend for several days before serving.

This pickle recipe is particularly good when the cucumber plants are first producing and just a few are ready.

PINT OF PICKLES
1/2 cup cider vinegar
1/4 cup sugar
1/4 t. salt
1 t. mixed pickling spice
2 1/2 cups sliced cucumbers
1 small onion, thinly sliced
Microwave vinegar, sugar, and spices on 100% power for 4

See MAGIC, 2B



Lingerie Sale 25% Off

Thurs. - Fri. - Sat., Aug. 14 - 15 - 16
BRAS, SLIPS, CAMISOLES, GOWNS, ROBES, PANTIES
Vanity Fair - Olga - Ball - Formfit
All Sales Final - Cash - Checks
MasterCard - VISA - American Express

116 W. First St.
PH. 323-4132
Historic Downtown Sanford
Lois Dycus - Owner

Lois' Place

Legal Notice
IN THE CIRCUIT COURT OF THE EIGHTEENTH JUDICIAL CIRCUIT OF FLORIDA
CASE NO. 86-079-CA-17-P
JUDGE: S. JOSEPH DAVIS, JR.
IN RE: FORFEITURE OF \$3,423.79 UNITED STATES CURRENCY

Legal Notice
IN THE CIRCUIT COURT OF THE EIGHTEENTH JUDICIAL CIRCUIT OF FLORIDA
CASE NO. 86-079-CA-17-P
JUDGE: S. JOSEPH DAVIS, JR.
IN RE: FORFEITURE OF \$3,423.79 UNITED STATES CURRENCY

Legal Notice
IN THE CIRCUIT COURT OF THE EIGHTEENTH JUDICIAL CIRCUIT OF FLORIDA
CASE NO. 86-079-CA-17-P
JUDGE: S. JOSEPH DAVIS, JR.
IN RE: FORFEITURE OF \$3,423.79 UNITED STATES CURRENCY

Legal Notice
IN THE CIRCUIT COURT OF THE EIGHTEENTH JUDICIAL CIRCUIT OF FLORIDA
CASE NO. 86-079-CA-17-P
JUDGE: S. JOSEPH DAVIS, JR.
IN RE: FORFEITURE OF \$3,423.79 UNITED STATES CURRENCY

CLASSIFIED ADS
Seminole Orlando - Winter Park
322-2611 831-9993
CLASSIFIED DEPT. RATES
HOURS: 1 time 70¢ a line, 2 consecutive times 60¢ a line, 3 consecutive times 50¢ a line, 4 consecutive times 40¢ a line, 5 consecutive times 30¢ a line, 6 consecutive times 20¢ a line, 7 consecutive times 10¢ a line, 8 consecutive times 5¢ a line.
Contract Rates Available 3 Lines Minimum

21 - Personals
CRISIS PREGNANCY CENTER
ABORTION COUNSELING
FREE Pregnancy Tests, Contraception, Individual assistance. Call for app. Eve. Hrs Available 321-7695.

63 - Mortgages
Bought & Sold
W. BUY 1st and 2nd MORTGAGES Nation wide. Call: Ray Long Lic. Mtg Broker, 740 Douglas Ave., Altamonte, 774-7722

23 - Lost & Found
LOST - Briarcliff St, Vista, a like Weimaraner, 6 mos old, white with black collar. Reward \$200. Call: 321-4444

71 - Help Wanted
POLAR CUP, Florida's favorite frosted lemonade. We're offering you a unique opportunity to earn \$800 as a lone operator of one of our Polar Cup Trucks.

61 - Money to Lend
CREDIT & EMPLOYMENT do not matter. No application fee. 2nd mortgage loans fast. BOB M. BALL JR., Licensed Mortgage Broker, 289 Country Club Rd., Lake Mary, 327-4118

Medical Personnel Pool
CNA: Full time, PM shift. Good benefits. Apply 950 Mellonville Av., Sanford, 321-4211

Legal Notice
IN THE CIRCUIT COURT OF THE EIGHTEENTH JUDICIAL CIRCUIT OF FLORIDA
CASE NO. 86-1539-CA-99-P
GENERAL JURISDICTION DIVISION
FEDERAL NATIONAL MORTGAGE ASSOCIATION PLAINTIFF,

Legal Notice
IN THE CIRCUIT COURT OF THE EIGHTEENTH JUDICIAL CIRCUIT OF FLORIDA
CASE NO. 86-1539-CA-99-P
GENERAL JURISDICTION DIVISION
FEDERAL NATIONAL MORTGAGE ASSOCIATION PLAINTIFF,

Legal Notice
IN THE CIRCUIT COURT OF THE EIGHTEENTH JUDICIAL CIRCUIT OF FLORIDA
CASE NO. 86-1539-CA-99-P
GENERAL JURISDICTION DIVISION
FEDERAL NATIONAL MORTGAGE ASSOCIATION PLAINTIFF,

Legal Notice
IN THE CIRCUIT COURT OF THE EIGHTEENTH JUDICIAL CIRCUIT OF FLORIDA
CASE NO. 86-1539-CA-99-P
GENERAL JURISDICTION DIVISION
FEDERAL NATIONAL MORTGAGE ASSOCIATION PLAINTIFF,

Legal Notice
IN THE CIRCUIT COURT OF THE EIGHTEENTH JUDICIAL CIRCUIT OF FLORIDA
CASE NO. 86-1539-CA-99-P
GENERAL JURISDICTION DIVISION
FEDERAL NATIONAL MORTGAGE ASSOCIATION PLAINTIFF,

Legal Notice
IN THE CIRCUIT COURT OF THE EIGHTEENTH JUDICIAL CIRCUIT OF FLORIDA
CASE NO. 86-1539-CA-99-P
GENERAL JURISDICTION DIVISION
FEDERAL NATIONAL MORTGAGE ASSOCIATION PLAINTIFF,

Legal Notice
IN THE CIRCUIT COURT OF THE EIGHTEENTH JUDICIAL CIRCUIT OF FLORIDA
CASE NO. 86-1539-CA-99-P
GENERAL JURISDICTION DIVISION
FEDERAL NATIONAL MORTGAGE ASSOCIATION PLAINTIFF,

Legal Notice
IN THE CIRCUIT COURT OF THE EIGHTEENTH JUDICIAL CIRCUIT OF FLORIDA
CASE NO. 86-1539-CA-99-P
GENERAL JURISDICTION DIVISION
FEDERAL NATIONAL MORTGAGE ASSOCIATION PLAINTIFF,

Legal Notice
IN THE CIRCUIT COURT OF THE EIGHTEENTH JUDICIAL CIRCUIT OF FLORIDA
CASE NO. 86-075-CA-99-G
GENERAL JURISDICTION DIVISION
ALLIANCE MORTGAGE COMPANY, Plaintiff,

CELEBRITY CIPHER
Celebrity Cipher cryptograms are created from quotations by famous people, past and present. Each letter in the cipher stands for another. Today's clue: X equals G.

CELEBRITY CIPHER
Celebrity Cipher cryptograms are created from quotations by famous people, past and present. Each letter in the cipher stands for another. Today's clue: X equals G.

CELEBRITY CIPHER
Celebrity Cipher cryptograms are created from quotations by famous people, past and present. Each letter in the cipher stands for another. Today's clue: X equals G.

CELEBRITY CIPHER
Celebrity Cipher cryptograms are created from quotations by famous people, past and present. Each letter in the cipher stands for another. Today's clue: X equals G.

Legal Notice
NOTICE OF PUBLIC HEARING
SEMINGO COUNTY PLANNING AND ZONING COMMISSION
SEPT 3, 1986, 7:00 PM
Room W-120
SEMINGO COUNTY SERVICES BLDG., SANFORD, FLORIDA

BLOOM COUNTY
by Berke Breathed
SO HOW ARE YOU GETTING ALONG WITH BERT?

BLOOM COUNTY
by Berke Breathed
OPUS, I THINK YOU'RE JEALOUS.

BLOOM COUNTY
by Berke Breathed
YOU ARE AM NOT.

BLOOM COUNTY
by Berke Breathed
ANYWAY FINNER'S READY.

Legal Notice
NOTICE OF PUBLIC HEARING
SEMINGO COUNTY PLANNING AND ZONING COMMISSION
SEPT 3, 1986, 7:00 PM
Room W-120
SEMINGO COUNTY SERVICES BLDG., SANFORD, FLORIDA

71 - Help Wanted
CONSTRUCTION WORKERS
NEEDS: Former metal shop, exp. 1985-86. 2nd shift.

71 - Help Wanted
POLAR CUP, Florida's favorite frosted lemonade. We're offering you a unique opportunity to earn \$800 as a lone operator of one of our Polar Cup Trucks.

71 - Help Wanted
EXCELLENT INCOME for part time home assembly work. For information call: 504-41-8003 Extension 7960

71 - Help Wanted
FREE TUITION TO REAL ESTATE LICENSE SCHOOL
A New Career
A New Beginning
Call Fran Or Stu 323-3200

71 - Help Wanted
RELOCATING
Short term leases, furnished efficiencies, single or family, private, no pets. Call: 322-1469 after 4pm

71 - Help Wanted
FRANKLIN ARMS
1 Bdrm, 1 bath, \$335.00 Month
Central Air & Heat
Pool & Laundry Facilities

71 - Help Wanted
AIRLINE/TRAVEL SCHOOL
Travel Agent & Tour Guide
A.C.T. Travel School
1-800-432-3004

71 - Help Wanted
RECEPTIONIST
Excellent opportunity, typing and general office. Permanent position, never a fee!

71 - Help Wanted
SECRETARY
30 + w.p.m., word processing helpful. Top notch company. Permanent, temporary, part-time. Never a fee!

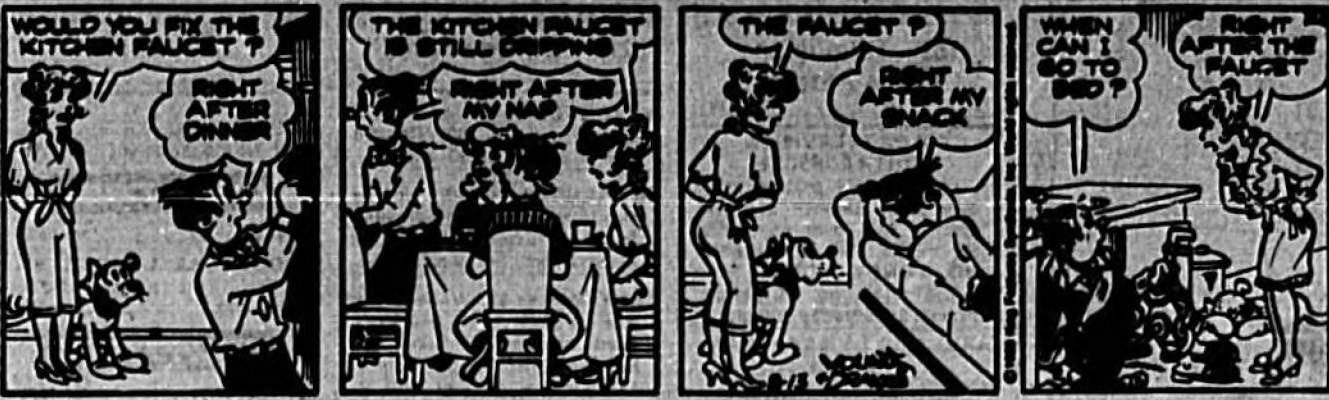
71 - Help Wanted
WANTED FOR MASONRY WORK
Laborers, no exp. necessary. Must have own vehicle. Call: 321-4242

71 - Help Wanted
ROOM IN PRIVATE HOME
Weekly rent, house privileges. Call: 321-4244

71 - Help Wanted
RELOCATING
Short term leases, furnished efficiencies, single or family, private, no pets. Call: 322-1469 after 4pm

71 - Help Wanted
FRANKLIN ARMS
1 Bdrm, 1 bath, \$335.00 Month
Central Air & Heat
Pool & Laundry Facilities

71 - Help Wanted
AIRLINE/TRAVEL SCHOOL
Travel Agent & Tour Guide
A.C.T. Travel School
1-800-432-3004



BEETLE BAILEY

by Mort Walker



THE BORN LOSER

by Art Sansom



ARCHIE

by Bob Montana



EEK & MEEK

by Howie Schneider



MR. MEN AND LITTLE MISS

by Hargreaves & Sellers



BUGS BUNNY

by Warner Brothers



FRANK AND ERNEST

by Bob Thaves



GARFIELD

by Jim Davis



TUMBLEWEEDS

by T. K. Ryan



Better See Specialist About The Discharges



DEAR DR. GOTT - I am a 50-year-old woman in good health. Six months ago I began to experience rectal bleeding and a mucous rectal discharge.

make an appointment in the metabolic clinic of a large hospital.

husband's interpretation is incorrect; the glands secrete an oily substance that protects the nipple during nursing.

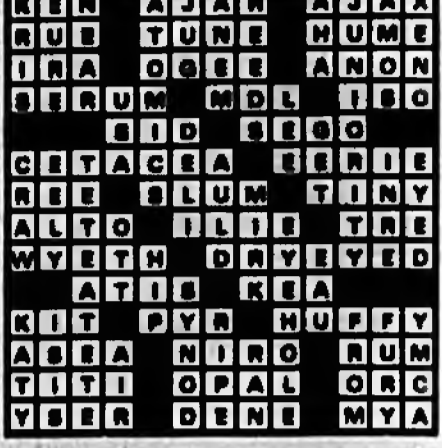
Send your questions to Dr. Gott at P.O. Box 91428, Cleveland, Ohio, 44101

DEAR DR. GOTT - The areolar glands are large oil glands surrounding each nipple. Your

ACROSS

- 1 Oklahoma town
4 Construction beam (2 wds.)
8 In the same place (abbr.)
12 Our (Fr.)
13 Tiny creature
14 Meth term
15 Summer drink
16 Assumed name
18 Marquis
20 Investigative agency (abbr.)
21 Wooden tub
22 Broadest
23 Compass point
26 Committee heads
30 Large wading bird
34 Intention
38 Superlative suffix
39 Legislature
37 South African antelope
38 Billboards
41 Voodoo cult deity
42 Norse night
43 Talking
45 That girl
47 Unused
48 Attach
51 Women's patriotic society (abbr.)
53 Dye compound
57 Wiggler
60 Fuzz
61 Fragrance
62 Sole
63 High mountain
64 Scruff
65 Village in South Africa
68 Arikara

Answer to Previous Puzzle



DOWN

- 1 Biblical tribe
2 Bird
3 On a cruise
4 Injured
5 Encore

WIN AT BRIDGE

By James Jacoby

South had a tough decision after East had opened with four hearts. Anything could be right, but four spades seemed the best choice.

South left West holding the Q-7 of spades and played the king of clubs and another. When East showed out on the third club, South let a diamond go as West won the trick.

Bridge hand diagram showing North, South, West, and East cards and play sequence.

HOROSCOPE

What The Day Will Bring...

YOUR BIRTHDAY AUGUST 14, 1986
Material rewards are in the offing for you during the year ahead, provided you're willing to pay the price.

LIBRA (Sept. 23-Oct. 23) Before offering advice to others, be sure you are following your own suggestions.
SCORPIO (Oct. 24-Nov. 22) On most occasions you're a pretty good bargain hunter.

PISCES (Feb. 20-March 20) You won't achieve career goals just because everyone thinks you're a good person.
ARIES (March 21-April 19) Today if you feel that something you're involved in isn't good for you, there is a strong possibility you're right.



by Leonard Starr

Exotic Cuisine

Hot Food For Hot Times

By **JOHN DEMERS**
UPI Food Editor
NEW YORK (UPI) — Don't look now, but a cuisine that once seemed too exotic even for most restaurants has become a popular alternative to traditional hot dogs and ribs for summer entertaining at home.

Thai food, near the top of Oriental styles for both spiciness and subtlety, is proving the choice of more and more hosts for parties at which beating the heat is a significant part of the mission.

With its affection for red chili peppers, Thai cuisine applies the old-fashioned southern notion that nothing is more cooling than perspiration, the same kind of reasoning used from Cajun country to Calcutta.

"We just followed both our own palates," said Boyce Brawley, a partner with Jean-Michel Savoca in a catering firm called New York Parties and one of the first to view Thai cuisine in a home entertaining context.

"Over the years you start thinking about what the next flavor will be, and that has a lot to do with your own tastes."

The cuisine of Thailand has been influenced over the centuries by its neighbors, primarily China and India. Curries, naturally, came from India, while stir-frying was learned from the Chinese.

The other major influence was a bit more surprising, but Europe staked its culinary claims on Thailand (or Siam, as it long was known) via the country's many ports. Staples like chili peppers, tapioca and coffee found their way in with the help of foreign sailors.

Like most other Asian cuisines, Thai food requires a relatively long time to prepare but very little time to cook — making it perfect for enjoying one's own parties. Stir-frying, most often in a wok, is the

flavored cooking technique. Unique spices in Thai cooking include lemon grass and galangale, known as loas or ka. A special fish sauce, usually referred to as nampla, is used as a flavor enhancer and is available at most Oriental groceries. It should be used carefully at first because of its strong flavor.

Fresh ginger and cilantro (also popular in southwestern cuisine) are used extensively, and a hot sauce called nam prik is commonly placed on every table as Americans set out salt and pepper.

"We've started introducing Thai food with other things on mixed-bag evenings," said Brawley, an industrial engineer by training but a chef by passion.

"Rather than having a taco table, we'll have Thai food. We've had a wonderful reaction to it, and I think it's going to be a really big seller in the fall."

Here are three recipes provided by New York Parties for summer entertaining. The dishes include a version of the ultimate Thai soup, a simple cashew chicken and a pungent mix of string beans with fresh ginger.

SPICY SHRIMP SOUP

- 1/2 pound shrimp (peeled but retaining shell at tail)
 - 4 cups water
 - 1 stalk fresh lemon grass, sliced (available at Oriental markets)
 - 1 8-ounce can straw mushrooms, drained
 - 1-4 Tbsp Thai fish sauce, according to preference
 - 1/4 cup fresh lime juice
 - 2 Tbsp sliced green onions
 - 1 Tbsp chopped cilantro
 - 1-4 red chili peppers, seeded and chopped
 - Chinese parsley sprigs for garnish
- Devein shrimp. Bring water to a boil. Add lemon grass and straw mushrooms, then reduce

heat to medium-low. Add shrimp and cook for 3 minutes. Stir in fish sauce and lime juice.

Sprinkle with green onions, Chinese parsley and red chili peppers, according to taste. Serve hot, garnished with sprigs of Chinese parsley.

CASHEW CHICKEN

- 1/4 pound boneless chicken breast
- 1/4 cup oil
- 2 cloves garlic, crushed
- 2 Tbsp oyster sauce
- 8 green onions, cut into 2-inch lengths
- 1-5 whole dried red chili peppers
- 1/2 pound unsalted roasted cashew nuts (about 3 cups)
- 4 large lettuce leaves
- Cilantro for garnish

Thinly slice the chicken. Heat oil in a wok, add garlic and stir-fry until light brown. Add chicken and oyster sauce, cooking for 4 to 6 minutes before reducing heat to medium.

Add green onions, red chili peppers and cashew nuts. Mix well. Place lettuce leaves on a platter and top with chicken. Garnish with cilantro.

STRING BEANS WITH FRESH GINGER

- 1 pound fresh string beans
 - 2 Tbsp oil
 - 1 stalk fresh lemon grass, finely chopped
 - 1 Tbsp shredded fresh ginger
 - 1-5 red chili peppers, seeded and finely chopped
 - 1/2 cup coconut milk
 - Salt to taste
 - 3 cups chopped cabbage
- Cut string beans into thin strips. Sauté lemon grass, ginger and red chilis in a hot wok. Stir in coconut milk and reduce liquid for 1 minute. Toss in the string beans.
- Season to taste with salt, removing from the heat when the beans are bright green. Pour hot beans over chopped cabbage.

Reuben Or Pizza? How About Both

By **Aileen Claire**
NEA Food Editor

Ingredients for a Reuben sandwich may vary, but it isn't a Reuben without the basic zesty sauerkraut.

A new cooking approach to this creative American basic is to prepare a luncheon snack or an evening supper treat. Serve with fresh fruits of the season and

iced tea.

REUBEN PIZZA

- 4 slices rye bread
- 6 slices corned beef, cut into 1-inch strips
- 1/2 cup shredded Cheddar cheese
- 1/3 cup thinly sliced dill pickles
- 1 1/2 cups sauerkraut, well drained
- 1/2 cup shredded mozzarella cheese

2 tablespoons Thousand Island dressing

MICROWAVE METHOD: Lightly toast bread in toaster. Arrange layers of corned beef, Cheddar cheese, dill pickles, kraut and mozzarella cheese on toast. Place pizzas on paper towel. Microwave on High 2 to 3 minutes or until cheese is melted. Spread lightly with dressing. This kitchen-tested recipe makes 4 servings.

Market Basket Shoppers BONANZA!

LEAN GROUND BEEF
5 lb. box **\$4.99**

T.G. LEE FRUIT DRINK
BUY ONE GET ONE **FREE**
Limit 2 With \$5.00 Food Order

PEPSI/MT. DEW
3 Fl. 16 Oz. **\$1.49**
with deposit

WELLESLEY FARMS ICE CREAM
Asst. Flavors 1/2 Gal. **99¢**

Fla. Grade A Premium FRYER WINGS
5 Lb. Box **\$3.95**

BELLY BUSTER FRANKS
5 lb. **\$7.59**

PAPER TOWELS
Jumbo Roll **21¢/1**

Martha White Plain or Self-Rising FLOUR
5 Lb. Bag **97¢**

U.S. Choice Heavy Western Beef CHUCK STEAK
5 Lb. Box **\$6.95**

FLA. GRADE A PREMIUM FRYER LEG QUARTERS
5 lb. box **\$2.95**

U.S. CHOICE HEAVY WESTERN BEEF CUBE STEAK
5 lb. box **\$9.95**

Dutch Laundry Detergent
42 oz. box **99¢**

Frozen FRENCH FRIES
5 lb. box **\$1.63**

GOODGIAN SUPERMARKETS
329 Sanford Avenue Sanford • 323-1580
Prices Good 8/14-8/20

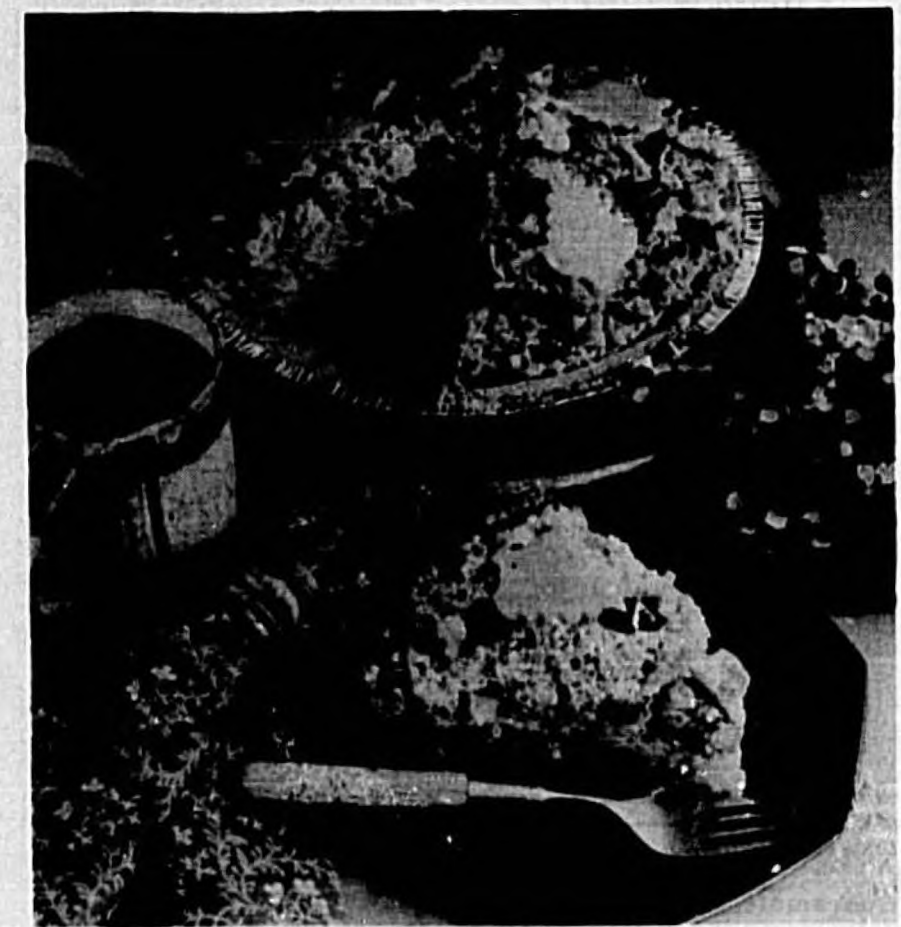
Hours: Mon-Fri 8am-7pm, Sat 8am-7pm, Sun 8am-1pm
SANFORD'S CHECK CASHING CENTER

Evening Herald COUPON SAVINGS Coming

Wed., Aug. 20 **Evening Herald**
Thurs., Aug. 21 **Herald Advertiser**

Don't miss this special section packed with money-saving coupons from your local merchants

For more information or to place a coupon for your business contact Advertising at 322-2611



Streusel Topping with Cheddar cheese enhances classic apple pie.

Nothing Tops Apple Pie Like Cheddar

By **Aileen Claire**
NEA Food Editor

Apple pie topped with Cheddar cheese knows no season. Here is an enriched version with streusel topping. Some will be tempted to add a whipped topping or ice cream. Apple-pie lovers will enjoy the pie hot or cold.

APPLE-CHEESE STREUSEL PIE

- 1 graham cracker ready-crust
 - 1 egg yolk
 - 1 can of sliced apples for pie (drain well if juicy)
 - 2 tablespoons flour
 - 1 teaspoon cinnamon
 - 1/4 teaspoon nutmeg
- Preheat oven to 375 degrees. Brush bottom and sides of crust evenly with egg yolk; bake on baking sheet until light brown, about 5 minutes. Remove from oven.
- Mix the apples, flour, cin-

namon and nutmeg together and put into pie crust.

- Topping:**
- 1/4 cup white sugar
 - 1/4 cup dark brown sugar
 - 1/3 cup butter
 - 1/4 cup flour
 - 4 heaping tablespoons powdered Cheddar cheese food or 4 tablespoons shredded Cheddar cheese
 - 1/2 cup coarsely chopped nuts (pecans or walnuts)

Put sugars and flour into butter until crumbly; then cut in cheese. Mix nuts lightly with crumb mixtures. Sprinkle over apples and bake 25 to 30 minutes at 375 degrees. Garnish with Cheddar cheese leaves (use a leaf-shaped cutter on thin slices of Cheddar cheese) immediately before serving. This kitchen-tested recipe makes 6 to 8 servings.

Thompson White or Red Flame

**Seedless
Grapes**

79¢
lb.

Ripe, Juicy Delicious (2-inch Size)
Fresh Peaches per lb. **39¢**



where shopping
is a pleasure
7 days a week

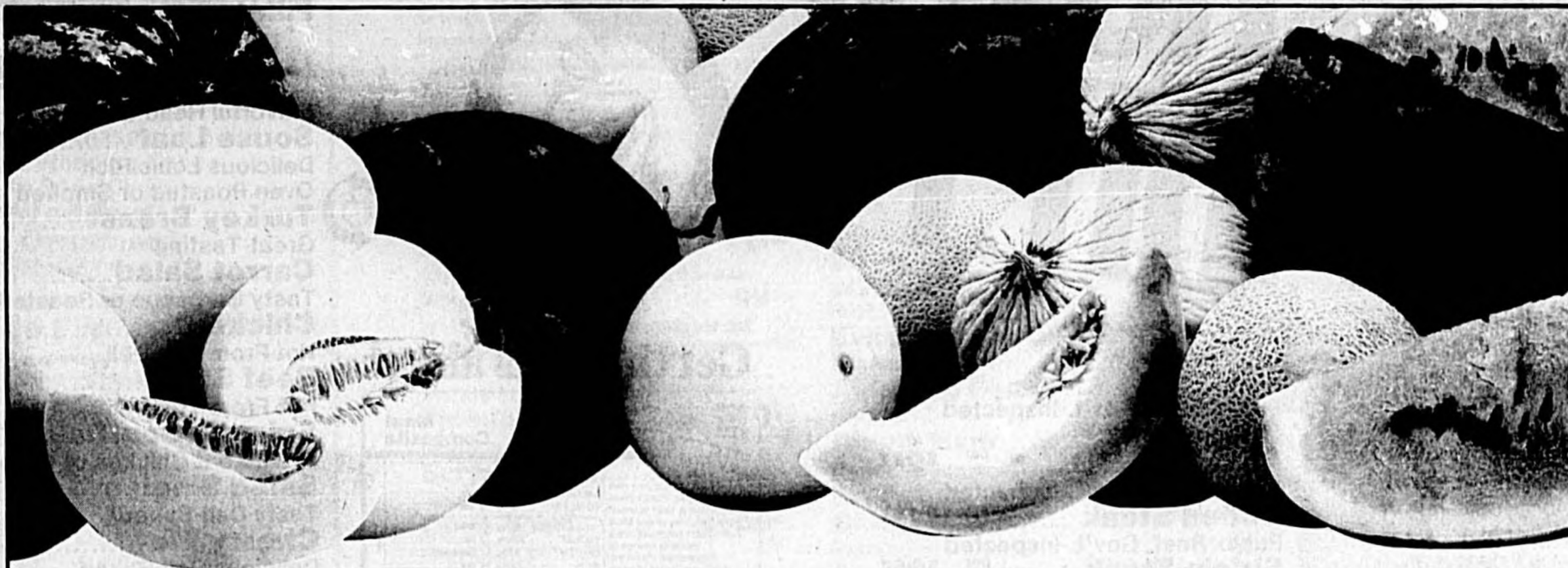
Made from Concentrate,
Publix Brand All Florida Chilled

**Orange
Juice**

half gal. **99¢**

Seed-Sweet Brand, (No Sugar Added), Chilled
**White Grapefruit
Sections** 20-oz. jar **\$1.89**

M-m-m-m-melons!



Ripe, Sweet,
Tasty Western

**Jumbo
Honeydews**

\$1.49
each

Nothing says summer like the sweet
taste of melons. And at Publix, we have
all your favorites: watermelon, cantaloupe,
honeydews, and more. Of course, like all our Publix fruit, each and every one is fresh picked, ripe and juicy—just bursting with flavor and goodness. Come savor the sweet taste of summer—with m-m-m-mouth-watering melons, and other flavorful fruits from Publix.

Serve Chilled, Ripe,
Sweet, Western

**Jumbo
Cantaloupe**

79¢
each

Excellent Steamed, Tender
Fresh Broccoli large bunch **99¢**
Salad Perfect, (Medium Size)
Tasty Tomatoes .. per lb. **49¢**

Colorful Fresh Cut
Fancy Carnations..... each bunch **\$2.99**

Select Your Favorites: Western
Assorted Melons

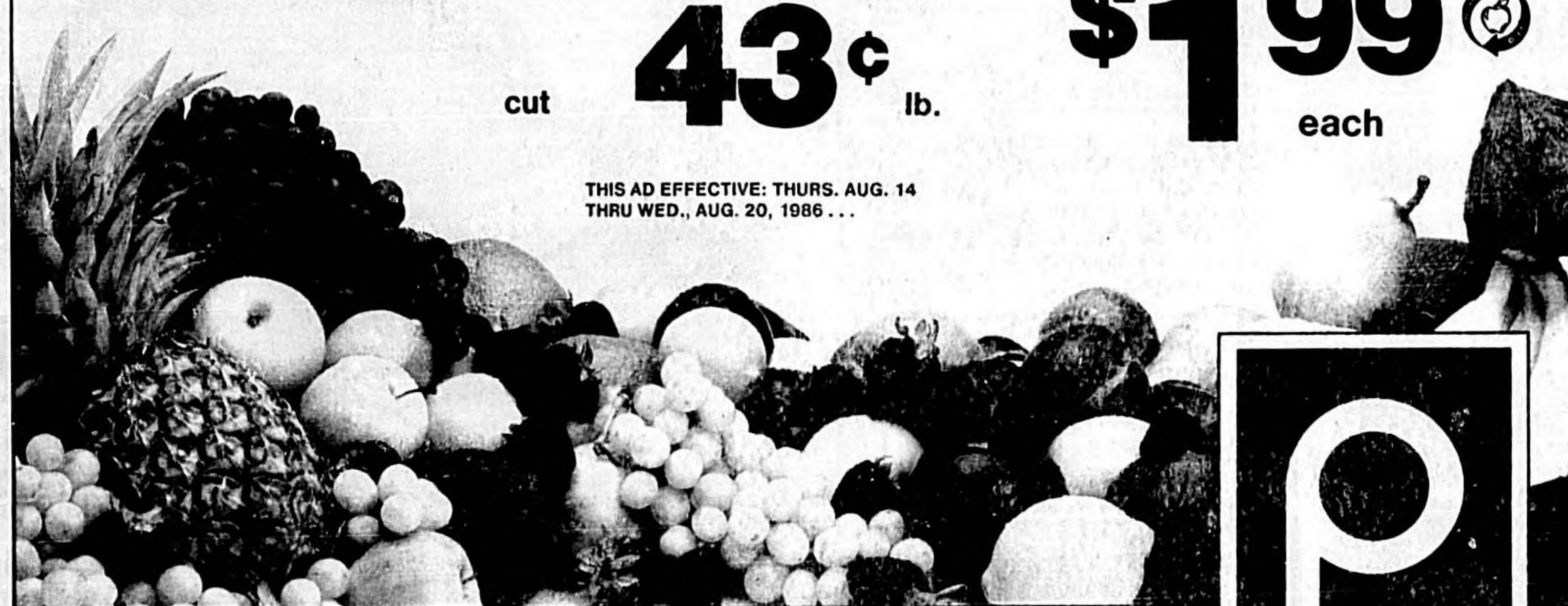
- Casaba •Crenshaw
- Persian •Juan Canari

whole **39¢** lb.
cut **43¢** lb.

Red, Ripe, Juicy (16-Lb. Average)

Watermelon
\$1.99
each

THIS AD EFFECTIVE: THURS. AUG. 14
THRU WED., AUG. 20, 1986 . . .



Publix Reserves The Right
To Limit Quantities Sold.

When you expect more, Publix is your store.



PRICE SPECIALS Buy 1 with each item \$4.00 Stamp Price Special Certificate Fresh Homogenized Publix Milk gallon size \$2.03 <small>(2% Low Fat, 1% Low Fat or Skim, Gallon Size Available with One \$4.00 Stamp Price Special Certificate)</small>	PRICE SPECIALS Buy 1 with each item \$4.00 Stamp Price Special Certificate Breakfast Club Grade A Florida White Large Eggs per dozen 39¢	PRICE SPECIALS Buy 1 with each item \$4.00 Stamp Price Special Certificate Sunnyland Breakfast Links 10-oz. pkg. 89¢	PRICE SPECIALS Buy 1 with each item \$4.00 Stamp Price Special Certificate Lykes Meat or Beef Jumbo Franks 1-lb. pkg. \$1.09	PRICE SPECIALS Buy 1 with each item \$4.00 Stamp Price Special Certificate (Bonus Pack) Wesson Oil 32-oz. bot. 79¢	PRICE SPECIALS Buy 1 with each item \$4.00 Stamp Price Special Certificate Hunt's Tomato Ketchup 32-oz. bot. 59¢
--	---	---	---	--	---



Exclusively at Publix

ROTATION DIET

Take a "vacation" from your diet and still lose weight!

ROTATION DIET WEEK 4

If you've finished the first three weeks of the Rotation Diet, you're ready for a "vacation." Come pick up this week's pamphlet and find out how to maintain your weight loss and get ready for Phase Two. And remember, you can start the Rotation Diet at any time. Everything you'll need is at your neighborhood Publix store!

- Publix Beef, Gov't.-Inspected **Sirloin Tip Roast** per lb. **\$2.37**
- Publix Beef, Gov't.-Inspected **Cubed Steak** per lb. **\$1.97**
- Publix Beef, Gov't.-Inspected **Sirloin Steak** per lb. **\$2.57**

Publix Beef, Gov't.-Inspected, Boneless Full Cut **Round Steak**
per lb.

\$1.37



Get the facts about

MEAT NUTRI-FACTS		Meat Composites	
The next time you visit your Publix meat department, take yourself to a free copy of our Meat Nutri-Facts brochure. It's a valuable source of information about the nutritional value of fresh meat, and a guide to your good health and well-being.			
CALORIES	236	12	100
TOTAL FAT	12.9g	19	100
CHOLESTEROL	69mg	23	100
SODIUM	36mg	12	100
PROTEIN	29g	50	100
IRON	2.9mg	16	100
ZINC	4.7mg	32	100
THIAMIN	12mg	6	100
NIACIN	3mg	15	100
B-12	2.6mcg	43	100

Today's meat is lower in fat, calories and cholesterol than ever before. That's why Publix is introducing Nutri-Facts, a program developed to provide nutrition labeling. Nutri-Facts makes it easy to count calories, watch sodium and cholesterol intakes and enjoy Publix meat.

- ### Seafood
- Seafood Treat! **Small Shrimp** per lb. **\$4.99**
 - Gulf Maid (Frozen) Cod Fillet** per lb. **\$3.19**
 - Virginia Capes (Frozen) Flounder Fillet** 1-lb. pkg. **\$3.99**
 - Fresh Frozen Mahi-Mahi Fillets** per lb. **\$1.89**

- ### Deli
- Flavorful Head Cheese or Souse Loaf** qtr. lb. **69¢**
 - Delicious Louis Rich Oven Roasted or Smoked Turkey Breast** qtr. lb. **\$1.19**
 - Great-Tasting Carrot Salad** per lb. **\$1.29**
 - Tasty Barbecue or Roasted Chicken** per lb. **\$1.59**
 - Hot From The Deli Beef Stew** per lb. **\$3.59**
 - Hot From The Deli Spinach Souffle** .. per lb. **\$1.89**
 - Orval Kent Chicken or Crabmeat Salad Singles** 7-oz. pkg. **\$1.89**
 - Tasty Deli-Baked Cherry Pie** each for **\$2.69**
 - Delicious Deli-Baked Kaiser Rolls** 6-ct. pkg. **79¢**
 - Tasty Treat Yellow, White, or Swiss American Cheese** qtr. lb. **59¢**

- Young N' Tender, Gov't.-Inspected, Shipped D&D, Fresh Not Frozen, Premium Grade, Fresh Cornish Hens**... per lb. **\$1.09**
- Sliced (Frozen) Beef Liver** per lb. **69¢**

1/4 INCH TRIM
In the Publix meat department you'll find professional meat cutters who take extra steps to make sure you take home the **LEANEST CUTS POSSIBLE**. Our steaks and roasts, pork and lamb are trimmed to not over **1/4 INCH AVERAGE**. That saves you money. Because less fat means more value for your food dollar.

- ### Frozen Seafood
- Wakefield Crabmeat & Shrimp** 6-oz. pkg. **\$3.99**

- ### Candy
- Assorted Flavors, Wrigley **Chewing Gum** 10-pk. **95¢**
 - 5-oz. Screaming Yellow Zonkers or **Fiddle Faddle** each box **59¢**

- ### Health & Beauty
- Normal-Oily or Normal-Dry Liquid **Prell Shampoo or Conditioner** 7-oz. bot. **99¢**
 - Aqua-Fresh (15c Off Label) Toothpaste** 4.6-oz. tube **99¢**
 - Pump, Skin Cream** 10.5-oz. size **\$2.39**
 - Noxzema** 10.5-oz. size **\$2.39**

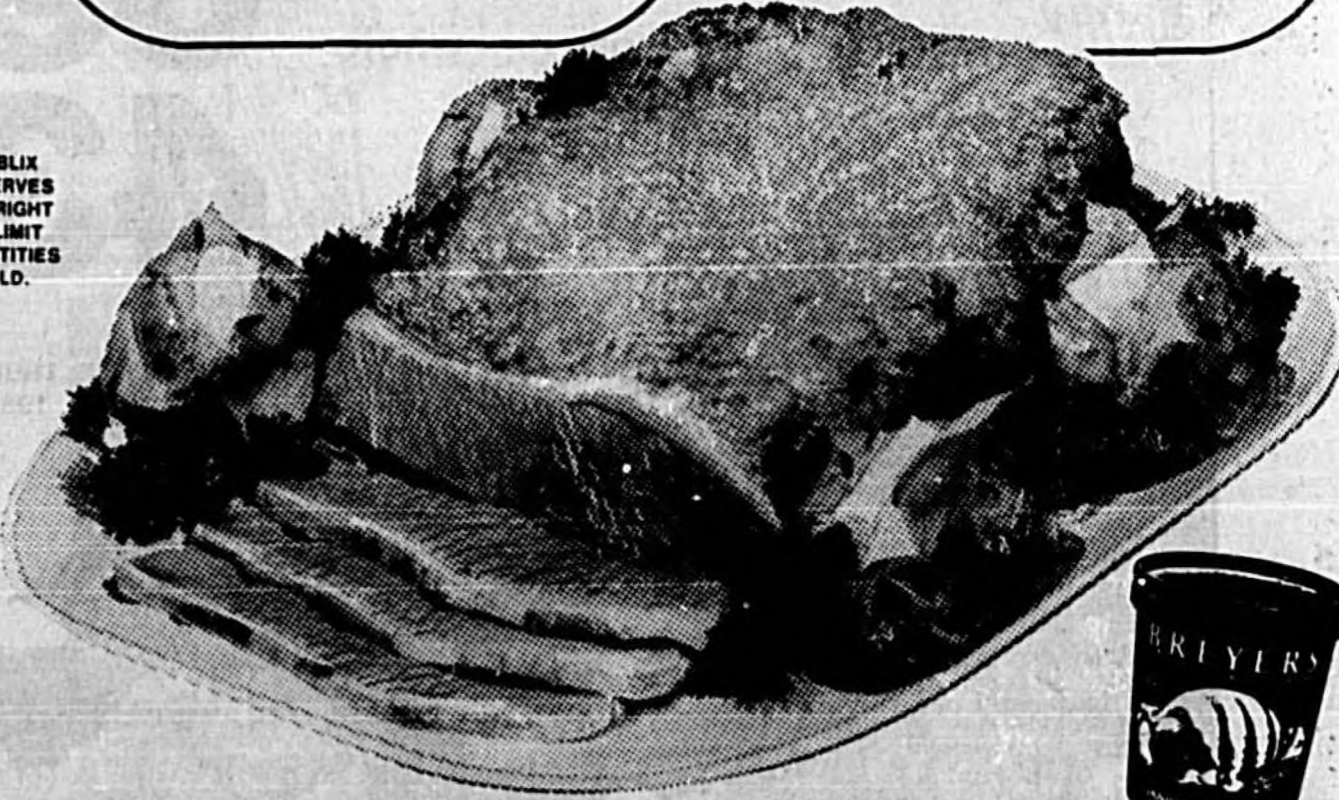


COUPON HALF OFF
With This Coupon
Any Style Mens or Ladies Bonneau Sunglasses each pair
6 7 8 9 10 12 14 15
(Effective Aug. 14-20, 1986) (C)

PUBLIC RESERVES THE RIGHT TO LIMIT QUANTITIES SOLD.

U.S.D.A. Choice **Leg o' Lamb**
per lb.
\$1.89

Lykes Old Fashion or Mild **Corn Beef Brisket**
per lb.
\$1.69



Walt Disney FUN-TO-LEARN LIBRARY
This week's feature **VOLUME 5 Animals and Their Babies**
\$2.59
99¢
BANTAM BOOKS.

THIS AD EFFECTIVE: THURS. AUG. 14 THRU WED., AUG. 20, 1986 ...

Makes a Delicious Root Beer Float!
Regular or Diet
Hires Root Beer
2-lit. bot. **99¢**

Assorted Flavors **Breyers Ice Cream**
qtr. ctn. **\$1.69**

PRICE SPECIALS
 (Buy 1 with each item \$2.00 Stamp Price Special Certificate)

From Produce,
 Zesty Yellow
Cooking Onions
 3 lb. bag **19¢**

PRICE SPECIALS
 (Buy 1 with each item \$2.00 Stamp Price Special Certificate)

Publix Salted or
 Unsalted Dry Roasted
Peanuts
 16-oz. jar **\$1.19**

PRICE SPECIALS
 (Buy 1 with each item \$2.00 Stamp Price Special Certificate)

Northern
 White or Assorted
Bathroom Tissue
 4-roll pack **49¢**

PRICE SPECIALS
 (Buy 1 with each item \$2.00 Stamp Price Special Certificate)

Dairy-Fresh
Sour Cream
 16-oz. cup **39¢**

Breakfast Club Regular
Margarine
Quarters
 4 1-lb. **\$1**
 ctns.

Danish Bakery

For The Health Conscious
 100% Whole Wheat
Bread
 loaf **79¢**

With the purchase of a 3-tier
 or larger Wedding Cake
 (Value to \$15.00)
**Free Wedding
 Cake Ornament**
 (Effective August, 1986)

A Delicious New Item
Orange Flip..... each for **59¢**

Items above available at Publix
 stores with in-store bakeries only.

Items below available at all
 Publix stores & Danish Bakeries.

**Strawberry Cheese
 Coffee Cake**.... each for **\$1.79**

**Zucchini
 Muffins**..... 6-ct. **\$1.89**

**Green Giant Sliced or Whole
 Mushrooms**..... 4.5-oz. jar **99¢**

Publix Special Recipe
**Butter Sesame
 Bread**..... 2 16-oz. **\$1.19**
 leaves

Publix Special Recipe
**Sesame
 Sandwich Rolls**.... 6-ct. **59¢**
 pkg.

Grandma's 4 to 5-oz.
 Assorted Varieties
**Rich 'n Chewy
 Cookies**..... each **69¢**
 pkg.

Frito Nacho Cheese,
 Traditional, or Chlada
Tostitos..... 7.5-oz. **\$1.39**
 pkg.

Post Natural Cereal
Bran Flakes..... 18-oz. **\$1.49**
 box

Nabisco
Oreo Cookies..... 20-oz. **\$2.29**
 pkg.

Assorted Fruit Flavors
Hi-C 100 Drinks... 44-oz. **\$1.19**
 bot.

Assorted Fruit Flavors 8.45-oz.
Hi-C 100 Drinks... 3-pk. **99¢**
 ct.

In Heavy Syrup or Unsweetened
 Pineapple Juice, Dole Crushed,
 Sliced, or Chunks or
 Tidbits in Juice
Pineapple..... 20-oz. **79¢**
 can

New Laundry Detergent
Surf..... 72-oz. **\$2.89**
 box

Gentle
Dove Soap..... 3.5-oz. **69¢**
 bar

New Concentrated
 Fabric Softener
Snuggle..... 64-oz. **\$2.09**
 bot.

Reg. or Sugar Free
 Assorted Flavors
**Royal Gelatin
 Dessert**..... 3 reg. **89¢**
 pkgs.

BE A BIG SHOT

20 X 30 — \$15.99
 16 X 20 — \$10.99

Great gift for parents, grandparents, boy room or dorm!
 Available from 35mm negative or slide.
 Limited time offer. Not available in conjunction with any other promotional offer.

GIANT PHOTO POSTERS

Smucker's
Strawberry Jam.. 2-lb. **\$1.99**
 jar

Seasoned With Bacon,
 Bush's Best
Baked Beans..... 28-oz. **79¢**
 can

Assorted Flavors
Alpo Dog Food... 3 14-oz. **\$1**
 cans

Hormel
Chunk Ham..... 6.75-oz. **\$1.09**
 can

Hormel Chunk
**Breast of
 Chicken**..... 6.75-oz. **\$1.29**
 can

Publix Tall
Garbage Bags..... 15-ct. **89¢**
 pkg.

Publix
Trash Bags..... 20-ct. **\$1.89**
 pkg.

In Water or Oil,
 Chicken of The Sea Light
Chunk Tuna..... 6.5-oz. **39¢**
 can

Dairy

1-lb. ctn. Lightly Salted or
 Sweet Unsalted Qtrs. or 1-lb. bowl
 Lightly Salted Soft Land O Lakes
**Country Morning
 Blend**..... each **\$1.45**
 pkg.

Reg. or Chocolate Lowfat
Lactaid Milk..... 6-oz. **75¢**
 ct.

Dairy-Fresh Assorted Swiss-Style
Yogurt..... 3 8-oz. **89¢**
 cups

Pillsbury White or Wheat
Pipin' Hot Loaf..... 10-oz. **95¢**
 can

Sargento Colby or
 Cheddar Halfmoon
Longhorn Cheese.. 10-oz. **\$1.69**
 pkg.

Sargento Swiss or Sharp Cheddar
Shredded Cheese.. 4-oz. **89¢**
 pkg.

Kraft Individually-Wrapped
 Cheese Food
Sliced American.... 1-lb. **\$2.49**
 pkg.

Sealtest Small Curd
Cottage Cheese.... 24-oz. **\$1.69**
 cup

Light N' Lively Lowfat
Cottage Cheese.... 24-oz. **\$1.69**
 cup

County Line Cheese: Medium
 Sharp Cheddar, Monterey Jack
 w/ Jalapeno Peppers or
Muenster..... 8-oz. **\$1.45**
 pkg.

COUPON

30¢ OFF
 With This Coupon ONLY
 Halfmoon Colby, Old Fashioned
 Swiss, Baby Swiss Wedge,
 No-Salt Swiss or Gouda
Amish Cheese
 per pkg.
 (Effective Aug. 14-20, 1986)

Assorted Flavors
 Publix Diet
**Soft
 Drinks**
 2 lit. bottle **69¢**

Publix Real
Mayonnaise
 32-oz. jar **89¢**

(Limit 1 Please, With Other
 Purchases of \$7.50 or More,
 Excluding All Tobacco Items)

In Spring Water,
 Chicken of The Sea, Light
**Chunk
 Tuna**
 6.5-oz. can **39¢**

Reg., ADC, or
 Elec. Perk Coffee
**Maxwell
 House**
 1-lb. can **\$2.59**

(Limit 1 Please, With Other
 Purchases of \$7.50 or More,
 Excluding All Tobacco Items)

Frozen Food

Minute Maid Reg. or Country Style
 Concentrated
Orange Juice..... 12-oz. **89¢**
 can

Clarks Breaded Veal or Chopped
Sirloin Steak..... 20-oz. **\$2.49**
 pkg.

Aunt Jemima
**Buttermilk
 Pancakes**..... 9.25-oz. **99¢**
 pkg.

Assorted Varieties Totino
 Crisp Crust 10 inch
Party Pizzas..... each **99¢**
 pkg.

Chicken, Turkey, Salisbury Steak,
 or Veal Parmagian
Banquet Dinners... 11-oz. **89¢**
 pkg.

Sara Lee Streusel or Pecan
Coffee Cake..... 11.5-oz. **\$2.39**
 pkg.

Sara Lee 23.5-oz. French or
 26-oz. Strawberry
Cheese Cake..... each **\$2.99**
 pkg.

Southland Reg. or French Cut
Green Beans..... 16-oz. **89¢**
 poly bag

COUPON

\$1.00 OFF
 With This Coupon ONLY
 Halibut Teriyaki, Sole in Wine
 Sauce, Swordfish in Lemon Parsley
 Sauce, or Flounder Provencale
**Taste O'Sea
 Fish Dishes**
 12-oz. pkg.
 (Effective Aug. 14-20, 1986) C

Polk, Highlands, Orange, Lake,
 Seminole, Osceola Co. Mt. Dew
 or Reg. or Diet: Pepsi Free,
 Dr. Pepper, Assorted
 Slice Flavors or
Pepsi Cola
 2-liter **\$1.05**
 bottle

Reg. or Light
Stroh's Beer
 6-pk. **\$2.39**
 12-oz. bots.

(Limit 4 Please, With Other Purchases of
 \$7.50 or More, Excluding all Tobacco Items)

Chablis, Rose, Rhine, Burgundy
**Twelve Oaks
 Wine**
 3-liter **\$4.99**
 bottle

COUPON

\$1.00 OFF With This
 Coupon
**and Purchase of \$7.00
 or More of any
 School Supplies**
 (Effective Aug. 14-20, 1986) (C)

This Ad Effective At These
 Locations Only where shopping is a pleasure. 7 days a week

**SEMINOLE
 CENTRE
 3609 ORLANDO
 DRIVE
 SANFORD**

**LONGWOOD
 VILLAGE
 CENTER,
 LONGWOOD**

Use the convenient
 automated teller at
 Publix, it's...
Presto!

Publix

DOUBLE MANUFACTURER'S COUPONS EVERYDAY

WE WILL DOUBLE THE FACE VALUE OF MANUFACTURER'S COUPONS UP TO AND INCLUDING 50c. COUPONS FROM 5c UP TO \$1.00 WILL BE REDEEMED FOR \$1.00.

1. Limit one coupon per item.
2. A limit of three coupons for the same item will be allowed per customer. All other coupons of that item will be considered for face value only.
3. If the value of the coupon, or the double value of the coupon, exceeds the retail price of the item, the customer is entitled only to the retail value of the item. (No cash back).
4. Customers must adhere to all manufacturer's purchase requirements stipulated on the face of the coupon. Expired coupons will not be honored.
5. This offer excludes free coupons, Winn-Dixie coupons, other retailer coupons, refund certificates and items excluded by law.

EXAMPLE OF REDEMPTION VALUES
 25c Coupon — 50c Value
 50c Coupon — \$1.00 Value
 75c Coupon — \$1.00 Value

JOIN THE FUN AND EXCITEMENT NOW AT WINN-DIXIE



America's Supermarket™

PLAY... COUPONS & CASH BINGO™

OVER \$6,000,000

IN CASH AND VALUABLE COUPONS

Now Bingo is more fun and more rewarding! You may win up to \$1,000 in cash while you collect money saving coupons in every game ticket. So, shop often and save more at WINN-DIXIE...America's Supermarket.

PRICES GOOD AUGUST 14-16, 1986

SOFT 'N PRETTY BATH TISSUE
4 ROLL PKG. **98c**
Limit 2 with \$5.00 or more purchase excl. cigs.

PREMIUM GRADE FRESH FRYER LEGQUARTERS
10-LB. BAG **49c**
LB.
PREMIUM GRADE FRESH FRYER (LESS THAN 10 LBS.) Legquarters . LB. 69c

REGULAR MILLER or LITE BEER 6-PK 12-oz. **\$2.39**
Limit two 6-packs with \$5.00 or more purchase excl. cigs.

THOMPSON SEEDLESS WHITE GRAPES
LB. **79c**

W-D BRAND USDA CHOICE BEEF BONELESS SIRLOIN TIP ROAST
LB. **\$1.87**
W-D BRAND USDA CHOICE BEEF BONELESS SIRLOIN Steak LB. \$1.97

FLAVOR OF THE MONTH SUPERBRAND Butterscotch Royale ICE CREAM
HALF GAL. **99c**
SAVE 60c

DELI-BAKERY DELI SLICED TO ORDER ROAST BEEF
HALF LB. **\$2.49**
HERNICH MEAT, BEEF OF GERMAN Bologna LB. \$1.99
AVAILABLE ONLY AT STORES WITH DELIS

AIM TOOTH PASTE
6.4-oz. SIZE **\$1.65**
REGULAR FLAVORED TOOTH PASTE
FLUORIDE
UNREFINED
Cavity Protection

DEL MONTE CATSUP
32-oz. BTL. **99c**

SUPER BONUS SPECIALS

1 Pick up blank Super Bonus Certificates at our checkout counters. 2 You get a Super Bonus Stamp for every \$1 you spend. Paste 36 Super Bonus Stamps on each certificate. 3 When you check out present one filled Super Bonus Certificate for each Super Bonus Special you select.

<p>SUPER BONUS SPECIAL MIRACLE WHIP QT. JAR 98c WITH ONE FILLED SUPER BONUS CERTIFICATE GOOD AUGUST 14 - 16, 1986</p>	<p>SUPER BONUS SPECIAL SCOTT TOWELS ROLL 9c WITH ONE FILLED SUPER BONUS CERTIFICATE GOOD AUGUST 14 - 16, 1986</p>	<p>SUPER BONUS SPECIAL GOLD MEDAL FLOUR 5-LB. BAG 39c WITH ONE FILLED SUPER BONUS CERTIFICATE GOOD AUGUST 14 - 16, 1986</p>	<p>SUPER BONUS SPECIAL REGULAR NABISCO OREOS 20-oz. PKG. \$1.59 WITH ONE FILLED SUPER BONUS CERTIFICATE GOOD AUGUST 14 - 16, 1986</p>	<p>SUPER BONUS SPECIAL ALL GRINDS FOLGERS COFFEE 1-LB. CAN \$2.49 WITH ONE FILLED SUPER BONUS CERTIFICATE GOOD AUGUST 14 - 16, 1986</p>
<p>SUPER BONUS SPECIAL REGULAR CLOROX BLEACH GAL. 39c WITH ONE FILLED SUPER BONUS CERTIFICATE GOOD AUGUST 14 - 16, 1986</p>	<p>SUPER BONUS SPECIAL SUPERBRAND SPREAD 3-LB. TUB 59c WITH ONE FILLED SUPER BONUS CERTIFICATE GOOD AUGUST 14 - 16, 1986</p>	<p>SUPER BONUS SPECIAL W-D BRAND MEAT or BEEF FRANKS 12-oz. SIZE 89c WITH ONE FILLED SUPER BONUS CERTIFICATE GOOD AUGUST 14-20, 1986</p>	<p>SUPER BONUS SPECIAL W-D BRAND MEAT or THICK SLICED BOLOGNA 12-oz. SIZE 89c WITH ONE FILLED SUPER BONUS CERTIFICATE GOOD AUGUST 14-20, 1986</p>	<p>SUPER BONUS SPECIAL ASTOR BROCCOLI SPEARS 24-oz. SIZE 99c WITH ONE FILLED SUPER BONUS CERTIFICATE GOOD AUGUST 14-20, 1986</p>