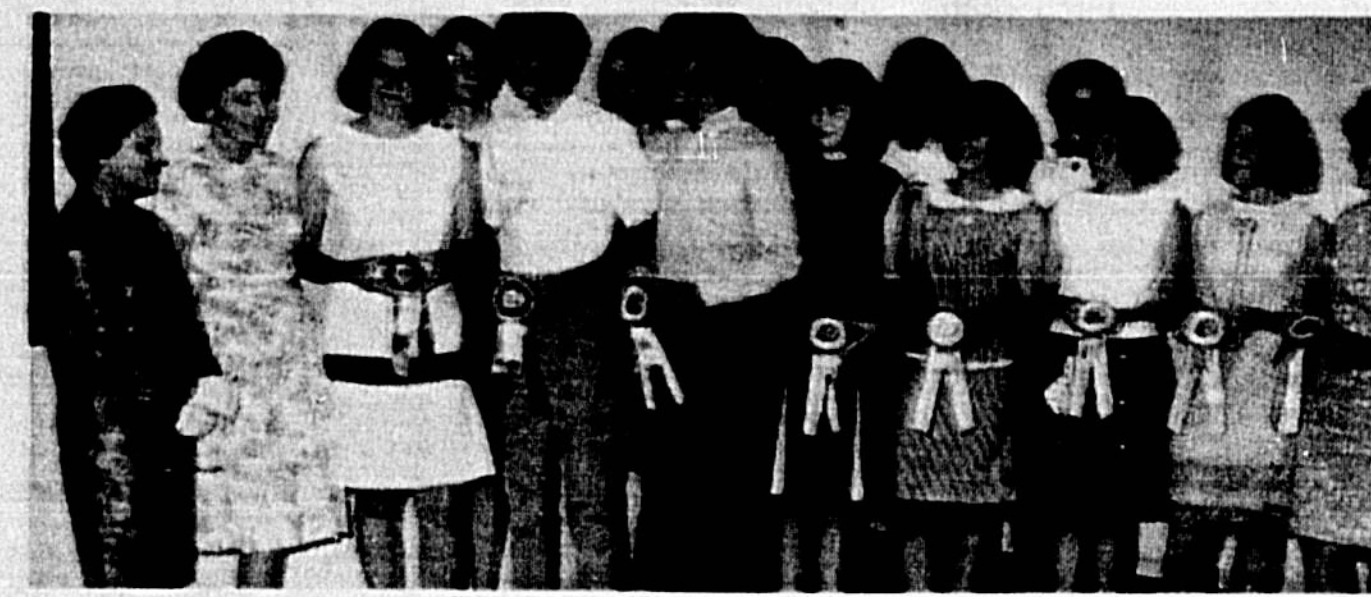




NEW MEMBERS of American Legion Auxiliary Unit 58 of Sanford are welcomed by Mrs. Betty Luoecker (right, front), president...



JUNIOR HIGH finalists in Americanism essay contest sponsored by American Legion Auxiliary Unit 58 are shown with Mrs. Louis Kosky, teacher...

'Lucille Baxter Fund' Grows

By MRS. JOS. E. MATHEUX
After just one week's efforts and the warm-hearted response of the generous people of Seminole County, the "Lucille Baxter Fund" is well on the way to becoming a real success.

Lucille is showing some hopeful signs of response to the many treatments and the therapy. She is a lovely young girl, just 20 years old. Special arrangements have been made with John Moore through the United State Bank of Seminole to set up a trust fund to help this unfortunate young person regain her health...

Student Council Officers Named In Oviedo
Students at Oviedo High School elected junior and senior high school student council officers for the coming year.

New faster schedules via Trailways and direct thru routes
Plan your trip homebound to enjoy Spring all the while. The whole country, from Florida to Canada, is ablaze with flowers and shrubs.

Directory Open In Sanford
Sanford business firms are being invited to apply for listings in the new Casseberry City Directory now in process of publication by Casseberry Police and Fire Departments.

Trailways: easiest travel on earth
First six-day bike race was held in the old Madison Square Garden in New York in 1901.

Round-Eyed Snakes Are Not Poisonous

By STAFFORD DERRY
What one needs to know about snakes was explained by a nationally known authority—Jack Raymon, of Casselberry, retired herpetologist — at the weekly meeting of the Sanford Rotary Club in the Civic Center yesterday.

Joseph Kennedy In Cape Cod
HYANNIS PORT, Mass. (AP) — Former Ambassador Joseph P. Kennedy has returned to his Cape Cod home after spending most of the winter in Palm Beach, Fla.

Worry of FALSE TEETH? Slipping or Irritating?
Don't be embarrassed by loose false teeth slipping, dropping or wobbling when you smile, talk or laugh. Just wear a little PERFECTION Milk.

You Deserve a Choice About Vitamin-Fortification of Milk
(MOST MILK NOW CONTAINS ADDED VITAMIN D)



Presently almost all milk sold homesteaders in the Orlando area contains added vitamin D. Your doctor may tell you that for some people such fortification may not only be unnecessary, but also undesirable.

ROBERTS PERFECTION FOODS, INC.
3400 SOUTH ORANGE BLOSSOM TRAIL, ORLANDO, FLORIDA
Presently almost all milk sold homesteaders in the Orlando area contains added vitamin D.

Pay Boost For Nurses

A \$2,200-a-month across-the-board salary increase for nursing personnel of Seminole Memorial Hospital was approved by the board of trustees Tuesday afternoon.

How Jenö Played Sanla
Generous Jenö Paulucci, 41, of Sanford, who built a \$3 million business from a literal bean sprout in 20 years, gave his Chun King Corporation employees a \$1 million tax.

No Hospital In S. Seminole Now - Besserer

Even though some of the inconveniences to residents of South Seminole County in using facilities at Seminole Memorial Hospital in Sanford are recognized, building of a hospital in the area at this time does not have approval of Robert G. Besserer, hospital administrator.

Help Asked To Keep Center Open
By MAHYANN MILES
J. R. Grant, trustee of the Longwood Medical Center, in a stirring talk, appealed to representatives of 13 South Seminole County organizations...

Seminole Adds New Park Facility At Lake Jessup
Seminole County added a new park to its list with authorization by the Board of County Commissioners to improve the boat ramp and picnic facilities at the six acre site.

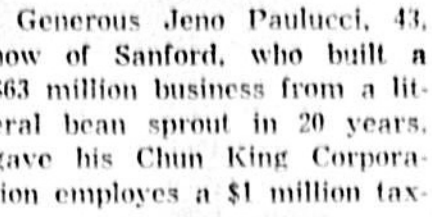
6,000 Auto Tags Sold In One Week
Sixteen per cent of the total number of automobile license tags expected to be sold in Seminole County this year were purchased during the first week which ended last Friday, Troy Roy, tax collector reports.

Band Barbecue
The Seminole High Band parents will sponsor a barbecue at the Elks Club Saturday at 5 p.m. A band concert will highlight the festivities.

The Sanford Herald

Phone 322-2611 or 425-5038 Zip Code 32771
WEATHER: Temperature in upper 80s Thursday.

How Jenö Played Sanla
Generous Jenö Paulucci, 41, of Sanford, who built a \$3 million business from a literal bean sprout in 20 years, gave his Chun King Corporation employees a \$1 million tax.



JENO PAULUCCI

free bonus for "long and faithful service."

Uncle Sam Declares War On Seminole
The IRS party expected to tangle with Seminole County in a court action is the Internal Revenue Service of the federal government.

Hospitalized GIs To Receive Gifts
A paperback book drive for hospitalized servicemen in Vietnam is being headed in Seminole County by Mrs. Nancy Nordstrom and in Central Florida by Col. and Mrs. Tim Wood, according to Gary Stryker, Dick DeVasto, Marine Corps recruiter.

Young Farmer
HARRISONBURG, Va. (AP) — A 34-year-old East Palatka (Fla.) man who began raising flowers on a small family plot in high school has been named one of the country's four outstanding young farmers.

'Action' Meet
The Community Action Executive Board will meet at 5:30 p.m. today at Pine St.

Double Session 'Gripe' To Be Aired By Board

The County School Board will be besieged by concerned parents from South Seminole Elementary and Junior High schools in the fall.

Plante Warns City, County Get Bills In
TALLAHASSEE (Sp.) — All governmental agencies in Seminole County were advised today to forward any proposed legislation immediately if they want action in the present session of the State Legislature.

Judge Stalls On Sand Lake
Circuit Judge William G. Akridge of Rockledge today ordered attorneys for both the county and plaintiffs in the Sand Lake Road dispute to submit memoranda of opinions on count one of the suit within 10 days.

Harvey Coulter
The commission, several months ago, determined by survey Sand Lake Road had "deviated" through the years to the north of its correct right of way and decided to relocate the road on its "correct" right of way.

Tom Lovett
Public auction has been set by IRS for 9:30 a.m. April 20 at the Oviedo Town Hall on 28 parcels of property owned by Daniels in Seminole to be sold.

Bill Gunter
Sen. Bill Gunter on the Seminole-Orange Delegation has been named to the powerful Appropriations Committee, Senate President Verle Pope announced today.

Bill Gunter Gets Top Post
Sen. Bill Gunter on the Seminole-Orange Delegation has been named to the powerful Appropriations Committee, Senate President Verle Pope announced today.

Bill Gunter
Sen. Bill Gunter on the Seminole-Orange Delegation has been named to the powerful Appropriations Committee, Senate President Verle Pope announced today.

Bill Gunter
Sen. Bill Gunter on the Seminole-Orange Delegation has been named to the powerful Appropriations Committee, Senate President Verle Pope announced today.

Bill Gunter
Sen. Bill Gunter on the Seminole-Orange Delegation has been named to the powerful Appropriations Committee, Senate President Verle Pope announced today.

Bill Gunter
Sen. Bill Gunter on the Seminole-Orange Delegation has been named to the powerful Appropriations Committee, Senate President Verle Pope announced today.

Bill Gunter
Sen. Bill Gunter on the Seminole-Orange Delegation has been named to the powerful Appropriations Committee, Senate President Verle Pope announced today.

Bill Gunter
Sen. Bill Gunter on the Seminole-Orange Delegation has been named to the powerful Appropriations Committee, Senate President Verle Pope announced today.

Bill Gunter
Sen. Bill Gunter on the Seminole-Orange Delegation has been named to the powerful Appropriations Committee, Senate President Verle Pope announced today.

Dial 322-1611 for a low-cost 4 1/2% auto loan.
\$4.50 Per Hundred Per Year
CONSULT THIS SAMPLE PAYMENT SCHEDULE
When You Shop For Your Car

Trucks Roll Again With U. S. Goods

WASHINGTON (AP)—Trucks began hauling the nation's goods to market again today after a partial contract agreement with the Teamsters Union ended a three-day industry lockout.

The three-year contract including an estimated 50-cent wage hike must still be ratified by 450,000 workers in some 12,000 trucking firms, but Teamsters General Vice President Frank Fitzsimmons urged the industry to immediately "get our people back to work."

Railroad Strike Barred

WASHINGTON (AP)—President Johnson, operating with jet plane speed in a ground transport crisis, signed into law today the resolution barring a nationwide railroad strike for an extra 20 days.

The National Mediation Board announced it had received word from the President, at a hemispheric summit meeting in Punta del Este, Uruguay, had affixed the signature that made the measure effective. Almost simultaneously word of the signing came in dispatches from Punta del Este.

Congress, showing its own strong burst of speed, had passed the measure only Tuesday.

Early morning action by the chief executive made it clear the document had been hurried to him in an overnight flight to make sure of heading off the proposed walkout of railroad shopworkers at 12:01 a.m. Thursday. Flight time is 10 hours or more.

The mediation board, in announcing the signing, also said it had sent out telegrams requesting the unions to cancel their strike authority. The board said the effect of the resolution is that no walkout can be called before May 2.

Even before formally receiving the resolution for signature, Johnson had called on management and the workers to make maximum use of the new 20-day period to avoid "the terrible consequences" of a nationwide rail stoppage.

The 20-day breather would extend a current 60-day truce that has blocked a strike by six railroad shopworkers which would hamstring railroads which account for 95 per cent of the nation's rail freight.

Johnson, asking Congress for the extension, had warned of the catastrophic effect of a prolonged rail strike on the nation's economy.

He said it could boost unemployment as high as 15 per cent, force nearly immediate layoffs of 40,000 coal miners and cripple attempts to supply U.S. fighting forces in Vietnam.

Members of the six unions average about \$2.50 an hour with skilled machinists receiving up to \$3.04. The unions are asking a 5 per cent pay boost. The railroads are offering 5 per cent.

Auto Cos. Call Back Workers

DETROIT (AP)—The nation's auto industry today mapped plans to call back thousands of workers laid off because of parts shortages blamed on the trucking shutdown.

A tentative contract agreement, reached early today between the Teamsters Union and the trucking industry in Washington, was expected to end scattered panic buying, mass layoffs in some industries and a nationwide scare of trucking shortages of many commodities.

"We are calling off our defensive shut-down," M. M. Gordon, president of TEL, said after the group's board of directors had met nearly three and a half hours.

"They'll go back to work as soon as possible," a Ford spokesman said. "I shouldn't take any longer than a day."

An exception, he said, is the Chicago area, where Teamsters are on strike and not represented by TEL.

In calling the lockout last Saturday at midnight, TEL had broadly hinted that President Johnson should invoke the Taft-Hartley Act with an 80-day cooling-off injunction.

But high government officials made it clear they wouldn't recommend an injunction unless the lockout effects became more severe. The contract agreement, however, was not expected to be reached until Thursday.

Gordon said the industry policy committee will meet Thursday. The board of directors of TEL will recommend to its policy committee that it accept the contract agreement, he said.

"This has been a real case of collective bargaining," he said.

The board of government presenters said chief federal mediator William E. Simkin, who worked for weeks with federal mediators Walter Maggioni and Gilbert Seidin to win the settlement.

In Chicago, one of the hardest hit cities during the lockout, a wave of panic buying stripped some supermarket shelves of canned goods and produce.

More than 20,000 auto workers in numerous cities were laid off at least part of a day because of a shortage of parts. A Boston food chain switched to rail shipment for its perishables and the San Francisco Chamber of Commerce had predicted "a complete breakdown in our distribution system."

The marriage was the fourth of Miss Garland, 41. She and Herron, 36, were wed Nov. 14, 1965, in Las Vegas and separated five months later.

Divorces 4th

LOS ANGELES (AP)—Singer Judy Garland was granted a divorce Tuesday from actor Matti Herron after she testified in numerous cities were laid off at least part of a day because of a shortage of parts. A Boston food chain switched to rail shipment for its perishables and the San Francisco Chamber of Commerce had predicted "a complete breakdown in our distribution system."

The marriage was the fourth of Miss Garland, 41. She and Herron, 36, were wed Nov. 14, 1965, in Las Vegas and separated five months later.

HOLLYWOOD'S ACADEMY AWARDS

For best acting performances of 1966 belong to Liz Taylor (upper right), shown in her "Virginia Woolf" make-up, and Paul Scofield (lower right). Oscar top supporting roles went to Sandy Dennis (upper left) and Walter Matthau.

35 Persons Die In Plane Crash

ALGIERS (AP)—Thirty-five persons aboard an Algerian airliner were killed when the plane slammed into a mountain near an oasis in southern Algeria Tuesday night, news services reported. Most of those aboard were believed European.

Four persons on the plane were said to have survived but three were reported seriously hurt.

The Algerian news agency said the DC-8 crashed as it apparently was preparing to land at Tamansourt, an airstrip and military post in the Algerian mountains. The oasis is on the auto track across the Sahara Desert.



Sound Value System Stressed For DCT

By JULIA WELLS
The need for establishing values in life based on religious, economic and political freedoms was stressed by John Y. Mercer, executive vice president of United States Bank of Seminole, for Seminole High School students of the Diversified Cooperative Training Club at their annual employer-employee banquet Tuesday night.

Speaking on the subject, "In Pursuit of Pleasure," Mercer advised, "One cannot expect to live a 'cafeteria life,' just picking up the pie, but must live creatively, with thought of others, if he is to find the most 'pleasure in life.'"

"Continue to deepen and broaden your relationship with your church, be an active and participating member of your community, and, most important, express a personal interest in your federal government."

He urged students to support the DCT Club, contributing most to club; Barbara Bell, highest academic achiever; Sue Davidson, most improved senior; and Kathy Garver, most improved junior.

Summit Confab Moves Ahead As Chiefs Meet

PUNTA DEL ESTE, Uruguay (AP)—The inter-American summit conference appeared to be making some headway today as President Johnson and Latin-American chiefs of state prepared to open talks on the economic future of Central and South America and the role the United States will play in it.

In advance of the conference's first formal session late this afternoon, the foreign ministers of a selected preliminary agreement on a provisional agreement on a provisional final conference declaration calling for economic integration of Latin America and creation of a common market. The preliminary declaration also endorsed and a pledge to support it.

"Build your life around the freedoms we are privileged in this continent to enjoy. If you destroy one, the others will fall," he warned in conclusion.

Keynote to this year's goal is "The sober resolve of those attending to do an effective job was obvious from the time that Mrs. R. L. Tucker, residential chairman for the county-wide meeting, said she would be glad to see the meeting take place in the county-wide meeting, especially the area chairmen in Sanford.

The sober resolve of those attending to do an effective job was obvious from the time that Mrs. R. L. Tucker, residential chairman for the county-wide meeting, said she would be glad to see the meeting take place in the county-wide meeting, especially the area chairmen in Sanford.

Disney World To Be Unveiled

TALLAHASSEE (AP)—"Disney World Day" unfolds in the Florida Legislature today with a meeting scheduled for lawmakers to examine 500 pages of bills proposed by the Disney Corp.

First reaction from legislative leaders may come during the 12:30 p.m. meeting of design a meeting scheduled for lawmakers to examine 500 pages of bills proposed by the Disney Corp.

Cancer Crusade Aides Ready For Campaign

By STAFFORD DERBY
For the first time in Sanford residential area chairmen for the Cancer Crusade held a kick-off meeting in the Florida State lounge last night and prepared for an enthusiastic, effective house-to-house solicitation from April 14-18.

Keynote to this year's goal is "The sober resolve of those attending to do an effective job was obvious from the time that Mrs. R. L. Tucker, residential chairman for the county-wide meeting, said she would be glad to see the meeting take place in the county-wide meeting, especially the area chairmen in Sanford.

Overnight Camp Held By Scouts

By JANE CASSELBERY
An overnight campout was enjoyed by 20 junior girl scouts on Friday afternoon and that night they enjoyed popcorn and hot chocolate around the campfire while they entertained each other with skits.

Pencil's Originator

The lead pencil owes its origin to Joseph Dixon, American inventor, who was a pioneer in the industrial use of graphite. A printer and lithographer by trade, he began the manufacture of lead pencils as early as 1827 in Marlborough, Mass.

35 Persons Die In Plane Crash

ALGIERS (AP)—Thirty-five persons aboard an Algerian airliner were killed when the plane slammed into a mountain near an oasis in southern Algeria Tuesday night, news services reported. Most of those aboard were believed European.

Four persons on the plane were said to have survived but three were reported seriously hurt.

The Algerian news agency said the DC-8 crashed as it apparently was preparing to land at Tamansourt, an airstrip and military post in the Algerian mountains. The oasis is on the auto track across the Sahara Desert.

Disney World To Be Unveiled

TALLAHASSEE (AP)—"Disney World Day" unfolds in the Florida Legislature today with a meeting scheduled for lawmakers to examine 500 pages of bills proposed by the Disney Corp.

First reaction from legislative leaders may come during the 12:30 p.m. meeting of design a meeting scheduled for lawmakers to examine 500 pages of bills proposed by the Disney Corp.

Cancer Crusade Aides Ready For Campaign

By STAFFORD DERBY
For the first time in Sanford residential area chairmen for the Cancer Crusade held a kick-off meeting in the Florida State lounge last night and prepared for an enthusiastic, effective house-to-house solicitation from April 14-18.

Keynote to this year's goal is "The sober resolve of those attending to do an effective job was obvious from the time that Mrs. R. L. Tucker, residential chairman for the county-wide meeting, said she would be glad to see the meeting take place in the county-wide meeting, especially the area chairmen in Sanford.

Overnight Camp Held By Scouts

By JANE CASSELBERY
An overnight campout was enjoyed by 20 junior girl scouts on Friday afternoon and that night they enjoyed popcorn and hot chocolate around the campfire while they entertained each other with skits.

Pencil's Originator

The lead pencil owes its origin to Joseph Dixon, American inventor, who was a pioneer in the industrial use of graphite. A printer and lithographer by trade, he began the manufacture of lead pencils as early as 1827 in Marlborough, Mass.

Disney World To Be Unveiled

TALLAHASSEE (AP)—"Disney World Day" unfolds in the Florida Legislature today with a meeting scheduled for lawmakers to examine 500 pages of bills proposed by the Disney Corp.

Cancer Crusade Aides Ready For Campaign

By STAFFORD DERBY
For the first time in Sanford residential area chairmen for the Cancer Crusade held a kick-off meeting in the Florida State lounge last night and prepared for an enthusiastic, effective house-to-house solicitation from April 14-18.

Overnight Camp Held By Scouts

By JANE CASSELBERY
An overnight campout was enjoyed by 20 junior girl scouts on Friday afternoon and that night they enjoyed popcorn and hot chocolate around the campfire while they entertained each other with skits.

Pencil's Originator

The lead pencil owes its origin to Joseph Dixon, American inventor, who was a pioneer in the industrial use of graphite. A printer and lithographer by trade, he began the manufacture of lead pencils as early as 1827 in Marlborough, Mass.

Disney World To Be Unveiled

TALLAHASSEE (AP)—"Disney World Day" unfolds in the Florida Legislature today with a meeting scheduled for lawmakers to examine 500 pages of bills proposed by the Disney Corp.

Cancer Crusade Aides Ready For Campaign

By STAFFORD DERBY
For the first time in Sanford residential area chairmen for the Cancer Crusade held a kick-off meeting in the Florida State lounge last night and prepared for an enthusiastic, effective house-to-house solicitation from April 14-18.

Overnight Camp Held By Scouts

By JANE CASSELBERY
An overnight campout was enjoyed by 20 junior girl scouts on Friday afternoon and that night they enjoyed popcorn and hot chocolate around the campfire while they entertained each other with skits.

Pencil's Originator

The lead pencil owes its origin to Joseph Dixon, American inventor, who was a pioneer in the industrial use of graphite. A printer and lithographer by trade, he began the manufacture of lead pencils as early as 1827 in Marlborough, Mass.

Disney World To Be Unveiled

TALLAHASSEE (AP)—"Disney World Day" unfolds in the Florida Legislature today with a meeting scheduled for lawmakers to examine 500 pages of bills proposed by the Disney Corp.

Cancer Crusade Aides Ready For Campaign

By STAFFORD DERBY
For the first time in Sanford residential area chairmen for the Cancer Crusade held a kick-off meeting in the Florida State lounge last night and prepared for an enthusiastic, effective house-to-house solicitation from April 14-18.

Overnight Camp Held By Scouts

By JANE CASSELBERY
An overnight campout was enjoyed by 20 junior girl scouts on Friday afternoon and that night they enjoyed popcorn and hot chocolate around the campfire while they entertained each other with skits.

Pencil's Originator

The lead pencil owes its origin to Joseph Dixon, American inventor, who was a pioneer in the industrial use of graphite. A printer and lithographer by trade, he began the manufacture of lead pencils as early as 1827 in Marlborough, Mass.

Disney World To Be Unveiled

TALLAHASSEE (AP)—"Disney World Day" unfolds in the Florida Legislature today with a meeting scheduled for lawmakers to examine 500 pages of bills proposed by the Disney Corp.

Cancer Crusade Aides Ready For Campaign

By STAFFORD DERBY
For the first time in Sanford residential area chairmen for the Cancer Crusade held a kick-off meeting in the Florida State lounge last night and prepared for an enthusiastic, effective house-to-house solicitation from April 14-18.

Overnight Camp Held By Scouts

By JANE CASSELBERY
An overnight campout was enjoyed by 20 junior girl scouts on Friday afternoon and that night they enjoyed popcorn and hot chocolate around the campfire while they entertained each other with skits.

Pencil's Originator

The lead pencil owes its origin to Joseph Dixon, American inventor, who was a pioneer in the industrial use of graphite. A printer and lithographer by trade, he began the manufacture of lead pencils as early as 1827 in Marlborough, Mass.

Disney World To Be Unveiled

TALLAHASSEE (AP)—"Disney World Day" unfolds in the Florida Legislature today with a meeting scheduled for lawmakers to examine 500 pages of bills proposed by the Disney Corp.

Cancer Crusade Aides Ready For Campaign

By STAFFORD DERBY
For the first time in Sanford residential area chairmen for the Cancer Crusade held a kick-off meeting in the Florida State lounge last night and prepared for an enthusiastic, effective house-to-house solicitation from April 14-18.

Overnight Camp Held By Scouts

By JANE CASSELBERY
An overnight campout was enjoyed by 20 junior girl scouts on Friday afternoon and that night they enjoyed popcorn and hot chocolate around the campfire while they entertained each other with skits.

Pencil's Originator

The lead pencil owes its origin to Joseph Dixon, American inventor, who was a pioneer in the industrial use of graphite. A printer and lithographer by trade, he began the manufacture of lead pencils as early as 1827 in Marlborough, Mass.

Disney World To Be Unveiled

TALLAHASSEE (AP)—"Disney World Day" unfolds in the Florida Legislature today with a meeting scheduled for lawmakers to examine 500 pages of bills proposed by the Disney Corp.

Cancer Crusade Aides Ready For Campaign

By STAFFORD DERBY
For the first time in Sanford residential area chairmen for the Cancer Crusade held a kick-off meeting in the Florida State lounge last night and prepared for an enthusiastic, effective house-to-house solicitation from April 14-18.

Overnight Camp Held By Scouts

By JANE CASSELBERY
An overnight campout was enjoyed by 20 junior girl scouts on Friday afternoon and that night they enjoyed popcorn and hot chocolate around the campfire while they entertained each other with skits.

Pencil's Originator

The lead pencil owes its origin to Joseph Dixon, American inventor, who was a pioneer in the industrial use of graphite. A printer and lithographer by trade, he began the manufacture of lead pencils as early as 1827 in Marlborough, Mass.

Disney World To Be Unveiled

TALLAHASSEE (AP)—"Disney World Day" unfolds in the Florida Legislature today with a meeting scheduled for lawmakers to examine 500 pages of bills proposed by the Disney Corp.

Cancer Crusade Aides Ready For Campaign

By STAFFORD DERBY
For the first time in Sanford residential area chairmen for the Cancer Crusade held a kick-off meeting in the Florida State lounge last night and prepared for an enthusiastic, effective house-to-house solicitation from April 14-18.

Overnight Camp Held By Scouts

By JANE CASSELBERY
An overnight campout was enjoyed by 20 junior girl scouts on Friday afternoon and that night they enjoyed popcorn and hot chocolate around the campfire while they entertained each other with skits.

Pencil's Originator

The lead pencil owes its origin to Joseph Dixon, American inventor, who was a pioneer in the industrial use of graphite. A printer and lithographer by trade, he began the manufacture of lead pencils as early as 1827 in Marlborough, Mass.

Disney World To Be Unveiled

TALLAHASSEE (AP)—"Disney World Day" unfolds in the Florida Legislature today with a meeting scheduled for lawmakers to examine 500 pages of bills proposed by the Disney Corp.

Cancer Crusade Aides Ready For Campaign

By STAFFORD DERBY
For the first time in Sanford residential area chairmen for the Cancer Crusade held a kick-off meeting in the Florida State lounge last night and prepared for an enthusiastic, effective house-to-house solicitation from April 14-18.

Overnight Camp Held By Scouts

By JANE CASSELBERY
An overnight campout was enjoyed by 20 junior girl scouts on Friday afternoon and that night they enjoyed popcorn and hot chocolate around the campfire while they entertained each other with skits.

Pencil's Originator

The lead pencil owes its origin to Joseph Dixon, American inventor, who was a pioneer in the industrial use of graphite. A printer and lithographer by trade, he began the manufacture of lead pencils as early as 1827 in Marlborough, Mass.

Disney World To Be Unveiled

TALLAHASSEE (AP)—"Disney World Day" unfolds in the Florida Legislature today with a meeting scheduled for lawmakers to examine 500 pages of bills proposed by the Disney Corp.

Cancer Crusade Aides Ready For Campaign

By STAFFORD DERBY
For the first time in Sanford residential area chairmen for the Cancer Crusade held a kick-off meeting in the Florida State lounge last night and prepared for an enthusiastic, effective house-to-house solicitation from April 14-18.

Overnight Camp Held By Scouts

By JANE CASSELBERY
An overnight campout was enjoyed by 20 junior girl scouts on Friday afternoon and that night they enjoyed popcorn and hot chocolate around the campfire while they entertained each other with skits.

Pencil's Originator

The lead pencil owes its origin to Joseph Dixon, American inventor, who was a pioneer in the industrial use of graphite. A printer and lithographer by trade, he began the manufacture of lead pencils as early as 1827 in Marlborough, Mass.

Disney World To Be Unveiled

TALLAHASSEE (AP)—"Disney World Day" unfolds in the Florida Legislature today with a meeting scheduled for lawmakers to examine 500 pages of bills proposed by the Disney Corp.

Cancer Crusade Aides Ready For Campaign

By STAFFORD DERBY
For the first time in Sanford residential area chairmen for the Cancer Crusade held a kick-off meeting in the Florida State lounge last night and prepared for an enthusiastic, effective house-to-house solicitation from April 14-18.

Overnight Camp Held By Scouts

By JANE CASSELBERY
An overnight campout was enjoyed by 20 junior girl scouts on Friday afternoon and that night they enjoyed popcorn and hot chocolate around the campfire while they entertained each other with skits.

Pencil's Originator

The lead pencil owes its origin to Joseph Dixon, American inventor, who was a pioneer in the industrial use of graphite. A printer and lithographer by trade, he began the manufacture of lead pencils as early as 1827 in Marlborough, Mass.

Disney World To Be Unveiled

TALLAHASSEE (AP)—"Disney World Day" unfolds in the Florida Legislature today with a meeting scheduled for lawmakers to examine 500 pages of bills proposed by the Disney Corp.

Cancer Crusade Aides Ready For Campaign

By STAFFORD DERBY
For the first time in Sanford residential area chairmen for the Cancer Crusade held a kick-off meeting in the Florida State lounge last night and prepared for an enthusiastic, effective house-to-house solicitation from April 14-18.

Overnight Camp Held By Scouts

By JANE CASSELBERY
An overnight campout was enjoyed by 20 junior girl scouts on Friday afternoon and that night they enjoyed popcorn and hot chocolate around the campfire while they entertained each other with skits.

Pencil's Originator

The lead pencil owes its origin to Joseph Dixon, American inventor, who was a pioneer in the industrial use of graphite. A printer and lithographer by trade, he began the manufacture of lead pencils as early as 1827 in Marlborough, Mass.

Disney World To Be Unveiled

TALLAHASSEE (AP)—"Disney World Day" unfolds in the Florida Legislature today with a meeting scheduled for lawmakers to examine 500 pages of bills proposed by the Disney Corp.

Cancer Crusade Aides Ready For Campaign

By STAFFORD DERBY
For the first time in Sanford residential area chairmen for the Cancer Crusade held a kick-off meeting in the Florida State lounge last night and prepared for an enthusiastic, effective house-to-house solicitation from April 14-18.

Overnight Camp Held By Scouts

By JANE CASSELBERY
An overnight campout was enjoyed by 20 junior girl scouts on Friday afternoon and that night they enjoyed popcorn and hot chocolate around the campfire while they entertained each other with skits.

Pencil's Originator

The lead pencil owes its origin to Joseph Dixon, American inventor, who was a pioneer in the industrial use of graphite. A printer and lithographer by trade, he began the manufacture of lead pencils as early as 1827 in Marlborough, Mass.

Disney World To Be Unveiled

TALLAHASSEE (AP)—"Disney World Day" unfolds in the Florida Legislature today with a meeting scheduled for lawmakers to examine 500 pages of bills proposed by the Disney Corp.

Cancer Crusade Aides Ready For Campaign

By STAFFORD DERBY
For the first time in Sanford residential area chairmen for the Cancer Crusade held a kick-off meeting in the Florida State lounge last night and prepared for an enthusiastic, effective house-to-house solicitation from April 14-18.

Overnight Camp Held By Scouts

By JANE CASSELBERY
An overnight campout was enjoyed by 20 junior girl scouts on Friday afternoon and that night they enjoyed popcorn and hot chocolate around the campfire while they entertained each other with skits.

Pencil's Originator

The lead pencil owes its origin to Joseph Dixon, American inventor, who was a pioneer in the industrial use of graphite. A printer and lithographer by trade, he began the manufacture of lead pencils as early as 1827 in Marlborough, Mass.

Disney World To Be Unveiled

TALLAHASSEE (AP)—"Disney World Day" unfolds in the Florida Legislature today with a meeting scheduled for lawmakers to examine 500 pages of bills proposed by the Disney Corp.

Cancer Crusade Aides Ready For Campaign

By STAFFORD DERBY
For the first time in Sanford residential area chairmen for the Cancer Crusade held a kick-off meeting in the Florida State lounge last night and prepared for an enthusiastic, effective house-to-house solicitation from April 14-18.

Overnight Camp Held By Scouts

By JANE CASSELBERY
An overnight campout was enjoyed by 20 junior girl scouts on Friday afternoon and that night they enjoyed popcorn and hot chocolate around the campfire while they entertained each other with skits.

Pencil's Originator

The lead pencil owes its origin to Joseph Dixon, American inventor, who was a pioneer in the industrial use of graphite. A printer and lithographer by trade, he began the manufacture of lead pencils as early as 1827 in Marlborough, Mass.

Disney World To Be Unveiled

TALLAHASSEE (AP)—"Disney World Day" unfolds in the Florida Legislature today with a meeting scheduled for lawmakers to examine 500 pages of bills proposed by the Disney Corp.

Cancer Crusade Aides Ready For Campaign

By STAFFORD DERBY
For the first time in Sanford residential area chairmen for the Cancer Crusade held a kick-off meeting in the Florida State lounge last night and prepared for an enthusiastic, effective house-to-house solicitation from April 14-18.

Strikes... Spares

By JOHN SPOLSKI
 "We had a good time!" Or really not that far away. For those of you who've been inquiring about these varied summer programs, they should be starting in the next three to four weeks. So, get your entries in, now please.

It was a good turn-out and pleasing in many respects, with so many new and different faces appearing in the winner's circle.

That pick-up team of the Pin Busters witnessed all challenges issued, but just barely did escape one of the major upsets of the year when even newer bowlers of the Thursday evening Volkswagen finished in second place with their 204 set, just 45 less than the Pin Busters' 249.

Greyhounds Romp To 12th Straight Win

Power hitting outfielders, Don Paulsen and John Tipple, spearheaded a 16 hit attack for Lyman yesterday afternoon as Coach Jim Payne's Greyhounds won their 12th consecutive game, whipping Lakeview 6-1 at Winter Garden.

Paulsen rapped three singles and slugged a tape-measured homer in four at bats, while teammate Tipple laced two singles and a double in support of southpaw ace Charlie Newell.

The Greyhounds virtually clinched their first Orange Belt League title with the important victory. Payne's lumberjuggers are undefeated in the OBL with just two league games remaining. They meet Wildwood on Saturday morning and second place Deland next Monday evening, both games at Cooper Field at Casselberry.

Newell (1-1) scattered seven hits and notched 13 strikeouts in winning his sixth in a row against the Red Devils yesterday. The newly minted lefty, who has hurled two no hitters this season, stretched his string of scoreless innings to 36, a new Lyman record, before Lakeview's John North belted a sixth frame home run.

The biggest thrill at the lanes in league competition this past week went to John Mathewson of the Navy Mixed League, which bowls Thursday evenings. John will be wearing the

Century Patch shortly due to his rolling 100 pins over his average. He started with two strikes, started in the third frame, and then tied nine strikes-in-a-row to finish with his week's highest league game, a rousing 277.

Our Bowler's Salute of the Week goes to John Mathewson, his 174 average and all. Attaway, Johnson-hale.

Many thanks to all those who assisted by serving as scorers and to our two co-managers for running the tournament as smoothly as they handled it. It is one special acknowledgment to Gil for providing us with additional statistics.

High handicap series was a Murphy's 665 plus 28 pins index for a 704. Those rolling over 600 scratch during the contest were Murphy 665, John Fischer 628, Bob Mac 625, Alex Serrano 626, Jesse Carathers and Jerry Farrelia 617, Jay Young 615, Marc MacLeary 612, Doug Owens 607, Spill Ski 606 and Pete Peterson 604.

Cudas Edge Seminoles

For six consecutive innings, it was a pitcher's duel at New Smyrna Beach last night between Sanford's Seminoles and the Cudas of N.S.B. that produced the up to that point and then the pin-point pitching control was lost and so was the victory streak for the local diamond nine.

Seminole High dropped a tough one, 1-0 to New Smyrna Beach, and are now 12-5 for the season with their next game scheduled at home on Friday at 4 p.m. against Ocala.

The Seminoles Raiders came through once again. After a comparatively slow start, the Raiders have "jelled" into a balanced hitting crew, their latest victim yesterday afternoon in Daytona Beach against Daytona Beach Junior College.

The local diamond nine led the game in the seventh and final frame when they tallied three times in the bottom of the frame, based on 11 hits and only two errors.

What pleases me most in this game was our defensive wind up in a tie for runner-up position in their division. If they take both games, they'll have ended their season in second place, a very strong position considering this is their first season organized last season.

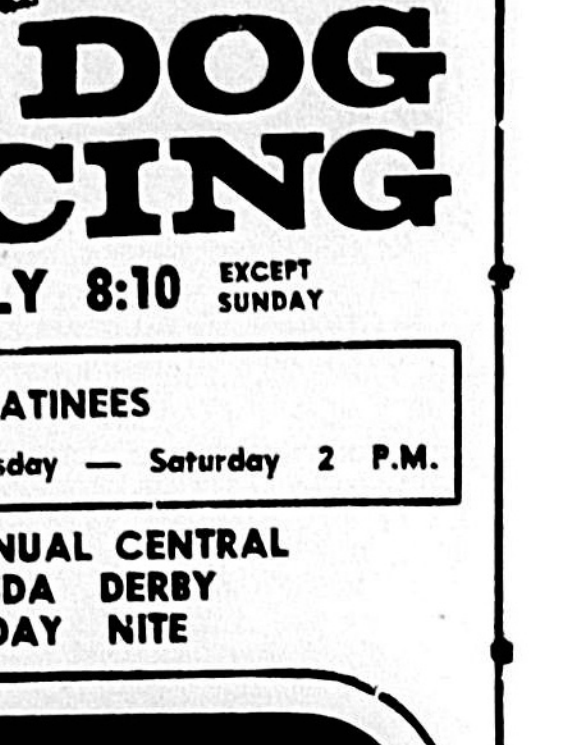
Rob Bessner erased the other school record, which dated back to 1968 in the 100 yard backstroke when he came in first with a time of 1:04.

Coach Grey Boyles watched his teams record a number of first place finishes and witnessed three new school records established. "I think that the loyal support we've been receiving from the fans has been a tremendous morale booster for the kids and I hope that when we meet Evans High School this Friday at 4:00 p.m. at the Sanford Naval Academy Pool, they'll be jammed with spectators again," added the popular Boyles.

Los Angeles Dodger pitchers turned in 20 shutouts in 52 complete games last year and had a team earned run average of 2.62.

The Sanford Herald
 Page 6 — April 12, 1967

The Best in Catering
PRIVATE PARTIES
DANCES
 PH. 322-2531
 Mayfair Country Club



DOG RACING
 NIGHTLY 8:10 SUNDAY
 MATINEES
 Monday — Wednesday — Saturday 2 P.M.
 32nd ANNUAL CENTRAL FLORIDA DERBY FRIDAY NIGHT
 Sanford-Orlando KENNEL CLUB
 HWY. 17-92
 MIDWAY BETWEEN SANFORD & ORLANDO

DOG RACING RESULTS
 TUESDAY NIGHT RACE RESULTS
 APRIL 11, 1967
 1. L.S. Prince 1:40 2.00
 2. M. J. Galt 1:41 2.00
 3. M. J. Galt 1:42 2.00
 4. M. J. Galt 1:43 2.00
 5. M. J. Galt 1:44 2.00
 6. M. J. Galt 1:45 2.00
 7. M. J. Galt 1:46 2.00
 8. M. J. Galt 1:47 2.00
 9. M. J. Galt 1:48 2.00
 10. M. J. Galt 1:49 2.00

DOG RACING RESULTS
 APRIL 11, 1967
 1. L.S. Prince 1:40 2.00
 2. M. J. Galt 1:41 2.00
 3. M. J. Galt 1:42 2.00
 4. M. J. Galt 1:43 2.00
 5. M. J. Galt 1:44 2.00
 6. M. J. Galt 1:45 2.00
 7. M. J. Galt 1:46 2.00
 8. M. J. Galt 1:47 2.00
 9. M. J. Galt 1:48 2.00
 10. M. J. Galt 1:49 2.00

DOG RACING RESULTS
 APRIL 11, 1967
 1. L.S. Prince 1:40 2.00
 2. M. J. Galt 1:41 2.00
 3. M. J. Galt 1:42 2.00
 4. M. J. Galt 1:43 2.00
 5. M. J. Galt 1:44 2.00
 6. M. J. Galt 1:45 2.00
 7. M. J. Galt 1:46 2.00
 8. M. J. Galt 1:47 2.00
 9. M. J. Galt 1:48 2.00
 10. M. J. Galt 1:49 2.00

DOG RACING RESULTS
 APRIL 11, 1967
 1. L.S. Prince 1:40 2.00
 2. M. J. Galt 1:41 2.00
 3. M. J. Galt 1:42 2.00
 4. M. J. Galt 1:43 2.00
 5. M. J. Galt 1:44 2.00
 6. M. J. Galt 1:45 2.00
 7. M. J. Galt 1:46 2.00
 8. M. J. Galt 1:47 2.00
 9. M. J. Galt 1:48 2.00
 10. M. J. Galt 1:49 2.00

DOG RACING RESULTS
 APRIL 11, 1967
 1. L.S. Prince 1:40 2.00
 2. M. J. Galt 1:41 2.00
 3. M. J. Galt 1:42 2.00
 4. M. J. Galt 1:43 2.00
 5. M. J. Galt 1:44 2.00
 6. M. J. Galt 1:45 2.00
 7. M. J. Galt 1:46 2.00
 8. M. J. Galt 1:47 2.00
 9. M. J. Galt 1:48 2.00
 10. M. J. Galt 1:49 2.00

Mathews Comes Back To Haunt Braves

By THE ASSOCIATED PRESS
 In his many years with the Boston Milwaukee - Atlanta Braves, Eddie Mathews used to specialize in great opening-day performances. But it is his debut in a Houston uniform that particularly endeared him to fans in the past in the opener, but I'll settle for this one.

The Braves traded Mathews to Chicago last season, but he returned to Atlanta last year. He is now a free agent and is expected to sign with another team.

Kansas City Shakes Up Drab Existence

By THE ASSOCIATED PRESS
 The fashionable Kansas City A's have countered the minimalist rebellion with a new style of home runs. They are now hitting more home runs than any other team in the American League.

The A's opened their 1967 season by beating the Indians 4-3 on Fred Whitfield's error with the bases loaded in the seventh inning in Kansas City, and joined Baltimore, California and New York in first place.

Oviedo Rally Flops; Melbourne Wins, 6-2

The Oviedo Lions came on strong in the sixth inning, but couldn't get enough going to overcome Melbourne Central Catholic's five-run lead going down 6-2 to the Huskers.

Melbourne Central opened up the game in the bottom of the second inning when Dave Knecht connected for a stand-up double. The Huskers buried Bill Prezza followed with a triple scoring Knecht.

Rangers Backed In Dark Corner

NEW YORK (AP) — The New York Rangers, backed into a dark corner by Montreal's resolute Canadiens, are down to their last tomorrow.

The Canadiens, given a quick two-goal sendoff by Claude Larose and Jean Beliveau Tuesday night, held off the desperate Rangers 3-2 for their ninth straight victory and a 5-0 stranglehold in the Stanley Cup semifinal playoff series.

HARRY PENTECOST AND RICH MURPHY

Many thanks to all those who assisted by serving as scorers and to our two co-managers for running the tournament as smoothly as they handled it. It is one special acknowledgment to Gil for providing us with additional statistics.

High handicap series was a Murphy's 665 plus 28 pins index for a 704. Those rolling over 600 scratch during the contest were Murphy 665, John Fischer 628, Bob Mac 625, Alex Serrano 626, Jesse Carathers and Jerry Farrelia 617, Jay Young 615, Marc MacLeary 612, Doug Owens 607, Spill Ski 606 and Pete Peterson 604.

The highest single game roll of belonged to Dick Schmitzer when he accumulated 10 strikes for a tie 255.

Look, really it slips my mind, if you really want to be pleasantly surprised, you doncha come on out for the junior bowling tournament this Saturday for the team competition. These youngsters will have their own doubles and singles next Saturday.

Sanford Swimmers Topple Oak Ridge

The Seminole High School swim teams splashed their way to victory yesterday in Orlando as they defeated the Oak Ridge team in the Beckler Pool.

The girls captured their events by a 60-29 margin while the boys narrowly dropped theirs 51-44. The current records of both teams are the girls at 7 wins and only one loss while the boys are an even 500 with four wins and an equal number of losses.

Coach Grey Boyles watched his teams record a number of first place finishes and witnessed three new school records established. "I think that the loyal support we've been receiving from the fans has been a tremendous morale booster for the kids and I hope that when we meet Evans High School this Friday at 4:00 p.m. at the Sanford Naval Academy Pool, they'll be jammed with spectators again," added the popular Boyles.

GOODYEAR NYLON CORD TIRES

ANY SIZE ONE PRICE \$2
 ALL-WEATHER TIRES
 Extra-mileage Tufsyn rubber
 Track-tested, of course

ANY SIZE ONE PRICE \$18
 TRACTION ALL-WEATHER TIRES
 Wrap-around tread with over 8000 gripping edges
 4 FULL PLYES FOR LARGER CARS

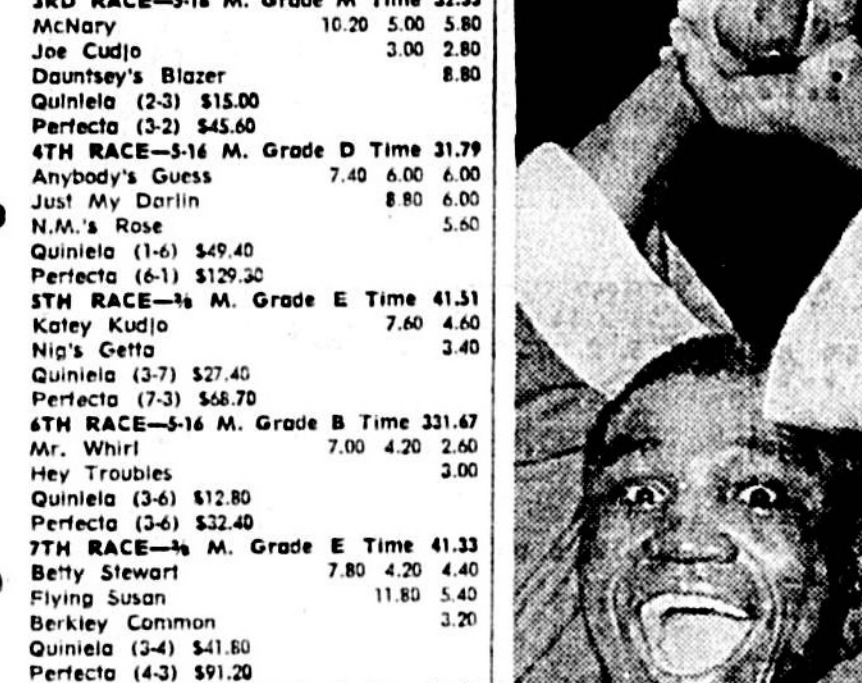
NO MONEY DOWN on our EASY PAY PLAN
 Goodyear Brake Adjustment
 Brake Safer and Save!
 April Only!

NO FIGHT?

LAS VEGAS, Nev. (AP) — The champion packed up and went home.

The challenger canceled his airline reservations.

The promoter huddled with his lawyer to decide where to stage the Cassius Clay-Floyd Patterson heavyweight title fight.



Dick Tiger
 In Metro Loop
 Action Galore
 Footbal-like scores filled the Metro Softball League last night at Pinehurst Park as Modern Mobile Homes dropped Cuba 12-16 and American Oil obliterated Osteen, 20-4.

Bobby Jackson and Joe Pickens led his apiece and Jackson knocking a solo shot, too. Berry Rutherford scored a triple for the losers. Winning pitcher was LeRoy Estridge and Thomas Lemon.

Nevada Gov. Paul Laxalt, a former amateur boxer, pulled a surprise secret punch Tuesday and asked the Nevada Athletic Commission to rescind its approval of the license for the April 25 fight at the Las Vegas Convention Center.

The second of three show series will be presented this Sunday by the Dusty Boots Riding Association at the Rodeo grounds on Hwy. 17, 62, behind the Farmer's Market.

Tiger Torres Set To Battle In Title Go
 The third world championship fight within three months was booked for Madison Square Garden today with the controversial, 200-pound heavyweight king Dick Tiger for a return bout with Jose Torres on May 16.

Both Tiger, of Nigeria, and Torres, of New York, agreed to terms, which included a provision that the winner meet the No. 1 contender in the next defense. He is Roger Rouse of Anconada, Mont.

The Garden started its parade of championship fights with the Cassius Clay-Zora Foley heavyweight clash on March 22. Middleweight champion Emile Griffith defeated his crown against Italy's Nino Benvenuti next Monday night.

Official contracts will be signed before the state's State Athletic Commission next week.

Modern Mobile Homes collected 16 hits to Cuba's 10, but Jimmy Butler provided the spark for the winner with three timely singles.

There was big scoring in the Church Softball League also last night as the First Baptist team walloped the Pinecrest Baptist nine, 17 to 9. In other action, All Souls thumped First Presbyterian 15 to 2.

Otto Thomas was the winning pitcher for the First Baptist team and received hitting support from Oz Dornmyer and DeWitt Mathews with three hits apiece. Bob Travis and Dave Taber had two each in a losing cause.

Nick Constantine had an easy time blanking the All Souls team to a win last night as Mike Bowens clubbed four hits for the winners and teammate Jay Bergman chipped-in with three singles.

Tomorrow's schedule for the Church League is All Souls vs. Church of God of Preachers, 7:30 p.m., and First Presbyterian meeting First Baptist at 8:45 p.m. at Pinehurst Park.

Firestone

STORE-WIDE

CLEARANCE

We're cleaning house to make room for incoming truckloads of new spring and summer merchandise!

Everything in this ad is priced for immediate sale—OVERSTOCKS • DEMONSTRATORS • DISCONTINUED MODELS • ODDS 'N ENDS • GOOD USED TRADE-INS! Don't miss out!

3 DAYS ONLY • Thursday 8 a.m. to 6 p.m., Friday 8 a.m. to 7 p.m. and Saturday 8 a.m. to 5 p.m. **BE HERE EARLY!** We have limited quantities of some items. Hurry... don't be disappointed!

Sporting Goods

12 gauge Winchester Shotgun No. 10P126	\$109.95
5 1/2 Bats No. 10A237	\$1.19
Deluxe Table Tennis Set	\$5.29
Deluxe Skateboard	\$2.99
30 yds. Fishing Line	29¢
Swim Fins	99¢
Swim Mask	99¢
Vagabond Bicycle	\$29.95
Shotgun Shell, box	\$2.44
Table Tennis Set	\$1.99
Golf Ball Marking Kit	59¢
Golf Bag	\$17.95
Golf Cart	\$11.95

Lawn & Garden

AC Lawnmower	79¢
Scap Car Pruning Shears	\$1.19
Recessed Riding Mower	\$89.95
Leaf Blower No. 8C105	79¢
2 1/2 Gal. Galvanized Gas Can, 8D111	\$2.59
Revolving Lawn Sprinkler	88¢
Sigbee Garden Hose	\$1.19
Ladies' Garden Gloves, pr.	44¢

Service Specials

Repair Front Wheels	39¢
Adjust Brakes	39¢
Rotate Tires	39¢
Wheel Balance	89¢
Grease Job	59¢

Odds and Ends

High Intensity Lamp with Ball	\$1.99
Powerful Lantern (less batteries)	69¢
Two Beam Lantern (less batteries)	59¢
Pkg. of 4 Palm Brushes	79¢
50 ft. Sisal Rope, 1/2"	69¢
"D" Size Flashlight Batteries	12¢
Regular Bicycle Tires	\$2.29
Inflating Board Cover	29¢
Arvin Clock Radio	\$13.95

Fans - Air Conditioners

Air Conditioner	\$1.49
5,000 BTU New Air Conditioner, 5G523	\$89.96
20" Heater Fan (Shopvac)	\$15.95
20" GE 3-Speed Fan	\$23.35
Air Conditioner No. 11AC1	\$235.38

Television - Stereo

Portable Stereo No. 4G40	\$49.95
Robbit Ears Antenna 13M44	89¢
Used Television	\$19.95
Beautiful Admiral 29 1/2" TV	\$139.95
1965 Color TV No. 54Z84B	\$289.00

Appliances

15 Ft. Palco No-Frost Refrigerator-Freezer, Ice Maker, 16RM6A	\$285.00
17 Ft. Palco No-Frost Refrigerator-Freezer, Ice Maker, 17RDYA	\$299.00

FREE!

Package of ZINNIA SEEDS While They Last

FREE!

Delco Eye BATTERY CAP While They Last

2c A GALLON DISCOUNT

On famous Shell gasoline to all customers during this Clearance.

NEW Firestone TIRES with discontinued tread design

Firestone SAFETY CHAMPIONS
A fine quality tire with full 4-ply nylon cord body and high performance wrap-around tread.
ANY SIZE LISTED
\$16.20 Tubeless Blackwalls
6.00-13 8.00-14 6.50-15 6.50-13 (8.25-14) (7.75-15) 7.50-14 5.00-15 (7.75-15) (7.75-14) 6.00-15 (7.75-15) 7.10-15 (8.15-15)
Plus \$1.59 to \$2.38 Fed. Ex. Tax. Sales Tax & Trade-in tire off your car.

NO MONEY DOWN

Take months to pay on **FIRESTONE UNI-CHARGE**

Amount Charged	Monthly Payment
\$ 50.00	\$ 5.00
75.00	7.00
95.00	9.00
150.00	10.00
200.00	15.00
400.00	20.00

FIRESTONE RETREADS

Firestone Deluxe Champion
Discontinued Tread Design
POPULAR SIZES \$7.95
Blackwall Size 7.50-14 and smaller

LARGE SIZES \$8.95

Blackwall Size 8.00-14 and larger
ADD \$1 EACH FOR WHITEWALLS
All prices plus 32¢ to 57¢ Fed. ex. tax, sales tax, and retreadable tire off your car.

USED TIRES

A-1 Inspected USED TIRES
Some with thousands of miles of tread. Big selection of sizes and types.
YOUR CHOICE \$5
Plus tax and trade-in tire

TIRES ROTATED AND FRONT END ALIGNMENT \$4.99

Auto Accessories

Travel & Storage Bag No. 4D226	49¢
Seat Belt Retractor, 3B402	49¢
Seat Belts, Belts, 2B252	\$1.99
Child's Seat Belts, Set of 2	\$1.95
Odds & End Part-A-Wall, each	29¢
Grand Prix Part-A-Wall, set of 2	\$1.95
Any Oil Filter in Stock, installed	\$2.49
Custom Mag Wheels, each installed	\$31.50
Custom File Wheels, each installed	\$28.95
Alcoa Cushions, No. 4D223	75¢
Trico Wiper Blades, each	\$1.19

Everyday Buys

The Pressure Gauge	99¢
Door-to-door Floor Mats, 4D226	\$1.44
Heavy Duty Push Broom, 4D728	99¢
Squeeze Mop, 7P11	\$1.79
2-Gallon Gas Can	88¢
Leak Proof, 2D-10-5	\$1.87
Umbrellas, assorted	\$1.99
Spalding Golf Balls, Pkg. of 2	\$1.33
Ice Bucket, styrofoam	29¢
50' Garden Hose, 8B249	\$1.99
Plastic Garbage Container	\$1.88

Power Tools

Shop Moto 1/2" Drill, 7E270	\$11.95
Shop Moto Jig Saw	\$11.95
Skill Jig	\$12.95
Saw	\$19.95
Skill 1/2" Drill	\$19.95

Tires

FACTORY SECONDS	
6.50 x 13 D1CW2	\$16.20 \$15.55 FET
8.15 x 15 D1CWN	\$19.55 \$2.15 FET
8.25 x 14 D1CLB	\$17.60 \$2.05 FET
7.60 x 15 Champ NW	\$14.95 \$2.31 FET
7.35 x 14 D1C	\$13.95 \$1.82 FET
7.75 x 15 S40 NW	\$19.80 \$2.19 FET

DISCONTINUED

6.00 x 13 Champ NW	\$9.40 \$1.42 FET
8.00 x 14 Champ BL	\$11.95 \$2.05 FET

TAKE OFFS

8.55 x 14 U. S. R. WS	\$21.92 \$2.34 FET
-----------------------	--------------------

DISCONTINUED TRUCK TIRES

8.15 x 5 T100TU, 6 ply	\$49.95 \$4.77 FET
6.70 x 15 T100TU, 6 ply	\$26.20 \$2.76 FET
7.50 x 16 SUP All Traction (6)	\$17.95 \$3.03 FET
6.70 x 15 T & C, 6 ply	\$14.95 \$3.19 FET
11.00 x 22 Transport 12 ply	\$59.95 \$1.39 FET
6.70 x 15 Nylonaire	\$7.88 \$1.42 FET

MANY MORE SIZES AND TYPES OF TIRES IN STOCK SUBJECT TO CLEARANCE PRICES

FREE!

AUTO SAFETY INSPECTION

FREE!

Artificial **ORCHID CORSAGE**
To The First 100 Ladies

FREE!

Lawnmower **OIL CHECK CAP**
While They Last

Dealer Bids Invited on Large Lots • No Phone Orders Accepted • All Sales Final!

MANY MORE SIZES & TYPES OF TIRES IN STOCK SUBJECT TO CLEARANCE PRICES

FIRST AND FRENCH
Sanford, Florida

Firestone

TIRE AND SAFETY CENTER

OPEN Daily 'Til 6 P.M. Fri. 'Til 7 P.M. TELEPHONE 322-0244

USE YOUR FIRESTONE UNI-CHARGE NO MONEY DOWN AND MONTHS TO PAY!



Promenaders In Realm Of Neptune

GAIETY reigned in a unique Marineland setting Saturday night at Sanford Civic Center at Seminole High School annual Junior-Senior Prom. Promenaders on parade are photos 1—Mike McGuire and Donna Hogan; 2—Patty Howe and Kenny Hall; 3—Lynn McRoberts and Bill Halaack; 4—Craig Orseno and Mary Margaret Reynolds; 5—Pam Robinson and George Hauptkorn; 6—Benny Bishop, Sherry Irby, Sydney Park and Terry King; 7—Ann Doudney and Rex Sanderson; 8—John Durham, Dorie Bach, Karen Weber and Fonda Fortier; 9—Lamar Oxford, Cindy Wilson, Mary Lou Klay and Ronnie Westbrook.

NOWC Adopts Mental Health Project

By CECILIA FARMER
THE NAVAL OFFICERS' WIVES CLUB voted to make a monthly contribution to the local Mental Health Clinic as one of their welfare projects. Mrs. Kathy Criswell, welfare chairman of the club presented a check for \$25 to Stanley Pierce, a representative of the Seminole County Mental Health Clinic, this month.

The MH Clinic provides psychiatric services for all residents in Seminole County. The Florida Division of MH is now paying one half of the cost of this clinic and public subscriptions and donations makes up the difference. Local offices are located in the County Health Department, on French Ave.



MRS. KATHY CRISWELL, left, welfare chairman for the Naval Officers' Wives Club, presents Stanley Pierce, a representative of the Seminole County Mental Health Clinic, a check for \$25. This is the first of a series of contributions the NOWC plans to make to the clinic. (Herald Photo)

RVAH-5 OFFICERS' WIVES assembled at the home of Lois Lillard, Friday, for a combination coffee and game night. Refreshments were served and a Spanish punch called SANGRIA added to the "Go Europe" theme.

The latest members of the group to depart for the Mediterranean area were Anne Everts and Nancy Hall, Lois Lillard, Patty Johnson and Brenda Banvard are also planning to make the trip soon.

Special guest for the game night party was Pat Deoraph. Others enjoying the evening were Jeanne Dunne, Marjorie Selmes, Connie A. Britton, Brenda Banvard, Dianne Thunberg, Patty Johnson, Isabel Goshorn, Pat Stevenson, Donna Stevens and the hostess.

Good news was received from Winky Cook who has been hospitalized since January in Virginia. She is now at her mother's home and is planning to return to Sanford in June.

Betty Johnson, a member of the club at Dover Shores, recently returned from a week long Easter vacation at her parents' home in Austin, Texas. Jeanne Dunne presented engraved silver baby cups to three new mothers in the squadron, Donna Stevens, Pat Stevenson and Lois Lillard.

THE RVAH-6 ENLISTED WIVES CLUB elected officers at a recent meeting. Mrs. Betty Scott was named president and Mrs. Pat Catalina vice president. Other officers elected were Mrs. Carol Jamison, secretary, Mrs. Helen Christie, treasurer, Mrs. George Ann Keith, chaplain and Mrs. Nona Hines, historian.

The installation dinner is scheduled for 7:30 p.m. this Thursday at the home of Mrs. Elty O'Gara, wife of the commanding officer. All club members are invited to attend. Hostesses for the election meeting, Mrs. Carol Jamison, served ignonies, cookies and coffee for refreshments.

THE "BAT" WIVES OF RVAH-12 are planning several events for the coming weeks and after reading Doris Williams column recently where she commented that the welfare of the area would appreciate a FASHION SHOW FOR WOMEN, not all for seniors, they decided to do something about it. After contacting some merchants they have arranged a luncheon and FASHION SHOW for the average woman. It will be at Otto's Hof Brauhaus at 12 noon, April 27 and the fashion will be from Mary Kathleen Betty Stokes will be the commentator. More about it later — for reservations and tickets call Jon Higginbotham at 323-1442 or Carole O'Shea at 322-8917.

RVAH-15 wives met at the home of Dora Griffin for the April coffee with Diane Watty as co-hostess. A few mini-skirts were seen as the girls gathered to enjoy refreshments of pineapple, cream cheese and poppy seed coffee cakes, miniature Danish pastries, fruit, lemonade and coffee.

Jon Higginbotham presided at the business session and welcomed Marjorie Fog, wife of the commanding officer. The club has openings for several more interested women. It is a six week course which meets on Monday nights. Fran Carlton has many tips on figure con-

THE RVAH-11 CHECKERBOARDERS and their LADIES gathered at the West Park home of Lt.(jg) Brad Evans, Saturday night for a "Pot Luck" supper. Specialty dishes prepared by the wives were enjoyed by all. Welcomed as special guests for the evening were Capt. and Mrs. Richard Powell.

New arrivals welcomed by RVAH-11 families recently include Claire Suzanne Monroe, who weighed in at a healthy 6 lbs. 10 oz. Proud parents are Lt. Cdr. and Mrs. Vince Monroe, while mums, baby's breakfast and greener.

Guests were RVAH-9 Officers' Wives, Tee Dee Holton, the bride's sister, Donna McDaniel and Joan Greenwood, former "Hostess." Game night will be held at the home of Kathy Hasted, this month.

THE CPO WIVES CLUB board members are urged to attend the MAYFAIR COUNTRY Club luncheon at 12 noon, April 28. The CPO Wives Club members enjoyed the VIP tour of Busch Gardens in Tampa. The girl who did not drive their own cars were transported by the Busch area manager.

Following the tour the group had lunch in the VIP Room of the Hospitality House. According to reports the food was delicious. They all rode the monorail and saw the animals that roam the grounds. The group gave a big vote of thanks to Mrs. Helen Christie, who arranged the outing and to officials of the Hospitality House. According to reports the food was delicious. They all rode the monorail and saw the animals that roam the grounds. The group gave a big vote of thanks to Mrs. Helen Christie, who arranged the outing and to officials of the Hospitality House.

THE LADY HOME scheduled for 7:30 p.m. this Thursday at the home of Mrs. Elty O'Gara, wife of the commanding officer. All club members are invited to attend. Hostesses for the election meeting, Mrs. Carol Jamison, served ignonies, cookies and coffee for refreshments.

THE "BAT" WIVES OF RVAH-12 are planning several events for the coming weeks and after reading Doris Williams column recently where she commented that the welfare of the area would appreciate a FASHION SHOW FOR WOMEN, not all for seniors, they decided to do something about it. After contacting some merchants they have arranged a luncheon and FASHION SHOW for the average woman. It will be at Otto's Hof Brauhaus at 12 noon, April 27 and the fashion will be from Mary Kathleen Betty Stokes will be the commentator. More about it later — for reservations and tickets call Jon Higginbotham at 323-1442 or Carole O'Shea at 322-8917.

RVAH-15 wives met at the home of Dora Griffin for the April coffee with Diane Watty as co-hostess. A few mini-skirts were seen as the girls gathered to enjoy refreshments of pineapple, cream cheese and poppy seed coffee cakes, miniature Danish pastries, fruit, lemonade and coffee.

RVAH-11 wives met at the home of Dora Griffin for the April coffee with Diane Watty as co-hostess. A few mini-skirts were seen as the girls gathered to enjoy refreshments of pineapple, cream cheese and poppy seed coffee cakes, miniature Danish pastries, fruit, lemonade and coffee.

RVAH-15 wives met at the home of Dora Griffin for the April coffee with Diane Watty as co-hostess. A few mini-skirts were seen as the girls gathered to enjoy refreshments of pineapple, cream cheese and poppy seed coffee cakes, miniature Danish pastries, fruit, lemonade and coffee.

RVAH-15 wives met at the home of Dora Griffin for the April coffee with Diane Watty as co-hostess. A few mini-skirts were seen as the girls gathered to enjoy refreshments of pineapple, cream cheese and poppy seed coffee cakes, miniature Danish pastries, fruit, lemonade and coffee.

RVAH-15 wives met at the home of Dora Griffin for the April coffee with Diane Watty as co-hostess. A few mini-skirts were seen as the girls gathered to enjoy refreshments of pineapple, cream cheese and poppy seed coffee cakes, miniature Danish pastries, fruit, lemonade and coffee.

RVAH-15 wives met at the home of Dora Griffin for the April coffee with Diane Watty as co-hostess. A few mini-skirts were seen as the girls gathered to enjoy refreshments of pineapple, cream cheese and poppy seed coffee cakes, miniature Danish pastries, fruit, lemonade and coffee.

Engagements Announced

Garver-Bowlin

Mr. and Mrs. E. S. Garver, 2829 Park Ave., Sanford, announce the engagement of their daughter, Andrea Maureen, to James Franklin Bowlin, son of Mr. and Mrs. L. V. Bowlin, 115 Lake Blvd., Sanford.

Miss Garver was born in New Market, Va., attended Seminole High School and Seminole Junior College. She was a member of the Future Homemakers and the Turnbridge Club and is presently employed at Sears Advertising in Orlando.

Wedding plans will be announced at a later date.



MISS JANET ELIZABETH JOHNSON (Bridges Photo)

Johnson-Montgomery

Mr. and Mrs. C. O. (Pete) Johnson, 438 W. Crystal Dr., Sanford, are announcing the engagement and approaching marriage of their daughter, Miss Janet Elizabeth Johnson, to Anthony Russell Montgomery, son of Mr. and Mrs. Russell Norman Montgomery, 84 Griggs Ave., Casselberry.

The wedding will be an event of June 17 at 2 p.m. at the First Christian Church, Sanford. All friends and relatives of the couple are cordially invited to the wedding and reception immediately following at the Church Educational Building.



MISS ANDREA MAUREEN GARVER

New Arrivals

Mr. and Mrs. James Martin are the proud parents of a daughter, born Easter Sunday at Seminole Memorial Hospital. She weighed six pounds, six and one-half ounces and has been named Jill. The little lady was welcomed home by four brothers, Jimmy, Jack, Joe and Jeb.

Mrs. Martin's mother, Mrs. H. S. Lee, of Romney, W. Va., is spending several weeks with her daughter and family.

Ever try adding poppyseed to French dressing? Good served over crisp greens.



THE LITTLE POOR BOY rib that has taken sweater fashion by storm has now been converted into a "rich boy" in luxury cashmere. Braemar of Scotland (left) fits the rib into a special realm of understated elegance in this turtle-necked sweater in assorted colors. Roundabout styling and soft cashmere make an unbeatable combination in the two styles (right) by Pringle of Scotland. Real gems of the wardrobe, the turled sweater and the barred tank-top pullover set an elegant fashion pace.



MISS JANET ELIZABETH JOHNSON (Bridges Photo)

Johnson-Montgomery

Mr. and Mrs. C. O. (Pete) Johnson, 438 W. Crystal Dr., Sanford, are announcing the engagement and approaching marriage of their daughter, Miss Janet Elizabeth Johnson, to Anthony Russell Montgomery, son of Mr. and Mrs. Russell Norman Montgomery, 84 Griggs Ave., Casselberry.

The wedding will be an event of June 17 at 2 p.m. at the First Christian Church, Sanford. All friends and relatives of the couple are cordially invited to the wedding and reception immediately following at the Church Educational Building.

THE CPO WIVES CLUB board members are urged to attend the MAYFAIR COUNTRY Club luncheon at 12 noon, April 28. The CPO Wives Club members enjoyed the VIP tour of Busch Gardens in Tampa. The girl who did not drive their own cars were transported by the Busch area manager.

Following the tour the group had lunch in the VIP Room of the Hospitality House. According to reports the food was delicious. They all rode the monorail and saw the animals that roam the grounds. The group gave a big vote of thanks to Mrs. Helen Christie, who arranged the outing and to officials of the Hospitality House.

THE LADY HOME scheduled for 7:30 p.m. this Thursday at the home of Mrs. Elty O'Gara, wife of the commanding officer. All club members are invited to attend. Hostesses for the election meeting, Mrs. Carol Jamison, served ignonies, cookies and coffee for refreshments.

THE "BAT" WIVES OF RVAH-12 are planning several events for the coming weeks and after reading Doris Williams column recently where she commented that the welfare of the area would appreciate a FASHION SHOW FOR WOMEN, not all for seniors, they decided to do something about it. After contacting some merchants they have arranged a luncheon and FASHION SHOW for the average woman. It will be at Otto's Hof Brauhaus at 12 noon, April 27 and the fashion will be from Mary Kathleen Betty Stokes will be the commentator. More about it later — for reservations and tickets call Jon Higginbotham at 323-1442 or Carole O'Shea at 322-8917.

RVAH-15 wives met at the home of Dora Griffin for the April coffee with Diane Watty as co-hostess. A few mini-skirts were seen as the girls gathered to enjoy refreshments of pineapple, cream cheese and poppy seed coffee cakes, miniature Danish pastries, fruit, lemonade and coffee.

RVAH-11 wives met at the home of Dora Griffin for the April coffee with Diane Watty as co-hostess. A few mini-skirts were seen as the girls gathered to enjoy refreshments of pineapple, cream cheese and poppy seed coffee cakes, miniature Danish pastries, fruit, lemonade and coffee.

RVAH-15 wives met at the home of Dora Griffin for the April coffee with Diane Watty as co-hostess. A few mini-skirts were seen as the girls gathered to enjoy refreshments of pineapple, cream cheese and poppy seed coffee cakes, miniature Danish pastries, fruit, lemonade and coffee.

RVAH-15 wives met at the home of Dora Griffin for the April coffee with Diane Watty as co-hostess. A few mini-skirts were seen as the girls gathered to enjoy refreshments of pineapple, cream cheese and poppy seed coffee cakes, miniature Danish pastries, fruit, lemonade and coffee.

RVAH-15 wives met at the home of Dora Griffin for the April coffee with Diane Watty as co-hostess. A few mini-skirts were seen as the girls gathered to enjoy refreshments of pineapple, cream cheese and poppy seed coffee cakes, miniature Danish pastries, fruit, lemonade and coffee.

RVAH-15 wives met at the home of Dora Griffin for the April coffee with Diane Watty as co-hostess. A few mini-skirts were seen as the girls gathered to enjoy refreshments of pineapple, cream cheese and poppy seed coffee cakes, miniature Danish pastries, fruit, lemonade and coffee.

RVAH-15 wives met at the home of Dora Griffin for the April coffee with Diane Watty as co-hostess. A few mini-skirts were seen as the girls gathered to enjoy refreshments of pineapple, cream cheese and poppy seed coffee cakes, miniature Danish pastries, fruit, lemonade and coffee.

SHS Junior-Senior Prom Lavish In Marine Setting

The Sanford Civic Center became a vast ballroom, Saturday night, when the Junior-Senior Class of Seminole High School staged the annual Junior-Senior Prom honoring the seniors.

"The Realm of Neptune" was carried out as the theme of this year's prom with sea creatures of all natures and scenes depicting sea stories cleverly portrayed in the unique decor of the auditorium.

Centering the stage was Neptune's Castle, constructed of gleaming gold and surrounded by masses of floating seaweed. A giant octopus crouched at one end of the stage, standing guard over the pretentious castle. Fish net draped the walls and various sections featured Davy Jones locker, a pirates den and refreshment nooks.

Beautifully gowned girls on the arms of their impeccably tuxedoed escorts entered the auditorium through the mouth of a life-size whale, constructed at the entrance.

Mary Margaret Reynolds introduced the seniors as they promenade across the stage and dancing was enjoyed by all to the music of "The Sounds of Tyme."

Mary Margaret Reynolds was chairman of the decorating committee with the following assisting: Bobby Hatback, David Soper, Laura Henderson, Sue Price, Stan Hemphill, Ann Dounney, Sherry Scott, Sharon Scott, Gail Gatehel, Ann Michels, Bob Bessner, Susan White, Craig Orsino, Mike Gibson, Duane Vihlen and Trudy Postlewie.

Pam Robinson and her committee arranged the delightful refreshments.

Dell And Hank Johnson Entertain... Gala Open House Sparked With Fun 'N Festivity



DELL AND HANK JOHNSON (couple at left) greet Mike and Jackie Canolo, who were among 350 invited guests to a gala open house at the Johnson Meltonville Avenue home, April 8. (Herald Photo)

It was a swinging night for the socially polite, Saturday, when the hosts with the most, Dell and Hank Johnson, entertained at an elaborate Open House at their fashionable home, 1008 Meltonville Ave.

The occasion? Who needs a special occasion to invite friends in for a gala evening? The Johnsons have been here for about four years, moved into their present home two years ago and just had the urge to throw a big party.

Elegant gowns on no parade by glamorous socialites and gaiety was the order of the evening as some 350 guests were welcomed by the hosts.

Mrs. Johnson received her guests in a stunning white fish-tail gown, and her husband, Hank, in a matching white tuxedo. Complimenting the fashionable attire were trays of a variety of party tidbits.

Sanford Personals

Mr. and Mrs. Jim Brooke last week with Mrs. Kathy Suran and children at their home, Crimora, Va., after spending 1500 Magnolia Ave.

Casselberry Personals

By JANE CASSELBERRY
Mr. and Mrs. Thomas Gullickson, 200 Lakewood Drive, Fern Park, had as their guests for a week, their son and daughter-in-law, Mr. and Mrs. Thomas R. Gullickson, of Milwaukee, Wis., and their children, Gary, Vickie, Wendy.

Geneva Gardeners Convene

By MRS. JOS. E. MATHIEUX
The April meeting of the Geneva Garden Club was conducted at the local Community Center with the president, Mrs. C. A. V. Oldham, presiding. Twenty-nine people were present who answered the roll call with the name of a plant beginning with the letter G.

Routine reports were given and Dr. Doris Cline reported on horticulture.

Mrs. Donald Norton, chairman of the nominating committee, presented the following slate of nominees for the ensuing year: Mrs. Calvin Oldham, president; Mrs. F. E. Luak, vice president; Mrs. Theodore J. Chaffin, Jr., secretary; Mrs. Donald Norton, treasurer; and Mrs. Charles Cole, parliamentarian.

Due to the untimely illness of Mrs. Cole who is ill at the Broward Hospital at Ft. Lauderdale, Mrs. Donald Norton called upon to present an impromptu program which she did most aptly and to the enlightenment of all present. Her most knowledgeable program about snakes — poisonous and "friendly" and poisonous.

Juveniles And Delinquents Discussed At BPW Dinner

The April dinner meeting of the Sanford Business and Professional Women's Club was held in the private dining room of Otto's Hofbrauhaus for the first time, all members being favorably impressed by the variety of delicious German and American food.

President Val Colbert was the guest speaker on this subject to any organization or group fortunate enough to secure him. Members and guests attending were Misses, Val Colbert, Polly Jones, Sandra Conway, Ruth Cummings, Maria Perez, Arlyn True, Myrtle Gradick, Marge Cowan, Margaret Diamond, Helen Pearson, Marjorie Graham, Margaret Gans, Harriet Slawter and Leslie Cole of Orlando.

The April business meeting will be held in the Caucus Room of the First Federal Building April 19 at 8 p.m. with all members urged to attend.

Diced cooked chicken mixed with celery and mayonnaise makes a good salad. But if you want to vary this, try adding curry powder and cooked rice. Serve on lettuce with a garnish of seedless grapes.

Rehearsal Dinner Fetes Bridal Party

Following the rehearsal, Saturday night for the Yates-Walker wedding, the groom's parents, Mr. and Mrs. Garfield Walker, entertained members of the bridal party and a few close friends at their home, 422 Summerlin Ave.

A buffet style dinner was served to the group. A color theme of blue and white was carried out in decorations. The serving table was overlaid with a white imported brocade linen.

Yates, the bride-elect; Rosell (left) to his friends as "luteh"; Walker, groom-elect; Mrs. Larry McDaniel, sister of the bride and matron of honor; Miss Vicki Kennedy, bridesmaid; John R. Wimlish, best man; Denise Yates of Starke, niece of the bride, and the bride's mother, Mrs. Alice Yates.

Also Rev. L. H. Afford, pastor of the Church of God; Rev. and Mrs. Arnold Godwin of Orlando, soloist and organist; Mr. and Mrs. Richard Yates of Del Rio Beach; Mr. and Mrs. Ed. Walker, groom's father and sister; Sharon; Mark Rumber, Mrs. H. I. Cockman and Roy and Edith Walker, brother and sister of the groom.

Rosemary tastes good as a seasoning for lamb; it also — surprisingly enough — complements potatoes.

USE A TWEEZER
An eyebrow tweezer can be a handy kitchen gadget. It's perfect for removing bones from fish and for placing candies or decorative sugar roses on a birthday cake.

FOR A DIFFERENT SANDWICH
Spread the bread with butter, then add a filling of crabmeat salad.

FOR A DIFFERENT SANDWICH
Spread the bread with butter, then add a filling of crabmeat salad.

FOR A DIFFERENT SANDWICH
Spread the bread with butter, then add a filling of crabmeat salad.

FOR A DIFFERENT SANDWICH
Spread the bread with butter, then add a filling of crabmeat salad.

FOR A DIFFERENT SANDWICH
Spread the bread with butter, then add a filling of crabmeat salad.

FOR A DIFFERENT SANDWICH
Spread the bread with butter, then add a filling of crabmeat salad.

FOR A DIFFERENT SANDWICH
Spread the bread with butter, then add a filling of crabmeat salad.

FOR A DIFFERENT SANDWICH
Spread the bread with butter, then add a filling of crabmeat salad.

FOR A DIFFERENT SANDWICH
Spread the bread with butter, then add a filling of crabmeat salad.

Only Your Beautician Will Know

EXPERT HAIR COLORING
NEWEST COLORS
LATEST TECHNIQUES
(Make An Appointment Today)
DIAL 322-4913
Betty Anne's
Hair Styling Salon
Open 10 to 9 p.m. Thurs. & Fri.
220 PARK AVE.

Deltona Women Attend Garden Convention

The executive meeting of the Deltona Garden Club will be held on Friday, April 11. Members of the Amaryllis Circle will be the hostesses.

The nominating committee will offer a slate of new officers and installation of those chosen will be at the May meeting. Various committees will be appointed after the installation of officers.

Other business at the meeting included an application by a newly formed group known as the Hibiscus Circle. The club anticipates the completion of plans in the next few days for another new circle with the proposed name of the Periwinkle Circle.

Several Deltona ladies attended the 41st annual convention of Garden Clubs held in Jacksonville on April 2 and 3. Attending were Mrs. George Murphy from the Aster Circle, Mrs. Howard James from the Dogwood Circle, Mrs. F. Hochstetler from the Carnation Circle and Mrs. A. Croninger, who represented the Garden Club of Deltona.

Visit Zale's at Sanford Plaza during Get Acquainted Days

HANDSOME ASH TRAY AND LIGHTER SET

Special only **88¢**

ZALE'S 323-4742

SANFORD PLAZA OPEN THURS. & FRI. 10 - 9 322-1080

The Vogue GIANT SALE DAYS!

THURSDAY-FRIDAY & SATURDAY

DRESS SALE
up to 1/2 OFF

A special group of our famous name brand dresses reduced up to 1/2 off. A wide assortment of styles.

OUR ENTIRE STOCK OF '67 NEW STRAW HANDBAGS

20% OFF, 3 DAYS ONLY

SLEEPWEAR SALE!
specially priced \$3.29 or 2 for \$6
Spring and Summer sleepwear

FULL FASHIONED CARDIGAN SWEATER \$399

COSTUME JEWELRY SALE!
SIMULATED PEARLS 99¢
PIERCED EARRINGS 2 for \$3

SANFORD PLAZA - HWY. 17-92

A COMPLETE VARIETY OF **MODESS SANITARY PRODUCTS**

REG. - SUPER - V-FORM - TEENAGE **NAPKINS . . . 125 39¢**

REG. - SUPER - V-FORM **NAPKINS . . . 245 77¢**

REG. - SUPER **NAPKINS . . . 485 \$1.49**

V-FORMS **NAPKINS . . . 365 \$1.09**

REG. - SUPER **TAMPONS . . . 105 37¢**

REG. - SUPER **TAMPONS . . . 405 \$1.33**

available at . . . **FOOD FAIR**

110 E. First Street Downtown Sanford Open Friday Evenings

SPECIAL PURCHASE!

The Overblouse

Cool and lacy are these short sleeved and sleeveless overblouses. In style-to-care-for drip dry cotton. Choice of white and pastel in sizes 32-38.

A \$9.98 Value **398**

USE OUR LAYAWAY

Hollywood

General Electric Air Conditioning WALL PLUMBING HEATING, INC. 1807 S. Sanford 322-4562

DeBary BPW Club Slates Installation Of Officers

By MRS. JOHN LEONE
The DeBary Business and Professional Women's Club held its annual business session at the home of Mrs. John Dick, 47 Catalina Drive.

Mrs. Albert T. Williams presided during the business session that followed the supper.

The nominating chairman, Mrs. Jo Peck, presented the new slate of officers for 1967-68 as follows: Miss Mary Ann Lederman, president; Mrs. Betty Zeul, first vice president; Mrs. Margaret Williams, third vice president; Miss Irene Brodin, corresponding secretary; Mrs. Elizabeth Ann Loz, treasurer. Installation will take place at the May meeting with the place to be announced later.

An auction was held at the luncheon meeting where Mrs. Jo Peck, presented the new slate of officers for 1967-68 as follows: Miss Mary Ann Lederman, president; Mrs. Betty Zeul, first vice president; Mrs. Margaret Williams, third vice president; Miss Irene Brodin, corresponding secretary; Mrs. Elizabeth Ann Loz, treasurer. Installation will take place at the May meeting with the place to be announced later.

An auction was held at the luncheon meeting where Mrs. Jo Peck, presented the new slate of officers for 1967-68 as follows: Miss Mary Ann Lederman, president; Mrs. Betty Zeul, first vice president; Mrs. Margaret Williams, third vice president; Miss Irene Brodin, corresponding secretary; Mrs. Elizabeth Ann Loz, treasurer. Installation will take place at the May meeting with the place to be announced later.

Husband A GROUCH?

Cool Him Off - Cool Your Whole House WITH

General Electric Air Conditioning WALL PLUMBING HEATING, INC. 1807 S. Sanford 322-4562

Dear Abby:

By Abigail Van Buren

Horoscope

Forecast

DEAR ABBY: You recently wrote, "Nothing is more overrated than money. Ask anyone who has suffered a real tragedy, and he will tell you that no amount of money could have comforted him in his hour of sorrow."

I disagree with you. My friend and I worked our way through college. I took a home of our own. I took my 14 years, but we finally got it. Then came a terrible and our love home was demolished. Of course there was no insurance, so it was a total loss. Now if some kind soul had come along and given us \$50,000 it would have comforted us plenty in our hour of sorrow.

So please, Dear Abby, admit that even \$100 can go good even in a while.

VICTIM IN TOPEKA
DEAR ABBY: I admit that I "spoke" to a "victim in a white." But while losing one's worldly goods is indeed tragic, only he who has suffered an irreplaceable loss, such as a mate, a child, or a beloved friend, knows the meaning of "real" tragedy.

DEAR ABBY: Some friends of ours recently had a golden wedding anniversary, so several weeks before that date I telephoned a local florist and asked him to send them two dozen long-stemmed yellow roses. (Cost \$24.) The daughter

of this couple had planned a party for her parents, and she used the same florist I called. She learned of my order so she told the florist they wouldn't be needing any extra bouquets, so to just accept my money and to deduct it from HER bill.

Since she is well-known and respected in town, I don't blame the florist for doing as she requested, however, I am very hurt to think that I paid part of HER bill rather than to have sent my own flowers.

The daughter did tell her parents about my order, however, because I received a nice thank you note for my "intentions." Am I wrong to feel hurt?

HURT
DEAR ABBY: No florist with whom you placed your order is every bit as guilty as the daughter who treated you that chintzy scheme. I can't imagine a reputable florist going along with the daughter's order after your approval. As I see it, you owe that florist NOTHING!

DEAR ABBY: I was at home preparing to go on a much-needed vacation when I received a phone call from my daughter's boss, telling me I should try to convince my daughter to get some time off her approval. As I see it, you owe that florist NOTHING!

How has the world been treating you? Unload your problems on Dear Abby, Box 6706, Los Angeles, Calif. 90069. For a personal, unprinted reply, enclose a self-addressed envelope.

For Abby's booklet, "How to Have a Lovely Wedding," send \$1 to Abby, Box 6706, Los Angeles, Calif. 90069.

Jacoby On Bridge

By Jacoby and Son

WEST EAST

Q2 ♠ 10 9 8 7 6 5 4 3 2
A2 ♠ A K J 10 9 8 7 6 5 4 3 2
K2 ♠ A K J 10 9 8 7 6 5 4 3 2
J2 ♠ A K J 10 9 8 7 6 5 4 3 2

Q3 ♠ 10 9 8 7 6 5 4 3 2
A3 ♠ A K J 10 9 8 7 6 5 4 3 2
K3 ♠ A K J 10 9 8 7 6 5 4 3 2
J3 ♠ A K J 10 9 8 7 6 5 4 3 2

Q4 ♠ 10 9 8 7 6 5 4 3 2
A4 ♠ A K J 10 9 8 7 6 5 4 3 2
K4 ♠ A K J 10 9 8 7 6 5 4 3 2
J4 ♠ A K J 10 9 8 7 6 5 4 3 2

In the early days of contract, like Golf's New York, was one of the greatest if not THE greatest defensive player. He was also famous for his sayings. One was: "When both sides play the same suit, one must be crazy."

It is a good general rule to follow this principle when on defense. If declarer plays one suit, you should play another suit just as you shouldn't always return your partner's lead, you should occasionally return your opponent's.

South wasn't the least bit happy about his six club contract. Somehow or other he felt that his partner might have insisted on playing diamonds.

On the other hand, South had nothing to gain by playing diamonds and he started out to do the best he could with the tools at hand.

He won the heart lead and played the queen, king and ace of spades in order to get rid of dummy's ten of hearts. He was pleased to see the jack drop from the West hand but he still had to attack diamonds.

He led a diamond and fished dummy's queen. East was in with the king and led a heart to force dummy. South ruffed, led out four rounds of trumps and crossed his hand.

There would have been no defense against the proper six diamond contract. But East could have beaten the club suit if he had thought to lead back a diamond when he got in with the king. Then, if South ruffed, he wouldn't be able to get to dummy for the rest of the diamonds. If he did not pull the heart, he would have to play the fourth trump would beat him.

Jacoby and Son

played the queen, king and ace of spades in order to get rid of dummy's ten of hearts. He was pleased to see the jack drop from the West hand but he still had to attack diamonds.

He led a diamond and fished dummy's queen. East was in with the king and led a heart to force dummy. South ruffed, led out four rounds of trumps and crossed his hand.

There would have been no defense against the proper six diamond contract. But East could have beaten the club suit if he had thought to lead back a diamond when he got in with the king. Then, if South ruffed, he wouldn't be able to get to dummy for the rest of the diamonds. If he did not pull the heart, he would have to play the fourth trump would beat him.

Polly's Pointers

By Polly Cramer

DEAR POLLY: Whenever I read an interesting book review in the newspaper or a magazine, I clip it out. If and when I buy the book, I tape the clipping to the inside cover. It is interesting to comment my opinion with that of the critic. When I loan the book to friends, they, too, enjoy the other person's professional viewpoint.

MRS. S. P. G.

DEAR POLLY: To make dresser scarves which are little care, buy colored oldcloth to match the room's color scheme. Cut the size needed and trim the edges with pinkish shears. These just need dusting, and any spills can be easily wiped up with a damp cloth.

VIRGINIA

POLLY'S PROBLEM
DEAR POLLY: Some of my blouses have stiff lace at the neck and on the sleeves. After washing, this lace goes limp and starch does not stiffen it. Does anyone know how I can make this lace stiff again? —**CLIPPING**

DEAR POLLY: I presume Mrs. N. is worried about her too small for planters, so I want to suggest that she use white to decorate a pair of book ends. Inexpensive wooden book ends can often be bought with an extending platform to which the shoes can be attached. It is attractive, handy. If her husband is handy, making the shoes would be an easy job. —**MRS. W. H. B.**

DEAR POLLY: I have so enjoyed reading and using the Pointers that I feel it is time for me to contribute something. I tell Mrs. K. that your modern medicine leaves no room for the family doctor and "one pill and one bill."

BALTIMORE, Md. (AP) — Dr. S. J. Axelrod, a University of Michigan physician, says modern medicine leaves no room for the family doctor and "one pill and one bill."

Axelrod told the final session of a three-day conference on medicine at Social Security headquarters Wednesday. "In this age of specialization, realists can appreciate how inefficient it is to call for the old-fashioned family doctor."

"We're just not turning out old-time family doctors. With specialization and with the complexities of today's medical services and their high cost, we can never expect to go back to the day of one pill and one bill," he said.

"As a nation, we are necessarily moving from primary concern with paying medical bills to an increasing concern with the manner in which services are rendered — toward a higher organization of medical care."

Statistics of the Public Health Service show that approximately 38 million blood specimens for syphilis are tested annually in the United States by public and private laboratories of all types. It is estimated that about 1.1 million of these specimens, or roughly 3% are positive. However, only 700,000 of the reactive specimens, or about 64%, are reported to health departments for follow-up.

Day Of 'One Pill, Bill'

DEAR POLLY: I have so enjoyed reading and using the Pointers that I feel it is time for me to contribute something. I tell Mrs. K. that your modern medicine leaves no room for the family doctor and "one pill and one bill."

BALTIMORE, Md. (AP) — Dr. S. J. Axelrod, a University of Michigan physician, says modern medicine leaves no room for the family doctor and "one pill and one bill."

Axelrod told the final session of a three-day conference on medicine at Social Security headquarters Wednesday. "In this age of specialization, realists can appreciate how inefficient it is to call for the old-fashioned family doctor."

"We're just not turning out old-time family doctors. With specialization and with the complexities of today's medical services and their high cost, we can never expect to go back to the day of one pill and one bill," he said.

"As a nation, we are necessarily moving from primary concern with paying medical bills to an increasing concern with the manner in which services are rendered — toward a higher organization of medical care."

Statistics of the Public Health Service show that approximately 38 million blood specimens for syphilis are tested annually in the United States by public and private laboratories of all types. It is estimated that about 1.1 million of these specimens, or roughly 3% are positive. However, only 700,000 of the reactive specimens, or about 64%, are reported to health departments for follow-up.

Beauty after Forty

By Edyth Thornton NicLeod

"Dear Edyth Thornton NicLeod: We're a small group of after-40 ladies who are either gray or going gray. We'd like to know what the most important colors are for spring—and whatever else is new in fashion for this season?"—**Liz.**

"Color is rampant. Yellow is very much 'in' but it's not for every 40's. The great stress is being put on beautiful fabrics. The lines are simple but the skirts are shorter than you've ever worn them unless you were a flapper." Wear the length that becomes you, your age and figure. Cotton is a much-needed material, so beautiful. When lined it's not so difficult to handle. Prints are large and simple, and brown and white are now seen more than white and black. But there are new necks. Buttons are particularly interesting and come in so many shapes and sizes.

"I'm getting married for the first time at the age of 40. I know that a formal brown gown would not be especially flattering, so what do you suggest? I'm tall, thin and I've reddish brown hair."—**Kate R. W.**

"You could wear a white wool suit, as brown as an accessory. Look for primary concern with paying medical bills to an increasing concern with the manner in which services are rendered — toward a higher organization of medical care."

Statistics of the Public Health Service show that approximately 38 million blood specimens for syphilis are tested annually in the United States by public and private laboratories of all types. It is estimated that about 1.1 million of these specimens, or roughly 3% are positive. However, only 700,000 of the reactive specimens, or about 64%, are reported to health departments for follow-up.

Divorce vs. Marriage

The ratio of divorces to marriages in the United States, including the strained forces overseas, reached a peak of 4.5 per 1,000 population in 1946, according to the Encyclopedia Britannica.

Statistics of the Public Health Service show that approximately 38 million blood specimens for syphilis are tested annually in the United States by public and private laboratories of all types. It is estimated that about 1.1 million of these specimens, or roughly 3% are positive. However, only 700,000 of the reactive specimens, or about 64%, are reported to health departments for follow-up.

Statistics of the Public Health Service show that approximately 38 million blood specimens for syphilis are tested annually in the United States by public and private laboratories of all types. It is estimated that about 1.1 million of these specimens, or roughly 3% are positive. However, only 700,000 of the reactive specimens, or about 64%, are reported to health departments for follow-up.

Statistics of the Public Health Service show that approximately 38 million blood specimens for syphilis are tested annually in the United States by public and private laboratories of all types. It is estimated that about 1.1 million of these specimens, or roughly 3% are positive. However, only 700,000 of the reactive specimens, or about 64%, are reported to health departments for follow-up.

Statistics of the Public Health Service show that approximately 38 million blood specimens for syphilis are tested annually in the United States by public and private laboratories of all types. It is estimated that about 1.1 million of these specimens, or roughly 3% are positive. However, only 700,000 of the reactive specimens, or about 64%, are reported to health departments for follow-up.

Statistics of the Public Health Service show that approximately 38 million blood specimens for syphilis are tested annually in the United States by public and private laboratories of all types. It is estimated that about 1.1 million of these specimens, or roughly 3% are positive. However, only 700,000 of the reactive specimens, or about 64%, are reported to health departments for follow-up.

Statistics of the Public Health Service show that approximately 38 million blood specimens for syphilis are tested annually in the United States by public and private laboratories of all types. It is estimated that about 1.1 million of these specimens, or roughly 3% are positive. However, only 700,000 of the reactive specimens, or about 64%, are reported to health departments for follow-up.

Statistics of the Public Health Service show that approximately 38 million blood specimens for syphilis are tested annually in the United States by public and private laboratories of all types. It is estimated that about 1.1 million of these specimens, or roughly 3% are positive. However, only 700,000 of the reactive specimens, or about 64%, are reported to health departments for follow-up.

Statistics of the Public Health Service show that approximately 38 million blood specimens for syphilis are tested annually in the United States by public and private laboratories of all types. It is estimated that about 1.1 million of these specimens, or roughly 3% are positive. However, only 700,000 of the reactive specimens, or about 64%, are reported to health departments for follow-up.

Statistics of the Public Health Service show that approximately 38 million blood specimens for syphilis are tested annually in the United States by public and private laboratories of all types. It is estimated that about 1.1 million of these specimens, or roughly 3% are positive. However, only 700,000 of the reactive specimens, or about 64%, are reported to health departments for follow-up.

Statistics of the Public Health Service show that approximately 38 million blood specimens for syphilis are tested annually in the United States by public and private laboratories of all types. It is estimated that about 1.1 million of these specimens, or roughly 3% are positive. However, only 700,000 of the reactive specimens, or about 64%, are reported to health departments for follow-up.

Statistics of the Public Health Service show that approximately 38 million blood specimens for syphilis are tested annually in the United States by public and private laboratories of all types. It is estimated that about 1.1 million of these specimens, or roughly 3% are positive. However, only 700,000 of the reactive specimens, or about 64%, are reported to health departments for follow-up.

Statistics of the Public Health Service show that approximately 38 million blood specimens for syphilis are tested annually in the United States by public and private laboratories of all types. It is estimated that about 1.1 million of these specimens, or roughly 3% are positive. However, only 700,000 of the reactive specimens, or about 64%, are reported to health departments for follow-up.

Statistics of the Public Health Service show that approximately 38 million blood specimens for syphilis are tested annually in the United States by public and private laboratories of all types. It is estimated that about 1.1 million of these specimens, or roughly 3% are positive. However, only 700,000 of the reactive specimens, or about 64%, are reported to health departments for follow-up.

Statistics of the Public Health Service show that approximately 38 million blood specimens for syphilis are tested annually in the United States by public and private laboratories of all types. It is estimated that about 1.1 million of these specimens, or roughly 3% are positive. However, only 700,000 of the reactive specimens, or about 64%, are reported to health departments for follow-up.

Statistics of the Public Health Service show that approximately 38 million blood specimens for syphilis are tested annually in the United States by public and private laboratories of all types. It is estimated that about 1.1 million of these specimens, or roughly 3% are positive. However, only 700,000 of the reactive specimens, or about 64%, are reported to health departments for follow-up.

Statistics of the Public Health Service show that approximately 38 million blood specimens for syphilis are tested annually in the United States by public and private laboratories of all types. It is estimated that about 1.1 million of these specimens, or roughly 3% are positive. However, only 700,000 of the reactive specimens, or about 64%, are reported to health departments for follow-up.

Statistics of the Public Health Service show that approximately 38 million blood specimens for syphilis are tested annually in the United States by public and private laboratories of all types. It is estimated that about 1.1 million of these specimens, or roughly 3% are positive. However, only 700,000 of the reactive specimens, or about 64%, are reported to health departments for follow-up.

Statistics of the Public Health Service show that approximately 38 million blood specimens for syphilis are tested annually in the United States by public and private laboratories of all types. It is estimated that about 1.1 million of these specimens, or roughly 3% are positive. However, only 700,000 of the reactive specimens, or about 64%, are reported to health departments for follow-up.

Statistics of the Public Health Service show that approximately 38 million blood specimens for syphilis are tested annually in the United States by public and private laboratories of all types. It is estimated that about 1.1 million of these specimens, or roughly 3% are positive. However, only 700,000 of the reactive specimens, or about 64%, are reported to health departments for follow-up.

Statistics of the Public Health Service show that approximately 38 million blood specimens for syphilis are tested annually in the United States by public and private laboratories of all types. It is estimated that about 1.1 million of these specimens, or roughly 3% are positive. However, only 700,000 of the reactive specimens, or about 64%, are reported to health departments for follow-up.

Statistics of the Public Health Service show that approximately 38 million blood specimens for syphilis are tested annually in the United States by public and private laboratories of all types. It is estimated that about 1.1 million of these specimens, or roughly 3% are positive. However, only 700,000 of the reactive specimens, or about 64%, are reported to health departments for follow-up.

Statistics of the Public Health Service show that approximately 38 million blood specimens for syphilis are tested annually in the United States by public and private laboratories of all types. It is estimated that about 1.1 million of these specimens, or roughly 3% are positive. However, only 700,000 of the reactive specimens, or about 64%, are reported to health departments for follow-up.

Statistics of the Public Health Service show that approximately 38 million blood specimens for syphilis are tested annually in the United States by public and private laboratories of all types. It is estimated that about 1.1 million of these specimens, or roughly 3% are positive. However, only 700,000 of the reactive specimens, or about 64%, are reported to health departments for follow-up.

Statistics of the Public Health Service show that approximately 38 million blood specimens for syphilis are tested annually in the United States by public and private laboratories of all types. It is estimated that about 1.1 million of these specimens, or roughly 3% are positive. However, only 700,000 of the reactive specimens, or about 64%, are reported to health departments for follow-up.

Statistics of the Public Health Service show that approximately 38 million blood specimens for syphilis are tested annually in the United States by public and private laboratories of all types. It is estimated that about 1.1 million of these specimens, or roughly 3% are positive. However, only 700,000 of the reactive specimens, or about 64%, are reported to health departments for follow-up.

Statistics of the Public Health Service show that approximately 38 million blood specimens for syphilis are tested annually in the United States by public and private laboratories of all types. It is estimated that about 1.1 million of these specimens, or roughly 3% are positive. However, only 700,000 of the reactive specimens, or about 64%, are reported to health departments for follow-up.

Statistics of the Public Health Service show that approximately 38 million blood specimens for syphilis are tested annually in the United States by public and private laboratories of all types. It is estimated that about 1.1 million of these specimens, or roughly 3% are positive. However, only 700,000 of the reactive specimens, or about 64%, are reported to health departments for follow-up.

Statistics of the Public Health Service show that approximately 38 million blood specimens for syphilis are tested annually in the United States by public and private laboratories of all types. It is estimated that about 1.1 million of these specimens, or roughly 3% are positive. However, only 700,000 of the reactive specimens, or about 64%, are reported to health departments for follow-up.

Statistics of the Public Health Service show that approximately 38 million blood specimens for syphilis are tested annually in the United States by public and private laboratories of all types. It is estimated that about 1.1 million of these specimens, or roughly 3% are positive. However, only 700,000 of the reactive specimens, or about 64%, are reported to health departments for follow-up.

Statistics of the Public Health Service show that approximately 38 million blood specimens for syphilis are tested annually in the United States by public and private laboratories of all types. It is estimated that about 1.1 million of these specimens, or roughly 3% are positive. However, only 700,000 of the reactive specimens, or about 64%, are reported to health departments for follow-up.

Statistics of the Public Health Service show that approximately 38 million blood specimens for syphilis are tested annually in the United States by public and private laboratories of all types. It is estimated that about 1.1 million of these specimens, or roughly 3% are positive. However, only 700,000 of the reactive specimens, or about 64%, are reported to health departments for follow-up.

Statistics of the Public Health Service show that approximately 38 million blood specimens for syphilis are tested annually in the United States by public and private laboratories of all types. It is estimated that about 1.1 million of these specimens, or roughly 3% are positive. However, only 700,000 of the reactive specimens, or about 64%, are reported to health departments for follow-up.

Statistics of the Public Health Service show that approximately 38 million blood specimens for syphilis are tested annually in the United States by public and private laboratories of all types. It is estimated that about 1.1 million of these specimens, or roughly 3% are positive. However, only 700,000 of the reactive specimens, or about 64%, are reported to health departments for follow-up.

Statistics of the Public Health Service show that approximately 38 million blood specimens for syphilis are tested annually in the United States by public and private laboratories of all types. It is estimated that about 1.1 million of these specimens, or roughly 3% are positive. However, only 700,000 of the reactive specimens, or about 64%, are reported to health departments for follow-up.

Statistics of the Public Health Service show that approximately 38 million blood specimens for syphilis are tested annually in the United States by public and private laboratories of all types. It is estimated that about 1.1 million of these specimens, or roughly 3% are positive. However, only 700,000 of the reactive specimens, or about 64%, are reported to health departments for follow-up.

Statistics of the Public Health Service show that approximately 38 million blood specimens for syphilis are tested annually in the United States by public and private laboratories of all types. It is estimated that about 1.1 million of these specimens, or roughly 3% are positive. However, only 700,000 of the reactive specimens, or about 64%, are reported to health departments for follow-up.

Statistics of the Public Health Service show that approximately 38 million blood specimens for syphilis are tested annually in the United States by public and private laboratories of all types. It is estimated that about 1.1 million of these specimens, or roughly 3% are positive. However, only 700,000 of the reactive specimens, or about 64%, are reported to health departments for follow-up.

Statistics of the Public Health Service show that approximately 38 million blood specimens for syphilis are tested annually in the United States by public and private laboratories of all types. It is estimated that about 1.1 million of these specimens, or roughly 3% are positive. However, only 700,000 of the reactive specimens, or about 64%, are reported to health departments for follow-up.

Statistics of the Public Health Service show that approximately 38 million blood specimens for syphilis are tested annually in the United States by public and private laboratories of all types. It is estimated that about 1.1 million of these specimens, or roughly 3% are positive. However, only 700,000 of the reactive specimens, or about 64%, are reported to health departments for follow-up.

Statistics of the Public Health Service show that approximately 38 million blood specimens for syphilis are tested annually in the United States by public and private laboratories of all types. It is estimated that about 1.1 million of these specimens, or roughly 3% are positive. However, only 700,000 of the reactive specimens, or about 64%, are reported to health departments for follow-up.

Statistics of the Public Health Service show that approximately 38 million blood specimens for syphilis are tested annually in the United States by public and private laboratories of all types. It is estimated that about 1.1 million of these specimens, or roughly 3% are positive. However, only 700,000 of the reactive specimens, or about 64%, are reported to health departments for follow-up.

Statistics of the Public Health Service show that approximately 38 million blood specimens for syphilis are tested annually in the United States by public and private laboratories of all types. It is estimated that about 1.1 million of these specimens, or roughly 3% are positive. However, only 700,000 of the reactive specimens, or about 64%, are reported to health departments for follow-up.

Statistics of the Public Health Service show that approximately 38 million blood specimens for syphilis are tested annually in the United States by public and private laboratories of all types. It is estimated that about 1.1 million of these specimens, or roughly 3% are positive. However, only 700,000 of the reactive specimens, or about 64%, are reported to health departments for follow-up.

Statistics of the Public Health Service show that approximately 38 million blood specimens for syphilis are tested annually in the United States by public and private laboratories of all types. It is estimated that about 1.1 million of these specimens, or roughly 3% are positive. However, only 700,000 of the reactive specimens, or about 64%, are reported to health departments for follow-up.

Statistics of the Public Health Service show that approximately 38 million blood specimens for syphilis are tested annually in the United States by public and private laboratories of all types. It is estimated that about 1.1 million of these specimens, or roughly 3% are positive. However, only 700,000 of the reactive specimens, or about 64%, are reported to health departments for follow-up.

Statistics of the Public Health Service show that approximately 38 million blood specimens for syphilis are tested annually in the United States by public and private laboratories of all types. It is estimated that about 1.1 million of these specimens, or roughly 3% are positive. However, only 700,000 of the reactive specimens, or about 64%, are reported to health departments for follow-up.

Statistics of the Public Health Service show that approximately 38 million blood specimens for syphilis are tested annually in the United States by public and private laboratories of all types. It is estimated that about 1.1 million of these specimens, or roughly 3% are positive. However, only 700,000 of the reactive specimens, or about 64%, are reported to health departments for follow-up.

Statistics of the Public Health Service show that approximately 38 million blood specimens for syphilis are tested annually in the United States by public and private laboratories of all types. It is estimated that about 1.1 million of these specimens, or roughly 3% are positive. However, only 700,000 of the reactive specimens, or about 64%, are reported to health departments for follow-up.

Statistics of the Public Health Service show that approximately 38 million blood specimens for syphilis are tested annually in the United States by public and private laboratories of all types. It is estimated that about 1.1 million of these specimens, or roughly 3% are positive. However, only 700,000 of the reactive specimens, or about 64%, are reported to health departments for follow-up.

Statistics of the Public Health Service show that approximately 38 million blood specimens for syphilis are tested annually in the United States by public and private laboratories of all types. It is estimated that about 1.1 million of these specimens, or roughly 3% are positive. However, only 700,000 of the reactive specimens, or about 64%, are reported to health departments for follow-up.

Statistics of the Public Health Service show that approximately 38 million blood specimens for syphilis are tested annually in the United States by public and private laboratories of all types. It is estimated that about 1.1 million of these specimens, or roughly 3% are positive. However, only 700,000 of the reactive specimens, or about 64%, are reported to health departments for follow-up.

Statistics of the Public Health Service show that approximately 38 million blood specimens for syphilis are tested annually in the United States by public and private laboratories of all types. It is estimated that about 1.1 million of these specimens, or roughly 3% are positive. However, only 700,000 of the reactive specimens, or about 64%, are reported to health departments for follow-up.

Statistics of the Public Health Service show that approximately 38 million blood specimens for syphilis are tested annually in the United States by public and private laboratories of all types. It is estimated that about 1.1 million of these specimens, or roughly 3% are positive. However, only 700,000 of the reactive specimens, or about 64%, are reported to health departments for follow-up.

Statistics of the Public Health Service show that approximately 38 million blood specimens for syphilis are tested annually in the United States by public and private laboratories of all types. It is estimated that about 1.1 million of these specimens, or roughly 3% are positive. However, only 700,000 of the reactive specimens, or about 64%, are reported to health departments for follow-up.

Statistics of the Public Health Service show that approximately 38 million blood specimens for syphilis are tested annually in the United States by public and private laboratories of all types. It is estimated that about 1.1 million of these specimens, or roughly 3% are positive. However, only 700,000 of the reactive specimens, or about 64%, are reported to health departments for follow-up.

Statistics of the Public Health Service show that approximately 38 million blood specimens for syphilis are tested annually in the United States by public and private laboratories of all types. It is estimated that about 1.1 million of these specimens, or roughly 3% are positive. However, only 700,000 of the reactive specimens, or about 64%, are reported to health departments for follow-up.

Statistics of the Public Health Service show that approximately 38 million blood specimens for syphilis are tested annually in the United States by public and private laboratories of all types. It is estimated that about 1.1 million of these specimens, or roughly 3% are positive. However, only 700,000 of the reactive specimens, or about 64%, are reported to health departments for follow-up.

Statistics of the Public Health Service show that approximately 38 million blood specimens for syphilis are tested annually in the United States by public and private laboratories of all types. It is estimated that about 1.1 million of these specimens, or roughly 3% are positive. However, only 700,000 of the reactive specimens, or about 64%, are reported to health departments for follow-up.

Statistics of the Public Health Service show that approximately 38 million blood specimens for syphilis are tested annually in the United States by public and private laboratories of all types. It is estimated that about 1.1 million of these specimens, or roughly 3% are positive. However, only 700,000 of the reactive specimens, or about 64%, are reported to health departments for follow-up.

OUR BOARDING HOUSE

By Galbraith

DEAR ABBY: I DON'T WANT TO SCARE YOU BUT I DON'T THINK YOU CAN PANIC ME WITH YOUR HIRING QUESTIONS. I SIMPLY BELIEVE IN A GEORGE (CLOONEY).

DEAR ABBY: I DON'T WANT TO SCARE YOU BUT I DON'T THINK YOU CAN PANIC ME WITH YOUR HIRING QUESTIONS. I SIMPLY BELIEVE IN A GEORGE (CLOONEY).

OUT OUR WAY

By Dick Turner

DEAR ABBY: I DON'T WANT TO SCARE YOU BUT I DON'T THINK YOU CAN PANIC ME WITH YOUR HIRING QUESTIONS. I SIMPLY BELIEVE IN A GEORGE (CLOONEY).

DEAR ABBY: I DON'T WANT TO SCARE YOU BUT I DON'T THINK YOU CAN PANIC ME WITH YOUR HIRING QUESTIONS. I SIMPLY BELIEVE IN A GEORGE (CLOONEY).

CARNIVAL

By Dick Turner

DEAR ABBY: I DON'T WANT TO SCARE YOU BUT I DON'T THINK YOU CAN PANIC ME WITH YOUR HIRING QUESTIONS. I SIMPLY BELIEVE IN A GEORGE (CLOONEY).

DEAR ABBY: I DON'T WANT TO SCARE YOU BUT I DON'T THINK YOU CAN PANIC ME WITH YOUR HIRING QUESTIONS. I SIMPLY BELIEVE IN A GEORGE (CLOONEY).

PRISCILLA'S POP

By Dick Turner

DEAR ABBY: I DON'T WANT TO SCARE YOU BUT I DON'T THINK YOU CAN PANIC ME WITH YOUR HIRING QUESTIONS. I SIMPLY BELIEVE IN A GEORGE (CLOONEY).

DEAR ABBY: I DON'T WANT TO SCARE YOU BUT I DON'T THINK YOU CAN PANIC ME WITH YOUR HIRING QUESTIONS. I SIMPLY BELIEVE IN A GEORGE (CLOONEY).

SHORT RIBS

By Dick Turner

DEAR ABBY: I DON'T WANT TO SCARE YOU BUT I DON'T THINK YOU CAN PANIC ME WITH YOUR HIRING QUESTIONS. I SIMPLY BELIEVE IN A GEORGE (CLOONEY).

DEAR ABBY: I DON'T WANT TO SCARE YOU BUT I DON'T THINK YOU CAN PANIC ME WITH YOUR HIRING QUESTIONS. I SIMPLY BELIEVE IN A GEORGE (CLOONEY).



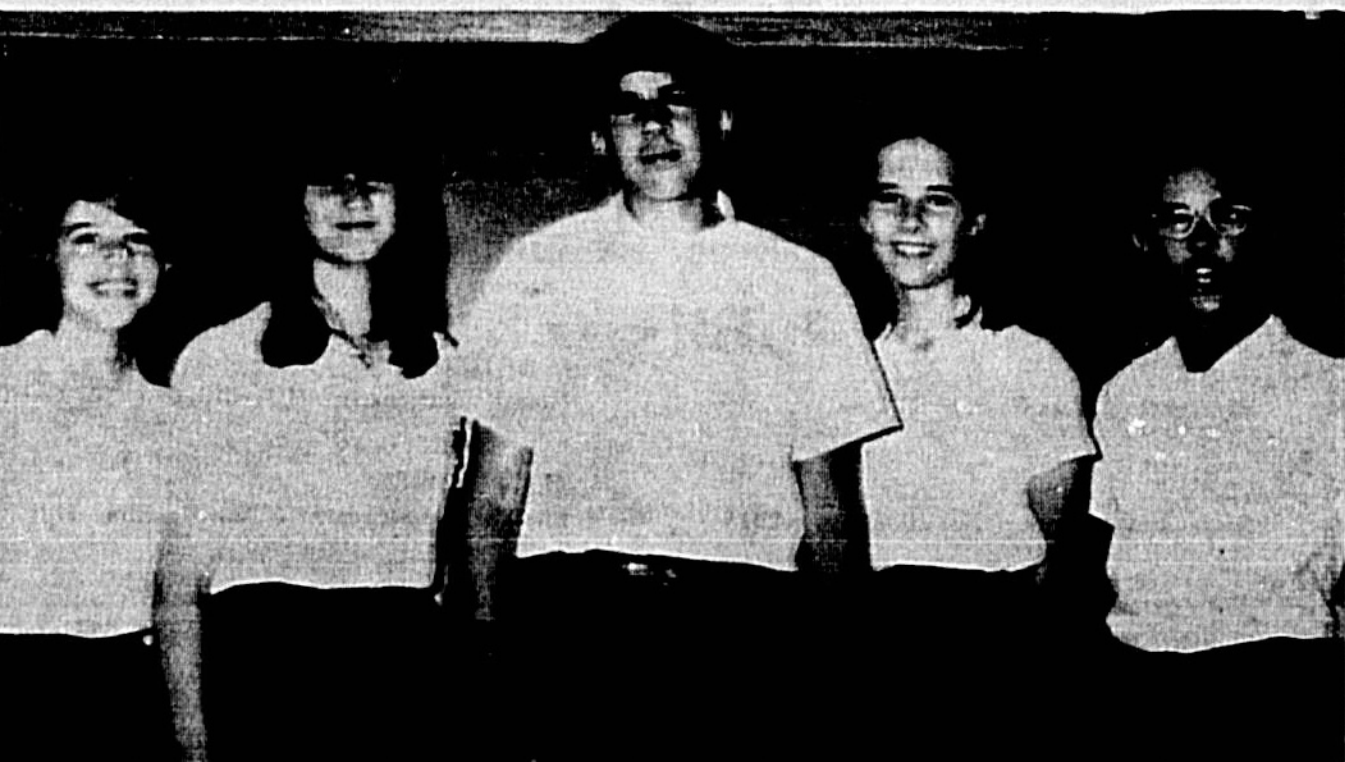
NEW RAMBLER dealership in Sanford has been opened by J. D. (Red) Brass at 618 West First Street. With a half-century of automobile experience to his credit, Brass has been in the business in Sanford for the last decade.



ROBERT L. PITTMAN, chief electronics technician, after 20 years of service in the Navy, was transferred from RVAH-3 at Sanford Naval Air Station to the Fleet Reserve. He is presented a plaque by Lt. Cdr. W. J. Thomas (right). (Navy Photo)



COMMITTEE for luncheon honoring faculty and personnel of Altamonte Springs School, given by executive board of the Parent-Teacher Association, was (left to right) Vi Segrest, Barbara Jones, Linda Conner, Mary Ann Kinsey, Thelma Knoeche, and Joan Neff. Fifty-five enjoyed Chicken Tetrazzini casserole, combination bean salad, relish tray, apple crisp and tea or coffee. (Herald Photo)



EIGHTH GRADE class officers at St. Mary-Magdalene Parochial School in Altamonte Springs are (left to right) Cecelia Wicklin, secretary; Rosemary Hickey, vice president; Peter Controme, president; Cheryl Briggs, treasurer, and Mike Malatesta, sergeant at arms. (Herald Photo)

Bear Lake Is 'Guinea Pig' School

By MARYANN MILES
Bear Lake School will be the experimental school in the county for the new non-graded system, starting next fall, Principal Floyd Richards announced at the April meeting of the Parent-Teacher Association.

At the same time, team teaching also will be introduced at the school, Richards advised.

The non-graded system will be used on a two-year basis, after which teachers will assist those in other elementary schools as this new method, termed as that for the school of the future, is expected to be adopted county-wide.

The team teaching will involve four teachers, each specializing in his own field, thus allowing each to devote more time to a particular subject and/or student. Students will spend 50 per cent of the day with his classroom teacher and the remainder with individual

teachers where they most need help. Extra work will be given the fast learner to prevent boredom.

Parents have been asked to help work out some type of report form for next fall, Richards advised.

In other announcements, Richards stated the school auditorium will be converted into a library next term. Last year, \$2,000 of the \$4,000 allotted Bear Lake was held back and will be added to this year's allotment, making a total \$6,000 to be used for textbooks and other needed supplies.

Officers elected in business of the meeting were Grant Mueller, president; Mrs. Chris Richards, first vice president; Richards, second vice president; Mrs. Rosylee Brogan, secretary, and John Hulm, treasurer. Installations will be at the school May 2 meeting.

The membership voted to go

on record as being opposed to double sessions expected next term. Mrs. Nancy Bower reported on a recent meeting of school principals and PTA representatives to discuss steps of protest against the double sessions, and John Hall was named to represent Bear Lake at future meetings of this nature.

In report from Mrs. Virginia Krause on the Seminole County Health Department, it was noted 50 per cent of mental health problems come from the south end of the county. Members were urged to support the county's mental health clinic program.

A balance of \$632.20 was reported in the treasury after expenditure of \$275 for new playground equipment.

A dinner is being planned for April 20, 6-7:15 p.m., at the school.

Roomcount was won by Mrs. Nell McNeal's room.

Forest City Fire Dept. Moves Into New Home

By MARYANN MILES
The Forest City Volunteer Fire Department has a new location and a new telephone number.

The truck and equipment have been moved from Brown's Service Station to the site for the proposed new fire station located approximately one block west on the south side of S.E. 436. All emergency calls should be made to 831-1300.

Since January, this year, when the Forest City-Bear Lake fire control district was established, considerable progress has been made toward the erection of the new fire station, department officials report.

The lot has been graded, culvert has been put in for the driveway, outside lighting has been installed and the street has been moved. All improvement expenditures are based upon a proposed budget of \$10,000, which is the expected yield from the 3/10 to 4/10 mills taxation.

New firemen have been recruited and a regular training program is underway, with the next meeting at 7:30 p.m. each Thursday, under direction of Fire Chief Dick Lashley.

While final preparation for a water supply is being made, a temporary source has been obtained through arrangements with Deep South Products plant



EYE-POPPING STEAKS were served at the Seminole County Sportsman's Club's first cookout of the year at its recreation grounds on West Hwy. 46, at the Wekiva River. Brenda, 5, and Darlene, 8, daughters of Mr. and Mrs. W. A. Mackey, eye a juicy and succulent steak. (Herald Photo)

INSURANCE
Personal Commercial Industrial Bonds
CRUMLEY-CONTELETTI, INC.
500 W. First St. 322-0376
Sanford

GRAND OPENING

April 13, 1967

BRASS MOTORS

Your new American Motors / Rambler Dealer!



AMBASSADOR!
Now—luxury cars created for today! See the most luxurious full-size Ambassadors ever. Cars priced for people who want their luxury car now.



MARLIN!
Now—full-size luxury comes to the sports fastback! Room for 6 adults to stretch out in style—choice of two powerful 6's... Three Typhoon V-8's!



REBEL!
Now—the first Excitement Machines in the intermediate class! Cars for Now that never existed before—with more people-space than any cars their size!



RAMBLER AMERICAN!
Now—Typhoon V-8 thruster comes to America's low-priced economy champs! Come see America's only complete line of compacts!

Come in Now for a terrific deal on any 1967 Now Car you decide to buy!

BRASS MOTORS

519 EAST FIRST STREET SANFORD, FLA.



more exciting! more fun!
new '67 edition
"Let's go to the races"



"LET'S GO TO THE RACES" CARD

CARD 40	SAMPLE CARD	10
1st RACE	1	WFLA-TV Ch. 8
2nd RACE	8	WFTS-TV Ch. 2
3rd RACE	2	WTVT-TV Ch. 10
4th RACE	7	WFTS-TV Ch. 12
5th RACE	5	WFTS-TV Ch. 13

Prizes limited to one winner per card. After each race check your TV screen for the number of the winning horse. Compare this number with number on your card under "WIN" in your Public Market. Winner will receive assignment within 72 hours after verification. Winning cards must be redeemed within three days after broadcast. Cards that do not correspond with the race event, quarter at year store will not be honored. Cards that have been mutilated or altered will not be accepted. No purchase necessary to obtain this merchandise card. Pick up your card at your Public Market.

... by matching winning horse numbers in TV show races with winning horse numbers on FREE cards given now at PUBLIX!
9 winning \$500.00 tickets at Publix Markets each week. More than 11,000 other winning tickets (worth \$2 to \$100.00) each week!

Be ready for all the excitement and thrills of the 1967 Edition of "Let's Go To The Races." Pick up your game card at any Publix Market. If a number on your card matches the winning number shown on TV, you have won a cash prize. You can see the winners on TV... or you can see the winners posted at every Publix Market.

WATCH the show this Saturday.

WFLA, Channel 8, Tampa St. Petersburg	5:30 to 6:00 PM
WDBO, Channel 6, Orlando	5:00 to 5:30 PM
WLBW, Channel 10, Miami	5:30 to 6:00 PM
WEAT, Channel 12, West Palm Beach	7:30 to 8:00 PM

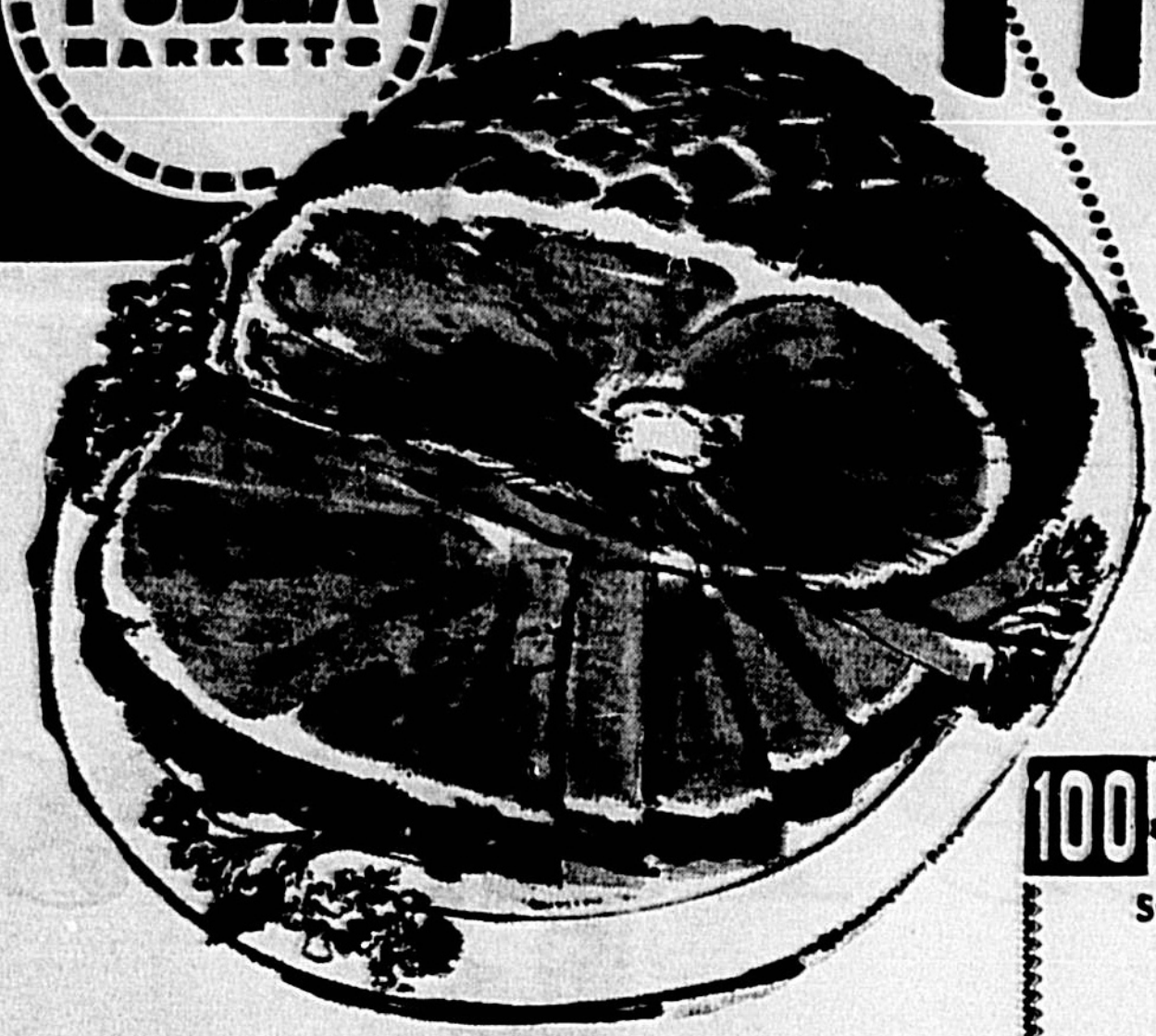
REMEMBER... You do not have to watch the TV show to win. The five winning numbers for the week will be posted at all PUBLIX Markets each Monday for your convenience.

- 5 Races in Every Half-Hour TV Show
- 1st Race Each Week \$2.00 for WIN
- 2nd Race Each Week \$5.00 for WIN
- 3rd Race Each Week \$10.00 for WIN
- 4th Race Each Week \$100.00 for WIN
- 5th Race Each Week \$500.00 for WIN
- New Cards Given Free Every Week
- You Don't Have to Watch TV to Win
- Check Your Card at PUBLIX Weekly
- Pick Up Your Card TODAY!





Ham 'n Yams



Serve with Ham — North Carolina Kilm Dried
Sweet Yams
 lb. **13¢**
 Sweet as Honey
Golden Bananas
 lb. **10¢**

100 Green Stamps
 EXTRA WITH THIS COUPON AND PURCHASE \$1.00 OF SWIFT'S PREMIUM BONELESS CANNED HAMS 5 lb. can \$3.99

PRICES EFFECTIVE THURS., FRI., SAT. APRIL 13-14-15 1967

SWIFT'S PREMIUM BONELESS

SWEET CREAM
Land O' Lakes
Butter
 1-lb. ctn.
59¢
 LIMIT 1 PLEASE WITH OTHER PURCHASES OF \$5.00 OR MORE

CANNED HAMS
\$3.99
 5-lb. can
 Plus 100 Extra 5 & H GREEN STAMPS with coupon!

- dairy specials**
- Wisconsin Cheese Bar Special, Muenster Cheese per lb. 83¢
 - Wisconsin Cheese Bar Slices
 - Breakfast Club Grade 'A' Florida Medium Eggs 2 doz. 69¢
 - Big Eye Swiss per lb. 43¢
 - Fleischmann's Tasty New Soft Margarine 1-lb. can 47¢
 - Kraft's Assorted Whipped Dip
 - Cream Cheese per lb. 35¢

health & beauty aids

- List Price \$1.09, Concentrated Prell Shampoo large size 54¢
- List Price \$1.05, Spray Style Secret Deodorant 7-oz. can 84¢

SWIFT'S PREMIUM PROTEIN BONE-IN
Pot Roast
 per lb.
59¢

- Swift's Premium Boneless Imperial
- Roast** per lb. 79¢
 - Boneless English-Cut **Beef Roast** per lb. 89¢
 - Tender Enough To Grill! **Chuck Steaks** per lb. 69¢
 - A True Gourmet Steak Cut **London Broil** per lb. \$1.09
 - Tender, Meaty Beef **Short Ribs** per lb. 49¢
 - Always A Family Favorite, Fresh **Grnd. Beef** 3 lbs. \$1.47

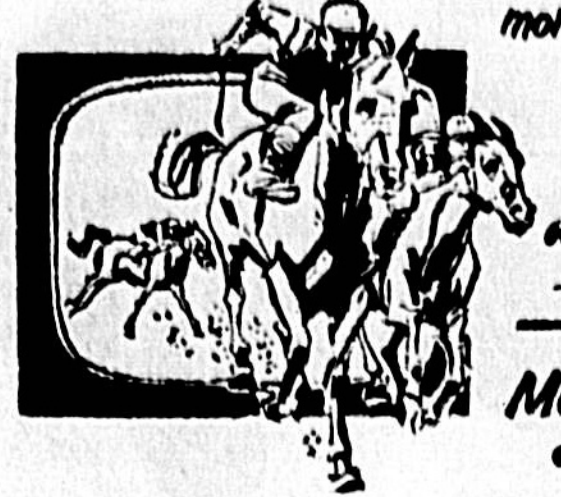
sunshine rinse detergent 85¢	fluffy all detergent 85¢	regular all detergent (10¢ off) 69¢	cold water liquid all 79¢	lux liquid detergent (8¢ off) 55¢	wisk liquid detergent 79¢	liquid dove for dishes (12¢ off) 50¢	final touch fabric softner (12¢ off) 40¢
------------------------------	--------------------------	-------------------------------------	---------------------------	-----------------------------------	---------------------------	--------------------------------------	--

"An American Way of Thrift Since 1896"

famous Southern Pair



- Save 20c on Heart's Delight **Apricot Nectar** . . . 3 46-oz. cans \$1
- Save 33c on Dole Pineapple-Pink Grapefruit **Fruit Drink** . . . 4 46-oz. cans \$1
- Save 29c on Cherry-Mo Dark **Sweet Cherries** . . . 3 #303 cans \$1
- Save 16c on F & P Bartlett **Pear Halves** . . . 4 #303 cans \$1
- Save 8c on Evaporated Style **Carnation Milk** . . . 6 tall cans 98¢



more exciting! more fun!
new '67 edition
"Let's go to the races"

MORE WINNERS!
 GET THIS WEEK'S "LET'S GO TO THE RACES" CARD TODAY AT PUBLIX



THIS SATURDAY WATCH OUR FIRST "RACES" TV SHOW

- Save 33c on Libby's Refreshing **Tomato Juice** . . . 4 46-oz. cans \$1.
- Save 25c on Kraft's Delicious **Fruit Cocktail** . . . 5 #303 cans \$1.
- Save 15c on Libby's C.S. or Whole Kernel **Golden Corn** . . . 5 #303 cans \$1.
- Save 20c on Libby's Green **Sweet Peas** . . . 5 #303 cans \$1.
- Save 18c on Kraft's Famous **Miracle Whip** . . . quart jar 49¢
- Save 11c on Mushroom or Chicken-Noodle **Campbell Soup** 6 tall cans \$1.
- Save 10c on Lykes Family-Sized **Beef Stew** 24-oz. can 39¢
- Save 19c on Lykes Tasty **Beef Hash** 3 #300 cans \$1.

- P.F.V. Cookie Feature
- Fudge Cremes 11 1/2-oz. pkg. 29¢
 - Shiraham's Chocolate-Drop Coconut Cookies 15-oz. bag 49¢
 - Kraft's Dinner Delights Macaroni & Cheese 14-oz. pkg. 49¢
 - Kraft's Creamy Famous Brownie Mix 22-oz. pkg. 44¢
 - For Tasty Whipped Cream Toppings, Dream Whip 4-oz. pkg. 45¢
 - Tasty Assorted Flavors Toastems 10-oz. pkg. 45¢
 - Soft Absorbent Assorted (Lace Be) Gala Towels large roll 29¢
 - No Rings, No Lady 13-inch wide Shelf Paper 25-ft. roll 43¢
 - No Rings, No Lady 18-inch wide Shelf Paper 18-ft. roll 43¢
 - Famous Flower Lighter (large jar) Instant Tea 3-oz. jar 89¢
 - Muller's Fine Quality Thin Spaghetti 2-lb. pkg. 29¢
- SAVE 8c, SCOTT 2-PLY TISSUE (WHITE OR COLORED) 4 2-roll \$1

COLD WATER DETERGENT
Cold Power
 1-gal. pkg.
38¢
 LIMIT 1 PLEASE WITH OTHER PURCHASES OF \$5.00 OR MORE

NEW CUSTOMER BONUS
Samsonite FOLDING TABLE
 in beautiful WOODGRAIN FINISH!
 (WOODGRAIN FINISH ON MAPLES)
 REGULAR \$59.95 VALUE NOW ONLY **\$3.99**
 WITH \$20 WORTH OF REGISTER TAPES
 GET YOUR TABLE NOW!
 expires April 19

SWIFT'S PARK LANE ASST'D. FLAVORS
Ice Cream
 half gal.
59¢

- Save 19c on Six Cans of Donald Duck Frozen Florida **Orange Concentrate** 6-oz. can 10¢
- Swenson's Chicken or Turkey Pot Pies 4 8-oz. pkg. \$1
- Mrs. Smith's Dutch Apple Crumb Pie 28-oz. pkg. 49¢
- Ore-Ida Frozen Crinkle-Cut Potatoes 3 1-lb. pkg. 89¢
- Beauly's Quick-Frozen Perch Steaks 1-lb. pkg. 49¢
- Beauly's Frozen Shrimp Sole Fillets 1-lb. pkg. 59¢

WHERE SHOPPING IS A PLEASURE!

SANFORD PLAZA **SEMINOLE PLAZA**
 Hwy. 17-92 and Onora Dr., Sanford Casselberry

HOURS:
 MON., TUES., WED., SAT.: 8:30-7:00
 THURS., FRI.: 8:30-9:00

FRESH COFFEE ALL GRINDS
Chase & Sanborn
 1-lb. can
38¢
 LIMIT 1 PLEASE WITH OTHER PURCHASES OF \$5.00 OR MORE

lux toilet soap 3 1-oz. bars 35¢	lifebuoy toilet soap 2 1-oz. bars 31¢	pompeian olive oil 4-oz. size 25¢	ideal dog food 3 tall cans 49¢	alcoa aluminum foil 25-ft. roll 33¢	miracle white cleaner 1-gal. 79¢	gerber's for babies orange juice 2 small cans 23¢
----------------------------------	---------------------------------------	-----------------------------------	--------------------------------	-------------------------------------	----------------------------------	---

"An American Way of Thrift Since 1896"



SENTENCED to serve 1-1/2 years in prison, former Senate aide Bobby Baker still plans to appeal his conviction for income tax evasion and fraud to higher courts. He could have received a 48-year sentence and a \$47,000 fine. (NEA Telephoto)

Winter Wheat Suffers From Lack Of Rain

KANSAS CITY, Mo. (AP) — In parts of Kansas, Oklahoma, Texas and Colorado fields of winter wheat which would be greening with even a little water are spotted brown.

Farmers of Kansas, the nation's greatest wheat-producing state, planted one-fifth more wheat last fall than they did the year before, but will be lucky to reap a crop even equaling the 200 million bushels of 1966.

The official Agriculture Department crop estimate Monday was that the Kansas yield will be only 107,190,000 bushels.

"There's no question we've been hurt," says Charles W. Pence, executive secretary of Great Plains Wheat Inc., a regional and international marketing organization.

"We've seen years like this and then we've gotten rain and come up with an average crop," says J.E. Pallesen, statistician for the Kansas State-Federal Crop Reporting Service. "If we can get normal precipitation now a lot of our wheat would be a fair crop."

The drought affects the western half of Kansas — where the bulk of the state's wheat is grown — and extends through southeast Colorado, the panhandles of Oklahoma and Texas, and western Oklahoma.

While eastern Kansas receives up to six inches of rain last weekend, the big wheat counties of Sumner and Sedgewick received only half an inch. Those counties, in south-central Kansas, received only .64 of an inch of rain the first three months this year. The average is 2.26 inches.

When there is sufficient moisture below the ground, young wheat can draw its spring nourishment from there. But soil moisture reserves are low because some areas got only 40 per cent of normal rainfall last year.

Bill Crutinger of Tribune, legislative agent for the Kansasians, had predicted the crop at 168 million bushels on the basis of April 1 conditions. "That area of the state of Kansas, west of U.S. 81, which produces about three-fourths of the state's wheat, is still powder dry," Crutinger said. "The ravages of drought, winter-kill and insects are readily visible in most areas."

Grain elevator operators throughout the Oklahoma wheat belt had indicated they expected their crop to be only 50 to 80 per cent of last year's 98.4 million bushels, and Monday's official estimate was 62,320,000. Harold A. Rector, market analyst for the Oklahoma Board of Agriculture, says the low local areas that had sufficient rainfall probably will have production equal or better than 1966. "But these areas are very small," Rector says.

The official forecast is for a national winter wheat crop of 1.16 billion bushels. This is down sharply from the 1.26 billion bushels forecast in December but 10 per cent more than last year's production.

"Remember," said J. H. Dean of Hutchinson, Kansas, "one billion bushels of wheat still is a hollow lot more wheat than we would use in this country in one year." Dean is general manager of one of the largest wheat marketing cooperatives in the country, with 125 elevators.

PARK AND SHOP
OPEN 7 DAYS A WEEK!
25th AND PARK AVE.

PARK AVE. AT 25th Street
THESE PRICES GOOD THRU WED. APRIL 19
(Quantity Rights Reserved)

OLD FASHIONED BARGAIN DAYS!

GIANT PACKAGE DETERGENT
FAB 47¢
(LIMIT: ONE WITH YOUR \$5. OR MORE FOOD ORDER PLEASE)

"HUNT'S" CATSUP 14-OZ. BOTTLE
19¢
(LIMIT: 4 WITH \$5.00 ORDER)

"GALA" DECORATOR TOWELS JUMBO ROLLS
29¢

"MORTON" FROZEN DINNERS 11-OZ. 89¢
"MCKENZIE" SPECKLED BUTTER BEANS 2 24-OZ. POLY BAGS 89¢

Thriftyway's "Lazy Aged" RIB ROAST
Quality MEATS
CIGARETTES ALL BRANDS CARTON **\$2.69**
VALUES GALORE



- "Vegetable" Shortening 3-Lb. Can 69¢
- "Everfresh" Potato Chips 9-Oz. Twin-Pak 38¢
- "Campbell's" Tomato Soup Tall Can 10¢
- "Lara Lynn" Saltines Lb. Box 19¢
- "Similac" Baby Formula 13-Oz. Can 25¢
- "Shurline" Milk Tall Can 14¢
- "Showboat" Pork & Beans No. 300 Can 10¢
- "Jay Bird" Viennas 4-Oz. Can 10¢
- "Holsum" P'nut Butter 28-Oz. Jar 69¢
- "Whitfield" Fresh Cucumber Chips 22-Oz. Jar 29¢
- "Sunlite" Tomatoes 6 No. 303 5¢ 00 Cans
- "Double Luck" Cut Green Beans 8 No. 303 5¢ 00 Cans
- "Trellis" Peas 6 No. 303 5¢ 00 Cans
- "Jim Dandy" Dog Food 10-Lb. Bag 99¢
- "Good 'N Rich" Cake Mixes 7-Oz. Pkg. 10¢
- "Good 'N Rich" Frosting Mixes 5 1/2-Oz. Pkg. 10¢

"BORDEN'S" ASSORTED FLAVORS FRUIT DRINKS 3 1/2 GAL **87¢**

STEAKS

- "LAZY-AGED" Beef Steaks
- FAMILY & RIB LB. **73¢**
- CHUCK LB. **53¢**
- SIRLOIN ROUND CLUB SWISS **83¢** LB.

Farm Fresh PRODUCE
WESTERN ICEBERG HEAD LETTUCE **14¢**
"NEW CROP" TEXAS YELLOW COOKING ONIONS 3 LB. BAG 29¢
"FRESH 'N CRISP" CARROTS LB. BAG 7¢
"KRAFT" FRESH ORANGE JUICE HALF GAL 37¢
U.S. NO. 1 WHITE POTATOES 5 LB. BAG 29¢

BEEF ROASTS! Quality MEATS

FLA. GRADE "A" FAMILY-PAK FRYERS 5 Lb. \$1.98
FRESH DAILY GROUND BEEF 4 Lb. \$1.88
"SMOKED" MEATY HAM HOCKS Lb. 38¢
"HICKORY SMOKED" SLICED PICNIC Lb. 48¢
"QUICK FROZEN" TURKEY LEGS, WINGS CHICKEN WINGS Lb. 28¢
"OLD FASHIONED" COUNTRY SMOKED SAUSAGE Lb. 58¢

CHUCK ROAST LB. **43¢**
SHOULDER ROAST LB. **63¢**
POT ROAST LB. **53¢**
"Boneless" POT ROAST LB. **78¢**

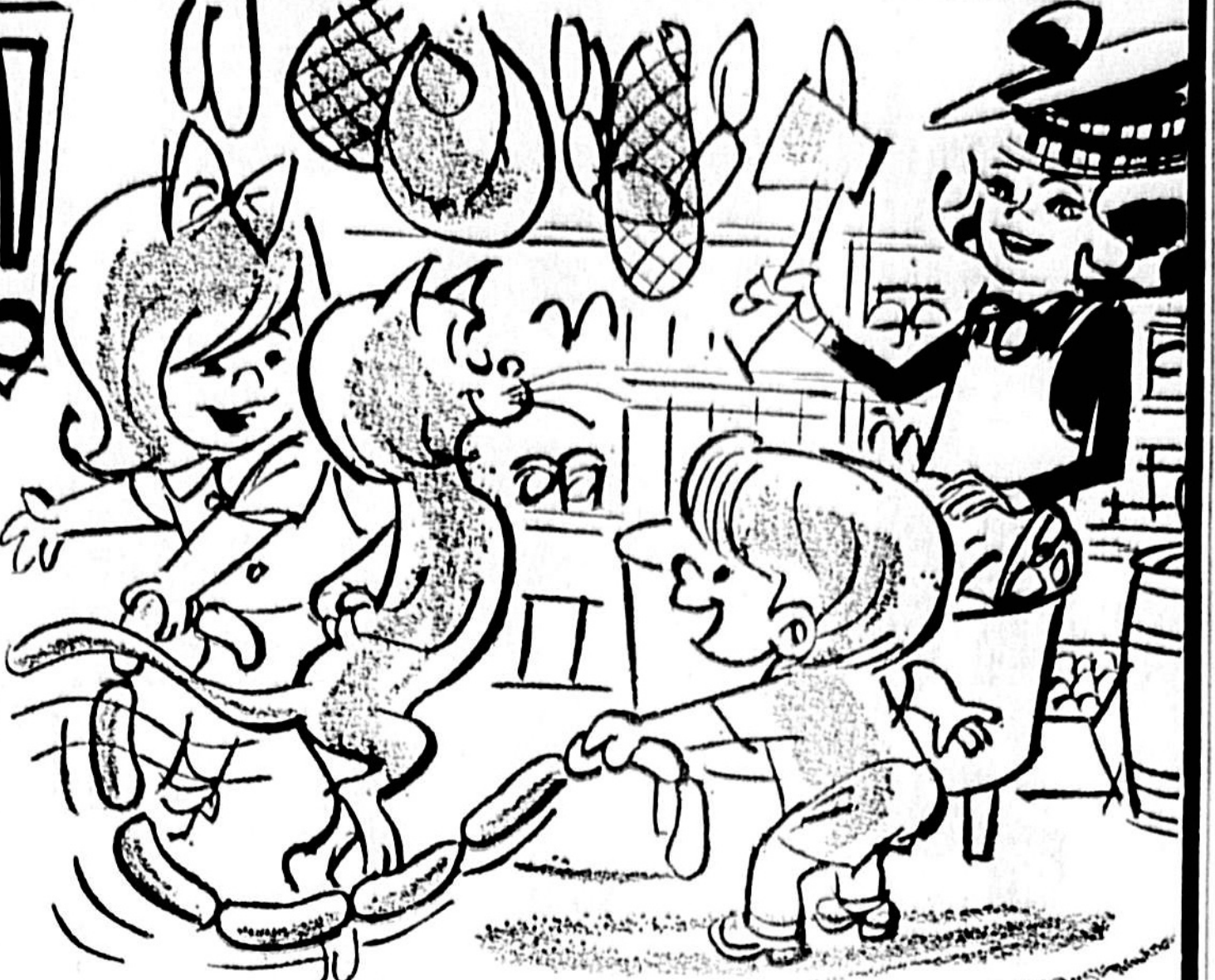
"COPELAND" ALL MEAT FRANKS 12-OZ. PKG. **45¢**
"BUDGET" SLICED BACON LB. TRAY **48¢**

"LYKES" SUGAR CREEK PICNICS LB. **29¢**

"FRESH" WESTERN PORK SHOULDER ROAST LB. **38¢**

Fresh from Our BAKERY
"EVERFRESH" DINNER ROLLS HAMBURGER BUNS HOT DOG BUNS 2 PKGS OF **45¢**
"LEAN 'N MEATY" ALL MEAT STEW Lb. 68¢
"BEEF" BAR-B-QUEING SHORT RIBS Lb. 48¢
"COPELAND" PURE PORK BAG SAUSAGE Lb. 48¢
"LYKES" ALL MEAT BOLOGNA Lb. 58¢
"OLD HICKORY" SMOKED SAUSAGE, WIENERS OR BOLOGNA 2 1/2-Lb. \$1.00

"BIG SCOOP" ICE MILK HALF GALLON (LIMIT: 2 WITH \$5.00 ORDER) **37¢**



"FOLGER'S" COFFEE ALL GRINDS LB. CAN **37¢**
(LIMIT: ONE WITH \$5.00 ORDER)

"PARKAY" QUARTERS OLEO LB. PKG. **25¢**
(LIMIT: THREE WITH \$5.00 ORDER)

"SHURFRESH" BISCUITS 6 8-Oz. Cans **49¢**
FLA. GRADE "A" MEDIUM EGGS 3 Doz. **\$1.00**

"EVERFRESH" Pound Cake 13-OZ. EACH **29¢**
"O'SAGE" PEACH HALVES NO. 2 1/2 CAN **19¢**
(LIMIT: 2 WITH \$5.00 ORDER)



VENTURE VENTURE — Chimp Mr. Jigga gives illustration on dental care for phobophras as part of National Toothbrush Inspection Week.

Tanglewood Area Group To Hear Angel

By JANE CASSELL-BERRY
John Angel, principal of South Seminole Junior High School, will be the guest speaker at a meeting of the Tanglewood Area Civic Association at 7:30 p.m., Monday at St. Richard's Episcopal Church on Lake Howell Road.

He will give a profile of the school, reporting how double sessions will affect them.

There will be a vote concerning a proposed change in the by-laws to allow meetings to be held every other month.

The meeting night has been changed from Sunday to Monday night as a result of preference expressed by residents in a questionnaire recently distributed in the area.

A container gown camellia plant will be given away as a door prize.

Backward City Asks Road Signs

RADECO, Calif. (AP) — The people of Radece are proud because their town is backward.

The backward place there is, they call it.

So backward, in fact, that townspeople even spell its name that way.

But the 10 families have a beef with the highway department — there are no road signs to let motorists know they've been in town.

"Radece isn't much," says David Welch, a town father of this village 100 miles southeast of Los Angeles. "No sidewalks. No street lights. At night the place is so dark those going through don't even know what they've missed."

Welch has strung six signs around his house. All read "Radece."

The village got its post office years ago, and the townspeople had to decide on a name. They wanted "Cedar."

"Up until we got the post office," says Vivian McGaugh, "we were nameless. When someone would ask where do you live, we would always say 15 miles up the road from Temecula."

There already was a Cedar, Calif.

"I couldn't think of anything else, so we spelled Cedar backwards and we've been Radece ever since," Mrs. A.E. Bergman said.

Irene Welch, proprietor of the town's only general store, was asked to visit to point out some of the outstanding features of Radece, nestled in the Agua Tibia mountains.

"You got me stumped," she replied. "I can't think of a thing."

Moose Elect New Officers

Sanford Lodge 1861, Loyal Order of Moose, has elected John Humberly to the chair of governor for the coming year.

Other officers are M. D. Roberts, junior governor; W. W. Smith, prelate; Elmer Easterbrook, treasurer; and Don Siler, three year trustee.

Installation will take place at 2 p.m., Sunday, April 30, at the Lodge Home, 2660 S. Palmview Avenue. A buffet dinner will follow, with Sanford Chapter 104, Women of the Moose, as hostess.

Crooms Seniors Present Play Monday

By Mrs. Robert B. Thomas Jr. 322-5756

Senior Class of Crooms High School will present "I'm a Family Crisis," their class play Monday at 8 p.m. in the school auditorium.

The hilarious three-act comedy is centered around Dr. John Morgan, his wife, Dora Morgan, and his two daughters, Peggy and Betsy.

Mrs. Morgan is running for the "Mother of the Year"; Peggy is anxious to become a member of the Triple S Honor Society; and Betsy has entered a baton-twirling contest. Several crises develop as Peggy, who is a chatterbox, tries to help everyone including her father, who wants to build a hospital for Oak Lawn to obtain his goal.

The characters are: Peggy Morgan — Deborah Baker; Betsy — Berta Wiggins; Mrs. Morgan — Rhonda Hangerman; Dr. Morgan — Tommy Ringling; Nellie Grimstead — Gail Montgomery; Uncle Syl — Pablo Williams; Willie Carter — Tommy Saunders; Gwen Harris — Beulah Daniels; Mrs. Tabor — Marcia Boykins; Attendant from Rest Haven — Ronald Estell.

Plan now to attend and enjoy an evening of entertainment by the 1967 graduating class.

Hopper PTA held its regular session in the school's auditorium.

Students of Hopper's special

programs, purchased a set of the uniforms for a team in the Goldsboro Little League this year.

Wille V. Graham of the Sanford Recreation Department wish to thank Daniels and the Crusaders Teen Club for all of their efforts in helping to make this project a big success.

(A note to adult civic clubs from this writer) "If the Teenagers are so terrible and loud, and can do a good deed as this one, if you can't lick them, then let's join them." Come on community clubs, purchase a set too.

Theodis Purnell said that circuit number 34 has been their organization work for their coming semi-annual circuit assembly to be held at Crooms High School, April 14-15.

The convention officials estimate an attendance of 900 to be present for events that are sponsored by Watchtower Bible Tract Society and congregations of Jehovah's Witnesses.

There will be about 40 local brothers volunteering time and abilities free to make this assembly a success. Many local brothers have already received their assignment to appear on talks, demonstration and symposium discussions in which the entire family will participate.

This assembly is to strengthen the faith of each delegate and keep them on the road to everlasting life. The theme of the assembly is, "Supply to You r Faith Endurance." 2 Peter 1:5-6.

There has been a public demand for the repeat showing of the film, "God Cannot Lie," which will be the climax of the assembly. Time for showing is scheduled April 16 at 3:30 p.m.

The public is invited.

Mrs. Beatrice C. Waldon of Rochester, N.Y. is visiting with her parents, Mr. and Mrs. Harrison Clark Sr. of 801 Orange Avenue.

She is currently in the service of (A. B. C.) Action for a Better Community, Rochester's Anti-poverty Program.

Mrs. Waldon, the former Beatrice Clark, is a former student of Crooms, and a graduate of Hungerford High, Eastonville.



CHARACTERS OF HIS SENIOR CLASS PLAY, "I'm a Family Crisis," are engaged in a heated argument over the love life of a daughter. Shown are Julius Ringling, Pablo Williams and Rhonda Hangerman.



LADIES OF THE ROSE OF SHARON order of Eastern Star observes 20th anniversary. (Front) Mrs. Vinie Miller and Mrs. Marie Jones; (back) Mrs. Eva Stephens, associate matron; Mrs. Aurelia Davis, worthy matron; and Mrs. Annie B. Williams. (Bottom) Mrs. Odessa Williams, Mrs. Bellamy, second point of the star, Ada; Mrs. Viola McCloud, recording secretary, and Wille Graham, worthy patron.



Crime Council Sets Workshop For Friday

Central Florida chapter, Florida Council on Crime and Delinquency, announced its second annual workshop Friday at the Holiday Inn, 4040 South Orange Blossom Trail, Orlando.

Theme of the workshop will be "Inter-Agency Co-operation in Working With the Offender and His Family."

The workshop will be from 8:30 until 10 a.m., and the morning session will start at 10 with Dr. Carol Burnett speaking on the topic, "Working With the Disturbed Offender."

The afternoon workshop will be divided into two seminars, juvenile and adult. The juvenile moderator will be Pastor Otto Schmidt, and will include as speakers Chief R. J. Cheving, Orlando police department, Dr. William Wharton, director of Alachua County Mental Health Department, and Miss Jean Cushman, supervisor of protective services, State Welfare Department, Winter Park.

The adult session, Part I, will be headed by David Bachman, deputy director of Division of Corrections, with panel to be composed of Chief Cheving and Howell Windree, district supervisor, Probation & Parole Commission, Ocala.

Part II of the afternoon adult session will be headed by Commissioner J. Hoppe Barker, Florida Probation & Parole Commission, Tallahassee, and the panel will include Joe Foy, manager of Florida State Employment Service, Winter Park; Mrs. Betty Jo McLeod, paymaster, Patient Clinic; Miss Ann Curtright, district director, State Welfare Department; and William Earle, district supervisor, Vocational Rehabilitation, Orlando.

There will be a banquet at 6:30 p.m. with Roy W. Russell, chairman, Florida Probation & Parole Commission, as speaker.

The workshop is open to the public and all citizens who are interested in our nation's crime rate are urged to attend. Reservations can be made by contacting Jim Lee, Room 2001, Seminole County Courthouse, 159 Valley.

Have you forgotten? The Crooms High Athletic Department is still soliciting your financial aid.

HAVE'S. Please purchase a pen from the school if you have not seen one of the representatives. Your generosity will never be forgotten.

Berta Wiggins daughter of Mr. and Mrs. Joe Wiggins - 1400 Southwest Road, was recently chosen to serve as a tutor for underachieving elementary school children. This tutorial service is sponsored by Seminole Community Action Center.

She is a member of the cast of the Senior Class Play, "I'm a Family Crisis," holds membership in F. B. I. Dance Club and Student Council.

She serves as Assistant editor of the Panther Gazette, secretary and clubnet player of the Crooms High Marching Band.

During high school years, she previously received recognition for scholastic achievement, and an award for outstanding achievement in typing.

Upon graduating from high school, she plans to attend a two-year institution in preparation for becoming a secretary. Her major vocational plan is to become an airline stewardess upon reaching the required age.

Berta would like to give these words of encouragement to fellow students by saying, "regardless of how great or small a task may appear to you or your associates, always do your best, for it will serve as something more meaningful and gratifying than anything else you can receive in Mathematics."

Her words of encouragement to you, however, will be to use that talent that you have, is the question.

Rose of Sharon 134, Order of Eastern Star, celebrated its 20th anniversary with an inspirational program on Sunday, April 9 at the Triumph Holiness Church.

The speaker for the afternoon was Worthy Matron Aurelia Davis. Her discourse was centered around the beginning of OES.

Mrs. Davis was truly surprised during the program when Associate Matron Eva Stephens presented her with gifts from the Order in recognition of her April 7 birthday.

The program was enjoyed by all in attendance. Refreshments were served in the Annex following the program.

The Women's Improvement Club will meet at the home of Mrs. Faye Kendrick, 2716 Truman Blvd., April 17 at 8 p.m.

The president is asking that all members be present at this meeting.

The Crusaders Teen Club purchased a complete set of baseball uniforms for a team in the Goldsboro Little League. The members giving of their time and efforts are: Almansa, Darlene, and Sandra Bell, Ernest Berry, Walter Bradley, Alfred Brooks, Ethel Davis, Bonnie Dillon, Bridgette Dupree, McArthur Foster, Russ Gaines, Zithedee Gipson, Laura Gray.

An essay on the subject material, written by Mrs. Georgia May (Hart) Henderson in the Wilson College contest, also was reprinted in full in the 1964 Sanmagundi, Seminoles High School yearbook. This essay tells of Gen. Sanford's birth, his education, diplomatic career, marriage, the founding of Sanford, the help received from Swedish immigrants in developing the citrus industry, and of the General's many activities on behalf of the region.

Further information on the contest may be obtained at the library.

General Sanford Library Elects New Officers

Members of General Sanford Memorial Library named Mrs. Hortense Roumillat president in elections conducted at the recent annual meeting in the library building, 510 E. First Street.

Jack Bolt, retiring president, was named as new vice president. Others elected were A. B. Peterson Jr., secretary, and Roy R. Wright Jr., treasurer.

It was voted to sponsor a \$100 scholarship essay contest, open to area students, on the subject "General Sanford," or "The City of Sanford." In addition to information available in the library, there are microfilms at Florida State Bank which could be used for research.

An essay on the subject material, written by Mrs. Georgia May (Hart) Henderson in the Wilson College contest, also was reprinted in full in the 1964 Sanmagundi, Seminoles High School yearbook. This essay tells of Gen. Sanford's birth, his education, diplomatic career, marriage, the founding of Sanford, the help received from Swedish immigrants in developing the citrus industry, and of the General's many activities on behalf of the region.

Further information on the contest may be obtained at the library.

Based On Fact

The popular "Ballad of Tom Dooley" is based on a Civil War soldier from North Carolina. He was executed and put to death in 1868 for the slaying of Laura Foster in Wilkes County's Hatter Valley.

The Only Product Delivered To Your Door For Only

nc Daily

Your Local Newspaper

The Sanford Herald

Sanford Herald
P.O. Box 1657
Sanford, Florida

Please Enter My Subscription To The Sanford Herald

NAME _____ CITY _____

STREET _____

(See Subscription Prices On Editorial Page)

CALL 322-2611 for HOME DELIVERY!



GEN. CRICHTON W. ABRAMS JR. has been assigned by President Johnson to fill the No. 2 spot in Vietnam as chief deputy to commanding Gen. William C. Westmoreland.

Clock Watchers Wound Up Over Daylight Time

MIAMI (AP)—Clock watchers around Florida are wound up about daylight saving time.

Both faces of the timely question drew alarms from stem-winder who bombarded newspaper editors around the state with mail in response to a series of polls on the issue.

The votes seem to favor daylight time, especially in city areas along the coast where residents punch time clocks and work indoors.

Unless Florida's Legislature votes to exempt the state from the new national law before time runs out, Florida goes on DST at 2 a.m. April 30. A state senate subcommittee is studying the issue.

"We were overwhelmed. I had no idea there was such a deep interest in the subject," said Milton Kelly, managing editor of the Fort Lauderdale News. Kelly's paper published a column for 10 days.

Kelly was swamped by 14,223 votes from readers. The tally was 8,665 in favor and 5,558 opposed to daylight time.

The Miami News received 8,178 replies after running a column for two days. Voting was 1,742 for daylight time, 1,436 against.

C. Edward Pearce, managing editor of the Miami News, said, "There was no offer of any reward. This was a fantastic response. We've never seen anything like it."

Pensacola News-Journal inquired the question in their regular Sunday poll in mid-March and drew 124 votes in favor of daylight time and 183 votes against.

The Panhandle area seemed to harbor the most opponents to the question, said News-Journal editor Earl Bowdler, probably because residents are so far west sunset arrives is later than on the east coast.

Two newspapers, the Miami Herald and Sarasota Journal, made telephone calls in their circulation areas.

The Herald called 100 residents in south Florida and found 50 favoring daylight time, 25 opposed and 25 with no opinion.

The Journal said 75 per cent of the 150 people called by them favored the change to daylight time.

Some stations—WIOD in Miami, WKTO in Cape Kennedy and WFTS at Cypress Gardens—filled calls from listeners. In Miami more than 600 callers favored the idea with 400 against.

WKTO found 53 per cent of its callers opposed to daylight time. In Cape Kennedy the vote was oppositely in favor of daylight time.

LOOK, DON'T WIGGLE CAIRO (AP) — Sidewalk

search for a woman, and get by with it. But if they accompany the gazing by eyebrow movements, they will be considered as moral offenders. They will get a "Yul Brenner" style head shave.

In a sweeping campaign designed to purge Cairo "physically and morally," Said Zayed, the Cairo governor, ordered police to arrest all misbehaving elements and shave their heads clean.

The governor was presumably disappointed at the results. The first 50-called offenders arrested were reported to have liked the clean shave.

4th St. & Sanford Ave. | 110 W. 13th St.

Quantity Rights Reserved
PRICES GOOD THRU WED., APRIL 19
SAVE MONEY!
NOT STAMPS!

LAZY-AGED BEEF

CHUCK ROAST LB. 43¢

SIRLOIN OR ROUND

STEAK LB. 83¢

Quality MEATS

CLUB STEAK LB. 78¢

SHOULDER ROAST LB. 63¢

RIB ROAST LB. 78¢

CHUCK STEAK LB. 58¢

BONELESS POT ROAST LB. 78¢

POT ROAST LB. 58¢

BONUS BUY!
"BIG SCOOP" Ice Milk 37¢
HALF GALLON
(Limit: Two With \$5.00 Order)

BONUS BUY!
FLORIDA GRADE "A" MEDIUM EGGS 3 DOZ. \$1.00

"COPELAND" SMOKED

PICNICS 28¢ Lb.

FRESH DAILY GROUND BEEF 4 LBS. \$1.98

"SMOKED" MEATY HAM HOCKS LB. 38¢

"HICKORY SMOKED" SLICED PICNIC LB. 48¢

"QUICK FROZEN" TURKEY LEGS, WINGS CHICKEN WINGS LB. 38¢

"BUDGET" SLICED BACON LB. TRAY 48¢

"LEAN 'N' MEATY" ALL MEAT STEW LB. 68¢

"BEEF" BAR-B-QUEING SHORT RIBS LB. 48¢

"COPELAND" PURE PORK BAG SAUSAGE LB. 48¢

"LYKES" ALL MEAT BOLOGNA LB. 58¢

"OLD HICKORY" SMOKED SAUSAGE OR WIENERS 2 1/2-LB. \$1.00

"LYKES" PALM RIVER FRANKS 12-OZ. Pkg. 38¢

"BORDEN'S" FRUIT DRINKS 3 1/2 GAL. 87¢

"KANSAS QUEEN" SELF-RISING FLOUR 5-LB. BAG 45¢

"TABLE READY" SOLID OLEO 2 1-LB. PKGS. 35¢

BONUS BUY!
"OSAGE" HALVES PEACHES 19¢
NO. 2 1/2 CAN
(Limit: 2 With \$5.00 Order)

FRESH 'N' CRISP CARROTS POUND BAG 10¢

U.S. NO. 1 WHITE POTATOES 10 LB. VENT-VUE BAG 45¢

JONATHAN SCHOOL BOY APPLES 4 LB. BAG 39¢

FANCY — 200 SIZE LEMONS DOZEN 39¢

NEW TEXAS ONIONS 3 LB CELLO BAG 29¢

BONUS BUY!
"GALA" DECORATOR TOWELS 29¢
JUNIO ROLL

BONUS BUY!
"HUNT'S" CATSUP 19¢
14-OZ. BOTTLE
(Limit: 4 With \$5.00 Order)

"MORTON'S" Macaroni With Beef, Spaghetti & Meat Balls

Dinners 11-OZ. 2 FOR 79¢

"MASTER CHEF" FRIES 9-OZ. PKG. 10¢

"MCKENZIE'S" SPECKLED BUTTER BEANS BUTTER BEANS FORDHOOK LIMAS 2 34-OZ. POLY BAGS 89¢

BONUS BUY!
Folgers coffee COFFEE 37¢
(LIMIT: 1 WITH \$5 OR MORE FOOD ORDER)

BONUS BUY!
DETERGENT FAB 47¢
GIANT PACKAGE
(LIMIT: 1 WITH \$5 OR MORE FOOD ORDER)

BONUS BUY!
BORAX 47¢
(LIMIT: 1 WITH \$5 OR MORE FOOD ORDER)



JUNK CARS, such as pictured, will be removed as part of the City of Oviedo's "Clean-up Campaign," which is being conducted in conjunction with the Florida State Board of Health and the Seminole County Commission in the eradication of rats, mosquitoes and flies. (Herald Photo)



STUDY OF HEART was chosen by these five eighth graders at St. Mary's, Magdalen Parochial School in Altamonte Springs as science project. Shown are (top) Joseph Sallette (left) and John Jenick, who display chart and pickled deer and beef hearts. Demonstration of how a heart pumps blood and why mold of heart valves are shown by (bottom, left to right) Cheryl Briggs, Beth Schlot and Patricia Pappia. (Herald Photo)



Traffic Accidents On Increase

Spurred by a sharp increase in the number and seriousness of traffic accidents in Seminole County since Jan. 1, settlement is proving to take logical and practical steps to stop this destruction of life and property. Two of these, given top priority by County Prosecutor Kenneth W. McIntosh in a hard-hitting speech to the Sanford Lions at their weekly meeting in the Civic Center yesterday, are examinations to assure proper physical condition in both the auto and the operator and an end to drinking drivers.

These sobering recommendations were offered against a background of statistics and personal experiences. "Since Jan. 1, 1967," McIntosh announced, "our office has handled 230 accident cases. Most of these are from 'road-hogging' which we describe as failure to yield right-of-way, improper turning, backing, stopping, changing lane and speeding."

The Seminole County attorney recognized the fact that many living here are quite ready to accept traffic accidents as major problems in the great metropolitan areas of New York, Chicago and Los Angeles. "But it can't happen here." With a very smile McIntosh quoted national traffic statistics which show that Florida rates high in this respect. "For every 100 million miles driven in the state, Florida shows a 5.7 per cent accident rate; in Chicago it is 5 per cent; in New York 4.9 per cent with California in the same class."

"Something must be done," was the theme of his remarks. Among these things he placed an inspection of the auto as "a prudent survey showed that every four cars that pass you on the highway, three have never been inspected." As for

Senior Citizens



NEED SUGAR FOR ENERGY



SHOP

The store that cares...about you!

"Super-Right" Delicious Smoked (Whole or Half Sliced... Lb. 39c)

Whole Picnics LB. 35¢

4 TO 8-LB. AVG.

"Super-Right" Extra Lean, Freshly Ground Beef 3 LB. PKG. \$1.29

"Super-Right" Heavy Western, Boneless Rump Roast LB. 98¢

Sultana Frozen All Varieties Dinners	Each 39¢	Grade "A" Quick Frozen FRYER Breast	5-Lb. Box \$1.99	Super-Right Quick Frozen Chopped Ground BEEF Patties	Lb. 49¢
Super-Right Vac-Packed SALOME SPICED LUNCHEON PICKLE LOAF	3 Pkgs. 79¢	Quick Frozen PERCH Fillets	5-Lb. Box \$1.59	Quick Frozen Honeysuckle Turkey ROAST	2 1/2-Lb. Pan \$2.99

Round Steak 88¢

"SUPER-RIGHT" HEAVY WESTERN BEEF FULL CUT

SWISS STEAK or BONELESS CUBED CHUCK STEAK LB. ...

Fine Grocery Features!

JIFFY FROSTING AND SPECIAL! LIBBY'S (IN DECANTERS)

Cake Mixes 9-OZ. PKG. 10¢

Tomato Juice 4 1-Qt. DEC. 99¢

COFFEE SALE!

ASSORTED FLAVORS YUKON CLUB SPECIAL! Beverages 15 12-OZ. CANS \$1.00

EXTRA SPECIAL! Mild and Mellow

SPECIAL! Dressing 12-OZ. JAR 35¢

Eight O' Clock COFFEE

SPECIAL! Charcoal 10-LB. PKGS. 79¢

1-LB. BAG save 16¢

SPECIAL! EGGS 2 CTNS. OF 1-DOZ. 79¢

LOWEST PRICES IN YEARS!

EXTRA SPECIAL! "10¢ OFF" LABEL (Limit: 1 with \$5. order)

COLD POWER DETERGENT GIANT PKG. 49¢

3-Lb. BAG \$1.45 SAVE 44¢

Baked Foods!

Fresh Fruits & Vegetables!

LUSCIOUS RED RIPE STRAWBERRIES 3-PINTS \$1.00

JANE PARKER DELICIOUS APPLE PIE 1-LB. 8-OZ. EACH 39¢

Lemons LOOSE OR BAG DOZ. 39¢

JANE PARKER CINNAMON ROLLS 12-OZ. PKG. 33¢

JANE PARKER CUSTARD Angel Food 1-Lb. 1-Qt. 39¢

Another Big Mix 'n Match Sale

JANE PARKER WHITE ENRICHED REGULAR OR SANDWICH BREAD 4 99¢

5-lb. bag East. White POTATOES

JANE PARKER CUSTARD Angel Food 1-Lb. 1-Qt. 39¢

3-lb. bag Yellow, Cooking ONIONS

25 EXTRA PLAIN STAMPS 69¢

25 EXTRA Blue Seal Reg. 31¢

3-lb. bag Red Bliss POTATOES

50 EXTRA PLAIN STAMPS 59¢

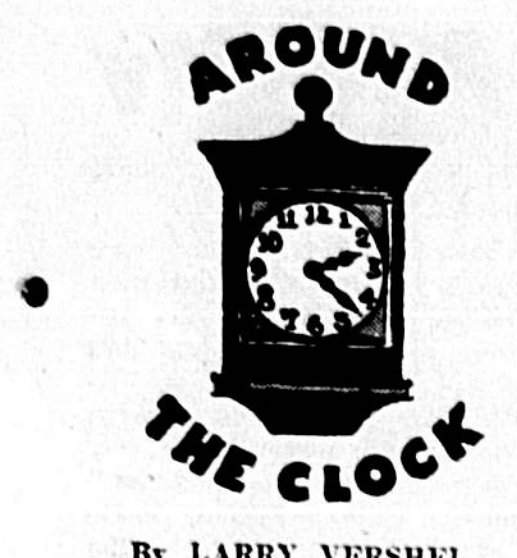
5-lb. bag Sweet Juicy ORANGES

5-lb. bag Juicy GRAPEFRUIT

3 for 89¢

PRICES IN THIS AD ARE GOOD SATURDAY, APRIL 15.

PINECREST SHOPPING CENTER HWY. 17-92 S. SANFORD (QUANTITY RIGHTS RESERVED)



By LARRY VERSHEL

A CONVERSATION WITH A SPARROW - Do you have any "Right Guard" in your pocket?

SPARROW - Aw, come on, you mean because the Democrats wouldn't let you in last night?

REPORTER - Yeah, you know what happened?

SPARROW - Same old approach, same old line... No changes. You might as well say goodbye to Sheriff Hobby, Mr. Beckwith, Mrs. Walker, Mrs. Ray, Mrs. Bruce, Judge Householder...

REPORTER - That had?

SPARROW - Better get some "Scope" too.

Actually with 13 officeholders present, the Democrats met for close to three hours... Fear was expressed that a "strong person" would take over the office of chairman and from that position attempt to control party primaries...

HUTCHISON (attorney for the City) - Did Lt. Hickson mistreat you?

KATO - Bow wow arf bow wow.

FREDERICK (attorney for Lt. Hickson) - Let's knock off that claptrap. Answer the question!

KATO - how wow... CLEVELAND (attorney, Civil Service board member) - Listen, I want a fair hearing. You have got to stop landing this witness.

KATO - Gr-r-r-r. (He spits an official of the Humane Society and the curtain falls.)

Fire Department should do something about those rickety stairs in their offices on Palmto. It's in deplorable shape.

Remember the other day when we mentioned the brand new office furniture in City Hall to the tune of \$1,200? What did the city do with the old furniture? They gave it (I mean sold it) to two city employees at 55 a piece.) Deputy clerk bought one and the tax assessor got (oops, I mean purchased) two.

A CONVERSATION WITH VICE CHAIRMAN JOHN PATRICK (also called the great peace-maker):

REPORTER - How are we gonna stop Swafford from under from wetting all the time?

FITZPATRICK - Then you won't have anything to write about.

The county should stop giving clay to all and everyone. Didn't the road superintendent the other day complain to the commission they are running out?

Usually firemen go to blazes... Not so this morning. Fire city refuse truck pulled into Palmto Avenue station. Garbage and trash ablaze... The fire was extinguished in a matter of minutes.

City will open bids on sewer lift station equipment April 29... Cost between \$7,500 and \$8,500.

County Judge Kariyle Householder says he will definitely try the Leffer-Milwee case during the next term of county court.

Someone at the zoo put a racoon in with an eagle the other day. The person who gave the small animal to the facility did it with the understanding it would be well cared for. When last seen the "acoon had one leg broken and the other one infected.

'Loophole' To Aid Schools?

A "loophole" which may provide additional state money for new school construction in Seminole County was being investigated today by Sen. Kenneth Planté (R-Altamonte Springs) at Tallahassee. Planté informed The Sanford Herald a "sleeper" has been found in an account known as "county school additional capital outlay trust fund" held by the state treasurer.

The law, the senator said, provides the state treasurer shall set aside each year a sum of \$13,750,000 to be used to meet "drastic needs in school construction." He added that he has requested the attorney for the Senate to investigate whether any moneys may be made available from this account for Seminole County.

Planté this morning co-signed a measure which would reduce the student load per teacher from 27 to 25, estimated to cost the state, if approved, \$30 million. Meanwhile, it was reported delegations of school parents, especially from South Seminole County, were to attend the School Board session this afternoon in protest to possible double sessions next year.

Negro Ministers Blast County Mixing

The Seminole County Interdenominational Ministerial Alliance, made up of Negro pastors, severely criticized the School Board today urging Negro parents to send their youngsters to Negro schools.

The alliance made the statement after school board members ordered a phase out of seventh and eighth grades recently at Jackson-Heights, Midway and Rosewald Schools. Some 140 pupils will be transferred in the fall.

At the same time, Supt. of Schools R. T. Milwee said the board has acted in good faith in following the guidelines. "We have never denied any request for transfer," Milwee emphasized.

Seminole County *** on the St. Johns River *** "The Nile of America"

The Sanford Herald

Phone 322-2611 or 425-5938 Zip Code 32771

WEATHER: Warm and cloudy thru Friday.

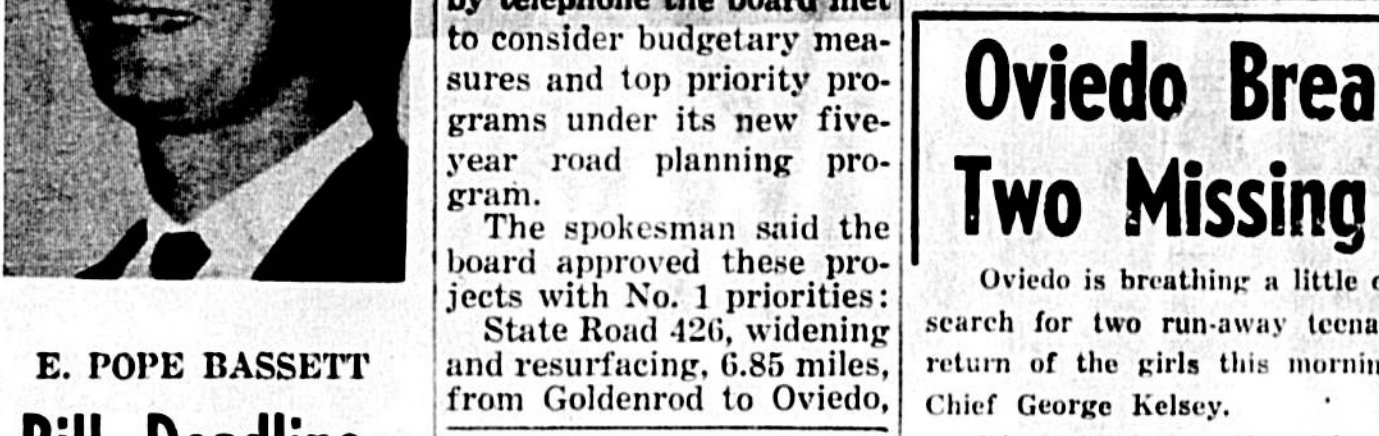
VOL. 59 NO. 169 - AP Leased Wire - Established 1908 - THURSDAY, APRIL 13, 1967 - SANFORD, FLORIDA - Price 10 Cents

426 Top Priority

Top priorities on three Seminole County road projects and a new Osteen bridge were approved early this afternoon by the State Road Department in Tallahassee.

A SRD spokesman informed The Sanford Herald by telephone the board met to consider budgetary measures and top priority programs under its new five-year road planning program.

These projects will be \$350,000, to be completed during the 1967-68 fiscal year.



E. POPE BASSETT Bill Deadline Set Monday By Lawmakers

State Road 436, four-laning, 4.12 miles, from Orange County to Interstate 4, \$500,000, in 1970-71.

State Road 426, when repaired 7.8 miles from Oviedo to Geneva, \$270,000, in 1969-70.

Jaycees Deny Aid Campaign

When Chief Kelsey found a torn blouse which belonged to one of the teenagers, an immediate search of the surrounding area was organized.

Following an all-night vigil the girls were found at 8 a.m. by Chief Kelsey in the swamp behind the Foli Brothers Construction Company.

John Ducker (R-Orlando) was named today as minority floor leader of the House of Representatives, while Bassett and Jan Fortune (R-English Estates) were named to the Republican policy committee.

Winners of the Jaycee Safe Driving Road-to-o poster contest are left to right, David Benson (first place) and Riley Jeffcoat (second). The annual Jaycee project will start tomorrow and last until April 22.

These and many more IMPROVEMENTS ACCEPTABLE! Built-in ranges, refrigerators, clothes dryers, stoves, swimming pools, landscaping, wall-to-wall floor covering.

County Judge Kariyle Householder says he will definitely try the Leffer-Milwee case during the next term of county court.

County Judge Kariyle Householder says he will definitely try the Leffer-Milwee case during the next term of county court.

County Judge Kariyle Householder says he will definitely try the Leffer-Milwee case during the next term of county court.

County Judge Kariyle Householder says he will definitely try the Leffer-Milwee case during the next term of county court.

County Judge Kariyle Householder says he will definitely try the Leffer-Milwee case during the next term of county court.

County Judge Kariyle Householder says he will definitely try the Leffer-Milwee case during the next term of county court.

County Judge Kariyle Householder says he will definitely try the Leffer-Milwee case during the next term of county court.

County Judge Kariyle Householder says he will definitely try the Leffer-Milwee case during the next term of county court.

County Judge Kariyle Householder says he will definitely try the Leffer-Milwee case during the next term of county court.

County Judge Kariyle Householder says he will definitely try the Leffer-Milwee case during the next term of county court.

County Judge Kariyle Householder says he will definitely try the Leffer-Milwee case during the next term of county court.

County Judge Kariyle Householder says he will definitely try the Leffer-Milwee case during the next term of county court.

County Judge Kariyle Householder says he will definitely try the Leffer-Milwee case during the next term of county court.

County Judge Kariyle Householder says he will definitely try the Leffer-Milwee case during the next term of county court.

County Judge Kariyle Householder says he will definitely try the Leffer-Milwee case during the next term of county court.

County Judge Kariyle Householder says he will definitely try the Leffer-Milwee case during the next term of county court.

County Judge Kariyle Householder says he will definitely try the Leffer-Milwee case during the next term of county court.

County Judge Kariyle Householder says he will definitely try the Leffer-Milwee case during the next term of county court.

County Judge Kariyle Householder says he will definitely try the Leffer-Milwee case during the next term of county court.

County Judge Kariyle Householder says he will definitely try the Leffer-Milwee case during the next term of county court.

County Judge Kariyle Householder says he will definitely try the Leffer-Milwee case during the next term of county court.

County Judge Kariyle Householder says he will definitely try the Leffer-Milwee case during the next term of county court.

County Judge Kariyle Householder says he will definitely try the Leffer-Milwee case during the next term of county court.

County Judge Kariyle Householder says he will definitely try the Leffer-Milwee case during the next term of county court.

County Judge Kariyle Householder says he will definitely try the Leffer-Milwee case during the next term of county court.

County Judge Kariyle Householder says he will definitely try the Leffer-Milwee case during the next term of county court.

County Judge Kariyle Householder says he will definitely try the Leffer-Milwee case during the next term of county court.

County Judge Kariyle Householder says he will definitely try the Leffer-Milwee case during the next term of county court.

County Judge Kariyle Householder says he will definitely try the Leffer-Milwee case during the next term of county court.

County Judge Kariyle Householder says he will definitely try the Leffer-Milwee case during the next term of county court.



CHECKING THE NEWS - Herald Publisher Walter Gielow and Miss Brenda Carter, Youth government week associate editor, look over the national wire news report this morning. Miss Carter, along with some 16 others, from Seminole High School are participating in the weeklong activities.

Sanford Seeks \$101,980 For New Negro Youth Center

The City of Sanford today officially applied for federal funds for a neighborhood center building between Oleander and Mangoustine.

The report stresses that some 4,000 people would be served by the facility and that Sanford is eligible under a Housing and Urban Development act.

City Sets Special Meet On Holiday Inn Lease

The City Commission is expected to meet in special session today to go over the lease details, City Manager W. E. Knowles reported.

Knowles said he looked over the city, Monday, approved the lease yesterday and saw no plans for the \$650,000 facility difficulties.

Borrow Up To \$5,000

WITH A LOW COST LOAN

CALL 322-6211

Sanford Atlantic National Loan Dept

MEMBER F.D.I.C.