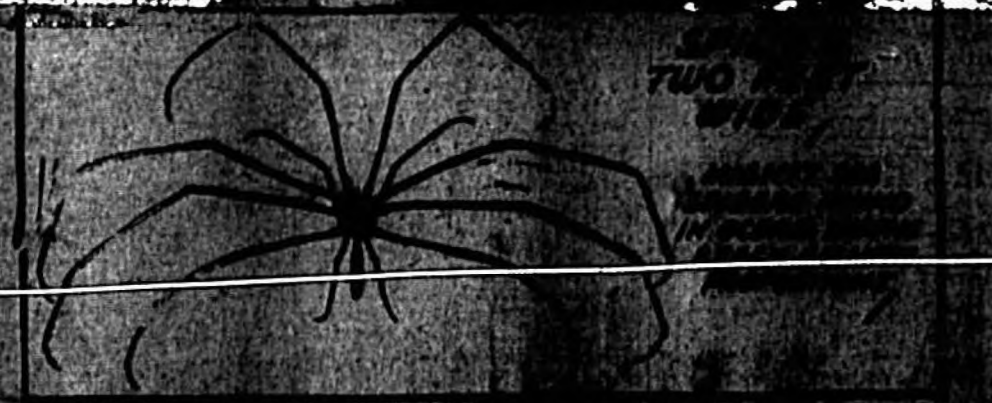


[illegible]

Abraham Joshua P. Benjamin became a National Guardsman in 1812 during the War Between the States. He was a leading War Between the States soldier in the Confederacy of the United States. It was in 1815 that his marriage moved to the South from the British West Indies where he had been living. After leaving Yale University, Benjamin went to New Orleans where he passed the bar and started on his brilliant career. The elder Benjamin, an English Jew, managed to become naturalized, a fact that his distinguished son completely overlooked. Following the fall of the Confederacy, Benjamin made his way to

[illegible]

卷之四
 四
 五
 六
 七
 八
 九
 十
 十一
 十二
 十三
 十四
 十五
 十六
 十七
 十八
 十九
 二十
 二十一
 二十二
 二十三
 二十四
 二十五
 二十六
 二十七
 二十八
 二十九
 三十
 三十一
 三十二
 三十三
 三十四
 三十五
 三十六
 三十七
 三十八
 三十九
 四十
 四十一
 四十二
 四十三
 四十四
 四十五
 四十六
 四十七
 四十八
 四十九
 五十
 五十一
 五十二
 五十三
 五十四
 五十五
 五十六
 五十七
 五十八
 五十九
 六十
 六十一
 六十二
 六十三
 六十四
 六十五
 六十六
 六十七
 六十八
 六十九
 七十
 七十一
 七十二
 七十三
 七十四
 七十五
 七十六
 七十七
 七十八
 七十九
 八十
 八十一
 八十二
 八十三
 八十四
 八十五
 八十六
 八十七
 八十八
 八十九
 九十
 九十一
 九十二
 九十三
 九十四
 九十五
 九十六
 九十七
 九十八
 九十九
 一百

1. *Pharmaceuticals*. The pharmaceutical industry is a major player in the U.S. economy, with sales of over \$200 billion in 2000. The industry is characterized by high R&D costs, long development times, and high barriers to entry. The industry is also highly competitive, with many firms competing for market share.

2. *Medical Devices*. The medical device industry is another major player in the U.S. economy, with sales of over \$100 billion in 2000. The industry is characterized by high R&D costs, long development times, and high barriers to entry. The industry is also highly competitive, with many firms competing for market share.

3. *Medical Services*. The medical services industry is a major player in the U.S. economy, with sales of over \$100 billion in 2000. The industry is characterized by high R&D costs, long development times, and high barriers to entry. The industry is also highly competitive, with many firms competing for market share.

4. *Medical Insurance*. The medical insurance industry is a major player in the U.S. economy, with sales of over \$100 billion in 2000. The industry is characterized by high R&D costs, long development times, and high barriers to entry. The industry is also highly competitive, with many firms competing for market share.

5. *Medical Research*. The medical research industry is a major player in the U.S. economy, with sales of over \$100 billion in 2000. The industry is characterized by high R&D costs, long development times, and high barriers to entry. The industry is also highly competitive, with many firms competing for market share.

[illegible][illegible][illegible]

The Sanford Herald

AN INDEPENDENT NEWSPAPER

SANFORD, FLORIDA, SATURDAY, JUNE 1, 1940

Established in 1908

NUMBER 241

Giant Battleship Sinks Down Ways At Philadelphia

OF 30,000. Is sent As Battle Ship to Delaware River. Joining Of Italy Would Help And Hinder Nazis. Country Is Strong In War Material But Weak In Resources.

PHILADELPHIA, June 1. (AP)—The 35,000-ton battleship USS Nevada, the first of the new class, was launched today at the Philadelphia Navy Yard. The ship, which will cost \$40,000,000, is the largest ever built in this country. It is the first of a class of four ships which will be built at the Philadelphia Navy Yard. The ship is the first of a class of four ships which will be built at the Philadelphia Navy Yard. The ship is the first of a class of four ships which will be built at the Philadelphia Navy Yard.

Italy would add strength and weakness to the world war machine if she joined Germany as a full-fledged ally. The world would be stronger in war material but weaker in resources. Italy would add strength and weakness to the world war machine if she joined Germany as a full-fledged ally. The world would be stronger in war material but weaker in resources. Italy would add strength and weakness to the world war machine if she joined Germany as a full-fledged ally. The world would be stronger in war material but weaker in resources.

Italy would add strength and weakness to the world war machine if she joined Germany as a full-fledged ally. The world would be stronger in war material but weaker in resources. Italy would add strength and weakness to the world war machine if she joined Germany as a full-fledged ally. The world would be stronger in war material but weaker in resources. Italy would add strength and weakness to the world war machine if she joined Germany as a full-fledged ally. The world would be stronger in war material but weaker in resources.

Italy would add strength and weakness to the world war machine if she joined Germany as a full-fledged ally. The world would be stronger in war material but weaker in resources. Italy would add strength and weakness to the world war machine if she joined Germany as a full-fledged ally. The world would be stronger in war material but weaker in resources. Italy would add strength and weakness to the world war machine if she joined Germany as a full-fledged ally. The world would be stronger in war material but weaker in resources.

Italy would add strength and weakness to the world war machine if she joined Germany as a full-fledged ally. The world would be stronger in war material but weaker in resources. Italy would add strength and weakness to the world war machine if she joined Germany as a full-fledged ally. The world would be stronger in war material but weaker in resources. Italy would add strength and weakness to the world war machine if she joined Germany as a full-fledged ally. The world would be stronger in war material but weaker in resources.

THE WINNER



Italy would add strength and weakness to the world war machine if she joined Germany as a full-fledged ally. The world would be stronger in war material but weaker in resources. Italy would add strength and weakness to the world war machine if she joined Germany as a full-fledged ally. The world would be stronger in war material but weaker in resources.

Italy would add strength and weakness to the world war machine if she joined Germany as a full-fledged ally. The world would be stronger in war material but weaker in resources. Italy would add strength and weakness to the world war machine if she joined Germany as a full-fledged ally. The world would be stronger in war material but weaker in resources.

Italy would add strength and weakness to the world war machine if she joined Germany as a full-fledged ally. The world would be stronger in war material but weaker in resources. Italy would add strength and weakness to the world war machine if she joined Germany as a full-fledged ally. The world would be stronger in war material but weaker in resources.

Italy would add strength and weakness to the world war machine if she joined Germany as a full-fledged ally. The world would be stronger in war material but weaker in resources. Italy would add strength and weakness to the world war machine if she joined Germany as a full-fledged ally. The world would be stronger in war material but weaker in resources.

Italy would add strength and weakness to the world war machine if she joined Germany as a full-fledged ally. The world would be stronger in war material but weaker in resources. Italy would add strength and weakness to the world war machine if she joined Germany as a full-fledged ally. The world would be stronger in war material but weaker in resources.

Pope Named To Seat On Commission

Unofficial Herald Returns Of Results In All Other Races. A mistake of 10 votes in the unofficial election results decided the County Commission race in District One, in favor of the incumbent, O. J. Pope, yesterday.

Italy would add strength and weakness to the world war machine if she joined Germany as a full-fledged ally. The world would be stronger in war material but weaker in resources. Italy would add strength and weakness to the world war machine if she joined Germany as a full-fledged ally. The world would be stronger in war material but weaker in resources.

Italy would add strength and weakness to the world war machine if she joined Germany as a full-fledged ally. The world would be stronger in war material but weaker in resources. Italy would add strength and weakness to the world war machine if she joined Germany as a full-fledged ally. The world would be stronger in war material but weaker in resources.

Italy would add strength and weakness to the world war machine if she joined Germany as a full-fledged ally. The world would be stronger in war material but weaker in resources. Italy would add strength and weakness to the world war machine if she joined Germany as a full-fledged ally. The world would be stronger in war material but weaker in resources.

Italy would add strength and weakness to the world war machine if she joined Germany as a full-fledged ally. The world would be stronger in war material but weaker in resources. Italy would add strength and weakness to the world war machine if she joined Germany as a full-fledged ally. The world would be stronger in war material but weaker in resources.

Italy would add strength and weakness to the world war machine if she joined Germany as a full-fledged ally. The world would be stronger in war material but weaker in resources. Italy would add strength and weakness to the world war machine if she joined Germany as a full-fledged ally. The world would be stronger in war material but weaker in resources.

Americans In Ireland Seek Passage Home

U. S. Liner Arrives But Number To Be Permitted On Vessels Undetermined. DUBLIN, Ireland, June 1. (AP)—Nearly 1,100 Americans sought passage home on the liner President Roosevelt today, but the number to be permitted on the vessel was not yet determined.

Italy would add strength and weakness to the world war machine if she joined Germany as a full-fledged ally. The world would be stronger in war material but weaker in resources. Italy would add strength and weakness to the world war machine if she joined Germany as a full-fledged ally. The world would be stronger in war material but weaker in resources.

Italy would add strength and weakness to the world war machine if she joined Germany as a full-fledged ally. The world would be stronger in war material but weaker in resources. Italy would add strength and weakness to the world war machine if she joined Germany as a full-fledged ally. The world would be stronger in war material but weaker in resources.

Italy would add strength and weakness to the world war machine if she joined Germany as a full-fledged ally. The world would be stronger in war material but weaker in resources. Italy would add strength and weakness to the world war machine if she joined Germany as a full-fledged ally. The world would be stronger in war material but weaker in resources.

Italy would add strength and weakness to the world war machine if she joined Germany as a full-fledged ally. The world would be stronger in war material but weaker in resources. Italy would add strength and weakness to the world war machine if she joined Germany as a full-fledged ally. The world would be stronger in war material but weaker in resources.

Italy would add strength and weakness to the world war machine if she joined Germany as a full-fledged ally. The world would be stronger in war material but weaker in resources. Italy would add strength and weakness to the world war machine if she joined Germany as a full-fledged ally. The world would be stronger in war material but weaker in resources.

Nazis Claim Sinking Of Battleship Nelson

Guns Of Fleet Cover Allied Retreat. Loss Of Dreadnaught Would Be Biggest To British Navy Since War Began.



This map shows the principal theater of action in war-torn Europe, where Allied troops pocketed in Flanders were reported escaping to England amid fierce fighting. Big guns of the Allied fleet were brought into play to drop a protective barrage of fire and steel around the French "escape port" of Dunkirk.

Italy would add strength and weakness to the world war machine if she joined Germany as a full-fledged ally. The world would be stronger in war material but weaker in resources. Italy would add strength and weakness to the world war machine if she joined Germany as a full-fledged ally. The world would be stronger in war material but weaker in resources.

Italy would add strength and weakness to the world war machine if she joined Germany as a full-fledged ally. The world would be stronger in war material but weaker in resources. Italy would add strength and weakness to the world war machine if she joined Germany as a full-fledged ally. The world would be stronger in war material but weaker in resources.

Italy would add strength and weakness to the world war machine if she joined Germany as a full-fledged ally. The world would be stronger in war material but weaker in resources. Italy would add strength and weakness to the world war machine if she joined Germany as a full-fledged ally. The world would be stronger in war material but weaker in resources.

Italy would add strength and weakness to the world war machine if she joined Germany as a full-fledged ally. The world would be stronger in war material but weaker in resources. Italy would add strength and weakness to the world war machine if she joined Germany as a full-fledged ally. The world would be stronger in war material but weaker in resources.

Germans Launch Somme Offensive

Friend Of Germany Is Made Prime Minister Of Rumania. The sinking of the 33,950-ton battleship Nelson, flagship of the British home fleet, was reported in Berlin today as the Nazi armies wheeled in an attack on the Somme River—the Allies' line guarding Paris.

Italy would add strength and weakness to the world war machine if she joined Germany as a full-fledged ally. The world would be stronger in war material but weaker in resources. Italy would add strength and weakness to the world war machine if she joined Germany as a full-fledged ally. The world would be stronger in war material but weaker in resources.

Italy would add strength and weakness to the world war machine if she joined Germany as a full-fledged ally. The world would be stronger in war material but weaker in resources. Italy would add strength and weakness to the world war machine if she joined Germany as a full-fledged ally. The world would be stronger in war material but weaker in resources.

Italy would add strength and weakness to the world war machine if she joined Germany as a full-fledged ally. The world would be stronger in war material but weaker in resources. Italy would add strength and weakness to the world war machine if she joined Germany as a full-fledged ally. The world would be stronger in war material but weaker in resources.

Italy would add strength and weakness to the world war machine if she joined Germany as a full-fledged ally. The world would be stronger in war material but weaker in resources. Italy would add strength and weakness to the world war machine if she joined Germany as a full-fledged ally. The world would be stronger in war material but weaker in resources.

Italy would add strength and weakness to the world war machine if she joined Germany as a full-fledged ally. The world would be stronger in war material but weaker in resources. Italy would add strength and weakness to the world war machine if she joined Germany as a full-fledged ally. The world would be stronger in war material but weaker in resources.

Kick-Off Breakfast Planned For Annual Boy Scout Fund Campaign

Next Wednesday morning a breakfast will be held at the Value Hotel, beginning at 8:30 a. m. The purpose of the breakfast is to kick off the annual Boy Scout fund campaign. The breakfast will be held at the Value Hotel, beginning at 8:30 a. m. The purpose of the breakfast is to kick off the annual Boy Scout fund campaign.

Italy would add strength and weakness to the world war machine if she joined Germany as a full-fledged ally. The world would be stronger in war material but weaker in resources. Italy would add strength and weakness to the world war machine if she joined Germany as a full-fledged ally. The world would be stronger in war material but weaker in resources.

Italy would add strength and weakness to the world war machine if she joined Germany as a full-fledged ally. The world would be stronger in war material but weaker in resources. Italy would add strength and weakness to the world war machine if she joined Germany as a full-fledged ally. The world would be stronger in war material but weaker in resources.

Italy would add strength and weakness to the world war machine if she joined Germany as a full-fledged ally. The world would be stronger in war material but weaker in resources. Italy would add strength and weakness to the world war machine if she joined Germany as a full-fledged ally. The world would be stronger in war material but weaker in resources.

Efforts Made To Keep Communists Out Of Radio Lanes

NEW YORK, June 1. (AP)—Efforts to keep communists out of radio lanes were made today by the Federal Communications Commission. The commission is trying to keep communists out of radio lanes. The commission is trying to keep communists out of radio lanes.

Italy would add strength and weakness to the world war machine if she joined Germany as a full-fledged ally. The world would be stronger in war material but weaker in resources. Italy would add strength and weakness to the world war machine if she joined Germany as a full-fledged ally. The world would be stronger in war material but weaker in resources.

Italy would add strength and weakness to the world war machine if she joined Germany as a full-fledged ally. The world would be stronger in war material but weaker in resources. Italy would add strength and weakness to the world war machine if she joined Germany as a full-fledged ally. The world would be stronger in war material but weaker in resources.

Winona Boys Camp To Be Opened June 7

For the 14th consecutive season, a boys camp under the supervision of H. E. Morris, principal of the Junior High School, will be held at Camp Winona in Volusia County from June 7 to June 21.

Italy would add strength and weakness to the world war machine if she joined Germany as a full-fledged ally. The world would be stronger in war material but weaker in resources. Italy would add strength and weakness to the world war machine if she joined Germany as a full-fledged ally. The world would be stronger in war material but weaker in resources.

Holland Leaves For Few Days Of Quiet

BRITISH, June 1. (AP)—The Dutch government has announced that it will leave for a few days of quiet. The Dutch government has announced that it will leave for a few days of quiet.

Italy would add strength and weakness to the world war machine if she joined Germany as a full-fledged ally. The world would be stronger in war material but weaker in resources. Italy would add strength and weakness to the world war machine if she joined Germany as a full-fledged ally. The world would be stronger in war material but weaker in resources.

American Embassy Clerk Is Detained

LONDON, June 1. (AP)—Tyler Kent, clerk, dismissed by the United States embassy, has been detained by the British government. Tyler Kent, clerk, dismissed by the United States embassy, has been detained by the British government.

of the Senior Class of the City of Sanford, Fla., at Seminole State College in the year of our Lord, 1949, being of sound mind and body, and not being under fraud, duress, or undue influence of any kind whatsoever, do make, publish and declare this will and Testament in the manner following, that is to say:

and cancel all other former records by us at any time.

SECOND: We give and bestow the following:

SECTION ONE:

Article 1. To Mr. McKay we have read memorials all the while we were in the school, we caused in the halls during vacation period, and the unusual mystery of how we managed to get into the building without permits and out of class without being caught.

Article 2. To the teachers we have the good grades we never received, quite able to capture.

Article 3. To the juniors we have all the senior privileges, the good seats in chapel, the seats with which we get out of school, and the pictures of being absent at the Junior-Senior banquet.

Article 4. To the sophomores we have all the knowledge we have assimilated.

Article 5. To the freshmen, we have the good advice: Don't get down-hearted - better men have been sophomores before gotten over it.

Article 6. To Mr. Lawton we have the faculty and may be the faculty better than anywhere.

Article 7. To Mr. Emery we have the principal and Mr. Chaffin, we have a good excuse to storm their doors and pour out their hearts about injustices of the school.

Harry Brownlee leaves his unique ability to discuss the class and have enough means to get to Joyce Whidson.

Ashley Jones leaves his super-physics and grand personality to Charles Part, Dick Fickett and Jerry Dornith, there's plenty of both to go around boys, don't shirk.

Sheldon Hardin leaves his smile and his ability to go as slowly as he will not stop to Fred Dymally.

Maebel Chapman, Edith Lundquist, Tom Ratliff and Bruce Kirkhead leave their superhuman intelligence to those who would be seniors.

Priscilla Reynolds leaves her ability to ask questions to Janet Boyd.

Robert McCall and Daniel Benarkit will their musical abilities to Jack Spertman and Nolly Trawick.

Carolyn Dague and Anna Benarkit leave their duties in the office to the future office workers.

Estel Hens, Marjorie Haglund, Hazel Hens, Pauline leave their ability to shirk duty to Janet Boyd, Annie Mayrie Hensler and Elna Lirrell.

Helen Kane leaves her general unambitious and good sportsmanship to Lorraine Ellison.

Dolly Kelly and Mary Wright graciously will their good looks to Madeline Carroll and Mary Kane.

[illegible]

Now that the end of our high school days has come and we must seek our place in life's road—what lies before us? Will the way be clouded with worry and doubt? Will we find fulfillment of our right to life, liberty, and the pursuit of happiness?

We cannot escape realities. We must face them. We dream of '40, may not be able to pursue our dreams, and nothing is certain.

The European conflict continues to impact on our lives. We cannot may not have the opportunity to

McCallan's capable hands.

Edward Higgins does it dramatically by going to all patting his engaging way of getting around his teachers.

Mary Francis Wells and Janice Kasse leave their ability for having a wonderful time to Marguerite Dumes and Betty Wilkins.

Evelyn Stone and Madelyn Trulock show their ability to

and still get to class on time to Joyce Whiddon and Jean Durden,
Selma Levy and Lois Hagan leave their ability to get into the lunch room to get to the last serving to Ruth Stenstrom and Jean Harper.
Jimmie Renaud, with his ability as an entertainer, per-
forms for George Oakley.
Margaret Culpepper and Virginia Yarbrough leave their will to work to Joe Davis.
Estelle Hart and Jane Schuit leave their vivacity and camaraderie to Lucille Garrell and Virginia Taylor.
David Greer and Thomas Burnett leave their quiet dignity to Mary Alice Hunter and Jimmie Ridge.
Sara Russell leaves her dynamic personality and sparkling wit to Betty Angel.
Mary Grace Brown leaves a generous portion of her sweet gravity to Rae Jean Dunn.
Mary Wyatt Rittell bequeaths to Lois Caldwell, a few extra inches and her secret of how to remove a stain.
Lynn Harnage leaves his absentmindedness to Virginia Chapman and his lovely brown eyes to Carol Jean Nix.
William E. Williams and William Winters leave their show, easygoing ways to Dickie Brown and Kenneth Herndon.
Gertrude Hunter will be generous in giving and quiet ways to Kay Lusk.
Roy Grimsahl leaves his ability to always find something to argue about to Hope Tartar.
Theodore C. Brown, president of the club, leaves the business of winning to do not our allegiance and seat on the last, Last Will and Testament of the Class of the year nineteen hundred and twenty.
Mary Francis Williams (Barnes)
Selma Levy
Rebecca Stevenson
Ruth Hand
This will has been made in full of no malice or intent to annoy

The Senior Tea given at the Hi-Y was held Tuesday afternoon, May 25, at the home of Erna Doudney. The receiving line consisted of Miss Edwene Mendenhall, Mary-Beldin and Natalie Truitt. The piano was played by Virginia Varborough and Mary-Beldin. Serving were Erna Doudney, Margaret Spencer, Doreen, and Margaret Spencer. Seniors who were seen at the function were Mable Chapman, Virginia Varborough, Anne O'Brien, Marion Allen, Helen Hale, Leona Vuelage, Esther Stronge, Prilla Reynolds, Mary Virginia, Louise Perkins, Lois Hagren, Kimball, Madalyn Trautman, and Selma Levy. Jimmy Smekacker, Wade Slaughter, Raymond Bell, James Trawick, Abby Newman, Jimmy Gorman, and Fred Gorman Hall and Frank Crook. It was from four o'clock to six. Punch and cookies were served.

at peace; we still enjoy security. It is our duty to keep it that way. We must prepare ourselves with patriotic determination to carry America through the days that are at hand. We must prepare intellectually and spiritually, as well as so that we may serve for peace.

It is Europe's job to quench the conflagration which she herself has started. It is for her to see that the flames of the soul spread in our direction.

The challenge is ours as we pass from these halls to meet our destiny. May this verse point the way to the guideposts when confronted by the problems of this changing world.

"New occasions teach new duties; time makes ancient things new; new tasks await new men; new worlds to win."

They must upward still and onward who would keep abreast of truth."

Lo, before us gleam the camps of life; we ourselves must fight the grim game.

Launch our Mayflower, and steer boldly through the desperate winter sea.

Not afloat but the future's path we tread; blood must be the sea's red line; we are the crew."

EDITH BLUNDILEY

Because they are used in making purchases of 75 pounds or more, there is a shortage of farthings—each worth about one-half cent—in London. Despite the fact that the British government has issued a new farthing, the shortage continues.

**Junior Class Graduates
At Mayfair Hotel**

The annual Junior-Senior Banquet was held at Mayfair Hotel, Thursday evening, May 30, honoring the 1946 graduating class. As the students arrived, they gathered in the lobby.

The honor guests on this occasion included: Five of the eight members of the class of 46 who were attending the banquet—Ethel Hickson Strange (Mrs. Fred Strange); Muriel Harold Hunt (Mrs. Emmet Hunt); Ann Whitner Hutchinson (Mrs. J. C. Hutchinson); Daisy Betts Spoor and Vivian A. Spoor (Mr. and Mrs. V. A. Spoor), and a teacher of 1946, Lillian Olfness Brownlee (Mrs. E. D. Brownlee).

The faculty attending were: Miss Lillian Dunlap, Mrs. Mae Daly Fort, Miss Ruth Hains, Mrs. Louise McCracken, Miss Ethel Riser, Mrs. Lucy Smith, Miss Phyllis Smith, Miss Rebecca Stevens, Miss Catherine Takach,

Mrs. Olin D. King. Mr. and Mrs. W. L. Crosby, and Mr. Leonard L. Melmons.
 The Junior and Senior Class Mothers present were: Mrs. J. H. Truluck, Mrs. E. B. Ratliff, Mrs. M. C. Hagan, Mrs. St. Clair White, Mrs. E. K. Pippin and Mrs. Yarnall.
 A pink, blue and green color scheme was carried through out the decorations. Vases of delphiniums were used in the lobby and a beautiful

The Debating Club of Semhol High School is closing the year of "1940" with some really brilliant debates. The president of the club, "Chuck" de Wolshi, will always be remembered for his calm attitude at all debates. The Secretary, "Bill" de Wolshi, will also be remembered for his calm work in handling the finances. Mary Higgins and Ethel Hines for their loyal support in all debates.

Next Year we plan to have a larger, although I doubt it, we could have any better club than we have. We want all the students of Semhol High School to join the club and to try to be the best seniors to attend for the Debating Club.

—STUART QUARTERMAN—

Seminole Quips

Flash 1. Faculty member eloped. The former Miss Nell Williams has received her M. R. S. degree and now is Mrs. Boyd Coleman. Best wishes to the blushing bride!

At the Century Post Staff party last night, someone was asked to give a talk on "Why Post Columns Are Pink." My guess is that it is on account of the coloring matter in them.

Margie Proctor was going to tell about her "coloring matter" moments but it was just too too

In this issue of the Seminole County News, which is dedicated to the seniors, the Journalism Club of Seminole High School, say "good-bye" and "best wishes always" to our departing senior members—Lola Hagan, Selma Levy, Edith Lund, Frances Reynolds, and Jimmie Carter.

Lola, our Editor-in-Chief, has ably filled her position during the past year. She became a member of the Journalism Club last year by winning a contest.

Her fellow members will continue now interested members into the club.

Friedrich Reynolds, one of our associate editors, was one of the charter members of the club and he has organized a new

[illegible]

1. The first step in the process is to identify the problem or issue that needs to be addressed. This involves gathering information and understanding the context of the problem.

The annual Junior-Senior Banquet was given at the Hotel, Thursday evening, May 20, honoring the 1940 graduating class. As the students arrived, they gathered in the lobby.

Guests on this occasion included: Five of the eight members of the class of '41, who are still in the student body. They were: Ruth Nielson, Strange Mrs. Paul, Pauline, Buried, Harold Hunt (Mrs. E. E. Hunt), and William Hutchinson (Mrs. J. C. Hutchinson); Daisy Betts Spoor and Virgil A. Spoor (Mrs. V. A. Spoor); and a teacher of 1915, Lillian Gibson Brownlee (Mrs. E. D. Brownlee).

The faculty attending were: Miss Lillian Dunlap, Mrs. Mae Daily, Mrs. Ruth Hunt, Mrs. Louise McCracken, Miss Ethel Elser, Mrs. Lucy Smith, Miss Phyllis Smith, Miss Rebecca Stevens, Miss Catherine Talsch,

The Junior and Senior Class members present were: Mrs. J. H. Truheck, Mrs. Kettiff, Mrs. M. C. Hagan, Mrs. J. C. Chis White, Mrs. R. R. Pippin and Mrs. Forrester.

A peach, blue and green color scheme was carried through out the decorations. Vases of delphiniums were placed on the lobby and a beautiful bank of pink geraniums and cactus lilies adorned the piano. The tables were laid with peach gladioli and fern. The columns were wrapped in fern.

The theme of the banquet "Bo-

out through the smart program and phase cards resembling musical strains.

The delightful programme which was given throughout the evening consisted of the following: The Invocation was given by Joyce Whidden. Barbara Lee, vice-president, acting in the absence of the president, Edwin Brown, gave the opening address. A response was made by Kent Hammer, president of the Senior Class. A toast was given to the class '18 by toastmaster, the class '18. A letter from Edwin Brown, president of the class '18, not being able to attend was read by Barbara Lee.

Musical selections by Elizabeth Mary Barker, pianist, were enjoyed by the students during the evening.

The students present were:

[illegible]

Sanford Theater News for the Coming Week



JOHNNY LAMOUR and Tyrone Power are pictured (above) in scenes from their latest co-starring vehicle, "Johnny Apollo," for presentation at the Ritz Theatre tomorrow and Monday. Advertisers state that this is Power's strongest at any time since "Joan Jones."



THE LATE Zane Grey, "The Light of Western Stars" returns to the screen of the Ritz Theatre next Friday and Saturday with Victor Jory, Jo Ann Sayers and Russell Hayden in the leading roles. Although filmed twice previously, both as a silent and a talkie, this version brings Jory to star as a hero, a far cry from his usual roles of the villain.

PROGRAM FOR WEEK OF JUNE 2
AT THE RITZ
Sunday, Monday—Tyrone Power, Dorothy Lamour, Edward Arnold and Lionel Atwill in "JOHNNY APOLLO"—Also CARTOON, TRAVELOGUE and METRO NEWS.
Tuesday—John Randolph, Joan Barry and George Murphy in "GIRLS ON BROADWAY"—Also: Alan Moray and Barbara Read in "CURTAIN CALL."
Wednesday, Thursday—Loretta Young, Ray Milland and Gail Patrick in "THE DOCTOR TAKES A WIFE"—Also: Crime Doesn't Pay, "WHILE AMERICA SLEEPS," 1934, De Lande, Local, Universal News.
Friday, Saturday—Victor Jory, Russell Hayden and Noah Berry in "LIGHT OF WESTERN STARS"—Also: Greta Landis and Lee Chaney, Jr. in "ONE MILLION B.C."

THIS WEEK'S CASTS

"JOHNNY APOLLO"
Bob Carr... Tyrone Power
Lucky... Dorothy Lamour
Robert Cain, Jr... Edward Arnold
Mickey Doyle... Lloyd Nolan
Judge... Charles Granger
Jim McLoughlin... Lionel Atwill
Rites... Mary Lawrence
Dr. Brown... Jonathan Hale
Plaza... Harvey Baerenthal
District Attorney... Russell Hicks
Cellmate... Fussy Knight
Asst. District Attorney... Charles Lane
Warden... Selmer Jackson
Judge... Charles Trowbridge
John Hamilton

"LIGHT OF WESTERN STARS"
Gail Patrick... Victor Jory
Majesty Hammond... Jo Ann Sayers
Alfred Hammond... Russell Hayden
Nat Hayward... Morris Ankrum
Fuss... Noah Berry, Jr.
Bill Stillwell... J. Farrell MacDonald
Flo Klingberg... Ruth Rogers
Sheriff Tom Hawes... Tom Tyler

"CURTAIN CALL"
Helen Middleton... Barbara Reed
Donald Avery... Alan Moray
Charlotte Morley... Helen Wilson
Jeff Crandall... Donald Macdonald
Ted Palmer... John Archer
Miss Smith... Lora Marie
Spink Malone... Frank Taylor
Attendant... Tom Kennedy
Leslie Barnard... Ralph Forbes
Mr. Middleton... J. E. Kerrigan
Mrs. Middleton... Ada Brown
Fred Middleton... Thomas Kelly

"DOCTOR TAKES A WIFE"
June Cameron... Loretta Young
Dr. Timothy Sterling... Ray Milland
John Flacey... Reginald Gardiner
Marilyn Thomas... Gail Patrick
Dr. Lionel Sterling... Edmund Owen
Shakespeare... Frank Sully
Orlando... Gordon Jones
Joan Barry... George Matyas
Dr. Brewster... Charles Halton
Dr. Nelson... Joseph Singleton
Dean Lewton... Paul McAllister
Charles... Charles Chase
Gail... Hal E. Dugan
Northard... Edward Van Sloan

"ONE MILLION B.C."
Tusak... Victor Mature
Loma... Carole Landis
Akhoa... Lon Chaney, Jr.
Odiao... John Hubbard
Mupond... Mamie Clark
Feytore... Nigel de Brulier
Ward... Mary Gale Fisher
Shakana... Edgar Edwards
Tehana... Ines Palange
Atat... Jacqueline Dalya
Narrator... Conrad Nagel

"TWO GIRLS ON SWAT"
Pat Mahoney... Lora Marie
Molly Mahoney... Joan Barry
Eddie Kern... George Murphy
Chat Chataworth... Ned Terry
Bobby Bartell... Richard Lane
Jed Marlowe... Walter Ford
Joe... Gail Patrick
Judge... Lora Marie
Barclay's Assistant... Charles Waggoner



THE TWO juvenile leads of "Johnny Apollo" (above) pictured by Gail Patrick in scenes from the picture, which will be shown at the Ritz Theatre tomorrow and Monday. The picture is the latest of the Ritz Theatre's "Johnny Apollo" series.



THE two juvenile leads of "Johnny Apollo" (above) pictured by Gail Patrick in scenes from the picture, which will be shown at the Ritz Theatre tomorrow and Monday. The picture is the latest of the Ritz Theatre's "Johnny Apollo" series.



ONE OF the greatest film musical comedies yet to come out of Hollywood will be seen in part of a double feature program devoted entirely to "Johnny Apollo" next Tuesday. At the Ritz Theatre, when Lora Marie, Gordon Matyas and Joan Barry (above) star, when Lora Marie, Gordon Matyas and Joan Barry (above) star, when Lora Marie, Gordon Matyas and Joan Barry (above) star.

How To Pronounce French Stumblers

PLEIN—The word is pronounced "plein" and not "plein" as many people say. It means "full" or "plenty."

MAINTIENS—The word is pronounced "maintiens" and not "maintiens" as many people say. It means "maintain" or "keep."

JOHN—The word is pronounced "john" and not "john" as many people say. It means "John" or "John."

THE—The word is pronounced "the" and not "the" as many people say. It means "the" or "the."

JOHN—The word is pronounced "john" and not "john" as many people say. It means "John" or "John."

THE—The word is pronounced "the" and not "the" as many people say. It means "the" or "the."

JOHN—The word is pronounced "john" and not "john" as many people say. It means "John" or "John."

THE—The word is pronounced "the" and not "the" as many people say. It means "the" or "the."

DIRECTORY

WAGNER
FURNITURE CO.
We Pay Cash For Used Furniture At
111 N. 1st St.
Sanford, Fla.

Sanford County Court Records

Sanford County Court Records
The following are the records of the Sanford County Court for the month of May, 1934.
1. **Sanford County Court**—The court met on May 1, 1934, at 10 o'clock a.m. in the court room of the Sanford County Court House. The judge presiding was Judge J. H. Smith. The clerk of the court was J. H. Smith. The following cases were heard:
2. **Sanford County Court**—The court met on May 2, 1934, at 10 o'clock a.m. in the court room of the Sanford County Court House. The judge presiding was Judge J. H. Smith. The clerk of the court was J. H. Smith. The following cases were heard:
3. **Sanford County Court**—The court met on May 3, 1934, at 10 o'clock a.m. in the court room of the Sanford County Court House. The judge presiding was Judge J. H. Smith. The clerk of the court was J. H. Smith. The following cases were heard:
4. **Sanford County Court**—The court met on May 4, 1934, at 10 o'clock a.m. in the court room of the Sanford County Court House. The judge presiding was Judge J. H. Smith. The clerk of the court was J. H. Smith. The following cases were heard:
5. **Sanford County Court**—The court met on May 5, 1934, at 10 o'clock a.m. in the court room of the Sanford County Court House. The judge presiding was Judge J. H. Smith. The clerk of the court was J. H. Smith. The following cases were heard:

Sanford County Produces
More Fruit And Vegetables Than Any
Similar Area In Florida

The Sanford Herald

AN INDEPENDENT NEWSPAPER

Sanford Is The Only Central
Florida City Affording Rail, Highway
And Water Transportation

VOLUME XXXI Member Associated Press SANFORD, FLORIDA, MONDAY, JUNE 3, 1940 Established In 1908 NUMBER 242

PARIS IS BOMBED BY GERMANS

Motion Picture Bigwig Indicted For Tax Evasion

Joseph Schenck, Book-

keeper Charged by
Federal Jury With
Income Tax Fraud

24 Counts Are
In Indictment

107 Years In Prison,
\$160,000 Fine Would
Be Maximum Penalty

NEW YORK, June 3.—

(AP)—Joseph Schenck, president and board chairman for the 20th Century-Fox Film Corporation, was indicted by a federal grand jury today on 24 counts of income tax fraud, conspiracy, and making false statements to the government investigator.

The indictment resulted from a three-month inquiry, Joseph H. Moscovitz, was named co-defendant.

Two indictments specified that Schenck had defrauded the government of \$160,000 in taxes for 1935-37.

The indictments said Schenck had fraudulently deducted from his gross income "losses" registered by essentially selling stock to friends in Hollywood, that he had written off as business expenses amounts that were actually personal.

If convicted on all charges, Schenck would face a maximum prison term of 107 years, and fines totaling \$160,000.

50th Anniversary
Will Be Observed
By Woodmen Lodge

The local Camp of Woodmen of the World will take an active part in the nation-wide celebration of Woodmen's 50th anniversary on June 3, 4, 5, 6, 7, 8, 9, 10, 11, 12, 13, 14, 15, 16, 17, 18, 19, 20, 21, 22, 23, 24, 25, 26, 27, 28, 29, 30, 31, 1940.

The local Camp of Woodmen of the World will take an active part in the nation-wide celebration of Woodmen's 50th anniversary on June 3, 4, 5, 6, 7, 8, 9, 10, 11, 12, 13, 14, 15, 16, 17, 18, 19, 20, 21, 22, 23, 24, 25, 26, 27, 28, 29, 30, 31, 1940.

The local Camp of Woodmen of the World will take an active part in the nation-wide celebration of Woodmen's 50th anniversary on June 3, 4, 5, 6, 7, 8, 9, 10, 11, 12, 13, 14, 15, 16, 17, 18, 19, 20, 21, 22, 23, 24, 25, 26, 27, 28, 29, 30, 31, 1940.

The local Camp of Woodmen of the World will take an active part in the nation-wide celebration of Woodmen's 50th anniversary on June 3, 4, 5, 6, 7, 8, 9, 10, 11, 12, 13, 14, 15, 16, 17, 18, 19, 20, 21, 22, 23, 24, 25, 26, 27, 28, 29, 30, 31, 1940.

The local Camp of Woodmen of the World will take an active part in the nation-wide celebration of Woodmen's 50th anniversary on June 3, 4, 5, 6, 7, 8, 9, 10, 11, 12, 13, 14, 15, 16, 17, 18, 19, 20, 21, 22, 23, 24, 25, 26, 27, 28, 29, 30, 31, 1940.

The local Camp of Woodmen of the World will take an active part in the nation-wide celebration of Woodmen's 50th anniversary on June 3, 4, 5, 6, 7, 8, 9, 10, 11, 12, 13, 14, 15, 16, 17, 18, 19, 20, 21, 22, 23, 24, 25, 26, 27, 28, 29, 30, 31, 1940.

The local Camp of Woodmen of the World will take an active part in the nation-wide celebration of Woodmen's 50th anniversary on June 3, 4, 5, 6, 7, 8, 9, 10, 11, 12, 13, 14, 15, 16, 17, 18, 19, 20, 21, 22, 23, 24, 25, 26, 27, 28, 29, 30, 31, 1940.

The local Camp of Woodmen of the World will take an active part in the nation-wide celebration of Woodmen's 50th anniversary on June 3, 4, 5, 6, 7, 8, 9, 10, 11, 12, 13, 14, 15, 16, 17, 18, 19, 20, 21, 22, 23, 24, 25, 26, 27, 28, 29, 30, 31, 1940.

The local Camp of Woodmen of the World will take an active part in the nation-wide celebration of Woodmen's 50th anniversary on June 3, 4, 5, 6, 7, 8, 9, 10, 11, 12, 13, 14, 15, 16, 17, 18, 19, 20, 21, 22, 23, 24, 25, 26, 27, 28, 29, 30, 31, 1940.

The local Camp of Woodmen of the World will take an active part in the nation-wide celebration of Woodmen's 50th anniversary on June 3, 4, 5, 6, 7, 8, 9, 10, 11, 12, 13, 14, 15, 16, 17, 18, 19, 20, 21, 22, 23, 24, 25, 26, 27, 28, 29, 30, 31, 1940.

The local Camp of Woodmen of the World will take an active part in the nation-wide celebration of Woodmen's 50th anniversary on June 3, 4, 5, 6, 7, 8, 9, 10, 11, 12, 13, 14, 15, 16, 17, 18, 19, 20, 21, 22, 23, 24, 25, 26, 27, 28, 29, 30, 31, 1940.

The local Camp of Woodmen of the World will take an active part in the nation-wide celebration of Woodmen's 50th anniversary on June 3, 4, 5, 6, 7, 8, 9, 10, 11, 12, 13, 14, 15, 16, 17, 18, 19, 20, 21, 22, 23, 24, 25, 26, 27, 28, 29, 30, 31, 1940.

The local Camp of Woodmen of the World will take an active part in the nation-wide celebration of Woodmen's 50th anniversary on June 3, 4, 5, 6, 7, 8, 9, 10, 11, 12, 13, 14, 15, 16, 17, 18, 19, 20, 21, 22, 23, 24, 25, 26, 27, 28, 29, 30, 31, 1940.

The local Camp of Woodmen of the World will take an active part in the nation-wide celebration of Woodmen's 50th anniversary on June 3, 4, 5, 6, 7, 8, 9, 10, 11, 12, 13, 14, 15, 16, 17, 18, 19, 20, 21, 22, 23, 24, 25, 26, 27, 28, 29, 30, 31, 1940.

Germany Claims H. M. S. Nelson Sunk



Germany announced destruction of the 33,950-ton battleship Nelson, flagship of the British home fleet, with loss of 700 of her crew.

Germany announced destruction of the 33,950-ton battleship Nelson, flagship of the British home fleet, with loss of 700 of her crew.

Germany announced destruction of the 33,950-ton battleship Nelson, flagship of the British home fleet, with loss of 700 of her crew.

Germany announced destruction of the 33,950-ton battleship Nelson, flagship of the British home fleet, with loss of 700 of her crew.

Germany announced destruction of the 33,950-ton battleship Nelson, flagship of the British home fleet, with loss of 700 of her crew.

Germany announced destruction of the 33,950-ton battleship Nelson, flagship of the British home fleet, with loss of 700 of her crew.

Germany announced destruction of the 33,950-ton battleship Nelson, flagship of the British home fleet, with loss of 700 of her crew.

Germany announced destruction of the 33,950-ton battleship Nelson, flagship of the British home fleet, with loss of 700 of her crew.

Germany announced destruction of the 33,950-ton battleship Nelson, flagship of the British home fleet, with loss of 700 of her crew.

Germany announced destruction of the 33,950-ton battleship Nelson, flagship of the British home fleet, with loss of 700 of her crew.

Germany announced destruction of the 33,950-ton battleship Nelson, flagship of the British home fleet, with loss of 700 of her crew.

Germany announced destruction of the 33,950-ton battleship Nelson, flagship of the British home fleet, with loss of 700 of her crew.

Germany announced destruction of the 33,950-ton battleship Nelson, flagship of the British home fleet, with loss of 700 of her crew.

Germany announced destruction of the 33,950-ton battleship Nelson, flagship of the British home fleet, with loss of 700 of her crew.

Germany announced destruction of the 33,950-ton battleship Nelson, flagship of the British home fleet, with loss of 700 of her crew.

Germany announced destruction of the 33,950-ton battleship Nelson, flagship of the British home fleet, with loss of 700 of her crew.

Germany announced destruction of the 33,950-ton battleship Nelson, flagship of the British home fleet, with loss of 700 of her crew.

Germany announced destruction of the 33,950-ton battleship Nelson, flagship of the British home fleet, with loss of 700 of her crew.

Germany announced destruction of the 33,950-ton battleship Nelson, flagship of the British home fleet, with loss of 700 of her crew.

Germany announced destruction of the 33,950-ton battleship Nelson, flagship of the British home fleet, with loss of 700 of her crew.

Germany announced destruction of the 33,950-ton battleship Nelson, flagship of the British home fleet, with loss of 700 of her crew.

Germany announced destruction of the 33,950-ton battleship Nelson, flagship of the British home fleet, with loss of 700 of her crew.

Germany announced destruction of the 33,950-ton battleship Nelson, flagship of the British home fleet, with loss of 700 of her crew.

Germany announced destruction of the 33,950-ton battleship Nelson, flagship of the British home fleet, with loss of 700 of her crew.

Flag Salute Requirement Is Sustained

Pepper's Plans For
Sale Of Old U. S.
Planes Are Laid
Before Roosevelt

WASHINGTON, June 3.—(AP)—The Supreme Court today held constitutional the regulation requiring school children to salute the American flag.

Justice Frankfurter delivered an 8 to 1 decision that sustained the flag salute requirement by a Minersville, Pa., school board.

Frankfurter said "the wisdom of training children in the patriotic impulses by those compulsion which necessarily pervades so much of educational process is not for our independent judgment."

The court room is not an arena for debating the issues of educational policy. That authority has not been given to this court nor should we assume it.

Justice Stone was the lone dissenter.

Meanwhile on Capitol Hill, President Roosevelt was reported reliably yesterday to have before him a proposal that the Administration authorize the army and navy to trade in some of their older warplanes, to manufacturers who in turn could sell them to the Allies for immediate delivery.

This suggestion was said to have been made by the President.

(Continued on Page Two)

Allies Beat Off
40 Bombers With
3 U. S. Planes

LONDON, June 3.—(AP)—Three American-built Hudson bombers attacking 40 German bombers and fighter planes just as they were about to pour death on Allied troops off Dunkerque Saturday, destroyed five bombers and dispersed the remainder of the Nazi formation in a 13-minute battle, the Air Ministry reported last night.

The ministry also declared in a communique that Royal Air Force fighters destroyed or severely damaged 78 German bombers and fighting planes in the increasing operations over the Allied retreat at Dunkerque.

The ministry said this "sets a new record for the RAF."

(Continued on Page Four)

Summer School To
Begin On Tuesday

Registration for the first term of the summer school in Sanford will take place at the Southside Primary School Tuesday morning and classes will begin immediately, school officials said today.

Miss Ethel Welch and Mrs. Marion St. John will be in charge of the work for students from the first through the third grades while for the intermediate grades, Mrs. Irene Watt will have a kindergarten class.

The school will be conducted on tuition basis and a permit must be obtained from the principal before enrollment in these classes.

Public Thanked For
Supporting WPA Week

The public is invited to hear the address of Mayor Paul Hank of Sanford on "Fifth Column Activities in America" at the 10th annual meeting of the Camp Woodmen of the World, which will be held in connection with the regular luncheon of the civic organization in the Vauder Hotel Wednesday at noon.

President Karl Moberg said today, J. W. Hall, chairman of the local interfaith religious committee, is in charge of arrangements for the meeting while the Rev. J. J. Kellaghan is in charge of plans for the program.

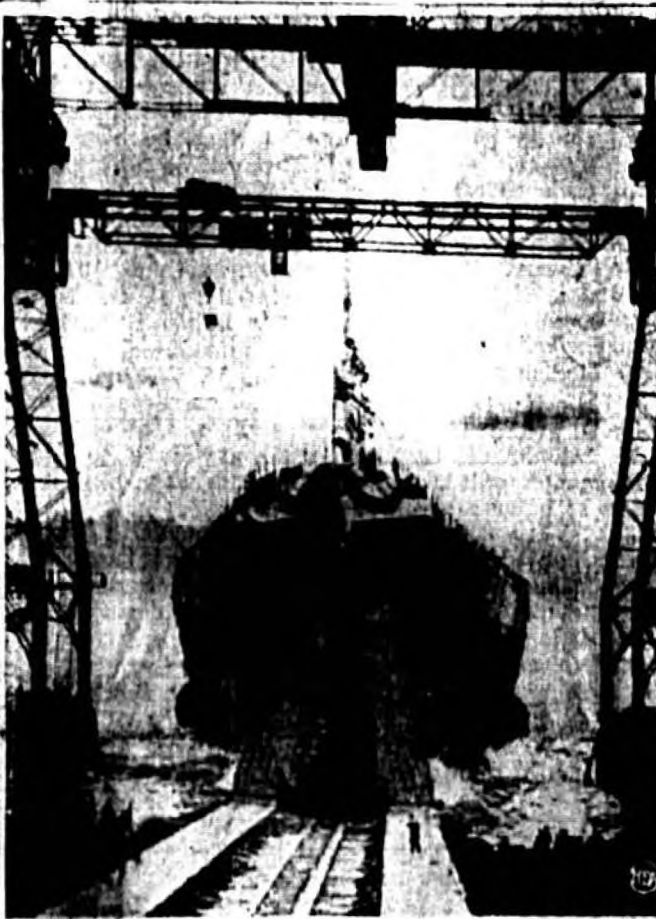
The religious committee of the Sanford Kiwanis Club will be held in connection with the regular luncheon of the civic organization in the Vauder Hotel Wednesday at noon.

President Karl Moberg said today, J. W. Hall, chairman of the local interfaith religious committee, is in charge of arrangements for the meeting while the Rev. J. J. Kellaghan is in charge of plans for the program.

The religious committee of the Sanford Kiwanis Club will be held in connection with the regular luncheon of the civic organization in the Vauder Hotel Wednesday at noon.

"Dud" Bomb Falls Within 6 Feet Of Ambassador Bullitt

S. S. Washington Slides Down Ways



Down the ways at the Philadelphia navy yard slides the U. S. S. Washington, biggest warship ever built in this country and first capital ship to be added to the U. S. navy in 19 years. Every possible precaution was taken as the mighty dreadnaught was displaced 35,000 tons. Cost \$75,000,000.

Seek Ye First The
Kingdom Of God,
Brownlee Urges

Auditorium Is Packed
For Sermon To High
School Graduates

"Seek ye first the Kingdom of God and His righteousness," Dr. E. D. Brownlee, pastor of the First Presbyterian Church, counseled the members of the Seminole High School graduating class in delivering the baccalaureate sermon at the high school auditorium last night.

The auditorium was jammed to capacity for the sermon to the class with its 125 members who will formally complete their high school work at the commencement exercises to be held tonight.

(Continued on Page Three)

59 Rollins College Seniors Given
Diplomas At Commencement Program

WINTER PARK, June 3.—Rollins College conferred diplomas on 59 seniors at the institution's fifty-first Commencement exercises in the Knowles Memorial Chapel this morning, with the bestowal of honor awards featuring the program.

Commencement speaker John Adams Kingsbury, New York social welfare leader, urged the graduates to acquire a scientific attitude toward every phase of life, charging them to keep their minds clear of cant and open to new ideas.

"Don't be a copy of a copy," he warned. "Learn to see clearly, to think straight, and to know what you think."

The attitude of the skeptic is the healthy policy to adopt, he declared. "Learn to see clearly, to think straight, and to know what you think."

The attitude of the skeptic is the healthy policy to adopt, he declared. "Learn to see clearly, to think straight, and to know what you think."

The attitude of the skeptic is the healthy policy to adopt, he declared. "Learn to see clearly, to think straight, and to know what you think."

The attitude of the skeptic is the healthy policy to adopt, he declared. "Learn to see clearly, to think straight, and to know what you think."

The attitude of the skeptic is the healthy policy to adopt, he declared. "Learn to see clearly, to think straight, and to know what you think."

The attitude of the skeptic is the healthy policy to adopt, he declared. "Learn to see clearly, to think straight, and to know what you think."

45 Die, 149 Hurt As
Swarms Of German
Planes Rock French
Capital With Bombs

Flanders Armies
Fight Fiercely

Allies Strengthen
Defenses In Mediterranean Sector

By Associated Press

Waves of German warplanes bombed Paris today, killing and wounding scores, setting great fires, smashing buildings, and dropping within six feet of U. S. Ambassador Bullitt, a "dud" bomb which failed to explode.

Unconfirmed reports said that 35 were killed, including an American.

While Paris dispatches said the bombs fell in the heart of the city as well as on the outskirts, Berlin reported that the German raid centered on the Paris airdrome, and other military targets in the region.

Streets were ripped up and littered with twisted steel, broken tiles, stones and rubble.

Great columns of black smoke rose from the outlying districts, where the main force of the German attack was apparently felt.

The crash of the bombs was heard all over the capital, suddenly roused to the alarm.

A roaring swarm of between (Continued from Page Three)

American Liners
Load To Capacity
And Leave Europe

By Associated Press

Two American liners, loaded to the gunwales with American and foreign refugees, left European ports yesterday with nearly 3000 aboard.

The United States liner Manhattan, jammed with 2200 sailed from Genoa for New York, and the liner President Roosevelt, with about 800, made a delayed start from Galway, Ireland.

Meanwhile Washington warned all of Europe's warring nations that the President Roosevelt had sailed, to avoid any possibility that the plainly marked ship might be mistaken for a belligerent vessel and be fired on.

William C. Bullitt, United States ambassador to France, prominently posted on the ship's bulletin board, it advised all citizens to reconcile themselves to discomfort by accepting the emergency conditions.

Many woe-filled tales were told by passengers. Many foreign refugees had abandoned all their possessions in flight. One Belgian from Antwerp, accompanied by his wife and child, said they traveled 18 days in refugee columns which were continuously bombed and machine-gunned by Nazi planes.

The family boarded the Manhattan with little more than the clothes they wore, looked brown and then smiled wryly. For all the discomforts, they said, "I looked like paradise."

Among the Manhattan's passengers was Mrs. Myron Taylor, wife of President Roosevelt's personal representative to the war can. Taylor stayed aboard.

CHEMIST IN MANITOBA

During 1939 the province of Manitoba, Canada, produced \$61,764 pounds of heavy metals, an increase of 177,000 pounds over the previous year.

LOCAL WEATHER

Forecast for June 3, 1940: Partly cloudy, with a chance of rain. Temperature 60 to 70 degrees.