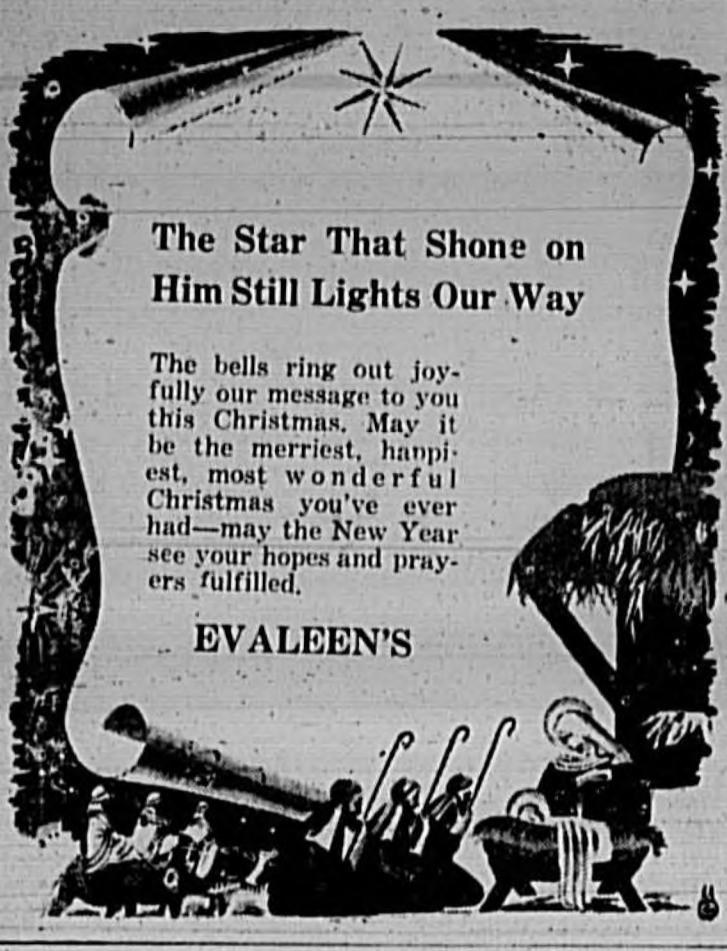


**The Star That Shone on Him Still Lights Our Way**

The bells ring out joyfully our message to you this Christmas. May it be the merriest, happiest, most wonderful Christmas you've ever had—may the New Year see your hopes and prayers fulfilled.

**EVALEEN'S**




**NATIVITY**

AND THEY CAME WITH HASTE, AND FOUND MARY, AND JOSEPH, AND THE BABE LYING IN A MANGER.—LUKE 2, 16

From Painting by Carl Mueller



The world is aglow with happiness this Christmas as peace again reigns supreme. We wish you a wonderful Christmas and a glorious New Year.

**THE ESSEX STUDIO**

ROBERT L. COX  
PHOTOGRAPHER

Sanford Florida



**MERRY CHRISTMAS**  
☆ TO ONE AND ALL ☆

Unselfish interest in others is the keynote of happiness at Christmastime. May each gift you receive breathe love and devotion and bind the ties of home and friendship more securely.

As for ourselves, we desire to express our appreciation for your loyalty to us in 1945, and wish you a Merry Christmas.

**HUFFMAN'S SUNOCO SERVICE**

3rd & Park Ave.  
Prop. Harry M. Huffman

**Old Fashion Game Under Tree With Dad Is Lots Of Fun**

(Continued from Page One)  
plastic, metal and die cut materials. So we will have to wait awhile for the bulk of new game inventions.

But dad with a little ingenuity may find some new ways to play those old games. If he happens to be an ex-GI the chances are that he already has some up his sleeve.

It won't be too difficult to locate the card game revivals like Rook, Pit and Clinch or Crossword Lexicon, the word-building game, because most of these use a minimum of materials. It's the best sellers in the board game class like Camelot and Monopoly for which the demand does not equal the supply.

If you get a variety of games, there will always be one that will become a favorite with each member of the family.

Dig is fun even for the small fry who enjoy scrambling for the letters with the sticky-tipped "gold mining" picks.

Teen-agers should be amused by a sophisticated game like bonanza, a combination of Michigan and rummy, which has the playing field staked out on a cloth.

There are limited supplies of dart games with steel tips available and toylands have some miniature croquet and bowling games and variations of the ring

**Fireworks During Christmas Season Old Latin Custom**

By GERARD TETLEY  
AP Newsfeatures  
To those who have sometimes asked why fireworks should be associated with the birth of Christ, the answer is that this was an imported custom, which settlers brought from France to New Orleans.

Before it was introduced in this country, the Italians were using colored fire on December 25 and there is abundant evidence that the Spaniards also indulged in early pyrotechnics.

In the southern states, fireworks remain a Christmas "must" notwithstanding the fact that many cities and towns have enacted prohibitive ordinances because in so many instances Christmas joy was turned to Christmas grief in killings and maimings.

The paganistic motif bobs up again in the burning of the Yule Log which is certainly tied in inextricably with Christmas, but which can be traced back to the word Yul and the Goth's festival commemorating the winter solstice.

Mistletoe is another Christmas custom which goes back to the white robed bride who reveres it. They always cut it with a golden blade because they considered it a symbol of peace. In the early ages if two foemen met underneath mistletoe, they dropped their arms and embraced—hence the modern practice of kissing under the mistletoe.

The Christmas tree is entirely Germanic in origin and first made its appearance at Strasburg in 1605. It was not until 1840 that the Princess of Mecklenberg introduced it in England to become immediately a Christmas fixture.

But one little known fact is that the Christmas tree was a current Christmas fixture in America before it was in England.



**HOLLYWOOD DIRECTOR** John De Toth, 32, beams happily at his wife, blonde screen star Veronica Lake, as he proudly shows her his newly-acquired American citizenship papers in Federal Court in Los Angeles. The director came to this country five years ago from Hungary. (International Soundphoto)

**Hazards Lurk In Your Christmas Tree Decorations**

(Continued from Page One)  
helps keep the tree fresh and reduces the chances of fire. Another and important safeguard is to use a chemical flame-proofing solution.

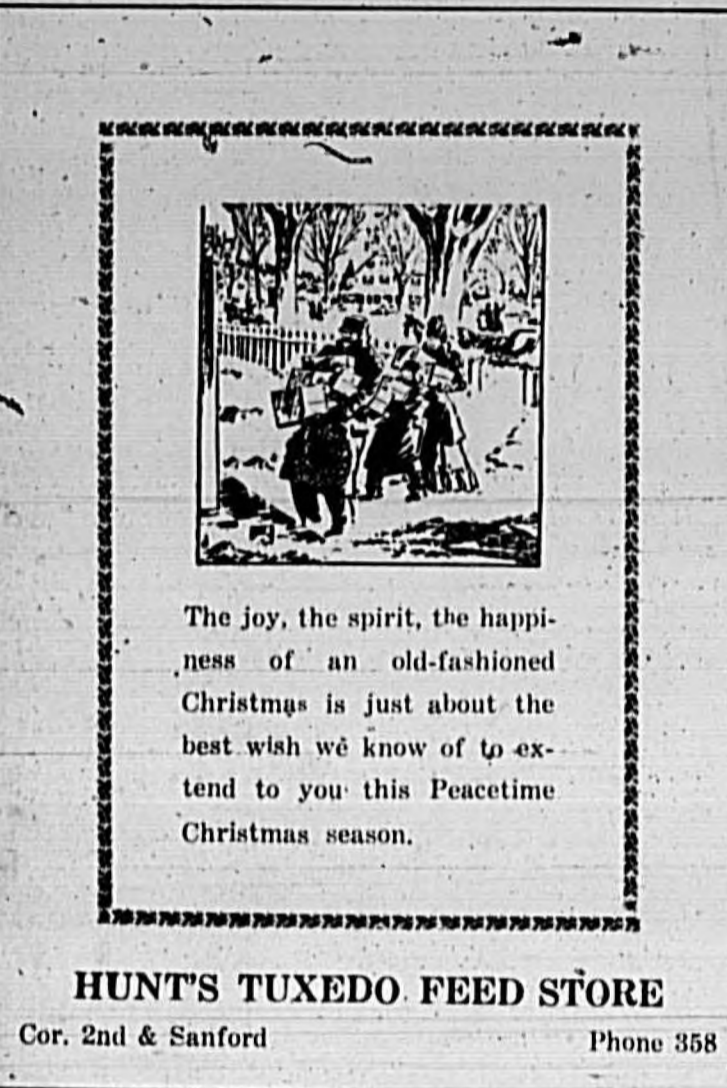
Disolve one pound of sodium chloride in one and one-half pints of water. That will take care of a tree that weighs approximately eight pounds, use two pounds of chemical and three pints of water.

Put the solution in the container in which the tree stands. Let the tree soak up as much of the chemical solution as possible. In case calcium chloride is not available ammonium sulfate will be highly satisfactory.

Cigarettes burn slowly at 8,000 feet in the air than on the ground.

About 9 per cent of motor vehicle trips in the United States are less than 30 miles in length.

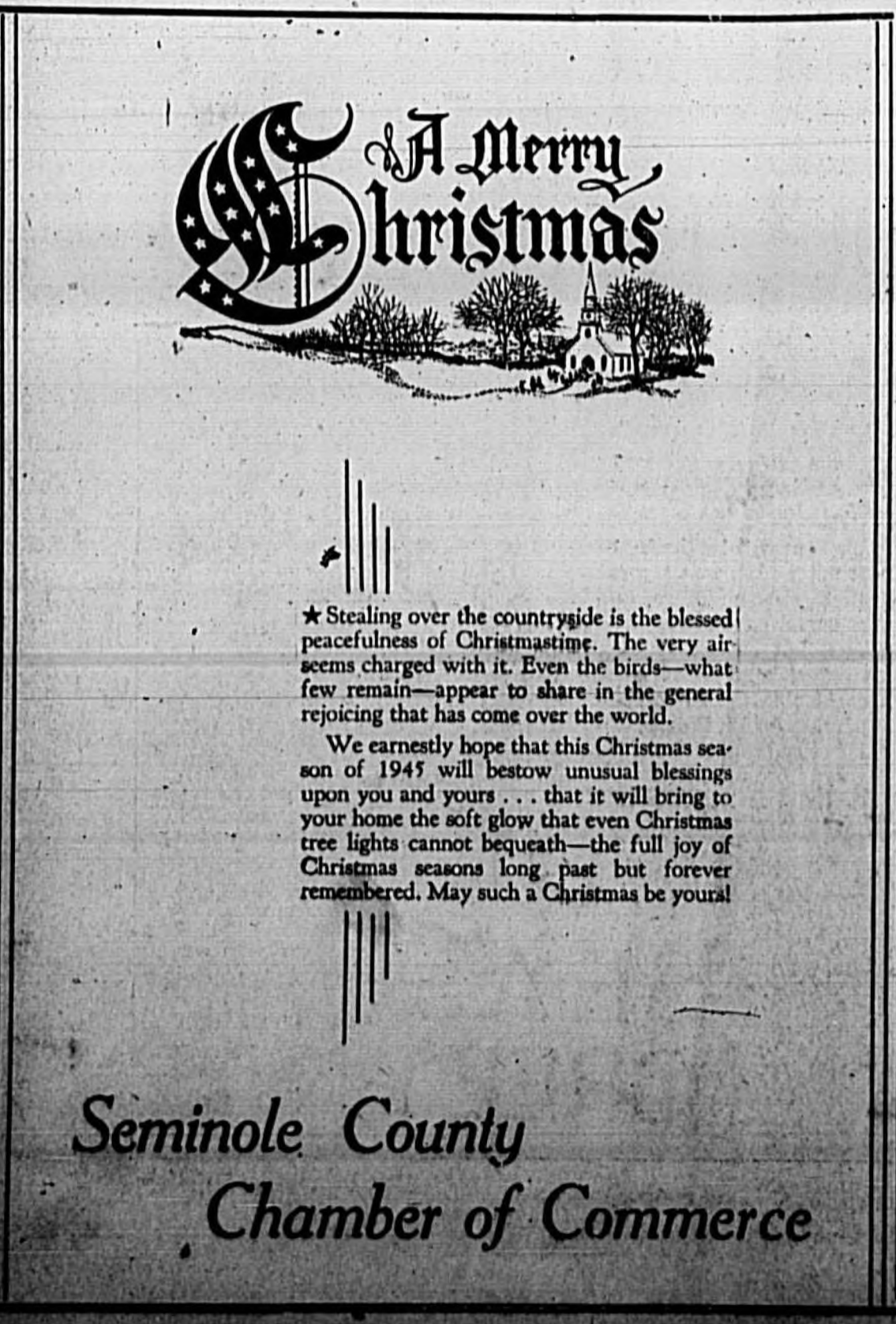
Warp threads are those which run lengthwise of the fabric; weft threads run transversely.



The joy, the spirit, the happiness of an old-fashioned Christmas is just about the best wish we know of to extend to you this Peacetime Christmas season.

**HUNT'S TUXEDO FEED STORE**  
Cor. 2nd & Sanford Phone 358

**A Merry Christmas**

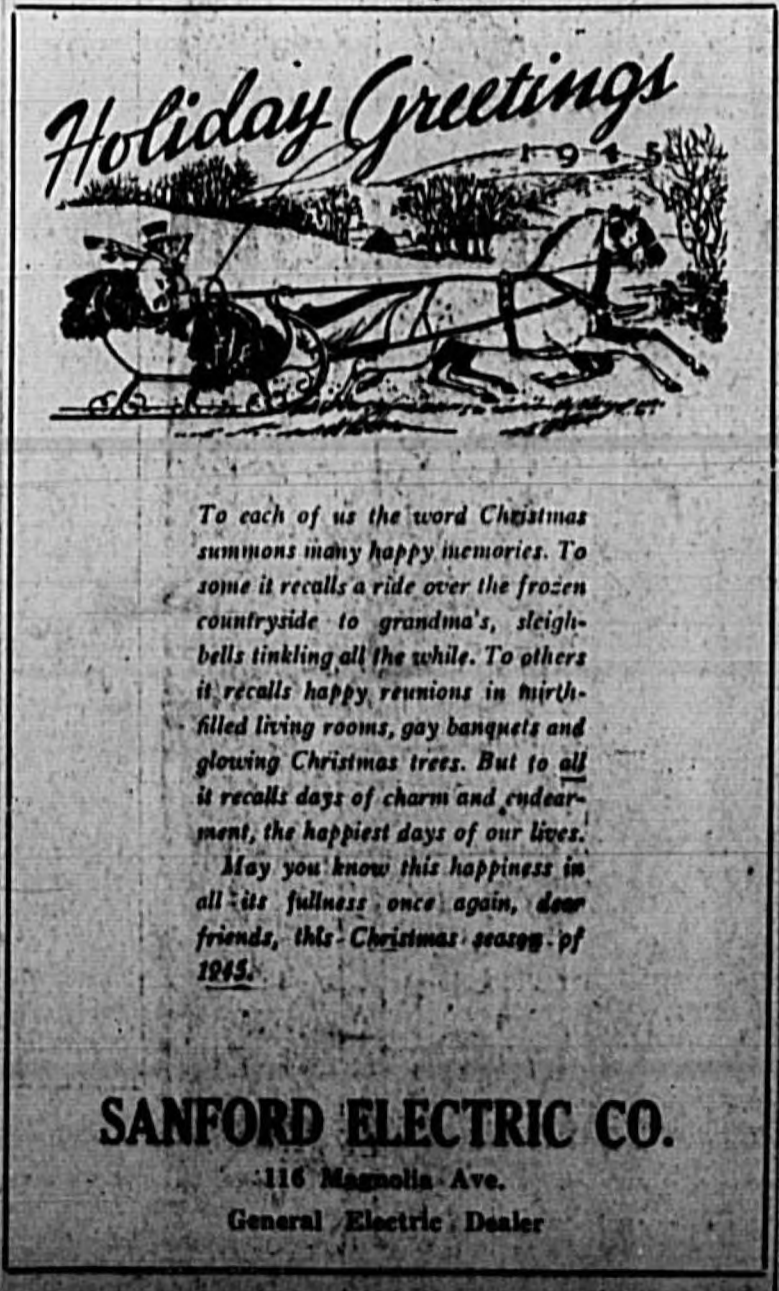


★ Stealing over the countryside is the blessed peacefulness of Christmastime. The very air seems charged with it. Even the birds—what few remain—appear to share in the general rejoicing that has come over the world.

We earnestly hope that this Christmas season of 1945 will bestow unusual blessings upon you and yours . . . that it will bring to your home the soft glow that even Christmas tree lights cannot bequeath—the full joy of Christmas seasons long past but forever remembered. May such a Christmas be yours!

**Seminole County Chamber of Commerce**

**Holiday Greetings**



To each of us the word Christmas summons many happy memories. To some it recalls a ride over the frozen countryside to grandma's, sleigh bells tinkling all the while. To others it recalls happy reunions in birth-filled living rooms, gay banquets and glowing Christmas trees. But to all it recalls days of charm and endearment, the happiest days of our lives.

May you know this happiness in all its fullness once again, dear friends, this Christmas season of 1945.

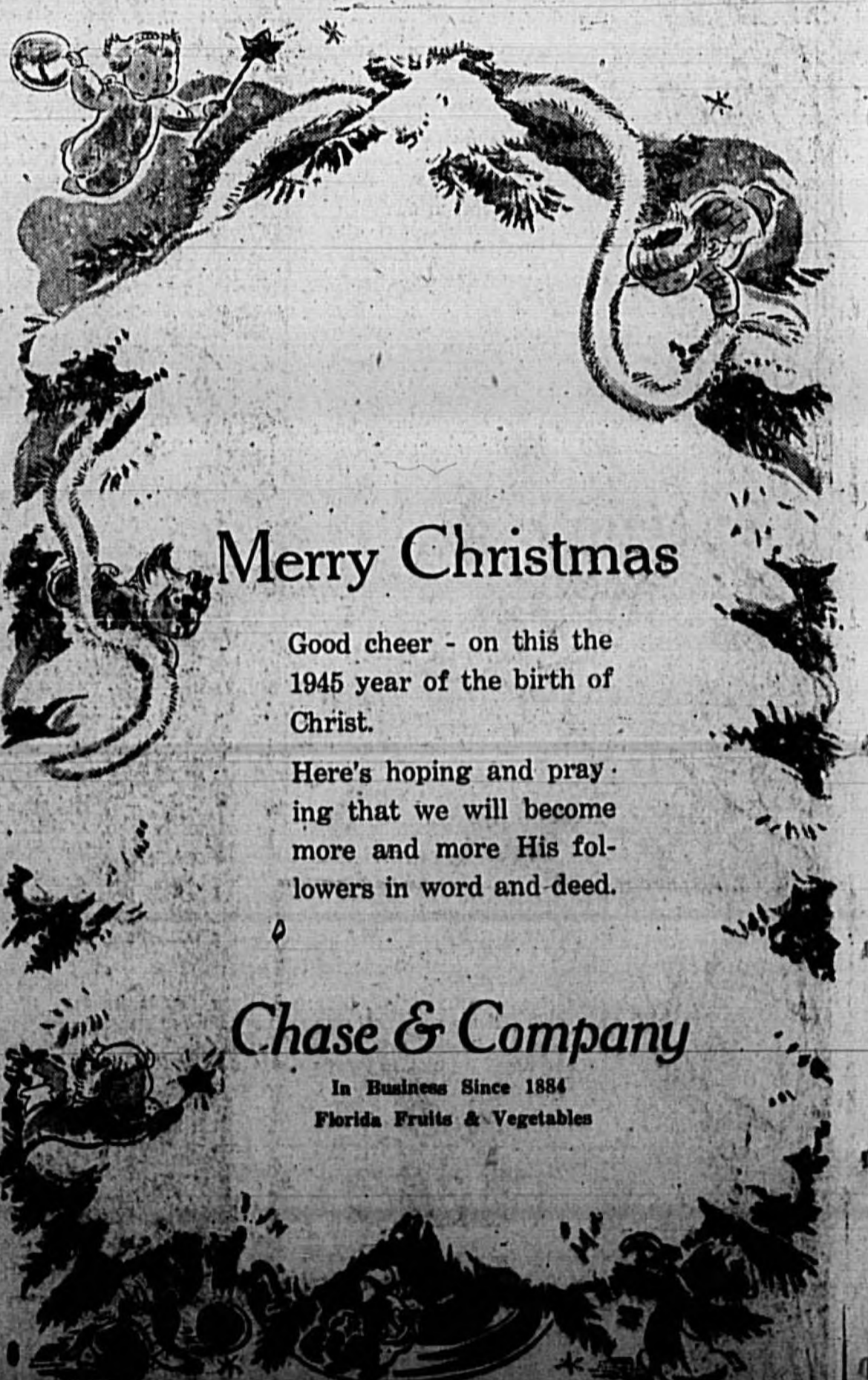
**SANFORD ELECTRIC CO.**  
116 Magnolia Ave.  
General Electric Dealer

**Merry Christmas**

Good cheer - on this the 1945 year of the birth of Christ.

Here's hoping and praying that we will become more and more His followers in word and deed.

**Chase & Company**  
In Business Since 1884  
Florida Fruits & Vegetables



# The Sanford Herald

AN INDEPENDENT DAILY NEWSPAPER

THE WEATHER

Generally fair through Thursday cooler this afternoon and tonight, mild Thursday.

In Unity There Is Strength—  
To Protect the Peace of the World;  
To Promote the Progress of America;  
To Produce Prosperity for Sanford.

VOLUME XXXVII

Established 1908

SANFORD, FLORIDA, WEDNESDAY, DECEMBER 26, 1945

Associated Press Leased Wire

NUMBER 73

## Conference Of Ministers To End Tonight

### Big Three Delegates Await Reply From French On Formula For Drafting Peace

MOSCOW, Dec. 26, (AP)—The Big Three foreign ministers have gone into another session. They are hoping to clear up the remaining details of their 11-day conference so that it may come to an end by late tonight.

The hour at which the final communiqué will be issued is not known. Yesterday, a British source said that the bulletin would be made public at 6 P. M., EST today. Latest indications from Moscow are that no definite time has been set.

Informed sources in the Russian capital say that Molotov, Byrnes and Bevin have reached greater agreement than any of them thought possible when they met. The three statesmen are said to have gotten along much better than they did at the London conference.

All three are still waiting for France to reply to the formula for drafting the peace treaties for Europe. Secretary Byrnes has been unable to reach French Foreign Minister Bidault by telephone. French insistence on being a party to all European peace treaties was one of the issues which ended the London conference in a stalemate.

MOSCOW, Dec. 26, (AP)—Secretary of State James Byrnes is today in hopes that he may be able to leave Moscow within the next few hours. The big three Foreign Ministers Conference apparently is scheduled to conclude tonight (Monday) after 11 days of talks on world problems.

Reliable Moscow sources say that Byrnes and Bidault reached an accord on a number of vital world issues. British sources indicate a final communiqué can be expected at 6:00 o'clock this evening, E.S.T.

## British Admiral Lord Keyes Dies In London Today

LONDON, Dec. 26, (AP)—Admiral of the Fleet Lord Keyes died today in his sleep. He was 78.

Lord Keyes — one of Britain's outstanding naval heroes — had been ill for three weeks.

Admiral Keyes was the leader of the spectacular "Operation M" in World War I. He also was credited with a large part of the success in combating the German submarine menace in the first world war conflict.

As commander of the Dover patrol, Admiral Keyes organized the famous St. George's Day operation in 1918 which sealed up the Bruges Canal.

Lord Keyes also served the Royal Navy in World War II as director of combined operations in 1940 and 1941. He was one of the sponsors of the famed British Commandos. His son, Lieut. Col. G. C. T. Keyes, was killed leading a commando raid in 1941 against Field Marshal Erwin Rommel's headquarters in North Africa.

As commander of the Dover patrol, Admiral Keyes organized the famous St. George's Day operation in 1918 which sealed up the Bruges Canal.

Lord Keyes also served the Royal Navy in World War II as director of combined operations in 1940 and 1941. He was one of the sponsors of the famed British Commandos. His son, Lieut. Col. G. C. T. Keyes, was killed leading a commando raid in 1941 against Field Marshal Erwin Rommel's headquarters in North Africa.

## Jao Paper Charges Privileged Class Of Hoarding Goods

TOKYO, Dec. 26, (AP)—A new Tokyo daily newspaper (Mimpo) charged today that Japan's so-called privileged class is hoarding large stocks of foodstuffs. The paper asserted further that the Japanese Government is trying to create the impression that the only way to tide over the food crisis was to import foreign rice.

The paper demanded editorially that the foodstuffs it alleged were being hoarded should be distributed.

Meanwhile, General MacArthur's headquarters issued a directive today concerning the food situation. Under terms of the directive, more than 44,000,000 pounds of food and more than 5,000,000 pieces of clothing taken from Japanese military stores will be distributed among the Japanese people.

At the same time, Allied headquarters directed several agencies of the Japanese Government to submit weekly statistical statements on the food situation. The statements are to be submitted by the Japanese Government to the Allied headquarters.

At the same time, Allied headquarters directed several agencies of the Japanese Government to submit weekly statistical statements on the food situation. The statements are to be submitted by the Japanese Government to the Allied headquarters.

## Truman Tests White House Snow



WITH WASHINGTON BLANKETED under several inches of winter's first snowfall, President Truman semi-officially opens the season by rolling a fast snowball on the White House grounds. He stayed out in the sharp air long enough to show he still knows how. (International Soumphoto)

## 3 Persons Killed In Explosion Of California Truck Warehouse, Apartment Building Are Wrecked By Blast

SANTA BARBARA, Calif., Dec. 26, (AP)—Three persons were killed today when an explosion wrecked a warehouse and apartment building in Santa Barbara, Calif. Five other persons were injured — but not seriously — when the explosion of a butane gas truck destroyed the structure.

The dead have been identified tentatively as Mr. and Mrs. John Johnson and ten-year-old Caroline Stovall, all residents of apartments on the upper floor of the two-story building. Missing is another resident, Frances Watson. But friends believe that she was out of the city on a holiday visit.

The injured include Anthony Berta, a truck driver. Berta explains the blast this way, "I stepped on the starter and the butane just took off."

The structure was located at Chapala and Cota Streets, only one block from the main traffic artery, State Street.

The blast shattered nearly every window in blocks adjacent to the building. Police reported that reserves were called to patrol the area. A bank one block away was put under heavy guard. Meanwhile, police and sheriff's telephone exchanges were jammed with calls from residents as far as ten miles away inquiring about the blast.

Every available piece of fire equipment was rushed to fight the fire. The flames were under control within one half hour.

The building housed the Santa Barbara distributing company's beer and soft drink bottling works.

The structure was located at Chapala and Cota Streets, only one block from the main traffic artery, State Street.

The blast shattered nearly every window in blocks adjacent to the building. Police reported that reserves were called to patrol the area. A bank one block away was put under heavy guard. Meanwhile, police and sheriff's telephone exchanges were jammed with calls from residents as far as ten miles away inquiring about the blast.

Every available piece of fire equipment was rushed to fight the fire. The flames were under control within one half hour.

The building housed the Santa Barbara distributing company's beer and soft drink bottling works.

## No Frost Danger Till After Saturday

LAKELAND, Dec. 26, (AP)—Sub-freezing weather is forecast for tomorrow morning in extreme northern Florida. For tonight and tomorrow morning, the Frost Warning Service at Lakeland predicts partly cloudy weather in southern districts, mostly clear skies northern districts, cooler in north and central districts.

Lowest temperatures expected tomorrow morning are 29 to 33 degrees with scattered frosts in the extreme north portion of the Gainesville district. No frost danger in all other sections.

Forecast for Thursday — fair and mild. Slightly warmer Thursday night and Friday in northern districts. Mild in southern districts. No frost danger through Saturday morning.

REALTORS TO MEET  
The Sanford Realtors Association, of which Ed Lane is president, will meet Friday afternoon at the City Hall for election of officers and making of plans for the new year.

COMMISSION TO MEET  
A regular meeting of the City Commission will take place this evening at the City Hall. At 7:00 o'clock, it was announced by H. N. Sayer, city clerk.

## French Set To Approve Bretton Woods

### Speedy Ratification Is Predicted Following Devaluation Of French Currency

WASHINGTON, Dec. 26, (AP)—The United States has answered the French note concerning future relations with Franco Spain. The State Department has notified France that it is ready to discuss with Britain and France all aspects of the relations of the three governments with the present regime in Madrid. This was made known today by acting Secretary of State Dean Acheson.

PARIS, Dec. 26, (AP)—The French constituent assembly in Paris today is focusing its attention on the Bretton Woods Monetary Agreement. This follows close on the heels of the French government's decree yesterday, devaluing the franc by more than one half in order to stabilize the nation's currency.

In fact, French experts say the franc has been devalued at this time in order to facilitate speedy ratification of Bretton Woods.

Since the liberation the franc has been pegged at 50 to the dollar and 200 to the British pound. But the new value of the franc, effective today is a little more than 119 francs to the dollar and 480 francs to the pound sterling.

French economists say the two-cent devaluation of the franc was artificial and prevented France from selling anything to the United States or England. They explain the franc was devalued in order to align France's currency more closely to its actual value in world markets.

ROMA, Dec. 26, (AP)—The United States Office of Economic Liquidation disclosed today that the Italian government has paid \$7,773,500 for surplus American Army stocks. Included in the sale were 133 locomotives.

WASHINGTON, Dec. 26, (AP)—Tomorrow a group of senators will start on a month's flight around the world. They are members of a subcommittee of the Senate's Defense Investigating Committee. Their leader is Senator James Tamm of Delaware, an old hand at investigations aboard.

Senator William Knowland of California and Senator Hugh Mitchell of Washington complete the party. The job ahead of them is to determine whether or not military goods are being thrown away wastefully.

It is said that usable trucks are being pushed over cliffs and food allowed to spoil while children go hungry. Knowland served as a major in Europe before becoming a lawmaker. He said the Army during the war had a crackerjack system of salvage which saved a tremendous amount of shipping by repairing battle damage.

The California Republican added that war itself is a wasteful process and many useful things had to be thrown away. What he and his co-workers want to discover now is whether there is unnecessary waste going on now.

Senator William Knowland of California and Senator Hugh Mitchell of Washington complete the party. The job ahead of them is to determine whether or not military goods are being thrown away wastefully.

It is said that usable trucks are being pushed over cliffs and food allowed to spoil while children go hungry. Knowland served as a major in Europe before becoming a lawmaker. He said the Army during the war had a crackerjack system of salvage which saved a tremendous amount of shipping by repairing battle damage.

The California Republican added that war itself is a wasteful process and many useful things had to be thrown away. What he and his co-workers want to discover now is whether there is unnecessary waste going on now.

## Mrs. W. C. Hartline Dies In Orlando

Mrs. W. C. Hartline, 55, a resident of Sanford for the past 26 years died at the Florida Sanatorium in Orlando at 11:00 o'clock yesterday morning following an illness of approximately two years.

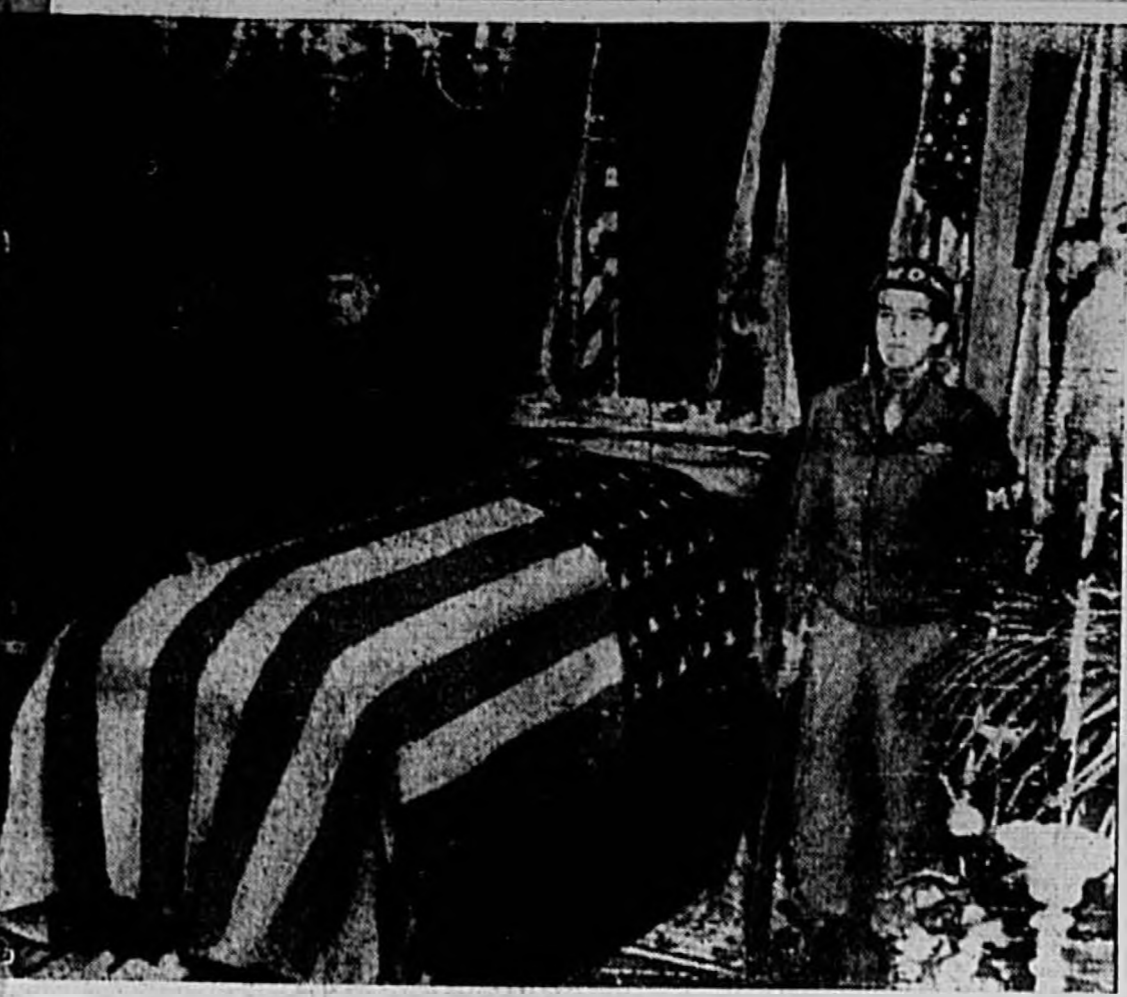
The body will lie in state from 8:00 o'clock until 11:00 o'clock tomorrow morning at the chapel of Ebelstein and Wigginton, 170 East Church Street, Orlando. Funeral services will be conducted by Page-Hancock of Chattahoochee, Tenn., and interment will be in Forest Hill Cemetery in that city possibly Friday afternoon.

Mrs. Hartline was born in Chattanooga, Ga. She was the daughter of the late Mr. and Mrs. John X. Dickert. She is survived by her husband, Mr. W. C. Hartline, and one brother, Mr. W. B. Dickert of Chattanooga.

MINERS TRAPPED  
PINEVILLE, Kan., Dec. 26, (AP)—Between 20 and 25 miners have been trapped in an explosion in a coal mine at Pineville, Kentucky. The explosion, which occurred about 1:30 o'clock this morning, G. S. S. deep in the mine, sealed the mine behind a cave-in. Mine operator W. E. Lewis said nothing can be learned about conditions in the cave-in area until rescue operations commence that part of the mine.

USO PARTY POSTPONED  
The party which had been planned by Naval personnel to be held Friday evening at the USO for senior hostesses, has been postponed to a later date. Joe K. Hall USO director announced today.

## First Picture Of Gen. Patton-Lying In State



LYING IN STATE in Heidelberg, Germany, where he made a brave but futile fight against the ancient Villa Renier, guest house of Lt. Gen. Geoffrey Keyes. Shortly after the picture was taken, the body of the great soldier was taken to Hamm in Luxembourg for burial. (International from U. S. Signal Corps Radio)

## Ceiling May Be Removed From Strawberry Crop

### Wilson Says Plea Is Presented Before Special OPA Group

JACKSONVILLE, Dec. 26, (Special)—"There is an apparent possibility that we may get some action from the Office of Price Administration, on the matter of lifting ceilings from Florida's production of Winter strawberries," said William L. Wilson, Director of Florida State Farmers' Markets, in a statement issued today, in connection with his weekly review of production and distribution conditions affecting Florida's crops.

Director Wilson, who is in the North for conferences with Federal officials concerning the lifting of berry ceilings, emphasized that "Our hope for favorable action finds its basis in Senator Popper's announcement this week that the OPA is sending Doyle Timmons, agricultural adviser to Administrator Chester Bowles, to make a personal investigation of conditions in Florida."

"Florida's plea for the lifting of ceilings on strawberries was presented to a special OPA committee, during this last week," Congressman J. Hardin Peterson, R. E. Johnson, manager of the State Farmers' Market in Plant City and W. D. Outman, special Washington representatives of Florida's Department of Agriculture, took part in this conference, during which we presented our plea. Our argument was based on the fact that Florida's strawberries, produced in the winter season, are strictly a luxury product. They are not in any sense in competition with berries produced in the regular growing season in other states, where a great volume of the crop is handled by processors, for canning, preserving, or fountain use.

"The holding of ceilings on strawberries appears to me to be pretty much a matter of preference during which we are serving the ceiling for the benefit of the producer or consumer. This year, for instance, only a few hundred plants of strawberries have moved from the State's major berry production center at Plant City.

In 1943, December shipments totaled 57,781 pints, and in December of 1942, shipments ran to 389,448 pints in December. This variation in volume is made more apparent if we consider that this year strawberry acreage is more than double that of 1942, and nearly five times as great as in 1945. Florida strawberries have to be replanted every year — whereas in other areas affected by the OPA ceilings, this is not necessary. Florida's winter strawberries are in fact practically a hot house product — since the plants have to be covered with straw, or otherwise, in lines of frost or otherwise, to protect the berries, and, hence, fruit. This is a variation in volume is made more apparent if we consider that this year strawberry acreage is more than double that of 1942, and nearly five times as great as in 1945. Florida strawberries have to be replanted every year — whereas in other areas affected by the OPA ceilings, this is not necessary. Florida's winter strawberries are in fact practically a hot house product — since the plants have to be covered with straw, or otherwise, in lines of frost or otherwise, to protect the berries, and, hence, fruit. This is a variation in volume is made more apparent if we consider that this year strawberry acreage is more than double that of 1942, and nearly five times as great as in 1945. Florida strawberries have to be replanted every year — whereas in other areas affected by the OPA ceilings, this is not necessary. Florida's winter strawberries are in fact practically a hot house product — since the plants have to be covered with straw, or otherwise, in lines of frost or otherwise, to protect the berries, and, hence, fruit. This is a variation in volume is made more apparent if we consider that this year strawberry acreage is more than double that of 1942, and nearly five times as great as in 1945. Florida strawberries have to be replanted every year — whereas in other areas affected by the OPA ceilings, this is not necessary. Florida's winter strawberries are in fact practically a hot house product — since the plants have to be covered with straw, or otherwise, in lines of frost or otherwise, to protect the berries, and, hence, fruit. This is a variation in volume is made more apparent if we consider that this year strawberry acreage is more than double that of 1942, and nearly five times as great as in 1945. Florida strawberries have to be replanted every year — whereas in other areas affected by the OPA ceilings, this is not necessary. Florida's winter strawberries are in fact practically a hot house product — since the plants have to be covered with straw, or otherwise, in lines of frost or otherwise, to protect the berries, and, hence, fruit. This is a variation in volume is made more apparent if we consider that this year strawberry acreage is more than double that of 1942, and nearly five times as great as in 1945. Florida strawberries have to be replanted every year — whereas in other areas affected by the OPA ceilings, this is not necessary. Florida's winter strawberries are in fact practically a hot house product — since the plants have to be covered with straw, or otherwise, in lines of frost or otherwise, to protect the berries, and, hence, fruit. This is a variation in volume is made more apparent if we consider that this year strawberry acreage is more than double that of 1942, and nearly five times as great as in 1945. Florida strawberries have to be replanted every year — whereas in other areas affected by the OPA ceilings, this is not necessary. Florida's winter strawberries are in fact practically a hot house product — since the plants have to be covered with straw, or otherwise, in lines of frost or otherwise, to protect the berries, and, hence, fruit. This is a variation in volume is made more apparent if we consider that this year strawberry acreage is more than double that of 1942, and nearly five times as great as in 1945. Florida strawberries have to be replanted every year — whereas in other areas affected by the OPA ceilings, this is not necessary. Florida's winter strawberries are in fact practically a hot house product — since the plants have to be covered with straw, or otherwise, in lines of frost or otherwise, to protect the berries, and, hence, fruit. This is a variation in volume is made more apparent if we consider that this year strawberry acreage is more than double that of 1942, and nearly five times as great as in 1945. Florida strawberries have to be replanted every year — whereas in other areas affected by the OPA ceilings, this is not necessary. Florida's winter strawberries are in fact practically a hot house product — since the plants have to be covered with straw, or otherwise, in lines of frost or otherwise, to protect the berries, and, hence, fruit. This is a variation in volume is made more apparent if we consider that this year strawberry acreage is more than double that of 1942, and nearly five times as great as in 1945. Florida strawberries have to be replanted every year — whereas in other areas affected by the OPA ceilings, this is not necessary. Florida's winter strawberries are in fact practically a hot house product — since the plants have to be covered with straw, or otherwise, in lines of frost or otherwise, to protect the berries, and, hence, fruit. This is a variation in volume is made more apparent if we consider that this year strawberry acreage is more than double that of 1942, and nearly five times as great as in 1945. Florida strawberries have to be replanted every year — whereas in other areas affected by the OPA ceilings, this is not necessary. Florida's winter strawberries are in fact practically a hot house product — since the plants have to be covered with straw, or otherwise, in lines of frost or otherwise, to protect the berries, and, hence, fruit. This is a variation in volume is made more apparent if we consider that this year strawberry acreage is more than double that of 1942, and nearly five times as great as in 1945. Florida strawberries have to be replanted every year — whereas in other areas affected by the OPA ceilings, this is not necessary. Florida's winter strawberries are in fact practically a hot house product — since the plants have to be covered with straw, or otherwise, in lines of frost or otherwise, to protect the berries, and, hence, fruit. This is a variation in volume is made more apparent if we consider that this year strawberry acreage is more than double that of 1942, and nearly five times as great as in 1945. Florida strawberries have to be replanted every year — whereas in other areas affected by the OPA ceilings, this is not necessary. Florida's winter strawberries are in fact practically a hot house product — since the plants have to be covered with straw, or otherwise, in lines of frost or otherwise, to protect the berries, and, hence, fruit. This is a variation in volume is made more apparent if we consider that this year strawberry acreage is more than double that of 1942, and nearly five times as great as in 1945. Florida strawberries have to be replanted every year — whereas in other areas affected by the OPA ceilings, this is not necessary. Florida's winter strawberries are in fact practically a hot house product — since the plants have to be covered with straw, or otherwise, in lines of frost or otherwise, to protect the berries, and, hence, fruit. This is a variation in volume is made more apparent if we consider that this year strawberry acreage is more than double that of 1942, and nearly five times as great as in 1945. Florida strawberries have to be replanted every year — whereas in other areas affected by the OPA ceilings, this is not necessary. Florida's winter strawberries are in fact practically a hot house product — since the plants have to be covered with straw, or otherwise, in lines of frost or otherwise, to protect the berries, and, hence, fruit. This is a variation in volume is made more apparent if we consider that this year strawberry acreage is more than double that of 1942, and nearly five times as great as in 1945. Florida strawberries have to be replanted every year — whereas in other areas affected by the OPA ceilings, this is not necessary. Florida's winter strawberries are in fact practically a hot house product — since the plants have to be covered with straw, or otherwise, in lines of frost or otherwise, to protect the berries, and, hence, fruit. This is a variation in volume is made more apparent if we consider that this year strawberry acreage is more than double that of 1942, and nearly five times as great as in 1945. Florida strawberries have to be replanted every year — whereas in other areas affected by the OPA ceilings, this is not necessary. Florida's winter strawberries are in fact practically a hot house product — since the plants have to be covered with straw, or otherwise, in lines of frost or otherwise, to protect the berries, and, hence, fruit. This is a variation in volume is made more apparent if we consider that this year strawberry acreage is more than double that of 1942, and nearly five times as great as in 1945. Florida strawberries have to be replanted every year — whereas in other areas affected by the OPA ceilings, this is not necessary. Florida's winter strawberries are in fact practically a hot house product — since the plants have to be covered with straw, or otherwise, in lines of frost or otherwise, to protect the berries, and, hence, fruit. This is a variation in volume is made more apparent if we consider that this year strawberry acreage is more than double that of 1942, and nearly five times as great as in 1945. Florida strawberries have to be replanted every year — whereas in other areas affected by the OPA ceilings, this is not necessary. Florida's winter strawberries are in fact practically a hot house product — since the plants have to be covered with straw, or otherwise, in lines of frost or otherwise, to protect the berries, and, hence, fruit. This is a variation in volume is made more apparent if we consider that this year strawberry acreage is more than double that of 1942, and nearly five times as great as in 1945. Florida strawberries have to be replanted every year — whereas in other areas affected by the OPA ceilings, this is not necessary. Florida's winter strawberries are in fact practically a hot house product — since the plants have to be covered with straw, or otherwise, in lines of frost or otherwise, to protect the berries, and, hence, fruit. This is a variation in volume is made more apparent if we consider that this year strawberry acreage is more than double that of 1942, and nearly five times as great as in 1945. Florida strawberries have to be replanted every year — whereas in other areas affected by the OPA ceilings, this is not necessary. Florida's winter strawberries are in fact practically a hot house product — since the plants have to be covered with straw, or otherwise, in lines of frost or otherwise, to protect the berries, and, hence, fruit. This is a variation in volume is made more apparent if we consider that this year strawberry acreage is more than double that of 1942, and nearly five times as great as in 1945. Florida strawberries have to be replanted every year — whereas in other areas affected by the OPA ceilings, this is not necessary. Florida's winter strawberries are in fact practically a hot house product — since the plants have to be covered with straw, or otherwise, in lines of frost or otherwise, to protect the berries, and, hence, fruit. This is a variation in volume is made more apparent if we consider that this year strawberry acreage is more than double that of 1942, and nearly five times as great as in 1945. Florida strawberries have to be replanted every year — whereas in other areas affected by the OPA ceilings, this is not necessary. Florida's winter strawberries are in fact practically a hot house product — since the plants have to be covered with straw, or otherwise, in lines of frost or otherwise, to protect the berries, and, hence, fruit. This is a variation in volume is made more apparent if we consider that this year strawberry acreage is more than double that of 1942, and nearly five times as great as in 1945. Florida strawberries have to be replanted every year — whereas in other areas affected by the OPA ceilings, this is not necessary. Florida's winter strawberries are in fact practically a hot house product — since the plants have to be covered with straw, or otherwise, in lines of frost or otherwise, to protect the berries, and, hence, fruit. This is a variation in volume is made more apparent if we consider that this year strawberry acreage is more than double that of 1942, and nearly five times as great as in 1945. Florida strawberries have to be replanted every year — whereas in other areas affected by the OPA ceilings, this is not necessary. Florida's winter strawberries are in fact practically a hot house product — since the plants have to be covered with straw, or otherwise, in lines of frost or otherwise, to protect the berries, and, hence, fruit. This is a variation in volume is made more apparent if we consider that this year strawberry acreage is more than double that of 1942, and nearly five times as great as in 1945. Florida strawberries have to be replanted every year — whereas in other areas affected by the OPA ceilings, this is not necessary. Florida's winter strawberries are in fact practically a hot house product — since the plants have to be covered with straw, or otherwise, in lines of frost or otherwise, to protect the berries, and, hence, fruit. This is a variation in volume is made more apparent if we consider that this year strawberry acreage is more than double that of 1942, and nearly five times as great as in 1945. Florida strawberries have to be replanted every year — whereas in other areas affected by the OPA ceilings, this is not necessary. Florida's winter strawberries are in fact practically a hot house product — since the plants have to be covered with straw, or otherwise, in lines of frost or otherwise, to protect the berries, and, hence, fruit. This is a variation in volume is made more apparent if we consider that this year strawberry acreage is more than double that of 1942, and nearly five times as great as in 1945. Florida strawberries have to be replanted every year — whereas in other areas affected by the OPA ceilings, this is not necessary. Florida's winter strawberries are in fact practically a hot house product — since the plants have to be covered with straw, or otherwise, in lines of frost or otherwise, to protect the berries, and, hence, fruit. This is a variation in volume is made more apparent if we consider that this year strawberry acreage is more than double that of 1942, and nearly five times as great as in 1945. Florida strawberries have to be replanted every year — whereas in other areas affected by the OPA ceilings, this is not necessary. Florida's winter strawberries are in fact practically a hot house product — since the plants have to be covered with straw, or otherwise, in lines of frost or otherwise, to protect the berries, and, hence, fruit. This is a variation in volume is made more apparent if we consider that this year strawberry acreage is more than double that of 1942, and nearly five times as great as in 1945. Florida strawberries have to be replanted every year — whereas in other areas affected by the OPA ceilings, this is not necessary. Florida's winter strawberries are in fact practically a hot house product — since the plants have to be covered with straw, or otherwise, in lines of frost or otherwise, to protect the berries, and, hence, fruit. This is a variation in volume is made more apparent if we consider that this year strawberry acreage is more than double that of 1942, and nearly five times as great as in 1945. Florida strawberries have to be replanted every year — whereas in other areas affected by the OPA ceilings, this is not necessary. Florida's winter strawberries are in fact practically a hot house product — since the plants have to be covered with straw, or otherwise, in lines of frost or otherwise, to protect the berries, and, hence, fruit. This is a variation in volume is made more apparent if we consider that this year strawberry acreage is more than double that of 1942, and nearly five times as great as in 1945. Florida strawberries have to be replanted every year — whereas in other areas affected by the OPA ceilings, this is not necessary. Florida's winter strawberries are in fact practically a hot house product — since the plants have to be covered with straw, or otherwise, in lines of frost or otherwise, to protect the berries, and, hence, fruit. This is a variation in volume is made more apparent if we consider that this year strawberry acreage is more than double that of 1942, and nearly five times as great as in 1945. Florida strawberries have to be replanted every year — whereas in other areas affected by the OPA ceilings, this is not necessary. Florida's winter strawberries are in fact practically a hot house product — since the plants have to be covered with straw, or otherwise, in lines of frost or otherwise, to protect the berries, and, hence, fruit. This is a variation in volume is made more apparent if we consider that this year strawberry acreage is more than double that of 1942, and nearly five times as great as in 1945. Florida strawberries have to be replanted every year — whereas in other areas affected by the OPA ceilings, this is not necessary. Florida's winter strawberries are in fact practically a hot house product — since the plants have to be covered with straw, or otherwise, in lines of frost or otherwise, to protect the berries, and, hence, fruit. This is a variation in volume is made more apparent if we consider that this year strawberry acreage is more than double that of 1942, and nearly five times as great as in 1945. Florida strawberries have to be replanted every year — whereas in other areas affected by the OPA ceilings, this is not necessary. Florida's winter strawberries are in fact practically a hot house product — since the plants have to be covered with straw, or otherwise, in lines of frost or otherwise, to protect the berries, and, hence, fruit. This is a variation in volume is made more apparent if we consider that this year strawberry acreage is more than double that of 1942, and nearly five times as great as in 1945. Florida strawberries have to be replanted every year — whereas in other areas affected by the OPA ceilings, this is not necessary. Florida's winter strawberries are in fact practically a hot house product — since the plants have to be covered with straw, or otherwise, in lines of frost or otherwise, to protect the berries, and, hence, fruit. This is a variation in volume is made more apparent if we consider that this year strawberry acreage is more than double that of 1942, and nearly five times as great as in 1945. Florida strawberries have to be replanted every year — whereas in other areas affected by the OPA ceilings, this is not necessary. Florida's winter strawberries are in fact practically a hot house product — since the plants have to be covered with straw, or otherwise, in lines of frost or otherwise, to protect the berries, and, hence, fruit. This is a variation in volume is made more apparent if we consider that this year strawberry acreage is more than double that of 1942, and nearly five times as great as in 1945. Florida strawberries have to be replanted every year — whereas in other areas affected by the OPA ceilings, this is not necessary. Florida's winter strawberries are in fact practically a hot house product — since the plants have to be covered with straw, or otherwise, in lines of frost or otherwise, to protect the berries, and, hence, fruit. This is a variation in volume is made more apparent if we consider that this year strawberry acreage is more than double that of 1942, and nearly five times as great as in 1945. Florida strawberries have to be replanted every year — whereas in other areas affected by the OPA ceilings, this is not necessary. Florida's winter strawberries are in fact practically a hot house product — since the plants have to be covered with straw, or otherwise, in lines of frost or otherwise, to protect the berries, and, hence, fruit. This is a variation in volume is made more apparent if we consider that this year strawberry acreage is more than double that of 1942, and nearly five times as great as in 1945. Florida strawberries have to be replanted every year — whereas in other areas affected by the OPA ceilings, this is not necessary. Florida's winter strawberries are in fact practically a hot house product — since the plants have to be covered with straw, or otherwise, in lines of frost or otherwise, to protect the berries, and, hence, fruit. This is a variation in volume is made more apparent if we consider that this year strawberry acreage is more than double that of 1942, and nearly five times as great as in 1945. Florida strawberries have to be replanted every year — whereas in other areas affected by the OPA ceilings, this is not necessary. Florida's winter strawberries are in fact practically a hot house product — since the plants have to be covered with straw, or otherwise, in lines of frost or otherwise, to protect the berries, and, hence, fruit. This is a variation in volume is made more apparent if we consider that this year strawberry acreage is more than double that of 1942, and nearly five times as great as in 1945. Florida strawberries have to be replanted every year — whereas in other areas affected by the OPA ceilings, this is not necessary. Florida's winter strawberries are in fact practically a hot house product — since the plants have to be covered with straw, or otherwise, in lines of frost or otherwise, to protect the berries, and, hence, fruit. This is a variation in volume is made more apparent if we consider that this year strawberry acreage is more than double that of 1942, and nearly five times as great as in 1945. Florida strawberries have to be replanted every year — whereas in other areas affected by the OPA ceilings, this is not necessary. Florida's winter strawberries are in fact practically a hot house product — since the plants have to be covered with straw, or otherwise, in lines of frost or otherwise, to protect the berries, and, hence, fruit. This is a variation in volume is made more apparent if we consider that this year strawberry acreage is more than double that of 1942, and nearly five times as great as in 1945. Florida strawberries have to be replanted every year — whereas in other areas affected by the OPA ceilings, this is not necessary. Florida's winter strawberries are in fact practically a hot house product — since the plants have to be covered with straw, or otherwise, in lines of frost or otherwise, to protect the berries, and, hence, fruit. This is a variation in volume is made more apparent if we consider that this year strawberry acreage is more than double that of 1942, and nearly five times as great as in 1945. Florida strawberries have to be replanted every year — whereas in other areas affected by the OPA ceilings, this is not necessary. Florida's winter strawberries are in fact practically a hot house product — since the plants have to be covered with straw, or otherwise, in lines of frost or otherwise, to protect the berries, and, hence, fruit. This is a variation in volume is made more apparent if we consider that this year strawberry acreage is more than double that of 1942, and nearly five times as great as in 1945. Florida strawberries have to be replanted every year — whereas in other areas affected by the OPA ceilings, this is not necessary. Florida's winter strawberries are in fact practically a hot house product — since the plants have to be covered with straw, or otherwise, in lines of frost or otherwise, to protect the berries, and, hence, fruit. This is a variation in volume is made more apparent if we consider that this year strawberry acreage is more than double that of 1942, and nearly five times as great as in 1945. Florida strawberries have to be replanted every year — whereas in other areas affected by the OPA ceilings, this is not necessary. Florida's winter strawberries are in fact practically a hot house product — since the plants have to be covered with straw, or otherwise, in lines of frost or otherwise, to protect the berries, and, hence, fruit. This is a variation in volume is made more apparent if we consider that this year strawberry acreage is more than double that of 1942, and nearly five times as great as in 1945. Florida strawberries have to be replanted every year — whereas in other areas affected by the OPA ceilings, this is not necessary. Florida's winter strawberries are in fact practically a hot house product — since the plants have to be covered with straw, or otherwise, in lines of frost or otherwise, to protect the berries, and, hence, fruit. This is a variation in volume is made more apparent if we consider that this year strawberry acreage is more than double that of 1942, and nearly five times as great as in 1945. Florida strawberries have to be replanted every year — whereas in other areas affected by the OPA ceilings, this is not necessary. Florida's winter strawberries are in fact practically a hot house product — since the plants have to be covered with straw, or otherwise, in lines of frost or otherwise, to protect the berries, and, hence, fruit. This is a variation in volume is made more apparent if we consider that this year strawberry acreage is more than double that of 1942, and nearly five times as great as in 1945. Florida strawberries have to be replanted every year — whereas in other areas affected by the OPA ceilings, this is not necessary. Florida's winter strawberries are in fact practically a hot house product — since the plants have to be covered with straw, or otherwise, in lines of frost or otherwise, to protect the berries, and, hence, fruit. This is a variation in volume is made more apparent if we consider that this year strawberry acreage is more than double that of 1942, and nearly five times as great as in 1945. Florida strawberries have to be replanted every year — whereas in other areas affected by the OPA ceilings, this is not necessary. Florida's winter strawberries are in fact practically a hot house product — since the plants have to be covered with straw, or otherwise, in lines of frost or otherwise, to protect the berries, and, hence, fruit. This is a variation in volume is made more apparent if we consider that this year strawberry acreage is more than double that of 1942, and nearly five times as great as in 1945. Florida strawberries have to be replanted every year — whereas in other areas affected by the OPA ceilings, this is not necessary. Florida's winter strawberries are in fact practically a hot house product — since the plants have to be covered with straw, or otherwise, in lines of frost or otherwise, to protect the berries, and, hence, fruit. This is a variation in volume is made more apparent if we consider that this year strawberry acreage is more than double that of 1942, and nearly five times as great as in 1945. Florida strawberries have to be replanted every year — whereas in other areas affected by the OPA ceilings, this is not necessary. Florida's winter strawberries are in fact practically a hot house product — since the plants have to be covered with straw, or otherwise, in lines of frost or otherwise, to protect the berries, and, hence, fruit. This is a variation in volume is made more apparent if we consider that this year strawberry acreage is more than double that of 1942, and nearly five times as great as in 1945. Florida strawberries have to be replanted every year — whereas in other areas affected by the OPA ceilings, this is not necessary. Florida's winter strawberries are in fact practically a hot house product — since the plants have to be covered with straw, or otherwise, in lines of frost or otherwise, to protect the berries, and, hence, fruit. This is a variation in volume is made more apparent if we consider that this year strawberry acreage is more than double that of 1942, and nearly five times as great as in 1945. Florida strawberries have to be replanted every year — whereas in other areas affected by the OPA ceilings, this is not necessary. Florida's winter strawberries are in fact practically a hot house product — since the plants have to be covered with straw, or otherwise, in lines of frost or otherwise, to protect the berries, and, hence, fruit. This is a variation in volume is made more apparent if we consider that this year strawberry acreage is more than double that of 1942, and nearly five times as great as in 1945. Florida strawberries have to be replanted every year — whereas in other areas affected by the OPA ceilings, this is not necessary. Florida's winter strawberries are in fact practically a hot house product — since the plants have to be covered with straw, or otherwise, in lines of frost or otherwise, to protect the berries, and, hence, fruit. This is a variation in volume is made more apparent if we consider that this year strawberry acreage is more than double that of 1942, and nearly five times as great as in 1945. Florida strawberries have to be replanted every year — whereas in other areas affected by the OPA ceilings, this is not necessary. Florida's winter strawberries are in fact practically a hot house product — since the plants have to be covered with straw, or otherwise, in lines of frost or otherwise, to protect the berries, and, hence, fruit. This is a variation in volume is made more apparent if we consider that this year strawberry acreage is more than double that of 1942, and nearly five times as great as in 1945. Florida strawberries have to be replanted every year — whereas in other areas affected by the OPA ceilings, this is not necessary. Florida's winter strawberries are in fact practically a hot house product — since the plants have to be covered with straw, or otherwise, in lines of frost or otherwise, to protect the berries, and, hence, fruit. This is a variation in volume is made more apparent if we consider that this year strawberry acreage is more than double that of 1942, and nearly five times as great as in 1945. Florida strawberries have to be replanted every year — whereas in other areas affected by the OPA ceilings, this is not necessary. Florida's winter strawberries are in fact practically a hot house product — since the plants have to be covered with straw, or otherwise, in lines of frost or otherwise, to protect the berries, and, hence, fruit. This is a variation in volume is made more apparent if we consider that this year strawberry acreage is more than double that of 1942, and nearly five times as great as in 1945. Florida strawberries have to be replanted every year — whereas in other areas affected by the OPA ceilings, this is not necessary. Florida's winter strawberries are in fact practically a hot house product — since the plants have to be covered with straw, or otherwise, in lines of frost or otherwise, to protect the berries, and, hence, fruit. This is a variation in volume is made more apparent if we consider that this year strawberry acreage is more than double that of 1942, and nearly five times as great as in 1945. Florida strawberries have to be replanted every year — whereas in other areas affected by the OPA ceilings, this is not necessary. Florida's winter strawberries are in fact practically a hot house product — since the plants have to be covered with straw, or otherwise, in lines of frost or otherwise, to protect the berries, and, hence, fruit. This is a variation in volume is made more apparent if we consider that this year strawberry acreage is more than double that of 1942, and nearly five times as great as in 1945. Florida strawberries have to be replanted every year — whereas in other areas affected by the OPA ceilings, this is not necessary. Florida's winter strawberries are in fact practically a hot house product — since the plants have to be covered with straw, or otherwise, in lines of frost or otherwise, to protect the berries, and, hence, fruit. This is a variation in volume is made more apparent if we consider that this year strawberry acreage is more than double that of 1942, and nearly five times as great as in 1945. Florida strawberries have to be replanted every year — whereas in other areas affected by the OPA ceilings, this is not necessary. Florida's winter strawberries are in fact practically a hot house product — since the plants have to be covered with straw, or otherwise, in lines of frost or otherwise, to protect the berries, and, hence, fruit. This is a variation in volume is made more apparent if we consider that this year strawberry acreage is more than double that of 1942, and nearly five times as great as in 1945. Florida strawberries have to be replanted every year — whereas





### Board Of Control Gives Approval Of ROTC Reactivation

GAINESVILLE, Dec. 26—Reactivation of the University of Florida's Reserve Officers' Training Corps in both the artillery and infantry divisions on Jan. 26, has received Board of Control approval, President John J. Tigert, announced today.

The University was recently notified by the War Department that will mean increased financial reimbursement to veterans, but no date for its reactivation was announced at that time.

The ROTC was suspended at the University early in the war because of decreased student enrollment, although the basic military training course has been carried through the war.

Under the new program, veterans who have served six months will be excused from one year of the basic two year course, and veterans with a year or more service in the army will be excused from all of the two years basic course.

Physical standards for the advanced course will be in keeping with army standards required of officer candidates. Veterans and students enrolled in the course will receive financial reimbursement in keeping with garrison pay and wear standard officer uniforms prescribed by the army for reserve officers. At the end of the two year training period students will receive a commission as a second lieutenant in the reserve corps.

Applications for the ROTC are being received at the University, and students qualifying through standard army physical and mental examinations may begin the course semester of the current school year.



FIRST national commander of the Legion of Women Veterans is Mrs. Patricia M. Deuse of New York. Formed for women who served in the Army, Navy and Marine Corps during the war, the new organization plans to establish posts in all the forty-eight states within the next few months. (International)

### Plant Field In Tampa Reverts To Fairground Status

TAMPA, Dec. 26, (FNS)—The thousands of GI's who at one time or another during the war period were stationed at Plant Field in Tampa, would hardly recognize their old home today, for real progress has been made in reactivating this former military post back to its original status as a Fair Grounds.

Ever since the Army moved out swarms of workmen have been busy transforming the drab grounds and buildings into a colorful exposition site. Carpenters and painters are flowing in the wake of the clean up squads. Electricians are busy rewiring, to provide for miles of gayly colored streamers, tons of clay have been placed on the race track, the grandstand and bleachers have been repaired and rebuilt and indications are that all will be in readiness for the opening of Florida's first State Fair since the war.

Seeing in the Fair an opportunity to display their wares advantageously to hundreds of thousands of people during the 11 days and nights of the big show, commercial exhibitors are planning the most interesting and elaborate displays in years.

Since the last Fair was held hundreds of new industries have sprung up in Florida and Fair visitors are going to be amazed to find Florida made products on display that they never dreamed were being produced in this state.

Magnificent exhibits of fruits and vegetables, poultry and cattle will tell the story of Florida's agricultural development, displays of school work, women's work, arts and crafts will all be outstanding with the buildings housing these departments packed to capacity. The flower show which has always been one of the finest features of the Fair promises to be bigger and better than ever.

General Manager P. T. Streider states that there has never been such a demand for space so far in advance of the opening date and he advises anyone interested in securing a booth to contact him promptly as available space is going fast. Dates for the 1946 Florida Fair are Feb. 5 to 16 inclusive.

### RURAL COMMON SENSE

By Spada Johnson

GAINESVILLE, Dec. 26, (Special)— Never before has there been a greater appreciation of the farmer's job and the farmer's products. More people, particularly those in the cities who buy most of their food, know more about the sources of food and the problems involved in producing it than since colonial days.

Scarcity during the war was the teacher for thousands who could not buy as much butter, cream, beef, pork, and other agricultural products as they wanted. And it's only human nature for folks to think more about things that have been almost commonplace when those things become scarce. So, lots of folks who never thought further than the counter from which they obtained their food learned that cream and butter, beef and pork are products resulting from a great deal of hard work, careful planning, much study and observation, and continued and persistent striving to overcome the vagaries of weather and other problems.

Crop condition reports during the war were read by business men, home-makers, and many others who had never before paid the slightest attention to them, and when the outlook was reported good, it was cheerful news indeed to them.

This new and greater understanding of the farmer's problems by large numbers of consumers who had only a meagre—if any at all—conception of them before should be a strong force for good in the Nation's agriculture. With this knowledge, the consumer will give the farmer recognition for his proper place as an essential individual in our social makeup, as a man of many skills (for the successful farmer must be versatile), and as a worker who has to work with natural forces and resources and triumph over difficult obstacles to feed the Nation.

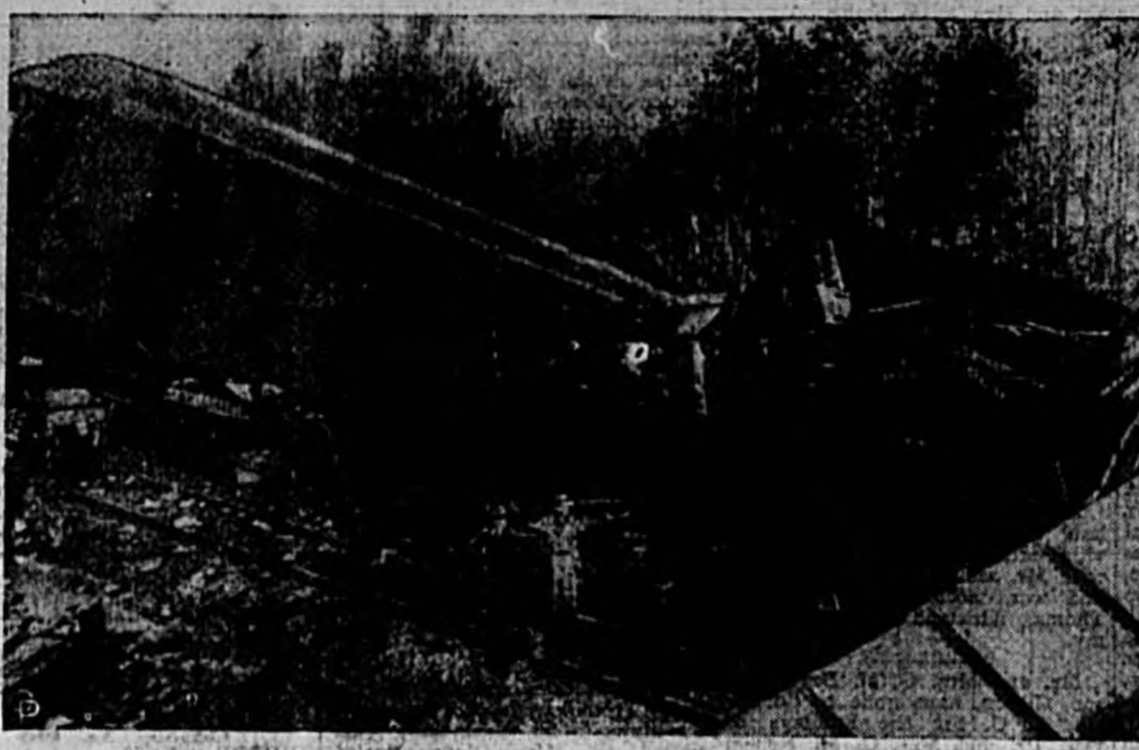
Consumers will have a greater appreciation of his work, his products, and his problems. In learning more about the farmer's job, consumers also have learned more about grade and quality of his products. Their knowledge of these things means that they are going to ask for high grade and high quality products, and this is a cue to the farmer to produce the types of crops that they want, produce the types that will meet a ready and favorable response from consumers and bring him profitable returns.

The decree emphasizes that families with at least three persons able to work, from 15 to 50 years, will have priorities.

The nonpoisonous indigo snake kills and eats the deadly rattler.



VERY MUCH PLEASED, President Truman in the White House is shown receiving from Frank Land of Kansas City, Mo., a Christmas gift oil painting of his 92-year-old mother. Also he heard her message: "You tell Harry to behave himself." Land heads the Order of De Molay which ordered the painting. (International)



A PASSENGER COACH THAT HAPPENED TO BE EMPTY lies where it was thrown when a freight train (right) plowed into the rear of the Southern Railway's Piedmont Limited near Gainesville, Ga., killing three and injuring half a dozen or more. The Limited had been stopped on a red light signal. (International Soundphoto)

### LEGAL NOTICE

#### OFFICE OF MASTERBANK

Notice is hereby given that I, the undersigned, Special Master in Chancery, under and by virtue of a certain final decree entered in that certain cause pending in the Circuit Court of Seminole County, Florida, wherein Helen Marie Meisch is plaintiff and H. S. Long, as trustee, is defendant, do hereby certify that on Monday, the 17th day of January, A. D. 1946, in front of the court house door at Sanford, Seminole County, Fla., a offer for sale and sell to the highest bidder for cash the following described land situated in Seminole County, Florida, to-wit: Lot 1, as more fully described as follows, to-wit:

All of Block 1, Tr. 18, of the Town of Sanford, Florida, according to E. A. Traford's map thereof recorded in map book 1, pages 54-55 of the Public Records of Seminole County, Florida.

and said sale to be made to satisfy said final decree.

Dated at Sanford, Florida this 5th day of December, A. D. 1945. H. M. Watson, Special Master in Chancery, Garland W. Speer, Clerk of Court, Solicitor for Plaintiff

TO: GUSSE MANNING, WATLEY, ALABAMA. You are hereby ordered and required to be and appear upon the 7th day of January, A. D. 1946, to the bill of complaint filed against you in this cause in the Circuit Court of Seminole County, at Sanford, Florida, by J. M. Manning, the same being an action for divorce.

The Sanford Herald is designated as the newspaper in which this Order shall be published for four consecutive weeks.

WITNESS the Honorable O. P. Herndon, Clerk of said Court, at Sanford, Florida, and the official seal thereof, this 5th day of November, A. D. 1945.

O. P. HERNDON, Clerk. By: HUBERT D. C. (Circuit Court Seal)

WHAT IS VETO? COMING SOON! WATCH FOR IT!

SPECIAL NOTICE 3 to 5 Day Dry Cleaning Service 5 Day Laundry Service We recommend that new customers send their laundry last three days of week. Phone 475 SEMINOLE COUNTY LAUNDRY CO. 319 W. 2nd St. Phone 475

Be sure with Pare SEMINOLE TIRE SHOP Tires and Tubes Auto Accessories Wash, Polish & Wax Radio Batteries Jack E. Morrison

What does your home lighting say to this quiz? Home lighting is important, and it is important for you to know just what adequate home lighting means. Lighting can be too bright as well as too dim... can be wasteful as well as inadequate. Take the test below - use that information on the lighting in your home... and you may see some things you never saw before. Remember, Eyesight is Precious, Light is Cheap.

TEST YOUR KNOWLEDGE via this brush-up lesson on home lighting - WHAT'S YOUR SCORE? CORRECT ANSWERS TO THE LIGHTING QUIZ

SIGNS SHOW CARD AND POSTERS O-Dee's Sign Service (O. D. LANDRESS) Phone 1021-105 N. Palmetto Ave. RAYMOND M. BALL, REALTOR Real Estate Sales-Rentals-Mortgage Loans Dependable Insurance and Bonds Phone 960 Room 4, Florida State Bank Building. Corn All You Want 3.65 Scratch All You Want 3.85 Hay Best Grade Timothy 2.50 Peanut Vine & Molasses 2.40 Citrus Pulp New Crop 2.50 Best Grade 20% Dairy Feed 3.75 Also a complete line Tuxedo Feeds & Armour's Fertilizer Make our Store your Store HUNT'S TUXEDO FEED Cor. 2nd Sanford Phone 358. HABIT plays an important part in everyone's success... The habit of being well groomed should be started early in life... Your clothes will last longer if regularly cleaned... LANEY DRY CLEANING CO. 110 E. 2nd Phone 35

IN THE SOUTHEAST  
More people drink Atlantic Ale and Beer than any other.  
It must be...

# Good Taste!

**ATLANTIC ALE AND BEER**  
"Full of good taste"

Atlantic Company—Breweries in Allentown, Charleston, Chesapeake, Norfolk, Orlando

**CLASSIFIED ADVERTISING**  
PHONE 148 OR BRING YOUR ADS TO THE SANFORD HERALD Count five words to the line, including phone and address. All advertisements for situations wanted will be charged for at the regular classified rates.  
10¢ per line for one insertion  
95¢ per line for three insertions  
27¢ per line for 6 insertions  
25¢ per line for 20 insertions  
Minimum rates . . . 30¢

**FOR SALE—**  
FILL up with kerosene and fuel oil.  
**H. B. POPE CO., INC.**

**TWO FARMS FOR SALE—**One 3 acres, tiled land, 1 good well, 2 story house, 1 car garage, 1 cool house, 300 ft. West of Lake Monroe Post Office. One 5 acres, tiled, good well, 2 story house, 2 story barn, 1/4 mile west on Orange Boulevard. J. W. Bell, Lake Monroe, Phone 15.

**FOR SALE—**  
COMPLETE Broiler Plant capable of handling 300-400 fryers a week up to an age of 12-13 weeks. Approximately 2000 chickens 5 to 16 weeks old. Dressing machine. Make me a cash offer. 2205 Sanford Ave. phone 924.

**ROOFING**—Brand new, solid aluminum sheet roofing, V-crimp and snap lock styles. Phone-Wire-Write at once! Fulenwider Mfg. & Distributing Co., P.O. Box 3351, 910 Lancaster Drive, Orlando. Phone 21733.

**SHEET Music**, popular and standard, book music and music instruction books at The Music Box in the Princess Theater Bldg.

**RECORDS**—All the latest popular, string music and album sets for Christmas gifts at your music store, The Music Box in the Princess Theater Bldg.

**SLAB wood**, \$2.00 load, cut up slab wood, \$3.00 strand, no deliveries. Oviedo Lumber and Supply Co., Oviedo, Fla.

**USED TRUCKS**  
NO prospect of new trucks. Meet the need for trucks by buying one of our dependable used trucks.  
**HOLLER MOTOR SALES**  
208 W. 1st St.

**WE ARE** fully equipped and know how to reup your tires. Natural rubber or synthetic, we protect the sidewalls of your tire. Jones Tire Shop, Cor. 1st and Elm, phone 608.

**FRYERS** and hens. Phone 899-W, 1307 E. 2nd St.

**ORANGES** packed and shipped. Live, Orlando Highway, phone 828-W.

**SERVICE STATIONS**  
We have in stock now—NORWALK TRUCK TIRES in these sizes:  
600 x 20 825 x 20 1100 x 24  
650 x 20 900 x 20 1200 x 24  
750 x 20 1000 x 20  
700 x 20 1100 x 20  
Also a good stock of truck tubes. A.M. Prevatt Seville, Fla.  
**NORWALK DISTRIBUTOR**  
Phone 2104

**FOR SALE**  
At Ceiling Prices  
1940 Chevrolet 3/4 ton Pick-up  
1940 Ford 1/2 ton stake  
1936 Chevrolet 1 1/2 ton long wheel base platform  
**SEMINOLE COUNTY MOTORS**  
100 N. Palmetto Phone 1011

**WHY WORRY?**  
I CARRY ANTI-WORRY INSURANCE—A Regular Ad  
This Newspaper

**SIT. WANTED—**  
WANTED: Roofing and painting work of all kind. Reliable men available. n.o.w. SANFORD PAINT & GLASS CO., 117 So. Park. Phone 393.

**Lost and Found—**  
FOUND: All white dog with dark harness. Phone 220-J.  
LOST: One pair of ice tons and ice bag on Osteen road. Finder please return to Squire Wright, 712 Locust Ave. or phone 202, ice box.  
LOST: Two weeks ago, vicinity of 20th St. and Park Avenue, grey, part Persian male cat, answers to name of "Smookey Joe". Phone 9123, Reward.

**HELP WANTED—**  
GIRL for soda Fountain at Langley's Drug Store. Part time or full time.  
FOUNTAIN girls. Apply Ship's Service, Sanford Naval Air Station.  
WANTED: Seamstresses experienced and inexperienced. Permanent work offered. Working conditions are excellent in a well lighted and ventilated plant. All-joining restaurant where lunches may be obtained. Forty hour week. Monday through Friday. Life insurance provided without cost. Bus service from Sanford and Oviedo. Apply in person at plant, Sunnyside Trgs, Casselberry, Fla.

**TRUSTWORTHY** colored couple wanted to live on place. Good people to work for and permanent job and home if qualified. Can use one or both now. Phone 4295, Orlando.

**RETURNED VETERANS GET SECURITY NOW WITH OPPORTUNITY UNLIMITED**  
FIRESTONE STORES has good position open now for salesman. Starting salary commensurate with your ability. Previous experience desirable but not essential. Apply by letter only, stating age and experience.  
**FIRESTONE STORES**  
111 E. 1st St.

**BUSINESS SERVICE**  
WASHING machines repaired—and all home appliances. Caldwell General Repair Shop, 707 North Mills, Orlando, phone 2-1972. Prompt service.

**Expert Auto Repairing**  
Barfield & Jackson  
in connection with  
Yates Auto Paint & Body Works  
Phone 371

**AUTO PAINTING**  
By C.W. "Pat" Johnson  
15 years experience in auto and aircraft painting. Sanford's popular paint authority.  
**HOLLER MOTOR SALES**  
208 W. 1st St.

**MOTOR TUNE-UP**  
Factories recommend it every 5000 miles or twice a year. Essential to efficient car performance. Our expert mechanics and Sun Motor Analyzer assure satisfaction. Come in today.  
**HOLLER MOTOR SALES**  
208 W. 1st St.

**EXPERT service** on machines. Electric irons, oil heaters and cook stoves, backed by 10 years' experience. Phone 701-J.

**WANTED—**  
**MISCELLANEOUS**  
BORROW HERE WHERE PRIVACY IS RESPECTED  
YOUR natural desire for privacy in money matters is strictly respected. Friends and relatives are not questioned about your credit. Your employer or business associate will not hear of your personal affairs. There is no cause for embarrassment. Complete requirements. Minimum credit money loan. 701-J. Phone 701-J.

**IS THERE GOLD IN YOUR CELLAR?**  
Yes, and in Your Attic Too!  
Turn Those Things You Don't Want Into Money with a Visit to

**WHY WORRY?**  
I CARRY ANTI-WORRY INSURANCE—A Regular Ad  
This Newspaper

HAVE YOU HEARD ABOUT  
**VETO?**  
COMING SOON!  
WATCH FOR IT!

USE **666**  
**Cold Preparations**  
LIQUID, TABLETS, SALVE, NOSE-DROPS—CAUTION USE ONLY AS DIRECTED

**Relief At Last— For Your Cough**  
Creomulsion relieves promptly because it goes right to the seat of the trouble to help loosen and expel germ laden phlegm, and aid nature to soothe and heal raw, tender, inflamed bronchial mucous membranes. Tell your druggist to sell you a bottle of Creomulsion with the understanding you must like the way it quickly allays the cough or you are to have your money back.  
**CREOMULSION**  
for Coughs, Chest Colds, Bronchitis

**TELEPHONE OPERATORS**  
Starting Rate  
6 days—\$26.00  
Single or Married  
Ages 16-35  
Experience Unnecessary  
● Paid while learning  
● Frequent increases  
● Overtime pay  
● Paid vacations  
● Taxi-cab service for late hours  
APPLY CHIEF OPERATOR  
8-5 weekdays  
Saturdays 8-12  
**SOUTHERN BELL TEL & TEL CO.**

**LONE RANGER**  
IT'S DAN!  
KEMO SABAY-- LOOK!  
GOLLY, AM I GLAD TO SEE YOU!  
WE'VE BEEN FOLLOWING YOUR BACK-TRAIL FOR SEVERAL HOURS. WHAT HAPPENED, DAN?  
THE TINSMITH, "HANDY-ANDY" HE FIXED THE COFFEE POT FOR ME. THEN TWO COW-PUNCHERS RODE UP. THEY HIT ANDY OVER THE HEAD AND MADE ME DRIVE HIS WAGON TO THE DOUBLE-A RANCH.

YOU SAY THOSE MEN ARE HOLDING ANDY IN A BARN AT THE DOUBLE-A RANCH?  
I THINK THEY'LL KILL ANDY WHEN "RUCK" MASON COMES BACK WITH THE STOLEN HORSES.  
AND WHAT'S MORE, I'LL BET---  
HERE, RIDE DOUBLE WITH ME. YOU CAN FINISH THE STORY ON THE WAY TO THE RANCH.  
I'VE LEARNED A LOT OF THINGS THIS AFTERNOON. DO YOU KNOW WHAT "TINKER'S DAM" IS?  
I DON'T BELIEVE I DO.  
I'LL TELL YOU.  
COME ON, SILVER.  
GITTUM UP, SCOUT.

**ETTA KETT**  
I STILL CAN'T FIGURE WHY THEY'RE BROKEN SO MANY DATES LATELY!!  
THERE'S SOME BODY AT THE BOTTOM OF THIS!  
HOW'S THE BOYFRIEND SITUATION?  
MAYBE JUST COINCIDENCE, THAT'S ALL!  
YES, A CERTAIN PERSON BY THE NAME OF BURKE IS MY GUESS.  
HOW YOU GOING TO PROVE IT?  
I'VE SET A NEAT LITTLE TRAP!

**ETTA KETT**  
YOU'RE DRYED? WHO'S THE LUCKY LUG?  
SOMETHING TELLS ME SHE'S GETTING SUSPICIOUS OF ME BUYING UP DATES!  
I'VE GOT A HUDDLE WITH ETTA!  
HOW WOULD SHE GET WISE TO MY GAME? I'M IMAGINING THINGS.  
HEY BEASEY, HOW ABOUT THAT DATE YOU GOT SCHEDULED TO-NIGHT? WANTA SELL? NAME YOUR PRICE!  
FIVE FROG HIDES.

UAW-CIO  
OFFER  
DEMAND

## The truth about "take-home"

The demand of UAW-CIO leaders for a wage increase to "maintain wartime take-home" assumes that the wartime work week averaged 48 hours.

*That is not true. In General Motors workers averaged 45.6 hours work a week. For industry as a whole the average was a little less.*

The demand of UAW-CIO leaders also assumes that the postwar work week will be 40 hours.

*General Motors expects to work 45 to 48 hours for a considerable period of time in order to produce enough goods to relieve shortages created during the war. Employees will be paid at the rate of time-and-a-half for hours worked over 40.*

General Motors answered the UAW demand for a 30% jump in present rates with the offer of a wage increase that would have averaged 13 1/2 cents an hour. This would have made the average wage increase since January 1941 at least equal to the increase in the cost of living.

*A GM worker who earned \$56.93 for a 45 6-hour week during the war would have received \$63.44, under the GM postwar offer, for working the same number of hours.*

This offer, aimed to increase wartime take-home pay by at least 10%, was rejected by UAW leaders.

WHY?

# GENERAL MOTORS

"More and Better Things for More People"

**By PAUL ROBINSON**  
**By PAUL ROBINSON**

**LEGAL NOTICE**  
 IN THE COURT OF THE COUNTY JUDGE, SEMINOLE COUNTY, STATE OF FLORIDA.  
 IN RE THE ESTATE OF JAMES M. WYNN, Deceased.

**WHAT IS VETO?**  
**COMING SOON!**  
**WATCH FOR IT!**

Notice is hereby given that the undersigned, JAMES M. WYNN, deceased, has filed his final report as Administrator of the estate of James M. Wynn, deceased, on the 21st day of December, 1945, for approval of same and for final discharge as Administrator of the estate of James M. Wynn, deceased, on this 24th day of November, 1945. H. J. OVERSTREET, Sr., Administrator of the estate of James M. Wynn, deceased.

IN THE COURT OF THE COUNTY JUDGE, SEMINOLE COUNTY, FLORIDA, IN PROBATE.  
 IN RE: ESTATE OF CHARLES VINCENT, deceased.  
 TO ALL CREDITORS AND PERSONS HAVING CLAIMS OR DEMANDS AGAINST SAID ESTATE:  
 You are notified and required to present any claims and demands which you, or either of you, may have against the estate of Charles Vincent, deceased, to the undersigned, Administrator of the estate of Charles Vincent, deceased, on or before the 17th day of December, 1945.

IN THE COURT OF THE COUNTY JUDGE, SEMINOLE COUNTY, FLORIDA, IN PROBATE.  
 IN RE: ESTATE OF NONA A. WYLLY, Deceased.  
 Notice is hereby given that the undersigned, Administrator of the estate of Nona A. Wylly, deceased, on the 19th day of January, 1946, for approval of same and for final discharge as Administrator of the estate of Nona A. Wylly, deceased, on this 24th day of November, 1945.

ORDER OF PUBLICATION  
 TO: JAMES THOMAS HOWE, whose place of residence and Post Office Address is "RFD No. 2, Georgetown, Ky." You are hereby notified and required to appear to a certain Bill of Complaint filed against you, for divorce, by Sallie Elizabeth Howe, suit now pending in the Circuit Court of Seminole County, Florida, on or before the January 15th day, 1946, at the default thereof said cause will proceed Ex Parte.

ORDER OF PUBLICATION  
 TO: JAMES THOMAS HOWE, whose place of residence and Post Office Address is "RFD No. 2, Georgetown, Ky." You are hereby notified and required to appear to a certain Bill of Complaint filed against you, for divorce, by Sallie Elizabeth Howe, suit now pending in the Circuit Court of Seminole County, Florida, on or before the January 15th day, 1946, at the default thereof said cause will proceed Ex Parte.

ORDER OF PUBLICATION  
 TO: JAMES THOMAS HOWE, whose place of residence and Post Office Address is "RFD No. 2, Georgetown, Ky." You are hereby notified and required to appear to a certain Bill of Complaint filed against you, for divorce, by Sallie Elizabeth Howe, suit now pending in the Circuit Court of Seminole County, Florida, on or before the January 15th day, 1946, at the default thereof said cause will proceed Ex Parte.

The decree stipulates that only authorized companies will be allowed to transport immigrants to Brazil.

**year in year out**

Prices Good Thru Monday, Dec. 31

**TABLE SUPPLY STORES**

**CLOSED TUESDAY**  
 Open All Day Wed.

**Has The Lowest Prices In Town!**

Armour's Canned Meat

**TREET**

12-oz Can **30c**

Extra Standard

Tomatoes 3 no. 2 **35c**

Land O' Sunshine Peanut Butter 23-oz **33c**

Table Supply Raisin Bread 20-oz loaf **15c**

**PORK IS KING!**

Fresh Cut Whole Shoulders lb **29c**

Fresh, Bone In, Skinned Pork Chops lb **30c**

Grade A Sirloin Steak pound **40c**

10-in Rib Roast pound **30c**

Boneless Brisket pound **33c**

Fresh Hamburger pound **25c**

Plate Beef Stew pound **19c**

Short Ribs lb **21c**

Beef Tongues lb **29c**

Young Tender Calves Liver pound **75c**

Rib Chops pound **38c**

Veal Breast pound **20c**

Boneless Shoulder pound **35c**

For A Quick Snack Yellow Sharp 1/2-lb **28c**

Big Eye Swiss 1/2-lb **28c**

Coltidge Cheese lb **21c**

ASSORTED COLD MEATS — lb **29c**

COUNTRY STYLE SOUSE — lb **25c**

LONG LINK SAUSAGE — lb **42c**

SLICED BOLOGNA — lb **29c**

GA. MADE SMOKED SAUSAGE — lb **32c**

SPICED LUNCHEON MEAT 1/2-lb **25c**

KINGAN'S FRESH SAUSAGE — lb **37c**

SUNNYLAND SMOKED SAUSAGE — lb **39c**

HY-GEE FROZEN DOG FOOD 1-lb Ctn. **14c**

CANNED SMOKED HAMS, 34 oz. can **145c**

From Kegs—Bulk Sauer

Kraut 3 lbs **25c**

Skinless Wieners lb **35c**

Roe Shad lb **35c**

King Mackerel lb **39c**

Fla. Yellowtail lb **45c**

Snapper lb **45c**

Spanish Mackerel lb **25c**

Headless Ocean Shrimp lb **45c**

Fully Dressed Pan Fish lb **19c**

Whiting Fillets lb **24c**

Cooked for Broiling Lobsters lb **42c**

Fla. Speckle Trout lb **35c**

Fresh Dark Crab Meat lb **75c**

Fat Drawn Stewing Hens lb **49c**

Pan Ready Roasting Chickens lb **55c**

Fat Drawn Fryers lb **55c**

N. Y. Dressed, 14 lbs. up Turkeys lb **47c**

**ORANGES**

Sweet Florida 5 lbs **33c**

Heavy Juicy Grapefruit lb **6c**

Thin Skinned Tangerines lb **17c**

Fresh Pineapples each **19c**

**Golden Crisp Carrots** 2 bchs **15c**

Fla. Green Cabbage lb **3 1/2c**

Fancy Potholed Potatoes lb **45c**

ICabo Baking Potatoes 5 lbs **25c**

Kila Dried La. Yams 3 lbs **20c**

U. S. 1 Maine Potatoes 10 lbs **35c**

Firm Yellow Onions 3 lbs **31c**

New Crop Florida Celery 2 stks **29c**

Red Bliss Potatoes 2 lbs **17c**

Salt Stall Almonds lb **47c**

Polished Pecans lb **45c**

Soft Shell Almonds lb **47c**

IN THE COURT OF THE COUNTY JUDGE, SEMINOLE COUNTY, FLORIDA, IN PROBATE.  
 IN RE: ESTATE OF NONA A. WYLLY, Deceased.  
 Notice is hereby given that the undersigned, Administrator of the estate of Nona A. Wylly, deceased, on the 19th day of January, 1946, for approval of same and for final discharge as Administrator of the estate of Nona A. Wylly, deceased, on this 24th day of November, 1945.

NOTICE OF APPLICATION FOR TAX DEED  
 CHAPTER 1745 OF 1935  
 NOTICE IS HEREBY GIVEN THAT W. G. WHITTON, holder of Tax Certificate No. 286, issued the 1st day of July, 1945, has filed same in my office and has made application for a tax deed to be issued thereon. The certificate embraces the following described property in the County of Seminole, State of Florida, to-wit:

27 1/2 ac. of NW 1/4 of SW 1/4 Section 27 Township 21 South Range 31 East 10 acres.  
 The assessment of the said property under the said certificate issued was in the name of Edward A. Gable, Clerk of the Court. Unless said certificate shall be redeemed according to law, the property described therein will be sold to the highest bidder at the court house door on the first Monday in the month of January, 1946, which is the 7th day of January, 1946.

IN THE COURT OF THE COUNTY JUDGE, SEMINOLE COUNTY, FLORIDA, IN PROBATE.  
 IN RE: ESTATE OF NONA A. WYLLY, Deceased.  
 Notice is hereby given that the undersigned, Administrator of the estate of Nona A. Wylly, deceased, on the 19th day of January, 1946, for approval of same and for final discharge as Administrator of the estate of Nona A. Wylly, deceased, on this 24th day of November, 1945.

IN THE COURT OF THE COUNTY JUDGE, SEMINOLE COUNTY, FLORIDA, IN PROBATE.  
 IN RE: ESTATE OF NONA A. WYLLY, Deceased.  
 Notice is hereby given that the undersigned, Administrator of the estate of Nona A. Wylly, deceased, on the 19th day of January, 1946, for approval of same and for final discharge as Administrator of the estate of Nona A. Wylly, deceased, on this 24th day of November, 1945.

**Does your child need a laxative? Give FLETCHER'S CASTORIA!**

Fletcher's Castoria is the laxative to give your child because it is made especially for children.

It's safe and gentle—as a child's laxative should be—and it works thoroughly and effectively.

There are no harsh drugs in Fletcher's Castoria. It will not cause griping or discomfort.

Moreover, Fletcher's Castoria is pleasant-tasting. Children like it, so you don't have to fight with your child to get it down.

Get Fletcher's Castoria at your drugstore today. Look for the green band and laboratory control number on the package.


Always take a laxative only as directed on the package or by your physician.

**Chas. H. Fletcher CASTORIA**

ORDER OF PUBLICATION  
 TO: JAMES THOMAS HOWE, whose place of residence and Post Office Address is "RFD No. 2, Georgetown, Ky." You are hereby notified and required to appear to a certain Bill of Complaint filed against you, for divorce, by Sallie Elizabeth Howe, suit now pending in the Circuit Court of Seminole County, Florida, on or before the January 15th day, 1946, at the default thereof said cause will proceed Ex Parte.

**UNCLE HANK #12**

USUALLY 'N' GUY THATS 'ANDIN' YOU OUT FREE. 'ADVICE ON HOW T' MAKE A MILLION DOLLARS— FIFTEEN CENTS C. HIS OWN



Our experience should qualify us to give motorists "free advice." Our best bet for keeping your car running smoothly is to have your tires checked regularly, the oil changed often, and use only the best gas and oil from the SEMINOLE TIRE SHOP, INC.

**SEMINOLE TIRE SHOP, INC.**  
 201 NO. PARK AVE.

ORDER OF PUBLICATION  
 TO: JAMES THOMAS HOWE, whose place of residence and Post Office Address is "RFD No. 2, Georgetown, Ky." You are hereby notified and required to appear to a certain Bill of Complaint filed against you, for divorce, by Sallie Elizabeth Howe, suit now pending in the Circuit Court of Seminole County, Florida, on or before the January 15th day, 1946, at the default thereof said cause will proceed Ex Parte.

ORDER OF PUBLICATION  
 TO: JAMES THOMAS HOWE, whose place of residence and Post Office Address is "RFD No. 2, Georgetown, Ky." You are hereby notified and required to appear to a certain Bill of Complaint filed against you, for divorce, by Sallie Elizabeth Howe, suit now pending in the Circuit Court of Seminole County, Florida, on or before the January 15th day, 1946, at the default thereof said cause will proceed Ex Parte.

ORDER OF PUBLICATION  
 TO: JAMES THOMAS HOWE, whose place of residence and Post Office Address is "RFD No. 2, Georgetown, Ky." You are hereby notified and required to appear to a certain Bill of Complaint filed against you, for divorce, by Sallie Elizabeth Howe, suit now pending in the Circuit Court of Seminole County, Florida, on or before the January 15th day, 1946, at the default thereof said cause will proceed Ex Parte.

ORDER OF PUBLICATION  
 TO: JAMES THOMAS HOWE, whose place of residence and Post Office Address is "RFD No. 2, Georgetown, Ky." You are hereby notified and required to appear to a certain Bill of Complaint filed against you, for divorce, by Sallie Elizabeth Howe, suit now pending in the Circuit Court of Seminole County, Florida, on or before the January 15th day, 1946, at the default thereof said cause will proceed Ex Parte.

Sweet Florida

**ORANGES**

5 lbs **33c**

Heavy Juicy Grapefruit lb **6c**

Thin Skinned Tangerines lb **17c**

Fresh Lemons lb **12 1/2c**

Fresh Pineapples each **19c**

Golden Bunches

**CARROTS**

2 bunches **15c**

Fla. Green Cabbage lb **3 1/2c**

Sweet Mild Rutabagas lb **3 1/2c**

Firm Yellow Onions 3 lbs **21c**

New Crop Florida Celery 2 stks **29c**

Red Bliss Potatoes 2 lbs **17c**

ICabo Baking Potatoes 5 lbs **25c**

Kila Dried La. Yams 3 lbs **20c**

U. S. Maine

**POTATOES**

10 lbs **35c**

Polished Pecans lb **45c**

Soft Shell Almonds lb **47c**

**PORK IS KING!**

Fresh Cut Whole Shoulders lb **29c**

Lean, Meaty Pig Pork Chops lb **30c**

Grade A Sirloin Steak pound **40c**

10-in Rib Roast pound **30c**

Boneless Brisket pound **33c**

Fresh Hamburger pound **25c**

Plate Beef Stew pound **19c**

Short Ribs lb **21c**

Beef Tongues lb **29c**

Young Tender Calves Liver pound **75c**

Rib Chops pound **38c**

Veal Breast pound **20c**

Boneless Shoulder pound **35c**

For A Quick Snack Yellow Sharp 1/2-lb **28c**

Big Eye Swiss 1/2-lb **28c**

Coltidge Cheese lb **21c**

ASSORTED COLD MEATS — lb **29c**

COUNTRY STYLE SOUSE — lb **25c**

LONG LINK SAUSAGE — lb **42c**

SLICED BOLOGNA — lb **29c**

GA. MADE SMOKED SAUSAGE — lb **32c**

SPICED LUNCHEON MEAT 1/2-lb **25c**

KINGAN'S FRESH SAUSAGE — lb **37c**

SUNNYLAND SMOKED SAUSAGE — lb **39c**

HY-GEE FROZEN DOG FOOD 1-lb Ctn. **14c**

CANNED SMOKED HAMS, 34 oz. can **145c**

From Kegs—Bulk Sauer

Kraut 3 lbs **25c**

Skinless Wieners lb **35c**

Roe Shad lb **35c**

King Mackerel lb **39c**

Fla. Yellowtail lb **45c**

Snapper lb **45c**

Spanish Mackerel lb **25c**

Headless Ocean Shrimp lb **45c**

Fully Dressed Pan Fish lb **19c**

Whiting Fillets lb **24c**

Cooked for Broiling Lobsters lb **42c**

Fla. Speckle Trout lb **35c**

Fresh Dark Crab Meat lb **75c**

Fat Drawn Stewing Hens lb **49c**

Pan Ready Roasting Chickens lb **55c**

Fat Drawn Fryers lb **55c**

N. Y. Dressed, 14 lbs. up Turkeys lb **47c**

Armour's Canned Meat —

**TREET** 12-oz can **30c**

Van Camp Baked BEANS 2 20-oz cans **25c**

Gator Roach Hives sm **13c**

20 Mule Team Borax pkg **12c**

11 Clones & Blooms! CLOROX 1/2 gal **29c**

Van Camp's CHILE 17-oz Jar **27c**

Sunshine Krispy Crackers pkg **17c**

Velvo Coffee 2 lbs **41c**

Nabisco Old Fashion Ginger Snaps pkg **21c**

Ham & Lima Beans 12-oz **29c**

Stokely Capt. Kraut 27-oz **17c**

Lovett's Raisin BREAD 20-oz Loaf **15c**

Harris Roach Tablets sm **25c**

Sunbrite Cleanser can **5c**


India Orange Astor 4-oz Pkg **23c**

**OLD-FASHIONED DARK BROWN SUGAR**

Preferred by good cooks because it's rich, full-bodied flavor. New packed in the New RECLOSURE Carton.

**DIXIE CRYSTALS**

PURE CANE SUGAR



Coasting Into The New Year On LOWER PRICES!

Save a Little Everyday on Everything You Buy

**PIGGY WIGGY LOVETT'S**

FOOD STORES

Quantity Rights Reserved

Prices Good Thru Mon. Dec. 31  
 Closed Tuesday — Open All Day Wednesday

**LUCKY NEW YEAR'S DISH**

An Old Legend has it that if on New Year's Day you eat black eye peas, hog jowl and rice you will have Peace, Joy and Riches.

**PEACE BLACK EYE PEAS** lb **8 1/2c**

**JOY HOG JOWL** (They May Be Available)

**RICHES BLUE ROSE RICE** 4 lbs **29c**

**PORK IS KING!**

Fresh Cut Whole Shoulders lb **29c**

Lean, Meaty Pig Pork Chops lb **30c**

Grade A Sirloin Steak pound **40c**

10-in Rib Roast pound **30c**

Boneless Brisket pound **33c**

Fresh Hamburger pound **25c**

Plate Beef Stew pound **19c**

Short Ribs lb **21c**

Beef Tongues lb **29c**

Young Tender Calves Liver pound **75c**

Rib Chops pound **38c**

Veal Breast pound **20c**

Boneless Shoulder pound **35c**

For A Quick Snack Yellow Sharp 1/2-lb **28c**

Big Eye Swiss 1/2-lb **28c**

Coltidge Cheese lb **21c**

ASSORTED COLD MEATS — lb **29c**

COUNTRY STYLE SOUSE — lb **25c**

LONG LINK SAUSAGE — lb **42c**

SLICED BOLOGNA — lb **29c**

GA. MADE SMOKED SAUSAGE — lb **32c**

SPICED LUNCHEON MEAT 1/2-lb **25c**

KINGAN'S FRESH SAUSAGE — lb **37c**

SUNNYLAND SMOKED SAUSAGE — lb **39c**

HY-GEE FROZEN DOG FOOD 1-lb Ctn. **14c**

CANNED SMOKED HAMS, 34 oz. can **145c**

From Kegs—Bulk Sauer

Kraut 3 lbs **25c**

Skinless Wieners lb **35c**

Roe Shad lb **35c**

King Mackerel lb **39c**

Fla. Yellowtail lb **45c**

Snapper lb **45c**

Spanish Mackerel lb **25c**

Headless Ocean Shrimp lb **45c**

Fully Dressed Pan Fish lb **19c**

Whiting Fillets lb **24c**

Cooked for Broiling Lobsters lb **42c**

Fla. Speckle Trout lb **35c**

Fresh Dark Crab Meat lb **75c**

Fat Drawn Stewing Hens lb **49c**

Pan Ready Roasting Chickens lb **55c**

Fat Drawn Fryers lb **55c**

N. Y. Dressed, 14 lbs. up Turkeys lb **47c**

Armour's Canned Meat —

**TREET** 12-oz can **30c**

Van Camp Baked BEANS 2 20-oz cans **25c**

Gator Roach Hives sm **13c**

20 Mule Team Borax pkg **12c**

11 Clones & Blooms! CLOROX 1/2 gal **29c**

Van Camp's CHILE 17-oz Jar **27c**

Sunshine Krispy Crackers pkg **17c**

Velvo Coffee 2 lbs **41c**

Nabisco Old Fashion Ginger Snaps pkg **21c**

Ham & Lima Beans 12-oz **29c**

Stokely Capt. Kraut 27-oz **17c**

Lovett's Raisin BREAD 20-oz Loaf **15c**

Harris Roach Tablets sm **25c**

Sunbrite Cleanser can **5c**

India Orange Astor 4-oz Pkg **23c**

In Unity There Is Strength—

To Protect the Peace of the World;  
To Promote the Progress of America;  
To Produce Prosperity for Sanford.

# The Sanford Herald

AN INDEPENDENT DAILY NEWSPAPER

VOLUME XXXVII

Established 1908

SANFORD, FLORIDA, THURSDAY, DECEMBER 27, 1945

Associated Press Leased Wire

NUMBER 74

THE WEATHER

Increasing cloudiness this afternoon followed by showers tonight and Friday. Mild this afternoon and Friday. Warmer tonight.

## ICC Ordered To Postpone Rate Changes

### Northern States Get Order To Halt ICC Action To Lower Rates In South

WASHINGTON, Dec. 27.—(AP)—The nation's railroads have received permission to postpone indefinitely freight class rate adjustments ordered by the Interstate Commerce Commission. The rates were to have become effective on Jan. 1. They were to constitute a ten per cent increase in freight class rates in northern and eastern states and a corresponding decrease in the South and West. The ICC postponement of the new rate schedule was taken to conform with a federal court injunction restraining the Commission from enforcing the change. The injunction was granted last Friday in Utica, N. Y., at the request of nine northern states.

## Albert D. Stine Spends Christmas With His Family

Albert D. Stine, C 8/K, USN, arrival home Dec. 18 after serving with the Naval supply corps at the NAS in Norfolk, Va., aboard the USS Arkansas, USS Reina Mercedes, USS Brooklyn and the USS Franklin. He entered the Navy June, 1937 in Orlando and served aboard the USS Arkansas from October, 1937 until August, 1939 when he was assigned to the USS Reina Mercedes, a receiving ship stationed at Annapolis, Md. for five years. He handled all stores and supplies with the training of midshipmen at the U. S. Naval Academy. In June, 1944 he was transferred to the USS Reina Mercedes in transport. At Palermo, Sicily, he was assigned to the USS Brooklyn on July 20, 1944 and participated in the invasion of southern France. Vice Admiral Stine was assigned duty in August following the invasion it was the duty of the staff to close the Mediterranean ports and turn them back to their original owners. The USS Brooklyn was ordered to return to New York on Dec. 1, 1944 for overhauling after which the ship was sent to Trinidad in April, 1945 for six weeks training new crews. Stine was further assigned duty in August, 1945 aboard the USS Franklin. He is the son of Mr. and Mrs. W. D. Stine of 1111 Palmetto Avenue and wears the following ribbons: American Theater, European Theater with one star, Good Conduct, American Defense with one star and the Victory Medal.

## C-47 Carries Nazi Gold From Spain

MADRID, Dec. 27.—(AP)—A United States Army transport plane is on its way to Frankfurt, Germany from Madrid. The plane is carrying 1,000,000 dollars in German gold to be turned over to the Allied Control Commission in Frankfurt. The gold is made up of English and United States coins turned over to the Spanish Government when the Nazis collapsed. The Spanish Government agreed to turn over the gold to British and American authorities only about ten days ago.

## Swedish Ship Explodes

GALVESTON, Tex., Dec. 27.—(AP)—Eight crew members of the Swedish ship which was wrecked by an explosion in Galveston today are feared dead. The ship sank after the blast which occurred as gasoline was being loaded aboard. The first mate of the vessel, the Embassy, said that eight men are missing and feared dead and that 13 others were injured, two critically.

## File In Pinhurst

Pinhurst, at 11:50 a'clock this afternoon, today used their Army truck with tank and bumper pump to battle a big grass fire in the Pinhurst section of West. The health street, which threatened nearby houses. They stopped further spread of the blaze by back-ditching some sections.

## German Orders Transfer

WASHINGTON, Dec. 27.—(AP)—President Truman has ordered the transfer of the work of the Smaller War Plants Corporation to the Commerce Department and the Reconstruction Finance Corporation. The President has authorized the transfer of the work of the Smaller War Plants Corporation to the Commerce Department and the Reconstruction Finance Corporation. The President has authorized the transfer of the work of the Smaller War Plants Corporation to the Commerce Department and the Reconstruction Finance Corporation.

## Wounded Vets Swap Xmas Gifts



RECOVERING FROM INJURIES received overseas, these GI's get together for a little Christmas present swapping at the Lawson General Hospital in Atlanta, Georgia. Pfc. James Mautz of New York City, who lost both legs while fighting in Belgium, receives a present from Pfc. Frank (Lindell) of Mamaroneck, N. Y., and Pfc. Gustar Lindrow (in crutches), who is a resident of New York City. (International Soundphoto)

## U. S. Army Seeks Murderers Of 2 GI's In Berlin

BERLIN, Dec. 27.—(AP)—A house-to-house search is going on in the Tempelhof-Aldrome district of Berlin today for those responsible in the killing of two American soldiers on Christmas Eve. German military police are aiding American military police in the search. Meanwhile, United States Army authorities in Berlin have confirmed reports of the shootings officially. But they have refused to divulge the names of the two victims until they are assured next of kin have been notified. The Army officials say both men were shot in the head with a .38 caliber gun. At the same time, a 19-year-old German girl has given her version of what happened to American officials. The girl—Ingrid Grossa—says one of the soldiers was strolling away from a cafe when they heard the shot. The German girl says they thought boys were shooting-off fire crackers when two uniformed men approached. According to the fraulien, the men were Russians. She says one of them remained on the darkened sidewalk and the other came up to her and her companion in the street, asking the American in broken English: "Are you an American?"

## Soldiers Were Shot Christmas Eve By .38 Calibre Gun

The German girl says that when the American asked why his assailant drew a gun, firing at him twice. The body of the other American was found in the street about 50 yards away. He had been seen by friends outside a theater early that morning and later with a girl. The girl has not been found. The shooting of a German actor is also being investigated. He was Fritz Herberholz and he was shot last night in the Anhalter Station area.

## Tour Ends

BERLIN, Dec. 27.—(AP)—Five American correspondents have just completed an eight-day tour of the Russian-occupied zone of Germany. Here is what the Associated Press Correspondent on the tour—Richard Kasachke—has found to be the basis of the Soviet program in Russian-occupied Germany: A planned economy for industry and business and a widespread revision of the ownership of land.

## Wives Go Overseas

SAN DIEGO, Dec. 27.—(AP)—The first servicemen's wives to leave for overseas were called aboard the Navy Assault Transport Henry. Most of the 84 service wives are bound for Hawaii, where their husbands are stationed. But one of the wives, accompanied by her three-year-old son in honor for Midway to join her husband, Marine M. Sgt. W. M. Kasar.

## Enroute To U. S.

SAN DIEGO, Dec. 27.—(AP)—Members of a famous Marine Regiment are scheduled to arrive in San Diego tomorrow, according to a 2,000 member of the 5th Marine Division's 20th Regiment are returning from overseas. The 20th is the unit which fought at Iwo Jima and Okinawa.

## Proposal For Truce Sent To Nationalists

### Red Agreement Calls For Unconditional Truce On Fronts Of Undeclared War

CHUNGKING, Dec. 27.—(AP)—The Chinese Communists have announced that they have presented a formal written proposal to the Chinese National Government. It calls for an unconditional truce on all fronts in the undeclared civil war. The offer was handed to Generalissimo Chiang Kai-Shek's representatives during a conference which lasted two hours. This was the first formal meeting of the two warring factions since Nov. 17, aside from social gatherings at which the Reds ran into representatives of the Chungking regime. The Communist offer makes no requests—that each side issue a "cease fire" order, that all problems relating to the civil war be settled peacefully and that non-partisan observers be sent to the various fronts to look into the exact situation. The truce plan will now be delivered to Generalissimo Chiang Kai-Shek for his consideration.

## Motorists Admire Christmas Display At Lane Residence

Motorists from far and near passing during recent evenings the home of Mr. and Mrs. Edward Lane, 510 Park Avenue, have stopped to gaze in admiration at the new Santa Claus and Christmas display, brilliantly lit by a spotlight in the yard adjoining the home. For the past eight years, Mr. and Mrs. Lane have had a similar display which in time became a bit weather beaten. They engaged the services of a professional decorator to have the display a big new Santa Claus. There is a large fireplace with a light depicting a fire, and the mantles have big candles that light up at night. There also is Santa's sled and reindeers and white canvas representing snow. Mr. Lane, local realtor, reported that before he put out the new display, he had a long talk with the Salvation Army, who reported that five boxes containing cash donations intended to be used to purchase Christmas gifts for the needy, had been stolen from five Salvation Army boxes placed in downtown stores during the Christmas period. However the crowning misdeed, which should comedy net the thief, an extra turn over the underworld barbecue pit, was to steal a box of donations intended for infantile paralysis relief. Major Whorton added that there had been no thefts of this nature last year in Sanford.

## Meanest Man Robs Empty Stocking Fund

The meanest man on earth evidently is an unwelcome winter visitor in Sanford, according to Major Allan R. Whorton of the Salvation Army, who reported that five boxes containing cash donations intended to be used to purchase Christmas gifts for the needy, had been stolen from five Salvation Army boxes placed in downtown stores during the Christmas period. However the crowning misdeed, which should comedy net the thief, an extra turn over the underworld barbecue pit, was to steal a box of donations intended for infantile paralysis relief. Major Whorton added that there had been no thefts of this nature last year in Sanford.

## Famed Sports Writer Dies In Clearwater

NEW YORK, Dec. 27.—(AP)—One of the best-known baseball writers of all time, Hugh Fullerton, Sr., has died in Clearwater. He was 72 years old. Word of Fullerton's death was received in New York City today by his son, Hugh Fullerton, Jr., an Associated Press sports writer.

## WASP Sails

SOUTHAMPTON, England, Dec. 27.—(AP)—The United States Aircraft Carrier Wasp sailed from Southampton for the United States today with 5,000 troops aboard. The ship is expected to reach New York harbor early on New Year's Day. Temporary repairs were made at Southampton on damage to the Carrier caused in an Atlantic storm last week.

## New Flag?

WASHINGTON, Dec. 27.—(AP)—The suggestion that Hawaii be granted statehood has raised a question about the United States flag. If Hawaii should become a state, another star will have to be added to the flag. The question is whose would the new star be placed on the flag. One suggestion is that the stars in the flag would have to be rearranged so that there would be seven rows of seven stars each, instead of the present arrangement of 48 stars.

IN TALLAHASSEE Mrs. Ruth Trapp, who received training in hospitalizing in the Herald's printing department, and who also worked at Daytona and Winter Park, is now employed by the East Printing Company of Tallahassee. A new year's message will be printed by the company.

# U.S. Agrees To Four Power Control Council For Japan

### At Height Of Hospital Fire In Hartford



SMOKE PARTLY obscured New Street Hospital in Hartford, Conn., as firemen pour water on the building in a Christmas Eve battle. A fire apparatus turned out to fight the spectacular fire that tore through the Victorian structure and killed fifteen of the seventy elderly victims trapped within it. (International)

## Lt. Shinholser Is Home After Pacific Service

Lt. Albert Edwin Shinholser, son of the late S. O. Shinholser and Mrs. Shinholser of 1408 Oak Avenue, has returned to Sanford following a period of nearly four years service with the United States Navy. Lt. Shinholser entered the Navy in March, 1942, as an Ensign. He served 18 months in the communications section of the Key West Naval Base, and also 18 months in the Communications department of the Naval Air Station at Miami. Following the tour of duty in Miami, he was placed in command of the communications unit and sent to Connecticut where the organization received additional overseas technical training. After the unit had spent six weeks in training in the Mojave Desert, it was sent to the Philippines from the port of embarkation at Ventura, Calif. While in the Philippines, Lt. Shinholser and his unit established the active range of a 22 caliber rifle at various newly established Naval bases. He returned to the United States in December. He is on terminal leave and currently spending the week in Miami.

## Hope For Rescue Of Miners Is Fading

PINEVILLE, Kan., Dec. 27.—(AP)—Hope has practically disappeared for the miners trapped in the shaft of the Straight Creek Coal Company here. Rescue workers are about 3,000 feet from the entombed men, and there is a chance that they may get through today. However, some authorities believe it will take at least two or three more days of digging through the wreckage. The rescue workers have spotted and put out at least 13 fires. The number of men imprisoned in the shaft is still unknown, with some estimates ranging as high as 50.

## Funeral To Be Held For Roberts Brown

Funeral services for Robert Anon Brown, 13, victim of an accidental shooting yesterday afternoon near his home at Floral Heights, will be held Friday afternoon at 3:30 o'clock at the Erickson Funeral Home. The Rev. A. C. Camp will officiate. Interment will be in Evergreen Cemetery. Robert Brown was a member of the South Side Baptist Sunday School, and attended the eighth grade at the Junior High School. He had lived here all of his life. He is survived by the father and mother, Mr. and Mrs. William A. Brown of Floral Heights, a brother, John Paul Brown; two uncles, L. A. Brown of Sanford and L. H. Brown of Oviedo, and an aunt, Mrs. T. H. Buchanan of Oviedo.

## Two Sanford Naval Men Are Discharged

Two Sanford men of the United States Navy have received their discharges according to information received today from the Naval Personnel Separation Center at Jacksonville. They are Pfc. George D. Rowland, 101 West Eighteenth Street and Sgt. Eric Grover C. Whidden, Jr., 108 East Eighteenth Street.

FLYING DENTIST  
SALT LAKE CITY, Dec. 27.—(AP)—Dr. Crane Hayward, Salt Lake City dentist appointed president of the Latter-Day Saints (Mormon) dental partners states association, reported he had located the materials for purchase. He stated that it would be 68 to 70 days before they could be delivered. Present at the meeting were Mayor Higgins and Commissioner George Bishop and H. J. Galt. Matters of a routine nature were discussed, and it was decided to hold a mass meeting of the dental partners in 1946.

## Hand Is Against Allowing Youths To Handle Arms

A warning against allowing youths to handle dangerous firearms was issued yesterday by Sheriff Hand following the accidental and shooting yesterday afternoon of Bobby Brown, 13 year old son of W. A. Brown of Citrus Heights. Sheriff Hand reported that the shooting, which occurred among a group of boys, was accidental. At the time Bobby Brown was in his yard playing with his brother Paul, a cousin, Harry Turner, and a companion, Charles Turner, 14. According to the Sheriff's office this morning, it was not known which boy did the shooting. Several of the boys were said to have had rifles. The bullet entered the boy's head through the nose, and he was pronounced dead upon arrival at Fernald-Laughton Memorial Hospital to which he was rushed. "In my opinion there ought to be a law to keep dangerous weapons out of the hands of any youth under 21 years of age," said Sheriff Hand. Police Chief Roy G. Williams, who accompanied Sheriff Hand in an investigation of the shooting, pointed out that it is unlawful to use firearms of any kind in the city. He added that many adults are careless with firearms, and when resting at target practice, sometimes stand with hands over the muzzle end of the gun. "The first thing to do upon picking up a gun, is to find out if it is loaded," he cautioned, "and then don't point it at anything but the target when at practice."

## Women Workers And Former Prisoners Dance In Street

BERLIN, Dec. 27.—(AP)—A street scene in Berlin took on a nostalgic note. It occurred on a corner of Wilhelmstrasse. Women were pushing heavy sand trucks through the ruins. Or they were passing bricks from hand to hand in a chain as gangs of rubble dealers. They were shabby and dirty and tired. Suddenly, out of the ruins came a song. A vagabond of melody, an organ grinder, appeared for the first time since the war ended. His advent created an unforgettable scene. The women who had been pushing the heavy sand trucks stopped. The bricklayers abandoned their tools. They looked at each other. They embraced each other, then they started to dance. They danced a lulling waltz in the ruined street. A group of returned prisoners of war came shuffling along the street. They were looking for their old homes. As they neared the women, they were rushed and surrounded. The shabby women put their arms about the even shabbier men. They bid them to dance. At first, the men just looked. Then shyly, the broken men took spirit. Smiles lit up their faces slowly, and they tried a few clumsy steps. The organ grinder finished his music, collected his pennings, and passed out of sight. The prisoners shuffled along the street. The women went back to their piles of rubble. That was a street scene in Berlin.

## Two Sanford Naval Men Are Discharged

Two Sanford men of the United States Navy have received their discharges according to information received today from the Naval Personnel Separation Center at Jacksonville. They are Pfc. George D. Rowland, 101 West Eighteenth Street and Sgt. Eric Grover C. Whidden, Jr., 108 East Eighteenth Street.

## Earthquake

NEW YORK, Dec. 27.—(AP)—The Fordham University seismograph in New York has recorded two earthquake shocks described as fairly severe. The shocks, recorded last night and early today, were said to be in the direction of the Dutch East Indies.

The Seminole County Tuberculosis Association sent a large box of Christmas gifts, including candy and cigars to nine patients at the Florida State Tuberculosis Sanatorium. It was reported by Mrs. Edward Kircher, association secretary.

## Russia Is Reported To Have Accepted U. S. - British Policy On Atom Bomb

WASHINGTON, Dec. 27.—(AP)—United States officials said today that the Big Three foreign ministers have agreed to establish a four-power control council to administer Japan. The officials—who do not wish to be quoted by name—say that the agreement on Japan will be disclosed in the communiqué to be issued tonight at 10:00 P. M., EST. This communiqué also is slated to divulge the agreement on the atom bomb which Secretary of State Byrnes has announced.

According to the American officials the control council for Japan would have headquarters in Tokyo. The United States, Russia, Britain and China, it is said, will be represented on the council. The council assembly will execute policy recommendations of the Far Eastern Commission, en route to Japan. It is said that Russia will join an agency with which she has not been affiliated.

A reliable source in London said today the atomic agreement reached by the Big Three foreign ministers in Moscow involving Russian acceptance of the American-British plan for an atomic energy. That plan calls for a resolution to be submitted to the United Nations general assembly next month, outlining suggestions for the control of atomic energy. The source, who is in a position to know what transpired at the 11-day foreign ministers' meeting in Moscow, outlined other agreements reached by the three nations.

MOSCOW, Dec. 27.—(AP)—A communiqué setting forth the achievements of the Big Three foreign ministers' conference is to be issued simultaneously tonight, at 10:00 o'clock, Eastern Standard Time, in Moscow, London and Washington.

United States Secretary of State James Byrnes indicates that he, Soviet Foreign Minister V. M. Molotov and British Foreign Secretary Ernest Bevin have reached an agreement on the highest issue confronting the exploratory conference—atomic energy.

Byrnes has told a farewell news conference in Moscow that the three nations have reached what he calls an "atomic agreement." The Secretary of State adds that no agreement was reached on any subject which will not be covered in the communiqué. Says Byrnes: "When you read the atomic agreement you will know that no phase, other than that set forth, was discussed." Byrnes says the formal announcement will cover all phases of the foreign ministers' 11-day discussions.

Secretary Byrnes adds, however, that he, Bevin and Molotov delved into a number of problems in addition to that which will not be covered in the communiqué. He says the exchange of views on these problems has clarified subjects for the three governments so that future agreements will be achieved more easily.

Byrnes says he stressed the fact that nothing was agreed to beyond what will be contained in the communiqué because some persons always are anxious to know what has been any secret agreements.

The Secretary of State believes the cordial relations which prevailed among the ministers during the conference augurs well for settlement of other problems. He adds that there always will be new matters pending and therefore a question of what percentage of agreement has been reached currently is not pertinent.

Byrnes has left Moscow aboard his special plane and now is en route to the United States. He will return by way of Berlin, Paris and the Azores without stopovers.

Two Sanford Army men are enroute to the United States, according to information received today from the Service Force Commander of the Pacific Fleet. They are as follows: Pfc. Lewis Knight, son of Mrs. Anna Howard, aboard the U.S.S. Missoia and Sgt. John C. Smith, husband of Catherine Smith, P. O. Box 151, aboard the U.S.S. Crescent City.

The soldiers will go directly to the Separation Center nearest their home to receive their discharge.