

Sanford Herald

Serving Sanford, Lake Mary and Seminole County since 1908

86th Year, No. 162 - Sanford, Florida

NEWS DIGEST

INSIDE

Sports

Ready for the stretch run

SANFORD — M.A. Erectors and A.D. Rosier/Florida Sport Wear maintained their respective leads in the Sanford Recreation Thursday Men's Polar Bear Softball Leagues.
□ See Page 1B

People

New Social Security service

Social Security has expanded its services. Information is now available 24 hours a day by calling a toll-free number.
□ See Page 3B.

Leisure

TV, weekend guide

The week's television listing, including a sports calendar, plus a compilation of events and activities in and around the Sanford and Lake Mary areas.
See Leisure Magazine

WHAT'S HAPPENING

Weekend to-do guide

● Saturday, Feb. 26, The Westside Community Association, Inc., will hold a first anniversary dinner celebration. The dinner occasion is semi-formal. Dinner tickets are \$10 per plate. The event will begin at 6 p.m., at the West Sanford Boys and Girls Club, 919 Persimmon Ave. in Sanford.
For tickets or further information, phone 324-5919.

● Saturday, Feb. 26, The Winter Park Bach Festival adds a new program this year. "Bach in the Park" will be presented in Winter Park's Central Park at 3 p.m. The concert is free to the public. The Orlando Concert Band will present a program of concert band classics including Wagner's overture from Die Walkure, marches by John Philip Sousa, and music by Bach. Bach in the Park is co-sponsored by the Music Performance Trust Funds of the Recording Industries, administered by the American Federation of Musicians, and presented through the cooperation of the Parks and Recreation Dept. of Winter Park.
The event is free of charge. For information, phone 646-2182.

● Saturday and Sunday — Feb. 26 and 27 — The Central Florida Renaissance Festival will take place at L&L Acres Ranch, I-4 and Lake Mary Boulevard in Heathrow. The festival will be open from 9 a.m. to 6 p.m. each day. Tickets for the event are \$5 for adults, \$3.50 for children 12-17 and free for children under 12 and seniors over 60. There will be plays, skits, musical presentations, food concessions and other fun activities.

● Sunday — Feb. 27 — The Maitland Art Center presents its fifth annual "And All That Jazz." Jazz groups include Panama Francis, Jackie Jones and others. The event starts with a parade at 11 a.m. through the streets of Maitland, with the jazz concerts to follow. Admission is \$5 for adults, \$3 for senior jazz buffs and children 3-12. Children under three are admitted free.

Activities are sponsored by Florida Dept. of State, Division of Cultural Affairs, Florida Arts Council, Arts Services Council, and Maitland Art Center.
For information phone 539-2181.

● Through March 6 — The Central Florida Fair continues over the next week. It will take place at the Seminole Greyhound Track just off U.S. Highway 17-92 between State Roads 434 and 436. Rides, exhibitions, entertainment and food will be highlighted at the largest event of its kind in Seminole County. For more information about the fair, call 699-0770.

From staff reports

INDEX

Classifieds.....6B,7B	Horoscope.....6B
Comics.....6B	Movies.....3B
Crossword.....6B	Nation.....6A
Dear Abby.....3B	People.....3B
Deaths.....5A	Police.....3A
Dr. Gott.....5B	Religion.....5A
Editorial.....4A	Sports.....1B,2B
Florida.....2A	Weather.....2A

Rains continue through today



Partly cloudy with high in the low to mid 70s. Wind becoming northeast 10 mph.

For more weather, see Page 2A

Sanford keeps growing

184 apartments, drug store added to local economy

By NICK PFEIFAU
Herald Staff Writer

SANFORD — Residential and commercial growth continues in Sanford, with a major apartment complex and new Walgreens drug store among the latest projects.

The residential area, Town Centre apartments, is located off U.S. Highway 17-92 facing the lakefront between downtown Sanford and the Central Florida Zoological Park.

The \$6 million 184 unit complex is now under construction by Orlando-based Roger Kennedy Construction, Inc. It is considered as an affordable housing project.

Kenneth H. Cristol, of Cristol Marketing, spokesman for the project, said there is no connection between the Town Centre complex and the proposed Seminole Towne Center mall which will be built a short distance to the southwest, other than a similarity in the names.

"This apartment complex is being developed by
□ See Growth, Page 5A



Herald Photo by Tommy Vincent

Construction this morning continues on a 184-unit apartment complex in Sanford.

Seminole County Fair opens

Organizer: So far, so good!

By VICKI DeSORMIER
Herald Staff Writer

CASSELBERRY — Despite ominous clouds and a forecast of heavy rains the crowds at the opening night of the Seminole County Fair last evening pleased organizers.

"We were very, very happy with the crowds that came out," Patty Bean, who along with her husband Greg, has built the fair from the ground up into the newest county fair in the country. "We were a little surprised at how many came out to the fair, but we were really pleased that they did, despite the weather threats."

Bean said there were no major problems on the opening night and they are looking to make any corrections that are necessary today.

"Things ran very smoothly," she said. "We're making a few adjustments and we're looking forward to a great weekend run starting to night."

□ See Fair, Page 5A



Herald Photo by Michael Siodzinski

Thrill seekers from Longwood Elementary School took a spin on the Himalaya at the Seminole County Fair which opened last night.

Garbage saga update

By J. MARK BARFIELD
Senior Staff Writer

SANFORD — Seminole County's solid waste saga continues Monday morning.

After failing to reach a decision twice this week, commissioners will hold a third discussion in an effort whether or not to switch to a mandatory garbage collection program in an effort to lower resident rates and eliminate yard waste collection charges. The proposal affects only unincorporated areas of the county.

The meeting will be held at 8:30 a.m. in the County Services Building.

Commissioners met Monday and Tuesday to vote on the proposal, but commissioner Daryl McLain found no supporters to his proposed mandatory program. McLain suggested lowering monthly rates to \$12.95 for the full service and \$10.70 for a minimum service. Current rates average \$13.79

□ See Garbage, Page 5A

There goes the judge



Herald Photo by Tommy Vincent

Circuit Court Judge Robert B. McGregor enjoyed a pitch-in luncheon provided by Seminole County Courthouse employees Thursday as his 34-year career as a judge drew to a close. McGregor is flanked by his wife, Mona, left, and his judicial assistant, Doris

Brady. McGregor, the longest serving active judge in the state, received a mantle clock from courthouse employees. At a later date, McGregor said he may apply for senior judge status enabling him to serve on an on-call basis.

Longwood

Administrator hopefuls to be interviewed; city attorney hired

By SANDRA ELLIOTT
Herald Staff Writer

LONGWOOD — City commissioners unanimously agreed to hire Richard Taylor as city attorney after they picked four city administrator candidates for individual interviews.

At the Thursday night work session, the commissioners said they would hire Taylor, who has been acting city attorney since mid-November. Taylor was ranked first for the job by a selection committee of the Seminole County Bar Association. He served as Longwood city attorney from 1988 until 1990. The Longwood attorney will receive a \$4,000 monthly retainer, amount-
□ See Longwood, Page 5A

How Brady law affects you

By SANDRA ELLIOTT
Herald Staff Writer

SANFORD — Monday marks the beginning of waiting periods and background checks for handgun buyers under the Brady law, but Floridians probably won't notice, because those measures are already in place here.

Florida, along with 20 other states and territories, is exempt from the law because Brady-approved alternatives such as gun-buyer permits or background checks are already in place.

□ See Guns, Page 5A

FLORIDA BRIEFS



Girl pulled from bedroom, assaulted

BRADENTON — A stranger pulled an 8-year-old girl through her bedroom window, carried her off on a bicycle and sexually assaulted her, police said.

The girl was asleep early Thursday morning in a room with her younger sister and two young friends when she was taken. The other girls were not harmed.

The child's mother heard screams coming from the bedroom, and she immediately called 911.

A police officer found the girl minutes later running down the street. He put on the cruiser's blue lights, and the girl ran to him yelling "Help me."

Police searched the neighborhood for the man, but no arrests had been made early today. The girl told her mother she had never before seen the man.

The girl's mother was cleaning out her duplex apartment late Thursday, vowing not to make her four children spend another night in the neighborhood.

"My daughter is so strong; she's doing better than I am," said the mother. "But she can't stand to even see this house again. She's afraid even to walk by the living room."

The victim was released from the hospital after doctors examined her and confirmed she had been sexually assaulted. She had no other injuries.

Inquiry launched into alleged statements

JACKSONVILLE — The sheriff's office is investigating whether a state attorney made derogatory statements to a police academy class, but the attorney said the investigation is "silly."

Lt. Pete Mittleman, former commander of the police academy, said he launched the inquiry about State Attorney Harry Shorstein.

Shorstein said it is an effort to sour already tenuous relations between him and Jacksonville County Sheriff Jim McMillan.

Three of 11 recruits who responded to a Feb. 11 memo from Mittleman said they remembered hearing Shorstein tell a derogatory joke: "What's the difference between a puppy and a police officer? At least a puppy stops whining when he grows up."

"I also remember all too well how negative we all felt after the meeting," wrote Officer C.W. Wilkie, one of the respondents.

Eight recruits said Shorstein made negative comments indicating police work is not dangerous and saying officers are overpaid and undereducated.

Shorstein called the inquiry "silly."

"It is inconceivable to me that the Sheriff's Office would be creating dissension between our offices by addressing an insignificant, 2-year-old issue," he said. "I urge that we focus on the serious issue of crime prevention and not this stuff."

Rabies quarantine declared

MELBOURNE — Pets must be confined to their owners' property or on a tight leash for 60 days in parts of Brevard County after a fox tested positive for rabies.

Officials ordered a rabies quarantine for portions of Palm Bay, Malabar and south Melbourne.

Last week, a fox ran up to a teenage girl as she was walking to her school bus stop. It grabbed the teen by the sleeve, but did not bite her. The girl carried the fox home and her father notified health authorities.

Health officials told the girl to take a rabies vaccine.

The quarantine will end April 21 if no other rabid animals are found in the area.

"Typically, a rabid animal is not aggressive," said Bob Griswold, director of Brevard County Animal Control. "It's sick. It's walking funny and acting goofy."

Boys arrested for imitating movie crime

HOBE SOUND — Three boys — ages 12, 14 and 15 — shot and robbed a convenience store clerk after watching a movie in which a teenager killed a neighborhood grocer, sheriff's deputies said.

The oldest boy shot Dominic Moschella in the back of the head with a .22-caliber semiautomatic handgun late Wednesday after he and his friends watched the video, Menace II Society, Martin County sheriff's officials said.

"They watched the video, and then they went out and committed the robbery and shooting," said Capt. Bill Snyder. "I certainly think the video was a contributing factor."

The bullet lodged in Moschella's neck without causing serious injury. He was released from Martin Memorial Center on Thursday.

A 15-year-old high school freshman told investigators he decided to rob Hobe Sound Discount Beverage because he needed money to pay for the handgun he recently bought from another teenager, detective Tim Furey said.

The other two, the 14-year-old and a 12-year-old, said they had no idea their friend had a gun or that he planned to rob the store, Furey said.

From Associated Press reports

NEWS FROM THE REGION AND ACROSS THE STATE

Crime budget

Juvenile justice and prisons dominate Legislative budgets

By BILL BERGSTROM
Associated Press Writer

TALLAHASSEE — House and Senate spending plans ready for debate next week resemble Gov. Lawton Chiles' proposed budget in their emphasis on crime fighting and freedom from tax and fee increases.

And Chiles predicted the differences between his budget and those cleared by House and Senate appropriations panels Thursday would be worked out.

The committees' proposed \$38-billion budgets for 1994-95 both would spend about \$150 million on new efforts to fight juvenile crime.

The biggest difference is the way the House and Senate propose to finance new prisons beds. The House would use bonds to pay for about 14,000 beds, which is similar to what the governor has proposed. The Senate would pay cash for about 17,000 beds.

Chiles said he was concerned the Senate plan would earmark about \$170 million less on education and social services than his budget.

But he said, "I don't want to just be faulting them because most of our budget's in one side or the other."

The budgets are headed for the House and Senate floors next Thursday, after which negotiators will get together to produce a final version.

Senate leaders said they wanted to adopt a budget that would add enough prison beds to ensure prisoners serve at least three-quarters of their sentences and meet the outcry for tougher treatment of young criminals.

"While we may not be doing exactly the

Juvenile crime spending

By Associated Press

Highlights of the juvenile crime bill (HB 2381) approved 37-0 Thursday by the House Appropriations Committee:

- A new Department of Juvenile Justice would combine juvenile programs presently run by the Department of Health and Rehabilitative Services and Department of Corrections. The new department would be formed July 1; programs would be fully transferred by Oct. 1, 1995.
- The state would spend \$12.9 million for secure detention capacity for 865 juvenile offenders, and \$11.7 million for additional commitment space for 1,319 offenders — including 210 in boot camps.
- Children age 14 and over who commit certain violent offenses, and children any age who commit more than three felony offenses, would be charged as adults.

- Judges could place youths in detention centers if found in contempt of court.
- Teen-agers could be held for 36 days rather than the current maximum of 21 days before trial and could be held upon conviction until they are placed in a residential program.
- Convicted teens can be held between eight months and three years under a new maximum security program. The longest period teens now can be held is up to one year.
- Parents could be held in contempt of court if they fail to obey a summons to appear in juvenile court.
- Juvenile justice agencies would share information on children taken into custody for offenses that would be crimes if committed by adults, regardless of the children's age.

same thing, we're philosophical twins," said Senate Appropriations Chairman Ken Jenne, D-Fort Lauderdale. "The governor has given us a lead on the prisons and juvenile justice, and we've taken that lead."

The Senate's budget included \$144 million for new juvenile justice programs while the House plan had about \$150 million.

The House budget would add 14,655 prison beds by selling \$300 million worth of bonds and paying them off over 15 years, twice as fast as the governor's proposal. That would save nearly \$200 million in

financing costs, said House Appropriations Chairman John Long, D-Land O'Lakes.

The Senate, on the other hand, wants to pay for prison beds with about \$200 million in savings in lower-than-expected costs for publicly-financed health care for the poor next year. The Senate also would add an extra 2,500 beds by privately-run prisons.

The governor said he does not like the way the Senate wants to pay for the prison beds because other prevention and social service programs would get cut.



A performance to remember

The Christian Fellowship Choir performed at Seminole High School Thursday evening in celebration of Black History Month, sponsored by members of Alpha American United, with the theme "They Had A Dream, We Have A Responsibility." The evening was filled with songs of praise, inspirational speakers and poetry written, performed and inspired by African-Americans, past and present, to those of the future.

Herald Photo by Michael Stoddinski

Orange blossom time in the citrus belt

By Associated Press

ARCADIA — Orange trees in Florida's citrus belt are loaded with blossoms thanks to warm, wet weather and growers say if favorable conditions persist that could mean a bountiful crop next year.

"The conditions we have been having are an ideal environment for the bloom," said Harry Whittaker, citrus specialist with the Florida Agricultural Statistics Service.

"We've been hearing from growers that they've got heavy bloom and that weather conditions are good," Mary Hartney, spokeswoman for Florida Citrus Mutual, a Lakeland-based cooperative owned by growers, said Thursday.

"We haven't heard of any heavy disease incidence that might affect it," said Hartney, spokeswoman for the Lakeland-based grower cooperative.

Whittaker said new growth would be susceptible to damage

from a late-season freeze. Also, the industry is watchful for any sign of a disease called blossom blight or an insect called the citrus leaf miner which could reduce the potential of the 1994-95 crop.

Hartney said it is hard to get a handle on crop prediction until at least late summer. A more accurate forecast comes in October from the U.S. Agriculture Department and the Florida Agricultural Statistics Service.

"It is difficult to gauge crop

size by bloom. Just 2 to 5 percent of the bloom actually becomes fruit," Hartney said.

"But you can't have a large crop without a good bloom to start off with," said Don Lins of Silver Springs Citrus.

This season Florida is expected to produce 176 million boxes of oranges, down from 186 million a year earlier.

The bloom is prompting optimism that next year the state may approach the 1979-80 record of 206.7 million boxes.

LOTTERY

MIAMI - Here are the winning numbers selected Thursday in the Florida Lottery:

Fantasy 5
19-14-13-22-2



Cash 3
1-4-3
Play 4
5-3-6-3

Sanford Herald

Friday, February 25, 1994
Vol. 86, No. 162

Published Daily and Sunday, except Saturday by The Sanford Herald, Inc. 300 N. French Ave., Sanford, Fla. 32771

Second Class Postage Paid at Sanford, Florida and additional mailing offices.

POSTMASTER: Send address changes to THE SANFORD HERALD, P.O. Box 1667, Sanford, FL 32772-1667.

Subscription Rates (Daily & Sunday)
Home Delivery \$18.00
3 Months \$54.00
6 Months \$98.00
1 Year \$178.00

Florida Residents must pay 7% sales tax in addition to rates above.

Phone (407) 322-2611.

THE WEATHER

LOCAL FORECAST

Today: Partly cloudy. High in the lower to mid 70s. Wind becoming northeast 10 mph.

Tonight: Variable cloudiness with a slight chance of showers. Low in the mid 50s. Wind west 5 to 10 mph. Rain chance 20 percent.

Saturday: Mostly cloudy and breezy with a 20 percent chance of morning showers decreasing cloudiness in the afternoon. High in the lower 70s. Wind northwest 15 to 20 mph.

Extended forecast: Sunday: Partly cloudy. A chance of showers east sections. Lows in the mid 50s.

FLORIDA TEMPS

City	Hi	Lo	Pct
Daytona Beach	67	63	17
Fl. Laud Beach	65	76	00
Fort Myers	79	69	00
Gainesville	64	57	26
Homesland	mm	72	mm
Jacksonville	64	57	37
Key West	84	76	00
Lakeland	72	62	46
Miami	87	75	00
Pensacola	63	43	43
Sarasota	68	63	37
Tallahassee	65	52	131
Tampa	68	58	33
Vero Beach	81	69	05
W. Palm Beach	85	69	00

EXTENDED OUTLOOK

FRIDAY	SATURDAY	SUNDAY	MONDAY	TUESDAY
Ptly cldy 72-82	Mtly cldy 72-82	Ptly cldy 67-85	Ptly cldy 70-82	Mtly cldy 73-83

MOON PHASES

FULL Feb. 26	LAST March 4
NEW March 12	FIRST March 20

BEACH CONDITIONS

Daytona Beach: Waves are 1-2 feet and semi glassy. Current is to the south with a water temperature of 60 degrees.

New Smyrna Beach: Waves are 2 feet and semi glassy. Current is to the south with a water temperature of 60 degrees.

TIDES

SATURDAY:
SOLUNAR TABLE: Min. 5:05 a.m.; 5:25 p.m.; Maj. 11:15 a.m.; 11:40 p.m. TIDES: Daytona Beach: highs. 8:01 a.m.; 8:26 p.m.; lows. 1:45 a.m.; 2:07 p.m.; New Smyrna Beach: highs. 8:06 a.m.; 8:31 p.m.; lows. 1:50 a.m.; 2:12 p.m.; Cocoa Beach: highs. 8:21 a.m.; 8:46 p.m.; lows. 2:05 a.m.; 2:27 p.m.

BOATING

St. Augustine to Jupiter Inlet
Tonight: Wind mostly west 10 kts. Seas near 2 ft. Bay and inland waters smooth. Scattered showers mainly south part. Saturday: Wind northwest to north 15 kts. Seas 3 to 5 ft. Bay and inland waters a moderate chop. Scattered showers.

STATISTICS

The high temperature in Sanford Thursday was 73 degrees and the overnight low was 55 as reported by the University of Florida Agricultural Research and Education Center, Celery Avenue.

Recorded rainfall for the period, ending at 9 a.m. Friday, totaled .03 of an inch.

The temperature at 9 a.m. today was 61 degrees and Friday's overnight low was 55, as recorded by the National Weather Service at the Orlando International Airport.

☐ Thursday's high.....73
☐ Barometric pressure.....30.10
☐ Relative Humidity.....75 pct
☐ Winds.....North 12 mph
☐ Rainfall......03 of an in.
☐ Sunset.....6:23 p.m.
☐ Sunrise.....6:54 a.m.

NATIONAL TEMPS

Temperatures indicate previous day's high and overnight low to 8 a.m. EST.

City	Hi	Lo	Prc	Outl
Anchorage	19	02	00	clr
Atlanta	53	40	18	cdy
Atlantic City	47	40	30	cdy
Baltimore	49	34	20	cdy
Birmingham	62	04	09	cdy
Birmingham	52	35	00	cdy
Bismarck	10	02	11	cdy
Boise	51	37	00	rn
Boston	35	22	50	an
Burlington, Vt.	30	18	74	an
Charleston, S.C.	65	59	00	clr
Charleston, W. Va.	36	29	32	cdy
Charlotte, N.C.	57	44	32	cdy
Cheyenne	47	20	00	cdy
Chicago	22	11	04	cdy
Cleveland	27	23	03	cdy
Columbus, N.H.	23	14	29	cdy
Dallas-Ft. Worth	61	30	00	cdy
Denver	55	33	00	cdy
Des Moines	20	01	00	cdy
Detroit	26	19	02	cdy
Honolulu	81	64	00	cdy
Houston	64	34	00	cdy
Indianapolis	36	19	01	cdy
Jackson, Miss.	52	30	00	cdy
Kansas City	38	06	00	cdy
Las Vegas	63	33	00	cdy
Little Rock	50	14	00	cdy
Los Angeles	77	51	00	cdy
Memphis	47	28	00	cdy
Missoula	26	13	06	cdy
Mobile	23	07	01	cdy
Nashville	46	23	00	cdy
New Orleans	57	42	00	cdy
New York City	43	30	26	cdy
North Platte	48	11	00	cdy
Oklahoma City	63	30	00	cdy
Omaha	23	08	00	cdy
Philadelphia	46	34	32	cdy
Phoenix	74	47	00	cdy
Pittsburgh	32	27	46	an
Portland, Maine	20	10	36	cdy
St. Louis	31	16	00	cdy
Salt Lake City	47	34	00	cdy
Seattle	42	27	00	rn
Washington, D.C.	53	36	37	cdy

POLICE BRIEFS

Rest stop arrests

Sheriff's deputies made two arrests Wednesday in the westbound rest stop of Interstate-4. According to the arrest reports, officers were called to the area, and arrived to see a man and woman participating in a sexual act, next to their motorcycle. The cycle was reportedly parked under a light post. In the evening hours, Deputies said two children, 11 and 10 witnessed the incident. Arrested were Frank Richard Whitaker III, 31, of Raleigh, N.C., and Tonya Peeler, 25, of Altamonte Springs. Each was charged with lewd/obscene and indecent acts upon a child. Whitaker was also found to be wanted on a Seminole County warrant for failing to appear in court. They were taken to the John E. Polk Correctional Facility where they are held under \$15,000 bond each.

Disturbance call

Sanford police responded to a disturbance call early Thursday, at 138 Country Club Drive, Sanford. Harold Michael Miller, 25, of that address, was arrested on charges of disorderly intoxication and resisting an officer without violence.

Warrants served

James Greg Selfried, 34, 2545 Park Drive, Sanford, was located Wednesday by Sanford police, as he was walking near 3rd Street and Elm Avenue. He was wanted for failing to appear for sentencing on a grand theft conviction, and possession of less than 20 grams of cannabis.

Edwin Bernard McDonald, 39, 1204 W. 10th Street, Sanford, was located on Bisson Avenue by sheriff's deputies Wednesday. He was wanted on a warrant for driving with a suspended/revoked license.

Robert Frederic Platt, 32, 134 Country Club Circle, Sanford, turned himself in at the John E. Polk Correctional Facility Wednesday. He was wanted on a warrant for violation of parole on a conviction of driving under the influence of an alcoholic beverage.

Audry Lawrence Williams, 29, 1503 Terrace Drive, Sanford, was located in the 300 block of Pine Avenue by deputies Wednesday. He was wanted on a warrant for violation of parole on a conviction of assignment to commit prostitution.

Domestic cases

Ronald Lee Wales, 45, 96 Exeter Court, Sanford, was arrested Wednesday at his residence by Sanford police, following a reported altercation with a female. He was charged with domestic violence, battery.

Timothy Earl Walker, 31, 2050 Terrace Blvd., Longwood, was arrested by deputies at his residence Wednesday following a reported fight with a female. He was charged with battery, domestic violence.

Inmate gain time can be taken away

By JACKIE HALLIFAX
Associated Press Writer

TALLAHASSEE — The state didn't violate the rights of inmates when it wiped out early-release credits that had been awarded to make room for incoming prisoners, the state Supreme Court ruled.

Revoking the credits is justified by the state's "need to protect society," the high court wrote in Thursday's unanimous opinion.

The ruling doesn't affect incentive gain time, which is given to prisoners to reward them for good behavior.

The early-release credits, called provisional or administrative gain time, that were at issue used to be automatically awarded to many prisoners to free up space for new inmates.

Last year, state lawmakers decided to do away with provisional gain time.

Prisoners still have to be released early to make room for new inmates. But now the Parole Commission reviews each case in an effort to keep the most dangerous criminals behind bars.

On average, criminals in Florida prisons serve 41 percent of their sentences.

The issue of early release gained new notoriety this week. A convict released from prison in June after serving 1 1/2 years of a 5 1/2-year grand theft sentence was charged with the first-degree murder of an 18-year-old camper in Ocala National Forest.

Loran Cole, 27, of Orlando, also was charged with armed kidnapping, armed sexual battery and automobile theft.

The appeal before the court was filed by Freddie Griffin, who is serving a 20-year sentence for a 1985 murder.

Griffin, 36, was facing first-degree murder charges when he agreed to plead guilty to the

second-degree murder of Robert Morris. Griffin, a Belle Glade resident, had robbed Morris of \$40 and then fatally beat him with a hammer.

Between 1986 and 1992, Griffin had cut 2,280 days — about six years and three months — off his sentence, thanks to the provisional credit program.

Griffin lost most of his credits in May 1993 after Attorney General Bob Butterworth said a 1992 law barred second-degree murderers from the program. A few months later he lost the rest, when the 1993 Legislature can-

celled all provisional credits.

Also Thursday, the high court reprimanded a Broward County circuit judge for writing a character reference on official stationery for a prominent lawyer facing sentencing in federal court.

The Judicial Qualifications Commission recommended the reprimand, to which Judge Robert Abel Jr. agreed.

The panel concluded Abel violated the judicial code of ethics, which bans judges from using the prestige of their office to advance anyone's private inter-

est and prohibits them from voluntarily testifying as character witnesses.

The letter in question was written in July 1992 on behalf of Emerson Allsworth, a former state lawmaker and well-connected lawyer and lobbyist representing large companies and governments in South Florida.

Federal prosecutors accused Allsworth of allowing his attorney trust account to be used to transfer drug proceeds from California to Florida.

SANFORD ACE Hardware Stores

BLOOMING ANNUALS
6" Pots
Reg. \$1.99
Now **\$1.58**

POTTING SOIL
Reg. \$1.89
Now **\$1.39**

BLOOMING PETUNIAS
4" Pots
Reg. 79c
Now **58c**

COMPOST & PLANT MIXES
TOP SOIL
YOUR CHOICE
TOP, COW or PEAT
Only **99c**

RECYCLED MULCH
2 CU. FT.
Reg. 99c
Now **88c**

MARIGOLDS
3" Pots
Reg. 69c
Now **48c**

LONGWOOD
Hwy 434 & 427
339-4883

LAKE MARY
Publix Shopping Center
330-6589

ACE Hardware

SANFORD
207 E. 25th St.
321-0885

CASSELBERRY
Winter Park Dr.
339-7365

Hearing set to begin in Rosewood massacre

By ADAM YEOMANS
Associated Press Writer

TALLAHASSEE — The state is conducting a hearing into the racial violence that wiped out the black settlement of Rosewood as legislators try to unravel the 1923 massacre.

Lawyers for the victims and the state will argue today whether the Legislature should pay survivors and direct descendants more than \$7 million to compensate them for their losses in the hamlet near Florida's gulf coast in Levy County. Survivors and descendants also will testify.

Gov. Lawton Chiles said Thursday he supported compensation for the victims although he was not sure how much.

"I think we ought to do something about it," he said. "That's a chapter we ought to put behind us."

Rosewood was destroyed after a New Year's Day accusation in 1923 by a white woman, Fannie Taylor, who claimed a black man had attacked her.

A posse formed to track down her attacker, but it soon turned into a drunken mob of several hundred that murdered blacks, burned their homes, and drove them from their land in a weeklong rampage.

At least eight people died, and virtually every house, church

and building was destroyed, according to a recent legislative report.

Attorney General Bob Butterworth, whose office is representing the state, said the Legislature should pay the victims nothing.

Jim Peters, an assistant attorney general, wrote in a legal brief that the state would open itself to many other potential claims if it awarded money to the victims of Rosewood.

Peters said criticisms about the legislative study on Rosewood completed last year by Florida State University, the University of Florida and Florida A&M University raised questions about what actually occurred in Rosewood.

The victims are relying heavily on the report, which was commissioned last year by the Florida House, to prove their constitutional rights were violated because the state failed to prevent the deaths and property destruction.

Peters said the report made a flawed conclusion when it blamed Sheriff Robert Elias Walker and Gov. Cary DeWalt for failing to quell the violence 70 years ago.

The Legislature also is considering separate legislation to spend \$1 million on a memorial at the site on State Road 24 near Cedar Key.

This Friday & Saturday Only!

Manager's SPECIAL SALE

Dear Shoppers,
It's my store. I'll have a sale if I want to! And I'm calling it the "Manager's Special Sale."
Come see the price cuts on these tremendous hand-picked specials!! (I ought to know...I picked them!)
You'll save on living rooms, dining rooms, bedrooms, jewelry, electronics and a whole lot more!
I'm talking serious discounts!!
Don't miss this one! You never know when I'll have a sale this special again!

Sincerely,
John Cox

Our "Display Floor" Is **BULGING**

It's a bargain shopper's dream come true!

You'll Find Super Discounts

- Floor samples
- One-of-a-kind items
- Discontinued merchandise
- Slightly damaged items
- Leftover group pieces
- And a whole lot more!



1100 S. FRENCH AVE., SANFORD
(407) 322-7953

FREE DELIVERY

We reserve the right to limit quantities.
© Heilig-Meyers Co. 1994

COUNTRY FOLK ART SHOW & SALE



**FEBRUARY 25-26-27
ORLANDO**

ORANGE COUNTY CONVENTION CENTER

I-4 to Exit #28 (Boellino), 1st Exit - International Dr
right 1/4 mile to Convention Center

**THE LEADING FOLK ART SHOW IN THE NATION
FEATURING THE BEST, TOP QUALITY
FOLK ARTISANS FROM ACROSS THE COUNTRY**

Country & painted furniture; pierced & stenciled lamp shades; teddy bears; spongeware; salt glaze stoneware; baskets; Scherenschnitte; Windsor chairs; samplers; tinware; blacksmith; dolls & toys; grained frames; tole painting & stenciling; rag, braided & hooked rugs; carvings; country clothing & textiles; theorems; calligraphy; weather-vanes; decoys; Shaker boxes; folk art paintings; whittlings; floorcloths; dummy boards; quilts; fireboards; dried florals; candles; gourmet delights; French Country, Victorian, Southwest & Country-Western items. All Country decorating needs for sale.

Friday eve, 5 - 9 p.m. Adm. \$6
(Early Buying Privileges)
Sat. & Sun. 10 a.m. to 5 p.m. Adm. \$5
Children under 10 Adm. \$2
NO STROLLERS PLEASE!

Country
Folk Art Shows, Inc.
Box 111, Ortonville, MI 48462
(810)834-4181

Publishers of Country Folk Art® & Yippy-Yi-Yee™ Magazines

Editorials/Opinions

Sanford Herald

(USPS 481-380)
300 N. FRENCH AVE., SANFORD, FLA. 32771
Area Code 407-322-2611 or 831-9993
Wayne D. Doyle, Publisher and Editor

SUBSCRIPTION RATE:
3 Months \$19.50
6 Months \$39.00
1 Year \$78.00
Florida Residents must pay 7% sales tax in addition to rates above.

EDITORIALS

We need a major indoor complex

The Seminole County School Board has made a decision. Beginning in June, 1995, all high school graduations must take place indoors.

The immediate reaction was to consider the arena in downtown Orlando. With the many programs and sporting events held at the "O-rena," conflicts on dates will be common.

As we see it however, there is no other suitable location for graduation ceremonies, which draw several thousand people each year.

The concept of holding this event indoors, out of the heat of summer and possible rain showers, is logical. This is an important occasion. Many parents and students dress well for the occasion. In the boiling sun however, this does not provide much comfort.

Again, the potential move to Orlando of our local high school graduation events proves the Sanford area is lacking.

Efforts are underway to improve downtown Sanford and design a downtown Lake Mary area. Plans are being developed to improve the Lake Monroe waterfront.

In the western part of Sanford, one of the largest malls in Central Florida is being built.

Yet no one is considering a large-scale gathering place anywhere in Seminole County. Its potential however, not only for income from persons attending local functions, but attracting more visitors (and their money) to this area is huge.

Large-scale presentations are held throughout Florida each year. Also, the Orlando facility is often out of reach for many seniors wishing to attend a Broadway musical or some other type of presentation.

With this area's middle-of-the-state location, it would be most suitable for such events.

Orlando has its share of traffic problems, and has many major attractions. We suspect conventioners or spectators might be more comfortable in the Sanford or Lake Mary area.

It will take a great deal of money to create such a facility, probably extending into the millions. The financial rewards from such an investment however, would be helpful to our area's economic life.

It will also better serve our schools and other needs, thus being a good cultural and social advantage for the county.

Many projects are presently in the planning stages for our future. Now we suggest an additional step. Give consideration to a major indoor complex in north Seminole County. Everyone will benefit.

LETTERS

Garbage hauling plan

Wednesday, Feb. 9, 1994. I listened to a nearly two hour discourse on what can be called the "McLain Mandatory Garbage Service Plan." Being a charitable individual, I would rate the plan as pathetic. Any plan of government at nearly every level should show who benefits and who loses.

Q. Does the county gain increased tipping fees from the claimed increased garbage delivered to the landfill?

A. No, county staff have often stated that any mandatory collection would not increase the tonnage now handled.

Q. Would tipping fees remain at the present level?

A. Not likely. An existing ordinance adopted by the commission authorized increases, if any, to be made by Oct. 1 of each year. Last year the tip fees were increased by \$5 a ton or 16.1 percent which was passed on to the customers by the haulers as permitted in the contract.

Q. Will the rates indicated by the McLain Mandatory Garbage Service Plan remain constant?

A. See second question.

Q. Who stands to gain?

A. By adding some thousands of residential customers, by force, the haulers will increase their income (gross) probably over one million dollars. I do not recall the McLain Mandatory Garbage Plan mentioning that.

Robert N. Daves
Winter Springs

LETTERS TO EDITOR

Letters to the editor are welcome. All letters must be signed, include the address of the writer and a daytime telephone number. Letters should be on a single subject and be as brief as possible. The letters are subject to editing.

CHUCK STONE

Japan's trade policy colonizes U.S.

Japan's determination to subjugate the United States into an economic colony makes it easy to embrace Stephen Decatur's call to patriotic arms. "Our country, right or wrong."

Jingoism is always therapeutic. But sometimes it can prevent resistance to wrongheaded policies that lead to reciprocal recriminations. That's why Alcibiades made more sense than Decatur: "And the true lover of his country is not he who consents to lose it unjustly rather than attack it, but he who longs for it so much that he will go to all lengths to recover it."

That almost sounds subversive. It's not. It simply means that if America's resistance to Japan's economic supremacist policies causes this nation some economic distress, we ought to be prepared to sustain sacrifices in the short run to assure long-range economic growth.

Right now, front-page headlines are using the phrase "trade war," helping to create the climate that has polarized the two nations into antagonistic camps.

The problem is so simple that a high school student could solve it. Two words: trade deficit. The U.S. trade deficit with Japan - \$60 billion - is the largest of any nation that trades with us. And the Japanese have done nothing to narrow

the gap.

"The Japanese are doing everything we would do," said a U.S.-Japanese trade expert who spoke on condition of anonymity. "And we've let them. They always send their best people to the bargaining table. We don't."

At the same time, the Japanese government-industry complex has consistently refused to negotiate in good faith to reduce the trade deficit. In 1982, the United States imported \$40 billion worth of products from Japan, but only exported \$21 billion of products to Japan. In 1992, both numbers proportionately swelled



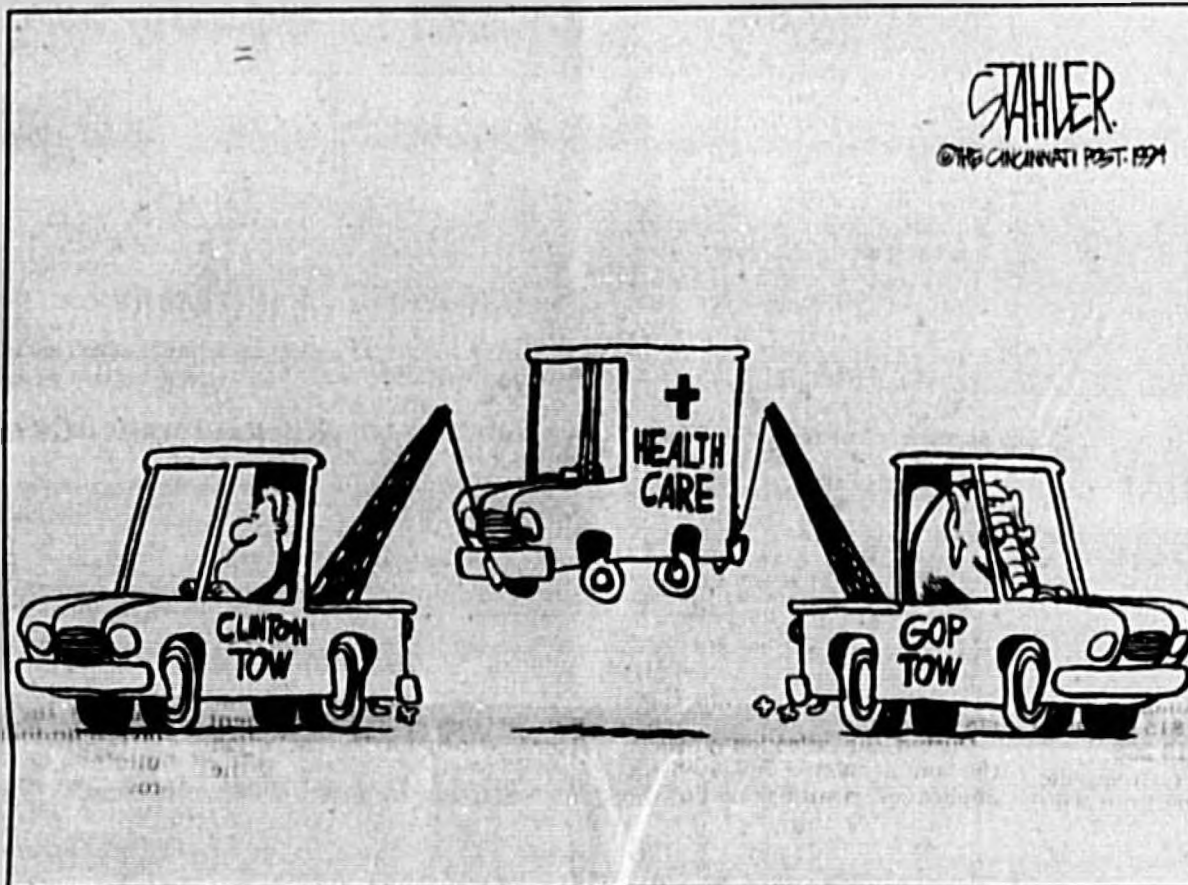
Jingoism is always therapeutic.

and the United States is still economically disadvantaged. The United States imported \$97 billion in products from Japan, but exported only \$48 billion worth of products to Japan. That 1992 trade deficit of \$49 billion is now \$60 billion.

The problem here is the kind of products. "Question: What do you call a country that exports raw materials and imports finished products?" former Chrysler President Lee Iacocca asked in his brilliant autobiography. "Answer: a colony." Exporting "wheat, corn, soybeans, coal and timber," while we import "cars, trucks, motorcycles, oil well equipment and electronics" does absolutely nothing to narrow the U.S.-Japan balance of trade gap.

Motorola is a poignant case in point. Last week, Motorola President Christopher Galvin estimated that Japan's tariff policies cost his company \$250 million to \$300 million annually in lost revenue. Multiply the number of companies by 25, and you get an idea of the causes of the trade deficit.

It's time to get tough with Japan. "Let us never negotiate out of fear," John F. Kennedy said in his most eloquent of all inaugural addresses. "But let us never fear to negotiate."



JACK ANDERSON

Health Organization needs a check-up

WASHINGTON - Since its creation in 1948, the World Health Organization has grown into a bloated international bureaucracy that often spends more on the care and feeding of its own officials than on battling health problems throughout the world.

That's one reason why officials at the Agency for International Development are so disturbed by the way WHO is rattling the tin cup to raise money for fighting tuberculosis.

It all began last year, when WHO, based in Geneva, declared the first "global health emergency" in its history to raise awareness of the worldwide spread of tuberculosis. With TB infection spreading throughout the world, WHO asked the United States to contribute \$3 million - one-third of a \$9 million budget - for a renewed effort to halt the spread of the disease. The money was to come from AID, already reeling from severe cuts in its global health budget.

AID officials spurned the request, saying there simply wasn't enough room in the already slashed budget to fund TB. Besides, international aid officials and other sources privately argue, WHO already receives \$138 million per year from U.S. taxpayers - money that could be redirected into controlling TB.

"The joke about WHO is, every time they get a new program, they put up a new building," one international aid official told us. That assessment may not be too far off the mark.

Although WHO claims credit for eradicating the smallpox virus, an independent report released last fall revealed a bureaucracy where waste is the rule rather than the exception.

A study conducted last year by a British think tank revealed among other things that three-fourths of WHO's \$872 million core budget for 1994-95 will be spent on salaries for organization officials, who earn a median income of more than \$70,000. For every \$2 spent on actual programs, the report states, \$8 is spent on administrative costs. Merely cutting costs from the WHO's \$5.6 million budget for "office supplies" could make a difference in the global health emergency.

While WHO lobbies wealthy governments for more TB funding, it lavishly spends \$50 million budget for meetings. In the next two years, the organization plans to meet in Geneva, Washington, D.C., Stockholm and Florence to discuss such weighty topics as "adolescent health" and "clean air at work." When they're not attending meetings, WHO officials are busy generating 101.6 million pages of reports that flow annually from the Geneva headquarters.

Even Rep. Tony Hall, D-Ohio, Congress' most tireless fighter against hunger and poverty, agrees that WHO is wasteful. "A lot of these bureaucracies have a lot of money and they point a lot of fingers," Hall told our associate Jan Moller. "They [WHO] have enough money that if they want to fund the [TB] program they can find the money for it." Hall, who chairs the Congressional Hunger Caucus, recently held hearings on the topic, which he said were designed to forge a consensus for action.

The biggest tragedy is that bureaucratic bickering and bloat are threatening to undermine the war against TB. The deadly disease is expected to take 30 million lives in the next decade, even though WHO officials say it's one of the most cost-effective diseases to cure.



The World Health Organization has grown into a bloated international bureaucracy.

DONNA BRITT

Just one big, happy family

WASHINGTON - Watching them relax on adjacent sofas, you can tell this isn't the first time that the russet-haired young woman and the courtly, balding man have sat here, chatting about the neighborhood, their respective kids, about homemade wine. A bottle sits nearby, unopened in the paper bag that Mr. George always uses when he brings over a sample.

The first time was three years ago. Back then, no wide-eyed, 6-month-old baby boy squirmed on Susan Farquhar's lap; she had no 2-year-old daughter whose dinner needed fixing.

The first time she conversed with Christopher Columbus George Jr., now 67, Farquhar had just moved with her husband into this roomy frame house in Northeast Washington, D.C. She had just one main concern: whether she and her husband would be welcomed. Like neighbors.

At first, says Farquhar, 28, she didn't much consider whether the fact that she and her husband are white would affect their reception by neighbors, 80 percent of whom are black.

"We wanted a house in D.C., and this is where we could afford it," says Farquhar. The suburbs they could afford to live in seemed too distant, or too anonymous. "We wanted a neighborhood."

But on moving day, in July 1991, Farquhar recalls, "I got scared. ...I could see these...mostly black middle-class families asking, 'Why are these people moving here?' And not want us here."

But her husband, a federal government employee who asked that his name not be mentioned in this column, said, "As long as we're nice and fix up our yard, they'll like us."

First to arrive were local kids intrigued by her cat's penchant for roof-climbing. Next came Mr. George - even longtime neighbors call the retired United Airlines employee that - with his Concord grape "welcome wine." ("I never sell it. ...It's a gift.") And Frances, from around the corner, asked if the Farquhars wanted to join in an impromptu neighborhood Christmas caroling party, which culminated in a "Rudolph the Red-Nosed Reindeer" rap by a 10-year-old boy.

"Everybody came over," Farquhar recalls. "My husband made a ham."

There must be thousands like her, like her neighbors. People of every hue who don't care overmuch what color their new neighbors are. Who feel blessed by their differences, not limited or cursed by them.

Certainly, we don't hear about them enough. I know about Farquhar only because she wrote me a letter - one of dozens of upbeat, lovely missives I've received describing the unexpected kindness and courtesy of everyday folks.

After her daughter's birth, wrote Farquhar, "so many neighbors came by." Her favorite visit: from a 13-year-old girl who inquired about the baseball glove hanging above the baby's crib. "When I explained that the mitt had been mine and was now my daughter's, (the girl) said, 'All right! Power to the Sister!'"

The timeworn leather mitt now hangs above the computer where Farquhar, a former researcher, types free-lance articles while staying home with her baby. The mitt was a big part of Farquhar's childhood around then-homogeneous Westchester County, N.Y. "I remember an Italian American family moving onto the street and people being up in arms. ...Another time, there was a woman who didn't speak English. ...I remember seeing her walking down the street with grocery bags, two boys spitting at her. ...I was 13."

"But when I was younger than that," continues Farquhar who says her ancestors are German and Scottish, "I lived in a real neighborhood, where we had block parties on Memorial Days, everybody knew each other. It feels more like that here."

Farquhar, who moved to Washington at age 20, says, "I missed learning about different kinds of people growing up. ...I like that my children get to see all kinds of people, to know different cultures."

Today, she's hanging out with Mr. George, who looks natty in a navy blue suit and who claims that his drawl is due to having been born "in Maine. ...The main part of North Carolina." Occasionally glancing out at Farquhar's Labradors, named Rhythm and Blues, Mr. George is explaining that winemaking is a neighborhood tradition, and that his brew comes in "three strengths - medium, strong and Love Potion."

He said he and his wife, Carolyn, a homemaker with whom he raised 12 children, felt no surprise in 1991, seeing a young, white couple unloading their belongings. "When we first moved here, it was all white. All of them were nice," he says with a grin. Then: "I was raised to love everybody."

He points at Farquhar. "She's just like I was, at Christmas passing out cookies to neighbors. We've always just been one big happy family."



She had just one main concern: whether she and her husband would be welcomed. Like neighbors.

Guns

Continued from Page 1A

"We have a three-day waiting period, and a background check through the Florida Department of Law Enforcement," Seminole County Sheriff Don Eslinger said, explaining Florida's requirement for gun purchases. The regulations were put in place during the late 1980s when the state constitution was amended, he explained. "There is a hotline mechanism for gun dealers to call for the background checks," Eslinger said. The sheriff's department is not involved in the background checks, however the department helps facilitate the licensing of other guns. "Unfortunately, this basically affects law abiding citizens," Eslinger commented. "and criminals still have other avenues to traffic firearms." Burt Nelson, owner of A & N Sports, South French Ave. said instant background checks are done on all persons purchasing firearms, however, the waiting period does not apply for rifles or

shotguns. The three-day waiting period for the purchase of a handgun applies, except if the buyer has a concealed weapon permit or is trading in a handgun to purchase another. There are also exceptions for the purchase of antique firearms. Some law enforcement, probation and parole officers are also exempt from the waiting period in Florida. There is a 72-hour waiting period in Florida for handgun purchases, not counting weekends and holidays, Nelson added. Under the law, 34 states and territories must start implementing the Brady law's five-day waiting period and background check for handgun purchases. Some jurisdictions where the wait and background check are supposed to be implemented could be surprised they're subject to that part of the law. The National Rifle Association, meanwhile, is trying to block its implementation with federal lawsuits contending the law violates states' rights and is unconstitutionally vague, said Bob

Corbin, a former Arizona attorney general and president of the NRA.

Corbin said he hopes to have the lawsuits filed in Arizona, Montana and possibly other states within a week.

"We're getting calls from all over the country, mostly from sheriffs who say it won't work and want to be plaintiffs," Corbin said Wednesday.

There are disputes about just where the new law applies.

But the Bureau of Alcohol, Tobacco and Firearms disagrees.

Handgun Control Inc., the Brady law's chief proponent during seven years of congressional battles before it was passed last November, developed a list last year of states it believed would be exempt. That list included Washington as well as Minnesota, North Carolina, Rhode Island and Tennessee.

But the ATF said the only exempt states and jurisdictions are California, Connecticut, Delaware, the District of Columbia, Florida, Guam, Hawaii, Illinois, Indiana, Iowa, Maryland, Massachusetts, Michigan, Missouri, Nebraska, New Jersey, New York, Oregon, Virginia, Wisconsin and Tennessee.

It noted, however, that a Colorado, North Carolina, Utah and Washington could become exempt if they pass bills pending in their state legislatures.

Information from the Associated Press was used in this report.

Bridgewater, out for blood

SANFORD — Bridgewater Apartments, 500 W. Airport Blvd., will be out for blood this Saturday. It is conducting a blood drive, through the cooperation of the Central Florida Blood Bank.

"We'll have finger-foos, balloons, and many other incentives," said Amy Keenan, marketing director for Cumberland Properties, which manages Bridgewater.

"Everyone is invited to come and donate blood this Saturday," she said. "We especially want our residents to step in, but for every friend they bring with them to donate, there will be some added incentives."

Keenan said she organized the event based on a story regarding the Central Florida Blood Bank, written several months ago in the *Sanford Herald*.

"I had no idea how much blood donations were needed right here in the Sanford area until I read that," she said. "so we immediately began organizing the blood drive we'll be holding tomorrow."

Linda Decker, of the Central Florida Blood Bank commented, "I think this is exceptional that this business is taking it upon themselves to set up this blood donation drive for us."

Decker added, "It couldn't come at a better time, because right now we are at an extremely critical level, and desperately need blood of all types."

The blood drive at Bridgewater Apartments, 500 W. Airport Blvd., will be held from 11 a.m. until 3 p.m., this Saturday, Feb. 26.

For additional information, phone Amy Keenan at 322-9104.

Fair

Continued from Page 1A

The Beans and others were making trips to the lumber market and taking tools in hand to ensure everything would be perfect for the second day of operation for the fair.

Bean said that the weather reports had had the organizers a little worried as the time for opening the gates approached, but they saw hardly any precipitation at the event.

"I think we got a few drops," she said. "But no one noticed at all."

The fair will be open tonight from 5 p.m. until midnight. Tomorrow and Sunday, the events will begin at 10 a.m. and run through midnight. The exhibitions will close at 10 p.m. each night. During the week, the fair is open only for evening hours.

The fair runs through March 6.

Longwood

Continued from Page 1A

ing to \$48,000 annually, which will include all non-litigation related matters. His fee for representation in litigation is \$90 an hour. Taylor's appointment is expected to be made official at the March 7 commission meeting.

The commissioners also selected candidates from Iowa, Illinois, Georgia and Florida to interview for city administrator.

Mayor Paul Lovstrand stressed no applicants have been eliminated from consideration for the \$56,000 a year job left vacant by the resignation of James McFellin in November. Gerry Norman has been serving as interim administrator until

the job is filled.

Selected to meet with the commissioners March 4 are:

• Douglas Clark, city administrator of Fella, Iowa since March 1987, \$18 million operating budget, 9,270 population.

• W. Shelton Smith, LaGrange, Georgia, county manager of Troup County, Ga. from Jan. 1993 to present, population 56,000 plus, formerly city manager Pascagoula, Mississippi, Sept. 1986 to Jan. 1993, population 26,000.

• Dodd Southern, Miami Springs, city manager Sept. 1988 to July 1993, \$15.6 million budget, population 13,268.

• Larry D. Stoeber, Greenville, Illinois, city manager from April

1985 to present, \$4 million budget, 1990 population of 5,108.

A total of 108 applications were received for administrator. The number of candidates was narrowed to 10 by the "Range Rovers," a group of volunteer city managers/administrators. Their fees are paid by the Florida City Managers Association. Many of the "Range Rovers" are retired city managers.

A committee of the Longwood, Winter Springs Chamber of Commerce also reviewed the applications and made recommendations to the commissioners.

During the selection process, the commissioners reviewed the applicants' resumes, noting the

size of the respective cities and their budgets, the number of city employees and job histories.

A major attribute the commission members looked for in a candidate was stability, staying in a city manager job for several years. Longwood has had six managers since 1986.

The commissioners will each spend time with the applicants March 4 then conduct the formal interviews during the evening.

In other business, the commissioners agreed to hire Amy Goodblatt of the firm of Killgore, Pearlman, Shepard and Stamp, P.A. as the Code Enforcement Board attorney. The selection will be officially voted on at the next commission meeting.

DEATHS

RALPH W. BAUER

Ralph W. Bauer, 73, Fayetteville Avenue, Deltona, died Wednesday, Feb. 23, 1994, at Central Florida Regional Hospital, Sanford. Born Dec. 28, 1920, in Boston, Mass., he moved to Central Florida from Wyckoff, N.J. in 1985. Mr. Bauer was a supervisor of A.T.C. Shipping Company, New York. He was Protestant. He served in the Maritime Service during World War II.

Survivors include wife, Carolyn; sons, Ralph W. Jr., Lubbock, Texas, John, Wyckoff, N.J.; sisters, Dorothy Kistingberg, Edna P. Nielsen, both of Burlingame, Calif.; brother, John C. Burlingame; four grandchildren.

Stephen R. Baldauff Funeral Home, Deltona, in charge of arrangements.

ALBERT EDWARDS

Albert Edwards, 73, Southwest Road, Sanford, died Wednesday, Feb. 23, 1994, at Deltona Healthcare Center. Born April 17, 1920, in Pierson, he moved to Central Florida in 1922. Mr. Edwards an auto mechanic. He was a member of Second Shiloh Missionary Baptist Church where he served on the Deacon Board and was church custodian. He was an Army veteran of World War II.

Survivors include wife, Margaret; sons, Albert Jr., Buffalo N.Y., Reginald, Sanford, Vincent, Camp LeJune, N.C., Erwin Leonard, Altamonte Springs; daughter, Margaret E. Currey, Sanford; brothers, Richard, Horace, both of Jacksonville, Don, Rochester, N.Y.; sister, Rosa Lee Falsion, Rochester, N.Y.; 19 grandchildren and two great-grandchildren.

Wilson-Eichelberger Mortuary, Inc., Sanford, in charge of arrangements.

MACK WILLIAM FIKES

Mack William Fikes, 60, Tuscarora Trail, Maitland, died Wednesday, Feb. 23, 1994, at his residence. Born Jan. 2, 1933, in Hermleigh, Texas, he moved to Central Florida in 1969. Mr. Fikes was a member of First Baptist Church, Orlando. He was an Army veteran.

Survivors include wife, Sandra; sons, Marchall, Maitland, James, Altamonte

Springs; daughter, Mary, Winter Park; mother, Lois Williams, Newcastle, Texas; brothers, Wade, Olney, Texas, Dean, Ft. Worth, Thomas, Phoenix, Ariz.; sister, Laverne Brown, Shreveport, La.

Baldwin-Fairchild Funeral Home, Altamonte Springs, in charge of arrangements.

JAMES FRANKLIN LUKE II

James Franklin Luke, II, 30, Barclay Avenue, Altamonte Springs, died Tuesday, Feb. 22, 1994, at his residence. Born March 7, 1963, in Miami, he moved to Central Florida in 1972. Mr. Luke was a salesman. He was Catholic.

Survivors include father, four brothers and sisters, all of Oviedo.

Baldwin-Fairchild Funeral Home, Altamonte Springs, in charge of arrangements.

MARTHA EVELYN McEVERS

Martha Evelyn McEvers, 71, East Magnolia Avenue, Longwood, died Wednesday, Feb. 23, 1994, at her residence. Born Aug. 15, 1922, in Benton, Ill., she moved to Central Florida in 1958. She was a homemaker.

Survivors include sons, Jim A., Knoxville, Tenn., Timothy M., Sparta, Tenn.; brother, Martin Finn, Herrin, Ill.; four grandchildren and four great-grandchildren.

Gaines Carey Hand Garden Chapel Funeral Home, Longwood, in charge of arrangements.

NANCY ANN ROACH

Nancy Ann Roach, 38, Sumatra Avenue, Deltona, died Wednesday Feb. 23, 1994, at Central Florida Regional Hospital, Sanford. Born March 13, 1955, in Bethesda, Md., she moved to Central Florida in 1992. Mrs. Roach was a line leader for a window manufacturer. She was Baptist. She was a member of the D.A.V. Auxiliary, Chapter 30, Sanford.

Survivors include daughter, Christina Marie Eamigh, Deltona; son, Bruce McKinley Eamigh, Deltona; father, Dana Roach, Sanford, stepmother, Mona Roach, Sanford; mother, Freda I. Morris, Niles, Ohio; brothers, Jerry A., Dana L., both of California.

Baldwin-Fairchild Cemetery

and Funeral Home, Lake Mary, in charge of arrangements.

ELIZABETH DAGGETT ROBBINS

Elizabeth Daggett Robbins, 55, Carriage Hill Circle, Casselberry, died Thursday, Feb. 24, 1994. Born in Niagara Falls, N.Y., she moved to Central Florida in the early 1950s. Mrs. Robbins was a homemaker. She was a member of St. Richards Episcopal Church, Winter Park, the Robert P. Duvall Chapter of DAR and Deer Run Golf Club.

Survivors include husband, Leon J.; daughters, Mary Katherine Cathcart, Laura Edwards, both of Phoenix, Elizabeth M., Orlando, Jessica G., Casselberry; sisters, Katherine Newman, Hudson, Ohio, Gall Perry, White River Junction, Vt.; brother, John F. Daggett, Sarasota; five grandchildren.

Martin-Jackson Funeral Home, Sarasota, in charge of arrangements.

MELBA G. TALLEY

Melba G. Talley, 62, Ivanhoe Way, Casselberry, died Wednesday, Feb. 23, 1994, at her residence. Born July 5, 1931, in Hendersonville, N.C., she moved to Central Florida in 1954. Mrs. Talley was a retired food service

worker and a member of Forrest Ave. Baptist Church, Apopka.

Survivors include sons, Gary A., Casselberry, Steve W., Union Park, Willis H., Altamonte Springs, Tim T., Apopka; daughters, Linda J. Woods, Wanda J. Kelly, both of Casselberry; brother, Charles Bradley, Columbia, S.C.; sisters, Jackie Williamson, Hendersonville, Marvis Barbour, Graham, N.C.; 13 grandchildren and one great-grandchild.

Baldwin-Fairchild Funeral Home, Goldenrod, in charge of arrangements.

FUNERAL

ROACH, NANCY ANN
Funeral services for Nancy Ann Roach, age 38, of Deltona, who passed away Wednesday, will be conducted Saturday at 10 a.m. at the Oaklawn Park Chapel of the Baldwin-Fairchild Funeral Home with the Rev. Bob Work officiating. Interment will follow at Oaklawn Park Cemetery, Lake Mary. Visitation for friends will be held Friday from 7 p.m. at the funeral home.

Baldwin-Fairchild Funeral Home, Oaklawn Park Chapel, in charge of arrangements.

FREE! ANIMAL SHOW



Rare Exotic Animals
TIGER EYE PRODUCTIONS
Presenting
FLEA FUN WORLD / WORLD
HWY 17-92, SANFORD
321-1792 or 330-1792

Special Thanks...
On behalf of the Fanny Johnson family, we would like to thank everyone who brought food, sent flowers and made donations to hospice after our mother passed away recently. An extra special thanks to Westview Baptist Church and its pastor and members for their special love and attention.
Sincerely,
J.K. Johnson and family

Garbage

Continued from Page 1A

among the four haulers for a service which requires an additional \$127 for each bag of yard waste collected.

Currently, nearly a quarter of all households in the unincorporated areas of the county do not subscribe to garbage collection service.

Many residents complain about the yard waste "bag-tag" fee, but are divided over the mandatory program. Many rural folks don't want the program because they haul their own garbage to the dump or transfer station. Many suburban dwellers do want it to keep their neighborhoods clean.

When McLain called for support of his program Monday and Tuesday, he found no commissioner willing to even vote on the topic. In response, chairman

Dick Van Der Weide called for a new meeting each time. Most commissioners say they are at least willing to consider a mandatory program if it serves to lower rates.

Pat Warren was out of town Monday, and ill Tuesday, so did not participate in the vote. Carlton Henley said he needed more information on the details

of the program before he could vote. Dick Van Der Weide said he was concerned the county may arrive at a lower rate if the garbage collection contracts were rebid.

Commissioner Larry Furlong does not support the proposal and wants to scrap much of the county's garbage program and eliminate franchise areas.

Growth

Continued from Page 1A

SWT Construction of Altamonte Springs. Cristol explained. "Present plans call for a completion date by July of this year."

The new Walgreens drug store is being proposed by Evans Properties, at the southeast corner of French Avenue and 25th Street. The building presently on the corner of the land has been the site of several restaurants during the past decade, the most recent being Webb's Diner.

Jerry C. Evans, president of WEB Properties, is planning to develop the site. In order to do so however, he has requested the city vacate a portion of the alley that runs through the property, and reroute the utilities in the alley.

Although Evans was not immediately available for comment, a staff member in his office indicated that the Walgreens facility will be a free-standing structure, not part of any complex.

It was not immediately revealed if the project would involve eliminating the present building or expanding it to provide the floor space required for the Walgreen store.

The matter is scheduled for consideration at Monday night's

Sanford City Commission meeting.

The city's Plans Review Committee considered the request and has recommended approval of the alley vacating. General agreements have been obtained to relocate cable TV lines, power lines and other utilities for the vacating.

Evans has indicated that WEB is willing to absorb costs for relocation of the lines.

City Manager Bill Simmons is recommending the commission authorize the City Attorney to prepare the property ordinance to close, vacate and abandon the alley as requested, with conditions and stipulations recommended by the Plans Review Committee, which deals with such items as relocating the sewer line, providing a 20 foot easement, and construction of a new sanitary sewer.

The item is listed near the beginning of Monday's commission meeting beginning at 7 p.m. in the commission chambers of Sanford City Hall.

Affordable Health Care
For self-employed & small business owners.
FREE QUOTES
407-880-8605
1-800-207-8605

Spirit of Florida

Four hearts icon

Your United Way

AAA TRANSMISSION

FREE TOWING & ESTIMATES
CALL FOR APPOINTMENT

\$14.95 TRANSMISSION TUNE-UP INCLUDES

\$75 OFF MAJOR REPAIRS

SANFORD 321-3270
LAKE MARY / HEATHROW 330-3810
DELAND / DELTONA (804) 775-0003
ALT. SPS. / LONGWOOD 830-5500
ORLANDO 380-6500

SEMINOLE COUNTY FAIR

FEBRUARY 24TH - MARCH 6TH
AT SEMINOLE GREYHOUND PARK CASSELBERRY

Just Off 17-92, between SR 434 & SR 436 in Casselberry

NIGHTLY IN THE FREE GRANDSTAND 8:00 P.M.

Chevrolet
Simply Smarter
Presents The Laser
Fireworks Spectacular

"Americana Rhapsody"
Produced By **SeaWorld**
Orlando, Florida

OVER 18 FREE SHOWS
DAILY AT 6 DIFFERENT STAGES

For information call: (407) 699-9770

FEATURING CUMBERLAND VALLEY SHOWS OVER 30 THRILLING RIDES, GAMES, FOODS, SHOWS AND ATTRACTIONS.

ALL STAGE SHOWS FREE WITH YOUR GATE ADMISSIONS.

GOP starts maneuvering early

By JOHN KING
AP Political Writer

WASHINGTON — At Dick Cheney's office, aides use tacks on a map to track his travels: 35 states since leaving the Pentagon's top job a little over a year ago. Bob Dole's got a travel log too: 39 states and counting in the past year.

The frequent flying and friends made along the way might come in handy if, as expected, Cheney and Dole enter the next presidential election campaign, because a new, front-loaded 1996 GOP primary calendar could result in an extraordinarily fast — and expensive — selection of a Republican nominee.

With the Iowa caucuses on Feb. 12 and the March 26 California primary as bookends, 33 states, including the eight most populous, and Puerto Rico are tentatively scheduled to hold Republican presidential primaries and caucuses in a six-week span in 1996.

That would be 10 more GOP presidential preliminaries in that period than in 1992.

And a few more states are considering moving up, as the changes Democrats have sought to spread their nomination process are taking hold on a Republican selection process that for years was deliberately

stretched out, with an emphasis on caucuses over primaries.

"It clearly helps the front-runners, those with solid name identification and the ability to raise solid sums of money quickly," said Ralph Reed, executive director of Pat Robertson's Christian Coalition, an active voice in many states with early Republican contests.

So it's little wonder that the 1996 Republican presidential prospecting is under way so early. Money and organization are likely to count more than ever because of a crowded calendar that some believe could result in a de facto nominee by mid-March.

"It is going to put a premium on having the money needed already raised and set aside, and place a premium on organization and people with logistics experience," said David Addington, a political adviser to Cheney, the former defense secretary. "If you decide to run, you are going to have to have February and March 1996 planned out in detail to the last dollar, the last airplane ride."

None of the likely Republican candidates says he is thinking that far ahead; indeed all say that helping GOP state, local and national candidates this year comes first. Still, mindful of the likely calendar changes,

several leading GOP prospects are taking early steps toward 1996 runs.

In addition to making frequent political trips, including a combined eight stops in the kickoff states of Iowa and New Hampshire, Dole gave generously to Republican candidates and causes.

In a recent report to the Federal Election Commission, Dole's Campaign America political action committee reported nearly \$143,000 in contributions, ranging from gifts to Senate colleagues and the Iowa Republican Party to a GOP candidate for city council in Atlanta.

Texas GOP Sen. Phil Gramm used his position as head of the National Republican Senatorial Committee to visit more than 30 states, and his political travels included seven stops in New Hampshire and five in Iowa.

Gramm's campaign accounts — he has two — entered 1994 with an impressive \$7.2 million on hand. Dole's Campaign America, by comparison, had \$1.9 million in the bank, according to FEC reports.

Former Housing Secretary Jack Kemp also repped up his fund-raising, establishing a new political action committee, Campaign for a New Agenda, and holding a major Super Bowl event to get it up and running.

THE LIQUOR STORE

WE CASH RAPID REFUND CHECKS

CIGARETTES

GENERIC BRAND \$12.49 100'S PREMIUM BRANDS \$14.99 100'S

COURVOISIER 750 \$18.99	BOONE'S WINE 750 \$1.99	SMIRNOFF VODKA 1.75 \$15.99
E&J BRANDY 1.75 \$16.99	CARLO ROSSI 3 LITER \$6.99	BUSCH 12 PACK \$4.99 CASE \$9.95
RONRICO 750	GILBEY'S GIN & VODKA 750	BUDWEISER \$12.99
LORD CALVERTS 750	OLD CROW 750 \$6.99	COORS MILLER LITE MILLER DRAFT \$6.39

1303 Sanford Ave. (13th St. & Sanford Ave.) SANFORD 322-3884

• GOVERNMENT CHECKS
• MONEY ORDERS
• PRICES DO NOT INCLUDE TAX

First female combat pilot completes Air Force training

By AL BRAVO
Associated Press Writer

LUKE AIR FORCE BASE, Ariz. — Air Force 1st Lt. Jeannie Flynn is going where no woman has gone before.

Flynn, 27, is the nation's first female combat pilot.

"I've wanted to fly as long as I can remember," she said Thursday at a news conference marking completion of her six-month combat training course. "Once I knew something about airplanes, I knew I wanted to fly fighters."

But there was no way, even though she graduated first in her pilot training class, because she is a woman and the military didn't allow women to fly in combat.

Then in April, the Pentagon lifted the ban, allowing female Air Force, Navy and Army pilots to fly combat jets, bombers and helicopters.

Flynn will fly the F-15E Strike Eagle, which some consider the most advanced fighter-attack aircraft in the world.

"I wouldn't have quins having her on my wing," said one of Flynn's instructors, Capt. Jeff Fiebig. "She is very tough, physically and mentally, and was definitely an above average student."

Her training included 224 hours in the classroom, 37 hours in simulators and 64 hours in the air, practicing such skills as night and day surface attacks.

It took a little time, but her male colleagues adjusted to her presence. "I was just another student," said Flynn, a St. Louis native who earned a masters degree in aeronautics and astronautics from Stanford University.

"I was as ready as any of the other guys," she said. "When the time arrives I'll be able to do

the right thing."

She completed her pilot training Feb. 10. An earlier meeting with the media at this base west of Phoenix was delayed because she had chicken pox.

She now goes on to 2 1/2 weeks of survival training at Fairchild Air Force Base in Washington before starting her assignment with the 336th squadron at Seymour Johnson Air Force Base near Goldsboro, N.C.

Other women also are training to do what Flynn does. Last week, Lt. Shannon Workman became the first woman to qualify to fly combat aircraft off Navy war ships. Workman, 26, flew her final qualifying flight Saturday from the carrier Dwight D. Eisenhower.

Flynn, who recognizes her status as a role model, had some advice for other women.

"Do what you want to do. This is what I want to do, and I work my hardest and here I am."



Katie's
WEKIVA
RIVER
LANDING

SEMINOLE COUNTY



Katie's Wekiva River Landing
Real World Radio Network
and Real Radio 104.1

Proudly Present

"A Day On The River"

With Live Music By

- Sea Dawg • Potential Frenzy
- The Bassments • John Mark Shilling Trio
- The Sleepers • Jill Towers • The Wait

FREE ADMISSION!

Sunday, February 27th - 10am 'til Dark

- Bikini Contest • Canoe Races
- Plenty of Food and Beer Available!

(Sorry, No Coolers Allowed)



SR 46
W

From I-4 Exit #51, SR46 (Sanford Exit) Go west 4 1/2 miles, turn right on Wekiva Park Drive at the Katie's Landing sign

407/628-1482

Legal Notices

NOTICE OF FICTITIOUS NAME

Notice is hereby given that I am engaged in business at P.O. Box 575, Goldenrod, Fla. 32733 0375, Seminole County, Florida, under the Fictitious Name of ANGELS REMEMBERS, and that I intend to register said name with the Division of Corporations, Tallahassee, Florida, in accordance with the provisions of the Fictitious Name Statutes, To Wit: Section 845.09, Florida Statutes 1991.

Pat Pachmeyer
Publish: February 25, 1994
DEO 234

NOTICE OF FICTITIOUS NAME

Notice is hereby given that we are engaged in business at 309 Heath Ln., Casselberry, FL 32707, Seminole County, Florida, under the Fictitious Name of PAX PROMOTIONS, and that we intend to register said name with the Division of Corporations, Tallahassee, Florida, in accordance with the provisions of the Fictitious Name Statutes, To Wit: Section 845.09, Florida Statutes 1991.

Pat Pachmeyer
Al Pachmeyer
Publish: February 25, 1994
DEO 237

NOTICE OF FICTITIOUS NAME

Notice is hereby given that I am engaged in business at 1335 Bennett Drive, Suite 127, Longwood, Florida 32750, Seminole County, Florida, under the Fictitious Name of EAST TO WEST IMPORTS, and that I intend to register said name with the Division of Corporations, Tallahassee, Florida, in accordance with the provisions of the Fictitious Name Statutes, To Wit: Section 845.09, Florida Statutes 1991.

Jennifer Scarbrough
Publish: February 25, 1994
DEO 240

NOTICE OF FICTITIOUS NAME

Notice is hereby given that I am engaged in business at 995 SR 424 North, Suite 205, Altamonte Springs, FL 32714, Seminole County, Florida, under the Fictitious Name of NAIL ATTITUDES, and that I intend to register said name with the Division of Corporations, Tallahassee, Florida, in accordance with the provisions of the Fictitious Name Statutes, To Wit: Section 845.09, Florida Statutes 1991.

Sidney Reyes
Publish: February 25, 1994
DEO 244

Legal Notices

NOTICE OF PUBLIC AUCTION

Notice is hereby given. Seminole Wrecker Service will sell at Public Auction for salvage for cash on demand in highest bidder, the following described vehicles:

March 09, 1994
Mc Chev. Cavalier
VIN#1G1JE77PKG1J9M17

The auction will be held at 12:00 pm on the said dates above. At Seminole Wrecker Service, 2540 S. Myrtle Ave., Sanford, Fla. 32773. Prospective bidders may inspect vehicles one hour prior to sale. Terms are cash or certified funds. Seminole Wrecker reserves the right to accept or reject any and all bids.

Publish: February 25, 1994
DEO 239

IN THE CIRCUIT COURT FOR SEMINOLE COUNTY, FLORIDA

PROBATE DIVISION

File Number 94-079 CP

IN RE: ESTATE OF GEORGE ELLIOTT Deceased

NOTICE OF ADMINISTRATION

The administration of the estate of GEORGE ELLIOTT, deceased, File Number 94-079 CP, is pending in the Circuit Court for Seminole County, Florida, Probate Division, the address of which is Seminole County Courthouse, Probate Division, 301 North Park Avenue, Sanford, Florida 32771. The names and addresses of the personal representative and the personal representative's attorney are set forth below.

All interested persons are required to file with this court, WITHIN THREE MONTHS OF THE FIRST PUBLICATION OF THIS NOTICE: (1) all claims against the estate and (2) any objection by an interested person on whom this notice is served that challenges the validity of the will, the qualifications of the personal representative, venue, or jurisdiction of the court.

All claims and objections NOT SO FILED WILL BE FOREVER BARRED.

Publication of this Notice has begun on February 25, 1994.

Personal Representative:
AILEEN ELLIOTT
1140 Arden Street
Longwood, FL 32750
Attorney for Personal Representative:
THOMAS L. STEPHAN, ESQUIRE
531 Dog Track Rd.
Longwood, FL 32750
(407) 747-5322
Publish: February 25 & March 4, 1994
DEO 234

Legal Notice

IN THE CIRCUIT COURT IN AND FOR THE EIGHTEENTH JUDICIAL CIRCUIT PROBATE DIVISION, SEMINOLE COUNTY, FLORIDA

CASE NUMBER: 94-154 CP

IN RE: THE ESTATE OF GERTRUDE ELIZABETH LEWIS. Deceased

NOTICE OF ADMINISTRATION

The administration of the estate of GERTRUDE ELIZABETH LEWIS, deceased, File Number 94-154 CP, is pending in the Circuit Court for Seminole County, Florida, Probate Division, the address of which is Seminole County Courthouse, Probate Division, 301 North Park Avenue, Sanford, Florida 32771. The names and addresses of the personal representative and the personal representative's attorney are set forth below.

ALL INTERESTED PERSONS ARE NOTIFIED THAT:

All persons on whom this notice is served who have objections that challenge the validity of the will, the qualifications of the personal representative, venue, or jurisdiction of this Court are required to file their objections with this Court WITHIN THE LATER OF THREE MONTHS AFTER THE DATE OF THE FIRST PUBLICATION OF THIS NOTICE OR THIRTY DAYS AFTER THE DATE OF SERVICE OF A COPY OF THIS NOTICE ON THEM.

All creditors of the decedent and other persons having claims or demands against decedent's estate on whom a copy of this notice is served within three months after the date of the first publication of this notice must file their claims with this Court WITHIN THE LATER OF THREE MONTHS AFTER THE DATE OF THE FIRST PUBLICATION OF THIS NOTICE OR THIRTY DAYS AFTER THE DATE OF SERVICE OF A COPY OF THIS NOTICE ON THEM.

All other creditors of the decedent and persons having claims or demands against the decedent's estate must file their claims with this court WITHIN THREE MONTHS AFTER THE DATE OF THE FIRST PUBLICATION OF THIS NOTICE. ALL CLAIMS, DEMANDS AND OBJECTIONS NOT SO FILED WILL BE FOREVER BARRED.

The date of the first publication of this notice is February 25, 1994.

JOHN SOKOLOWSKY
Personal Representative
638 Acacia Drive
Longwood, Florida 32750
CARMINE M. BRAVO, ESQUIRE
Carmine M. Bravo, P.A.
2957 West State Road 43,
Suite 400
Longwood, Florida 32777
(407) 774-1444
FAX: (407) 774-7130
Florida Bar Number: 117636
Attorney for Estate
Publish: February 25 & March 4, 1994
DEO 233

Legal Notice

ST. JOHNS RIVER WATER MANAGEMENT DISTRICT GIVES NOTICE OF INTENDED AGENCY ACTION

The District gives notice of its intent to issue a permit to the following applicant(s) on March 8, 1994:

CITY OF ALTAMONTE SPRINGS, FL 32701, application #117-036AG. The project is located in Seminole County, Sections 13, 14, 23 & 24, Township 21 South, Range 29 East. The application is for MODIFICATION OF THE EXISTING DRAINAGE WELLS IN ORDER TO LOWER THE CONTROL LAKE LEVEL FROM ELEVATION FOR LAKE ORIENTA. The receiving waterbody is LAKE ORIENTA.

CITY OF ALTAMONTE SPRINGS, FL 32701, application #117-036AG. The project is located in Seminole County, Section 34, Township 31 South, Range 29 East. The application is for EXCAVATION AND FILLING ASSOCIATED WITH THE MODIFICATION OF THE LAKE ORIENTA DRAINWELL. The receiving waterbody is LAKE ORIENTA.

The files containing each of the above-listed application(s) are available for inspection Monday through Friday except for legal holidays, 8:00 a.m. to 5:00 p.m. at the St. Johns River Water Management District Headquarters or the appropriate field office. The District will take action on each permit application listed above unless a proposed permitting decision (proceeding/hearing) is filed pursuant to the provisions of section 120.37, F.S., and section 40C.1-311, F.A.C. A person whose substantial interests are affected by any of the Districts proposed permitting decisions identified above may petition for an administrative hearing in accordance with section 120.37, F.S. Petitions must comply with the requirements of Florida Administrative Code Rules 40C.1-111 and 40C.1-321 and be filed with (received by) the District Clerk, P.O. Box 1429, Palatka, Florida 32978-1429. Petitions for administrative hearing on the above application(s) must be filed within fourteen (14) days of publication of this notice or within fourteen (14) days of actual receipt of this intent, whichever first occurs. Failure to file a petition within this time period shall constitute a waiver of any right such person may have to request an administrative determination (hearing) under section 120.37, F.S., concerning the subject permit application. Petitions which are not filed in accordance with the above provisions are subject to dismissal.

Shannon Barican
Sr. Permit Data Technician
Permit Data Services Division
St. Johns River Water Management District
Publish: February 25, 1994
DEO 238

Sick Of Your Present Job?

TAKE TWO ASPIRIN AND CHECK THE

CLASSIFIEDS

EVERY DAY

NOTICE

The St. Johns River Water Management District has received an application for Consumptive Water Use from:

ARVIDA CORPORATION, ATTN: JOE DOBOSH, 1275 LAKE HEATHROW LANE, HEATHROW, FL 32746, application #2-117-0037ANF2M. The District proposes to allocate 0.552 million gallons per day of water for GOLF COURSE, URBAN LANDSCAPE irrigation. The withdrawals used by this proposed project will consist of GROUND WATER FROM THE FLORIDIAN AQUIFER SURFACE WATER FROM WHOLLY OWNED STORMWATER LAKES via ELEVEN EXISTING WELLS AND TEN EXISTING PUMPS to serve 195.2 acres in Seminole County located in the

NW 1/4 OF NW 1/4 OF NE 1/4 OF SE 1/4 of Section 12, Township 20 South, Range 29 East;
NE 1/4 OF SW 1/4 OF SW 1/4 OF SE 1/4 of Section 12, Township 20 South, Range 29 East;
NE 1/4 OF NE 1/4 OF NE 1/4 OF SE 1/4 of Section 11, Township 20 South, Range 29 East;
NE 1/4 OF NE 1/4 OF NE 1/4 OF SE 1/4 of Section 11, Township 20 South, Range 29 East;
SE 1/4 OF NE 1/4 OF NW 1/4 OF SE 1/4 of Section 11, Township 20 South, Range 29 East;
SE 1/4 OF NE 1/4 OF NW 1/4 OF SE 1/4 of Section 11, Township 20 South, Range 29 East;
SE 1/4 OF SW 1/4 OF SE 1/4 OF SE 1/4 of Section 11, Township 20 South, Range 29 East;
SW 1/4 OF SW 1/4 OF NE 1/4 OF NE 1/4 of Section 12, Township 20 South, Range 29 East;
SW 1/4 OF NW 1/4 OF NW 1/4 OF SW 1/4 of Section 01, Township 20 South, Range 29 East;
NE 1/4 OF SW 1/4 OF NW 1/4 OF NW 1/4 of Section 01, Township 20 South, Range 29 East;
NW 1/4 OF NW 1/4 OF SW 1/4 OF NE 1/4 of Section 12, Township 20 South, Range 29 East;
NW 1/4 OF NE 1/4 OF NW 1/4 OF SW 1/4 of Section 11, Township 20 South, Range 29 East;
SE 1/4 OF SE 1/4 OF SE 1/4 OF SE 1/4 of Section 11, Township 20 South, Range 29 East;
SW 1/4 OF SE 1/4 OF SE 1/4 OF SW 1/4 of Section 12, Township 20 South, Range 29 East;
NE 1/4 OF SW 1/4 OF NW 1/4 OF NE 1/4 of Section 12, Township 20 South, Range 29 East;
SE 1/4 OF NE 1/4 OF NE 1/4 OF SE 1/4 of Section 02, Township 20 South, Range 29 East;
NE 1/4 OF SW 1/4 OF NW 1/4 OF NW 1/4 of Section 01, Township 20 South, Range 29 East;
NW 1/4 OF NE 1/4 OF SE 1/4 OF SW 1/4 of Section 12, Township 20 South, Range 29 East;
NE 1/4 OF NE 1/4 OF NE 1/4 OF SE 1/4 of Section 11, Township 20 South, Range 29 East;

The Governing Board of the District will take action to grant or deny the application on March 8, 1994. Should you be interested in the application, you should contact the St. Johns River Water Management District at P. O. Box 1429, Palatka, Florida 32178-1429, or in person at its office on State Highway 100 West, Palatka, Florida, or by phoning 904-329-4401. Written objections to the application may be made, but should be received no later than 14 days from this publication. Written objections should identify the objector by name and address, and fully describe the objection to the application. All timely filed written objections will be presented to the Board for its consideration in its deliberation on the application prior to the Board taking action on the application.

Janet Stein, Senior Permit Data Technician
Division of Permit Data Services

Sports

B

IN BRIEF

LOCALLY

No youth basketball Saturday

SANFORD — The championship playoffs in the Sanford Youth Basketball League scheduled for tomorrow (Feb. 26) has been postponed because of the all-star tournaments this week.

The finals will be held next Saturday, March 5, at the Sanford Middle School Gymnasium.

AROUND THE STATE

Capitals best Panthers

MIAMI — Randy Burridge and Michal Pivonka each scored as the Washington Capitals beat the Florida Panthers 2-1 Thursday night.

Bob Kudelski scored with five minutes left to ruin Washington goalie Don Beaupre's shutout.

No. 21 FIU women blast UCF

MIAMI — Albena Branzova had 29 points to lead No. 21 Florida International in a 98-53 rout of Central Florida Thursday.

Tamika Coley led UCF (11-13) with 17 points.

AROUND THE NATION

NBA fines Miller, Bowie

NEW YORK — Reggie Miller of Indiana and Anthony Bowie of Orlando were each fined \$5,000 Thursday for fighting during a game.

Miller and Bowie were penalized for elbowing each other and wrestling on the floor during the first quarter of Wednesday night's game.

Orlando's Scott Skiles was fined \$2,500 for leaving the bench during the incident.

Tulane roll by USF

NEW ORLEANS — Senior Carlin Hartman had 20 points and a career-high 13 rebounds to lead Tulane over South Florida, 72-60, Thursday night.

Jerome Robinson led USF with 18 points.

Charleston holds off FIU

CHARLESTON, S.C. — Marion Busby scored 28 points and Thaddeous Delaney had 11 points and 13 rebounds as the College of Charleston beat Florida International 64-59 Thursday.

FIU was paced by Joe Leake's 19 points.

AROUND THE WORLD

Pupa, Lightning snuff Flames

CALGARY, Alberta — Tampa Bay's Daren Pupa posted his fourth shutout Thursday as the Lightning beat the Calgary Flames 4-0.

Scoring for Tampa Bay were Denis Savard, Brian Bradley, Rob DiMaio, and Chris Gratton.

WHAT'S HAPPENING

TODAY

JUCO Baseball

North Florida JC at Seminole CC, 3 p.m.

Baseball

Oviedo at Apopka, 7 p.m.
Lake Howell at University, 4 p.m.
Lake Brantley at Kissimmee-Osceola, 7 p.m.

Boys' Basketball

4A-Region II at Dr. Phillips High School: St. Petersburg-Gibbs vs. Eau Gallie, 6 p.m.; St. Petersburg-Boca Ciega vs. Seminole, 8 p.m.

SATURDAY

JUCO Baseball

Valencia CC at Seminole CC, 2 p.m.

Baseball

Sarasota-Riverview at Lake Brantley, 1 p.m.

Softball

Early Bird Tournament at Merrill Park: First round & Lantana-Santalucas vs. Edgewater, Lake Mary vs. Tavaras, Lake Brantley vs. Evans, Orange Park vs. Eau Gallie.

Track and Field

Eagle Relays (boys only), Showalter Field, Winter Park, 10 a.m.
Lake Howell Relays (girls only), Richard L. Evans Field, 10 a.m.

BEST BETS ON TV

BASKETBALL
7:30 p.m. — SUN, New Jersey Nets at Orlando Magic. (L)

Complete listings on Page 2B

Heading for the wire

M.A. Erectors sweep deuce

From Staff Reports

SANFORD — M.A. Erectors worked a double shift Thursday night at Pinehurst Park and it paid off handsomely in the form of a two-game sweep of the S&S Raiders in the Sanford Recreation Thursday Men's Polar Bear Slowpitch Softball League.

Briar Corp. opened the evening with a 7-0 forfeit win over Exterior Homesavers. M.A. Erectors followed with an 18-7 win over the S&S Raiders in the regularly scheduled contest and a 17-3 beating of the Raiders in a makeup of a game

S&S Raiders	003	050	0	-	7	13
M.A. Erectors	104	331	4	-	18	23

From Staff Reports

rained out earlier in the season. With two weeks left in the season, M.A. Erectors (6-1) holds a one-game lead on Briar Corp. (5-2). Exterior Homesavers (2-5) is third in front of the S&S Raiders (1-6).

Paul Rodriguez hit for the cycle to lead M.A. Erectors' 23-hit attack in the first game, collecting an inside-the-park home run, triple, double, single, three runs scored, and three RBI. Simon Morley added a triple, double, single, two runs, and two. Chris Bullock had three doubles, two runs, and three RBI.

See Pinchurst, Page 2B

A.D. Rosier gains on title

From Staff Reports

SANFORD — The fat lady isn't singing yet, but she's warming up in the wings.

A.D. Rosier/Florida Sport Wear moved within a game of clinching the championship of the Sanford Recreation Department Men's Thursday Night Polar Bear Slowpitch Softball League at Chase Park with a come-from-behind 9-8 victory over Sanford First Baptist Church.

First Baptist held leads twice, taking a 2-0 lead in the top of the first inning and then scoring six

Sanford First Baptist Church	200	000	0	-	1	12
A.D. Rosier/Fla. Sport Wear	122	103	4	-	9	15

Stiffey Affordables	418	030	4	-	13	18
Beer:30	003	003	0	-	4	11

runs in the fifth inning to lead 8-6. But the league-leaders would not fold, scoring three runs in the bottom of the sixth inning to claim the victory.

In the other game, Stiffey Affordables kept its title hopes alive by taking a 5-0 lead in the second inning and never allowing Beer:30 to get closer than two runs again in taking a 12-6 triumph.

A.D. Rosier/Florida Sport Wear is now 5-1 on the season, while Stiffey Affordables is 3-2. First Baptist is 2-4 and Beer:30 1-4.

See Chase, Page 2B

Deltona strikes early, then holds off Patriots

By DEAN SMITH
Herald Sports Writer

DELTONA — Lake Brantley dug itself a hole it could not get out of Thursday afternoon, dropping a 6-5 decision to Deltona in a girls' softball game at Deltona High School.

The Wolves scored six runs in the bottom of the first inning to erase a 2-0 deficit and the Patriots could not come all the way back against the offerings of freshman hurler Tasha Mathis.

"This is a huge win for us," said Deltona head coach Chris Ramer. "We've been in every game this season but have not been able to win. Maybe now we'll realize we can play with, and beat, a quality program."

The win raised the Wolves' record to 1-4, while Lake Brantley fell to 2-1. The Patriots will take part in the Lake Mary Early Bird Tournament on Saturday, opening play against Evans at 9 a.m. at Merrill Park in Altamonte Springs.

Lake Brantley's first inning runs came on a pair of infield singles by Annie Freeburg and Kelly Treat, a sacrifice RBI bunt by Tiffany Poppe and an RBI grounder by Nadine White-Davis.

But with one out in the bottom of the first inning, Deltona started its rally.

Brandy Stern walked, Nicolette Corso singled and Erin Maljub reached on an error to load the bases. Shannon Hill, Mathis and Debbie Hinson then hit consecutive RBI singles to put the Wolves ahead 3-2.

Yvonne Greiner followed with a

WOLVES v. PATRIOTS							
Lake Brantley	210	010	1	-	3	6	5
Deltona	400	000	4	-	6	4	4

From Staff Reports

ground ball to shortstop that was bobbled and then thrown into right-center field. When the dust had settled, Hill, Mathis and Hinson had scored and the score was 6-2.

The Wolves only got one other runner past first base over the last five innings, but the damage had been done.

The Patriots scored a run in the second on a single by Stacey Stuller, a bunt and an RBI single by Freeburg, and another in the fifth inning on a walk, a stolen base, a throwing error and an RBI grounder by Treat to cut the lead to 6-4.

Lake Brantley tried to rally in the seventh as Freeburg walked and Treat singled to put runners on first and second with no one out. Poppe struck out, but Freeburg and Treat pulled off a double steal.

White-Davis lifted a sacrifice fly to center with Freeburg scoring and Treat going to third, but Tracy Brown ripped a line drive that was snagged by the Deltona first baseman to end the game.

Providing the offense for Deltona were Hill (two singles, run, RBI), Mathis and Hinson (one single, one run and one RBI each), Corso (single, run), Gina Mangelli (single), Greiner (RBI) and Stern and Maljub (one run each).

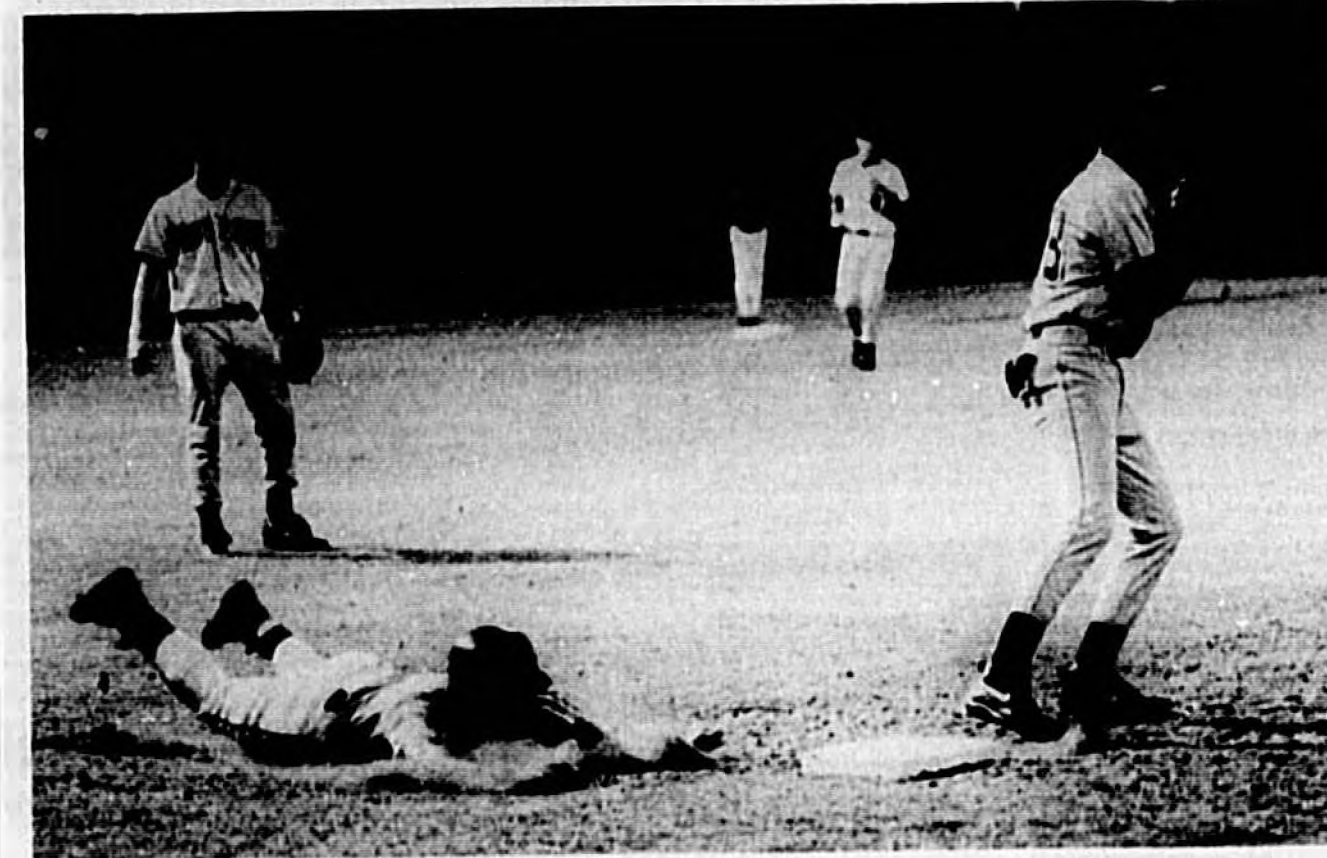
Doing the damage for the Patriots were Freeburg (two singles, three

See Softball, Page 2B



Reaching for the brass ring

Eric Roberts (right) and Seminole's Arrow Force II will play St. Petersburg-Boca Ciega at 8 p.m. in the 4A-Region II tournament at Dr. Phillips High School. St. Petersburg-Gibbs plays Melbourne-Eau Gallie in the 6 p.m. semifinal. The championship game will be 7:30 p.m. Saturday.



Herald Photo by Michael Siedzinski

While he did nothing here except get his uniform dirty, Winter Park's Marcel Torres (sliding) hit a single, scored a run, and came on to retire the last Lake Mary hitter with the bases loaded in the seventh inning to secure the Wildcats' 5-1 victory in the championship game of the Lyman Invitational baseball tournament.

Winter Park tops Rams in Lyman final

By DEAN SMITH
Herald Sports Writer

LONGWOOD — Greg Vaughan and Marcel Torres combined on a two-hitter and Jay Howard drove in two runs as the Winter Park Wildcats topped Lake Mary 5-1 in the championship game of the Lyman Invitational baseball tournament Thursday night.

Vaughan (1-0) allowed two singles, struck out six, and walked five to get the win and Torres picked up his first save of the season by retiring the only batter he faced with the bases loaded and two out in the seventh as the

LYMAN INVITATIONAL CHAMPIONSHIP WILDCATS v. RAMS							
Lake Mary	000	100	0	-	1	2	2
Winter Park	040	100	4	-	5	4	1

From Staff Reports

Wildcats improved to 3-0 on the season. Winter Park took control of the game by scoring four runs in the bottom of the second inning off Rams ace

See Baseball, Page 2B

SCC falls in Jacksonville

From Staff Reports

JACKSONVILLE — Can anyone win in this town?

Once again, a Seminole Community College athletic team ventured into Jacksonville and returned with a loss.

This time, it was the baseball team's turn as Florida Community College at Jacksonville took advantage of five Raiders errors and the strong pitching of Greene to shutout SCC, 5-0, in a Mid-Florida Conference contest Thursday.

The loss dropped the Raiders to 5-7 overall and 1-1 in the M-FC heading into a weekend home stand.

North Florida Community College comes calling to Raider Field at 3 p.m. today in a non-conference game while Orlando rival Valencia Community College pays a visit Saturday in an M-FC contest at 2 p.m.

Seminole High School graduates Demy Beamon and Rick Eckstein had three of the Raiders' five hits, with Beamon going 2-for-3 and Eckstein 1-for-3 and getting hit with a pitch.

Getting the other hits were New Smyrna Beach's Johnny Goodrich with a double and freshman Larry Hardy with a single.

SCC had two good chances to get on the board. Goodrich led off the

See Raiders, Page 2B

STARBUK RAIDERS						
Seminole C.C.	000	000	0	-	0	5
Florida C.C.-Jacksonville	100	030	0	-	4	9

STATS & STANDINGS

DOGS

Thursday night	
1 Gulls Haggard	4.90 3.80 3.40
2 Jernistic	4.90 4.20 4.80
3 Joffa Fawn	4.40
Q (1-5) 26.20 P (1-5) 11.00 T (1-5) 10.00 D (1-5) 25.00 S (1-5) 10.00	
Second race - 3/8 D. 38.41	
4 Quella Della	9.00 5.00 2.60
5 Princess Heart	8.60 3.00
1 Miklos Slick	3.30
Q (1-4) 17.00 P (1-4) 7.00 T (1-4) 11.00 D (1-4) 25.00 S (1-4) 10.00	
Third race - 3/16. M. 31.57	
1 Lahoma Jullien	11.20 5.60 4.20
2 Sunday News	5.80 3.30
7 Ion Earthfire	3.40
Q (1-3) 27.00 P (1-3) 10.00 T (1-3) 7.25 D (1-3) 25.00 S (1-3) 10.00	
Fourth race - 3/16. C. 31.16	
4 Boo's Rambler	19.20 7.80 4.40
7 Bikini Witcher	7.40 5.40
3 Aok Stormy	5.60
Q (1-3) 13.20 P (1-3) 11.00 T (1-3) 6.50 D (1-3) 25.00 S (1-3) 10.00	
Fifth race - 3/16. E. 31.31	
7 Tash Serviceplus	75.00 10.00 12.40
8 Spirit Song	9.00 7.40
4 Willow Ellie	4.00
Q (1-3) 13.20 P (1-3) 11.00 T (1-3) 6.50 D (1-3) 25.00 S (1-3) 10.00	
Sixth race - 3/16. C. 31.16	
5 Jenna's Mithras	10.20 4.60 3.00
4 Katsu Sapporo	5.40 3.30
7 Pay Me Bonnie	4.00
Q (1-3) 25.00 P (1-3) 9.00 T (1-3) 7.25 D (1-3) 25.00 S (1-3) 10.00	
Seventh race - 3/16. C. 38.34	
2 Sunnyland Slim	13.20 5.60 4.40
4 Nancy H	3.60 3.40
1 Sunny Vulcan	3.20
Q (1-4) 37.00 P (1-4) 17.00 T (1-4) 11.00 D (1-4) 17.00 S (1-4) 17.00	
Eighth race - 3/16. M. 31.43	
8 Ripley Zoo	9.60 7.80 3.40
2 Ion Defender	13.20 1.00
7 Okie Ray	5.80
Q (1-3) 45.00 P (1-3) 11.00 T (1-3) 7.25 D (1-3) 25.00 S (1-3) 10.00	
Ninth race - 3/16. D. 38.46	
1 Hob Nob Baby	18.40 4.80 4.20
3 Omni Hades	4.20 3.20
7 Fat Alice	3.40
Q (1-3) 19.20 P (1-3) 9.40 T (1-3) 5.25 D (1-3) 25.00 S (1-3) 10.00	
Tenth race - 3/16. D. 38.46	
8 MI Sandeeble	8.60 4.20 4.40
4 Nis Looking Glas	7.00 3.00
2 Buckeye Burner	4.80
Q (1-4) 17.00 P (1-4) 11.00 T (1-4) 11.00 D (1-4) 17.00 S (1-4) 17.00	
Eleventh race - 3/16. C. 31.16	
3 Sweet Passion	9.60 5.00 2.60
1 Bob's Zuni	5.60 6.40
4 Cris Heart Throb	6.40
Q (1-3) 27.00 P (1-3) 11.00 T (1-3) 11.00 D (1-3) 27.00 S (1-3) 11.00	
Twelfth race - 3/16. A. 38.14	
8 Katsu Wakanonaha	7.40 3.60 4.00
1 Danny's Almo	6.00 3.40
3 Franks Jill	3.20
Q (1-3) 25.00 P (1-3) 11.00 T (1-3) 11.00 D (1-3) 25.00 S (1-3) 11.00	
Thirteenth race - 3/16. D. 38.46	
2 R. Sassy El Bapa	26.00 4.00 4.40
4 Dream Prince	3.20 4.80
1 Bright Blaze	3.40
Q (1-4) 17.00 P (1-4) 11.00 T (1-4) 11.00 D (1-4) 17.00 S (1-4) 17.00	
Fourteenth race - 3/16. B. 38.43	
1 Fand A Tanga	9.60 5.30 4.40
7 Mad About Maggie	5.00 4.00
5 Puffi Mackenzie	3.40
Q (1-3) 26.20 P (1-3) 11.00 T (1-3) 11.00 D (1-3) 26.20 S (1-3) 11.00	
A-1471; H-116448	

COLLEGE BASKETBALL

SOUTH	
Berry 7, St. Thomas 3	
E. Michigan 4, Vanderbilt 3	
Edvard 12, Castleton 5	
Francis Marion 8, Longwood 4	
Fresno 5, Clatsop 3	
Grambling St. 4, Centenary 3	
Gulfport 3, Greenbrier 0	
Lehigh 16, Brainerd 5	
Limestone 14, Eastern Wash. 8	
Michigan 10, St. Leo 8	
Missouri 11, New Orleans 4	
N.C. Wilmington 3, Barton 0	
SW Louisiana 7, Tulane 4	
Siena Heights 14, Auburn Montgomery 9	
W. Carolina 18, N.C. Asheville 11	
SOUTHWEST	
Arkansas 14, Louisiana 5	
Concordia Lutheran 12, St. Edward's 5	
Texas 1	
SW Texas 14, Schreiner 7	
WESTERN CONFERENCE	
Brigham Young 17, Mesa, Colo. 8	
Clemson 11, UNLV 6	
Fresno 5, Clatsop 3	
Grand Canyon 14, Utah 7	
Rice 1, UNLV 1	
St. Mary's, Cal. 11, Hayward 5	
Washington St., Lewis Clark 51, ppd. snow	

NBA STANDINGS

EASTERN CONFERENCE				
Atlantic Division				
W	L	Pct.	GB	
New York	36	17	.479	
Orlando	31	26	.546	4
Miami	27	25	.519	8 1/2
New Jersey	27	25	.519	8 1/2
Boston	20	32	.387	16
Philadelphia	20	32	.387	16
Washington	14	37	.272	24
Central Division				
Atlanta	36	16	.692	
Chicago	34	18	.655	2
Cleveland	29	24	.547	7 1/2
Indiana	26	25	.510	9 1/2
Charlotte	23	29	.442	13
Milwaukee	15	38	.283	21 1/2
Detroit	13	39	.255	23
WESTERN CONFERENCE				
Midwest Division				
Houston	30	13	.745	
San Antonio	29	15	.722	1 1/2
Phoenix	27	17	.613	4 1/2
Utah	25	19	.564	6 1/2
Denver	16	27	.371	15 1/2
Minnesota	15	37	.288	17 1/2
Dallas	6	46	.117	28 1/2
Pacific Division				
Seattle	37	14	.725	
Phoenix	33	16	.674	4
Portland	32	17	.652	6
Golden State	31	18	.636	6 1/2
LA Lakers	19	32	.373	18
Sacramento	17	34	.338	19
LA Clippers	17	34	.338	19

Thursday's Games	
Dallas 115, Charlotte 130	
Sacramento 102, LA Lakers 99	
Houston 93, New York 73	
Sacramento 102, LA Lakers 99	
Friday's Games	
Miami at Philadelphia, 7:30 p.m.	
Chicago at Washington, 7:30 p.m.	
New Jersey at Orlando, 7:30 p.m.	
Milwaukee at Atlanta, 7:30 p.m.	
Golden State at Cleveland, 7:30 p.m.	
Detroit at Indiana, 7:30 p.m.	
New York at Denver, 9 p.m.	
Phoenix at Utah, 9 p.m.	
Boston at Seattle, 10 p.m.	
Sacramento at LA Clippers, 10:30 p.m.	

EDITORIAL

Excitement

As we take a look at the many newspaper components, we don't want to forget our editorial staff. Everyone has opinions and ideas, and the purpose of newspaper editorials is to share them on a variety of topics. From family issues and local events to election campaigns and political decisions. You can read all about them in the Sanford Herald's editorials.

Subscribe Today!
Don't Miss The Excitement.
322-2611

San Antonio at L.A. Lakers, 10:30 p.m.	
San Antonio	103
L.A. Lakers	100

COLLEGE BASKETBALL

Thursday's Men's Scores	
EAST	
Adelphi 76, Pace 71	
Bloomington 90, Millersville 84	
Colby Sawyer 81, Wheaton 79	
Douglas 80, Southampton 72	
Duquesne 97, St. Bonaventure 76	
George Washington 51, N.C. Charlotte 44	
Harford 84, Boston U. 69	
Hartwick 82, RPI 68	
Hofstra 81, St. Francis, N.Y. 89	
John Jay 90, Old Westbury 89	
Kutztown 77, Mansfield 65	
Massachusetts 51, Temple 50	
Mercyhurst 90, Gannon 85	
Monmouth, N.J. 80, Robert Morris 72	
Mount St. Mary's, Md. 113, Marist 91	
Nyack 69, Bloomsfield 64	
Rhode Island 105, West Virginia 102, JOT	
Rutgers 89, Holy Cross 65	
Sacred Heart 90, Bridgeport 81	
Salisbury 51, Frostburg 51, 100	
Teikyo Post 77, Dominican, N.Y. 57	
Tufts 106, Brandeis 103, OT	
Vermont 84, Northeastern 76	
Wagner 84, St. Francis, Pa. 72	
Williams 90, Shidmore 72	
SOUTH	
Ala. Birmingham 83, Southern U. 41	
Belmont 141, Christian Brothers 94	
Cell. of Charleston 64, FIU 39	
Cumberland, Ky. 98, Limestone 83	
Delaware 51, Howard U. 83	
Ky. Wesleyan 74, Bellarmine 64	
Lipscomb 110, Cumberland, Tenn. 102	
McNeese 51, Sam Houston 51, 64	
Md. Baltimore County 73, N.C. Asheville 61	
Memphis 81, Ark. Little Rock 64	
Mercer 77, Samford 64	
N. Kentucky 102, Apriland 84	
N.C. Greensboro 71, Campbell 54	
Nicholls 51, 100, Stephen F. Austin 78	
S. Indiana 105, Kentucky 51, 89	
Sue Bennett 105, Pikeville 98	
Tennessee 51, 82, Winthrop 68	
Transylvania 78, Berea 104	
Tulane 71, South Florida 64	
Tuskegee 91, West Georgia 65	
MIDWEST	
Aquinas 96, Mich. Dearborn 72	
Blackhawk 113, Priceville 72	
Cardinal Stritch 81, Northwestern, Wis. 62	
Cleveland 51, 77, Youngstown St. 72	
Ferris State 116, Mac Murray 83	
Ill. Chicago 97, Valparaiso 71	
Indiana 51, 72, Drake 64	
Indiana 81, Northwestern 74	
Lake Superior 51, Grand Valley 44	
N. Michigan 118, Oakland, Mich. 95	
NE Illinois 111, Chicago 51, 92	
Quincy 84, Missouri Baptist 79	
Rio Grande 84, Urbana 87	
SW Missouri 51, 71, Creighton 28	
Trinity, Ill. 98, St. Francis, Ind. 87	
W. Illinois 70, N. Illinois 61	
Wayne, Mich. 77, Hillsdale 73	
Wis. Milwaukee 88, Wis. Green Bay 55	
Wright 51, 77, E. Illinois 64	
SOUTHWEST	
Ark. Monticello 84, U. of the Ozarks 91	
E. Texas 51, 72, Texas A&M Kingsville 70	
Harding 92, Arkansas Coll. 89	
Houston 89, Southern Meth. 80	
Howard Payne 91, Dallas 70	
Midwestern St., Texas 94, Oklahoma City 83	
NW Oklahoma 72, Oklahoma Christian 54	
North Texas 80, Texas Tech 74	
Oklahoma Baptist 92, NE Oklahoma 78	
Quachita 89, John Brown 74	
S. Arkansas 78, Arkansas Tech 72	
SW Texas 51, 94, Texas Arlington 64	
Texas 81, Texas Tech 74	
W. Kentucky 85, Lamar 83	
Wayland Baptist 74, W. New Mexico 53	
FAR WEST	
Arizona 96, Oregon 51, 69	
Cal Lutheran 103, Ventura 80	
Cal St., Fullerton 101, UC Irvine 95	
California 92, UCLA 80	
Colorado 51, 98, San Diego 51, 83	
Denver 74, Colorado Christian 73	
E. Montana 73, Southern Pacific 64	
Fort Lewis 65, Colo. Colo. Springs 60	
Gonzaga 93, San Francisco 89	
Hawaii 113, Wyoming 84, JOT	
Idaho 79, N. Arizona 73	
Long Beach St. 84, New Mexico 83	
Nevada 80, N. Nevada 81	
Occidental 89, Whittier 77	
Oregon 87, Arizona 51, 80	
Pacific 86, Nevada 89	
Portland 94, San Diego 89	
Puget Sound 51, 84, Martin 63	
Riga 78, Metro 51, 73	
S. Utah 68, CS Northridge 81	
Stanford 68, Southern Cal 55	
UNLV 64, UC Santa Barbara 63	
Utah 51, 60, San Jose 54	
W. Washington 94, Simon Fraser 72	
Weber 51, 87, E. Washington 101	

COLLEGE BASKETBALL

Thursday's Women's Scores	
EAST	
American Int'l 73, Assumption 64	
Amherst 72, Tufts 69	
Bloomington 73, Millersville 67	
Brigport 51, Col. Sacred Heart 41	
Connecticut 79, Syracuse 50	
Connecticut Coll. 71, Elms 52	
Douglas 60, Southampton 52	
La Salle 87, Butler 85	
Mansfield 80, Kutztown 57	
Merrimack 63, St. Anselm 58	
Normouth, N.J. 84, Robert Morris 69	
Mount St. Mary's, Md. 84, Marist 72	
Northeastern 74, Vermont 64	
Queens Coll. 77, Molloy 69	
Rider 84, Fairleigh Dickinson 77	
Siena 75, Iona 58	
Stevens 41, Marlboro 33	
Wagner 74, St. Francis, Pa. 64	
Williams 63, Trinity, Conn. 57	
SOUTH	
Bellarmine 81, Ky. Wesleyan 58	
Belmont 108, Christian Bros 88	
Campbellville 84, Lindsey Wilson 77	
Clellan 87, Va. Tech 66	

COLL. OF CHAS. 64, FLORIDA INT. 39

Florida Int. (16-11)	
Lewis 12 0 0 2, Matych 4 10 4 15, Nicolls 2 4 2 2, Aarnt 2 3 4 8, Look 8 13 0 19, Dwyer 2 3 3 8, Esson 12 0 0 2, Totals 22-45 10-13-9	
Call. of Chas. (23-9)	
Harris 3 0 0 7, Ward 5 3 5 13, Delaney 4 4 3 11, Busby 11 15 0 28, Dunbar 0 5 0 10, Palmer 1 1 0 2, King 3 3 0 3, Woods 0 1 0 0, Amesley 0 0 0 0, Totals 23-46 10-18-4	
Halftime: Call. Chas. 23, Florida Int. 26. 3 Point goals - Florida Int. 5 (Marriott 1-5, Leake 3-4, Dwyer 1-2), Call. of Chas. 0 (11) (Marriott 1-4, Busby 0-8, Dunbar 0-4, King 1-1). Fouled out - None. Rebounds - Florida Int. 27 (Marriott 7, Call. of Chas. 23 (Delaney 13), Assists - Florida Int. 10 (Marriott 4), Call. of Chas. 16 (Dunbar 10). Total fouls - Florida Int. 12, Call. of Chas. 16. Technicals - None.	

TULANE 72, SOUTH FLORIDA 44

Tulane (15-9)	
Hartman 9 14 2 20, Rasche 0 1 0 0, Perry 3 7 3 4, Simmons 4 11 2 10, Lewis 8 4 4 17, Allen 1 3 0 0, Williams 0 0 0 0, Cameron 1 2 4 4, Childs 0 0 0 0, Honeycutt 3 3 4 10, Totals 72-56 18-24-7	
Halftime - South Florida 40, Tulane 32.	
3 Point goals - South Florida 6 (17) (Palk 3-7, Atkins 3-8, Robinson 0-1, Jackson 0-1), Tulane 2 (4) (Childs 1-1, Honeycutt 1-3, Simmons 0-2). Fouled out - Robinson, Allen, Rebounds - S. Florida 26 (Robinson 6), Tulane 29 (Hartman 12). Assists - South Florida 14 (Atkins 6), Tulane 14 (Hartman, Honeycutt 4). Total Fouls - South Florida 18, Tulane 16. Technicals - Hartman, Allen - 3, 51.	

Thursday's Women's Scores

EAST	
American Int'l 73, Assumption 64	
Amherst 72, Tufts 69	
Bloomington 73, Millersville 67	
Brigport 51, Col. Sacred Heart 41	
Connecticut 79, Syracuse 50	
Connecticut Coll. 71, Elms 52	
Douglas 60, Southampton 52	
La Salle 87, Butler 85	
Mansfield 80, Kutztown 57	
Merrimack 63, St. Anselm 58	
Normouth, N.J. 84, Robert Morris 69	
Mount St. Mary's, Md. 84, Marist 72	
Northeastern 74, Vermont 64	
Queens Coll. 77, Molloy 69	

People

IN BRIEF

AACA sets Winter National Meet

The Brevard County-based Cape Canaveral Region of the Antique Automobile Club of America will host the AACA Southeastern Winter National Meet on March 17-19 at the Hilton at Rialto Place in Melbourne.

The car show on Saturday, March 19 is free and open to the public. It will feature more than 400 cars.

It will start early Saturday morning and go through 3:30 p.m. Cars from the early 1900s through 1969 will be on display.

Some cars will be available for purchase, as well as parts and auto-related memorabilia. The cars and other items will be for sale on Friday as well as Saturday from 8 a.m. to 5 p.m.

Other activities, including a dinner dance, an awards banquet and a national judges' school, will take place throughout the three-day event.

Only cars owned by AACA members and entered by prior registration are eligible for this event.

For further information about the show, about AACA or about the Cape Canaveral region, should contact Art Griffin, meet chairman, at 407-254-7087.

CALENDAR

Blood Bank seeks donors

Central Florida Blood Bank is asking donors of all types blood — especially O-type donors — to donate at its Sanford branch, 1302 E. Second St. For information, call 322-0822.

Substance abuse discussed

SAFE, Substance Abuse Family Education, is conducting a "Families in Crisis" outreach program. Interested organizations wanting to contact the Life Savers Club of SAFE may call Libby Kuharske at 291-4357.

Poets to talk verse

First Florida Poets meet at 10 a.m. every Monday at the Deland Public Library. Interested poets are welcome.

For more information, please call Bob Shelford, 904-736-0416, or Virginia Martin, 904-775-8909.

Sanford Rotarians to meet

Rotary Club of Sanford meets every Monday at noon, at the Sanford Civic Center.

Bridge club meets every Monday

Lake Mary Seniors invite anyone 55 years or older to play party bridge. The Party Bridge Club meets every Monday between 1-3 p.m. at the Lake Mary Senior Center at the Old City Hall, 158 N. Country Club Road.

Cancer support group meets

Support, Hope and Recovery, S.H.A.R., meets every Monday afternoon at 5 p.m. at Central Florida Regional Hospital in the far corner of the dining room. This is a self help support group for all cancer survivors, whether in treatment now or finished with it. Call 324-8737 or 322-7785 for more information.

Help for gamblers offered

Gamblers Anonymous and Gam-Anon for family and friends, meet separately Monday and Friday (non-smokers) at 7:30 p.m., Church of the Good Shepherd, 331 Lake Ave., Maitland. For more information, call 236-9206.

Al-Anon group gathers

If you are troubled by the alcoholism of a friend or relative, there is help. Serenity Won, an Al-Anon group for friends and family of alcoholics, will meet each Monday, Tuesday and Thursday night at 8 p.m. at the Sahara Club, 2587 S. Sanford Ave., Sanford. For more information, call 332-4122.

Narcotics Anonymous meets in Sanford

Narcotics Anonymous meets Monday at 8 p.m. at the Presbyterian House of Goodwill, 317 Oak Ave., Sanford.

Social Security expands

Information available 24 hours daily toll-free



CONSUMER FOCUS

BARBARA HUGHES / GREGG

Social Security has expanded toll-free services. You can get Social Security information 24 hours a day simply by calling the toll-free telephone number, 1-800-772-1213. Both personal and automated telephone service are now offered by the Social Security Administration, Monday through Friday, from 7 a.m. to 7 p.m. Social Security representatives are available to respond to your questions and requests for information. In some areas of the country, you may also be offered the use of an automated service when a representative is not immediately available to respond to your call.

The automated service is available nationally from 7 p.m. to 7 a.m. on weekdays. On weekends and holidays, this service is available around the clock. So if the business you have to take care of doesn't require that you speak directly with a representative, you can use a Touchtone phone and call the 800 number to request

some forms and pamphlets or hear recorded messages about various Social Security programs. The automated service enables you to obtain:

- A form for a new or replacement Social Security card.
- A form to request a record of your earnings and an estimate of your future Social Security benefits; or
- Proof of payments received from the

Social Security or Supplemental Security Income (SSI) programs, or both.

Using the automated service, you can listen to a recorded message or request a pamphlet that provides information about:

- Retirement benefits.
- Disability benefits.
- Benefits for the spouse of a disabled, retired, or deceased worker.
- The effect of work and earnings on your Social Security benefits.
- The Medicare program.
- The Qualified Medicare Beneficiary (QMB) program.
- Benefits for individuals with HIV infection.
- Benefits for children with disabilities.

It's easy to use Social Security's automated service. All you need is a Touchtone phone. When you call, it helps if you have this information ready: your name, mailing address, and Social Security number.



Woman wins \$500 gift certificate

Cato, a ladies ready-to-wear shop in Sanford, recently held a drawing for a \$500 gift certificate so that some local lady could go on a shopping spree. The winner, Jan Armbrust, receives the certificate from Pam Ricci, store manager. According to the manager, the store frequently holds drawings for gift certificates.

Herald Photo by Michael Sledzinski

Dieter's heavy hints will help take off the pounds

DEAR ABBY: With the holidays well behind us, and the resolutions in full swing, I would like to share some of the tips for dieting that I have collected. I am overweight myself, but have had the satisfaction of losing a great deal of weight. I no longer call myself a compulsive overeater — but I am a professional dieter.

The list is quite long, but feel free to share some of your favorites with your readers.

BECKY TIGGES, THE COLONY, TEXAS

DEAR BECKY: I think the list is quite helpful and worth sharing. I'm sure many will join me in thanking you for sending it:

1. Eat at least three times a day, and drink plenty of water. Do not let your stomach get empty.
2. If you get a craving: Go for a walk. Brush your teeth. Drink something hot, such as herbal tea. Do a crossword puzzle or something that requires brainwork to take your mind off food. Chew some sugarless gum. Keep carrot sticks, celery, lettuce, etc., on hand for snacking.
3. Never go shopping on an empty stomach!
4. Clean all of the "no-nos" out of your kitchen cabinet. (If your spouse or children complain, they won't for long because of all the healthful food they will be able to eat.)
5. If you have lost one pound or more, go to the store and weigh a bag of fruit that is equivalent to the amount of weight you have lost. Feel how heavy it is. When you have lost 10 pounds, do it again. And ask yourself how you could have carried this much weight around 24 hours a day.
6. Give yourself pep talks. Look in the mirror and remind yourself why you are dieting.
7. Read labels for fat content, and "eat lean." Fat calories are the hardest calories to burn, regardless of whether they are saturated or unsaturated.
8. When you eat out, ask for a doggie bag when placing your order. When the order arrives, portion your food accordingly. Take the rest home and use it for another meal, or feed it to your pet.
9. When eating out, always ask for salad dressing, sauces, etc., "on the side." Also, ask for as much nutrition information as you can get such as, "Do you



ADVICE

ABIGAIL VAN BUREN

have local dressing?" and, "Explain what it means when it says 'charbroiled.'"

10. Exercise is important. A brisk 30-minute walk will burn calories and tone the body. (It will also clear your mind and lift your spirits.)

11. Set realistic goals in small increments. And do not weigh every day. (It can be too discouraging.) Weigh once a week, same day of the week, same time of day.

12. Remember. There are no miracle cures for obesity. Only by sensible, healthy eating will you be able to achieve the weight you desire.

A final thought, Dear Readers: Many of us eat for emotional, not physical reasons. Before you take a bite of something forbidden, it's a good idea to stop for a moment and see what's eating you!

DEAR ABBY: After my father died, my 69-year-old mother started dating a 47-year-old man with two children. He told her that his marriage was "in name only" and the usual things that men tell widows when they are trying to win them over.

The bottom line: He took my mother for \$100,000! That money was supposed to take care of her in her old age and help put her grandchildren through college. Instead, she used it to buy a "skating rink" in North Carolina that didn't exist. I am enclosing copies of the bank transfers in case you don't believe that a woman can be so gullible.

Please tell older widows to make no business deals without consulting their own lawyer or financial adviser or they may end up in the poorhouse!

MOTHER'S DAUGHTER

DEAR DAUGHTER: Thanks for the supporting evidence. It is a pity that your mother was left so vulnerable—without a trusted adviser to help her manage her

financial affairs. Perhaps her astute experience will serve as a warning to others. I sincerely hope so.

(Problems? Write to Dear Abby. For a personal, unpublished reply, send a self-addressed, stamped envelope to Dear Abby, P.O. Box 69440, Los Angeles, Calif. 90069. All correspondence is confidential.)

MOVIELAND Drive In 322-1216
 NO PASSES Hwy 17, Sanford
BLUE CHIPS (PG-13) 7:30
WAYNE'S WORLD (PG-13) 9:30

Blitchfield
 8 SECONDS (PG-13) 2:15, 4:15, 7:15, 9:15
MRS. DOUBTFIRE (PG-13) 2:15, 4:15, 7:15, 9:15
BLANK CHECK (PG) 2:30, 4:30, 7:30, 9:30
ACE VENTURA (PG) 2:30, 4:30, 7:30, 9:30
MY GIRL 2 (PG) 2:30, 4:30, 7:30, 9:30
PHILADELPHIA (PG-13) 2:15, 4:15, 7:15, 9:15
ON DEADLY GROUND (R) 2:05, 4:05, 7:05, 9:05
THE GETAWAY (R) 1:50
MY FATHER - THE HERO (PG) 2:20, 7:20
REALITY BITES (PG-13) 2:10, 4:10, 7:10, 9:10
BLUE CHIPS (PG-13) 2:05, 4:05, 7:05, 9:05
 \$2.50 FOR ALL MOVIES STARTING BETWEEN 4 TO 6

Divorce a crisis in most families

DEAR MARY: This isn't about drugs but I don't know where to turn for the help my daughter in second grade needs. Her dad and I are divorcing after a stormy 10-year-marriage where she's seen too much of the mean side of life.

As bad as things have been for us, she's really reacting badly to the fact that I am getting out of this marriage. She doesn't sleep well, is having behavior problems at school, and just sits around the house after school. When I ask her what's wrong, she says she misses her dad, even though he wasn't home that much when we were living together and he mostly just ignored her when he was here.

I'm going through a lot right now, too, so I really don't have the patience or energy for her that I would like to have. Altogether, everything's a mess in our lives and we need help. Don't tell me to see a therapist; I don't have the money, and there's no insurance. So what can I do to get the help we both need?

DESPERATE

DEAR DESPERATE: You are in a common but rough place for families in divorce. Let's separate the problems. First, your daughter: by all means go to her school and be open and honest with the teacher and counselor about what's going on in your daughter's life. Believe me, they've already noticed that there's a problem.

In many schools, there are counseling services for kids going through the crisis of parents' separation and divorce. Also,



DRUG COUNSELOR

MARY BALK

some schools have a "full service" designation whereby there's a mental health counselor available to work with both parents and kids. See what's available there before you look further. To gain the emotional strength you need to go through this difficult time, you must also find support for yourself.

Seminole Community College and Valencia both provide services through their Displaced Homemakers Program for people in your situation. There are also support groups led by psychotherapists available for a very nominal fee. Finally, if you have a church affiliation, there may be counseling and support available for free or very low cost.

It's important that you and your daughter get the help you need now. Look in all these places and follow up on any other leads you come across. How well you deal with this crisis will have long-term effects on both of you.

(Mary Balk is a Certified Addiction Prevention Professional and counselor. Write her at the Sanford Herald, or call the Seminole County Schools' Drug Prevention office, 323-5710.)

Sanford Herald

is a proud member of the "Welcome Wagon" Family in Seminole County

If You Are:
 Moving Into or
 Around The Area
 Getting Married
 Having A Baby



Let your Welcome Wagon representative answer your questions about the area and present you with free gifts.

If You Live In One Of These Areas, Please Call

- | | | |
|----------------|---|----------------------|
| Sanford | - | 323-5265 |
| Lake Mary | - | 321-6660 |
| Longwood | - | 869-8612 or 774-1231 |
| Winter Springs | - | 777-3370 |
| Altamonte | - | 339-4468 |
| Casselberry | - | 695-7974 |
| Oviedo | - | 695-3819 |

Or Anytime Day Or Night Call 646-9844



RELIGION

Assembly Of God
FAMILY WORSHIP CENTER
 1770 W. Airport Blvd.
 Sanford, FL 32773
 Tel. 322-8227
 Pastor Jeff Kroll
 Sunday School 8:30 a.m.
 Worship Service 10:30 a.m.
 Wednesday Service 7:00 p.m.
 Community Prayer Service
 Every Friday 7:30 p.m.
 ACTS tea
 Every Friday 8:30 p.m.

IMMANUEL ASSEMBLY OF GOD
 330 Commercial Street
 (Across from the Civic Center)
 Sanford, FL 32772
 Telephone (407) 321-1218
 Pastor David DeCan
 Sunday 10:00 a.m.
 Fellowship Hour 10:30 a.m.
 Mid-Week Home Fellowship Groups
 (Call for details)
 Visitors Welcome
 Nursery Provided

Baptist
CENTRAL BAPTIST CHURCH
 3101 W. 1st St., Sanford
 322-2914
 Don Hicks Pastor
 Jerry Fugate Assoc. Pastor
 Jack M. Thomas Minister of Music
 Sunday School 9:30 a.m.
 Morning Worship 8:15 & 11:00 a.m.
 Evening Worship 6:00 p.m.
 Wed. Prayer Service 6:30 p.m.
 Nursery Provided

COUNTRYSIDE BAPTIST CHURCH
 Country Club Road, Lake Mary
 Avery M. Long Pastor
 Sunday School 9:45 a.m.
 Preaching & Worshiping 10:45 a.m.
 Bible Study 9:30 a.m.
 Sharing & Proclaiming 7:30 p.m.
 Wed. Prayer Meet 7:30 p.m.
 Nursery Provided

FIRST BAPTIST CHURCH OF SANFORD
 518 Park Ave., Sanford
 Rev. Floyd Blake, Jr. Pastor
 Rev. Jim Cornett Minister of Music
 Rev. Sidney Brock Minister of Youth
 Mrs. Cathy Blake
 Pre-School/Children's Ministries
 Sunday Worship 8:15 & 10:30 a.m.
 Sunday School 9:15 a.m.
 Discipleship Training 9:15 a.m.
 Evening Worship 6:00 p.m.
 Wed. Prayer Service 6:15 p.m.
 Nursery Provided

JORDAN BAPTIST CHURCH
 820 Upsala Rd., Sanford
 322-8072
 George Siedd Pastor
 Sunday School 10:00 a.m.
 Morning Service 11:00 a.m.
 Evening Service 6:00 p.m.
 Wednesday Service 7:00 p.m.
 Old Truths for a New Day

"Brighter Than Snow"

It's a snowy morning in February. As you gradually stretch and open your eyes, bright light meets your reluctantly rising lids.

Yet, the sky, from your horizontal position, is a solid blanket of gray. Puzzled, you arise to find a white covering of snow reaching the horizon as bright as to illumine the entire room as would the moonday sun. A perfect bright, snowy Saturday... a reflection of the weather, no less.

Can you imagine a light more perfect than this? In Psalm 50:2, we read, "The perfection of beauty, God shines forth." Even through cloudy circumstances, God's brightness abounds, disguising the chill.

God is with you always... in dark times as well as joyous ones. This Sabbath, may we remember the words of the Psalmist David, as he praises our Heavenly Father, "even the darkness is not dark to Thee, the night is bright as the day; for darkness is not with Thee" (Psalm 139:12).

Inter-denominational
CELEBRATION CHURCH LAKE MARY
 126 W. Lakeview Ave.
 Lake Mary, Florida 32713
 Dr. Kevin Chubb, Pastor 321-0210
 Sunday Morning 10:00 a.m.
 Celebration Service 10:00 a.m.
 Wednesday Night Bible Study 7:00 p.m.

OUTREACH DELIVERANCE CENTER
 2231 Sipes Ave., Sanford
 324-1010
 Josephine Barrington Pastor
 Mother Howell Co-Pastor
 Robert Key Minister
 Brother Dickerson Evangelist
 Mother Byrd Missionary
 Charles Hays Deacon
 Sister Pearl D. Key Secretary
 Sister Dickerson Usher Board # 2
 Sunday School 10:00 a.m.
 Sunday Service 11:00 a.m.
 Tuesday Evening Bible Study 6:00 p.m.
 Thursday Evening Praise and Worship Service 8:00 p.m.

SHOWER DOWN OF BLESSINGS
 201 Elm Avenue, Sanford
 321-8389
 Timothy Hudson Pastor
 Sunday School 10:00 a.m.
 Morning Worship 11:00 a.m.
 Tuesday Prayer 7:15 p.m.
 Tuesday Bible Study 7:45 p.m.

Lutheran
HOLY CROSS LUTHERAN CHURCH OF LAKE MARY
 780 Sun Drive, Lake Mary
 Paul Meyer Pastor
 Sunday Worship 8 & 10:30 a.m.
 Saturday Service 5:30 p.m.
 Sunday School 9:15 a.m.
 Holy Cross Story Hour Preschool
 For Information Call 333-0797

GOOD SHEPHERD EVANGELICAL LUTHERAN CHURCH OF SANFORD
 ELCA
 2817 Orlando Dr. (Hwy 170)
 Phone 322-7312
 Patricia F. Johnson Pastor
 Sunday School 9:30 a.m.
 Worship Service 10:30 a.m.
 Nursery Provided

Methodist
CHRIST UNITED METHODIST CHURCH
 408 Tucker Drive
 (Corner Tucker Dr. & CR 427)
 Rev. Larry Armstrong Pastor
 Telephone 322-7800
 Sunday School 9:45 a.m.
 Morning Worship 11:00 a.m.
 Wednesday Bible Study 7:00 p.m.
 Youth Meeting 7:00 p.m.
 1st & 3rd Wed. Children's Time included in Worship
 Nursery provided for babies and small children
 (Call 322-7800 to Love You)

FIRST UNITED METHODIST CHURCH
 419 Park Ave.
 322-4371
 Clifford Melvin Pastor
 Daniel Sellers Choir Director
 Morning Worship 8:30 & 11:00 a.m.
 Coffee Fellowship 9:30 a.m.
 Sunday School 9:45 a.m.
 Youth Fellowship 4:30 p.m.
 Women's Fellowship 11:00 a.m.
 Women's Circle 10:00 a.m., 2:00 p.m., 7:30 p.m.
 1st Thursday 6:30 a.m.
 Men's Fellowship Dinner 8:30 p.m.
 2nd Thursday 8:30 p.m.
 Nursery Provided For All Services

UPSALA PRESBYTERIAN
 W. 25th & Upsala Rd., Sanford
 Rev. Darin Shea Pastor
 Sunday School 9 a.m.
 Church Service 10 a.m.
 Bible Study
 Tues. 9 a.m. & 7:30 p.m.

WERNY PRESBYTERIAN CHURCH
 211 Wood Springs Lane
 Longwood, Phone 808-1808
 Rev. Samuel R. D. Massey Pastor
 Church Services 8:30 and 11:00 a.m.
 Sunday School
 (All ages) 9:45 a.m.
 Nursery Provided

Catholic
ALL SCULS CATHOLIC CHURCH
 902 Oak Ave., Sanford, FL
 Father Richard W. Trout Pastor
 Sat. Vigil Mass 5:30 p.m.
 Sun. Mass 7:45 a.m.
 (Hispanic 9:00 a.m.)
 10:30 & 12:00
 Confession, Sat. 4:00-4:45 p.m.

Christian
FIRST CHRISTIAN CHURCH (Diocese of Orlando)
 1807 S. Sanford Ave.
 S. Edward Johnson Pastor
 Sunday School 9:45 a.m.
 Worship 11:00 a.m.
 Coffee Fellowship After Worship
 Tuesday Bible Study 10:00 a.m.
 All Are Welcome Here
 Nursery Available

Christian Science
FIRST CHURCH OF CHRIST SCIENTIST, LONGWOOD
 Corner of E.E. Williamson Rd.
 Sunday School 10:00 a.m.
 Wednesday 8:00 p.m.
 Nursery Available At All Services
 Reading Room: Mon.-Wed.
 Fri.-Sat. 10 a.m.-1 p.m.
 786-7708

United Church of Christ
CHRISTIAN FELLOWSHIP CHURCH, U.C.C.
 Rev. Arthur Arvey Pastor
 Sunday Worship 10:00 a.m.
 Church School 10:15 a.m.
 Fellowship 11:00 a.m.
 "COME GROW WITH US
 OUR TEMPORARY WORKSHOP
 LOCATION IS
 Lake Mary Community Building
 260 N. Country Club Road
 Lake Mary
 Mailing Address:
 Christian Fellowship Church,
 U.C.C.
 P.O. Box 90866
 Lake Mary, FL 32795-0866
 Telephone 322-3119

Church of Christ
LONGWOOD CHURCH OF CHRIST
 1018 Hwy. 17/92 1 mi. N/W Hwy 434
 323-5830, 899-0832, 804-796-3170
 Sun. Worship 10:30 a.m. & 8 P.M.
 You are invited to visit, study, and worship with us in the near future. A friendly greeting always awaits.

Church of God
CHURCH OF GOD
 801 W. 22nd Street
 Rev. Donald E. Wiggins Pastor
 Sunday School 9:45 a.m.
 Morning Worship 10:50 a.m.
 Evangelistic Service 7:00 p.m.
 Service Wednesday 7:00 p.m.

Charismatic
DOVE'S WAY FELLOWSHIP
 420 Live Oaks Blvd.
 Casselberry, FL 32718
 Phone 407-338-6433
 Frank & Charlotte Brown Pastors
 Sunday 10:00 a.m. & 8:30 p.m.
 Wednesday 7:30 p.m.

Episcopal
HOLY CROSS EPISCOPAL CHURCH
 401 Park Avenue
 Sanford, Florida
 Telephone (407) 322-4811
 Rev. C. Alfred Cole, Jr. Rector
 Eucharist 7:30 a.m.
 Children's Chapel 8:00 a.m.
 Sunday School 9:15 a.m.
 Choral Eucharist 10:00 a.m.
 Nursery Services Provided
 Tuesday 7:00 a.m.
 Wednesday 10:00 a.m.
 Thursday 7:30 p.m.

Lutheran
LUTHERAN CHURCH OF THE REEMER
 (Missouri Synod)
 2525 Oak Ave.
 Rev. Elmer A. Reuecher Pastor
 Sunday School 9:15 a.m.
 Church Phone 321-4183
 Sunday School 10:00 a.m. & 8 P.M.
 Sunday Service 10:30 a.m.
 Nursery & Fellowship
 Confession By Appointment

STENSTROM REALTY
 Herb Stenstrom and Staff

MINCER MOTORS CARS & TRUCKS
 SEE DIANA MINCER & EMPLOYEES
 221-2992
 1808 S. FRENCH AVE.

BRAM BEAUTY SALON
 519 E. 1st St. • Sanford
 321-8580
 BETTY WEBER

Lee's Famous Recipe COUNTRY CHICKEN
 "IT'S HONEY DIPPED"
 1806 FRENCH AVE. 322-3650

COURTESY USED CARS
 BANK FINANCE OR BUY HERE & PAY HERE
 2318 B. Highway 17/92, Sanford
 Sanford (407) 322-2123 Orlando (407) 426-9086

A.J. LOSSING TRANSFER & STORAGE
 Phil & Marie Roche
 ALLIED VAN LINES
 307 S. Pine Ave., Sanford
 322-3572

ROYAL CARRIAGE LIMOUSINE SERVICE
 M.E. TOBIN
 an elite experience
 (407) 323-7004

HARRELL & BEVERLY TRANSMISSION
 David Beverly and Staff
 209 W 25th St.

JIM ROWE PEST CONTROL
 LOCALLY OWNED & OPERATED
 RON RUSSI & STAFF
 2626 Iroquois Av. 322-2070

CENTRAL SYSTEMS
 Restaurant and Food Service
 Equipment and Supplies
 Party Goods and Paper Goods
 2820 Iroquois Ave. Sanford 32773
 330-1680

SERGIO'S ITALIAN RESTAURANT
 WAL-MART PLAZA
 323-9043
 PETER RUDEZ

BRISSON FUNERAL HOME
 O.R. Shorty Smith and Bill Webber
 91th St. and Laurel Ave.
 Sanford 322-2131

WILLIAMS AND SON
 DAMAGE FREE TOWING
 Pam Williams & Steve Williams, Jr.
 Local & Long Distance Towing
 322-8290

DON'S GLASS & MIRROR
 303 S. LAUREL AVE., SANFORD
 321-2360

The Staff Of Hillhaven Health Care Center
 322-8566

Baldwin-Fataleld Oak Lawn Park
 Caretaker and Fataleld Home
 THE SUFFOLK PLAN.
 Rt. No. 66A Sanford Rd. Lake Mary
 322-4263

ADCOCK ROOFING & SHEET METAL
 800 FRENCH AVE.
 322-9558

KEN KERN'S TRANSMISSIONS
 325-3040
 500 Laurel Ave. Sanford

SMITTY'S MOWERS
 Mike & Connie Smith
 2506 S. Park Dr., Sanford
 322-2811

HOPKINS MEAT PACKING
 MICHAN STREET - OFF SANFORD AVE.
 322-9291

HOME APPLIANCE CENTER, INC.
 "SERVICES ALL MAJOR BRANDS"
 GENERAL ELECTRIC • MAYTAG • CARRIER
 REFRIGERATORS • WASHING MACHINES • DISHWASHERS & STOVES
 322-3883
 304 E. COMMERCIAL ST.

TIRE EXPRESS
 2650 S. Orlando Drive, Sanford
 323-6684
 Carl Bergman & Employees

THE MCKIBBIN AGENCY
 Insurance

ROCKY'S SEPTIC SYSTEMS
 Rocky Love, Owner
 Complete Septic System
 Trouble Shooting
 Septic Tank Cleaned
 330-3544

OSBORN'S BOOK AND BIBLE STORE
 2599 Sanford Ave.

COLONIAL ROOM RESTAURANT
 116 E. FIRST ST., SANFORD

Religion

IN BRIEF

Positive t-shirt service Sunday

SANFORD — Pastor Nolan T. Pitts, of Historic St. James A.M.E. Church, 9th Street and Cupress Avenue, has designated the fourth Sunday, Feb. 27, as Positive T-Shirt Day. Members and friends have been asked to wear t-shirts with positive messages on them. After the 11 a.m. service, a procession from the church will wind its way through the streets of the community of Georgetown for about a mile. All are welcomed to join.

'Souper Supper' each Thursday

SANFORD — Holy Cross Episcopal Church, 401 S. Park Ave., will sponsor a "Souper Supper" on Thursday, March 3, at 5:30 p.m. in the church parish hall followed by a presentation and discussion. "The Gospel of Mark and the Church in a New World" at 6:30 p.m. This is a continuing series, presented by Father Al Cole, rector of Holy Cross, on Thursday evenings during Lent. Everyone is welcome.

Lutherans plan Friendship Sunday

SANFORD — Friendship Sunday will be observed Feb. 27 at the Lutheran Church of the Redeemer, 2525 Oak Ave. "When You Need a Friend" will be the theme of this month-long celebration of friendship. Members and friends are encouraged to invite a friend to attend church on Friendship Sunday, beginning at 10:30 a.m. The service will be followed by a carry-in church dinner in Fellowship Hall. Lenten services will be held on Wednesday evenings at 7:30 p.m. This year's midweek theme is "He Died For Our Sins."

Community Methodist hosts Worrell

CASSELBERRY — Dr. Winston Worrell, associate pastor of programming for the World Methodist Evangelism Institute, will speak at the 8:30 and 11 a.m. services on Sunday, March 6, at Community United Methodist Church, 4931 U.S. Highway 17-92 South. A native of Barbados, he will be one of several speakers during the mission emphasis weekend. "Faith at Work." The mission conference begins Saturday, March 5, with a pancake breakfast at 8 a.m. in fellowship hall. Local mission representatives will be featured at home mission meetings at 7 p.m. Saturday and Sunday during Sunday School at 9:45 a.m. and at a dinner at noon. Events conclude with a 7 p.m. service.

Spring Craft Fair set for March

The music ministries of Aloma Methodist Church will hold its Spring Craft Fair on Saturday, March 19, from 9 a.m. to 3 p.m. The fair will feature nearly 100 booths of all types of arts and crafts. The church is located on the corner of Aloma Avenue and S.R. 436, in Winter Park. Proceeds from the fair will benefit the church's music ministries.

Neihart in concert for 'Sundays At Three'

Charlene Neihart, organist, will perform Sunday, March 6, at 3 p.m. at 1006 Clay St., Winter Park. She is organist/choir director in Kansas City, Mo., for both Central Presbyterian Church and New Reform Temple. Her artistry is offered without admission cost, as part of the "Sundays at Three" series of concerts, gifts to this community, by the Orlando congregation, of the Reorganized Church of Jesus Christ of Latter Day Saints. For information, call 422-7218 or 644-2395.

Concert announced for Sunday

SANFORD — Greg and Linda Nelson will be in concert on Sunday, Feb. 27, at 11 a.m. at the Paula Weasley Church, 5650 Wayside Dr. There is no cost to attend. A loving offering will be accepted. The concert is open to the public. For more information call 323-0366.

WEF hosts 'Love Feast'

SANFORD — The Sanford Branch of Women Evangelistic Fellowship International (WEF) will host its quarterly "Love Feast" on Saturday, Feb. 26, beginning 8 p.m. at the Midway Center on Hurston Avenue. This will be a time of sharing our love, rejoicing in the Lord, with praise songs, prayer, and the word of God. Everyone is welcome. For more information, please call Clareth Hudson at 322-0998.

St. Peter's plans next mission

By SHARIE BRODIE
Herald Columnist

LAKE MARY — An organizational meeting for a second medical mission, sponsored by St. Peter's Episcopal Church, in Lake Mary, was held Sunday at the parish hall. The first highly successful mission to Quince de Enero, Honduras was organized last year by church members Steve Israel and John Millonig. The medical mission followed the building of a church in the village of Quince de Enero, entirely funded by St. Peter's, in 1991. The church in Honduras was named San Pedro Episcopal Church. Israel was the architect for the Honduran project.

The Lake Mary congregation has close ties with the congregation in Honduras. The second medical mission continues an ongoing commitment to the village that goes back 10 years. Organizers Israel and Millonig stressed this continuing commitment as they addressed the gathering of 30 or more people who had expressed interest in traveling to Honduras on the second mission. According to the mission statement "(the) trip for June 1994 is slightly different in that we want to emphasize education in the areas of hygiene, the prevention of minor infection and the elimination of common parasites. Instructors utilizing video media, as well as take home literature, will accomplish this task."

In August 1993, two doctors, two dentists and 13 support staff



Steve Israel and John Millonig speak to a group interested in participating in the medical mission.

traveled to Quince de Enero. In four 9-hour days, working at four stations, the team saw an average of 25 patients an hour. Honduras, is the second poorest nation in the western hemisphere north of the equator. In need of this type of mission, the only medical treatment available in rural areas. All of the members of the team paid their own way to and from Honduras. All monies raised by the church go toward the purchase of the 25 or more

medicines they take to Honduras. Church members, with contacts with pharmaceutical companies, solicit donations of as much of the medicine as possible. Some funds are raised through corporate donations. St. Peter's will be holding an auction and spaghetti dinner on April 23 to raise money for the mission. This year's mission leaves on Saturday, June 11, and returns on Saturday, June 18. The mission is still looking for qualified medical personnel

interested in traveling to Honduras at their own expense. They are also looking for any donations of durable medical goods, health-related educational material and even such simple items as adult and child toothbrushes and baking soda.

Anyone interested in helping the mission should contact Steve Israel at 328-6411 or John Millonig at 322-9039, or the church office at 444-5673, for more information.

Teaching, preserving Gospel music

SANFORD — The Sanford/Central Florida Interdenominational Musicians' Guild began offering group music lessons recently to all ages at Mount Moriah Primitive Baptist Church, 1101 Locust Ave.

The guild is implementing the 45-minute sessions as part of its commitment to develop well-rounded church musicians in the Sanford area.

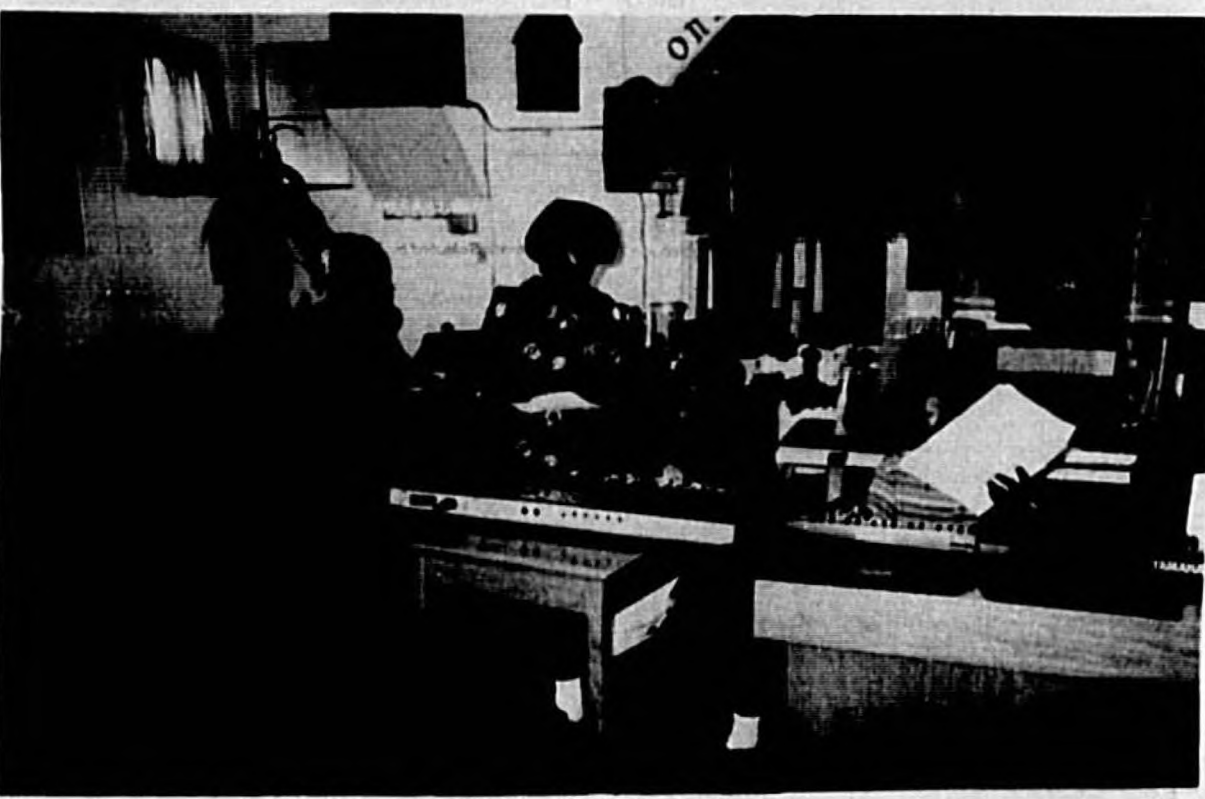
"It's so exciting seeing a group of musicians willing to share their God-given talents to help build our churches," said Charles D. Jackson, president of the guild.

Students attending Saturday's session showed a lot of potential, according to instructor Doris Alford, who holds a bachelor's degree in music and is a musician for New Bethel A.M.E. Church.

"Some have a natural feeling for the keyboard," she said. "I'm integrating theory with ear training. It's keeping their interest and I think they'll learn faster."

Teaching classes with Alford is retired educator Sylvia Stallworth, who is minister of music at the Historic St. James A.M.E. Church.

Cost of the lessons are \$5. All the proceeds go toward a scholarship fund.



Doris Alford instructs a group of enthusiastic musicians.

Lessons begin promptly at 2 p.m. each Saturday at Mt. Moriah. Students must bring their own keyboards.

The guild is a non-profit ministry devoted to promoting and preserving gospel music. Breakfast meetings are held at

10 a.m. the first and third Saturdays at Quince's in Sanford. All church musicians are invited to attend.

SEMINOLE COUNTY AREA CHURCH DIRECTORY

<p>ALLIANCE CHURCH Community Alliance Church, 4815 East Lake Drive, Winter Springs Neighborhood Alliance Church, 301 Markham Woods Rd., Longwood Sanford Alliance Church, 1401 S. Park Ave., Sanford</p> <p>ASSEMBLY OF GOD Emmanuel Assembly of God, 330 Commercial St., Sanford Family Worship Center, 1770 W. Airport Blvd., Sanford Freedom Assembly of God, 2860 Orlando Dr., Sanford Wee Wee Assembly of God, 1675 Dixon Rd., Longwood</p> <p>BAPTIST Antioch Baptist Church, Oviedo Carry Baptist Church, Crystal Lake Ave & 3rd St., Lake Mary Cassaberry Baptist Church, 770 Seminola Blvd. Central Baptist Church, 3101 W. 1st St. Chukot's First Baptist Clearwater Missionary Baptist Church, Southwest Rd. Country Side Baptist Church, Country Club Pk., Lake Mary First Baptist Church, 918 Park Ave. First Baptist Church of Altamonte Springs, Rt. 436, Altamonte Springs First Baptist Church of Forest City First Baptist Church of Geneva First Baptist Church, Markham Woods First Baptist Church of Lake Monroe First Baptist Church of Longwood, 891 East SR 434 First Baptist Church of Osteen First Baptist Church of Oviedo First Baptist Church of Santalando Springs First Baptist Missionary Baptist Church, 1101 W. 13th St. Fountain Head Baptist Church, Oviedo Hope Baptist Church, Forest City Community Center, Forest City Independence Baptist Miss., Civic League Bldg., Longwood Jordan Missionary Baptist Church, 950 Usuala Rd. Lighthouse Baptist Church, 665 Longwood, Lake Mary Rd. Lakewood Baptist Church, 138 Lakewood Ave., Lake Mary Macedonia Mission Baptist Church, Oak Hill Rd., Osteen Missionary Baptist Church, North Rd., Enterprise Morning Glory Baptist Church, 1101 Locust Ave., Sanford Mt. Moriah Primitive Baptist Church, 1101 Locust Ave., Sanford Mt. Zion Missionary Baptist Church, 1800 Jerry Ave. New Bethel Missionary Baptist Church, 918 St. & Hickory Ave. New Mt. Zion Baptist Church, 1109 W. 12th St. New Salem Primitive Baptist Church, 1509 W. 12th St. New Testament Baptist Church, Quality Inn, North Longwood New Mt. Zion Baptist Church, 1720 Park Ave. New Life Fellowship, 4981 E. Lake Dr., Cassaberry Northside Baptist Church, Chuluota Peachtree Zion Baptist Church, 1184 Pine St., Altamonte Springs People's Baptist Church, 1201 W. 1st St., Sanford Pinecrest Baptist Church, 601 E. Airport Blvd. Prairie Lake Baptist Church, Ridge Rd., Fern Park Progressive Missionary Baptist Church, Midway Providence Missionary Baptist Church, 4561 Douglas Ave., Bootertown Second English Baptist Church West, Sanford Smyrna Baptist Church, 750 Overbrook Dr., Cassaberry Sunlight Baptist Church, 152 Bahama Rd. St. James Missionary Baptist Church, SR 415, Osteen St. John's Missionary Baptist Church, 308 Longwood Tr.</p>	<p>ARIZONA SPRINGS St. Luke Missionary Baptist Church of Cameron City, Inc. St. Paul Baptist Church, 813 Pine Ave. St. Matthews Baptist Church, Canaan Hgts. St. John's Missionary Baptist Church, 800 Cypress St. Springfield Missionary Baptist Church, 12th St. & Cedar Ave. Palmetto Ave. Baptist Church, 2626 Palmetto Ave. Temple Baptist Church, Palm Springs Rd., Altamonte Springs Victory Baptist Church, Old Orlando Rd., Altamonte Springs Westview Baptist Church, 4100 Paddock Rd., 168A William Chapel Missionary Baptist Church, Mark & William St., Altamonte Springs Zion Hope Baptist Church, 712 Orange Ave.</p> <p>CATHOLIC All Souls Catholic Church, 602 Oak Ave., Sanford Church of the Nativity, Lake Mary Our Lady of the Lakes Catholic Church, 1310 Maximilian, Deltona St. Ann's Catholic Church, Dogwood Trail, Seberry St. Augustin Catholic Church, Sunset Dr., near Sutton Rd., Cassaberry St. Clare Catholic Community meets at Osteen Civic Center St. Mary Magdalene Catholic Church, Matland Ave., Altamonte Springs St. Mary's Ukrainian Catholic Church, 245 McCoy Dr., Apopka</p> <p>CHRISTIAN First Christian Church, 1607 S. Sanford Ave. First Christian Church of Longwood, 1400 E. B. Williamson Rd., Longwood Celebration Church Lake Mary, 178 W. Lakewood Ave., Lake Mary Grace Christian Church, Wilson Elementary School (Postal), 985 Orange Blvd., Sanford Lakewood Christian Church, Bear Lake Rd., at Jamison Sanford Christian Church, 720 Usuala Rd., Sanford South Seminole Christian Church, 300 W. SR 434, Oviedo</p> <p>CHRISTIAN SCIENCE First Church of Christ Scientist, 975 Markham Woods Rd., Longwood</p> <p>CHURCH OF CHRIST Church of Christ, 1912 S. Park Ave. Church of Christ at Lake Ellen, U.S. Hwy 17-92 N., Cassaberry Church of Christ, 800 Palm Springs Dr., Altamonte Springs Church of Christ, Geneva Church of Christ, Longwood Church of Christ, W. 13th St. Horsham Church of Christ, Fla. Haven Dr., Matland South Seminole Church of Christ, 5410 Lake Howell Rd.</p> <p>CHURCH OF GOD Church of God, 503 Hickory Ave. Church of God, 803 W. 22nd St. Church of God, Oviedo Church of God Holiness, Lake Monroe Church of God Mission, Enterprise Church of God, 1402 W. 18th St. Church of God in Christ, Oviedo Church of God of Prophecy, 2505 S. Elm Ave. Church of God of Prophecy, 1708 N. Perimeter Ave. Church of God of Prophecy, 468 E. Canistot, Oviedo Church of God (7th Day), Deltona Community Center, Deltona (Sun Room) Rescue Church of God, 1700 W. 13th St., Sanford True Church of God, 3700 Ridgewood Ave., Sanford</p> <p>CONGREGATIONAL Congregational Christian Church, 2401 B. Park Ave., Sanford</p> <p>EASTERN ORTHODOX Eastern Orthodox Church, St. George, 2001 Dylan Way, Matland</p>	<p>Eastern Orthodox Church, St. Steven's of O.C.A., 1899 Lake Emma Rd., Longwood Eastern Orthodox Church, St. John Orthodox, 2743 Country Club Rd., Sanford</p> <p>EPISCOPAL All Saints Episcopal Church, E. DeBary Ave., Enterprise Christ Episcopal Church, Longwood Episcopal Church of the New Covenant, 875 Tusawilla Rd., Winter Springs Episcopal Church of the Resurrection, 751 E. Lake Brantley Dr., Longwood Holy Cross Episcopal Church, Park Ave. at 4th St., Sanford St. Peter's Episcopal Church, 700 Rinehart Rd., Lake Mary St. Richard's Church, 5151 Lake Howell Rd., Winter Park The Church of the Good Shepherd, 3311 Lake Ave., Matland</p> <p>INTERDENOMINATIONAL Calvary Christian Center, 500 W. 4th St., Sanford New Harvest Christian Fellowship, 2760 Country Club Rd., Sanford Northland Community Church, 530 Dog Track Rd., Longwood Outreach Deliverance Center, 2231 Spots Ave., Sanford</p> <p>JEWISH Beth Am Synagogue meeting at corner of Sand Lake and County Line Rd., West 14 Temple Emanuel, 1780 E. Highway Blvd., Deltona</p> <p>LUTHERAN Ascension Lutheran Church, Overbrook Dr., Cassaberry Good Shepherd Lutheran Church, ELCA, 2917 Orlando Dr. (Hwy 17-92), Sanford Holy Cross Lutheran Church of Lake Mary, 780 Sun Dr., Lake Mary Lord of Life Lutheran Church, 395 Tusawilla Rd., Winter Springs Lutheran Church of Providence, Deltona Lutheran Church of the Redeemer, 2525 Oak Ave. Messiah Lutheran Church, Golden Days Dr. & Hwy 17-92, Cassaberry St. Luke's Lutheran Church, Rt. 426, Siesta St. Stephen Lutheran Church, 434 just W. of 14, Longwood</p> <p>METHODIST Barnett United Methodist Church, E. DeBary Ave., Enterprise Bear Lake United Methodist Church Bethel A.M.E. Church, Canaan Heights Cassaberry Community United Methodist Church, Hwy. 17-92 at Piney Ridge Rd., Cassaberry Christ United Methodist Church, Tucker Dr., Sunset Estates Delaware Community Methodist Church, W. Highways Rd., DeBary First United Methodist Church, 419 Park Ave. First Methodist Church of Geneva First Methodist Church of Oviedo Grace United Methodist Church, 499 N. Country Club Rd., Lake Mary Grant Chapel A.M.E. Church, Oviedo Oak Grove Methodist Church, Oviedo Osteen Methodist Church, cor. of Carpenter & Murray St., Osteen Pinecrest Methodist Church, cor. of Wabur Ave. & Country Club Rd., Lake Mary Sanford United Methodist Church, SR 434 and 14, Longwood St. James A.M.E., 9th of Cypress St. Luke M.E. Church of Canaan City, Inc., Beardsall off SR 46 E. St. Mary's A.M.E. Church, SR 415, Osteen St. Paul's Methodist Church, DeBary, Enterprise Stratford Memorial Church, S. DeBary</p> <p>NAZARENE First Church of the Nazarene, 2541 Sanford Ave. Geneva Church of the Nazarene, SR 45, Geneva Lake Mary Church of the Nazarene, 171 E. Crystal Lake Ave., Lake Mary</p> <p>Longwood Church of the Nazarene, Wayman & Jessup Ave., Longwood Markham Woods Church of the Nazarene, SR 46, 3 1/2 miles W. of 14 at the Wekiva River</p> <p>PRESBYTERIAN Deltona Presbyterian Church, Holland Blvd. & Austin Ave., Deltona First Presbyterian Church of Lake Mary First Presbyterian Church, Oak Ave. & 3rd St. First Presbyterian Church of DeBary, E. Highland Markham Woods Presbyterian Church, 5210 Markham Woods Rd., Lake Mary St. Andrew's Presbyterian Church, 9913 Bear Lake Rd. St. Mary's Presbyterian Church, 1021 Palm Springs Rd., Altamonte Springs Tusawilla Presbyterian Church, 3600 W. SR 426, Oviedo Usuala Community Presbyterian Church, Usuala Rd. Westminster Presbyterian Church, Red Bug Rd., Cassaberry</p> <p>SEVENTH DAY ADVENTIST Forest Lake Seventh Day Adventist Church, Hwy. 436, Forest City Mars Hill Seventh Day Adventist Church, 801 E. 2nd St., Sanford Sanford Seventh Day Adventist Church, 5615 N. Hwy. 427 Seventh Day Adventist Church, Matland Ave., Altamonte Springs Winter Springs Seventh Day Adventist Church, 50 S. Moss Rd.</p> <p>OTHER CHURCHES All Faith Chapel, Camp Seminole, Wekiva Park Rd. Allen's A.M.E. Church, Dives & 17th Beardsall Avenue Holiness Chapel, Beardsall Ave. Chukot's Community Church Church of Jesus Christ of Latter Day Saints, 2315 Park Ave. E.C.R.A.H.A.R., 170 Big Tree Dr., Suite 100, Longwood Family Church Christian Center, 1544 Seminola Blvd., Cassaberry First Born Church of the Living God, Midway First Church of Christ, Scientist, Elam Blvd. & Venus St., Deltona First Pentecostal Church of Longwood First Pentecostal Church of Sanford Full Gospel Church of God in Christ, 1826 Jerry Ave., Sanford Full Gospel Tabernacle, 2724 Country Club Rd. Grace Bible Church, 2644 S. Sanford Ave. Holy Trinity Church of God in Christ, 1514 Mangrove Ave. Kingdom Hall of Jehovah's Witness, Lake Monroe Unit, 1562 W. 3rd St. Lake Mary Community Church, 101 N. Country Club Rd., Lake Mary Lake Monroe Chapel, Orange Blvd., Lake Monroe Mt. Olive Holiness Church, Oak Hill Rd., Osteen Neighborhood Alliance Church, 301 Markham Woods Rd., Longwood Paula Wesleyan Church, 5650 Wayside Dr., Sanford Pentecostal Open Bible Tabernacle, Ridgewood Ave. off 25th opposite Seminole High School Restoration Community Church, 5615 N. CR 427, Sanford Rolling Hills Moreland Church, SR 434, Longwood Sanford Alliance Church, 1401 S. Park Ave. Sanford Bible Church, 1480 Sanford Ave. Second Church of the Living God, 3426 Beardsall Ave., Sanford St. Peter's Serbian Orthodox Church, 1980 Lake Emma Rd., Longwood The Full Gospel Church of Our Lord Jesus Christ, Washington St., Canaan City The Salvation Army, 700 W. 24th St. Triumph, The Church of the New Age, 1006 W. 8th St. United Church of Christ, Altamonte Community Chapel, Altamonte Springs United Church of Christ Christian Fellowship, 260 N. Country Club Rd., Lake Mary U.C.B. Spiritual Centre, 125 A.B. Volusia Ave., corner of Greaves & Volusia Ave., Orange City</p>
---	--	--

Legal Notices

IN THE CIRCUIT COURT FOR SEMINOLE COUNTY, FLORIDA PROBATE DIVISION...

UNCLAIMED VEHICLE ACTION Removal of the below described vehicles was conducted in compliance with F.S. 713.78...

IN THE CIRCUIT COURT OF THE EIGHTEENTH JUDICIAL CIRCUIT IN AND FOR SEMINOLE COUNTY, FLORIDA...

IN THE COUNTY COURT OF THE EIGHTEENTH JUDICIAL CIRCUIT, IN AND FOR SEMINOLE COUNTY, FLORIDA...

IN THE COUNTY COURT OF THE EIGHTEENTH JUDICIAL CIRCUIT, IN AND FOR SEMINOLE COUNTY, FLORIDA...

IN THE COUNTY COURT OF THE EIGHTEENTH JUDICIAL CIRCUIT, IN AND FOR SEMINOLE COUNTY, FLORIDA...

IN THE COUNTY COURT OF THE EIGHTEENTH JUDICIAL CIRCUIT, IN AND FOR SEMINOLE COUNTY, FLORIDA...

IN THE COUNTY COURT OF THE EIGHTEENTH JUDICIAL CIRCUIT, IN AND FOR SEMINOLE COUNTY, FLORIDA...

IN THE COUNTY COURT OF THE EIGHTEENTH JUDICIAL CIRCUIT, IN AND FOR SEMINOLE COUNTY, FLORIDA...

IN THE COUNTY COURT OF THE EIGHTEENTH JUDICIAL CIRCUIT, IN AND FOR SEMINOLE COUNTY, FLORIDA...

IN THE COUNTY COURT OF THE EIGHTEENTH JUDICIAL CIRCUIT, IN AND FOR SEMINOLE COUNTY, FLORIDA...

IN THE COUNTY COURT OF THE EIGHTEENTH JUDICIAL CIRCUIT, IN AND FOR SEMINOLE COUNTY, FLORIDA...

IN THE COUNTY COURT OF THE EIGHTEENTH JUDICIAL CIRCUIT, IN AND FOR SEMINOLE COUNTY, FLORIDA...

Legal Notices

IN THE COUNTY COURT OF THE EIGHTEENTH JUDICIAL CIRCUIT, IN AND FOR SEMINOLE COUNTY, FLORIDA...

IN THE COUNTY COURT OF THE EIGHTEENTH JUDICIAL CIRCUIT, IN AND FOR SEMINOLE COUNTY, FLORIDA...

IN THE COUNTY COURT OF THE EIGHTEENTH JUDICIAL CIRCUIT, IN AND FOR SEMINOLE COUNTY, FLORIDA...

IN THE COUNTY COURT OF THE EIGHTEENTH JUDICIAL CIRCUIT, IN AND FOR SEMINOLE COUNTY, FLORIDA...

IN THE COUNTY COURT OF THE EIGHTEENTH JUDICIAL CIRCUIT, IN AND FOR SEMINOLE COUNTY, FLORIDA...

IN THE COUNTY COURT OF THE EIGHTEENTH JUDICIAL CIRCUIT, IN AND FOR SEMINOLE COUNTY, FLORIDA...

IN THE COUNTY COURT OF THE EIGHTEENTH JUDICIAL CIRCUIT, IN AND FOR SEMINOLE COUNTY, FLORIDA...

IN THE COUNTY COURT OF THE EIGHTEENTH JUDICIAL CIRCUIT, IN AND FOR SEMINOLE COUNTY, FLORIDA...

IN THE COUNTY COURT OF THE EIGHTEENTH JUDICIAL CIRCUIT, IN AND FOR SEMINOLE COUNTY, FLORIDA...

IN THE COUNTY COURT OF THE EIGHTEENTH JUDICIAL CIRCUIT, IN AND FOR SEMINOLE COUNTY, FLORIDA...

IN THE COUNTY COURT OF THE EIGHTEENTH JUDICIAL CIRCUIT, IN AND FOR SEMINOLE COUNTY, FLORIDA...

IN THE COUNTY COURT OF THE EIGHTEENTH JUDICIAL CIRCUIT, IN AND FOR SEMINOLE COUNTY, FLORIDA...

IN THE COUNTY COURT OF THE EIGHTEENTH JUDICIAL CIRCUIT, IN AND FOR SEMINOLE COUNTY, FLORIDA...

Legal Notices

IN THE COUNTY COURT OF THE EIGHTEENTH JUDICIAL CIRCUIT, IN AND FOR SEMINOLE COUNTY, FLORIDA...

IN THE COUNTY COURT OF THE EIGHTEENTH JUDICIAL CIRCUIT, IN AND FOR SEMINOLE COUNTY, FLORIDA...

IN THE COUNTY COURT OF THE EIGHTEENTH JUDICIAL CIRCUIT, IN AND FOR SEMINOLE COUNTY, FLORIDA...

IN THE COUNTY COURT OF THE EIGHTEENTH JUDICIAL CIRCUIT, IN AND FOR SEMINOLE COUNTY, FLORIDA...

IN THE COUNTY COURT OF THE EIGHTEENTH JUDICIAL CIRCUIT, IN AND FOR SEMINOLE COUNTY, FLORIDA...

IN THE COUNTY COURT OF THE EIGHTEENTH JUDICIAL CIRCUIT, IN AND FOR SEMINOLE COUNTY, FLORIDA...

IN THE COUNTY COURT OF THE EIGHTEENTH JUDICIAL CIRCUIT, IN AND FOR SEMINOLE COUNTY, FLORIDA...

IN THE COUNTY COURT OF THE EIGHTEENTH JUDICIAL CIRCUIT, IN AND FOR SEMINOLE COUNTY, FLORIDA...

IN THE COUNTY COURT OF THE EIGHTEENTH JUDICIAL CIRCUIT, IN AND FOR SEMINOLE COUNTY, FLORIDA...

IN THE COUNTY COURT OF THE EIGHTEENTH JUDICIAL CIRCUIT, IN AND FOR SEMINOLE COUNTY, FLORIDA...

IN THE COUNTY COURT OF THE EIGHTEENTH JUDICIAL CIRCUIT, IN AND FOR SEMINOLE COUNTY, FLORIDA...

IN THE COUNTY COURT OF THE EIGHTEENTH JUDICIAL CIRCUIT, IN AND FOR SEMINOLE COUNTY, FLORIDA...

IN THE COUNTY COURT OF THE EIGHTEENTH JUDICIAL CIRCUIT, IN AND FOR SEMINOLE COUNTY, FLORIDA...

Legal Notices

IN THE COUNTY COURT OF THE EIGHTEENTH JUDICIAL CIRCUIT, IN AND FOR SEMINOLE COUNTY, FLORIDA...

IN THE COUNTY COURT OF THE EIGHTEENTH JUDICIAL CIRCUIT, IN AND FOR SEMINOLE COUNTY, FLORIDA...

IN THE COUNTY COURT OF THE EIGHTEENTH JUDICIAL CIRCUIT, IN AND FOR SEMINOLE COUNTY, FLORIDA...

IN THE COUNTY COURT OF THE EIGHTEENTH JUDICIAL CIRCUIT, IN AND FOR SEMINOLE COUNTY, FLORIDA...

IN THE COUNTY COURT OF THE EIGHTEENTH JUDICIAL CIRCUIT, IN AND FOR SEMINOLE COUNTY, FLORIDA...

IN THE COUNTY COURT OF THE EIGHTEENTH JUDICIAL CIRCUIT, IN AND FOR SEMINOLE COUNTY, FLORIDA...

IN THE COUNTY COURT OF THE EIGHTEENTH JUDICIAL CIRCUIT, IN AND FOR SEMINOLE COUNTY, FLORIDA...

IN THE COUNTY COURT OF THE EIGHTEENTH JUDICIAL CIRCUIT, IN AND FOR SEMINOLE COUNTY, FLORIDA...

IN THE COUNTY COURT OF THE EIGHTEENTH JUDICIAL CIRCUIT, IN AND FOR SEMINOLE COUNTY, FLORIDA...

IN THE COUNTY COURT OF THE EIGHTEENTH JUDICIAL CIRCUIT, IN AND FOR SEMINOLE COUNTY, FLORIDA...

IN THE COUNTY COURT OF THE EIGHTEENTH JUDICIAL CIRCUIT, IN AND FOR SEMINOLE COUNTY, FLORIDA...

IN THE COUNTY COURT OF THE EIGHTEENTH JUDICIAL CIRCUIT, IN AND FOR SEMINOLE COUNTY, FLORIDA...

IN THE COUNTY COURT OF THE EIGHTEENTH JUDICIAL CIRCUIT, IN AND FOR SEMINOLE COUNTY, FLORIDA...

CLASSIFIED ADS

Seminole Orlando - Winter Park 322-2611 831-9993

CLASSIFIED DEPT. HOURS 8:00 A.M. - 5:30 P.M. MONDAY thru FRIDAY

14 consecutive times 57¢ a line 7 consecutive times 70¢ a line 3 consecutive times 91¢ a line 1 time \$1.19 a line

12 - Elderly Care ADULT CARE in our private home, Sanford area. Please contact Holly 323-9142

Bladder Control Problems? SENIOR call to find out if you qualify for assistance with DIAPERS/PADS delivered to your door monthly. 407-960-1254

21 - Personal ADOPTIONS Free medical care, transportation, counseling, private adoption, etc.

23 - Lost & Found LOST KITTY neutered male, all white except for tabby head, tail and spot on side.

25 - Special Notices NEWAYS "Sainny Day" high cream. As seen on Ch 9 news. Now available. Please call Natalie Ferguson 329-3270

27 - Nursery & Child Care MOTHER OF 2 will care for your child in my Sanford home. 3am-6pm. Call Kathy 323-5833

61 - Money to Lend KEEP DRIVING AND STILL GET THE MONEY! All you need is your title. Jack Diamond for appointment. 260-2979

71 - Help Wanted DELI HELP Full time. M-F. experience preferred. reliable, pleasant personality. Good pay.

71 - Help Wanted DENTAL ASSISTANT Experienced with expanded duties needed for busy multi-disciplinary office.

71 - Help Wanted DRIVERS NEEDED A.G. CARRIERS, Taverna, Fl. a well established and growing Central Florida based company offers you:

71 - Help Wanted EMPLOYMENT 323-5176 ADD TO YOUR INCOME SELL AVON NOW!

71 - Help Wanted AGENTS-REAL ESTATE! Nothing succeeds like success. We're well into our 3rd decade of training successful agents.

71 - Help Wanted ASSEMBLY/FACTORY \$7.50/hr. No exp. nec. Immed. opening. 407-260-0426, tm. See AVAILABLE POSITIONS

71 - Help Wanted JANITORS Part time for Lake Mary/Healthcare. Apply 1601 Philadelphia Ave. Orlando. 407-996-6900

71 - Help Wanted CARPET CLEANING P/T. Morn or night hrs. Must have own transportation. Call 221-4543 leave message

71 - Help Wanted

LEE'S FAMOUS CHICKEN EXPERIENCED Cook Counter Person Salad Prep Cashier

MAIDS ServiceMaid now hiring Leaders avg \$8/hr. Paid mileage. Call today, start tomorrow! E. exp. only 321-6242

MAINTENANCE A/C, refrig, exp. req. Send resumes to: 733 Secret Harbor Ln. Lake Mary, FL 32746

MPN Part time. Apply in person. Lakeside Nursing Center, 819 East 3rd Street, Sanford.

NATIONWIDE COMMON CARRIER NOW ACCEPTING APPLICATIONS FOR FULL-TIME O.T.R. DRIVERS \$50,000 A YEAR POSSIBLE Paid vacation

DRIVERS CLASS B Must have good driving record; need 15 years experience; good MVR. CPC is looking for drivers who are self-motivated.

DRIVERS TT, pneumatic tank. Local or over the road. Must have CDL with air endorsements, 3 year verification tractor trailer experience, and clean MVR.

JANITORS Part time for Lake Mary/Healthcare. Apply 1601 Philadelphia Ave. Orlando. 407-996-6900

LABORERS NEEDED - skilled and unskilled. Positions available. Days call between 10-3. SPRINT STAFFING. 329-3011

CLASS A DRIVERS We need five drivers who know the Orlando area. We're making deliveries, lifting up to 70 lbs., starting at \$9.00 per hour.

CERICAL Need to fill three positions that require a variety of skills. Summer youth program. Limited term employment. No calls. Send resume to: Private Industry Council, 510 West Lake Mary Blvd., Sanford FL 32773

ORDERLIES Full-time 3-11 shift LPN Full-time 3-11 and part-time 3-11

CONSTRUCTION WORKERS Good pay, steady work. Will train 904-735-1675 lv message

LOTS OF CLOTHING Some of everything, 201 Hays Drive. Saturday only 8-3

GARAGE SALE SAT. ONLY 8 AM furniture, glassware, baby items, something for everyone! 838 Monroe Harbor Place, Sanford Place off 427

GARAGE SALE SAT. ONLY 8 AM furniture, glassware, baby items, something for everyone! 838 Monroe Harbor Place, Sanford Place off 427

GARAGE SALE SAT. ONLY 8 AM furniture, glassware, baby items, something for everyone! 838 Monroe Harbor Place, Sanford Place off 427

GARAGE SALE SAT. ONLY 8 AM furniture, glassware, baby items, something for everyone! 838 Monroe Harbor Place, Sanford Place off 427

Advertising Works! WE CAN HELP YOU GET THE MOST OUT OF YOUR ADVERTISING. 322-2611

CELEBRITY CIPHER Celebrity Cipher is a game that is fun and easy to play. Each letter in the cipher stands for another. Today's clue: E adorns V. P H B L Z Z J F R F W Z V P Z U P W Y B B L P S Z F U Z J Y Z P H M F H F V F M F U B M P H Y M P R Y D L M H T J L M L M L M L R F W. PREVIOUS SOLUTION: "My one rule is, Never ask for one penny more than you're worth. I was worth billions." - Larry Hagman.

Professional Services

Notice FLORIDA STATE REQUIRES all contractors be registered or certified. To verify a state contractor's license call 1-800-342-1940.

Flooring HARDWOOD FLOORING Install Sanding Finishing TOM OLSEN 1-413-426-2977

General Services INDOOR & OUTDOOR Painting, Remodel, new and historic homes. 323-9910

Home Improvement AFFORDABLE Home Repair. Dependable. All phases. Call for free est. Michael 323-7108

Let This Display Ad Work For You... Call Classified 322-2611

Swimming Pool Service/Repair WEEKLY SERVICE from \$45 mo. Chem Rite Pool Service 260-2770 Robert Shoemaker

Window Repair and Cleaning WINDOW & SCREEN REPAIR: 402-323-7113

Painting CUSTOM PAINTING by Jeffrey Power. Int./ext. Lic'd. Ins. Free estimates. 321-6143

Pressure Cleaning DUM RITE. Clean driveways, roofs, pool decks, walks, houses. Free est. 221-4122

Roofing OYBERS ROOFING: Free est., 10 yrs experience. Bond/ins./Lic. RCO045195. Call 374-4313

Swimming Pool Service/Repair WEEKLY SERVICE from \$45 mo. Chem Rite Pool Service 260-2770 Robert Shoemaker

Window Repair and Cleaning WINDOW & SCREEN REPAIR: 402-323-7113

Window Repair and Cleaning WINDOW & SCREEN REPAIR: 402-323-7113

Window Repair and Cleaning WINDOW & SCREEN REPAIR: 402-323-7113

BLONDIE by Chic Young

DAGWOOD, IF YOU'RE NOT DRESSED IN ONE MINUTE, I'M GOING TO PINCH YOUR NOSE!
 OKAY, I WARNED YOU! HERE GOES...
 TA-DAA!
 I WAS DRESSED! WHY DID YOU PINCH MY NOSE?

BEETLE BAILEY by Mort Walker

WELL, IF YOU DO SEE HIM, SEND HIM HOME PRONTO!
 YES, MA'AM
 SAY... WAIT JUST A SECOND

THE BORN LOSER by Art Sansom

MY FAMILY'S GETTIN' A LABRADOR!
 YOU MEAN YOU DON'T ALREADY HAVE ONE?
 UH... NO
 WHAT HAVE YOU BEEN USIN' THEN, AN OUTHOUSE?

PEANUTS by Charles M. Schulz

WHEN YOUR DOG WAS SICK, YOU WERE WORRIED ABOUT HIM, WEREN'T YOU?
 IF I GOT SICK, WOULD YOU WORRY THAT MUCH ABOUT ME?
 OF COURSE
 THAT MUCH OR MORE?
 I CAN'T HEAR YOU... THE TV IS TOO LOUD...
 STUPID DOG!

ECK & MECK by Howie Schneider

HOW WAS YOUR DATE LAST NIGHT?
 I LEFT IN THE MIDDLE
 HEADACHE?
 NO...
 DISASTER RELIEF

TUMBLEWEEDS by T.K. Ryan

THEY'RE DOING IT AGAIN, SIR! THEY'RE DOING IT AGAIN!
 WERE YOU FIENDS CALLING RAW RECRUIT FIZZY A PASTY-FACED GREENHORN AGAIN?
 BUT, THEY ARE FLAUNTING THEIR GLORIOUS TANS AGAIN!

ARLO AND JANIS by Jimmy Johnson

I HAVE AN IDEA! WHY DON'T YOU ASK SCOTT IF YOU CAN SLEEP OVER TONIGHT?
 REALLY?
 SURE!
 ALL RIGHT, DAD! COOL!
 SO I'M HORRIBLE

FRANK AND ERNEST by Bob Thaves

TONIGHT'S LECTURE: "ECONOMICS"
 HE SAYS THE RECOVERY IS DRIVEN BY PEOPLE SPENDING MONEY THEY DON'T HAVE ON THINGS THEY DON'T NEED.
 THE VIRTUAL ECONOMY!

GARFIELD by Jim Davis

GOOD NEWS!
 I'M HAPPY TO REPORT THAT I HAVE SUCCESSFULLY GAINED FIVE POUNDS!
 FIRST TIME I EVER HIT A WEIGHT GOAL!

ROBOTMAN by Jim Meddick

SO, MR. MONTAGUE, YOU WANT TO CHANGE YOUR NAME BECAUSE A TV SHOW IS ALSO CALLED "MONTY"?
 YEAH, AND I HATE IT.
 AND YOU WANT YOUR NEW NAME TO BE "STARSKY N. HUTCH"?
 YEAH, WELL THE FUNNY THING IS, IT STARTED ME THINKING OF OTHER TV SHOWS, SHOWS THAT I REALLY ADMIRED AND...
 CASE DISMISSED!
 OK, OK, HOW ABOUT MR. GILLIGAN KOJAK?!

Fibromyalgia, Lyme disease not related

DEAR DR. GOTT: Are Lyme disease and fibromyalgia similar diseases? What differentiates the two?

DEAR READER: Although fibromyalgia and Lyme disease share some characteristics (tenderness, muscle spasm and fatigue), the two conditions are distinct. Fibromyalgia causes aches and stiffness of muscles. It is a rheumatic disorder of unknown origin, occurs more commonly in women, is frequently related to stress, and is not a hazard to health.

On the other hand, Lyme disease is caused by infection with a microorganism transmitted by the bite of the deer tick. Unlike fibromyalgia, Lyme disease may cause arthritis, rash, heart disorders, and brain inflammation. Also, Lyme disease may be diagnosed by a blood test. Further, the treatment is different: long-term antibiotic therapy for Lyme disease.

DEAR DR. GOTT: My son was diagnosed with Wegener's granulomatosis in 1988 at the age of 15. Complications have been many, including bad sinusitis, throat swelling and renal failure. My sister suggested his sinus problem could be related to a yeast problem from being on prednisone for so long. Is this a possibility?

DEAR READER: Wegener's granulomatosis, a rare disease of unknown cause, is marked by inflammation of the upper and lower respiratory tracts, blood vessels and the kidneys. Although it resembles an infection, it is probably an auto-immune disorder, when the body mistakenly attempts to destroy its own normal tissues.

Symptoms include sinus congestion and ulcerations, ear infections, chest pain, cough, and blood spitting. Fever, loss of appetite, weight, malaise, arthritis, and skin ulcers may appear. There is often blood in the urine. Renal failure may occur.

The diagnosis is made by blood tests and biopsy. Early diagnosis is crucial, because treatment can lessen symptoms and prolong life. Copyright 1994, NEWSPAPER ENTERPRISE ASSN



- ACROSS**
- 1 Distant
 - 7 Dividing into areas
 - 13 Of practical value
 - 14 Of the eyes
 - 15 Fight
 - 16 Tomorrow, in Mexico
 - 17 Take to court
 - 18 Strike-breaker
 - 20 Sweet potato
 - 21 Sailing ship's ladder
 - 24 No
 - 27 Lectures
 - 31 Uncontaminated
 - 32 Braid
 - 33 Collect
 - 35 Askew
 - 36 Spends lavishly
 - 40 Two words of under-
- DOWN**
- 41 Sudsier
 - 43 Dentist's deg.
 - 46 Indication
 - 47 Wedding words
 - 50 Hatful
 - 53 Model Lauren
 - 55 Gossip
 - 56 Pianist - Garner
 - 57 Shellfish
 - 58 Greatly
 - 1 Messages
 - 2 Jacob's brother
 - 3 Allocated
 - 4 Frequently (poet.)
 - 5 City in Oklahoma
 - 6 Votes in
 - 7 Rum drink

Answer to Previous Puzzle

L	I	E	R	I	M	S	R	I	B	S
S	O	L	U	F	O	S	A	N	O	A
A	T	A	L	A	S	T	R	A	W	
T	A	B	L	E	T	S	P	O	E	T
O	L	D	E	R	I	N				
R	A	R	A	T	S	A	R	L	I	B
E	N	A	M	O	R	W	A	L	E	S
N	O	T	A	R	Y	A	L	E	V	E
O	N	E	D	O	E	R	T	I	E	S
B	U	R	M	A	T	R	A	N	I	A
U	P	H	O	L	S	T	E	R	C	O
N	O	E	L	R	O	B	E	U	N	A
G	N	A	T	A	R	A	R	S	E	T

- 8 Wood sorrel
- 9 Convent resident
- 10 Now - me down to sleep
- 11 Zola heroine
- 12 Metric weight
- 19 High mountain
- 21 - monkey
- 22 Fiber cluster
- 23 Cream-filled pastry
- 24 Arrow poison
- 25 Camel part
- 26 Russian river
- 28 Turns left
- 29 Ireland
- 30 Eye infection
- 34 Theater sign (abbr.)
- 37 Funny remark (sl.)
- 38 Spire ornament
- 39 Expressed regret
- 42 Habituate (var.)
- 43 Infect (2 wds.)
- 44 WWII event
- 45 Uses chair - not
- 46 Plaything
- 49 Sole
- 51 Baseball player Mel -
- 52 Rubber tree
- 54 - la-la

WIN AT BRIDGE

By Phillip Alder
 Abraham Lincoln, in his second inaugural address on March 4, 1865, said something that is applicable to today's deal: "With malice toward none, with charity for all; with firmness in the right... let us strive on to finish the work we are in."

If you know something about malicious plays that work well for your side and realize that charity can help you, not your opponents, you will finish today's deal with a nice profit.

It isn't clear what to open with that South hand. The drawback of five (or four) diamonds is that it takes you straight past three no-trump, which might be the only making game. But five diamonds may have the advantage of making life difficult for the opponents. West led a top club. South

ruffed, drew trumps and cashed dummy's two top spades. He had seen that if West held the spade queen, the contract was always safe. And South didn't want to lose to East's doubleton queen. Yet when the queen didn't appear, South had to play a third round. However, East won with the queen and switched to the heart queen: one down.

South's line was reasonable, but he had a guaranteed way to keep East off the lead. At trick one, he shouldn't have ruffed; he should have discarded a spade.

West's best play now is to cash the heart ace, but suppose he continues with the club ace. South ruffs, draws trumps and plays three rounds of spades, ruffing the last in hand. He leads a trump to the dummy and cashes the winning J-9 of spades, discarding his heart

losers. Declarer collects an overtrick, not an undertrick.

NORTH 2-25-94	
♠ A K J 9 2	
♥ 7 6	
♦ K 9 8	
♣ J 4 3	
EAST	
♠ Q 10 8	
♥ Q J 10 9 2	
♦ 4 3	
♣ 8 7 5 2	
SOUTH	
♠ 7 6 3	
♥ K 4	
♦ A Q J 10 7 6 5 2	
♣ - - -	
Vulnerable: East-West	
Dealer: South	
South 5 ♠	West Pass
North Pass	East Pass
Opening lead: ♠ K	

HOROSCOPE

By Bernice Bede Osol
YOUR BIRTHDAY
 Feb. 26, 1994

In the year ahead you're likely to have a broader range of interests than you have had in the past. This could open up opportunities for you both socially and commercially.

PISCES (Feb. 20-March 20) If you deliberately abdicate your right to make decisions today, persons with whom you'll be involved may do your thinking for you and come up with the wrong answers. Know where to look for romance and you'll find it. The Astro-Graph Matchmaker instantly reveals which signs are romantically perfect for you. Mail \$2 and a long, self-addressed, stamped envelope to Matchmaker, c/o this newspaper, P.O. Box 4465, New York, N.Y. 10163.

ARIES (March 21-April 19) Today if you're not discriminating in your associations, especially with persons in your field of endeavor, you could be asking for problems.

TAURUS (April 20-May 20) There's a possibility your hopes and expectations might be built

upon a faulty premise today. This is an unusual pattern for one as realistic as you normally are.

GEMINI (May 21-June 20) All eyes will be focused on you today, even though you might not deliberately seek the spotlight. Be mindful of your behavior, and win or lose with grace.

CANCER (June 21-July 22) You might considerate it an innocent flirtation, but the recipient may read much more into it than that. Be careful how you exude your charm on others today.

LEO (July 23-Aug. 22) If you've been contemplating making some investments at this time, first be sure you have the very best advisors possible. This could be a tricky area with hidden dangers.

VIRGO (Aug. 23-Sept. 22) Instead of worrying today whether someone with whom you're closely associated will treat you fairly, give some thought as to what you'll do for him/her.

LIBRA (Sept. 23-Oct. 23) If your generosity isn't freely given today, the response you're antici-

ipating from the recipient might not be forthcoming. Give without expecting anything in return.

SCORPIO (Oct. 24-Nov. 22) You might have to deal with someone today in a social situation who makes you feel inferior. However, if you maintain your composure, you'll deprive her/him of power.

SAGITTARIUS (Nov. 23-Dec. 21) Inclinations to be the center of attention could be rather strong today. Take care you don't let these innate impulses cause you to do something ridiculous.

CAPRICORN (Dec. 22-Jan. 19) If you step out of character today and see things as you wish them to be instead of as they really are, you might create complications for yourself. Be positive, but be realistic.

AQUARIUS (Jan. 20-Feb. 19) Don't be disappointed today if the conductor on the Success Express doesn't let you board the train without a ticket. Let's face it, the world doesn't owe you a free ride.

Copyright 1994 NEWSPAPER ENTERPRISE ASSN.

ANNIE by Leonard Starr

DO YOU MIND IF I WATCH A BIT OF TV BEFORE I TURN IN "DADDY"?
 SURE, I'LL HARDLY HEAR IT IN MY ROOM!
 OH - I MEANT TO ASK... WHAT DO YOU THINK OF SONDRA FLECK?
 WELL... SHE'S KIND OF MAGGE SOMETIMES BUT I LIKE HER FINE. WHY?
 NO REAL REASON, JUST, UM... ANNIE, FLECK ASKED ME WHAT I THOUGHT OF HER.