

Casselberry Lions Win District Meet

By Jane Casselberry
Announcement has been made that the Lions Club of Casselberry was district winner of the Lions International Membership Contest for 1961-1962.

Sanford Girls Meet To Choose 4-H Projects

Sewing and good grooming will be fall projects for the Sanford Girls 4-H club, which met Saturday to make plans for the year.

Six new members met with last year's members and the new leader at the get-acquainted party held in the Home Demonstration Building.

Meetings will be held Saturday afternoons at the home of the leader, Mrs. David A. Turner.

New members of the club are Patricia Brown, Julie and June Hutchinson, Patricia O'Donnell, Brenda Phillips and Linda Wilson.

Members with previous 4-H experience are Susan E. Day, Gail Farmer, Bonnie Gandy, Sharon Sheffield and Linda King, who is also a Junior leader.

Girls interested in 4-H work can still become members of the club by contacting a member or calling Miss Myrtle Wilson, county home demonstration agent.

Plans Annual Faculty Supper

The annual get-together and pot-luck supper sponsored by the Oviedo Parent-Teacher Organization in honor of the Oviedo School faculty will be held Saturday in the school cafeteria beginning at 6:30 p. m.

Chuluota parents and children are invited and encouraged to attend the event which is held primarily to give parents and teachers an opportunity to become better acquainted.

Since it is a covered dish supper those planning to attend are asked to bring a large covered dish of their own choosing and a complete table service for each member of the family who will be present.

Retired Folks To Resume Club Meetings

By Virginia Chadwick
The first fall meeting of the Chuluota Retired Folks Club will be held on Thursday, Oct. 18, at the Chuluota Community House. All meetings of the club were recessed during the summer months of July, August and September.

The usual pot-luck supper will be held at the October meeting with members bringing a covered dish. The regular monthly schedule of the club will be resumed for the season with meetings to be held on the third Thursday of each month with E. Richardson presiding as president.

price of a portable aluminum and plywood speaker's stand bearing the Lion's emblem and which conveniently folds flat to a height of less than two inches.

Plans were made at last week's meeting for two current fund raising activities from which proceeds will go towards financing the sight conservation and youth projects carried on by the local club.

In one project a Tohatsu light motorcycle will be given away at a dance to be held Oct. 12 from 8 p. m. until midnight at the outdoor dance patio next to the Casselberry Post Office. Winner of the prize does not have to be present and if he does not wish to keep the motorcycle the local dealer will refund him its post price.

As a second project the club is sponsoring the sale of Halloween candy in bags of 100 individually wrapped pieces. The candy will be on sale with some of the Cas-

selberry merchants by the Lion sponsored Boy Scout Troop.

John Minor, visiting Lion from the Oviedo Club, was introduced as a candidate for governor of District 25-6. Representatives of the Winter Park Telephone Co. will be present at the meeting next Thursday night to give a demonstration of direct long distance dialing.

The company has offered at this time to give one free long distance call to anywhere in the United States to someone in the local club and a contest was conducted to see who would make the call during the demonstration. Winner was James Prevatt of Howell Park who plans to transfer his membership from the Palatka Club to Casselberry.



SHERRI WILLIAMS is taking a brief rest (and a pretty pose, I might add) by one of the many Cypress trees at Beautiful Cypress Gardens.

Missile Instructors Visit Science Classes

By Jane Casselberry
Capt. Jack B. Shaw and 1st Lt. Charles Wingo of the USAF Tactical Missile School at Orlando Air Base, instructors in the launching and maintenance of the Mace Missile, visited the seventh and eighth grade science classes of Mrs. Catherine Martin and Mrs. Stanley Rhee at South Seminole Junior High last Friday.

They brought with them the film entitled "The Air Force Missile Mission" which is in color and is narrated by James Stewart. They also had a number of training slides and a scale model of the Mace.

Following his talk the Captain attempted to answer the many questions put to him by the eager young audience. Though they are no longer a part of Lyman School, these members of the former Lyman Missile

Club still are vitally interested in everything concerning missiles and the space age.

At present they are busy organizing a Missile Club at the Junior High and are selecting a new name and electing officers. Fortunately, Mrs. Martin, who sponsored the club at Lyman, is teaching science at the new school and shares the enthusiasm of the students.

INTERIORS RE-UPHOLSTERED

Like NEW Again Regardless Of Make or Model

Auto Glass AND SEAT COVER CO. 304 W. 2nd 322-9432

3rd Anniversary SPECIALS!

For A Limited Time Only

VINYL ASBESTOS TILE

Anniversary Special Only — **8 1/2¢** Per Tile

9 x 12 LINOLEUM RUGS

Just A Few Left REG. \$7.95

\$4.25



House of Floors

Fern Plaza, Fern Park FA 3-0814 or TE 8-1677

Bridge Club Winner Named

This week's Tuesday afternoon meeting of the DeBary Duplicate Bridge Club, which has moved back to the Community Center, saw 12 tables in action.

Winners were NS, first, Mrs. Clyde Ramsey and Mrs. E. E. Anderson; second, Mrs. Ruth Blatt and William Woodcock; third, Mrs. Doyle Driver and Mrs. O. N. Lacey and fourth, Mr. and Mrs. Howard Middleton.

EW, first, Mrs. Donald C. Johnston and Mrs. Lois Weeks; second, William Luis and H. G. Chase, third, Mrs. Minta Morrison and Harry Schob and fourth, Mrs. Charles Daglia and Mrs. C. R. Andrews.



BOTTLED GAS



PER 100 LB. CYLINDER \$8.00

No Installation Charge Delivery Anywhere in Seminole County

Call FA 2-5733

Sanford Gas Co.

109 W. 1st ST.



'63 CHEVROLET IMPALA SPORT SEDAN

Tomorrow-GO JET-SMOOTH CHEVROLET for '63

If it didn't say Chevrolet on the flanks of the superb automobile you see here, you'd have a hard time proving that it's a low-priced car. Its interior is more luxurious than most living rooms; it rides like a limousine and performs with the smoothness and silence that used to be limited strictly to cars for the very rich. In addition to all this, there's a host of advances and refinements that'll help keep your Chevrolet looking and

IT'S EXCITING!

running like a new car when a lot of others have started to sag and sigh. Fisher Body with air-washed rust-cheating rocker panels for one, self-adjusting brakes for another, and the Delcotron generator to help you have an always-ready supply of electricity and lengthen the life of your battery. If you ever wondered why Chevrolet leads the field, a drive in this '63 should answer all your questions.



GO CHEVY II for '63-IT'S EXCITING!

'63 CHEVY II NOVA SPORT COUPE

Hard to believe, but this year's Chevy II is better than last year's. It shares all the new easy-care features of the big Chevrolet and adds its own attributes of parkable size, four- or six-cylinder economy, and interiors that'll match cars with twice the price and half the charm. Chevy II has made a permanent place for itself with its sparkling performance and nickel-nursing economy and if you want more car for the money, Chevy II is the car for you.

It's Chevy Showtime '63! See four entirely different kinds of cars at your Chevrolet Dealer's Showroom



GO CORVAIR for '63-IT'S EXCITING!

'63 CORVAIR MONZA CONVERTIBLE

Change it? Calm yourself, nobody's going to mess with a winner like this one! We did add self-adjusting brakes and a more fully aluminum muffler; interiors are refined a bit, and you'll notice some trim changes. But the rest is pure untampered-with Corvaire with all the over-the-road goodness that implies. Oh yes, we changed the rings around the taillights so all those people you pass will know you're driving a '63.



Ravenna Park

"Homes In A Community Built With Pride"

3 & 4 BEDROOMS - 1, 1 1/2 & 2 BATHS

Priced From \$11,900

LOW DOWN PAYMENT

F.H.A., F.H.A. In-Service, Conventional Financing KITCHENS GENERAL ELECTRIC

Shoemaker

CONSTRUCTION CO., INC. Custom Building A Specialty

Gen. Office 211 W. 25th St. - Ph. FA 2-3103 Sales Office FA 2-7495 Homes On Country Club Rd. - Follow Our Signs

STENSTROM REALTY Sales Agents

HOLLER MOTOR SALES COMPANY

Corner 2nd & Palmetto

SANFORD, FLA.

FA 2-0711



By LARRY VERSHEL
On Aug. 22 of this year Circuit Court Clerk Arthur Beckwith Jr. wrote a letter to five members of the County Commission who held office in 1969. He asked them to make good for those two steak dinners for the zoning board that were held without proper authorization. Serving on the board were John Krider, David Gatchel, Vernon Dunn, Lawrence Swafford and Homer Little . . . Beckwith said today that no money had been received from the five.

No doubt that fall is here . . . Using the Sanford Atlantic Bank temperature chart . . . At 5:30 a.m. temperature was 68, at 6 a.m. it dropped two more degrees . . . Don't ask me what I was doing downtown at that hour.

City and County Commission will meet Monday night to discuss water and sewer lines to the proposed Hunt Company site . . . Estimated cost according to City Manager W. E. Knowles—\$67,000.

They partitioned off City Clerk Hank Tamm Jr. today . . . maybe to give him a little more peace to work on that reappraisal we have been promised.

City of Daytona Beach conducted trial covering up parking meters . . . increase of 20 percent in business reported.

There's a group of boy scouts trying to raise money with a car wash at the service station by 35th St. and Park Saturday . . . Try to help 'em.

Speaking of help . . . don't forget the rummage sale for the Little Red School House today and Saturday, sponsored by Theta Sigma Chapter of Beta Sigma Phi.

Engineer Bill Bush reported to the County Commission that his office had made a survey of the roads leading to Crystal Lake in Lake Mary. Total number of roads planned and approved: 16, total usable and open to traffic: six. Bush says the rights of way planned for the roads are used by many citizens as though they owned the dedicated ways, for everything but access—some are even fenced off!

Jottings from the Jayvee Jousting: The Warrior Juniors are still jealously guarding their goal line—still uncrossed . . . The 20-0 lead toward the mid-fourth quarter gave the coaches a chance to use some of the reserves . . . Not enough, perhaps, but at least they got the taste of battle . . . Then just to test the first team, Coaches Stumpf and Colbert ran them back in with a "Let's see if you're good enough to make that touchdown that your subs have set up for you!" . . . Bing, bang, bo-o-n-n-ggg! And that was it!

Probably the best executed play of the game was the one that preceded Kosky's TD trot in the fourth quarter . . . Looked like the line PLASTERED their opposites and Hinson with two men ahead of him streaked for the goal in the left coffin corner . . . But he was picked off with yards to go . . . Kosky swept the other end to make it 29-0.

That line again looked tough and rugged . . . Felt that way, too, to the Leeburg battlers, who never gave up . . . Earl Black runs with determination . . . Trucked the leather for more than 100 yards of gain . . . Hinson's PAT's that come from his place kicks are a welcome addition to an important kicking department in the whole Seminole setup . . . Season is early, though.

The Varsity game tonight is at Apopka . . . Big convoy being assembled . . . Jayvee game next week is on WEDNESDAY in Sanford . . . Memorial Stadium . . . 7:30 p.m.

The results of the Herald poll on downtown needs will be published Monday. Last count over 400 returns . . .



Here Is A View Of The New Hospital Wing

New Hospital Wing To Open Here Monday

The new \$650,000 East Wing of Seminole Memorial Hospital, begun last summer will officially open for patients Monday, adding 28 beds to the hospital capacity, A. B. Peterson Sr., Chairman of the Board of Trustees announced today.

"The members of the board, along with Hospital Administrator Robert Bessner are inviting the public to inspect the new wing Saturday and Sunday with Open House hours from 2 to 4 p. m. each day," Peterson said.

The opening of the new wing will bring the present 75 bed hospital up to 103 beds and by stretching an additional 20 or more beds or 125 patients can be accommodated in time of emergency.

The members of the Board of Trustees are already hard at work on plans for the completion of the third floor, which has been planned as a step-by-step construction program.

Other members of the board are vice-chairman J. W. Evans; secretary - treasurer, Andrew Carraway, Robert S. Bradford and John Schirra. Legal counsel is Gordon Fredrick.

Schirra To Photo Earth's Face

CAPE CANAVERAL (UPI) — U. S. astronaut Walter M. Schirra Jr. will photograph earth's rugged face on his upcoming orbital flight to get pictures that may help in future detailed studies of the planet Mars, it was learned today.

The 39-year-old Navy commander is scheduled to make a six-orbit voyage around earth next Wednesday — America's third manned spaceflight around the globe.

THE WEATHER — Cloudy through Saturday. High today, 80-85. Low tonight, 68-72.
VOL. 53 United Press Leased Wire Established 1903 FRI., SEPTEMBER 28, 1962 SANFORD, FLORIDA NO. 650

The Sanford Herald

Feds Await Word

Barnett Defies Courts

NEW ORLEANS (UPI) — Gov. Rose Barnett today again defied a federal court by refusing to appear and explain why he should not be held in contempt for blocking the admission of a Negro from the University of Mississippi.

OXFORD, Miss. (UPI) — Hundreds of federal marshals, supported by U. S. Army Engineers, awaited orders today to enter Mississippi and place, by force if necessary, a Negro in the state's white-only university.

A physical showdown was expected by Monday unless a compromise can be reached — and that did not appear at all likely.

The U. S. 5th Circuit Court of Appeals immediately began deliberations on what to do about the Mississippi governor who refused to enroll James H. Meredith, 29-year-old Negro, in the university.

Barnette sent a formidable battery of lawyers into court to represent him, headed by John C. Satterfield former

Force Strategy Meeting Held

WASHINGTON (UPI) — President Kennedy held a new round of conferences with his advisers today on when and how much federal force should be used to compel the court-ordered enrollment of Negro James H. Meredith at the University of Mississippi.

The White House said the President conferred at least once during the morning with Atty. Gen. Robert F. Kennedy, who is handling federal strategy in the Mississippi crisis.

It was another in a series of consultations the President and his brother have held on the situation.

news...

Briefs Mandate To Be Obeyed-Holland

WASHINGTON (UPI) — Sen Spessard L. Holland, (D-Fla.), said Thursday that if Florida was faced with a court order such as that causing upheaval in Mississippi, "Our Florida people would obey that mandate as much as we would dislike it."

Red Chinese Shake Up Party

TOKYO (UPI) — Red China's all-powerful Communist Party shook up its leadership today, and publicly admitted that there have been errors in the country's agricultural and economic administration.

Cancer Victim

HOLLYWOOD (UPI) — Dick Powell, onetime banjo-playing singer who became a successful actor and television producer, was being treated for cancer today, hopeful that doctors can cure the disease.

Senate OK's Tax Deductions

WASHINGTON (UPI) — The Senate today passed and sent to the White House legislation permitting doctors, lawyers and other self-employed persons tax deductions for setting up their own private pension plans. The vote was 70-8.

Big Savings

TALLAHASSEE (UPI) — The Road Department said today it has saved \$91,241 during the past nine months through the use of compact automobiles.

Storms Hit

By United Press International
Winds with gusts of gale force and thunderstorms hit the Northeast today. In Arizona, a number of communities braced for desert floods.

Pay Hike

WASHINGTON (UPI) — The Senate served up a combination sandwich of postal rate increases and federal pay raises today, and some House members were finding it hard to swallow.

Refugees Report Cuba Curfew

United Press International
Cuban refugees in Mexico City said today Premier Fidel Castro's revolutionary regime has imposed a 9 p.m. curfew on the Mariel area, west of Havana, to limit public observation of truck convoys bringing rockets to the Russian - manned military base there.

Disaster Area

TALLAHASSEE (UPI) — Gov. Farris Bryant said President Kennedy today to declare Manatee, Sarasota and Charlotte Counties disaster areas eligible for federal assistance to relieve damage done last week by high wind and rain.

Herald Index

Bridged . . . Page 4
Classified . . . Page 10 & 11
Comics . . . Page 10
Dear Abby . . . Page 4
Editorial . . . Page 8
Entertainment . . . Page 4
Legals Page 4-9-10 & 12
Puzzle . . . Page 10
Society . . . Page 5
Sports . . . Page 12
Churches . . . Page 2

BULLETIN

WASHINGTON (UPI) — The Senate Appropriations Committee today approved funds to complete planning of the controversial Cross-Florida Barge Canal.

Krider Urges

Boost Sales Tax To Pay For Canal

John Krider, manager of the Seminole County Chamber of Commerce, called Thursday for an added one per cent to the state sales tax to finance the Sanford-Titusville Canal, as a part of the total state conservation program which would include the Florida Cross-State Canal, also.

Krider brought the meeting of county leaders of Seminole, Orange, Volusia and Brevard Counties, called by Sen. Bernard Parrish, down to earth with a thud when he said, "If we wait for Federal money to build the Sanford-Titusville Canal, neither us nor our children will ever live to see it done."

Krider was emphatic that to talk about Federal funds, when 49 other states are "dipping their hands in the same pot is sheer pipe dreaming."

His proposal was to finance the project, and the cross-state canal both, by internal financing with funds acquired by the imposition of an additional 1 per cent sales tax, which would bring in an estimated \$70 million which, Krider said, along with the usual \$12 to \$14 million handed down by the Federal government, would get the total state conservation program underway, including the two canals.

There was a discussion of possible routes for the Sanford-Titusville venture, and it was pointed out by Norman Scott, of the engineering firm Reynolds, Smith and Hills, representing Brevard County, that a southerly course, down the St. Johns River to a point below Highway 520 would be the most feasible.

Scott also concurred with Krider that the only hope for getting the project underway was a program of state financing rather than waiting for Congress to appropriate the necessary funds. The longer the wait, Scott said, the larger the amount of money needed, and soon it would be so large that it would be out of sight.

The final conclusion of the meeting was that the acquisition of suitable rights of way would get underway at the earliest possible time so the alignment of the canal can be set. This step will facilitate the acceptance of the project by the U. S. Corps of Engineers.

Chief Judge Elbert P. Tuttle opened the proceedings by asking: "Is there a respondent present for Gov. Ross Barnett?"

There was a long silence. Then Satterfield advised the court that he and his colleagues represented the governor who was not present.

Bryant May Jump Into 'Milk' Feud

TALLAHASSEE (UPI) — An old campaigner against the State Milk Commission is considering taking the field again—Gov. Farris Bryant.

Bryant told his news conference Thursday he would decide whether to jump into the controversy over a new retail price-fixing order on the basis of advice from an assistant assigned to study the matter.

Hire Handicapped

TALLAHASSEE (UPI) — Gov. Farris Bryant urged employers today to hire the handicapped. The governor has designated Oct. 7-13 as Hire the Handicapped Week in Florida.

Ford 24,000-Mile Warranty!

W. A. Morrison, president of Strickland-Morrison, Inc., Sanford, today announced that all purchasers of 1963 Ford cars and trucks will receive a 24-month or 24,000-mile warranty.

The new warranty, Mr. Morrison said, represents a doubling of the 12-month, 12,000-mile warranty, with which Ford dealers led the industry in offering to their customers in the 1961 model year.

The 24,000-mile warranty was pioneered by the Lincoln Continental on 1961 models.

"Extension of this warranty to other car and truck models for 1963," Mr. Morrison said, "is possible because of continued progress toward quality and reliability goals that year after year have enabled Ford dealers to be the leader in providing products requiring less and less maintenance."

Invitations Heavy For Hunt Session

Sheriff J. L. Hobby, A. D. Aldrich, director of the Game and Fresh Water Fish Commission, and his chief aides, and Naval Air Station representatives are being invited to listen to the opinions of sportsmen and other residents on allowing hunting. The area was opened for

hunting two years ago after consideration by the game commission and the proposal to close it again was made in a resolution by the county commission after complaints from property owners were filed last May. It is open until official action is taken.

Key factor in the effort to close the area to shooting doves is local enforcement of the ruling, if it should be made. The state agency will not get involved in enforcement, but leaves that up to the sheriff's department. Sheriff Hobby has said that this would create a man-

power problem for his office during the season which opens Oct. 8.

The sportsman's association is trying to get a large turnout for the Monday meeting, scheduled at 8 p. m. in the courthouse. All interested residents are urged to attend and express an opinion on this hunting proposal.

Dear Abby: By Abigail Van Buren

DEAR ABBY: How can my... (letter text)

DEAR OUGHT: You ought to... (letter text)

DEAR ABBY: Can you or any... (letter text)

DEAR HUGGED: A real pipe... (letter text)

DEAR ABBY: I don't see why... (letter text)

DEAR ABBY: I don't see why... (letter text)

DEAR HYANNIS: All I know... (letter text)

DEAR ABBY: I don't see why... (letter text)

Jacoby On Bridge By Oswald Jacoby

The East-West Mating—as... (text)

WEST EAST... (bridge text)

was led from dummy, South... (bridge text)

Word's double of two... (bridge text)

SOUTH... (bridge text)

At the other table America... (bridge text)

The swing eventuated—in... (bridge text)

Both vulnerable... (bridge text)

Thus, we incurred a loss of... (bridge text)

North led the king, queen... (bridge text)

played his jack and dummy's... (bridge text)

king won. The deuce of clubs... (bridge text)

We The Women: By Ruth Millet

Question your friends... (letter text)

bring, junkie with us? It's so... (letter text)

good, do you? "Do you want to know... (letter text)

Highlights TV Time Previews

7:30-8:30 p. m. CBS. Raw... (TV preview)

national Showtime. "Katie's... (TV preview)

7:30-8:30 p. m. ABC. Close... (TV preview)

Legal Notice

IN THE CIRCUIT COURT OF... (legal notice)

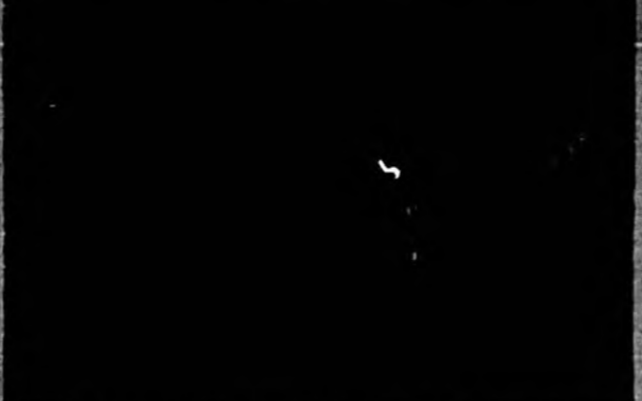
Improvements, fixtures, app... (legal notice)

OPEN 12:45 TODAY & SAT... (Cool Ritz ad)

Sing Along With Harry... (Mar-Lou ad)

TV RENTAL Seminole TV... (TV rental ad)

Did she did she... (Kim Novak ad)



KIM NOVAK seems sort of doubtful... (text)

Comedy Is Ritz Bound

A tremendous star trio — Kim Novak, Academy Award... (text)



ELVIS PRESLEY plays a prize-fighter... (text)

Presley Film At Drive-In

Elvis Presley's latest film is... (text)

Weekend Television

Table with TV listings for Friday, Saturday, and Sunday P.M., Saturday A.M., and Monday P.M.

Legal Notice and Sonny's Coming Soon? advertisement.

SO LONG '62 SALE! advertisement for Galaxie Home Bldrs. and Brass Motors.

Remodeling Of Hospital Underway

For the new wing of the
Seminole Memorial Hospital

By...
Bill Newsome Tile
200 Palmwood Ave. ORLANDO, FLA. CR 1-4261

We invite You To
Inspect Our Quality
Painting

on your tour of
the new wing of
Seminole Memorial
Hospital

Wayne R. Ruff
PAINTING CONTRACTOR
P. O. Box 6404 GA 4-0433
ORLANDO, FLA.

Be Sure To Attend
The Formal Open House
Of The East Wing

Seminole Memorial Hospital

SATURDAY AND SUNDAY, SEPT. 29 AND 30

FOR FAST, RELIABLE
Prescription Service, CALL —

FA 2-3784
Medical Center Pharmacy
301 SAN MARCOS

FA 2-0392
Roumillat & Anderson
FIRST ST. at PARK AVE.

With Pride We Did The---

Plumbing
Heating

and
Air
Conditioning

For The New Wing of ----
Seminole Memorial Hospital

Orange PLUMBING & HEATING CO.

2141 W. Church St. ORLANDO, FLA.

CY 2-6110

Spreading Out Move

Remodeling of the main building of Seminole Memorial Hospital is still under way, as the new East Wing is opened for patients for the first time Monday. The "spreading-out" made possible by the construction

of brick as an accent. Starting with the lobby, which is being enlarged (taking in the space formerly occupied by the Family Room), the Hospitality Shop has also come in for enlargement, making access and serving more convenient.

Next to the Hospitality Shop is the new Admitting Office, more privately located to screen incoming patients from public view. Just behind that is the remodeled finance office and the office of the general manager, George Weigand.

The Doctor's Conference Room has been cut down a little, but still contains the small library of reference books, its conference table and chairs and a convenient television set for those who have to wait.

Across the hall, the new Family Room is presently being equipped and furnished by members of the Sanford Ministerial Assn., and plans show that it will be a beautiful room, suitable for family gatherings, quiet conferences and silent meditation. This room is the former office of the Director of Nurses.

To the left of the lobby is the greatly enlarged Laboratory Department, the Pharmacy, and the testing rooms. Across the hall is the new office of the Director of Nurses, the doctors chart room and the medical records room. All have been enlarged, expanded, remodeled and painted.

The AMA does oppose out-patient clinics in which addicts would be given drugs primarily for the maintenance of addiction. It does not oppose out-patient clinics that would assist in the care and rehabilitation of addicts.

Not Opposed To Out-Patient Clinics—AMA

CHICAGO—The American Medical Association said today it is not opposed to experimental ambulatory, or out-patient, clinics for the rehabilitation of narcotic addicts.

Bear Lake PTA Sets Meeting

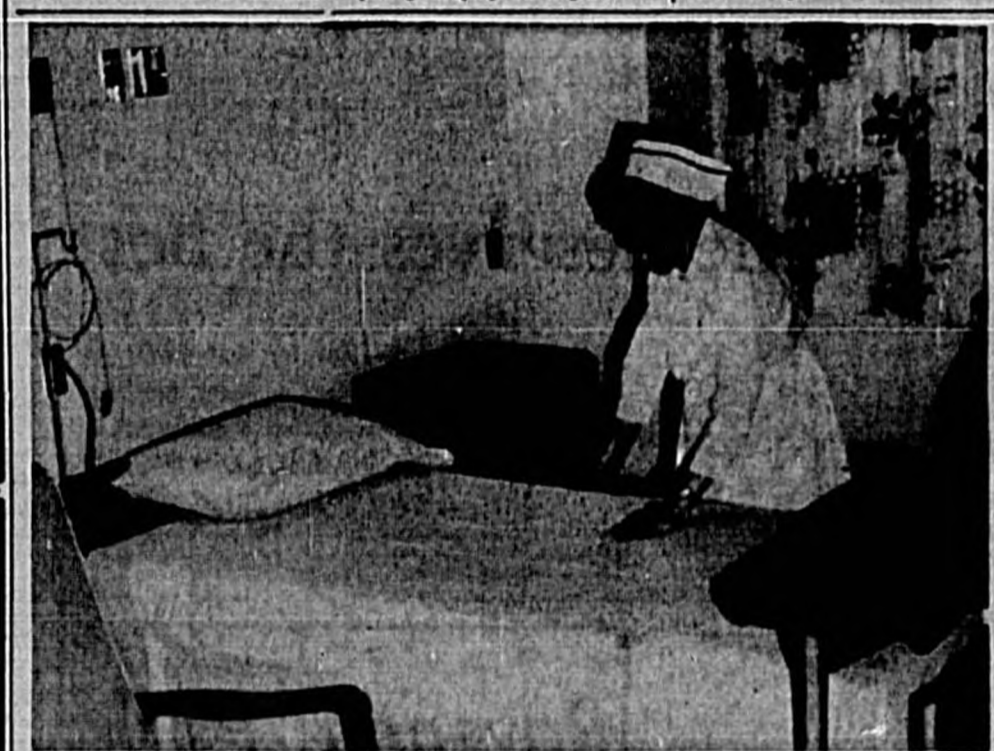
By Shirley Westworth
The first meeting of the Bear Lake Elementary PTA will be held next Tuesday beginning with a refreshment and social period at 7:30 p.m. PTA President Neel Buell will preside at the business meeting which is scheduled to open promptly at 8 p.m.

Circle To Meet

By Jane Casselberry
The Sunshine Circle of the Casselberry Community Methodist Church WSCS will meet Tuesday at 9 a. m. at the home of Mrs. John Birkheimer at 1490 Seminole Blvd. in Casselberry.



EMERGENCY ROOM NURSES STATION in the new wing is located in the hall leading from the entrance of the new east wing. Here Acting Supervisor of Nurses, Mrs. Phyllis Arney, RN, answers the phone, as Miss Patricia Holt, RN, checks the records. An emergency room nurse and aide are on duty 24 hours a day at the emergency room in the new wing. (Herald Photo)



PRIVATE ROOM in the new wing has a new Hi-Lo electric bed, which patient can raise, lower or position to suit himself, comfortable Danish walnut furnishings, attractive draw drapes, and the bed is made with cool, aqua-green pastel sheets. Here Nurse Mrs. Nancy Staley smooths the last wrinkle from the bed. There are 24 new beds in the new wing, and four private rooms. (Herald Photo)

Visit ---
the new wing of the
Seminole Memorial Hospital

Sat. & Sun.
Sept. 28 & 29

Faust's

DRUG STORE
224 E. 1st FA 2-0784
PHARMACY
1307 E. 2nd FA 2-7107



LABORATORY SPACE has been greatly enlarged, giving technicians more working space and more room for equipment. Here staff lab technician Mrs. Carman Ramos examines a specimen in the microscope, with the help of John Yelsley, also a staff lab technician. Chief Lab Technician R. Ramos, makes a cholesterol reading and lab secretary Sue Barrowman

checks the centrifuge. At right, Clyde Smith, staff lab technician is cross-matching blood samples. In addition to the room shown here there are storage rooms and another room where EKG and EHR readings are taken. This was formerly the east entrance way. The rest of the lab is now spread over the space where the X-ray department used to be. (Herald Photo)

Cancer Research Meet Scheduled

Fourteen of the nation's leading authorities in various fields of cancer research and cancer investigation studies are scheduled to speak and participate on panel discussions at the 1963 Southeastern State Cancer Seminar. The professional meeting has been planned for doctors, scientists and dentists residing in Florida and six adjoining States, and will be held at the George Washington Hotel, West Palm Beach, November 15-17.



CENTRAL SUPPLY, one of the most important centers of the hospital has an entirely new department in the new wing. Here equipment and supplies are kept, cleaning and sterilizing equipment are located. A lighted table helps supply room aides to quickly find holes or flaws in linens. Here Mrs. Monserrate Valez, RN, Supervisor of Central Supply (right) observes Mrs. Elizabeth Chesteron, nurses aide and Mrs. Martha Sayer, nurses aide, as they check some of the mountains of linens used by the hospital every day. (Herald Photo)

Doctors Get Drug 'Data'

CHICAGO—American physicians are beginning to get more complete, objective information about new drugs and their uses than ever before, and they are getting it faster. This was the American Medical Association's statement on the first anniversary of the AMA's expanded drug information program. The expanded program was launched in the summer of 1961 to help practicing physicians keep abreast of the rapidly mushrooming number of new drugs that are appearing on the market today. The principal channel of communication between the AMA's Council on Drugs and the physician in practice is the weekly Journal of the AMA. The Journal is mailed to each of the 186,000 AMA members and also goes to many other physicians, both in the United States and abroad.

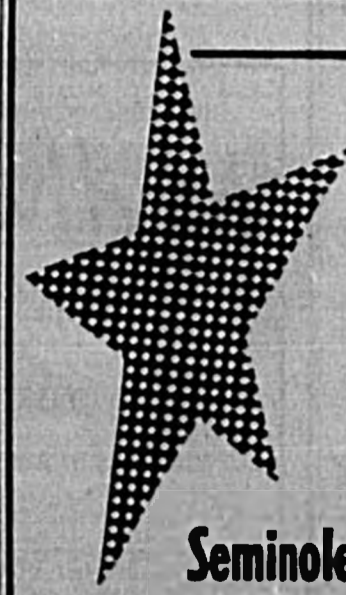
Tile Work

For the beautiful new
Seminole Memorial
Hospital

--- was done by

Watson
Tile Company

2722 E. Central Avenue
GA 5-3812
ORLANDO



ELECTRICAL WORK
and
LIGHTING FIXTURES

FOR THE MAGNIFICENT
NEW WING OF THE

Seminole Memorial Hospital
was done with pleasure by ---

Johnson

ELECTRIC CO., INC.
260 S. MAGNOLIA AVE. ORLANDO, FLA. GA 2-5186

Patients To Move Into New Wing Monday

Patients will be moved into the new green-sheeted beds on the second floor of the new \$250,000 East Wing of Seminole Memorial Hospital Monday.

Saturday and Sunday, Hospital Administrator Robert Bessner and the Board of Trustees are holding open house in the new facility so that Seminole County residents may inspect the addition to their hospital.

Pink Ladies of the Hospital Auxiliary will be on hand as guides to show visitors through the wing, during the open house hours from 2 to 4 p.m. each day.

There are 28 beds in the new wing, 24 of them in attractively furnished double rooms, and four of them in luxurious private rooms, spaced across the front of the

wing, with a view of Lake Monroe and the waterfront.

In all the rooms and throughout the hospital, all windows have been hung with attractive lined draw draperies, for subdued lighting and a gentler, quieter tone through the building, adding beauty to the surroundings.

In the new wing, pastel green sheets add color and a more homey look to the patients' beds. This change of color from the well-known hospital white, is one long ago adopted by doctors who now wear the soft-hued operating room green, a psychological color which has a quieting, soothing effect.

A much larger nurses station is centered in the second floor of the wing, close by patients' rooms, equipped with greater storage and preparation space and allowing nurses more elbow room for the keeping of charts and records and the preparation of medication.

On the first floor of the new wing is the huge new central supply division, the emergency room and emergency room nurses station, the suite of X-Ray rooms and a waiting lounge.

The third floor has not yet been completed inside, but is part of a step-by-step construction program.



NEW NURSES STATION in the new east wing has many added features such as a preparation room, much more storage space, cabinets, drawers, to enable nurses to work even more efficiently and add to the comfort and aid of both nurses and patients. Getting things set up in the new station are Nurses Aide, Mrs. Mildred Gerke, Mrs. Nancy Stanley, RN, Mrs. Mary Hausch, RN and Mrs. Bessie Swallow, LPN. (Herald Photo)

Like Our Excellent, Modern Hospital

THE LIGGETT-TOUGHTON DRUG STORES

are guardians of your health.

Prescriptions Are Our Primary Concern

CALL FA 2-2422
FREE DELIVERY

LIGGETT TOUCHTON

Congratulations...

Completion of the new East Wing of Seminole Memorial Hospital is another mark of growth and progress in Seminole County.

For Quick, Courteous Ambulance Service
Call.....

GRAMKOW

PHONE FA 2-3218

2-WAY RADIO DISPATCH

Radiology Department Housed In Brand New Wing Quarters

The X-Ray and Radiology department of Seminole Memorial Hospital is housed in brand-new quarters on the first floor of the new East Wing.

Here the very latest and finest in X-Ray equipment is already in use under the direction of Radiologist Dr. John Johnson and X-Ray Technicians Richard Riley, A. Baltrusis and Lloyd Fox.

The gigantic X-Ray machine is the new General Electric high speed model, costing \$20,000, the latest production for diagnostic testing.

At the other end of the wing is the Central Supply suite, the giant feeding system for the hospital where thousands of items of supply are funneled in and out every day. Coming in, they are cleaned, sterilized, packed, labeled and stored, then checked out on written orders to all departments of the hospital.

Audio Tests Scheduled At Bear Lake

By Shirley Wentworth
Clinic Mothers of the Bear Lake Elementary School will begin Monday at 9 a. m. to give audio tests to check the hearing of students in grades one, three, five and six.

Just off the X-Ray department is a convenient lobby, equipped with comfortable lounge chairs, convenient tables, lamps and stocked with magazines for persons waiting for patients in Emergency or X-Ray.

Altar Society Plans Sales

By Shirley Wentworth
A white elephant and rummage sale sponsored by the Altar Society of the Altamonte Springs St. Mary-Magdalen Catholic Church will be held on Oct. 5-6 at the Super Valu Food Store on SR 436.

Church Services Are Resumed

By Jane Casselberry
Rev. Delmas Copeland of the Casselberry Community Methodist Church has announced that the two services discontinued for the summer have been resumed.

Midweek prayer service is being held on Wednesdays at 7:30 p.m. and the Sunday evening service, also at 7:30 p.m., is being conducted.



EFFICIENT NEW X-RAY DEPARTMENT with all the latest and most modern equipment for patients of the area has these four department workers. From left, holding overhead equipment, Richard P. Riley, X-Ray Technician; Mrs. Barbara Dekle, (seated) X-Ray secretary; Miss Pamela Grinnell, student X-Ray technician and A. Baltrusis, X-Ray technician, positioning Mrs. Dekle's arm. Adjoining this room are the developing room and viewing room, the secretarial office and the office of radiologist Dr. John Johnson. (Herald Photo)

Lumber

for the new wing of the Seminole Memorial Hospital

was supplied by

Gator

Lumber Co.
700 S. French
FA 2-7121

Congratulations

on the progress and growth of a fine institution —

Our Seminole County Memorial Hospital

FOR PEACE OF MIND when illness strikes there's nothing like

MONEY IN THE BANK

EMERGENCIES WILL HOLD NO TERROR, IF...

You Start A Savings Account TODAY

THE SANFORD ATLANTIC NATIONAL BANK



Incorporated 1927

OPEN FRIDAY NIGHTS 'TIL 8:00



Ready-Mix Concrete

By

Miracle Concrete Co.

309 Elm Ave. FA 2-5751

"Established in 1910"

we are proud to have been selected

General Contractor

for the building of the new wing at

Seminole Memorial Hospital

we cordially invite you to inspect the new facilities Saturday & Sunday!

Jack Jennings

General Contractors
1030 Wilfred Dr. GA 3-6451
ORLANDO, FLA.

we furnished the FLOOR COVERING

For the new wing of the

Seminole Memorial Hospital

Open House

Sat. & Sun. Sept. 29 & 30

Unusual Floor Designing



Sherrod
FLOOR COVERING

1249 N. Orange Ave. ORLANDO, FLA. GA 3-6235

OBC opener For Seminoles Tonight

Locals Play Apopka

By Ronnie Broadway
Herald Staff Editor
Although not at top strength, the Seminoles will be there to do battle with the rest of the Blue Darters tonight as the teams travel to Apopka for the first OBC meeting for the Seminoles.

Touhy, Glad Spark Defense

JV's Pick Up Second Win Of Grid Season

By Ronnie Broadway
Herald Staff Editor
Seminoles High School's Junior Varsity made it two in a row Thursday night as the JV's downed Leesburg 32-0 in a high scoring rout.

League Leaders

Player & Club	Points
Tommy Hinson	113
Tommy Hinson	113
Tommy Hinson	113
Tommy Hinson	113
Tommy Hinson	113
Tommy Hinson	113
Tommy Hinson	113
Tommy Hinson	113
Tommy Hinson	113
Tommy Hinson	113

Legal Notice

IN THE CIRCUIT COURT OF THE FIRST JUDICIAL CIRCUIT IN AND FOR SEMINOLE COUNTY, FLORIDA. CHAS. W. WATSON, Plaintiff vs. WILLIAM H. PHILLIPS, Defendant.

Site Of Tourney

NEW YORK (UPI)—Walter's Row Country Club at Albany, N. Y., will be the site of the 1963 National Girls Junior golf championship. The tournament, open to girls who will not have reached their 18th birthday by the last day of August, is scheduled for Aug. 18-14.

DRAG RACE

SATURDAY, SEPT. 29
Time Trials 7:30 P. M.
Eliminations 9:30 P. M.

Osceola Air Strip

SOUTH ON RT. 46 to GENEVA THEN FOLLOW SIGNS
Admission \$1.25
Entire Profit To Be Donated To THE JUVENILE COURT

THE JUVENILE COURT

SPONSORED BY -- Seminole Timing Assoc. SANFORD, FLA.

Why YOU Should Buy TIRES from McROBERTS

• Lifetime Unconditional Road Hazard Warranty.
FREE: Periodic Inspection
FREE: Flat Tire Repair
FREE: Tire Rotation
FREE: Front End Check
BUDGET TERMS - NO CARRYING CHARGE
TIRE SPECIALIST SINCE 1933
McROBERTS TIRE SUPPLY, INC.
Florida Distributors For DeSaan Custom Built Tires
We Give Florida Stamp
163 W. First St. SANFORD, FLA. 2-4631

The Sanford Herald Page 12 - Sept. 28, 1962



SHERIFF J. L. HOBBS and County Judge Vernon Misa look over one of the cars to be run in the Seminole Timing Assn. speed trial Saturday night for the benefit of the county juvenile council. All proceeds of the race will go to help needy youngsters. Trials start at 7:30 with eliminations at 9:30. (Herald Photo)

Butterfingers! Bums Flop; Giants Fizzle

United Press International
What a bunch of butterfingers!
You can say that again—once for the faltering Giants and once for the fumbling Dodgers.

Nursery Takes First In Loop

The Grapeville Nursery team rose to first place in the 11-second league at Shoemaker Construction.

Boxer Still Fights Death

LOS ANGELES (UPI)—Boxer Alejandro Lavorante today won part of a battle with death, and vigilant doctors said if the handsome Argentine could "weather another week" his chances for survival were good.

SPORTSMEN CALL MEETING

8:00 P.M.
Monday, Oct. 1st
AT COURT HOUSE
STATE GAME COMMISSION OFFICIALS will be present to hear protests to local petitions to prohibit hunting in the area south of and including the Sanford Naval Air Station.

ALL SPORTSMEN ARE INVITED TO ATTEND

BOARD OF DIRECTORS
Seminole County Sportsmen's Association

Lyman Tangles With Newberry

Lyman Greyhound Coach Buck Metts and staff will be seeking their third straight win of the season tonight as the team meets Newberry. Lyman is thus far undefeated and unscathed for the season for two games, downing Crystal River 26-0 and Ocoee 19-0.

New Kegler Loops Forming

On Monday afternoon at 8:15 p.m. it'll be the girls from Seminole High School bowling in the Powder-Puff Kegler-style League.

SEC Action

United Press International
Powerful Alabama and lowly Tulane kicked another Southeastern Conference football weekend tonight in a game that could be closer than the 17-point spread offered by bookmakers.

Standings

City	Points
Los Angeles	101
San Francisco	88
Cincinnati	85
Pittsburgh	81
Milwaukee	80
St. Louis	78
Philadelphia	78
Houston	73
Chicago	71
New York	68

Here's your ESCORT

--for all the great shows!



GENERAL ELECTRIC

PORTABLE TV

PORTABLY YOURS... extra light, 22-lb! Extra compact but room enough for famous G-E engineering features.

PERSONALLY YOURS... private earphone for John DeLorean. Personalized colors: Cardinal or Charcoal and Brushed Silver or Smoke White and Soft Gold finishes.

• Front controls and sound • Big 14-in. "Daylight Blue" picture • Built-in adjustable antenna • Automatic gain control for picture stability on any signal

ONLY \$169.95 WITH TRADE

RECORDS and ALBUMS
New Fall Selections
Just Arrived

Sanford Electric Co.

118 Magnolia Ave. SANFORD, FLA. 2-1562

BRING THIS AD TO OUR PARTS DEPT.

STRICKLAND-MORRISON, INC.
308 E. 1st St.
PH. FA 2-1481