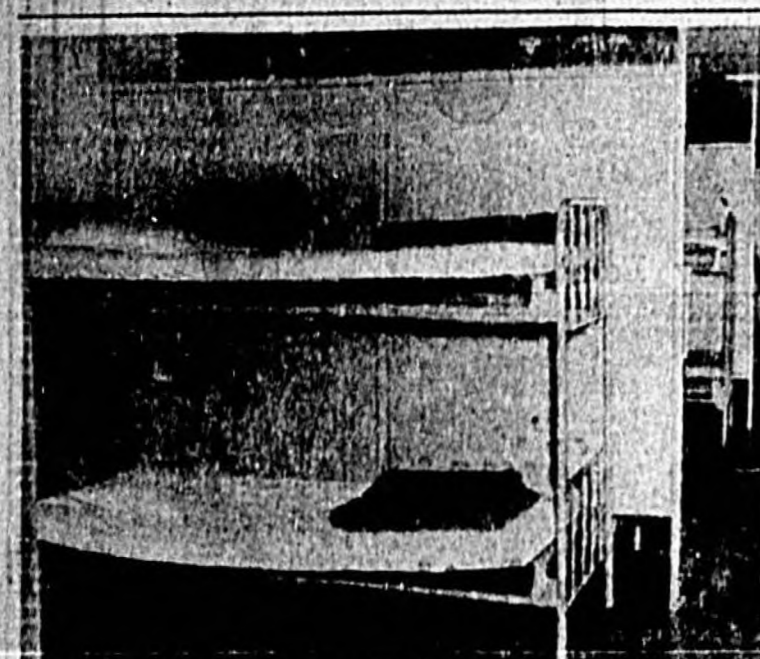
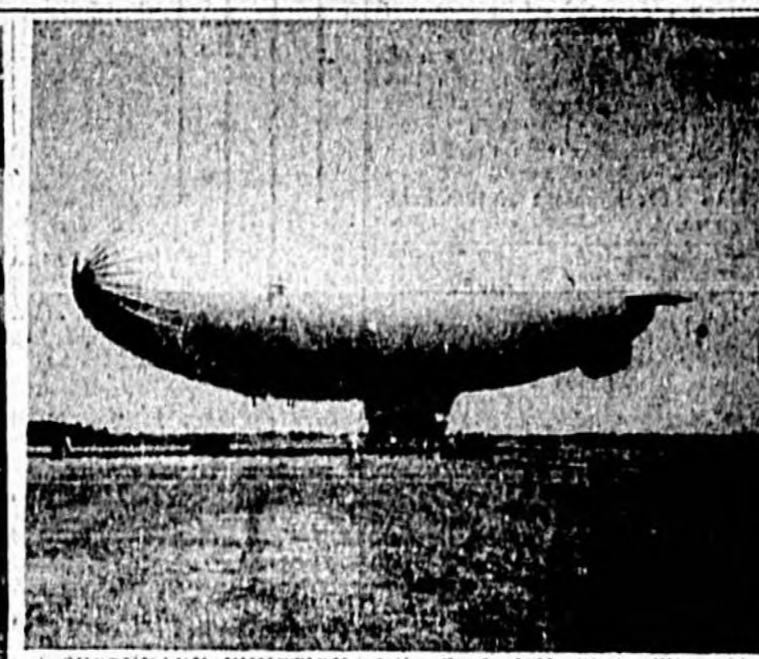




HIGH OBLIQUE AERIAL view of NAAS, Sanford, looking East.



ENLISTED MEN'S LIVING quarters have been under a face lifting in the past few months at NAAS. Above is shown a newly renovated barracks with semi-private cubicles. (Official Photo, U. S. Navy)



A SECONDARY FUNCTION of the Sanford Naval Auxiliary Air Station is that of an emergency refueling station for Naval Airships, which accounts for the periodic visits of the "blimps". (Official Photo, U. S. Navy)



Jim Spencer's



Lobster All You Can Eat — \$2.00

• Steaks • Chickens • Seafoods

Our unexcelled sea food and other delicious foods, our cocktail lounge and private dining room and the gracious atmosphere will make your evenings a truly special occasion.

Be Sure and visit our

Gift Annex:

- Jewelry
- Greeting Cards
- Imported Fancy Foods
- Home Barbecue Supplies

Visit Jim Spencer's

Cocktail Lounge and Restaurant During Your Stay

in Florida

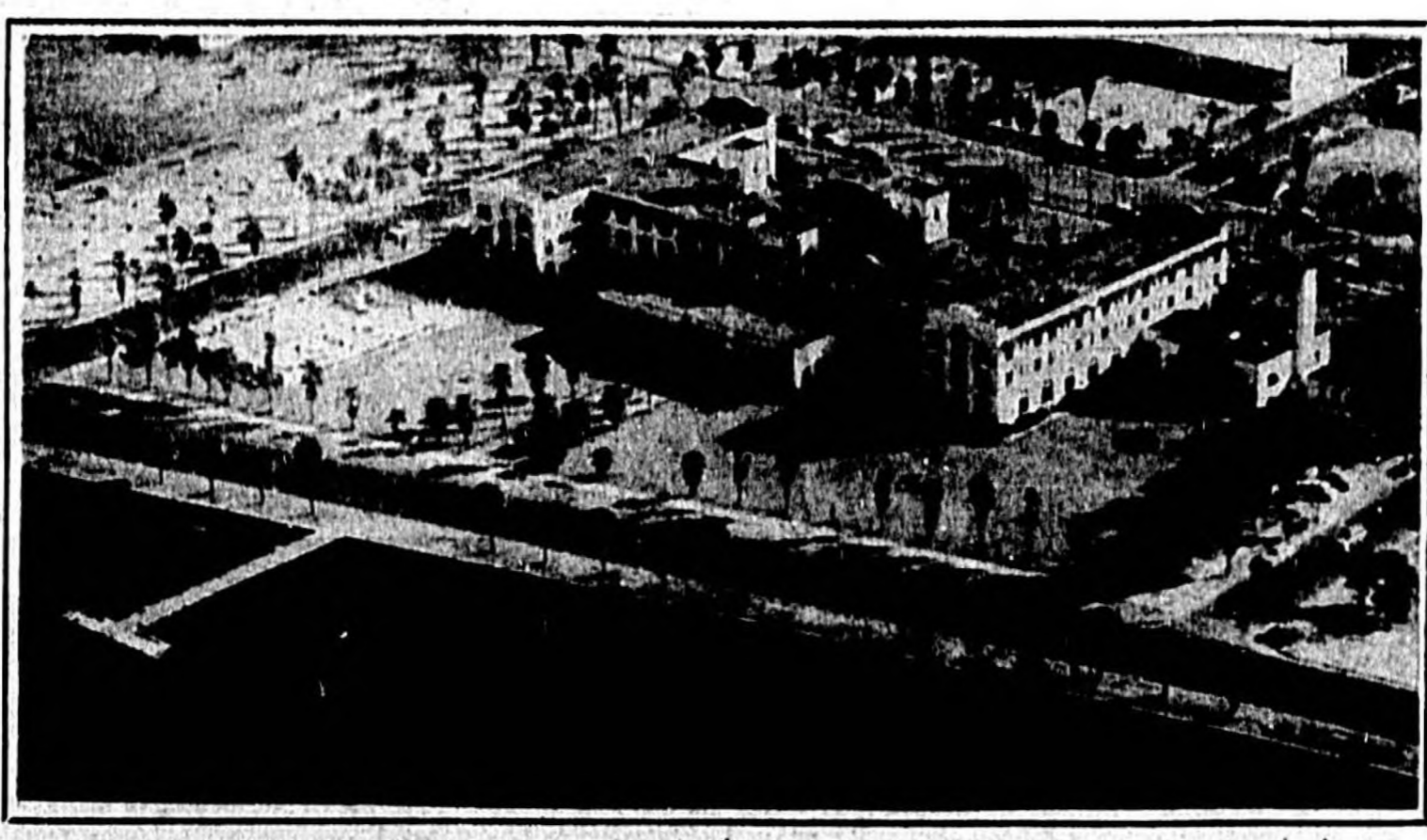


Corner French Ave. & 17-92

Phone 7

Enjoying Another Grand Sanford Winter!

Home of the \$15,000 P.G.A. OPEN



Central Florida's Only Major Professional Golf Tournament

This Year . . . As In The Past . . . The New York Giants Are Happy To Extend To The People Of Sanford A Hearty Invitation To Enjoy The Facilities Of The Inn Whenever They So Desire. The Inn's Tradition Of

Fine Foods, Wines, Entertainment And Recreation Are Now Available. The Inn Looks Forward To Being Of Service To The People Of Sanford Another Year.

Dancing Nightly

Send for beautifully illustrated booklet about the Mayfair Inn and the perfect Florida vacation.

NEW YORK GIANTS'

MAYFAIR INN

and Country Club

SANFORD, FLORIDA

Frank Mebane, Jr.,
Manager

The Sanford Herald

Section D

AN INDEPENDENT DAILY NEWSPAPER

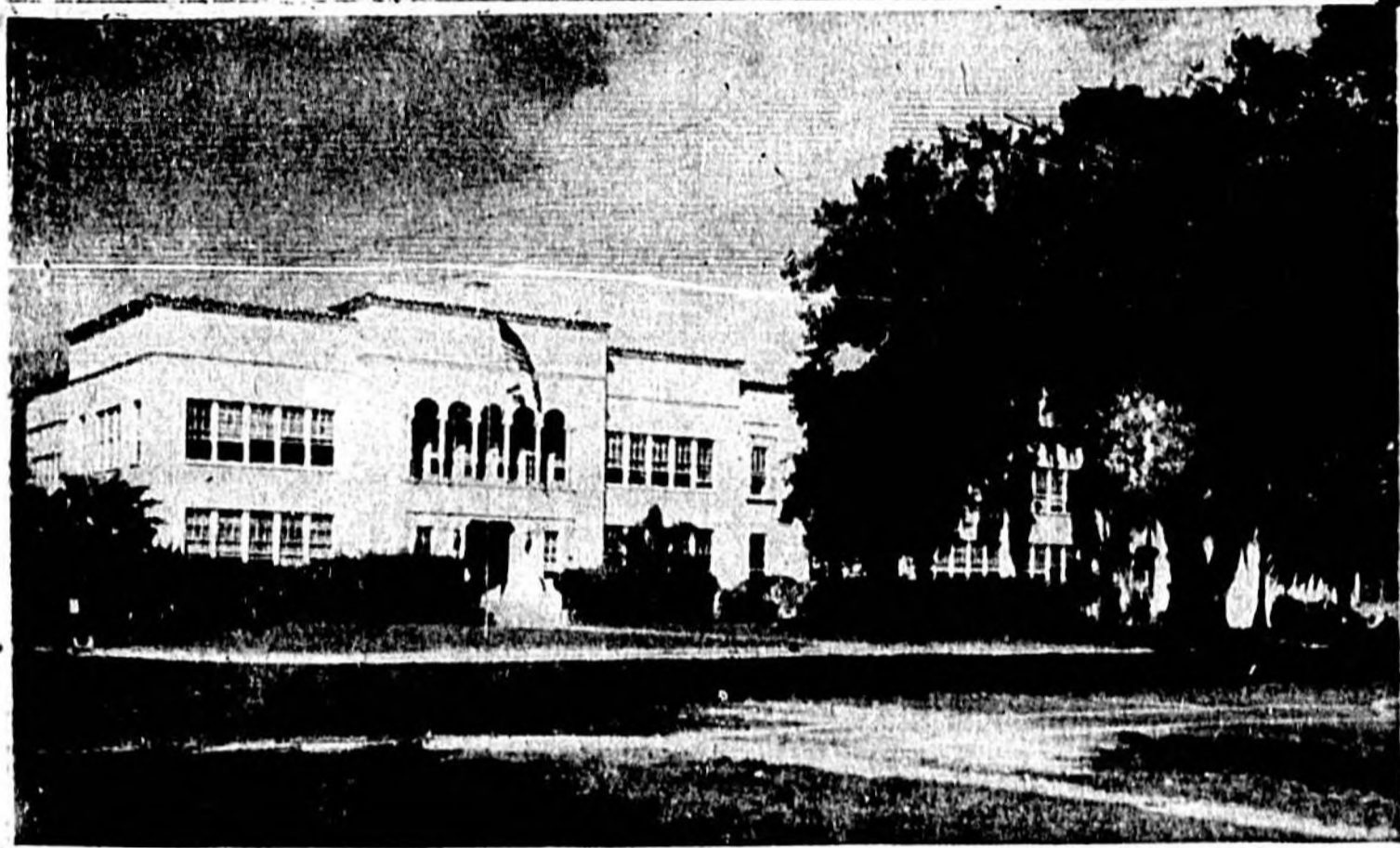
VOLUME XLVIII

Established 1908

SANFORD, FLORIDA, MARCH, 1956

ANNUAL TOURIST EDITION

Churches, Schools In Sanford, Seminole County Show Pioneer Spirit Is Growing, Developing With Community



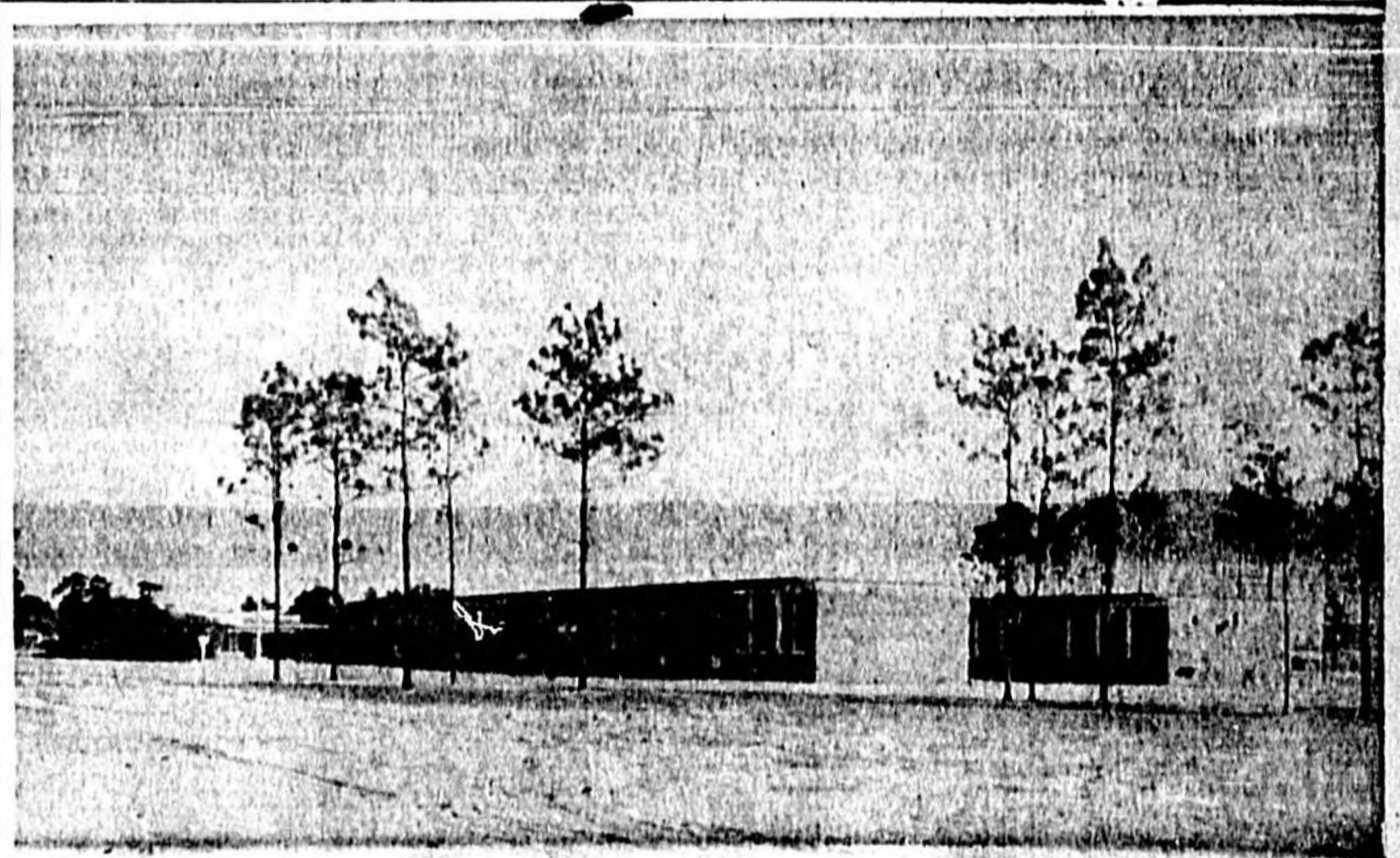
Large Oak Shades Seminole High School



Methodist Church, Work of Art



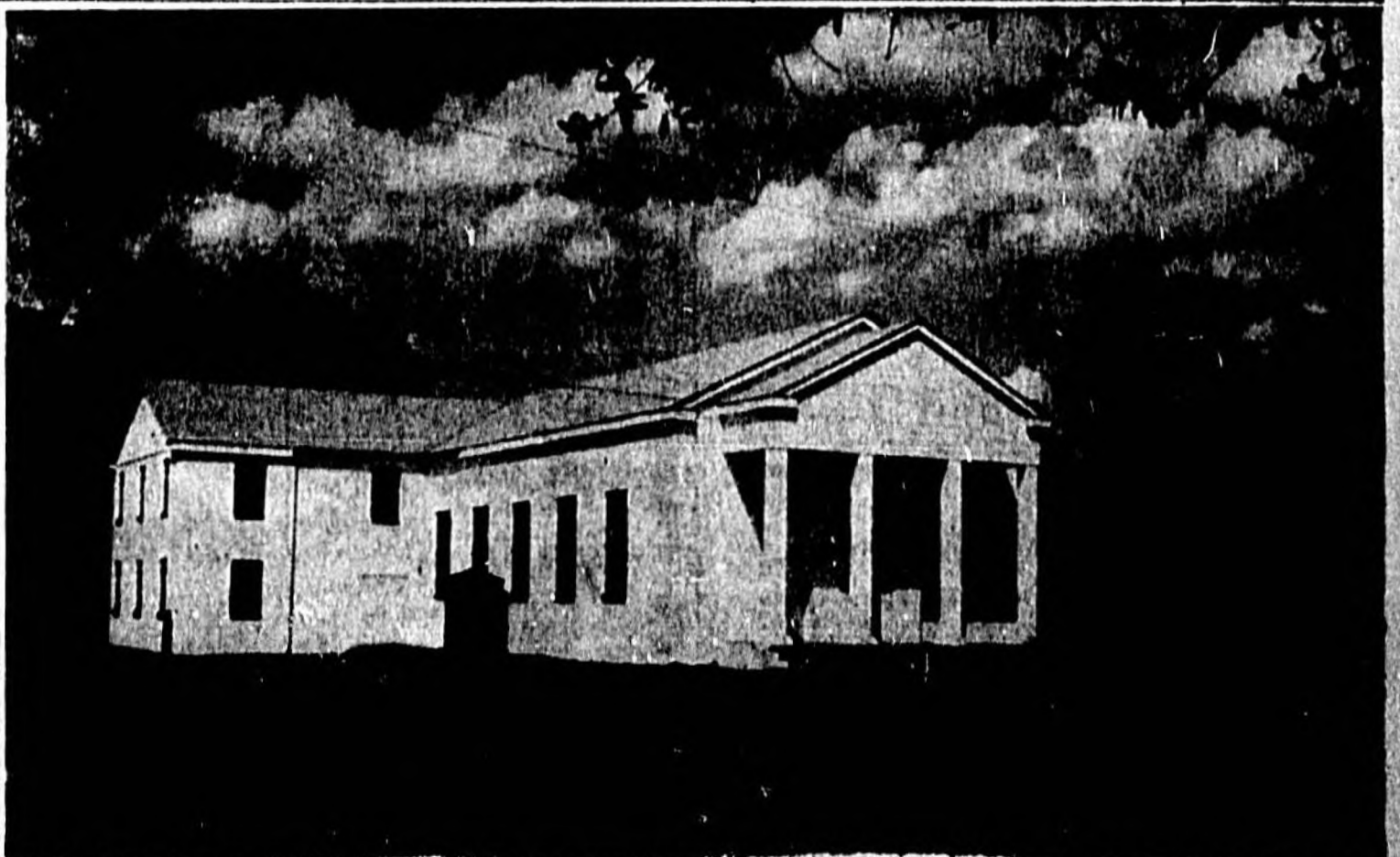
Seventh Day Adventist Church



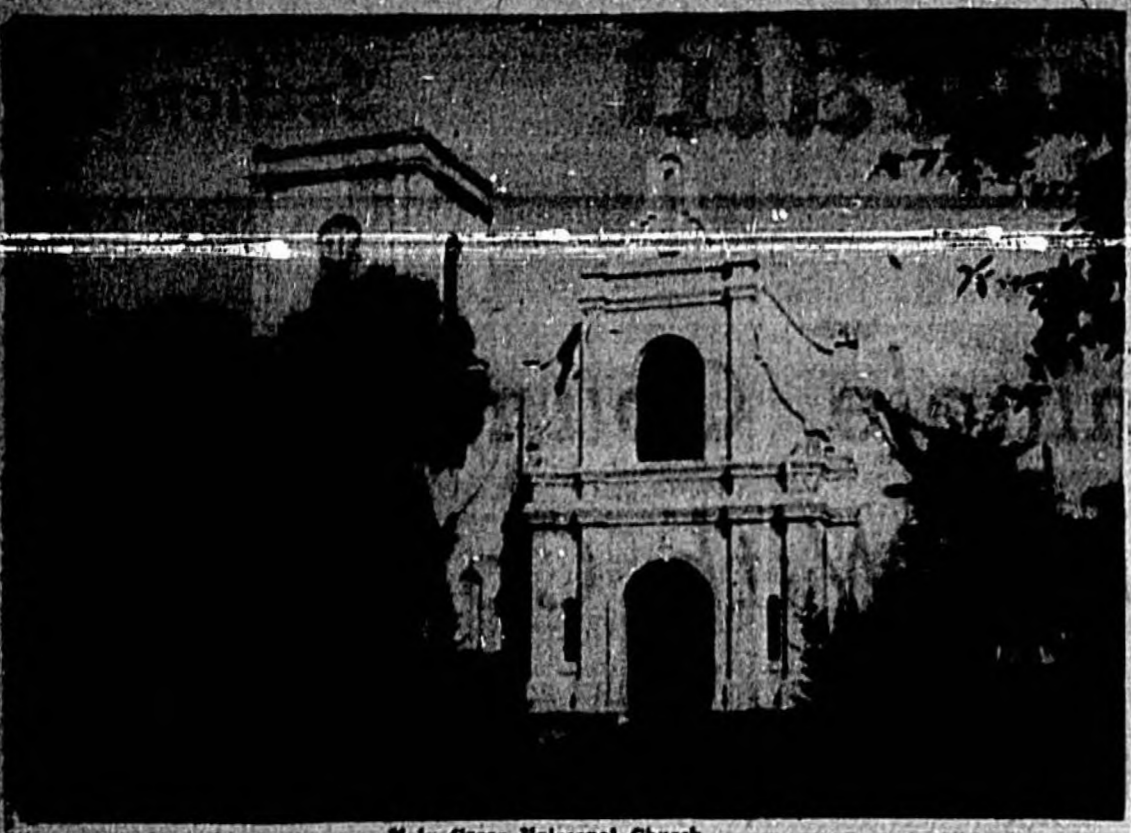
New, Modern Pinecrest School



Lyman School In Longwood



Central Baptist Church Shown Above



Holy Cross Episcopal Church (Photo By Jameson)

Church History Shows True Pioneering Spirit

Holy Cross seems to have had its beginning in Melloville. We find in "Records of the beginning of church work at Melloville and adjoining settlements", the following entry — "On Good Friday, April 15-1870, the Rev. Edward McClure, Missionary of Upper St. John's, held the first service in the 'Marlin and Evans Hotel.' The Evans mentioned was the father of Mrs. Minnie Jones and Mrs. Lily Harnden, and Mr. Marlin was the father of the late Mrs. E. Douglas, Post Master of Lake Mary. A second entry tells of a congregation of seventeen at the same location on May 12. Subsequent services were held in the school house at Fort Reed, but not for long.

It was probably in the same year that General Henry S. Sanford decided lots to each denomination for church buildings. The Rev. Edgar Pennington, writing the Trustees, says that in 1871 it was reported "At Sanford, near Melloville, on Lake Monroe, a beautiful church, after designs by Upjohn is nearly ready for consecration, by the side of which is to be erected a Rectory." This church was consecrated by Bishop Young, the first Sunday after Easter, April 20, 1873. This building was located on the lots now occupied by the Parish House. General and Mrs. Sanford contributed generously and started their influence in the construction. The fact that it was consecrated so soon, bears witness that any indebtedness was quickly taken care of. The Sanfords gave the beautiful painting of "Christ on the Cross," now hanging in the Chapel of Peace, and also a very sweet toned bell, cast in Belgium, which was destroyed in the fire of 1923. We read that Holy Cross was an effective power for good in the early days of our town, under the ministrations of Rev. Lyman Phelps, living in Sanford and Missionary to Orange County. He conducted services in a number of missions, including Orlando, where in 1844, St. Luke's Parish was admitted into Union with the Council of the Diocese of Florida (Communicants in 1871). Also served were Hilland, Fort Reed, Fort Mason (later probably Tuttle) and Zellwood. On August 29, 1889, a hurricane destroyed Holy Cross. Steps were promptly taken for rebuilding, at the site which the present church occupies. The year 1882 found the Church and Rectory not yet complete. Also the Rev. S. B. Carpen-

ter had succeeded the Rev. Lyman Phelps as Missionary in Charge. Bishop Carpenter of Alabama is the son of the early Rector. The Rev. Mr. Carpenter had twelve families at St. James Mission, Enterprise, six families in the Zellwood, Apopka Mission in 1883. By then, regular services had begun in Winter Park, which showed evidence of being a strong church community. By 1888, Rockledge, Tropic, Eau Gallie and Melbourne had been added on the Indian River as well as Matland and Bartow on the South Florida R. R. These were further added to and in 1889 the Rev. Mr. Carpenter reported much progress to the Diocesan Council, with a plea for more workers.

Bishop Whipple, of Minnesota, built and consecrated in 1883 the Church of the good Shepherd in Matland. He also made gifts which resulted in the founding of the "Bishop Whipple School for Boys" in Sanford. It was located on Lake Ada almost across the highway from the present Farmers Auction Market. Its life came to an end when fire destroyed it in 1906. It was often referred to locally as the Bates School—the Rev. Mr. Bates being the Head-Master. They have in Holy Cross, at least two of three who attended this school. The first record of a parish meeting to elect a Vestry was April 22, 1889. E. R. Trafford was elected Chairman and the following chosen Vestrymen; J. E. Ingraham, E. K. Foster, T. L. Newton, T. F. Higgins, Dr. King Willy, B. P. Whitner, T. J. Miller, E. D. Durlin, an C. S. Partridge. On Nov. 1, 1891, the new Church being out of debt it was consecrated by Bishop Weed. Before the turn of the century, Holy Cross was served by the Rev. Messrs. S. B. Carpenter, Lyman Phelps, E. L. Turquand, J. J. Andrew, Castle, Bates and probably others. The Rev. Mr. Carpenter has always been considered the first Rector of Holy Cross. Undoubtedly his status became such with what seems to be the setting up of our Parish machinery in 1889.

The Rev. Samuel Day served as the Rector from 1899 until 1904. During that period missions were maintained at Lake Mary, Sylvan Lake and Enterprise. The great freezes of 1894 and 1895, also losses and hardships of the following ten years after Mr. Day's ministrations ended, Holy Cross was unable to have a resident priest. Scarcely of available

means may have been a factor, but just as with the rest of us, a priest must generally accept a call that promises a sustaining salary. The following years held many hardships which were overcome. Then the Rev. T. Mark Carpenter was given charge of the restoration and reopening. During this restoration, too, the indebtedness on our rectory was discharged, leaving all of Holy Cross property un-mortgaged.

Since the coming of the present Rector, in 1944, the Rev. H. L. Zimmerman, the Parish has shown growth in every way. The number of Communicants has increased materially, the number of Communionals even more. The Church School and Y. P. S. L. are keeping pace with the congregation as a whole. Before long it is hoped that it will be feasible to add the services of an assistant priest, as well as enlarge the facilities for church school and other parochial work.

Holy Cross Episcopal Church is quite proud of its kindergarten, Holy Cross Parish Day School. The Rev. H. Lytle Zimmerman is principal and Mrs. J. B. St. Johns is the teacher. The school is governed by a board of seven members from the parish. There are sixteen pupils enrolled at present, the maximum enrollment being twenty-five. Children from all denominations are welcomed. The purpose of the day school is to prepare your child for the first grade. It is believed that schools would prepare children to live in a democracy. We learn to live by living today, not getting ready to live tomorrow. A child must learn to accept his responsibilities in order to grow and develop into a well rounded personality. The school will try to help your child to develop:

1. Spiritually — To bring the child into a meaningful and conscious relationship with God through the fellowship of His Church, that he may love whatsoever things are true and pure and lovely and of good report following the example of his Savior Jesus Christ.
2. Mentally — To learn and use the skills and aptitudes comparable to his age and grade level.
3. Physically — To learn the importance of Health.
4. Emotionally — To learn to be a happy wholesome well adjusted person.
5. Socially — To acquire habits and skills of interest to himself and others.

To close here is a quote from a very recent letter from the beloved Bishop Bram: — "This history of Sanford and of Holy Cross is one of obstacles overcome. It is a record of American character and pioneering. It is a witness of loyalty and service to God and to man."

Geneva Methodist Church Debt Free

By ADDIE PREVATT
In the school term of 1878-79, Mrs. Abbie Tucker of Sanford was sent to Geneva — then called to Harney Cove — to teach the public school in a small log house where the late E. H. Kilbees' home now stands. It was at Mrs. Tucker's suggestion to write the Rev. Selvin Smith of Sanford to come and preach, which he did. This was the first Methodist sermon ever preached here.

This led to a Methodist Church being organized in Oct. 1879 by the late Rev. H. H. Barnett who became one of the outstanding and much loved ministers of the church.

Jack Holder, father of Mrs. J. W. Flynt and called "Uncle Jack" by the community, gave the land for a building to be erected. But there were problems of financing the building of the church. Mrs. Mary Hart, better known as "Grandma Hart", among others with true pioneer spirit offered to get donations from the community and friends which she did by riding horseback over the surrounding country. The lumber was ordered and sent up the St. Johns river on barges to Bisset Landing, which is now the area in and around Mullet Lake Park. From Bisset Landing it was hauled by ox team by Stephen Williams and Isiah Hart. This building was located on the place where the home of Harry Geiger now stands.

Since there was still a financial problem, there was no money to buy a musical instrument for the church, so Mr. Stephen Williams brought his daughter's organ every preaching Sunday to the church by team. At this time, services were held only once a month by the Methodist and once by the Baptist, in the same building. The Baptist minister being Rev. Powell, grandfather of Mrs. W. L. Alderman and the late Eli Hart.

In about three years the members felt they could cell the building and build better seats. So with the help of Stephen Williams

and A. A. Moran, two well-known members of the church, built the seats and cell the building. These seats are still being used by the present Methodist Church. The altar and pulpit were donated.

For some time, this building that had seen many revivals and souls born to the kingdom, seemed to outlive its usefulness and a larger and more adequate building near the center of Geneva was being talked about. In 1913, after much planning and work, this dream came true and in November of the same year, Dr. Fred Blackburn dedicated the building which is still the Methodist Church of Geneva and filled in as pastor.

On July 6, 1930, the Rev. W. B. Kyser of Mims was called as pastor. In 1943 the entire indebtedness was paid, noted were burned and there was a time of general rejoicing.

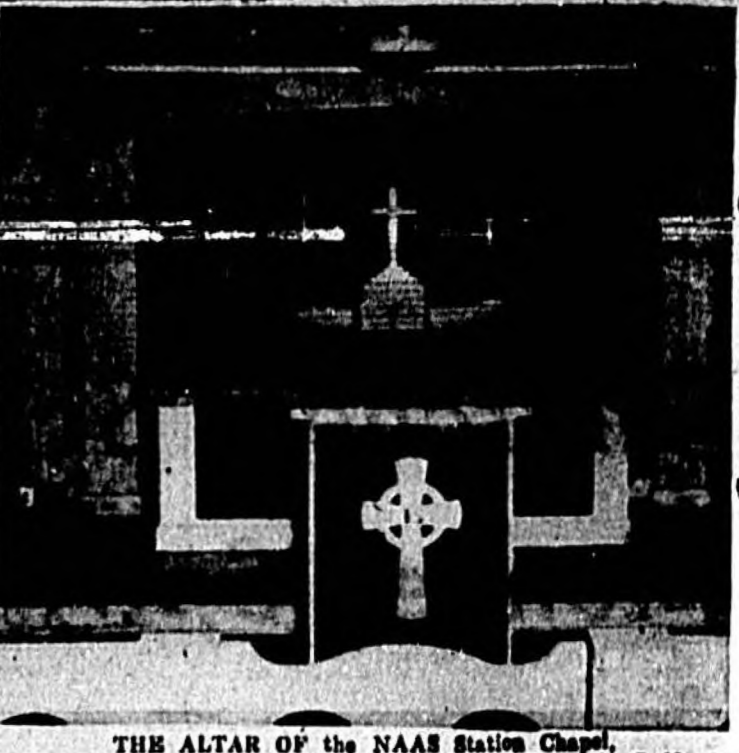
REJECTED BADGE OF SIN
OMAHA, Neb. (AP) — Immanuel School of Nursing, sponsored by the Augustana Lutheran Church, ordered monogrammed pins bearing the school's initials. The pins came back with the initials "S-I-N". They were returned with instructions to furnish pins bearing the initials in proper sequence.

Seminole County Vocational School Has Many Courses

The Seminole County Vocational School, located in the Kent Building, has played an important role in the business life of this community since its establishment in 1926. It has provided the businessman with bookkeepers, secretaries, stenographers and general office workers and has given the people of this country an opportunity to receive training for these positions.

Both day and evening classes are offered in all commercial subjects, including bookkeeping and business arithmetic, shorthand, typing, business English and spelling, business machines, business law and office practice. High school subjects for veterans of World War II are offered in the evening school, and other veterans may be eligible for commercial training both day and evening. A six-months' course for locomotive engineers is given during the late spring and summer months.

CLEAN GETAWAY
TUCSON, Ariz. (AP) — An embarrassed member of the Tucson police force is looking for a burglar. The thief broke into his car and stole a paper dry cleaning bag. Inside was a policeman's uniform.



THE ALTAR OF the NAAS Station Chapel, (Official Photo, U. S. Navy)

HONESTY TEST
BEAUMONT, Tex. (AP) — Randolph Owens thinks his hometown folks are more honest than average. He's lost his wallet four times.

twice in Beaumont and twice in other cities. Both times in Beaumont his wallet, with money and papers intact, was returned. Elsewhere he got his wallet and papers back, but the money was gone.

OFFICIAL TROUBLE
OLYMPIA, Wash. (AP) — Washington officials' nomination for the year's toughest request to fill come from a Providence, R. I., school-boy.

The lad wrote: "Would you be kind enough to send me an official with the governor's name on it so I can put it in my scrap book. Thank you kindly."

WELCOME TO SANFORD and CENTRAL FLORIDA!



THE YEAR 'ROUND PLAYGROUND

Welcome to Sanford
AND TO TOMMY O'STEEN'S
GULF SERVICE
120 S. Park Avenue
Phone 9102
Sanford, Florida

HAPPY VACATIONING!

FOR THE BEST IN BOOTS
• SEE OUR DISPLAY

BOOTS
• DRESS
• ENGINEER
• POLE-CLIMBER

EXPERT REPAIRING OF FOOTWEAR AND ALL LEATHER GOODS

HANSON SHOE SHOP
223 E. First St.
SANFORD, Florida

OUTSTANDING FOR FINE PRINTING SINCE 1920

CELERY CITY PRINTING COMPANY

OFFICE OUTFITTERS
115 SO. PARK SANFORD, FLORIDA
PHONE 340

"If It's Worth Printing — It's Worth Printing Right"



Southside Primary School (Photo By Jameson)

Southside School Very Friendly

Ministerial Association Has Much Success

The Seminole County Ministerial Association is an organization displaying a rare unity and spirit of cooperation. In a group which represents such a great cross-section of religious conviction, there is nevertheless, a remarkable solidarity.

The association is composed of Protestant ministers of Seminole County. All the recognized leaders of organized evangelical churches are eligible for membership. Only the leaders become members—not the churches.

Meetings are held monthly with the exception of June, July, and August. The current officers are: President, Rev. Milton H. Wyatt; First Methodist; Vice-president, Rev. Louis L. Day, Oviedo Baptist; Secretary-Treasurer, Rev. Perry L. Stone, First Christian.

The present membership is composed of the following: Chaplain Charles L. Arnold, NAAS; Dr. W. P. Brooks Jr., Sanford First Baptist; Rev. David S. Carnell, Christian and Missionary Alliance; Rev. William A. Ellenwood, First Baptist, Geneva; Rev. Fred B. Fisher, First Baptist, Sanford; Rev. G. Eldon Kline, Free Methodist; Lt. Raymond Luce, Salvation Army; Rev. L. C. Futch, Longwood Baptist; Rev. A. G. McInnis, First Presbyterian.

Rev. J. W. Parham, Central Baptist; Rev. C. W. Flank, Baptist; Dr. J. B. Hood, Congregational Christian; also Dr. Fred Estlin, Rev. L. W. Scott, Lake Mary Community; Rev. C. W. Shaffer, Wesleyan Methodist, Paola; Rev. Robert H. Speer, Nazarene; and Rev. H. L. Zimmerman, Holy Cross Episcopal.

The primary purpose of the association is to provide and foster a unified fellowship among the ministers of the various churches in the county. In addition there are specific projects of cooperation designed for the spiritual benefit of the whole community.

Full endorsement is given to the weekly church advertisement in The Sanford Herald which presents an inspirational display and lists the services of all the churches through the sponsorship of a number of the local business concerns.

Welcome letters are sent to all new members of the community inviting them to make one of the friendly churches in the county as their church home. This service is made possible through the kindness of The Florida Power and Light Company which supplies a weekly list of all new subscribers. The letters are sent out by the president and lately are averaging about 25 - 30 a week.

There are several cooperative efforts via radio. Monday through Friday mornings at 8:30 a. m. there is a devotional program over radio station WTRR. These meditations are conducted by the ministers in rotation, one week at a time. Also, the Sunday morning services of several of the churches are broadcast in rotation, and the International Sunday School lesson is presented each Saturday evening. All these features are public service presentations of station WTRR with the cooperation of the Ministerial Association.

Two union services are sponsored by the group every year. On Easter Sunday, a sunrise service is conducted, usually in the Sanford Memorial Stadium. At that time it is customary for the President to speak and other ministers to assist in the order of service. A union service is also held in one of the churches on Thanksgiving morning.

In addition to these two services, planned and conducted by the ministerial association, full cooperation is extended to the First Presbyterian Church in the presentation of a traditional Good Friday service. This service is in remembrance of the Crucifixion of Christ. It is of three hours duration, divided into seven vocal sections in which different ministers have an active part in directing sharp

The friendly-looking edifice taking up the block between 15th and 14th Sts. on Magnolia Ave. is known as Southside Primary School of which Mrs. Valma Mitchell serves as principal. The first ten rooms went up in 1924 with an additional 10 rooms built in 1926.

A total enrollment of 593 children is divided among six first grades, five second grades, five third grades, and four fourth grades instructed by 20 members of the faculty.

The body-building meals are prepared in the lunchroom under the direction of Mrs. Ruby M. Davis who is ably assisted by six persons. A full time custodian and secretary are employed and music and art lessons are taught weekly. On a specified day Miss Gene Mumford goes to each room with various instruments to instruct the pupils.

Each year new books are purchased with the funds provided by the Seminole County School Board. These are placed in the rooms for the use of the students whenever they wish.

Individual teachers are responsible for classes during the planned physical education period which includes such activities as circle games, relay races, hopscotch, and baseball. Also for recreational purposes swings, seesaws, monkey bars and merry-go-rounds are provided. Ratsy take place in the classrooms.

Prior to the erection and completion of the children indoors where they enjoy events that may include of Pine Crest School crowded conditions forced the practice of split sessions and the use of the auditorium for a second grade class. A straight session has been resumed and the auditorium class was discontinued early in February of this year. Plans are now in the making for the continuation of chapel

focus upon the last seven utterances of Christ spoken from the Cross.

At any time a matter of interest or need is recognized in regard to the moral and spiritual conditions of the community the Seminole County Ministerial Association stands ready to give its full support and cooperation.

Goals Are Yet To Be Reached By Members

The Upsala Community Presbyterian Church, U. S. A., was organized 1891.

At the time the church was organized there was a thriving village in "New" Upsala of about 200, consisting of a post office, school house, Lutheran Church, and many other buildings. Depression came in 1892 and many things were changed. The Lutheran Church was torn down and moved away. Also, many families left their homes, and many houses were torn down. A few held on to the Presbyterian Church and continued the Sunday School. For some time the church had lay leaders, but at present the Rev. C. C. White is serving the church as pastor, holding regular service. The Rev. White is formerly from The West side Presbyterian Church, Beloit, Wis., where he served as Pastor for 20 years.

Upsala Church is mother church

Presbyterians Have Grown With Sanford

The First Presbyterian Church of Sanford, located at the corner of 3rd St. and Oak Ave., is the only Presbyterian Church in the city, and has grown with Sanford through the years serving the people of the city and county.

The church now has an active membership of around 1,000 members living throughout the county and across the St. Johns River at DeBary. It is the third largest church in the St. Johns' Presbytery.

To meet the demands of growth the church has erected an educational building. This newly organized building is constantly used by the various organizations of the Church and Sunday School. The church has recently purchased the Garner building for additional school facilities.

An achievement was the securing of a director of Christian education to work with the program of religious education, and direct the recreation for our young people. Already the influence of this program is being felt throughout the life of the church, although it has been in progress only about two months. Added to the activities centered in this program are the Boy Scouts, and Brownies, and the Junior and senior high girls who are under the able direction of Mrs. George Touhy, whose reputation as an organist and choir director is well known throughout the state.

Many of our winter visitors find a cordial welcome and enjoy the fellowship as they worship. Rev. Angus G. McInnis finished 7 years as pastor on the first of February this year. Miss Katherine Brown is the director of Christian Education; Mrs. George Touhy, minister of music and Mrs. Pugh, church secretary.

In 1934 the membership of the church had grown to 78 and was beginning to need more Sunday School class rooms. Organizations in the church include the Woman's Missionary Society, Royal Ambassador unit for Young People, and the recent building for a Junior Choir.

The Sunday starts with Sunday School at 9:15 a. m. Worship at 11 a. m. with a nursery for the children; Baptist Training Union at 7:30 p. m. and Church at 8:30 p. m. Wednesday night is devoted to prayer meetings.

The Rev. Herb Frith, a student at Stetson University in DeLand is now visiting pastor. The church is centrally located

if the Lake Mary Community Presbyterian Church.

Improvements have been made since the re-organization of the church. A new roof put on the church, well dug, and now using an electric pump. Church painted inside and out. Church service sign. A library, hymn books and Bibles purchased. Pulpit railing installed, folding screens for SS rooms. Wood house re-built, and Church Communion set purchased.

New Church addition size 16x34 feet, giving additional room for Sunday School classes.

The Sunday School is well organized with different departments, suitable for all ages.

Recent improvements made are: New Pews installed, with book racks and communion holders, floor sanded, varnished, etc., new heater installed and new runners in aisle.

The following organizations are in the church: The Dorcas Circle and Mother's Circle, The Willing Workers and Westminster Fellowship.

Recreational activities, new Manso, etc. are goals yet to reach.

Mrs. Christine Borell was the first bride in the Upsala Church.

AT FIRST SIGHT

TULSA, Okla. — Mrs. Almer Davidson, 67-year-old Tulsa bride, said it didn't take her long to decide to marry her husband, Orba Davidson, 70. "He just knocked on my door and I felt like God sent him," she explained.

Wilson School Is Red Brick

The first school of Paola consisting of a one room, white frame building with a flag school bell belfry was built in 1884 and was located between Sylvan Lake and Paola about one-fourth mile south of the present location on a site donated to the county—then Orange County—by Mr. Balsley.

The present school building, which is of red brick construction with white trim, consists of an auditorium, office and four classrooms, one of which is used as an art room and library. The cafeteria is a small building situated in the rear of the main structure and at present is the only school cafeteria in the county which serves hot breads daily.

This school system is built on five acres of high pine land donated to Seminole County for this purpose by Mrs. Emmet Wilson School in honor of the late Thomas Emmet Wilson, her husband, E. D. Oglesby, D. G. Blacklock, and M. Hanson were trustees at this time.

The present faculty consists of a principal and two teachers, Mrs. Pearl Bates, Mrs. M'Liss Denton and Mrs. Thelma Sikes, each teaching two grades from the first through the sixth. Mrs. Bates assumed her duties in 1942 succeeding H. E. True, who was principal from 1928 through 1942.

Actually Wilson School is Paola since the small post office, the only remaining business of a once thriving and prosperous commun-

Nazarene Church Of Lake Mary

Use Improvements

The Nazarene Church of Lake Mary was founded in 1891 and is one of the oldest churches in the county. The Rev. Jesse C. Brannon served as pastor for four years and has returned recently to take over again.

Improvements have been made on the parsonage and the church has recently had a revival with the Rev. Robert Spears from the

city. was reluctantly closed in June of 1935 and Paola placed on rural route delivery from Sanford.

THE SANFORD HERALD

Sec. D Page 3
Sanford church as leader. The Sunday school has 29 members and the church is growing very fast. Sunday starts with Sunday School at 9:45 a. m., Preaching Service, 11 a. m.; NYF at 8:30 p. m.; Church at 7:30 p. m. and Wednesday night at 7:30 p. m. for prayer meeting. Mrs. William Clark is pastor and Mrs. Lily Tills is pianist. The church is located on Crystal Lake Drive in Lake Mary and Mrs. W. M. Dorton is president of the Women's Society. Mr. Dorton is Sunday School Superintendent.

EMRICK'S

BODY and PAINT SHOP

Quality Work Guaranteed

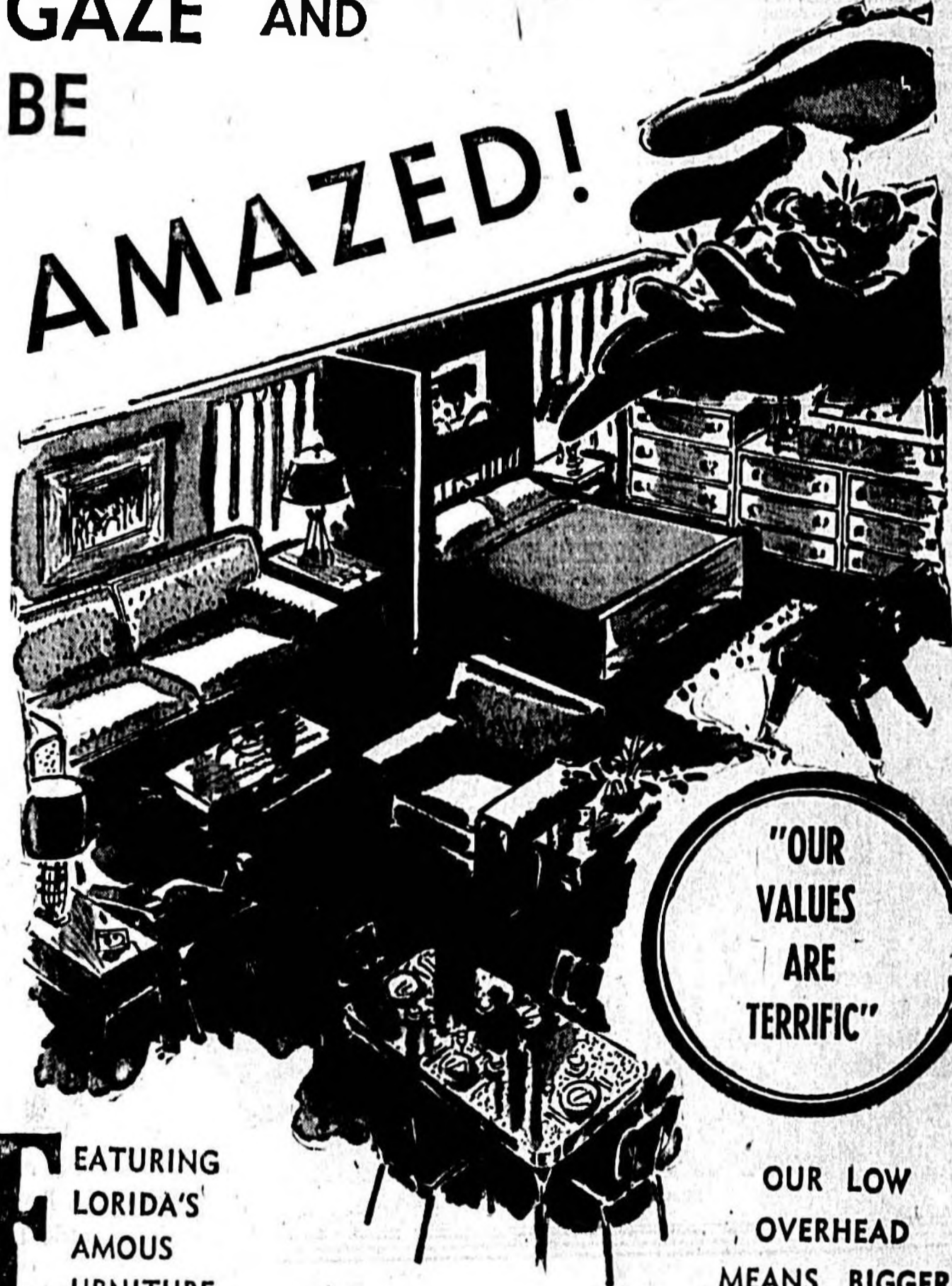
Wrecks Rebuilt Painting and Welding



ORVIL P. EMRICK

405 Celery Ave. Phone 3184

GAZE AND BE AMAZED!



"OUR VALUES ARE TERRIFIC"

FEATURING FLORIDA'S FAMOUS FURNITURE

OUR LOW OVERHEAD MEANS BIGGER VALUES TO YOU!

You'll Be Surprised At Our Low Prices On Fine Beautiful Furniture! Be Wise - Economize

BERRY'S WAREHOUSE Furniture Co.

LOUIS BERRY "THE OLD BARN" FRAN BERRY
901 W. 1st ST. PHONE 1687 SANFORD, FLA.

for true Southern Comfort
SPEND YOUR VACATION
at
SANFORD
in
Central Florida

You'll Find A Hearty Welcome At—
Clark's Tourist Court

- Kitchenettes
- Hot Water Heaters
- Beautyrest mattresses
- City Water

ROUTE 17-92 SOUTH

Church Is Striving To Obtain Goals

One Room Is Start Of School

By GRACE THURSTON
The Lake Monroe School started in 1916, as a one room school. Sessions were first held in the Community Church. The school structure was soon started and public moved in and teaching started Mar. 8, 1918.

Mr. Shinkler was the contractor for the building and the architect was the late Linton Moughton. All the classes met in one large room, which was divided by sheets for the many classes. Teachers who taught in this school of Monroe were: Mr. Thrasher, Miss Isomman, Miss Mary Aulin, Miss Arnett, Lucious Coward and Mr. and Mrs. J. T. Jacobs.

During the time Jacobs was Principal and taught the school it became the first accredited school. Class L. Jacobs had an enrollment of 300 pupils at that time. The building of the ice plant and the new Power plant brought many families to Monroe.

The second addition of the school came in 1923. Later Mr. and Mrs. Jacobs helped organize the lunch room, and assisted with it in addition to teaching the children.

The Jacobs planted the acorns, and nourished the lovely oaks, that now stand in the school yard, where they stand as a dedication to Mr. and Mrs. Jacobs. Jacobs did many things to improve not only the teaching system in Seminole County, also many things to improve the Community. He organized the first baseball team in Seminole County in 1918, along with Dr. Blackburn of Rollins College.

Mr. Jacobs left Lake Monroe School in 1926, to become the principal of the Junior High School.

Principals that followed after Mr. Jacobs were Clarence Priddy, Herman Morris (now principal of Seminole High School), Ben Steele, Mr. True, Mrs. Bates, Mr. Nichols, and the present principal, W. J. Wells Jr.

The enrollment at the present time is over 100 pupils. First through eighth grades are taught in Lake Monroe. Teachers now at Monroe are: First grade: Mrs. Dorothy Doughton, second and third grades: Mrs. Pauline Kirkpatrick, Fourth and Fifth grades: W. Watt, Sixth and Seventh grades: Ben Steele, Eighth grade: W. J. Wells Jr., also Principal.

Alabama had 16,658 irrigated acres in 1934 compared with 207 in 1949.

THE SANFORD HERALD
Page 4, Sec. D

structure of Colonial type architecture with large columns and a handsome balcony.

When General Sanford founded the town of Sanford, many of the inhabitants of Maitlandville moved to the new city.

In 1888 the late J. M. Lord suggested that the residents of southwest Sanford build a church and he gave an acre of his land for that purpose. Ernest Chapel had been sold and the proceeds divided between the church in Sanford and the Methodists who wished to build a church at Lord's.

The new church was completed in August of that year with the furnishings of Ernest Chapel and with an organ Lord donated. When asked what the new church should be called, Lord said, "Ebenezer", which means, "Hitherto hath the Lord helped us."

Another milestone in the progress of the local congregation occurred in 1909 when the beautiful new educational building was completed, and dedicated as McKinley Hall. This was accomplished during the pastorate of the Rev. J. E. McKinley. The Christian education of Church School students is carried forward each Sunday by a staff of consecrated teachers and Church School workers. Teacher training programs are instituted each year in order that workers might grow in knowledge and technicals adequate for meeting the needs of modern Christian education as well as the individual needs of each pupil. An active Commission on Education works diligently to provide the best equipment, skill and technique. Nursery facilities are provided each Sunday during the Morning Worship Hour for the convenience of parents with small children.

The total church, in its Official Board and various Commissions, is striving to create the best possible church organization and programs for the Methodists of Sanford, striving to attain knowledge of present needs in order to fulfill them more completely, and with a wide-open view toward the future of the church as the city of Sanford expands.

The present pastor is the Rev. Milton H. Wyatt.



Lake Mary Community Church (Photo By Jameson)

All Souls Catholic Church (Photo By Jameson)

Rapid Increase In Membership Evident At Masses

The rapid increase of membership at All Souls Catholic Church has made it necessary to raise the number of masses each Sunday to four which are held at 6:30 a.m., 8 a.m., 9:30 and 11 a.m. Approximately 400 families hold membership. Father Richard Lyons is pastor.

There was no Catholic Church in Sanford 100 years ago and when the priest went to individual homes to say mass the family felt fortunate to be able to have the services performed.

On July 6, 1867, the first church frame structure, was dedicated but 44 years later the building was destroyed by fire. The present tile and stone church was built at that time and still serves with a seating capacity of 425 persons. Even with four services, many Sundays find the church filled with people standing along its walls.

In September, 1934 a nine-grade parochial school was opened to teach youngsters from kindergarten through the ninth grades. Sisters of Christian Charity of Mendham, N.J., teach the approximately 205 that attend classes. The realization of this dream to open All Souls School has been a major factor in the decision of many families to make their home in this county.

The school and the convent are located across the street from the church which stands on the corner of Ninth St. and Oak Ave. The Rev. Lyons makes his home in the rectory at 718 Oak Ave.

Excess of births over deaths brought a U.S. population increase of 2,570,000 in 1935 with immigrants accounting for another 350,000 increase in the same time.



First Methodist Church (Photo By Jameson)

COMPLIMENTS OF

Anderson Nursing Home

1404 ELM AVENUE

PHONE 1118

BE FREE
From Baking Cares While In Florida!



Delicious Home Made French Butter Crust, Home Style and Potato Bread, Made Daily . . . Also Parker House, Crispy Crust English Muffins, Hamburger Rolls. Made The Way You Like Them.

Cheesed and Cake Donuts, Jelly, Radio, Danish Rolls, Cup Cakes, Fried Cinnamon Rolls, Brownies, Home Baked Pies.



ROBB'S HOME BAKERY

Across From Post Office

Sanford, Fla.

SANFORD

"In the Heart of Central Florida"



A BETTER PLACE TO LIVE

AND OWEN'S GULF SERVICE

1219 S. Park Ave.

Phone 9170

A Better Place For Car Service

WELCOME

TO
SANFORD
FLORIDA

Vacationland



YOU CAN ALWAYS ENJOY THE MANY SPORTS OF OUTDOOR FLORIDA . . . (WITHOUT



A WORRY) BY FIRST TALKING TO THE FOLKS AT



H. JAMES GUT AGENCY
GENERAL INSURANCE

H. JAMES GUT
315 E. 1st St.

H. JAMES GUT
PHONE 78

Christian Scientist Church Recognized

First Church of Christ, Scientist, 800 E. 2nd St., Sanford, has regular Sunday services at 11 a.m.

The King James Version of the Bible and the Christian Science textbook, "Science and Health with Key to the Scriptures" by Mary Baker Eddy, are used in the services of all the churches of this denomination. These two books were designated the only pastor by Mary Baker Eddy in The Manual of The Mother Church, The First Church of Christ, Scientist, in Boston, Mass.

The Sunday services are conducted by two Readers, the Second Reader reads from the Bible, then the First Reader reads correlative passages from the Science and Health. The citations are used as indicated in the Christian Science Quarterly for the subject. This service opens with a hymn and the reading of a Scriptural selection by the First Reader. After this the congregation unites in silent prayer, followed by the audible repetition of the Lord's Prayer, with its spiritual interpretation as given in the textbook. Following a solo the Readers read the principal part of the services. The two Readers are elected to office by the church members every third year.

Wednesday evening testimony meetings are held in First Church of Christ, Scientist every Wednesday evening at 8 p.m. These services are conducted by the First

Reader who reads selections from the Bible and then correlative passages from Science and Health. About a half hour is devoted to the giving of testimonies of healing in Christian Service. Many inspiring testimonies are heard every Wednesday evening as individuals tell how they have experienced the healing of sickness, sorrow, sin, and other inharmonies through the prayer of spiritual understanding. On Thanksgiving Day a special service stressing gratitude is held. Christian Science services are devoid of ritualism as the emphasis is on the spiritual significance, which underlies outward ceremony.

A free lecture on Christian Science is sponsored by First Church of Christ, Scientist, every year by a member of the Board of Lectureship of The Mother Church. The public is cordially invited to attend these lectures where some of the basic truths of Christian Science and facts about M. Eddy are discussed by competent speakers.

A free Christian Science reading room is maintained by the local church in Sanford at 104 S. Park Ave. on the second floor. The Bible, Science and Health, other writings by Mrs. Eddy, The Christian Science Journal, The Christian Science Sentinel, The Christian Science Monitor and other authorized Christian Science literature may be read, borrowed, or purchased. The public is cordially



First Church Christ Scientist

(Photo By Jameson)

invited to attend the church services and to make use of the free reading room, which is open Monday through Friday from 12:30 p.m. to 4:30 p.m.

Sunday School is held every Sunday in the church office at 9:30 a.m. and the first lessons the children learn are the Ten Commandments, the Beatitudes, and the Lord's Prayer with its spiritual interpretation. Pupils are accepted in the Sunday School up to 20 years of age.

The purpose of the Sunday School teaching is to give the pupils a practical understanding of the presence and power of God and how to realize that presence and power through prayer. The study in the senior classes centers largely on the weekly lesson-sermon. At the Sunday services and in the Sunday School classes the Christian Science Quarterly (Bible Lessons) are used. The Quarters have 26 subjects which are repeated twice each year, and were

selected by Mrs. Eddy to be read at all Sunday services and to be studied daily by all earnest students of Christian Science.

The history of First Church of Christ, Scientist, began with a small group of persons interested in Christian Science in the year 1911. The first services were held in a private home and in 1914 this group moved into the building then occupied by the Women's Club. On May 24, 1921 this group was recognized by The Mother

THE SANFORD HERALD
Sec. D, Page 6

Church in Boston, as a Christian Science Society. Christian Science services continued in the Women's Club until 1920 when the present church edifice was completed. In 1923 a Sunday School was started and is continuing every Sunday.

The first reading room was opened in 1924 in a room of a Sanford office building.

On Aug. 4, 1928, Christian Science Society was recognized by the Board of Directors of the Mother Church in Boston, as First Church of Christ, Scientist, Sanford.

The corner stone of the present church edifice was laid with appropriate ceremonies on the morning of May 3, 1929. It was first used for services on July 11.

A Christian Science Church cannot be dedicated until it is free of debt and the Sanford branch of The Mother Church was dedicated on January 22, 1939, and has grown steadily since its beginning.

In Science and Health Mrs. Eddy defines "Church" as: "The structure of Truth and Love, whatever rests upon and proceeds from divine Principle. The Church is that institution, which affords proof of its utility, and is found elevating the race, rousing the dormant understanding from material beliefs to the apprehension of spiritual ideas and the demonstration of divine Science, through casting out devils, or error, and healing the sick."

Free China reports its population is now more than 10 million.

Local Beth Israel Men, Womens Groups Combined

On Nov. 20, 1939, a combined meeting of the Jewish ladies of Sanford, Florida, was held at the home of the late Mrs. J. Fiescher for the purpose of forming an auxiliary. Thus the "Ladies Auxiliary of Congregation Beth Israel" was born, with the late Mrs. Charles Kanner as the first president. Any Jewish woman of the community was eligible for membership. The auxiliary voted to sponsor a Sunday School for the Jewish children of Sanford. There were nineteen children in attendance.

The main projects of the auxiliary then, as always, have been philanthropic works. Contributions have been made to local hospital, the National Jewish Hospital, Denver, Colo., Hebrew Orphans Home of Atlanta, Ga., Denver Consumptive Hospital, Hebrew Sheltering Aid Society at Jacksonville, Fla.

Under the encouragement and leadership of Mrs. Frank Shames in 1945, the Auxiliary became a Chapter of Hadassah, working for greater glories for the Jewish race. With the Jewish population in Sanford growing smaller, Hadassah was dissolved in 1951 and the Auxiliary again took shape.

At the present time Congregation Beth Israel is organized into combined men's and women's groups.

FISHING IS IDEAL IN SEMINOLE COUNTY—IT'S ONLY A FEW MINUTES DRIVE FROM SANFORD TO THE FISH CAMPS BELOW



JOHN CRIM'S Camp At Lemon Bluff
"Famous for Bass and Shad"

11 MILES FROM SANFORD ON THE ST. JOHNS RIVER
BOATS - MOTORS - GUIDES
LIVE BAIT - LICENSES
TACKLE - SNACK BAR
PICNIC TABLES
P. O. Box 106 Osteen, Fla.

CAMP SEMINOLE
10 miles West of Sanford on Highway 46

CABINS BOATS
MOTORS TACKLE
BAIT OF ALL KINDS
SNACK BAR
Route 1, Box 184
Sanford, Florida

CROWES CAMP

4 miles East of Sanford, "Paved to the Door"

BOATS TACKLE
MOTORS SNACK BAR
LICENSES BAIT
"CENTER OF BEST FISHING IN SEMINOLE COUNTY"
Star Route - Sanford, Fla.

FORT FLORIDA

Fish Camp on the St. Johns—

BOAT RENTALS
MOTORS - FUEL
LIVE BAIT

"Where Fishing Is Great"

MONROE BOAT BOWL and TRAILER PARK

LIVE BAIT TACKLE
30 BOATS FUEL
BOAT STORAGE

North-end Monroe Bridge on Highway 17-92—On Beautiful Lake Monroe.

PHIL EGGER'S Fish Camp

(Mrs. Phil Egger)
LIVE BAIT — BOATS

COTTAGES

FOR RENT
OPEN YEAR ROUND
3 1/2 Miles West of 17-92
On Fort Florida Road
For The Best In PERCH & BASS

SCHOLL'S Boat Camp

(The Finest Fishing in U. S.)

5 1/2 miles East of Route 17 on Route 46 East End of Geneva Bridge.

HILEY'S

FISHING CAMP & RESTAURANT

52 BOATS

MOTORS

LIVE BAIT

TACKLE

PICNIC TABLES

400 FOOT DOCK

6 MILES EAST ON 17-92, Turn left 5 miles South of Sanford

COTTAGES FOR RENT

Name Of Church Is Changed In 1890

By ADDIE PREVATT
On August 15, 1875, the Geneva Baptist Church, formerly known as the Lake Harney Baptist Church, was organized with ten members with the Rev. George M. Powell as pastor. He was the grandfather of Mrs. W. L. Alderman and the late Eli Hart.

Services were held in the homes of the members. Then on July 24, 1886 a committee was appointed to erect a house of worship.

This church was dedicated on June 17, 1887 and at that time stood near what is now the present cemetery.

A committee was appointed on August 5, 1888 to draw up plans for a cemetery, the land having been donated by R. DeBary.

In October 1888 W. B. Lassiter was ordained as deacon, T. J. Bell served as pastor from Sept. 4, 1888 to Feb. 19, 1889 when the Rev. R. W. Lawson was elected as pastor.

The name, Lake Harney Baptist Church was changed to Geneva Baptist Church on Aug. 1, 1890. Records of routine conferences were kept until 1894 when because of the big freeze, members moved away and the church became inactive until the spring of 1906. It was then reorganized by a visiting minister, the Rev. George H. Sieg of Americus, Ga.

The Rev. E. Lee Smith of Orlando then served for five years as pastor and was succeeded in 1913 by the Rev. William Stone of Orlando who served until his death in 1917. The Rev. J. N. Thompson of Oviedo next served until 1925, the J. Max Cook served the church for a year.

The church building was later moved near the place where the present school building now stands. In 1926 it was sold to these colored people.

The church then purchased the Woman's Club building for \$3,500. They moved in and had Sunday School, and the following Friday night, it was burned. All records and furnishings of the church were destroyed.

Members began immediately to make efforts to raise funds for the building of another church and in less than a year, services were being held in the present building. Members were few and there was a debt to be paid, but the church held services regularly and they continued to make efforts to raise funds.

The Rev. J. N. DeVette was the first pastor of the new church, serving from July 1927 until December 1928. But as time went on it was becoming more and more burdensome for the small membership of the church to carry the

THE SANFORD HERALD
Page 6, Sec. D

Young People Like Baptists

The First Baptist Church of Sanford has come a long way since it was founded on Feb. 3, 1824 with 18 charter members. Its first pastor was the Rev. J. W. Butts who would preach here for two Sundays and two in Orlando.

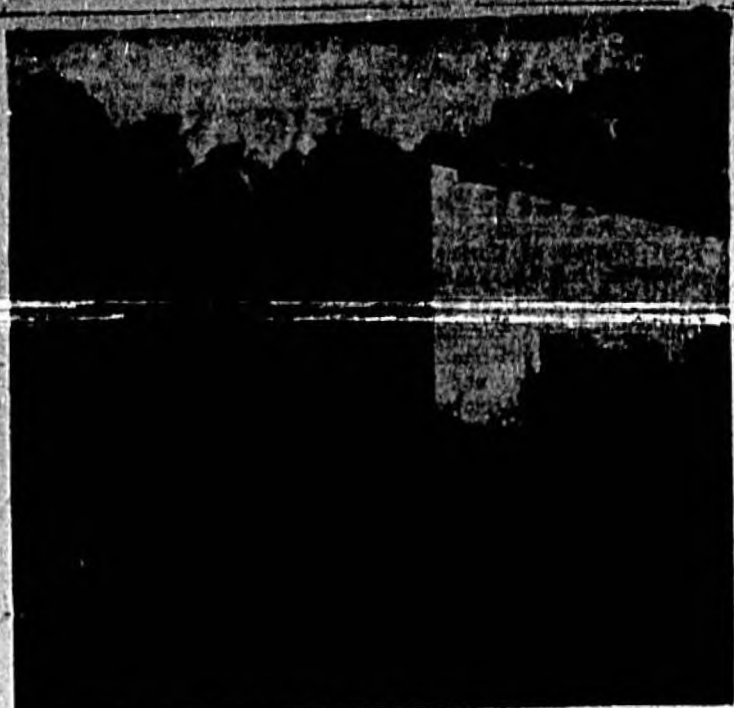
The Rev. W. F. Brooks Jr. is now pastor of the church which he has served since November 1929. The membership has grown to over 1,400 with a Sunday School enrollment totaling more than 1,500.

The choir is under the direction of Kirby Rogers with the Rev. Fred B. Fisher as associate pastor serving with Dr. Brooks.

New occupying two different buildings, the church has always been cooperative with the associations and conventions of which it has been a member. Definitely mission-minded, quite a number of young people have gone out to enter Christian service.

Although the first evangelists were regarded as products of the devil, at a later time, artists often pictured the apostles as wearing spectacles.

Since so it was decided that services would be held on the first and third Sundays of each month. A Mr. McQuire was then pastor.



Congregational Both Inside (Photo By Jameson)

HADDOCK HOOKED (See With the straightest of faces 10 of his colleagues recommended him for the Fish and Game Committee. The senate agreed.)
RICHMOND, Va. (AP)—The senate of Virginia lost no time in assigning Dr. E. E. Haddock, new senator from Richmond, to a committee.

Congregational Church

(Photo By Jameson)

Dr. J. B. Root Is Pastor Of Congregational Church

Almost fifty four was a notable year in the annals of this oldest church of the city of Sanford, the Congregational Church. It marked the relocation of the congregation on the same site and principal highway, changing the church site from a location in a residential district, known for growing rapidly and the church shared the experience. Fifty-five years ago this congregation bought the important corner of Park Ave. (Highway 17-92) and Third St. An ample and attractive frame church was the first church to be seen as you came in from the north after debarking from the river steamer from Jacksonville of the Lake Shore dock.

Twenty years later, in 1910, the congregation built a gothic-type edifice with towers. It is widely remembered for its churchly appearance. In 1915 a Mohler pipe organ, the first fine church organ in the city, was installed. Because of the central situation the church was often used for interdenominational gatherings. The chapel became, successively, a parsonage and a parish house. The latter was used for Chautauque lectures and for a platform and stage for improving drama.

A hurricane wrecked the bell tower, blowing out the beautiful rose window and making the tower so unsafe that it had to be truncated. After a number of attempts to make repairs, which became increasingly expensive, the decision was to relocate the church, and to build a different type structure. In 1933 the corner was sold to the Phillips 66 gasoline corporation and six months was allowed to clear the ground for the filling station, which was located there.

For over a year, Sunday services were held in the large parsonage at 811 Palmetto Ave. The congregation, and later the building committee, met every Wednesday night to plan for the new church. The Parsonage proved to be a fine rallying place. The church school grew and a number of new members joined the church. William J. Moughton was the church architect. A cruciform Mission type edifice was designed. The Building Committee consisted of representatives of the trustees, deacons, deaconesses, women's societies and church school. Gus Schmah was chosen builder. He used fine judgment in the organization and supervision of construction and in the completion of architectural details. It was decided to have the church completed for worship and activities before it was opened.

A Ground Breaking ceremony, in which former Mayor Randall Chase and Rev. Lottin W. Root of the Seminole County Ministerial Association participated, was held on November 29, 1933, at the new site on the southwest corner of Park Avenue (Highway 17-92) and Twenty Fourth St. 21 blocks directly south from the former church site.

The four lots for the new church totaled 200 feet along the highway and 17 feet west. The spacious grounds are landscaped with tropical palms, a lawn and a few shrubs in front and there is a lot for parking along the alley at the rear. The new church with its educational annex now stands on the corner in a thing of beauty, much commended for its proportions, symmetry and coloring. It is heavily paneled with steel and has a red gleam to the roof. It is hurricane proof and could become a refuge in a severe storm.

The new church is the first to appear on the highway as you drive in from the south. It is the long block from the south-bound traffic highway light at the street where the driving new traffic center is located.

The interior of the new church is pleasing to the interior. The church will be after, pulpits and pews are finished in South Amer-

ican fir. The nave has varnished beamed beams. The natural pine pews below were made for the old church over fifty years ago by E. B. Randall. The walls are cream and the mottled green glass of the windows is pleasing.

A thriving church school proves to be interesting. New members are joining the church frequently. The church opening was on November 21, 1934, the general public being invited to an afternoon service in which Associate Superintendent Robbins Ralf of the Florida Congregational Christian Conference made an address and there was a half hour organ recital.

Dr. J. Bernard Root has been pastor of the church for 29 years and is now going strong as a vigorous Biblical preacher.

Lutherans Break Ground Recently For New Building

The Lutheran Church of the Redeemer was formed in Sanford on Mother's Day 1933 when 19 Lutherans of the Lutheran Church, Missouri Synod, met for the first service.

Services were conducted by Rev. A. H. D. Besalshi, pastor of the Trinity Lutheran Church of Orlando who continued to conduct the services on Sunday evenings at the Sanford Yacht Club.

A Sunday School was started on the following Sunday and has been in continuous existence since.

The Lutheran Church of the Redeemer services have been held in the Sanford Yacht Club through the cooperation of the City of Sanford. Only during the period of high water were the services held in the City Commissioners Room of the City Hall.

In September, 1933 the Rev. Philip Schlessmann was called to Sanford as the pastor of the Lutheran Church of the Redeemer and pastor of Faith Lutheran Church of Kustis, both missions of the Florida-Gorgia District, Lutheran Church, Missouri Synod.

The mission church here has steadily grown in congregation membership since its beginning in 1933 and at present time a church building is under construction on Oak Avenue at 25th Place.

Ground was recently broken for the church building with ceremonies attended by many Luther-

Half-Block Playground Invites Child

Among the primary schools for Seminole County children is West Side School situated at 611 W. Third St. and housing grades one through three. Six teachers instruct 158 children attending classes with Mrs. Elizabeth Sharon serving as teacher along with her duties as principal. Other faculty members are Mrs. Helen Stevenson, Mrs. Thelma Buffalow, Mrs. Irene Watt, Mrs. Rebecca Holmes, and Mrs. Oscar Neider. Mrs. Martha Beard is the school secretary.

Any child going to West Side for the first time is likely to envision himself in a sprawling southern home of days gone by when he sees the homey structure with its spacious front porch shaded by huge oaks that blend in with the surroundings of the neighborhood school.

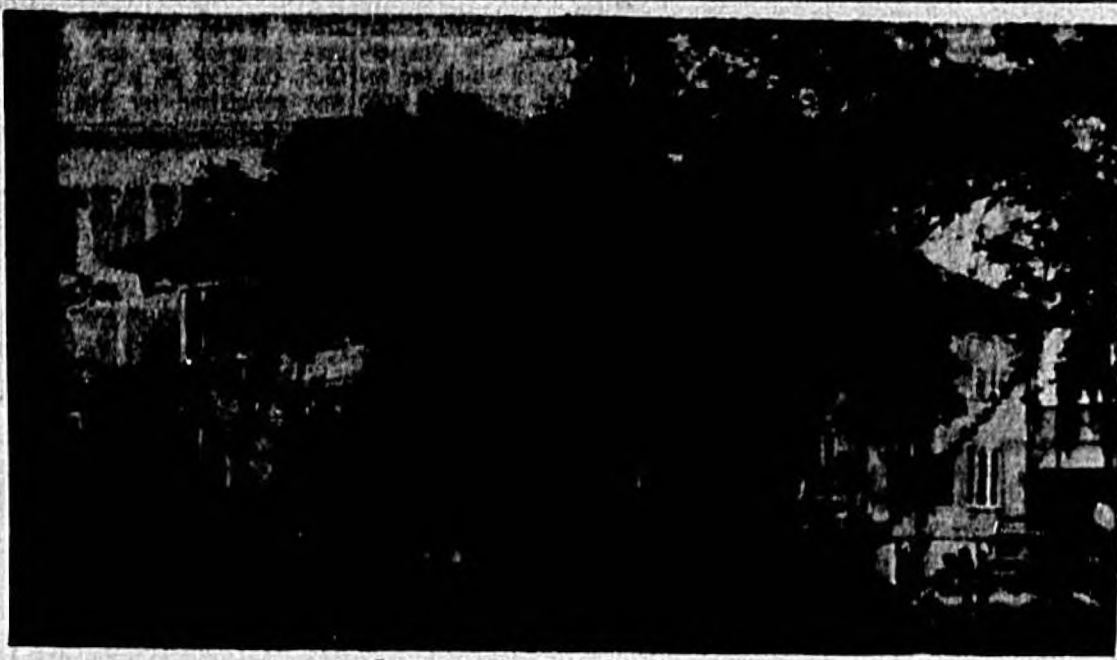
The children and teachers live and learn together the basic fundamentals of reading, writing and arithmetic along with spelling, science, health, physical education, art and music. Excellent lunches are served by Mrs. Clarice Dekle assisted by Mrs. Ebba Lee and Mrs. June Lyons. The new lunchroom provides a warm, friendly atmosphere where no one goes hungry as second servings are always offered.

The half-block playground invites the child to have fun and participate in supervised play. Another form of recreation takes place in the chapel which is always filled to capacity by eager youngsters.

Pupils soon become attached to West Side and her friendly teachers who are always ready to help out with any problems that may arise.

ans of the Central Florida area. The new building, on a huge area purchased for the location, will be of modern architecture and designed for all of the church services and meetings, as well as Sunday School, until a larger church is constructed.

Also organized in the Lutheran Church of the Redeemer is a Men's Club and a Ladies Aid.



Sanford Junior High School

(Photo By Jameson)



ASSOCIATE STORE

FRED M. SMITH, OWNER

INVITES YOU TO - CHOOSE

Central Florida

For Your Vacation Or Pleasant Year Around Living

- Enjoy every kind of Recreation "Under the Sun" in Seminole County ...



OR "JUST RELAX"-ON ONE OF THE MANY BEAUTIFUL BEACHES NEAR SANFORD

- Home of The Mayfair Inn \$15,000 P. G. A. Golf Tournament



- GO BOATING On The Smooth Waters Of Lake Monroe
- Fish In The Many Beautiful Lakes And Rivers Where The Fish "Really Bite"!



WELCOME TO

SANFORD and Central Florida

We Will Welcome, Also, A Chance To Serve Your Needs In—

- PLUMBING
- WELL DRILLING
- HEATING
- PUMPS & REPAIRS

M. G. HODGES

Palco Road Phone 700

**H. H. KASTNER
AND COMPANY**

"CABBAGE AND
CELERY
OUR SPECIALTY"

1300 FRENCH AVE.

PHONE 1780

L. D. - 10 AND L. D. - 38

1601 N. SECOND ST.

PHONE 1811

**R. S.
BATES
TRUCKING &
TRUCK BROKER**

LONG DISTANCE
REFRIGERATED
TRUCK SERVICE

PHONES: 1406

OR

L. D. 20

**BERL
HENSON
PRODUCE**

BEANS OUR SPECIALTY
"We Sure Know Our Beans"

L.D. 17 - Phone 1704

Stall No. 18

**A. & J.
PRODUCE CO.**

GROWERS
DEALERS
SHIPPERS

SPECIALIZING IN ALL
VEGETABLES IN SEASON

L. D. 24 LOCAL PHONE 2020



SANFORD STATE FARMERS MARKET

The Nerve Center of the Farming and Produce Industry in Central Florida.

While In Seminole County, We Invite You To Come And See Us.

ANDERSON REFRIGERATED SERVICE

HOME OFFICE - SANFORD, FLA. - LOCATED IN MARKET BUILDING

BRANCHES: - Belle Glade, Fla.; Hendersonville, N. C.; Elizabeth City, N. C.; Tennant, N. J. and Batavia, N. Y.

Local & Long Distance Hauling of Produce & Citrus

PHONE L.D. - 50

LOCAL PHONE 72

BONDED BROKERS

**CORLEY
PRODUCE COMPANY, Inc.**

GROWER & SHIPPER OF FLORIDA VEGETABLES

1300 FRENCH AVE.

L.D. 55

PHONE 1163

L.D. 45

**W. W. HORNE
TRUCK BROKERAGE Co.**

LONG DISTANCE REFRIGERATED HAULING

1400 FRENCH AVE.

PHONE 1304

OR

L.D. 30

**J. M. BLYTHE
TRUCK BROKER**

1303 FRENCH AVE.

PHONE 1424

PHONE L.D. - 40

**ROY F. SYMES, Jr.
TRUCKING CO.**

L.D. REFRIGERATED TRUCKING SERVICE
ALL POINTS U. S. A. - ALL LOADS INSURED
LOCAL PHONE 1183 - L.D. 42

**SANFORD
FRUIT CO.**

L.D. 33

1300 FRENCH AVE.

PHONE 1137

**R. F. ROBISON
MARKETING
SERVICE**

BROKER CARLOADS
DISTRIBUTOR TRUCKLOADS

Citrus Fruits & Vegetables

1300 FRENCH AVE.

PHONE 1366

L. D. 43

**W. L. JUSTICE
PRODUCE**

Grower & Shipper

FRESH FRUIT

AND

VEGETABLES

PHONES

DAY 1428

NIGHT 1404-M

L. D. 34

C. E. PHILLIPS

TRUCK
TRANSPORTATION
BROKER

John S. Laubach, Associate

PHONES

DAY 1250 - L. D. 36

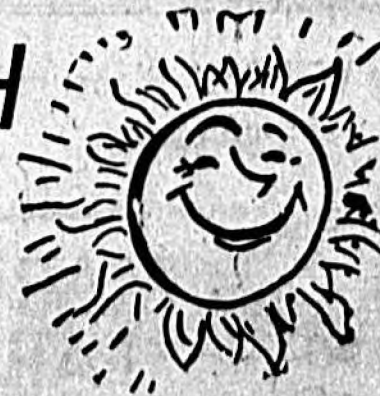
Night 1700 - 2251-M

P. O. Box 1011 - Sanford, Fla.

MAKE A DATE WITH
SUNSHINE



VACATION IN FLORIDA



Church Of Christ Proclaims Gospel

Daniel in the long ago as he described the image erected by Nebuchadnezzar, prophesied that in the days of these kings the God of heaven would set up his kingdom which would last forever. Jesus continued this thought while here on earth by stating "I will build my church," and told Peter and the other disciples, "I will give thee the keys of this kingdom and what thou shalt bind on earth shall be bound in heaven and what thou shalt loose on earth shall be loosed in heaven."

Jesus later instructed that he would send the Holy Spirit to guide them into all truth and when he left to go back to the Father he reminded them to tarry in the city of Jerusalem until they received the promised power. On the first Pentecost after Jesus' resurrection the Spirit came in power and Jesus' disciples began their work in the kingdom. The church or kingdom previous to this time was spoken of in the future sense. But beginning with this Pentecost as recorded in the second chapter of Acts the church is spoken of in fact or present tense. The church of our Lord had its beginning here and the teaching or doctrine of the apostles which was binding on the people then and recognized in heaven has the same binding effect on the people in the 20th century.

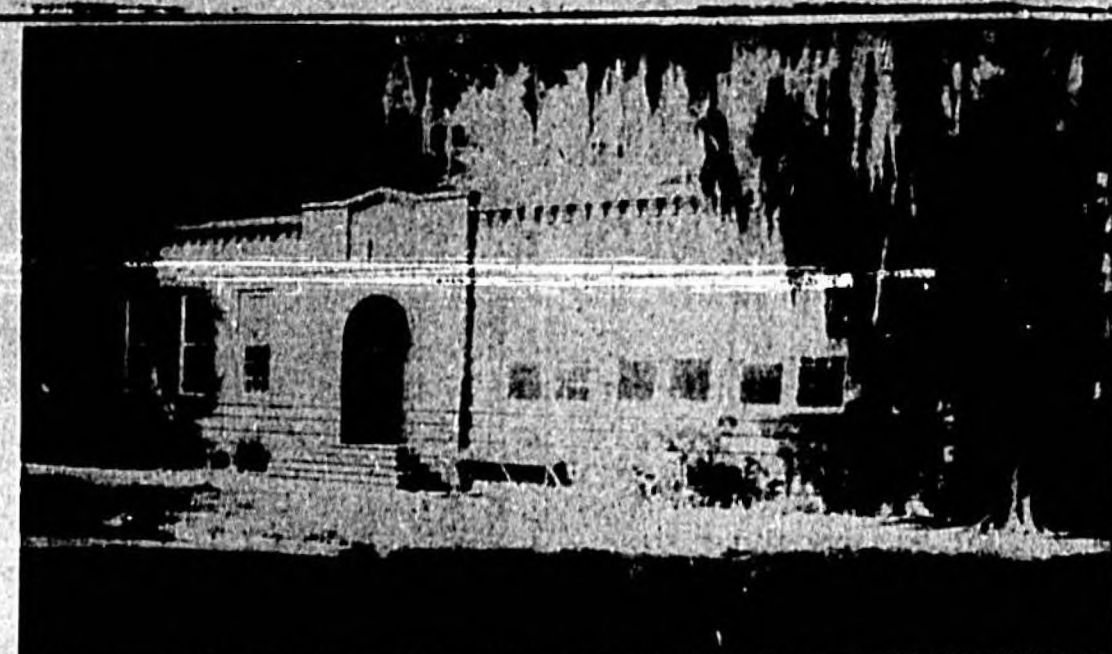
Therefore, to know if we today, as a religious people, comprise the body of the Lord all we need to do is to go to the New Testament and check the pattern given and compare ourselves with that pattern. The church today will have its origin as the first Pentecost after Christ's resurrection; it will wear the name that was recognized in the New Testament; the terms of membership will be the same required by the apostles; the teaching will be the teaching found in the New Testament; the worship will be according to the New Testament pattern and its government or organization will conform to New Testament standards.

The church of Christ today advocates the very principles outlined above and pleads for a return to the New Testament as a complete and final guide in religion. The boundless energy of the 400 enrolled is used up on the swings, monkey bars, merry-go-rounds, softball, baseball, volleyball and football. Besides these sports, folk-dancing is taught by teachers during the physical education period. The boys and girls show their interest in this field by making costumes and performing for numerous civic and school clubs.

On "free day" when a student is free to choose a sport during physical ed period, the walk in front of the school is often lined with couples practicing the dances to the music furnished over loud speakers or a phonograph. The presentation of the King and Queen of May highlights activities of the year when the Royal Couple and its court are entertained by their "subjects".

When the Florida sun forgets to shine indoor events are provided for the students who engage in chess and checkers. Extra curricular activities include a band which is led by Perry Bremer and the glee club directed by Miss Gene Nunnally. Individual teachers instruct the pupils in art lessons. The teachers and students are fully responsible for the chapel programs which, during the year, are divided among the rooms. Three types of programs presented are: major - taking in all children and costumes; minor - those with special talent present songs or poems and speaker - the room invites an official or businessman

In August, 1953, Sam Binkley began to work with the Church in



Sanford Grammar School (Photo By Jameson)

Geneva Church Organized In August 1949

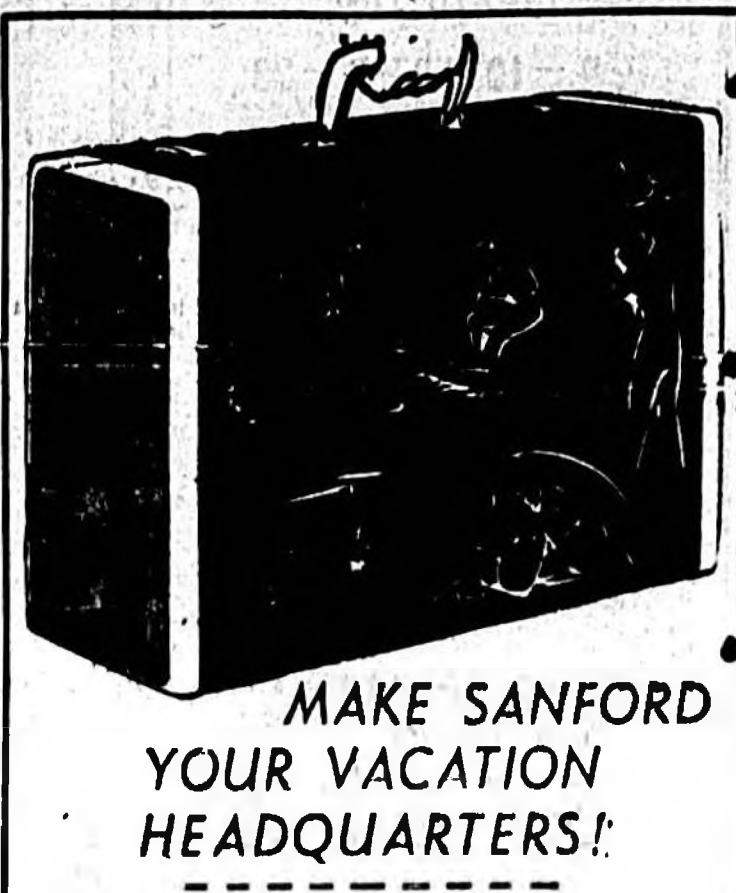
The local congregation of the church of Christ in Geneva was organized in August of 1949, and held its services in the Community Hall for over a year. In the fall of 1950, the erection of a church home was begun. This structure was completed in April, 1951, the dedicatory service being held the fifth Sunday of that month.

The building, located near the Post Office, is of block construction, and consists of main auditorium, classrooms, restrooms, and baptistry. Brother J. P. Lowrey has been local evangelist since the establishment of the congregation. Services are held each Sunday at 10:00 and 11:00 a. m. and on Sunday and Wednesday nights at 7:30.

who gives a lecture or speaks on some popular subject.

The 1953-54 school year saw the creation of the first annual Peazut Bowl Game which is sponsored by the P-TA. In this big affair each student participates in some way, either in the game or half-time show. Basketball tournaments are also high on the activity list.

Herold R. Heckenbach is principal of Grammar School with 12 teachers serving on the staff. The fourth, fifth and sixth grades are included. The lunchroom furnishes hot, healthful meals for the youths who are hard at work learning to become the citizens of tomorrow.



MAKE SANFORD YOUR VACATION HEADQUARTERS!

Auto Service ALL MAKES & MODELS

- Expert Mechanics
- Speedometer Repairs
- Complete Job Repairs
- Front End Repairs
- Motor Tune Up
- Parts & Accessories

Maffett Auto Service
120 1/2 N. Park Ave. Sanford, Fla. Phone 924

Seminole High Has Numerous Activities

Seminole High School is located on the newly widened French Ave. It graduated its first class in 1927 and since that time it has become a landmark in the hearts of Seminole County residents.

The present principal of Seminole High is Herman E. Morris. He has served in this position for over 10 years. In the fall of 1953 A. J. Bracken became assistant principal. Mr. Bracken came to SHS from the University of Florida in Gainesville.

In addition to these fine men there is an excellent faculty consisting of 26 members. During the year students from nearby colleges and universities intern at SHS. At the present time there are two young men from Stetson University serving as interns. The students number over 650 and are residents of Sanford and neighboring communities throughout Seminole County.

The youngsters are offered an excellent curriculum which includes languages, sciences, mathematics, telegraphy, and art. S. H. S. boasts a fine music department and has both a Glee Club and Band. These organizations participate in District and State contests and have made many superior ratings in the past years. Aside from their contest participation both groups entertain at civic affairs during the year. The Glee Club gives an annual Variety Show and Operetta. The band has the school and county creditably. Rex Parade at the Mardi Gras in New Orleans, 1954. They perform in many parades throughout the year and always represent the school and county creditably. Just this year they have added a 24 member majorette corps to their ranks. The corps has proved very successful and is certainly an asset to the group.

The Sports Department is one of the newest additions to the school. It has shown its value by furnishing talented student performers in "the pits" and arenas for various civic club and warmly received and are a credit school affairs. They have been to the school.

Physical education plays an important part in the life of a student at Seminole High. Excellent physical ed. is available to both boys and girls. Tops among the boys sports are football, basketball and baseball. Track has also become popular. SHS is proud of its sports record and even more proud of the fine sportsmanship its students display. The girls too, enjoy athletics. They participate in basketball, volleyball, softball and archery. A recent addition is golf for both boys and girls.

The students in Seminole High govern themselves. They have their own Student Council which is the governing body. A Senior serves as President and is elected by the Student Body through democratic voting. The other officers are elected by the students also and each class elects its own representatives. This year is sponsored a Sadie Hawkins Day in honor of Leap Year. It plans chapel programs and other activities.

The Tri-Hi-Y and Key Club are both honor societies. Sponsored by the Kiwanis the Key Club is very stimulating to a young man's civic duties. Both clubs are service organizations. The big event for the Tri-Hi-Y is the annual football banquet given at the end of the season. Key Club boys sponsored several dances throughout the year and perform many duties for the school. Development of Leadership and Good Citizenship is the motto for both groups. The Pep Club is composed of

ing the Basketball-Basball Banquet. Boys enjoy being in the Projectionists Club. They learn the in charge of showing all of the workings of a projector and are films.

The Future Nurses are assisting at the new hospital during mealtime. They are a comparatively new group but are very active nevertheless.

Another new organization at SHS is the Future Teacher's Club. They have just recently received their charter and have made many plans for the future.

The first and second year Latin Students form a Latin Club. They have a Roman style banquet each year complete with Caesar and Calpurnia.

The Future Farmers and Future Home Makers are active in the school. Both chapters are members of the national organization. Students interested in Library work gain experience as members of the Library Council.

A total of 75 courses are taught in the school.

Rev. R. Spear Jr. Is Now Nazarene Church Minister

The First Church of the Nazarene was organized Aug. 27, 1944 at 115 Pametto Ave. in what is now the Downtown Cleaners and Laundry. District Superintendent Strickland appointed Rev. C. G. Bralley pastor. Rev. Bralley served two years at the end of which time Rev. L. R. Rushton was called. The growing congregation felt need of larger quarters and such was afforded by the R. P. Arnold residence at 608 W. First St., which became a chapel of worship with living quarters for the pastor and family upstairs.

Under the aggressive leadership of Rev. Rushton and the far-sighted planning of the people, lots were purchased on the corner of Second St. and Maple Ave. and a building program was launched. Through sacrificial giving of money and man-hours, plus donations by many appreciative friends, a cornerstone ceremony was observed as the congregation moved to its present location in February of 1947. Rev. John L. Knight was now District Superintendent and officiated at this service.

For a time an apartment behind the church served as living quarters for the Rushton family, but in 1951 a beautiful three bedroom parsonage was built on the corner of West First and Poplar which is now conservatively appraised at fourteen thousand dollars. After nine years of fruitful labor Rev. Rushton resigned in August of 1954 to accept pastorate of the Panama Park Church of the Nazarene in Jacksonville. The Rev. R. H. Spear Jr., then pastoring in Titusville accepted pastorate of the Sanford Church of the Nazarene and officially began his duties Oct. 24, 1954. Plans are currently being made for a much needed Educational Annex for the Church School. Truly it can be said: "What? God hath wrought."

CHIEF IS BAKER
NEWTON, Iowa (AP)—The police department has frequent "feeds" at the City Hall. The meat is furnished by Mayor C. C. Harp, who operates a locker plant, and the wives do most of the cooking. But when cakes are served, they are baked personally by Police Chief N. C. (Doc) Shaver.

Fifty-five per cent of U.S. imports come from the Western Hemisphere.

Eber, director of the Sunbeams, which is made up of young children. The present pastor is B. G. Brown, a student at Stetson University, DeLand.

University Man Is Now Pastor At Lake Monroe

By GRACE THURSTON
The Lake Monroe Baptist Church stands in the heart of this small farming community. This staunch little church, was first organized in 1915 with ten charter members. The first pastor being the Rev. M. J. McGuire. At the start services were conducted in the school house. The present church was built in 1921. Services prior to the church being built were held twice a month. Upon completion of the church it then had weekly services.

There are three charter members that still retain their membership. Mrs. C. H. McKenny, Mrs. Carrie Lou Oglesby, and J. B. Johnson.

Since the church was built it had several student pastors, who have gone to wider fields of the ministry. Two of the members of this very promising church, have gone into the ministry. The Rev. Cecil Clark, pastor in Tennessee and the Rev. Charles Swaggerty, pastor of the Chulucota Baptist Church.

This small church has all the activities of any of the larger sister churches. It has now on roll 168 members and 108 Sunday School students.

W. R. Gile is the Sunday School Superintendent, Mrs. R. D. Bass, director of the Baptist Training Union; Mrs. Ed Oglesby, president, Mission Society; Mrs. Marion Warfle, director Girls' Auxiliary of Mission Society and Mrs. Joyce

POSTERS DISPLAY STORE FRONTS
SIGNS OF ALL KINDS
SILK SCREEN SNOW CARDS

It Will Be A Pleasure To Serve You

MARCEL FAILLE
809 ESCAMBIA DR.
Phone 1262-R

Consider **SANFORD** for a Vacation or Year 'Round Living

O. LEWIS DINKINS - Distributor
The Pure Oil Company
807 E. 2nd Phone 500

SANFORD, FLORIDA

Is Terrific

AND YOU ARE INVITED TO MAKE THIS YOUR HOME OR VACATION SPOT.

THE OLDEST INDEPENDENT GROCER IN SANFORD

...We Offer You

- QUALITY GROCERIES
- FINE MEATS

Lodge & Son Grocery
807 E. 2nd Phone 500

First Christian Church Popular

The First Christian Church in Sanford is a part of the great body of Christians known as the Disciples of Christ or the Christian Church, has a congregational form of government, and strive to abide by rules laid down in the Bible for its government and procedure. They do not believe they are the only "Christians," but do not believe in calling themselves by any name except the name of Christ, who is the head of the church.

Adventists Buy Land To Have New Building

The Seventh-day Adventist Church of Sanford was organized on September 17, 1917 with Elder W. H. Heckman, President of the Florida Conference of Seventh-day Adventists in charge. For some months previous this group of 19 people, which was made up of members of other Adventist churches who had moved into Sanford, met as a Sabbath School. Other members were soon added through study of the Adventist Doctrines.

Their first meeting place was the Ohio House, then the Masonic Hall. For the next 21 years they met in the Woman's Club. In 1941 land was purchased at the corner of 7th and Elm Streets. In March the church building was begun and in July the first church service was held in the new building.

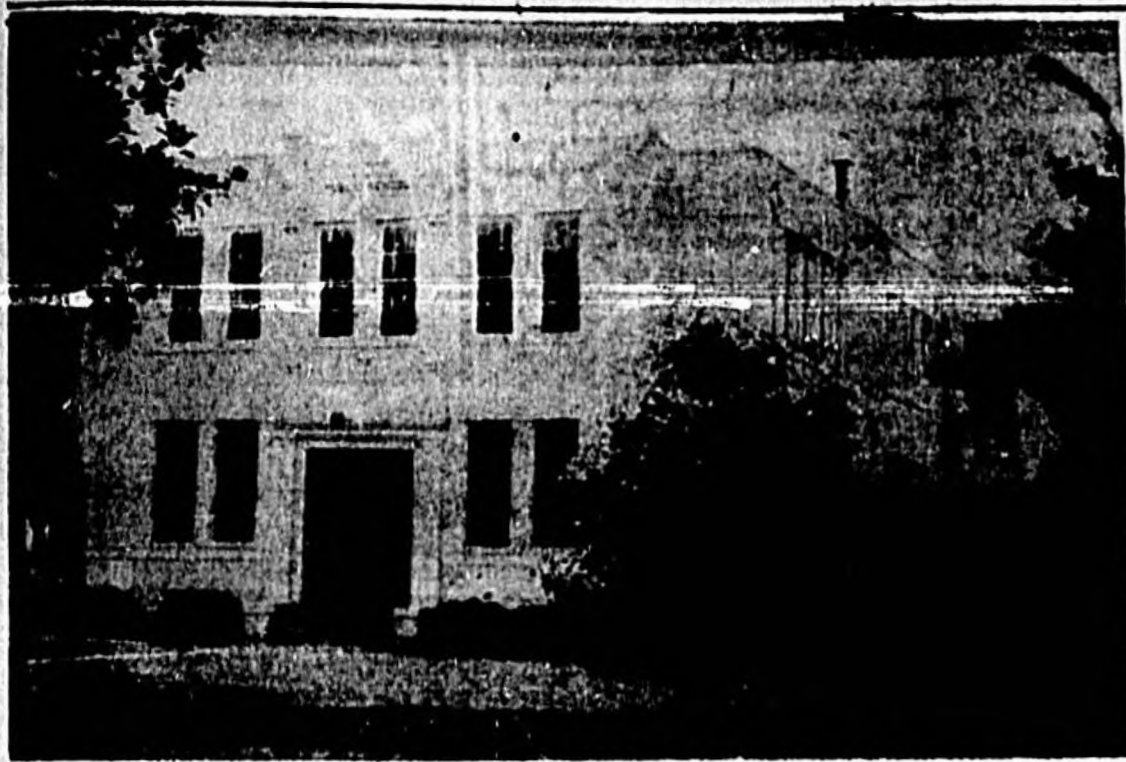
Adventists believe in Christian education. Their motto is "train the head, heart and hand." In harmony with these beliefs a church school was organized in September of 1932. That year the school with its seven pupils was held at the home of the pastor, K. E. Mensing, and Mrs. Mensing was the teacher. The following two years two more rooms in the rear of the church have served as schoolrooms. Mrs. Elizabeth Carawan is the teacher.

As the enrollment grew it became necessary to provide larger accommodations, so the church purchased more land at the rear of the church building in 1933 and a modern two-room structure has been erected. One room is used as a classroom and the other as a recreation center.

In July of 1923 under the leadership of Mrs. R. A. Terhune, several members met with the Rev. O. S. Brooks of Eustis and he preached for a few weeks. On Sept. 20 of the same year, a meeting was called at the Women's Club presided over by Rev. J. L. Jackson, chairman of the Orlando District, and the charter was signed and the church organized for Sanford. Most of the charter members have since died or moved away.

For some time they met in the American Legion Hut and brought their own chairs, and Rev. O. S. Brooks was the first minister. After he was called to the church in Kissimmee, Rev. H. T. Bolton, who with his daughter, Martha, was spending his winters in Florida ministered for a short time, followed by Rev. O. H. Greenwell, and Rev. Edward Rudicel. As many members had now been added to the little congregation, they sought quarters in the Junior High School building in 1926. After Rudicel was called to another church, the Board called the Rev. Frank M. Marler, who did valuable work in the church and the community. His first sermon was preached on Mother's Day, 1927, and through his efforts the present building was erected and the first services to be held in the new church was on Mother's Day 1929.

During the first years they were partially supported by the State Mission Board, but became self-supporting in 1931, and since that time have helped support other mission churches in the state. Mr. Marler's work was evangelistic and added many members to the church, but his chief interest was in the young people. His wife, Rose, was also interested in young people and organized the first Girl Scout Troop in Sanford. The Marlers served the church for seven years. Ministers who followed him were: Rev. W. Herman Forbes, Rev. Isenberg, Rev. Dance, Rev. Grantham, Rev. William Perry Vesley, Rev. Farris, Rev. Herbert J. Bass, and the Rev. H. E. Johnson. Two of the ministers passed away while they were serving the church, the Rev. Dance and the Rev. Vesley, both of heart attacks. After Ves-



Lake Monroe Public School House

(Photo By Jameson)

Central Baptist Church Considered Ambitious, Growing

The Southside Baptist Church was organized by a Rev. Thompson during the year of 1937. The first meeting was held in a dwelling house near Glenderville. Later, the church was moved to 32nd Street and after a few years a Rev. Tucker was called as the pastor and the church was moved to 9th Street and Laurel Avenue.

After moving the location to 9th Street and Laurel Avenue there were several pastors; however records were not kept during the

early years of the church. On June 1948, the Rev. S. L. Whalley was called as pastor of the Central Baptist Church.

The Rev. I. W. Farham is now pastor. He is married to a Sanford girl, the former Miss Alyce De Coursey.

The church then consisted of approximately 60 members.

In December, 1952, the church moved into a new concrete block building at the corner of 14th Street and Oak Avenue. The entire building is valued at approxi-

mately \$20,000, the auditorium has recently been furnished with new furniture throughout and an organ has also been installed.

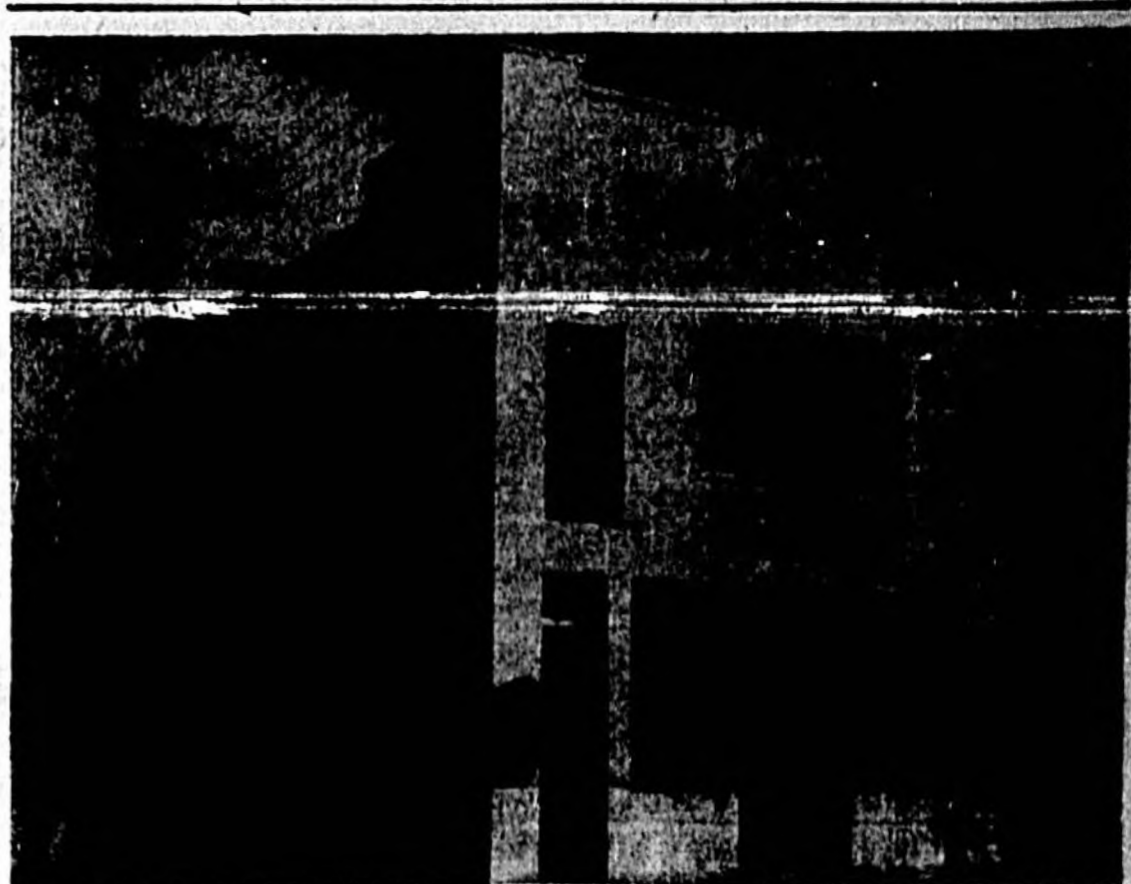
The educational building consists of 36 rooms including office space, library, nursery and rest rooms.

Some scientists believe that warming of the earth will cause melting of enough polar ice to raise the level of the oceans and flood some low coastal areas within the next 80 years.



All Souls Parochial School on Magnolia Ave.

(Photo By Jameson)



The Salvation Army Building

(Photo By Jameson)

ley's death, a parsonage committee consisting of Lester Tharp, O. D. Landress, and Mrs. Phillip Mars planned a parsonage for the church as a Yesley Memorial. Funds were raised among the members and friends of Yesley both in Sanford and the west where he formerly ministered and partially financed by the National Church Extension Board. The church, which today is completely debt free, is looking forward to the erection of a new

Educational Building in the near future.

In the past three years the church auditorium has been completely re-decorated, new pews, carpets, draperies, pulpit and communion service. A new console organ has been installed and paid for. The old pews were borrowed from their Presbyterian friends and have now been returned after 23 years. Thank you, neighbors.

The church is now in better financial and spiritual condition than at any time in its history

and it is expecting even greater things in the future. It has a well organized, graded Sunday School and an active Men and Women's Fellowship. An excellent choir is under the direction of Jay M. Walter, with Mrs. N. V. Farer organist.

The present membership is 120. The Rev. Perry T. Stone is serving as minister.

Contrary to a widespread popular belief, checks written on Sunday are valid.



Site of proposed Lutheran Church

(Photo By Jameson)

Welcome To THE SUNNY SOUTH!

WHERE THERE'S LOADS OF FUN FOR EVERYONE!



Many years of training—careful study of new pharmaceuticals—go into each prescription compounded here. Our licensed pharmacists put their skill at your disposal.

Free Delivery

Your Walgreen Agency



We Feature
AT OUR FOUNTAIN
Complete Breakfast,
Luncheon,
and
Supper
Service
—Also—
Delicious Fountain
Treats

Cosmetics In Name Brands

- Max Factor
- Lenthic
- Shulton
- Coty
- Jean Graham
- Peggy Sage
- Revlon
- Jacqueline Cochran

ROUMILLAT AND ANDERSON
WELCOMES YOU TO SANFORD—
STOP IN AND SEE US FOR YOUR
EVERY DRUG NEED.



- Sunburn Cream
- Hand Lotion
- Sun Lotion
- Sun Glasses
- Sun Tan Lotion
- Lip Ice
- Insect Repellents
- Electric Fans
- Insulated Coolers
- Thermos Bottles
- Sun Caps
- Bathing Caps
- Swim Wings
- Float Toys
- Beach Balls



ROUMILLAT & ANDERSON

100 E. FIRST STREET

Walgreen Agency
"ON THE CORNER BY THE CLOCK"

PHONE 36 & 1247

Midway School Now Develops Citizens

The Midway Elementary School began July of 1917 when the Seminole County School Board appointed S. L. Monroe and Mrs. Mary Clark as principal and teacher of the Midway-Canaan area.

Two churches were rented to house the 67 pupils enrolled. Professor Monroe was authorized by the board to hire a third teacher as soon as the enrollment reached 100. Later Miss F. B. Reid was appointed as a third member of the faculty.

This was the beginning of one of Seminole County's largest and most progressive schools. Mrs. J. L. Moore, Mrs. Mary Bryant, and others were soon added to the faculty.

The first school building was a two story frame structure of four classrooms and an assembly room which was also used as a classroom. The original structure was destroyed by fire around 1936. A six room structure replaced the original and was erected on the present site of the school. Through the years, the Cameron City School was consolidated with the Midway School (1937). The plant now consists of four buildings. There are fifteen classrooms and a lunchroom, on 9 1/2 acres of land.

Principals: S. E. Monroe (deceased), Miss F. B. Reid, present principal of the new Goldboro Elementary School; William L. Hamilton was appointed principal in September, 1932.

Under the leadership of principal Hamilton the school has continued to grow and progress. It is the sincere desire of the principal, parents, and teachers to make the Midway School a happier place of any pupils to live, work, play, and continue to develop into the kind of citizens our community is proud to welcome.

Some Recent Improvements: The school is in its third year of a five year beautification program. More shrubbery has been added this term, and seasonal flowers are kept in abundance.

New book cases have been secured for the four rooms without them; additional equipment and supplies have been provided for the science and art classes in order

to extend the variety of experiences of the pupils. Cumulative Guidance folders have been provided for all grade levels represented in the school. Library services have been expanded through the purchase of more library books, and the addition of a wholesome variety of current publications.

Public Relations: As a means of improving public relations and informing the public the school engaged in many activities. Some activities were a Patrons and Citizens Tea; summaries of units of work and student programs were presented to the P-TA; tape recordings have been made of class activities; resource persons have been presented to the pupils at various intervals; a school paper is published periodically by the student council. The P-TA sent its president to the state Congress of Parents and Teachers, that was held in Miami. The P-TA sponsored a county-wide P-TA meeting at which time the presidents from each school's P-TA was present to hear an address by Mrs. D. B. Saunders, state president of the Congress of Parents and Teachers.

The annual pre-school round-up was held Sunday afternoon April 17, 1933, at which time pre-school registration was held. The school center has shown an increase in their interest in charitable contributions, the highest amount this term (\$90.91) going to the March of Dimes.

The present personnel includes Mrs. M. G. Francis, B. S. F.M. College, grade 8; H. L. Refoe Jr., M.A. A.M. University, grade 8 and 7; Mrs. S. L. Refoe, B.S. A. & M. College, grade 7; Mrs. M. S. Jones, B.S., Bethune-Cookman College, grade 6; Mrs. E. A. Rosier, B.S., Bethune-Cookman College, grade 6; Mrs. C. R. Bronson, B.S., Florida N. & I. College, grade 5; Miss V. G. Mattox, B.S., Florida A. & M. College, grade 4; Mrs. D. L. Miley, B.S., Bethune-Cookman College, grade 4; J. C. Byrd, B.S., Bethune-Cookman College, grade 4; Mrs. A. L. Hamilton, M. Ed. Tuskegee, grade 3; Miss J. L. Goins, B.S., Florida A. & M. College, grade 3; Mrs. I. J. Baker, B.S., F. A. & M. College, grade 2; Miss M. P. Smith, B.S., Bethune-Cookman College, grade 2; Mrs. L. H. Williams, B.S., Florida A. & M. College, grade 1; and Mrs. E. C. Pringle, M.S., Florida A. & M. U., grade 1.

Mrs. M. R. Chesborough, secretary; Mrs. Victoria Burton, lunchroom manager; Miss Rosella Detreville, lunchroom assistant; Mrs. Rosa L. Hughes, custodian; William L. Hamilton, M. Ed. Tuskegee, principal.

Students Receiving Rich Experiences From P-TA Events

In 1912 by authorization of the Seminole County School Board Hopper Elementary School was built on its present site.

The first principal was Professor J. N. Crooms who is now retired. Professor Crooms helped to plan the structure of this building, which was considered modern for that time.

In 1927 when the present Crooms Academy was established, all grades above the elementary were transferred to that school. In the same year Hopper Elementary became an elementary school. Six persons preceded the present principal. They were Miss Fannie B. Reid, the late Mrs. Ethel Gramling, the late Mrs. Ollie Strickland, Professor David Brewer, Mrs. Minnie Ellis, and Mrs. Alma Hurston. Some commendable improvements have been made since the establishment of the school. The building has been refueled and the school has a lunch room and one room is maintained for a library and classroom combined.

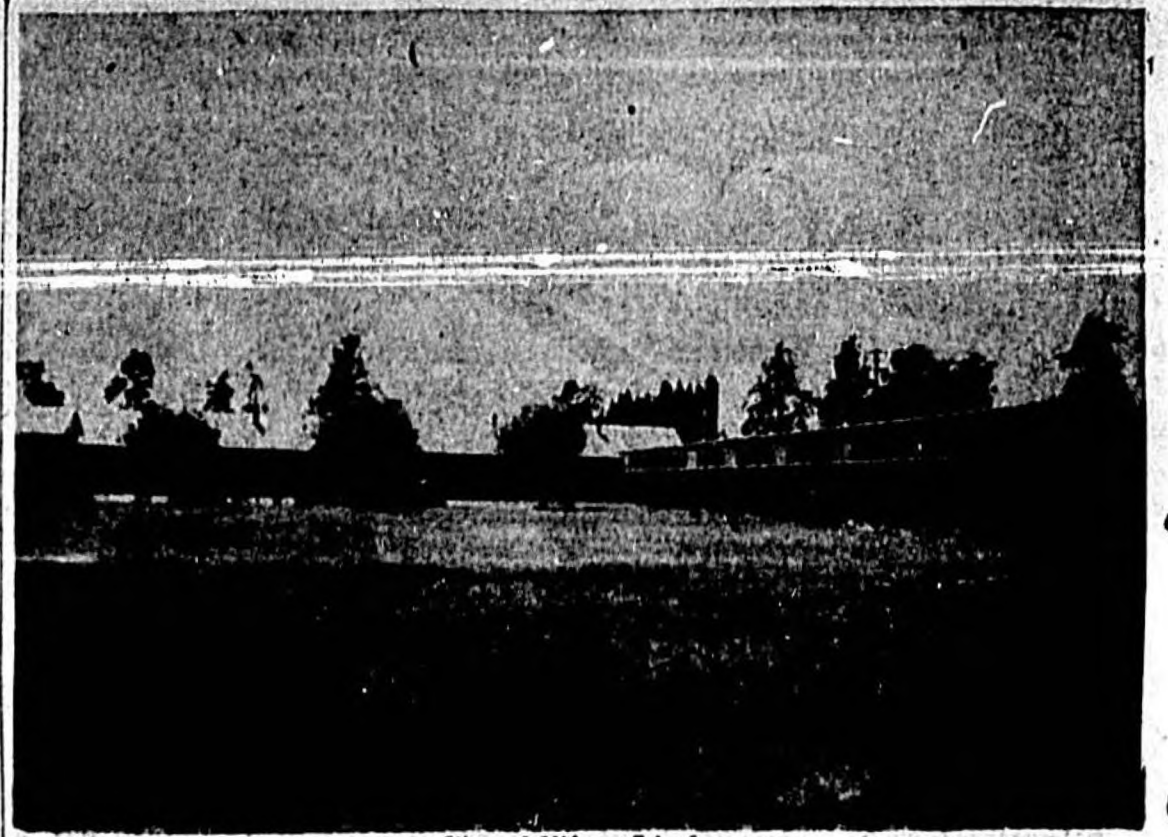
At present Hopper Elementary is under the principalship of Professor L. R. Eubanks. The faculty includes Mrs. Inez Bacon, Mrs. Flossie Lawson, Mrs. Leola Bryant, Mrs. Laura Fulton, Mrs. Julia Merritt, Mrs. Elizabeth Young, Mrs. Thelma Sheppard, and Mrs. Mary Johnson. The school retains its accreditation which it merited five years ago.

The pupils are receiving valuable experiences through participation in parent and teacher-guided activities. These include a planned curriculum which is manipulated through units, plays, assembly programs, parties, and carnivals. Extra-curricular activities such as club organizations are carried on.

The school has been used by Bethune-Cookman College as a laboratory unit for its teacher-training program. Hopper has had the opportunity of directing two internes of that institution. They were Mrs. Dorothy Miley and Mrs. Mattie Cherry. Directing teachers were Mrs. Flossie Lawson and Mrs. Julia Merritt.

Pupils at Hopper are receiving adequate music training from our County Music Supervisor Mrs. M. Fuller.

A sufficient hot lunch is served daily by two efficient lunchroom workers. They are Mrs. Altamase Dixon and Mrs. Cleo Teak. A well-organized Parent-Teacher Association meets regularly each month. The officers are: Mrs. Dorothy Rhigling, president; Mrs. Louise Feacher, secretary; Mrs. Willie Mitchell, treasurer, and the Rev. John Gray, Chaplain.



View of Midway School

(Photo By Jameson)

Geneva Mission Organized Dec. 14, 1925 By Group

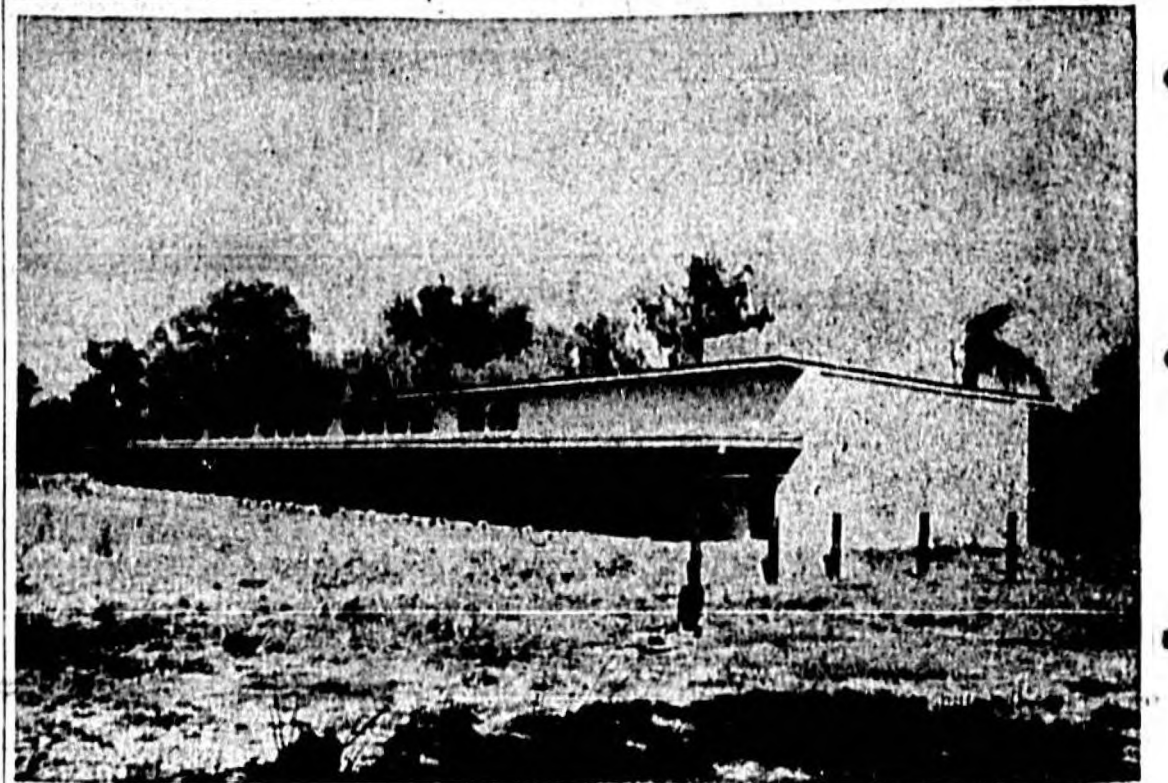
The Hillcrest Baptist Church of Geneva had its beginning when a group of Baptists met at the home of Mr. and Mrs. Phillip Bauer on Dec. 14, 1925. The meeting was for the purpose of starting the Geneva Mission. At this meeting, the Rev. L. A. Hall was called as pastor. A

building fund was started with \$100 in which to build a church. There were 27 charter members.

For six months, the mission met at the home of Mr. and Mrs. H. H. Geisler.

Mr. and Mrs. W. G. Kilbee donated an acre of land on Highway

45, and by June 1933, the Geneva Mission had completed the church building and moved in it for services. The members bought the materials and constructed the building. The pulpit, pews, communion table and bannisters were donated. On July 12, 1933 the Geneva Mission was organized into a church and then became the Hillcrest Baptist Church. The Rev. Hall resigned in August 1931 and the Rev. C. N. Flank was called as pastor in October 1934 and resigned February 1936.



Shown above, Oviedo Negro School.

(Photo By Jameson)

Goldboro School Is Growing Fast Since Inauguration

The fast growing Goldboro Elementary School has been plagued with congestion since its inauguration.

The Goldboro Primary School was formerly housed at W. 18th Street and Lake Avenue. But in 1930 a four-room frame structure was built at the school's present site, West 16th Street. It was long referred to as the "Little Red School." At that time, it served 2000 children of the first three grades from the West Sanford or Goldboro area. Its faculty consisted of three teachers. One of the teachers was Principal Joann Moore, who served in this capacity for the ensuing 35 years.

A few years later, congested conditions created a need for more classrooms and teachers. To alleviate this condition, two classrooms and two teachers were added. However, these proved insufficient and another teacher had to be employed, but no addition was

made to the housing facilities. This situation necessitated the introduction of the double sessions which are still necessary at this school.

In 1933, Mrs. Moore retired and Miss F. B. Reid succeeded her as principal. This year saw the beginning of a new era for Goldboro Primary. The transition from frame buildings to concrete units began. The first concrete unit included 3 classrooms, lavatories for boys and girls, and teachers' lounge. However, a one-room frame building had to be moved in from Kolokee.

During the following 1933-'34 school term, 3-4th grades with teachers, were transferred from Crooms Academy to begin the evolution from Goldboro Primary to Goldboro Elementary. In 1934-'35, 3-5th Grades and 3 teachers were added. Immediate construction began on new facilities. Before they were completed, fire had claimed one frame building which housed 4 classrooms.

The new facilities included 10 classrooms, lavatories for boys and girls, cafeteria, and an administrative suite with dispensary.

Upon completion in 1935 three 8th grades and 3 teachers were added, and construction began on 9 additional classrooms, expected to be in use soon.

Goldboro Elementary still has double sessions and even with the latest addition it is expected that congested conditions will not be completely relieved at present. Its students number 750, its teachers, 24.

No longer is the Goldboro Elementary School to be referred to as the "Little Red School," but, more appropriately, the "Big Green School." And it's still growing.

LOST TOP

KNOXVILLE, Tenn. (AP) — The owner of a 1933 automobile had a shock when he arrived to claim it at a parking lot, and found that the top was down. The car wasn't a convertible.

In the owner's absence, a wall adjoining the lot had collapsed and the car was smashed flat.

Outside the United States 4 1/2 of railroad mileage is government owned.



Student Council officers of Hopper Elementary school are installed.

Again, For 14th Year,
State Farm Mutual Insured More
Car Owners Than Any Other Company

THE NEW LOW-COST
HOMEOWNERS 4-IN-1 POLICY
IS THE REASON:

1. Covers Your Home
Provides fire and other coverages
2. Covers Your Personal Property
Provides coverage on such property anywhere in the world.
3. Covers Your Legal Liability
Protects you in case of accidents on or off your premises.
4. Covers Crime Perils
Provides Theft Insurance on your home — your personal property — at home or away.
• Subject to policy terms



"It pays to know your State Farm agent."

IRVING I. PRYOR

PHONE 1436

SANFORD, FLA.

State Farm Mutual Automobile Insurance Company today protects over 4,000,000 cars a half-million more than any other company.

RED-I-MIX Concrete



PRE-CAST CONCRETE PRODUCTS

- BENCHES
- STEPS
- SEWER PIPE
- SEPTIC TANKS
- WINDOW SILL'S
- FLOWER POTS
- STEPPING STONES
- LINTELS
- DRY WELLS
- GREASE TRAPS

FREE ESTIMATES

Miracle Concrete Co.

309 Elm Ave.

Established 1910

Phone 1335

School Officials Praised By Bailey

"I want to commend your school officials for furnishing the leadership that made this school possible," Thomas D. Bailey, Superintendent of Public Instruction for the State of Florida, told a packed auditorium at the new Pinecrest School recently as the school was formally dedicated.

"Florida has been a leader for some time now in providing a school program for its youth," said Bailey who made the principal address as he was flanked by County and City officials and leaders on the platform of the school's modern stage.

"Our teachers in Florida today rank among the top three States with 88% of them having four years college degrees in comparison with 63% in 1948," he said. "They are better prepared to do a better job than ever before."

However, as he painted a word picture of the school program throughout the State, and as he spoke of the children looking for an education, he said "There's room in our hearts and in our homes for them—will there be room in our schools?"

Bailey commended the legislature for their presentation of the school program of Florida and said, "We are on the threshold of greatness in this State."

"The American school today is the greatest single agency to which you and I can look to the improvement of our Democratic way of life," he said.

However, he said, we know we don't have the perfect institution, we know we have faults. But anyone who is critical of our schools should be willing to help improve them.

"It takes intelligent people today to take part in a democratic government," Bailey said.

And he concluded, "I now dedicate this modern school plant."

Bailey was introduced by Senator Douglas Steinbaum.

Harry Weir, president of the Pinecrest School Parent-Teacher Association opened the dedication ceremonies as he welcomed those in the auditorium. He said "We owe a tremendous debt of gratitude to all of the officials who have made possible this school."

Chaplain F. W. Kempson, of the Sanford Naval Auxiliary Air Station, in the devotional portion of the dedication program said, as he quoted from a scripture passage, "And a child grew and waxed strong with wisdom," he said. "We came primarily to develop our children. We come rather, not to dedicate a building but to dedicate lives."

Climaxing the dedication was the presentation of the keys to Pinecrest School to Mrs. Margaret Reynolds, principal by Superintendent of Public Instruction R. T. Milwee.

W. A. Patrick Gets Recognition Medal

W. A. Patrick, Seminole County Chairman for the United States Savings Bonds program, was presented a silver medal recently in recognition of the 100 per cent attainment of the county in its 1953 Savings Bonds goal.

The Treasury award is given only to those chairmen who lead their areas to accomplishment of the assigned quota.

In accepting the award, Patrick stated that it could not have been done without the outstanding cooperation of the key agencies in the county, such as the banks, The Sanford Herald and the radio station, who kept the public aware of the great need of Savings Bonds in maintaining a sound dollar and a healthy, thriving economy.

"Of course," he added, "the good people of the county who bought Savings Bonds were the ones who put the dollar volume over the top. We are all grateful for them."

The medallion, which is set in a lucite frame, bears on its front side the emblem of the Minute Man and the United States Treasury shield with the inscription "U. S. Treasury Award."

The reverse side of the award carries the words of peace with the inscription "For Patriotic Service."

Forest Lake School Trains Students For Service, God

The Forest Lake Academy located in Maitland is a Seventh Day Adventist School which believes in Christian education for the youth of the world. The mind and hand of each student is trained for the service of God.

Senior class officers include Charles Owen Franz, president, Miami; Phyllis Yvonne Kline, vice-president, Orlando; Barbara Kay Dalton, secretary, Winter Park; Charles James Canterbury, treasurer, Panama City; Marvin Leroy Moore, Pastor, Havana, Cuba; John H. Lehason, sergeant-at-arms, Jacksonville; Verlon R. Godwin, cadet-chaplain, Dothan, Ala.; and Bruce D. Powers, salutatorian, Havana, Cuba.

The school in close connection with its religion has a vesper hour in the evening, a sabbath school, and a Missionary Volunteer Society.

Recently a new addition was built for the boys of the school in the form of a dormitory.

Clubs featured are the Town Club, Village Club, Spanish Club, Amateur Hour, a school paper, student council, Choir Council, Academy Band, and many others.

The school boasts a personnel office, business office, reader department, library, switchboard, daily, maintenance department, printing department, campus department, laundry, bakery, cafeteria, and numerous others.

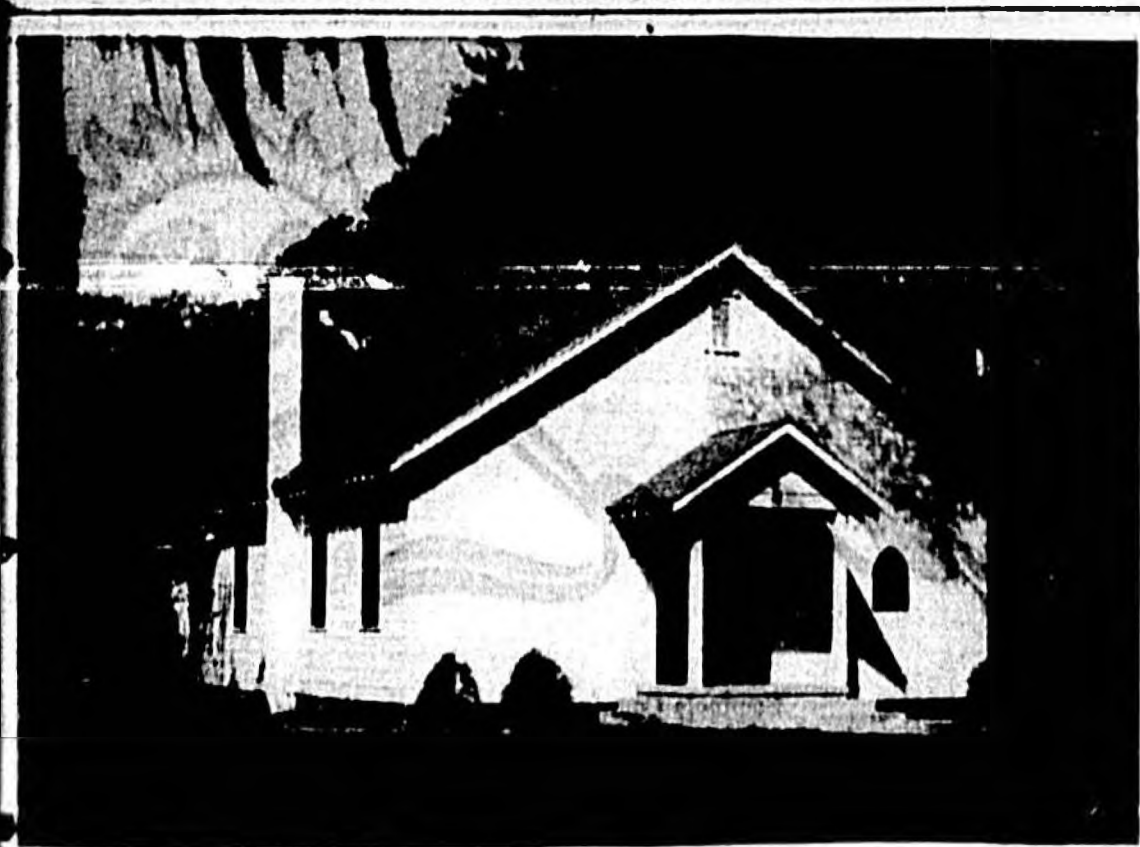
In Seminole County it's the Sanford Linoleum & Tile Co. For All Kinds of Floor Covering

Modernize at LOW COST with colorful, durable, KENTILE FLOORS.

New Carpeting by Gullistan

Made to fit

Sanford Linoleum & Tile Co. 127 W. First St. Phone 1917



The Seventh Day Adventist Church on Elm Ave. (Photo By Jameson)

Seminole High Band Brings Recognition To Sanford

The Seminole High School Band stems from a long line of bands in Sanford, the first known community bands was directed by A. H. Crippen in 1886. Since then several bands have helped to create the public pride in Sanford. The present Seminole High School Band was reorganized by Bernard E. Black in 1947 when the membership consisted of 15 pupils that quickly grew to 80 members. Uniforms and instruments were acquired during Mr. Black's leadership and the band entered its first contest in 1948. Making a first division rating at the District IV Contest held in Cocoa, Florida. In 1949 the band went to Miami for the State Contest.

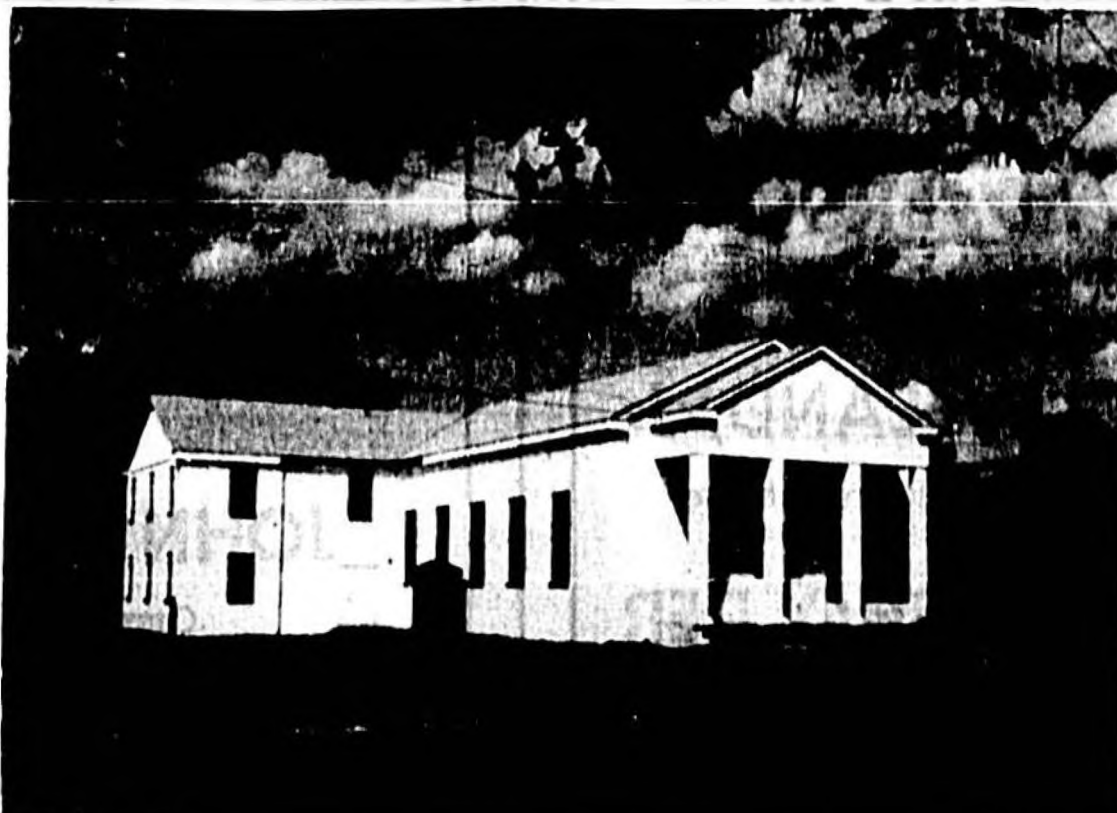
Ernest Cowley, the present director, came to Seminole High School in August of 1951. He immediately organized a booster club consisting of band parents and persons interested in the welfare of the band. Much credit for the splendid spirit and success of the band is due to this very active Seminole High School Band Association and the principal Herman Morris. When the present director came the students wrote up a governing constitution and reorganized a military student governing staff.

The band program was accelerated and by the end of that first year the band and its component parts had performed numerous public and school occasions. With renewed interest and enthusiasm the band moved to greater heights the following year (1952-1953), by performing 100 times during the school year including school assemblies, six major concerts, ten parades (the governor's inaugural parade in Tallahassee, the Gasparilla Parade in Tampa and the American Legion Convention Parade in Orlando). During this year the ever comical jug band was organized.

Then came the big year for the Seminole High School Band. During the year of 1953-1954 the pride of Sanford traveled to New Orleans, La., in march in the internationally famous Rex Parade of Mardi Gras and upon return was asked to give a special marching exposition while leading the Festival of State Parade in St. Petersburg, Fla. The Mardi Gras Parade televised the Seminole High School Band through a national hookup in every state in the union as it marched through a throng of one million people in New Orleans. This parade alone has given the band a name as one of Florida's finest high school bands. During that school year (1953-54) the band made 74 appearances and traveled a total of 2,500 miles.

The band this present school year has already made a name for itself by joining with the Pep Club to present outstanding pageants and extravaganzas at the high school football half-times. Other activities for the remaining year will include the Leesburg Watermelon Festival Parade and a concert in the Million Dollar Bandshell at Daytona Beach, Fla. in May. This band has the distinction of being the only band outside of the Daytona Beach Bands to play annually in the Daytona Bandshell eight years in succession.

Realizing that the Seminole High School Band is part of the community as an organization they are always ready and willing to perform at various civic occasions. Since 1951 this band has played the dedications of the Farmers' Auction Market Building, the Sanford Tourist Club Building, the Americana Legion Fair Exhibit Building, the Memorial Stadium, the opening of the Sanford Railroad Depot Building and the corner stone laying at the Fish Memorial Hospital. To raise money and also help create better civic club unity the band and the SHS Band Association sponsors a "Six Night Contest" each year. This includes entertainment given by each club in contest with one another and a prize is awarded the outstanding skill presented.



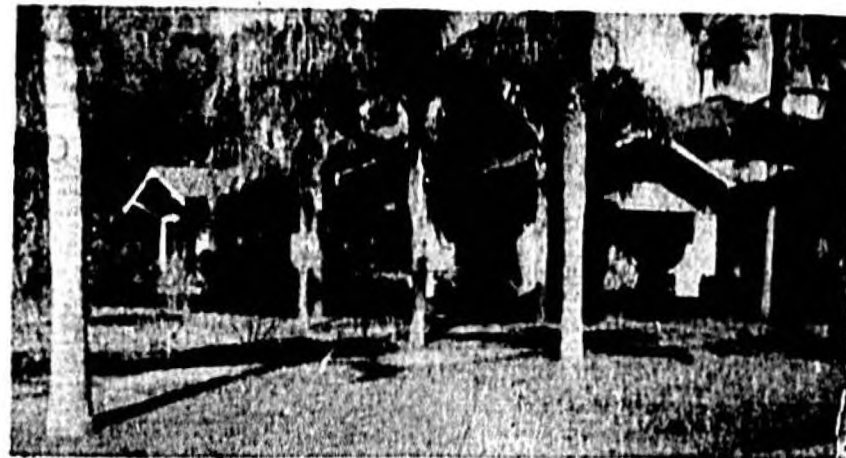
The newly built Central Baptist Church on Oak Ave. (Photo By Jameson)

Wesleyan Church Of Paola Growing

The Wesleyan Methodist Church of Paola was organized in 1921 under the South Georgia Conference by J. W. Johnson who was the first pastor. Services were first held in the packing house, but they soon purchased a church on W. First Street, which had been built about 1885.

A new parsonage was built in 1945, under the leadership of U. R. Ruppe, who was pastor then. In 1950, the church was included in the newly organized Florida Conference. The congregation outgrew the old frame building, and in 1954, during the ministry of G. D. Marsh, a concrete block Sunday school building was begun.

In August, 1955, services were transferred to the new building and the old church was torn down. A new concrete block church is being erected on the site of the old church. C. W. Shaffer is the present pastor.



3-BEDROOM HOME—Hardwood Floors, On 2 Lots \$16,000

Looking for a "dream house"?



Call Hall

PHONE 1758

Always consult a realtor! Check our wide listing of desirable homes and properties and you'll be sure to find the home of your dreams! We'll help arrange all financing at convenient payments to suit your budget.

Be sure of a fair deal... all ways—deal with a realtor!

J. W. HALL REAL ESTATE DRIVE-IN 2155 FRENCH AVE.



WELCOME TO

Celery City Restaurant



- CHOICE STEAKS
- FRIED CHICKEN
- SEA FOOD

Our Famous Round Table

"The nearest thing to home-away from home" See what you want — Eat all you want.

OPEN

5:00 A. M. to 8 P. M. Daily Except Sundays

Celery City Restaurant

218 Magnolia Ave. Near the Ritz

Take It From Me There's lots of fun for everyone in Sanford



You can play Golf, Baseball, and Tennis, or Go Fishing, Swimming or just loaf in the Sun.

But...

the best place to go when you want to be refreshed is —

McREYNOLD'S DRUG STORE

PRESCRIPTION DRUGGISTS

Fountain and Curb Service

CORNER 25th ST. and SANFORD AVE.

PHONE 90

SANFORD, FLORIDA

SEMINOLE COUNTY

a perfect

Vacationland



Seminole County has a charm all its own with its many lakes and beautiful St. Johns River — Hunting and fishing are prevalent and popular as well as all of the competitive out-of-door sports.

Each one of the County and State Officials listed below invites you to visit this growing and industrial center, and to consider making it your permanent home . . .

Seminole County is always happy to greet the many visitors and prospective residents who prefer Central Florida to all other sections of the State.

R. T. MILWEE

Supt. of Public Instruction

DOUGLAS STENSTROM

State Senator

JOHN L. GALLOWAY

Tax Collector

F. A. DYSON

County Commissioner

J. D. CORDELL

Sheriff

J. W. YARBOROUGH

County Road Superintendent

O. P. HERNDON

Clerk of Circuit Court

OTIS E. FOURAKRE

County Commissioner

CAMILLA D. BRUCE

Supervisor of Registration

MACK N. CLEVELAND, Sr.

Fire Chief

MACK N. CLEVELAND, Jr.

County Attorney — State Representative

JOHN W. MEISCH

County Commissioner

KARLYLE HOUSHOLDER

County Prosecuting Attorney

W. B. MILLER

Chairman Board of County Commissioners

ERNEST HOUSHOLDER

County Judge & Juvenile Judge

B. C. DODD

County Commissioner

J. Q. [Slim] GALLOWAY

Constable 4th District



Florida *Keyed for Better Living!*

The following towns are located in Seminole County: Altamonte Springs, Bear Lake, Chuluota, Casselberry, Fern Park, Forest City, Goldenrod, Geneva, Lake Mary, Lake Monroe, Longwood, Oviedo, Paola, Slavia and Sanford the County Seat. Each town extends you a cordial welcome along with the

COUNTY and STATE OFFICIALS

The Sanford Herald

AN INDEPENDENT DAILY NEWSPAPER

Section E

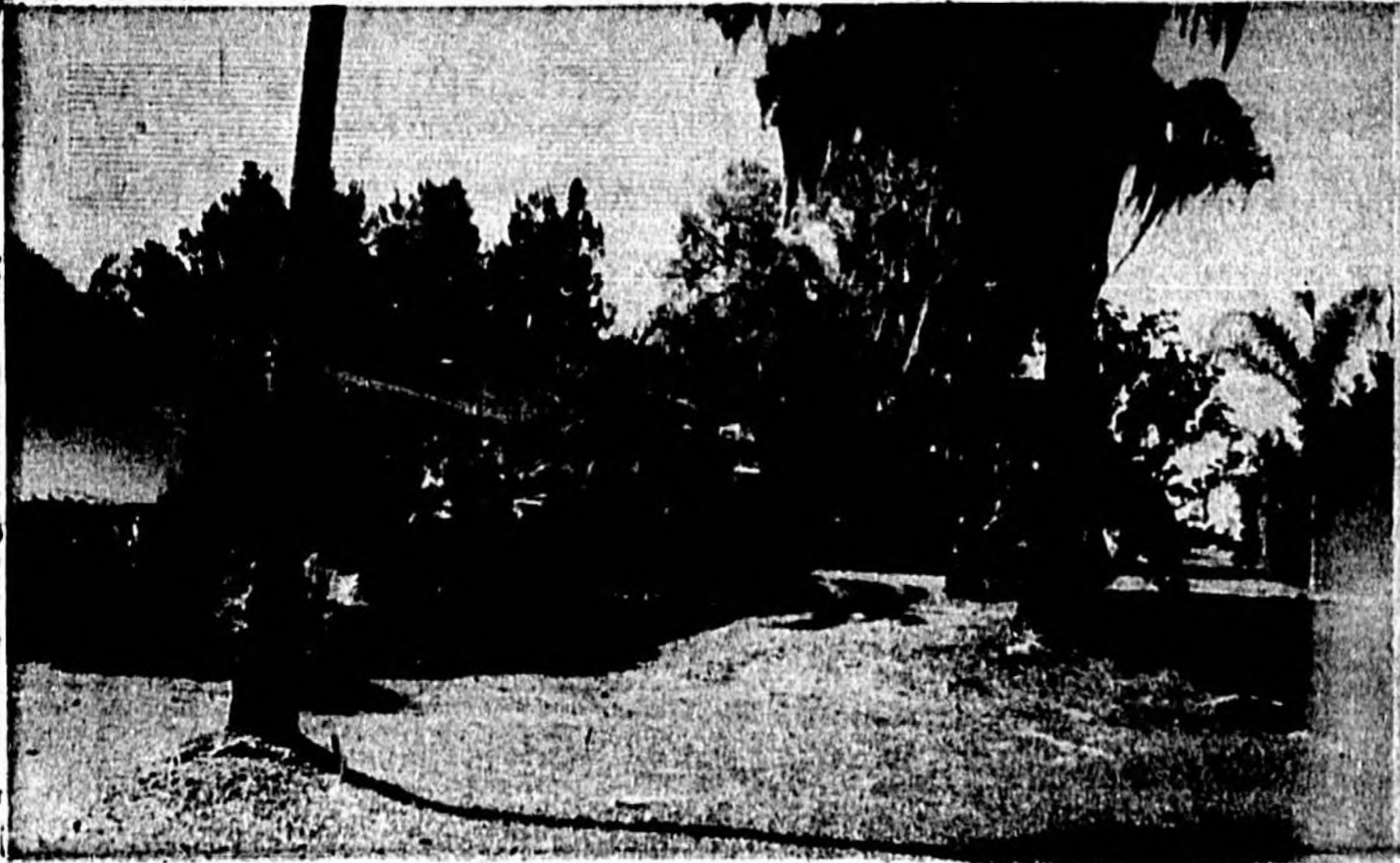
VOLUME XLVIII

Established 1908

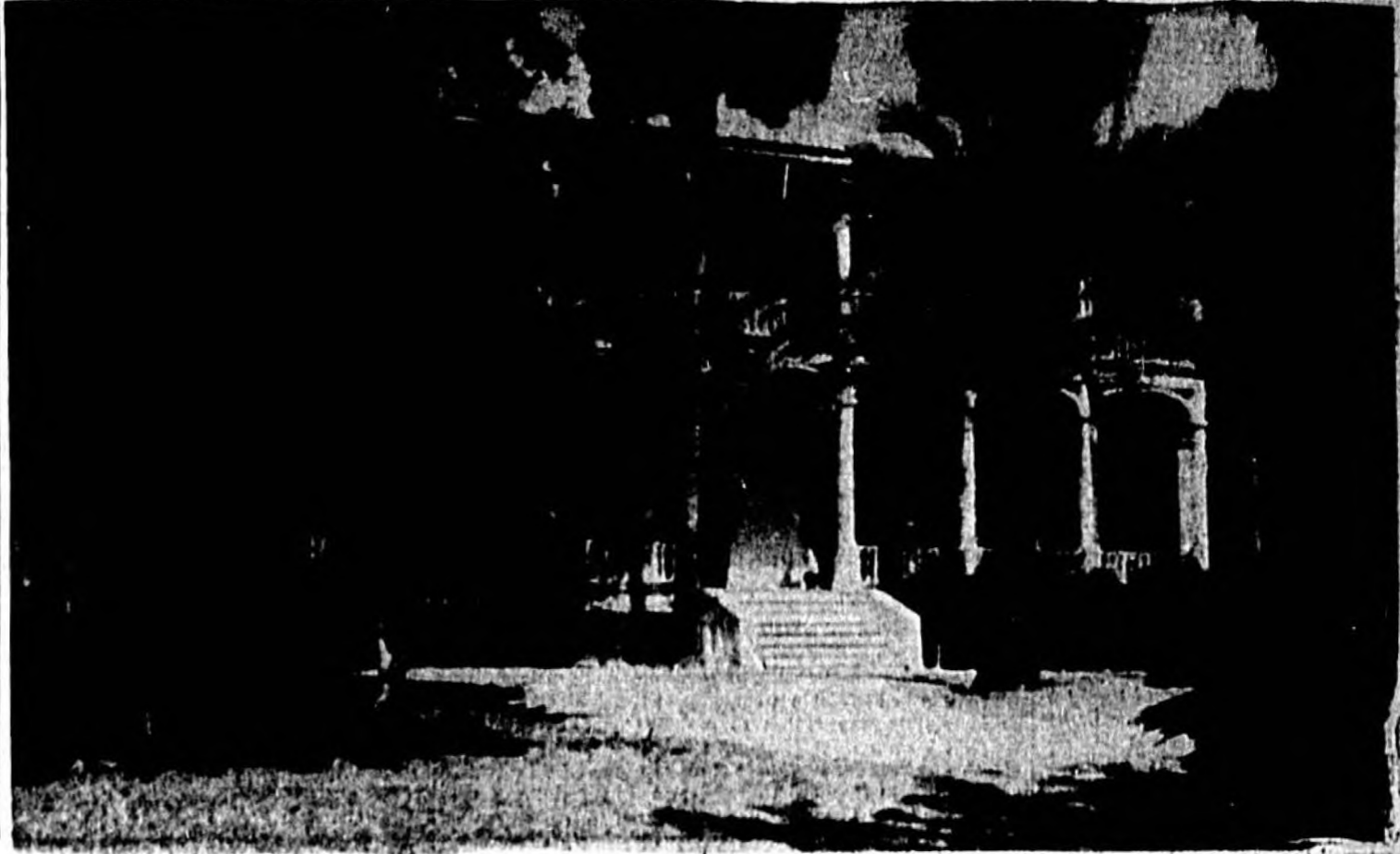
SANFORD, FLORIDA, MARCH, 1935

ANNUAL TOURIST EDITION

Home Building Spearheads Progress Of Sanford, Seminole County



A. R. Peterson's home on Hidden Lake. (Photo By Jameson)



Count DeBary mansion now used for clubhouse



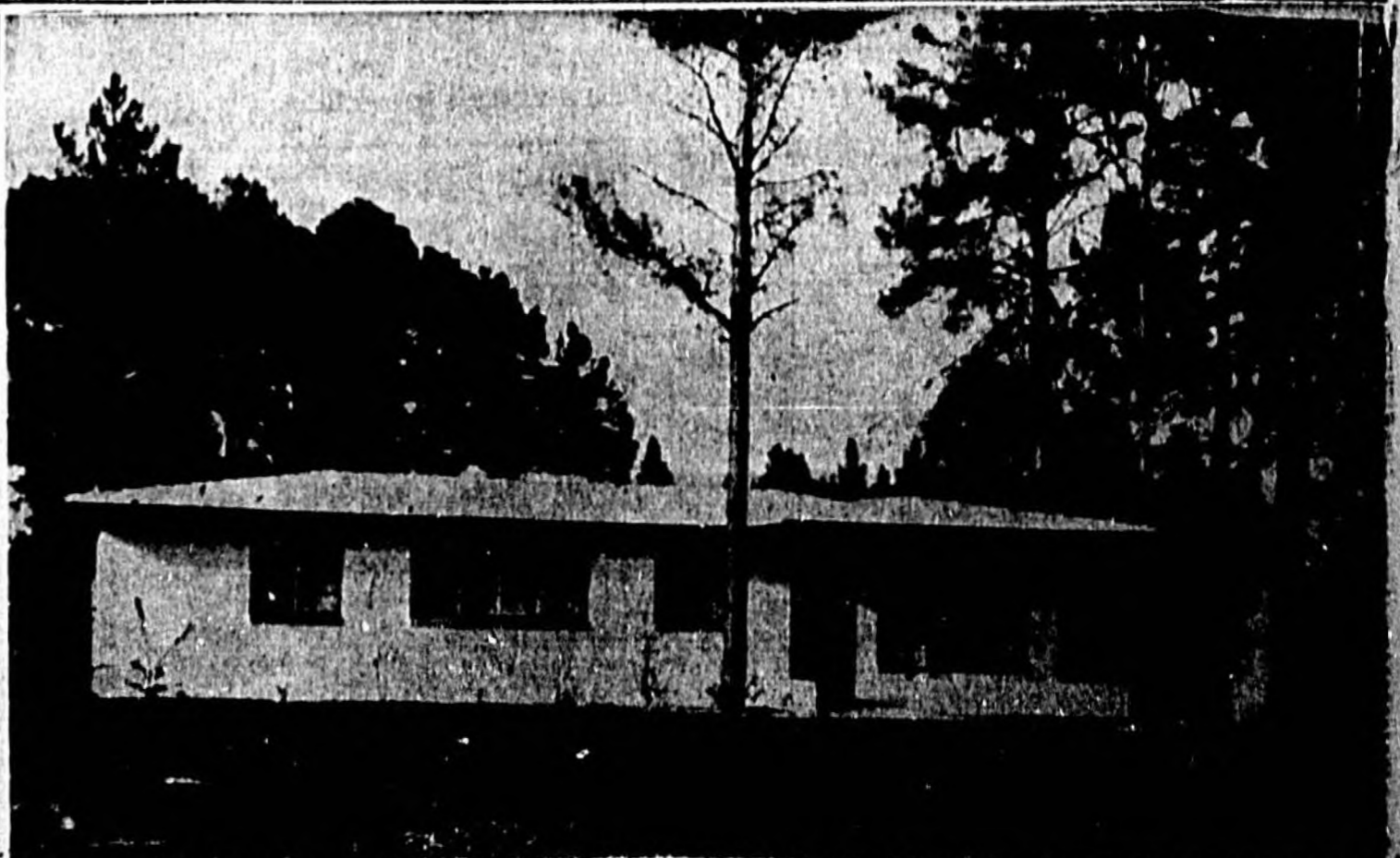
The lovely home of James Crapps (Photo By Jameson)



Neill Houston's home (Photo By Jameson)



One of the homes built by Odham & Tudor, Inc.



Home built by Phillips