

THE SEMINOLE HERALD

MAY 7, 2003

95th YEAR No. 75
Copyright © 2003 The Seminole Herald

Sanford, Florida

50c

www.seminoleherald.com



Diamond dozen

The FHSAA Baseball and Softball Playoff Series began on Tuesday with 12 teams representing Seminole County in action in the Regional Quarterfinals. The softball teams are also scheduled to play Regional Semifinals and Finals this week and the baseball teams are to play their Regional Semifinals on Friday. See Sports, Page 8

Honoring our troops: Cpl. Waleri currently in Iraq

LONGWOOD — Marine Corps Cpl. Richard M. Waleri, son of Bonita L. Waleri of Longwood, is currently deployed in support of Operation Iraqi Freedom. He is assigned to the 26th Marine Expeditionary Unit, based in Camp Lejeune, N.C.

Elements of Waleri's unit recently joined coalition forces in the vicinity of Mosul, Iraq, to promote stability in the region and eliminate any pockets of Iraqi resistance.

Waleri is one of more than 4,000 Pacific Fleet Sailors and Marines who deployed aboard the ships of the USS Iwo Jima Amphibious Ready Group.

Waleri's unit is an expeditionary intervention force with the ability to rapidly organize for combat operations in virtually any environment. MEUs are composed of more than 2,000 personnel and are divided into an infantry battalion, aircraft squadron, support group and command element. With this combination, Waleri's unit supplies and sustains itself for either quick mission accomplishment or clearing the way for follow-on forces.

Waleri is a 2000 graduate of Lake Mary High School in Lake Mary. He joined the Marine Corps in March 2002.

Seminole Smile



Kari Sweeney — Secretary at the Seminole County Public Defenders Office

Index

Business	6-7
Classified	11-12
Crossword	11
Dear Abby	2
Legals	9-10
Obituaries	3
Police Log	2
Sports	8-9

Maloy plans bid for tax collector's seat

By Jamie J. Anderson-Potter
Staff Writer

County commissioner keeps promise not to run for third term

SANFORD — Seminole County Commissioner Grant E. Maloy announced Tuesday that he will not seek re-election in November 2004.

"When I was originally elected, I promised voters I would only serve two terms," said Maloy. "This is the end of two terms. I think eight years is enough. I don't think any elected office should be a lifelong career."

Instead, Maloy will vie for the elected

position of Seminole County tax collector. Maloy plans to officially file the paperwork at the Office of Supervisor of Elections at 10 a.m. today.

Maloy says his decision to run was based partially on the ethical practices of the current tax collector, Ray Valdes.

According to publish reports, during his 14 years in office, Valdes and his family

have purchased land, well below its worth, being auctioned for back taxes. The family has also purchased certificates that earn interest on people's delinquent taxes.

According to Maloy, although Valdes' actions are not illegal, he doesn't feel he should make a profit on the system he was elected to oversee.

"I put a lot of thought and prayer into it

and decided to go ahead and attempt to make a change there," said Maloy. "I will work to restore integrity and a positive public opinion in that office."

"I think I've had a record of following through on my promises of being fair and independent, with high levels of ethics," he added. "I think I could improve the public perception of the office."

According to Maloy, if elected he will introduce a policy stating that the tax collector and employees of the tax office may

See Maloy, Page 5

Deputy's passion for kids earns him award

By Dan Ping
Editor

SANFORD — Carl Tipton was finishing spring drills when he received an urgent call.

Tipton is a football coach at Lake Mary High School and a full-time deputy with the Seminole County Sheriff's Office, so urgent calls are nothing new for the Sanford native.

This call, however, came from straight from Chief Deputy Steve Harriett.

"He said, 'You need to get over here. To Sanford immediately,'" Tipton recalled.

This wasn't the usual emergency, though. Tipton was needed in Sanford to accept a surprise award: the Eugene Gregory Humanitarian Award.

"I was awe-struck," Tipton said. "I had no idea this was coming."

The award is given every year by the Sanford Lakeside Lions Club to honor a Seminole County Sheriff's Office employee.

"This honor recognizes the qualities of a good humanitarian," Harriett said in presenting the award to Tipton. "It's not about being a good deputy, though that's certainly a part of earning this award. It's about doing more, much more, than the job requires to make the community a better place."

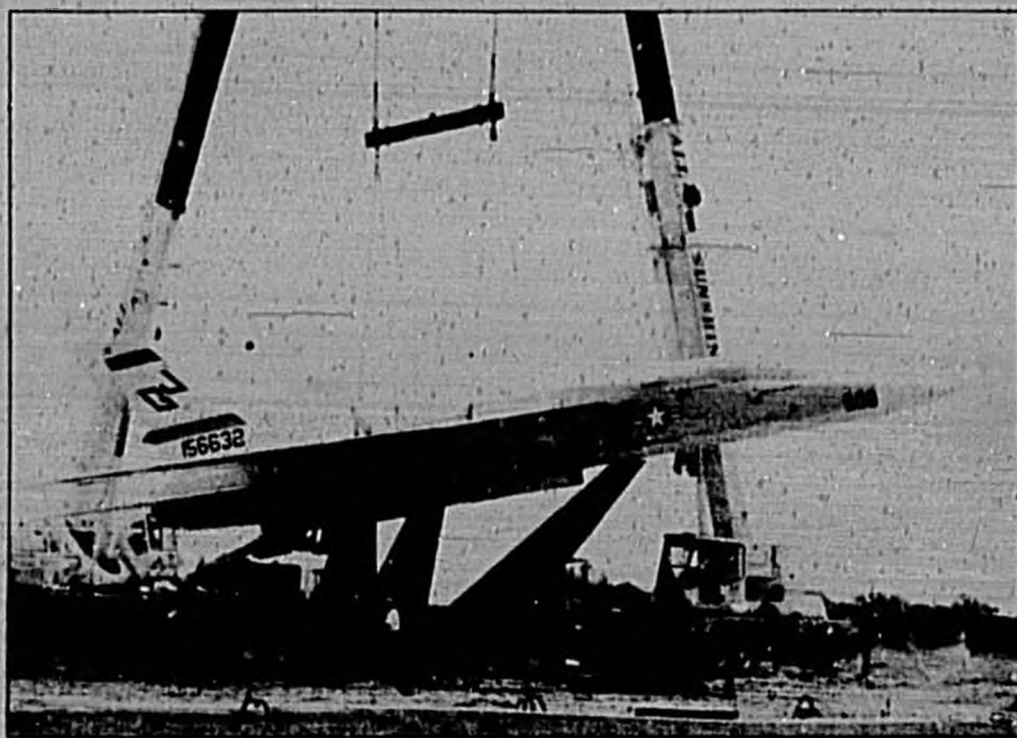
Tipton, who began his career with the sheriff's office in 1991, is an active role model for the youth of Seminole County, Harriett said. In addition to working with the Lake Mary football program, Tipton is a school resource officer at Lake Mary High School, and he leads the youth group at Palmetto Avenue Baptist Church.

"Carl has a real passion for working with kids," Harriett said. "He invests himself into their lives and he is dedicated to helping young people."

"As a personal example," Harriett added, "Carl worked with some of the youth at my church, and every where he went, there were at least 10 young people around. They absolutely love

See Tipton, Page 5

Fighter's return



Herald photos by Tommy Vincent

Vigilante, memorial park dedication set for May 30

When the Sanford Airport Memorial Committee formed about three years ago, they had the goal of obtaining a historic US Navy aircraft and erecting a monument that would serve as a reminder of the airport's glorious military history. In less than a month, the fruits of their labor will be on display for all to see.

On May 30, a vintage RA-5C Vigilante aircraft will enter the sky once again, mounted on steel pylons for public viewing at the airport's entrance. Crews were in town recently mounting the craft on the style pylons.

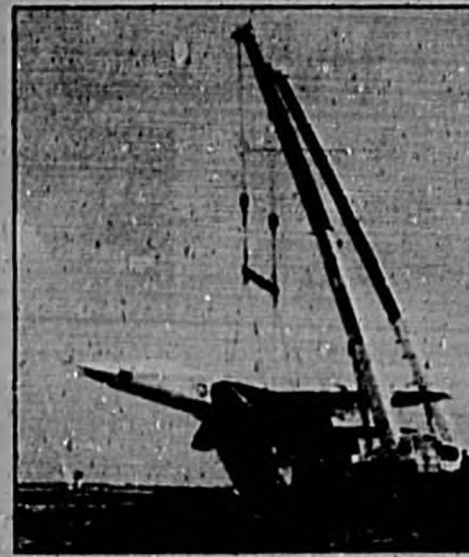
Since acquiring the aircraft in 2001 in poor condition, some 20 people have spent a year and a half restoring the plane to its former glory. Many of these workers are part of the Aircraft Restoration Committee, a group of 15 mostly retired military men.

The plane will serve as the centerpiece of a small memorial park that will also include such features as memorial benches and plaques. Unfortunately because of lack of funding the park will not reach completion in time for the unveiling of the plane. The committee hopes to have the park open by the fall.

As for the Vigilante, it will get dedicated in a traditional military-type ceremony set to begin at 10 a.m. on May 30. The entire public is invited to attend. For more information about the memorial, contact Jack Dow at 407-485-4006.



The Vigilante is mounted on steel pylons



UK travelers boost airport numbers

By Dan Ping
Editor

SANFORD — Passenger counts on domestic and international flights continues to remain well below pre-Sept. 11 totals, but there are signs that the worst may be over at Orlando Sanford International Airport (OSIA).

Larry Gouldthorpe, president of TBI Airport Management Inc., told board Sanford Airport Authority members that there are preliminary indications the international market may rebound during the summer.

"Really, I think March was the bottoming out month," said Gouldthorpe, whose company manages the day-to-day operations at the airport. "We're starting to see some turnover in the United Kingdom. The operators there are becoming quite bullish."

In March, 46,000 domestic and international travelers passed through OSIA, a 56 percent drop-off from March 2002 when the airport logged 97,000 travelers.

For April, preliminary figures indicate passenger counts will be about 20 percent less than April 2002's 96,000 passengers; however, Gouldthorpe pointed out that the numbers increasing, and there is a silver lining to the overall totals.

"The UK counts are up 11 percent, which gets lost in the overall information," Gouldthorpe said. "I think, by mid-summer, those numbers should continue to increase to the point that are monthly numbers match last year."

Aviajet, a UK-based charter service is one reason Gouldthorpe is optimistic about increased travel to Sanford. The carrier announced it would begin non-stop service to Sanford from Dublin, Ireland in July. Officials at Aviajet have bumped that started date up to June 2.

In addition, Gouldthorpe said OSIA officials are negotiating with Pace Airlines about directing more domestic routes to Sanford.

"This is the kind of carrier that will emerge from this distress in the industry," Gouldthorpe said.

Larry Dale, president of OSIA, agreed and said Pace has twenty-two 737 jets and is ideally posi-

See Passengers, Page 5

Downtown attracts 'Drowning' film crew

By Jamie J. Anderson-Potter
Staff Writer

SANFORD — While traveling on Main Street in the downtown Sanford historic district Monday morning, chances are you were involved in a traffic jam caused by a blue Cadillac.

Against popular belief, this wasn't the result of an 80-something driver who didn't put the pedal to the metal. It was actually a pseudo traffic jam created when crewmembers from New York as well as Valencia Community College converged on the historic district to shoot scenes for an

upcoming independent film "Drowning."

"I always enjoy shooting here," said Ralph R. Clemente, program director of film production technology and professor of film productions at Valencia Community College. "It's a great looking downtown. It has great Americana and can portray any time period."

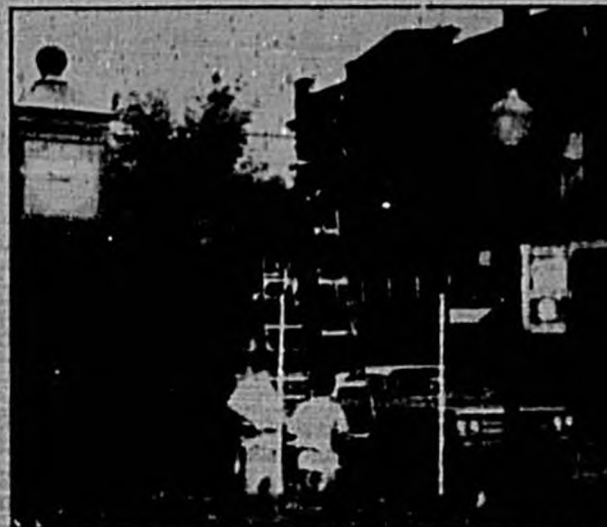
The crew set up shop in front of Cool Beans Coffee on Magnolia Square while shooting scenes at the traffic light located in front of the city's historic clock. They also shot scenes in front of Cobbleson's at the corner of 1st Street and Palmetto Avenue.

At several points throughout the day, the crew pulled locals off the street to act as extras in the film. Later in the day, the crew made its way to the dock of Rivership Romance to shoot.

The project is a collaboration between Valencia Community College's film department and Scott Graham, the film's writer and director.

Graham, who graduated from Valencia in 1997, spent several years booking bands in the Orlando music scene before relocating to New York in August 2000.

See Drowning, Page 5



Herald photo by Tommy Vincent

Crewmembers from New York, as well as Valencia Community College, converged on the historic district Monday to shoot scenes for an upcoming independent film, "Drowning."

Sponsored by:
Sanford Historic Trust
Seminole Cultural Arts Council
The Seminole Herald



"Sanford Voices"

An original play by Jim Howard

Discover Sanford's 125-year history as performed by Seminole High School students.
7 p.m. Thursday, May 8 at the Helen Stairs Theatre.

Tickets \$8, available the night of the show

Obituaries

HERMAN H. BERGES
Herman H. Berges, 64, Madison Drive, Orlando, died Friday, May 2, 2003.
He was born March 16, 1938, in Havana, Cuba. He was a computer analyst. He was an U.S. Army veteran.
Survivors include wife Gloria Berges, Orlando; daughters Elizabeth Berges, Gloria Berges, Cynthia Berges, all of Orlando; one granddaughter.
Funeral services were held Friday at Banfield Funeral Home in Winter Springs. Banfield Funeral Home, Winter Springs, in charge of arrangements.

JOANN HARRIETT BROWN
JoAnn Harriett Brown, 68, Fairfax Avenue, Winter Springs, died Sunday, May 4, 2003, at Winter Park Memorial Hospital in Winter Park. She was born Nov. 25, 1934, in Louisville, Ky. She was in the retail sales industry.
Survivors include son Curtis Brown, Winter Springs; daughter Terri Thrall, Franklin, N.C.; brother Joseph Cowell, DePaul, Ind.; sister Marie Catherine Sillings, Idaho; six grandchildren, four great-grandchildren.
Funeral services will be held at 11 a.m. Saturday at Banfield Funeral Home, 420 W. State Road 434, in Winter Springs, with Pastor Gustav H. Scheuermann officiating.
Banfield Funeral Home, Winter Springs, in charge of arrangements.

MAE NORA DIXON
Mae Nora Dixon, 81, South Pennsylvania Avenue, Winter Park, died Saturday, May 3, 2003.
She was born in Valdosta, Ga., and moved to the area in 1946. She was an instructor of home economics. She was a member of Moriah Missionary Baptist Church in Winter Park. She was also president of Mt. Moriah Missionary Baptist Church, General Mission, member of the deaconess board, Church Women United, Ideal Women's Club, Key Chain Club and Orange County Public School Retired Educators Association. She enjoyed sewing, cooking, reading and decorating.
Survivors include sons Wayne Elton Dixon, Seattle, Wash.; James Dixon, Jr., Evansville, N.J.; daughter Beverly Marie Dixon, Winter Park; sisters Annie Pearl Gandy, Annie Ruth Maxfield, both of Valdosta, Ga.; brother Samuel Johnson, Valdosta, Ga.; aunts Beatrice Welch, Daytona Beach; Fula Mae Shiver, Valdosta, Ga.; one grandchild.
Golden Funeral Home, Inc., Winter Park, in charge of arrangements.

LIDA BELLE ROBBINS NOELL DYER
Lida Belle Robbins Noell Dyer, 76, of Sanford, died Saturday, May 3, 2003, at Central Florida Regional Hospital in Sanford. She was born June 14, 1926, in Mt. Sterling, Ky.
She was a refined production manager. She was a Methodist.
Survivors include father Frank Hayes Robbins; mother Laura Bramblette Robbins; son David

Noell, Clarksville, Tenn.; two grandchildren.
Funeral services will be held at 11 a.m. Saturday at Maplelawn Cemetery.
Contributions may be made to Semnole High School in Sanford.
Herald & Stewart Home for Funerals, Mt. Sterling, Ky., in charge of arrangements.

WELDON FRANKLIN, SR.
Weldon Franklin, Sr., 92, West 15th Street, Sanford, died Wednesday, April 30, 2003, at Healthcare and Rehabilitation Center of Sanford. He was born Oct. 14, 1920, in Sanford. He was a foreman. He was a member of New Mt. Calvary Missionary Baptist Church.
Survivors include sons Roosevelt Franklin, Deltona; Weldon Franklin, Jr., Miami; daughter Irene Lamar, Sanford; 11 grandchildren; 11 great grandchildren; seven great-great grandchildren.
Funeral services will be held at 4 p.m. today at New Mt. Calvary Missionary Baptist Church, with Rev. Ricky Scott officiating.
Wilson-Eichelberger Mortuary, Inc., Sanford, in charge of arrangements.

VENUS GUESS
Venus Guess, 83, Mellowville Avenue, Sanford, died Sunday, May 4, 2003, at Healthcare and Rehabilitation Center of Sanford. She was born July 11, 1919, in Climax, Ga. She was a homemaker. She was a member of New Zion Primitive Baptist Church in Sanford.

Survivors include son Lom Guess, Sr., Camden, N.J.; daughters Carol B. Henderson, Joyce L. Cummings, Mary G. Holt, all of Sanford; 10 grandchildren; 17 great-grandchildren; one great-great-grandchild.
Viewing and visitation for family and friends will be held 4-8 p.m. Friday at Wilson-Eichelberger Mortuary, Inc., 1110 Pine Ave., in Sanford. Funeral services will be held at 11 a.m. Saturday at New Zion Primitive Baptist Church, 2300 Greenway Street, in Sanford, with Rev. Robert Wintaker, III, officiating.
Wilson-Eichelberger Mortuary, Inc., Sanford, in charge of arrangements.

VINCENZA RAGO
Vincenza Rago, 75, Sylvia Road, Deltona, died Friday, May 2, 2003, at Hospice of Volusia/Flagler in Fort Orange. She was born in Italy. She was a retired commercial art designer. She was a member of Our Lady of the Lakes Catholic Church and past president of the Deltona Art Club. She enjoyed dancing and painting.
Survivors include son Kyle Buxton, Cora DeCaza, Calif.; two grandchildren.
Baldauff Family Funeral Home, Crematorium, Orange City, in charge of arrangements.

VIVIAN C. RICHARDSON
Vivian C. Richardson, 75, Casa Grande Court, Winter Springs, died Friday, May 2, 2003. She was born Sept. 28, 1927, in Tupperlake, N.Y. She was a retired secretary for Esklak

Survivors include husband George Richardson, Wintter Springs; son George D. Richardson, Maryland; Ken Richardson, New York; Ron Richardson, Roger Richardson, both of Texas; Mark Richardson, Virginia; daughters Linda Januzzi, Virginia; Marie Armstrong, New York; brothers Ivan Clark, New York; Ralph Clark, Connecticut; sisters Fran Clark, Ohio; Julia Clark, Vera Clark, both of New York; 17 grandchildren; six great-grandchildren.
Banfield Funeral Home, Winter Springs, in charge of arrangements.

LAURA J. SHELLARD
Laura J. Shellard, 44, Cypress Knee Lane, Lake Mary, died Thursday, May 1, 2003. She was born Sept. 19, 1959, in New Haven, Conn. She was a financial service advisor.
Survivors include husband Scott E. Shellard, Lake Mary; sons Daniel S. Shellard, Eric R. Shellard, both of Lake Mary; daughter Jillian M. Shellard, Lake Mary; brother Russell Velardi, Hamden, Conn.; stepbrothers Robert Balzano, Wallingford, Conn.; Richard Balzano, West Haven, Conn.; sister Linda Goodall, Orange City; stepsister Lauren Torro-Gifford, Conn.; father Salvatore Velardi, East Haven, Conn.; stepmother Shirley Velardi, East Haven, Conn.
Banfield Funeral Home, Winter Springs, in charge of arrangements.

LARI RICHARD STAUFFER
Lari Richard Stauffer, 76, died Saturday, April 26, 2003, at a retirement community in Orlando. He was born Aug. 23, 1927, in Canton, Ohio. He was an accomplished brick mason selected to work on the dome of the President William McKinley monument. He was decorated World War II veteran. He was a member of the Oaklawn First Baptist Church of Dallas, Texas, where he volunteered his masonry skills.
Survivors include sons Lari Richard Stauffer, Jacksonville; David Lari Stauffer, daughter Pamela Kaye Stauffer, Eugene, Ore.; sisters Susie, Frances, Mable Stauffer, both of Canton, Ohio; one grandchild.
Funeral services were held in graveside at the Veterans National Cemetery in Bremerton.



MARK E. SWAN
Mark E. Swan, 31, Junco Mount Drive, Cass, died Friday, May 2, 2003, at Orlando Regional South Seminole Hospital in Leesburg. He was born Jan. 25, 1952, at Marysville, Minn. He was an operations technician.
Survivors include wife Terry E. Swan, Cass; brothers Jerry, Fred Swan; half brother Neil Swan; half sister two granddaughters.
Banfield Funeral Home, Winter Springs, in charge of arrangements.

Seminole school system announces Assistant Principals of the Year

Seminole County Public Schools announced recently that Samella Phillips, Hamilton Elementary; Robin Dehlinger, League Middle; and Rick Johnson, Lyman High, were named Seminole County Elementary and Secondary Assistant Principals of the Year.

Samella Phillips is in her fourth year as assistant principal at Hamilton Elementary after serving as a parent facilitator for two years. She started her career as a teacher 21 years ago. Phillips is a graduate from Bethune Cookman College and received her master's degree from Nova University.

Hamilton Elementary Principal Nan Parker said, Miss Phillips works tirelessly to ensure the children, parents

and staff of Hamilton Elementary have everything they need to be successful each day at school. We know what an excellent job she does and it is wonderful to know others are aware also. Miss Phillips' positive outlook and joyous approach to life help all those she works with do their best and be their best each day.

Robin Dehlinger began teaching in Seminole County in 1988 at Lake Mary High School. After earning a master's degree in Educational Leadership from UCF in 1997, Dehlinger began her current job at League

Middle School. While at League, she has worked closely with the Exceptional Student Education teachers to develop a successful inclusion program for Varying Exceptionalities students. As the mother of three graduates of Seminole County Public Schools, Dehlinger has begun work on a

doctorate in Educational Leadership this year and also serves as president elect of the Seminole Association of School Administrators.

Rick Johnson graduated from The Citadel before spending nine years in the U.S. Army. He completed his master's from the University of Oklahoma

while on active duty in the Army. In 1978 he began his career in Seminole County at Sanford Middle School. During that time, Johnson received an Educational Specialist Degree from Nova University. He became an assistant principal in 1990 at Lake Mary High and in 1992 transferred to Lyman

High. Principal Sam Moloney said, Mr. Johnson's leadership, wisdom, experience, and a strong demeanor enable him to make the right decision in any and all circumstances. He is able to see potential problems before they happen and work to make sure they don't become actual problems.

HUNT MONUMENT CO. DISPLAY YARD
Hwy. 17-92 - Maitland
Ph. 339-6988
Gene Hunt, Owner
Bronze, Marble & Granite

BATT'S FUNERAL HOME
Over A Decade of Cemetery Service
Affordable - Flexible - Options
• Burial - Cremation - Pre-arranged
• Pre-need - Pre-arranged - Pre-need
• Pre-need - Pre-arranged - Pre-need
• Pre-need - Pre-arranged - Pre-need
• Pre-need - Pre-arranged - Pre-need
Ray Batts, L.F.D.
407-841-2351, Pgr. 407-420-7530

Banfield Funeral Home
Family Owned & Serving Central Florida Since 1989

Burial \$1995	Cremation \$750	Transport Out Of State \$995
---------------	-----------------	------------------------------

We Accept Most Pre-arranged Funeral Plans
407-327-1500

BRISSON FUNERAL HOME
Seminole County's Most Experienced Funeral Home

A Combined Total Of 147 Years of Caring Service

FULFILLING YOUR FUNERAL AND CREMATION NEEDS LOCALLY AND WORLDWIDE

905 Laurel Ave., Sanford
(407) 322-2131

ACE HARDWARE

COME AND CELEBRATE MY BIRD-DAY SAVINGS!!

ACE Hardware Stores
Pet Friendly Stores

CORN ON THE COB 39¢ BAG	CYPRESS MULCH \$1.32 2 CU FT	WILD BIRD BELL \$1.09 EA
WILD BIRD FOOD 22 Lb. (81995) \$4.53 BAG	STANDARD LIGHT BULBS Handy 4-packs in 40, 60, 75, or 100 watts (32949, 50, 51, 31320) 99¢ PK.	CYPRESS MULCH 2 CU FT \$1.32 EA.
		BLACK KOW COW MANURE 50 LB \$2.97 BAG

RENTALS Carpet Steam \$12.00 Cleaner Rental Per Day Pressure Washer \$39.95 Per Day

PROPANE TANKS FILLED EVERY DAY While You Wait 20 lb. Tank **\$9.95** (includes tax)

AmeriGas America's Propane Company
SATISFACTION GUARANTEED Serving All Your Hardware Needs Since 1978 SATISFACTION GUARANTEED

ACE LONGWOOD Hwy 434 & 427 339-4883	ACE SANFORD 207 E. 25th St. 321-0885	ACE CASSELBERRY Winter Park Dr. 339-7365	ACE FOREST CITY 1122 W. Hwy 436 862-4323	ACE OVIEDO Hwy 434 & 475 365-6634
--	---	---	---	--

SEMINOLE SUMMARY

A GLANCE AROUND OUR COUNTY

Finding steady job is hard for Navy wife on the move

DEAR ABBY: I am a Navy wife. My husband is deployed to the Persian Gulf. Since his departure, I find myself worrying most of the time, and I would like to do something constructive. I'd like to get a job, because frankly, I could use the extra income, but I don't know where to start.



Dear Abby

We recently moved to Norfolk, Va., but will probably have to relocate again when my husband returns to the States, so I can't commit to a long-term position. Since you do such a wonderful job assisting families with all kinds of issues, have you any suggestions for me?

Thank you in advance.
ELIZABETH GUIDRY, NORFOLK, VA.

DEAR ELIZABETH: I admire your "take action" approach to coping with the stress and separation, and I agree that a job would be a terrific outlet. I consulted a friend at the Department of the Navy, who suggests that you look into a program called Adecco Career Accelerator. It's a partnership between the Department of the Navy and a worldwide staffing company called Adecco, specifically designed for military spouses — active and reserve — who have difficulty finding work because of frequent relocations.

Adecco recruiters provide military spouses with career counseling, training and job placement — at no cost to the military or the spouses. The company then places people in a wide range of positions, from administrative to technical, financial and light industrial, which provides a variety of options. Another advantage of this program is that vacation and other benefits transfer with you when you move. The program isn't hard to find. It operates on or near almost every Navy and Marine Corps base in the country.

Military spouses are a valuable untapped reservoir of talent and resources. We should all recognize the important contributions of military spouses not only in the lives of their families, but also to our nation. I salute each and every one of you, and support your efforts.

To locate the nearest Adecco office, visit www.usadecco.com/careeraccelerator/.

DEAR ABBY: "Humiliated in the Rocky Mountains" said she had found evidence on their computer that her husband was cheating. She did not mention what the "evidence" was, but if it's e-mails, she should be very cautious about accusing her husband because things aren't always as they seem.

I set up an e-mail address for my dog, Chester. I give out his address whenever a Web site requires an e-mail address and I do not wish to receive e-mails from them.

Just last night, Chester received an e-mail from "Ginger." The subject was, "Thanks for the great time last night, Tiger!" While Chester is a fun-loving dog, he is not THAT friendly. I had him "fixed" when he was a year old.

It turned out to be an unsolicited e-mail ("spam") advertising a pornographic Web site. Had I received that e-mail and my wife had seen it, goodness knows what she'd think.

KEEPING A CLOSE EYE ON CHESTER, NORTHBROOK, ILL.

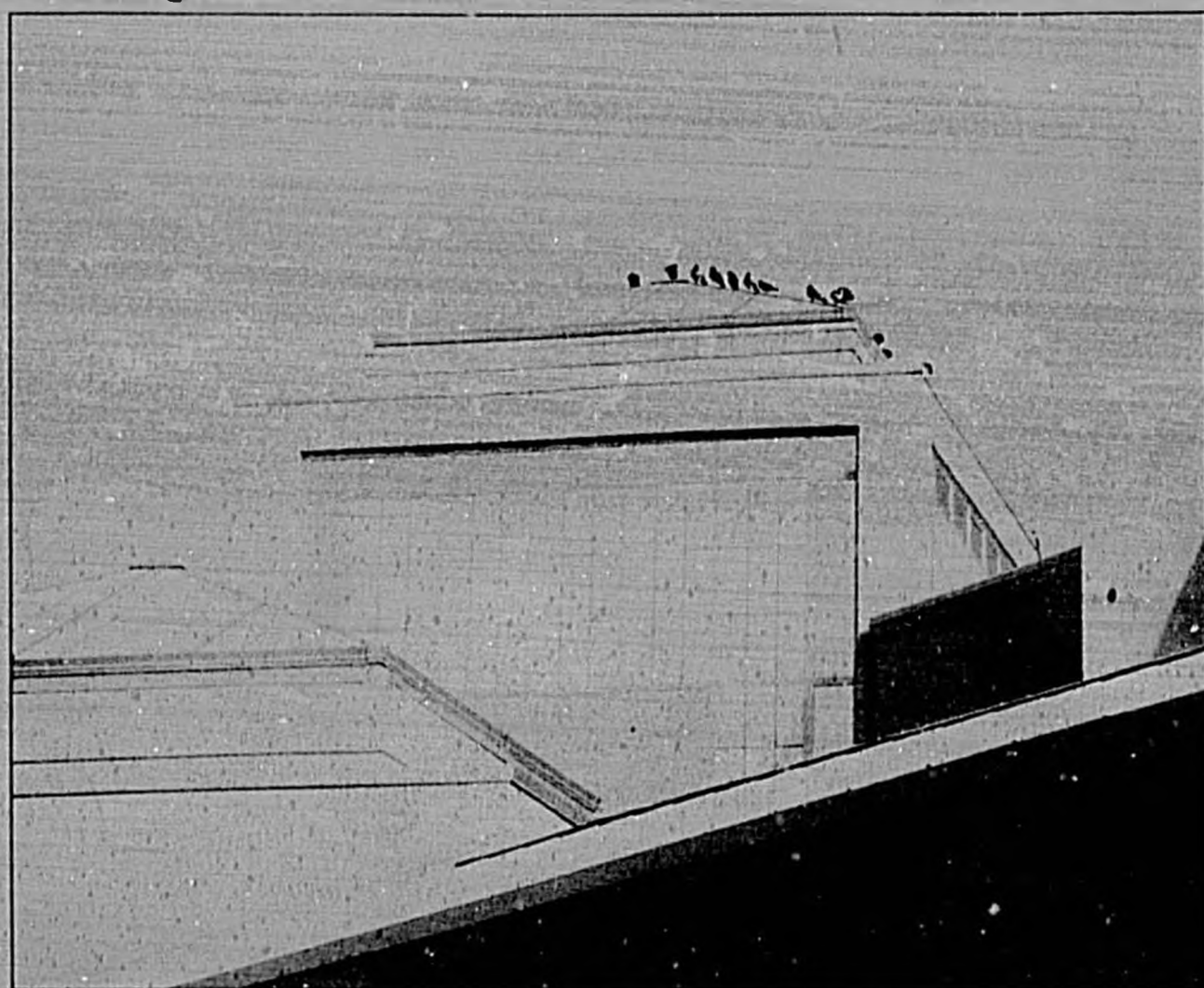
DEAR KEEPING: Thank you for pointing this out. Your letter may save someone's marriage from going to the dogs.

Dear Abby is written by Abigail Van Buren, also known as Jeanne Phillips, and was founded by her mother, Pauline Phillips. Write Dear Abby at www.DearAbby.com or P.O. Box 69440, Los Angeles, CA 90069.

For everything you need to know about wedding planning, order "How to Have a Lovely Wedding." Send a business-size, self-addressed envelope, plus check or money order for \$5 (U.S. funds only) to: Dear Abby, Wedding Booklet, P.O. Box 447, Mount Morris, IL 61054-0447. (Postage is included.)

© 2003 UNIVERSAL PRESS SYNDICATE

Landing zone



The domestic arrivals terminal at the Orlando Sanford International Airport is also the arrival destination of choice for this flock of pigeons atop the entrance to the terminal. Wonder if they were trying to avoid U.S. Customs and a search that may have ruffled a few feathers.

Herald photo by Tommy Vincent

Traffic

• Mark John Carozzi, 49, Hollow Way Court, Sanford, was stopped by Florida Highway Patrol Sunday at the intersection of Markham Woods and Lake Mary Boulevard in Sanford. He was charged with a non-moving traffic violation for driving with a suspended license.

• Gerald Leon Williams, 26, West Eighth Street, Sanford, was stopped by Sanford police Sunday on William Clark Court in Sanford. He was charged with a non-moving traffic violation for driving with a suspended license. According to reports, he is a habitual offender.

• Miguel Angel Pantoja, 20, East Maral Lake Cove, Casselberry, was stopped by Casselberry police Sunday at the intersection of State Road 600 and Impiet Drive in Casselberry. He was charged with not possessing a valid license.

• Frank J. Gabrielle, 46, Palm Way, Sanford, was arrested by Sanford police Sunday at home. He was charged with a hit and run for failure to remain at a crash involving injuries which occurred at the intersection of Lake Mary Boulevard and Orlando Drive in Sanford.

• Rachelle B. Griffin, 33, Lynbrook Road, Orlando, was stopped by Oviedo police Monday at the intersection of State Road 434 and Alafaya Woods Boulevard in Oviedo. She was charged with a non-moving traffic violation for driving with a suspended license.

• Gregory Kyle Gagner, 30, Steeple Chase, Sanford, was stopped by Florida Highway Patrol Monday. He was charged with reckless driving.

Fights

• Kevin Robert Keating, 41, Grass Point Drive, Lake Mary, was arrested at home Sunday by Seminole County sheriff's deputies. He was charged with battery (domestic violence).

• Shamer R. McDaniels, 33, Petunia Terrace, Sanford, was arrested at home Sunday by Seminole County sheriff's deputies. He was charged with battery (domestic violence).

• Jack Dasilva, 35, Willow Key Terrace, Casselberry, was arrested at home Sunday by Seminole County sheriff's deputies. He was charged with aggravated battery on a pregnant woman (domestic violence).

• Eldon Bernard Sule, 29, Old England Loop, Sanford, was arrested at home Sunday by Sanford police. He was charged with battery (domestic violence) and aggravated assault with intent to commit a felony.

Drugs

• Christian Figueroa, 20, Harbor Light

Police Blotter



Way, Winter Park, was stopped by Seminole County sheriff's deputies Sunday at the intersection of Harbor Light Way and Spout Circle in Winter Park. He was charged with possession of a hallucinogen.

Multiple Charges

• James Nicholas Walters, 46, Wilderness Way, Osteen, was stopped by Longwood police Sunday on Maine Avenue in Longwood. He was charged with a hit and run for leaving the scene of a crash involving property damage and possession of less than 20 grams of marijuana.

• Skylar J. Dean, 20, Gowen Circle, Orlando, was stopped by Oviedo police Monday at the intersection of Alafaya Boulevard and State Road 434 in Oviedo. She was charged with driving under the influence (DUI) and a non-moving traffic violation for driving with a suspended or revoked license.

• Josephine Trenett Brown, 26, Sierra Lynn Brown, 24, both of Randall Street, Sanford, and Donald Oliver, 27, Titway, Sanford, were arrested by Seminole County sheriff's deputies Sunday at a convenience store located on the 4000 block of West State Road 46 in Sanford. Josephine Trenett Brown was charged with battery on an officer, crimes against a public servant, resisting officers without violence and disorderly conduct. Sherri Lynn Brown was charged with crimes against a public servant, resisting officers without violence and disorderly conduct. Oliver was charged with resisting officers without violence, disorderly conduct and possession of less than 20 grams of marijuana.

• Kimberly Marie Valentin, 21, Lake Ruff Drive, Longwood, was arrested by Casselberry police Sunday at a bar in Longwood. She was charged with disorderly conduct and resisting officers without violence.

• Terrance Whitaker, 32, West 22nd Street, Sanford, was arrested by Sanford police Sunday at the intersection of 15th Street and Southwest Road in Sanford. She was charged with aggravated assault with a deadly weapon without the intent to kill and possession of less than 20 grams of

marijuana

• Marcos Saldana Cruz, 27, Goldsboro Wilson, N.C., was arrested by Seminole County sheriff's deputies Sunday at the intersection of State Road 600 and State Road 417 in Sanford. He was charged with DUI of alcohol and/or drugs and a non-moving traffic violation for not possessing a license.

• Michael Maldonado, 20, Robert Street, Longwood, Joshua Linton Jannuel, 22, Little Wekiva Circle, Altamonte Springs, Jason Vernon James, 20, Orchid Lane, Altamonte Springs, and Gerald Maurice Murray, 22, Benjamin Avenue, Winter Park, were stopped by Seminole County sheriff's deputies Sunday on State Road 434 in Altamonte Springs.

Maldonado was charged with possession of less than 20 grams of marijuana and a moving traffic violation for violating restrictions placed on a license. Jannuel and James were charged with possession of 20 grams of marijuana. Murray was charged with possession of a drug without a prescription for Viagra 50 mg.

DUIs

• Isabel Nieto Lopez, 40, South Wymore Road, Altamonte Springs, was stopped by Altamonte Springs police Sunday on Spanish Trace Drive in Altamonte Springs. He was charged with DUI.

• Bruce Douglas Bonds, 34, Sunwood Lane, Orlando, was stopped by Seminole County sheriff's deputies Sunday at the intersection of Fernwood Boulevard and Oxford Road in Fern Park. He was charged with DUI of alcohol and/or drugs.

Theft

• John Doe, 37, was arrested by Seminole County sheriff's deputies Saturday on Orange Avenue in Sanford. He was charged with grand theft auto.

Other

• Gary Wayne Henry, 43, Hewlett Road, Orlando, was arrested by Seminole County sheriff's deputies Sunday on Little Java Lane in Geneva. He was charged with trespassing.

• Byron Edward McKenzie, 41, Broadway Avenue, Sanford, and Harold G. Harts, 32, Greenway, Sanford, were arrested by Seminole County sheriff's deputies Sunday at a convenience store located on the 3000 block of East State Road 46 in Sanford. They were charged with possession of an open container of alcohol in a public or semi-public parking lot.

OUT & ABOUT

THUR 8

A performance of "Sanford Voices," presented by Sanford Historic Trust, will take place at 7 p.m. Thursday at Helen Stair Theatre for the Performing Arts, 203 S. Magnolia Ave., in Sanford. For ticket information, call 407-321-8111.

FRI 9

A youth and parent FCAT pizza party will be held 9 a.m. to 1 p.m. Friday at the Westside Recreation Center, located on Persimmon Avenue in Sanford.

The first 100 Goldsboro children to arrive at the event will receive a free backpack. A parent or an adult must accompany children, and children must be signed in by parents. Participants must be willing to receive information about the FCAT and the Florida Sunshine Skills needed for children to be promoted to the next grade level.

The event will also include sign-ups for FCAT tutoring and ACT-SAT financial information.

For more information, call Dr. Velma Hayes Williams at 407-302-1377, Eloise Dillgard at 407-322-9270 or Verrion McQueen at 407-302-1377.

SAT 10

The Seminole County Sheriff's Office will offer an Internet safety class, "The Internet and Your Child," from 8:30 a.m. until 4:30 p.m. Saturday at the National Center for Forensic Science, located at 12354 Research Parkway in Orlando (near the University of Central Florida). The hands-on class is free and will cover how computers work, and offer live demonstrations of how child molesters use the Internet to gain access to children. The class is open to parents, teachers and caregivers. For more information, log on at www.seminolesheriff.org.

The Goldsboro Asthma Task Force Breathe Easier Rally will be held from 10 a.m. to 2 p.m. Saturday at the West Sanford Boys and Girls Club, located at 919 Persimmon Ave., in Sanford. The event will feature educational booths on asthma and other respiratory conditions, smoking and indoor/outdoor air quality. There will be free food, prizes and giveaways, educational workshops and a host of surprises for children and adults alike. The event is free to the public.

The Central Florida Zoo will host Safari Night from 5 to 8 p.m. Saturday. Discover the park, just before dark. Enjoy peaceful sunset strolls and cool evenings while visiting the zoo animals.

The event features musical entertainment by acoustic country folk band Jon Semmes and the Florida Friends, food, beer and wine. Cost is \$8 adults, \$5 seniors and \$4 for children ages 3-12. Zoo members cost \$3 adults, \$2 seniors and \$1 children. The zoo is located at 3755 N.W. Highway 17-92 in Sanford.

For more information, call 407-323-4450.



Dan Ping
Editor and Publisher



THE SEMINOLE HERALD

Serving Seminole County Since 1905

Wednesday, May 7, 2003 • Vol. 95, No. 75

Published every Wednesday and Saturday by
Herald Newspapers, Inc. • 300 N. French Ave., Sanford, FL 32771
• Phone (407) 322-2611 • Fax (407) 323-9408

Periodical postage paid at Sanford, Florida
and at additional mailing offices.

USPS 461-010
Postmaster: Send address changes to:
THE SEMINOLE HERALD
P.O. Box 2007
Sanford, FL 32771

Subscription Rates

1 Month in Seminole County \$11.00
6 Months in Seminole County \$50.00
1 Year in Seminole County \$90.00
1 Year Outside Seminole County \$47.00
Single Copy \$0.50

We welcome and encourage your letters and comments. All letters must include your name, address and phone number to be published.

Write to us:
300 N. French Avenue
Sanford, FL 32771

Call us:
(407) 322-2611

E-Mail us:

Editorial:
editor@seminoleherald.com

Advertising:
camith@seminoleherald.com

Publisher:
dping@seminoleherald.com

Fax us:
(407) 323-9408

Administration
Betsy Barnett

Display Advertising
Chris Goucharous
Rozzie Lavender
Advertising Sales Manager

Classified Advertising
Ted Walker

Legal Advertising
Paul Smith

Circulation
Wanda Kourpandis

Cheryl Smith
Computing and Pre-Press

Editorial
Michelle Jatta
Managing Editor
Janice Anderson
Doris Dietrich
Marie Hawkins
Nick Pflaaf
Dean Smith
Tommy Vincent



Republic Newspapers Inc.

Drowning

Continued from Page 1

to focus his efforts on a writing career.

"I knew I wanted to direct a movie and I figured the only way that was going to happen was to write one and direct the one I wrote," said Graham, who spent four years working on the "Drowning" script. "I spent a long time getting this right."

The independent film is Graham's debut writing effort. It's a dark romantic comedy in the tradition of "Harold and Maude" (1971) or "The Graduate" (1967). The film focuses on a young religious man, Ben Anders, who becomes obsessed with rationality and becoming the ideal man.

Before meeting a beautiful young woman named Rain, Anders is "drowning" in his own thoughts due to a social anxiety disorder. As the heroin, Rain pulls him out of his shell and saves him from "drowning."

The cast is led by New York Actress Jenna Lamia as Rain ("Nowhere to Go But Up" and "Oz"), Los Angeles Actor Kelly Nyks as Anders ("Legally Blonde" and "Carnivale") and Central Florida Actor Bob Lipka as Norman ("Cold Case" and "Bluegrass").

The film crew consists of several New Yorkers, including Graham, Cinematographer David Ferrara ("Black and White" and "Kill Me Later") and Producer Vince Maggio ("The Next Big Thing" and "Click").

In order to keep costs down on this low-budget film, Graham also enlisted the help of film students from Valencia Community College to round out the remaining crewmembers.

The Valencia program is a great program, said Graham. "Everyone in our crew is amazed by the students so far. These kids will come out of the program with

the knowledge to work in the industry, not unlike theory."

The college has assisted in 20 feature films, including "The First of May" and "Sailed with a Kiss," which was shot in front of Helen Stars Theatre for the Performing Arts and is currently airing on HBO.

Passengers

Continued from Page 1

hoped for growth as the major airlines feather on the brink of bankruptcy.

"Because the major airlines are dropping routes to balance their books, it opens up opportunities for smaller companies like Pace to provide service," Dale said.

One of those opportunities is a Syracuse, N.Y. to San Juan, Puerto Rico route with a stop in Sanford. TransMeridian Airlines (TMA) will offer daily flights six days a week beginning June 27.

"We really see a market in some of the mid-Atlantic states, like Knoxville, Tenn.," Couldthorpe

said. "The 21 day shoot will take cast and crew throughout Central Florida before wrapping up on May 28."

"Our goal is to sell it as soon as we get it done," Graham said. "I think that's a realistic goal

because we have a great cast, great story, and all the tools in place to make a great finished product."

"We really appreciate that we were able to shoot in Sanford," he

said. "Couldthorpe also reported that Vacation Express, the tour operator based in Atlanta, may return to Central Florida. The company had used Sanford as its North American hub, but relocated to Atlanta last year in a move to boost business."

"The move to Atlanta has hurt them, and they've lost a lot of money," Couldthorpe said. "It has not been very successful in Atlanta, and we're going to re-approach them."

Dale put the chances of Vacation Express moving back to Sanford at "better than 50/50."

because we have a great cast, great story, and all the tools in place to make a great finished product."

"We really appreciate that we were able to shoot in Sanford," he

Tipton

Continued from Page 1

him. "For Tipton, being involved in youth activities is natural. His late father, Thomas Tipton, coached youth sports and worked with disadvantaged kids."

"I never realized that he was reaching out to these kids until I was much older," Tipton said. "As I thought about how Charles coached more kids to play sports with..."

Harrell, Eugene Gregory, Seminole County Sheriff's Office employee who demonstrates outstanding personal service to the community, will be honored with a description. This award marks the fifth year the award has been given in memory of Eugene Gregory, a Seminole County sheriff's deputy killed while on duty in Gainesville in 1998. He had served the County faithfully since 1971.

This award is given in honor of someone who is very dear to the sheriff's office family. Harrell said of Gregory,

"Gregory served the community beyond his policing duties

added. "When we saw the location, you know this is where we wanted to shoot. It's a great town and we were grateful that we were able to shoot there and that everyone was so gracious."

Tipton

Continued from Page 1

and Harrell. As an outdoorsman, he "truly loved in that rural setting and the community at large," said Harrell. He explained that Gregory could communicate on all levels, which earned him respect in the community. He was known for assisting the elderly by bringing food to them and for helping other citizens in need.

Gregory also counseled and helped children at the Florida sheriff's youth ranch. It was his passion, said Harrell. He cared about the outdoors and farm animals, which complemented his involvement with the youth ranch, Harrell added.

The Sanford Lakeside Lions Club chose to honor Gregory's memory because of his personal commitment to community service in keeping with the club's dedication to community involvement.

The club's Eugene Gregory Humitarian Award recipients include James Clark, Deputy Sheriff, 2002; Bernard J. Harner, Sheriff, 2001; Charles Fagan III, Deputy Sheriff, 2000; William J. Nett, Sheriff, 1999.



Photo submitted to the Herald. Seminole County Deputy Sheriff Steve Harrell presents the Eugene Gregory Humitarian Award to Sheriff's Office employee Eugene Gregory.

Thanks

The City of Sanford Recreation and Parks, SCPS Student Museum, Seminole Community Volunteer program, and the Seminole County Extension Center in conjunction with Spring Fest

Earth Day 2003 would like to thank everyone who participated in our wonderful community endeavor. It was a great day to celebrate Sanford's 125th anniversary and Earth Day. We would like to thank our sponsors: Ivora Garden Club, Ace Hardware, Stenstrom, McIntosh, Colbert, Whigham & Simmons, P.A. and Sprint. We appreciated all who visited with us on this day. Thank you for supporting us. Remember: Every day is Earth Day.

Maloy

Continued from Page 1

not purchase tax certificates or deeds.

According to Maloy, it has been 15 years since a commissioner has decided not to run for re-election. His decision to enter the tax collector race will leave a vacancy in the District 1 County Commission spot. However, a special election will not be held since both positions will be up for election in November 2004.

"It would be a smooth transition from one office to the other," he said.

Maloy says his background of customer service, business management and knowledge of the

community will be an asset if elected as tax collector.

"I grew up in the county, my mom and dad live here," said Maloy, who worked in his parents' nursery for 25 years in South Seminole County before opening his own foliage nursery. "I'm raising my two boys and one girl here, so I'm committed to making Seminole County a better place."

According to the Office of Supervisor of Elections, reports no one is currently signed up to run against Maloy, including Valdes, who was originally elected in November 1988. However, several people have picked up information packets.

Dance recital May 17 at Sanford theater

Performances of Donnal's Dance Studio Recital will take place at 2 and 9 p.m. May 17 at Helen Stars Theatre for the

Performing Arts, 2038 Magnolia Avenue in Sanford.

For ticket information call 407-349-9847.

Food & Fun

All Transmission Defects Are Not Major Problems - Consult a Specialist

Harrell & Beverly Transmissions

209 W. 25th St., Sanford 322-8415
Since 1959...Same Location MV-00564

GRAND OPENING

MAY 10th

Casey's Pet Spa

Grooming by Casey & Carla
We're back in town with our own professional Pet Spa!
ALL BREEDS WELCOME & CATS TOO.
Specializing in Bichon, Poodle, and other hand scissored cuts.

CALL NOW TO BOOK EARLY AND RECEIVE \$5.00 OFF 1st VISIT.
407-321-6476

VIVONA'S FINE ITALIAN PIZZERIA, INC.

DELIVERY FRESH BREAD BAKED DAILY EXPANDED IN LACE HURST

SANFORD • 207 PARK AVE. • (407) 324-6147
LACE HURST POINT • PULIX PLAZA • (407) 333-2040

(1) Large 16" Pizza 2 Toppings \$7.99

Now Serving Sicilian Style Pizza 50 Subs to choose from

2 PIZZAS! (2) X Large 18" Pizzas 3 Toppings \$19.99

Historic Sanford Beauty

Home For Sale

Just reduced to \$133,000
Completely renovated 2-bed-room, 1-bath in great location

COLDWELL BANKER

Karen Faulkner, Realtor
Phone: 407-619-6170
karen.faulkner@coldwellbanker.com

Stay Cool With Us Summer Leagues Now Forming

MONDAY	LUNCH & BOWL	MIXED HOCK	3	1:00 PM	5:15
	MASCAL	MIXED HOCK	4	6:30 PM	8:45
	SEARCHED DOUBLES	MIXED SCRATCH	2	9:00 PM	10:45
TUESDAY	SENIOR LUNDA	MIXED	3	12:30 PM	4:15
	AIRPORT GOLF & MATCH	MIXED HOCK	4	6:30 PM	8:45
	N & O	MIXED HOCK	3	6:30	
	LADIES TEE	LADIES HOCK	3	9:00 AM	9:45
	PITCHER DITCHERS	LADIES HOCK	3	9:00 AM	9:45
	HUMP DAY HOULERS	MIXED HOCK	4	6:30 PM	8:45
	CASINO MAS	MIXED HOCK	3	7:00 PM	8:45
THURSDAY	THURSDAY NITE MIXED	MIXED HOCK	4	6:30 PM	8:45
	MENS COMMERCIAL	MEN HOCK	4	9:00 PM	10:45
	BATTLE OF THE SEXES	LADIES VS MEN	3	9:00 PM	10:45
FRIDAY	LADIES TEE OUT	MIXED HOCK	3	10:00 AM	10:45
	SUMMER PARTY MIX	MIXED HOCK	4	6:45 PM	8:45
	O & A	MIXED HOCK	4	6:45	8:45
SATURDAY	GRAY & DIAZ	YOUTH	4	10:00 AM	11:45
	SUMMER SAL MITE LITE	MIXED HOCK	4	6:30	8:45
SUNDAY	ADULT YOUTH LEAGUE	MIXED HOCK	4	5:30 PM	8:45
	SUNDAY FUNNIES	MIXED HOCK	4	6:15 PM	8:45
	AVIAN LEAGUE	MIXED HOCK	4	9:00 PM	10:45

Airport Lanes
190 E Airport Blvd. Sanford, FL 32773
Phone: 407-324-2129
Fax: 407-324-4838

There's a better way to buy insurance.

You can buy your insurance from a stranger at a

1-800 NUMBER or from

TONY RUSSI INSURANCE

Since 1968
2575 S. French Ave. Sanford (407) 322-0285

Auto-Owners Insurance
Life Home Car Business
The No Problem People

a neighbor, someone you know, someone you can trust and respect

Call today and talk to a real person who cares about your family's protection and security.

Baseball Special

With the start of the baseball season, we will have a special offer on Leagues in the Seminole Herald. In addition, we'll have news on today's baseball scene with the best coverage of the local baseball scene.

Buy a year's subscription to the Herald for \$34 and Receive a baseball signed by Sanford native David Eckstein, starting shortstop for the World Champion Anaheim Angels.

Stop by the Seminole Herald and sign up for your year's subscription and receive your autographed baseball.

NAME _____
ADDRESS _____
CITY _____
PHONE _____

Business Notes

Workers Temporary Staffing projects record Year

Workers Temporary Staffing, one of Florida's largest and most active temporary employment firms, projects record revenues in 2003.

Mark A. Lang, Sr. founder and president of the firm, said Workers Temporary Staffing is putting 2,000 people to work every day in Florida, and that's a good sign for the economy.

"We have been averaging 2,000 jobs per day for more than 90 days," said Lang. "The fact that that pace has increased significantly is a strong sign for the economy. Typically, we are about six months ahead of the hiring curve."

Lang said the biggest demand for temporary workers now is in warehousing, refuse and carpentry.

Those are also good signs, Lang said. Growth in warehousing and distribution and the refuse industry are both strong indicators of economic health, he said. "Demand is strong and work is steady."

Mitchell, Gebben receive top countrywide award

Countrywide Home Loans Inc., a national leader in residential finance, has presented Colleen Mitchell and Judy Gebben with its prestigious Circle of Excellence Award. Only Countrywide's top home loan consultants nationwide receive the award, which is given based on overall purchase loan volume.

"This award acknowledges Colleen's and Judy's strong work ethic and commitment to excellence at Countrywide," said Joe Anderson, managing director of Countrywide's consumer markets division. "Countrywide is a leader in home finance, and we attribute much of our success to employees like Judy and Colleen who work tirelessly to maintain a high level of service to their customers."

As a Countrywide home loan consultant, Mitchell and Gebben are responsible for originating home loans in the Winter Springs office. Each Countrywide branch has the authority to approve home loans up front and locally in this pay. Countrywide's mortgage experts work directly with borrowers and real estate professionals for improved communication and faster closings.

To meet the needs of its customers, Countrywide offers a full range of mortgage products, including fixed-rate and adjustable, conventional, government-jumbo, home improvement and home-equity loans. Low- and no-down payment programs with more flexible guidelines are also available.

Founded in 1997, Countrywide Financial Corporation (NYSE: CFG) is a member of the S&P 500, Fortune 500 and Forbes 500. Countrywide, through its subsidiaries, provides mortgage banking and diversified financial services in domestic and international markets. Mortgage banking businesses include both production and servicing, principally through Countrywide Home Loans, Inc., which originates, purchases, securitizes, sells, and services primarily prime-quality loans. Countrywide Home Loans was recently ranked number one overall in the third quarter 2002, CoStar's Internet Mortgage Survey 101. The company is headquartered in California and has more than 25,000 employees with over 800 offices. For more information, visit the company's Web site at www.countrywide.com.

Ongeluzzo, VanDyke join Caldwell Banker

Ms. New Mortgage and First VanDyke have joined Caldwell Banker Residential Real Estate, Inc. For more information, visit the website of the Las Mary Edwards at www.1stmaryedwards.com.

Ms. Robin M. Ozark, Managing Broker of the Caldwell Banker Florida Lake Mary, Heathrow office.

First to joining Caldwell Banker, Ms. Ongeluzzo and VanDyke met the Florida real estate licensing requirements and completed the recent Banker Residential Real Estate, Inc. (Caldwell Banker) Difference course. We're pleased to have Ms. Ongeluzzo and VanDyke join our team. They will be working with us in the coming days and we're looking forward to a successful relationship. Ms. Ongeluzzo and

Ms. VanDyke's professional career background in sales. Ms. Ongeluzzo's professional career background includes six years experience in property management.

Crescent Resources negotiates new office lease

Crescent Resources, Inc. has negotiated a new lease for 430,000 square feet of office space at One Resource Square at the Central Florida Research Park in south-east Orlando.

Ida Roski, leasing director for Crescent Resources, Inc., has negotiated the lease, representing the landlord, L. J. The new tenant is M. J. Systems, Inc. (www.mjsystems.com).

Crescent Resources, Inc. is a major U.S. developer of corporate office facilities, retail centers, multi-family and single-family development in the U.S. In Orlando, Crescent is developing Resource Square at Central Florida Research Park. This Crescent at Parkview and New Century Park in Lake Mary and Gateway Crossing Shopping Center in Altamonte Springs.

Florida Solar names marketing executives

Florida Solar, technology, the world's largest and most active distributor of pool heating systems, has named Frank Durrcher, sales and marketing director in the Tampa division.

Durrcher has been with Florida Solar for six years in the Sanford headquarters division, according to Skip West, president of sales and marketing for Olympian Home Services, the firm's parent company.

West also named Adrian Ball, marketing director for Tampa. Ball has 13 years of experience in sales and marketing according to West.

Olympian Home Services is the world's largest provider of swimming pool heating, automation and purification and also markets a wide range of services involving pest control, solar hot water, weekly swimming pool maintenance and pressure cleaning. The firm launched a statewide expansion program earlier this year and now has service centers in Sanford, Tampa, Fort Lauderdale, West Palm Beach and Sarasota.

Colonial Bank earns top rank in Florida

Montgomery, Ala.-based Colonial Bank is among the largest and fastest-growing banks in the state of Florida, according to the December 31, 2002 Branch Expansion Report of Florida Bank and Thrift Institutions, published by the Florida Bankers Association.

Colonial is the fifth largest bank holding company in Florida in two categories: total deposits and number of locations. Additionally, Colonial is third among Alabama-based banks in the Florida market, based on total deposits and number of locations.

Colonial's corporate quarterly earnings report reflects solid growth in asset size with the Florida franchise composing \$6.8 billion or 43 percent of the total corporate assets as of March 31, 2003. Core deposits for Colonial's Florida franchise increased 37 percent annualized from the fourth quarter of 2002 and 37 per-

cent from the first quarter of 2002, including the impact of the acquisition of Palm Beach National Bank located in Palm Beach County, without which Florida deposits increased 27 percent over March 31, 2002.

"Our first quarter results reflect our commitment to provide outstanding service to our customers through our retail banking franchise," said the Colonial BancGroup, Inc. Chairman and CEO Robert J. Lowder. "We are achieving record results in mortgage origination, income, financial planning services and electronic banking."

During the fourth quarter of 2002, Colonial announced plans to open more than 40 new offices during the next three years, focusing on the fast-growing state of Florida as well as Nevada and Texas. Since that time, six new offices have opened in the Cape Coral, Ft. Myers, Orlando and St. Augustine areas, bringing the number of Florida locations to 105. Twenty-five additional Florida locations are planned through 2005.

In Central Florida, Colonial Bank manages \$1.3 billion in total assets through its 45 offices in nine counties comprised of Brevard, Lake Orange, Osceola, Polk, Seminole, Flagler, St. Johns and Volusia. The regional headquarters is located at 201 East Pine Street in downtown Orlando.

Scott receives MVP award from shopping center group

Seminole County resident Dale E. Scott, Vice President of Maitland-based Keene

Construction Company, received the prestigious 2002 CenterBuild Construction MVP Award from the 4,000-member International Council of Shopping Centers, presented by the ICS CenterBuild Advisory Council.

Scott also received ICS's 2002 Distinguished Service Award. Scott is a longtime national retail construction veteran who has been responsible for business development at Keene Construction since 1995. He has been a member of the ICS

CenterBuild Advisory Council since 1990, serving as Chairman in 1997 and Vice Chairman of the CenterBuild Advisory Council. Scott also served as Chairman of ICS's 2000 Distinguished Service Award Conference and as Chairman of the ICS International Trade Builders Association Joint Florida International Builders Trades Council. Scott is also Chairman of the Orlando Retail Program Committee and serves on the Tampa Bay Idea Exchange Program Committee.

Progress Energy donates scholarship



Photo submitted to The Herald. On Tuesday, April 22, Central Region Vice President of Progress Energy and SCC Foundation Board member Billy R. Bailey donated \$10,000 to the SCC Foundation on behalf of the electric company. The scholarship money will fund ten \$1,000 scholarships to students attending the SCC at Oviedo campus while pursuing a science degree, preferably in an environmentally sensitive field. The donation is eligible for matching funds from the state. Present for the donation were from left, Suzanne Telenski, president of SCC at Oviedo, Billy Bailey, Central Region Vice President, Progress Energy, and Dr. E. Ann McGeer, SCC president.

BUSINESS

BUSINESS GALLERY

"Support These Local Businesses"

Omega Casket Co.
Factory Direct

Solid Hardwood Caskets

Beautifully hand-crafted and inspired by our skilled craftsmen at excellent prices.

Visit us on the web at www.omegacaskets.com

WHOLESALE TO THE PUBLIC

Select Hardwood • Crepe Myrtle Interior • Hand-Crafted

FREE DELIVERY to all of Central Florida

To Any Location of Your Choice

Warehouse 407-688-2244

SUMMER THEATRE CAMP

Open to all children ages 4 to 17

3 week sessions: Monday-Friday 9:00AM-3:00 PM

June 2 - June 20 or July 14 - August 1

Learn Acting Voice Movement Music Improv Theatre Games

Work on a Final Production to be performed on stage!

Call early to reserve your spot
Limited Availability

CFT Theatre Academy
Phone: 407-302-8191
Fax: 407-302-8783
Email: cttheatre@aol.com

Bringing Families Together and Literature to Life

120 South Park Avenue, Sanford, FL 32771

Tracy Davis, LMT
DEEP TISSUE MASSAGE

Mother's Day Special

Buy one massage at the regular price of \$60 and get the second at 1/2 price!!

Located in Beautiful Historic Sanford
Avian Center for Therapeutic Massage
1400 S. Park Ave. • Sanford, FL 32771

407-330-6807 • 407-929-9996

Gift Certificates Available!

MASSAGE • EST. 1998

The APPLIANCE STORE, Inc.
153 W SR 434 • Winter Springs
407-327-3344

Ranges
Dishwashers &
Refrigerators
ALSO PARTS

USED WASHERS & DRYERS FROM \$80 EACH

SPECIAL Heavy Duty Rebuilt Washer & Dryer 2 Yr. Warranty \$299

SANFORD ELECTRIC COMPANY, INC.
Electrical Contractors

• REPAIRS • REMODELING
• NEW CONSTRUCTION

Serving Central Florida Since 1925

2522 S. Park Drive
Sanford
(407) 322-1562

KRC Exotic Birds
SPECIALIZING IN TAME, HAND-FED EXOTIC BIRDS

Grooming • Banding • A Pair of Bird Supplies

COCKATIELS, LOVEBIRDS, CANARIES, FINCHES

\$3.00 Off Any Purchase **WE'VE MOVED!**

We've Expanded to Better Serve Our Clients!

RADCOCK CENTER
407-327-5720

PORZIG Realty
Sales & Property Management

Linda Akerson

SANFORD BARBER SHOP

SENIOR CITIZEN..... \$7.00

Regular Hair Cut..... \$8.00

Flat-Tops & Styles \$10.00

Face Shave..... \$8.00

Beard Trim..... \$4.00

See Tony or Lonnie
MON. - SAT. 8am - 6 pm
2021 French Ave., Sanford
407-302-8088

When you're ready, we'll meet you half way.

Let Curves help you look your best!

Join now and get 50% off full service fee!

Curves
386-740-1080 407-331-1080

Sports

Inside:

CLASSIFIEDS 11-13
CROSSWORD 13

Briefs

51HS BOOSTER GOLF
The 14th Annual Seminole High Booster Club Golf Tournament will be held at Mayfair Country Club at noon on Friday, May 9.

Cost of the tournament is \$70 per player and Hole Sponsorships are \$100. A foursome can play and have a Hole Sponsorship for a reduced rate of \$330.

There will be plenty of Door Prizes and Winner's Prizes including Low Net, Closest-to-the-Pin, and Longest Drive.

Please help support our athletic program in the single biggest fundraiser of the year.

Questions concerning the tournament should be directed to either Mike Gaudreau at 407-320-5102 or Mike Powers at 407-320-5057.

GIRLS STATE HOCPS
Winning Ways Basketball presents the AAU Girls State Tournament May 9-11.

Tournament Sites are the Lake Brantley Athletic Complex Fieldhouse, Lake Brantley High School Gymnasium, & Lyman High School Gymnasium (additional sites TBA).

For more information, please contact Winning Ways Basketball at 407-339-9053 or visit www.winwaysinc.com.

MAY MID FLORIDA WRESTLING CARD
Mid-Florida Wrestling will once again return to the Delany VFW Post 8093 for a Saturday, May 10th night of action.

The Main Event will feature a Jay Team Title Match between Breakers, with Ace Valvone, taking on the Ryzen Outlaws, with Sapphire & Tom Bass.

The Semi-Main will be a LightWeight Title bout between the Champion, BaddBoy, and challenger Sapphire, with Mace.

In a Six-Man Tag Match, the Anti-mime, with Mini-mime, Cpl. Wright and a mystery teammate, will tackle Heavyweight Champion Thump Dapree, LoneWolf and Wikid.

In a Hardcore Match, Rouge will challenge Champion NightStalker.

In a ICA vs ICA matchup, JJ Vegas battles Deathrow lethrow.

And in a Grudge Match, El Macho, with Sage, locks up with El Corupto.

Doors open at 7 p.m. and Bell Time is set for 8 p.m.

Tickets are \$8 for adults, \$4 for kids 6-12, with children 5 & under free!

For more information call VFW Post 8093 at 386-608-8121, the MFW offices at 407-328-9035 or go to www.mid-floridawrestling.com.

FREE PHYSICALS FOR VOLUSIA ATHLETES
The Volusia County Medical Society will sponsor free physicals for high school athletes.

Free physicals can be obtained from 8 a.m. to 11 a.m. May 17 at Florida Hospital Ormond Memorial (Seabreeze), Florida Hospital Deland (Deland, Taylor), Regional Oncology Center at Halifax Medical Center (Atlantic, Mainland, Creek) and Florida Hospital Fish Memorial (Deltona, Pine Ridge).

SCRC GOLF
On Friday, May 16th, the Seminole Cities Recreation Council (SCRC) will be hosting a golf tournament at Magnolia Plantation Golf Club.

Registration will begin at 10 a.m. and there will be a shotgun start at 11 a.m. Dinner and awards will follow.

See Briefs, Page 9

Rams fall in state quarterfinals

By Dean Smith
Sports Editor

ROYAL PALM BEACH — Oh so close. The Lake Mary boys volleyball team was within one game of advancing to the State Semifinals, but Northeast High School from Oakland Park rallied to win the final two games to end the season for the Rams Friday in the first ever FHSAA Boys Volleyball Finals at Royal Palm Beach High School.

Lake Mary (23-4) rallied from a 4-1 deficit in the first game to win, 15-10, and move to within a win of advancing. But the trend of getting off to a slow

Lake Mary boys come up a little short in volleyball

start continued in the final two games as the Rams would never lead again, trailing 4-0 in each of the final two games.

Lake Mary did get things going in the second game, but Northeast came out at a time and place that proved insurmountable, and again in the last game, to even the match, 19-9.

After battling back within 1-0 in the

winner take all game, Northeast, which improved to 26-2, scored six straight points to all but close out the deal and after a brief Rams rally that closed the game to 3-8 Northeast got an ace and a kill to end the match.

Northeast would fall in three tough games to Cypress Creek in the Semifinals and the Bear would lose in the

Championship Game to undefeated Southwest Miami.

Tom Spencer led the way for coach George Gordon's squad with 10 kills and five digs, while Travis Green had two kills, seven assists and three digs. Aaron Rayburn had four kills and two digs and Shannon Maia had six assists and a dig.

Other contributors were Larry Smith (kill, four digs), Presley Dorschner (assist, two digs), Rod Bobele (two digs), Ross Malin (two kills) and Eddie Willingham (kill, dig).

Other members of the team were Daniel Castaing, Kevin Moorhouse, Aaron Bell and Rob Green.

Diamond dozen

Locals get 12 of 16 regional positions

By Dean Smith
Sports Editor

SANFORD — Seminole County high school baseball and softball teams went into last week's district tournaments with 16 spots available for the FHSAA State Playoffs.

And by the time the tournaments and Mother Nature were finished Saturday night, area teams had claimed 12 of those spots, including seven district championships.

Oviedo and Winter Springs won their respective district baseball titles on Thursday, while Trinity Prep and Orangewood Christian squads had to wait until Friday and Saturday to earn their home games.

In softball, Lake Mary again edged Oviedo for the Class 4A-District 2 crown at Seminole, 2-1, on Friday while Winter Springs upset top-seeded, and host, Lyman for the 5A-6 title.

Trinity Prep gave the Saints a sweep of the 2A-9 titles, while Orangewood Christian also had its two teams qualify, although the softball team finished second in A-6.

All 12 teams were to have begun the playoffs in Regional Quarterfinals on Tuesday.

But the week is hardly over for any team that won on Tuesday, as the Regional Semifinals for the softball teams is Thursday and the Regional Semifinals for the baseball winners is Friday.

If any of the softball teams are still alive after Thursday, they would play their Regional Finals with a state tournament slot on the line, on Saturday.

See Regionals, Page 9



Herald photos by Jim Wetness



Oviedo's Bridger Hunt (NO. 24 above) getting back safely in a game earlier this season at Historic Sanford Memorial Stadium and Lake Mary's Beth Lawrence, left, shown hitting against Seminole High last month) both had big district tournaments to help their respective teams advance to Tuesday's Regional Quarterfinals, the first official games in the Florida High School Athletic Association (FHSAA) State Playoff Series. Both the Lions (26-2) and Rams (26-3), the highest ranked teams in Seminole County, won Class 4A-District 2 championships last week and lead 12 different Seminole County teams in baseball and softball into the state playoffs if any or all of the teams win on Tuesday they would advance to the Regional Semifinals, the softball winners playing on Thursday and the baseball winners on Friday. It will be a busy week for softball teams if any advance as the Regional Championship Games are set for Saturday, with the winners advancing to next week's State Tournament in Tampa. The baseball Regional Finals would not be until

County shines in district, regional track

By Dean Smith
Sports Editor

SANFORD — This past week proved to be a banner one for Seminole County track athletes as Seminole Athletic Conference schools swept the top spots in the Class 4A and Class 5A District meets, while Crosson Academy and Trinity Prep qualified 21 individuals or teams for this Friday's Class A State Meet in Gainesville.

The Oviedo boys led a clean SAC sweep of the top five team finishers in the Class 4A-District 2 Meet on Buddy Lawson Memorial Track at Thomas F. Whigham Stadium, while Winter Springs topped the girls' meet that saw the top four teams being from the SAC.

The top individual event of the meet was won by Lake Mary's runner, Angelo Presley, who won four individual events as well as running a regional second place 800-meter relay team.

In the Class 4A-District 2 Meet at the Cavalotti De Haven Sports Complex, Lyman proved to be a huge force in the County rounds with the boys and girls teams.

At first, we were out of luck in the semifinals and the boys with 20 individual or teams, including the Oviedo boys, Oviedo Academy and the Winter Springs girls, were out of the top five. But the boys' 400-meter relay team, led by Chase Hill, won the semifinals and the final.

Trinity Prep, Lake Mary, and Winter Springs were the top three teams in the boys' 400-meter relay final. Trinity Prep will be competing tomorrow at Thomas F. Whigham Stadium in Gainesville.

Bob Moser Track at Showalter Field and Jim A. at Astronaut High School in Titusville.

The Class A State Meet is Friday at the Percy Beard Stadium Track Complex of the University of Florida.

CLASS 4A-DISTRICT 2 AT SEMINOLE HIGH SCHOOL BOYS

Team Results: 1. Oviedo, 142-2; Seminole, 121-2; Winter Springs, 84; Lake Brantley, 66; S. Lake Mary, 64; 2. Oviedo, 142-2; Seminole, 121-2; Winter Springs, 84; Lake Brantley, 66; S. Lake Mary, 64.

Individual Results: 100m: 1. Trinity Prep, 17.2; 200m: 1. Trinity Prep, 37.8; 400m: 1. Trinity Prep, 1:10.5; 800m: 1. Trinity Prep, 2:25.5; 1600m: 1. Trinity Prep, 5:15.5; 3200m: 1. Trinity Prep, 11:05.5; 6400m: 1. Trinity Prep, 22:15.5; 12800m: 1. Trinity Prep, 44:30.5; 25600m: 1. Trinity Prep, 88:45.5; 51200m: 1. Trinity Prep, 177:30.5; 102400m: 1. Trinity Prep, 354:45.5; 204800m: 1. Trinity Prep, 709:30.5; 409600m: 1. Trinity Prep, 1418:45.5; 819200m: 1. Trinity Prep, 2837:30.5; 1638400m: 1. Trinity Prep, 5674:45.5; 3276800m: 1. Trinity Prep, 11349:30.5; 6553600m: 1. Trinity Prep, 22698:45.5; 13107200m: 1. Trinity Prep, 45397:30.5; 26214400m: 1. Trinity Prep, 90794:45.5; 52428800m: 1. Trinity Prep, 181589:30.5; 104857600m: 1. Trinity Prep, 363178:45.5; 209715200m: 1. Trinity Prep, 726357:30.5; 419430400m: 1. Trinity Prep, 1452714:45.5; 838860800m: 1. Trinity Prep, 2905429:30.5; 1677721600m: 1. Trinity Prep, 5810858:45.5; 3355443200m: 1. Trinity Prep, 11621717:30.5; 6710886400m: 1. Trinity Prep, 23243434:45.5; 13421772800m: 1. Trinity Prep, 46486869:30.5; 26843545600m: 1. Trinity Prep, 92973738:45.5; 53687091200m: 1. Trinity Prep, 185947477:30.5; 107374182400m: 1. Trinity Prep, 371894954:45.5; 214748364800m: 1. Trinity Prep, 743789909:30.5; 429496729600m: 1. Trinity Prep, 1487579818:45.5; 858993459200m: 1. Trinity Prep, 2975159637:30.5; 1717986918400m: 1. Trinity Prep, 5950319274:45.5; 3435973836800m: 1. Trinity Prep, 11900638549:30.5; 6871947673600m: 1. Trinity Prep, 23801277098:45.5; 13743895347200m: 1. Trinity Prep, 47602554197:30.5; 27487790694400m: 1. Trinity Prep, 95205108394:45.5; 54975581388800m: 1. Trinity Prep, 190410216789:30.5; 109951162777600m: 1. Trinity Prep, 380820433578:45.5; 219902325555200m: 1. Trinity Prep, 761640867157:30.5; 439804651110400m: 1. Trinity Prep, 1523281734314:45.5; 879609302220800m: 1. Trinity Prep, 3046563468629:30.5; 1759218604441600m: 1. Trinity Prep, 6093126937258:45.5; 3518437208883200m: 1. Trinity Prep, 12186253874517:30.5; 7036874417766400m: 1. Trinity Prep, 24372507749034:45.5; 14073748835532800m: 1. Trinity Prep, 48745015498069:30.5; 28147497671065600m: 1. Trinity Prep, 97490030996138:45.5; 56294995342131200m: 1. Trinity Prep, 194980061992277:30.5; 112589990684262400m: 1. Trinity Prep, 389960123984554:45.5; 225179981368524800m: 1. Trinity Prep, 779920247969109:30.5; 450359962737049600m: 1. Trinity Prep, 1559840495938218:45.5; 900719925474099200m: 1. Trinity Prep, 3119680991876437:30.5; 1801439850948198400m: 1. Trinity Prep, 6239361983752874:45.5; 3602879701896396800m: 1. Trinity Prep, 12478723967505749:30.5; 7205759403792793600m: 1. Trinity Prep, 24957447935011498:45.5; 14411518807585587200m: 1. Trinity Prep, 49914895870022997:30.5; 28823037615171174400m: 1. Trinity Prep, 99829791740045994:45.5; 57646075230342348800m: 1. Trinity Prep, 19965958348009199:30.5; 11529215046068473600m: 1. Trinity Prep, 39931916696018398:45.5; 23058430092136947200m: 1. Trinity Prep, 79863833392036796:30.5; 46116860184273894400m: 1. Trinity Prep, 159727666784073592:45.5; 92233720368547788800m: 1. Trinity Prep, 319455333568147184:30.5; 184467440737095577600m: 1. Trinity Prep, 638910667136294368:45.5; 368934881474191155200m: 1. Trinity Prep, 1277821334272588736:30.5; 737869762948382310400m: 1. Trinity Prep, 2555642668545177472:45.5; 1475739525896764620800m: 1. Trinity Prep, 5111285337090354944:30.5; 2951479051793529241600m: 1. Trinity Prep, 10222570674180709888:45.5; 5902958103587058483200m: 1. Trinity Prep, 20445141348361419776:30.5; 11805916207174116966400m: 1. Trinity Prep, 40890282696722839552:45.5; 23611832414348233932800m: 1. Trinity Prep, 81780565393445679104:30.5; 47223664828696467865600m: 1. Trinity Prep, 163561130786891358208:45.5; 94447329657392935731200m: 1. Trinity Prep, 327122261573782716416:30.5; 188894659314785871462400m: 1. Trinity Prep, 654244523147565432832:45.5; 377789318629571742924800m: 1. Trinity Prep, 1308489046295130865664:30.5; 755578637259143485849600m: 1. Trinity Prep, 2616978092590261731328:45.5; 1511157274518286971673600m: 1. Trinity Prep, 5233956185180523462656:30.5; 3022314549036573943347200m: 1. Trinity Prep, 10467912370361046925312:45.5; 60446290980731478866844800m: 1. Trinity Prep, 20935824740722093850624:30.5; 120892581961462957733689600m: 1. Trinity Prep, 41871649481444187701248:45.5; 2417851639229259154673772800m: 1. Trinity Prep, 83743298962888375402496:30.5; 48357032784585183093475200m: 1. Trinity Prep, 16748659792577675080496:45.5; 96714065569170366186950400m: 1. Trinity Prep, 33497319585155350160992:30.5; 193428131138340732373900800m: 1. Trinity Prep, 66994639170310700321992:45.5; 386856262276681464747804800m: 1. Trinity Prep, 133989278340621400643984:30.5; 773712524553362929495609600m: 1. Trinity Prep, 267978556681242801287968:45.5; 154742504910672564591131200m: 1. Trinity Prep, 535957113362485602575936:30.5; 309485009821345129182262400m: 1. Trinity Prep, 1071914226724971205151968:45.5; 618970019642690258364524800m: 1. Trinity Prep, 2143828453449942410303936:30.5; 1237940039285380516729049600m: 1. Trinity Prep, 4287656906899884820607872:45.5; 247588007857076103345817600m: 1. Trinity Prep, 8575313813799769641215744:30.5; 495176015714152206691748800m: 1. Trinity Prep, 1715062762759953928243488:45.5; 990352031428304413383497600m: 1. Trinity Prep, 3430125525519907856486976:30.5; 188070406285660882676699200m: 1. Trinity Prep, 6860251051039815712973952:45.5; 376140812571321765353390400m: 1. Trinity Prep, 13720502102079631425947904:30.5; 752281625142643530706780800m: 1. Trinity Prep, 27441004204159262851895808:45.5; 1484563250285287061413561600m: 1. Trinity Prep, 54882008408318525703791664:30.5; 2969126500570574122827123200m: 1. Trinity Prep, 109764016816637051407583328:45.5; 5938253001141148245654246400m: 1. Trinity Prep, 219528033633274102815166656:30.5; 11876506002282296491311331200m: 1. Trinity Prep, 43905606726654820563033328:45.5; 2375301200456459298262266400m: 1. Trinity Prep, 87811213453309641126066656:30.5; 4750602400912918596524531200m: 1. Trinity Prep, 17562242690661928225213328:45.5; 9501204801825837193048662400m: 1. Trinity Prep, 35124485381323856450426656:30.5; 1900240960365167438609332800m: 1. Trinity Prep, 70248970762647712900853328:45.5; 3800481920730334877218665600m: 1. Trinity Prep, 14049794152529545780370664:30.5; 7600963841460669754437332800m: 1. Trinity Prep, 28099588305059091560741328:45.5; 15201927683221339110888665600m: 1. Trinity Prep, 56199176610118183121482656:30.5; 3040385536644267822177731200m: 1. Trinity Prep, 112398353220236366242955328:45.5; 6080771073288535644359106400m: 1. Trinity Prep, 224796706440472732485911064:30.5; 12161542146577071288718212800m: 1. Trinity Prep, 44959341288094546497182224:45.5; 2432308429315414257643644800m: 1. Trinity Prep, 8991868257618909299436448:30.5; 4864616858630828515287289600m: 1. Trinity Prep, 17983736515237818598872896:45.5; 9729233717261657030574579200m: 1. Trinity Prep, 35967473030475637197745792:30.5; 19458467434523314061151153600m: 1. Trinity Prep, 71934946060951274395491536:45.5; 3891693486904662812228230400m: 1. Trinity Prep, 14386989212190254879098304:30.5; 7783386973809325624456460800m: 1. Trinity Prep, 28773978424380509758196608:45.5; 15566773947618651248911321600m: 1. Trinity Prep, 57547956848761019516393216:30.5; 3113354789523730249782263200m: 1. Trinity Prep, 11509591369752203903278464:45.5; 6226709579047460499564526400m: 1. Trinity Prep, 23019182739504407806556928:30.5; 12453419158094920991131153600m: 1. Trinity Prep, 46038365479008815613113856:45.5; 2490683831618984118222671200m: 1. Trinity Prep, 92076730958017631226253712:30.5; 4981367663237968236445142400m: 1. Trinity Prep, 184153461916035262452507264:45.5; 9962735326475936472890284800m: 1. Trinity Prep, 36830692383207052490501472:30.5; 19925470652951832955780569600m: 1. Trinity Prep, 73661384766414104981002944:45.5; 39850941305903665911561913600m: 1. Trinity Prep, 147322769532828209962005888:30.5; 79701882611807331822401177600m: 1. Trinity Prep, 294645539065656419924011776:45.5; 159403765223614663648035331200m: 1. Trinity Prep, 5892910781313128398480353312:30.5; 318807530447229327296070662400m: 1. Trinity Prep, 11785821562626256796960706624:45.5; 637615060894458654592141324800m: 1. Trinity Prep, 23571643125252513593921413248:30.5; 1275230121788917091184282649600m: 1. Trinity Prep, 47143286250505027187842826496:45.5; 2550460243577834182368565299200m: 1. Trinity Prep, 94286572501010054375685652992:30.5; 5100920487155668364737131598400m: 1. Trinity Prep, 188573145002020108751371315984:45.5; 10201840974311336737074271196800m: 1. Trinity Prep, 377146290004040217502742711968:30.5; 2040368194862273447414854393600m: 1. Trinity Prep, 75429258000808043500548543936:45.5; 4080736389724546914829708787200m: 1. Trinity Prep, 150858516001616889001087087872:30.5; 8161472779449093829659577574400m: 1. Trinity Prep, 301717032003233778002174175744:45.5; 16322945558898187659315151516800m: 1. Trinity Prep, 603434064006467556004343515168:30.5; 32645891117796375318630303033600m: 1. Trinity Prep, 12068681280123551120086863030336:45.5; 65291782235592750637260606067200m: 1. Trinity Prep, 2413736256024710240017372606060672:30.5; 1305835644711854012003472606060672:45.5; 26116712894237080240069452606060672:30.5; 5223342578847416048001391052606060672:45.5; 104466851576948320960027821052606060672:30.5; 2089337031538966419200556421052606060672:45.5; 41786740630779328384001112821052606060672:30.5; 835734812615586567680022256421052606060672:45.5; 16714696252311731360044512821052606060672:30.5; 33429392504623467200890256421052606060672:45.5; 668587850092469344001780512821052606060672:30.5; 13371757001849386880035610256421052606060672:45.5; 26743514003698773760071220512821052606060672:30.5; 534870280073975475200142410256421052606060672:45.5; 1069740560147950950400284810256421052606060672:30.5; 2139481120295901900800569610256421052606060672:45.5; 42789622405918038016001139210256421052606060672:30.5; 85579244811836076032002278410256421052606060672:45.5; 171158489623672152064004556810256421052606060672:30.5; 342316979247344304128009113610256421052606060672:45.5; 684633958494688608256001

Orlando SpeedWorld Dragway in for busy week

From Staff Reports

BITHO — Orlando SpeedWorld Dragway will step into the spotlight this week, holding three nights of straightline 1/4-mile racing action.

In addition to its regular Wednesday and Friday night Street Drags program, the track will be hosting the next installment of the "Quick & Dirty" series for the Super Pro Sports 1.1 and Pro Cycle classes on Saturday.

The regular Street Drags run from 6 p.m. until 10:30 p.m. and can be used for tuning practice, judge racing, and co-driver drags. Admission is \$10 and it only costs \$5 more to run.

The "Quick & Dirty" event costs \$12 for parking and \$10 for admission, while kids under 12 are free. It costs \$30, including admission, for the Quick & Dirty Super pros and \$23 (including admission) for Sports 1.1 and Pro Cycle.

Events open at 5:30 p.m. with time trials and qualifying at 6 p.m. Staging lanes close at 6:30 p.m. with eliminations to follow.

For event tickets and race day weather information call 407-968-5522.

"They said it couldn't be done, but promoter Dick Westfall and his 'skelton' crew proved that by gathering of the state's best club racers in a 1/4-mile show and the fans that came out last

Saturday night were treated to some awesome racing action at the Orlando SpeedWorld oval.

With 115 cars in the pits, only 20 of which had V-8 power, in seven divisions it was quite a night for the "little guy," but Westfall admitted he was "overwhelmed" while being quite "understated."

The Bandolero racing was split into two groups: Bandits and Young Guns, while also in action were the Modified Likes, the Mini Cup cars, the Florida IQLite Models, Pro Challenge cars, the Legend cars, and the Classic Auto Racing Series.

The next SpeedWorld Saturday Night special is slated for June 7th.

The Orlando SpeedWorld oval will host this week's Test and Tune tonight (Wednesday) from 6 p.m. to 10 p.m. As it and three persons will be admitted for \$20. Each additional person will cost \$5 more.

On Friday, the 1/8.5-mile oval will host a Super Stock 50 Lap feature along with the regular FASCAR divisions of Bandolero Bandits, Bandolero Young Guns, Super Late Model, Sportsman, Open Wheel Modified and Mini Stock. No Strictly Stocks this week.

Pat gates open at 5 p.m. and the grandstands at 6 p.m. Racing begins promptly at 8 p.m.

For race day information call 407-968-1367. SpeedWorld is located 17 miles east of Orlando

between Orlando and Titusville, on Highway 50 at the 520 Covey cut-off.

On Saturday, New Smyrna Speedway will feature a V-8 Demolition Derby as well as all of the FASCAR divisions of Super Late Models, Late Models, Open Wheel Modifieds, Sportsman, Super Stocks, Mini Stocks and Strictly Stocks in heats and features.

Join us at New Smyrna Speedway for a night of the greatest half-mile racing around. Bring your honey for an early Mother's Day present.

New Smyrna Speedway is located at the intersection of SR44 and SR415 between I-4 and I-95, eight miles west of New Smyrna Beach.

Grandstands open at 6 p.m. with racing action slated for 7:30 p.m.

For more information on any FASCAR short-track action, call the FASCAR offices at (407) 568-1367 (Orlando) or (386) 427-4129 (New Smyrna).

or check the Internet site at www.newsmyrnaspeedway.com.

Also on Saturday, Volusia Speedway Park in Barberville will be holding a regular night's action of heats and features in the weekly classes of Late Model, Hobby Stock, Mini Stock, Street Stock, and Pure Stock.

Grandstands open at 5 p.m. and racing starts at 7:30 p.m.

General Admission is \$10 with children 12 and under free. The track also offers senior and Student discount.

For information on schedules, etc., call 386-987-4402 or visit the web at <http://www.volusia-speedwaypark.com>.

Volusia Speedway Park is located just 15 miles west of Ormond Beach. From I-95, take exit 88 west on State Road 40. From Highway 17, turn left on SR 40. The facility is five miles east of Barberville.

Regionals

Continued from page 8

In softball, Oviedo (17-10) was in Jacksonville to play Moultrie (17-10) with the winner to play at the home of the Highwater (21-8). Cypress Creek (19-11) game.

Lake Mary (26-3) was hosting Southwood (14-11) and if the Rams win, they will host the Bears (20-7). West Orange (20-11) will play Thursday at 7 p.m.

The winners of that bracket will play on Saturday, and Lake Mary will go on the road (ifless Oviedo is the opponent, then the Rams would host).

11-8. A figure to be tougher than a man (11-8) was in Bunnell against Higher Palm Coast (20-7) and Winter Springs (10-18).

If the Cats holed, they would be at Plant City (19-10) and if the Bears won, they would host the Tampa Charge/Trinity (23-9). Plant City (14-8) game.

The winner of that bracket would probably host on Saturday.

Trinity Prep (26-6) hosted Melbourne Central Catholic on Tuesday and if the Saints won

they would host the Lakeland McKeel (22-6). Sarasota Cardinal Mooney (13-13) winner on Thursday at 4 p.m.

If Trinity Prep wins its first two games, it would host the Regional Final on Saturday most likely against Lake Highland Prep and former Lake Mary star Michele Ginnage.

Orange/wood Christian has the toughest road to be as the Rams (11-8) were in Bronson (11-10) on Tuesday with the winner set to play at Mt. Dora Bible (21-5) on Thursday. Mt. Dora got an automatic bid to the Regional Quarterfinals.

OK would also probably have to go on the road for the final as well.

In baseball, Lake Mary (17-13) was at Sandalwood (18-7) with the winner to play the Apopka (26-5). Colonial (18-13) winner probable at that primer's home on Friday.

Oviedo (26-2) hosted Ed White (11-17) and if the Lions win, they would host the Cypress Creek (22-8). Winter Park (19-10) winner on Friday. An Oviedo-Winter Park matchup would have added intrigue as the Wildcats stopped

the Lions' 18-game winning streak two weeks ago.

Lake Howell and Winter Springs have a tough road to hoe in Class 5A as the Silver Hawks (18-15) was at Deltona (20-4) and the Bears (16-14) hosted Spruce Creek (18-9).

If Lake Howell won it would probably travel to the winner of the Lakeland (17-10)/Tampa Leto (8-16) game on Friday, while if Winter Springs won it would host the Tampa King (18-4). Plant City (11-16) winner on Friday.

The Trinity Prep baseball team has the same schedule virtually as the softball team as the Saints hosted Melbourne Central Catholic on Tuesday and if they won, they would host the Lakeland McKeel (21-7). Sarasota Cardinal Mooney (13-11) winner on Friday with a chance to host probably Lake Highland in the Regional final next Tuesday.

Orange/wood Christian (11-15) made a tough schedule pay off as it won the district and hosted Oviedo-Trinity Christian on Tuesday and would host the Melbourne Holy Trinity Episcopal (14-5). Mt. Dora Bible winner on Friday if it won

Briefs

Continued from page 8

low immediately afterwards.

A tour/sovereign and tee sponsorship package is available for \$350 and tee sponsorships are available for \$75.

Magnolia Plantation Golf Club is located at 720 Shadowmoss Circle in Lake Mary.

The tournament will benefit the Youth Intra City Olympic Festival, an annual event involving over 500 Seminole County summer camp children. Children will range in ages from 5 to 12 years old. Field events include track and field, swimming, basketball, volleyball, brain games and more. This is a fantastic event that brings together the children of Seminole County cities and teaches them to work in a cooperative environment.

The mission of the Seminole Cities Recreation Council is working, interacting and promoting together to enhance the quality and opportunities of recreation, leisure services for the citizens of Seminole County through the joint effort of the Cities. The SCRC includes the cities of Oviedo, Sanford, Longwood, Lake Mary, Casselberry, Winter Springs and Altamonte Springs.

For more information about the golf tournament, please contact Phil Graves with the City of Oviedo's Parks and Recreation Department. He can be reached at 407-977-6077 or philgraves@oviedo.fl.us.

SOAP BOX DERBY

On May 17th the Central Florida Soap Box Derby will have its 15th Annual All American

Soap Box Derby in Sanford.

Over 50 boys and girls ages 8 to 17 will compete in three divisions. The race will begin at 9 a.m. and will end approximately 2 p.m. The winners will be sent to Akron, Ohio for one week to challenge others from all over the world.

For more information please contact Norm Perry, Regional Director South East Local Director for 407-330-5607.

FREE HUNTER ED COURSE

The Florida Fish and Wildlife Conservation Commission (FWC) is offering a free hunter education course in Chulohota on May 24-25 from 8 a.m. - 5 p.m.

Participants must pre-register by calling the FWC's Hunter Education Training Center at (352) 625-2804. To successfully complete the course, students must attend all class sessions, pass a written exam and participate on the firing range. Class materials, guns and ammunition will be provided, but participants must bring their own pen, pencil and paper to take notes.

The course covers survival, wildlife identification, hunting laws, ethics, first aid and gun safety, and is required for anyone born on or after June 1, 1975 in order to purchase a Florida hunting license.

For information on future hunter education classes and classes in other areas, please visit the FWC's Hunter Education website at <http://floridahunters.com>.

Track

Continued from page 8

1500 Meter Relay — Winter Springs, 4; 1099 South Orange, 2; Alachua, 3; 1099 South Orange, 4; 1099 South Orange, 5; 1099 South Orange, 6; 1099 South Orange, 7; 1099 South Orange, 8; 1099 South Orange, 9; 1099 South Orange, 10; 1099 South Orange, 11; 1099 South Orange, 12; 1099 South Orange, 13; 1099 South Orange, 14; 1099 South Orange, 15; 1099 South Orange, 16; 1099 South Orange, 17; 1099 South Orange, 18; 1099 South Orange, 19; 1099 South Orange, 20; 1099 South Orange, 21; 1099 South Orange, 22; 1099 South Orange, 23; 1099 South Orange, 24; 1099 South Orange, 25; 1099 South Orange, 26; 1099 South Orange, 27; 1099 South Orange, 28; 1099 South Orange, 29; 1099 South Orange, 30; 1099 South Orange, 31; 1099 South Orange, 32; 1099 South Orange, 33; 1099 South Orange, 34; 1099 South Orange, 35; 1099 South Orange, 36; 1099 South Orange, 37; 1099 South Orange, 38; 1099 South Orange, 39; 1099 South Orange, 40; 1099 South Orange, 41; 1099 South Orange, 42; 1099 South Orange, 43; 1099 South Orange, 44; 1099 South Orange, 45; 1099 South Orange, 46; 1099 South Orange, 47; 1099 South Orange, 48; 1099 South Orange, 49; 1099 South Orange, 50; 1099 South Orange, 51; 1099 South Orange, 52; 1099 South Orange, 53; 1099 South Orange, 54; 1099 South Orange, 55; 1099 South Orange, 56; 1099 South Orange, 57; 1099 South Orange, 58; 1099 South Orange, 59; 1099 South Orange, 60; 1099 South Orange, 61; 1099 South Orange, 62; 1099 South Orange, 63; 1099 South Orange, 64; 1099 South Orange, 65; 1099 South Orange, 66; 1099 South Orange, 67; 1099 South Orange, 68; 1099 South Orange, 69; 1099 South Orange, 70; 1099 South Orange, 71; 1099 South Orange, 72; 1099 South Orange, 73; 1099 South Orange, 74; 1099 South Orange, 75; 1099 South Orange, 76; 1099 South Orange, 77; 1099 South Orange, 78; 1099 South Orange, 79; 1099 South Orange, 80; 1099 South Orange, 81; 1099 South Orange, 82; 1099 South Orange, 83; 1099 South Orange, 84; 1099 South Orange, 85; 1099 South Orange, 86; 1099 South Orange, 87; 1099 South Orange, 88; 1099 South Orange, 89; 1099 South Orange, 90; 1099 South Orange, 91; 1099 South Orange, 92; 1099 South Orange, 93; 1099 South Orange, 94; 1099 South Orange, 95; 1099 South Orange, 96; 1099 South Orange, 97; 1099 South Orange, 98; 1099 South Orange, 99; 1099 South Orange, 100; 1099 South Orange, 101; 1099 South Orange, 102; 1099 South Orange, 103; 1099 South Orange, 104; 1099 South Orange, 105; 1099 South Orange, 106; 1099 South Orange, 107; 1099 South Orange, 108; 1099 South Orange, 109; 1099 South Orange, 110; 1099 South Orange, 111; 1099 South Orange, 112; 1099 South Orange, 113; 1099 South Orange, 114; 1099 South Orange, 115; 1099 South Orange, 116; 1099 South Orange, 117; 1099 South Orange, 118; 1099 South Orange, 119; 1099 South Orange, 120; 1099 South Orange, 121; 1099 South Orange, 122; 1099 South Orange, 123; 1099 South Orange, 124; 1099 South Orange, 125; 1099 South Orange, 126; 1099 South Orange, 127; 1099 South Orange, 128; 1099 South Orange, 129; 1099 South Orange, 130; 1099 South Orange, 131; 1099 South Orange, 132; 1099 South Orange, 133; 1099 South Orange, 134; 1099 South Orange, 135; 1099 South Orange, 136; 1099 South Orange, 137; 1099 South Orange, 138; 1099 South Orange, 139; 1099 South Orange, 140; 1099 South Orange, 141; 1099 South Orange, 142; 1099 South Orange, 143; 1099 South Orange, 144; 1099 South Orange, 145; 1099 South Orange, 146; 1099 South Orange, 147; 1099 South Orange, 148; 1099 South Orange, 149; 1099 South Orange, 150; 1099 South Orange, 151; 1099 South Orange, 152; 1099 South Orange, 153; 1099 South Orange, 154; 1099 South Orange, 155; 1099 South Orange, 156; 1099 South Orange, 157; 1099 South Orange, 158; 1099 South Orange, 159; 1099 South Orange, 160; 1099 South Orange, 161; 1099 South Orange, 162; 1099 South Orange, 163; 1099 South Orange, 164; 1099 South Orange, 165; 1099 South Orange, 166; 1099 South Orange, 167; 1099 South Orange, 168; 1099 South Orange, 169; 1099 South Orange, 170; 1099 South Orange, 171; 1099 South Orange, 172; 1099 South Orange, 173; 1099 South Orange, 174; 1099 South Orange, 175; 1099 South Orange, 176; 1099 South Orange, 177; 1099 South Orange, 178; 1099 South Orange, 179; 1099 South Orange, 180; 1099 South Orange, 181; 1099 South Orange, 182; 1099 South Orange, 183; 1099 South Orange, 184; 1099 South Orange, 185; 1099 South Orange, 186; 1099 South Orange, 187; 1099 South Orange, 188; 1099 South Orange, 189; 1099 South Orange, 190; 1099 South Orange, 191; 1099 South Orange, 192; 1099 South Orange, 193; 1099 South Orange, 194; 1099 South Orange, 195; 1099 South Orange, 196; 1099 South Orange, 197; 1099 South Orange, 198; 1099 South Orange, 199; 1099 South Orange, 200; 1099 South Orange, 201; 1099 South Orange, 202; 1099 South Orange, 203; 1099 South Orange, 204; 1099 South Orange, 205; 1099 South Orange, 206; 1099 South Orange, 207; 1099 South Orange, 208; 1099 South Orange, 209; 1099 South Orange, 210; 1099 South Orange, 211; 1099 South Orange, 212; 1099 South Orange, 213; 1099 South Orange, 214; 1099 South Orange, 215; 1099 South Orange, 216; 1099 South Orange, 217; 1099 South Orange, 218; 1099 South Orange, 219; 1099 South Orange, 220; 1099 South Orange, 221; 1099 South Orange, 222; 1099 South Orange, 223; 1099 South Orange, 224; 1099 South Orange, 225; 1099 South Orange, 226; 1099 South Orange, 227; 1099 South Orange, 228; 1099 South Orange, 229; 1099 South Orange, 230; 1099 South Orange, 231; 1099 South Orange, 232; 1099 South Orange, 233; 1099 South Orange, 234; 1099 South Orange, 235; 1099 South Orange, 236; 1099 South Orange, 237; 1099 South Orange, 238; 1099 South Orange, 239; 1099 South Orange, 240; 1099 South Orange, 241; 1099 South Orange, 242; 1099 South Orange, 243; 1099 South Orange, 244; 1099 South Orange, 245; 1099 South Orange, 246; 1099 South Orange, 247; 1099 South Orange, 248; 1099 South Orange, 249; 1099 South Orange, 250; 1099 South Orange, 251; 1099 South Orange, 252; 1099 South Orange, 253; 1099 South Orange, 254; 1099 South Orange, 255; 1099 South Orange, 256; 1099 South Orange, 257; 1099 South Orange, 258; 1099 South Orange, 259; 1099 South Orange, 260; 1099 South Orange, 261; 1099 South Orange, 262; 1099 South Orange, 263; 1099 South Orange, 264; 1099 South Orange, 265; 1099 South Orange, 266; 1099 South Orange, 267; 1099 South Orange, 268; 1099 South Orange, 269; 1099 South Orange, 270; 1099 South Orange, 271; 1099 South Orange, 272; 1099 South Orange, 273; 1099 South Orange, 274; 1099 South Orange, 275; 1099 South Orange, 276; 1099 South Orange, 277; 1099 South Orange, 278; 1099 South Orange, 279; 1099 South Orange, 280; 1099 South Orange, 281; 1099 South Orange, 282; 1099 South Orange, 283; 1099 South Orange, 284; 1099 South Orange, 285; 1099 South Orange, 286; 1099 South Orange, 287; 1099 South Orange, 288; 1099 South Orange, 289; 1099 South Orange, 290; 1099 South Orange, 291; 1099 South Orange, 292; 1099 South Orange, 293; 1099 South Orange, 294; 1099 South Orange, 295; 1099 South Orange, 296; 1099 South Orange, 297; 1099 South Orange, 298; 1099 South Orange, 299; 1099 South Orange, 300; 1099 South Orange, 301; 1099 South Orange, 302; 1099 South Orange, 303; 1099 South Orange, 304; 1099 South Orange, 305; 1099 South Orange, 306; 1099 South Orange, 307; 1099 South Orange, 308; 1099 South Orange, 309; 1099 South Orange, 310; 1099 South Orange, 311; 1099 South Orange, 312; 1099 South Orange, 313; 1099 South Orange, 314; 1099 South Orange, 315; 1099 South Orange, 316; 1099 South Orange, 317; 1099 South Orange, 318; 1099 South Orange, 319; 1099 South Orange, 320; 1099 South Orange, 321; 1099 South Orange, 322; 1099 South Orange, 323; 1099 South Orange, 324; 1099 South Orange, 325; 1099 South Orange, 326; 1099 South Orange, 327; 1099 South Orange, 328; 1099 South Orange, 329; 1099 South Orange, 330; 1099 South Orange, 331; 1099 South Orange, 332; 1099 South Orange, 333; 1099 South Orange, 334; 1099 South Orange, 335; 1099 South Orange, 336; 1099 South Orange, 337; 1099 South Orange, 338; 1099 South Orange, 339; 1099 South Orange, 340; 1099 South Orange, 341; 1099 South Orange, 342; 1099 South Orange, 343; 1099 South Orange, 344; 1099 South Orange, 345; 1099 South Orange, 346; 1099 South Orange, 347; 1099 South Orange, 348; 1099 South Orange, 349; 1099 South Orange, 350; 1099 South Orange, 351; 1099 South Orange, 352; 1099 South Orange, 353; 1099 South Orange, 354; 1099 South Orange, 355; 1099 South Orange, 356; 1099 South Orange, 357; 1099 South Orange, 358; 1099 South Orange, 359; 1099 South Orange, 360; 1099 South Orange, 361; 1099 South Orange, 362; 1099 South Orange, 363; 1099 South Orange, 364; 1099 South Orange, 365; 1099 South Orange, 366; 1099 South Orange, 367; 1099 South Orange, 368; 1099 South Orange, 369; 1099 South Orange, 370; 1099 South Orange, 371; 1099 South Orange, 372; 1099 South Orange, 373; 1099 South Orange, 374; 1099 South Orange, 375; 1099 South Orange, 376; 1099 South Orange, 377; 1099 South Orange, 378; 1099 South Orange, 379; 1099 South Orange, 380; 1099 South Orange, 381; 1099 South Orange, 382; 1099 South Orange, 383; 1099 South Orange, 384; 1099 South Orange, 385; 1099 South Orange, 386; 1099 South Orange, 387; 1099 South Orange, 388; 1099 South Orange, 389; 1099 South Orange, 390; 1099 South Orange, 391; 1099 South Orange, 392; 1099 South Orange, 393; 1099 South Orange, 394; 1099 South Orange, 395; 1099 South Orange, 396; 1099 South Orange, 397; 1099 South Orange, 398; 1099 South Orange, 399; 1099 South Orange, 400; 1099 South Orange, 401; 1099 South Orange, 402; 1099 South Orange, 403; 1099 South Orange, 404; 1099 South Orange, 405; 1099 South Orange, 406; 1099 South Orange, 407; 1099 South Orange, 408; 1099 South Orange, 409; 1099 South Orange, 410; 1099 South Orange, 411; 1099 South Orange, 412; 1099 South Orange, 413; 1099 South Orange, 414; 1099 South Orange, 415; 1099 South Orange, 416; 1099 South Orange, 417; 1099 South Orange, 418; 1099 South Orange, 419; 1099 South Orange, 420; 1099 South Orange, 421; 1099 South Orange, 422; 1099 South Orange, 423; 1099 South Orange, 424; 1099 South Orange, 425; 1099 South Orange, 426; 1099 South Orange, 427; 1099 South Orange, 428; 1099 South Orange, 429; 1099 South Orange, 430; 1099 South Orange, 431; 1099 South Orange, 432; 1099 South Orange, 433; 1099 South Orange, 434; 1099 South Orange, 435; 1099 South Orange, 436; 1099 South Orange, 437; 1099 South Orange, 438; 1099 South Orange, 439; 1099 South Orange, 440; 1099 South Orange, 441; 1099 South Orange, 442; 1099 South Orange, 443; 1099 South Orange, 444; 1099 South Orange, 445; 1099 South Orange, 446; 1099 South Orange, 447; 1099 South Orange, 448; 1099 South Orange, 449; 1099 South Orange, 450; 1099 South Orange, 451; 1099 South Orange, 452; 1099 South Orange, 453; 1099 South Orange, 454; 1099 South Orange, 455; 1099 South Orange, 456; 1099 South Orange, 457; 1099 South Orange, 458; 1099 South Orange, 459; 1099 South Orange, 460; 1099 South Orange, 461; 1099 South Orange, 462; 1099 South Orange, 463; 1099 South Orange, 464; 1099 South Orange, 465; 1099 South Orange, 466; 1099 South Orange, 467; 1099 South Orange, 468; 1099 South Orange, 469; 1099 South Orange, 470; 1099 South Orange, 471; 1099 South Orange, 472; 1099 South Orange, 473; 1099 South Orange, 474; 1099 South Orange, 475; 1099 South Orange, 476; 1099 South Orange, 477; 1099 South Orange, 478; 1099 South Orange, 479; 1099 South Orange, 480; 1099 South Orange, 481; 1099 South Orange, 482; 1099 South Orange, 483; 1099 South Orange, 484; 1099 South Orange, 485; 1099 South Orange, 486; 1099 South Orange, 487; 1099 South Orange, 488; 1099 South Orange, 489; 1099 South Orange, 490; 1099 South Orange, 491; 1099 South Orange, 492; 1099 South Orange, 493; 1099 South Orange, 494; 1099 South Orange, 495; 1099 South Orange, 496; 1099 South Orange, 497; 1099 South Orange, 498; 1099 South Orange, 499; 1099 South Orange, 500; 1099 South Orange, 501; 1099 South Orange, 502; 1099 South Orange, 503; 1099 South Orange, 504; 1099 South Orange, 505; 1099 South Orange, 506; 1099 South Orange, 507; 1099 South Orange, 508; 1099 South Orange, 509; 1099 South Orange, 510; 1099 South Orange, 511; 1099 South Orange, 512; 1099 South Orange, 513; 1099 South Orange, 514; 1099 South Orange, 515; 1099 South Orange, 516; 1099 South Orange, 517; 1099 South Orange, 518; 1099 South Orange, 519; 1099 South Orange, 520; 1099 South Orange, 521; 1099 South Orange, 522; 1099 South Orange, 523; 1099 South Orange, 524; 1099 South Orange, 525; 1099 South Orange, 526; 1099 South Orange, 527; 1099 South Orange, 528; 1099 South Orange, 529; 1099 South Orange, 530; 1099 South Orange, 531; 1099 South Orange, 532; 1099 South Orange, 533; 1099 South Orange, 534; 1099 South Orange, 535; 1099 South Orange, 536; 1099 South Orange, 537; 1099 South Orange, 538; 1099 South Orange, 539; 1099 South Orange, 540; 1099 South Orange, 541; 1099 South Orange, 542; 1099 South Orange, 543; 1099 South Orange, 544; 1099 South Orange, 545; 1099 South Orange, 546; 1099 South Orange, 547; 1099 South Orange, 548; 1099 South Orange, 549; 1099 South Orange, 550; 1099 South Orange, 551; 1099 South Orange, 552; 1099 South Orange, 553; 1099 South Orange, 554; 1099 South Orange, 555; 1099 South Orange, 556; 1099 South Orange, 557; 1099 South Orange, 558; 1099 South Orange, 559; 1099 South Orange, 560; 1099 South Orange, 561; 1099 South Orange, 562; 1099 South Orange, 563; 1099 South Orange, 564; 1099 South Orange, 565; 1099 South Orange, 566; 1099 South Orange, 567; 1099 South Orange, 568; 1099 South Orange, 569; 1099 South Orange, 570; 1099 South Orange, 571; 1099 South Orange, 572; 1099 South Orange, 573; 1099 South Orange, 574; 1099 South Orange, 575; 1099 South Orange, 576; 1099 South Orange, 577; 1099 South Orange, 578; 1099 South Orange, 579; 1099 South Orange, 580; 1099 South Orange, 581; 1099 South Orange, 582; 1099 South Orange, 583; 1099 South Orange, 584; 1099 South Orange, 585; 1099 South Orange, 586; 1099 South Orange, 587; 1099 South Orange, 588; 1099 South Orange, 589; 1099 South Orange, 590; 1099 South Orange, 591; 1099 South Orange, 592; 1099 South Orange, 593; 1099 South Orange, 594; 1099 South Orange, 595; 1099 South Orange, 596; 1099 South Orange, 597; 1099 South Orange, 598; 1099 South Orange, 599; 1099 South Orange, 600; 1099 South Orange, 601; 1099 South Orange, 602; 1099 South Orange, 603; 1099 South Orange, 604; 1099 South Orange, 605; 1099 South Orange, 606; 1099 South Orange, 607; 1099 South Orange, 608; 1099 South Orange, 609; 1099 South Orange, 610; 1099 South Orange, 611; 1099 South Orange, 612; 1099 South Orange, 613; 1099 South Orange, 614; 1099 South Orange, 615; 1099 South Orange, 616; 1099 South Orange, 617; 1099 South Orange, 618; 1099 South Orange, 619; 1099 South Orange, 620; 1099 South Orange, 621; 1099 South Orange, 622; 1099 South Orange, 623; 1099 South Orange, 624; 1099 South Orange, 625; 1099 South Orange, 626; 1099 South Orange, 627; 1099 South Orange, 628; 1099 South Orange, 629; 1099 South Orange, 630; 1099 South Orange, 631; 1099 South Orange, 632; 1099 South Orange, 633; 1099 South Orange, 634; 1099 South Orange, 635; 1099 South Orange, 636; 1099 South Orange, 637; 1099 South Orange, 638; 1099 South Orange, 639; 1099 South Orange, 640; 1099 South Orange, 641; 1099 South Orange, 642; 1099 South Orange, 643; 1099 South Orange, 644; 1099 South Orange, 645; 1099 South Orange, 646; 1099 South Orange, 647; 1099 South Orange, 648; 1099 South Orange, 649; 1099 South Orange, 650; 1099 South Orange, 651; 1099 South Orange, 652; 1099 South Orange, 653; 1099 South Orange, 654; 1099 South Orange, 655; 1099 South Orange, 656; 1099 South Orange, 657; 1099 South Orange, 658; 1099 South Orange, 659; 1099 South Orange, 660; 1099 South Orange, 661; 1099 South Orange, 662; 1099 South Orange, 663; 1099 South Orange, 664; 1099 South Orange, 665; 1099 South Orange, 666; 1099 South Orange, 667; 1099 South Orange, 668; 1099 South Orange, 669; 1099 South Orange, 670; 1099 South Orange, 671; 1099 South Orange, 672; 1099 South Orange, 673; 1099 South Orange, 674; 1099 South Orange, 675; 1099 South Orange, 676; 1099 South Orange, 677; 1099 South Orange, 678; 1099 South Orange, 679; 1099 South Orange, 680; 1099 South Orange, 681; 1099 South Orange, 682; 1099 South Orange, 683; 1099 South Orange, 684; 1099 South Orange, 685; 1099 South Orange, 686; 1099 South Orange, 687; 1099 South Orange, 688; 1099 South Orange, 689; 1099 South Orange, 690; 1099 South Orange, 691; 1099 South Orange, 692; 10

"Where Everybody Rides!" "Where Everybody Rides!" "Where Everybody Rides!" "Where Everybody Rides!"

SCORE BIG SAVINGS

Bob Dance Automotive

PERIOD VISITOR

ADD**ED** B**ONUS**: Save An Additional **\$500** Just By Calling & Making An Appointment!

ELIZABETH GRACE ARASH

Shop www.bobdance.com

FAST & FRIENDLY DEALING

Get A Minimum Of **\$3,000** For Any Old Trade

OPEN LATE 7 DAYS A WEEK

CAPT. CREDIT IS HERE TO HELP YOU!

PEOPLE COME BY THIS WEEK AND SCORE BIG SAVINGS ON A NEW CAR TRUCK OR SUV!

BOB DANCE

RON NICK OSH PAUL BILL JOE SCOTT FRED

BUSTER THE WONDER DOG

SAVE AN ADDITIONAL **\$500** PLUS **\$3,000**

Just By Calling & Making An Appointment Price & Payments In Minutes For Any Old Trade

HAVE OK CREDIT, START NEW CREDIT OR NEED TAX BREAK? CURRENT PAYMENTS TOO HIGH? RECENT COLLEGE GRADUATE? NO CREDIT? CALL CAPTAIN CREDIT NOW!

HAVEN'T PURCHASED A CAR ON CREDIT BEFORE? NEW IN THE AREA? NEW ON THE JOB? NO LOCAL CREDIT? LET US HELP CALL

ORLANDO (407) 578-5337 LONGWOOD (407) 292-0000

GRAB LIFE BY THE HORNS

NEW '03 RAM 1500 QUAD CAB

GRAB LIFE BY THE HORNS

A.C. AM, FM Stereo, Anti Spin, Load'ed, w/Standard Features

\$20,488
- 3,000
- 2,500

0% APR Full 60 Mos

\$14,988

3.9% APR On Select Certified Used Cars

'01 SUZUKI VITARA 4 X 4 Auto, A/C, AM, FM, CD, P/W, P/L, #111861 \$9,988	'02 DODGE STRATUS 4 Dr. Auto, A/C, P/W, Tilt, Cruise, #334078 \$9,988	'00 DODGE RAM 1500 Auto, V8, A/C, #505436 \$9,988
'02 DODGE INTREPID SE 4 Dr. Auto, A/C, Loaded, #267203 \$11,988	'01 DODGE STRATUS SE Auto, P/W, P/L, Tilt, Cruise, Loaded, #218854 \$12,988	'00 HONDA ACCORD LX 4Dr. Auto, A/C, Loaded, Only 27K Miles \$12,988
'02 DODGE GRAND CARAVAN SPORT 7 Pass, A/C, #548567 \$13,988	'00 DODGE DURANGO V8, A/C, Low Miles, #274438A \$13,988	'02 FORD MUSTANG Auto, A/C, Power Package, 13K Miles, #230062 \$13,988
'01 DODGE STRATUS RT V6, Auto/Stick, Leather, Sunroof, Loaded, #214099 \$14,988	'02 FORD EXPLORER Auto, A/C, Loaded, 16K Miles, #38826 \$14,988	'01 ISUZU RODEO LS 4 Dr. Auto, A/C, Loaded, 24K Miles, #326534 \$14,988
'02 HONDA ACCORD SE Auto, Loaded, Sunroof \$15,988	'01 DODGE DURANGO RT AWD, 4x4, 5.9L AM, FM, CD, Infinity, Heated PR, Seek, Loaded, #624262 \$22,988	'99 CHEVY CORVETTE 6Spd, Glass Top, Only 7k Miles \$29,888

NEW '03 CARAVAN SE

GRAB LIFE BY THE HORNS

A.C., P.W., P.L., AM, FM Stereo, Deluxe Convenience Group, Roof Rack, Loaded

\$20,988
- 3,000
- 2,500

0% APR Full 60 Mos

\$15,488

BOB DANCE DODGE
3775 North Hwy. 17-92 In LONGWOOD
(407) 292-0000

HYUNDAI

NEW '03 ACCENT

HYUNDAI

10 Year 100,000 Mile
5 Year 60,000 Mile
5 Year Unlimited Mile

AM, FM Cass, Rear Window Defrost, Loaded w/Standard Features

\$10,738
- 3,000
- 750

0% APR OR \$6,988

NEW '03 ELANTRA GLS

HYUNDAI

10 Year 100,000 Mile
5 Year 60,000 Mile
5 Year Unlimited Mile

P/W, P/L, P/Mirror, AM, FM Stereo Cass

\$12,988
- 3,000
- 1,000

0% APR OR \$8,988

NEW '03 SONATA GL

HYUNDAI

10 Year 100,000 Mile
5 Year 60,000 Mile
5 Year Unlimited Mile

15" Steel Wheels, P.W., P.L., P/Mirror, Cruise, AM, FM Stereo CD, Keyless Remote, Alarm

\$15,488
- 3,000
- 1,000

0% APR OR \$11,488

NEW '03 SANTA FE

HYUNDAI

10 Year 100,000 Mile
5 Year 60,000 Mile
5 Year Unlimited Mile

16" Alloy Wheels, AM, FM Stereo CD, P.W., P.L., P/Mirrors, Loaded

\$17,988
- 3,000
- 1,000

0% APR OR \$13,988

BOB DANCE HYUNDAI
3775 North Hwy. 17-92 In LONGWOOD
4110 West Colonial Dr. In ORLANDO
(407) 292-0000 (407) 578-5337

CHRYSLER ONLY IN A Jeep

NEW '03 PT CRUISER TOURING

CHRYSLER

DRIVE & LOVE

A.C., AM, FM Stereo, Loaded w/Standard Features

\$18,488
- 3,000
- 2,500

0% APR Full 60 Mos

\$12,988

3.9% APR On Select Certified Used Cars

'01 HYUNDAI ACCENT 2 Dr, A/C, Only 29K #118410 \$4,988	'00 TOYOTA CAMRY LE 4Dr. Auto, A/C, Loaded, #646826 \$9,988	'01 CHRYSLER VOYAGER 7 Pass, A/C, Factory Warranty #254199A \$11,988
'02 HONDA CIVIC LX 4 Dr. Auto, A/C, 16K \$11,988	'00 MAZDA MIATA CONV Auto, A/C, Like New #154584 \$12,988	'01 MERCURY COUGAR Auto, '06, A/C, Loaded #607139 \$12,988
'98 JEEP WRANGLER SPORT 6 Cyl., Auto, Like New #752301 \$12,988	'02 DODGE INTREPID ES Leather, Top Of The Line #170995 \$14,988	'99 CHEVY SUBURBAN 1500 Auto, Dual A/C, Best Color #169450 \$14,988

'00 CHRYSLER TOWN & COUNTRY LXI 7 Pass, Dual A/C, Leather Only 32K #682643 \$15,988	'02 CHRYSLER SEBRING CONV Loaded for the Season, 12K Miles #250233 \$16,988	'02 JEEP LIBERTY Auto, A/C, Power Pkg, Low Miles #327201A \$16,988
'01 ACURA CL 2Dr. Coupe, S Type, Leather, Sunroof \$16,988	'02 CHRYSLER CONCORD LMTD Leather, Custom Wheels Loaded #187337 \$17,988	'02 CHRYSLER 300M Leather, Best Color, Only 13K #283191 \$19,988

NEW '03 JEEP LIBERTY SPORT

ONLY IN A Jeep

A.C., AM, FM Stereo, Loaded w/Standard Features

\$17,488
- 3,000
- 1,500

0% APR Full 60 Mos

\$12,988

BOB DANCE JEEP/CHRYSLER
4110 West Colonial Dr. In ORLANDO
(407) 578-5337

"Where Everybody Rides!" "Where Everybody Rides!" "Where Everybody Rides!" "Where Everybody Rides!"

NAME - PARCEL NUMBER	TAXES DUE	SEQ. #	NAME - PARCEL NUMBER	TAXES DUE	SEQ. #	NAME - PARCEL NUMBER	TAXES DUE	SEQ. #
PAD: 204 E 1ST ST N 23 85 FT OF E 345 2 FT OF	4,871.53	327	PAD: 111 PARK AVE LOT 11 LESS 5 1/2 FT. BLK 4	283.23	347	25 19 30 5AG 0000 000A		
YOMURVE DONALD & LESLIE 25 19 30 5AG 0301 0150			25 19 30 5AG 0300 0010			FRATHER JOHN & ALMA E 57 11 FT OF E 1/2 LESS E 7	115.00	404
LOTS 15 & 16 BLK 1 TR 1 TOWN	1,196.13	328	PAD: 140 ST PT OF LOTS 1 & 2 LESS 40 FT	240.85	368	25 19 30 5AG 0000 000A (HX)		
WALLACE DEAN A & WALLACE LENFORD & BAKER DERRICK L			25 19 30 5AG 0508 0060	412.16	368	PAD: 115 HICKORY AVE S 30 FT OF LOT 8 & ALL 1/2 9	71.50	405
25 19 30 5AG 0302 0040			25 19 30 5AG 0507 0020			DEVEAUX EILEENA 25 19 30 5AG 0000 010A		
PAD: 112 S PALMETTO AVE LOT 4 & N 1 FT OF LOT 5 BLK	5,032.67	329	25 19 30 5AG 0506 0020			PAD: 117 HICKORY AVE W 1/2 OF LOT 10 BLK 7 TR D	102.89	406
NEW ERA PARTNERS INC 25 19 30 5AG 0303 0010			PAD: 109 ELM AVE LOT 8 LESS N 31 FT OF W 58	796.89	370	FRANKLIN PETER HEIKS 25 19 30 5AG 0000 0010		
LARK REAL LLC 25 19 30 5AG 0303 0060	1,819.98	330	25 19 30 5AG 0507 0020			PAD: 118 W 6TH ST S 50 FT OF W 124 FT BLK 7 TR	416.64	407
LOTS 6 & 7 & 11 & W 1/2 OF			PAD: 110 ELM AVE LOT 3 BLK 4 TR	400.59	371	TRENHAM VERA CA & LE ROSE CLARA & MATHEWS JAMES		
HURLEY DENISE 25 19 30 5AG 0304 001A	1,919.77	331	25 19 30 5AG 0509 0010			25 19 30 5AG 0000 0010		
S 61.7 FT OF LOT 1 BLK 4 TR			25 19 30 5AG 0508 0010			PAD: 121 W 4TH ST W 22 1/4 FT OF E 128 1/4 FT	125.41	408
BANCO POPULAR 25 19 30 5AG 0305 0040	1,928.47	332	25 19 30 5AG 0509 0010			ANDREW GASTON & JUANITA JAMES MATHEWS		
PAD: 207 W FIRST ST LOTS 4 & 5 & 7 & 8 BLK 4 TR 1			25 19 30 5AG 0508 0090	3,658.73	372	25 19 30 5AG 0711 0040		
NIELSEN CHRISTOPHER P 25 19 30 5AG 0306 0100	1,871.95	333	25 19 30 5AG 0507 0020	595.35	373	W 2 1/4 FT OF E 191 1/2 FT	211.75	409
PAD: 112 ELM ST S 10 27 FT OF LOT 22 & ALL			25 19 30 5AG 0508 0010 (HX)			ALLEN JOHN W & MERRITT JOSE A		
KULER STANLEY 25 19 30 5AG 0307 0030	2,476.23	334	25 19 30 5AG 0509 0010	1,808.80	374	25 19 30 5AG 0000 0010		
PAD: 407 W 1ST ST LOT 3 BLK 3 TR 7 TOWN OF			25 19 30 5AG 0510 0010			LOT 1 BLK 8 TR 1 TOWN OF	931.38	410
COLONIAL OIL INC 25 19 30 5AG 0308 0030	1,492.40	335	PAD: 111 HOLLY AVE LOT 3 & 1/4 BLK 5 TR 10 TOWN	148.82	375	25 19 30 5AG 0000 0040 (HX)		
PAD: 101 S FRENCH AVE W 1/2 OF LOT 1 & ALL LOTS 4			25 19 30 5AG 0511 0010 (HX)			PAD: 114 SANFORD AVE LOT 4 BLK 8 TR 1 TOWN OF	145.14	411
KENDALL RICHARD F 25 19 30 5AG 0311 0070 (HX)	268.20	336	PAD: 110 HOLLY AVE LOT 4 BLK 5 TR 11 TOWN OF	1,048.09	376	25 19 30 5AG 0000 0060 (HX)		
PAD: 108 W 2ND ST S 42 FT OF LOT 7 BLK 4 TR 10	847.36	337	25 19 30 5AG 0513 0050 (HX)			PAD: 108 PALMETTO AVE LOT 3 BLK 8 TR 7 TOWN OF	1,491.89	412
THARGARD TRUSTEE FBO			25 19 30 5AG 0514 0010 (HX)	1,270.68	377	25 19 30 5AG 0000 0050		
25 19 30 5AG 0310 000A			25 19 30 5AG 0509 0010	1,290.64	378	25 19 30 5AG 0000 0050		
PAD: 109 HOLLY AVE N 37 1 FT OF LOT 8 BLK 3 TR	211.01	338	PAD: SANFORD AVE LOT 3 & S 21 FT OF LOT 1 BLK	1,290.64	378	25 19 30 5AG 0000 0050		
BLACK EARL S SR & LELIA O 25 19 30 5AG 0311 0080 (HX)			25 19 30 5AG 0509 0010			25 19 30 5AG 0000 0050 (HX)		
PAD: 817 W 1ST ST LOT 4 BLK 3 TR 11 TOWN OF	508.45	339	PAD: 101 PALMETTO AVE LOTS 2 & 3 (LESS E 50 FT)	19.17	379	25 19 30 5AG 0000 0050 (HX)		
A 1 FUNDING CORP TRUSTEE FBO			25 19 30 5AG 0509 0150 (HX)			25 19 30 5AG 0000 0050		
25 19 30 5AG 0311 0040 (HX)			PAD: 108 E 8TH ST E 42 FT OF S 24 FT OF LOT 15	178.31	380	25 19 30 5AG 0000 0050		
PAD: 106 HOLLY AVE LOT 6 & E 1/2 OF VACD ALLEY	744.96	340	25 19 30 5AG 0509 015A (HX)			25 19 30 5AG 0000 0050		
BLACK EARL S SR & LELIA O 25 19 30 5AG 0311 0080			PAD: 412 PALMETTO AVE S 29 FT OF W 28 FT OF LOT 15	1,844.82	381	25 19 30 5AG 0000 0050		
PAD: 111 CEDAR AVE LOT 5 & W 1/2 OF VACD ALLEY	2,422.85	341	MADDO EDWARD E & MICHELLE F 25 19 30 5AG 0000 0010			25 19 30 5AG 0000 0050		
ELLIS HAPPY W JR & MARVINE F 25 19 30 5AG 0312 0020			PAD: 100 PALMETTO AVE E 71 FT OF LOT 1 & E 71 FT	1,214.04	382	25 19 30 5AG 0000 0050		
E 98 FT OF W 188 FT OF N 100	999.27	342	25 19 30 5AG 0509 0070			25 19 30 5AG 0000 0050		
BASE TONY W			PAD: 113 PALMETTO AVE LOT 2 BLK 8 TR 2 TOWN OF	2,554.51	383	25 19 30 5AG 0000 0050		
25 19 30 5AG 0312 0080			25 19 30 5AG 0509 0090			25 19 30 5AG 0000 0050		
PAD: 120 POPPARD AVE N 15 FT OF S 95 FT OF W 100	823.81	343	PAD: 209 E 4TH ST E 50 FT OF LOTS 8 & 10 BLK 4	325.79	384	25 19 30 5AG 0000 0050		
CONNELLY WILLIAM C & SHERYL L 25 19 30 5AG 0312 006A			MORRISON FRANK R S HOLMER VIVIANNE J			25 19 30 5AG 0000 0050		
PAD: 1401 W 1ST ST E 48 1/2 FT OF N 106 1/2 FT	767.62	344	25 19 30 5AG 0509 0010 (HX)			25 19 30 5AG 0000 0050		
CONNELLY WILLIAM C & SHERYL L 25 19 30 5AG 0312 0080			PAD: 110 MYRTLE AVE LOT 4 BLK 4 TR 6 TOWN OF	165.77	385	25 19 30 5AG 0000 0050		
PAD: 1401 W 1ST ST W 49 FT OF S 97 1/2 FT OF N	1,118.23	345	25 19 30 5AG 0509 0010			25 19 30 5AG 0000 0050		
HART TUISA W TRUSTEE 25 19 30 5AG 0319 0080			25 19 30 5AG 0509 0010			25 19 30 5AG 0000 0050		
NE 1/4 (LESS RD) BLK 1 TR 19	317.85	346	25 19 30 5AG 0509 0010			25 19 30 5AG 0000 0050		
NEW ERA PARTNERS INC 25 19 30 5AG 0319 0040			25 19 30 5AG 0509 0010			25 19 30 5AG 0000 0050		
PAD: S MARSHALL AVE LOT 4 BLK 4 TR 3	1,786.66	347	25 19 30 5AG 0509 0010			25 19 30 5AG 0000 0050		
CHRISTENSEN TERRANCE E & SUE S 25 19 30 5AG 0404 0050			25 19 30 5AG 0509 0010			25 19 30 5AG 0000 0050		
PAD: 518 S PARK AVE LOT 5 BLK 4 TR 4 TOWN OF	161.59	348	25 19 30 5AG 0509 0010			25 19 30 5AG 0000 0050		
CHRISTENSEN TERRANCE E & SUE S 25 19 30 5AG 0404 0100			25 19 30 5AG 0509 0010			25 19 30 5AG 0000 0050		
PAD: E 3RD ST E 45 FT OF LOT 10 BLK 4 TR 4	976.50	349	25 19 30 5AG 0509 0010			25 19 30 5AG 0000 0050		
ABRAMS SCHULTZ BLDG CORP 25 19 30 5AG 0406 0010			25 19 30 5AG 0509 0010			25 19 30 5AG 0000 0050		
PAD: 200 S MYRTLE AVE E 1/2 OF LOT 1 BLK 4 TR 6	615.29	350	25 19 30 5AG 0509 0010			25 19 30 5AG 0000 0050		
ABRAMS SCHULTZ BLDG CORP 25 19 30 5AG 0406 001A			25 19 30 5AG 0509 0010			25 19 30 5AG 0000 0050		
PAD: W 2ND ST W 1/2 OF LOT 1 BLK 4 TR 6	1,222.07	351	25 19 30 5AG 0509 0010			25 19 30 5AG 0000 0050		
ABRAMS JOE L & ANNE S 25 19 30 5AG 0406 0020			25 19 30 5AG 0509 0010			25 19 30 5AG 0000 0050		
PAD: 200 S MYRTLE AVE LOTS 2 & 3 BLK 4 TR 6 TOWN	1,921.59	352	25 19 30 5AG 0509 0010			25 19 30 5AG 0000 0050		
GORDON ANGELIA L 25 19 30 5AG 0407 0010			25 19 30 5AG 0509 0010			25 19 30 5AG 0000 0050		
PAD: 206 ELM AVE LOTS 1 & 2 BLK 4 TR 7 TOWN	136.86	353	25 19 30 5AG 0509 0010			25 19 30 5AG 0000 0050		
VANBAMON ROBERT JR 25 19 30 5AG 0407 0050 (HX)			25 19 30 5AG 0509 0010			25 19 30 5AG 0000 0050		
PAD: 218 ELM AVE LOT 5 BLK 4 TR 7 TOWN OF	4,424.32	354	25 19 30 5AG 0509 0010			25 19 30 5AG 0000 0050		
HOLDER SARAH A 25 19 30 5AG 0409 0010			25 19 30 5AG 0509 0010			25 19 30 5AG 0000 0050		
PAD: 200 S FRENCH AVE LOT 1 BLK 4 TR 9 TOWN OF	991.86	355	25 19 30 5AG 0509 0010			25 19 30 5AG 0000 0050		
ZAREK ZOURIN 25 19 30 5AG 0410 0010			25 19 30 5AG 0509 0010			25 19 30 5AG 0000 0050		
PAD: 204 MAPLE AVE LOT 2 BLK 4 TR 10 TOWN OF	576.55	356	25 19 30 5AG 0509 0010			25 19 30 5AG 0000 0050		
BEAM VP PARTNERS INC 25 19 30 5AG 0411 004A			25 19 30 5AG 0509 0010			25 19 30 5AG 0000 0050		
PAD: 206 W 3RD ST W 38 FT OF E 78 FT OF LOTS 4	229.25	357	25 19 30 5AG 0509 0010			25 19 30 5AG 0000 0050		
BROWN LORNA A & BROWN THERESA L			25 19 30 5AG 0509 0010			25 19 30 5AG 0000 0050		
25 19 30 5AG 0411 0010			25 19 30 5AG 0509 0010			25 19 30 5AG 0000 0050		
PAD: 109 HOLLY AVE LOT 1 BLK 4 TR 11	2,149.21	358	25 19 30 5AG 0509 0010			25 19 30 5AG 0000 0050		
DAYMONT WENDY 25 19 30 5AG 0411 0060			25 19 30 5AG 0509 0010			25 19 30 5AG 0000 0050		
PAD: 618 W 3RD LOTS 9 & 10 (LESS E 58 FT)	528.09	359	25 19 30 5AG 0509 0010			25 19 30 5AG 0000 0050		
MAYO CLARENCE & JANE 25 19 30 5AG 0414 0080 (HX)			25 19 30 5AG 0509 0010			25 19 30 5AG 0000 0050		
PAD: 201 S W LIBERTY AVE NW 1/4 (LESS 60 FT) BLK 4	1,052.37	360	25 19 30 5AG 0509 0010			25 19 30 5AG 0000 0050		
TURNER JASON 25 19 30 5AG 0415 0010			25 19 30 5AG 0509 0010			25 19 30 5AG 0000 0050		
LOTS 6 & 7 BLK 5 TR 1	1,414.66	361	25 19 30 5AG 0509 0010			25 19 30 5AG 0000 0050		
FORD DARLON K 25 19 30 5AG 0501 009A			25 19 30 5AG 0509 0010			25 19 30 5AG 0000 0050		
PAD: 101 S PALMETTO AVE W 64 FT OF LOTS 3 & 4 BLK 5	2,818.63	362	25 19 30 5AG 0509 0010			25 19 30 5AG 0000 0050		
CREATINE MONEY WORKS INC 25 19 30 5AG 0502 0050			25 19 30 5AG 0509 0010			25 19 30 5AG 0000 0050		
PAD: 118 S PALMETTO AVE S 66 4 FT OF LOT 2 & ALL LOTS 2	313.88	363	25 19 30 5AG 0509 0010			25 19 30 5AG 0000 0050		
INAKIA JOSEPH TRUSTEE 25 19 30 5AG 0503 0010			25 19 30 5AG 0509 0010			25 19 30 5AG 0000 0050		
PAD: 300 S MARSHALL AVE LOTS 1 & 2 BLK 5 TR 1 TOWN	1,784.29	364	25 19 30 5AG 0509 0010			25 19 30 5AG 0000 0050		
TRIMM DIANE M 25 19 30 5AG 0504 0090			25 19 30 5AG 0509 0010			25 19 30 5AG 0000 0050		
PAD: 305 S PARK AVE LOTS 9 & 10 BLK 5 TR 31	1,248.16	365	25 19 30 5AG 0509 0010			25 19 30 5AG 0000 0050		
MARKET VALUE GROUP 25 19 30 5AG 0504 0110			25 19 30 5AG 0509 0010			25 19 30 5AG 0000 0050		
PAD: 307 PARK AVE LOT 11 BLK 5 TR 1 TOWN OF	1,867.58	366	25 19 30 5AG 0509 0010			25 19 30 5AG 0000 0050		
MARKET VALUE GROUP INC 25 19 30 5AG 0504 0120			25 19 30 5AG 0509 0010			25 19 30 5AG 0000 0050		
25 19 30 5AG 0509 0010			25 19 30 5AG 0509 0010			25 19 30 5AG 0000 0050		

NAME - PARCEL NUMBER TAXES DUE SEQ #

NAME - PARCEL NUMBER TAXES DUE SEQ #

NAME - PARCEL NUMBER TAXES DUE SEQ #

Table with 3 columns: Name, Parcel Number, Taxes Due, Seq #. Contains property records for various owners like MARTIN, KEAYE, LYONS, etc.

Table with 3 columns: Name, Parcel Number, Taxes Due, Seq #. Contains property records for various owners like WANG, WOOD, WILSON, etc.

Table with 3 columns: Name, Parcel Number, Taxes Due, Seq #. Contains property records for various owners like FOSTER, HILLEY, HARRIS, etc.

NAME - PARCEL NUMBER TAXES DUE SEQ #

NAME - PARCEL NUMBER TAXES DUE SEQ #

NAME - PARCEL NUMBER TAXES DUE SEQ #

Table with columns: NAME, PARCEL NUMBER, TAXES DUE, SEQ #. Contains multiple rows of property records, including names like 'MRS. J. W. BROWN' and 'MRS. M. J. BROWN'.

Table with columns: NAME, PARCEL NUMBER, TAXES DUE, SEQ #. Contains multiple rows of property records, including names like 'MRS. J. W. BROWN', 'MRS. M. J. BROWN', and 'MRS. J. W. BROWN'.

Table with columns: NAME, PARCEL NUMBER, TAXES DUE, SEQ #. Contains multiple rows of property records, including names like 'MRS. J. W. BROWN', 'MRS. M. J. BROWN', and 'MRS. J. W. BROWN'.

NAME - PARCEL NUMBER	TAXES DUE	SEQ #	NAME - PARCEL NUMBER	TAXES DUE	SEQ #	NAME - PARCEL NUMBER	TAXES DUE	SEQ #
09-20-32-101-0160-0000 (HX)			SEC 10 TWP 20S RGE 12E BEG			***** ACRES		
PAD: 500 SHAWNEE TRL			BRADY BOBIN L	103.72	3,655	***** PARCELS		
SEC 09 TWP 20S RGE 12E BEG			10-20-32-JAE-0470-0000 (HX)			CHASE WILLIAM E &	6,142.33	3,674
KIMMER LAURA J	499.02	3,619	PAD: 319 SETTLERS LOOP			PHILIP MICHELLE M		
09-20-32-101-0180-0000			SEC 10 TWP 20S RGE 12E BEG			15-20-32-101-0010-0000 (HX)		
PAD: INDIAN CYPRUS TRL			BUNBOW LUTHER E & ELAINE A	585.11	3,656	PAD: 1351 N HART RD		
SEC 09 TWP 20S RGE 12E BEG			PAD: 123 E ORCUELA RD			SEC 14 TWP 20S RGE 12E BEG		
WILLIAMSON JAMES C &	571.81	3,620	SEC 10 TWP 20S RGE 12E BEG			***** GENEVA TRACT		
APRETTI CATHY L			ARABIAN JERROLD E	700.88	3,657	***** FB 2 PG 66		
09-20-32-101-0140-0000 (HX)			10-20-32-JAE-0570-0000			SCOTT DAVID R	571.34	3,650
PAD: 1081 HUNN TRK RD			PAD: 110 BEE LN			15-20-32-JAE-0000-0000		
SEC 09 TWP 20S RGE 12E BEG			10-20-32-TWP 20S RGE 12E BEG			LOT 22 (LARGE N 1/2) ET		
CARR ANTHONY W	877.74	3,621	COHEN DONNA J	562.85	3,658	YOUNG ORALD D	2,069.98	3,696
09-20-32-101-0150-0000			10-20-32-JAE-0620-0000 (HX)			15-20-32-JAE-0000-0000		
PAD: 1100 APAPANI TRL			PAD: 1012 BEE LN			THAT PT OF SEC 14 TWP 20S RGE 12E BEG		
SEC 09 TWP 20S RGE 12E BEG			SEC 10 TWP 20S RGE 12E BEG			ALGER ERIC C &	75.87	3,697
HADDLETON KENNETH W &	611.06	3,622	HARRISON STEPHEN C &	619.08	3,659	YOUNG BRAD		
HADDLETON ABBEY			HARRISON KOCY			15-20-32-JAE-0000-0000		
09-20-32-101-0170-0000 (HX)			10-20-32-JAE-0720-0000			DAVE W HART		
PAD: 1140 APAPANI TRL			PAD: 140 W ORCUELA RD			TRAY PT OF TWP 20S RGE 12E BEG		
SEC 09 TWP 20S RGE 12E BEG			SEC 10 TWP 20S RGE 12E BEG			YOUNG ORALD D	1,144.99	3,698
SMITH MARY J	1,361.23	3,623	PELLETIER BRUCE M	181.61	3,660	15-20-32-JAE-0000-0000		
09-20-32-101-0160-0000 (HX)			SEC 10 TWP 20S RGE 12E BEG			TRAY PT OF TWP 20S RGE 12E BEG		
PAD: 1100 APAPANI TRL			SEC 10 TWP 20S RGE 12E BEG			TRAY PT OF TWP 20S RGE 12E BEG		
SEC 09 TWP 20S RGE 12E BEG			SEC 10 TWP 20S RGE 12E BEG			TRAY PT OF TWP 20S RGE 12E BEG		
SMITH MARY J	942.53	3,625	SEC 10 TWP 20S RGE 12E BEG			TRAY PT OF TWP 20S RGE 12E BEG		
09-20-32-101-0160-0000 (HX)			SEC 10 TWP 20S RGE 12E BEG			TRAY PT OF TWP 20S RGE 12E BEG		
PAD: 1100 APAPANI TRL			SEC 10 TWP 20S RGE 12E BEG			TRAY PT OF TWP 20S RGE 12E BEG		
SEC 09 TWP 20S RGE 12E BEG			SEC 10 TWP 20S RGE 12E BEG			TRAY PT OF TWP 20S RGE 12E BEG		
SMITH MARY J	806.64	3,626	SEC 10 TWP 20S RGE 12E BEG			TRAY PT OF TWP 20S RGE 12E BEG		
09-20-32-101-0160-0000 (HX)			SEC 10 TWP 20S RGE 12E BEG			TRAY PT OF TWP 20S RGE 12E BEG		
PAD: 1100 APAPANI TRL			SEC 10 TWP 20S RGE 12E BEG			TRAY PT OF TWP 20S RGE 12E BEG		
SEC 09 TWP 20S RGE 12E BEG			SEC 10 TWP 20S RGE 12E BEG			TRAY PT OF TWP 20S RGE 12E BEG		
SMITH MARY J	567.25	3,627	SEC 10 TWP 20S RGE 12E BEG			TRAY PT OF TWP 20S RGE 12E BEG		
09-20-32-101-0160-0000 (HX)			SEC 10 TWP 20S RGE 12E BEG			TRAY PT OF TWP 20S RGE 12E BEG		
PAD: 1100 APAPANI TRL			SEC 10 TWP 20S RGE 12E BEG			TRAY PT OF TWP 20S RGE 12E BEG		
SEC 09 TWP 20S RGE 12E BEG			SEC 10 TWP 20S RGE 12E BEG			TRAY PT OF TWP 20S RGE 12E BEG		
SMITH MARY J	1,865.87	3,628	SEC 10 TWP 20S RGE 12E BEG			TRAY PT OF TWP 20S RGE 12E BEG		
09-20-32-101-0160-0000 (HX)			SEC 10 TWP 20S RGE 12E BEG			TRAY PT OF TWP 20S RGE 12E BEG		
PAD: 1100 APAPANI TRL			SEC 10 TWP 20S RGE 12E BEG			TRAY PT OF TWP 20S RGE 12E BEG		
SEC 09 TWP 20S RGE 12E BEG			SEC 10 TWP 20S RGE 12E BEG			TRAY PT OF TWP 20S RGE 12E BEG		
SMITH MARY J	784.21	3,629	SEC 10 TWP 20S RGE 12E BEG			TRAY PT OF TWP 20S RGE 12E BEG		
09-20-32-101-0160-0000 (HX)			SEC 10 TWP 20S RGE 12E BEG			TRAY PT OF TWP 20S RGE 12E BEG		
PAD: 1100 APAPANI TRL			SEC 10 TWP 20S RGE 12E BEG			TRAY PT OF TWP 20S RGE 12E BEG		
SEC 09 TWP 20S RGE 12E BEG			SEC 10 TWP 20S RGE 12E BEG			TRAY PT OF TWP 20S RGE 12E BEG		
SMITH MARY J	402.06	3,630	SEC 10 TWP 20S RGE 12E BEG			TRAY PT OF TWP 20S RGE 12E BEG		
09-20-32-101-0160-0000 (HX)			SEC 10 TWP 20S RGE 12E BEG			TRAY PT OF TWP 20S RGE 12E BEG		
PAD: 1100 APAPANI TRL			SEC 10 TWP 20S RGE 12E BEG			TRAY PT OF TWP 20S RGE 12E BEG		
SEC 09 TWP 20S RGE 12E BEG			SEC 10 TWP 20S RGE 12E BEG			TRAY PT OF TWP 20S RGE 12E BEG		
SMITH MARY J	473.97	3,631	SEC 10 TWP 20S RGE 12E BEG			TRAY PT OF TWP 20S RGE 12E BEG		
09-20-32-101-0160-0000 (HX)			SEC 10 TWP 20S RGE 12E BEG			TRAY PT OF TWP 20S RGE 12E BEG		
PAD: 1100 APAPANI TRL			SEC 10 TWP 20S RGE 12E BEG			TRAY PT OF TWP 20S RGE 12E BEG		
SEC 09 TWP 20S RGE 12E BEG			SEC 10 TWP 20S RGE 12E BEG			TRAY PT OF TWP 20S RGE 12E BEG		
SMITH MARY J	735.24	3,632	SEC 10 TWP 20S RGE 12E BEG			TRAY PT OF TWP 20S RGE 12E BEG		
09-20-32-101-0160-0000 (HX)			SEC 10 TWP 20S RGE 12E BEG			TRAY PT OF TWP 20S RGE 12E BEG		
PAD: 1100 APAPANI TRL			SEC 10 TWP 20S RGE 12E BEG			TRAY PT OF TWP 20S RGE 12E BEG		
SEC 09 TWP 20S RGE 12E BEG			SEC 10 TWP 20S RGE 12E BEG			TRAY PT OF TWP 20S RGE 12E BEG		
SMITH MARY J	642.71	3,633	SEC 10 TWP 20S RGE 12E BEG			TRAY PT OF TWP 20S RGE 12E BEG		
09-20-32-101-0160-0000 (HX)			SEC 10 TWP 20S RGE 12E BEG			TRAY PT OF TWP 20S RGE 12E BEG		
PAD: 1100 APAPANI TRL			SEC 10 TWP 20S RGE 12E BEG			TRAY PT OF TWP 20S RGE 12E BEG		
SEC 09 TWP 20S RGE 12E BEG			SEC 10 TWP 20S RGE 12E BEG			TRAY PT OF TWP 20S RGE 12E BEG		
SMITH MARY J	428.12	3,634	SEC 10 TWP 20S RGE 12E BEG			TRAY PT OF TWP 20S RGE 12E BEG		
09-20-32-101-0160-0000 (HX)			SEC 10 TWP 20S RGE 12E BEG			TRAY PT OF TWP 20S RGE 12E BEG		
PAD: 1100 APAPANI TRL			SEC 10 TWP 20S RGE 12E BEG			TRAY PT OF TWP 20S RGE 12E BEG		
SEC 09 TWP 20S RGE 12E BEG			SEC 10 TWP 20S RGE 12E BEG			TRAY PT OF TWP 20S RGE 12E BEG		
SMITH MARY J	1,802.00	3,635	SEC 10 TWP 20S RGE 12E BEG			TRAY PT OF TWP 20S RGE 12E BEG		
09-20-32-101-0160-0000 (HX)			SEC 10 TWP 20S RGE 12E BEG			TRAY PT OF TWP 20S RGE 12E BEG		
PAD: 1100 APAPANI TRL			SEC 10 TWP 20S RGE 12E BEG			TRAY PT OF TWP 20S RGE 12E BEG		
SEC 09 TWP 20S RGE 12E BEG			SEC 10 TWP 20S RGE 12E BEG			TRAY PT OF TWP 20S RGE 12E BEG		
SMITH MARY J	654.14	3,636	SEC 10 TWP 20S RGE 12E BEG			TRAY PT OF TWP 20S RGE 12E BEG		
09-20-32-101-0160-0000 (HX)			SEC 10 TWP 20S RGE 12E BEG			TRAY PT OF TWP 20S RGE 12E BEG		
PAD: 1100 APAPANI TRL			SEC 10 TWP 20S RGE 12E BEG			TRAY PT OF TWP 20S RGE 12E BEG		
SEC 09 TWP 20S RGE 12E BEG			SEC 10 TWP 20S RGE 12E BEG			TRAY PT OF TWP 20S RGE 12E BEG		
SMITH MARY J	723.94	3,637	SEC 10 TWP 20S RGE 12E BEG			TRAY PT OF TWP 20S RGE 12E BEG		
09-20-32-101-0160-0000 (HX)			SEC 10 TWP 20S RGE 12E BEG			TRAY PT OF TWP 20S RGE 12E BEG		
PAD: 1100 APAPANI TRL			SEC 10 TWP 20S RGE 12E BEG			TRAY PT OF TWP 20S RGE 12E BEG		
SEC 09 TWP 20S RGE 12E BEG			SEC 10 TWP 20S RGE 12E BEG			TRAY PT OF TWP 20S RGE 12E BEG		
SMITH MARY J	2,113.94	3,638	SEC 10 TWP 20S RGE 12E BEG			TRAY PT OF TWP 20S RGE 12E BEG		
09-20-32-101-0160-0000 (HX)			SEC 10 TWP 20S RGE 12E BEG			TRAY PT OF TWP 20S RGE 12E BEG		
PAD: 1100 APAPANI TRL			SEC 10 TWP 20S RGE 12E BEG			TRAY PT OF TWP 20S RGE 12E BEG		
SEC 09 TWP 20S RGE 12E BEG			SEC 10 TWP 20S RGE 12E BEG			TRAY PT OF TWP 20S RGE 12E BEG		
SMITH MARY J	1,116.50	3,639	SEC 10 TWP 20S RGE 12E BEG			TRAY PT OF TWP 20S RGE 12E BEG		
09-20-32-101-0160-0000 (HX)			SEC 10 TWP 20S RGE 12E BEG			TRAY PT OF TWP 20S RGE 12E BEG		
PAD: 1100 APAPANI TRL			SEC 10 TWP 20S RGE 12E BEG			TRAY PT OF TWP 20S RGE 12E BEG		
SEC 09 TWP 20S RGE 12E BEG			SEC 10 TWP 20S RGE 12E BEG			TRAY PT OF TWP 20S RGE 12E BEG		
SMITH MARY J	1,663.48	3,640	SEC 10 TWP 20S RGE 12E BEG			TRAY PT OF TWP 20S RGE 12E BEG		
09-20-32-101-0160-0000 (HX)			SEC 10 TWP 20S RGE 12E BEG			TRAY PT OF TWP 20S RGE 12E BEG		
PAD: 1100 APAPANI TRL			SEC 10 TWP 20S RGE 12E BEG			TRAY PT OF TWP 20S RGE 12E BEG		
SEC 09 TWP 20S RGE 12E BEG			SEC 10 TWP 20S RGE 12E BEG			TRAY PT OF TWP 20S RGE 12E BEG		
SMITH MARY J	187.37	3,641	SEC 10 TWP 20S RGE 12E BEG			TRAY PT OF TWP 20S RGE 12E BEG		
09-20-32-101-0160-0000 (HX)			SEC 10 TWP 20S RGE 12E BEG			TRAY PT OF TWP 20S RGE 12E BEG		
PAD: 1100 APAPANI TRL			SEC 10 TWP 20S RGE 12E BEG			TRAY PT OF TWP 20S RGE 12E BEG		
SEC 09 TWP 20S RGE 12E BEG			SEC 10 TWP 20S RGE 12E BEG			TRAY PT OF TWP 20S RGE 12E BEG		
SMITH MARY J	572.58	3,642	SEC 10 TWP 20S RGE 12E BEG			TRAY PT OF TWP 20S RGE 12E BEG		
09-20-32-101-0160-0000 (HX)			SEC 10 TWP 20S RGE 12E BEG			TRAY PT OF TWP 20S RGE 12E BEG		
PAD: 1100 APAPANI TRL			SEC 10 TWP 20S RGE 12E BEG			TRAY PT OF TWP 20S RGE 12E BEG		
SEC 09 TWP 20S RGE 12E BEG			SEC 10 TWP 20S RGE 12E BEG			TRAY PT OF TWP 20S RGE 12E BEG		
SMITH MARY J	916.51	3,643	SEC 10 TWP 20S RGE 12E BEG			TRAY PT OF TWP 20S RGE 12E BEG		
09-20-32-101-0160-0000 (HX)			SEC 10 TWP 20S RGE 12E BEG			TRAY PT OF TWP 20S RGE 12E BEG		
PAD: 1100 APAPANI TRL			SEC 10 TWP 20S RGE 12E BEG			TRAY PT OF TWP 20S RGE 12E BEG		
SEC 09 TWP 20S RGE 12E BEG			SEC 10 TWP 20S RGE 12E BEG			TRAY PT OF TWP 20S RGE 12E BEG		
SMITH MARY J	581.83	3,644	SEC 10 TWP 20S RGE 12E BEG			TRAY PT OF TWP 20S RGE 12E BEG		
09-20-32-101-0160-0000 (HX)			SEC 10 TWP 20S RGE 12E BEG			TRAY PT OF TWP 20S RGE 12E BEG		
PAD: 1100 APAPANI TRL			SEC 10 TWP 20S RGE 12E BEG			TRAY PT OF TWP 20S RGE 12E BEG		
SEC 09 TWP 20S RGE 12E BEG			SEC 10 TWP 20S RGE 12E BEG			TRAY PT OF TWP 20S RGE 12E BEG		
SMITH MARY J	783.51	3,645	SEC 10 TWP 20S RGE 12E BEG			TRAY PT OF TWP 20S RGE 12E BEG		
09-20-32-101-0160-0000 (HX)			SEC 10 TWP 20S RGE 12E BEG			TRAY PT OF TWP 20S RGE 12E BEG		
PAD: 1100 APAPANI TRL			SEC 10 TWP 20S RGE 12E BEG			TRAY PT OF TWP 20S RGE 12E BEG		
SEC 09 TWP 20S RGE 12E BEG			SEC 10 TWP 20S RGE 12E BEG			TRAY PT OF TWP 20S RGE 12E BEG		
SMITH MARY J	654.40	3,646	SEC 10 TWP 20S RGE 12E BEG			TRAY PT OF TWP 20S RGE 12E BEG		
09-20-32-101-0160-0000 (HX)			SEC 10 TWP 20S RGE 12E BEG			TRAY PT OF TWP 20S RGE 12E BEG		
PAD: 1100 APAPANI TRL			SEC 10 TWP 20S RGE 12E BEG			TRAY PT OF TWP 20S RGE 12E BEG		
SEC 09 TWP 20S RGE 12E BEG								

NAME - PARCEL NUMBER	TAXES DUE	SEQ. #
UNIT 114		
JACKSON CHRISTOPHER A	816.26	5.017
JACKSON CHRISTOPHER A		
21-21-29-516-0000-114		
PAD: 856 LAKE LESTERY BL		
UNIT 114		
GALLAGHER KEITH A	421.99	5.011
21-21-29-516-0000-114A		
PAD: 856 LAKE LESTERY BL 114A		
UNIT 114A		
AVILA YADIRA	600.40	5.014
21-21-29-516-0000-115H		
PAD: 856 LAKE LESTERY BL 115H		
UNIT 115H		
MURKIN STEVEN L	811.61	5.015
21-21-29-516-0000-115		
PAD: 856 LAKE LESTERY BL 115		
UNIT 115		
.....HIDDEN RIDGE TRAIL		
.....HIDDEN RIDGE TRAIL		
ACTIVITIES CENTER PHASE 1	243.40	5.016
21-21-29-516-0000-115H		
PAD: 856 LAKE LESTERY BL 115H		
UNIT 115H		
NAVARRO GARDON A & PAMEN	808.51	5.017
21-21-29-516-0000-115H		
PAD: 856 LAKE LESTERY BL 115H		
UNIT 115H		
NAVARRO GARDON A & PAMEN	808.51	5.017
JARROLD CARMEN W		
21-21-29-516-0000-115H		
PAD: 856 LAKE LESTERY BL 115H		
UNIT 115H		
BRIVAN VARIANA S	887.01	5.018
21-21-29-516-0000-115H		
PAD: 856 LAKE LESTERY BL 115H		
UNIT 115H		
BRIGHAM ANITA S	1,288.00	5.020
ALLEN EMERETT A		
21-21-29-516-0000-115H		
PAD: 856 LAKE LESTERY BL 115H		
UNIT 115H		
WALLS DANNY C & TRACY B	148.42	5.022
21-21-29-516-0000-115H		
PAD: 856 LAKE LESTERY BL 115H		
UNIT 115H		
ADAMS MAURICE JR	808.51	5.020
21-21-29-516-0000-115H		
PAD: 856 LAKE LESTERY BL 115H		
UNIT 115H		
WEINMANN THOMAS P	868.51	5.021
21-21-29-516-0000-115H		
PAD: 856 LAKE LESTERY BL 115H		
UNIT 115H		
FAMILIA WILLIAM S & MELINDA S	887.00	5.024
FAMILIA WILLIAM S		
21-21-29-516-0000-115H		
PAD: 856 LAKE LESTERY BL 115H		
UNIT 115H		
MENTA LATA F	887.00	5.025
21-21-29-516-0000-115H		
PAD: 856 LAKE LESTERY BL 115H		
UNIT 115H		
BYRANT COURTNEY S & VALITA	887.00	5.025
21-21-29-516-0000-115H		
PAD: 856 LAKE LESTERY BL 115H		
UNIT 115H		
WIXSON DAVID S	845.78	5.027
WIXSON JOSEPH M		
21-21-29-516-0000-1000 (HX)		
PAD: 220 CHEROKEE #100 CT		
UNIT 1000		
WEINMANN THOMAS P	868.51	5.028
21-21-29-516-0000-107H		
PAD: 220 CHEROKEE #107 CT		
UNIT 107H		
WEINMANN THOMAS P	868.51	5.029
21-21-29-516-0000-111H		
PAD: 220 CHEROKEE #111 CT		
UNIT 111H		
WEINMANN THOMAS P	868.51	5.030
21-21-29-516-0000-112M		
PAD: 220 CHEROKEE #112 CT		
UNIT 112M		
CHAUDHARI BIVIND M TRUSTEE	868.51	5.031
21-21-29-516-0000-125B		
PAD: 220 CHEROKEE #125 CT		
UNIT 125B		
.....SPRING VALLEY CLUB		
.....SPRING VALLEY CLUB		
LIVINGSTONE DONALD L SUSAN J	842.74	5.032
21-21-29-517-0000-0010 (HX)		
PAD: 201 MAJESTIC OAK DR		
.....BIRNIE LAKE POINTE		
.....BIRNIE LAKE POINTE		
.....ALL A RE A VA A SE IT A V A D		
FEIRCE HOLDING LLC	2,887.12	5.033
21-21-29-518-0000-0010		
FEIRCE HOLDING LLC	2,887.12	5.034
21-21-29-518-0000-0040		
FEIRCE HOLDING LLC	2,887.12	5.035
21-21-29-518-0000-0090		
PETRE HOLDING LLC	4,887.12	5.036
21-21-29-518-0000-1000		
LOT C (LEAS PER ERY UNIT 100)		
FEIRCE HOLDING LLC	4,887.12	5.037
21-21-29-518-0000-1070		
FEIRCE HOLDING LLC	4,887.12	5.038
21-21-29-518-0000-1080		
FEIRCE HOLDING LLC	4,887.12	5.039
21-21-29-518-0000-1090		
FEIRCE HOLDING LLC	4,887.12	5.040
21-21-29-518-0000-1100		
FEIRCE HOLDING LLC	4,887.12	5.041
21-21-29-518-0000-1110		
FEIRCE HOLDING LLC	4,887.12	5.042
21-21-29-518-0000-1120		
FEIRCE HOLDING LLC	4,887.12	5.043
21-21-29-518-0000-1130		
FEIRCE HOLDING LLC	4,887.12	5.044
21-21-29-518-0000-1140		
FEIRCE HOLDING LLC	4,887.12	5.045
21-21-29-518-0000-1150		
FEIRCE HOLDING LLC	4,887.12	5.046
21-21-29-518-0000-1160		
FEIRCE HOLDING LLC	4,887.12	5.047
21-21-29-518-0000-1170		
FEIRCE HOLDING LLC	4,887.12	5.048
21-21-29-518-0000-1180		
FEIRCE HOLDING LLC	4,887.12	5.049
21-21-29-518-0000-1190		
FEIRCE HOLDING LLC	4,887.12	5.050
.....BARCLAY WOODS VILAGE		
.....BARCLAY WOODS VILAGE		
FATTERSON VALERIE B	4,900.00	5.051
21-21-29-519-0000-102A		
PAD: 413 BARCLAY AVE		
ASHBY DAVID A	4,900.00	5.052
21-21-29-519-0000-103A		
PAD: 413 BARCLAY AVE		
CHURCH ORLANDO JR & IN	4,900.00	5.053
21-21-29-519-0000-104A		
CHURCH ORLANDO JR & IN	4,900.00	5.054
21-21-29-519-0000-105A		
CHURCH ORLANDO JR & IN	4,900.00	5.055
21-21-29-519-0000-106A		
CHURCH ORLANDO JR & IN	4,900.00	5.056
21-21-29-519-0000-107A		
CHURCH ORLANDO JR & IN	4,900.00	5.057
21-21-29-519-0000-108A		
CHURCH ORLANDO JR & IN	4,900.00	5.058
21-21-29-519-0000-109A		
CHURCH ORLANDO JR & IN	4,900.00	5.059
21-21-29-519-0000-110A		
CHURCH ORLANDO JR & IN	4,900.00	5.060
21-21-29-519-0000-111A		
CHURCH ORLANDO JR & IN	4,900.00	5.061
21-21-29-519-0000-112A		
CHURCH ORLANDO JR & IN	4,900.00	5.062
21-21-29-519-0000-113A		
CHURCH ORLANDO JR & IN	4,900.00	5.063
21-21-29-519-0000-114A		
CHURCH ORLANDO JR & IN	4,900.00	5.064
21-21-29-519-0000-115A		
CHURCH ORLANDO JR & IN	4,900.00	5.065
21-21-29-519-0000-116A		
CHURCH ORLANDO JR & IN	4,900.00	5.066
21-21-29-519-0000-117A		
CHURCH ORLANDO JR & IN	4,900.00	5.067
21-21-29-519-0000-118A		
CHURCH ORLANDO JR & IN	4,900.00	5.068
21-21-29-519-0000-119A		
CHURCH ORLANDO JR & IN	4,900.00	5.069
21-21-29-519-0000-120A		
CHURCH ORLANDO JR & IN	4,900.00	5.070
.....MATTILAND AVE		
.....MATTILAND AVE		
MURPHY JOHN	4,900.00	5.071
21-21-29-519-0000-121A		
MURPHY JOHN	4,900.00	5.072
21-21-29-519-0000-122A		
MURPHY JOHN	4,900.00	5.073
21-21-29-519-0000-123A		
MURPHY JOHN	4,900.00	5.074
21-21-29-519-0000-124A		
MURPHY JOHN	4,900.00	5.075
21-21-29-519-0000-125A		
MURPHY JOHN	4,900.00	5.076
21-21-29-519-0000-126A		
MURPHY JOHN	4,900.00	5.077
21-21-29-519-0000-127A		
MURPHY JOHN	4,900.00	5.078
21-21-29-519-0000-128A		
MURPHY JOHN	4,900.00	5.079
21-21-29-519-0000-129A		
MURPHY JOHN	4,900.00	5.080
21-21-29-519-0000-130A		
MURPHY JOHN	4,900.00	5.081
21-21-29-519-0000-131A		
MURPHY JOHN	4,900.00	5.082
21-21-29-519-0000-132A		
MURPHY JOHN	4,900.00	5.083
21-21-29-519-0000-133A		
MURPHY JOHN	4,900.00	5.084
21-21-29-519-0000-134A		
MURPHY JOHN	4,900.00	5.085
21-21-29-519-0000-135A		
MURPHY JOHN	4,900.00	5.086
21-21-29-519-0000-136A		
MURPHY JOHN	4,900.00	5.087
21-21-29-519-0000-137A		
MURPHY JOHN	4,900.00	5.088
21-21-29-519-0000-138A		
MURPHY JOHN	4,900.00	5.089
21-21-29-519-0000-139A		
MURPHY JOHN	4,900.00	5.090
21-21-29-519-0000-140A		
MURPHY JOHN	4,900.00	5.091
21-21-29-519-0000-141A		
MURPHY JOHN	4,900.00	5.092
21-21-29-519-0000-142A		
MURPHY JOHN	4,900.00	5.093
21-21-29-519-0000-143A		
MURPHY JOHN	4,900.00	5.094
21-21-29-519-0000-144A		
MURPHY JOHN	4,900.00	5.095
21-21-29-519-0000-145A		
MURPHY JOHN	4,900.00	5.096
21-21-29-519-0000-146A		
MURPHY JOHN	4,900.00	5.097
21-21-29-519-0000-147A		
MURPHY JOHN	4,900.00	5.098
21-21-29-519-0000-148A		
MURPHY JOHN	4,900.00	5.099
21-21-29-519-0000-149A		
MURPHY JOHN	4,900.00	5.100
21-21-29-519-0000-150A		
MURPHY JOHN	4,900.00	5.101
21-21-29-519-0000-151A		
MURPHY JOHN	4,900.00	5.102
21-21-29-519-0000-152A		
MURPHY JOHN	4,900.00	5.103
21-21-29-519-0000-153A		
MURPHY JOHN	4,900.00	5.104
21-21-29-519-0000-154A		
MURPHY JOHN	4,900.00	5.105
21-21-29-519-0000-155A		
MURPHY JOHN	4,900.00	5.106
21-21-29-519-0000-156A		
MURPHY JOHN	4,900.00	5.107
21-21-29-519-0000-157A		
MURPHY JOHN	4,900.00	5.108
21-21-29-519-0000-158A		
MURPHY JOHN	4,900.00	5.109
21-21-29-519-0000-159A		
MURPHY JOHN	4,900.00	5.110
21-21-29-519-0000-160A		
MURPHY JOHN	4,900.00	5.111
21-21-29-519-0000-161A		
MURPHY JOHN	4,900.00	5.112
21-21-29-519-0000-162A		
MURPHY JOHN	4,900.00	5.113
21-21-29-519-0000-163A		
MURPHY JOHN	4,900.00	5.114
21-21-29-519-0000-164A		
MURPHY JOHN	4,900.00	5.115
21-21-29-519-0000-165A		
MURPHY JOHN	4,900.00	5.116
21-21-29-519-0000-166A		
MURPHY JOHN	4,900.00	5.117
21-21-29-519-0000-167A		
MURPHY JOHN	4,900.00	5.118
21-21-29-519-0000-168A		
MURPHY JOHN	4,900.00	5.119
21-21-29-519-0000-169A		
MURPHY JOHN	4,900.00	5.120
21-21-29-519-0000-170A		
MURPHY JOHN	4,900.00	5.121
21-21-29-519-0000-171A		
MURPHY JOHN	4,900.00	5.122
21-21-29-519-0000-172A		
MURPHY JOHN	4,900.00	5.123
21-21-29-519-0000-173A		
MURPHY JOHN	4,900.00	5.124
21-21-29-519-0000-174A		
MURPHY JOHN	4,900.00	5.125
21-21-29-519-0000-175A		
MURPHY JOHN	4,900.00	5.126
21-21-29-519-0000-176A		
MURPHY JOHN	4,900.00	5.127
21-21-29-519-0000-177A		
MURPHY JOHN	4,900.00	5.128
21-21-29-519-0000-178A		
MURPHY JOHN	4,900.00	5.129
21-21-29-519-0000-179A		
MURPHY JOHN	4,900.00	5.130
21-21-29-519-0000-180A		
MURPHY JOHN	4,900.00	5.131
21-21-29-519-0000-181A		
MURPHY JOHN	4,900.00	5.132
21-21-29-519-0000-182A		
MURPHY JOHN	4,900.00	5.133
21-21-29-519-0000-183A		
MURPHY JOHN	4,900.00	5.134
21-21-29-519-0000-184A		
MURPHY JOHN	4,900.00	5.135
21-21-29-519-0000-185A		
MURPHY JOHN	4,900.00	5.136
21-21-29-519-0000-186A		
MURPHY JOHN	4,900.00	5.137
21-21-29-519-0000-187A		
MURPHY JOHN	4,900.00	5.138
21-21-29-519-0000-188A		
MURPHY JOHN	4,900.00	5.139
21-21-29-519-0000-189A		
MURPHY JOHN	4,900.00	5.140
21-21-29-519-0000-190A		
MURPHY JOHN	4,900.00	5.141
21-21-29-519-0000-191A		
MURPHY JOHN	4,900.00	5.142
21-21-29-519-0000-192A		
MURPHY JOHN	4,900.00	5.143
21-21-29-519-0000-193A		
MURPHY JOHN	4,900.00	5.144
21-21-29-519-0000-194A		
MURPHY JOHN	4,900.00	5.145
21-21-29-519-0000-195A		
MURPHY JOHN	4,900.00	5.146
21-21-29-519-0000-196A		
MURPHY JOHN	4,900.00	5.147</

NAME - PARCEL NUMBER	TAXES DUE	SEQ. #	NAME - PARCEL NUMBER	TAXES DUE	SEQ. #	NAME - PARCEL NUMBER	TAXES DUE	SEQ. #
FISHER NED	51.01	5.866	FISHER ROSE B & JOHN W	436.29	5.866	PAD MORSE ST		
18-21-30-501-0100-0001			WHEELER MARIE H & TRUSTEES			LOTS 124 & 125 LESS RD		
PAD DIVISION ST			18-21-30-501-0000-0190 (HX)			BOLDEN AMOS &	65.12	5.904
WRIGHT MARY C	543.99	5.866	PAD 1274 JAY ST			BOLDEN ELIZABETH		
18-21-30-501-0100-0001 (HX)			18-21-30-501-0000-0190 ADD			18-21-30-501-0000-0190		
PAD 1133 AMANDA ST			CAD BORDA	690.04	5.866	PAD MORSE ST		
SMALL DARLENE	540.56	5.866	18-21-30-501-0000-0210			LOT 130 LESS RD REPLAT OF		
18-21-30-501-0000-0210			PAD 1133 JAY ST			GLOVER KENNETH C & CRAWFORD	803.16	5.905
PAD DE FOUR ST			GILLEY P W	88.94	5.866	MARY & BLUNT CHARLOTTE PER REP		
SMITH LEMMIE & MAURY I	268.23	5.866	18-21-30-501-0000-0240			18-21-30-501-0000-0140		
18-21-30-501-0100-0000 (HX)			PAD OAK ST			PAD JACKSON OFFI ST		
PAD 1285 DE FOUR ST			HERITAT FOR HUMANITY OF	94.95	5.866	LOTS 134 TO 139 REPLAT OF		
GINN JAMES E	41.97	5.866	GREATER ORLANDO AREA INC			GLOVER KENNETH C & CRAWFORD	408.70	5.906
18-21-30-501-0000-0000			18-21-30-501-0000-0010			MARY & BLUNT CHARLOTTE PER REP		
PAD AMANDA ST			PAD ANCHOR RD	180.85	5.870	18-21-30-501-0000-0420		
WIMES SADRIS HALL SERVICE INC	110.51	5.866	SUTTON JUANITA			PAD JACKSON OFFI ST		
18-21-30-501-0000-0110 (HX)			18-21-30-501-0000-0070 (HX)			LOTS 140 TO 145 REPLAT OF		
PAD 1133 AMANDA ST			PAD 1133 FINE ST			*****FRSTS ADD TO ALTIAMONTE		
GINN JAMES E	89.87	5.866	*****HOME TERRACE			*****FR 1 PG 14		
18-21-30-501-0000-0110			*****FR 7 PG 12			FREEMAN THOMAS G	12,819.00	5.907
PAD AMANDA ST			DUMAS BETTY & ORR BURACE &	997.97	5.871	18-21-30-501-0000-0160		
18-21-30-501-0000-0110			CHRISTINA THERESA ET AL			PAD 1009 E ALTAMONTE DR		
PAD AMANDA ST			18-21-30-501-0000-0080			LOTS 16 17 18 & S 1/2 OF		
BLUNT CHARLOTTE & JAMES	346.09	5.866	PAD 1009 MERRITT ST			ALTAMONTE TOWING SERVICE INC	4,616.94	5.908
18-21-30-501-0000-0080			18-21-30-501-0000-0110			18-21-30-501-0000-0420		
18-21-30-501-0000-0080 (HX)			*****HOME TERRACE			BEN INT WLT R/W MARKER ET &		
PAD 1133 AMANDA ST			*****FR 7 PG 12			WILSON ANTHONY L & JANICE E	913.41	5.908
18-21-30-501-0000-0080			DUMAS BETTY & ORR BURACE &	997.97	5.871	18-21-30-501-0000-0130		
18-21-30-501-0000-0080			CHRISTINA THERESA ET AL			PAD 147 MARKER ST		
PAD AMANDA ST			18-21-30-501-0000-0080			DARKINS GLENN T	327.04	5.910
18-21-30-501-0000-0080			*****HOME TERRACE			18-21-30-501-0000-0600		
18-21-30-501-0000-0080			*****FR 7 PG 12			PAD 1009 ALTAMONTE DR		
18-21-30-501-0000-0080			DUMAS BETTY & ORR BURACE &	997.97	5.871	W 8 FT OF S 1/2 OF LOT 160 &		
18-21-30-501-0000-0080			CHRISTINA THERESA ET AL			*****FRSTS ADD NR 2 TO		
18-21-30-501-0000-0080			18-21-30-501-0000-0080			*****ALTAMONTE		
18-21-30-501-0000-0080			*****HOME TERRACE			*****FR 1 PG 14		
18-21-30-501-0000-0080			*****FR 7 PG 12			CHURCH WILLIAMS CHAPEL	401.90	5.911
18-21-30-501-0000-0080			DUMAS BETTY & ORR BURACE &	997.97	5.871	BAPTIST CH		
18-21-30-501-0000-0080			CHRISTINA THERESA ET AL			18-21-30-501-0000-0040		
18-21-30-501-0000-0080			18-21-30-501-0000-0080			PAD STATION ST		
18-21-30-501-0000-0080			*****HOME TERRACE			S 41 2 FT OF LOT 4 & ALL LOT		
18-21-30-501-0000-0080			*****FR 7 PG 12			FOSTER JOHN W JR	102.50	5.910
18-21-30-501-0000-0080			DUMAS BETTY & ORR BURACE &	997.97	5.871	18-21-30-501-0000-0060		
18-21-30-501-0000-0080			CHRISTINA THERESA ET AL			PAD MARKER ST		
18-21-30-501-0000-0080			18-21-30-501-0000-0080			N 61 FT OF S 1/2 FT OF LOT 6		
18-21-30-501-0000-0080			*****HOME TERRACE			FOSTER JOHN W	470.66	5.911
18-21-30-501-0000-0080			*****FR 7 PG 12			18-21-30-501-0000-0060 (HX)		
18-21-30-501-0000-0080			DUMAS BETTY & ORR BURACE &	997.97	5.871	PAD 217 MARKER ST		
18-21-30-501-0000-0080			CHRISTINA THERESA ET AL			S 61 FT OF LOT 6		
18-21-30-501-0000-0080			18-21-30-501-0000-0080			PAMELA CORP	2,044.23	5.914
18-21-30-501-0000-0080			*****HOME TERRACE			CAD DR GORDON & MERRITT		
18-21-30-501-0000-0080			*****FR 7 PG 12			18-21-30-501-0000-0120		
18-21-30-501-0000-0080			DUMAS BETTY & ORR BURACE &	997.97	5.871	PAD 1010 WILLIAMS ST		
18-21-30-501-0000-0080			CHRISTINA THERESA ET AL			STOPEY MICHAEL	294.21	5.915
18-21-30-501-0000-0080			18-21-30-501-0000-0080			18-21-30-501-0000-0140		
18-21-30-501-0000-0080			*****HOME TERRACE			PROJ 1040 EMERSON PT		
18-21-30-501-0000-0080			*****FR 7 PG 12			N 100 FT OF W 70 FT OF E 1/2		
18-21-30-501-0000-0080			DUMAS BETTY & ORR BURACE &	997.97	5.871	FOSTER JOHN W JR	742.50	5.916
18-21-30-501-0000-0080			CHRISTINA THERESA ET AL			18-21-30-501-0000-0110		
18-21-30-501-0000-0080			18-21-30-501-0000-0080			PAD TERRACE LN		
18-21-30-501-0000-0080			*****HOME TERRACE			W 60 FT OF E 1/2 FT OF S 1/2		
18-21-30-501-0000-0080			*****FR 7 PG 12			STOPEY MICHAEL	70.94	5.916
18-21-30-501-0000-0080			DUMAS BETTY & ORR BURACE &	997.97	5.871	18-21-30-501-0000-0110		
18-21-30-501-0000-0080			CHRISTINA THERESA ET AL			FT LOT 13 BEG 100 FT N OF SE		
18-21-30-501-0000-0080			18-21-30-501-0000-0080			CHURCH WILLIAMS CHAPEL MISS	33.36	5.914
18-21-30-501-0000-0080			*****HOME TERRACE			BAPTIST CH & MANDY MARY ET AL		
18-21-30-501-0000-0080			*****FR 7 PG 12			18-21-30-501-0000-0140		
18-21-30-501-0000-0080			DUMAS BETTY & ORR BURACE &	997.97	5.871	N 50 FT OF E 1/2 FT OF LOT 14		
18-21-30-501-0000-0080			CHRISTINA THERESA ET AL			CHURCH WILLIAMS CHAPEL	44.06	5.915
18-21-30-501-0000-0080			18-21-30-501-0000-0080			MISSIONARY BAPTIST		
18-21-30-501-0000-0080			*****HOME TERRACE			18-21-30-501-0000-0140		
18-21-30-501-0000-0080			*****FR 7 PG 12			PROJ 1040 EMERSON PT		
18-21-30-501-0000-0080			DUMAS BETTY & ORR BURACE &	997.97	5.871	S 1/2 FT OF E 1/2 FT OF LOT 14		
18-21-30-501-0000-0080			CHRISTINA THERESA ET AL			FOSTER JOHN W	942.20	5.920
18-21-30-501-0000-0080			18-21-30-501-0000-0080			18-21-30-501-0000-0140		
18-21-30-501-0000-0080			*****HOME TERRACE			PAD 107 MARKER ST		
18-21-30-501-0000-0080			*****FR 7 PG 12			N 44 FT OF LOT 15		
18-21-30-501-0000-0080			DUMAS BETTY & ORR BURACE &	997.97	5.871	JONES ROY L & CASIE W	457.80	5.921
18-21-30-501-0000-0080			CHRISTINA THERESA ET AL			18-21-30-501-0000-0140		
18-21-30-501-0000-0080			18-21-30-501-0000-0080			PAD 217 MARKER ST		
18-21-30-501-0000-0080			*****HOME TERRACE			N 55 FT OF S 1/2 FT OF LOT 15		
18-21-30-501-0000-0080			*****FR 7 PG 12			CHURCH WILLIAMS CHAPEL	42.27	5.912
18-21-30-501-0000-0080			DUMAS BETTY & ORR BURACE &	997.97	5.871	MISSIONARY BAPTIST		
18-21-30-501-0000-0080			CHRISTINA THERESA ET AL			18-21-30-501-0000-0140		
18-21-30-501-0000-0080			18-21-30-501-0000-0080			PAD MARKER ST		
18-21-30-501-0000-0080			*****HOME TERRACE			N 44 FT OF S 1/2 FT OF LOT 15		
18-21-30-501-0000-0080			*****FR 7 PG 12			WILSON ANTHONY & JANICE	711.04	5.922
18-21-30-501-0000-0080			DUMAS BETTY & ORR BURACE &	997.97	5.871	18-21-30-501-0000-0150		
18-21-30-501-0000-0080			CHRISTINA THERESA ET AL			PAD 217 MARKER ST		
18-21-30-501-0000-0080			18-21-30-501-0000-0080			S 50 FT OF LOT 15 LESS 6 80		
18-21-30-501-0000-0080			*****HOME TERRACE			WILSON WANDA L	651.70	5.924
18-21-30-501-0000-0080			*****FR 7 PG 12			18-21-30-501-0000-0150		
18-21-30-501-0000-0080			DUMAS BETTY & ORR BURACE &	997.97	5.871	PAD 1062 WILLIAMS ST		
18-21-30-501-0000-0080			CHRISTINA THERESA ET AL			W 60 FT OF S 50 FT OF LOT 15		
18-21-30-501-0000-0080			18-21-30-501-0000-0080			THE PROPERTIES INC	1,054.01	5.925
18-21-30-501-0000-0080			*****HOME TERRACE			18-21-30-501-0000-0140		
18-21-30-501-0000-0080			*****FR 7 PG 12			PAD 1072 WILLIAMS ST		
18-21-30-501-0000-0080			DUMAS BETTY & ORR BURACE &	997.97	5.871	S 1/2 FT OF E 70 FT OF LOT 16		
18-21-30-501-0000-0080			CHRISTINA THERESA ET AL			CHURCH WILLIAMS CHAPEL	42.27	5.912
18-21-30-501-0000-0080			18-21-30-501-0000-0080			BAPTIST		
18-21-30-501-0000-0080			*****HOME TERRACE			18-21-30-501-0000-0160		
18-21-30-501-0000-0080			*****FR 7 PG 12			PAD WILLIAMS ST		
18-21-30-501-0000-0080			DUMAS BETTY & ORR BURACE &	997.97	5.871	N 64 FT OF S 1/2 FT OF LOT		
18-21-30-501-0000-0080			CHRISTINA THERESA ET AL			GHELTON SAMUEL	1,400.00	5.927
18-21-30-501-0000-0080			18-21-30-501-0000-0080			C/O ANNA S ROBINSON		
18-21-30-501-0000-0080			*****HOME TERRACE			18-21-30-501-0000-0140		
18-21-30-501-0000-0080			*****FR 7 PG 12			PAD 217 MARKER ST		
18-21-30-501-0000-0080			DUMAS BETTY & ORR BURACE &	997.97	5.871	N 19 FT OF S 99 FT OF LOTS		
18-21-30-501-0000-0080			CHRISTINA THERESA ET AL			WHITE CLEAVEATHER MERRITT	1,354.40	5.928
18-21-30-501-0000-0080			18-21-30-501-0000-0080			18-21-30-501-0000-0190		
18-21-30-501-0000-0080			*****HOME TERRACE			PAD 215 MARKER ST		
18-21-30-501-0000-0080			*****FR 7 PG 12			N 1/2 FT OF LOT OF LINES E		
18-21-30-501-0000-0080			DUMAS BETTY & ORR BURACE &	997.97	5.871	YATES STEVENS M & WERA	689.00	5.930
18-21-30-501-0000-0080			CHRISTINA THERESA ET AL			18-21-30-501-0000-0190		
18-21-30-501-0000-0080			18-21-30-501-0000-0080			PAD 215 MARKER ST		
18-21-30-501-0000-0080			*****HOME TERRACE			N 1/2 FT OF LOT OF LINES E		

NAME - PARCEL NUMBER	TAXES DUE	SEQ. #
JONES LAVERNE 18 21 30 514 0000 0150 (HX) PAD: 601 PRAIRIE LAKE DR S. 118 FT. OF E. 80 FT. OF LOT	1,261.93	5,940
PRELLES VALERIE M. 18 21 30 514 0000 0180 (HX) PAD: 417 SOUTH ST S. 112 FT. OF E. 1/2 LOT 14	1,261.93	5,940
FUMELLI MICHAEL E. 18 21 30 514 0000 0010 (HX) PAD: 413 PRAIRIE LAKE DR LOT 14 E. 1/2 OF LOT 14 BLK F	4,334.51	5,941
.....
MARSHALL ALLEN 18 21 30 514 0000 0040 (HX) PAD: 367 PARKIN DR	651.13	5,942
KEITH JOHN W. 18 21 30 514 0000 0110 (HX) PAD: 351 PARKIN DR	671.26	5,943
HANNA WYNN B. 18 21 30 514 0000 0120 (HX) PAD: 351 ANNE AVE	850.43	5,944
.....
TOMLIN KENNETH L. PATRICIA B. 18 21 30 514 0000 0040 (HX) PAD: 351 PRAIRIE LAKE DR	4,669.35	5,945
.....
HAMILTON CHARLES L. VERA 18 21 30 514 0000 0040 (HX) PAD: 351 PRAIRIE LAKE DR	3,987.64	5,946
.....
EDWARDS JOHN E. & LILLEN C. 18 21 30 514 0000 0110 (HX) PAD: 1245 N. ALAMANTE DR	5,841.00	5,947
.....
JOHNSON MICHAEL A. 18 21 30 514 0000 0110 (HX) PAD: 103 HIGHLAND DR	399.67	5,948
BLANCHARD JOHN L. 18 21 30 514 0000 0140 (HX) PAD: 103 HIGHLAND DR	784.17	5,949
ELLIOTT JERRY L. & A. 18 21 30 514 0000 0210 (HX) PAD: 103 HIGHLAND DR	1,241.79	5,950
.....
MUNOZ TERENTA 18 21 30 514 0000 0200 (HX) PAD: 143 W. LAUREN ST	2,166.64	5,951
RODRIGUEZ CARLOS & MARIA G. 18 21 30 514 0000 0210 (HX) PAD: 143 W. LAUREN ST	1,046.61	5,952
.....
BITTER L. & SON INC. 18 21 30 514 0000 0000 (HX) PAD: 1946 S. 17th St	4,767.04	5,953
SCHUPEN RICHARD J. PER REF. ESTATE OF FOSTER SCHUPEN 18 21 30 514 0000 0100 (HX) PAD: 1946 S. 17th St	1,261.81	5,954
.....
SCHUPEN RICHARD J. PER REF. ESTATE OF FOSTER SCHUPEN 18 21 30 514 0000 0100 (HX) PAD: 1946 S. 17th St	1,261.81	5,955
.....
RIVAS FERNANDO & CLARISSA C. 18 21 30 514 0000 0000 (HX) PAD: 110 E. LAUREN CT	1,003.44	5,956
MORRELL DAVID F. 18 21 30 514 0000 0110 (HX) PAD: 110 E. LAUREN CT	753.76	5,957
.....
BRIEN SHAMON 18 21 30 514 0000 0000 (HX) PAD: 110 E. LAUREN CT	1,388.19	5,958
.....
BRIDER DALE B. & BRIDER LORNE M. 18 21 30 514 0000 0110 (HX) PAD: 500 S. OAKLAND AVE PD LOT 10 REG. 8 84 DRG. 1 MIN	2,273.45	5,959
.....
PNM INC. 18 21 30 514 0000 0010 (HX) PAD: 740 S. 17th St	8,504.00	5,960
.....
BROOKS SLY OR LOT 1 MEN N BOWMAN J. THOMAS 18 21 30 501 0000 0010 (HX) PAD: 150 SOUTH ST P. 111 FT. W. OF NE COR LOT 1	815.12	5,961
.....
AVISTA PROPERTIES WILL INC. 18 21 30 501 0000 0000 (HX) PAD: 150 SOUTH ST	5,940.85	5,962
.....
PHINEMER JOSEPH W. & MILDRED & PECK BARBARA J. 18 21 30 501 0000 0120 (HX) PAD: 500 SOUTH ST	1,457.11	5,963
.....
DELL VICKY A. 18 21 30 501 0000 0210 (HX) PAD: 417 SOUTH ST S. 112 FT. OF E. 1/2 LOT 14	2,715.4	5,964
.....
LAKE OF THE WOODS SUBD
BRIEN SHAMON 18 21 30 514 0000 0000 (HX) PAD: 110 E. LAUREN CT	1,388.19	5,958
.....
BRIDER DALE B. & BRIDER LORNE M. 18 21 30 514 0000 0110 (HX) PAD: 500 S. OAKLAND AVE PD LOT 10 REG. 8 84 DRG. 1 MIN	2,273.45	5,959
.....
PNM INC. 18 21 30 514 0000 0010 (HX) PAD: 740 S. 17th St	8,504.00	5,960
.....
BROOKS SLY OR LOT 1 MEN N BOWMAN J. THOMAS 18 21 30 501 0000 0010 (HX) PAD: 150 SOUTH ST P. 111 FT. W. OF NE COR LOT 1	815.12	5,961
.....
AVISTA PROPERTIES WILL INC. 18 21 30 501 0000 0000 (HX) PAD: 150 SOUTH ST	5,940.85	5,962
.....
PHINEMER JOSEPH W. & MILDRED & PECK BARBARA J. 18 21 30 501 0000 0120 (HX) PAD: 500 SOUTH ST	1,457.11	5,963
.....
DELL VICKY A. 18 21 30 501 0000 0210 (HX) PAD: 417 SOUTH ST S. 112 FT. OF E. 1/2 LOT 14	2,715.4	5,964
.....
LAKE OF THE WOODS SUBD
BRIEN SHAMON 18 21 30 514 0000 0000 (HX) PAD: 110 E. LAUREN CT	1,388.19	5,958
.....
BRIDER DALE B. & BRIDER LORNE M. 18 21 30 514 0000 0110 (HX) PAD: 500 S. OAKLAND AVE PD LOT 10 REG. 8 84 DRG. 1 MIN	2,273.45	5,959
.....
PNM INC. 18 21 30 514 0000 0010 (HX) PAD: 740 S. 17th St	8,504.00	5,960
.....
BROOKS SLY OR LOT 1 MEN N BOWMAN J. THOMAS 18 21 30 501 0000 0010 (HX) PAD: 150 SOUTH ST P. 111 FT. W. OF NE COR LOT 1	815.12	5,961
.....
AVISTA PROPERTIES WILL INC. 18 21 30 501 0000 0000 (HX) PAD: 150 SOUTH ST	5,940.85	5,962
.....
PHINEMER JOSEPH W. & MILDRED & PECK BARBARA J. 18 21 30 501 0000 0120 (HX) PAD: 500 SOUTH ST	1,457.11	5,963
.....
DELL VICKY A. 18 21 30 501 0000 0210 (HX) PAD: 417 SOUTH ST S. 112 FT. OF E. 1/2 LOT 14	2,715.4	5,964
.....
LAKE OF THE WOODS SUBD
BRIEN SHAMON 18 21 30 514 0000 0000 (HX) PAD: 110 E. LAUREN CT	1,388.19	5,958
.....
BRIDER DALE B. & BRIDER LORNE M. 18 21 30 514 0000 0110 (HX) PAD: 500 S. OAKLAND AVE PD LOT 10 REG. 8 84 DRG. 1 MIN	2,273.45	5,959
.....
PNM INC. 18 21 30 514 0000 0010 (HX) PAD: 740 S. 17th St	8,504.00	5,960
.....
BROOKS SLY OR LOT 1 MEN N BOWMAN J. THOMAS 18 21 30 501 0000 0010 (HX) PAD: 150 SOUTH ST P. 111 FT. W. OF NE COR LOT 1	815.12	5,961
.....
AVISTA PROPERTIES WILL INC. 18 21 30 501 0000 0000 (HX) PAD: 150 SOUTH ST	5,940.85	5,962
.....
PHINEMER JOSEPH W. & MILDRED & PECK BARBARA J. 18 21 30 501 0000 0120 (HX) PAD: 500 SOUTH ST	1,457.11	5,963
.....
DELL VICKY A. 18 21 30 501 0000 0210 (HX) PAD: 417 SOUTH ST S. 112 FT. OF E. 1/2 LOT 14	2,715.4	5,964
.....
LAKE OF THE WOODS SUBD
BRIEN SHAMON 18 21 30 514 0000 0000 (HX) PAD: 110 E. LAUREN CT	1,388.19	5,958
.....
BRIDER DALE B. & BRIDER LORNE M. 18 21 30 514 0000 0110 (HX) PAD: 500 S. OAKLAND AVE PD LOT 10 REG. 8 84 DRG. 1 MIN	2,273.45	5,959
.....
PNM INC. 18 21 30 514 0000 0010 (HX) PAD: 740 S. 17th St	8,504.00	5,960
.....
BROOKS SLY OR LOT 1 MEN N BOWMAN J. THOMAS 18 21 30 501 0000 0010 (HX) PAD: 150 SOUTH ST P. 111 FT. W. OF NE COR LOT 1	815.12	5,961
.....
AVISTA PROPERTIES WILL INC. 18 21 30 501 0000 0000 (HX) PAD: 150 SOUTH ST	5,940.85	5,962
.....
PHINEMER JOSEPH W. & MILDRED & PECK BARBARA J. 18 21 30 501 0000 0120 (HX) PAD: 500 SOUTH ST	1,457.11	5,963
.....
DELL VICKY A. 18 21 30 501 0000 0210 (HX) PAD: 417 SOUTH ST S. 112 FT. OF E. 1/2 LOT 14	2,715.4	5,964
.....
LAKE OF THE WOODS SUBD
BRIEN SHAMON 18 21 30 514 0000 0000 (HX) PAD: 110 E. LAUREN CT	1,388.19	5,958
.....
BRIDER DALE B. & BRIDER LORNE M. 18 21 30 514 0000 0110 (HX) PAD: 500 S. OAKLAND AVE PD LOT 10 REG. 8 84 DRG. 1 MIN	2,273.45	5,959
.....
PNM INC. 18 21 30 514 0000 0010 (HX) PAD: 740 S. 17th St	8,504.00	5,960
.....
BROOKS SLY OR LOT 1 MEN N BOWMAN J. THOMAS 18 21 30 501 0000 0010 (HX) PAD: 150 SOUTH ST P. 111 FT. W. OF NE COR LOT 1	815.12	5,961
.....
AVISTA PROPERTIES WILL INC. 18 21 30 501 0000 0000 (HX) PAD: 150 SOUTH ST	5,940.85	5,962
.....
PHINEMER JOSEPH W. & MILDRED & PECK BARBARA J. 18 21 30 501 0000 0120 (HX) PAD: 500 SOUTH ST	1,457.11	5,963
.....
DELL VICKY A. 18 21 30 501 0000 0210 (HX) PAD: 417 SOUTH ST S. 112 FT. OF E. 1/2 LOT 14	2,715.4	5,964
.....
LAKE OF THE WOODS SUBD
BRIEN SHAMON 18 21 30 514 0000 0000 (HX) PAD: 110 E. LAUREN CT	1,388.19	5,958
.....
BRIDER DALE B. & BRIDER LORNE M. 18 21 30 514 0000 0110 (HX) PAD: 500 S. OAKLAND AVE PD LOT 10 REG. 8 84 DRG. 1 MIN	2,273.45	5,959
.....
PNM INC. 18 21 30 514 0000 0010 (HX) PAD: 740 S. 17th St	8,504.00	5,960
.....
BROOKS SLY OR LOT 1 MEN N BOWMAN J. THOMAS 18 21 30 501 0000 0010 (HX) PAD: 150 SOUTH ST P. 111 FT. W. OF NE COR LOT 1	815.12	5,961
.....
AVISTA PROPERTIES WILL INC. 18 21 30 501 0000 0000 (HX) PAD: 150 SOUTH ST	5,940.85	5,962
.....
PHINEMER JOSEPH W. & MILDRED & PECK BARBARA J. 18 21 30 501 0000 0120 (HX) PAD: 500 SOUTH ST	1,457.11	5,963
.....
DELL VICKY A. 18 21 30 501 0000 0210 (HX) PAD: 417 SOUTH ST S. 112 FT. OF E. 1/2 LOT 14	2,715.4	5,964
.....
LAKE OF THE WOODS SUBD
BRIEN SHAMON 18 21 30 514 0000 0000 (HX) PAD: 110 E. LAUREN CT	1,388.19	5,958
.....
BRIDER DALE B. & BRIDER LORNE M. 18 21 30 514 0000 0110 (HX) PAD: 500 S. OAKLAND AVE PD LOT 10 REG. 8 84 DRG. 1 MIN	2,273.45	5,959
.....
PNM INC. 18 21 30 514 0000 0010 (HX) PAD: 740 S. 17th St	8,504.00	5,960
.....
BROOKS SLY OR LOT 1 MEN N BOWMAN J. THOMAS 18 21 30 501 0000 0010 (HX) PAD: 150 SOUTH ST P. 111 FT. W. OF NE COR LOT 1	815.12	5,961
.....
AVISTA PROPERTIES WILL INC. 18 21 30 501 0000 0000 (HX) PAD: 150 SOUTH ST	5,940.85	5,962
.....
PHINEMER JOSEPH W. & MILDRED & PECK BARBARA J. 18 21 30 501 0000 0120 (HX) PAD: 500 SOUTH ST	1,457.11	5,963
.....
DELL VICKY A. 18 21 30 501 0000 0210 (HX) PAD: 417 SOUTH ST S. 112 FT. OF E. 1/2 LOT 14	2,715.4	5,964
.....
LAKE OF THE WOODS SUBD
BRIEN SHAMON 18 21 30 514 0000 0000 (HX) PAD: 110 E. LAUREN CT	1,388.19	5,958
.....
BRIDER DALE B. & BRIDER LORNE M. 18 21 30 514 0000 0110 (HX) PAD: 500 S. OAKLAND AVE PD LOT 10 REG. 8 84 DRG. 1 MIN	2,273.45	5,959
.....
PNM INC. 18 21 30 514 0000 0010 (HX) PAD: 740 S. 17th St	8,504.00	5,960
.....
BROOKS SLY OR LOT 1 MEN N BOWMAN J. THOMAS 18 21 30 501 0000 0010 (HX) PAD: 150 SOUTH ST P. 111 FT. W. OF NE COR LOT 1	815.12	5,961
.....
AVISTA PROPERTIES WILL INC. 18 21 30 501 0000 0000 (HX) PAD: 150 SOUTH ST	5,940.85	5,962
.....
PHINEMER JOSEPH W. & MILDRED & PECK BARBARA J. 18 21 30 501 0000 0120 (HX) PAD: 500 SOUTH ST	1,457.11	5,963
.....
DELL VICKY A. 18 21 30 501 0000 0210 (HX) PAD: 417 SOUTH ST S. 112 FT. OF E. 1/2 LOT 14	2,715.4	5,964
.....
LAKE OF THE WOODS SUBD
BRIEN SHAMON 18 21 30 514 0000 0000 (HX) PAD: 110 E. LAUREN CT	1,388.19	5,958
.....
BRIDER DALE B. & BRIDER LORNE M. 18 21 30 514 0000 0110 (HX) PAD: 500 S. OAKLAND AVE PD LOT 10 REG. 8 84 DRG. 1 MIN	2,273.45	5,959
.....
PNM INC. 18 21 30 514 0000 0010 (HX) PAD: 740 S. 17th St	8,504.00	5,960
.....
BROOKS SLY OR LOT 1 MEN N BOWMAN J. THOMAS 18 21 30 501 0000 0010 (HX) PAD: 150 SOUTH ST P. 111 FT. W. OF NE COR LOT 1	815.12	5,961
.....
AVISTA PROPERTIES WILL INC. 18 21 30 501 0000 0000 (HX) PAD: 150 SOUTH ST	5,940.85	5,962
.....
PHINEMER JOSEPH W. & MILDRED & PECK BARBARA J. 18 21 30 501 0000 0120 (HX) PAD: 500 SOUTH ST	1,457.11	5,963
.....
DELL VICKY A. 18 21 30 501 0000 0210 (HX) PAD: 417 SOUTH ST S. 112 FT. OF E. 1/2 LOT 14	2,715.4	5,964
.....
LAKE OF THE WOODS SUBD
BRIEN SHAMON 18 21 30 514 0000 0000 (HX) PAD: 110 E. LAUREN CT	1,388.19	5,958
.....
BRIDER DALE B. & BRIDER LORNE M. 18 21 30 514 0000 0110 (HX) PAD: 500 S. OAKLAND AVE PD LOT 10 REG. 8 84 DRG. 1 MIN	2,273.45	5,959
.....
PNM INC. 18 21 30 514 00		

NAME - PARCEL NUMBER	TAXES DUE	SEQ. #
*****SENELA BEND	*****	
*****PH 50 PG 1 & 2	*****	
TORRES NYDIA & DANIEL	2,686.40	6,815
16-21-31-519-0000-0190 (HX)		
PAD: 65 OAK BEND CT		
RICHLAND TUSCUMILLA LANE	1,181.01	6,846
1 URBAN CTR STE 310		
1-21-31-519-0100-0000		
PAD: 5010 WINTER SPRING BLVD		
TRACT 1		
*****WINDY OAKS	*****	
*****PH 55 PG 1 & 2	*****	
THOMAS JOHN W & PAFIN L	903.19	6,847
16-21-31-519-0000-0000		
*****SLAVIA COLONY CO-OP	*****	
*****PH 2 PG 1	*****	
ARIST PAULINE	1,761.18	6,848
16-21-31-519-0000-0190		
LOT 19 8008 HILL OF HAMBURG		
STONE CURTIS J	120.28	6,849
16-21-31-519-0000-0110		
LOTS 21 774 34 35 36 37 38		
STONE CURTIS J	771.44	6,850
16-21-31-519-0000-0110 (HX)		
PAD: 1951 MILLEN BL		
1 AC HOMESTEAD 1/4 ACRES IN		
DUDE MIKE A	1,780.12	6,851
TESINSKY JOHN CO-OPER PEPS		
16-21-31-519-0000-0770		
LOT 17 1/2 ACRES 1/4 ACRES		
NAVARRO ALEXANDER & MARITA	1,699.71	6,852
16-21-31-519-0000-0000		
W 1/2 FT OF N 1/2 OF LOT 4		
MICKLER ANDREW LAND TRUST	161.53	6,853
16-21-31-519-0000-0110		
5 4/8 FT OF N 1/2 FT OF N 1/2		
HOOVER JAMES D & NANCY J	2,510.10	6,854
16-21-31-519-0000-1170 (HX)		
PAD: 2425 BLACKBERRY TRL		
N 1/2 OF LOT 117		
*****SEC 18 TWP 21 RNG 31	*****	
*****WEDGEMOUNT UNIT 1	*****	
*****PH 21 PGS 12 & 14	*****	
TERPJE JOANN	978.0	6,855
18-21-31-501-0000-1170 (HX)		
PAD: 1130 DAPPLET ELM LN		
*****TUSCUMILLA RIDGE	*****	
*****PH 24 PG 21	*****	
THOMPSON WENTON E & MICHELE B	1,373.35	6,856
18-21-31-501-0000-0110 (HX)		
PAD: 1131 SADDLEBORN CIR		
UNIT 19		
*****SUNRISE ESTATES UNIT 1	*****	
*****PH 31 PG 24	*****	
HAWKINS PETER R & DEANNA M	2,252.60	6,857
18-21-31-501-0000-0010		
PAD: 1320 ORTEGA ST		
UDDIN GONAH A	1,366.59	6,858
18-21-31-501-0000-1110 (HX)		
PAD: 1375 CHAPARRAL LN		
MARTINEZ MARGARET	1,175.32	6,859
18-21-31-501-0000-0190 (HX)		
PAD: 1395 CHAPARRAL LN		
*****GREENBRIAR SUBD PH 1	*****	
*****PH 13 PGS 1 & 2	*****	
WILSON DONNA	1,810.72	6,860
18-21-31-501-0000-0160 (HX)		
PAD: 1009 KINGSWOOD CT		
GILTZ BYRON W & CAROLE M	1,530.54	6,861
18-21-31-501-0000-0770 (HX)		
PAD: 1001 TROCH TRACE		
LOT 77 (LESS W 5 FT)		
MYBURGH PHILIPPUS A	1,635.10	6,862
18-21-31-501-0000-0790 (HX)		
PAD: 1002 TROCH TRACE		
*****SUNRISE ESTATES UNIT 1	*****	
*****PH 40 PG 51	*****	
CADENAS MARISA	1,458.83	6,863
18-21-31-501-0000-1200 (HX)		
PAD: 1209 AMES DR		
*****TUSKA RIDGE UNIT 2	*****	
*****PH 52 PGS 53 & 54	*****	
LANKFORD FRANK & BOBBIE	1,230.90	6,864
18-21-31-512-0000-0770		
PAD: 2267 CATHARIN WAY		
*****WICKLOW OPENING AT TUSCUMILLA	*****	
*****PH 54 PGS 76 & 77	*****	
HENRY DAVID W & JILL M	1,478.06	6,865
18-21-31-512-0000-0010		
PAD: 101 ASHFORD DR		
*****TUSKA RIDGE UNIT 2	*****	
*****PH 54 PGS 91 & 92	*****	
DUNN MICHAEL S & JILL	1,057.44	6,866
18-21-31-514-0000-2700 (HX)		
PAD: 2184 MIDLINE CT		
*****TUSCUMILLA UNIT 1	*****	
*****PH 51 PGS 46 & 47	*****	
BRIDGES ARLENE C TRUSTEE	2,748.97	6,867
FBO		
18-21-31-514-0000-0790		
PAD: 1102 MARCUS CT		
*****TUSKA RIDGE UNIT 1	*****	
*****PH 43 PGS 23 & 24	*****	
CAUKIN BRIAN A & BEVERLY W	2,632.98	6,868
18-21-31-514-0000-0440 (HX)		
PAD: 902 KENWOOD CIP		
HATISTINI ENFIQUE A	1,834.00	6,869
18-21-31-512-0000-1050 (HX)		
PAD: 1148 KENWOOD CIR		
NAVARRO ALEXANDER TRUSTEE	738.58	6,870
FBO		
18-21-31-512-0000-0810		
PAD: 1172 KENWOOD CIR		
FERNANDEZ TERESA TRUSTEE	919.03	6,871
C/O ALEXANDER NAVARRO		
18-20-21-512-0000-0000		
PAD: 1157 HOLLOW PINE DR		
*****SEC 18 TWP 21 RNG 31	*****	
CONDELLO JOSEPH	1,361.54	6,872
19-21-31-501-0000-0000		
PAD: 1100 FISHER SUN BLVD		
*****SUNRISE UNIT 1	*****	
*****PH 23 PG 31	*****	
SANTOS BAMBANA	1,244.41	6,873
19-21-31-501-0000-0000 (HX)		
PAD: 1305 VIA VILLA NOVA		
SART ARTHUR F	1,931.41	6,874
19-21-31-501-0000-1000 (HX)		
PAD: 1134 VIA VILLA NOVA		
*****SUNRISE UNIT 1	*****	
*****PH 21 PGS 13 & 14	*****	
LEE CHIN H & LINDA H	1,772.90	6,875
19-21-31-501-0000-0200		
PAD: 1101 AVENUE DE LA TERRE		
WHEELER FRANK S	2,060.51	6,876
19-21-31-501-0000-0000		
PAD: 1414 MARTIN WAY		
TURK LURE & MELISSA E	1,721.12	6,877
19-21-31-501-0000-0000		
PAD: 1414 MARTIN WAY		
MCLEN JR CLARA J	156.41	6,878
19-21-31-501-0000-0000 (HX)		
PAD: 1104 AVENUE DE LA TERRE		
*****SUNRISE UNIT 1	*****	
*****PH 24 PGS 12 & 13	*****	
ELLEY MARGARET A	945.62	6,879
19-21-31-501-0000-1000 (HX)		
PAD: 1130 FRANKLIN WAY		
*****SUNRISE VILLAGE UNIT 1	*****	
*****PH 24 PGS 12 & 13	*****	
DUNN CAROL	1,272.71	6,880
19-21-31-501-0000-0110		
PAD: 1132 SAN DIEGO ST		
PODRICH FAY	1,010.41	6,881
19-21-31-501-0000-0110 (HX)		
PAD: 1130 SAN DIEGO ST		
*****SUNRISE VILLAGE UNIT 2	*****	
*****PH 24 PGS 12 & 13	*****	

NAME - PARCEL NUMBER	TAXES DUE	SEQ. #
MITCHELL PHINOLD & SOPHIA A	1,277.04	6,882
19-21-31-501-0000-0680 (HX)		
PAD: 1145 LA PALOMA CIR		
ALIE NAUFER D	1,686.58	6,883
19-21-31-501-0000-0770		
PAD: 14 MIRADA CT		
*****ALAFAYETTE FOREST	*****	
*****PH 24 PGS 12 & 13	*****	
GARLAND ROBERT & JANE	2,485.62	6,884
19-21-31-512-0000-0010 (HX)		
PAD: 2608 DANIELLE DR		
BILL HARVEY A	2,487.65	6,885
19-21-31-501-0000-0290 (HX)		
PAD: 1572 S LYONS CT		
PEPPER BRUCE D & SYBIL D	1,535.61	6,886
19-21-31-501-0000-0410		
PAD: 2596 DANIELLE DR		
GRIFFIN KEITH A & LINDA P	2,741.85	6,887
19-21-31-501-0000-0480 (HX)		
PAD: 1581 FRANCIS CT		
*****SUNRISE VILLAGE UNIT 6	*****	
*****PH 3 PG 22	*****	
CANTON WILSON	944.42	6,888
19-21-31-501-0000-0960 (HX)		
PAD: 1333 ANNES DR		
DOZIER HENRY C & DANNA E	1,711.81	6,889
19-21-31-501-0000-1350		
PAD: 1114 GALEON CT		
*****CONQUEST	*****	
*****PH 41 PGS 13 & 14	*****	
WATSON ROBERT M & SUSAN H	2,491.21	6,890
19-21-31-501-0000-0440 (HX)		
PAD: 1600 THORNHILL CIR		
RISHALL GEORGE P & ROBERTA S	2,315.11	6,891
19-21-31-501-0000-0460 (HX)		
PAD: 1600 THORNHILL CIR		
MULLER CATRY & PETER	2,667.08	6,892
19-21-31-501-0000-0710 (HX)		
PAD: 1511 THORNHILL CIR		
*****SUNRISE UNIT 2C	*****	
*****PH 28 PG 41	*****	
UDDIN MOHAMMED S & PARVEEN S	1,241.71	6,893
19-21-31-501-0000-1820 (HX)		
PAD: 1247 MADEIRA AVE		
GLICKER BRADLEY E & PAREN A	1,750.77	6,894
19-21-31-501-0000-0070		
PAD: 1230 MADEIRA AVE		
*****PAPER TUBS	*****	
*****PH 41 PG 617	*****	
WHITE ETHEL	1,214.75	6,895
19-21-31-501-0000-0210		
PAD: 1402 PALMWOOD WAY		
SEC 19 TWP 13S RGE 11E LOT 21		
*****SEC 20 TWP 21 RNG 31	*****	
KINGSLAND ROBERT S &	1,255.98	6,896
KATHLEEN K		
20-21-31-501-0000-0000 (HX)		
PAD: 1949 SLAVIA RD		
*****WILLIAMS SURVEY OF LOT 25	*****	
*****SLAVIA COLONY CO	*****	
*****PH 19 PG 163 S C R	*****	
JAMBOIN DAVID PEP REF &	1,198.47	6,897
JAMBOIN MILAN ET AL		
20-21-31-501-0000-0070		
PAD: 1991 W 426 SP		
LOT 7 & 15 FT WAD ST ADJ ON		
JAMBOIN DAVID PEP REF &	186.68	6,898
JAMBOIN MILAN ET AL		
20-21-31-501-0000-0000		
PAD: W 426		
LOT 7 & 15 FT WAD ST ADJ ON		
*****TUSKA RIDGE UNIT 1	*****	
*****PH 40 PGS 44 & 45	*****	
DONNAN JAMES A & LIZ M	1,136.31	6,899
20-21-31-501-0000-0080 (HX)		
PAD: 1114 AMADOR PL		
*****SLAVIA PARKS	*****	
*****PH 4 PGS 4	*****	
MUELLER RUDY L	61.67	6,900
20-21-31-501-0000-005A		
PAD: EAGLE PASS RD		
W 400 FT OF LOT 4 (LESS RDS)		
MUELLER RUDOLPH O	1,357.06	6,901
20-21-31-501-0000-006B		
PAD: 1200 EAGLE PASS RD		
N 300 FT OF LOT 6		
DUCA MIKE A	575.71	6,902
TESINSKY JOHN CO-OPER PEPS		
20-21-31-501-0000-0000		
PAD: W 426 SP		
LOT C (LESS RD)		
DUCA MIKE A	556.57	6,903
TESINSKY JOHN CO-OPER PEPS		
20-21-31-501-0000-0000 (HX)		
PAD: 2144 W 426 SP		
LOT B & N 15 FT OF LOT 2		
*****TUSKA RIDGE UNIT 2	*****	
*****PH 40 PGS 46 & 47	*****	
FOSTER JAMES N & JOAN M	1,269.44	6,904
20-21-31-501-0000-0290 (HX)		
PAD: 1111 ELMSTRET PL		
RADELEF MICHAEL E & PAREN	1,810.50	6,905
20-21-31-501-0000-0410		
PAD: 1169 HOLLOW PINE DR		
PIPKA PETER & CAMELON S	2,779.73	6,906
20-21-31-501-0000-1000 (HX)		
PAD: 1132 HOLLOW PINE DR		
*****SEC 21 TWP 21 RNG 31	*****	
STONE CURTIS J	2,451.87	6,907
21-21-31-501-0120-0000		
*****HARBORSIDE FARMS	*****	
*****PH 17 PGS 71	*****	
BAKER JANE R A	1,888.97	6,908
MARLENE MARY L		
21-21-31-501-0000-0000 (HX)		
PAD: 602 OAK WIP		
LOT B & FT LOT C BEG. SE		
*****MIRAMILLA UNIT 3	*****	
*****PH 41 PGS 69 & 70	*****	
HELLER ALBERT W & SHELLEY R	1,071.26	6,909
21-21-31-501-0000-1550 (HX)		
PAD: 404 MCKAY LANE		
MATTHEW JENNIFER	2,034.67	6,910
21-21-31-501-0000-1920 (HX)		
PAD: 1164 SLASH PINE PL		
MORROWAY PETER	2,167.64	6,911
21-21-31-501-0000-1910		
PAD: 1428 SLASH PINE PL		
*****LAKY CREEK	*****	
*****PH 41 PGS 1 & 2	*****	
SPRACHEY ALEXANDER &	1,657.77	6,912
MARTEEN		
19-21-31-501-0000-0120 (HX)		
PAD: 1428 SLASH PINE PL		
*****MAYFAIR PARK	*****	
*****PH 44 PGS 12 & 13	*****	
TERREL DAVID M & PAREN Y	1,416.48	6,913
21-21-31-501-0000-0130 (HX)		
PAD: 1428 WEMBLEY PL		
*****MAYFAIR PARK	*****	
*****PH 44 PGS 12 & 13	*****	
MATTHEW JENNIFER	1,881.15	6,914
21-21-31-501-0000-0110 (HX)		
PAD: 1428 SLASH PINE PL		
*****MAYFAIR PARK	*****	
*****PH 44 PGS 12 & 13	*****	
MATTHEW JENNIFER	1,881.15	6,915
21-21-31-501-0000-0110 (HX)		
PAD: 1428 SLASH PINE PL		
*****MAYFAIR PARK	*****	
*****PH 44 PGS 12 & 13	*****	
MATTHEW JENNIFER	1,881.15	6,916
21-21-31-501-0000-0110 (HX)		
PAD: 1428 SLASH PINE PL		
*****MAYFAIR PARK	*****	
*****PH 44 PGS 12 & 13	*****	
MATTHEW JENNIFER	1,881.15	6,917
21-21-31-501-0000-0110 (HX)		
PAD: 1428 SLASH PINE PL		
*****MAYFAIR PARK	*****	
*****PH 44 PGS 12 & 13	*****	
MATTHEW JENNIFER	1,881.15	6,918
21-21-31-501-0000-0110 (HX)		
PAD: 1428 SLASH PINE PL		
*****MAYFAIR PARK	*****	
*****PH 44 PGS 12 & 13	*****	
MATTHEW JENNIFER	1,881.15	6,919
21-21-31-501-0000-0110 (HX)		
PAD: 1428 SLASH PINE PL		
*****MAYFAIR PARK	*****	
*****PH 44 PGS 12 & 13	*****	

NAME - PARCEL NUMBER	TAXES DUE	SEQ. #
HOSTON RUSSELL PER REP	2,825.46	6,920
22-21-31-501-0100-0000 (HX)		
PAD: 122 RUN THY CT		
*****ALAFAYA WOODS PH 19	*****	
*****PH 37 PGS 10 TO 31	*****	
HASLER SCOTT T & MELODY A	2,201.39	6,921
22-21-31-501-0000-0210 (HX)		
PAD: 1003 PARTIN CT		
TIERNEY PATRICIA M	1,700.18	6,922
22-21-31-501-0000-0530 (HX)		
PAD: 1003 PRESIDENTE LN		
M. WILSON JAMES A	1,415.00	6,923
22-21-31-501-0000-0810 (HX)		
PAD: 1014 FREEL CT		
*****ALAFAYA WOODS PH 22		

NAME - PARCEL NUMBER	TAXES DUE	SEQ #
LAWSON JAMES H	1,429.55	6,958
31-21-31-510-0000-0260 (HX)		
PAD 1014 VERNON LOOP		
DUREK JOE	1,514.79	6,959
23-21-31-510-0000-0560 (HX)		
PAD 1003 VERNON LOOP		
*****BIG OAKS		
*****PFS 37 PGS 73 TO 81		
BELOW SCOTT B & TAMMY	2,422.63	6,960
21-21-31-511-0000-0140 (HX)		
PAD 1042 BIG OAKS BLVD		
FOSTER ERNESTINE	2,691.39	6,961
21-21-31-511-0000-0430 (HX)		
PAD 1017 BIG OAKS BLVD		
*****TWIN RIVERS SEC 1		
*****PFS 38 PGS 1 TO 4		
CARSON ALONZO & BEATRICE	2,694.64	6,962
23-21-31-512-0000-0030 (HX)		
PAD 1004 GREEN BRANCH CT		
*****ALAFAYA WOODS PH 17		
*****PFS 38 PGS 41 TO 43		
SCHAFF PATRICK	1,552.06	6,963
23-21-31-513-0000-0090 (HX)		
PAD 1009 BAPTIST CT		
MERCOURT KEVIN L	1,692.38	6,964
42-21-31-513-0000-0130 (HX)		
PAD 1018 BAPTIST CT		
CLAIR DENNIS W & KARLA M	2,109.44	6,965
23-21-31-513-0000-0040 (HX)		
PAD 1008 BAPTIST CT		
*****ALAFAYA WOODS PH 21		
*****PFS 38 PGS 63 TO 64		
JOE DIANE P	2,561.14	6,966
23-21-31-515-0000-0010 (HX)		
PAD 1001 POND APPLE CT		
BOSTON INV GROUP INC	1,468.95	6,967
23-21-31-515-0000-0300 (HX)		
PAD 1011 BLUEJACK OAK DR		
SMITH WILLIE M &	1,499.76	6,968
SMITH EDDIE B CO TRS		
23-21-31-515-0000-0320 (HX)		
PAD 1015 BLUEJACK OAK DR		
KAVALLA CAROL C	2,280.08	6,969
23-21-31-515-0000-0560 (HX)		
PAD 1016 HORNBEAM CT		
GOMEZ FRANCISCO	2,489.13	6,970
23-21-31-515-0000-0840 (HX)		
PAD 1014 HORNBEAM CT		
*****ALAFAYA WOODS PH 21B		
*****PFS 43 PGS 85 TO 88		
MARTINEZ MARLENE J & EDWARD L	1,160.92	6,971
23-21-31-516-0000-0110 (HX)		
PAD 1023 SUGARHERBY TRL		
BOUFFARD NUMERIANO V & MARIA E	1,315.08	6,972
23-21-31-516-0000-0420 (HX)		
PAD 1056 HORNBEAM ST		
*****LAKE ROGERS ESTATES		
*****PFS 43 PGS 36 THRU 40		
WOODS ANNA M	2,495.28	6,973
23-21-31-517-0000-0200 (HX)		
PAD 1045 LAKE ROGERS CTR		
DIAFONSO EDMUNDO & REBECCA	1,402.56	6,974
23-21-31-517-0000-0430 (HX)		
PAD 1130 LAKE ROGERS TR		
*****ALAFAYA WOODS PH 11		
*****PFS 43 PGS 47 & 44		
GREENE CLIFTON M W	1,383.46	6,975
23-21-31-518-0000-0100 (HX)		
PAD 1050 SAND KEY DR		
*****ALAFAYA WOODS PH 02		
*****PFS 12 PGS 64 TO 61		
HUYNH TAM LUONG V	1,795.06	6,976
23-21-31-518-0000-0160 (HX)		
PAD 1019 NEELY ST		
SMITH JEFFREY T & DELOFAY A	2,461.07	6,977
23-21-31-518-0000-0950 (HX)		
PAD 1010 RAGSDALE RD		
TORRES LUIS R & ANDREA P	1,009.25	6,978
23-21-31-518-0000-0000 (HX)		
PAD 1005 RAGSDALE RD		
WEBSTER RICK W & BETTY R	2,079.74	6,979
23-21-31-518-0000-0770 (HX)		
PAD 1051 WEAVER DR		
RAMIREZ ROSALIA &	2,400.40	6,980
FERNA ROSA ANGE		
23-21-31-518-0000-0800 (HX)		
PAD 1011 WEAVER DR		
REVINGTON KEVIN C & CLARA L	1,867.29	6,981
23-21-31-518-0000-1230 (HX)		
PAD 1013 FAIRCLOTH CT		
PEREZ DANNY & APRIL	2,426.66	6,982
23-21-31-518-0000-1257 (HX)		
PAD 1017 FAIRCLOTH CT		
*****ALAFAYA WOODS PH 04		
*****PFS 38 PGS 62 TO 64		
GONZALEZ ELSIE & ELWIN	1,713.76	6,983
23-21-31-518-0000-0010 (HX)		
PAD 1104 MC KINNON AVE		
HANSON DALE A & KATHERINE A	1,634.68	6,984
23-21-31-518-0000-0160 (HX)		
PAD 1074 MC KINNON AVE		
WATTS MICHELLE	981.86	6,985
23-21-31-518-0000-0330 (HX)		
PAD 1002 WHITTIER CDR		
TRAVITSKY LAWRENCE B &	1,540.23	6,986
BEATRICE		
23-21-31-518-0000-0990 (HX)		
PAD 1009 MC KINNON AVE		
LACKMAN HERBERT F & LILLIE E	2,574.28	6,987
23-21-31-518-0000-0310 (HX)		
PAD 1008 GUTWALT DR		
*****ALAFAYA WOODS PH 03		
*****PFS 38 PGS 65 TO 68		
CHURCH HOPE COMMUNITY OF	6,744.12	6,988
TRILANDOVING		
24-21-31-500-0000-0000 (HX)		
PAD 1025 W 419 CR		
CHULOGIA ROAD TRUST	4,570.6	6,989
24-21-31-500-0000-0000 (HX)		
PAD 412 CR		
CHURCH BAPTIST METHODIST	1,881.03	6,990
ORLANDO INC		
24-21-31-500-0000-0000 (HX)		
PAD 434		
*****TWIN RIVERS SEC 1A		
*****PFS 39 PGS 24 & 28		
ACHENBACH BILLY J	41.58	6,991
24-21-31-500-0000-0200 (HX)		
PAD 1011 BENNETT CREEK CT		
PELOUZA JOSEFINA FERRO J &	2,378.78	6,992
OMAYRA J		
24-21-31-500-0000-0000 (HX)		
PAD 1002 MARSHAL CREEK CT		
AGUIRRE JUAN DIEGO MONTANAR	1,004.4	6,993
24-21-31-500-0000-0110 (HX)		
PAD 1017 GOLF CREEK BLVD		
HARRIS JERRY W & JANE	1,111.11	6,994
24-21-31-500-0000-0110 (HX)		
PAD 1018 KELLY CREEK BLVD		
LOVE PETER T & JEAN	2,233.99	6,995
24-21-31-500-0000-0120 (HX)		
PAD 1018 KELLY CREEK BLVD		
*****TWIN RIVERS SEC 1B		
*****PFS 39 PGS 24 & 28		
DEANIAN EDUARDO & FINNIE Y	61.58	6,996
24-21-31-500-0000-0000 (HX)		
PAD 1014 QUAKER BRIDGE		
*****TWIN RIVERS SEC 1C		

NAME - PARCEL NUMBER	TAXES DUE	SEQ #
*****PFS 40 PGS 82 TO 76		
DEREK JENNIE T	2,544.35	6,999
24-21-31-500-0000-0100 (HX)		
PAD 1977 CRYSTAL DOWNS CT		
ESSIGN GUDWIN J	2,248.27	7,000
24-21-31-500-0000-0130 (HX)		
PAD 1978 CRYSTAL DOWNS CT		
FARWELL KRISTY	2,561.52	7,001
24-21-31-500-0000-0270 (HX)		
PAD 1977 TURNBERRY DR		
MC DONALD KELLY G & STEPHANIE	4,472.14	7,002
42-21-31-500-0000-0480 (HX)		
PAD 2156 FIRESTONE CT		
LINARDI MARIO C & PATRICIA B	1,244.25	7,003
24-21-31-500-0000-0810 (HX)		
PAD 1974 TURNBERRY DR		
MC DONALD KELLY G & STEPHANIE	4,400.92	7,004
42-21-31-500-0000-0480 (HX)		
PAD 2156 FIRESTONE CT		
MC DONALD KELLY G & STEPHANIE	4,400.92	7,005
42-21-31-500-0000-0480 (HX)		
PAD 2156 FIRESTONE CT		
MC DONALD KELLY G & STEPHANIE	4,400.92	7,006
42-21-31-500-0000-0480 (HX)		
PAD 2156 FIRESTONE CT		
MC DONALD KELLY G & STEPHANIE	4,400.92	7,007
42-21-31-500-0000-0480 (HX)		
PAD 2156 FIRESTONE CT		
MC DONALD KELLY G & STEPHANIE	4,400.92	7,008
42-21-31-500-0000-0480 (HX)		
PAD 2156 FIRESTONE CT		
MC DONALD KELLY G & STEPHANIE	4,400.92	7,009
42-21-31-500-0000-0480 (HX)		
PAD 2156 FIRESTONE CT		
MC DONALD KELLY G & STEPHANIE	4,400.92	7,010
42-21-31-500-0000-0480 (HX)		
PAD 2156 FIRESTONE CT		
MC DONALD KELLY G & STEPHANIE	4,400.92	7,011
42-21-31-500-0000-0480 (HX)		
PAD 2156 FIRESTONE CT		
MC DONALD KELLY G & STEPHANIE	4,400.92	7,012
42-21-31-500-0000-0480 (HX)		
PAD 2156 FIRESTONE CT		
MC DONALD KELLY G & STEPHANIE	4,400.92	7,013
42-21-31-500-0000-0480 (HX)		
PAD 2156 FIRESTONE CT		
MC DONALD KELLY G & STEPHANIE	4,400.92	7,014
42-21-31-500-0000-0480 (HX)		
PAD 2156 FIRESTONE CT		
MC DONALD KELLY G & STEPHANIE	4,400.92	7,015
42-21-31-500-0000-0480 (HX)		
PAD 2156 FIRESTONE CT		
MC DONALD KELLY G & STEPHANIE	4,400.92	7,016
42-21-31-500-0000-0480 (HX)		
PAD 2156 FIRESTONE CT		
MC DONALD KELLY G & STEPHANIE	4,400.92	7,017
42-21-31-500-0000-0480 (HX)		
PAD 2156 FIRESTONE CT		
MC DONALD KELLY G & STEPHANIE	4,400.92	7,018
42-21-31-500-0000-0480 (HX)		
PAD 2156 FIRESTONE CT		
MC DONALD KELLY G & STEPHANIE	4,400.92	7,019
42-21-31-500-0000-0480 (HX)		
PAD 2156 FIRESTONE CT		
MC DONALD KELLY G & STEPHANIE	4,400.92	7,020
42-21-31-500-0000-0480 (HX)		
PAD 2156 FIRESTONE CT		
MC DONALD KELLY G & STEPHANIE	4,400.92	7,021
42-21-31-500-0000-0480 (HX)		
PAD 2156 FIRESTONE CT		
MC DONALD KELLY G & STEPHANIE	4,400.92	7,022
42-21-31-500-0000-0480 (HX)		
PAD 2156 FIRESTONE CT		
MC DONALD KELLY G & STEPHANIE	4,400.92	7,023
42-21-31-500-0000-0480 (HX)		
PAD 2156 FIRESTONE CT		
MC DONALD KELLY G & STEPHANIE	4,400.92	7,024
42-21-31-500-0000-0480 (HX)		
PAD 2156 FIRESTONE CT		
MC DONALD KELLY G & STEPHANIE	4,400.92	7,025
42-21-31-500-0000-0480 (HX)		
PAD 2156 FIRESTONE CT		
MC DONALD KELLY G & STEPHANIE	4,400.92	7,026
42-21-31-500-0000-0480 (HX)		
PAD 2156 FIRESTONE CT		
MC DONALD KELLY G & STEPHANIE	4,400.92	7,027
42-21-31-500-0000-0480 (HX)		
PAD 2156 FIRESTONE CT		
MC DONALD KELLY G & STEPHANIE	4,400.92	7,028
42-21-31-500-0000-0480 (HX)		
PAD 2156 FIRESTONE CT		
MC DONALD KELLY G & STEPHANIE	4,400.92	7,029
42-21-31-500-0000-0480 (HX)		
PAD 2156 FIRESTONE CT		
MC DONALD KELLY G & STEPHANIE	4,400.92	7,030
42-21-31-500-0000-0480 (HX)		
PAD 2156 FIRESTONE CT		
MC DONALD KELLY G & STEPHANIE	4,400.92	7,031
42-21-31-500-0000-0480 (HX)		
PAD 2156 FIRESTONE CT		
MC DONALD KELLY G & STEPHANIE	4,400.92	7,032
42-21-31-500-0000-0480 (HX)		
PAD 2156 FIRESTONE CT		
MC DONALD KELLY G & STEPHANIE	4,400.92	7,033
42-21-31-500-0000-0480 (HX)		
PAD 2156 FIRESTONE CT		
MC DONALD KELLY G & STEPHANIE	4,400.92	7,034
42-21-31-500-0000-0480 (HX)		
PAD 2156 FIRESTONE CT		
MC DONALD KELLY G & STEPHANIE	4,400.92	7,035
42-21-31-500-0000-0480 (HX)		
PAD 2156 FIRESTONE CT		
MC DONALD KELLY G & STEPHANIE	4,400.92	7,036
42-21-31-500-0000-0480 (HX)		
PAD 2156 FIRESTONE CT		
MC DONALD KELLY G & STEPHANIE	4,400.92	7,037
42-21-31-500-0000-0480 (HX)		
PAD 2156 FIRESTONE CT		
MC DONALD KELLY G & STEPHANIE	4,400.92	7,038
42-21-31-500-0000-0480 (HX)		
PAD 2156 FIRESTONE CT		
MC DONALD KELLY G & STEPHANIE	4,400.92	7,039
42-21-31-500-0000-0480 (HX)		
PAD 2156 FIRESTONE CT		
MC DONALD KELLY G & STEPHANIE	4,400.92	7,040
42-21-31-500-0000-0480 (HX)		
PAD 2156 FIRESTONE CT		
MC DONALD KELLY G & STEPHANIE	4,400.92	7,041
42-21-31-500-0000-0480 (HX)		
PAD 2156 FIRESTONE CT		
MC DONALD KELLY G & STEPHANIE	4,400.92	7,042
42-21-31-500-0000-0480 (HX)		
PAD 2156 FIRESTONE CT		
MC DONALD KELLY G & STEPHANIE	4,400.92	7,043
42-21-31-500-0000-0480 (HX)		
PAD 2156 FIRESTONE CT		
MC DONALD KELLY G & STEPHANIE	4,400.92	7,044
42-21-31-500-0000-0480 (HX)		
PAD 2156 FIRESTONE CT		
MC DONALD KELLY G & STEPHANIE	4,400.92	7,045
42-21-31-500-0000-0480 (HX)		
PAD 2156 FIRESTONE CT		
MC DONALD KELLY G & STEPHANIE	4,400.92	7,046
42-21-31-500-0000-0480 (HX)		
PAD 2156 FIRESTONE CT		
MC DONALD KELLY G & STEPHANIE	4,400.92	7,047
42-21-31-500-0000-0480 (HX)		
PAD 2156 FIRESTONE CT		
MC DONALD KELLY G & STEPHANIE	4,400.92	7,048
42-21-31-500-0000-0480 (HX)		
PAD 2156 FIRESTONE CT		
MC DONALD KELLY G & STEPHANIE	4,400.92	7,049
42-21-31-500-0000-0480 (HX)		
PAD 2156 FIRESTONE CT		
MC DONALD KELLY G & STEPHANIE	4,400.92	7,050
42-21-31-500-0000-0480 (HX)		
PAD 2156 FIRESTONE CT		
MC DONALD KELLY G & STEPHANIE	4,400.92	7,051
42-21-31-500-0000-0480 (HX)		
PAD 2156 FIRESTONE CT		
MC DONALD KELLY G & STEPHANIE	4,400.92	7,052
42-21-31-500-0000-0480 (HX)		
PAD 2156 FIRESTONE CT		
MC DONALD KELLY G & STEPHANIE	4,400.92	7,053
42-21-31-500-0000-0480 (HX)		
PAD 2156 FIRESTONE CT		
MC DONALD KELLY G & STEPHANIE	4,400.92	7,054
42-21-31-500-0000-0480 (HX)		
PAD 2156 FIRESTONE CT		
MC DONALD KELLY G & STEPHANIE	4,400.92	7,055
42-21-31-500-0000-0480 (HX)		
PAD 2156 FIRESTONE CT		
MC DONALD KELLY G & STEPHANIE	4,400.92	7,056
42-21-31-500-0000-0480 (HX)		
PAD 2156 FIRESTONE CT		
MC DONALD KELLY G & STEPHANIE	4,400.92	7,057
42-21-31-500-0000-0480 (HX)		
P		



**TERRORISM FORCES US TO
MAKE A CHOICE. WE CAN BE AFRAID.
OR WE CAN BE READY.**

- Lu Sun Ye, Office of Emergency Management -

Next time there's a terrorist alert, you can feel helpless or you can feel prepared. It's up to you. The steps to readiness are not difficult. First, make an emergency supply kit for yourself and your family. Set aside supplies to survive three days at home. Water, food, first-aid supplies, clothing, a flashlight and a battery-powered radio. Next, develop a family communications plan so your family can stay in touch during an emergency. Third, learn how to respond to the different types of terrorist threats, such as biological, chemical and radiological.

That information, along with details about kits and plans, is available at www.ready.gov. Or, call 1-800-BE-READY (1-800-237-3239) for a free brochure, "Preparing Makes Sense. Get Ready Now."

READY



Part of a campaign by the U.S. Department of Homeland Security and The Advertising Council. Richard Corman, Photographer