

ACROSS 52 Cents. 1 Arctic, 2 Novelist, 3 Bagnoid, 4 Slaughter, 5 Famous uncle, 6 Attable, 7 Legal claim, 7 Note (Lat), 8 Evening in Italy, 20 Vice-president (N), 22 Actor Ferrer, 23 Monument, 27 Burning, 27 Eastern, 29 lower (prefix), 31 Positive pole, 32 Year (pref), 34 Companion of ood, 38 Venetian official, 40 Food, 42 Those in office, 43 Most noise, 45 Seaweed, 46 If not, 51 Author Fleming, 52 Cents, 55 Fall in drops, 58 Male horse, 60 Push with the head, 62 Here (Fr), 63 Coin of Italy, 64 Paradise, 65 Astronauts, 66 Squeezed out, 67 Haul up, 68 Compass point, 69 Opponent, 70 Facilitate, 71 Egyptian deity, 2 Torse, 3 Beginning, 4 Long fish, 5 Innocent, 6 Phras of understanding (2), 7 Force unit, 8 Externist, 9 Ruler's unit, 10 Aquatic, 11 Type of rock, 12 Ringing, 21 Small cushion (abbr), 24 Compass, 25 Facilitate, 28 Canal system in northern Michigan, 29 State (Fr), 30 Word of negation, 33 Snare, 35 Legos, 36 Genetic material, 37 Compass, 38 Holy message, 39 Environment, 40 Mummy, 41 Small cushion (abbr), 42 Compass, 43 Egyptian deity, 46 Lysergic acid diethylamide, 47 Place for a drama critic, 48 Design on fabric, 49 Trough by resident, 50 Colorado park, 53 Over (Ger), 54 Unclothed, 55 Holy message, 57 Road, 59 Mum's mate, 61 Explosive (abbr).

Plants Contain No Cholesterol

DEAR DR. LAMB — I read your article stating that one of the vegetable oils contain cholesterol. While the department of agriculture does agree with this, the American Heart Assn. does not. Their folder "The Way to a Man's Heart" contains these statements: "Saturated animal fats are found in beef, lamb, pork and ham; in butter, cream and whole milk; and in cheeses made from cream and whole milk." Saturated vegetable fats are found in many solid and hydrogenated shortenings; and in coconut oil, cocoa butter and palm oil (used in commercially prepared cookies, pie fillings and non-dairy milk and cream substitutes).

I am sending you The Health Letter number 1-2, Cholesterol, Triglycerides, Blood Fats, Atherosclerosis, to help you understand these important factors. Others who want this information can send 50 cents with a long, stamped, self-addressed envelope for it. Just send your letter to me in care of this newspaper, P.O. Box 1551, Radio City Station, New York, NY 10101. DEAR DR. LAMB — What are histamines? Histamine is a complex chemical manufactured by animal and plant tissues. It contains an amine group of nitrogen and hydrogen the same as the amine group in an amino acid or protein. Histamine is important in certain circulatory reactions, stimulates the stomach to produce acid digestive juices and is an irritant that causes the symptoms people have during an allergic response. The offending "allergic agent" enters the body and the body releases histamine from sensitive cells. The histamine release causes symptoms, such as a runny nose, asthma attack or hives. Antihistamines counteract the action of histamines and relieve the symptoms of allergic reactions.

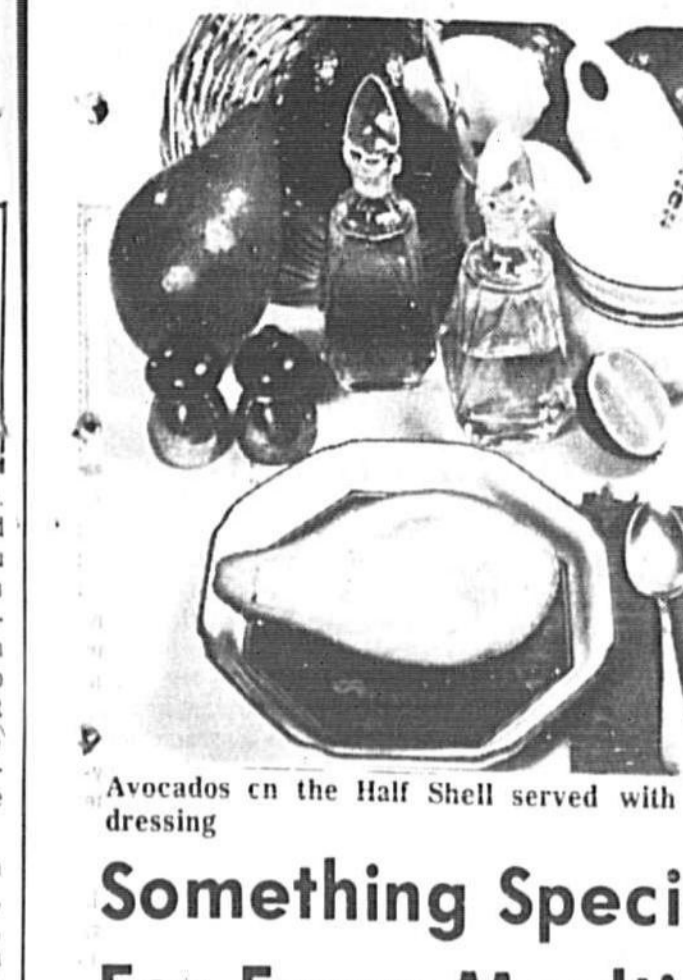
HOROSCOPE

ARIES (March 21-April 19) Joint ventures are very promising today. If your partner is as ambitious as you are, the rewards are greater. TAURUS (April 20-May 20) You'll be surprised what a few well-placed compliments will accomplish today. If a person deserves recognition, make it a point to do the honors. GEMINI (May 21-June 20) Don't sit on ingenious ideas today. They can be of great value to you. They'll not only make your life easier — they'll be profitable. CANCER (June 21-July 21) Someone new and exciting may enter your life in the near future. The meeting will occur under very unusual circumstances. LEO (July 22-Aug. 22) You are very resourceful today, particularly under stress. You may even surprise yourself with your ability to maneuver out of trouble. VIRGO (Aug. 23-Sept. 22) Be spontaneous if you have a matter of importance to discuss with another today. The ideas off the top of your head will be the best ones. LIBRA (Sept. 23-Oct. 23) Something unusual may develop today that will be of benefit to you financially. You must act quickly to take advantage of it. SCORPIO (Oct. 24-Nov. 21) Perhaps you've never thought of yourself as being inventive, but if something happens today where you have to improvise, the Edison in you will come out. SAGITTARIUS (Nov. 22-Dec. 21) Conditions are very extraordinary for you today. Personal advantages can come in ways you'd least imagine or expect. CAPRICORN (Dec. 22-Jan. 19) If you have the chance to do where there are fresh faces and new ideas, by all means go. You could turn up someone who'll be very important in your life. AQUARIUS (Jan. 20-Feb. 19) You'll be relatively successful in important endeavors today, but the best in you won't come out until the competition stiffens. You're a tiger then. PISCES (Feb. 20-March 20) Keep in touch with friends separated from you by a considerable distance. A pal from afar has some good news for you today.

YOUR BIRTHDAY Jan. 13, 1977 New hopes will be awakened in you this year through new contacts. Be a joiner. Take more interest in clubs and organizations.

W: N AT BRIDGE By OSWALD and JAMES JACOBY. NORTH ♠ 8876, ♥ 987, ♦ A92, ♣ A52. EAST ♠ 105, ♥ 10984, ♦ K107632, ♣ Q984. SOUTH (D) ♠ KQJ43, ♥ 713, ♦ J5, ♣ A98. Both vulnerable. West North East South ♠ Pass 2♥ Pass 3♥ Pass 3♠ Pass 4♠ Pass Pass Pass. Opening lead — ♣A.

SPIDER-MAN by Stan Lee and John Romita. DOONESBURY by Garry Trudeau.



Something Special For Every Mealtime

WATER-FALL WOULD HAVE BEEN FULL ENOUGH. I DON'T DRINK MUCH... BUT WHEN I DO, I DRINK TO FORGET. THEN, FIM WE IN ADVANCE.

COOKING IS FUN. more wine if necessary to have beans almost covered. Top with onion rings. Bake, uncovered, in a preheated 350-degree oven until bubbling-hot — 45 to 60 minutes. Makes 8 servings.

COMPANY SUPPER. Favorite Salad Rolls. Chocolate Torte Coffee. FAVORITE SALAD. 1 small head romaine, torn into fork-size pieces. Membrane-free sections of 2 oranges. 1 shallot or scallion bulb, finely chopped. 12 minato-stuffed green olives. 1 medium-size ripe avocado. Dressing: olive oil blended with white wine vinegar and Dijon mustard in proportions to suit taste.

CHILI SUPPER. Chili Rice. Giant Salad Bowl. Apple Pie Cheese. PAT MANNON'S CHILI. A popular version from Tulsa, Okla. 1 tablespoon olive or other salad oil. 1 large onion, chopped. 1 clove garlic, chopped. 1 pound ground lean beef. 1 green pepper, chopped. 1/2 cup tomatoes, undrained. 1/2 teaspoon cumin seed. 1 crushed bay leaf. Pinch each of dried basil, celery salt and cayenne. 1 heaping tablespoon chili powder. 1/2 cup port wine. 1/2 cup butter or margarine, softened. 1 egg. 2 tablespoons milk. 3/4 cup flour. 2 teaspoons baking soda. 2 teaspoons cinnamon. 1/2 teaspoon ginger. 1 teaspoon cardamom. 1/2 teaspoon cloves. 1/2 teaspoon salt. 1/2 teaspoon pepper.

POTLUCK PARTY. Three-Bean Casserole. Salad Rolls Fruit Cheese. THREE-BEAN CASSEROLE. 1 or 2 tablespoons butter, or margarine. 1 large onion, chopped. 1 clove garlic, minced. 2 to 4 tablespoons dark brown sugar. 1 to 2 tablespoons prepared mustard. 1/2 cup catchup. 1/2 cup (or more) red wine. 1/2 cup (or more) red wine. 1/2 cup (or more) red wine. 1/2 cup (or more) red wine. 1/2 cup (or more) red wine.

AVOCADOS ON THE HALF SHELL SERVED WITH SAVORY DRESSING. DEAR DR. LAMB — I read your article stating that one of the vegetable oils contain cholesterol. While the department of agriculture does agree with this, the American Heart Assn. does not.

In Season Now Avocados, Citrus Make Elegant Team



By CECILY BROWNSTONE, Associated Press Food Editor. At this time of year some of the most delicious avocados are in season. They have smooth skin that's forest-green in color and delectable flavor within. Served on the half-shell as a first course, they can make a supper menu with a thrifty main course suitable for the most finicky of guests. This way of serving avocados we add, as further persuasion, couldn't be easier. Offering avocados on the half-shell means that you serve halves of the fruit in their skin with a savory dressing that contrasts well with the delicate flavor of the avocado itself. The dressing may be prepared well ahead, but the avocados are cut and seeded just before serving so their surface won't darken. A spoonful of dressing is poured into each cavity and the avocados are offered on salad plates with teaspoons for scooping away the flesh from the skin.

Sometimes an "extra" is added to each cavity before the dressing is poured in. In the case of a dressing with a tomato base this can be a few cooked shrimp or lumps of crabmeat. In the following recipe, much enjoyed at our house, we added contrasts well with the delicate flavor of the avocado itself. The dressing may be prepared well ahead, but the avocados are cut and seeded just before serving so their surface won't darken. A spoonful of dressing is poured into each cavity and the avocados are offered on salad plates with teaspoons for scooping away the flesh from the skin.

ORANGE AVOCADOS ON THE HALF-SHELL. 4 medium-size oranges. 1/4 cup olive oil. 2 tablespoons lemon juice. 1/2 teaspoon salt. 1/4 tsp. salt. 1/4 tsp. pepper. 4 medium-size ripe avocados. With a sharp knife cut rind away from oranges so no thick white membrane remains. Over a bowl, slice each orange into sections by cutting the pulp away from the dividing thin membranes; or if the thin membranes are very tender, as in some oranges, cut sections so

each segment of pulp encloses a thin membrane in its center. Cut each section in half crosswise. Chill oranges, reserving the small amount of juice inevitably left after sectioning. Whisk or shake together 2 ta-

blespoons of the reserved orange juice, the olive oil, lemon juice, salt and pepper; chill. Just before serving cut avocado in half lengthwise; twist apart; remove seeds and any brown inner skin that adheres. Place avocado halves on salad plates. Arrange oranges (minus any juice that may have collected) in cavities. Whisk or shake together the dressing again and spoon a tablespoonful of it into each cavity. Serve at once. Makes 8 servings.

Spice Up Flavor Of Canned Peaches. WEEKDAY LUNCH. Egg Salad Rolls. Spiced Peaches Beverage. SPICED PEACHES. How to vary the flavor of a canned fruit. 1 pound, 13-ounce can sliced yellow cling peaches in syrup. 1-1/8th teaspoon coriander seed. 1 small piece dried ginger. 1 whole allspice. 1 whole clove. Pinch of fennel seed. Rind (yellow part only) of 1/4 of a lemon. Drain syrup from peaches into a saucpan. Tie spices in a cheesecloth bag and add to syrup with lemon rind; bring to a rolling boil. Pour syrup, spice bag and lemon rind over peaches; chill overnight to allow flavors to blend before serving. Makes 6 servings.

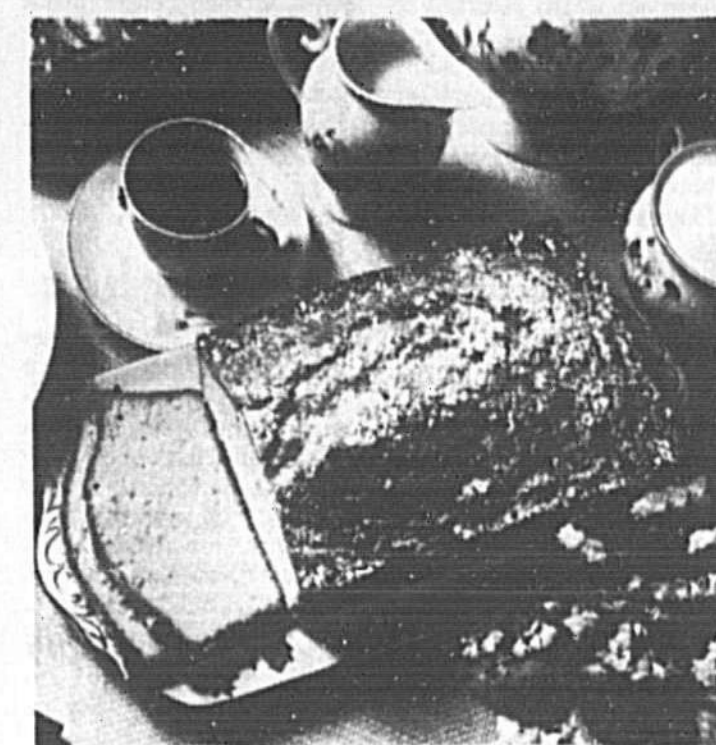
A NEW PUBLIX "CUSTOMER BONUS" now when you pick up your groceries you can drop off your film

Bonus Prints. With new Publix Bonus Prints, having your film developed is as convenient as shopping at Publix. And when you have your film developed by Publix, you'll get TWO PRINTS plus a FREE ROLL OF FILM. And extra S&H Green Stamps, too. You can count on the quality of Publix processing just as you count on the quality of Publix' foods. And if you drop film off before 10 a.m., most films will be ready for you within 24 hours. Or you can pick them up the next time you do your shopping at Publix. Try Publix newest customer benefit: BONUS PRINTS MEANS... fast quality service, extra prints, free film and S&H Green Stamps. They're all part of the convenience of shopping at Publix. And part of making shopping at Publix a pleasure. *weekends excepted from 24-hour delivery.

Kodacolor II COLOR NEGATIVE FILM. FREE FILM With Processed Color Print Rolls. 10-12. FOR COLOR PRINTS / 12 EXPOSURES. FILM PROCESSING CHART. COLOR PRINT FILM DEVELOPING (TWO PRINTS PLUS FREE FILM). Color Print 12-exposure \$4.89. Color Print 20-exposure \$7.29. BLACK & WHITE FILM DEVELOPING (TWO PRINTS — NO FREE FILM). B&W 12-exposure \$2.40. B&W 20-exposure \$3.60. SLIDE & MOVIE DEVELOPING (NO EXTRA PRINTS OR FREE FILM). 20-exposure color slides \$1.99. 36-exposure color slides \$3.69. 8mm or Super 8mm movie \$1.99. (Prints from slides — 58¢). COLOR ENLARGEMENTS (in handsome folders). 5" x 7" \$1.59. 8" x 10" \$3.60. 11" x 14" \$8.30. *Borderless Contour Silk Finish Prints. Publix, Where Shopping Is A Pleasure. OFFER IS AVAILABLE IN THE FOLLOWING COUNTIES: BREVARD, OSCEOLA, ORANGE, SEMINOLE, LAKE.

Vary Flavor 3 Ways

Half-A-Pound-Cake Recipe Foolproof As Can Be



Half-A-Pound-Cake flavor can be varied

By CECILY BROWNSTONE
Associated Press Food Editor
Recently a reader wrote that a pound cake she baked was "soggy" and asked for a remedy.

One remedy is to try a new recipe! For this we suggest one that is probably as foolproof as a recipe can be.

Spinach Pie For Quiet Parties

By AILEEN CLAIRE
NEA Food Editor
Raucous parties with streamers, hats and balloons were keynotes for many celebrating the wintup of the year.



Wheat Germ Stuffed Spinach Pie and Pork Chops — perfect party meal

Use Season's Grapefruit

GRAPEFRUIT PILAF
1 pkg. (8 oz.) wheat pilaf mix
1/2 cup water

Shop Publix and Bring Home the Values
Families look forward to satisfying meals. So, when you walk in the door with delectable foods from Publix, you're sure to see smiles of delight.

Publix products and prices: Regular Margarine 4 1-lb. cans \$1.49; Pillsbury Flour 5-lb. bag 59c; Maxwell House Coffee 1-lb. can \$1.99; Oscar Mayer Donuts 12-oz. pkg. 59c; Hair Spray 13-oz. can 69c; Light 'N Lively milk 1/2 gal. 99c; Large Eggs per dozen 69c; Chunk Style Tuna 2 6-1/2-oz. cans 89c; Hellmann's Mayonnaise 89c; Pepsi 8 pack 99c; Iceberg Lettuce 3 for \$1; Wesson Oil 38-oz. bottle 1.19; Royal Gelatin 6 3-oz. pkgs. \$1.60; Royal Pudding 6 reg. pkgs. \$1.60; White Potatoes 10 lb. bag 89c.

Test Versatility Of Pork Dishes

By AILEEN CLAIRE
NEA Food Editor
Pork is a far more versatile meat than most of us realize. With the trend to growing leaner pigs, the producers also provide a boon to those who watch their intake of fats and low can put pork back into their menus occasionally.

Try New Recipe Ideas For Fish, Celery

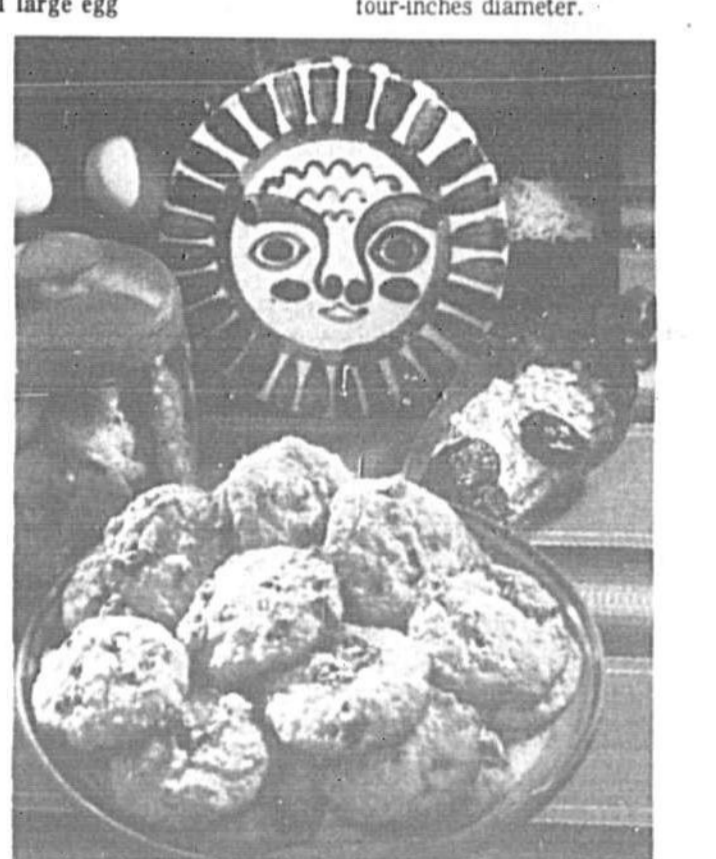
Meatless cookery gets a flavor boost when fruits are combined with other basic ingredients. For example, fish fillets are enhanced by the use of grapefruit slices and a tuna casserole is distinctly different when wheat pilaf is cooked in grapefruit juice and grapefruit sections also are added during the final minutes of baking.



Tender pork chops and rich sauce top rice for tasty meal

Cookie Combines Texture, Taste

Those who enjoy a moist cookie full of texture and taste will take to prune coconut drops. These are easy to put together and gain an essential amount of moisture from the sweet flavored prunes.



Prunes, coconut and oats make moist and chewy cookies

Make Moulds For Main Courses

Variety in molded gelatin salads is as far-reaching as a cook's imagination. A handsome and very delicious cherry-cheese mold combines dark sweet cherries and cream cheese with an extra surprise of pecans and stuffed olives.

Publix store layout with various product prices and advertisements: Regular Margarine 4 \$1.49; Pillsbury Flour 59c; Maxwell House Coffee \$1.99; Oscar Mayer Donuts 59c; Hair Spray 69c; Light 'N Lively milk 99c; Large Eggs 69c; Chunk Style Tuna 89c; Hellmann's Mayonnaise 89c; Pepsi 99c; Iceberg Lettuce 3 for \$1; Wesson Oil 1.19; Royal Gelatin 1.60; Royal Pudding 1.60; White Potatoes 89c; Publix coupons and promotions.



USDA GRADE
FRESH
PAN-FRIED
CUT-UP
FRYERS
49¢
Fryer Thighs . 79¢

W-D BRAND
USDA CHOICE
BONELESS
STEAKS
\$2.69
Rib Roast . 5.99

W-D BRAND
USDA CHOICE
CHUCK
ROAST
99¢
Strip Steak . 1.29

PURE GROUND BEEF
W-D BRAND
100% PURE HAND-PAK
GROUND BEEF
10 \$5.89
POUND
PKG.
W-D BRAND HAND-PAK 100% PURE
GROUND BEEF . . . 5 LB. PKG. \$2.99

PRICES GOOD
JAN. 13 - 15

W-D BRAND
USDA CHOICE
BONELESS BOTTOM
ROUND STEAK
\$1.39
LB.
BEEF BOTTOM ROUND
CUBED STEAK LB. \$1.49

W-D BRAND REGULAR AND THICK SLICED ALL BEEF
Bologna 89¢
W-D BRAND SPICED LUNCHEON OR
Salami 79¢
W-D BRAND HOT OR MILD PORK
Sausage 99¢
HYGRADE
Knockwurst \$1.19
COPELAND SMOKED
Sausage \$1.79

SUNNYLAND SLICED BOLOGNA OR
Cheese Loaf 69¢
CELEBRITY COOKED
Sliced Ham \$1.99
MEXICO TEXAS STYLE (12-oz. CAN)
Biscuits 29¢
CRACKIN' GOOD ENGLISH
Muffins 39¢
SUPERBRAND INDIVIDUALLY WRAPPED
SLICED, STACK PACK, CHEESE
Singles 3 LB. BOX \$4.49

TASTE O'SEA FRENCH FRIED, PEACH, FLOUNDER AND
SHRIMP PATTIES LB. \$1.09
WEIGHT WATCHERS DELIGHT, TURBOT
FISH FILLETS LB. 99¢
SUPERBRAND REGULAR OR STA FIT LOW FAT (1-LB. CUP 4.5)
COTTAGE CHEESE 2 LB. CUP \$1.19
SUPERBRAND (HALF PINT 3.5)
SOUR CREAM PINT CUP 59¢

W-D BRAND
USDA CHOICE
BLADE CUT
CHUCK ROAST
79¢
LB.
BEEF CHUCK, 7 BONE CENTER CUT
CHUCK ROAST LB. 89¢

MRS. FILBERTS
SOFT
GOLD BOWL
MARGARINE
75¢
1-LB. PKG.

DIET
MAZOLA
MARGARINE
71¢
1-LB. PKG.

W-D BRAND
USDA CHOICE
FEDERALLY INSPECTED
HEAVY WESTERN
AGED BEEF
BONELESS ROAST
\$1.59
Roast \$1.99
W-D BRAND USDA CHOICE BEEF
WHOLE OR HALF 20 TO 22 LB. AVG.
BONELESS CHUCK
89¢
Family Pack Boneless Chuck
Cube Steak . 4 \$5.99
U.S. CHOICE W-D BRAND BEEF (150 TO 170 LB. AVG.)
HINDQUARTER LB. 99¢
U.S. CHOICE W-D BRAND BEEF (150 TO 180 LB. AVG.)
FOREQUARTER LB. 79¢
U.S. CHOICE W-D BRAND (300 TO 350 LB. AVG.) CONSISTING OF ONE FOREQUAR-
TER AND ONE HINDQUARTER
SIDE OF BEEF LB. 89¢

SAVE 20¢ KIM BROWN/NEUTRAL/BLACK
Paste Wax 1.25-oz. SIZE 39¢
SAVE 27¢ TOOTH PASTE
Close Up 4-4-oz. TUBE 88¢
SAVE 80¢ CONDITIONER & REGULAR & EXTRA BODY
Revlon Flex 16-oz. SIZE \$1.29
HOOTE OWL PLASTIC
Nursur 8-oz. SIZE 63¢
EXTRA DRY HAND CREAM
Pacquin 3.5-oz. SIZE 81¢
DISPOSABLE DOUCHE
Massengill 6-oz. SIZE 63¢
SHICK
Super II 9-CT. PKG. \$2.09

SAVE 30¢
THRIFTY MAID
SUGAR
5 59¢
LB. BAG
Limit 1 with \$5.00 or more purchase excl. cigs.

SAVE 30¢
NESTLE'S QUIK 2 LB. \$1.69

W-D BRAND USDA CHOICE BEEF
BONELESS CHUCK
15 LB. \$14.99

WESTERN CORN FED
FAMILY PACK
PORK LOIN
15 LB. \$15.99

W-D BRAND USDA CHOICE
WHOLE 16 TO 22 LB. AVG.
BONELESS WHOLE
N.Y. STRIPS
\$1.99

WESTERN CORN FED
FULL 1/4 PORK LOINS SLICED INTO
PORK CHOPS
\$1.19

SWISSLAND ECONOMY
SLICED BACON
69¢

Hickory Sweet Sliced
Bacon 1-LB. PKG. 99¢
Hickory Sweet
Sliced Bacon 2-LB. PKG. \$1.95
Tolmidge Country Whole or Half
Cured Ham \$1.79

SAVE 6¢
LIPTON
TEA BAGS
\$1.59

SAVE 11¢
GREEN GIANT
CUT OR FRENCH STYLE
GREEN BEANS
89¢

SWISS MISS
Cocoa Mix 2.3-oz. SIZE \$1.79
SWISS MISS W/ MARSHMALLOW
Cocoa Mix 2.3-oz. SIZE \$1.79
MAXWELL HOUSE
Coffee 2-LB. CAN \$4.97
MAXWELL HOUSE
Coffee 1-LB. BAG \$2.29
FOLGERS
Coffee 1-LB. CAN \$2.69

MAITHA WHITE
Flap Stax 4 55-oz. PKGS. 89¢
HEC FLORIDA
Fruit Punch 2 46-oz. CAN 99¢
SUNSHINE VENTURA
Fingers 12-oz. PKG. 69¢
GARNES
Puppy Choice 26-oz. SIZE \$1.35
MAITHA
Bix Mix 4 99-oz. PKGS. 89¢

WE ACCEPT
USDA
FOOD STAMP
COUPONS

THE BEEF PEOPLE

SAVE 56¢
DETERGENT
GIANT TIDE
Limit 1 with \$5.00 or more purchase excl. cigs.
49-oz. PKG. 89¢

THRIFTY MAID
WHOLE UNBEELED
APRICOTS
OR BARTLETT
PEARS
2 29-oz. CANS \$1
Plums . . . 2 20-oz. CANS \$1.00

SAVE 30¢
DEEP SOUTH
MAYONNAISE
Limit 1 with \$5.00 or more purchase
excl. cigs.
QT. JAR 69¢
DEEP SOUTH KOSHER DILL 48-oz. JAR 99¢
DEEP SOUTH SWEET
Pickles 22-oz. JAR 79¢

HUNTS
KETCHUP
79¢
QT. BTL.
DEEP SOUTH SWEET
Relish 22-oz. JAR 79¢

SAVE WITH
WINN-DIXIE
THE BEEF PEOPLE

DIXIE DARLING LARGE
FAMILY BREAD 3 20-oz. LVS. \$1.00
DIXIE DARLING
RAISIN BREAD 16-oz. LOAF 59¢
DIXIE DARLING FRENCH
HARD BREAD 10-oz. PKGS. \$1.00
DIXIE DARLING CINNAMON
HOT BREAD 10-oz. PKG. 87¢

DIXIE DARLING
DUNKIN STIX 10-oz. PKG. 59¢
DIXIE DARLING
CINN. ROLLS 3 8-oz. PKGS. \$1.00
CRACKIN' GOOD SANDWICH
CREMES 2 1-LB. PKGS. \$1.00
CRACKIN' GOOD TOASTER
PASTRIES 2 10-oz. PKGS. \$1.00

PRICES GOOD IN THESE COUNTIES ONLY: VOLUSIA, SUMNER, CHARLOTTE, LEE AND HERNANDO. ORANGE, SEMINOLE, OSCEOLA, LAKE, CITRUS BREVARD. PRICES GOOD JAN. 13-15

U.S. NO. 1
VENT VUE WHITE
POTATOES
10 89¢
LB. BAG
20-LB. BAG \$1.78

QUARTERS
MARGARINE
3 1-LB. PKG. 99¢

QUARTERS
PARKAY
MARGARINE
1-LB. PKG. 59¢

WE ACCEPT
USDA
FOOD STAMP
COUPONS

Quantity Rights Reserved
Winn-Dixie Stores, Inc.
COPYRIGHT—1976

SAVE 18¢
CHARMIN
BATH TISSUE
Limit 2 with a \$5.00 or more purchase excl. cigs.
4 ROLL PKG 69¢
ARROW
PAPER NAPKINS 2 180-CT. PKGS. \$1.00

SAVE 24¢
OLD MILWAUKEE
BEER
Limit two 6-pks. with \$5.00 or more purchase excl. cigs.
6 12-oz. CANS \$1.19
CRACKIN' GOOD TWIN PACK REGULAR & WAVY
POTATO CHIPS 8-oz. PKG. 69¢

HARVEST
FRESH
PRODUCE

SALAD
TOMATOES
3 LB. \$1.00

THRIFTY MAID
ALL FLAVORS
ICE MILK
3 HALF GALS. \$1.99

SUPERBRAND ICE CREAM BAR OR
Sandwiches 12-PK. PKG. 99¢
TASTE O'SEA ALL VARIETIES
Dinners 9-oz. PKG. 69¢
BANQUET FRIED
Chicken 2 LB. PKG. \$1.99
SAUSAGE PEPPERONI, OR SASSY & SPICY
Saluto Pizza 20-oz. PKG. \$2.29
ASTOR (ON-THE-COB)
Corn 8 EAR PKG. 79¢
ASTOR CAULIFLOWER OR BRUSSEL
Sprouts 2 10-oz. PKGS. 79¢
FRENCH FRY
Potatoes 5 LB. BAG 99¢
PET ALL VARIETIES
Cobblers 26-oz. PKG. 99¢

PICKED AND PACKED BY THE PRODUCE PRO
3 LBS. \$1.00

PICKED AND PACKED BY THE PRODUCE PRO
3 LBS. \$1.00

2% LOW FAT OR HOMOGENIZED
GUSTAFSON'S MILK
1 GAL JUG \$1.59

HARVEST FRESH FLORIDA
TANGERINES OR TEMPLE
ORANGES
13 99¢

PICKED AND PACKED BY THE PRODUCE PRO
5 LBS. \$1.00

PICKED AND PACKED BY THE PRODUCE PRO
5 LBS. \$1.00

SEVEN SEAS CEASAR
Dressing 8-oz. BTL. 63¢
Glad Wrap 100-FT. ROLL 53¢
Glad Food
Storage Bags 73-CT. PKG. \$1.15
Glad Sandwich
Bags 80-CT. PKG. 53¢
Glad Large
Kitchen Bags 15-CT. PKG. 99¢

(20-OZ. OFF)
PUREX
HEAVY DUTY
LIQUID DETERGENT
\$1.79

(25-OZ. DOWNEY)
FABRIC SOFTENER
\$2.64

PICKED AND PACKED BY THE PRODUCE PRO
4 QTS. \$1.00

PICKED AND PACKED BY THE PRODUCE PRO
4 QTS. \$1.00

NEW STORE HOURS
MONDAY THRU SATURDAY
9 a.m.—9 p.m.

SUNDAY
9 a.m.—7 p.m.

PICKED AND PACKED BY THE PRODUCE PRO
16 FOR \$1.99

PICKED AND PACKED BY THE PRODUCE PRO
16 FOR \$1.99

FRENCH AVE. & 25th ST. SANFORD 419 E. FIRST ST.

PICKED AND PACKED BY THE PRODUCE PRO
9 FOR 99¢

PICKED AND PACKED BY THE PRODUCE PRO
9 FOR 99¢

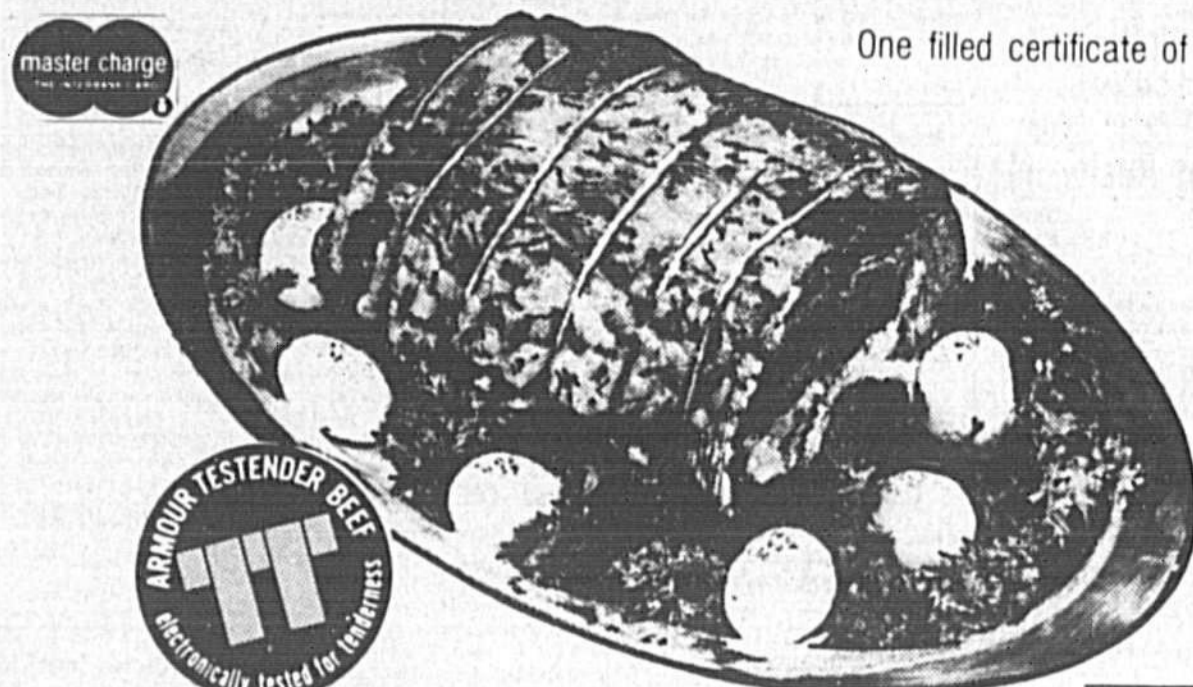
SWEET
POTATOES
5 LBS. \$1.00

HARVEST FRESH
CUCUMBERS . 4 FOR 99¢
HARVEST FRESH BELL
PEPPERS 4 FOR 99¢
Harvest Fresh Cream
Potatoes . . 10 LB. \$1.79 Onions \$2.99

EVERYDAY LOW PRICES

AT YOUR FAVORITE FAIRWAY SUPERMARKET
PLUS... YOU SAVE EXTRA CASH

WITH Cash Dividends BONUS BUYS..



One filled certificate of 30 Bonus Coupons is all you need to purchase any one of these cash dividend bonus specials!

CASH DIVIDEND BONUS NABISCO OREO CHOCOLATE SANDWICH COOKIES 16 OZ. 28¢	CASH DIVIDEND BONUS 8-16 OZ. BOTTLES R-C COLA OR DIET PEPSI (Plus Deposit) 38¢	CASH DIVIDEND BONUS HALF GALLON SEAL TEST ICE CREAM 48¢	CASH DIVIDEND BONUS ONE GALLON JUG HOMOGENIZED MILK 98¢
---	---	--	--

ANY WAY YOU FIX IT, ARMOUR TESTENDER BEEF IS JUST NATURALLY THE TASTIEST TENDEREST YOU CAN SERVE! WE GUARANTEE IT! SO DOES ARMOUR!

CHUCK ROAST

BONELESS ROLLED

WOW! YOU WILL LOVE THE TASTY FLAVOR OF THIS BEEF!

NEW YORK STRIP LOIN

BONE IN - EXTRA LEAN
WE WILL CUT & WRAP FREE!

98¢

ECONO PAK MIXED FRYER PARTS

3 Hindquarters, 3 Forequarters, 3 Wings w/Giblets

34¢

SIRLOIN TIP

BONELESS ROLLED PRACTICALLY NO WASTE

1.38

FRYERS

WHOLE EVERYDAY LOW PRICE!

36¢

GARDEN FRESH PRODUCE

YELLOW CROCKNECK SQUASH... 29¢
MUSHROOMS... 1.29
AVOCADOS... 59¢
DELICIOUS APPLES... 6/69¢

SMOKED MEATS

FAIRWAY FARMS FANCY CUT SLICED BACON... 98¢
Bologna... 78¢
COPOLAND BEEF... 58¢

WHITE POTATOES

10 LB. BAG

78¢

FAIRWAY DELICATESSEN

FOR ONE PERSON OR A CROWD... TRY OUR TASTY

99¢

KRAFT FOOD SALE!

32 OZ. JAR GRAPE JELLY... 78¢
SALAD DRESSING... 98¢
FRENCH DRESSING... 78¢
MARGARINE... 38¢

EVERYDAY LOW PRICES!!

FAIRWAY FARMS 20 OZ. LOAF WHITE BREAD... 28¢	FAIRWAY FARMS 8 PACK HAMBURGER OR HOT DOG BUNS... 28¢
VAN CAMP PORK & BEANS... 28¢	COLA OR FLAVORS SHASTA DRINKS... 22¢
CAMPBELL'S TOMATO SOUP... 16¢	VEGETABLE SHORTENING SNOWDRIFT... \$1.28
DEL MONTE REGULAR GREEN BEANS... 28¢	BIRDSEYE FROZEN GRINKLE CUT FRENCH FRIES... 48¢
DEL MONTE W/K OR C/S YELLOW CORN... 34¢	HYDE PARK FROZEN CONCENTRATE ORANGE JUICE... \$1.18
DEL MONTE SWEET PEAS... 34¢	MUELLER THIN OR REGULAR SPAGHETTI... 38¢
PETER PAN (SM OR CR) PEANUT BUTTER... \$1.38	RAGU SAUCE... \$1.08
JOHNSON FURNITURE PLEDGE... \$1.28	FOR FRESHER MOUTH USE SCOPE... 88¢
SCOT SCOTTOWELS... 58¢	TRAIL BLAZER DOG FOOD... \$3.58
DAYTIME DISPOSABLE PAMPERS... \$2.18	JOHNSON DISPOSABLE NEWBORNS... \$1.78
CARNATION CHUNK TUNA... 40¢	GERBER STRAINED BABY FOOD... 17¢

USE THESE COUPONS FOR EXTRA CASH DIVIDEND COUPONS!

10 FREE 10 CASH DIVIDEND COUPONS WITH THIS COUPON AND THE PURCHASE OF 2 PACKAGES OF SOUTHLAND COOKIES... \$1.99

Evening Herald

69th Year, No. 124—Thursday, January 13, 1977 Sanford, Florida 32771—Price 10 Cents



(Herald Photo by Tom Vincent)

Raincheck Issued On Axed Jail Funds

By ED PRICKETT
Herald Staff Writer

The Washington reception for Seminole County Commission Chairman Dick Williams and Sheriff John Polk ran hot and cold — with both good and bad news.

The bad news is that Seminole is not scheduled to receive a \$4.56-million grant for construction of a new jail complex.

The good news is that Williams and Polk have met with top-level bureaucrats and have been assured Seminole will receive top priority for jail funds when additional funds are appropriated.

The weather at the nation's Capitol this morning was about 10 degrees when Williams confirmed during a telephone interview that Seminole lost the grant because the jail ranked behind five other public works projects from this county.

Things warmed up a bit, however, when the chairman said he and the sheriff have been assured Seminole will be "first in line" for jail funding when, and if, new public works projects are implemented after Jimmy Carter takes office a week from today.

County officials were notified on Monday that Seminole was not scheduled to get the \$4.56-million.

Then, on Wednesday, Polk and Williams flew to the nation's Capitol to try and convince federal officials Seminole's jail is a high priority item.

Both Williams and Polk are due back in Florida at noon today.

"A quirk in the system got us kicked out," the chairman noted. The jail grant, according to Charles Osley, regional director of the Economic Development Administration (EDA) in Atlanta, was rejected in place of five other requests from Seminole because it scored lowest in the system used to allocate funds.

However, Williams said Washington-based EDA chief, George Karras, has assured him Seminole will "be in" when, and if, the Carter administration gets an additional \$4-billion for public works construction. Carter has said he wants the additional funds and has ranked it a top priority item for the early days of his administration.



FIREMAN LOWERS THE BOOM

School Hearing Moved; Fireman Cites Ordinance

By JEAN PATTISON
Herald Staff Writer

Sanford Fireman Steven Crews interrupted a public hearing at Wednesday night's school board meeting to tell board chairman Davis Sims that the overworking of the meeting room was in violation of city fire ordinance.

The meeting would have to be continued in larger quarters, said Crews.

His announcement was greeted with cheers and applause from more than 200 teachers sitting, standing and crammed in the aisles of the 98-seat County Commission chambers. They were at the hearing to support the efforts of the Seminole Education Association (SEA) members to urge the school board to accept special master Douglas Stowell's report on deadlocked contract items.

The fire department's order to evacuate the commission chambers, and Sims' decision to recess 6 minutes later in the Seminole High School auditorium, represented a victory for the SEA.

Anticipating a larger-than-usual turnout at the public hearing, the SEA had urged School Supt. William P. Layer to schedule the meeting at the Lyman High School auditorium. Layer refused, and the hearing was slated for the board's regular meeting place in the courthouse.

The victory did backfire somewhat when, despite Principal Don Reynolds' efforts with the school heating system, temperatures in Seminole High's drafty auditorium remained frigid. The audio system was inadequate and visual aid material had to be projected onto a brick wall.

But despite the interruption and technical difficulties, and bundled up in coats and gloves against the cold, the SEA continued its presentation until 12:15 a.m. At this point, Sims adjourned the meeting. It will reconvene tonight at 7 p.m. in the commission chambers.

Gene Grooms, SEA executive director, commented that morning that he was proud of the teachers who gave evidence at the hearing. "It's a new day for SEA," he said.

SEA spokesman Susan Smith, a Sanford Middle School language arts teacher, told the board during the hearing that sufficient funding is available to provide a \$4,000 base. She said the increase, which would cost the school system \$312,000, would not detract from present instructional programs.

SEA President Bill Moore spoke to the matter of class size and stated that, based on a survey conducted last year, he believed teachers regarded smaller classes a higher priority than salary increases.

The SEA is quarrelling with the administration's district-wide averaging of class sizes.

SEA spokesman Linda Antoni presented a recommendation for the categorization of supplements paid to teachers for work done outside classroom hours. She said Layer had suggested forming an ad hoc committee to study changes in supplements, but that the SEA regarded this as a stalling tactic.

Steve Rosenthal, Sanford Middle School social studies teacher, urged the board to accept the special master's recommendation that the board contribute \$200 annually per teacher toward the health plan currently in effect. Layer has recommended that the board's contribution be raised from \$150 to \$160 annually.

"I can handle 40 kids but I can't teach 40," said Crews.

"For the first time they are expressing their views in public, and to the right people," Grooms added that he felt optimistic about the outcome of the hearing. "I believe we have a fair-minded board and when they weigh the evidence presented, we will carry a majority of the board."

Grooms said that the main issue was not money. "Three hundred thousand dollars is not that much in a fifty million dollar budget," he said. "The issue here is new concepts which can benefit the students and do much for the morale of teachers in the county."

Layer said this morning that he would make no comment until the hearing was over. "I just hope it's concluded tonight and the board will reach a decision in the near future, if not tonight."

The items in the special master's report, which the SEA has accepted, include class size, salary, supplements, medical and health protection and the term of agreement.

The administration is holding out for a base salary raise from \$8,100 to \$8,300. The SEA has lowered its hopes of a \$8,500 base to fall in line with the special master's recommendation of \$8,400.

SEA spokesman Susan Smith, a Sanford Middle School language arts teacher, told the board during the hearing that sufficient funding is available to provide a \$4,000 base. She said the increase, which would cost the school system \$312,000, would not detract from present instructional programs.

SEA President Bill Moore spoke to the matter of class size and stated that, based on a survey conducted last year, he believed teachers regarded smaller classes a higher priority than salary increases.

The SEA is quarrelling with the administration's district-wide averaging of class sizes.

SEA spokesman Linda Antoni presented a recommendation for the categorization of supplements paid to teachers for work done outside classroom hours. She said Layer had suggested forming an ad hoc committee to study changes in supplements, but that the SEA regarded this as a stalling tactic.

Steve Rosenthal, Sanford Middle School social studies teacher, urged the board to accept the special master's recommendation that the board contribute \$200 annually per teacher toward the health plan currently in effect. Layer has recommended that the board's contribution be raised from \$150 to \$160 annually.

State Probing Ranch Runaway

County officials had planned a modern jail and sheriff's complex on county-owned property near Five Points and Highway 17. Initially, there was an error that had Seminole confused with Pasco County. And, the first reports were Seminole's funds had been shifted to Pasco. But Williams said today federal officials have confirmed the funds went to the city of Miami — not Pasco.

On Wednesday, Congressman Richard Kelly, R-Holiday, appealed to President Ford and to Secretary of Commerce Elliot Richardson asking that the jail be funded.

Kelly press aide Bill Purvis said today that Richardson promised to look into it. But, Purvis also said he felt the meeting with Karras was the most beneficial because of the "semi commitment" from him that Seminole will be next in line when new money is appropriated.

State officials are investigating an incident in which a child apparently ran away from his foster home after being placed in the care of the Sky King Youth Ranch.

Paul Sneed, director of Seminole County Youth Services, said the child had been placed by court order of the English Judge Virgil Conkling in the care of the Sky King Youth Ranch. The ranch operates two licensed child care facilities: one in Chulotia which houses boys and one in the English Estates home of Harrell E. Corley, executive director of the ranch, which houses girls.

When the child ran away, Sneed said, she left a residence in Maitland which has no licensing from the state as a child care facility. She allegedly had been placed there by Corley.

State officials are investigating all phases of the youth ranch operation. They have expressed particular interest in reports that children have been placed in foster homes by the ranch. Special licensing is required for any institution to place children in foster homes. The Sky King Youth Ranch has not received such licensing.

Knowles On Sewer Plan: Time Gone

By MARK WEINBERG
Herald Staff Writer

Sanford City Manager W.E. Knowles has told the Regional Sewer Plant Interim Study Committee that time is running out for planning a regional sewer system for Sanford, Lake Mary and north Seminole County.

He cited a letter received by the City of Sanford on Jan. 4 from the federal Environmental Protection Administration (EPA) advising the city until February to submit plans to be at "a point of zero waste" discharge into Lake Monroe" by July 1.

Knowles, a member of the interim committee, said Wednesday night, "Sanford's sewer permit will be lifted."

Wednesday's meeting was the first for the full membership of the committee, which includes two members appointed by the Sanford City Commission, two by the Lake Mary City Council, two by the Seminole County Commission and three elected by the six appointed members.

"We've treated water for so long (seven months) that we've run out of time," Knowles said. He urged the committee to develop a schedule for compliance with the EPA deadline and an administrative framework to carry out the schedule.

County Executive Assistant Roger Neiswander, also a committee member, replied, "Speaking for Seminole County, we will not be stampeding by EPA. We will not panic. It's ludicrous to present to this group that in 14 days we must complete" a financing and compliance schedule.

"Responsibility on their part will dictate an extension," he said.

The committee elected Sanford Commissioner John Morris chairman and chose Neiswander vice-chairman. Both were nominated by Harry Terry, Lake Mary city councilman. John Kimbrough,

Shad Anglers Stay On Top

The rich are getting richer in the Shad Derby. With cold weather keeping many fishermen off the river and lakes, Larry Pifer and Raynor Lash remained the top anglers in the 34th annual Shad Derby sponsored by the Greater Sanford Chamber of Commerce and the Evening Herald.

While Pifer's 3-pound, 15-ounce shad still leads the senior division, eight-year-old Miss Lash went out and increased her standing in the junior division by one-half ounce, catching a 3-pound, 13½-ounce shad.

Senior division contestants Richard Reilly of Sanford weighed in a 3-pound, 8½-ounce shad at Marina Lake Wednesday and Sanford's David Gallant had one 3½.

The tournament continues through March 13, and entries may be checked in at Lemon Bluff Fish Camp, Marina Lake, Lindsey Camp, Osteen Camp or Moore Sports Center.

Around The Clock 4-A
Bridge 4-B
Calendar 4-C
Comics 4-D
Crossword 4-E
Editorial 4-F
Dear Abby 4-G
Dr. Lamb 4-H

Horseplay 4-B
Hospital 4-B
Obituaries 4-A
Sports 4-B
Television 4-B
Weather 4-A
Women 4-B