

HOOPER'S Road Expenses

WASHINGTON, June 25.—(AP)—The state department announced today that its expenses for the year ending June 30, 1933, are estimated to be \$1,388,100, a deficit of \$1,388,100 over the \$2,776,200 of receipts.

The state department's financial statement for the year ending June 30, 1933, shows a deficit of \$1,388,100. This deficit is the result of a combination of factors, including the increase in the cost of living, the increase in the cost of labor, and the increase in the cost of materials.

The state department's financial statement for the year ending June 30, 1933, shows a deficit of \$1,388,100. This deficit is the result of a combination of factors, including the increase in the cost of living, the increase in the cost of labor, and the increase in the cost of materials.

It is the purpose of the chairman of this department to propose to the board at its next meeting the discontinuance of certain work now being done by the state forces, the making over of certain construction work now engaged in construction and placing these men on maintenance work, which, while it will entail the cutting off of free labor, will at the same time decrease our expenditures on construction; also to recommend a reduction in the amount shown in the budget for the year ending June 30, 1934.

Representatives Matthews of Duval and Watson of Hillsborough and Robinson in his fight for the resolution and whatever bills are necessary to restrict road building to actual needs and maintenance.

Contract let for hard-surfacing Highway No. 4 between Fort Orange and Tomoka Creek.

ARCADIA—F. E. Brick opened suite parlors, 621 North Park Avenue.

WASHINGTON, June 25.—(AP)—The state department announced today that its expenses for the year ending June 30, 1933, are estimated to be \$1,388,100, a deficit of \$1,388,100 over the \$2,776,200 of receipts.

The state department's financial statement for the year ending June 30, 1933, shows a deficit of \$1,388,100. This deficit is the result of a combination of factors, including the increase in the cost of living, the increase in the cost of labor, and the increase in the cost of materials.

WASHINGTON, June 25.—(AP)—The state department announced today that its expenses for the year ending June 30, 1933, are estimated to be \$1,388,100, a deficit of \$1,388,100 over the \$2,776,200 of receipts.

The state department's financial statement for the year ending June 30, 1933, shows a deficit of \$1,388,100. This deficit is the result of a combination of factors, including the increase in the cost of living, the increase in the cost of labor, and the increase in the cost of materials.

WASHINGTON, June 25.—(AP)—The state department announced today that its expenses for the year ending June 30, 1933, are estimated to be \$1,388,100, a deficit of \$1,388,100 over the \$2,776,200 of receipts.

The state department's financial statement for the year ending June 30, 1933, shows a deficit of \$1,388,100. This deficit is the result of a combination of factors, including the increase in the cost of living, the increase in the cost of labor, and the increase in the cost of materials.

MAN DROWNS

LAKE WALES, June 25.—(Special)—R. H. Bechman of this city drowned Thursday afternoon in Lake Wales, when his boat capsized. J. A. Aden and W. A. Mahoney, Jr., who were within 150 yards of the place where he sank, made a futile effort to reach him before he went down. Searchers still were trying to find his body Thursday.

WASHINGTON, June 25.—(AP)—The state department announced today that its expenses for the year ending June 30, 1933, are estimated to be \$1,388,100, a deficit of \$1,388,100 over the \$2,776,200 of receipts.

The state department's financial statement for the year ending June 30, 1933, shows a deficit of \$1,388,100. This deficit is the result of a combination of factors, including the increase in the cost of living, the increase in the cost of labor, and the increase in the cost of materials.

WASHINGTON, June 25.—(AP)—The state department announced today that its expenses for the year ending June 30, 1933, are estimated to be \$1,388,100, a deficit of \$1,388,100 over the \$2,776,200 of receipts.

The state department's financial statement for the year ending June 30, 1933, shows a deficit of \$1,388,100. This deficit is the result of a combination of factors, including the increase in the cost of living, the increase in the cost of labor, and the increase in the cost of materials.

WASHINGTON, June 25.—(AP)—The state department announced today that its expenses for the year ending June 30, 1933, are estimated to be \$1,388,100, a deficit of \$1,388,100 over the \$2,776,200 of receipts.

The state department's financial statement for the year ending June 30, 1933, shows a deficit of \$1,388,100. This deficit is the result of a combination of factors, including the increase in the cost of living, the increase in the cost of labor, and the increase in the cost of materials.

WASHINGTON, June 25.—(AP)—The state department announced today that its expenses for the year ending June 30, 1933, are estimated to be \$1,388,100, a deficit of \$1,388,100 over the \$2,776,200 of receipts.

The state department's financial statement for the year ending June 30, 1933, shows a deficit of \$1,388,100. This deficit is the result of a combination of factors, including the increase in the cost of living, the increase in the cost of labor, and the increase in the cost of materials.

WASHINGTON, June 25.—(AP)—The state department announced today that its expenses for the year ending June 30, 1933, are estimated to be \$1,388,100, a deficit of \$1,388,100 over the \$2,776,200 of receipts.

The state department's financial statement for the year ending June 30, 1933, shows a deficit of \$1,388,100. This deficit is the result of a combination of factors, including the increase in the cost of living, the increase in the cost of labor, and the increase in the cost of materials.

W. H. LONG

W. H. LONG
"Long's Meat is a Treat to Eat"
221 East First Street Opposite Postoffice

We Suck 'Em Free

NICE TENDER
HENS & FRYERS
BEEF STEW
10c - 12½c - 15c lb.

GOOD PURE SAUSAGE AND
HAMBURGERS, 15c 12½c

VEAL 16c 25c

ROAST OF MEAT 15c 16c

M. D. GATCHEL
Phone 110 Corner Celery and Sanford Aves.
STAPLE AND FANCY GROCERIES

Announcing Our
New Cash Plan

A message to our customers and friends:
The operating policy of this store has been changed from that of the "Community Store" to the new and more cash plan. There will be no restriction in quantity, but no restriction in quality of merchandise. In order to introduce the new system to you, we are opening a special

19c SALE
SATURDAY

200 lbs. A & P
SWEET POTATOS

WASH. STATE

WASHINGTON, June 25.—(AP)—The state department announced today that its expenses for the year ending June 30, 1933, are estimated to be \$1,388,100, a deficit of \$1,388,100 over the \$2,776,200 of receipts.

The state department's financial statement for the year ending June 30, 1933, shows a deficit of \$1,388,100. This deficit is the result of a combination of factors, including the increase in the cost of living, the increase in the cost of labor, and the increase in the cost of materials.

WASHINGTON, June 25.—(AP)—The state department announced today that its expenses for the year ending June 30, 1933, are estimated to be \$1,388,100, a deficit of \$1,388,100 over the \$2,776,200 of receipts.

The state department's financial statement for the year ending June 30, 1933, shows a deficit of \$1,388,100. This deficit is the result of a combination of factors, including the increase in the cost of living, the increase in the cost of labor, and the increase in the cost of materials.

WASHINGTON, June 25.—(AP)—The state department announced today that its expenses for the year ending June 30, 1933, are estimated to be \$1,388,100, a deficit of \$1,388,100 over the \$2,776,200 of receipts.

The state department's financial statement for the year ending June 30, 1933, shows a deficit of \$1,388,100. This deficit is the result of a combination of factors, including the increase in the cost of living, the increase in the cost of labor, and the increase in the cost of materials.

WASHINGTON, June 25.—(AP)—The state department announced today that its expenses for the year ending June 30, 1933, are estimated to be \$1,388,100, a deficit of \$1,388,100 over the \$2,776,200 of receipts.

The state department's financial statement for the year ending June 30, 1933, shows a deficit of \$1,388,100. This deficit is the result of a combination of factors, including the increase in the cost of living, the increase in the cost of labor, and the increase in the cost of materials.

WASHINGTON, June 25.—(AP)—The state department announced today that its expenses for the year ending June 30, 1933, are estimated to be \$1,388,100, a deficit of \$1,388,100 over the \$2,776,200 of receipts.

The state department's financial statement for the year ending June 30, 1933, shows a deficit of \$1,388,100. This deficit is the result of a combination of factors, including the increase in the cost of living, the increase in the cost of labor, and the increase in the cost of materials.

BUSY BEE CURB MARKET

Corner 10th St. and French Ave.
Headquarters for Fruits and Vegetables
Saturday and Monday Specials

New Potatoes, 10 Lbs.	10c
Green Peas, 7 Lbs.	20c
Fresh Tomatoes, Lb.	2c
Egg Plants, Lb.	3c
Cabbage, Lb.	3c
Okra, Lb.	7c
Bananas, 5 Lbs.	23c
Watermelons	10c each up

Flour, Selecting, NEW
Potatoes 10 Lbs. 19¢

Flour Granulated—C&M bags
SUGAR 10 Lbs. 47¢

CAMPBELL'S—Delicious FRESH and
BEANS 3 CANS 19¢

IONA—Plain or Self-Rising 14-16 Bag 14-16 Bag
Flour 39¢ 69¢

White House Brand
EVAPORATED MILK
3 Tall Cans 20c

ANN PAGE
Delicious Pure Fruit
Preserves
2 14-Oz. Jars 35c

OUR OWN BRAND
Lettuce, Cabbage, etc.
Discover your good luck
Try our...
15c 19c

Big (Lys) Honey, 5 No. 2 1/2 Cans 29c

Mandy—Unbottled Corn Meal, 5 Lb. Bag 17c

ANN PAGE—Delicious Pure Grape Jelly, 2-16-oz. Jars 35c

Emerson Yellow Cling Halves Del. House—Large No. 2 1/2 can PEACHES 17c

Brand with Butler PICKLES, 2 Jars 35c

Yellow Del. regular and Big Ginger Ale, Per Bottle 10c

5 D'Casey—mild, medium heat COFFEE, Per Pound 21c

ANN—Delicious Pure Apple Sauce, 2 No. 2 cans 19c

ANN—Delicious Pure Orange Juice, 16-oz. bottle 19c

624 Special Milk Syrup, No. 2 1/2 Cans 35c

200 lbs. A & P
SWEET POTATOS

SEMINOLE FISH AND MEAT MARKET

Specials for Saturday

1 PAYER

CHAMPION HORSE AND HIS OWNER

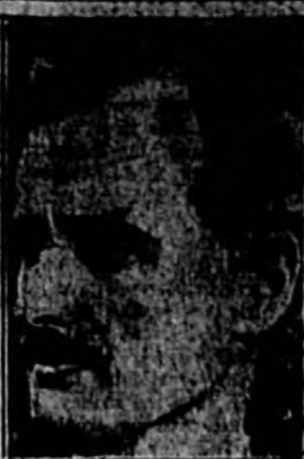


Mrs. Payne Whitney's Twenty Grand captured the Belmont Stakes, thereby clinching the three-year-old turf championship. Mrs. Whitney is shown above with Twenty Grand immediately after the running of the race.

War Is Declared On Gangdon By Mayor Walker

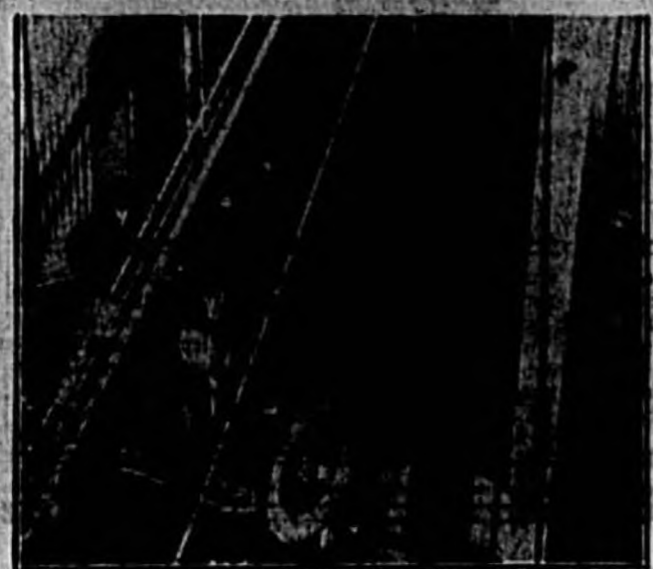
(Continued from Page One) had grown rich and powerful here, and as a result no one had been willing to testify against them. They had become emboldened, he said, to a point "wilder than the greatest dreams of Jesse James or Hicks the Pirate." If, however, the city's businessmen were ready to give information against the gangs, the mayor promised, the city would stamp them out and if necessary, to prevent reprisals would assign police to protect the informers even to the extent of sleeping in their homes. While the mayor was promising drastic action against racketeering, police were opening two safes in an office they understood to be the headquarters of Dutch Schultz. Bronx beer lord now held on charges of assaulting detectives who fatally shot his bodyguard during a street fight.

TWIN RESEARCHER



Dr. Jean Picard, above, twin brother of Professor August Picard, the Swiss scientist whose recent balloon flight into the stratosphere attracted world-wide attention, who lives near Wilmington, Delaware, plans to visit his brother this summer.

ODD EVIDENCE IN DEATH TRIAL



Shown above is the car in which William Fraser, on trial for his life in Elizabeth, N. J., is alleged to have shot Mrs. Phoebe Stader. It is shown as it was hoisted up to the second floor of the court house, to be presented by the prosecutor in his attempt to send Fraser to the electric chair.

Impeachment Charge Falls Against Haston

NASHVILLE, June 26.—(AP)—The impeachment charge against Secretary of State Haston was withdrawn by its author today when the House tabled a motion to summon witnesses to hear testimony concerning Haston's connection with the Tennessee Electric Power Company as an attorney. It is alleged that Haston was at-

orney for the company during the time he served as secretary of state.

CHAIN STORE PROFITS

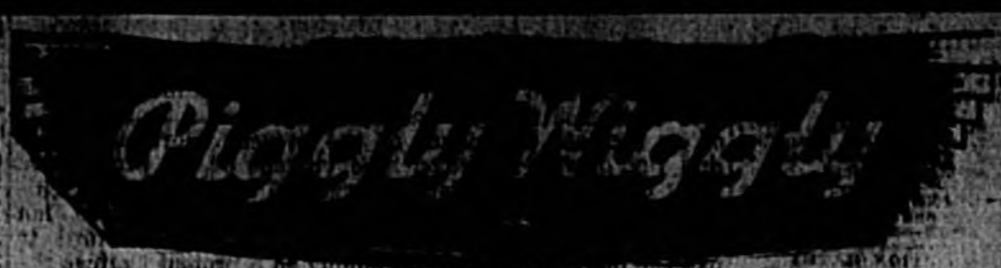
CAMBRIDGE, Mass., June 26.—(AP)—A bulletin issued yesterday by the bureau of business research of the Harvard business school said chain grocery stores realized a profit of 1.2 cents on every dollar received from customers in 1929.

Fischer's Market At Piggly Wiggly Store

- Cor. 4th St. and Sanford Ave. PHONE 660 WE DELIVER PHONE 660 WE DRESS 'EM FREE HENS LB. 23¢ ALL MEATS PLUMP RED FRYERS LB. 33¢ SWIFT, LARGE WEINERS LB. 15¢ BALT OR WHOLE, SWISS SKINNED HAMS LB. 23¢ GENUINE SPRING LAMB LEGS LB 25¢ GENUINE SPRING Lamb Shoulders 15¢ WESTERN, BUNDLING SLICED BACON LB. 29¢

SANFORD SEA FOOD -AND- POULTRY MARKET

- 402 SANFORD AVE. PHONE 755 G. I. FISCHER, Owner "WE DELIVER" DRESSED AND DRAWN FREE HENS LB. 23¢ YOUNG, TENDER, FAT, RED—ALL SIZES FRYERS LB. 33¢ SMALL OR MEDIUM Red Snapper LB 23¢ LARGE, WEST COAST MULLET Lb. 10¢ ALL SIZES AND KINDS PAN FISH LB. 10¢ RAW LB. COOKED LB. Shrimp 33¢ Shrimp 39¢ JUST RECEIVED Bream or Perch LB. 12 1/2¢



322 East First Street, Jacksonville, Fla. J. W. FLYNN, JR., Mgr. 118 Magnolia Avenue HAROLD KARTNER, Mgr. 405 Sanford Avenue J. H. COCHRAN, Mgr.

Are You Taking Full Advantage of Piggly Wiggly Prices? Food prices have greatly decreased—many articles are selling for less than at any time for twenty years. Each decline has been promptly passed on to our customers. Why not do a still larger part of your buying at Piggly Wiggly and thus save still more money. Below are just a few of our many values.

- Pillsbury's Best Flour There is a Real Difference—Ask for the "Balanced" Flour 24 lbs. 89c-12 lbs. 45c-6 lbs. 25c OCTAGON SOAP Small size 3 for 11¢ Carolina Cobble POTATOES No. 1's 10 lbs. 20¢ Swift's BROOKFIELD BUTTER LB. 29¢ SOUP Campbell's Tomato 3 Cans 23¢ Del Monte PRUNES IN CARTONS 1 Lb. Carton..... 9c 2 Lb. Carton..... 17c LUX TOILET SOAP 3 FOR 21¢ LUX FLAKES 2 Pkgs. 19¢ 26-Oz. Jar Alabama Grit PICKLES Sweet Mixed or Plain 23¢ PEANUT BUTTER Lb. Jar PET 21¢ FLORIDA KEY LIMES Per Dozen 17¢ Arkansas Blacks—For eating or cooking APPLES 3 POUNDS 25¢ NUCOA LB. 15¢ Welch's Grapelade lb. jar 17¢ Quart Jar Texas FIGS Each 45¢ Bread and Butter PICKLES jar 17¢ BEST FOODS Pts. 33c 1/2 Pint 17c Small size 9c MAYONNAISE & RELISH 10¢ Size BRILLO 2 Pkgs. 15¢ Assorted Kinds PABSTETTE CHEESE PACKAGE 18¢ TUNA FLAKES 2 Cans 25¢ In Our Sanitary Markets Best Grade WHITE BACON LB. 12¢ Best COMPOUND LARD LB. 10¢ Sugar Cured Picnic HAMS Lb. 15¢ Western Spare Ribs Lb. 12¢ Western Pork Shoulders Lb. 15¢ Fancy Rindless Sliced BACON LB. 27¢ Canned Hams Lb. 21¢ Half or Whole Center Cuts Lb. 39¢ Long Jolly WEINERS Lb. 15¢

THE GOLDEN GOOSE

The golden goose is the one that has been the source of the trouble. The doors are open to the golden goose. The golden goose is the one that has been the source of the trouble. The doors are open to the golden goose.

THE GOLDEN GOOSE

The golden goose is the one that has been the source of the trouble. The doors are open to the golden goose. The golden goose is the one that has been the source of the trouble. The doors are open to the golden goose.

THE GOLDEN GOOSE

The golden goose is the one that has been the source of the trouble. The doors are open to the golden goose. The golden goose is the one that has been the source of the trouble. The doors are open to the golden goose.

THE GOLDEN GOOSE

The golden goose is the one that has been the source of the trouble. The doors are open to the golden goose. The golden goose is the one that has been the source of the trouble. The doors are open to the golden goose.

THE GOLDEN GOOSE

The golden goose is the one that has been the source of the trouble. The doors are open to the golden goose. The golden goose is the one that has been the source of the trouble. The doors are open to the golden goose.

THE GOLDEN GOOSE

The golden goose is the one that has been the source of the trouble. The doors are open to the golden goose. The golden goose is the one that has been the source of the trouble. The doors are open to the golden goose.

THE GOLDEN GOOSE

The golden goose is the one that has been the source of the trouble. The doors are open to the golden goose. The golden goose is the one that has been the source of the trouble. The doors are open to the golden goose.

THE GOLDEN GOOSE

The golden goose is the one that has been the source of the trouble. The doors are open to the golden goose. The golden goose is the one that has been the source of the trouble. The doors are open to the golden goose.

THE GOLDEN GOOSE

The golden goose is the one that has been the source of the trouble. The doors are open to the golden goose. The golden goose is the one that has been the source of the trouble. The doors are open to the golden goose.

THE GOLDEN GOOSE

The golden goose is the one that has been the source of the trouble. The doors are open to the golden goose. The golden goose is the one that has been the source of the trouble. The doors are open to the golden goose.

THE GOLDEN GOOSE

The golden goose is the one that has been the source of the trouble. The doors are open to the golden goose. The golden goose is the one that has been the source of the trouble. The doors are open to the golden goose.

THE GOLDEN GOOSE

The golden goose is the one that has been the source of the trouble. The doors are open to the golden goose. The golden goose is the one that has been the source of the trouble. The doors are open to the golden goose.

THE GOLDEN GOOSE

The golden goose is the one that has been the source of the trouble. The doors are open to the golden goose. The golden goose is the one that has been the source of the trouble. The doors are open to the golden goose.

THE GOLDEN GOOSE

The golden goose is the one that has been the source of the trouble. The doors are open to the golden goose. The golden goose is the one that has been the source of the trouble. The doors are open to the golden goose.

THE GOLDEN GOOSE

The golden goose is the one that has been the source of the trouble. The doors are open to the golden goose. The golden goose is the one that has been the source of the trouble. The doors are open to the golden goose.

THE GOLDEN GOOSE

The golden goose is the one that has been the source of the trouble. The doors are open to the golden goose. The golden goose is the one that has been the source of the trouble. The doors are open to the golden goose.

THE GOLDEN GOOSE

THE GOLDEN GOOSE

The golden goose is the one that has been the source of the trouble. The doors are open to the golden goose. The golden goose is the one that has been the source of the trouble. The doors are open to the golden goose.

THE GOLDEN GOOSE

The golden goose is the one that has been the source of the trouble. The doors are open to the golden goose. The golden goose is the one that has been the source of the trouble. The doors are open to the golden goose.

THE GOLDEN GOOSE

The golden goose is the one that has been the source of the trouble. The doors are open to the golden goose. The golden goose is the one that has been the source of the trouble. The doors are open to the golden goose.

THE GOLDEN GOOSE

The golden goose is the one that has been the source of the trouble. The doors are open to the golden goose. The golden goose is the one that has been the source of the trouble. The doors are open to the golden goose.

THE GOLDEN GOOSE

The golden goose is the one that has been the source of the trouble. The doors are open to the golden goose. The golden goose is the one that has been the source of the trouble. The doors are open to the golden goose.

THE GOLDEN GOOSE

The golden goose is the one that has been the source of the trouble. The doors are open to the golden goose. The golden goose is the one that has been the source of the trouble. The doors are open to the golden goose.

THE GOLDEN GOOSE

The golden goose is the one that has been the source of the trouble. The doors are open to the golden goose. The golden goose is the one that has been the source of the trouble. The doors are open to the golden goose.

THE GOLDEN GOOSE

The golden goose is the one that has been the source of the trouble. The doors are open to the golden goose. The golden goose is the one that has been the source of the trouble. The doors are open to the golden goose.

THE GOLDEN GOOSE

THE GOLDEN GOOSE

The golden goose is the one that has been the source of the trouble. The doors are open to the golden goose. The golden goose is the one that has been the source of the trouble. The doors are open to the golden goose.

THE GOLDEN GOOSE

The golden goose is the one that has been the source of the trouble. The doors are open to the golden goose. The golden goose is the one that has been the source of the trouble. The doors are open to the golden goose.

THE GOLDEN GOOSE

The golden goose is the one that has been the source of the trouble. The doors are open to the golden goose. The golden goose is the one that has been the source of the trouble. The doors are open to the golden goose.

THE GOLDEN GOOSE

The golden goose is the one that has been the source of the trouble. The doors are open to the golden goose. The golden goose is the one that has been the source of the trouble. The doors are open to the golden goose.

THE GOLDEN GOOSE

The golden goose is the one that has been the source of the trouble. The doors are open to the golden goose. The golden goose is the one that has been the source of the trouble. The doors are open to the golden goose.

THE GOLDEN GOOSE

The golden goose is the one that has been the source of the trouble. The doors are open to the golden goose. The golden goose is the one that has been the source of the trouble. The doors are open to the golden goose.

THE GOLDEN GOOSE

The golden goose is the one that has been the source of the trouble. The doors are open to the golden goose. The golden goose is the one that has been the source of the trouble. The doors are open to the golden goose.

THE GOLDEN GOOSE

The golden goose is the one that has been the source of the trouble. The doors are open to the golden goose. The golden goose is the one that has been the source of the trouble. The doors are open to the golden goose.

THE GOLDEN GOOSE

THE GOLDEN GOOSE

The golden goose is the one that has been the source of the trouble. The doors are open to the golden goose. The golden goose is the one that has been the source of the trouble. The doors are open to the golden goose.

THE GOLDEN GOOSE

The golden goose is the one that has been the source of the trouble. The doors are open to the golden goose. The golden goose is the one that has been the source of the trouble. The doors are open to the golden goose.

THE GOLDEN GOOSE

The golden goose is the one that has been the source of the trouble. The doors are open to the golden goose. The golden goose is the one that has been the source of the trouble. The doors are open to the golden goose.

THE GOLDEN GOOSE

The golden goose is the one that has been the source of the trouble. The doors are open to the golden goose. The golden goose is the one that has been the source of the trouble. The doors are open to the golden goose.

THE GOLDEN GOOSE

The golden goose is the one that has been the source of the trouble. The doors are open to the golden goose. The golden goose is the one that has been the source of the trouble. The doors are open to the golden goose.

THE GOLDEN GOOSE

The golden goose is the one that has been the source of the trouble. The doors are open to the golden goose. The golden goose is the one that has been the source of the trouble. The doors are open to the golden goose.

THE GOLDEN GOOSE

The golden goose is the one that has been the source of the trouble. The doors are open to the golden goose. The golden goose is the one that has been the source of the trouble. The doors are open to the golden goose.

THE GOLDEN GOOSE

The golden goose is the one that has been the source of the trouble. The doors are open to the golden goose. The golden goose is the one that has been the source of the trouble. The doors are open to the golden goose.

THE GOLDEN GOOSE



(for marking trees in a forest) stumped. They were offered dig-
love philtres, gon damar, atar
gums and ellipographs at current
rates, but when they tried to get
down and ready-to-install foot-
quations on a white elephant
and an orang-utang they were told
that there are none on the mar-
ket. There is a fine orang-utang
in the Bronx Zoo but there is
Only twice were the colleagues

Prohibiting Fruit Stealing

Among the few really beneficial laws enacted by the 1933 session of the Legislature is one contemplated to put an end to the wholesale stealing of oranges and grapefruit from Florida groves. The new law requires every person transporting citrus fruits by truck to carry a bill of sale showing the names of both purchaser and seller, and grants to every peace officer the right to stop any fruit-laden truck and demand to see such bill of sale. It is not necessary to prove that the fruit was stolen; it is a sufficient offense in itself if the bill of sale is not available.

This law seems to be an excellent and much-needed one, says the St. Petersburg Independent. "Groves owners of Pinellas, and especially in the middle part of the county, have been suffering heavy loss by reason of thefts of oranges and grapefruit. These were no small pilferings by persons passing in automobiles. The thieves were stealing wholesale for profit. Big truckloads of fruit have been taken from groves in the night. The fruit has been sold to dealers, most of whom did not know they were buying stolen fruit."

St. Petersburg had at one time, and may still have, an ordinance requiring all dealers in fruit, whether selling from a stand or a wagon, to tell any inquiring policeman or deputy sheriff from whom and when the fruit offered for sale was purchased. In this way the police could check up on fruit stocks and determine whether or not it had been stolen.

With such a city ordinance in effect, and with the new law applying to the whole county and regulating transportation of fruit over the highways, it ought to be possible to put a stop to the stealing of citrus fruits from groves in this and adjoining counties. Some such measure is needed. Too much stolen fruit has been put on the market in St. Petersburg and in other parts of the county. The citrus patrol did good work but it could not cover the territory. The new law would allow the patrol to stop trucks and require proof that the fruit was lawfully acquired.

THE WORLD RESPONDS

NEW YORK HERALD TRIBUNE

The sudden, almost overwhelming response from abroad to President Hoover's moratorium proposal leaves no doubt that it was as timely and made as to achieve the maximum psychological effect. Nearly every one of the world's great trading exchanges has responded upward. In Germany every official and unofficial organ of opinion has expressed the sense of gratitude and increased relief in England the Cabinet has already accepted the proposal and a chorus of public opinion which regards the speedy ratification, not in France, though commentators are quick to make some national variations, has been in favor of the idea that there has been a new departure in the attitude of the world's leading nations toward the economic situation.

The College of the City of New York has recently awakened to this important aspect of the charms of the city and has launched a survey to ascertain exactly what you can buy here, according to no substitutes. Dr. George W. Edwards, the dean of the business school, and twenty of the students have been busy for weeks listing things. The way they are going about it is that each searches the dictionaries and goes word by word for something that somebody might conceivably wish to buy. Then he finds out if it is actually available in the local market.

Twenty thousand items have been placed on the list so far, and the earnest scientists have already ascertained that they could be guaranteed almost immediate delivery on 8,000 of them. That is, as far as they have got to verifying the list, and I would like to bet them that the remaining 12,000 will turn out to be as many as a tuna fish sandwich in a corner drug store. Some of the items that Dr. Edwards' youths narrowly escaped having forced upon them (when they inquired) were: bacchanal animals, green small shells, blue gin and imported gin, cotton field plows, ostriches, sewer cream, kangaroos, timber scribbles

on final balance the United States would gain more than it would lose by it. Equally, the cin assures that he would not have made it did he not believe that France and each of the other powers concerned would also gain more than they would lose. To be of use it requires the consent of all, and no nation can ask another to assent to any agreement by which the other is set in the long run to be a gainer.



in support its own statements in such a proposal one really feel reluctant to increase it when it comes from outside. So far, France has been less affected by the declaration that any other major power. The French tollers themselves have made extreme efforts to be ready of their treaty rights, while the moratorium has necessitated suggestions to them concerning their possibilities. It is noted that the French press, while approving a moratorium on the debt, should prefer that it be accompanied by a French sacrifice of the net reparations payments.

THE GOLDEN GOOSE
The golden goose is the one that has been the source of the trouble. The doors are open to the golden goose. The golden goose is the one that has been the source of the trouble. The doors are open to the golden goose.

SPENCER'S NEW BABY
On Country Club Road
And See For Yourself Why
Our Bacteria Count is
Maintained Under 10,000
U. S. Standard for
CERTIFIED MILK
Inspection Insured
At All Times
SPENCER'S DAIRY, INC.
Geo. C. Hudson, Mgr.

MAKING UP YOUR LIST

PERHAPS you do your staple shopping by the week. Larger items you renew each month. Household furnishings, automobiles, radios, and similar things are in the nature of investments, whether for months, for years, or for life. You buy these things at long intervals.

But no matter what you buy, you serve yourself best if you plan your purchases in advance. Every list you make is a budget in itself. Careful study of the advertisements will always help you in picking and choosing . . . in comparing prices . . . in weighing your needs and wants.

Making up your list is really a fascinating game when you play it against your allowance. The more careful you are in the preliminary study of the advertisements, the better will be your results. You will get the best bargains for your money. That can be done by making up your list in advance.

And Personal Activities

Calendar

FRIDAY
 St. Anthony's Society Mass
 St. Anthony's Society Mass
 St. Anthony's Society Mass

MARY

ST. ANTHONY'S SOCIETY
 St. Anthony's Society Mass
 St. Anthony's Society Mass

Philathea Class Of Church Holds Picnic

The members of the Philathea Class of the First Baptist Church enjoyed a swimming party and watermelon cutting last night at Evansdale Park near Lake Mary. After bathing in the lake for a short time those present enjoyed watermelon.

2 More Highways Added To State's U.S. Marked Roads

TALLAHASSEE, June 24.—Two more roads have been added to Florida's list of U. S. numbered highways, by action of the National Committee on U. S. numbered Highways, it is announced by Chairman Bentley of the State Road Department.

Faithful's Wives To Doctor Fight Authentic

NEW YORK, June 24.—(AP)—His wife had questioned the authenticity of Starr Faithfull's signature nearly all night, Attorney Elvin Edwards announced yesterday that letters written by the grand jury by Dr. Carr, of the Central Penitentiary, were genuine.

Sears-Roebuck Store To Open In Orlando

The Orlando store of Sears-Roebuck Company, with Charles S. Farrell, as manager, will be open to the public on Orange Avenue next Monday with 20 complete departments including the following: clothing and furnishings for men, boys, ladies, girls and infants; electrical appliances, plumbing, hardware and paints; kitchen utensils; washing machines and electric refrigerators; radios; sporting goods; and automobile tires and other accessories.

Some like it hot Some like it cold

And whether it's bean porridge in the pot, or roast beef on the rack, we're on the lookout for the best ways of serving it hot or cold. For we have a kitchen of our own, fitted out with all the traditional gear for cooking and tasting food.

ATLANTIC & PACIFIC Tea Co.

Miss Kathryn Wright Marries W. E. Petris

Little Miss Maria Wright, daughter of Mr. and Mrs. M. L. Wright of this city, listed as flower girl at the wedding Wednesday afternoon at Winter Garden of her cousin, Miss Kathryn Wright, daughter of Mr. and Mrs. Rufus Paria Wright, of Winter Garden, to Willis Edward Petris, son of Mr. and Mrs. Edmund Petris, of Usalanda. The ceremony was performed by the Rev. John E. Evans at the First Baptist Church at Winter Garden in the presence of a large number of friends.

Personals

H. E. Lawson left yesterday for New York City to send some time.
 Dr. J. C. Gibbs will leave tomorrow for Crown Point, Ind. to spend the summer season.
 Mr. and Mrs. J. C. Aycock, Lucy Brounillat, and Jack Aycock are at Daytona Beach for a few days.

Herbert Squires, of Atlanta, has been called here by the illness of his mother, Mrs. Susan Squires, at her home on Fifth Street.

R. B. Trosmann, of the Trueman Furrier Company, of Jacksonville, spent yesterday and today here on business. He was the guest of C. A. Adama.
 Mrs. Bruce McCullough and little son, of Jacksonville, are spending a week here with the former's mother, Mrs. H. H. Lawson, 107 North Locust Street.
 Mrs. R. F. Crenshaw and sons, Olin and Joe, and Miss Kate Abrams will leave tomorrow for Marshallville, Monksma and other points in Georgia where they will visit relatives for a week.

By World Feature Service

PARIS, June 24.—Will the two daughters of ex-king Alfonso XII wed?
 "Will they follow their careers?"
 "Will they take part in a double wedding?"
 These are the questions Paris is asking.

Hand Lockers \$4.98

Roomy and strong... sheet steel covered, with brass plated hardware. An unusual value!

TIES 79c

Colorful Values for Summer

Cotton Pajamas 98c

Household pajamas with wide trousers that look almost like a skirt... sleeping pajamas... beach styles with low backs. All made of tubfast cottons in gay prints and cheery plain colors.

Ex-King Alfonso's daughters have never shirked work. Above you see them in one of Madrid's soup kitchens, with Princess Beatrice in the foreground as she served the poor in the Spanish capital. At the right you see Princess Christina in her Red Cross nurse uniform. Below, left to right are shown Princess Beatrice, the ex-queen of Spain, and Princess Christina, in their latest photograph.



WASH DRESSES 49c

Seamless, scalloped bedspreads... novelty weaves, and all Fast Color. Can be had in assorted colors. This is a really exceptional value!

Sheer Cotton Dresses 49c

A fresh one for every day in the week will make this a smart summer... and a thrifty one. Tubfast prints and fresh colors in cool summer styles.

Aywon Mouth Wash and Antiseptic 25c

"Aywon" protects your health... destroys common disease germs in 15 seconds... counteracts mouth odors! Refreshing... and absolutely safe!

Savings in Pajamas! 98c

Frog fronts in newest wash-dyeing materials in fancy patterns.

KING'S DAUGHTERS ARE NO STRANGERS TO WORK



WASH DRESSES 49c

Seamless, scalloped bedspreads... novelty weaves, and all Fast Color. Can be had in assorted colors. This is a really exceptional value!

Sheer Cotton Dresses 49c

A fresh one for every day in the week will make this a smart summer... and a thrifty one. Tubfast prints and fresh colors in cool summer styles.

Aywon Mouth Wash and Antiseptic 25c

"Aywon" protects your health... destroys common disease germs in 15 seconds... counteracts mouth odors! Refreshing... and absolutely safe!

Savings in Pajamas! 98c

Frog fronts in newest wash-dyeing materials in fancy patterns.

CARD OF THANKS

We wish to thank our friends for their kindness, during the illness and death of our grandmother, and for the beautiful floral offerings.
 Mr. and Mrs. Ernest Lee and Alta Shimmom.
 —Adv.

PLANT CITY—Grading underway on State Road No. 17 between here and Polk County line.
 Key West—Hatching crawfish resumed at State hatchery on Porter dock, east of Duval Street.

ARCADIA

Drewy, Robinson and E. W. Hoyt opened electrical shop in East Magnolia St.

Life Insurance—the only known method of capitalizing the savings of the future.
 The Prudential issues on the average of Ten Millions of life insurance every day.
 C. MILLS BOYD
 Phone 739 Phone 179-R
 107-S. B. Park Ave.

25 Pair Shoes Given Away!

Here's How
 To the first 25 customers purchasing a pair of shoes in this store
SATURDAY ONLY
 we will give away one good pair of shoes... wrapped and tied. If the shoe fits—wear it. If not—sell it.

WELBORN'S SHOE SHOP

105 W. 1st St.

J. C. PENNEY CO. INC.

DEPARTMENT STORE

212 EAST FIRST ST. 214

"Nation-Wide" 81x99 SHEETS 87c

A popular size and a firm, substantial quality that will wear and wear. A big value at this price.

\$5x36 inch cases, Each 21c

Crinkled Cotton Bedspreads 79c

NEW LOW PRICE

Large size, 80 x 105 inches... colored stripes, scalloped edges, assorted colors. A new low price for this high quality seamless spread.

WASH DRESSES 49c

Summer Styles New Prints

Now you can buy a truly smart dress for less than you used to pay for an apron! Tubfast cotton prints on light and dark backgrounds... style details copied from silk dresses... alsovelours in regular and extra sizes.

Hand Lockers \$4.98

Roomy and strong... sheet steel covered, with brass plated hardware. An unusual value!

Crinkled Cotton Bedspreads \$1.29

80 x 105

Seamless, scalloped bedspreads... novelty weaves, and all Fast Color. Can be had in assorted colors. This is a really exceptional value!

Aywon Mouth Wash and Antiseptic 25c

"Aywon" protects your health... destroys common disease germs in 15 seconds... counteracts mouth odors! Refreshing... and absolutely safe!

TIES 79c

Colorful Values for Summer

Sheer Cotton Dresses 49c

Sizes 7 to 14

A fresh one for every day in the week will make this a smart summer... and a thrifty one. Tubfast prints and fresh colors in cool summer styles.

Savings in Pajamas! 98c

Frog fronts in newest wash-dyeing materials in fancy patterns.

Cotton Pajamas 98c

Household pajamas with wide trousers that look almost like a skirt... sleeping pajamas... beach styles with low backs. All made of tubfast cottons in gay prints and cheery plain colors.

ATLANTIC & PACIFIC Tea Co.

ATLANTIC & PACIFIC Tea Co.

Major Mergers

SHIP YIELDS TO BUFFETING OF HEAVY SEAS



An air view of the S. S. Harvard, stranded since May 30 on a rocky reef off Point Arguello, showing the vessel just before it broke in two under the continued pounding of the waves.

End Is Seen Of Row Over Merger Of 2 Steel Companies

WASHINGTON, June 24.—(AP)—A new constitution providing for the union was approved at separate assemblies.

At the outset the united body will have the Congregational moderators and the Christian president as co-moderators.

The majority of the Christian Churches involved are located in the states of the Mississippi Valley and the Southeast. Churchmen said the merger was the largest ever to have taken place between denominations entirely distinct in origin and history.

The churches affecting total 6470 in this country, with a communicant membership of 1,050,000 and a constituency, including adherents of about 2,000,000.

The foreign missions of the two groups already have been merged under the American board of Commissioners for Foreign Missions. The missions are in 16 foreign countries, where 850 American missionaries and more than 6000 nationals are employed.

Those who led the negotiations for the union said they believed it was the beginning of a new trend in church life and will be followed by other mergers. They expressed hope other denominations will join with them to form a group large enough to warrant the use of the name, The United Church of Christ in America.

NEW YORK, June 24.—(AP)—Reports were circulated in Wall Street yesterday that a peaceful settlement of the litigation over the proposed billion dollar merger of the Bethlehem Steel and Youngstown Sheet & Tube companies had been reached.

The New York Evening Post said the peace pact to end litigation over the merger, now blocked by an injunction granted minority stockholders, was the forerunner to creation of a unit in the steel industry even larger than previously contemplated.

No high official of either company could be reached for comment but in some quarters it was said informal announcement of the settlement might be forthcoming later in the week.

George T. Bishop, president of Continental States Investment Trust, with large stockholders in Youngstown Sheet & Tube, said he had not been advised of any peace pact, and his statement was quoted by William G. Mather, Cleveland capitalist who supported Young in his effort to block the merger.

The companies that would be involved in the reported consolidation to enlarge Bethlehem, including Republic Steel, Otis Steel, Cleveland Cliffs and Inland Steel of Chicago.

Both Charles M. Schwab, chairman, and Eugene Grace, president, of Bethlehem, were out of the city and it was said at the company's office there was no information of any change in the situation. No one at the Youngstown Sheet & Tube company offices would comment.

Spurling's Suit Against Pope Is Started Today

Continued From Page One

On Jan. 2, 1929, which resulted in the death of her husband J. E. Spurling.

Through her attorney she claims that Mr. Pope was negligent in allowing his daughter, Miss Isabelle Pope, to use the automobile which collided with the Spurling machine; that Miss Pope was the agent of Mr. Pope, and that Mr. Spurling was driving the automobile along a public highway.

Mr. Pope, through his attorney, pleaded not guilty to all of the charges, declaring that Mr. Spurling did not use necessary care nor diligence in operating his automobile; that Miss Pope was not the agent of her father, the owner of the car; that Mr. Spurling was driving his car along a sand trail; although this trail was on Geneva Avenue was so narrow that an approaching automobile could not be seen, and that the Spurling machine did not stop to look for the Pope car on the highway and drove into the Pope machine which was proceeding along Geneva Avenue at a moderate speed.

THEY'RE CALIFORNIA'S PRETTY HURDLE TOPPERS



Over the hurdles in fine style go this team of girl riders. They are students at an exclusive girls' school, Pebble Beach, California, and are pictured for their entry in the Monterey Peninsula Horse Show.

duce the following as witnesses: Perc. J. Mero, A. K. McInyre, C. H. Winn, G. W. Rutherford, Ira Southward, T. W. Jones, Roy G. Williams, George Gray, A. Welboldt, Geo. E. Wells, and Dr. R. E. Steven.

Mr. Pope experts to introduce the following: Mrs. O. J. Pope, Mr. Pope, Miss Pope, J. E. Estridge, T. H. Crawley, L. M. Marshall, H. S. White, Mrs. L. E. Johnson, and R. J. Reel.

Report Of U. S. Guard In Milk War Denied

BIRMINGHAM, June 24.—(AP)—Federal agents and officials of foremost dairies today denied reports that federal officers are guarding trucks transporting milk here from Central Alabama. Officials of the company whose trucks have been the object of two recent unsuccessful bombing attempts said no request had been made to the government for protection as previously reported. They said no action had been taken in the milk price war here and expressed the belief that there would be no more attempts at bombing trucks.

MAYO—New sidewalk laid in front of Winburn Hardware and Furniture Company's Store.

LIKE MOTHS AROUND A FLAME

PEOPLE are attracted to light like moths around a flame.

Good lighting is good selling because it searches out those fascinating and alluring details of your merchandise that catch and hold the attention of the customer. Your sales people as well as those who visit your store are made more cheerful, more wide-awake, and more confident when the light is good.

DON'T LOSE BUSINESS

through poor lighting in your windows, show cases or stores. Request our Commercial Lighting Division to send a lighting specialist to you at once. There is no obligation. It is just another Sunshine Service maintained for your convenience . . . and profit.

MIAMI BEACH—The Green... received permit for construction... \$15,000 residence and garage at 540 Pine Street Drive.

MEMPHIS—The... opened at 100 Market Street.

PUNYA GOBIN—Highway... more than 100,000, nearing completion.

State road commission... and a costing \$20,000, near Tampa, Fla.

STANDARD MOTOR PRODUCTS

like standard brands of merchandise— are the safest to buy!

It would be hard to sell "a pig in a poke" to even a child today. The American people prefer standard brands of merchandise of known value and dependability, made by responsible companies who put their reputation behind their products. That's one reason why year after year STANDARD Motor Products—Crown Standard Gasoline, Crown Ethyl Gasoline, and "Standard" Motor Oil, continue to lead in point of sales... Motorists have faith in "Standard" products, and this faith has not, and will never be abused.

ATLAS TIRES

have exceptional non-skid qualities due to deep sipes, sipes, sipes—making tread, scientifically designed to maintain contact with the road at any angle, and are sold at extremely low prices.

STANDARD OIL COMPANY

INCORPORATED IN KENTUCKY

FREE ROUTING of motor-trips anywhere—by the STANDARD OIL TOURING SERVICE

If you are planning a motor-trip this Spring or Summer to any point in the United States, Canada or Mexico, fill in the coupon and mail it to our Touring Service today.

Mail this Coupon →→

STANDARD OIL TOURING SERVICE, 425 W. Bloom St., Louisville, Ky.

I would like for you to send me leaflets, maps, which it to be furnished free of charge.

Name _____
Address _____
City _____

BIGGER THAN THE TIRE BUSINESS

THE TIRE SENSATION of 1934

Eleven GREAT IMPROVEMENTS AND LOWER PRICES! More Miles—More Style—More Value for your Dollar!

New and better in 11 ways, yet it costs you less than ever! This great new Goodyear All-Weather is a value possible only because Goodyear builds MILLIONS MORE tires and more people ride on Goodyear than on any other tires.

4.40-21 (28x3.50)	\$7.45	5.00-19 (28x3.00)	\$6.15	5.00-20 (28x3.50)	\$12.00
4.50-21 (28x3.50)	\$7.65	5.00-20 (28x3.00)	\$6.35	5.00-22 (28x4.00)	\$12.20
4.75-19 (28x3.50)	\$8.05	5.25-19 (28x3.50)	\$6.55	5.00-24 (28x4.50)	\$12.40

ROCKEY'S STOP

THE RADIO TOWER

WBDO—Orlando... South Sea Islanders; 8:15... Arthur Pryor's Cream...

OVIEDO NEWS

Mrs. L. A. Niblack of Oviedo and Miss Gail Marshall of Sanford left last week for a month's visit...

Tariff Revisions Are Approved By President Hoover

WASHINGTON, June 26—(AP)—Increased duties on three commodities and decreases on four others were proclaimed yesterday...

SHIP WITH FRIENDS AT THE END

Church on the End and 4th Sunday evenings of the summer months and at the Methodist Church...

NOTICE OF THE STATE OF FLORIDA

Notice is hereby given that Manifested Holman, purchaser of Tax Certificate No. 119, dated the 2nd day of July A. D. 1931...

4—Business Service

LANEY'S DRUG STORE—Prescriptions, magazines, fountain service, PROMPT deliveries. Phone 103.

12—Wanted

WANTED: 500 Ladies & Men Saturday to purchase Western Pork Chops at 15c per lb. from L. Allen's Market...

On the Spot

By LARS MORRIS. But Not So Dangerous As All That. ACROSS... YESTERDAY'S ANSWERS... DOWN...

MISS DOROTHY LEE IS THE GUEST

of her grand-parents, Mr. and Mrs. S. W. Swope of Orlando. W. S. Lee left Friday for Glennville, Ga., for a visit...

FIRE FATAL TO TWO

NORTH RIVER, N. Y., June 26.—(AP)—Two persons were burned to death in a fire which destroyed the Thirteenth Lake house at Thirteenth Lake yesterday...

NOTICE OF APPLICATION FOR TAX DEED UNDER SECTION 575 OF THE GENERAL STATUTES OF THE STATE OF FLORIDA

Notice is hereby given that C. J. FINLEY, purchaser of Tax Certificate No. 351, dated the 4th day of July A. D. 1931, has filed said certificate in my office...

NOTICE OF APPLICATION FOR TAX DEED UNDER SECTION 575 OF THE GENERAL STATUTES OF THE STATE OF FLORIDA

Notice is hereby given that W. E. WATSON, purchaser of Tax Certificate No. 417, dated the 4th day of July A. D. 1931, has filed said certificate in my office...

NOTICE OF APPLICATION FOR TAX DEED UNDER SECTION 575 OF THE GENERAL STATUTES OF THE STATE OF FLORIDA

Notice is hereby given that L. G. HUNTER, purchaser of Tax Certificate No. 419, dated the 4th day of July A. D. 1931, has filed said certificate in my office...

20—Farms For Sale

FOR SALE: 5 acre celery farm, tiled, good residence, tenant house, barn, fully equipped including mule, on hard road, good location, price and terms very reasonable...

PILES Quickly! NO PAIN NO OPERATION. DR. F. L. BROWN

\$5.50 UP to NEW YORK and RETURN. ONLY DIRECT LINE WITHOUT CHANGE. Clyde Mallory

GOOD LAXATIVE FOR ALL AGES. All people—young and old—need Theford's Black-Draught when troubled with constipation...

21—Wanted Real Estate

WANTED REAL ESTATE: Willing to purchase ten acre farm and pay cash, if priced right. What have you to offer? Frances Wyrtemberg, P. O. Box 1694, Newark, N. J.

26—Miscellaneous For Sale

FOR SALE: Cement lawn benches \$6.00, fancy flower pots \$2.00 & \$3.50, Miracle Concrete Co., 3rd St. & Elm Ave.

DOT DOPE

THE LADIES AN' GENTLEMEN, BUNGLA THE... SO! THERE YOU ARE, DOPE!!!

HOLY MACKEREL! ME OLD MAN!!

STEAL MY NEW PANAMA HAT WILL YOU, MISTER WILD MAN? WELL, A CRIPPLE FROM BORNEO, I'LL MAKE YOU!

DO YOU... SURE I'LL RASSLE HIM—AND I'LL PUT HIM ON D'SHELF FOR A MONTH!

YEAH? WELL—IF THAT GUY DON'T TIE YOU UP LIKE A PRETZEL IT'LL BE ONLY BECAUSE YOU GOT LOOSE AN' BIT OUT FOR THE SHOWER!

Dear Ed—Crazy things happening lately. I had my wintler, Willie Bright, matched to meet Lutz at our Dave's show tomorrow night...

CLASSIFIED BUSINESS DIRECTORY. Classified Ads. HAVE YOUR WATCH repaired by one who really knows how! Briggs, Jeweler, Mag. Ave.

KELLY LOTTA MILES TIRES. 21-40 \$4.95 26-50 \$7.10 21-45 \$4.95 21-55 \$5.25 21-65 \$5.50 21-75 \$5.75 21-85 \$6.00