



Seminole Herald

THURSDAY
November 18, 1999
92nd Year, No. 64
(407) 322-2611
Sanford, FL
50 Cents

Serving

Sanford, Casselberry,
Lake Mary, Longwood,
Oviedo, Winter Springs
and Seminole County
Since 1908



Weather
Clear
High: 73
Low: 50
2A



SCC Women
boost their
record to 4-0
1B

Police make bust
of international
Ecstasy ring
5A

Seminole County waste collection schedule for Thanksgiving

There will be no residential waste collection service in unincorporated Seminole County on Thanksgiving Day, Thursday, Nov. 25.

For residential customers in the unincorporated county with twice a week Monday/Thursday garbage collection, service will resume Monday, Nov. 29.

For residential customers in unincorporated area with once a week Thursday service, collection will resume Thursday, Dec. 2.

Collection of recyclable will also resume on Thursday, Dec. 2.

On Thanksgiving Day, Thursday, Nov. 25, both the Seminole County Central Transfer Station at 1634 SR-419 and the Osceola Road landfill, will be closed. They will reopen for business Friday, Nov. 26.

Today is ...

Thursday, Nov. 18, 1999
Today is the 322nd day of 1999 and the 57th day of fall.

TODAY'S HISTORY: On this day in 1919, printers in Seattle refused to print a newspaper advertisement criticizing organized labor.

On this day in 1928, animator U.B. Iwerks drew the animated character Mickey Mouse for the first time.

On this day in 1949, Jackie Robinson was named the Most Valuable Player in the National League.

TODAY'S BIRTHDAYS: Clarence Day (1874-1935), writer; Eugene Ormandy (1899-1985), conductor-music director; George Gallup (1901-1984), pollster; Johnny Mercer (1909-1976), lyricist; Alan Shepard (1923-1998), astronaut; Margaret Atwood (1939-), writer, is 60; Linda Evans (1942-), actress, is 57; Warren Moon (1956-), football player, is 43.

TODAY'S SPORTS: On this day in 1967, the University of Southern California defeated UCLA 21-20, due to O.J. Simpson's 64-yard touchdown run in the fourth quarter.

TODAY'S QUOTE: "A divorce is like an amputation; you survive, but there's less of you."
Margaret Atwood

TODAY'S MOON: Between first quarter (Nov. 16) and full moon (Nov. 23).

© 1999 NEWSPAPER ENTERPRISE ASSN.

Index

Classified 3B-4B
Comics 5B
Crossword 4B
Dear Abby 6B
Horoscope 5B
Life Style 6B
Obituaries 3A
Police Log 3A
Sports 1B-2B

Two arrested in throat-slashing case

By Bill Kerns
Staff Writer

SANFORD — Investigators with the Seminole County Sheriff's Office made two arrests Wednesday in connection with the attempted murder and kidnapping of an Orlando woman, whose throat was slashed in an apparent love-triangle that turned violent.

Andre Henley, 28, is accused of attempted first-degree murder of his ex-

Ex-girlfriend walks to safety after being left for dead

girlfriend, 24-year-old Jennifer Meagan Forehand. He is also charged with kidnapping, aggravated battery, and grand theft auto.

Desiree Vega, 28, Henley's current girl-

friend, is accused of being an accessory after the fact on the charges. Both are being held in the Seminole County Jail without bond.

Forehand, an Orlando resident, was

left for dead with her throat slashed Tuesday night near the entrance to the Seminole County Public Schools Environmental Education property, just outside of Winter Springs.

She was transported to Orlando Regional Medical Center where she underwent emergency surgery after losing three pints of blood. Her prognosis is good and hospital officials expect her to recover from her injuries, according to See Slashing, Page 4A

Pan Am begins flight service Chicago area

Afternoon flights offered six days per week

By Bill Kerns
Staff Writer

SANFORD — Pan American Airways began service between Sanford and Chicago on Wednesday, expanding the Orlando Sanford Airport's first scheduled domestic service.

Pan Am now offers daily service between Sanford and the Gary-Chicago Airport six days per week, in addition to service between the Orlando Sanford Airport and Portsmouth, N.H., which is 50 miles outside of Boston.

Service between the Gary-Chicago Airport and Portsmouth begins today, linking service between the three cities.

"We've started service now at three special airports," said Tim Mellon, CEO of Pan Am, who flew the inaugural flight from

Chicago to Sanford. "The reason we're at all three cities is the people and the community."

Flights from the Chicago-Gary Airport will arrive in Sanford at 12:20 p.m. every day except Tuesdays. The flight will depart Sanford for Gary-Chicago at 2:20 p.m.

Gary, Ind., a city of 117,000 people, is located 20 miles outside of Chicago on the southern tip of Lake Michigan. There are 500,000 people in the metropolitan area of Gary.

Pan Am's service in Sanford began in October with flights six days per week between Sanford and Portsmouth. The first scheduled passenger flight for Pan Am since February 1998 provided Sanford's airport with its first regularly scheduled domestic service.

Next year, the airline is considering adding service from Sanford to perhaps four more cities. Among the cities Pan Am is considering for expansion are Atlanta, St. Louis, Philadelphia, Pittsburgh, San Juan and Aguadilla, Puerto Rico, and See Pan Am

Donations for the Ritz



Renovations at the Ritz Theater, in background, are nearing completion and donations continue to come in. The Sanford Lakeside Lions Club donated \$570 to the project. Those on hand for the donation include Joyce Fitzgerald, Lions Club board member; Lynda Baldorf, new Lions Club member; David Hall, president of the Lions Club; and Helen Stairs, president of the Ritz Community Theater Project Inc. The Ritz will formally open in January, but there will be a gala reception to kick-off the Sanford Historical Trust's Tour of Homes on Dec. 4.

Herald photo by Tommy Vincent

Novice Conley to challenge Rep. Feeney for state house position

By Russ White
Staff Writer

OVIDO — A 63-year-old Oviedo property manager, Chamber of Commerce president and grandmother who has never run for public office, has decided to challenge the District 33 seat of Florida House of Representatives Speaker

Designate Tom Feeney.

Glenda Conley, a Democrat, said she will file Year 2000 election papers in Sanford today.

"I realize that Tom Feeney has all the support in Tallahassee — he was Jeb Bush's running mate in 1994 — but I'm determined to give this a go," Conley said.

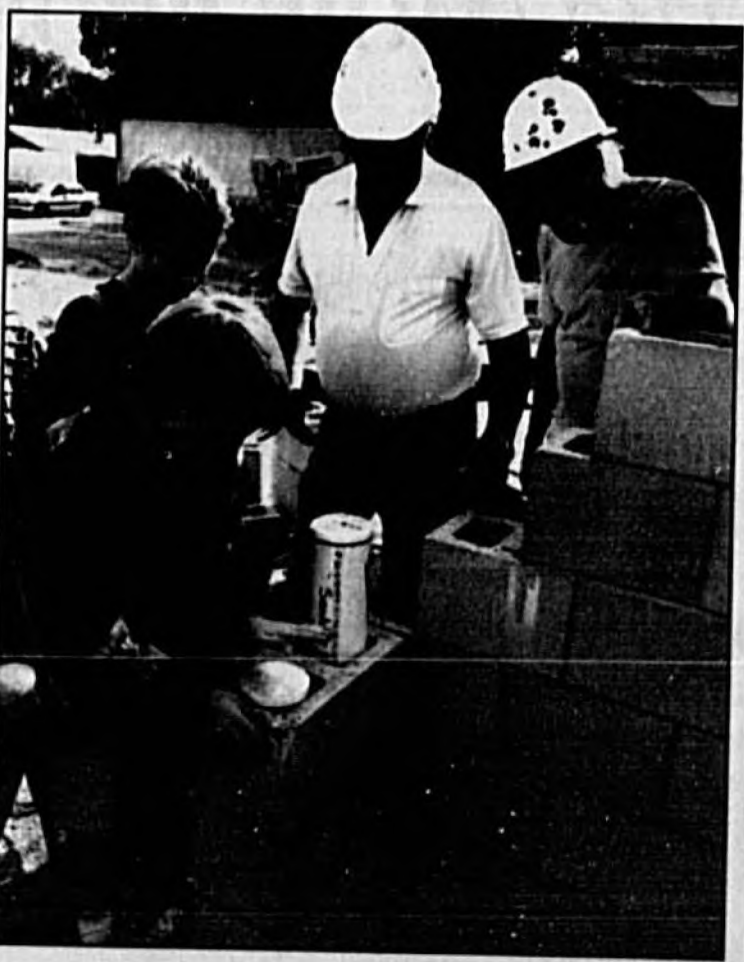
"I know I'm not your typical political candidate," Conley

said. "I'm just a Southern Democrat, pro choice, conservative and active in my community and ready to go to bat against Mr. Feeney. The Democrats here are behind me. So why not try?"

Feeney, 41, has been a state representative since 1996. He has Seminole County support from conservative Christian voters

See Conley, Page 5A

Sealing time



Idyllwilde Elementary School students Jeremy Rice and Chris Pawlik place time capsules in the walls of the school's new building as Paul Carlson, superintendent of Holbrook Construction, and block mason Butch Goss look on.

Herald photo by Tommy Vincent

Sanford firefighters host gospel sing

By Nicole King
Herald Intern

SANFORD — The Sanford Fire Department will host its 44th annual Gospel Sing 7 p.m., Nov. 26 at the Sanford Civic Center.

The Gospel Sing raises funds for the Firemen's Benefit Fund and other charities. Mark James, a firefighter/paramedic for Sanford, is the coordinator of the event.

The Firemen's Benefit Fund was set up 45 years ago so firefighters could draw from the fund to help them with medical expenses not covered by insurance. Recently, the fund has donated money to the Arnold Palmer Children's Hospital and Shands Hospital.

James said the event is not only for a worthy cause, but is a lot of fun for participants and the audience. It's a tradition at James' fire station that rookie



Firefighter Shawn King, Lt. Matt Hall and firefighter Dave Ripple are ready for the Sanford Fire Department's annual Gospel Sing.

Herald photo by Tommy Vincent

firefighters must sing during the show.

"We try to uphold the tradition," he said.

This will be the third year Sanford's own, Sonshine Quartet has performed at the benefit. James said the Quartet is a local

favorite and always draws a crowd.

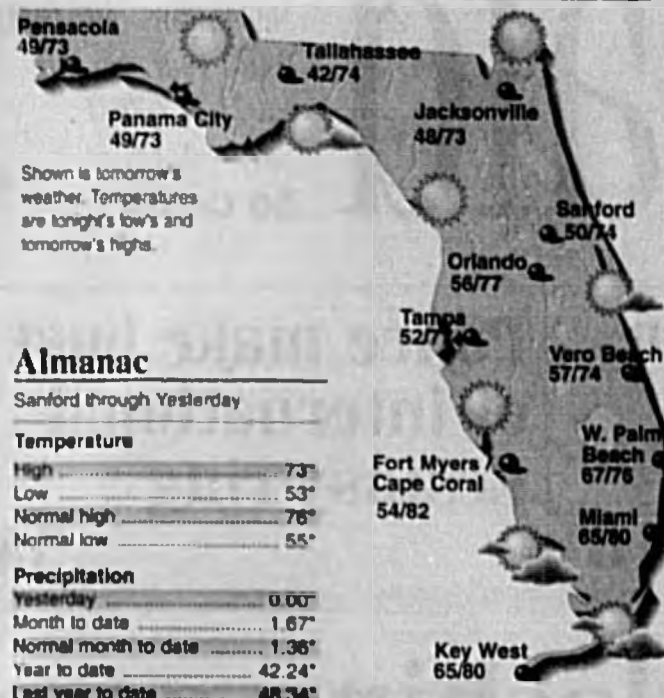
"We're real proud of them," he said.

The Rev. Dennis Littleton of Westview Baptist Church is a member of the group. Littleton See Sing, Page 4A

ACCU WEATHER® FORECAST FOR SEMINOLE COUNTY

accuweather.com

Florida Weather

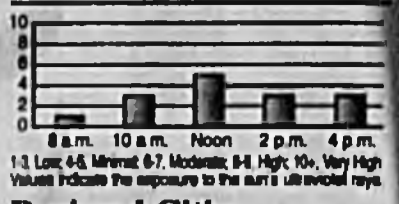


Shown is tomorrow's weather. Temperatures are tonight's lows and tomorrow's highs.

Five-Day Forecast for Sanford

Tonight	Friday	Saturday	Sunday	Monday
Mainly clear, seasonable.	Clouds, sun and a stray coastal shower.	Some sun, a brief shower is possible.	Partly sunny; brief shower in spots.	Turning out partly to mostly sunny.
50	74 56	78 56	76 58	78 58

UV Index Tomorrow



1-3 Low, 4-6 Moderate, 8-10 High, 11-12 Very High. Values indicate the exposure to the sun's ultraviolet rays.

Almanac

Sanford through Yesterday

Temperature
 High 73°
 Low 53°
 Normal high 76°
 Normal low 55°

Precipitation
 Yesterday 0.00"
 Month to date 1.67"
 Normal month to date 1.36"
 Year to date 42.24"
 Last year to date 48.34"
 Normal year to date 45.52"

Regional Weather

Florida: Mainly clear tonight with a few clouds in the south. Sunshine tomorrow with a stray shower or two along the east coast.

Georgia: Clear tonight with patchy fog forming. Plenty of sunshine tomorrow with a milder afternoon.

Mississippi: High pressure should keep skies clear for one more night tonight. Milder tomorrow with plenty of sunshine.

Alabama: Mainly clear tonight, but not as cool as previous nights. Mostly sunny and a bit more seasonable tomorrow.

South Carolina: Clear tonight, but not as cold as it has been. Sunny and a bit milder tomorrow.

Louisiana: Milder tonight under mainly clear skies. Mostly sunny and seasonably warm tomorrow.

Sun and Moon

Sunset tonight 5:30 p.m.
 Sunrise Friday 6:51 a.m.
 Moonset today 1:40 a.m.
 Moonset today 1:40 a.m.

Full Nov 23
 Last Nov 29
 New Dec 7
 First Dec 15

Tides

Tides for Daytona Beach Shores, Sunflow Pier

Tomorrow	Today
First Low 10:12 a.m.	0.2 ft.
First High 3:55 a.m.	4.0 ft.
Second Low 10:38 p.m.	-0.3 ft.
Second High 4:22 p.m.	4.0 ft.

Saturday
 First Low 11:10 a.m. -0.2 ft.
 First High 4:52 a.m. 4.4 ft.
 Second Low 11:30 p.m. -0.6 ft.
 Second High 5:18 p.m. 4.2 ft.

Regional Cities

City	Tom.	Hi	Lo	W	Hi	Lo	W
Albany, GA	79	81	pc	79	80	pc	79
Appalachian	73	85	pc	74	86	pc	74
Atlanta, GA	70	49	pc	66	45	sh	66
Bainbridge, GA	74	51	pc	75	45	pc	75
Boca Raton	78	83	pc	79	86	pc	79
Cairo, GA	73	81	pc	75	46	pc	75
Coral Springs	77	81	pc	77	83	pc	77
Crestview	73	54	c	74	49	c	74
FL Lauderdale	81	87	pc	78	88	pc	78
Fort Myers	82	88	pc	77	88	pc	77
Gainesville	75	54	pc	75	53	pc	75
Key West	80	88	pc	78	70	pc	78
Kissimmee	78	87	pc	78	87	pc	78
Lakeland	77	86	pc	77	86	pc	77
Merbourne	77	82	pc	77	80	pc	77
Naples	83	88	pc	80	82	s	80
Orlando	77	88	pc	77	88	pc	77
Pensacola	73	80	c	74	80	c	74
Sarasota	77	80	pc	77	80	pc	77
St. Augustine	75	86	pc	77	86	pc	77
St. Petersburg	74	89	pc	76	81	pc	76
Tallahassee	74	81	pc	75	46	pc	75
Tampa	77	88	pc	77	88	pc	77
Thomasville	73	81	pc	75	45	pc	75
Valdosta, GA	73	80	pc	74	80	pc	74
Vero Beach	74	89	pc	76	81	pc	76
W. Palm Bch.	78	82	pc	78	84	pc	78

National Cities

City	Tom.	Hi	Lo	W	Hi	Lo	W
Atlanta	70	49	pc	66	45	c	66
Atlantic City	64	41	s	69	45	c	69
Baltimore	64	42	s	64	46	c	64
Bilings	55	34	pc	63	32	c	63
Birmingham	70	48	c	69	43	pc	69
Boise	47	38	c	53	34	r	53
Boston	50	40	s	63	45	c	63
Charleston, SC	71	51	pc	73	51	c	73
Charleston, WV	67	45	s	62	43	sh	62
Chicago	58	40	r	46	36	sh	46
Cleveland	62	44	pc	52	36	sh	52
Daytona Beach	75	57	pc	78	56	pc	78
Denver	68	28	s	68	30	s	68
Des Moines	48	28	r	47	32	s	47
Detroit	60	42	pc	49	37	sh	49
El Paso	74	34	s	73	44	s	73
Fairbanks	28	14	sn	28	12	sn	28
Grand Rapids	57	40	sh	48	32	r	48
Helena	51	27	pc	50	31	sn	50
Honolulu	80	68	s	82	66	pc	82
Houston	80	56	pc	77	57	pc	77
Indianapolis	60	40	sh	60	37	sh	60
Jacksonville	73	55	pc	78	52	pc	78
Kansas City	56	31	c	55	39	s	55
Las Vegas	69	45	pc	65	45	c	65
Little Rock	71	48	c	64	48	s	64
Louisville	62	45	pc	65	41	sh	65
Memphis	71	48	c	62	46	s	62
Miami	80	66	pc	78	66	pc	78
Minneapolis	67	38	s	49	30	sh	49
Missoula	41	27	sh	38	30	pc	38
Nashville	65	47	sh	60	43	sh	60
New Orleans	75	57	sh	72	50	pc	72
New York City	62	48	s	62	48	pc	62
Oklahoma City	64	40	s	66	45	s	66
Omaha	47	28	c	61	35	s	61
Philadelphia	64	44	pc	64	46	c	64
Phoenix	82	54	s	78	52	pc	78
Pittsburgh, PA	64	48	pc	64	48	pc	64
Providence	63	38	s	61	42	c	61
Raleigh-Durham	70	46	pc	69	45	c	69
Rapid City	49	28	pc	58	29	pc	58
Reno	54	35	r	64	42	r	64
St. Louis	58	40	r	64	43	s	64
Salt Lake City	52	36	s	53	36	sh	53
San Antonio	64	28	s	56	30	s	56
San Diego	68	48	pc	61	38	sh	61
Seattle	60	44	r	60	42	r	60
Topaka	56	30	c	57	30	s	57
Tucson	79	48	s	78	46	pc	78
Washington, DC	66	46	s	64	46	c	64

Tomorrow's National Weather



Shown are noon positions of weather systems and precipitation. Temperature bands are highs for the day. Forecast high/low temperatures are given for selected cities. Yesterday's National High/Low: (for the 48 contiguous states) High 63° in Gila Bend, AZ Low 12° in Alamosa, CO

World Cities

City	Tom.	Hi	Lo	W	Hi	Lo	W
Athens	66	57	pc	64	46	pc	64
Beijing	66	34	s	62	37	s	62
Berlin	28	22	pc	32	25	pc	32
Buenos Aires	79	64	pc	79	64	pc	79
Carro	68	65	pc	68	65	pc	68
Hong Kong	73	80	pc	77	80	pc	77
Jerusalem	77	55	s	76	60	pc	76
London	41	32	s	42	39	pc	42
Manila	83	72	r	88	73	pc	88
Manito City	68	48	pc	65	43	pc	65
Moscow	30	23	sh	24	18	sh	24
Paris	41	31	c	32	26	pc	32
Rome	68	34	sh	69	38	pc	69
Sydney	68	48	c	68	38	pc	68
Sydney	65	53	s	68	59	s	68
Tokyo	60	51	pc	61	52	c	61
Warsaw	57	18	sh	57	18	sh	57
Zurich	27	18	sh	27	18	sh	27

OVER 160 YEARS IN THE MAKING



LT133 Lawn Tractor
 • 13-hp engine
 • 38-inch mowing deck
 • 5-speed transmission



LT155 Lawn Tractor
 • 15-hp engine
 • 38- or 42-inch mowing deck
 • Automatic transmission



LT166 Lawn Tractor
 • 16-hp engine
 • 42- or 46-inch mowing deck
 • Automatic transmission

THE JOHN DEERE LT LAWN TRACTORS

Good things take time. Even at John Deere, where developing a great tractor comes naturally. Each of our LTs comes with all the reliability, durability, and ingenuity that John Deere's been delivering since 1837. Isn't it time you stopped by and saw one for yourself?

NOTHING RUNS LIKE A DEERE®



P98106-H/B

www.deere.com

To Locate a John Deere Dealer near you call:
 (Toll Free) (888) 669-7767 (MOW PROS)



*Features may vary by dealer. See dealer for details.



Become a weather page sponsor. Your ad will be seen by thousands of potential customers daily. So don't let the sun go down before you call a Seminole Herald Advertising specialist for more details on this exciting offer. (407) 322-2611

We need your input and opinions. Letters to the editor and guest columns are both encouraged and appreciated.

Write to us:
 300 N. French Avenue
 Sanford, FL 32771

Call us:
 (407) 322-2611

E-Mail us:
 Editorial:
 editor@seml.com
 Advertising:
 samkan@seml.com
 Publisher:
 semdoug@seml.com

Fax us:
 (407) 323-9408



Seminole Herald

"Serving Seminole County Since 1908"

Thursday, November 18, 1999 • Vol. 92, No. 64
 Published: Daily Except Monday, Saturday, Thanksgiving,
 Christmas and New Years by
 Republic Newspapers, Inc. • 300 N. French Ave., Sanford, FL 32771

Phone: (407) 322-2611 Fax: (407) 323-9408

Periodical Postage Paid at Sanford, Florida and additional mailing offices.

USPS 481280
 Postmaster: Send address changes to
 THE SEMINOLE HERALD
 P.O. Box 1667
 Sanford, FL 32772-1667

Subscription Rates (Daily & Sunday)

	Home Delivery	Mail
3 Months	\$19.50	\$24.00
6 Months	\$39.00	\$48.00
1 Year	\$78.00	\$96.00

Florida Residents add 7% sales tax to above rates.

ADMINISTRATION
 Doug Fetter - Publisher
 Betty Bennett
 Jonilee Mallin
 Linda Spiegel

ADVERTISING
 Ken Holtzinger - Manager
 John Colman
 Terry Kinnert
 Roxzie Lavender
 Melinda Morris

CLASSIFIED
 Eva Shelton
 Ted Walker

CIRCULATION
 Edward A. Kramarch - Publisher
 Circulation Manager
 Wanda Kourpanidis

EDITORIAL
 Dan Ping - Editor
 Doris Dietrich
 Bill Kerns
 Dean Smith
 Tommy Vincent
 Russ White

PRODUCTION
 Frank Volzins - Consultant
 Robert "Skip" Cowan
 Mark Savioe
 Bill Egan
 Jack E. Ritchie
 Elwin Tyrrell, Jr. - Head Pressman

Republic Newspapers, Inc.

Interstate 4 is history, prepare your skymobiles

Orange County Chairman Mel Martinez can do anything he wants to Interstate 4. Widen it. Barrier it. Car pool it. Pave it with yellow bricks. Paint it orange & blue. Get a second ET billboard. Charge tolls. Ban 18-wheelers. Anything. I still won't like I-4. Never have. Never will.



Russ White

It's too big, already. Too busy. Too dangerous. I used to think the Northway from Albany to Glens Falls in New York was America's worst highway. It is the most dangerous in winter, but for 12 months every year I-4 is scarier than the Northway.

Spending \$2 billion for the next 25 years on I-4 is about the goofiest idea imaginable. By 2025, there won't be any need for interstate highways. Everyone will be gadding about on monorail systems if not in personal flying machines — Skymobiles.

The prediction here is that Florida will become America's first "Car Free" state — light rail years ahead of the other 49 states. Remember where you read it. Florida — America's first "Car Free" State. By 2035, the only cars left will be in museums.

Robert Frost's poem — the one about the road not taken — will be appropriate in a decade or so. By 2025, it'll be the roads not taken. The only people on roads will be walking or biking or on horseback. People will like home so much, they'll stick close to it. Or engage their skymobiles.

Do you really think we can go on the way we are? How many near misses have you had in your car the last week? The last 24 hours? See much road rage? See anyone try to race through a train warning? See anybody using a turn signal.

See anyone yield? See anyone smiling at a stop light? See what I mean?

Chairman Martinez, forget Interstate 4. Get your Orange County commissioners to concentrate on Light Rail. That's where we'll be in 2025. Light rail or in our skymobiles. Leave I-4 the way it is. The Road with No Future could be a landing pad for skymobiles or we could run the Light Rail system through it.

Anyone who can't envision an entirely futuristic mode of transportation in 2025 probably has season tickets to Arena Football or thinks Daisy Fuentes is a real blond. By 2025, no one will remember Arena Football, and Miss Daisy will be 58. Geeks will be asking her out by then. Regis Philbin, too.

To all governments listening to overtures from Mel Martinez to sink money into Interstate 4, please, think skymobiles. Think light rail. That's your answer.

Russ White's column appears Tuesday through Sunday in the Seminole Herald.

Students participate in 'Nearly-New, Barely-Used Shoe Drive'

From Staff Reports

SANFORD — Fourteen schools in Seminole and Orange counties are participating in the second annual "Nearly-New, Barely-Used Shoe Drive" to benefit the less fortunate, sponsored by a local orthodontist.

As shoes are donated, the "mercury" in the "shoemometer" displayed at the Altamonte Springs office of Dr. Barry Levin will continually rise to show the total number of pairs collected.

Upon completion of the Shoe Drive on Dec. 21, all shoes will be donated to the Mustard Seed of Central Florida, a local, non-profit organization which annually helps thousands of homeless people and people who are victims of despair or tragedy.

Twelve public schools and one private school in Seminole County are participating in the Shoe Drive.

Last year's goal for the shoe drive was 500 pairs of shoes, and the final total was 4,128.

"The Shoe Drive is an opportunity to fill a dire need not usually considered during the holiday season," Levin said. "And, in an era in which we keep hearing terrible news about students and school incidents, the Shoe Drive is a program that rallies them together for a very worthwhile cause."

Levin credits much of last year's success to the enthusiastic participation of the students of area schools.

"The final result was overwhelmingly more than we ever imagined," Levin said. "It will be challenging to break our record."

Shoe collection bins are located on the campuses of all 14 participating schools as well as at Levin's Altamonte Springs and Lake Mary offices.

Shoes are being accepted in all sizes. The only requirement is that they be in decent condition and clean. To keep the pairs matched, either tie shoelaces together or rubber band each pair.

The participating schools in Seminole County include Altamonte, Keith, Sabal Point, Woodlands, Lake Mary and Wilson elementary schools, Rock Lake and Teague middle schools, as well as Lake Mary, Lake Brantley, Lyman, and Seminole High Schools, plus Orangewood Christian School.

For additional information, contact Sheryl Kurland, Shoe Drive Chairperson, at (407) 786-7747.

18 schools earn Five Star award from state

Eighteen Seminole County schools have received recognition by the state Department of Education for winning the Five Star School Award.

Five Star schools receive the Department of Education's highest award community involvement.

In order to qualify for the award, schools must achieve 100 percent of the criteria in the categories of business partnerships, family involvement, volunteers, student community service, and School Advisory Councils. Schools receiving the award

include Altamonte, Bear Lake, Casselberry, Geneva, Heathrow, Idyllwilde, Keith, Lake Mary, Longwood, Spring Lake, Sterling Park, Wekiva, Wilson, and Woodlands elementary schools.

Crooms Academy, is also receiving the award, as well as Jackson Heights, and Tuskawilla middle schools and Oviedo High School.

Obituaries

FELIX APONTE

Felix Aponte, 79, S. Sundance Drive, Lake Mary, died Wednesday, Nov. 17, 1999 at Orlando Regional Medical Center, Orange Division, Orlando. Mr. Aponte was a retired machinist. Born March 31, 1920 in San German, Puerto Rico, he resided in Central Florida for two years. He was a member of All Souls Catholic Church.

Survivors include wife, Ana Aponte of Lake Mary; daughter, Norma Rodriguez of Lake Mary; six grandchildren, 13 great-grandchildren.

Banfield Funeral Home, Winter Springs, is in charge of arrangements.

PINKIE BURNEM

Pinkie Burnem, 72, Palmetto Avenue, Sanford, died Sunday, Nov. 14, 1999 in Maitland. Mrs. Burnem was a homemaker. Born in Blakley, Ga., she lived in Central Florida for several years.

Survivors include niece, Martha Anderson, Sanford.

Brisson's Funeral Home, Orlando, is in charge of arrangements.

LEWIS JAY GEHMAN

Lewis Jay Gehman, 72, W.

Crystal Drive, Sanford, died Nov. 17, 1999. Mr. Gehman was a lithographer in the newspaper business, who worked for the Orlando Sentinel in the color engraving department for 27 years. A veteran of the US Navy, he served in WWII. Born in Narvon Township, Pa., he moved to Central Florida in 1965 from Wrightsville, Pa. He was a member of First Presbyterian Church of Lake Mary.

Survivors include wife, Lois Gehman of Sanford; son, Douglas Gehman of New Smyrna Beach; daughter, Janis Ferrell of Lake Mary; brothers, LeRoy Gehman of New Holland, Pa., Russell of New Holland, Pa., Kenneth of Ft. Lauderdale; sister, Thelma Steffy of Ephrata, Pa.

Baldwin-Fairchild-Oaklawn Park Cemetery and Funeral Home, Lake Mary, is in charge of arrangements.

ESTELLE R. HILBERT

Estelle R. Hilbert, 68, Lokanotosa Trail, Orlando, died Wednesday, Nov. 10, 1999.

Mrs. Hilbert was a homemaker. Born June 2, 1931 in Philadelphia, Pa., she moved to Central Florida in 1988 from

New Jersey. She was Catholic.

Survivors include daughters, Kathy Pinella of Clearwater, Terry Cloninger of Plano, Texas, Denise Muto of Las Vegas, Nevada, Joanne Koch of Orlando, Michele Steedle of Tampa; sons, Louis Hilbert of Orlando, Craig Hilbert of Oviedo, John Hilbert of Oviedo; sisters, Marie of Philadelphia, Pa., Patricia of New Jersey, Connie of New Jersey; 15 grandchildren, two great-grandchildren.

Baldwin-Fairchild Funeral Home, Oviedo, is in charge of arrangements.

MARGARET J. WOLFF

Margaret J. Wolff, 83, Banana Street, DeLand, died Tuesday, Nov. 16, 1999. Mrs. Wolff was a homemaker. Born in Detroit, Mich., she moved to Central Florida in 1978. She was Presbyterian.

Survivors include daughter, Janet DeLozier of DeLand; son, George Wolff of Sulligent, Ala; three grandchildren, four great-grandchildren.

Baldwin-Fairchild-Oaklawn Park Cemetery and Funeral Home, Lake Mary, is in charge of arrangements.

Police Log

DRUGS

Winter Park — Robert Hudson Stoyanov, 26, and Pamela Michele Stoyanov, 21, of 2772 Howell Br. Road, Winter Park, were arrested by Seminole County Sheriff's Deputies at 4 p.m. on November 16. Robert Hudson Stoyanov (alias Bob Stoi) was charged with duty free smuggling of MDMA (Ecstasy) and for distribution of same. Stoyanov had been under investigation for some time. Pamela Michele Stoyanov, a sister, was charged with possession of

cocaine, marijuana and drug paraphernalia. CCIB agents estimate the value of the MDMA at nearly \$18,000. Earlier this month, agents intercepted a shipment of 864 does of Ecstasy which was mailed to Stoyanov's residence.

DUI

Sanford — Cindy Jones Jackson, 39, of 134 Country Club

Drive, Sanford, was stopped by Sanford Police at 9:05 p.m. November 16. Charged with DUI.

Longwood — John Lindsey Browman, 30, of 1770 Springwood Circle, Longwood, was stopped by Seminole County Sheriff's Deputies on November 16. Charged with DUI.

SEVENTH ANNUAL

Come discover rich colors of imagination. Expressed in the fine arts & crafts of 200 artists. Just in time for the holidays!

DeLand Fall Festival of the ARTS

- Enjoy Live Music
- Free Admission & Parking
- Exceptional Food
- Children's Hands-on Workshops

NOVEMBER 20 & 21, 1999

SATURDAY • 9 A.M. TO 5 P.M.

SUNDAY • 10 A.M. TO 5 P.M.

Art exhibits are located along Woodland Boulevard in DeLand's Historic Downtown District 1-4, East 56. 20 minutes west of Daytona Beach, 30 minutes northeast of Orlando.

FOR INFORMATION CALL: (904) 738-5705



Banfield Funeral Home
Family Owned & Serving Central Florida For 10 Years
GUARANTEED LOWEST PRICES

Burial \$1,495	Cremation \$450	Transport Out Of State \$795
--------------------------	---------------------------	--

We Accept Most Prearranged Funeral Plans
327-1500

Four Towns Cremation, Inc
Direct Cremation
\$385.00
Orange City, FL
1-888-598-8662 24 Hr. Service

Seminole Herald
Serving Sanford, Casselberry, Lake Mary, Longwood, Oviedo, Winter Springs and Seminole County

LOTTERY
Here are the winning numbers selected in the Florida Lottery:

Fantasy 5 (Nov. 17)
3-5-8-11-16

Lotto (Nov. 17)
5-13-39-47-51-52

Mega Money (Nov. 18)
1-3-21-23 — Megaball 32

Nov. 17
Play 4
8-6-6-3
Cash 3
9-1-1

280 W. Warren Ave.
Longwood, FL.
www.judysdolls.com
email: judy@judysdolls.com

Hours: Tues. - Fri. 12-6
Sat. 10-5
(407) 332-7928

JUDY'S DOLLS DOLL SHOP

AUTHORIZED DEALER OF:

ASHTON DRAKE	EFFANBEE
STEIFF	BETSY MC CALL
GINNY-VOGUE	COROLLE
MADAME ALEXANDER	GENE

PLUS MANY OTHERS!

FULL LINE OF BADGER
DOLL FURNITURE IN STOCK
DOLL CASES IN STOCK

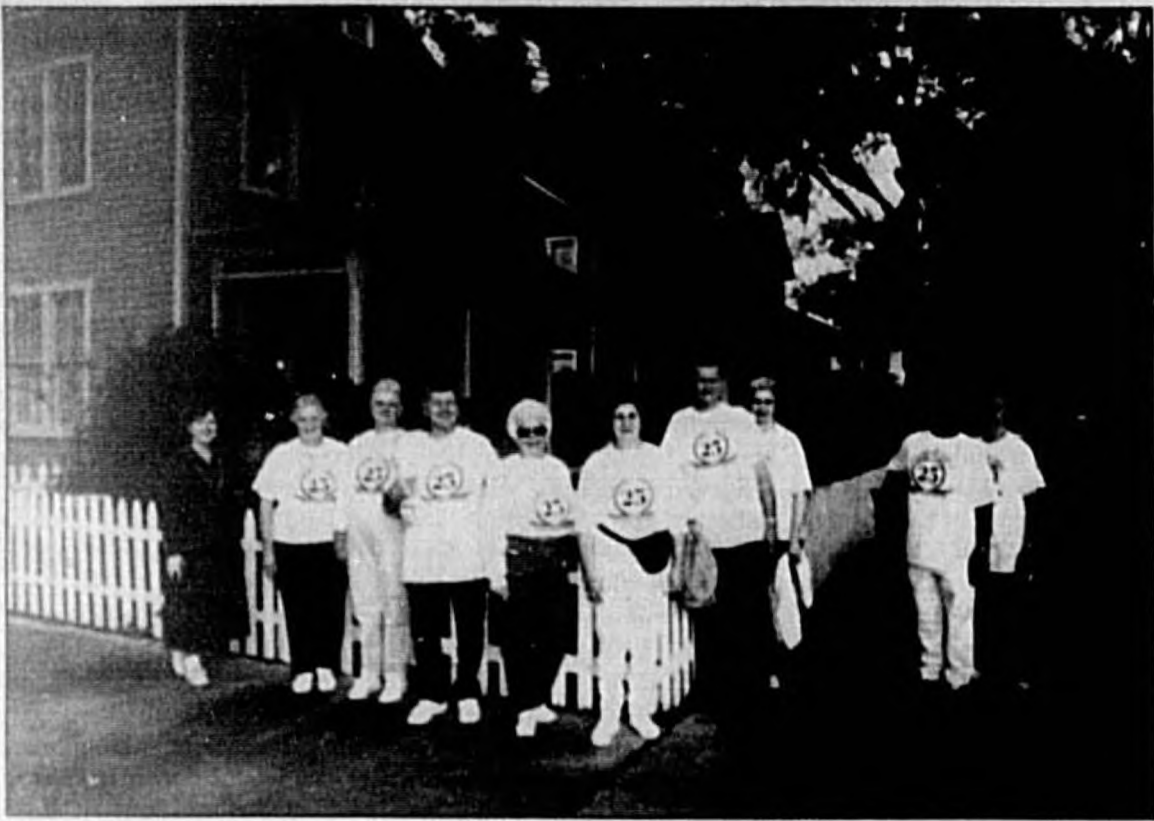
Timmy's Toy Chest

Grand Opening Saturday, November 20th 11am - 2 pm

Grand Prize Drawing!
Enter to win a "Timmy's Toy Chest"
A chest full of new toys!
Entertainment by Magician
Christian Milsner of Totally Magic!
Meet Paddington Bear!
Balloons, Refreshments, & Fun!

Shoppes at Oakmonte
1210 S. International Pkwy.
Lake Mary (across from Heathrow)
(407) 804-9877
www.timmystoychest.com

Touring the Historic District



Herald photo by Tommy Vincent

Alicia Clark, far left, curator of the Sanford Museum, leads a group of Golden Age Games participants on a tour of the Sanford Historic District. Those in the tour include Louise Wilson, Pauline Codema, Jack White, Joan Lichtenberger, Connie Casucci, Tom Slayton, Olga Slayton, Julia Davis and Gloria Drioles.

Slashing

Continued from Page 1A

hospital officials.

After extensive questioning on Wednesday, Henley told investigators about the events, which he said began as a love-triangle.

Both women were apparently in love with Henley.

Investigators said Vega told Henley he had to make a choice between the two women and apparently he took it to mean he had to kill Forehand, his ex-girlfriend.

Vega and Forehand decided to meet in the parking lot of a closed business off State Road 436 near Winter Woods Boulevard. Henley told investigators he hid nearby and when

the meeting was done, he ambushed Forehand.

Henley also told investigators he took speaker wire and put it around Forehand's neck, choking her and rendering her unconscious. He said he then loaded Forehand into her own two-door Nissan and drove her to just outside the Environmental Education Center property, where he choked her again and then slashed her neck with a box cutter.

After Henley left Forehand for dead, investigators said she was able to get up and walk 150 feet to a travel trailer and get help.

Investigators said Henley

took Forehand's car and abandoned it in the Branchwood Apartments. He then walked to the San Jose Apartments, where he met up with Vega. Officers believe she helped him come up with an alibi, which is why she was charged as an accessory after the fact.

Investigators were able to find out about Henley through Forehand, who, even though she could not talk because of her injuries, was able to communicate through writing.

Henley's address is 2846 United Kingdom Circle in Winter Park. Investigators say he often stayed with Vega, at 83 San Jose Circle in Winter Park.

Sing

Continued from Page 1A

said the benefit is a chance to listen to seldom-played Southern Gospel music.

"There isn't really a platform for the music," Littleton said, "unless you find a store that sells the cassettes or CDs, or come listen to a live group. There isn't one radio station for it."

Darren Roberts, music minister at Westview Baptist Church, is also a member of the Quartet and agreed with Littleton that the event provides a unique venue for the music.

"I don't know of any other place where you can listen to Southern Gospel music," he said.

Refreshing, uplifting, and encouraging is how Littleton describes the Southern Gospel sound.

"First we get the ear, then we get the heart," he said. "It's very attractive to the listener. We've found that people from all age groups who aren't really religious enjoy this kind of music."

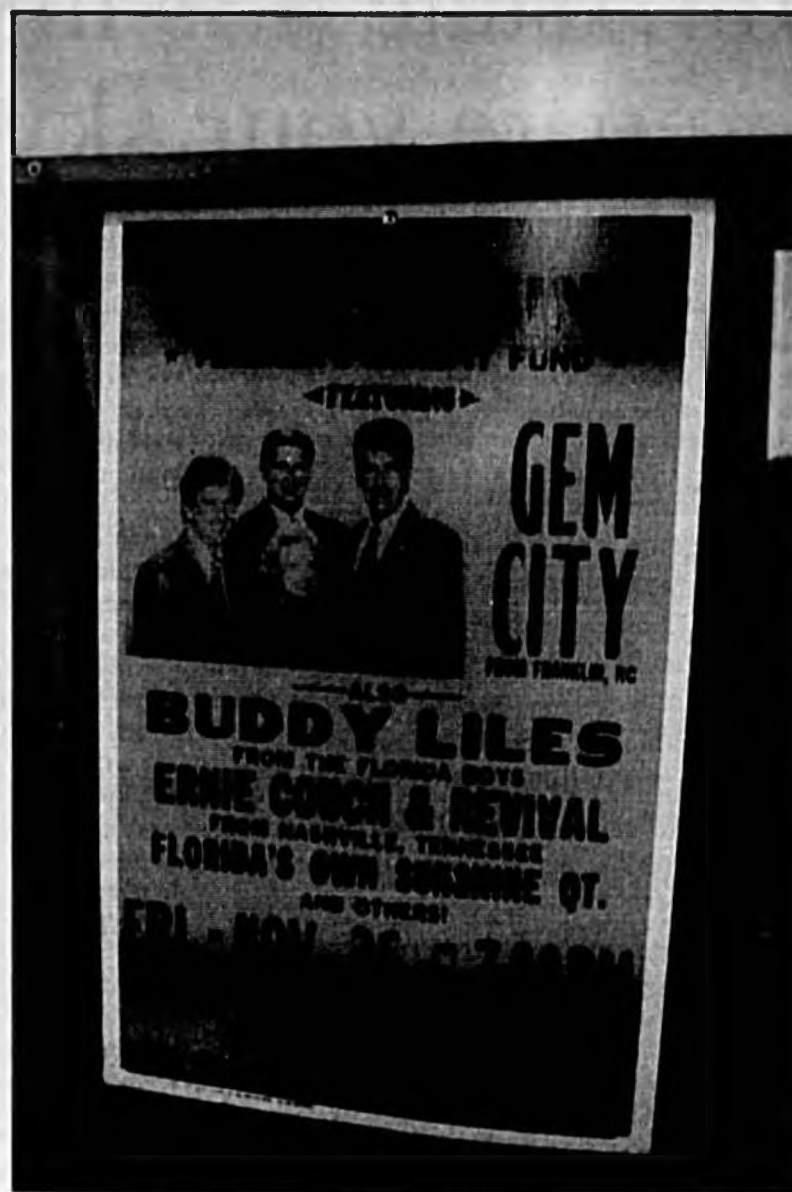
Roberts said the best part of the evening for him is seeing the different groups come together.

"It's also good for the audience to hear all the varieties of groups who come," he said.

Littleton, Roberts, and the rest of the Quartet see the event as an evening of clean family fun.

"It seems we have a lot of negatives in the world," Littleton said. "There isn't any place you can go where there isn't risqué jokes, bad language or people worried about what their children will hear or see."

"This is an opportunity to enjoy a wonderful evening of wholesome entertainment," he said.



Herald photo by Tommy Vincent

A number of groups will participate in the Sanford Fire Department's Gospel Sing.

Proceeds from this year's show will benefit Seminole High School's chapter of the Fellowship of Christian Athletes.

Approximately 600 people attended last year's show, which raised \$3,000 for the Fellowship.

Talent for the event will be Buddy Liles, Ernie Couch and Revival, and

Sonshine Quartet.

Tickets are \$8 in advance and may be purchased at any of the three Sanford fire stations. Tickets will be \$10 at the door. Group rates are also available.

Contact 302-1094 for more information.

Space Shuttle crew conducts tests for Dec. 6 mission launch

The crew of Space Shuttle mission STS-103 is at Kennedy Space Center this week for the Terminal Countdown Demonstration Test (TCDT).

In preparation for this and other activities required prior to launch, Shuttle Discovery was rolled out of the Vehicle Assembly Building (VAB) to Launch Pad 39B on Saturday. First motion from the VAB occurred at about 7:27 a.m. and the vehicle was hard down on the pad at 2:17 p.m.

The TCDT is held at KSC prior to each Space Shuttle flight, providing the crew of each mission an opportunity to participate in simulated countdown activities.

The TCDT ends with a mock launch countdown culminating in a simulated main engine cutoff. The crew also spends time undergoing emergency egress training exercises at the pad and

has an opportunity to view and inspect the payloads in the orbiter's payload bay.

The seven-member crew of mission STS-103 arrived at KSC's Shuttle Landing Facility (SLF) Monday afternoon.

Wednesday morning, the entire crew took part in simulated launch day events. Once the crew arrived at the pad, they entered the orbiter Discovery fully suited for the simulated Shuttle main engine ignition and cut-off.

Following TCDT, the crew is scheduled to depart KSC for their homes in Houston for final flight preparations.

Discovery is targeted for launch on Dec. 6 at 2:37 a.m. EST. Mission STS-103 is scheduled to last 9 days, 21 hours, 20 minutes on the third servicing mission to the Hubble Space Telescope. Landing is targeted for Kennedy Space Center on

Dec. 15 at 11:57 p.m.

Crew members for mission STS-103 are: Commander Curtis Brown; Pilot Scott Kelly; Mission Specialists Steve Smith, Michael Foale, and John Grunsfeld, and as Claude Nicollier and Jean-Francois Clervoy, both of the European Space Agency.

SEMINOLE COUNTY BOARD OF COUNTY COMMISSIONERS NOTICE OF PUBLIC HEARING NOVEMBER 23, 1999 1:30 PM

Notice is hereby given that the Seminole County Board of County Commissioners will conduct a public hearing on November 23, 1999, beginning at 1:30 p.m., or as soon thereafter as possible, in the County Services Building, 1101 East First Street, Sanford, Florida, Room 1028 (Board Chambers). The purpose of this public hearing is to amend Resolution Number 99-R-132, by adjusting Fiscal Year 1999/00 budgeted revenues and expenditures to reestablish previously approved grants for operating and capital projects within the Community Development Division.

Additional information regarding the proposed amended resolution is available for public reviewing at 1101 East First Street, Sanford, FL 32771, Room 3325, between the hours of 8:00 a.m. and 5:00 p.m., Monday through Friday, excluding holidays. Persons with disabilities needing assistance to participate in any of these proceedings should contact the Human Resources Department ADA Coordinator 48 hours in advance of the meeting at (407) 665-7941. Persons are advised that if they decide to appeal any decisions made at this hearing, they will need to ensure a verbatim record of the proceedings is made, which record includes the testimony and evidence upon which the appeal is based (Florida Statutes, Section 288.0105).

"OUR GOAL IS TO GIVE YOU THE BEST POSSIBLE SERVICE EVERY DAY"



Ed Kramarcik
Circulation Manager

If you are having a service problem that you are unable to resolve, please contact me.

If your service is terrific I'd like to hear about that too!

Our carriers and entire staff at The Seminole Herald appreciate your business and are here to serve you.



Seminole Herald

Call Us When You Need Us

For Home Delivery Call: (407) 322-2611 or visit my web site at:

<http://SeminoleHerald.Virtualave.net>

To Speak To The Circulation Manager:

(407) 322-2611

Cellular: 492-5790

For missed paper delivery call before 6:30 p.m. for same day delivery service.

Juvenile justice employee arrested on drug charges

Sanford-A six-week investigation resulted in the arrest of a Department of Juvenile Justice employee on drug charges.

Rodney E. Grant, 32, of Sanford, was arrested Nov. 14 for the sale and delivery of Cannabis, drug and drug paraphernalia possession.

Grant is now on suspension from the Department while it conducts its own investigation.

Agents believe Grant committed the crimes outside of work.

There is no indication that fellow Department employees or any of the juveniles housed at the Center were involved.

Representatives from the Department of Juvenile Justice and the Inspector General's Office assisted in the investigation.

Grant has worked for the Department since September 1997. He is a detention employee, assigned to the Seminole County Juvenile Detention Center.

He was booked at the John E. Polk Corrections Center. His bond is set at \$10,000.



Don't Be A Turkey!

Subscribe to the Seminole Herald and keep up to date on what is going on in your community. Call 322-2611 today!

ON SALE NOW!
Great for your home or office.
Show people you are "Sanford Proud!"
They also make great Christmas gifts.

\$5.00 Each

GET YOURS TODAY!

A project of the Sanford Historical Society, Inc.
AVAILABLE AT THE SANFORD MUSEUM AND THE SEMINOLE HERALD

Police recover \$18,000 worth of narcotics in Winter Springs

Suspect believed to be involved in international Ecstasy ring

By Bill Kerns
Staff Writer

SANFORD — A Winter Park man has been arrested for importing the drug Ecstasy into the United States as part of a drug trafficking organization.

Drug agents gathered information about Robert Stoyanov, 25, as part of an ongoing investigation into an organization involved in the distribution of the controlled substance MDMA, otherwise known as Ecstasy.

Investigators said Stoyanov was apparently one of several of individuals involved in an organization that would travel overseas to Amsterdam, capital of the Netherlands, to arrange the purchase and shipment of large amounts of the drug to the U.S.

Earlier this month, agents intercepted a shipment of 864 doses of Ecstasy mailed to Stoyanov's home at 2772 Howell Branch Road in Winter Park. The recipient was listed as Bob Stoi, an alias being used by Stoyanov. Agents used the drugs they seized for a controlled delivery on Tuesday.

Agents observed Stoyanov pick up the shipment and take it into his residence. Then, agents executed a search warrant of his home and found the shipment next to the door with the words "Return to Sender" on it. Inside a bedroom, agents

found cocaine residue and some marijuana.

According to investigators, members of the organization would have the drugs shipped to their mailing address and use a name similar, but not identical, to their own. When the shipment arrived, the person receiving the shipment marked "Return to Sender."

They would then leave the shipment in plain view near the front door area and not open it for three or more days, believing that by doing this they could escape prosecution. Investigators are not releasing information on how extensive the organization is.

The value of the MDMA seized at Stoyanov's home is estimated by drug agents at nearly \$18,000.

Stoyanov faces charges of possession of drug paraphernalia and possession of a controlled substance with intent to distribute. He is being held at the John E. Polk Correctional Facility.

Pamela Stoyanov, Robert's 21-year-old sister who lived in his home, was also arrested on Tuesday on charges of possession of cocaine, possession of marijuana, and possession of drug paraphernalia. She was taken to the Seminole County Jail.

Agents do not believe that Pamela Stoyanov played a role in the drug trafficking organization.

"He's the player here, not her," said Steve Olson, spokesman for the Seminole County Sheriff's Office. "She just kind of got caught up in this. Her involvement was minimal to non-existent."

Conley

Continued from Page 1A

and from the Republican Party. His popularity and power are evident in his being designated as House Speaker. Conley is the first challenger for Feeney's District 33 seat.

Conley, who was born in Blytheville, Ark., has lived in Oviedo for 31 years. She has been a real estate agent and manages the Courtyard Office complex in Oviedo. She has been the president of the Oviedo Chamber of Commerce and involved in Parent Teacher Association activities. She and her husband, Johnnie, have three children and four grand children.

"Glenda Conley's a dynamic personality, a longtime resident and community activist — she's going to win voters," said Bob Poe, executive director of the Seminole County Democratic Party. "We're excited about her candidacy. Sure, some will say that Tom Feeney is a shoo-in. Well, maybe we'll all be surprised."

Conley said she's conducting her campaign activities from her

Oviedo home and inside what she said was an 1886 train station.

"Nothing like being on track," she said. Or perhaps starting a "whistle stop tour." Just for the kick of it, Conley said her E-mail address ought to ring more bells: GlendaVY2K. The V, she said, was for victory.

After a number of years, the Democratic Party of Seminole County is attempting to become more active. All of the county's elected officials at present are Republicans. School Board Chairman Larry Furlong was a Democrat when he was a county commissioner but won his School Board seat as a Republican. Paul Partyka of Winter Springs is the only Democrat among county mayors.

Dean Ray, a Sanford business man, is running for the District 5 County Commission seat held for eight years by Daryl McLain. Tom West and Don Nicholas are also opposing McLain. Ray previously ran for mayor and a Sanford city commission seat.

Pan Am

Continued from Page 1A

Montreal, Toronto and Halifax, Canada. However, no decision has been made on which cities will be added, and Pan Am has not announced a timetable for expansion.

"Right now we're wanting to take a deep breath and put what we have on the plate in order," said Dave Fink, President of Pan Am. "The worst thing we can do is move too fast. We're going from smaller airports just outside metro areas, which is something that has never been done before."

Fink said that Pan Am will expand into smaller airports such as the Chicago-Gary airport and the Orlando Sanford Airport, where passengers will face less commuter traffic.

"We're here for the long run," Fink said. "We're not here for the short run."

In preparation for the flights, the construction on the \$24.5

million, seven gate domestic terminal expansion will begin in December. It is expected to be completed in January of 2001.

Sanford's airport handled 1.2 million passengers in 1998, primarily from British charter flights. This represents fast-paced growth from the 50,000 passengers served in 1996, when regular international service began. This year, despite the loss of several charter carriers, the airport is expected to serve 1 million passengers.

The airport served as a Naval Air Station from 1942 to 1946, and 1951 to 1968.

The success of Pan Am is key to efforts by airport and Sanford officials to attract additional domestic service.

Pan Am began local service in October with flights departing Portsmouth at 8:30 a.m. and arriving in Sanford at 1:10 p.m. The flight then departs Sanford at 1:20 p.m., and arrive in

Portsmouth at 4 p.m. Fares to Portsmouth begin at \$84. Fares to Chicago also start at \$84.

Pan Am established a maintenance facility at Sanford's air-

port in March. The airline's Clipper Class flights are reconfigured 727's with the total number of seats reduced from 173 to 149.

"We're here for the long run."

Dave Fink
President of Pan Am

The Pan Am service at Gary-Chicago marks the return to scheduled passenger service at the airport, and is expected to help usher in the expansion of facilities and increased passenger flight. The expansion effort is part of a regional agreement designed to address congestion at the O'Hare and Midway facilities and provide service to the Northern Indiana region. Improvements currently

underway at the Gary-Chicago Airport include terminal renovations, new emergency equipment, snow removal equipment, and other air field improvements.

Pan Am, founded in the 1920's by Juan Trippe, is owned by Guilford Transportation Industries, a New England railroad operator and owner of paper mills.

The original Pan Am filed for bankruptcy in 1991, and the second Pan Am also filed for bankruptcy. This is the third incarnation of the airline.

For one year after acquiring Pan Am in June of 1998 and relocating the headquarters from Ft. Lauderdale to Portsmouth, Guilford Transportation operated Pan Am as a charter service.

THE SPORTS AUTHORITY

12th Anniversary Celebration

4 DAYS ONLY!

Always priced right.

ENTIRE STOCK OF FOOTWEAR

Buy One Pair, Get the Second Pair at

50% off

NIKE • REEBOK • NEW BALANCE • ADIDAS • TIMBERLAND • ASICS • YUKON & MORE



Second pair must be of equal or lesser value.

<h3>\$25 OFF</h3> <p>TENNIS AND RACQUETBALL RACQUETS</p> <p>OVER 79.99 sample savings:</p>  <p>WILSON Ultra Ti Stretch Racquet 28" length, oversized head, graphite construction.</p> <p>Reg. 79.99 Now 54.99</p>	<h3>\$50 OFF</h3> <p>TREADMILLS</p> <p>sample savings:</p>  <p>PROFORM 385EX Treadmill Display shows speed, distance, time and calories burned. 2.0 HP motor, 0-10 MPH, 16" x 45" walking belt.</p> <p>Reg. 399.99 Now 349.99</p>	<h3>\$20 OFF</h3> <p>GPS UNITS</p> <p>sample savings:</p>  <p>MAGELLAN GPS 300 Lightweight, floats, 3 navigational screens, 100 landmarks.</p> <p>Reg. 99.99 Now 79.99</p>	<h3>\$50 OFF</h3> <p>GOLF SETS</p> <p>OVER 199.99 sample savings:</p>  <p>MACGREGOR RPM 11 Piece Set Shallow face low profile fairway woods with 100% graphite shafts, oversized stainless steel irons, steel shafts, men's right hand.</p> <p>Reg. 229.99 Now 179.99</p>
--	---	---	--

4 Days Only! Deals in Every Department!

<h3>\$50 OFF</h3> <p>FUJI BIKES</p> <p>sample savings:</p>  <p>FUJI MX180 Men's or Women's 26" ATB Limited Quantities</p> <p>Reg. 159.99 Now 109.99</p>	<h3>\$30 OFF</h3> <p>IN-LINE SKATES</p> <p>OVER 69.99 sample savings:</p>  <p>ROLLER DERBY Key Largo Women's In-Line Skates</p> <p>Reg. 69.99 Now 39.99</p>	<h3>SAVE \$50</h3> <p>TABLE GAMES</p> <p>OVER 99.99 sample savings:</p>  <p>SPORTCRAFT 6' Oval Air Hockey Table Forward positioned goal for behind-the-net action, includes 2 pushers and 4 pucks, 72" L x 44" W x 31" H.</p> <p>Orig. 249.99 Now 199.99</p>	<h3>50% OFF</h3> <p>WILSON WARM-UPS</p> <p>FOR MEN AND WOMEN</p> 
--	---	---	--

The Sports Authority

150% LOW PRICE PROMISE

If you find a lower locally advertised price on any identical item that we carry, we'll take 150% of the difference off the purchase price, even up to 14 days after you bought it. See store for complete details.

Prices and offers are good through Sunday, Nov. 21st (unless otherwise noted).

*Select styles. Merchandise shown is a sample of savings available at most locations. Hundreds of other items are available at discounted prices, although size, selection and style may vary by store.



NOW OPEN - SANFORD

(407) 302-3908

WEST ORLANDO • (407) 281-6653
KISSIMEE • (407) 832-4444
SAND LAKE PLAZA • (407) 857-1811
EAST ORLANDO • (407) 277-1194
AL TAMONTE SPRINGS • (407) 774-0666
MELBOURNE • (407) 722-4150
GAINESVILLE • (352) 331-9235

To find The Sports Authority nearest you, dial 1-888-LOOK 4 TSA For gift certificates, dial 1-888-325-GIFTS

THE SPORTS AUTHORITY

Always priced right.

FREE \$10 to shop online! Visit any store or www.thesportsauthority.com

Briefs

Oviedo to Light up for Christmas

The Greater Oviedo Chamber of Commerce Annual Tree Lighting is scheduled for December 2, at 5 p.m. Children's choirs from area schools have been invited to sing and Santa Clause will pause from his busy schedule to join in the festivities.

Pictures with Santa will be available for a nominal fee and there will be free hot dogs and cookies for the children.

For further details, call the chamber at (407) 365-6500.

Boys and Girls Clubs defeat 102 Jamz

The Boys and Girls Club defeated 102 Jamz 84-67 Wednesday in a charity game to raise funding for programs at the West Sanford Boys and Girls Club held at the Crooms Academy Gymnasium in Sanford.

The two teams will meet again at Crooms Academy Dec. 8 at 7:30 p.m. Sanford City Commissioner Velma Williams is the head coach of the Boys and Girls Club team. For more information concerning the Dec. 8 game, call the Boys and Girls Club at 330-7585.

Mock accident designed to show dangers of drinking and driving

By Bill Kerns
Staff Writer

SANFORD — Two students were critically injured, and one died in a mock drinking-and-driving accident staged at Seminole High School on Wednesday in a morning assembly for the school's 11th- and 12th-grade students at Thomas E. Whigham Stadium.

During the remainder of the school day, a red rose was placed at the vacant desk of 17-year-old senior Kim Nelson in every class that she normally attends. Her death was simulated in the crash.

"I started crying (with a friend)," Kim said. "I don't even know why. I'm just glad it's not real for any of my friends."

The mock DUI crash was sponsored by the Seminole County Community Traffic Team, made up of volunteers from public and private agencies. The participants in the simulation included school drama students, the Seminole County Fire Department's Emergency Management Services, paramedics, and law enforcement officers.

This is the second year that the mock crashes are being staged at high schools in Seminole County.

There were mock crashes at four high schools last school year, and so far this year two have been staged. A mock crash was performed at Lyman High School in October, and plans are underway for another mock

crash in the spring at Lake Brantley High School.

Lt. Jerry Riggins of the Seminole County Sheriff's Office is the uncle of Kim Nelson. He said that watching the mock accident was painful.

"To see part of your family lying there is just devastating," Riggins said. "She was made up so well that it seemed real."

Garrett Goldsmith, a senior who is the starting quarterback for the school's football team, was airlifted to South Seminole Hospital by paramedics following the crash. The drunken driver in the mock crash was uninjured, and placed under arrest.

"I thought I was really injured," said Goldsmith, who had a simulated head injury. "Everyone was looking at me

when I got up."

Lake Mary Police Chief Richard Beary said that the mock crashes are difficult for law enforcement officers who have dealt with fatal DUI accidents.

"It brings back a lot of bad memories of death notifications and the young peoples' hands I've held when they died," Beary said. "You never get over it."

From January through September of this year, the Florida Highway Patrol reports that there have been five DUI fatalities in Seminole County.

With Thanksgiving and Christmas approaching, law enforcement officers want to raise the student's awareness to the dangers of drinking and driving.

Cesar Silva, an 18-year-old, 11th-grade student, suffered a broken wrist in 1992 when the Chevy Blazer he was a passenger in was struck by a drunk driver. No one was seriously injured.

"My mother was driving, and I was sleeping in the back seat," Silva said. "No one was injured, except me. I had a broken wrist and some glass in my skin. I was very lucky. I think about how precious life is every day."

Silva said that the mock crash provides a wake-up call.

"It was mind boggling," Silva said. "I've been in a lot of accidents, but I've never been airlifted. Seeing that was scary."

Military News

Air Force Airman 1st Class Robert L. Pasquarelli has graduated from basic military training at Lackland Air Force Base, San Antonio, Texas.

During the six weeks of training, the airman studied the Air Force mission, organization, and customs and received special training in human relations.

In addition, airmen who complete basic training earn credits toward an associate degree through the Community College of the Air Force.

Pasquarelli is the son of Olga G. Pasquarelli & Bob F. Pasquarelli, both of Casselberry.

The airman is a 1998 graduate of Lyman High School, Longwood.

Army National Guard Pfc. Erik J. Jackson has entered basic military training at Fort Jackson, Columbia, S.C.

During the eight weeks of training, the soldier will study the Army mission and will receive instruction in drill and ceremonies, weapons, map reading, tactics, military courtesy, military justice, physical fitness, first aid, Army history and traditions, and special training in human relations.

Jackson is the son of Larry L. and Virginia A. Jackson, Sanford.

He is a 1995 graduate of Seminole High School, Sanford.

Air Force Airman Wallace H. Bagwell Jr. graduated from the munitions systems material apprentice course at Sheppard Air Force Base in Wichita Falls, Texas.

Bagwell's training included conventional and nuclear ordnance inventory management and accounting systems.

He is the son of Wallace H. and Pat S. Bagwell, Deltona.

Christina M. Callin graduated from the Army Reserve Officer Training Corps (ROTC) Camp Challenge at Fort Knox, Ky.

The training included fundamental military skills, basic rifle marksmanship, drill and ceremonies, small arms tactics, and communications.

Callin is a 1999 graduate of Oviedo High School and is currently a student at Marion Military Institute, Ala. She is the daughter of David M. and Anna T. Callin, Chuluota.

Navy Seaman Apprentice Alex R. Jacot recently completed U.S. Navy basic training at Recruit Training Command in Great Lakes, Ill.

The eight-week program focused on practical instruction on naval customs, first aid, fire fighting, water safety and survival, and shipboard and aircraft safety. Physical fitness and classroom study was also emphasized.

Jacot is a 1998 graduate of Seminole High School.

TRANSMISSION TROUBLE?

Harrell & Beverly Transmissions

209 W. 25th St.
Sanford
322-8415

Since 1959...Same Location

Remodel Your Kitchen
with KraftMaid

Encore Kitchen & Bath
Best Price Guarantee on
*KraftMaid Cabinetry
*Schrock Cabinetry
*Corian Countertops
*Pergo Flooring

(904) 428-6222
2102 S. Ridgewood Ave. #17
Edgewater, FL 32141

A UNIQUE MEXICAN RESTAURANT FULL BAR

OPEN MONDAY - SATURDAY
MONDAY THROUGH THURSDAY
11:00 AM TO 10:00 PM
FRIDAY: 11:00 AM TO 11:00 PM
SATURDAY: 11:00 AM - 10:00 PM

Circuit City Plaza
1140 E. Altamonte Dr.
Altamonte Springs, FL 32701
407-339-7888

Bring this coupon with you and purchase one lunch or dinner with 2 beverages and receive the 2nd meal of equal or lesser value free!

SPOTLIGHT ON BUSINESS

The Psychic Shop
You Will Be Amazed

The Psychic Shop has a gifted psychic who came by her abilities naturally as her grandfather, grandmother and mother were psychic as well. She has the power to see the past, present and future. She can give helpful advice to many people from different walks of life. You will be amazed at her accuracy. She has been in the business for over 30 years and at this location for over a year. She is experienced in all types of readings such as palm, lip, psychic, crystals and pyramid. You can also purchase candles, crystals, oils, books, and tarot cards.

Feel free to stop by for a visit or you can call for an appointment for a reading. Located at 1185 E. Altamonte (across from Circuit City) The phone number is (407) 261-0162

PAID ADVERTISEMENT

The Psychic Shop

Do you have questions that need answering?
Do you feel lonely or confused?
Come to the Psychic Shop for answers.

Gift Certificates Available!

We Sell
•Candles •Crystals
•Oils •Tarot Cards
•Books •And More!

50% OFF READING OR 25% OFF MERCHANDISE W/AD

Palm, Tarot Card, Psychic, Crystal Ball & Lip Readings
1185 E. Altamonte Dr. (436)
Across from Circuit City **261-0162**

THE ALL NEW DESIGNED BFGoodrich All-Season T/A

SALE PRICE	33X12.50R15	\$124.10	1.71 FET
	35X12.50R15	\$138.94	1.96 FET
	35X12.50R16.5	\$156.48	2.50 FET
	285/75R16	\$148.86	2.50 FET

Price Includes Mounting and Balancing

TIRE CITY
FULL SERVICE TIRE & AUTOMOTIVE REPAIRS
321-717-7170

2921 Orlando Dr. (Hwy 17-92) #100 • Sanford, FL 32773

KINGS AUTO SERVICE
"ASE Certified Auto Technicians"
QUALITY USED CARS
699-0778

- Major to Minor Repairs
- Guaranteed Service
- Towing Available

10% OFF with this ad

CRAIG S. SMITH
Master Auto Technician
Master Collision Technician
H.D. Truck Technician

485 N. Hwy. 17-92
Longwood, FL 32750

Sanford Beauty Supply
2921 S. Orlando Dr. • Suite 132
Sanford • (407) 330-0032

HOURS: MON. THRU SAT. 9 AM - 7 PM
CLOSED SUN.

Location: 17-92 Sanford Plaza between Save-A-Lot and Big Lots

DISCOUNT ON SELECTED ITEMS
SALE FROM 15% TO 40% OFF

- Hair Care Products
- Extensions
- All Accessories
- Wigs
- Purse & Wallets
- Salon Equipment

TAKE AN EXTRA 5% OFF
from already low prices!
MUST PRESENT COUPON WHEN PURCHASING
No personal checks accepted. ATM Debit

Offer Expires 11-30-99

EURO MOTORS Sales & Service

In Sanford Located Across From The Police Station at 900 Franch Ave. • 324-3111

Offering Selected Preowned Vehicles at Wholesale Prices. Specializing in Porsche, Volvo, Mercedes, BMW, Jaguar & Saab.

COUPON REQUIRED	COUPON REQUIRED	COUPON REQUIRED
OIL & LUBE CHANGE \$14.95	A/C CHECK \$9.95	COMPLETE RADIATOR SYSTEM FLUSH \$39.95

OFFERING COMPLETE AUTO REPAIR PERFORMED BY MASTER TECHNICIANS

NAIL DOWN a Great Deal FREE ESTIMATE

L.S. # RC0022890

Yates Roofing

ALL TYPES OF ROOFING
SINCE 1928 3rd GENERATION OF ROOFERS

"SPECIAL DISCOUNTS TO CHURCHES & SENIORS"

407-322-1449

CODY LIQUIDATORS
Hotel/Motel Furniture
Sold Wholesale To The Public
Bedroom Sets...From \$73.00

Dining Sets As Low As \$41.99
Bathrooms \$75.00 • Mirrors \$20.00 - \$75.00
Framed Pictures \$5-\$20 • Sofa Beds \$99.00

Box Spring & Mattress Sets
••• Queen • \$69 • King • \$79

PLUS MUCH MORE

\$10.00 OFF \$80 OR MORE PURCHASE WITH THIS AD

888 S. HWY. 17-92 • LONGWOOD LAKES PLAZA
LONGWOOD, FLORIDA • 830-8383
HOURS: Tues. thru Sat. 10:00 - 6:00 • Sun. 12 noon - 6:00 Closed Monday

23rd Annual Longwood Arts & Crafts Festival

Sat. 9am-5pm, Sun. 9am-4pm • November 20th & 21st

SPONSORED BY

CENTRAL FLORIDA SOCIETY FOR HISTORICAL PRESERVATION

Historical Awareness for Seminole County Students, a community service project of the Central Florida Society for Historical Preservation is now scheduling tours for the 1999-2000 school term. The Society's program will provide transportation cost for Seminole County students to tour the historic Bradlee-McIntyre House Museum. Costumed docents and artisans conduct the tours creating the ambience of the late Victorian Period. The program meets the requirements of the Sunshine

State Standards that elementary students have a complete overview of American History before graduation to middle school. The program can be adapted to meet the needs of all Seminole County students. The project is funded in part by the Seminole Cultural Arts Council, Inc.

For High Schools, an architect gives a lesson on the unique architecture of the house. To schedule a tour call Carolyn Bislinne, Education Committee Chair, at 830-9459 or 834-9506.



Longwood Arts & Crafts Festival "Always The Weekend Before Thanksgiving"

The Longwood Arts & Crafts Festival is held in the Longwood Historic District, the focal point of most of the boutiques, gift shops etc. for which Longwood is known. The streets, closed to vehicular traffic for that weekend are devoted to the festival and afford both the exhibitor and visitor alike a wonderful atmosphere for the weekend. As an added bonus, all of the shops are open for business. Local restaurants and outside vendors cater to every taste. Besides attracting visitors from greater Orlando, the old Florida ambience, and the central location of Longwood, lure festival goers from near and far. The Festival is a family-oriented show for spectators of all ages. As a reasonable projection, we can expect upwards of 30,000 visitors to the festival.

Christmas In Old Longwood

A special holiday program, "Christmas in Old Longwood," is being sponsored by the Central Florida Society for Historical Preservation. The evening begins at 7:00 pm at Christ Episcopal Church, the oldest church in continuous use in Seminole County. Readings by Father David Knox and carols by Lake Mary High School choir, directed by Mrs. Alice Nielson.

Following will be a holiday dinner at the Bradlee-McIntyre House. This c 1885 3-story 13-room Queen Ann Style Victorian House, decorated for the holiday season is the perfect setting to enjoy a delicious holiday dinner.

Tickets are \$20.00 per person, limited to 50 guests each evening. The dates are Monday, Tuesday, Wednesday, December 6, 7, 8. Tickets are available at select shops in the Longwood Historic District. Call 407-831-3688 or 407-834-7220 for tickets and information.



BRADLEE/MCINTYRE HOUSE

Bradlee-McIntyre Annual Christmas Open House

Experience a Victorian Christmas with a tour of the c1885 Queen Ann Style Victorian House.
December 12th 1:00-4:00 • December 15th 11:00-4:00
December 22nd 11:00-4:00

Brief History Of The Bradlee/McIntyre House

The recorded history of the Bradlee/McIntyre house begins with the creation of the South Florida Railroad which was completed from Sanford to Orlando in 1880. With the railroad the area was opened up for tourists who came to spend the winter. The Altamonte Land, Hotel, and Navigation Company was formed by a group of Boston business men in 1882 to build a "Florida Boston Town" The corporation was formed for the purpose of selling building lots, operating a hotel, and hopefully connecting Lake Oria with the St. Johns river by constructing a canal to the Little Wekiva river. The first hotel was opened in Feb. of 1883 located on Lake Oria at what is now the southwest corner of SR 436 and Maitland Ave. Shortly thereafter, Nathan Bradlee, one of the leading architects of Boston, was brought in to build several "cottages" on lots on the east side of maitland Avenue, near Boston Avenue on the west side of the hotel and north of hotel just west of Lake Adelaide. This house, built by Mr. Bradlee for himself was on the north side of SR 436 and stood near Massachusetts Avenue and Park Place. Unique to these homes were the lack of kitchens since meals were generally taken at the hotel, or if entertaining at home, by food brought to the house by the hotel.

Mr. Bradlee lived in the house until his death in 1888. After that time it was sold several times until in 1904 it was bought by Mr. & Mrs. McIntyre, who wished to live in Altamonte Springs year round. Since the hotel was not open year around the McIntyre's added a summer kitchen connected by a breezeway on the back of the house. After Mrs. McIntyre's death in 1946 the house was resold many times.

Since the house is expensive to keep in repair and no means was found to make the house economically self sufficient the house went through a number of owners becoming more run down with each owner until it was abandoned. The town of Altamonte Springs, wishing to have the land for the hospital, decided to sell the house for \$1.00 with the provision that it be moved from its site. If no buyer was found they would allow the city fire department to demolish it for public use.

The Central Florida Society for Historical Preservation, realizing the heritage that the "Cottage" represented to the early tourism industry of the area and it's unique Queen Anne style architecture, took on the house as its first project. Unable to find a suitable location in Altamonte Springs and having land offered in the Longwood Historical District by Mr. & Mrs. Robert Bradford, the house was moved to this site in 1973. The house was placed on the National Register of Historic Places.

The Society took on the restoration of the building with a grant from the state which repaired the building and installed central heating and cooling, the furnishing of the house in the style of the late Victorian period has been accomplished by gifts of furniture of this period to the house and selective purchases where pieces were needed to fill out the Victorian decor.

The house is maintained today as a late Victorian style House Museum furnished as it might have been during the time the Bradlees lived here.

Tours Of The Historic Bradlee/ McIntyre House Museum

c 1885 Queen Ann Style
3-story 13-room Victorian
winter vacation cottage.
2nd & 4th Wednesday
11:00 am - 4:00 pm
For Group Tours &
Information
Call 407-332-6920 or
407-834-9506
Longwood Historic
District
130 W. Warren Ave.
P.O. Box 520500
Longwood, Florida
32752-0500

LONGWOOD STATION
DELI CAFE
323 North County Road 427 • Historic Downtown Longwood
Boar's Head Delicatessen Meats
Phone & Fax
407-260-0495

Joyce's Crafts
• Jewelry Findings • Rhinestones
• Decoupage • Basket Weaving
• Silk Flowers • Tole Painting
• Wedding Supplies
Complete Line of Arts & Craft Supplies
4000 S. HWY. 17-92
Casselberry, FL 32707
(407) 831-8877

Trilogy Art Designs Inc.
Member of PFAA
Nationally Certified
Framer
Over Size Framing
• Custom Framing
• Shadow Box Framing
• Dry Mounting & Lamination
• Needle Crafts & Fabric Art
• Diplomas & Certificates
• Repairs & Reframing Jobs
20% Off
With This Ad
260 E. State Road 434 • Winter Springs (Badcock Plaza)
(407) 327-0046 www.trilogyart.com

"We're Here When You Need Us"



A TIMELESS
TRADITION
OF DISTINGUISHED
SERVICE
Since 1965



Official "Drop-Off" Spot for Toys for Tots.
Bring new unwrapped toys to our office seven days a week!



Realty Corp., Realtors®

100 Waymont Court,
Suite 110
Lake Mary, Florida 32746
"On Lake Mary Blvd.,
West of the Post Office"
(407) 323-3200

THE TOBACCO AND WINE MERCHANT

• Specialty Wines • Fine Cigars • Pipes • Tobaccos •



Longwood Village
1877 W. State Rd. 434
(Near Jacobsons)
767-0050
www.thetobaccomerchant.com

Grand Opening
Celebration

FREE
BOTTLE
OF WINE*

With \$25.00 Wine Purchase
* Some Restrictions Apply
Not Valid With
Any Other Discount
Coupon Expires Nov. 15, 1999



Moving Day for the Bradlee House formerly of Altamonte Springs, FL.



HALF TIME
Longwood, FL.
(407) 260-2435
Winn Dixie Shopping Center

Come in and see SADDLE UP'S new Larger Showroom for one of the largest selections of boots and western wear in Central Florida

Ad good for \$10.00 off any purchase of \$40.00 or more

Only one coupon per purchase. Not valid on Wrangler Jean Purchase. Good through 12-7-99

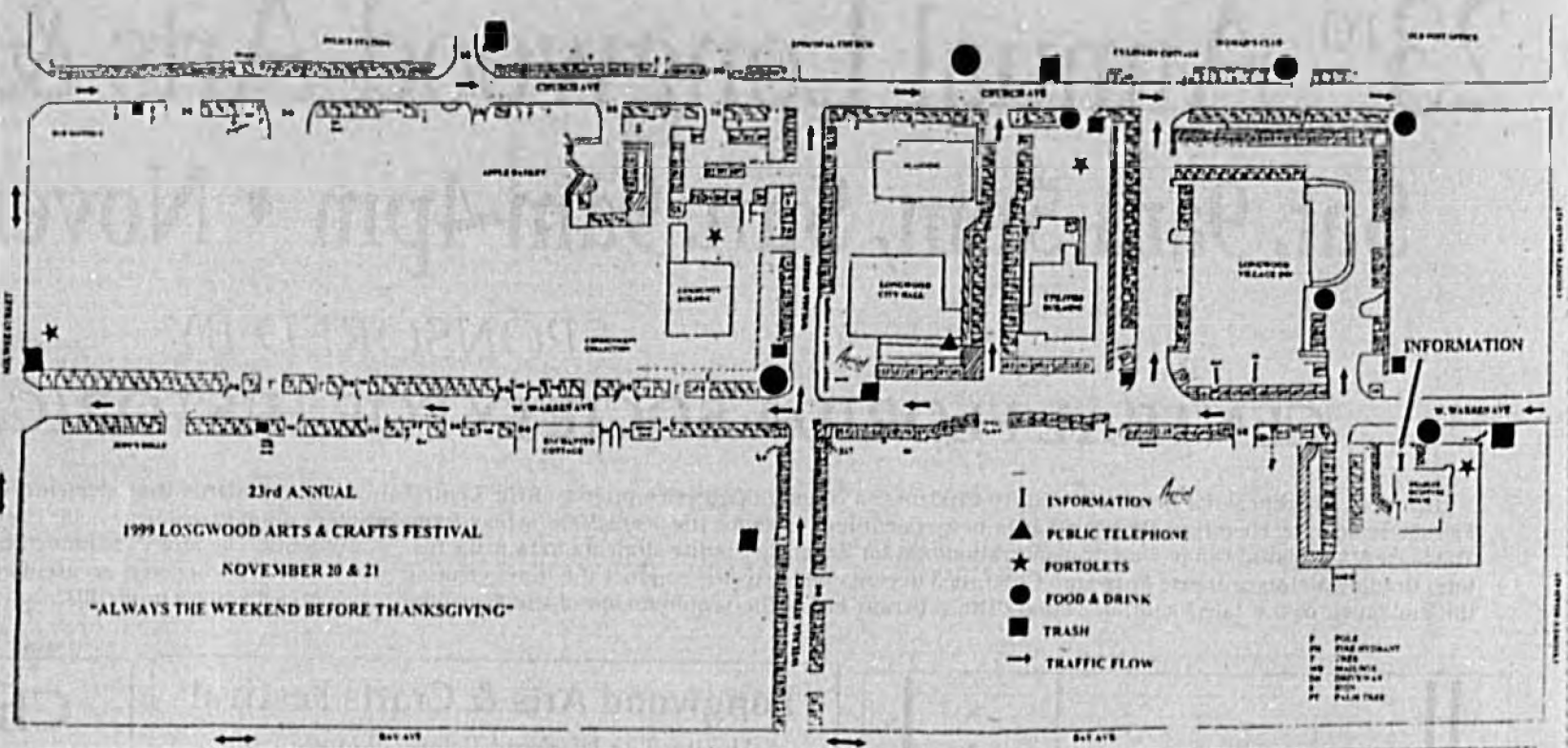
FOR A LIMITED TIME! BUY A PAIR OF JUSTIN BOOTS AND RECEIVE A

FREE PAIR OF **Wrangler** JEANS



Saddle Up Western Store

HOME OF UNBEATABLE PRICES!
NOTE OUR NEW STORE HOURS:
MONDAY - SATURDAY 10:00 TILL 8:00 (407)831-3393
SUNDAY 12:00 - 6:00



Central Florida Society for Historic Preservation presents



23rd Annual
Longwood Arts & Crafts Festival

November 20th and 21st
Saturday 9-5 • Sunday 9-4

Always the weekend before Thanksgiving

THE PREMIERE ARTS & CRAFTS FESTIVAL

Free admission & parking

400 + booths along the oak shaded streets of Longwood Historic District
2 blocks N. of S.R. 434 @ C.R. 427

HOME DECOR

Southern Comfort

CARPET • TILE • WOOD • LAMINATE
BLINDS • SHUTTERS • WALLPAPER • FABRIC

Wallpaper
UP TO
40% off

BLINDS & SHUTTERS
UP TO
75% off

Always In Bloom

- Custom Silk Designs
- Unique Accessories & Gifts
- Mirrors • Framed Prints
- Bridal & Gift Registry

- Christmas Gifts & Accessories
- Collector Santa's and Arthur Court Gift Line

25 Your One Stop Shop For Home Decor
Complimentary Decorating Services
834-5566 • 834-2288
207 West State Road 434 • Longwood, Florida

Timmy's Toy Chest



Grand Opening
Saturday, November 20th
11am - 2 pm

Grand Prize Drawing!

Enter to win a "Timmy's Toy Chest"
A chest full of new toys!
Entertainment by Magician
Christian Misner of Totally Magic!
Meet Paddington Bear!
Balloons, Refreshments, & Fun!

Shoppes at Oakmonte
1210 S. International Pkwy.
Lake Mary (across from Heathrow)
(407) 804-9877
www.timmysoychest.com

PEARL

The World's Largest Art, Craft & Gift Discount Center!

Huge Supply of Paint & Canvas

Large Selection of Pens, Pencils, Markers, Pastels

Porcelain Dolls -

Sculpturing Supplies -

Large Selection of Holiday Needs

Wide Selection of Craft Supplies

Complete Selection of Frames -

Assorted Giftwear -

Large Selection of Kids Crafts -

Big Floral and Wedding Depts.

Assorted Candles & Candlesmaking Supplies

Store Hours: Mon. - Sat. 8am to 9pm - Sunday 11am to 6pm

Altamonte Springs, FL: 1220 E. Altamonte Dr. • 407-831-3000

Credit Union Real Estate Services, Inc.

Discounted Real Estate Services to Credit Union Members

Mark T. Pease, President

State Licensed Real Estate Broker #BK-0649249

State Certified Residential Real Estate Appraiser #RD-0002677

FREE Home Buyer Workshops-Credit Union Preferred Realtor

Equal Housing Opportunity

300 North C.R. 427, Ste 205
Longwood, FL 32750

Phone: (407) 331-5855
Fax: (407) 331-5575

WARNING

AUTO ACCIDENT

Send for a free report that reveals secret information. Insurance Companies don't want you to know. If you've been hurt it may be weeks or months before pain appears. Don't take chances.

For your Free Report
1-800-962-9241

88-000

Serving the Greater Orlando Area Since 1940

Baldwin Parkside

CEMETERIES AND FUNERAL HOMES

24 Hrs. Telephone (407) 898-8111

Sports

Seminole Herald, Sanford, Florida - Thursday, November 18, 1999 - 1B

B

Hunting season is here

Special to the Herald

OCALA - In the state's Central Zone, which includes most of central and northeast Florida, general gun season for antlered deer and wild hog began last Saturday, Nov. 13, and will continue through Jan. 23.

Fall turkey season (gobblers only) also began on Nov. 13 and will run through Jan. 9, and gray squirrel and quail season (small game) began on Nov. 13 and will continue through March 5.

The statewide waterfowl season will open this Saturday, Nov. 20, and continues through Jan. 18, with a special Youth Waterfowl hunt day on Jan. 22.

While some people hunt on private lands, many hunters take advantage of Florida's extensive wildlife management area (WMA) system - public lands managed by the Florida Fish and Wildlife Conservation Commission (FWC) to provide good hunting opportunities for a variety of wildlife species.

There are 31 WMAs in the FWC's 12-county central region that are open at various times during general gun or modern gun, waterfowl, turkey, and squirrel and quail seasons.

They are: Baird Unit of Richloom WMA (Sumter), Bull Creek WMA (Osceola), Caravelle WMA (Putnam), Citrus WMA (Citrus), Dexter/Mary Farms Unit of Lake George WMA (Volusia), Etowah Creek WMA (Putnam), Flying Eagle WMA (Citrus) and Fort McCoy WMA (Marion).

Also, Georgia-Pacific WMA (Putnam), Guana River WMA (St. Johns), Half Moon WMA (Sumter), Homosassa WMA (Citrus), Jumper Creek WMA (Sumter), Kilbee Unit of Little Big Econlockhatchee WMA (Seminole), Lake George WMA (Putnam and Volusia), Lake Panasofkee WMA (Sumter), Miami Corporation WMA (Brevard and Volusia), Ocala WMA (Lake, Marion and Putnam), Potts WMA (Citrus), Prairie Lakes Unit of Three Lakes WMA (Osceola), Relay WMA (Flagler), Ross Prairie WMA (Marion), Richloom WMA (Lake, Sumter, Pasco and Hernando), Rima Ridge Unit of Tiger Bay WMA (Volusia) and Rook Springs Run WMA (Lake and Orange).

Others include, Seminole Forest WMA (Lake), Seminole Ranch WMA (Orange), Three Lakes WMA (Osceola), Tiger Bay WMA (Volusia), Tosohatchee WMA (Orange) and Triple N Ranch WMA (Osceola).

Hunters should note that a quota hunt permit is required for hunting in some of these areas, while others require only a valid Florida hunting license and a valid wildlife management area stamp. Not all areas offer all hunting opportunities.

For specifics, hunters should refer to the hunt map for the particular WMA they are interested in. They should also obtain a copy of the Florida Hunting Handbook and Regulations Summary for statewide regulations.

These publications are available at county tax collectors, from the FWC's regional office in Ocala, or can be viewed or downloaded from the FWC's website at <http://www.state.fl.us/fwc/> and then clicking on the Hunting tab.

State law requires that anyone hunting deer in Florida during the gun season must wear a minimum of 500 square inches of daylight fluorescent-orange material as an outer garment, such as a jacket or vest.

See Hunting, Page 2B

It's a whole new ballgame
SAC quartet begin search for a state football championshipBy Dean Smith
SPORTS EDITOR

LAKE MARY - It's back to square one now.

Records, winning streaks, a tough schedule, playing in a good conference or strong district. None of that will mean a thing when the Lake Brantley, Lake Mary, Oviedo and Seminole football teams step on the field Friday night.

Now it's back to sports in its most basic form, single elimination. You win, you keep playing. You lose, and your season is over.

The 1999 Florida High School Activities Association (FHSAA) Football Champion-

ships get underway with the four Seminole Athletic Conference squads looking for the gold at the end of the rainbow.

All four teams come into the playoffs on an up-beat. Lake Mary (9-1) was the Class 6A-District 2 champion and has won nine games in a row, including huge wins over Oviedo and Lake Brantley, and has not lost since a season-opening setback to Seminole.

Lake Brantley (8-2) bounced back admirably from a loss to Lake Mary with crushing victories over DeLand on the road and a talented Lyman team to finish second in 6A-9.

The Patriots' domination of

the Bulldogs was especially impressive as it came on the heels of the loss to the Rams and came against a team that had won four district games in a row and appeared ready to storm into the playoffs.

Oviedo (7-3) looked to be all but out of the playoff race when it fell to 3-3 with all three losses coming to district foes (Lake Brantley, Lake Mary and DeLand) by a total 12 points.

But the Lions have won four in a row to earn an At-Large bid and have been playing outstanding football on both sides of the line of scrimmage.

Seminole (8-2) has also bounced back well from a tough Class 5A-District 4 loss to

champion Spruce Creek with victories over an always tough Merritt Island team (which is in the 4A playoffs) and a romp over a Winter Springs team that had won four games in a row and could have knocked the Tribe out of the playoffs.

In the games this Friday:

Lake Mary hosts Orange Park (8-2), which has only losses against Tallahassee-Lincoln and undefeated Palatka, but has not played as tough a schedule as the Rams, at Don T. Reynolds Stadium.

Lake Brantley hosts Dr. Phillips (7-3), which has won five of its last six games and has losses to teams that have a combined 29-1 record, at Tom

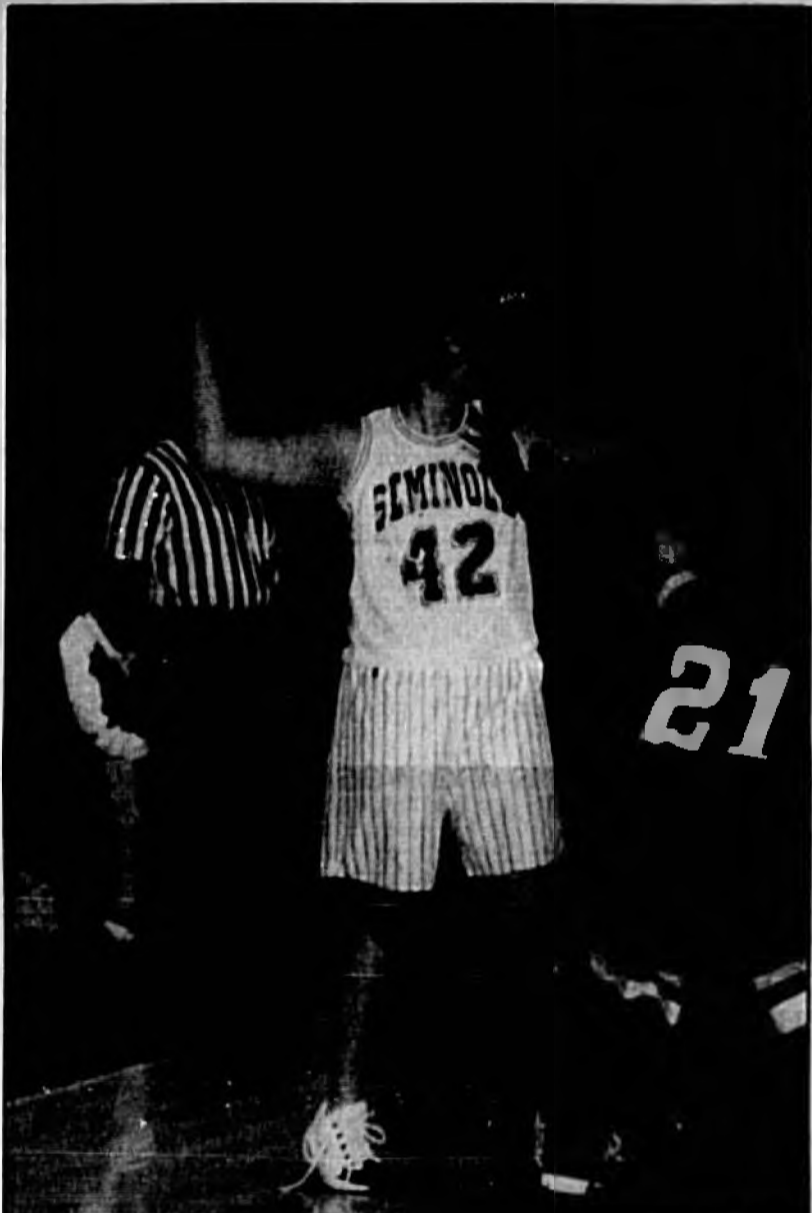
Story Field.

This game will have the added motivation of revenge for the Patriots as the Panthers ousted undefeated Lake Brantley in the first round of the playoffs last year.

Oviedo travels to Winter Garden to take on West Orange (9-1) team that has racked up over 350 yards of offense per game and won the tough 6A-4 Orlando district.

Seminole has to make the longest trip, heading to Palm Beach Gardens to take on Dwyer (5-4), which won its district in a three-way Kansas tie-breaker.

All of the games are set for 7:30 p.m. starts.



Herald photos by Arch Booths

It was a big night for the 'flying fins' as Kaisa Tuura (No. 42, above) and Satu Raimesalo (No. 13, right) from Finland combined for 42 points, nine rebounds, six assists and five steals as the Seminole Community College women's basketball team improved to 4-0 with an 82-59 victory over Palm Beach Community College Wednesday.



Rusty Raiders stay undefeated

By Dean Smith
SPORTS EDITOR

SANFORD - Sometimes talent is enough. Playing like a team that had been idle for a week, the Seminole Community College women's basketball team stumbled and bumbled through most of the game before its constant defensive pressure finally wore Palm Beach Community College down as the Raiders improved to 4-0 with an 82-59 victory at the SCC Health and Physical Education Center Wednesday evening.

The game was the first for SCC since clobbering St. Petersburg Junior College 107-37 last Tuesday and the layoff showed

as the normally sure-handed Raiders' timing seemed to be off, having several potential defensive interceptions go right through their hands and also overthrewing open players on the fast break.

The SCC players were probably at least partially distracted as their thoughts were with their coach, Ken Patrick, who missed the game because his father passed away on Monday.

But despite all of its troubles, however, SCC never trailed as its superior talent and physical conditioning paid off against a talented and big Panthers squad.

The contest started well as sophomore forward Satu Raimesalo from Lahti, Finland

nailed the first of her three-point shots on the evening on the Raiders' first trip down the court.

SCC then stretched the lead to 5-0 when Shernel Donovan grabbed an offensive rebound and powered the ball back into the basket.

PBCC got back into the game on back-to-back layups by Stacy Brown, but SCC opened up a 17-9 margin on a basket by Keicia Smith, two jumpers by Raimesalo and a jumper and four free throws by Kaisa Tuura.

The game then turned into a free throw shooting contest that the Raiders were not

Please see SCC, Page 2B

Seminole surprises in district swimming

By Dean Smith
SPORTS EDITOR

ALTAMONTE SPRINGS - Lake Brantley and Lake Mary were in their accustomed position atop the standings at the Class 3A-District 3 Swimming and Diving Championships at the Lake Brantley Aquatic Center last week, but it was Seminole that surprised everyone in attendance.

The Patriots scored a combined 1,057 points to best the Rams, who accumulated 935 points.

But it was the Fighting Seminoles who finished a surprising third with 456 points, edging Oviedo (439) and Winter Springs (424).

Individually, the Lake Brantley boys topped Lake Mary, 493-462, with Seminole third

with 242 points.

The Patriot girls won by wider margin over the Rams, 564-473, with Oviedo third (222) and Seminole fourth (214).

"We're elated with the results," said Seminole head coach Tony Ackerson. "These are the same teams that we swam at the conference meet two weeks ago and we felt pretty good about that meet (Boys fourth and girls fifth).

"I'll guarantee you no one outside of our kids thought that we could pull this off. We just have a small group of overachievers that work their tails off and do what they're asked to do."

This was the highest district finish for Seminole in recent memory, which is amazing considering the Tribe was moved up into a tougher district this

year, after a pair of fifth place finishes last year, and had lost a state champion (Lori Thomas, now at the University of Hawaii) and several talented seniors.

Based on the seed times coming into district, the boys should have been fourth and the girls a distant fifth, but the team swam over its head to out-point teams like Lyman and Oviedo that it had lost to in dual meets during the regular season.

In the process, Seminole qualified nine swimmers for the state meet (starting today in Orlando) with Dan Bishop winning the 200 freestyle by shaving five seconds off his time from two weeks ago and the two spring relay teams setting new school records in finishing as district runners-up.

"I've never been prouder of a team that I've coached," said Ackerson. "We've had some good individual success over the past few years, but this was by far the best team effort that I've been associated with. There are no stars on this team, but every one of them understands the big picture, the team goal, and they all bought into it this year."

Despite his "no stars" comment, Ackerson did have high praise for Dan Bishop and Corrie Seland.

"Dan Bishop was huge," said Ackerson. "He won the 200 on guts, pure and simple, and he gave our team a big-time boost by winning the first individual event of the finals."

"Corrie Seland was another

Please see District, Page 2B

Wednesday softball all even at top

By Dean Smith
SPORTS EDITOR

SANFORD - A playoff is looming in the City of Sanford Recreation and Parks Department Men's Wednesday Night Fall Slow Pitch Softball League.

Three weeks ago, Wilson-Eichelberger Funeral Home was standing alone at the top with Vivona's and Wells Contracting waiting for the leader to wilt.

Flash forward to today and Wilson-Eichelberger Funeral Home and Vivona's are tied for first with Beer :30 coming on strong riding a three-game winning streak and Wells Contracting wondering what happened to its offense.

On Wednesday, November 10th at Pinehurst Park, Vivona's drew even by scoring at least four runs in each inning it batted, while holding Wells Contracting to two singles in a 20-0, four-inning romp, while Wilson-Eichelberger Funeral Home was falling to show up for its game with winless I.F.I.

Beer :30 also continued its rally from a slow start, blanking Brian's Lawn Maintenance on three singles in an 11-0, run rule victory.

Last night (Nov. 17) at Pinehurst Park, Wilson-Eichelberger Funeral Home got back on track, using an 11-run second inning to help erase a 6-0 deficit and going on for a 21-11 run rule romp over Brian's Lawn Maintenance.

Vivona's kept pace, scoring 12 runs over the first three innings and holding on for a 15-7 triumph over I.F.I.

Beer :30 also continued its hot play, holding Wells Contracting to three singles and posting a 6-0 shutout.

After all of the weirdness of the last two weeks, Vivona's and Wilson-Eichelberger Funeral Home are both 7-2, with Beer :30 still alive with a 6-3 mark.

With its back-to-back losses, Wells Contracting fell to 5-4 and out of the race with Brian's Lawn Maintenance and I.F.I. (both 1-8) long out of the running.

The regular season is scheduled to end next Wednesday night at Pinehurst Park with I.F.I. taking on Brian's Lawn Maintenance Service in a battle for fifth place at 6:30 p.m.; Beer :30 hoping to stay in the race when it battles Vivona's at 7:30 p.m.; and Wilson-Eichelberger Funeral Home hoping to avoid an upset at the hands of Wells Contracting at 8:30 p.m.

A victory by Vivona's and Wilson-Eichelberger Funeral Home would force a winner-take-all playoff on December 1st, while a Beer :30 victory and Wilson-Eichelberger Funeral Home loss would force a three-team playoff on the 1st.

The whole thing could be decided also, if Vivona's loses and Wilson-Eichelberger Funeral Home wins, or Vivona's wins and Wilson-Eichelberger Funeral Home loses.

Providing the offense were: **NOVEMBER 10TH** Vivona's: four hits - Shannon Split (three runs, RBI); three

Please see Softball, Page 2B

Classifieds GET THE JOB DONE!

Call 322-2611
Seminole Herald Classified Dept.
 To Place Your Ad

Seminole Herald, Sanford, Florida - Thursday, November 18, 1999 - 3B



DON'T BE A TURKEY!

Subscribe to the **Seminole Herald** and find out what's going on in your community! Call: 322-2611 To start your subscription today!



The **Seminole Herald**

WHAT A DEAL

The best way to find a bargain is to shop the **Seminole Herald Classifieds**

CELEBRITY CIPHER

by Luis Campos

U Z B T T O A S H G Y
 I W B W L P K C U Z H N
 Z I N M H S N L X Z S M Z B S X
 R Y Z M E U L K O - I B U I U B
 H U T T O S X
 ... (more cipher text) ...

Legal Notices

NOTICE OF SALE
 85 OLDS 1G3B8V8812731
 87 FORD 1FADP40A2H116934
 86 CHRYSLER 1C3BA4D06G318826
 86 BUICK 1G4AH51R7K464305
 84 CHEVY 1G1AP8706N198010
 754 MONROE RD. (C-15)
 LAKE MONROE, FL 32747
 11:00 AM
 Publish November 18 1999
 DE1145

IN THE CIRCUIT COURT OF THE EIGHTEENTH JUDICIAL CIRCUIT IN AND FOR SEMINOLE COUNTY, FLORIDA

CASE NO. 93-2714-CA-14L
 CONTINENTAL BANK, N.A., a national banking association, Plaintiff/Counter Defendant,
 vs.
 THE ANDEN GROUP OF FLORIDA, by and through its general partners WESTHOLME PARTNERS and ROHICOR BUILDERS, INC., et al., Defendants

NOTICE OF SALE
 Notice is hereby given that pursuant to the final judgment of foreclosure entered in the above styled action on October 28, 1999, the following property will be sold by the clerk of the court at public sale at 11:00 a.m. on November 30, 1999, to the highest bidder or bidders, for cash at the West front door of the Seminole County Courthouse, Sanford, Florida.

Case No. 93-2714-CA-14L
 CONTINENTAL BANK, N.A., a national banking association, Plaintiff
 vs.
 BARBARA L. CETRONE, et al., Defendants

IN THE CIRCUIT COURT OF THE EIGHTEENTH JUDICIAL CIRCUIT IN AND FOR SEMINOLE COUNTY, FLORIDA

CASE NO. 98-0781-CA-16-K
 GENERAL JURISDICTION COMMERCIAL FEDERAL BANK, Plaintiff
 vs.
 BARBARA L. CETRONE, et al., Defendants

NOTICE OF FORECLOSURE SALE BY CLERK OF CIRCUIT COURT
 Notice is hereby given that the undersigned Maryanne Morse, Clerk of the Circuit Court of SEMINOLE County, Florida, will on the 30th day of December 1999, at 11:00 a.m. at the front door of the Seminole County Courthouse in Sanford, Florida offer for sale and sell at public outcry to the highest and best bidder for cash the following described property situated in SEMINOLE County, Florida, to-wit:

COMMODITY UNIT NO. 409 KENNINGTON PARK A CONDO MINUM ACCORDING TO THE DECLARATION OF CONDOMINIUM FILED IN OFFICIAL RECORDS BOOK 1414 PAGE 195 AS AMENDED BY THAT CERTAIN FIRST AMENDMENT TO DECLARATION OF CONDOMINIUM FILED IN OFFICIAL RECORDS BOOK 1455 PAGE 1429 AND RECORDED IN OFFICIAL RECORDS BOOK 1456 PAGE 1712 AS MORE PARTICULARLY DESCRIBED IN EXHIBIT 'A' ATTACHED HERETO AND MADE A PART HEREOF

pursuant to the final decree of foreclosure entered in a case pending in said court the date of which is "COMMERCIAL FEDERAL BANK vs. BARBARA L. CETRONE et al. et al."

Persons with a disability who need a special accommodation to participate in this proceeding should contact ADA Coordinator at 301 N. Park Avenue, Suite 101, Sanford, Florida 32771 at least five days prior to the proceeding. Telephone 407-323-4330 ext. #4227, 800-955-8771 (TDD) or 800-955-8770 (VI), via Florida Relay Service.

With this my hand and official seal of said Court this 18th day of November, 1999.

Honorable Maryanne Morse
 Clerk of the Circuit Court
 By Jane E. Jasevec
 Deputy Clerk
LAF ORICES OF JOSEPH PANIELLO
 Post Office Box 2347
 Tampa Florida 33601
 Publish November 11 18 1999
 DE1180

Legal Notices

NOTICE OF PUBLIC AUCTION
 NOTICE IS HEREBY GIVEN THAT SANFORD TOWING WILL SELL AT PUBLIC AUCTION FOR SALVAGE OR TITLE FOR CASH ON DEMAND TO HIGHEST BIDDER THE FOLLOWING DESCRIBED VEHICLES:
 89 Jeep Cherokee
 1997 JCB 641123537
 THE AUCTION WILL BE HELD ON FRIDAY 12-3-99 AT 3:00 AM AT SANFORD TOWING 2522 COUNTRY CLUB RD. SANFORD, FL 32772 PROSPECTIVE BIDDERS MAY INSPECT VEHICLES ONE HOUR PRIOR TO SALE. TERMS ARE CASH OR CERTIFIED FUNDS. SANFORD TOWING RESERVES THE RIGHT TO ACCEPT OR REJECT ANY AND ALL BIDS.
 Publish November 18 1999
 DE1141

IN THE CIRCUIT COURT OF THE EIGHTEENTH JUDICIAL CIRCUIT IN AND FOR SEMINOLE COUNTY, FLORIDA

GENERAL JURISDICTION DIVISION
CASE NO. 99-CA-1827-14-B
 NORTHWEST BANK MINNESOTA, N.A. a Trustee under that certain Pledging and Servicing Agreement dated as February 1, 1997, for Southern Pacific Secured Assets Corp. Mortgage Loan Asset Backed Pass Through Certificates Series 1997-1
 Plaintiff
 vs.
 ROBERT DEHARDER et al. Defendants

NOTICE OF ACTION
 YOU ARE NOTIFIED that an action for breach of contract, quantum meruit and to foreclose a construction lien on the following property in Seminole County, Florida:
 From the Southeast corner of the Northwest 1/4 of the Northwest 1/4 of Section 23, Township 21 South, Range 29 East, Seminole County, Florida, said Southeast corner being described and recorded in Official Records Book 400, Page 291, Public Records of Seminole County, Florida.

including the buildings and appurtenances located thereon, together with any improvements erected and fixtures attached to the described property has been filed against you and Meister Financial Group, Inc., Professional Design Associates, Inc., Daphn Building Materials, Inc., Marlon J. Stalling & Associates, Inc., and Northwest Bank Minnesota, N.A. and you are required to serve a copy of your written defenses 4 days after the date of the first publication of this notice, and to file the original with the clerk of this court after before service on plaintiff's attorney or immediately thereafter, otherwise a default will be entered against you for the relief demanded in the complaint or petition.

Dated this 18th day of November, 1999.

MARYANNE MORSE
 Clerk of the Circuit Court
 By Ruth King
 As Deputy Clerk
 Publish November 11 18 1999
 DE1182

Legal Notices

Florida run North 00 degrees 04'56" East 484.00 feet to the point of beginning, said point of beginning being the Northeast corner of that certain parcel of land being described and recorded in said Official Record Book 400, Page 291, thence run North 89 degrees 54'54" West 30.00 feet along the North boundary of said parcel of land to a 4 inch by 4 inch concrete monument, thence continue North 89 degrees 54'54" West 523.00 feet along the said North boundary to a 4 inch by 4 inch concrete monument, thence run South 00 degrees 54'54" West 112.37 West 613.93 feet along the Northwest boundary of the above parcel of land to a 4 inch by 4 inch concrete monument, thence run South 63 degrees 48'31 East 109.00 feet to a point of beginning designated as Point 'A', said Point 'A' also being South 51 degrees 50'25" West 15.00 feet from a 4 inch by 4 inch concrete monument, thence return to the point of beginning and run South 00 degrees 04'56" West 14.80 feet along the East boundary of the above parcel of land, measured at right angles to the North boundary of said parcel of land, recorded in Official Record Book 400, Page 291, thence run North 89 degrees 54'54" West 51.39 feet parallel with and 14.80 feet west of the line measured at right angles to the North boundary of said parcel of land, recorded in Official Record Book 400, Page 291, thence run North 00 degrees 04'56" East 118.00 feet to a point thence North 89 degrees 54'54" West 267.97 feet parallel with and 13.00 feet south of the line measured at right angles to the North boundary of the description, recorded in Official Record Book 400, Page 291, to an iron bar being marked with a cap bearing registration #1585 and #1819 and said iron bar being on the Southeast boundary of that certain parcel of land being described and recorded in said Official Record Book 444, Page 425, Public Records of Seminole County, Florida, thence South 50 degrees 04'07" West 213.28 feet to a 12 inch iron pipe said pipe being at an angle point on the East boundary of that certain parcel of land being described and recorded in Official Record Book 400, Page 291, thence South 51 degrees 50'25" West 513.79 feet along the Southeast boundary of said certain parcel of land to the previously described 4 inch by 4 inch concrete monument, thence continue South 51 degrees 50'25" West 15.00 feet along the said Southeast boundary to a Point 'A', as previously described, said Point 'A' being the terminus of the description.

Less From the Southeast corner of the Northwest 1/4 of the Northwest 1/4 of Section 23, Township 21 South, Range 29 East, Seminole County, Florida, said Southeast corner being described and recorded in Official Record Book 400, Page 291, Public Records of Seminole County, Florida, thence run North 00 degrees 04'56" East 484.00 feet to the point of beginning, said point of beginning being South 00 degrees 04'56" West 14.80 feet from the Northeast corner of that certain parcel of land being described and recorded in said Official Record Book 400, Page 291, thence continue North 89 degrees 54'54" West 315.78 feet along said South boundary to a point on the East boundary of that certain parcel of land as described and recorded in Official Record Book 444, Page 425, Public Records of Seminole County, Florida, thence run South 50 degrees 07'04" West 4.67 feet along said East boundary, thence run South 89 degrees 54'54" West 51.39 feet to the point of beginning. Subject to Wynmore Road right-of-way on the East.

Parcel #1 Parcel No. 23-21-29-300-0080-0000-0-1

From the Southeast corner of the Northwest 1/4 of the Northwest 1/4 of Section 23, Township 21 South, Range 29 East, Seminole County, Florida, said Southeast corner being described and recorded in Official Record Book 400, Page 291, Public Records of Seminole County, Florida, thence run North 00 degrees 04'56" East 489.20 feet to the point of beginning, said point of beginning being South 00 degrees 04'56" West 14.80 feet from the Northeast corner of that certain parcel of land being described and recorded in said Official Record Book 400, Page 291, thence continue North 89 degrees 04'56" East 489.20 feet along the said North boundary of said parcel of land, recorded in Official Record Book 400, Page 291, thence run South 89 degrees 54'54" West 315.78 feet along said South boundary to a point on the East boundary of that certain parcel of land as described and recorded in Official Record Book 444, Page 425, Public Records of Seminole County, Florida, thence run South 50 degrees 07'04" West 4.67 feet along said East boundary, thence run South 89 degrees 54'54" West 51.39 feet to the point of beginning. Subject to Wynmore Road right-of-way on the East.

Parcel #2 Parcel No. 23-21-29-300-0080-0000-0-1

From the Southeast corner of the Northwest 1/4 of the Northwest 1/4 of Section 23, Township 21 South, Range 29 East, Seminole County, Florida, said Southeast corner being described and recorded in Official Record Book 400, Page 291, Public Records of Seminole County, Florida, thence run North 00 degrees 04'56" East 489.20 feet to the point of beginning, said point of beginning being South 00 degrees 04'56" West 14.80 feet from the Northeast corner of that certain parcel of land being described and recorded in said Official Record Book 400, Page 291, thence continue North 89 degrees 04'56" East 489.20 feet along the said North boundary of said parcel of land, recorded in Official Record Book 400, Page 291, thence run South 89 degrees 54'54" West 315.78 feet along said South boundary to a point on the East boundary of that certain parcel of land as described and recorded in Official Record Book 444, Page 425, Public Records of Seminole County, Florida, thence run South 50 degrees 07'04" West 4.67 feet along said East boundary, thence run South 89 degrees 54'54" West 51.39 feet to the point of beginning. Subject to Wynmore Road right-of-way on the East.

Parcel #3 Parcel No. 23-21-29-300-0080-0000-0-1

From the Southeast corner of the Northwest 1/4 of the Northwest 1/4 of Section 23, Township 21 South, Range 29 East, Seminole County, Florida, said Southeast corner being described and recorded in Official Record Book 400, Page 291, Public Records of Seminole County, Florida, thence run North 00 degrees 04'56" East 489.20 feet to the point of beginning, said point of beginning being South 00 degrees 04'56" West 14.80 feet from the Northeast corner of that certain parcel of land being described and recorded in said Official Record Book 400, Page 291, thence continue North 89 degrees 04'56" East 489.20 feet along the said North boundary of said parcel of land, recorded in Official Record Book 400, Page 291, thence run South 89 degrees 54'54" West 315.78 feet along said South boundary to a point on the East boundary of that certain parcel of land as described and recorded in Official Record Book 444, Page 425, Public Records of Seminole County, Florida, thence run South 50 degrees 07'04" West 4.67 feet along said East boundary, thence run South 89 degrees 54'54" West 51.39 feet to the point of beginning. Subject to Wynmore Road right-of-way on the East.

Parcel #4 Parcel No. 23-21-29-300-0080-0000-0-1

From the Southeast corner of the Northwest 1/4 of the Northwest 1/4 of Section 23, Township 21 South, Range 29 East, Seminole County, Florida, said Southeast corner being described and recorded in Official Record Book 400, Page 291, Public Records of Seminole County, Florida, thence run North 00 degrees 04'56" East 489.20 feet to the point of beginning, said point of beginning being South 00 degrees 04'56" West 14.80 feet from the Northeast corner of that certain parcel of land being described and recorded in said Official Record Book 400, Page 291, thence continue North 89 degrees 04'56" East 489.20 feet along the said North boundary of said parcel of land, recorded in Official Record Book 400, Page 291, thence run South 89 degrees 54'54" West 315.78 feet along said South boundary to a point on the East boundary of that certain parcel of land as described and recorded in Official Record Book 444, Page 425, Public Records of Seminole County, Florida, thence run South 50 degrees 07'04" West 4.67 feet along said East boundary, thence run South 89 degrees 54'54" West 51.39 feet to the point of beginning. Subject to Wynmore Road right-of-way on the East.

Parcel #5 Parcel No. 23-21-29-300-0080-0000-0-1

From the Southeast corner of the Northwest 1/4 of the Northwest 1/4 of Section 23, Township 21 South, Range 29 East, Seminole County, Florida, said Southeast corner being described and recorded in Official Record Book 400, Page 291, Public Records of Seminole County, Florida, thence run North 00 degrees 04'56" East 489.20 feet to the point of beginning, said point of beginning being South 00 degrees 04'56" West 14.80 feet from the Northeast corner of that certain parcel of land being described and recorded in said Official Record Book 400, Page 291, thence continue North 89 degrees 04'56" East 489.20 feet along the said North boundary of said parcel of land, recorded in Official Record Book 400, Page 291, thence run South 89 degrees 54'54" West 315.78 feet along said South boundary to a point on the East boundary of that certain parcel of land as described and recorded in Official Record Book 444, Page 425, Public Records of Seminole County, Florida, thence run South 50 degrees 07'04" West 4.67 feet along said East boundary, thence run South 89 degrees 54'54" West 51.39 feet to the point of beginning. Subject to Wynmore Road right-of-way on the East.

Parcel #6 Parcel No. 23-21-29-300-0080-0000-0-1

From the Southeast corner of the Northwest 1/4 of the Northwest 1/4 of Section 23, Township 21 South, Range 29 East, Seminole County, Florida, said Southeast corner being described and recorded in Official Record Book 400, Page 291, Public Records of Seminole County, Florida, thence run North 00 degrees 04'56" East 489.20 feet to the point of beginning, said point of beginning being South 00 degrees 04'56" West 14.80 feet from the Northeast corner of that certain parcel of land being described and recorded in said Official Record Book 400, Page 291, thence continue North 89 degrees 04'56" East 489.20 feet along the said North boundary of said parcel of land, recorded in Official Record Book 400, Page 291, thence run South 89 degrees 54'54" West 315.78 feet along said South boundary to a point on the East boundary of that certain parcel of land as described and recorded in Official Record Book 444, Page 425, Public Records of Seminole County, Florida, thence run South 50 degrees 07'04" West 4.67 feet along said East boundary, thence run South 89 degrees 54'54" West 51.39 feet to the point of beginning. Subject to Wynmore Road right-of-way on the East.

Parcel #7 Parcel No. 23-21-29-300-0080-0000-0-1

From the Southeast corner of the Northwest 1/4 of the Northwest 1/4 of Section 23, Township 21 South, Range 29 East, Seminole County, Florida, said Southeast corner being described and recorded in Official Record Book 400, Page 291, Public Records of Seminole County, Florida, thence run North 00 degrees 04'56" East 489.20 feet to the point of beginning, said point of beginning being South 00 degrees 04'56" West 14.80 feet from the Northeast corner of that certain parcel of land being described and recorded in said Official Record Book 400, Page 291, thence continue North 89 degrees 04'56" East 489.20 feet along the said North boundary of said parcel of land, recorded in Official Record Book 400, Page 291, thence run South 89 degrees 54'54" West 315.78 feet along said South boundary to a point on the East boundary of that certain parcel of land as described and recorded in Official Record Book 444, Page 425, Public Records of Seminole County, Florida, thence run South 50 degrees 07'04" West 4.67 feet along said East boundary, thence run South 89 degrees 54'54" West 51.39 feet to the point of beginning. Subject to Wynmore Road right-of-way on the East.

Parcel #8 Parcel No. 23-21-29-300-0080-0000-0-1

From the Southeast corner of the Northwest 1/4 of the Northwest 1/4 of Section 23, Township 21 South, Range 29 East, Seminole County, Florida, said Southeast corner being described and recorded in Official Record Book 400, Page 291, Public Records of Seminole County, Florida, thence run North 00 degrees 04'56" East 489.20 feet to the point of beginning, said point of beginning being South 00 degrees 04'56" West 14.80 feet from the Northeast corner of that certain parcel of land being described and recorded in said Official Record Book 400, Page 291, thence continue North 89 degrees 04'56" East 489.20 feet along the said North boundary of said parcel of land, recorded in Official Record Book 400, Page 291, thence run South 89 degrees 54'54" West 315.78 feet along said South boundary to a point on the East boundary of that certain parcel of land as described and recorded in Official Record Book 444, Page 425, Public Records of Seminole County, Florida, thence run South 50 degrees 07'04" West 4.67 feet along said East boundary, thence run South 89 degrees 54'54" West 51.39 feet to the point of beginning. Subject to Wynmore Road right-of-way on the East.

Parcel #9 Parcel No. 23-21-29-300-0080-0000-0-1

From the Southeast corner of the Northwest 1/4 of the Northwest 1/4 of Section 23, Township 21 South, Range 29 East, Seminole County, Florida, said Southeast corner being described and recorded in Official Record Book 400, Page 291, Public Records of Seminole County, Florida, thence run North 00 degrees 04'56" East 489.20 feet to the point of beginning, said point of beginning being South 00 degrees 04'56" West 14.80 feet from the Northeast corner of that certain parcel of land being described and recorded in said Official Record Book 400, Page 291, thence continue North 89 degrees 04'56" East 489.20 feet along the said North boundary of said parcel of land, recorded in Official Record Book 400, Page 291, thence run South 89 degrees 54'54" West 315.78 feet along said South boundary to a point on the East boundary of that certain parcel of land as described and recorded in Official Record Book 444, Page 425, Public Records of Seminole County, Florida, thence run South 50 degrees 07'04" West 4.67 feet along said East boundary, thence run South 89 degrees 54'54" West 51.39 feet to the point of beginning. Subject to Wynmore Road right-of-way on the East.

Parcel #10 Parcel No. 23-21-29-300-0080-0000-0-1

From the Southeast corner of the Northwest 1/4 of the Northwest 1/4 of Section 23, Township 21 South, Range 29 East, Seminole County, Florida, said Southeast corner being described and recorded in Official Record Book 400, Page 291, Public Records of Seminole County, Florida, thence run North 00 degrees 04'56" East 489.20 feet to the point of beginning, said point of beginning being South 00 degrees 04'56" West 14.80 feet from the Northeast corner of that certain parcel of land being described and recorded in said Official Record Book 400, Page 291, thence continue North 89 degrees 04'56" East 489.20 feet along the said North boundary of said parcel of land, recorded in Official Record Book 400, Page 291, thence run South 89 degrees 54'54" West 315.78 feet along said South boundary to a point on the East boundary of that certain parcel of land as described and recorded in Official Record Book 444, Page 425, Public Records of Seminole County, Florida, thence run South 50 degrees 07'04" West 4.67 feet along said East boundary, thence run South 89 degrees 54'54" West 51.39 feet to the point of beginning. Subject to Wynmore Road right-of-way on the East.

Parcel #11 Parcel No. 23-21-29-300-0080-0000-0-1

From the Southeast corner of the Northwest 1/4 of the Northwest 1/4 of Section 23, Township 21 South, Range 29 East, Seminole County, Florida, said Southeast corner being described and recorded in Official Record Book 400, Page 291, Public Records of Seminole County, Florida, thence run North 00 degrees 04'56" East 489.20 feet to the point of beginning, said point of beginning being South 00 degrees 04'56" West 14.80 feet from the Northeast corner of that certain parcel of land being described and recorded in said Official Record Book 400, Page 291, thence continue North 89 degrees 04'56" East 489.20 feet along the said North boundary of said parcel of land, recorded in Official Record Book 400, Page 291, thence run South 89 degrees 54'54" West 315.78 feet along said South boundary to a point on the East boundary of that certain parcel of land as described and recorded in Official Record Book 444, Page 425, Public Records of Seminole County, Florida, thence run South 50 degrees 07'04" West 4.67 feet along said East boundary, thence run South 89 degrees 54'54" West 51.39 feet to the point of beginning. Subject to Wynmore Road right-of-way on the East.

Parcel #12 Parcel No. 23-21-29-300-0080-0000-0-1

From the Southeast corner of the Northwest 1/4 of the Northwest 1/4 of Section 23, Township 21 South, Range 29 East, Seminole County, Florida, said Southeast corner being described and recorded in Official Record Book 400, Page 291, Public Records of Seminole County, Florida, thence run North 00 degrees 04'56" East 489.20 feet to the point of beginning, said point of beginning being South 00 degrees 04'56" West 14.80 feet from the Northeast corner of that certain parcel of land being described and recorded in said Official Record Book 400, Page 291, thence continue North 89 degrees 04'56" East 489.20 feet along the said North boundary of said parcel of land, recorded in Official Record Book 400, Page 291, thence run South 89 degrees 54'54" West 315.78 feet along said South boundary to a point on the East boundary of that certain parcel of land as described and recorded in Official Record Book 444, Page 425, Public Records of Seminole County, Florida, thence run South 50 degrees 07'04" West 4.67 feet along said East boundary, thence run South 89 degrees 54'54" West 51.39 feet to the point of beginning. Subject to Wynmore Road right-of-way on the East.

Parcel #13 Parcel No. 23-21-29-300-0080-0000-0-1

From the Southeast corner of the Northwest 1/4 of the Northwest 1/4 of Section 23, Township 21 South, Range 29 East, Seminole County, Florida, said Southeast corner being described and recorded in Official Record Book 400, Page 291, Public Records of Seminole County, Florida, thence run North 00 degrees 04'56" East 489.20 feet to the point of beginning, said point of beginning being South 00 degrees 04'56" West 14.80 feet from the Northeast corner of that certain parcel of land being described and recorded in said Official Record Book 400, Page 291, thence continue North 89 degrees 04'56" East 489.20 feet along the said North boundary of said parcel of land, recorded in Official Record Book 400, Page 291, thence run South 89 degrees 54'54" West 315.78 feet along said South boundary to a point on the East boundary of that certain parcel of land as described and recorded in Official Record Book 444, Page 425, Public Records of Seminole County, Florida, thence run South 50 degrees 07'04" West 4.67 feet along said East boundary, thence run South 89 degrees 54'54" West 51.39 feet to the point of beginning. Subject to Wynmore Road right-of-way on the East.

Parcel #14 Parcel No. 23-21-29-300-0080-0000-0-1

From the Southeast corner of the Northwest 1/4 of the Northwest 1/4 of Section 23, Township 21 South, Range 29 East, Seminole County, Florida, said Southeast corner being described and recorded in Official Record Book 400, Page 291, Public Records of Seminole County, Florida, thence run North 00 degrees 04'56" East 489.20 feet to the point of beginning, said point of beginning being South 00 degrees 04'56" West 14.80 feet from the Northeast corner of that certain parcel of land being described and recorded in said Official Record Book 400, Page 291, thence continue North 89 degrees 04'56" East 489.20 feet along the said North boundary of said parcel of land, recorded in Official Record Book 400, Page 291, thence run South 89 degrees 54'54" West 315.78 feet along said South boundary to a point on the East boundary of that certain parcel of land as described and recorded in Official Record Book 444, Page 425, Public Records of Seminole County, Florida, thence run South 50 degrees 07'04" West 4.67 feet along said East boundary, thence run South 89 degrees 54'54" West 51.39 feet to the point of beginning. Subject to Wynmore Road right-of-way on the East.

Parcel #15 Parcel No. 23-21-29-300-0080-0000-0-1

From the Southeast corner of the Northwest 1/4 of the Northwest 1/4 of Section 23, Township 21 South, Range 29 East, Seminole County, Florida, said Southeast corner being described and recorded in Official Record Book 400, Page 291, Public Records of Seminole County, Florida, thence run North 00 degrees 04'56" East 489.20 feet to the point of beginning, said point of beginning being South 00 degrees 04'56" West 14.80 feet from the Northeast corner of that certain parcel of land being described and recorded in said Official Record Book 400, Page 291, thence continue North 89 degrees 04'56" East 489.20 feet along the said North boundary of said parcel of land, recorded in Official Record Book 400, Page 291, thence run South 89 degrees 54'54" West 315.78 feet along said South boundary to a point on the East boundary of that certain parcel of land as described and recorded in Official Record Book 444, Page 425, Public Records of Seminole County, Florida, thence run South 50 degrees 07'04" West 4.67 feet along said East boundary, thence run South 89 degrees 54'54" West 51.39 feet to the point of beginning. Subject to Wynmore Road right-of-way on the East.

Parcel #16 Parcel No. 23-21-29-300-0080-0000-0-1

From the Southeast corner of the Northwest 1/4 of the Northwest 1/4 of Section 23, Township 21 South, Range 29 East, Seminole County, Florida, said Southeast corner being described and recorded in Official Record Book 400, Page 291, Public Records of Seminole County, Florida, thence run North 00 degrees 04'56" East 489.20 feet to the point of beginning, said point of beginning being South 00 degrees 04'56" West 14.80 feet from the Northeast corner of that certain parcel of land being described and recorded in said Official Record Book 400, Page 291, thence continue North 89 degrees 04'56" East 489.20 feet along the said North boundary of said parcel of land, recorded in Official Record Book 400, Page 291, thence run South 89 degrees 54'54" West 315.78 feet along said South boundary to a point on the East boundary of that certain parcel of land as described and recorded in Official Record Book 444, Page 425, Public Records of Seminole County, Florida, thence run South 50 degrees 07'04" West 4.67 feet along said East boundary, thence run South 89 degrees 54'54" West 51.39 feet to the point of beginning. Subject to Wynmore Road right-of-way on the East.

Parcel #17 Parcel No. 23-21-29-300-0080-0000-0-1

From the Southeast corner of the Northwest 1/4 of the Northwest 1/4 of Section 23, Township 21 South, Range 29 East, Seminole County, Florida, said Southeast corner being described and recorded in Official Record Book 400, Page 291, Public Records of Seminole County, Florida, thence run North 00 degrees 04'56" East 489.20 feet to the point of beginning, said point of beginning being South 00 degrees 04'56" West 14.80 feet from the Northeast corner of that certain parcel of land being described and recorded in said Official Record Book 400, Page 291, thence continue North 89 degrees 04'56" East 489.20 feet along the said North boundary of said parcel of land, recorded in Official Record Book 400, Page 291, thence run South 89 degrees 54'54" West 315.78 feet along said South boundary to a point on the East boundary of that certain parcel of land as described and recorded in Official Record Book 444, Page 425, Public Records of Seminole County, Florida, thence run South 50 degrees 07'04" West 4.67 feet along said East boundary, thence run South 89 degrees 54'54" West 51.39 feet to the point of beginning. Subject to Wynmore Road right-of-way on the East.

Parcel #18 Parcel No. 23-21-29-300-0080-0000-0-1

From the Southeast corner of the Northwest 1/4 of the Northwest 1/4 of Section 23, Township 21 South, Range 29 East, Seminole County, Florida, said Southeast corner being described and recorded in Official Record Book 400, Page 291, Public Records of Seminole County, Florida, thence run North 00 degrees 04'56" East 489.20 feet to the point of beginning, said point of beginning being South 00 degrees 04'56" West 14.80 feet from the Northeast corner of that certain parcel of land being described and recorded in said Official Record Book 400, Page 291, thence continue North 89 degrees 04'56" East 489.20 feet along the said North boundary of said parcel of land, recorded in Official Record Book 400, Page 291, thence run South 89 degrees 54'54" West 315.78 feet along said South boundary to a point on the East boundary of that certain parcel of land as described and recorded in Official Record Book 444, Page 425, Public Records of Seminole County, Florida, thence run South 50 degrees 07'04" West 4.67 feet along said East boundary, thence run South 89 degrees 54'54" West 51.39 feet to the point of beginning. Subject to Wynmore Road right-of-way on the East.

Parcel #19 Parcel No. 23-21-29-300-0080-0000-0-1

From the Southeast corner of the Northwest 1/4 of the Northwest 1/4 of Section 23, Township 21 South, Range 29 East, Seminole County, Florida, said Southeast corner being described and recorded in Official Record Book 400, Page 291, Public Records of Seminole County, Florida, thence run North 00 degrees 04'56" East 489.20 feet to the point of beginning, said point of beginning being South 00 degrees 04'56" West 14.80 feet from the Northeast corner of that certain parcel of land being described and recorded in said Official Record Book 400, Page 291, thence continue North 89 degrees 04'56" East 489.20 feet along the said North boundary of said parcel of land, recorded in Official Record Book 400, Page 291, thence run South 89 degrees 54'54" West 315.78 feet along said South boundary to a point on the East boundary of that certain parcel of land as described and recorded in Official Record Book 444, Page 425, Public Records of Seminole County, Florida, thence run South 50 degrees 07'04" West 4.67 feet along said East boundary, thence run South 89 degrees 54'54" West 51.39 feet to the point of beginning. Subject to Wynmore Road right-of-way on the East.

Parcel #20 Parcel No. 23-21-29-300-0080-0000-0-1

From the Southeast corner of the Northwest 1/4 of the Northwest 1/4 of Section 23, Township 21 South, Range 29 East, Seminole County, Florida, said Southeast corner being described and recorded in Official Record Book 400, Page 291, Public Records of Seminole County, Florida, thence run North 00 degrees 04'56" East 489.20 feet to the point of beginning, said point of beginning being South 00 degrees 04'56" West 14.80 feet from the Northeast corner of that certain parcel of land being described and recorded in said Official Record Book 400, Page 291, thence continue North 89 degrees 04'56" East 489.20 feet along the said North boundary of said parcel of land, recorded in Official Record Book 400, Page 291, thence run South 89 degrees 54'54" West 315.78 feet along said South boundary to a point on the East boundary of that certain parcel of land as described and recorded in Official Record Book 444, Page 425, Public Records of Seminole County, Florida, thence run South 50 degrees 07'04" West 4.67 feet along said East boundary, thence run South 89 degrees 54'54" West 51.39 feet to the point of beginning. Subject to Wynmore Road right-of-way on the East.

Parcel #21 Parcel No. 23-21-29-300-0080-0000-0-1

From the Southeast corner of the Northwest 1/4 of the Northwest 1/4 of Section 23, Township 21 South, Range 29 East, Seminole County, Florida, said Southeast corner being described and recorded in Official Record Book 400, Page 291, Public Records of Seminole County, Florida, thence run North 00 degrees 04'56" East 489.20 feet to the point of beginning, said point of beginning being South 00 degrees 04'56" West 14.80 feet from the Northeast corner of that certain parcel of land being described and recorded in said Official Record Book 400, Page 291, thence continue North 89 degrees 04'56" East 489.20 feet along the said North boundary of said parcel of land, recorded in Official Record Book 400, Page 291, thence run South 89 degrees 54'54" West 315.78 feet along said South boundary to a point on the East boundary of that certain parcel of land as described and recorded in Official Record Book 444, Page 425, Public Records of Seminole County, Florida, thence run South 50 degrees 07'04" West 4.67 feet along

Comics

FRANK AND ERNEST

by Bob Thaves



EK & MEK

by Howie Schneider



BLONDIE

by Chick Young



PEANUTS

by Charles M. Schultz



TUMBLEWEEDS

by T.K. Ryan



THE BORN LOSER

by Art Sansom



BEETLE BAILEY

by Mort Walker



ARLO & JANIS

by Jimmy Johnson



GARFIELD

by Jim Davis



ROBOT MAN

by Jim Meddick



ANNIE

by Leonard Starr



Horoscopes

Your Birthday
Friday, Nov. 19, 1999
If things have been going smoothly for you, you should continue to operate on the same plane in the year ahead. Stick-to-itiveness is what will bring you success and fulfillment.

SCORPIO (Oct. 24-Nov. 22) There is a strong possibility that you might gain in some manner from a situation that has been engineered by another. This will make for a rather exciting time today. Astro-Graph year ahead predictions make great Xmas stocking stuffers for all signs of the Zodiac. Mail \$2 for each to Astro-Graph, c/o this newspaper, P.O. Box 1758, Murray Hill Station, New York, NY 10158. Be sure to state the Zodiac signs you desire.

SAGITTARIUS (Nov. 23-Dec. 21) Wherever you go and whatever you do today, your charisma will be operating at full throttle and friends will find you extremely charming and pleasing. It should be a nice day for you.

CAPRICORN (Dec. 22-Jan. 19) Turn away from the use of tradi-

tional tactics today and a rather unique goal you've established for yourself can be achieved. Let your ingenuity devise the plan of action.

AQUARIUS (Jan. 20-Feb. 19) Telling it like it is will be the most effective tool you possess today, so don't hesitate to speak or write what is on your mind. Frills will not be required to make your points.

PISCES (Feb. 20-March 20) Even though there are no visible ways at this time to achieve something material you need, unforeseen circumstances could intervene today and help you fulfill this desire.

ARIES (March 21-April 19) Listen carefully to what others have to say today, but don't discredit your own findings. Your judgment is likely to be a trifle keener than that of someone with whom you'll be associating.

TAURUS (April 20-May 20) A matter you've had to handle solely on your own up until now may get the assistance today you've been hoping for. Things could speed up considerably for you.

GEMINI (May 21-June 20) Be extra careful that your concepts are

well thought out before you present them to associates. Others are apt to act on your thoughts, and you won't want to be embarrassingly wrong.

CANCER (June 21-July 22) You're well-equipped to take on a leadership role today, so don't be reluctant to assume the responsibility when asked. People will be depending on you for guidance.

LEO (July 23-Aug. 22) There's a good chance you could meet someone today with whom you'll have much in common. However, this person may be hidden among a crowd you don't like, so be nice to all.

VIRGO (Aug. 23-Sept. 22) Several loose ends that have been left dangling concerning a financial matter that is important to you could be tied down today through an unexpected occurrence. Be on your toes.

LIBRA (Sept. 23-Oct. 23) Don't hesitate to offer guidance today to a friend who lacks your imagination and experience. You are the right candidate for helping your pal get back on track.

Copyright 1999 by NEA, Inc.

Win at Bridge

Turning four into two

It is possible to telescope two losers into one if both opponents win trick 13. Does that sound paradoxical? Well, what really happens is that one defender ruffs his partner's side-suit winner. But have you seen a deal in which four losers are condensed into two? If not, read on, Macduff! Over South's one-spade opening, West used the Unusual No-Trump, showing at least 5-5 in the minors. After North mentioned his heart suit, South bid three no-trump because he had both minor-suit stoppers — yet only of a sort in clubs. North did well to correct to four spades; three no-trump would surely have failed. Not that four spades looks like a bargain with the bad breaks. Declarer seems about to lose two spades, one diamond and two clubs, yet he managed to extract 10 tricks.

South ducked the diamond-king lead, won the diamond-queen continuation, and cashed his two top trumps, getting the not unexpected bad news. Then he played off dummy's two heart winners, ruffed a heart in hand, trumped a diamond in the dummy, ruffed a heart in hand, played a club to dummy's ace, and trumped the last heart in hand. Have you been counting? Of course you have — so you know that that was South's 10th trick: two spades, two hearts, one diamond, one club, three heart ruffs in hand and one diamond ruff in the dummy. What happened to the defenders' four remaining winners? Well, at tricks 12 and 13, West's winning jack and king of clubs are ruffed by East's two trumps.



Bridge
Phillip Alder

North		11 18 99	
♠	8 5 4		
♥	A K 6 4 3		
♦	J 4		
♣	A 7 2		
West		East	
♠	2	♥	Q J 10 9
♥	8	♦	Q J 10 9 7
♦	K Q 10 9 7	♣	8 5 2
♣	K J 10 8 6 5	♠	9
South		North	
♠	A K 7 6 3	♥	5 2
♥	5 2	♦	A 6 3
♦	A 6 3	♣	Q 4 3
Vulnerable: Neither			
Dealer: South			
South	West	North	East
1♠	2NT	3♥	Pass
3NT	Pass	4♣	All pass
Opening lead: ♣ K			

Doctor Gott

Artificial insemination usually safe

DEAR DR. GOTT: Because of my husband's low sperm count, both our children were conceived by artificial insemination with donor sperm. Now I'd like a third child but am concerned about AIDS. The sperm bank assures me that the specimens are sold by medical students who have been screened genetically and physically, are of good moral character and intelligence, and enjoy excellent health. Should I be concerned?

DEAR READER: The AIDS virus is spread by transmission of body fluids, primarily blood and semen. Therefore, there is a risk of AIDS during artificial insemination. On the other hand, banked sperm is carefully checked and is considered safe because of meticulous screening. Nonetheless, no medical test is perfect and, in theory, no semen sample can be absolutely guaranteed free of HIV,

no matter how fastidious the donors and the testing procedures are. However, I believe that you are safe in conceiving another child, providing the sperm comes from a reputable agency and the procedure is completed under competent medical supervision.

DEAR DR. GOTT: Is it possible to diagnose heart and lung disorders without the use of X-ray tests?

DEAR READER: X-rays are simply tools that help doctors diagnose a variety of disorders, especially those causing lung congestion and inflammation. Other methods can accomplish the same goal, but they are often cumbersome and more expensive than X-rays. For example, MRI scans (which do not involve X-rays) are of great value in diagnosing heart and lung ailments. However, MRI testing is far more expensive than most X-ray exams. For the average patient, X-ray films are a safe way to obtain the most information in the shortest time.



Doctor Gott

Remember, too, that cardiograms and ultrasound are also inexpensive and valuable tests for heart function and do not involve X-rays.

DEAR DR. GOTT: As an experienced teacher, I am concerned about the length of the lunch period in my school. The students are given only 20 minutes to eat. Doesn't this encourage bad eating habits and stomach problems?

DEAR READER: I agree that a 20-minute lunch break is inadequate for school children and could foster both bad eating habits and malnutrition.

I suggest that you discuss your concerns with the school principal or administrator. I'll bet that he or she takes more than 20 minutes for lunch and would be willing to alter the students' schedules to allow for a more civilized eating period. If this person refuses, suggest a 20-minute limit on his or her lunchtime. I hope you have tenure.

Doctor Peter Gott, a syndicated columnist for Newspaper Enterprise Association, can be written to at P.O. Box 91389, Cleveland, OH 44101-3369

Life Style

Department of Children and Families investigators must offer voluntary services

In past articles we have discussed what happens after a report of abuse, abandonment, or neglect of a child is made to the central abuse registry and what information is usually gathered at the investigation site.

The investigator's role, however, does not consist solely of gathering information. As noted in the past, the investigator must also determine whether protective, treatment, and ameliorative services are necessary to safeguard and ensure the child's well-being and development.

If the investigator determines that a child requires services such as: (1) Medical or other health care; (2) Homemaker care, day care, protective supervision, or other services to stabilize the home environment, including intensive family preservation services through the Family Builders Program, the Intensive Crisis Counseling Program, or both; or (3) Foster care, shelter care, or other substitute care to remove the child from the parents' custody; such services must first be offered for the voluntary acceptance of the parents or other person responsible for the child's welfare.

At the time the such services are offered, the investigator must inform the parents or other person responsible for the child's welfare of the right to refuse services as well as the responsibility of the department to protect the child regardless of the acceptance or refusal of services. However, if the services are refused or the department deems that the child's need for protection so requires, the department shall take the child into protective custody or petition the court as provided by law.

In addition to determining whether protective treatment, and ameliorative services are necessary and regardless of whether the services are voluntarily accepted, the investigator is required to make a report to the state attorney and the appropriate law enforcement agency under certain circumstances.

For example, if the investigator learns during the course of an investigation that a child received an observable injury or medically diagnosed internal injury as a result of child abuse or neglect, the investigator must notify the state attorney and the appropriate law enforcement agency. Furthermore, if the investigator learns during the course of an investigation that: (1) The immediate safety or well-being of a child is endangered; (2) The family is likely to

flee; (3) A child died as a result of abuse or neglect; (4) A child is a victim of aggravated child abuse; or (5) A child is a victim of sexual battery or of sexual abuse; the investigator must immediately communicate that information to the county sheriff's office or local police department that is jurisdictionally responsible.

In conclusion, an investigator's role in a case alleging abuse, abandonment, or neglect of a child includes gathering information, determining whether certain services are necessary to safeguard and ensure the child's well-being and development and, under certain circumstances, reporting his or her findings to the appropriate agency. In the coming weeks we will discuss the Family Builders Program as well as other topics related to juvenile law.

Manny Acevedo is a practicing attorney in Seminole County and a member of the Florida Bar Association. His column is for general information and should not replace consulting an attorney about your specific problem.



Manny Acevedo

Smoker's reluctance to quit frustrates family

DEAR ABBY: My husband's mother has been diagnosed with emphysema and deteriorating lungs. Last April, the doctor's prognosis was that she would die within the year. We decided to move to her hometown to be with her and the family during this time of crisis.



Dear Abby

Her doctor ordered her to quit working, so now she is home all day, and all she does is complain and talk about dying. Abby, if she's so worried about dying, why won't she quit smoking and try to make herself better? She is not that old. She has four wonderful grandchildren to watch grow up, and my husband and I would like her to be around when WE have children. I feel like I'm hitting my head against a brick wall when-

ever I try to talk to her and give her words of encouragement. She refuses to go to another doctor for a second opinion, which I feel she needs to do.

Abby, what can the family and I do to help her see the light? I'm hopeful that if she sees this letter in the paper, she'll understand what we are going through.

CONCERNED DAUGHTER-IN-LAW

DEAR CONCERNED: Your mother-in-law probably has not stopped smoking because she is hopelessly addicted to cigarettes and feels that because she is terminal, it's useless to fight a battle she has been told she will lose anyway.

Your suggestion that she seek a second medical opinion was excellent. No one should accept a death sentence without seeking a second opinion — or even a third. Your husband and the other members of the family should schedule an appointment for Mom and see that she keeps it. Where there is life, there is hope.

Your letter is a timely one, because today marks the 23rd annual Great American Smokeout. For those who may

not know about it, the Smokeout is an upbeat, good-humored, one-day campaign to encourage smokers to quit smoking for 24 hours — just to prove to themselves they can do it.

In 1998, 19 percent of smokers (approximately 8,930,000 people) participated in the Great American Smokeout. Of those participating, 10 percent — more than 890,000 adults — reported that they were smoking less or not at all one to five days later.

While "cold turkey" is the most difficult way to quit, I'm told it is also the most effective way to rid oneself of the habit. Those who need help or want more information about the effects of tobacco may call their local chapter of the American Cancer Society or (800) ACS-2345.

•••••

DEAR ABBY: Every year our family gathers at the home of "Aunt Dottie and Uncle Joe" for Christmas dinner. This includes us, our parents, aunts, uncles, cousins and their children. Aunt Dottie and Uncle Joe used to charge only the adults — the children ate free — and the adults

also brought along bottles of alcohol. Now the charge is per person, so everyone pays.

Abby, we have no choice in the menu. Aunt Dottie and Uncle Joe plan the meal. If they serve something we don't like, or if we can't stay for the whole meal, don't you think we should get at least a partial refund? Shouldn't we have a say in the menu since we pay for our meals? They don't need the money, but they never offer a refund if we eat little or leave early.

I think a better plan would be for all of us to meet in a restaurant for Christmas dinner, so we'd have a choice. What do you think?

FED UP IN NEW JERSEY

DEAR FED UP: It's unrealistic to expect your aunt and uncle to refund the money for the uneaten food, and having a "committee" create the menu might be more of a hassle for your aunt and uncle than they're willing to accept. Since all of you pay for your own dinner anyway, your suggestion is practical. Mention it to your relatives and see how they react. More than a few may "second" the motion.

\$10

per month for digital service.



Digital Nokia 5120

Features: Alarm clock, 3 games, 30 ringing tones, weighs only 6 oz., rapid charger, 4-6 day battery.

Starting at \$49.00* with rebate

Add unlimited nights and weekends for \$10. And 100 anytime minutes for \$10.*

Call us before Dec.3 and get a \$20 rebate on any phone with a new activation.*

FREE delivery.

CELLTEL
CELLULAR

Authorized Agent of
BELLSOUTH Mobility

Free Delivery

Sanford (407) 328-8385
Orlando (407) 897-2111

Orange City (904) 774-0469
Casselberry (407) 830-8001

Sweet Water Oaks Garden Club meets on Mondays

The Sweetwater Oaks Garden Club, Inc. meets at the Sweetwater Community Center, 810 Fox Valley Drive, at 9:30 a.m. on the second Monday of each month.

The club is a member of the Florida Federation of Garden Clubs, Inc., and there are 73 members.

Anyone wishing to become a member may call 814-1069 for details.

*New activation. All plans require a TDMA digital phone and a 12-mo. service agreement. Prices do not include taxes, roaming, applicable long distance, and universal service fee, or other exaction. A connection charge of \$1.24 will apply during any month in which landline terminated calls are originated from the cell phone. Unused package minutes expire each month. Airtime billed in one minute increments. Digital features may not work outside the local calling area. The last month's service charge is not prorated. Subject to credit approval. See contract for terms and conditions. Roaming service available only within coverage area of BellSouth's preferred roaming partners. Prices are subject to change without notice. \$10 plan: airtime charged at .39/min. 100 package minutes available in conjunction with the \$10 pricing plan only. Airtime in excess of package minutes will be charged .39/min. Nights and weekends calling times are 8 PM to 6:59 AM Mon-Fri, and all day Sat. and Sun. Unlimited nights and weekends does not apply outside home service area. Limited time offer. Certain restrictions may apply. Rebate on phones given by CellTel Cellular, will appear as credit on your BellSouth Mobility bill.