

Visit Beautiful
CYPRESS GARDENS
4 Water Ski Shows Daily
BRING YOUR CAMERA

DR. L. T. DOSS
CHIROPRACTOR
HOURS 9 to 12 — 2 to 5
Phone 765
705 Atlantic Bank Building

Let us solve your
PLUMBING PROBLEMS
ROY WALL
1007 Sanford Ave. Ph. 1118

DR. H. K. RING
CHIROPRACTOR
Please call for appointment
Phone 1752 — 1746

WANT ADS

FOLDS CURB MARKET

Corner Third and Palmetto Telephone 1287

FRESH PICKED — TENDER POLE BEANS Lb. 19¢	GOLDEN BANTAM SWEET CORN 3 Ears 25¢
SNOW WHITE — LOCAL CAULIFLOWER 2 Heads 25¢	GREEN — FRESH CUT CABBAGE Head 10¢
YOUNG TENDER — LOCAL YELLOW SQUASH 2 Lbs. 29¢	LARGE STALKS PASCAL CELERY Ea. 10¢
BEETS or TURNIPS 2 Bunches 25¢	VINE-RIPENED TOMATOES (Small and Firm) Lb. 5¢ Lb.
GREENTOP CARROTS Bunch 10¢	SPRING ONIONS Bunch 10¢
STRAWBERRIES Pt. 25¢	TEMPLE ORANGES Doz. 35¢
BANANAS 2 Lbs. 25¢	GRAPEFRUIT 6 For 25¢
WESTERN DELICIOUS EATING APPLES Lb. 19¢	RED MEXICAN GRAPES Lb. 25¢
SUGARLOAF PINEAPPLES Each 35¢	PAPEE SHEET PECANS Lb. 39¢
EGGPLANT 2 Lbs. 25¢	

Schneider's Ice Cream

• PINTS • CONES
• HALF • CUPS
• GALLONS • POPKICLES

OZARK IKE By Ray Gott



FLASH GORDON and his adventures in space By Dan Barry



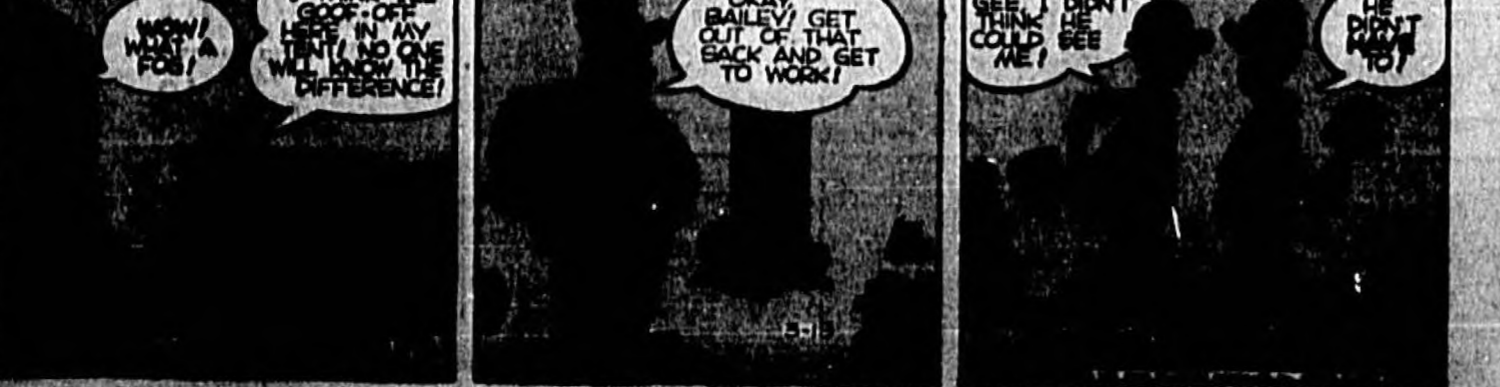
THE LONE RANGER By Fran Striker



MIKEY MOUSE By Walt Disney



BEETLE BAILEY By Mort Walker



Use HERALD WANT ADS
For Results

The following rates apply to all Want Ads published in The Sanford Herald.
Time 15¢ per line insertions 3 times 10¢ per line insertions 30 times 5¢ per line insertions 60 times 4¢ per line insertions 120 times 3¢ per line insertions 240 times 2¢ per line insertions 480 times 1¢ per line insertions 960 times 50¢ per line insertions 1920 times 25¢ per line insertions 3840 times 12¢ per line insertions 7680 times 6¢ per line insertions 15360 times 3¢ per line insertions 30720 times 1.5¢ per line insertions 61440 times 75¢ per line insertions 122880 times 37¢ per line insertions 245760 times 18¢ per line insertions 491520 times 9¢ per line insertions 983040 times 4.5¢ per line insertions 1966080 times 2.25¢ per line insertions 3932160 times 1.125¢ per line insertions 7864320 times 56¢ per line insertions 15728640 times 28¢ per line insertions 31457280 times 14¢ per line insertions 62914560 times 7¢ per line insertions 125829120 times 3.5¢ per line insertions 251658240 times 1.75¢ per line insertions 503316480 times 87¢ per line insertions 1006632960 times 43¢ per line insertions 2013265920 times 21¢ per line insertions 4026531840 times 10.5¢ per line insertions 8053063680 times 5.25¢ per line insertions 16106127360 times 2.625¢ per line insertions 32212254720 times 1.3125¢ per line insertions 64424509440 times 65¢ per line insertions 128849018880 times 32.5¢ per line insertions 257698037760 times 16.25¢ per line insertions 515396075520 times 8.125¢ per line insertions 1030792151040 times 4.0625¢ per line insertions 2061584302080 times 2.03125¢ per line insertions 4123168604160 times 1.015625¢ per line insertions 8246337208320 times 50.78125¢ per line insertions 16492674416640 times 25.390625¢ per line insertions 32985348833280 times 12.6953125¢ per line insertions 65970697666560 times 6.34765625¢ per line insertions 131941395333120 times 3.173828125¢ per line insertions 263882790666240 times 1.5869140625¢ per line insertions 527765581332480 times 79.345703125¢ per line insertions 1055531162664960 times 39.6728515625¢ per line insertions 2111062325329920 times 19.83642578125¢ per line insertions 4222124650659840 times 9.918212890625¢ per line insertions 8444249301319680 times 4.9591064453125¢ per line insertions 16888498602639360 times 2.47955322265625¢ per line insertions 33776997205278720 times 1.239776611328125¢ per line insertions 67553994410557440 times 619.8880000000000¢ per line insertions 135107988821114880 times 309.9440000000000¢ per line insertions 270215977642229760 times 154.9720000000000¢ per line insertions 540431955284459520 times 77.4860000000000¢ per line insertions 1080863910568919040 times 38.7430000000000¢ per line insertions 2161727821137838080 times 19.3715000000000¢ per line insertions 4323455642275676160 times 9.6857500000000¢ per line insertions 8646911284551352320 times 4.8428750000000¢ per line insertions 17293822569102704640 times 2.4214375000000¢ per line insertions 34587645138205409280 times 1.2107187500000¢ per line insertions 69175290276410818560 times 605.8575000000000¢ per line insertions 138350580552821637120 times 303.9287500000000¢ per line insertions 276701161105643274240 times 151.9643750000000¢ per line insertions 553402322211286548480 times 75.9821875000000¢ per line insertions 1106804644222573096960 times 37.9910937500000¢ per line insertions 2213609288445146193920 times 18.9955468750000¢ per line insertions 4427218576890292387840 times 9.4977734375000¢ per line insertions 8854437153780584775680 times 4.7488867187500¢ per line insertions 17708874307561169551360 times 2.3744433593750¢ per line insertions 35417748615122339102720 times 1.1872216796875¢ per line insertions 70835497230244678205440 times 593.5193750000000¢ per line insertions 141670994460489356410880 times 296.7596875000000¢ per line insertions 283341988920978712821760 times 148.3798437500000¢ per line insertions 566683977841957425643520 times 74.1899218750000¢ per line insertions 1133367955683914851287040 times 37.0949609375000¢ per line insertions 2266735911367829702574080 times 18.5474804687500¢ per line insertions 4533471822735659405148160 times 9.2737402343750¢ per line insertions 9066943645471318810296320 times 4.6368701171875¢ per line insertions 18133887290942637620592640 times 2.31843505859375¢ per line insertions 36267774581885275241185280 times 1.159217529296875¢ per line insertions 72535549163770550482370560 times 579.3093750000000¢ per line insertions 145071098327541100964741120 times 289.6546875000000¢ per line insertions 290142196655082201929482240 times 144.8273437500000¢ per line insertions 580284393310164403858964480 times 72.4136718750000¢ per line insertions 1160568786620328807717928960 times 36.2068359375000¢ per line insertions 2321137573240657615435857280 times 18.1034179687500¢ per line insertions 4642275146481315230871714560 times 9.0517089843750¢ per line insertions 9284550292962630461743429120 times 4.5258544921875¢ per line insertions 18569100585925260923486858240 times 2.26292724609375¢ per line insertions 37138201171850521846973716480 times 1.131463623046875¢ per line insertions 74276402343701043693947432960 times 566.1518750000000¢ per line insertions 148552804687402087387894857920 times 283.0759375000000¢ per line insertions 297105609374804174775789715840 times 141.5379687500000¢ per line insertions 594211218749608349551579431680 times 70.7689843750000¢ per line insertions 1188422437498116699103158863360 times 35.3844921875000¢ per line insertions 2376844874996233398206317726720 times 17.6922460937500¢ per line insertions 4753689749992466796412635453440 times 8.8461230468750¢ per line insertions 9507379499984933592825270906880 times 4.4230615234375¢ per line insertions 19014758999969867185650541813760 times 2.21153076171875¢ per line insertions 38029517999939734371301083627520 times 1.105765380859375¢ per line insertions 76059035999879468742602167255040 times 553.8268750000000¢ per line insertions 152118071999758937485204334510080 times 276.9134375000000¢ per line insertions 304236143999517874970408670020160 times 138.4567187500000¢ per line insertions 608472287999035749940817340040320 times 69.2283593750000¢ per line insertions 1216944575998071499881634680080640 times 34.6141796875000¢ per line insertions 2433889151996142999763269360161280 times 17.3070898437500¢ per line insertions 4867778303992285999526538720322560 times 8.6535449218750¢ per line insertions 9735556607984571999053077440645120 times 4.3267724609375¢ per line insertions 19471113215969143998106154881290240 times 2.16338623046875¢ per line insertions 38942226431938287996212309762580480 times 1.081693115234375¢ per line insertions 77884452863876575992424619525160960 times 541.0468750000000¢ per line insertions 155768905727753151984849239050321920 times 270.5234375000000¢ per line insertions 311537811455506303969698478100643840 times 135.2617187500000¢ per line insertions 623075622911012607939396956201287680 times 67.6308593750000¢ per line insertions 1246151245822025215878793912402573440 times 33.8154296875000¢ per line insertions 2492302491644050431757587824805146880 times 16.9077148437500¢ per line insertions 4984604983288100863515175649610293760 times 8.4538574218750¢ per line insertions 9969209966576201727030351299220587520 times 4.2269287109375¢ per line insertions 19938419933152403454060702598441157440 times 2.11346435546875¢ per line insertions 3987683986630480690812140519688234880 times 1.056732177734375¢ per line insertions 7975367973260961381624281039376469760 times 537.5184375000000¢ per line insertions 15950735946521922763248562078752139520 times 270.7592187500000¢ per line insertions 31901471893043845526497124157504279040 times 135.3796093750000¢ per line insertions 63802943786087691052994248315008558080 times 67.6898046875000¢ per line insertions 127605887572175382105988496630017116160 times 33.8449023437500¢ per line insertions 255211775144350764211976993260034232320 times 16.9224511718750¢ per line insertions 510423550288701528423953986520068464640 times 8.4612255859375¢ per line insertions 1020847100577403056847907973040136929280 times 4.23061279296875¢ per line insertions 2041694201154806113695815946080273858560 times 2.115306396484375¢ per line insertions 4083388402309612227391631892160547717120 times 1.0576531982421875¢ per line insertions 8166776804619224454783263784321095434240 times 537.5184375000000¢ per line insertions 1633355360923844890956652756864219086880 times 270.7592187500000¢ per line insertions 3266710721847689781913305513728438173760 times 135.3796093750000¢ per line insertions 6533421443695379563826611027456876347520 times 67.6898046875000¢ per line insertions 13066842887390759127653222054917536695040 times 33.8449023437500¢ per line insertions 26133685774781518255306444109835073390080 times 16.9224511718750¢ per line insertions 52267371549563036510612888219670146780160 times 8.4612255859375¢ per line insertions 10453474309912607302122576439934133556320 times 4.23061279296875¢ per line insertions 209069486198252146042451528798682671112480 times 2.115306396484375¢ per line insertions 41813897239650429208490305759736534222560 times 1.0576531982421875¢ per line insertions 836277944793008584169806115194730684445120 times 537.5184375000000¢ per line insertions 1672555889586017168339612203889471688880 times 270.7592187500000¢ per line insertions 3345111779172034336679224407778943377760 times 135.3796093750000¢ per line insertions 6690223558344068673358448815557886755520 times 67.6898046875000¢ per line insertions 13380447116688137346716897631115773511040 times 33.8449023437500¢ per line insertions 26760894233376274693433795262231547022080 times 16.9224511718750¢ per line insertions 53521788466752549386867590524463094044160 times 8.4612255859375¢ per line insertions 107043576933505098773735181048926180888320 times 4.23061279296875¢ per line insertions 214087153867010197547470362097852361776640 times 2.115306396484375¢ per line insertions 428174307734020395094940724195704723553280 times 1.0576531982421875¢ per line insertions 856348615468040790189881448391409447106560 times 537.5184375000000¢ per line insertions 171269723093608158037976289678281824221120 times 270.7592187500000¢ per line insertions 342539446187216316075952579356563648442240 times 135.3796093750000¢ per line insertions 68507889237443263215190515871312728888480 times 67.6898046875000¢ per line insertions 1370157784748865264303810317426555777760 times 33.8449023437500¢ per line insertions 2740315569497730528607620634853111555520 times 16.9224511718750¢ per line insertions 5480631138995461057215241269706223111040 times 8.4612255859375¢ per line insertions 10961262277990922114430482539412442222080 times 4.23061279296875¢ per line insertions 219225245559818442288609650788248844445120 times 2.115306396484375¢ per line insertions 438450491119636884577219301576497688888320 times 1.0576531982421875¢ per line insertions 876900982239273769154438603152995377776640 times 537.5184375000000¢ per line insertions 17538019644785475383088772063059907555520 times 270.7592187500000¢ per line insertions 35076039289570950766177544126119815111040 times 135.3796093750000¢ per line insertions 70152078579141901532355088252239630222080 times 67.6898046875000¢ per line insertions 140304157158283803064710176504479260445120 times 33.8449023437500¢ per line insertions 280608314316567606129420353008958520890240 times 16.9224511718750¢ per line insertions 5612166286331352122588407060179170417760 times 8.4612255859375¢ per line insertions 112243325726627042451768141203583408355520 times 4.23061279296875¢ per line insertions 224486651453254084903536282407168706711040 times 2.115306396484375¢ per line insertions 448973302906508169807072564814337413422080 times 1.0576531982421875¢ per line insertions 8979466058130163396141451296286748266445120 times 537.5184375000000¢ per line insertions 1795893211626032679228290259257349533288320 times 270.7592187500000¢ per line insertions 3591786423252065358456580518514790666576640 times 135.3796093750000¢ per line insertions 7183572846504130716913161037029581333153280 times 67.6898046875000¢ per line insertions 143671456930082614338263220740591666626640 times 33.8449023437500¢ per line insertions 287342913860165228676526441481183333321280 times 16.9224511718750¢ per line insertions 574685827720330457353052882962366666644480 times 8.4612255859375¢ per line insertions 114937165544066091470610576592473333328960 times 4.23061279296875¢ per line insertions 229874331088132182941221131184946666657920 times 2.115306396484375¢ per line insertions 459748662176264365882442262369893333155840 times 1.0576531982421875¢ per line insertions 9194973243525287317648845247397866663116960 times 537.5184375000000¢ per line insertions 183899464870505746352976904947973333623360 times 270.7592187500000¢ per line insertions 367798929741011492705953809895946666246720 times 135.3796093750000¢ per line insertions 735597859482022985411917619791893333493440 times 67.6898046875000¢ per line insertions 1471195718964045970823835395983786666986880 times 33.8449023437500¢ per line insertions 294239143792809194164767079196757333973760 times 16.9224511718750¢ per line insertions 5884782875856183883295341583935146667467520 times 8.4612255859375¢ per line insertions 1176956575171236776659068316787029339451360 times 4.23061279296875¢ per line insertions 235391315034247355331813673577405868890240 times 2.115306396484375¢ per line insertions 470782630068494710663627347154811737780480 times 1.0576531982421875¢ per line insertions 94156526013698942132735469430962347556160 times 537.5184375000000¢ per line insertions 18831305202739788426547093886192489111322240 times 270.7592187500000¢ per line insertions 376626104054795768530941877723849782222560 times 135.3796093750000¢ per line insertions 753252208109591537061883755447699644445120 times 67.6898046875000¢ per line insertions 1506504416219183074123767510895399288890240 times 33.8449023437500¢ per line insertions 3013008832438366148247535021790798577780480 times 16.9224511718750¢ per line insertions 602601766487673229649507004358159715555680 times 8.4612255859375¢ per line insertions 1205203532975346459299014008716394311111360 times 4.23061279296875¢ per line insertions 2410407065950692918598028017432888622222720 times 2.115306396484375¢ per line insertions 48208141319013858371960560348657772444444480 times 1.0576531982421875¢ per line insertions 9641628263802771674392112069731554488888960 times 537.5184375000000¢ per line insertions 1928325652760554334878422413946110977777920 times 270.7592187500000¢ per line insertions 3856651305521108669756844827892221955555840 times 135.3796093750000¢ per line insertions 7713302611042217339513689655784443911111680 times 67.6898046875000¢ per line insertions 15426605222084434679027379311568887822223360 times 33.8449023437500¢ per line insertions 30853210444168869358054758623137775644446720 times 16.9224511718750¢ per line insertions 617064208883377387161

The Sanford Herald

AN INDEPENDENT DAILY NEWSPAPER

THE WEATHER

Partly cloudy through Saturday becoming overcast at times slightly warmer in extreme north and continued mild elsewhere.

IF YOU DON'T receive your Sanford Herald, City Delivery, by 7:00 p.m., please call YELLOW CAB 1444

VOLUME XLIV Established 1908 SANFORD, FLORIDA FRIDAY, MAR. 25, 1953 Associated Press-Letter Wire

Tito Hits Top Spots In England On Eve Of Returning Home

Dictator Turns Sight-seer Of Old Places

LONDON (AP) — Marshal Tito, dictator turned sightseer, sped at a dizzy pace today through ancient castles all tourists must see in the London area.

Natally attired as commander in chief of the Yugoslav Army, the anti-Kremlin president of Yugoslavia in 15 minutes toured Hampton Court, where Henry VIII had great banquets. He needed about half an hour to absorb Windsor Castle, royal country residence and burial place of Britain's kings since Tudor times.

The marshal has completed his political and economic talks with British leaders. Only social affairs were left on the schedule before he departs sometime tomorrow on the Yugoslav naval training ship Galeb, which brought him here from his Balkan land.

The Yugoslav strong man was reported well pleased with results of his round of defense talks with British leaders.

Tito outlined for Prime Minister (Continued On Page 8)

E. G. Kilpatrick Resigns As Head Of Florida Bank

E. G. Kilpatrick, Jr. tendered his resignation as president of the Florida State Bank on Mar. 14 to take effect as of Apr. 1, he announced today. No reason was given by Mr. Kilpatrick for his resignation, but he said his plans for the future will be announced later.

Coming to Sanford in July of 1944 to become executive vice president of the Florida State Bank, one of the McNulty group of nine banks in Central Florida, Mr. Kilpatrick and his family have taken an active part in the life of the community. He was elected president of the bank in 1950.

He is a past president of the Seminole County Chamber of Commerce and is at present a member of the board of directors and the executive and finance committee. He is also a director of the Kiwanis Club and a member of the First Methodist Church, the bank under his management is indicative of the progress of the growth in deposits from \$2,812,642 in 1944 to \$5,258,792.37 on Mar. 14, 1953, and in the capital account of surplus, undivided (Continued On Page 8)

Citrus League Is Against Artificial Coloring For Fruit

Randall Chase, president of Chase and Co., said yesterday he has been informed that directors of the Indian River Citrus League have gone on record as opposing the practice of coloring fruit. He said the league had made no recommendations, however.

Earlier this week, Chase and Co. went on record as opposing the coloring process. Three packing houses operated by the Chase Co. shipped 364,564 boxes of oranges last season, and added color to 188,818 boxes, or 51.8 percent.

From Indian River Citrus League headquarters in Vero Beach, Ed Poe, secretary of the league, said that area producers saw orange and coloring is not used to any great extent in the Indian River section.

Directors of the league during yesterday's meeting tabled a proposed recommendation to increase the grapefruit advertising tax, but approved the following recommendations asked by William Stubbs of Orlando, executive secretary of the Florida Express Shippers Association: (1) Making it illegal for express fruit to be sent out of the state in used containers; (2) Provide an inspection of express shipments as well as for regular packing houses; (3) To discourage shippers advertising themselves as "bonded."

Mr. Stubbs pointed out that "bonded" is misleading and simply means the shipper is bonded to pay the grove owner for his fruit.

3 Swarms Of Bees Arrive At Market

Not included for obvious reasons in this week's State Market report, according to Sandy Anderson, manager, were three swarms of bees that arrived late last week.

Despite the sagging market, there was plenty of activity on the platform and throughout the whole neighborhood for the better part of two days and even the unseasonably warm weather failed to keep the truck drivers from coming.

Joseph Nichols of Jacksonville who has had many years of experience in the laundry business, announced today he will open a new laundry here Monday to be known as "Wash It Day."

The business will be located on South Sanford Avenue between Angelo's Eat Shop and Sunset house Service Station. Plumbing in the new establishment was done by Leo Brothers, and electrical work by Stafford Electric Co.

Mr. Nichols expects to move his family here in the near future.

New Laundry To Be Opened In Sanford

Joseph Nichols of Jacksonville who has had many years of experience in the laundry business, announced today he will open a new laundry here Monday to be known as "Wash It Day."

The business will be located on South Sanford Avenue between Angelo's Eat Shop and Sunset house Service Station. Plumbing in the new establishment was done by Leo Brothers, and electrical work by Stafford Electric Co.

Mr. Nichols expects to move his family here in the near future.

Minor Fires Put Out By Fire Department

A flaming chair leaning against a wall caused some damage to the side of the house before City Firemen arrived yesterday morning. Fire Chief M. N. Cleveland reported today that caused the chair to burst into flames was unknown, Chief Cleveland said. The house is owned by Bessie Lewis, colored, and occupied by Negroes Mayll Fisher.

Firemen answered two grass fire alarms yesterday and one this morning. Yesterday's two blazes occurred at the corner of 610 West Ninth Street and at the west end of the Sanford State Farmers' Market. This morning's grass fire was at Twenty-fifth Street and Willow Avenue.

Annual King, Queen Contest Nears Finish

The Kiwanis Club's Fourth Annual King and Queen contest will terminate tomorrow night, following six days of intensive balloting during the intermission of the Kiwanis sponsored — Theater Guild production, "Cuckoo on the Hearth," at the Little Theater on Ninth Street and Laurel Avenue.

Both Elks Club candidates, Dr. J. C. Boyce and his wife Mickey, withdrew from yesterday's heavy voting by collecting enough ballots to surge out in front in their respective ballots.

Dr. Boyce pushed ahead of the week-long leader, Mack Cleveland Jr., American Legion candidate, Zeb Hallif, Lions Club and Greenville Touchton, of the Pilot Club, in the race for the King title.

Mrs. Boyce forged ahead of Fattie Witte, Junior Chamber of Commerce, and Hot Powell, American Legion nominee, in the battle for the Queen's crown.

Ballot booths are located at the three downtown drug stores. Fattie Witte, Junior Chamber of Commerce, and Hot Powell, American Legion nominee, in the battle for the Queen's crown.

Billhimer Named 99 Pints Of Blood Exalted Ruler Of Donated Thursday Local Elks Club At McKinley Hall

Robert S. Billhimer, restaurant manager of Touchton Drug Co., was elected ruler of the Sanford Elks Club at a regular meeting last night at the club.

He succeeds Earl Huginbottom in that office.

Other officers elected were: John Williams, esteemed leading knight; James Iosonow, esteemed loyal knight; James Hoolihan, esteemed lecturing knight; J. A. Fonder, tiller; Lew Butner, secretary; E. J. Moughton Jr., treasurer; and J. D. McNeill, trustee for three year term.

Holdover trustees are C. L. Hodding and Dr. J. C. Boyce. Judge Victor Wehle, Florida State Elks Association president, was present along with Bill Knight of Cocoa, the state vice president.

Judge Wehle declared Florida is the leading Elks' state in the world. He said this state has the largest membership, and the largest number of new lodges in attendance in 1952. He commended the Sanford Elks for sponsoring and recting the public playground adjacent to the Mayfair Inn.

Visitors were present from DeLand, Orlando, Winter Park, New Smyrna, and Cocoa.

Call Issued For People Who Are Willing To Work In Sewing Plant

A call went out today from Sanford Industries, Inc., organized Wednesday night on a permanent basis. Mr. W. A. Stempier vice president and George H. Williams as secretary and treasurer, for a report from all those in the area who would be interested in working in a sewing plant.

Negotiations are now under way, Mr. Cowan said, with a manufacturing concern with from 250 to 350 sewing machines which is expected to locate here if an adequate labor pool is available. Any one interested in this type of work is asked to write Sanford Industries, Inc., at P. O. Box 1288, or to contact Mr. Cowan at his store.

Mr. Cowan also revealed that he had received in the mail this morning a check for \$1,000 from A. D. Davis, president of Wiant & Lovett Grocery Co., as the first contribution on their pledges of \$5,000. Mr. Davis is chairman of the newly organized State Industrial Board which is seeking to attract new industries to Florida.

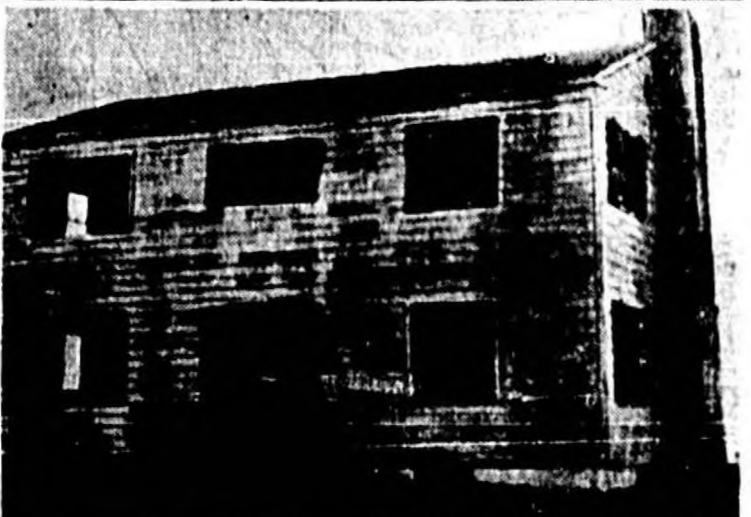
Now is the time for those who have made pledges to Sanford Industries to come up with their contributions so that we can get going in a big way," Mr. Cowan stated. "Do not wait for us to contact you, our staff your pledges in," Mr. Cowan urged.

GI Service Officer To Be Here Tomorrow

Senator Lloyd F. Boyle this morning announced that Tom H. Deen, Assistant State Service Officer, will be in his office tomorrow morning at 9:00 o'clock to assist veterans in this area in obtaining benefits under the GI Bill. Senator Boyle is the County Service Officer.

Mr. Deen was invited to this area by Senator Boyle for the purpose of helping veterans or their dependents in filing claims for compensation benefits or solving their insurance problems. This free service includes assistance to employees of veterans under the GI Bill, with vocational training, subsistence or other problems.

Damage In Wake Of A-Blast



A PILE OF RUBBLE (top) marks the remains of a sturdy two-story house that was smashed 3,500 feet from Ground Zero, the point underneath the atomic explosion center 63 miles from Las Vegas, Nev. Test house number two (center), 7,500 feet from the blast, remained standing although windows and doors were knocked out and joists, beams and walls were damaged. Department store building (right) some damage indicated real occupants would have been killed or severely injured except those protected by two shelters in the cellars. At bottom, Civilian Defense Director Val Peterson examines an automobile which suffered shallow dents in its roof two miles from blast.

Van Fleet Is Honored Guest At Centennial

General Returns To Old Time Bailiwick

GAINESVILLE, Fla. — Gen. James A. Van Fleet, retired Eighth Army commander, came here today to the University of Florida campus where he taught military science and football 30 years ago.

More than a score of the players he coached in 1923 and 1924 and dozens of other old friends and Florida governmental leaders were on hand to greet him.

The general, standing up a week of homecoming to his native Florida as guest of honor at the university's Centennial celebration, will share the speakers' platform Saturday with Charles F. Kettering, former vice president of General Motors and inventor of the automobile self-starter.

The general's subject will be "Recollections at the Close of a Military Career."

At the second of a three-day series of convocations, the university today handed out Centennial awards to 173 men and women for meritorious service to the institution and the state.

While the awards, ceremonies and academic processions furnished the color for the centennial celebration, a series of conferences on the university's activities was on display in one manner or another.

Dr. Fred M. Hancher, president of the State University of Iowa and in the day's principal speech, said "Society has a right to expect more than technical competence from the professional man."

He said the United States "the default" has less made responsible for the leadership of the free nations of the world and it is more important than ever for doctors, scientists and other professional men to have liberal education to help exercise that leadership.

General Sanford's Daughter Dies In Greenwich, Conn.

Word was received here today of the death on Mar. 22 of Elizabeth Wilhelmina MacKinnon Sanford of Greenwich, Conn., sister of Mrs. Abbott Low Dow of the "Homestead" in Derby, Conn. and daughter of the late General and Mrs. Henry Shelton Sanford, founder of this city.

General Sanford was one of the great heroes of World War I. He was a five-time recipient of the Congressional Medal of Honor and was among the first survivors of the "Hull House" in London, England, during the German bombardment of that city.

General Sanford's other children included Henry Shelton Sanford, Jr., born in 1865, a graduate of Eton in England and Harvard in Cambridge, Mass., and an accomplished poet, whose work was published in both the Century and Harper's magazines. But death cut short his promising career in 1901.

Another son, Leopold, Derby, Conn., a prominent child of great promise died when only five. Of the five daughters, Gertrude, an born and educated in Brussels, but she died at a comparatively early age. Her sister, Erika Dolores, was an artist of note, but spent most of her later life at the home of her father in Derby. She lived until Dec. 17, 1950.

The third daughter, Ethel, was educated in Brussels and in Paris and married her second cousin, John Sanford, on Feb. 17, 1922 in Holy Cross Church in Sanford. She was a wealthy and brilliant hostess and entertained extensively in Aiken, S. C., Saratoga, New York, and in London.

Mrs. Dow, the only surviving daughter of the General, now lives at the "Homestead" in Derby, Conn. She was born in Berlin, Pa. She was married in 1908 to the Hon. Seth Low, former president of Columbia University. Abbott Low Dow was born in Brooklyn of a prominent family engaged in fur business and early in life served as the first American consul at Travencore, India.

Following his death in 1914 Mrs. Dow lived for some 15 years in France and in Rome and Florence, Italy, where she enhanced her reputation in art and literature. She now resides at the "Homestead" in Derby, Conn.

TO SPEAK AT ROTARY
The Rev. Malcolm Watson, associate pastor of the Park Lane Presbyterian Church of Orlando, will speak at the regular Monday meeting of the Rotary Club. He is a former missionary to Brazil.

Sealed Orders Guide Aircraft Now Flying Atlantic Into U.S.

MIG Fires On Plane Off Siberia



AN AMERICAN C-119 plane (of the type shown above) was fired on by a Soviet MIG-15 jet fighter 25 miles east of the Siberian Peninsula of Kamchatka (indicated on map) over what the United States Government considers international waters. The American craft answered the Soviet jet's fire after the MIG pilot had opened up on the bomber without warning. The C-119 had taken off from the Eielson Air Range base near Fairbanks, Alaska, on one of its almost daily weather flights throughout the Arctic and sub-Arctic areas. (Central Press)

Public Meeting Will Be Held Tuesday On Proposed Legislation

All residents of Seminole County are invited to attend a public meeting Tuesday night at 8:00 o'clock at the Court House when the senatorial district E. Boyle and state Representatives Volke Williams Jr. and Mack Cleveland will hold an open hearing on the proposed bills to revise the constitution to introduce in this session of the Legislature.

Mr. Boyle said today that every one who desires any of the proposed bills or would like to have any other matters discussed should attend the hearing.

"Only by people letting us know their thoughts on these various matters, do we know their attitudes," Mr. Boyle pointed out. "We want to do what the people of this county wants us to do."

Rep. Williams declared "It is the obligation of all citizens to be informed on bills and to participate in the decisions of elected representatives. It is impossible to represent us consistently if we do not know how they feel. We will welcome their advice and suggestions on all proposed legislation."

Among bills now being considered by the local delegates are the following:

Regulation of county sale of alcoholic beverages.

Provision to be given in connection with arrest and conviction of the police district.

Distribution of gasoline tax levies.

Fixing of monthly compensation for the members of the County Board of Commissioners at \$150.

Providing for appointment of deputy constables in each justice of the peace district.

Allowing certain county commissioners \$50 monthly for car expenses.

Providing for county committees being nominated countywide.

Fixing times and dates for regular and special meetings of the County Board of Commissioners.

Enthusiastic Applause Is Given Sanford Theater Guild's Play

A large crowd of "first nighters" gave wide approval last night to the Sanford Theatre Guild's opening presentation of "Cuckoo on the Hearth," a three act comedy written by Parker Fennelly and directed by guest director Louis Ingram of Rollins College. Approval of individual performances was shown by applause throughout the program and three curtain calls were demanded by continued applause at the conclusion of the play.

"Cuckoo on the Hearth" is the second production of the Sanford Theatre Guild's initial season and is being sponsored by the Kiwanis Club of Sanford, all proceeds to be used for underprivileged children. The play will be presented again tonight and Saturday at the Guild Playhouse, Ninth Street and Laurel Avenue at 8:15 p.m.

The play combines comedy with mystery and suspense and takes place in the state of Maine during a severe snowstorm. The setting is the home of an inventor and his wife Mr. and Mrs. Carlton, ably portrayed by Larry Loring and Jean Nunnelly. Mr. Carlton has invented a gas which could be used in warfare to put people asleep for any specified period of time without actually harming them. In any way and he is called to Washington.

(Continued on page 8)

New Identification System Instituted

WASHINGTON (AP) — Sealed orders, secret until opened in the air, are tunneling aircraft flying the North Atlantic into the United States under a new identification system inaugurated by the Air Force.

In its announcement of the new method today, the Air Force said each incoming plane—civil or military—must enter an assigned corridor 225 miles before it reaches Fort Nantuxet, Mass., radio beacon.

This applies to all aircraft planning to cross the U. S. coastline west and north of Montauk Point, New York.

The method is similar to a technique employed for the past year, with considerable success, on the west coast to identify planes arriving from Hawaii or from the Alaskan Aleutian area.

It will be tried experimentally on the heavy incoming North Atlantic air traffic for a month. Military planes started flying the Nantuxet corridors last Sunday. Civil participation is on a voluntary basis. However, the Air Force has been told that both of the U. S. coast-to-coast airlines, Pan American and TWA, and all the foreign airlines crossing the North Atlantic are taking part.

The new system works this way: Each pilot, before leaving a major European field for the U. S., is handed a sealed envelope not to be opened until his plane is in the air.

The envelope contains instructions telling the pilot 1. Which of three Nantuxet corridors he will fly; 2. When and where he will make a certain "check turn"; 3. When and where he will make an "authentication" maneuver.

Radar equipment monitoring the corridors will detect immediately each of the planes in compliance with the sealed orders. Jet fighters then will be sent up to investigate.

Seminole County Children's Group Studies Problem

Members of the Seminole County Children's Committee at their regular meeting at the Court House this week saw a model film strip entitled "Community Responsibilities to Children" which pointed out the cooperation and cooperation necessary in child welfare.

The film was one in a series produced under American Legion auspices.

Mr. E. J. Williams, secretary of the committee, reported a letter received from the Florida Children's Commission praising the activities of the group.

Herman E. Morris, member of Seminole High School, said that through a series of three reports have volunteered their services in assisting Judge Douglas Stenstrom in his work in connection with juvenile delinquency.

A need for immediate action of a recreation center for both children and adults was discussed.

Chairman of a committee to investigate possible building sites. Other members are Mr. Morris and Mrs. E. J. Roth.

Discussion, started at last month's meeting concerning the investigation of the need for a trained counselor assistant, continued. However, it was decided to take on the matter again at a future time in view of the practical aspects of the situation.

Mrs. A. J. Peterson reported there are eight day nurseries and kindergartens in Sanford with a total of 198 children enrolled. Of the total, five are for white children with an enrollment of 150. With only three schools for Negro children with a total enrollment of 48, Mrs. Peterson pointed out a need for this type of service for the colored children.

The next meeting of the group is scheduled for April 20 at 4:00 p.m. at the Court House.

Driver Arrested For Passing School Bus

Dr. Benjamin Topick, Longwood dentist, posted a \$25 bond following his arrest by Deputy Sheriff Morgan McClellan for passing a school bus on Route 17-22 Wednesday afternoon. It was reported by Sheriff J. L. Hobby today.

A 19-year-old Negro youth, Rufus McClain of 1205 Railroad Avenue, posted a \$25 bond yesterday on a speeding charge lodged against him. Mr. McClain was stopped near the Geneva Bridge on Route 40 earlier this month and arrested for driving between 68 and 75 miles per hour.

CHURCH NEWS

All Church Notices must be presented at The Herald office by 4:00 P. M. on the day before publication.

HOLY CROSS CHURCH
(Episcopal)
The Rev. H. L. Zimmerman, R. D., Rector.
Fifth (Passion) Sunday in Lent 8:00 a.m. Holy Communion.
9:30 a.m. Family Service and Church School.
11:00 a.m. Morning Prayer and Sermon.
Services through the week:
Holy Communion daily at 7:30 a.m. except Friday at 9:00 a.m.
Wednesday Evening Prayer, Litany Sermon 8:00 p.m.
Thursday Rector's Study Class 8:00 p.m.
Friday Women's Auxiliary Quiet Day 9:00 a.m. to 1:30 p.m.
Saturday Sacrament of Penance 8:00-8:10 p.m.

CHRIST CHURCH, Longwood
(Episcopal)
The Rev. H. L. Zimmerman, R. D., Priest-in-Charge.
Fifth (Passion) Sunday in Lent Holy Communion 9:00 a.m.
Augustinian Fathers from the Good Shepherd Monastery, Orange City will officiate at services.

FIRST CHURCH OF CHRIST SCIENTIST
800 East Second Street
Sunday School 9:30 a.m.
Church Service 11:00 a.m.
Wednesday Service 8:00 p.m.
Reading Room Tuesdays and Fridays 8:00 to 8:30 p.m.
That material laws of discord and death must yield to God's omnipotence is the theme of Christian Science services Sunday. Subject of the Lesson-Sermon is "Matter."
"Little children, keep yourselves from idols" (1 John 5:21) is the Golden Text.
Bible selections include: "I, even I, am the Lord; and beside me there is no savior" (Isaiah 43:11).
Readings from "Science and Health with Key to the Scriptures" by Mary Baker Eddy include: "A correct view of Christian Science and of its adaptation to healing includes vastly more than is at first seen. Works on metaphysics leave the grand point untouched. They never crown the power of Mind as the Messiah, nor do they carry the day against physical enemies, even to the extinction of all belief in matter, evil, disease, and death,—nor insist upon the fact that God is all, therefore that matter is nothing beyond an image in mortal mind" (p. 116).

FIRST METHODIST CHURCH
J. E. McKinley, Minister
Miss Thelma Long, Missions Secretary
9:45 a.m. Sunday School. A class for every age.
11:00 a.m. Morning Worship. Sermon theme: "The Mysteries of the Cross."
6:30 p.m. Intermediate and Senior Youth Fellowship Service.
7:30 p.m. Evening Worship. Sermon theme: "The Call of the Cross."

THE FIRST BAPTIST CHURCH
of Orlando
Frank C. Moran, D.D., Pastor
9:45 a.m. Sunday School. B. F. Wheeler Sr., superintendent.
11:00 a.m. Sermon "Law vs. Grace."
7:30 p.m. Sermon "Opposition to Christ."
Wednesday at 7:30 p.m. Prayer Meeting.

FIRST CHRISTIAN CHURCH
1647 Sanford Avenue
Herbert J. Bass, Pastor
Bible School 9:45 a.m.
Morning Worship 11:00 a.m.
Sermon by the pastor, subject, "The Purpose of the Cross."
Christian Youth Fellowship 6:30 p.m.
Evening Service 7:30 p.m.
A most cordial welcome to all visitors.

FIRST BAPTIST CHURCH
Park Avenue at Sixth Street
W. P. Brooks Jr., Pastor
John L. Miller, Minister of Education
"We've Saved a Place For You" Sunday School 9:45 a.m. "Hiring all the family." We provide a place for every member of the family. Even a nursery for the babies.
Morning Worship 11:00 a.m. Sermon by W. P. Brooks Jr. Training Union 6:15 p.m. Unions for all age groups. Nursery for the small children.
Evening Service 7:30 p.m. Sermon by W. P. Brooks Jr. The pastor will bring a second message in a series on "Where Are the Dead?"
Fellowship Hour after the Evening Service sponsored by the Training Union.
Wednesday Evening Service 7:30 p.m. We will have a group of Ministerial Students from Stetson University who will have charge of the service.
Earphones for the hard of hearing.
Welcome.

SANFORD ASSEMBLY OF GOD
2700th Street at Laurel Avenue
Harold H. Kastner, Pastor
Amelia J. Bullock
Sunday: 9:45 a.m. Sunday School. A class for every age.
11:00 a.m. Morning Worship.
8:00 a.m. Morning Evangelism at County Jail.
7:30 p.m. Evangelistic Service.
Tuesday 7:45 p.m. Christ's Ambassador Service.
Wednesday 8:00 p.m. Bible Hour and Prayer.
"Whatever things are true, whatever things are honest, whatever things are just, whatever things are pure, whatever things are lovely, whatever things are of good report, if there be any virtue, and if there be any praise, let us think on these things." (Phil. 4:8)

CHURCH OF CHRIST
Elm Avenue and Second Street
James H. Harwell, Minister
10:30 a.m. Bible Study.
11:00 a.m. Morning Worship.
6:30 p.m. Herald of Truth, broadcast over WTRF. Sermon Topic: "Seeking the Lord."
8:00 p.m. Evening Worship.
Wednesday 8:00 p.m. Bible Study.
Visitors always welcome.

THE CONGREGATIONAL CHURCH
Park Avenue and Third Street
J. Bernard Root, Minister
Sunday School 10:00 a.m.
Morning Worship 11:00 a.m.
Sermon: "The Triumph of the Cross"

CHRIST'S CROSS NOT FINAL
"However much we may value the past, for us it can never be final. God has not spoken his last word or his best. Jesus Christ has not yet exhausted his power to redeem and to transform. There are still vast reaches of truth to be penetrated, new meanings in the old gospel still to be disclosed. There are still great stretches of territory waiting to be subdued to Christ's obedience, millions of hungry hearts longing for the satisfaction He can bring. It is for his church to win these conquests, to appropriate this truth, and to render this ministry. But we shall succeed in our mission only as we turn our eyes from the past and even from the present to the greater and better future that awaits us. Still the Master's promise holds true for those who have faith to receive it. "The works that I do shall ye do also, and greater works than these will ye do because I go to my Father."
—William Adams Brown

FIRST PRESBYTERIAN CHURCH
Oak Avenue and Third Street
Rev. A. G. McInnis, Minister
9:45 a.m. Sunday School.
11:00 a.m. Morning Worship.
Anthems and Chorale "When Life Begins to Fall Me" from St. Matthews Passion, Bach; "Were You There" arr. Scholin by Chancel Choir. Sermon by Mr. McInnis.
Church Nursery 10:45-12:00 each Sunday morning.
6:30 p.m. Pioneer Fellowship.
6:30 p.m. Senior High Fellowship.
7:30 p.m. Evening Worship. Sermon by Mr. McInnis.

UPSALA COMMUNITY PRESBYTERIAN CHURCH
Rev. C. C. White, Minister
Regular services
Unified Services 10:30 a.m. Church school and talk by pastor.
Church Nursery 10:45-12:00 p.m.
Evening Service 7:30 p.m.
Wednesday evenings 7:00 p.m. Prayer and Bible Study.
Mrs. Paul Marra — Pianist.
Mr. Alfred Ericson, Supt. of Church School.
Mr. George Pezold, Leader — midweek service.

SEVENTH DAY ADVENTIST CHURCH
Seventh Street and Elm Avenue
K. E. Mensing, Pastor
Church Service 11:00 a.m. Saturday.
Sabbath School 9:30 a.m. Mrs. H. Buckner, superintendent.
Prayer Meeting Wednesday 8:00 p.m.
Visitors are welcome.

Rev. John Miller Named Chairman In Baptist Drive

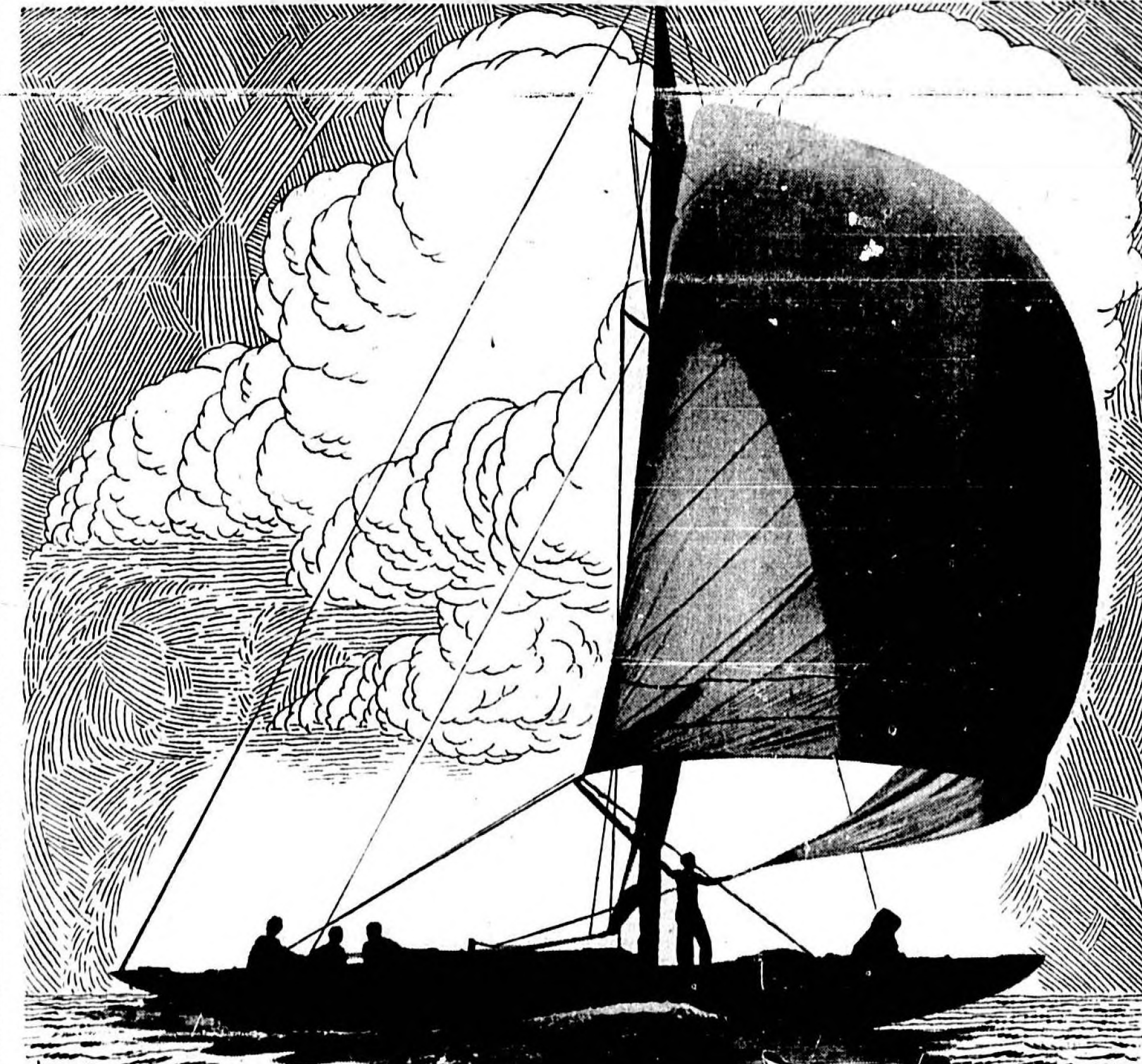
The Rev. John L. Miller, minister of education at the First Baptist Church, has been named chairman of the drive to increase the Sunday School enrollment drive of the Southern Baptist Convention during 1954.

He will be assisted by the following: The Rev. Lee Nichols, pastor of the First Baptist Church, Daytona Beach; The Rev. Jack T. Bryant, pastor of the First Baptist Church, Port Orange; The Rev. C. Norman Bennett Jr., pastor of the Calvary Baptist Church, Daytona Beach, and moderator of Seminole Association; and Mrs. Hazel Cokeroff, educational director of First Baptist Church, Daytona Beach.

Dr. J. N. Burnette, Sunday School secretary of the Baptist Sunday School Board of the Southern Baptist Convention, is to be the leader of the convention-wide drive. C. F. Barry, Sunday School secretary of Florida, will be the leader in this state. A net Sunday School enrollment gain of one million persons in the 28,000 Southern Baptist Convention Churches was set for 1954 in a meeting of 22 states held in Nashville, Tenn. recently.

The year 1953 has been set as one of preparation. All churches will be requested to launch preparations in a special evening conference Mar. 31 in the First Baptist Church, New Smyrna. Major items of preparation which were suggested to make the enrollment gain of a million more include: Provision of more space by erecting new buildings, remodeling present structures and buying additional property; enlisting and training of 100,000 additional workers; and the moving up of several thousand class Sunday schools to department organizations capable of enlisting more people.

Efforts to enroll "a million more in '54" will necessitate a gain of three times as many as has been realized in any previous year. Southern Baptist Sunday Schools have increased 98.8 percent since 1926. The gain for the six years of most rapid growth, from 1943 to 1951, was 1,728,065.



AN ETERNAL FORCE

The wind is like the power of God. It is invisible—you can neither see nor touch it. And yet it will carry a sailboat skimming across the waves with all the beauty and grace and freedom of a seagull. But whereas the wind may die and leave you drifting aimlessly and helplessly with the tide, the strength of God remains eternally steadfast. It is through the Church that man is given understanding of this Power. For by worshipping God he can acquire the spiritual insight which gives fuel to his soul and purpose for his pursuits.

THE CHURCH FOR ALL... ALL FOR THE CHURCH

The Church is the greatest factor on earth for the building of character and good citizenship. It is a storehouse of spiritual values. Without a strong Church, neither democracy nor civilization can survive. There are four sound reasons why every person should attend services regularly of his local Church. They are: (1) For his own sake. (2) For his children's sake. (3) For the sake of his community and nation. (4) For the sake of the Church itself, which needs his moral and material support. Plan to go to church regularly and read your Bible daily.

Sunday	Book	Chapter	Verses
Monday	Matthew	7	7-14
Tuesday	Matthew	10	16-27
Wednesday	Mark	4	22-32
Thursday	Mark	4	36-41
Friday	John	3	37-38
Saturday	John	3	16
	Psalm	42	1-11

ROY WALL
1007 Sanford Ave. Ph. 1110

OPENING SALE OF USED CARS
Compare These Prices — Compare These Cars

1950 Chevrolet Styleline, Tutone Green	\$1095
1950 Ford Tudor, Radio, Very Clean	\$1095
1950 Plymouth One Owner, Low Mileage, Clean	\$1095
1950 Dodge Automatic Transmission, One Owner	\$1195
1949 Pontiac Tutone Green Hydramatic Radio and Heater	\$1095
1949 Plymouth 4 Door, One Owner, Low Mileage	\$995
1949 Plymouth 4 Door, Black, One Owner	\$995
1948 Plymouth Clude Coupe, Very Clean	\$795
1948 Kaiser 4 Door, Local One Owner	\$495
1946 Ford V8, Radio, Good Buy	\$595
1942 Plymouth, Radio, Heater	\$395

A Used Car Is Only As Good As The Dealer
Check Our Reputation Even Before You Look
"Talk It Over With Bill — Lois or Van"
BILL KIRK MOTORS
Chrysler — Plymouth
Next To Bus Station — Commercial and Palmotte

This Series is Being Published Each Week in the Sanford Herald with the Approval of the Seminole County Ministerial Association, and is Sponsored by the Following Business Establishments:

- | | | | |
|---|---|--------------------------|---|
| TOUGHTON DRUG CO. | NEHI BOTTLING CO. | HOLLER MOTOR SALES | SANFORD ATLANTIC NATIONAL BANK |
| CELERY CITY PRINTING CO. | HILL LUMBER & SUPPLY YARD | THE MAYFAIR INN | BRITT TRACTOR CO. |
| SENKARIK GLASS & PAINT CO. | WILSON-MAYER FURNITURE CO., INC. | W. W. HORNE TRUCKING CO. | J. M. BLYTHE TRUCKING CO. |
| BRISSON FUNERAL HOME | RAY KENNEDY'S SANFORD AUTOMATIC LAUNDRY | SANFORD BOAT WORKS | J. C. HUTCHISON & CO. |
| WARNER'S GULF SERVICE STATION | STINE MACHINE & SUPPLY CO. | ST. JOHNS' REALTY CO. | GENE'S TEXACO SERVICE |
| THE KILGORE SEED CO. | SANFORD ELECTRIC CO. | WHEELER FERTILIZER CO. | HAROLD H. KASTNER & CO. |
| EARL HIGGINBOTHAM Agent, Standard Oil Co. | NICHOLSON - BUICK CO. | HERMAN'S CAFE | ROY WALL, PLUMBING |
| CENTRAL FLORIDA FOODS, INC. | SEMINOLE TRUCK & TRACTOR CO. | SANFORD AUTO PARTS | SEMINOLE DRY CLEANERS |
| HILL HARDWARE CO. | SEMINOLE COUNTY LAUNDRY CO. | A. F. RAMSAY, FLORIST | AMERICAN OIL CO. M. R. Strickland, Contractor |
| | | SLATON MONUMENT CO. | FLORIDA STATE BANK Of Sanford |
| | | OZIER-WEILER HOMES, INC. | |
| | | HUNT'S TUXEDO FEED STORE | |

The Sanford Herald

Established in 1908
Published daily except Saturdays,
Sundays, Christmas and New
Years. Published on Saturdays fol-
lowing Christmas and New Years,
111 Magnolia Avenue

Subscription Rates
By Carrier \$ 25
Three Months 3.00
Six Months 5.75
One Year 11.00

ADVERTISING RATES
The Herald is a member of the
Associated Press which is entitled
to the use of its news service
in the newspaper as well as all
AP news dispatches.

FRIIDAY MAR. 20, 1953

TODAY'S BIBLE VERSE

Cataclysmic changes have over-
whelmed the earth in past geo-
logical ages. We need fear no tra-
geical action now that God's
children have pushed to the ends
of the earth. Floods and glacial
ages served a purpose to prepare
for man. Waters shall no more
become a flood to destroy all
flesh.—Gen. 9:15.

We are where they have counted
the gold and found it all there.
That is to say, they did not actu-
ally count all 23 billion dollars of
it, but they did make a sort of spot
check, counting about ten percent
of the bars and weighing about 10
percent of those counted. Every-
thing turned out okay.

The Senate Appropriations Com-
mittee recommends an expenditure
of \$345,288,000 for the next two
years as compared with \$346,000,-
000 recommended by the State
Cabinet. This is about four million
dollars more than anticipated re-
venues. Tentatively eliminated were
funds for the Florida Children's
Commission and the State highway
safety program. There will be few
made in the budget if they
have to eliminate those items.

Among those honored at the Uni-
versity of Florida yesterday, in ad-
dition to General Van Fleet, were
Clifford Beasley, formerly of San-
ford, former Governor Fuller War-
ren, Frank Wright, former U. of F.
publicity director; C. Ferris Bryant,
speaker of the House; Rayner
Miquire, prominent Orlando attor-
ney; W. M. Davidson of Silver
Springs; William Holler of Mount
Dora; Harold Cole of the State
Chamber of Commerce; Dr. Ollie
Edmunds of Stetson; Fred and
Kathryn Hanna of Rollins, and a
number of prominent political fig-
ures.

Down in Orlando they are hold-
ing an open forum at the court
house today to discuss proposed
local bills scheduled for introduc-
tion next month in the State Leg-
islature. That is a wholesome dem-
ocratic approach to the program and
one which should be supported by
all the people. Too often a desire
on the part of legislators to put
bills through without anyone know-
ing anything about it, or the com-
placency and indifference of the
public which fails to take an active
interest in proposed legislation, re-
sults in the statute books being
cluttered up with bad law.

Man is in danger of becoming
the slave of the machine he has
invented rather than its master.
Lord Dunsany, the Irish playwright,
declares that American inventions
are actually driving people crazy.
"The shock to the human nervous
system produced by the machine is
far too great," he insists. "We have
art, such as surrealism; poems,
short stories and plays that have
little or no meaning. This I think,
is due to the peculiar kind of in-
sanity produced by the machine.
It accounts, too, for the obscenity
of literary production these days.
Insanity and obscenity are related."
Well, we guess that explains every-
thing.

It is interesting to read that one
of Florida's most beautiful birds,
the roseate spoonbill is coming
back, after becoming almost extinct
during the first half of this cen-
tury. Their beautiful rose colored
plumage was a great prize for hunt-
ers in the days when such things
were worn promiscuously on ladies'
hats, and they were slaughtered
without mercy. Drainage of Flor-
ida's wastelands and Everglades,
did not help their breeding places,
and the intrude of hundreds of
thousands of people in the onward
march of civilization made their
survival uncertain. With the estab-
lishment of bird sanctuaries and
the passage of game laws, they are
being seen again among the south-
western swamps in increasing

Choosing A Plant Site

Now that Sanford has formally completed the organi-
zation of Sanford Industries, Inc., the question naturally
arises as to how an organization goes about attracting new
industries to a community, how does an industry, seeking a
new site for factory or plant, decide where it wants to locate,
and what characteristics must a community possess in order
to attract the type of industry?

Some of these questions have been pretty well answered
in an article by Gwilym A. Price, president of Westinghouse
Electric Corporation, in the March 14 issue of the North
Carolina State which has been brought to our attention by
Sandy Anderson of the State Farmers Market.

Pointing out that there are 4,270 communities in the
United States having a population of 2,500 or more, Mr.
Price, who only recently selected Raleigh, N. C. as the site
for a new meter factory, points out that raw materials,
transportation, availability of land and its
cost, utility services, location in relation to distribution of
the product, taxation, housing, climate, and the general atti-
tude of the community toward business are of primary im-
portance.

However, there are always certain special requirements
for special types of factories. For instance, where testing of
aviation products is required, a nearby airport with suitable
runways is essential. In locating a television plant, it is
necessary to have convenient television broadcasting facili-
ties. Certain products require plenty of water of a certain
type.

Sometimes a city may be a very desirable location in
many respects and yet be lacking in a single essential which
renders it impossible. Mr. Price points out. He recalls a
careful analysis made of one city which seemed to be ex-
actly what was wanted until the plant officials arrived upon
the scene only to learn they were right in the middle of a
water shortage, when plenty of water was an absolute
"must".

"Although the cost of taxes and special services is im-
portant," Mr. Price says, "it should be clearly understood
that this is not by any means the primary consideration
in selecting a plant location. Only after a number of sites
favorable from other standpoints are chosen, does the mat-
ter of taxes receive serious study. But an unfavorable tax
picture can definitely sway the balance between two sites
comparable from other standpoints."

Altogether it is a rather complex problem, but it is
one which other Florida cities have begun to solve, and there
is no reason why Sanford shouldn't do so too.

Adenauer Visit

Chancellor Konrad Adenauer, who has governed West
Germany since September 1949, will visit the United States
in early April. He plans to visit Washington and he may in-
clude New York City on his itinerary. In addition to seeking
first hand information on the United States policy toward
Russia, Adenauer may appeal for further financial aid to his
country.

It is surprising that Hitler's tyranny left behind it as
upright and capable a man as Adenauer. He is the survivor
of a concentration camp sentence. He has guided Germany
with a vigor that belies his 77 years, and is now attempting
what may be the greatest task of his career, the persuasion
of his countrymen to ratify the Western Europe defense
treaty. This would make Germany the full partner of the
free world.

Adenauer will be received hospitably in this country. He
has done much to allay the bitterness against Germany
which resulted from Hitler's arrogance and cruelty. Ameri-
cans in the cities he visits will be pleased to pay their
respects to a great world statesman.

Greatest Heavyweight

"The greatest heavyweight of them all." This was the
verdict on the late James J. Jeffries, champion from 1899 to
his retirement in 1905, passed by his rival, Tom Sharkey.
Sharkey had fought not only Jeffries, but the other leading
boxers of the time, and followed the ring afterwards. His
judgment is therefore worth considering.

Jeffries, a boiler-maker by trade, excelled in strength and
speed, as distinguished from skillful pugilists such as Cor-
bett and Fitzsimmons. After his voluntary retirement, like
most other ring champions, he failed to keep in condition,
and on his attempt to return in 1910 was easily beaten by
Jack Johnson.

In his day, however, he was considered tops, though his
supremacy will be denied by the old-timers who still speak of
John L. Sullivan, and later followers of the sport, who re-
call Jack Dempsey. Many will believe that as long as Joe
Louis remained in condition, he was the most brilliant of
them all.

Sanford Springs
TROPICAL GARDENS
OFF U.S. 17-77

RUPTURE
SUTHERLAND'S NEW IN-
VENTION ELIMINATES
RULERS, BELTS & STRAPS.
Reasonable Prices
McREYNOLDS DRUG

DEPENDABLE USED CARS

1941 Chevrolet Club Coupe Special	\$225.00
1946 Mercury 4 Door Sedan Special	\$480.00
1950 Buick Special Sedan	
1948 Buick Super Sedan	
1949 Buick Super Sedan	
1946 Buick Super Sedan	
1948 Chevrolet 2 - Door Sedan	
1950 Studebaker Champion Sedan	
1947 Chevrolet Sedan	
1950 Pontiac 2 - Door Sedan	

NICHOLSON BUICK CO.
TELEPHONE 1684 SANFORD, FLORIDA

SOME DAY, ANOTHER AMMUNITION SHORTAGE



Business Mirror

By SAM DAWSON

NEW YORK — Business once more is pushing back the deadline for the slump. More executives now look for prosperity to hold all through the year.

The switch to confidence by many industrialists and financiers who earlier had been doubtful about the last half of 1953 is not shared by all. But it appears to be growing.

Among reasons for the new optimism: Relief that world tension will keep the country's defense spending high—might even send it higher. Defense industries will continue to flourish.

Business Mirror

By SAM DAWSON

Signs that profits right now are running higher than a year ago—they've been picking up since last summer.

A steady increase in confidence by business leaders discounting earlier fears of a let-down late this year.

And, a seeming paradox: The caution which many businessmen are showing. This caution in handling inventories, purchasing policies, and financing breeds confidence this way: It reassures many observers that businessmen aren't climbing out on a limb as they did in the late Twenties, thus lessening any threat of a sharp snow-balling break.

Business Mirror

By SAM DAWSON

Tire makers are counting on a 15 per cent gain in replacement sales this year, and on selling more original equipment tires to the auto makers.

More new homes are being started now than at this time last year. The real judge, however, is the consumer. He'll decide what kind of a year it is, most businessmen agree.

And the consumer is more confident than a year ago, the Federal Reserve Board reports today. His debt total has climbed to almost 24 billion dollars but it doesn't seem to worry him.

THE WORLD TODAY

By JAMES MARLOW

WASHINGTON — This is an ABC on the fuss within the Republican party over the budget and the chance of cutting taxes.

President Truman on Jan. 2 sent to Congress the budget, or estimate of government expenses, for the fiscal year starting July 1. The budget: \$78,600,000,000. Estimated revenue, from income taxes, corporation taxes, and other sources: \$68,700,000,000.

This meant government expenses would exceed government revenue by \$9,900,000,000, a deficit of almost 10 billion, a 10 billion dollar deficit would boost the national debt, now running at \$27,400,000,000, even higher.

Some Republican congressmen announced at once, without time to examine all the itemized figures Truman gave them, that they could cut the budget as much as 10 or 12 billion dollars.

It would be nice if they could. That would really balance the budget. The question was: How? Where would the cuts be made? Of the total \$78,600,000,000 Truman budget, about 87 per cent, or \$68,300,000,000 would be for paying off interest on the national debt, for veterans payments, and for national defense and foreign aid.

Nothing could be cut off the interest on the debt. That's fixed. Nothing could be taken from the veterans. That would be bad politics. How could cuts be made in defense and foreign aid without endangering the country?

Well, maybe President Eisenhower could solve it when he took over Jan. 20. During the campaign he had spoken often about all the government waste that could be cut out.

Right after he took office he said eliminating that \$9,900,000,000 deficit would be the "first order of business." He's been looking for ways to do it ever since.

Still, some of his Republicans in Congress were hot for cutting taxes. He knew that any tax cut which meant a cut in government revenue would make it just that tougher to balance the budget.

So at his first White House news conference Feb. 17 he said the government couldn't afford to cut taxes until it had in sight a spending program which balanced in come and outgo.

That didn't stop a veteran House Republican, Rep. Daniel A. Reed of New York, who is chairman of the Ways and Means Committee, which handles all tax problems for the House. He introduced a tax cut, and soon.

Reed and his committee voted to cut individual income taxes 10 per cent. When would it start? Not necessarily July 1, when the new budget, which might exceed revenue, would go into effect.

This needs explaining: Under present law the excess profits tax on business will expire July 1, unless Congress votes to extend it. And, under present law, the income tax on individuals is scheduled to drop 10 per cent starting Jan. 1.

Reed argued that if it's to keep the excess profits tax on business July 1, then it's only fair to move up that 10 per cent income tax on individuals from Jan. 1 to July 1, too.

Together the end of the excess profits tax and Reed's 10 per cent drop in income tax would mean a total loss of revenue to the government of \$4,300,000,000.

Eisenhower's position is: We can't cut government revenue before we can cut government expenses down to a point where they match the revenue. He said that again yesterday.

He not only didn't want Reed moving around with a tax cut but said that if Congress lets the excess profits tax expire July 1, he wants it to pass some other kind of tax to make up the loss.

This might indicate he won't want income taxes dropped Jan. 1 either. So Eisenhower, who talked freely during the campaign about cutting expenses, is finding it's easier said than done.

DR. H. K. RING
CHIROPRACTOR
Please call for appointment
Phone 1752 — 1744

DR. L. T. DOSS
CHIROPRACTOR
HOURS 9 to 12 — 2 to 5
Phone 785
305 Atlantic Bank Building

"CUCKOOS ON THE HEARTH"
presented by
Sanford Theatre Guild Players
Ninth Street and Laurel
March 19 - 20 - 21
Tickets \$1.00 plus tax
Sponsored by Kiwanis Club U. P. C. Com.

Bring The Kiddies

LAST TIMES TODAY ! !

JANE RUSSELL
Montana Belle
GEORGE BRUNT

SATURDAY ONLY
2
HIG FEATURES
A FUN HOLIDAY IN LAS VEGAS!

SKY FULL OF MOON
CARTOON
CARDPENTER
Jan STERLING Keenan WYNN
Written and Directed by NORMAN FOSTER
Produced by SIDNEY FRANKLIN, JR.

"ROCKY" LANE
And His Stallion "Black Jack"
"MARSHAL OF CEDAR ROCK"
— PLUS —
SERIAL—"DICK TRACY"
THE PHANTOM EMPIRE

"NITWITTY KITTY"
CARTOON

SHOWING SUNDAY and MONDAY ! !
The Musical Show-Time of a Lifetime!

Hear the wonderful songs!
See the breath-taking dances!
Meet the lady ambassador who dazzled two continents with the "mostest of the bestest!"

IRVING BERLIN'S CALL ME MADAM
STARRING
ETHEL MERMAN • DONALD O'CONNOR
VERA ELLEN • GEORGE SANDERS
MUSIC AND LYRICS BY
IRVING BERLIN
Technicolor

20
Produced by SOL C. SIEGEL Directed by WALTER LANG Screen Play by ARTHUR SHEEKMAN
— ADDED — CARTOON — "HERO FOR A DAY" — PARAMOUNT NEWS



FLASH GORDON and his adventures in space

By Dan Barry



WANT ADS

READ AND USE THE... FOR QUICK RESULTS

Use WERLAD WANT ADS For Results

The following rates apply to all want ads published in the Sanford Herald:

1 Time 15¢ per line insertion
 2 Time 10¢ per line insertion
 3 Time 8¢ per line insertion
 4 Time 6¢ per line insertion
 5 Time 5¢ per line insertion
 6 Time 4¢ per line insertion
 7 Time 3¢ per line insertion
 8 Time 2¢ per line insertion
 9 Time 1¢ per line insertion
 10 Time 1¢ per line insertion

Five Words in the Line
 Double Rate For Black Paper Copy

PHONE 148

Want ads will be accepted over the telephone on most occasions if your name is listed in the telephone book. In return for this accommodation the advertiser is expected to pay promptly. In order for us to enter the best "wants" section all want ads must be in an office on the day before publication. Please write us immediately if an error occurs in your ad. We cannot be responsible for more than one incorrect insertion.

THE SANFORD HERALD

FOR RENT

WELAKA Apartments 114 W First Street Phone 400 W

ROLLAWAY AND BABY BEDS Day, week or month - Tel 1425 Furniture Center, 116 W First

3 ROOM furnished. Screened porch. See it. Osborn Apartments, Osborn, Florida Phone 1357 91

ONE ROOM efficiency apt. suitable for working couple. Ideally located across from Post Office. Private bath. Inquire Manuel Jacobson's Dept. Store

FURNISHED kitchenette - apartment. Highway 17 1/2. South City limits. Shubertland Court

UNFURNISHED single family home. April to October. 2113 Princeton Ave. Phillips Terrace. \$85 per month

FURNISHED 5 room apartment. 300 W 5th St. Private entrance. Call 62 W. Mrs. Forrester

TWO ROOM cottage. Furnished. Light and water included. Phone 1313 R

NICE 1 bedroom apartment. furnished. 318 Palmetto Ave. Phone 1112

FURNISHED 2 room apartment. Hot and cold water. \$100 per month. 206 Laurel Ave.

NEARLY NEW HOME in finest section in Deland. Electric. Love and refrigerator. 2 bedrooms. tile bath and nice yard. Lease a month. Call Sanford 198 J

TWO BEDROOM nicely furnished apartment. Private entrance. bath and carport. No pets. A July only. Telephone 614 W

SMALL FURNISHED apartment downtown. \$25.00. Call 260 W

UPSTAIRS APARTMENT three rooms and bath. Utilities furnished. 609 Palmetto

2 - WANTED TO RENT - 2

WANTED unfurnished 2 or 3 bedroom house. Write L. H. V. Greene, B.O. Room 293 SP 17, N.S. Norfolk, Va

REAL ESTATE FOR SALE - 3

\$1,000 Down for two Bedrooms

\$1,450 Down for Three Bedrooms

FHA inspected and insured homes now under construction in Sanfo Park on Willow Avenue and Phillips Terrace on Yale Avenue. Down payment includes electric range, refrigerator, circulating heater, hot water heater, veneer tile and shrubbery. Sanford's Best Buy. First commercial served. Phone 344 or visit Phillips Properties' Sales Office at Model Home in Wynewood.

NEW 2 bedroom home - Carport. Fruit trees. 1505 Elliott Ave.

COLORADO PALMS - 1/2 lot for sale in Lockhart's and West Sanford Subdivision. \$10.00 down and \$3.00 per month. Write Boca Raton Housing Corp. Box 814, Miami Beach, Fla.

DUPLEX - Good Income Property. \$2500.00 will handle. Full price \$7,900. Phone owner 1288 W

OUTSTANDING VALUE in two and three bedroom homes now available in WYNEWOOD. Beautiful trees and natural charm combined with PHILLIPS' quality construction makes for FLORIDA LIVING at its best. Late July. Model FHA's down payments. Come and see our 1955 model home at corner of Key and Forest. Phone 344-11.

2 ACRES - furnished cement block house on old Orlando Highway, south of Elder Springs. Normal. Marlatt, Rt 2, Box 283

3 BEDROOM frame home. Lake Mary. Tel. 1562-R. Excellent terms.

TWO STONY 3 room frame house on corner lot with additional lot in rear. Only four blocks from business district; easily converted into two apartments. Reasonable. Phone 46-J.

NEW HOME, 1101 Santa Barbara Drive, \$6,800.00. Corner lot outside City Limits. Phone 1039-M.

MODERN, FURNISHED four room concrete block home with carport and all electric kitchen. Total price \$2800. Rount Realty Company, Tel. 938-M.

LAKE FRONT BARGAIN - Well furnished 3 bedroom bungalow, recently built, tiled bath, attic fan, carport. 75 X 192 nicely landscaped. Only \$8,500. 5 Lake Ellen Drive, Casselberry.

3- REAL ESTATE FOR SALE - 3

SPACIOUS 3 BEDROOM HOUSE. Inlaid, large rooms with plenty of closets. Large lot landscaped. Well financed. Let us show you this house before you buy.

UNUSUALLY WELL BUILT 2 bedroom house, with good heating system. beautifully shaded corner lot. This is an outstanding value well financed.

2 BEDROOM HOUSE just out of city limits completely redecorated inside and out. Low down payment with balance like rent \$600.00.

We have 2 and 3 bedroom houses from \$6500.00 up. Let us show you at your convenience.

C. A. WHIDDON SR.
 119 S. Park Ave. Telephone 1241

IMMEDIATE OCCUPANCY Spacious 3 bedroom home on large lot. Seven large closets plus storage room and carport. Automatic dish washer, clothes washer and dryer. Stove and refrigerator optional. Kitchen exhaust fan. Sidewalks and ceiling insulated with fiber glass. awning windows. This is the "Home of the Year" you read about in the Match issue "Living For Young Home-makers". Would trade or accept trade as part payment. Terms to suit. Owner Weller Homes, Inc. 1203 Randolph St. Phone 1992 nights 724 J

LARGE LOT on Santa Barbara Drive, 9 blocks from city limits. 140 ft. frontage. 210 ft. deep. Phone 1933 M

8000 DOWN \$10. PER MO. Either masonry or frame.

3 bedrooms - large living room 12' x 20' - 2 closets - walk in pantry and storage. Over 200 square feet. 4 rooms on large well shaded lots.

We are sold out of all but a few of the 4 bedrooms on lot with large pine trees. If you wish to lock one now you may do so and pay a portion of your down payment now and the balance later. Home of the Year.

OVERWATER HOMES, Inc.
 1203 Randolph St.
 Phone 1992 nights 724 J

FOR SALE OR RENT - 1 bedroom house. 2 bath rooms. Home on Orange City 1/2 mile north of Orange City behind fruit stand.

LOOKING FOR a superior home? Clean, 2200 sq. ft. - 3 bedrooms. Be sure it has a good one of our approved heating system. Try to heat homes with electric ranges and spot heaters overhead electric lines. The system isn't built for that. There are not enough cold days to justify it. Remember, use OIL for heat in homes.

8000 DOWN - Lovely modern 2 bedroom bungalow. 2 years old. Just out of city in new development. \$38.50 per month will pay for this home in 12 years. We can show this home anytime. Total price - \$6900.

VERY DELICIOUS - One of Mayfield's lovely 3 bedroom homes on corner lot 170' X 132'. beautifully landscaped. This home has every desirable feature. If you can afford to own this lovely home, it's a steal at \$21,500.00. Shown by appointment only.

SEMINOLE REALTY - 27 1320 Magnolia Ave. Phone - 3536

WILL TAKE LATE MODEL 35.36 in home. 2 bedrooms. 2 baths. 2 cars. on two bedroom home, 3 lots, on lake, in Orlando. Frances Warren Faust Drug Store.

FOR REAL ESTATE IN LAKE MARY see Raymond M. Hall, Realtor, Sanford, Florida

30 - REALTORS - 30

Whether buying or selling, it will pay you to see:

J. W. HALL, Realtor
 Florida State Bank Building
 "Call Hall" Phone 175A

See Raymond M. Hall, Licensed Broker for all kinds of Real Estate, 1007 1/2 Park Upstairs, Phone 100

REAL ESTATE WANTED - 4

WANTED Lake property. Customer desires to own land surrounding small sandy bottom lake. Area of lake does not have to be over an acre. Must be near paved highway.

HAIRMAN CRUMLEY
 100 W. 1st Phone 732

ARTICLES FOR SALE - 3

WINE AND LIQUOR All Popular Brands

GOLDENROD PACKAGE - 1000 W. 12th St.

SING COLE pinball machine, set of china, new yellow leather chair \$25. New 6 room Suite - \$175. 6 cu. ft. G. E. refrigerator. Bendix automatic washer - \$125. New 6 hp Wizard outboard motor. Table lamp. Phone 0148.

GOAT MILK - H. D. Priest, E. Sanford Ave. Phone 716-W.

ARTICLES FOR SALE - 3

CONCRETE floor blocks, steps, window sills, lintels, septic tanks, grease traps and sewer pipe. Miracle Concrete Co., 309 Elm Ave., Phone 1335

GARBAGE CAN RACKS! No more rusted bottom! The new rack designed and manufactured in Sanford on sale now at Sweeney's, 114 Magnolia Ave. Phone 147

MARCH SPECIALS AT MATIERS

Reg. 12.95 Plastic Covered Cocktail Chairs 4.88

Reg. 12.95 8 x 12 Linoleum Rugs 7.95

3 pc. Cypress Yard Set including Settee, two chairs. New Birch finish baby bed complete with wetproof innerspring mattress. New Simmons Roll a way bed with innerspring mattress. 39.95

New 3 pc. Maple finished bedroom suite 69.95

Reg. 89.95 New 9x12 Axminster Rugs 69.95

New Simmons Sofa Beds, new modern design 79.50

MATIER OF SANFORD
 203 09 E. 1st St. Phone 127

Master Craft Paint \$2.50 gal

Army Blankets, Cots, Tarps, Army-Navy Surplus

310 Sanford Ave. Phone 1321

AIR CONDITIONER - Window type. York 4 ton 825 W. Winter Park Ave. Orlando - 6879

TWO 9 X 12 BELGIAN RUGS, one hand crocheted bed spread. 2474 Palmetto Ave. Tel. 1672 J

WE BUY, SELL AND TRADE USED FURNITURE Wilson Moler Furniture Co. 311 E. 1st Phone 904

USED UPRIGHT Pianos must be good condition and reasonable. Phone 1313 AW

Farm Supplies, Machinery - 8

LUXEED FEEDS Complete line. Hunt's Luxeed Feed Store.

HELP WANTED - 10

EXPERIENCED beauty operator. Salary and commission. Telephone 971

WATRESS wanted at Touchtons Drug Co. Apply to Mr. Bill any morning before 12 o'clock

EXPERIENCED beauty operator. Salary and commission. Telephone 971

WATRESS wanted at Touchtons Drug Co. Apply to Mr. Bill any morning before 12 o'clock

EXPERIENCED beauty operator. Salary and commission. Telephone 971

WATRESS wanted at Touchtons Drug Co. Apply to Mr. Bill any morning before 12 o'clock

EXPERIENCED beauty operator. Salary and commission. Telephone 971

WATRESS wanted at Touchtons Drug Co. Apply to Mr. Bill any morning before 12 o'clock

EXPERIENCED beauty operator. Salary and commission. Telephone 971

WATRESS wanted at Touchtons Drug Co. Apply to Mr. Bill any morning before 12 o'clock

EXPERIENCED beauty operator. Salary and commission. Telephone 971

WATRESS wanted at Touchtons Drug Co. Apply to Mr. Bill any morning before 12 o'clock

EXPERIENCED beauty operator. Salary and commission. Telephone 971

WATRESS wanted at Touchtons Drug Co. Apply to Mr. Bill any morning before 12 o'clock

EXPERIENCED beauty operator. Salary and commission. Telephone 971

WATRESS wanted at Touchtons Drug Co. Apply to Mr. Bill any morning before 12 o'clock

EXPERIENCED beauty operator. Salary and commission. Telephone 971

WATRESS wanted at Touchtons Drug Co. Apply to Mr. Bill any morning before 12 o'clock

EXPERIENCED beauty operator. Salary and commission. Telephone 971

WATRESS wanted at Touchtons Drug Co. Apply to Mr. Bill any morning before 12 o'clock

EXPERIENCED beauty operator. Salary and commission. Telephone 971

WATRESS wanted at Touchtons Drug Co. Apply to Mr. Bill any morning before 12 o'clock

EXPERIENCED beauty operator. Salary and commission. Telephone 971

WATRESS wanted at Touchtons Drug Co. Apply to Mr. Bill any morning before 12 o'clock

EXPERIENCED beauty operator. Salary and commission. Telephone 971

WATRESS wanted at Touchtons Drug Co. Apply to Mr. Bill any morning before 12 o'clock

EXPERIENCED beauty operator. Salary and commission. Telephone 971

WATRESS wanted at Touchtons Drug Co. Apply to Mr. Bill any morning before 12 o'clock

EXPERIENCED beauty operator. Salary and commission. Telephone 971

WATRESS wanted at Touchtons Drug Co. Apply to Mr. Bill any morning before 12 o'clock

EXPERIENCED beauty operator. Salary and commission. Telephone 971

WATRESS wanted at Touchtons Drug Co. Apply to Mr. Bill any morning before 12 o'clock

EXPERIENCED beauty operator. Salary and commission. Telephone 971

WATRESS wanted at Touchtons Drug Co. Apply to Mr. Bill any morning before 12 o'clock

EXPERIENCED beauty operator. Salary and commission. Telephone 971

WATRESS wanted at Touchtons Drug Co. Apply to Mr. Bill any morning before 12 o'clock

EXPERIENCED beauty operator. Salary and commission. Telephone 971

WATRESS wanted at Touchtons Drug Co. Apply to Mr. Bill any morning before 12 o'clock

EXPERIENCED beauty operator. Salary and commission. Telephone 971

WATRESS wanted at Touchtons Drug Co. Apply to Mr. Bill any morning before 12 o'clock

EXPERIENCED beauty operator. Salary and commission. Telephone 971

WATRESS wanted at Touchtons Drug Co. Apply to Mr. Bill any morning before 12 o'clock

EXPERIENCED beauty operator. Salary and commission. Telephone 971

WATRESS wanted at Touchtons Drug Co. Apply to Mr. Bill any morning before 12 o'clock

EXPERIENCED beauty operator. Salary and commission. Telephone 971

WATRESS wanted at Touchtons Drug Co. Apply to Mr. Bill any morning before 12 o'clock

SPECIAL SERVICES - 14

AWNINGS - Free estimates. Phone 1714 after 6 p.m. for appointment.

BATTERY, Generator or Starter Service. Call 517, Swan's Battery Service, Sanford Avenue and 2nd Street.

SAVE MONEY! For your home yourself! Rent machine & furnish material. Gene's Texaco Service, 1120 Sanford Ave. Phone 1186

NEW FLOORS surfaced in perfection. Old floors made like new. First-class cleaning and waxing, also portable power plant. Serving Seminole County since 1925. H. M. Gleason, Lake Mary 1186

JALOUSIES Lifetime Aluminum - Free estimates. Free installation. Telephone 1125. Furniture Center, 116 W. First

L. L. BILL - Piano Technician. Phone 611 W. Route 1, Sanford.

LAWN MOWERS sharpened. Bladed. Call 445 St.

FRIGIDARE appliances, sales and service. 11 High, Oviedo, Fla. Phone 4151 or 1642-W.

ARE YOU WELL? Stop dragging yourself around. Demand NEW OTC Tonic Tablets. Faust's Pharmacy

ALL TYPES Bulldozing and Land Clearing work. Reasonable rates. Frank Griffin, Lake Mary, Fla. Tel. 1984 J or 1867 X.

SALOONS WHITES IRONED. Phone 2236 M

SPREADER SERVICE - Lime and Dolomite and Fertilizer. Phone 1300 M. David E. Carpenter.

Automobiles - Fraters - 11

TRAILER WANTED - Would like used trailer as down payment on new spacious three bedroom house. Over Weller Homes, Inc. 1205 Randolph St. Phone 1992 nights 724 J

HOUSE Trailer cheap due to moving. Good condition throughout. \$2000.00. Lake Ave. pay monthly \$180.00. Clifford G. Briley, Sanford Trailer Park. Phone 9169

1950 STATION WAGON 5 new tires, life guard tubes, radio and heater. \$1000.00. Contact Mr. Fretwell, Phone APOA 2342.

WILL GIVE up equity in 47 Chevy if you take up payments. See after 5:00. 612 E. Second. 582-J.

GOOD LOOKING, good running model A for quick sale cheap by owner. Phone 1041 W

SEE THE NEW 1953 RICHARDSON AND NASHUA mobile homes. From 29' to 41' all with built in hot water. THE BEST BUY'S TODAY. 331 Richardson Boulevard complete with 2 bedrooms, tank beds, bath, hot water, vacuum blower, drapes & curtains. \$1700. 11' refrigerator with freezer, picture windows. Deluxe stove with timer, 7 sleeper. 1863 delivered, we buy clean used trailers. Eastside Trailer Sales, phone 53443 or 52843 Palatka, Fla.

BUY AND SELL CLEAN Late model used cars. See W. E. McMaster, Brailey Offham Used Cars, 13th and Park Ave.

BOATS - MOTORS - 10

COVERED BOAT - up to 50 ft. long. \$28. per month. C. W. Bell, Yacht Basin, Box 966, Cocoa. Under new management.

FURNITURE - Hold Goods 20

OVEN, FURNACES - By Kresky, Wall, Floor and Fireplace. M. G. HODGES, 405 W. 1st St. Phone 122

TRAVELER Extension Beds - 29" to 38". Senkark Glass and Paint Co.

VENETIAN BLINDS Factory priced. Roll-a-head Blinds, Aluminum slats, cotton or plastic tapes. Complete repair service. SEMINOLE VENETIAN BLIND COMPANY, 820 West Third Phone 226

IF YOU HAVE SOMETHING TO SELL and are in a hurry to sell it, let the classified advertising department of THE SANFORD HERALD prove its ability as an efficient sales medium.

Free - Free - Free Buffer Rental with Purchase of Paste Wax at Senkark Glass & Paint Co.

PIANOS - New and Used. 1200 Myrtle Avenue. Phone 1284-W.

LOST AND FOUND - 31

LOST between Bethel Church and Cemetery Blue Banner with white letters H.B.A. Society. Call 1256-J.

PLUMBING Contract and repair work. Free estimates. R. L. Harvey, 204 Sanford Ave. Phone 1828.

ORLANDO Morning Sentinel, Orlando Evening Star. Call Ralph Ray, 1165-J.

CARPENTER WORK For quick repair jobs, or small building, Call Jim 1143-M-4.

YOU CAN BE ABBLE With A Classified Ad JUST CALL 148

"BE THANKFUL YOU CAN SEE" HELP THE BLIND BY COOPERATING WITH THE LIONS CLUB BUY CANDY BALL GUM "BE SURE ITS FORD"

Metts, Clark, Jones Make Herald's All-County Team



Pearson Surprises Ivey

Women's Golf Meet Enters 2nd Round

THE SANFORD HERALD
Friday, March 23, 1956

By KENT CHILMAN
The Myrtle Inn Seminoles Country Club's annual women's golf championship entered its second round after a first round played here with the following results:

Mrs. Russell Pearson surprised Mrs. John Ivey, dropping the latter on the seventh hole of the 18-hole match. Mrs. Ivey, who had won the championship in 1955, was defeated by Mrs. Pearson, 12 to 11.

Mrs. Ivey, who had won the championship in 1955, was defeated by Mrs. Pearson, 12 to 11.

Seminole High's John Scott Is Named County's Coach-Of-Year

John Scott, coach of the Seminole High School basketball team, has been named as the county's coach-of-year for the 1955-56 season. Scott, who has coached the team for three years, led them to a state championship in 1955.

Negro Try Out Canceled

By KENT CHILMAN
The Negro try-out for the Jacksonville Beach Seals was canceled after a citizens protest meeting here Thursday.

Lie Detector Test For Chip Bohlen Is McCarthy's Latest

Senator Makes Suggestion At Hearing
Prize Winning Essay Presented At Rotary Meet

Navy Scaphand Is Missing In San Juan Area

11 Are Aboard Craft On Training Flight
SAN JUAN, Puerto Rico, (U. S. Navy) — A Navy scaphand was missing today after 11 men aboard had been missing over the Atlantic northwest of San Juan since nightfall.

Baruch Sees Agreement Made Controls Law On Rent Controls; As Imperative RFC Demise Is Set

WASHINGTON, (U. S. News) — A Baruch report today said that an agreement on rent controls is imperative for the Federal Reserve Commission's demise.

Cubs Beat Giants, 13-5 For Fourth Straight Victory

WINTER PARK (Special) — The Cubs beat the Giants 13-5 today in the state of North Carolina for the fourth straight victory.

North Carolina And Rollins Sings Battle

WINTER PARK (Special) — The Rollins College football team defeated the North Carolina team 13-5 today.

Fan Protest Force Sees - Bird Change

JACKSONVILLE BEACH, Fla. — Plans to give Negro baseball players a chance to try out for the Jacksonville Beach Seals were canceled after a citizens protest meeting here Thursday.

Crooms Nine Is Looking Forward To Its Best Season In 5 Years

By KENT CHILMAN
Will Crooms, manager of the Jacksonville Beach Seals, is looking forward to his best season in five years.

Overcast Skies May Minimize Harm Of Heavy Downpours

A continuation of overcast skies may minimize the harmful effects of the weekend's heavy rain, according to the State Weather Bureau.

Week-end Motor Mishaps In State Claim Lives Of 20

WASHINGTON, (U. S. News) — A week-end motor mishap in Florida claimed the lives of 20 people.

7th District Court Guard To Hold Meet

The Seventh District Court Guard will hold a meeting on Friday, March 24, at 8:00 p.m.

Sports Roundup

By KENT CHILMAN
A roundup of sports news from the Sanford area.

Baseball Standings

Team	W	L	Pct.
Orlando	10	10	.500
Sanford	8	12	.400
Titusville	6	14	.300
Winter Park	4	16	.200

City Commissioners Will Meet Tonight

The City Commissioners will meet tonight at 7:30 p.m. to discuss the city budget.

City Commissioners Will Meet Tonight

The City Commissioners will meet tonight at 7:30 p.m. to discuss the city budget.

City Commissioners Will Meet Tonight

The City Commissioners will meet tonight at 7:30 p.m. to discuss the city budget.

Sanford-Orlando Kennel Club Entries

Club	W	L	Pct.
Sanford	10	10	.500
Orlando	8	12	.400

Baseball Standings

Team	W	L	Pct.
Orlando	10	10	.500
Sanford	8	12	.400

Baseball Standings

Team	W	L	Pct.
Orlando	10	10	.500
Sanford	8	12	.400

City Commissioners Will Meet Tonight

The City Commissioners will meet tonight at 7:30 p.m. to discuss the city budget.

City Commissioners Will Meet Tonight

The City Commissioners will meet tonight at 7:30 p.m. to discuss the city budget.

City Commissioners Will Meet Tonight

The City Commissioners will meet tonight at 7:30 p.m. to discuss the city budget.

Sanford-Orlando Kennel Club Entries

Club	W	L	Pct.
Sanford	10	10	.500
Orlando	8	12	.400

Baseball Standings

Team	W	L	Pct.
Orlando	10	10	.500
Sanford	8	12	.400

Baseball Standings

Team	W	L	Pct.
Orlando	10	10	.500
Sanford	8	12	.400

City Commissioners Will Meet Tonight

The City Commissioners will meet tonight at 7:30 p.m. to discuss the city budget.

City Commissioners Will Meet Tonight

The City Commissioners will meet tonight at 7:30 p.m. to discuss the city budget.

City Commissioners Will Meet Tonight

The City Commissioners will meet tonight at 7:30 p.m. to discuss the city budget.

Sanford-Orlando Kennel Club Entries

Club	W	L	Pct.
Sanford	10	10	.500
Orlando	8	12	.400

Baseball Standings

Team	W	L	Pct.
Orlando	10	10	.500
Sanford	8	12	.400

Baseball Standings

Team	W	L	Pct.
Orlando	10	10	.500
Sanford	8	12	.400

City Commissioners Will Meet Tonight

The City Commissioners will meet tonight at 7:30 p.m. to discuss the city budget.

City Commissioners Will Meet Tonight

The City Commissioners will meet tonight at 7:30 p.m. to discuss the city budget.

City Commissioners Will Meet Tonight

The City Commissioners will meet tonight at 7:30 p.m. to discuss the city budget.

Sanford-Orlando Kennel Club Entries

Club	W	L	Pct.
Sanford	10	10	.500
Orlando	8	12	.400

Baseball Standings

Team	W	L	Pct.
Orlando	10	10	.500
Sanford	8	12	.400

Baseball Standings

Team	W	L	Pct.
Orlando	10	10	.500
Sanford	8	12	.400

City Commissioners Will Meet Tonight

The City Commissioners will meet tonight at 7:30 p.m. to discuss the city budget.

City Commissioners Will Meet Tonight

The City Commissioners will meet tonight at 7:30 p.m. to discuss the city budget.

City Commissioners Will Meet Tonight

The City Commissioners will meet tonight at 7:30 p.m. to discuss the city budget.

Sanford-Orlando Kennel Club Entries

Club	W	L	Pct.
Sanford	10	10	.500
Orlando	8	12	.400

Baseball Standings

Team	W	L	Pct.
Orlando	10	10	.500
Sanford	8	12	.400

Baseball Standings

Team	W	L	Pct.
Orlando	10	10	.500
Sanford	8	12	.400

City Commissioners Will Meet Tonight

The City Commissioners will meet tonight at 7:30 p.m. to discuss the city budget.

City Commissioners Will Meet Tonight

The City Commissioners will meet tonight at 7:30 p.m. to discuss the city budget.

City Commissioners Will Meet Tonight

The City Commissioners will meet tonight at 7:30 p.m. to discuss the city budget.

Sanford-Orlando Kennel Club Entries

Club	W	L	Pct.
Sanford	10	10	.500
Orlando	8	12	.400

Baseball Standings

Team	W	L	Pct.
Orlando	10	10	.500
Sanford	8	12	.400

Baseball Standings

Team	W	L	Pct.
Orlando	10	10	.500
Sanford	8	12	.400

City Commissioners Will Meet Tonight

The City Commissioners will meet tonight at 7:30 p.m. to discuss the city budget.

City Commissioners Will Meet Tonight

The City Commissioners will meet tonight at 7:30 p.m. to discuss the city budget.

City Commissioners Will Meet Tonight

The City Commissioners will meet tonight at 7:30 p.m. to discuss the city budget.