





### Butt Plant Represents Last Word In Pre-Cooling Process For Vegetables

Washing and pre-cooling are recognized among the latest improvements in the preparation of vegetables for market. Not so many years ago the method was to wash and pre-cool in a large tank and it has only recently become one of the greatest factors in increasing the demand for Sanford-grown celery.

### City's Maintenance Requires Extensive Equipage And Men

(Continued from page one) It is sometimes necessary, and especially so during the rainy season, to assist incorporation with firewood. The work of this department is handled by two men and they are assisted by the pound men who haul the cans and ash to a nearby dump. There is an average of about 12 loads of trash, tree trimmings, etc. collected each day, partly by the garbage trucks and the balance by the Street cleaners.

### Creamery Has Big Capacity To Turn Out Its Products

Electrically equipped with the latest type of machinery, the Seminole Creamery, owned and operated by Hayward Walker, and located in the business district of Sanford, manufactures an average of 600 gallons of ice cream daily between 8 and 10 o'clock in the morning and 10 and 11 o'clock in the afternoon. The plant has a storage capacity of over 1500 gallons of manufactured cream, and supplies dealers throughout Seminole and parts of Volusia counties. The milk is brought daily from local dairies to the creamery where it is pasteurized.

### City Owns, Operates Local Water Plant

The City of Sanford owns and operates its own water plant. Two 100 horse power Fairbanks Morse pumps, each with a capacity of 2,000 gallons per minute, are installed in the plant, located in the southern part of the city on a high level. The city water supply is taken from six large wells located three miles south of Sanford also on a high elevation. The water from these wells is first pumped into a reservoir, and then into a tank 110 feet high with a capacity of 200,000 gallons.

### City Owns, Operates Local Water Plant

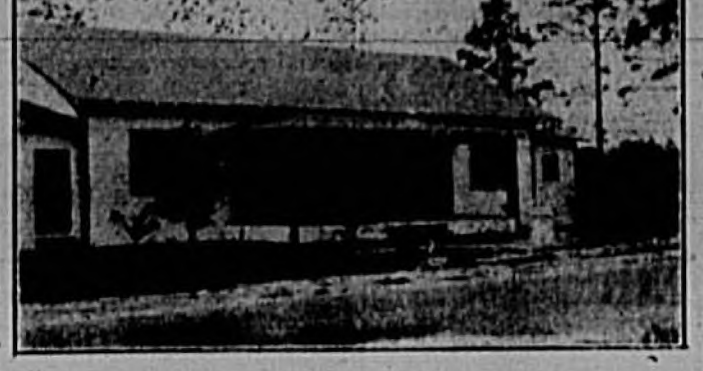
The City of Sanford owns and operates its own water plant. Two 100 horse power Fairbanks Morse pumps, each with a capacity of 2,000 gallons per minute, are installed in the plant, located in the southern part of the city on a high level. The city water supply is taken from six large wells located three miles south of Sanford also on a high elevation. The water from these wells is first pumped into a reservoir, and then into a tank 110 feet high with a capacity of 200,000 gallons.

### LAKE MARY CASINO



Lake Mary Casino, on Crystal Lake. Swimming, boating, and dancing may be enjoyed here year-round.

### LAKE MARY C. OF C. BUILDING



The Lake Mary Chamber of Commerce building, located in the heart of the Little Seminole County, city, six miles south-west of Sanford. This building is attractive and well-equipped.

### Sporting Facilities Of Sanford Afford Fine Opportunities

(Continued from page one) The sporting facilities of Sanford afford most of the diversions which attract sports-loving people and attract the Chamber of Commerce. The sporting facilities of Sanford afford most of the diversions which attract sports-loving people and attract the Chamber of Commerce. The sporting facilities of Sanford afford most of the diversions which attract sports-loving people and attract the Chamber of Commerce.

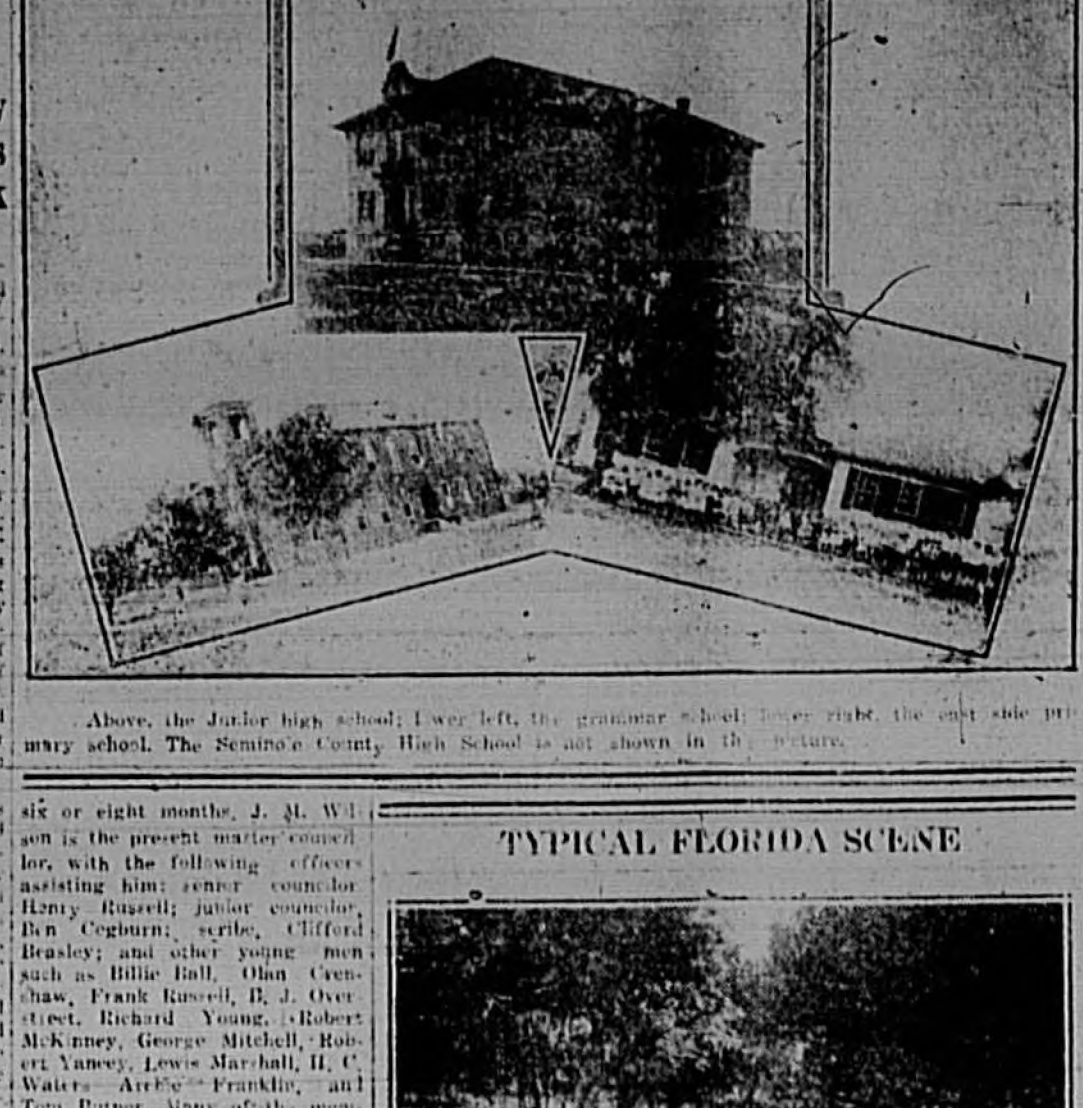
### John Thomas Gives Boost To Chamber Of Commerce In Interview Yesterday

John Thomas, secretary of the Chamber of Commerce, yesterday gave a boost to the organization in an interview with the Herald. Mr. Thomas stated that the Chamber of Commerce is planning to hold a series of sporting events during the winter months, making his home in the R. J. Holly residence, Park Avenue and Sixth Street.

### Local DeMolay Organization Is Active In Work

The local DeMolay organization is active in its work. The organization is planning to hold a series of sporting events during the winter months, making his home in the R. J. Holly residence, Park Avenue and Sixth Street.

### SANFORD HAS GOOD SCHOOLS



Above, the Junior high school; lower left, the grammar school; lower right, the city primary school. The Seminole County High School is not shown in the picture.

### Full Rows

Advertisement for Virginia Carolina Chemical Corporation. Includes text: "No Substitute!", "Heavy Fire Losses", "Now Look at Them!", and "A Seminole County Institution".

Consider the value of such a plant to a celery producing area, the number of people employed, and the large weekly payroll. The Dutton washing and pre-cooling plant is acclaimed by local growers to be one of the most important units of this section.

Consider the value of such a plant to a celery producing area, the number of people employed, and the large weekly payroll. The Dutton washing and pre-cooling plant is acclaimed by local growers to be one of the most important units of this section.

Consider the value of such a plant to a celery producing area, the number of people employed, and the large weekly payroll. The Dutton washing and pre-cooling plant is acclaimed by local growers to be one of the most important units of this section.

Consider the value of such a plant to a celery producing area, the number of people employed, and the large weekly payroll. The Dutton washing and pre-cooling plant is acclaimed by local growers to be one of the most important units of this section.

Consider the value of such a plant to a celery producing area, the number of people employed, and the large weekly payroll. The Dutton washing and pre-cooling plant is acclaimed by local growers to be one of the most important units of this section.

Consider the value of such a plant to a celery producing area, the number of people employed, and the large weekly payroll. The Dutton washing and pre-cooling plant is acclaimed by local growers to be one of the most important units of this section.

Consider the value of such a plant to a celery producing area, the number of people employed, and the large weekly payroll. The Dutton washing and pre-cooling plant is acclaimed by local growers to be one of the most important units of this section.

Consider the value of such a plant to a celery producing area, the number of people employed, and the large weekly payroll. The Dutton washing and pre-cooling plant is acclaimed by local growers to be one of the most important units of this section.

Advertisement for Southern Bulb Association Inc. Sanford, Fla. Includes text: "We Buy and We Sell All Kinds of Bulb Stocks", "Wishes All Fla. Knew of Sargon", "MRS. BESSIE WELLS".

Advertisement for Red Cross Pharmacy. Includes text: "SPECIAL ANNOUNCEMENT", "Red Cross Pharmacy", "Beginning tomorrow, March 1st, we will conduct a general CLEARANCE SALE for an indefinite period."

Advertisement for S.O. SHINHOLSER. Includes text: "The Story Of A GOOD CRATE", "SPECIAL ANNOUNCEMENT", "S.O. SHINHOLSER", "MAKER OF GOOD CRATES".

Advertisement for SEMINOLE DRY CLEANERS. Includes text: "SEMINOLE DRY CLEANERS", "R. A. WILLIAMS PROPRIETOR", "Telephone 861 218-220 Magnolia Ave.", "SANFORD, FLORIDA", "QUALITY SERVICE", "WE INVITE COMPARISON".

Advertisement for HOTEL MONTEZUMA and SANFORD GAS CO. Includes text: "HOTEL MONTEZUMA", "A Home Away From Home", "SANFORD GAS CO.", "The Sanford gas plant is a modern, up-to-date utility furnishing gas not only for Sanford consumers but piping it from the Sanford plant to Deland."

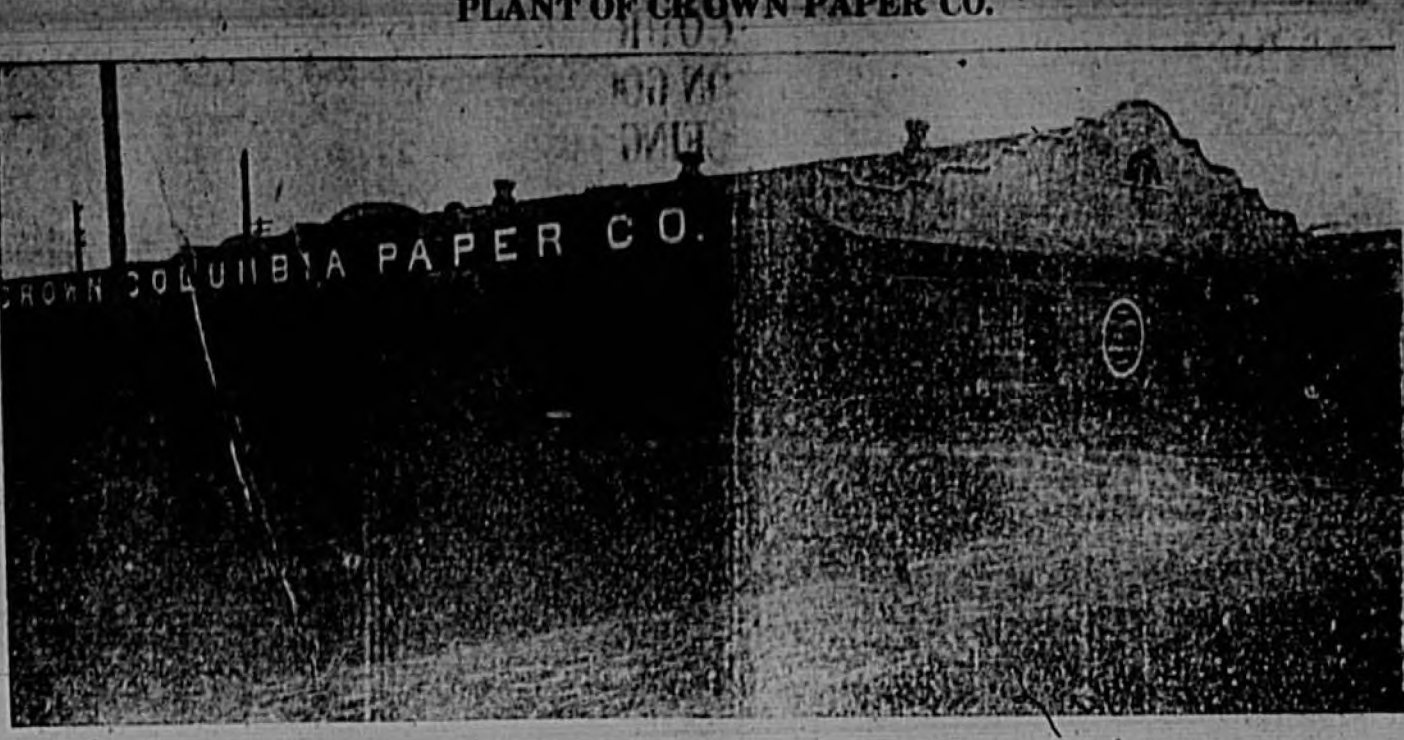
Advertisement for A Seminole County Institution. Includes text: "A Seminole County Institution", "Princess Ice Cream", "Deserving of your patronage", "SEMINOLE CREAMERY CO.", "PHONE 63".

### POST OFFICE HAS SHOWN INCREASE IN ITS CROPS OVER PAST YEAR

#### Is Main Crop Many Other Products Raised Here

ALEX. R. JOHNSON  
The post office has shown a total area of only 164 acres in Seminole County, but it ranks first in its crops over the past year. It is the main crop in many other products raised here.

"During the past two months business has been better than during the same period of last year," J. P. Hall, Sanford postmaster, stated in an interview this morning. "Judging from the large number of applications for action and class matter from local business houses, the heavy mailing will continue through the summer months," Mr. Hall further declared.



PLANT OF CROWN PAPER CO.

The Crown Paper Co. manufactures of paper wrappers for oranges, grapefruit, celery, and many other fruits and vegetables. It is the largest manufacturing plant of its kind in this section of the country, and supplies growers and shippers all over Florida with wrappers.

### Sandy Anderson Gives Herald Fine Celery

Sandy Anderson, Sanford resident, who is associated with the local branch of the American Fruit Growers, presented The Sanford Herald with a crate of washed, precooled, wrapped and packed Sanford celery yesterday afternoon.

Upon receipt of the gift the entire Herald force suspended work for a short time, in order to enjoy the delicious flavor of Mr. Anderson's gift. Judging from the brief time in which the greater part of the celery was disposed of, the local newspaper's force is very fond of Sanford's prize product.

The Crown Paper Co. manufactures of paper wrappers for oranges, grapefruit, celery, and many other fruits and vegetables. It is the largest manufacturing plant of its kind in this section of the country, and supplies growers and shippers all over Florida with wrappers.

### PLANS ARE MADE FOR CELEBRATION AT TALLAHASSEE

#### All Classes To Hold Reunions During Big School Celebration

FLORIDA STATE COLLEGE, Tallahassee, Feb. 27—Tentative plans for the celebration of the 25th anniversary of the Florida State College for Women, to take place at commencement, Saturday, May 31, through Wednesday, June 4, have just been made. Mrs. T. H. Wallis, president-executive secretary of the Alumnae Association, announced.

At this celebration, which will be known as the Silver Jubilee, all former classes will hold reunions. This gathering, Mrs. Wallis said, will be the largest the college has ever had or ever expects to have until the celebration of the Golden Jubilee in 1955. Even at this early date, an exceedingly large number of alumnae have already signified their intentions of returning to take part in the Jubilee.

Besides the regular commencement exercises, the dedication of the new library and gymnasium will be features on the Jubilee program. Both buildings have been in use this year for the first time and are considered two of the most modern and up-to-date structures in the entire South.

### FIRST NATIONAL BANK BUILDING



This modern five story building was constructed in 1921 at an approximate cost of \$275,000. It formerly housed the First National Bank which for over 40 years was the largest financial institution in this county.

ers will be guests of the college during the Jubilee. The baccalaureate service will be given Sunday morning, June 1, while the commencement exercises will be held Wednesday morning, June 4.

### COURT, RELYING ON GOOD WILL, IS BEING TRIED OUT

#### Has No Legal Standing And No Jurors Nor Lawyers In Makeup

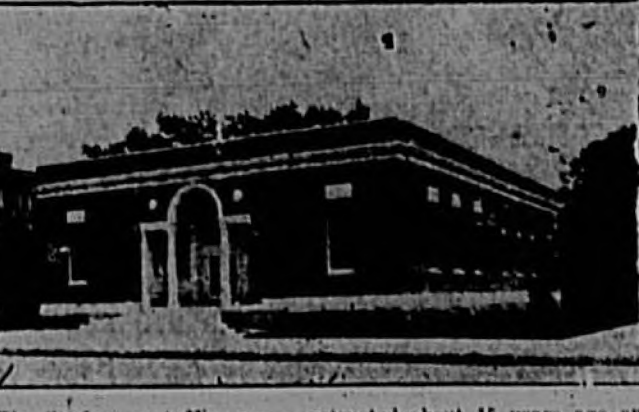
By Adelaide Macker  
Associated Press Staff Writer  
NEW YORK, Feb. 27—A court dependent solely upon the principle of "good will" to achieve its results has undertaken solution of the marital and other difficulties of baffled New Yorkers.

Founded by the community church on Park Avenue, it has no legal standing, no jurors and no lawyers. Its judges at the first session last night were a psychiatrist, a rabbi and a business man. Its purpose is to bring "good will" to bear upon matters which cause differences between citizens.

The judge, who serves with no pay, were Dr. Leslie Leubus, rabbi Sidney Goldstein and Edmund S. Hawley of the American Telephone and Telegraph Company.

The first complaint was a little woman who nervously tilted a wedding ring about her finger as she told how her husband left her seven years ago after constant quarrels over the holding of her hair and the kind of clothes she wore.

### FEDERAL BUILDING



The Sanford postoffice was constructed about 15 years ago and cost in the neighborhood of \$55,000. It is located in the heart of the business district.

"I want him to come back! And I won't let go until I can get well and get a job. I've been just sort of hanging on and trying to keep my house together as his chair and hinges would be there when he came back."

Other cases were called. There was Miss Y., who said that "her emine" who teased her, would tell police of a speakeasy in the home where she lived. She received her trial by the psychopathic ward of a hospital, where she had been pronounced suffering from senility.

### BOAT WORKS HAS BEST FACILITIES IN THIS SECTION

#### Brumley Concern Has Fine Inland Harbor Easily Accessible

The Sanford Boat Works, located on the St. John's River three miles east of Sanford and under the management of John L. Brumley is said to be the leading boat-storing, building, and repairing company in Central Florida.

This concern boasts of one of the finest inland harbors in the state, and is easily accessible from all Central Florida cities. A number of winter residents living in Orlando and other nearby cities which have on access to water routes, are known to use the Sanford Boat Works as a storage place for their yachts and boats of various sizes.

Business offering an excellent place to anchor craft for different periods of time the boat works maintain expert ship builders, who are said to be "well qualified to construct anything from a row boat to a sea-going yacht." Mr. Brumley left early this morning, but at all times his boat works would stand behind any boat built.

### LEGAL NOTICES

IN THE CIRCUIT COURT, SEMINOLE COUNTY, FLORIDA, IN CONJUNCTION WITH COMPANY, INCORPORATED, COMPLAINT.

EDWARD E. BLANTON, et al., Defendants.

There are six well known large truck and fruit shipping and packing houses operating in Seminole County. There are also a number of seasonal buyers who operate regularly in the district with offices at Sanford.

The world's largest initial being plant for fruits and vegetables is located here and combined with the modern vegetable washing and precooling plants located at Sanford and Oviedo makes possible the best and most efficient system of preparing truck crops for market and shipping.

Crates used in the shipping of the 14,000,000 vegetable crop are manufactured in two veneer mills located in the farming centers.

Free agricultural educational service is available to farmers of Seminole County through the Department of Vocational Agriculture, Seminole High School located at Sanford. This department offers free evening courses in general farm problems and in such special enterprises as poultry production. This department holds the highest rating of any vocational agricultural department in the State of Florida.

The County School Demonstration Farm which is directed by the agricultural department serves as a means of checking new ideas in agriculture and as a means of educational demonstration.

As a bond between the farmers of the county, the Seminole Agricultural Club, an organization of more than 150 farmers, holds monthly meetings for the purpose of discussing farm problems and holding an educational program.

The Poultrymen of this county enjoy regular monthly meetings of the Seminole Poultry Club. This club has a membership of about 25 active poultry producers. Monthly meetings are used for educational programs which include a regular round-table discussion of poultry problems.

The Seminole County Agricultural Advisory Board acts in an advisory capacity to the County Agricultural Department. This board consists of seven practical farmers representing the various sections of the county and the agricultural industries and meets from time to time as the need arises.

Celery markets, spruce, rubber boots, reborn, underwear, etc. also have come here.

Hill Hdw. Co.

UNIFORMLY THE BEST

## In all the country no other selling service affords to growers a distribution similarly widespread

# American Fruit Growers, Inc.

Sanford, Florida

DEPENDABLE AFG QUALITY

# SANFORD BOAT WORKS

On The St. Johns River

CELERY AVE. SANFORD PHONE 3904

## BOAT BUILDING REPAIRS DRY-DOCKS STORAGE PAINTING

Yachtsmen and operators of pleasure craft of all kind will find our service unusually broad in its scope and perfect in efficient operation.

We invite your inspection of our works and solicit your patronage on the basis of the best of work and service at the most reasonable prices.

DeLand **DREKA'S** Florida

Since 1878

One of Florida's Leading Department Stores.

### The Inside Fashion Story of the Spring Mode

Smartness is not merely a matter of being perfectly groomed. It requires accessories like these for individuality.

Newest ideas in silhouettes—newest fabrics—newest details—are featured in these latest arrivals in our dress department.

New Millinery

Handbags

Scarfs

Gloves

Shoes

and Hose

\$1675

to

\$2950

Ask to see the New Spring Styles in Queen Quality Shoes Attractively priced From 6.00 to 10.00

All the chic and becomingness of the 1938 mode in its most wearable form is reflected in these new Spring dresses of Crepe de Chine, Flat Crepe, Chiffon and Georgette.

## G.A. DREKA and CO.



### P. O. E. ROUNDS BUT SUCCESSFUL TERM OF SERVICE

#### Organization Includes Many Civic Leaders Among Its Members

By Rev. A. G. Peck  
Rounding out nearly 20 years of continuous fraternal, charitable, social and community welfare work in Sanford, the Sanford Lodge, 1241 of the Benevolent and Protective Order of Elks was given its charter by the National Order in 1911.

It has had a large and most representative membership from the start. Its members have been professional and business men of Sanford, its roster counts the builders and leaders of the City. The present Seminole County Court House was the original home.

The work accomplished and that which is being carried on, in accordance with the strict principles of the order. The order of Elks does not selfishly confine its charity or offer the helping hand to brother Elks only. As the National Order contributes millions of dollars annually to "outside" needed causes, which work otherwise would remain undone; the local lodge attends to all calls only limit is its financial ability. Especially at Thanksgiving and Christmas, the local Elks lend out the true Elk spirit of freedom. They welcome at all times opportunity of being of service to their fellow-men.

The local lodge achieves in education and stimulating a desire for education in the child. The Elks are making it possible for a local Sanford young man to attend the University of Georgia. This year will mark his graduation. At the same time, the local lodge has maintained annual prizes for competitive essays in the local junior and Senior High Schools. The prizes awarded at commencement are two in each school—\$20.00 in gold and a gold medal; \$10 in gold and a silver medal.

The public and open exercises of the lodge are evidently appreciated by the large audiences attending "Mother's Day" Flag Day and the Memorial Sunday for "the Living Brothers" for living dead an Elks is never forgotten. At our last Memorial Day services held in the City Hall auditorium, Dean Coe of Southern College, Lakeland was the orator.

The local lodge now has its home and lodge and club room at 20 Oak Ave., where all visiting Elks as well as home members are always most welcome. Mr. Hugh Peters is our most genial host. The present officers of the lodge are: Rev. Father Peck, installed ruler and state chaplain; Joseph Ludwig, esteemed leading light; Dave Honick, esteemed night knight; Roy Harbin, esteemed lecturing knight; S. Runge, secretary; Rex Packard, treasurer; Hugh Watson, J. R. Stewart and Perry Weinberg, trustees; Edward Orellana, chaplain; Sherman Lloyd, equisitor; Ed Rourke, J. N. Robinson, Jr., inner guard.

### Film Polk Pay Final Tribute To Actress

LOS ANGELES, Feb. 28.—(AP)—A group of film assembled today to pay their final tribute to Mabel Normand, comedienne, who died in seven impersonations celebrated in the hearts of motion picture fans throughout the world. She died in a California, California Sanatorium Sunday of tuberculosis.

Law Cady, husband of Miss Normand, announced that honorary pallbearers, many of them prominent in the film industry, would include Sid Gramann, D. W. Griffith, Mack Sennet, Charles Chaplin, Douglas Fairbanks, Fort Sterling, Eugene Pallette, Sam Goldwyn, Arthur Goulet, Paul Bern and Federal Judge William J. James.

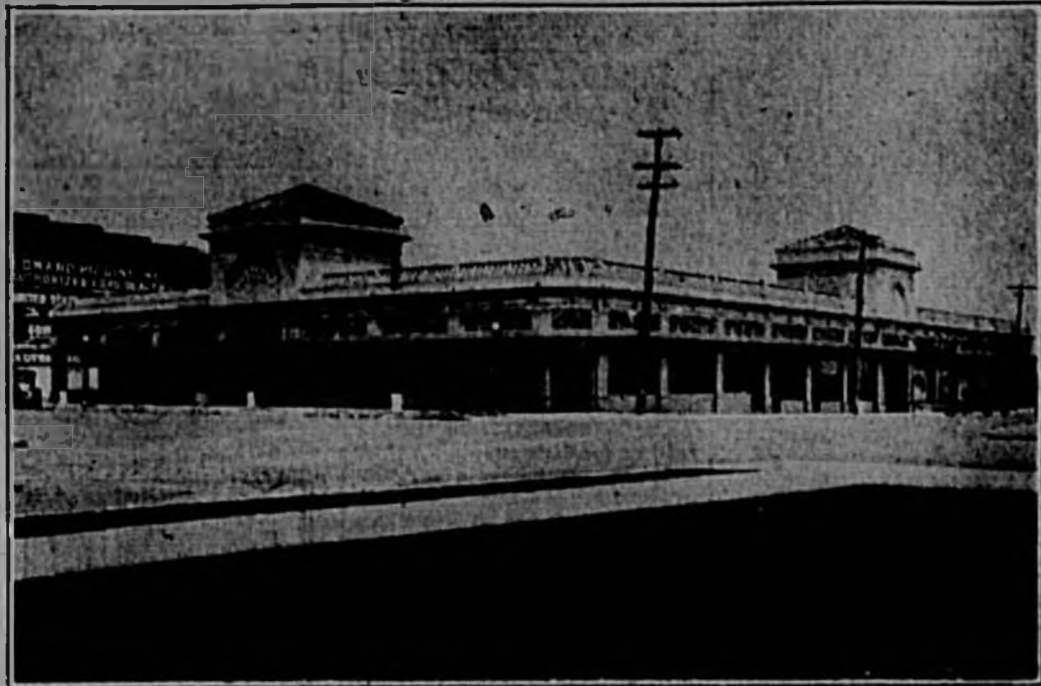
The body will be placed in a crypt in Calvary Cemetery after a Catholic funeral ceremony.

### Whiskey Still Found Inside Steam Shovel

LOS ANGELES, Feb. 28.—(AP)—A steam shovel, it appears, cannot "disappear" its public duty. It is a steam shovel, it is in an excavation here, it is tilted and puffed with great ado, attracting the attention of passersby just like countless other hard working steam shovels.

In this case, however, there was something wrong with it. A technician "expert steam shovel" watchers observed that: while there didn't seem to be anything wrong with its stance or its pulling, it didn't move much more than the average shovels with a good shifter.

### THE MCLANDER ARCADE



### THE RADIO TOWER TONIGHT'S PROGRAM

FRIDAY, FEB. 28  
(By The Associated Press)  
Programs in eastern standard time. All time is p. m. unless otherwise indicated. Wave-lengths in left of call letters. Microphone in right.  
513.3—WJAZ New York—650 (NBC Chain)  
6:30, Black and Gold Room dance orchestra; 7:45, The World in Music; 8:00, Family Goes Aboard; 8:30, The Town; 8:30, Bourdon concert of Debra and Cavalieri; 9:30, Elks' dance orchestra; 10:30, White Way; 10:45, Alpha and Omega; 11:30, Mystery House; 11:45, Vincent Lopez dance orchestra.

314.6—WABC New York—660 (CBS Chain)  
6:30, Radio City Orchestra; 7:30, Radio City Orchestra; 8:30, Fashion Stars orchestra; 9:30, Radio City Orchestra; 10:30, Ben Pollack's orchestra.  
394.5—WJZ New York—750 (NBC Chain)  
6:30, Smith Ballou's dance orchestra; Pauline Harwood; 7:30, Andy; 7:45, May; 8:00, Singing Bunch; 8:30, Stars of Melody; 9:30, Dickson; 10:30, Men About Town; 11:15, Emma Jones; 11:30, Billy Jones and Ernie Hart; 11:45, Orchestra and mixed chorus; 12:30, Quaker; 12:30, Smith Ballou's dance orchestra; 1:15, Skitch Hank dramatic chorus; 1:45, Shubert Music; 2:30, Andy; 2:30, Andy; 2:30, Andy.

422.3—WOL Newark—710  
6:30, Uncle Sam; 7:30, Concert orchestra; 8:30, Concert; 9:30, Vocal; 10:30, Vocal; 11:30, Vocal; 12:30, Vocal.  
422.3—WJZ Atlantic City—1100  
8:30, Dinner music; 9:30, Health Talk; 10:30, Music; 11:30, Music; 12:30, Music.  
305.9—KDKA Pittsburgh—940  
6:30, Little Symphony; 7:30, WJZ (16 m.); 8:30, WJZ (16 m.); 9:30, WJZ (16 m.); 10:30, WJZ (16 m.); 11:30, WJZ (16 m.); 12:30, WJZ (16 m.).

378.5—WJZ Schenectady—790  
6:30, Dinner music; 7:30, Singing; 8:30, Singing; 9:30, Singing; 10:30, Singing; 11:30, Singing; 12:30, Singing.  
428.3—WJZ Cincinnati—700  
6:30, Hour of music; 7:30, Educational; 8:30, Scrap Book; 9:30, Chopin; 10:30, A. M.; 11:30, WJZ; 12:30, WJZ.

405.2—WJZ Atlanta—710  
7:30, Hour from WJAZ; 8:30, Feature; 9:30, WJZ program; 10:30, WJZ; 11:30, WJZ; 12:30, WJZ.  
353.5—WHAS Louisville—820  
7:30, The Club; Studio concert; 8:30, WEAF; 9:30, Dance music; 10:30, Voice of the Bank; 11:30, WJZ; 12:30, WJZ.

413.—WMM Nashville—670  
7:30, Hour from WEAF; 8:30, WJZ; 9:30, WJZ; 10:30, WJZ; 11:30, WJZ; 12:30, WJZ.  
463.—WFLA Clearwater—420  
7:15, Organ recital; 7:45, Russell Kay, scrap book; 8:30, Weather service; 8:30, Old time fiddlers; 9:30, Studio program; 10:30, Feature program; 11:30.

### Young Men's Club Found To Furnish Clean Amusements

Organized in the fall of 1929, the "Savage Qui Penit" today is said to be one of the leading young men's club of Sanford. This body, composed of a group of the older members of the high school and also a number of Sanford alumni, was founded for the purpose of "furnishing clean, modern, and amusing entertainment for Sanford's younger group," according to Robert Mason, active member of the club. Mr. Mason stressed the fact that the club, of which he is a member, is "different from most organizations" in that it does not charge to members, no regular meeting times, and no officers. He said that, to some extent, the younger men desire a change and not the regular routine, which are sometimes part of the majority of organized bodies.

"For entertainment, and entertainment only" is the real purpose of the "Savage Qui Penit," Mr. Mason declared recently, saying that already the group has sponsored several dances, women's parties, and other such modern entertainments.

### Helping The Child

Jane began crying and her mother in an exasperated tone exclaimed, "toothache again?" After applying toothache drops she turned to her guest and said, "I don't know what I'll ever do with Jane! Nearly every evening she has a toothache, and the poor child hardly ever can do her work."

The mother could not be persuaded to take Jane to a dentist because she could "see no sense in spending money on baby teeth." She is one of many mothers who do not realize the dangers resulting from neglect of the temporary teeth. Not that they know that neglected teeth are often the cause of the child's failure in school.

In school children are taught that the teeth must receive proper care, but the large majority will do nothing about it unless there is some cooperation with the school.

It has been estimated that eight out of every ten school children have defective teeth. This is a serious condition and it seems most necessary to educate parents that care of the teeth is a very essential part of the home hygienic training.

Many mothers insist upon the teeth being brushed twice a day but they never inspect the teeth until the child complains of a toothache and by then damage has done it is too late to save that six year molar, which set so often mistaken by mothers as temporary teeth and the removal of the molars means that the keystone of the permanent set is gone and maturation is impaired.

Parents who know, understand the advantage of preventive dentistry, and no defect is too slight to receive prompt attention. The temporary teeth receive as much care as the permanent ones because they receive this means proper development of the jaws, which in turn, means so much in facial appearance. They know decayed teeth mean the child cannot chew food properly and this may lead to indigestion, and that a diseased tooth may affect the general health, so between the ages of two and fourteen their children are placed under the care of a good dentist, consequently they never have a toothache. After the temporary teeth have all been extracted and the permanent ones are forming properly the growing children

### HOTEL ARRIVALS

HOTEL VALDEZ  
The Rev. J. G. Crawford, Sanford; R. L. J. H. Hendley, Jacksonville; Mrs. J. P. Womble and Mrs. Wren McGinn, Atlanta, Ga.; Mr. and Mrs. Shafer, Bainbridge, Ga.; Mr. and Mrs. J. L. Olive, Oxford, Mich.; Mr. and Mrs. L. N. Fowler, Knoxville, Tenn.; Mr. and Mrs. W. J. Ellworth, Trenton, N. J.; Mr. and Mrs. C. T. Holmes, Flint, Mich.; C. H. Hale, Palatka; Mr. and Mrs. O. W. Olney, Athens, Ga.; W. N. Walton, Palatka; George W. Stout, Miami; W. A. Clayton, Melbourne; Mr. and Mrs. C. M. Searby, Palatka; Frank C. Smith, Savannah, Ga.; D. I. Gordon, Plant City; J. B. Chapman, Miami; H. B. Lanfret, Tampa; E. C. Harty, Ft. Pierce; L. B. Smith, Hartsville, Pa.; Harry A. Cook, Ft. Pierceburg; J. N. Richardson, Lamesa; H. V. S. Hurt, New Orleans, La.; John M. Kelley, Sanford; T. O. Bour, Jacksonville; A. W. Blair, Tampa; Mr. and Mrs. M. C. Burbaum, Chicago, Ill.; A. L. Hickman, Perry; Mr. H. B. Lyon, Homestead, Pa.; Mrs. H. D. Jesse, Philadelphia, Pa.; Mr. and Mrs. H. F. Newman, Jacksonville; B. R. Tracy, A. W. Holt, and J. D. Wright, Jacksonville; D. Savagen, Philadelphia; W. R. Lovett, Jacksonville; W. H. Hearn, Chicago, Ill.; C. H. Simpson, Jacksonville; Mr. and Mrs. J. C. Murphy, Philadelphia, Pa.; R. H. Wright, Sarasota; C. N. Harper, and Norman Hopkins, Palatka.

Also H. C. Gahey, Dayton, Ohio; W. E. White and J. N. Hickman, Jacksonville; H. B. Morrison, Orlando; Fredon Johnston, Jacksonville; Mr. and Mrs. Louis Harrington and daughter, Chicago, Ill.; Mr. and Mrs. A. I. Sisson, Chicago, Ill.; Ralph Rosen, and M. C. Burroughs, Dayton Beach; Guy S. Alvariz, Jacksonville; Dr. and Mrs. Shavitt, Brandon, Wis.; Mr. and Mrs. F. E. Gales, Wayne, Mich.; W. L. Wadley, Jacksonville; George D. Sterne, Savannah, Ga.; H. L. Avery, Fort Pierce; O. A. La Motte, Tampa; A. R. Baraban, Tampa; C. E. Thigpen, Palatka; Mr. and Mrs. L. C. Demaree, Jacksonville; W. W. Wiggins, Jacksonville; F. E. Crisp, Dalton, Tenn.; and Murray Milton, Dalton, Tenn.

HOTEL MONTEZUMA  
Mr. and Mrs. G. E. Wright and family, Savannah, N. Y.; Mrs. Harry McNeil, Yonka, N. Y.; Mrs. M. Vrooman, Glensville, N. Y.; A. E. Croker, Louisville; George W. Albright, Orlando, Fla.; M. Wilson, Tampa; W. P. Weaver, Jacksonville; T. D. Weather, Philadelphia, Pa.; Dr. and Mrs. Shavitt, Brandon, Wis.; Mr. and Mrs. Ray Fox, Redwood, N. D.; Mrs. Anne V. Fox, Redwood, N. D.; Mrs. Gladys Fox, Bridgeton, N. J.; Clarence Taylor, Alhambra, Pa.; H. J. Atsch, Erie, Pa.; Mr. and Mrs. H. I. Penta, Reading, Pa.; J. W. Feltz, Alhambra, Pa.; Mr. and Mrs. John Z. Adams, New York City; Charles P. Adams, New York City; Mrs. Gladys, Windsor, Ont.; Mrs. Frohman, and Mrs. B. H. Hart, Windsor, Ont.; Elsie Blum, Chicago; and Jennie I. Mindell, Chicago; and Al Reeves, Atlantic Coast Line Railroad.

continue to make regular visits to the dentist's office, for inspection. These parents know that proper foods are necessary to develop strong and healthy teeth. Leafy and starchy vegetables, especially the crisp celery, lettuce and raw cabbage, fruits like apples, which exercise the teeth, whole grain cereals, whole wheat bread, specially crusts, meat that requires chewing, eggs and milk are foods that develop good teeth. Foods should be restricted—figs, raisins, dates and honey, are good sources of sugar.

### Memorial Hospital Has Every Modern Medical Facility

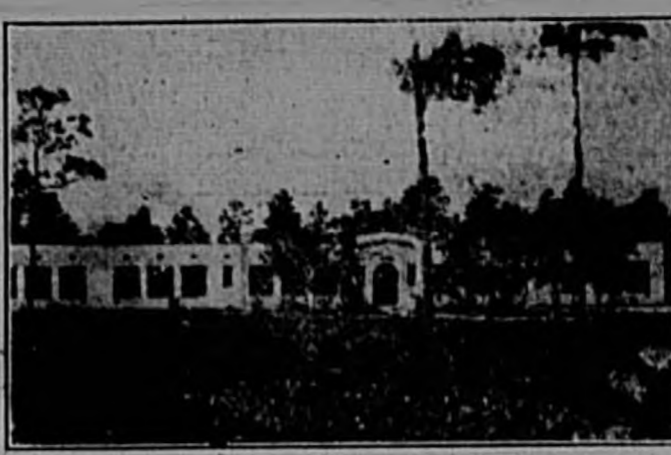
With every modern convenience, and operated economically, the Fernald-Loughton Memorial Hospital, located near the business section of Sanford yet far enough away to insure the quietness of a residential section, has been managed by the Fernald-Loughton Memorial Association, under the Presidency of T. W. Lawton since January of 1920.

The building and property were donated in 1920, by Mrs. Mabel L. Fernald, formerly of this city to be used as a hospital. Today the building, property and equipment is valued at approximately \$40,000.

During 1929 this institution cared for an average of 42 patients daily, who usually remained in the hospital for a period of seven days. The cost of operating this hospital during the past year were \$19,726.68, this placed a cost of \$4.45 per day on each patient.

Besides receiving funds from patients the institution is maintained from donations from Seminole County citizens and from annual contributions from local civic clubs, organizations, and business houses.

### LAKE MARY SCHOOL



This school, located at Lake Mary, is only one of the many fine educational institutions to be found in Seminole County.

### Carlton's Name No Longer With Firm

TAMPA, Fla., Feb. 28.—(AP)—Governor Doyle E. Carlton's name has been withdrawn from the law firm of Malloy, Reeves and Carlton, of which he was a member, it was learned today.

Though no formal announcement was made it was understood the name was removed by a decision of other members to avoid embarrassing the government through appearance of his name in connection with court activities. Governor Carlton had not been actually connected with the firm since 1927, it was learned today.

### Pilot Claims Shots Caused His Plane To Have Fatal Fall

WALSBERG, Colo., Feb. 28.—(AP)—The theory of a pilot that his plane was crippled by shots fired at it by cattle rustlers caused an investigation to lay into an airplane crash that brought death to a high school girl and serious injuries to another on a plane yesterday.

Miss Elsie Leche 16, a student at Centennial High School, Pueblo, was killed and Miss Abra Talbot 16, also a student at the school, seriously injured. Harry Miller, the pilot of the plane which was owned by the Alamosa Cattle Co., suffered slight injuries.

### "NO ROSE OF JUNE may bloom again"

(John Greenleaf Whittier—1807-1892)



### AVOID THAT FUTURE SHADOW\*

By refraining from over-indulgence, if you would maintain the modern figure of fashion.

Women who prize the modern figure with its subtle, seductive curves—men who would keep that trim, proper figure, eat healthfully but not immoderately. Banish excessiveness—eliminate abuses. Be moderate—be moderate in all things, even in smoking. When tempted to excess, when your eyes are bigger than your stomach, reach for a Lucky instead. Coming events cast their shadows before. Avoid that future shadow by avoiding over-indulgence if you would maintain the lithic, youthful, modern figure.

Lucky Strike, the finest Cigarette a man ever smoked, made of the finest tobacco—The Cream of the Crop—"IT'S TOASTED." Everyone knows that heat purifies and so "TOASTING" not only removes impurities but adds to the flavor and improves the taste.

"Coming events cast their shadows before"



### "It's toasted"

Your Throat Protection—against irritation—against cough.

\*Be Moderate!... Don't jeopardize the modern form by drastic diets, harmful reducing girdles, fake reducing tablets or other quick "anti-fat" remedies condemned by the Medical Professional Millions of dollars each year are wasted on these ridiculous and dangerous nostrums. Be Sensible! Be Moderate! We do not represent that smoking Lucky Strike Cigarettes will bring modern figures or cause the reduction of flesh. We do declare that when tempted to do yourself too well, if you will "Reach for a Lucky" instead, you will thus avoid over-indulgence in things that cause excess weight and, by avoiding over-indulgence, maintain a modern, graceful form.

LUNY IN—The Lucky Strike Dance Orchestra, every Saturday night, over a coast-to-coast net-work of the N. H. C.