

Sanford Herald

82nd Year, No. 56 — Sanford, Florida

NEWS DIGEST

Florida

Ethics panel overworked

TALLAHASSEE — Florida's new law requiring all lobbyists to register with the state is causing the state Ethics Commission nightmares. The Ethics Commission, already running behind in investigating reports of ethics violation, is being inundated with registration cards from state lobbyists.

See Page 2A

Sports

Hounds, Pats top swimmers

ORLANDO — Lyman High School's swimmers who didn't win their races, but placed, played a big role in the swim team's convincing win over Lake Mary's boys at the Seminole Athletic Conference swim meet over the weekend.

The Rams took five first places compared to the Greyhounds' four, but Lyman's depth of swimmers who placed won the meet for them

See Page 1B

Jackpot grows to \$12 million

TALLAHASSEE — Florida's Lotto jackpot doubled to an estimated \$12 million Sunday after players failed to pick all six winning numbers in the weekly drawing, lottery officials said.

Although no single player chose all six numbers drawn Saturday, nearly 271,000 players won something by correctly guessing three, four or five of the numbers. The winning numbers were 7, 13, 19, 28, 36 and 46.

Lottery officials said 382 players picked five of six numbers to win \$2,124 each. Another 15,881 players picked four of six to win \$74.50 each, while 254,511 players chose three of the six to win \$4.50 apiece.

Lottery officials estimate the size of the week's jackpot each Sunday, based on sales projections and long-term interest rates.

Suspected drug buyer killed

SANFORD — A Sanford police investigation continues today in the fatal shooting at 1:48 a.m. Sunday of a 26-year-old Osteen man.

Police Lt. Mike Rotundo said Darin Lee Howell was shot to death when an apparent drug deal went sour near the corner of Sanford Avenue and Sheppard Street.

Howell was in his car when he was shot in the heart, Rotundo said.

Police are withholding the name of a passenger in Howell's car who witnessed the slaying.

Howell body was found in the parking lot of The Barn nightclub, 1200 N. French Ave. No suspects have been identified in the case.

United Way at 54% of goal

The Heart of Florida United Way has reached 54 percent of its goal locally, Seminole area director Jeanne Daly said today.

Seminole County has raised \$221,805; tri-county results are at \$6,183,000 or 65 percent of the goal Daly said.

Sanford Mayor Betty Smith has joined the leadership club, and has pledged \$1,000.

"It's so exciting because she's the first public official to join. We're hoping she'll be a real leader," Daly said.

Other major contributors include: Systems, a Maitland company which contributed \$4,868; Sam's Wholesale Club, Casselberry, \$3,610; Jordan Marsh, \$7,400; and the Seminole County commissioners who contributed \$5,400.

The next meeting will be held Wednesday, Nov. 8, at The Salvation Army in Sanford.

"We're looking to be at 85 percent of our goal," Daly said.

Lake Mary City Hall open 'til 5

LAKE MARY — Today is the first day city hall will remain open until 5 p.m. City hall is located within the Shoppes At Lake Mary. Hours are now from 8:30 a.m. to 5 p.m., one-half hour longer than usual.

From staff and wire reports

| | |
|-------------------|-------------------|
| Bridges.....28 | Horoscope.....28 |
| Classified.....28 | Notes.....28 |
| Comics.....28 | People.....28 |
| Crossword.....28 | Police.....28 |
| Dear Abby.....28 | Sports.....28 |
| Deaths.....28 | Television.....28 |
| Editorial.....28 | Weather.....28 |
| Florida.....28 | World.....28 |

Partly cloudy today



Partly cloudy this afternoon with a high of 80 and west winds at 15 mph. Fair tonight with a chance of fog toward morning. Sunny tomorrow with a high in the low 80s.



Many of the extras for a scene from a Valencia Community College film, shot outside The Ritz

theater in downtown Sanford Sunday night, were recruited from the Half Shell Pyster Bar next door.

The Ritz' heyday returns for a night

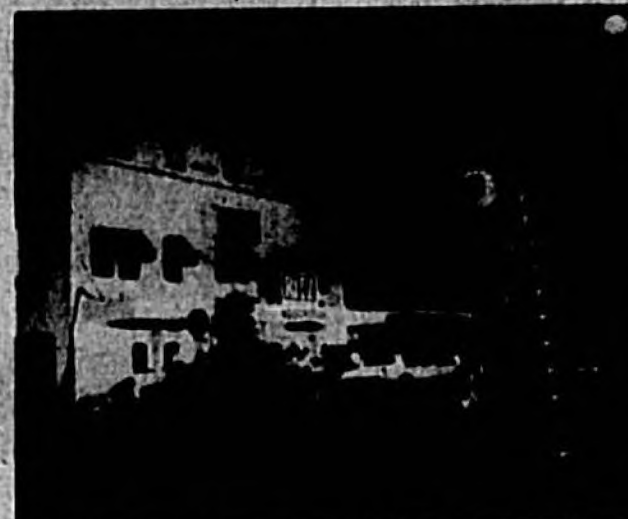
By LAURA L. SULLIVAN
Herald staff writer

SANFORD — Jim Dunn stood outside The Ritz theater last night in a tuxedo, remembering the days when fifteen cents bought admission to one of the liveliest spots in Sanford.

As a local extra playing a chauffeur in the film "Sealed With a Kiss," Dunn shared the nostalgia of the central character who rode in the back seat of his limousine.

"I used to come here as a kid, so to see this is great," Dunn said about improvements made to the theater's facade for the filming last night.

See Ritz, Page 5A



Floodlights illuminate the scene.

Voters don't support higher taxes for welfare programs

United Press International

MIAMI — A majority of Florida residents are unwilling to pay higher taxes to support programs for the poor, according to a poll conducted by Florida International University.

Fifty percent of the voting public would either keep spending on social programs at the current level or impose cuts. Of that fifty percent, nine percent strongly supported spending cuts, while 41 percent favored the

present level of funding for poverty programs.

Another 45 percent of those responding to the FIU poll were in favor of increased allocations for social programs, but only about half of those were willing to pay higher taxes to provide the funding.

Those who favored increased spending without increased taxation said money should be diverted from other programs to meet the needs of the poor.

"There's not a large constituency for further decima-

See Taxes, page 5A

Voter apathy concerns officials

United Press International

ZEPHYRHILLS — Concern over low voter turnout and the public's cynicism about the ethics of politicians are providing an impetus for needed change, but reform won't be easy, several lawmakers say.

"I think we are in a climate when you are going to see substantial change in how this process is run," state Rep. Norman Ostrau, D-Plantation, told county election supervisors last week.

But Ostrau, who is chairman of the House Ethics and Elections Committee, and his Senate counterpart, Tom Brown, D-Port Orange, said reform won't come easily.

"Legislators prefer the devil they know to the one they don't," Brown said.

Concern over voter apathy and cynicism prompted Secretary of State Jim Smith to propose a number of changes aimed at boosting voter turnout and confidence in elected officials.

In the 1988 presidential elections, voter turnout in Florida ranked 44th in the nation, Smith said. Fewer than half of the state's registered voters and only about one-fourth of all eligible voters bothered to go the polls.

Party primaries typically draw fewer than 20 percent of the electorate.

"And when we have that kind of participation, it should sound some alarms," Smith said.

See Apathy, page 5A

County leaders emerge

By J. MARK BARNFIELD
Herald staff writer

SANFORD — Tony VanDerworp, director of the Seminole County planning department, and Public Works director Larry Sellers today were named acting deputy managers of the county as acting County Manager Bob McMillan begins to rebuild county government's staff leadership.

The formal appointments this morning follow the announcement that the director of one of the county's most critical departments, the Office of Management and Budget had resigned along with one of her chief aides. No appointment to replace Penny Fleming, OMB director, has been confirmed.

County Attorney McMillan, who became acting county manager Friday at 5:01 p.m., said Friday VanDerworp, 37, had agreed to take over the responsibilities of former Deputy County Manager Jim Bible.

This morning, McMillan said he asked Sellers to assume Beamer's responsibilities until a new deputy could be hired. Both men accepted the appointments, McMillan said. Bible and fellow deputy manager Montye Beamer resigned last Tuesday following the announcement of the resignation of County Manager Ken Hooper.

Bible oversaw all county development departments, including the Building, Land Management and Environmental Services Departments. Beamer was the county's chief officer over the administrative.

See County, Page 5A

Supervisors waiting for new boss

By J. MARK BARNFIELD
Herald staff writer

SANFORD — Although most of Seminole County's 15 department directors were surprised by last Tuesday's resignations of the county's top three officials, including County Manager Ken Hooper, many say they'll wait and see what role a new county manager will require of them before considering their own resignation.

No other department directors are expected to leave following the resignation of Penny Fleming, director of the Office of Management and Budget (OMB), Friday. Other department heads said they planned to remain with the county to see what happens next.

"We are really sorry to see those three go," said Herb Hardin, director of the county Land Management Department.

See Supervisors, Page 5A

TOUR OF HISTORIC HOMES

Welch's Queen Anne-style home built in 1894

By LAURA L. SULLIVAN
Herald staff writer

SANFORD — Cathryn and Hal Welch's first home is a 95-year-old Queen Anne structure in Sanford's downtown residential district.

The Welches bought the pale-yellow house at 801 Park Ave. in April after much restoration of the home had been completed. The couple believes the house has been renovated twice since 1978, Cathryn Welch said.

The Welch home is a Free Style Classic version of the Queen Anne style, with a palladian window, classical columns, asymmetric shape, textured shingles and bay windows.

The home was built by T.J. Miller in 1894. The Welches had thought the home may have been built in 1905, but when replacing dry wall this week they found piping for gas lights, Cathryn Welch said. The land was first wired for electricity in the late 1890s she said.

The Welches have sanded pine flooring on the second story, replaced oak flooring in the first-floor living area and have repainted the home's interior since they moved in. The couple also plans to place a pantry in the kitchen on the spot where neighbors say one once stood.

The Welches have purchased a bannister originally from the old Flagler Hotel in St. Augustine for stairs in the front foyer, Cathryn

See House, Page 5A



Catherine and Hal Welch's home faces Park on Park.

Beware of the creatures
that come out with the moon.
Ghosts and goblins and
witches on brooms!!

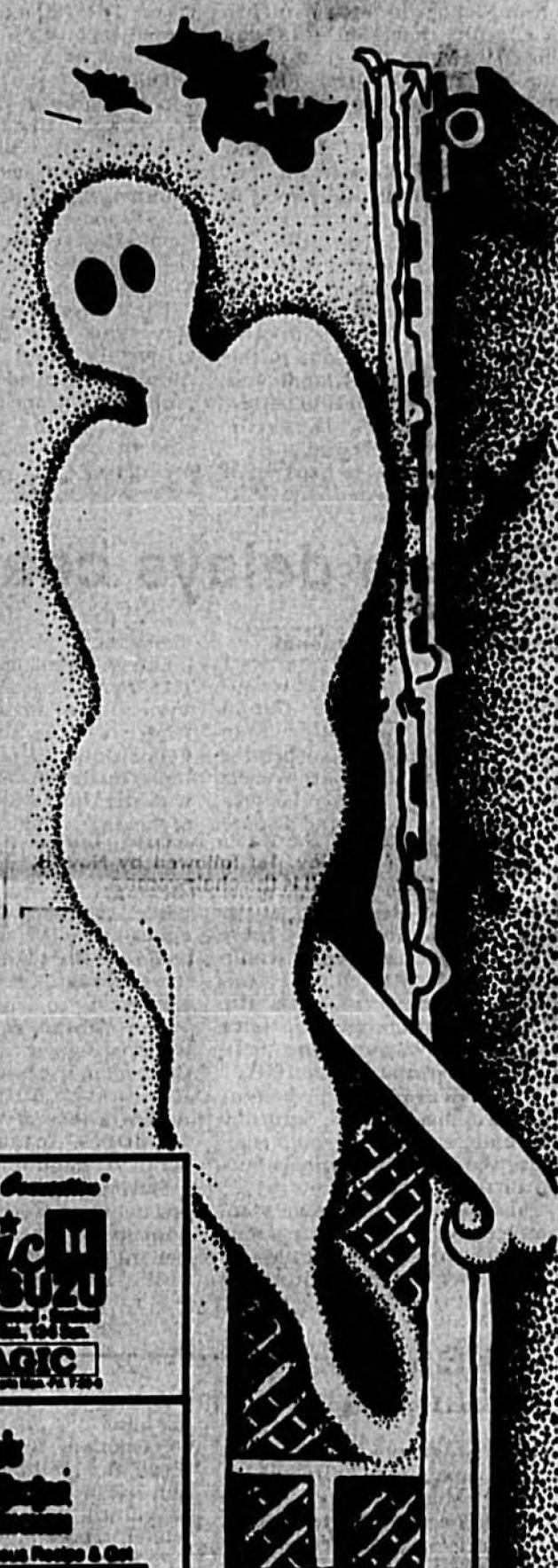
They're scary and frightful
with their screams and boos!
Be careful - don't let them
sneak up on you!

For this happens only
but once each year,
when the day comes to an end
and the night draws near!

Have fun and be careful
for the time is right,
it's October 31...
HALLOWEEN NIGHT!!!

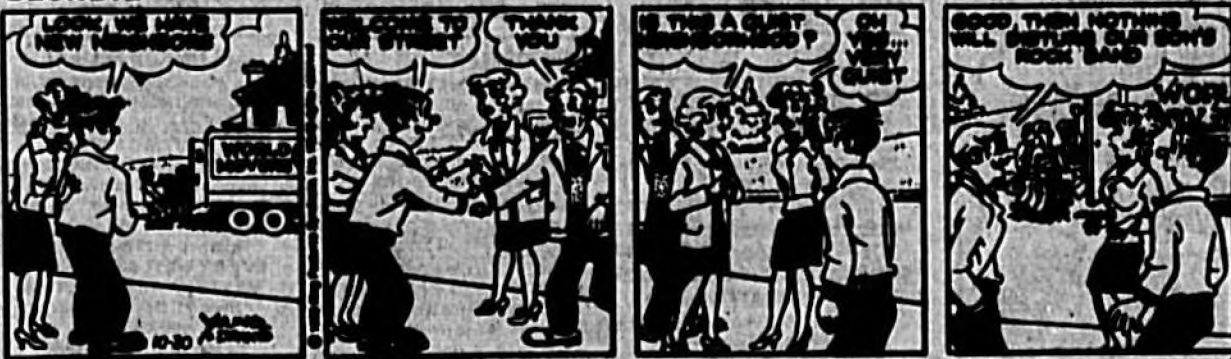
Halloween Safety Tips

1. Try to Trick or Treat when it's still light outside.
2. Children should wear their masks on top of the head when walking and pull them over the face when they reach the door.
3. Carry a flashlight, so you can see and be seen easily.
4. Pick up ladders, tools, playthings and other objects from the yard so children won't trip.
5. Give your children a meal or snack before they go out and emphasize that no treats should be eaten before they get home.
6. Discard commercially-produced candy if the wrapper is loose or the seal has been broken.



| | | | |
|---|--|---|---|
| <p>SANFORD DRY CLEANERS, INC. "Sanford & Semholz's Choice" COMPLETE UNIFORM & LINEN RENTAL SERVICE</p> <p>115 Palmetto Ave., Sanford, Fla. 32756</p> | <p>Let F.P.L. Pay To Insulate Your Home SPEARS INSULATION Insulation Saves You \$\$\$ Know What I Mean, Vern? Vern "Jr" Spears (407) 321-7428</p> | <p>Hillhaven Healthcare Center "Caring is Our Business" 930 McDevilla Avenue Sanford, Florida 32771 (407) 322-8366 A Subsidiary of National Medical Enterprises, Inc.</p> | <p>"Palmetto's Magic Carpet" Magic Carpet 323-MAGIC Advanced Carpet Services & Floor Care, Inc.</p> |
| <p>TRU DIMENSIONS PRINTING 10000 W. LINDSEY 322-5555</p> | <p>Allstate "Call us and compare" AUTO • HOME • LIFE GENERAL OF INSURANCE COMPANY 888-3377 CORPORATE OFFICE: 1000 W. W. BERRY BLVD. SANFORD, FLORIDA 32771</p> | <p>GRIGORY LUMBER 322-0500 1000 W. W. BERRY BLVD. SANFORD, FLORIDA 32771</p> | <p>Lock COUNTRY CARRIAGES Present This Ad To Receive 10% Off 322-5555</p> |
| <p>Shirley & Williamson Insurance, Inc. • Insurance • Bonds 222 W. First St., Sanford, FL 32771 322-8975</p> | <p>AUTO GLASS & SEAT COVER CO. SERVING SANFORD SINCE 1950 322-2042</p> | <p>A & B Roofing SHINGLES • SHAKES FLYING DUTCHMAN ROOFING • 322-8000</p> | <p>PHONE 322-8888 B & L AIR-CONDITIONING AND HEATING SERVICE, INC. Serving Sanford & Orange Counties LARRY DONALDSON 401 S. CRYSTAL LAKE AVE. SANFORD, FLORIDA 32708</p> |
| <p>REMODELING & CURTAINS DAILY HOURS B.E. LINK CONSTRUCTION FINANCING AVAILABLE 322-7029 BIRMINGHAM • SANFORD • WINTER WE HANDLE THE WHOLE SALL OF HOME REPAIRS REMODELING (FL. LIC. #C23887)</p> | <p>SANFORD HEATING AND AIR CONDITIONING L.C. #238810004 322-8888 322 S. SANFORD AVE. SANFORD</p> | <p>STEPHEN R. BALDAUFF FUNERAL HOME "FBI MASTER TRUST" 322-775-2101 Sanford, Fla.</p> | <p>LONGWOOD POLICE DEPARTMENT Please Drive Safely On Halloween 322-8400 222 W. GARDEN ST., LONGWOOD, FLORIDA</p> |
| <p>BLAIR AGENCY "IT MAKES SENSE" Auto • Home • Life • Health Sanford • Imperial Risk Business • Group • Worker's Comp Financial Planning • Annuities 322-7710 SANFORD • DELTONA 2016 S. Oak Ave. Sanford, FL 32756 322-3848 322-3234 HEATHERWILL MARY LONGLEAF - L.L. MARY 222 W. 17th St. Sanford, FL 32756</p> | <p>SANFORD LANDING APARTMENTS 1222 W. First Street • Sanford, Fla. 32756 First Street Stationers 122 E. First St., Sanford 322-8422 Office Supplies, Printers, Computer Supplies M-F 9 a.m. - 5:30 p.m. S 9 a.m. - 2:00 p.m. Free Delivery "Keep It Safe Also"</p> | <p>BETTYE SMITH Mayor Of Sanford "A Happy Halloween To One & All!" Ken Rummel Sanford County's Chevrolet Dealership FULL CHEVROLET & GEO SALES, BODY & SERVICE DEPARTMENTS 322-1111</p> | <p>Peace Of Mind Banking Sanford Office 322-8888 Deltona Office 322-8888 THE MCKIBBIN AGENCY INSURANCE 322-8331</p> |

BLONDIE



by Chic Young

BETLE BAILEY



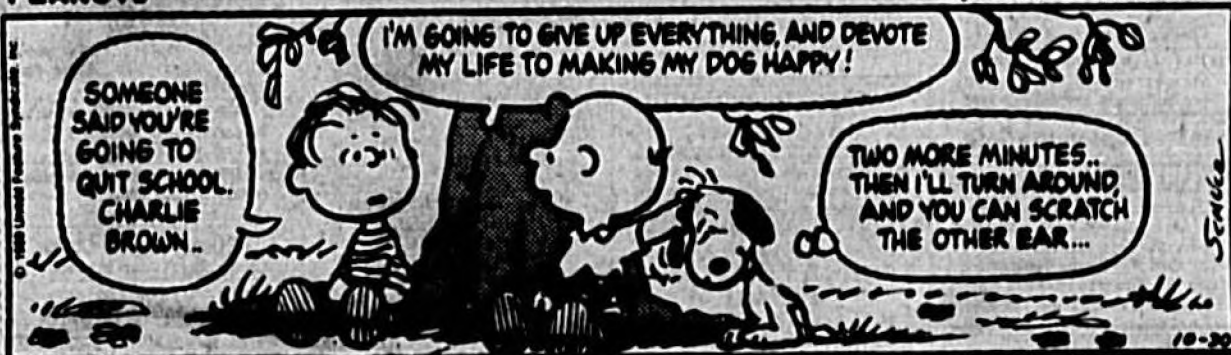
by Mort Walker

THE BORN LOSER



by Art Scaenon

PEANUTS



by Charles M. Schulz

BEK & MEK



by Howie Schneider

TUMBLEWEEDS



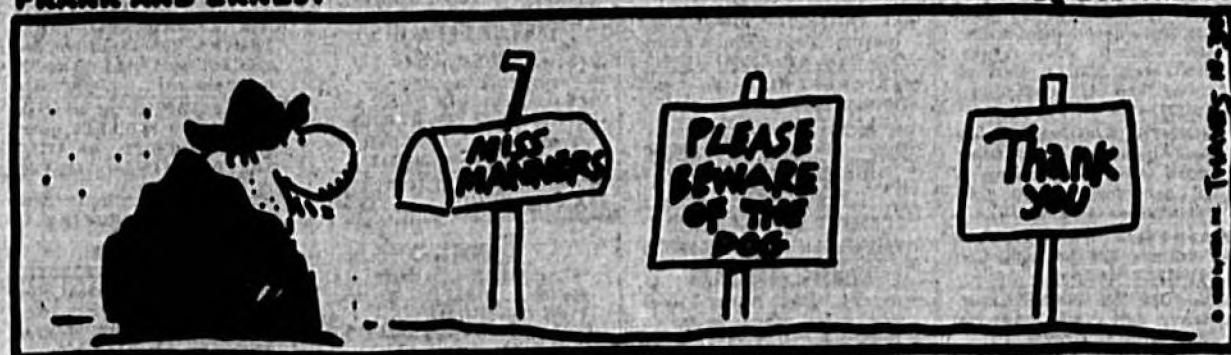
by T.K. Ryan

ARLO AND JANIS



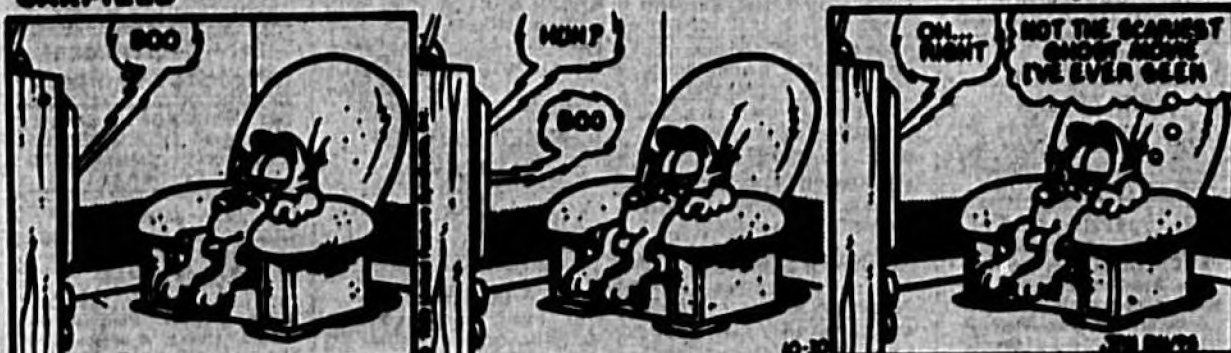
by Jimmy Johnson

FRANK AND ERNEST



by Bob Thaves

GARFIELD



by Jim Davis

BUGS BUNNY



by Warner Brothers

Urologist should diagnose impotence



PETER GOTT, M.D.

DEAR DR. GOTT: Our 39-year-old son is impotent. I had the mumps while I was five months pregnant with him. Is this the cause of his impotence?

DEAR READER: No. In order for your mumps to have affected your son, the virus would have had to infect his testicles before birth, a highly unlikely possibility. Also, immature testicles seem to be relatively resistant to the mumps virus. Further, prenatal mumps would have caused your son to have problems starting from puberty. Mumps can cause infertility and impotence when the disease affects mature testicles, leading to acute inflammation and scar tissue.

Your son's impotence is more likely the consequence of something affecting him in adulthood, such as diabetes, medication effect, psychological factors or alcohol/drug abuse. He should see a physician, preferably a urologist, for an examination and testing. To give you more information, I am sending you a free copy of my Health Report "Impotence." Other readers who would like a copy should send \$1.25 with their name and address to P.O. Box 91389, Cleveland, OH 44101-3389. Be sure to mention the title.

DEAR DR. GOTT: I'm an amputee with extreme phantom pain. I've been taking Elavil. Can you tell me what this drug does, and how it might affect my body?

DEAR READER: Elavil (amitriptyline) is an antidepressant with sedative effects. It potentiates alcohol and should be used with caution in patients with glaucoma, epilepsy and enlargement of the prostate gland. Although the precise mechanism of action is unknown, the drug appears to block the absorption of serotonin, a chemical messenger in the brain.

Major side effects include heart attack, heart block, rapid pulse, low blood pressure, seizures,

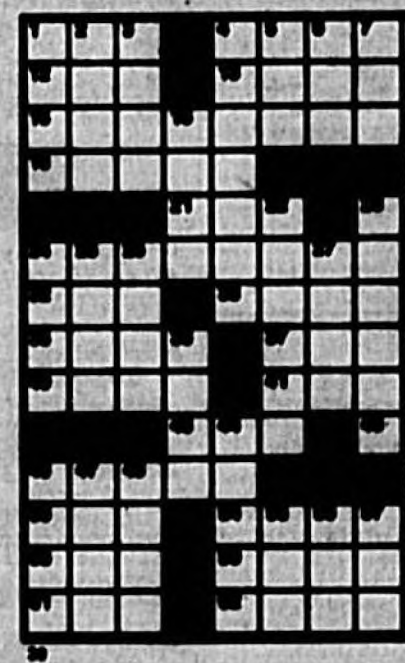
disordered thinking, headache, rash and hair loss. Despite its potential side effects, the drug is widely used and, for most patients, poses no problems under appropriate monitoring.

If your phantom pain is chronic and intractable, I suggest you seek a referral to a pain clinic.

- ACROSS**
- 1 Kiss - lung
 - 2 Chap
 - 3 Sessame plant
 - 12 Actress
 - 13 Farrow's stand
 - 14 Hoop
 - 15 Of surface adhesion
 - 17 In the past
 - 18 Recurve
 - 19 - Wales
 - 21 Over (post.)
 - 22 Crotch
 - 24 Posture
 - 25 Stone
 - 26 Course
 - 28 Put into practice
 - 33 Kinship
 - 34 High school dance
 - 35 Work like
- DOWN**
- 1 Government agent
 - 2 Fish
 - 3 Retraction
 - 4 Mad



- Answer to Previous Puzzle**
- 10 Fragrance
 - 11 Address See
 - 12 Actor
 - 13 Farrow's stand
 - 14 Hoop
 - 15 Of surface adhesion
 - 17 In the past
 - 18 Recurve
 - 19 - Wales
 - 21 Over (post.)
 - 22 Crotch
 - 24 Posture
 - 25 Stone
 - 26 Course
 - 28 Put into practice
 - 33 Kinship
 - 34 High school dance
 - 35 Work like



By James Jacoby
Does a reverse bid by opener on 13 high-card points seem overdone? Perhaps, but South rightly upgraded his cards when North made a two-diamond response to the one-heart opening. Since North had nothing extra, he was quick to sign off at game. The bidding was fine, but declarer floundered in the play. South ruffed the second club. At first glance, it seems that he could lose two diamond tricks and still make his contract by shedding losing spades on the long diamond winners. So he played ace of hearts and a heart to the king. When East showed out, the situation changed. With West holding length in trumps, declarer should now play East for the key diamond honors

(passing the nine of diamonds and continuing the suit would still succeed), but South played instead to his diamond king and then back. So the defenders took two diamond tricks, and the long trump in the West hand became the setting trick later. Declarer should recognize that he needs the trumps in dummy for ruffing purposes. After ruffing the second club, he should lead a diamond to dummy's queen. East wins and plays another club. Declarer ruffs and can now make the contract without pain by playing K-A of spades, ruffing a spade and returning to his hand with the diamond king to ruff another spade. West winds up ruffing his partner's jack of diamonds at the finish, and declarer makes 10 tricks.

NORTH N-30-30
 ♠ K 7
 ♥ K J 3
 ♦ Q 8 5 3
 ♣ J 8 2

WEST ♠ 9 3
 ♥ 8 5 4
 ♦ 7 2
 ♣ A K 6 5

EAST ♠ J 6 4
 ♥ 9
 ♦ A J 8
 ♣ Q 8 7 6 3

SOUTH ♠ A 8 5 3
 ♥ A Q M 7 3
 ♦ K M 4
 ♣ 4

Vulnerable: North-South
 Dealer: South

| | | | |
|-------|------|-------|----------|
| South | West | North | East |
| 10 | Pass | 10 | Pass |
| 10 | Pass | 10 | Pass |
| 10 | Pass | 10 | All pass |

Opening lead: ♠ K

By Bernice Bode Oost
YOUR BIRTHDAY
Oct. 31, 1989

An extremely active cycle could be in the offing for you in the year ahead. Lots of travel, new interests and new acquaintances will keep you hoping in enjoyable ways.

SCORPIO (Oct. 24-Nov. 22) Assume the principal role in any joint venture in which you're involved today, because you'll be rather ingenious as the leader, especially if participants are disorganized. Know where to look for romance and you'll find it. The Astro-Graph Matchmaker instantly reveals which signs are romantically perfect for you. Mail 82 to Matchmaker, c/o this newspaper, P.O. Box 91428, Cleveland, OH 44101-3428.

SAGITTARIUS (Nov. 23-Dec. 21) You are likely to be luckier in commercial arrangements today than you will be in those which are of a purely social nature. Make hay today and play tomorrow.

CAPRICORN (Dec. 22-Jan. 19) If your club or organization pegs you to be part of a committee or a special assignment today, don't try to dodge it. It could turn out to be something

uniquely advantageous.

AQUARIUS (Jan. 20-Feb. 19) Your chances for success will be greatly enhanced today if you use both your intellect and your intuition. Each will constructively supplement the other.

PISCES (Feb. 20-March 20) There's a possibility that something will develop today similar to a situation that worked out very well for you previously. The same procedures you used then will serve your best interests now.

ARIES (March 21-April 19) Sorting out complications for others is your strong suit today. Regardless of whether the problems are financial, social or esthetic, you'll come up with the right answers.

TAURUS (April 20-May 20) Persons with whom you'll be associating today could provide you with worthwhile ideas and information. Be a good listener, because what you are told can be ultimately used to your advantage.

GEMINI (May 21-June 20) This is a good day for you to experiment with the new or

different. If you've been considering some type of unique project, it's time to begin to test the waters.

CANCER (June 21-July 22) Progressive allies for a program you want to initiate can be found in the ranks of persons you know socially. Look for aid in that area rather than among your commercial contacts.

LEO (July 23-Aug. 22) If you don't rock the boat today things could have a way of working out to your ultimate advantage. Let events run their natural courses instead of making alterations.

VIRGO (Aug. 23-Sept. 22) Do not be afraid of involvements today that have competitive elements. Challenges will have a stimulating effect on your intellect and this will give you an edge over others.

LIBRA (Sept. 23-Oct. 23) There's a possibility you could be the bird dog today who is able to sniff out good deals for others. This will enable you to serve as a middle man who brings two factions together for a profitable purpose.

(C)1989, NEWSPAPER ENTERPRISE ASSN.



by Leonard Starr